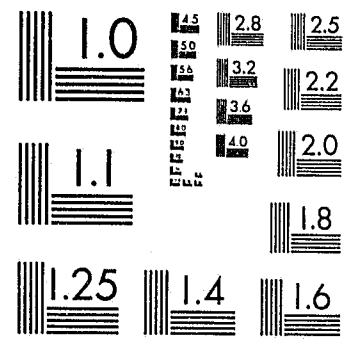


95788

National Criminal Justice Reference Service



This microfiche was produced from documents received for inclusion in the NCJRS data base. Since NCJRS cannot exercise control over the physical condition of the documents submitted, the individual frame quality will vary. The resolution chart on this frame may be used to evaluate the document quality.



MICROCOPY RESOLUTION TEST CHART
NATIONAL BUREAU OF STANDARDS-1963-A

Microfilming procedures used to create this fiche comply with the standards set forth in 41CFR 101-11.504.

Points of view or opinions stated in this document are those of the author(s) and do not represent the official position or policies of the U. S. Department of Justice.

National Institute of Justice
United States Department of Justice
Washington, D. C. 20531



State of Wisconsin \ DEPARTMENT OF HEALTH AND SOCIAL SERVICES

DIVISION OF CORRECTIONS
1 WEST WILSON STREET
P.O. BOX 7925
MADISON, WISCONSIN 53707

A PROFILE OF BBLACKS AND HISPANICS IN
WISCONSIN CORRECTIONAL INSTITUTIONS

U.S. Department of Justice
National Institute of Justice
This document has been reproduced exactly as received from the person or organization originating it. Points of view or opinions stated in this document are those of the authors and do not necessarily represent the official position or policies of the National Institute of Justice.
Permission to reproduce this copyrighted material has been granted by
Wisconsin Dept. of Corrections
to the National Criminal Justice Reference Service (NCJRS).
Further reproduction outside of the NCJRS system requires permission of the copyright owner.

Prepared by
Michael R. Moskoff
Office of Policy, Planning and Budget

July 1984

95788

3/25/85

DOCUMENT DIGEST

Department of Health
and Social Services

Document Title: A Profile of Blacks and Hispanics in
Wisconsin Correctional Institutions

Document Date: July 1984

This report provides demographic data on male and female Blacks and Hispanics admitted to Wisconsin correctional institutions as of June 30, 1983. While three years of statistics are presented, most of the discussion is centered on fiscal year 1983. In addition to traditional demographics, other descriptive data include custody ratings, needs assessments and disciplinary reports.

The profile of Blacks and Hispanics admitted to Wisconsin correctional institutions may be characterized as follows:

- 21-24 years of age
- Male
- Single
- Sentenced to 69 months
- Most Blacks were committed from Milwaukee
- Previously convicted of felonies
- A high proportion previously served time in correctional institutions
- In need of educational, vocational and clinical programs
- Assaultive
- Proportionately, more are in maximum security than other security levels
- Received most of the conduct reports issued in institutions

The report contains several recommendations addressing the profile that resulted. Further examination of certain issues is recommended to rectify perceived or real inequities. Among these is the sentencing practices of the courts in Wisconsin, especially Milwaukee. Second is the determination of security placements. Of need for additional discussion is minority participation in educational, vocational and clinical programs. Finally, the area of disciplinary reports issued requires further examination.

FOREWORD

The following pages represent major data collection and analysis efforts regarding Blacks and Hispanics in Wisconsin prisons. The information in this report should be of concern to all citizens. The data require careful evaluation; suggest the need for additional information; and require people in the criminal justice system to work together to solve the problems which are identified.

The report has several different implications. As to some information, such as the fact that Blacks receive longer sentences than Whites, additional information is necessary. Why is this so? Does it reflect racial discrimination or are there other explanations?

While the report provides much raw data, careful evaluation is necessary. For example, a substantial number of inmates, both Black and White, receive no visitors. Is this because the inmates are alienated from their families; because of the location of institutions; the visiting hours at institutions?

On the surface, the implications of this report are serious because of the disparities apparently based on race. While we need to get more information and better evaluate it and what we have, we also need to take action of various kinds.

For example, efforts are underway to develop more adequate programs and to get minority group members into them based on their needs. This is within our control.

Other matters are not within the control of the Division of Corrections. The Division does not sentence, nor is it responsible for the serious deficiencies in the educational background of offenders. Our responsibility is to share this information with judges and schools and to bring them together to try to deal more effectively with these issues. We will do this.

The objective of the Division of Corrections is the elimination of discrimination based on race or other improper factors in the Correctional system. We are working toward this end in a variety of ways.

Walter J. Dickey
Administrator

Table of Contents

| Section | Page |
|---|------|
| I. Introduction | 1 |
| II. Admissions to Adult Correctional Institutions | 1 |
| III. Custody Ratings and Needs Assessments | 4 |
| IV. Disciplinary Data | 6 |
| V. Other Issues | 7 |
| VI. Summary | 9 |
| VII. Conclusion | 10 |

Appendices

- A. Tables of Demographic Characteristics: Fiscal Years 1983, 1982, 1981
- B. Wisconsin Map by Counties and Regions
- C. Admission Codes
- D. Tables of Custody Ratings and Needs Assessments
- E. Tables of Disciplinary Data: 1983, 1982, 1981
- F. Tables of Releases: 1983, 1982, 1981

NCRS

NOV 16 1984

ACQUISITIONS

ACKNOWLEDGEMENTS

A descriptive study requires many hours of data collection, programming and analysis. This profile reflects substantial data which could not have been reported without the cooperation and assistance of Division of Corrections institution staff responsible for submitting case information. Their efforts have afforded us the ability to analyze the offender populations portrayed in this report.

Special recognition is given to Carl Sam of the Office of Information Management and Operations for providing the historical data needed for this analysis.

I. Introduction

A Profile of Blacks and Hispanics in Wisconsin Correctional Institutions presents a variety of characteristics by race* and ethnicity**. The population reviewed includes males and females admitted to adult institutions during fiscal years 1981, 1982 and 1983. Most tables present data for all three years, which are relatively similar (Appendix A); narrative description, for the most part, is limited to fiscal year 1983.

The category "Hispanics" includes Whites and Blacks who are of Hispanic origin; "Blacks" includes Blacks who are not of Hispanic origin; and "Whites" includes Whites who are not of Hispanic origin.

Information was derived from the Division of Corrections Adult Institution Information System, the Classification Project (sponsored by the National Institute of Corrections), and the Disciplinary Information System. The Adult Institution Information System is the major source of data for this report. The report profiles three general areas of interest:

1. Demographic characteristics; (e.g., age, sex, marital status)
2. Custody ratings and inmate needs assessments; and
3. Conduct reports.

It should be noted that tables are presented by column percentages, while some discussion (e.g., Section VI. Summary) is by row percentages. These were calculated separately.

II. Admissions to Adult Correctional Institutions

This section discusses traditional demographics (e.g., age, sex, marital status). It also presents information on sentencing and previous adult institutional and juvenile experiences. All tables (for fiscal years 1981, 1982 and 1983) are in Appendix A.

During fiscal year 1983, 2,555 individuals were admitted to Wisconsin correctional institutions. Of this population, 861 (34%) were Black; 147 (6%) were Hispanic.

A. Age

The most represented age group were those individuals 21-24 years old.

Approximately 28% of all inmates were 21-24 years of age.

* Race includes individuals of White, Black, Native American or Asian origins.

** Ethnicity includes individuals with an Hispanic background (i.e., Mexican, Puerto Rican, Cuban, Central or South American, or other Spanish culture or background regardless of race).

B. Sex

Most admissions were male.

Of 2,555 persons admitted, 94% were male; 6% were female. Of the males, 33% were Black; 6% were Hispanic; 61% were White. Among the women, 46% were Black; 6% were Hispanic; 48% were White.

C. Marital Status

Most inmates were single.

Most Blacks (75%) and Hispanics (67%) were single (Whites = 61%). Among those married, a higher proportion of Blacks (4%) were separated than Hispanics (3%) and Whites (3%). Blacks and Hispanics had lower divorce rates than Whites.

D. Term of Sentence

In fiscal year 1983 Blacks and Hispanics were sentenced to the institutions an average of twelve months longer than Whites (70 vs. 58 months). (See Table 4a, Appendix A and Table 11 for Types of Offenders.)

The difference in the average length of sentence between Blacks and Hispanics on the one hand and Whites on the other, appears to be compensated through discretionary parole release. On the average, Blacks are paroled with 41 months left to serve; Hispanics, 34 months; and Whites, 30 months. These data show Blacks and Hispanics served a lesser percentage of their sentences than Whites.

Terms of sentence appearing in Table 4 are in 24 month intervals. After 120 months the categories are "121 months to less than life" and "life." Table 4 shows that Whites are admitted more often (proportionately) than all Blacks with sentences in the two lowest categories; proportionately, Blacks were sentenced longer than Whites in the remaining categories except for life sentences; proportionately, Hispanics received longer sentences than Whites in the categories 25-48 months, 49-72 months, and 121 months to less than life.

E. Region of Commitment*

Most admissions from Milwaukee are Black.

More than one-third (942 or 38%) of all individuals admitted were from the Milwaukee region. Nearly two-thirds of those committed from Milwaukee were Black (63%). The Southern and Southeast regions committed the next highest number of people. Most of those were White. The Northern region committed the fewest number of individuals (171 or 7%). Again, most of those committed were White. The majority of Hispanics were committed from southern Wisconsin.

* For administrative purposes, DOC divides Wisconsin's 72 counties into five regions (see Appendix B for the counties in the respective regions).

F. Prior Penal Institution Experience

Most inmates have not been in prison before.

Nearly 48% of the Blacks, 66% of the Hispanics and 60% of the Whites had never served time in a penal institution prior to their present commitment. Of those who served time, 44% of the Blacks, 26% of the Hispanics, and 33% of the Whites served time in Wisconsin institutions.

G. Previous Felony Convictions

Most inmates have not been convicted of felonies.

Forty-six percent of Blacks, 60% of Hispanics and 51% of Whites admitted had no prior felony convictions. Approximately 25% of all groups had one prior felony conviction; 14% of the Blacks, 7% of the Hispanics and 11% of the Whites had two prior felony convictions. Overall, Blacks and Hispanics represented more than one-third (39%) of those who had previous felony convictions.

H. Highest Grade Completed

Based upon most recent reviews, 35% of the Blacks had completed high school or had a G.E.D. diploma as did 19% of the Hispanics and 49% of Whites. One inmate (Black) had a doctorate degree and four had masters degrees (3 Whites and one Hispanic).

I. Offender Status at Admission

In fiscal year 1983, there were 1,985 first admissions and 487 readmissions to the institutions. Of these 2,472, 143 (6%) were Hispanic; 850 (34%) were Black; 1,479 (60%) were White. For first admissions, 6% were Hispanic; 32% were Black; 62% were White. For readmissions, 4% were Hispanic, 46% were Black; 50% were White. (See Appendix A, Table 9 for more detailed data.)

J. Juvenile Institution Experience

Among the individuals who reported on this area, 327 Blacks (41%) had prior juvenile institution experience; 29 Hispanics (21%); 425 Whites (30%).

K. Type of Offender

More than one-half (56%) of all admissions were for property offenses. Blacks accounted for 31% of these offenders; Hispanics - 5%; Whites - 64%. Of the assaultive offenses, excluding sexual assaults and/or drug offenses, 287 (42%) involved Blacks; 7% involved Hispanics; and one-half (51%) involved Whites.

Most of the sexual assaults were committed by Whites (132 or 60%); Blacks accounted for 70 (32%); Hispanics accounted for 17 (8%). Whites accounted for the most drug offenders (69%); Blacks - 23%; and Hispanics - 8%.

III. Custody Ratings and Needs Assessments

In 1982, the Division of Corrections received a grant from the National Institute of Corrections to develop a classification model in two areas: Custody Ratings and Needs of Inmates. Assessment and Evaluation (A&E), HSS ch. 302 Wis. Admin. Code 1983, conducted at Dodge Correctional Institution or Program Review Committees (PRC), HSS 302.18-19 (at individual institutions) have sole responsibility for determining these ratings and making assessments about security status. Since this project is relatively new, the available data presented are for the resident population on June 30, 1983. Approximately 75% of the adult institution population, on June 30, 1983, had custody and need assessment ratings completed. (See Appendix D.)

A. Changes in Custody Ratings

The data presented here reflect the differences between the scored and final custody ratings. The scored custody ratings are conducted by social workers either for A&E at the Dodge Correctional Institution or for Program Review at individual institutions. The scored custody rating is derived using the adapted NIC classification forms. The scored custody rating can be overridden by the A&E or PRC staffing committees based on supportive evidence that the inmate does not belong in that particular scored custody. The A&E Committee may override the A&E scored custody ratings, and the PRC committee may override the PRC scored custody ratings. Therefore, the scored custody ratings (determined using the NIC forms) and the "final" custody ratings (determined by the staffing committees) can either be the same, be higher, or lower.

On June 30, 1983, there were 3,447 individuals given final custody ratings: 36% of the Blacks had maximum security classifications; 35% in medium and 27% in minimum. Of the Hispanics 39% were in maximum, 38% in medium, 19% in minimum; 28% of the Whites were in maximum, 34% in medium, 35% in minimum. (See Appendix D, Table 1B).

Of the 3,447 final custody ratings, Blacks accounted for 39%; 45% of the ratings relating to Blacks remained the same; 43% were changed upward, the majority going from either minimum to medium or medium to maximum security; 12% of the Blacks were moved down, mainly from medium out to minimum. Among the Hispanic population scored, 39% remained the same; 54% went up from minimum or medium to maximum; 7% were scored to lower classifications, mainly from medium and medium out to minimum. (Whites - 43% remained the same; 46% went up mainly from minimum to medium, and medium to maximum; 11% went down from medium, and medium out, to minimum.)

B. Needs Assessments

The same procedure (i.e., A&E and PRC) for identifying needs of inmates is applied to assess needs as that for establishing custody ratings. Ratings are according to five needs:

- Emotional and Mental Health
- Alcohol Abuse
- Drug Abuse
- Education
- Vocational

1. Emotional and Mental Health

Most inmates reflected appropriate emotional/mental health adjustment (81% of Blacks, 73% of Hispanics, 75% of Whites). However, a significant number had some problems (12% of Blacks, 19% of Hispanics and 18% of Whites). Several had severe problems (7% Blacks, 9% of Hispanics, 7% of Whites).

2. Alcohol Abuse

Most inmates showed no problem in this area (61% of Blacks, 50% of Hispanics, 59% of Whites). Fewer showed slight problems (22% Black, 24% Hispanic, 26% White) while more Hispanics (26%) and Whites (34%) reflected severe problems; 17% of Blacks showed severe Alcohol problems.

3. Drug Abuse

A substantial number of inmates were assessed as having drug problems (Blacks - 49%; Hispanic - 38%; Whites - 45%). More Blacks (22%) than Hispanics (19%) and Whites (16%) had severe drug problems.

4. Educational Needs

Fewer Hispanics (26%) than Blacks (40%) and Whites (60%) reflected adequate education. Blacks (42%) indicate inadequate education (Hispanics - 35%; Whites - 33%). Hispanics show the least amount of education (39%); while Blacks (19%) and Whites (8%) rank next.

5. Vocational Skills

Few inmates reflect adequate vocational skills (Blacks - 16%; Hispanic - 18%; Whites - 26%). Approximately 47% of the three groups have some vocational skills while fewer have no vocational skills (Blacks - 38%; Hispanics - 35%; Whites - 28%).

Recommended Programs

Program Review Committees at individual institutions recommend plans to address identified needs of the resident population. Table 7 in Appendix D reflects the numbers of clinical and vocational/educational programs recommended for inmates as of June 30, 1983.

Of 3,802 programs recommended, 1,412 (37%) were for Blacks and 241 (6%) were for Hispanics. The major programs recommended were vocational (29%) and educational (24%). Among the clinical programs, emotional/mental health ranked first, accounting for 15% of the total; alcohol and drugs followed with 13%.

IV. Disciplinary Data

This section of the report presents information gleaned from DOC's "Disciplinary Reporting System," HSS ch. 303, Wis. Admin. Code 1983. Disciplinary reports are conduct reports (HSS 303.66). Conduct reports may be issued for either major or minor rule violations - see HSS 303.68.*

A. Type of Handling

Of 17,911 conduct reports issued in FY '83, most (48%) were issued to Blacks; nearly the same amount (46%) to Whites and 6% to Hispanics.** Blacks accounted for 49% of the reports which resulted in hearings for minor violations; Hispanics - 5%; Whites - 47%. Where a full due process hearing was waived, Blacks accounted for 48% of waivers; Whites 43%; Hispanics 8%. Of the conduct reports handled summarily, 42% involved Blacks; 4% Hispanics; 54% Whites.

B. Dispositions

Of 17,902 conduct reports disposed (see HSS 303.64) (9 were unreported), 10,196 (57%) resulted in "loss of privileges". Of these, 47% involved Blacks; 5% involved Hispanics; 47% involved Whites. Adjustment segregation HSS 303.69, was the next major disposition. Blacks accounted for 51% of these; 8% Hispanics; 41% Whites. Of 2,612 reprimands issued, 51% involved Blacks; 6% involved Hispanics; 43% involved Whites.

* Under HSS 303.76 et. seq., a major violation requires a major due process hearing; a minor violation requires a hearing with fewer procedural safeguards, HSS 303.75. Some minor violations may be handled summarily, HSS 303.74. Inmates may waive their right to have a major due process hearing, HSS 303.77.

** Among the inmate population, Blacks represent 34% while Hispanics represent 6%.

V. Other Issues

Additional information regarding inmate populations, while not directly related to the profile, is presented here.

A. Visits

Based upon 1978-79 data* (by race, not ethnicity), in a study of 291 inmates, 185 or 64% received no visitors. By race, 69% of the Blacks and 61% of the Whites had no visitors (31% of the Blacks and 39% of the Whites had one or more visitors).

B. Affirmative Action - DOC Employees

According to data completed by DOC's Office of Human Resources,** employees in Wisconsin's adult correctional institutions are not representative of the inmate or general state populations. The following table shows the percent of employees, inmates and general population by race and ethnicity:

| <u>Adult Institutions</u> | <u>Blacks</u> | <u>Hispanics</u> |
|---------------------------|---------------|------------------|
| Employees | 2.3% | 0.8% |
| Inmates | 38.1% | 4.8% |
| General Population | 3.9% | 1.3% |

C. Releases

Although this report has focused on admissions to Wisconsin correctional institutions, release data for fiscal years 1983, 1982, and 1981 also reveal trends (see Appendix F). The trend over the three years shows the percentage of Blacks and Hispanics released varied by one or two percentage points.

Additional release data reveal an increase in the number of Blacks serving a reduced proportion of time (i.e., 1981-58%, 1982-59%, 1983-64% served 1-24 months). Data on Hispanics reveal a similar trend. In addition, the proportion of Blacks released who served 49-72 months decreased between 1981 and 1983 (1981-8%, 1982-7%, 1983-6%).

Between 1981 and 1983, increasing rates of releases of Blacks and Hispanics from the institutions were for property offenses. Fewer Blacks were released for sexual assaults.

* From "Analysis and Evaluation of Services to Families of Offenders," by Melanie Foxcroft, Wisconsin Division of Corrections, (June 1983).

** Report published in November 1983.

Except for two of the regions, between 1982 and 1983, the proportions of property offenders released had shown an increase. The number of releases of property offenders from southeastern and northern Wisconsin decreased. The proportion of assaultive offenders from the southeastern region increased between FY 1982 and 1983 while the other regions (including Milwaukee) showed decreases.

VI. Summary

Based upon fiscal year 1983 data presented, the following is summarized regarding male and female Blacks and Hispanics in Wisconsin correctional institutions:

| Characteristics | Blacks | Hispanics | Page Reference |
|------------------------------------|-----------|-----------|----------------|
| % of Admissions | 34% | 6% | 1 |
| 21-24 Years of Age | 33% | 6% | 1 |
| Males/Females | 33%/46% | 6%/ 6% | 2 |
| Married/Separated | 26%/40% | 7%/ 5% | 2 |
| Average Sentence | 69 Months | 68 Months | 2 |
| Milwaukee Commitments | 63% | 7% | 2 |
| Prior Penal Institution Experience | 40% | 4% | 3 |
| Previous Felony Convictions | 36% | 4% | 3 |
| High School/G.E.D. | 27% | 2% | 3 |
| First Admissions | 32% | 6% | 3 |
| Readmissions | 46% | 4% | 3 |
| Juvenile Institution Experience | 42% | 4% | 3 |
| Property Offenses | 31% | 5% | 3 |
| Assaultive | 42% | 7% | 3 |
| Sexual Assaults | 32% | 8% | 3 |
| <u>Custody Ratings</u> | | | 4 |
| Maximum Security | 36% | 39% | |
| Medium Security | 35% | 38% | |
| Minimum Security | 27% | 19% | |
| <u>Needs</u> | | | 5 |
| Emotional/Mental Health | 19% | 28% | |
| Alcohol Abuse | 39% | 50% | |
| Drug Abuse | 50% | 38% | |
| Educational | 61% | 74% | |
| Vocational | 84% | 82% | |
| <u>Programs Recommended</u> | | | 6 |
| Emotional/Mental Health | 30% | 8% | |
| Alcohol Abuse | 23% | 7% | |
| Drug Abuse | 48% | 4% | |
| Educational | 44% | 8% | |
| Vocational | 41% | 6% | |
| <u>Conduct Reports</u> | 48% | 6% | 6 |
| Minor Violations | 49% | 5% | |
| Handled Summarily | 42% | 4% | |
| Loss of Privileges | 47% | 5% | |
| Adjustment Segregation | 51% | 8% | |
| Reprimands | 51% | 6% | |

VII. Conclusion

As evidenced by the data, Blacks and Hispanics, when compared to the general population are disproportionately represented in Wisconsin's correctional institutions.

Although definitive statements can not be made and final interpretations of the data would be premature, steps will be taken to further examine the minority population in Wisconsin's correctional system. For example, because of the questions raised by the data, the Division of Corrections will review community corrections data; solicit input from inmates and individuals on probation or parole; and examine the data through ongoing review with staff in classification, A&E and Program Services. Data will be collected and a follow-up report will be issued in August 1985.

MM:blw
10-24-17/464

APPENDIX A

Tables of Demographic Characteristics

for

Fiscal Years 1983, 1982, 1981

1983

TABLE 1
AGE BY RACE AND ETHNICITY

| AGE | WHITE NON- HISPANIC #/% | WHITE HISPANIC #/% | BLACK NON- HISPANIC #/% | BLACK HISPANIC #/% | TOTAL |
|-----------------|----------------------------------|--------------------------|----------------------------------|--------------------------|-------|
| UN- REPORTED | 16 | 0 | 9 | 0 | |
| UNDER 18 | 21 1.37 | 1 0.85 | 13 1.53 | 0 0.00 | 35 |
| 18 | 101 6.60 | 10 8.55 | 40 4.69 | 2 6.67 | 153 |
| 19 | 143 9.34 | 6 5.13 | 55 6.46 | 9 30.00 | 213 |
| 20 | 154 10.06 | 7 5.98 | 66 7.75 | 1 3.33 | 228 |
| 21 TO 24 | 428 27.96 | 34 29.06 | 231 27.11 | 8 26.67 | 701 |
| 25 TO 29 | 256 16.72 | 26 22.22 | 224 26.29 | 5 16.67 | 511 |
| 30 TO 34 | 164 10.71 | 14 11.97 | 128 15.02 | 3 10.00 | 309 |
| 35 TO 39 | 116 7.58 | 9 7.69 | 53 6.22 | 1 3.33 | 179 |
| OVER 39 | 148 9.67 | 10 8.55 | 42 4.93 | 1 3.33 | 201 |
| TOTAL | 1531 | 117 | 852 | 30 | 2530 |

TABLE 2
SEX BY RACE AND ETHNICITY

| SEX | WHITE NON- HISPANIC #/% | WHITE HISPANIC #/% | BLACK NON- HISPANIC #/% | BLACK HISPANIC #/% | TOTAL |
|--------|----------------------------------|--------------------------|----------------------------------|--------------------------|-------|
| MALE | 1477 95.48 | 109 93.16 | 794 92.22 | 30 100.00 | 2410 |
| FEMALE | 70 4.52 | 8 6.84 | 67 7.78 | 0 0.00 | 145 |
| TOTAL | 1547 | 117 | 861 | 30 | 2555 |

TABLE 3
TABLE OF MARITAL STATUS BY RACE AND ETHNICITY

| MARITAL STATUS | WHITE NON-HISPANIC #/% | WHITE HISPANIC #/% | BLACK NON-HISPANIC #/% | BLACK HISPANIC #/% | TOTAL |
|----------------|------------------------|--------------------|------------------------|--------------------|-------|
| UNREPORTED | 38 | 6 | 33 | 0 | . |
| SINGLE | 921 61.03 | 69 62.16 | 623 75.24 | 20 66.67 | 1633 |
| MARRIED | 259 17.16 | 20 18.02 | 99 11.96 | 8 26.67 | 386 |
| COMMON LAW | 2 0.13 | 1 0.90 | 2 0.24 | 0 0.00 | 5 |
| SEPARATED | 46 3.05 | 3 2.70 | 33 3.99 | 1 3.33 | 83 |
| DIVORCED | 264 17.50 | 15 13.51 | 67 8.09 | 1 3.33 | 347 |
| WIDOWED | 17 1.13 | 3 2.70 | 4 0.48 | 0 0.00 | 24 |
| TOTAL | 1509 | 111 | 828 | 30 | 2478 |

TABLE 4A

AVERAGE TERM OF SENTENCE (IN MONTHS) BY RACE AND ETHNICITY: 1981, 1982, 1983

| YEAR | WHITE NON-HISPANIC | WHITE HISPANIC | BLACK NON-HISPANIC | BLACK HISPANIC |
|------------------------|----------------------|---------------------|---------------------|---------------------|
| 1981 (# Admissions) | 62 Months (1,267) | 70 Months (86) | 68 Months (666) | 57 Months (2) |
| 1982 (# Admissions) | 56 Months (1,362) | 66 Months (83) | 68 Months (785) | 147 Months (16) |
| 1983 (# Admissions) | 58 Months (1,547) | 71 Months (117) | 69 Months (861) | 56 Months (30) |

TABLE 4
TERM OF SENTENCE BY RACE AND ETHNICITY

| SENTENCE (IN MONTHS) | WHITE NON-HISPANIC #/% | WHITE HISPANIC #/% | BLACK NON-HISPANIC #/% | BLACK HISPANIC #/% | TOTAL |
|-----------------------|------------------------|--------------------|------------------------|--------------------|-------|
| UNREPORTED | 22 | 4 | 33 | 0 | . |
| 1 TO 24 MONTHS | 427 28.00 | 21 18.58 | 180 21.74 | 6 20.00 | 634 |
| 25 TO 48 MONTHS | 541 35.48 | 46 40.71 | 280 33.82 | 13 43.33 | 880 |
| 49 TO 72 MONTHS | 258 16.92 | 26 23.01 | 160 19.32 | 5 16.67 | 449 |
| 73 TO 96 MONTHS | 92 6.03 | 4 3.54 | 65 7.85 | 2 6.67 | 163 |
| 97 TO 120 MONTHS | 70 4.59 | 2 1.77 | 51 6.16 | 2 6.67 | 125 |
| 121 TO LESS THAN LIFE | 111 7.28 | 13 11.50 | 82 9.90 | 1 3.33 | 207 |
| LIFE | 26 1.70 | 1 0.88 | 10 1.21 | 1 3.33 | 38 |
| TOTAL | 1525 | 113 | 828 | 30 | 2496 |

TABLE 5
COUNTY OF COMMITMENT BY RACE AND ETHNICITY

| COUNTIES COMBINED INTO REGIONS | WHITE NON-HISPANIC #/% | WHITE HISPANIC #/% | BLACK NON-HISPANIC #/% | BLACK HISPANIC #/% | TOTAL |
|--------------------------------|------------------------|--------------------|------------------------|--------------------|-------|
| UNREPORTED | 22 | 4 | 37 | 0 | . |
| MILWAUKEE | 282 18.49 | 46 40.71 | 597 72.45 | 17 56.67 | 942 |
| SOUTHERN REGION | 292 19.15 | 16 14.16 | 68 8.25 | 4 13.33 | 380 |
| WESTERN REGION | 217 14.23 | 8 7.08 | 1 0.12 | 5 16.67 | 231 |
| SO EAST REGION | 281 18.43 | 30 26.55 | 147 17.84 | 3 10.00 | 461 |
| NORTHERN REGION | 168 11.02 | 1 0.88 | 2 0.24 | 0 0.00 | 171 |
| EASTERN REGION | 285 18.69 | 12 10.62 | 9 1.09 | 1 3.33 | 307 |
| TOTAL | 1525 | 113 | 824 | 30 | 2492 |

TABLE 6
PRIOR PENAL INSTITUTION EXPERIENCE BY RACE AND ETHNICITY

| TYPE OF INSTITUTION | WHITE NON-HISPANIC #/% | WHITE HISPANIC #/% | BLACK NON-HISPANIC #/% | BLACK HISPANIC #/% | TOTAL |
|--------------------------|------------------------|--------------------|------------------------|--------------------|-------|
| UNREPORTED | 63 | 7 | 38 | 1 | . |
| NONE | 895 60.31 | 71 64.55 | 392 47.63 | 21 72.41 | 1379 |
| WISCONSIN INSTITUTION | 484 32.61 | 30 27.27 | 365 44.35 | 6 20.69 | 885 |
| STATE, FEDERAL, MILITARY | 104 7.01 | 6 5.45 | 65 7.90 | 0 0.00 | 175 |
| OTHER | 1 0.07 | 3 2.73 | 1 0.12 | 2 6.90 | 7 |
| TOTAL | 1484 | 110 | 823 | 29 | 2446 |

TABLE 7
PREVIOUS FELONY CONVICTIONS BY RACE AND ETHNICITY

| NUMBER OF CONVICTIONS | WHITE NON-HISPANIC #/% | WHITE HISPANIC #/% | BLACK NON-HISPANIC #/% | BLACK HISPANIC #/% | TOTAL |
|-----------------------|------------------------|--------------------|------------------------|--------------------|-------|
| UNREPORTED | 78 | 9 | 51 | 2 | . |
| NONE | 746 50.78 | 63 58.33 | 374 46.17 | 19 67.86 | 1202 |
| ONE | 366 24.91 | 23 21.30 | 217 26.79 | 6 21.43 | 612 |
| TWO | 162 11.03 | 7 6.48 | 111 13.70 | 2 7.14 | 282 |
| THREE | 85 5.79 | 9 8.33 | 57 7.04 | 1 3.57 | 152 |
| FOUR | 39 2.65 | 3 2.78 | 26 3.21 | 0 0.00 | 68 |
| FIVE OR MORE | 71 4.83 | 3 2.78 | 25 3.09 | 0 0.00 | 99 |
| TOTAL | 1469 | 108 | 810 | 28 | 2415 |

TABLE 8
HIGHEST GRADE COMPLETED BY RACE AND ETHNICITY

| HIGHEST GRADE COMPLETED | WHITE NON-HISPANIC #/% | WHITE HISPANIC #/% | BLACK NON-HISPANIC #/% | BLACK HISPANIC #/% | TOTAL |
|-------------------------|------------------------|--------------------|------------------------|--------------------|-------|
| UNREPORTED | 86 | 9 | 61 | 3 | . |
| THREE AND UNDER | 5 0.34 | 6 5.56 | 6 0.75 | 3 11.11 | 20 |
| FOUR THRU SIX | 18 1.23 | 16 14.81 | 17 2.13 | 6 22.22 | 57 |
| SEVEN THRU NINE | 257 17.59 | 34 31.48 | 165 20.63 | 10 37.04 | 466 |
| TEN THRU TWELVE | 354 24.23 | 23 21.30 | 281 35.13 | 4 14.81 | 662 |
| HS GRAD OR GED | 721 49.35 | 22 20.37 | 278 34.75 | 3 11.11 | 1024 |
| SOME COLLEGE | 87 5.95 | 5 4.63 | 50 6.25 | 1 3.70 | 143 |
| COLLEGE GRADUATE | 12 0.82 | 1 0.93 | 2 0.25 | 0 0.00 | 15 |
| COLLEGE PLUS | 4 0.27 | 0 0.00 | 0 0.00 | 0 0.00 | 4 |
| MASTERS | 3 0.21 | 1 0.93 | 0 0.00 | 0 0.00 | 4 |
| DOCTORAL | 0 0.00 | 0 0.00 | 1 0.13 | 0 0.00 | 1 |
| TOTAL | 1461 | 108 | 800 | 27 | 2396 |

TABLE 9
OFFENDER STATUS AT ADMISSION BY RACE AND ETHNICITY

| OFFENDER STATUS | WHITE NON-HISPANIC #/% | WHITE HISPANIC #/% | BLACK NON-HISPANIC #/% | BLACK HISPANIC #/% | TOTAL |
|---------------------------|------------------------|--------------------|------------------------|--------------------|-------|
| FIRST ADMISSIONS | 1236 79.90 | 95 81.20 | 626 72.71 | 28 93.33 | 1985 |
| READMISSIONS | 243 15.71 | 18 15.38 | 224 26.02 | 2 6.67 | 487 |
| ALTERNATIVE TO REVOCATION | 68 4.40 | 4 3.42 | 11 1.28 | 0 0.00 | 83 |
| TOTAL | 1547 | 117 | 861 | 30 | 2555 |

TABLE 10
JUVENILE INSTITUTION EXPERIENCE BY RACE AND ETHNICITY

| EXPERIENCE | WHITE NON-HISPANIC #/% | WHITE HISPANIC #/% | BLACK NON-HISPANIC #/% | BLACK HISPANIC #/% | TOTAL |
|---------------------|------------------------|--------------------|------------------------|--------------------|-------|
| UNREPORTED | 107 | 9 | 73 | 1 | . |
| JUVENILE EXPERIENCE | 425 29.51 | 25 23.15 | 327 41.50 | 4 13.79 | 781 |
| NO EXPERIENCE | 1015 70.49 | 83 76.85 | 461 58.50 | 25 86.21 | 1584 |
| TOTAL | 1440 | 108 | 788 | 29 | 2365 |

TABLE 11
TYPE OF OFFENDER BY RACE AND ETHNICITY

| TYPE OF OFFENDER | WHITE NON-HISPANIC #/% | WHITE HISPANIC #/% | BLACK NON-HISPANIC #/% | BLACK HISPANIC #/% | TOTAL |
|-----------------------|------------------------|--------------------|------------------------|--------------------|-------|
| PROPERTY | 926 59.86 | 50 42.74 | 448 52.03 | 15 50.00 | 1439 |
| ASSAULTIVE | 349 22.56 | 36 30.77 | 287 33.33 | 14 46.67 | 686 |
| SEXUAL ASSAULTS | 132 8.53 | 16 13.68 | 70 8.13 | 1 3.33 | 219 |
| ASSAULTIVE, SEX, DRUG | 2 0.13 | 0 0.00 | 1 0.12 | 0 0.00 | 3 |
| SEX | 9 0.58 | 0 0.00 | 3 0.35 | 0 0.00 | 12 |
| DRUG | 122 7.89 | 14 11.97 | 40 4.65 | 0 0.00 | 176 |
| ASSAULTIVE AND DRUG | 7 0.45 | 1 0.85 | 12 1.39 | 0 0.00 | 20 |
| TOTAL | 1547 | 117 | 861 | 30 | 2555 |

1982
TABLE 1
AGE BY RACE AND ETHNICITY

| AGE | WHITE NON-HISPANIC #/% | WHITE HISPANIC #/% | BLACK NON-HISPANIC #/% | BLACK HISPANIC #/% | TOTAL |
|----------|------------------------|--------------------|------------------------|--------------------|-------|
| UNDER 18 | 23 1.67 | 2 2.41 | 11 1.36 | 0 0.00 | 36 |
| 18 | 86 6.25 | 5 6.02 | 59 7.32 | 1 6.25 | 151 |
| 19 | 152 11.05 | 9 10.84 | 61 7.57 | 3 18.75 | 225 |
| 20 | 141 10.25 | 11 13.25 | 64 7.94 | 0 0.00 | 216 |
| 21 TO 24 | 396 28.78 | 22 26.51 | 216 26.80 | 3 18.75 | 637 |
| 25 TO 29 | 239 17.37 | 19 22.89 | 199 24.69 | 6 37.50 | 463 |
| 30 TO 34 | 137 9.96 | 7 8.43 | 115 14.27 | 2 12.50 | 261 |
| 35 TO 39 | 72 5.23 | 3 3.61 | 37 4.59 | 0 0.00 | 112 |
| OVER 39 | 130 9.45 | 5 6.02 | 44 5.46 | 1 6.25 | 180 |
| TOTAL | 1376 | 83 | 806 | 16 | 2281 |

TABLE 2
SEX BY RACE AND ETHNICITY

| SEX | WHITE NON-HISPANIC #/% | WHITE HISPANIC #/% | BLACK NON-HISPANIC #/% | BLACK HISPANIC #/% | TOTAL |
|--------|------------------------|--------------------|------------------------|--------------------|-------|
| MALE | 1308 95.06 | 78 93.98 | 751 93.18 | 16 100.00 | 2153 |
| FEMALE | 68 4.94 | 5 6.02 | 55 6.82 | 0 0.00 | 128 |
| TOTAL | 1376 | 83 | 806 | 16 | 2281 |

TABLE 3
MARITAL STATUS BY RACE AND ETHNICITY

| MARITAL STATUS | WHITE NON-HISPANIC #/% | WHITE HISPANIC #/% | BLACK NON-HISPANIC #/% | BLACK HISPANIC #/% | TOTAL |
|----------------|------------------------|--------------------|------------------------|--------------------|-------|
| UNREPORTED | 14 | 0 | 21 | 0 | . |
| SINGLE | 852 62.56 | 58 69.88 | 581 74.01 | 11 68.75 | 1502 |
| MARRIED | 216 15.86 | 15 18.07 | 90 11.46 | 1 6.25 | 322 |
| COMMON LAW | 4 0.29 | 1 1.20 | 3 0.38 | 0 0.00 | 8 |
| SEPARATED | 52 3.82 | 4 4.82 | 48 6.11 | 2 12.50 | 106 |
| DIVORCED | 224 16.45 | 5 6.02 | 58 7.39 | 2 12.50 | 289 |
| WIDOWED | 14 1.03 | 0 0.00 | 5 0.64 | 0 0.00 | 19 |
| TOTAL | 1362 | 83 | 785 | 16 | 2246 |

TABLE 4
TERM OF SENTENCE BY RACE AND ETHNICITY

| SENTENCE (IN MONTHS) | WHITE NON-HISPANIC #/% | WHITE HISPANIC #/% | BLACK NON-HISPANIC #/% | BLACK HISPANIC #/% | TOTAL |
|-----------------------|------------------------|--------------------|------------------------|--------------------|-------|
| UNREPORTED | 14 | 0 | 20 | 0 | . |
| 1 TO 24 MOS | 426 31.28 | 25 29.76 | 156 20.03 | 1 6.25 | 608 |
| 25 TO 48 MOS | 463 33.99 | 29 34.52 | 266 34.15 | 2 12.50 | 760 |
| 49 TO 72 MOS | 226 16.59 | 13 15.48 | 151 19.38 | 5 31.25 | 395 |
| 73 TO 96 MOS | 75 5.51 | 2 2.38 | 73 9.37 | 0 0.00 | 150 |
| 97 TO 120 MOS | 70 5.14 | 2 2.38 | 49 6.29 | 4 25.00 | 125 |
| 121 TO LESS THAN LIFE | 88 6.46 | 8 9.52 | 76 9.76 | 3 18.75 | 175 |
| LIFE | 14 1.03 | 5 5.95 | 8 1.03 | 1 6.25 | 28 |
| TOTAL | 1362 | 84 | 779 | 16 | 2241 |

TABLE 5
COUNTY OF COMMITMENT BY RACE AND ETHNICITY

| COUNTIES COMBINED INTO REGIONS | WHITE NON-HISPANIC #/% | WHITE HISPANIC #/% | BLACK NON-HISPANIC #/% | BLACK HISPANIC #/% | TOTAL |
|--------------------------------|------------------------|--------------------|------------------------|--------------------|-------|
| UNREPORTED | 14 | 0 | 22 | 0 | . |
| MILWAUKEE | 213 15.64 | 43 51.81 | 516 65.82 | 10 62.50 | 782 |
| SOUTHERN REGION | 233 17.11 | 9 10.84 | 79 10.08 | 3 18.75 | 324 |
| WESTERN REGION | 196 14.39 | 6 7.23 | 7 0.89 | 1 6.25 | 210 |
| SO EAST REGION | 282 20.70 | 19 22.89 | 169 21.56 | 2 12.50 | 472 |
| EASTERN REGION | 257 18.87 | 6 7.23 | 12 1.53 | 0 0.00 | 275 |
| NORTHERN REGION | 181 13.29 | 0 0.00 | 1 0.13 | 0 0.00 | 182 |
| TOTAL | 1362 | 83 | 784 | 16 | 2245 |

TABLE 6
PRIOR PENAL INSTITUTION EXPERIENCE BY RACE AND ETHNICITY

| TYPE OF INSTITUTION | WHITE NON-HISPANIC #/% | WHITE HISPANIC #/% | BLACK NON-HISPANIC #/% | BLACK HISPANIC #/% | TOTAL |
|--------------------------|------------------------|--------------------|------------------------|--------------------|-------|
| UNREPORTED | 31 | 3 | 29 | 0 | . |
| NONE | 847 62.97 | 54 67.50 | 432 55.60 | 12 75.00 | 1345 |
| WISCONSIN INSTITUTION | 402 29.89 | 19 23.75 | 285 36.68 | 1 6.25 | 707 |
| STATE; FEDERAL, MILITARY | 93 6.91 | 5 6.25 | 59 7.59 | 0 0.00 | 157 |
| OTHER | 3 0.22 | 2 2.50 | 1 0.13 | 3 18.75 | 9 |
| TOTAL | 1345 | 80 | 777 | 16 | 2218 |

TABLE 7
PREVIOUS FELONY CONVICTIONS BY RACE AND ETHNICITY

| NUMBER OF CONVICTIONS | WHITE NON-HISPANIC #/% | WHITE HISPANIC #/% | BLACK NON-HISPANIC #/% | BLACK HISPANIC #/% | TOTAL |
|-----------------------|------------------------|--------------------|------------------------|--------------------|-------|
| UNREPORTED | 35 | 4 | 37 | 0 | . |
| NONE | 688 51.30 | 51 64.56 | 368 47.85 | 9 56.25 | 1116 |
| ONE | 295 22.00 | 15 18.99 | 216 28.09 | 5 31.25 | 531 |
| TWO | 158 11.78 | 10 12.66 | 97 12.61 | 1 6.25 | 266 |
| THREE | 78 5.82 | 0 0.00 | 38 4.94 | 1 6.25 | 117 |
| FOUR | 39 2.91 | 2 2.53 | 21 2.73 | 0 0.00 | 62 |
| FIVE OR MORE | 83 6.19 | 1 1.27 | 29 3.77 | 0 0.00 | 113 |
| TOTAL | 1341 | 79 | 769 | 16 | 2205 |

TABLE 8
HIGHEST GRADE COMPLETED BY RACE AND ETHNICITY

| HIGHEST GRADE COMPLETED | WHITE NON-HISPANIC #/% | WHITE HISPANIC #/% | BLACK NON-HISPANIC #/% | BLACK HISPANIC #/% | TOTAL |
|-------------------------|------------------------|--------------------|------------------------|--------------------|-------|
| THIRD AND UNDER | 3 0.22 | 3 3.61 | 7 0.87 | 0 0.00 | 13 |
| FOURTH THRU SIXTH | 11 0.80 | 9 10.84 | 8 0.99 | 1 6.25 | 29 |
| SEVENTH THRU NINTH | 208 15.12 | 16 19.28 | 120 14.89 | 6 37.50 | 350 |
| TENTH THRU TWELFTH | 393 28.56 | 30 36.14 | 341 42.31 | 4 25.00 | 768 |
| HS GRAD OR GED | 615 44.69 | 21 25.30 | 235 29.16 | 3 18.75 | 874 |
| SOME COLLEGE | 91 6.61 | 3 3.61 | 53 6.58 | 2 12.50 | 149 |
| COLLEGE GRADUATE | 4 0.29 | 0 0.00 | 2 0.25 | 0 0.00 | 6 |
| COLLEGE PLUS | 2 0.15 | 0 0.00 | 1 0.12 | 0 0.00 | 3 |
| MASTERS | 3 0.22 | 0 0.00 | 0 0.00 | 0 0.00 | 3 |
| DOCTORAL | 2 0.15 | 0 0.00 | 0 0.00 | 0 0.00 | 2 |
| UNREPORTED | 44 3.20 | 1 1.20 | 39 4.84 | 0 0.00 | 84 |
| TOTAL | 1376 | 83 | 806 | 16 | 2281 |

TABLE 9
OFFENDER STATUS AT ADMISSION BY RACE AND ETHNICITY

| OFFENDER STATUS | WHITE NON-HISPANIC | WHITE HISPANIC | BLACK NON-HISPANIC | BLACK HISPANIC | TOTAL |
|---------------------------|--------------------|----------------|--------------------|----------------|-------|
| First Admissions | 1,107 80.45% | 69 83.14% | 625 77.54% | 15 93.75% | 1,816 |
| Readmissions | 231 16.80% | 13 15.66% | 171 21.22% | 1 6.25% | 416 |
| Alternative to Revocation | 37 2.70% | 1 1.20% | 8 .99% | 0 0 | 46 |
| Other | 1 0.07% | 0 0 | 2 .25% | 0 0 | 3 |
| Total | 1,376 | 83 | 806 | 16 | 2,281 |

TABLE 10
JUVENILE INSTITUTION EXPERIENCE BY RACE AND ETHNICITY

| EXPERIENCE | WHITE NON- HISPANIC #/% | WHITE HISPANIC #/% | BLACK NON- HISPANIC #/% | BLACK HISPANIC #/% | TOTAL |
|------------------------|----------------------------------|--------------------------|----------------------------------|--------------------------|-------|
| UNREPORTED | 50 | 3 | 34 | 0 | |
| JUVENILE EXPERIENCE | 405 30.54 | 26 32.50 | 284 36.79 | 6 37.50 | 721 |
| NO EXPERIENCE | 921 69.46 | 54 67.50 | 488 63.21 | 10 62.50 | 1473 |
| TOTAL | 1326 | 80 | 772 | 16 | 2194 |

TABLE 11
TYPE OF OFFENDER BY RACE AND ETHNICITY

| TYPE OF OFFENDER | WHITE NON- HISPANIC #/% | WHITE HISPANIC #/% | BLACK NON- HISPANIC #/% | BLACK HISPANIC #/% | TOTAL |
|--------------------------|----------------------------------|--------------------------|----------------------------------|--------------------------|-------|
| PROPERTY | 783 56.90 | 24 28.92 | 359 44.54 | 2 12.50 | 1168 |
| ASSAULTIVE | 303 22.02 | 40 48.19 | 336 41.69 | 12 75.00 | 691 |
| SEXUAL ASSAULTS | 153 11.12 | 7 8.43 | 62 7.69 | 2 12.50 | 224 |
| ASSAULTIVE, SEX, DRUG | 0 0.00 | 0 0.00 | 1 0.12 | 0 0.00 | 1 |
| SEX | 12 0.87 | 3 3.61 | 1 0.12 | 0 0.00 | 16 |
| DRUG | 111 8.07 | 8 9.64 | 41 5.09 | 0 0.00 | 160 |
| ASSAULTIVE AND DRUG | 14 1.02 | 1 1.20 | 6 0.74 | 0 0.00 | 21 |
| TOTAL | 1376 | 83 | 806 | 16 | 2281 |

1981

TABLE 1
AGE BY RACE AND ETHNICITY

| AGE | WHITE NON- HISPANIC #/% | WHITE HISPANIC #/% | BLACK NON- HISPANIC #/% | BLACK HISPANIC #/% | TOTAL |
|-------------|----------------------------------|--------------------------|----------------------------------|--------------------------|-------|
| UNDER 18 | 21 1.61 | 1 1.15 | 10 1.47 | 0 0.00 | 32 |
| 18 | 108 8.26 | 4 4.60 | 53 7.79 | 0 0.00 | 165 |
| 19 | 133 10.17 | 7 8.05 | 58 8.53 | 0 0.00 | 198 |
| 20 | 134 10.24 | 8 9.20 | 56 8.24 | 0 0.00 | 198 |
| 21 TO 24 | 383 29.28 | 24 27.59 | 210 30.88 | 0 0.00 | 617 |
| 25 TO 29 | 221 16.90 | 19 21.84 | 140 20.59 | 1 50.00 | 381 |
| 30 TO 34 | 131 10.02 | 12 13.79 | 75 11.03 | 1 50.00 | 219 |
| 35 TO 39 | 73 5.58 | 7 8.05 | 46 6.76 | 0 0.00 | 126 |
| OVER 39 | 104 7.95 | 5 5.75 | 32 4.71 | 0 0.00 | 141 |
| TOTAL | 1308 | 87 | 680 | 2 | 2077 |

TABLE 2
SEX BY RACE AND ETHNICITY

| SEX | WHITE NON- HISPANIC #/% | WHITE HISPANIC #/% | BLACK NON- HISPANIC #/% | BLACK HISPANIC #/% | TOTAL |
|--------|----------------------------------|--------------------------|----------------------------------|--------------------------|-------|
| MALE | 1251 95.64 | 84 96.55 | 637 93.68 | 2 100.00 | 1974 |
| FEMALE | 57 4.36 | 3 3.45 | 43 6.32 | 0 0.00 | 103 |
| TOTAL | 1308 | 87 | 680 | 2 | 2077 |

TABLE 3
MARITAL STATUS BY RACE AND ETHNICITY

| MARITAL STATUS | WHITE NON-HISPANIC #/% | WHITE HISPANIC #/% | BLACK NON-HISPANIC #/% | BLACK HISPANIC #/% | TOTAL |
|----------------|------------------------|--------------------|------------------------|--------------------|-------|
| UNREPORTED | 41 | 1 | 17 | 0 | . |
| SINGLE | 780 61.56 | 48 55.81 | 496 74.81 | 2 100.00 | 1326 |
| MARRIED | 201 15.86 | 16 18.60 | 85 12.82 | 0 0.00 | 302 |
| COMMON LAW | 2 0.16 | 0 0.00 | 1 0.15 | 0 0.00 | 3 |
| SEPARATED | 58 4.58 | 7 8.14 | 32 4.83 | 0 0.00 | 97 |
| DIVORCED | 211 16.65 | 14 16.28 | 47 7.09 | 0 0.00 | 272 |
| WIDOWED | 14 1.10 | 1 1.16 | 2 0.30 | 0 0.00 | 17 |
| OTHER | 1 0.08 | 0 0.00 | 0 0.00 | 0 0.00 | 1 |
| TOTAL | 1267 | 86 | 663 | 2 | 2018 |

TABLE 4
TERM OF SENTENCE BY RACE AND ETHNICITY

| SENTENCE (IN MONTHS) | WHITE NON-HISPANIC #/% | WHITE HISPANIC #/% | BLACK NON-HISPANIC #/% | BLACK HISPANIC #/% | TOTAL |
|-----------------------|------------------------|--------------------|------------------------|--------------------|-------|
| UNREPORTED | 41 | 1 | 14 | 0 | . |
| 1 TO 24 MOS | 357 28.18 | 22 25.58 | 134 20.12 | 0 0.00 | 513 |
| 25 TO 48 MOS | 428 33.78 | 22 25.58 | 237 35.59 | 1 50.00 | 688 |
| 49 TO 72 MOS | 231 18.23 | 14 16.28 | 118 17.72 | 0 0.00 | 363 |
| 73 TO 96 MOS | 80 6.31 | 11 12.79 | 56 8.41 | 1 50.00 | 148 |
| 97 TO 120 MOS | 54 4.26 | 5 5.81 | 26 3.90 | 0 0.00 | 85 |
| 121 TO LESS THAN LIFE | 107 8.45 | 9 10.47 | 83 12.46 | 0 0.00 | 199 |
| LIFE | 10 0.79 | 3 3.49 | 12 1.80 | 0 0.00 | 25 |
| TOTAL | 1267 | 86 | 666 | 2 | 2021 |

TABLE 5
COUNTY OF COMMITMENT BY RACE AND ETHNICITY

| COUNTIES COMBINED INTO REGIONS | WHITE NON-HISPANIC #/% | WHITE HISPANIC #/% | BLACK NON-HISPANIC #/% | BLACK HISPANIC #/% | TOTAL |
|--------------------------------|------------------------|--------------------|------------------------|--------------------|-------|
| UNREPORTED | 41 | 2 | 13 | 0 | . |
| MILWAUKEE | 249 19.65 | 39 45.88 | 511 76.61 | 2 100.00 | 801 |
| SOUTHERN REGION | 200 15.79 | 6 7.06 | 41 6.15 | 0 0.00 | 247 |
| WESTERN REGION | 181 14.29 | 5 5.88 | 7 1.05 | 0 0.00 | 193 |
| SO EAST REGION | 230 18.15 | 30 35.29 | 98 14.69 | 0 0.00 | 358 |
| EASTERN REGION | 245 19.34 | 5 5.88 | 9 1.35 | 0 0.00 | 259 |
| NORTHERN REGION | 162 12.79 | 0 0.00 | 1 0.15 | 0 0.00 | 163 |
| TOTAL | 1267 | 85 | 667 | 2 | 2021 |

TABLE 6
PRIOR PENAL INSTITUTION EXPERIENCE BY RACE AND ETHNICITY

| TYPE OF INSTITUTION | WHITE NON-HISPANIC #/% | WHITE HISPANIC #/% | BLACK NON-HISPANIC #/% | BLACK HISPANIC #/% | TOTAL |
|--------------------------|------------------------|--------------------|------------------------|--------------------|-------|
| UNREPORTED | 97 | 3 | 48 | 0 | . |
| NONE | 767 63.34 | 58 69.05 | 354 56.01 | 1 50.00 | 1180 |
| WISCONSIN INSTITUTION | 342 28.24 | 16 19.05 | 213 33.70 | 1 50.00 | 572 |
| STATE, FEDERAL, MILITARY | 93 7.68 | 8 9.52 | 53 8.39 | 0 0.00 | 154 |
| OTHER | 9 0.74 | 2 2.38 | 12 1.90 | 0 0.00 | 23 |
| TOTAL | 1211 | 84 | 632 | 2 | 1929 |

TABLE 7
PREVIOUS FELONY CONVICTIONS BY RACE AND ETHNICITY

| NUMBER OF CONVICTIONS | WHITE NON-HISPANIC #/% | WHITE HISPANIC #/% | BLACK NON-HISPANIC #/% | BLACK HISPANIC #/% | TOTAL |
|-----------------------|------------------------|--------------------|------------------------|--------------------|-------|
| UNREPORTED | 107 | 2 | 60 | 0 | |
| NONE | 605 50.37 | 57 67.06 | 316 50.97 | 0 0.00 | 978 |
| ONE | 281 23.40 | 13 15.29 | 178 28.71 | 0 0.00 | 472 |
| TWO | 142 11.82 | 11 12.94 | 57 9.19 | 1 50.00 | 211 |
| THREE | 71 5.91 | 3 3.53 | 38 6.13 | 1 50.00 | 113 |
| FOUR | 24 2.00 | 1 1.18 | 11 1.77 | 0 0.00 | 36 |
| FIVE OR MORE | 78 6.49 | 0 0.00 | 20 3.23 | 0 0.00 | 98 |
| TOTAL | 1201 | 85 | 620 | 2 | 1908 |

TABLE 8
HIGHEST GRADE COMPLETED BY RACE AND ETHNICITY

| HIGHEST GRADE COMPLETED | WHITE NON-HISPANIC #/% | WHITE HISPANIC #/% | BLACK NON-HISPANIC #/% | BLACK HISPANIC #/% | TOTAL |
|-------------------------|------------------------|--------------------|------------------------|--------------------|-------|
| THIRD AND UNDER | 3 0.23 | 4 4.60 | 4 0.59 | 0 0.00 | 11 |
| FOURTH THRU SIXTH | 16 1.22 | 12 13.79 | 18 2.65 | 0 0.00 | 46 |
| SEVENTH THRU NINTH | 206 15.75 | 17 19.54 | 122 17.94 | 2 100.00 | 347 |
| TENTH THRU TWELFTH | 378 28.90 | 26 29.89 | 311 45.74 | 0 0.00 | 715 |
| HS GRAD OR GED | 557 42.58 | 20 22.99 | 169 24.85 | 0 0.00 | 746 |
| SOME COLLEGE | 76 5.81 | 4 4.60 | 26 3.82 | 0 0.00 | 106 |
| COLLEGE GRADUATE | 9 0.69 | 0 0.00 | 1 0.15 | 0 0.00 | 10 |
| COLLEGE PLUS | 2 0.15 | 0 0.00 | 1 0.15 | 0 0.00 | 3 |
| MASTERS | 4 0.31 | 0 0.00 | 1 0.15 | 0 0.00 | 5 |
| DOCTORAL | 1 0.08 | 1 1.15 | 0 0.00 | 0 0.00 | 2 |
| UNREPORTED | 56 4.28 | 3 3.45 | 27 3.97 | 0 0.00 | 86 |
| TOTAL | 1308 | 87 | 680 | 2 | 2077 |

TABLE 9
OFFENDER STATUS AT ADMISSION BY RACE AND ETHNICITY

| OFFENDER STATUS | WHITE NON-HISPANIC | WHITE HISPANIC | BLACK NON-HISPANIC | BLACK HISPANIC | TOTAL |
|---------------------------|--------------------|----------------|--------------------|----------------|-------|
| First Admissions | 1,048 80.13% | 73 83.91% | 534 78.54% | 2 100.00% | 1,657 |
| Readmissions | 221 16.89% | 13 14.95% | 143 21.04% | 0 0 | 377 |
| Alternative to Revocation | 36 2.75% | 0 0 | 3 .44% | 0 0 | 39 |
| Other | 3 .23% | 1 1.15% | 0 0 | 0 0 | 4 |
| Total | 1,308 | 87 | 680 | 2 | 2,077 |

TABLE 10
JUVENILE INSTITUTION EXPERIENCE BY RACE AND ETHNICITY

| EXPERIENCE | WHITE NON- HISPANIC #/% | WHITE HISPANIC #/% | BLACK NON- HISPANIC #/% | BLACK HISPANIC #/% | TOTAL |
|------------------------|----------------------------------|--------------------------|----------------------------------|--------------------------|-------|
| UNREPORTED | 113 | 8 | 68 | 0 | |
| JUVENILE EXPERIENCE | 417 34.90 | 20 25.32 | 252 41.18 | 2 100.00 | 691 |
| NO EXPERIENCE | 778 65.10 | 59 74.68 | 360 58.82 | 0 0.00 | 1197 |
| TOTAL | 1195 | 79 | 612 | 2 | 1888 |

TABLE 11
TYPE OF OFFENDER BY RACE AND ETHNICITY

| TYPE OF OFFENDER | WHITE NON- HISPANIC #/% | WHITE HISPANIC #/% | BLACK NON- HISPANIC #/% | BLACK HISPANIC #/% | TOTAL |
|--------------------------|----------------------------------|--------------------------|----------------------------------|--------------------------|-------|
| PROPERTY | 734 56.12 | 28 32.18 | 308 45.29 | 0 0.00 | 1070 |
| ASSAULTIVE | 318 24.31 | 36 41.38 | 282 41.47 | 1 50.00 | 637 |
| SEXUAL ASSAULTS | 147 11.24 | 17 19.54 | 57 8.38 | 0 0.00 | 221 |
| ASSAULTIVE, SEX, DRUG | 1 0.08 | 0 0.00 | 0 0.00 | 0 0.00 | 1 |
| SEX | 9 0.69 | 0 0.00 | 5 0.74 | 0 0.00 | 14 |
| DRUG | 91 6.96 | 6 6.90 | 22 3.24 | 1 50.00 | 120 |
| ASSAULTIVE AND DRUG | 8 0.61 | 0 0.00 | 6 0.88 | 0 0.00 | 14 |
| TOTAL | 1308 | 87 | 680 | 2 | 2077 |

APPENDIX B

Wisconsin Map

by

Counties and Regions

TABLE 10
JUVENILE INSTITUTION EXPERIENCE BY RACE AND ETHNICITY

| EXPERIENCE | WHITE NON- HISPANIC #/% | WHITE HISPANIC #/% | BLACK NON- HISPANIC #/% | BLACK HISPANIC #/% | TOTAL |
|------------------------|----------------------------------|--------------------------|----------------------------------|--------------------------|-------|
| UNREPORTED | 113 | 8 | 68 | 0 | . |
| JUVENILE EXPERIENCE | 417 34.90 | 20 25.32 | 252 41.18 | 2 100.00 | 691 |
| NO EXPERIENCE | 778 65.10 | 59 74.68 | 360 58.82 | 0 0.00 | 1197 |
| TOTAL | 1195 | 79 | 612 | 2 | 1888 |

TABLE 11
TYPE OF OFFENDER BY RACE AND ETHNICITY

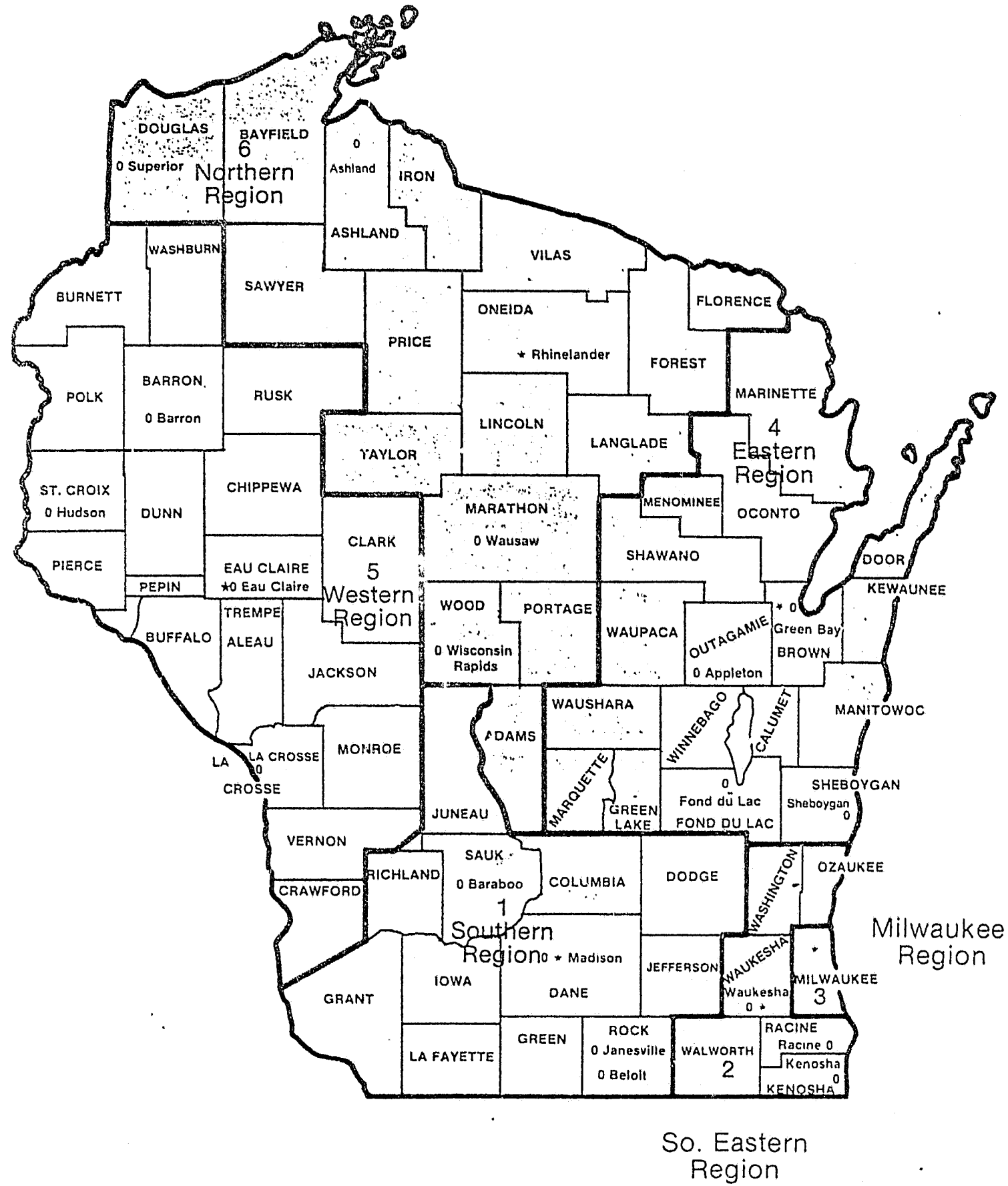
| TYPE OF OFFENDER | WHITE NON- HISPANIC #/% | WHITE HISPANIC #/% | BLACK NON- HISPANIC #/% | BLACK HISPANIC #/% | TOTAL |
|--------------------------|----------------------------------|--------------------------|----------------------------------|--------------------------|-------|
| PROPERTY | 734 56.12 | 28 32.18 | 308 45.29 | 0 0.00 | 1070 |
| ASSAULTIVE | 318 24.31 | 36 41.38 | 282 41.47 | 1 50.00 | 637 |
| SEXUAL ASSAULTS | 147 11.24 | 17 19.54 | 57 8.38 | 0 0.00 | 221 |
| ASSAULTIVE, SEX, DRUG | 1 0.08 | 0 0.00 | 0 0.00 | 0 0.00 | 1 |
| SEX | 9 0.69 | 0 0.00 | 5 0.74 | 0 0.00 | 14 |
| DRUG | 91 6.96 | 6 6.90 | 22 3.24 | 1 50.00 | 120 |
| ASSAULTIVE AND DRUG | 8 0.61 | 0 0.00 | 6 0.88 | 0 0.00 | 14 |
| TOTAL | 1308 | 87 | 680 | 2 | 2077 |

APPENDIX B

Wisconsin Map

by

Counties and Regions



APPENDIX C

Admission Codes

Admission Movement Codes

130 ADM-NEW SENT,NOT A VIOL
131 ADM-NEW SENT,JV PROB VIOL
133 ADM-NEW SENT,PROB VIOL
134 ADM-NEW SENT,ER VIOL
135 ADM-NEW SENT,JV AFT VIOL
137 ADM-NEW SENT,PAROLE VIOL
138 ADM-NEW SENT,MR VIOL

143 ADM-NO NEW SENT,PROB VIOL
144 ADM-NO NEW SENT,ER VIOL
147 ADM-NO NEW SENT,PAR VIOL
148 ADM-NO NEW SENT,MR VIOL

173 ADM-ALT TO PROB REV
174 ADM-ALT TO ER REV
177 ADM-ALT TO PAROLE REV
178 ADM-ALT TO MR REV

180 ADM-NO WIS SENTENCE

199 ERRONEOUS ADMISSION

234 ADM-VOL RET FROM ER
237 ADM-VOL RET FROM PAROLE
238 ADM-VOL RET FROM MR

273 ADM PENDING PROB REV HRG
274 ADM PENDING ER REV HRG
277 ADM PENDING PAR REV HRG
278 ADM PENDING MR REV HRG

Note: Other rarely used or currently obsolete admission codes are available in the system such as YO admissions. If needed, see the Data Dictionary.

APPENDIX D

Tables of Custody Ratings
and
Needs Assessments

TABLE 1
CHANGES IN CUSTODY RATINGS BY RACE AND ETHNICITY

| RATING | WHITE NON- HISPANIC | BLACK NON- HISPANIC | HISPANIC | TOTAL |
|------------|---------------------------|---------------------------|-------------|-------|
| UNREPORTED | 585 | 391 | 53 | . |
| SAME | 816 42.6% | 605 44.9% | 72 39.3% | 1493 |
| UP | 886 46.2% | 577 42.8% | 99 54.1% | 1562 |
| DOWN | 214 11.2% | 166 12.3% | 12 6.6% | 392 |
| TOTAL | 1916 | 1348 | 183 | 3447 |

TABLE 1B
FINAL CUSTODY RATINGS BY RACE AND ETHNICITY

| FINAL CUSTODY RATING | WHITE NON- HISPANIC #/% | BLACK NON- HISPANIC #/% | HISPANIC #/% | TOTAL |
|----------------------------|----------------------------------|----------------------------------|-----------------|-------|
| . | 585 | 391 | 53 | . |
| CLOSED | 8 0.42 | 6 0.45 | 2 1.09 | 16 |
| MAXIMUM | 528 27.56 | 484 35.91 | 72 39.34 | 1084 |
| MEDIUM | 650 33.92 | 468 34.72 | 70 38.25 | 1188 |
| MEDIUM OUT | 55 2.87 | 27 2.00 | 4 2.19 | 86 |
| MINIMUM | 675 35.23 | 363 26.93 | 35 19.13 | 1073 |
| TOTAL | 1916 | 1348 | 183 | 3447 |

TABLE 2
EMOTIONAL AND MENTAL HEALTH RATINGS BY RACE AND ETHNICITY

| RATING | WHITE | | BLACK | | TOTAL |
|------------------------------------|---------------|----------------|---------------|----------------|-------|
| | NON-HISPANIC | WHITE HISPANIC | NON-HISPANIC | BLACK HISPANIC | |
| UNREPORTED | 600 | 41 | 409 | 13 | . |
| APPROPRIATE | 1428 75.1% | 113 73.9% | 1081 81.3% | 19 65.5% | 2641 |
| SOME EMOTIONAL & MENTAL HLTH PROBS | 332 17.5% | 29 19.0% | 161 12.1% | 6 20.7% | 528 |
| SEVERE EMOTION & MENTAL HLTH PROBS | 141 7.4% | 11 7.2% | 88 6.6% | 4 13.8% | 244 |
| TOTAL | 1901 | 153 | 1330 | 29 | 3413 |

TABLE 3
ALCOHOL ABUSE RATINGS BY RACE AND ETHNICITY

| RATING | WHITE | | BLACK | | TOTAL |
|------------------------|--------------|----------------|--------------|----------------|-------|
| | NON-HISPANIC | WHITE HISPANIC | NON-HISPANIC | BLACK HISPANIC | |
| UNREPORTED | 604 | 42 | 414 | 14 | . |
| NO ALCOHOL PROBLEM | 747 39.4% | 73 48.0% | 804 60.7% | 17 60.7% | 1641 |
| SLIGHT ALCOHOL PROBLEM | 501 26.4% | 38 25.0% | 295 22.3% | 5 17.9% | 839 |
| SEVERE ALCOHOL PROBLEM | 649 34.2% | 41 27.0% | 226 17.1% | 6 21.4% | 922 |
| TOTAL | 1897 | 152 | 1325 | 28 | 3402 |

TABLE 4
DRUG ABUSE RATINGS BY RACE AND ETHNICITY

| RATING | WHITE | | BLACK | | TOTAL |
|---------------------|---------------|----------------|--------------|----------------|-------|
| | NON-HISPANIC | WHITE HISPANIC | NON-HISPANIC | BLACK HISPANIC | |
| UNREPORTED | 604 | 40 | 410 | 14 | . |
| NO DRUG PROBLEM | 1036 54.6% | 95 61.7% | 671 50.5% | 18 64.3% | 1820 |
| SLIGHT DRUG PROBLEM | 557 29.4% | 32 20.8% | 372 28.0% | 3 10.7% | 964 |
| SEVERE DRUG PROBLEM | 304 16.0% | 27 17.5% | 286 21.5% | 7 25.0% | 624 |
| TOTAL | 1897 | 154 | 1329 | 28 | 3408 |

TABLE 5
EDUCATION RATINGS BY RACE AND ETHNICITY

| RATING | WHITE | | BLACK | | TOTAL |
|----------------------|---------------|----------------|--------------|----------------|-------|
| | NON-HISPANIC | WHITE HISPANIC | NON-HISPANIC | BLACK HISPANIC | |
| UNREPORTED | 607 | 40 | 414 | 13 | . |
| ADEQUATE EDUCATION | 1128 59.6% | 46 29.9% | 527 39.8% | 2 6.9% | 1703 |
| INADEQUATE EDUCATION | 618 32.6% | 58 37.7% | 552 41.7% | 6 20.7% | 1234 |
| LITTLE EDUCATION | 148 7.8% | 50 32.5% | 246 18.6% | 21 72.4% | 465 |
| TOTAL | 1894 | 154 | 1325 | 29 | 3402 |

TABLE 6
VOCATIONAL RATINGS BY RACE AND ETHNICITY

| RATING | WHITE | | BLACK | | TOTAL |
|---------------------------|--------------|----------------|--------------|----------------|-------|
| | NON-HISPANIC | WHITE HISPANIC | NON-HISPANIC | BLACK HISPANIC | |
| UNREPORTED | 604 | 41 | 406 | 13 | . |
| ADEQUATE VOCATIONAL SKILL | 487 25.7% | 30 19.6% | 216 16.2% | 3 10.3% | 736 |
| SOME VOCATIONAL SKILL | 887 46.8% | 74 48.4% | 608 45.6% | 12 41.4% | 1581 |
| NO VOCATIONAL SKILL | 523 27.6% | 49 32.0% | 509 38.2% | 14 48.3% | 1095 |
| TOTAL | 1897 | 153 | 1333 | 29 | 3412 |

TABLE 7

CLINICAL, VOCATIONAL AND EDUCATIONAL PROGRAMS RECOMMENDED
BY RACE AND ETHNICITY

| PROGRAM | WHITE NON- HISPANIC # / % | WHITE HISPANIC # / % | BLACK NON- HISPANIC # / % | BLACK HISPANIC # / % | TOTAL |
|-----------------------------|------------------------------------|----------------------------|------------------------------------|----------------------------|-------|
| Unreported | 1,486 . | 121 . | 1,096 . | 22 . | . |
| Emotional/ Mental Health | 350 16% | 34 18% | 160 11% | 8 14% | 552 |
| Alcohol | 340 16% | 27 15% | 109 8% | 5 9% | 481 |
| Drugs | 127 6% | 9 5% | 128 9% | 3 5% | 267 |
| Alcohol and Drugs | 312 15% | 15 8% | 157 11% | 4 7% | 488 |
| Educational | 443 21% | 53 29% | 403 29% | 17 30% | 916 |
| Vocational | 577 27% | 47 25% | 455 32% | 19 34% | 1,098 |
| Total | 2,149 | 185 | 1,412 | 56 | 3,802 |

APPENDIX E

Tables of Disciplinary Data:

1983, 1982, 1981

1983

TABLE 1
CONDUCT REPORTS: TYPE OF HANDLING BY RACE AND ETHNICITY

| TYPE OF HANDLING | WHITE NON-HISPANIC #/% | WHITE HISPANIC #/% | BLACK NON-HISPANIC #/% | BLACK HISPANIC #/% | TOTAL |
|----------------------------|------------------------|--------------------|------------------------|--------------------|-------|
| SUMMARY DISPOSITION | 1449 17.73 | 91 11.22 | 1118 12.93 | 26 9.25 | 2684 |
| HEARING ON MINOR VIOLATION | 3688 45.14 | 279 34.40 | 3856 44.59 | 102 36.30 | 7925 |
| WAIVER- FULL DUE PROCESS | 2039 24.95 | 282 34.77 | 2259 26.12 | 108 38.43 | 4688 |
| FULL DUE PROCESS HEARING | 982 12.02 | 159 19.61 | 1409 16.29 | 45 16.01 | 2595 |
| CIVIL AUTHORITIES | 13 0.16 | 0 0.00 | 6 0.07 | 0 0.00 | 19 |
| TOTAL | 8171 | 811 | 8648 | 281 | 17911 |

TABLE 2
CONDUCT REPORTS: DISPOSITIONS BY RACE AND ETHNICITY

| TYPE OF DISPOSITION | WHITE NON-HISPANIC #/% | WHITE HISPANIC #/% | BLACK NON-HISPANIC #/% | BLACK HISPANIC #/% | TOTAL |
|--------------------------|------------------------|--------------------|------------------------|--------------------|-------|
| UNREPORTED | 5 | 0 | 4 | 0 | . |
| DISMISSED | 350 4.29 | 38 4.69 | 445 5.15 | 18 6.41 | 851 |
| REPRIMAND ONLY | 1119 13.70 | 113 13.93 | 1341 15.51 | 39 13.88 | 2612 |
| LOSS OF PRIVILEGES | 4804 58.83 | 409 50.43 | 4833 55.91 | 150 53.38 | 10196 |
| RESTITUTION | 83 1.02 | 11 1.36 | 66 0.76 | 0 0.00 | 160 |
| EXTRA DUTY | 170 2.08 | 9 1.11 | 170 1.97 | 0 0.00 | 349 |
| BUILDING CONFINEMENT | 30 0.37 | 3 0.37 | 20 0.23 | 0 0.00 | 53 |
| ADJUSTMENT SEGREGATION | 1315 16.10 | 177 21.82 | 1640 18.97 | 66 23.49 | 3198 |
| PROGRAM SEGREGATION | 186 2.28 | 50 6.17 | 98 1.13 | 6 2.14 | 340 |
| LOSS OF GOOD TIME | 101 1.24 | 1 0.12 | 25 0.29 | 2 0.71 | 129 |
| REFERRAL FOR PROSECUTION | 8 0.10 | 0 0.00 | 6 0.07 | 0 0.00 | 14 |
| TOTAL | 8166 | 811 | 8644 | 281 | 17902 |

1982

TABLE 1
CONDUCT REPORTS: TYPE OF HANDLING BY RACE AND ETHNICITY

| TYPE OF HANDLING | WHITE NON-HISPANIC #/% | WHITE HISPANIC #/% | BLACK NON-HISPANIC #/% | BLACK HISPANIC #/% | TOTAL |
|----------------------------|------------------------|--------------------|------------------------|--------------------|-------|
| SUMMARY DISPOSITION | 1142 12.28 | 71 10.25 | 968 10.13 | 2 4.00 | 2183 |
| HEARING ON MINOR VIOLATION | 4677 50.30 | 335 48.34 | 4473 46.81 | 21 42.00 | 9506 |
| WAIVER- FULL DUE PROCESS | 2285 24.58 | 172 24.82 | 2235 23.39 | 9 18.00 | 4701 |
| FULL DUE PROCESS HEARING | 1184 12.73 | 113 16.31 | 1875 19.62 | 18 36.00 | 3190 |
| CIVIL AUTHORITIES | 10 0.11 | 2 0.29 | 4 0.04 | 0 0.00 | 16 |
| TOTAL | 9298 | 693 | 9555 | 50 | 19596 |

TABLE 2
CONDUCT REPORTS: DISPOSITIONS BY RACE AND ETHNICITY

| TYPE OF DISPOSITION | WHITE NON-HISPANIC #/% | WHITE HISPANIC #/% | BLACK NON-HISPANIC #/% | BLACK HISPANIC #/% | TOTAL |
|--------------------------|------------------------|--------------------|------------------------|--------------------|-------|
| UNREPORTED | 16 . | 2 . | 10 . | 0 . | . |
| DISMISSED | 458 4.93 | 34 4.92 | 518 5.43 | 4 8.00 | 1014 |
| REPRIMAND ONLY | 1238 13.34 | 115 16.64 | 1362 14.27 | 9 18.00 | 2724 |
| LOSS OF PRIVILEGES | 5348 57.62 | 374 54.12 | 5237 54.87 | 25 50.00 | 10984 |
| RESTITUTION | 100 1.08 | 2 0.29 | 70 0.73 | 1 2.00 | 173 |
| EXTRA DUTY | 197 2.12 | 17 2.46 | 273 2.86 | 0 0.00 | 487 |
| BUILDING CONFINEMENT | 57 0.61 | 1 0.14 | 40 0.42 | 0 0.00 | 98 |
| ADJUSTMENT SEGREGATION | 1611 17.36 | 129 18.67 | 1900 19.91 | 11 22.00 | 3651 |
| PROGRAM SEGREGATION | 192 2.07 | 13 1.88 | 105 1.10 | 0 0.00 | 310 |
| LOSS OF GOOD TIME | 68 0.73 | 4 0.58 | 35 0.37 | 0 0.00 | 107 |
| REFERRAL FOR PROSECUTION | 13 0.14 | 2 0.29 | 5 0.05 | 0 0.00 | 20 |
| TOTAL | 9282 | 691 | 9545 | 50 | 19568 |

1981

TABLE 1
CONDUCT REPORTS: TYPE OF HANDLING BY RACE AND ETHNICITY

| TYPE OF HANDLING | WHITE NON-HISPANIC #/% | WHITE HISPANIC #/% | BLACK NON-HISPANIC #/% | BLACK HISPANIC #/% | TOTAL |
|----------------------------|------------------------|--------------------|------------------------|--------------------|-------|
| SUMMARY DISPOSITION | 665 11.93 | 34 7.66 | 645 9.63 | 1 6.67 | 1345 |
| HEARING ON MINOR VIOLATION | 3062 54.95 | 218 49.10 | 3220 48.07 | 8 53.33 | 6508 |
| WAIVER- FULL DUE PROCESS | 1054 18.92 | 97 21.85 | 1286 19.20 | 2 13.33 | 2439 |
| FULL DUE PROCESS HEARING | 786 14.11 | 95 21.40 | 1547 23.09 | 4 26.67 | 2432 |
| CIVIL AUTHORITIES | 5 0.09 | 0 0.00 | 1 0.01 | 0 0.00 | 6 |
| TOTAL | 5572 | 444 | 6699 | 15 | 12730 |

TABLE 2
CONDUCT REPORTS: DISPOSITION BY RACE AND ETHNICITY

| TYPE OF DISPOSITION | WHITE NON-HISPANIC #/% | WHITE HISPANIC #/% | BLACK NON-HISPANIC #/% | BLACK HISPANIC #/% | TOTAL |
|--------------------------|------------------------|--------------------|------------------------|--------------------|-------|
| UNREPORTED | 10 . | 1 . | 7 . | 0 . | . |
| DISMISSED | 292 5.25 | 22 4.97 | 423 6.32 | 0 0.00 | 737 |
| REPRIMAND ONLY | 879 15.80 | 88 19.86 | 1128 16.86 | 3 20.00 | 2098 |
| LOSS OF PRIVILEGES | 3162 56.85 | 212 47.86 | 3533 52.79 | 10 66.67 | 6917 |
| RESTITUTION | 87 1.56 | 4 0.90 | 86 1.29 | 0 0.00 | 177 |
| EXTRA DUTY | 71 1.28 | 1 0.23 | 86 1.29 | 0 0.00 | 158 |
| BUILDING CONFINEMENT | 9 0.16 | 4 0.90 | 13 0.19 | 0 0.00 | 26 |
| ADJUSTMENT SEGREGATION | 937 16.85 | 105 23.70 | 1338 19.99 | 2 13.33 | 2382 |
| PROGRAM SEGREGATION | 95 1.71 | 7 1.58 | 66 0.99 | 0 0.00 | 168 |
| LOSS OF GOOD TIME | 28 0.50 | 0 0.00 | 17 0.25 | 0 0.00 | 45 |
| REFERRAL FOR PROSECUTION | 2 0.04 | 0 0.00 | 2 0.03 | 0 0.00 | 4 |
| TOTAL | 5562 | 443 | 6692 | 15 | 12712 |

APPENDIX F

Tables of Releases
1983, 1982, 1981

Table 1
Percent of Releases by Race and Ethnicity:
Fiscal Years 1981, 1982, 1983

| <u>Year</u> | <u>Race and Ethnicity</u> | | |
|-------------|---------------------------|--------------|-----------------|
| | <u>White</u> | <u>Black</u> | <u>Hispanic</u> |
| 1981 | 62% | 34% | 3% |
| 1982 | 60% | 36% | 4% |
| 1983 | 61% | 34% | 5% |

Table 2
 Percent of Time Served
 by Race and Ethnicity:
 Fiscal Years 1981, 1982, 1983 (Releases)

| TIME SERVED | RACE | 1981 | 1982 | 1983 |
|---------------------------------|----------|------|------|------|
| | | % | % | % |
| 1- 24 Months | White | 69 | 73 | 73 |
| | Black | 58 | 59 | 64 |
| | Hispanic | 57 | 63 | 71 |
| 25- 48 Months | White | 23 | 19 | 22 |
| | Black | 29 | 26 | 25 |
| | Hispanic | 38 | 27 | 23 |
| 49- 72 Months | White | 5 | 5 | 2 |
| | Black | 8 | 7 | 6 |
| | Hispanic | 4 | 6 | 3 |
| 73- 96 Months | White | 2 | 1 | 1 |
| | Black | 4 | 4 | 3 |
| | Hispanic | 2 | 3 | 2 |
| 97-120 Months | White | 1 | 1 | * |
| | Black | 1 | 2 | 2 |
| | Hispanic | * | * | 1 |
| 121 Months to Less than Life | White | 1 | * | * |
| | Black | * | 1 | 2 |
| | Hispanic | * | * | * |

* = Less than 1%

Table 3
 Percent of Types of Offenders
 by Race and Ethnicity
 Fiscal Years 1981, 1982, 1983 (Releases)

| TYPES OF OFFENDERS | RACE | 1981 | 1982 | 1983 |
|--------------------|----------|------|------|------|
| | | % | % | % |
| Property | White | 61 | 59 | 62 |
| | Black | 43 | 45 | 48 |
| | Hispanic | 30 | 37 | 41 |
| Assault | White | 24 | 26 | 21 |
| | Black | 41 | 41 | 40 |
| | Hispanic | 43 | 39 | 45 |
| Sexual Assault | White | 7 | 7 | 9 |
| | Black | 9 | 8 | 7 |
| | Hispanic | 7 | 14 | 5 |
| Drugs | White | 7 | 7 | 8 |
| | Black | 5 | 5 | 5 |
| | Hispanic | 16 | 8 | 9 |
| Sex | White | * | * | * |
| | Black | 2 | * | * |
| | Hispanic | * | * | * |

* = Less than 1%.

Table 4

Percent of Types of Offenders
by County¹ of Sentencing:
Released During Fiscal Year 1983

| TYPES OF OFFENDERS | REGIONS | | | | | |
|--------------------|----------------|---------------|--------------|---------------|--------------|---------------|
| | MILWAUKEE % | SOUTHERN % | WESTERN % | SO. EAST % | EASTERN % | NORTHERN % |
| Property | 50 | 56 | 70 | 53 | 61 | 66 |
| Assault | 37 | 24 | 16 | 28 | 23 | 18 |
| Sexual Assault | 8 | 10 | 7 | 9 | 8 | 8 |
| Sex | * | * | * | 1 | * | * |
| Drug | 5 | 9 | 6 | 9 | 8 | 8 |
| Assault & Drug | * | * | * | * | * | * |

¹ Counties have been combined into regions except for Milwaukee.

* = Less than 1%

Table 5

Percent of Types of Offenders
by County¹ of Sentencing:
Released During Fiscal Year 1982

| TYPES OF OFFENDERS | REGIONS | | | | | |
|--------------------|----------------|---------------|--------------|---------------|--------------|---------------|
| | MILWAUKEE % | SOUTHERN % | WESTERN % | SO. EAST % | EASTERN % | NORTHERN % |
| Property | 45 | 53 | 62 | 57 | 60 | 67 |
| Assault | 41 | 27 | 24 | 24 | 24 | 24 |
| Sexual Assault | 8 | 12 | 6 | 5 | 9 | 6 |
| Sex | * | * | * | * | * | * |
| Drug | 4 | 8 | 7 | 12 | 6 | 3 |
| Assault & Drug | 1 | * | 1 | 1 | 1 | * |

¹ Counties have been combined into regions except for Milwaukee.

* = Less than 1%

Table 6
 Percent of Types of Offenders
 by County¹ of Sentencing:
 Released During Fiscal Year 1981

| TYPES OF OFFENDERS | REGIONS | | | | | |
|--------------------|----------------|---------------|--------------|---------------|--------------|---------------|
| | MILWAUKEE % | SOUTHERN % | WESTERN % | SO. EAST % | EASTERN % | NORTHERN % |
| Property | 44 | 58 | 70 | 49 | 68 | 73 |
| Assault | 39 | 25 | 20 | 31 | 20 | 12 |
| Sexual Assault | 8 | 6 | 5 | 7 | 7 | 13 |
| Sex | 1 | * | * | 1 | * | * |
| Drug | 6 | 8 | 5 | 11 | 5 | 3 |
| Assault & Drug | 1 | 2 | * | 2 | * | * |

¹ Counties have been combined into regions except for Milwaukee.

* = Less than 1%

END