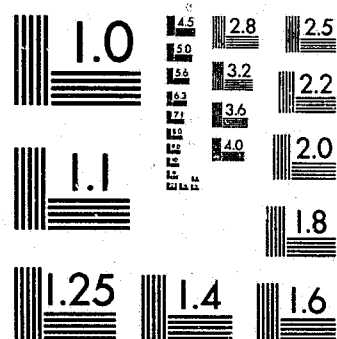


National Criminal Justice Reference Service



This microfiche was produced from documents received for inclusion in the NCJRS data base. Since NCJRS cannot exercise control over the physical condition of the documents submitted, the individual frame quality will vary. The resolution chart on this frame may be used to evaluate the document quality.



MICROCOPY RESOLUTION TEST CHART  
NATIONAL BUREAU OF STANDARDS-1963-A

Microfilming procedures used to create this fiche comply with the standards set forth in 41CFR 101-11.504.

Points of view or opinions stated in this document are those of the author(s) and do not represent the official position or policies of the U. S. Department of Justice.

National Institute of Justice  
United States Department of Justice  
Washington, D. C. 20531

17/23/84

92999

# Residential Security Program

## Program Guide & Evaluation

CR-Sent  
5-9-84

U.S. Department of Justice  
National Institute of Justice  
92999

This document has been reproduced exactly as received from the person or organization originating it. Points of view or opinions stated in this document are those of the authors and do not necessarily represent the official position or policies of the National Institute of Justice.

Permission to reproduce this copyrighted material has been granted by  
**American Assn. of Retired Persons**  
**Criminal Justice Services Program Dev.**  
to the National Criminal Justice Reference Service (NCJRS).

Further reproduction outside of the NCJRS system requires permission of the copyright owner.

92999

**MARYLAND CRIME WATCH  
RESIDENTIAL SECURITY  
PROGRAM**

**Guide and Evaluation**

**Developed by Maryland Crime Watch,  
Maryland Criminal Justice Coordinating Council**

Co-Sponsored By:

**American Association of Retired Persons**

## STATEMENT OF PURPOSE

The Maryland Crime Watch Residential Security Program (RSP) has been developed with a dual purpose in mind. First, it serves as a guide for the practitioner who is interested in the implementation of a comprehensive residential crime prevention program. Secondly, this document enables the practitioner to measure the actual effect of a community crime prevention program as it relates to criminal activity, the fear of crime and citizen/law enforcement interaction.

Program evaluation may be the single most important task faced by crime prevention practitioners. This Program Guide and Evaluation Manual has been designed to:

- Measure the degree of progress toward specific objectives and toward the general goal of the program;
- Identify weak and strong points of program operations and suggest changes;
- Monitor program activities and capture pertinent statistical data;
- Provide for timely recognition of negative program effects;
- Increase public support for successful approaches;
- Provide standards against which to measure achievement; and
- Obtain reliable "bottom line" information.

The Residential Security Program Guide and Evaluation consists of an introduction, a set of general instructions, the specific objectives with corresponding methods of evaluation, and the forms to be used during program implementation.

This program should not be instituted until the implementing practitioner has received specialized training in its use. This training will be provided by MCW upon request.

## ACKNOWLEDGMENTS

*Maryland Crime Watch Residential Security Program Guide and Evaluation* was developed by the Maryland Crime Watch staff of the Maryland Criminal Justice Coordinating Council and the Maryland Crime Watch Evaluation Subcommittee. Project staff were Ms. Pat Sill, coordinator; Ms. Linda Evans and Ms. Nancy Hax, program specialists; Lt. Roy Chiavacci, Maryland State Police, who was detailed to Maryland Crime Watch for this project; and Ms. Joyce Gary, Maryland Crime Watch secretary.

Special thanks are due to the members of the Maryland Crime Watch Evaluation Subcommittee, and the law enforcement agencies and organizations they represent. Their input, advice, and assistance were invaluable in developing and formulating this document. These individuals and their agencies are as follows:

- Cpl. Jesse Bane, Harford County Sheriff's Department and Maryland Crime Prevention Association Vice President
- Sgt. Larry Faries, Maryland State Police and Maryland Crime Prevention Association President
- Dr. Sheldon Greenberg, Howard County Police Department
- Capt. Richard Kollmann, Prince George's County Police Department
- Sgt. Casey McDevitt, Charles County Sheriff's Department
- Sgt. Robert Novak, Baltimore City Police Department
- Sgt. Woody Pifer, Montgomery County Police Department
- Mr. George Sunderland, American Association of Retired Persons

Maryland Crime Watch and the Maryland Crime Watch Evaluation Subcommittee are grateful for the assistance provided to this project by the following groups and individuals: the Maryland Crime Watch Residential Security Program Field Review Committee; the Maryland Crime Prevention Association; Dr. Ralph Taylor, Johns Hopkins University Metropolitan Research Center; Dr. Lewis Dexter, University of Maryland, Baltimore County; Ms. Catherine Conly, Chief, Research and Statistics Section, Maryland Criminal Justice Coordinating Council; Mr. Len Sipes, National Criminal Justice Reference Service; Mr. Ray Franklin, Maryland Criminal Justice Resource Center; Ms. Lee Pearson and Mr. Steve Stiles, American Association of Retired Persons; and the many law enforcement officers, state crime prevention program and association representatives, and other individuals across the country who reviewed this document.

A special note of thanks to the American Association of Retired Persons and the FBI Academy for their co-sponsorship of the Residential Security Program National Field Review held in September, 1982 at the FBI Academy in Quantico, Virginia.

©American Association of Retired Persons, 1983.

## TABLE OF CONTENTS

Statement of Purpose .....	iii
Acknowledgments .....	v
Residential Security Program Guide and Evaluation .....	1
Residential Security Program General Instructions .....	9
Purposes of Data Retrieval Forms .....	13
Data Retrieval Forms Cross Reference .....	14
Data Retrieval Forms .....	15
MCW Form 101: Target Area Criminal Activity Statistics .....	17
MCW Form 102: RSP Implementation Information .....	19
MCW Form 103: Pre-Program Neighborhood Attitude Survey .....	25
MCW Form 104: Post-Program Neighborhood Attitude Survey .....	27
MCW Form 105: Tally Sheet for MCW Forms 103 and 104 .....	31
MCW Form 106: Pre- and Post-Survey of Program Knowledge .....	39
MCW Form 106A: Tabulation of MCW Form 106 .....	41
MCW Form 107: Security Survey and Victimization Data .....	43
MCW Form 108: RSP Summary .....	45
Appendix: MCW Home Security Survey Form .....	51

**NCJRS**  
FEB 13 1984  
**ACQUISITIONS**

# MARYLAND CRIME WATCH RESIDENTIAL SECURITY PROGRAM GUIDE AND EVALUATION

## INTRODUCTION

The Residential Security Program (RSP) has been developed to reduce neighborhood crime through a joint law enforcement/citizen program consisting of:

1. Neighborhood observation and reporting of suspicious activity (Neighborhood Watch).
2. Identification of physical and procedural security weaknesses and the implementation of corrective measures to eliminate those weaknesses (security surveys and compliance).
3. Property markings (Operation Identification).

By incorporating these three activities, traditionally undertaken in community crime prevention programming, the RSP is designed to obtain maximum community involvement to:

1. Reduce fear levels as they pertain to crime.
2. Reduce or eliminate criminal activity.
3. Improve citizen interaction with law enforcement.

To be truly effective, all three activities (Neighborhood Watch, security surveys, Operation Identification) should be presented as a comprehensive program since each one individually complements the others. Experience has shown that although participation in one activity is considered a "good start," the implementation and maintenance of the entire RSP considerably increase the likelihood of reaching the ultimate goal.

NOTE: Citizens should not be discouraged from participating in any one activity; rather, they should be encouraged to consider the incorporation of all three activities in the RSP.

## RSP EVALUATION

Webster defines "evaluate" as, "to find the value or amount of; determine the worth of; appraise." The evaluation portion of the RSP is as important an ingredient as any other in attaining the program's overall goal. A formal systematic approach to measuring crime prevention programming is long overdue, and this document addresses this shortcoming. This instrument will not only "determine the worth of" the programs, but it will also serve as a step-by-step guide for those individuals who are responsible for program implementation and maintenance.

The "bottom line" information that concerns crime prevention officers, participating citizens, law enforcement supervisors, law enforcement agency heads, and public officials can only be obtained (with any degree of reliability) by using a formal system designed to capture the required data. Participation levels, fear levels, reductions in criminal activity, and improved citizen interaction with law enforcement are considered the "bottom line" pieces of information used to determine continued programming, which includes:

1. Law enforcement's providing manpower and related resources.
2. Community involvement based on successful programs.
3. Private and public funding for delivery systems.

## PROGRAM GOAL\*

To reduce neighborhood crime and the fear of crime through a joint law enforcement/citizen program consisting of:

1. Neighborhood observation and reporting of suspicious activity;
2. Identification of physical security weaknesses and implementation of corrective measures to eliminate those weaknesses, and
3. Property marking.

## OBJECTIVES AND METHODS OF EVALUATION

### OBJECTIVE #1

*To increase acceptance by citizens of their responsibilities for crime prevention by stimulating neighborhood interaction and creating awareness of neighborhood crime rates, trends, crime risks, and criminal opportunities.*

### METHOD OF EVALUATION

- A.** Maintain a continuous assessment of neighborhood crime prevention programming needs by measuring the following:
1. Criminal activity in the target area, measurable through an analysis of crime data before and after initiation of the Residential Security Program (RSP). (See MCW Form 101.) (NOTE: Crime data alone should not be the only measure of program success or failure; a successful program may generate increased reporting of crime for a certain period of time.)
  2. Fear levels, measurable through pre- and post-questionnaires. (See MCW Forms 103, 104.) (NOTE: Fear levels may increase initially after citizens are sensitized to the amount of criminal activity in their communities.)
  3. Program knowledge, measurable through pre- and post-questionnaires. (See MCW Form 106.)
- B.** Maintain data on public awareness activities regarding neighborhood crime and citizen responsibility (e.g., personal contacts, program presentations, media announcements, etc.). (See MCW Forms 102 and 103.)

\*This document should be read in conjunction with the RSP General Instructions, page 9.

**OBJECTIVE #2**

*To inform the community of the availability of the Residential Security Program, which includes Neighborhood Watch, security surveys, and Operation Identification.*

**METHOD OF EVALUATION**

Maintain data on public awareness activities (e.g., personal contacts, program presentations, media announcements, etc.) regarding the availability of the Residential Security Program. (See MCW Forms 102 and 103.)

**OBJECTIVE #3**

*To develop a mechanism to continue the interest, education and action of Residential Security Program participants (program maintenance and evaluation).*

**METHOD OF EVALUATION**

Upon establishing the RSP, those responsible for implementation should be prepared to continue the flow of information in the community regarding the crime problem and prevention methods, in particular citing victimization studies on Residential Security Program participants before and after involvement in the program (e.g., use existing community newsletter; develop a community crime prevention newsletter; make information available at community association meetings; participate in the Governor's Crime Prevention Awards Program; develop local recognition programs, etc.). Identify special groups in the community and develop additional programs or projects to meet their specific crime prevention needs. Maintain records of these groups and programs. (See MCW Forms 102, 103, 104, 107, and 108.)

**OBJECTIVE #4**

*To educate the community regarding benefits of the Neighborhood Watch, security survey, and Operation Identification programs, and provide it with the information and materials necessary to implement the programs.*

**METHOD OF EVALUATION**

Maintain data on personal contacts (e.g., meetings, displays, presentations, literature, etc.) provided to the participants and note increase in requests for security surveys and in Neighborhood Watch and Operation Identification participation. (See MCW Forms, 102, 104, and 107.)

**OBJECTIVE #5**

*To establish a Neighborhood Watch program and develop a communications system for the exchange of crime-related information between neighborhood participants and law enforcement.*

**METHOD OF EVALUATION**

Refer to data maintained in MCW Forms 102 and 104.

**OBJECTIVE #6**

*To establish a cooperative system of observation among Neighborhood Watch participants. (Incorporating legal ramifications and participant limitations.)*

**OBJECTIVE #7**

*To increase the immediate and accurate reporting of crime, suspicious activities, and suspicious persons to the police and subsequent arrests by the police which are related to those calls for service.*

**METHOD OF EVALUATION**

Maintain data on calls for service related to criminal activity. Compare calls for service related to criminal activity in the neighborhood before and after inception of the program. Compare calls for service related to criminal activity in neighborhood with calls for service related to criminal activity area-wide. (NOTES: 1. Data can be maintained on total crime-related calls for service or broken down into categories such as suspicious persons, breaking and entering, burglary, attempts, in-progress calls, etc. 2. A program which generates citizen involvement through awareness of potential problems may also generate increased calls for service over a certain period of time. See MCW Form 101.)

**OBJECTIVE #8**

*To determine existing crime risks by on-site assessment of procedural, perceptual, physical and psychological barriers.*

**METHOD OF EVALUATION**

Maintain data on the surveys that have been conducted (i.e., number of surveys conducted, number and/or types of security risks cited, location(s) of survey(s), recommendations, etc. (See MCW Form 107 and Appendix: Maryland Crime Watch Home Security Survey Form.)

**OBJECTIVE #9**

*To recommend target hardening devices, procedures, and other methods (e.g., Operation Identification) necessary to remove or reduce identified crime risks. (See Appendix: Maryland Crime Watch Home Security Survey Form.)*



**OBJECTIVE #10**

To monitor compliance and non-compliance with security survey recommendations in relation to the victimization of homes whose occupants have been offered the security survey.

**METHOD OF EVALUATION**

- A. Maintain data to compare victimization of homes whose occupants have complied with the security survey recommendations with victimization of homes whose occupants have not complied. (See MCW Form 107.)
- B. Maintain data noting attempted burglaries that were thwarted because the occupants had complied with security survey recommendations. (See MCW Form 107.)
- C. Maintain data to compare victimization of homes whose occupants have complied with security survey recommendations compared to victimization of homes whose occupants declined to participate in the survey. (See MCW Form 107.)

**OBJECTIVE #11**

To inform citizens of the importance of permanently marking or engraving their valuables, and photographing those items that cannot be marked or engraved. NOTE: The number used in the Operation Identification program is the owner's driver's license/Soundex number. Business owners can obtain a Soundex number from the Motor Vehicle Administration. Individuals who do not drive can obtain an identification number from the MVA which can be used for the Operation Identification Program.

**OBJECTIVE #12**

To inform citizens of the importance of preparing detailed property lists that provide full descriptions of valuables and numerical identifiers.

**OBJECTIVE #13**

To create a visual deterrent to potential criminals and to identify Operation Identification program participants through display of the Operation Identification decal.

**METHOD OF EVALUATION**

Maintain data on targeted communities to determine the extent to which Operation Identification decals are displayed. NOTE: To maintain the integrity of the Operation Identification program, strict controls should be used to prevent indiscriminate distribution of Operation Identification decals to anyone other than those persons who have complied with program requirements. (This data can be kept in a card file by targeted communities, and can include information relative to the total number of engravers lent and decals issued.)

**OBJECTIVE #14**

To create a visual deterrent to potential criminals through display of the Neighborhood Watch/Operation Identification sign in those neighborhoods that have the required level of participation in the Neighborhood Watch program.

**METHOD OF EVALUATION**

Compare the number of crimes in the targeted neighborhood before and after the installation of the Neighborhood Watch/Operation Identification sign. (See MCW Forms 101 and 102.) NOTE: The participation levels required for Neighborhood Watch/Operation Identification signs vary from jurisdiction to jurisdiction. Strict controls should be kept over these signs so that only the neighborhoods with the required participation post the signs.

**OBJECTIVE #15**

To enhance the identification of recovered stolen property and the return of recovered stolen property to the rightful owners.

**METHOD OF EVALUATION**

- A. Maintain data on the amount or percentage of stolen property marked or recorded in conjunction with Operation Identification in the targeted area. (This information can be kept in a card file in conjunction with Form 107 on Victimization.)
- B. Maintain data on the amount of property returned as a result of participation in Operation Identification in the target area. (This information can be kept by a card file in conjunction with Form 107 on Victimization.)

**OBJECTIVE #16**

To monitor the incidence of crime, fear of crime, and the level of community involvement following implementation of the Residential Security Program.

**METHOD OF EVALUATION**

- A. Periodically review the data collected on criminal activity in the Residential Security Program community. (See MCW Forms 101 and 108.)
- B. Periodically review the levels of fear in the Residential Security Program community. (See MCW Forms 105 and 108.)
- C. Periodically review the levels of citizen participation and community involvement within the framework of the Residential Security Program. (See MCW Forms 102, 106A, 107, 108. (NOTE: Optimum participation is achieved when members of the targeted community belong to the Neighborhood Watch program, have identified their property, have had security surveys performed, and have complied with the survey recommendations.)

# MARYLAND CRIME WATCH RESIDENTIAL SECURITY PROGRAM (RSP)

## GENERAL INSTRUCTIONS

1. Review RSP Introduction, Program Goal, Objectives, Methods of Evaluation.
2. Choose a target area to implement the RSP
  - Based on citizen interest, fear levels, and/or
  - Based on crime rate, trends.
3. Record the targeted crimes (burglary, breaking and entering, and larceny) as indicated on MCW 101. You may select other crimes to be monitored. Record these as well. *Refer to Objective 1.*

*NOTE:* The RSP is designed to have a direct impact upon residential burglary, breaking or entering, and larceny. However, the RSP may have indirect effects on other crimes (e.g., sexual assault, auto theft, vandalism).

4. Survey the homes in the target area, using MCW 103\* to assess citizen attitudes about crime in their neighborhood. *Refer to Objective 2.* Record on MCW 102 the number of surveys distributed. This survey can be given by using one of the following methods:
  - Phone (using law enforcement officers or trained volunteers—e.g., Explorers, senior citizens)
  - Door-to-door (using law enforcement officers or trained volunteers—e.g., Explorers, senior citizens)
  - Neighborhood meeting—*NOTE:* Attendees will probably be the most interested/fearful/aware in the neighborhood, and survey results could be skewed.

\*You may elect to use MCW 105 and tally as you survey.

5. Tally results of MCW 103 using MCW 105. Record on MCW 102 the number of surveys returned.

6. Begin public awareness activities as suggested on MCW 102 and record on MCW 102. *Refer to Objective 2.*

NOTES: Ideally, these activities should only be implemented after the attitude survey is given (MCW 103); otherwise, increased awareness might affect attitudes.

Throughout the RSP implementation period, keep media actively involved in publicizing crime prevention activities. Use alternate media, develop new material, look for new sources to disseminate material.

7. Conduct the first neighborhood meeting. Record necessary data on MCW 102. *Refer to Objectives 1 and 2.*

- Distribute roster requesting names, addresses, and phone numbers.
- Distribute MCW 103 if not completed prior to this meeting.
- Distribute MCW 106 to assess participant pre-program knowledge. Tally results on MCW 106A.
- Present relevant crime prevention information and materials. Record on MCW 102.

NOTE: To sustain interest and to be more effective, there should be several meetings to spread the delivery of information.

8. Plan program maintenance activities. Use MCW 102 to record these activities. *Refer to Objective 3.*
9. At subsequent meetings, present information regarding Neighborhood Watch, security surveys, and Operation Identification. Maintain MCW 102 for each presentation given. *Refer to Objective 4.*
10. Record on MCW 102 the specifics of your agency's Neighborhood Watch program.
11. Organize Neighborhood Watch program according to your agency policy. Explain the following: 1) Participation requirements, both individual and neighborhood; 2) Limitations of Neighborhood Watch participants; i.e., they are the "eyes and ears of the police," should not intervene, have no arrest powers.  
Record Neighborhood Watch participation on MCW 102. *Refer to Objectives 5 and 6.*
12. Maintain data on calls for service related to criminal activity and record on MCW 101. *Refer to Objective 7.*
13. Introduce security survey concept to participants. Perform surveys and maintain records on individual security surveys performed using the Maryland Crime Watch Security Survey Form. Use MCW 107 to keep monthly and cumulative totals of surveys conducted. *Refer to Objectives 8 and 9.*

14. Record on MCW 107 the specifics of your agency's definition of security, survey compliance. (Remember: the *degree of security achieved* is more important than the number of recommendations implemented.) Apply this standard of compliance consistently for all security surveys performed. *Refer to Objectives 8 and 9.*

15. Perform follow-up on security surveys conducted to monitor participant compliance with security survey recommendations. Use MCW 107 to keep monthly and cumulative totals (MT and CT) of follow-ups and the number of homes complying. *Refer to Objective 10.*

16. Using MCW 107, maintain data on victimization of households whose residents were offered the security survey, in relation to compliance and non-compliance with security survey recommendations. *Refer to Objective 10.*

17. Set up a record-keeping system (e.g., card file) for your Operation Identification program, including information on loan of engravers and decal distribution. *Refer to Objective 13.*

18. Introduce and implement the Operation Identification Program. Use your own record-keeping system (devised above) and MCW 102 to record participant information. Also use your Operation Identification record-keeping system to maintain statistics on which homes display the Operation Identification decals. *Refer to Objectives 11, 12, and 13.*

19. Help *qualifying* neighborhoods obtain Neighborhood Watch/Operation Identification signs, per your agency policy. On MCW 102, record the location of signs. *Refer to Objective 14.*

20. Compare the number of crimes in the target neighborhood before and after the installation of the Neighborhood Watch/Operation Identification sign. *Refer to Objective 14.*

21. Identify target neighborhood homes which have been victimized (includes burglaries, breakings and enterings, larcenies) since the RSP was implemented. (Use MCW 107 as a starting point to identify these homes.) Identify the following:

- 1) Marked (Operation Identification) property stolen.
- 2) Marked (Operation Identification) property recovered/returned.

Use your Operation Identification record-keeping system to record this information. *Refer to Objective 15.*

22. Allow a suitable time period to firmly establish all three RSP components (Neighborhood Watch, security surveys, Operation Identification) in the target area. This time period will vary depending on departmental resources (e.g., personnel, time, etc.) and other variables (e.g., use of volunteers, time of year implemented, etc.).

23. Record post-program crime data for a period (e.g., 12 months) corresponding to the pre-program crime data. Use MCW 101 to record this information. Transfer the pre-program and the post-program data from MCW 101 to the appropriate spaces on MCW 108. Compute the percentage change in crime and calls for service. Record on MCW 108 as indicated. *Refer to Objective 16.*
24. Using MCW 104, survey homes in the target area to assess citizen attitudes about crime in their neighborhood. Use MCW 105 to tally MCW 104 responses (in the same way you used MCW 105 to tally MCW 103 responses). Transfer tallied MCW 103 and 104 information from MCW 105 to MCW 108.  
Compute percentage change in attitude and record on MCW 108 as indicated. *Refer to Objective 16.*
25. Using MCW 106, survey homes in the target area to assess post-program knowledge. Tally results on MCW 106A. Transfer the pre- and post-program knowledge data from MCW 106A to the appropriate spaces on MCW 108. Compute percentage change in knowledge and record on MCW 108 as indicated. *Refer to Objective 16.*
26. Transfer cumulative total (CT) security survey/victimization information from MCW 107 to MCW 108. Record as indicated. *Refer to Objective 16.*
27. Assess the number of RSP participants at various levels of program implementation. To assess optimum participation, count only those participants that have completed all three program components; they must be Neighborhood Watch participants *and* have marked or recorded their property in conjunction with Operation Identification *and* have complied with security survey recommendations. Record this number on MCW 108 as indicated.
28. Initiate maintenance activities. *Refer to Objective 3 and MCW 102.*
29. Assess the effectiveness in the target community by reviewing MCW Form 108. Disseminate this information as appropriate. (e.g. department head, MCW, etc.)

## SPECIFIC PURPOSES OF DATA RETRIEVAL FORMS

- MCW 101** — Target Area Criminal Activity Statistics  
**Purpose:** To maintain pre-program and post-program crime data in the target area, as well as citizen calls for service.
- MCW 102** — RSP Implementation Information  
**Purpose:** To maintain all relevant participant and program information on RSP neighborhoods.
- MCW 103** — Pre-Program Neighborhood Attitude Survey  
**Purpose:** To assess neighborhood crime victimization and citizen attitudes regarding crime and the fear of crime in the target neighborhood.
- MCW 104** — Post-Program Neighborhood Attitude Survey  
**Purpose:** 1. To assess neighborhood crime victimization and citizen attitudes regarding crime and the fear of crime in the target neighborhood after RSP implementation.  
2. To assess the level of citizen familiarity with and participation in the RSP in the target neighborhood.
- MCW 105** — Tally Sheet for Forms 103 and 104  
**Purpose:** To provide a means for tallying the answers to questions on Forms 103 and 104.
- MCW 106 and 106A** — Pre-and Post-Survey of Program Knowledge  
**Purpose:** To assess pre- and post-RSP knowledge of crime prevention programs in the target area.
- MCW 107** — Security Survey and Victimization Data  
**Purpose:** To maintain data on security surveys in the target area and victimization related to compliance and non-compliance and non-participating homes.
- MCW 108** — RSP Summary  
**Purpose:** To capture the "bottom line" information on the effects of the RSP on crime and citizen fear of crime in the target neighborhood.

## DATA RETRIEVAL FORMS CROSS REFERENCE

### MCW 101

Objective 1  
Objective 7  
Objective 14  
Objective 16

### MCW 102

Objective 1  
Objective 2  
Objective 3  
Objective 4  
Objective 5  
Objective 14

### MCW 103

Objective 1  
Objective 2  
Objective 3

### MCW 104

Objective 1  
Objective 3  
Objective 4  
Objective 5

### MCW 105

Objective 16

### MCW 106

Objective 1

### MCW 106A

Objective 16

### MCW 107

Objective 3  
Objective 4  
Objective 8  
Objective 10  
Objective 15  
Objective 16

### MCW 108

Objective 3  
Objective 16

## MARYLAND CRIME WATCH RESIDENTIAL SECURITY PROGRAM DATA RETRIEVAL FORMS

**RESIDENTIAL SECURITY PROGRAM**

**MCW 101**

Case/File # \_\_\_\_\_

**TARGET AREA CRIMINAL ACTIVITY STATISTICS**

Target Area \_\_\_\_\_

Date Information Compiled \_\_\_\_\_ by \_\_\_\_\_  
(Name of Person)

Crime\*: \_\_\_\_\_

Dates of Pre-Program Crimes Stats  
(12 month period)

Dates of Post-Program Crime Stats  
(12 month period)

From \_\_\_ / \_\_\_ / \_\_\_ to \_\_\_ / \_\_\_ / \_\_\_

From \_\_\_ / \_\_\_ / \_\_\_ to \_\_\_ / \_\_\_ / \_\_\_

Pre-Program Stats:

Post-Program Stats:

[ Number of Crimes ]  
[ (Month) ]

[ Number of Crimes ]  
[ (Month) ]

( \_\_\_\_\_ )

( \_\_\_\_\_ )

( \_\_\_\_\_ )

( \_\_\_\_\_ )

( \_\_\_\_\_ )

( \_\_\_\_\_ )

( \_\_\_\_\_ )

( \_\_\_\_\_ )

( \_\_\_\_\_ )

( \_\_\_\_\_ )

( \_\_\_\_\_ )

( \_\_\_\_\_ )

( \_\_\_\_\_ )

( \_\_\_\_\_ )

( \_\_\_\_\_ )

( \_\_\_\_\_ )

( \_\_\_\_\_ )

( \_\_\_\_\_ )

( \_\_\_\_\_ )

( \_\_\_\_\_ )

( \_\_\_\_\_ )

( \_\_\_\_\_ )

( \_\_\_\_\_ )

( \_\_\_\_\_ )

12-Month Total: \_\_\_\_\_

12-Month Total: \_\_\_\_\_

\* In this space, the targeted crimes as well as others to be monitored should be noted. Use one copy of this form per crime. Crimes monitored may be chosen based on reported crime or on citizen perception of offenses.

MCW 101

- 2 -

Dates of Pre-Program Crime-Related Calls for Service\*\* (12 month period)

From / / to / /

Pre-Program Stats:

[ Number of Calls ] [ (Month) ]

( )

( )

( )

( )

( )

( )

( )

( )

( )

( )

( )

( )

12-Month Total: \_\_\_\_\_

Dates of Post-Program Crime-Related Calls for Service\*\* (12 month period)

From / / to / /

Post-Program Stats:

[ Number of Calls ] [ (Month) ]

( )

( )

( )

( )

( )

( )

( )

( )

( )

( )

( )

( )

12-Month Total: \_\_\_\_\_

\*\*Would include actual offenses as well as calls relating to suspicious persons, suspicious vehicles, suspicious activities, etc.

RESIDENTIAL SECURITY PROGRAM

MCW 102

Case/File # \_\_\_\_\_

RSP IMPLEMENTATION INFORMATION

General Information

Name of group \_\_\_\_\_

Contact initiated by: Group \_\_\_\_\_

Law Enforcement Agency \_\_\_\_\_

Target area/Neighborhood name \_\_\_\_\_

Number of households \_\_\_\_\_

Contact person \_\_\_\_\_ Phone Number \_\_\_\_\_

Topic requested \_\_\_\_\_

Date of initial contact \_\_\_\_\_ Date of first meeting \_\_\_\_\_

Assigned to: \_\_\_\_\_

Has MCW Form 101 been completed? Yes \_\_\_\_\_ No \_\_\_\_\_

Have subsequent meetings been planned? Yes \_\_\_\_\_ No \_\_\_\_\_

If yes, when? \_\_\_\_\_ Topic(s) \_\_\_\_\_

Public Awareness Activities/Neighborhood Attitude Information

(Check if used, and describe as indicated.)

1. \_\_\_\_\_ Posters Date(s) distributed \_\_\_\_\_

Locations and by whom \_\_\_\_\_

Subject: \_\_\_\_\_ General Crime Prevention \_\_\_\_\_ Operation Identification

\_\_\_\_\_ Neighborhood Watch \_\_\_\_\_ Security Survey

\_\_\_\_\_ Other (Describe) \_\_\_\_\_

2. \_\_\_\_\_ News Releases Date(s) of Releases \_\_\_\_\_

Media receiving releases (newspapers, newsletters, radio, TV) \_\_\_\_\_

Subject: \_\_\_\_\_ General Crime Prevention \_\_\_\_\_ Operation Identification

\_\_\_\_\_ Neighborhood Watch \_\_\_\_\_ Security Survey

\_\_\_\_\_ Other (Describe) \_\_\_\_\_

Dates: \_\_\_\_\_

3. Other contacts with media (personal, phone, etc.)

Television stations

Subject: \_\_\_\_\_ General Crime Prevention \_\_\_\_\_ Operation Identification  
\_\_\_\_\_ Neighborhood Watch \_\_\_\_\_ Security Survey  
\_\_\_\_\_ Other (Describe) \_\_\_\_\_

Name(s) of station(s) \_\_\_\_\_

Date(s) contacted \_\_\_\_\_

Date(s) and time(s) material was used \_\_\_\_\_

Radio stations

Subject: \_\_\_\_\_ General Crime Prevention \_\_\_\_\_ Operation Identification  
\_\_\_\_\_ Neighborhood Watch \_\_\_\_\_ Security Survey  
\_\_\_\_\_ Other (Describe) \_\_\_\_\_

Name(s) of station(s) \_\_\_\_\_

Date(s) contacted \_\_\_\_\_

Date(s) and time(s) material was used \_\_\_\_\_

Newspapers

Subject: \_\_\_\_\_ General Crime Prevention \_\_\_\_\_ Operation Identification  
\_\_\_\_\_ Neighborhood Watch \_\_\_\_\_ Security Survey  
\_\_\_\_\_ Other (Describe) \_\_\_\_\_

Name(s) of newspaper(s) \_\_\_\_\_

Date(s) contacted \_\_\_\_\_

Date(s) and time(s) material was used \_\_\_\_\_

4. Neighborhood (group) attitude survey taken (MCW Form 103) \_\_\_\_\_ Yes \_\_\_\_\_ No

Date mailed/distributed \_\_\_\_\_

Mailed/distributed to (specify neighborhood, group, etc.) \_\_\_\_\_

Number mailed/distributed \_\_\_\_\_ Number returned \_\_\_\_\_

For results, See MCW 105.

Participant Information/Program Activities

1. Date of presentation \_\_\_\_\_ Location \_\_\_\_\_

2. Number in attendance for Residential Security Program presentation \_\_\_\_\_

3. Number of households (if applicable) \_\_\_\_\_

4. Pre-program knowledge survey distributed (MCW Form 106) \_\_\_\_\_ Yes \_\_\_\_\_ No

5. Number distributed \_\_\_\_\_ Number returned \_\_\_\_\_  
For results, see MCW Form 106A.

6. Information presented and method of presentation (e.g., burglary prevention—oral presentation and film) \_\_\_\_\_

7. Printed material distributed (titles and amounts—e.g., 100 *Outsmarting Crime*) \_\_\_\_\_

\_\_\_\_\_  
\_\_\_\_\_  
\_\_\_\_\_



**Neighborhood Watch/Operation Identification Programs**

1. Record specifics of *your agency's* Neighborhood Watch program participation requirements as follows:

a. What constitutes individual participation in Neighborhood Watch? (e.g., participation in Operation Identification, having had a security survey performed, having complied with security survey recommendations, reporting of suspicious activities, designation of block captains, etc.)

\_\_\_\_\_  
\_\_\_\_\_  
\_\_\_\_\_

b. What percentage of neighborhood participation are you going to require before erecting a Neighborhood Watch sign in that neighborhood? \_\_\_\_\_%

c. Cost of the sign \_\_\_\_\_ Who pays? \_\_\_\_\_

d. Other \_\_\_\_\_

2. Number of targeted neighborhood homes participating in Operation Identification (i.e., have engraved or identified their valuables and displayed the Operation Identification decal) \_\_\_\_\_

Total number of homes in targeted area \_\_\_\_\_

Percent of neighborhood \_\_\_\_\_%

3. Number of targeted neighborhood homes participating in Neighborhood Watch (See 1a. above) \_\_\_\_\_

Total number of homes in targeted area \_\_\_\_\_

Percent of neighborhood \_\_\_\_\_%

Is this a sufficient percentage for a Neighborhood Watch sign to be erected?

Yes \_\_\_\_\_ No \_\_\_\_\_

Has a Neighborhood Watch sign been erected? Yes \_\_\_\_\_ No \_\_\_\_\_

If yes, give street location \_\_\_\_\_

Date sign was erected \_\_\_\_\_

**Maintenance Activities**

1. Post-program neighborhood attitude survey (MCW 104). Describe results as compared with pre-survey.

\_\_\_\_\_  
\_\_\_\_\_  
\_\_\_\_\_

Date Mailed/Distributed \_\_\_\_\_ Number Mailed/Distributed \_\_\_\_\_

Number Returned \_\_\_\_\_

(Check where applicable and explain.)

2. \_\_\_\_\_ Follow-up presentations on other crime prevention topics

Date(s), topic(s), and location(s) \_\_\_\_\_

3. \_\_\_\_\_ Contacts with individual households in neighborhood (e.g., phone, personal)

\_\_\_\_\_  
\_\_\_\_\_  
\_\_\_\_\_

4. \_\_\_\_\_ Neighborhood newsletter articles and information

Date(s) and topic(s) \_\_\_\_\_

5. \_\_\_\_\_ Re-examination of program knowledge (MCW Form 106)

Date Mailed/Distributed \_\_\_\_\_ Number Mailed/Distributed \_\_\_\_\_

Describe results as compared with pre-program knowledge \_\_\_\_\_

6. Is MCW Form 108 being utilized on a continuing basis? Yes \_\_\_\_\_ No \_\_\_\_\_

7. Are participants being kept abreast of criminal activity? (See MCW Form 101.)

Yes \_\_\_\_\_ No \_\_\_\_\_

8. \_\_\_\_\_ Other. Describe: \_\_\_\_\_

\_\_\_\_\_  
\_\_\_\_\_

**RESIDENTIAL SECURITY PROGRAM**

**MCW 103\***

**PRE-PROGRAM NEIGHBORHOOD  
ATTITUDE SURVEY**

The purpose of this survey is to assist your neighborhood in designing a comprehensive crime prevention program. Your opinion is important and will remain completely confidential.

1. I feel that crime in my neighborhood is: (please check 1 response only)

- Very serious
- Serious
- A problem, but no worse than other neighborhoods
- Not serious

2. The most serious type of crime in my neighborhood is \_\_\_\_\_

3. In the last year, crime in my neighborhood has: (1 response)

- Increased
- Decreased
- Stayed about the same

4. How long have you lived in your neighborhood? (1 response)

- Under 1 year
- 1-5 years
- 5 and over

5. How safe would you feel being out alone in your neighborhood during the day?  
(1 response)

- Very safe
- Somewhat safe
- Somewhat unsafe
- Very unsafe

6. How safe would you feel if you were out alone in your neighborhood at night?  
(1 response)

- Very safe
- Somewhat safe
- Somewhat unsafe
- Very unsafe

\* Use Form 105 to tally the results. After tallying the results, you may wish to record the totals on another copy of MCW 103.

9/83

- 7. Within the past year, was someone in your household a victim of crime?  
 Yes     No
- 8. If yes, was the crime in your neighborhood?  
 Yes     No
  - a. What crime(s) \_\_\_\_\_
  - b. Was the crime reported to the police?  
 Yes     No
- 9. If you were to observe a crime taking place in your neighborhood, would you:  
 (1 response)  
 Call the police  
 Call a neighbor or friend  
 Try to catch the person  
 Do nothing. Why? \_\_\_\_\_
- 10. If your neighbors were to observe a crime taking place, do you believe they would:  
 (1 response)  
 Call the police  
 Call a neighbor or friend  
 Try to catch the person  
 Do nothing. Why? \_\_\_\_\_
- 11. Do you feel that citizens in your neighborhood have accepted some responsibility for their personal safety?  
 Yes     No
- 12. Would you be interested in learning more about how you can help protect your family and secure your home?  
 Yes     No

### POST-PROGRAM NEIGHBORHOOD ATTITUDE SURVEY

You and your neighbors have been helping to fight crime by participating in a Residential Security Program. As you are aware, this program has consisted of free home security surveys, implementation of the Operation Identification program, and establishment of a Neighborhood Watch or Block Watch program whereby residents keep an eye on each other's home and property.

In an attempt to keep this crime prevention effort as effective as possible, we ask that you complete the following. Your responses are most important and will remain completely confidential. Thank you for your cooperation.

- 1. I feel that crime in my neighborhood is: (please check 1 response only)  
 Very serious  
 Serious  
 A problem, but no worse than other neighborhoods  
 Not serious
- 2. The most serious type of crime in my neighborhood is \_\_\_\_\_
- 3. In the last year, crime in my neighborhood has: (1 response)  
 Increased  
 Decreased  
 Stayed about the same
- 4. How long have you lived in your neighborhood?  
 Under 1 year  
 1-5 years  
 5 and over
- 5. How safe would you feel being out alone in your neighborhood during the day?  
 (1 response)  
 Very safe  
 Somewhat safe  
 Somewhat unsafe  
 Very unsafe

\* Use Form 105 to tally the results. After tallying the results, you may wish to record the totals on another copy of MCW 104.

6. How safe would you feel if you were out alone in your neighborhood at night?

(1 response)

- Very safe
- Somewhat safe
- Somewhat unsafe
- Very unsafe

7. Within the past year was someone in your household the victim of a crime?

Yes  No

8. If yes, was the crime in your neighborhood?

Yes  No

a. What crime(s) \_\_\_\_\_

b. Was (were) the crime(s) reported to the police?  Yes  No

9. If you were to observe a crime taking place in your neighborhood, would you:

(1 response)

- Call the police
- Call a neighbor or friend
- Try to catch the person
- Do nothing. Why? \_\_\_\_\_

10. If your neighbors were to observe a crime taking place, do you believe they would:

(1 response)

- Call the police
- Call a neighbor or friend
- Try to catch the person
- Do nothing. Why? \_\_\_\_\_

11. Do you feel that citizens in your neighborhood have benefited by becoming involved in the Residential Security Program?

Yes  No

12. Do you believe you have learned more about protecting your family and securing your home?

Yes  No

13. How long have you been part of a neighborhood Residential Security Program?

- 1-3 months
- 3-6 months
- 6-9 months
- 9-12 months
- Longer

14. What were your reasons for becoming involved in the program? (Please check any number of reasons.)

- Victim of a crime
- Past participation in a similar program
- Recommendation of friends
- Recommendation of neighbors
- TV, radio, billboard ads, newspapers
- Law enforcement agency presentations
- Other \_\_\_\_\_

15. Did you receive information on the Operation Identification program?

Yes  No

a. Have you engraved or recorded your property in conjunction with the Operation Identification program?

Yes  No

b. If yes, have you displayed the Operation Identification sticker(s) on your doors and windows?

Yes  No

16. Did you have a security inspection performed on your home by a law enforcement officer or a trained representative?

\_\_\_\_\_ Yes \_\_\_\_\_ No

a. If yes, have you carried out the recommendations in regard to securing your home?

\_\_\_\_\_ Yes \_\_\_\_\_ No

b. If yes:

Approximate total cost

\_\_\_\_\_ I implemented all of the recommendations.

\_\_\_\_\_ I implemented some of the recommendations.

c. If no:

\_\_\_\_\_ Because of the cost involved.

\_\_\_\_\_ Because of the time involved.

\_\_\_\_\_ Because I don't know how.

\_\_\_\_\_ Other reason \_\_\_\_\_

17. What impact do you feel the RSP has had on:

a. Citizen fear of crime? (1 response)

\_\_\_\_\_ Increased fear a lot

\_\_\_\_\_ Increased fear somewhat

\_\_\_\_\_ Reduced fear somewhat

\_\_\_\_\_ Reduced fear a lot

b. Crime? (1 response)

\_\_\_\_\_ Increased crime a lot

\_\_\_\_\_ Increased crime somewhat

\_\_\_\_\_ Reduced crime somewhat

\_\_\_\_\_ Reduced crime a lot

TALLY SHEET FOR MCW FORMS 103 AND 104

Answers

Tally Space

Total

1. Very serious

Serious

A problem but no worse than other neighborhoods

Not serious

No answer

Total Responses

2. Murder

Rape

Robbery

Assault

Auto Theft

B&E

Other

No answer

Total Responses

Answers                      Tally Space                      Total

3. Increased

\_\_\_\_\_

Decreased

\_\_\_\_\_

Stayed about the same

\_\_\_\_\_

No answer

**Total Responses** \_\_\_\_\_

4. Under 1 year

\_\_\_\_\_

1-5 years

\_\_\_\_\_

5 and over

\_\_\_\_\_

No answer

**Total Responses** \_\_\_\_\_

5. Very safe

\_\_\_\_\_

Somewhat safe

\_\_\_\_\_

Somewhat unsafe

\_\_\_\_\_

Very unsafe

\_\_\_\_\_

No answer

**Total Responses** \_\_\_\_\_

6. Very safe

\_\_\_\_\_

Somewhat safe

\_\_\_\_\_

Answers                      Tally Space                      Total

Somewhat unsafe

\_\_\_\_\_

Very unsafe

\_\_\_\_\_

No answer

**Total Responses** \_\_\_\_\_

7. Yes

\_\_\_\_\_

No

\_\_\_\_\_

No answer

**Total Responses** \_\_\_\_\_

8. Yes

\_\_\_\_\_

No

\_\_\_\_\_

No answer

**Total Responses** \_\_\_\_\_

8a. Murder

\_\_\_\_\_

Rape

\_\_\_\_\_

Robbery

\_\_\_\_\_

Assault

\_\_\_\_\_

Auto Theft

\_\_\_\_\_

B&E

\_\_\_\_\_

Answers                      Tally Space                      Total

Other

No answer

**Total Responses**

8b. Yes

No

No answer

**Total Responses**

9. Call the police

Call a neighbor or friend

Try to catch the person

Do nothing

No answer

**Total Responses**

10. Call the police

Call a neighbor or friend

Try to catch the person

Do nothing

No answer

**Total Responses**

Answers                      Tally Space                      Total

11. Yes

No

No answer

**Total Responses**

12. Yes

No

No answer

**Total Responses**

NOTE: MCW Form 103 stops with question #12. Questions 13 through 17 relate to MCW 104 alone.

13. 1-3 months

3-6 months

6-9 months

9-12 months

Longer

No answer

**Total Responses**

<u>Answers</u>	<u>Tally Space</u>	<u>Total</u>
----------------	--------------------	--------------

14. Victim of a crime

\_\_\_\_\_

Past participation in a similar program

\_\_\_\_\_

Recommendation of friends

\_\_\_\_\_

Recommendation of neighbors

\_\_\_\_\_

TV, radio, billboard ads, newspaper article

\_\_\_\_\_

Law enforcement agency presentations

\_\_\_\_\_

Other

\_\_\_\_\_

No answer

**Total Responses** \_\_\_\_\_

15. Yes

\_\_\_\_\_

No

\_\_\_\_\_

No answer

**Total Responses** \_\_\_\_\_

15a. Yes

\_\_\_\_\_

No

\_\_\_\_\_

No answer

**Total Responses** \_\_\_\_\_

<u>Answers</u>	<u>Tally Space</u>	<u>Total</u>
----------------	--------------------	--------------

15b. Yes

\_\_\_\_\_

No

\_\_\_\_\_

No answer

**Total Responses** \_\_\_\_\_

16. Yes

\_\_\_\_\_

No

\_\_\_\_\_

No answer

**Total Responses** \_\_\_\_\_

16a. Yes

\_\_\_\_\_

No

\_\_\_\_\_

No answer

**Total Responses** \_\_\_\_\_

16b. I implemented all of the recommendations

\_\_\_\_\_

I implemented some of the recommendations

\_\_\_\_\_

No answer

**Total Responses** \_\_\_\_\_



Answers                      Tally Space                      Total

**16c.** Because of the cost involved

\_\_\_\_\_

Because of the time involved

\_\_\_\_\_

Because I don't know how

\_\_\_\_\_

Other reason

\_\_\_\_\_

No answer

**Total Responses** \_\_\_\_\_

**17a.** Increased fear a lot

\_\_\_\_\_

Increased fear somewhat

\_\_\_\_\_

Reduced fear somewhat

\_\_\_\_\_

Reduced fear a lot

\_\_\_\_\_

No answer

**Total Responses** \_\_\_\_\_

**17b.** Increased crime a lot

\_\_\_\_\_

Increased crime somewhat

\_\_\_\_\_

Reduced crime somewhat

\_\_\_\_\_

Reduced crime a lot

\_\_\_\_\_

No answer

**Total Responses** \_\_\_\_\_

**PRE- AND POST-SURVEY OF PROGRAM KNOWLEDGE**

1. For a crime to occur, three elements are necessary: desire, ability, and opportunity. Crime prevention focuses on which one of these three elements?  
a) Desire    b) Ability    c) Opportunity    d) I don't know
2. The most important participants in a crime prevention program are:  
a.) The police    b) Citizens    c) Both    d) I don't know
3. Operation Identification is: Marking your valuables, recording a description of your valuables, and displaying an OP ID sticker.  
\_\_\_\_\_ True    \_\_\_\_\_ False    \_\_\_\_\_ I don't know
4. What number should you use for the Operation Identification Program?  
a) Social Security    b) Driver's license/Soundex #    c) Random combination of #s
5. Generally, most crime is reported.  
\_\_\_\_\_ True    \_\_\_\_\_ False    \_\_\_\_\_ I don't know
6. Law enforcement officers will conduct a *free* home security survey in your home to determine your security risks and offer advice on reducing those risks.  
\_\_\_\_\_ True    \_\_\_\_\_ False    \_\_\_\_\_ I don't know
7. Any neighborhood can qualify for a Neighborhood Watch sign to deter potential criminals from entering the neighborhood.  
\_\_\_\_\_ True    \_\_\_\_\_ False    \_\_\_\_\_ I don't know
8. One of the best security devices for a door is:  
\_\_\_\_\_ A chain latch    \_\_\_\_\_ A deadbolt lock    \_\_\_\_\_ A key-in-the-knob latch  
\_\_\_\_\_ I don't know
9. Generally, most burglaries occur:  
\_\_\_\_\_ During daylight hours  
\_\_\_\_\_ In the evening  
\_\_\_\_\_ After dark  
\_\_\_\_\_ I don't know
10. The Residential Security Program is a joint effort between law enforcement and citizens that consists of:  
\_\_\_\_\_ Neighborhood Watch  
\_\_\_\_\_ Operation Identification  
\_\_\_\_\_ Security Surveys  
\_\_\_\_\_ All of the above  
\_\_\_\_\_ None of the above

**RESIDENTIAL SECURITY PROGRAM**

**MCW 106A**

**PRE- AND POST-SURVEY  
OF PROGRAM KNOWLEDGE**

**TABULATION**

Name of neighborhood/community \_\_\_\_\_

Number of surveyed homes \_\_\_\_\_

Pre-survey program knowledge results:

Number of surveys distributed \_\_\_\_\_

Number of surveys completed \_\_\_\_\_

<b>Score</b>	<b>Responses</b>	<b>% of Total Tested</b>
90-100%	_____	_____
70-80%	_____	_____
50-60%	_____	_____
Below 50%	_____	_____
TOTAL	_____	_____

Post-survey program knowledge results:

Number of surveys distributed \_\_\_\_\_

Number of surveys completed \_\_\_\_\_

<b>Score</b>	<b>Responses</b>	<b>% of Total Tested</b>
90-100%	_____	_____
70-80%	_____	_____
50-60%	_____	_____
Below 50%	_____	_____
TOTAL	_____	_____

**RESIDENTIAL SECURITY PROGRAM**

**MCW 107**

Case/File # \_\_\_\_\_

**SECURITY SURVEY AND VICTIMIZATION\* DATA**

Target Area \_\_\_\_\_

# of Homes in Area \_\_\_\_\_ Date Program Started \_\_\_\_\_

NOTE: MT = Monthly Total CT = Cumulative Total

Month	Requests for Survey	Surveys Conducted	Follow-up	# of Surveyed Homes Complying**	Complying Homes Victimized**	Complying Homes Where Victimization Thwarted	Surveyed Homes Not Complying & Victimized	Refused Survey & Victimized
MT	___	___	___	___	___	___	___	___
CT	___	___	___	___	___	___	___	___
MT	___	___	___	___	___	___	___	___
CT	___	___	___	___	___	___	___	___
MT	___	___	___	___	___	___	___	___
CT	___	___	___	___	___	___	___	___
MT	___	___	___	___	___	___	___	___
CT	___	___	___	___	___	___	___	___
MT	___	___	___	___	___	___	___	___
CT	___	___	___	___	___	___	___	___
MT	___	___	___	___	___	___	___	___
CT	___	___	___	___	___	___	___	___
MT	___	___	___	___	___	___	___	___
CT	___	___	___	___	___	___	___	___
MT	___	___	___	___	___	___	___	___
CT	___	___	___	___	___	___	___	___
MT	___	___	___	___	___	___	___	___
CT	___	___	___	___	___	___	___	___

\*Victimization includes Breaking and Entering, Burglary and Larceny (not including Auto Theft)  
 \*\*Record specifics of your agency's standard of compliance \_\_\_\_\_

**RESIDENTIAL SECURITY PROGRAM**

**MCW 108**

**SUMMARY\***

Case/File # \_\_\_\_\_

Date Form Completed \_\_\_\_\_

Target Area \_\_\_\_\_

# of Homes in Target Area \_\_\_\_\_

Date RSP Program Initiated \_\_\_\_\_

**Level of Neighborhood Crime—From MCW 101**

Crime(s) \_\_\_\_\_

Dates of Pre-Program Crime Data	Dates of Post-Program Crime Data	% Change (+/-)
From ___/___/___ to ___/___/___	From ___/___/___ to ___/___/___	
_____ month total _____	_____ month total _____	

Dates of Pre-Program Crime-Related Calls for Service	Dates of Post-Program Crime-Related Calls for Service	% Change (+/-)
From ___/___/___ to ___/___/___	From ___/___/___ to ___/___/___	
_____ month total _____	_____ month total _____	

**RSP Implementation Information—From MCW 102**

Total # of Homes in Target Area \_\_\_\_\_

Total # of Homes Participating in Operation Identification \_\_\_\_\_  
\_\_\_\_\_ % of total area

Total # of Homes Participating in Neighborhood Watch \_\_\_\_\_  
\_\_\_\_\_ % of total area

Total # of Homes Receiving Home Security Survey (See MCW 107) \_\_\_\_\_  
\_\_\_\_\_ % of total area

Total # of Homes Complying with Home Security Survey Recommendations  
(See MCW 107) \_\_\_\_\_  
\_\_\_\_\_ % of total area

\* With this summary sheet you may also include any success stories you may have gathered from the target area (e.g., return of stolen property due to Operation Identification, assistance in prosecution due to increased citizen awareness, letters from citizens, etc.)

**Pre-Program and Post-Program Neighborhood Attitude Survey—  
From MCW 103, 104, and 105**

Question	Pre-Program Result MCW 103	Post-Program Result MCW 104	% Change (+/-)
1. I feel that crime in my neighborhood is:			
Very serious	_____	_____	_____
Serious	_____	_____	_____
A problem, but no worse than other neighborhoods	_____	_____	_____
Not serious	_____	_____	_____
5. How safe would you feel being out alone in your neighborhood during the day?			
Very safe	_____	_____	_____
Somewhat safe	_____	_____	_____
Somewhat unsafe	_____	_____	_____
Very unsafe	_____	_____	_____
6. How safe would you feel if you were out alone in your neighborhood at night?			
Very safe	_____	_____	_____
Somewhat safe	_____	_____	_____
Somewhat unsafe	_____	_____	_____
Very unsafe	_____	_____	_____
7. Within the past year was someone in your household the victim of a crime?			
Yes	_____	_____	_____
No	_____	_____	_____
8. If yes, was the crime in your neighborhood?			
Yes	_____	_____	_____
No	_____	_____	_____

Question	Pre-Program Result MCW 103	Post-Program Result MCW 104	% Change (+/-)
9. If you were to observe a crime taking place in your neighborhood, would you:			
Call the police	_____	_____	_____
Call a neighbor or friend	_____	_____	_____
Try to catch the person	_____	_____	_____
Do nothing	_____	_____	_____
10. If your neighbors were to observe a crime taking place, do you believe they would:			
Call the police	_____	_____	_____
Call a neighbor or friend	_____	_____	_____
Try to catch the person	_____	_____	_____
Do nothing	_____	_____	_____
*****			
17. What impact do you feel the Residential Security Program has had on citizen fear of crime and crime?			
a. Citizen fear of crime:			
Increased fear a lot		_____	
Increased fear somewhat		_____	
Reduced fear somewhat		_____	
Reduced fear a lot		_____	
b. Crime:			
Increased crime a lot		_____	
Increased crime somewhat		_____	
Reduced crime somewhat		_____	
Reduced crime a lot		_____	

**Pre- and Post-Survey of Program Knowledge—From MCW 106**

Score	Pre-Survey Program Knowledge Results % of Total Tested	Post-Survey Program Knowledge Results % of Total Tested	% Change (+/-)
90-100%	_____	_____	_____
70-80%	_____	_____	_____
50-60%	_____	_____	_____
Below 50%	_____	_____	_____
TOTAL	_____	_____	_____

**Security Survey and Victimization Data—From MCW 107**

	Requests for Survey	Surveys Conducted	Follow-up	# of Surveyed Homes Complying	Complying Homes Victimized	Complying Homes Where Victimization Thwarted	Surveyed Homes Not Complying & Victimized	Refused Survey & Victimized
Totals								

**APPENDIX:  
Maryland Crime Watch  
Home Security Survey**



MARYLAND CRIME WATCH HOME SECURITY SURVEY

FILE (CASE) NO. \_\_\_\_\_

RESIDENT'S NAME \_\_\_\_\_ PHONE NO. \_\_\_\_\_

ADDRESS \_\_\_\_\_ COUNTY \_\_\_\_\_

SURVEYING OFFICER \_\_\_\_\_  Single Family  Multiple Unit Home  Apartment

Department or Agency \_\_\_\_\_ Date \_\_\_\_\_

Recommendations for security improvements checked below are in the interest of reducing the opportunity for a crime to occur.

DOOR SYSTEMS

1. HINGED DOORS - F-front S-side R-rear O-other\*

- Recommendations table with columns F, S, R, O and rows a-j for hinged doors.

2. SLIDING DOORS

- Recommendations table for sliding doors with rows a-f and an 'Other' field.

3. GARAGE DOORS

- Recommendations table for garage doors with rows a-d and an 'Other' field.

\*Doors leading to living area from basement or garage, hinged doors from garage to outside. \*\*Before recommending or using double cylinder dead-bolts, check local building code and fire regulations.

WINDOWS

4. DOUBLE HUNG

- Recommendations table for double hung windows with rows a-d.

5. CASEMENT

- Recommendations table for casement windows with rows a-d.

6. SLIDING

- Recommendations table for sliding windows with rows a-e.

7. BASEMENT

- Recommendations table for basement windows with rows a-c and an 'Other' field.

MISCELLANEOUS

8. Attic, basement, outbuildings, fences

Recommendations \_\_\_\_\_

9. ALARMS

\_\_\_\_\_

LIGHTING

- Recommendations table for lighting with rows a-c.

SHRUBBERY

- Recommendations table for shrubbery with rows a-c.

SECURITY HABITS

- 12. Reviewed basic security habits with resident (see reverse)

OPERATION ID

- 13. Recommendation table for operation ID with rows a-d.

OTHER INFORMATION/Explanation of above

Blank lines for other information and explanation.

(NOTE: Separate copies before completing this side)

**BASIC SECURITY HABITS**

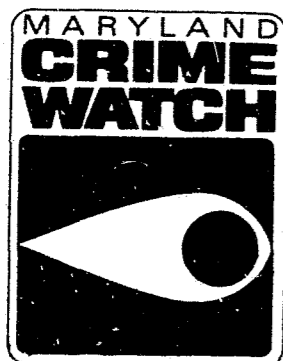
YES NO

- Does resident always lock home and garage?
- Is there proper control over keys and/or have locks been rekeyed if necessary?
- Does resident utilize security lighting (e.g. night lighting, use of timers)?
- Are proper precautions taken before opening the door or admitting strangers? (e.g. use of peepholes, proper identification)?
- Are house numbers plainly visible?

**VACATION PRACTICES**

- Does resident inform neighbors when he (she) is going to be away for extended periods of time?
- Does resident have someone pick up mail, newspapers, etc. or stop deliveries?
- Does resident have someone mow lawn, shovel snow, etc. to give home a lived-in appearance?

Other \_\_\_\_\_  
\_\_\_\_\_





**END**