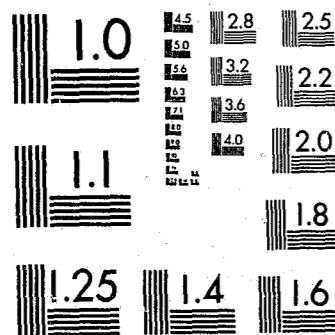


National Criminal Justice Reference Service



This microfiche was produced from documents received for inclusion in the NCJRS data base. Since NCJRS cannot exercise control over the physical condition of the documents submitted, the individual frame quality will vary. The resolution chart on this frame may be used to evaluate the document quality.



MICROCOPY RESOLUTION TEST CHART
NATIONAL BUREAU OF STANDARDS-1963-A

Microfilming procedures used to create this fiche comply with the standards set forth in 41CFR 101-11.504.

Points of view or opinions stated in this document are those of the author(s) and do not represent the official position or policies of the U. S. Department of Justice.

National Institute of Justice
United States Department of Justice
Washington, D. C. 20531

12/30/83

A READING TEST RESOURCE HANDBOOK FOR ADULT BASIC EDUCATION

Assembled by

THE CLEARINGHOUSE FOR
OFFENDER LITERACY PROGRAMS

A Joint Project of:

American Bar Association
Commission on Correctional Facilities and Services

American Correctional Association
Association for Public Continuing and Adult Education



D.C.

May 1974

90554

A
READING TEST RESOURCE HANDBOOK
FOR ADULT BASIC EDUCATION

Introduction

The information concerning assessment and evaluation contained in this resource manual has been drawn together as an aid intended primarily for correctional educators. It must be noted, however, that the listings contained in this volume are not necessarily recommended nor have they been evaluated by the Clearinghouse for Offender Literacy Programs in relation to their applicability to the correctional population.

The instruments listed in this publication result from responses to inquiries sent to over 70 publishers requesting information on any reading tests or assessment devices which could be used with adults. Additional entries were noted on a survey undertaken by the Clearinghouse in October of 1973 which was sent to over 1100 institutions throughout the nation. The final result is the more than 20 profiles from 10 different publishers capsulized in this manual.

The format employed in this resource guide is designed to give the user a quick overview of the various tests. This includes, in addition to the name of the publisher and the diagnostic or assessment test being described:

- (i) the author of the instrument or device
- (ii) learner groups for whom the device was designed and how it is to be administered
- (iii) capsule of the scope of the instrument
- (iv) forms involved and time required for administration
- (v) scoring techniques
- (vi) record keeping procedures
- (vii) general purpose of device
- (viii) special training required for test administrators
- (ix) test validation (if any)
- (x) cost and availability information.

U.S. Department of Justice
National Institute of Justice

This document has been reproduced exactly as received from the person or organization originating it. Points of view or opinions stated in this document are those of the authors and do not necessarily represent the official position or policies of the National Institute of Justice.

Permission to reproduce this copyrighted material has been granted by
American Bar Association

to the National Criminal Justice Reference Service (NCJRS).

Further reproduction outside of the NCJRS system requires permission of the copyright owner.

NCJRS
AUG 9 1972
ACQUISITIONS

Although in-depth information has not been developed, it is readily available from publishers or their representatives in your area. We encourage your contacting them for the detail necessary to make intelligent choices.

Many of the achievement tests were designed to measure more than just reading achievement. These additional areas, usually spelling, mathematics and language are noted in the text. An example would be the Follett Adult Basic Education Student Survey which includes mathematics.

A growing development in assessment is the move toward criterion-referenced tests. An example would be the Educational Progress Individualized Criterion-Referenced Testing. These tests measure an individual's ability to respond appropriately to specific behavioral (or performance) objectives such as, "The student will demonstrate recognition of compounds by identifying compound words." The advantage of this type of assessment is the resulting information spelled out in terms of specific learning objectives which have not yet been achieved. The difficulty with these tests may well be in matching those behavioral objectives to available learning materials. (This is done for elementary level programs in one instance by the McGraw-Hill Prescriptive Reading Inventory). A second difficulty lies in the fact that the criterion-referenced assessments have yet to be validated on adult groups. In this regard, it should be noted that one device is being tested with inmates at the Robert F. Kennedy Youth Center in Morgantown, W. Va. Interested educators and ABE program directors can correspond with R.F.K. Center staff directly for their evaluation of the procedure.

Also contained in this manual is a list of publishers and their addresses. This list precedes the descriptions of tests and diagnostic instruments and will permit the user to make direct inquiry when seeking additional information.

It is the intent of the Clearinghouse to update and add to this information as it becomes available. The Clearinghouse welcomes inquiries from correctional educators and others concerning instruments particularly suited for their situations or involving criteria for making choices among the alternatives described in this resource manual.

Clearinghouse for Offender Literacy Programs
June, 1974

ADDRESSES OF PUBLISHERS

American Guidance Service
Publisher's Building
Circle Pines, Minnesota 53014

CTB/McGraw Hill
Del Monte Research Park
Monterey, California 93940

The Economy Company
P. O. Box 25308
1901 North Walnut
Oklahoma City, Oklahoma 73125

Educational Progress
A Division of
Educational Development Corp.
4900 South Lewis
Tulsa, Oklahoma 74105

Essay Press
P. O. Box 5
Planetarium Station
New York, New York 10024

Follett Education Corporation
1010 W. Washington Building
Chicago, Illinois 60607

Guidance Associates
1526 Gilpin Avenue
Wilmington, Delaware 19806

Harcourt Brace Jovanovich, Inc.
757 Third Avenue
New York, New York, 10017

P. A. R., Inc.
Abbott Park Place
Providence, Rhode Island 01903

Science Research Associates, Inc.
259 East Erie Street
Chicago, Illinois 60611

PUBLISHER : AMERICAN GUIDANCE SERVICE, INC.
 Publisher's Building
 Circle Pines, Minnesota 53014

TITLE : Doren Diagnostic Reading Test (1973)

AUTHOR : Margaret Doren

NATURE OF TEST : Designed for : Primary through Adult
 Administration : Group Administration
 Scope : Letter Recognition
 Beginning Sounds
 Whole Word Recognition
 Words within Words
 Speech Consonants
 Ending Sounds
 Blending, Rhyming, Vowels
 Discriminate Guessing
 Spelling, Sight Words

Forms or Levels : One form (provides
 diagnostic information)

Time Required : 1 to 3 hours depending upon
 group

Scoring : Overlay keys

Record Keeping : Class Composite and
 Individual Diagnosis

PURPOSE : To produce a record of an individual's reading
 (word attack) skill development. Can be used
 as a diagnostic instrument leading to a prescrip-
 tion. Group administered which is unique for
 this type of device.

TRAINING FOR TEST
 ADMINISTRATOR : No special training - must follow manual

VALIDATION : Available from publisher

COST : Test Booklets (25) includes class
 composite.....\$ 5.85
 Manual..... 1.85
 Complete Set of Cut-Out Overlay
 Keys (73 ed.)..... 3.00
 Specimen Set with manual..... 2.10

AVAILABILITY : Immediately from publisher

PUBLISHER : AMERICAN GUIDANCE SERVICE INC.
 Publisher's Building
 Circle Pines, Minnesota 53014

TITLE : Peabody Individual Achievement Test

AUTHORS : Lloyd M. Dunn, Frederick C. Markwardt, Jr.

NATURE OF TEST : Designed for : Youth through adult levels
 Administration : Administered individually
 Scope : Reading comprehension
 Word recognition

Forms or Levels : Single form - scoring in
 grade equivalents
 percentile or standard scores

Time Required : 30 to 40 minutes

Scoring : Accomplished during
 administration

Record Keeping : On individual record booklets

PURPOSE : To measure achievement in word recognition and
 comprehension. Scores converted into grade
 equivalents, percentile or standar scores

TRAINING FOR TEST
 ADMINISTRATOR : None - must follow manual

VALIDATION : Available from publisher

COST : Complete PIAT Kit.....\$ 26.00
 Complete Piat Kit except with
 special plastic test plates..... 34.00
 PIAT Easel-Kit Vol. I..... 11.00
 PIAT Easel-Kit Vol. II..... 12.00
 Individual Record Booklets (25)..... 3.00
 Manual..... 2.25
 Training tape.... (not included in kits)... 4.00

AVAILABILITY : Immediately from publisher

PUBLISHER : AMERICAN GUIDANCE SERVICE, INC.
 Publisher's Building
 Circle Pines, Minnesota 53014

TITLE : Woodcock Reading Mastery Tests (1966)

AUTHOR : Richard W. Woodcock

NATURE OF TEST : Designed for : Youth and Young Adults
 Administration : Individually Administered
 Scope : Letter Identification
 Word Identification
 Word Attack
 Word Comprehension, and
 Passage Comprehension
 Forms or Levels : Forms A & B
 Criterion referenced grade
 level scores from 0 through
 grade 12
 Time Required : 20 to 30 minutes
 Scoring : Scored by administrator
 as test is given
 Record Keeping : On response forms - point
 and total scores - only
 administered in "Critical
 Range"

PURPOSE : To provide individual predictive information in
 relation to reading. Diagnostic and instructional
 implications may be derived.

TRAINING FOR TEST
 ADMINISTRATOR : None - necessary to use manual

VALIDATION : Available from publisher

COST : Complete Kit Form A or B.....\$ 18.00 each
 Form A Response Forms (25)..... 3.25
 Form B Response Forms (25)..... 3.25
 Manual for both forms (A & B)..... 2.50

AVAILABILITY : Immediately from publisher

PUBLISHER : CTB/McGRAW-HILL
 Del Monte Research Park
 Monterey, California 93940

TITLE : California Achievement Tests (1970)

AUTHOR : CTB

NATURE OF TEST : Designed for : Students who have performance
 levels between 1.5 and 12.0
 Administration : Group administration
 Scope : Reading: vocabulary and
 comprehension (math &
 language also included)
 Forms or Levels : Two forms - five levels
 covering grades 1.5 through
 12.0
 Time Required : Between 15 and 60 minutes for
 reading
 Scoring : Hand or Machine Scoring
 Record Keeping : Individual and Class records

PURPOSE : To measure achievement in vocabulary and compre-
 hension (as well as language and math). Can be
 used to measure effectiveness of instruction and
 to evaluate curriculum.

TRAINING FOR TEST
 ADMINISTRATION : None - examiner manual must be carefully followed.

VALIDATION : Available from publisher

COST : Reading: Level Pkg/35
 CREAD-70 M/S-1 (machine scorable) 1 \$ 9.00
 CREAD-70 H/S-1 (hand scorable) 1 5.60
 CREAD-70 M/S-2 (machine scorable) 2 9.00
 CREAD-70 H/S-2 (hand scorable) 2 5.60
 CREAD-70-3 (use answer sheet) 3 7.10
 CREAD-70-4 (use answer sheet) 4 7.10
 CREAD-70-5 (use answer sheet) 5 7.10

AVAILABILITY : Immediately from Publisher

COSTS (contd.) :

Level C and 1 (machine scored).....\$	20.80
Level C (hand scored).....	9.70
Level 1 (hand scored).....	10.25
Levels 2, 3, and 4 (machine scored)	15.00 ea.

Contact publisher for further information

AVAILABILITY : Immediately from publisher

PUBLISHER : CTB/MCGRAW-HILL
Del Monte Research Park
Monterey, California 93940

TITLE : Comprehensive Tests of Basic Skills

AUTHORS : CTB

NATURE OF TEST : Designed for : Students - K through 12
(frequently used with adults)

Administered : Group Administration

Scope : Reading: vocabulary and
comprehension (reference
skills, language, science,
social studies and math)

Forms or Levels : Form: S, Levels A, B, C,
1, 2, 3, 4 ranging from K
through Grade 12

Time Required : Reading portion, approxi-
mately 50 - 60 minutes

Scoring : Hand scored or machine
scored

Record Keeping : Individual and Class Profiles
available. Results reported
in + or - in relation to item

PURPOSE : To measure basic skills development in relation
to specific items. This will show strengths and
weaknesses in each area. Class record sheets may
be used to evaluate instruction and the curriculum.

TRAINING FOR TEST
ADMINISTRATION : None - Must follow Examiner's Manual

VALIDATION : Available from publisher

COSTS : Note: only those portions which include reading
are given; contact the publisher for complete price -
list.

Specimen Set (Levels A, B, C, or Level 1 or Levels 2, 3, 4,.....)	\$ 2.00 ea.
Test Books (1973) 35 in each package	
Levels A & B (machine scored).....	14.00 ea.
Levels A & B (hand scored).....	7.40 ea.

PUBLISHER : CTB/MCGRAW-HILL
 Del Monte Research Park
 Monterey, California 93940

TITLE : Comprehensive Tests of Basic Skills

AUTHOR : CTB

NATURE OF TEST : Designed for : Students - Grades 2 - 12
 (Frequently used with adults)

Administration : Group Administered

Scope : Reading Vocabulary
 and Comprehension (also
 includes language, arithmetic
 study skills)

Forms or Levels : Forms Q & R, Levels 1-4
 covering grades 2 - 12

Time Required : Approximately 45 minutes
 for reading only

Scoring : Hand scored or machine scored

Record Keeping : Class record and student
 profile sheets. Reports in
 percentile and stanines.

PURPOSE : Tests designed to measure achievement of students
 in basic skills. Scores are comparative in nature
 and can be used to find strengths and weaknesses.

TRAINING FOR TEST
 ADMINISTRATION : None - use of "Examiner's Manual" necessary

VALIDATION : Available from publisher

COST : Specimen sets, Levels 1 or 2.....\$ 2.45
 Levels 3, 4, or 5..... 2.00
 Complete Battery:
 Level 1 & 2 (machine scored)..... 17.16
 Level 1 & 2 (hand scored)..... 9.00
 Level 3, 4, & 5 (machine scored)..... 12.10 ea.
 Contact publisher for further information

AVAILABILITY : Immediately from publisher

PUBLISHER : CTB/MCGRAW-HILL
 Del Monte Research Park
 Monterey, California 93940

TITLE : Diagnostic Reading Scales (1972 rev.)

AUTHOR : George W. Spache

NATURE OF TEST : Designed for : Any student with serious
 reading problems

Administration : Administered individually

Scope : Word recognition and
 phonics

Forms or Levels : Word recognition: Reports
 1) instructional level;
 2) independent level; and
 3) potential level

Time Required : Not stated

Scoring : One each student's record
 booklet as test is administered

Record Keeping : One each student's record
 booklet as test is administered.

PURPOSE : To evaluate oral and silent reading skills and
 auditory comprehension in a standardized manner

TRAINING FOR TEST
 ADMINISTRATOR : None - must follow "Examiner's Manual"

VALIDATION : Available from publisher

COST : Diagnostic Reading Scale (1973 ed.).....\$ 1.10
 Examiner's Record Booklet (One
 needed for each student (35)..... 12.30
 Examiner's Manual..... 1.00
 Specimen Set (1972 ed.)..... 2.80

AVAILABILITY : Immediately from publisher

PUBLISHER : CTB/McGRAW-HILL
 Del Monte Research Park
 Monterey, California 93940

TITLE : Prescriptive Reading Inventory

AUTHOR : CTB

NATURE OF TEST : Designed for : Elementary level reading skills which are stated in terms of performance objectives (you may wish to try these on young adults for purposes of diagnosis.)

Administration : Group Administration

Scope : Reading Inventory: all skills as stated behaviorally and keyed to widely used elementary programs.

Forms or Levels : Red, Green, Blue and Orange levels cover skills normally found in grades 1-6.

Time Required : Approximately 3 hours to be broken down in 4 periods

Scoring : Machine scores

Record Keeping : Individual study guide, class diagnostic map and class grouping report are reported to teacher.

PURPOSE : Test is designed to show which reading skills have been learned and those which need to be learned for each student tested. Results can be keyed to elementary materials for teaching purposes.

TRAINING FOR TEST ADMINISTRATION : None-careful use of Examiner's manual is recommended.

VALIDATION : Available from publisher

COST : Specimen Set
 Red Book (Level A) or Green Book (Level B) includes machine-scorable test book, Examiner's Manual and Interpretive Handbook Please specify Level A or B.....\$ 4.10 ea

: Blue Book (Level C)- includes machine-scorable test book and reusable test book with MRC Answer Sheet, Examiner's Manual and Interpretive Handbook.....\$ 4.40 ea

Orange Book (Level D) - includes reusable test book, MRC Answer Sheet, Examiner's Manual and Interpretive Handbook..... 3.90 ea

Test Books - 1972

Each package of 35 includes an Examiner's Manual. Each package of the hand-scorable edition (available Fall 1974) also includes 35 Individual Diagnostic Maps and an Objective Mastery Report (for hand recording).

Code	Book/Level	Pkg/35
PRI-M/S-A-R (machine-scorable)	Red Book (Level A)	\$18.30
PRI-M/S-B-G (machine-scorable)	Green Book (Level B)	18.30
PRI-M/S-C-B (machine-scorable)	Blue Book (Level C)	18.30
PRI-R/B-C-B (use answer sheet)	Blue Book (Level C)	8.30
PRI-R/B-D-O (use answer sheet)	Orange Book (Level D)	10.60

Answer Sheets

MRC Answer Sheets	Number	Units/50	Box/500
Blue Book (Level C)	3500	\$ 3.00	\$ 27.00
Orange Book (Level D)	3501	3.00	27.00

AVAILABILITY : Immediately from publisher

COST

- : Specimen Set
Red Book (Level A) or Green Book (Level B)
includes machine-scorable test book,
Examiner's Manual and Interpretive Handbook
Please specify Level A or B.....\$ 4.10 ea
- : Blue Book (Level C)- includes machine-
scorable test book and reusable test book
with MRC Answer Sheet, Examiner's
Manual and Interpretive Handbook.....\$ 4.40 ea
- : Orange Book (Level D) - includes reusable
test book, MRC Answer Sheet, Examiner's
Manual and Interpretive Handbook..... 3.90 ea

Test Books - 1972

Each package of 35 includes an Examiner's Manual. Each package of the hand-scorable edition (available Fall 1974) also includes 35 Individual Diagnostic Maps and an Objective Mastery Report (for hand recording).

Code	Book/Level	Pkg/35
PRI-M/S-A-R (machine-scorable)	Red Book (Level A)	\$18.30
PRI-M/S-B-G (machine-scorable)	Green Book (Level B)	18.30
PRI-M/S-C-B (machine-scorable)	Blue Book (Level C)	18.30
PRI-R/B-C-B (use answer sheet)	Blue Book (Level C)	8.30
PRI-R/B-D-O (use answer sheet)	Orange Book (Level D)	10.60

Answer Sheets

MRC Answer Sheets	Number	Units/50	Box/500
Blue Book (Level C)	3500	\$ 3.00	\$ 27.00
Orange Book (Level D)	3501	3.00	27.00

AVAILABILITY : Immediately from publisher

- PUBLISHER : CTB/McGRAW-HILL
Del Monte Research Park
Monterey, California 93940
- TITLE : PRI Interim Tests (1973)
- AUTHOR : CTB
- NATURE OF TEST : Designed for : Elementary level reading skills stated in performance terms to be used with PRI tests (you may wish to try this test with young adults for prescriptive purposes).
- Administration : Individually administered
- Scope : Those objectives as determined by CTB to equal reading
- Form or Levels : Red, Green, Blue and Orange levels (1.5 through 6.5)
- Time Required : Varies between five and 25 minutes depending upon skill being tested
- Scoring : Hand scored individual booklets
- Record Keeping : Individual and Class Summaries
- PURPOSE : Tests designed to be used in conjunction with the PRI group tests. This test will give information as to whether specific skill has been learned or student needs to be recycled.
- TRAINING FOR TEST ADMINISTRATION : None - however, Examiner's Manual must be followed carefully
- VALIDATION : Available from publisher

COST : Multi-Level Examination Kit
 Includes a representative Skills Kit and Comprehension Booklet for each level, Examiner's Manuals for Levels A and C, and Class Summary Sheet.....\$ 3.00 ea
Specimen Set
 Includes a representative Skills Test and Comprehension Booklet, Examiner's Manual and Class Summary Sheet.
 Please specify level..... 1.40 ea
PRI Interim Test Assortments
 A box of materials can be ordered, sufficient to test a class of 32 students, containing (for each level) Skills Tests, Comprehension Booklets Examiner's Manual, and Class Summary Sheet. Please specify level desired.
 Level Red (A) or Level Orange (D).....40.00/box
 Level Green (B) or Blue (C).....47.00/box

AVAILABILITY : Immediately from publisher

PUBLISHER : CTB/MCGRAW-HILL
 Del Monte Research Park
 Monterey, California 93940

TITLE : Tests of Adult Basic Education (1967)

AUTHORS : Ernest W. Tiegs and Willis W. Clark

NATURE OF TEST :
 Designed for : Mature adults
 Administration : Group test capability
 Scope : Reading: vocabulary and comprehension
 Forms or Levels : Level E (easy) for persons with severe limitations (upper primary to grade four)
Level M (medium) covers elementary level skills
Level D (difficult) two forms available for each level

Time Required : Vocabulary/Comprehension

Level E	9 min.	31 min.
Level M	8 min.	42 min.
Level D	8 min.	60 min.

Scoring : (1) SCOREZE or (2) IBM1230 answer sheets can be scored by hand. Analysis of errors possible for remedial or teaching prescription titled "Analysis of Learning Difficulties".

Record Keeping : (1) Profile Sheet - shows student's performance in each test. Scores used to plot profiles and provide cooperative data
 (2) Individual Response Record - machine prepared report giving item analysis for prescription purposes

Accessory Locator Test : Practice exercises and locator's test - for practice and entry into appropriate test.

PURPOSE : These tests can be used for (1) pre-teaching information, (2) identification of major areas of weakness, and (3) measuring growth.

TRAINING FOR TEST ADMINISTRATOR : No special training necessary. Must follow Examiner's Manual directions and time limits.

VALIDATION : Available from publisher

COST : Specimen Set
Includes Practice Exercises and Locator Test, test books and manuals for all three levels, Scoring Key, answer sheet and Class Record Sheet.....\$ 3.60
Practice Exercises and Locator Test, 1967
Practice Exercises and locator test and one copy of Directions for Administration..... (pkg/25)..... 2.50
Test Books 1963, 1967
Each pkg. of 25 includes an Examiner's Manual: Level Easy..... (pkg/25).. 6.00
Level Medium, Difficult (pkg/25).. 7.40

<u>Answer Sheets</u>		
IBM 1230	Units/50	Box/500
Reading - Medium	\$ 3.00	\$ 27.00
- Difficult	3.00	27.00

SCOREZE

Reading - Medium	2.50	22.50
Difficult	2.50	22.50

Practice Exercises and Locator Test Answer Sheets - for all levels - No. 5460 (stencil required to score)...\$3.00 Units/50 \$27.00 Box/500

Scoring Stencils

IBM 1230 Hand Stencils (please specify level)(set).....	\$ 2.40
Practice Exercises Hand Stencils (each).....	.80

Accessories (Please specify level)

Scoring Keys..... (each).....	\$.30
Locator Test Scoring Keys.....(each).....	.10
Additional Examiner's Manuals....(each).....	.50
Additional Directions for Administration (practice exercises and locator test)(each)...	.25
Profile Sheets/Analysis of Learning Difficulties..... (pkg./25)...	1.00
Additional Class Record Sheets (serves all levels - each).....	.10

AVAILABILITY : Immediately from publisher

PUBLISHER : THE ECONOMY COMPANY
P. O. Box 25308
1901 North Walnut
Oklahoma City, Oklahoma 73125

TITLE : Sucher-Allred Reading Placement Inventory (1973)

AUTHORS : Floyd Sucher and Ruel A. Allred

NATURE OF TEST : Designed for : Youth
Administration : Administered to individuals
Scope : Word recognition, comprehension
Forms or Levels : Gives results which will show 1) independent level, 2) instructional level, and 3) frustration level from primer through grade 9
Time Required : Word recognition, approx. four minutes, oral, approx. 15 minutes.
Scoring : Teacher scores as student proceeds through test
Record Keeping : "A Reading Placement Inventory Student Test Booklet" has entries for test summary and post tests. There is also a class record which gives a two page summary of test data.

PURPOSE : To permit the teacher to (1) identify the student's independent, instructional and frustration reading levels, (2) identify the common word-recognition and comprehension errors made by students in oral reading, and (3) place a student properly for reading instruction.

TRAINING FOR TEST ADMINISTRATOR : No special training necessary, thoroughly read test manual and follow directions in administrator's booklet

VALIDATION : Not specified

COST : Teachers Manual.....\$ 2.49
Student Test Booklets pkg./35..... 2.97

AVAILABILITY : Immediately from Publisher

PUBLISHER : EDUCATIONAL PROGRESS
A Division of Educational Development Corporation
4900 South Lewis
Tulsa, Oklahoma 74105

TITLE : Individualized Criterion Referenced Testing

NATURE OF TEST :
Designed for : Youth and Young Adults
Administration : Groups, but results are reported for individuals
Scope : Covers criterion referenced items which are correlated with performance in grades 1-8
Forms or Levels : Two forms available covers objectives associated with performance in grades 1-8
Time Required : Approximately one and a half hours for five tests
Scoring : Computerized - gives results in terms of district, building teacher and student planning documents.
Record Keeping : Automated through computer printouts

PURPOSE : To provide a measure of an individual's success with specific objectives in the area of reading, provide implications for specific prescription

TRAINING FOR TEST ADMINISTRATOR : Minimal - However, directions must be followed. In-service help is available from EPC's Education Specialists.

VALIDATION : Available on request

COST : Student Test Cards (prices include scoring)
100 - 249 (per card).....\$ 1.15
250 - 499 "90
500 - up "25

COST (contd.) : Testing Kits, Levels 1-8
Forms A & B (6 or more labs).....\$ 49.00 each
Fewer than 6 labs..... 54.00
Sample Set - 1 copy each of each test in reading levels 4 - 8, 1 Teacher's guide
1 scoring template and 1 student test card..... 15.00

AVAILABILITY : Immediately from publisher

PUBLISHER : ESSAY PRESS
P. O. Box 5
Planetarium Station
New York, New York 10024

TITLE : Roswell-Chall Diagnostic Reading Test
of Word Analysis Skills

AUTHORS : Florence G. Roswell and Jeanne S. Chall

NATURE OF TEST : Designed for : Young Adults
Administration : Administered to individuals
Scope : Reading, word analysis,
auditory blending
Forms or Levels : Designed in two forms (I
& II) for test-retest purposes
Time Required : Varies with student; approxi-
mately five minutes per test
Scoring : As tests are oral they are
scored on test booklet as
test progresses. Tables then
are used to convert raw data
into grade level scores.
Record Keeping : Scoring page tears out to
become part of a student's
permanent record.

PURPOSE : "Auditory blending": to test student's ability to
blend sounds to form words when sounds are
presented orally. "Word Analysis," to test
strengths and weaknesses in word recognition.

TRAINING FOR TEST
ADMINISTRATOR : No special training necessary. Must follow
directions on test booklet.

VALIDATION : Printed on test booklet.

COST : Diagnostic Reading Test
Specimen Set (s).....\$ 2.00*
Manuals only..... 1.50*
Pkg(s) of Form I..... 5.00
Pkg(s) of Form II..... 5.00

* Pre-Paid Only

COST (contd.) : Auditory Blending Test
Specimen set(s).....\$ 2.00*
Manuals only..... 1.50*
Pkg(s) (only one form)..... 5.00
Microfiche containing both sets..... 2.00*

AVAILABILITY : Immediately from publisher

*Pre-Paid Only

PUBLISHER : FOLLETT EDUCATIONAL CORPORATION
1010 W. Washington Blvd.
Chicago, Illinois 60607

TITLE : Individual Reading Placement Inventory, (1969)

AUTHORS : Edwin H. Smith and Weldon G. Bradtmueller

NATURE OF TEST : Designed for : Young and mature adults
Administration : Administered to individuals
Scope : Word recognition and analysis
sight-sound perception, differences, comprehension, rate, posture, emotional symptoms and auditory discrimination difficulties.
Forms or Levels : Two forms A&B. Results reported up to grade 7
Time Required : Varies with performance
Scoring : Scored by person administering in "Student's Test and Scoring Booklet:
Record Keeping : Kept individually on test booklet.

PURPOSE : To quickly determine an accurate reading level for adults so as to intelligently plan reading instruction

TRAINING FOR TEST ADMINISTRATOR : No formal training necessary. Use of "User's Manual" imperative

VALIDATION : Specified in "User's Manual"

COST : Form A&B
Inventory Booklets, pkg/20.....\$ 3.60
Admin./Teacher's packet, incl.
Instructor's Manual, 2 word recognition wheels and paragraph reading cards..... 4.50
Examiner's Kit, one inventory booklet, one word recognition wheel, two paragraph reading cards, one Instructor's Manual..... 2.10

AVAILABILITY : Immediately from publisher

PUBLISHER : FOLLETT EDUCATION CORPORATION
1010 W. Washington Blvd.
Chicago, Illinois 60607

TITLE : Adult Basic Education, Student Survey, (1966)

AUTHORS : Elvin Rosef and Monroe C. Neff

NATURE OF TEST : Designed for : Young and mature adults
Administration : May be administered to groups or individuals
Scope : Reading Comprehension
Word Recognition
(Math also included in survey)
Form or Levels : Forms A & B. Results reported in grade level, equivalents, cumulative percent and "T" scores
Scoring : Done by hand using template or answer key. (Machine scored answer sheets may be available in the future).
Record Keeping : Record list form appears on back of "Instructor's Manual".

PURPOSE : To use for gross sorting of pupils into groups, as a guide to student growth and as a learning experience in "Test Taking".

TRAINING FOR TEST ADMINISTRATOR : No formal training required. Use of "Instructor's Manual" required.

VALIDATION : Information given in "Instructor's Manual"

COST : Adult Basic Education Student Survey
 Form A Test Kit: Contains materials
 for the instructor and for the initial
 testing and retesting of 20 students..
 \$ 31.40 \$23.55

Components of Student Survey -
 Form A: Test Booklet, Parts
 One and Two - Reading (pkg/20).... 8.80 6.60

Adult Basic Education Student Survey
 Form B Test Kit: Contains materials
 for the instructor and for the initial
 testing and retesting of 20 students...
 31.40 23.55

Components of Student Survey -
 Form B: Test Booklet, Parts
 One and Two - Reading (pkg/20)..... 8.80 6.60

AVAILABILITY : Immediately from publisher

PUBLISHER : GUIDANCE ASSOCIATES
 1526 Gilpin Avenue
 Wilmington, Delaware 19806

TITLE : Wide Range Achievement Test (1965)

AUTHORS : J. F. Jastak, S. W. Bijou and
 J. R. Jastak

NATURE OF TEST : Designed for : Children - 5 years to adults
 Administration : Group Administration
 Scope : Reading: Letter and
 Word Recognition (Spelling
 and Math)
 Forms or Levels : Level I - Age 5 - 12
 Level II - 12 to Adulthood
 Time Required : Varies according to level
 Scoring : Hand scored
 Record Keeping : Individual Booklets

PURPOSE : Designed to measure sensory motor skills and
 achievement ranging from kindergarten to college
 in each sub-test. Result are reported in grade
 equivalents, percentiles and standard scores.

TRAINING FOR TEST
 ADMINISTRATION : No special training - use of manual mandatory

VALIDATION : Available from publisher

COST : Manual.....\$ 4.80
 Tests (pkg/50)..... 5.70
 Specimen Set - includes a manual
 and two forms..... 5.40
 Note: Both levels are included on the
 one test sheet.

AVAILABILITY : Immediately from publisher

PUBLISHER : HARCOURT BRACE JOVANOVICH, INC.
757 Third Avenue
New York, New York 10017

TITLE : Adult Basic Learning Examination (1967)

AUTHORS : Dr. Bjorn Karlsen, Dr. Richard Madden and
Dr. Eric F. Gardner

NATURE OF TEST : Designed for : Adults
Administration : Group Administration
Scope : Reading: Vocabulary, Compre-
hension (Spelling and Arithmetic)
Forms or Levels : Level I Grades 1 - 4
Level II Grades 5 - 8
Forms A and B
Time Required : 50 minutes for reading sections
Scoring : Hand or machine-scored
Record Keeping : Individual and Group Record forms.

PURPOSE : A test developed specifically for adults with content
for the purpose of measuring achievement as low as
first grade level. Results reported in grade equiva-
lents (however authors recommend conversion to
percentiles or stanines for use with pupils).

TRAINING FOR TEST
ADMINISTRATION : None, use of handbook imperative.

VALIDATION : Available from publisher

COST : Specimen Sets
Levels I, II, III (each).....\$ 2.75
Complete Packages
Level I..... 19.00*
Levels II, III 19.50*
Handbooks (each)..... 1.75
Key for Directions (Level I and II)..... .60
Group Record (each level)..... .25
Hand Scorable Sheets..... 10.00**

AVAILABILITY : Immediately from publisher

*pkg/35
**pkg/100

PUBLISHER : HARCOURT BRACE JOVANOVICH, INC.
757 Third Avenue
New York, New York, 10017

TITLE : Stanford Achievement Test (1973)

AUTHORS : Richard Madden, Eric F. Gardner, Herbert
C. Rudman, Bjorn Karlsen, Jack C. Merwin

NATURE OF TEST : Designed for : School age youngsters
grades 1-9 (Not designed
for adults but used in many
institutions.)
Administration : Group administration
Scope : Reading: vocabulary,
comprehension and word study
skills
Forms or Levels : Levels I, II, III for
a) primary
b) intermediate, and
c) advanced - Forms A and B
Time Required : Approximately 2 hours for
reading sections
Scoring : Hand Scored
Record Keeping : Class and Individual record
forms

PURPOSE : To provide an instrument which will measure pupil
achievement. Results can be used for individual
or class achievement information, can be grouped
to provide information in relation to objectives
achieved. Can be translated into scaled scores;
grade equivalents; percentile ranks and stanines.

VALIDATION : Available from publisher

COST : Primary I (grades 1.5-2.4)..... pkg/35
\$ 7.15
II (grades 2.5-3.4)..... 8.15
III (grades 3.5-4.4)..... 8.15
Intermediate I (grades 4.5-5.4)..... 8.15
II (grades 5.5-6.9)..... 8.15
Advanced (grades 7-9.5)..... 8.15

AVAILABILITY : Immediately from publisher

PUBLISHER : P. A. R., INC.
Abbott Park Place
Providence, Rhode Island 01903

TITLE : Basic Studies Inventory

NATURE OF TEST : Designed for : Young Adults
Administration : Designed for Groups
Scope : Reading Comprehension
Writing
Listening (and Math)
Forms or Levels : Forms A and B
Reports results on grade levels
Time Required : One hour
Scoring : Hand scored from answer keys
Record Keeping : Individual profile sheets in percentiles.

PURPOSE : To provide a criterion referenced assessment which can also be used for level determination and diagnosis

TRAINING FOR TEST ADMINISTRATOR : None - follow directions in booklet

VALIDATION : Available from publisher

COST : Twenty-five cents per copy (per student)

AVAILABILITY : Immediately from publisher

PUBLISHER : SCIENCE RESEARCH ASSOCIATES, INC.
259 East Erie Street
Chicago, Illinois 60611

TITLE : Assessment Survey - Multilevel Achievement Series

AUTHORS : Robert A. Naslund, Lois P. Thorpe and D. Welty Lefever

NATURE OF TEST : Designed for : Students in grades 1-12
Administration : Group Administration
Scope : Reading: Comprehension and Vocabulary (Math, Spelling Use of Sources and Science, Social Studies, and Language Arts)
Forms or Levels : Three levels (Blue, easiest; Green and Red)
Time Required : Approximately one and a half hours for reading section
Scoring : Hand or Machine Scored
Record Keeping : Pupil results reported back by group. Class norms available.

PURPOSE : Designed to measure achievement in numerous areas of the curriculum

VALIDATION : Available from publisher

COST : Specimen Set (all levels included).....\$ 5.06
Forms E and F-Heavy Duty(Reusable)
Blue, Green and Red (pkg/25)..... 16.00
Forms E and F-Less Sturdy(Reusable)
Blue, Green and Red (pkg/25)..... 11.25
Answer Sheets
Handscored (pkg/100)..... 10.68
(includes 3 examination manuals
conversion tables booklet, and
Key)
Machine Scoring Service Available

AVAILABILITY : Immediately from publisher

PUBLISHER : SLOSSON EDUCATIONAL PUBLICATIONS, INC.
140 Pine Street
East Aurora, New York 14052

TITLE : Slosson Oral Reading Test (SORT)

NATURE OF TEST : Designed for : Any Age Level
Administration : Individually Administered
Scope : Word Recognition
Forms or Levels : One form
Time Required : Three minutes to administer
score
Scoring : By examiner on test form
Record Keeping : Test form becomes student
record.

PURPOSE : To give a quick assessment of a "comfortable"
reading level (grade equivalent).

TRAINING FOR TEST
ADMINISTRATION : None - must follow directions on test sheet

VALIDATION : Available from publisher

COST : \$1.25 per pad of 20 test sheets

AVAILABILITY : Immediately from publisher

END