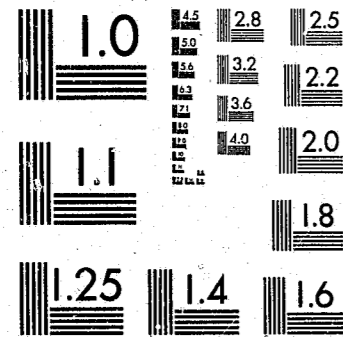


National Criminal Justice Reference Service



This microfiche was produced from documents received for inclusion in the NCJRS data base. Since NCJRS cannot exercise control over the physical condition of the documents submitted, the individual frame quality will vary. The resolution chart on this frame may be used to evaluate the document quality.



MICROCOPY RESOLUTION TEST CHART  
NATIONAL BUREAU OF STANDARDS-1963-A

Microfilming procedures used to create this fiche comply with the standards set forth in 41CFR 101-11.504.

Points of view or opinions stated in this document are those of the author(s) and do not represent the official position or policies of the U. S. Department of Justice.

National Institute of Justice  
United States Department of Justice  
Washington, D. C. 20531

7-6-82

MF-1

# STATISTICAL REPORT

## MAINE STATE PRISON

THOMASTON, MAINE

(FISCAL YEAR ENDING JUNE 30, 1981)

(CLASSIFICATION DEPT)

*Paul K. Vestal, Jr.*  
WARDEN

82058

U.S. Department of Justice  
National Institute of Justice

This document has been reproduced exactly as received from the person or organization originating it. Points of view or opinions stated in this document are those of the authors and do not necessarily represent the official position or policies of the National Institute of Justice.

Permission to reproduce this copyrighted material has been granted by  
**The Main State Prison**

to the National Criminal Justice Reference Service (NCJRS).

Further reproduction outside of the NCJRS system requires permission of the copyright owner.

MAINE STATE PRISON  
CLASSIFICATION DEPARTMENT  
THOMASTON, MAINE

NCJRS

NOV - 9 1981

INDEX

	<u>Page</u>
<u>Data on Inmates - Fiscal</u>	
Average Yearly Population (1924 to 1981) . . . . .	1
Average Daily Population . . . . .	3
Average Monthly Population . . . . .	3
Recidivism . . . . .	3
Commitments by Month from the Courts . . . . .	4
Admissions . . . . .	5
Releases . . . . .	6
Inmates Paroled/Released by Month . . . . .	7
Parole Violators Returned by Month . . . . .	8
Number Paroled and Returned as Violators . . . . .	9
<u>Data on Sentences starting during Fiscal Year (299)</u>	
Age Groups . . . . .	10
Marital Status . . . . .	10
Formerly at Maine Youth Center . . . . .	11
Formerly at Maine Correctional Center . . . . .	11
Inmates with Relatives having Maine State Prison backgrounds . . . . .	11
Country of Birth . . . . .	12
Race . . . . .	12
Education . . . . .	13
Religion . . . . .	14
Military Service . . . . .	14
Inmates who have been committed to other prisons (not in Maine) . . . . .	15
Inmates with prior sentences to Maine State Prison . . . . .	15
Commitments by Counties . . . . .	16
Sentences of Inmates Committed (old code) . . . . .	17
Sentences of Inmates Committed (new code) . . . . .	22
Crimes . . . . .	26
<u>Data on Inmates Confined on the 30th day of June of Listed Years (529)</u>	
Inmates with Prior sentences to Maine State Prison . . . . .	34
Education (at time of commitment) . . . . .	35
Marital Status (at time of commitment) . . . . .	36
Race . . . . .	36
Country of Birth . . . . .	37
Inmates w/Relatives having Maine State Prison background . . . . .	38
Former Inmates of Penal Institutions not in Maine . . . . .	38
Religion . . . . .	39
Military Service . . . . .	40
Formerly at Maine Youth Center . . . . .	40
Formerly at Maine Correctional Center . . . . .	40
Dependents (at time of Commitment) . . . . .	40
Commitments by Counties . . . . .	41
Percentage of Population by County . . . . .	42
Crimes . . . . .	43
Sentences (old code) . . . . .	50
Sentences (new code) . . . . .	56
Manpower Training Division . . . . .	60
Community Programs - Furloughs . . . . .	61
Community Programs - Work Release . . . . .	62
Statistic Summary . . . . .	63
Bangor Pre-Release Statistics . . . . .	65
Bolduc Unit Statistics . . . . .	66

Average Yearly Population of Maine State Prison

<u>Year</u>	<u>Av. Pop.</u>	<u>Year</u>	<u>Av. Pop.</u>	<u>Year</u>	<u>Av. Pop.</u>	<u>Year</u>	<u>Av. Pop.</u>	<u>Year</u>	<u>Av. Pop.</u>
1824	39	1842	50	1860	118	1878	211	1896	156
1825	64	1843	60	1861	110	1879	207	1897	181
1826	80	1844	59	1862	98	1880	203	1898	220
1827	74	1845	74	1863	100	1881	187	1899	221
1828	84	1846	64	1864	95	1882	162	1900	184
1829	97	1847	69	1865	72	1883	149	1901	184
1830	95	1848	68	1866	114	1884	157	1902	200
1831	95	1849	63	1867	137	1885	176	1903	168
1832	93	1850	75	1868	138	1886	170	1904	177
1833	83	1851	89	1869	154	1887	165	1905	177
1834	70	1852	84	1870	171	1888	152	1906	179
1835	64	1853	74	1871	168	1889	150	1907	-
1836	71	1854	80	1872	169	1890	174	1908	217
1837	77	1855	89	1873	146	1891	168	1909	209
1838	75	1856	91	1874	133	1892	150	1910	198
1839	70	1857	101	1875	142	1893	125	1911	200
1840	68	1858	117	1876	160	1894	-	1912	215
1841	56	1859	120	1877	188	1895	156	1913	208

Average Yearly Population of Maine State Prison

<u>Year</u>	<u>Av. Pop.</u>	<u>Fiscal Years</u>	<u>Av. Pop.</u>	<u>Fiscal Years</u>	<u>Av. Pop.</u>
1914	190	1945-46	355	1963-64	491
1915	185	1946-47	384	1964-65	480
1916	217	1947-48	428	1965-66	437
1917	-	1948-49	446	1966-67	399
1918	203	1949-50	459	1967-68	368
1919-20	185	1950-51	493	1968-69	381
1921	-	1951-52	488	1969-70	364
1921-32	-	1952-53	454	1970-71	340
1933-34	272	1953-54	433	1971-72	336
1935-36	287	1954-55	426	1972-73	361
1937	314	1955-56	422	1973-74	345
1938	357	1956-57	449	1974-75	418
1939	397	1957-58	443	1975-76	504
1940	435	1958-59	454	1976-77	469
1941	422	1959-60	472	1977-78	468
1942	364	1960-61	478	1978-79	501
1943	308	1961-62	495	1979-80	518
1944	278	1962-63	491	1980-81	520

MAINE STATE PRISON  
CLASSIFICATION DEPARTMENT  
THOMASTON, MAINE

Average Daily Population

1968 to 1969	381	( 4% Increase)	1974 to 1975	418	(21% Increase)
1969 to 1970	364	( 4% Decrease)	1975 to 1976	504	(20% Increase)
1970 to 1971	340	( 7% Decrease)	1976 to 1977	469	( 7% Decrease)
1971 to 1972	336	( 1% Decrease)	1977 to 1978	468	(.2% Decrease)
1972 to 1973	361	( 7% Increase)	1978 to 1979	501	( 7% Increase)
1973 to 1974	345	( 5% Decrease)	1979 to 1980	518	( 3% Increase)
			1980 to 1981	520	( 1% Increase)

Monthly Population Average

	70	71	72	73	74	75	76	77	78	79	80
	<u>71</u>	<u>72</u>	<u>73</u>	<u>74</u>	<u>75</u>	<u>76</u>	<u>77</u>	<u>78</u>	<u>79</u>	<u>80</u>	<u>81</u>
July	361	324	358	367	404	499	491	477	485	524	512
August	363	321	357	360	392	494	491	459	487	525	517
September	362	317	353	345	386	491	478	450	486	515	520
October	357	318	368	340	390	502	474	451	478	514	515
November	361	325	364	333	396	507	462	455	486	516	520
December	351	326	352	336	402	496	463	455	489	514	525
January	328	331	353	334	409	502	465	460	499	508	519
February	322	349	364	353	430	530	456	473	510	516	520
March	318	350	367	347	442	529	456	485	521	520	523
April	315	353	363	340	439	526	458	487	520	524	520
May	321	354	373	346	448	497	461	481	528	519	521
June	325	361	362	343	479	480	469	483	525	518	529

Recidivism Rate over a 3-year period for Adult Institutions Only

76	77	78	79	80
<u>77</u>	<u>78</u>	<u>79</u>	<u>80</u>	<u>81</u>
49%	38%	40%	53%	44%

Number of Commitments by Month from the Courts

	<u>70</u>	<u>71</u>	<u>72</u>	<u>73</u>	<u>74</u>	<u>75</u>	<u>76</u>	<u>77</u>	<u>78</u>	<u>79</u>	<u>80</u>
	<u>71</u>	<u>72</u>	<u>73</u>	<u>74</u>	<u>75</u>	<u>76</u>	<u>77</u>	<u>78</u>	<u>79</u>	<u>80</u>	<u>81</u>
July	7	12	6	17	22	34	25	13	21	16	26
August	8	4	6	7	9	21	15	18	29	15	19
September	14	9	26	15	22	25	29	27	19	11	14
October	18	12	32	36	48	43	24	27	23	23	22
November	18	20	7	23	31	14	12	25	29	16	23
December	9	14	13	23	18	17	23	24	18	9	17
January	11	26	18	18	32	23	22	32	21	11	17
February	13	17	18	36	37	40	15	18	20	26	19
March	10	18	12	20	37	28	18	47	28	12	31
April	23	10	24	24	26	22	25	12	20	24	23
May	11	22	15	19	37	23	21	27	29	16	21
June	14	23	24	21	61	25	27	26	29	14	18

Admissions from Other Institutions

	<u>70</u>	<u>71</u>	<u>72</u>	<u>73</u>	<u>74</u>	<u>75</u>	<u>76</u>	<u>77</u>	<u>78</u>	<u>79</u>	<u>80</u>
	<u>71</u>	<u>72</u>	<u>73</u>	<u>74</u>	<u>75</u>	<u>76</u>	<u>77</u>	<u>78</u>	<u>79</u>	<u>80</u>	<u>81</u>
Trans fr MCC (fm '78 on inc. trainees)	7	6	14	7	4	8	29	50	45	56	82
Trans fr Fed Inst	0	0	1	5	6	2	2	4	2	1	2
Trans fr CCI	2	7	1	2	4	1	5	3	5	3	2
Trans fr NHSP	1	3	2	2	4	0	2	2	5	2	5
Trans fr MCI	0	1	0	1	0	0	2	0	3	6	5
Trans fr VtSP	0	1	3	1	1	0	0	1	0	0	0
Trans fr RISP	0	5	4	1	1	1	0	0	0	1	1
Trans fr TennSP	0	0	0	0	0	0	0	0	0	1	0
Trans fr FlaSP	0	0	0	0	0	0	0	0	0	0	4
Safekeeping	5	3	2	3	8	7	13	*25	*11	*6	26
Ret'd fr Appeal	6	5	4	2	9	12	9	5	4	5	5
Escapees Ret'd	2	3	15	11	17	19	23	17	6	6	6
Ret'd fr placement	0	4	4	4	1	2	3	0	1	0	0
Observation	-	-	-	-	-	-	-	*3	*2	*1	0

\*Safekeeping and Observation included in above

Releases to Other Institutions

	<u>70</u>	<u>71</u>	<u>72</u>	<u>73</u>	<u>74</u>	<u>75</u>	<u>76</u>	<u>77</u>	<u>78</u>	<u>79</u>	<u>80</u>	
	<u>71</u>	<u>72</u>	<u>73</u>	<u>74</u>	<u>75</u>	<u>76</u>	<u>77</u>	<u>78</u>	<u>79</u>	<u>80</u>	<u>81</u>	
Deceased	0	0	2	0	0	3	2	1	2	1	1	
Rel to Warrant	statistics for these years not available									4	10	
Rel by Court Order	12	12	3	18	12	12	10	12	13	10	6	
*Trans to AMHI	23	12	7	1	4	11	3	6	13	18	21	
*Trans to BMHI	0	1	4	3	1	10	3	4	5	16	5	
Trans to MCC	1	2	2	1	9	16	7	8	10	6	7	
Trans to Pineland	0	0	0	0	1	0	1	0	0	0	0	
Trans to CCI	1	4	1	1	0	4	1	1	2	2	2	
Ret'd to CCI	stat's for these yrs not avail.							4	4	1	2	
Trans to RISP	0	3	5	1	0	4	0	0	0	1	1	
Trans to NHSP	1	2	2	1	3	8	5	4	5	7	8	
Ret'd to NHSP	stat's for these yrs not avail.							2	1	4	0	4
Trans to Fed Inst	0	2	1	2	1	0	4	4	0	10	6	
Ret'd to Fed Auth	stat's for these yrs not avail.							1	2	2	2	2
Trans to VA Togus	0	0	1	0	1	2	0	0	2	2	2	
Rel fr Safekeeping	2	2	1	2	6	4	11	20	18	8	26	
Rel fr Observation								3	3	1	0	

\*Transfers to AMHI and BMHI for the past 5 fiscal years appear to be down because the prison used the furlough program in many instances rather than the transfer process



Releases (cont'd)

	70	71	72	73	74	75	76	77	78	79	80
	<u>71</u>	<u>72</u>	<u>73</u>	<u>74</u>	<u>75</u>	<u>76</u>	<u>77</u>	<u>78</u>	<u>79</u>	<u>80</u>	<u>81</u>
Trans to MCI	0	0	0	1	1	0	0	0	3	5	6
Ret'd to MCI	stat's for these yrs not avail.							1	1	6	3
Trans to VtSP	2	4	0	3	0	0	0	0	0	0	0
Ret'd to VtSP	stat's for these yrs not avail.							1	0	0	
Trans to FlaSP	0	0	0	0	0	0	0	0	0	0	2
Escaped (see below)	2	4	21	10	18	24	21	16	7	8	5
Rel to Placement	0	0	0	0	1	2	0	0	0	0	0
Ret'd to MCC	0	0	1	0	0	1	1	4	15	14	13
Discharged (old code)	stat's not avail.				19	19	17	12	5	11	2
Disch fr Parole (presently on parole)	stat's not avail.				134	129	189	170	105	79	31

-----  
Escapes - There were 5 escapes for the current fiscal year.

	74	75	76	77	78	79	80
	(18) <u>75</u>	(25) <u>76</u>	(21) <u>77</u>	(16) <u>78</u>	(7) <u>79</u>	(8) <u>80</u>	(5) <u>81</u>
Sentenced	9	3	14	8	5	5	3
Still Missing	4	2	0	4	1	1	0
Still missing fm prev year		3	4	4	4	4	4
Under Indictment	1	13	1	5	1	1	2
Not Charged	4	7	1	2	1	1	0
Filed			1	0	0	0	0
Found Not Guilty			3	0	0	0	0
Ret'd to sending state			1	0	0	0	0
Suspended sentence				1	1	0	0
Deceased w/on escape							1
Total on Escape 6/30/81		5	6	4	4	4	5

Number of Inmates Paroled by Month

	<u>70</u>	<u>71</u>	<u>72</u>	<u>73</u>	<u>74</u>	<u>75</u>	<u>76</u>	<u>77</u>	<u>*78</u>	<u>79</u>	<u>80</u>
July	<u>71</u>	<u>72</u>	<u>73</u>	<u>74</u>	<u>75</u>	<u>76</u>	<u>77</u>	<u>78</u>	<u>*79</u>	<u>80</u>	<u>81</u>
August	9	19	14	19	19	24	25	18	7	3	4
September	9	12	11	15	24	24	28	25	10	7	2
October	19	12	19	18	19	23	23	18	10	10	5
November	16	11	18	33	28	28	37	10	5	4	7
December	14	18	19	23	17	20	24	13	11	5	6
January	26	16	16	17	13	15	25	15	10	1	4
February	28	15	15	14	19	25	23	9	2	4	3
March	12	12	16	12	14	20	21	5	5	3	3
April	18	23	14	25	22	23	19	11	5	6	4
May	16	12	10	20	26	34	19	6	4	11	7
June	14	21	15	19	21	62	20	14	6	9	1
(*) includes probation in following years	13	16	21	17	17	24	14	12	9	5	3

Number of Inmates Released by Month

	<u>77</u>	<u>78</u>	<u>79</u>	<u>80</u>
July	<u>78</u>	<u>79</u>	<u>80</u>	<u>81</u>
August	7	14	11	23
September	8	8	12	12
October	6	19	10	15
November	4	9	12	18
December	10	10	14	13
January	8	9	9	14
February	8	10	10	24
March	4	8	13	10
April	8	12	8	28
May	5	15	9	21
June	10	9	9	16
	10	8	16	12

Number of Parole Violators Returned by Month

	<u>70</u>	<u>71</u>	<u>72</u>	<u>73</u>	<u>74</u>	<u>75</u>	<u>76</u>	<u>77</u>	<u>78</u>	<u>79</u>	<u>80</u>
	<u>71</u>	<u>72</u>	<u>73</u>	<u>74</u>	<u>75</u>	<u>76</u>	<u>77</u>	<u>78</u>	<u>79</u>	<u>80</u>	<u>81</u>
July	7	7	8	2	7	6	8	3	1	1	2
August	6	6	10	5	4	8	5	0	2	4	2
September	7	7	9	1	6	9	6	1	1	2	1
October	5	4	5	4	10	12	6	6	6	2	4
November	3	6	5	4	4	5	5	5	3	1	0
December	3	9	4	9	7	5	7	4	2	2	1
January	4	6	7	9	6	18	4	4	3	4	1
February	5	7	5	4	11	13	5	6	2	3	2
March	5	9	4	6	10	7	3	3	3	4	0
April	11	10	3	13	6	10	5	4	5	3	0
May	7	6	5	8	13	12	5	5	0	4	0
June	9	8	5	2	11	11	4	6	0	5	0

Parolees and Parole Violators Returned by Year

1969 to 1970	Paroled	171	Returned	73
1970 to 1981	"	194	"	72
1971 to 1972	"	196	"	85
1972 to 1973	"	188	"	70
1973 to 1974	"	232	"	67
1974 to 1975	"	239	"	95
1975 to 1976	"	322	"	116
1976 to 1977	"	278	"	63
1977 to 1978	"	156	"	47
1978 to 1979	"	84	"	28
1979 to 1980	"	68	"	35
1980 to 1981	"	49	"	13

Inmate Age Groups

	<u>70</u>	<u>71</u>	<u>72</u>	<u>73</u>	<u>74</u>	<u>75</u>	<u>76</u>	<u>77</u>	<u>78</u>	<u>79</u>	<u>80</u>
Number Committed	159	258	282	302	442	451	362	346	337	251	299
Up to 19 years	23	26	19	45	45	44	28	41	38	30	19
20 to 24 years	52	82	98	120	173	173	109	132	115	98	127
25 to 29 years	36	60	80	67	111	112	95	70	66	44	50
30 to 34 years	22	34	31	29	62	52	66	45	51	36	48
35 to 39 years	9	18	28	19	22	34	33	27	39	24	29
40 to 49 years	12	27	19	21	24	27	24	25	24	13	14
50 to	5	11	7	1	5	9	7	6	4	6	7
Average Age	26	25	27	26	25	27	28	28	28	28	27

Inmate Marital Status

Single	81	123	116	131	191	181	132	166	154	126	146
Married	54	77	100	111	159	168	134	94	104	60	89
Divorced	22	53	63	57	85	97	96	85	76	62	53
Widower	2	5	3	3	7	5	0	1	3	3	6

	<u>70</u>	<u>71</u>	<u>72</u>	<u>73</u>	<u>74</u>	<u>75</u>	<u>76</u>	<u>77</u>	<u>78</u>	<u>79</u>	<u>80</u>
<u>Former Inmates of Maine Institutions</u>											
Maine Youth Center	48	66	61	63	101	122	91	111	114	68	83
Percentage	30%	25%	22%	11%	22%	27%	25%	32%	34%	27%	28%
Maine Corr Ctr	71	99	125	97	165	175	162	154	173	148	172
Percentage	46%	37%	44%	32%	37%	39%	45%	45%	51%	59%	58%

Inmates with relatives who  
are, or have been in MSP

One Relative	15	20	15	42	53	67	45	32	44	21	30
Two "	3	1	3	8	21	19	11	11	11	8	11
Three "	2	1	2	2	1	0	3	1	5	4	2
Four "	0	0	0	0	2	2	2	2	0	0	0
Five "	0	0	0	0	1	0	0	2	0	0	0
Six "	0	0	0	0	0	0	2	0	0	0	1
Seven "	0	0	0	0	0	0	0	0	0	0	0
Eight "	0	0	0	0	0	0	0	0	0	0	0
Percentage	11%	8%	8%	11%	17%	20%	17%	14%	18%	13%	15%

<u>Country of Birth</u>	<u>70</u>	<u>71</u>	<u>72</u>	<u>73</u>	<u>74</u>	<u>75</u>	<u>76</u>	<u>77</u>	<u>78</u>	<u>79</u>	<u>80</u>
	<u>71</u>	<u>72</u>	<u>73</u>	<u>74</u>	<u>75</u>	<u>76</u>	<u>77</u>	<u>78</u>	<u>79</u>	<u>80</u>	<u>81</u>
Germany	0	0	0	0	1	0	0	0	1	0	0
Canada	0	3	3	2	3	3	6	3	2	0	2
France	0	0	0	0	1	1	0	0	0	0	1
Philippine Islands	0	0	1	0	0	0	0	0	1	0	0
Cuba	0	0	1	0	0	0	0	0	0	0	0
Puerto Rico	0	0	4	0	0	0	1	0	0	1	0
Latavia	0	0	0	1	0	0	0	0	0	0	0
China	0	0	0	0	2	0	0	0	0	0	0
Honduras	0	0	0	0	1	0	0	0	0	0	0
England	0	0	0	0	1	0	1	1	0	0	1
United States	159	250	273	299	433	447	353	342	331	247	293
British West Indies	0	0	0	0	0	0	1	0	1	0	0
Italy	0	0	0	0	0	0	0	0	1	1	0
Spain	0	0	0	0	0	0	0	0	0	0	1
South Korea	0	0	0	0	0	0	0	0	0	2	0
Czechoslovakia	0	0	0	0	0	0	0	0	0	0	1

Race

Indian	2	2	8	10	3	3	8	8	7	6	7
Negro	2	6	2	2	5	2	6	2	4	3	5
White	155	250	272	290	432	446	347	335	325	240	287
Chinese	0	0	0	0	2	0	0	0	0	0	0
Puerto Rican	0	0	0	0	0	0	1	1	0	0	0
Philippino	0	0	0	0	0	0	0	0	1	0	0
Asian	0	0	0	0	0	0	0	0	0	2	0

Education, at time of commitment	70 71 (159)	71 72 (258)	72 73 (282)	73 74 (302)	74 75 (442)	75 76 (451)	76 77 (362)	77 78 (346)	78 79 (337)	79 80 (251)	80 81 (299)
No Education	1	1	0	0	2	0	2	1	1	0	0
1st Grade	0	0	0	4	0	0	0	0	0	0	0
2nd Grade	0	2	0	1	1	1	0	2	0	0	1
3rd Grade	0	1	2	1	3	2	1	0	0	0	1
4th Grade	1	1	3	2	1	6	1	1	3	3	4
5th Grade	2	7	2	2	5	4	6	5	1	2	3
6th Grade	9	15	11	6	12	6	20	8	8	6	5
7th Grade	20	31	13	18	22	32	16	26	22	12	9
8th Grade	52	70	82	61	92	82	83	80	68	44	50
1st High	22	34	43	53	78	87	54	37	59	27	36
2nd High	17	38	46	41	96	89	61	70	56	31	33
3rd High	7	7	25	29	47	43	38	44	39	9	23
High Graduate	20	36	38	65	62	71	55	52	59	105	118
1st College	4	5	6	9	4	8	14	9	8	4	4
2nd College	1	8	6	4	7	13	6	5	7	4	3
3rd College	1	1	4	2	3	1	1	3	2	1	2
College Graduate	2	1	1	4	6	5	4	1	2	1	2
17 yrs	0	0	0	0	0	0	0	1	0	1	0
18 yrs	0	0	0	0	1	1	0	1	2	0	0
21 yrs	0	0	0	0	0	0	0	0	0	1	0
Average Education	9th	8th	9th	10th	10th	10th	9.5th	9.6th	9.8th	10th	10th
% of High Grad.	18%	20%	20%	21%	18%	22%	22%	21%	24%	47%	40%



EDUCATION DEPARTMENT  
 STATISTICAL REPORT  
 FY 1981

	Enrollments	Withdrawals/ Attending	Completions	% of Compl.
Mid-Coast Community College Liberal Studies Program	21	4	17	80
High School Equivalency Diploma Program (GED)	62	24	38	61
Remedial Reading (Literacy Volunteer Program)	15	13	2	13
Avocational (Poetry)	21	18	3	14
Vocational (Manpower Training Division - Bolduc Unit) Includes Carpentry, Building Trades, Auto Mechanics, and Auto Body Repair Schools	76	36	44	57
<b>Totals</b>	<b>195</b>	<b>95</b>	<b>104</b>	<b>53</b>

Student Enrollment - Unduplicated Count	175
Average Weekly Attendance	56
Total Number of Courses Offered	19
Total Number of General Aptitude Test Batteries Administered	87
Total Number of Tests of Adult Basic Education Administered	53
Total Days of Instruction	230

Program Effectiveness

A total of 201 new admissions were interviewed in FY '81. 112 of the new admissions had secondary certificates; i.e. GED or high school diploma. Of the remaining 89 who were eligible for adult basic education courses, 41 enrolled. Those 41 students and an additional 36 students who had been sentenced to the prison prior to July '80 reflect the total enrollment in basic education for FY '81. Twenty-one enrolled in a college course and an equal number enrolled in a poetry workshop. Seventy-six were enrolled in four vocational courses at the Bolduc Unit. The Total number of students enrolled in all programs (unduplicated count) was one hundred seventy-five (175).

<u>Religion</u>	<u>70</u>	<u>71</u>	<u>72</u>	<u>73</u>	<u>74</u>	<u>75</u>	<u>76</u>	<u>77</u>	<u>78</u>	<u>79</u>	<u>80</u>
	<u>71</u>	<u>72</u>	<u>73</u>	<u>74</u>	<u>75</u>	<u>76</u>	<u>77</u>	<u>78</u>	<u>79</u>	<u>80</u>	<u>81</u>
Agnostic	0	0	1	0	1	2	1	1	0	0	0
Atheist	1	0	0	0	0	1	0	0	1	1	0
Baba	0	0	0	0	0	0	1	0	0	0	0
Bahai	0	0	0	0	1	0	0	0	0	0	0
Buddah	0	0	0	0	2	1	0	0	0	0	0
Catholic	55	79	109	97	140	169	130	123	109	81	108
Christian Science	1	0	0	0	0	0	0	0	1	0	0
Greek Orthodox	0	0	0	0	1	0	0	0	0	0	1
Hebrew	0	2	1	0	1	0	1	0	1	1	0
Hindu	0	1	0	0	0	0	0	0	0	0	0
Indian Culture	0	0	0	0	0	1	0	0	0	0	0
Jehovah's Witness	0	1	0	0	3	1	3	0	0	1	2
Mormon	0	1	1	1	1	1	1	0	1	0	0
Moslem	0	0	0	0	0	0	2	0	0	0	0
No Preference	4	9	8	1	0	5	0	0	1	0	0
None	2	7	13	45	49	31	54	62	39	42	46
Protestant	97	156	149	158	242	238	169	160	184	125	136
Quaker	0	0	0	0	0	1	0	0	0	0	0
Satanist	0	1	0	0	0	0	0	0	0	0	0
Pagan	0	0	0	0	0	0	0	0	0	0	1

Formerly in the Armed Services

Honorable Discharge	27	67	75	84	113	124	79	75	71	56	63
Bad Conduct Disch	28	20	44	39	64	57	51	44	39	16	21
Dishonorable	1	9	6	4	0	1	1	0	1	2	3
Active Duty	2	3	7	2	4	4	1	2	2	0	2

Residents who have been committed to other prisons (not in Maine)

	70	71	72	73	74	75	76	77	78	79	80
	<u>71</u>	<u>72</u>	<u>73</u>	<u>74</u>	<u>75</u>	<u>76</u>	<u>77</u>	<u>78</u>	<u>79</u>	<u>80</u>	<u>81</u>
One other prison	21	33	40	34	66	38	59	43	38	44	47
Two " " (s)	4	6	5	6	11	8	18	9	6	5	9
Three " "	1	4	2	3	3	5	2	10	11	6	11
Four " "	1	0	1	2	2	0	5	5	2	2	1
Five " "	1	1	1	1	0	0	0	1	0	0	0
Six " "	0	0	0	0	0	0	0	1	0	1	0
Seven " "	0	1	0	0	0	1	2	1	1	0	0
Eight " "	0	0	0	0	1	0	0	0	1	1	0
Nine or More"	0	0	1	0	0	0	1	1	0	0	1
Percentage	18%	17%	18%	12%	18%	12%	24%	21%	18%	24%	23%

Inmates with Prior Sentences at Maine State Prison

One Prior	24	39	50	41	91	117	76	90	76	60	56
Two "	7	13	24	16	30	35	49	33	38	20	35
Three "	5	8	10	8	9	13	21	20	18	13	11
Four "	2	1	2	2	4	4	12	9	7	10	4
Five "	3	2	2	2	3	4	5	5	4	2	4
Six "	1	3	1	0	2	0	4	4	2	0	0
Seven "	0	1	0	0	0	1	1	1	4	2	1
Eight "	1	2	0	0	1	0	1	0	2	0	1
Nine "	0	0	0	0	0	0	1	0	1	0	1
Ten "	0	0	0	0	0	0	0	0	0	0	1
Percentage	27%	27%	31%	22%	31%	39%	47%	47%	45%	43%	38%

<u>Commitments by</u> <u>Counties</u>	<u>70</u>	<u>71</u>	<u>72</u>	<u>73</u>	<u>74</u>	<u>75</u>	<u>76</u>	<u>77</u>	<u>78</u>	<u>79</u>	<u>80</u>
	<u>71</u>	<u>72</u>	<u>73</u>	<u>74</u>	<u>75</u>	<u>76</u>	<u>77</u>	<u>78</u>	<u>79</u>	<u>80</u>	<u>81</u>
Androscoggin	3	20	27	23	68	59	27	29	38	26	29
Aroostook	11	22	25	8	20	20	28	19	10	9	9
Cumberland	42	70	72	68	80	102	79	89	81	51	55
Franklin	5	3	8	6	11	11	6	6	4	5	8
Hancock	0	5	6	5	13	7	11	11	12	11	4
Kennebec	16	32	31	30	59	61	34	37	38	32	30
Knox	5	13	8	5	20	32	19	17	31	19	14
Lincoln	6	4	2	3	6	5	5	7	5	7	5
Oxford	1	3	6	8	11	16	19	6	12	11	7
Penobscot	18	24	28	72	52	44	42	35	37	17	45
Piscataquis	5	4	3	3	5	5	3	0	3	1	5
Sagadahoc	1	5	2	8	10	7	11	7	8	4	1
Somerset	8	10	12	5	17	32	38	20	13	16	23
Waldo	7	3	2	7	5	4	5	14	4	7	13
Washington	7	7	2	10	20	20	10	7	10	7	8
York	10	21	14	19	29	23	16	36	21	20	27
MCC transfers	13	6	24	12	7	8	29	50	45	56	82
Massachusetts	0	0	0	1	0	1	2	0	3	6	5
Connecticut	1	7	1	1	4	1	5	3	5	3	2
Rhode Island	1	7	1	1	0	1	0	0	0	1	1
New Hampshire	1	2	2	2	4	0	2	2	4	2	5
Vermont	0	0	4	1	1	0	0	1	0	0	0
Federal	1	2	2	2	6	2	3	4	4	1	2
Tennessee	0	0	0	0	0	0	0	0	0	1	0
Florida	0	0	0	0	0	0	0	0	0	0	4

Sentences of Inmates Committed - OLD CODE

	<u>70</u>	<u>71</u>	<u>72</u>	<u>73</u>	<u>74</u>	<u>75</u>	<u>76</u>	<u>77</u>	<u>78</u>	<u>79</u>	<u>80</u>
	<u>71</u>	<u>72</u>	<u>73</u>	<u>74</u>	<u>75</u>	<u>76</u>	<u>77</u>	<u>78</u>	<u>79</u>	<u>80</u>	<u>81</u>
30 days	0	0	0	8	12	4	0	0	0	0	0
45 days	0	0	0	1	2	0	0	0	0	0	0
60 days	0	0	0	29	44	52	7	0	0	0	0
6 mos to 1½ yrs	1	1	1	0	0	0	0	0	0	0	0
Indet. to 3 yrs	0	0	0	10	25	34	14	1	0	0	1
1 yr to 2 yrs	19	53	59	74	57	55	20	12	8	0	0
1 yr to 2½ yrs	0	0	0	0	0	0	0	0	0	0	0
1 yr to 3 yrs	38	42	39	29	39	49	8	3	0	0	0
1 yr to 4 yrs	0	8	2	1	5	4	1	1	0	0	0
1 yr to 5 yrs	1	20	17	10	23	10	5	0	0	0	0
1 yr to 6 yrs	7	1	2	0	0	2	0	0	0	0	0
1 yr to 7 yrs	0	1	1	2	1	3	1	0	0	0	0
1 yr to 8 yrs	0	1	0	0	0	0	0	0	0	0	0
1 yr to 10 yrs	3	0	3	1	1	0	0	0	0	1	0
1 yr to 20 yrs	0	0	0	0	1	0	0	0	0	1	0
1 yr 1 day to 5 yrs	0	0	0	1	0	0	0	0	0	0	0
1 yr 3 mos to 3 yrs	0	2	1	1	0	1	0	0	0	0	0
1 yr 3 mos to 4 yrs	0	1	2	0	0	1	0	0	0	0	0
1 yr 3 mos to 5 yrs	0	0	1	0	0	2	0	0	0	0	0
1 yr 4 mos to 2 yrs 8 mos	0	0	0	1	0	0	0	0	0	0	0
1 yr 3 mos to 2 yrs 6 mos	0	0	2	0	1	1	2	0	0	0	0
1 yr 9 mos to 4 yrs	0	8	0	0	0	0	0	0	0	0	0
1 yr 2 mos to 3 yrs	0	0	0	0	2	0	0	0	0	0	0
1 yr 3 mos to 3 yrs	7	0	24	15	28	41	4	0	0	0	0
1½ yrs to 3 yrs	7	0	24	15	28	41	4	4	0	0	0

Sentences - Cont'd

	<u>70</u>	<u>71</u>	<u>72</u>	<u>73</u>	<u>74</u>	<u>75</u>	<u>76</u>	<u>77</u>	<u>78</u>	<u>79</u>	<u>80</u>
	<u>71</u>	<u>72</u>	<u>73</u>	<u>74</u>	<u>75</u>	<u>76</u>	<u>77</u>	<u>78</u>	<u>79</u>	<u>80</u>	<u>81</u>
1½ yrs to 3½ yrs	0	0	0	0	1	0	0	0	0	0	0
1½ yrs to 4 yrs	2	6	4	2	8	0	2	0	0	0	0
1½ yrs to 5 yrs	12	6	10	9	11	8	2	0	1	0	0
1½ yrs to 6 yrs	1	0	0	0	2	0	0	0	0	0	0
1½ yrs to 7 yrs	0	0	0	0	1	0	0	0	0	0	0
1½ yrs to 8 yrs	0	0	0	0	1	1	0	0	0	0	0
1½ yrs to 10 yrs	0	0	1	2	3	0	0	0	0	0	0
2 yrs to 4 yrs	8	11	13	14	35	37	9	1	2	0	2
2 yrs to 5 yrs	9	9	14	20	20	16	7	0	0	0	0
2 to 6 yrs	7	3	5	2	3	3	0	0	0	0	0
2 to 7 yrs	0	1	0	1	0	1	1	0	0	0	0
2 to 8 yrs	0	1	1	0	1	0	0	0	0	0	0
2 to 9 yrs	0	0	0	0	1	0	0	0	0	0	0
2 to 10 yrs	5	2	3	2	1	3	0	0	1	0	0
2 to 20 yrs	0	0	1	0	0	0	0	0	0	0	0
2½ to 4 yrs	0	0	0	1	0	0	0	0	0	0	0
2½ to 5 yrs	10	8	15	16	28	38	7	4	3	1	0
2½ to 6 yrs	2	4	0	0	0	0	1	0	0	0	0
2½ to 7 yrs	2	1	0	0	2	1	0	0	0	1	0
2½ to 8 yrs	1	1	0	1	1	1	0	0	0	0	0
2½ to 10 yrs	0	0	1	0	0	0	1	0	1	0	0
2 yr 8 mos to 6 yrs	0	0	0	0	0	1	0	0	0	0	0
3 to 5 yrs	1	1	0	1	0	0	0	0	0	3	0
3 to 6 yrs	0	1	5	4	4	11	5	2	1	3	1
3 to 7 yrs	0	2	1	3	2	1	0	0	0	0	0

Sentences - Cont'd	<u>70</u>	<u>71</u>	<u>72</u>	<u>73</u>	<u>74</u>	<u>75</u>	<u>76</u>	<u>77</u>	<u>78</u>	<u>79</u>	<u>80</u>
	<u>71</u>	<u>72</u>	<u>73</u>	<u>74</u>	<u>75</u>	<u>76</u>	<u>77</u>	<u>78</u>	<u>79</u>	<u>80</u>	<u>81</u>
3 to 8 yrs	0	1	1	0	1	0	0	0	0	0	0
3 to 9 yrs	1	0	0	0	0	0	0	0	0	0	0
3 to 10 yrs	0	4	2	2	6	2	3	0	0	0	0
3 to 15 yrs	0	1	0	2	0	0	0	0	0	0	0
3½ to 7 yrs	2	1	2	1	5	6	2	0	4	0	1
3½ to 8 yrs	0	0	0	1	0	0	2	1	2	0	0
3½ to 10 yrs	1	1	1	1	0	1	0	0	0	0	0
3½ to 15 yrs	0	0	0	0	0	1	0	0	0	0	0
4 yrs	0	0	0	1	0	0	0	0	0	0	0
4 to 5 yrs	0	1	0	0	0	0	0	0	0	0	0
4 to 8 yrs	4	1	7	1	7	3	1	0	0	0	0
4 to 10 yrs	0	1	3	2	6	4	2	0	0	0	0
4 to 12 yrs	0	0	0	0	1	0	0	0	0	0	0
4½ to 9 yrs	0	0	0	1	0	0	0	0	0	0	0
4½ to 10 yrs	1	0	0	0	0	0	0	0	0	0	0
4½ to 15 yrs	0	0	0	1	1	0	0	0	0	0	0
5 yrs 2 mos 10 days	0	0	0	0	0	0	0	0	0	1	0
5 to 10 yrs	1	4	3	7	15	12	4	1	1	1	2
5 to 13 yrs	0	0	0	0	0	2	0	0	0	0	0
5 to 15 yrs	1	2	0	2	3	2	1	0	0	0	0
5 to 20 yrs	0	1	0	0	1	0	0	0	0	0	0
6 to 8 yrs	0	0	0	0	0	0	1	0	0	0	0
6 to 12 yrs	0	1	0	1	1	0	2	0	1	1	1
6½ to 15 yrs	0	0	0	0	0	1	0	0	0	0	0
6 yrs to Life	0	0	1	1	0	0	0	0	0	0	0

<u>Sentences - Cont'd</u>	<u>70</u>	<u>71</u>	<u>72</u>	<u>73</u>	<u>74</u>	<u>75</u>	<u>76</u>	<u>77</u>	<u>78</u>	<u>79</u>	<u>80</u>
	<u>71</u>	<u>72</u>	<u>73</u>	<u>74</u>	<u>75</u>	<u>76</u>	<u>77</u>	<u>78</u>	<u>79</u>	<u>80</u>	<u>81</u>
7 to 10 yrs	0	0	0	0	0	0	0	0	0	1	0
7 to 14 yrs	0	0	0	0	0	0	0	0	1	0	0
7 to 15 yrs	0	3	0	0	1	0	0	0	0	1	0
7 to 25 yrs	0	0	1	0	0	0	0	0	0	0	0
7½ to 15 yrs	2	1	2	1	3	3	0	1	0	0	1
7½ to 20 yrs	0	0	1	1	0	1	0	0	0	0	0
8 to 10 yrs	0	0	0	0	0	0	0	0	1	2	0
8 to 12 yrs	0	0	0	1	0	0	0	0	0	0	1
8 to 15 yrs	0	0	0	0	0	0	0	0	1	0	0
8 to 16 yrs	0	2	2	0	1	0	0	0	0	1	0
8 to 17 yrs	0	0	0	0	0	0	0	1	0	0	0
8 to 20 yrs	0	0	2	0	2	2	1	0	0	0	0
8½ to 20 yrs	0	0	0	0	1	1	0	0	0	0	0
9½ to 20 yrs	0	0	0	0	0	1	0	1	0	0	0
10 to 20 yrs	0	5	3	4	3	1	3	0	0	0	1
10 yrs	0	0	0	0	0	1	0	0	1	1	2
10 to 15 yrs	0	0	0	0	0	0	0	0	1	2	1
10 to 30 yrs	1	0	1	0	0	0	1	1	0	0	0
10 to 45 yrs	0	0	0	0	0	0	0	0	1	0	0
10 to Life	0	0	0	0	0	0	1	0	0	0	0
12 to 15 yrs	0	0	0	0	0	0	0	0	0	0	0
12½ to 25 yrs	0	0	0	1	0	0	0	0	0	4	0
13 yrs	0	0	0	0	0	1	0	0	0	0	0
13 to 15 yrs	0	0	0	0	0	0	0	0	0	1	0
15 to 30 yrs	0	1	0	0	0	0	0	0	0	0	0



Sentences - Cont'd

	<u>70</u>	<u>71</u>	<u>72</u>	<u>73</u>	<u>74</u>	<u>75</u>	<u>76</u>	<u>77</u>	<u>78</u>	<u>79</u>	<u>80</u>
	<u>71</u>	<u>72</u>	<u>73</u>	<u>74</u>	<u>75</u>	<u>76</u>	<u>77</u>	<u>78</u>	<u>79</u>	<u>80</u>	<u>81</u>
15 yrs	0	0	1	0	0	0	0	0	0	0	0
15 to 20 yrs	0	0	0	0	0	0	0	0	0	1	0
15 to 45 yrs	0	0	0	0	0	0	0	1	0	0	0
15 to 50 yrs	0	1	0	0	0	0	0	0	0	0	0
16 to Life	0	0	0	0	0	0	1	0	0	0	0
18 yrs	0	0	0	0	0	0	0	1	0	0	0
18 to Life	0	0	0	0	0	0	0	0	0	1	0
19 to 20 yrs	0	0	0	0	0	0	0	0	0	1	0
20 to 30 yrs	0	1	0	0	0	0	0	0	0	0	0
20 to Life	0	0	0	0	0	0	0	2	0	0	0
23 to 27 yrs	0	0	0	0	0	0	0	0	0	1	0
25 to 50 yrs	0	1	0	0	0	1	0	0	0	0	0
25 to Life	0	0	0	0	0	0	0	1	0	0	0
37 yrs	0	0	0	0	0	0	0	0	1	0	0
Federal 2 yrs	0	0	0	0	1	0	0	0	0	1	0
Federal 3 yrs	0	0	0	2	1	0	1	0	0	0	0
Federal 6 yrs	0	0	0	0	0	0	0	0	0	2	0
Federal 20 yrs	0	0	0	0	0	0	0	1	2	0	0
LIFE	2	7	4	4	8	5	3	1	0	2	4
Safekeeping	5	3	2	2	8	7	12	24	12	7	26
Ave. Min. Sentence	1.95	2.1	1.2	1.9	1.99	1.96	2.43	2.01	3.99	8.29	7.19
Ave. Max. Sentence	5.1	5.9	3.9	4.6	4.7	5.31	5.62	3.39	7.76	11.9	11.5

(Note - Minimum and maximum sentences are now fluctuating greatly due to the decreasing number of those incarcerated under the old code sentencing structure. We are now holding more and more long timers who will eventually become parole eligible.)

Sentences of Inmates Committed - NEW CODE

	<u>75</u>	<u>76</u>	<u>77</u>	<u>78</u>	<u>79</u>	<u>80</u>
	<u>76</u>	<u>77</u>	<u>78</u>	<u>79</u>	<u>80</u>	<u>81</u>
17 days	0	0	1	0	0	0
30 days	0	4	4	4	5	1
45 days	0	1	1	0	1	0
59 days	0	1	0	0	0	0
60 days	0	12	5	4	1	4
65 days	0	0	0	0	0	1
90 days	0	6	13	3	4	3
4 mos	0	1	1	3	4	3
5 mos	0	0	3	1	0	1
6 mos	2	17	24	28	34	13
6 mos and 1 day	0	0	0	2	2	4
7 mos	0	2	1	1	1	2
8 mos	0	1	0	1	1	1
9 mos	0	3	5	6	5	2
10 mos	0	0	0	0	0	5
11 mos	0	4	5	11	8	2
11 mos 15 days	0	1	0	0	0	0
11 mos 29 days	0	0	1	0	0	0
360 days	0	0	1	0	0	1
364 days	0	1	3	4	8	2
14 mos	0	1	1	0	0	1
15 mos	0	2	4	1	0	1
17 mos	0	0	1	1	0	1
18 mos	0	0	0	4	4	8
1 yr	2	33	19	25	32	32

Continued - Cont'd

	71	72	73	74	75	80
1 yr 6 mos	1	17	22	15	19	9
20 mos	0	0	2	1	2	1
22 mos	0	0	1	0	1	1
2 yrs	1	27	39	49	34	42
2 yr 3 mos	0	1	0	2	0	1
28 mos	0	0	0	0	0	1
2 yr 6 mos	3	10	11	16	11	13
2 yr 11 mos	0	0	0	0	1	0
33 mos	0	0	0	1	1	0
3 yrs	3	20	32	35	35	30
3 yrs 106 days	0	0	0	0	0	1
3 yrs 6 mos	0	4	2	9	0	1
4 yrs	0	12	30	21	19	15
4 yrs 4 mos	0	1	0	0	0	0
4 yrs 6 mos	0	3	0	3	0	1
5 yrs	0	15	25	22	25	26
5 yrs 6 mos	0	0	0	1	0	1
6 yrs	0	0	0	2	0	3
6 yrs 2 mos 8 days	0	0	0	0	0	2
6 yrs 6 mos	0	0	0	0	0	0
7 yrs	0	4	1	2	0	0
7 yrs 6 mos	1	4	12	1	1	4
8 mos	0	1	5	4	0	3
8 yrs 6 mos	0	0	0	0	0	0
9 yrs	0	0	4	0	1	0
9 yrs 6 mos	0	0	0	0	0	0

Sentences - Cont'd

	<u>75</u>	<u>76</u>	<u>77</u>	<u>78</u>	<u>79</u>	<u>80</u>
	<u>76</u>	<u>77</u>	<u>78</u>	<u>79</u>	<u>80</u>	<u>81</u>
10 yrs	0	6	15	10	6	16
10 yrs 6 mos	0	0	0	0	0	0
11 yrs	0	0	0	0	1	0
11 yrs 6 mos	0	0	0	0	0	0
12 yrs	0	2	2	3	1	0
12 yrs 6 mos	0	1	0	0	0	0
13 yrs	0	0	0	0	0	0
13 yrs 6 mos	0	0	0	0	0	0
14 yrs	0	1	0	0	1	0
14 yrs 6 mos	0	0	0	0	0	0
15 yrs	0	6	3	2	2	1
15 yrs 6 mos	0	0	0	0	0	0
16 yrs	0	0	0	0	0	0
16 yrs 6 mos	0	0	0	0	0	0
17 yrs	0	0	0	0	1	0
17 yrs 6 mos	0	0	0	0	0	0
18 yrs	0	0	0	2	1	1
18 yrs 6 mos	0	0	0	0	0	0
19 yrs	0	0	0	0	0	0
19 yrs 6 mos	0	0	0	0	0	0
20 yrs	0	3	2	4	2	5
21 yrs	0	0	0	0	0	2
25 yrs	0	0	1	0	2	4
30 yrs	0	0	0	1	2	0
32 yrs	0	0	1	1	0	0
33 yrs	0	0	0	1	0	0

Sentences - Cont'd

	<u>75</u>	<u>76</u>	<u>77</u>	<u>78</u>	<u>79</u>	<u>80</u>
	<u>76</u>	<u>77</u>	<u>78</u>	<u>79</u>	<u>80</u>	<u>81</u>
35 yrs	0	0	0	0	1	0
40 yrs	0	0	1	1	1	2
45 yrs	0	0	1	0	2	0
50 yrs	0	1	0	2	0	0
70 yrs	0	0	0	1	0	0
Natural Life	0	1	0	3	2	1
120 Day Observation	0	3	3	2	1	0
Average Sentence	2.35	3.54	3.14	3.9	3.7	4.2

(Note: From 78-79 on, the average sentence does not include figures of over 50 years or natural life, as the longer sentences somewhat distort the figure when included. The average sentence is actually a little less than the figures show because of the other long term sentences that are calculated into it.)

<u>Crimes</u>	70	71	72	73	74	75	76	77	78	79	80
	<u>71</u>	<u>72</u>	<u>73</u>	<u>74</u>	<u>75</u>	<u>76</u>	<u>77</u>	<u>78</u>	<u>79</u>	<u>80</u>	<u>81</u>
Acc After the Fact	0	1	0	1	0	5	2	0	0	0	0
Acc Asslt to Rob	0	0	0	0	0	0	0	0	0	0	0
Acc to Burglary or Robbery	0	0	0	0	0	0	1	1	0	0	1
Acc Before the Fact	1	0	0	0	1	5	0	0	0	1	1
Acc to Forgery	0	0	0	0	0	0	0	0	1	0	0
Acq. Drugs by Deception	0	0	0	0	0	0	1	0	0	0	0
Aggravated Assault	6	7	19	9	17	12	20	22	18	18	21
Aggravated Robbery	0	0	0	0	0	0	1	1	0	0	0
Armed Assault	0	0	0	0	3	8	7	1	1	1	1
Armed Bank Robbery	0	0	0	0	0	0	0	1	1	0	0
Arson	0	1	5	13	8	9	12	11	8	14	6
Assault & Battery	3	7	13	11	17	23	15	9	8	10	11
Asslt w/Intent to Kill	2	3	2	5	1	0	3	0	1	2	1
Asslt to Maim	0	0	0	0	0	0	0	0	0	0	1
Asslt on an Officer	0	0	0	0	0	1	0	2	5	2	2
Asslt on Prison Guard	0	0	1	0	1	0	0	1	0	1	1
Asslt w/Intent to Rape	2	0	2	2	3	2	1	0	0	0	0
Asslt w/Intent to Rob	2	1	1	0	2	2	1	0	0	1	2
Asslt w/Int to Rob w/Armed	0	0	0	0	1	0	0	0	0	0	0
Asslt w/Dangerous Weapon	2	1	5	4	8	2	1	1	0	1	2
Assisting Escape	0	0	0	0	1	1	0	0	0	0	0
Att. Aggravated Assault	0	0	0	0	0	1	0	0	0	0	0
Att. Armed Robbery	0	0	0	3	1	1	0	0	1	0	0
Att. Crim. Homicide 2nd Deg	0	0	0	0	0	0	1	1	0	1	0
Att. B & E	0	5	3	0	1	1	3	1	0	2	2
Att. to Cheat w/FalPretenses	0	0	0	0	0	2	0	0	0	0	0

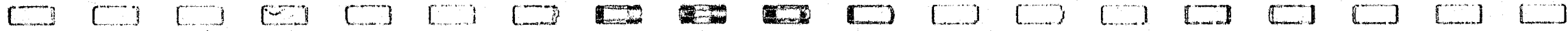
<u>Crimes - Cont'd</u>	<u>70</u>	<u>71</u>	<u>72</u>	<u>73</u>	<u>74</u>	<u>75</u>	<u>76</u>	<u>77</u>	<u>78</u>	<u>79</u>	<u>80</u>
	<u>71</u>	<u>72</u>	<u>73</u>	<u>74</u>	<u>75</u>	<u>76</u>	<u>77</u>	<u>78</u>	<u>79</u>	<u>80</u>	<u>81</u>
Att. Escape	0	0	1	0	0	0	4	1	2	2	0
Att. Gross Sexual Misconduct	0	0	0	0	0	0	0	0	0	2	0
Att. to Utter Forg. Inst.	0	0	0	0	0	2	0	0	0	0	0
Att. Murder	0	0	0	0	0	0	0	3	3	0	0
Att. Rape	0	0	0	0	1	0	1	1	0	0	1
Att. Robbery	0	1	2	0	1	0	0	0	0	0	1
Att. Obtain Drugs w/ Forg. Prescrip.	0	0	0	1	0	0	0	0	0	0	0
Att. Theft b/Deception	0	0	0	0	0	0	0	1	0	1	0
B E & L Daytime	10	19	17	19	30	38	13	4	4	1	0
B E & L Nighttime	25	39	23	28	76	73	20	6	1	1	1
B & E w/Intent	14	24	24	23	43	36	4	0	1	0	1
Bribery in Official Matters	0	0	0	0	0	0	0	0	0	0	1
Burglary	2	1	0	2	2	2	79	93	119	98	110
Burglary w/Arm w/DangWeapon	0	0	0	0	0	0	5	0	0	0	0
Carnal Knowledge	1	0	0	1	1	2	1	0	0	0	0
Carrying Loaded Pistol in MV	0	0	0	0	0	0	0	0	0	1	0
Cheating b/FalPretenses	1	6	3	3	10	12	4	0	1	1	0
Common Thief	1	0	0	0	0	0	0	0	0	0	0
Concealing Stolen Property	0	0	0	0	4	1	0	0	0	0	0
Concealed Weapon	0	0	0	1	0	0	0	1	0	2	1
Conspiracy	3	2	2	0	3	9	3	1	1	0	2
Conversion of Rental Goods	0	0	1	0	0	0	0	0	0	0	0
Criminal Attempt	0	0	0	0	0	0	3	1	1	1	1
Crim.Att. of Crim.Homic(inc.1stDeg)	0	0	0	0	0	0	1	0	6	1	0
Crim. Mischief (inc. Agg.)	0	0	0	0	0	0	5	5	4	2	7
Crim. Restraint	0	0	0	0	0	0	1	0	1	0	0

Crimes - Cont'd

	<u>70</u>	<u>71</u>	<u>72</u>	<u>73</u>	<u>74</u>	<u>75</u>	<u>76</u>	<u>77</u>	<u>78</u>	<u>79</u>	<u>80</u>
	<u>71</u>	<u>72</u>	<u>73</u>	<u>74</u>	<u>75</u>	<u>76</u>	<u>77</u>	<u>78</u>	<u>79</u>	<u>80</u>	<u>81</u>
Crim. Threatening (inc. w/Firearm)	0	0	0	0	0	0	5	9	11	6	7
Crim. Trespass	0	0	0	0	0	0	2	2	2	2	4
Crim. Use of Explosives	0	0	0	0	0	0	0	2	0	0	0
Cruelty to Animals	0	0	0	0	0	0	1	1	0	0	1
Depositing a Bomb	0	0	0	0	0	1	0	0	0	0	0
Disorderly Conduct	0	0	0	0	0	0	0	3	1	2	0
Display Another's Op.Lic.as Own	0	0	0	0	0	0	0	0	0	0	1
Driving to Endanger	0	0	0	0	0	0	0	0	1	0	0
Drug Trafficking & Drug Furnishing	0	0	0	0	0	0	2	0	2	0	0
Embezzlement	1	1	0	2	0	6	0	1	0	0	0
Ent. Dwelling nt w/Intent	0	0	0	0	0	1	0	0	1	0	0
Escape	11	14	16	18	22	32	22	23	21	28	30
Escape with Firearm	0	0	0	0	0	1	0	0	0	0	0
Extortion	0	0	1	0	0	0	0	0	0	0	0
Failure to Appear	0	0	0	0	0	0	0	1	0	1	1
False Report	0	0	0	0	0	0	0	0	0	0	1
False Swearing	0	0	0	0	0	0	0	0	1	0	0
Federal Crimes	0	0	0	3	2	1	1	1	1	0	0
Felonious Assault	0	1	0	0	0	0	0	0	0	0	0
Felonious Trespass	0	0	0	1	1	10	1	0	1	0	0
Felonious Use of Firearm	0	0	0	0	0	0	0	0	1	0	0
Felony Murder	0	0	0	0	0	0	0	0	0	2	0
Forgery & Uttering	0	5	3	0	5	4	5	2	7	2	7
Fraud	0	0	0	0	0	0	0	1	0	0	0
Furnishing Amphetamine	0	0	0	3	5	1	0	0	0	0	0



<u>Crimes - Cont'd</u>	<u>70</u>	<u>71</u>	<u>72</u>	<u>73</u>	<u>74</u>	<u>75</u>	<u>76</u>	<u>77</u>	<u>78</u>	<u>79</u>	<u>80</u>
	<u>71</u>	<u>72</u>	<u>73</u>	<u>74</u>	<u>75</u>	<u>76</u>	<u>77</u>	<u>78</u>	<u>79</u>	<u>80</u>	<u>81</u>
Furnishing LSD	0	0	0	3	1	1	0	0	0	0	0
Furnishing Marijuana	0	0	0	4	1	1	1	0	0	0	0
Grand Larceny	6	1	3	5	6	15	4	2	0	0	1
Gross Sex.Misconduct(inc.w/DangWeap)	0	0	0	0	0	0	8	11	14	15	16
Habitual MV Offender	0	0	0	0	0	0	0	0	0	0	1
Habitual Offender	0	0	0	0	0	0	0	0	0	1	0
Harrassment	0	0	0	0	0	0	0	0	0	1	0
Hindering Apprehension	0	0	0	0	0	0	2	1	0	0	1
Homicide I	0	0	0	0	0	0	1	0	0	0	0
Homicide II	0	0	0	0	0	0	3	7	4	1	0
Homicide III	0	0	0	0	0	0	1	2	0	0	0
Homicide IV	0	0	0	0	0	0	3	5	2	0	0
Homicide V	0	0	0	0	0	0	0	2	0	0	0
Homicide VI	0	0	0	0	0	0	0	0	0	0	0
Idle & Disorderly Conduct	0	0	1	0	0	0	0	0	0	0	0
Ill. Poss. Hypo Needle	0	0	2	0	0	0	1	0	1	0	0
Ill. Sale Drugs	3	12	1	0	2	3	0	0	0	0	0
Ill. Sale Halluc. Drugs	0	0	2	11	0	0	0	0	0	0	0
Ill. Sale LSD-25	0	0	0	0	6	5	0	0	0	0	0
Ill. Sale Marijuana	0	10	5	30	20	29	0	0	0	0	0
Importing Hashish (Fed)	0	0	1	0	0	0	0	0	0	0	0
Incest	1	5	3	6	1	1	0	0	0	0	0
Indecent Liberties	7	8	5	5	8	11	3	0	0	0	0
Induc.Female to Become Prostitute	0	0	0	0	0	1	0	1	1	0	0
Injury to Public Utility	0	0	0	0	0	0	0	0	2	0	0
Intent to Commit Theft	0	0	0	0	0	0	0	0	2	0	0



<u>Crimes - Cont'd</u>	<u>70</u>	<u>71</u>	<u>72</u>	<u>73</u>	<u>74</u>	<u>75</u>	<u>76</u>	<u>77</u>	<u>78</u>	<u>79</u>	<u>80</u>
	<u>71</u>	<u>72</u>	<u>73</u>	<u>74</u>	<u>75</u>	<u>76</u>	<u>77</u>	<u>78</u>	<u>79</u>	<u>80</u>	<u>81</u>
Kidnapping	1	1	1	1	5	2	6	7	3	1	3
Kidnapping w/Armed	0	0	0	0	0	2	2	4	0	1	1
Larceny	1	6	6	2	3	4	0	1	1	1	1
Larceny from Person	4	1	3	1	2	0	0	0	0	0	0
Malicious Mischief	0	0	0	0	1	3	0	0	0	0	0
Manslaughter	2	8	15	4	12	11	2	1	8	12	9
Misdemeanor	1	3	0	0	0	0	1	0	0	0	0
Murder	2	9	5	4	7	5	4	3	8	14	11
Negot. Worthless Instrument	0	0	0	0	0	0	0	0	2	0	2
NMVTA	0	0	0	0	1	0	1	0	0	0	0
Obt. Goods Under False Pretenses	0	1	0	0	0	0	0	1	0	0	0
Offer to Sell Amphetamine	0	0	0	0	0	1	0	0	0	0	0
Offer to Sell Methamphetamine	0	0	0	1	0	0	0	0	0	0	0
Op. After Susp.	0	0	0	0	0	0	1	1	2	2	1
Op. MV Under Influence	0	0	0	0	1	0	3	1	3	1	0
Op. w/o License	0	0	0	0	0	0	0	0	0	0	1
Perjury	0	1	0	0	1	0	1	0	0	0	0
Poss of Amphetamine	2	1	3	4	1	5	0	0	0	0	0
Poss of Amphetam & Barbiturates	0	0	0	0	0	3	0	0	0	0	0
Poss Burglars Tools	0	0	0	0	0	0	0	0	0	1	2
Poss Cannabis w/Int Sell	0	0	0	0	0	3	0	0	0	0	0
Poss of Cocaine	0	0	0	0	1	1	0	0	0	0	0
Poss Contraband	0	0	0	0	0	2	0	0	0	0	0
Poss Controlled Drugs	0	0	0	0	0	2	0	0	0	0	1
Poss Firearm by Felon	0	1	2	2	4	3	10	6	9	7	10
Poss Heroin	1	1	0	1	0	1	0	0	0	0	0

<u>Crimes: Cont'd</u>	<u>70</u>	<u>71</u>	<u>72</u>	<u>73</u>	<u>74</u>	<u>75</u>	<u>76</u>	<u>77</u>	<u>78</u>	<u>79</u>	<u>80</u>
	<u>71</u>	<u>72</u>	<u>73</u>	<u>74</u>	<u>75</u>	<u>76</u>	<u>77</u>	<u>78</u>	<u>79</u>	<u>80</u>	<u>81</u>
Poss Hypo Syringe	0	0	0	0	0	0	1	0	0	0	1
Poss LSD	3	1	6	0	1	1	0	0	0	0	0
Poss Marijuana	0	0	0	0	0	1	1	0	0	0	0
Poss Material Approp. for Const. Bomb	0	0	0	0	0	2	0	0	0	0	0
Poss Methamphetamine	0	0	0	0	0	0	1	0	0	0	0
Poss of Narcotic	0	1	0	0	0	0	0	0	0	0	0
Poss of Narcotic Drugs	0	0	0	3	1	1	1	1	0	0	0
Poss of Opium	0	0	1	0	0	0	0	0	0	0	0
Poss of P.C.P.	0	0	1	0	1	2	0	0	0	0	0
Public Indecency	0	0	0	0	0	0	0	0	1	0	0
Rape	5	5	7	2	4	10	10	10	10	6	7
Receiving Stolen Goods	3	1	3	3	9	6	2	4	8	5	4
Reckless Conduct	0	0	0	0	0	0	1	1	2	3	3
Reckless Driving	0	0	0	0	0	1	0	1	0	0	0
Reckless Homicide	0	0	1	1	2	2	3	1	0	0	0
Robbery (includes armed)	12	23	17	31	42	38	41	44	42	32	56
Safekeeping	4	3	2	3	8	7	15	23	12	7	26
Sale of Amphetamine	0	0	1	0	1	7	2	0	0	0	0
Sale of Cannabis	0	0	0	0	0	0	5	2	1	0	0
Sale of Cocaine	0	0	0	4	3	1	1	0	0	0	0
Sale of Counterfeit Subst.	0	0	0	0	0	1	0	0	0	0	0
Sale of Heroin	0	0	1	1	0	0	0	0	0	0	0
Sale of Methamphetamine	0	0	9	1	5	0	1	0	0	0	0
Sale of PCP	0	0	0	0	0	2	0	0	0	0	0
Sale of Regulated Drugs	0	0	0	0	6	0	1	1	1	0	0
Sell Mortgaged Property	0	0	0	1	0	0	1	0	0	0	0

Crimes - Cont'd

	<u>70</u>	<u>71</u>	<u>72</u>	<u>73</u>	<u>74</u>	<u>75</u>	<u>76</u>	<u>77</u>	<u>78</u>	<u>79</u>	<u>80</u>
	<u>71</u>	<u>72</u>	<u>73</u>	<u>74</u>	<u>75</u>	<u>76</u>	<u>77</u>	<u>78</u>	<u>79</u>	<u>80</u>	<u>81</u>
Sell Property w/o Title	0	0	0	0	0	0	1	0	0	0	0
Sexual Abuse of a Minor	0	0	0	0	0	0	1	2	0	1	0
Sexual Assault	0	0	0	0	0	0	0	0	1	0	0
Simple Assault	0	0	0	0	0	0	2	0	2	0	0
Sodomy	1	4	3	1	7	1	5	0	0	0	0
Solicitation	0	0	0	0	0	0	0	1	1	0	0
Statutory Rape	0	0	1	0	0	0	0	0	0	0	0
T C w/o OC	2	2	1	0	4	1	0	0	0	1	0
Tampering with a Witness	0	0	0	0	0	0	0	0	0	1	1
Terrorizing	0	0	0	0	0	0	9	9	3	0	1
Theft (inc. Armed)	0	0	0	0	0	0	56	83	94	60	74
Threat & Communication	2	1	1	4	3	2	1	0	0	0	0
Trafficking in Prison Contraband	0	0	0	0	0	0	0	2	2	4	2
Unauth. Use of Property	0	0	0	0	0	0	2	4	0	0	0
Traffic Violations	0	0	0	0	0	0	0	2	0	0	2
Under Influence of Amphetamine	0	0	0	0	1	0	0	0	0	0	0
Unlaw. Furn. Scheduled Drugs	0	0	0	0	0	0	1	1	1	4	0
Unlaw. Poss of Cocaine	0	0	1	0	1	0	0	0	0	0	0
Unlawful Sale of Drug	0	0	1	0	3	1	2	0	1	0	0
Unlawful Sexual Contact	0	0	0	0	0	0	4	6	8	7	6
Unlaw Traff. in Sch. Drugs (inc. Agg)	0	0	0	0	0	0	3	5	5	19	5
Unlawful Use of Property	0	0	0	0	0	0	0	0	1	2	4
Use of Unauth. Credit Device	0	0	0	0	0	1	0	0	0	0	1
Uttering	9	8	7	8	19	17	3	0	1	0	0
Uttering Forged Prescription	0	0	0	0	0	1	0	0	0	0	0
Violation of Furlough Regulations	0	0	0	1	0	0	0	0	0	0	0

Crimes - Cont'd

	<u>70</u>	<u>71</u>	<u>72</u>	<u>73</u>	<u>74</u>	<u>75</u>	<u>76</u>	<u>77</u>	<u>78</u>	<u>79</u>	<u>80</u>
Violation of Parole	<u>71</u>	<u>72</u>	<u>73</u>	<u>74</u>	<u>75</u>	<u>76</u>	<u>77</u>	<u>78</u>	<u>79</u>	<u>80</u>	<u>81</u>
120 Day Observation	0	0	0	0	0	0	0	0	0	1	1
	0	0	0	0	0	0	3	3	2	1	0

The following pages reflect a  
sample day (June 30, 1981) of  
inmates at Maine State Prison

<u>Repeaters: (MSP)</u>	<u>71</u>	<u>72</u>	<u>73</u>	<u>74</u>	<u>75</u>	<u>76</u>	<u>77</u>	<u>78</u>	<u>79</u>	<u>80</u>	<u>81</u>
One Prior Sentence	78	83	78	71	109	136	97	122	121	105	95
Two " " (s)	38	28	40	39	46	50	68	65	69	65	63
Three " "	19	21	21	18	25	19	25	25	21	19	21
Four " "	5	3	4	5	7	5	8	10	15	14	9
Five " "	7	4	4	3	6	8	5	6	8	5	4
Six " "	0	3	4	2	2	2	5	6	4	2	2
Seven " "	0	2	2	1	1	1	0	1	4	4	5
Eight " "	0	0	0	1	2	1	0	0	0	0	1
Nine " "	0	0	0	0	0	0	1	0	0	0	0
Ten " "	0	1	0	0	0	0	0	0	0	0	0
No Prior Sentence					298	265	269	252	287	301	329
Percent with Prior Sentence(s)	44%	38%	39%	38%	40%	46%	44%	48%	46%	42%	38%

<u>Education at Time of Commitment</u>	<u>71</u>	<u>72</u>	<u>73</u>	<u>74</u>	<u>75</u>	<u>76</u>	<u>77</u>	<u>78</u>	<u>79</u>	<u>80</u>	<u>81</u>
No Education	4	2	1	1	3	2	3	3	3	2	2
1st Grade	0	0	0	1	0	0	0	1	0	0	0
2nd Grade	1	2	1	1	1	2	0	2	1	1	2
3rd Grade	4	0	6	4	7	10	6	4	4	2	3
4th Grade	6	7	6	6	5	6	4	5	3	5	8
5th Grade	6	8	5	2	3	5	6	6	3	4	6
6th Grade	22	19	22	16	17	15	22	20	18	17	16
7th Grade	51	56	34	33	35	30	30	31	34	28	21
8th Grade	109	115	113	100	114	100	105	103	114	106	96
1st Year High School	39	44	56	61	76	92	84	71	82	72	82
2nd Year High School	31	49	54	59	105	91	76	95	95	75	72
3rd Year High School	13	14	23	30	40	42	44	47	54	42	39
High School Graduate	42	47	55	56	63	67	70	74	86	132	154
1st Year College	6	7	9	10	7	6	14	14	13	13	13
2nd Year College	1	1	6	9	12	13	7	5	9	8	6
3rd Year College	1	6	4	3	4	3	1	3	3	1	3
13½ Year College	0	0	1	0	0	0	0	0	0	1	3
College Graduate	3	2	1	3	3	1	5	2	3	2	1
17 years	0	0	0	0	0	0	0	1	1	3	2
Master's Degree - 18 years	0	0	0	0	1	2	1	0	3	3	0
21 years	0	0	0	0	0	0	0	0	0	1	0
Average Education	8th	8th	9th	9th	9th	9th	9th	9th	9.6th	9.8th	9.8th
High School Graduate or better	16%	17%	19%	21%	18%	19%	21%	20%	22%	31%	34%





<u>Marital Status</u>	<u>71</u>	<u>72</u>	<u>73</u>	<u>74</u>	<u>75</u>	<u>76</u>	<u>77</u>	<u>78</u>	<u>79</u>	<u>80</u>	<u>81</u>
Single	169	189	180	174	214	192	183	205	230	229	232
Married	114	116	127	136	176	182	165	159	174	157	171
Divorced	49	64	79	76	93	99	119	114	114	116	112
Widower	7	10	11	10	13	14	11	9	11	13	14

---

<u>Race</u>											
White	330	364	378	378	481	475	460	473	515	500	512
Phillipino	0	0	0	0	1	0	0	0	1	0	0
Negro	4	8	7	6	3	4	7	5	6	6	6
Cuban	0	0	1	1	1	1	0	0	0	0	0
Indian	5	7	10	11	8	5	8	8	7	8	10
Puerto Rican	0	0	1	0	0	0	1	1	0	0	0
Chinese	0	0	0	0	2	2	2	0	0	0	0
Asian	0	0	0	0	0	0	0	0	0	1	1

<u>Country of Birth</u>	<u>71</u>	<u>72</u>	<u>73</u>	<u>74</u>	<u>75</u>	<u>76</u>	<u>77</u>	<u>78</u>	<u>79</u>	<u>80</u>	<u>81</u>
Canada	5	9	7	5	7	4	5	7	5	5	6
Germany	0	0	0	0	1	1	0	0	1	1	1
Italy	1	0	0	0	0	0	0	0	1	2	1
United States	333	370	387	388	480	475	465	475	518	503	514
England	0	0	1	1	2	1	1	1	0	0	1
Cuba	0	0	1	1	1	1	0	0	0	0	0
Phillipines	0	0	1	1	1	1	1	1	1	0	0
France	0	0	0	0	1	1	1	1	1	1	2
Honduras	0	0	0	0	1	1	1	0	0	0	0
China	0	0	0	0	2	2	2	0	0	0	0
Puerto Rico	0	0	0	0	0	0	1	1	0	1	1
British West Indies	0	0	0	0	0	0	1	1	2	1	1
South Korea	0	0	0	0	0	0	0	0	0	1	1
Czechoslovakia	0	0	0	0	0	0	0	0	0	0	1

Family  
Inmates with relatives  
here or have been here

	<u>71</u>	<u>72</u>	<u>73</u>	<u>74</u>	<u>75</u>	<u>76</u>	<u>77</u>	<u>78</u>	<u>79</u>	<u>80</u>	<u>81</u>
One Relative	37	36	31	51	66	66	59	58	62	59	60
Two " (s)	9	4	7	11	23	20	20	18	18	15	21
Three " (s)	3	3	3	4	4	3	3	3	4	4	2
Four " (s)	0	0	1	0	2	2	4	3	2	1	1
Five " (s)	0	0	0	0	0	0	0	1	0	0	0
Six " (s)	2	0	0	0	0	0	1	2	1	1	1
Seven " (s)	0	0	0	0	0	0	0	0	1	1	0
Eight " (s)	0	0	0	0	0	0	0	0	0	0	0
Percentage	15%	11%	11%	17%	19%	19%	18%	17%	17%	16%	16%

Former Inmates of Penal Institutions not in Maine

One other institution	50	56	56	67	63	61	64	62	61	71	65
Two " " (s)	8	15	13	10	14	12	22	20	17	14	16
Three " " (s)	6	10	6	7	7	8	8	9	12	15	18
Four " " (s)	3	5	5	4	2	1	2	3	1	1	1
Five " " (s)	1	1	1	2	1	0	0	1	1	1	1
Six " " (s)	1	0	0	0	0	0	0	1	1	2	1
Seven " " (s)	0	1	0	0	0	1	3	3	2	1	1
Eight " " (s)	0	0	0	0	0	0	0	0	0	1	1
Nine or over	0	0	1	1	0	0	1	2	0	0	0
Percentage	20%	23%	21%	23%	17%	17%	21%	21%	18%	21%	20%

<u>Religion</u>	<u>71</u>	<u>72</u>	<u>73</u>	<u>74</u>	<u>75</u>	<u>76</u>	<u>77</u>	<u>78</u>	<u>79</u>	<u>80</u>	<u>81</u>
Advent - 7th Day	0	0	0	0	1	0	0	0	0	0	0
Agnostic	1	2	1	0	1	2	1	1	0	0	0
Atheist	0	0	0	0	0	1	1	0	1	2	1
Baba	0	0	0	0	0	0	1	1	1	1	0
Bahai	1	0	0	0	1	0	0	0	0	0	0
Buddah	0	0	0	0	2	3	2	0	0	0	0
Catholic	123	127	141	130	165	171	179	189	173	176	183
Christian Scientist	0	0	0	0	0	0	0	0	1	0	0
Greek Orthodox	2	2	0	0	1	1	1	1	1	1	2
Hebrew	0	1	1	0	1	1	1	2	2	3	3
Hindu	0	1	1	1	1	1	1	1	1	0	0
Indian Culture	0	0	0	0	0	1	0	0	0	0	0
Jehovah Witness	0	0	0	0	0	0	0	0	0	1	2
Mormon	0	0	1	1	0	1	1	0	1	1	0
Moslem	1	1	0	0	0	0	2	1	1	1	1
No Preference	5	8	10	4	4	7	3	2	3	2	1
No Religion	4	6	12	34	43	33	57	66	61	66	69
Pagan	0	0	0	0	0	0	0	0	0	0	1
Protestant	202	229	230	226	274	263	225	223	283	261	266
Quaker	0	0	0	0	0	1	1	0	0	0	0
Russian Orthodox	0	1	0	0	0	0	0	0	0	0	0
Satanist	0	1	0	0	0	0	0	0	0	0	0

<u>Military Service</u>	<u>71</u>	<u>72</u>	<u>73</u>	<u>74</u>	<u>75</u>	<u>76</u>	<u>77</u>	<u>78</u>	<u>79</u>	<u>80</u>	<u>81</u>
Honorable Discharge	81	102	107	104	133	136	126	116	132	122	129
Bad Conduct Discharge	48	40	49	47	63	57	58	51	75	41	48
Dishonorable	3	12	12	12	7	6	5	5	17	3	5
Active	0	0	4	4	5	4	2	4	4	4	4
Never Served			223	229	288	284	287	311	301	345	343

<u>Former MYC</u>	78	92	91	84	110	133	118	129	150	135	134
	23%	24%	23%	31%	22%	27%	25%	26%	28%	26%	25%
<u>Former MCC</u>	150	144	168	153	249	186	197	195	218	223	235
	40%	37%	42%	38%	50%	38%	41%	40%	41%	43%	44%

<u>Dependents</u>													
One	Dependent		31	32	38	49	59	59	58	59	65	61	59
Two	"	(s)	36	41	46	48	67	72	69	75	67	66	72
Three	"	(s)	22	33	36	30	40	55	53	37	33	35	39
Four	"	(s)	11	17	14	17	27	23	23	17	22	21	16
Five	"	(s)	12	15	13	13	18	9	14	13	14	11	11
Six	"	(s)	7	6	6	12	7	5	2	3	4	4	3
Seven	"	(s)	2	1	2	0	1	2	2	5	2	1	2
Eight	"	(s)	1	2	1	2	0	2	2	2	2	2	2
Nine	"	(s)	2	1	2	1	1	0	2	2	2	0	0
Ten	"	(s)	0	1	1	1	1	1	0	1	2	0	0
Eleven	"	(s)	1	1	2	2	3	3	1	1	1	0	0
Twelve	"	(s)	0	0	0	0	0	1	0	0	0	0	0
No	Dependents		0	0	0	0	0	1	0	0	0	0	0
						221	272	255	252	272	315	314	325

Commitments by Counties

	<u>71</u>	<u>72</u>	<u>73</u>	<u>74</u>	<u>75</u>	<u>76</u>	<u>77</u>	<u>78</u>	<u>79</u>	<u>80</u>	<u>81</u>
Androscoggin	18	30	36	31	60	57	40	44	53	45	50
Aroostook	32	25	33	16	23	18	28	31	28	22	25
Cumberland	70	98	109	108	101	105	106	114	133	130	132
Franklin	9	12	10	9	13	12	5	6	6	6	8
Hancock	5	5	9	9	13	10	14	11	17	18	14
Kennebec	33	39	41	43	60	62	63	50	60	63	56
Knox	14	18	18	10	24	32	18	13	26	20	15
Lincoln	11	6	7	7	13	11	12	16	14	14	11
Oxford	8	6	8	7	14	16	20	14	19	24	17
Penobscot	44	47	44	70	67	59	69	66	60	59	58
Piscataquis	10	8	4	4	7	4	2	1	2	2	6
Sagadahoc	5	4	5	7	8	6	9	10	13	4	3
Somerset	22	20	14	15	19	33	30	32	25	26	35
Waldo	14	5	7	7	7	5	6	13	10	8	15
Washington	11	12	7	11	22	22	14	14	13	16	18
York	28	37	33	28	34	29	33	46	44	46	53

Commitments by States

Vermont	0	0	4	2	1	0	0	1	0	0	0
New Hampshire	0	0	2	3	2	0	0	1	2	4	4
Massachusetts	0	0	2	2	1	1	3	1	3	6	7
Connecticut	0	0	2	3	5	3	6	4	4	5	3
Rhode Island	0	0	0	0	0	2	1	0	0	1	2
Federal	0	0	2	4	2	2	2	3	5	3	2
Tennessee	0	0	0	0	0	0	0	0	0	1	1
Florida	0	0	0	0	0	0	0	0	0	0	4

<u>1970 Maine Population</u>	<u>County</u>	<u>6/78</u>	<u>Inmates Per 10,000</u>	<u>6/79</u>	<u>Inmates Per 10,000</u>	<u>1980 Maine Population</u>	<u>6/80</u>	<u>Inmates Per 10,000</u>	<u>6/81</u>	<u>Inmates Per 10,000</u>
91,279	Androscoggin	44	4.8	53	5.8	99,682	45	4.9	50	5.0
92,463	Aroostook	31	3.4	28	3.0	91,256	22	2.4	25	2.7
192,528	Cumberland	114	5.9	133	6.9	215,521	130	6.8	132	6.1
22,444	Franklin	6	2.7	6	2.7	27,003	6	2.7	8	2.95
34,590	Hancock	11	3.2	17	4.9	41,735	18	5.2	14	3.4
92,447	Kennebec	50	5.4	60	6.5	109,721	63	6.8	56	5.1
29,013	Knox	13	4.5	26	9.0	32,952	20	6.9	15	4.6
20,537	Lincoln	16	7.8	14	6.8	25,800	14	6.8	11	4.3
43,457	Oxford	14	3.2	19	4.4	48,949	24	5.5	17	3.5
124,393	Penobscot	66	5.3	60	4.8	137,018	59	4.7	58	4.2
16,285	Piscataquis	1	.6	2	1.2	17,612	2	1.2	6	3.4
23,452	Sagadahoc	10	4.3	13	5.5	28,763	4	1.7	3	1.0
40,597	Somerset	32	7.9	25	6.2	44,900	26	6.4	35	7.8
23,328	Waldo	13	5.6	10	4.3	28,418	8	3.4	15	5.3
29,859	Washington	14	4.7	13	4.4	34,921	16	5.4	18	5.2
111,576	York	46	4.1	44	3.9	139,420	46	4.1	53	3.8

Crimes of those Residents at Maine State Prison on the 30th day of June 1981

	<u>71</u>	<u>72</u>	<u>73</u>	<u>74</u>	<u>75</u>	<u>76</u>	<u>77</u>	<u>78</u>	<u>79</u>	<u>80</u>	<u>81</u>
Acc After the Fact	0	1	0	1	0	4	2	0	0	0	0
Acc Before the Fact	1	1	0	1	2	1	0	0	0	1	2
Acc to Burglary or Robbery	0	0	0	0	0	0	0	2	1	0	0
Acc Assault to Rob	0	1	1	0	0	0	0	0	1	0	0
Acq Drugs b/Deception	0	0	0	0	0	0	1	0	0	0	0
Aggravated Assault	10	9	15	13	17	15	19	26	30	34	40
Armed Assault	0	0	0	0	4	11	11	9	8	8	6
Armed Bank Robbery	0	0	0	0	0	0	0	5	1	1	0
Arson	2	3	4	0	7	8	13	11	13	23	18
Assault & Battery	3	9	15	12	16	16	15	11	8	6	14
Asslt Dangerous Weapon	2	5	7	6	11	10	5	5	5	5	5
Asslt w/Int to Kill	0	0	8	8	5	6	7	6	7	6	7
Asslt to Maim	0	0	0	0	0	0	0	0	0	0	1
Assault on Officer	0	1	1	0	0	1	1	2	3	1	1
Asslt on Prison Officer	0	0	1	0	1	0	0	1	2	0	1
Assault to Rape	5	2	2	3	4	3	2	1	0	0	1
Assault to Rob	3	3	3	0	2	3	2	0	0	1	2
Asslt w/IntCommit Robb w/Arm w/FA	0	0	0	0	0	1	0	1	0	0	0
Assisting Escape	0	0	0	0	1	2	0	0	0	0	0
Att Aggravated Assault	0	0	0	0	0	1	1	0	0	0	0
Att Armed Robbery	0	1	1	2	1	0	1	0	1	1	1
Att to B&E	1	2	4	0	1	0	3	2	1	2	4
Att to Cheat b/FalPretenses	0	0	0	0	0	2	0	1	0	0	0
Att Crim Homicide 2nd Degree	0	0	0	0	0	0	2	2	3	3	2
Att to Escape	1	0	1	1	0	0	1	0	1	1	0
Att Gross Sexual Misconduct	0	0	0	0	0	0	0	0	0	2	1



<u>Crimes - Cont'd</u>	<u>71</u>	<u>72</u>	<u>73</u>	<u>74</u>	<u>75</u>	<u>76</u>	<u>77</u>	<u>78</u>	<u>79</u>	<u>80</u>	<u>81</u>
Att Larceny	0	0	0	0	0	0	0	0	0	0	0
Att Murder	0	0	0	0	0	0	0	3	5	4	2
Att Rape	0	0	1	1	0	0	0	1	2	2	1
Att Robbery	0	0	0	0	1	0	0	0	0	0	1
Att Theft by Deception	0	0	0	0	0	0	0	1	0	1	1
Att Uttering	0	0	0	0	0	2	2	0	0	0	0
B E & L Daytime	16	12	20	17	23	29	18	7	4	1	1
B E & L Nighttime	48	36	40	31	74	69	34	21	14	9	5
B & E w/Intent	18	18	21	25	38	37	15	1	0	1	4
Bribery in Official Matters	0	0	0	0	0	0	0	0	0	0	1
Burglary	4	4	2	2	2	2	60	94	140	154	164
Burglary w/Armed	0	0	0	0	0	0	4	5	4	3	3
Carnal Knowledge	1	0	0	1	1	2	2	2	1	1	1
Carry Loaded Pistol in MV	0	0	0	0	0	0	0	0	0	1	1
Chtg b/False Pretenses	2	6	7	1	7	11	8	2	2	3	0
Common Thief	1	0	1	0	0	0	0	0	0	0	0
Concealing Stolen Property	0	0	0	0	2	1	0	0	1	1	0
Concealed Weapon	0	0	0	1	1	0	0	1	0	2	3
Conspiracy	3	4	3	2	2	7	7	5	5	4	5
Crime Against Nature	2	1	0	0	0	0	0	0	0	0	1
Criminal Attempt	0	0	0	0	0	0	1	1	1	2	2
Crim Att Crim Homicide	0	0	0	0	0	0	1	1	6	6	4
Crim Mischief (inc Aggravated)	0	0	0	0	0	0	2	3	4	2	6
Crim Restraint	0	0	0	0	0	0	1	0	1	1	1
Crim Threatening	0	0	0	0	0	0	5	8	10	10	11
Crim Trespass	0	0	0	0	0	0	2	2	1	1	4
Crim Use Explosives	0	0	0	0	0	0	0	2	1	2	0

<u>Crimes - Cont'd</u>	<u>71</u>	<u>72</u>	<u>73</u>	<u>74</u>	<u>75</u>	<u>76</u>	<u>77</u>	<u>78</u>	<u>79</u>	<u>80</u>	<u>81</u>	
Cruelty to Animals	0	0	0	0	0	0	0	1	1	0	1	
Drug Trafficking & Furnishing	0	0	0	0	0	0	2	1	2	0	0	
Disorderly Conduct	0	0	0	0	0	0	0	1	2	1	3	
Driving to Endanger	0	0	0	0	0	0	0	0	1	1	1	
Embezzlement	1	0	0	1	0	2	0	1	1	1	1	
Ent Dwelling nt w/Int	0	0	0	0	0	1	0	0	0	0	0	
Entering/Larceny nighttime	0	0	0	1	2	3	1	1	1	0	0	
Escape	21	21	14	26	21	30	23	17	24	32	27	
Escape from MCC	stat's fm. some years ntav7						5	4	4			
Escape w/Firearm	0	0	0	0	0	1	1	0	0	1	0	
Extortion	0	0	1	0	0	0	0	0	0	0	0	
Failure to Appear	0	0	0	0	0	0	0	0	0	0	1	
False Swearing	0	0	0	0	0	0	0	0	1	1	1	
Federal Crimes	0	0	2	3	1	1	1	0	1	1	1	
Fel. Asslt & Battery	1	0	1	0	0	0	0	0	0	0	0	
Fel. Asslt & Batt & Robbery	0	1	0	0	0	0	0	0	0	0	0	
Fellatio	1	1	0	0	0	0	0	0	0	0	0	
Felonious Trespass	0	0	0	0	0	5	3	1	0	0	0	
Felonious Use of Firearm	0	0	0	0	0	0	0	0	1	1	1	
Felony Murder	0	0	0	0	0	0	0	0	0	2	2	
Forcibly Rescuing a Prisoner	0	1	0	0	0	0	0	0	0	0	0	
Forgery	2	3	0	0	5	1	4	3	5	4	2	
Forgery & Uttering	5	2	2	1	1	2	0	0	2	0	0	
Furnishing LSD-25	0	0	0	2	0	1	0	0	0	0	0	
Furnishing Amphetamine	0	0	8	3	2	0	0	0	0	0	0	
Furnishing Marijuana	0	0	0	2	0	0	1	0	0	0	0	

<u>Crimes - Cont'd</u>	<u>71</u>	<u>72</u>	<u>73</u>	<u>74</u>	<u>75</u>	<u>76</u>	<u>77</u>	<u>78</u>	<u>79</u>	<u>80</u>	<u>81</u>
Grand Larceny	8	4	3	5	5	13	4	1	0	0	1
Gross Sex. Miscend (inc. Armed)	0	0	0	0	0	0	7	14	19	26	34
Harrassment	0	0	0	0	0	0	0	0	0	1	1
Hindering Apprehension	0	0	0	0	0	0	1	1	0	0	1
Habitual Offender	0	0	0	0	0	0	0	0	0	1	0
Habitual MV Offender	0	0	0	0	0	0	0	0	0	0	1
Homicide I	0	0	0	0	0	0	1	1	1	1	1
Homicide II	0	0	0	0	0	0	3	7	9	10	10
Homicide III	0	0	0	0	0	0	1	4	4	4	0
Homicide IV	0	0	0	0	0	0	3	8	10	9	9
Homicide V	0	0	0	0	0	0	0	1	0	0	0
Homicide VI	0	0	0	0	0	0	0	0	0	0	0
Idle & Disord. Conduct	0	0	1	0	0	0	0	0	0	0	0
Ill Sale of Marijuana	0	8	3	12	16	15	0	0	0	0	0
Ill Sale Narcotic Drug	2	11	2	0	1	0	0	0	0	0	0
Ill Sale Hallucinogenic Drugs	0	0	2	7	1	0	0	0	0	0	0
Ill Sale LSD-25	0	0	0	0	5	3	0	0	0	0	0
Ill Poss Hypo Needle	0	0	2	0	0	0	0	0	0	0	0
Importing Hashish	0	0	1	0	0	0	0	0	0	0	0
Incest	3	8	6	8	5	1	0	1	0	0	0
Indecent Liberties	16	11	9	5	11	12	7	0	1	0	1
Induc Female to Become Prostitute	0	0	0	0	0	1	2	1	1	0	0
Intent to Commit Theft	0	0	0	0	0	0	0	0	0	1	0
Kidnapping	5	3	6	5	10	8	12	13	13	16	13
Kidnapping w/Armed	0	0	0	0	0	2	3	6	6	7	7
Larceny	10	4	7	3	0	4	0	1	0	1	1
Larceny from the Person	6	1	3	3	7	0	0	0	0	0	0

<u>Crimes - Cont'd</u>	<u>71</u>	<u>72</u>	<u>73</u>	<u>74</u>	<u>75</u>	<u>76</u>	<u>77</u>	<u>78</u>	<u>79</u>	<u>80</u>	<u>81</u>
Lascivious Cohabitation	0	1	0	0	0	0	0	0	0	0	0
Malicious Mischief	1	1	0	0	0	2	0	0	0	0	0
Manslaughter	15	20	26	21	23	24	27	19	20	27	31
Manslaughter w/Arm w/Firearm	0	0	0	0	1	1	0	0	0	0	0
Murder	36	38	44	42	45	47	46	47	50	59	66
Misdemeanor - MCC	0	0	1	0	0	0	1	0	0	0	0
Negot. worthless Instrument	0	0	0	0	0	0	0	0	0	0	1
Observation - 120 Day	0	0	0	0	0	0	2	1	0	0	0
Obt. Goods Under FalPretenses	0	2	0	0	0	0	0	1	0	0	0
Offer to Sell Amphetamines	0	0	0	0	0	1	0	0	0	0	0
Offer to Sell Methamphetamines	0	0	0	1	0	0	0	0	0	0	0
Operating after Suspension	0	0	0	0	0	0	0	0	0	0	1
Op MV Under Influ Liquor	0	0	0	0	1	0	1	0	0	0	0
Op w/o License	0	0	0	0	0	0	0	0	0	0	1
Perjury	0	1	0	0	0	1	1	0	0	0	0
Poss Firearm b/Felon	2	3	1	1	4	5	10	9	14	12	18
Poss Amphetamines	2	3	1	2	1	2	0	0	0	0	0
Poss Amphet & Barbiturates	0	0	0	0	1	2	1	0	0	0	0
Poss Burg Tools	0	0	0	0	0	0	0	0	0	1	1
Poss Cannabis w/Int to Sell	0	0	0	0	0	2	0	0	0	0	0
Poss Cocaine	0	0	0	0	1	1	1	0	0	0	0
Poss Contraband	0	0	0	0	0	0	1	0	0	0	0
Poss Controlled Drugs	0	0	0	0	0	2	1	0	0	1	1
Poss Heroin	1	3	1	0	0	1	0	0	0	0	0
Poss Hypodermic Syringe	0	0	0	0	0	0	1	0	1	0	1
Poss LSD-25	0	0	0	0	1	1	0	0	0	0	0
Poss Mat. for Const. of Bomb	0	0	0	0	0	1	0	0	0	0	0
Poss Methamphetamine	0	0	0	0	0	0	1	0	0	0	0

<u>Crimes - Cont'd</u>	<u>71</u>	<u>72</u>	<u>73</u>	<u>74</u>	<u>75</u>	<u>76</u>	<u>77</u>	<u>78</u>	<u>79</u>	<u>80</u>	<u>81</u>
Poss Narcotic Drug	0	0	0	2	1	2	1	1	0	0	0
Public Indecency	0	0	0	0	0	0	0	0	1	0	0
Rape	12	13	15	11	10	16	17	25	32	32	34
Reckless Driving	0	0	0	0	0	1	0	1	0	0	0
Reckless Homicide	0	0	0	1	2	2	2	3	1	0	0
Reckless Conduct	0	0	0	0	0	0	1	1	1	2	5
Receiving Stolen Goods	0	0	2	1	8	7	1	3	9	10	6
Robbery (inc. Arm. or Agg.)	28	56	52	62	74	73	82	89	99	97	111
Safekeeping	2	2	1	1	1	0	3	8	1	0	0
Sale of Amphetamine	0	0	1	0	1	5	3	0	0	0	0
Sale of Cannabis	0	0	0	0	0	0	6	7	1	0	0
Sale of Cocaine	0	0	0	3	2	0	1	0	0	0	0
Sale of Heroin	0	0	0	1	0	0	0	0	0	0	0
Sale of Methamphetamine	0	0	6	2	1	0	2	1	0	0	0
Sale of PCP	0	0	0	0	0	2	0	1	0	0	0
Sale of Regulated Drugs	0	0	0	0	5	1	1	2	1	1	0
Selling Mrg'd Property	0	0	0	1	0	0	0	1	0	0	0
Sexual Abuse of Minor	0	0	0	0	0	0	0	2	0	1	0
Sexual Assault	0	0	0	0	0	0	0	0	1	1	0
Simple Assault	0	0	0	0	0	0	1	0	1	1	1
Sodomy	5	8	3	3	7	5	4	2	0	0	0
Solicitation	0	0	0	0	0	0	0	1	1	1	1
Statutory Rape	1	1	2	1	1	1	1	1	0	1	0
Tak Car w/o Own Permission	1	0	0	0	0	0	0	0	0	0	0
Tampering w/Witness	0	0	0	0	0	0	0	0	0	1	2
Terrorizing	0	0	0	0	0	0	5	12	7	2	1
Theft (inc. Arm & Int to Comm)	0	0	0	0	0	0	37	72	118	102	102

<u>Crimes- Cont'd</u>	<u>71</u>	<u>72</u>	<u>73</u>	<u>74</u>	<u>75</u>	<u>76</u>	<u>77</u>	<u>78</u>	<u>79</u>	<u>80</u>	<u>81</u>
Threat b/Communication	2	0	1	3	5	0	1	0	0	0	0
Traffic Violations	0	0	0	0	0	0	0	1	1	1	3
Trafficking in Prison Contraband	0	0	0	0	0	0	0	1	2	2	1
Unauth. Use of Property	0	0	0	0	0	0	0	3	3	2	4
Under Influ. of Amphet.	0	0	0	0	1	2	1	1	0	0	0
Unlaw. Furn. Sch. Drugs	0	0	0	0	0	0	0	2	2	5	0
Unlaw. Sale of Drugs	0	0	1	1	2	1	1	0	1	0	0
Unlaw. Sexual Contact	0	0	0	0	0	0	4	6	8	10	12
Unlaw. Trafficking in Sch. Drugs	0	0	0	0	0	0	2	5	5	16	8
Uttering	11	16	7	11	17	12	19	4	2	0	0
Violation of Parole	0	0	0	0	0	0	0	0	0	1	1

OLD CODE

Sentences of Residents at Maine State Prison on the 30th day of June 1981

	<u>71</u>	<u>72</u>	<u>73</u>	<u>74</u>	<u>75</u>	<u>76</u>	<u>77</u>	<u>78</u>	<u>79</u>	<u>80</u>	<u>81</u>
30 days	0	0	0	0	0	1	0	0	0	0	0
60 days	0	0	0	3	14	6	0	0	0	0	0
6 mos (Fed)	0	0	2	0	0	0	0	0	0	0	0
6 mos to 2 yrs	0	0	0	0	0	0	0	1	0	0	0
Indet-3 yrs	0	0	9	4	8	5	9	0	1	0	0
1 to 2 years	21	36	45	54	36	36	7	10	4	1	0
1 to 2½ years	0	0	0	0	0	0	0	0	0	0	0
1 to 3 yrs	29	39	23	28	30	33	8	2	3	0	1
1 yr to 3 yrs 6 mos	0	0	0	0	0	0	0	0	0	0	0
1 to 4 yrs	4	11	2	1	4	2	1	2	0	0	0
1 to 5 yrs	7	14	15	9	21	9	3	3	3	0	0
1 to 6 yrs	0	0	2	0	0	1	0	0	0	0	0
1 to 7 yrs	1	2	0	2	0	1	2	0	0	0	0
1 to 10 yrs	4	3	3	0	1	1	0	0	0	1	0
1 to 15 yrs	0	1	0	0	0	0	0	0	0	0	0
1 to 20 yrs	0	0	0	0	0	0	0	0	0	1	0
1 yr 1 day to 5 yrs	0	0	0	1	0	0	0	0	0	0	0
1 yr 2 mos to 3 yrs	0	0	0	0	1	0	0	0	0	0	0
1 yr 3 mos to 2 yrs 6 mos	0	0	2	0	1	0	2	2	0	0	0
1 yr 3 mos to 3 yrs	0	2	2	1	0	1	0	0	0	0	0
1 yr 3 mos to 4 yrs	0	2	3	0	0	1	0	0	0	0	0
1 yr 3 mos to 5 yrs	0	0	1	0	0	1	0	0	0	0	0
1 yr 6 mos to 3 yrs	16	15	21	20	32	42	9	6	2	1	0
1 yr 6 mos to 3 yrs 6 mos	0	0	0	0	1	0	1	0	0	0	0
1 yr 6 mos to 4 yrs	6	6	8	3	7	1	2	0	1	0	0
1 yr 6 mos to 5 yrs	13	9	11	9	13	9	2	1	1	0	1

<u>Sentences - Cont'd</u>	<u>71</u>	<u>72</u>	<u>73</u>	<u>74</u>	<u>75</u>	<u>76</u>	<u>77</u>	<u>78</u>	<u>79</u>	<u>80</u>	<u>81</u>
1 yr 6 mos to 6 yrs	2	0	1	0	1	0	0	0	0	0	0
1 yr 6 mos to 7 yrs	0	0	0	0	1	0	0	0	0	0	0
1 yr 6 mos to 8 yrs	0	0	0	0	0	1	0	0	0	0	0
1 yr 6 mos to 10 yrs	0	0	1	1	4	0	0	0	0	0	0
1 yr 8 mos to 4 yrs	0	1	0	0	1	0	1	1	1	0	0
2 to 4 yrs	16	20	16	19	41	49	20	4	1	1	1
2 to 5 yrs	17	10	21	25	35	26	14	3	0	0	0
2 to 6 yrs	8	8	6	4	4	5	2	3	2	0	0
2 to 7 yrs	0	1	1	1	0	1	1	1	0	0	0
2 to 8 yrs	4	0	2	0	1	0	0	0	0	0	0
2 to 10 yrs	9	4	6	3	1	4	1	0	1	0	0
2 to 15 yrs	1	0	0	0	0	0	0	0	0	0	0
2 to 20 yrs	0	0	1	1	0	0	1	0	0	0	0
2 yrs 3 mos to 5 yrs	1	0	0	0	0	0	0	0	0	0	0
2 yrs 2 mos to 6 yrs	0	1	0	0	0	0	1	0	0	0	0
2 yrs 6 mos to 4 yrs	0	0	0	0	1	1	1	0	0	0	0
2 yrs 3 mos to 6 yrs	0	0	0	1	0	0	0	0	0	0	0
2 yrs 6 mos to 5 yrs	24	19	21	32	43	57	31	12	8	5	2
2 yrs 6 mos to 6 yrs	3	3	2	0	0	0	0	0	0	0	0
2 yrs 6 mos to 7 yrs	3	4	2	0	2	3	1	0	0	1	0
2 yrs 6 mos to 8 yrs	1	2	0	1	0	1	0	1	1	1	0
2 yrs 6 mos to 10 yrs	2	1	1	1	0	0	1	0	1	1	0
2 yrs 6 mos to 20 yrs	0	0	0	0	0	0	0	0	0	0	0
3 to 5 yrs	0	1	0	1	1	0	0	0	0	3	2
3 to 6 yrs	1	1	6	7	8	15	9	4	5	4	2
3 to 7 yrs	2	3	3	4	5	2	0	2	0	0	0



Sentences - Cont'd

	<u>71</u>	<u>72</u>	<u>73</u>	<u>74</u>	<u>75</u>	<u>76</u>	<u>77</u>	<u>78</u>	<u>79</u>	<u>80</u>	<u>81</u>
3 to 8 yrs	0	0	2	2	2	0	0	0	0	0	0
3 to 9 yrs	2	2	1	0	0	0	0	0	0	0	0
3 to 10 yrs	3	5	5	6	10	7	5	2	0	0	1
3 to 12 yrs	0	0	0	0	0	0	0	0	0	0	0
3 to 15 yrs	2	1	0	2	2	0	0	0	0	1	1
3 yrs 3 mos to 6 yrs 6 mos	0	0	0	0	0	1	1	0	0	0	0
3 yrs 5 mos to 7 yrs	0	0	0	0	0	0	0	0	0	0	0
3 yrs 6 mos to 7 yrs	4	4	5	4	6	9	11	5	2	3	1
3 yrs 6 mos to 8 yrs	0	0	1	0	0	0	0	0	0	0	0
3 yrs 6 mos to 10 yrs	0	3	3	3	2	2	1	0	0	0	0
3 yrs 6 mos to 15 yrs	0	0	0	0	0	2	0	0	0	0	1
3 yrs 10 mos to 10 yrs	0	0	1	1	0	0	1	0	0	0	0
4 to 5 yrs	0	1	0	0	0	0	0	0	0	0	0
4 to 6 yrs	7	1	10	11	16	14	11	5	1	0	1
4 to 10 yrs	5	7	5	6	8	9	11	4	2	4	2
4 to 12 yrs	1	1	0	0	1	1	1	0	0	0	0
4 to 15 yrs	1	0	0	0	0	0	0	0	0	0	0
4 yrs 6 mos to 9 yrs	1	1	0	1	2	1	1	0	0	0	0
4 yrs 6 mos to 10 yrs	0	1	0	0	0	0	0	0	0	0	0
4 yrs 6 mos to 15 yrs	0	0	0	1	1	0	0	0	0	0	0
5 yrs 2 mos 10 days	0	0	0	0	0	0	0	0	0	1	0
5 to 7 yrs	1	1	0	0	0	0	0	0	0	0	0
5 to 10 yrs	18	20	21	19	28	36	30	19	11	10	8
5 to 12 yrs	0	1	1	0	0	0	0	0	0	0	0
5 to 13 yrs	0	0	0	0	0	2	2	1	0	1	1
5 to 15 yrs	7	5	3	6	6	5	4	4	5	2	2

Sentences - Cont'd

	<u>71</u>	<u>72</u>	<u>73</u>	<u>74</u>	<u>75</u>	<u>76</u>	<u>77</u>	<u>78</u>	<u>79</u>	<u>80</u>	<u>81</u>
5 to 20 yrs	1	1	1	1	1	1	0	1	1	1	1
6 to 8 yrs	0	0	0	0	0	0	1	1	1	0	0
6 to 12 yrs	3	3	2	3	5	3	4	4	3	3	4
6 to 15 yrs	1	3	3	4	4	1	2	1	1	1	1
6 yrs 6 mos to 15 yrs	0	0	0	0	0	1	0	0	0	0	0
6 yrs to life	0	0	1	1	1	0	0	0	0	0	0
7 to 10 yrs	0	0	0	0	0	0	0	0	0	1	1
7 to 14 yrs	0	0	0	0	0	0	0	0	1	1	1
7 to 15 yrs	1	3	2	2	3	3	2	2	2	3	0
7 to 17 yrs	0	0	0	0	0	0	0	0	0	0	0
7 to 25 yrs	0	0	1	1	0	0	0	0	0	0	0
7 yrs 6 mos to 15 yrs	4	5	6	5	5	7	6	6	5	4	2
7 yrs 6 mos to 20 yrs	1	2	3	4	3	4	4	3	3	1	1
8 to 10 yrs	0	0	0	0	0	0	0	0	0	1	1
8 to 12 yrs	0	0	0	1	0	0	0	0	0	0	1
8 to 15 yrs	0	0	0	0	0	0	0	0	1	1	0
8 to 16 yrs	0	2	4	4	3	3	1	1	1	1	1
8 to 20 yrs	2	3	4	3	5	6	6	6	0	3	2
8 yrs 6 mos to 20 yrs	1	1	1	0	1	1	1	1	1	2	2
9 to 18 yrs	1	1	0	0	0	0	0	0	0	0	0
9 to 20 yrs	1	1	1	1	1	0	0	0	0	0	0
9 yrs 6 mos to 20 yrs	0	0	1	1	1	2	2	2	1	1	1
10 yrs	0	0	0	0	0	1	0	0	1	1	3
10 to 12 yrs	1	0	0	0	0	0	0	0	0	0	0
10 to 15 yrs	0	0	0	0	0	0	0	0	1	3	2
10 to 20 yrs	12	18	11	10	10	11	13	12	11	11	10

Sentences - Cont'd

	<u>71</u>	<u>72</u>	<u>73</u>	<u>74</u>	<u>75</u>	<u>76</u>	<u>77</u>	<u>78</u>	<u>79</u>	<u>80</u>	<u>81</u>
10 to 30 yrs	2	0	2	3	3	1	2	3	2	1	1
10 to 45 yrs	0	0	0	0	0	0	0	0	1	1	1
10 to 50 yrs	0	0	0	0	0	0	0	0	0	0	1
10 yrs to life	0	0	0	0	0	0	1	1	0	0	0
12 to 15 yrs	0	0	0	0	0	0	0	0	0	4	4
12 to 24 yrs	0	0	0	0	0	0	0	0	0	0	0
12 to 25 yrs	1	2	1	1	1	1	1	1	0	1	0
12 to 40 yrs	1	0	1	0	0	0	0	0	0	0	0
12 yrs 6 mos to 25 yrs	0	0	1	2	2	2	2	2	2	2	2
13 yrs	0	0	0	0	0	1	0	0	0	0	0
13 to 15 yrs	0	0	0	0	0	0	0	0	0	1	1
15 yrs	0	0	1	1	1	1	0	0	0	0	0
15 to 20 yrs	0	0	0	0	0	0	0	0	0	1	1
15 to 30 yrs	3	0	3	2	3	0	0	0	0	0	0
15 to 45 yrs	1	1	0	0	0	0	0	0	0	0	0
15 to 50 yrs	1	1	2	2	1	1	1	1	0	0	0
16 yrs to life	0	0	0	0	0	0	1	1	1	1	1
17 yrs	0	1	0	0	0	0	0	0	0	0	0
18 yrs	0	0	0	0	0	0	0	0	1	1	0
19 to 20 yrs	0	0	0	0	0	0	0	0	0	1	1
20 to 30 yrs	0	1	1	1	1	0	1	0	0	0	0
20 to 40 yrs	1	2	1	1	0	0	0	0	0	0	0
20 yrs to life	0	0	0	0	0	0	0	1	0	0	0
25 to 50 yrs	2	2	2	1	0	1	1	1	1	1	1
30 to 60 yrs	0	1	0	0	0	2	0	0	0	0	0
30 to 70 yrs	0	0	0	0	0	0	0	0	0	0	0

Sentences - Cont'd

	<u>71</u>	<u>72</u>	<u>73</u>	<u>74</u>	<u>75</u>	<u>76</u>	<u>77</u>	<u>78</u>	<u>79</u>	<u>80</u>	<u>81</u>
37 yrs	0	0	0	0	0	0	0	0	1	1	1
Federal 3 yrs	0	0	0	2	0	0	0	0	0	0	0
Federal 20 yrs	0	0	0	0	0	0	0	1	2	1	0
Safekeeping	0	0	1	1	1	0	3	8	1	0	0
Life	39	36	41	39	44	47	46	46	42	41	42
Average Minimum Sentence	4.6	4.3	5.9	4.4	4.8	4.3	5.6	7.5	4.4	9.8	10.6
Average Maximum Sentence	11.0	9.8	10.2	9.9	9.3	9.1	9.9	19.6	16.3	14.5	19.1

(Note--Minimum and maximum sentences are now fluctuating greatly due to the decreasing number of those incarcerated under the old code sentencing structure. We are now holding more and more long timers under the old code who will eventually become parole eligible.)

New Code Sentences on June 30th

	<u>76</u>	<u>77</u>	<u>78</u>	<u>79</u>	<u>80</u>	<u>81</u>
30 days	0	2	0	2	3	3
45 days	0	0	1	0	1	0
60 days	0	2	2	1	0	0
65 days	0	0	0	0	0	1
3 mos	0	1	1	5	2	3
4 mos	0	1	1	1	1	0
5 mos	0	0	2	2	1	1
6 mos	2	10	19	29	34	26
6 mos 1 day	0	0	0	2	0	0
7 mos	0	1	0	1	0	0
8 mos	0	0	0	1	0	1
9 mos	0	1	3	2	3	2
10 mos	0	1	0	0	0	2
11 mos	0	2	4	8	9	3
11 mos 15 days	0	1	0	0	0	0
11 mos 29 days	0	0	1	0	0	0
260 days	0	0	0	0	0	0
364 days	0	1	2	2	7	6
14 mos	0	0	1	1	0	1
15 mos	0	1	2	1	0	1
17 mos	0	0	1	0	0	1
18 mos	0	1	1	5	3	0
20 mos	0	0	2	1	2	1
22 mos	0	0	1	1	0	0
1 yr	2	23	10	11	21	19

New Code Sentences - Cont'd

	<u>76</u>	<u>77</u>	<u>78</u>	<u>79</u>	<u>80</u>	<u>81</u>
1 yr 6 mos	1	11	15	13	22	16
2 yrs	1	24	40	53	42	49
2 yrs 3 mos	0	1	1	2	0	1
2 yrs 4 mos	0	0	0	0	0	1
2 yrs 6 mos	3	13	14	18	13	17
2 yrs 11 mos	0	0	0	0	1	0
3 yrs	3	28	52	52	54	52
3 yrs 106 days	0	0	0	0	0	1
3 yrs 6 mos	0	3	5	7	9	5
4 yrs	0	12	34	47	48	38
4 yrs 4 mos	0	1	1	1	0	0
4 yrs 6 mos	0	3	3	4	2	3
5 yrs	0	13	39	68	71	94
5 yrs 6 mos	0	0	0	1	1	1
6 yrs	0	3	12	18	25	28
6 yrs 6 mos	0	0	0	1	1	1
7 yrs	0	2	3	7	11	14
7 yrs 6 mos	1	5	6	7	8	8
8 yrs	0	0	5	9	12	17
8 yrs 6 mos	0	0	0	1	1	1
9 yrs	0	2	2	2	3	6
9 yrs 6 mos	0	0	0	0	0	0
10 yrs	0	4	17	26	33	43
10 yrs 6 mos	0	0	0	0	0	0
11 yrs	0	0	0	0	0	1
11 yrs 6 mos	0	0	0	0	0	0
12 yrs	0	1	4	6	7	7

New Code Sentences - Cont'd

	<u>76</u>	<u>77</u>	<u>78</u>	<u>79</u>	<u>80</u>	<u>81</u>
12 yrs 6 mos	0	1	1	1	1	1
13 yrs	0	0	0	0	0	0
13 yrs 6 mos	0	0	0	0	0	0
14 yrs	0	1	1	1	2	2
14 yrs 6 mos	0	0	0	0	0	0
15 yrs	0	5	6	7	9	9
15 yrs 6 mos	0	0	0	0	0	0
16 yrs	0	0	0	0	0	0
16 yrs 6 mos	0	0	0	0	0	0
17 yrs	0	0	0	0	1	1
17 yrs 6 mos	0	0	0	0	0	0
18 yrs	0	0	1	1	2	3
18 yrs 6 mos	0	0	0	0	0	0
19 yrs	0	0	0	0	0	0
19 yrs 6 mos	0	0	0	0	0	0
20 yrs	0	2	4	8	10	14
21 yrs	0	0	0	0	0	2
22 yrs	0	0	0	0	0	0
23 yrs	0	0	0	0	0	0
24 yrs	0	0	0	0	0	0
25 yrs	0	0	1	1	3	7
30 yrs	0	0	0	1	3	3
32 yrs	0	0	1	2	2	2
33 yrs	0	0	1	1	1	0
35 yrs	0	0	0	0	1	1

New Code Sentences - Cont'd

	<u>76</u>	<u>77</u>	<u>78</u>	<u>79</u>	<u>80</u>	<u>81</u>
40 yrs	0	0	1	0	1	3
45 yrs	0	0	1	1	3	3
70 yrs	0	0	0	1	1	1
120 days Obs.	0	2	1	0	0	0
Natural Life	0	1	1	4	6	7
Average Sentence	2.35	4.02	4.89	5.08	5.80	6.49

(1979, 1980, 1981 average sentences do not include any sentences over 50 years, as this would distort the actual average.)



Manpower Training Division

TOTALS

	1974	1975	1976	1977	1978	1979	1980
	<u>75</u>	<u>76</u>	<u>77</u>	<u>78</u>	<u>79</u>	<u>80</u>	<u>81</u>
Enrollment (Carry-ins from .80--32) (New applicants --51)	60	76	74	60	78	81	83
Completions	30	52	67	53	34	39	42
Transfers	--	--	--	1	--	2	--
Terminations (non-positive)	13	16	23	25	16	16	22
Still in Training	17	19	23	20	20	24	19

JOB PLACEMENT

Training Related job placement	23	41	32	15	26	18	20
Non-Training related job placement	3	8	17	14	--	14	11
Looking for work	10	--	--	10	16	8	5
Not eligible	12	19	23	--	--	--	7
Entered school			2	1	--	1	--

Currently there are 19 men in training

Building Maintenance	4	5	3	7	3	6	4
Auto Mechanic	8	8	8	5	4	9	5
Construction worker II	5	6	6	7	7	4	5
Auto Body Repair		0	6	1	6	5	5

Community Programs - Furlough Program

(includes MSP, Bolduc Unit, County Jails, Pharos House, Charleston Corr. Cen.)

July 1, 1980 to June 30, 1981

Total number of furloughs granted	1299
Total number of residents receiving furloughs	531

Number of new crimes	0
Number of escapes	0
Number of administrative violations	35

Community Programs - Work Release

<u>1979-80</u>	<u>Kenn. Cty 1/2-Way Hse</u>	<u>Pharos House</u>	<u>BPRC</u>	<u>Bolduc Unit</u>	<u>1/2-Way Hse</u>	<u>Total</u>
Gross Wages	----	\$44,735.96	\$130,975.15	\$27,710.67	\$9,338.57	\$212,760.35
Net Wages	----	37,277.35	111,442.95	22,910.67	8,510.27	180,141.24
Federal Taxes	----	4,637.28	10,849.71	3,505.69	649.36	19,642.04
State Taxes	----	574.51	1,507.05	504.53	77.16	2,663.25
Social Security Taxes	----	2,246.92	6,249.69	1,865.62	389.24	10,751.47
Rent Paid	----	10,778.73	11,610.00	1,834.00	2,874.50	28,097.23
Expenses	----	242.10	19,348.26	----	----	19,590.36
Support Payments	----	529.00	8,196.90	4,430.34	2,028.00	15,184.24
Savings	----	9,887.25	64,367.99	8,264.34	943.59	83,463.17
Miscellaneous	----	1,222.07	1,944.80	----	361.90	3,528.77
Transportation	----	----	5,975.00	----	----	----
<u>1980-81</u>						
Gross Wages		19,939.79	127,289.65	37,912.15	6,145.00	191,286.59
Net Wages	8,138.96	16,574.40	----	31,022.66	5,776.00	61,512.02
Federal Taxes	----	2,020.70	10,945.39	5,960.67	445.00	19,371.76
State Taxes	----	241.90	1,345.47	440.85	53.00	2,081.22
Social Security Taxes	----	1,102.79	6,864.99	2,763.19	354.00	11,084.97
Rent Paid	1,565.00	5,889.01	12,308.00	2,844.00	1,662.00	24,268.01
Expenses	----	----	17,773.08	----	----	17,773.08
Support Payments	2,674.00	1,290.00	9,255.02	7,055.09	225.00	21,399.11
Savings	----	3,226.39	56,295.16	4,810.05	1,644.00	65,975.60
Miscellaneous	2,553.55	----	1,917.54	----	----	4,471.09
Transportation	----	----	8,465.00	1,660.00	----	10,125.00

This does not include figures for 20 inmates housed in jails or work release

Residents at the Maine State Prison - June 30, 1981

	<u>75</u>	<u>76</u>	<u>77</u>	<u>78</u>	<u>80</u>	<u>81</u>
Daily Food Per Capita per day approx.	1.70	1.94	1.80	2.12	2.33	3.35
Daily overall per Capita per day approx.	19.15	21.29	23.25	26.59	30.34	42.87
Per Capita per year approx.	7008.90	7770.00	8486.25	9705.40	11,072.92	15,651.00
Cost per meal	.57	.65	.599	.7081	.7754	1.12

<u>Age Groups</u>	<u>71</u>	<u>72</u>	<u>73</u>	<u>74</u>	<u>75</u>	<u>76</u>	<u>77</u>	<u>78</u>	<u>79</u>	<u>80</u>	<u>81</u>
Up to 19 yrs	34	35	37	36	47	50	32	40	54	56	46
20 to 24 yrs	110	122	117	131	166	151	133	152	158	157	172
25 to 29 yrs	69	78	105	100	123	116	129	120	119	108	103
30 to 34 yrs	48	50	51	46	75	64	79	87	80	82	89
35 to 39 yrs	29	40	38	34	34	44	46	50	61	61	62
40 to 49 yrs	34	35	35	42	44	46	42	43	43	39	42
50 to 59 yrs	11	13	9	4	4	11	13	10	9	10	10
60 and over	4	6	5	3	3	5	4	5	5	2	5
Average Age	29	28	29	28	28	29	29.5	29	28	28.4	28.8

Statistics on Residents confined on the 30th day of June 1981

Previous Record Status

25% of the residents were former residents of the Maine Youth Center compared to last year's 26%

44% of the residents were former residents of the Maine Corr Ctr compared to last year's 43%

20% of the residents were former residents of out-of-stats inst's compared to last year's 21%

38% of the residents have served prior sentences at Maine State Prison compared to year before's 42%

16% of the residents have had relatives at the Maine State Prison

3% of the residents were foreign born

Religion	Protestant	266	Catholic	183	Others	80
<hr/>						
Country of Birth	Canada	6	United States	514	England	1
	Germany	1	Puerto Rico	1	France	2
	British West Indies	1	Italy	1		
	Czechoslovakia	1				

Former Members of Armed Services

Honorable Discharge	129
Undesirable Discharge	48
Dishonorable Discharge	5
Active	4
No service record	343

Marital Status

Single	232
Widower	14
Married	171
Divorced	112

Bangor Pre-Release Center

Statistics for

7/ 1/74 to 9/ 1/81

Total Assigned	614
Releases (Parole, Discharge, Release)	314
Parole Violators and Discharged men returned	53
Percent of transgressions	16.87%
New crimes committed on parole or discharge status	28
Percent of transgressions	8.91%
Total ret'd to MSP or MCC	211
Percent of transgressions	34.36%

Work Release

Men assigned	614
New crimes committed	5
Escapes from Work Release	7
Percent of transgressions	1.95%
Administrative Violations	
Drinking 68	
or drugs	
Misconduct 40	108

Furloughs

Furloughs granted	2732
New crimes committed	3
Warrants w/No convictions	1
Escapes (includes furlough pass)	13
Percent of transgressions	.62%
Administrative Violations	
Drinking 51	
Misconduct 88	
Percent Administrative Violations	139
	5.08%

BPRC Escapes

Total number assigned	614
Total number of escapes	17
AWOL and returned	3
Percent	3.25%

**Bolduc Unit**  
**Statistics for**  
**7/ 1/80 to 6/30/81**

Furloughs      486 furloughs      26 violations

Work Release    23 men                    1 violation

	<u>Fiscal 79</u>	<u>Fiscal 80</u>	<u>Fiscal 81</u>
Gross Salaries	\$25,822.29	\$27,710.67	\$37,912.15
Net Salaries	22,884.26	22,910.67	31,022.66
Federal Tax	2,491.42	3,505.69	5,960.67
State Tax	261.42	504.53	440.85
Social Security	1,792.00	1,865.62	2,763.19
Rent Receipts	1,252.00	1,834.00	2,844.00
Bank Deposits	7,150.32	8,264.12	4,810.05
Sent Home	6,063.32	4,430.34	7,055.09
Percent of net salaries banked and/or saved	57.7%	55.4%	38.0%

Escapes = 4

Average population = 62.8

BU returned to MSP = 35      Average per month 2.9

BU Parole Violations = 4

Discharged men returned to MSP = 11

Total Residents assigned = 753.6

Percent of transgressions = 7%

END