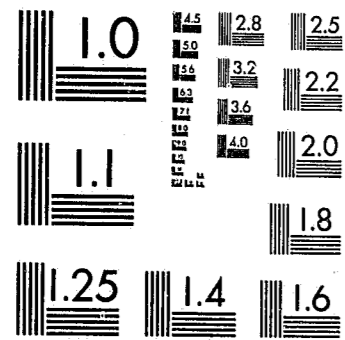


National Criminal Justice Reference Service



This microfiche was produced from documents received for inclusion in the NCJRS data base. Since NCJRS cannot exercise control over the physical condition of the documents submitted, the individual frame quality will vary. The resolution chart on this frame may be used to evaluate the document quality.



MICROCOPY RESOLUTION TEST CHART
NATIONAL BUREAU OF STANDARDS-1963-A

Microfilming procedures used to create this fiche comply with the standards set forth in 41CFR 101-11.504.

Points of view or opinions stated in this document are those of the author(s) and do not represent the official position or policies of the U. S. Department of Justice.

National Institute of Justice
United States Department of Justice
Washington, D. C. 20531

3/8/82

THE INSTITUTIONAL CENTERS
Objectives and Progress

January, 1981

Michigan Department of Social Services
Office of Children and Youth Services
Lansing, Michigan 48909

77514

Winter, 1981

The
I
N
S
T
I
T
U
T
I
O
N
A
L
C
E
N
T
E
R
S

U.S. Department of Justice
National Institute of Justice

77514

This document has been reproduced exactly as received from the person or organization originating it. Points of view or opinions stated in this document are those of the authors and do not necessarily represent the official position or policies of the National Institute of Justice.

Permission to reproduce this copyrighted material has been granted by
Reginald Carter
Michigan Dept. of Social Services

to the National Criminal Justice Reference Service (NCJRS).

Further reproduction outside of the NCJRS system requires permission of the copyright owner.

NCJRS

APR 23 1981

ACQUISITION

Michigan Department of Social Services
Office of Children and Youth Services
Shirley A. Tate, Director

~~X~~
AN UPDATE OF EVALUATION
1974 through 1980

A research report of the
INSTITUTIONAL SERVICES DIVISION, O.C.Y.S.
300 S. Capitol Ave.
Lansing, Michigan 48909

Vergil M. Pinckney, Director
Dale Shears, Assistant Director
Institutional Services Division

In cooperation with the
Social Services Evaluation and Analysis Division

... Information from the INSTITUTIONAL DATA CENTER
Whitmore Lake, Michigan

Becky Rush, Data Analyst
Marilyn Duncan, Clerical Support
Terry Drum, Technical Assistant

MISSION STATEMENT
 Institutional Services Division
 Office of Children and Youth Services
 Michigan Department of Social Services

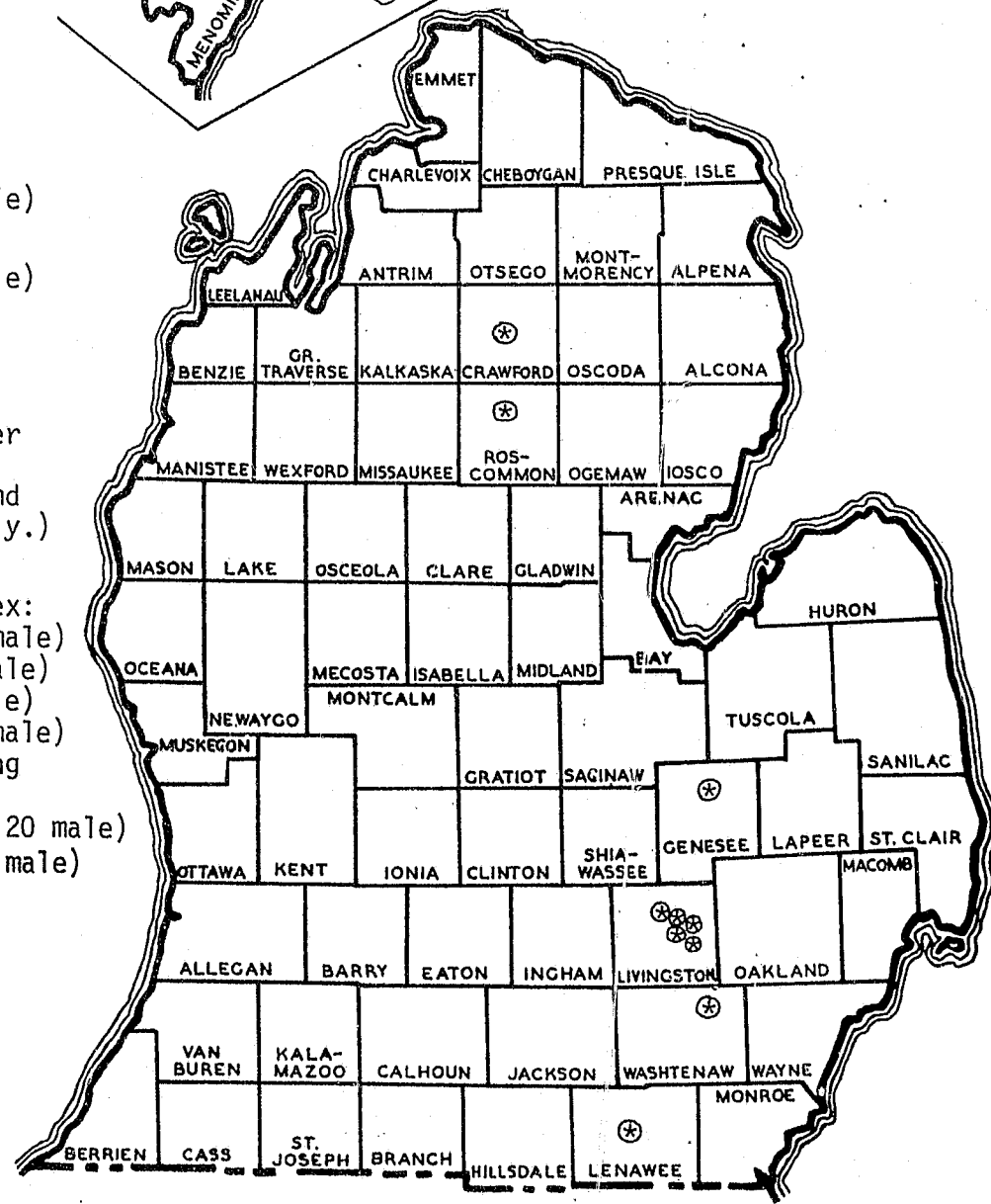
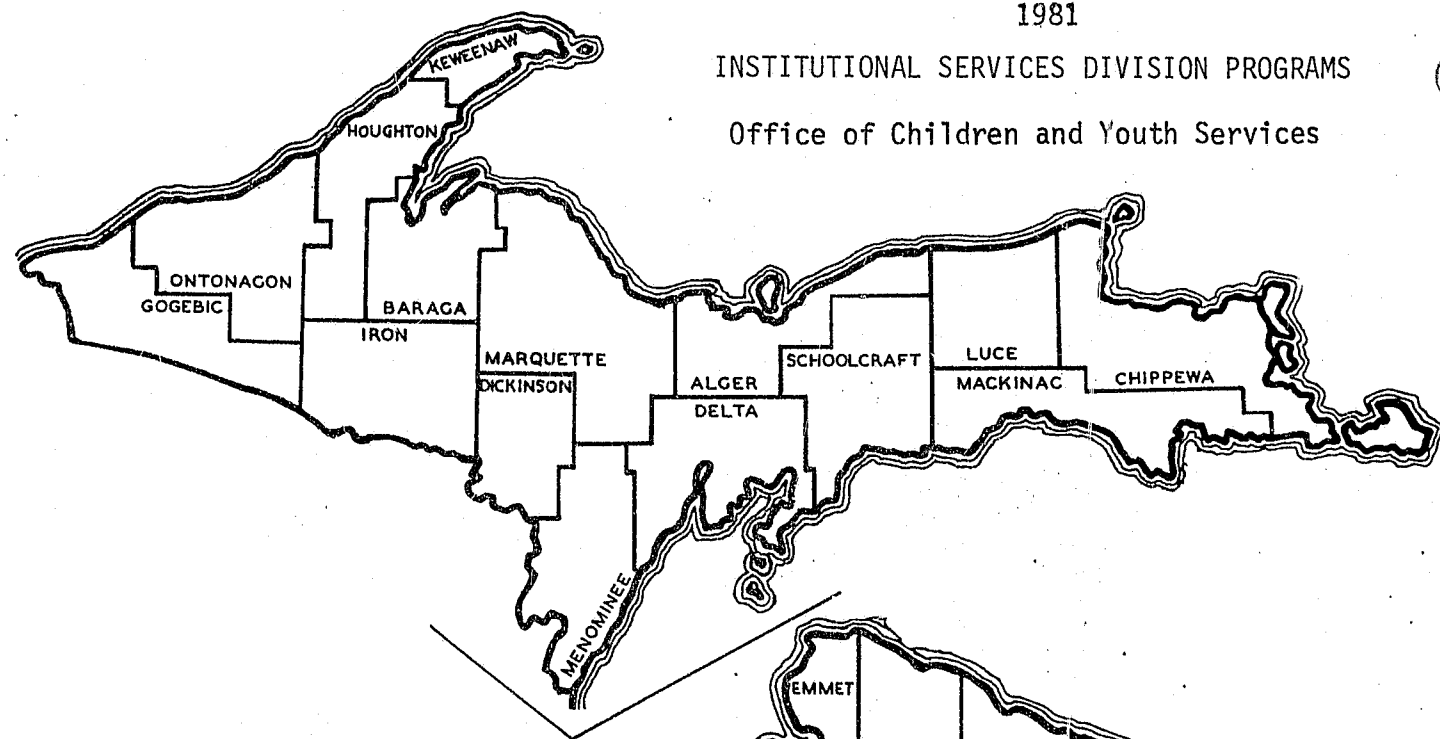
To provide temporary residential care which offers effective intervention of delinquent behavior where community diversionary efforts have not succeeded, and which leads to an early return to permanent placement and a delinquency-free lifestyle.

TABLE OF CONTENTS

	Page
MISSION STATEMENT	ii
LOCATION OF INSTITUTIONAL SERVICES DIVISION CENTERS	iv
LIST OF PROGRAM DIRECTORS	v
FOREWORD	1
OBJECTIVES FOR 1980 - 1981	2
YOUTH OPINION POLL	5
A. Self-Esteem	8
B. Locus of Responsibility	9
C. Delinquent Values	10
EDUCATIONAL ACHIEVEMENT	11
A. Youth Entering Above 5.0	14
B. Youth Entering Below 4.9	16
C. Overall Trends	20
D. Drivers Education Completion	21
E. General Educational Development Tests	22
F. Educational Planning and Placement Committees (EPPC)	23
ASSAULT	25
TRUANCY	29
LENGTH OF STAY	37
OUTCOMES	45
A. Arrest Trends	48
B. Arrests at Three Months Following Release	49
C. Job/School (Productivity) Outcomes	54
D. Types of Release (Planned, Crisis, Truancy)	56
E. Twelve-Month Arrest Rates	58
INTAKE	59
A. Trends	60
B. Active Rolls, 1969 - present	61
C. The Waiting List	62
REGIONAL DETENTION	65
APPENDIX - Statistical Support Studies	

(Summary of Studies 1974-1976; Pregnancy; Youth Profiles for Institutions, Camps, Special Programs, Adrian Female; Aggressiveness Pattern for Wayne County; the Violent Offender; Follow-up into Adult Corrections; Ages at Intake and Release; Youth with Mental Health Placement Histories).

1981
 INSTITUTIONAL SERVICES DIVISION PROGRAMS
 Office of Children and Youth Services



Grayling:
 Camp Shawono (50 bed male)

Prudenville:
 Camp Nokomis (50 bed male)

Flint:
 Regional Detention Center
 (52 male, 16 female)
 (Short-term detention and
 evaluation services only.)

Whitmore Lake:
 W.J. Maxey Campus Complex:
 Sequoyah Center (116 male)
 Olympic Center (120 male)
 Summit Center (120 male)
 Reception Center (40 male)
 -Intake & Case Planning
 (20 male)
 -Intensive Treatment (20 male)
 Green Oak Center (100 male)

Ann Arbor:
 Arbor Heights Center
 (17 male, 8 female)

Adrian:
 Adrian Training School
 (80 male, 60 female)

INSTITUTIONAL SERVICES DIVISION
 OFFICE OF CHILDREN AND YOUTH SERVICES
 DEPARTMENT OF SOCIAL SERVICES

Mr. Vergil M. Pinckney, Director
 Mr. Dale Shears, Assistant Director
 300 South Capitol Avenue
 Lansing, Michigan 48909
 Phone: (517) 373-2046

ADRIAN TRAINING SCHOOL

Mr. Robert A. McBride, Director
 Adrian Training School
 Box 218
 Adrian, Michigan 49221
 Phone: (517) 263-2104

REGIONAL DETENTION CENTER

Mr. Richard C. Friz, Director
 Regional Detention Center
 4287 West Pasadena Avenue
 Flint, Michigan 48504
 Phone: (313) 733-4233

ARBOR HEIGHTS CENTER

Mr. Jack W. Boyd, Director
 Arbor Heights Center
 1447 Washington Heights
 Ann Arbor, Michigan 48104
 Phone: (313) 663-4296

YOUTH REHABILITATION CAMPS

Mr. Richard Manley, Director
 Camp Nokomis and
 Camp Shawono
 Prudenville, Michigan 48651
 Phone: (517) 336-5368

W. J. MAXEY CAMPUS

Mr. Neil Wasserman,
 Campus Administrator
 W. J. Maxey Campus
 Box 349
 Whitmore Lake, Michigan 48189
 Phone: (313) 449-4400

SEQUOYAH CENTER, MAXEY CAMPUS

Mrs. Nancy Coleman, Director
 Phone: (313) 449-4422, Ext. 283

GREEN OAK CENTER, MAXEY CAMPUS

Mr. Wolfgang Eggers, Director
 Phone: (313) 449-4422, Ext. 260

OLYMPIC CENTER, MAXEY CAMPUS

Mr. Norman Isaacson, Director
 Phone: (313) 449-4422, Ext. 327

SUMMIT CENTER, MAXEY CAMPUS

Mr. Kenneth Rimstad, Director
 Phone: (313) 449-4422, Ext. 316

RECEPTION CENTER, MAXEY CAMPUS

Ms. Lynne Listeman, Acting Director
 Phone: (313) 449-4422, Ext. 215

Foreword

The Institutional Services Division is part of the Office of Children and Youth Services, within the Michigan Department of Social Services. Youth in care are delinquent wards of the State of Michigan.

The Institutional Services Division is responsible for the operation of nine residential care and rehabilitation centers for children who are between the ages of 12 and 17 at the time of admittance. (In addition, the Division has administrative responsibility for the first state-operated regional detention center in Flint. This center provides short-term care and diagnostic services.)

The following report is the eleventh in a series of studies which integrate the Institutional Services Division's evaluation program and its management objectives. Reports are semi-annual (July and January). Division managers renegotiate objectives and evaluation procedures annually.

The Appendix contains statistical support studies.

January, 1981
Lansing, Michigan

Objectives

OBJECTIVES

MEASUREMENTS

I. Self-Concept, Personal Responsibility and Socialization

- A. Increase youths' feelings of self-worth.
- B. Increase youths' belief that they can influence their future life events.
- C. Decrease youths' identification with delinquent values and attitudes.

- A. Self-esteem scale of the Youth Opinion Poll.
- B. Locus of Reinforcement Scale of the Youth Opinion Poll.
- C. Delinquent value scales of the Youth Opinion Poll.

II. Survival Skills

- A. (1) For youth who enter Division programs at or above the 5.0 grade level, increase educational performance by (a) 1.5 grade levels per year in the secure institutions, (b) 3.2 grade levels per year in Camps, and (c) 1.2 grade levels per year at Arbor Heights.
- (2) For youth who enter Division programs at or below 4.9 grade level, increase educational performance by (a) 1.2 grade levels per year in the secure institutions, (b) 2.3 grade levels in Camps, and (c) 1.0 grade levels per year at Arbor Heights.
- (3) Increase the percentage of students who are released above 5.0 grade level who had pre-tested at 4.9 or below.
- B. Provide General Educational Development (G.E.D.) services to all students declared eligible as part of the individual education plan.

- A. (1) Educational transcripts recording pre and post academic levels.
- (2) Educational transcripts recording pre and post academic levels.
- (3) Educational transcripts recording pre and post academic levels.
- B. Records at release will note date student is declared eligible or ineligible and date of completion or partial completion.

*Each residential center will declare as part of its management plans for 1980-81 specific objectives in each of these areas.

for 1980-1981

OBJECTIVES

MEASUREMENTS

- C. Provide driver education instruction to all students, unless declared ineligible as part of the individual education plan, and achieve a 70% completion rate of those eligible.
- D. Monitor the process of declaring appropriate youth as educationally handicapped. Establish baseline for number of youth screened, referred, and conferenced in an EPPC at each Center.

- C. Records at release will record date student is declared eligible or ineligible, date enrolled and date of completion.
- D. For the first and second half of each calendar year, Centers will report:
 - (a.) Number of youth entering;
 - (b.) number of youth screened for an EPPC;
 - (c.) number of youth referred for an EPPC conference; and
 - (d.) number of youth successfully conferenced within 25 days.

III. Protection of Youth, Staff, and Community from Harm:

- A. Monitor the number of assaultive events on youth and staff which require first aid procedure or medical attention.
- B. (1) Maintain the number of youth on the outstanding truancy roster at no more than 10% of the resident population at any one point in time.
- (2) Reduce the incidence of on-campus and off-campus successful truanies in the secure institutional programs to no more than 14% of residents during any six-month period.
- (3) Increase the percentage of youth returned from a truancy attempt within six hours to 40%.

- A. As documented by the Unusual Incident Reports.
- B. (1) Monthly population reports.
- (2) Monthly truancy reports.
- (3) Monthly truancy reports.

OBJECTIVES (continued)

- C. Monitor the number of felonies committed by youth while on truancy status; study the number of law violations attributed to truants within a twenty mile radius of all Division residential Centers.

IV. Length of Stay:

Release 67% (two-thirds) of youth in secure institutions within 11 months of admission to the Center; release 90% of youth in rehabilitation camps within 7 months of their admission.

V. Outcome Measures:

- A. Increase the percentage of youth who are enrolled in school, are in special training, or who are employed three months after release to (1.) 56% for youth released in the Jan. - June period; and (2.) 60% for youth released in the July - Dec. period.
- B. Increase the number of E.P.P.C.-declared youth who are receiving special education services in the community three months after release.
- C. Decrease the percentage of youth arrested within three months of release from the Center.
- D. Accomplish planned completion percentages of (1.) 85% for youth in secure institutions; and (2.) 75% for youth in Camps and Arbor Heights.

MEASUREMENTS (continued)

- C. Truancy return report forms.

Length of stay computations from Data Center by 0-3, 4-7, 8-11 and over 11 month categories.

- A. Job/school outcome scale of Community Care Telephone Questionnaire.
- B. Community Care Telephone Questionnaire.
- C. Outcome Scale of the Community Care Telephone Questionnaire.
- D. Weekly Population Information Reports.

Youth Opinion Poll

YOUTH OPINION POLL

Assessing Attitudes and Values:

The Youth Opinion Poll is a 120-item test of attitudes and values. Items are true/false. The Y.O.P. is administered to all youth at intake and release.

The Poll is administered by audiotape, so that results are independent of reading ability. This procedure is considered essential, given the reading levels of many youth.

The Poll yields a change score on three value scales presumed important to the successful treatment of problem youth -- namely self-esteem, personal responsibility, and delinquent values and attitudes.

In 1979 the Poll was shortened from 240 to 120 items, to reduce testing time and facilitate machine scoring. Self-esteem and personal responsibility scale scores are still comparable to previous scores; delinquency scores have a new baseline, since the scale has been shortened from 100 to 43 items. To permit continued comparison with previous scores, obtained scores on the shortened delinquency scale are expanded by a .43:100 ratio in the reporting.

Problems with Validity:

Research indicates that the Youth Opinion Poll scales display little or no relationship to youth arrest outcomes. In 1978 an item-analysis was completed on the Y.O.P. test items, to determine if it were possible to derive a scale of items that did relate to arrest outcomes of youth. The number of items that proved predictive of arrest was found to be little more than what might have been expected by chance alone.

Desirable changes in attitude and values are still valuable as process or program objectives, however, even though the gains may have no predictive value in youth rehabilitation. The Y.O.P. serves to keep a healthy program focus on attitude/value dimensions felt to be of importance in the care of delinquent youth.

Summary of Major Findings:

1. Youth display striking and predictable changes in desired directions on attitude/value scales during the course of their stay in Institutional Services Division programs. Scores on Self-Esteem and Locus of Responsibility go up; scores on Delinquent attitudes and values drop.
2. At the same time, personality test scores have little or no relationship to arrest outcomes.

Preceding page blank

YOUTH OPINION POLL

Objective: Increase youths' feelings of self-worth.

Measurement: Self-Esteem Scale of the Youth Opinion Poll.

SELF-ESTEEM SCORES*

	BASELINE 74/75			1/79 - 6/79		
	Pre	Post	Change	Pre	Post	Change
Sequoyah	29.7	38.1	+8.4	35.0	39.4	+4.4*
Olympic	30.9	37.7	+6.8	31.7	39.0	+7.3
Summit	31.1	37.6	+6.5	31.8	41.7	+9.9
ATS (M)	34.3	40.2	+5.9	33.4	39.9	+6.5
ATS (F)	30.6	39.7	+9.1	30.6	38.4	+7.8
G.O.C.	31.4	35.4	+4.0	33.0	39.1	+6.1*
Nokomis	29.5	32.7	+3.2	30.8	35.4	+4.6
Shawono	29.5	32.7	+3.2	31.4	36.9	+5.5
I.T.P.	30.1	33.6	+3.5*	29.8	32.2	+2.4*
A.H.C.	NA	NA	NA	33.3	31.0	-2.3*

	7/79 - 12/79			1/80 - 6/80		
	Pre	Post	Change	Pre	Post	Change
Sequoyah	34.3	39.2	+4.9	33.1	36.7	+3.6
Olympic	33.1	40.8	+7.7	36.1	41.6	+5.5
Summit	31.9	40.4	+8.5	31.4	41.8	+10.4
ATS(M)	33.8	33.8	+5.0	33.6	38.9	+5.3
ATS (F)	30.9	41.3	+10.4	29.3	40.8	+11.5
G.O.C.	31.5	38.4	+6.9	31.5	39.5	+8.0
Nokomis	32.9	35.9	+3.0	31.6	36.2	+4.6*
Shawono	32.2	36.4	+4.2	30.6	34.9	+4.3
I.T.P.	28.0	37.2	+9.2	26.6	32.2	+5.6*
A.H.C.	24.0	35.0	+9.0*	28.7	31.9	+3.2*

* All change scores are significant at or beyond .05 level unless indicated with an asterisk. If the number of youth observed in a program is small, even a sizable change may not prove statistically significant. Data for 7/75 - 12/78 available in previous reports.

YOUTH OPINION POLL (continued)

Objective: Increase youths' belief that they can influence their future life events.

Measurement: Locus of Responsibility Scale of the Youth Opinion Poll.

LOCUS OF RESPONSIBILITY SCORES*

	BASELINE 74/75			1/79 - 6/79		
	Pre	Post	Change	Pre	Post	Change
Sequoyah	13.3	15.5	+2.2	13.9	15.4	+1.5*
Olympic	13.2	14.8	+1.6	14.1	15.7	+1.6
Summit	13.0	15.0	+2.0	13.0	16.2	+3.2
ATS (M)	14.1	14.9	+0.8*	13.0	15.2	+2.2
ATS (F)	13.6	15.8	+2.2	13.8	15.0	+1.2
G.O.C.	13.6	14.8	+1.2	13.0	14.8	+1.8*
Nokomis	13.7	14.8	+1.1	14.2	15.1	+0.9*
Shawono	13.7	14.8	+1.1	14.2	15.2	+1.0*
I.T.P.	13.5	14.6	+1.1*	10.5	10.2	-0.3*
A.H.C.	NA	NA	NA	11.0	14.0	+3.0*

	7/79 - 12/79			1/80 - 6/80		
	Pre	Post	Change	Pre	Post	Change
Sequoyah	14.3	16.0	+1.7	13.5	15.4	+1.9
Olympic	14.3	16.0	+1.7	14.1	15.9	+1.8
Summit	13.4	16.4	+3.0	14.0	16.2	+2.2
ATS (M)	13.7	15.5	+2.8	14.2	15.5	+1.3*
ATS (F)	14.5	16.5	+2.0	13.5	15.8	+2.3
G.O.C.	13.5	15.8	+2.3	14.3	16.9	+2.6
Nokomis	14.3	15.0	+0.7*	13.9	15.9	+2.0
Shawono	13.7	15.1	+1.4	13.8	14.9	+1.1*
I.T.P.	10.9	12.9	+2.0*	13.7	14.0	+0.3*
A.H.C.	17.0	15.0	-2.0*	13.0	14.2	+1.2*

* All change scores are significant at or beyond .05 level unless indicated with an asterisk. If the number of youth observed in a program is small, even a sizable change may not prove statistically significant. Data for 7/75 - 12/78 available in previous reports.

10
Youth Opinion Poll (continued)

Objective: To decrease youths' identification with delinquent values and attitudes.

Measurement: Delinquent value scales of the Youth Opinion Poll.

DELINQUENT VALUES*
(7/79-12/79 and 1/80-6/80 data prorated for comparison with earlier periods)

	BASELINE 74/75			1/79 - 6/79		
	Pre	Post	Change	Pre	Post	Change
Sequoyah	43.2	32.2	-11.0	35.2	29.1	- 6.1*
Olympic	42.3	31.1	-11.2	39.1	28.1	-10.6
Summit	45.0	33.3	-11.7	42.2	24.2	-18.0
ATS (M)	40.1	31.8	- 8.3	37.2	28.4	- 8.8
ATS (F)	38.4	25.4	-13.0	41.6	27.6	-14.0
G.O.C.	41.3	36.0	- 5.3	37.8	34.1	- 3.7*
Nokomis	40.9	37.4	- 3.5	39.0	35.1	- 3.9
Shawono	40.9	37.4	- 3.5	39.8	33.9	- 5.9
I.T.P.	43.9	33.9	-10.0	49.8	50.2	+ 0.4*
A.H.C.	NA	NA	NA	40.0	36.7	- 3.3*

	7/79 - 12/79			1/80 - 6/80		
	Pre	Post	Change	Pre	Post	Change
Sequoyah	36.3	26.3	-10.0	38.4	29.0	- 9.4
Olympic	39.8	24.6	-15.2	38.5	29.6	- 8.9
Summit	41.5	24.5	-17.0	41.1	22.8	-18.3
ATS (M)	36.5	28.1	- 8.4	38.9	29.2	- 9.7
ATS (F)	37.2	20.0	-17.2	38.0	24.0	-14.0
G.O.C.	36.8	30.0	- 6.8	42.3	32.0	-10.3
Nokomis	35.8	36.2	- 0.4*	40.2	35.4	- 4.8*
Shawono	42.4	39.3	- 3.1*	40.3	37.4	- 2.9*
I.T.P.	53.0	36.1	-16.9	55.7	45.5	-10.2*
A.H.C.	49.0	28.0	-21.0*	44.1	42.9	- 1.2*

* All change scores are significant at or beyond .05 level unless indicated with an asterisk. If the number of youth observed in a program is small, even a sizable change may not prove statistically significant. Data for 7/75 - 12/78 available in previous reports.

EDUCATIONAL ACHIEVEMENTMeasuring Achievement:

Throughout the Institutional Services Division educational achievement is assessed through pre and post administration of the Stanford Achievement Test.

Development of a Comparison Index:

In order to compare educational progress in programs with different lengths of stay, an Index of Educational Achievement has been developed. For each program, this index is determined by the formula:

$$\frac{\text{Average Gain in Grade Level}}{\text{Average Length of Stay (in days)}} \times 365$$

Separate Educational Goals:

Educational goals are now stated separately for youth who enter institutional programs above or below fifth grade level. Separate goals permit closer analysis of educational delivery to those youth who arrive with serious academic deficiencies.

A major effort is now underway to provide eligibility determinations where appropriate for youth in institutions who are eligible for special services as educationally handicapped.

Summary of Major Findings:

1. There is a statistically significant relationship between educational achievement level at release and arrest outcomes of youth. The higher the academic level at release, the lower the rearrest probability.
2. The institutional centers achieve high rates of educational services delivery with academically disadvantaged youth. In community school programs, these youth have progressed only about .5 grade levels per year; while in institutional care they progress at nearly three times this rate (1.5 grade levels per year in program).
3. The average gain (all Division programs) for youth who enter at low academic levels is 1.2 grade levels per year in program. The average gain for youth entering at the fifth grade level or above is 1.6 grade levels per year.

Educational Achievement

Preceding page blank

EDUCATIONAL ACHIEVEMENT (continued)

Objective: Increase educational performance level of youth who enter Division programs at or above the 5.0 grade level by (a) 1.5 grade levels per year in the secure institutions; (b) 3.2 grade levels per year in Camps; and (c) 1.2 grade levels per year at Arbor Heights.

Measurement: Stanford Achievement Test educational achievement gains.

EDUCATIONAL ACHIEVEMENT Youth Released 7/78 - 12/78						
Center	N=	Avg. Level at Entry	Avg. Level at Release	Avg. Gain	Avg. LOS in Days	Index of Educational Achievement
Sequoyah	31	7.49	9.05	1.56	321	1.77 yrs.
Olympic	21	7.84	9.25	1.41	348	1.48 yrs.
Summit	30	8.08	9.50	1.42	345	1.50 yrs.
A.T.S. (M)	19	7.62	8.82	1.20	221	1.98 yrs.
A.T.S. (F)	25	7.25	8.40	1.15	353	1.18 yrs.
G.O.C.	15	8.81	10.83	2.02	383	1.93 yrs.
I.T.P.	1	6.00	7.00	1.00	335	1.10 yrs.
SUBTOTAL (Secure Programs)	142	7.77	9.20	1.43	329	1.59 yrs.
Nokomis	21	7.69	9.67	1.98	177	4.08 yrs.
Shawono	19	7.39	8.84	1.45	213	2.48 yrs.
A.H.C.	4	7.15	8.02	0.87	429	0.74 yrs.
TOTAL (All Div. Programs)	186	7.71	9.19	1.48	302	1.79 yrs.

EDUCATIONAL ACHIEVEMENT Youth Released 1/79 - 6/79						
Center	N=	Avg. Level at Entry	Avg. Level at Release	Avg. Gain	Avg. LOS in Days	Index of Educational Achievement
Sequoyah	39	7.76	9.26	1.50	360	1.52 yrs.
Olympic	48	7.55	8.94	1.39	314	1.62 yrs.
Summit	39	7.60	8.96	1.36	336	1.48 yrs.
A.T.S. (M)	20	7.13	9.09	1.96	314	2.28 yrs.
A.T.S. (F)	25	7.44	8.95	1.51	404	1.36 yrs.
G.O.C.	25	8.04	9.09	1.03	405	0.93 yrs.
I.T.P.	3	6.53	6.87	0.34	224	0.55 yrs.
SUBTOTAL (Secure Programs)	199	7.59	9.01	1.42	349	1.49 yrs.
Nokomis	21	7.79	9.53	1.74	166	3.83 yrs.
Shawono	19	7.47	9.01	1.54	189	2.97 yrs.
A.H.C.	2	7.83	8.66	0.83	319	0.95 yrs.
TOTAL (All Div. Programs)	249	7.61	9.06	1.45	315	1.68 yrs.

EDUCATIONAL ACHIEVEMENT Youth Released 7/79 - 12/79						
Center	N=	Avg. Level at Entry	Avg. Level at Release	Avg. Gain	Avg. LOS in Days	Index of Educational Achievement
Sequoyah	35	6.95	8.42	1.47	355	1.51 yrs.
Olympic	43	8.06	9.29	1.21	306	1.44 yrs.
Summit	33	8.18	9.49	1.31	333	1.44 yrs.
A.T.S. (M)	16	8.06	9.46	1.40	275	1.86 yrs.
A.T.S. (F)	11	7.02	8.36	1.34	373	1.31 yrs.
G.O.C.	18	7.35	8.87	1.52	372	1.49 yrs.
I.T.P.	3	7.97	8.17	0.20	180	0.41 yrs.
SUBTOTAL (Secure Programs)	159	7.68	9.02	1.34	329	1.49 yrs.
Nokomis	41	8.07	10.03	1.96	168	4.26 yrs.
Shawono	20	8.11	8.67	0.56	209	0.98 yrs.
A.H.C.	0	--	--	--	--	--
TOTAL (All Div. Programs)	220	7.79	9.18	1.39	288	1.76 yrs.

EDUCATIONAL ACHIEVEMENT Youth Released 1/80 - 6/80						
Center	N=	Avg. Level at Entry	Avg. Level at Release	Avg. Gain	Avg. LOS in Days	Index of Educational Achievement
Sequoyah	29	7.12	9.05	1.93	364	1.94 yrs.
Olympic	28	7.76	9.17	1.41	276	1.86 yrs.
Summit	41	8.00	9.42	1.42	348	1.49 yrs.
A.T.S. (M)	24	7.77	9.08	1.31	242	1.98 yrs.
A.T.S. (F)	16	8.92	10.47	1.55	394	1.44 yrs.
G.O.C.	22	7.34	8.39	1.05	353	1.09 yrs.
I.T.P.	4	6.69	8.24	1.55	345	1.64 yrs.
SUBTOTAL (Secure Programs)	164	7.74	9.20	1.46	328	1.62 yrs.
Nokomis	25	7.45	8.99	1.54	161	3.49 yrs.
Shawono	20	7.18	7.61	.43	201	.78 yrs.
A.H.C.	7	6.66	7.13	.47	452	.38 yrs.
TOTAL (All Div. Programs)	216	7.62	8.96	1.34	301	1.62 yrs.

EDUCATIONAL ACHIEVEMENT (continued)

Objective: Increase educational performance level of youth who enter Division programs at 4.9 grade level or below by (a) 1.2 grade levels per year in the secure institutions; (b) 2.3 grade levels per year in Camps; and (c) 1.0 grade levels per year at A.H.C.

Measurement: Stanford Achievement Test educational Achievement gains.

EDUCATIONAL ACHIEVEMENT Youth Released 7/78 - 12/78						
Center	N=	Avg. Level at Entry	Avg. Level at Release	Avg. Gain	Avg. LOS in Days	Index of Educational Achievement
Sequoyah	21	3.69	4.65	0.96	338	1.04 yrs.
Olympic	22	3.58	4.67	1.09	338	1.18 yrs.
Summit	15	3.60	4.83	1.23	311	1.44 yrs.
A.T.S. (M)	10	3.28	4.37	1.09	326	1.22 yrs.
A.T.S. (F)	7	3.91	4.76	0.85	435	0.71 yrs.
G.O.C.	12	3.45	4.99	1.54	410	1.37 yrs.
I.T.P.	9	2.86	3.65	0.79	244	1.18 yrs.
SUBTOTAL (Secure Programs)	96	3.52	4.61	1.09	340	1.17 yrs.
Nokomis	10	3.57	3.93	0.36	188	0.70 yrs.
Shawono	7	4.01	5.51	1.50	167	3.28 yrs.
A.H.C.	1	3.30	3.70	0.40	354	0.40 yrs.
TOTAL (All Div. Programs)	114	3.55	4.60	1.05	316	1.21 yrs.

EDUCATIONAL ACHIEVEMENT Youth Released 1/79 - 6/79						
Center	N=	Avg. Level at Entry	Avg. Level at Release	Avg. Gain	Avg. LOS in Days	Index of Educational Achievement
Sequoyah	18	3.49	4.75	1.26	369	1.25 yrs.
Olympic	11	3.73	4.71	0.98	350	1.02 yrs.
Summit	20	3.51	4.48	0.97	374	0.95 yrs.
A.T.S. (M)	10	3.38	4.30	0.92	367	0.91 yrs.
A.T.S. (F)	14	4.08	5.86	1.78	463	1.40 yrs.
G.O.C.	7	4.07	6.16	2.09	371	2.06 yrs.
I.T.P.	5	3.00	3.99	0.99	302	1.20 yrs.
SUBTOTAL (Secure Programs)	85	3.63	4.88	1.25	379	1.20 yrs.
Nokomis	8	3.64	4.72	1.08	173	2.28 yrs.
Shawono	7	3.63	5.40	1.77	214	3.02 yrs.
A.H.C.	1	3.83	5.61	1.78	397	1.64 yrs.
TOTAL (All Div. Programs)	101	3.63	4.91	1.28	352	1.33 yrs.

Youth 4.9 or Below at Entry

EDUCATIONAL ACHIEVEMENT Youth Released 7/79 - 12/79						
Center	N=	Avg. Level at Entry	Avg. Level at Release	Avg. Gain	Avg. LOS in Days	Index Educational Achievement
Sequoyah	25	3.46	4.86	1.30	383	1.24 yrs.
Olympic	18	3.47	4.43	0.96	315	1.11 yrs.
Summit	17	3.90	5.09	1.19	394	1.10 yrs.
A.T.S. (M)	10	3.57	4.88	1.31	396	1.21 yrs.
A.T.S. (F)	5	3.44	4.72	1.28	438	1.07 yrs.
G.O.C.	5	4.13	5.44	1.31	262	1.82 yrs.
I.T.P.	2	3.75	5.55	1.80	308	2.13 yrs.
SUBTOTAL (Secure Programs)	82	3.66	4.86	1.20	365	1.20 yrs.
Nokomis	3	4.70	5.97	1.27	163	2.84 yrs.
Shawono	9	3.49	4.41	0.92	235	1.43 yrs.
A.H.C.	1	3.40	4.40	1.00	365	1.00 yrs.
TOTAL (All Div. Programs)	95	3.67	4.85	1.18	347	1.24 yrs.

EDUCATIONAL ACHIEVEMENT Youth Released 1/80 - 6/80						
Center	N=	Avg. Level at Entry	Avg. Level at Release	Avg. Gain	Avg. LOS in Days	Index Educational Achievement
Sequoyah	22	3.61	4.84	1.23	364	1.23 yrs.
Olympic	13	3.58	4.55	.97	262	1.35 yrs.
Summit	18	3.77	4.93	1.16	325	1.30 yrs.
A.T.S. (M)	13	3.53	4.58	1.05	297	1.29 yrs.
A.T.S. (F)	14	3.82	5.34	1.52	510	1.09 yrs.
G.O.C.	9	3.97	5.69	1.72	396	1.59 yrs.
I.T.P.	7	2.73	3.51	.78	233	1.22 yrs.
SUBTOTAL (Secure Programs)	96	3.63	4.84	1.21	349	1.27 yrs.
Nokomis	6	4.06	5.56	1.50	183	2.99 yrs.
Shawono	4	3.18	3.76	.58	207	1.02 yrs.
A.H.C.	3	2.86	3.54	.68	818	.30 yrs.
Total (All Div. Programs)	109	3.62	4.80	1.18	348	1.24 yrs.

EDUCATIONAL ACHIEVEMENT (continued)

Objective: Increase the percentage of students who are released above 5.0 grade level who had pre-tested at 4.9 or below.

Measurement: Stanford Achievement Test scores on educational transcripts at release.

THE PERCENTAGE OF LOW-ACADEMIC YOUTH
REACHING A MINIMAL 5TH GRADE PERFORMANCE LEVEL BY RELEASE

Youth Released 7/78 - 12/78			
Center	No. of Youth Below 4.9 at Intake	No. of Youth Reaching 5.0 or Better by Release	% Reaching 5.0
Sequoyah	21	10	48%
Olympic	22	11	50%
Summit	15	8	53%
A.T.S. (M)	10	2	20%
A.T.S. (F)	7	3	43%
G.O.C.	12	7	58%
Nokomis	10	1	10%
Shawono	7	5	71%
I.T.P.	9	2	22%
A.H.C.	1	0	0%
TOTAL	114	49	43%

Youth Released 1/79 - 6/79			
Center	No. of Youth Below 4.9 at Intake	No. of Youth Reaching 5.0 or Better by Release	% Reaching 5.0
Sequoyah	18	8	44%
Olympic	11	5	45%
Summit	20	8	40%
A.T.S. (M)	10	4	40%
A.T.S. (F)	14	11	79%
G.O.C.	7	6	86%
Nokomis	8	4	50%
Shawono	7	5	71%
I.T.P.	5	2	40%
A.H.C.	1	1	100%
TOTAL	101	54	53%

EDUCATIONAL ACHIEVEMENT (continued)

THE PERCENTAGE OF LOW-ACADEMIC YOUTH
REACHING A MINIMAL 5TH GRADE PERFORMANCE LEVEL BY RELEASE

Youth Released 7/79 - 12/79			
Center	No. of Youth Below 4.9 at Intake	No. of Youth Reaching 5.0 or Better by Release	% Reaching 5.0
Sequoyah	25	12	48%
Olympic	18	10	55%
Summit	17	10	59%
A.T.S. (M)	10	5	50%
A.T.S. (F)	5	3	60%
G.O.C.	5	3	60%
Nokomis	3	3	100%
Shawono	9	2	22%
I.T.P.	2	2	100%
A.H.C.	1	0	0%
TOTAL	95	50	53%

Youth Released 1/80 - 6/80			
Center	No. of Youth Below 4.9 at Intake	No. of Youth Reaching 5.0 or Better by Release	% Reaching 5.0
Sequoyah	22	9	41%
Olympic	13	4	31%
Summit	18	11	61%
A.T.S. (M)	13	5	38%
A.T.S. (F)	14	9	64%
G.O.C.	9	6	67%
Nokomis	6	3	50%
Shawono	4	0	0%
I.T.P.	7	1	14%
A.H.C.	3	0	0%
TOTAL	109	48	44%

EDUCATIONAL ACHIEVEMENT (continued)

GENERAL TREND IN
ACADEMIC SERVICES DELIVERY
1975 - 1980

The table below represents general trend information on overall educational performance delivery in the institutions and camps. All youth are included in this summarization:

AVERAGE EDUCATIONAL GAIN PER YEAR IN PROGRAM
(Stanford Achievement Tests)*

	<u>Institutions</u>	<u>Camps</u>
7/75 - 12/75	1.0	3.0
1/76 - 6/76	1.1	2.1
7/76 - 12/76	1.3	2.2
1/77 - 6/77	1.4	3.0
7/77 - 12/77	1.6	2.4
1/78 - 6/78	1.6	3.1
7/78 - 12/78	1.4	3.2
1/79 - 6/79	1.4	3.3
7/79 - 12/79	1.5	3.0
1/80 - 6/80	1.5	2.2

* This index is computed from the general formula:

$$\frac{\text{Average Grade Level Gain}}{\text{Length of Stay in Days}} \times 365$$

Objective: Provide driver education instruction to all youth, unless declared ineligible in an individual education plan; achieve 70% completion rate for eligible youth.

Measurement: Educational Transcripts at Release.

DRIVER EDUCATION SERVICES DELIVERY
Youth Released 1/79 - 6/79

	<u>Total Transcripts</u>	<u>Declared Ineligible</u>	<u>Remainder Eligible</u>	<u>Dr. Ed. Completed</u>	<u>% Completed</u>
Sequoyah	57	9	48	30	62.5%
Olympic	59	5	54	36	67.0%
Summit	51	15	36	36	100.00%
A.T.S. (M)	47	0	47	12	26.0%
A.T.S. (F)	25	0	25	13	52.0%
G.O.C.	35	0	35	11	31.0%
Nokomis	41	1	40	36	90.0%
Shawono	29	0	29	21	72.0%
I.T.P.	11	0	11	1	9.0%
A.H.C.	9	0	9	0	0.0%
TOTAL	364	30	334	196	59.0%

Youth Released 7/79 - 12/79

	<u>Total Transcripts</u>	<u>Declared Ineligible</u>	<u>Remainder Eligible</u>	<u>Dr. Ed. Completed</u>	<u>% Completed</u>
Sequoyah	62	3	59	40	68.0%
Olympic	61	6	55	38	69.0%
Summit	52	5	47	34	72.0%
A.T.S. (M)	28	0	28	10	36.0%
A.T.S. (F)	18	0	18	5	28.0%
G.O.C.	25	0	25	12	48.0%
Nokomis	46	3	43	36	84.0%
Shawono	34	3	32	25	78.0%
I.T.P.	5	0	5	0	0.0%
A.H.C.	8	1	7	1	14.0%
TOTAL	339	21	318	201	63.0%

Youth Released 1/80 - 6/80

	<u>Total Transcripts</u>	<u>Declared Ineligible</u>	<u>Remainder Eligible</u>	<u>Dr. Ed. Completed</u>	<u>% Completed</u>
Sequoyah	52	4	48	35	73.0%
Olympic	41	5	36	28	78.0%
Summit	59	8	51	42	82.0%
A.T.S. (M)	38	1	37	12	32.0%
A.T.S. (F)	31	5	26	8	31.0%
G.O.C.	31	2	29	23	79.0%
Nokomis	31	4	27	27	100.00%
Shawono	30	4	26	21	81.0%
I.T.P.	11	6	5	2	40.0%
A.H.C.	12	9	3	3	100.00%
TOTAL	336	48	288	201	70.0%

Objective: Provide General Educational Development (G.E.D.) services to all students declared eligible as part of the individual education plan.

Measurement: Educational Transcripts at Release.

G.E.D. SERVICES DELIVERY
Youth Released 1/79 - 6/79

	Total Transcripts	Total in G.E.D.	Pass	Partial Completion
Sequoyah	57	19	19	0
Olympic	59	24	19	2
Summit	51	29	18	7
A.T.S. (M)	47	9	4	1
A.T.S. (F)	25	9	9	0
G.O.C.	35	11	5	2
Nokomis	41	13	13	0
Shawono	29	19	14	1
I.T.P.	11	4	1	0
A.H.C.	9	0	0	0
TOTAL	364	137	102	13

Youth Released 7/79 - 12/79

	Total Transcripts	Total in G.E.D.	Pass	Partial Completion
Sequoyah	62	20	13	3
Olympic	61	27	21	2
Summit	52	23	17	5
A.T.S. (M)	28	12	10	2
A.T.S. (F)	18	6	3	2
G.O.C.	25	10	7	3
Nokomis	46	26	26	0
Shawono	34	22	13	3
I.T.P.	5	1	0	1
A.H.C.	8	3	1	2
TOTAL	339	150	111	23

Youth Released 1/80 - 6/80

	Total Transcripts	Total in G.E.D.	Pass	Partial Completion
Sequoyah	52	22	15	1
Olympic	41	18	11	1
Summit	59	32	25	1
A.T.S. (M)	38	15	11	1
A.T.S. (F)	31	12	9	0
G.O.C.	31	11	7	0
Nokomis	31	9	6	0
Shawono	30	10	8	0
I.T.P.	11	1	0	0
A.H.C.	12	5	0	0
TOTAL	336	135	92	4

EDUCATIONAL ACHIEVEMENT (continued)

Objective: Monitor the process of declaring appropriate youth as educationally handicapped. Establish baseline for number of youth screened, referred, and conferenced in an EPPC at each Center.

Measurement: Center educational records.

E.P.P.C. IMPLEMENTATION
1/80 - 6/80

	No. of Youth Entering	No. Screened for EPPC	No. Referred for EPPC	No. Successfully Conferenced Within 25 Days	No. Youth Declared 1/80-6/80
Sequoyah	69	69	25	12	20
Olympic	66	66	20	6	13
Summit	70	70	18	1	13
Adrian	81	81	17	0	30
G.O.C.	40	7	3	0	1
Nokomis	56	43	0	0	0
Shawono	53	53	4	2	2
Reception	157	12*	10	0	8
A.H.C.	13	0	11	9	9
R.D.C.	221*	211	88	1	1
Total					97

* Only youth referred from CPA to ITP were screened.
** Remained in Center longer than 15 days.

Assault

Preceding page blank

ASSAULT

Overview:

An important aspect of residential care programming for troubled youth is the insurance of physical safety. Delinquent youth often exhibit poor controls in the area of physical aggression. A major goal of the Institutional Services Division, therefore, is the guarantee of physical protection for youth and staff.

Early Attempts at Measurement:

Until 1978, goals in the area of assault were monitored by a Behavior Checklist, completed by staff teams throughout the Institutional Services Division. A study in 1977 indicated that most of the "assaults" being reported on the checklist were non-injurious. (Only 9% of the reported incidents for males, and 18% of the reported incidents for females involved any kind of first aid or medical attention.)

The Revised Unusual Incident Report Form:

On July 1, 1978 the Behavior Checklist was terminated and a revision was made in the Unusual Incident Report Form that would provide for notice and detail regarding any assaultive incident that resulted in first aid or medical attention, no matter how minor. Staff complete the U.I.R.F. before leaving shifts whenever an incident of this sort (or any other unusual incident) occurs. Copies go to the Center Director, Medical Services Unit, and Data Center.

The use of a "first aid or medical attention" definition for assault permits closer and more consistent monitoring of assaultive incidents in Division programs.

Preceding page blank

ASSAULT (continued)

Objective: Monitor the number of assaultive events on youth and staff which require first aid procedure or medical attention.

Measurement: Unusual Incident Reports

ASSAULTS ON YOUTH INVOLVING FIRST AID OR MEDICAL ATTENTION				
Center	<u>7/78 - 12/78</u>	<u>1/79 - 6/79</u>	<u>7/79 - 12/79</u>	<u>1/80 - 6/80</u>
Sequoyah	2	18	14	15
Olympic	12	6	19	36
Summit	60	37	37	43
Reception	8	2	2	9
G.O.C.	1	2	3	6
A.T.S. (M)	9	34	34	80
A.T.S. (F)	28	40	36	39
Nokomis	2	10	7	8
Shawono	1	7	5	4
A.H.C. (M)	0	4	2	6
A.H.C. (F)	0	1	1	1
TOTAL	123	161	160	247

ASSAULTS ON STAFF INVOLVING FIRST AID OR MEDICAL ATTENTION				
Center	<u>7/78 - 12/78</u>	<u>1/79 - 6/79</u>	<u>7/79 - 12/79</u>	<u>1/80 - 6/80</u>
Sequoyah	0	1	0	0
Olympic	0	0	0	2
Summit	2	1	1	1
Reception	1	4	0	3
G.O.C.	3	1	3	2
A.T.S. (M)	0	5	0	9
A.T.S. (F)	3	4	5	3
Nokomis	0	0	0	0
Shawono	0	0	0	0
A.H.C. (M)	0	0	0	2
A.H.C. (F)	0	0	1	0
TOTAL	9	16	10	22

Truancy

TRUANCY

A Perennial Problem:

Truancy is one of the perennial problems in residential care for troubled youth. Chronic truancy is an important predictor of negative outcomes for youth. The recording of truancies has been a regular part of individual program reporting for many years, but only recently has truancy data been described and analyzed within a meaningful comparative framework.

Truancy is an event of particular concern. It disrupts a youth's treatment program, and it engenders real risks to both youth and community. A truancy is defined as "successful" if a youth is truant longer than 6 hours. The Institutional Services Division carefully monitors law violations by truants. Violations that occur within a twenty-mile radius of the residential centers receive special notice.

Measuring Program Effectiveness:

A useful index of a Center's success in reducing truancy is one that distinguishes between successful and unsuccessful truancies. When youth attempt to truant and are rapidly apprehended, the event is still undesirable. But the truancy has not "worked" for the youth, and an opportunity arises to deal with the problems that the unsuccessful truancy uncovers. Percentage of youth apprehended within a few hours is therefore a useful measure of program responsiveness and strength.

Off-campus truancies generally represent a risk (not necessarily well-calculated) taken in the interest of treatment objectives, while on-campus truancies are reflective of daily program difficulty with containment of youth.

Summary of Findings:

1. Institutional Services Division programs have improved dramatically in their ability to reduce the number and percentage of youth on outstanding truancy status. From 37% (270 of 733) of the total population in 1973 to only 7% (53 of 751) in July of 1980, the percentage of youth on truancy status has been substantially reduced.
2. Many youth in institutions will truant at some time during the course of their stay, but 9 in 10 are eventually returned and complete a planned release.

Preceding page blank

TRUANCY (continued)

Objective: Maintain the number of youth on the outstanding truancy roster at no more than 10% of the resident population at any one point in time.

Measurement: Monthly Population Reports

INSTITUTIONAL SERVICES*
RESIDENT POPULATION AND YOUTH OUT ON TRUANCY

	1/1/73	1/1/74	1/1/75	1/1/76	1/1/77	1/1/78	1/1/79	1/1/80	6/30/80
Active Rolls	463	558	562	545	583	669	689	681	698
Truancy List	270	256	161	128	87	77	83	77	53
Total	733	814	723	673	670	746	772	758	751
Percentage Truant	37%	31%	22%	19%	13%	10%	11%	10%	7%

* Includes Youth Rehabilitation Camps

TRUANCY (continued)

Objective: Increase the percentage of youth returned from a truancy attempt within six hours, to 40%.

Measurement: Monthly Truancy Reports

PERCENTAGE OF TRUANTS RETURNED

WITHIN SIX HOURS

(On - and Off - Campus Truancies)

	1/78- 6/78	7/78- 12/78	1/79- 6/79	7/79- 12/79	1/80- 6/80
Sequoyah	36%	40%	30% (11 of 37)	40% (6 of 15)	19% (3 of 16)
Olympic	31%	12.5%	9% (4 of 46)	22% (11 of 50)	36% (14 of 39)
Summit	52%	53%	41% (12 of 29)	32% (8 of 25)	45% (17 of 38)
Adrian	62%	61%	48% (15 of 31)	61% (20 of 33)	59% (26 of 44)
G.O.C.	21%	33%	0% (0 of 8)	0% (0 of 11)	15% (2 of 13)
Reception	36%	44%	41% (7 of 17)	37% (7 of 19)	40% (6 of 15)
Nokomis	54%	47%	38% (23 of 61)	28% (11 of 39)	53% (27 of 51)
Shawono	21%	27%	41% (14 of 34)	22% (9 of 41)	46% (25 of 54)
A.H.C.	11%	16%	35% (25 of 72)	39% (13 of 33)	59% (38 of 64)
DIVISION TOTAL (Secure and non-secure Programs)	38%	34%	33% (111 of 335)	32% (85 of 266)	47% (158 of 334)

TRUANCY (continued)

Objective: Reduce the incidence of on-campus and off-campus successful truanancies in the secure institutional programs to no more than 14% of residents during any six-month period.

Measurement: Monthly Truancy Reports.

INCIDENCE OF TRUANCY: 7/78 - 12/78						
	Avg. No. of Youth in Care	Total On-Campus Truancies	Successful On-Campus Truancies	Total Off-Campus Truancies	Successful Off-Campus Truancies	Rate of Successful Truancy
Sequoyah	117	8	4	7	5	8%
Olympic	126	39	33	17	16	39%
Summit	124	20	5	12	10	12%
Adrian	139	42	13	7	6	14%
G.O.C.	70	4	2	11	8	14%
Reception	50	9	3	9	7	20%
<hr/>						
SUBTOTAL Secure Programs	626	122	60	63	52	18%
Nokomis	35	31	13	7	7	57%
Shawono	36	42	31	2	1	89%
A.H.C.	21	58	48	4	4	248%
<hr/>						
TOTAL, ALL Programs	718	253	152	76	64	30%

INCIDENCE OF TRUANCY: 1/79 - 6/79						
	Avg. No. of Youth in Care	Total On-Campus Truancies	Successful On-Campus Truancies	Total Off-Campus Truancies	Successful Off-Campus Truancies	Rate of Successful Truancy
Sequoyah	120	21	12	16	14	22%
Olympic	122	37	30	9	9	32%
Summit	127	14	5	15	12	13%
Adrian	127	26	8	5	5	10%
G.O.C.	75	0	0	8	8	11%
Reception	48	11	5	6	5	21%
<hr/>						
SUBTOTAL Secure Programs	619	109	60	59	53	18%
Nokomis	43	55	34	6	4	88%
Shawono	46	28	15	6	4	41%
A.H.C.	23	71	46	1	1	204%
<hr/>						
TOTAL, ALL Programs	731	263	155	72	62	30%

TRUANCY (continued)

Objective: Reduce the incidence of on-campus and off-campus successful truanancies in the secure institutional programs to no more than 14% of residents during any six-month period.

Measurement: Monthly Truancy Reports

INCIDENCE OF TRUANCY: 7/79 - 12/79						
	Avg. No. of Youth in Care	Total On-Campus Truancies	Successful On-Campus Truancies	Total Off-Campus Truancies	Successful Off-Campus Truancies	Rate of Successful Truancy
Sequoyah	118	13	7	2	2	8%
Olympic	121	43	32	7	7	32%
Summit	127	18	13	7	7	13%
Adrian	123	29	11	4	4	13%
G.O.C.	86	3	3	8	8	11%
Reception	48	15	9	4	3	26%
<hr/>						
SUBTOTAL Secure Programs	622	121	75	32	26	16%
Nokomis	41	37	26	2	2	68%
Shawono	41	41	32	0	0	78%
A.H.C.	22	32	19	1	1	91%
<hr/>						
TOTAL, ALL Programs	726	231	152	35	29	25%

INCIDENCE OF TRUANCY: 1/80 - 6/80						
	Avg. No. of Youth in Care	Total On-Campus Truancies	Successful On-Campus Truancies	Total Off-Campus Truancies	Successful Off-Campus Truancies	Rate of Successful Truancy
Sequoyah	116	11	8	5	5	11%
Olympic	120	33	19	6	6	21%
Summit	126	30	15	8	6	17%
Adrian	137	40	14	4	4	13%
G.O.C.	92	6	5	7	6	12%
Reception	47	8	2	7	7	19%
<hr/>						
SUBTOTAL Secure Programs	638	128	63	37	34	15%
Nokomis	40	42	21	9	3	60%
Shawono	40	49	28	5	1	73%
A.H.C.	23	64	26	0	0	113%
<hr/>						
TOTAL, ALL Programs	741	283	138	51	38	24%

TRUANCY (continued)

Objective: Monitor the number of felonies committed by youth while on truancy status; study the number of law violations attributed to truants within a twenty-mile radius of all Division residential centers.

Measurement: Truancy Return Report Forms.

FELONIES REPORTED FOR YOUTH ON TRUANCY STATUS

	<u>1/77- 6/77</u>	<u>7/77- 12/77</u>	<u>1/78- 6/78</u>	<u>7/78- 12/78</u>	<u>1/79- 6/79</u>	<u>7/79- 12/79</u>	<u>1/80- 6/80</u>
Sequoyah	1	3	2	3	8	3	3
Olympic	11	8	9	11	6	9	4
Summit	8	0	10	8	2	9	6
A.T.S. (M)	2	14	6	9	10	21	5
A.T.S. (F)	0	0	1	0	0	1	0
G.O.C.	6	8	0	4	2	3	4
I.T.P./Reception	4	0	1	5	1	20	1
TOTAL, Secure Programs	32	33	29	40	29	66	23
					(11 from LOA's)	(8 from LOA's)	
Nokomis	7	2	4	1	8	5	3
Shawono	9	4	9	1	0	7	0
A.H.C.	NA	2	1	8	2	6	0
TOTAL All Programs	48	41	43	50	39	84	26

FELONIES REPORTED IN LOCAL AREA (WITHIN 20 MILES)

	<u>1/79- 6/79</u>	<u>7/79- 12/79</u>	<u>1/80- 6/80</u>
Sequoyah	0	0	1
Olympic	2	5	1
Summit	0	1	2
A.T.S. (M)	2	7	0
A.T.S. (F)	0	0	0
G.O.C.	0	0	0
I.T.P./Reception	1	6	0
TOTAL, Secure Programs	5	19	4
Nokomis	6	4	1
Shawono	0	5	0
A.H.C.	2	4	0
TOTAL, All Programs	13	32	5

Length of Stay

LENGTH OF STAY

Length of Stay and Population Changes:

Original (1975) length of stay objectives for the Institutional Services Division were: (a) to increase percentage of releases within the 4-7 month period; and (b) to decrease the percentage of releases after 11 months.*

In 1976, the Division's evaluation program unearthed evidence that three variables --- Productivity (particularly employability), educational achievement level at release, and age at release (older youth more successful) --- were related to community arrest-outcome success. These variables relate indirectly to length of stay, inasmuch as they may be influenced by the duration and intensity of care provided.

Since 1976, major policy changes have affected the institutional population. Status offenders were removed from institutions, and serious offenders began to be sent to institutions with regularity. Nearly half of all youth now entering care have been adjudicated for a serious felony (assault, robbery, murder, rape, arson). In addition, the percentage of youth with mental health placement histories has been increasing.

In 1980, Division administrators reconsidered the length of stay goal in light of changes in the institutional population. They concluded that, for most youth, the eleven month goal was still appropriate. The current objective is: "Release 67% (two-thirds) of youth in secure institutions within 11 months of admission to the center; release 90% of youth in rehabilitation camps within 7 months of their admission."

Summary:

- a.) For institutional males, the Institutional Services Division is now nearly on target with respect to its length of stay objective. For male youth released 1/80 - 6/80, only 34.5% remained in care longer than 11 months. This is the lowest figure since the original 1974-76 baseline was established.
- b.) At the same time, length of stay for females reached the highest level ever recorded in the 1/80 - 6/80 period, with 74% of the girls remaining in care beyond 11 months.

*Note: Averages are generally poor indicators of length of stay trends (because the distribution of scores on this variable is skewed heavily by a few long-term youth).

Preceding page blank

TRENDS IN INSTITUTIONAL LENGTH OF STAY*

Although it is recognized that for some youth a stay longer than eleven months is needed, the current division goal for institutions is to have no more than one-third of all youth remain in care longer than eleven months.

BOYS

Percentage released in:	7/74 - 6/76 N=727	1/78 - 6/78 N=231 (Avg. = 334 days)	7/78 - 12/78 N=218 (Avg. = 334 days)	1/79 - 6/79 N=262 (Avg. = 343 days)	7/79 - 12/79 N=233 (Avg. = 334 days)	1/80 - 6/80 N=233 (Avg. = 321 days)
0 - 3 mos.	1%	0%	1%	2%	0%	.5%
4 - 7 mos.	28%	14%	17%	16%	21%	20%
8 - 11 mos.	41%	42%	45%	36%	39%	45%
Over 11 mos.	30%	44%	37%	46%	40%	34.5%

GIRLS

Percentage released in:	7/74 - 6/76 N=211	1/78 - 6/78 N=31 (Avg. = 373 days)	7/78 - 12/78 N=32 (Avg. = 401 days)	1/79 - 6/79 N=41 (Avg. = 423 days)	7/79 - 12/79 N=18 (Avg. = 372 days)	1/80 - 6/80 N=31 (Avg. = 447 days)
0 - 3 mos.	3%	0%	0%	0%	6%	0%
4 - 7 mos.	7%	19%	12%	5%	11%	7%
8 - 11 mos.	28%	32%	38%	29%	22%	19%
Over 11 mos.	62%	49%	50%	66%	61%	74%

* Excluding Camps and Arbor Heights.

LENGTH OF STAY

Objective: Release 67% (two-thirds) of youth in secure institutions within eleven months of admission to the Center; release 90% of youth in rehabilitation camps within seven months of admission.

Measurement: Length of Stay Analysis from Data Center.

SEQUOYAH CENTER

Percentage released in:	BASELINE			
	7/74 - 12/75 N=135 Avg. LOS in Days = 302	1/79 - 6/79 N=66 Avg. LOS in Days = 345	7/79 - 12/79 N = 63 Avg. LOS in Days = 366	1/80 - 6/80 N = 52 Avg. LOS in Days = 370
0 - 3 mos.	1%	5%	0%	0%
4 - 7 mos.	24%	12%	8%	2%
8 - 11 mos.	45%	27%	30%	54%
Over 11 mos.	30%	56%	62%	44%
Over 15 mos.	NA	9%	16%	15%

OLYMPIC CENTER

Percentage released in:	BASELINE			
	7/74 - 12/75 N = 130 Avg. LOS in Days = 307	1/79 - 6/79 N = 60 Avg. LOS in Days = 320	7/79 - 12/79 N = 61 Avg. LOS in Days = 303	1/80 - 6/80 N = 42 Avg. LOS in Days = 268
0 - 3 mos.	1%	0%	0%	0%
4 - 7 mos.	28%	18%	30%	36%
8 - 11 mos.	38%	40%	44%	40%
Over 11 mos.	33%	42%	26%	24%
Over 15 mos.	NA	8%	8%	0%

SUMMIT CENTER

Percentage released in:	BASELINE			
	7/74 - 12/75 N = 98 Avg. LOS in Days = 309	1/79 - 6/79 N = 60 Avg. LOS in Days = 348	7/79 - 12/79 N = 52 Avg. LOS in Days = 352	1/80 - 6/80 N = 59 Avg. LOS in Days = 341
0 - 3 mos.	0%	2%	0%	0%
4 - 7 mos.	30%	13%	12%	8%
8 - 11 mos.	37%	43%	40%	56%
Over 11 mos.	33%	42%	48%	36%
Over 15 mos.	NA	13%	17%	12%

Length of Stay (continued)

ADRIAN TRAINING SCHOOL (GIRLS)

Percentage released in:	BASELINE	1/79 - 6/79	7/79 - 12/79	1/80 - 6/80
	7/74 - 12/75 N = 164 Avg. LOS in Days = 396	N = 41 Avg. LOS in Days = 423	N = 18 Avg. LOS in Days = 372	N = 31 Avg. LOS in Days = 447
0 - 3 mos.	4%	0%	6%	0%
4 - 7 mos.	7%	5%	11%	7%
8 - 11 mos.	27%	29%	22%	19%
Over 11 mos.	62%	66%	61%	74%
Over 15 mos.	NA	29%	22%	39%

ADRIAN TRAINING SCHOOL (BOYS)

Percentage released in:	BASELINE	1/79 - 6/79	7/79 - 12/79	1/80 - 6/80
	7/74 - 12/75 N = 33 Avg. LOS in Days = 329	N = 30 Avg. LOS in Days = 331	N = 27 Avg. LOS in Days = 305	N = 38 Avg. LOS in Days = 263
0 - 3 mos.	0%	3%	0%	3%
4 - 7 mos.	27%	20%	37%	45%
8 - 11 mos.	30%	27%	37%	31%
Over 11 mos.	43%	50%	26%	21%
Over 15 mos.	NA	13%	8%	5%

GREEN OAK CENTER

Percentage released in:	BASELINE	1/79 - 6/79	7/79 - 12/79	1/80 - 6/80
	7/74 - 12/75 N = 131 Avg. LOS in Days = 307	N = 35 Avg. LOS in Days = 409	N = 25 Avg. LOS in Days = 337*	N = 31 Avg. LOS in Days = 366*
0 - 3 mos.	1%	0%	0%	0%
4 - 7 mos.	34%	11%	24%	13%
8 - 11 mos.	35%	40%	48%	35.5%
Over 11 mos.	30%	49%	28%	51.5%
Over 15 mos.	NA	31%	20%	19%

* 390 days if prev. care in other Centers is included

* 391 days if prev. care in other Centers is included

Length of Stay (continued)

YOUTH CAMPS

Percentage released in:	BASELINE	1/79 - 6/79		7/79 - 12/79		1/80 - 6/80	
	7/74 - 12/75 N = 240 Avg. LOS in Days = 158	N = 72 Avg. LOS in Days = 181		N = 84 Avg. LOS in Days = 173		N = 61 Avg. LOS in Days = 177	
		Nokomis N=43 LOS=162	Shawono N=29 LOS=208	Nokomis N=49 LOS=158	Shawono N=35 LOS=195	Nokomis N=32 LOS=161	Shawono N=29 LOS=195
0 - 3 mos.	8%	9%	0%	8%	11%	6%	3%
4 - 7 mos.	85%	89%	79%	86%	69%	85%	80%
8 - 11 mos.	7%	2%	17%	6%	20%	9%	17%
Over 11 mos.	0%	0%	4%	0%	0%	0%	0%

INTENSIVE TREATMENT PROGRAM

Percentage released in:	7/74 - 12/75	1/79 - 6/79	7/79 - 12/79	1/80 - 6/80
	N = 35 Avg. LOS in Days = 220	N = 11 Avg. LOS in Days = 262	N = 5 Avg. LOS in Days = 231*	N = 11 Avg. LOS in Days = 274*
0 - 3 mos.	3%	0%	0%	0%
4 - 7 mos.	54%	36.5%	60%	36.5%
8 - 11 mos.	37%	36.5%	20%	36.5%
Over 11 mos.	6%	27%	20%	27%
Over 15 mos.	NA	0%	0%	9%

* 309 days if prev. care in other centers is included

* 345 days if prev. care in other centers is included

ARBOR HEIGHTS CENTER

Percentage released in:	BASELINE	1/79 - 6/79	7/79 - 12/79	1/80 - 6/80
	7/74 - 12/75 N = 11 Avg. LOS in Days = 667	N = 11 Avg. LOS in Days = 234	N = 8 Avg. LOS in Days = 238	N = 11 Avg. LOS in Days = 514
0 - 3 mos.	0%	18%	12%	9%
4 - 7 mos.	18%	37%	38%	9%
8 - 11 mos.	18%	18%	25%	18%
Over 11 mos.	64%	27%	25%	64%
Over 15 mos.	NA	0%	0%	45%

Outcomes

Preceding page blank

ARREST OUTCOMES AT THREE AND TWELVE MONTHS

The Arrest Outcome Scale:

The primary outcome scale in this evaluation program assesses arrest rates at three and twelve months following release. ("Arrest" means any formal police or court action against a youth. The question of guilt is not addressed.)

All youth in the Institutional Services Division are state delinquent wards, and each has a Community Services Worker. Follow-up on youth is achieved by telephone contact and structured interview with the worker.

Early in the research effort, this scale was tested for reliability against police and court records. It proved highly accurate (96%).

Further Refinements:

The outcome scale has been refined to provide more information on reason for arrest. Arrest may be on (a) aggressive felony, (b) felony, (c) misdemeanor, or (d) juvenile status offense charges.

Juvenile status offenses are those offenses which would not constitute crimes if committed by an adult. Shoplifting and marijuana possession are listed as misdemeanors. Violent felonies include murder, rape, assault, robbery and arson.

Summary of Major Findings:

1. Of more than four thousand (4,153) youth released between 7/74 and 6/80, outcome determinations can be made on 98% at three months, and on 90% through twelve months.
2. In the last few years, three-month arrest rates for male youth have dropped. For 655 youth released in 1979, the rearrest rate was only 17% --- down substantially from the 30% rate that applied in 1974-1977. In the first half of 1980, the male arrest rate rose slightly to 21%, but the overall rate remains low.

(Rates for females have averaged 10% over the past two years. Twelve-month rearrest rates have been 44% for males and 21% for females.)
3. Most of the arrests that occur in the first year happen in the first three months following release. This is a critical period for re-adjustment.
4. Four out of five arrests for males are on felony charges. (For females, only 40% of all rearrests are on felony charges.)
5. Several program variables have been found to be statistically related to felony-arrest outcome. These include: (1) level of educational achievement at release; (2) productivity (either job or school) in the community; and (3) age at release (the older the youth, the greater the probability of success).

Preceding page blank

INSTITUTIONAL SERVICES DIVISION:
TRENDS IN 3-MONTH ARREST OUTCOMES SINCE 1974

Release Group	Boys	Girls
7/74 - 6/75	32% (N = 608)	15% (N = 123)
7/75 - 6/76	29% (N = 554)	5% (N = 98)
7/76 - 12/76	30% (N = 289)	6% (N = 31)
1/77 - 6/77	30% (N = 239)	15% (N = 27)
7/77 - 12/77	23% (N = 290)	3% (N = 36)
1/78 - 6/78	27% (N = 300)	11% (N = 28)
7/78 - 12/78	23% (N = 295)	9% (N = 34)
1/79 - 6/79	17% (N = 335)	11% (N = 44)
7/79 - 12/79	18% (N = 320)	10% (N = 20)
1/80 - 6/80	21% (N = 441)	2% (N = 41)

OUTCOMES AT THREE MONTHS FOLLOWING RELEASE

Objective: To decrease the percentage of youths arrested/charged within three months of release.

Measurement: Outcome Scale of Community Care Telephone Questionnaire.

SEQUOYAH CENTER

	BASELINE 7/74-12/75 N = 159	7/78-12/78 N = 53	1/79-6/79 N = 58	7/79-12/79 N = 62	1/80-6/80 N = 76
No police contact	53%	75%	71%	85%	64%
Some contact	14%	2%	8%	2%	17%
Arrested	27%	17%	19%	13%	16%
Unknown	6%	6%	2%	0%	3%

Arrests:					
Aggressive Felonies		3	2	1	2
Felonies	40	4	5	5	6
Misdemeanors	3	2	4	0	1
Status Offenses	0	0	0	2	3

OLYMPIC CENTER

	BASELINE 7/74-12/75 N = 144	7/78-12/78 N = 41	1/79-6/79 N = 60	7/79-12/79 N = 61	1/80-6/80 N = 66
No police contact	60%	68%	72%	60.5%	70%
Some contact	6%	2.5%	7%	10%	10.5%
Arrested	26%	27%	20%	28%	18%
Unknown	8%	2.5%	1%	1.5%	1.5%

Arrests:					
Aggressive Felonies		3	0	4	2
Felonies	32	6	8	12	4
Misdemeanors	4	2	3	1	2
Status Offenses	2	0	1	0	4

OUTCOMES AT THREE MONTHS (continued)

SUMMIT CENTER

	BASELINE 7/74-12/75 N = 130		7/78-12/78 N = 46		1/79-6/79 N = 60		7/79-12/79 N = 52		1/80-6/80 N = 84	
No police contacts	52%		76%		80%		79%		79%	
Some contact	9%		7%		2%		11%		8%	
Arrested	31%		17%		16%		10%		12%	
Unknown	8%		0%		2%		0%		1%	

Arrests:										
Aggressive Felonies			3		1		0		1	
Felonies	35		5		8		4		4	
Misdemeanors	5		0		1		1		0	
Status Offenses	1		0		0		0		5	

ADRIAN TRAINING SCHOOL

	BASELINE 7/74-12/75		7/78-12/78		1/79-6/79		7/79-12/79		1/80-6/80	
	Girls N=165	Boys N=33	Girls N=31	Boys N=30	Girls N=41	Boys N=31	Girls N=18	Boys N=27	Girls N=37	Boys N=31
No police contact	70%	70%	80%	60%	78%	77%	83.5%	78%	89%	65%
Some contact	13%	6%	10%	10%	7%	13%	5.5%	7%	8%	6%
Arrested	12%	21%	10%	30%	12%	3%	5.5%	15%	3%	29%
Unknown	5%	3%	0%	0%	3%	7%	5.5%	0%	0%	0%

Arrests:										
Aggressive Felonies			0		2		1		1	
Felonies	6		7		0		5		2	
Misdemeanors	9		0		2		2		1	
Status Offenses	4		0		1		0		1	

OUTCOMES AT THREE MONTHS (continued)

GREEN OAK CENTER

	BASELINE 7/74-12/75 N = 125		7/78-12/78 N = 32		1/79-6/79 N = 35		7/79-12/79 N = 24		1/80-6/80 N = 51	
No police contact	50%		72%		74%		75%		59%	
Some contact	13%		0%		9%		8%		8%	
Arrested	36%		28%		14%		17%		31%	
Unknown	1%		0%		3%		0%		2%	

Arrests:										
Aggressive Felonies			2		1		0		1	
Felonies	42		4		3		1		3	
Misdemeanors	0		1		1		3		2	
Status Offenses	3		2		0		0		10	

INTENSIVE TREATMENT PROGRAM

	BASELINE 7/74-12/75 N = 35		7/78-12/78 N = 13		1/79-6/79 N = 11		7/79-12/79 N = 5		1/80-6/80 N = 20	
No police contact	40%		62%		91%		100%		60%	
Some contact	17%		0%		0%		0%		5%	
Arrested	40%		31%		9%		0%		35%	
Unknown	3%		7%		0%		0%		0%	

Arrests:										
Aggressive Felonies			0		0		0		1	
Felonies	13		4		1		0		0	
Misdemeanors	1		0		0		0		1	
Status Offenses	0		0		0		0		5	

OUTCOMES AT THREE MONTHS (continued)

CAMP SHAWONO

	BASELINE 7/76-12/76 N=54	7/78-12/78 N=37	1/79-6/79 N=29	7/79-12/79 N=35	1/80-6/80 N= 37
No police contact	69%	70%	66%	77%	67.5%
Some contact	5%	3%	14%	6%	11%
Arrested	24%	27%	17%	17%	21.5%
Unknown	2%	0%	3%	0%	0%
<hr/>					
Arrests:					
Aggressive Felonies		1	2	2	2
Felonies	8	6	2	3	4
Misdemeanors	4	3	1	1	1
Status Offenses	1	0	0	0	1

CAMP NOKOMIS

	BASELINE 7/76-12/76 N=42	7/78-12/78 N=36	1/79-6/79 N=43	7/79-12/79 N=48	1/80-6/80 N=46
No police contact	48%	69%	79%	75%	80.5%
Some contact	10%	12%	2%	4%	4.5%
Arrested	38%	19%	19%	19%	15%
Unknown	4%	0%	0%	2%	0%
<hr/>					
Arrests:					
Aggressive Felonies		0	0	1	0
Felonies	14	5	8	5	3
Misdemeanors	2	2	0	3	2
Status Offenses	0	0	0	0	2

OUTCOMES AT THREE MONTHS (continued)

YOUTH CAMPS (TOTAL)

	BASELINE 7/74-12/75 N = 268	7/78-12/78 N = 73	1/79-6/79 N = 72	7/79-12/79 N = 83	1/80-6/80 N = 83
No police contact	54%	70%	74%	76%	75%
Some contact	13%	7%	7%	5%	7%
Arrested	30%	23%	18%	18%	18%
Unknown	3%	0%	1%	1%	0%
<hr/>					
Arrests:					
Aggressive Felonies		1	2	3	2
Felonies	69	11	10	8	7
Misdemeanors	11	5	1	4	3
Status Offenses	1	0	0	0	3

ARBOR HEIGHTS CENTER

	BASELINE 7/74-6/77		7/78-12/78		1/79-6/79		7/79-12/79		1/80-6/80	
	Girls N=14	Boys N=26	Girls N=3	Boys N=7	Girls N=3	Boys N=8	Girls N=2	Boys N=6	Girls N=4	Boys N=10
No police contact	50%	73%	33%	72%	100%	50%	50%	16.5%	75%	50%
Some contact	22%	15%	67%	0%	0%	0%	0%	16.5%	25%	0%
Arrested	14%	12%	0%	14%	0%	50%	50%	67%	0%	40%
Unknown	14%	0%	0%	14%	0%	0%	0%	0%	0%	10%
<hr/>										
Arrests:										
Aggressive Felonies			0	0	0	1	0	0	0	1
Felonies	0	2	0	1	0	1	1	4	0	3
Misdemeanors	2	1	0	0	0	0	0	0	0	0
Status Offenses	0	0	0	0	0	2	0	0	0	0

JOB/SCHOOL OUTCOMES AT THREE MONTHS

Objective: Increase the percentage of students who are enrolled in school, are in special training, or who are employed three months after release, to 56% for youth released in the January - June period and 60% for youth released in the July - December period.

Measurement: Job/School Outcome Scale of the Community Care Telephone Questionnaire

THE PRODUCTIVITY (JOB/SCHOOL) OUTCOME SCALE

This outcome scale assesses the rate at which youth achieve job or school participation within three months following release from an institutional center. (Training programs and military are also counted productive.)

Job and school outcomes are combined in one index entitled "Productivity", but the variables are studied separately as well as in combination.

The "Productivity" index is determined by telephone contact with the Community Care Worker at a point 3 months after release from an institutional center. "Productivity" is determined as of the date of the telephone contact. (i.e., the Productivity Index is not a summary of the three-month community period.)

Summary of Major Findings:

1. Productive status is the most important factor to date predicting arrest outcome success. The felony arrest rate for non-productive youth is nearly four times the arrest rate for productive youth. Even when youth who are in jail or detention are omitted from the comparison (these youth couldn't be productive, since they were in jail) the arrest rate for non-productive youth is still more than double the rate for productive youth (36% to 14% in one study.)
2. Since 1974, nearly half of all youth have been totally non-productive (no job or school) three months after release. Supports are needed to help youth achieve productive status in the post-release period.
3. There appear to be seasonal fluctuations in productivity, with considerably less productivity in the summer months.

TRENDS IN PRODUCTIVITY RATES AT THREE MONTHS

- All Centers -

1-6/76 (N=303)	7-12/76 (N=320)	1-6/77 (N=260)	7-12/77 (N=327)	1-6/78 (N=296)	7-12/78 (N=312)	1-6/79 (N=362)	7-12/79 (N=330)	1-6/80 (N=468)
41%	51%	45%	64%	52%	60%	56%	60%	56%

PRODUCTIVITY RATES BY CENTER

	Release Groups						
	1-6/77 (N=260)	7-12/77 (N=327)	1-6/78 (N=296)	7-12/78 (N=312)	1-6/79 (N=362)	7-12/79 (N=330)	1/80-6/80 (N=468)
Sequoyah	43%	72%	52%	60%	56%	70%	60% (N=73)
Olympic	37%	64%	46%	58%	70%	48%	66% (N=64)
Summit	59%	59%	76%	56%	52%	65%	54% (N=83)
A.T.S. (M)	52%	63%	50%	73%	48%	52%	63% (N=51)
A.T.S. (F)	48%	64%	36%	54%	35%	63%	54% (N=35)
G.O.C.	34%	50%	51%	43%	52%	52%	43% (N=49)
Nokomis	36%	70%	58%	67%	68%	62%	53% (N=45)
Shawono	57%	73%	44%	73%	57%	60%	51% (N=35)
I.T.P.	44%	44%	25%	50%	73%	100%	60% (N=20)
A.H.C. (M)	50%	100%	0%	67%	12%	67%	44% (N=9)
A.H.C. (F)	100%	100%	0%	0%	67%	0%	75% (N=4)
Total	45%	64%	52%	60%	56%	60%	56% (N=468)

Objective: Accomplish planned completion percentages of (a) 85% for youth in secure institutions; and (b) 75% for youth in Camps and Arbor Heights.

Measurement: Weekly Population Information Reports.

REASONS FOR CASE TERMINATION: 1/79 - 6/79							
Center	N =	Planned Completion		Crisis Completion		Truancy Completion	
Sequoyah	72	57	79%	11	15%	4	6%
Olympic	91	70	77%	16	18%	5	5%
Summit	70	61	87%	8	12%	1	1%
G.O.C.	47	39	83%	1	2%	7	15%
I.T.P.	20	17	85%	1	5%	2	10%
A.T.S. (M)	43	32	74%	9	21%	2	5%
Institutional Male Total	343	276	81%	46	13%	21	6%
A.T.S. (F)	42	42	100%	0	0%	0	0%
A.H.C.	12	2	17%	4	33%	6	50%
Nokomis	53	39	74%	7	13%	7	13%
Shawono	37	28	76%	7	19%	2	5%
Camps Total	90	67	74%	14	16%	9	10%

REASONS FOR CASE TERMINATION 7/79 - 12/79							
Center	N =	Planned Completion		Crisis Completion		Truancy Completion	
Sequoyah	77	68	88%	8	10%	1	2%
Olympic	88	66	75%	16	18%	6	7%
Summit	64	52	81%	7	11%	5	8%
G.O.C.	31	26	84%	2	6%	3	10%
I.T.P.	9	6	67%	2	22%	1	11%
A.T.S. (M)	33	27	82%	4	12%	2	6%
Institutional Male Total	302	245	81%	39	13%	18	6%
A.T.S. (F)	19	18	95%	0	0%	1	5%
A.H.C.	8	1	12.5%	1	12.5%	6	75%
Nokomis	53	44	83%	2	4%	7	13%
Shawono	54	29	54%	2	4%	23	42%
Camps Total	107	73	68%	4	4%	30	28%

Objective: Accomplish planned completion percentages of (a) 85% for youth in secure institutions; and (b) 75% for youth in Camps and Arbor Heights.

Measurement: Weekly Population Information Reports.

REASONS FOR CASE TERMINATION: 1/80 - 6/80							
Center	N =	Planned Completion		Crisis Completion		Truancy Completion	
Sequoyah	57	52	91%	4	7%	1	2%
Olympic	80	47	59%	17	21%	16	20%
Summit	67	61	91%	4	6%	2	3%
G.O.C.	35	30	86%	3	8%	2	6%
I.T.P.	13	12	92%	1	8%	0	0%
A.T.S. (M)	43	38	89%	4	9%	1	2%
Institutional Male Total	295	240	81%	33	11%	22	8%
A.T.S. (F)	32	32	100%	0		0	
A.H.C.	13	10	77%	2	15%	1	8%
Nokomis	39	31	80%	4	10%	4	10%
Shawono	32	28	88%	0	0%	4	12%
Camps Total	71	59	83%	4	6%	8	11%

ARREST OUTCOMES AT 12 MONTHS FOLLOWING RELEASE

Although the Institutional Services Division does not maintain a program goal for rearrest rate at twelve months after release, nevertheless the 12 month rate is monitored for general purposes.

12 Month Arrest Rates by Center

RELEASE PERIODS:	BASELINE 7/73-6/74	1/77 - 6/77	7/77 - 12/77	1/78 - 6/78	7/78 - 12/78	1/79 - 6/79
Sequoyah	46% (N=352)*	53%	29%	41%	37%	41% (N=58)
Olympic	46% (N=352)*	64%	40%	56%	44%	35% (N=60)
Summit	46% (N=352)*	33%	38%	31%	49%	48% (N=60)
Adrian (M)	54% (N=26)	46%	33%	37%	53%	45% (N=31)
Adrian (F)	18% (N=141)	27%	18%	27%	16%	32% (N=41)
G.O.C.	68% (N=53)	56%	44%	32%	59%	49% (N=35)
Nokomis	47% (N=154)**	39%	44%	46%	56%	35% (N=43)
Shawono	47% (N=154)**	39%	38%	51%	46%	46% (N=28)
I.T.P.	56% (N=9)	86%	33%	50%	50%	27% (N=11)
A.H.C. (M)	40% (N=10)	33%	50%	33%	20%	60% (N=5)
A.H.C. (F)	14% (N=7)	100%	0%	25%	20%	0% (N=3)
TOTAL						
Males	52% (N=604)	48%	38%	42%	47%	42% (N=331)
Females	19% (N=148)	26%	17%	26%	16%	30% (N=44)

* Computed as one Maxey figure

** Computed as one Camps figure

Intake

INTAKE AND CASE FLOW

Overview:

Case flow is a fundamental component of residential care planning and operations. The following section depicts trends in institutional population, waiting lists, and intake from Wayne County and Outstate. Reasons for case termination (planned release, crisis release, or release from truancy) are discussed on pp. 56 and 57, in the Outcomes section of this report.

Summary of Trends:

1. The waiting list of youth in detention or jail awaiting institutional placement remains unacceptably high, although the last six months has seen major fluctuations in number of youth on the list.
2. Between 1976 and 1978, institutional programs were expanded by 168 beds in response to intake pressures. All of the expansion was in the boy's programs. The institutions have been operating at capacity since 1978.
3. Wayne County is consistently contributing 43% of all institutional intake for males. (In the period 1973-1976, Wayne County used institutional resources sparingly.)
4. Approximately 8 in 10 youth admitted to institutional programs (see pp. 56 and 57) will eventually receive a planned completion. Few youth are released or discharged because of truancy. Every institutional center but one meets the goal of 85% successful (planned) completion established by the Institutional Services Division in the summer of 1980.

Preceding page blank

STUDENTS ON ACTIVE ROLLS
 INSTITUTIONAL SERVICES DIVISION*

	<u>Institutional Males</u>	<u>Institutional Females</u>	<u>Camps Males</u>	<u>Total</u>
June, 1969	918	316	80	1,314
December, 1969	833	301	65	1,199
June, 1970	838	281	80	1,199
December, 1970	739	270	76	1,085
June, 1971	560	190	84	834
December, 1971	578	105	59	742
June, 1972	429	72	70	571
December, 1972	344	67	51	462
June, 1973	324	105	64	493
December, 1973	386	109	63	558
June, 1974	387	111	71	569
December, 1974	384	98	80	562
June, 1975	387	93	70	550
December, 1975	380	85	80	545
June, 1976	405	61	81	547
December, 1976	446	59	78	583
June, 1977	529	69	84	682
December, 1977	513	75	81	669
June, 1978	542	77	85	704
December, 1978	526	75	88	689
June, 1979	551	57	70	678
December, 1979	567	60	54	681
June, 1980	565	57	76	698

* Figures include Camps, but not Arbor Heights Center or Regional Detention Center.

Preceding page blank

THE WAITING LIST INTO INSTITUTIONAL CARE

12/77 - 12/80

Waiting list pressures have been pronounced in recent years. Between 1976 and 1978, institutional programs were expanded by opening 168 unused beds in response to intake pressures. The final (40 bed) expansion was in April/May 1978. Since that time, institutions have been at capacity.

After temporary reduction due to the impact of the 1978 expansion, the active waiting list resumed a steady climb. In June of 1980, there was a sudden, sharp decline in the active list, and a corresponding increase in the hold list. Later in the year, the active list again climbed into the 50's.

Week Ending (date):	ACTIVE WAITING LIST	Hold ^s *	Total
12/30/77	NA	NA	92
2/10/78	NA	NA	89
3/17/78	71	25	96
4/14/78	58	32	90
5/5/78	34	35	69
6/2/78	24	51	75
6/30/78	36	44	80
8/4/78	51	48	99
9/29/78	64	41	105
10/27/78	67	42	109
11/24/78	69	39	108
12/29/78	79	37	114
2/2/79	70	47	117
4/20/79	72	46	118
6/29/79	79	45	124
8/27/79	84	36	120
9/5/79	85	39	124
11/7/79	76	40	116
1/31/80	97	48	145
3/18/80	100	48	148
5/30/80	111	45	156
6/30/80	63	60	123
10/1/80	32	64	96
12/3/80	53	23	76

* Youth referred, but unavailable to active waiting list for a variety of reasons including truancy, pending court hearing, pending Youth Parole and Review Board hearing, illness, etc. In October of 1980, the hold list was "cleaned up" by removing youth who had been in hold status longer than 30 days (unless workers requested an extension).

INTAKE BY QUARTER - INSTITUTIONAL BOYS

	Wayne County	Not Wayne County	Total
<u>1976</u>			
1st Quarter	24 (26%)	68	92
2nd Quarter	36 (34%)	70	106
3rd Quarter	44 (36%)	77	121
4th Quarter	74 (58%)	53	127
	<u>178 (40%)</u>	<u>268 (60%)</u>	<u>446</u>
<u>1977</u>			
All Quarters	266 (50%)	263 (50%)	529
<u>1978</u>			
All Quarters	207 (41%)	302 (59%)	509
<u>1979</u>			
1st Quarter	62 (46%)	73 (54%)	135
2nd Quarter	60 (39%)	95 (61%)	155
3rd Quarter	76 (47%)	87 (53%)	163
4th Quarter	54 (40%)	82 (60%)	136
	<u>252 (43%)</u>	<u>337 (57%)</u>	<u>589</u>
<u>1980</u>			
1st Quarter	55 (44%)	71 (56%)	126
2nd Quarter	64 (42%)	88 (58%)	152
3rd Quarter	73 (43%)	97 (57%)	170

INTAKE BY QUARTER - INSTITUTIONAL GIRLS

	Wayne County	Not Wayne County	Total
<u>1976</u>			
All Quarters	13 (27%)	36 (73%)	49
<u>1977</u>			
All Quarters	32 (41%)	47 (59%)	79
<u>1978</u>			
All Quarters	21 (34%)	41 (66%)	62
<u>1979</u>			
All Quarters	14 (33%)	28 (67%)	42
<u>1980</u>			
1st Quarter	4 (33%)	8 (67%)	12
2nd Quarter	12 (60%)	8 (40%)	20
3rd Quarter	8 (89%)	1 (11%)	9

Regional Detention

Preceding page blank

REGIONAL DETENTION CENTER (RDC)

History of RDC and Counties Served:

The Genesee County Children's Facility was transferred to the administration of the Michigan Department of Social Services in October, 1978, and was designated as a Regional Detention Center for the following counties:

Eaton	Huron	Sanilac
Genesee	Lapeer	Shiawassee
Gratiot	Tuscola	Livingston

Purpose of RDC and Youth Accepted:

The Center was established to provide short-term custody, assessment, and assistance to youth in preparing them to return to the community, or to an alternative placement. Youth alleged to be delinquent may be detained as ordered by juvenile court pending an adjudication hearing, and/or pending completion of a placement subsequent to a disposition hearing.

Program Description and Services:

Four interdisciplinary teams provide supportive and secure care for up to 68 youth (16 females and 52 males).

Each youth receives a physical examination within 72 hours of admission and a dental examination within one week.

Educationally, each youth is administered the Wide Range Achievement Test (WRAT) their first school day, and has a two week Individual Lesson Plan (ILP) developed for both Basic Education and Career Education. The ILP is updated every two weeks thereafter which assists staff teams in assessing school performance, in completing transcripts, and in screening youth for an educational handicap. Each youth daily receives two 1½ hour periods of basic education, a 1½ hour period of career education, a 1½ hour period of physical education, and a 1½ hour period of art education.

From a social service standpoint, each youth's adjustment is reviewed weekly at staff team meetings and a formal intake conference is held after two weeks if the youth is still in detention. This allows for the development of individual case plans for detention, the completion of monthly progress reports (as appropriate), and the preparation of release summaries.

Besides the preceding services, which are made available to all youth in the Center, the Juvenile Court or a local DSS office may request the Center to administer a psychological and/or a psychiatric examination, case planning and placement search assistance, and testimony at hearings.

Preceding page blank

1. Secure Detention Objective:

Provide short-term secure detention to all youth referred to the Center by the 9 Primary Courts and local DSS offices.

Measurement(s)	Baseline	
	(12 Months) 10/78-9/79	(12 Months) 10/79-9/80
a. # Primary County Admissions	670	614
b. # Primary County Referrals	691	633
c. % of Referrals Admitted	97%	97%
d. Total # Youth Served	825	707
e. % of Total from Primary Counties	81%	86%

2. Diagnostic/Casework Services Objective:

Of those youth released with 15 or more days in the Center, increase the percentage of JC/DSS requests for diagnostics and casework services that are honored.

Measurement(s)	Baseline					
	(5 Months) 5/79-9/79		(6 Months) 10/79-3/80		(6 Months) 4/80-9/80	
	Number Requests	Number Honored	Number Requests	Number Honored	Number Requests	Number Honored
a. Youth Released with 15+ Days	202		217		233	
b. Secure Detention Only	62	62	64	64	64	64
c. Copies of Medical Exam	103	100	94	94	117	116
d. Copies of Dental Exam	84	81	72	72	102	102
e. Copies of School Trans.	8	8	19	19	16	16
f. Copies Case Plan/Rel. Summary	49	46	25	25	31	31
g. Interim Adjustment Rpr.	40	32	39	39	41	40
h. Psychological Exam	82	75	102	101	107	106
i. Psychiatric Exam	5	5	6	6	17	17
j. Educational Prg. Plann. Conference	0	0	0	0	1	1
k. Placement Recommendation	22	19	20	20	35	34
l. Court or P & R Testimony	N/A	N/A	N/A	N/A	N/A	N/A
m. Placement Counseling	9	9	7	7	4	4
n. Family Counseling	2	2	1	1	0	0
o. Total JC/DSS Req. (w/o "b")	405	377	385	384	470	467
p. % of JC/DSS Requests Honored	93%		99%		99%	

3. Education Plan Objective:

Of those youth released with 15 or more days in the Center, increase the percentage who successfully completed their Individual Education Plan (IEP).

Measurement(s)	Baseline		
	(5 Months) 5/79-9/79	(6 Months) 10/79-3/80	(6 Months) 4/80-9/80
a. Number of youth released with 15+ days in the Center	202	217	233
b. Number of IEP's prepared	542	756	766
c. Number of IEP's successfully completed	419	575	624
d. Percent of IEP's successfully completed	77.3%	76.1%	81.5%

4. Jailing Objective:

Determine by the 9 Primary Counties frequency of juveniles booked at a jail and placed in a cell.

Measurement(s)	Baseline		
	(4 Months) 6/79-9/79	(6 Months) 10/79-3/80	(6 Months) 4/80-9/80
a. Eaton	3	3	0
b. Genesee	2	4	2
c. Gratiot	0	7	7
d. Huron	3	5	3
e. Lapeer	0	0	3
f. Livingston	10	17	13*
g. Sanilac	31	26	27**
h. Shiawassee	1	3	0***
i. Tuscola	12	9	1****
j. Total Youth	62	74	56

* Does not include May report
 ** Does not include August report
 *** Does not include May, July, August and September reports
 **** Does not include July report

5. Status Offender Objective:

Determine by the 9 Primary Counties the number of Status Offenders admitted to the Center where alternatives to detention have not been tried:

Measurement(s)	Baseline		
	(4 months) 6/79-9/79	(6 months) 10/79-3/80	(6 months) 4/80-9/80
a. Eaton	0	3	1
b. Genesee	1	5	2
c. Gratiot	0	0	0
d. Huron	1	1	0
e. Lapeer	6	1	0
f. Livingston	6	11	6
g. Sanilac	1	1	1
h. Shiawassee	2	1	0
i. Tuscola	1	3	5
j. Total Youth	18	26	15

6. Length of Stay Objective:

Determine the primary purpose of detention, for the majority of time at RDC, for youth released after 31+ days.

Measurement(s)	(5 months)	(6 months)	(6 months)
	5/79-9/79	10/79-3/80	4/80-9/80
a. Waiver Hearing	3	1	0
b. JC Adjudication Hearing	22	30	9
c. P & R Hearing	16	7	10
d. DSS Acceptance of Case	0	5	4
e. Diagnostics	0	1	0
f. Placement Search	30	37	40
g. Training School Waiting List	10	18	28
h. Other Waiting Lists	14	16	13
i. Other	1	6	5
j. Unknown	0	3	2
k. Total Youth	96	124	111

APPENDIX

STATISTICAL SUPPORT STUDIES
January, 1981
INSTITUTIONAL EVALUATION PROGRAM

(1)

SUMMARIZATION:

STUDIES COMPLETED 1974 - 1976 *

1) Productivity (job or school participation) and Arrest Outcomes:

- Job/school productivity is highly predictive of success at avoiding arrest within three youths of release (see page 48; this report). Arrest rate of productive youth studied = 14%; non-productive youth = 50%.
- Youth display high rates of non-productivity (more than 50%) three short months after release.

2) Educational Achievement and Arrest Outcomes:

- The higher the achievement level of students at release, the greater their probability of success at avoiding re-arrest.
- Academic level attained is predictive of success, while the amount of academic gain is not.

3) Educational Level at Entry and Amount Gained During Stay:

- Youth entering at 2.9 grade level or below do not gain as much as youth entering at higher levels.

4) Age at Release and Arrest Outcomes:

- Youth released at 17 years or older have a significantly lower arrest rate than youth released under 17. (Older youth studied = 19% and younger = 33%.)

5) Length of Stay and Arrest Outcomes:

- Length of stay averages do not describe the relationship between length of stay and arrest probability very well, because the relationship is curvilinear.
- Youth with very short length of stays tend to be lower-risk youth, and their arrest outcomes are indeed better. But contrary to prediction, youth with longer than average stays have better arrest outcomes than youth with average stays. (Apparently, other factors such as age, employability, etc., affect the expected outcome rates, since long-term residents are often difficult, high-risk youth.)

* For detailed analysis, see previous Centers reports.

PREGNANCY AND CHILDBIRTH
 AMONG ADRIAN GIRLS
 12 MONTHS AFTER RELEASE

In 1974-76, of 289 girls released from the Adrian Training School, 63 (22%) were either pregnant or had given birth one year after release, according to their community care workers.

<u>Pregnant</u>	<u>Mothers</u>	<u>Total</u>
38	25	63 (22%)

In 1977-78, of 121 girls released at Adrian, only 19 (16%) were either pregnant or had given birth within one year.

<u>Pregnant</u>	<u>Mothers</u>	<u>Total</u>
13	6	19 (16%)

Analysis:

The rate of pregnancy and childbirth in the period immediately following release has dropped somewhat for girls at Adrian Training School. The decline is not statistically significant, however.

PROFILES OF
 YOUTH IN INSTITUTIONS

- (a) Institutional Boys (Sequoyah, Olympic, Summit, Adrian)
- (b) Boys in Camps
- (c) Boys in Green Oak Center/ITP
- (d) Girls in Institutions

December, 1979

PROFILE:

BOYS IN INSTITUTIONS

The following profile is descriptive of the typical male youth currently entering Institutional Services Division Centers (excluding G.O.C., I.T.P. and Camps).

Age: (intake for 1/78 - 12/78, N=546)

Average age at entry = 16 years, 11 days
 Average length of stay = 334 days
 Average age at release = 16 years, 345 days

Academic Level: (released youths 7/78 - 6/79, N=374)

Average grade level at entry = 6.25
 Average grade level at release = 7.58
 Average academic gain during stay = 1.33
 Average gain "per year in program" = 1.48 $\left(\frac{1.33 \times 365 \text{ days}}{329 \text{ days}}\right)$

Previous Offense Patterns:

(Most serious adjudications - Intake for 1/79 - 9/79, N=373)

Aggressive felons = 47%
 Property felons = 51%
 Misdemeanors = 2%
 Status Offenders = 0%*

Previous Actions and Placements: (Intake for 1/79 - 9/79, N=373)

At point of intake, the average youth:

- averaged 3.4 previous court appearances
- averaged 3.1 previous adjudicated offenses
- averaged 1.1 previous out of home placements
- one youth in nine (11%) had seen previous placement in a residential facility for the mentally ill or emotionally disturbed.

* Since 7/1/76

May, 1980

PROFILE:

BOYS IN CAMPS

The following profile is descriptive of the typical male youth currently entering the Institutional Services Division's Youth Rehabilitation Camps.

Age: (Intake for 1/80 - 3/80, N=63)

Average age at entry = 16 years, 113 days
 Average length of stay = 189 days
 Average age at release = 16 years, 314 days

Academic Level: * (Youth released 1/80 - 3/80, N=28)

Average grade level at entry = 6.1
 Average grade level at release = 7.4
 Average academic gain during stay = 1.3
 Average gain "per year in program" = 2.5 $\left(\frac{1.3 \times 365 \text{ days}}{189 \text{ days}}\right)$

Previous Offense Patterns:

(Most serious adjudications - Intake from 10/79 - 3/80, N=83)

Aggressive felonies = 13%
 Property felonies = 77%
 Misdemeanors = 5%
 Status offenses = 5%

Previous Actions and Placements:

- had averaged 2.7 previous court appearances
- had averaged 3.1 previous adjudicated offenses
- had averaged .8 previous out-of-home placements

* Figures not available for two youths.

PROFILE:
BOYS IN SPECIAL PROGRAMS

The following profile is descriptive of the typical male youth currently entering Green Oak Center and the Intensive Treatment Program

Age: (intake for 1/78 - 12/78, N = 67)

Average age at entry = 16 years, 47 days
Average length of stay = 334 days
Average age at release = 17 years, 16 days

Academic Level: (released youths 7/78 - 6/79, N = 77)

Average grade level at entry = 6.10
Average grade level at release = 7.44
Average academic gain during stay = 1.34
Average gain "per year in program" = 1.34 $\frac{(1.34 \times 365 \text{ days})}{365 \text{ days}}$

Previous Offense Patterns:

(Most serious adjudications, intake for 1/79 - 9/79, N = 116)

Aggressive felons = 56%
Property felons = 44%
Misdemeanors = 0%
Status offenders = 0%

Previous Actions and Placements: (Intake for 1/79 - 9/79, N = 116)

At point of intake, the average youth:

- averaged 2.7 previous court appearances
- averaged 2.5 previous adjudicated offenses
- averaged 1.8 previous out of home placements
- nearly one youth in three (30%) had seen previous placement in a residential facility for the mentally ill or emotionally disturbed.

PROFILE:
GIRLS IN INSTITUTIONS

The following profile is descriptive of the typical female youth currently entering Institutional Services Division Centers (Adrian Training School)

Age: (Intake for 1/78 - 12/78, N = 69)

Average age at entry = 15 years, 263 days
Average length of stay = 1 year, 22 days (387 days)
Average age at release = 16 years, 300 days

Academic Level:

Average grade level at entry = 5.9
Average grade level at release = 7.0
Average academic gain during stay = 1.1
Average gain per year in program = 1.04 $\frac{(1.1 \times 365)}{387 \text{ days}}$

Previous Offense Patterns:

(Most serious adjudication - 1/78 - 12/78, N = 69)

Aggressive felonies (murder, manslaughter, rape, assault, robbery: armed and unarmed, arson criminal sexual conduct). = 52%

Property felonies (car theft, breaking and entering, larceny, drug law violations: excluding marijuana possession). = 33%

Misdemeanors (malicious destruction of property, drunk and disorderly, shoplifting, marijuana possession, violation of probation). = 15%

Status offenses (home and school truancy, incorrigibility, curfew). = 0%

Previous Actions and Placements:

At point of intake, the average youth:

- Averaged 2.7 previous court appearances
- Averaged 1.8 previous adjudicated offenses
- Averaged 1.8 previous out-of-home placements
- One youth in five (18%) had seen previous placement in a residential facility for the mentally ill or emotionally disturbed.

A STUDY OF AGGRESSIVE ADJUDICATION HISTORIES
IN INSTITUTIONAL INTAKE:

WAYNE COUNTY AND OUTSTATE

OBSERVATION GROUP: 569 male youth admitted to Sequoyah, Summit, Green Oak Center, and Intensive Treatment between 12/75 and 7/77.

	<u>WAYNE COUNTY</u>	<u>OUTSTATE</u>
Record of Aggressive Felony Adjudication	54% (N = 115)	35% (N = 92)
No Record of Aggressive Felony Adjudication	46% (N = 97)	65% (N = 265)

χ^2 for this distribution (df = 1) = 39.06 which is significant beyond the .001 level of probability.

CONCLUSION: Wayne County youth have significantly greater rates of aggressive felony adjudications than outstate youth.

Aggressive felonies include murder, rape, assault, robbery and arson.

THE VIOLENT OFFENDER
(OUTCOMES)

Overview:

One youth in three (34%) currently entering the Institutional Services Division has been adjudicated for a violent felony. The remaining two-thirds (66%) have been committed for property felonies. (Currently, the misdemeanor is rare. The status offender is not admitted.)

We know a good deal more today about the outcomes of youth in state institutional care than we have in recent years. This sheet is necessarily a simplification. (Detailed information available upon request.)

What we know about the violent offender:

- The violent offender is principally male.
- While property offenders have higher rearrest rates, violent offenders are more likely to commit another violent offense.
- In short, property offense predicts probability of rearrest, but violent offense predicts violence.
- The probability of a youth being rearrested on a violent felony charge within one year of release is:
 - 1 in 9 for institutional youth as a whole;
 - but
 - 1 in 12 for youth admitted as property offenders;
 - and
 - 1 in 5½ for youth admitted as violent offenders.
- More than one male delinquent state ward in 100 will be discharged from state care because he is dead. This is three times the normal mortality rate. A disproportionate number of these deaths (about 4 in 5) are among youth who have committed offenses harmful to persons.
- In short, the violent youth is a high-risk youth -- not only to the community, but to himself.

Conclusions:

An intensification of effort is needed to focus on the violent youthful offender group. This is particularly the case in the post-institutional period, where more than half of all institutional releasees are typically idle within three months of release.

The risks -- and the needs -- of this group appear extreme.

Longitudinal Tracking of Youth Entering Adult Department of Corrections Programs

Subject Groups: Three hundred sixty-one male youth released from Institutions between 7/1/74 and 6/30/75; 115 male youth released from Youth Rehabilitation Camps between 12/1/74 and 6/30/75; 119 females released at Adrian, 7/1/74 - 6/30/75.

A comparison group of youth released in 7/77 - 6/78 is now available. This group may be compared (at 2½ yrs.) with the initial study group.

Procedure: Youth in the subject groups were checked annually against Department of Corrections population rosters, to determine if they had entered the adult correctional system. (Note: Names only appeared on the rosters if a young person has drawn a sentence greater than one year. Sentences of less than a year were served in the county jail system.) Figures below include youth who have entered D. of C., served sentences and been released.

	No. of Youth Released 1974/75	2½ Yrs. % in Prison 6/30/77	3½ Yrs. % in Prison 6/30/78	4½ Yrs. % in Prison 6/30/79	5½ Yrs. % in Prison 6/30/80	No. of Youth Released 1977/1978	2½ Yrs. % in Prison 6/30/80
G.O.C.	91	34(37%)	42(46%)	49(54%)	51(56%)	81	28 (35%)
Adrian (M)	9*	4(44%)	4(44%)	4(44%)	4(44%)	48	6 (13%)
Sequoyah	89	24(27%)	32(36%)	41(46%)	43(48%)	113	26 (23%)
Olympic	85	20(24%)	29(34%)	33(39%)	35(41%)	88	25 (28%)
Sunmit	64	9(14%)	17(27%)	20(31%)	25(39%)	105	21 (20%)
Camps	115	16(14%)	26(23%)	30(26%)	33(29%)	176	22 (13%)
Rec./ITP	23	3(13%)	5(22%)	7(30%)	10(43%)	17	3 (18%)
Total (M)	476	110(23%)	155(33%)	184(39%)	201(42%)	628	131 (21%)
Adrian (F)	119	5(4%)	6(5%)	7(6%)	7(6%)	69	0 (0%)

* Adrian figures are small because programming for males was in early stages in 1974-75.

AVERAGE AGES 1978

INTAKE

Center	Average Age
Adrian Training School (F) N = 69	15 yr., 263 days
Adrian Training School (M) N = 76	16 yr., 59 days
Arbor Heights Center N = 35	15 yr., 7 days
Green Oak Center N = 41	16 yr., 181 days
Olympic Center N = 134	16 yr., 47 days
Reception/I.T.P. N = 26	15 yr., 202 days
Sequoyah Center N = 134	15 yr., 326 days
Summit Center N = 135	15 yr., 363 days
All Institutional Males N = 546	16 yr., 30 days
Youth Rehabilitation Camps N = 181	16 yr., 89 days
I.S.D. Total N = 831	16 yr., 39 days

AVERAGE AGES 1978

RELEASE

<u>Center</u>	<u>Average Age</u>
Adrian Training School (F) N = 65	16 yr., 300 days
Adrian Training School (M) N = 61	17 yr., 75 days
Arbor Heights Center N = 27	15 yr., 312 days
Green Oak Center N = 68	17 yr., 184 days
Olympic Center N = 85	16 yr., 362 days
Reception/I.T.P. N = 24	16 yr., 94 days
Sequoyah Center N = 112	16 yr., 350 days
Summit Center N = 98	16 yr., 350 days
All Institutional Males N = 448	17 yr., 17 days
Youth Rehabilitation Camps N = 183	16 yr., 267 days
I.S.D. Total N = 723	16 yr., 330 days

AGE DISTRIBUTIONS
1978 INTAKE
FOR INSTITUTIONAL MALES

N = 546

13 or under	=	3%
14	=	13%
15	=	24%
16	=	45%
17	=	15%
18	=	0%

AGE DISTRIBUTIONS:
1978 INTAKE
FOR INSTITUTIONAL FEMALES

N = 69

13 or under	=	4%
14	=	13%
15	=	48%
16	=	29%
17	=	6%
18	=	0%

AGE DISTRIBUTIONS AT
RELEASE FOR
INSTITUTIONAL MALES (1978)

N = 448

13 or under	=	0%
14	=	2%
15	=	12%
16	=	26%
17	=	44%
18	=	16%

AGE DISTRIBUTIONS AT
RELEASE FOR
INSTITUTIONAL FEMALES (1978)

N = 65

13 or under	=	0%
14	=	6%
15	=	9%
16	=	39%
17	=	35%
18	=	11%

TRENDS IN INSTITUTIONAL INTAKE:

MALE YOUTH WITH PREVIOUS PLACEMENTS
IN A RESIDENTIAL FACILITY
FOR THE MENTALLY ILL OR EMOTIONALLY DISTURBED

	<u>1977 INTAKE</u>	<u>INTAKE FOR 1/79 - 9/79</u>
Open Programs	7% (N=302)	11% (N=373)
Green Oak Center	14% (N=110)	31% (N=86)
Intensive Treatment Program	16% (N=19)	33% (N=24)*
Total for males	9% (N=431)	16% (N=483)
Adrian females	16% (N=76)	18% (N=40)
Total, males and females	10% (N=507)	16% (N=523)

* Includes five (5) youths from October & November 1979

END