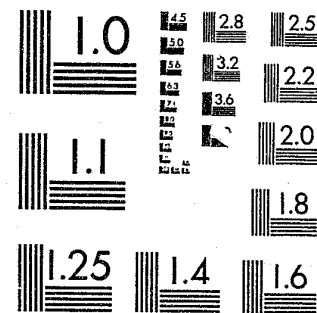


National Criminal Justice Reference Service



This microfiche was produced from documents received for inclusion in the NCJRS data base. Since NCJRS cannot exercise control over the physical condition of the documents submitted, the individual frame quality will vary. The resolution chart on this frame may be used to evaluate the document quality.



MICROCOPY RESOLUTION TEST CHART  
NATIONAL BUREAU OF STANDARDS-1963-A

Microfilming procedures used to create this fiche comply with the standards set forth in 41CFR 101-11.504.

Points of view or opinions stated in this document are those of the author(s) and do not represent the official position or policies of the U. S. Department of Justice.

National Institute of Justice  
United States Department of Justice  
Washington, D. C. 20531

5/31/85

INTER-UNIVERSITY CONSORTIUM FOR  
POLITICAL AND SOCIAL RESEARCH

ICPSR  
96181

EXPENDITURE AND EMPLOYMENT  
DATA FOR THE CRIMINAL JUSTICE  
SYSTEM: 1976  
  
(ICPSR 7618)

Principal Investigator

Law Enforcement Assistance Administration

Second ICPSR Edition, 1979

EXPENDITURE AND EMPLOYMENT DATA  
FOR THE CRIMINAL JUSTICE SYSTEM: 1976  
(ICPSR 7618)

Principal Investigator

Law Enforcement Assistance Administration

Inter-University Consortium for Political  
and Social Research

P.O. Box 1248

Ann Arbor, Michigan 48106

ICPSR Edition  
Second Printing, 1979

U.S. Department of Justice  
National Institute of Justice

This document has been reproduced exactly as received from the person or organization originating it. Points of view or opinions stated in this document are those of the authors and do not necessarily represent the official position or policies of the National Institute of Justice.

Permission to reproduce this copyrighted material has been granted by

Public Domain/NIJ

U.S. Department of Justice

to the National Criminal Justice Reference Service (NCJRS).

Further reproduction outside of the NCJRS system requires permission of the copyright owner.

## ACKNOWLEDGMENT OF ASSISTANCE

All manuscripts utilizing data made available through the Consortium should acknowledge that fact as well as identify the original collector of the data. The ICPSR Council urges all users of ICPSR data facilities to follow some adaptation of this statement with the parentheses indicating items to be filled in appropriately or deleted by the individual user.

The data (and tabulations) utilized in this (publication) were made available (in part) by the Inter-university Consortium for Political and Social Research. The data for EXPENDITURE AND EMPLOYMENT DATA FOR THE CRIMINAL JUSTICE SYSTEM: 1976 were originally collected by the U.S. Bureau of the Census for the Law Enforcement Assistance Administration (LEAA). Neither the original collector of the data nor the Consortium bear any responsibility for the analyses or interpretation presented here.

In order to provide funding agencies with essential information about the use of archival resources, and to facilitate the exchange of information about ICPSR participants' research activities, each user of the ICPSR data facilities is expected to send two copies of each completed manuscript or thesis abstract to the Consortium. Please indicate in the cover letter which data were used.

## TABLE OF CONTENTS

INTRODUCTION	
Study Description	I
Data Collection and Sample	II
Processing	II
File Structure	III
Codebook Information	IV
VARIABLE DESCRIPTION LIST	VI
CODEBOOK	1
GLOSSARY	35

NCJRS

JAN 7 1986

ACQUISITIONS

## STUDY DESCRIPTION

The 1976 Criminal Justice Expenditure and Employment data are part of an annual survey series conducted under the requirements of the Omnibus Crime Control and Safe Streets Act of 1968. The data were collected by the U.S. Bureau of the Census for the Law Enforcement Assistance Administration (LEAA).

A related publication is EXPENDITURE AND EMPLOYMENT DATA FOR THE CRIMINAL JUSTICE SYSTEM, 1976, prepared by the Census Bureau and the LEAA.

The data included in the present study concern criminal justice employment and expenditures for all the states, counties, and certain municipal governments. Specific variables include: full and part-time employees and payroll; expenditures for current operations, capital outlay, and contributions to employee benefits; and intergovernmental expenditures paid to state and local governments. Figures are presented for the following sectors of the criminal justice system: police protection, judicial, legal services and prosecution, public defense, corrections, and other criminal justice services.

The survey design for this study included the collection of data from all states and counties, and from municipalities having a 1970 population of 10,000 or more. In addition, a sample of the remaining cities and municipalities under 10,000 in population was selected in accordance with the relative size of their annual expenditures in criminal justice. Data for 1976 include records for 50 states, 2722 counties, 3915 cities, and 1530 townships, for a total of 8217 records.

The state expenditure data cover the fiscal year which ends June 30 for all states except three, whose fiscal years end as follows: New York, March 31; Texas, August 31; and Alabama, September 30. Included in the state totals is information from some state agencies which operate on a fiscal year different from the state government under which it is organized. Figures for such agencies are those from the fiscal year which terminated within the state's regular fiscal year. For local governments, the fiscal year reported is that which closed between July 1, 1975 and June 30, 1976. Data on the number of employees is reported for the pay period which included October 15, 1976 and includes personnel on payroll for the month of October 1976.

## II

### DATA COLLECTION AND SAMPLE

The surveys were accomplished using two methods of data collection: field compilation and mail canvass. Field representatives compiled expenditure and employment data for the 50 states, 312 largest counties, 384 largest cities, and for selected smaller units from the government's own records. Other government units in the sample were canvassed by mail over a five-month period, January through May 1976. Response for field-completed units was 100%, and response in mail canvass units was approximately 90%. The field survey efforts and mail canvass were supplemented by reference to a variety of published government documents, such as budget and audit reports. In some instances, such sources were the basis for the breakdown of totals into more detailed expenditure and employment figures.

The sample of municipal governments was designed to produce an estimate for each state of the ratio of state to local government criminal justice expenditures with a sample error of less than 0.5% at the 95% confidence level. The relative error of the state-by-state estimates of local government criminal justice expenditures has also been calculated at the 95% confidence level.

The LEAA has sponsored seven years of expenditure-employee data, 1970 through 1976. The data for fiscal years 1971-1976 are directly comparable; the data were collected, edited, and processed in a uniform way. Due to significant changes in the survey procedures, 1970 data are not directly comparable with the 1971-76 years.

### PROCESSING

The archive file consists of three physical files stored on magnetic tape: a machine-readable user's guide, which documents the data for the human user; an Osiris type 1 dictionary file which describes the data to a computer program; and a data file.

A unit in this dataset is a state, county, city, or municipal government. Each unit is identified and sorted on these four variables: a state reference code, a level-of-government identifier, a county code, and a city or municipal reference number. The states are coded according to the Government's Division Code; counties and cities are alphabetically coded within their respective states.

## III

This study has been checked and formatted to ICPSR standards for Class I data. All ampersands, dashes, embedded blanks, and alphabetic characters have been removed.

### FILE STRUCTURE

The data are available from ICPSR in two formats: a card image file and an OSIRIS dataset. The card image file contains 16 decks per respondent in a format based on 80 column punched cards. The data are sorted by respondent with all decks for each case together in ascending order. There are two components to the OSIRIS dataset. The OSIRIS dictionary gives the format and other information for each variable in the OSIRIS data file. The dictionary or dictionary-codebook file is used in conjunction with the OSIRIS software package. The OSIRIS data file is constructed with a single logical record of 1005 bytes for each respondent.

The OSIRIS data file can be accessed directly by software packages which do not use the OSIRIS dictionary by specifying the tape locations of the desired variables. These tape locations are contained in the OSIRIS codebook.

## CODEBOOK INFORMATION

The example below is a reproduction of information appearing in the machine readable codebook for a typical variable. The numbers in brackets do not appear in the codebook, but are references to the descriptions which follow this example.

.....

[1]VAR 0002	[2]LEVEL OF GOVERNMENT	[3]MD=XXX
[1]REF 0002	[4]LOC 4 WIDTH 1	[5]DK COL
	[6]---	[7]IMP DEC=0

[8]LEVEL OF GOVERNMENT

-----

[9]GOVERNMENT DIVISION CODE  
[10]SEE NOTE(S) --

[11]	[12]	[13]	
50	0.	STATE	
2722	1.	COUNTY	
3915	2.	CITY	
1530	3.	TOWNSHIP	

.....

1. Indicates the variable and reference numbers. A variable and a reference number are assigned to each item in the study. In the present codebook, which documents the archived dataset, these numbers are identical. Should the data be subsetted or rearranged by an OSIRIS program (e.g., MMP to intersperse data from another source, or TCOT to produce an analysis deck), the variable numbers would change to reflect the order of the new dataset, while the reference numbers would remain unchanged to reflect the variable number in the codebook describing the archived dataset.
2. Indicates the abbreviated (24 characters maximum) variable name used within the OSIRIS system to identify the variable for the user. An expanded version of these names can be found in the variable description list.
3. Indicates the designation of missing data. In this example code values less than or equal to XXX are missing data (MD=LE -1). Alternative statements for other variables are "MD=0," "MD=0 OR GE 9," OR "NO MISSING DATA CODES." Some analysis software packages (including the OSIRIS software package) require that

certain types of data which the user desires to exclude from analysis be designated as "MISSING DATA," e.g., inappropriate, unascertained, unascertainable or ambiguous data categories. Although these categories are defined as missing data categories, this does not mean that a user should not or cannot use these codes in a substantive role if he or she so desires.

4. Indicates the starting location and width of this variable when the data are stored on a magnetic tape in the OSIRIS format. If the variable is of a multiple response type, the width referenced is that of a single response.
5. Indicates the location by deck and column(s) of this variable when the data are on cards or in card image (either 80 or 84 column format). For multiple response variables, the locations refer to the entire variable field.
6. Multiple response variable information is usually inserted in this space. There are no multiple response variables in this study.
7. A variable containing data with implied decimals is denoted by the message "XX DEC PLACE(S)," where XX is the number of decimal places implied (not punched) in the variable. In this example, there are no implied decimal places.
8. Indicates any contingency associated with the variable. Also listed is the full text (question) supplied by the investigator to describe the variable. The question text reflects the original wording of the questionnaire item.
9. Indicates an additional comment or explanation appended to the variable description.
10. A variable which has a footnote associated with it is denoted by the message, "SEE NOTE(S) X," where X is the number of the footnote referenced.
11. Indicates the frequency of occurrence of each code value. This codebook does not list frequencies.
12. Indicates the code values occurring in the data for this variable.
13. Indicates the textual definitions of the codes. Abbreviations commonly used in the code definitions are DK (DO NOT KNOW), NA (NOT ASCERTAINED), and INAP. (INAPPROPRIATE).

## VI

## VARIABLE DESCRIPTION LIST

## IDENTIFICATION AND POPULATION VARIABLES

V001 State Number  
 V002 Level of Government  
 V003 County Number  
 V004 City or Township Number  
 V005 City or Township Name  
 V006 1970 Population  
 V007 1975 Population Estimate  
 V008 Fiscal Year  
 V009 Sequence Number

## POLICE PROTECTION

V010 Full-Time Employees  
 V011 Full-Time Payroll  
 V012 Part-Time Employees  
 V013 Part-Time Payroll  
 V014 Current Operations  
 V015 Capital Outlay  
 V016 Intergovernmental Expenditure Paid to Local Government  
 V017 Intergovernmental Expenditure Paid to State Government  
 V018 Contributions to Employee Benefits

## JUDICIAL

V019 Full-Time Employees  
 V020 Full-Time Payroll  
 V021 Part-Time Employees  
 V022 Part-Time Payroll  
 V023 Current Operations  
 V024 Capital Outlay  
 V025 Intergovernmental Expenditure Paid to Local Government  
 V026 Intergovernmental Expenditure Paid to State Government  
 V027 Contributions to Employee Benefits

## LEGAL SERVICES AND PROSECUTION

V028 Full-Time Employees  
 V029 Full-Time Payroll  
 V030 Part-Time Employees  
 V031 Part-Time Payroll  
 V032 Current Operations

## VII

V033 Capital Outlay  
 V034 Intergovernmental Expenditure Paid to Local Government  
 V035 Intergovernmental Expenditure Paid to State Government  
 V036 Contributions to Employee Benefits

## PUBLIC DEFENSE

V037 Full-Time Employees  
 V038 Full-Time Payroll  
 V039 Part-Time Employees  
 V040 Part-Time Payroll  
 V041 Current Operations  
 V042 Capital Outlay  
 V043 Intergovernmental Expenditure Paid to Local Government  
 V044 Intergovernmental Expenditure Paid to State Government  
 V045 Contributions to Employee Benefits

## CORRECTION

V046 Full-Time Employees  
 V047 Full-Time Payroll  
 V048 Part-Time Employees  
 V049 Part-Time Payroll  
 V050 Current Operations  
 V051 Capital Outlay  
 V052 Intergovernmental Expenditure Paid to Local Government  
 V053 Intergovernmental Expenditure Paid to State Government  
 V054 Contributions to Employee Benefits

## OTHER CRIMINAL JUSTICE

V055 Full-Time Employees  
 V056 Full-Time Payroll  
 V057 Part-Time Employees  
 V058 Part-Time Payroll  
 V059 Current Operations  
 V060 Capital Outlay  
 V061 Intergovernmental Expenditure Paid to Local Government  
 V062 Intergovernmental Expenditure Paid to State Government  
 V063 Contributions to Employee Benefits

## VIII

## MAJOR TRIAL COURT

V064 Full-Time Employees  
V065 Full-Time Payroll

## REVENUE SOURCES

V066 Revenue Directly From Federal Government

## POLICE FULL-TIME EQUIVALENT

V067 Census of the Government's 1972 Police Full-Time Equivalent

## PAY PERIODS

V068 Full-Time Pay Period  
V069 Part-Time Pay Period

## SWORN POLICE PERSONNEL

V070 Full-Time Employees  
V071 Full-Time Payroll  
V072 Part-Time Employees  
V073 Part-Time Payroll

## FULL-TIME EQUIVALENTS

V074 Full-Time Equivalent: Sworn Police  
V075 Full-Time Equivalent: Corrections: Institution  
V076 Full-Time Equivalent: Corrections: Probation  
V077 Full-Time Equivalent: Corrections: Administrative and Miscellaneous

## WEIGHT AND POPULATION CHARACTERISTICS

V078 Weight  
V079 Standard Metropolitan Statistical Area (SMSA)  
V080 Population

## FULL-TIME EQUIVALENTS

V081 Police Full-Time Equivalent  
V082 Judicial Full-Time Equivalent  
V083 Legal Services and Prosecution Full-Time Equivalent  
V084 Public Defense Full-Time Equivalent  
V085 Total Corrections Full-Time Equivalent  
V086 Other Full-Time Equivalent

## IX

## CORRECTIONS: INSTITUTION

V087 Full-Time Employees  
V088 Full-Time Payroll  
V089 Part-Time Employees  
V090 Part-Time Payroll  
V091 Current Operations  
V092 Capital Outlay  
V093 Intergovernmental Expenditure Paid to Local Government  
V094 Intergovernmental Expenditure Paid to State Government  
V095 Contributions to Employee Benefits

## CORRECTIONS: PROBATION, PARDON, AND PAROLE

V096 Full-Time Employees  
V097 Full-Time Payroll  
V098 Part-Time Employees  
V099 Part-Time Payroll  
V100 Current Operations  
V101 Capital Outlay  
V102 Intergovernmental Expenditure Paid to Local Government  
V103 Intergovernmental Expenditure Paid to State Government  
V104 Contributions to Employee Benefits

## CORRECTIONS: ADMINISTRATIVE AND MISCELLANEOUS

V105 Full-Time Employees  
V106 Full-Time Payroll  
V107 Part-Time Employees  
V108 Part-Time Payroll  
V109 Current Operations  
V110 Capital Outlay  
V111 Intergovernmental Expenditure Paid to Local Government  
V112 Intergovernmental Expenditure Paid to State Government  
V113 Contributions to Employee Benefits

## ICPSR ID NUMBERS

V114 ICPSR Study Number  
V115 Version Number  
V116 File Number



'01'

DK 1 COL 1- 2

VAR 0114 ICPSR STUDY NUMBER NO MISSING DATA CODES  
 REF 0114 LOC 998 WIDTH 4 DK 1 COL 3- 6

ICPSR Study Number

7618. Unique ICPSR study number

VAR 0115 VERSION NUMBER NO MISSING DATA CODES  
 REF 0115 LOC 1002 WIDTH 3 DK 1 COL 7- 9

Version Number

2. Version 2

VAR 0009 SEQUENTIAL ID NO MISSING DATA CODES  
 REF 0009 LOC 60 WIDTH 5 DK 1 COL 10-14

Sequential ID Number

VAR 0001 STATE NO MISSING DATA CODES  
 REF 0001 LOC 1 WIDTH 2 DK 1 COL 15-16

State Number

Government Division Code

- 01. Alabama
- 02. Alaska
- 03. Arizona
- 04. Arkansas
- 05. California

(CONTINUED)

- 06. Colorado
- 07. Connecticut
- 08. Delaware
- 09. District of Columbia
- 10. Florida
- 11. Georgia
- 12. Hawaii
- 13. Idaho
- 14. Illinois
- 15. Indiana
- 16. Iowa
- 17. Kansas
- 18. Kentucky
- 19. Louisiana
- 20. Maine
- 21. Maryland
- 22. Massachusetts
- 23. Michigan
- 24. Minnesota
- 25. Mississippi
- 26. Missouri
- 27. Montana
- 28. Nebraska
- 29. Nevada
- 30. New Hampshire
- 31. New Jersey
- 32. New Mexico
- 33. New York
- 34. North Carolina
- 35. North Dakota
- 36. Ohio
- 37. Oklahoma
- 38. Oregon
- 39. Pennsylvania
- 40. Rhode Island
- 41. South Carolina
- 42. South Dakota
- 43. Tennessee
- 44. Texas
- 45. Utah
- 46. Vermont
- 47. Virginia
- 48. Washington
- 49. West Virginia
- 50. Wisconsin
- 51. Wyoming

VAR 0002      TYPE                      NO MISSING DATA CODES  
 REF 0002      LOC      3 WIDTH 1                      DK    1 COL 17

Level of Government  
 -----

Government Unit Code

- 0. State
- 1. County
- 2. City
- 3. Township

.....  
 VAR 0003      COUNTY                      NO MISSING DATA CODES  
 REF 0003      LOC      4 WIDTH 3                      DK    1 COL 18-20

County Number  
 -----

Government Unit Code

If the record is a state record, both the County Code and the Unit Code are equal to zero. If a county, then the County Code is a number assigned sequentially within a state to the counties in alphabetical order.

.....  
 VAR 0004      UNIT                                      NO MISSING DATA CODES  
 REF 0004      LOC      7 WIDTH 3                                      DK    1 COL 21-23

Unit Code  
 -----

Government Unit Code

The Unit Code number is usually, but not always, the same as the County Code. If a city or township, the Unit Code is a unique number assigned within the county to a city or township. Level of government determines the contents of County Code and Unit Code number.

VAR 0005 NAME NO MISSING DATA CODES  
REF 0005 LOC 10 WIDTH 30 DK 1 COL 24-53

Unit Name

VAR 0006 1970 POPULATION MD=-1  
REF 0006 LOC 40 WIDTH 9 DK 1 COL 54-62

1970 Population

VAR 0007 1975 POPULATION MD=-1  
REF 0007 LOC 49 WIDTH 9 DK 1 COL 63-71

1975 Population Estimate

VAR 0008 FISCAL YEAR 76 NO MISSING DATA CODES  
REF 0008 LOC 58 WIDTH 2 DK 1 COL 72-73

Fiscal Year

76. 1976

'02'

DK 2 COL 1- 2

VAR 0114 ICPSR STUDY NUMBER NO MISSING DATA CODES  
REF 0114 LOC 998 WIDTH 4 DK 2 COL 3- 6

ICPSR Study Number

7618. Unique ICPSR study number

VAR 0115 VERSION NUMBER NO MISSING DATA CODES  
REF 0115 LOC 1002 WIDTH 3 DK 2 COL 7- 9

Version Number

2. Version 2

VAR 0009 SEQUENTIAL ID NO MISSING DATA CODES  
REF 0009 LOC 60 WIDTH 5 DK 2 COL 10-14

Sequential ID Number

VAR 0010 POLICE FULL-TIME EMP NO MISSING DATA CODES  
REF 0010 LOC 65 WIDTH 9 DK 2 COL 15-23

Police Protection, Full-Time Employees, 1976

VAR 0011 POLICE FULL-TIME PAY NO MISSING DATA CODES  
REF 0011 LOC 74 WIDTH 9 DK 2 COL 24-32

Police Protection, Full-Time Payroll, 1976

VAR 0012 POLICE PART-TIME EMP NO MISSING DATA CODES  
REF 0012 LOC 83 WIDTH 9 DK 2 COL 33-41

Police Protection, Part-Time Employees, 1976

VAR 0013 POLICE PART-TIME PAY NO MISSING DATA CODES  
 REF 0013 LOC 92 WIDTH 9 DK 2 COL 42-50

Police Protection, Part-Time Payroll, 1976

VAR 0014 POLICE CURRNT OPERATIONS NO MISSING DATA CODES  
 REF 0014 LOC 101 WIDTH 9 DK 2 COL 51-59

Police Protection, Current Operations, 1976

VAR 0015 POLICE CAPITAL OUTLAY NO MISSING DATA CODES  
 REF 0015 LOC 110 WIDTH 9 DK 2 COL 60-68

Police Protection, Capital Outlay, 1976

VAR 0016 POLICE PAY/LOCAL GOVTS. NO MISSING DATA CODES  
 REF 0016 LOC 119 WIDTH 9 DK 2 COL 69-77

Police Protection, Intergovernmental Expenditure Paid to  
 Local Government, 1976

'03' DK 3 COL 1- 2

VAR 0114 ICPSR STUDY NUMBER NO MISSING DATA CODES  
 REF 0114 LOC 998 WIDTH 4 DK 3 COL 3- 6

ICPSR Study Number

7618. Unique ICPSR study number

VAR 0115 VERSION NUMBER NO MISSING DATA CODES  
 REF 0115 LOC 1002 WIDTH 3 DK 3 COL 7- 9

Version Number

2. Version 2

VAR 0009 SEQUENTIAL ID NO MISSING DATA CODES  
 REF 0009 LOC 60 WIDTH 5 DK 3 COL 10-14

Sequential ID Number

VAR 0017 POLICE PAY/STATE GOVTS. NO MISSING DATA CODES  
 REF 0017 LOC 128 WIDTH 9 DK 3 COL 15-23

Police Protection, Intergovernmental Expenditure Paid to  
 State Government, 1976

VAR 0018 POLICE CONTRIB TO EMPS. NO MISSING DATA CODES  
 REF 0018 LOC 137 WIDTH 9 DK 3 COL 24-32

Police Protection, Contributions to Employee Benefits, 1976

VAR 0019 JUDICIAL FULL-TIME EMP NO MISSING DATA CODES  
 REF 0019 LOC 146 WIDTH 9 DK 3 COL 33-41

Judicial, Full-Time Employees, 1976

VAR 0020 JUDICIAL FULL-TIME PAY NO MISSING DATA CODES  
REF 0020 LOC 155 WIDTH 9 DK 3 COL 42-50

Judicial, Full-Time Payroll, 1976

VAR 0021 JUDICIAL PART-TIME EMP NO MISSING DATA CODES  
REF 0021 LOC 164 WIDTH 9 DK 3 COL 51-59

Judicial, Part-Time Employees, 1976

VAR 0022 JUDICIAL PART-TIME PAY NO MISSING DATA CODES  
REF 0022 LOC 173 WIDTH 9 DK 3 COL 60-68

Judicial, Part-Time Payroll, 1976

VAR 0023 JUDICIAL CURRNT OPERAT NO MISSING DATA CODES  
REF 0023 LOC 182 WIDTH 9 DK 3 COL 69-77

Judicial, Current Operations, 1976

'04' DK 4 COL 1- 2

VAR 0114 ICPSR STUDY NUMBER NO MISSING DATA CODES  
REF 0114 LOC 998 WIDTH 4 DK 4 COL 3- 6

ICPSR Study Number

7618. Unique ICPSR study number

VAR 0115 VERSION NUMBER NO MISSING DATA CODES  
REF 0115 LOC 1002 WIDTH 3 DK 4 COL 7- 9

Version Number

2. Version 2

VAR 0009 SEQUENTIAL ID NO MISSING DATA CODES  
REF 0009 LOC 60 WIDTH 5 DK 4 COL 10-14

Sequential ID Number

VAR 0024 JUDICIAL CAPITAL OUTLAY NO MISSING DATA CODES  
REF 0024 LOC 191 WIDTH 9 DK 4 COL 15-23

Judicial, Capital Outlay, 1976

VAR 0025 JUDICIAL PAY/LOCAL GOVTS NO MISSING DATA CODES  
REF 0025 LOC 200 WIDTH 9 DK 4 COL 24-32

Judicial, Intergovernmental Expenditure Paid to Local Government, 1976

VAR 0026 JUDICIAL PAY/STATE GOVTS NO MISSING DATA CODES  
REF 0026 LOC 209 WIDTH 9 DK 4 COL 33-41

Judicial, Intergovernmental Expenditure Paid to State Government, 1976

VAR 0027 JUDICIAL CONTRIB TO EMPS NO MISSING DATA CODES  
REF 0027 LOC 218 WIDTH 9 DK 4 COL 42-50

Judicial, Contributions to Employee Benefits, 1976

VAR 0028 PROSECUTN FULL-TIME EMP NO MISSING DATA CODES  
REF 0028 LOC 227 WIDTH 9 DK 4 COL 51-59

Legal Services and Prosecution, Full-Time Employees, 1976

VAR 0029 PROSECUTN FULL-TIME PAY NO MISSING DATA CODES  
REF 0029 LOC 236 WIDTH 9 DK 4 COL 60-68

Legal Services and Prosecution, Full-Time Payroll, 1976

VAR 0030 PROSECUTN PART-TIME EMP NO MISSING DATA CODES  
REF 0030 LOC 245 WIDTH 9 DK 4 COL 69-77

Legal Services and Prosecution, Part-Time Employees, 1976

'05' DK 5 COL 1- 2

VAR 0114 ICPSR STUDY NUMBER NO MISSING DATA CODES  
REF 0114 LOC 998 WIDTH 4 DK 5 COL 3- 6

ICPSR Study Number

7618. Unique ICPSR study number

VAR 0115 VERSION NUMBER NO MISSING DATA CODES  
REF 0115 LOC 1002 WIDTH 3 DK 5 COL 7- 9

Version Number

2. Version 2

VAR 0009 SEQUENTIAL ID NO MISSING DATA CODES  
REF 0009 LOC 60 WIDTH 5 DK 5 COL 10-14

Sequential ID Number

VAR 0031 PROSECUTN PART-TIME PAY NO MISSING DATA CODES  
REF 0031 LOC 254 WIDTH 9 DK 5 COL 15-23

Legal Services and Prosecution, Part-Time Payroll, 1976

VAR 0032 PROSECUTN CURRNT OPERAT NO MISSING DATA CODES  
REF 0032 LOC 263 WIDTH 9 DK 5 COL 24-32

Legal Services and Prosecution, Current Operations, 1976

VAR 0033 PROSECUTN CAPITAL OUTLAY NO MISSING DATA CODES  
REF 0033 LOC 272 WIDTH 9 DK 5 COL 33-41

Legal Services and Prosecution, Capital Outlay, 1976

VAR 0034 PROSECUTN PAY/LOCAL GOVT NO MISSING DATA CODES  
REF 0034 LOC 281 WIDTH 9 DK 5 COL 42-50

Legal Services and Prosecution, Intergovernmental  
Expenditure Paid to Local Government, 1976

VAR 0035 PROSECUTN PAY/STATE GOVT NO MISSING DATA CODES  
REF 0035 LOC 290 WIDTH 9 DK 5 COL 51-59

Legal Services and Prosecution, Intergovernmental  
Expenditure Paid to State Government, 1976

VAR 0036 PROSECUTN CONTRIB TO EMP NO MISSING DATA CODES  
REF 0036 LOC 299 WIDTH 9 DK 5 COL 60-68

Legal Services and Prosecution, Contributions to Employee  
Benefits, 1976

VAR 0037 PUB. DEF FULL-TIME EMP NO MISSING DATA CODES  
REF 0037 LOC 308 WIDTH 9 DK 5 COL 69-77

Public Defense, Full-Time Employees, 1976

'06' DK 6 COL 1- 2

VAR 0114 ICPSR STUDY NUMBER NO MISSING DATA CODES  
REF 0114 LOC 998 WIDTH 4 DK 6 COL 3- 6

ICPSR Study Number

7618. Unique ICPSR study number

VAR 0115 VERSION NUMBER NO MISSING DATA CODES  
REF 0115 LOC 1002 WIDTH 3 DK 6 COL 7- 9

Version Number

2. Version 2

VAR 0009 SEQUENTIAL ID NO MISSING DATA CODES  
REF 0009 LOC 60 WIDTH 5 DK 6 COL 10-14

Sequential ID Number

VAR 0038 PUB. DEF FULL-TIME PAY NO MISSING DATA CODES  
REF 0038 LOC 317 WIDTH 9 DK 6 COL 15-23

Public Defense, Full-Time Payroll, 1976

VAR 0039 PUB. DEF PART-TIME EMP NO MISSING DATA CODES  
REF 0039 LOC 326 WIDTH 9 DK 6 COL 24-32

Public Defense, Part-Time Employees, 1976

VAR 0040 PUB. DEF PART-TIME PAY NO MISSING DATA CODES  
REF 0040 LOC 335 WIDTH 9 DK 6 COL 33-41

Public Defense, Part-Time Payroll, 1976

VAR 0041      PUB. DEF CURRNT OPERAT      NO MISSING DATA CODES  
REF 0041      LOC 344 WIDTH 9      DK 6 COL 42-50

Public Defense, Current Operation, 1976

VAR 0042      PUB. DEF CAPITAL OUTLAY      NO MISSING DATA CODES  
REF 0042      LOC 353 WIDTH 9      DK 6 COL 51-59

Public Defense, Capital Outlay, 1976

VAR 0043      PUB. DEF PAY/LOCAL GOVTS      NO MISSING DATA CODES  
REF 0043      LOC 362 WIDTH 9      DK 6 COL 60-68

Public Defense, Intergovernmental Expenditure Paid to Local Government, 1976

VAR 0044      PUB. DEF PAY/STATE GOVTS      NO MISSING DATA CODES  
REF 0044      LOC 371 WIDTH 9      DK 6 COL 69-77

Public Defense, Intergovernmental Expenditure Paid to State Government, 1976

'07'      DK 7 COL 1-2

VAR 0114      ICPSR STUDY NUMBER      NO MISSING DATA CODES  
REF 0114      LOC 998 WIDTH 4      DK 7 COL 3-6

ICPSR Study Number

7618. Unique ICPSR study number

VAR 0115      VERSION NUMBER      NO MISSING DATA CODES  
REF 0115      LOC 1002 WIDTH 3      DK 7 COL 7-9

Version Number

2. Version 2

VAR 0009      SEQUENTIAL ID      NO MISSING DATA CODES  
REF 0009      LOC 60 WIDTH 5      DK 7 COL 10-14

Sequential ID Number

VAR 0045      PUB. DEF CONTRIB TO EMPS      NO MISSING DATA CODES  
REF 0045      LOC 380 WIDTH 9      DK 7 COL 15-23

Public Defense, Contributions to Employee Benefits, 1976

VAR 0046      TOTAL FULL-TIME EMP      NO MISSING DATA CODES  
REF 0046      LOC 389 WIDTH 9      DK 7 COL 24-32

Corrections: Total, Full-Time Employees, 1976

VAR 0047      TOTAL FULL-TIME PAY      NO MISSING DATA CODES  
REF 0047      LOC 398 WIDTH 9      DK 7 COL 33-41

Corrections: Total, Full-Time Payroll, 1976



VAR 0048 TOTAL PART-TIME FMP NO MISSING DATA CODES  
REF 0048 LOC 407 WIDTH 9 DK 7 COL 42-50

Corrections: Total, Part-Time Employees, 1976

VAR 0049 TOTAL PART-TIME PAY NO MISSING DATA CODES  
REF 0049 LOC 416 WIDTH 9 DK 7 COL 51-59

Corrections: Total, Part-Time Payroll, 1976

VAR 0050 TOTAL CURRNT OPERAT NO MISSING DATA CODES  
REF 0050 LOC 425 WIDTH 9 DK 7 COL 60-68

Corrections: Total, Current Operations, 1976

VAR 0051 TOTAL CAP OUTLAY NO MISSING DATA CODES  
REF 0051 LOC 434 WIDTH 9 DK 7 COL 69-77

Corrections: Total, Capital Outlay, 1976

'08' DK 8 COL 1- 2

VAR 0114 ICPSR STUDY NUMBER NO MISSING DATA CODES  
REF 0114 LOC 998 WIDTH 4 DK 8 COL 3- 6

ICPSR Study Number

7618. Unique ICPSR study number

VAR 0115 VERSION NUMBER NO MISSING DATA CODES  
REF 0115 LOC 1002 WIDTH 3 DK 8 COL 7- 9

Version Number

2. Version 2

VAR 0009 SEQUENTIAL ID NO MISSING DATA CODES  
REF 0009 LOC 60 WIDTH 5 DK 8 COL 10-14

Sequential ID Number

VAR 0052 TOTAL PAY/LOCAL GOV NO MISSING DATA CODES  
REF 0052 LOC 443 WIDTH 9 DK 8 COL 15-23

Corrections: Total, Intergovernmental Expenditure Paid to Local Government, 1976

VAR 0053 TOTAL PAY/STATE GOV NO MISSING DATA CODES  
REF 0053 LOC 452 WIDTH 9 DK 8 COL 24-32

Corrections: Total, Intergovernmental Expenditure Paid to State Government, 1976

VAR 0054 TOTAL CONTRIB EMPS. NO MISSING DATA CODES  
REF 0054 LOC 461 WIDTH 9 DK 8 COL 33-41

Corrections: Total, Contributions to Employee Benefits, 1976

VAR 0055 OTHER FULL-TIME EMP NO MISSING DATA CODES  
 REF 0055 LOC 470 WIDTH 9 DK 8 COL 42-50

Other Criminal Justice, Full-Time Employees, 1976

VAR 0056 OTHER FULL-TIME PAY NO MISSING DATA CODES  
 REF 0056 LOC 479 WIDTH 9 DK 8 COL 51-59

Other Criminal Justice, Full-Time Payroll, 1976

VAR 0057 OTHER PART-TIME EMP NO MISSING DATA CODES  
 REF 0057 LOC 488 WIDTH 9 DK 8 COL 60-68

Other Criminal Justice, Part-Time Employees, 1976

VAR 0058 OTHER PART-TIME PAY NO MISSING DATA CODES  
 REF 0058 LOC 497 WIDTH 9 DK 8 COL 69-77

Other Criminal Justice, Part-Time Payroll, 1976

'09' DK 9 COL 1-2

VAR 0114 ICPSR STUDY NUMBER NO MISSING DATA CODES  
 REF 0114 LOC 998 WIDTH 4 DK 9 COL 3-6

ICPSR Study Number

7618. Unique ICPSR study number

VAR 0115 VERSION NUMBER NO MISSING DATA CODES  
 REF 0115 LOC 1002 WIDTH 3 DK 9 COL 7-9

Version Number

2. Version 2

VAR 0009 SEQUENTIAL ID NO MISSING DATA CODES  
 REF 0009 LOC 60 WIDTH 5 DK 9 COL 10-14

Sequential ID Number

VAR 0059 OTHER CURRNT OPERATIONS NO MISSING DATA CODES  
 REF 0059 LOC 506 WIDTH 9 DK 9 COL 15-23

Other Criminal Justice, Current Operations, 1976

VAR 0060 OTHER CAPITAL OUTLAY NO MISSING DATA CODES  
 REF 0060 LOC 515 WIDTH 9 DK 9 COL 24-32

Other Criminal Justice, Capital Outlay, 1976

VAR 0061 OTHER PAY/LOCAL GOVTS. NO MISSING DATA CODES  
 REF 0061 LOC 524 WIDTH 9 DK 9 COL 33-41

Other Criminal Justice, Intergovernmental Expenditure Paid to Local Governments, 1976

VAR 0062 OTHER PAY/STATE GOVTS. NO MISSING DATA CODES  
 REF 0062 LOC 533 WIDTH 9 DK 9 COL 42-50

Other Criminal Justice, Intergovernmental Expenditure Paid to State Government, 1976

VAR 0063 OTHER CONTRIB. TO EMPS. NO MISSING DATA CODES  
 REF 0063 LOC 542 WIDTH 9 DK 9 COL 51-59

Other Criminal Justice, Contributions to Employee Benefits, 1976

VAR 0064 MAJOR TRIAL COURT FTE NO MISSING DATA CODES  
 REF 0064 LOC 551 WIDTH 9 DK 9 COL 60-68

Major Trial Court, Full-Time Employees, 1976

VAR 0065 MAJOR TRIAL COURT FTP NO MISSING DATA CODES  
 REF 0065 LOC 560 WIDTH 9 DK 9 COL 69-77

Major Trial Court, Full-Time Payroll, 1976

'10' DK 10 COL 1- 2

VAR 0114 ICPSR STUDY NUMBER NO MISSING DATA CODES  
 REF 0114 LOC 998 WIDTH 4 DK 10 COL 3- 6

ICPSR Study Number

7618. Unique ICPSR study number

VAR 0115 VERSION NUMBER NO MISSING DATA CODES  
 REF 0115 LOC 1002 WIDTH 3 DK 10 COL 7- 9

Version Number

2. Version 2

VAR 0009 SEQUENTIAL ID NO MISSING DATA CODES  
 REF 0009 LOC 60 WIDTH 5 DK 10 COL 10-14

Sequential ID Number

VAR 0066 REV. DIR. FROM FED. GOVT NO MISSING DATA CODES  
 REF 0066 LOC 569 WIDTH 9 DK 10 COL 15-23

Revenue Directly from Federal Government, 1976

VAR 0067 POLICE FTEQ NO MISSING DATA CODES  
 REF 0067 LOC 578 WIDTH 9 DK 10 COL 24-32

Police Full-Time Equivalent, 1976

An independent figure, taken from the Census of Government's 1972 data

VAR 0068 FULL-TIME PAY PERIOD NO MISSING DATA CODES  
 REF 0068 LOC 587 WIDTH 9 DK 10 COL 33-41

Full-Time Pay Period, 1976

VAR 0069 PART-TIME PAY PERIOD NO MISSING DATA CODES  
REF 0069 LOC 596 WIDTH 9 DK 10 COL 42-50

Part-Time Pay Period, 1976

VAR 0070 SWP FULL-TIME EMP NO MISSING DATA CODES  
REF 0070 LOC 605 WIDTH 9 DK 10 COL 51-59

Sworn Police Personnel, Full-Time Employees, 1976

VAR 0071 SWP FULL-TIME PAY NO MISSING DATA CODES  
REF 0071 LOC 614 WIDTH 9 DK 10 COL 60-68

Sworn Police Personnel, Full-Time Payroll, 1976

VAR 0072 SWP PART-TIME EMP NO MISSING DATA CODES  
REF 0072 LOC 623 WIDTH 9 DK 10 COL 69-77

Sworn Police Personnel, Part-Time Employees, 1976

'11' DK 11 COL 1- 2

VAR 0114 ICPSR STUDY NUMBER NO MISSING DATA CODES  
REF 0114 LOC 998 WIDTH 4 DK 11 COL 3- 6

ICPSR Study Number

7618. Unique ICPSR study number

VAR 0115 VERSION NUMBER NO MISSING DATA CODES  
REF 0115 LOC 1002 WIDTH 3 DK 11 COL 7- 9

Version Number

2. Version 2

VAR 0009 SEQUENTIAL ID NO MISSING DATA CODES  
REF 0009 LOC 60 WIDTH 5 DK 11 COL 10-14

Sequential ID Number

VAR 0073 SWP PART-TIME PAY NO MISSING DATA CODES  
REF 0073 LOC 632 WIDTH 9 DK 11 COL 15-23

Sworn Police Personnel, Part-Time Payroll, 1976

VAR 0074 SWP FULL-TIME EQUIVALENT NO MISSING DATA CODES  
REF 0074 LOC 641 WIDTH 9 DK 11 COL 24-32

Sworn Police Personnel, Full-Time Equivalent, 1976

VAR 0075 INSTITUTIN FULL-TIME EQ NO MISSING DATA CODES  
REF 0075 LOC 650 WIDTH 9 DK 11 COL 33-41

Corrections: Institution, Full-Time Equivalent, 1976

VAR 0076 PROBATION FULL-TIME EQ NO MISSING DATA CODES  
 REF 0076 LOC 659 WIDTH 9 DK 11 COL 42-50

Corrections: Probation, Pardon and Parole, Full-Time  
 Equivalent, 1976

VAR 0077 ADMIN/MISC FULL-TIME EQ NO MISSING DATA CODES  
 REF 0077 LOC 668 WIDTH 9 DK 11 COL 51-59

Corrections: Administrative and Miscellaneous, Full-Time  
 Equivalent, 1976

VAR 0078 WEIGHT NO MISSING DATA CODES  
 REF 0078 LOC 677 WIDTH 9 DK 11 COL 60-68  
 IMP DEC= 4

Weight

Full weight, includes non-response factors

VAR 0079 SMSA NO MISSING DATA CODES  
 REF 0079 LOC 686 WIDTH 6 DK 11 COL 69-74

SMSA (Standard Metropolitan Statistical Area)

'12'

DK 12 COL 1- 2

VAR 0114 ICPSR STUDY NUMBER NO MISSING DATA CODES  
 REF 0114 LOC 998 WIDTH 4 DK 12 COL 3- 6

ICPSR Study Number

(CONTINUED)

7618. Unique ICPSR study number

VAR 0115 VERSION NUMBER NO MISSING DATA CODES  
 REF 0115 LOC 1002 WIDTH 3 DK 12 COL 7- 9

Version Number

2. Version 2

VAR 0009 SEQUENTIAL ID NO MISSING DATA CODES  
 REF 0009 LOC 60 WIDTH 5 DK 12 COL 10-14

Sequential ID Number

VAR 0080 POPULATION NO MISSING DATA CODES  
 REF 0080 LOC 692 WIDTH 9 DK 12 COL 15-23

Population

VAR 0081 POLICE FULL-TIME EQUIV. NO MISSING DATA CODES  
 REF 0081 LOC 701 WIDTH 9 DK 12 COL 24-32

Police Protection, Full-Time Equivalent, 1976

Derived from this data

VAR 0082 JUDICIAL FULL-TIME EQ NO MISSING DATA CODES  
 REF 0082 LOC 710 WIDTH 9 DK 12 COL 33-41

Judicial, Full-Time Equivalent, 1976

VAR 0083 PROSECUTN FULL-TIME EQ NO MISSING DATA CODES  
 REF 0083 LOC 719 WIDTH 9 DK 12 COL 42-50

Legal Services and Prosecution, Full-Time Equivalent, 1976

VAR 0084 PUB. DEF FULL-TIME EQ NO MISSING DATA CODES  
 REF 0084 LOC 728 WIDTH 9 DK 12 COL 51-59

Public Defense, Full-Time Equivalent, 1976

VAR 0085 TOTAL FULL-TIME EQ NO MISSING DATA CODES  
 REF 0085 LOC 737 WIDTH 9 DK 12 COL 60-68

Total Corrections: Institution; Probation, Pardon and  
 Parole; and Administrative and Miscellaneous, Full-Time  
 Equivalent, 1976

VAR 0086 OTHER FULL-TIME EQ NO MISSING DATA CODES  
 REF 0086 LOC 746 WIDTH 9 DK 12 COL 69-77

Other Criminal Justice, Full-Time Equivalent, 1976

'13'  
 DK 13 COL 1- 2

VAR 0114 ICPSR STUDY NUMBER NO MISSING DATA CODES  
 REF 0114 LOC 998 WIDTH 4 DK 13 COL 3- 6

ICPSR Study Number

7618. Unique ICPSR study number

VAR 0115 VERSION NUMBER NO MISSING DATA CODES  
 REF 0115 LOC 1002 WIDTH 3 DK 13 COL 7- 9

Version Number

2. Version 2

VAR 0009 SEQUENTIAL ID NO MISSING DATA CODES  
 REF 0009 LOC 60 WIDTH 5 DK 13 COL 10-14

Sequential ID Number

VAR 0087 INSTITUTIN FULL-TIME EMP NO MISSING DATA CODES  
 REF 0087 LOC 755 WIDTH 9 DK 13 COL 15-23

Corrections: Institution, Full-Time Employees, 1976

VAR 0088 INSTITUTIN FULL-TIME PAY NO MISSING DATA CODES  
 REF 0088 LOC 764 WIDTH 9 DK 13 COL 24-32

Corrections: Institution, Full-Time Payroll, 1976

VAR 0089 INSTITUTIN PART-TIME EMP NO MISSING DATA CODES  
REF 0089 LOC 773 WIDTH 9 DK 13 COL 33-41

Corrections: Institution, Part-Time Employees, 1976

VAR 0090 INSTITUTIN PART-TIME PAY NO MISSING DATA CODES  
REF 0090 LOC 782 WIDTH 9 DK 13 COL 42-50

Corrections: Institution, Part-Time Payroll, 1976

VAR 0091 INSTITUTIN CUPRNT OPERAT NO MISSING DATA CODES  
REF 0091 LOC 791 WIDTH 9 DK 13 COL 51-59

Corrections: Institution, Current Operations, 1976

VAR 0092 INSTITUTIN CAP OUTLAY NO MISSING DATA CODES  
REF 0092 LOC 800 WIDTH 9 DK 13 COL 60-68

Corrections: Institution, Capital Outlay, 1976

VAR 0093 INSTITUTIN PAY/LOCAL GOV NO MISSING DATA CODES  
REF 0093 LOC 809 WIDTH 9 DK 13 COL 69-77

Corrections: Institution, Intergovernmental Expenditure Paid to Local Government, 1976

'14'

DK 14 COL 1- 2

VAR 0114 ICPSR STUDY NUMBER NO MISSING DATA CODES  
REF 0114 LOC 998 WIDTH 4 DK 14 COL 3- 6

ICPSR Study Number

7618. Unique ICPSR study number

VAR 0115 VERSION NUMBER NO MISSING DATA CODES  
REF 0115 LOC 1002 WIDTH 3 DK 14 COL 7- 9

Version Number

2. Version 2

VAR 0009 SEQUENTIAL ID NO MISSING DATA CODES  
REF 0009 LOC 60 WIDTH 5 DK 14 COL 10-14

Sequential ID Number

VAR 0094 INSTITUTIN PAY/STATE GOV NO MISSING DATA CODES  
REF 0094 LOC 818 WIDTH 9 DK 14 COL 15-23

Corrections: Institution, Intergovernmental Expenditure Paid to State Government, 1976

VAR 0095 INSTITUTIN CONTRIB EMPS NO MISSING DATA CODES  
REF 0095 LOC 827 WIDTH 9 DK 14 COL 24-32

Corrections: Institution, Contributions to Employee Benefits, 1976

VAR 0096 PROBATION FULL-TIME EMP NO MISSING DATA CODES  
REF 0096 LOC 836 WIDTH 9 DK 14 COL 33-41

Corrections: Probation, Pardon and Parole, Full-Time  
Employees, 1976

VAR 0097 PROBATION FULLTIME PAY NO MISSING DATA CODES  
REF 0097 LOC 845 WIDTH 9 DK 14 COL 42-50

Corrections: Probation, Pardon and Parole, Full-Time  
Payroll, 1976

VAR 0098 PROBATION PART-TIME EMP NO MISSING DATA CODES  
REF 0098 LOC 854 WIDTH 9 DK 14 COL 51-59

Corrections: Probation, Pardon and Parole, Part-Time  
Employees, 1976

VAR 0099 PROBATION PART-TIME PAY NO MISSING DATA CODES  
REF 0099 LOC 863 WIDTH 9 DK 14 COL 60-68

Corrections: Probation, Pardon and Parole, Part-Time  
Payroll, 1976

VAR 0100 PROBATION CURENT OPERAT NO MISSING DATA CODES  
REF 0100 LOC 872 WIDTH 9 DK 14 COL 69-77

Corrections: Probation, Pardon and Parole, Current  
Operations, 1976

'15'

DK 15 COL 1- 2

VAR 0114 ICPRS STUDY NUMBER NO MISSING DATA CODES  
REF 0114 LOC 998 WIDTH 4 DK 15 COL 3- 6

ICPSR Study Number

7616. Unique ICPSR study number

VAR 0115 VERSION NUMBER NO MISSING DATA CODES  
REF 0115 LOC 1002 WIDTH 3 DK 15 COL 7- 9

Version Number

2. Version 2

VAR 0009 SEQUENTIAL ID NO MISSING DATA CODES  
REF 0009 LOC 60 WIDTH 5 DK 15 COL 10-14

Sequential ID Number

VAR 0101 PROBATION CAP OUTLAY NO MISSING DATA CODES  
REF 0101 LOC 881 WIDTH 9 DK 15 COL 15-23

Corrections: Probation, Pardon and Parole, Capital Outlay,  
1976

VAR 0102 PROBATION PAY/LOCAL GOV NO MISSING DATA CODES  
REF 0102 LOC 890 WIDTH 9 DK 15 COL 24-32

Corrections: Probation, Pardon and Parole, Intergovernmental  
Expenditure Paid to Local Government, 1976



VAR 0103 PROBATION PAY/STATE GOV NO MISSING DATA CODES  
REF 0103 LOC 899 WIDTH 9 DK 15 COL 33-41

Corrections: Probation, Pardon and Parole, Intergovernmental  
Expenditure Paid to State Government, 1976

VAR 0104 PROBATION CONTRIB EMPS. NO MISSING DATA CODES  
REF 0104 LOC 908 WIDTH 9 DK 15 COL 42-50

Corrections: Probation, Pardon and Parole, Contributions to  
Employee Benefits, 1976

VAR 0105 ADMIN/MISC FULL-TIME EMP NO MISSING DATA CODES  
REF 0105 LOC 917 WIDTH 9 DK 15 COL 51-59

Corrections: Administrative and Miscellaneous, Full-Time  
Employees, 1976

VAR 0106 ADMIN/MISC FULL-TIME PAY NO MISSING DATA CODES  
REF 0106 LOC 926 WIDTH 9 DK 15 COL 60-68

Corrections: Administrative and Miscellaneous, Full-Time  
Payroll, 1976

VAR 0107 ADMIN/MISC PART-TIME EMP NO MISSING DATA CODES  
REF 0107 LOC 935 WIDTH 9 DK 15 COL 69-77

Corrections: Administrative and Miscellaneous, Part-Time  
Employees, 1976

'16'

DK 16 COL 1- 2

VAR 0114 ICPSR STUDY NUMBER NO MISSING DATA CODES  
REF 0114 LOC 998 WIDTH 4 DK 16 COL 3- 6

ICPSR Study Number

7618. Unique ICPSR study number

VAR 0115 VERSION NUMBER NO MISSING DATA CODES  
REF 0115 LOC 1002 WIDTH 3 DK 16 COL 7- 9

Version Number

2. Version 2

VAR 0009 SEQUENTIAL ID NO MISSING DATA CODES  
REF 0009 LOC 60 WIDTH 5 DK 16 COL 10-14

Sequential ID Number

VAR 0108 ADMIN/MISC PART-TIME PAY NO MISSING DATA CODES  
REF 0108 LOC 944 WIDTH 9 DK 16 COL 15-23

Corrections: Administrative and Miscellaneous, Part-Time  
Payroll, 1976

VAR 0109 ADMIN/MISC CURRNT OPERAT NO MISSING DATA CODES  
REF 0109 LOC 953 WIDTH 9 DK 16 COL 24-32

Corrections: Administrative and Miscellaneous, Current  
Operations, 1976

VAR 0110 ADMIN/MISC CAP OUTLAY NO MISSING DATA CODES  
REF 0110 LOC 962 WIDTH 9 DK 16 COL 33-41

Corrections: Administrative and Miscellaneous, Capital  
Outlay, 1976

VAR 0111 ADMIN/MISC PAY/LOCAL GOV NO MISSING DATA CODES  
REF 0111 LOC 971 WIDTH 9 DK 16 COL 42-50

Corrections: Administrative and Miscellaneous,  
Intergovernmental Expenditure Paid to Local Government, 1976

VAR 0112 ADMIN/MISC PAY/STATE GOV NO MISSING DATA CODES  
REF 0112 LOC 980 WIDTH 9 DK 16 COL 51-59

Corrections: Administrative and Miscellaneous,  
Intergovernmental Expenditure Paid to State Government, 1976

VAR 0113 ADMIN/MISC CONTRIB EMPS NO MISSING DATA CODES  
REF 0113 LOC 989 WIDTH 9 DK 16 COL 60-68

Corrections: Administrative and Miscellaneous, Contributions  
to Employee Benefits, 1976

VAR 0116 FILE NUMBER NO MISSING DATA CODES  
REF 0116 LOC 1005 WIDTH 1 DK 16 COL 69

File Number

6. 1976

## GLOSSARY

GOVERNMENT EXPENDITURE is all amounts of money paid out (net of any correcting transactions) other than for retirement of debt (including interest), investment in securities, extensions of loans, or agency transactions. It includes only external cash payments and excludes any intra-governmental transfers and non-cash transactions, such as the provision of meals or housing of employees. It also includes any payments financed from borrowing fund balances, intergovernmental revenue and other current revenue. In several instances, two or more governments share the expense of maintaining a court or other criminal justice agency. In these cases, the allocable direct expenditure amount is reported for each government in the appropriate category. When a government pays pensions directly to retired employees from appropriated funds, such payments are included as expenditure of the government concerned. However, State and local government contributions to retirement systems and various other employee benefits are not included in expenditure data, since the majority of governments make lump-sum contributions to plans covering all government employees and cannot report for criminal justice employees separately. Neither in government's basic accounting records (from which criminal justice expenditure figures are drawn) nor in the records of their general-coverage employee benefit systems is there usually any breakdown of amounts contributed in terms of the various agencies or functions involved. Nor has an adequate procedure for calculating the proportion of such contributions allocable to criminal justice employees been developed because of the wide variation in the coverage of various plans, employee status requirements, benefit rates, etc.

For those governments whose records reflect contributions of criminal justice employees separately, separate data were obtained. However, these data are subject to the same variation referred to above, and neither the amount nor the quality of the data reported would permit any attempt to estimate total contributions for all similar governments in a given state. Given the problems involved, no estimation procedure seems feasible. Such data as were reported separately were therefore excluded from total criminal

(CONTINUED)

justice expenditures to provide a consistent data base for administering the "variable pass-through" requirement.

Expenditure is divided into two major categories by character:

1. **DIRECT EXPENDITURE** is all expenditure except that classed as intergovernmental and is further divided into two principal object categories:

a. **DIRECT CURRENT**, which includes salaries, wages, fees, and commissions, purchase of supplies, materials, and contractual services.

b. **CAPITAL OUTLAY**, which includes expenditure for the three subcategories below:

**CONSTRUCTION:** Production of fixed works and structures and additions, replacements and major alterations thereto undertaken either on a contract basis by private contractors or through force account construction by the employees of the government. Included are the planning and designing of specific projects, the grading, landscaping, and other site improvement, and the provision of equipment and facilities that are integral parts of the structure

**EQUIPMENT:** Purchase and installation of apparatus, furnishings, office equipment, motor vehicles and the like having an expected life of more than 5 years. This includes both additional equipment and replacements. Rentals for equipment, including rental payments that may be credited on the purchase price if purchase options are exercised, are classified as direct current expenditure. Equipment and facilities that are integral parts of constructed or purchased structures are classified respectively under construction or purchase of land and existing structures.

**PURCHASE OF LAND AND EXISTING STRUCTURES:** Purchase of these assets as such, purchase of rights-of-way, and

(CONTINUED)

title search and similar activities associated with purchase transactions.

The other object categories -- interest on general debt, assistance and subsidies, and insurance benefits -- are not applied to specific functions because they are not ordinarily available on a functional basis from government financial reports. In the few instances where bonded or mortgaged general indebtedness is identified for specific purposes, the interest payments are aggregated with other interest expenditures, which make it virtually impossible to arrive at reliable and consistent breakdowns of such data over a long period of time.

2. **INTERGOVERNMENTAL EXPENDITURE** is payments from one general purpose government to another, including grants-in-aid, shared revenues, payments in lieu of taxes, and amounts for services performed by one government for another on a reimbursable or cost-sharing basis (for example, payments by one government to another for boarding prisoners).

**TOTAL EXPENDITURE** is direct and intergovernmental expenditure of a government or level of government for criminal justice activities.

**TOTAL GENERAL EXPENDITURE** is all expenditure of a government or level of government FOR ALL GOVERNMENT FUNCTIONS, including criminal justice activities, but excluding utility system expenditure, liquor store expenditure, and insurance trust expenditure. Total general expenditure shown for the local level of government includes expenditure of special districts and school districts.

#### GOVERNMENT EMPLOYMENT

**EMPLOYEES** includes all persons paid for personal services performed, including all paid officials and persons in paid leave status, and excludes unpaid officials, persons on unpaid leave, pensioners and contractors. Under this definition are two classes:

1. **FULL-TIME EMPLOYEES**, who are all persons employed

(CONTINUED)

during the pay period including October 15 of each year, on a full-time basis, including all full-time temporary or seasonal workers employed during this pay period, as well as persons having a permanent status.

2. PART-TIME EMPLOYEES, who are persons employed during the pay period including October 15 of each year, on a basis other than full-time, and persons paid by more than one government.

Derived from these two classes is:

FULL-TIME EQUIVALENT EMPLOYEES, which means the total number of employees, discounted by applying average full-time earning rates. This is calculated by dividing the total payroll (full-time plus part-time) by the FULL-TIME PAYROLL and multiplying the results by the number of full-time employees, where both full-time and part-time employees and payroll are reported. Where only part-time employees and payroll are reported, full-time equivalent employees are calculated by dividing the total part-time payroll by the average full-time salary for the particular criminal justice sector and type of government. AVERAGE FULL-TIME SALARY is calculated by dividing the full-time payroll by the number of full-time employees for the particular criminal justice sector and type of government.

PAYROLL is the gross payroll before deductions and includes salaries, wages, fees and commissions paid to employees as defined above for the month of October for each year.

#### GOVERNMENTAL FUCTIONS

POLICE PROTECTION is the function of enforcing the law, preserving order, and apprehending those who violate the law, whether these activities are performed by a police department, a sheriff's department, or a special police force maintained by an agency whose prime responsibility is outside the criminal justice system, but which has a police force to perform these activities in its specialized area (geographic or functional).

(CONTINUED)

Included in this activity are regular police services, the maintenance of buildings used for police purposes, and such specialized police forces (including public and private contract forces) as airport police, free and toll highway police, free and toll bridge and tunnel police, housing police, maritime police, park police, transit and other utility system police, college and university campus police, and alcoholic beverage control agents. Coroners and medical examiners are also included. Excluded are vehicular inspection and licensing, traffic safety and engineering, fish and game wardens, fire marshals, and the like.

The special police forces included in the data are only those which are part of the general purpose governments. Security forces, building guards, school crossing guards, and meter maids without general arrest power were excluded. Those special police forces that are part of independent school districts or special districts are not included in the data, inasmuch as these districts are not general purpose governments. SWORN POLICE PERSONNEL are auxiliary police, without much of the power of the regular police force.

In most states, sheriffs' departments are multifunctional agencies providing police protection, judicial, and/or correctional services. In order to allocate expenditure and employment data to the proper activity, the data for sheriffs' departments are prorated using factors developed from a special survey of sheriffs' departments conducted in 1973, or more current estimates of manpower distribution if available.

Short term custody and detention have traditionally been considered part of the police protection function; and in editions prior to the 1969-70 report, were treated as such. However, beginning with the 1969-70 report, the concept was modified on the basis of information obtained from the 1970 NATIONAL JAIL CENSUS. Data for institutions with authority to hold prisoners 48 hours or more are included in the "Corrections" sector. Data for lockups or "tanks" holding prisoners less than 48 hours are included in the "Police Protection" sector.

JUDICIAL ACTIVITIES encompass all civil and criminal courts and activities associated with courts such as law libraries, grand juries, petit juries, and the like. Since the names of courts with similar functions and legal jurisdiction vary

(CONTINUED)

from state to state and even within states, data have been categorized by types of court rather than by court name.

1. APPELLATE COURTS include courts of last resort and intermediate appellate courts. These are courts having jurisdiction of appeal and review, with original jurisdiction conferred only in special cases.
  - a. COURT OF LAST RESORT is the final appeal within the judicial structure of each state. (In most states, it is called the Supreme Court.)
  - b. INTERMEDIATE APPELLATE COURTS are those that are limited in their appellate jurisdiction by state law or at the discretion of the court of last resort.
2. MAJOR TRIAL COURTS are trial courts of general jurisdiction having unlimited original jurisdiction in civil and/or criminal cases, the names of which vary considerably.
3. COURTS OF GENERAL JURISDICTION are trial courts having unlimited original jurisdiction in civil and/or criminal cases, the names of which vary considerably.
4. COURTS OF LIMITED JURISDICTION are courts whose legal jurisdiction covers only a particular class of cases or cases where the amount in controversy is below a prescribed sum or is subject to specific exceptions. Included under this category are probate courts, juvenile courts and other courts of limited jurisdiction.
5. MISCELLANEOUS JUDICIAL includes data on judicial activities that could not be reported under any of the above court categories, such as judicial councils and conferences, court administration offices (where identifiable), law libraries, jury commissions, and grand juries.

LEGAL SERVICES AND PROSECUTION includes the civil and criminal justice activities of the attorneys general, district attorneys, state's attorneys, and their variously

(CONTINUED)

named equivalents; corporation counsels, solicitors, and legal departments with various names. It includes providing legal advice to the chief executives and subordinate departmental officers, representation of the government in lawsuits, and the prosecution of accused violators of criminal law. These activities are included whether performed by one office or several, because in some jurisdictions a single officer provides all legal services, whereas in others a prosecutor's office handles only criminal matters, and a separate attorney's office performs all civil legal services. The operations of various investigative agencies having full arrest powers and attached to offices of attorneys general, district attorneys, or their variously named equivalents are also included.

PUBLIC DEFENSE includes legal counsel and representation in either criminal or civil proceedings as provided by public defenders, and other government programs that pay the fees of court-appointed counsel. These include court-paid fees to individually retained counsel, fees paid by the court to court-appointed counsel, government contributions to private legal aid societies and bar association-sponsored programs, and the activities of an established public defender office or program. Employment data are included only for public defenders' offices, because fee-paid counselors are not considered government employees, nor are counselors working for bar associations or legal aid societies.

CORRECTIONS is that function of government involving the confinement and rehabilitation of adults and juveniles convicted of offenses against the law and the confinement of persons suspected of a crime and awaiting adjudication. Data for institutions with authority to hold prisoners 48 hours or more are included in this sector. Data for lockups or "tanks" holding prisoners less than 48 hours are included in "Police Protection." Correction includes the operation of prisons, reformatories, jails, houses of correction, and other institutions. It also includes institutions, facilities and programs exclusively for the confinement of the criminally insane or for the examination, evaluation, classification, and assignment of inmates and institutions and programs for the confinement, treatment, and rehabilitation of drug addicts and alcoholics if the institution or program is administered by a correction agency of the criminal justice system. Pardon boards and parole and probation agencies, including resettlement or halfway houses for those not in need of institutionaliza-

(CONTINUED)

tion, are included in the correction sector as a separate subcategory.

1. CORRECTIONAL INSTITUTIONS are prisons, reformatories, jails, houses of correction, penitentiaries, correctional farms, workhouses, reception centers, diagnostic centers, industrial schools, training schools, detention centers, and a variety of other types of institutions for the confinement and correction of convicted adults or juveniles adjudicated delinquent or in need of supervision, and for the detention of those adults and juveniles accused of a crime and awaiting trial or hearing. When an institution maintains a prison industry or agricultural program, data on the cost of production or the value of prison labor used by agencies of the same government, if identifiable, are excluded (and classified as expenditure for the function using the products or services. Expenditure for the manufacture, production, sale, and distribution of goods produced for sale or use outside the government are included under this heading.

a. INSTITUTIONS FOR MEN includes identifiable expenditure and employment data for institutions exclusively for adult male offenders.

b. INSTITUTIONS FOR WOMEN include identifiable expenditure and employment data for institutions exclusively for adult female offenders. Where there is no separate women's prison, women offenders are either maintained in a prison complex that also houses other offenders or are boarded in private facilities or institutions in another state. No attempt was made to prorate data on institutions housing more than one type of inmate, but where females are boarded in private institutions or in another state, available expenditure data was tabulated. Employment data were not tabulated because the personnel were employees of another government.

c. INSTITUTIONS FOR JUVENILES are those institutions identified by the 1975 Juvenile Detention and Correction Facility Census as housing primarily juveniles and in some states, "youthful offenders." These institutions include those under the control of a juvenile court, a probation department, of a youth authority or other similarly designated administrative body, as well as

(CONTINUED)

independently administered institutions. Also included are government payments to private agencies for the detention or treatment of delinquent juveniles.

There is considerable variation from state to state in the legal definition of a juvenile, particularly in regard to the age at which a person is no longer considered a juvenile. Institutions for juveniles have been classified individually in accordance with the laws and age designations of their respective states.

d. OTHER AND COMBINED INSTITUTIONS are those institutions holding a combination of inmates. Where expenditure or employment data for physically separate institutions for juveniles, adult females, and adult males were not separable by institution or type of institution, the entire amounts were included under this category.

2. CORRECTIONAL ADMINISTRATION consists of data for the overall administration of the correctional system, including data on the central administrative office (for example, the department of corrections or a youth authority). Data on the administration of individual correctional institutions or probation/parole/pardon agencies are included in the appropriate sub-category if it was possible to deduct them.

3. PROBATION, PAROLE AND PARDON includes data on probation agencies, boards of parole, boards of pardon, and their variously named equivalents. Although probation agencies frequently function under the administration of the general jurisdiction court, the data are presented here after having been deducted from the judicial data, because of the correctional nature of the probation function. If the probation, parole and pardon activities, or any of them individually, were part of the correctional administrative office, data were deducted where possible and shown separately here, and the balance was shown under the correctional administrative category. The overlapping character of the probation, parole and pardon activities prevented the separate presentation of these data.

4. MISCELLANEOUS CORRECTION includes expenditure and

(CONTINUED)

employment data that could not be classified under one of the other sub-categories.

OTHER CRIMINAL JUSTICE ACTIVITIES includes expenditure or employment data that cut across more than one category, or that are not allocable to separate categories; e.g., expenditure on a general curriculum in educational institutions, the operation of the state criminal justice agencies, crime commissions, etc. Such data are included in the totals, where they are not shown separately.

INSTITUTIONS, THE OPERATION OF THE STATE CRIMINAL JUSTICE AGENCIES, CRIME COMMISSIONS, ETC. SUCH DATA ARE INCLUDED IN THE TOTALS, WHERE THEY ARE NOT SHOWN SEPARATELY.

**END**