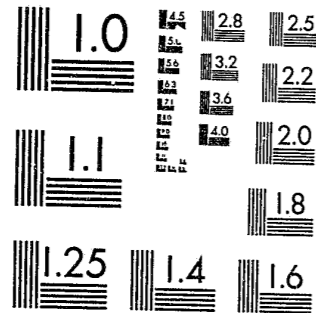


National Criminal Justice Reference Service



This microfiche was produced from documents received for inclusion in the NCJRS data base. Since NCJRS cannot exercise control over the physical condition of the documents submitted, the individual frame quality will vary. The resolution chart on this frame may be used to evaluate the document quality.



MICROCOPY RESOLUTION TEST CHART  
NATIONAL BUREAU OF STANDARDS-1963-A

Microfilming procedures used to create this fiche comply with the standards set forth in 41CFR 101-11.504.

Points of view or opinions stated in this document are those of the author(s) and do not represent the official position or policies of the U. S. Department of Justice.

National Institute of Justice  
United States Department of Justice  
Washington, D. C. 20531

4/12/85

INTER-UNIVERSITY CONSORTIUM FOR  
POLITICAL AND SOCIAL RESEARCH

EXPENDITURE AND EMPLOYMENT DATA  
FOR THE CRIMINAL JUSTICE SYSTEM,  
1973

(ICPSR 7618)

96178  
ICPSR

Principal Investigator

Law Enforcement  
Assistance Administration

First ICPSR Edition, 1978

U.S. Department of Justice  
National Institute of Justice

This document has been reproduced exactly as received from the person or organization originating it. Points of view or opinions stated in this document are those of the authors and do not necessarily represent the official position or policies of the National Institute of Justice.

Permission to reproduce this copyrighted material has been granted by

Public Domain/NIJ

U. S. Department of Justice

to the National Criminal Justice Reference Service (NCJRS).

Further reproduction outside of the NCJRS system requires permission of the copyright owner.

EXPENDITURE AND EMPLOYMENT DATA FOR THE  
CRIMINAL JUSTICE SYSTEM, 1973

(ICPSR 7618)

Principal Investigator

Law Enforcement Assistance  
Administration

Inter-university Consortium for Political and Social Research  
P.O. Box 1248  
Ann Arbor, Michigan 48106

First ICPSR Edition, 1978

ACKNOWLEDGMENT OF ASSISTANCE

All manuscripts utilizing data made available through the Consortium should acknowledge that fact as well as identify the original collector of the data. The ICPSR Council urges all users of ICPSR data facilities to follow some adaptation of this statement with the parentheses indicating items to be filled in appropriately or deleted by the individual user.

The data (and tabulations) utilized in this (publication) were made available (in part) by the Inter-university Consortium for Political and Social Research. The data for Expenditure and Employment Data for the Criminal Justice System, 1973 were originally collected by the U. S. Bureau of the Census for the Law Enforcement Assistance Administration (LEAA). Neither the original collector of the data nor the Consortium bear any responsibility for the analyses or interpretations presented here.

In order to provide funding agencies with essential information about the use of archival resources, and to facilitate the exchange of information about ICPSR participants' research activities, each user of the ICPSR data facilities is expected to send two copies of each completed manuscript or thesis abstract to the Consortium. Please indicate in the cover letter which data were used.

SUMMARY OF CONTENTS

Study Description . . . . .	1
Data Collection Methods and Sample . . . . .	2
Processing . . . . .	2
Description of the Codebook . . . . .	3
Variable Description List . . . . .	6
Codebook . . . . .	8
Appendix 1: Definition of Terms . . . . .	22
Appendix 2: Counties by Name . . . . .	34
Appendix 3: OSIRIS III Type 3 Dictionary Description . . . . .	64

NCJRB

JAN 7 1980

ACQUISITIONS

## STUDY DESCRIPTION

The 1973 Criminal Justice Expenditure and Employment data are part of an annual survey series conducted under the requirements of the Omnibus Crime Control and Safe Streets Act of 1968. The data were collected by the U. S. Bureau of the Census for the Law Enforcement Assistance Administration (LEAA).

A related publication is report 0324-01046, available by sale through the U. S. Government Printing Office, Washington D. C. 20402. The reader is urged to use the above report in conjunction with this dataset in order to attain complete information on the survey methodology and definitions of terms used in this study. The information which appears in the user's guide accompanying this study was extracted from report 0324-01046.

The data included in this study concern criminal justice employment and expenditures for all the states and counties, and for certain city and municipal governments. Specific variables include: full- and part-time employees and payroll; expenditures for current operations, capital outlay, and contributions to employee benefits; and inter-governmental expenditure paid to state and local governments. Figures are presented for the following sectors of the criminal justice system: police protection, judicial, legal services and prosecution, public (indigent) defense, corrections, and other criminal justice services. Definitions of these terms can be found in Appendix I.

The survey design for this study included the collection of data from all states and counties, and from cities and municipalities having a 1970 population of 10,000 or more. In addition, a sample of the remaining cities and townships under 10,000 in population was selected in accordance to the relative size of their annual expenditures in criminal justice, as reported in the 1970 Census of Governments. The original survey panel was comprised of 50 state governments, 3044 county governments, 4286 cities, and 1706 townships. This dataset includes records for: 50 states, 2847 counties, 3965 cities, and 1558 townships -- a total of 8420 records.

The state expenditure data covers the fiscal year ending June 30, for all states except these three, whose fiscal years end as follows: New York, March 31; Texas, August 31; and Alabama, September 30. Included in the state expenditure data totals is information from some state agencies which operate on a fiscal year different from the state government under which it is organized. Figures for such agencies are those from the fiscal year which terminated within the state's regular fiscal year. For local governments, the 1972-73 fiscal year reported is that which closed between July 1, 1972, and June 30, 1973. Data on the number of employees is reported for the pay period which included October 15, 1973, and includes the personnel on the payroll for the month of October 1973.

## DATA COLLECTION METHODS AND SAMPLE

The survey was accomplished using two methods of data collection: field compilation and mail canvass. Field representatives compiled expenditure and employment data for the 50 states, 312 largest counties, 384 largest cities, and for selected smaller units from the government's own records. Compilation was done between July 1972 and June 1973. All other governmental units in the sample were canvassed by mail over a five month period, January 1973 through May 1973. Response in field-compilation was 100%; response from mail canvass units was 88.5%.

The field survey efforts and mail canvass were supplemented by references to a variety of published government documents, such as budget and audit reports. In some instances, such sources were the basis for the breakdown of totals into more detailed expenditure and employment figures.

The sample of municipal governments was designed to produce an estimate for each state, of the ratio of state to local government criminal justice expenditures with a sample error of less than 0.5% at the 95% confidence level. The relative error of the state-by-state estimates of local government criminal justice expenditures has also been calculated at the 95% confidence level.

The LEAA has sponsored seven years of expenditure - employment data, 1970 through 1976. The data for fiscal years 1971 through 1976 are directly comparable; the data were collected, edited, and processed in a uniform way. Due to significant changes in the survey procedures, 1970 data are not directly comparable with the 1971-1976 years.

## PROCESSING

The archive file consists of three physical files stored on a magnetic tape: a machine-readable user's guide which documents the data for the human user; an OSIRIS dictionary file which describes the data to a computer program and a data file. Appendix III contains additional information on file format.

A unit in this data file is a state, county, city, or municipal government. There are 8420 units in the 1973 file. Each governmental unit is identified and sorted according to four variables: a state reference code, a level-of-government identifier, a county code, and a city or municipal reference number. States and counties are coded according to the Government's Division Code, and cities and municipalities by the Government's Unit Code.

Description of the Codebook

This section contains an explanation of typical entries in the codebook section which follows. The numbers in brackets do not appear in the codebook but are references to the descriptions which follow the examples.

.....

[1] V2	[6] Reference: 0002
[2] LEVEL OF GOVERNMENT	[7] File I.D.: E73
[3] Location: 3 Width: 1	[8] Numeric character
[4] Missing data: EQ 9	

[10]	[11]	[12]
50	0	State
2847	1	County
3965	2	City
1558	3	Township

[13] Reference numbers 3, 4. If the facility is operated by a state, both the COUNTY NUMBER and CITY/TOWNSHIP NUMBER are equal to zero. If the facility is operated by a county, then the COUNTY NUMBER is a number assigned sequentially within a state to the counties in alphabetical order. CITY/TOWNSHIP NUMBER is usually but not always the same as COUNTY NUMBER. If the facility is operated by a city or township, the CITY/TOWNSHIP NUMBER is a unique number assigned within the county to a city or township. LEVEL OF GOVERNMENT (Ref. No. 2) determines the contents of COUNTY NUMBER and CITY/TOWNSHIP NUMBER.

[1] V7	[6] Reference: 0007
[2] WEIGHT	[7] File I.D.: E73
[3] Location: 17 Width: 5	[8] Numeric character
[4] Missing data: EQ 9	
[5] Implicit decimal places: 4	

[9] Sample weight

.....

1. The OSIRIS variable number. The variable number is used as the SPSS variable name when an OSIRIS file is processed by SPSS.

2. The abbreviated (24 characters maximum) variable label used within the OSIRIS or SPSS systems to identify the variable for the user.
3. The starting location and width of this variable in the data as stored on a magnetic tape. This information and the number of decimal places, if any, is the format information needed to read the data into other systems.
4. The designation of missing data. In the examples, code values for LEVEL OF GOVERNMENT or WEIGHT equal to nine are designated as missing data. Some analysis software packages (including the OSIRIS and SPSS packages) require that certain types of data which are usually excluded from analysis be designated as "missing data;" e.g., inappropriate, unascertained, unascertainable or ambiguous data categories. If need be, this designation can be changed by the user and the values used in a substantive manner.
5. Number of decimal places to the right of the decimal point. The decimal point is implied and is not part of the data item. In this file, WEIGHT is the only variable with an implied number of decimal places other than zero.
6. The OSIRIS reference number. The LEAA Data Archive has adopted the OSIRIS III convention of assigning both a variable number and a reference number to each data item when a file is created. In the archive file, they are the same. Should the data be subsetted or rearranged, the variable numbers would change to reflect the order of the new data file, while the reference numbers would remain to reflect the variable numbers in the codebook describing the archived data file.
7. The three-column identification number unique to this data file.
8. The storage mode of the variable. All data in this file are in numeric character form.
9. The unabbreviated variable label or the text of the question from the survey form.
10. The frequency of occurrence of each code value.
11. The code values occurring in the data for a variable.
12. The textual definitions of the codes. The first 20 characters form a short label which is sometimes used to document the output of analysis programs. A longer description follows the short label when necessary.

13. Explanatory text referring to a group of variables which follows. These entries are used whenever a lengthy description applies to more than one or two variables or when some comment about a group of variables is needed.

## VARIABLE DESCRIPTION LIST

Identification and Weight Variables

V1 State number  
 V2 Level of government  
 V3 County number  
 V4 City or Township number  
 V5 Fiscal year  
 V6 Sequence number  
 V7 Sample weight

Police Protection Expenditure and Employment

V8 Full-time employees  
 V9 Full-time payroll  
 V10 Part-time employees  
 V11 Part-time payroll  
 V12 Current operations  
 V13 Capital outlay  
 V14 Intergovernmental expenditure paid to local government  
 V15 Intergovernmental expenditure paid to state government  
 V16 Contributions to employee benefits

Judicial Expenditure and Employment

V17 Full-time employees  
 V18 Full-time payroll  
 V19 Part-time employees  
 V20 Part-time payroll  
 V21 Current operations  
 V22 Capital outlay  
 V23 Intergovernmental expenditure paid to local government  
 V24 Intergovernmental expenditure paid to state government  
 V25 Contributions to employee benefits

Legal Services and Prosecution Expenditure and Employment

V26 Full-time employees  
 V27 Full-time payroll  
 V28 Part-time employees  
 V29 Part-time payroll  
 V30 Current operations  
 V31 Capital outlay  
 V32 Intergovernmental expenditure paid to local government  
 V33 Intergovernmental expenditure paid to state government  
 V34 Contributions to employee benefits

Indigent Defense Expenditure and Employment

V35 Full-time employees  
 V36 Full-time payroll  
 V37 Part-time employees  
 V38 Part-time payroll  
 V39 Current operations  
 V40 Capital outlay  
 V41 Intergovernmental expenditure paid to local government  
 V42 Intergovernmental expenditure paid to state government  
 V43 Contributions to employee benefits

Correction Expenditure and Employment

V44 Full-time employees  
 V45 Full-time payroll  
 V46 Part-time employees  
 V47 Part-time payroll  
 V48 Current operations  
 V49 Capital outlay  
 V50 Intergovernmental expenditure paid to local government  
 V51 Intergovernmental expenditure paid to state government  
 V52 Contributions to employee benefits

Other Criminal Justice Expenditure and Employment

V53 Full-time employees  
 V54 Full-time payroll  
 V55 Part-time employees  
 V56 Part-time payroll  
 V57 Current operations  
 V58 Capital outlay  
 V59 Intergovernmental expenditure paid to local government  
 V60 Intergovernmental expenditure paid to state government  
 V61 Contributions to employee benefits

LEAA Academic Assistance

V62 LEEP funds to state governmental institutions  
 V63 LEEP funds to local governmental institutions

## CODEBOOK

V1  
STATE NUMBER  
Location: 1 Width: 2  
Missing Data: EQ 99

Reference: 0001  
File I.D.: E73  
Numeric character

138	1	Alabama
46	2	Alaska
35	3	Arizona
146	4	Arkansas
298	5	California
110	6	Colorado
113	7	Connecticut
30	8	Delaware
1	9	District of Columbia
180	10	Florida
264	11	Georgia
5	12	Hawaii
98	13	Idaho
310	14	Illinois
229	15	Indiana
237	16	Iowa
267	17	Kansas
191	18	Kentucky
118	19	Louisiana

(V1, STATE NUMBER, Continued)

180	20	Maine
56	21	Maryland
157	22	Massachusetts
270	23	Michigan
240	24	Minnesota
146	25	Mississippi
229	26	Missouri
109	27	Montana
161	28	Nebraska
28	29	Nevada
111	30	New Hampshire
236	31	New Jersey
73	32	New Mexico
311	33	New York
176	34	North Carolina
244	35	North Dakota
302	36	Ohio
171	37	Oklahoma
85	38	Oregon
326	39	Pennsylvania
35	40	Rhode Island
118	41	South Carolina
363	42	South Dakota
169	43	Tennessee
397	44	Texas



## (V1, STATE NUMBER, Continued)

66 45 Utah  
 246 46 Vermont  
 136 47 Virginia  
 95 48 Washington  
 117 49 West Virginia  
 196 50 Wisconsin  
 55 51 Wyoming

V2  
 LEVEL OF GOVERNMENT  
 Location: 3 Width: 1  
 Missing Data: EQ 9

Reference: 0002  
 File I.D.: E73  
 Numeric character

50 0 State  
 2847 1 County  
 3965 2 City  
 1558 3 Township

Ref. Nos. 3,4. If the facility is operated by a state, both the COUNTY NUMBER and CITY/TOWNSHIP NUMBER are equal to zero. If the facility is operated by a county, then the COUNTY NUMBER is a number assigned sequentially within a state to the counties in alphabetical order. CITY/TOWNSHIP NUMBER is usually but not always the same as COUNTY NUMBER. If the facility is operated by a city or township, the CITY/TOWNSHIP NUMBER is a unique number assigned within the county to a city or township. LEVEL OF GOVERNMENT (Ref. No. 2) determines the contents of COUNTY NUMBER and CITY/TOWNSHIP NUMBER.

V3  
 COUNTY NUMBER  
 Location: 4 Width: 3  
 Missing Data: EQ 999

Reference: 0003  
 File I.D.: E73  
 Numeric character

V4  
 CITY/TOWNSHIP #  
 Location: 7 Width: 3  
 Missing Data: EQ 999

Reference: 0004  
 File I.D.: E73  
 Numeric character

V5  
 FISCAL YEAR  
 Location: 10 Width: 2  
 <No Missing Data Defined>

Reference: 0005  
 File I.D.: E73  
 Numeric character

8420 73 Fiscal year 1972-73

V6  
 SEQUENCE NUMBER  
 Location: 12 Width: 5  
 <No Missing Data Defined>

Reference: 0006  
 File I.D.: E73  
 Numeric character

The values range from 1 to 8420 and are in ascending order.

V7  
 WEIGHT  
 Location: 17 Width: 5  
 Missing Data: EQ 9  
 Implicit decimal places: 4

Reference: 0007  
 File I.D.: E73  
 Numeric character

Sample weight.

V8  
 POLICE FULL-TIME EMPLOYE  
 Location: 22 Width: 5  
 Missing Data: EQ -1

Reference: 0008  
 File I.D.: E73  
 Numeric character

Police protection, full-time employees.

V9  
 POLICE FULL-TIME PAYROLL  
 Location: 27 Width: 8  
 Missing Data: EQ -1

Reference: 0009  
 File I.D.: E73  
 Numeric character

Police protection, full-time payroll.

V10  
POLICE PART-TIME EMPLOYEE  
Location: 35 Width: 4  
Missing Data: EQ -1

Reference: 0010  
File I.D.: E73  
Numeric character

Police protection, part-time employees.

V11  
POLICE PART-TIME PAYROLL  
Location: 39 Width: 7  
Missing Data: EQ -1

Reference: 0011  
File I.D.: E73  
Numeric character

Police protection, part-time payroll.

V12  
POLICE CURRENT OPERATION  
Location: 46 Width: 9  
Missing Data: EQ -1

Reference: 0012  
File I.D.: E73  
Numeric character

Police protection, current operations.

V13  
POLICE CAPITAL OUTLAY  
Location: 55 Width: 8  
Missing Data: EQ -1

Reference: 0013  
File I.D.: E73  
Numeric character

Police protection, capital outlay.

V14  
POLICE PAY TO LOCAL GOVT  
Location: 63 Width: 8  
Missing Data: EQ -1

Reference: 0014  
File I.D.: E73  
Numeric character

Police protection, intergovernmental expenditure paid to local government.

V15  
POLICE PAY TO STATE GOVT  
Location: 71 Width: 6  
Missing Data: EQ -1

Reference: 0015  
File I.D.: E73  
Numeric character

Police protection, intergovernmental expenditure paid to state government.

V16  
POLICE CONTRIB TO EMPLOY  
Location: 77 Width: 9  
Missing Data: EQ -1

Reference: 0016  
File I.D.: E73  
Numeric character

Police protection, contributions to employee benefits.

V17  
JUD FULL-TIME EMPLOYEE  
Location: 86 Width: 4  
Missing Data: EQ -1

Reference: 0017  
File I.D.: E73  
Numeric character

Judicial, full-time employees.

V18  
JUD FULL-TIME PAYROLL  
Location: 90 Width: 8  
Missing Data: EQ -1

Reference: 0018  
File I.D.: E73  
Numeric character

Judicial, full-time payroll.

V19  
JUD PART-TIME EMPLOYEE  
Location: 98 Width: 3  
Missing Data: EQ -1

Reference: 0019  
File I.D.: E73  
Numeric character

Judicial, part-time employees.

V20  
JUD PART-TIME PAYROLL  
Location: 101 Width: 7  
Missing Data: EQ -1

Reference: 0020  
File I.D.: E73  
Numeric character

Judicial, part-time payroll.

V21  
JUD CURRENT OPERATIONS  
Location: 108 Width: 9  
Missing Data: EQ -1

Reference: 0021  
File I.D.: E73  
Numeric character

Judicial, current operations.

V22  
 JUD CAPITAL OUTLAY  
 Location: 117 Width: 8  
 Missing Data: EQ -1

Reference: 0022  
 File I.D.: E73  
 Numeric character

Judicial, capital outlay.

V23  
 JUD PAY TO LOCAL GOVT  
 Location: 125 Width: 8  
 Missing Data: EQ -1

Reference: 0023  
 File I.D.: E73  
 Numeric character

Judicial, intergovernmental expenditure paid to local government.

V24  
 JUD PAY TO STATE GOVT  
 Location: 133 Width: 7  
 Missing Data: EQ -1

Reference: 0024  
 File I.D.: E73  
 Numeric character

Judicial, intergovernmental expenditure paid to state government.

V25  
 JUD CONTRIB TO EMPLOYEE  
 Location: 140 Width: 7  
 Missing Data: EQ -1

Reference: 0025  
 File I.D.: E73  
 Numeric character

Judicial, contributions to employee benefits.

V26  
 PROS FULL-TIME EMPLOYEE  
 Location: 147 Width: 4  
 Missing Data: EQ -1

Reference: 0026  
 File I.D.: E73  
 Numeric character

Legal services and prosecution, full-time employees.

V27  
 PROS FULL-TIME PAYROLL  
 Location: 151 Width: 7  
 Missing Data: EQ -1

Reference: 0027  
 File I.D.: E73  
 Numeric character

Legal services and prosecution, full-time payroll.

V28  
 PROS PART-TIME EMPLOYEE  
 Location: 158 Width: 3  
 Missing Data: EQ -1

Reference: 0028  
 File I.D.: E73  
 Numeric character

Legal services and prosecution, part-time employees.

V29  
 PROS PART-TIME PAYROLL  
 Location: 161 Width: 6  
 Missing Data: EQ -1

Reference: 0029  
 File I.D.: E73  
 Numeric character

Legal services and prosecution, part-time payroll

V30  
 PROS CURRENT OPERATIONS  
 Location: 167 Width: 8  
 Missing Data: EQ -1

Reference: 0030  
 File I.D.: E73  
 Numeric character

Legal services and prosecution, current operations.

V31  
 PROS CAPITAL OUTLAY  
 Location: 175 Width: 7  
 Missing Data: EQ -1

Reference: 0031  
 File I.D.: E73  
 Numeric character

Legal services and prosecution, capital outlay.

V32  
 PROS PAY TO LOCAL GOVT  
 Location: 182 Width: 7  
 Missing Data: EQ -1

Reference: 0032  
 File I.D.: E73  
 Numeric character

Legal services and prosecution, intergovernmental expenditure paid to local government.

V33  
 PROS PAY TO STATE GOVT  
 Location: 189 Width: 6  
 Missing Data: EQ -1

Reference: 0033  
 File I.D.: E73  
 Numeric character

Legal services and prosecution, intergovernmental expenditure paid to state government.

V34  
 PROS CONTRIB TO EMPLOYEE  
 Location: 195 Width: 7  
 Missing Data: EQ -1

Reference: 0034  
 File I.D.: E73  
 Numeric character

Legal services and prosecution, contributions to employee benefits.

V35  
 IND DEF FULL-TIME EMPLOY  
 Location: 202 Width: 3  
 Missing Data: EQ -1

Reference: 0035  
 File I.D.: E73  
 Numeric character

Indigent defense, full-time employees.

V36  
 IND DEF FULL-TIME PAYROL  
 Location: 205 Width: 7  
 Missing Data: EQ -1

Reference: 0036  
 File I.D.: E73  
 Numeric character

Indigent defense, full-time payroll.

V37  
 IND DEF PART-TIME EMPLOY  
 Location: 212 Width: 2  
 Missing Data: EQ -1

Reference: 0037  
 File I.D.: E73  
 Numeric character

Indigent defense, part-time employees.

V38  
 IND DEF PART-TIME PAYROL  
 Location: 214 Width: 5  
 Missing Data: EQ -1

Reference: 0038  
 File I.D.: E73  
 Numeric character

Indigent defense, part-time payroll.

V39  
 IND DEF CURRENT OPER  
 Location: 219 Width: 8  
 Missing Data: EQ -1

Reference: 0039  
 File I.D.: E73  
 Numeric character

Indigent defense, current operations.

V40  
 IND DEF CAPITAL OUTLAY  
 Location: 227 Width: 6  
 Missing Data: EQ -1

Reference: 0040  
 File I.D.: E73  
 Numeric character

Indigent defense, capital outlay.

V41  
 IND DEF PAY TO LOCAL GOV  
 Location: 233 Width: 7  
 Missing Data: EQ -1

Reference: 0041  
 File I.D.: E73  
 Numeric character

Indigent defense, intergovernmental expenditure paid to local government.

V42  
 IND DEF PAY TO STATE GOV  
 Location: 240 Width: 5  
 Missing Data: EQ -1

Reference: 0042  
 File I.D.: E73  
 Numeric character

Indigent defense, intergovernmental expenditure paid to state government.

V43  
 IND DEF CONTRIB TO EMP  
 Location: 245 Width: 6  
 Missing Data: EQ -1

Reference: 0043  
 File I.D.: E73  
 Numeric character

Indigent defense, contributions to employee benefits.

V44  
 CORRECT FULL-TIME EMPLOY  
 Location: 251 Width: 5  
 Missing Data: EQ -1

Reference: 0044  
 File I.D.: E73  
 Numeric character

Correction, full-time employees.

V45  
 CORRECT FULL-TIME PAYROL  
 Location: 256 Width: 8  
 Missing Data: EQ -1

Reference: 0045  
 File I.D.: E73  
 Numeric character

Correction, full-time payroll.

V46  
CORRECT PART-TIME EMPLOY  
Location: 264 Width: 4  
Missing Data: EQ -1

Reference: 0046  
File I.D.: E73  
Numeric character

Correction, part-time employees.

V47  
CORRECT PART-TIME PAYROL  
Location: 268 Width: 6  
Missing Data: EQ -1

Reference: 0047  
File I.D.: E73  
Numeric character

Correction, part-time payroll.

V48  
CORRECT CURRENT OPER  
Location: 274 Width: 9  
Missing Data: EQ -1

Reference: 0048  
File I.D.: E73  
Numeric character

Correction, current operations.

V49  
CORRECT CAPITAL OUTLAY  
Location: 283 Width: 8  
Missing Data: EQ -1

Reference: 0049  
File I.D.: E73  
Numeric character

Correction, capital outlay.

V50  
CORRECT PAY TO LOCAL GOV  
Location: 291 Width: 8  
Missing Data: EQ -1

Reference: 0050  
File I.D.: E73  
Numeric character

Correction, intergovernmental expenditure paid to local government.

V51  
CORRECT PAY TO STATE GOV  
Location: 299 Width: 7  
Missing Data: EQ -1

Reference: 0051  
File I.D.: E73  
Numeric character

Correction, intergovernmental expenditure paid to state government.

V52  
CORRECT CONTRIB TO EMP  
Location: 306 Width: 8  
Missing Data: EQ -1

Reference: 0052  
File I.D.: E73  
Numeric character

Correction, contributions to employee benefits.

V53  
OTHER FULL-TIME EMPLOYEE  
Location: 314 Width: 4  
Missing Data: EQ -1

Reference: 0053  
File I.D.: E73  
Numeric character

Other criminal justice, full-time employees.

V54  
OTHER FULL-TIME PAYROLL  
Location: 318 Width: 7  
Missing Data: EQ -1

Reference: 0054  
File I.D.: E73  
Numeric character

Other criminal justice, full-time payroll.

V55  
OTHER PART-TIME EMPLOYEE  
Location: 325 Width: 2  
Missing Data: EQ -1

Reference: 0055  
File I.D.: E73  
Numeric character

Other criminal justice, part-time employees.

V56  
OTHER PART-TIME PAYROLL  
Location: 327 Width: 5  
Missing Data: EQ -1

Reference: 0056  
File I.D.: E73  
Numeric character

Other criminal justice, part-time payroll.

V57  
OTHER CURRENT OPERATIONS  
Location: 332 Width: 8  
Missing Data: EQ -1

Reference: 0057  
File I.D.: E73  
Numeric character

Other criminal justice, current operations.

V58  
OTHER CAPITAL OUTLAY  
Location: 340 Width: 8  
Missing Data: EQ -1

Reference: 0058  
File I.D.: E73  
Numeric character

Other criminal justice, capital outlay.

V59  
OTHER PAY TO LOCAL GOVT  
Location: 348 Width: 8  
Missing Data: EQ -1

Reference: 0059  
File I.D.: E73  
Numeric character

Other criminal justice, intergovernmental expenditure paid to local government.

V60  
OTHER PAY TO STATE GOVT  
Location: 356 Width: 6  
Missing Data: EQ -1

Reference: 0060  
File I.D.: E73  
Numeric character

Other criminal justice, intergovernmental expenditure paid to state government.

V61  
OTHER CONTRIB TO EMPLOYE  
Location: 362 Width: 6  
Missing Data: EQ -1

Reference: 0061  
File I.D.: E73  
Numeric character

Other criminal justice, contributions to employee benefits.

Ref. Nos. 62-63. Although all data for these variables are missing, they have been included to maintain compatibility of the files in the expenditure and employment series. The first year for which data are available is fiscal year 1973-74.

V62  
STATE LEEP FUNDS  
Location: 368 Width: 7  
Missing Data: EQ -1

Reference: 0062  
File I.D.: E73  
Numeric character

LEAA academic assistance to state government institutions of higher education.

V63  
LOCAL LEEP FUNDS  
Location: 375 Width: 7  
Missing Data: EQ -1

Reference: 0063  
File I.D.: E73  
Numeric character

LEAA academic assistance to local government institutions of higher education.

## APPENDIX 1: DEFINITION OF TERMS

Following is a glossary of terms, concepts, and categories used in collecting the expenditure and employment data, and comments concerning their limitations.

The definitions are those applied in the field compilation of data for the 50 states, 312 largest counties, and 384 largest cities. These definitions were necessarily summarized for inclusion in the survey questionnaires (see Appendix 3 of the publication Expenditure and Employment Data for the Criminal Justice System, 1972-73) sent to governments on the mail panel.

Government Expenditure

Expenditure comprises all amounts of money paid out (net of any correcting transactions) other than for retirement of debt, investment in securities, extensions of loans, or agency transactions. It includes only external cash payments and excludes any intragovernmental transfers and noncash transactions, such as the provision of meals or housing of employees. It also includes any payments financed from borrowing, fund balances, intergovernmental revenue, and other current revenue. In several instances, two or more governments share the expense of maintaining a court or other criminal justice agency. In these cases, the allocatable direct expenditure amount is reported for each government in the appropriate category. When a government pays pensions directly to retired employees from appropriated funds, such payments are included as expenditure of the government concerned. However, State and local government contributions to retirement systems and various other employee benefits are not included in expenditure data, since the majority of governments make lump-sum contributions to plans covering all government employees and cannot report for criminal justice employees separately. Neither in governments basic accounting records (from which criminal justice expenditure figures are drawn) nor in the records of their general-coverage employee benefit systems is there usually any breakdown of amounts contributed in terms of the various agencies or functions involved. Nor has an adequate procedure for calculating the proportion of such contributions allocatable to criminal justice employees been developed due to the wide variation in the coverage of various plans, employee status requirements, benefit rates, etc.

For those governments whose records reflect contributions for criminal justice employees separately, separate data were obtained. However, these data are subject to the same variation referred to above, and neither the amount nor the quality of the data reported would permit any attempt to estimate total contributions for all similar governments in a given State. Given the problems involved, no estimation procedure seems feasible. Such data as were reported separately were therefore excluded from total criminal justice expenditures to provide a consistent data base for administering the variable pass-through requirement.

Expenditure is divided into two major categories by character: direct expenditure and intergovernmental expenditure.

1. Direct expenditure comprises all expenditure except that classed as intergovernmental and is further divided into two principal object categories:
  - a. Current operation, which includes salaries, wages, fees, and commissions, purchase of supplies, materials, and contractual services.
  - b. Capital outlay, which includes expenditure for the three subcategories below:

Construction includes production of fixed works and structures, and additions, replacements and major alterations thereto undertaken either on a contract basis by private contractors or through force account construction by the employees of the government. Included are the planning and designing of specific projects, the grading, landscaping, and other site improvement, and the provision of equipment and facilities that are integral parts of the structure.

Equipment comprises purchase and installation of apparatus, furnishings, office equipment, motor vehicles and the like having an expected life of more than five years. This includes both additional equipment and replacements. Rentals for equipment, including rental payments that may be credited on the purchase price if purchase options are exercised, are classified as current operation expenditure. Equipment and facilities that are integral parts of constructed or purchased structures are classified respectively under construction or purchase of land and existing structures.

Purchase of land and existing structures includes

purchase of these assets as such, purchase of rights-of-way, and title search and similar activities associated with purchase transactions.

The other object categories--interest on general debt, assistance and subsidies, and insurance benefits--are not applied to specific functions.

2. Intergovernmental expenditure comprises payments from one government to another, including grants-in-aid, shared revenues, payments in lieu of taxes, and amounts for services performed by one government for another on a reimbursable or cost-sharing basis (for example, payments by one government to another for boarding prisoners).

Total expenditure is comprised of direct and intergovernmental expenditure of a government or level of government for criminal justice activities.

Total general expenditure comprises all expenditure of a government or level of government for all governmental functions, including criminal justice activities, but excluding utility system expenditure, liquor store expenditure and insurance trust expenditure. Total general expenditure for the local level of government includes expenditure only of general purpose governments, and excludes expenditure of special districts and school districts.

#### Government Employment

Employees includes all persons paid for personal services performed, including all paid officials and persons in paid leave status, and excludes unpaid officials, persons on unpaid leave, pensioners, and contractors. Under this definition are two classes:

1. Full-time employees, which comprises all persons employed during the pay period including October 15, 1973, on a full-time basis, including all full-time temporary or seasonal workers employed during this pay period as well as persons having permanent status.
2. Part-time employees, which includes persons employed during the pay period including October 15, 1973, on a basis other than full-time, and persons paid by more than one government.

Derived from these two classes is:

Full-time equivalent employees, which is the total number of employees, discounted by applying average full-time earning rates. This is calculated by dividing the total payroll (full-time plus part-time) by the full-time payroll and multiplying this by the number of full-time employees.

Payroll is the gross payroll before deductions and includes salaries, wages, fees, and commissions paid to employees as defined above for the month of October, 1973.

#### Governmental Functions

Governmental functions are divided into six sectors: police protection, judicial, legal services and prosecution, indigent defense, correction, and other criminal justice activities.

#### Police Protection

Police protection is the function of enforcing the law, preserving order, and apprehending those who violate the law whether these activities are performed by a police department, a sheriff's department, or a special police force maintained by an agency whose prime responsibility is outside the criminal justice system but which has a police force to perform these activities in its specialized area (geographic or functional).

Included in this activity are regular police services, the maintenance of buildings used for police purposes, and such specialized police forces (including public and private contract forces) as airport police, free and toll highway police, free and toll bridge and tunnel police, housing police, maritime police, park police, transit and other utility system police, college and university campus police, and alcoholic beverage control agents. Coroners and medical examiners are also included. Excluded are vehicular inspection and licensing, traffic safety and engineering, fish and game wardens, fire marshals and the like.

The special police forces included in the data are only those which are part of general-purpose governments. Security forces and building guards without the power to make a police arrest were excluded. Those special police forces which are part of independent school districts or special districts are not included in the data, inasmuch as



these districts are not general-purpose governments. However, data for selected larger special police forces of these districts are displayed in Appendix 1, Tables A and B, of the publication cited above.

At the county government level, both county police agencies and sheriffs' departments, where such departments exist, are included in the police protection sector, unless research has indicated that the sheriffs have no substantial responsibility for police activities. The lack of needed information has prevented the consistent proration of expenditure or employment of the sheriffs' departments where those departments are multifunctional.

Short-term custody and detention have traditionally been considered part of the police protection function, and in years prior to 1969-70 were treated as such. However, beginning with 1969-70, the concept was modified on the basis of information obtained from the 1970 National Jail Census. Data for institutions with authority to hold prisoners 48 hours or more are included in the corrections sector. Data for lockups or "tanks" holding prisoners less than 48 hours are included in the police protection sector.

#### Judicial

Judicial activities encompass all courts and activities associated with courts such as law libraries, grand juries, petit juries, and the like. Since the names of courts with similar functions and legal jurisdiction vary from State to State and even within States, data have been categorized by types of court rather than by court name.

1. Appellate courts include courts of last resort and intermediate appellate courts. These are courts having jurisdiction of appeal and review, with original jurisdiction conferred only in special cases:

a. Court of last resort is the court of final appeal within the judicial structure of each State. It is called the Court of Appeals in the District of Columbia, Kentucky, Maryland, and New York; the Supreme Court of Appeals in West Virginia; the Supreme Judicial Court in Maine and Massachusetts. In Texas and Oklahoma two courts of last resort are authorized--the Court of Criminal Appeals for criminal cases and a Supreme Court for civil cases. In every other State the court of last resort is titled the Supreme Court.

b. Intermediate appellate courts are those which are

limited in their appellate jurisdiction by State law or at the discretion of the court of last resort. In 15 of the 24 States with a court of this type operating in fiscal year 1972-73, the name Court of Appeals is used. These States are:

Arizona	Indiana	North Carolina
California	Louisiana	Ohio
Colorado	Michigan	Oklahoma
Florida	Missouri	Oregon
Georgia	New Mexico	Washington

In Illinois the title is Appellate Court; in Maryland, Court of Special Appeals; in Massachusetts, Appeals Court; in New Jersey, Appellate Division of the Superior Court; in New York, Appellate Division of the Supreme Court; and in Texas, Court of Civil Appeals. In Alabama the civil and criminal cases are heard on appeal by separate courts--a Court of Civil Appeals and a Court of Criminal Appeals. In Tennessee the Court of Appeals hears only civil appeals; a separate Court of Criminal Appeals reviews criminal cases before review by the court of last resort. In Pennsylvania the Commonwealth Court reviews all cases brought by or against the State government or its agencies; the Superior Court reviews all other appeals except those within the exclusive jurisdiction of the court of last resort.

2. Major trial courts are trial courts of general jurisdiction having unlimited original jurisdiction in civil and/or criminal cases, the names of which vary considerably. The list below shows the title of the courts of general jurisdiction in each State. Several States are listed more than once because local situations led to the development of separate courts, either to hear cases involving different types of pleadings or to hear cases in particular local jurisdictions.

In many States, statutes either require or permit local governments to supplement the salary of State-paid judges of major trial courts. These judges were counted as part-time employees at both the State and local levels when actually receiving a check from both governments.

#### Circuit Courts

Alabama	Kentucky	South Carolina
Arkansas	Maryland	South Dakota
Florida	Michigan	Tennessee
Hawaii	Mississippi	Virginia
Illinois	Missouri	West Virginia
Indiana	Oregon	Wisconsin

District Courts

Colorado	Minnesota	North Dakota
Idaho	Montana	Oklahoma
Iowa	Nebraska	Texas
Kansas	Nevada	Utah
Louisiana	New Mexico	Wyoming

Superior Courts

Alaska	Georgia	New Jersey
Arizona	Indiana	North Carolina
California	Maine	Rhode Island
Connecticut	Massachusetts	Washington
Delaware	New Hampshire	
District of Columbia		

Chancery Courts

Arkansas	Mississippi	Tennessee
Delaware		

County Courts

New Jersey	Vermont	Wisconsin
New York		

Common Pleas Court

Missouri	Ohio	Pennsylvania
----------	------	--------------

Supreme Court

New York

Criminal Court

Indiana

3. Courts of limited jurisdiction are courts whose legal jurisdiction covers only a particular class of cases, or cases where the amount in controversy is below a prescribed sum or which is subject to specific exceptions. These courts are reported under three subcategories: juvenile, probate, and other. Juvenile court and probate court data are reported in separate subcategories when such jurisdiction is exercised by an independent court having only juvenile or probate jurisdiction.

- a. Probate courts are also called orphans courts, surrogate's courts, or courts of ordinary. The subject jurisdiction varies from place to place but generally includes estate settlement, probate and

contest of wills, adoption, commitment of the insane, administration of the affairs of orphans, mental defectives and incompetents, guardianship of minors, apprenticeship, receivership, change of name proceedings, and the administration of trusts. Data were reported separately only for independent probate courts. Where probate matters are part of the jurisdiction of another court, either generally or in a separate division or branch, the data are not reported separately but are included with the court exercising jurisdiction.

- b. Juvenile courts are those which deal primarily with delinquent and neglected children regardless of the name of the court. In various places such courts are called juvenile courts, family courts, juvenile and domestic relations courts, domestic relations courts, or other similar names. The jurisdiction of these courts can include crimes committed by persons under legal age, juvenile status offenses, offenses against children, probation of minor delinquents, adoption, custody, or disposition of minor and mentally incompetent children, child neglect or abandonment, child and wife support, and paternity. Data were reported separately only for independent juvenile courts. Where juvenile cases are handled by another court, either generally or in a separate division or branch, the data are not reported separately but are included with the court exercising jurisdiction.
- c. Other courts includes various other State and local courts with limited jurisdiction such as justices of the peace, district magistrates, justice courts, county courts of limited jurisdiction, municipal courts, city courts, etc. Also included in this category are data on specialized courts such as tax courts, courts of claims, and courts having jurisdiction over more than one type of case (e.g., a court which handles both juvenile and probate cases).

4. Miscellaneous judicial includes data on judicial activities which could not be reported under any of the above court categories, such as judicial councils and conferences, court administration offices (where identifiable), law libraries, jury commissions, and grand juries.

### Legal Services and Prosecution

Legal services and prosecution includes the civil and criminal justice activities of the attorneys general, district attorneys, State's attorneys and their variously named equivalents; corporation counsels, solicitors, and legal departments with various names. It includes providing legal advice to the chief executives and subordinate departmental officers, representation of the government in lawsuits, and the prosecution of accused violators of criminal law. These activities are included whether performed by one office or several, since in some jurisdictions, a single officer provides all legal services, while in others a prosecutor's office handles only criminal matters and a separate attorney's office performs all civil legal services. The operations of various investigative agencies having full arrest powers and attached to offices of attorneys general, district attorneys or their variously named equivalents are also included.

### Indigent Defense

Indigent defense includes activities associated with the right of persons to have legal counsel and representation, office of the public defender and other government programs which pay the fees of court-appointed counsel. These include court-paid fees to individually retained counsel, fees paid by the court to court-appointed counsel, government contributions to private legal aid societies and bar association sponsored programs, and the activities of an established public defender office or program. Employment data are included only for public defender offices since fee-paid counselors are not considered government employees, nor are counselors working for bar associations or legal aid societies.

### Correction

Correction is that function of government involving the confinement and rehabilitation of adults and juveniles convicted of offenses against the law, and the confinement of persons suspected of a crime and awaiting adjudication. Data for institutions with authority to hold prisoners 48 hours or more are included in this sector. Data for lockups or "tanks" holding prisoners less than 48 hours are included in police protection. Correction includes the operation of

prisons, reformatories, jails, houses of correction, and other institutions. It also includes institutions, facilities and programs exclusively for the confinement of the criminally insane or for the examination, evaluation, classification, and assignment of inmates; and institutions and programs for the confinement, treatment, and rehabilitation of drug addicts and alcoholics if the institution or program is administered by a correction agency of the criminal justice system. Pardon boards and parole and probation agencies, including resettlement or halfway houses for those not in need of institutionalization, are included in the correction sector as a separate subcategory.

1. Correctional institutions are prisons, reformatories, jails, houses of correction, penitentiaries, correctional farms, workhouses, reception centers, diagnostic centers, industrial schools, training schools, detention centers, and a variety of other types of institutions for the confinement and correction of convicted adults and juveniles and for the incarceration of those accused of a crime and awaiting adjudication. When an institution maintains a prison industry or agricultural program, data on the cost of production or the value of prison labor used by agencies of the same government, if identifiable, are excluded (and classed as expenditure for the function using the products or services). Expenditure for the manufacture, production, sale and distribution of goods produced for sale or use outside the government are included under this heading.
  - A. Institutions for men includes identifiable expenditure and employment data for institutions exclusively for adult male offenders. This category also includes institutions for young adult offenders described as "youthful offenders" (all such institutions presently known hold males only).
  - b. Institutions for women includes identifiable expenditure and employment data for institutions exclusively for adult female offenders. Where there is no separate women's prison, women offenders are either maintained in a prison complex that also houses other offenders or boarded in private facilities or institutions in another State. No attempt was made to prorate data on institutions housing more than one type of inmate, but where females are boarded in private institutions or in another State, available expenditure data were reported. Employment data were not reported because the personnel were employees of another government.

New Hampshire boards its female offenders in the

Massachusetts Correctional Institution (for Women). Montana operates a split system, housing some females at the Warm Springs State Hospital and contracting with Nebraska for the rest. Vermont also operates a split system, housing some females and contracting with Massachusetts for the rest. North Dakota and Wyoming house all of their female offenders in the Nebraska Reformatory for Women; and Idaho contracts with the State of Oregon for boarding its female offenders in the Oregon Women's Correctional Center.

- c. Institutions for juveniles are those institutions identified by the Juvenile Detention and Correction Facility Census of 1971 as housing primarily juveniles. These institutions include those under the control of a juvenile court, a probation department, or a youth authority or other similarly designated administrative body, as well as independently administered institutions.

There is considerable variation from State to State in the legal definition of a juvenile particularly in regard to the age at which a person is no longer considered a juvenile. Institutions for juveniles have been classified individually in accordance with the laws and age designations of their respective States. Institutions housing youths treated as adults by the courts or other authority were included in the institutions for men category.

- d. Other and combined institutions are those institutions holding a combination of inmates. Where expenditure or employment data for physically separate institutions for juveniles, adult females and adult males were not separable by institution or type of institution, the entire amounts were included under this category.
2. Correctional administration consists of data for the administration of the correctional system, including data on the central administrative office (for example, the department of corrections or a youth authority) and available data on the administration of individual correctional institutions. For some individual institutions, administration data were not segregable from data on the operation of the institution.
3. Probation, parole and pardon includes data on probation agencies, boards of parole, boards of pardon and their variously named equivalents. Although probation agencies frequently function under the administration of the major trial court, the data are presented here after having been deducted from the judicial data,

because of the correctional nature of the probation function. If the probation, parole, and pardon activities, or any of them individually, were part of the correctional administrative office, data were deducted and shown separately here and the balance under the correctional administration category. The overlapping character of the probation, parole and pardon activities prevented the separate presentation of these data.

4. Miscellaneous correction includes expenditure and employment data which could not be classified under one of the other subcategories.

#### Other Criminal Justice Activities

Other criminal justice activities includes expenditure and employment data not elsewhere classified, or which cut across more than one category, or are unallocatable to separate categories; e.g., expenditure on a general curriculum in educational institutions, the operation of State criminal justice agencies, crime commissions, etc.

## APPENDIX 2: COUNTIES BY NAME

The list which follows shows the name of each county for which there is a record in the data file. The list includes and is ordered by the State number and the county number, Ref. Nos. 1 and 3 respectively.

01 - Alabama

001 - Autauga  
002 - Baldwin  
003 - Barbour  
004 - Bibb  
005 - Blount  
007 - Butler  
008 - Calhoun  
009 - Chambers  
010 - Cherokee  
011 - Chilton  
012 - Choctaw  
013 - Clarke  
016 - Coffee  
017 - Colbert  
018 - Conecuh  
019 - Coosa  
020 - Covington  
021 - Crenshaw  
022 - Cullman  
023 - Dale  
024 - Dallas  
025 - De Kalb  
026 - Elmore  
027 - Escambia  
028 - Etowah  
029 - Fayette  
030 - Franklin  
031 - Geneva  
032 - Greene  
033 - Hale  
034 - Henry  
035 - Houston  
036 - Jackson  
037 - Jefferson  
038 - Lamar  
039 - Lauderdale  
040 - Lawrence  
041 - Lee  
042 - Limestone  
043 - Lowndes  
044 - Macon

045 - Madison  
046 - Marengo  
047 - Marion  
048 - Marshall  
049 - Mobile  
050 - Monroe  
051 - Montgomery  
052 - Morgan  
053 - Perry  
054 - Pickens  
055 - Pike  
056 - Randolph  
057 - Russell  
058 - St. Clair  
059 - Shelby  
060 - Sumter  
061 - Talladega  
062 - Tallapoosa  
063 - Tuscaloosa  
064 - Walker  
065 - Washington  
066 - Wilcox  
067 - Winston

02 - Alaska

025 - Bristol Bay  
026 - Ketchikan, Gateway  
027 - Greater Anchorage  
028 - Juneau  
030 - Kenai Peninsula  
031 - Kodiak Island  
032 - Matanuska, Susitna  
033 - Fairbanks, North Star  
035 - Outside Borough Area

03 - Arizona

001 - Apache  
002 - Cochise  
003 - Coconino

004 - Gila  
005 - Graham  
006 - Greenlee  
007 - Maricopa  
008 - Mohave  
009 - Navajo  
010 - Pima  
011 - Pinal  
012 - Santa Cruz  
013 - Yavapai  
014 - Yuma

04 - Arkansas

001 - Arkansas  
002 - Ashley  
003 - Baxter  
004 - Benton  
005 - Boone  
006 - Bradley  
007 - Calhoun  
008 - Carroll  
010 - Clark  
012 - Cleburne  
013 - Cleveland  
014 - Columbia  
015 - Conway  
016 - Craighead  
017 - Crawford  
018 - Crittenden  
019 - Cross  
020 - Dallas  
021 - Desha  
022 - Drew  
023 - Faulkner  
024 - Franklin  
025 - Fulton  
026 - Garland  
027 - Grant  
028 - Greene  
029 - Hempstead  
030 - Hot Spring  
031 - Howard  
032 - Independence  
033 - IZard  
034 - Jackson  
035 - Jefferson  
036 - Johnson  
037 - Lafayette  
038 - Lawrence  
040 - Lincoln  
041 - Little River  
042 - Logan

043 - Lonoke  
044 - Madison  
045 - Marion  
046 - Miller  
047 - Mississippi  
048 - Monroe  
049 - Montgomery  
050 - Nevada  
051 - Newton  
052 - Ouachita  
053 - Perry  
054 - Phillips  
055 - Pike  
056 - Poinsett  
057 - Polk  
058 - Pope  
059 - Prairie  
060 - Pulaski  
061 - Randolph  
062 - St. Francis  
063 - Saline  
064 - Scott  
066 - Sebastian  
067 - Sevier  
070 - Union  
071 - Van Buren  
072 - Washington  
073 - White  
074 - Woodruff  
075 - Yell

05 - California

001 - Alameda  
002 - Alpine  
003 - Amador  
004 - Butte  
005 - Calaveras  
006 - Colusa  
007 - Contra Costa  
008 - Del Norte  
009 - El Dorado  
010 - Fresno  
011 - Glenn  
012 - Humboldt  
013 - Imperial  
014 - Inyo  
015 - Kern  
016 - Kings  
017 - Lake  
018 - Lassen  
019 - Los Angeles  
020 - Madera

021 - Marin  
 022 - Mariposa  
 023 - Mendocino  
 024 - Merced  
 025 - Modoc  
 026 - Mono  
 027 - Monterey  
 028 - Napa  
 029 - Nevada  
 030 - Orange  
 031 - Placer  
 032 - Plumas  
 033 - Riverside  
 034 - Sacramento  
 035 - San Benito  
 036 - San Bernardino  
 037 - San Diego  
 038 - San Francisco  
 039 - San Joaquin  
 040 - San Luis Obispo  
 041 - San Mateo  
 042 - Santa Barbara  
 043 - Santa Clara  
 044 - Santa Cruz  
 045 - Shasta  
 046 - Sierra  
 047 - Siskiyou  
 048 - Solano  
 049 - Sonoma  
 050 - Stanislaus  
 051 - Sutter  
 052 - Tehama  
 053 - Trinity  
 054 - Tulare  
 055 - Tuolumne  
 056 - Ventura  
 057 - Yolo  
 058 - Yuba

06 - Colorado

001 - Adams  
 002 - Alamosa  
 003 - Arapahoe  
 004 - Archuleta  
 005 - Baca  
 006 - Bent  
 007 - Boulder  
 008 - Chaffee  
 009 - Cheyenne  
 010 - Clear Creek  
 011 - Conejos  
 013 - Crowley

015 - Delta  
 016 - Denver  
 018 - Douglas  
 019 - Eagle  
 020 - Elbert  
 021 - El Paso  
 022 - Fremont  
 023 - Garfield  
 024 - Gilpin  
 025 - Grand  
 026 - Gunnison  
 027 - Hinsdale  
 028 - Huerfano  
 029 - Jackson  
 030 - Jefferson  
 031 - Kiowa  
 032 - Kit Carson  
 033 - Lake  
 034 - La Plata  
 035 - Larimer  
 036 - Las Animas  
 037 - Lincoln  
 038 - Logan  
 039 - Mesa  
 040 - Mineral  
 041 - Moffat  
 042 - Montezuma  
 043 - Montrose  
 044 - Morgan  
 045 - Otero  
 046 - Ouray  
 047 - Park  
 048 - Phillips  
 049 - Pitkin  
 050 - Prowers  
 051 - Pueblo  
 052 - Rio Blanco  
 053 - Rio Grande  
 054 - Routt  
 055 - Saguache  
 056 - San Juan  
 058 - Sedgwick  
 059 - Summit  
 060 - Teller  
 061 - Washington  
 062 - Weld  
 063 - Yuma

07 - Connecticut

001 - Fairfield  
 002 - Hartford  
 003 - Litchfield

004 - Middlesex  
 005 - New Haven  
 006 - New London  
 007 - Tolland  
 008 - Windham

08 - Delaware

001 - Kent  
 002 - New Castle  
 003 - Sussex

09 - District of Columbia

001 - District of  
 Columbia

10 - Florida

001 - Alachua  
 002 - Baker  
 003 - Bay  
 004 - Bradford  
 005 - Brevard  
 006 - Broward  
 007 - Calhoun  
 008 - Charlotte  
 009 - Citrus  
 010 - Clay  
 011 - Collier  
 012 - Columbia  
 013 - Dade  
 014 - De Soto  
 015 - Dixie  
 016 - Duval  
 017 - Escambia  
 018 - Flagler  
 019 - Franklin  
 020 - Gadsden  
 021 - Gilchrist  
 022 - Glades  
 023 - Gulf  
 024 - Hamilton  
 025 - Hardee  
 026 - Hendry  
 027 - Hernando  
 028 - Highlands  
 029 - Hillsborough  
 030 - Holmes  
 031 - Indian River  
 032 - Jackson  
 033 - Jefferson  
 034 - Lafayette

035 - Lake  
 036 - Lee  
 037 - Leon  
 038 - Levy  
 039 - Liberty  
 040 - Madison  
 041 - Manatee  
 042 - Marion  
 043 - Martin  
 044 - Monroe  
 045 - Nassau  
 046 - Okaloosa  
 047 - Okeechobee  
 048 - Orange  
 049 - Osceola  
 050 - Palm Beach  
 051 - Pasco  
 052 - Pinellas  
 053 - Polk  
 054 - Putnam  
 055 - St. Johns  
 056 - St. Lucie  
 057 - Santa Rosa  
 058 - Sarasota  
 059 - Seminole  
 060 - Sumter  
 061 - Suwannee  
 062 - Taylor  
 063 - Union  
 064 - Volusia  
 065 - Wakulla  
 066 - Walton  
 067 - Washington

11 - Georgia

001 - Appling  
 002 - Atkinson  
 003 - Bacon  
 005 - Baldwin  
 006 - Banks  
 007 - Barrow  
 008 - Bartow  
 009 - Ben Hill  
 010 - Berrien  
 011 - Bibb  
 012 - Bleckley  
 014 - Brooks  
 015 - Bryan  
 016 - Bulloch  
 017 - Burke  
 018 - Butts  
 019 - Calhoun

020 - Camden	076 - Houston
021 - Candler	077 - Irwin
022 - Carroll	078 - Jackson
023 - Catoosa	079 - Jasper
024 - Charlton	080 - Jeff Davis
025 - Chatham	081 - Jefferson
026 - Chattahoochee	083 - Johnson
027 - Chattooga	085 - Lamar
028 - Cherokee	086 - Lanier
029 - Clarke	087 - Laurens
030 - Clay	088 - Lee
031 - Clayton	089 - Liberty
032 - Clinch	090 - Lincoln
033 - Cobb	091 - Long
034 - Coffee	092 - Lowndes
035 - Colquitt	093 - Lumpkin
036 - Columbia	094 - Mc Duffie
037 - Cook	095 - Mc Intosh
038 - Coweta	096 - Macon
039 - Crawford	098 - Marion
040 - Crisp	099 - Meriwether
042 - Dawson	100 - Miller
043 - Decatur	101 - Mitchell
044 - De Kalb	102 - Monroe
045 - Dodge	103 - Montgomery
046 - Dooly	104 - Morgan
047 - Dougherty	106 - Muscogee
048 - Douglas	107 - Newton
049 - Early	108 - Oconee
051 - Effingham	109 - Oglethorpe
052 - Elbert	110 - Paulding
053 - Emanuel	111 - Peach
054 - Evans	113 - Pierce
056 - Fayette	114 - Pike
057 - Floyd	115 - Polk
058 - Forsyth	116 - Pulaski
059 - Franklin	117 - Putnam
060 - Fulton	118 - Quitman
061 - Gilmer	119 - Rabun
062 - Glascock	120 - Randolph
063 - Glynn	121 - Richmond
064 - Gordon	122 - Rockdale
065 - Grady	123 - Schley
066 - Greene	124 - Screven
067 - Gwinnett	125 - Seminole
068 - Habersham	126 - Spalding
069 - Hall	127 - Stephens
070 - Hancock	128 - Stewart
071 - Haralson	129 - Sumter
072 - Harris	130 - Talbot
073 - Hart	131 - Taliaferro
074 - Heard	132 - Tattnall
075 - Henry	133 - Taylor

134 - Telfair
135 - Terrell
136 - Thomas
137 - Tift
138 - Toombs
140 - Treutlen
141 - Troup
142 - Turner
143 - Twiggs
144 - Union
145 - Upson
146 - Walker
147 - Walton
148 - Ware
149 - Warren
150 - Washington
151 - Wayne
152 - Webster
154 - White
155 - Whitfield
156 - Wilcox
157 - Wilkes
158 - Wilkinson
159 - Worth

12 - Hawaii

001 - Hawaii
002 - Honolulu
003 - Kauai
004 - Maui

13 - Idaho

001 - Ada
002 - Adams
003 - Bannock
004 - Bear Lake
005 - Benewah
006 - Bingham
007 - Blaine
008 - Boise
009 - Bonner
010 - Bonneville
011 - Boundary
012 - Butte
013 - Camas
014 - Canyon
015 - Caribou
016 - Cassia
017 - Clark
018 - Clearwater
019 - Custer

020 - Elmore
021 - Franklin
022 - Fremont
023 - Gem
024 - Gooding
025 - Idaho
026 - Jefferson
027 - Jerome
028 - Kootenai
029 - Latah
030 - Lemhi
031 - Lewis
032 - Lincoln
033 - Madison
034 - Minidoka
035 - Nez Perce
036 - Oneida
037 - Owyhee
038 - Payette
039 - Power
040 - Shoshone
041 - Teton
042 - Twin Falls
043 - Valley
044 - Washington

14 - Illinois

001 - Adams
003 - Bond
004 - Boone
005 - Brown
006 - Bureau
007 - Calhoun
008 - Carroll
009 - Cass
010 - Champaign
011 - Christian
012 - Clark
013 - Clay
014 - Clinton
015 - Coles
016 - Cook
017 - Crawford
018 - Cumberland
019 - De Kalb
020 - De Witt
021 - Douglas
022 - Du Page
023 - Edgar
025 - Effingham
026 - Fayette
027 - Ford

028 - Franklin  
 029 - Fulton  
 030 - Gallatin  
 031 - Greene  
 032 - Grundy  
 033 - Hamilton  
 034 - Hancock  
 035 - Hardin  
 036 - Henderson  
 037 - Henry  
 038 - Iroquois  
 039 - Jackson  
 040 - Jasper  
 041 - Jefferson  
 042 - Jersey  
 043 - Jo Daviess  
 044 - Johnson  
 045 - Kane  
 046 - Kankakee  
 047 - Kendall  
 048 - Knox  
 049 - Lake  
 050 - La Salle  
 051 - Lawrence  
 052 - Lee  
 053 - Livingston  
 054 - Logan  
 055 - Mc Donough  
 056 - Mc Henry  
 057 - Mc Lean  
 058 - Macon  
 059 - Macoupin  
 060 - Madison  
 061 - Marion  
 063 - Mason  
 064 - Massac  
 066 - Mercer  
 067 - Monroe  
 068 - Montgomery  
 069 - Morgan  
 070 - Moultrie  
 071 - Ogle  
 072 - Peoria  
 073 - Perry  
 074 - Piatt  
 075 - Pike  
 077 - Pulaski  
 078 - Putnam  
 079 - Randolph  
 080 - Richland  
 081 - Rock Island  
 082 - St. Clair  
 083 - Saline

084 - Sangamon  
 085 - Schuyler  
 086 - Scott  
 087 - Shelby  
 088 - Stark  
 089 - Stephenson  
 090 - Tazewell  
 091 - Union  
 092 - Vermilion  
 094 - Warren  
 095 - Washington  
 096 - Wayne  
 097 - White  
 098 - Whiteside  
 099 - Will  
 100 - Williamson  
 101 - Winnebago  
 102 - Woodford

15 - Indiana

001 - Adams  
 002 - Allen  
 003 - Bartholomew  
 004 - Benton  
 005 - Blackford  
 006 - Boone  
 007 - Brown  
 008 - Carroll  
 009 - Cass  
 010 - Clark  
 011 - Clay  
 012 - Clinton  
 013 - Crawford  
 014 - Daviess  
 015 - Dearborn  
 016 - Decatur  
 017 - De Kalb  
 018 - Delaware  
 019 - Dubois  
 020 - Elkhart  
 021 - Fayette  
 022 - Floyd  
 023 - Fountain  
 024 - Franklin  
 025 - Fulton  
 026 - Gibson  
 027 - Grant  
 028 - Greene  
 029 - Hamilton  
 030 - Hancock  
 031 - Harrison  
 032 - Hendricks

033 - Henry  
 034 - Howard  
 035 - Huntington  
 036 - Jackson  
 037 - Jasper  
 038 - Jay  
 039 - Jefferson  
 040 - Jennings  
 041 - Johnson  
 042 - Knox  
 043 - Kosciusko  
 044 - Lagrange  
 045 - Lake  
 046 - La Porte  
 047 - Lawrence  
 048 - Madison  
 049 - Marion  
 050 - Marshall  
 051 - Martin  
 052 - Miami  
 053 - Monroe  
 054 - Montgomery  
 055 - Morgan  
 056 - Newton  
 057 - Noble  
 058 - Ohio  
 059 - Orange  
 060 - Owen  
 061 - Parke  
 062 - Perry  
 063 - Pike  
 064 - Porter  
 065 - Posey  
 066 - Pulaski  
 067 - Putnam  
 068 - Randolph  
 069 - Ripley  
 070 - Rush  
 071 - St. Joseph  
 072 - Scott  
 073 - Shelby  
 074 - Spencer  
 075 - Starke  
 076 - Steuben  
 077 - Sullivan  
 078 - Switzerland  
 079 - Tippecanoe  
 080 - Tipton  
 081 - Union  
 082 - Vanderburgh  
 083 - Vermillion  
 084 - Vigo  
 085 - Wabash

086 - Warren  
 087 - Warrick  
 088 - Washington  
 089 - Wayne  
 090 - Wells  
 091 - White  
 092 - Whitley

16 - Iowa

001 - Adair  
 002 - Adams  
 003 - Allamakee  
 004 - Appanoose  
 005 - Audubon  
 006 - Benton  
 007 - Black Hawk  
 008 - Boone  
 009 - Bremer  
 010 - Buchanan  
 011 - Buena Vista  
 012 - Butler  
 013 - Calhoun  
 014 - Carroll  
 015 - Cass  
 016 - Cedar  
 017 - Cerro Gordo  
 018 - Cherokee  
 019 - Chickasaw  
 020 - Clarke  
 021 - Clay  
 022 - Clayton  
 023 - Clinton  
 024 - Crawford  
 025 - Dallas  
 026 - Davis  
 027 - Decatur  
 028 - Delaware  
 029 - Des Moines  
 030 - Dickinson  
 031 - Dubuque  
 032 - Emmet  
 033 - Fayette  
 034 - Floyd  
 035 - Franklin  
 036 - Fremont  
 037 - Greene  
 038 - Grundy  
 039 - Guthrie  
 040 - Hamilton  
 041 - Hancock  
 042 - Hardin  
 043 - Harrison



044 - Henry  
 045 - Howard  
 046 - Humboldt  
 047 - Ida  
 048 - Iowa  
 049 - Jackson  
 050 - Jasper  
 051 - Jefferson  
 052 - Johnson  
 053 - Jones  
 054 - Keokuk  
 055 - Kossuth  
 056 - Lee  
 057 - Linn  
 058 - Louisa  
 059 - Lucas  
 060 - Lyon  
 061 - Madison  
 062 - Mahaska  
 063 - Marion  
 064 - Marshall  
 065 - Mills  
 066 - Mitchell  
 067 - Monona  
 068 - Monroe  
 069 - Montgomery  
 070 - Muscatine  
 071 - O'Brien  
 072 - Osceola  
 073 - Page  
 074 - Palo Alto  
 075 - Plymouth  
 076 - Pocahontas  
 077 - Polk  
 078 - Pottawattamie  
 079 - Poweshiek  
 080 - Ringgold  
 081 - Sac  
 082 - Scott  
 083 - Shelby  
 084 - Sioux  
 085 - Story  
 086 - Tama  
 087 - Taylor  
 088 - Union  
 089 - Van Buren  
 090 - Wapello  
 091 - Warren  
 092 - Washington  
 093 - Wayne  
 094 - Webster  
 095 - Winnebago  
 096 - Winneshiek

097 - Woodbury  
 098 - Worth  
 099 - Wright

17 - Kansas

001 - Allen  
 002 - Anderson  
 003 - Atchison  
 004 - Barber  
 005 - Barton  
 006 - Bourbon  
 007 - Brown  
 008 - Butler  
 009 - Chase  
 010 - Chautauqua  
 011 - Cherokee  
 012 - Cheyenne  
 013 - Clark  
 014 - Clay  
 015 - Cloud  
 016 - Coffey  
 017 - Comanche  
 018 - Cowley  
 019 - Crawford  
 020 - Decatur  
 021 - Dickinson  
 022 - Doniphan  
 023 - Douglas  
 024 - Edwards  
 025 - Elk  
 026 - Ellis  
 027 - Ellsworth  
 028 - Finney  
 029 - Ford  
 030 - Franklin  
 031 - Geary  
 032 - Gove  
 033 - Graham  
 034 - Grant  
 035 - Gray  
 036 - Greeley  
 037 - Greenwood  
 038 - Hamilton  
 039 - Harper  
 040 - Harvey  
 041 - Haskell  
 042 - Hodgeman  
 043 - Jackson  
 044 - Jefferson  
 045 - Jewell  
 046 - Johnson  
 047 - Kearny

048 - Kingman  
 049 - Kiowa  
 050 - Labette  
 051 - Lane  
 052 - Leavenworth  
 053 - Lincoln  
 054 - Linn  
 055 - Logan  
 056 - Lyon  
 057 - McPherson  
 058 - Marion  
 059 - Marshall  
 060 - Meade  
 061 - Miami  
 062 - Mitchell  
 063 - Montgomery  
 064 - Morris  
 065 - Morton  
 066 - Nemaha  
 067 - Neosho  
 068 - Ness  
 069 - Norton  
 070 - Osage  
 071 - Osborne  
 072 - Ottawa  
 073 - Pawnee  
 074 - Phillips  
 075 - Pottawatomie  
 076 - Pratt  
 077 - Rawlins  
 078 - Reno  
 079 - Republic  
 080 - Rice  
 081 - Riley  
 082 - Rooks  
 083 - Rush  
 084 - Russell  
 085 - Saline  
 086 - Scott  
 087 - Sedgwick  
 088 - Seward  
 089 - Shawnee  
 090 - Sheridan  
 091 - Sherman  
 092 - Smith  
 093 - Stafford  
 094 - Stanton  
 095 - Stevens  
 096 - Sumner  
 097 - Thosmas  
 098 - Trego  
 099 - Wabaunsee  
 100 - Wallace

101 - Washington  
 102 - Wichita  
 103 - Wilson  
 104 - Woodson  
 105 - Wyandotte

18 - Kentucky

001 - Adair  
 002 - Allen  
 003 - Anderson  
 004 - Ballard  
 005 - Barren  
 006 - Bath  
 007 - Bell  
 008 - Boone  
 009 - Bourbon  
 010 - Boyd  
 011 - Boyle  
 012 - Bracken  
 013 - Breathitt  
 014 - Breckinridge  
 015 - Bullitt  
 016 - Butler  
 017 - Caldwell  
 018 - Calloway  
 019 - Campbell  
 020 - Carlisle  
 021 - Carroll  
 022 - Carter  
 023 - Casey  
 024 - Christian  
 025 - Clark  
 026 - Clay  
 027 - Clinton  
 028 - Crittenden  
 029 - Cumberland  
 030 - Daviess  
 031 - Edmonson  
 032 - Elliott  
 033 - Estill  
 034 - Fayette  
 035 - Fleming  
 036 - Floyd  
 037 - Franklin  
 038 - Fulton  
 039 - Gallatin  
 040 - Garrard  
 041 - Grant  
 042 - Graves  
 043 - Grayson  
 044 - Green  
 045 - Greenup

046 - Hancock  
 047 - Hardin  
 048 - Harlan  
 049 - Harrison  
 050 - Hart  
 051 - Henderson  
 052 - Henry  
 054 - Hopkins  
 055 - Jackson  
 056 - Jefferson  
 057 - Jessamine  
 058 - Johnson  
 059 - Kenton  
 060 - Knott  
 061 - Knox  
 062 - Larue  
 064 - Lawrence  
 066 - Leslie  
 067 - Letcher  
 069 - Lincoln  
 070 - Livingston  
 071 - Logan  
 073 - Mc Cracken  
 074 - Mc Creary  
 075 - Mc Lean  
 076 - Madison  
 077 - Magoffin  
 078 - Marion  
 079 - Marshall  
 080 - Martin  
 081 - Mason  
 082 - Meade  
 083 - Menifee  
 084 - Mercer  
 086 - Monroe  
 087 - Montgomery  
 088 - Morgan  
 089 - Muhlenberg  
 090 - Nelson  
 091 - Nicholas  
 092 - Ohio  
 093 - Oldham  
 097 - Perry  
 098 - Pike  
 099 - Powell  
 100 - Pulaski  
 101 - Robertson  
 102 - Rockcastle  
 103 - Rowan  
 104 - Russell  
 105 - Scott  
 106 - Shelby  
 107 - Simpson

108 - Spencer  
 109 - Taylor  
 110 - Todd  
 111 - Trigg  
 112 - Trimble  
 113 - Union  
 114 - Warren  
 115 - Washington  
 116 - Wayne  
 117 - Webster  
 118 - Whitley  
 120 - Woodford

19 - Louisiana

001 - Acadia  
 002 - Allen  
 003 - Ascension  
 004 - Assumption  
 005 - Avoyelles  
 006 - Beauregard  
 007 - Bienville  
 008 - Bossier  
 009 - Caddo  
 010 - Calcasieu  
 011 - Caldwell  
 012 - Cameron  
 013 - Catahoula  
 014 - Claiborne  
 015 - Concordia  
 016 - De Soto  
 017 - East Baton Rouge  
 018 - East Carroll  
 019 - East Feliciana  
 020 - Evangeline  
 021 - Franklin  
 022 - Grant  
 023 - Iberia  
 024 - Iberville  
 025 - Jackson  
 026 - Jefferson  
 027 - Jefferson Davis  
 028 - Lafayette  
 029 - Lafourche  
 030 - La Salle  
 031 - Lincoln  
 032 - Livingston  
 033 - Madison  
 034 - Morehouse  
 035 - Natchitoches  
 036 - Orleans  
 037 - Ouachita  
 038 - Plaquemines

039 - Pointe Coupee  
 040 - Rapides  
 041 - Red River  
 042 - Richland  
 043 - Sabine  
 044 - St. Bernard  
 045 - St. Charles  
 046 - St. Helena  
 047 - St. James  
 048 - St. John the Baptist  
 049 - St. Landry  
 050 - St. Martin  
 051 - St. Mary  
 052 - St. Tammany  
 053 - Tangipahoa  
 054 - Tensas  
 055 - Terrebonne  
 056 - Union  
 057 - Vermilion  
 058 - Vernon  
 059 - Washington  
 060 - Webster  
 061 - West Baton Rouge  
 062 - West Carroll  
 063 - West Feliciana  
 064 - Winn

004 - Baltimore  
 Independent City  
 005 - Calvert  
 006 - Caroline  
 007 - Carroll  
 008 - Cecil  
 009 - Charles  
 010 - Dorchester  
 011 - Frederick  
 012 - Garrett  
 013 - Harford  
 014 - Howard  
 015 - Kent  
 016 - Montgomery  
 017 - Prince Georges  
 019 - St. Marys  
 020 - Somerset  
 021 - Talbot  
 022 - Washington  
 023 - Wicomico  
 024 - Worcester

22 - Massachusetts

001 - Barnstable  
 002 - Berkshire  
 003 - Bristol  
 004 - Dukes  
 005 - Essex  
 006 - Franklin  
 007 - Hampden  
 008 - Hampshire  
 009 - Middlesex  
 010 - Nantucket  
 011 - Norfolk  
 012 - Plymouth  
 013 - Suffolk  
 014 - Worcester

23 - Michigan

001 - Alcona  
 003 - Allegan  
 004 - Alpena  
 005 - Antrim  
 006 - Arenac  
 007 - Baraga  
 008 - Barry  
 009 - Bay  
 010 - Benzie  
 011 - Berrien  
 012 - Branch  
 013 - Calhoun

20 - Maine

001 - Androscoggin  
 002 - Aroostook  
 003 - Cumberland  
 004 - Franklin  
 005 - Hancock  
 006 - Kennebec  
 007 - Knox  
 008 - Lincoln  
 009 - Oxford  
 010 - Penobscot  
 011 - Piscataquis  
 012 - Sagadahoc  
 013 - Somerset  
 014 - Waldo  
 015 - Washington  
 016 - York

21 - Maryland

001 - Allegany  
 002 - Anne Arundel  
 003 - Baltimore

014 - Cass	068 - Oscoda
015 - Charlevoix	069 - Otsego
016 - Cheboygan	070 - Ottawa
017 - Chippewa	072 - Roscommon
018 - Clare	073 - Saginaw
019 - Clinton	074 - St. Clair
020 - Crawford	075 - St. Joseph
021 - Delta	076 - Sanilac
022 - Dickinson	077 - Schoolcraft
023 - Eaton	078 - Shiawassee
024 - Emmet	079 - Tuscola
025 - Genesee	080 - Van Buren
026 - Gladwin	081 - Washtenaw
027 - Gogebic	082 - Wayne
028 - Grand Traverse	083 - Wexford
029 - Gratiot	
030 - Hillsdale	<u>24 - Minnesota</u>
031 - Houghton	001 - Aitkin
032 - Huron	002 - Anoka
033 - Ingham	003 - Becker
034 - Ionia	004 - Beltrami
035 - Iosco	005 - Benton
036 - Iron	006 - Big Stone
037 - Isabella	007 - Blue Earth
038 - Jackson	008 - Brown
039 - Kalamazoo	009 - Carlton
040 - Kalkaska	010 - Carver
041 - Kent	011 - Cass
042 - Keweenaw	012 - Chippewa
043 - Lake	013 - Chisago
044 - Lapeer	014 - Clay
045 - Leelanau	015 - Clearwater
046 - Lenawee	016 - Cook
047 - Livingston	017 - Cottonwood
048 - Luce	018 - Crow Wing
049 - Mackinac	019 - Dakota
050 - Macomb	020 - Dodge
051 - Manistee	021 - Douglas
052 - Marquette	022 - Faribault
053 - Mason	023 - Fillmore
054 - Mecosta	024 - Freeborn
055 - Menominee	025 - Goodhue
056 - Midland	026 - Grant
057 - Missaukee	027 - Hennepin
058 - Monroe	028 - Houston
059 - Montcalm	029 - Hubbard
060 - Montmorency	030 - Isanti
061 - Muskegon	031 - Itasca
062 - Newaygo	032 - Jackson
063 - Oakland	033 - Kanabec
064 - Oceana	034 - Kandiyohi
065 - Ogemaw	035 - Kittson
067 - Osceola	

036 - Koochiching	<u>25 - Mississippi</u>
037 - Lac qui Parle	001 - Adams
038 - Lake	002 - Alcorn
039 - Lake of the Woods	003 - Amite
040 - Le Sueur	004 - Attala
041 - Lincoln	005 - Benton
042 - Lyon	006 - Bolivar
043 - Mc Leod	007 - Calhoun
044 - Mahanomen	009 - Chickasaw
045 - Marshall	010 - Choctaw
046 - Martin	011 - Claiborne
047 - Meeker	013 - Clay
048 - Mille Lacs	014 - Coahoma
049 - Morrison	015 - Copiah
050 - Mower	016 - Covington
051 - Murray	017 - De Soto
052 - Nicollet	018 - Forrest
053 - Nobles	019 - Franklin
054 - Norman	020 - George
055 - Olmsted	021 - Greene
056 - Otter Tail	022 - Grenada
057 - Pennington	023 - Hancock
058 - Pine	024 - Harrison
059 - Pipestone	025 - Hinds
060 - Polk	026 - Holmes
061 - Pope	027 - Humphreys
062 - Ramsey	028 - Issaquena
063 - Red Lake	029 - Itawamba
064 - Redwood	030 - Jackson
065 - Renville	031 - Jasper
066 - Rice	032 - Jefferson
067 - Rock	033 - Jefferson Davis
068 - Roseau	034 - Jones
069 - St. Louis	035 - Kemper
070 - Scott	036 - Lafayette
071 - Sherburne	037 - Lamar
072 - Sibley	038 - Lauderdale
073 - Stearns	039 - Lawrence
074 - Steele	040 - Leake
075 - Stevens	041 - Lee
076 - Swift	042 - Leflore
077 - Todd	043 - Lincoln
078 - Traverse	044 - Lowndes
079 - Wabasha	045 - Madison
080 - Wadena	046 - Marion
081 - Waseca	047 - Marshall
082 - Washington	048 - Monroe
083 - Watonwan	049 - Montgomery
084 - Wilkin	050 - Neshoba
085 - Winona	051 - Newton
086 - Wright	052 - Noxubee
087 - Yellow Medicine	053 - Oktibbeha

054 - Panola  
 055 - Pearl River  
 056 - Perry  
 057 - Pike  
 058 - Pontotoc  
 059 - Prentiss  
 060 - Quitman  
 061 - Rankin  
 062 - Scott  
 063 - Sharkey  
 064 - Simpson  
 065 - Smith  
 066 - Stone  
 067 - Sunflower  
 068 - Tallahatchie  
 069 - Tate  
 070 - Tippah  
 071 - Tishomingo  
 072 - Tunica  
 073 - Union  
 074 - Walthall  
 075 - Warren  
 076 - Washington  
 077 - Wayne  
 079 - Wilkinson  
 080 - Winston  
 081 - Yazoo  
 082 - Yazoo

26 - Missouri

001 - Adair  
 002 - Andrew  
 003 - Atchison  
 004 - Audrain  
 005 - Barry  
 006 - Barton  
 007 - Bates  
 008 - Benton  
 009 - Bollinger  
 010 - Boone  
 011 - Buchanan  
 012 - Butler  
 013 - Caldwell  
 014 - Callaway  
 015 - Camden  
 016 - Cape Girardeau  
 017 - Carroll  
 018 - Carter  
 019 - Cass  
 020 - Cedar  
 022 - Christian  
 023 - Clark  
 024 - Clay  
 026 - Cole  
 027 - Cooper  
 029 - Dade  
 031 - Daviess  
 032 - De Kalb  
 033 - Dent  
 034 - Douglas  
 035 - Dunklin  
 036 - Franklin  
 037 - Gasconade  
 038 - Gentry  
 039 - Greene  
 040 - Grundy  
 041 - Harrison  
 042 - Henry  
 043 - Hickory  
 044 - Holt  
 045 - Howard  
 046 - Howell  
 047 - Iron  
 048 - Jackson  
 049 - Jasper  
 050 - Jefferson  
 051 - Johnson  
 052 - Knox  
 053 - Laclede  
 054 - Lafayette  
 055 - Lawrence  
 056 - Lewis  
 057 - Lincoln  
 058 - Linn  
 059 - Livingston  
 060 - Mc Donald  
 061 - Macon  
 063 - Maries  
 064 - Marion  
 065 - Mercer  
 066 - Miller  
 067 - Mississippi  
 068 - Moniteau  
 069 - Monroe  
 070 - Montgomery  
 071 - Morgan  
 072 - New Madrid  
 073 - Newton  
 074 - Nodaway  
 075 - Oregon  
 076 - Osage  
 077 - Ozark  
 078 - Pemiscot  
 080 - Pettis  
 081 - Phelps

082 - Pike  
 083 - Platte  
 084 - Polk  
 085 - Pulaski  
 086 - Putnam  
 087 - Ralls  
 088 - Randolph  
 089 - Ray  
 090 - Reynolds  
 091 - Ripley  
 092 - St. Charles  
 093 - St. Clair  
 094 - St. Francois  
 095 - St. Louis  
 096 - St. Louis City  
 Independent City  
 097 - Sainte Genevieve  
 098 - Saline  
 099 - Schuyler  
 100 - Scotland  
 101 - Scott  
 102 - Shannon  
 103 - Shelby  
 104 - Stoddard  
 105 - Stone  
 106 - Sullivan  
 107 - Taney  
 108 - Texas  
 109 - Vernon  
 110 - Warren  
 111 - Washington  
 113 - Webster  
 114 - Worth  
 115 - Wright

27 - Montana

001 - Beaverhead  
 002 - Big Horn  
 003 - Blaine  
 004 - Broadwater  
 005 - Carbon  
 006 - Carter  
 007 - Cascade  
 008 - Chouteau  
 009 - Custer  
 010 - Daniels  
 011 - Dawson  
 012 - Deer Lodge  
 013 - Fallon  
 014 - Fergus  
 015 - Flathead  
 016 - Gallatin

017 - Garfield  
 018 - Glacier  
 019 - Golden Valley  
 020 - Granite  
 021 - Hill  
 022 - Jefferson  
 023 - Judith Basin  
 024 - Lake  
 025 - Lewis and Clark  
 026 - Liberty  
 027 - Lincoln  
 028 - Mc Cone  
 029 - Madison  
 030 - Meagher  
 031 - Mineral  
 032 - Missoula  
 033 - Musselshell  
 034 - Park  
 035 - Petroleum  
 036 - Phillips  
 037 - Pondera  
 038 - Powder River  
 039 - Powell  
 040 - Prairie  
 041 - Ravalli  
 042 - Richland  
 043 - Roosevelt  
 044 - Rosebud  
 045 - Sanders  
 046 - Sheridan  
 047 - Silver Bow  
 048 - Stillwater  
 049 - Sweet Grass  
 050 - Teton  
 051 - Toole  
 052 - Treasure  
 053 - Valley  
 054 - Wheatland  
 055 - Wibaux  
 056 - Yellowstone

28 - Nebraska

001 - Adams  
 002 - Antelope  
 003 - Arthur  
 004 - Banner  
 005 - Blaine  
 006 - Boone  
 007 - Box Butte  
 008 - Boyd  
 009 - Brown  
 010 - Buffalo

011 - Burt  
 012 - Butler  
 013 - Cass  
 014 - Cedar  
 015 - Chase  
 016 - Cherry  
 017 - Cheyenne  
 018 - Clay  
 019 - Colfax  
 020 - Cuming  
 021 - Custer  
 022 - Dakota  
 023 - Dawes  
 024 - Dawson  
 025 - Deuel  
 026 - Dixon  
 027 - Dodge  
 028 - Douglas  
 029 - Dundy  
 030 - Fillmore  
 031 - Franklin  
 033 - Furnas  
 034 - Gage  
 035 - Garden  
 036 - Garfield  
 037 - Gosper  
 038 - Grant  
 039 - Greeley  
 040 - Hall  
 041 - Hamilton  
 042 - Harlan  
 043 - Hayes  
 044 - Hitchcock  
 045 - Holt  
 046 - Hooker  
 047 - Howard  
 048 - Jefferson  
 049 - Johnson  
 050 - Kearney  
 051 - Keith  
 052 - Keya Paha  
 053 - Kimball  
 054 - Knox  
 055 - Lancaster  
 056 - Lincoln  
 057 - Logan  
 058 - Loup  
 059 - Mc Pherson  
 060 - Madison  
 061 - Merrick  
 062 - Morrill  
 063 - Nance  
 064 - Nemaha

065 - Nuckolls  
 066 - Otoe  
 067 - Pawnee  
 068 - Perkins  
 069 - Phelps  
 070 - Pierce  
 071 - Platte  
 073 - Red Willow  
 074 - Richardson  
 075 - Rock  
 076 - Saline  
 077 - Sarpy  
 078 - Saunders  
 079 - Scotts Bluff  
 080 - Seward  
 081 - Sheridan  
 083 - Sioux  
 084 - Stanton  
 085 - Thayer  
 086 - Thomas  
 087 - Thurston  
 088 - Valley  
 089 - Washington  
 090 - Wayne  
 091 - Webster  
 092 - Wheeler  
 093 - York

29 - Nevada

001 - Churchill  
 002 - Clark  
 003 - Douglas  
 004 - Elko  
 005 - Esmeralda  
 006 - Eureka  
 007 - Humboldt  
 008 - Lander  
 009 - Lincoln  
 010 - Lyon  
 011 - Mineral  
 012 - Nye  
 013 - Ormsby  
 014 - Pershing  
 015 - Storey  
 016 - Washoe  
 017 - White Pine

30 - New Hampshire

001 - Belknap  
 002 - Carroll  
 003 - Cheshire

004 - Coos  
 005 - Grafton  
 006 - Hillsborough  
 007 - Merrimack  
 008 - Rockingham  
 009 - Strafford  
 010 - Sullivan

31 - New Jersey

001 - Atlantic  
 002 - Bergen  
 003 - Burlington  
 004 - Camden  
 005 - Cape May  
 006 - Cumberland  
 007 - Essex  
 008 - Gloucester  
 009 - Hudson  
 010 - Hunterdon  
 011 - Mercer  
 012 - Middlesex  
 013 - Monmouth  
 014 - Morris  
 015 - Ocean  
 016 - Passaic  
 017 - Salem  
 018 - Somerset  
 019 - Sussex  
 020 - Union  
 021 - Warren

32 - New Mexico

001 - Bernalillo  
 002 - Catron  
 003 - Chaves  
 004 - Colfax  
 005 - Curry  
 006 - De Baca  
 007 - Dona Ana  
 008 - Eddy  
 009 - Grant  
 010 - Guadalupe  
 011 - Harding  
 012 - Hidalgo  
 013 - Lea  
 014 - Lincoln  
 015 - Los Alamos  
 016 - Luna  
 017 - Mc Kinley  
 018 - Mora  
 019 - Otero

020 - Quay  
 021 - Rio Arriba  
 022 - Roosevelt  
 023 - Sandoval  
 024 - San Juan  
 025 - San Miguel  
 026 - Santa Fe  
 027 - Sierra  
 028 - Socorro  
 029 - Taos  
 030 - Torrance  
 031 - Union  
 032 - Valencia

33 - New York

001 - Albany  
 002 - Allegany  
 004 - Broome  
 005 - Cattaraugus  
 006 - Cayuga  
 007 - Chautauqua  
 008 - Chemung  
 009 - Chenango  
 010 - Clinton  
 011 - Columbia  
 012 - Cortland  
 013 - Delaware  
 014 - Dutchess  
 015 - Erie  
 016 - Essex  
 017 - Franklin  
 018 - Fulton  
 019 - Genesee  
 020 - Greene  
 021 - Hamilton  
 022 - Herkimer  
 023 - Jefferson  
 025 - Lewis  
 026 - Livingston  
 027 - Madison  
 028 - Monroe  
 029 - Montgomery  
 030 - Nassau  
 031 - New York City  
 032 - Niagara  
 033 - Oneida  
 034 - Onondaga  
 035 - Ontario  
 036 - Orange  
 037 - Orleans  
 038 - Oswego  
 039 - Otsego

040 - Putnam  
 042 - Rensselaer  
 044 - Rockland  
 045 - St. Lawrence  
 046 - Saratoga  
 047 - Schenectady  
 048 - Schoharie  
 049 - Schuyler  
 050 - Seneca  
 051 - Steuben  
 052 - Suffolk  
 053 - Sullivan  
 054 - Tioga  
 055 - Tompkins  
 056 - Ulster  
 057 - Warren  
 058 - Washington  
 059 - Wayne  
 060 - Westchester  
 061 - Wyoming  
 062 - Yates

34 - North Carolina

001 - Alamance  
 003 - Alleghany  
 004 - Anson  
 005 - Ashe  
 007 - Beaufort  
 008 - Bertie  
 009 - Bladen  
 010 - Brunswick  
 011 - Buncombe  
 012 - Burke  
 013 - Cabarrus  
 014 - Caldwell  
 015 - Camden  
 016 - Carteret  
 017 - Caswell  
 018 - Catawba  
 019 - Chatham  
 020 - Cherokee  
 021 - Chowan  
 022 - Clay  
 023 - Cleveland  
 024 - Columbus  
 025 - Craven  
 026 - Cumberland  
 027 - Currituck  
 029 - Davidson  
 030 - Davie  
 031 - Duplin  
 032 - Durham

033 - Edgecombe  
 034 - Forsyth  
 035 - Franklin  
 036 - Gaston  
 037 - Gates  
 038 - Graham  
 039 - Granville  
 040 - Greene  
 041 - Guilford  
 042 - Halifax  
 043 - Harnett  
 044 - Haywood  
 045 - Henderson  
 046 - Hertford  
 047 - Hoke  
 048 - Hyde  
 049 - Iredell  
 050 - Jackson  
 051 - Johnston  
 052 - Jones  
 053 - Lee  
 054 - Lenoir  
 055 - Lincoln  
 056 - Mc Dowell  
 058 - Madison  
 059 - Martin  
 060 - Mecklenburg  
 061 - Mitchell  
 062 - Montgomery  
 063 - Moore  
 064 - Nash  
 065 - New Hanover  
 066 - Northampton  
 067 - Onslow  
 068 - Orange  
 069 - Pamlico  
 070 - Pasquotank  
 071 - Pender  
 072 - Perquimans  
 073 - Person  
 074 - Pitt  
 076 - Randolph  
 077 - Richmond  
 078 - Robeson  
 079 - Rockingham  
 080 - Rowan  
 081 - Rutherford  
 082 - Sampson  
 083 - Scotland  
 084 - Stanly  
 085 - Stokes  
 086 - Surry  
 088 - Transylvania

089 - Tyrrell  
 090 - Union  
 091 - Vance  
 092 - Wake  
 093 - Warren  
 094 - Washington  
 095 - Watauga  
 096 - Wayne  
 097 - Wilkes  
 098 - Wilson  
 099 - Yadkin  
 100 - Yancey

35 - North Dakota

001 - Adams  
 002 - Barnes  
 003 - Benson  
 004 - Billings  
 005 - Bottineau  
 006 - Bowman  
 007 - Burke  
 008 - Burleigh  
 009 - Cass  
 010 - Cavalier  
 011 - Dickey  
 012 - Divide  
 013 - Dunn  
 014 - Eddy  
 015 - Emmons  
 016 - Foster  
 017 - Golden Valley  
 018 - Grand Forks  
 019 - Grant  
 020 - Griggs  
 021 - Hettinger  
 022 - Kidder  
 023 - La Moure  
 024 - Logan  
 025 - Mc Henry  
 026 - Mc Intosh  
 027 - Mc Kenzie  
 028 - Mc Lean  
 029 - Mercer  
 030 - Morton  
 031 - Mountrail  
 032 - Nelson  
 033 - Oliver  
 034 - Pembina  
 035 - Pierce  
 036 - Ramsey  
 037 - Ransom  
 038 - Renville

039 - Richland  
 040 - Rolette  
 041 - Sargent  
 042 - Sheridan  
 044 - Slope  
 045 - Stark  
 046 - Steele  
 047 - Stutsman  
 048 - Towner  
 049 - Traill  
 050 - Walsh  
 051 - Ward  
 052 - Wells  
 053 - Williams

36 - Ohio

001 - Adams  
 002 - Allen  
 003 - Ashland  
 004 - Ashtabula  
 005 - Athens  
 006 - Auglaize  
 007 - Belmont  
 008 - Brown  
 009 - Butler  
 010 - Carroll  
 011 - Champaign  
 012 - Clark  
 013 - Clermont  
 014 - Clinton  
 015 - Columbiana  
 016 - Coshocton  
 017 - Crawford  
 018 - Cuyahoga  
 019 - Darke  
 020 - Defiance  
 021 - Delaware  
 022 - Erie  
 023 - Fairfield  
 024 - Fayette  
 025 - Franklin  
 026 - Fulton  
 027 - Gallia  
 028 - Geauga  
 029 - Greene  
 030 - Guernsey  
 031 - Hamilton  
 032 - Hancock  
 033 - Hardin  
 034 - Harrison  
 035 - Henry  
 036 - Highland

037 - Hocking  
 038 - Holmes  
 039 - Huron  
 040 - Jackson  
 041 - Jefferson  
 042 - Knox  
 043 - Lake  
 044 - Lawrence  
 045 - Licking  
 046 - Logan  
 047 - Lorain  
 048 - Lucas  
 049 - Madison  
 050 - Mahoning  
 051 - Marion  
 052 - Medina  
 053 - Meigs  
 054 - Mercer  
 055 - Miami  
 056 - Monroe  
 057 - Montgomery  
 059 - Morrow  
 060 - Muskingum  
 061 - Noble  
 062 - Ottawa  
 063 - Paulding  
 064 - Perry  
 065 - Pickaway  
 066 - Pike  
 067 - Portage  
 068 - Preble  
 069 - Putnam  
 070 - Richland  
 071 - Ross  
 072 - Sandusky  
 073 - Scioto  
 074 - Seneca  
 075 - Shelby  
 076 - Stark  
 077 - Summit  
 078 - Trumbull  
 079 - Tuscarawas  
 080 - Union  
 081 - Van Wert  
 082 - Vinton  
 083 - Warren  
 084 - Washington  
 085 - Wayne  
 086 - Williams  
 087 - Wood  
 088 - Wyandot

37 - Oklahoma

001 - Adair  
 002 - Alfalfa  
 003 - Atoka  
 004 - Beaver  
 005 - Beckham  
 007 - Bryan  
 008 - Caddo  
 009 - Canadian  
 010 - Carter  
 011 - Cherokee  
 012 - Choctaw  
 013 - Cimarron  
 014 - Cleveland  
 015 - Coal  
 016 - Comanche  
 017 - Cotton  
 018 - Craig  
 019 - Creek  
 020 - Custer  
 021 - Delaware  
 022 - Dewey  
 023 - Ellis  
 024 - Garfield  
 025 - Garvin  
 026 - Grady  
 027 - Grant  
 028 - Greer  
 029 - Harmon  
 030 - Harper  
 031 - Haskell  
 032 - Hughes  
 033 - Jackson  
 034 - Jefferson  
 035 - Johnston  
 036 - Kay  
 037 - Kingfisher  
 038 - Kiowa  
 039 - Latimer  
 040 - Le Flore  
 041 - Lincoln  
 042 - Logan  
 043 - Love  
 044 - Mc Clain  
 045 - Mc Curtain  
 046 - Mc Intosh  
 047 - Major  
 048 - Marshall  
 049 - Mayes  
 050 - Murray  
 051 - Muskogee  
 052 - Noble

053 - Nowata  
 054 - Okfuskee  
 055 - Oklahoma  
 056 - Okmulgee  
 057 - Osage  
 058 - Ottawa  
 059 - Pawnee  
 060 - Payne  
 061 - Pittsburg  
 062 - Pontotoc  
 063 - Pottawatomie  
 064 - Pushmataha  
 065 - Roger Mills  
 066 - Rogers  
 067 - Seminole  
 068 - Sequoyah  
 069 - Stephens  
 071 - Tillman  
 072 - Tulsa  
 073 - Wagoner  
 074 - Washington  
 075 - Washita  
 076 - Woods  
 077 - Woodward

028 - Sherman  
 029 - Tillamook  
 030 - Umatilla  
 031 - Union  
 032 - Wallowa  
 033 - Wasco  
 034 - Washington  
 035 - Wheeler  
 036 - Yamhill

39 - Pennsylvania

001 - Adams  
 002 - Allegheny  
 003 - Armstrong  
 004 - Beaver  
 005 - Bedford  
 006 - Berks  
 007 - Blair  
 008 - Bradford  
 009 - Bucks  
 010 - Butler  
 011 - Cambria  
 012 - Cameron  
 013 - Carbon  
 014 - Centre  
 015 - Chester  
 016 - Clarion  
 017 - Clearfield  
 018 - Clinton  
 019 - Columbia  
 020 - Crawford  
 021 - Cumberland  
 022 - Dauphin  
 023 - Delaware  
 024 - Elk  
 025 - Erie  
 026 - Fayette  
 027 - Forest  
 028 - Franklin  
 029 - Fulton  
 030 - Greene  
 031 - Huntingdon  
 032 - Indiana  
 033 - Jefferson  
 034 - Juniata  
 035 - Lackawanna  
 036 - Lancaster  
 037 - Lawrence  
 038 - Lebanon  
 039 - Lehigh  
 040 - Luzerne  
 041 - Lycoming

38 - Oregon

001 - Baker  
 002 - Benton  
 003 - Clackamas  
 004 - Clatsop  
 005 - Columbia  
 006 - Coos  
 007 - Crook  
 008 - Curry  
 009 - Deschutes  
 010 - Douglas  
 011 - Gilliam  
 012 - Grant  
 013 - Harney  
 014 - Hood River  
 015 - Jackson  
 016 - Jefferson  
 017 - Josephine  
 018 - Klamath  
 020 - Lane  
 021 - Lincoln  
 022 - Linn  
 023 - Malheur  
 024 - Marion  
 025 - Morrow  
 026 - Multnomah  
 027 - Polk

042 - Mc Kean  
 043 - Mercer  
 044 - Mifflin  
 045 - Monroe  
 046 - Montgomery  
 047 - Montour  
 048 - Northampton  
 049 - Northumberland  
 050 - Perry  
 051 - Pike  
 052 - Philadelphia  
 053 - Potter  
 054 - Schuylkill  
 055 - Snyder  
 056 - Somerset  
 057 - Sullivan  
 058 - Susquehanna  
 059 - Tioga  
 060 - Union  
 061 - Venango  
 062 - Warren  
 063 - Washington  
 064 - Wayne  
 065 - Westmoreland  
 066 - Wyoming  
 067 - York

40 = Rhode Island

001 - Bristol  
 002 - Kent  
 003 - Newport  
 004 - Providence  
 005 - Washington

41 = South Carolina

001 - Abbeville  
 002 - Aiken  
 003 - Allendale  
 004 - Anderson  
 005 - Bamberg  
 006 - Barnwell  
 007 - Beaufort  
 008 - Berkeley  
 009 - Calhoun  
 010 - Charleston  
 011 - Cherokee  
 012 - Chester  
 013 - Chesterfield  
 014 - Clarendon  
 015 - Colleton  
 016 - Darlington

017 - Dillon  
 018 - Dorchester  
 019 - Edgefield  
 020 - Fairfield  
 021 - Florence  
 022 - Georgetown  
 023 - Greenville  
 024 - Greenwood  
 025 - Hampton  
 026 - Horry  
 027 - Jasper  
 028 - Kershaw  
 029 - Lancaster  
 030 - Laurens  
 031 - Lee  
 032 - Lexington  
 033 - Mc Cormick  
 034 - Marion  
 035 - Marlboro  
 036 - Newberry  
 037 - Oconee  
 038 - Orangeburg  
 039 - Pickens  
 040 - Richland  
 041 - Saluda  
 042 - Spartanburg  
 043 - Sumter  
 044 - Union  
 045 - Williamsburg  
 046 - York

42 = South Dakota

002 - Aurora  
 003 - Beadle  
 004 - Bennett  
 005 - Bon Homme  
 006 - Brookings  
 007 - Brown  
 008 - Brule  
 009 - Buffalo  
 010 - Butte  
 011 - Campbell  
 012 - Charles Mix  
 013 - Clark  
 014 - Clay  
 015 - Codington  
 016 - Corson  
 017 - Custer  
 018 - Davison  
 019 - Day  
 020 - Deuel  
 021 - Dewey

022 - Douglas  
 023 - Edmunds  
 024 - Fall River  
 025 - Faulk  
 026 - Grant  
 027 - Gregory  
 028 - Haakon  
 029 - Hamlin  
 030 - Hand  
 031 - Hanson  
 032 - Harding  
 033 - Hughes  
 034 - Hutchinson  
 035 - Hyde  
 036 - Jackson  
 037 - Jerauld  
 038 - Jones  
 039 - Kingsbury  
 040 - Lake  
 041 - Lawrence  
 042 - Lincoln  
 043 - Lyman  
 044 - Mc Cook  
 045 - Mc Pherson  
 046 - Marshall  
 047 - Meade  
 048 - Mellette  
 049 - Miner  
 050 - Minnehaha  
 051 - Moody  
 052 - Pennington  
 053 - Perkins  
 054 - Potter  
 055 - Roberts  
 056 - Sanborn  
 058 - Spink  
 059 - Stanley  
 060 - Sully  
 062 - Tripp  
 063 - Turner  
 064 - Union  
 065 - Walworth  
 067 - Yankton  
 068 - Ziebach

43 = Tennessee

001 - Anderson  
 002 - Bedford  
 003 - Benton  
 004 - Bledsoe  
 005 - Blount  
 006 - Bradley

007 - Campbell  
 008 - Cannon  
 009 - Carroll  
 010 - Carter  
 011 - Cheatham  
 012 - Chester  
 013 - Claiborne  
 014 - Clay  
 015 - Cocke  
 016 - Coffee  
 017 - Crockett  
 018 - Cumberland  
 019 - Davidson  
 020 - Decatur  
 021 - De Kalb  
 022 - Dickson  
 023 - Dyer  
 024 - Fayette  
 025 - Fentress  
 026 - Franklin  
 027 - Gibson  
 028 - Giles  
 029 - Grainger  
 030 - Greene  
 032 - Hamblen  
 033 - Hamilton  
 034 - Hancock  
 035 - Hardeman  
 036 - Hardin  
 037 - Hawkins  
 038 - Haywood  
 039 - Henderson  
 040 - Henry  
 041 - Hickman  
 042 - Houston  
 043 - Humphreys  
 044 - Jackson  
 045 - Jefferson  
 046 - Johnson  
 047 - Knox  
 048 - Lake  
 049 - Lauderdale  
 050 - Lawrence  
 051 - Lewis  
 052 - Lincoln  
 053 - Loudon  
 054 - Mc Minn  
 055 - Mc Nairy  
 056 - Macon  
 057 - Madison  
 058 - Marion  
 059 - Marshall  
 060 - Maury



061 - Meigs	018 - Bosque
062 - Monroe	019 - Bowie
063 - Montgomery	020 - Brazoria
064 - Moore	021 - Brazos
066 - Obion	023 - Briscoe
067 - Overton	024 - Brooks
068 - Perry	025 - Brown
069 - Pickett	026 - Burleson
070 - Polk	027 - Burnet
071 - Putnam	028 - Caldwell
072 - Rhea	029 - Calhoun
073 - Roane	030 - Callahan
074 - Robertson	031 - Cameron
075 - Rutherford	033 - Carson
076 - Scott	035 - Castro
077 - Sequatchie	036 - Chambers
078 - Sevier	037 - Cherokee
079 - Shelby	038 - Childress
080 - Smith	039 - Clay
081 - Stewart	040 - Cochran
082 - Sullivan	041 - Coke
083 - Sumner	042 - Coleman
084 - Tipton	043 - Collin
085 - Trousdale	044 - Collingsworth
086 - Unicoi	045 - Colorado
087 - Union	046 - Comal
088 - Van Buren	048 - Concho
089 - Warren	049 - Cooke
090 - Washington	050 - Coryell
091 - Wayne	051 - Cottle
092 - Weakley	052 - Crane
093 - White	053 - Crockett
094 - Williamson	054 - Crosby
095 - Wilson	055 - Culberson

44 - Texas

001 - Anderson	056 - Dallam
002 - Andrews	057 - Dallas
003 - Angelina	058 - Dawson
004 - Aransas	059 - Deaf Smith
005 - Archer	061 - Denton
006 - Armstrong	062 - De Witt
007 - Atascosa	063 - Dickens
009 - Bailey	064 - Dimmit
010 - Bandera	065 - Donley
011 - Bastrop	067 - Eastland
012 - Baylor	068 - Ector
013 - Bee	069 - Edwards
014 - Bell	070 - Ellis
015 - Bexar	071 - El Paso
016 - Blanco	072 - Erath
017 - Borden	073 - Falls
	074 - Fannin
	075 - Fayette
	076 - Fisher

077 - Floyd	131 - Kenedy
078 - Foard	132 - Kent
079 - Fort Bend	133 - Kerr
080 - Franklin	134 - Kimble
081 - Freestone	135 - King
082 - Frio	137 - Kleberg
083 - Gaines	139 - Lamar
084 - Galveston	140 - Lamb
085 - Garza	141 - Lampasas
086 - Gillespie	142 - La Salle
087 - Glasscock	143 - Lavaca
088 - Goliad	144 - Lee
089 - Gonzales	146 - Liberty
090 - Gray	147 - Limestone
091 - Grayson	148 - Lipscomb
092 - Gregg	149 - Live Oak
093 - Grimes	150 - Llano
094 - Guadalupe	151 - Loving
095 - Hale	152 - Lubbock
096 - Hall	153 - Lynn
097 - Hamilton	154 - Mc Culloch
098 - Hansford	155 - Mc Lennan
099 - Hardeman	156 - Mc Mullen
100 - Hardin	158 - Marion
101 - Harris	160 - Mason
102 - Harrison	161 - Matagorda
103 - Hartley	162 - Maverick
104 - Haskell	165 - Midland
105 - Hays	166 - Milam
106 - Hemphill	167 - Mills
107 - Henderson	168 - Mitchell
108 - Hidalgo	169 - Montague
109 - Hill	170 - Montgomery
110 - Hockley	171 - Moore
111 - Hood	173 - Motley
112 - Hopkins	174 - Nacogdoches
113 - Houston	175 - Navarro
114 - Howard	176 - Newton
115 - Hudspeth	177 - Nolan
116 - Hunt	178 - Nueces
117 - Hutchinson	179 - Ochiltree
118 - Irion	180 - Oldham
119 - Jack	181 - Orange
120 - Jackson	182 - Palo Pinto
121 - Jasper	183 - Panola
122 - Jeff Davis	184 - Parker
123 - Jefferson	185 - Parmer
124 - Jim Hogg	186 - Pecos
125 - Jim Wells	187 - Polk
126 - Johnson	188 - Potter
128 - Karnes	189 - Presidio
129 - Kaufman	190 - Rains
130 - Kendall	191 - Randall

192 - Reagan  
 193 - Real  
 194 - Red River  
 195 - Reeves  
 196 - Refugio  
 197 - Roberts  
 199 - Rockwall  
 200 - Runnels  
 201 - Rusk  
 202 - Sabine  
 203 - San Augustine  
 205 - San Patricio  
 206 - San Saba  
 207 - Schleicher  
 208 - Scurry  
 209 - Shackelford  
 210 - Shelby  
 211 - Sherman  
 212 - Smith  
 213 - Somervell  
 214 - Starr  
 215 - Stephens  
 216 - Sterling  
 217 - Stonewall  
 219 - Swisher  
 220 - Tarrant  
 221 - Taylor  
 222 - Terrell  
 223 - Terry  
 224 - Throckmorton  
 225 - Titus  
 226 - Tom Green  
 227 - Travis  
 228 - Trinity  
 229 - Tyler  
 230 - Upshur  
 231 - Upton  
 232 - Uvalde  
 233 - Val Verde  
 234 - Van Zandt  
 235 - Victoria  
 236 - Walker  
 237 - Waller  
 238 - Ward  
 239 - Washington  
 240 - Webb  
 241 - Wharton  
 242 - Wheeler  
 243 - Wichita  
 244 - Wilbarger  
 246 - Williamson  
 247 - Wilson  
 248 - Winkler

249 - Wise  
 250 - Wood  
 251 - Yoakum  
 253 - Zapata  
 254 - Zavala

45 - Utah

001 - Beaver  
 002 - Box Elder  
 003 - Cache  
 004 - Carbon  
 005 - Daggett  
 006 - Davis  
 007 - Duchesne  
 008 - Emery  
 009 - Garfield  
 010 - Grand  
 011 - Iron  
 012 - Juab  
 013 - Kane  
 014 - Millard  
 015 - Morgan  
 017 - Rich  
 018 - Salt Lake  
 019 - San Juan  
 020 - Sanpete  
 021 - Sevier  
 022 - Summit  
 023 - Tooele  
 024 - Uintah  
 025 - Utah  
 026 - Wasatch  
 027 - Washington  
 028 - Wayne  
 029 - Weber

46 - Vermont

001 - Addison  
 002 - Bennington  
 003 - Caledonia  
 004 - Chittenden  
 005 - Essex  
 006 - Franklin  
 007 - Grand Isle  
 008 - Lamoille  
 009 - Orange  
 010 - Orleans  
 011 - Rutland  
 012 - Washington  
 013 - Windham  
 014 - Windsor

47 - Virginia

001 - Accomack  
 002 - Albemarle  
 003 - Alleghany  
 004 - Amelia  
 005 - Amherst  
 006 - Appomattox  
 007 - Arlington  
 008 - Augusta  
 009 - Bath  
 010 - Bedford  
 011 - Bland  
 013 - Brunswick  
 014 - Buchanan  
 015 - Buckingham  
 016 - Campbell  
 017 - Caroline  
 018 - Carroll  
 019 - Charles City  
 020 - Charlotte  
 021 - Chesterfield  
 023 - Craig  
 025 - Cumberland  
 026 - Dickenson  
 027 - Dinwiddie  
 029 - Essex  
 030 - Fairfax  
 031 - Fauquier  
 033 - Fluvanna  
 034 - Franklin  
 035 - Frederick  
 036 - Giles  
 037 - Gloucester  
 038 - Goochland  
 039 - Grayson  
 040 - Greene  
 042 - Halifax  
 043 - Hanover  
 044 - Henrico  
 045 - Henry  
 046 - Highland  
 047 - Isle of Wight  
 048 - James City  
 049 - King and Queen  
 050 - King George  
 051 - King William  
 052 - Lancaster  
 053 - Lee  
 054 - Loudoun  
 055 - Louisa  
 057 - Madison  
 058 - Mathews

059 - Mecklenburg  
 060 - Middlesex  
 061 - Montgomery  
 063 - Nelson  
 064 - New Kent  
 066 - Northampton  
 067 - Northumberland  
 068 - Nottoway  
 070 - Page  
 071 - Patrick  
 072 - Pittsylvania  
 073 - Powhatan  
 074 - Prince Edward  
 075 - Prince George  
 076 - Prince William  
 078 - Pulaski  
 079 - Rappahannock  
 080 - Richmond  
 081 - Roanoke  
 082 - Rockbridge  
 083 - Rockingham  
 084 - Russell  
 085 - Scott  
 086 - Shenandoah  
 087 - Smyth  
 089 - Spotsylvania  
 090 - Stafford  
 092 - Sussex  
 093 - Tazewell  
 094 - Warren  
 096 - Washington  
 097 - Westmoreland  
 098 - Wise  
 099 - Wythe  
 100 - York  
 101 - Alexandria  
 102 - Bristol  
 104 - Charlottesville  
 105 - Chesapeake  
 107 - Colonial Heights  
 108 - Covington  
 109 - Danville  
 110 - Fairfax  
 111 - Falls Church  
 112 - Franklin  
 113 - Fredericksburg  
 114 - Galax  
 115 - Hampton  
 116 - Harrisonburg  
 117 - Hopewell  
 119 - Lynchburg  
 120 - Martinsville  
 121 - Newport News

122 - Norfolk  
 124 - Petersburg  
 125 - Portsmouth  
 126 - Radford  
 127 - Richmond  
 128 - Roanoke  
 129 - South Boston  
 130 - Staunton  
 132 - Virginia Beach  
 133 - Waynesboro  
 134 - Williamsburg  
 135 - Winchester  
 138 - Salem

48 - Washington

001 - Adams  
 002 - Asotin  
 003 - Benton  
 004 - Chelan  
 005 - Clallam  
 006 - Clark  
 007 - Columbia  
 008 - Cowlitz  
 009 - Douglas  
 010 - Ferry  
 011 - Franklin  
 012 - Garfield  
 013 - Grant  
 014 - Grays Harbor  
 015 - Island  
 016 - Jefferson  
 017 - King  
 018 - Kitsap  
 019 - Kittitas  
 020 - Klickitat  
 021 - Lewis  
 022 - Lincoln  
 023 - Mason  
 024 - Okanogan  
 025 - Pacific  
 026 - Pend Oreille  
 027 - Pierce  
 029 - Skagit  
 030 - Skamania  
 031 - Snohomish  
 032 - Spokane  
 033 - Stevens  
 034 - Thurston  
 036 - Walla Walla  
 037 - Whatcom  
 038 - Whitman  
 039 - Yakima

49 - West Virginia

001 - Barbour  
 002 - Berkeley  
 003 - Boone  
 004 - Braxton  
 005 - Brooke  
 006 - Cabell  
 007 - Calhoun  
 008 - Clay  
 010 - Payette  
 012 - Grant  
 013 - Greenbrier  
 014 - Hampshire  
 015 - Hancock  
 016 - Hardy  
 017 - Harrison  
 018 - Jackson  
 019 - Jefferson  
 020 - Kanawha  
 021 - Lewis  
 022 - Lincoln  
 023 - Logan  
 024 - Mc Dowell  
 025 - Marion  
 026 - Marshall  
 027 - Mason  
 028 - Mercer  
 029 - Mineral  
 030 - Mingo  
 031 - Monongalia  
 033 - Morgan  
 034 - Nicholas  
 035 - Ohio  
 036 - Pendleton  
 037 - Pleasants  
 038 - Pocahontas  
 039 - Preston  
 040 - Putnam  
 041 - Raleigh  
 042 - Randolph  
 043 - Ritchie  
 044 - Roane  
 045 - Summers  
 046 - Taylor  
 047 - Tucker  
 048 - Tyler  
 049 - Upshur  
 050 - Wayne  
 052 - Wetzel  
 053 - Wirt  
 054 - Wood  
 055 - Wyoming

50 - Wisconsin

001 - Adams  
 002 - Ashland  
 003 - Barron  
 004 - Bayfield  
 005 - Brown  
 006 - Buffalo  
 007 - Burnett  
 008 - Calumet  
 009 - Chippewa  
 010 - Clark  
 011 - Columbia  
 012 - Crawford  
 013 - Dane  
 014 - Dodge  
 015 - Door  
 016 - Douglas  
 017 - Dunn  
 018 - Eau Claire  
 019 - Florence  
 020 - Fond du Lac  
 021 - Forest  
 022 - Grant  
 023 - Green  
 024 - Green Lake  
 025 - Iowa  
 027 - Jackson  
 028 - Jefferson  
 029 - Juneau  
 030 - Kenosha  
 031 - Kewaunee  
 032 - La Crosse  
 033 - Lafayette  
 034 - Langlade  
 035 - Lincoln  
 036 - Manitowoc  
 037 - Marathon  
 038 - Marinette  
 039 - Marquette  
 040 - Menominee  
 041 - Milwaukee  
 042 - Monroe  
 043 - Oconto  
 044 - Oneida  
 045 - Outagamie  
 046 - Ozaukee  
 047 - Pepin  
 048 - Pierce  
 049 - Polk  
 050 - Portage  
 051 - Price  
 052 - Racine

053 - Richland  
 054 - Rock  
 055 - Rusk  
 056 - St. Croix  
 057 - Sauk  
 058 - Sawyer  
 059 - Shawano  
 060 - Sheboygan  
 061 - Taylor  
 062 - Trempealeau  
 063 - Vernon  
 065 - Walworth  
 066 - Washburn  
 067 - Washington  
 068 - Waukesha  
 069 - Waupaca  
 070 - Waushara  
 071 - Winnebago  
 072 - Wood

51 - Wyoming

001 - Albany  
 002 - Big Horn  
 003 - Campbell  
 004 - Carbon  
 005 - Converse  
 006 - Crook  
 007 - Fremont  
 008 - Goshen  
 009 - Hot Springs  
 010 - Johnson  
 011 - Laramie  
 012 - Lincoln  
 013 - Natrona  
 014 - Niobrara  
 015 - Park  
 016 - Platte  
 017 - Sheridan  
 018 - Sublette  
 019 - Sweetwater  
 020 - Teton  
 021 - Uinta  
 022 - Washakie

## APPENDIX 3: OSIRIS III TYPE 3 DICTIONARY DESCRIPTION

This description of an OSIRIS III Type 3 dictionary was taken from OSIRIS III, Volume 1: System and Program Description, Release 2 Edition, Appendix D published by Institute for Social Research, University of Michigan.

Dictionary-descriptor record

Position	Content
1-3	Blanks
4	3: Type 3 dictionary
5-8	First variable number
9-12	Last variable number
13-16	1: Number of logical records per case
20	1: Format of variable location specification is starting location and field width
21-80	Blanks

Variable-descriptor record

Position	Content
1	T: Variable descriptor record
2-5	Variable number
6	Blank
7-30	Variable name
31	Blank
32-35	Starting location of the variable within each data record
36-39	Field width of response 1-9: numeric variables 1-255: alphabetic variables
40	Number of decimal places 0-9: numeric variables 0: alphabetic variables
41	Character type and storage mode Blank: numeric, character mode 1: alphabetic, character mode
42	Variable type Blank: single response 1: multiple response

43-44	Number of responses If the variable has more than one response, columns 5-35 describe the first response and the remaining responses are assumed to be in adjacent fields of the same description.
45-51	First missing data code or blanks
52-58	Second missing data code or blanks
59-72	Blanks
73-75	File ID
76-80	Sequence number or blanks

**END**