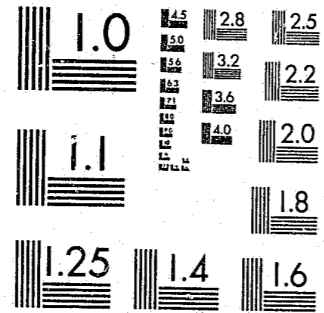


National Criminal Justice Reference Service



This microfiche was produced from documents received for inclusion in the NCJRS data base. Since NCJRS cannot exercise control over the physical condition of the documents submitted, the individual frame quality will vary. The resolution chart on this frame may be used to evaluate the document quality.



MICROCOPY RESOLUTION TEST CHART
NATIONAL BUREAU OF STANDARDS-1963-A

Microfilming procedures used to create this fiche comply with the standards set forth in 41CFR 101-11.504.

Points of view or opinions stated in this document are those of the author(s) and do not represent the official position or policies of the U. S. Department of Justice.

National Institute of Justice
United States Department of Justice
Washington, D. C. 20531

4/12/85

INTER-UNIVERSITY CONSORTIUM FOR
POLITICAL AND SOCIAL RESEARCH

EXPENDITURE AND EMPLOYMENT DATA
FOR THE CRIMINAL JUSTICE SYSTEM,
1972

(ICPSR 7618)

96177

I
C
P
S
R

Principal
Investigator

Law Enforcement
Assistance Administration

First ICPSR Edition, 1978

U.S. Department of Justice
National Institute of Justice

This document has been reproduced exactly as received from the person or organization originating it. Points of view or opinions stated in this document are those of the authors and do not necessarily represent the official position or policies of the National Institute of Justice.

Permission to reproduce this copyrighted material has been granted by

LAW ENFORCEMENT ASSISTANCE
ADMINISTRATION

to the National Criminal Justice Reference Service (NCJRS).

Further reproduction outside of the NCJRS system requires permission of the copyright owner.

EXPENDITURE AND EMPLOYMENT DATA FOR THE
CRIMINAL JUSTICE SYSTEM, 1972

(ICPSR 7618)

Principal Investigator
Law Enforcement Assistance
Administration

Inter-university Consortium for Political and Social Research
P.O. Box 1248
Ann Arbor, Michigan 48106

First ICPSR Edition, 1978

Acknowledgment of Assistance

All manuscripts utilizing data made available through the Consortium should acknowledge that fact as well as identify the original collector of the data. The ICPSR Council urges all users of ICPSR data facilities to follow some adaptation of this statement with the parentheses indicating items to be filled in appropriately or deleted by the individual user.

The data (and tabulations) utilized in this (publication) were made available (in part) by the Inter-university Consortium for Political and Social Research. The data for Expenditure and Employment Data for the Criminal Justice System, 1972, survey were originally collected by the Law Enforcement Assistance Administration. Neither the original collector of the data nor the Archive bears any responsibility for the analysis or interpretations presented here.

In order to provide funding agencies with essential information about the use of archival resources, and to facilitate the exchange of information about ICPSR participants' research activities, each user of the ICPSR data facilities is expected to send two copies of each completed manuscript or thesis abstract to the Consortium. Please indicate in the cover letter which data were used.

SUMMARY OF CONTENTS

Study Description	1
Data Collection and Sample	2
Processing	2
Description of the Codebook	3
Codebook	6
Appendix 1: Definition of Terms	20
Appendix 2: Counties by Name	32
Appendix 3: Osiris III Type 3 Dictionary Description . .	62

NCJRS

JAN 7 1985

ACQUISITIONS

STUDY DESCRIPTION

The 1972 Criminal Justice Expenditure and Employment data are part of an annual survey series conducted under the requirements of the Omnibus Crime Control and Safe Streets Act of 1968. The data were collected by the U.S. Bureau of the Census for the Law Enforcement Assistance Administration (LEAA).

A related publication is Expenditure and Employment Data for the Criminal Justice System, 1972-1973, prepared by the Census Bureau and the LEAA. The report is currently out of print.

The data included in this study concern criminal justice expenditure and employment for all the states and counties, and for certain selected municipal and city governments. Specific variables include: full- and part-time employees and payroll; expenditures for current operation, capital outlay, and contributions to employee benefits; and, intergovernmental expenditure paid to state and local governments. Figures are tabulated for the following sectors of the criminal justice system: police protection, judicial, legal services and prosecution, public (indigent) defense, corrections, and other criminal justice services. Definitions of these terms can be found in Appendix 1.

The survey design for the present study included data collection from all states and counties, and from municipalities and cities having a 1970 population of 10,000 or more. In addition, a sample of the remaining municipalities and cities under 10,000 in population was selected in accordance with the relative size of their annual expenditures in criminal justice, as reported in the 1967 Census of Governments. The original survey panel for the present study was comprised of the 50 state governments, 3044 county governments, 4304 cities (including the District of Columbia), and 1706 townships. The actual data file includes records for 50 states, 2532 county governments, 3987 cities, and 1577 townships, a total of 8146 records.

The state expenditure data covers the fiscal year ending June 30, for all states except three whose fiscal years end as follows: New York, March 31; Texas, August 31; and Alabama, September 30. Included in the state expenditure totals is information from some state agencies which operate on a fiscal year different from the state government's year under which it is organized. In such cases, figures for the agency are those for the fiscal year that ended within the state's regular fiscal year. For local governments, the fiscal year reported is that which closed between July 1, 1971, and June 30, 1972. Data on the number of employees is reported for the pay period which included October 15, 1972, and includes personnel on the payroll for the month of October 1972.

DATA COLLECTION AND SAMPLE

The survey was accomplished using two methods of data collection: field compilation and mail canvass. Field representatives compiled expenditure and employment data for the 50 states, 312 largest counties, 384 largest cities, and for selected smaller units from the government's own records. Compilation was done between July, 1971, and June, 1972. All other governmental units in the sample were canvassed by mail over a five-month period, December 1971 through April 1972. Response for field-compilation units was 100%. The response from the mail canvass was 80%. The field survey efforts and mail canvass were supplemented by reference to a variety of published government documents, such as budget and audit reports. In some instances, such sources were the basis for the breakdown of totals into more detailed expenditure and employment figures.

The sample of municipal governments was designed to produce an estimate for each state, of the ratio of state to local government criminal justice expenditures with a sample error of less than 0.5% at the 95% confidence level. The relative error of the state-by-state estimates of local government criminal justice expenditures has also been calculated at the 95% confidence level.

The LEAA has sponsored seven years of expenditure-employment data, 1970 through 1976. The data for fiscal years 1971-1976 are directly comparable; the data were collected, edited, and processed in a uniform way. Due to significant changes in the survey procedures, 1970 data are not directly comparable with the 1971-1976 years.

PROCESSING

The archive file consists of three physical files stored on magnetic tape: a machine-readable user's guide which documents the data for the human user, an OSIRIS dictionary file which describes the data to a computer program, and a data file. Appendix III contains additional information on file format.

A unit in this data file is a state, county, city or municipal government. There are 7224 units in the 1972 dataset. Each unit is identified and sorted according to four variables: a state reference code, a level-of-government identifier, a county code, and a city or municipal reference number. States and counties are coded according to the Government's Division Code, and cities and municipalities by the Government's Unit Code.

DESCRIPTION OF THE CODEBOOK

THIS SECTION CONTAINS AN EXPLANATION OF TYPICAL ENTRIES IN THE CODEBOOK SECTION WHICH FOLLOWS. THE NUMBERS IN BRACKETS DO NOT APPEAR IN THE CODEBOOK BUT ARE REFERENCES TO THE DESCRIPTIONS WHICH FOLLOW THE EXAMPLES.

.....

1	V2	6	REFERENCE:	0002
2	LEVEL OF GOVERNMENT	7	FILE I.D.:	E72
3	LOCATION: 3 WIDTH: 1	8	NUMERIC CHARACTER	
4	MISSING DATA: EQ 9			

10 11 12

50 0 STATE

2532 1 COUNTY

3587 2 CITY

1577 3 TOWNSHIP

13 REFERENCE NUMBERS 3, 4. IF THE FACILITY IS OPERATED BY A STATE, BOTH THE COUNTY NUMBER AND CITY/TOWNSHIP NUMBER ARE EQUAL TO ZERO. IF THE FACILITY IS OPERATED BY A COUNTY, THEN THE COUNTY NUMBER IS A NUMBER ASSIGNED SEQUENTIALLY WITHIN A STATE TO THE COUNTIES IN ALPHABETICAL ORDER. CITY/TOWNSHIP NUMBER IS USUALLY BUT NOT ALWAYS THE SAME AS COUNTY NUMBER. IF THE FACILITY IS OPERATED BY A CITY OR TOWNSHIP, THE CITY/TOWNSHIP NUMBER IS A UNIQUE NUMBER ASSIGNED WITHIN THE COUNTY TO A CITY OR TOWNSHIP. LEVEL OF GOVERNMENT (REF. NO. 2) DETERMINES THE CONTENTS OF COUNTY NUMBER AND CITY/TOWNSHIP NUMBER.

1	V7	6	REFERENCE:	0007
2	WEIGHT	7	FILE I.D.:	E72
3	LOCATION: 17 WIDTH: 5	8	NUMERIC CHARACTER	
4	MISSING DATA: EQ 9			
5	IMPLICIT DECIMAL PLACES: 4			

9 SAMPLE WEIGHT

.....

1. THE OSIRIS VARIABLE NUMBER. THE VARIABLE NUMBER IS USED AS THE SPSS VARIABLE NAME WHEN AN OSIRIS FILE IS PROCESSED BY SPSS.

2. THE ABBREVIATED (24 CHARACTERS MAXIMUM) VARIABLE LABEL USED WITHIN THE OSIRIS OR SPSS SYSTEMS TO IDENTIFY THE VARIABLE FOR THE USER.
3. THE STARTING LOCATION AND WIDTH OF THIS VARIABLE IN THE DATA AS STORED ON A MAGNETIC TAPE. THIS INFORMATION AND THE NUMBER OF DECIMAL PLACES, IF ANY, IS THE FORMAT INFORMATION NEEDED TO READ THE DATA INTO OTHER SYSTEMS.
4. THE DESIGNATION OF MISSING DATA. IN THE EXAMPLES, CODE VALUES FOR LEVEL OF GOVERNMENT OR WEIGHT EQUAL TO NINE ARE DESIGNATED AS MISSING DATA. SOME ANALYSIS SOFTWARE PACKAGES (INCLUDING THE OSIRIS AND SPSS PACKAGES) REQUIRE THAT CERTAIN TYPES OF DATA WHICH ARE USUALLY EXCLUDED FROM ANALYSIS BE DESIGNATED AS "MISSING DATA;" E.G., INAPPROPRIATE, UNASCERTAINED, UNASCERTAINABLE OR AMBIGUOUS DATA CATEGORIES. IF NEEDED, THIS DESIGNATION CAN BE CHANGED BY THE USER AND THE VALUES USED IN A SUBSTANTIVE MANNER.
5. NUMBER OF DECIMAL PLACES TO THE RIGHT OF THE DECIMAL POINT. THE DECIMAL POINT IS IMPLIED AND IS NOT PART OF THE DATA ITEM. IN THIS FILE, WEIGHT IS THE ONLY VARIABLE WITH AN IMPLIED NUMBER OF DECIMAL PLACES OTHER THAN ZERO.
6. THE OSIRIS REFERENCE NUMBER. THE LEAA DATA ARCHIVE HAS ADOPTED THE OSIRIS III CONVENTION OF ASSIGNING BOTH A VARIABLE NUMBER AND A REFERENCE NUMBER TO EACH DATA ITEM WHEN A FILE IS CREATED. IN THE ARCHIVE FILE, THEY ARE THE SAME. SHOULD THE DATA BE SUBSETTED OR REARRANGED, THE VARIABLE NUMBERS WOULD CHANGE TO REFLECT THE ORDER OF THE NEW DATA FILE, WHILE THE REFERENCE NUMBERS WOULD REMAIN TO REFLECT THE VARIABLE NUMBERS IN THE CODEBOOK DESCRIBING THE ARCHIVED DATA FILE.
7. THE THREE-COLUMN IDENTIFICATION NUMBER UNIQUE TO THIS DATA FILE.
8. THE STORAGE MODE OF THE VARIABLE. ALL DATA IN THIS FILE ARE IN NUMERIC CHARACTER FORM.
9. THE UNABBREVIATED VARIABLE LABEL OR THE TEXT OF THE QUESTION FROM THE SURVEY FORM.
10. THE FREQUENCY OF OCCURRENCE OF EACH CODE VALUE.
11. THE CODE VALUES OCCURRING IN THE DATA FOR A VARIABLE.
12. THE TEXTUAL DEFINITIONS OF THE CODES. THE FIRST 20 CHARACTERS FORM A SHORT LABEL WHICH IS SOMETIMES USED TO DOCUMENT THE OUTPUT OF ANALYSIS PROGRAMS. A LONGER DESCRIPTION FOLLOWS THE SHORT LABEL WHEN NECESSARY.

13. EXPLANATORY TEXT REFERRING TO A GROUP OF VARIABLES WHICH FOLLOWS. THESE ENTRIES ARE USED WHENEVER A LENGTHY DESCRIPTION APPLIES TO MORE THAN ONE OR TWO VARIABLES OR WHEN SOME COMMENT ABOUT A GROUP OF VARIABLES IS NEEDED.

EXPENDITURE AND EMPLOYMENT DATA FOR
THE CRIMINAL JUSTICE SYSTEM, 1972

CODEBOOK

V1
STATE NUMBER
LOCATION: 1 WIDTH: 2
MISSING DATA: EQ 99

REFERENCE: 0001
FILE I.D.: E72
NUMERIC CHARACTER

114	1	ALABAMA
43	2	ALASKA
35	3	ARIZONA
154	4	ARKANSAS
294	5	CALIFORNIA
114	6	COLORADO
115	7	CONNECTICUT
30	8	DELAWARE
1	9	DISTRICT OF COLUMBIA
171	10	FLORIDA
249	11	GEORGIA
5	12	HAWAII
96	13	IDAHO
292	14	ILLINOIS
220	15	INDIANA
231	16	IOWA
267	17	KANSAS
132	18	KENTUCKY
81	19	LOUISIANA

EXPENDITURE AND EMPLOYMENT DATA FOR
THE CRIMINAL JUSTICE SYSTEM, 1972

(V1, STATE NUMBER, CONTINUED)

197	20	MAINE
55	21	MARYLAND
152	22	MASSACHUSETTS
254	23	MICHIGAN
235	24	MINNESOTA
119	25	MISSISSIPPI
218	26	MISSOURI
115	27	MONTANA
170	28	NEBRASKA
27	29	NEVADA
101	30	NEW HAMPSHIRE
214	31	NEW JERSEY
74	32	NEW MEXICO
311	33	NEW YORK
178	34	NORTH CAROLINA
245	35	NORTH DAKOTA
305	36	OHIO
171	37	OKLAHOMA
79	38	OREGON
333	39	PENNSYLVANIA
33	40	RHODE ISLAND
98	41	SOUTH CAROLINA
369	42	SOUTH DAKOTA
149	43	TENNESSEE
403	44	TEXAS

EXPENDITURE AND EMPLOYMENT DATA FOR
THE CRIMINAL JUSTICE SYSTEM, 1972

(V1, STATE NUMBER, CONTINUED)

72 45 UTAH
250 46 VERMONT
120 47 VIRGINIA
95 48 WASHINGTON
104 49 WEST VIRGINIA
199 50 WISCONSIN
57 51 WYOMING

V2
LEVEL OF GOVERNMENT
LOCATION: 3 WIDTH: 1
MISSING DATA: EQ 9

REFERENCE: 0002
FILE I.D.: E72
NUMERIC CHARACTER

50 0 STATE
2532 1 COUNTY
3987 2 CITY
1577 3 TOWNSHIP

REF. NOS. 3,4. IF THE FACILITY IS OPERATED BY A STATE, BOTH THE COUNTY NUMBER AND CITY/TOWNSHIP NUMBER ARE EQUAL TO ZERO. IF THE FACILITY IS OPERATED BY A COUNTY, THEN THE COUNTY NUMBER IS A NUMBER ASSIGNED SEQUENTIALLY WITHIN A STATE TO THE COUNTIES IN ALPHABETICAL ORDER. CITY/TOWNSHIP NUMBER IS USUALLY BUT NOT ALWAYS THE SAME AS COUNTY NUMBER. IF THE FACILITY IS OPERATED BY A CITY OR TOWNSHIP, THE CITY/TOWNSHIP NUMBER IS A UNIQUE NUMBER ASSIGNED WITHIN THE COUNTY TO A CITY OR TOWNSHIP. LEVEL OF GOVERNMENT (REF. NO. 2) DETERMINES THE CONTENTS OF COUNTY NUMBER AND CITY/TOWNSHIP NUMBER.

V3
COUNTY NUMBER
LOCATION: 4 WIDTH: 3
MISSING DATA: EQ 999

REFERENCE: 0003
FILE I.D.: E72
NUMERIC CHARACTER

EXPENDITURE AND EMPLOYMENT DATA FOR
THE CRIMINAL JUSTICE SYSTEM, 1972

V4
CITY/TOWNSHIP #
LOCATION: 7 WIDTH: 3
MISSING DATA: EQ 999

REFERENCE: 0004
FILE I.D.: E72
NUMERIC CHARACTER

V5
FISCAL YEAR
LOCATION: 10 WIDTH: 2
<NO MISSING DATA DEFINED>

REFERENCE: 0005
FILE I.D.: E72
NUMERIC CHARACTER

8146 72 FISCAL YEAR 1971-72

V6
SEQUENCE NUMBER
LOCATION: 12 WIDTH: 5
<NO MISSING DATA DEFINED>

REFERENCE: 0006
FILE I.D.: E72
NUMERIC CHARACTER

THE VALUES RANGE FROM 1 TO 8146 AND ARE IN ASCENDING ORDER.

V7
WEIGHT
LOCATION: 17 WIDTH: 5
MISSING DATA: EQ 9
IMPLICIT DECIMAL PLACES: 4

REFERENCE: 0007
FILE I.D.: E72
NUMERIC CHARACTER

SAMPLE WEIGHT.

V8
POLICE FULL-TIME EMPLOYEE
LOCATION: 22 WIDTH: 5
MISSING DATA: EQ -1

REFERENCE: 0008
FILE I.D.: E72
NUMERIC CHARACTER

POLICE PROTECTION, FULL-TIME EMPLOYEES.

V9
POLICE FULL-TIME PAYROLL
LOCATION: 27 WIDTH: 8
MISSING DATA: EQ -1

REFERENCE: 0009
FILE I.D.: E72
NUMERIC CHARACTER

POLICE PROTECTION, FULL-TIME PAYROLL.

EXPENDITURE AND EMPLOYMENT DATA FOR
THE CRIMINAL JUSTICE SYSTEM, 1972

V10 POLICE PART-TIME EMPLOYEE
LOCATION: 35 WIDTH: 4
MISSING DATA: EQ -1

REFERENCE: 0010
FILE I.D.: E72
NUMERIC CHARACTER

POLICE PROTECTION, PART-TIME EMPLOYEES.

V11 POLICE PART-TIME PAYROLL
LOCATION: 39 WIDTH: 7
MISSING DATA: EQ -1

REFERENCE: 0011
FILE I.D.: E72
NUMERIC CHARACTER

POLICE PROTECTION, PART-TIME PAYROLL.

V12 POLICE CURRENT OPERATION
LOCATION: 46 WIDTH: 9
MISSING DATA: EQ -1

REFERENCE: 0012
FILE I.D.: E72
NUMERIC CHARACTER

POLICE PROTECTION, CURRENT OPERATIONS.

V13 POLICE CAPITAL OUTLAY
LOCATION: 55 WIDTH: 6
MISSING DATA: EQ -1

REFERENCE: 0013
FILE I.D.: E72
NUMERIC CHARACTER

POLICE PROTECTION, CAPITAL OUTLAY.

V14 POLICE PAY TO LOCAL GOVT
LOCATION: 63 WIDTH: 8
MISSING DATA: EQ -1

REFERENCE: 0014
FILE I.D.: E72
NUMERIC CHARACTER

POLICE PROTECTION, INTERGOVERNMENTAL EXPENDITURE PAID
TO LOCAL GOVERNMENT.

V15 POLICE PAY TO STATE GOVT
LOCATION: 71 WIDTH: 6
MISSING DATA: EQ -1

REFERENCE: 0015
FILE I.D.: E72
NUMERIC CHARACTER

POLICE PROTECTION, INTERGOVERNMENTAL EXPENDITURE PAID
TO STATE GOVERNMENT.

EXPENDITURE AND EMPLOYMENT DATA FOR
THE CRIMINAL JUSTICE SYSTEM, 1972

V16 POLICE CONTRIB TO EMPLOY
LOCATION: 77 WIDTH: 9
MISSING DATA: EQ -1

REFERENCE: 0016
FILE I.D.: E72
NUMERIC CHARACTER

POLICE PROTECTION, CONTRIBUTIONS TO EMPLOYEE BENEFITS.

V17 JUD FULL-TIME EMPLOYEE
LOCATION: 86 WIDTH: 4
MISSING DATA: EQ -1

REFERENCE: 0017
FILE I.D.: E72
NUMERIC CHARACTER

JUDICIAL, FULL-TIME EMPLOYEES.

V18 JUD FULL-TIME PAYROLL
LOCATION: 90 WIDTH: 8
MISSING DATA: EQ -1

REFERENCE: 0018
FILE I.D.: E72
NUMERIC CHARACTER

JUDICIAL, FULL-TIME PAYROLL.

V19 JUD PART-TIME EMPLOYEE
LOCATION: 98 WIDTH: 3
MISSING DATA: EQ -1

REFERENCE: 0019
FILE I.D.: E72
NUMERIC CHARACTER

JUDICIAL, PART-TIME EMPLOYEES.

V20 JUD PART-TIME PAYROLL
LOCATION: 101 WIDTH: 7
MISSING DATA: EQ -1

REFERENCE: 0020
FILE I.D.: E72
NUMERIC CHARACTER

JUDICIAL, PART-TIME PAYROLL.

V21 JUD CURRENT OPERATIONS
LOCATION: 108 WIDTH: 9
MISSING DATA: EQ -1

REFERENCE: 0021
FILE I.D.: E72
NUMERIC CHARACTER

JUDICIAL, CURRENT OPERATIONS.

EXPENDITURE AND EMPLOYMENT DATA FOR
THE CRIMINAL JUSTICE SYSTEM, 1972

V22 REFERENCE: 0022
JUD CAPITAL OUTLAY FILE I.D.: E72
LOCATION: 117 WIDTH: 8 NUMERIC CHARACTER
MISSING DATA: EQ -1

JUDICIAL, CAPITAL OUTLAY.

V23 REFERENCE: 0023
JUD PAY TO LOCAL GOVT FILE I.D.: E72
LOCATION: 125 WIDTH: 8 NUMERIC CHARACTER
MISSING DATA: EQ -1

JUDICIAL, INTERGOVERNMENTAL EXPENDITURE PAID TO LOCAL GOVERNMENT.

V24 REFERENCE: 0024
JUD PAY TO STATE GOVT FILE I.D.: E72
LOCATION: 133 WIDTH: 7 NUMERIC CHARACTER
MISSING DATA: EQ -1

JUDICIAL, INTERGOVERNMENTAL EXPENDITURE PAID TO STATE GOVERNMENT.

V25 REFERENCE: 0025
JUD CONTRIB TO EMPLOYEE FILE I.D.: E72
LOCATION: 140 WIDTH: 7 NUMERIC CHARACTER
MISSING DATA: EQ -1

JUDICIAL, CONTRIBUTIONS TO EMPLOYEE BENEFITS.

V26 REFERENCE: 0026
PROS FULL-TIME EMPLOYEE FILE I.D.: E72
LOCATION: 147 WIDTH: 4 NUMERIC CHARACTER
MISSING DATA: EQ -1

LEGAL SERVICES AND PROSECUTION, FULL-TIME EMPLOYEES.

V27 REFERENCE: 0027
PROS FULL-TIME PAYROLL FILE I.D.: E72
LOCATION: 151 WIDTH: 7 NUMERIC CHARACTER
MISSING DATA: EQ -1

LEGAL SERVICES AND PROSECUTION, FULL-TIME PAYROLL.

EXPENDITURE AND EMPLOYMENT DATA FOR
THE CRIMINAL JUSTICE SYSTEM, 1972

V28 REFERENCE: 0028
PROS PART-TIME EMPLOYEE FILE I.D.: E72
LOCATION: 158 WIDTH: 3 NUMERIC CHARACTER
MISSING DATA: EQ -1

LEGAL SERVICES AND PROSECUTION, PART-TIME EMPLOYEES.

V29 REFERENCE: 0029
PROS PART-TIME PAYROLL FILE I.D.: E72
LOCATION: 161 WIDTH: 6 NUMERIC CHARACTER
MISSING DATA: EQ -1

LEGAL SERVICES AND PROSECUTION, PART-TIME PAYROLL

V30 REFERENCE: 0030
PROS CURRENT OPERATIONS FILE I.D.: E72
LOCATION: 167 WIDTH: 8 NUMERIC CHARACTER
MISSING DATA: EQ -1

LEGAL SERVICES AND PROSECUTION, CURRENT OPERATIONS.

V31 REFERENCE: 0031
PROS CAPITAL OUTLAY FILE I.D.: E72
LOCATION: 175 WIDTH: 7 NUMERIC CHARACTER
MISSING DATA: EQ -1

LEGAL SERVICES AND PROSECUTION, CAPITAL OUTLAY.

V32 REFERENCE: 0032
PROS PAY TO LOCAL GOVT FILE I.D.: E72
LOCATION: 182 WIDTH: 7 NUMERIC CHARACTER
MISSING DATA: EQ -1

LEGAL SERVICES AND PROSECUTION, INTERGOVERNMENTAL EXPENDITURE PAID TO LOCAL GOVERNMENT.

V33 REFERENCE: 0033
PROS PAY TO STATE GOVT FILE I.D.: E72
LOCATION: 189 WIDTH: 6 NUMERIC CHARACTER
MISSING DATA: EQ -1

LEGAL SERVICES AND PROSECUTION, INTERGOVERNMENTAL EXPENDITURE PAID TO STATE GOVERNMENT.

EXPENDITURE AND EMPLOYMENT DATA FOR
THE CRIMINAL JUSTICE SYSTEM, 1972

V46
CORRECT PART-TIME EMPLOY
LOCATION: 264 WIDTH: 4
MISSING DATA: EQ -1

REFERENCE: 0046
FILE I.D.: E72
NUMERIC CHARACTER

CORRECTION, PART-TIME EMPLOYEES.

V47
CORRECT PART-TIME PAYROL
LOCATION: 268 WIDTH: 6
MISSING DATA: EQ -1

REFERENCE: 0047
FILE I.D.: E72
NUMERIC CHARACTER

CORRECTION, PART-TIME PAYROLL.

V48
CORRECT CURRENT OPER
LOCATION: 274 WIDTH: 9
MISSING DATA: EQ -1

REFERENCE: 0048
FILE I.D.: E72
NUMERIC CHARACTER

CORRECTION, CURRENT OPERATIONS.

V49
CORRECT CAPITAL OUTLAY
LOCATION: 283 WIDTH: 8
MISSING DATA: EQ -1

REFERENCE: 0049
FILE I.D.: E72
NUMERIC CHARACTER

CORRECTION, CAPITAL OUTLAY.

V50
CORRECT PAY TO LOCAL GOV
LOCATION: 291 WIDTH: 8
MISSING DATA: EQ -1

REFERENCE: 0050
FILE I.D.: E72
NUMERIC CHARACTER

CORRECTION, INTERGOVERNMENTAL EXPENDITURE PAID TO LOCAL
GOVERNMENT.

V51
CORRECT PAY TO STATE GOV
LOCATION: 299 WIDTH: 7
MISSING DATA: EQ -1

REFERENCE: 0051
FILE I.D.: E72
NUMERIC CHARACTER

CORRECTION, INTERGOVERNMENTAL EXPENDITURE PAID TO STATE
GOVERNMENT.EXPENDITURE AND EMPLOYMENT DATA FOR
THE CRIMINAL JUSTICE SYSTEM, 1972

V52
CORRECT CONTRIB TO EMP
LOCATION: 306 WIDTH: 8
MISSING DATA: EQ -1

REFERENCE: 0052
FILE I.D.: E72
NUMERIC CHARACTER

CORRECTION, CONTRIBUTIONS TO EMPLOYEE BENEFITS.

V53
OTHER FULL-TIME EMPLOYEE
LOCATION: 314 WIDTH: 4
MISSING DATA: EQ -1

REFERENCE: 0053
FILE I.D.: E72
NUMERIC CHARACTER

OTHER CRIMINAL JUSTICE, FULL-TIME EMPLOYEES.

V54
OTHER FULL-TIME PAYROLL
LOCATION: 318 WIDTH: 7
MISSING DATA: EQ -1

REFERENCE: 0054
FILE I.D.: E72
NUMERIC CHARACTER

OTHER CRIMINAL JUSTICE, FULL-TIME PAYROLL.

V55
OTHER PART-TIME EMPLOYEE
LOCATION: 325 WIDTH: 2
MISSING DATA: EQ -1

REFERENCE: 0055
FILE I.D.: E72
NUMERIC CHARACTER

OTHER CRIMINAL JUSTICE, PART-TIME EMPLOYEES.

V56
OTHER PART-TIME PAYROLL
LOCATION: 327 WIDTH: 5
MISSING DATA: EQ -1

REFERENCE: 0056
FILE I.D.: E72
NUMERIC CHARACTER

OTHER CRIMINAL JUSTICE, PART-TIME PAYROLL.

V57
OTHER CURRENT OPERATIONS
LOCATION: 332 WIDTH: 8
MISSING DATA: EQ -1

REFERENCE: 0057
FILE I.D.: E72
NUMERIC CHARACTER

OTHER CRIMINAL JUSTICE, CURRENT OPERATIONS.

APPENDIX 1: DEFINITION OF TERMS

FOLLOWING IS A GLOSSARY OF TERMS, CONCEPTS, AND CATEGORIES USED IN COLLECTING THE EXPENDITURE AND EMPLOYMENT DATA, AND COMMENTS CONCERNING THEIR LIMITATIONS.

THE DEFINITIONS ARE THOSE APPLIED IN THE FIELD COMPILATION OF DATA FOR THE 50 STATES, 312 LARGEST COUNTIES, AND 384 LARGEST CITIES. THESE DEFINITIONS WERE NECESSARILY SUMMARIZED FOR INCLUSION IN THE SURVEY QUESTIONNAIRES (SEE APPENDIX 3 OF THE PUBLICATION EXPENDITURE AND EMPLOYMENT DATA FOR THE CRIMINAL JUSTICE SYSTEM, 1971-72) SENT TO GOVERNMENTS ON THE MAIL PANEL.

GOVERNMENT EXPENDITURE

EXPENDITURE COMPRISES ALL AMOUNTS OF MONEY PAID OUT (NET OF ANY CORRECTING TRANSACTIONS) OTHER THAN FOR RETIREMENT OF DEBT, INVESTMENT IN SECURITIES, EXTENSIONS OF LOANS, OR AGENCY TRANSACTIONS. IT INCLUDES ONLY EXTERNAL CASH PAYMENTS AND EXCLUDES ANY INTRAGOVERNMENTAL TRANSFERS AND NONCASH TRANSACTIONS, SUCH AS THE PROVISION OF MEALS OR HOUSING OF EMPLOYEES. IT ALSO INCLUDES ANY PAYMENTS FINANCED FROM BORROWING, FUND BALANCES, INTERGOVERNMENTAL REVENUE, AND OTHER CURRENT REVENUE. IN SEVERAL INSTANCES, TWO OR MORE GOVERNMENTS SHARE THE EXPENSE OF MAINTAINING A COURT OR OTHER CRIMINAL JUSTICE AGENCY. IN THESE CASES, THE ALLOCATABLE DIRECT EXPENDITURE AMOUNT IS REPORTED FOR EACH GOVERNMENT IN THE APPROPRIATE CATEGORY. WHEN A GOVERNMENT PAYS PENSIONS DIRECTLY TO RETIRED EMPLOYEES FROM APPROPRIATED FUNDS, SUCH PAYMENTS ARE INCLUDED AS EXPENDITURE OF THE GOVERNMENT CONCERNED. HOWEVER, STATE AND LOCAL GOVERNMENT CONTRIBUTIONS TO RETIREMENT SYSTEMS AND VARIOUS OTHER EMPLOYEE BENEFITS ARE NOT INCLUDED IN EXPENDITURE DATA, SINCE THE MAJORITY OF GOVERNMENTS MAKE LUMP-SUM CONTRIBUTIONS TO PLANS COVERING ALL GOVERNMENT EMPLOYEES AND CANNOT REPORT FOR CRIMINAL JUSTICE EMPLOYEES SEPARATELY. NEITHER IN GOVERNMENTS BASIC ACCOUNTING RECORDS (FROM WHICH CRIMINAL JUSTICE EXPENDITURE FIGURES ARE DRAWN) NOR IN THE RECORDS OF THEIR GENERAL-COVERAGE EMPLOYEE BENEFIT SYSTEMS IS THERE USUALLY ANY BREAKDOWN OF AMOUNTS CONTRIBUTED IN TERMS OF THE VARIOUS AGENCIES OR FUNCTIONS INVOLVED. NOR HAS AN ADEQUATE PROCEDURE FOR CALCULATING THE PROPORTION OF SUCH CONTRIBUTIONS ALLOCATABLE TO CRIMINAL JUSTICE EMPLOYEES BEEN DEVELOPED DUE TO THE WIDE VARIATION IN THE COVERAGE OF VARIOUS PLANS, EMPLOYEE STATUS REQUIREMENTS, BENEFIT RATES, ETC.

FOR THOSE GOVERNMENTS WHOSE RECORDS REFLECT CONTRIBUTIONS FOR CRIMINAL JUSTICE EMPLOYEES SEPARATELY, SEPARATE DATA WERE OBTAINED. HOWEVER, THESE DATA ARE SUBJECT TO THE SAME VARIATION REFERRED TO ABOVE AND NEITHER THE AMOUNT NOR THE QUALITY OF THE DATA REPORTED WOULD PERMIT ANY ATTEMPT TO ESTIMATE TOTAL CONTRIBUTIONS FOR ALL SIMILAR GOVERNMENTS IN A GIVEN STATE. GIVEN THE PROBLEMS INVOLVED, NO ESTIMATION PROCEDURE SEEMS FEASIBLE. SUCH DATA AS WERE REPORTED SEPARATELY WERE THEREFORE EXCLUDED FROM TOTAL CRIMINAL JUSTICE EXPENDITURES TO PROVIDE A CONSISTENT DATA BASE FOR ADMINISTERING THE VARIABLE PASS-THROUGH REQUIREMENT.

EXPENDITURE IS DIVIDED INTO TWO MAJOR CATEGORIES BY CHARACTER: DIRECT EXPENDITURE AND INTERGOVERNMENTAL EXPENDITURE.

1. DIRECT EXPENDITURE COMPRISES ALL EXPENDITURE EXCEPT THAT CLASSIFIED AS INTERGOVERNMENTAL AND IS FURTHER DIVIDED INTO TWO PRINCIPAL OBJECT CATEGORIES:

- A. CURRENT OPERATION, WHICH INCLUDES SALARIES, WAGES, FEES, AND COMMISSIONS, PURCHASE OF SUPPLIES, MATERIALS, AND CONTRACTUAL SERVICES.
- B. CAPITAL OUTLAY, WHICH INCLUDES EXPENDITURE FOR THE THREE SUBCATEGORIES BELOW:

CONSTRUCTION INCLUDES PRODUCTION OF FIXED WORKS AND STRUCTURES, AND ADDITIONS, REPLACEMENTS AND MAJOR ALTERATIONS THERETO UNDERTAKEN EITHER ON A CONTRACT BASIS BY PRIVATE CONTRACTORS OR THROUGH FORCE ACCOUNT CONSTRUCTION BY THE EMPLOYEES OF THE GOVERNMENT. INCLUDED ARE THE PLANNING AND DESIGNING OF SPECIFIC PROJECTS, THE GRADING, LANDSCAPING, AND OTHER SITE IMPROVEMENT, AND THE PROVISION OF EQUIPMENT AND FACILITIES THAT ARE INTEGRAL PARTS OF THE STRUCTURE.

EQUIPMENT COMPRISES PURCHASE AND INSTALLATION OF APPARATUS, FURNISHINGS, OFFICE EQUIPMENT, MOTOR VEHICLES AND THE LIKE HAVING AN EXPECTED LIFE OF MORE THAN FIVE YEARS. THIS INCLUDES BOTH ADDITIONAL EQUIPMENT AND REPLACEMENTS. RENTALS FOR EQUIPMENT, INCLUDING RENTAL PAYMENTS THAT MAY BE CREDITED ON THE PURCHASE PRICE IF PURCHASE OPTIONS ARE EXERCISED, ARE CLASSIFIED AS CURRENT OPERATION EXPENDITURE. EQUIPMENT AND FACILITIES THAT ARE INTEGRAL PARTS OF CONSTRUCTED OR PURCHASED STRUCTURES ARE CLASSIFIED RESPECTIVELY UNDER CONSTRUCTION OR PURCHASE OF LAND AND EXISTING STRUCTURES.

PURCHASE OF LAND AND EXISTING STRUCTURES INCLUDES

PURCHASE OF THESE ASSETS AS SUCH, PURCHASE OF RIGHTS-OF-WAY, AND TITLE SEARCH AND SIMILAR ACTIVITIES ASSOCIATED WITH PURCHASE TRANSACTIONS.

THE OTHER OBJECT CATEGORIES--INTEREST ON GENERAL DEBT, ASSISTANCE AND SUBSIDIES, AND INSURANCE BENEFITS--ARE NOT APPLIED TO SPECIFIC FUNCTIONS.

2. **INTERGOVERNMENTAL EXPENDITURE** COMPRISES PAYMENTS FROM ONE GOVERNMENT TO ANOTHER, INCLUDING GRANTS-IN-AID, SHARED REVENUES, PAYMENTS IN LIEU OF TAXES, AND AMOUNTS FOR SERVICES PERFORMED BY ONE GOVERNMENT FOR ANOTHER ON A REIMBURSABLE OR COST-SHARING BASIS (FOR EXAMPLE, PAYMENTS BY ONE GOVERNMENT TO ANOTHER FOR BOARDING PRISONERS).

TOTAL EXPENDITURE IS COMPRISED OF DIRECT AND INTERGOVERNMENTAL EXPENDITURE OF A GOVERNMENT OR LEVEL OF GOVERNMENT FOR CRIMINAL JUSTICE ACTIVITIES.

TOTAL GENERAL EXPENDITURE COMPRISES ALL EXPENDITURE OF A GOVERNMENT OR LEVEL OF GOVERNMENT FOR ALL GOVERNMENT FUNCTIONS INCLUDING CRIMINAL JUSTICE ACTIVITIES, BUT EXCLUDING UTILITY SYSTEM EXPENDITURE, LIQUOR STORE EXPENDITURE, AND INSURANCE TRUST EXPENDITURE.

GOVERNMENT EMPLOYMENT

EMPLOYEES INCLUDES ALL PERSONS PAID FOR PERSONAL SERVICES PERFORMED, INCLUDING ALL PAID OFFICIALS AND PERSONS IN PAID LEAVE STATUS, AND EXCLUDES UNPAID OFFICIALS, PERSONS ON UNPAID LEAVE, PENSIONERS, AND CONTRACTORS. UNDER THIS DEFINITION ARE TWO CLASSES:

1. **FULL-TIME EMPLOYEES**, WHICH COMPRISES ALL PERSONS EMPLOYED DURING THE PAY PERIOD INCLUDING OCTOBER 15, 1972, ON A FULL-TIME BASIS, INCLUDING ALL FULL-TIME TEMPORARY OR SEASONAL WORKERS EMPLOYED DURING THIS PAY PERIOD AS WELL AS PERSONS HAVING PERMANENT STATUS.
2. **PART-TIME EMPLOYEES**, WHICH INCLUDES PERSONS EMPLOYED DURING THE PAY PERIOD INCLUDING OCTOBER 15, 1972, ON A BASIS OTHER THAN FULL-TIME, AND PERSONS PAID BY MORE THAN ONE GOVERNMENT.

DERIVED FROM THESE TWO CLASSES IS:

FULL-TIME EQUIVALENT EMPLOYEES, WHICH IS THE TOTAL NUMBER OF EMPLOYEES, DISCOUNTED BY APPLYING AVERAGE

FULL-TIME EARNING RATES. THIS IS CALCULATED BY DIVIDING THE TOTAL PAYROLL (FULL-TIME PLUS PART-TIME) BY THE FULL-TIME PAYROLL AND MULTIPLYING THIS BY THE NUMBER OF FULL-TIME EMPLOYEES.

PAYROLL IS THE GROSS PAYROLL BEFORE DEDUCTIONS AND INCLUDES SALARIES, WAGES, FEES AND COMMISSIONS PAID TO EMPLOYEES AS DEFINED ABOVE FOR THE MONTH OF OCTOBER, 1972.

GOVERNMENTAL FUNCTIONS

GOVERNMENTAL FUNCTIONS ARE DIVIDED INTO SIX SECTORS: POLICE PROTECTION, JUDICIAL, LEGAL SERVICES AND PROSECUTION, INDIGENT DEFENSE, CORRECTION, AND OTHER CRIMINAL JUSTICE ACTIVITIES.

POLICE PROTECTION

POLICE PROTECTION IS THE FUNCTION OF ENFORCING THE LAW, PRESERVING ORDER, AND APPREHENDING THOSE WHO VIOLATE THE LAW WHETHER THESE ACTIVITIES ARE PERFORMED BY A POLICE DEPARTMENT, A SHERIFF'S DEPARTMENT, OR A SPECIAL POLICE FORCE MAINTAINED BY AN AGENCY WHOSE PRIME RESPONSIBILITY IS OUTSIDE THE CRIMINAL JUSTICE SYSTEM BUT WHICH HAS A POLICE FORCE TO PERFORM THESE ACTIVITIES IN ITS SPECIALIZED AREA (GEOGRAPHIC OR FUNCTIONAL).

INCLUDED IN THIS ACTIVITY ARE REGULAR POLICE SERVICES, THE MAINTENANCE OF BUILDINGS USED FOR POLICE PURPOSES, AND SUCH SPECIALIZED POLICE FORCES (INCLUDING PUBLIC AND PRIVATE CONTRACT FORCES) AS AIRPORT POLICE, FREE AND TOLL HIGHWAY POLICE, FREE AND TOLL BRIDGE AND TUNNEL POLICE, HOUSING POLICE, MARITIME POLICE, PARK POLICE, TRANSIT AND OTHER UTILITY SYSTEM POLICE, COLLEGE AND UNIVERSITY CAMPUS POLICE, AND ALCOHOLIC BEVERAGE CONTROL AGENTS. CORONERS AND MEDICAL EXAMINERS ARE ALSO INCLUDED. EXCLUDED ARE VEHICULAR INSPECTION AND LICENSING, TRAFFIC SAFETY AND ENGINEERING, FISH AND GAME WARDENS, FIRE MARSHALS, AND THE LIKE.

THE SPECIAL POLICE FORCES INCLUDED IN THE DATA ARE ONLY THOSE WHICH ARE PART OF GENERAL-PURPOSE GOVERNMENTS. SECURITY FORCES AND BUILDING GUARDS WITHOUT THE POWER TO MAKE A POLICE ARREST WERE EXCLUDED. THOSE SPECIAL POLICE FORCES WHICH ARE PART OF INDEPENDENT SCHOOL DISTRICTS OR SPECIAL DISTRICTS ARE NOT INCLUDED IN THE DATA, INASMUCH AS THESE DISTRICTS ARE NOT GENERAL-PURPOSE GOVERNMENTS. HOWEVER, DATA FOR SELECTED LARGER SPECIAL POLICE FORCES OF THESE DISTRICTS ARE DISPLAYED IN APPENDIX 1, TABLES A AND B, OF THE PUBLICATION CITED ABOVE.

AT THE COUNTY GOVERNMENT LEVEL, BOTH COUNTY POLICE AGENCIES AND SHERIFFS' DEPARTMENTS, WHERE SUCH DEPARTMENTS EXIST, ARE INCLUDED IN THE POLICE PROTECTION SECTOR, UNLESS RESEARCH HAS INDICATED THAT THE SHERIFFS HAVE NO SUBSTANTIAL RESPONSIBILITY FOR POLICE ACTIVITIES. THE LACK OF NEEDED INFORMATION HAS PREVENTED THE CONSISTENT PRORATION OF EXPENDITURE OR EMPLOYMENT OF THE SHERIFFS' DEPARTMENTS WHERE THOSE DEPARTMENTS ARE MULTIFUNCTIONAL.

SHORT-TERM CUSTODY AND DETENTION HAVE TRADITIONALLY BEEN CONSIDERED PART OF THE POLICE PROTECTION FUNCTION, AND IN YEARS PRIOR TO 1969-70, WERE TREATED AS SUCH. HOWEVER, BEGINNING WITH 1969-70, THE CONCEPT WAS MODIFIED ON THE BASIS OF INFORMATION OBTAINED FROM THE 1970 NATIONAL JAIL CENSUS. DATA FOR INSTITUTIONS WITH AUTHORITY TO HOLD PRISONERS 48 HOURS OR MORE ARE INCLUDED IN THE CORRECTIONS SECTOR. DATA FOR LOCKUPS OR "TANKS" HOLDING PRISONERS LESS THAN 48 HOURS ARE INCLUDED IN THE POLICE PROTECTION SECTOR.

JUDICIAL

JUDICIAL ACTIVITIES ENCOMPASS ALL COURTS AND ACTIVITIES ASSOCIATED WITH COURTS SUCH AS LAW LIBRARIES, GRAND JURIES, PETIT JURIES, AND THE LIKE. SINCE THE NAMES OF COURTS WITH SIMILAR FUNCTIONS AND LEGAL JURISDICTION VARY FROM STATE TO STATE AND EVEN WITHIN STATES, DATA HAVE BEEN CATEGORIZED BY TYPES OF COURT RATHER THAN BY COURT NAME.

1. **APPELLATE COURTS** INCLUDE COURTS OF LAST RESORT AND INTERMEDIATE APPELLATE COURTS. THESE ARE COURTS HAVING JURISDICTION OF APPEAL AND REVIEW, WITH ORIGINAL JURISDICTION CONFERRED ONLY IN SPECIAL CASES.
 - A. **COURT OF LAST RESORT** IS THE COURT OF FINAL APPEAL WITHIN THE JUDICIAL STRUCTURE OF EACH STATE. IT IS CALLED THE COURT OF APPEALS IN THE DISTRICT OF COLUMBIA, KENTUCKY, MARYLAND, AND NEW YORK; THE SUPREME COURT OF APPEALS IN WEST VIRGINIA; THE SUPREME JUDICIAL COURT IN MAINE AND MASSACHUSETTS. IN TEXAS AND OKLAHOMA TWO COURTS OF LAST RESORT ARE AUTHORIZED--THE COURT OF CRIMINAL APPEALS FOR CRIMINAL CASES AND A SUPREME COURT FOR CIVIL CASES. IN EVERY OTHER STATE THE COURT OF LAST RESORT IS TITLED THE SUPREME COURT.
 - B. **INTERMEDIATE APPELLATE COURTS** ARE THOSE WHICH ARE LIMITED IN THEIR APPELLATE JURISDICTION BY STATE LAW OR AT THE DISCRETION OF THE COURT OF LAST RESORT. IN 15 OF THE 23 STATES WITH A COURT OF THIS TYPE OPERATING IN FISCAL YEAR 1971-72, THE NAME

COURT OF APPEALS IS USED. THESE STATES ARE:

ARIZONA	INDIANA	NORTH CAROLINA
CALIFORNIA	LOUISIANA	OHIO
COLORADO	MICHIGAN	OKLAHOMA
FLORIDA	MISSOURI	OREGON
GEORGIA	NEW MEXICO	WASHINGTON

IN ILLINOIS THE TITLE IS APPELLATE COURT; IN MARYLAND, COURT OF SPECIAL APPEALS; IN NEW JERSEY, APPELLATE DIVISION OF THE SUPERIOR COURT; IN NEW YORK, APPELLATE DIVISION OF THE SUPREME COURT; AND IN TEXAS, COURT OF CIVIL APPEALS. IN ALABAMA THE CIVIL AND CRIMINAL CASES ARE HEARD ON APPEAL BY SEPARATE COURTS--A COURT OF CIVIL APPEALS AND A COURT OF CRIMINAL APPEALS. IN TENNESSEE THE COURT OF APPEALS HEARS ONLY CIVIL APPEALS; A SEPARATE COURT OF CRIMINAL APPEALS REVIEWS CRIMINAL CASES BEFORE REVIEW BY THE COURT OF LAST RESORT. IN PENNSYLVANIA THE COMMONWEALTH COURT REVIEWS ALL CASES BROUGHT BY OR AGAINST THE STATE GOVERNMENT OR ITS AGENCIES; THE SUPERIOR COURT REVIEWS ALL OTHER APPEALS EXCEPT THOSE WITHIN THE EXCLUSIVE JURISDICTION OF THE COURT OF LAST RESORT.

2. **MAJOR TRIAL COURTS** ARE TRIAL COURTS OF GENERAL JURISDICTION HAVING UNLIMITED ORIGINAL JURISDICTION IN CIVIL AND/OR CRIMINAL CASES, THE NAMES OF WHICH VARY CONSIDERABLY. THE LIST BELOW SHOWS THE TITLE OF THE COURTS OF GENERAL JURISDICTION IN EACH STATE. SEVERAL STATES ARE LISTED MORE THAN ONCE BECAUSE LOCAL SITUATIONS LED TO THE DEVELOPMENT OF SEPARATE COURTS, EITHER TO HEAR CASES INVOLVING DIFFERENT TYPES OF PLEADINGS OR TO HEAR CASES IN PARTICULAR LOCAL JURISDICTIONS.

IN MANY STATES, STATUTES EITHER REQUIRE OR PERMIT LOCAL GOVERNMENTS TO SUPPLEMENT THE SALARY OF STATE-PAID JUDGES OF MAJOR TRIAL COURTS. IN LAST YEAR'S SURVEY, AN ATTEMPT WAS MADE TO COUNT THESE JUDGES AND THEIR TOTAL PAYROLL ONLY AT THE STATE LEVEL. HOWEVER, THIS EFFORT WAS NOT UNIFORMLY SUCCESSFUL; NOR WAS A SIMILAR ADJUSTMENT ATTEMPTED FOR PROSECUTORS OR PUBLIC DEFENDERS WHO ARE ALSO FREQUENTLY PAID BY MORE THAN ONE GOVERNMENT. FOR THESE REASONS THE JUDGES WERE COUNTED IN THIS YEAR'S SURVEY AS PART-TIME EMPLOYEES AT BOTH THE STATE AND LOCAL LEVELS WHEN ACTUALLY RECEIVING A CHECK FROM BOTH GOVERNMENTS.

CIRCUIT COURTS

ALABAMA
ARKANSAS
FLORIDA
HAWAII
ILLINOIS

KENTUCKY
MARYLAND
MICHIGAN 1
MISSISSIPPI
MISSOURI

SOUTH CAROLINA
SOUTH DAKOTA
TENNESSEE
VIRGINIA 2
WEST VIRGINIA

INDIANA

OREGON

WISCONSIN

DISTRICT COURTS

COLORADO
IDAHO
IOWA
KANSAS
LOUISIANA

MINNESOTA
MONTANA
NEBRASKA
NEVADA
NEW MEXICO

NORTH DAKOTA
OKLAHOMA
TEXAS
UTAH
WYOMING

SUPERIOR COURTS

ALASKA
ARIZONA
CALIFORNIA
CONNECTICUT
DELAWARE
DISTRICT OF COLUMBIA

GEORGIA
INDIANA
MAINE
MASSACHUSETTS
NEW HAMPSHIRE

NEW JERSEY
NORTH CAROLINA
RHODE ISLAND
WASHINGTON

CHANCERY COURTS

ARKANSAS
DELAWARE

MISSISSIPPI

TENNESSEE

COUNTY COURTS

NEW JERSEY
NEW YORK

VERMONT

WISCONSIN

COMMON PLEAS COURT

MISSOURI

OHIO

PENNSYLVANIA

SUPREME COURT

NEW YORK

3

1. IN THESE STATES THE CIRCUIT COURTS ARE SUPPLEMENTED IN SOME COUNTIES AND CITIES BY MAJOR TRIAL COURTS WITH VARYING NAMES.

CRIMINAL COURTS

INDIANA

3. COURTS OF LIMITED JURISDICTION ARE COURTS WHOSE LEGAL JURISDICTION COVERS ONLY A PARTICULAR CLASS OF CASES, OR CASES WHERE THE AMOUNT IN CONTROVERSY IS BELOW A PRESCRIBED SUM OR WHICH IS SUBJECT TO SPECIFIC EXCEPTIONS. THESE COURTS ARE REPORTED UNDER THREE SUBCATEGORIES: JUVENILE, PROBATE, AND OTHER. JUVENILE COURT AND PROBATE COURT DATA ARE REPORTED IN SEPARATE SUBCATEGORIES WHEN SUCH JURISDICTION IS EXERCISED BY AN INDEPENDENT COURT HAVING ONLY JUVENILE OR PROBATE JURISDICTION.

A. PROBATE COURTS ARE ALSO CALLED ORPHANS COURTS, SURREGATE'S COURTS OR COURTS OF ORDINARY. THE SUBJECT JURISDICTION VARIES FROM PLACE TO PLACE BUT GENERALLY INCLUDES ESTATE SETTLEMENT, PROBATE AND CONTEST OF WILLS, ADOPTION, COMMITMENT OF THE INSANE, ADMINISTRATION OF THE AFFAIRS OF ORPHANS, MENTAL DEFECTIVES AND INCOMPETENTS, GUARDIANSHIP OF MINORS, APPRENTICESHIP, RECEIVERSHIP, CHANGE OF NAME PROCEEDINGS, AND THE ADMINISTRATION OF TRUSTS. DATA WERE REPORTED SEPARATELY ONLY FOR INDEPENDENT PROBATE COURTS. WHERE PROBATE MATTERS ARE PART OF THE JURISDICTION OF ANOTHER COURT, EITHER GENERALLY OR IN A SEPARATE DIVISION OR BRANCH, THE DATA ARE NOT REPORTED SEPARATELY BUT ARE INCLUDED WITH THE COURT EXERCISING JURISDICTION.

B. JUVENILE COURTS ARE THOSE WHICH DEAL PRIMARILY WITH DELINQUENT AND NEGLECTED CHILDREN REGARDLESS OF THE NAME OF THE COURT. IN VARIOUS PLACES SUCH COURTS ARE CALLED JUVENILE COURTS, FAMILY COURTS, JUVENILE AND DOMESTIC RELATIONS COURTS, DOMESTIC RELATIONS COURTS, OR OTHER SIMILAR NAMES. THE JURISDICTION OF THESE COURTS CAN INCLUDE CRIMES COMMITTED BY PERSONS UNDER LEGAL AGE, JUVENILE STATUS OFFENSES, OFFENSES AGAINST CHILDREN, PROBATION OF MINOR DELINQUENTS, ADOPTION, CUSTODY, OR DISPOSITION OF MINOR AND MENTALLY INCOMPETENT CHILDREN, CHILD NEGLECT OR ABANDONMENT, CHILD AND WIFE SUPPORT, AND PATERNITY. DATA WERE REPORTED SEPARATELY ONLY FOR INDEPENDENT JUVENILE COURTS. WHERE JUVENILE CASES ARE HANDLED BY ANOTHER COURT, EITHER GENERALLY OR IN A SEPARATE DIVISION OR BRANCH, THE DATA ARE NOT REPORTED SEPARATELY BUT ARE INCLUDED WITH THE COURT EXERCISING JURISDICTION.

C. OTHER COURTS INCLUDE VARIOUS OTHER STATE AND LOCAL COURTS WITH LIMITED JURISDICTION SUCH AS JUSTICES OF THE PEACE, DISTRICT MAGISTRATES, JUSTICE COURTS, COUNTY COURTS OF LIMITED JURISDICTION, MUNICIPAL

COURTS, CITY COURTS, ETC. ALSO INCLUDED IN THIS CATEGORY ARE DATA ON SPECIALIZED COURTS SUCH AS TAX COURTS, COURTS OF CLAIMS AND COURTS HAVING JURISDICTION OVER MORE THAN ONE TYPE OF CASE (E.G., A COURT WHICH HANDLES BOTH JUVENILE AND PROBATE CASES).

4. **MISCELLANEOUS JUDICIAL** INCLUDES DATA ON JUDICIAL ACTIVITIES WHICH COULD NOT BE REPORTED UNDER ANY OF THE ABOVE COURT CATEGORIES, SUCH AS JUDICIAL COUNCILS AND CONFERENCES, COURT ADMINISTRATION OFFICES (WHERE IDENTIFIABLE), LAW LIBRARIES, JURY COMMISSIONS, AND GRAND JURIES.

LEGAL SERVICES AND PROSECUTION

LEGAL SERVICES AND PROSECUTION INCLUDES THE CIVIL AND CRIMINAL JUSTICE ACTIVITIES OF THE ATTORNEYS GENERAL; DISTRICT ATTORNEYS, STATE'S ATTORNEYS AND THEIR VARIOUSLY NAMED EQUIVALENTS; CORPORATION COUNSELS, SOLICITORS, AND LEGAL DEPARTMENTS WITH VARIOUS NAMES. IT INCLUDES PROVIDING LEGAL ADVICE TO THE CHIEF EXECUTIVES AND SUBORDINATE DEPARTMENTAL OFFICERS, REPRESENTATION OF THE GOVERNMENT IN LAWSUITS, AND THE PROSECUTION OF ACCUSED VIOLATORS OF CRIMINAL LAW. THESE ACTIVITIES ARE INCLUDED WHETHER PERFORMED BY ONE OFFICE OR SEVERAL, SINCE IN SOME JURISDICTIONS A SINGLE OFFICER PROVIDES ALL LEGAL SERVICES, WHILE IN OTHERS A PROSECUTOR'S OFFICE HANDLES ONLY CRIMINAL MATTERS AND A SEPARATE ATTORNEY'S OFFICE PERFORMS ALL CIVIL LEGAL SERVICES. THE OPERATIONS OF VARIOUS INVESTIGATIVE AGENCIES HAVING FULL ARREST POWERS AND ATTACHED TO OFFICES OF ATTORNEYS GENERAL, DISTRICT ATTORNEYS OR THEIR VARIOUSLY NAMED EQUIVALENTS ARE ALSO INCLUDED.

INDIGENT DEFENSE

INDIGENT DEFENSE INCLUDES ACTIVITIES ASSOCIATED WITH THE RIGHT OF PERSONS TO HAVE LEGAL COUNSEL AND REPRESENTATION, OFFICE OF THE PUBLIC DEFENDER AND OTHER GOVERNMENT PROGRAMS WHICH PAY THE FEES OF COURT-APPOINTED COUNSEL. THESE INCLUDE COURT-PAID FEES TO INDIVIDUALLY RETAINED COUNSEL, FEES PAID BY THE COURT TO COURT-APPOINTED COUNSEL, GOVERNMENT CONTRIBUTIONS TO PRIVATE LEGAL AID SOCIETIES AND BAR ASSOCIATION SPONSORED PROGRAMS, AND THE ACTIVITIES OF AN ESTABLISHED PUBLIC DEFENDER OFFICE OR PROGRAM. EMPLOYMENT DATA ARE INCLUDED ONLY FOR PUBLIC DEFENDER OFFICES SINCE FEE-PAID COUNSELORS ARE NOT CONSIDERED GOVERNMENT EMPLOYEES, NOR ARE COUNSELORS WORKING FOR BAR ASSOCIATIONS OR LEGAL AID SOCIETIES.

CORRECTION

CORRECTION IS THAT FUNCTION OF GOVERNMENT INVOLVING THE CONFINEMENT AND REHABILITATION OF ADULTS AND JUVENILES CONVICTED OF OFFENSES AGAINST THE LAW, AND THE CONFINEMENT OF PERSONS SUSPECTED OF A CRIME AND AWAITING ADJUDICATION. DATA FOR INSTITUTIONS WITH AUTHORITY TO HOLD PRISONERS 48 HOURS OR MORE ARE INCLUDED IN THIS SECTOR. DATA FOR LOCKUPS OR "TANKS" HOLDING PRISONERS LESS THAN 48 HOURS ARE INCLUDED IN POLICE PROTECTION." CORRECTION INCLUDES THE OPERATION OF PRISONS, REFORMATORIES, JAILS, HOUSES OF CORRECTION, AND OTHER INSTITUTIONS. IT ALSO INCLUDES INSTITUTIONS, FACILITIES AND PROGRAMS EXCLUSIVELY FOR THE CONFINEMENT OF THE CRIMINALLY INSANE OR FOR THE EXAMINATION, EVALUATION, CLASSIFICATION, AND ASSIGNMENT OF INMATES; AND INSTITUTIONS AND PROGRAMS FOR THE CONFINEMENT, TREATMENT, AND REHABILITATION OF DRUG ADDICTS AND ALCOHOLICS IF THE INSTITUTION OR PROGRAM IS ADMINISTERED BY A CORRECTION AGENCY OF THE CRIMINAL JUSTICE SYSTEM. PARDON BOARDS AND PAROLE AND PROBATION AGENCIES, INCLUDING RESETTLEMENT OR HALFWAY HOUSES FOR THOSE NOT IN NEED OF INSTITUTIONALIZATION, ARE INCLUDED IN THE CORRECTION SECTOR AS A SEPARATE SUBCATEGORY.

1. **CORRECTIONAL INSTITUTIONS** ARE PRISONS, REFORMATORIES, JAILS, HOUSES OF CORRECTION, PENITENTIARIES, CORRECTIONAL FARMS, WORKHOUSES, RECEPTION CENTERS, DIAGNOSTIC CENTERS, INDUSTRIAL SCHOOLS, TRAINING SCHOOLS, DETENTION CENTERS, AND A VARIETY OF OTHER TYPES OF INSTITUTIONS FOR THE CONFINEMENT AND CORRECTION OF CONVICTED ADULTS AND JUVENILES AND FOR THE INCARCERATION OF THOSE ACCUSED OF A CRIME AND AWAITING ADJUDICATION. WHEN AN INSTITUTION MAINTAINS A PRISON INDUSTRY OR AGRICULTURAL PROGRAM, DATA ON THE COST OF PRODUCTION OR THE VALUE OF PRISON LABOR USED BY AGENCIES OF THE SAME GOVERNMENT, IF IDENTIFIABLE, ARE EXCLUDED (AND CLASSIFIED AS EXPENDITURE FOR THE FUNCTION USING THE PRODUCTS OR SERVICES). EXPENDITURE FOR THE MANUFACTURE, PRODUCTION, SALE AND DISTRIBUTION OF GOODS PRODUCED FOR SALE OR USE OUTSIDE THE GOVERNMENT ARE INCLUDED UNDER THIS HEADING.

- a. **INSTITUTIONS FOR MEN** INCLUDES IDENTIFIABLE EXPENDITURE AND EMPLOYMENT DATA FOR INSTITUTIONS EXCLUSIVELY FOR ADULT MALE OFFENDERS. THIS CATEGORY ALSO INCLUDES INSTITUTIONS FOR YOUNG ADULT OFFENDERS DESCRIBED AS "YOUTHFUL OFFENDERS" (ALL SUCH INSTITUTIONS PRESENTLY KNOWN HOLD MALES ONLY).

- b. **INSTITUTIONS FOR WOMEN** INCLUDES IDENTIFIABLE

EXPENDITURE AND EMPLOYMENT DATA FOR INSTITUTIONS EXCLUSIVELY FOR ADULT FEMALE OFFENDERS. WHERE THERE IS NO SEPARATE WOMEN'S PRISON, WOMEN OFFENDERS ARE EITHER MAINTAINED IN A PRISON COMPLEX THAT ALSO HOUSES OTHER OFFENDERS, OR ARE BOARDED IN PRIVATE FACILITIES OR INSTITUTIONS IN ANOTHER STATE. NO ATTEMPT WAS MADE TO PRORATE DATA ON INSTITUTIONS HOUSING MORE THAN ONE TYPE OF INMATE, BUT WHERE FEMALES ARE BOARDED IN PRIVATE INSTITUTIONS OR IN ANOTHER STATE, AVAILABLE EXPENDITURE DATA WERE REPORTED. EMPLOYMENT DATA WERE NOT REPORTED BECAUSE THE PERSONNEL WERE EMPLOYEES OF ANOTHER GOVERNMENT.

NEW HAMPSHIRE AND RHODE ISLAND BOARD THEIR FEMALE OFFENDERS IN THE MASSACHUSETTS CORRECTIONAL INSTITUTION (FOR WOMEN). MONTANA OPERATES A SPLIT SYSTEM, HOUSING SOME FEMALES AT THE MONTANA STATE HOSPITAL AND CONTRACTING WITH NEBRASKA FOR THE REST. VERMONT ALSO OPERATES A SPLIT SYSTEM, HOUSING SOME FEMALES AND CONTRACTING WITH MASSACHUSETTS FOR THE REST. NORTH DAKOTA, SOUTH DAKOTA, AND WYOMING HOUSE ALL OF THEIR FEMALE OFFENDERS IN THE NEBRASKA REFORMATORY FOR WOMEN; AND IDAHO CONTRACTS WITH THE STATE OF OREGON FOR BOARDING ITS FEMALE OFFENDERS IN THE OREGON WOMEN'S CORRECTIONAL CENTER.

- C. INSTITUTIONS FOR JUVENILES ARE THOSE INSTITUTIONS IDENTIFIED BY THE 1971 JUVENILE DETENTION AND CORRECTION FACILITY CENSUS AS HOUSING PRIMARILY JUVENILES. THESE INSTITUTIONS INCLUDE THOSE UNDER THE CONTROL OF A JUVENILE COURT, A PROBATION DEPARTMENT, OR A YOUTH AUTHORITY OR OTHER SIMILARLY DESIGNATED ADMINISTRATIVE BODY, AS WELL AS INDEPENDENTLY ADMINISTERED INSTITUTIONS.

THERE IS CONSIDERABLE VARIATION FROM STATE TO STATE IN THE LEGAL DEFINITION OF A JUVENILE PARTICULARLY IN REGARD TO THE AGE AT WHICH A PERSON IS NO LONGER CONSIDERED A JUVENILE. INSTITUTIONS FOR JUVENILES HAVE BEEN CLASSIFIED INDIVIDUALLY IN ACCORDANCE WITH THE LAWS AND AGE DESIGNATIONS OF THEIR RESPECTIVE STATES. INSTITUTIONS HOUSING YOUTHS TREATED AS ADULTS BY THE COURTS OR OTHER AUTHORITY WERE INCLUDED IN THE INSTITUTIONS FOR MEN CATEGORY.

- D. OTHER AND COMBINED INSTITUTIONS ARE THOSE INSTITUTIONS HOLDING A COMBINATION OF INMATES. WHERE EXPENDITURE OR EMPLOYMENT DATA FOR PHYSICALLY SEPARATE INSTITUTIONS FOR JUVENILES, ADULT FEMALES AND ADULT MALES WERE NOT SEPARABLE BY INSTITUTION OR TYPE OF INSTITUTION, THE ENTIRE AMOUNTS WERE INCLUDED UNDER THIS CATEGORY.

2. CORRECTIONAL ADMINISTRATION CONSISTS OF DATA FOR THE

ADMINISTRATION OF THE CORRECTIONAL SYSTEM, INCLUDING DATA ON THE CENTRAL ADMINISTRATIVE OFFICE (FOR EXAMPLE, THE DEPARTMENT OF CORRECTIONS OR A YOUTH AUTHORITY) AND AVAILABLE DATA ON THE ADMINISTRATION OF INDIVIDUAL CORRECTIONAL INSTITUTIONS. FOR SOME INDIVIDUAL INSTITUTIONS, ADMINISTRATION DATA WERE NOT SEGREGABLE FROM DATA ON THE OPERATION OF THE INSTITUTION.

3. PROBATION, PAROLE AND PARDON INCLUDES DATA ON BOARDS OF PARDON, BOARDS OF PAROLE, PROBATION AGENCIES, AND THEIR VARIOUSLY NAMED EQUIVALENTS. ALTHOUGH PROBATION AGENCIES FREQUENTLY FUNCTION UNDER THE ADMINISTRATION OF THE MAJOR TRIAL COURT, THE DATA ARE PRESENTED HERE AFTER HAVING BEEN DEDUCTED FROM THE JUDICIAL DATA, BECAUSE OF THE CORRECTIONAL NATURE OF THE PROBATION FUNCTION. IF THE PROBATION, PAROLE, AND PARDON ACTIVITIES, OR ANY OF THEM INDIVIDUALLY, WERE PART OF THE CORRECTIONAL ADMINISTRATIVE OFFICE, DATA WERE DEDUCTED AND SHOWN SEPARATELY HERE AND THE BALANCE UNDER THE CORRECTIONAL ADMINISTRATION CATEGORY. THE OVERLAPPING CHARACTER OF THE PROBATION, PAROLE AND PARDON ACTIVITIES PREVENTED THE SEPARATE PRESENTATION OF THESE DATA.
4. MISCELLANEOUS CORRECTION INCLUDES EXPENDITURE AND EMPLOYMENT DATA WHICH COULD NOT BE CLASSIFIED UNDER ONE OF THE OTHER SUBCATEGORIES.

OTHER CRIMINAL JUSTICE ACTIVITIES

OTHER CRIMINAL JUSTICE ACTIVITIES INCLUDES EXPENDITURE AND EMPLOYMENT DATA NOT ELSEWHERE CLASSIFIED, OR WHICH CUT ACROSS MORE THAN ONE CATEGORY, OR ARE UNALLOCATABLE TO SEPARATE CATEGORIES; E.G., EXPENDITURE ON A GENERAL CURRICULUM IN EDUCATIONAL INSTITUTIONS, THE OPERATION OF STATE CRIMINAL JUSTICE AGENCIES, CRIME COMMISSIONS, ETC.

APPENDIX 2: COUNTIES BY NAME

THE LIST WHICH FOLLOWS SHOWS THE NAME OF EACH COUNTY FOR WHICH THERE IS A RECORD IN THE DATA FILE. THE LIST INCLUDES AND IS ORDERED BY THE STATE NUMBER AND THE COUNTY NUMBER, REF. NOS. 1 AND 3 RESPECTIVELY.

01 = ALABAMA

001 - AUTAUGA
002 - BALDWIN
003 - BARBOUR
005 - BLOUNT
006 - BULLOCK
007 - BUTLER
008 - CALHOUN
010 - CHEROKEE
011 - CHILTON
012 - CHOCTAW
014 - CLAY
015 - CLEBURNE
016 - COFFEE
017 - COLBERT
018 - CONEHOUS
020 - COVINGTON
021 - CRENSHAW
022 - CULLMAN
023 - DALE
024 - DALLAS
025 - DE KALB
026 - ELMORE
027 - ESCAMBIA
028 - ETOWAH
029 - FAYETTE
030 - FRANKLIN
032 - GREENE
033 - HALE
034 - HENRY
035 - HOUSTON
036 - JACKSON
037 - JEFFERSON
038 - LAMAR
039 - LAUDERDALE
041 - LEE
042 - LIMESTONE
043 - LOWNDES
044 - MACON
045 - MADISON
046 - MARENGO
047 - MARION

048 - MARSHALL
049 - MOBILE
051 - MONTGOMERY
052 - MORGAN
053 - PERRY
055 - PIKE
056 - RANDOLPH
057 - RUSSELL
059 - SHELBY
060 - SUMTER
061 - TALLADEGA
062 - TALLAPOOSA
063 - TUSCALOOSA
064 - WALKER
065 - WASHINGTON
066 - WILCOX
067 - WINSTON

02 = ALASKA

025 - BRISTOL BAY
026 - KETCHIKAN, GATEWAY
027 - GREATER ANCHORAGE
030 - KENAI PENINSULA
031 - KODIAK ISLAND
032 - MATANUSKA, SUSITNA
033 - FAIRBANKS,
NORTH STAR
035 - OUTSIDE BOROUGH
AREA

03 = ARIZONA

001 - APACHE
002 - COCHISE
003 - COCONINO
004 - GILA
005 - GRAHAM
007 - MARICOPA
008 - MOHAVE
009 - NAVAJO
010 - PIMA
011 - PINAL

012 - SANTA CRUZ
013 - YAVAPAI
014 - YUMA

04 = ARKANSAS

001 - ARKANSAS
002 - ASHLEY
003 - BAXTER
004 - BENTON
005 - BOONE
006 - BRADLEY
007 - CALHOUN
008 - CARROLL
009 - CHICOT
010 - CLARK
011 - CLAY
012 - CLEBURNE
013 - CLEVELAND
014 - COLUMBIA
015 - CONWAY
016 - CRAIGHEAD
017 - CRAWFORD
018 - CRITTENDEN
019 - CROSS
020 - DALLAS
021 - DESHA
022 - DREW
023 - FAULKNER
024 - FRANKLIN
025 - FULTON
026 - GARLAND
027 - GRANT
028 - GREENE
029 - HEMPSTEAD
030 - HOT SPRING
031 - HOWARD
032 - INDEPENDENCE
033 - IZARD
034 - JACKSON
035 - JEFFERSON
037 - LAFAYETTE
038 - LAWRENCE
039 - LEE
040 - LINCOLN
041 - LITTLE RIVER
042 - LOGAN
043 - LONGKNEE
044 - MADISON
045 - MARION
046 - MILLER
047 - MISSISSIPPI
048 - MONROE

049 - MONTGOMERY
050 - NEVADA
051 - NEWTON
052 - OUACHITA
053 - PERRY
054 - PHILLIPS
055 - PIKE
056 - POINSETT
057 - POLK
058 - POPE
059 - PRAIRIE
060 - PULASKI
061 - RANDOLPH
062 - ST. FRANCIS
063 - SALINE
064 - SCOTT
065 - SEARCY
066 - SEBASTIAN
067 - SEVIER
070 - UNION
072 - WASHINGTON
073 - WHITE
074 - WOODRUFF
075 - YELL

05 = CALIFORNIA

001 - ALAMEDA
002 - ALPINE
004 - BUTTE
005 - CALAVERAS
006 - COLUSA
007 - CONTRA COSTA
008 - DEL NORTE
009 - EL DORADO
010 - FRESNO
011 - GLENN
012 - HUMBOLDT
013 - IMPERIAL
014 - INYO
015 - KERN
016 - KINGS
017 - LAKE
018 - LASSEN
019 - LOS ANGELES
020 - MADERA
021 - MARIN
022 - MARIPOSA
023 - MENDOCINO
024 - MERCED
025 - MODOC
026 - MONO
027 - MONTEREY

028 - NAPA
 029 - NEVADA
 030 - ORANGE
 031 - PLACER
 032 - PLUMAS
 033 - RIVERSIDE
 034 - SACRAMENTO
 035 - SAN BENITO
 036 - SAN BERNARDINO
 037 - SAN DIEGO
 038 - SAN FRANCISCO
 039 - SAN JOAQUIN
 040 - SAN LUIS OBISPO
 041 - SAN MATEO
 042 - SANTA BARBARA
 043 - SANTA CLARA
 044 - SANTA CRUZ
 045 - SHASTA
 046 - SIERRA
 047 - SISKIYOU
 048 - SCLAND
 049 - SONOMA
 050 - STANISLAUS
 051 - SUTTER
 052 - TEHAMA
 053 - TRINITY
 054 - TULARE
 055 - TUOLUMNE
 056 - VENTURA
 057 - YOLO
 058 - YUBA

06 = COLORADO

001 - ADAMS
 002 - ALAMOSA
 003 - ARAPAHOE
 004 - ARCHULETA
 005 - BACA
 006 - BENT
 007 - BOULDER
 008 - CHAFFEE
 009 - CHEYENNE
 010 - CLEAR CREEK
 011 - CONEJOS
 012 - COSTILLA
 013 - CROWLEY
 014 - CUSTER
 015 - DELTA
 016 - DENVER
 017 - DOLORES
 018 - DOUGLAS
 019 - EAGLE

020 - ELBERT
 021 - EL PASO
 022 - FREMONT
 023 - GARFIELD
 024 - GILPIN
 025 - GRAND
 026 - GUNNISON
 027 - HINSDALE
 028 - HUERFANO
 029 - JACKSON
 030 - JEFFERSON
 031 - KIOWA
 032 - KIT CARSON
 033 - LAKE
 034 - LA PLATA
 035 - LARIMER
 036 - LAS ANIMAS
 037 - LINCOLN
 038 - LOGAN
 039 - MESA
 040 - MINERAL
 041 - MOFFAT
 042 - MONTEZUMA
 043 - MONTE ROSE
 044 - MORGAN
 045 - OTERO
 046 - OURAY
 047 - PARK
 048 - PHILLIPS
 049 - PITKIN
 050 - PROWERS
 051 - PUEBLO
 052 - RIO BLANCO
 054 - ROUTT
 055 - SAGUACHE
 056 - SAN JUAN
 057 - SAN MIGUEL
 058 - SEDGWICK
 059 - SUMMIT
 060 - TELLER
 061 - WASHINGTON
 062 - WELD
 063 - YUMA

07 = CONNECTICUT

001 - FAIRFIELD
 002 - HARTFORD
 003 - LITCHFIELD
 004 - MIDDLESEX
 005 - NEW HAVEN
 006 - NEW LONDON
 007 - TOLLAND

008 - WINDHAM

08 = DELAWARE

001 - KENT
 002 - NEW CASTLE
 003 - SUSSEX

09 = DISTRICT OF COLUMBIA

001 - DISTRICT OF
 COLUMBIA

10 = FLORIDA

001 - ALACHUA
 002 - BAKER
 003 - BAY
 004 - BRADFORD
 005 - BREVARD
 006 - BROWARD
 007 - CALHOUN
 008 - CHARLOTTE
 009 - CITRUS
 010 - CLAY
 011 - COLLIER
 012 - COLUMBIA
 013 - DADE
 014 - DE SOTO
 015 - DIXIE
 016 - DUVAL
 017 - ESCAMBIA
 018 - FLAGLER
 019 - FRANKLIN
 020 - GAUSDEN
 021 - GILCHRIST
 022 - GLADES
 023 - GULF
 024 - HAMILTON
 025 - HARDEE
 026 - HENDRY
 027 - HERNANDO
 028 - HIGHLANDS
 029 - HILLSBOROUGH
 030 - HOLMES
 031 - INDIAN RIVER
 032 - JACKSON
 033 - JEFFERSON
 034 - LAFAYETTE
 035 - LAKE
 036 - LEE
 037 - LEON
 038 - LEVY

039 - LIBERTY
 040 - MADISON
 041 - MANATEE
 042 - MARION
 043 - MARTIN
 044 - MONROE
 045 - NASSAU
 046 - OKALOOSA
 047 - OKEECHOBEE
 048 - ORANGE
 049 - OSCEOLA
 050 - PALM BEACH
 051 - PASCO
 052 - PINELLAS
 053 - POLK
 054 - PUTNAM
 055 - ST. JOHNS
 056 - ST. LUCIE
 057 - SANTA ROSA
 058 - SARASOTA
 059 - SEMINOLE
 060 - SUMTER
 061 - SUWANNEE
 062 - TAYLOR
 063 - UNION
 064 - VOLUSIA
 065 - WAKULLA
 066 - WALTON
 067 - WASHINGTON

11 = GEORGIA

001 - APPLING
 002 - ATKINSON
 003 - BACON
 004 - BAKER
 006 - BANKS
 007 - BARROW
 008 - BARTOW
 009 - BEN HILL
 010 - BERRIEN
 011 - BIBB
 012 - BLECKLEY
 013 - BRANTLEY
 014 - BROOKS
 015 - BRYAN
 016 - BULLOCH
 017 - BURKE
 018 - BUTTS
 019 - CALHOUN
 020 - CAMDEN
 021 - CANDLER
 022 - CARROLL

023 - CATOOSA
 024 - CHARLTON
 025 - CHATHAM
 026 - CHATTAHOOCHEE
 028 - CHEROKEE
 029 - CLARKE
 030 - CLAY
 031 - CLAYTON
 032 - CLINCH
 033 - COBB
 034 - COFFEE
 035 - CCLQUITT
 037 - COCK
 038 - COWETA
 039 - CRAWFORD
 040 - CRISP
 041 - CACE
 042 - CAWSON
 043 - DECATUR
 044 - DE KALB
 045 - JUDGE
 046 - DOOLY
 047 - DOUGHERTY
 048 - DOUGLAS
 049 - EARLY
 050 - ECHOLS
 051 - EFFINGHAM
 052 - ELBERT
 053 - EMANUEL
 054 - EVANS
 055 - FANNIN
 056 - FAYETTE
 057 - FLOYD
 058 - FORSYTH
 059 - FRANKLIN
 060 - FULTON
 061 - GILMER
 062 - GLASCOCK
 063 - GLYNN
 064 - GORDON
 065 - GRADY
 066 - GREENE
 067 - GWINNETT
 068 - HABERSHAM
 069 - HALL
 070 - HANCOCK
 071 - HARALSON
 072 - HARRIS
 073 - HART
 074 - HEARD
 075 - HENRY
 076 - HCLSTON
 077 - IRWIN
 078 - JACKSON
 079 - JASPER
 080 - JEFF DAVIS
 081 - JEFFERSON
 085 - LAMAR
 086 - LANIER
 089 - LIBERTY
 091 - LONG
 092 - LOWNDES
 093 - LUMPKIN
 094 - MC DUFFIE
 095 - MC INTOSH
 096 - MACON
 098 - MARION
 099 - MERIWETHER
 100 - MILLER
 101 - MITCHELL
 103 - MONTGOMERY
 104 - MORGAN
 105 - MURRAY
 106 - MUSCOGEE
 107 - NEWTON
 108 - OGCNEE
 109 - OGLETHORPE
 110 - PAULDING
 111 - PEACH
 112 - PICKENS
 113 - PIERCE
 114 - PIKE
 115 - POLK
 116 - PULASKI
 117 - PUTNAM
 118 - QUITMAN
 119 - RABUN
 120 - RANDOLPH
 121 - RICHMOND
 122 - ROCKDALE
 123 - SCHLEY
 124 - SCREVEN
 125 - SEMINOLE
 126 - SPALDING
 127 - STEPHENS
 128 - STEWART
 129 - SUMTER
 130 - TALBOT
 131 - TALIAFERRO
 132 - TATTNALL
 133 - TAYLOR
 134 - TELFAIR
 135 - TERRELL
 136 - THOMAS
 137 - TIFT
 138 - TOCOMBS

139 - TOWNS
 140 - TREUTLEN
 141 - TROUP
 142 - TURNER
 143 - TWIGGS
 144 - UNION
 145 - UPSON
 146 - WALKER
 147 - WALTON
 148 - WARE
 149 - WARREN
 150 - WASHINGTON
 151 - WAYNE
 152 - WEBSTER
 153 - WHEELER
 154 - WHITE
 155 - WHITFIELD
 156 - WILCOX
 157 - WILKES
 158 - WILKINSON
 159 - WORTH

12 = HAWAII

001 - HAWAII
 002 - HONOLULU
 003 - KAUAI
 004 - MAUI

13 = IDAHO

001 - ADA
 002 - ADAMS
 003 - BANNOCK
 004 - BEAR LAKE
 005 - BENEWAH
 006 - BINGHAM
 007 - BLAINE
 008 - BOISE
 009 - BONNER
 010 - BONNEVILLE
 011 - BOUNDARY
 012 - BUTTE
 013 - CAMAS
 014 - CANYON
 015 - CARIBOU
 016 - CASSIA
 017 - CLARK
 018 - CLEARWATER
 019 - CUSTER
 020 - ELMORE
 021 - FRANKLIN
 022 - FREMONT

023 - GEM
 024 - GOODING
 025 - IDAHO
 026 - JEFFERSON
 027 - JEROME
 028 - KOOTENAI
 029 - LATAH
 030 - LEMHI
 031 - LEWIS
 032 - LINCOLN
 033 - MADISON
 034 - MINIDOKA
 035 - NEZ PERCE
 036 - ONEIDA
 037 - OWYHEE
 038 - PAYETTE
 039 - POWER
 040 - SHOSHONE
 041 - TETON
 042 - TWIN FALLS
 043 - VALLEY
 044 - WASHINGTON

14 = ILLINOIS

001 - ADAMS
 003 - BOND
 004 - BOONE
 006 - BUREAU
 008 - CARROLL
 009 - CASS
 010 - CHAMPAIGN
 011 - CHRISTIAN
 012 - CLARK
 013 - CLAY
 014 - CLINTON
 015 - COLES
 016 - COOK
 017 - CRAWFORD
 018 - CUMBERLAND
 019 - DE KALB
 021 - DOUGLAS
 022 - DU PAGE
 023 - EDGAR
 024 - EDWARDS
 025 - EFFINGHAM
 027 - FORD
 028 - FRANKLIN
 029 - FULTON
 030 - GALLATIN
 031 - GREENE
 032 - GRUNDY
 033 - HAMILTON

034 - HANCOCK
 035 - HARDIN
 036 - HENDERSON
 037 - HENRY
 038 - IROQUOIS
 039 - JACKSON
 040 - JASPER
 041 - JEFFERSON
 043 - JO DAVIESS
 044 - JOHNSON
 045 - KANE
 046 - KANKAKEE
 047 - KENCALL
 048 - KNCX
 049 - LAKE
 050 - LA SALLE
 051 - LAWRENCE
 052 - LEE
 053 - LIVINGSTON
 054 - LOGAN
 055 - MC DONOUGH
 056 - MC HENRY
 057 - MC LEAN
 058 - MACON
 059 - MACOUPIN
 060 - MADISON
 061 - MARION
 064 - MASSAC
 066 - MERCER
 067 - MONROE
 068 - MONTGOMERY
 069 - MORGAN
 071 - OGLE
 072 - PEORIA
 073 - PERRY
 075 - PIKE
 076 - POPE
 077 - PULASKI
 078 - PUTNAM
 079 - RANDOLPH
 080 - RICHLAND
 081 - ROCK ISLAND
 082 - ST. CLAIR
 083 - GALINE
 084 - SANGAMEN
 085 - SCHUYLER
 086 - SCOTT
 087 - SHELBY
 088 - STARK
 089 - STEPHENSON
 090 - TAZEWELL
 091 - UNION
 092 - VERMILION

094 - WARREN
 095 - WASHINGTON
 096 - WAYNE
 097 - WHITE
 098 - WHITESIDE
 099 - WILL
 100 - WILLIAMSON
 101 - WINNEBAGO
 102 - WOODFORD

15 = INDIANA

001 - ADAMS
 002 - ALLEN
 003 - BARTHOLOMEW
 004 - BENTON
 005 - BLACKFORD
 006 - BOONE
 007 - BROWN
 008 - CARROLL
 009 - CASS
 010 - CLARK
 011 - CLAY
 012 - CLINTON
 013 - CRAWFORD
 014 - DAVIESS
 015 - DEARBORN
 016 - DECATUR
 017 - DE KALB
 018 - DELAWARE
 019 - DUBOIS
 020 - ELKHART
 021 - FAYETTE
 022 - FLOYD
 023 - FOUNTAIN
 024 - FRANKLIN
 025 - FULTON
 026 - GIBSON
 027 - GRANT
 028 - GREENE
 029 - HAMILTON
 030 - HANCOCK
 031 - HARRISON
 032 - HENDRICKS
 033 - HENRY
 034 - HOWARD
 035 - HUNTINGTON
 036 - JACKSON
 037 - JASPER
 038 - JAY
 039 - JEFFERSON
 040 - JENNINGS
 041 - JOHNSON

042 - KNCX
 043 - KOSCIUSKO
 044 - LAGRANGE
 045 - LAKE
 046 - LA PORTE
 047 - LAWRENCE
 048 - MADISON
 049 - MARION
 050 - MARSHALL
 051 - MARTIN
 052 - MIAMI
 053 - MONROE
 054 - MONTGOMERY
 055 - MORGAN
 056 - NEWTON
 057 - NOBLE
 058 - OHIO
 059 - ORANGE
 060 - OWEN
 061 - PARKE
 062 - PERRY
 063 - PIKE
 064 - PORTER
 065 - POSEY
 066 - PULASKI
 067 - PUTNAM
 068 - RANDOLPH
 069 - RIPLEY
 070 - RUSH
 071 - ST. JOSEPH
 072 - SCOTT
 073 - SHELBY
 074 - SPENCER
 075 - STARKE
 076 - STEUBEN
 077 - SULLIVAN
 078 - SWITZERLAND
 079 - TIPPECANOE
 080 - TIPTON
 081 - UNION
 082 - VANDERBURGH
 083 - VERMILION
 084 - VIGO
 085 - WABASH
 086 - WARREN
 087 - WARRICK
 088 - WASHINGTON
 089 - WAYNE
 090 - WELLS
 091 - WHITE
 092 - WHITLEY

16 = IOWA

001 - ADAIR
 002 - ADAMS
 003 - ALLAMAKEE
 004 - APPANOOSE
 005 - AUDUBON
 006 - BENTON
 007 - BLACK HAWK
 008 - BOONE
 009 - BREMER
 010 - BUCHANAN
 011 - BUENA VISTA
 012 - BUTLER
 013 - CALHOUN
 014 - CARROLL
 015 - CASS
 016 - CECAR
 017 - CERRO GORDO
 018 - CHEROKEE
 019 - CHICKASAW
 020 - CLARKE
 021 - CLAY
 022 - CLAYTON
 023 - CLINTON
 024 - CRAWFORD
 025 - DALLAS
 026 - DAVIS
 027 - DECATUR
 028 - DELAWARE
 029 - DES MOINES
 030 - DICKINSON
 031 - DUBUQUE
 032 - EMMET
 033 - FAYETTE
 034 - FLOYD
 035 - FRANKLIN
 036 - FREMONT
 037 - GREENE
 038 - GRUNDY
 039 - GUTHRIE
 040 - HAMILTON
 041 - HANCOCK
 042 - HARDIN
 043 - HARRISON
 044 - HENRY
 045 - HOWARD
 046 - HUMBOLDT
 047 - IOWA
 048 - IOWA
 049 - JACKSON
 050 - JASPER
 051 - JEFFERSON

052 - JOHNSON
 053 - JONES
 054 - KECKUK
 055 - KJSSUTH
 056 - LEE
 057 - LINN
 058 - LOUISA
 059 - LUCAS
 060 - LYON
 061 - MADISON
 062 - MAHASKA
 063 - MARION
 064 - MARSHALL
 065 - MILLS
 066 - MITCHELL
 067 - MONONA
 068 - MCNROE
 069 - MONTGOMERY
 070 - MUSCATINE
 071 - O'BRIEN
 072 - OSCEOLA
 073 - PAGE
 074 - PALU ALTO
 075 - PLYMOUTH
 076 - POCAHONTAS
 077 - POLK
 078 - POTTAWATTAMIE
 079 - POWESHIEK
 080 - RINGGOLD
 081 - SAC
 082 - SCOTT
 083 - SHELBY
 084 - SIOUX
 085 - STORY
 086 - TAMA
 088 - UNION
 089 - VAN BUREN
 090 - WAPELLU
 091 - WARREN
 092 - WASHINGTON
 093 - WAYNE
 094 - WEBSTER
 095 - WINNEBAGO
 096 - WINNESHIEK
 097 - WOODBURY
 099 - WRIGHT

17 = KANSAS

001 - ALLEN
 002 - ANDERSON
 003 - ATCHISON
 004 - BARBER

005 - BARTON
 006 - BOLIBON
 007 - BROWN
 008 - BUTLER
 009 - CHASE
 010 - CHAUTAUQUA
 011 - CHEROKEE
 012 - CHEYENNE
 013 - CLARK
 014 - CLAY
 015 - CLAUD
 016 - COFFEY
 017 - COMANCHE
 018 - COWLEY
 019 - CRAWFORD
 020 - DECATUR
 021 - DICKINSON
 022 - DONIPHAN
 023 - DOUGLAS
 024 - EDWARDS
 025 - ELK
 026 - ELLIS
 027 - ELLSWORTH
 028 - FINNEY
 029 - FORD
 030 - FRANKLIN
 031 - GEARY
 032 - GOVE
 033 - GRAHAM
 034 - GRANT
 035 - GRAY
 036 - GREELEY
 037 - GREENWOOD
 038 - HAMILTON
 039 - HARPER
 040 - HARVEY
 041 - HASKELL
 042 - HODGEMAN
 043 - JACKSON
 044 - JEFFERSON
 045 - JEWELL
 046 - JOHNSON
 047 - KEARNY
 048 - KINGMAN
 049 - KICWA
 050 - LABETTE
 051 - LANE
 052 - LEAVENWORTH
 053 - LINCOLN
 054 - LINN
 055 - LOGAN
 056 - LYON
 057 - MC PHERSON

058 - MARION
 059 - MARSHALL
 060 - MEADE
 061 - MIAMI
 062 - MITCHELL
 063 - MONTGOMERY
 064 - MORRIS
 065 - MORTON
 066 - NEMAHA
 067 - NEOSHO
 068 - NESS
 069 - NORTON
 070 - OSAGE
 071 - OSBORNE
 072 - OTTAWA
 073 - PAWNEE
 074 - PHILLIPS
 075 - POTTAWATOMIE
 076 - PRATT
 077 - RAWLINS
 078 - RENO
 079 - REPUBLIC
 080 - RICE
 081 - RILEY
 082 - ROCKS
 083 - RUSH
 084 - RUSSELL
 085 - SALINE
 086 - SCOTT
 087 - SEDGWICK
 088 - SEWARD
 089 - SHAWNEE
 090 - SHERIDAN
 091 - SHERMAN
 092 - SMITH
 093 - STAFFORD
 094 - STANTON
 095 - STEVENS
 096 - SUMNER
 097 - THOMAS
 098 - TREGO
 099 - WABAUNSEE
 100 - WALLACE
 101 - WASHINGTON
 102 - WICHITA
 103 - WILSON
 104 - WOODSON
 105 - WYANDOTTE

18 = KENTUCKY

001 - ADAIR
 002 - ALLEN

004 - BALLARD
 005 - BARREN
 006 - BATH
 007 - BELL
 008 - BOCNE
 009 - BOURBON
 010 - BOYD
 011 - BOYLE
 013 - BREATHITT
 016 - BUTLER
 017 - CALDWELL
 018 - CALLOWAY
 019 - CAMPBELL
 021 - CARROLL
 022 - CARTER
 025 - CLARK
 026 - CLAY
 027 - CLINTON
 029 - CUMBERLAND
 030 - DAVIESS
 034 - FAYETTE
 035 - FLEMING
 036 - FLOYD
 037 - FRANKLIN
 038 - FULTON
 040 - GARRARD
 041 - GRANT
 042 - GRAVES
 045 - GREENUP
 046 - HANCOCK
 047 - HARDIN
 048 - HARLAN
 049 - HARRISON
 051 - HENDERSON
 052 - HENRY
 053 - HICKMAN
 054 - HOPKINS
 055 - JACKSON
 056 - JEFFERSON
 057 - JESSAMINE
 059 - KENTON
 060 - KNOTT
 062 - LARUE
 063 - LAUREL
 064 - LAWRENCE
 066 - LESLIE
 067 - LETCHER
 068 - LEWIS
 071 - LOGAN
 073 - MC CRACKEN
 075 - MC LEAN
 076 - MACISON
 077 - MAGOFFIN

078 - MARION
 080 - MARTIN
 081 - MASON
 082 - MEADE
 083 - MENIFEE
 084 - MERCER
 087 - MONTGOMERY
 088 - MORGAN
 089 - MUHLENBERG
 090 - NELSON
 092 - OHIO
 093 - OLHAM
 097 - PERRY
 098 - PIKE
 100 - PULASKI
 101 - ROBERTSON
 102 - ROCKCASTLE
 105 - SCOTT
 107 - SIMPSON
 108 - SPENCER
 109 - TAYLOR
 110 - TODD
 113 - UNION
 114 - WARREN
 115 - WASHINGTON
 116 - WAYNE
 117 - WEBSTER

19 = LOUISIANA

001 - ACADIA
 002 - ALLEN
 003 - ASCENSION
 004 - ASSUMPTION
 005 - AVOUELLES
 006 - BEAUREGARD
 009 - CADDO
 010 - CALCASIEU
 013 - CATAHOULA
 014 - CLAIBORNE
 015 - CONCORDIA
 016 - DE SOTO
 017 - EAST BATON ROUGE
 019 - EAST FELICIANA
 020 - EVANGELINE
 021 - FRANKLIN
 022 - GRANT
 023 - IBERIA
 025 - JACKSON
 026 - JEFFERSON
 027 - JEFFERSON DAVIS
 028 - LAFAYETTE
 029 - LAFOURCHE

031 - LINCOLN
 035 - NATCHITOCHE
 036 - ORLEANS
 037 - QUACHITA
 039 - POINTE COUPEE
 040 - RAPIDES
 041 - RED RIVER
 042 - RICHLAND
 047 - ST. JAMES
 049 - ST. LANDRY
 050 - ST. MARTIN
 051 - ST. MARY
 052 - ST. TAMMANY
 053 - TANGIPAHOA
 055 - TERREBONNE
 056 - UNION
 057 - VERMILION
 058 - VERNON
 060 - WEBSTER
 063 - WEST FELICIANA
 064 - WINN

20 = MAINE

001 - ANDROSCOGGIN
 002 - ARCOSTOOK
 003 - CUMBERLAND
 004 - FRANKLIN
 005 - HANCOCK
 006 - KENNEBEC
 007 - KNOX
 008 - LINCOLN
 009 - OXFORD
 010 - PENOBSCOT
 011 - PISCATAQUIS
 012 - SAGadahoc
 013 - SOMERSET
 014 - WALDO
 015 - WASHINGTON
 016 - YORK

21 = MARYLAND

001 - ALLEGANY
 002 - ANNE ARUNDEL
 003 - BALTIMORE
 004 - BALTIMORE
 INDEPENDENT CITY
 006 - CAROLINE
 007 - CARROLL
 008 - CECIL
 009 - CHARLES
 010 - DORCHESTER

011 - FREDERICK
 012 - GARRETT
 013 - HARFORD
 014 - HOWARD
 015 - KENT
 016 - MONTGOMERY
 017 - PRINCE GEORGES
 018 - QUEEN ANNES
 019 - ST. MARYS
 020 - SUMERSET
 021 - TALBOT
 022 - WASHINGTON
 023 - WICOMICO
 024 - WORCESTER

22 = MASSACHUSETTS

001 - BARNSTABLE
 002 - BERKSHIRE
 003 - BRISTOL
 004 - DUKES
 005 - ESSEX
 006 - FRANKLIN
 007 - HAMPDEN
 008 - HAMPSHIRE
 009 - MIDDLESEX
 010 - NANTUCKET
 011 - NORFOLK
 012 - PLYMOUTH
 013 - SUFFOLK
 014 - WORCESTER

23 = MICHIGAN

001 - ALCONA
 003 - ALLEGAN
 004 - ALPENA
 005 - ANTRIM
 006 - ARENAC
 007 - BARAGA
 008 - BARRY
 009 - BAY
 010 - BENZIE
 011 - BERRIEN
 012 - BRANCH
 013 - CALHOUN
 014 - CASS
 015 - CHARLEVOIX
 016 - CHEBOYGAN
 017 - CHIPPEWA
 018 - CLARE
 019 - CLINTON
 020 - CRAWFORD

021 - DELTA
 022 - DICKINSON
 023 - EATON
 024 - EMMET
 025 - GENESEE
 026 - GLADWIN
 027 - GOGEBIC
 028 - GRAND TRAVERSE
 029 - GRATIOT
 030 - HILLSDALE
 031 - HOUGHTON
 032 - HURON
 033 - INGHAM
 034 - IONIA
 035 - IOSCO
 036 - IRON
 037 - ISABELLA
 038 - JACKSON
 039 - KALAMAZOO
 040 - KALKASKA
 041 - KENT
 042 - KEWEENAW
 043 - LAKE
 044 - LAPEER
 045 - LEELANAU
 046 - LENAWEE
 047 - LIVINGSTON
 048 - LUCE
 049 - MACKINAC
 050 - MACOMB
 051 - MANISTEE
 052 - MARQUETTE
 054 - MECOSTA
 055 - MENOMINEE
 056 - MIDLAND
 057 - MISSAUKEE
 058 - MONROE
 059 - MONTCALM
 061 - MUSKOGON
 062 - NEWAYGO
 063 - OAKLAND
 064 - OCEANA
 065 - Ogemaw
 068 - OSCODA
 069 - OTSEGO
 070 - OTTAWA
 071 - PRESQUE ISLE
 072 - ROSCOMMON
 073 - SAGINAW
 074 - ST. CLAIR
 075 - ST. JOSEPH
 076 - SANILAC
 077 - SCHOOLCRAFT

078 - SHIAWASSEE
 079 - TUSCOLA
 080 - VAN BUREN
 081 - WASHTENAW
 082 - WAYNE
 083 - WEXFORD

24 = MINNESOTA

001 - AITKIN
 002 - ANOKA
 003 - BECKER
 004 - BELTRAMI
 005 - BENTON
 006 - BIG STONE
 007 - BLUE EARTH
 008 - BROWN
 009 - CARLTON
 010 - CARVER
 011 - CASS
 012 - CHIPPEWA
 013 - CHISAGO
 014 - CLAY
 015 - CLEARWATER
 016 - COOK
 017 - COTTONWOOD
 018 - CROW WING
 019 - DAKOTA
 020 - DODGE
 021 - DOUGLAS
 022 - FARIBAULT
 023 - FILLMORE
 024 - FREEBORN
 025 - GOODHUE
 026 - GRANT
 027 - HENNEPIN
 028 - HOUSTON
 029 - HUBBARD
 030 - ISANTI
 031 - ITASCA
 032 - JACKSON
 033 - KANABEC
 034 - KANDIYOHU
 035 - KITTSON
 037 - LAC QUI PARLE
 038 - LAKE
 039 - LAKE OF THE WOODS
 040 - LE SUEUR
 041 - LINCOLN
 042 - LYON
 043 - MC LEOD
 044 - MAHONMEN
 045 - MARSHALL

046 - MARTIN
 047 - MEEKER
 048 - MILLE LACS
 049 - MORRISON
 050 - MOWER
 051 - MURRAY
 052 - NICOLLET
 053 - NOBLES
 054 - NORMAN
 055 - OLMSTED
 056 - OTTER TAIL
 057 - PENNINGTON
 058 - PINE
 060 - POLK
 061 - POPE
 062 - RAMSEY
 063 - RED LAKE
 064 - REDWOOD
 065 - RENVILLE
 066 - RICE
 067 - ROCK
 068 - ROSEAU
 069 - ST. LOUIS
 070 - SCOTT
 071 - SHERBURNE
 072 - SIBLEY
 073 - STEARNS
 074 - STEELE
 075 - STEVENS
 076 - SWIFT
 077 - TODD
 078 - TRAVERSE
 079 - WABASHA
 080 - WADENA
 081 - WASECA
 082 - WASHINGTON
 083 - WATONWAN
 084 - WILKIN
 085 - WINONA
 086 - WRIGHT
 087 - YELLOW MEDICINE

25 = MISSISSIPPI

001 - ADAMS
 002 - ALCORN
 003 - AMITE
 005 - BENTON
 006 - BOLIVAR
 007 - CALHOUN
 009 - CHICKASAW
 010 - CHOCTAW
 011 - CLAIBORNE

012 - CLARKE
 013 - CLAY
 014 - COAHOMA
 015 - COPIAH
 016 - COVINGTON
 017 - DE SOTE
 018 - FORREST
 019 - FRANKLIN
 020 - GEORGE
 021 - GREENE
 022 - GRENADE
 023 - HANCOCK
 024 - HARRISON
 025 - HINDS
 026 - HOLMES
 028 - ISSAQUENA
 029 - ITAWAMBA
 030 - JACKSON
 031 - JASPER
 032 - JEFFERSON
 033 - JEFFERSON DAVIS
 035 - KEMPER
 036 - LAFAYETTE
 037 - LAMAR
 038 - LAUDERDALE
 039 - LAWRENCE
 040 - LEAKE
 041 - LEE
 042 - LEFLORE
 044 - LOWNDES
 045 - MADISON
 046 - MARION
 047 - MARSHALL
 048 - MUNROE
 049 - MCINTOMERY
 050 - NESHOMA
 051 - NEWTON
 052 - NOXUBEE
 053 - OKTIBBEHA
 054 - PANOLA
 055 - PEARL RIVER
 056 - PERRY
 057 - PIKE
 058 - PONTOTOC
 059 - PRENTISS
 060 - QUITMAN
 061 - RANKIN
 062 - SCOTT
 063 - SHARKEY
 064 - SIMPSON
 066 - STONE
 067 - SUNFLOWER
 068 - TALLAHATCHIE

069 - TATE
 070 - TIPPAH
 071 - TISHOMINGO
 072 - TUNICA
 073 - UNION
 074 - WALTHALL
 075 - WARREN
 076 - WASHINGTON
 079 - WILKINSON
 080 - WINSTON
 081 - YALOBUSHA

26 = MISSOURI

001 - ADAIR
 002 - ANDREW
 003 - ATCHISON
 004 - AUDRAIN
 005 - BARRY
 006 - BARTON
 007 - BATES
 008 - BENTON
 010 - BOONE
 011 - BUCHANAN
 012 - BUTLER
 013 - CALDWELL
 014 - CALLAWAY
 016 - CAPE GIRARDEAU
 017 - CARROLL
 018 - CARTER
 019 - CASS
 021 - CHARITON
 022 - CHRISTIAN
 024 - CLAY
 025 - CLINTON
 026 - COLE
 027 - COOPER
 029 - DADE
 031 - DAVIESS
 032 - DE KALB
 033 - DEW
 034 - DOUGLAS
 035 - DUNKLIN
 036 - FRANKLIN
 037 - GASCONADE
 038 - GENTRY
 039 - GREENE
 040 - GRUNDY
 041 - HARRISON
 042 - HENRY
 043 - HICKORY
 044 - HOLT
 045 - HOWARD

046 - HOWELL
 047 - IRON
 048 - JACKSON
 049 - JASPER
 050 - JEFFERSON
 051 - JOHNSON
 052 - KNOX
 053 - LACLEDE
 054 - LAFAYETTE
 055 - LAWRENCE
 056 - LEWIS
 057 - LINCOLN
 058 - LINN
 059 - LIVINGSTON
 060 - MC DONALD
 061 - MACON
 062 - MADISON
 063 - MARIES
 064 - MARION
 065 - MERCER
 066 - MILLER
 067 - MISSISSIPPI
 068 - MONITEAU
 069 - MONROE
 070 - MONTGOMERY
 071 - MORGAN
 072 - NEW MADRID
 073 - NEWTON
 074 - NODAWAY
 076 - OSAGE
 077 - OZARK
 079 - PERRY
 080 - PETTIS
 081 - PHELPS
 082 - PIKE
 083 - PLATTE
 084 - POLK
 085 - POLASKI
 086 - PUTNAM
 087 - RALLS
 088 - RANDOLPH
 089 - RAY
 090 - REYNOLDS
 092 - ST. CHARLES
 093 - ST. CLAIR
 094 - ST. FRANCIS
 095 - ST. LOUIS
 096 - ST. LOUIS CITY
 INDEPENDENT CITY
 098 - SALINE
 099 - SCHUYLER
 100 - SCOTLAND
 101 - SCOTT

103 - SHELBY
 104 - STODDARD
 105 - STONE
 106 - SULLIVAN
 107 - TANEY
 108 - TEXAS
 109 - VERNON
 110 - WARREN
 111 - WASHINGTON
 112 - WAYNE
 114 - WORTH
 115 - WRIGHT

27 = MISSOURI

001 - BEAVERHEAD
 002 - BIG HORN
 003 - BLAINE
 004 - BROADWATER
 005 - CARBON
 006 - CARTER
 007 - CASCADE
 008 - CHICUTEAU
 009 - CUSTER
 010 - DANIELS
 011 - DAWSON
 012 - DEER LODGE
 013 - FALLON
 014 - FERGUS
 015 - FLATHEAD
 016 - GALLATIN
 017 - GARFIELD
 018 - GLACIER
 019 - GOLDEN VALLEY
 020 - GRANITE
 021 - HILL
 022 - JEFFERSON
 023 - JUDITH BASIN
 024 - LAKE
 025 - LEWIS AND CLARK
 026 - LIBERTY
 027 - LINCOLN
 028 - MC CONE
 029 - MADISON
 030 - MEAGHER
 031 - MINERAL
 032 - MISSOURI
 033 - MUSSELSHELL
 034 - PARK
 035 - PETROLEUM
 036 - PHILLIPS
 037 - PENDER
 038 - POWDER RIVER

039 - POWELL
 040 - PRAIRIE
 041 - RAVALLI
 042 - RICHLAND
 043 - ROOSEVELT
 044 - ROSEBUD
 045 - SANDERS
 046 - SHERIDAN
 047 - SILVER BOW
 048 - STILLWATER
 049 - SWEET GRASS
 050 - TETON
 051 - TOOLE
 052 - TREASURE
 053 - VALLEY
 054 - WHEATLAND
 055 - WYBAUX
 056 - YELLOWSTONE

28 = NEBRASKA

001 - ADAMS
 002 - ANTELOPE
 003 - ARTHUR
 004 - BANNER
 005 - BLAINE
 006 - BOONE
 007 - BOX BUTTE
 008 - BOYD
 009 - BROWN
 010 - BUFFALO
 011 - BURT
 012 - BUTLER
 013 - CASS
 014 - CEDAR
 015 - CHASE
 016 - CHERRY
 017 - CHEYENNE
 018 - CLAY
 019 - COLFAX
 020 - CUMING
 021 - CUSTER
 022 - DAKOTA
 023 - DAWES
 024 - DAWSON
 025 - DEUEL
 026 - DIXON
 027 - JUDGE
 028 - DOUGLAS
 029 - DUNDY
 030 - FILLMORE
 031 - FRANKLIN
 032 - FRONTIER

033 - FURNAS
 034 - GAGE
 035 - GARDEN
 036 - GARFIELD
 037 - GOSPER
 038 - GRANT
 039 - GREELEY
 040 - HALL
 041 - HAMILTON
 042 - HARLAN
 043 - HAYES
 044 - HITCHCOCK
 045 - HOLT
 046 - HOOKER
 047 - HOWARD
 048 - JEFFERSON
 049 - JOHNSON
 050 - KEARNEY
 051 - KEITH
 052 - KEYA PAHA
 053 - KIMBALL
 054 - KNOX
 055 - LANCASTER
 056 - LINCOLN
 057 - LOGAN
 058 - LOUP
 059 - MC PHERSON
 060 - MADISON
 061 - MERRICK
 062 - MORRILL
 063 - NANCE
 064 - NEMAH
 065 - NUCKOLLS
 066 - OTCE
 067 - PAWNEE
 068 - PERKINS
 069 - PHELPS
 070 - PIERCE
 071 - PLATTE
 073 - RED WILLOW
 074 - RICHARDSON
 075 - ROCK
 076 - SALINE
 077 - SARPY
 078 - SAUNDERS
 079 - SCOTTS BLUFF
 080 - SEWARD
 081 - SHERIDAN
 082 - SHERMAN
 083 - SIOUX
 084 - STANTON
 085 - THAYER
 086 - THOMAS

087 - THURSTON
 088 - VALLEY
 089 - WASHINGTON
 090 - WAYNE
 091 - WEBSTER
 092 - WHEELER
 093 - YORK

29 = NEVADA

001 - CHURCHILL
 002 - CLARK
 003 - DOUGLAS
 004 - ELKO
 005 - ESMERALDA
 006 - EUREKA
 007 - HUMBOLDT
 008 - LANDER
 009 - LINCOLN
 010 - LYCN
 011 - MINERAL
 013 - CRMSBY
 014 - PERSHING
 015 - STOREY
 016 - WASHOE
 017 - WHITE PINE

30 = NEW HAMPSHIRE

001 - BELKNAP
 002 - CARROLL
 003 - CHESHIRE
 004 - COOS
 005 - GRAFTON
 006 - HILLSBOROUGH
 007 - MERRIMACK
 008 - ROCKINGHAM
 009 - STRAFFORD
 010 - SULLIVAN

31 = NEW JERSEY

001 - ATLANTIC
 002 - BERGEN
 003 - BURLINGTON
 004 - CAMDEN
 005 - CAPE MAY
 006 - CUMBERLAND
 007 - ESSEX
 008 - GLOUCESTER
 009 - HUDSON
 010 - HUNTERDON
 011 - MERCER

012 - MIDDLESEX
 013 - MONMOUTH
 014 - MORRIS
 015 - OCEAN
 016 - PASSAIC
 017 - SALEM
 018 - SOMERSET
 019 - SUSSEX
 020 - UNION
 021 - WARREN

32 = NEW MEXICO

001 - BERNALILLO
 002 - CATRON
 003 - CHAVES
 004 - CULFAX
 005 - CURRY
 006 - DE BACA
 007 - DONA ANA
 008 - EDDY
 009 - GRANT
 010 - GUADALUPE
 011 - HARDING
 012 - HIDALGO
 013 - LEA
 014 - LINCOLN
 015 - LOS ALAMOS
 016 - LUNA
 017 - MC KINLEY
 018 - MORA
 019 - OTERO
 020 - QUAY
 021 - RIO ARRIBA
 022 - RUCSEVELT
 024 - SAN JUAN
 025 - SAN MIGUEL
 026 - SANTA FE
 027 - SIERRA
 028 - SOCORRO
 030 - TORRANCE
 031 - UNION
 032 - VALENCIA

33 = NEW YORK

001 - ALBANY
 002 - ALLEGANY
 004 - BROOME
 005 - CATTARAUGUS
 006 - CAYUGA
 007 - CHAUTAUQUA
 008 - CHEMUNG

009 - CHENANGO
 010 - CLINTON
 011 - COLUMBIA
 012 - CORTLAND
 013 - DELAWARE
 014 - DUTCHESS
 015 - ERIE
 016 - ESSEX
 017 - FRANKLIN
 018 - FULTON
 019 - GENESEE
 020 - GREENE
 021 - HAMILTON
 022 - HERKIMER
 023 - JEFFERSON
 025 - LEWIS
 026 - LIVINGSTON
 027 - MADISON
 028 - MONROE
 029 - MONTGOMERY
 030 - NASSAU
 031 - NEW YORK CITY
 032 - NIAGARA
 033 - ONEIDA
 034 - ONONDAGA
 035 - ONTARIO
 036 - ORANGE
 037 - ORLEANS
 038 - JSWEGO
 039 - OTSEGO
 040 - PUTNAM
 042 - RENSSELAER
 044 - ROCKLAND
 045 - ST. LAWRENCE
 046 - SARATOGA
 047 - SCHENECTADY
 048 - SCHOHARIE
 049 - SCHUYLER
 050 - SENECA
 051 - STEUBEN
 052 - SUFFOLK
 053 - SULLIVAN
 054 - TIOGA
 055 - TOMPKINS
 056 - ULSTER
 057 - WARREN
 058 - WASHINGTON
 059 - WAYNE
 060 - WESTCHESTER
 061 - WYOMING
 062 - YATES

34 = NORTH CAROLINA

001 - ALAMANCE
 002 - ALEXANDER
 003 - ALLEGHANY
 004 - ANSON
 005 - ASHE
 007 - BEAUFORT
 008 - BERTIE
 009 - BLADEN
 010 - BRUNSWICK
 011 - BUNCOMBE
 012 - BURKE
 013 - CABARRUS
 014 - CALDWELL
 015 - CAMDEN
 016 - CARTERET
 017 - CASWELL
 018 - CATAWBA
 019 - CHATHAM
 020 - CHEROKEE
 021 - CHOWAN
 022 - CLAY
 023 - CLEVELAND
 024 - COLUMBUS
 025 - CRAVEN
 026 - CUMBERLAND
 027 - CURRITUCK
 029 - DAVIDSON
 030 - DAVIE
 031 - DUPLIN
 032 - DURHAM
 033 - EDGEcombe
 034 - FORSYTH
 035 - FRANKLIN
 036 - GASTON
 037 - GATES
 038 - GRAHAM
 039 - GRANVILLE
 040 - GREENE
 041 - GUILFORD
 042 - HALIFAX
 043 - HARNETT
 044 - HAYWOOD
 045 - HENDERSON
 046 - HERTFORD
 047 - HOKE
 048 - HYDE
 049 - IREDELL
 050 - JACKSON
 051 - JOHNSTON
 052 - JONES
 053 - LEE

054 - LENOIR
 055 - LINCOLN
 056 - MC DOWELL
 057 - MACON
 058 - MADISON
 059 - MARTIN
 060 - MECKLENBURG
 061 - MITCHELL
 062 - MONTGOMERY
 063 - MOORE
 064 - NASH
 065 - NEW HANOVER
 066 - NORTHAMPTON
 067 - ONSLOW
 068 - ORANGE
 069 - PAMLICO
 070 - PASQUOTANK
 071 - PENDER
 072 - PERQUIMANS
 073 - PERSON
 074 - PITT
 075 - POLK
 076 - RANDOLPH
 077 - RICHMOND
 078 - ROBESON
 079 - ROCKINGHAM
 080 - ROYAN
 081 - RUTHERFORD
 082 - SAMPSON
 083 - SCOTLAND
 084 - STANLY
 085 - STOKES
 086 - SURRY
 087 - SWAIN
 088 - TRANSYLVANIA
 089 - TYRRELL
 090 - UNION
 091 - VANCE
 092 - WAKE
 094 - WASHINGTON
 095 - WATAUGA
 096 - WAYNE
 097 - WILKES
 098 - WILSON
 099 - YADKIN
 100 - YANCEY

32 = NORTH DAKOTA

001 - ACAMS
 002 - BARNES
 003 - BENSON
 004 - BILLINGS

005 - BOTTINEAU
 006 - BOWMAN
 007 - BURKE
 008 - BURLEIGH
 009 - CASS
 010 - CAVALIER
 011 - DICKEY
 012 - DIVIDE
 013 - DUNN
 014 - EDDY
 015 - EMMONS
 016 - FOSTER
 017 - GOLDEN VALLEY
 018 - GRAND FORKS
 019 - GRANT
 020 - GRIGGS
 021 - HETTINGER
 022 - KIDDER
 023 - LA MOURE
 024 - LOGAN
 025 - MC HENRY
 026 - MC INTOSH
 027 - MC KENZIE
 028 - MC LEAN
 029 - MERCER
 030 - MORTON
 031 - MOUNTRAIL
 032 - NELSON
 033 - OLIVER
 034 - PEMBINA
 035 - PIERCE
 036 - RAMSEY
 037 - RANSOM
 038 - RENVILLE
 039 - RICHLAND
 040 - ROLETTE
 041 - SARGENT
 042 - SHERIDAN
 043 - SIOUX
 044 - SLOPE
 045 - STARK
 046 - STEELE
 047 - STUTSMAN
 048 - TOWNER
 049 - TRAILL
 050 - WALSH
 051 - WARD
 052 - WELLS
 053 - WILLIAMS

36 = OHIO

001 - ACAMS
 002 - ALLEN
 003 - ASHLAND
 004 - ASHTABULA
 005 - ATHENS
 006 - AUGLAIZE
 007 - BELMONT
 008 - BROWN
 009 - BUTLER
 011 - CHAMPAIGN
 012 - CLARK
 013 - CLERMONT
 014 - CLINTON
 015 - COLUMBIANA
 016 - COSHOCTON
 017 - CRAWFORD
 018 - CUYAHOGA
 019 - DARKE
 020 - DEFIANCE
 021 - DELAWARE
 022 - ERIE
 023 - FAIRFIELD
 024 - FAYETTE
 025 - FRANKLIN
 026 - FULTON
 027 - GALLIA
 028 - GAUGA
 029 - GREENE
 030 - GUERNSEY
 031 - HAMILTON
 032 - HANCOCK
 033 - HARDIN
 034 - HARRISON
 035 - HENRY
 036 - HIGHLAND
 037 - HOCKING
 038 - HOLMES
 039 - HURON
 040 - JACKSON
 041 - JEFFERSON
 042 - KNOX
 043 - LAKE
 044 - LAWRENCE
 045 - LICKING
 046 - LOGAN
 047 - LORAIN
 048 - LUCAS
 049 - MADISON
 050 - MAHONING
 051 - MARION
 052 - MEDINA

053 - MEIGS
 054 - MERCER
 055 - MIAMI
 056 - MONROE
 057 - MONTGOMERY
 059 - MORROW
 060 - MUSKINGUM
 061 - NOBLE
 062 - OTTAWA
 063 - PAULDING
 064 - PERRY
 065 - PICKAWAY
 066 - PIKE
 067 - PORTAGE
 068 - PREBLE
 069 - PUTNAM
 070 - RICHLAND
 071 - ROSS
 072 - SANDUSKY
 073 - SCIOTO
 074 - SENECA
 075 - SHELBY
 076 - STARK
 077 - SUMMIT
 078 - TRUMBULL
 079 - TUSCARAWAS
 080 - UNION
 081 - VAN WERT
 082 - VINTON
 083 - WARREN
 084 - WASHINGTON
 085 - WAYNE
 086 - WILLIAMS
 087 - WOOD
 088 - WYANDOT

37 = OKLAHOMA

001 - ADAIR
 002 - ALFALFA
 003 - ATCKA
 004 - BEAVER
 005 - BECKHAM
 007 - BRYAN
 008 - CADDO
 009 - CANADIAN
 010 - CARTER
 011 - CHEROKEE
 012 - CHOCTAW
 013 - CIMARRON
 014 - CLEVELAND
 015 - COAL
 016 - COMANCHE

017 - COTTON
 018 - CRAIG
 019 - CREEK
 020 - CLUSTER
 021 - DELAWARE
 022 - DEWEY
 023 - ELLIS
 024 - GARFIELD
 025 - GARVIN
 026 - GRADY
 027 - GRANT
 028 - GREER
 029 - HARMON
 030 - HARPER
 031 - HASKELL
 032 - HUGHES
 033 - JACKSON
 034 - JEFFERSON
 035 - JOHNSTON
 036 - KAY
 037 - KINGFISHER
 038 - KICWA
 039 - LATIMER
 040 - LE FLORE
 041 - LINCOLN
 042 - LOGAN
 043 - LOVE
 044 - MC CLAIN
 045 - MC CURTAIN
 046 - MC INTOSH
 047 - MAJOR
 048 - MARSHALL
 049 - MAYES
 050 - MURRAY
 051 - MUSKOGEE
 052 - NOBLE
 053 - NOWATA
 054 - OKFUSKEE
 055 - OKLAHOMA
 056 - OKMULGEE
 057 - OSAGE
 058 - OTTAWA
 059 - PAWNEE
 060 - PAYNE
 061 - PITTSBURG
 062 - PONTOTOC
 063 - POTTAWATOMIE
 064 - PUSHMATAHA
 065 - ROGER MILLS
 066 - ROGERS
 067 - SEMINOLE
 068 - SEQUOYAH
 069 - STEPHENS

070 - TEXAS
 071 - TILLMAN
 072 - TULSA
 073 - WAGNER
 074 - WASHINGTON
 075 - WASHITA
 076 - WOODS
 077 - WOODWARD

38 = OREGON

001 - BAKER
 002 - BENTON
 003 - CLACKAMAS
 004 - CLATSOP
 005 - COLUMBIA
 006 - COOS
 007 - CROOK
 009 - DESCHUTES
 010 - DOUGLAS
 011 - GILLIAM
 012 - GRANT
 013 - HARNEY
 014 - HOOD RIVER
 015 - JACKSON
 016 - JEFFERSON
 017 - JOSEPHINE
 018 - KLAMATH
 019 - LAKE
 020 - LANE
 021 - LINCOLN
 022 - LINN
 023 - MALHEUR
 024 - MARION
 025 - MORROW
 026 - MULTNOMAH
 027 - POLK
 028 - SHERMAN
 029 - TILLAMOOK
 030 - UMATILLA
 031 - UNION
 032 - WALLOWA
 033 - WASCO
 034 - WASHINGTON
 035 - WHEELER
 036 - YAMHILL

39 = PENNSYLVANIA

001 - ADAMS
 002 - ALLEGHENY
 003 - ARMSTRONG
 004 - BEAVER

005 - BEDFORD
 006 - BERKS
 007 - BLAIR
 008 - BRADFORD
 009 - BUCKS
 010 - BUTLER
 011 - CAMBRIA
 012 - CAMERON
 013 - CARBON
 014 - CENTRE
 015 - CHESTER
 016 - CLARION
 017 - CLEARFIELD
 018 - CLINTON
 019 - COLUMBIA
 020 - CRAWFORD
 021 - CUMBERLAND
 022 - DAUPHIN
 023 - DELAWARE
 024 - ELK
 025 - ERIE
 026 - FAYETTE
 027 - FOREST
 028 - FRANKLIN
 029 - FULTON
 030 - GREENE
 031 - HUNTINGDON
 032 - INDIANA
 033 - JEFFERSON
 034 - JUNIATA
 035 - LACKAWANNA
 036 - LANCASTER
 037 - LAWRENCE
 038 - LEBANON
 039 - LEHIGH
 040 - LUZERNE
 041 - LYCOMING
 042 - MC KEAN
 043 - MERCER
 044 - MIFFLIN
 045 - MONROE
 046 - MONTGOMERY
 047 - MONTGOMERY
 048 - NORTHAMPTON
 049 - NORTHUMBERLAND
 050 - PERRY
 051 - PIKE
 052 - PHILADELPHIA
 053 - POTTER
 054 - SCHLYLKILL
 055 - SNYDER
 056 - SCMERSET
 057 - SULLIVAN

059 - TIOGA
 061 - VENANGO
 062 - WARREN
 063 - WASHINGTON
 065 - WESTMORELAND
 067 - YORK

40 = RHODE ISLAND

001 - BRISTOL
 002 - KENT
 003 - NEWPORT
 004 - PROVIDENCE
 005 - WASHINGTON

41 = SOUTH CAROLINA

001 - ABBEVILLE
 002 - AIKEN
 003 - ALLENDALE
 004 - ANDERSON
 005 - BAMBERG
 006 - BARNWELL
 007 - BEAUFORT
 008 - BERKELEY
 010 - CHARLESTON
 011 - CHEROKEE
 013 - CHESTERFIELD
 014 - CLARENDON
 015 - COLLETON
 016 - DARLINGTON
 017 - DILLON
 019 - EDGEFIELD
 021 - FLORENCE
 022 - GEORGETOWN
 023 - GREENVILLE
 024 - GREENWOOD
 025 - HAMPTON
 026 - Horry
 027 - JASPER
 028 - KERSHAW
 029 - LANCASTER
 030 - LAURENS
 031 - LEE
 032 - LEXINGTON
 033 - MC CORMICK
 034 - MARION
 036 - NEWBERRY
 037 - OCONEE
 038 - ORANGEBURG
 039 - PICKENS
 040 - RICHLAND
 041 - SALUDA

042 - SPARTANBURG
 043 - SUMTER
 044 - UNICN
 045 - WILLIAMSBURG
 046 - YORK

42 = SQUIH CARKOIA

002 - AURORA
 003 - BEADLE
 004 - BENNETT
 005 - BCN HCMME
 006 - BROOKINGS
 007 - BROWN
 008 - BRULE
 009 - BUFFALO
 010 - BUTTE
 011 - CAMPBELL
 012 - CHARLES MIX
 013 - CLARK
 014 - CLAY
 015 - CODINGTON
 016 - CURSON
 017 - CLSTER
 018 - DAVISON
 019 - DAY
 020 - DEUEL
 021 - DEWEY
 022 - DOUGLAS
 023 - EDMUNDS
 024 - FALL RIVER
 025 - FAULK
 026 - GRANT
 027 - GREGORY
 028 - HAAKON
 029 - HAMLIN
 030 - HAND
 031 - HANSON
 032 - HARDING
 033 - HUGHES
 034 - HUTCHINSON
 035 - HYDE
 036 - JACKSON
 037 - JERAULD
 038 - JONES
 039 - KINGSBURY
 040 - LAKE
 041 - LAWRENCE
 042 - LINCOLN
 043 - LYMAN
 044 - MC COCK
 045 - MC PHERSON
 046 - MARSHALL

047 - MEADE
 048 - MELLETTE
 049 - MINER
 050 - MINNEHAHA
 051 - MOODY
 052 - PENNINGTON
 053 - PERKINS
 054 - PCTTER
 055 - ROBERTS
 056 - SANBORN
 058 - SPINK
 059 - STANLEY
 060 - SULLY
 062 - TRIPP
 063 - TURNER
 064 - UNION
 065 - WALWORTH
 067 - YANKTON
 068 - ZIEBACH

43 = TENNESSEE

001 - ANDERSON
 002 - BELFORD
 003 - BENTON
 004 - BLEDSOE
 005 - BLCUNT
 006 - BRADLEY
 007 - CAMPBELL
 008 - CANNON
 009 - CARROLL
 010 - CARTER
 011 - CHEATHAM
 012 - CHESTER
 015 - COCKE
 016 - COFFEE
 017 - CROCKETT
 018 - CUMBERLAND
 019 - DAVIDSON
 021 - DE KALB
 022 - DICKSON
 023 - DYER
 024 - FAYETTE
 026 - FRANKLIN
 027 - GIBSON
 028 - GILES
 029 - GRAINGER
 030 - GREENE
 032 - HAMBLEN
 033 - HAMILTON
 035 - HARDEMAN
 036 - HARDIN
 037 - HAWKINS

038 - HAYWOOD
 039 - HENDERSON
 040 - HENRY
 041 - HICKMAN
 042 - HOUSTON
 043 - HUMPHREYS
 044 - JACKSON
 045 - JEFFERSON
 046 - JOHNSON
 047 - KNOX
 049 - LAUDERDALE
 050 - LAWRENCE
 051 - LEWIS
 052 - LINCOLN
 053 - LONDON
 054 - MC MINN
 056 - MACCN
 057 - MADISON
 058 - MARION
 059 - MARSHALL
 060 - MAURY
 062 - MONROE
 063 - MONTGOMERY
 066 - OBIGN
 070 - POLK
 071 - PUTNAM
 072 - RHEA
 073 - ROANE
 074 - ROBERTSON
 075 - RUTHERFORD
 076 - SCOTT
 077 - SEQUATCHIE
 078 - SEVIER
 079 - SHELBY
 081 - STEWART
 082 - SULLIVAN
 083 - SUMNER
 084 - TIPTON
 085 - TROUSDALE
 086 - UNICOI
 087 - UNIGN
 088 - VAN BUREN
 089 - WARREN
 090 - WASHINGTON
 092 - WEAKLEY
 093 - WHITE
 094 - WILLIAMSON
 095 - WILSON

44 = TEXAS

001 - ANDERSON
 003 - ANGELINA

004 - ARANSAS
 005 - ARCHER
 006 - ARMSTRONG
 007 - ATASCOSA
 008 - AUSTIN
 009 - BAILEY
 010 - BANDERA
 011 - BASTROP
 012 - BAYLOR
 013 - BEE
 014 - BELL
 015 - BEXAR
 016 - BLANCO
 017 - BORDEN
 018 - BOSQUE
 019 - BOWIE
 020 - BRAZORIA
 021 - BRAZOS
 022 - BREWSTER
 023 - BRISCOE
 024 - BROOKS
 025 - BROWN
 026 - BURLESON
 027 - BURNET
 028 - CALDWELL
 029 - CALHOUN
 030 - CALLAHAN
 031 - CAMERON
 033 - CARSON
 034 - CASS
 035 - CASTRO
 036 - CHAMBERS
 037 - CHEROKEE
 038 - CHILDRESS
 039 - CLAY
 040 - COCHRAN
 041 - COKE
 042 - COLEMAN
 043 - COLLIN
 044 - COLLINGSWORTH
 045 - COLORADO
 046 - COMAL
 047 - COMANCHE
 048 - CONCHO
 049 - COOKE
 050 - CORYELL
 052 - CRANE
 053 - CROCKETT
 054 - CRISBY
 055 - CULBERSON
 056 - DALLAM
 057 - DALLAS
 058 - DAWSON

059 - DEAF SMITH	117 - HUTCHINSON
061 - DENTON	118 - IRION
062 - DE WITT	119 - JACK
063 - DICKENS	120 - JACKSON
064 - DIMMIT	121 - JASPER
065 - DONLEY	122 - JEFF DAVIS
067 - EASTLAND	123 - JEFFERSON
068 - ECTOR	124 - JIM HOGG
069 - EDWARDS	125 - JIM WELLS
070 - ELLIS	126 - JOHNSON
071 - EL PASC	127 - JONES
072 - ERATH	128 - KARNES
074 - FANNIN	129 - KALFMAN
075 - FAYETTE	130 - KENDALL
076 - FISHER	131 - KENEY
077 - FLOYD	132 - KENT
078 - FOARD	133 - KERR
079 - FURT BEND	134 - KIMBLE
080 - FRANKLIN	135 - KING
081 - FREESTONE	136 - KINNEY
082 - FRIO	137 - KLEBERG
083 - GAINES	138 - KNCX
084 - GALVESTON	139 - LAMAR
085 - GARZA	140 - LAMB
087 - GLASSCOCK	142 - LA SALLE
088 - GCLIAO	143 - LAVACA
089 - GONZALES	144 - LEE
090 - GRAY	146 - LIBERTY
091 - GRAYSON	147 - LIMESTONE
092 - GREGG	148 - LIPSCOMB
093 - GRIMES	149 - LIVE OAK
094 - GUADALUPE	150 - LLANO
095 - HALE	152 - LUBBOCK
096 - HALL	153 - LYNN
097 - HAMILTON	154 - MC CULLOCH
098 - HANSFORD	155 - MC LENNAN
100 - HARDIN	156 - MC MULLEN
101 - HARRIS	158 - MARION
102 - HARRISON	160 - MASON
103 - HARTLEY	161 - MATAGORDA
104 - HASKELL	162 - MAVERICK
105 - HAYS	163 - MEDINA
106 - HEMPHILL	164 - MENARD
107 - HENDERSON	165 - MIDLAND
108 - HIDALGO	166 - MILAM
109 - HILL	168 - MITCHELL
110 - HOCKLEY	169 - MONTAGUE
111 - HOGG	170 - MONTGOMERY
112 - HOPKINS	171 - MOORE
113 - HOUSTON	172 - MORRIS
114 - HOWARD	173 - MOTLEY
115 - HUDSPETH	174 - NACOGDOCHES
116 - HUNT	175 - NAVARRO

177 - NOLAN	231 - UPTON
178 - NUECES	232 - UVALDE
179 - OCHILTREE	233 - VAL VERDE
180 - OLDHAM	234 - VAN ZANDT
181 - ORANGE	235 - VICTORIA
182 - PALO PINTO	236 - WALKER
183 - PANOLA	237 - WALLER
184 - PARKER	238 - WARD
185 - PARKER	239 - WASHINGTON
186 - PECOS	240 - WEBB
187 - PCLK	241 - WHARTON
188 - POTTER	242 - WHEELER
189 - PRESIDIO	243 - WICHITA
190 - RAINS	244 - WILBARGER
191 - RANCALL	245 - WILLACY
192 - REAGAN	246 - WILLIAMSON
193 - REAL	247 - WILSON
194 - RED RIVER	248 - WINKLER
195 - REEVES	249 - WISE
197 - ROBERTS	250 - WOOD
198 - ROBERTSON	251 - YOAKUM
199 - ROCKWALL	252 - YOUNG
200 - RUNNELS	253 - ZAPATA
201 - RUSK	254 - ZAVALA
202 - SABINE	
203 - SAN AUGUSTINE	42 - UTAH
204 - SAN JACINTO	
205 - SAN PATRICIO	001 - BEAVER
206 - SAN SABA	002 - BOX ELDER
207 - SCHLEICHER	003 - CACHE
208 - SCURRY	004 - CARBON
209 - SHACKELFORD	005 - DAGGETT
210 - SHELBY	006 - DAVIS
211 - SHERMAN	007 - DUCHESNE
212 - SMITH	008 - EMERY
213 - SCMERVELL	009 - GARFIELD
214 - STARR	010 - GRAND
215 - STEPHENS	011 - IRCN
216 - STERLING	012 - JUAB
217 - STONEWALL	013 - KANE
218 - SUTTON	014 - MILLARD
219 - SWISHER	015 - MORGAN
220 - TARRANT	016 - PIUTE
221 - TAYLOR	017 - RICH
222 - TERRELL	018 - SALT LAKE
223 - TERRY	019 - SAN JUAN
224 - THROCKMORTON	020 - SANPETE
225 - TITUS	021 - SEVIER
226 - TCM GREEN	022 - SUMMIT
227 - TRAVIS	023 - TOCELE
228 - TRINITY	024 - Uintah
229 - TYLER	025 - UTAH
230 - UPSHUR	026 - WASATCH

027 - WASHINGTON
028 - WAYNE
029 - WEBER

46 = VERMONT

001 - ADDISON
002 - BENNINGTON
003 - CALEDONIA
004 - CHITTENDEN
005 - ESSEX
006 - FRANKLIN
007 - GRAND ISLE
008 - LAMOILLE
009 - ORANGE
010 - ORLEANS
011 - RUTLAND
012 - WASHINGTON
013 - WINDHAM
014 - WINDSOR

47 = VIRGINIA

001 - ACCOMACK
002 - ALBEMARLE
003 - ALLEGHANY
004 - AMELIA
005 - AMHERST
006 - APPOMATTOX
007 - ARLINGTON
009 - BATH
010 - BEDFORD
011 - BLAND
012 - BERTHOUD
015 - BUCKINGHAM
016 - CAMPBELL
017 - CAROLINE
018 - CARROLL
019 - CHARLES CITY
020 - CHARLOTTE
021 - CHESTERFIELD
023 - CRAIG
024 - CULPEPER
025 - CUMBERLAND
027 - DINWIDDIE
029 - ESSEX
030 - FAIRFAX
031 - FAUQUIER
032 - FLOYD
033 - FLUVANNA
034 - FRANKLIN
035 - FREDERICK
037 - GLOUCESTER

038 - GOOCHLAND
039 - GRAYSON
040 - GREENE
042 - HALIFAX
043 - HANOVER
044 - HENRICO
045 - HENRY
046 - HIGHLAND
047 - ISLE OF WIGHT
049 - KING AND QUEEN
050 - KING GEORGE
051 - KING WILLIAM
052 - LANCASTER
054 - LOUDOUN
055 - LOUISA
057 - MADISON
059 - MECKLENBURG
060 - MIDDLESEX
063 - NELSON
064 - NEW KENT
066 - NORTHAMPTON
067 - NORTHUMBERLAND
068 - NOTTOWAY
069 - ORANGE
070 - PAGE
073 - POWHATAN
074 - PRINCE EDWARD
076 - PRINCE WILLIAM
078 - PULASKI
080 - RICHMOND
081 - ROANOKE
082 - ROCKBRIDGE
083 - ROCKINGHAM
085 - SCOTT
086 - SHENANDOAH
087 - SMYTH
088 - SOUTHAMPTON
089 - SPOTSYLVANIA
090 - STAFFORD
091 - SURRY
092 - SUSSEX
093 - TAZEWELL
094 - WARREN
096 - WASHINGTON
097 - WESTMORELAND
098 - WISE
100 - YORK
101 - ALEXANDRIA
102 - BRISTOL
104 - CHARLOTTESVILLE
105 - CHESAPEAKE
107 - COLONIAL HEIGHTS
108 - COVINGTON

110 - FAIRFAX
111 - FALLS CHURCH
112 - FRANKLIN
115 - HAMPTON
116 - HARRISONBURG
117 - HOPEWELL
119 - LYNCHBURG
120 - MARTINSVILLE
121 - NEWPORT NEWS
122 - NORFOLK
124 - PETERSBURG
125 - PORTSMOUTH
126 - RADFORD
127 - RICHMOND
128 - ROANOKE
129 - SOUTH BOSTON
130 - STAUNTON
132 - VIRGINIA BEACH
133 - WAYNESBORO
134 - WILLIAMSBURG
135 - WINCHESTER
138 - SALEM

48 = WASHINGTON

001 - ADAMS
002 - ASOTIN
003 - BENTON
004 - CHELAN
005 - CLALLAM
006 - CLARK
007 - COLUMBIA
008 - COWLITZ
009 - DOUGLAS
010 - FERRY
011 - FRANKLIN
012 - GARFIELD
013 - GRANT
014 - GRAYS HARBOR
015 - ISLAND
016 - JEFFERSON
017 - KING
018 - KITSAP
019 - KITTITAS
020 - KLICKITAT
021 - LEWIS
023 - MASON
024 - OKANOGAN
025 - PACIFIC
026 - PEND OREILLE
027 - PIERCE
028 - SAN JUAN
029 - SKAGIT

030 - SKAMANIA
031 - SNOHOMISH
032 - SPokane
033 - STEVENS
034 - THURSTON
035 - WAHKIAKUM
036 - WALLA WALLA
037 - WHATCOM
038 - WHITMAN
039 - YAKIMA

49 = WEST VIRGINIA

001 - BARBOUR
002 - BERKELEY
003 - BOONE
004 - BRAXTON
005 - BROOKE
006 - CABELL
007 - CALHOUN
008 - CLAY
010 - FAYETTE
012 - GRANT
013 - GREENBRIER
014 - HAMPSHIRE
015 - HANCOCK
016 - HARDY
017 - HARRISON
018 - JACKSON
019 - JEFFERSON
020 - KANAWHA
022 - LINCOLN
023 - LOGAN
024 - MC DOWELL
025 - MARION
026 - MARSHALL
027 - MASON
028 - MERCER
029 - MINERAL
030 - MINGO
031 - MONONGALIA
032 - MONROE
033 - MORGAN
034 - NICHOLAS
035 - OHIO
036 - PENDLETON
037 - PLEASANTS
038 - POCAHONTAS
039 - PRESTON
040 - PUTNAM
041 - RALEIGH
042 - RANDOLPH
043 - RITCHIE

044 - ROANE
 045 - SUMMERS
 046 - TAYLOR
 047 - TUCKER
 048 - TYLER
 049 - UPSHUR
 050 - WAYNE
 052 - WETZEL
 053 - WIRT
 054 - WOOD
 055 - WYOMING

50 = WISCONSIN

002 - ASHLAND
 003 - BARRON
 004 - BAYFIELD
 005 - BROWN
 006 - BUFFALO
 007 - BURNETT
 008 - CALUMET
 009 - CHIPPEWA
 010 - CLARK
 011 - COLUMBIA
 012 - CRAWFORD
 013 - DANE
 014 - DODGE
 015 - DODR
 016 - DOUGLAS
 017 - DUNN
 018 - EAU CLAIRE
 019 - FLORENCE
 020 - FOND DU LAC
 021 - FOREST
 022 - GRANT
 023 - GREEN
 024 - GREEN LAKE
 025 - IOWA
 026 - IRON
 027 - JACKSON
 028 - JEFFERSON
 029 - JUNEAU
 030 - KENOSHA
 031 - KEWAUNEE
 032 - LA CROSSE
 033 - LAFAYETTE
 034 - LANGLADE
 035 - LINCOLN
 036 - MANITOWOC
 037 - MARATHON
 038 - MARINETTE
 039 - MARQUETTE
 040 - MENOMINEE

041 - MILWAUKEE
 043 - MONTO
 044 - ONEIDA
 045 - OUTAGAMIE
 046 - OZAUKEE
 047 - PEPIN
 048 - PIERCE
 049 - POLK
 050 - PORTAGE
 051 - PRICE
 052 - RACINE
 053 - RICHLAND
 054 - ROCK
 055 - RUSK
 056 - ST. CROIX
 057 - SAUK
 058 - SAWYER
 059 - SHAWANO
 060 - SHEBOYGAN
 061 - TAYLOR
 062 - TREMPEREAU
 063 - VERNON
 064 - VILAS
 065 - WALWORTH
 066 - WASHBURN
 067 - WASHINGTON
 068 - WAUKESHA
 069 - WALPACA
 070 - WAUSHARA
 071 - WINNEBAGO
 072 - WOOD

51 = WYOMING

001 - ALBANY
 002 - BIG HORN
 003 - CAMPBELL
 004 - CARBON
 005 - CONVERSE
 006 - CROOK
 007 - FREMONT
 008 - GOSHEN
 009 - HOT SPRINGS
 010 - JOHNSON
 011 - LARAMIE
 012 - LINCOLN
 013 - NATRONA
 014 - NIOBRARA
 015 - PARK
 016 - PLATTE
 017 - SHERIDAN
 018 - SUBLETTE
 019 - SWEETWATER

020 - TETON
 021 - Uinta
 022 - WASHAKIE

APPENDIX 3: USIRIS III TYPE 3 DICTIONARY DESCRIPTION

THIS DESCRIPTION OF AN USIRIS III TYPE 3 DICTIONARY WAS TAKEN FROM USIRIS III, VOLUME 1: SYSTEM AND PROGRAM DESCRIPTION, RELEASE 2 EDITION, APPENDIX D PUBLISHED BY INSTITUTE FOR SOCIAL RESEARCH, UNIVERSITY OF MICHIGAN.

DICTIONARY=DESCRIPTOR RECORD

POSITION	CONTENT
1-3	BLANKS
4	3: TYPE 3 DICTIONARY
5-8	FIRST VARIABLE NUMBER
9-12	LAST VARIABLE NUMBER
13-16	1: NUMBER OF LOGICAL RECORDS PER CASE
20	1: FORMAT OF VARIABLE LOCATION SPECIFICATION IS STARTING LOCATION AND FIELD WIDTH
21-80	BLANKS

VARIABLE=DESCRIPTOR RECORD

POSITION	CONTENT
1	T: VARIABLE DESCRIPTOR RECORD
2-5	VARIABLE NUMBER
6	BLANK
7-30	VARIABLE NAME
31	BLANK
32-35	STARTING LOCATION OF THE VARIABLE WITHIN EACH DATA RECORD
36-39	FIELD WIDTH OF RESPONSE 1-9: NUMERIC VARIABLES 1-255: ALPHABETIC VARIABLES
40	NUMBER OF DECIMAL PLACES 0-9: NUMERIC VARIABLES 0: ALPHABETIC VARIABLES
41	CHARACTER TYPE AND STORAGE MODE BLANK: NUMERIC, CHARACTER MODE 1: ALPHABETIC, CHARACTER MODE
42	VARIABLE TYPE BLANK: SINGLE RESPONSE 1: MULTIPLE RESPONSE

43-44

NUMBER OF RESPONSES

IF THE VARIABLE HAS MORE THAN ONE RESPONSE, COLUMNS 5-35 DESCRIBE THE FIRST RESPONSE AND THE REMAINING RESPONSES ARE ASSUMED TO BE IN ADJACENT FIELDS OF THE SAME DESCRIPTION.

45-51

FIRST MISSING DATA CODE OR BLANKS

52-58

SECOND MISSING DATA CODE OR BLANKS

59-72

BLANKS

73-75

FILE ID

76-80

SEQUENCE NUMBER OR BLANKS

END