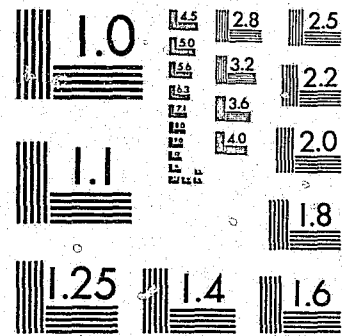


National Criminal Justice Reference Service

ncjrs

This microfiche was produced from documents received for inclusion in the NCJRS data base. Since NCJRS cannot exercise control over the physical condition of the documents submitted, the individual frame quality will vary. The resolution chart on this frame may be used to evaluate the document quality.



MICROCOPY RESOLUTION TEST CHART
NATIONAL BUREAU OF STANDARDS-1963-A

Microfilming procedures used to create this fiche comply with the standards set forth in 41CFR 101-11.504.

Points of view or opinions stated in this document are those of the author(s) and do not represent the official position or policies of the U. S. Department of Justice.

National Institute of Justice
United States Department of Justice
Washington, D. C. 20531

5/29/85

INTER-UNIVERSITY CONSORTIUM FOR
POLITICAL AND SOCIAL RESEARCH

I
C
P
S
R

96174
46196

UNIFORM CRIME REPORTS, 1958-1969,
AND COUNTY AND CITY DATA BOOKS,
1962, 1967, 1972: MERGED DATA

(ICPSR 7715)

Principal Investigator

Federal Bureau of Investigation; Bureau of the Census, U.S. Department of Commerce.

First ICPSR Printing, 1979

UNIFORM CRIME REPORTS, 1958-1969, AND COUNTY AND CITY
DATA BOOKS, 1962, 1967, 1972: MERGED DATA

(ICPSR Study 7715)

Principal Investigators

Federal Bureau of Investigation

Bureau of the Census, U.S. Department of Commerce

Inter-university Consortium for Political
and Social Research

P.O. BOX 1248

Ann Arbor, Michigan 48109

ICPSR Edition
First Printing, 1979

U.S. Department of Justice
National Institute of Justice

This document has been reproduced exactly as received from the person or organization originating it. Points of view or opinions stated in this document are those of the authors and do not necessarily represent the official position or policies of the National Institute of Justice.

Permission to reproduce this copyrighted material has been granted by

Public Domain/NIJ
U.S. Department of Justice

to the National Criminal Justice Reference Service (NCJRS).

Further reproduction outside of the NCJRS system requires permission of the copyright owner.

Acknowledgment of Assistance

All manuscripts utilizing data made available through the Consortium should acknowledge that fact as well as identify the original collector of the data. The ICPSR Council urges all users of the ICPSR data facilities to follow some adaptation of this statement with the parentheses indicating items to be filled in appropriately or deleted by the individual user.

The data (and tabulations) utilized in this (publication) were made available (in part) by the Inter-university Consortium for Political and Social Research. The data for the study of UNIFORM CRIME REPORTS, 1958-1969, AND COUNTY AND CITY DATA BOOKS, 1962, 1967, 1972: MERGED DATA were originally collected by the Federal Bureau of Investigation and the U.S. Bureau of the Census. Neither the collectors of the original data nor the Consortium bear any responsibility for the analyses or interpretations presented here.

In order to provide funding agencies with essential information about the use of archival resources and to facilitate the exchange of information about ICPSR participants' research activities, each user of the ICPSR data facilities is expected to send two copies of each completed manuscript or thesis abstract to the Consortium. Please indicate in the cover letter which data were used.

Table of Contents

	Page No.
Introduction	
Study Description	I
File Structure	II
ICPSR Processing Information	III
Codebook Information	IV
Variable Description List	VI
Codebook	1

Study Description

This dataset includes selected variables and cases from the Federal Bureau of Investigation's Uniform Crime Reports, 1958-1969 and the County and City Data Books for 1962, 1967, and 1972. Data is reported for all U.S. cities with a population of 75,000 or more persons in 1960. The data were taken from a dataset originally created by Alvin L. Jacobson and were prepared for use in the ICPSR's Workshop on Data Processing and Data Management in the Criminal Justice Field in the summer of 1978.

Data taken from the Uniform Crime Reports include for each year: the number of homicides, forcible rapes, robberies, aggravated assaults, burglaries, larcenies over \$50, and auto thefts. Also included is the Total Crime Index, which is the simple sum of all the crimes listed above. Certain variables which describe population characteristics and city finances have been taken from the 1962, 1967, and 1972 County and City Data Books.

Related Publications:

Jacobson, A.L., "Crime Trends in Southern and Nonsouthern Cities: A Twenty-Year Perspective", *SOCIAL FORCES*, Sept., 1975, pp. 226-242

File Structure

The data are available from ICPSR in two formats: a card image file and an OSIRIS dataset. The card image file contains 18 decks per city in a format based on 80 column punched cards. The data are sorted by city with all decks together in ascending order.

The OSIRIS data file is constructed with a single logical record of 1130 bytes for each city. There are 162 variables on 172 cases.

The OSIRIS data file consists of three files stored on magnetic tape: a machine readable user's guide which documents the data for the human user, an OSIRIS Type 1 dictionary file which describes the data to a computer program, and a data file.

The OSIRIS data file can be accessed directly by software packages which do not use the OSIRIS dictionary by specifying the tape locations of the desired variables. These tape locations are given in the OSIRIS codebook.

Codebook Information

The example below is a reproduction of information appearing in a machine readable codebook for a typical variable. The numbers in brackets do not appear in the codebook but are references to the descriptions which follow this example.

```
.....
[ 1] VAR 0001 [ 2] STATE CODE           [ 3] MD=99
REF 0001    [ 4] LOC 1      WIDTH 2    [ 5] DK 1 COL 7
                                   [ 6] IMP DEC=X
```

[7] State Code

[8] Census Bureau State Code.

```
[ 9]  [10]
      1. Alabama
      2. Alaska
      4. Arizona
```

- ```
.....
```
1. Indicates the variable and reference numbers. A variable and a reference number are assigned to each item in the study. In this codebook which documents the archived dataset these numbers are identical. Should the data be formed into a fixed length record file, new variable numbers may be assigned or created. The reference number would remain unchanged and correspond to those in this codebook.
  2. Indicates the abbreviated (24 character maximum) variable label used within OSIRIS to identify each variable. An expanded version can be found in the Variable Description List.

III

ICPSP Processing Information

The study was processed according to the standard ICPSR processing procedures. The data were checked for illegal or inconsistent code values which, when found, were recoded to OSIRIS missing data values. Throughout the text additional comments, bracketed in "<" and ">" signs, were inserted by the study processor in the course of preparing the codebook to provide further explanatory information.

IV

Codebook Information

The example below is a reproduction of information appearing in a machine readable codebook for a typical variable. The numbers in brackets do not appear in the codebook but are references to the descriptions which follow this example.

.....  
 [ 1] VAR 0001 [ 2] STATE CODE [ 3] MD=99  
 REF 0001 [ 4] LOC 1 WIDTH 2 [ 5] DK 1 COL 7  
 [ 6] IMP DEC=X

[ 7] State Code

[ 8] Census Bureau State Code.

- [ 9] [ 10]  
 1. Alabama  
 2. Alaska  
 4. Arizona

- .....
1. Indicates the variable and reference numbers. A variable and a reference number are assigned to each item in the study. In this codebook which documents the archived dataset these numbers are identical. Should the data be formed into a fixed length record file, new variable numbers may be assigned or created. The reference number would remain unchanged and correspond to those in this codebook.
  2. Indicates the abbreviated (24 character maximum) variable label used within OSIRIS to identify each variable. An expanded version can be found in the Variable Description List.

3. Indicates the designation of missing data. In this example code values equal to 99 are missing data (MD=99). Alternative statements for other variables are "MD=0 OR GE 9", "MD GE 9", or "NO MISSING DATA CODES". Some analysis software packages (including the ICPSR-supported package) require that certain types of data which the user desires to be excluded from analysis be designated as "missing data" e.g., inappropriate, unascertained, unascertainable, or ambiguous data categories. Although this value is defined as within the missing data category, this does not mean that users should not or cannot use this code value in a substantive role if they so desire.
4. Indicates the sequential location and width of this variable within the record when the data are stored on magnetic tape. In this example the variable named "STATE CODE" is two columns wide and located in the 1st column within the dataset. In a fixed length record file of this data the locations will be different.
5. Indicates the location by deck and column of this variable when the data are on cards or in card image form (either 80 or 84 column format).
6. A variable containing data with implied decimals is denoted by the message, "IMP DEC=X", where X is the number of decimal places implied (not punched) in the variable.
7. Indicates the full text of the variable description supplied by the original collector of the data.
8. Indicates an additional comment or explanation appended to the variable description.
9. Indicates the code values occurring in the data for this variable.
10. Indicates the meaning of the codes.

## Variable Description List

Var.  
No.

1. State Code
2. Population, 1950

County and City Data Book, 1962

---

3. Total Population, 1960
4. Population per Square Mile, 1960
5. Population Change, 1950-1960
6. Nonwhite Population, 1950
7. Nonwhite Population, 1960
8. Percent of Population Under 5 Years of Age, 1960
9. Percent of Population Over 21 Years of Age, 1960
10. Percent of Population Over 65 Years of Age, 1960
11. Median Age of the Population, 1960
12. Percent of Population Foreign Born, 1960
13. Percent of Population Native of Foreign or Mixed Parentage, 1960
14. Number of Families, 1960
15. 1959 Median Income of Families, 1960
16. Percent of Families with 1959 Income less than \$3,000
17. Percent of Families with 1959 Income greater than \$10,000
18. Median School Years Completed for the Population 25 Years Old and Over, 1960
19. Percent of Population 25 Years Old and Over that Completed less than 5 Years of School, 1960
20. Percent of Population 25 Years Old and Over that Completed High School or More, 1960
21. Percent of Population 25 Years Old and Over that are College Graduates, 1960
22. Number of Persons 5-34 Years Old Enrolled in Kindergarten and Elementary School, 1960
23. Number of Persons 5-34 Years Old Enrolled in High School, 1960
24. Number of Persons 5-34 Years Old Enrolled in College
25. Percent of Civilian Labor Force Unemployed, 1960
26. Percent of Civilian Labor Force in White-collar Occupations, 1960
27. Total City General Revenue, 1960
28. Total City Tax Revenue, 1960
29. Total City General Expenditure, 1960
30. Percent Total Expenditure for Police Protection, 1960
31. Percent Total Expenditure for Public Welfare, 1960

VII

County and City Data Book, 1967

---

- 32. Percent Negro of Total Population, 1960
- 33. Total City General Expenditure, 1964-1965
- 34. Percent of Total Expenditure for Police Protection, 1964-1965

County and City Data Book, 1972

---

- 35. Total Population, 1970
- 36. Population per Square Mile, 1970
- 37. Population Change, 1960-1970
- 38. Percent Negro of Total Population, 1970
- 39. Percent of Population under 5 Years of Age, 1970
- 40. Percent of Population over 18 Years of Age, 1970
- 41. Percent of Population over 65 Years of Age, 1970
- 42. Median Age of the Population, 1970
- 43. Percent of Population Foreign Born or Native of Foreign or Mixed Parentage, 1970
- 44. Number of Families, 1970
- 45. Median Income of Families, 1969
- 46. Percent of Families with 1969 Income less than \$3,000
- 47. Percent of Families with 1969 Income less than \$10,000
- 48. Median School Years Completed for the Population 25 Years Old and Over, 1970
- 49. Percent of Population 25 Years Old and Over that Completed less than 5 Years of School, 1970
- 50. Percent of Population 25 Years Old and Over that Completed High School or More, 1970
- 51. Percent of Population 25 Years Old and Over that are College Graduates, 1970
- 52. Number of Persons 5-34 Years Old Enrolled in Kindergarten and Elementary School, 1970
- 53. Number of Persons 5-34 Years Old Enrolled in High School, 1970
- 54. Number of Persons 5-34 Years Old Enrolled in College, 1970
- 55. Percent of Civilian Labor Force Unemployed, 1970
- 56. Percent of Civilian Labor Force in White-collar Occupations, 1970
- 57. Total City General Revenue, 1970
- 58. Total City Tax Revenue, 1970
- 59. Total City General Expenditure, 1970
- 60. Percent of Total Expenditure for Police and Fire Protection, 1970
- 61. Percent of Total Expenditure for Public Welfare, 1970

VIII

Uniform Crime Reports, 1958

---

- 62. Total Crime Index
- 63. Murder and Non-negligent Manslaughter
- 64. Forcible Rape
- 65. Robbery
- 66. Aggravated Assault
- 67. Burglary
- 68. Larceny
- 69. Auto Theft

Uniform Crime Reports, 1959

---

- 70. Total Crime Index
- 71. Murder and Non-negligent Manslaughter
- 72. Forcible Rape
- 73. Robbery
- 74. Aggravated Assault
- 75. Burglary
- 76. Larceny
- 77. Auto Theft

Uniform Crime Reports, 1960

---

- 78. Total Crime Index
- 79. Murder and Non-negligent Manslaughter
- 80. Forcible Rape
- 81. Robbery
- 82. Aggravated Assault
- 83. Burglary
- 84. Larceny
- 85. Auto Theft

Uniform Crime Reports, 1961

---

- 86. Total Crime Index
- 87. Murder and Non-negligent Manslaughter
- 88. Forcible Rape
- 89. Robbery
- 90. Aggravated Assault
- 91. Burglary
- 92. Larceny
- 93. Auto Theft

Uniform Crime Reports, 1962

---

- 94. Total Crime Index
- 95. Murder and Non-negligent Manslaughter
- 96. Forcible Rape
- 97. Robbery
- 98. Aggravated Assault
- 99. Burglary
- 100. Larceny
- 101. Auto Theft

Uniform Crime Reports, 1963

---

- 102. Total Crime Index
- 103. Murder and Non-negligent Manslaughter
- 104. Forcible Rape
- 105. Robbery
- 106. Aggravated Assault
- 107. Burglary
- 108. Larceny
- 109. Auto Theft

Uniform Crime Reports, 1964

---

- 110. Total Crime Index
- 111. Murder and Non-negligent Manslaughter
- 112. Forcible Rape
- 113. Robbery
- 114. Aggravated Assault
- 115. Burglary
- 116. Larceny
- 117. Auto Theft

Uniform Crime Reports, 1965

---

- 118. Total Crime Index
- 119. Murder and Non-negligent Manslaughter
- 120. Forcible Rape
- 121. Robbery
- 122. Aggravated Assault
- 123. Burglary
- 124. Larceny
- 125. Auto Theft

Uniform Crime Reports, 1966

---

- 126. Total Crime Index
- 127. Murder and Non-negligent Manslaughter
- 128. Forcible Rape
- 129. Robbery
- 130. Aggravated Assault
- 131. Burglary
- 132. Larceny
- 133. Auto Theft

Uniform Crime Reports, 1967

---

- 134. Total Crime Index
- 135. Murder and Non-negligent Manslaughter
- 136. Forcible Rape
- 137. Robbery
- 138. Aggravated Assault
- 139. Burglary
- 140. Larceny
- 141. Auto Theft

Uniform Crime Reports, 1968

---

- 142. Total Crime Index
- 143. Murder and Non-negligent Manslaughter
- 144. Forcible Rape
- 145. Robbery
- 146. Aggravated Assault
- 147. Burglary
- 148. Larceny
- 149. Auto Theft

Uniform Crime Reports, 1969

---

- 150. Total Crime Index
- 151. Murder and Non-negligent Manslaughter
- 152. Forcible Rape
- 153. Robbery
- 154. Aggravated Assault
- 155. Burglary
- 156. Larceny
- 157. Auto Theft



Identification Variables

- 158. City Code
- 159. City Name

ICPSR Processing Variables

- 160. ICPSR Study Number - 7715
- 161. ICPSR Part Number - 1
- 162. ICPSR Version Number - 1

DECK IDENTIFICATION IS: '01'

DK 1 COL 1- 2

VAR 0160 ICPSR STUDY NUMBER NO MISSING DATA CODES  
 REF 0160 LOC 1125 WIDTH 4 DK 1 COL 3- 6

ICPSR Study Number - 7715

VAR 0161 ICPSR PART NUMBER NO MISSING DATA CODES  
 REF 0161 LOC 1129 WIDTH 1 DK 1 COL 7

ICPSR Part Number - 1

VAR 0162 ICPSR VERSION NUMBER NO MISSING DATA CODES  
 REF 0162 LOC 1130 WIDTH 1 DK 1 COL 8

ICPSR Version Number - 1

VAR 0001 STATE CO NO MISSING DATA CODES  
 REF 0001 LOC 1 WIDTH 2 DK 1 COL 9-10

State Code

- |                      |                    |
|----------------------|--------------------|
| 01. Alabama          | 30. Montana        |
| 02. Alaska           | 31. Nebraska       |
| 04. Arizona          | 32. Nevada         |
| 05. Arkansas         | 33. New Hampshire  |
| 06. California       | 34. New Jersey     |
| 08. Colorado         | 35. New Mexico     |
| 09. Connecticut      | 36. New York       |
| 10. Delaware         | 37. North Carolina |
| 11. Washington, D.C. | 38. North Dakota   |
| 12. Florida          | 39. Ohio           |
| 13. Georgia          | 40. Oklahoma       |
| 15. Hawaii           | 41. Oregon         |
| 16. Idaho            | 42. Pennsylvania   |

(CONTINUED)

- |                   |                    |
|-------------------|--------------------|
| 17. Illinois      | 44. Rhode Island   |
| 18. Indiana       | 45. South Carolina |
| 19. Iowa          | 46. South Dakota   |
| 20. Kansas        | 47. Tennessee      |
| 21. Kentucky      | 48. Texas          |
| 22. Louisiana     | 49. Utah           |
| 23. Maine         | 50. Vermont        |
| 24. Maryland      | 51. Virginia       |
| 25. Massachusetts | 53. Washington     |
| 26. Michigan      | 54. West Virginia  |
| 27. Minnesota     | 55. Wisconsin      |
| 28. Mississippi   | 56. Wyoming        |
| 29. Missouri      |                    |

.....

VAP 0158 CITY MD=-9  
REF 0158 LOC 1095 WIDTH 4 DK 1 COL 11-14

City Code

Government Divisions City Code.

.....

VAP 0002 1950 POP MD=9999999  
REF 0002 LOC 3 WIDTH 7 DK 1 COL 15-21

Population, 1950

(CONTINUED)

County and City Data Book, 1962

.....

VAP 0003 1960 POP MD=9999999  
REF 0003 LOC 10 WIDTH 7 DK 1 COL 22-28

Total Population, 1960

.....

VAP 0004 POP/SQ M MD=9999999  
REF 0004 LOC 17 WIDTH 7 DK 1 COL 29-35

Population Per Square Mile, 1960

.....

VAP 0005 % POP CH MD=9999999  
REF 0005 LOC 24 WIDTH 7 DK 1 COL 36-42

Population Change, 1950-1960

Percent of population change between 1950 and 1960.

.....

VAP 0006 % NONWHI MD=9999999  
REF 0006 LOC 31 WIDTH 7 DK 1 COL 43-49

Nonwhite Population, 1950

Percent of nonwhites in the population in 1950.

.....

VAP 0007 % NONWHI MD=9999999  
REF 0007 LOC 38 WIDTH 7 DK 1 COL 50-56

Nonwhite Population, 1960

(CONTINUED)

Percent of nonwhites in the population in 1960.

VAR 0008 % UNDER 5 YEARS MD=9999999  
REF 0008 LOC 45 WIDTH 7 DK 1 COL 57-63

Percent of Population Under 5 Years of Age, 1960

VAR 0009 %OVER 21 MD=9999999  
REF 0009 LOC 52 WIDTH 7 DK 1 COL 64-70

Percent of Population Over 21 Years of Age, 1960

VAP 0010 % OVER 65 YEARS MD=9999999  
REF 0010 LOC 59 WIDTH 7 DK 1 COL 71-77

Percent of Population Over 65 Years of Age, 1960

DECK IDENTIFICATION IS: '02' DK 2 COL 1- 2

VAR 0160 ICPSR STUDY NUMBER NO MISSING DATA CODES  
REF 0160 LOC 1125 WIDTH 4 DK 2 COL 3- 6

ICPSR Study Number - 7715

VAR 0161 ICPSR PART NUMBER NO MISSING DATA CODES  
REF 0161 LOC 1129 WIDTH 1 DK 2 COL 7

ICPSR Part Number - 1

VAR 0162 ICPSR VERSION NUMBER  
REF 0162 LOC 1130 WIDTH 1

NO MISSING DATA CODES  
DK 2 COL 8

ICPSR Version Number - 1

VAR 0001 STATE CO NO MISSING DATA CODES  
REF 0001 LOC 1 WIDTH 2 DK 2 COL 9-10

State Code

- |                      |                    |
|----------------------|--------------------|
| 01. Alabama          | 30. Montana        |
| 02. Alaska           | 31. Nebraska       |
| 04. Arizona          | 32. Nevada         |
| 05. Arkansas         | 33. New Hampshire  |
| 06. California       | 34. New Jersey     |
| 08. Colorado         | 35. New Mexico     |
| 09. Connecticut      | 36. New York       |
| 10. Delaware         | 37. North Carolina |
| 11. Washington, D.C. | 38. North Dakota   |
| 12. Florida          | 39. Ohio           |
| 13. Georgia          | 40. Oklahoma       |
| 15. Hawaii           | 41. Oregon         |
| 16. Idaho            | 42. Pennsylvania   |
| 17. Illinois         | 44. Rhode Island   |
| 18. Indiana          | 45. South Carolina |
| 19. Iowa             | 46. South Dakota   |
| 20. Kansas           | 47. Tennessee      |
| 21. Kentucky         | 48. Texas          |
| 22. Louisiana        | 49. Utah           |
| 23. Maine            | 50. Vermont        |
| 24. Maryland         | 51. Virginia       |
| 25. Massachusetts    | 53. Washington     |
| 26. Michigan         | 54. West Virginia  |
| 27. Minnesota        | 55. Wisconsin      |
| 28. Mississippi      | 56. Wyoming        |
| 29. Missouri         |                    |

6  
VAR 0158 CITY MD=-9  
REF 0158 LOC 1095 WIDTH 4 DK 2 COL 11-14

City Code

Government Divisions City Code.

VAR 0011 MEDIAN AGE MD=9999999  
REF 0011 LOC 66 WIDTH 7 DK 2 COL 15-21

Median Age of the Population, 1960

VAR 0012 % FCR BO MD=9999999  
REF 0012 LOC 73 WIDTH 7 DK 2 COL 22-28

Percent of Population Foreign Born, 1960

VAR 0013 % NAT FO MD=9999999  
REF 0013 LOC 80 WIDTH 7 DK 2 COL 29-35

Percent of Population Native of Foreign or Mixed Parentage, 1960

VAR 0014 NUMBER OF FAMILIES MD=9999999  
REF 0014 LOC 87 WIDTH 7 DK 2 COL 36-42

Number of Families, 1960

VAR 0015 MED INC. MD=9999999  
REF 0015 LOC 94 WIDTH 7 DK 2 COL 43-49

Median Income of Families in 1959

VAR 0016 % FAM IN MD=9999999  
REF 0016 LOC 101 WIDTH 7 DK 2 COL 50-56

Percent of Families with 1959 Income Less Than \$3,000

VAR 0017 % FAM IN MD=9999999  
REF 0017 LOC 108 WIDTH 7 DK 2 COL 57-63

Percent of Families with 1959 Income Greater Than \$10,000

VAR 0018 MED YRS MD=9999999  
REF 0018 LOC 115 WIDTH 7 DK 2 COL 64-70

Median School Years Completed for the Population 25 Years Old and Over, 1960

VAR 0019 % POP<5 YRS SCHOOL MD=9999999  
REF 0019 LOC 122 WIDTH 7 DK 2 COL 71-77

Percent of Population 25 Years Old and Over That Completed Less Than 5 Years of School, 1960

DECK IDENTIFICATION IS: '03' DK 3 COL 1-2



VAP 0160 ICPSR STUDY NUMBER NO MISSING DATA CODES  
REF 0160 LOC 1125 WIDTH 4 DK 3 COL 3-6

ICPSR Study Number - 7715

VAR 0161 ICPSR PART NUMBER NO MISSING DATA CODES  
REF 0161 LOC 1129 WIDTH 1 DK 3 COL 7

ICPSR Part Number = 1

VAP 0162 ICPSR VERSION NUMBER NO MISSING DATA CODES  
REF 0162 LOC 1130 WIDTH 1 DK 3 COL 8

ICPSR Version Number - 1

VAR 0001 STATE CO NO MISSING DATA CODES  
REF 0001 LOC 1 WIDTH 2 DK 3 COL 9-10

State Code

|                      |                    |
|----------------------|--------------------|
| 01. Alabama          | 30. Montana        |
| 02. Alaska           | 31. Nebraska       |
| 04. Arizona          | 32. Nevada         |
| 05. Arkansas         | 33. New Hampshire  |
| 06. California       | 34. New Jersey     |
| 08. Colorado         | 35. New Mexico     |
| 09. Connecticut      | 36. New York       |
| 10. Delaware         | 37. North Carolina |
| 11. Washington, D.C. | 38. North Dakota   |
| 12. Florida          | 39. Ohio           |
| 13. Georgia          | 40. Oklahoma       |
| 15. Hawaii           | 41. Oregon         |
| 16. Idaho            | 42. Pennsylvania   |
| 17. Illinois         | 44. Rhode Island   |
| 18. Indiana          | 45. South Carolina |
| 19. Iowa             | 46. South Dakota   |

(CONTINUED)

|                   |                   |
|-------------------|-------------------|
| 20. Kansas        | 47. Tennessee     |
| 21. Kentucky      | 48. Texas         |
| 22. Louisiana     | 49. Utah          |
| 23. Maine         | 50. Vermont       |
| 24. Maryland      | 51. Virginia      |
| 25. Massachusetts | 53. Washington    |
| 26. Michigan      | 54. West Virginia |
| 27. Minnesota     | 55. Wisconsin     |
| 28. Mississippi   | 56. Wyoming       |
| 29. Missouri      |                   |

VAR 0158 CITY MD=-9  
REF 0158 LOC 1095 WIDTH 4 DK 3 COL 11-14

City Code

Government Divisions City Code.

VAR 0020 % POP COMPLETE HS MD=9999999  
REF 0020 LOC 129 WIDTH 7 DK 3 COL 15-21

Percent of Population 25 Years Old and Over That Completed  
High School or More, 1960

VAR 0021 %POP COL MD=9999999  
REF 0021 LOC 136 WIDTH 7 DK 3 COL 22-28

Percent of Population 25 Years Old and Over That are College  
Graduates, 1960

VAR 0022 ELEM SCH MD=9999999  
REF 0022 LOC 143 WIDTH 7 DK 3 COL 29-35

Number of Persons 5 to 34 Years Old Enrolled in Kindergarten

(CONTINUED)

and Elementary School, 1960

VAR 0023 HIGH SCH MD=9999999  
 REF 0023 LOC 150 WIDTH 7 DK 3 COL 36-42

Number of Persons 5 to 34 Years Old Enrolled in High School,  
 1960

VAR 0024 COLLEGE MD=9999999  
 REF 0024 LOC 157 WIDTH 7 DK 3 COL 43-49

Number of Persons 5 to 34 Years Old Enrolled in College,  
 1960

VAR 0025 % UNEMPL MD=9999999  
 REF 0025 LOC 164 WIDTH 7 DK 3 COL 50-56

Percent of Civilian Labor Force Employed, 1960

VAR 0026 % WHITE COLLAR MD=9999999  
 REF 0026 LOC 171 WIDTH 7 DK 3 COL 57-63

Percent of Civilian Labor Force in White-collar Occupations,  
 1960

These include professional, managerial (except farm),  
 clerical, and sales occupations.

VAR 0027 TOTAL GEN REV MD=9999999  
 REF 0027 LOC 178 WIDTH 7 DK 3 COL 64-70

Total City General Revenue, 1960

Actual amount coded in thousands of dollars.

VAR 0028 TOTAL TAX REV MD=9999999  
 REF 0028 LOC 185 WIDTH 7 DK 3 COL 71-77

Total City Tax Revenue, 1960

Actual amount coded in thousands of dollars.

DECK IDENTIFICATION IS: '04' DK 4 COL 1-2

VAR 0160 ICPSR STUDY NUMBER NO MISSING DATA CODES  
 REF 0160 LOC 1125 WIDTH 4 DK 4 COL 3-6

ICPSR Study Number - 7715

VAR 0161 ICPSR PART NUMBER NO MISSING DATA CODES  
 REF 0161 LOC 1129 WIDTH 1 DK 4 COL 7

ICPSR Part Number - 1

VAR 0162 ICPSR VERSION NUMBER NO MISSING DATA CODES  
 REF 0162 LOC 1130 WIDTH 1 DK 4 COL 8

ICPSR Version Number - 1

VAR 0001  
REF 0001

STATE CO  
LOC 1 WIDTH 2

NO MISSING DATA CODES  
DK 4 COL 9-10

State Code

- |                      |                    |
|----------------------|--------------------|
| 01. Alabama          | 30. Montana        |
| 02. Alaska           | 31. Nebraska       |
| 04. Arizona          | 32. Nevada         |
| 05. Arkansas         | 33. New Hampshire  |
| 06. California       | 34. New Jersey     |
| 08. Colorado         | 35. New Mexico     |
| 09. Connecticut      | 36. New York       |
| 10. Delaware         | 37. North Carolina |
| 11. Washington, D.C. | 38. North Dakota   |
| 12. Florida          | 39. Ohio           |
| 13. Georgia          | 40. Oklahoma       |
| 15. Hawaii           | 41. Oregon         |
| 16. Idaho            | 42. Pennsylvania   |
| 17. Illinois         | 44. Rhode Island   |
| 18. Indiana          | 45. South Carolina |
| 19. Iowa             | 46. South Dakota   |
| 20. Kansas           | 47. Tennessee      |
| 21. Kentucky         | 48. Texas          |
| 22. Louisiana        | 49. Utah           |
| 23. Maine            | 50. Vermont        |
| 24. Maryland         | 51. Virginia       |
| 25. Massachusetts    | 53. Washington     |
| 26. Michigan         | 54. West Virginia  |
| 27. Minnesota        | 55. Wisconsin      |
| 28. Mississippi      | 56. Wyoming        |
| 29. Missouri         |                    |

VAR 0158  
REF 0158

CITY  
LOC 1095 WIDTH 4

MD=-9  
DK 4 COL 11-14

City Code

Government Divisions City Code.

VAR 0029  
REF 0029

TOTAL GEN EXP  
LOC 192 WIDTH 7

MD=9999999  
DK 4 COL 15-21

Total City General Expenditure, 1960

Actual amount coded in thousands of dollars.

VAR 0030  
REF 0030

%POL EXP  
LOC 199 WIDTH 7

MD=9999999  
DK 4 COL 22-28

Percent of Total Expenditure for Police Protection, 1960

VAR 0031  
REF 0031

% PUB WE  
LOC 206 WIDTH 7

MD=9999999  
DK 4 COL 29-35

Percent of Total Expenditure for Public Welfare, 1960

(CONTINUED)

## 1967 County and City Data Book

VAR 0032 % NEGRO MD=9999999  
 REF 0032 LOC 213 WIDTH 7 DK 4 COL 36-42

Percent Negro of Total Population, 1960

VAR 0033 TOTAL GEN EXP MD=9999999  
 REF 0033 LOC 220 WIDTH 7 DK 4 COL 43-49

Total City General Expenditure, 1964-1965

Actual amount coded in thousands of dollars.

VAP 0034 % POL EXP MD=9999999  
 RFP 0034 LOC 227 WIDTH 7 DK 4 COL 50-56

Percent of Total Expenditure for Police Protection, 1964-1965

(CONTINUED)

## 1972 County and City Data Book

VAR 0035 1970 TOT MD=9999999  
 RFP 0035 LOC 234 WIDTH 7 DK 4 COL 57-63

Total Population, 1970

VAR 0036 POP/SQ M MD=9999999  
 REF 0036 LOC 241 WIDTH 7 DK 4 COL 64-70

Population Per Square Mile, 1970

VAP 0037 %POP CHA MD=9999999  
 RFP 0037 LOC 248 WIDTH 7 DK 4 COL 71-77

Population Change, 1960-1970

Percent population change between 1960 and 1970.

DECK IDENTIFICATION IS: '05'

DK 5 COL 1- 2

VAP 0160 ICPSR STUDY NUMBER NO MISSING DATA CODES  
 REF 0160 LOC 1125 WIDTH 4 DK 5 COL 3- 6

ICPSR Study Number - 7715



VAR 0161 ICPSR PART NUMBER NO MISSING DATA CODES  
 REF 0161 LOC 1129 WIDTH 1 DK 5 COL 7

ICPSR Part Number - 1

VAR 0162 ICPSR VERSION NUMBER NO MISSING DATA CODES  
 REF 0162 LOC 1130 WIDTH 1 DK 5 COL 8

ICPSR Version Number - 1

VAR 0001 STATE CO NO MISSING DATA CODES  
 REF 0001 LOC 1 WIDTH 2 DK 5 COL 9-10

State Code

- |                      |                    |
|----------------------|--------------------|
| 01. Alabama          | 30. Montana        |
| 02. Alaska           | 31. Nebraska       |
| 04. Arizona          | 32. Nevada         |
| 05. Arkansas         | 33. New Hampshire  |
| 06. California       | 34. New Jersey     |
| 08. Colorado         | 35. New Mexico     |
| 09. Connecticut      | 36. New York       |
| 10. Delaware         | 37. North Carolina |
| 11. Washington, D.C. | 38. North Dakota   |
| 12. Florida          | 39. Ohio           |
| 13. Georgia          | 40. Oklahoma       |
| 15. Hawaii           | 41. Oregon         |
| 16. Idaho            | 42. Pennsylvania   |
| 17. Illinois         | 44. Rhode Island   |
| 18. Indiana          | 45. South Carolina |
| 19. Iowa             | 46. South Dakota   |
| 20. Kansas           | 47. Tennessee      |
| 21. Kentucky         | 48. Texas          |
| 22. Louisiana        | 49. Utah           |
| 23. Maine            | 50. Vermont        |
| 24. Maryland         | 51. Virginia       |
| 25. Massachusetts    | 53. Washington     |
| 26. Michigan         | 54. West Virginia  |
| 27. Minnesota        | 55. Wisconsin      |
| 28. Mississippi      | 56. Wyoming        |

(CONTINUED)

29. Missouri

VAR 0158 CITY MD=-9  
 REF 0158 LOC 1095 WIDTH 4 DK 5 COL 11-14

City Code

Government Divisions City Code.

VAR 0038 % NEGRO MD=9999999  
 REF 0038 LOC 255 WIDTH 7 DK 5 COL 15-21

Percent Negro of Total Population, 1970

VAR 0039 % UNDER 5 YRS MD=9999999  
 REF 0039 LOC 262 WIDTH 7 DK 5 COL 22-28

Percent of Population Under 5 Years of Age, 1970

VAR 0040 % OVER 1 MD=9999999  
 REF 0040 LOC 269 WIDTH 7 DK 5 COL 29-35

Percent of Population Over 18 Years of Age, 1970

VAR 0041 % OVER 65 MD=9999999  
 REF 0041 LOC 276 WIDTH 7 DK 5 COL 36-42

Percent of Population Over 65 Years of Age, 1970

VAR 0042 MEDIAN A MD=9999999  
 PFF 0042 LOC 283 WIDTH 7 DK 5 COL 43-49

Median Age of the Population, 1970

VAR 0043 %FOR STO MD=9999999  
 REF 0043 LOC 290 WIDTH 7 DK 5 COL 50-56

Percent of Population Foreign Born or Native of Foreign or  
 Mixed Parentage, 1970

VAR 0044 NUMBER OF FAMILIES MD=9999999  
 PFF 0044 LOC 297 WIDTH 7 DK 5 COL 57-63

Number of Families, 1970

VAR 0045 MED INC MD=9999999  
 REF 0045 LOC 304 WIDTH 7 DK 5 COL 64-70

Median Income of Families in 1969

VAR 0046 % FAM IN MD=9999999  
 REF 0046 LOC 311 WIDTH 7 DK 5 COL 71-77

Percent of Families with 1969 Income less than \$3,000

DECK IDENTIFICATION IS: '06' DK 6 COL 1- 2

VAR 0160 ICPSR STUDY NUMBER NO MISSING DATA CODES  
 REF 0160 LOC 1125 WIDTH 4 DK 6 COL 3- 6

ICPSR Study Number - 7715

VAR 0161 ICPSR PART NUMBER NO MISSING DATA CODES  
 REF 0161 LOC 1129 WIDTH 1 DK 6 COL 7

ICPSR Part Number - 1

VAR 0162 ICPSR VERSION NUMBER NO MISSING DATA CODES  
 REF 0162 LOC 1130 WIDTH 1 DK 6 COL 8

ICPSR Version Number - 1

VAR 0001 STATE CO NO MISSING DATA CODES  
 REF 0001 LOC 1 WIDTH 2 DK 6 COL 9-10

State Code

- |                      |                    |
|----------------------|--------------------|
| 01. Alabama          | 30. Montana        |
| 02. Alaska           | 31. Nebraska       |
| 04. Arizona          | 32. Nevada         |
| 05. Arkansas         | 33. New Hampshire  |
| 06. California       | 34. New Jersey     |
| 08. Colorado         | 35. New Mexico     |
| 09. Connecticut      | 36. New York       |
| 10. Delaware         | 37. North Carolina |
| 11. Washington, D.C. | 38. North Dakota   |
| 12. Florida          | 39. Ohio           |
| 13. Georgia          | 40. Oklahoma       |
| 15. Hawaii           | 41. Oregon         |
| 16. Idaho            | 42. Pennsylvania   |
| 17. Illinois         | 44. Rhode Island   |
| 18. Indiana          | 45. South Carolina |
| 19. Iowa             | 46. South Dakota   |

(CONTINUED)

- 20. Kansas
- 21. Kentucky
- 22. Louisiana
- 23. Maine
- 24. Maryland
- 25. Massachusetts
- 26. Michigan
- 27. Minnesota
- 28. Mississippi
- 29. Missouri
- 47. Tennessee
- 48. Texas
- 49. Utah
- 50. Vermont
- 51. Virginia
- 53. Washington
- 54. West Virginia
- 55. Wisconsin
- 56. Wyoming

VAR 0158 CITY MD=-9  
 RFF 0158 LOC 1095 WIDTH 4 DK 6 COL 11-14

City Code

Government Divisions City Code.

VAR 0047 % FAM IN MD=9999999  
 RFF 0047 LOC 318 WIDTH 7 DK 6 COL 15-21

Percent of Families with 1969 Income greater than \$10,000

VAR 0048 MED YRS MD=9999999  
 RFF 0048 LOC 325 WIDTH 7 DK 6 COL 22-28

Median School Years Completed for the Population 25 Years Old and Over, 1970

VAR 0049 % POP<5 YRS SCHOOL MD=9999999  
 RFF 0049 LOC 332 WIDTH 7 DK 6 COL 29-35

Percent of Population 25 Years Old and Over that Completed less than 5 Years of School, 1970

VAR 0050 % POP COMPLETE HS MD=9999999  
 RFF 0050 LOC 339 WIDTH 7 DK 6 COL 36-42

Percent of Population 25 Years Old and Over that Completed High School or More, 1970

VAR 0051 % POP COLLEGE MD=9999999  
 RFF 0051 LOC 346 WIDTH 7 DK 6 COL 43-49

Percent of Population 25 Years Old and Over that are College Graduates, 1970

VAR 0052 ELEM SCH MD=9999999  
 RFF 0052 LOC 353 WIDTH 7 DK 6 COL 50-56

Number of Persons 5 to 34 Years Old Enrolled in Kindergarten and Elementary School, 1970

VAR 0053 HIGH SCH MD=9999999  
 RFF 0053 LOC 360 WIDTH 7 DK 6 COL 57-63

Number of Persons 5 to 34 Years Old Enrolled in High School, 1970

VAR 0054 COLLEGE MD=9999999  
 RFF 0054 LOC 367 WIDTH 7 DK 6 COL 64-70

Number of Persons 5 to 34 Years Old Enrolled in College, 1970

VAR 0055 % UNEMPL MD=9999999  
 REF 0055 LOC 374 WIDTH 7 DK 6 COL 71-77

Percent of Civilian Labor Force Unemployed, 1970  
 -----

DECK IDENTIFICATION IS: '07' DK 7 COL 1-2  
 -----

VAR 0160 ICPSR STUDY NUMBER NO MISSING DATA CODES  
 REF 0160 LOC 1125 WIDTH 4 DK 7 COL 3-6

ICPSR Study Number - 7715  
 -----

VAR 0161 ICPSR PART NUMBER NO MISSING DATA CODES  
 REF 0161 LOC 1129 WIDTH 1 DK 7 COL 7

ICPSR Part Number - 1  
 -----

VAR 0162 ICPSR VERSION NUMBER NO MISSING DATA CODES  
 REF 0162 LOC 1130 WIDTH 1 DK 7 COL 8

ICPSR Version Number - 1  
 -----

VAR 0001 STATE CO NO MISSING DATA CODES  
 REF 0001 LOC 1 WIDTH 2 DK 7 COL 9-10

State Code  
 -----

|              |                   |
|--------------|-------------------|
| 01. Alabama  | 30. Montana       |
| 02. Alaska   | 31. Nebraska      |
| 04. Arizona  | 32. Nevada        |
| 05. Arkansas | 33. New Hampshire |

(CONTINUED)

|                      |                    |
|----------------------|--------------------|
| 06. California       | 34. New Jersey     |
| 08. Colorado         | 35. New Mexico     |
| 09. Connecticut      | 36. New York       |
| 10. Delaware         | 37. North Carolina |
| 11. Washington, D.C. | 38. North Dakota   |
| 12. Florida          | 39. Ohio           |
| 13. Georgia          | 40. Oklahoma       |
| 15. Hawaii           | 41. Oregon         |
| 16. Idaho            | 42. Pennsylvania   |
| 17. Illinois         | 44. Rhode Island   |
| 18. Indiana          | 45. South Carolina |
| 19. Iowa             | 46. South Dakota   |
| 20. Kansas           | 47. Tennessee      |
| 21. Kentucky         | 48. Texas          |
| 22. Louisiana        | 49. Utah           |
| 23. Maine            | 50. Vermont        |
| 24. Maryland         | 51. Virginia       |
| 25. Massachusetts    | 53. Washington     |
| 26. Michigan         | 54. West Virginia  |
| 27. Minnesota        | 55. Wisconsin      |
| 28. Mississippi      | 56. Wyoming        |
| 29. Missouri         |                    |

VAR 0158 CITY MD=-9  
 REF 0158 LOC 1095 WIDTH 4 DK 7 COL 11-14

City Code  
 -----

Government Divisions City Code.  
 -----

VAR 0056 % WHITE COLLAR MD=9999999  
 REF 0056 LOC 381 WIDTH 7 DK 7 COL 15-21

Percent of Civilian Labor Force in White-collar Occupations,  
 1970  
 -----

These include professional, managerial (except farm),  
 clerical, and sales occupations.



VAR 0057 TOTAL GEN REV MD=9999999  
REF 0057 LOC 388 WIDTH 7 DK 7 COL 22-28

Total City General Revenue, 1970

Actual amount coded in thousands of dollars.

VAR 0058 TOTAL TAX REV MD=9999999  
REF 0058 LOC 395 WIDTH 7 DK 7 COL 29-35

Total City Tax Revenue, 1970

Actual amount coded in thousands of dollars.

VAR 0059 TOTAL GEN EXP MD=9999999  
REF 0059 LOC 402 WIDTH 7 DK 7 COL 36-42

Total City General Expenditure, 1970

Actual amount coded in thousands of dollars.

VAR 0060 % POL EXP MD=9999999  
REF 0060 LOC 409 WIDTH 7 DK 7 COL 43-49

Percent of Total Expenditure for Police and Fire Protection, 1970

VAR 0061 % PUB WEL EXP MD=9999999  
REF 0061 LOC 416 WIDTH 7 DK 7 COL 50-56

Percent of Total Expenditure for Public Welfare, 1970

(CONTINUED)

Uniform Crime Reports

VAR 0062 TTL CRIM MD=9999999  
REF 0062 LOC 423 WIDTH 7 DK 7 COL 57-63

Total Crime Index, 1958

VAR 0063 HOMICIDE MD=9999999  
REF 0063 LOC 430 WIDTH 7 DK 7 COL 64-70

Murder and Non-negligent Manslaughter, 1958

Actual number coded.

VAR 0064 RAPES 58 MD=9999999  
REF 0064 LOC 437 WIDTH 7 DK 7 COL 71-77

Forcible Rape, 1958

Actual number coded.

DECK IDENTIFICATION IS: '08' DK 8 COL 1- 2

VAR 0160 ICPSR STUDY NUMBER NO MISSING DATA CODES  
REF 0160 LOC 1125 WIDTH 4 DK 8 COL 3- 6

ICPSR Study Number - 7715

VAR 0161 ICPSR PART NUMBER NO MISSING DATA CODES  
REF 0161 LOC 1129 WIDTH 1 DK 8 COL 7

ICPSR Part Number - 1

VAR 0162 ICPSR VERSION NUMBER NO MISSING DATA CODES  
REF 0162 LOC 1130 WIDTH 1 DK 8 COL 8

ICPSR Version Number - 1

VAR 0001 STATE CO NO MISSING DATA CODES  
REF 0001 LOC 1 WIDTH 2 DK 8 COL 9-10

State Code

- |                      |                    |
|----------------------|--------------------|
| 01. Alabama          | 30. Montana        |
| 02. Alaska           | 31. Nebraska       |
| 04. Arizona          | 32. Nevada         |
| 05. Arkansas         | 33. New Hampshire  |
| 06. California       | 34. New Jersey     |
| 08. Colorado         | 35. New Mexico     |
| 09. Connecticut      | 36. New York       |
| 10. Delaware         | 37. North Carolina |
| 11. Washington, D.C. | 38. North Dakota   |
| 12. Florida          | 39. Ohio           |
| 13. Georgia          | 40. Oklahoma       |
| 15. Hawaii           | 41. Oregon         |
| 16. Idaho            | 42. Pennsylvania   |
| 17. Illinois         | 44. Rhode Island   |
| 18. Indiana          | 45. South Carolina |
| 19. Iowa             | 46. South Dakota   |
| 20. Kansas           | 47. Tennessee      |
| 21. Kentucky         | 48. Texas          |
| 22. Louisiana        | 49. Utah           |
| 23. Maine            | 50. Vermont        |
| 24. Maryland         | 51. Virginia       |
| 25. Massachusetts    | 53. Washington     |
| 26. Michigan         | 54. West Virginia  |
| 27. Minnesota        | 55. Wisconsin      |
| 28. Mississippi      | 56. Wyoming        |

(CONTINUED)

29. Missouri

VAR 0158 CITY MD=-9  
REF 0158 LOC 1095 WIDTH 4 DK 8 COL 11-14

City Code

Government Divisions City Code.

VAR 0065 ROBBERIES MD=9999999  
REF 0065 LOC 444 WIDTH 7 DK 8 COL 15-21

Robbery, 1958

Actual number coded.

VAR 0066 ASSAULTS MD=9999999  
REF 0066 LOC 451 WIDTH 7 DK 8 COL 22-28

Aggravated Assaults, 1958

Actual number coded.

VAR 0067 BURGLARIES MD=9999999  
REF 0067 LOC 458 WIDTH 7 DK 8 COL 29-35

Burglary - Breaking or Entering, 1958

Actual number coded.

VAR 0068 LARCENIES MD=99999999  
REF 0068 LOC 465 WIDTH 7 DK 8 COL 36-42

Larceny/Theft of \$50 or More, 1958

Actual number coded.

VAR 0069 AUTO THEFT MD=99999999  
REF 0069 LOC 472 WIDTH 7 DK 8 COL 43-49

Auto Theft, 1958

Actual number coded.

VAR 0070 TTL CRIM MD=99999999  
REF 0070 LOC 479 WIDTH 7 DK 8 COL 50-56

Total Crime Index, 1959

VAR 0071 HOMICIDE MD=99999999  
REF 0071 LOC 486 WIDTH 7 DK 8 COL 57-63

Murder and Non-negligent Manslaughter, 1959

Actual number coded.

VAR 0072 RAPES 59 MD=99999999  
REF 0072 LOC 493 WIDTH 7 DK 8 COL 64-70

Forcible Rape, 1959

Actual number coded.

VAR 0073 ROBBERIES MD=99999999  
REF 0073 LOC 500 WIDTH 7 DK 8 COL 71-77

Robbery, 1959

Actual number coded.

DECK IDENTIFICATION IS: '09' DK 9 COL 1-2

VAR 0160 ICPSR STUDY NUMBER NO MISSING DATA CODES  
REF 0160 LOC 1125 WIDTH 4 DK 9 COL 3-6

ICPSR Study Number - 7715

VAR 0161 ICPSR PART NUMBER NO MISSING DATA CODES  
REF 0161 LOC 1129 WIDTH 1 DK 9 COL 7

ICPSR Part Number - 1

VAR 0162 ICPSR VERSION NUMBER NO MISSING DATA CODES  
REF 0162 LOC 1130 WIDTH 1 DK 9 COL 8

ICPSR Version Number - 1

VAR 0001 STATE CO NO MISSING DATA CODES  
REF 0001 LOC 1 WIDTH 2 DK 9 COL 9-10

State Code

01. Alabama  
02. Alaska

30. Montana  
31. Nebraska





VAR 0080      RAPES 60      MD=9999999  
 REF 0080      LOC 549 WIDTH 7      DK 9 COL 57-63

Forcible Rape, 1960

Actual number coded.

VAR 0081      ROBBERIES      MD=9999999  
 REF 0081      LOC 556 WIDTH 7      DK 9 COL 64-70

Robbery, 1960

Actual number coded.

VAR 0082      ASSAULTS      MD=9999999  
 REF 0082      LOC 563 WIDTH 7      DK 9 COL 71-77

Aggravated Assaults, 1960

Actual number coded.

DECK IDENTIFICATION IS: '10'      DK 10 COL 1- 2

VAR 0160      ICPSR STUDY NUMBER      NO MISSING DATA CODES  
 REF 0160      LOC 1125 WIDTH 4      DK 10 COL 3- 6

ICPSR Study Number - 7715

VAR 0161      ICPSR PART NUMBER      NO MISSING DATA CODES  
 REF 0161      LOC 1129 WIDTH 1      DK 10 COL 7

ICPSR Part Number - 1

VAR 0162      ICPSR VERSION NUMBER      NO MISSING DATA CODES  
 REF 0162      LOC 1130 WIDTH 1      DK 10 COL 8

ICPSR Version Number - 1

VAR 0001      STATE CO      NO MISSING DATA CODES  
 REF 0001      LOC 1 WIDTH 2      DK 10 COL 9-10

State Code

|                      |                    |
|----------------------|--------------------|
| 01. Alabama          | 30. Montana        |
| 02. Alaska           | 31. Nebraska       |
| 04. Arizona          | 32. Nevada         |
| 05. Arkansas         | 33. New Hampshire  |
| 06. California       | 34. New Jersey     |
| 08. Colorado         | 35. New Mexico     |
| 09. Connecticut      | 36. New York       |
| 10. Delaware         | 37. North Carolina |
| 11. Washington, D.C. | 38. North Dakota   |
| 12. Florida          | 39. Ohio           |
| 13. Georgia          | 40. Oklahoma       |
| 15. Hawaii           | 41. Oregon         |
| 16. Idaho            | 42. Pennsylvania   |
| 17. Illinois         | 44. Rhode Island   |
| 18. Indiana          | 45. South Carolina |
| 19. Iowa             | 46. South Dakota   |
| 20. Kansas           | 47. Tennessee      |
| 21. Kentucky         | 48. Texas          |
| 22. Louisiana        | 49. Utah           |
| 23. Maine            | 50. Vermont        |
| 24. Maryland         | 51. Virginia       |
| 25. Massachusetts    | 53. Washington     |
| 26. Michigan         | 54. West Virginia  |
| 27. Minnesota        | 55. Wisconsin      |
| 28. Mississippi      | 56. Wyoming        |
| 29. Missouri         |                    |

VAR 0158 CITY MD=-9  
REF 0158 LOC 1095 WIDTH 4 DK 10 COL 11-14

City Code

Government Divisions City Code.

VAR 0083 BURGLARIES MD=9999999  
REF 0083 LOC 570 WIDTH 7 DK 10 COL 15-21

Burglary - Breaking or Entering, 1960

Actual number coded.

VAR 0084 LARCENIES MD=9999999  
REF 0084 LOC 577 WIDTH 7 DK 10 COL 22-28

Larceny/Theft of \$50 or More, 1960

Actual number coded.

VAR 0085 AUTO THEFT MD=9999999  
REF 0085 LOC 584 WIDTH 7 DK 10 COL 29-35

Auto Theft, 1960

Actual number coded.

VAR 0086 TTL CRIM MD=9999999  
REF 0086 LOC 591 WIDTH 7 DK 10 COL 36-42

Total Crime Index, 1961

VAR 0087 HOMICIDE MD=9999999  
REF 0087 LOC 598 WIDTH 7 DK 10 COL 43-49

Murder and Non-negligent Manslaughter, 1961

Actual number coded.

VAR 0088 RAPES 61 MD=9999999  
REF 0088 LOC 605 WIDTH 7 DK 10 COL 50-56

Forcible Rape, 1961

Actual number coded.

VAR 0089 ROBBERIES MD=9999999  
REF 0089 LOC 612 WIDTH 7 DK 10 COL 57-63

Robbery, 1961

Actual number coded.

VAR 0090 ASSAULTS MD=9999999  
REF 0090 LOC 619 WIDTH 7 DK 10 COL 64-70

Aggravated Assault, 1961

Actual number coded.

VAR 0091 BURGLARIES MD=9999999  
REF 0091 LOC 626 WIDTH 7 DK 10 COL 71-77

Burglary - Breaking or Entering, 1961

(CONTINUED)

Actual number coded.

DECK IDENTIFICATION IS: '11'

DK 11 COL 1-2

.....

|          |                    |                       |
|----------|--------------------|-----------------------|
| VAR 0160 | ICPSR STUDY NUMBER | NO MISSING DATA CODES |
| REF 0160 | LOC 1125 WIDTH 4   | DK 11 COL 3-6         |

ICPSR Study Number - 7715

.....

|          |                   |                       |
|----------|-------------------|-----------------------|
| VAR 0161 | ICPSR PART NUMBER | NO MISSING DATA CODES |
| REF 0161 | LOC 1129 WIDTH 1  | DK 11 COL 7           |

ICPSR Part Number - 1

.....

|          |                      |                       |
|----------|----------------------|-----------------------|
| VAR 0162 | ICPSR VERSION NUMBER | NO MISSING DATA CODES |
| REF 0162 | LOC 1130 WIDTH 1     | DK 11 COL 8           |

ICPSR Version Number - 1

.....

|          |               |                       |
|----------|---------------|-----------------------|
| VAP 0001 | STATE CO-     | NO MISSING DATA CODES |
| REF 0001 | LOC 1 WIDTH 2 | DK 11 COL 9-10        |

State Code

|                 |                    |
|-----------------|--------------------|
| 01. Alabama     | 30. Montana        |
| 02. Alaska      | 31. Nebraska       |
| 04. Arizona     | 32. Nevada         |
| 05. Arkansas    | 33. New Hampshire  |
| 06. California  | 34. New Jersey     |
| 08. Colorado    | 35. New Mexico     |
| 09. Connecticut | 36. New York       |
| 10. Delaware    | 37. North Carolina |

(CONTINUED)

|                      |                    |
|----------------------|--------------------|
| 11. Washington, D.C. | 38. North Dakota   |
| 12. Florida          | 39. Ohio           |
| 13. Georgia          | 40. Oklahoma       |
| 15. Hawaii           | 41. Oregon         |
| 16. Idaho            | 42. Pennsylvania   |
| 17. Illinois         | 44. Rhode Island   |
| 18. Indiana          | 45. South Carolina |
| 19. Iowa             | 46. South Dakota   |
| 20. Kansas           | 47. Tennessee      |
| 21. Kentucky         | 48. Texas          |
| 22. Louisiana        | 49. Utah           |
| 23. Maine            | 50. Vermont        |
| 24. Maryland         | 51. Virginia       |
| 25. Massachusetts    | 53. Washington     |
| 26. Michigan         | 54. West Virginia  |
| 27. Minnesota        | 55. Wisconsin      |
| 28. Mississippi      | 56. Wyoming        |
| 29. Missouri         |                    |

.....

|          |                  |                 |
|----------|------------------|-----------------|
| VAR 0158 | CITY             | MD=-9           |
| REF 0158 | LOC 1095 WIDTH 4 | DK 11 COL 11-14 |

City CodeGovernment Divisions City Code.

.....

|          |                 |                 |
|----------|-----------------|-----------------|
| VAR 0092 | LARCENIES       | MD=9999999      |
| REF 0092 | LOC 633 WIDTH 7 | DK 11 COL 15-21 |

Larceny/Theft of \$50 or More, 1961

Actual number coded.

.....

|          |                 |                 |
|----------|-----------------|-----------------|
| VAP 0093 | AUTO THEFT      | MD=9999999      |
| REF 0093 | LOC 640 WIDTH 7 | DK 11 COL 22-28 |

Auto Theft, 1961

(CONTINUED)

Actual number coded.

VAR 0094 TTL CRIM MD=9999999  
REF 0094 LOC 647 WIDTH 7 DK 11 COL 29-35

Total Crime Index, 1962

VAR 0095 HOMICIDE MD=9999999  
REF 0095 LOC 654 WIDTH 7 DK 11 COL 36-42

Murder and Non-negligent Manslaughter, 1962

Actual number coded.

VAR 0096 RAPES 52 MD=9999999  
REF 0096 LOC 661 WIDTH 7 DK 11 COL 43-49

Forcible Rape, 1962

Actual number coded.

VAR 0097 ROBBERIES MD=9999999  
REF 0097 LOC 668 WIDTH 7 DK 11 COL 50-56

Robbery, 1962

Actual number coded.

VAR 0098 ASSAULTS MD=9999999  
REF 0098 LOC 675 WIDTH 7 DK 11 COL 57-63

Aggravated Assault, 1962

Actual number coded.

VAR 0099 BURGLARIES MD=9999999  
REF 0099 LOC 682 WIDTH 7 DK 11 COL 64-70

Burglary - Breaking or Entering, 1962

Actual number coded.

VAR 0100 LARCENIES MD=9999999  
REF 0100 LOC 689 WIDTH 7 DK 11 COL 71-77

Larceny/Theft of \$50 or More, 1962

Actual number coded.

DFCK IDENTIFICATION IS: '12' DK 12 COL 1-2

VAR 0160 ICPSR STUDY NUMBER NO MISSING DATA CODES  
REF 0160 LOC 1125 WIDTH 4 DK 12 COL 3-6

ICPSR Study Number - 7715

VAR 0161 ICPSR PART NUMBER NO MISSING DATA CODES  
REF 0161 LOC 1129 WIDTH 1 DK 12 COL 7

ICPSR Part Number - 1



VAR 0162 ICPSR VERSION NUMBER NO MISSING DATA CODES  
REF 0162 LOC 1130 WIDTH 1 DK 12 COL 8

ICPSR Version Number - 1

VAR 0001 STATE CO NO MISSING DATA CODES  
REF 0001 LOC 1 WIDTH 2 DK 12 COL 9-10

State Code

|                      |                    |
|----------------------|--------------------|
| 01. Alabama          | 30. Montana        |
| 02. Alaska           | 31. Nebraska       |
| 04. Arizona          | 32. Nevada         |
| 05. Arkansas         | 33. New Hampshire  |
| 06. California       | 34. New Jersey     |
| 08. Colorado         | 35. New Mexico     |
| 09. Connecticut      | 36. New York       |
| 10. Delaware         | 37. North Carolina |
| 11. Washington, D.C. | 38. North Dakota   |
| 12. Florida          | 39. Ohio           |
| 13. Georgia          | 40. Oklahoma       |
| 15. Hawaii           | 41. Oregon         |
| 16. Idaho            | 42. Pennsylvania   |
| 17. Illinois         | 44. Rhode Island   |
| 18. Indiana          | 45. South Carolina |
| 19. Iowa             | 46. South Dakota   |
| 20. Kansas           | 47. Tennessee      |
| 21. Kentucky         | 48. Texas          |
| 22. Louisiana        | 49. Utah           |
| 23. Maine            | 50. Vermont        |
| 24. Maryland         | 51. Virginia       |
| 25. Massachusetts    | 53. Washington     |
| 26. Michigan         | 54. West Virginia  |
| 27. Minnesota        | 55. Wisconsin      |
| 28. Mississippi      | 56. Wyoming        |
| 29. Missouri         |                    |

VAR 0158 CITY MD=-9  
REF 0158 LOC 1095 WIDTH 4 DK 12 COL 11-14

City Code

Government Divisions City Code.

VAR 0101 AUTO THEFT MD=9999999  
REF 0101 LOC 696 WIDTH 7 DK 12 COL 15-21

Auto Theft, 1962

Actual number coded.

VAR 0102 TTL CRIM MD=9999999  
REF 0102 LOC 703 WIDTH 7 DK 12 COL 22-28

Total Crime Index, 1963

VAR 0103 HOMICIDE MD=9999999  
REF 0103 LOC 710 WIDTH 7 DK 12 COL 29-35

Murder and Non-negligent Manslaughter, 1963

Actual number coded.

VAR 0104 RAPES 63 MD=9999999  
REF 0104 LOC 717 WIDTH 7 DK 12 COL 36-42

Forcible Rape, 1963

Actual number coded.

VAR 0105 ROBBERIES MD=9999999  
REF 0105 LOC 724 WIDTH 7 DK 12 COL 43-49

Robbery, 1963

Actual number coded.

VAR 0106 ASSAULTS MD=9999999  
REF 0106 LOC 731 WIDTH 7 DK 12 COL 50-56

Aggravated Assault, 1963

Actual number coded.

VAR 0107 BURGLARIES MD=9999999  
REF 0107 LOC 738 WIDTH 7 DK 12 COL 57-63

Burglary - Breaking or Entering, 1963

Actual number coded.

VAR 0108 LARCENIES MD=9999999  
REF 0108 LOC 745 WIDTH 7 DK 12 COL 64-70

Larceny/Theft of \$50 or More, 1963

Actual number coded.

VAR 0109 AUTO THEFT MD=9999999  
REF 0109 LOC 752 WIDTH 7 DK 12 COL 71-77

Auto Theft, 1963

(CONTINUED)

Actual number coded.

DECK IDENTIFICATION IS: '13'

DK 13 COL 1-2

VAR 0160 ICPSR STUDY NUMBER NO MISSING DATA CODES  
REF 0160 LOC 1125 WIDTH 4 DK 13 COL 3-6

ICPSR Study Number - 7715

VAR 0161 ICPSR PART NUMBER NO MISSING DATA CODES  
REF 0161 LOC 1129 WIDTH 1 DK 13 COL 7

ICPSR Part Number - 1

VAR 0162 ICPSR VERSION NUMBER NO MISSING DATA CODES  
REF 0162 LOC 1130 WIDTH 1 DK 13 COL 8

ICPSR Version Number - 1

VAR 0001 STATE CO NO MISSING DATA CODES  
REF 0001 LOC 1 WIDTH 2 DK 13 COL 9-10

State Code

|                 |                    |
|-----------------|--------------------|
| 01. Alabama     | 30. Montana        |
| 02. Alaska      | 31. Nebraska       |
| 04. Arizona     | 32. Nevada         |
| 05. Arkansas    | 33. New Hampshire  |
| 06. California  | 34. New Jersey     |
| 08. Colorado    | 35. New Mexico     |
| 09. Connecticut | 36. New York       |
| 10. Delaware    | 37. North Carolina |

(CONTINUED)

|                      |                    |
|----------------------|--------------------|
| 11. Washington, D.C. | 38. North Dakota   |
| 12. Florida          | 39. Ohio           |
| 13. Georgia          | 40. Oklahoma       |
| 15. Hawaii           | 41. Oregon         |
| 16. Idaho            | 42. Pennsylvania   |
| 17. Illinois         | 44. Rhode Island   |
| 18. Indiana          | 45. South Carolina |
| 19. Iowa             | 46. South Dakota   |
| 20. Kansas           | 47. Tennessee      |
| 21. Kentucky         | 48. Texas          |
| 22. Louisiana        | 49. Utah           |
| 23. Maine            | 50. Vermont        |
| 24. Maryland         | 51. Virginia       |
| 25. Massachusetts    | 53. Washington     |
| 26. Michigan         | 54. West Virginia  |
| 27. Minnesota        | 55. Wisconsin      |
| 28. Mississippi      | 56. Wyoming        |
| 29. Missouri         |                    |

.....

VAR 0158 CITY MD=-9  
REF 0158 LOC 1095 WIDTH 4 DK 13 COL 11-14

City Code

-----

Government Divisions City Code.

.....

VAR 0110 TTL CRIM MD=9999999  
REF 0110 LOC 759 WIDTH 7 DK 13 COL 15-21

Total Crime Index, 1964

-----

Actual number coded.

.....

VAR 0111 HOMICIDE MD=9999999  
REF 0111 LOC 766 WIDTH 7 DK 13 COL 22-28

Murder and Non-negligent Manslaughter, 1964

-----

(CONTINUED)

Actual number coded.

.....

VAR 0112 RAPES 64 MD=9999999  
REF 0112 LOC 773 WIDTH 7 DK 13 COL 29-35

Forcible Rape, 1964

-----

Actual number coded.

.....

VAR 0113 ROBBERIES MD=9999999  
REF 0113 LOC 780 WIDTH 7 DK 13 COL 36-42

Robbery, 1964

-----

Actual number coded.

.....

VAR 0114 ASSAULTS MD=9999999  
REF 0114 LOC 787 WIDTH 7 DK 13 COL 43-49

Aggravated Assault, 1964

-----

Actual number coded.

.....

VAR 0115 BURGLARIES MD=9999999  
REF 0115 LOC 794 WIDTH 7 DK 13 COL 50-56

Burglary - Breaking or Entering, 1964

-----

Actual number coded.

VAP 0116 LARCENIES MD=9999999  
REF 0116 LOC 801 WIDTH 7 DK 13 COL 57-63

Larceny/Theft of \$50 or More, 1964

Actual number coded.

VAR 0117 AUTO THEFT MD=9999999  
REF 0117 LOC 808 WIDTH 7 DK 13 COL 64-70

Auto Theft, 1964

Actual number coded.

VAR 0118 TTL CRIM MD=9999999  
REF 0118 LOC 815 WIDTH 7 DK 13 COL 71-77

Total Crime Index, 1965

DECK IDENTIFICATION IS: '14' DK 14 COL 1- 2

VAR 0160 ICPSR STUDY NUMBER NO MISSING DATA CODES  
REF 0160 LOC 1125 WIDTH 4 DK 14 COL 3- 6

ICPSR Study Number - 7715

VAR 0161 ICPSR PART NUMBER NO MISSING DATA CODES  
REF 0161 LOC 1129 WIDTH 1 DK 14 COL 7

ICPSR Part Number - 1

VAR 0162 ICPSR VERSION NUMBER NO MISSING DATA CODES  
REF 0162 LOC 1130 WIDTH 1 DK 14 COL 8

ICPSR Version Number - 1

VAR 0001 STATE CO NO MISSING DATA CODES  
REF 0001 LOC 1 WIDTH 2 DK 14 COL 9-10

State Code

- |                      |                    |
|----------------------|--------------------|
| 01. Alabama          | 30. Montana        |
| 02. Alaska           | 31. Nebraska       |
| 04. Arizona          | 32. Nevada         |
| 05. Arkansas         | 33. New Hampshire  |
| 06. California       | 34. New Jersey     |
| 08. Colorado         | 35. New Mexico     |
| 09. Connecticut      | 36. New York       |
| 10. Delaware         | 37. North Carolina |
| 11. Washington, D.C. | 38. North Dakota   |
| 12. Florida          | 39. Ohio           |
| 13. Georgia          | 40. Oklahoma       |
| 15. Hawaii           | 41. Oregon         |
| 16. Idaho            | 42. Pennsylvania   |
| 17. Illinois         | 44. Rhode Island   |
| 18. Indiana          | 45. South Carolina |
| 19. Iowa             | 46. South Dakota   |
| 20. Kansas           | 47. Tennessee      |
| 21. Kentucky         | 48. Texas          |
| 22. Louisiana        | 49. Utah           |
| 23. Maine            | 50. Vermont        |
| 24. Maryland         | 51. Virginia       |
| 25. Massachusetts    | 53. Washington     |
| 26. Michigan         | 54. West Virginia  |
| 27. Minnesota        | 55. Wisconsin      |
| 28. Mississippi      | 56. Wyoming        |
| 29. Missouri         |                    |



VAR 0158 CITY MD=-9  
REF 0158 LOC 1095 WIDTH 4 DK 14 COL 11-14

City Code

Government Divisions City Code.

VAR 0119 HOMICIDE MD=9999999  
REF 0119 LOC 822 WIDTH 7 DK 14 COL 15-21

Murder and Non-negligent Manslaughter, 1965

Actual number coded.

VAR 0120 RAPES 65 MD=9999999  
REF 0120 LOC 829 WIDTH 7 DK 14 COL 22-28

Forcible Rape, 1965

Actual number coded.

VAR 0121 ROBBERIES MD=9999999  
REF 0121 LOC 836 WIDTH 7 DK 14 COL 29-35

Robbery, 1965

Actual number coded.

VAR 0122 ASSAULTS MD=9999999  
REF 0122 LOC 843 WIDTH 7 DK 14 COL 36-42

Aggravated Assault, 1965

(CONTINUED)

Actual number coded.

VAR 0123 BURGLARIES MD=9999999  
REF 0123 LOC 850 WIDTH 7 DK 14 COL 43-49

Burglary - Breaking or Entering, 1965

Actual number coded.

VAR 0124 LARCENIES MD=9999999  
REF 0124 LOC 857 WIDTH 7 DK 14 COL 50-56

Larceny/Theft of \$50 or More, 1965

Actual number coded.

VAR 0125 AUTO THEFT MD=9999999  
REF 0125 LOC 864 WIDTH 7 DK 14 COL 57-63

Auto Theft, 1965

Actual number coded.

VAR 0126 TTL CRIM MD=9999999  
REF 0126 LOC 871 WIDTH 7 DK 14 COL 64-70

Total Crime Index, 1966

VAR 0127 HOMICIDE MD=9999999  
 REF 0127 LOC 878 WIDTH 7 DK 14 COL 71-77

Murder and Non-negligent Manslaughter, 1966

Actual number coded.

DECK IDENTIFICATION IS: '15' DK 15 COL 1- 2

VAR 0160 ICPSR STUDY NUMBER NO MISSING DATA CODES  
 REF 0160 LOC 1125 WIDTH 4 DK 15 COL 3- 6

ICPSR Study Number - 7715

VAR 0161 ICPSR PART NUMBER NO MISSING DATA CODES  
 REF 0161 LOC 1129 WIDTH 1 DK 15 COL 7

ICPSR Part Number - 1

VAR 0162 ICPSR VERSION NUMBER NO MISSING DATA CODES  
 REF 0162 LOC 1130 WIDTH 1 DK 15 COL 8

ICPSR Version Number - 1

VAR 0001 STATE CO. NO MISSING DATA CODES  
 REF 0001 LOC 1 WIDTH 2 DK 15 COL 9-10

State Code

- |             |              |
|-------------|--------------|
| 01. Alabama | 30. Montana  |
| 02. Alaska  | 31. Nebraska |

(CONTINUED)

- |                      |                    |
|----------------------|--------------------|
| 04. Arizona          | 32. Nevada         |
| 05. Arkansas         | 33. New Hampshire  |
| 06. California       | 34. New Jersey     |
| 08. Colorado         | 35. New Mexico     |
| 09. Connecticut      | 36. New York       |
| 10. Delaware         | 37. North Carolina |
| 11. Washington, D.C. | 38. North Dakota   |
| 12. Florida          | 39. Ohio           |
| 13. Georgia          | 40. Oklahoma       |
| 15. Hawaii           | 41. Oregon         |
| 16. Idaho            | 42. Pennsylvania   |
| 17. Illinois         | 44. Rhode Island   |
| 18. Indiana          | 45. South Carolina |
| 19. Iowa             | 46. South Dakota   |
| 20. Kansas           | 47. Tennessee      |
| 21. Kentucky         | 48. Texas          |
| 22. Louisiana        | 49. Utah           |
| 23. Maine            | 50. Vermont        |
| 24. Maryland         | 51. Virginia       |
| 25. Massachusetts    | 53. Washington     |
| 26. Michigan         | 54. West Virginia  |
| 27. Minnesota        | 55. Wisconsin      |
| 28. Mississippi      | 56. Wyoming        |
| 29. Missouri         |                    |

VAR 0158 CITY MD=-9  
 REF 0158 LOC 1095 WIDTH 4 DK 15 COL 11-14

City Code

Government Divisions City Code.

VAR 0128 RAPES 66 MD=9999999  
 REF 0128 LOC 885 WIDTH 7 DK 15 COL 15-21

Forcible Rape, 1966

Actual number coded.

VAR 0129 ROBBERIES MD=9999999  
REF 0129 LOC 892 WIDTH 7 DK 15 COL 22-28

Robbery, 1966

Actual number coded.

VAR 0130 ASSAULTS MD=9999999  
REF 0130 LOC 899 WIDTH 7 DK 15 COL 29-35

Aggravated Assault, 1966

Actual number coded.

VAR 0131 BURGLARIES MD=9999999  
REF 0131 LOC 906 WIDTH 7 DK 15 COL 36-42

Burglary - Breaking or Entering, 1966

Actual number coded.

VAR 0132 LARCENIES MD=9999999  
REF 0132 LOC 913 WIDTH 7 DK 15 COL 43-49

Larceny/Theft of \$50 or More, 1966

Actual number coded.

VAR 0133 AUTO THEFT MD=9999999  
REF 0133 LOC 920 WIDTH 7 DK 15 COL 50-56

Auto Thefts, 1966

(CONTINUED)

Actual number coded.

VAR 0134 TTL CRIM MD=9999999  
REF 0134 LOC 927 WIDTH 7 DK 15 COL 57-63

Total Crime Index, 1967

VAR 0135 MURDERS MD=9999999  
REF 0135 LOC 934 WIDTH 7 DK 15 COL 64-70

Murder and Non-negligent Manslaughter, 1967

Actual number coded.

VAR 0136 RAPES 67 MD=9999999  
REF 0136 LOC 941 WIDTH 7 DK 15 COL 71-77

Forcible Rape, 1967

Actual number coded.

DECK IDENTIFICATION IS: '16' DK 16 COL 1-2

VAR 0160 ICPSR STUDY NUMBER NO MISSING DATA CODES  
REF 0160 LOC 1125 WIDTH 4 DK 16 COL 3-6

ICPSR Study Number - 7715

VAR 0161 IGPSR PART NUMBER NO MISSING DATA CODES  
REF 0161 LOC 1129 WIDTH 1 DK 16 COL 7

ICPSR Part Number = 1

VAR 0162 ICPSR VERSION NUMBER NO MISSING DATA CODES  
REF 0162 LOC 1130 WIDTH 1 DK 16 COL 8

ICPSR Version Number = 1

VAR 0001 STATE CO NO MISSING DATA CODES  
REF 0001 LOC 1 WIDTH 2 DK 16 COL 9-10

State Code

- |                      |                    |
|----------------------|--------------------|
| 01. Alabama          | 30. Montana        |
| 02. Alaska           | 31. Nebraska       |
| 04. Arizona          | 32. Nevada         |
| 05. Arkansas         | 33. New Hampshire  |
| 06. California       | 34. New Jersey     |
| 08. Colorado         | 35. New Mexico     |
| 09. Connecticut      | 36. New York       |
| 10. Delaware         | 37. North Carolina |
| 11. Washington, D.C. | 38. North Dakota   |
| 12. Florida          | 39. Ohio           |
| 13. Georgia          | 40. Oklahoma       |
| 15. Hawaii           | 41. Oregon         |
| 16. Idaho            | 42. Pennsylvania   |
| 17. Illinois         | 44. Rhode Island   |
| 18. Indiana          | 45. South Carolina |
| 19. Iowa             | 46. South Dakota   |
| 20. Kansas           | 47. Tennessee      |
| 21. Kentucky         | 48. Texas          |
| 22. Louisiana        | 49. Utah           |
| 23. Maine            | 50. Vermont        |
| 24. Maryland         | 51. Virginia       |
| 25. Massachusetts    | 53. Washington     |
| 26. Michigan         | 54. West Virginia  |
| 27. Minnesota        | 55. Wisconsin      |
| 28. Mississippi      | 56. Wyoming        |

(CONTINUED)

29. Missouri

VAR 0158 CITY MD=-9  
REF 0158 LOC 1095 WIDTH 4 DK 16 COL 11-14

City Code

Government Divisions City Code.

VAR 0137 ROBBERIES MD=9999999  
REF 0137 LOC 948 WIDTH 7 DK 16 COL 15-21

Robbery, 1967

Actual number coded.

VAR 0138 ASSAULTS MD=9999999  
REF 0138 LOC 955 WIDTH 7 DK 16 COL 22-28

Aggravated Assault, 1967

Actual number coded.

VAR 0139 BURGLARIES MD=9999999  
REF 0139 LOC 962 WIDTH 7 DK 16 COL 29-35

Burglary - Breaking or Entering, 1967

Actual number coded.



VAR 0140 LARCENIES MD=9999999  
REF 0140 LOC 969 WIDTH 7 DK 16 COL 36-42

Larceny/Theft of \$50 or More, 1967

Actual number coded.

VAR 0141 AUTO THEFT MD=9999999  
REF 0141 LOC 976 WIDTH 7 DK 16 COL 43-49

Auto Theft, 1967

Actual number coded.

VAR 0142 TTL CRIM MD=9999999  
REF 0142 LOC 983 WIDTH 7 DK 16 COL 50-56

Total Crime Index, 1968

VAR 0143 HOMICIDE MD=9999999  
REF 0143 LOC 990 WIDTH 7 DK 16 COL 57-63

Murder and Non-negligent Manslaughter, 1968

Actual number coded.

VAR 0144 RAPES 68 MD=9999999  
REF 0144 LOC 997 WIDTH 7 DK 16 COL 64-70

Forcible Rape, 1968

Actual number coded.

VAR 0145 ROBBERIES MD=9999999  
REF 0145 LOC 1004 WIDTH 7 DK 16 COL 71-77

Robbery, 1968

Actual number coded.

DECK IDENTIFICATION IS: '17'

DK 17 COL 1-2

VAR 0160 ICPSR STUDY NUMBER NO MISSING DATA CODES  
REF 0160 LOC 1125 WIDTH 4 DK 17 COL 3-6

ICPSR Study Number - 7715

VAR 0161 ICPSR PART NUMBER NO MISSING DATA CODES  
REF 0161 LOC 1129 WIDTH 1 DK 17 COL 7

ICPSR Part Number - 1

VAR 0162 ICPSR VERSION NUMBER NO MISSING DATA CODES  
REF 0162 LOC 1130 WIDTH 1 DK 17 COL 8

ICPSR Version Number - 1

VAR 0001 STATE CO NO MISSING DATA CODES  
REF 0001 LOC 1 WIDTH 2 DK 17 COL 9-10

State Code

01. Alabama  
02. Alaska  
30. Montana  
31. Nebraska



VAR 0152      RAPES 69      MD=9999999  
REF 0152      LOC 1053 WIDTH 7      DK 17 COL 57-63

Forcible Rape, 1969

Actual number coded.  
.....

VAR 0153      ROBBERIES      MD=9999999  
REF 0153      LOC 1060 WIDTH 7      DK 17 COL 64-70

Robbery, 1969

Actual number coded.  
.....

VAR 0154      ASSAULTS      MD=9999999  
REF 0154      LOC 1067 WIDTH 7      DK 17 COL 71-77

Aggravated Assault, 1969

Actual number coded.  
.....

DECK IDENTIFICATION IS: '18'      DK 18 COL 1- 2

VAR 0160      ICPSR STUDY NUMBER      NO MISSING DATA CODES  
REF 0160      LOC 1125 WIDTH 4      DK 18 COL 3- 6

ICPSR Study Number - 7715

VAR 0161      ICPSR PART NUMBER      NO MISSING DATA CODES  
REF 0161      LOC 1129 WIDTH 1      DK 18 COL 7

ICPSR Part Number - 1

VAR 0162      ICPSR VERSION NUMBER      NO MISSING DATA CODES  
REF 0162      LOC 1130 WIDTH 1      DK 18 COL 8

ICPSR Version Number - 1

VAR 0001      STATE CO      NO MISSING DATA CODES  
REF 0001      LOC 1 WIDTH 2      DK 18 COL 9-10

State Code

- |                      |                    |
|----------------------|--------------------|
| 01. Alabama          | 30. Montana        |
| 02. Alaska           | 31. Nebraska       |
| 04. Arizona          | 32. Nevada         |
| 05. Arkansas         | 33. New Hampshire  |
| 06. California       | 34. New Jersey     |
| 08. Colorado         | 35. New Mexico     |
| 09. Connecticut      | 36. New York       |
| 10. Delaware         | 37. North Carolina |
| 11. Washington, D.C. | 38. North Dakota   |
| 12. Florida          | 39. Ohio           |
| 13. Georgia          | 40. Oklahoma       |
| 15. Hawaii           | 41. Oregon         |
| 16. Idaho            | 42. Pennsylvania   |
| 17. Illinois         | 44. Rhode Island   |
| 18. Indiana          | 45. South Carolina |
| 19. Iowa             | 46. South Dakota   |
| 20. Kansas           | 47. Tennessee      |
| 21. Kentucky         | 48. Texas          |
| 22. Louisiana        | 49. Utah           |
| 23. Maine            | 50. Vermont        |
| 24. Maryland         | 51. Virginia       |
| 25. Massachusetts    | 53. Washington     |
| 26. Michigan         | 54. West Virginia  |
| 27. Minnesota        | 55. Wisconsin      |
| 28. Mississippi      | 56. Wyoming        |
| 29. Missouri         |                    |

VAR 0158 CITY MD=-9  
REF 0158 LOC 1095 WIDTH 4 DK 18 COL 11-14

City Code

Government Divisions City Code.

VAR 0155 BURGLARIES MD=9999999  
REF 0155 LOC 1074 WIDTH 7 DK 18 COL 15-21

Burglary - Breaking or Entering, 1969

Actual number coded.

VAR 0156 LARCENIES MD=9999999  
REF 0156 LOC 1081 WIDTH 7 DK 18 COL 22-28

Larceny/Theft of \$50 or More, 1969

Actual number coded.

VAR 0157 AUTO THEFT MD=9999999  
REF 0157 LOC 1088 WIDTH 7 DK 18 COL 29-35

Auto Theft, 1969

Actual number coded.

VAR 0159 CITY NAME NO MISSING DATA CODES  
REF 0159 LOC 1099 WIDTH 26 DK 18 COL 36-61

City Name



**END**