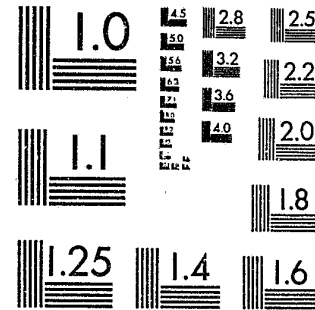


National Criminal Justice Reference Service



This microfiche was produced from documents received for inclusion in the NCJRS data base. Since NCJRS cannot exercise control over the physical condition of the documents submitted, the individual frame quality will vary. The resolution chart on this frame may be used to evaluate the document quality.



MICROCOPY RESOLUTION TEST CHART
NATIONAL BUREAU OF STANDARDS-1963-A

Microfilming procedures used to create this fiche comply with the standards set forth in 41CFR 101-11.504.

Points of view or opinions stated in this document are those of the author(s) and do not represent the official position or policies of the U. S. Department of Justice.

National Institute of Justice
United States Department of Justice
Washington, D. C. 20531

3/12/86

ICPSR
Inter-university Consortium for
Political and Social Research

**Expenditure and
Employment Data
for the Criminal Justice
System: Annual File,
1979**

U.S. Dept. of Justice
Bureau of Justice Statistics

96143



EXPENDITURE AND EMPLOYMENT DATA FOR THE CRIMINAL
JUSTICE SYSTEM: 1979

(ICPSR STUDY 7618)

Principal Investigator

Bureau of Justice Statistics

Inter-university Consortium for Political
and Social Research

P.O. BOX 1248

Ann Arbor, Michigan 48106

Second ICPSR Edition
First Printing, 1983

U.S. Department of Justice
National Institute of Justice

This document has been reproduced exactly as received from the person or organization originating it. Points of view or opinions stated in this document are those of the authors and do not necessarily represent the official position or policies of the National Institute of Justice.

Permission to reproduce this copyrighted material has been granted by

Public Domain/NIJ

U.S. Department of Justice

to the National Criminal Justice Reference Service (NCJRS).

Further reproduction outside of the NCJRS system requires permission of the copyright owner.

ACKNOWLEDGEMENT OF ASSISTANCE

All manuscripts utilizing data made available through the Consortium should acknowledge that fact as well as identify the original collector of the data. The ICPSR Council urges all users of the ICPSR data facilities to follow some adaptation of this statement with the parentheses indicating items to be filled in appropriately or deleted by the individual user.

The data (and tabulations) utilized in this (publication) were made available (in part) by the Inter-university Consortium for Political and Social Research. The data for the EXPENDITURE AND EMPLOYMENT DATA FOR THE CRIMINAL JUSTICE SYSTEM: 1979 were originally collected by the U.S. Bureau of the Census for the Bureau of Justice Statistics. Neither the collector of the original data nor the Consortium bear any responsibility for the analyses or interpretations here presented.

In order to provide funding agencies with essential information about the use of archival resources and to facilitate the exchange of information about ICPSR participants' research activities, each user of the ICPSR data facilities is expected to send two copies of each completed manuscript or thesis abstract to the Consortium. Please indicate in the cover letter which data were used.

TABLE OF CONTENTS

	PAGE NO.
INTRODUCTION	
Study Description	I
Data Collection and Sample	II
ICPSR Processing Information	II
Weighting Information	III
File Structure	III
Codebook Information	IV
VARIABLE DESCRIPTION LIST	VI
CODEBOOK	1
GLOSSARY	92
FREQUENCY ADDENDUM	102

STUDY DESCRIPTION

The 1979 Criminal Justice Expenditure and Employment Data are part of an annual survey series conducted under the requirements of the Omnibus Crime Control and Safe Streets Act of 1968. The data were collected by the U.S. Bureau of the Census for the Bureau of Justice Statistics.

The data included in the present study concern criminal justice employment and expenditures for all states, counties, and certain municipal governments. Specific variables include: full- and part-time employees and payroll; expenditures for current operations, capital outlay, and contributions to employee benefits; and intergovernmental expenditures paid to state and local governments. Figures are presented for the following sectors of the criminal justice system: police protection, judicial, legal services and prosecution, public defense, corrections, and other criminal justice services.

The survey design for this study included the collection of data for all American states and counties, and from municipalities having a 1970 population of 10,000 or more. In addition, a sample of the remaining cities and municipalities under 10,000 in population was selected in accordance with the relative size of their annual expenditures in criminal justice. Data for 1979 include records for 50 states and Puerto Rico, 2,861 counties, 6,005 cities, and 1,825 townships, for a total of 10,742 records.

The state expenditure data cover the fiscal year which ends June 30 for all states except three, whose fiscal years end as follows: New York, March 31; Texas, August 31; and Alabama, September 30. Included in the state totals is information from some state agencies which operate on a fiscal year different from the state government under which it is organized. Figures for such agencies are those from the fiscal year which terminated within the state's regular year. For local governments, the fiscal year reported is that which closed between July 1, 1978 and June 30, 1979. Data on the number of employees is reported for the pay period which included October 15, 1978 and includes personnel on payroll for the month of October, 1978.

DATA COLLECTION AND SAMPLE

The surveys were accomplished using two methods of data collection: field compilation and mail canvass. Field representatives compiled expenditure and employment data for the 50 states, cities with a population of 50,000 or more, counties with a population of 100,000 or more, 11 townships in the state of New York, and for selected smaller units from the government's own records. Other government units in the sample were canvassed by mail over a five-month period, January through May, 1978. Response for field-completed units was 100%, and response for mail canvass units was approximately 91%. The field survey efforts and mail canvass were supplemented by reference to a variety of published government documents, such as budget and audit reports. In some instances, such sources were the basis for the breakdown of totals into more detailed expenditure and employment figures. The sample of municipal governments was designed to produce an estimate for each state of the ratio of state to local government expenditures.

The Bureau of Justice Statistics (formerly the Law Enforcement Assistance Administration) has sponsored ten years of expenditure-employment data, 1970 through 1979. The data for fiscal years 1971-1979 are comparable; the data were collected, edited, and processed in a uniform way. Due to significant changes in survey procedures, 1970 data are not directly comparable with data for 1971-1979.

PROCESSING

The archive file consists of three physical files stored on magnetic tape: a machine-readable user's guide which documents the data for the human user, an Osiris type 1 dictionary file which describes the data to a computer program, and a data file.

A unit in this dataset is a state, county, city, or municipal government. Each unit is identified and sorted on the following variables: a state reference code, a level-of-government identifier, a county code, and a city or municipal reference number. The states are coded according to the Government's Division Code; counties and cities are coded alphabetically within their respective states.

WEIGHTING INFORMATION

The weight variable is a multiplicative variable which represents the probability of selection for each level of government within each state. This weight has been adjusted for non-response to the survey. For example, the estimate of total expenditure for a level of government within a state is arrived at by multiplying each of the case's expenditure by its weight and summing within the level and state.

FILE STRUCTURE

The Expenditure and Employment Data for the Criminal Justice System: 1979 are available from the ICPSR in two formats: a card image file and an OSIRIS dataset. The card image file contains several decks per case in a format based on 80 column punched cards. The data are sorted by facility with all decks for a case together in ascending order.

The OSIRIS dictionary gives the format and other information for each variable in the OSIRIS data file. The dictionary or dictionary-codebook file is used in conjunction with the OSIRIS software package. The OSIRIS data file is constructed with a single logical record for each case. There are 280 variables on 10,742 cases.

The OSIRIS data file can be accessed directly through software packages or programs which do not use the OSIRIS dictionary by specifying the tape locations of the desired variables. These tape locations are given in the OSIRIS dictionary-codebook.

CODEBOOK INFORMATION

The example below is a reproduction of information appearing in the machine-readable codebook for a typical variable. The numbers in brackets do not appear but are references to the descriptions which follow this example.

[1] VAR 0002 [2] TYPE [3] NO MISSING DATA CODES
[1] REF 0002 [4] LOC 3 WIDTH 1 [5] DK 1 COL 16

[6] LEVEL OF GOVERNMENT

[7]-----

[8]	[9]
0.	State
1.	County
2.	City
3.	Township

- [1] Indicates the variable and reference numbers. A variable and reference number are assigned to each item in the study. In this codebook which documents the archived dataset these numbers are identical. Should the data be disseminated in a different structure, new variable numbers may be assigned or created. The reference number would remain unchanged and correspond to those in this codebook.
- [2] Indicates the abbreviated (24 character maximum) variable label used within OSIRIS to identify each variable. An expanded version can be found in the Variable Description List.
- [3] Indicates the designation of missing data. In this example, as throughout the study, no codes were assigned.

- [4] Indicates the sequential location and width of this variable within the record when the data are stored on magnetic tape. In this example the variable named "Level of Government" is 1 column wide and located in the 3rd position within the record.
- [5] Indicates the location by deck and column(s) of this variable when the data are stored on cards or in card image format.
- [6] Indicates the full text of the variable description supplied by the original collector of the data. The numbers and letters that may appear at the beginning are question numbers from the survey forms.
- [7] Indicates an additional comment or explanation appended to the variable description.
- [8] Indicates the code values occurring in the data for this variable.
- [9] Indicates the textual definitions of the codes.

VARIABLE DESCRIPTION LIST

EXPENDITURE AND EMPLOYMENT DATA
FOR THE CRIMINAL JUSTICE SYSTEM: 1979IDENTIFICATION VARIABLES

1. ICPSR Study Number - 7618
2. ICPSR Part Number - 9
3. ICPSR Version Number - 2
4. Sequential ID Number
5. 1977 Population Estimate

FIPS CODES

6. Sample SMSA
7. FIPS State/Country Codes
8. FIPS SMSA

POLICE PROTECTION, 1977

9. Full-Time Equivalent, 1977
10. Current Expenditure, 1977
11. Full-Time Payroll, 1977
12. Full-Time Employees, 1977

WEIGHT, FISCAL YEAR, SMSA, PLACEMENT, UNIT ID VARIABLES

13. Weight, 1979
14. Name of Government Unit, 1979
15. Fiscal Year, 1979
16. SMSA (Standard Metropolitan Statistical Area), 1979
17. Placement, 1979
18. Field Unit, 1979
19. State Number, 1979
20. Level of Government, 1979
21. County Code, 1979
22. Unit Code, 1979

POLICE PROTECTION

23. Full-Time Employees, 1979
24. Full-Time Payroll, 1979

25. Part-Time Employees, 1979
26. Part-Time Payroll, 1979
27. Current Operations, 1979
28. Capital Outlay, 1979
29. Equipment Expenditure, 1979
30. Construction Expenditure, 1979
31. Land Expenditure, 1979
32. Intergovernmental Expenditure Paid to Local Government, 1979
33. Intergovernmental Expenditure Paid to State Government, 1979
34. Contributions to Employee Benefits, 1979

SWORN POLICE PERSONNEL

35. Full-Time Employees, 1979
36. Full-Time Payroll, 1979
37. Part-Time Employees, 1979
38. Part-Time Payroll, 1979

NON-SWORN POLICE PERSONNEL

39. Full-Time Employees, 1979
40. Full-Time Payroll, 1979
41. Part-Time Employees, 1979
42. Part-Time Payroll, 1979

JUDICIAL

43. Full-Time Employees, 1979
44. Full-Time Payroll, 1979
45. Part-Time Employees, 1979
46. Part-Time Payroll, 1979
47. Current Operations, 1979
48. Capital Outlay, 1979
49. Equipment Expenditure, 1979
50. Construction Expenditure, 1979
51. Land Expenditure, 1979
52. Intergovernmental Expenditure Paid to Local Government, 1979
53. Intergovernmental Expenditure Paid to State Government, 1979
54. Contributions to Employee Benefits, 1979

VIII

JUDICIAL: APPELLATE COURT TOTAL

- 55. Full-Time Employees, 1979
- 56. Full-Time Payroll, 1979
- 57. Part-Time Employees, 1979
- 58. Part-Time Payroll, 1979
- 59. Current Operations, 1979
- 60. Capital Outlay, 1979
- 61. Equipment Expenditure, 1979
- 62. Construction Expenditure, 1979
- 63. Land Expenditure, 1979
- 64. Intergovernmental Expenditure Paid to Local Government, 1979
- 65. Intergovernmental Expenditure Paid to State Government, 1979
- 66. Contributions to Employee Benefits, 1979

JUDICIAL: COURTS OF LAST RESORT

- 67. Full-Time Employees, 1979
- 68. Full-Time Payroll, 1979
- 69. Part-Time Employees, 1979
- 70. Part-Time Payroll, 1979
- 71. Current Operations, 1979

JUDICIAL: INTERMEDIATE APPELLATE COURTS

- 72. Full-Time Employees, 1979
- 73. Full-Time Payroll, 1979
- 74. Part-Time Employees, 1979
- 75. Part-Time Payroll, 1979
- 76. Current Operations, 1979

JUDICIAL: COURTS OF GENERAL JURISDICTION

- 77. Full-Time Employees, 1979
- 78. Full-Time Payroll, 1979
- 79. Part-Time Employees, 1979
- 80. Part-Time Payroll, 1979
- 81. Current Operations, 1979
- 82. Capital Outlay, 1979
- 83. Equipment Expenditure, 1979

IX

- 84. Construction Expenditure, 1979
- 85. Land Expenditure, 1979
- 86. Intergovernmental Expenditure Paid to Local Government, 1979
- 87. Intergovernmental Expenditure Paid to State Government, 1979
- 88. Contributions to Employee Benefits, 1979

JUDICIAL: COURTS OF LIMITED JURISDICTION

- 89. Full-Time Employees, 1979
- 90. Full-Time Payroll, 1979
- 91. Part-Time Employees, 1979
- 92. Part-Time Payroll, 1979
- 93. Current Operations, 1979
- 94. Capital Outlay, 1979
- 95. Equipment Expenditure, 1979
- 96. Construction Expenditure, 1979
- 97. Land Expenditure, 1979
- 98. Intergovernmental Expenditure Paid to Local Government, 1979
- 99. Intergovernmental Expenditure Paid to State Government, 1979
- 100. Contributions to Employee Benefits, 1979

JUDICIAL: MISCELLANEOUS

- 101. Full-Time Employees, 1979
- 102. Full-Time Payroll, 1979
- 103. Part-Time Employees, 1979
- 104. Part-Time Payroll, 1979
- 105. Current Operations, 1979
- 106. Capital Outlay, 1979
- 107. Equipment Expenditure, 1979
- 108. Construction Expenditure, 1979
- 109. Land Expenditure, 1979
- 110. Intergovernmental Expenditure Paid to Local Government, 1979
- 111. Intergovernmental Expenditure Paid to State Government, 1979
- 112. Contributions to Employee Benefits, 1979

LEGAL SERVICES AND PROSECUTION

- 113. Full-Time Employees, 1979
- 114. Full-Time Payroll, 1979
- 115. Part-Time Employees, 1979
- 116. Part-Time Payroll, 1979

- 117. Current Operations, 1979
- 118. Capital Outlay, 1979
- 119. Equipment Expenditure, 1979
- 120. Construction Expenditure, 1979
- 121. Land Expenditure, 1979
- 122. Intergovernmental Expenditure Paid to Local Government, 1979
- 123. Intergovernmental Expenditure Paid to State Government, 1979
- 124. Contributions to Employee Benefits, 1979

PUBLIC DEFENSE

- 125. Full-Time Employees, 1979
- 126. Full-Time Payroll, 1979
- 127. Part-Time Employees, 1979
- 128. Part-Time Payroll, 1979
- 129. Current Operations, 1979
- 130. Capital Outlay, 1979
- 131. Equipment Expenditure, 1979
- 132. Construction Expenditure, 1979
- 133. Land Expenditure, 1979
- 134. Intergovernmental Expenditure Paid to Local Government, 1979
- 135. Intergovernmental Expenditure Paid to State Government, 1979
- 136. Contributions to Employee Benefits, 1979

CORRECTIONS: TOTAL

- 137. Full-Time Employees, 1979
- 138. Full-Time Employees, 1979
- 139. Part-Time Employees, 1979
- 140. Part-Time Payroll, 1979
- 141. Current Operations, 1979
- 142. Capital Outlay, 1979
- 143. Equipment Expenditure, 1979
- 144. Construction Expenditure, 1979
- 145. Land Expenditure, 1979
- 146. Intergovernmental Expenditure Paid to Local Government, 1979
- 147. Intergovernmental Expenditure Paid to State Government, 1979
- 148. Contributions to Employee Benefits, 1979

CORRECTIONS: INSTITUTIONS

- 149. Full-Time Employees, 1979
- 150. Full-Time Payroll, 1979

- 151. Part-Time Employees, 1979
- 152. Part-Time Payroll, 1979
- 153. Current Operations, 1979
- 154. Capital Outlay, 1979
- 155. Equipment Expenditure, 1979
- 156. Construction Expenditure, 1979
- 157. Land Expenditure, 1979
- 158. Intergovernmental Expenditure Paid to Local Government, 1979
- 159. Intergovernmental Expenditure Paid to State Government, 1979
- 160. Contributions to Employee Benefits, 1979

CORRECTIONS: INSTITUTIONS FOR MEN

- 161. Full-Time Employees, 1979
- 162. Full-Time Payroll, 1979
- 163. Part-Time Employees, 1979
- 164. Part-Time Payroll, 1979
- 165. Current Operations, 1979

CORRECTIONS: INSTITUTIONS FOR WOMEN

- 166. Full-Time Employees, 1979
- 167. Full-Time Payroll, 1979
- 168. Part-Time Employees, 1979
- 169. Part-Time Payroll, 1979
- 170. Current Operations, 1979

CORRECTIONS: INSTITUTIONS FOR JUVENILES

- 171. Full-Time Employees, 1979
- 172. Full-Time Payroll, 1979
- 173. Part-Time Employees, 1979
- 174. Part-Time Payroll, 1979
- 175. Current Operations, 1979

CORRECTIONS: OTHER AND COMBINED INSTITUTIONS

- 176. Full-Time Employees, 1979
- 177. Full-Time Payroll, 1979

XII

- 178. Part-Time Employees, 1979
- 179. Part-Time Payroll, 1979
- 180. Current Operations, 1979

CORRECTIONS: PROBATION, PARDON AND PAROLE

- 181. Full-Time Employees, 1979
- 182. Full-Time Payroll, 1979
- 183. Part-Time Employees, 1979
- 184. Part-Time Payroll, 1979
- 185. Current Operations, 1979
- 186. Capital Outlay, 1979
- 187. Equipment Expenditure, 1979
- 188. Construction Expenditure, 1979
- 189. Land Expenditure, 1979
- 190. Intergovernmental Expenditure Paid to Local Government, 1979
- 191. Intergovernmental Expenditure Paid to State Government, 1979
- 192. Contributions to Employee Benefits, 1979

CORRECTIONS: ADMINISTRATION AND MISCELLANEOUS

- 193. Full-Time Employees, 1979
- 194. Full-Time Payroll, 1979
- 195. Part-Time Employees, 1979
- 196. Part-Time Payroll, 1979
- 197. Current Operations, 1979
- 198. Capital Outlay, 1979
- 199. Equipment Expenditure, 1979
- 200. Construction Expenditure, 1979
- 201. Land Expenditure, 1979
- 202. Intergovernmental Expenditure Paid to Local Government, 1979
- 203. Intergovernmental Expenditure Paid to State Government, 1979
- 204. Contributions to Employee Benefits, 1979

CORRECTIONS: GENERAL ADMINISTRATION

- 205. Full-Time Employees, 1979
- 206. Full-Time Payroll, 1979
- 207. Part-Time Employees, 1979

XIII

- 208. Part-Time Payroll, 1979
- 209. Current Operations, 1979
- 210. Capital Outlay, 1979
- 211. Equipment Expenditure, 1979
- 212. Construction Expenditure, 1979
- 213. Land Expenditure, 1979
- 214. Intergovernmental Expenditure Paid to Local Government, 1979
- 215. Intergovernmental Expenditure Paid to State Government, 1979
- 216. Contributions to Employee Benefits, 1979

CORRECTIONS: MISCELLANEOUS

- 217. Full-Time Employees, 1979
- 218. Full-Time Payroll, 1979
- 219. Part-Time Employees, 1979
- 220. Part-Time Payroll, 1979
- 221. Current Operations, 1979
- 222. Capital Outlay, 1979
- 223. Equipment Expenditure, 1979
- 224. Construction Expenditure, 1979
- 225. Land Expenditure, 1979
- 226. Intergovernmental Expenditure Paid to Local Government, 1979
- 227. Intergovernmental Expenditure Paid to State Government, 1979
- 228. Contributions to Employee Benefits, 1979

OTHER CRIMINAL JUSTICE

- 229. Full-Time Employees, 1979
- 230. Full-Time Payroll, 1979
- 231. Part-Time Employees, 1979
- 232. Part-Time Payroll, 1979
- 233. Current Operations, 1979
- 234. Capital Outlay, 1979
- 235. Equipment Expenditure, 1979
- 236. Construction Expenditure, 1979
- 237. Land Expenditure, 1979
- 238. Intergovernmental Expenditure Paid to Local Government, 1979

XIV

239. Intergovernmental Expenditure Paid
to State Government, 1979
240. Contributions to Employee Benefits, 1979

GENERAL DIRECT REVENUE FROM FEDERAL GOVERNMENT

241. Federal General Revenue Sharing
and Anti-Recession Funds, 1979
242. CETA Revenue and Other Federal Manpower
Funds, 1979
243. Other Federal General Direct Revenue, 1979
244. Total Federal General Direct Revenue, 1979

"DEDICATED" REVENUE FROM FEDERAL GOVERNMENT

245. LEAA Discretionary Grants, 1979
246. Reimbursements From Federal Government, 1979
247. Other "Dedicated" Federal Revenue, 1979
248. Total "Dedicated" Federal Revenue, 1979

STATE REVENUE

249. LEAA Revenue from State Government, 1979
250. Other Federal Criminal Justice Revenue
from State Government, 1979
251. State Criminal Justice Funding, 1979
252. Reimbursements from State for Criminal
Justice Services Rendered, 1979
253. Other State Criminal Justice Revenue, 1979
254. Total State Criminal Justice Revenue, 1979

LOCAL REVENUE

255. Reimbursements from Local Governments
for Criminal Justice Services Rendered, 1979
256. Other Local Criminal Justice Revenue, 1979
257. Total Local Criminal Justice Revenue, 1979

XV

FULL-TIME EQUIVALENTS

258. Police Protection, 1979
259. Sworn Police Personnel, 1979
260. Non-Sworn Police Personnel, 1979
261. Judicial, 1979
262. Appellate Court, 1979
263. Courts of Last Resort, 1979
264. Intermediate Appellate Courts, 1979
265. Courts of General Jurisdiction, 1979
266. Courts of Limited Jurisdiction, 1979
267. Judicial: Miscellaneous, 1979
268. Legal Services and Prosecution, 1979
269. Public Defense, 1979
270. Corrections: Total, 1979
271. Corrections: Institutions, 1979
272. Corrections: Institutions for Men, 1979
273. Corrections: Institutions for Women, 1979
274. Corrections: Institutions for Juveniles,
1979
275. Corrections: Other and Combined Institutions,
1979
276. Corrections: Probation, Pardon and Parole,
1979
277. Corrections: Administration and Miscellaneous,
1979
278. Corrections: General Administration, 1979
279. Corrections: Miscellaneous, 1979
280. Other Criminal Justice, 1979

DECK IDENTIFICATION NUMBER IS '01'

DK 1 COL 1- 2

VAR 0001 STUDY NUMBER NO MISSING DATA CODES
REF 0001 LOC 1 WIDTH 4 DK 1 COL 3- 6

ICPSR Study Number

7618 - The ICPSR has attached this number as a study identification number.

VAR 0002 PART NUMBER NO MISSING DATA CODES
REF 0002 LOC 5 WIDTH 1 DK 1 COL 7

Part Number -- 9

The entire dataset for the Expenditure and Employment for the Criminal Justice System annual files, 1971-1979 is contained in nine parts, one part for each year.

VAR 0003 VERSION NUMBER NO MISSING DATA CODES
REF 0003 LOC 6 WIDTH 1 DK 1 COL 8

Version Number -- 2

This is the 2nd version of the Expenditure and Employment for the Criminal Justice System, 1979.

VAR 0004 SEQUENCE NUMBER NO MISSING DATA CODES
REF 0004 LOC 7 WIDTH 5 DK 1 COL 9-13

VAR 0005 1977 POPULATION ESTIMATE MD=-1
 REF 0005 LOC 12 WIDTH 8 DK 1 COL 14-21

1977 Population Estimate

VAR 0006 SAMPLE SMSA MD=0
 REF 0006 LOC 20 WIDTH 8 DK 1 COL 22-29

Sample SMSA (Standard Metropolitan Statistical Area) Code

VAR 0007 FIPS STATE/COUNTY CODES MD=0
 REF 0007 LOC 28 WIDTH 8 DK 1 COL 30-37

FIPS State/County Code

VAR 0008 FIPS SMSA MD=0
 REF 0008 LOC 36 WIDTH 8 DK 1 COL 38-45

FIPS SMSA (Standard Metropolitan Statistical Area)

VAR 0009 POLICE FULL-TIME EQ 1977 MD=-1
 REF 0009 LOC 44 WIDTH 8 DK 1 COL 46-53

Police Protection, Full-Time Equivalent, 1977

VAR 0010 POLICE CURRENT EXP 1977 MD=-1
 REF 0010 LOC 52 WIDTH 8 DK 1 COL 54-61

Police Protection, Current Expenditure, 1977

VAR 0011 POLI FULL-TIME PAY 1977 MD=-1
 REF 0011 LOC 60 WIDTH 8 DK 1 COL 62-69

Police Protection, Full-Time Payroll, 1977

VAR 0012 POLI FULL-TIME EMP 1977 MD=-1
 REF 0012 LOC 68 WIDTH 8 DK 1 COL 70-77

Police Protection, Full-Time Employees, 1977

DECK IDENTIFICATION NUMBER IS '02' DK 2 COL 1- 2

VAR 0001 STUDY NUMBER NO MISSING DATA CODES
 REF 0001 LOC 1 WIDTH 4 DK 2 COL 3- 6

ICPSR Study Number

7618 - The ICPSR has attached this number as a study identification number.

VAR 0002 PART NUMBER NO MISSING DATA CODES
 REF 0002 LOC 5 WIDTH 1 DK 2 COL 7

Part Number -- 9

The entire dataset for the Expenditure and Employment for the Criminal Justice System annual files, 1971-1979 is contained in nine parts, one part for each year.

VAR 0003 VERSION NUMBER NO MISSING DATA CODES
 REF 0003 LOC 6 WIDTH 1 DK 2 COL 8

Version Number -- 2

.....
 This is the 2nd version of the Expenditure and Employment
 for the Criminal Justice System, 1979.

VAR 0004 SEQUENCE NUMBER NO MISSING DATA CODES
 REF 0004 LOC 7 WIDTH 5 DK 2 COL 9-13

VAR 0013 WEIGHT MD=0
 REF 0013 LOC 76 WIDTH 8 DK 2 COL 14-21

Weight

VAR 0014 UNIT NAME NO MISSING DATA CODES
 REF 0014 LOC 84 WIDTH 10 DK 2 COL 22-31

Government Unit Name

VAR 0015 YEAR CODE NO MISSING DATA CODES
 REF 0015 LOC 94 WIDTH 2 DK 2 COL 32-33

Fiscal Year

79. 1979

VAR 0016 SMSA NO MISSING DATA CODES
 REF 0016 LOC 96 WIDTH 10 DK 2 COL 34-43

SMSA (Standard Metropolitan Statistical Area)

.....
 VAR 0017 PLACEMENT NO MISSING DATA CODES
 REF 0017 LOC 106 WIDTH 10 DK 2 COL 44-53

Placement

VAR 0018 FIELD UNIT NO MISSING DATA CODES
 REF 0018 LOC 116 WIDTH 10 DK 2 COL 54-63

Field Unit

VAR 0019 STATE NUMBER NO MISSING DATA CODES
 REF 0019 LOC 126 WIDTH 10 DK 2 COL 64-73

State Number

Government Division Code

- 01. Alabama
- 02. Alaska
- 03. Arizona
- 04. Arkansas
- 05. California
- 06. Colorado
- 07. Connecticut
- 08. Delaware
- 09. District of Columbia
- 10. Florida
- 11. Georgia
- 12. Hawaii
- 13. Idaho
- 14. Illinois

(CONTINUED)

- 15. Indiana
- 16. Iowa
- 17. Kansas
- 18. Kentucky
- 19. Louisiana
- 20. Maine
- 21. Maryland
- 22. Massachusetts
- 23. Michigan
- 24. Minnesota
- 25. Mississippi
- 26. Missouri
- 27. Montana
- 28. Nebraska
- 29. Nevada
- 30. New Hampshire
- 31. New Jersey
- 32. New Mexico
- 33. New York
- 34. North Carolina
- 35. North Dakota
- 36. Ohio
- 37. Oklahoma
- 38. Oregon
- 39. Pennsylvania
- 40. Rhode Island
- 41. South Carolina
- 42. South Dakota
- 43. Tennessee
- 44. Texas
- 45. Utah
- 46. Vermont
- 47. Virginia
- 48. Washington
- 49. West Virginia
- 50. Wisconsin
- 51. Wyoming
- 52. Puerto Rico

DECK IDENTIFICATION NUMBER IS '03'

DK 3 COL 1- 2

.....

VAR 0001	STUDY NUMBER	NO MISSING DATA CODES
REF 0001	LOC 1 WIDTH 4	DK 3 COL 3- 6

ICPSR Study Number

(CONTINUED)

7618 - The ICPSR has attached this number as a study identification number.

.....

VAR 0002	PART NUMBER	NO MISSING DATA CODES
REF 0002	LOC 5 WIDTH 1	DK 3 COL 7

Part Number -- 9

The entire dataset for the Expenditure and Employment for the Criminal Justice System annual files, 1971-1979 is contained in nine parts, one part for each year.

.....

VAR 0003	VERSION NUMBER	NO MISSING DATA CODES
REF 0003	LOC 6 WIDTH 1	DK 3 COL 8

Version Number -- 2

This is the 2nd version of the Expenditure and Employment for the Criminal Justice System, 1979.

.....

VAR 0004	SEQUENCE NUMBER	NO MISSING DATA CODES
REF 0004	LOC 7 WIDTH 5	DK 3 COL 9-13

.....

VAR 0020	LEVEL OF GOVERNMENT	NO MISSING DATA CODES
REF 0020	LOC 136 WIDTH 9	DK 3 COL 14-22

Level of Government

Government Unit Code

- 0. State
- 1. County
- 2. City
- 3. Township

VAR 0021 COUNTY CODE NO MISSING DATA CODES
 REF 0021 LOC 145 WIDTH 9 DK 3 COL 23-31

County Code

Government Unit Code
 Counties are assigned code values according to their alphabetical sequence within the state. If the record is a state record, both the County Code and the Unit Code are equal to zero. If it is a county record, then the County Code is supplied.

VAR 0022 UNIT CODE NO MISSING DATA CODES
 REF 0022 LOC 154 WIDTH 9 DK 3 COL 32-40

Unit Code

Government Unit Code
 If a city or township, the Unit Code is a unique number assigned within the county to a city or township. Level of government determines the contents of County Code and Unit Code number.

VAR 0023 POLICE FULL-TIME EMP MD=-1
 REF 0023 LOC 163 WIDTH 9 DK 3 COL 41-49

Police Protection, Full-Time Employees, 1979

VAR 0024 POLICE FULL-TIME PAY MD=-1
 REF 0024 LOC 172 WIDTH 10 DK 3 COL 50-59

Police Protection, Full-Time Payroll, 1979

VAR 0025 POLICE PART-TIME EMP MD=-1
 REF 0025 LOC 182 WIDTH 9 DK 3 COL 60-68

Police Protection, Part-Time Employees, 1979

VAR 0026 POLICE PART-TIME PAY MD=-1
 REF 0026 LOC 191 WIDTH 9 DK 3 COL 69-77

Police Protection, Part-Time Payroll, 1979

DECK IDENTIFICATION NUMBER IS '04' DK 4 COL 1- 2

VAR 0001 STUDY NUMBER NO MISSING DATA CODES
 REF 0001 LOC 1 WIDTH 4 DK 4 COL 3- 6

ICPSR Study Number

7618 - The ICPSR has attached this number as a study identification number.

VAR 0002 PART NUMBER NO MISSING DATA CODES
 REF 0002 LOC 5 WIDTH 1 DK 4 COL 7

Part Number -- 9

The entire dataset for the Expenditure and Employment for the Criminal Justice System annual files, 1971-1979 is contained in nine parts, one part for each year.

VAR 0003 VERSION NUMBER NO MISSING DATA CODES
 REF 0003 LOC 6 WIDTH 1 DK 4 COL 8

 Version Number -- 2

This is the 2nd version of the Expenditure and Employment
 for the Criminal Justice System, 1979.

VAR 0004 SEQUENCE NUMBER NO MISSING DATA CODES
 REF 0004 LOC 7 WIDTH 5 DK 4 COL 9-13

VAR 0027 POLICE CURRENT OPERAT MD=-1
 REF 0027 LOC 200 WIDTH 10 DK 4 COL 14-23

 Police Protection, Current Operations, 1979

VAR 0028 POLICE CAPITAL OUTLAY MD=-1
 REF 0028 LOC 210 WIDTH 9 DK 4 COL 24-32

 Police Protection, Capital Outlay, 1979

VAR 0029 POLICE EQUIPMENT EXP MD=-1
 REF 0029 LOC 219 WIDTH 9 DK 4 COL 33-41

 Police Protection, Equipment Expenditure, 1979

VAR 0030 POLICE CONSTRUCT EXP MD=-1
 REF 0030 LOC 228 WIDTH 9 DK 4 COL 42-50

 Police Protection, Construction Expenditure, 1979

VAR 0031 POLICE LAND EXP MD=-1
 REF 0031 LOC 237 WIDTH 9 DK 4 COL 51-59

 Police Protection, Land Expenditure, 1979

VAR 0032 POLICE PAY/LOCAL GOVT MD=-1
 REF 0032 LOC 246 WIDTH 9 DK 4 COL 60-68

 Police Protection, Intergovernmental Expenditure Paid to
 Local Government, 1979

VAR 0033 POLICE PAY/STATE GOVT MD=-1
 REF 0033 LOC 255 WIDTH 9 DK 4 COL 69-77

 Police Protection, Intergovernmental Expenditure Paid to
 State Government, 1979

DECK IDENTIFICATION NUMBER IS '05' DK 5 COL 1- 2

VAR 0001 STUDY NUMBER NO MISSING DATA CODES
 REF 0001 LOC 1 WIDTH 4 DK 5 COL 3- 6

 ICPSR Study Number

7618 - The ICPSR has attached this number as a study
 identification number.

VAR 0002 PART NUMBER NO MISSING DATA CODES
 REF 0002 LOC 5 WIDTH 1 DK 5 COL 7

 Part Number -- 9

(CONTINUED)

The entire dataset for the Expenditure and Employment for the Criminal Justice System annual files, 1971-1979 is contained in nine parts, one part for each year.

.....

VAR 0003	VERSION NUMBER	NO MISSING DATA CODES
REF 0003	LOC 6 WIDTH 1	DK 5 COL 8

Version Number -- 2

This is the 2nd version of the Expenditure and Employment for the Criminal Justice System, 1979.

.....

VAR 0004	SEQUENCE NUMBER	NO MISSING DATA CODES
REF 0004	LOC 7 WIDTH 5	DK 5 COL 9-13

.....

VAR 0034	POLICE CONTRIB TO EMP	MD=-1
REF 0034	LOC 264 WIDTH 9	DK 5 COL 14-22

Police Protection, Contributions to Employee Benefits, 1979

.....

VAR 0035	SW PER FULL-TIME EMP	MD=-1
REF 0035	LOC 273 WIDTH 9	DK 5 COL 23-31

Sworn Police Personnel, Full-Time Employees, 1979

.....

VAR 0036	SW PER FULL-TIME PAY	MD=-1
REF 0036	LOC 282 WIDTH 9	DK 5 COL 32-40

Sworn Police Personnel, Full-Time Payroll, 1979

VAR 0037	SW PER PART-TIME EMP	MD=-1
REF 0037	LOC 291 WIDTH 9	DK 5 COL 41-49

Sworn Police Personnel, Part-Time Employees, 1979

.....

VAR 0038	SW PER PART-TIME PAY	MD=-1
REF 0038	LOC 300 WIDTH 9	DK 5 COL 50-58

Sworn Police Personnel, Part-Time Payroll, 1979

.....

VAR 0039	NON-SW PER FULL-TIME EMP	MD=-1
REF 0039	LOC 309 WIDTH 9	DK 5 COL 59-67

Non-Sworn Police Personnel, Full-Time Employees, 1979

.....

VAR 0040	NON-SW PER FULL-TIME PAY	MD=-1
REF 0040	LOC 318 WIDTH 9	DK 5 COL 68-76

Non-Sworn Police Personnel, Full-Time Payroll, 1979

DECK IDENTIFICATION NUMBER IS '06' DK 6 COL 1- 2

.....

VAR 0001	STUDY NUMBER	NO MISSING DATA CODES
REF 0001	LOC 1 WIDTH 4	DK 6 COL 3- 6

ICPSR Study Number

7618 - The ICPSR has attached this number as a study identification number.

VAR 0002 PART NUMBER NO MISSING DATA CODES
REF 0002 LOC 5 WIDTH 1 DK 6 COL 7

Part Number -- 9

The entire dataset for the Expenditure and Employment for the Criminal Justice System annual files, 1971-1979 is contained in nine parts, one part for each year.

VAR 0003 VERSION NUMBER NO MISSING DATA CODES
REF 0003 LOC 6 WIDTH 1 DK 6 COL 8

Version Number -- 2

This is the 2nd version of the Expenditure and Employment for the Criminal Justice System, 1979.

VAR 0004 SEQUENCE NUMBER NO MISSING DATA CODES
REF 0004 LOC 7 WIDTH 5 DK 6 COL 9-13

VAR 0041 NON-SW PER PART-TIME EMP MD=-1
REF 0041 LOC 327 WIDTH 9 DK 6 COL 14-22

Non-Sworn Police Personnel, Part-Time Employees, 1979

VAR 0042 NON-SW PER PART-TIME PAY MD=-1
REF 0042 LOC 336 WIDTH 9 DK 6 COL 23-31

Non-Sworn Police Personnel, Part-Time Payroll, 1979

VAR 0043 JUDICIAL FULL-TIME EMP MD=-1
REF 0043 LOC 345 WIDTH 9 DK 6 COL 32-40

Judicial, Full-Time Employees, 1979

VAR 0044 JUDICIAL FULL-TIME PAY MD=-1
REF 0044 LOC 354 WIDTH 9 DK 6 COL 41-49

Judicial, Full-Time Payroll, 1979

VAR 0045 JUDICIAL PART-TIME EMP MD=-1
REF 0045 LOC 363 WIDTH 9 DK 6 COL 50-58

Judicial, Part-Time Employees, 1979

VAR 0046 JUDICIAL PART-TIME PAY MD=-1
REF 0046 LOC 372 WIDTH 9 DK 6 COL 59-67

Judicial, Part-Time Payroll, 1979

VAR 0047 JUDICIAL CURRENT OPERAT MD=-1
REF 0047 LOC 381 WIDTH 9 DK 6 COL 68-76

Judicial, Current Operations, 1979

DECK IDENTIFICATION NUMBER IS '07' DK 7 COL 1- 2

VAR 0001 STUDY NUMBER NO MISSING DATA CODES
 REF 0001 LOC 1 WIDTH 4 DK 7 COL 3- 6

ICPSR Study Number

7618 - The ICPSR has attached this number as a study identification number.

VAR 0002 PART NUMBER NO MISSING DATA CODES
 REF 0002 LOC 5 WIDTH 1 DK 7 COL 7

Part Number -- 9

The entire dataset for the Expenditure and Employment for the Criminal Justice System annual files, 1971-1979 is contained in nine parts, one part for each year.

VAR 0003 VERSION NUMBER NO MISSING DATA CODES
 REF 0003 LOC 6 WIDTH 1 DK 7 COL 8

Version Number -- 2

This is the 2nd version of the Expenditure and Employment for the Criminal Justice System, 1979.

VAR 0004 SEQUENCE NUMBER NO MISSING DATA CODES
 REF 0004 LOC 7 WIDTH 5 DK 7 COL 9-13

VAR 0048 JUDICIAL CAPITAL OUTLAY MD=-1
 REF 0048 LOC 390 WIDTH 9 DK 7 COL 14-22

Judicial, Capital Outlay, 1979

VAR 0049 JUDICIAL EQUIPMENT EXP MD=-1
 REF 0049 LOC 399 WIDTH 9 DK 7 COL 23-31

Judicial, Equipment Expenditure, 1979

VAR 0050 JUDICIAL CONSTRUCT EXP MD=-1
 REF 0050 LOC 408 WIDTH 9 DK 7 COL 32-40

Judicial, Construction Expenditure, 1979

VAR 0051 JUDICIAL LAND EXP MD=-1
 REF 0051 LOC 417 WIDTH 9 DK 7 COL 41-49

Judicial, Land Expenditure, 1979

VAR 0052 JUDICIAL PAY/LOCAL GOVT MD=-1
 REF 0052 LOC 426 WIDTH 9 DK 7 COL 50-58

Judicial, Intergovernmental Expenditure Paid to Local Government, 1979

VAR 0053 JUDICIAL PAY/STATE GOVT MD=-1
 REF 0053 LOC 435 WIDTH 9 DK 7 COL 59-67

Judicial, Intergovernmental Expenditure Paid to State Government, 1979

VAR 0054 JUDICIAL CONTRIB TO EMP MD=-1
 REF 0054 LOC 444 WIDTH 9 DK 7 COL 68-76

Judicial, Contributions to Employee Benefits, 1979

DECK IDENTIFICATION NUMBER IS '08' DK 8 COL 1- 2

VAR 0001 STUDY NUMBER NO MISSING DATA CODES
 REF 0001 LOC 1 WIDTH 4 DK 8 COL 3- 6

ICPSR Study Number

7618 - The ICPSR has attached this number as a study identification number.

VAR 0002 PART NUMBER NO MISSING DATA CODES
 REF 0002 LOC 5 WIDTH 1 DK 8 COL 7

Part Number -- 9

The entire dataset for the Expenditure and Employment for the Criminal Justice System annual files, 1971-1979 is contained in nine parts, one part for each year.

VAR 0003 VERSION NUMBER NO MISSING DATA CODES
 REF 0003 LOC 6 WIDTH 1 DK 8 COL 8

Version Number -- 2

This is the 2nd version of the Expenditure and Employment for the Criminal Justice System, 1979.

VAR 0004 SEQUENCE NUMBER NO MISSING DATA CODES
 REF 0004 LOC 7 WIDTH 5 DK 8 COL 9-13

VAR 0055 APPELLATE FULL-TIME EMP MD=-1
 REF 0055 LOC 453 WIDTH 9 DK 8 COL 14-22

Judicial: Appellate Court Total, Full-Time Employees, 1979

VAR 0056 APPELLATE FULL-TIME PAY MD=-1
 REF 0056 LOC 462 WIDTH 9 DK 8 COL 23-31

Judicial: Appellate Court Total, Full-Time Payroll, 1979

VAR 0057 APPELLATE PART-TIME EMP MD=-1
 REF 0057 LOC 471 WIDTH 9 DK 8 COL 32-40

Judicial: Appellate Court Total, Part-Time Employees, 1979

VAR 0058 APPELLATE PART-TIME PAY MD=-1
 REF 0058 LOC 480 WIDTH 9 DK 8 COL 41-49

Judicial: Appellate Court Total, Part-Time Payroll, 1979

VAR 0059 APPELLATE CURRENT OPERAT MD=-1
 REF 0059 LOC 489 WIDTH 9 DK 8 COL 50-58

Judicial: Appellate Court Total, Current Operations, 1979

VAR 0060 APPELLATE CAPITAL OUTLAY MD=-1
REF 0060 LOC 498 WIDTH 9 DK 8 COL 59-67

Judicial: Appellate Court Total, Capital Outlay, 1979

VAR 0061 APPELLATE EQUIPMENT EXP MD=-1
REF 0061 LOC 507 WIDTH 9 DK 8 COL 68-76

Judicial: Appellate Court Total, Equipment Expenditure, 1979

DECK IDENTIFICATION NUMBER IS '09' DK 9 COL 1- 2

VAR 0001 STUDY NUMBER NO MISSING DATA CODES
REF 0001 LOC 1 WIDTH 4 DK 9 COL 3- 6

ICPSR Study Number

7618 - The ICPSR has attached this number as a study identification number.

VAR 0002 PART NUMBER NO MISSING DATA CODES
REF 0002 LOC 5 WIDTH 1 DK 9 COL 7

Part Number -- 9

The entire dataset for the Expenditure and Employment for the Criminal Justice System annual files, 1971-1979 is contained in nine parts, one part for each year.

VAR 0003 VERSION NUMBER NO MISSING DATA CODES
REF 0003 LOC 6 WIDTH 1 DK 9 COL 8

Version Number -- 2

This is the 2nd version of the Expenditure and Employment for the Criminal Justice System, 1979.

VAR 0004 SEQUENCE NUMBER NO MISSING DATA CODES
REF 0004 LOC 7 WIDTH 5 DK 9 COL 9-13

VAR 0062 APPELLATE CONSTRUCT EXP MD=-1
REF 0062 LOC 516 WIDTH 9 DK 9 COL 14-22

Judicial: Appellate Court Total, Construction Expenditure, 1979

VAR 0063 APPELLATE LAND EXP MD=-1
REF 0063 LOC 525 WIDTH 9 DK 9 COL 23-31

Judicial: Appellate Court, Land Expenditure, 1979

VAR 0064 APPELLATE PAY/LOCAL GOVT MD=-1
REF 0064 LOC 534 WIDTH 9 DK 9 COL 32-40

Judicial: Appellate Court, Intergovernmental Expenditure Paid To Local Government, 1979

VAR 0065 APPELLATE PAY/STATE GOVT MD=-1
 REF 0065 LOC 543 WIDTH 9 DK 9 COL 41-49

Judicial: Appellate Court, Intergovernmental Expenditure
 Paid to State Government, 1979

VAR 0066 APPELLATE CONTRIB TO EMP MD=-1
 REF 0066 LOC 552 WIDTH 9 DK 9 COL 50-58

Judicial: Appellate Court, Contributions to Employee
 Benefits, 1979

VAR 0067 LAST RESORT F-T EMP MD=-1
 REF 0067 LOC 561 WIDTH 9 DK 9 COL 59-67

Judicial: Courts of Last Resort, Full-Time Employees, 1979

VAR 0068 LAST RESORT F-T PAY MD=-1
 REF 0068 LOC 570 WIDTH 9 DK 9 COL 68-76

Judicial: Courts of Last Resort, Full-Time Payroll, 1979

DECK IDENTIFICATION NUMBER IS '10' DK 10 COL 1- 2

VAR 0001 STUDY NUMBER NO MISSING DATA CODES
 REF 0001 LOC 1 WIDTH 4 DK 10 COL 3- 6

ICPSR Study Number

7618 - The ICPSR has attached this number as a study
 identification number.

VAR 0002 PART NUMBER NO MISSING DATA CODES
 REF 0002 LOC 5 WIDTH 1 DK 10 COL 7

Part Number -- 9

The entire dataset for the Expenditure and Employment for
 the Criminal Justice System annual files, 1971-1979 is
 contained in nine parts, one part for each year.

VAR 0003 VERSION NUMBER NO MISSING DATA CODES
 REF 0003 LOC 6 WIDTH 1 DK 10 COL 8

Version Number -- 2

This is the 2nd version of the Expenditure and Employment
 for the Criminal Justice System, 1979.

VAR 0004 SEQUENCE NUMBER NO MISSING DATA CODES
 REF 0004 LOC 7 WIDTH 5 DK 10 COL 9-13

VAR 0069 LAST RESORT P-T EMP MD=-1
 REF 0069 LOC 579 WIDTH 9 DK 10 COL 14-22

Judicial: Courts of Last Resort, Part-Time Employees, 1979

VAR 0070 LAST RESORT P-T PAY MD=-1
 REF 0070 LOC 588 WIDTH 9 DK 10 COL 23-31

Judicial: Courts of Last Resort, Part-Time Payroll, 1979

VAR 0071 LAST RESORT CURRENT OPER MD=-1
 REF 0071 LOC 597 WIDTH 9 DK 10 COL 32-40

Judicial: Courts of Last Resort, Current Operations, 1979

VAR 0072 INTERMED FULL-TIME EMP MD=-1
 REF 0072 LOC 606 WIDTH 9 DK 10 COL 41-49

Judicial: Intermediate Appellate Courts, Full-Time
 Employees, 1979

VAR 0073 INTERMED FULL-TIME PAY MD=-1
 REF 0073 LOC 615 WIDTH 9 DK 10 COL 50-58

Judicial: Intermediate Appellate Courts, Full-Time Payroll,
 1979

VAR 0074 INTERMED PART-TIME EMP MD=-1
 REF 0074 LOC 624 WIDTH 9 DK 10 COL 59-67

Judicial: Intermediate Appellate Courts, Part-Time
 Employees, 1979

VAR 0075 INTERMED PART-TIME PAY MD=-1
 REF 0075 LOC 633 WIDTH 9 DK 10 COL 68-76

Judicial: Intermediate Appellate Courts, Part-Time Payroll,
 1979

DECK IDENTIFICATION NUMBER IS '11' DK 11 COL 1- 2

VAR 0001 STUDY NUMBER NO MISSING DATA CODES
 REF 0001 LOC 1 WIDTH 4 DK 11 COL 3- 6

ICPSR Study Number

7618 - The ICPSR has attached this number as a study
 identification number.

VAR 0002 PART NUMBER NO MISSING DATA CODES
 REF 0002 LOC 5 WIDTH 1 DK 11 COL 7

Part Number -- 9

The entire dataset for the Expenditure and Employment for
 the Criminal Justice System annual files, 1971-1979 is
 contained in nine parts, one part for each year.

VAR 0003 VERSION NUMBER NO MISSING DATA CODES
 REF 0003 LOC 6 WIDTH 1 DK 11 COL 8

Version Number -- 2

This is the 2nd version of the Expenditure and Employment
 for the Criminal Justice System, 1979.

VAR 0004 SEQUENCE NUMBER NO MISSING DATA CODES
 REF 0004 LOC 7 WIDTH 5 DK 11 COL 9-13

VAR 0076 INTERMED CURRENT OPERAT MD=-1
 REF 0076 LOC 642 WIDTH 9 DK 11 COL 14-22

Judicial: Intermediate Appellate Courts, Current
 Operations, 1979

VAR 0077 GEN JURIS FULL-TIME EMP MD=-1
REF 0077 LOC 651 WIDTH 9 DK 11 COL 23-31

Judicial: Courts of General Jurisdiction, Full-Time
Employees, 1979

VAR 0078 GEN JURIS FULL-TIME PAY MD=-1
REF 0078 LOC 660 WIDTH 9 DK 11 COL 32-40

Judicial: Courts of General Jurisdiction, Full-Time
Payroll, 1979

VAR 0079 GEN JURIS PART-TIME EMP MD=-1
REF 0079 LOC 669 WIDTH 9 DK 11 COL 41-49

Judicial: Courts of General Jurisdiction, Part-Time
Employees, 1979

VAR 0080 GEN JURIS PART-TIME PAY MD=-1
REF 0080 LOC 678 WIDTH 9 DK 11 COL 50-58

Judicial: Courts of General Jurisdiction, Part-Time
Payroll, 1979

VAR 0081 GEN JURIS CURRENT OPER MD=-1
REF 0081 LOC 687 WIDTH 9 DK 11 COL 59-67

Judicial: Courts of General Jurisdiction, Current
Operations, 1979

VAR 0082 GEN JURIS CAPITAL OUTLAY MD=-1
REF 0082 LOC 696 WIDTH 9 DK 11 COL 68-76

Judicial: Courts of General Jurisdiction, Capital Outlay,
1979

DECK IDENTIFICATION NUMBER IS '12' DK 12 COL 1- 2

VAR 0001 STUDY NUMBER NO MISSING DATA CODES
REF 0001 LOC 1 WIDTH 4 DK 12 COL 3- 6

ICPSR Study Number

7618 - The ICPSR has attached this number as a study
identification number.

VAR 0002 PART NUMBER NO MISSING DATA CODES
REF 0002 LOC 5 WIDTH 1 DK 12 COL 7

Part Number -- 9

The entire dataset for the Expenditure and Employment for
the Criminal Justice System annual files, 1971-1979 is
contained in nine parts, one part for each year.

VAR 0003 VERSION NUMBER NO MISSING DATA CODES
REF 0003 LOC 6 WIDTH 1 DK 12 COL 8

Version Number -- 2

This is the 2nd version of the Expenditure and Employment
for the Criminal Justice System, 1979.

VAR 0004 SEQUENCE NUMBER NO MISSING DATA CODES
 REF 0004 LOC 7 WIDTH 5 DK 12 COL 9-13

VAR 0083 GEN JURIS EQUIPMENT EXP MD=-1
 REF 0083 LOC 705 WIDTH 9 DK 12 COL 14-22

Judicial: Courts of General Jurisdiction, Equipment
 Expenditure, 1979

VAR 0084 GEN JURIS CONSTRUCT EXP MD=-1
 REF 0084 LOC 714 WIDTH 9 DK 12 COL 23-31

Judicial: Courts of General Jurisdiction, Construction
 Expenditure, 1979

VAR 0085 GEN JURIS LAND EXP MD=-1
 REF 0085 LOC 723 WIDTH 9 DK 12 COL 32-40

Judicial: Courts of General Jurisdiction, Land Expenditure,
 1979

VAR 0086 GEN JURIS PAY/LOCAL GOVT MD=-1
 REF 0086 LOC 732 WIDTH 9 DK 12 COL 41-49

Judicial: Courts of General Jurisdiction, Intergovernmental
 Expenditure Paid to Local Government, 1979

VAR 0087 GEN JURIS PAY/STATE GOVT MD=-1
 REF 0087 LOC 741 WIDTH 9 DK 12 COL 50-58

Judicial: Courts of General Jurisdiction, Intergovernmental
 Expenditure Paid to State Government, 1979

VAR 0088 GEN JURIS CONTRIB TO EMP MD=-1
 REF 0088 LOC 750 WIDTH 9 DK 12 COL 59-67

Judicial: Courts of General Jurisdiction, Contributions to
 Employee Benefits, 1979

VAR 0089 LMTD JURIS FULL-TIME EMP MD=-1
 REF 0089 LOC 759 WIDTH 9 DK 12 COL 68-76

Judicial: Courts of Limited Jurisdiction, Full-Time
 Employees, 1979

DECK IDENTIFICATION NUMBER IS '13' DK 13 COL 1- 2

VAR 0001 STUDY NUMBER NO MISSING DATA CODES
 REF 0001 LOC 1 WIDTH 4 DK 13 COL 3- 6

ICPSR Study Number

7618 - The ICPSR has attached this number as a study
 identification number.

VAR 0002 PART NUMBER NO MISSING DATA CODES
 REF 0002 LOC 5 WIDTH 1 DK 13 COL 7

Part Number -- 9

(CONTINUED)

The entire dataset for the Expenditure and Employment for the Criminal Justice System annual files, 1971-1979 is contained in nine parts, one part for each year.

VAR 0003 VERSION NUMBER NO MISSING DATA CODES
REF 0003 LOC 6 WIDTH 1 DK 13 COL 8

Version Number -- 2

This is the 2nd version of the Expenditure and Employment for the Criminal Justice System, 1979.

VAR 0004 SEQUENCE NUMBER NO MISSING DATA CODES
REF 0004 LOC 7 WIDTH 5 DK 13 COL 9-13

VAR 0090 LMTD JURIS FULL-TIME PAY MD=-1
REF 0090 LOC 768 WIDTH 9 DK 13 COL 14-22

Judicial: Courts of Limited Jurisdiction, Full-Time Payroll, 1979

VAR 0091 LMTD JURIS PART-TIME EMP MD=-1
REF 0091 LOC 777 WIDTH 9 DK 13 COL 23-31

Judicial: Courts of Limited Jurisdiction, Part-Time Employees, 1979

VAR 0092 LMTD JURIS PART-TIME PAY MD=-1
REF 0092 LOC 786 WIDTH 9 DK 13 COL 32-40

Judicial: Courts of Limited Jurisdiction, Part-Time

(CONTINUED)

Payroll, 1979

VAR 0093 LMTD JURIS CURRENT OPER MD=-1
REF 0093 LOC 795 WIDTH 9 DK 13 COL 41-49

Judicial: Courts of Limited Jurisdiction, Current Operations, 1979

VAR 0094 LMTD JURIS CAPITL OUTLAY MD=-1
REF 0094 LOC 804 WIDTH 9 DK 13 COL 50-58

Judicial: Courts of Limited Jurisdiction, Capital Outlay, 1979

VAR 0095 LMTD JURIS EQUIPMENT EXP MD=-1
REF 0095 LOC 813 WIDTH 9 DK 13 COL 59-67

Judicial: Courts of Limited Jurisdiction, Equipment Expenditure, 1979

VAR 0096 LMTD JURIS CONSTRUCT EXP MD=-1
REF 0096 LOC 822 WIDTH 9 DK 13 COL 68-76

Judicial: Courts of Limited Jurisdiction, Construction Expenditure, 1979

DECK IDENTIFICATION NUMBER IS '14' DK 14 COL 1- 2

VAR 0001 STUDY NUMBER NO MISSING DATA CODES
 REF 0001 LOC 1 WIDTH 4 DK 14 COL 3-6

ICPSR Study Number

7618 - The ICPSR has attached this number as a study identification number.

VAR 0002 PART NUMBER NO MISSING DATA CODES
 REF 0002 LOC 5 WIDTH 1 DK 14 COL 7

Part Number -- 9

The entire dataset for the Expenditure and Employment for the Criminal Justice System annual files, 1971-1979 is contained in nine parts, one part for each year.

VAR 0003 VERSION NUMBER NO MISSING DATA CODES
 REF 0003 LOC 6 WIDTH 1 DK 14 COL 8

Version Number -- 2

This is the 2nd version of the Expenditure and Employment for the Criminal Justice System, 1979.

VAR 0004 SEQUENCE NUMBER NO MISSING DATA CODES
 REF 0004 LOC 7 WIDTH 5 DK 14 COL 9-13

VAR 0097 LMTD JURIS LAND EXP MD=-1
 REF 0097 LOC 831 WIDTH 9 DK 14 COL 14-22

Judicial: Courts of Limited Jurisdiction, Land Expenditure, 1979

VAR 0098 LMTD JURIS PAY/LOCAL GOV MD=-1
 REF 0098 LOC 840 WIDTH 9 DK 14 COL 23-31

Judicial: Courts of Limited Jurisdiction, Intergovernmental Expenditure Paid to Local Government, 1979

VAR 0099 LMTD JURIS PAY/STATE GOV MD=-1
 REF 0099 LOC 849 WIDTH 9 DK 14 COL 32-40

Judicial: Courts of Limited Jurisdiction, Intergovernmental Expenditure Paid to State Government, 1979

VAR 0100 LMTD JURIS CONTRI TO EMP MD=-1
 REF 0100 LOC 858 WIDTH 9 DK 14 COL 41-49

Judicial: Courts of Limited Jurisdiction, Contributions to Employee Benefits, 1979

VAR 0101 MISC JUDIC FULL-TIME EMP MD=-1
 REF 0101 LOC 867 WIDTH 9 DK 14 COL 50-58

Judicial: Miscellaneous, Full-Time Employees, 1979

VAR 0102 MISC JUDIC FULL-TIME PAY MD=-1
 REF 0102 LOC 876 WIDTH 9 DK 14 COL 59-67

Judicial: Miscellaneous, Full-Time Payroll, 1979

VAR 0103 MISC JUDIC PART-TIME EMP MD=-1
 REF 0103 LOC 885 WIDTH 9 DK 14 COL 68-76

Judicial: Miscellaneous, Part-Time Employees, 1979

DECK IDENTIFICATION NUMBER IS '15' DK 15 COL 1- 2

VAR 0001 STUDY NUMBER NO MISSING DATA CODES
 REF 0001 LOC 1 WIDTH 4 DK 15 COL 3- 6

ICPSR Study Number

7618 - The ICPSR has attached this number as a study identification number.

VAR 0002 PART NUMBER NO MISSING DATA CODES
 REF 0002 LOC 5 WIDTH 1 DK 15 COL 7

Part Number -- 9

The entire dataset for the Expenditure and Employment for the Criminal Justice System annual files, 1971-1979 is contained in nine parts, one part for each year.

VAR 0003 VERSION NUMBER NO MISSING DATA CODES
 REF 0003 LOC 6 WIDTH 1 DK 15 COL 8

Version Number -- 2

This is the 2nd version of the Expenditure and Employment for the Criminal Justice System, 1979.

VAR 0004 SEQUENCE NUMBER NO MISSING DATA CODES
 REF 0004 LOC 7 WIDTH 5 DK 15 COL 9-13

VAR 0104 MISC JUDIC PART-TIME PAY MD=-1
 REF 0104 LOC 894 WIDTH 9 DK 15 COL 14-22

Judicial: Miscellaneous, Part-Time Payroll, 1979

VAR 0105 MISC JUDIC CURRENT OPER MD=-1
 REF 0105 LOC 903 WIDTH 9 DK 15 COL 23-31

Judicial: Miscellaneous, Current Operations, 1979

VAR 0106 MISC JUDIC CAPITL OUTLAY MD=-1
 REF 0106 LOC 912 WIDTH 9 DK 15 COL 32-40

Judicial: Miscellaneous, Capital Outlay, 1979

VAR 0107 MISC JUDIC EQUIPMENT EXP MD=-1
 REF 0107 LOC 921 WIDTH 9 DK 15 COL 41-49

Judicial: Miscellaneous, Equipment Expenditure, 1979

VAR 0108 MISC JUDIC CONSTRUCT EXP MD=-1
 REF 0108 LOC 930 WIDTH 9 DK 15 COL 50-58

Judicial: Miscellaneous, Construction Expenditure, 1979

VAR 0109 MISC JUDIC LAND EXP MD=-1
 REF 0109 LOC 939 WIDTH 9 DK 15 COL 59-67

Judicial: Miscellaneous, Land Expenditure, 1979

VAR 0110 MISC JUDI PAY/LOCAL GOVT MD=-1
 REF 0110 LOC 948 WIDTH 9 DK 15 COL 68-76

Judicial: Miscellaneous, Intergovernmental Expenditure Paid to Local Government, 1979

DECK IDENTIFICATION NUMBER IS '16' DK 16 COL 1- 2

VAR 0001 STUDY NUMBER NO MISSING DATA CODES
 REF 0001 LOC 1 WIDTH 4 DK 16 COL 3- 6

ICPSR Study Number

7618 - The ICPSR has attached this number as a study identification number.

VAR 0002 PART NUMBER NO MISSING DATA CODES
 REF 0002 LOC 5 WIDTH 1 DK 16 COL 7

Part Number -- 9

The entire dataset for the Expenditure and Employment for the Criminal Justice System annual files, 1971-1979 is contained in nine parts, one part for each year.

VAR 0003 VERSION NUMBER NO MISSING DATA CODES
 REF 0003 LOC 6 WIDTH 1 DK 16 COL 8

Version Number -- 2

This is the 2nd version of the Expenditure and Employment for the Criminal Justice System, 1979.

VAR 0004 SEQUENCE NUMBER NO MISSING DATA CODES
 REF 0004 LOC 7 WIDTH 5 DK 16 COL 9-13

VAR 0111 MISC JUDI PAY/STATE GOVT MD=-1
 REF 0111 LOC 957 WIDTH 9 DK 16 COL 14-22

Judicial: Miscellaneous, Intergovernmental Expenditure Paid to State Government, 1979

VAR 0112 MISC JUDIC CONTRI TO EMP MD=-1
 REF 0112 LOC 966 WIDTH 9 DK 16 COL 23-31

Judicial: Miscellaneous, Contributions to Employee Benefits, 1979

VAR 0113 PROSECUTN FULL-TIME EMP MD=-1
 REF 0113 LOC 975 WIDTH 9 DK 16 COL 32-40

Legal Services and Prosecution, Full-Time Employees, 1979

VAR 0114 PROSECUTN FULL-TIME PAY MD=-1
 REF 0114 LOC 984 WIDTH 9 DK 16 COL 41-49

Legal Services and Prosecution, Full-Time Payroll, 1979

VAR 0115 PROSECUTN PART-TIME EMP MD=-1
 REF 0115 LOC 993 WIDTH 9 DK 16 COL 50-58

Legal Services and Prosecution, Part-Time Employees, 1979

VAR 0116 PROSECUTN PART-TIME PAY MD=-1
 REF 0116 LOC 1002 WIDTH 9 DK 16 COL 59-67

Legal Services and Prosecution, Part-Time Payroll, 1979

VAR 0117 PROSECUTN CURRENT OPERAT MD=-1
 REF 0117 LOC 1011 WIDTH 9 DK 16 COL 68-76

Legal Services and Prosecution, Current Operations, 1979

DECK IDENTIFICATION NUMBER IS '17' DK 17 COL 1- 2

VAR 0001 STUDY NUMBER NO MISSING DATA CODES
 REF 0001 LOC 1 WIDTH 4 DK 17 COL 3- 6

ICPSR Study Number

7618 - The ICPSR has attached this number as a study identification number.

VAR 0002 PART NUMBER NO MISSING DATA CODES
 REF 0002 LOC 5 WIDTH 1 DK 17 COL 7

Part Number -- 9

The entire dataset for the Expenditure and Employment for the Criminal Justice System annual files, 1971-1979 is contained in nine parts, one part for each year.

VAR 0003 VERSION NUMBER NO MISSING DATA CODES
 REF 0003 LOC 6 WIDTH 1 DK 17 COL 8

Version Number -- 2

This is the 2nd version of the Expenditure and Employment for the Criminal Justice System, 1979.

VAR 0004 SEQUENCE NUMBER NO MISSING DATA CODES
 REF 0004 LOC 7 WIDTH 5 DK 17 COL 9-13

VAR 0118 PROSECUTN CAPITAL OUTLAY MD=-1
 REF 0118 LOC 1020 WIDTH 9 DK 17 COL 14-22

Legal Services and Prosecution, Capital Outlay, 1979

VAR 0119 PROSECUTN EQUIPMENT EXP MD=-1
 REF 0119 LOC 1029 WIDTH 9 DK 17 COL 23-31

Legal Services and Prosecution, Equipment Expenditure, 1979

VAR 0120 PROSECUTN CONSTRUCT EXP MD=-1
 REF 0120 LOC 1038 WIDTH 9 DK 17 COL 32-40

Legal Services and Prosecution, Construction Expenditure,
 1979

VAR 0121 PROSECUTN LAND EXP MD=-1
 REF 0121 LOC 1047 WIDTH 9 DK 17 COL 41-49

Legal Services and Prosecution, Land Expenditure, 1979

VAR 0122 PROSECUTN PAY/LOCAL GOVT MD=-1
 REF 0122 LOC 1056 WIDTH 9 DK 17 COL 50-58

Legal Services and Prosecution, Intergovernmental
 Expenditure Paid to Local Government, 1979

VAR 0123 PROSECUTN PAY/STATE GOVT MD=-1
 REF 0123 LOC 1065 WIDTH 9 DK 17 COL 59-67

Legal Services and Prosecution, Intergovernmental
 Expenditure Paid to State Government, 1979

VAR 0124 PROSECUTN CONTRIB TO EMP MD=-1
 REF 0124 LOC 1074 WIDTH 9 DK 17 COL 68-76

Legal Services and Prosecution, Contributions to Employee
 Benefits, 1979

DECK IDENTIFICATION NUMBER IS '18' DK 18 COL 1- 2

VAR 0001 STUDY NUMBER NO MISSING DATA CODES
 REF 0001 LOC 1 WIDTH 4 DK 18 COL 3- 6

ICPSR Study Number

7618 - The ICPSR has attached this number as a study
 identification number.

VAR 0002 PART NUMBER NO MISSING DATA CODES
 REF 0002 LOC 5 WIDTH 1 DK 18 COL 7

Part Number -- 9

The entire dataset for the Expenditure and Employment for
 the Criminal Justice System annual files, 1971-1979 is
 contained in nine parts, one part for each year.

VAR 0003 VERSION NUMBER NO MISSING DATA CODES
 REF 0003 LOC 6 WIDTH 1 DK 18 COL 8

Version Number -- 2

This is the 2nd version of the Expenditure and Employment
 for the Criminal Justice System, 1979.

VAR 0004 SEQUENCE NUMBER NO MISSING DATA CODES
 REF 0004 LOC 7 WIDTH 5 DK 18 COL 9-13

VAR 0125 PUBL DEF FULL-TIME EMP MD=-1
 REF 0125 LOC 1083 WIDTH 9 DK 18 COL 14-22

Public Defense, Full-Time Employees, 1979

VAR 0126 PUBL DEF FULL-TIME PAY MD=-1
 REF 0126 LOC 1092 WIDTH 9 DK 18 COL 23-31

Public Defense, Full-Time Payroll, 1979

VAR 0127 PUBL DEF PART-TIME EMP MD=-1
 REF 0127 LOC 1101 WIDTH 9 DK 18 COL 32-40

Public Defense, Part-Time Employees, 1979

VAR 0128 PUBL DEF PART-TIME PAY MD=-1
 REF 0128 LOC 1110 WIDTH 9 DK 18 COL 41-49

Public Defense, Part-Time Payroll, 1979

VAR 0129 PUBL DEF CURRENT OPERAT MD=-1
 REF 0129 LOC 1119 WIDTH 9 DK 18 COL 50-58

Public Defense, Current Operations, 1979

VAR 0130 PUBL DEF CAPITAL OUTLAY MD=-1
 REF 0130 LOC 1128 WIDTH 9 DK 18 COL 59-67

Public Defense, Capital Outlay, 1979

VAR 0131 PUBL DEF EQUIPMENT EXP MD=-1
 REF 0131 LOC 1137 WIDTH 9 DK 18 COL 68-76

Public Defense, Equipment Expenditure, 1979

DECK IDENTIFICATION NUMBER IS '19'

DK 19 COL 1- 2

VAR 0001 STUDY NUMBER NO MISSING DATA CODES
 REF 0001 LOC 1 WIDTH 4 DK 19 COL 3- 6

ICPSR Study Number

7618 - The ICPSR has attached this number as a study
 identification number.

VAR 0002 PART NUMBER NO MISSING DATA CODES
 REF 0002 LOC 5 WIDTH 1 DK 19 COL 7

Part Number -- 9

The entire dataset for the Expenditure and Employment for
 the Criminal Justice System annual files, 1971-1979 is
 contained in nine parts, one part for each year.

VAR 0003 VERSION NUMBER NO MISSING DATA CODES
 REF 0003 LOC 6 WIDTH 1 DK 19 COL 8

Version Number -- 2

This is the 2nd version of the Expenditure and Employment
 for the Criminal Justice System, 1979.

VAR 0004 SEQUENCE NUMBER NO MISSING DATA CODES
 REF 0004 LOC 7 WIDTH 5 DK 19 COL 9-13

VAR 0132 PUBL DEF CONSTRUCT EXP MD=-1
 REF 0132 LOC 1146 WIDTH 9 DK 19 COL 14-22

Public Defense, Construction Expenditure, 1979

VAR 0133 PUBL DEF LAND EXP MD=-1
 REF 0133 LOC 1155 WIDTH 9 DK 19 COL 23-31

Public Defense, Land Expenditure, 1979

VAR 0134 PUBL DEF PAY/LOCAL GOVT MD=-1
 REF 0134 LOC 1164 WIDTH 9 DK 19 COL 32-40

Public Defense, Intergovernmental Expenditure Paid to Local Government, 1979

VAR 0135 PUBL DEF PAY/STATE GOVT MD=-1
 REF 0135 LOC 1173 WIDTH 9 DK 19 COL 41-49

Public Defense, Intergovernmental Expenditure Paid to State Government, 1979

VAR 0136 PUBL DEF CONTRIB TO EMP MD=-1
 REF 0136 LOC 1182 WIDTH 9 DK 19 COL 50-58

Public Defense, Contributions to Employee Benefits, 1979

VAR 0137 CORRECTNS FULL-TIME EMP MD=-1
 REF 0137 LOC 1191 WIDTH 9 DK 19 COL 59-67

Corrections: Total, Full-Time Employees, 1979

VAR 0138 CORRECTNS FULL-TIME PAY MD=-1
 REF 0138 LOC 1200 WIDTH 9 DK 19 COL 68-76

Corrections: Total, Full-Time Payroll, 1979

DECK IDENTIFICATION NUMBER IS '20' DK 20 COL 1- 2

VAR 0001 STUDY NUMBER NO MISSING DATA CODES
 REF 0001 LOC 1 WIDTH 4 DK 20 COL 3- 6

ICPSR Study Number

7618 - The ICPSR has attached this number as a study identification number.

VAR 0002 PART NUMBER NO MISSING DATA CODES
 REF 0002 LOC 5 WIDTH 1 DK 20 COL 7

Part Number -- 9

The entire dataset for the Expenditure and Employment for the Criminal Justice System annual files, 1971-1979 is contained in nine parts, one part for each year.

VAR 0003 VERSION NUMBER NO MISSING DATA CODES
REF 0003 LOC 6 WIDTH 1 DK 20 COL 8

Version Number -- 2

This is the 2nd version of the Expenditure and Employment
for the Criminal Justice System, 1979.

VAR 0004 SEQUENCE NUMBER NO MISSING DATA CODES
REF 0004 LOC 7 WIDTH 5 DK 20 COL 9-13

VAR 0139 CORRECTNS PART-TIME EMP MD=-1
REF 0139 LOC 1209 WIDTH 9 DK 20 COL 14-22

Corrections: Total, Part-Time Employees, 1979

VAR 0140 CORRECTNS PART-TIME PAY MD=-1
REF 0140 LOC 1218 WIDTH 9 DK 20 COL 23-31

Corrections: Total, Part-Time Payroll, 1979

VAR 0141 CORRECTNS CURRENT OPERAT MD=-1
REF 0141 LOC 1227 WIDTH 9 DK 20 COL 32-40

Corrections: Total, Current Operations, 1979

VAR 0142 CORRECTNS CAPITAL OUTLAY MD=-1
REF 0142 LOC 1236 WIDTH 9 DK 20 COL 41-49

Corrections: Total, Capital Outlay, 1979

VAR 0143 CORRECTNS EQUIPMENT EXP MD=-1
REF 0143 LOC 1245 WIDTH 9 DK 20 COL 50-58

Corrections: Total, Equipment Expenditure, 1979

VAR 0144 CORRECTNS CONSTRUCT EXP MD=-1
REF 0144 LOC 1254 WIDTH 9 DK 20 COL 59-67

Corrections: Total, Construction Expenditure, 1979

VAR 0145 CORRECTNS LAND EXP MD=-1
REF 0145 LOC 1263 WIDTH 9 DK 20 COL 68-76

Corrections: Total, Land Expenditure, 1979

DECK IDENTIFICATION NUMBER IS '21' DK 21 COL 1- 2

VAR 0001 STUDY NUMBER NO MISSING DATA CODES
REF 0001 LOC 1 WIDTH 4 DK 21 COL 3- 6

ICPSR Study Number

7618 - The ICPSR has attached this number as a study
identification number.

VAR 0002 PART NUMBER NO MISSING DATA CODES
REF 0002 LOC 5 WIDTH 1 DK 21 COL 7

Part Number -- 9

The entire dataset for the Expenditure and Employment for

(CONTINUED)

the Criminal Justice System annual files, 1971-1979 is contained in nine parts, one part for each year.

VAR 0003 VERSION NUMBER NO MISSING DATA CODES
REF 0003 LOC 6 WIDTH 1 DK 21 COL 8

Version Number -- 2

This is the 2nd version of the Expenditure and Employment for the Criminal Justice System, 1979.

VAR 0004 SEQUENCE NUMBER NO MISSING DATA CODES
REF 0004 LOC 7 WIDTH 5 DK 21 COL 9-13

VAR 0146 CORRECTNS PAY/LOCAL GOVT MD=-1
REF 0146 LOC 1272 WIDTH 9 DK 21 COL 14-22

Corrections: Total, Intergovernmental Expenditure Paid to Local Government, 1979

VAR 0147 CORRECTNS PAY/STATE GOVT MD=-1
REF 0147 LOC 1281 WIDTH 9 DK 21 COL 23-31

Corrections: Total, Intergovernmental Expenditure Paid to State Government, 1979

VAR 0148 CORRECTNS CONTRIB TO EMP MD=-1
REF 0148 LOC 1290 WIDTH 9 DK 21 COL 32-40

Corrections: Total, Contributions to Employee Benefits, 1979

VAR 0149 CORR INST FULL-TIME EMP MD=-1
REF 0149 LOC 1299 WIDTH 9 DK 21 COL 41-49

Corrections: Institutions, Full-Time Employees, 1979

VAR 0150 CORR INST FULL-TIME PAY MD=-1
REF 0150 LOC 1308 WIDTH 9 DK 21 COL 50-58

Corrections: Institutions, Full-Time Payroll, 1979

VAR 0151 CORR INST PART-TIME EMP MD=-1
REF 0151 LOC 1317 WIDTH 9 DK 21 COL 59-67

Corrections: Institutions, Part-Time Employees, 1979

VAR 0152 CORR INST PART-TIME PAY MD=-1
REF 0152 LOC 1326 WIDTH 9 DK 21 COL 68-76

Corrections: Institutions, Part-Time Payroll, 1979

DECK IDENTIFICATION NUMBER IS '22' DK 22 COL 1- 2

VAR 0001 STUDY NUMBER NO MISSING DATA CODES
REF 0001 LOC 1 WIDTH 4 DK 22 COL 3- 6

ICPSR Study Number

7618 - The ICPSR has attached this number as a study identification number.

VAR 0002 PART NUMBER NO MISSING DATA CODES
REF 0002 LOC 5 WIDTH 1 DK 22 COL 7

Part Number -- 9

The entire dataset for the Expenditure and Employment for the Criminal Justice System annual files, 1971-1979 is contained in nine parts, one part for each year.

VAR 0003 VERSION NUMBER NO MISSING DATA CODES
REF 0003 LOC 6 WIDTH 1 DK 22 COL 8

Version Number -- 2

This is the 2nd version of the Expenditure and Employment for the Criminal Justice System, 1979.

VAR 0004 SEQUENCE NUMBER NO MISSING DATA CODES
REF 0004 LOC 7 WIDTH 5 DK 22 COL 9-13

VAR 0153 CORR INST CURRENT OPERAT MD=-1
REF 0153 LOC 1335 WIDTH 9 DK 22 COL 14-22

Corrections: Institutions, Current Operations, 1979

VAR 0154 CORR INST CAPITAL OUTLAY MD=-1
REF 0154 LOC 1344 WIDTH 9 DK 22 COL 23-31

Corrections: Institutions, Capital Outlay, 1979

VAR 0155 CORR INST EQUIPMENT EXP MD=-1
REF 0155 LOC 1353 WIDTH 9 DK 22 COL 32-40

Corrections: Institutions, Equipment Expenditure, 1979

VAR 0156 CORR INST CONSTRUCT EXP MD=-1
REF 0156 LOC 1362 WIDTH 9 DK 22 COL 41-49

Corrections: Institutions, Construction Expenditure, 1979

VAR 0157 CORR INST LAND EXP MD=-1
REF 0157 LOC 1371 WIDTH 9 DK 22 COL 50-58

Corrections: Institutions, Land Expenditure, 1979

VAR 0158 CORR INST PAY/LOCAL GOVT MD=-1
REF 0158 LOC 1380 WIDTH 9 DK 22 COL 59-67

Corrections: Institutions, Intergovernmental Expenditure Paid to Local Government, 1979

VAR 0159 CORR INST PAY/STATE GOVT MD=-1
REF 0159 LOC 1389 WIDTH 9 DK 22 COL 68-76

Corrections: Institutions, Intergovernmental Expenditure Paid to State Government, 1979

DECK IDENTIFICATION NUMBER IS '23' DK 23 COL 1- 2

VAR 0001 STUDY NUMBER NO MISSING DATA CODES
RE. 0001 LOC 1 WIDTH 4 DK 23 COL 3-6

ICPSR Study Number

7618 - The ICPSR has attached this number as a study identification number.

VAR 0002 PART NUMBER NO MISSING DATA CODES
REF 0002 LOC 5 WIDTH 1 DK 23 COL 7

Part Number -- 9

The entire dataset for the Expenditure and Employment for the Criminal Justice System annual files, 1971-1979 is contained in nine parts, one part for each year.

VAR 0003 VERSION NUMBER NO MISSING DATA CODES
REF 0003 LOC 6 WIDTH 1 DK 23 COL 8

Version Number -- 2

This is the 2nd version of the Expenditure and Employment for the Criminal Justice System, 1979.

VAR 0004 SEQUENCE NUMBER NO MISSING DATA CODES
REF 0004 LOC 7 WIDTH 5 DK 23 COL 9-13

VAR 0160 CORR INST CONTRIB TO EMP MD=-1
REF 0160 LOC 1398 WIDTH 9 DK 23 COL 14-22

Corrections: Institutions, Contributions to Employee Benefits, 1979

VAR 0161 INST/M FULL-TIME EMP MD=-1
REF 0161 LOC 1407 WIDTH 9 DK 23 COL 23-31

Corrections: Institutions for Men, Full-Time Employees, 1979

VAR 0162 INST/M FULL-TIME PAY MD=-1
REF 0162 LOC 1416 WIDTH 9 DK 23 COL 32-40

Corrections: Institutions for Men, Full-Time Payroll, 1979

VAR 0163 INST/M PART-TIME EMP MD=-1
REF 0163 LOC 1425 WIDTH 9 DK 23 COL 41-49

Corrections: Institutions for Men, Part-Time Employees, 1979

VAR 0164 INST/M PART-TIME PAY MD=-1
REF 0164 LOC 1434 WIDTH 9 DK 23 COL 50-58

Corrections: Institutions for Men, Part-Time Payroll, 1979

VAR 0165 INST/M CURRENT OPERAT MD=-1
REF 0165 LOC 1443 WIDTH 9 DK 23 COL 59-67

Corrections: Institutions for Men, Current Operations, 1979

VAR 0166 INST/F FULL-TIME EMP MD=-1
REF 0166 LOC 1452 WIDTH 9 DK 23 COL 68-76

Corrections: Institutions for Women, Full-Time Employees,
1979

DECK IDENTIFICATION NUMBER IS '24' DK 24 COL 1- 2

.....
VAR 0001 STUDY NUMBER NO MISSING DATA CODES
REF 0001 LOC 1 WIDTH 4 DK 24 COL 3- 6

ICPSR Study Number

7618 - The ICPSR has attached this number as a study
identification number.

.....
VAR 0002 PART NUMBER NO MISSING DATA CODES
REF 0002 LOC 5 WIDTH 1 DK 24 COL 7

Part Number -- 9

The entire dataset for the Expenditure and Employment for
the Criminal Justice System annual files, 1971-1979 is
contained in nine parts, one part for each year.

.....
VAR 0003 VERSION NUMBER NO MISSING DATA CODES
REF 0003 LOC 6 WIDTH 1 DK 24 COL 8

Version Number -- 2

This is the 2nd version of the Expenditure and Employment
for the Criminal Justice System, 1979.

VAR 0004 SEQUENCE NUMBER
REF 0004 LOC 7 WIDTH 5 NO MISSING DATA CODES
DK 24 COL 9-13

.....
VAR 0167 INST/F FULL TIME PAY MD=-1
REF 0167 LOC 1461 WIDTH 9 DK 24 COL 14-22

Corrections: Institutions for Women, Full-Time Payroll,
1979

.....
VAR 0168 INST/F PART-TIME EMP MD=-1
REF 0168 LOC 1470 WIDTH 9 DK 24 COL 23-31

Corrections: Institutions for Women, Part-Time Employees,
1979

.....
VAR 0169 INST/F PART-TIME PAY MD=-1
REF 0169 LOC 1479 WIDTH 9 DK 24 COL 32-40

Corrections: Institutions for Women, Part-Time Payroll,
1979

.....
VAR 0170 INST/F CURRENT OPERAT MD=-1
REF 0170 LOC 1488 WIDTH 9 DK 24 COL 41-49

Corrections: Institutions for Women, Current Operations,
1979

VAR 0171 INST/JUV FULL-TIME EMP MD=-1
 REF 0171 LOC 1497 WIDTH 9 DK 24 COL 50-58

Corrections: Institutions for Juveniles, Full-Time
 Employees, 1979

VAR 0172 INST/JUV FULL-TIME PAY MD=-1
 REF 0172 LOC 1506 WIDTH 9 DK 24 COL 59-67

Corrections: Institutions for Juveniles, Full-Time Payroll,
 1979

VAR 0173 INST/JUV PART-TIME EMP MD=-1
 REF 0173 LOC 1515 WIDTH 9 DK 24 COL 68-76

Corrections: Institutions for Juveniles, Part-Time
 Employees, 1979

DECK IDENTIFICATION NUMBER IS '25' DK 25 COL 1- 2

VAR 0001 STUDY NUMBER NO MISSING DATA CODES
 REF 0001 LOC 1 WIDTH 4 DK 25 COL 3- 6

ICPSR Study Number

7618 - The ICPSR has attached this number as a study
 identification number.

VAR 0002 PART NUMBER NO MISSING DATA CODES
 REF 0002 LOC 5 WIDTH 1 DK 25 COL 7

Part Number -- 9

(CONTINUED)

The entire dataset for the Expenditure and Employment for
 the Criminal Justice System annual files, 1971-1979 is
 contained in nine parts, one part for each year.

VAR 0003 VERSION NUMBER NO MISSING DATA CODES
 REF 0003 LOC 6 WIDTH 1 DK 25 COL 8

Version Number -- 2

This is the 2nd version of the Expenditure and Employment
 for the Criminal Justice System, 1979.

VAR 0004 SEQUENCE NUMBER NO MISSING DATA CODES
 REF 0004 LOC 7 WIDTH 5 DK 25 COL 9-13

VAR 0174 INST/JUV PART-TIME PAY MD=-1
 REF 0174 LOC 1524 WIDTH 9 DK 25 COL 14-22

Corrections: Institutions for Juveniles, Part-Time Payroll,
 1979

VAR 0175 INST/JUV CURRENT OPERAT MD=-1
 REF 0175 LOC 1533 WIDTH 9 DK 25 COL 23-31

Corrections: Institutions for Juveniles, Current
 Operations, 1979

VAR 0176 INST/OTHER FULL-TIME EMP MD=-1
 REF 0176 LOC 1542 WIDTH 9 DK 25 COL 32-40

Corrections: Other and Combined Institutions, Full-Time

(CONTINUED)

Employees, 1979

.....

VAR 0177	INST/OTHER FULL-TIME PAY	MD=-1
REF 0177	LOC 1551 WIDTH 9	DK 25 COL 41-49

Corrections: Other and Combined Institutions, Full-Time Payroll, 1979

.....

VAR 0178	INST/OTHER PART-TIME EMP	MD=-1
REF 0178	LOC 1560 WIDTH 9	DK 25 COL 50-58

Corrections: Other and Combined Institutions, Part-Time Employees, 1979

.....

VAR 0179	INST/OTHER PART-TIME PAY	MD=-1
REF 0179	LOC 1569 WIDTH 9	DK 25 COL 59-67

Corrections: Other and Combined Institutions, Part-Time Payroll, 1979

.....

VAR 0180	INST/OTHER CURRENT OPER	MD=-1
REF 0180	LOC 1578 WIDTH 9	DK 25 COL 68-76

Corrections: Other and Combined Institutions, Current Operations, 1979

.....

DECK IDENTIFICATION NUMBER IS '26' DK 26 COL 1- 2

.....

VAR 0001	STUDY NUMBER	NO MISSING DATA CODES
REF 0001	LOC 1 WIDTH 4	DK 26 COL 3- 6

ICPSR Study Number

7618 - The ICPSR has attached this number as a study identification number.

.....

VAR 0002	PART NUMBER	NO MISSING DATA CODES
REF 0002	LOC 5 WIDTH 1	DK 26 COL 7

Part Number -- 9

The entire dataset for the Expenditure and Employment for the Criminal Justice System annual files, 1971-1979 is contained in nine parts, one part for each year.

.....

VAR 0003	VERSION NUMBER	NO MISSING DATA CODES
REF 0003	LOC 6 WIDTH 1	DK 26 COL 8

Version Number -- 2

This is the 2nd version of the Expenditure and Employment for the Criminal Justice System, 1979.

.....

VAR 0004	SEQUENCE NUMBER	NO MISSING DATA CODES
REF 0004	LOC 7 WIDTH 5	DK 26 COL 9-13

VAR 0181	CORR PROB FULL-TIME EMP	MD=-1
REF 0181	LOC 1587 WIDTH 9	DK 26 COL 14-22

Corrections: Probation, Pardon and Parole, Full-Time Employees, 1979

.....

VAR 0182 CORR PROB FULL-TIME PAY MD=-1
REF 0182 LOC 1596 WIDTH 9 DK 26 COL 23-31

Corrections: Probation, Pardon and Parole, Full-Time Payroll, 1979

VAR 0183 CORR PROB PART-TIME EMP MD=-1
REF 0183 LOC 1605 WIDTH 9 DK 26 COL 32-40

Corrections: Probation, Pardon and Parole, Part-Time Employees, 1979

VAR 0184 CORR PROB PART-TIME PAY MD=-1
REF 0184 LOC 1614 WIDTH 9 DK 26 COL 41-49

Corrections: Probation, Pardon and Parole, Part-Time Payroll, 1979

VAR 0185 CORR PROB CURRENT OPERAT MD=-1
REF 0185 LOC 1623 WIDTH 9 DK 26 COL 50-58

Corrections: Probation, Pardon and Parole, Current Operations, 1979

VAR 0186 CORR PROB CAPITAL OUTLAY MD=-1
REF 0186 LOC 1632 WIDTH 9 DK 26 COL 59-67

Corrections: Probation, Pardon and Parole, Capital Outlay, 1979

VAR 0187 CORR PROB EQUIPMENT EXP MD=-1
REF 0187 LOC 1641 WIDTH 9 DK 26 COL 68-76

Corrections: Probation, Pardon and Parole, Equipment Expenditure, 1979

DECK IDENTIFICATION NUMBER IS '27' DK 27 COL 1- 2

VAR 0001 STUDY NUMBER NO MISSING DATA CODES
REF 0001 LOC 1 WIDTH 4 DK 27 COL 3- 6

ICPSR Study Number

7618 - The ICPSR has attached this number as a study identification number.

VAR 0002 PART NUMBER NO MISSING DATA CODES
REF 0002 LOC 5 WIDTH 1 DK 27 COL 7

Part Number -- 9

The entire dataset for the Expenditure and Employment for the Criminal Justice System annual files, 1971-1979 is contained in nine parts, one part for each year.

VAR 0003 VERSION NUMBER NO MISSING DATA CODES
REF 0003 LOC 6 WIDTH 1 DK 27 COL 8

Version Number -- 2

This is the 2nd version of the Expenditure and Employment for the Criminal Justice System, 1979.

VAR 0004 SEQUENCE NUMBER NO MISSING DATA CODES
 REF 0004 LOC 7 WIDTH 5 DK 27 COL 9-13

VAR 0188 CORR PROB CONSTRUCT EXP MD=-1
 REF 0188 LOC 1650 WIDTH 9 DK 27 COL 14-22

Corrections: Probation, Pardon and Parole, Construction
 Expenditure, 1979

VAR 0189 CORR PROB LAND EXP MD=-1
 REF 0189 LOC 1659 WIDTH 9 DK 27 COL 23-31

Corrections: Probation, Pardon and Parole, Land
 Expenditure, 1979

VAR 0190 CORR PROB PAY/LOCAL GOVT MD=-1
 REF 0190 LOC 1668 WIDTH 9 DK 27 COL 32-40

Corrections: Probation, Pardon and Parole,
 Intergovernmental Expenditure Paid to Local Government, 1979

VAR 0191 CORR PROB PAY/STATE GOVT MD=-1
 REF 0191 LOC 1677 WIDTH 9 DK 27 COL 41-49

Corrections: Probation, Pardon and Parole,
 Intergovernmental Expenditure Paid to State Government, 1979

VAR 0192 CORR PROB CONTRIB TO EMP MD=-1
 REF 0192 LOC 1686 WIDTH 9 DK 27 COL 50-58

Corrections: Probation, Pardon and Parole, Contributions to
 Employee Benefits, 1979

VAR 0193 CORR AD&MI FULL-TIME EMP MD=-1
 REF 0193 LOC 1695 WIDTH 9 DK 27 COL 59-67

Corrections: Administration and Miscellaneous, Full-Time
 Employees, 1979

VAR 0194 CORR AD&MI FULL-TIME EMP MD=-1
 REF 0194 LOC 1704 WIDTH 9 DK 27 COL 68-76

Corrections: Administration and Miscellaneous, Full-Time
 Payroll, 1979

DECK IDENTIFICATION NUMBER IS '28' DK 28 COL 1- 2

VAR 0001 STUDY NUMBER NO MISSING DATA CODES
 REF 0001 LOC 1 WIDTH 4 DK 28 COL 3- 6

ICPSR Study Number

7618 - The ICPSR has attached this number as a study
 identification number.

VAR 0002 PART NUMBER NO MISSING DATA CODES
 REF 0002 LOC 5 WIDTH 1 DK 28 COL 7

Part Number -- 9

(CONTINUED)

The entire dataset for the Expenditure and Employment for the Criminal Justice System annual files, 1971-1979 is contained in nine parts, one part for each year.

VAR 0003 VERSION NUMBER NO MISSING DATA CODES
REF 0003 LOC 6 WIDTH 1 DK 28 COL 8

Version Number -- 2

This is the 2nd version of the Expenditure and Employment for the Criminal Justice System, 1979.

VAR 0004 SEQUENCE NUMBER NO MISSING DATA CODES
REF 0004 LOC 7 WIDTH 5 DK 28 COL 9-13

VAR 0195 CORR AD&MI PART-TIME EMP MD=-1
REF 0195 LOC 1713 WIDTH 9 DK 28 COL 14-22

Corrections: Administration and Miscellaneous, Part-Time Employees, 1979

VAR 0196 CORR AD&MI PART-TIME EMP MD=-1
REF 0196 LOC 1722 WIDTH 9 DK 28 COL 23-31

Corrections: Administration and Miscellaneous, Part-Time Payroll, 1979

VAR 0197 CORR AD&MI CURRENT OPER MD=-1
REF 0197 LOC 1731 WIDTH 9 DK 28 COL 32-40

Corrections: Administration and Miscellaneous, Current

(CONTINUED)

Operations, 1979

VAR 0198 COR AD&MI CAPITAL OUTLAY MD=-1
REF 0198 LOC 1740 WIDTH 9 DK 28 COL 41-49

Corrections: Administration and Miscellaneous, Capital Outlay, 1979

VAR 0199 CORR AD&MI EQUIPMENT EXP MD=-1
REF 0199 LOC 1749 WIDTH 9 DK 28 COL 50-58

Corrections: Administration and Miscellaneous, Equipment Expenditure, 1979

VAR 0200 CORR AD&MI CONSTRUCT EXP MD=-1
REF 0200 LOC 1758 WIDTH 9 DK 28 COL 59-67

Corrections: Administration and Miscellaneous, Construction Expenditure, 1979

VAR 0201 CORR AD&MI LAND EXP MD=-1
REF 0201 LOC 1767 WIDTH 9 DK 28 COL 68-76

Corrections: Administration and Miscellaneous, Land Expenditure, 1979

DECK IDENTIFICATION NUMBER IS '29' DK 29 COL 1- 2

VAR 0001 STUDY NUMBER NO MISSING DATA CODES
REF 0001 LOC 1 WIDTH 4 DK 29 COL 3-6

ICPSR Study Number

7618 - The ICPSR has attached this number as a study
identification number.

VAR 0002 PART NUMBER NO MISSING DATA CODES
REF 0002 LOC 5 WIDTH 1 DK 29 COL 7

Part Number -- 9

The entire dataset for the Expenditure and Employment for
the Criminal Justice System annual files, 1971-1979 is
contained in nine parts, one part for each year.

VAR 0003 VERSION NUMBER NO MISSING DATA CODES
REF 0003 LOC 6 WIDTH 1 DK 29 COL 8

Version Number -- 2

This is the 2nd version of the Expenditure and Employment
for the Criminal Justice System, 1979.

VAR 0004 SEQUENCE NUMBER NO MISSING DATA CODES
REF 0004 LOC 7 WIDTH 5 DK 29 COL 9-13

VAR 0202 COR AD&MI PAY/LOCAL GOVT MD=-1
REF 0202 LOC 1776 WIDTH 9 DK 29 COL 14-22

Corrections: Administration and Miscellaneous,
Intergovernmental Expenditure Paid to Local Government, 1979

VAR 0203 COR AD&MI PAY/STATE GOVT MD=-1
REF 0203 LOC 1785 WIDTH 9 DK 29 COL 23-31

Corrections: Administration and Miscellaneous,
Intergovernmental Expenditure Paid to State Government, 1979

VAR 0204 CORR AD&MI CONTRIB TO EM MD=-1
REF 0204 LOC 1794 WIDTH 9 DK 29 COL 32-40

Corrections: Administration and Miscellaneous,
Contributions to Employees Benefits, 1979

VAR 0205 CORR ADMIN FULL-TIME EMP MD=-1
REF 0205 LOC 1803 WIDTH 9 DK 29 COL 41-49

Corrections: General Administration, Full-Time Employees,
1979

VAR 0206 CORR ADMIN FULL-TIME PAY MD=-1
REF 0206 LOC 1812 WIDTH 9 DK 29 COL 50-58

Corrections: General Administration, Full-Time Payroll,
1979

VAR 0207 CORR ADMIN PART-TIME EMP MD=-1
REF 0207 LOC 1821 WIDTH 9 DK 29 COL 59-67

Corrections: General Administration, Part-Time Employees,
1979

VAR 0208 CORR ADMIN PART-TIME PAY MD=-1
 REF 0208 LOC 1830 WIDTH 9 DK 29 COL 68-76

Corrections: General Administration, Part-Time Payroll,
 1979

 DECK IDENTIFICATION NUMBER IS '30' DK 30 COL 1- 2

.....
 VAR 0001 STUDY NUMBER NO MISSING DATA CODES
 REF 0001 LOC 1 WIDTH 4 DK 30 COL 3- 6

ICPSR Study Number

 7618 - The ICPSR has attached this number as a study
 identification number.

.....
 VAR 0002 PART NUMBER NO MISSING DATA CODES
 REF 0002 LOC 5 WIDTH 1 DK 30 COL 7

Part Number -- 9

 The entire dataset for the Expenditure and Employment for
 the Criminal Justice System annual files, 1971-1979 is
 contained in nine parts, one part for each year.

.....
 VAR 0003 VERSION NUMBER NO MISSING DATA CODES
 REF 0003 LOC 6 WIDTH 1 DK 30 COL 8

Version Number -- 2

 This is the 2nd version of the Expenditure and Employment
 for the Criminal Justice System, 1979.

VAR 0004 SEQUENCE NUMBER NO MISSING DATA CODES
 REF 0004 LOC 7 WIDTH 5 DK 30 COL 9-13

.....
 VAR 0209 CORR ADMIN CURRENT OPERA MD=-1
 REF 0209 LOC 1839 WIDTH 9 DK 30 COL 14-22

Corrections: General Administration, Current Operations,
 1979

.....
 VAR 0210 COR ADMIN CAPITAL OUTLAY MD=-1
 REF 0210 LOC 1848 WIDTH 9 DK 30 COL 23-31

Corrections: General Administration, Capital Outlay, 1979

.....
 VAR 0211 CORR ADMIN EQUIPMENT EXP MD=-1
 REF 0211 LOC 1857 WIDTH 9 DK 30 COL 32-40

Corrections: General Administration, Equipment Expenditure,
 1979

.....
 VAR 0212 CORR ADMIN CONSTRUCT EXP MD=-1
 REF 0212 LOC 1866 WIDTH 9 DK 30 COL 41-49

Corrections: General Administration, Construction
 Expenditure, 1979

.....
 VAR 0213 CORR ADMIN LAND EXP MD=-1
 REF 0213 LOC 1875 WIDTH 9 DK 30 COL 50-58

Corrections: General Administration, Land Expenditure, 1979

VAR 0214 COR ADMIN PAY/LOCAL GOVT MD=-1
REF 0214 LOC 1884 WIDTH 9 DK 30 COL 59-67

Corrections: General Administration, Intergovernmental
Expenditure Paid to Local Government, 1979

VAR 0215 COR ADMIN PAY/STATE GOVT MD=-1
REF 0215 LOC 1893 WIDTH 9 DK 30 COL 68-76

Corrections: General Administration, Intergovernmental
Expenditure Paid to State Government, 1979

DECK IDENTIFICATION NUMBER IS '31' DK 31 COL 1- 2

VAR 0001 STUDY NUMBER NO MISSING DATA CODES
REF 0001 LOC 1 WIDTH 4 DK 31 COL 3- 6

ICPSR Study Number

7618 - The ICPSR has attached this number as a study
identification number.

VAR 0002 PART NUMBER NO MISSING DATA CODES
REF 0002 LOC 5 WIDTH 1 DK 31 COL 7

Part Number -- 9

The entire dataset for the Expenditure and Employment for
the Criminal Justice System annual files, 1971-1979 is
contained in nine parts, one part for each year.

VAR 0003 VERSION NUMBER NO MISSING DATA CODES
REF 0003 LOC 6 WIDTH 1 DK 31 COL 8

Version Number -- 2

This is the 2nd version of the Expenditure and Employment
for the Criminal Justice System, 1979.

VAR 0004 SEQUENCE NUMBER NO MISSING DATA CODES
REF 0004 LOC 7 WIDTH 5 DK 31 COL 9-13

VAR 0216 COR ADMIN CONTRIB TO EMP MD=-1
REF 0216 LOC 1902 WIDTH 9 DK 31 COL 14-22

Corrections: Contributions to Employee Benefits, 1979

VAR 0217 CORR MISC FULL-TIME EMP MD=-1
REF 0217 LOC 1911 WIDTH 9 DK 31 COL 23-31

Corrections: Miscellaneous, Full-Time Employees, 1979

VAR 0218 CORR MISC FULL-TIME PAY MD=-1
REF 0218 LOC 1920 WIDTH 9 DK 31 COL 32-40

Corrections: Miscellaneous, Full-Time Payroll, 1979

VAR 0219 CORR MISC PART-TIME EMP MD=-1
REF 0219 LOC 1929 WIDTH 9 DK 31 COL 41-49

Corrections: Miscellaneous, Part-Time Employees, 1979

VAR 0220 CORR MISC PART-TIME PAY MD=-1
 REF 0220 LOC 1938 WIDTH 9 DK 31 COL 50-58

Corrections: Miscellaneous, Part-Time Payroll, 1979

VAR 0221 CORR MISC CURRENT OPERAT MD=-1
 REF 0221 LOC 1947 WIDTH 9 DK 31 COL 59-67

Corrections: Miscellaneous, Current Operations, 1979

VAR 0222 CORR MISC CAPITAL OUTLAY MD=-1
 REF 0222 LOC 1956 WIDTH 9 DK 31 COL 68-76

Corrections: Miscellaneous, Capital Outlay, 1979

DECK IDENTIFICATION NUMBER IS '32' DK 32 COL 1- 2

VAR 0001 STUDY NUMBER NO MISSING DATA CODES
 REF 0001 LOC 1 WIDTH 4 DK 32 COL 3- 6

ICPSR Study Number

7618 - The ICPSR has attached this number as a study
 identification number.

VAR 0002 PART NUMBER NO MISSING DATA CODES
 REF 0002 LOC 5 WIDTH 1 DK 32 COL 7

Part Number -- 9

The entire dataset for the Expenditure and Employment for

(CONTINUED)

the Criminal Justice System annual files, 1971-1979 is
 contained in nine parts, one part for each year.

VAR 0003 VERSION NUMBER NO MISSING DATA CODES
 REF 0003 LOC 6 WIDTH 1 DK 32 COL 8

Version Number -- 2

This is the 2nd version of the Expenditure and Employment
 for the Criminal Justice System, 1979.

VAR 0004 SEQUENCE NUMBER NO MISSING DATA CODES
 REF 0004 LOC 7 WIDTH 5 DK 32 COL 9-13

VAR 0223 CORR MISC EQUIPMENT EXP MD=-1
 REF 0223 LOC 1965 WIDTH 9 DK 32 COL 14-22

Corrections: Miscellaneous, Equipment Expenditure, 1979

VAR 0224 CORR MISC CONSTRUCT EXP MD=-1
 REF 0224 LOC 1974 WIDTH 9 DK 32 COL 23-31

Corrections: Miscellaneous, Construction Expenditure, 1979

VAR 0225 CORR MISC LAND EXP MD=-1
 REF 0225 LOC 1983 WIDTH 9 DK 32 COL 32-40

Corrections: Miscellaneous, Land Expenditure, 1979

CONTINUED

2 OF 3

VAR 0226 CORR MISC PAY/LOCAL GOVT MD=-1
 REF 0226 LOC 1992 WIDTH 9 DK 32 COL 41-49

Corrections: Miscellaneous, Intergovernmental Expenditure
 Paid to Local Government, 1979

VAR 0227 CORR MISC PAY/STATE GOVT MD=-1
 REF 0227 LOC 2001 WIDTH 9 DK 32 COL 50-58

Corrections: Miscellaneous, Intergovernmental Expenditure
 Paid to State Government, 1979

VAR 0228 CORR MISC CONTRIB TO EMP MD=-1
 REF 0228 LOC 2010 WIDTH 9 DK 32 COL 59-67

Corrections: Miscellaneous, Contributions to Employee
 Benefits, 1979

VAR 0229 OTHER CJ FULL-TIME EMP MD=-1
 REF 0229 LOC 2019 WIDTH 9 DK 32 COL 68-76

Other Criminal Justice, Full-Time Employment, 1979

DECK IDENTIFICATION NUMBER IS '33' DK 33 COL 1- 2

VAR 0001 STUDY NUMBER NO MISSING DATA CODES
 REF 0001 LOC 1 WIDTH 4 DK 33 COL 3- 6

ICPSR Study Number

7618 - The ICPSR has attached this number as a study

(CONTINUED)

identification number.

VAR 0002 PART NUMBER NO MISSING DATA CODES
 REF 0002 LOC 5 WIDTH 1 DK 33 COL 7

Part Number -- 9

The entire dataset for the Expenditure and Employment for
 the Criminal Justice System annual files, 1971-1979 is
 contained in nine parts, one part for each year.

VAR 0003 VERSION NUMBER NO MISSING DATA CODES
 REF 0003 LOC 6 WIDTH 1 DK 33 COL 8

Version Number -- 2

This is the 2nd version of the Expenditure and Employment
 for the Criminal Justice System, 1979.

VAR 0004 SEQUENCE NUMBER NO MISSING DATA CODES
 REF 0004 LOC 7 WIDTH 5 DK 33 COL 9-13

VAR 0230 OTHER CJ FULL-TIME PAY MD=-1
 REF 0230 LOC 2028 WIDTH 9 DK 33 COL 14-22

Other Criminal Justice, Full-Time Payroll, 1979

VAR 0231 OTHER CJ PART-TIME EMP MD=-1
 REF 0231 LOC 2037 WIDTH 9 DK 33 COL 23-31

Other Criminal Justice, Part-Time Employment, 1979

VAR 0232 OTHER CJ PART-TIME PAY MD=-1
 REF 0232 LOC 2046 WIDTH 9 DK 33 COL 32-40

Other Criminal Justice, Part-Time Payroll, 1979

VAR 0233 OTHER CJ CURRENT OPERAT MD=-1
 REF 0233 LOC 2055 WIDTH 9 DK 33 COL 41-49

Other Criminal Justice, Current Operations, 1979

VAR 0234 OTHER CJ CAPITAL OUTLAY MD=-1
 REF 0234 LOC 2064 WIDTH 9 DK 33 COL 50-58

Other Criminal Justice, Capital Outlay, 1979

VAR 0235 OTHER CJ EQUIPMENT EXP MD=-1
 REF 0235 LOC 2073 WIDTH 9 DK 33 COL 59-67

Other Criminal Justice, Equipment Expenditure, 1979

VAR 0236 OTHER CJ CONSTRUCT EXP MD=-1
 REF 0236 LOC 2082 WIDTH 9 DK 33 COL 68-76

Other Criminal Justice, Construction Expenditure, 1979

DECK IDENTIFICATION NUMBER IS '34' DK 34 COL 1- 2

VAR 0001 STUDY NUMBER NO MISSING DATA CODES
 REF 0001 LOC 1 WIDTH 4 DK 34 COL 3- 6

ICPSR Study Number

7618 - The ICPSR has attached this number as a study
 identification number.

VAR 0002 PART NUMBER NO MISSING DATA CODES
 REF 0002 LOC 5 WIDTH 1 DK 34 COL 7

Part Number -- 9

The entire dataset for the Expenditure and Employment for
 the Criminal Justice System annual files, 1971-1979 is
 contained in nine parts, one part for each year.

VAR 0003 VERSION NUMBER NO MISSING DATA CODES
 REF 0003 LOC 6 WIDTH 1 DK 34 COL 8

Version Number -- 2

This is the 2nd version of the Expenditure and Employment
 for the Criminal Justice System, 1979.

VAR 0004 SEQUENCE NUMBER NO MISSING DATA CODES
 REF 0004 LOC 7 WIDTH 5 DK 34 COL 9-13

VAR 0237 OTHER CJ LAND EXP MD=-1
 REF 0237 LOC 2091 WIDTH 9 DK 34 COL 14-22

Other Criminal Justice, Land Expenditure, 1979

VAR 0238 OTHER CJ PAY/LOCAL GOVT MD=-1
REF 0238 LOC 2100 WIDTH 9 DK 34 COL 23-31

Other Criminal Justice, Intergovernmental Expenditure Paid
to Local Government, 1979

VAR 0239 OTHER CJ PAY/STATE GOVT MD=-1
REF 0239 LOC 2109 WIDTH 9 DK 34 COL 32-40

Other Criminal Justice, Intergovernmental Expenditure Paid
to State Government, 1979

VAR 0240 OTHER CJ CONTRIB TO EMP MD=-1
REF 0240 LOC 2118 WIDTH 9 DK 34 COL 41-49

Other Criminal Justice, Contributions to Employee Benefits,
1979

VAR 0241 GEN REV SHAR/ANTI-RECESS MD=-1
REF 0241 LOC 2127 WIDTH 9 DK 34 COL 50-58

General Direct Revenue from Federal Government, Federal
General Revenue Sharing and Anti-Recession Funds, 1979

VAR 0242 CETA & OTHER MANPOWER MD=-1
REF 0242 LOC 2136 WIDTH 9 DK 34 COL 59-67

General Direct Revenue from Federal Government, CETA
(Comprehensive Employment and Training Act) Revenue and
Other Federal Manpower Funds, 1979

VAR 0243 GENERAL REVENUE OTHER MD=-1
REF 0243 LOC 2145 WIDTH 9 DK 34 COL 68-76

Other Federal General Direct Revenue, 1979

DECK IDENTIFICATION NUMBER IS '35' DK 35 COL 1- 2

VAR 0001 STUDY NUMBER NO MISSING DATA CODES
REF 0001 LOC 1 WIDTH 4 DK 35 COL 3- 6

ICPSR Study Number

7618 - The ICPSR has attached this number as a study
identification number.

VAR 0002 PART NUMBER NO MISSING DATA CODES
REF 0002 LOC 5 WIDTH 1 DK 35 COL 7

Part Number -- 9

The entire dataset for the Expenditure and Employment for
the Criminal Justice System annual files, 1971-1979 is
contained in nine parts, one part for each year.

VAR 0003 VERSION NUMBER NO MISSING DATA CODES
REF 0003 LOC 6 WIDTH 1 DK 35 COL 8

Version Number -- 2

This is the 2nd version of the Expenditure and Employment
for the Criminal Justice System, 1979.

VAR 0004 SEQUENCE NUMBER NO MISSING DATA CODES
REF 0004 LOC 7 WIDTH 5 DK 35 COL 9-13

.....
VAR 0244 TOT GEN DIRECT REVENUE MD=-1
REF 0244 LOC 2154 WIDTH 9 DK 35 COL 14-22

Total Federal General Direct Revenue, 1979

.....
VAR 0245 LEAA GRANTS MD=-1
REF 0245 LOC 2163 WIDTH 9 DK 35 COL 23-31

"Dedicated" Revenue from Federal Government, LEAA
Discretionary Grants, 1979

.....
VAR 0246 FED GOVT REIMBURSEMENT MD=-1
REF 0246 LOC 2172 WIDTH 9 DK 35 COL 32-40

"Dedicated" Revenue from Federal Government, Reimbursements
from Federal Government, 1979

.....
VAR 0247 OTHER DEDICATED FED REV MD=-1
REF 0247 LOC 2181 WIDTH 9 DK 35 COL 41-49

Other "Dedicated" Federal Revenue, 1979

.....
VAR 0248 TOTAL DEDICATED FED REV MD=-1
REF 0248 LOC 2190 WIDTH 9 DK 35 COL 50-58

Total "Dedicated" Federal Revenue, 1979

VAR 0249 LEAA REV FROM STATE MD=-1
REF 0249 LOC 2199 WIDTH 9 DK 35 COL 59-67

LEAA Revenue from State Government, 1979

.....
VAR 0250 OTHER FED CJ REV FROM ST MD=-1
REF 0250 LOC 2208 WIDTH 9 DK 35 COL 68-76

Other Federal Criminal Justice Revenue from State
Government, 1979

DECK IDENTIFICATION NUMBER IS '36' DK 36 COL 1- 2

.....
VAR 0001 STUDY NUMBER NO MISSING DATA CODES
REF 0001 LOC 1 WIDTH 4 DK 36 COL 3- 6

ICPSR Study Number

7618 - The ICPSR has attached this number as a study
identification number.

.....
VAR 0002 PART NUMBER NO MISSING DATA CODES
REF 0002 LOC 5 WIDTH 1 DK 36 COL 7

Part Number -- 9

The entire dataset for the Expenditure and Employment for
the Criminal Justice System annual files, 1971-1979 is
contained in nine parts, one part for each year.

VAR 0003	VERSION NUMBER	NO MISSING DATA CODES
REF 0003	LOC 5 WIDTH 1	DK 36 COL 8

Version Number -- 2

.....

This is the 2nd version of the Expenditure and Employment for the Criminal Justice System, 1979.

.....

VAR 0004	SEQUENCE NUMBER	NO MISSING DATA CODES
REF 0004	LOC 7 WIDTH 5	DK 36 COL 9-13

VAR 0251	STATE CRIM JUST FUNDING	MD=-1
REF 0251	LOC 2217 WIDTH 9	DK 36 COL 14-22

State Criminal Justice Funding, 1979

VAR 0252	STATE GOVT REIMBURSEMENT	MD=-1
REF 0252	LOC 2226 WIDTH 9	DK 36 COL 23-31

Reimbursements from State for Criminal Justice Services Rendered, 1979

VAR 0253	OTHER STATE CJ REV	MD=-1
REF 0253	LOC 2235 WIDTH 9	DK 36 COL 32-40

Other State Criminal Justice Revenue, 1979

VAR 0254	TOTAL STATE CJ REV	MD=-1
REF 0254	LOC 2244 WIDTH 9	DK 36 COL 41-49

Total State Criminal Justice Revenue, 1979

VAR 0255	LOCAL GOVT REIMBURSEMENT	MD=-1
REF 0255	LOC 2253 WIDTH 9	DK 36 COL 50-58

Reimbursements from Local Governments for Criminal Justice Services Rendered, 1979

VAR 0256	OTHER LOCAL CJ REV	MD=-1
REF 0256	LOC 2262 WIDTH 9	DK 36 COL 59-67

Other Local Criminal Justice Revenue, 1979

VAR 0257	TOTAL LOCAL CJ REV	MD=-1
REF 0257	LOC 2271 WIDTH 9	DK 36 COL 68-76

Total Local Criminal Justice Revenue, 1979

DECK IDENTIFICATION NUMBER IS '37'	DK 37 COL 1- 2
------------------------------------	----------------

VAR 0001	STUDY NUMBER	NO MISSING DATA CODES
REF 0001	LOC 1 WIDTH 4	DK 37 COL 3- 6

ICPSR Study Number

7618 - The ICPSR has attached this number as a study identification number.

VAR 0002	PART NUMBER	NO MISSING DATA CODES
REF 0002	LOC 5 WIDTH 1	DK 37 COL 7

Part Number -- 9

The entire dataset for the Expenditure and Employment for the Criminal Justice System annual files, 1971-1979 is contained in nine parts, one part for each year.

VAR 0003	VERSION NUMBER	NO MISSING DATA CODES
REF 0003	LOC 6 WIDTH 1	DK 37 COL 8

Version Number -- 2

This is the 2nd version of the Expenditure and Employment for the Criminal Justice System, 1979.

VAR 0004	SEQUENCE NUMBER	NO MISSING DATA CODES
REF 0004	LOC 7 WIDTH 5	DK 37 COL 9-13

VAR 0258	POLICE FULL-TIME EQUIV	MD=-1
REF 0258	LOC 2280 WIDTH 9	DK 37 COL 14-22

Police Protection, Full-Time Equivalents, 1979

VAR 0259	SW PER FULL-TIME EQ	MD=-1
REF 0259	LOC 2289 WIDTH 9	DK 37 COL 23-31

Sworn Police Personnel, Full-Time Equivalents, 1979

VAR 0260	NON-S PER FULL-TIME EQ	MD=-1
REF 0260	LOC 2298 WIDTH 9	DK 37 COL 32-40

Non-Sworn Police Personnel, Full-Time Equivalents, 1979

VAR 0261	JUDICIAL FULL-TIME EQ	MD=-1
REF 0261	LOC 2307 WIDTH 9	DK 37 COL 41-49

Judicial, Full-Time Equivalents, 1979

VAR 0262	APPELLATE FULL-TIME EQ	MD=-1
REF 0262	LOC 2316 WIDTH 9	DK 37 COL 50-58

Appellate Courts, Full-Time Equivalents, 1979

VAR 0263	LAST RESORT FULL-TIME EQ	MD=-1
REF 0263	LOC 2325 WIDTH 9	DK 37 COL 59-67

Courts of Last Resort, Full-Time Equivalents, 1979

VAR 0264	INTERMED FULL-TIME EQUIV	MD=-1
REF 0264	LOC 2334 WIDTH 9	DK 37 COL 68-76

Intermediate Appellate Courts, 1979

DECK IDENTIFICATION NUMBER IS '38' DK 38 COL 1- 2

VAR 0001	STUDY NUMBER	NO MISSING DATA CODES
REF 0001	LOC 1 WIDTH 4	DK 38 COL 3-6

ICPSR Study Number

7618 - The ICPSR has attached this number as a study identification number.

VAR 0002	PART NUMBER	NO MISSING DATA CODES
REF 0002	LOC 5 WIDTH 1	DK 38 COL 7

Part Number -- 9

The entire dataset for the Expenditure and Employment for the Criminal Justice System annual files, 1971-1979 is contained in nine parts, one part for each year.

VAR 0003	VERSION NUMBER	NO MISSING DATA CODES
REF 0003	LOC 6 WIDTH 1	DK 38 COL 8

Version Number -- 2

This is the 2nd version of the Expenditure and Employment for the Criminal Justice System, 1979.

VAR 0004	SEQUENCE NUMBER	NO MISSING DATA CODES
REF 0004	LOC 7 WIDTH 5	DK 38 COL 9-13

VAR 0265	GEN JURIS FULL-TIME EQUI	MD=-1
REF 0265	LOC 2343 WIDTH 9	DK 38 COL 14-22

Courts of General Jurisdiction, Full-Time Equivalents, 1979

VAR 0266	LMTD JURIS FULL-TIME EQ	MD=-1
REF 0266	LOC 2352 WIDTH 9	DK 38 COL 23-31

Courts of Limited Jurisdiction, Full-Time Equivalents, 1979

VAR 0267	MISC JUDIC FULL-TIME EQ	MD=-1
REF 0267	LOC 2361 WIDTH 9	DK 38 COL 32-40

Judicial: Miscellaneous, Full-Time Equivalents, 1979

VAR 0268	PROSECUTN FULL-TIME EQUI	MD=-1
REF 0268	LOC 2370 WIDTH 9	DK 38 COL 41-49

Legal Services and Prosecution, Full-Time Equivalents, 1979

VAR 0269	PUBL DEF FULL-TIME EQUIV	MD=-1
REF 0269	LOC 2379 WIDTH 9	DK 38 COL 50-58

Public Defense, Full-Time Equivalents, 1979

VAR 0270	TOT CORR FULL-TIME EQUIV	MD=-1
REF 0270	LOC 2388 WIDTH 9	DK 38 COL 59-67

Corrections: Total, Full-Time Equivalents, 1979

VAR 0271	TOT INST FULL-TIME EQUIV	MD=-1
REF 0271	LOC 2397 WIDTH 9	DK 38 COL 68-76

Corrections: Institutions, Full-Time Equivalents, 1979

DECK IDENTIFICATION NUMBER IS '39'

DK 39 COL 1- 2

VAR 0001 STUDY NUMBER NO MISSING DATA CODES
REF 0001 LOC 1 WIDTH 4 DK 39 COL 3- 6

ICPSR Study Number

7618 - The ICPSR has attached this number as a study identification number.

VAR 0002 PART NUMBER NO MISSING DATA CODES
REF 0002 LOC 5 WIDTH 1 DK 39 COL 7

Part Number -- 9

The entire dataset for the Expenditure and Employment for the Criminal Justice System annual files, 1971-1979 is contained in nine parts, one part for each year.

VAR 0003 VERSION NUMBER NO MISSING DATA CODES
REF 0003 LOC 6 WIDTH 1 DK 39 COL 8

Version Number -- 2

This is the 2nd version of the Expenditure and Employment for the Criminal Justice System, 1979.

VAR 0004 SEQUENCE NUMBER NO MISSING DATA CODES
REF 0004 LOC 7 WIDTH 5 DK 39 COL 9-13

VAR 0272 INST/M FULL-TIME EQUIV MD=-1
REF 0272 LOC 2406 WIDTH 9 DK 39 COL 14-22

Corrections: Institutions for Men, Full-Time Equivalents, 1979

VAR 0273 INST/F FULL-TIME EQUIV MD=-1
REF 0273 LOC 2415 WIDTH 9 DK 39 COL 23-31

Corrections: Institutions for Women, Full-Time Equivalents, 1979

VAR 0274 INST/JUV FULL-TIME EQUIV MD=-1
REF 0274 LOC 2424 WIDTH 9 DK 39 COL 32-40

Corrections: Institutions for Juveniles, Full-Time Equivalents, 1979

VAR 0275 INST/OTHER FULL-TIME EQ MD=-1
REF 0275 LOC 2433 WIDTH 9 DK 39 COL 41-49

Corrections: Other and Combined Institutions, Full-Time Equivalents, 1979

VAR 0276 PROB FULL-TIME EQUIV MD=-1
REF 0276 LOC 2442 WIDTH 9 DK 39 COL 50-58

Corrections: Probation, and Pardon and Parole, Full-Time Equivalents, 1979

VAR 0277 AD&MISC FULL-TIME EQUIV MD=-1
REF 0277 LOC 2451 WIDTH 9 DK 39 COL 59-67

Corrections: Administration and Miscellaneous, Full-Time
Equivalents, 1979

VAR 0278 ADMIN FULL-TIME EQUIV MD=-1
REF 0278 LOC 2460 WIDTH 9 DK 39 COL 68-76

Corrections: General Administration, Full-Time Equivalents,
1979

DECK IDENTIFICATION NUMBER IS '40' DK 40 COL 1- 2

VAR 0001 STUDY NUMBER NO MISSING DATA CODES
REF 0001 LOC 1 WIDTH 4 DK 40 COL 3- 6

ICPSR Study Number

7618 - The ICPSR has attached this number as a study
identification number.

VAR 0002 PART NUMBER NO MISSING DATA CODES
REF 0002 LOC 5 WIDTH 1 DK 40 COL 7

Part Number -- 9

The entire dataset for the Expenditure and Employment for
the Criminal Justice System annual files, 1971-1979 is
contained in nine parts, one part for each year.

VAR 0003 VERSION NUMBER NO MISSING DATA CODES
REF 0003 LOC 6 WIDTH 1 DK 40 COL 8

Version Number -- 2

This is the 2nd version of the Expenditure and Employment
for the Criminal Justice System, 1979.

VAR 0004 SEQUENCE NUMBER NO MISSING DATA CODES
REF 0004 LOC 7 WIDTH 5 DK 40 COL 9-13

VAR 0279 MISC FULL-TIME EQUIV MD=-1
REF 0279 LOC 2469 WIDTH 9 DK 40 COL 14-22

Corrections: Miscellaneous, Full-Time Equivalents, 1979

VAR 0280 OTHER CJ FULL-TIME EQUIV MD=-1
REF 0280 LOC 2478 WIDTH 9 DK 40 COL 23-31

Other Criminal Justice, Full-Time Equivalents, 1979

(CONTINUED)

GLOSSARY

GOVERNMENT EXPENDITURE is all amounts of money paid out (net of any correcting transactions) other than for retirement of debt (including interest), investment in securities, extensions of loans, or agency transactions. It includes external cash payments and excludes any intragovernmental transfers and noncash transactions, such as the provision of meals or housing of employees. It also includes any payments financed from borrowing fund balances, intergovernmental revenue, and other current revenue. In several instances, two or more governments share the expense of maintaining a court or other criminal justice agency. In these cases, the allocable direct expenditure amount is reported for each government in the appropriate category. When a government pays pensions directly to retired employees from appropriated funds, such payments are included as expenditure of the government concerned. However, State and Local government contributions to retirement systems and various other employee benefits are not included in expenditure data, since the majority of governments make lump-sum contributions to plans covering all government employees and cannot report for criminal justice employees separately. Neither in government's basic accounting records (from which criminal justice expenditure figures are drawn) nor in the records of their general-coverage employee benefit systems is there usually any breakdown of amounts contributed in terms of the various agencies or functions involved. Nor has an adequate procedure for calculating the proportion of such contributions allocable to criminal justice employees been developed because of the wide variation in the coverage of various plans, employee status requirements, benefit rates, etc.

For those governments whose records reflect contributions of criminal justice employees separately, separate data were obtained. However, these data are subject to the same variation referred to above, and neither the amount nor the quality of the data reported would permit any attempt to estimate total contributions for all similar governments in a given state. Given the problems involved, no estimation procedure seems feasible. Such data as were reported separately were therefore excluded from total criminal

(CONTINUED)

justice expenditures to provide a consistent data base for administering the "variable pass-through" requirement.

Expenditure is divided into two major categories by character:

1. DIRECT EXPENDITURE is all expenditure except that classed as intergovernmental and is further divided into two principal object categories:

a. DIRECT CURRENT, which includes salaries, wages, fees, and commissions, purchase of supplies, materials, and contractual services.

b. CAPITAL OUTLAY, which includes expenditure for the three subcategories below:

CONSTRUCTION: Production of fixed works and structures and additions, replacements and major alterations thereto undertaken either on a contract basis by private contractors or through force account construction by the employees of the government. Included are the planning and designing of specific projects, the grading, landscaping, and other site improvement, and the provision of equipment and facilities that are integral parts of the structure.

EQUIPMENT: Purchase and installation of apparatus, furnishings, office equipment, motor vehicles and the like having an expected life of more than 5 years. This includes both additional equipment and replacements. Rentals for equipment, including rental payments that may be credited on the purchase price if purchase options are exercised, are classified as direct current expenditure. Equipment and facilities that are integral parts of constructed or purchased structures are classified respectively under construction or purchase of land and existing structures.

PURCHASE OF LAND AND EXISTING STRUCTURES: Purchase of these assets as such, purchase of rights-of-way, and

(CONTINUED)

title search and similar activities associated with purchase transactions.

The other object categories -- interest on general debt, assistance and subsidies, and insurance benefits -- are not applied to specific functions because they are not ordinarily available on a functional basis from government financial reports. In the few instances where bonded or mortgaged general indebtedness is identified for specific purposes, the interest payments are aggregated with other interest expenditures, which make it virtually impossible to arrive at reliable and consistent breakouts of such data over a long period of time.

2. INTERGOVERNMENTAL EXPENDITURE is payments from one general purpose government to another, including grants-in-aid, shared revenues, payments in lieu of taxes, and amounts for services performed by one government for another on a reimbursable or cost-sharing basis (for example, payments by one government to another for boarding prisoners).

TOTAL EXPENDITURE is direct and intergovernmental expenditure of a government or level of government for criminal justice activities.

TOTAL GENERAL EXPENDITURE is all expenditure of a government or level of government FOR ALL GOVERNMENT FUNCTIONS, including criminal justice activities, but excluding utility system expenditure, liquor store expenditure, and insurance trust expenditure. Total general expenditure shown for the local level of government includes expenditure of special districts and school districts.

GOVERNMENT EMPLOYMENT

EMPLOYEES includes all persons paid for personal services performed, including all paid officials and persons in paid leave status, and excludes unpaid officials, persons on unpaid leave, pensioners and contractors. Under this definition are two classes:

1. FULL-TIME EMPLOYEES, who are all persons employed

(CONTINUED)

during the pay period including October 15 of each year, on a full-time basis, including all full-time temporary or seasonal workers employed during this pay period, as well as persons having a permanent status.

2. PART-TIME EMPLOYEES, who are persons employed during the pay period including October 15 of each year, on a basis other than full-time, and persons paid by more than one government.

Derived from these two classes is:

FULL-TIME EQUIVALENT EMPLOYEES, which means the total number of employees, discounted by applying average full-time earning rates. This is calculated by dividing the total payroll (full-time plus part-time) by the FULL-TIME PAYROLL and multiplying the results by the number of full-time employees, where both full-time and part-time employees and payroll are reported. Where only part-time employees and payroll are reported, full-time equivalent employees are calculated by dividing the total part-time payroll by the average full-time salary for the particular criminal justice sector and type of government. AVERAGE FULL-TIME SALARY is calculated by dividing the full-time payroll by the number of full-time employees for the particular criminal justice sector and type of government.

PAYROLL is the gross payroll before deductions and includes salaries, wages, fees and commissions paid to employees as defined above for the month of October for each year.

GOVERNMENTAL FUNCTIONS

POLICE PROTECTION is the function of enforcing the law, preserving order, and apprehending those who violate the law, whether these functions are performed by a police department, a sheriff's department, or a special police force maintained by an agency whose prime responsibility is outside the criminal justice system, but which has a police force to perform these activities in its specialized area (geographic or functional).

(CONTINUED)

Included in this activity are regular police services, the maintenance of buildings used for police purposes, and such specialized police forces (including public and private contract forces) as airport police, free and toll highway police, free and toll bridge and tunnel police, housing police, maritime police, park police, transit and other utility system police, college and university campus police, and alcoholic beverage control agents. Coroners and medical examiners are also included. Excluded are vehicular inspection and licensing, traffic safety and engineering, fish and game wardens, fire marshals, and the like.

The special police forces included in the data are only those which are part of the general purpose governments. Security forces, building guards, school crossing guards, and meter maids without general arrest power were excluded. Those special police forces that are part of independent school districts or special districts are not included in the data, inasmuch as these districts are not general purpose governments.

In most states, sheriffs' departments are multifunctional agencies providing police protection, judicial, and/or correctional services. In order to allocate expenditure and employment data to the proper activity, the data for sheriffs' departments are prorated using factors developed from a special survey of sheriffs' departments conducted in 1973, or more current estimates of manpower distribution if available.

Short term custody and detention have traditionally been considered part of the police protection function; and in editions prior to the 1969-70 report, were treated as such. However, beginning with the 1969-70 report, the concept was modified on the basis of information obtained from the 1970 NATIONAL JAIL CENSUS. Data for institutions with authority to hold prisoners 48 hours or more are included in the "Corrections" sector. Data for lockups or "tanks" holding prisoners less than 48 hours are included in the "Police Protection" sector.

JUDICIAL ACTIVITIES encompass all civil and criminal courts and activities associated with courts such as law libraries, grand juries, petit juries, and the like. Since the names of courts with similar functions and legal jurisdiction vary from state to state and even within states, data have been

(CONTINUED)

categorized by types of court rather than by court name.

1. APPELLATE COURTS include courts of last resort and intermediate appellate courts. These are courts having jurisdiction of appeal and review, with original jurisdiction conferred only in special cases.

a. COURT OF LAST RESORT is the final appeal within the judicial structure of each state. (In most states, it is called the Supreme Court.)

b. INTERMEDIATE APPELLATE COURTS are those that are limited in their appellate jurisdiction by state law or at the discretion of the court of last resort.

2. COURTS OF GENERAL JURISDICTION are trial courts having unlimited original jurisdiction in civil and/or criminal cases, the names of which vary considerably.

3. COURTS OF LIMITED JURISDICTION are courts whose legal jurisdiction covers only a particular class of cases or cases where the amount in controversy is below a prescribed sum or is subject to specific exceptions. Included under this category are probate courts, juvenile courts and other courts of limited jurisdiction.

4. MISCELLANEOUS JUDICIAL includes data on judicial activities that could not be reported under any of the above court categories, such as judicial councils and conferences, court administration offices (where identifiable), law libraries, jury commissions, and grand juries.

LEGAL SERVICES AND PROSECUTION includes the civil and criminal justice activities of the attorneys general, district attorneys, state's attorneys, and their variously named equivalents; corporation counsels, solicitors, and legal departments with various names. It includes providing legal advice to the chief executives and subordinate departmental officers, representation of the government in lawsuits, and the prosecution of accused violators of criminal law. These activities are included whether performed by one office or several, because in some

(CONTINUED)

jurisdictions a single officer provides all legal services, whereas in others a prosecutor's office handles only criminal matters, and a separate attorney's office performs all civil legal services. The operations of various investigative agencies having full arrest powers and attached to offices of attorneys general, district attorneys, or their variously named equivalents are also included.

PUBLIC DEFENSE includes legal counsel and representation in either criminal or civil proceedings as provided by public defenders, and other government programs that pay the fees of court-appointed counsel. These include court-paid fees to individually retained counsel, fees paid by the court to court-appointed counsel, government contributions to private legal aid societies and bar association-sponsored programs, and the activities of an established public defender office or program. Employment data are included only for public defenders' offices, because fee-paid counselors are not considered government employees, nor are counselors working for bar associations or legal aid societies.

CORRECTIONS is that function of government involving the confinement and rehabilitation of adults and juveniles convicted of offenses against the law and the confinement of persons suspected of a crime and awaiting adjudication. Data for institutions with authority to hold prisoners 48 hours or more are included in this sector. Data for lockups or "tanks" holding prisoners less than 48 hours are included in "Police Protection." Correction includes the operation of prisons, reformatories, jails, houses of correction, and other institutions. It also includes institutions, facilities and programs exclusively for the confinement of the criminally insane or for the examination, evaluation, classification, and assignment of inmates and institutions and programs for the confinement, treatment, and rehabilitation of drug addicts and alcoholics if the institution or program is administered by a correction agency of the criminal justice system. Pardon boards and parole and probation agencies, including resettlement or halfway houses for those not in need of institutionalization, are included in the correction sector as a separate subcategory.

1. CORRECTIONAL INSTITUTIONS are prisons, reformatories, jails, houses of correction, penitentiaries, correctional farms, workhouses, reception centers, diagnostic centers,

(CONTINUED)

industrial schools, training schools, detention centers, and a variety of other types of institutions for the confinement and correction of convicted adults or juveniles adjudicated delinquent or in need of supervision, and for the detention of those adults and juveniles accused of a crime and awaiting trial or hearing. When an institution maintains a prison industry or agricultural program, data on the cost of production or the value of prison labor used by agencies of the same government, if identifiable, are excluded (and classified as expenditure for the function using the products or services). Expenditure for the manufacture, production, sale, and distribution of goods produced for sale or use outside the government are included under this heading.

a. INSTITUTIONS FOR MEN includes identifiable expenditure and employment data for institutions exclusively for adult male offenders.

b. INSTITUTIONS FOR WOMEN include identifiable expenditure and employment data for institutions exclusively for adult female offenders. Where there is no separate women's prison, women offenders are either maintained in a prison complex that also houses other offenders or are boarded in private facilities or institutions in another state. No attempt was made to prorate data on institutions housing more than one type of inmate, but where females are boarded in private institutions or in another state, available expenditure data was tabulated. Employment data were not tabulated because the personnel were employees of another government.

c. INSTITUTIONS FOR JUVENILES are those institutions identified by the 1975 Juvenile Detention and Correction Facility Census as housing primarily juveniles and in some states, "youthful offenders." These institutions include those under the control of a juvenile court, a probation department, of a youth authority or other similarly designated administrative body, as well as independently administered institutions. Also included are government payments to private agencies for the detention or treatment of delinquent juveniles.

There is considerable variation from state to state in the legal definition of a juvenile, particularly in

(CONTINUED)

regard to the age at which a person is no longer considered a juvenile. Institutions for juveniles have been classified individually in accordance with the laws and age designations of their respective states.

d. OTHER AND COMBINED INSTITUTIONS are those institutions holding a combination of inmates. Where expenditure or employment data for physically separate institutions for juveniles, adult females, and adult males were not separable by institution or type of institution, the entire amounts were included under this category.

2. CORRECTIONAL ADMINISTRATION consists of data for the overall administration of the correctional system, including data on the central administrative office (for example, the department of corrections or a youth authority). Data on the administration of individual correctional institutions or probation/parole/pardon agencies are included in the appropriate sub-category if it was possible to deduct them.

3. PROBATION, PAROLE AND PARDON includes data on probation agencies, boards of parole, boards of pardon, and their variously named equivalents. Although probation agencies frequently function under the administration of the general jurisdiction court, the data are presented here after having been deducted from the judicial data, because of the correctional nature of the probation function. If the probation, parole and pardon activities, or any of them individually, were part of the correctional administrative office, data were deducted where possible and shown separately here, and the balance was shown under the correctional administrative category. The overlapping character of the probation, parole and pardon activities prevented the separate presentation of these data.

4. MISCELLANEOUS CORRECTION includes expenditure and employment data that could not be classified under one of the other sub-categories.

OTHER CRIMINAL JUSTICE ACTIVITIES include expenditure or employment data that cut across more than one category, or that are not allocable to separate categories; e.g.,

(CONTINUED)

expenditure on a general curriculum in educational institutions, the operation of the state criminal justice agencies, crime commissions, etc. Such data are included in the totals, where they are not shown separately.

*** TABLES -- CROSSTAB AND RANK ORDER STATISTICS ***

DEC 10, 1982 FREQUENCIES FOR EXPENDITURE AND EMPLOYMENT DATA FOR THE CRIMINAL JUSTICE SYSTEM: 1979

TABLES 1

ILLEGAL CHARACTERS IN THE DATA WILL
BE TREATED AS MISSING DATA 1

THE DATA ARE NOT WEIGHTED

10,742 CASES PASSED FILTER

ANALYSIS 1

VARIABLE V1 STUDY NUMBER
SAMPLE N 10742

STRATUM	N	MEAN	STANDARD DEVIATION	SKEWNESS	KURTOSIS	MIN	MAX
ALL	10,742	7,618.000	0.000	0.000	0.000	7,618	7,618

ANALYSIS 2

VARIABLE V2 PART NUMBER
SAMPLE N 10742

STRATUM	N	MEAN	STANDARD DEVIATION	SKEWNESS	KURTOSIS	MIN	MAX
ALL	10,742	1.000	0.000	0.000	0.000	1	1

ANALYSIS 3

VARIABLE V3 VERSION NUMBER
SAMPLE N 10742

STRATUM	N	MEAN	STANDARD DEVIATION	SKEWNESS	KURTOSIS	MIN	MAX
ALL	10,742	1.000	0.000	0.000	0.000	1	1

ANALYSIS 4

VARIABLE V4 SEQUENCE NUMBER
 SAMPLE N 10742

STRATUM	N	MEAN	STANDARD DEVIATION	SKEWNESS	KURTOSIS	MIN	MAX
ALL	10,742	5,371.500	3,101.093	0.000	-1.200	1	10,742

ANALYSIS 5

VARIABLE V5 1977 POPULATION ESTIMATE
 SAMPLE N 10742

REVISED N AFTER DELETIONS: 10741

STRATUM	N	MEAN	STANDARD DEVIATION	SKEWNESS	KURTOSIS	MIN	MAX
ALL	10,741	50,470.926	447,525.188	27.728	998.421	0	21,887,000

ANALYSIS 6

VARIABLE V6 SAMPLE SMSA
 SAMPLE N 10742

REVISED N AFTER DELETIONS: 10689

STRATUM	N	MEAN	STANDARD DEVIATION	SKEWNESS	KURTOSIS	MIN	MAX
ALL	10,689	714.057	344.063	-0.599	-1.295	4	999

ANALYSIS 7

VARIABLE V7 FIPS STATE/COUNTY CODES
 SAMPLE N 10742

***** NO VALID DATA LEFT AFTER DELETIONS FOR MISSING-DATA

DEC 10, 1982 FREQUENCIES FOR EXPENDITURE AND EMPLOYMENT DATA FOR THE CRIMINAL JUSTICE SYSTEM: 1979

TABLES 3

ANALYSIS 8

VARIABLE V8 FIPS SMSA
 SAMPLE N 10742

***** NO VALID DATA LEFT AFTER DELETIONS FOR MISSING-DATA

ANALYSIS 9

VARIABLE V9 POLICE FULL-TIME EQ 1977
 SAMPLE N 10742

REVISED N AFTER DELETIONS: 10711

STRATUM	N	MEAN	STANDARD DEVIATION	SKEWNESS	KURTOSIS	MIN	MAX
ALL	10,711	41.925	391.839	50.711	3,315.888	0	29,405

ANALYSIS 10

VARIABLE V10 POLICE CURRENT EXP 1977
 SAMPLE N 10742

REVISED N AFTER DELETIONS: 10711

STRATUM	N	MEAN	STANDARD DEVIATION	SKEWNESS	KURTOSIS	MIN	MAX
ALL	10,711	734.454	8,599.945	58.525	4,337.898	0	701,546

ANALYSIS 11

VARIABLE V11 POLI FULL-TIME PAY 1977
 SAMPLE N 10742

REVISED N AFTER DELETIONS: 10719

STRATUM	N	MEAN	STANDARD DEVIATION	SKEWNESS	KURTOSIS	MIN	MAX
ALL	10,719	51,480.281	691,066.000	63.703	4,989.043	0	58,577,823

ANALYSIS 12

VARIABLE V12 POLI FULL-TIME EMP 1977
 SAMPLE N 10742

REVISED N AFTER DELETIONS: 10719

STRATUM	N	MEAN	STANDARD DEVIATION	SKEWNESS	KURTOSIS	MIN	MAX
ALL	10,719	880.031	86,929.563	103.520	10,714.578	0	9,000,000

ANALYSIS 13

VARIABLE V13 WEIGHT
 SAMPLE N 10742

STRATUM	N	MEAN	STANDARD DEVIATION	SKEWNESS	KURTOSIS	MIN	MAX
ALL	10,742	8.632.531	2.920.946	-1.938	2.206	200	10,000

ANALYSIS 14

VARIABLE V14 UNIT NAME
 SAMPLE N 10742

STRATUM	N	MEAN	STANDARD DEVIATION	SKEWNESS	KURTOSIS	MIN	MAX
ALL	10,742	.776434E+09	.217413E+09	0.951	7.587-1044200763	2139062143	

ANALYSIS 15

VARIABLE V15 YEAR CODE
 SAMPLE N 10742

STRATUM	N	MEAN	STANDARD DEVIATION	SKEWNESS	KURTOSIS	MIN	MAX
ALL	10,742	79.000	0.000	0.000	0.000	79	79

DEC 10, 1982 FREQUENCIES FOR EXPENDITURE AND EMPLOYMENT DATA FOR THE CRIMINAL JUSTICE SYSTEM: 1979

TABLES 5

ANALYSIS 16

VARIABLE V16 SMSA
SAMPLE N 10742

STRATUM	N	MEAN	STANDARD DEVIATION	SKEWNESS	KURTOSIS	MIN	MAX
ALL	10,742	63.646	47.353	-0.593	-1.648	0	99

ANALYSIS 17

VARIABLE V17 PLACEMENT
SAMPLE N 10742

STRATUM	N	MEAN	STANDARD DEVIATION	SKEWNESS	KURTOSIS	MIN	MAX
ALL	10,742	64.902	45.698	-0.596	-1.639	0	99

ANALYSIS 18

VARIABLE V18 FIELD UNIT
SAMPLE N 10742

STRATUM	N	MEAN	STANDARD DEVIATION	SKEWNESS	KURTOSIS	MIN	MAX
ALL	10,742	0.381	5.481	17.896	319.022	0	99

ANALYSIS 19

VARIABLE V19 STATE NUMBER
SAMPLE N 10742

STRATUM	N	MEAN	STANDARD DEVIATION	SKEWNESS	KURTOSIS	MIN	MAX
ALL	10,742	27.341	13.475	-0.152	-1.065	1	52

ANALYSIS 20

VARIABLE	V20	LEVEL OF GOVERNMENT					
SAMPLE N	10742						
STRATUM	N	MEAN	STANDARD DEVIATION	SKEWNESS	KURTOSIS	MIN	MAX
ALL	10,742	1.894	0.666	0.027	-0.537	0	3

ANALYSIS 21

VARIABLE	V21	COUNTY CODE					
SAMPLE N	10742						
STRATUM	N	MEAN	STANDARD DEVIATION	SKEWNESS	KURTOSIS	MIN	MAX
ALL	10,742	41.408	37.620	2.058	6.658	0	254

ANALYSIS 22

VARIABLE	V22	UNIT CODE					
SAMPLE N	10742						
STRATUM	N	MEAN	STANDARD DEVIATION	SKEWNESS	KURTOSIS	MIN	MAX
ALL	10,742	55.838	157.727	4.069	15.967	0	924

ANALYSIS 23

VARIABLE	V23	POLICE FULL-TIME EMP					
SAMPLE N	10742						
STRATUM	N	MEAN	STANDARD DEVIATION	SKEWNESS	KURTOSIS	MIN	MAX
ALL	10,742	55.048	801.796	65.838	5,096.621	0	67,555

DEC 10, 1982 FREQUENCIES FOR EXPENDITURE AND EMPLOYMENT DATA FOR THE CRIMINAL JUSTICE SYSTEM: 1979

ANALYSIS 24

VARIABLE V24 POLICE FULL-TIME PAY
 SAMPLE N 10742

STRATUM	N	MEAN	STANDARD DEVIATION	SKEWNESS	KURTOSIS	MIN	MAX
ALL	10,742	83,529.438	1486406.000	68.361	5,380.371	0	126,883,603

ANALYSIS 25

VARIABLE V25 POLICE PART-TIME EMP
 SAMPLE N 10742

STRATUM	N	MEAN	STANDARD DEVIATION	SKEWNESS	KURTOSIS	MIN	MAX
ALL	10,742	4.039	80.186	66.784	4,839.141	0	6,494

ANALYSIS 26

VARIABLE V26 POLICE PART-TIME PAY
 SAMPLE N 10742

STRATUM	N	MEAN	STANDARD DEVIATION	SKEWNESS	KURTOSIS	MIN	MAX
ALL	10,742	886.925	11,558.898	53.915	3,263.775	0	788,912

ANALYSIS 27

VARIABLE V27 POLICE CURRENT OPERAT
 SAMPLE N 10742

STRATUM	N	MEAN	STANDARD DEVIATION	SKEWNESS	KURTOSIS	MIN	MAX
ALL	10,742	1149031.000	21504688.000	69.872	5,521.031	0	1841763000

ANALYSIS 28

VARIABLE V28		POLICE CAPITAL OUTLAY					
SAMPLE N 10742							
STRATUM	N	MEAN	STANDARD DEVIATION	SKEWNESS	KURTOSIS	MIN	MAX
ALL	10,742	54,981.883	883,414.938	79.620	7,322.477	0	83,121,000

ANALYSIS 29

VARIABLE V29		POLICE EQUIPMENT EXP					
SAMPLE N 10742							
STRATUM	N	MEAN	STANDARD DEVIATION	SKEWNESS	KURTOSIS	MIN	MAX
ALL	10,742	32,936.016	835,245.500	92.055	9,118.363	0	83,121,000

ANALYSIS 30

VARIABLE V30		POLICE CONSTRUCT EXP					
SAMPLE N 10742							
STRATUM	N	MEAN	STANDARD DEVIATION	SKEWNESS	KURTOSIS	MIN	MAX
ALL	10,742	9,823.496	181,070.500	50.042	3,564.442	0	14,176,000

ANALYSIS 31

VARIABLE V31		POLICE LAND EXP					
SAMPLE N 10742							
STRATUM	N	MEAN	STANDARD DEVIATION	SKEWNESS	KURTOSIS	MIN	MAX
ALL	10,742	423.850	16,026.070	53.513	3,282.126	0	1,162,000

ANALYSIS 32

VARIABLE V32 POLICE PAY/LOCAL GOVT
 SAMPLE N 10742

STRATUM	N	MEAN	STANDARD DEVIATION	SKEWNESS	KURTOSIS	MIN	MAX
ALL	10,742	23,234.957	735,315.188	75.968	6,661.406	0	67,396,000

ANALYSIS 33

VARIABLE V33 POLICE PAY/STATE GOVT
 SAMPLE N 10742

STRATUM	N	MEAN	STANDARD DEVIATION	SKEWNESS	KURTOSIS	MIN	MAX
ALL	10,742	589.282	14,989.777	68.320	5,556.082	0	1,307,000

ANALYSIS 34

VARIABLE V34 POLICE CONTRIB TO EMP
 SAMPLE N 10742

STRATUM	N	MEAN	STANDARD DEVIATION	SKEWNESS	KURTOSIS	MIN	MAX
ALL	10,742	95,979.813	3245819.000	77.134	6,426.375	0	290,252,000

ANALYSIS 35

VARIABLE V35 SW PER FULL-TIME EMP
 SAMPLE N 10742

STRATUM	N	MEAN	STANDARD DEVIATION	SKEWNESS	KURTOSIS	MIN	MAX
ALL	10,742	42.302	528.469	55.008	3,565.813	0	38,318

ANALYSIS 36

VARIABLE V36 SW PER FULL-TIME PAY
 SAMPLE N 10742

STRATUM	N	MEAN	STANDARD DEVIATION	SKEWNESS	KURTOSIS	MIN	MAX
ALL	10,742	68,869.250	1084651.000	60.290	4.215.078	0	84,410,350

ANALYSIS 37

VARIABLE V37 SW PER PART-TIME EMP
 SAMPLE N 10742

STRATUM	N	MEAN	STANDARD DEVIATION	SKEWNESS	KURTOSIS	MIN	MAX
ALL	10,742	2.382	75.306	76.252	6,068.906	0	6,494

ANALYSIS 38

VARIABLE V38 SW PER PART-TIME PAY
 SAMPLE N 10742

STRATUM	N	MEAN	STANDARD DEVIATION	SKEWNESS	KURTOSIS	MIN	MAX
ALL	10,742	447.851	9,213.742	69.685	5,455.031	0	785,967

ANALYSIS 39

VARIABLE V39 NON-SW PER FULL-TIME EMP
 SAMPLE N 10742

STRATUM	N	MEAN	STANDARD DEVIATION	SKEWNESS	KURTOSIS	MIN	MAX
ALL	10,742	12.746	297.701	89.490	8,671.074	0	29,237

ANALYSIS 40

VARIABLE V40 NON-SW PER FULL-TIME PAY
 SAMPLE N 10742

STRATUM	N	MEAN	STANDARD DEVIATION	SKEWNESS	KURTOSIS	MIN	MAX
ALL	10,742	14,660.199	431,506.625	90.439	8,764.969	0	42,473,253

ANALYSIS 41

VARIABLE V41 NON-SW PER PART-TIME EMP
 SAMPLE N 10742

STRATUM	N	MEAN	STANDARD DEVIATION	SKEWNESS	KURTOSIS	MIN	MAX
ALL	10,742	1.656	26.972	92.599	9,190.340	0	2,690

ANALYSIS 42

VARIABLE V42 NON-SW PER PART-TIME PAY
 SAMPLE N 10742

STRATUM	N	MEAN	STANDARD DEVIATION	SKEWNESS	KURTOSIS	MIN	MAX
ALL	10,742	439.073	6,659.000	87.544	8,460.266	0	650,352

ANALYSIS 43

VARIABLE V43 JUDICIAL FULL-TIME EMP
 SAMPLE N 10742

STRATUM	N	MEAN	STANDARD DEVIATION	SKEWNESS	KURTOSIS	MIN	MAX
ALL	10,742	13.245	165.417	44.144	2,539.322	0	11,262

DEC 10, 1982 FREQUENCIES FOR EXPENDITURE AND EMPLOYMENT DATA FOR THE CRIMINAL JUSTICE SYSTEM: 1979

ANALYSIS 44

VARIABLE V44 JUDICIAL FULL-TIME PAY
 SAMPLE N 10742

STRATUM	N	MEAN	STANDARD DEVIATION	SKEWNESS	KURTOSIS	MIN	MAX
ALL	10,742	18,392.957	333,318.875	55.521	3,600.623	0	23,950,460

ANALYSIS 45

VARIABLE V45 JUDICIAL PART-TIME EMP
 SAMPLE N 10742

STRATUM	N	MEAN	STANDARD DEVIATION	SKEWNESS	KURTOSIS	MIN	MAX
ALL	10,742	1.824	15.476	33.340	1,395.090	0	824

ANALYSIS 46

VARIABLE V46 JUDICIAL PART-TIME PAY
 SAMPLE N 10742

STRATUM	N	MEAN	STANDARD DEVIATION	SKEWNESS	KURTOSIS	MIN	MAX
ALL	10,742	1,188.188	26,329.945	62.613	4,681.855	0	2,183,178

ANALYSIS 47

VARIABLE V47 JUDICIAL CURRENT OPERAT
 SAMPLE N 10742

STRATUM	N	MEAN	STANDARD DEVIATION	SKEWNESS	KURTOSIS	MIN	MAX
ALL	10,742	293,967.438	5618196.000	61.023	4,166.984	0	414,758,000

ANALYSIS 48

VARIABLE V48 JUDICIAL CAPITAL OUTLAY
 SAMPLE N 10742

STRATUM	N	MEAN	STANDARD DEVIATION	SKEWNESS	KURTOSIS	MIN	MAX
ALL	10,742	12,766.461	248,844.000	55.260	3,912.539	0	19,703,000

ANALYSIS 49

VARIABLE V49 JUDICIAL EQUIPMENT EXP
 SAMPLE N 10742

STRATUM	N	MEAN	STANDARD DEVIATION	SKEWNESS	KURTOSIS	MIN	MAX
ALL	10,742	5,343.883	200,894.500	89.664	8,647.668	0	19,703,000

ANALYSIS 50

VARIABLE V50 JUDICIAL CONSTRUCT EXP
 SAMPLE N 10742

STRATUM	N	MEAN	STANDARD DEVIATION	SKEWNESS	KURTOSIS	MIN	MAX
ALL	10,742	6,434.367	141,417.813	42.942	2,331.853	0	9,285,000

ANALYSIS 51

VARIABLE V51 JUDICIAL LAND EXP
 SAMPLE N 10742

STRATUM	N	MEAN	STANDARD DEVIATION	SKEWNESS	KURTOSIS	MIN	MAX
ALL	10,742	289.052	15,812.426	72.464	5,795.707	0	1,377,000

ANALYSIS 52

VARIABLE V52 JUDICIAL PAY/LOCAL GOVT
 SAMPLE N 10742

STRATUM	N	MEAN	STANDARD DEVIATION	SKEWNESS	KURTOSIS	MIN	MAX
ALL	10,742	12,264.938	622,639.625	70.493	5,514.160	0	53,467,000

ANALYSIS 53

VARIABLE V53 JUDICIAL PAY/STATE GOVT
 SAMPLE N 10742

STRATUM	N	MEAN	STANDARD DEVIATION	SKEWNESS	KURTOSIS	MIN	MAX
ALL	10,742	8,220.941	351,890.188	84.784	7,871.207	0	33,661,000

ANALYSIS 54

VARIABLE V54 JUDICIAL CONTRIB TO EMP
 SAMPLE N 10742

STRATUM	N	MEAN	STANDARD DEVIATION	SKEWNESS	KURTOSIS	MIN	MAX
ALL	10,742	5,849.637	182,774.625	81.859	7,460.918	0	17,248,000

ANALYSIS 55

VARIABLE V55 APPELLATE FULL-TIME EMP
 SAMPLE N 10742

STRATUM	N	MEAN	STANDARD DEVIATION	SKEWNESS	KURTOSIS	MIN	MAX
ALL	10,742	0.507	10.318	29.911	1,117.945	0	537

ANALYSIS 56

VARIABLE V56 APPELLATE FULL-TIME PAY
 SAMPLE N 10742

STRATUM	N	MEAN	STANDARD DEVIATION	SKEWNESS	KURTOSIS	MIN	MAX
ALL	10,742	1,009.220	22,598.777	38.086	1,884.675	0	1,413,049

ANALYSIS 57

VARIABLE V57 APPELLATE PART-TIME EMP
 SAMPLE N 10742

STRATUM	N	MEAN	STANDARD DEVIATION	SKEWNESS	KURTOSIS	MIN	MAX
ALL	10,742	0.013	0.558	69.681	5,691.633	0	49

ANALYSIS 58

VARIABLE V58 APPELLATE PART-TIME PAY
 SAMPLE N 10742

STRATUM	N	MEAN	STANDARD DEVIATION	SKEWNESS	KURTOSIS	MIN	MAX
ALL	10,742	5.795	260.398	72.925	6,208.375	0	23,430

ANALYSIS 59

VARIABLE V59 APPELLATE CURRENT OPERAT
 SAMPLE N 10742

STRATUM	N	MEAN	STANDARD DEVIATION	SKEWNESS	KURTOSIS	MIN	MAX
ALL	10,742	12,597.746	261,232.500	29.879	1,069.369	0	12,530,000

ANALYSIS 60

VARIABLE V60 APPELLATE CAPITAL OUTLAY
 SAMPLE N 10742

STRATUM	N	MEAN	STANDARD DEVIATION	SKEWNESS	KURTOSIS	MIN	MAX
ALL	10,742	357.754	11,477.531	67.437	5,592.770	0	1,007,000

ANALYSIS 61

VARIABLE V61 APPELLATE EQUIPMENT EXP
 SAMPLE N 10742

STRATUM	N	MEAN	STANDARD DEVIATION	SKEWNESS	KURTOSIS	MIN	MAX
ALL	10,742	266.058	6,062.805	30.061	1,039.979	0	286,000

ANALYSIS 62

VARIABLE V62 APPELLATE CONSTRUCT EXP
 SAMPLE N 10742

STRATUM	N	MEAN	STANDARD DEVIATION	SKEWNESS	KURTOSIS	MIN	MAX
ALL	10,742	91.696	8,550.973	103.201	10,676.938	0	885,000

ANALYSIS 63

VARIABLE V63 APPELLATE LAND EXP
 SAMPLE N 10742

STRATUM	N	MEAN	STANDARD DEVIATION	SKEWNESS	KURTOSIS	MIN	MAX
ALL	10,742	0.000	0.000	0.000	0.000	0	0

ANALYSIS 64

VARIABLE V64 APPELLATE PAY/LOCAL GOVT
 SAMPLE N 10742

STRATUM	N	MEAN	STANDARD DEVIATION	SKEWNESS	KURTOSIS	MIN	MAX
ALL	10,742	0.000	0.000	0.000	0.000	0	0

ANALYSIS 65

VARIABLE V65 APPELLATE PAY/STATE GOVT
 SAMPLE N 10742

STRATUM	N	MEAN	STANDARD DEVIATION	SKEWNESS	KURTOSIS	MIN	MAX
ALL	10,742	0.000	0.000	0.000	0.000	0	0

ANALYSIS 66

VARIABLE V66 APPELLATE CONTRIB TO EMP
 SAMPLE N 10742

STRATUM	N	MEAN	STANDARD DEVIATION	SKEWNESS	KURTOSIS	MIN	MAX
ALL	10,742	0.000	0.000	0.000	0.000	0	0

ANALYSIS 67

VARIABLE V67 LAST RESORT F-T EMP
 SAMPLE N 10742

STRATUM	N	MEAN	STANDARD DEVIATION	SKEWNESS	KURTOSIS	MIN	MAX
ALL	10,742	0.236	3.898	19.718	444.342	0	137

ANALYSIS 68

VARIABLE	V68	LAST RESORT F-T PAY					
SAMPLE N	10742						
STRATUM	N	MEAN	STANDARD DEVIATION	SKEWNESS	KURTOSIS	MIN	MAX
ALL	10,742	433.234	7,341.844	22.269	625.013	0	319,389

ANALYSIS 69

VARIABLE	V69	LAST RESORT P-T EMP					
SAMPLE N	10742						
STRATUM	N	MEAN	STANDARD DEVIATION	SKEWNESS	KURTOSIS	MIN	MAX
ALL	10,742	0.006	0.245	53.735	3,332.767	0	18

ANALYSIS 70

VARIABLE	V70	LAST RESORT P-T PAY					
SAMPLE N	10742						
STRATUM	N	MEAN	STANDARD DEVIATION	SKEWNESS	KURTOSIS	MIN	MAX
ALL	10,742	2.858	101.956	43.530	2,070.308	0	5,855

ANALYSIS 71

VARIABLE	V71	LAST RESORT CURRENT OPER					
SAMPLE N	10742						
STRATUM	N	MEAN	STANDARD DEVIATION	SKEWNESS	KURTOSIS	MIN	MAX
ALL	10,742	5,833.734	99,676.750	21.181	510.556	0	3,340,000

ANALYSIS 72

VARIABLE V72 INTERMED FULL-TIME EMP
 SAMPLE N 10742

STRATUM	N	MEAN	STANDARD DEVIATION	SKEWNESS	KURTOSIS	MIN	MAX
ALL	10,742	0.271	6.983	36.307	1,588.679	0	400

ANALYSIS 73

VARIABLE V73 INTERMED FULL-TIME PAY
 SAMPLE N 10742

STRATUM	N	MEAN	STANDARD DEVIATION	SKEWNESS	KURTOSIS	MIN	MAX
ALL	10,742	575.987	16,197.648	45.018	2,513.724	0	1,093,660

ANALYSIS 74

VARIABLE V74 INTERMED PART-TIME EMP
 SAMPLE N 10742

STRATUM	N	MEAN	STANDARD DEVIATION	SKEWNESS	KURTOSIS	MIN	MAX
ALL	10,742	0.007	0.483	97.707	9,863.699	0	49

ANALYSIS 75

VARIABLE V75 INTERMED PART-TIME PAY
 SAMPLE N 10742

STRATUM	N	MEAN	STANDARD DEVIATION	SKEWNESS	KURTOSIS	MIN	MAX
ALL	10,742	2.938	229.783	99.039	10,062.234	0	23,430

ANALYSIS 76

VARIABLE V76 INTERMED CURRENT OPERAT
 SAMPLE N 10742

STRATUM	N	MEAN	STANDARD DEVIATION	SKEWNESS	KURTOSIS	MIN	MAX
ALL	10,742	6,764.008	176,156.500	36.101	1,539.203	0	9,772,000

ANALYSIS 77

VARIABLE V77 GEN JURIS FULL-TIME EMP
 SAMPLE N 10742

STRATUM	N	MEAN	STANDARD DEVIATION	SKEWNESS	KURTOSIS	MIN	MAX
ALL	10,742	4.246	64.995	36.957	1,730.648	0	3,591

ANALYSIS 78

VARIABLE V78 GEN JURIS FULL-TIME PAY
 SAMPLE N 10742

STRATUM	N	MEAN	STANDARD DEVIATION	SKEWNESS	KURTOSIS	MIN	MAX
ALL	10,742	6,143.516	113,097.000	49.190	3,213.917	0	8,500,011

ANALYSIS 79

VARIABLE V79 GEN JURIS PART-TIME EMP
 SAMPLE N 10742

STRATUM	N	MEAN	STANDARD DEVIATION	SKEWNESS	KURTOSIS	MIN	MAX
ALL	10,742	0.555	10.636	44.028	2,368.367	0	675

DEC 10, 1982 FREQUENCIES FOR EXPENDITURE AND EMPLOYMENT DATA FOR THE CRIMINAL JUSTICE SYSTEM: 1979

ANALYSIS 80

VARIABLE V80 GEN JURIS PART-TIME PAY
 SAMPLE N 10742

STRATUM	N	MEAN	STANDARD DEVIATION	SKEWNESS	KURTOSIS	MIN	MAX
ALL	10,742	685.617	24,633.090	71.027	5,862.578	0	2,177,356

ANALYSIS 81

VARIABLE V81 GEN JURIS CURRENT OPER
 SAMPLE N 10742

STRATUM	N	MEAN	STANDARD DEVIATION	SKEWNESS	KURTOSIS	MIN	MAX
ALL	10,742	86,773.938	1203065.000	30.851	1,199.341	0	55,030,000

ANALYSIS 82

VARIABLE V82 GEN JURIS CAPITAL OUTLAY
 SAMPLE N 10742

STRATUM	N	MEAN	STANDARD DEVIATION	SKEWNESS	KURTOSIS	MIN	MAX
ALL	10,742	767.176	40,121.430	92.090	9,057.402	0	3,984,000

ANALYSIS 83

VARIABLE V83 GEN JURIS EQUIPMENT EXP
 SAMPLE N 10742

STRATUM	N	MEAN	STANDARD DEVIATION	SKEWNESS	KURTOSIS	MIN	MAX
ALL	10,742	237.851	6,882.180	40.112	1,846.312	0	392,000

ANALYSIS 84

VARIABLE V84 GEN JURIS CONSTRUCT EXP
 SAMPLE N 10742

STRATUM	N	MEAN	STANDARD DEVIATION	SKEWNESS	KURTOSIS	MIN	MAX
ALL	10,742	466.114	38,393.332	100.697	10,310.945	0	3,939,000

ANALYSIS 85

VARIABLE V85 GEN JURIS LAND EXP
 SAMPLE N 10742

STRATUM	N	MEAN	STANDARD DEVIATION	SKEWNESS	KURTOSIS	MIN	MAX
ALL	10,742	63.210	6,551.293	103.634	10,738.000	0	679,000

ANALYSIS 86

VARIABLE V86 GEN JURIS PAY/LOCAL GOVT
 SAMPLE N 10742

STRATUM	N	MEAN	STANDARD DEVIATION	SKEWNESS	KURTOSIS	MIN	MAX
ALL	10,742	3.351	328.612	103.119	10,664.188	0	34,000

ANALYSIS 87

VARIABLE V87 GEN JURIS PAY/STATE GOVT
 SAMPLE N 10742

STRATUM	N	MEAN	STANDARD DEVIATION	SKEWNESS	KURTOSIS	MIN	MAX
ALL	10,742	8.285	638.598	83.044	7,230.965	0	59,000

DEC 10, 1982 FREQUENCIES FOR EXPENDITURE AND EMPLOYMENT DATA FOR THE CRIMINAL JUSTICE SYSTEM: 1979

ANALYSIS 88

VARIABLE V88 GEN JURIS CONTRIB TO EMP
 SAMPLE N 10742

STRATUM	N	MEAN	STANDARD DEVIATION	SKEWNESS	KURTOSIS	MIN	MAX
ALL	10,742	0.265	26.561	103.533	10,723.855	0	2,752

ANALYSIS 89

VARIABLE V89 LMTD JURIS FULL-TIME EMP
 SAMPLE N 10742

STRATUM	N	MEAN	STANDARD DEVIATION	SKEWNESS	KURTOSIS	MIN	MAX
ALL	10,742	2.810	65.214	60.605	4,388.223	0	5,267

ANALYSIS 90

VARIABLE V90 LMTD JURIS FULL-TIME PAY
 SAMPLE N 10742

STRATUM	N	MEAN	STANDARD DEVIATION	SKEWNESS	KURTOSIS	MIN	MAX
ALL	10,742	3,969.653	108,512.500	65.225	4,966.770	0	9,092,776

ANALYSIS 91

VARIABLE V91 LMTD JURIS PART-TIME EMP
 SAMPLE N 10742

STRATUM	N	MEAN	STANDARD DEVIATION	SKEWNESS	KURTOSIS	MIN	MAX
ALL	10,742	0.218	3.759	36.463	1,620.794	0	208

ANALYSIS 92

VARIABLE V92 LMTD JURIS PART-TIME PAY
 SAMPLE N 10742

STRATUM	N	MEAN	STANDARD DEVIATION	SKEWNESS	KURTOSIS	MIN	MAX
ALL	10,742	145.983	5,020.012	89.631	8,738.859	0	494,136

ANALYSIS 93

VARIABLE V93 LMTD JURIS CURRENT OPER
 SAMPLE N 10742

STRATUM	N	MEAN	STANDARD DEVIATION	SKEWNESS	KURTOSIS	MIN	MAX
ALL	10,742	51,908.207	1231422.000	69.487	5,679.750	0	107,506,000

ANALYSIS 94

VARIABLE V94 LMTD JURIS CAPITL OUTLAY
 SAMPLE N 10742

STRATUM	N	MEAN	STANDARD DEVIATION	SKEWNESS	KURTOSIS	MIN	MAX
ALL	10,742	281.605	13,545.219	68.644	5,083.707	0	1,102,000

ANALYSIS 95

VARIABLE V95 LMTD JURIS EQUIPMENT EXP
 SAMPLE N 10742

STRATUM	N	MEAN	STANDARD DEVIATION	SKEWNESS	KURTOSIS	MIN	MAX
ALL	10,742	192.050	11,026.078	93.922	9,300.523	0	1,102,000

ANALYSIS 96

VARIABLE V96 LMTD JURIS CONSTRUCT EXP
 SAMPLE N 10742

STRATUM	N	MEAN	STANDARD DEVIATION	SKEWNESS	KURTOSIS	MIN	MAX
ALL	10,742	22.435	1,643.533	91.698	8,856.293	0	162,000

ANALYSIS 97

VARIABLE V97 LMTD JURIS LAND EXP
 SAMPLE N 10742

STRATUM	N	MEAN	STANDARD DEVIATION	SKEWNESS	KURTOSIS	MIN	MAX
ALL	10,742	67.120	6,738.250	103.469	10,714.727	0	698,000

ANALYSIS 98

VARIABLE V98 LMTD JURIS PAY/LOCAL GOV
 SAMPLE N 10742

STRATUM	N	MEAN	STANDARD DEVIATION	SKEWNESS	KURTOSIS	MIN	MAX
ALL	10,742	10.892	1,128.868	103.634	10,738.012	0	117,000

ANALYSIS 99

VARIABLE V99 LMTD JURIS PAY/STATE GOV
 SAMPLE N 10742

STRATUM	N	MEAN	STANDARD DEVIATION	SKEWNESS	KURTOSIS	MIN	MAX
ALL	10,742	0.000	0.000	0.000	0.000	0	0

DEC 10, 1982 FRI 01:15

ANALYSIS 100

VARIABLE V100 LMTD JURIS CONTRI TO EMP
SAMPLE N 10742

STRATUM	N	MEAN	STANDARD DEVIATION	SKEWNESS	KURTOSIS	MIN	MAX
ALL	10,742	0.003	0.318	103.634	10,738.008	0	33

ANALYSIS 101

VARIABLE V101 MISC JUDIC FULL-TIME EMP
SAMPLE N 10742

STRATUM	N	MEAN	STANDARD DEVIATION	SKEWNESS	KURTOSIS	MIN	MAX
ALL	10,742	3.790	84.941	74.731	6,536.578	0	7,751

ANALYSIS 102

VARIABLE V102 MISC JUDIC FULL-TIME PAY
SAMPLE N 10742

STRATUM	N	MEAN	STANDARD DEVIATION	SKEWNESS	KURTOSIS	MIN	MAX
ALL	10,742	5,388.273	197,362.000	89.101	8,566.020	0	19,507,365

ANALYSIS 103

VARIABLE V103 MISC JUDIC PART-TIME EMP
SAMPLE N 10742

STRATUM	N	MEAN	STANDARD DEVIATION	SKEWNESS	KURTOSIS	MIN	MAX
ALL	10,742	0.316	8.421	88.258	8,536.936	0	824

ANALYSIS 104

VARIABLE V104 MISC JUDIC PART-TIME PAY
 SAMPLE N 10742

STRATUM	N	MEAN	STANDARD DEVIATION	SKEWNESS	KURTOSIS	MIN	MAX
ALL	10,742	116.601	1,379.056	25.982	907.913	0	64,718

ANALYSIS 105

VARIABLE V105 MISC JUDIC CURRENT OPER
 SAMPLE N 10742

STRATUM	N	MEAN	STANDARD DEVIATION	SKEWNESS	KURTOSIS	MIN	MAX
ALL	10,742	113,894.750	4194237.000	73.033	5,606.746	0	349,806,000

ANALYSIS 106

VARIABLE V106 MISC JUDIC CAPITL OUTLAY
 SAMPLE N 10742

STRATUM	N	MEAN	STANDARD DEVIATION	SKEWNESS	KURTOSIS	MIN	MAX
ALL	10,742	10,660.770	243,051.063	58.730	4,292.781	0	19,703,000

ANALYSIS 107

VARIABLE V107 MISC JUDIC EQUIPMENT EXP
 SAMPLE N 10742

STRATUM	N	MEAN	STANDARD DEVIATION	SKEWNESS	KURTOSIS	MIN	MAX
ALL	10,742	4,647.922	199,503.750	91.442	8,891.453	0	19,703,000

ANALYSIS 108

VARIABLE V108 MISC JUDIC CONSTRUCT EXP
 SAMPLE N 10742

STRATUM	N	MEAN	STANDARD DEVIATION	SKEWNESS	KURTOSIS	MIN	MAX
ALL	10,742	5,854.121	135,522.250	46.351	2,695.763	0	9,285,000

ANALYSIS 109

VARIABLE V109 MISC JUDIC LAND EXP
 SAMPLE N 10742

STRATUM	N	MEAN	STANDARD DEVIATION	SKEWNESS	KURTOSIS	MIN	MAX
ALL	10,742	158.723	8,573.805	69.127	5,183.922	0	710,000

ANALYSIS 110

VARIABLE V110 MISC JUDI PAY/LOCAL GOVT
 SAMPLE N 10742

STRATUM	N	MEAN	STANDARD DEVIATION	SKEWNESS	KURTOSIS	MIN	MAX
ALL	10,742	11,769.781	622,573.313	70.517	5,516.734	0	53,467,000

ANALYSIS 111

VARIABLE V111 MISC JUDI PAY/STATE GOVT
 SAMPLE N 10742

STRATUM	N	MEAN	STANDARD DEVIATION	SKEWNESS	KURTOSIS	MIN	MAX
ALL	10,742	7,368.180	351,752.813	84.890	7,884.340	0	33,661,000

ANALYSIS 112

VARIABLE V112 MISC JUDIC CONTRI TO EMP
 SAMPLE N 10742

STRATUM	N	MEAN	STANDARD DEVIATION	SKEWNESS	KURTOSIS	MIN	MAX
ALL	10,742	3,400.392	182,619.313	82.107	7,490.750	0	17,248,000

ANALYSIS 113

VARIABLE V113 PROSECUTN FULL-TIME EMP
 SAMPLE N 10742

STRATUM	N	MEAN	STANDARD DEVIATION	SKEWNESS	KURTOSIS	MIN	MAX
ALL	10,742	6.349	95.246	56.076	4,039.034	0	7,621

ANALYSIS 114

VARIABLE V114 PROSECUTN FULL-TIME PAY
 SAMPLE N 10742

STRATUM	N	MEAN	STANDARD DEVIATION	SKEWNESS	KURTOSIS	MIN	MAX
ALL	10,742	10,025.922	180,259.000	65.444	5,297.566	0	15,571,892

ANALYSIS 115

VARIABLE V115 PROSECUTN PART-TIME EMP
 SAMPLE N 10742

STRATUM	N	MEAN	STANDARD DEVIATION	SKEWNESS	KURTOSIS	MIN	MAX
ALL	10,742	0.701	6.989	44.233	2,397.623	0	455

DEC 10, 1982 FREQUENCIES FOR EXPENDITURE AND EMPLOYMENT DATA FOR THE CRIMINAL JUSTICE SYSTEM: 1979

ANALYSIS 116

VARIABLE V116 PROSECUTN PART-TIME PAY
 SAMPLE N 10742

STRATUM	N	MEAN	STANDARD DEVIATION	SKEWNESS	KURTOSIS	MIN	MAX
ALL	10,742	436.333	6,764.758	57.653	3,977.036	0	532,447

ANALYSIS 117

VARIABLE V117 PROSECUTN CURRENT OPERAT
 SAMPLE N 10742

STRATUM	N	MEAN	STANDARD DEVIATION	SKEWNESS	KURTOSIS	MIN	MAX
ALL	10,742	146,185.563	2878082.000	75.596	6,686.281	0	264,334,000

ANALYSIS 118

VARIABLE V118 PROSECUTN CAPITAL OUTLAY
 SAMPLE N 10742

STRATUM	N	MEAN	STANDARD DEVIATION	SKEWNESS	KURTOSIS	MIN	MAX
ALL	10,742	2,891.005	119,571.563	86.965	8,160.168	0	11,536,000

ANALYSIS 119

VARIABLE V119 PROSECUTN EQUIPMENT EXP
 SAMPLE N 10742

STRATUM	N	MEAN	STANDARD DEVIATION	SKEWNESS	KURTOSIS	MIN	MAX
ALL	10,742	1,528.952	42,783.293	73.712	6,309.520	0	3,862,000

DEC 10, 1982 FREQUENCIES FOR EXPENDITURE AND EMPLOYMENT DATA FOR THE CRIMINAL JUSTICE SYSTEM: 1979

ANALYSIS 120

VARIABLE V120 PROSECUTN CONSTRUCT EXP
 SAMPLE N 10742

STRATUM	N	MEAN	STANDARD DEVIATION	SKEWNESS	KURTOSIS	MIN	MAX
ALL	10,742	1,224.167	99,121.813	100.600	10,290.047	0	10,164,000

ANALYSIS 121

VARIABLE V121 PROSECUTN LAND EXP
 SAMPLE N 10742

STRATUM	N	MEAN	STANDARD DEVIATION	SKEWNESS	KURTOSIS	MIN	MAX
ALL	10,742	1.303	103.914	88.254	8,183.332	0	10,000

ANALYSIS 122

VARIABLE V122 PROSECUTN PAY/LOCAL GOVT
 SAMPLE N 10742

STRATUM	N	MEAN	STANDARD DEVIATION	SKEWNESS	KURTOSIS	MIN	MAX
ALL	10,742	2,325.760	124,258.750	81.570	7,415.484	0	11,709,000

ANALYSIS 123

VARIABLE V123 PROSECUTN PAY/STATE GOVT
 SAMPLE N 10742

STRATUM	N	MEAN	STANDARD DEVIATION	SKEWNESS	KURTOSIS	MIN	MAX
ALL	10,742	1,237.942	97,240.875	101.330	10,403.465	0	9,999,000

ANALYSIS 124

VARIABLE V124 PROSECUTN CONTRIB TO EMP
 SAMPLE N 10742

STRATUM	N	MEAN	STANDARD DEVIATION	SKEWNESS	KURTOSIS	MIN	MAX
ALL	10,742	3,906.922	155,838.063	93.083	9,184.965	0	15,529,000

ANALYSIS 125

VARIABLE V125 PUBL DEF FULL-TIME EMP
 SAMPLE N 10742

STRATUM	N	MEAN	STANDARD DEVIATION	SKEWNESS	KURTOSIS	MIN	MAX
ALL	10,742	0.780	14.178	40.322	1,963.335	0	838

ANALYSIS 126

VARIABLE V126 PUBL DEF FULL-TIME PAY
 SAMPLE N 10742

STRATUM	N	MEAN	STANDARD DEVIATION	SKEWNESS	KURTOSIS	MIN	MAX
ALL	10,742	1,315.249	26,965.234	42.019	2,089.183	0	1,578,210

ANALYSIS 127

VARIABLE V127 PUBL DEF PART-TIME EMP
 SAMPLE N 10742

STRATUM	N	MEAN	STANDARD DEVIATION	SKEWNESS	KURTOSIS	MIN	MAX
ALL	10,742	0.074	0.907	23.547	719.155	0	37

ANALYSIS 128

VARIABLE V128 PUBL DEF PART-TIME PAY
 SAMPLE N 10742

STRATUM	N	MEAN	STANDARD DEVIATION	SKEWNESS	KURTOSIS	MIN	MAX
ALL	10,742	46.765	682.476	26.228	894.827	0	32,811

ANALYSIS 129

VARIABLE V129 PUBL DEF CURRENT OPERAT
 SAMPLE N 10742

STRATUM	N	MEAN	STANDARD DEVIATION	SKEWNESS	KURTOSIS	MIN	MAX
ALL	10,742	34,754.809	521,115.313	33.578	1,367.297	0	26,215,000

ANALYSIS 130

VARIABLE V130 PUBL DEF CAPITAL OUTLAY
 SAMPLE N 10742

STRATUM	N	MEAN	STANDARD DEVIATION	SKEWNESS	KURTOSIS	MIN	MAX
ALL	10,742	207.946	7,133.754	64.723	4,914.883	0	598,000

ANALYSIS 131

VARIABLE V131 PUBL DEF EQUIPMENT EXP
 SAMPLE N 10742

STRATUM	N	MEAN	STANDARD DEVIATION	SKEWNESS	KURTOSIS	MIN	MAX
ALL	10,742	183.672	6,993.395	68.012	5,309.664	0	598,000

ANALYSIS 132

VARIABLE V132 PUBL DEF CONSTRUCT EXP
 SAMPLE N 10742

STRATUM	N	MEAN	STANDARD DEVIATION	SKEWNESS	KURTOSIS	MIN	MAX
ALL	10,742	13.685	1,304.457	103.186	10,674.695	0	135,000

ANALYSIS 133

VARIABLE V133 PUBL DEF LAND EXP
 SAMPLE N 10742

STRATUM	N	MEAN	STANDARD DEVIATION	SKEWNESS	KURTOSIS	MIN	MAX
ALL	10,742	0.000	0.000	0.000	0.000	0	0

ANALYSIS 134

VARIABLE V134 PUBL DEF PAY/LOCAL GOVT
 SAMPLE N 10742

STRATUM	N	MEAN	STANDARD DEVIATION	SKEWNESS	KURTOSIS	MIN	MAX
ALL	10,742	1,075.414	62,838.398	89.020	8,522.578	0	6,139,000

ANALYSIS 135

VARIABLE V135 PUBL DEF PAY/STATE GOVT
 SAMPLE N 10742

STRATUM	N	MEAN	STANDARD DEVIATION	SKEWNESS	KURTOSIS	MIN	MAX
ALL	10,742	13.007	549.240	70.225	5,808.469	0	48,500

CONTINUED

2 OF 3

DEC 10, 1982 FREQUENCIES FOR EXPENDITURE AND EMPLOYMENT DATA FOR THE CRIMINAL JUSTICE SYSTEM: 1979

TABLES 35

ANALYSIS 136

VARIABLE V136 PUBL DEF CONTRIB TO EMP
SAMPLE N 10742

STRATUM	N	MEAN	STANDARD DEVIATION	SKEWNESS	KURTOSIS	MIN	MAX
ALL	10,742	286.604	13,331.469	79.808	6,913.492	0	1,223.000

ANALYSIS 137

VARIABLE V137 CORRECTNS FULL-TIME EMP
SAMPLE N 10742

STRATUM	N	MEAN	STANDARD DEVIATION	SKEWNESS	KURTOSIS	MIN	MAX
ALL	10,742	24.466	330.397	27.494	973.263	0	16,195

ANALYSIS 138

VARIABLE V138 CORRECTNS FULL-TIME PAY
SAMPLE N 10742

STRATUM	N	MEAN	STANDARD DEVIATION	SKEWNESS	KURTOSIS	MIN	MAX
ALL	10,742	31,365.828	462,347.438	29.863	1,141.020	0	22,892,535

ANALYSIS 139

VARIABLE V139 CORRECTNS PART-TIME EMP
SAMPLE N 10742

STRATUM	N	MEAN	STANDARD DEVIATION	SKEWNESS	KURTOSIS	MIN	MAX
ALL	10,742	1.065	12.794	45.849	2,706.484	0	899

ANALYSIS 140

VARIABLE V140 CORRECTNS PART-TIME PAY
 SAMPLE N 10742

STRATUM	N	MEAN	STANDARD DEVIATION	SKEWNESS	KURTOSIS	MIN	MAX
ALL	10,742	420.376	6,217.277	56.089	4,141.559	0	503,463

ANALYSIS 141

VARIABLE V141 CORRECTNS CURRENT OPERAT
 SAMPLE N 10742

STRATUM	N	MEAN	STANDARD DEVIATION	SKEWNESS	KURTOSIS	MIN	MAX
ALL	10,742	486,717.500	7019603.000	29.807	1,150.607	0	336,764,000

ANALYSIS 142

VARIABLE V142 CORRECTNS CAPITAL OUTLAY
 SAMPLE N 10742

STRATUM	N	MEAN	STANDARD DEVIATION	SKEWNESS	KURTOSIS	MIN	MAX
ALL	10,742	53,660.359	824,706.125	28.912	1,087.497	0	43,019,000

ANALYSIS 143

VARIABLE V143 CORRECTNS EQUIPMENT EXP
 SAMPLE N 10742

STRATUM	N	MEAN	STANDARD DEVIATION	SKEWNESS	KURTOSIS	MIN	MAX
ALL	10,742	10,979.609	326,569.000	72.272	6,188.480	0	29,379,000

ANALYSIS 144

VARIABLE V144 CORRECTNS CONSTRUCT EXP
 SAMPLE N 10742

STRATUM	N	MEAN	STANDARD DEVIATION	SKEWNESS	KURTOSIS	MIN	MAX
ALL	10,742	39,355.703	681,436.000	33.697	1,572.060	0	41,473,000

ANALYSIS 145

VARIABLE V145 CORRECTNS LAND EXP
 SAMPLE N 10742

STRATUM	N	MEAN	STANDARD DEVIATION	SKEWNESS	KURTOSIS	MIN	MAX
ALL	10,742	400.205	15,441.441	52.308	2,948.110	0	977,000

ANALYSIS 146

VARIABLE V146 CORRECTNS PAY/LOCAL GOVT
 SAMPLE N 10742

STRATUM	N	MEAN	STANDARD DEVIATION	SKEWNESS	KURTOSIS	MIN	MAX
ALL	10,742	30,398.980	982,762.375	53.743	3,271.843	0	64,462,000

ANALYSIS 147

VARIABLE V147 CORRECTNS PAY/STATE GOVT
 SAMPLE N 10742

STRATUM	N	MEAN	STANDARD DEVIATION	SKEWNESS	KURTOSIS	MIN	MAX
ALL	10,742	3,863.500	131,282.750	63.799	4,575.047	0	10,609,000

ANALYSIS 148

VARIABLE V148 CORRECTNS CONTRIB TO EMP
 SAMPLE N 10742

STRATUM	N	MEAN	STANDARD DEVIATION	SKEWNESS	KURTOSIS	MIN	MAX
ALL	10,742	12,056.691	421,934.750	49.978	2,639.130	0	25,032,000

ANALYSIS 149

VARIABLE V149 CORR INST FULL-TIME EMP
 SAMPLE N 10742

STRATUM	N	MEAN	STANDARD DEVIATION	SKEWNESS	KURTOSIS	MIN	MAX
ALL	10,742	18.239	261.546	29.719	1,141.109	0	13,600

ANALYSIS 150

VARIABLE V150 CORR INST FULL-TIME PAY
 SAMPLE N 10742

STRATUM	N	MEAN	STANDARD DEVIATION	SKEWNESS	KURTOSIS	MIN	MAX
ALL	10,742	22,880.426	361,723.688	32.923	1,374.029	0	18,864,306

ANALYSIS 151

VARIABLE V151 CORR INST PART-TIME EMP
 SAMPLE N 10742

STRATUM	N	MEAN	STANDARD DEVIATION	SKEWNESS	KURTOSIS	MIN	MAX
ALL	10,742	0.770	9.855	55.440	3,947.292	0	781

ANALYSIS 152

VARIABLE V152 CORR INST PART-TIME PAY
 SAMPLE N 10742

STRATUM	N	MEAN	STANDARD DEVIATION	SKEWNESS	KURTOSIS	MIN	MAX
ALL	10,742	305.776	5,055.301	69.596	5,995.496	0	452,016

ANALYSIS 153

VARIABLE V153 CORR INST CURRENT OPERAT
 SAMPLE N 10742

STRATUM	N	MEAN	STANDARD DEVIATION	SKEWNESS	KURTOSIS	MIN	MAX
ALL	10,742	360,243.250	5523578.000	32.808	1,387.779	0	283,880,000

ANALYSIS 154

VARIABLE V154 CORR INST CAPITAL OUTLAY
 SAMPLE N 10742

STRATUM	N	MEAN	STANDARD DEVIATION	SKEWNESS	KURTOSIS	MIN	MAX
ALL	10,742	40,812.602	590,099.813	25.456	781.335	0	23,632,000

ANALYSIS 155

VARIABLE V155 CORR INST EQUIPMENT EXP
 SAMPLE N 10742

STRATUM	N	MEAN	STANDARD DEVIATION	SKEWNESS	KURTOSIS	MIN	MAX
ALL	10,742	8,200.520	263,950.750	72.858	6,145.480	0	23,632,000

ANALYSIS 156

VARIABLE V156 CORR INST CONSTRUCT EXP
 SAMPLE N 10742

STRATUM	N	MEAN	STANDARD DEVIATION	SKEWNESS	KURTOSIS	MIN	MAX
ALL	10,742	29,439.395	475,378.188	26.384	862.516	0	21,629,000

ANALYSIS 157

VARIABLE V157 CORR INST LAND EXP
 SAMPLE N 10742

STRATUM	N	MEAN	STANDARD DEVIATION	SKEWNESS	KURTOSIS	MIN	MAX
ALL	10,742	303.481	12,504.000	56.092	3,462.857	0	869,000

ANALYSIS 158

VARIABLE V158 CORR INST PAY/LOCAL GOVT
 SAMPLE N 10742

STRATUM	N	MEAN	STANDARD DEVIATION	SKEWNESS	KURTOSIS	MIN	MAX
ALL	10,742	9,567.105	332,520.436	74.276	6,330.801	0	29,992,000

ANALYSIS 159

VARIABLE V159 CORR INST PAY/STATE GOVT
 SAMPLE N 10742

STRATUM	N	MEAN	STANDARD DEVIATION	SKEWNESS	KURTOSIS	MIN	MAX
ALL	10,742	2,694.321	81,906.063	60.601	4,044.871	0	5,750,000

ANALYSIS 160

VARIABLE V160 CORR INST CONTRIB TO EMP
 SAMPLE N 10742

STRATUM	N	MEAN	STANDARD DEVIATION	SKEWNESS	KURTOSIS	MIN	MAX
ALL	10,742	1,274.481	7,882.320	13.851	279.197	0	255,556

ANALYSIS 161

VARIABLE V161 INST/M FULL-TIME EMP
 SAMPLE N 10742

STRATUM	N	MEAN	STANDARD DEVIATION	SKEWNESS	KURTOSIS	MIN	MAX
ALL	10,742	7.713	176.109	37.125	1,800.065	0	11,024

ANALYSIS 162

VARIABLE V162 INST/M FULL-TIME PAY
 SAMPLE N 10742

STRATUM	N	MEAN	STANDARD DEVIATION	SKEWNESS	KURTOSIS	MIN	MAX
ALL	10,742	10,021.125	244,393.188	41.628	2,208.596	0	15,999,798

ANALYSIS 163

VARIABLE V163 INST/M PART-TIME EMP
 SAMPLE N 10742

STRATUM	N	MEAN	STANDARD DEVIATION	SKEWNESS	KURTOSIS	MIN	MAX
ALL	10,742	0.074	2.782	55.955	3,664.809	0	211

ANALYSIS 164

VARIABLE V164 INST/M PART-TIME PAY
 SAMPLE N 10742

STRATUM	N	MEAN	STANDARD DEVIATION	SKEWNESS	KURTOSIS	MIN	MAX
ALL	10,742	42.500	2,311.923	89.965	8,723.184	0	227,349

ANALYSIS 165

VARIABLE V165 INST/M CURRENT OPERAT
 SAMPLE N 10742

STRATUM	N	MEAN	STANDARD DEVIATION	SKEWNESS	KURTOSIS	MIN	MAX
ALL	10,742	151,281.000	3523977.000	37.185	1,724.198	0	206,748,000

ANALYSIS 166

VARIABLE V166 INST/F FULL-TIME EMP
 SAMPLE N 10742

STRATUM	N	MEAN	STANDARD DEVIATION	SKEWNESS	KURTOSIS	MIN	MAX
ALL	10,742	0.410	9.063	30.691	1,135.978	0	453

ANALYSIS 167

VARIABLE V167 INST/F FULL TIME PAY
 SAMPLE N 10742

STRATUM	N	MEAN	STANDARD DEVIATION	SKEWNESS	KURTOSIS	MIN	MAX
ALL	10,742	614.085	16,010.195	43.750	2,411.831	0	1,083,428

DEC 10, 1982 FREQUENCIES FOR EXPENDITURE AND EMPLOYMENT DATA FOR THE CRIMINAL JUSTICE SYSTEM: 1979

ANALYSIS 168

VARIABLE		INST/F PART-TIME EMP					
VARIABLE	V168						
SAMPLE N	10742						
STRATUM	N	MEAN	STANDARD DEVIATION	SKEWNESS	KURTOSIS	MIN	MAX
ALL	10,742	0.008	0.405	63.551	4,436.320	0	32

ANALYSIS 169

VARIABLE		INST/F PART-TIME PAY					
VARIABLE	V169						
SAMPLE N	10742						
STRATUM	N	MEAN	STANDARD DEVIATION	SKEWNESS	KURTOSIS	MIN	MAX
ALL	10,742	4.715	284.723	88.689	8,508.574	0	27,816

ANALYSIS 170

VARIABLE		INST/F CURRENT OPERAT					
VARIABLE	V170						
SAMPLE N	10742						
STRATUM	N	MEAN	STANDARD DEVIATION	SKEWNESS	KURTOSIS	MIN	MAX
ALL	10,742	8,566.000	202,341.938	33.924	1,342.320	0	9,204,000

ANALYSIS 171

VARIABLE		INST/JUV FULL-TIME EMP					
VARIABLE	V171						
SAMPLE N	10742						
STRATUM	N	MEAN	STANDARD DEVIATION	SKEWNESS	KURTOSIS	MIN	MAX
ALL	10,742	3.785	58.592	29.085	1,112.654	0	3,114

ANALYSIS 172

VARIABLE V172 INST/JUV FULL-TIME PAY
 SAMPLE N 10742

STRATUM	N	MEAN	STANDARD DEVIATION	SKEWNESS	KURTOSIS	MIN	MAX
ALL	10,742	4,315.430	78,968.813	45.781	2,851.817	0	5,736,322

ANALYSIS 173

VARIABLE V173 INST/JUV PART-TIME EMP
 SAMPLE N 10742

STRATUM	N	MEAN	STANDARD DEVIATION	SKEWNESS	KURTOSIS	MIN	MAX
ALL	10,742	0.283	5.581	64.481	5,284.902	0	483

ANALYSIS 174

VARIABLE V174 INST/JUV PART-TIME PAY
 SAMPLE N 10742

STRATUM	N	MEAN	STANDARD DEVIATION	SKEWNESS	KURTOSIS	MIN	MAX
ALL	10,742	116.242	2,062.347	44.579	2,668.146	0	145,942

ANALYSIS 175

VARIABLE V175 INST/JUV CURRENT OPERAT
 SAMPLE N 10742

STRATUM	N	MEAN	STANDARD DEVIATION	SKEWNESS	KURTOSIS	MIN	MAX
ALL	10,742	75,863.750	1234502.000	37.175	1,904.269	0	79,069,000

ANALYSIS 176

VARIABLE V176 INST/OTHER FULL-TIME EMP
 SAMPLE N 10742

STRATUM	N	MEAN	STANDARD DEVIATION	SKEWNESS	KURTOSIS	MIN	MAX
ALL	10,742	5.969	102.505	56.389	3,905.954	0	7,955

ANALYSIS 177

VARIABLE V177 INST/OTHER FULL-TIME PAY
 SAMPLE N 10742

STRATUM	N	MEAN	STANDARD DEVIATION	SKEWNESS	KURTOSIS	MIN	MAX
ALL	10,742	8,492.797	196,087.813	65.808	4,909.230	0	16,047,535

ANALYSIS 178

VARIABLE V178 INST/OTHER PART-TIME EMP
 SAMPLE N 10742

STRATUM	N	MEAN	STANDARD DEVIATION	SKEWNESS	KURTOSIS	MIN	MAX
ALL	10,742	0.205	4.192	74.453	6,646.867	0	385

ANALYSIS 179

VARIABLE V179 INST/OTHER PART-TIME PAY
 SAMPLE N 10742

STRATUM	N	MEAN	STANDARD DEVIATION	SKEWNESS	KURTOSIS	MIN	MAX
ALL	10,742	94.088	1,760.460	48.010	2,821.062	0	119,219

DEC 10, 1982 FREQUENCIES FOR EXPENDITURE AND EMPLOYMENT DATA FOR THE CRIMINAL JUSTICE SYSTEM: 1979

ANALYSIS 180

VARIABLE V180 INST/OTHER CURRENT OPER
 SAMPLE N 10742

STRATUM	N	MEAN	STANDARD DEVIATION	SKEWNESS	KURTOSIS	MIN	MAX
ALL	10,742	125,710.938	2475767.000	55.958	3,681.740	0	183,407,000

ANALYSIS 181

VARIABLE V181 CORR PROB FULL-TIME EMP
 SAMPLE N 10742

STRATUM	N	MEAN	STANDARD DEVIATION	SKEWNESS	KURTOSIS	MIN	MAX
ALL	10,742	4.923	59.690	25.886	885.235	0	2,855

ANALYSIS 182

VARIABLE V182 CORR PROB FULL-TIME PAY
 SAMPLE N 10742

STRATUM	N	MEAN	STANDARD DEVIATION	SKEWNESS	KURTOSIS	MIN	MAX
ALL	10,742	6,469.637	90,547.375	33.809	1,580.151	0	5,453,119

ANALYSIS 183

VARIABLE V183 CORR PROB PART-TIME EMP
 SAMPLE N 10742

STRATUM	N	MEAN	STANDARD DEVIATION	SKEWNESS	KURTOSIS	MIN	MAX
ALL	10,742	0.243	5.063	79.738	7,348.094	0	477

ANALYSIS 184

VARIABLE V184 CORR PROB PART-TIME PAY
 SAMPLE N 10742

STRATUM	N	MEAN	STANDARD DEVIATION	SKEWNESS	KURTOSIS	MIN	MAX
ALL	10,742	82.438	1,267.263	38.767	1,921.417	0	79,612

ANALYSIS 185

VARIABLE V185 CORR PROB CURRENT OPERAT
 SAMPLE N 10742

STRATUM	N	MEAN	STANDARD DEVIATION	SKEWNESS	KURTOSIS	MIN	MAX
ALL	10,742	87,726.563	1195344.000	34.242	1,595.208	0	70,834,000

ANALYSIS 186

VARIABLE V186 CORR PROB CAPITAL OUTLAY
 SAMPLE N 10742

STRATUM	N	MEAN	STANDARD DEVIATION	SKEWNESS	KURTOSIS	MIN	MAX
ALL	10,742	1,160.577	38,916.141	80.698	7,368.863	0	3,664,000

ANALYSIS 187

VARIABLE V187 CORR PROB EQUIPMENT EXP
 SAMPLE N 10742

STRATUM	N	MEAN	STANDARD DEVIATION	SKEWNESS	KURTOSIS	MIN	MAX
ALL	10,742	865.388	36,579.316	94.237	9,372.211	0	3,664,000

ANALYSIS 188

VARIABLE V188 CORR PROB CONSTRUCT EXP
 SAMPLE N 10742

STRATUM	N	MEAN	STANDARD DEVIATION	SKEWNESS	KURTOSIS	MIN	MAX
ALL	10,742	251.629	11,693.699	60.136	3,982.483	0	897,000

ANALYSIS 189

VARIABLE V189 CORR PROB LAND EXP
 SAMPLE N 10742

STRATUM	N	MEAN	STANDARD DEVIATION	SKEWNESS	KURTOSIS	MIN	MAX
ALL	10,742	0.000	0.000	0.000	0.000	0	0

ANALYSIS 190

VARIABLE V190 CORR PROB PAY/LOCAL GOVT
 SAMPLE N 10742

STRATUM	N	MEAN	STANDARD DEVIATION	SKEWNESS	KURTOSIS	MIN	MAX
ALL	10,742	6,930.699	298,739.125	55.857	3,307.565	0	19,514,000

ANALYSIS 191

VARIABLE V191 CORR PROB PAY/STATE GOVT
 SAMPLE N 10742

STRATUM	N	MEAN	STANDARD DEVIATION	SKEWNESS	KURTOSIS	MIN	MAX
ALL	10,742	111.048	6,067.180	78.776	6,697.816	0	550,000

ANALYSIS 192

VARIABLE V192 CORR PROB CONTRIB TO EMP
 SAMPLE N 10742

STRATUM	N	MEAN	STANDARD DEVIATION	SKEWNESS	KURTOSIS	MIN	MAX
ALL	10,742	551.138	4,509.063	15.926	331.567	0	138,984

ANALYSIS 193

VARIABLE V193 CORR AD&MI FULL-TIME EMP
 SAMPLE N 10742

STRATUM	N	MEAN	STANDARD DEVIATION	SKEWNESS	KURTOSIS	MIN	MAX
ALL	10,742	1.304	26.808	32.391	1,217.636	0	1,257

ANALYSIS 194

VARIABLE V194 CORR AD&MI FULL-TIME EMP
 SAMPLE N 10742

STRATUM	N	MEAN	STANDARD DEVIATION	SKEWNESS	KURTOSIS	MIN	MAX
ALL	10,742	2,015.765	58,613.652	68.764	5,784.469	0	5,188,982

ANALYSIS 195

VARIABLE V195 CORR AD&MI PART-TIME EMP
 SAMPLE N 10742

STRATUM	N	MEAN	STANDARD DEVIATION	SKEWNESS	KURTOSIS	MIN	MAX
ALL	10,742	0.053	1.807	67.523	5,316.047	0	155

ANALYSIS 196

VARIABLE V196 CORR AD&MI PART-TIME EMP
 SAMPLE N 10742

STRATUM	N	MEAN	STANDARD DEVIATION	SKEWNESS	KURTOSIS	MIN	MAX
ALL	10,742	32.163	1,752.042	94.508	9,403.313	0	175,631

ANALYSIS 197

VARIABLE V197 CORR AD&MI CURRENT OPER
 SAMPLE N 10742

STRATUM	N	MEAN	STANDARD DEVIATION	SKEWNESS	KURTOSIS	MIN	MAX
ALL	10,742	38,747.664	901,954.063	52.121	3,607.879	0	70,341,000

ANALYSIS 198

VARIABLE V198 COR AD&MI CAPITAL OUTLAY
 SAMPLE N 10742

STRATUM	N	MEAN	STANDARD DEVIATION	SKEWNESS	KURTOSIS	MIN	MAX
ALL	10,742	11,687.180	466,856.563	68.809	5,616.629	0	40,883,000

ANALYSIS 199

VARIABLE V199 CORR AD&MI EQUIPMENT EXP
 SAMPLE N 10742

STRATUM	N	MEAN	STANDARD DEVIATION	SKEWNESS	KURTOSIS	MIN	MAX
ALL	10,742	1,913.703	59,256.672	52.218	3,360.547	0	4,468,000

DEC 10, 1982 FREQUENCIES FOR EXPENDITURE AND EMPLOYMENT DATA FOR THE CRIMINAL JUSTICE SYSTEM: 1979

ANALYSIS 200

VARIABLE V200 CORR AD&MI CONSTRUCT EXP
 SAMPLE N 10742

STRATUM	N	MEAN	STANDARD DEVIATION	SKEWNESS	KURTOSIS	MIN	MAX
ALL	10,742	9,664.680	443,181.438	74.947	6,502.219	0	40,372,000

ANALYSIS 201

VARIABLE V201 CORR AD&MI LAND EXP
 SAMPLE N 10742

STRATUM	N	MEAN	STANDARD DEVIATION	SKEWNESS	KURTOSIS	MIN	MAX
ALL	10,742	96.723	6,251.293	86.696	8,133.414	0	603,000

ANALYSIS 202

VARIABLE V202 COR AD&MI PAY/LOCAL GOVT
 SAMPLE N 10742

STRATUM	N	MEAN	STANDARD DEVIATION	SKEWNESS	KURTOSIS	MIN	MAX
ALL	10,742	13,901.176	646,594.875	71.125	5,847.324	0	57,082,000

ANALYSIS 203

VARIABLE V203 COR AD&MI PAY/STATE GOVT
 SAMPLE N 10742

STRATUM	N	MEAN	STANDARD DEVIATION	SKEWNESS	KURTOSIS	MIN	MAX
ALL	10,742	1,058.131	102,400.938	103.510	10,720.699	0	10,609,000

ANALYSIS 204

VARIABLE V204 CORR AD&MI CONTRIB TO EM
 SAMPLE N 10742

STRATUM	N	MEAN	STANDARD DEVIATION	SKEWNESS	KURTOSIS	MIN	MAX
ALL	10,742	10,231.070	421,815.125	50.034	2,642.994	0	25,032,000

ANALYSIS 205

VARIABLE V205 CORR ADMIN FULL-TIME EMP
 SAMPLE N 10742

STRATUM	N	MEAN	STANDARD DEVIATION	SKEWNESS	KURTOSIS	MIN	MAX
ALL	10,742	0.694	17.132	37.339	1,640.077	0	954

ANALYSIS 206

VARIABLE V206 CORR ADMIN FULL-TIME PAY
 SAMPLE N 10742

STRATUM	N	MEAN	STANDARD DEVIATION	SKEWNESS	KURTOSIS	MIN	MAX
ALL	10,742	926.046	22,420.918	36.915	1,626.450	0	1,246,004

ANALYSIS 207

VARIABLE V207 CORR ADMIN PART-TIME EMP
 SAMPLE N 10742

STRATUM	N	MEAN	STANDARD DEVIATION	SKEWNESS	KURTOSIS	MIN	MAX
ALL	10,742	0.015	0.704	60.366	3,954.246	0	52

ANALYSIS 208

VARIABLE V208 CORR ADMIN PART-TIME PAY
 SAMPLE N 10742

STRATUM	N	MEAN	STANDARD DEVIATION	SKEWNESS	KURTOSIS	MIN	MAX
ALL	10,742	6.501	318.119	61.884	4,059.462	0	21,911

ANALYSIS 209

VARIABLE V209 CORR ADMIN CURRENT OPERA
 SAMPLE N 10742

STRATUM	N	MEAN	STANDARD DEVIATION	SKEWNESS	KURTOSIS	MIN	MAX
ALL	10,742	16,501.953	396,788.000	37.256	1,652.810	0	20,902,000

ANALYSIS 210

VARIABLE V210 COR ADMIN CAPITAL OUTLAY
 SAMPLE N 10742

STRATUM	N	MEAN	STANDARD DEVIATION	SKEWNESS	KURTOSIS	MIN	MAX
ALL	10,742	1,647.645	117,425.000	101.161	10,386.762	0	12,070,000

ANALYSIS 211

VARIABLE V211 CORR ADMIN EQUIPMENT EXP
 SAMPLE N 10742

STRATUM	N	MEAN	STANDARD DEVIATION	SKEWNESS	KURTOSIS	MIN	MAX
ALL	10,742	542.916	20,161.961	65.713	5,215.969	0	1,731,000

ANALYSIS 212

VARIABLE V212 CORR ADMIN CONSTRUCT EXP
 SAMPLE N 10742

STRATUM	N	MEAN	STANDARD DEVIATION	SKEWNESS	KURTOSIS	MIN	MAX
ALL	10,742	1,098.212	99,600.500	102.291	10,543.859	0	10,276,000

ANALYSIS 213

VARIABLE V213 CORR ADMIN LAND EXP
 SAMPLE N 10742

STRATUM	N	MEAN	STANDARD DEVIATION	SKEWNESS	KURTOSIS	MIN	MAX
ALL	10,742	6.516	611.586	101.883	10,479.211	0	63,000

ANALYSIS 214

VARIABLE V214 COR ADMIN PAY/LOCAL GOVT
 SAMPLE N 10742

STRATUM	N	MEAN	STANDARD DEVIATION	SKEWNESS	KURTOSIS	MIN	MAX
ALL	10,742	28.486	2,857.561	103.461	10,713.539	0	296,000

ANALYSIS 215

VARIABLE V215 COR ADMIN PAY/STATE GOVT
 SAMPLE N 10742

STRATUM	N	MEAN	STANDARD DEVIATION	SKEWNESS	KURTOSIS	MIN	MAX
ALL	10,742	0.000	0.000	0.000	0.000	0	0

ANALYSIS 216

VARIABLE V216 COR ADMIN CONTRIB TO EMP
 SAMPLE N 10742

STRATUM	N	MEAN	STANDARD DEVIATION	SKEWNESS	KURTOSIS	MIN	MAX
ALL	10,742	0.004	0.453	103.634	10,738.000	0	47

ANALYSIS 217

VARIABLE V217 CORR MISC FULL-TIME EMP
 SAMPLE N 10742

STRATUM	N	MEAN	STANDARD DEVIATION	SKEWNESS	KURTOSIS	MIN	MAX
ALL	10,742	0.575	15.547	57.372	4,171.398	0	1,257

ANALYSIS 218

VARIABLE V218 CORR MISC FULL-TIME PAY
 SAMPLE N 10742

STRATUM	N	MEAN	STANDARD DEVIATION	SKEWNESS	KURTOSIS	MIN	MAX
ALL	10,742	1,056.001	51,655.934	94.884	9,477.281	0	5,198,982

ANALYSIS 219

VARIABLE V219 CORR MISC PART-TIME EMP
 SAMPLE N 10742

STRATUM	N	MEAN	STANDARD DEVIATION	SKEWNESS	KURTOSIS	MIN	MAX
ALL	10,742	0.031	1.594	88.422	8,404.344	0	155

ANALYSIS 220

VARIABLE V220 CORR MISC PART-TIME PAY
 SAMPLE N 10742

STRATUM	N	MEAN	STANDARD DEVIATION	SKEWNESS	KURTOSIS	MIN	MAX
ALL	10,742	23.669	1,712.023	100.638	10,306.191	0	175,631

ANALYSIS 221

VARIABLE V221 CORR MISC CURRENT OPERAT
 SAMPLE N 10742

STRATUM	N	MEAN	STANDARD DEVIATION	SKEWNESS	KURTOSIS	MIN	MAX
ALL	10,742	21,659.188	732,330.438	83.933	7,932.652	0	70,341,000

ANALYSIS 222

VARIABLE V222 CORR MISC CAPITAL OUTLAY
 SAMPLE N 10742

STRATUM	N	MEAN	STANDARD DEVIATION	SKEWNESS	KURTOSIS	MIN	MAX
ALL	10,742	10,027.461	446,074.875	74.449	6,395.086	0	40,422,000

ANALYSIS 223

VARIABLE V223 CORR MISC EQUIPMENT EXP
 SAMPLE N 10742

STRATUM	N	MEAN	STANDARD DEVIATION	SKEWNESS	KURTOSIS	MIN	MAX
ALL	10,742	1,370.787	55,379.836	60.556	4,308.492	0	4,468,000

ANALYSIS 224

VARIABLE V224 CORR MISC CONSTRUCT EXP
 SAMPLE N 10742

STRATUM	N	MEAN	STANDARD DEVIATION	SKEWNESS	KURTOSIS	MIN	MAX
ALL	10,742	8,566.465	430,516.688	80.326	7,268.668	0	40,372,000

ANALYSIS 225

VARIABLE V225 CORR MISC LAND EXP
 SAMPLE N 10742

STRATUM	N	MEAN	STANDARD DEVIATION	SKEWNESS	KURTOSIS	MIN	MAX
ALL	10,742	90.207	6,221.297	87.863	8,290.879	0	603,000

ANALYSIS 226

VARIABLE V226 CORR MISC PAY/LOCAL GOVT
 SAMPLE N 10742

STRATUM	N	MEAN	STANDARD DEVIATION	SKEWNESS	KURTOSIS	MIN	MAX
ALL	10,742	17,407.184	745,602.063	59.246	3,972.755	0	57,082,000

ANALYSIS 227

VARIABLE V227 CORR MISC PAY/STATE GOVT
 SAMPLE N 10742

STRATUM	N	MEAN	STANDARD DEVIATION	SKEWNESS	KURTOSIS	MIN	MAX
ALL	10,742	1,036.120	102,390.250	103.543	10,725.270	0	10,609,000

ANALYSIS 228

VARIABLE V228 CORR MISC CONTRIB TO EMP
 SAMPLE N 10742

STRATUM	N	MEAN	STANDARD DEVIATION	SKEWNESS	KURTOSIS	MIN	MAX
ALL	10,742	10,179.418	421,814.563	50.034	2,643.032	0	25,032,000

ANALYSIS 229

VARIABLE V229 OTHER CJ FULL-TIME EMP
 SAMPLE N 10742

STRATUM	N	MEAN	STANDARD DEVIATION	SKEWNESS	KURTOSIS	MIN	MAX
ALL	10,742	0.816	17.333	59.699	4,239.520	0	1.371

ANALYSIS 230

VARIABLE V230 OTHER CJ FULL-TIME PAY
 SAMPLE N 10742

STRATUM	N	MEAN	STANDARD DEVIATION	SKEWNESS	KURTOSIS	MIN	MAX
ALL	10,742	1,106.933	30,392.145	77.294	6,845.859	0	2,803,202

ANALYSIS 231

VARIABLE V231 OTHER CJ PART-TIME EMP
 SAMPLE N 10742

STRATUM	N	MEAN	STANDARD DEVIATION	SKEWNESS	KURTOSIS	MIN	MAX
ALL	10,742	2.108	212.773	103.611	10,734.840	0	22,051

ANALYSIS 232

VARIABLE V232 OTHER CJ PART-TIME PAY
 SAMPLE N 10742

STRATUM	N	MEAN	STANDARD DEVIATION	SKEWNESS	KURTOSIS	MIN	MAX
ALL	10,742	30.782	1,983.436	102.046	10,513.430	0	204,498

ANALYSIS 233

VARIABLE V233 OTHER CJ CURRENT OPERAT
 SAMPLE N 10742

STRATUM	N	MEAN	STANDARD DEVIATION	SKEWNESS	KURTOSIS	MIN	MAX
ALL	10,742	30,452.035	944,172.000	89.251	8,631.773	0	92,602,000

ANALYSIS 234

VARIABLE V234 OTHER CJ CAPITAL OUTLAY
 SAMPLE N 10742

STRATUM	N	MEAN	STANDARD DEVIATION	SKEWNESS	KURTOSIS	MIN	MAX
ALL	10,742	9,721.035	336,755.563	52.619	3,045.833	0	22,815,000

ANALYSIS 235

VARIABLE V235 OTHER CJ EQUIPMENT EXP
 SAMPLE N 10742

STRATUM	N	MEAN	STANDARD DEVIATION	SKEWNESS	KURTOSIS	MIN	MAX
ALL	10,742	2,112.083	137,794.125	98.164	9,922.926	0	14,000,000

ANALYSIS 236

VARIABLE V236 OTHER CJ CONSTRUCT EXP
 SAMPLE N 10742

STRATUM	N	MEAN	STANDARD DEVIATION	SKEWNESS	KURTOSIS	MIN	MAX
ALL	10,742	7,483.242	306,876.813	60.613	4,011.708	0	22,804,000

ANALYSIS 237

VARIABLE V237 OTHER CJ LAND EXP
 SAMPLE N 10742

STRATUM	N	MEAN	STANDARD DEVIATION	SKEWNESS	KURTOSIS	MIN	MAX
ALL	10,742	71.402	4,526.105	80.604	7,070.789	0	419,000

ANALYSIS 238

VARIABLE V238 OTHER CJ PAY/LOCAL GOVT
 SAMPLE N 10742

STRATUM	N	MEAN	STANDARD DEVIATION	SKEWNESS	KURTOSIS	MIN	MAX
ALL	10,742	53,033.488	1583793.000	51.936	3,113.682	0	104,298,000

ANALYSIS 239

VARIABLE V239 OTHER CJ PAY/STATE GOVT
 SAMPLE N 10742

STRATUM	N	MEAN	STANDARD DEVIATION	SKEWNESS	KURTOSIS	MIN	MAX
ALL	10,742	50,783.824	5065841.000	103.414	10,706.875	0	524,663,000

ANALYSIS 240

VARIABLE V240 OTHER CJ CONTRIB TO EMP
 SAMPLE N 10742

STRATUM	N	MEAN	STANDARD DEVIATION	SKEWNESS	KURTOSIS	MIN	MAX
ALL	10,742	662.235	32,567.910	65.111	4,468.363	0	2,436,000

ANALYSIS 241

VARIABLE V241 GEN REV SHAR/ANTI-RECESS
 SAMPLE N 10742

STRATUM	N	MEAN	STANDARD DEVIATION	SKEWNESS	KURTOSIS	MIN	MAX
ALL	10,742	111,644.375	1919060.000	78.661	7,168.414	0	179,586,000

ANALYSIS 242

VARIABLE V242 CETA & OTHER MANPOWER
 SAMPLE N 10742

STRATUM	N	MEAN	STANDARD DEVIATION	SKEWNESS	KURTOSIS	MIN	MAX
ALL	10,742	25,841.602	320,886.063	66.383	5,503.660	0	28,026,000

ANALYSIS 243

VARIABLE V243 GENERAL REVENUE OTHER
 SAMPLE N 10742

STRATUM	N	MEAN	STANDARD DEVIATION	SKEWNESS	KURTOSIS	MIN	MAX
ALL	10,742	419.196	34,924.766	98.906	10,030.277	0	3,558,000

DEC 10, 1982 FREQUENCIES FOR EXPENDITURE AND EMPLOYMENT DATA FOR THE CRIMINAL JUSTICE SYSTEM: 1979

ANALYSIS 244

VARIABLE V244 TOT GEN DIRECT REVENUE
 SAMPLE N 10742

STRATUM	N	MEAN	STANDARD DEVIATION	SKEWNESS	KURTOSIS	MIN	MAX
ALL	10,742	212,891.375	8024507.000	93.836	9,227.957	0	800,008,504

ANALYSIS 245

VARIABLE V245 LEAA GRANTS
 SAMPLE N 10742

STRATUM	N	MEAN	STANDARD DEVIATION	SKEWNESS	KURTOSIS	MIN	MAX
ALL	10,742	1,049.818	43,831.727	75.518	5,961.922	0	3,751,000

ANALYSIS 246

VARIABLE V246 FED GOVT REIMBURSEMENT
 SAMPLE N 10742

STRATUM	N	MEAN	STANDARD DEVIATION	SKEWNESS	KURTOSIS	MIN	MAX
ALL	10,742	809.341	42,123.910	93.917	9,297.125	0	4,210,000

ANALYSIS 247

VARIABLE V247 OTHER DEDICATED FED REV
 SAMPLE N 10742

STRATUM	N	MEAN	STANDARD DEVIATION	SKEWNESS	KURTOSIS	MIN	MAX
ALL	10,742	1,672.601	62,325.367	86.512	8,250.813	0	6,044,000

DEC 10, 1982 FREQUENCIES FOR EXPENDITURE AND EMPLOYMENT DATA FOR THE CRIMINAL JUSTICE SYSTEM: 1979

ANALYSIS 248

VARIABLE V248 TOTAL DEDICATED FED REV
 SAMPLE N 10742

STRATUM	N	MEAN	STANDARD DEVIATION	SKEWNESS	KURTOSIS	MIN	MAX
ALL	10,742	78,585.938	1339960.000	29.788	1,119.124	0	68,731,000

ANALYSIS 249

VARIABLE V249 LEAA REV FROM STATE
 SAMPLE N 10742

STRATUM	N	MEAN	STANDARD DEVIATION	SKEWNESS	KURTOSIS	MIN	MAX
ALL	10,742	11,458.477	412,341.375	70.937	5,734.563	0	36,041,000

ANALYSIS 250

VARIABLE V250 OTHER FED CJ REV FROM ST
 SAMPLE N 10742

STRATUM	N	MEAN	STANDARD DEVIATION	SKEWNESS	KURTOSIS	MIN	MAX
ALL	10,742	806.826	8,032.336	26.766	1,125.965	0	429,502

ANALYSIS 251

VARIABLE V251 STATE CRIM JUST FUNDING
 SAMPLE N 10742

STRATUM	N	MEAN	STANDARD DEVIATION	SKEWNESS	KURTOSIS	MIN	MAX
ALL	10,742	1,835.225	13,287.660	15.428	324.199	0	401,532

DEC 10, 1982 FREQUENCIES FOR EXPENDITURE AND EMPLOYMENT DATA FOR THE CRIMINAL JUSTICE SYSTEM: 1979

ANALYSIS 252

VARIABLE V252 STATE GOVT REIMBURSEMENT
 SAMPLE N 10742

STRATUM	N	MEAN	STANDARD DEVIATION	SKEWNESS	KURTOSIS	MIN	MAX
ALL	10,742	3,283.125	24,101.453	14.481	275.394	0	726,300

ANALYSIS 253

VARIABLE V253 OTHER STATE CJ REV
 SAMPLE N 10742

STRATUM	N	MEAN	STANDARD DEVIATION	SKEWNESS	KURTOSIS	MIN	MAX
ALL	10,742	2,154.763	15,127.711	14.377	282.764	0	436,107

ANALYSIS 254

VARIABLE V254 TOTAL STATE CJ REV
 SAMPLE N 10742

STRATUM	N	MEAN	STANDARD DEVIATION	SKEWNESS	KURTOSIS	MIN	MAX
ALL	10,742	81,632.063	898,935.188	33.439	1,466.683	0	51,075,000

ANALYSIS 255

VARIABLE V255 LOCAL GOVT REIMBURSEMENT
 SAMPLE N 10742

STRATUM	N	MEAN	STANDARD DEVIATION	SKEWNESS	KURTOSIS	MIN	MAX
ALL	10,742	2,360.647	25,095.055	39.284	2,197.213	0	1,683,000

ANALYSIS 256

VARIABLE	V256	OTHER LOCAL CJ REV					
SAMPLE N	10742						
STRATUM	N	MEAN	STANDARD DEVIATION	SKEWNESS	KURTOSIS	MIN	MAX
ALL	10,742	832.047	9,108.855	19.461	484.263	0	330,000

ANALYSIS 257

VARIABLE	V257	TOTAL LOCAL CJ REV					
SAMPLE N	10742						
STRATUM	N	MEAN	STANDARD DEVIATION	SKEWNESS	KURTOSIS	MIN	MAX
ALL	10,742	26,284.941	988,591.375	88.054	8,339.555	0	95,952,000

ANALYSIS 258

VARIABLE	V258	POLICE FULL-TIME EQUIV					
SAMPLE N	10742						
STRATUM	N	MEAN	STANDARD DEVIATION	SKEWNESS	KURTOSIS	MIN	MAX
ALL	10,742	55.773	805.066	65.921	5,111.832	0	67,910

ANALYSIS 259

VARIABLE	V259	SW PER FULL-TIME EQ					
SAMPLE N	10742						
STRATUM	N	MEAN	STANDARD DEVIATION	SKEWNESS	KURTOSIS	MIN	MAX
ALL	10,742	42.698	528.736	54.953	3,560.715	0	38,326

ANALYSIS 260

VARIABLE V260 NON-S PER FULL-TIME EQ
 SAMPLE N 10742

STRATUM	N	MEAN	STANDARD DEVIATION	SKEWNESS	KURTOSIS	MIN	MAX
ALL	10,742	13.193	302.059	89.619	8,692.781	0	29,685

ANALYSIS 261

VARIABLE V261 JUDICIAL FULL-TIME EQ
 SAMPLE N 10742

STRATUM	N	MEAN	STANDARD DEVIATION	SKEWNESS	KURTOSIS	MIN	MAX
ALL	10,742	14.024	167.601	43.104	2,442.397	0	11,290

ANALYSIS 262

VARIABLE V262 APPELLATE FULL-TIME EQ
 SAMPLE N 10742

STRATUM	N	MEAN	STANDARD DEVIATION	SKEWNESS	KURTOSIS	MIN	MAX
ALL	10,742	0.510	10.369	29.911	1,118.731	0	540

ANALYSIS 263

VARIABLE V263 LAST RESORT FULL-TIME EQ
 SAMPLE N 10742

STRATUM	N	MEAN	STANDARD DEVIATION	SKEWNESS	KURTOSIS	MIN	MAX
ALL	10,742	0.238	3.924	19.754	446.807	0	139

DEC 10, 1982 FREQUENCIES FOR EXPENDITURE AND EMPLOYMENT DATA FOR THE CRIMINAL JUSTICE SYSTEM: 1979

ANALYSIS 264

VARIABLE V264 INTERMED FULL-TIME EQUIV
 SAMPLE N 10742

STRATUM	N	MEAN	STANDARD DEVIATION	SKEWNESS	KURTOSIS	MIN	MAX
ALL	10,742	0.272	7.008	36.249	1,584.019	0	401

ANALYSIS 265

VARIABLE V265 GEN JURIS FULL-TIME EQUI
 SAMPLE N 10742

STRATUM	N	MEAN	STANDARD DEVIATION	SKEWNESS	KURTOSIS	MIN	MAX
ALL	10,742	4.532	66.827	36.731	1,719.884	0	3,592

ANALYSIS 266

VARIABLE V266 LMTD JURIS FULL-TIME EQ
 SAMPLE N 10742

STRATUM	N	MEAN	STANDARD DEVIATION	SKEWNESS	KURTOSIS	MIN	MAX
ALL	10,742	2.919	65.631	60.082	4,330.172	0	5,283

ANALYSIS 267

VARIABLE V267 MISC JUDIC FULL-TIME EQ
 SAMPLE N 10742

STRATUM	N	MEAN	STANDARD DEVIATION	SKEWNESS	KURTOSIS	MIN	MAX
ALL	10,742	3.890	85.378	74.380	6,491.336	0	7,777

ANALYSIS 268

VARIABLE V268 PROSECUTN FULL-TIME EQUI
 SAMPLE N 10742

STRATUM	N	MEAN	STANDARD DEVIATION	SKEWNESS	KURTOSIS	MIN	MAX
ALL	10,742	6.682	97.636	56.953	4,161.914	0	7,882

ANALYSIS 269

VARIABLE V269 PUBL DEF FULL-TIME EQUIV
 SAMPLE N 10742

STRATUM	N	MEAN	STANDARD DEVIATION	SKEWNESS	KURTOSIS	MIN	MAX
ALL	10,742	0.820	14.312	40.101	1,949.711	0	848

ANALYSIS 270

VARIABLE V270 TOT CORR FULL-TIME EQUIV
 SAMPLE N 10742

STRATUM	N	MEAN	STANDARD DEVIATION	SKEWNESS	KURTOSIS	MIN	MAX
ALL	10,742	24.809	332.631	27.516	974.816	0	16,259

ANALYSIS 271

VARIABLE V271 TOT INST FULL-TIME EQUIV
 SAMPLE N 10742

STRATUM	N	MEAN	STANDARD DEVIATION	SKEWNESS	KURTOSIS	MIN	MAX
ALL	10,742	18.497	263.315	29.786	1,145.877	0	13,657

ANALYSIS 272

VARIABLE V272 INST/M FULL-TIME EQUIV
 SAMPLE N 10742

STRATUM	N	MEAN	STANDARD DEVIATION	SKEWNESS	KURTOSIS	MIN	MAX
ALL	10,742	7.742	176.846	37.110	1,795.688	0	11,051

ANALYSIS 273

VARIABLE V273 INST/F FULL-TIME EQUIV
 SAMPLE N 10742

STRATUM	N	MEAN	STANDARD DEVIATION	SKEWNESS	KURTOSIS	MIN	MAX
ALL	10,742	0.413	9.147	30.822	1,144.783	0	457

ANALYSIS 274

VARIABLE V274 INST/JUV FULL-TIME EQUIV
 SAMPLE N 10742

STRATUM	N	MEAN	STANDARD DEVIATION	SKEWNESS	KURTOSIS	MIN	MAX
ALL	10,742	3.891	59.692	29.283	1,132.207	0	3,193

ANALYSIS 275

VARIABLE V275 INST/OTHER FULL-TIME EQ
 SAMPLE N 10742

STRATUM	N	MEAN	STANDARD DEVIATION	SKEWNESS	KURTOSIS	MIN	MAX
ALL	10,742	6.041	103.198	56.391	3,903.224	0	8,002

ANALYSIS 276

VARIABLE V276 PROB FULL-TIME EQUIV
 SAMPLE N 10742

STRATUM	N	MEAN	STANDARD DEVIATION	SKEWNESS	KURTOSIS	MIN	MAX
ALL	10,742	4.931	59.693	26.018	891.422	0	2,859

ANALYSIS 277

VARIABLE V277 AD&MISC FULL-TIME EQUIV
 SAMPLE N 10742

STRATUM	N	MEAN	STANDARD DEVIATION	SKEWNESS	KURTOSIS	MIN	MAX
ALL	10,742	1.321	27.183	32.762	1,250.138	0	1,300

ANALYSIS 278

VARIABLE V278 ADMIN FULL-TIME EQUIV
 SAMPLE N 10742

STRATUM	N	MEAN	STANDARD DEVIATION	SKEWNESS	KURTOSIS	MIN	MAX
ALL	10,742	0.699	17.294	37.413	1,641.470	0	957

ANALYSIS 279

VARIABLE V279 MISC FULL-TIME EQUIV
 SAMPLE N 10742

STRATUM	N	MEAN	STANDARD DEVIATION	SKEWNESS	KURTOSIS	MIN	MAX
ALL	10,742	0.584	15.907	58.536	4,330.824	0	1,300

DEC 10, 1982 FREQUENCIES FOR EXPENDITURE AND EMPLOYMENT DATA FOR THE CRIMINAL JUSTICE SYSTEM: 1979

TABLES 71

ANALYSIS 280

VARIABLE V280 OTHER CJ FULL-TIME EQUIV
SAMPLE N 10742

STRATUM	N	MEAN	STANDARD DEVIATION	SKEWNESS	KURTOSIS	MIN	MAX
ALL	10,742	0.835	18.108	61.892	4,552.770	0	1,471

***** Normal termination of TABLES \$155.41 175.93 secs

END