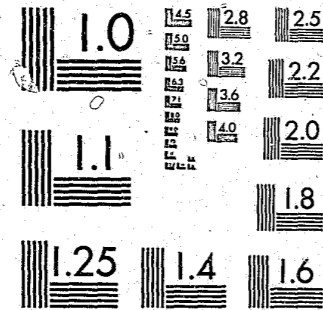


National Criminal Justice Reference Service



This microfiche was produced from documents received for inclusion in the NCJRS data base. Since NCJRS cannot exercise control over the physical condition of the documents submitted, the individual frame quality will vary. The resolution chart on this frame may be used to evaluate the document quality.



MICROCOPY RESOLUTION TEST CHART  
NATIONAL BUREAU OF STANDARDS-1963-A

Microfilming procedures used to create this fiche comply with the standards set forth in 41CFR 101-11.504.

Points of view or opinions stated in this document are those of the author(s) and do not represent the official position or policies of the U. S. Department of Justice.

National Institute of Justice  
United States Department of Justice  
Washington, D. C. 20531

5/13/85

ICPSR  
Inter-university Consortium for  
Political and Social Research

Juvenile Detention  
and Correctional  
Facility Census,  
1977

U.S. Dept. of Justice  
Bureau of Justice Statistics

96118

ICPSR 7758

96118

JUVENILE DETENTION AND CORRECTIONAL FACILITY  
CENSUS OF 1977

(ICPSR STUDY 7758)

Principal Investigator

Law Enforcement Assistance Administration

Inter-university Consortium for Political  
and Social Research

P.O. BOX 1248

Ann Arbor, Michigan 48106

ICPSR Edition  
First Printing, 1980

U.S. Department of Justice  
National Institute of Justice

This document has been reproduced exactly as received from the person or organization originating it. Points of view or opinions stated in this document are those of the authors and do not necessarily represent the official position or policies of the National Institute of Justice.

Permission to reproduce this copyrighted material has been granted by

Public Domain  
U. S. Department of Justice

to the National Criminal Justice Reference Service (NCJRS).

Further reproduction outside of the NCJRS system requires permission of the copyright owner.

ACKNOWLEDGEMENT OF ASSISTANCE

All manuscripts utilizing data made available through the Consortium should acknowledge that fact as well as identify the original collector of the data. The ICPSR Council urges all users of the ICPSR data facilities to follow some adaptation of this statement with the parentheses indicating items to be filled in appropriately or deleted by the individual user.

The data (and tabulations) utilized in this (publication) were made available (in part) by the Inter-university Consortium for Political and Social Research. The data for the Juvenile Detention and Correctional Facility Census of 1977 were originally collected by the Bureau of the Census for the Law Enforcement Assistance Administration and the Department of Health, Education and Welfare. Neither the collector of the original data nor the Consortium bear any responsibility for the analyses or interpretations presented here.

In order to provide funding agencies with essential information about the use of archival resources and to facilitate the exchange of information about ICPSR participants' research activities, each user of the ICPSR data facilities is expected to send two copies of each completed manuscript or thesis abstract to the Consortium. Please indicate in the cover letter which data were used.

TABLE OF CONTENTS

	PAGE NO.
INTRODUCTION	
Study Description	I
Data Collection Procedures	II
File Structure	II
ICPSR Processing Information	III
Codebook Information	III
VARIABLE DESCRIPTION LIST	V
CODEBOOK	1
APPENDIX	85

NCJRS

JAN 7 1985

ACQUISITIONS

STUDY DESCRIPTION

The Juvenile Detention and Correctional Facility Census of 1977 was the fifth in a series of surveys of state and local public facilities in the juvenile justice system. The first of these major surveys was designed by the Law Enforcement Assistance Administration (LEAA) and the Department of Health, Education and Welfare (HEW). The data collection for the five surveys (1971, 1973, 1974, 1975, and 1977) was performed by the Bureau of the Census. The 1977 census was the third one in the series to cover both public and private juvenile detention and correctional facilities. Data in this study are the results of the public sector survey.

Documentation for the Juvenile Detention and Correctional Facility Census is comprised of three parts: an introduction (this document), an OSIRIS dictionary-codebook, and a glossary of terms and concepts used in the survey.

The Census surveyed the number and kinds of juvenile detention facilities with a resident population of at least 50 percent juveniles. This last criterion did not apply to facilities that held youthful offenders in addition to juveniles. A facility was included if it was considered a juvenile facility even though the youthful offenders outnumbered juveniles at the time of the census. Specifically excluded were juvenile detention centers operated as part of a jail and without a separate staff or budget, nonresidential facilities, facilities exclusively for drug abusers or for dependent and neglected children, foster homes, and federal juvenile correctional facilities.

On December 31, 1977 the 987 public facilities were surveyed. Distributed by type of facility, there were 375 detention centers, 56 shelters, 23 reception or diagnostic centers, 178 training schools, 98 ranches, forestry camps or farms, and 257 halfway houses or group homes.

Included in the survey are the total number of juveniles held as of December 31, 1977 as well as the breakdown of the numbers in each type of facility. Also included are numbers and breakdown (by sex) of detention and status offenses for juveniles, numbers of full-time and part-time staff, payroll and nonpayroll staff, breakdown of residential population and staff by race, and facility expenditures.

DATA COLLECTION PROCEDURES

The 1977 census was conducted by mail, and questionnaires were mailed in November of 1977 to the facilities. The questionnaires were sent to central reporters (state or local agencies). The remaining questionnaires were mailed directly to the individual facilities.

The mailing list used in the 1977 census was the same as that used in the 1975 census, updated from the 1976-1977 edition of the Directory of Correctional Institutions and Agencies, published by the American Correctional Association and the 1977 State Comprehensive Law Enforcement Plans prepared by each state for LEAA. The updated list was then sent to juvenile correctional authorities in the respective states for review and correction.

The 1977 survey had a 100% response rate and is the universe. There is then no sampling or weighting information needed for this survey.

FILE STRUCTURE

The Juvenile Detention and Correctional Facility Census of 1977 data are available from the ICPSR in two formats: a card image file and an OSIRIS dataset. The card image file contains 9 decks per facility in a format based on 80 column punched cards. The data are sorted by facility with all decks for a case together in ascending order. The OSIRIS dictionary gives the format and other information for each variable in the OSIRIS data file. The dictionary or dictionary-codebook file is used in conjunction with the OSIRIS software package. The OSIRIS data file is constructed with a single logical record of 708 columns for each facility. There are 241 variables on 987 facilities.

The OSIRIS data file can be accessed directly through software packages or programs which do not use the OSIRIS dictionary by specifying the tape locations of the desired variables. These tape locations are given in the OSIRIS dictionary-codebook.

ICPSR PROCESSING INFORMATION

The study was processed according to the standard ICPSR processing procedures. The data were checked for illegal or inconsistent code values which, when found, were recoded to OSIRIS missing data values. No consistency checks were performed.

CODEBOOK INFORMATION

The example below is a reproduction of information appearing in the machine-readable codebook for a typical variable. The numbers in brackets do not appear but are references to the descriptions which follow this example.

.....

[1] VAR 006	[2] LEVEL OF GOVERNMENT	[3] MD=9
REF 006	[4] LOC 12 WIDTH 1	[5] DK 1 COL 14
[6] LEVEL OF GOVERNMENT ADMINISTERING FACILITY		
-----		
[7] -----		
[8] SEE NOTE(S) X		
[9]	[10]	
0.	STATE	
1.	COUNTY	
2.	CITY	

.....

[1] Indicates the variable and reference numbers. A variable and reference number are assigned to each item in the study. In this codebook which documents the archived dataset these numbers are identical. Should the data be disseminated in a different structure, new variable numbers may be assigned or created. The reference number would remain unchanged and correspond to those in this codebook.

## IV

- [2] Indicates the abbreviated (24 character maximum) variable label used within OSIRIS to identify each variable. An expanded version can be found in the Variable Description List.
- [3] Indicates the designation of missing data. In this example, code values equal to 9 are missing data (MD=9). Alternative statements for other variables are "MD=0 OR GE 9", "MD GE 9", or "NO MISSING DATA CODES". Some analysis software packages (including the ICPSR-supported package) require that certain types of data which the user desires to be excluded from analysis be designated as "missing data" (e.g., inappropriate, unascertained, unascertainable, or ambiguous data categories. Although this value is defined as within the missing data category, this does not mean that users should not or cannot use this code value in a substantive role if they so desire.
- [4] Indicates the sequential location and width of this variable within the record when the data are stored on magnetic tape. In this example the variable named "LEVEL OF GOVERNMENT" is one column wide and located in the 12th column within the record.
- [5] Indicates the location by deck and column(s) of this variable when the data are stored on cards or in card image format.
- [6] Indicates the full text of the variable description supplied by the original collector of the data. The numbers and letters that may appear at the beginning are question numbers from the survey forms.
- [7] Indicates an additional comment or explanation appended to the variable description.
- [8] A variable which has a footnote associated with it is denoted by the message, "SEE NOTE(S) X" where X is the number of the footnote referenced.
- [9] Indicates the code values occurring in the data for this variable.
- [10] Indicates the textual definitions of the codes.

## V

## VARIABLE DESCRIPTION LIST

ICPSR PROCESSING VARIABLES  
-----

1. ICPSR STUDY NUMBER - 7758
2. ICPSR VERSION NUMBER - 1
3. ICPSR PART NUMBER - 1
4. SEQUENTIAL IDENTIFIER

IDENTIFICATION VARIABLES  
-----

5. STATE CODE
6. LEVEL OF GOVERNMENT ADMINISTERING AGENCY
7. COUNTY CODE
8. CITY CODE
9. CHECK DIGIT

NEW AGENCY IDENTIFICATION NUMBER  
-----

10. TYPE OF NEW AGENCY
11. TYPE OF NEW FACILITY
12. NEW UNIQUE NUMBER
13. NEW AGENCY SEX
14. NEW AGENCY EMPLOYEE CODE
15. NEW AGENCY RESIDENT CODE

OLD AGENCY IDENTIFICATION NUMBER  
-----

16. TYPE OF OLD AGENCY
17. TYPE OF NEW FACILITY
18. OLD UNIQUE NUMBER
19. OLD AGENCY SEX
20. OLD AGENCY EMPLOYEE CODE
21. OLD AGENCY RESIDENT CODE

ANNUAL PERIOD COVERED BY REPORT  
-----

22. MONTH REPORT BEGINS
23. DAY REPORT BEGINS
24. YEAR REPORT BEGINS
25. MONTH REPORT ENDS
26. DAY REPORT ENDS
27. YEAR REPORT ENDS

ADULTS ADMITTED TO FACILITY  
-----

- 28. WERE ANY ADULTS ADMITTED?
- 29. TOTAL NUMBER OF MALE ADULTS HELD
- 30. TOTAL NUMBER OF FEMALE ADULTS HELD

TYPE OF FACILITY  
-----

- 31. PRIMARY FACILITY TYPE
- 32. ACCUSED STATUS OFFENDERS HELD?
- 33. ADJUDICATED STATUS OFFENDERS HELD?
- 34. ACCUSED DELINQUENT OFFENDERS HELD?
- 35. ADJUDICATED DELINQUENT OFFENDERS HELD?
- 36. NONOFFENDERS HELD?
- 37. OTHER NONOFFENDERS HELD?
- 38. VOLUNTARY ADMISSIONS HELD?
- 39. LARGEST GROUP OF JUVENILES HELD
- 40. IS LARGEST GROUP MORE THAN HALF OF JUVENILES HELD?

REASON FOR CUSTODY  
-----

- 41. JUVENILES HELD FOR DIAGNOSIS OR CLASSIFICATION?
- 42. JUVENILES HELD FOR DETENTION?
- 43. JUVENILES HELD FOR COMMITMENT/PLACEMENT?
- 44. JUVENILES HELD FOR PROBATION OR AFTERCARE?
- 45. JUVENILES HELD FOR VOLUNTARY ADMISSION?
- 46. LARGEST GROUP OF JUVENILES HELD

TYPE OF CUSTODY  
-----

- 47. SECURITY FOR JUVENILES AT FACILITY
- 48. ACCESS TO COMMUNITY ACTIVITIES AND RESOURCES
- 49. FREQUENCY JUVENILES ALLOWED TO LEAVE FACILITY
- 50. FACILITY DESIGNED FOR PHYSICAL RESTRAINT?
- 51. ARE MORE THAN HALF OF JUVENILES ACCUSED OR ADJUDICATED DELINQUENT OFFENDERS
- 52. AVERAGE LENGTH OF STAY IN MONTHS
- 53. AVERAGE LENGTH OF STAY IN DAYS

CAPACITY  
-----

- 54. NUMBER OF PERSONS FACILITY IS DESIGNED TO HOLD
- 55. DID FACILITY OPERATE BELOW CAPACITY?
- 56. AT WHAT CAPACITY DID FACILITY OPERATE?

FACILITY ADMINISTRATION  
-----

- 57. AGENCY ADMINISTERING FACILITY
- 58. SEX HOUSED
- 59. RECEIVE JUVENILES FROM WELFARE DEPARTMENTS?
- 60. RECEIVE JUVENILES FROM OTHER PUBLIC AGENCY?
- 61. RECEIVE JUVENILES DIRECT FROM PARENTS?
- 62. RECEIVE JUVENILES FROM OTHER SOURCES?
- 63. PRIMARY SOURCE OF JUVENILES
- 64. OJJDP FACILITY TYPE

JUVENILE RESIDENTIAL POPULATION  
-----

- 65. TOTAL NUMBER OF MALES
- 66. TOTAL NUMBER OF FEMALES
- 67. TOTAL NUMBER OF COMMITTED MALES
- 68. TOTAL NUMBER OF COMMITTED FEMALES
- 69. NUMBER OF MALE COMMITTED DELINQUENT OFFENDERS
- 70. NUMBER OF FEMALE COMMITTED DELINQUENT OFFENDERS
- 71. NUMBER OF MALE COMMITTED STATUS OFFENDERS
- 72. NUMBER OF FEMALE COMMITTED STATUS OFFENDERS
- 73. NUMBER OF MALE COMMITTED NONOFFENDERS
- 74. NUMBER OF FEMALE COMMITTED NONOFFENDERS
- 75. NUMBER OF MALE COMMITTED OTHER NONOFFENDERS
- 76. NUMBER OF FEMALE COMMITTED OTHER NONOFFENDERS
- 77. NUMBER OF MALE OTHER COMMITTED JUVENILES
- 78. NUMBER OF FEMALE OTHER COMMITTED JUVENILES

DETAINED JUVENILE POPULATION  
-----

- 79. TOTAL NUMBER OF MALES
- 80. TOTAL NUMBER OF FEMALES
- 81. NUMBER OF MALE DELINQUENT OFFENDERS
- 82. NUMBER OF FEMALE DELINQUENT OFFENDERS
- 83. NUMBER OF MALE STATUS OFFENDERS
- 84. NUMBER OF FEMALE STATUS OFFENDERS
- 85. NUMBER OF MALE NONOFFENDERS
- 86. NUMBER OF FEMALE NONOFFENDERS
- 87. NUMBER OF MALE OTHER NONOFFENDERS
- 88. NUMBER OF FEMALE OTHER NONOFFENDERS
- 89. NUMBER OF MALE OTHER JUVENILES
- 90. NUMBER OF FEMALE OTHER JUVENILES

VOLUNTARY ADMISSIONS  
-----

- 91. NUMBER OF MALES
- 92. NUMBER OF FEMALES

## VIII

## RESIDENTIAL POPULATION BY RACE

- 
- 93. TOTAL NUMBER OF MALE JUVENILES
  - 94. TOTAL NUMBER OF FEMALE JUVENILES
  - 95. TOTAL NUMBER OF MALE ADULTS
  - 96. TOTAL NUMBER OF FEMALE ADULTS
  - 97. TOTAL NUMBER OF WHITE MALE JUVENILES
  - 98. TOTAL NUMBER OF WHITE FEMALE JUVENILES
  - 99. TOTAL NUMBER OF WHITE MALE ADULTS
  - 100. TOTAL NUMBER OF WHITE FEMALE ADULTS
  - 101. TOTAL NUMBER OF BLACK MALE JUVENILES
  - 102. TOTAL NUMBER OF BLACK FEMALE JUVENILES
  - 103. TOTAL NUMBER OF BLACK MALE ADULTS
  - 104. TOTAL NUMBER OF BLACK FEMALE ADULTS
  - 105. TOTAL NUMBER OF NATIVE MALE JUVENILES
  - 106. TOTAL NUMBER OF NATIVE FEMALE JUVENILES
  - 107. TOTAL NUMBER OF NATIVE MALE ADULTS
  - 108. TOTAL NUMBER OF NATIVE FEMALE ADULTS
  - 109. TOTAL NUMBER OF ASIAN MALE JUVENILES
  - 110. TOTAL NUMBER OF ASIAN FEMALE JUVENILES
  - 111. TOTAL NUMBER OF ASIAN MALE ADULTS
  - 112. TOTAL NUMBER OF ASIAN FEMALE ADULTS
  - 113. TOTAL NUMBER OF WHITE HISPANIC MALE JUVENILES
  - 114. TOTAL NUMBER OF WHITE HISPANIC FEMALE JUVENILES
  - 115. TOTAL NUMBER OF WHITE HISPANIC MALE ADULTS
  - 116. TOTAL NUMBER OF WHITE HISPANIC FEMALE ADULTS
  - 117. TOTAL NUMBER OF BLACK HISPANIC MALE JUVENILES
  - 118. TOTAL NUMBER OF BLACK HISPANIC FEMALE JUVENILES
  - 119. TOTAL NUMBER OF BLACK HISPANIC MALE ADULTS
  - 120. TOTAL NUMBER OF BLACK HISPANIC FEMALE ADULTS

## AVERAGE AGE OF JUVENILE RESIDENTIAL POPULATION

- 
- 121. AVERAGE AGE OF MALES IN YEARS
  - 122. AVERAGE AGE OF MALES IN MONTHS
  - 123. AVERAGE AGE OF FEMALES IN YEARS
  - 124. AVERAGE AGE OF FEMALES IN MONTHS
  - 125. AGE OF YOUNGEST MALES
  - 126. AGE OF YOUNGEST FEMALES
  - 127. AGE OF OLDEST MALES
  - 128. AGE OF OLDEST FEMALES

## MOVEMENT OF COMMITMENT POPULATION

- 
- 129. JUVENILE MALES COMMITTED
  - 130. JUVENILE FEMALES COMMITTED

## IX

- 131. ADULT MALES COMMITTED
- 132. ADULT FEMALES COMMITTED
- 133. JUVENILE MALES DISCHARGED
- 134. JUVENILE FEMALES DISCHARGED
- 135. ADULT MALES DISCHARGED
- 136. ADULT FEMALES DISCHARGED
- 137. JUVENILE AVERAGE LENGTH OF STAY IN MONTHS
- 138. JUVENILE AVERAGE LENGTH OF STAY IN DAYS

## MOVEMENT OF DETENTION POPULATION

- 
- 139. JUVENILE MALES ADMITTED FOR DETENTION
  - 140. JUVENILE FEMALES ADMITTED FOR DETENTION
  - 141. ADULT MALES ADMITTED FOR DETENTION
  - 142. ADULT FEMALES ADMITTED FOR DETENTION
  - 143. JUVENILE MALES DISCHARGED OR TRANSFERRED
  - 144. JUVENILE FEMALES DISCHARGED OR TRANSFERRED
  - 145. ADULT MALES DISCHARGED OR TRANSFERRED
  - 146. ADULT FEMALES DISCHARGED OR TRANSFERRED
  - 147. JUVENILE AVERAGE LENGTH OF STAY IN DAYS

## MOVEMENTS OF VOLUNTARY RESIDENTS

- 
- 148. JUVENILE MALES ADMITTED
  - 149. JUVENILE FEMALES ADMITTED
  - 150. ADULT MALES ADMITTED
  - 151. ADULT FEMALES ADMITTED
  - 152. JUVENILE MALES DISCHARGED
  - 153. JUVENILE FEMALES DISCHARGED
  - 154. ADULT MALES DISCHARGED
  - 155. ADULT FEMALES DISCHARGED
  - 156. AVERAGE LENGTH OF STAY IN MONTHS
  - 157. AVERAGE LENGTH OF STAY IN DAYS

## AVERAGE DAILY POPULATION

- 
- 158. AVERAGE DAILY POPULATION

## TOTAL STAFF

- 
- 159. NUMBER OF PAYROLL FULL-TIME STAFF
  - 160. NUMBER OF PAYROLL PART-TIME STAFF
  - 161. NUMBER OF NONPAYROLL FULL-TIME STAFF
  - 162. NUMBER OF NONPAYROLL PART-TIME STAFF
  - 163. NUMBER OF COMMUNITY VOLUNTEERS FULL-TIME STAFF
  - 164. NUMBER OF COMMUNITY VOLUNTEERS PART-TIME STAFF

ADMINISTRATIVE STAFF  
-----

- 165. NUMBER OF PAYROLL FULL-TIME STAFF
- 166. NUMBER OF PAYROLL PART-TIME STAFF
- 167. NUMBER OF NONPAYROLL FULL-TIME STAFF
- 168. NUMBER OF NONPAYROLL PART-TIME STAFF
- 169. NUMBER OF COMMUNITY VOLUNTEERS FULL-TIME STAFF
- 170. NUMBER OF COMMUNITY VOLUNTEERS PART-TIME STAFF

CLERICAL SUPPORT STAFF  
-----

- 171. NUMBER OF PAYROLL FULL-TIME STAFF
- 172. NUMBER OF PAYROLL PART-TIME STAFF
- 173. NUMBER OF NONPAYROLL FULL-TIME STAFF
- 174. NUMBER OF NONPAYROLL PART-TIME STAFF
- 175. NUMBER OF COMMUNITY VOLUNTEERS FULL-TIME STAFF
- 176. NUMBER OF COMMUNITY VOLUNTEERS PART-TIME STAFF

TREATMENT AND EDUCATIONAL STAFF  
-----

- 177. NUMBER OF PAYROLL FULL-TIME STAFF
- 178. NUMBER OF PAYROLL PART-TIME STAFF
- 179. NUMBER OF NONPAYROLL FULL-TIME STAFF
- 180. NUMBER OF NONPAYROLL PART-TIME STAFF
- 181. NUMBER OF COMMUNITY VOLUNTEERS FULL-TIME STAFF
- 182. NUMBER OF COMMUNITY VOLUNTEERS PART-TIME STAFF

YOUTH SUPERVISION STAFF  
-----

- 183. NUMBER OF PAYROLL FULL-TIME STAFF
- 184. NUMBER OF PAYROLL PART-TIME STAFF
- 185. NUMBER OF NONPAYROLL FULL-TIME STAFF
- 186. NUMBER OF NONPAYROLL PART-TIME STAFF
- 187. NUMBER OF COMMUNITY VOLUNTEERS FULL-TIME STAFF
- 188. NUMBER OF COMMUNITY VOLUNTEERS PART-TIME STAFF

MAINTENANCE AND CULINARY STAFF  
-----

- 189. NUMBER OF PAYROLL FULL-TIME STAFF
- 190. NUMBER OF PAYROLL PART-TIME STAFF
- 191. NUMBER OF NONPAYROLL FULL-TIME STAFF
- 192. NUMBER OF NONPAYROLL PART-TIME STAFF
- 193. NUMBER OF COMMUNITY VOLUNTEERS FULL-TIME STAFF
- 194. NUMBER OF COMMUNITY VOLUNTEERS PART-TIME STAFF

OTHER STAFF  
-----

- 195. NUMBER OF PAYROLL FULL-TIME STAFF
- 196. NUMBER OF PAYROLL PART-TIME STAFF
- 197. NUMBER OF NONPAYROLL FULL-TIME STAFF
- 198. NUMBER OF NONPAYROLL PART-TIME STAFF
- 199. NUMBER OF COMMUNITY VOLUNTEERS FULL-TIME STAFF
- 200. NUMBER OF COMMUNITY VOLUNTEERS PART-TIME STAFF

TOTAL NUMBER OF STAFF BY RACE  
-----

- 201. TOTAL PAYROLL FULL-TIME STAFF
- 202. TOTAL PAYROLL PART-TIME STAFF
- 203. TOTAL NONPAYROLL FULL-TIME STAFF
- 204. TOTAL NONPAYROLL PART-TIME STAFF
- 205. TOTAL WHITE PAYROLL FULL-TIME STAFF
- 206. TOTAL WHITE PAYROLL PART-TIME STAFF
- 207. TOTAL WHITE NONPAYROLL FULL-TIME STAFF
- 208. TOTAL WHITE NONPAYROLL PART-TIME STAFF
- 209. TOTAL BLACK PAYROLL FULL-TIME STAFF
- 210. TOTAL BLACK PAYROLL PART-TIME STAFF
- 211. TOTAL BLACK NONPAYROLL FULL-TIME STAFF
- 212. TOTAL BLACK NONPAYROLL PART-TIME STAFF
- 213. TOTAL NATIVE PAYROLL FULL-TIME STAFF
- 214. TOTAL NATIVE PAYROLL PART-TIME STAFF
- 215. TOTAL NATIVE NONPAYROLL FULL-TIME STAFF
- 216. TOTAL NATIVE NONPAYROLL PART-TIME STAFF
- 217. TOTAL ASIAN PAYROLL FULL-TIME STAFF
- 218. TOTAL ASIAN PAYROLL PART-TIME STAFF
- 219. TOTAL ASIAN NONPAYROLL FULL-TIME STAFF
- 220. TOTAL ASIAN NONPAYROLL PART-TIME STAFF
- 221. TOTAL WHITE HISPANIC PAYROLL FULL-TIME STAFF
- 222. TOTAL WHITE HISPANIC PAYROLL PART-TIME STAFF
- 223. TOTAL WHITE HISPANIC NONPAYROLL FULL-TIME STAFF
- 224. TOTAL WHITE HISPANIC NONPAYROLL PART-TIME STAFF
- 225. TOTAL BLACK HISPANIC PAYROLL FULL-TIME STAFF
- 226. TOTAL BLACK HISPANIC PAYROLL PART-TIME STAFF
- 227. TOTAL BLACK HISPANIC NONPAYROLL FULL-TIME STAFF
- 228. TOTAL BLACK HISPANIC NONPAYROLL PART-TIME STAFF

NON-RESIDENT PROGRAM  
-----

- 229. DOES FACILITY OPERATE JUVENILE PROGRAM?
- 230. AVERAGE DAILY NUMBER OF MALES
- 231. AVERAGE DAILY NUMBER OF FEMALES
- 232. CAS FACILITY CLASSIFICATION CODE



PERIOD COVERED BY REPORT OF EXPENDITURES

- 233. BEGINNING MONTH OF REPORT
- 234. BEGINNING DAY OF REPORT
- 235. BEGINNING YEAR OF REPORT
- 236. ENDING MONTH OF REPORT
- 237. ENDING DAY OF REPORT
- 238. ENDING YEAR OF REPORT

OPERATING EXPENDITURES

- 239. GROSS SALARIES AND WAGES
- 240. OTHER OPERATING EXPENDITURES
- 241. CAPITAL EXPENDITURES

DECK IDENTIFICATION NUMBER IS '01'

DK 1 COL 1- 2

VAR 0001	ICPSR STUDY NUMBER	NO MISSING DATA CODES
REF 0001	LOC 1 WIDTH 4	DK 1 COL 3- 6

ICPSR STUDY NUMBER

7758. THE ICPSR HAS ATTACHED THIS NUMBER AS A STUDY IDENTIFICATION NUMBER.

VAR 0002	ICPSR VERSION NUMBER	NO MISSING DATA CODES
REF 0002	LOC 5 WIDTH 1	DK 1 COL 7

ICPSR VERSION NUMBER

2. THIS IS THE SECOND ICPSR VERSION OF THE STUDY.

VAR 0003	ICPSR PART NUMBER	NO MISSING DATA CODES
REF 0003	LOC 6 WIDTH 1	DK 1 COL 8

ICPSR PART NUMBER

1. THE ENTIRE STUDY IS CONTAINED IN ONE FILE.

VAR 0004	SEQUENTIAL IDENTIFIER	NO MISSING DATA CODES
REF 0004	LOC 7 WIDTH 3	DK 1 COL 9-11

CASE IDENTIFICATION NUMBER

THE ICPSR HAS ATTACHED A SEQUENTIAL CASE IDENTIFICATION NUMBER TO EVERY RECORD. THIS NUMBER UNIQUELY IDENTIFIES EACH RECORD IN THIS SURVEY.

VAR 0005 STATE MD=99  
REF 0005 LOC 10 WIDTH 2 DK 1 COL 12-13

STATE CODE FOR REPORTING AGENCY

GOVERNMENT DIVISIONS STATE CODE

SEE NOTE(S) 1

VAR 0006 LEVEL OF GOVERNMENT MD=9  
REF 0006 LOC 12 WIDTH 1 DK 1 COL 14

LEVEL OF GOVERNMENT ADMINISTERING AGENCY

- 0. STATE
- 1. COUNTY
- 2. CITY

VAR 0007 COUNTY MD=999  
REF 0007 LOC 13 WIDTH 3 DK 1 COL 15-17

COUNTY CODE

GOVERNMENT DIVISIONS COUNTY CODE

COUNTY CODES ARE SEQUENTIAL NUMBERS WITHIN EACH STATE AND RANGE FROM 1 TO 240. WHEN THE FACILITY IS OPERATED BY THE COUNTY, THEN THE CITY CODE (VAR.8) IS CODED THE SAME AS THE COUNTY CODE. IF THE FACILITY IS OPERATED BY THE STATE, THEN THE COUNTY CODE IS THE SEQUENTIAL NUMBER AND THE CITY CODE (VAR. 8) IS CODED 0 FOR THE RECORD. SEE NOTE 2 FOR THE COUNTY CODE LIST.

VAR 0008 CITY MD=999  
REF 0008 LOC 16 WIDTH 3 DK 1 COL 18-20

CITY CODE

GOVERNMENT DIVISIONS CITY CODE

CITY CODES ARE SEQUENTIAL NUMBERS WITHIN EACH COUNTY AND RANGE 0 TO 701 WHEN THE FACILITY IS OPERATED BY THE CITY. WHEN THE FACILITY IS OPERATED BY THE COUNTY, THE CITY CODE IS THE SAME AS THE COUNTY CODE (VAR. 7). CODES OF 0 INDICATE THAT THE FACILITY IS OPERATED BY THE STATE.

VAR 0009 CHECK DIGIT MD=9  
REF 0009 LOC 19 WIDTH 1 DK 1 COL 21

CHECK DIGIT

ACTUAL NUMBER 0 TO 8 IS CODED

VAR 0010 TYPE OF NEW AGENCY MD=0  
REF 0010 LOC 20 WIDTH 1 DK 1 COL 22

NEW AGENCY IDENTIFICATION CODE (NEW AGENCY IDENTIFICATION NUMBER)

5. JUVENILE DETENTION OR CORRECTIONAL FACILITY

VAR 0011 TYPE OF NEW FACILITY MD=0  
REF 0011 LOC 21 WIDTH 1 DK 1 COL 23

TYPE OF JUVENILE FACILITY (NEW AGENCY IDENTIFICATION NUMBER)

- 0. DETENTION CENTER
- 1. SHELTER

(CONTINUED)

- 2. JUVENILE RECEPTION OR DIAGNOSTIC CENTER
- 3. TRAINING SCHOOL
- 4. RESIDENTIAL TREATMENT CENTER
- 5. RANCH, FORESTRY CAMP OR FARM
- 6. HALFWAY HOUSE
- 7. GROUP HOME
- 8. OTHER

VAR 0012 NEW UNIQUE NUMBER MD=0  
 REF 0012 LOC 22 WIDTH 2 DK 1 COL 24-25

UNIQUE NUMBER FOR NEW AGENCY (NEW AGENCY IDENTIFICATION NUMBER)

IDENTIFICATION NUMBER TO UNIQUELY IDENTIFY A FACILITY OF A GIVEN TYPE WITHIN A UNIT OF GOVERNMENT.

VAR 0013 NEW AGENCY SEX MD=0  
 REF 0013 LOC 24 WIDTH 1 DK 1 COL 26

NEW AGENCY SEX (NEW AGENCY IDENTIFICATION NUMBER)

- 1. MALES ONLY
- 2. FEMALES ONLY
- 3. BOTH MALES AND FEMALES
- 4. UNKNOWN

VAR 0014 NEW AGCY EMPLOY CODE MD=0  
 REF 0014 LOC 25 WIDTH 1 DK 1 COL 27

EMPLOYEE CODE (NEW AGENCY IDENTIFICATION NUMBER)

- 1. 1 EMPLOYEE
- 2. 2-4 EMPLOYEES
- 3. 5-9 EMPLOYEES
- 4. 10-24 EMPLOYEES

(CONTINUED)

- 5. 25-49 EMPLOYEES
- 6. 50-99 EMPLOYEES
- 7. 100-199 EMPLOYEES
- 8. 200-299 EMPLOYEES
- 9. 300 OR MORE EMPLOYEES

0. INAP., NO EMPLOYEE CODE

VAR 0015 NEW AGCY RESIDENT CODE MD=0  
 REF 0015 LOC 26 WIDTH 1 DK 1 COL 28

RESIDENT CODE (NEW AGENCY IDENTIFICATION CODE)

- 1. 1-9 RESIDENTS
- 2. 10-24 RESIDENTS
- 3. 25-49 RESIDENTS
- 4. 50-74 RESIDENTS
- 5. 75-99 RESIDENTS
- 6. 100-199 RESIDENTS
- 7. 200 OR MORE RESIDENTS

0. INAP., NO RESIDENT CODE

VAR 0016 TYPE OF OLD AGENCY MD=0  
 REF 0016 LOC 27 WIDTH 1 DK 1 COL 29

OLD AGENCY IDENTIFICATION CODE (OLD AGENCY IDENTIFICATION NUMBER)

5. JUVENILE DETENTION OR CORRECTIONAL FACILITY

VAR 0017 TYPE OF OLD FACILITY MD=0  
 REF 0017 LOC 28 WIDTH 1 DK 1 COL 30

TYPE OF JUVENILE FACILITY (OLD AGENCY IDENTIFICATION NUMBER)

(CONTINUED)

- 0. DETENTION CENTER
- 1. SHELTER
- 2. JUVENILE RECEPTION OR DIAGNOSTIC CENTER
- 3. TRAINING SCHOOL
- 4. RESIDENTIAL TREATMENT CENTER
- 5. RANCH, FORESTRY CAMP OR FARM
- 6. HALFWAY HOUSE
- 7. GROUP HOME
- 8. OTHER

.....

VAR 0018 OLD UNIQUE NUMBER MD=0  
REF 0018 LOC 29 WIDTH 2 DK 1 COL 31-32

UNIQUE NUMBER FOR OLD AGENCY (OLD AGENCY IDENTIFICATION NUMBER)

-----

IDENTIFICATION NUMBER TO UNIQUELY IDENTIFY A FACILITY OF A GIVEN TYPE WITHIN A UNIT OF GOVERNMENT.

.....

VAR 0019 OLD AGENCY SEX MD=0  
REF 0019 LOC 31 WIDTH 1 DK 1 COL 33

OLD AGENCY SEX (OLD AGENCY IDENTIFICATION NUMBER)

-----

- 1. MALES ONLY
- 2. FEMALES ONLY
- 3. BOTH MALES AND FEMALES
- 4. UNKNOWN

.....

VAR 0020 OLD AGCY EMPLOY CODE MD=0  
REF 0020 LOC 32 WIDTH 1 DK 1 COL 34

EMPLOYEE CODE (OLD AGENCY IDENTIFICATION NUMBER)

-----

- 1. 1 EMPLOYEE

(CONTINUED)

- 2. 2-4 EMPLOYEES
- 3. 5-9 EMPLOYEES
- 4. 10-24 EMPLOYEES
- 5. 25-49 EMPLOYEES
- 6. 50-99 EMPLOYEES
- 7. 100-199 EMPLOYEES
- 8. 200-299 EMPLOYEES
- 9. 300 OR MORE EMPLOYEES

0. INAP., NO EMPLOYEE CODE

.....

VAR 0021 OLD AGCY RESIDENT CODE MD=0  
REF 0021 LOC 33 WIDTH 1 DK 1 COL 35

RESIDENT CODE (OLD AGENCY IDENTIFICATION CODE)

-----

- 1. 1-9 RESIDENTS
- 2. 10-24 RESIDENTS
- 3. 25-49 RESIDENTS
- 4. 50-74 RESIDENTS
- 5. 75-99 RESIDENTS
- 6. 100-199 RESIDENTS
- 7. 200 OR MORE RESIDENTS

0. INAP., NO RESIDENT CODE

.....

VAR 0022 ANNUAL REPORT BEGIN MNTH MD=-1  
REF 0022 LOC 34 WIDTH 2 DK 1 COL 36-37

INDICATE THE ANNUAL PERIOD COVERED BY THIS REPORT. DATA REQUESTED FOR THE CALENDAR YEAR JANUARY 1, 1977, THROUGH DECEMBER 31, 1977, IF POSSIBLE. IF YOU MUST REPORT FOR A FISCAL PERIOD OTHER THAN CALENDAR YEAR, REPORT FOR THE PERIOD THAT ENDED DURING 1977.  
MONTH REPORT BEGINS

-----

- 01. JANUARY
- 02. FEBRUARY
- 03. MARCH
- 04. APRIL

(CONTINUED)

- 05. MAY
- 06. JUNE
- 07. JULY
- 08. AUGUST
- 09. SEPTEMBER
- 10. OCTOBER
- 11. NOVEMBER
- 12. DECEMBER

.....

VAR 0023      ANNUAL REPORT BEGIN DAY      MD=-1  
 REF 0023      LOC    36 WIDTH 2      DK    1 COL 38-39

DAY ANNUAL REPORT BEGINS  
 -----

&lt;SEE REFERENCE NUMBER 22 FOR QUESTION&gt;

- 01. FIRST DAY OF MONTH
- .
- 31. THIRTY-FIRST DAY

.....

VAR 0024      ANNUAL REPORT BEGIN YEAR      MD=-1  
 REF 0024      LOC    38 WIDTH 2      DK    1 COL 40-41

YEAR ANNUAL REPORT BEGINS  
 -----

&lt;SEE REFERENCE NUMBER 22 FOR QUESTION&gt;

- 76. REPORT BEGINS IN 1976
- 77. REPORT BEGINS IN 1977

.....

VAR 0025      ANNUAL REPORT END MONTH      MD=-1  
 REF 0025      LOC    40 WIDTH 2      DK    1 COL 42-43

MONTH REPORT ENDS  
 -----

(CONTINUED)

&lt;SEE REFERENCE NUMBER 22 FOR QUESTION&gt;

- 01. JANUARY
- 02. FEBUARY
- 03. MARCH
- 04. APRIL
- 05. MAY
- 06. JUNE
- 07. JULY
- 08. AUGUST
- 09. SEPTEMBER
- 10. OCTOBERR
- 11. NOVEMBER
- 12. DECEMBER

.....

VAR 0026      ANNUAL REPORT END DAY      MD=-1  
 REF 0026      LOC    42 WIDTH 2      DK    1 COL 44-45

DAY ANNUAL REPORT ENDS  
 -----

&lt;SEE REFERENCE NUMBER 22 FOR QUESTION&gt;

- 01. FIRST DAY OF MONTH
- .
- 31. THIRTY-FIRST DAY

.....

VAR 0027      ANNUAL REPORT END YEAR      MD=-1  
 REF 0027      LOC    44 WIDTH 2      DK    1 COL 46-47

YEAR ANNUAL REPORT ENDS  
 -----

&lt;SEE REFERENCE NUMBER 22 FOR QUESTION&gt;

- 76. REPORT ENDS IN 1976
- 77. REPORT ENDS IN 1977

VAR 0028 ADULTS HELD - IIIA MD=0  
REF 0028 LOC 46 WIDTH 1 DK 1 COL 48

III.A. AT ANY TIME DURING THE ANNUAL PERIOD COVERED BY THIS REPORT, DID THE FACILITY HOLD ANY PERSONS WHO WERE ADMITTED TO THE FACILITY AS ADULTS, AS DEFINED BY THE LAWS OF YOUR STATE? (IF YOUR STATE HAS A YOUTHFUL OFFENDER STATUTE, PERSONS COVERED UNDER THE STATUTE SHOULD BE CONSIDERED ADULTS FOR PURPOSES OF THIS REPORT.)

- 1. YES
- 2. NO

VAR 0029 # ADULTS HELD - MALE MD=-1  
REF 0029 LOC 47 WIDTH 3 DK 1 COL 49-51

III.B. PROVIDE THE TOTAL NUMBER OF ADULTS HELD ON DECEMBER 31, 1977

III.B. MALE ADULTS HELD

ACTUAL NUMBER 1 TO 357 IS CODED

- 1. INAP. NO MALE ADULTS

VAR 0030 # ADULTS HELD - FEMALE MD=-1  
REF 0030 LOC 50 WIDTH 3 DK 1 COL 52-54

III.B. FEMALE ADULTS HELD

<SEE REFERENCE NUMBER 29 FOR QUESTION>

ACTUAL NUMBER 4 TO 37 IS CODED

- 1. INAP. NO FEMALE ADULTS

VAR 0031 FACILITY TYPE MD=9  
REF 0031 LOC 53 WIDTH 1 DK 1 COL 55

IV.A. IS THIS FACILITY PRIMARILY A -

- 0. DETENTION CENTER
- 1. SHELTER
- 2. RECEPTION OR DIAGNOSTIC CENTER
- 3. TRAINING SCHOOL
- 5. RANCH, FORESTRY CAMP, OR FARM
- 6. HALFWAY HOUSE OR GROUP HOME

VAR 0032 CUSTODY BY AUTH IVB1 MD=9  
REF 0032 LOC 54 WIDTH 1 DK 1 COL 56

IV.B. CUSTODIAL AUTHORITY

IV.B.1. WHICH OF THE FOLLOWING CATEGORIES OF JUVENILES DOES THE FACILITY USUALLY HOLD? (MARK AS MANY AS APPLY.)

IV.B.1. ACCUSED STATUS OFFENDERS (HELD PENDING ADJUDICATION FOR AN OFFENSE THAT WOULD NOT BE CONSIDERED A CRIME IF COMMITTED BY AN ADULT, E.G., TRUANCY, INCORRIGIBILITY, RUNNING AWAY)

- 1. AUTHORIZED
- 9. NOT AUTHORIZED

VAR 0033 CUSTODY BY AUTH IVB2 MD=9  
REF 0033 LOC 55 WIDTH 1 DK 1 COL 57

IV.B.1. ADJUDICATED STATUS OFFENDERS

<SEE REFERENCE NUMBER 32 FOR QUESTION>

- 2. AUTHORIZED
- 9. NOT AUTHORIZED

VAR 0034 CUSTODY BY AUTH IVB3 MD=9  
REF 0034 LOC 56 WIDTH 1 DK 1 COL 58

IV.B.1. ACCUSED DELINQUENT OFFENDERS (HELD PENDING  
ADJUDICATION FOR AN OFFENSE THAT WOULD BE CONSIDERED A CRIME  
IF COMMITTED BY AN ADULT, E.G. FELONY, MISDEMEANOR)

<SEE REFERENCE NUMBER 32 FOR QUESTION>

- 3. AUTHORIZED
- 9. NOT AUTHORIZED

VAR 0035 CUSTODY BY AUTH IVB4 MD=9  
REF 0035 LOC 57 WIDTH 1 DK 1 COL 59

IV.B.1. ADJUDICATED DELINQUENT OFFENDERS

<SEE REFERENCE NUMBER 32 FOR QUESTION>

- 4. AUTHORIZED
- 9. NOT AUTHORIZED

VAR 0036 CUSTODY BY AUTH IVB5 MD=9  
REF 0036 LOC 58 WIDTH 1 DK 1 COL 60

IV.B.1. NONOFFENDERS (HELD FOR DEPENDENCY, NEGLECT, OR  
ABUSE)

<SEE REFERENCE NUMBER 32 FOR QUESTION>

- 5. AUTHORIZED
- 9. NOT AUTHORIZED

VAR 0037 CUSTODY BY AUTH IVB6 MD=9  
REF 0037 LOC 59 WIDTH 1 DK 1 COL 61

IV.B.1. OTHER NONOFFENDERS (HELD FOR EMOTIONAL DISTURBANCE,  
MENTAL RETARDATION, ETC.)

<SEE REFERENCE NUMBER 32 FOR QUESTION>

- 6. AUTHORIZED
- 9. NOT AUTHORIZED

VAR 0038 CUSTODY BY AUTH IVB7 MD=9  
REF 0038 LOC 60 WIDTH 1 DK 1 COL 62

IV.B.1. VOLUNTARY ADMISSIONS (JUVENILES WHO ADMITTED  
THEMSELVES OR WERE REFERRED TO THE FACILITY BY A PARENT,  
COURT, SCHOOL, SOCIAL AGENCY, ETC., FOR TREATMENT WITHOUT  
BEING ADJUDICATED FOR AN OFFENSE)

<SEE REFERENCE NUMBER 32 FOR QUESTION>

- 7. AUTHORIZED
- 9. NOT AUTHORIZED

VAR 0039 CUSTODY BY AUTH IVB LG MD=9  
REF 0039 LOC 61 WIDTH 1 DK 1 COL 63

IV.B.1. CIRCLE THE BOX ABOVE THAT APPLIES TO THE LARGEST  
GROUP OF JUVENILES USUALLY HELD

INDICATES THE GROUP IDENTIFIED AS LARGEST OF THOSE NAMED IN  
REFERENCE NUMBERS 32 TO 38

- 1. ACCUSED STATUS OFFENDERS (SEE REFERENCE NUMBER 32  
FOR DEFINITION)
- 2. ADJUDICATED STATUS OFFENDERS
- 3. ACCUSED DELINQUENT OFFENDERS (SEE REFERENCE NUMBER  
34 FOR DEFINITION)

(CONTINUED)

- 4. ADJUDICATED DELINQUENT OFFENDERS
- 5. NONOFFENDERS (SEE REFERENCE NUMBER 36 FOR DEFINITION)
- 6. OTHER NONOFFENDERS (SEE REFERENCE NUMBER 37 FOR DEFINITION)
- 7. VOLUNTARY ADMISSIONS (SEE REFERENCE NUMBER 38 FOR DEFINITION)

.....

VAR 0040 CUSTODY BY AUTH IVB Y-N MD=0  
 REF 0040 LOC 62 WIDTH 1 DK 1 COL 64

IV.B.2. DOES THE GROUP YOU CIRCLED IN IV.B.1. USUALLY EQUAL MORE THAN HALF OF ALL THE JUVENILES HELD ?

-----

- 1. YES
- 2. NO

.....

VAR 0041 CUSTODY BY REASON IVC1 MD=9  
 REF 0041 LOC 63 WIDTH 1 DK 1 COL 65

IV.C. REASON FOR CUSTODY

IV.C. FOR WHICH OF THE FOLLOWING PURPOSES DOES THE FACILITY USUALLY HOLD JUVENILES? (MARK AS MANY AS APPLY.)

IV.C. HOLDS FOR DIAGNOSIS AND/OR CLASSIFICATION

- 
- 1. YES
  - 9. DOES NOT

.....

VAR 0042 CUSTODY BY REASON IVC2 MD=9  
 REF 0042 LOC 64 WIDTH 1 DK 1 COL 66

IV.C. HOLDS FOR DETENTION PENDING ADJUDICATION, COMMITMENT, OR PLACEMENT

(CONTINUED)

<SEE REFERENCE NUMBER 41 FOR QUESTION>

- 2. YES
- 9. DOES NOT

.....

VAR 0043 CUSTODY BY REASON IVC3 MD=9  
 REF 0043 LOC 65 WIDTH 1 DK 1 COL 67

IV.C. HOLDS FOR COMMITMENT/PLACEMENT (EXCEPT ON PROBATION OR AFTERCARE)

<SEE REFERENCE NUMBER 41 FOR QUESTION>

- 3. YES
- 9. DOES NOT

.....

VAR 0044 CUSTODY BY REASON IVC4 MD=9  
 REF 0044 LOC 66 WIDTH 1 DK 1 COL 68

IV.C. HOLDS FOR PROBATION OR AFTERCARE

<SEE REFERENCE NUMBER 41 FOR QUESTION>

- 4. YES
- 9. DOES NOT

.....

VAR 0045 CUSTODY BY REASON IVC5 MD=9  
 REF 0045 LOC 67 WIDTH 1 DK 1 COL 69

IV.C. HOLDS FOR VOLUNTARY ADMISSIONS

<SEE REFERENCE NUMBER 41 FOR QUESTION>

- 5. YES



(CONTINUED)

9. DOES NOT

VAR 0046 CUSTODY BY REASON IVC LG MD=9  
REF 0046 LOC 68 WIDTH 1 DK 1 COL 70

IV.C. CIRCLE THE BOX THAT APPLIES TO THE LARGEST GROUP OF JUVENILES USUALLY HELD

INDICATES THE REASON FROM REFERENCE NUMBER 41 TO 45 NAMED AS APPLYING

- 1. DIAGNOSIS AND/OR CLASSIFICATION
- 2. DETENTION PENDING ADJUDICATION, COMMITMENT, OR PLACEMENT
- 3. COMMITMENT/PLACEMENT FOR TREATMENT
- 4. PROBATION OR AFTERCARE
- 5. VOLUNTARY ADMISSIONS

VAR 0047 CUSTODY BY TYPE IVD1 MD=9  
REF 0047 LOC 69 WIDTH 1 DK 1 COL 71

IV.D. TYPE OF CUSTODY

IV.D.1. CONSIDERING BOTH THE SUPERVISORY CONTROLS EXERCISED BY THE STAFF AND THE PHYSICAL RESTRICTIONS AT YOUR FACILITY, HOW WOULD YOU DESCRIBE THE SECURITY FOR MOST JUVENILES AT THIS FACILITY?

- 1. STRICT
- 2. MEDIUM
- 3. MINIMAL
- 4. NONE

VAR 0048 CUSTODY BY TYPE IVD2 MD=9  
REF 0048 LOC 70 WIDTH 1 DK 1 COL 72

IV.D.2A. HOW WOULD YOU DESCRIBE THE EXTENT TO WHICH JUVENILES IN THE FACILITY HAVE ACCESS TO THE ACTIVITIES AND RESOURCES IN THE COMMUNITY SUCH AS SCHOOLS, TREATMENT, TRAINING, OR EMPLOYMENT?

- 1. MOST JUVENILES HAVE NO ACCESS
- 2. MOST JUVENILES HAVE ACCESS, BUT ARE ACCOMPANIED BY AN OFFICIAL
- 3. MOST JUVENILES HAVE ACCESS UNACCOMPANIED BY AN OFFICIAL

VAR 0049 CUSTODY BY TYPE IVD3 MD=9  
REF 0049 LOC 71 WIDTH 1 DK 1 COL 73

IV.D.2B. IF 2 OR 3 IS MARKED ABOVE, PLEASE MARK (X) HOW OFTEN MOST JUVENILES ARE ALLOWED TO LEAVE YOUR FACILITY TO ATTEND ACTIVITIES AND UTILIZE RESOURCES IN THE COMMUNITY

- 1. DAILY OR ALMOST EVERY DAY
- 2. ABOUT ONCE A WEEK
- 3. LESS FREQUENTLY THAN ONCE A WEEK, BUT AT LEAST ONCE A MONTH
- 4. LESS FREQUENTLY THAN ONCE A MONTH
- 9. INAP., CODED 1 IN REFERENCE NUMBER 48

VAR 0050 CUSTODY BY TYPE IVD4 MD=9  
REF 0050 LOC 72 WIDTH 1 DK 1 COL 74

IV.D.3A. IS YOUR FACILITY ONE THAT IS DESIGNED AND OPERATED SO AS TO ENSURE THAT ALL ENTRANCES AND EXITS ARE UNDER THE CONTROL OF THE STAFF OF THE FACILITY OR THAT RELIES ON LOCKED ROOMS AND BUILDINGS, FENCES OR PHYSICAL RESTRAINT IN ORDER TO CONTROL THE RESIDENTS?

- 1. YES

(CONTINUED)

2. NO

.....

VAR 0051 CUSTODY BY TYPE IVD5 MD=9  
 REF 0051 LOC 73 WIDTH 1 DK 1 COL 75

IV.D.3B. IF YOU MARKED NO IN 3A, DID ACCUSED OR ADJUDICATED  
 DELINQUENT OFFENDERS EQUAL MORE THAN 50% OF THE TOTAL  
 POPULATION DURING ANY CONSECUTIVE 30 DAYS IN THE REPORTING  
 PERIOD YOU ARE USING FOR THIS QUESTIONNAIRE?

-----

- 1. YES
  - 2. NO
  - 9. INAP., CODED 1 IN REFERENCE NUMBER 50
- .....

VAR 0052 LENGTH OF STAY - MONTHS MD=-1  
 REF 0052 LOC 74 WIDTH 2 DK 1 COL 76-77

IV.E. IN THE ANNUAL PERIOD COVERED BY THIS REPORT, WHAT WAS  
 THE AVERAGE (MEAN) LENGTH OF STAY (IN MONTHS AND DAYS) FOR  
 JUVENILES HELD IN THE FACILITY?

NUMBER OF MONTHS REPORTED

-----

ACTUAL NUMBER OF MONTHS 0 TO 48 IS CODED

-1. MISSING

.....

VAR 0053 LENGTH OF STAY - DAYS MD=-1  
 REF 0053 LOC 76 WIDTH 3 DK 9 COL 78-80

IV.E. NUMBER OF DAYS REPORTED

-----

<SEE REFERENCE NUMBER 52 FOR QUESTION>

ACTUAL NUMBER OF DAYS 1 TO 89 IS CODES

(CONTINUED)

-1. MISSING

DECK IDENTIFICATION NUMBER IS '02' DK 2 COL 1- 2

-----

VAR 0001 ICPSR STUDY NUMBER NO MISSING DATA CODES  
 REF 0001 LOC 1 WIDTH 4 DK 2 COL 3- 6

ICPSR STUDY NUMBER

-----

775 THE ICPSR HAS ATTACHED THIS NUMBER AS A STUDY  
 IDENTIFICATION NUMBER.

.....

VAR 0002 ICPSR VERSION NUMBER NO MISSING DATA CODES  
 REF 0002 LOC 5 WIDTH 1 DK 2 COL 7

ICPSR VERSION NUMBER

-----

2. THIS IS THE SECOND ICPSR VERSION OF THE STUDY.

.....

VAR 0003 ICPSR PART NUMBER NO MISSING DATA CODES  
 REF 0003 LOC 6 WIDTH 1 DK 2 COL 8

ICPSR PART NUMBER

-----

1. THE ENTIRE STUDY IS CONTAINED IN ONE FILE.

VAR 0004 SEQUENTIAL IDENTIFIER NO MISSING DATA CODES  
REF 0004 LOC 7 WIDTH 3 DK 2 COL 9-11

CASE IDENTIFICATION NUMBER

THE ICPSR HAS ATTACHED A SEQUENTIAL CASE IDENTIFICATION NUMBER TO EVERY RECORD. THIS NUMBER UNIQUELY IDENTIFIES EACH RECORD IN THIS SURVEY.

VAR 0054 CAPACITY - DESIGN IVF1 MD=-1  
REF 0054 LOC 79 WIDTH 3 DK 2 COL 12-14

IV.F. CAPACITY

IV.F.1. HOW MANY PERSONS IS YOUR FACILITY DESIGNED TO HOLD WITHOUT OVERCROWDING?

ACTUAL NUMBER FROM 3 TO 835 IS CODED

VAR 0055 CAPACITY IVF2 Y-N MD=0  
REF 0055 LOC 82 WIDTH 1 DK 2 COL 15

IV.F.2. FOR THE ANNUAL PERIOD COVERED BY THIS REPORT, DID YOUR FACILITY OPERATE AT A CAPACITY LESS THAN THE DESIGN CAPACITY BECAUSE OF BUDGETING, STAFFING, ETC.?

- 1. YES
- 2. NO

VAR 0056 CAPACITY - OPERATE IVF2 MD=-1  
REF 0056 LOC 83 WIDTH 3 DK 2 COL 16-18

IV.F.2. (IF YES) AT WHAT CAPACITY DID THE FACILITY OPERATE?

ACTUAL NUMBER FROM 1 TO 772 IS CODED

(CONTINUED)

-1. INAP. CODED 2 IN REFERENCE NUMBER 55

VAR 0057 FACILITY ADMINISTRATION MD=0  
REF 0057 LOC 86 WIDTH 1 DK 2 COL 19

IV.G. IS THIS FACILITY ADMINISTERED BY -

- 1. STATE
- 2. ONE COUNTY
- 3. ONE MUNICIPALITY
- 4. MULTI-GOVERNMENT ARRANGEMENTS

VAR 0058 SEX OF FACILITY POP MD=0  
REF 0058 LOC 87 WIDTH 1 DK 2 COL 20

IV.H. AS A MATTER OF PRACTICE, DOES YOUR FACILITY HOUSE -

- 1. MALES ONLY
- 2. FEMALES ONLY
- 3. BOTH MALES AND FEMALES

VAR 0059 SOURCE OF JUVENILES IVI1 MD=0  
REF 0059 LOC 88 WIDTH 1 DK 2 COL 21

IV.I. FROM WHAT SOURCE DO YOU RECEIVE JUVENILES FOR YOUR FACILITY? (MARK AS MANY AS APPLY)

IV.I. RECEIVES FROM WELFARE DEPARTMENTS

- 0. DOES NOT
- 1. YES

VAR 0060 SOURCE OF JUVENILES IVI2 MD=0  
REF 0060 LOC 89 WIDTH 1 DK 2 COL 22

IV.1. RECEIVES FROM OTHER PUBLIC AGENCY (E.G. PROBATION DEPARTMENT, JUVENILE COURT, CORRECTIONAL AUTHORITY, POLICE DEPARTMENT)

<SEE REFERENCE NUMBER 59 FOR QUESTION>

- 0. DOES NOT
- 2. YES

VAR 0061 SOURCE OF JUVENILES IVI3 MD=0  
REF 0061 LOC 90 WIDTH 1 DK 2 COL 23

IV.1. RECEIVES DIRECT REFERRAL FROM PARENTS

<SEE REFERENCE NUMBER 59 FOR QUESTION>

- 0. DOES NOT
- 3. YES

VAR 0062 SOURCE OF JUVENILES IVI4 MD=0  
REF 0062 LOC 91 WIDTH 1 DK 2 COL 24

IV.1. RECEIVES FROM OTHER SOURCES

<SEE REFERENCE NUMBER 59 FOR QUESTION>

- 0. DOES NOT
- 4. YES

VAR 0063 SOURCE OF JUV - PRIMARY MD=0  
REF 0063 LOC 92 WIDTH 1 DK 2 COL 25

IV.1. CIRCLE BOX ABOVE THAT SERVES AS PRIMARY SOURCE

INDICATES THE PRIMARY SOURCE FROM THOSE NAMED IN REFERENCE NUMBERS 59 TO 62

- 1. WELFARE DEPARTMENTS
- 2. OTHER PUBLIC AGENCY
- 3. DIRECT REFERRAL FROM PARENTS
- 4. OTHER SOURCES

VAR 0064 OJJDP TYPE OF FACILITY MD=0  
REF 0064 LOC 93 WIDTH 1 DK 2 COL 26

OJJDP FACILITY CLASSIFICATION TYPE CODE

- 1. DETENTION FACILITY
- 2. CORRECTIONAL FACILITY
- 3. PREPLACEMENT SHELTER
- 4. POST PLACEMENT SHELTER
- 5. NA

VAR 0065 TOTAL RESIDENTS - MALE MD=-1  
REF 0065 LOC 94 WIDTH 3 DK 2 COL 27-29

V. WHAT WAS THE JUVENILE RESIDENTIAL POPULATION OF THE FACILITY ON DECEMBER, 31, 1977? (INCLUDE ALL JUVENILES WHO WERE ON THE DECEMBER 31 ROLLS AS COMMITTED, DETAINED, OR VOLUNTARILY ADMITTED AS RESIDENTS. EXCLUDE ADULTS, IF ANY. IF COUNTS ARE NOT AVAILABLE, PLEASE PROVIDE REASONABLE ESTIMATES AND INDICATE EACH WITH AN ASTERISK (\*).)

V.1. TOTAL JUVENILE RESIDENTIAL POPULATION ON DECEMBER 31, 1977 - MALE

ACTUAL NUMBER 1 TO 444 IS CODED

(CONTINUED)

-1. MISSING

.....

VAR 0066	TOTAL RESIDENTS	FEMALE	MD=-1
REF 0066	LOC 97	WIDTH 3	DK 2 COL 30-32

V.1. TOTAL JUVENILE RESIDENTIAL POPULATION ON DECEMBER 31,  
1977 - FEMALE

-----

&lt;SEE REFERENCE NUMBER 65 FOR QUESTION&gt;

ACTUAL NUMBER 1 TO 172 IS CODED

-1. MISSING

.....

VAR 0067	# COMMITTED MALE JUV	MD=-1
REF 0067	LOC 100	WIDTH 3 DK 2 COL 33-35

V.2. TOTAL JUVENILE POPULATION COMMITTED TO THE FACILITY -  
MALE

-----

&lt;SEE REFERENCE NUMBER 65 FOR QUESTION&gt;

ACTUAL NUMBER 0 TO 444 IS CODED

-1. MISSING

.....

VAR 0068	# COMMITTED FEMALE JUV	MD=-1
REF 0068	LOC 103	WIDTH 3 DK 2 COL 36-38

V.2. TOTAL JUVENILE POPULATION COMMITTED TO THE FACILITY -  
FEMALE

-----

&lt;SEE REFERENCE NUMBER 65 FOR QUESTION&gt;

(CONTINUED)

ACTUAL NUMBER 0 TO 172 IS CODED

-1. MISSING

.....

VAR 0069	# COMMIT MALE JUV - DEL	MD=-1
REF 0069	LOC 106	WIDTH 3 DK 2 COL 39-41

V.2.A. COMMITTED DELINQUENT OFFENDERS - MALE

-----

JUVENILES WHO WERE ADJUDICATED FOR AN OFFENSE THAT WOULD BE  
CONSIDERED A CRIME IF COMMITTED BY AN ADULT (E.G., FELONY,  
MISDEMEANOR) AND WERE COMMITTED TO THE FACILITY

&lt;SEE REFERENCE NUMBER 65 FOR QUESTION&gt;

ACTUAL NUMBER 0 TO 444 IS CODED

-1. MISSING

.....

VAR 0070	# COMMIT FEMALE JUV-DEL	MD=-1
REF 0070	LOC 109	WIDTH 3 DK 2 COL 42-44

V.2.A. COMMITTED DELINQUENT OFFENDERS - FEMALE

-----

JUVENILES WHO HAVE BEEN ADJUDICATED FOR AN OFFENSE THAT  
WOULD BE CONSIDERED A CRIME IF COMMITTED BY AN ADULT (E.G.,  
FELONY, MISDEMEANOR) AND WERE COMMITTED TO THE FACILITY

&lt;SEE REFERENCE NUMBER 65 FOR QUESTION&gt;

ACTUAL NUMBER 1 TO 169 IS CODED

-1. MISSING

VAR 0071 # COMMIT MALE JUV-STATUS MD=-1  
REF 0071 LOC 112 WIDTH 3 DK 2 COL 45-47

V.2.B. COMMITTED STATUS OFFENDERS - MALE

JUVENILES WHO HAVE BEEN ADJUDICATED FOR AN OFFENSE THAT WOULD NOT BE CONSIDERED A CRIME IF COMMITTED BY AN ADULT (E.G., TRUANCY, INCORRIGIBILITY, RUNNING AWAY) AND WERE COMMITTED TO THE FACILITY

<SEE REFERENCE NUMBER 65 FOR QUESTION>

ACTUAL NUMBER 0 TO 128 IS CODED

-1. MISSING

VAR 0072 # COMMIT FEMALE JUV-STAT MD=-1  
REF 0072 LOC 115 WIDTH 3 DK 2 COL 48-50

V.2.B. COMMITTED STATUS OFFENDERS - FEMALE

JUVENILES WHO HAVE BEEN ADJUDICATED FOR AN OFFENSE THAT WOULD NOT BE CONSIDERED A CRIME IF COMMITTED BY AN ADULT (E.G., TRUANCY, INCORRIGIBILITY, RUNNING AWAY) AND WERE COMMITTED TO THE FACILITY

<SEE REFERENCE NUMBER 65 FOR QUESTION>

ACTUAL NUMBER 0 TO 138 IS CODED

-1. MISSING

VAR 0073 # COMMIT MALE JUV-DEP MD=-1  
REF 0073 LOC 118 WIDTH 3 DK 2 COL 51-53

V.2.C. COMMITTED DEPENDENT, NEGLECTED, OR ABUSED NONOFFENDERS - MALE

(CONTINUED)

JUVENILES COMMITTED STRICTLY FOR DEPENDENCY, NEGLECT, OR ABUSE

<SEE REFERENCE NUMBER 65 FOR QUESTION>

ACTUAL NUMBER 0 TO 72 IS CODED

-1. MISSING

VAR 0074 # COMMIT FEMALE JUV-DEP MD=-1  
REF 0074 LOC 121 WIDTH 3 DK 2 COL 54-56

V.2.C. COMMITTED DEPENDENT, NEGLECTED, OR ABUSED NONOFFENDER - FEMALE

JUVENILES COMMITTED STRICTLY FOR DEPENDENCY, NEGLECT, OR ABUSE

<SEE REFERENCE NUMBER 65 FOR QUESTION>

ACTUAL NUMBER 0 TO 44 IS CODED

-1. MISSING

VAR 0075 # COMMIT MALE JUV-NON MD=-1  
REF 0075 LOC 124 WIDTH 3 DK 2 COL 57-59

V.2.D. OTHER COMMITTED NONOFFENDERS - MALE

JUVENILES COMMITTED STRICTLY FOR EMOTIONAL DISTURBANCE, MENTAL RETARDATION, ETC.

<SEE REFERENCE NUMBER 65 FOR QUESTION>

ACTUAL NUMBER 0 TO 20 IS CODED

-1. MISSING

VAR 0076 # COMMIT FEMALE JUV-NON MD=-1  
REF 0076 LOC 127 WIDTH 3 DK 2 COL 60-62

V.2.D. OTHER COMMITTED NONOFFENDERS - FEMALE

JUVENILES COMMITTED STRICTLY FOR EMOTIONAL DISTURBANCE,  
MENTAL RETARDATION, ETC.

<SEE REFERENCE NUMBER 65 FOR QUESTION>

ACTUAL NUMBER 0 TO 2 IS CODED

-1. MISSING

VAR 0077 # COMMIT MALE JUV-OTHER MD=-1  
REF 0077 LOC 130 WIDTH 3 DK 2 COL 63-65

V.2.E. OTHER COMMITTED JUVENILES - MALE

JUVENILES WHOSE CASE RECORDS ARE UNAVAILABLE AND WHO  
THEREFORE CANNOT BE CLASSIFIED IN ONE OF THE CATEGORIES  
ABOVE

<SEE REFERENCE NUMBER 65 FOR QUESTION>

ACTUAL NUMBER 2 TO 13 IS CODED

-1. MISSING

VAR 0078 # COMMIT FEMALE JUV-OTHR MD=-1  
REF 0078 LOC 133 WIDTH 3 DK 2 COL 66-68

V.2.E. OTHER COMMITTED JUVENILES - FEMALE

JUVENILES WHOSE CASE RECORDS ARE UNAVAILABLE AND WHO  
THEREFORE CANNOT BE CLASSIFIED IN ONE OF THE CATEGORIES  
ABOVE

(CONTINUED)

<SEE REFERENCE NUMBER 65 FOR QUESTION>

ACTUAL NUMBER 0 TO 8 IS CODED

-1. MISSING

VAR 0079 # DETAINED MALE JUV MD=-1  
REF 0079 LOC 136 WIDTH 3 DK 2 COL 69-71

V.3. TOTAL JUVENILE POPULATION DETAINED IN THE FACILITY -  
MALE

<SEE REFERENCE NUMBER 65 FOR QUESTION>

ACTUAL NUMBER 0 TO 357 IS CODED

-1. MISSING

VAR 0080 # DETAINED FEMALE JUV MD=-1  
REF 0080 LOC 139 WIDTH 3 DK 2 COL 72-74

V.3. TOTAL JUVENILE POPULATION DETAINED IN THE FACILITY -  
FEMALE

<SEE REFERENCE NUMBER 65 FOR QUESTION>

ACTUAL NUMBER 0 TO 64 IS CODED

-1. MISSING

VAR 0081 # DET MALE JUV-DEL MD=-1  
REF 0081 LOC 142 WIDTH 3 DK 2 COL 75-77

V.3.A. DETAINED DELINQUENT OFFENDERS - MALE

(CONTINUED)

JUVENILES WHO ARE PENDING ADJUDICATION FOR AN OFFENSE THAT WOULD BE A CRIME IF COMMITTED BY AN ADULT (E.G., FELONY, MISDEMEANOR) OR WHO HAVE BEEN ADJUDICATED AND ARE AWAITING DISPOSITION OR PLACEMENT

<SEE REFERENCE NUMBER 65 FOR QUESTION>

ACTUAL NUMBER 0 TO 357 IS CODED

-1. MISSING

VAR 0082 # DET FEMALE JUV-DEL MD=-1  
REF 0082 LOC 145 WIDTH 3 DK 2 COL 78-80

V.3.A. DETAINED DELINQUENT OFFENDERS - FEMALE

JUVENILES WHO ARE PENDING ADJUDICATION FOR AN OFFENSE THAT WOULD BE A CRIME IF COMMITTED BY AN ADULT (E.G., FELONY, MISDEMEANOR) OR WHO HAVE BEEN ADJUDICATED AND ARE AWAITING DISPOSITION OR PLACEMENT

<SEE REFERENCE NUMBER 65 FOR QUESTION>

ACTUAL NUMBER 0 TO 64 IS CODED

-1. MISSING

DECK IDENTIFICATION NUMBER IS '03' DK 3 COL 1- 2

VAR 0001 ICPSR STUDY NUMBER NO MISSING DATA CODES  
REF 0001 LOC 1 WIDTH 4 DK 3 COL 3- 6

ICPSR STUDY NUMBER

7758. THE ICPSR HAS ATTACHED THIS NUMBER AS A STUDY IDENTIFICATION NUMBER.

VAR 0002 ICPSR VERSION NUMBER NO MISSING DATA CODES  
REF 0002 LOC 5 WIDTH 1 DK 3 COL 7

ICPSR VERSION NUMBER

2. THIS IS THE SECOND ICPSR VERSION OF THE STUDY.

VAR 0003 ICPSR PART NUMBER NO MISSING DATA CODES  
REF 0003 LOC 6 WIDTH 1 DK 3 COL 8

ICPSR PART NUMBER

1. THE ENTIRE STUDY IS CONTAINED IN ONE FILE.

VAR 0004 SEQUENTIAL IDENTIFIER NO MISSING DATA CODES  
REF 0004 LOC 7 WIDTH 3 DK 3 COL 9-11

CASE IDENTIFICATION NUMBER

THE ICPSR HAS ATTACHED A SEQUENTIAL CASE IDENTIFICATION NUMBER TO EVERY RECORD. THIS NUMBER UNIQUELY IDENTIFIES EACH RECORD IN THIS SURVEY.

VAR 0083 # DET MALE JUV-STATUS MD=-1  
REF 0083 LOC 148 WIDTH 3 DK 3 COL 12-14

V.3.B. DETAINED STATUS OFFENDERS - MALE

JUVENILES WHO ARE PENDING ADJUDICATION FOR AN OFFENSE THAT WOULD NOT BE CONSIDERED A CRIME IF COMMITTED BY AN ADULT (E.G., FELONY, MISDEMEANOR) OR WHO HAVE BEEN ADJUDICATED AND ARE AWAITING DISPOSITION OR PLACEMENT

<SEE REFERENCE NUMBER 65 FOR QUESTION>



(CONTINUED)

ACTUAL NUMBER 0 TO 24 IS CODED

-1. MISSING

.....

VAR 0084	# DET FEMALE JUV-STATUS	MD=-1
REF 0084	LOC 151 WIDTH 3	DK 3 COL 15-17

V.3.B. DETAINED STATUS OFFENDERS - FEMALE

JUVENILES WHO ARE PENDING ADJUDICATION FOR AN OFFENSE THAT WOULD NOT BE CONSIDERED A CRIME IF COMMITTED BY AN ADULT (E.G., FELONY, MISDEMEANOR) OR WHO HAVE BEEN ADJUDICATED AND ARE AWAITING DISPOSITION OR PLACEMENT

<SEE REFERENCE NUMBER 65 FOR QUESTION>

ACTUAL NUMBER 1 TO 24 IS CODED

-1. MISSING

.....

VAR 0085	# DET MALE JUV-DEP	MD=-1
REF 0085	LOC 154 WIDTH 3	DK 3 COL 18-20

V.3.C. DETAINED DEPENDENT, NEGLECTED, OR ABUSED NONOFFENDERS - MALE

JUVENILES WHO ARE PENDING ADJUDICATION, DISPOSITION, OR PLACEMENT FOR DEPENDENCY, NEGLECT, OR ABUSE

<SEE REFERENCE NUMBER 65 FOR QUESTION>

ACTUAL NUMBER 0 TO 38 IS CODED

-1. MISSING

VAR 0086	# DET FEMALE JUV-DEP	MD=-1
REF 0086	LOC 157 WIDTH 3	DK 3 COL 21-23

V.3.C. DETAINED DEPENDENT, NEGLECTED, OR ABUSED NONOFFENDER - FEMALE

JUVENILES WHO ARE PENDING ADJUDICATION, DISPOSITION, OR PLACEMENT FOR DEPENDENCY, NEGLECT, OR ABUSE

<SEE REFERENCE NUMBER 65 FOR QUESTION>

ACTUAL NUMBER 0 TO 29 IS CODED

-1. MISSING

.....

VAR 0087	# DET MALE JUV-NON	MD=-1
REF 0087	LOC 160 WIDTH 3	DK 3 COL 24-26

V.3.D. OTHER DETAINED NONOFFENDERS - MALE

JUVENILES WHO ARE PENDING ADJUDICATION, DISPOSITION, OR PLACEMENT FOR EMOTIONAL DISTURBANCE, MENTAL RETARDATION, ETC.

<SEE REFERENCE NUMBER 65 FOR QUESTION>

ACTUAL NUMBER 1 TO 32 IS CODED

-1. MISSING

.....

VAR 0088	# DET FEMALE JUV-NON	MD=-1
REF 0088	LOC 163 WIDTH 3	DK 3 COL 27-29

V.3.D. OTHER DETAINED NONOFFENDERS - FEMALE

JUVENILES WHO ARE PENDING ADJUDICATION, DISPOSITION, OR PLACEMENT FOR EMOTIONAL DISTURBANCE, MENTAL RETARDATION, ETC.

(CONTINUED)

<SEE REFERENCE NUMBER 65 FOR QUESTION>

ACTUAL NUMBER 1 TO 12 IS CODED

-1. MISSING

.....

VAR 0089	# DET MALE JUV-OTHER	MD=-1
REF 0089	LOC 166 WIDTH 3	DK 3 COL 30-32

V.3.E. OTHER DETAINED JUVENILES - MALE

JUVENILES WHO CANNOT BE CLASSIFIED IN ONE OF THE ABOVE CATEGORIES

<SEE REFERENCE NUMBER 65 FOR QUESTION>

ACTUAL NUMBER 1 TO 16 IS CODED

-1. MISSING

.....

VAR 0090	# DET FEMALE JUV-OTHER	MD=-1
REF 0090	LOC 169 WIDTH 3	DK 3 COL 33-35

V.3.E. OTHER DETAINED JUVENILES - FEMALE

JUVENILES WHO CANNOT BE CLASSIFIED IN ONE OF THE CATEGORIES ABOVE

<SEE REFERENCE NUMBER 65 FOR QUESTION>

ACTUAL NUMBER 1 TO 4 IS CODED

-1. MISSING

VAR 0091	# MALE VOLUNTARY ADMISSN	MD=-1
REF 0091	LOC 172 WIDTH 3	DK 3 COL 36-38

V.4. VOLUNTARY ADMISSIONS - MALE

JUVENILES WHO ADMITTED THEMSELVES OR WERE REFERRED TO THE FACILITY BY A PARENT, COURT, SCHOOL, SOCIAL AGENCY, ETC. FOR TREATMENT WITHOUT BEING ADJUDGED FOR AN OFFENSE

<SEE REFERENCE NUMBER 65 FOR QUESTION>

ACTUAL NUMBER 1 TO 46 IS CODED

-1. MISSING

.....

VAR 0092	# FEMALE VOL ADMISSIONS	MD=-1
REF 0092	LOC 175 WIDTH 3	DK 3 COL 39-41

V.4. VOLUNTARY ADMISSIONS - FEMALE

JUVENILES WHO ADMITTED THEMSELVES OR WHO WERE REFERRED TO THE FACILITY BY A PARENT, COURT, SCHOOL, SOCIAL AGENCY, ETC. FOR TREATMENT WITHOUT BEING ADJUDGED FOR AN OFFENSE

<SEE REFERENCE NUMBER 65 FOR QUESTION>

ACTUAL NUMBER 1 TO 21 IS CODED

-1. MISSING

.....

VAR 0093	# MALE JUVENILES	MD=-1
REF 0093	LOC 178 WIDTH 3	DK 3 COL 42-44

VI. WHAT WAS THE TOTAL RESIDENTIAL POPULATION, BY RACE, ON DECEMBER 31, 1977 (IF YOUR FACILITY HELD ANY ADULTS ON DECEMBER 31, 1977, INCLUDE THEM. IF COUNTS ARE NOT AVAILABLE FROM RECORDS, PLEASE PROVIDE REASONABLE ESTIMATES AND INDICATE EACH WITH AN ASTERISK (\*).)

(CONTINUED)

VI.A.1. TOTAL RESIDENTIAL POPULATION ON DECEMBER 31, 1977 -  
MALE JUVENILES

ACTUAL NUMBER 1 TO 444 IS CODED

-1. MISSING

.....  
VAR 0094 # FEMALE JUVENILES MD=-1  
REF 0094 LOC 181 WIDTH 3 DK 3 COL 45-47

VI.A.1. TOTAL RESIDENTIAL POPULATION ON DECEMBER 31, 1977 -  
FEMALE JUVENILES

ACTUAL NUMBER 1 TO 172 IS CODED

-1. MISSING

.....  
VAR 0095 # MALE ADULTS MD=-1  
REF 0095 LOC 184 WIDTH 3 DK 3 COL 48-50

VI.A.1. TOTAL RESIDENTIAL POPULATION ON DECEMBER 31, 1977 -  
MALE ADULTS

ACTUAL NUMBER 1 TO 357 IS CODED

-1. MISSING

.....  
VAR 0096 # FEMALE ADULTS MD=-1  
REF 0096 LOC 187 WIDTH 3 DK 3 COL 51-53

VI.A.1. TOTAL RESIDENTIAL POPULATION ON DECEMBER 31, 1977 -  
FEMALE ADULTS

ACTUAL NUMBER 4 TO 37 IS CODED

(CONTINUED)

-1. MISSING

.....  
VAR 0097 # WHITE MALE JUVENILES MD=-1  
REF 0097 LOC 190 WIDTH 3 DK 3 COL 54-56

VI.A.2. TOTAL RESIDENTIAL POPULATION ON DECEMBER 31, 1977 -  
WHITE MALE JUVENILES

<SEE REFERENCE NUMBER 93 FOR QUESTION>

ACTUAL NUMBER 1 TO 390 IS CODED

-1. MISSING

.....  
VAR 0098 # WHITE FEMALE JUVENILES MD=-1  
REF 0098 LOC 193 WIDTH 3 DK 3 COL 57-59

VI.A.2. TOTAL RESIDENTIAL POPULATION ON DECEMBER 31, 1977 -  
WHITE FEMALE JUVENILES

<SEE REFERENCE NUMBER 93 FOR QUESTION>

ACTUAL NUMBER 1 TO 137 IS CODED

-1. MISSING

.....  
VAR 0099 # WHITE MALE ADULTS MD=-1  
REF 0099 LOC 196 WIDTH 3 DK 3 COL 60-62

VI.A.2. TOTAL RESIDENTIAL POPULATION ON DECEMBER 31, 1977 -  
WHITE MALE ADULTS

<SEE REFERENCE NUMBER 93 FOR QUESTION>

(CONTINUED)

ACTUAL NUMBER 1 TO 225 IS CODED

-1. MISSING

.....

VAR 0100	# WHITE FEMALE ADULTS	MD=-1
REF 0100	LOC 199 WIDTH 3	DK 3 COL 63-65

VI.A.2. TOTAL RESIDENTIAL POPULATION ON DECEMBER 31, 1977 -  
WHITE FEMALE ADULT

-----

&lt;SEE REFERENCE NUMBER 93 FOR QUESTION&gt;

ACTUAL NUMBER 3 TO 17 IS CODED

-1. MISSING

.....

VAR 0101	# BLACK MALE JUVENILES	MD=-1
REF 0101	LOC 202 WIDTH 3	DK 3 COL 66-68

VI.A.3. TOTAL RESIDENTIAL POPULATION ON DECEMBER 31, 1977 -  
BLACK MALE JUVENILES

-----

&lt;SEE REFERENCE NUMBER 93 FOR QUESTION&gt;

ACTUAL NUMBER 1 TO 242 IS CODED

-1. MISSING

.....

VAR 0102	# BLACK FEMALE JUVENILES	MD=-1
REF 0102	LOC 205 WIDTH 3	DK 3 COL 69-71

VI.A.3. TOTAL RESIDENTIAL POPULATION ON DECEMBER 31, 1977 -  
BLACK FEMALE JUVENILES

-----

&lt;SEE REFERENCE NUMBER 93 FOR QUESTION&gt;

(CONTINUED)

ACTUAL NUMBER 1 TO 70 IS CODED

-1. MISSING

.....

VAR 0103	# BLACK MALE ADULTS	MD=-1
REF 0103	LOC 208 WIDTH 3	DK 3 COL 72-74

VI.A.3. TOTAL RESIDENTIAL POPULATION ON DECEMBER 31, 1977 -  
BLACK MALE ADULTS

-----

&lt;SEE REFERENCE NUMBER 93 FOR QUESTION&gt;

ACTUAL NUMBER 2 TO 120 IS CODED

-1. MISSING

.....

VAR 0104	# BLACK FEMALE ADULTS	MD=-1
REF 0104	LOC 211 WIDTH 3	DK 3 COL 75-77

VI.A.3. TOTAL RESIDENTIAL POPULATION ON DECEMBER 31, 1977 -  
BLACK FEMALE ADULTS

-----

&lt;SEE REFERENCE NUMBER 93 FOR QUESTION&gt;

ACTUAL NUMBER 1 TO 18 IS CODED

-1. MISSING

.....

VAR 0105	# INDIAN MALE JUVENILES	MD=-1
REF 0105	LOC 214 WIDTH 3	DK 3 COL 78-80

VI.A.4. TOTAL RESIDENTIAL POPULATION ON DECEMBER 31, 1977 -  
NATIVE MALE JUVENILES

-----

(CONTINUED)

&lt;SEE REFERENCE NUMBER 93 FOR QUESTION&gt;

ACTUAL NUMBER 1 TO 36 IS CODED

-1. MISSING

DECK IDENTIFICATION NUMBER IS '04'

DK 4 COL 1-2

.....

VAR 0001	ICPSR STUDY NUMBER	NO MISSING DATA CODES
REF 0001	LOC 1 WIDTH 4	DK 4 COL 3-6

ICPSR STUDY NUMBER

7758. THE ICPSR HAS ATTACHED THIS NUMBER AS A STUDY IDENTIFICATION NUMBER.

.....

VAR 0002	ICPSR VERSION NUMBER	NO MISSING DATA CODES
REF 0002	LOC 5 WIDTH 1	DK 4 COL 7

ICPSR VERSION NUMBER

2. THIS IS THE SECOND ICPSR VERSION OF THE STUDY.

.....

VAR 0003	ICPSR PART NUMBER	NO MISSING DATA CODES
REF 0003	LOC 6 WIDTH 1	DK 4 COL 8

ICPSR PART NUMBER

1. THE ENTIRE STUDY IS CONTAINED IN ONE FILE.

VAR 0004	SEQUENTIAL IDENTIFIER	NO MISSING DATA CODES
REF 0004	LOC 7 WIDTH 3	DK 4 COL 9-11

CASE IDENTIFICATION NUMBER

THE ICPSR HAS ATTACHED A SEQUENTIAL CASE IDENTIFICATION NUMBER TO EVERY RECORD. THIS NUMBER UNIQUELY IDENTIFIES EACH RECORD IN THIS SURVEY.

.....

VAR 0106	# INDIAN FEMALE JUV	MD=-1
REF 0106	LOC 217 WIDTH 3	DK 4 COL 12-14

VI.A.4. TOTAL RESIDENTIAL POPULATION ON DECEMBER 31, 1977 - NATIVE FEMALE JUVENILES

.....

&lt;SEE REFERENCE NUMBER 93 FOR QUESTION&gt;

ACTUAL NUMBER 1 TO 14 IS CODED

-1. MISSING

VAR 0107	# INDIAN MALE ADULTS	MD=-1
REF 0107	LOC 220 WIDTH 3	DK 4 COL 15-17

VI.A.4. TOTAL RESIDENTIAL POPULATION ON DECEMBER 31, 1977 - NATIVE MALE ADULTS

.....

&lt;SEE REFERENCE NUMBER 93 FOR QUESTION&gt;

ACTUAL NUMBER 1 TO 7 IS CODED

-1. MISSING

VAR 0108 # INDIAN FEMALE ADULTS MD=-1  
REF 0108 LOC 223 WIDTH 3 DK 4 COL 18-20

VI.A.4. TOTAL RESIDENTIAL POPULATION ON DECEMBER 31, 1977 -  
NATIVE FEMALE ADULTS

<SEE REFERENCE NUMBER 93 FOR QUESTION>

ACTUAL NUMBER 2 IS CODED

-1. MISSING

VAR 0109 # ASIAN MALE JUVENILES MD=-1  
REF 0109 LOC 226 WIDTH 3 DK 4 COL 21-23

VI.A.5. TOTAL RESIDENTIAL POPULATION ON DECEMBER 31, 1977 -  
ASIAN MALE JUVENILES

<SEE REFERENCE NUMBER 93 FOR QUESTION>

ACTUAL NUMBER 0 TO 63 IS CODED

-1. MISSING

VAR 0110 # ASIAN FEMALE JUVENILES MD=-1  
REF 0110 LOC 229 WIDTH 3 DK 4 COL 24-26

VI.A.5. TOTAL RESIDENTIAL POPULATION ON DECEMBER 31, 1977 -  
ASIAN FEMALE JUVENILES

<SEE REFERENCE NUMBER 93 FOR QUESTION>

ACTUAL NUMBER 1 TO 8 IS CODED

-1. MISSING

VAR 0111 # ASIAN MALE ADULTS MD=-1  
REF 0111 LOC 232 WIDTH 3 DK 4 COL 27-29

VI.A.5. TOTAL RESIDENTIAL POPULATION ON DECEMBER 31, 1977 -  
ASIAN MALE ADULTS

<SEE REFERENCE NUMBER 93 FOR QUESTION>

ACTUAL NUMBER 1 TO 5 IS CODED

-1. MISSING

VAR 0112 # ASIAN FEMALE ADULTS MD=-1  
REF 0112 LOC 235 WIDTH 3 DK 4 COL 30-32

VI.A.5. TOTAL RESIDENTIAL POPULATION ON DECEMBER 31, 1977 -  
ASIAN FEMALE ADULTS

<SEE REFERENCE NUMBER 93 FOR QUESTION>

-1. MISSING

VAR 0113 # WHITE HISP MALE JUV MD=-1  
REF 0113 LOC 238 WIDTH 3 DK 4 COL 33-35

VI.B.1. TOTAL RESIDENTIAL POPULATION ON DECEMBER 31, 1977 -  
WHITE HISPANIC MALE JUVENILES

<SEE REFERENCE NUMBER 93 FOR QUESTION>

ACTUAL NUMBER 1 TO 176 IS CODED

-1. MISSING

VAR 0114 # WHITE HISP FEMALE JUV MD=-1  
REF 0114 LOC 241 WIDTH 3 DK 4 COL 36-38

VI.B.1. TOTAL RESIDENTIAL POPULATION ON DECEMBER 31, 1977 -  
WHITE HISPANIC FEMALE JUVENILES

<SEE REFERENCE NUMBER 93 FOR QUESTION>

ACTUAL NUMBER 1 TO 30 IS CODED

-1. MISSING

VAR 0115 # WHITE HISP MALE ADULTS MD=-1  
REF 0115 LOC 244 WIDTH 3 DK 4 COL 39-41

VI.B.1. TOTAL RESIDENTIAL POPULATION ON DECEMBER 31, 1977 -  
WHITE HISPANIC MALE ADULTS

<SEE REFERENCE NUMBER 93 FOR QUESTION>

ACTUAL NUMBER 2 TO 91 IS CODED

-1. MISSING

VAR 0116 # WHITE HISP FEMALE ADLT MD=-1  
REF 0116 LOC 247 WIDTH 3 DK 4 COL 42-44

VI.B.1. TOTAL RESIDENTIAL POPULATION ON DECEMBER 31, 1977 -  
WHITE HISPANIC FEMALE ADULTS

<SEE REFERENCE NUMBER 93 FOR QUESTION>

ACTUAL NUMBER 2 TO 10 IS CODED

-1. MISSING

VAR 0117 # BLACK HISP MALE JUV MD=-1  
REF 0117 LOC 250 WIDTH 3 DK 4 COL 45-47

VI.B.2. TOTAL RESIDENTIAL POPULATION ON DECEMBER 31, 1977 -  
BLACK HISPANIC MALE JUVENILES

<SEE REFERENCE NUMBER 93 FOR QUESTION>

ACTUAL NUMBER 1 TO 31 IS CODED

-1. MISSING

VAR 0118 # BLACK HISP FEMALE JUV MD=-1  
REF 0118 LOC 253 WIDTH 3 DK 4 COL 48-50

VI.B.2. TOTAL RESIDENTIAL POPULATION ON DECEMBER 31, 1977 -  
BLACK HISPANIC FEMALE JUVENILES

<SEE REFERENCE NUMBER 93 FOR QUESTION>

ACTUAL NUMBER 1 IS CODED

-1. MISSING

VAR 0119 # BLACK HISP MALE ADULTS MD=-1  
REF 0119 LOC 256 WIDTH 3 DK 4 COL 51-53

VI.B.2. TOTAL RESIDENTIAL POPULATION ON DECEMBER 31, 1977 -  
BLACK HISPANIC MALE ADULTS

<SEE REFERENCE NUMBER 93 FOR QUESTION>

-1. MISSING

VAR 0120 # BLACK HISP FEMALE ADLT MD=-1  
REF 0120 LOC 259 WIDTH 3 DK 4 COL 54-56

VI.B.2. TOTAL RESIDENTIAL POPULATION ON DECEMBER 31, 1977 -  
BLACK HISPANIC FEMALE ADULTS

<SEE REFERENCE NUMBER 93 FOR QUESTION>

-1. MISSING

VAR 0121 AVE AGE MALE IN YEARS MD=-1  
REF 0121 LOC 262 WIDTH 3 DK 4 COL 57-59

VII.A. WHAT WAS THE AVERAGE (MEAN) AGE OF THE JUVENILE  
RESIDENTIAL POPULATION OF THE FACILITY ON DECEMBER 31, 1977?  
(EXCLUDE ADULTS, IF ANY.)

VII.A. AVERAGE (MEAN) AGE OF THE JUVENILE RESIDENTIAL  
POPULATION ON DECEMBER 31, 1977 - IN YEARS - MALES

ACTUAL NUMBER 5 TO 17 IS CODED

-1. MISSING

VAR 0122 AVE AGE MALE IN MONTHS MD=-1  
REF 0122 LOC 265 WIDTH 3 DK 4 COL 60-62

VII.A. AVERAGE (MEAN) AGE OF THE JUVENILE RESIDENTIAL  
POPULATION ON DECEMBER 31, 1977 - IN YEARS - FEMALES

ACTUAL NUMBER 1 TO 11 IS CODED

-1. MISSING

VAR 0123 AVE AGE FEMALE IN YEARS MD=-1  
REF 0123 LOC 268 WIDTH 3 DK 4 COL 63-65

VII.A. AVERAGE (MEAN) AGE OF THE JUVENILE RESIDENTIAL  
POPULATION ON DECEMBER 31, 1977 - IN MONTHS - MALES

ACTUAL NUMBER 0 TO 17 IS CODED

-1. MISSING

VAR 0124 AVE AGE FEMALE IN MONTHS MD=-1  
REF 0124 LOC 271 WIDTH 3 DK 4 COL 66-68

VII.A. AVERAGE (MEAN) AGE OF THE JUVENILE RESIDENTIAL  
POPULATION ON DECEMBER 31, 1977 - IN MONTHS - FEMALES

ACTUAL NUMBER 1 TO 11 IS CODED

-1. MISSING

VAR 0125 RANGE-AGE YOUNGEST MALES MD=-1  
REF 0125 LOC 274 WIDTH 3 DK 4 COL 69-71

VII.B. WHAT WAS THE RANGE OF AGES OF THE RESIDENTIAL  
POPULATION HELD IN THE FACILITY FOR THE ANNUAL PERIOD  
COVERED BY THIS REPORT?

VII.B.1. AGE OF YOUNGEST - MALES

ACTUAL NUMBER 1 TO 17 IS CODED

-1. MISSING



VAR 0126 RANGE-AGE YOUNGEST FEMALE MD=-1  
 REF 0126 LOC 277 WIDTH 3 DK 4 COL 72-74

VII.B.1. AGE OF YOUNGEST - FEMALES

ACTUAL NUMBER 0 TO 17 IS CODED

-1. MISSING

VAR 0127 RANGE-AGE OLDEST MALES MD=-1  
 REF 0127 LOC 280 WIDTH 3 DK 4 COL 75-77

VII.B.2. AGE OF OLDEST (INCLUDE ADULTS, IF ANY.) - MALES

<SEE REFERENCE NUMBER 125 FOR QUESTION>

ACTUAL NUMBER 11 TO 33 IS CODED

-1. MISSING

VAR 0128 RANGE-AGE OLDEST FEMALES MD=-1  
 REF 0128 LOC 283 WIDTH 3 DK 4 COL 78-80

VII.B.2. AGE OF OLDEST (INCLUDE ADULTS, IF ANY.) - FEMALES

<SEE REFERENCE NUMBER 125 FOR QUESTION>

ACTUAL NUMBER 0 TO 24 IS CODED

-1. MISSING

DECK IDENTIFICATION NUMBER IS '05' DK 5 COL 1- 2

VAR 0001 ICPSR STUDY NUMBER NO MISSING DATA CODES  
 REF 0001 LOC 1 WIDTH 4 DK 5 COL 3- 6

ICPSR STUDY NUMBER

7758. THE ICPSR HAS ATTACHED THIS NUMBER AS A STUDY IDENTIFICATION NUMBER.

VAR 0002 ICPSR VERSION NUMBER NO MISSING DATA CODES  
 REF 0002 LOC 5 WIDTH 1 DK 5 COL 7

ICPSR VERSION NUMBER

2. THIS IS THE SECOND ICPSR VERSION OF THE STUDY.

VAR 0003 ICPSR PART NUMBER NO MISSING DATA CODES  
 REF 0003 LOC 6 WIDTH 1 DK 5 COL 8

ICPSR PART NUMBER

1. THE ENTIRE STUDY IS CONTAINED IN ONE FILE.

VAR 0004 SEQUENTIAL IDENTIFIER NO MISSING DATA CODES  
 REF 0004 LOC 7 WIDTH 3 DK 5 COL 9-11

CASE IDENTIFICATION NUMBER

THE ICPSR HAS ATTACHED A SEQUENTIAL CASE IDENTIFICATION NUMBER TO EVERY RECORD. THIS NUMBER UNIQUELY IDENTIFIES EACH RECORD IN THIS SURVEY.

VAR 0129 COMMIT MALE JUV MD=-1  
REF 0129 LOC 286 WIDTH 6 DK 5 COL 12-17

VIII.A. MOVEMENT OF COMMITMENT POPULATION DURING THE ANNUAL PERIOD COVERED BY THIS REPORT

VIII.A.1. TOTAL MOVEMENT INTO FACILITY (INCLUDE PERSONS WHO ARE RECOMMITMENTS AS WELL AS FIRST COMMITMENTS, THOSE RETURNED FROM AFTERCARE/PAROLE, AND THOSE TRANSFERRED IN FROM ANOTHER FACILITY FOR JUVENILES. ALSO INCLUDE AWOL'S IF RETURNED AFTER HAVING BEEN REMOVED FROM THE FACILITY ROLLS.)  
- JUVENILE MALES

ACTUAL NUMBER 0 TO 3003 IS CODED

-1. MISSING

VAR 0130 COMMIT FEMALE JUV MD=-1  
REF 0130 LOC 292 WIDTH 6 DK 5 COL 18-23

VIII.A.1. TOTAL MOVEMENT INTO FACILITY (INCLUDE PERSONS WHO ARE RECOMMITMENTS AS WELL AS FIRST COMMITMENTS, THOSE RETURNED FROM AFTERCARE/PAROLE, AND THOSE TRANSFERRED IN FROM ANOTHER FACILITY FOR JUVENILES. ALSO INCLUDE AWOL'S IF RETURNED AFTER HAVING BEEN REMOVED FROM THE FACILITY ROLES.)  
- JUVENILE FEMALES

ACTUAL NUMBER 0 TO 488 IS CODED

-1. MISSING

VAR 0131 COMMIT MALE ADULTS MD=-1  
REF 0131 LOC 298 WIDTH 6 DK 5 COL 24-29

VIII.A.1. TOTAL MOVEMENT INTO FACILITY (INCLUDE PERSONS WHO ARE RECOMMITMENTS AS WELL AS FIRST COMMITMENTS, THOSE RETURNED FROM AFTERCARE/PAROLE, AND THOSE TRANSFERRED IN FROM ANOTHER FACILITY FOR JUVENILES. ALSO INCLUDE AWOL'S IF RETURNED AFTER HAVING BEEN REMOVED FROM THE FACILITY ROLES.)

(CONTINUED)

- ADULT MALES

ACTUAL NUMBER 1 TO 42 IS CODED

-1. MISSING

VAR 0132 COMMIT FEMALE ADULTS MD=-1  
REF 0132 LOC 304 WIDTH 6 DK 5 COL 30-35

VIII.A.1. TOTAL MOVEMENT INTO FACILITY (INCLUDE PERSONS WHO ARE RECOMMITMENTS AS WELL AS FIRST COMMITMENTS, THOSE RETURNED FROM AFTERCARE/PAROLE, AND THOSE TRANSFERRED IN FROM ANOTHER FACILITY FOR JUVENILES. ALSO INCLUDE AWOL'S IF RETURNED AFTER HAVING BEEN REMOVED FROM THE FACILITY ROLES.)  
- ADULT FEMALES

-1. MISSING

VAR 0133 DISCHARGED MALE JUV MD=-1  
REF 0133 LOC 310 WIDTH 6 DK 5 COL 36-41

VIII.A.2. TOTAL MOVEMENT OUT OF FACILITY (INCLUDE PERSONS WHO ARE DISCHARGED WITH NO FURTHER AGENCY SUPERVISION AS WELL AS THOSE DISCHARGED INTO AN AFTERCARE/PAROLE PROGRAM. ALSO INCLUDE TRANSFERS OUT TO ANOTHER FACILITY FOR JUVENILES AND AWOL'S IF REMOVED FROM FACILITY ROLES.) - JUVENILE MALES

<SEE REFERENCE NUMBER 129 FOR QUESTION>

ACTUAL NUMBER 0 TO 2986 IS CODED

-1. MISSING

VAR 0134 DISCHARGED FEMALE JUV MD=-1  
REF 0134 LOC 316 WIDTH 6 DK 5 COL 42-47

VIII.A.2. TOTAL MOVEMENT OUT OF FACILITY (INCLUDE PERSONS WHO ARE DISCHARGED WITH NO FURTHER AGENCY SUPERVISION AS WELL AS THOSE DISCHARGED INTO AN AFTERCARE/PAROLE PROGRAM. ALSO INCLUDE TRANSFERS OUT TO ANOTHER FACILITY FOR JUVENILES AND AWOL'S IF REMOVED FROM FACILITY ROLES.) - JUVENILE FEMALES

<SEE REFERENCE NUMBER 129 FOR QUESTION>

ACTUAL NUMBER 0 TO 480 IS CODED

-1. MISSING

VAR 0135 DISCHARGED MALE ADULTS MD=-1  
REF 0135 LOC 322 WIDTH 6 DK 5 COL 48-53

VIII.A.2. TOTAL MOVEMENT OUT OF FACILITY (INCLUDE PERSONS WHO ARE DISCHARGED WITH NO FURTHER AGENCY SUPERVISION AS WELL AS THOSE DISCHARGED INTO AN AFTERCARE/PAROLE PROGRAM. ALSO INCLUDE TRANSFERS OUT TO ANOTHER FACILITY FOR JUVENILES AND AWOL'S IF REMOVED FROM FACILITY ROLES.) - ADULT MALES

<SEE REFERENCE NUMBER 129 FOR QUESTION>

ACTUAL NUMBER 0 TO 59 IS CODED

-1. MISSING

VAR 0136 DISCHARGED FEMALE ADULTS MD=-1  
REF 0136 LOC 328 WIDTH 6 DK 5 COL 54-59

VIII.A.2. TOTAL MOVEMENT OUT OF FACILITY (INCLUDE PERSONS WHO ARE DISCHARGED WITH NO FURTHER AGENCY SUPERVISION AS WELL AS THOSE DISCHARGED INTO AN AFTERCARE/PAROLE PROGRAM. ALSO INCLUDE TRANSFERS OUT TO ANOTHER FACILITY FOR JUVENILES AND AWOL'S IF REMOVED FROM FACILITY ROLES.) - ADULT FEMALES

(CONTINUED)

<SEE REFERENCE NUMBER 129 FOR QUESTION>

ACTUAL NUMBER 0 IS CODED

-1. MISSING

VAR 0137 COMMIT AVE STAY IN MNTHS MD=-1  
REF 0137 LOC 334 WIDTH 3 DK 5 COL 60-62

VIII.A.3. WHAT WAS THE AVERAGE (MEAN) LENGTH OF STAY (IN MONTHS AND DAYS) FOR ALL COMMITTED JUVENILES IN THE ANNUAL PERIOD COVERED BY THIS REPORT? (EXCLUDE ADULTS, IF ANY) - MONTHS

ACTUAL NUMBER 0 TO 48 IS CODED

-1. MISSING

VAR 0138 COMMIT AVE STAY IN DAYS MD=-1  
REF 0138 LOC 337 WIDTH 3 DK 5 COL 63-65

VIII.A.3. WHAT WAS THE AVERAGE (MEAN) LENGTH OF STAY (IN MONTHS AND DAYS) FOR ALL COMMITTED JUVENILES IN THE ANNUAL PERIOD COVERED BY THIS REPORT? (EXCLUDE ADULTS, IF ANY) - DAYS

ACTUAL NUMBER 0 TO 89 IS CODED

-1. MISSING

VAR 0139 DETAINED MALE JUV MD=-1  
REF 0139 LOC 340 WIDTH 6 DK 5 COL 66-71

VIII.B. MOVEMENT OF DETENTION POPULATION DURING THE ANNUAL PERIOD COVERED BY THIS REPORT

(CONTINUED)

VIII.B.1. PERSONS ADMITTED TO THE FACILITY FOR DETENTION - JUVENILE MALES

ACTUAL NUMBER 1 TO 23865 IS CODED

-1. MISSING

VAR 0140 DETAINED FEMALE JUV MD=-1  
REF 0140 LOC 346 WIDTH 6 DK 5 COL 72-77

VIII.B.1. PERSONS ADMITTED TO THE FACILITY FOR DETENTION - JUVENILE FEMALES

ACTUAL NUMBER 4 TO 2977 IS CODED

-1. MISSING

DECK IDENTIFICATION NUMBER IS '06' DK 6 COL 1-2

VAR 0001 ICPSR STUDY NUMBER NO MISSING DATA CODES  
REF 0001 LOC 1 WIDTH 4 DK 6 COL 3-6

ICPSR STUDY NUMBER

7758. THE ICPSR HAS ATTACHED THIS NUMBER AS A STUDY IDENTIFICATION NUMBER.

VAR 0002 ICPSR VERSION NUMBER NO MISSING DATA CODES  
REF 0002 LOC 5 WIDTH 1 DK 6 COL 7

ICPSR VERSION NUMBER

(CONTINUED)

2. THIS IS THE SECOND ICPSR VERSION OF THE STUDY.

VAR 0003 ICPSR PART NUMBER NO MISSING DATA CODES  
REF 0003 LOC 6 WIDTH 1 DK 6 COL 8

ICPSR PART NUMBER

1. THE ENTIRE STUDY IS CONTAINED IN ONE FILE.

VAR 0004 SEQUENTIAL IDENTIFIER NO MISSING DATA CODES  
REF 0004 LOC 7 WIDTH 3 DK 6 COL 9-11

CASE IDENTIFICATION NUMBER

THE ICPSR HAS ATTACHED A SEQUENTIAL CASE IDENTIFICATION NUMBER TO EVERY RECORD. THIS NUMBER UNIQUELY IDENTIFIES EACH RECORD IN THIS SURVEY.

VAR 0141 DETAINED MALE ADULTS MD=-1  
REF 0141 LOC 352 WIDTH 6 DK 6 COL 12-17

VIII.B.1. PERSONS ADMITTED TO THE FACILITY FOR DETENTION - ADULT MALES

-1. MISSING

VAR 0142 DETAINED FEMALE ADULTS MD=-1  
REF 0142 LOC 358 WIDTH 6 DK 6 COL 18-23

VIII.B.1. PERSONS ADMITTED TO THE FACILITY FOR DETENTION - ADULT FEMALES

(CONTINUED)

-1. MISSING

.....

VAR 0143	DET MALE JUV DISCHARGED		MD=-1
REF 0143	LOC 364 WIDTH 6	DK 6 COL	24-29

VIII.B.2. PERSONS DISCHARGED FROM DETENTION OR TRANSFERRED  
OUT OF THE FACILITY - JUVENILE MALES

-----

<SEE REFERENCE NUMBER 139 FOR QUESTION>

ACTUAL NUMBER 1 TO 23806 IS CODED

-1. MISSING

.....

VAR 0144	DET FEMALE JUV DISCHARGD		MD=-1
REF 0144	LOC 370 WIDTH 6	DK 6 COL	30-35

VIII.B.2. PERSONS DISCHARGED FROM DETENTION OR TRANSFERRED  
OUT OF THE FACILITY - JUVENILE FEMALES

-----

<SEE REFERENCE NUMBER 139 FOR QUESTION>

ACTUAL NUMBER 4 TO 3019 IS CODED

-1. MISSING

.....

VAR 0145	DET MALE ADULT DISCHARGD		MD=-1
REF 0145	LOC 376 WIDTH 6	DK 6 COL	36-41

VIII.B.2. PERSONS DISCHARGED FROM DETENTION OR TRANSFERRED  
OUT OF THE FACILITY - ADULT MALES

-----

<SEE REFERENCE NUMBER 139 FOR QUESTION>

(CONTINUED)

-1. MISSING

.....

VAR 0146	DET FEMALE ADULT DISCHAR		MD=-1
REF 0146	LOC 382 WIDTH 6	DK 6 COL	42-47

VIII.B.2. PERSONS DISCHARGED FROM DETENTION OR TRANSFERRED  
OUT OF THE FACILITY - ADULT FEMALES

-----

<SEE REFERENCE NUMBER 139 FOR QUESTION>

-1. MISSING

.....

VAR 0147	DET JUVS AVE STAY - DAYS		MD=-1
REF 0147	LOC 388 WIDTH 3	DK 6 COL	48-50

VIII.B.3. WHAT WAS THE AVERAGE (MEAN) LENGTH OF STAY FOR ALL  
DETAINED JUVENILES IN THE ANNUAL PERIOD COVERED BY THIS  
REPORT? (EXCLUDE ADULTS, IF ANY.) - DAYS

-----

ACTUAL NUMBER 1 TO 75 IS CODED

-1. MISSING

.....

VAR 0148	VOL ADMISSION MALE JUV		MD=-1
REF 0148	LOC 391 WIDTH 3	DK 6 COL	51-53

VIII.C. MOVEMENT OF VOLUNTARY RESIDENTS DURING THE ANNUAL  
PERIOD COVERED BY THIS REPORT

-----

VIII.C.1. TOTAL VOLUNTARY RESIDENTS ADMITTED - JUVENILE  
MALES

-----

ACTUAL NUMBER 1 TO 586 IS CODED

-1. MISSING

VAR 0149 VOL ADMISSION FEMALE JUV MD=-1  
REF 0149 LOC 394 WIDTH 3 DK 6 COL 54-56

VIII.C.1. TOTAL VOLUNTARY RESIDENTS ADMITTED - JUVENILE  
FEMALES

ACTUAL NUMBER 1 TO 911 IS CODED

-1. MISSING

VAR 0150 VOL ADMISSION MALE ADULT MD=-1  
REF 0150 LOC 397 WIDTH 3 DK 6 COL 57-59

VIII.C.1. TOTAL VOLUNTARY RESIDENTS ADMITTED - ADULT MALES

-1. MISSING

VAR 0151 VOL ADMISSN FEMALE ADULT MD=-1  
REF 0151 LOC 400 WIDTH 3 DK 6 COL 60-62

VIII.C.1. TOTAL VOLUNTARY RESIDENTS ADMITTED - ADULT FEMALES

-1. MISSING

VAR 0152 VOL DISCHRG MALE JUV MD=-1  
REF 0152 LOC 403 WIDTH 3 DK 6 COL 63-65

VIII.C.2. TOTAL VOLUNTARY RESIDENTS DISCHARGED - JUVENILE  
MALES

<SEE REFERENCE NUMBER 148 FOR QUESTION>

ACTUAL NUMBER 1 TO 586 IS CODED

(CONTINUED)

-1. MISSING

VAR 0153 VOL DISCHRG FEMALE JUV MD=-1  
REF 0153 LOC 406 WIDTH 3 DK 6 COL 66-68

VIII.C.2. TOTAL VOLUNTARY RESIDENTS DISCHARGED - JUVENILE  
FEMALES

<SEE REFERENCE NUMBER 148 FOR QUESTION>

ACTUAL NUMBER 1 TO 911 IS CODED

-1. MISSING

VAR 0154 VOL DISCHRG MALE ADULT MD=-1  
REF 0154 LOC 409 WIDTH 3 DK 6 COL 69-71

VIII.C.2. TOTAL VOLUNTARY RESIDENTS DISCHARGED - ADULT MALES

<SEE REFERENCE NUMBER 148 FOR QUESTION>

-1. MISSING

VAR 0155 VOL DISCHRG FEMALE ADULT MD=-1  
REF 0155 LOC 412 WIDTH 3 DK 6 COL 72-74

VIII.C.2. TOTAL VOLUNTARY RESIDENTS DISCHARGED - ADULT  
FEMALES

<SEE REFERENCE NUMBER 148 FOR QUESTION>

-1. MISSING

VAR 0156 VOL AVE STAY MONTHS MD=-1  
REF 0156 LOC 415 WIDTH 3 DK 6 COL 75-77

VIII.C.3. WHAT WAS THE AVERAGE (MEAN) LENGTH OF STAY (IN MONTHS AND DAYS) FOR VOLUNTARY RESIDENTS IN THE ANNUAL PERIOD COVERED BY THIS REPORT? (EXCLUDE ADULTS, IF ANY.) - MONTHS

ACTUAL NUMBER 1 TO 16 IS CODED

-1. MISSING

VAR 0157 VOL AVE STAY DAYS MD=-1  
REF 0157 LOC 418 WIDTH 3 DK 6 COL 78-80

VIII.C.3. WHAT WAS THE AVERAGE (MEAN) LENGTH OF STAY (IN MONTHS AND DAYS) FOR VOLUNTARY RESIDENTS IN THE ANNUAL PERIOD COVERED BY THIS REPORT? (EXCLUDE ADULTS, IF ANY.) - DAYS

ACTUAL NUMBER 2 TO 27 IS CODED

-1. MISSING

DECK IDENTIFICATION NUMBER IS '07' DK 7 COL 1- 2

VAR 0001 ICPSR STUDY NUMBER NO MISSING DATA CODES  
REF 0001 LOC 1 WIDTH 4 DK 7 COL 3- 6

ICPSR STUDY NUMBER

7758. THE ICPSR HAS ATTACHED THIS NUMBER AS A STUDY IDENTIFICATION NUMBER.

VAR 0002 ICPSR VERSION NUMBER NO MISSING DATA CODES  
REF 0002 LOC 5 WIDTH 1 DK 7 COL 7

ICPSR VERSION NUMBER

2. THIS IS THE SECOND ICPSR VERSION OF THE STUDY.

VAR 0003 ICPSR PART NUMBER NO MISSING DATA CODES  
REF 0003 LOC 6 WIDTH 1 DK 7 COL 8

ICPSR PART NUMBER

1. THE ENTIRE STUDY IS CONTAINED IN ONE FILE.

VAR 0004 SEQUENTIAL IDENTIFIER NO MISSING DATA CODES  
REF 0004 LOC 7 WIDTH 3 DK 7 COL 9-11

CASE IDENTIFICATION NUMBER

THE ICPSR HAS ATTACHED A SEQUENTIAL CASE IDENTIFICATION NUMBER TO EVERY RECORD. THIS NUMBER UNIQUELY IDENTIFIES EACH RECORD IN THIS SURVEY.

VAR 0158 AVE POPULATION - ADP MD=-1  
REF 0158 LOC 421 WIDTH 6 DK 7 COL 12-17

IX. WHAT WAS THE AVERAGE (MEAN) DAILY RESIDENTIAL POPULATION IN THE FACILITY DURING THE ANNUAL PERIOD COVERED BY THIS REPORT? (INCLUDE ADULTS, IF ANY.)

ACTUAL NUMBER 1 TO 772 IS CODED

-1. MISSING

VAR 0159 # PAYROLL FULLTIME STAFF MD=-1  
REF 0159 LOC 427 WIDTH 6 DK 7 COL 18-23

X.A. TOTAL NUMBER OF STAFF ON DECEMBER 31, 1977

X.A. TOTAL NUMBER OF STAFF ON DECEMBER 31, 1977 - PAYROLL  
STAFF - FULL-TIME

-----  
ACTUAL NUMBER 1 TO 589 IS CODED

-1. MISSING

.....  
VAR 0160 # PAYROLL PARTTIME STAFF MD=-1  
REF 0160 LOC 433 WIDTH 6 DK 7 COL 24-29

X.A. TOTAL NUMBER OF STAFF ON DECEMBER 31, 1977 - PAYROLL  
STAFF - PART-TIME

-----  
ACTUAL NUMBER 0 TO 277 IS CODED

-1. MISSING

.....  
VAR 0161 # NONPAYROLL FULL TIME MD=-1  
REF 0161 LOC 439 WIDTH 6 DK 7 COL 30-35

X.A. TOTAL NUMBER OF STAFF ON DECEMBER 31, 1977 - NONPAYROLL  
STAFF - FULL-TIME

-----  
ACTUAL NUMBER 0 TO 69 IS CODED

-1. MISSING

VAR 0162 # NONPAYROLL PART TIME MD=-1  
REF 0162 LOC 445 WIDTH 6 DK 7 COL 36-41

X.A. TOTAL NUMBER OF STAFF ON DECEMBER 31, 1977 - NONPAYROLL  
STAFF - PART-TIME

-----  
ACTUAL NUMBER 0 TO 93 IS CODED

-1. MISSING

.....  
VAR 0163 # VOLUNTEER FULL TIME MD=-1  
REF 0163 LOC 451 WIDTH 6 DK 7 COL 42-47

X.A. TOTAL NUMBER OF STAFF ON DECEMBER 31, 1977 - COMMUNITY  
VOLUNTEERS - FULL-TIME

-----  
ACTUAL NUMBER 0 TO 43 IS CODED

-1. MISSING

.....  
VAR 0164 # VOLUNTEER PART TIME MD=-1  
REF 0164 LOC 457 WIDTH 6 DK 7 COL 48-53

X.A. TOTAL NUMBER OF STAFF ON DECEMBER 31, 1977 - COMMUNITY  
VOLUNTEERS - PART-TIME

-----  
ACTUAL NUMBER 0 TO 907 IS CODED

-1. MISSING

.....  
VAR 0165 # ADMIN PAYROLL FULLTIME MD=-1  
REF 0165 LOC 463 WIDTH 3 DK 7 COL 54-56

X.B. TOTAL NUMBER OF ADMINISTRATIVE STAFF ON DECEMBER 31,



(CONTINUED)

1977 - PAYROLL STAFF - FULL-TIME

SUPERINTENDENT, DIRECTOR, ADMINISTRATOR, ASSISTANT  
SUPERINTENDENT, BUSINESS MANAGERS, ETC.

ACTUAL NUMBER 1 TO 50 IS CODED

-1. MISSING

.....  
VAR 0166 # ADMIN PAYROLL PARTTIME MD=-1  
REF 0166 LOC 466 WIDTH 3 DK 7 COL 57-59

X.B. TOTAL NUMBER OF ADMINISTRATIVE STAFF ON DECEMBER 31,  
1977 - PAYROLL STAFF - PART-TIME

SUPERINTENDENT, DIRECTOR, ADMINISTRATOR, ASSISTANT  
SUPERINTENDENT, BUSINESS MANAGERS, ETC.

ACTUAL NUMBER 0 TO 86 IS CODED

-1. MISSING

.....  
VAR 0167 # ADMIN NONPAY FULL TIME MD=-1  
REF 0167 LOC 469 WIDTH 3 DK 7 COL 60-62

X.B. TOTAL NUMBER OF ADMINISTRATIVE STAFF ON DECEMBER 31,  
1977 - NONPAYROLL STAFF - FULL-TIME

SUPERINTENDENT, DIRECTOR, ADMINISTRATOR, ASSISTANT  
SUPERINTENDENT, BUSINESS MANAGERS, ETC.

ACTUAL NUMBER 1 TO 4 IS CODED

-1. MISSING

VAR 0168 # ADMIN NONPAY PART TIME MD=-1  
REF 0168 LOC 472 WIDTH 3 DK 7 COL 63-65

X.B. TOTAL NUMBER OF ADMINISTRATIVE STAFF ON DECEMBER 31,  
1977 - NONPAYROLL STAFF - PART-TIME

SUPERINTENDENT, DIRECTOR, ADMINISTRATOR, ASSISTANT  
SUPERINTENDENT, BUSINESS MANAGERS, ETC.

ACTUAL NUMBER 0 TO 6 IS CODED

-1. MISSING

.....  
VAR 0169 # ADMIN VOL FULL TIME MD=-1  
REF 0169 LOC 475 WIDTH 3 DK 7 COL 66-68

X.B. TOTAL NUMBER OF ADMINISTRATIVE STAFF ON DECEMBER 31,  
1977 - COMMUNITY VOLUNTEERS - FULL-TIME

SUPERINTENDENT, DIRECTOR, ADMINISTRATOR, ASSISTANT  
SUPERINTENDENT, BUSINESS MANAGERS, ETC.

-1. MISSING

.....  
VAR 0170 # ADMIN VOL PART TIME MD=-1  
REF 0170 LOC 478 WIDTH 3 DK 7 COL 69-71

X.B. TOTAL NUMBER OF ADMINISTRATIVE STAFF ON DECEMBER 31,  
1977 - COMMUNITY VOLUNTEERS - PART-TIME

SUPERINTENDENT, DIRECTOR, ADMINISTRATOR, ASSISTANT  
SUPERINTENDENT, BUSINESS MANAGERS, ETC.

ACTUAL NUMBER 0 TO 15 IS CODED

-1. MISSING



VAR 0171 # CLERICAL PAYR FULLTIME MD=-1  
REF 0171 LOC 481 WIDTH 3 DK 7 COL 72-74

X.C. TOTAL NUMBER OF CLERICAL SUPPORT STAFF ON DECEMBER 31,  
1977 - PAYROLL STAFF - FULL-TIME

STENOGRAPHER, BOOKKEEPER, SWITCHBOARD OPERATOR, CLERK,  
TYPIST, ETC.

ACTUAL NUMBER 1 TO 42 IS CODED

-1. MISSING

VAR 0172 # CLERICAL PAYR PARTTIME MD=-1  
REF 0172 LOC 484 WIDTH 3 DK 7 COL 75-77

X.C. TOTAL NUMBER OF CLERICAL SUPPORT STAFF ON DECEMBER 31,  
1977 - PAYROLL STAFF - PART-TIME

STENOGRAPHER, BOOKKEEPER, SWITCHBOARD OPERATOR, CLERK,  
TYPIST, ETC.

ACTUAL NUMBER 0 TO 9 IS CODED

-1. MISSING

VAR 0173 # CLERICAL NONP FULLTIME MD=-1  
REF 0173 LOC 487 WIDTH 3 DK 7 COL 78-80

X.C. TOTAL NUMBER OF CLERICAL SUPPORT STAFF ON DECEMBER 31,  
1977 - NONPAYROLL STAFF - FULL-TIME

STENOGRAPHER, BOOKKEEPER, SWITCHBOARD OPERATOR, CLERK,  
TYPIST, ETC.

ACTUAL NUMBER 0 TO 10 IS CODED

-1. MISSING

DECK IDENTIFICATION NUMBER IS '08'

DK 8 COL 1-2

VAR 0001 ICPSR STUDY NUMBER NO MISSING DATA CODES  
REF 0001 LOC 1 WIDTH 4 DK 8 COL 3-6

ICPSR STUDY NUMBER

7758. THE ICPSR HAS ATTACHED THIS NUMBER AS A STUDY  
IDENTIFICATION NUMBER.

VAR 0002 ICPSR VERSION NUMBER NO MISSING DATA CODES  
REF 0002 LOC 5 WIDTH 1 DK 8 COL 7

ICPSR VERSION NUMBER

2. THIS IS THE SECOND ICPSR VERSION OF THE STUDY.

VAR 0003 ICPSR PART NUMBER NO MISSING DATA CODES  
REF 0003 LOC 6 WIDTH 1 DK 8 COL 8

ICPSR PART NUMBER

1. THE ENTIRE STUDY IS CONTAINED IN ONE FILE.

VAR 0004 SEQUENTIAL IDENTIFIER NO MISSING DATA CODES  
REF 0004 LOC 7 WIDTH 3 DK 8 COL 9-11

CASE IDENTIFICATION NUMBER

THE ICPSR HAS ATTACHED A SEQUENTIAL CASE IDENTIFICATION  
NUMBER TO EVERY RECORD. THIS NUMBER UNIQUELY IDENTIFIES  
EACH RECORD IN THIS SURVEY.

VAR 0174 # CLERICAL NONP PARTTIME MD=-1  
 REF 0174 LOC 490 WIDTH 3 DK 8 COL 12-14

X.C. TOTAL NUMBER OF CLERICAL SUPPORT STAFF ON DECEMBER 31,  
 1977 - NONPAYROLL STAFF - PART-TIME

---

STENOGRAPHER, BOOKKEEPER, SWITCHBOARD OPERATOR, CLERK,  
 TYPIST, ETC.

ACTUAL NUMBER 0 TO 6 IS CODED

-1. MISSING

---

VAR 0175 # CLERICAL VOL FULL TIME MD=-1  
 REF 0175 LOC 493 WIDTH 3 DK 8 COL 15-17

X.C. TOTAL NUMBER OF CLERICAL SUPPORT STAFF ON DECEMBER 31,  
 1977 - COMMUNITY VOLUNTEERS - FULL-TIME

---

STENOGRAPHER, BOOKKEEPER, SWITCHBOARD OPERATOR, CLERK,  
 TYPIST, ETC.

-1. MISSING

---

VAR 0176 # CLERICAL VOL PART TIME MD=-1  
 REF 0176 LOC 496 WIDTH 3 DK 8 COL 18-20

X.C. TOTAL NUMBER OF CLERICAL SUPPORT STAFF ON DECEMBER 31,  
 1977 - COMMUNITY VOLUNTEERS - PART-TIME

---

STENOGRAPHER, BOOKKEEPER, SWITCHBOARD OPERATOR, CLERK,  
 TYPIST, ETC.

ACTUAL NUMBER 0 TO 5 IS CODED

-1. MISSING

VAR 0177 # TREATMENT PAYR FULLTME MD=-1  
 REF 0177 LOC 499 WIDTH 3 DK 8 COL 21-23

X.D. TOTAL NUMBER OF TREATMENT AND EDUCATIONAL STAFF ON  
 DECEMBER 31, 1977 - PAYROLL STAFF - FULL-TIME

---

PERSONNEL WHO PROVIDE PROFESSIONAL SERVICES, SUCH AS  
 PSYCHOLOGIST, CHAPLAIN, EDUCATIONAL/VOCATIONAL PERSONNEL,  
 SOCIAL WORKER, LIBRARIAN, AFTERCARE/PAROLE WORKER,  
 RECREATION WORKER, MEDICAL PERSONNEL, CLASSIFICATION  
 OFFICER, COUNSELOR, CASEWORKER, ETC.

ACTUAL NUMBER 1 TO 279 IS CODED

-1. MISSING

---

VAR 0178 # TREATMENT PAYR PARTTME MD=-1  
 REF 0178 LOC 502 WIDTH 3 DK 8 COL 24-26

X.D. TOTAL NUMBER OF TREATMENT AND EDUCATIONAL STAFF ON  
 DECEMBER 31, 1977 - PAYROLL STAFF - PART-TIME

---

PERSONNEL WHO PROVIDE PROFESSIONAL SERVICES, SUCH AS  
 PSYCHOLOGIST, CHAPLAIN, EDUCATIONAL/VOCATIONAL PERSONNEL,  
 SOCIAL WORKER, LIBRARIAN, AFTERCARE/PAROLE WORKER,  
 RECREATION WORKER, MEDICAL PERSONNEL, CLASSIFICATION  
 OFFICER, COUNSELOR, CASEWORKER, ETC.

ACTUAL NUMBER 0 TO 86 IS CODED

-1. MISSING

---

VAR 0179 # TREATMENT NONP FULLTME MD=-1  
 REF 0179 LOC 505 WIDTH 3 DK 8 COL 27-29

X.D. TOTAL NUMBER OF TREATMENT AND EDUCATIONAL STAFF ON  
 DECEMBER 31, 1977 - NONPAYROLL STAFF - FULL-TIME

---

(CONTINUED)

PERSONNEL WHO PROVIDE PROFESSIONAL SERVICES, SUCH AS PSYCHOLOGIST, CHAPLAIN, EDUCATIONAL/VOCATIONAL PERSONNEL, SOCIAL WORKER, LIBRARIAN, AFTERCARE/PAROLE WORKER, RECREATION WORKER, MEDICAL PERSONNEL, CLASSIFICATION OFFICER, COUNSELOR, CASEWORKER, ETC.

ACTUAL NUMBER 1 TO 53 IS CODED

-1. MISSING

VAR 0180 # TREATMENT NONP PARTTME MD=-1  
REF 0180 LOC 508 WIDTH 3 DK 8 COL 30-32

X.D. TOTAL NUMBER OF TREATMENT AND EDUCATIONAL STAFF ON DECEMBER 31, 1977 - NONPAYROLL STAFF - PART-TIME

PERSONNEL WHO PROVIDE PROFESSIONAL SERVICES, SUCH AS PSYCHOLOGIST, CHAPLAIN, EDUCATIONAL/VOCATIONAL PERSONNEL, SOCIAL WORKER, LIBRARIAN, AFTERCARE/PAROLE WORKER, RECREATION WORKER, MEDICAL PERSONNEL, CLASSIFICATION OFFICER, COUNSELOR, CASEWORKER, ETC.

ACTUAL NUMBER 0 TO 90 IS CODED

-1. MISSING

VAR 0181 # TREATMENT VOL FULLTIME MD=-1  
REF 0181 LOC 511 WIDTH 3 DK 8 COL 33-35

X.D. TOTAL NUMBER OF TREATMENT AND EDUCATIONAL STAFF ON DECEMBER 31, 1977 - COMMUNITY VOLUNTEERS - FULL-TIME

PERSONNEL WHO PROVIDE PROFESSIONAL SERVICES, SUCH AS PSYCHOLOGIST, CHAPLAIN, EDUCATIONAL/VOCATIONAL PERSONNEL, SOCIAL WORKER, LIBRARIAN, AFTERCARE/PAROLE WORKER, RECREATION WORKER, MEDICAL PERSONNEL, CLASSIFICATION OFFICER, COUNSELOR, CASEWORKER, ETC.

ACTUAL NUMBER 1 TO 7 IS CODED

(CONTINUED)

-1. MISSING

VAR 0182 # TREATMENT VOL PARTTIME MD=-1  
REF 0182 LOC 514 WIDTH 3 DK 8 COL 36-38

X.D. TOTAL NUMBER OF TREATMENT AND EDUCATIONAL STAFF ON DECEMBER 31, 1977 - COMMUNITY VOLUNTEERS - PART-TIME

PERSONNEL WHO PROVIDE PROFESSIONAL SERVICES, SUCH AS PSYCHOLOGIST, CHAPLAIN, EDUCATIONAL/VOCATIONAL PERSONNEL, SOCIAL WORKER, LIBRARIAN, AFTERCARE/PAROLE WORKER, RECREATION WORKER, MEDICAL PERSONNEL, CLASSIFICATION OFFICER, COUNSELOR, CASEWORKER, ETC.

ACTUAL NUMBER 0 TO 907 IS CODED

-1. MISSING

VAR 0183 # YOUTH SUPERV PAYR FT MD=-1  
REF 0183 LOC 517 WIDTH 3 DK 8 COL 39-41

X.E. TOTAL NUMBER OF YOUTH SUPERVISION STAFF ON DECEMBER 31, 1977 - PAYROLL STAFF - FULL-TIME

EMPLOYEES WHO ARE PRIMARILY IN CHARGE OF THE DAILY HANDLING OF YOUTH, SUCH AS HOUSEPARENT, GROUP WORKER, COTTAGE PARENT, MATRON, ETC.

ACTUAL NUMBER 1 TO 382 IS CODED

-1. MISSING

VAR 0184 # YOUTH SUPERV PAYR PT MD=-1  
REF 0184 LOC 520 WIDTH 3 DK 8 COL 42-44

X.E. TOTAL NUMBER OF YOUTH SUPERVISION STAFF ON DECEMBER 31,

(CONTINUED)

1977 - PAYROLL STAFF - PART-TIME

EMPLOYEES WHO ARE PRIMARILY IN CHARGE OF THE DAILY HANDLING OF YOUTH, SUCH AS HOUSEPARENT, GROUP WORKER, COTTAGE PARENT, MATRON, ETC.

ACTUAL NUMBER 1 TO 269 IS CODED

-1. MISSING

VAR 0185 # YOUTH SUPERV NONP FT MD=-1  
REF 0185 LOC 523 WIDTH 3 DK 8 COL 45-47

X.E. TOTAL NUMBER OF YOUTH SUPERVISION STAFF ON DECEMBER 31, 1977 - NONPAYROLL STAFF - FULL-TIME

EMPLOYEES WHO ARE PRIMARILY IN CHARGE OF THE DAILY HANDLING OF YOUTH, SUCH AS HOUSEPARENT, GROUP WORKER, COTTAGE PARENT, MATRON, ETC.

ACTUAL NUMBER 0 TO 29 IS CODED

-1. MISSING

VAR 0186 # YOUTH SUPERV NONP PT MD=-1  
REF 0186 LOC 526 WIDTH 3 DK 8 COL 48-50

X.E. TOTAL NUMBER OF YOUTH SUPERVISION STAFF ON DECEMBER 31, 1977 - NONPAYROLL STAFF - PART-TIME

EMPLOYEES WHO ARE PRIMARILY IN CHARGE OF THE DAILY HANDLING OF YOUTH, SUCH AS HOUSEPARENT, GROUP WORKER, COTTAGE PARENT, MATRON, ETC.

ACTUAL NUMBER 1 TO 18 IS CODED

-1. MISSING

VAR 0187 # YOUTH SUPERV VOL FT MD=-1  
REF 0187 LOC 529 WIDTH 3 DK 8 COL 51-53

X.E. TOTAL NUMBER OF YOUTH SUPERVISION STAFF ON DECEMBER 31, 1977 - COMMUNITY VOLUNTEERS - FULL-TIME

EMPLOYEES WHO ARE PRIMARILY IN CHARGE OF THE DAILY HANDLING OF YOUTH, SUCH AS HOUSEPARENT, GROUP WORKER, COTTAGE PARENT, MATRON, ETC.

ACTUAL NUMBER 1 TO 15 IS CODED

-1. MISSING

VAR 0188 # YOUTH SUPERV VOL PT MD=-1  
REF 0188 LOC 532 WIDTH 3 DK 8 COL 54-56

X.E. TOTAL NUMBER OF YOUTH SUPERVISION STAFF ON DECEMBER 31, 1977 - COMMUNITY VOLUNTEERS - PART-TIME

EMPLOYEES WHO ARE PRIMARILY IN CHARGE OF THE DAILY HANDLING OF YOUTH, SUCH AS HOUSEPARENT, GROUP WORKER, COTTAGE PARENT, MATRON, ETC.

ACTUAL NUMBER 0 TO 182 IS CODED

-1. MISSING

VAR 0189 # MAINT PAYR FULL TIME MD=-1  
REF 0189 LOC 535 WIDTH 3 DK 8 COL 57-59

X.F. TOTAL NUMBER OF MAINTENANCE AND CULINARY STAFF ON DECEMBER 31, 1977 - PAYROLL STAFF - FULL-TIME

HOUSEKEEPER, MAINTENANCE PERSON, COOK AND OTHER KITCHEN STAFF

ACTUAL NUMBER 1 TO 142 IS CODED

(CONTINUED)

-1. MISSING

.....

VAR 0190	# MAINT PAYR PART TIME	MD=-1
REF 0190	LOC 538 WIDTH 3	DK 8 COL 60-62

X.F. TOTAL NUMBER OF MAINTENANCE AND CULINARY STAFF ON  
 DECEMBER 31, 1977 - PAYROLL STAFF - PART-TIME

-----

HOUSEKEEPER, MAINTENANCE PERSON, COOK AND OTHER KITCHEN  
 STAFF

ACTUAL NUMBER 0 TO 42 IS CODED

-1. MISSING

.....

VAR 0191	# MAINT NONP FULL TIME	MD=-1
REF 0191	LOC 541 WIDTH 3	DK 8 COL 63-65

X.F. TOTAL NUMBER OF MAINTENANCE AND CULINARY STAFF ON  
 DECEMBER 31, 1977 - NONPAYROLL STAFF - FULL-TIME

-----

HOUSEKEEPER, MAINTENANCE PERSON, COOK AND OTHER KITCHEN  
 STAFF

ACTUAL NUMBER 1 TO 21 IS CODED

-1. MISSING

.....

VAR 0192	# MAINT NONP PART TIME	MD=-1
REF 0192	LOC 544 WIDTH 3	DK 8 COL 66-68

X.F. TOTAL NUMBER OF MAINTENANCE AND CULINARY STAFF ON  
 DECEMBER 31, 1977 - NONPAYROLL STAFF - PART-TIME

-----

(CONTINUED)

HOUSEKEEPER, MAINTENANCE PERSON, COOK AND OTHER KITCHEN  
 STAFF

ACTUAL NUMBER 1 TO 5 IS CODED

-1. MISSING

.....

VAR 0193	# MAINT VOL FULL TIME	MD=-1
REF 0193	LOC 547 WIDTH 3	DK 8 COL 69-71

X.F. TOTAL NUMBER OF MAINTENANCE AND CULINARY STAFF ON  
 DECEMBER 31, 1977 - COMMUNITY VOLUNTEERS - FULL-TIME

-----

HOUSEKEEPER, MAINTENANCE PERSON, COOK AND OTHER KITCHEN  
 STAFF

ACTUAL NUMBER 1 IS CODED

-1. MISSING

.....

VAR 0194	# MAINT VOL PART TIME	MD=-1
REF 0194	LOC 550 WIDTH 3	DK 8 COL 72-74

X.F. TOTAL NUMBER OF MAINTENANCE AND CULINARY STAFF ON  
 DECEMBER 31, 1977 - COMMUNITY VOLUNTEERS - PART-TIME

-----

HOUSEKEEPER, MAINTENANCE PERSON, COOK AND OTHER KITCHEN  
 STAFF

ACTUAL NUMBER 1 TO 15 IS CODED

-1. MISSING

VAR 0195 # OTHER PAYR FULL TIME MD=-1  
REF 0195 LOC 553 WIDTH 3 DK 8 COL 75-77

X.G. TOTAL NUMBER OF OTHER STAFF ON DECEMBER 31, 1977 -  
PAYROLL STAFF - FULL-TIME

ANY OTHER POSITIONS NOT INCLUDED ABOVE

ACTUAL NUMBER 0 TO 38 IS CODED

-1. MISSING

VAR 0196 # OTHER PAYR PART TIME MD=-1  
REF 0196 LOC 556 WIDTH 3 DK 8 COL 78-80

X.G. TOTAL NUMBER OF OTHER STAFF ON DECEMBER 31, 1977 -  
PAYROLL STAFF - PART-TIME

ANY OTHER POSITIONS NOT INCLUDED ABOVE

ACTUAL NUMBER 0 TO 3 IS CODED

-1. MISSING

DECK IDENTIFICATION NUMBER IS '09' DK 9 COL 1- 2

VAR 0001 ICPSR STUDY NUMBER NO MISSING DATA CODES  
REF 0001 LOC 1 WIDTH 4 DK 9 COL 3- 6

ICPSR STUDY NUMBER

7758. THE ICPSR HAS ATTACHED THIS NUMBER AS A STUDY  
IDENTIFICATION NUMBER.

VAR 0002 ICPSR VERSION NUMBER NO MISSING DATA CODES  
REF 0002 LOC 5 WIDTH 1 DK 9 COL 7

ICPSR VERSION NUMBER

2. THIS IS THE SECOND ICPSR VERSION OF THE STUDY.

VAR 0003 ICPSR PART NUMBER NO MISSING DATA CODES  
REF 0003 LOC 6 WIDTH 1 DK 9 COL 8

ICPSR PART NUMBER

1. THE ENTIRE STUDY IS CONTAINED IN ONE FILE.

VAR 0004 SEQUENTIAL IDENTIFIER NO MISSING DATA CODES  
REF 0004 LOC 7 WIDTH 3 DK 9 COL 9-11

CASE IDENTIFICATION NUMBER

THE ICPSR HAS ATTACHED A SEQUENTIAL CASE IDENTIFICATION  
NUMBER TO EVERY RECORD. THIS NUMBER UNIQUELY IDENTIFIES  
EACH RECORD IN THIS SURVEY.

VAR 0197 # OTHER NONP FULL TIME MD=-1  
REF 0197 LOC 559 WIDTH 3 DK 9 COL 12-14

X.G. TOTAL NUMBER OF OTHER STAFF ON DECEMBER 31, 1977 -  
NONPAYROLL STAFF - FULL-TIME

ANY OTHER POSITIONS NOT INCLUDED ABOVE

ACTUAL NUMBER 1 IS CODED

-1. MISSING

VAR 0198 # OTHER NONP PART TIME MD=-1  
 REF 0198 LOC 562 WIDTH 3 DK 9 COL 15-17

X.G. TOTAL NUMBER OF OTHER STAFF ON DECEMBER 31, 1977 -  
 NONPAYROLL STAFF - PART-TIME  
 -----

ANY OTHER POSITIONS NOT INCLUDED ABOVE

ACTUAL NUMBER 0 TO 18 IS CODED

-1. MISSING

VAR 0199 # OTHER VOL FULL TIME MD=-1  
 REF 0199 LOC 565 WIDTH 3 DK 9 COL 18-20

X.G. TOTAL NUMBER OF OTHER STAFF ON DECEMBER 31, 1977 -  
 COMMUNITY VOLUNTEERS - FULL-TIME  
 -----

ANY OTHER POSITIONS NOT INCLUDED ABOVE

ACTUAL NUMBER 43 IS CODED

-1. MISSING

VAR 0200 # OTHER VOL PART TIME MD=-1  
 REF 0200 LOC 568 WIDTH 3 DK 9 COL 21-23

X.G. TOTAL NUMBER OF OTHER STAFF ON DECEMBER 31, 1977 -  
 COMMUNITY VOLUNTEERS - PART-TIME  
 -----

ANY OTHER POSITIONS NOT INCLUDED ABOVE

ACTUAL NUMBER 0 TO 108 IS CODED

-1. MISSING

VAR 0201 TOTAL PAYROLL FULL TIME MD=-1  
 REF 0201 LOC 571 WIDTH 6 DK 9 COL 24-29

X.H. TOTAL NUMBER OF STAFF, BY RACE, ON DECEMBER 31, 1977

X.H.1. TOTAL NUMBER OF STAFF ON DECEMBER 31, 1977 - PAYROLL  
 STAFF - FULL-TIME  
 -----

ACTUAL NUMBER 1 TO 589 IS CODED

-1. MISSING

VAR 0202 TOTAL PAYROLL PART TIME MD=-1  
 REF 0202 LOC 577 WIDTH 6 DK 9 COL 30-35

X.H.1. TOTAL NUMBER OF STAFF ON DECEMBER 31, 1977 - PAYROLL  
 STAFF - PART-TIME  
 -----

ACTUAL NUMBER 0 TO 277 IS CODED

-1. MISSING

VAR 0203 TOTAL NONP FULL TIME MD=-1  
 REF 0203 LOC 583 WIDTH 6 DK 9 COL 36-41

X.H.1. TOTAL NUMBER OF STAFF ON DECEMBER 31, 1977 -  
 NONPAYROLL STAFF - FULL-TIME  
 -----

ACTUAL NUMBER 0 TO 69 IS CODED

-1. MISSING



**CONTINUED**

**1 OF 2**

VAR 0204 TOTAL NONP PART TIME MD=-1  
 REF 0204 LOC 589 WIDTH 6 DK 9 COL 42-47

X.H.1. TOTAL NUMBER OF STAFF ON DECEMBER 31, 1977 -  
 NONPAYROLL STAFF - PART-TIME

---

ACTUAL NUMBER 0 TO 93 IS CODED

-1. MISSING

---

VAR 0205 # WHITE PAYR FULL TIME MD=-1  
 REF 0205 LOC 595 WIDTH 3 DK 9 COL 48-50

X.H.2. TOTAL NUMBER OF WHITE STAFF ON DECEMBER 31, 1977 -  
 PAYROLL STAFF - FULL-TIME

---

A PERSON HAVING ORIGINS IN ANY OF THE ORIGINAL PEOPLES OF  
 EUROPE, NORTH AFRICA, OR THE MIDDLE EAST

ACTUAL NUMBER 1 TO 437 IS CODED

-1. MISSING

---

VAR 0206 # WHITE PAYR PART TIME MD=-1  
 REF 0206 LOC 598 WIDTH 3 DK 9 COL 51-53

X.H.2. TOTAL NUMBER OF WHITE STAFF ON DECEMBER 31, 1977 -  
 PAYROLL STAFF - PART-TIME

---

A PERSON HAVING ORIGINS IN ANY OF THE ORIGINAL PEOPLES OF  
 EUROPE, NORTH AFRICA, OR THE MIDDLE EAST

ACTUAL NUMBER 1 TO 136 IS CODED

-1. MISSING

VAR 0207 # WHITE NONP FULL TIME MD=-1  
 REF 0207 LOC 601 WIDTH 3 DK 9 COL 54-56

X.H.2. TOTAL NUMBER OF WHITE STAFF ON DECEMBER 31, 1977 -  
 NONPAYROLL STAFF - FULL-TIME

---

A PERSON HAVING ORIGINS IN ANY OF THE ORIGINAL PEOPLES OF  
 EUROPE, NORTH AFRICA, OR THE MIDDLE EAST

ACTUAL NUMBER 1 TO 55 IS CODED

-1. MISSING

---

VAR 0208 # WHITE NONP PART TIME MD=-1  
 REF 0208 LOC 604 WIDTH 3 DK 9 COL 57-59

X.H.2. TOTAL NUMBER OF WHITE STAFF ON DECEMBER 31, 1977 -  
 NONPAYROLL STAFF - PART-TIME

---

A PERSON HAVING ORIGINS IN ANY OF THE ORIGINAL PEOPLES OF  
 EUROPE, NORTH AFRICA, OR THE MIDDLE EAST

ACTUAL NUMBER 1 TO 76 IS CODED

-1. MISSING

---

VAR 0209 # BLACK PAYR FULL TIME MD=-1  
 REF 0209 LOC 607 WIDTH 3 DK 9 COL 60-62

X.H.3. TOTAL NUMBER OF BLACK STAFF ON DECEMBER 31, 1977 -  
 PAYROLL STAFF - FULL-TIME

---

A PERSON HAVING ORIGINS IN ANY OF THE BLACK RACIAL GROUPS OF  
 AFRICA

ACTUAL NUMBER 1 TO 360 IS CODED

-1. MISSING

VAR 0210 # BLACK PAYR PART TIME MD=-1  
REF 0210 LOC 610 WIDTH 3 DK 9 COL 63-65

X.H.3. TOTAL NUMBER OF BLACK STAFF ON DECEMBER 31, 1977 -  
PAYROLL STAFF - PART-TIME

A PERSON HAVING ORIGINS IN ANY OF THE BLACK RACIAL GROUPS OF  
AFRICA

ACTUAL NUMBER 1 TO 166 IS CODED

-1. MISSING

VAR 0211 # BLACK NONP FULL TIME MD=-1  
REF 0211 LOC 613 WIDTH 3 DK 9 COL 66-68

X.H.3. TOTAL NUMBER OF BLACK STAFF ON DECEMBER 31, 1977 -  
NONPAYROLL STAFF - FULL-TIME

A PERSON HAVING ORIGINS IN ANY OF THE BLACK RACIAL GROUPS OF  
AFRICA

ACTUAL NUMBER 0 TO 26 IS CODED

-1. MISSING

VAR 0212 # BLACK NONP PART TIME MD=-1  
REF 0212 LOC 616 WIDTH 3 DK 9 COL 69-71

X.H.3. TOTAL NUMBER OF BLACK STAFF ON DECEMBER 31, 1977 -  
NONPAYROLL STAFF - PART-TIME

A PERSON HAVING ORIGINS IN ANY OF THE BLACK RACIAL GROUPS OF  
AFRICA

ACTUAL NUMBER 1 TO 17 IS CODED

-1. MISSING

VAR 0213 # INDIAN PAYR FULL TIME MD=-1  
REF 0213 LOC 619 WIDTH 3 DK 9 COL 72-74

X.H.4. TOTAL NUMBER OF AMERICAN INDIAN OR ALASKAN NATIVE  
STAFF ON DECEMBER 31, 1977 - PAYROLL STAFF - FULL-TIME

A PERSON HAVING ORIGINS IN ANY OF THE ORIGINAL PEOPLES OF  
NORTH AMERICA, AND WHO MAINTAIN CULTURAL IDENTIFICATION  
THROUGH TRIBAL AFFILIATION OR COMMUNITY RECOGNITION

ACTUAL NUMBER 1 TO 23 IS CODED

-1. MISSING

VAR 0214 # INDIAN PAYR PART TIME MD=-1  
REF 0214 LOC 622 WIDTH 3 DK 9 COL 75-77

X.H.4. TOTAL NUMBER OF AMERICAN INDIAN OR ALASKAN NATIVE  
STAFF ON DECEMBER 31, 1977 - PAYROLL STAFF - PART-TIME

A PERSON HAVING ORIGINS IN ANY OF THE ORIGINAL PEOPLES OF  
NORTH AMERICA, AND WHO MAINTAIN CULTURAL IDENTIFICATION  
THROUGH TRIBAL AFFILIATION OR COMMUNITY RECOGNITION

ACTUAL NUMBER 1 TO 4 IS CODED

-1. MISSING

VAR 0215 # INDIAN NONP FULL TIME MD=-1  
REF 0215 LOC 625 WIDTH 3 DK 9 COL 78-80

X.H.4. TOTAL NUMBER OF AMERICAN INDIAN OR ALASKAN NATIVE  
STAFF ON DECEMBER 31, 1977 - NONPAYROLL STAFF - FULL-TIME

A PERSON HAVING ORIGINS IN ANY OF THE ORIGINAL PEOPLES OF  
NORTH AMERICA, AND WHO MAINTAIN CULTURAL IDENTIFICATION  
THROUGH TRIBAL AFFILIATION OR COMMUNITY RECOGNITION

(CONTINUED)

ACTUAL NUMBER 1 IS CODED

-1. MISSING

DECK IDENTIFICATION NUMBER IS '10'

DK 10 COL 1- 2

.....

VAR 0001	ICPSR STUDY NUMBER	NO MISSING DATA CODES
REF 0001	LOC 1 WIDTH 4	DK 10 COL 3- 6

ICPSR STUDY NUMBER

7758. THE ICPSR HAS ATTACHED THIS NUMBER AS A STUDY IDENTIFICATION NUMBER.

.....

VAR 0002	ICPSR VERSION NUMBER	NO MISSING DATA CODES
REF 0002	LOC 5 WIDTH 1	DK 10 COL 7

ICPSR VERSION NUMBER

2. THIS IS THE SECOND ICPSR VERSION OF THE STUDY.

.....

VAR 0003	ICPSR PART NUMBER	NO MISSING DATA CODES
REF 0003	LOC 6 WIDTH 1	DK 10 COL 8

ICPSR PART NUMBER

1. THE ENTIRE STUDY IS CONTAINED IN ONE FILE.

VAR 0004	SEQUENTIAL IDENTIFIER	NO MISSING DATA CODES
REF 0004	LOC 7 WIDTH 3	DK 10 COL 9-11

CASE IDENTIFICATION NUMBER

THE ICPSR HAS ATTACHED A SEQUENTIAL CASE IDENTIFICATION NUMBER TO EVERY RECORD. THIS NUMBER UNIQUELY IDENTIFIES EACH RECORD IN THIS SURVEY.

.....

VAR 0216	# INDIAN NONP PART TIME	MD=-1
REF 0216	LOC 628 WIDTH 3	DK 10 COL 12-14

X.H.4. TOTAL NUMBER OF AMERICAN INDIAN OR ALASKAN NATIVE STAFF ON DECEMBER 31, 1977 - NONPAYROLL STAFF - PART-TIME

-----

A PERSON HAVING ORIGINS IN ANY OF THE ORIGINAL PEOPLES OF NORTH AMERICA, AND WHO MAINTAIN CULTURAL IDENTIFICATION THROUGH TRIBAL AFFILIATION OR COMMUNITY RECOGNITION

ACTUAL NUMBER 1 IS CODED

-1. MISSING

.....

VAR 0217	# ASIAN PAYR FULL TIME	MD=-1
REF 0217	LOC 631 WIDTH 3	DK 10 COL 15-17

X.H.5. TOTAL NUMBER OF ASIAN OR PACIFIC ISLANDER STAFF ON DECEMBER 31, 1977 - PAYROLL STAFF - FULL-TIME

-----

A PERSON HAVING ORIGINS IN ANY OF THE ORIGINAL PEOPLES OF THE FAR EAST, SOUTHEAST ASIA, THE INDIAN SUBCONTINENT, OR THE PACIFIC ISLANDS

ACTUAL NUMBER 1 TO 67 IS CODED

-1. MISSING

VAR 0218 # ASIAN PAYR PART TIME MD=-1  
REF 0218 LOC 634 WIDTH 3 DK 10 COL 18-20

X.H.5. TOTAL NUMBER OF ASIAN OR PACIFIC ISLANDER STAFF ON  
DECEMBER 31, 1977 - PAYROLL STAFF - PART-TIME

A PERSON HAVING ORIGINS IN ANY OF THE ORIGINAL PEOPLES OF  
THE FAR EAST, SOUTHEAST ASIA, THE INDIAN SUBCONTINENT, OR  
THE PACIFIC ISLANDS

ACTUAL NUMBER 1 TO 15 IS CODED

-1. MISSING

VAR 0219 # ASIAN NONP FULL TIME MD=-1  
REF 0219 LOC 637 WIDTH 3 DK 10 COL 21-23

X.H.5. TOTAL NUMBER OF ASIAN OR PACIFIC ISLANDER STAFF ON  
DECEMBER 31, 1977 - NONPAYROLL STAFF - FULL-TIME

A PERSON HAVING ORIGINS IN ANY OF THE ORIGINAL PEOPLES OF  
THE FAR EAST, SOUTHEAST ASIA, THE INDIAN SUBCONTINENT, OR  
THE PACIFIC ISLANDS

ACTUAL NUMBER 0 TO 2 IS CODED

-1. MISSING

VAR 0220 # ASIAN NONP PART TIME MD=-1  
REF 0220 LOC 640 WIDTH 3 DK 10 COL 24-26

X.H.5. TOTAL NUMBER OF ASIAN OR PACIFIC ISLANDER STAFF ON  
DECEMBER 31, 1977 - NONPAYROLL STAFF - PART-TIME

A PERSON HAVING ORIGINS IN ANY OF THE ORIGINAL PEOPLES OF  
THE FAR EAST, SOUTHEAST ASIA, THE INDIAN SUBCONTINENT, OR  
THE PACIFIC ISLANDS

(CONTINUED)

ACTUAL NUMBER 1 TO 6 IS CODED

-1. MISSING

VAR 0221 # WHITE HISP PAYR FT MD=-1  
REF 0221 LOC 643 WIDTH 3 DK 10 COL 27-29

X.I.1. OF THE WHITE POPULATION REPORTED ABOVE, HOW MANY WERE  
HISPANIC (PERSONS OF MEXICAN, PUERTO RICAN, CUBAN, CENTRAL  
OR SOUTH AMERICAN, OR OTHER SPANISH CULTURE OR ORIGIN)? -  
PAYROLL STAFF - FULL-TIME

<SEE REFERENCE NUMBER 201 FOR QUESTION>

ACTUAL NUMBER 0 TO 94 IS CODED

-1. MISSING

VAR 0222 # WHITE HISP PAYR FT MD=-1  
REF 0222 LOC 646 WIDTH 3 DK 10 COL 30-32

X.I.1. OF THE WHITE POPULATION REPORTED ABOVE, HOW MANY WERE  
HISPANIC (PERSONS OF MEXICAN, PUERTO RICAN, CUBAN, CENTRAL  
OR SOUTH AMERICAN, OR OTHER SPANISH CULTURE OR ORIGIN)? -  
PAYROLL STAFF - PART-TIME

<SEE REFERENCE NUMBER 201 FOR QUESTION>

ACTUAL NUMBER 0 TO 18 IS CODED

-1. MISSING

VAR 0223 # WHITE HISP NONP FT MD=-1  
REF 0223 LOC 649 WIDTH 3 DK 10 COL 33-35

X.I.1. OF THE WHITE POPULATION REPORTED ABOVE, HOW MANY WERE

(CONTINUED)

HISPANIC (PERSONS OF MEXICAN, PUERTO RICAN, CUBAN, CENTRAL OR SOUTH AMERICAN, OR OTHER SPANISH CULTURE OR ORIGIN)? - NONPAYROLL STAFF - FULL-TIME

<SEE REFERENCE NUMBER 201 FOR QUESTION>

ACTUAL NUMBER 1 TO 8 IS CODED

-1. MISSING

VAR 0224 # WHITE HISP NONP PT MD=-1  
REF 0224 LOC 652 WIDTH 3 DK 10 COL 36-38

X.I.1. OF THE WHITE POPULATION REPORTED ABOVE, HOW MANY WERE HISPANIC (PERSONS OF MEXICAN, PUERTO RICAN, CUBAN, CENTRAL OR SOUTH AMERICAN, OR OTHER SPANISH CULTURE OR ORIGIN)? - NONPAYROLL STAFF - PART-TIME

<SEE REFERENCE NUMBER 201 FOR QUESTION>

ACTUAL NUMBER 0 TO 7 IS CODED

-1. MISSING

VAR 0225 # BLACK HISP PAYR FT MD=-1  
REF 0225 LOC 655 WIDTH 3 DK 10 COL 39-41

X.I.2. OF THE BLACK POPULATION REPORTED ABOVE, HOW MANY WERE HISPANIC? - PAYROLL STAFF - FULL-TIME

<SEE REFERENCE NUMBER 201 FOR QUESTION>

ACTUAL NUMBER 0 TO 4 IS CODED

-1. MISSING

VAR 0226 # BLACK HISP PAYR PT MD=-1  
REF 0226 LOC 658 WIDTH 3 DK 10 COL 42-44

X.I.2. OF THE BLACK POPULATION REPORTED ABOVE, HOW MANY WERE HISPANIC? - PAYROLL STAFF - PART-TIME

<SEE REFERENCE NUMBER 201 FOR QUESTION>

ACTUAL NUMBER 1 TO 6 IS CODED

-1. MISSING

VAR 0227 # BLACK HISP NONP FT MD=-1  
REF 0227 LOC 661 WIDTH 3 DK 10 COL 45-47

X.I.2. OF THE BLACK POPULATION REPORTED ABOVE, HOW MANY WERE HISPANIC? - NONPAYROLL STAFF - FULL-TIME

<SEE REFERENCE NUMBER 201 FOR QUESTION>

-1. MISSING

VAR 0228 # BLACK HISP NONP FT MD=-1  
REF 0228 LOC 664 WIDTH 3 DK 10 COL 48-50

X.I.2. OF THE BLACK POPULATION REPORTED ABOVE, HOW MANY WERE HISPANIC? - NONPAYROLL STAFF - PART-TIME

<SEE REFERENCE NUMBER 201 FOR QUESTION>

-1. MISSING

VAR 0229 NON-RESIDENT PROGRAM Y-N MD=0  
REF 0229 LOC 667 WIDTH 1 DK 10 COL 51

XI. DOES YOUR FACILITY OPERATE ANY COUNSELING, EDUCATIONAL,  
OR OTHER PROGRAMS IN WHICH NONRESIDENT JUVENILES ARE  
ENROLLED?

- 1. YES
- 2. NO

VAR 0230 NON-RESIDENT PGM MALE MD=-1  
REF 0230 LOC 668 WIDTH 3 DK 10 COL 52-54

XI. AVERAGE DAILY NUMBER - MALES

<SEE REFERENCE NUMBER 229 FOR QUESTION>

ACTUAL NUMBER 0 TO 254 IS CODED

- 1. MISSING

VAR 0231 NON-RESIDENT PGM FEMALE MD=-1  
REF 0231 LOC 671 WIDTH 3 DK 10 COL 55-57

XI. AVERAGE DAILY NUMBER - FEMALES

<SEE REFERENCE NUMBER 229 FOR QUESTION>

ACTUAL NUMBER 0 TO 100 IS CODED

VAR 0232 CAS FACILITY CLASS CODE MD=0  
REF 0232 LOC 674 WIDTH 1 DK 10 COL 58

CAS FACILITY CLASS CODE

(CONTINUED)

- 1. DETENTION/INSTITUTIONAL
- 2. DETENTION/OPEN
- 3. TREATMENT/INSTITUTIONAL
- 4. TREATMENT/OPEN

VAR 0233 XPEND ANNUAL PD BEGIN-MO MD=-1  
REF 0233 LOC 675 WIDTH 2 DK 10 COL 59-60

XII. ANNUAL PERIOD COVERED BY THIS REPORT OF EXPENDITURES -  
BEGINNING MONTH

INDICATE THE ANNUAL PERIOD COVERED BY THIS REPORT. DATA ARE  
REQUESTED FOR THE CALENDAR YEAR JANUARY 1, 1977, THROUGH  
DECEMBER 31, 1977, IF POSSIBLE. IF YOU MUST REPORT FOR A  
FISCAL PERIOD OTHER THAN A CALENDAR YEAR, REPORT FOR THE  
PERIOD THAT ENDED DURING THE CALENDAR YEAR 1977

ACTUAL NUMBER 1 TO 12 IS CODED

VAR 0234 XPEND ANNUAL PD BEGIN-DY MD=-1  
REF 0234 LOC 677 WIDTH 2 DK 10 COL 61-62

XII. ANNUAL PERIOD COVERED BY THIS REPORT OF EXPENDITURES -  
BEGINNING DAY

INDICATE THE ANNUAL PERIOD COVERED BY THIS REPORT. DATA ARE  
REQUESTED FOR THE CALENDAR YEAR JANUARY 1, 1977, THROUGH  
DECEMBER 31, 1977, IF POSSIBLE. IF YOU MUST REPORT FOR A  
FISCAL PERIOD OTHER THAN A CALENDAR YEAR, REPORT FOR THE  
PERIOD THAT ENDED DURING THE CALENDAR YEAR 1977

ACTUAL NUMBER 1 TO 30 IS CODED

VAR 0235 XPEND ANNUAL PD BEGIN-YR MD=-1  
REF 0235 LOC 679 WIDTH 2 DK 10 COL 63-64

XII. ANNUAL PERIOD COVERED BY THIS REPORT OF EXPENDITURES -

(CONTINUED)

BEGINNING YEAR

INDICATE THE ANNUAL PERIOD COVERED BY THIS REPORT. DATA ARE REQUESTED FOR THE CALENDAR YEAR JANUARY 1, 1977, THROUGH DECEMBER 31, 1977, IF POSSIBLE. IF YOU MUST REPORT FOR A FISCAL PERIOD OTHER THAN A CALENDAR YEAR, REPORT FOR THE PERIOD THAT ENDED DURING THE CALENDAR YEAR 1977

ACTUAL NUMBER 76 TO 77 IS CODED

VAR 0236 XPEND ANNUAL PD END-MO MD=-1  
REF 0236 LOC 681 WIDTH 2 DK 10 COL 65-66

XII. ANNUAL PERIOD COVERED BY THIS REPORT OF EXPENDITURES - ENDING MONTH

INDICATE THE ANNUAL PERIOD COVERED BY THIS REPORT. DATA ARE REQUESTED FOR THE CALENDAR YEAR JANUARY 1, 1977, THROUGH DECEMBER 31, 1977, IF POSSIBLE. IF YOU MUST REPORT FOR A FISCAL PERIOD OTHER THAN A CALENDAR YEAR, REPORT FOR THE PERIOD THAT ENDED DURING THE CALENDAR YEAR 1977

ACTUAL NUMBER 3 TO 12 IS CODED

VAR 0237 XPEND ANNUAL PD END-DAY MD=-1  
REF 0237 LOC 683 WIDTH 2 DK 10 COL 67-68

XII. ANNUAL PERIOD COVERED BY THIS REPORT OF EXPENDITURES - ENDING DAY

INDICATE THE ANNUAL PERIOD COVERED BY THIS REPORT. DATA ARE REQUESTED FOR THE CALENDAR YEAR JANUARY 1, 1977, THROUGH DECEMBER 31, 1977, IF POSSIBLE. IF YOU MUST REPORT FOR A FISCAL PERIOD OTHER THAN A CALENDAR YEAR, REPORT FOR THE PERIOD THAT ENDED DURING THE CALENDAR YEAR 1977

ACTUAL NUMBER 1 TO 31 IS CODED

VAR 0238 XPEND ANNUAL PD END-YR MD=-1  
REF 0238 LOC 685 WIDTH 2 DK 10 COL 69-70

XII. ANNUAL PERIOD COVERED BY THIS REPORT OF EXPENDITURES - ENDING YEAR

INDICATE THE ANNUAL PERIOD COVERED BY THIS REPORT. DATA ARE REQUESTED FOR THE CALENDAR YEAR JANUARY 1, 1977, THROUGH DECEMBER 31, 1977, IF POSSIBLE. IF YOU MUST REPORT FOR A FISCAL PERIOD OTHER THAN A CALENDAR YEAR, REPORT FOR THE PERIOD THAT ENDED DURING THE CALENDAR YEAR 1977

ACTUAL NUMBER 77 TO 78 IS CODED

VAR 0239 EXPENDITURES - WAGES MD=-1  
REF 0239 LOC 687 WIDTH 8 DK 10 COL 71-78

XII.A.1. OPERATING EXPENDITURES - GROSS SALARIES AND WAGES

EXCLUDE EMPLOYER CONTRIBUTIONS TO EMPLOYEE BENEFITS

ACTUAL AMOUNT IN DOLLARS 1,353 TO 9,531,987 IS CODED

DECK IDENTIFICATION NUMBER IS '11' DK 11 COL 1- 2

VAR 0001 ICPSR STUDY NUMBER NO MISSING DATA CODES  
REF 0001 LOC 1 WIDTH 4 DK 11 COL 3- 6

ICPSR STUDY NUMBER

7758. THE ICPSR HAS ATTACHED THIS NUMBER AS A STUDY IDENTIFICATION NUMBER.



VAR 0002 ICPSR VERSION NUMBER NO MISSING DATA CODES  
REF 0002 LOC 5 WIDTH 1 DK 11 COL 7

ICPSR VERSION NUMBER

2. THIS IS THE SECOND ICPSR VERSION OF THE STUDY.

VAR 0003 ICPSR PART NUMBER NO MISSING DATA CODES  
REF 0003 LOC 6 WIDTH 1 DK 11 COL 8

ICPSR PART NUMBER

1. THE ENTIRE STUDY IS CONTAINED IN ONE FILE.

VAR 0004 SEQUENTIAL IDENTIFIER NO MISSING DATA CODES  
REF 0004 LOC 7 WIDTH 3 DK 11 COL 9-11

CASE IDENTIFICATION NUMBER

THE ICPSR HAS ATTACHED A SEQUENTIAL CASE IDENTIFICATION NUMBER TO EVERY RECORD. THIS NUMBER UNIQUELY IDENTIFIES EACH RECORD IN THIS SURVEY.

VAR 0240 EXPENDITURES - OTHER MD=-1  
REF 0240 LOC 695 WIDTH 7 DK 11 COL 12-18

XII.A.2. OPERATING EXPENDITURES - OTHER OPERATING EXPENDITURES, SUCH AS THE PURCHASE OF FOOD, SUPPLIES, CONTRACTUAL SERVICES, AND EMPLOYER CONTRIBUTIONS TO EMPLOYEE BENEFITS

ACTUAL AMOUNT IN DOLLARS 1,075 TO 4,330,202 IS CODED

VAR 0241 EXPENDITURES - CAPITAL MD=-1  
REF 0241 LOC 702 WIDTH 7 DK 11 COL 19-25

XII.B. CAPITAL EXPENDITURES, INCLUDING NEW BUILDINGS, MAJOR REPAIRS OR IMPROVEMENTS, AND NEW EQUIPMENT

ACTUAL AMOUNT IN DOLLARS 6 TO 2,163,402 IS CODED

## APPENDIX

\*\*\* NOTE 1 \*\*\*

## GOVERNMENT DIVISIONS STATE CODE

1. ALABAMA
2. ALASKA
3. ARIZONA
4. ARKANSAS
5. CALIFORNIA
6. COLORADO
7. CONNECTICUT
8. DELAWARE
9. DISTRICT OF COLUMBIA
10. FLORIDA
11. GEORGIA
12. HAWAII
13. IDAHO
14. ILLINOIS
15. INDIANA
16. IOWA
17. KANSAS
18. KENTUCKY
19. LOUISIANA
20. MAINE
21. MARYLAND
22. MASSACHUSETTS
23. MICHIGAN
24. MINNESOTA
25. MISSISSIPPI
26. MISSOURI
27. MONTANA
28. NEBRASKA
29. NEVADA
30. NEW HAMPSHIRE
31. NEW JERSEY
32. NEW MEXICO
33. NEW YORK
34. NORTH CAROLINA
35. NORTH DAKOTA
36. OHIO
37. OKLAHOMA
38. OREGON
39. PENNSYLVANIA
40. RHODE ISLAND
41. SOUTH CAROLINA
42. SOUTH DAKOTA
43. TENNESSEE
44. TEXAS

45. UTAH
46. VERMONT
47. VIRGINIA
48. WASHINGTON
49. WEST VIRGINIA
50. WISCONSIN
51. WYOMING

**END**