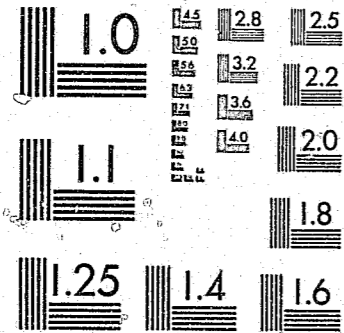


National Criminal Justice Reference Service



This microfiche was produced from documents received for inclusion in the NCJRS data base. Since NCJRS cannot exercise control over the physical condition of the documents submitted, the individual frame quality will vary. The resolution chart on this frame may be used to evaluate the document quality.



MICROCOPY RESOLUTION TEST CHART  
NATIONAL BUREAU OF STANDARDS-1963-A

Microfilming procedures used to create this fiche comply with the standards set forth in 41CFR 101-11.504.

Points of view or opinions stated in this document are those of the author(s) and do not represent the official position or policies of the U. S. Department of Justice.

National Institute of Justice  
United States Department of Justice  
Washington, D.C. 20531

6/10/85

INTER-UNIVERSITY CONSORTIUM FOR  
POLITICAL AND SOCIAL RESEARCH



I  
C  
P  
S  
R  
96116  
91196

POLICE DEPARTMENTS, ARRESTS,  
AND CRIME IN THE U.S.,  
1860-1920  
  
(ICPSR 7708)

Principal Investigator

Eric Monkkonen  
University of California,  
Los Angeles

First ICPSR Edition, 1979

96116

**POLICE DEPARTMENTS, ARRESTS, AND CRIME  
IN THE U.S., 1860-1920  
(ICPSR Study 7708)**

**Principal Investigator**

**Eric Honkkonen  
University of California, Los Angeles**

**Inter-university Consortium for Political  
and Social Research**

**P. O. BOX 1248**

**Ann Arbor, Michigan 48109**

**ICPSR Edition  
First Printing, 1979**

**U.S. Department of Justice  
National Institute of Justice**

This document has been reproduced exactly as received from the person or organization originating it. Points of view or opinions stated in this document are those of the authors and do not necessarily represent the official position or policies of the National Institute of Justice.

Permission to reproduce this copyrighted material has been granted by  
Public Domain  
U. S. Department of Justice

to the National Criminal Justice Reference Service (NCJRS).

Further reproduction outside of the NCJRS system requires permission of the copyright owner.

**Acknowledgment of Assistance**

All manuscripts utilizing data made available through the Consortium should acknowledge that fact as well as identify the original collector of the data. The ICPSR Council urges all users of the ICPSR data facilities to follow some adaptation of this statement with the parentheses indicating items to be filled in appropriately or deleted by the individual user.

The data (and tabulations) utilized in this (publication) were made available (in part) by the Inter-university Consortium for Political and Social Research. The data for the study of POLICE DEPARTMENTS, ARRESTS, AND CRIME IN THE U.S., 1860-1920 were originally collected by Eric Honkkonen with funding provided by the University of North Carolina and the University of California Academic Senate. Neither the collector of the original data nor the Consortium bear any responsibility for the analyses or interpretations presented here.

In order to provide funding agencies with essential information about the use of archival resources and to facilitate the exchange of information about ICPSR participants' research activities, each user of the ICPSR data facilities is expected to send two copies of each completed manuscript or thesis abstract to the Consortium. Please indicate in the cover letter which data were used.

Table of Contents

	Page No.
Introduction	
Study Description	I
File Structure	II
ICPSR Processing Information	III
Codebook Information	IV
Variable Description List: Raw Data from 23 U.S. Cities, 1860-1920	VI
Variable Description List: U.S. Cities, 1880-1890	VII
Variable Description List: Aggregated U.S. Cities, 1860-1920	VIII
Codebook: Raw Data from 23 U.S. Cities, 1860-1920	1
Codebook: U.S. Cities, 1880-1890	5
Appendix: Note 1 - City Code	9
Codebook: Aggregated U.S. Cities, 1860-1920	12

I  
Study Description

These data on nineteenth and early twentieth century police departments and arrest behavior were collected between 1975 and 1978 by Eric Monkkonen for a study of police and crime in the United States. Two of the datasets report time series data on 23 American cities for the period 1860-1920. The data, which are present for most but not all of the years in this time span, were drawn from annual reports of police departments found in the Library of Congress or in newspapers and legislative reports located elsewhere. Variables in the raw data file include arrests for drunkenness, conditional offenses and homicides, persons dismissed or held, police personnel and population. The second file aggregates by year and reports some of these variables on a per capita basis using a linear interpolation from the last decadal census to estimate population.

Data for 267 U.S. cities for the period 1880-1890 are from the 1880 federal census volume, REPORT ON THE DEFECTIVE, DEPENDENT, AND DELINQUENT CLASSES, published in 1888 and from the 1890 federal census volume SOCIAL STATISTICS OF CITIES. Information includes police personnel and expenditures, arrests, persons held overnight, trains entering town and population.

"Raw Data From 23 U.S. Cities, 1860-1920" contains 1179 cases (one case per city per year) and 14 variables (Class II); "Aggregated U.S. Cities, 1860-1920" contains 61 cases (one per year) and 9 variables (Class II); and "U.S. Cities, 1880-1890" contains 267 cases and 16 variables (Class II).

Related Publications:

Monkkonen, E., "Toward a Dynamic Theory of Crime and the Police: A Criminal Justice Systems Perspective", HISTORICAL METHODS NEWSLETTER, Fall, 1977, pp. 157-165

Monkkonen, E., "Sources for Criminal Justice History", JOURNAL OF INTERDISCIPLINARY HISTORY, Winter, 1978, pp. 451-464

## II

### File Structure

The data are available from ICPSR in two formats: a card image file and an OSIRIS dataset. The card image file for each of these three datasets contains one deck per unit of analysis in a format based on 80 column punched cards. The data are sorted by unit of analysis with all decks together in ascending order.

The unit of analysis for "Raw Data from 23 U.S. Cities, 1860-1920" and "U.S. Cities, 1880-1890" is a city. For "Aggregated U.S. Cities, 1860-1920" it is a year.

For "Raw Data from 23 U.S. Cities, 1860-1920" the OSIRIS data file is constructed with a single logical record of 62 bytes for each city. There are 14 variables on 1179 cases. For "U.S. Cities, 1880-1890" the OSIRIS data file is constructed with a single logical record of 63 bytes for each city. There are 16 variables on 267 cases. For "Aggregated U.S. Cities, 1860-1920" the OSIRIS data file is constructed with a single logical record of 48 bytes for each year. There are 9 variables on 61 years.

The OSIRIS data file consists of three files stored on magnetic tape: a machine readable user's guide which documents the data for the human user, an OSIRIS Type 1 dictionary file which describes the data to a computer program, and a data file.

The OSIRIS data file can be accessed directly by software packages which do not use the OSIRIS dictionary by specifying the tape locations of the desired variables. These tape locations are given in the OSIRIS codebook.

## III

### ICPSR Processing Information

The study was processed according to the standard ICPSR processing procedures. The data were checked for illegal or inconsistent codes which, when found, were changed to OSIRIS missing data values. Throughout the text additional comments, bracketed in "<" and ">" signs, were inserted by the study processor in the course of preparing the codebook to provide further explanatory information.

## Codebook Information

The example below is a reproduction of information appearing in a machine readable codebook for a typical variable. The numbers in brackets do not appear in the codebook but are references to the descriptions which follow this example.

.....  
 [1] VAR 0001 [2] CITY CODE [3] MD=99  
 REF 0001 [4] LOC 1 WIDTH 2 [5] DK 1 COL 7  
 [6] IHP DEC=X

[7] City Identification and Population Rank  
 -----

[8] City identifier and its rank in  
 population in 1880.

[9] [10]  
 1. New York  
 2. Philadelphia  
 3. Brooklyn

- .....
1. Indicates the variable and reference numbers. A variable and a reference number are assigned to each item in the study. In this codebook which documents the archived dataset these numbers are identical. Should the data be formed into a fixed length record file, new variable numbers may be assigned or created. The reference number would remain unchanged and correspond to those in this codebook.
  2. Indicates the abbreviated (24 character maximum) variable label used within OSIRIS to identify each variable. An expanded version can be found in the Variable Description List.

3. Indicates the designation of missing data. In this example code values equal to 99 are missing data (MD=99). Alternative statements for other variables are "MD=0 OR GE 9", "MD GE 9", or "NO MISSING DATA CODES". Some analysis software packages (including the ICPSR-supported package) require that certain types of data which the user desires to be excluded from analysis be designated as "missing data" e.g., inappropriate, unascertained, unascertainable, or ambiguous data categories. Although this value is defined as within the missing data category, this does not mean that users should not or cannot use this code value in a substantive role if they so desire.
4. Indicates the sequential location and width of this variable within the record when the data are stored on magnetic tape. In this example the variable named "CITY CODE" is two columns wide and located in the 1st column within the dataset. In a fixed length record file of this data the locations will be different.
5. Indicates the location by deck and column of this variable when the data are on cards or in card image form (either 80 or 84 column format).
6. A variable containing data with implied decimals is denoted by the message, "IHP DEC=X", where X is the number of decimal places implied (not punched) in the variable.
7. Indicates the full text of the variable description supplied by the original collector of the data.
8. Indicates an additional comment or explanation appended to the variable description.
9. Indicates the code values occurring in the data for this variable.
10. Indicates the meaning of the codes.

Variable Description List:  
Raw Data from 23 U.S. Cities, 1860-1920

Var.  
No.

1. City Identification and Population Rank
2. Year Data Collected
3. Total Arrests
4. Arrests for Drunkenness Related Offenses
5. Arrests for Personal Condition Offenses
6. Homicide Arrests
7. Persons Dismissed
8. Total Police Personnel
9. Patrol Officers
10. Annual Number of Lodgers
11. Population

ICPSR Processing Variables

12. ICPSR Study Number - 7708
13. ICPSR Part Number - 1
14. ICPSR Version Number - 1

Variable Description List:  
U.S. Cities, 1880-1890

Var.  
No.

1. City Name
2. Regional Code
3. Number of Police Officers on Patrol
4. Ratio of Police Officers to 1880 Population
5. Average Annual Number of Patrol Officers, 1880-1890
6. Average Total Annual Arrests, 1880-1890
7. Average Total Annual Lodgers, 1880-1890
8. Total Arrests in 1880
9. City Population in 1880
10. Average Annual Police Expenditure, 1880-1890
11. Number of Railroads Entering Town, 1890
12. Daily Number of Trains Entering Town, 1890

ICPSR Processing Variables

13. ICPSR Study Number - 7708
14. ICPSR Part Number - 2
15. ICPSR Version Number - 1
16. City Code

VIII

Variable Description List:  
Aggregated U.S. Cities, 1860-1920

Var.  
No.

1. Year of Aggregation
2. Arrests Per Capita
3. Arrests Made on Police Initiative Per Capita
4. Total Police Personnel Per Capita
5. Lodgers Per Capita
6. All Homicide Arrests Per Capita

ICPSR Processing Variables

7. ICPSR Study Number - 7708
8. ICPSR Part Number - 3
9. ICPSR Version Number - 1

RAW DATA FROM 23 U.S. CITIES, 1860-1920

DECK IDENTIFICATION IS: '01'

DK 1 COL 1- 2

VAR 0012 ICPSR STUDY NUMBER NO MISSING DATA CODES  
REF 0012 LOC 56 WIDTH 4 DK 1 COL 3- 6

ICPSR Study Number - 7708

VAR 0013 ICPSR PART NUMBER NO MISSING DATA CODES  
REF 0013 LOC 60 WIDTH 1 DK 1 COL 7

ICPSR Part Number - 1

VAR 0014 ICPSR VERSION NUMBER NO MISSING DATA CODES  
REF 0014 LOC 61 WIDTH 1 DK 1 COL 8

ICPSR Version Number - 1

VAR 0001 CITY ID AND POP RANK HD=99  
REF 0001 LOC 1 WIDTH 2 DK 1 COL 9-10

City Identification and Population Rank

City identifier and its rank in population in 1880.

01. New York, New York
02. Philadelphia, Pennsylvania
03. Brooklyn, New York (Brooklyn's municipal government merged with New York City's after 1896; thus, the annual arrests for Brooklyn after this year have been incorporated in those for New York City)
04. Chicago, Illinois
05. Boston, Massachusetts

(CONTINUED)

- 06. St. Louis, Missouri
- 07. Baltimore, Maryland
- 08. Cincinnati, Ohio
- 09. San Francisco, California
- 10. New Orleans, Louisiana
- 11. Cleveland, Ohio
- 13. Buffalo, New York
- 14. Washington, D.C.
- 15. Newark, New Jersey
- 16. Louisville, Kentucky
- 18. Detroit, Michigan
- 19. Milwaukee, Wisconsin
- 20. Providence, Rhode Island
- 22. Rochester, New York
- 23. Pittsburgh, Pennsylvania
- 25. Richmond, Virginia
- 26. New Haven, Connecticut
- 27. Lowell, Massachusetts

.....  
 VAR 0002      YEAR DATA COLLECTED      MD=9999  
 REF 0002      LOC    3 WIDTH 4      DK    1 COL 11-14

Year

Year for which data are collected.

.....  
 VAR 0003      TOTAL ARRESTS      MD=9999999  
 REF 0003      LOC    7 WIDTH 7      DK    1 COL 15-21

Total Arrests

Actual number coded.

.....  
 VAR 0004      DRUNK RELATED ARRESTS      MD=999999  
 REF 0004      LOC    14 WIDTH 6      DK    1 COL 22-27

Arrests for Drunkenness

(CONTINUED)

Actual number coded. Includes related offenses such as disorderly conduct.

.....  
 VAR 0005      PERSONAL CONDITION ARR      MD=999999  
 REF 0005      LOC    20 WIDTH 6      DK    1 COL 28-33

Arrests for Personal Condition Offenses

Actual number coded. Includes related offenses such as vagrancy and suspicion.

.....  
 VAR 0006      HOMICIDE ARRESTS      MD=999  
 REF 0006      LOC    26 WIDTH 3      DK    1 COL 34-36

Arrests for All Homicides

Actual number coded. Includes negligent homicide.

.....  
 VAR 0007      PERSONS DISMISSED      MD=99999  
 REF 0007      LOC    29 WIDTH 5      DK    1 COL 37-41

Persons Dismissed Without Further Processing

Actual number coded.

.....  
 VAR 0008      TOT POLICE PERSONNEL      MD=99999  
 REF 0008      LOC    34 WIDTH 5      DK    1 COL 42-46

Total Police Personnel

Actual number coded.



VAR 0009 PATROL OFFICERS MD=9999  
 REF 0009 LOC 39 WIDTH 4 DK 1 COL 47-50

Patrol Officers

Actual number coded.

VAR 0010 ANNUAL NUMBER OF LODGERS MD=999999  
 REF 0010 LOC 43 WIDTH 6 DK 1 COL 51-56

Annual Number of Lodgers

Actual number coded. Lodgers are those people who stayed overnight in the station but were not booked for arrest.

VAR 0011 POPULATION MD=9999999  
 REF 0011 LOC 49 WIDTH 7 DK 1 COL 57-63

Population

Actual number coded. Interdecadal years were estimated by linear interpolation.

(CONTINUED)

U.S. CITIES, 1880-1890

DECK IDENTIFICATION IS: '01' DK 1 COL 1-2

VAR 0016 CITY CODE NO MISSING DATA CODES  
 REF 0016 LOC 61 WIDTH 3 DK 1 COL 3-5

City Code

A unique number identifying each city.

SEE NOTE(S) 1

VAR 0001 CITY NAME NO MISSING DATA CODES  
 REF 0001 LOC 1 WIDTH 5 DK 1 COL 6-10

City Name

First five letters of city name.

VAR 0013 ICPSR STUDY NUMBER NO MISSING DATA CODES  
 REF 0013 LOC 55 WIDTH 4 DK 1 COL 11-14

ICPSR Study Number - 7708

VAR 0014 ICPSR PART NUMBER NO MISSING DATA CODES  
 REF 0014 LOC 59 WIDTH 1 DK 1 COL 15

ICPSR Part Number - 2

VAR 0015 ICPSR VERSION NUMBER NO MISSING DATA CODES  
REF 0015 LOC 60 WIDTH 1 DK 1 COL 16

ICPSR Version Number - 1

VAR 0002 REGIONAL CODE MD=9  
REF 0002 LOC 6 WIDTH 1 DK 1 COL 17

Regional Code

- 1. Northeast
- 2. Southeast
- 3. Midwest
- 4. West

VAR 0003 NO POL OFFICER ON PATROL MD=9999  
REF 0003 LOC 7 WIDTH 4 DK 1 COL 18-21

Number of Police Officers on Patrol, 1880

Actual number coded.

VAR 0004 RATIO PATROL OFF TO POP MD=999  
REF 0004 LOC 11 WIDTH 3 DK 1 COL 22-24

Ratio of Patrol Officers to 1890 Population

Ratio coded.

VAR 0005 AVG ANNUAL PATROL OFF MD=9999  
REF 0005 LOC 14 WIDTH 4 DK 1 COL 25-28

Average Annual Number of Patrol Officers, 1880-1890

Average coded.

VAR 0006 AVG TOT ANNUAL ARRESTS MD=999999  
REF 0006 LOC 18 WIDTH 5 DK 1 COL 29-33

Average Total Annual Arrests, 1880-1890

Average coded.

VAR 0007 AVG TOT ANNUAL LODGERS MD=999999  
REF 0007 LOC 23 WIDTH 6 DK 1 COL 34-39

Average Total Annual Lodgers, 1880-1890

Average coded.

VAR 0008 TOTAL ARRESTS 1880 MD=999999  
REF 0008 LOC 29 WIDTH 6 DK 1 COL 40-45

Total Arrests in 1880

Actual number coded.

VAR 0009 CITY POPULATION IN 1880 MD=9999999  
REF 0009 LOC 35 WIDTH 7 DK 1 COL 46-52

City Population in 1880

(CONTINUED)

Actual number coded.

.....  
 VAR 0010      AVG ANN POLICE EXPEND      MD=9999999  
 REF 0010      LOC    42 WIDTH    7      DK    1 COL 53-59

Average Annual Police Expenditure, 1880-1890

Average coded.

.....  
 VAR 0011      NO RR LINES ENTER TOWN      MD=99  
 REF 0011      LOC    49 WIDTH    2      DK    1 COL 60-61

Number of Railroad Lines Entering City in 1890

Actual number coded.

.....  
 VAR 0012      NO TRAINS ENTER PER DAY      MD=9999  
 REF 0012      LOC    51 WIDTH    4      DK    1 COL 62-65

Daily number of trains entering city in 1890

Actual number coded

## APPENDIX

\*\*\* NOTE 1 \*\*\*

## City Code

001.	Akron, Oh	135.	Lynchburg, Va
002.	Alameda, Ca	136.	Lynn, Ma
003.	Albany, NY	137.	HcKeesport, Pa
004.	Alexandria, Va	138.	Madison, In
005.	Allegheny, Pa	139.	Mahanoy, Pa
006.	Allentown, Pa	140.	Malden, Ma
007.	Alton, Il	141.	Manchester, NH
008.	Amsterdam, NY	142.	Mansfield, Oh
009.	Appleton, Wi	143.	Hassillon, Oh
010.	Atchison, Ka	144.	Hedford, Ma
011.	Atlantic City, NJ	145.	Memphis, Tn
012.	Auburn, Me	146.	Meriden, Ct
013.	Auburn, NY	147.	Hiddletown, NY
014.	Aurora, Il	148.	Hilwaukee, Wi
015.	Austin, Tx	149.	Hinneapolis, Mn
016.	Baltimore, Md	150.	Mobile, Al
017.	Bangor, Me	151.	Holine, Il
018.	Battle Creek, Mi	152.	Huscatine, Io
019.	Bay City, Mi	153.	Huskegon, Hi
020.	Beatrice, Ne	154.	Hanticoke, Pa
021.	Belleville, In	155.	Nashua, NH
022.	Beverly, Ma	156.	Nashville, Tn
023.	Biddeford, Me	157.	Natchez, Ms
024.	Binghamton, NY	158.	Nebraska City, Ne
025.	Bloomington, Il	159.	New Albany, In
026.	Boston, Ma	160.	Newark, NJ
027.	Bradford, Pa	161.	Newark, Oh
028.	Bridgeport, Ct	162.	New Bedford, Ma
029.	Bridgeton, NJ	163.	New Britain, Ct
030.	Brockton, Ma	164.	New Brunswick, NJ
031.	Brookline, Ma	165.	Newburg, NY
032.	Brooklyn, NY	166.	Newburyport, Ma
033.	Buffalo, NY	167.	Newcastle, Pa
034.	Burlington, Io	168.	New Haven, Ct
035.	Butte, Mt	169.	New London, Ct
036.	Cairo, Il	170.	New Orleans, La
037.	Cambridge, Ma	171.	Newport, Ky
038.	Camden, NJ	172.	Newport, RI
039.	Canton, Oh	173.	Newton, Ma
040.	Cedar Rapids, Io	174.	New York, NY
041.	Charlotte, NC	175.	Norfolk, Va
042.	Chelsea, Ma	176.	North Adams, Ma
043.	Cheyenne, WY	177.	Northampton, Ma
044.	Chicago, Il	178.	Norwich, Ct

045. Chicopee, Ma	179. Oakland, Ca
046. Chillicothe, Oh	180. Ogden, Ut
047. Cincinnati, Oh	181. Ogdensburg, NY
048. Cleveland, Oh	182. Oil City, Pa
049. Clinton, Io	183. Omaha, Ne
050. Clinton, Ma	184. Orange, NJ
051. Cohoes, NY	185. Oshkosh, Wi
052. Colorado Springs, Co	186. Oswego, NY
053. Columbus, Ga	187. Ottumwa, Io
054. Concord, NH	188. Paducah, Ky
055. Council Bluffs, Io	189. Passaic, NJ
056. Covington, Ky	190. Paterson, NJ
057. Dallas, Tx	191. Peabody, Ma
058. Danville, Il	192. Pensacola, Fl
059. Davenport, Io	193. Peoria, Il
060. Dayton, Oh	194. Petersburg, Va
061. Decatur, Il	195. Philadelphia, Pa
062. Denison, Tx	196. Pittsburgh, Pa
063. Denver, Co	197. Pittston, Pa
064. Detroit, Mi	198. Plainfield, NJ
065. Dover, NH	199. Port Huron, Mi
066. Dubuque, Io	200. Portland, Me
067. Duluth, Mn	201. Portsmouth, Va
068. East Liverpool, Oh	202. Poughkeepsie, NY
069. Easton, Pa	203. Providence, RI
070. East Portland, Or	204. Pueblo, Co
071. East St. Louis, Il	205. Quincy, Il
072. Eau Claire, Wi	206. Racine, Wi
073. Elgin, Il	207. Raleigh, NC
074. Elizabeth, NJ	208. Reading, Pa
075. Elkhart, In	209. Richmond, In
076. Elmira, NY	210. Richmond, Va
077. El Paso, Tx	211. Rochester, NY
078. Erie, Pa	212. Rockford, Il
079. Evansville, In	213. Rock Island, Il
080. Fall River, Ma	214. Sacramento, Ca
081. Fitchburg, Ma	215. Saginaw, Mi
082. Fond du Lac, Wi	216. St. Joseph, Mo
083. Fort Scott, Ka	217. St. Louis, Mo
084. Fort Smith, Ak	218. St. Paul, Mn
085. Fort Wayne, In	219. Salem, Ma
086. Freeport, Il	220. Salt Lake City, Ut
087. Fresno, Ca	221. San Antonio, Tx
088. Galesburg, Il	222. San Diego, Ca
089. Galveston, Tx	223. San Francisco, Ca
090. Gloucester, Ma	224. San Jose, Ca
091. Grand Rapids, Mi	225. Savannah, Ga
092. Hagerstown, Md	226. Schenectady, NY
093. Hamilton, Oh	227. Scranton, Pa
094. Hannibal, Mo	228. Sheboygan, Wi
095. Harrisburg, Pa	229. Sioux City, Io
096. Hartford, Ct	230. Sioux Falls, SD
097. Hastings, Ne	231. Somerville, Ma

098. Haverhill, Ma	232. South Bend, In
099. Helena, Mt	233. Spokane, Wa
100. Hoboken, NJ	234. Springfield, Il
101. Holyoke, Ma	235. Springfield, Ma
102. Hornellsville, NY	236. Springfield, Ho
103. Indianapolis, In	237. Springfield, Oh
104. Ironton, Oh	238. Stamford, Ct
105. Ithaca, NY	239. Stillwater, Mn
106. Jackson, Mi	240. Stockton, Ca
107. Jackson, Tn	241. Streator, Il
108. Jacksonville, Fl	242. Syracuse, NY
109. Jacksonville, Il	243. Tacoma, Wa
110. Jeffersonville, In	244. Taunton, Ma
111. Jersey City, NJ	245. Terre Haute, In
112. Joliet, Il	246. Tiffin, Oh
113. Kalamazoo, Mi	247. Toledo, Oh
114. Kansas City, Ka	248. Topeka, Ka
115. Kansas City, Mo	249. Trenton, NJ
116. Keokuk, Io	250. Troy, NY
117. Kingston, NY	251. Utica, NY
118. La Crosse, Wi	252. Waco, Tx
119. Lafayette, In	253. Waltham, Ma
120. Lancaster, Pa	254. Washington, D.C.
121. Lansing, Mi	255. Waterbury, Ct
122. Lansingburg, NY	256. West Bay City, Mi
123. Laredo, Tx	257. West Troy, NY
124. Lawrence, Ma	258. Weymouth, Ma
125. Leadville, Co	259. Williamsport, Pa
126. Lebanon, Pa	260. Wilmington, NC
127. Lewiston, Me	261. Winona, Mn
128. Lima, Oh	262. Woburn, Ma
129. Lincoln, Ne	263. Woonsocket, RI
130. Logansport, In	264. Worcester, Ma
131. Long Island, NY	265. Yonkers, NY
132. Los Angeles, Ca	266. York, Pa
133. Louisville, Ky	267. Youngstown, Oh
134. Lowell, Ma	

## AGGREGATED U.S. CITIES, 1860-1920

DECK IDENTIFICATION IS: '01'

DK 1 COL 1- 2

VAR 0007 ICPSR STUDY NUMBER  
REF 0007 LOC 43 WIDTH 4

NO MISSING DATA CODES  
DK 1 COL 3- 6

ICPSR Study Number - 7708

VAR 0008 ICPSR PART NUMBER  
REF 0008 LOC 47 WIDTH 1

NO MISSING DATA CODES  
DK 1 COL 7

ICPSR Part Number - 3

VAR 0009 ICPSR VERSION NUMBER  
REF 0009 LOC 48 WIDTH 1

NO MISSING DATA CODES  
DK 1 COL 8

ICPSR Version Number - 1

VAR 0001 YEAR OF AGGREGATION  
REF 0001 LOC 1 WIDTH 4

NO MISSING DATA CODES  
DK 1 COL 9-12

Year of Aggregation

Year for which data were collected.

VAR 0002 ARRESTS PER CAPITA  
REF 0002 LOC 5 WIDTH 8

NO MISSING DATA CODES  
DK 1 COL 13-20  
IMP DEC= 7

Arrests Per Capita

(CONTINUED)

Number coded to seven decimal places or millionths.

VAR 0003 ARRESTS ON POLICE INIT NO MISSING DATA CODES  
REF 0003 LOC 13 WIDTH 8 DK 1 COL 21-28  
IMP DEC= 7

Arrests Made on Police Initiative Per Capita

Number coded to seven decimal places or millionths. These arrests are mainly drunkenness related, but also include arrests for vagrancy, suspicion, and other personal conditions.

VAR 0004 TOT POLICE PER CAPITA NO MISSING DATA CODES  
REF 0004 LOC 21 WIDTH 7 DK 1 COL 29-35  
IMP DEC= 7

Total Police Personnel Per Capita

Number coded to seven decimal places or millionths.

VAR 0005 LODGERS PER CAPITA NO MISSING DATA CODES  
REF 0005 LOC 28 WIDTH 8 DK 1 COL 36-43  
IMP DEC= 7

Lodgers Per Capita

Number coded to seven decimal places or millionths.

VAR 0006 HOMICIDE ARRESTS PER CAP NO MISSING DATA CODES  
REF 0006 LOC 36 WIDTH 7 DK 1 COL 44-50  
IMP DEC= 10

All Homicide Arrests Per Capita

Number coded to ten decimal places or billionths.

**END**