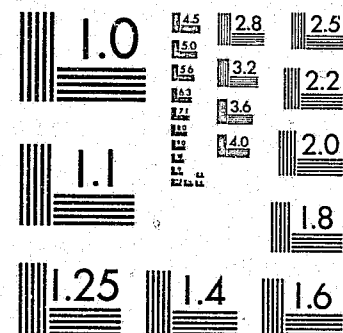


National Criminal Justice Reference Service



This microfiche was produced from documents received for inclusion in the NCJRS data base. Since NCJRS cannot exercise control over the physical condition of the documents submitted, the individual frame quality will vary. The resolution chart on this frame may be used to evaluate the document quality.



MICROCOPY RESOLUTION TEST CHART
NATIONAL BUREAU OF STANDARDS-1963-A

Microfilming procedures used to create this fiche comply with the standards set forth in 41CFR 101-11.504.

Points of view or opinions stated in this document are those of the author(s) and do not represent the official position or policies of the U. S. Department of Justice.

National Institute of Justice
United States Department of Justice
Washington, D. C. 20531

5/31/85

ICPSR
Inter-university Consortium for
Political and Social Research

**New Jersey Statewide
Criminal Justice Guidelines
Evaluation, 1980:
Inmate Survey Data**

Richard F. Sparks

96074

ICPSR 7911

96074

New Jersey Statewide Criminal Justice
Guidelines Evaluation, 1980: Inmate Survey Data
(ICPSR 7911)

Principal Investigator

Richard F. Sparks

U.S. Department of Justice
National Institute of Justice

This document has been reproduced exactly as received from the person or organization originating it. Points of view or opinions stated in this document are those of the authors and do not necessarily represent the official position or policies of the National Institute of Justice.

Permission to reproduce this copyrighted material has been granted by

Public Domain/NIJ
U.S. Dept. of Justice

to the National Criminal Justice Reference Service (NCJRS).

Further reproduction outside of the NCJRS system requires permission of the copyright owner.

First ICPSR Edition
First Printing, Spring 1982

Inter-university Consortium for
Political and Social Research
P.O. Box 1248
Ann Arbor, Michigan 48106

Acknowledgement of Assistance

All manuscripts utilizing data made available through the Consortium should acknowledge that fact as well as identify the original collector of the data. The ICPSR Council urges all users of the ICPSR data facilities to follow some adaptation of this statement with parenthesis indicating items to be filled in appropriately or deleted by the individual user.

The data (and tabulations) utilized in this (publication) were made available (in part) by the Inter-university Consortium for Political and Social Research. The data for New Jersey Statewide Criminal Justice Guidelines Evaluation, 1980: Inmate Survey Data were originally collected by Richard F. Sparks. Neither the collector of the original data nor the Consortium bear any responsibility for the analyses or interpretations presented here.

In order to provide funding agencies with essential information about the use of archival resources and to facilitate the exchange of information about ICPSR participants' research activities, each user of the ICPSR data facilities is expected to send two copies of each completed manuscript or thesis abstract to the Consortium. Please indicate in the cover letter which data were used.

Table of Contents

	page no.
ICPSR Data Collection Description	1
Scope of Data	1
File Processing Summary	2
Confidentiality Procedures	3
Tape and File Specifications	5
Data Dictionary Listing	7
Survey Instrument	31
SPSS Access Program	47
Variable Frequency Distributions	51

Data Collection Description

The Evaluation of Statewide Sentencing Guidelines project was established to study the development, implementation and use of statewide sentencing guidelines and to report on the perceptions of criminal justice system personnel and inmates regarding those guidelines. Funded by the National Institute of Law Enforcement and Criminal Justice, the project was carried out by the Rutgers University School of Criminal Justice from October 1978 to June 1981.

One part of the research consisted of interviewing inmates about their attitudes toward the relative seriousness of offenses, severity of punishments, appropriate penalties for various kinds of crimes, and about their perceptions of sentencing guidelines as a tool to structure judicial sentencing decisions.

The 1980 New Jersey Inmate Survey Data includes 191 variables for each of 157 inmates interviewed. The frequency distributions and survey instrument are included in this documentation.

The data are available in card-image format with 4 records per case. Class IV

NEW JERSEY INMATE SURVEY DATA 1980

Scope of Data

The New Jersey Inmate Survey Data 1980 includes 191 variables containing inmate responses to questions designed to elicit their attitudes to the relative seriousness of offenses, severity of punishments, and appropriateness of penalties for various kinds of crimes and their perceptions of sentencing guidelines in concept and as operationalized in the New Jersey sentencing guidelines. Appendix C contains the text of the 1980 Inmate Survey.

As in the 1979 Inmate Survey (see ICPSR study #7910), New Jersey's Rahway State Prison was selected as the site for interviewing. Sample selection was obtained by dividing men into either minimum or medium/maximum security status and then randomly sampling within these two frames with a higher proportion of minimum men selected to compensate for their relative rarity. Cases were selected using computer-generated random number codes which were then matched against the institution's inmate population record as of July 1980. The total sample N selected in 1980 was 292; of this number, 166 inmates agreed to respond to the survey. The final N used for analysis in the 1980 Inmate Survey was 157; the remaining respondents were excluded from data analysis due to either incomplete questionnaires or inability to understand English.

The samples selected for the 1979 Inmate Survey and the 1980 Inmate Survey, randomly drawn a year apart, necessarily included some overlap, as a number of those interviewed in 1979 were still around in 1980.

The 1980 Inmate Survey was administered to inmates during July and August of 1980 by a group of 9 trained interviewers. The questionnaires were then coded, key punched and code-checked during the fall of 1980.

The 1980 questionnaire contained seven sections, and there were four different versions administered. The seven sections are as follows: (A) Perceptions of sentencing in general; (B) Offense seriousness; (C) "Fair" sentences; (D) "Going" sentences; (E) Appropriateness of guidelines factors; (F) Preference of sentence terms, or sentence place; and (G) Sanction severity. The four different versions varied interviewer instructions for Section B and G. Section A of the 1980 questionnaire was a near duplicate of Section A from the 1979 questionnaire; and Sections C and D also resembled the 1979 version, although the number of items was reduced to 24 from 26.

Section F was a new section, and was designed to replace the old Section F of the 1979 questionnaire. In this section, respondents were asked to choose between two sentences, on the basis of which of the two sentences they would prefer to serve, and they were given 26 of these paired comparisons. Section E -- which asked about guidelines factors -- is similar to Section G of the 1979 questionnaire and although the actual questions differ somewhat, the guidelines factors are constant in both questionnaires.

NEW JERSEY INMATE SURVEY DATA 1980

File Processing Summary

The New Jersey Inmate Survey Data 1980 consists of a single statistical data file stored on magnetic tape. The unit of observation is an inmate housed in Rahway State Prison in New Jersey during the summer of 1980 and randomly selected for inclusion in the survey sample.

The statistical data base is a rectangular file containing 157 observations; the record for each of the 157 inmates is 301 characters in length and contains 191 variables relating inmate responses to the survey instrument (see page 33 of this documentation). All variables have been stored as numeric characters and all of the items have been coded as whole numbers.

The New Jersey Inmate Survey Data 1980 was prepared using an SPSS (Statistical Packages for the Social Sciences) program. The data have been stored as raw data and an SPSS program has been written to access and process the data. A copy of the SPSS program is included in this document to assist users in accessing the data base; however, the data can also be read into and processed by many other statistical packages. The necessary information about the format of the data can be found in the Data Dictionary Listing section of this document.

Frequency distributions have been prepared for all categorical and continuous variables in the data base. The frequency listings can be found in the Frequency Distribution section of this document. Individual labels for categorical variable responses have been included with the frequency distributions. Variables which ask for a "number of times" response such as "number of prior incarcerations" have not had each value labeled; the value itself serves as the item label.

All known errors in the data base have been corrected.

NEW JERSEY INMATE SURVEY DATA 1980

Confidentiality Procedures

The Evaluation of Statewide Sentencing Guidelines project is supplying the New Jersey Inmate Survey Data 1980 to the National Institute of Justice in compliance with special condition number 9 of the Evaluation of Statewide Sentencing Guidelines grant award (78-NI-AX-0147).

The New Jersey Inmate Survey Data 1980 contains inmate responses to a second questionnaire administered in the New Jersey State Prison at Rahway during the summer of 1980. That questionnaire is attached to this document as Appendix C. The 1980 Inmate Survey was the second phase of the research studying prisoners' perceptions of sentencing and crime and penalty severity. The stipulations relating to confidentiality and the protection of human subjects in research that applied to the 1979 Inmate Survey (discussed in File 3 of this document) also applied to this second research phase.

The data base does not contain any numeric or other codes that can be used to link individual inmates to particular questionnaire responses. As in the 1979 Inmate Survey data, the identification numbers used here to identify case records in the data base are random, non-duplicating numbers.

Inmate participation in the New Jersey Inmate Survey 1980 was completely voluntary. Each inmate participating in the survey was required to sign a consent form. The text of that form was as follows:

We have a grant from the federal government to carry out a study of inmates' attitudes and concerns about sentencing. We were here last year, talking to inmates, and now we are back again this year so that we can obtain further information.

Prisoners have been selected at random to take part in our study, which means that your name was selected out of all the other inmates purely by chance. We would like very much to have your honest and frank opinions on the subject of sentencing. The interview will last about an hour and you will be compensated for your time by the prison authorities.

Everything that you say will be treated as confidential, and will not be disclosed to the prison authorities or anyone else outside the prison. The questionnaire with your views on it will have a code number and will not contain your name or prison number. Your answers will be combined with the answers of other inmates, so there will be no way in which you, or anyone else, could be identified.

We hope that you will agree to help us by taking part in this research. However, your participation is completely voluntary and you do not have to take part if you don't want to. If at any time during this interview you should change your mind and decide not to continue, you may stop.

If you agree to be interviewed, please sign the form below.

I agree to take part in the Rutgers University research on prisoners' attitudes on sentencing. I understand that participation is completely voluntary, and that I do not have to be interviewed if I do not want to be. I also understand that the questionnaire will be treated as confidential, and will not be shown to anyone at Rahway, or anyone else.

Other than the removal of individual identifiers, no further modifications (such as encryptment, scrambling, or the entry of random values) have been made to the original data base.

There are no restrictions on public access to the New Jersey Inmate Survey Data 1980.

NEW JERSEY INMATE SURVEY DATA 1980

Tape Recording Specifications

Nine-Track Tape

Density (BPI)	6250
Parity	Odd
Record blocking	Fixed Block
Maximum block size	800
IBM standard labels	Not Labeled
Volume character label	NIJCPY
Character code	EBCDIC

File Access Specifications

File Number	4, NL
File Label (DSN)	NJIS80
DCB Parameters	
Record format	FB
Logical record length	80
Maximum block size	800

I agree to take part in the Rutgers University research on prisoners' attitudes on sentencing. I understand that participation is completely voluntary, and that I do not have to be interviewed if I do not want to be. I also understand that the questionnaire will be treated as confidential, and will not be shown to anyone at Rahway, or anyone else.

Other than the removal of individual identifiers, no further modifications (such as encryption, scrambling, or the entry of random values) have been made to the original data base.

There are no restrictions on public access to the New Jersey Inmate Survey Data 1980.

NEW JERSEY INMATE SURVEY DATA 1980

Tape Recording Specifications

Nine-Track Tape

Density (BPI)	6250
Parity	Odd
Record blocking	Fixed Block
Maximum block size	800
IBM standard labels	Not Labeled
Volume character label	NIJCPY
Character code	EBCDIC

File Access Specifications

File Number	4, NL
File Label (DSN)	NJIS80
DCB Parameters	
Record format	FB
Logical record length	80
Maximum block size	800

Preceding page blank

DATA DICTIONARY LISTING

FILE: New Jersey Inmate Survey Data 1980

Variable Number	Variable Label	Card / Column Location	Variable Width	Missing Data Value	# Decimal Places	Reference Number	File ID	Character Type	Unabbreviated Variable Label
CODE1	Identification Number	1/1-3	3	999	0	001	NJIS80	N	Inmate identification number
CARD1	Card Identifier	1/4	1	9	0	002	NJIS80	N	Card 1 identifier
VERSION	Questionnaire Version	1/5	1	9	0	003	NJIS80	N	Which version of Sections B & G was used in this questionnaire
INTERV	Interviewer Number	1/6	1	9	0	004	NJIS80	N	Interviewer identification code number
A1	Fair Sentence In State	1/7	1	9	0	005	NJIS80	N	Do you think the sentences given to offenders in this state are generally <u>fair</u> or <u>unfair</u>
A1A	How Unfair 1	1/8	1	9	0	006	NJIS80	N	In what way do you think they are unfair: Response 1
A1B	How Unfair 2	1/9	1	9	0	007	NJIS80	N	In what way do you think they are unfair: Response 2
A2	Own Sentence Fair	1/10	1	9	0	008	NJIS80	N	Do you think the sentence you are now serving is a fair sentence

8

DATA DICTIONARY LISTING

FILE: New Jersey Inmate Survey Data 1980

Variable Number	Variable Label	Card / Column Location	Variable Width	Missing Data Value	# Decimal Places	Reference Number	File ID	Character Type	Unabbreviated Variable Label
A2A	Why Own Unfair 1	1/11	1	9	0	009	NJIS80	N	If no: Why not: Response 1
A2B	Why Own Unfair 2	1/12	1	9	0	010	NJIS80	N	If no: Why not: Response 2
A3A	Minimum Sentence Imposed	1/13-15	3	999	0	011	NJIS80	N	What sentence did the judge give you: Minimum
A3B	Maximum Sentence Imposed	1/16-18	3	999	0	012	NJIS80	N	What sentence did the judge give you: Maximum
A4	Your Sentence Fair for Others	1/19	1	9	0	013	NJIS80	N	What if someone else did what you were convicted of? Would the sentence you got be fair for them?
A4A	Why Fair 1	1/20	1	9	0	014	NJIS80	N	Why would it be fair: Response 1
A4B	Why Fair 2	1/21	1	9	0	015	NJIS80	N	Why would it be fair: Response 2
A4C	Why Unfair 1	1/22	1	9	0	016	NJIS80	N	Why would it be unfair: Response 1

DATA DICTIONARY LISTING

FILE: New Jersey Inmate Survey Data 1980

Variable Number	Variable Label	Card / Column Location	Variable Width	Missing Data Value	# Decimal Places	Reference Number	File ID	Character Type	Unabbreviated Variable Label
A4D	Why Unfair 2	1/23	1	9	0	017	NJIS80	N	Why would it be unfair: Response 2
A5A	Minimum Fair Sentence	1/24-26	3	999	0	018	NJIS80	N	What sentence do you think the judge <u>should</u> have given you: Minimum
A5B	Maximum Fair Sentence	1/27-29	3	999	0	019	NJIS80	N	What sentence do you think the judge <u>should</u> have given you: Maximum
A5C	If Same - Why 1	1/30	1	9	0	020	NJIS80	N	If <u>same</u> as actual sentence: Why do you think you should have received this sentence: Response 1
A5D	If Same - Why 2	1/31	1	9	0	021	NJIS80	N	If <u>same</u> as actual sentence: Why do you think you should have received this sentence: Response 2
A5E	If Lighter - Why 1	1/32	1	9	0	022	NJIS80	N	If <u>lighter</u> than actual sentence: Why should you receive this sentence: Response 1
A5F	If Lighter - Why 2	1/33	1	9	0	023	NJIS80	N	If <u>lighter</u> than actual sentence: Why should you receive this sentence: Response 2
A5G	If Heavier - Why 1	1/34	1	9	0	024	NJIS80	N	If <u>heavier</u> than actual sentence: Why should you receive this sentence: Response 1

01

DATA DICTIONARY LISTING

FILE: New Jersey Inmate Survey Data 1980

Variable Number	Variable Label	Card / Column Location	Variable Width	Missing Data Value	# Decimal Places	Reference Number	File ID	Character Type	Unabbreviated Variable Label
A5H	If Heavier - Why 2	1/35	1	9	0	025	NJIS80	N	If heavier than actual sentence: Why should you receive this sentence: Response 2
A6	Do Others Think Fair	1/36	1	9	0	026	NJIS80	N	What about the people you know in here? Do most of them think their sentences are fair?
A7	Do You Think Fair	1/37	1	9	0	027	NJIS80	N	What do you think about the sentences other people in here received? Do you think most of them received fair sentences?
A8	Sentences Generally	1/38	1	9	0	028	NJIS80	N	Do you think your friends, or people you know in here, generally received sentences that were too heavy, fair, or too light for what they did?
BVERSION	Version 1 or 2 or Section B	1/51	1	9	0	029	NJIS80	N	Version of B section administered: anchored or unanchored scale
B1	Serious of Fight Injury	1/52-53	2	99	0	030	NJIS80	N	An offender injures another person in a fight
B2	Serious Attempted Rob.	1/54-55	2	99	0	031	NJIS80	N	An offender demands money of a person and assaults the victim with a weapon the victim does not give him any money.
B3	Serious B & E	1/56-57	2	99	0	032	NJIS80	N	The offender breaks into a private home and steals a TV set.

DATA DICTIONARY LISTING

FILE: New Jersey Inmate Survey Data 1980

Variable Number	Variable Label	Card / Column Location	Variable Width	Missing Data Value	# Decimal Places	Reference Number	File ID	Character Type	Unabbreviated Variable Label
B4	Serious Pickpocket	1/58-59	2	99	0	033	NJIS80	N	The offender pickpockets \$20 from a person.
B5	Serious Rape	1/60-61	2	99	0	034	NJIS80	N	The offender forcibly rapes a person.
B6	Serious Armed Rob	1/62-63	2	99	0	035	NJIS80	N	The offender, with a weapon, threatens a person, takes the victim's wallet and leaves without hurting him.
B7	Serious Sale CDS	1'64-65	2	99	0	036	NJIS80	N	The offender sells two ounces of heroin.
B8	Serious Credit Card	1/66-67	2	99	0	037	NJIS80	N	The offender buys a stolen credit card, with intent to use it.
B9	Serious Homicide	1/68-69	2	99	0	038	NJIS80	N	The offender attacks another person with a weapon and the victim dies from the injuries.
B10	Serious Intent Homicide	1/70-71	2	99	0	039	NJIS80	N	The offender attacks another person with a weapon, intending to kill the victim. The victim dies.
B11	Serious Cop	1/72-73	2	99	0	040	NJIS80	N	The offender, in the course of resisting arrest, assaults a police officer.

DATA DICTIONARY LISTING

12

FILE: New Jersey Inmate Survey Data 1980

Variable Number	Variable Label	Card / Column Location	Variable Width	Missing Data Value	# Decimal Places	Reference Number	File ID	Character Type	Unabbreviated Variable Label
B12	Serious Elderly Rob	1/74-75	2	99	0	041	NJIS80	N	The offender, with a weapon, threatens an elderly person, takes the victim's wallet and leaves without hurting him.
B13	Serious Arson	1/76-77	2	99	0	042	NJIS80	N	The offender purposely sets fire to someone else's home.
B14	Serious Handgun	1/78-79	2	99	0	043	NJIS80	N	The offender is carrying a handgun without a permit.
CODE2	Identification number	2/1-3	3	999	0	044	NJIS80	N	Inmate identification number
CARD2	Card Identifier	2/4	1	9	0	045	NJIS80	N	Card 2 identifier
B15	Serious Intent No Death	2/5-6	2	99	0	046	NJIS80	N	The offender attacks a person with a weapon, with intent to kill the victim; the victim does not die.
B16	Serious Poss. CDS	2/7-8	2	99	0	047	NJIS80	N	The offender is in possession of heroin for his own use.
B17	Serious Auto Theft	2/9-10	2	99	0	048	NJIS80	N	The offender steals a car

DATA DICTIONARY LISTING

FILE: New Jersey Inmate Survey Data 1980

13

Variable Number	Variable Label	Card / Column Location	Variable Width	Missing Data Value	# Decimal Places	Reference Number	File ID	Character Type	Unabbreviated Variable Label
B18	Serious Incest	2/11-12	2	99	0	049	NJIS80	N	The offender has sexual relations with his child
B19	Serious Check Forge	2/13-14	2	99	0	050	NJIS80	N	The offender forges a check in order to cash it.
B20	Serious White Collar	2/15-16	2	99	0	051	NJIS80	N	The offender steals goods from the company he works for.
B21	Serious Store Theft	2/17-18	2	99	0	052	NJIS80	N	The offender breaks into a store and steals property worth \$5000.
B22	Serious Intent Injury	2/19-20	2	99	0	053	NJIS80	N	The offender intentionally injures a person with a weapon; the victim has to go to the hospital.
B23	Serious Marijuana	2/21-22	2	99	0	054	NJIS80	N	The offender sells marijuana to a minor.
B24	Serious Stereo	2/23-24	2	99	0	055	NJIS80	N	The offender buys a stereo which he knows is stolen.
C1	Fair Fight Injury	2/25-26	2	99	0	056	NJIS80	N	The offender injures another person in a fight.

DATA DICTIONARY LISTING

FILE: New Jersey Inmate Survey Data 1980

Variable Number	Variable Label	Card / Column Location	Variable Width	Missing Data Value	# Decimal Places	Reference Number	File ID	Character Type	Unabbreviated Variable Label
C2	Fair Attempted Rob	2/27-28	2	99	0	057	NJIS80	N	The offender demands money of a person, assaults the victim with a weapon; the victim does not give him any money.
C3	Fair B & E	2/29-30	2	99	0	058	NJIS80	N	The offender breaks into a private home and steals a TV set.
C4	Fair Pickpocket	2/31-32	2	99	0	059	NJIS80	N	The offender pickpockets \$20 from a person.
C5	Fair Rape	2/33-34	2	99	0	060	NJIS80	N	The offender forcibly rapes a person
C6	Fair Armed Rob	2/35-36	2	99	0	061	NJIS80	N	The offender, with a weapon, threatens a person, takes the victim's wallet and leaves without hurting him.
C7	Fair Sale CDS	2/37-38	2	99	0	062	NJIS80	N	The offender sells two ounces of heroin.
C8	Fair Credit Card	2/39-40	2	99	0	063	NJIS80	N	The offender buys a stolen credit card, with intent to use it.
C9	Fair Homicide	2/41-42	2	99	0	064	NJIS80	N	The offender attacks another person with a weapon and the victim dies from the injuries.

DATA DICTIONARY LISTING

FILE: New Jersey Inmate Survey Data 1980

15

Variable Number	Variable Label	Card / Column Location	Variable Width	Missing Data Value	# Decimal Places	Reference Number	File ID	Character Type	Unabbreviated Variable Label
C10	Fair Intent Homicide	2/43-44	2	99	0	065	NJIS80	N	The offender attacks another person with a weapon, intending to kill the victim. The victim dies.
C11	Fair Police	2/45-46	2	99	0	066	NJIS80	N	The offender, in the course of resisting arrest, assaults a police officer.
C12	Fair Elderly Rob.	2/47-48	2	99	0	067	NJIS80	N	The offender, with a weapon, threatens an elderly person, takes the victim's wallet and leaves without hurting him.
C13	Fair Arson	2/49-50	2	99	0	068	NJIS80	N	The offender purposely sets fire to someone else's home.
C14	Fair Handgun	2/51-52	2	99	0	069	NJIS80	N	The offender is carrying a handgun without a permit.
C15	Fair Intent no Death	2/53-54	2	99	0	070	NJIS80	N	The offender attacks another person with a weapon, with intent to kill the victim; the victim does not die.
C16	Fair Poss CDS	2/55-56	2	99	0	071	NJIS80	N	The offender is in possession of heroin for his own use.
C17	Fair Auto Theft	2/57-58	2	99	0	072	NJIS80	N	The offender steals a car.

DATA DICTIONARY LISTING

FILE: New Jersey Inmate Survey Data 1980

Variable Number	Variable Label	Card / Column Location	Variable Width	Missing Data Value	# Decimal Places	Reference Number	File ID	Character Type	Unabbreviated Variable Label
C18	Fair Incest	2/59-60	2	99	0	073	NJIS80	N	The offender has sexual relations with his child.
C19	Fair Check Forge	2/61-62	2	99	0	074	NJIS80	N	The offender forges a check in order to cash it.
C20	Fair White Collar	2/63-64	2	99	0	075	NJIS80	N	The offender steals goods from the company he works for.
C21	Fair Store Theft	2/65-66	2	99	0	076	NJIS80	N	The offender breaks into a store and steals property worth \$5000.
C22	Fair Intent Injury	2/67-68	2	99	0	077	NJIS80	N	The offender intentionally injures a with a weapon; the victim has to go to the hospital.
C23	Fair Marijuana	2/69-70	2	99	0	078	NJIS80	N	The offender sells marijuana to a minor.
C24	Fair Stereo	2/71-72	2	99	0	079	NJIS80	N	The offender buys a stereo which he knows is stolen.
D1	Going Fight Injury	2/73-74	2	99	0	080	NJIS80	N	The offender injures another person in a fight.

DATA DICTIONARY LISTING

FILE: New Jersey Inmate Survey Data 1980

17

Variable Number	Variable Label	Card / Column Location	Variable Width	Missing Data Value	# Decimal Places	Reference Number	File ID	Character Type	Unabbreviated Variable Label
D2	Going Attempted Rob	2/75-76	2	99	0	081	NJIS80	N	The offender demands money of a person and assaults the victim with a weapon; the victim does not give him any money.
D3	Going B & E	2/77-78	2	99	0	082	NJIS80	N	The offender breaks into a private home and steals a TV set.
D4	Going Pickpocket	2/79-80	2	99	0	083	NJIS80	N	The offender pickpockets \$20 from a person.
CODE3	Identification Number	3/1-3	3	999	0	084	NJIS80	N	Inmate identification number
CARD3	Card Identifier	3/4	1	9	0	085	NJIS80	N	Card 3 identifier
D5	Going Rape	3/5-6	2	99	0	086	NJIS80	N	The offender forcibly rapes a person.
D6	Going Armed Rob	3/7-8	2	99	0	087	NJIS80	N	The offender, with a weapon, threatens a person, takes the victim's wallet and leaves without hurting him.
D7	Going Sale CDS	3/9-10	2	99	0	088	NJIS80	N	The offender sells two ounces of heroin.

DATA DICTIONARY LISTING

FILE: New Jersey Inmate Survey Data 1980

Variable Number	Variable Label	Card / Column Location	Variable Width	Missing Data Value	# Decimal Places	Reference Number	File ID	Character Type	Unabbreviated Variable Label
D8	Going Credit Card	3/11-12	2	99	0	089	NJIS80	N	The offender buys a stolen credit card, with intent to use it.
D9	Going Homicide	3/13-14	2	99	0	090	NJIS80	N	The offender attacks another person with a weapon and the victim dies from the injuries.
D10	Going Intent Homicide	3/15-16	2	99	0	091	NJIS80	N	The offender attacks another person with a weapon, intending to kill the victim. The victim dies.
D11	Going Police	3/17-18	2	99	0	092	NJIS80	N	The offender, in the course of resisting arrest, assaults a police officer.
D12	Going Elderly Rob	3/19-20	2	99	0	093	NJIS80	N	The offender, with a weapon, threatens an elderly person, takes the victim's wallet and leaves without hurting him.
D13	Going Arson	3/21-22	2	99	0	094	NJIS80	N	The offender purposely sets fire to someone else's home.
D14	Going Handgun	3/23-24	2	99	0	095	NJIS80	N	The offender is carrying a handgun without a permit.
D15	Going Intent no Death	2/25-26	2	99	0	096	NJIS80	N	The offender attacks another person with a weapon, with intent to kill the victim; the victim does not die.

DATA DICTIONARY LISTING

19

FILE: New Jersey Inmate Survey Data 1980

Variable Number	Variable Label	Card / Column Location	Variable Width	Missing Data Value	# Decimal Places	Reference Number	File ID	Character Type	Unabbreviated Variable Label
D16	Going Poss. CDS.	3/27-28	2	99	0	097	NJIS80	N	The offender is in possession of heroin for his own use.
D17	Going Auto Theft	3/29-30	2	99	0	098	NJIS80	N	The offender steals a car.
D18	Going Incest	3/31-32	2	99	0	099	NJIS80	N	The offender has sexual relations with his child
D19	Going Check Forge	3/33-34	2	99	0	100	NJIS80	N	The offender forges a check in order to cash it.
D20	Going White Collar	3/35-36	2	99	0	101	NJIS80	N	The offender steals goods from the company he works for.
D21	Going Store Theft	3/37-38	2	99	0	102	NJIS80	N	The offender breaks into a store and steals property worth \$5000.
D22	Going Intent Injury	3/39-40	2	99	0	103	NJIS80	N	The offender intentionally injures a person with a weapon; the victim has to go to the hospital.
D23	Going Marijuana	3/41-42	2	99	0	104	NJIS80	N	The offender sells marijuana to a minor.

DATA DICTIONARY LISTING

FILE: New Jersey Inmate Survey Data 1980

Variable Number	Variable Label	Card / Column Location	Variable Width	Missing Data Value	# Decimal Places	Reference Number	File ID	Character Type	Unabbreviated Variable Label
D24	Going Stereo	3/43-44	2	99	0	105	NJIS80	N	The offender buys a stereo which he knows is stolen.
E1	Same or Diff Sentences	3/45	1	9	0	106	NJIS80	N	Should all robbers get the same sentence, or is it alright if robbers get different sentences?
E1A	If Diff 1	3/46	1	9	0	107	NJIS80	N	If they should get <u>different</u> sentences: Why: Response 1
E1B	If Diff 2	3/47	1	9	0	108	NJIS80	N	If they should get <u>different</u> sentences: Why: Response 2
E2	Prior Vs. First	3/48	1	9	0	109	NJIS80	N	If one robber has a prior record and the other robber is a first offender, should they get the same sentence.
E2A	Who More	3/49	1	9	0	110	NJIS80	N	If they should get <u>different</u> sentences: Who should get more, the guy with a prior record or the first offender?
E2B	If Diff 1	3/50	1	9	0	111	NJIS80	N	Why: Response 1
E2C	If Diff 2	3/51	1	9	0	112	NJIS80	N	Why: Response 2

DATA DICTIONARY LISTING

FILE: New Jersey Inmate Survey Data 1980

21

Variable Number	Variable Label	Card / Column Location	Variable Width	Missing Data Value	# Decimal Places	Reference Number	File ID	Character Type	Unabbreviated Variable Label
E3	Married Vs. Single	3/52	1	9	0	113	NJIS80	N	If one robber is married and the other robber is single, should they get the same sentence?
E3A	Who More	3/53	1	9	0	114	NJIS80	N	If they should get different sentences: who should get more? The guy who is married or the single guy?
E3B	If Diff 1	3/54	1	9	0	115	NJIS80	N	Why: Response 1
E3C	If Diff 2	3/55	1	9	0	116	NJIS80	N	Why: Response 2
E4	Plea Vs. Trial	3/56	1	9	0	117	NJIS80	N	If one robber pleads guilty and the other robber pleads not guilty, should they get the same sentence?
E4A	Who More	3/57	1	9	0	118	NJIS80	N	If they should get different sentences: Who should get more?
E4B	If Diff 1	3/58	1	9	0	119	NJIS80	N	Why: Response 1
E4C	If Diff 2	3/59	1	9	0	120	NJIS80	N	Why: Response 2

DATA DICTIONARY LISTING

FILE: New Jersey Inmate Survey Data 1980

Variable Number	Variable Label	Card / Column Location	Variable Width	Missing Data Value	# Decimal Places	Reference Number	File ID	Character Type	Unabbreviated Variable Label
E5	Drug Use Vs. No Use	3/60	1	9	0	121	NJIS80	N	If one robber is addicted to heroin and the other robber doesn't use drugs, should they get the same sentence?
E5A	Who More	3/61	1	9	0	122	NJIS80	N	If they should get different sentences: Who should get more?
E5B	If Diff 1	3/62	1	9	0	123	NJIS80	N	Why: Response 1
E5C	If Diff 2	3/63	1	9	0	124	NJIS80	N	Why: Response 2
E6	Old Vs. Young	3/64	1	9	0	125	NJIS80	N	If one robber is 18 years old and the other robber is 30, should they get the same sentence?
E6A	Who More	3/65	1	9	0	126	NJIS80	N	If they should get different sentences: Who should get more? The old guy or the young guy?
E6B	If Diff 1	3/66	1	9	0	127	NJIS80	N	Why: Response 1
E6C	If Diff 2	3/67	1	9	0	128	NJIS80	N	Why: Response 2

DATA DICTIONARY LISTING

FILE: New Jersey Inmate Survey Data 1980

Variable Number	Variable Label	Card / Column Location	Variable Width	Missing Data Value	# Decimal Places	Reference Number	File ID	Character Type	Unabbreviated Variable Label
E7	School Vs. No School	3/68	1	9	0	129	NJIS80	N	If one robber is attending school and the other robber is not in school, should the judge give them the same sentence?
E7A	Who More	3/69	1	9	0	130	NJIS80	N	If they should get different sentences: Who should get more time?
E7B	If Diff 1	3/70	1	9	0	131	NJIS80	N	Why: Response 1
E7C	If Diff 2	3/71	1	9	0	132	NJIS80	N	Why: Response 2
E8	Job Vs. No Job	3/72	1	9	0	133	NJIS80	N	If one robber has a job and the other robber is unemployed, should they get the same sentence?
E8A	Who More	3/73	1	9	0	134	NJIS80	N	If they should get different sentences: Who should get more?
E8B	If Diff 1	3/74	1	9	0	135	NJIS80	N	Why: Response 1
E8C	If Diff 2	3/75	1	9	0	136	NJIS80	N	Why: Response 2

DATA DICTIONARY LISTING

FILE: New Jersey Inmate Survey Data 1980

24

Variable Number	Variable Label	Card / Column Location	Variable Width	Missing Data Value	# Decimal Places	Reference Number	File ID	Character Type	Unabbreviated Variable Label
E9	Male Vs. Female	3/76	1	9	0	137	NJIS80	N	And finally, let's suppose that one of the robbers is male and the other is female. Should they get the same sentence?
E9A	Who More	3/77	1	9	0	138	NJIS80	N	If they should get different sentences: Should the female get more or should the male get more?
E9B	If Diff 1	3/78	1	9	0	139	NJIS80	N	Why: Response 1
E9C	If Diff 2	3/79	1	9	0	140	NJIS80	N	Why: Response 2
CODE4	Identification Number	4/1-3	3	999	0	141	NJIS80	N	Inmate identification number
CARD4	Card Identifier	4/4	1	9	0	142	NJIS80	N	Card 4 identifier
F1	12MJ or 1-3 Prison	4/5	1	9	0	143	NJIS80	N	12 months jail or 1-3 years prison
F2	Life No Parole or Death	4/6	1	9	0	144	NJIS80	N	Life no parole or capital punishment

DATA DICTIONARY LISTING

FILE: New Jersey Inmate Survey Data 1980

25

Variable Number	Variable Label	Card / Column Location	Variable Width	Missing Data Value	# Decimal Places	Reference Number	File ID	Character Type	Unabbreviated Variable Label
3	3-5 Prison or 18MJ	4/7	1	9	0	145	NJIS80	N	3-5 years prison or 18 months jail
4	5 Year Prob or 6 MJ	4/8	1	9	0	146	NJIS80	N	5 years probation or 6 months jail
5	6MProb or 12MJ	4/9	1	9	0	147	NJIS80	N	6 months probation or 6 months jail
6	2YProb or \$50	4/10	1	9	0	148	NJIS80	N	2 years probation or fine of \$50
7	6MJ or 2YProb	4/11	1	9	0	149	NJIS80	N	6 months jail or 2 years probation
8	5YProb or 12MJ	4/12	1	9	0	150	NJIS80	N	5 years probation or 12 months jail
9	18MJ or 1YProb	4/13	1	9	0	151	NJIS80	N	18 months jail or 1 year probation
10	5YProb or \$500	4/14	1	9	0	152	NJIS80	N	5 years probation or fine of \$500

DATA DICTIONARY LISTING

FILE: New Jersey Inmate Survey Data 1980

Variable Number	Variable Label	Card / Column Location	Variable Width	Missing Data Value	# Decimal Places	Reference Number	File ID	Character Type	Unabbreviated Variable Label
F11	5YProb or 1-3 Prison	4/15	1	9	0	153	NJIS80	N	5 years probation or 1-3 years prison
F12	20-25 Prison or Life	4/16	1	9	0	154	NJIS80	N	20-25 years prison or life with parole
F13	18MJ or 1-3 Prison	4/17	1	9	0	155	NJIS80	N	18 months jail or 1-3 years probation
F14	2YProb or 12MJ	4/18	1	9	0	156	NJIS80	N	2 years probation or 12 months jail
F15	\$500 or 2YProb	4/19	1	9	0	157	NJIS80	N	Fine of \$500 or 2 years probation
F16	6MProb or \$50	4/20	1	9	0	158	NJIS80	N	6 months probation or fine of \$50
F17	1-3 Prison or 2YProb	4/21	1	9	0	159	NJIS80	N	1-3 years in prison or 2 years probation
F18	5YProb or 3-5 Prison	4/22	1	9	0	160	NJIS80	N	5 years probation or 3-5 years prison

DATA DICTIONARY LISTING

FILE: New Jersey Inmate Survey Data 1980

27

Variable Number	Variable Label	Card / Column Location	Variable Width	Missing Data Value	# Decimal Places	Reference Number	File ID	Character Type	Unabbreviated Variable Label
F19	6MJ or 1YProb	4/23	1	9	0	161	NJIS80	N	6 months jail or 1 year probation
F20	\$100 or 2YProb	4/24	1	9	0	162	NJIS80	N	Fine of \$100 or 2 years probation
F21	12MJ or 1YProb	4/25	1	9	0	163	NJIS80	N	12 months jail or 1 year probation
F22	2YProb or 18MJ	4/26	1	9	0	164	NJIS80	N	2 years probation or 18 months jail
F23	1-3 Prison or 1YProb	4/27	1	9	0	165	NJIS80	N	1-3 years prison or 1 year probation
F24	1 YProb or \$100	4/28	1	9	0	166	NJIS80	N	1 year probation or Fine of \$100
F25	18MJ or 5YProb	4/29	1	9	0	167	NJIS80	N	18 months jail or 5 years probation
F26	18MJ or \$500	4/30	1	9	0	168	NJIS80	N	18 months jail or fine of \$500

DATA DICTIONARY LISTING

FILE: New Jersey Inmate Survey Data 1980

Variable Number	Variable Label	Card / Column Location	Variable Width	Missing Data Value	# Decimal Places	Reference Number	File ID	Character Type	Unabbreviated Variable Label
VERSION	Version 1 or 2 of Section G	4/31	1	9	0	169	NJIS80	N	Version of G section administered: anchored or unanchored scale.
G1	Severe 12-15 Prison	4/32-33	2	99	0	170	NJIS80	N	Penalty severity: 18 months jail
G2	Severe 18MJ	4/34-35	2	99	0	171	NJIS80	N	Penalty severity: 12-15 years prison
G3	Severe \$50	4/36-37	2	99	0	172	NJIS80	N	Penalty severity: Fine of \$50
G4	Severe \$100	4/38-39	2	99	0	173	NJIS80	N	Penalty severity: Fine of \$100
G5	Severe \$500	4/40-41	2	99	0	174	NJIS80	N	Penalty severity: Fine of \$500
G6	Severe 6MProb	4/42-43	2	99	0	175	NJIS80	N	Penalty severity: 6 months probation
G7	Severe 1 YProb	4/44-45	2	99	0	176	NJIS80	N	Penalty severity: 1 year probation

DATA DICTIONARY LISTING

FILE: New Jersey Inmate Survey Data 1980

29

Variable Number	Variable Label	Card / Column Location	Variable Width	Missing Data Value	# Decimal Places	Reference Number	File ID	Character Type	Unabbreviated Variable Label
G8	Severe 2YProb	4/46-47	2	99	0	177	NJIS80	N	Penalty severity: 2 years probation
G9	Severe 5YProb	4/48-49	2	99	0	178	NJIS80	N	Penalty severity: 5 years probation
G10	Severe 6MJ	4/50-51	2	99	0	179	NJIS80	N	Penalty severity: 6 months in jail
G11	Severe 12MJ	4/52-53	2	99	0	180	NJIS80	N	Penalty severity: 12 months in jail
G12	Severe 1-3 Prison	4/54-55	2	99	0	181	NJIS80	N	Penalty severity: 1-3 years in prison
G13	Severe 3-5 Prison	4/56-57	2	99	0	182	NJIS80	N	Penalty severity: 3-5 years in prison
G14	Severe 5-7 Prison	4/58-59	2	99	0	183	NJIS80	N	Penalty severity: 5-7 years in prison
G15	Severe 7-10 Prison	4/60-61	2	99	0	184	NJIS80	N	Penalty severity: 7-10 years in prison

New Jersey Inmate Survey Data 1980

<u>Card Column</u>	<u>Variable Number</u>	<u>Questionnaire Text</u>
1/1-3	CODE1	Inmate Identification Number (Survey Sample Number)
1/4	CARD1	Card 1 identifier
1/5	VERSION	Questionnaire Version 1. Unanchored B and G Sections 2. B Section anchored 3. G Section anchored 4. Both B and G Sections anchored
1/6	INTERV	Interviewer Identification Number

Section A

Before we start, I want to tell you exactly why we are here interviewing people. We were given some money by the federal government to do a study of inmates' attitudes and concerns about sentencing. We were here last summer and talked to about 150 prisoners and now we are back again this year so we can find out what you think about sentencing. Now that consent form you just signed means that you have agreed to talk to us and give us your opinions. That form also means that we have agreed not to tell anyone what you tell us; that means that we have promised you and the federal government that we will not tell anyone who works at Rahway, or anyone on the Parole Board, or anyone else, what you tell us. Since what you think is very important to us, we hope that you will be as frank as possible with us, so we can get a clear idea of what inmates here at Rahway think about sentencing in New Jersey. OK? (MAKE SURE R UNDERSTANDS THE CONFIDENTIALITY OF THIS.)

1/7	A1	First of all, do you think the sentences given to offenders in this state are generally <u>fair</u> or <u>unfair</u> ? 1. Generally fair 2. Generally unfair 3. Some fair, some unfair (IF INSISTS ON EVEN SPLIT.) 8. Other 9. NK
1/8 1/8	A1A A1B	(IF "NOT FAIR"): In what way do you think they are unfair? (CODE TWO RESPONSES IN ORDER MENTIONED.) 1. System forces pleas 2. Too long for offense 3. Too long for circumstances surrounding offense 4. Prejudicial 5. Depends on judge or attorney

6. Based on prior record
7. R gives example about unfairness of own sentence
8. Other
9. NK

1/10 A2 Do you think the sentence you are now serving is a fair sentence?
1. Yes
2. No
8. Other
9. NK

1/11 A2A (IF "NO"): Why not? (CODE TWO RESPONSES IN ORDER MENTIONED.)
1/12 A2B 1. I was innocent
2. Too long
3. Codefendants/friends serving less for same/some serving less for more
4. Not all circumstances were taken into account
5. Forced into plea/no right to trial
6. Based on prior record
8. Other
9. NK

1/13-15 A3A What minimum sentence did the judge give you? (IF NECESSARY, FOR THIS TIME AROUND: WRITE IN VERBATIM.)
9. NK

1/16-18 A3B What maximum sentence did the judge give you?
9. NK

1/19 A4 What if someone else did what you were convicted of? Would the sentence you got be fair for them?
1. Yes
2. No
8. Other
9. NK

1/20 A4A Why would this sentence be fair? (CODE TWO RESPONSES.)
1/21 A4B

1/22 A4C Why would this sentence be unfair? (CODE TWO RESPONSES.)
1/23 A4D

1/24-26 A5A What minimum sentence do you think the judge should have given you? (WRITE IN VERBATIM.)

1/27-29 A5B What maximum sentence do you think the judge should have given you?

1/30 A5C (IF WHAT HE GOT AND WHAT HE THINKS HE SHOULD HAVE GOTTEN ARE
1/31 A5D SAME): Why do you think you should have received this sentence?
(CODE TWO RESPONSES.)
9. NK

1/32 A5E (IF SHOULD-HAVE-GOT SENTENCE IS LIGHTER): Why do you think you
1/33 A5F should have received _____ instead of _____?
(CODE TWO RESPONSES.)
9. NK

1/34 A5G (IF SHOULD-HAVE-GOT SENTENCE IS HEAVIER): Why do you think you
1/35 A5H should have received _____ instead of _____?
9. NK

1/36 A6 What about the people you know in here? From what you know, do most of them think their sentences are fair?
1. Yes
2. No
3. Some yes/some no
8. Other
9. NK

1/37 A7 What do you think about the sentences other people in here received? Do you think most of them received fair sentences?
1. Yes
2. No
8. Other
9. NK

1/38 A8 Do you think your friends, or people you know in here, generally received sentences that were too heavy, fair, or too light for what they did?
1. Generally too heavy
2. Generally fair
3. Generally too light
8. Other
9. NK

Section B: Version 1

(SHUFFLE CARDS.)

Now I'm going to read out some descriptions of crimes, and I'd like you to tell me how serious you think each one is by giving it a score from 1 to 15. If you think the offense I describe is very serious, give it a high score like 14 or 15; if you think it is not very serious, give it a low score like 1 or 2; and if you think it is about average, give it a score in the middle like 7 or 8. OK? (GIVE R BLANK SCORE CARD AND MAKE SURE HE UNDERSTANDS.) For all the offenses, the offender is an adult male with no prior record and what he has done is very much like what most people do when they commit these offenses. OK?

1/51 EVERSION 1. Questions B1 and B2 unanchored

1/52-53 B1 Now on this scale, how serious do you think it is if the offender injures a person in a fight? (WRITE IN VERBATIM HERE AND ON THE SCALE.)

1/54-55 B2

What score do you give this offense: the offender demands money of a person and assaults the victim with a weapon; the victim does not give him any money? (WRITE IN VERBATIM HERE AND ON THE SCALE.)

Section B: Version 2

(SHUFFLE CARDS.)

Now I'm going to read out some descriptions of crimes; and I'd like you to tell me how serious you think each one is by giving it a score from 1 to 15. If you think the offense I describe is very serious, give it a high score like 14 or 15; if you think it is not very serious, give it a low score like 1 or 2; and if you think it is about average, give it a score in the middle like 7 or 8. OK? (SHOW R SCALE CARD WITH MARKINGS.) See, last year inmates told us that if an offender injures another person in a fight, then that offense got a score around 4 or 5 on this scale. And if an offender demands money of a person and assaults the victim with a weapon; and the victim does not give him any money, then that offense got a score around 11 or 12 on this scale. Now for each offense that I am going to read to you, I want you to assume that the offender is an adult male with no prior record. Also assume that what he has done is very much like what most people do when they commit these offenses. OK? Here's the first offense:

/51 EVERSION

2. Questions B1 and B2 anchored

1/52-53 B1

77. Anchored value

1/54-55 B2

77. Anchored value

OK, now I'm going to read off the rest of the offenses and I want you just to tell me what score you would give each offense.

1/56-57 B3

The offender breaks into a private home and steals a TV set.

1/58-59 B4

The offender pickpockets \$20 from a person.

1/60-61 B5

The offender forcibly rapes a person.

1/62-63 B6

The offender, with a weapon, threatens a person, and then takes the victim's wallet and leaves without hurting him.

1/64-65 B7

The offender sells two ounces of heroin.

1/66-67 B8

The offender buys a stolen credit card, with intent to use it.

1/68-69 B9

The offender attacks another person with a weapon and the victim dies from the injuries.

1/70-71 B10

The offender attacks another person with a weapon, intending to kill the victim. The victim dies.

1/72-73 B11

The offender, in the course of resisting arrest, assaults a police officer.

1/74-75 B12

The offender, with a weapon, threatens an elderly person, and then takes the victim's wallet and leaves without hurting him.

1/76-77 B13

The offender purposely sets fire to someone else's home.

1/78-79 B14

The offender is carrying a handgun without a permit.

2/1-3 CODE2

Inmate Identification Number

2/4 CARD2

Card 2 identifier

2/5-6 B15

The offender attacks a person with a weapon, with intent to kill the victim; the victim does not die.

2/7-8 B16

The offender is in possession of heroin for his own use.

2/9-10 B17

The offender steals a car.

2/11-12 B18

The offender has sexual relations with his child.

2/13-14 B19

The offender forges a check in order to cash it.

2/15-16 B20

The offender steals goods from the company he works for.

2/17-18 B21

The offender breaks into a store and steals property worth \$5000.

2/19-20 B22

The offender intentionally injures a person with a weapon; the victim has to go to the hospital.

2/21-22 B23

The offender sells marijuana to a minor.

2/23-24 B24

The offender buys a stereo which he knows is stolen.

Section C

(RE-SHUFFLE CARDS.)

Now I'd like to read through that list of offenses again, and this time please tell me what you think would be a fair sentence for each offense, if it were committed by an adult male with no prior record. I mean, what would be a fair sentence for the judge to impose -- not how much time you think the offender should spend in prison. Of course, if you don't think it would be fair to send some of these offenders to prison, please tell me what fine or probation or jail term you think would be fair. OK? (GIVE R PENALTY LIST.) For example, here is a list of penalties that might be given to any of the offenders; this list does not have all the possible penalties on it so if what you think is fair is not on this list, that's OK. I just want you to tell me what you think would be a fair sentence, whatever that sentence might be. OK? (MAKE SURE R UNDERSTANDS.) Here's the first offense: (READ FROM CARDS.)

2/25-26	C1	The offender injures another person in a fight.
/27-28	C2	The offender demands money of a person and assaults the victim with a weapon; the victim does not give him any money.
2/29-30	C3	The offender breaks into a private home and steals a TV set.
2/31-32	C4	The offender pickpockets \$20 from a person.
2/33-34	C5	The offender forcibly rapes a person.
2/35-36	C6	The offender, with a weapon, threatens a person, and then takes the victim's wallet and leaves without hurting him.
2/37-38	C7	The offender sells two ounces of heroin.
2/39-40	C8	The offender buys a stolen credit card, with intent to use it.
2/41-42	C9	The offender attacks another person with a weapon and the victim dies from the injuries.
2/43-44	C10	The offender attacks another person with a weapon, intending to kill the victim. The victim dies.
2/45-46	C11	The offender, in the course of resisting arrest, assaults a police officer.
/47-48	C12	The offender, with a weapon, threatens an elderly person, and then takes the victim's wallet and leaves without hurting him.
2/49-50	C13	The offender purposely sets fire to someone else's home.
2/51-52	C14	The offender is carrying a handgun without a permit.
2/53-54	C15	The offender attacks another person with a weapon, with intent to kill the victim; the victim does not die.
2/55-56	C16	The offender is in possession of heroin for his own use.
2/57-58	C17	The offender steals a car.
2/59-60	C18	The offender has sexual relations with his child.
2/61-62	C19	The offender forges a check in order to cash it.
2/63-64	C20	The offender steals goods from the company he works for.
2/65-66	C21	The offender breaks into a store and steals property worth \$5000.
2/67-68	C22	The offender intentionally injures a person with a weapon; the victim has to go to the hospital.
/69-70	C23	The offender sells marijuana to a minor.
2/71-72	C24	The offender buys a stereo which he knows is stolen.

Section D

(RE-SHUFFLE CARDS.)

Now, I'd like to read through these offenses one more time, but this time I want you to tell me what you think is the going sentence for each offense; that is, I want you to tell me what sentence is typically given for that offense here in New Jersey. OK? The offender is still a male with no prior record. So just tell me what sentence you think judges typically give for each offense -- and not the time the offender might spend in prison. OK? (MAKE SURE R UNDERSTANDS -- ALSO, LET HIM KEEP THE PENALTY LIST.) (READ FROM CARDS.)

2/73-74	D1	The offender injures another person in a fight.
2/75-76	D2	The offender demands money of a person and assaults the victim with a weapon; the victim does not give him any money.
2/77-78	D3	The offender breaks into a private home and steals a TV set.
2/79-80	D4	The offender pickpockets \$20 from a person.
3/1-3	CODE3	Inmate Identification Number
3/4	CARD3	Card 3 identifier
3/5-6	D5	The offender forcibly rapes a person.
3/7-8	D6	The offender, with a weapon, threatens a person, and then takes the victim's wallet and leaves without hurting him.
3/9-10	D7	The offender sells two ounces of heroin.
3/11-12	D8	The offender buys a stolen credit card, with intent to use it.
3/13-14	D9	The offender attacks another person with a weapon and the victim dies from the injuries.
3/15-16	D10	The offender attacks another person with a weapon, intending to kill the victim. The victim dies.
3/17-18	D11	The offender, in the course of resisting arrest, assaults a police officer.
3/19-20	D12	The offender, with a weapon, threatens an elderly person, and then takes the victim's wallet and leaves without hurting him.
3/21-22	D13	The offender purposely sets fire to someone else's home.
3/23-24	D14	The offender is carrying a handgun without a permit.
3/25-26	D15	The offender attacks another person with a weapon, with intent to kill the victim; the victim does not die.

3/27-28	D16	The offender is in possession of heroin for his own use.
/29-30	D17	The offender steals a car.
3/31-32	D18	The offender has sexual relations with his child.
3/33-34	D19	The offender forges a check in order to cash it.
3/35-36	D20	The offender steals goods from the company he works for.
3/37-38	D21	The offender breaks into a store and steals property worth \$5000.
3/39-40	D22	The offender intentionally injures a person with a weapon; the victim has to go to the hospital.
3/41-42	D23	The offender sells marijuana to a minor.
3/43-44	D24	The offender buys a stereo which he knows is stolen.

Section E

Now I'd like to find out what you think judges should consider when they decide on a sentence for an offender. I am going to ask you some questions that a lot of people, not just prisoners, are concerned about when they think about sentencing. OK?

/45	E1	For example, some people say that when judges sentence people they should give everyone convicted of armed robbery the same sentence. Other people say that the judge should give different sentences to different people convicted of armed robbery. What do you think? Should all robbers get the same sentence, or is it alright if robbers get different sentences? 1. Same sentence 2. Different sentence 8. Other 9. NK
3/46 3/47	E1A E1B	(IF THEY SHOULD GET <u>DIFFERENT SENTENCES</u>): Why? (CODE TWO RESPONSES.) 9. NK
3/48	E2	What if one robber has a prior record and the other robber is a first offender. Should they get the same sentence? 1. Yes 2. No 8. Other 9. NK
3/49	E2A	(IF THEY SHOULD GET <u>DIFFERENT SENTENCES</u>): Who should get more, the guy with a prior record or the first offender? 1. Prior record 2. First offender 8. Other 9. NK

3/50	E2B	Why? (CODE TWO RESPONSES.)
3/51	E2C	9. NK
3/52	E3	What if one robber is married and the other robber is single? Should they get the same sentence? 1. Yes 2. No 8. Other 9. NK
3/53	E3A	(IF THEY SHOULD GET <u>DIFFERENT SENTENCES</u>): Who should get more? The guy who is married or the single guy? 1. Married 2. Single 8. Other 9. NK
3/54 3/55	E3B E3C	Why? (CODE TWO RESPONSES.) 9. NK
3/56	E4	How about if one robber pleads guilty and the other robber pleads not guilty? Should they get the same sentence? 1. Yes 2. No 8. Other 9. NK
3/57	E4A	(IF THEY SHOULD GET <u>DIFFERENT SENTENCES</u>): Who should get more? The guy who pleads guilty or the guy who pleads not guilty? 1. Pleads guilty 2. Pleads not guilty 8. Other 9. NK
3/58 3/59	E4B E4C	Why? (CODE TWO RESPONSES.) 9. NK
3/60	E5	What if one of the robbers is addicted to heroin and the other robber doesn't use drugs? Should these two robbers get the same sentence? 1. Yes 2. No 8. Other 9. NK
3/61	E5A	(IF THEY SHOULD GET <u>DIFFERENT SENTENCES</u>): Who should get more? The robber who is addicted to drugs or the robber who doesn't use drugs? 1. Addicted 2. No use 8. Other 9. NK
3/62 3/63	E5B E5C	Why? (CODE TWO RESPONSES.) 9. NK

3/64 E6 If one robber is 18 years old and the other robber is 30, should they get the same sentence?
 1. Yes
 2. No
 8. Other
 9. NK

3/65 E6A (IF THEY SHOULD GET DIFFERENT SENTENCES): Who should get more? The old guy or the young guy?
 1. Old
 2. Young
 8. Other
 9. NK

3/66 E6B Why? (CODE TWO RESPONSES.)
 3/67 E6C 9. NK

3/68 E7 Suppose one of the robbers is attending school and the other robber is not in school. Should the judge give these two robbers the same sentence?
 1. Yes
 2. No
 8. Other
 9. NK

3/69 E7A (IF THEY SHOULD GET DIFFERENT SENTENCES): Who should get more time? The guy in school or the guy not in school?
 1. In school
 2. Not in school
 8. Other
 9. NK

3/70 E7B Why? (CODE TWO RESPONSES.)
 3/71 E7C 9. NK

3/72 E8 What if one robber has a job and the other robber is unemployed. Should they get the same time?
 1. Yes
 2. No
 8. Other
 9. NK

3/73 E8A (IF THEY SHOULD GET DIFFERENT SENTENCES): Who should get more? The guy with the job or the guy without a job?
 1. With job
 2. Without job
 8. Other
 9. NK

3/74 E8B Why? (CODE TWO RESPONSES.)
 3/75 E8C 9. NK

3/76 E9 And finally, let's suppose that one of the robbers is male and the other robber is female. Should they get the same sentence?
 1. Yes
 2. No
 8. Other
 9. NK

3/77 E9A (IF THEY SHOULD GET DIFFERENT SENTENCES): Should the female get more or should the male get more?
 1. Female more
 2. Male more
 8. Other
 9. NK

3/78 E9B Why? (CODE TWO RESPONSES.)
 3/79 E9C 9. NK

4/1-3 CODE4 Inmate identification number

4/4 CARD4 Card 4 identifier

Section F

Now I am going to give you a list of penalties. (GIVE R LIST). On this list you will see some pairs of sentences. For example, the first pair on the list says 12 Months in Jail or 1-3 Years in Prison. Now what I want you to do is pretend that you are in front of a judge and he gives you a choice of a sentence; that is, he says to you that you can have a sentence of either 12 months in jail or 1-3 years in prison. You have to choose which sentence you would prefer. OK? Now I know that it isn't very often that judges give you a choice of sentence, but if you had the choice, which sentence would you rather have: 12 Months in Jail or 1-3 Years in Prison?

4/5 F1 12 months in jail or 1-3 years in prison.
 1. 12 months in jail
 2. 1-3 years in prison
 3. No difference
 8. Other
 9. NK

Now I am going to read through the rest of these paired sentences with you and for each pair I read, just tell me which sentence you would rather have if you had the choice. OK?

4/6 F2 Life with no parole or Capital punishment
 1. Life
 2. Capital punishment
 3. No difference
 8. Other
 9. NK

4/7 F3 3-5 years in prison or 18 months in jail
 1. 3-5 years in prison
 2. 18 months in jail
 3. No difference
 8. Other
 9. NK

4/8 F4 5 years probation or 6 months in jail
 1. 5 years probation
 2. 6 months in jail
 3. No difference
 8. Other
 9. NK

4/9 F5 6 months probation or 6 months in jail
 1. 6 months probation
 2. 6 months in jail
 3. No difference
 8. Other
 9. NK

4/10 F6 2 years probation or a fine of \$50
 1. 2 years probation
 2. fine of \$50
 3. No difference
 8. Other
 9. NK

4/11 F7 6 months in jail or 2 years probation
 1. 6 months in jail
 2. 2 years probation
 3. No difference
 8. Other
 9. NK

4/12 F8 5 years probation or 12 months in jail
 1. 5 years probation
 2. 12 months in jail
 3. No difference
 8. Other
 9. NK

4/13 F9 18 months in jail or 1 year probation
 1. 18 months in Jail
 2. 1 year probation
 3. No difference
 8. Other
 9. NK

4/14 F10 5 years probation or a fine of \$500
 1. 5 years probation
 2. Fine of \$500
 3. No difference
 8. Other
 9. NK

4/15 F11 5 years probation or 1-3 years in prison
 1. 5 years probation
 2. 1-3 years in prison
 3. No difference
 8. Other
 9. NK

4/16 F12 20-25 years in prison or Life with parole
 1. 20-25 years in prison
 2. Life with parole
 3. No difference
 8. Other
 9. NK

4/17 F13 18 months in Jail or 1-3 years in prison
 1. 18 months in jail
 2. 1-3 years in prison
 3. No difference
 8. Other
 9. NK

4/18 F14 2 years probation or 12 months in jail
 1. 2 years probation
 2. 12 months in jail
 3. No difference
 8. Other
 9. NK

4/19 F15 A fine of \$500 or 2 years probation
 1. Fine of \$500
 2. 2 years probation
 3. No difference
 8. Other
 9. NK

4/20 F16 6 months probation or a fine of \$50
 1. 6 months probation
 2. Fine of \$50
 3. No difference
 8. Other
 9. NK

4/21 F17 1-3 years in prison or 2 years probation
 1. 1-3 years in prison
 2. 2 years probation
 3. No difference
 8. Other
 9. NK

4/22 F18 5 years probation or 3-5 years in prison
 1. 5 years probation
 2. 3-5 years in prison
 3. No difference
 8. Other
 9. NK

4/23	F19	6 months in jail or 1 year probation 1. 6 months in jail 2. 1 year probation 3. No difference 8. Other 9. NK
4/24	F20	A fine of \$100 or 2 years probation 1. Fine of \$100 2. 2 years probation 3. No difference 8. Other 9. NK
4/25	F21	12 months in jail or 1 year probation 1. 12 months in jail 2. 1 year probation 3. No difference 8. Other 9. NK
4/26	F22	2 years probation or 18 months in jail 1. 2 years probation 2. 18 months in jail 3. No difference 8. Other 9. NK
4/27	F23	1-3 years in prison or 1 year probation 1. 1-3 years in prison 2. 1 year probation 3. No difference 8. Other 9. NK
4/28	F24	1 year probation or a fine of \$100 1. 1 year probation 2. Fine of \$100 3. No difference 8. Other 9. NK
4/29	F25	18 months in jail or 5 years probation 1. 18 months in jail 2. 5 years probation 3. No difference 8. Other 9. NK
4/30	F26	18 months in jail or a fine of \$500 1. 18 months in jail 2. Fine of \$500 3. No difference 8. Other 9. NK

Section G: Version 1

(SHUFFLE CARDS.)

OK, now we are almost done. But first I want to ask you how serious you think some sentences are. I am going to read out a list of penalties to you and then I want you to tell me how serious you think each penalty is on a scale from 1 to 15. This is just like when I asked you to give me a score for an offense, only this time I want you to give me a score for a penalty. OK? (SHOW R BLANK SCALE CARD.) Now if you think the sentence I read out is very serious, give it a high score like 14 or 15; if you think the sentence is not very serious, give it a low score like 1 or 2; and if you think it is about average, give it a score in the middle like 7 or 8. OK? You see, what I really want to know is how serious you think it would be if a judge gave you any of these penalties. (MAKE SURE R UNDERSTANDS.)

4/31 GVERSION 1. Questions G1 and G2 are unanchored.

4/32-33 G1 Now here's the first sentence: 12-15 years in prison. How serious do you think this penalty is? (WRITE IN VERBATIM HERE AND ON THE SCALE.)4/34-35 G2 How about a sentence of 18 months in jail? How serious is this sentence? (WRITE IN VERBATIM HERE AND ON THE SCALE.)

Section G: Version 2

(SHUFFLE CARDS.)

OK, now we are almost done. But first I want to ask you how serious you think some sentences are. I am going to read out a list of penalties to you and then I want you to tell me how serious you think each penalty is on a scale from 1 to 15. This is just like when I asked you to give me a score for a penalty. OK? Now if you think the sentence I read out is very serious, give it a high score like 14 or 15; if you think the sentence is not very serious, give it a low score like 1 or 2; and if you think it is about average, give it a score in the middle like 7 or 8. OK? You see, what I really want to know is how serious you think it would be if a judge gave you any of these penalties. (SHOW R SCALE CARD WITH MARKINGS.) Now last year inmates told us that a sentence of 18 months in jail got a score around 4 or 5 on this scale; and a sentence of 12-15 years in prison got a score around 11 or 12 on this scale. Now for each of the sentences I read to you, I want you to tell me how serious each one is on this scale. OK? (MAKE SURE R UNDERSTANDS.) (READ FROM, AND CODE ON, CARDS.)

4/31 GVERSION 2. Questions G1 and G2 are anchored

4/32-33 G1 77. Anchor scale value

4/34-35 G2 77. Anchor scale value

Now I am going to read through the rest of the penalties and I want you just to tell me what score you would give each penalty. OK?
(READ FROM, AND CODE ON, CARDS.)

4/36-37	G3	Fine of \$50
4/38-39	G4	Fine of \$100
4/40-41	G5	Fine of \$500
4/42-43	G6	6 months probation
4/44-45	G7	1 year probation
4/46-47	G8	2 years probation
4/48-49	G9	5 years probation
4/50-51	G10	6 months in jail
4/52-53	G11	12 months in jail
4/54-55	G12	1-3 years in prison
4/56-57	G13	3-5 years in prison
4/58-59	G14	5-7 years in prison
4/60-61	G15	7-10 years in prison
4/62-63	G16	10-12 years in prison
4/64-65	G17	15-20 years in prison
4/66-67	G18	20-25 years in prison
4/68-69	G19	25-30 years in prison
4/70-71	G20	Life with parole
4/72-73	G21	Life with no parole
4/74-75	G22	Capital punishment

New Jersey Inmate Survey Data 1980

```
// EXEC SPSS
//FT08F001 DD UNIT=TAPE9,VOL=SER=NIJCPY,LABEL=(4,NL),DISP=SHR,
// DCB=(RECFM=FB,LRECL=80,BLKSIZE=800),DSN=NJIS80
//SYSIN DD *
RUN NAME      N.J. INMATE SURVEY 1980 FREQUENCIES
FILE NAME     N.J. INMATE SURVEY DATA 1980
VARIABLE LIST CODE1,CARD1,VERSION,INTERV,A1,ALA,A1B,A2,A2A,
              A2B,A3A,A3B,A4,A4A,A4B,A4C,A4D,A5A,A5B,A5C,A5D,
              A5E,A5F,A5G,A5H,A6,A7,A8,BVERSION,B1,B2,B3,B4,
              B5,B6,B7,B8,B9,B10,B11,B12,B13,B14,CODE2,CARD2,
              B15,B16,B17,B18,B19,B20,B21,B22,B23,B24,C1,C2,
              C3,C4,C5,C6,C7,C8,C9,C10,C11,C12,C13,C14,C15,C16,
              C17,C18,C19,C20,C21,C22,C23,C24,D1,D2,D3,D4,CODE3,
              CARD3,D5,D6,D7,D8,D9,D10,D11,D12,D13,D14,D15,D16,
              D17,D18,D19,D20,D21,D22,D23,D24,E1,E1A,E1B,E2,E2A,
              E2B,E2C,E3,E3A,E3B,E3C,E4,E4A,E4B,E4C,E5,E5A,E5B,
              E5C,E6,E6A,E6B,E6C,E7,E7A,E7B,E7C,E8,E8A,E8B,E8C,
              E9,E9A,E9B,E9C,CODE4,CARD4,F1,F2,F3,F4,F5,F6,F7,F8,
              F9,F10,F11,F12,F13,F14,F15,F16,F17,F18,F19,F20,F21,
              F22,F23,F24,F25,F26,GVERSION,G1,G2,G3,G4,G5,G6,G7,
              G8,G9,G10,G11,G12,G13,G14,G15,G16,G17,G18,G19,G20,
              G21,G22
INPUT MEDIUM  TAPE
INPUT FORMAT  FIXED (1F3.0,9F1.0,2F3.0,5F1.0,2F3.0,9F1.0,12X,
                  1F1.0,14F2.0/1F3.0,1F1.0,38F2.0/1F3.0,1F1.0,
                  20F2.0,35F1.0/1F3.0,28F1.0,22F2.0)
N OF CASES    157
RECODE        A1,A4B,A4C (0=9)/A5A (969=999)/A5E (0=9)/
              B3,B4 (00=99)/B8 (00=99)/B9,B10 (00=99) (30=99)/
              B11,B12,B13,B14 (00=99)/B15,B16,B17 (00=99)/
              B18 (00=99) (18=99) (50=99)/B19,B20,B21 (00=99)/
              B22,B23,B24 (00=99)/E4 (3=9)/E4B,E4C (0=9)/
              E5,E7B (3=9)/E9B (4=9)/F1,F2,F3,F26 (0=9)/
              G1 TO G22 (00=99)/G16,G19 (17=99)/G18,G21,G22
              (20=99)/G19,G20,G21 (30=99)/G21,G22 (16=99)/
VAR LABELS    A1 FAIR SENTENCE IN STATE/ALA HOW UNFAIR1/
              A1B HOW UNFAIR2/A2 OWN SENTENCE FAIR/
              A2A WHY OWN UNFAIR1/A2B WHY OWN UNFAIR2/
              A3A MINIMUM SENT IMPOSED/A3B MAXIMUM SENT IMPOSED/
              A4 YOUR SENT FAIR FOR OTHERS/A4A WHY FAIR1/
              A4B WHY FAIR2/A4C WHY UNFAIR1/A4D WHY UNFAIR2/
              A5A MINIMUM FAIR SENT/A5B MAXIMUM FAIR SENT/
              A5C IF SAME - WHY1/A5D IF SAME - WHY2/
              A5E IF LIGHTER - WHY1/A5F IF LIGHTER - WHY2/
              A5G IF HEAVIER - WHY 1/A5H IF HEAVIER - WHY2/
              A6 DO OTHERS THINK FAIR/A7 DO YOU THINK FAIR/
              A8 SENTENCES GENERALLY/B1 SERIOUS OF FIGHT INJURY/
              B2 SERIOUS ATTEMPTED ROB/B3 SERIOUS B & E/
              B4 SERIOUS PICKPOCKET/B5 SERIOUS RAPE/
              B6 SERIOUS ARMED ROB/B7 SERIOUS SALE CDS/
```


B8 SERIOUS CREDIT CARD/B9 SERIOUS HOMICIDE/
B10 SERIOUS INTENT HOMICIDE/B11 SERIOUS COP/
B12 SERIOUS ELDERLY ROB/B13 SERIOUS ARSON/
B14 SERIOUS HANDGUN/B15 SERIOUS INTENT NO DEATH/
B16 SERIOUS POSS CDS/B17 SERIOUS AUTO THEFT/
B18 SERIOUS INCEST/B19 SERIOUS CHECK FORGE/
B20 SERIOUS WHITE COLLAR/B21 SERIOUS STORE THEFT/
B22 SERIOUS INTENT INJURY/B23 SERIOUS MARIJUANA/
B24 SERIOUS STEREO/C1 FAIR FIGHT INJURY/
C2 FAIR ATTEMPTED ROB/C3 FAIR B & E/C4 FAIR PICKPOCKET/
C5 FAIR RAPE/C6 FAIR ARMED ROB/C7 FAIR SALE CDS/
C8 FAIR CREDIT CARD/C9 FAIR HOMICIDE/
C10 FAIR INTENT HOMICIDE/C11 FAIR COP/
C12 FAIR ELDERLY ROB/C13 FAIR ARSON/C14 FAIR HANDGUN/
C15 FAIR INTENT NO DEATH/C16 FAIR POSS CDS/
C17 FAIR AUTO THEFT/C18 FAIR INCEST/C19 FAIR CHECK FORGE/
C20 FAIR WHITE COLLAR/C21 FAIR STORE THEFT/
C22 FAIR INTENT INJURY/C23 FAIR MARIJUANA/
C24 FAIR STEREO/D1 GOING FIGHT INJURY/
D2 GOING ATTEMPTED ROB/D3 GOING B & E/
D4 GOING PICKPOCKET/D5 GOING RAPE/D6 GOING ARMED ROB/
D7 GOING SALE CDS/D8 GOING CREDIT CARD/D9 GOING HOMICIDE/
D10 GOING INTENT HOMICIDE/D11 GOING COP/
D12 GOING ELDERLY ROB/D13 GOING ARSON/
D14 GOING HANDGUN/D15 GOING INTENT NO DEATH/
D16 GOING POSS CDS/D17 GOING AUTO THEFT/
D18 GOING INCEST/D19 GOING CHECK FORGE/
D20 GOING WHITE COLLAR/D21 GOING STORE THEFT/
D22 GOING INTENT INJURY/D23 GOING MARIJUANA/
D24 GOING STEREO/E1 SAME OR DIFF SENTENCES/
E1A IF DIFF1/E1B IF DIFF2/E2 PRIOR VS. FIRST/
E2A WHO MORE/E2B IF DIFF1/E2C IF DIFF2/
E3 MARRIED VS. SINGLE/E3A WHO MORE/E3B IF DIFF1/
E3C IF DIFF2/E4 PLEA VS. TRIAL/E4A WHO MORE/
E4B IF DIFF1/E4C IF DIFF2/E5 DRUG USE VS. NO USE/
E5A WHO MORE/E5B IF DIFF1/E5C IF DIFF2/
E6 OLD VS. YOUNG/E6A WHO MORE/E6B IF DIFF1/
E6C IF DIFF2/E7 SCHOOL VS. NO SCHOOL/E7A WHO MORE/
E7B IF DIFF1/E7C IF DIFF2/E8 JOB VS. NOJOB/
E8A WHO MORE/E8B IF DIFF1/E8C IF DIFF2/
E9 MALE VS. FEMALE/E9A WHO MORE/E9B IF DIFF1/
E9C IF DIFF2/F1 12MJ OR 1-3PRISON/
F2 LIFE NOPAROLE OR DEATH/F3 3-5PRISON OR 18MJ/
F4 5YPROB OR 6MJ/F5 6MPROB OR 6MJ/F6 2YPROB OR \$50/
F7 6MJ OR 2YPROB/F8 5YPROB OR 12MJ/F9 18MJ OR 1YPROB/
F10 5YPROB OR \$500/F11 5YPROB OR 1-3PRISON/
F12 20-25PRISON OR LIFE/F13 18MJ OR 1-3PRISON/
F14 2YPROB OR 12MJ/F15 \$500 OR 2YPROB/F16 6MPROB OR \$50/
F17 1-3PRISON OR 2YPROB/F18 5YPROB OR 3-5PRISON/
F19 6MJ OR 1YPROB/F20 \$100 OR 2YPROB/F21 12MJ OR 1YPROB/

VALUE LABELS

F22 2YPROB OR 18MJ/F23 1-3PRISON OR 1YPROB/
F24 1YPROB OR \$100/ F25 18MJ OR 5YPROB/F26 18MJ OR \$500/
G1 SEVERE 12-15 PRISON/G2 SEVERE 18MJ/G3 SEVERE \$50/
G4 SEVERE \$100/G5 SEVERE \$500/G6 SEVERE 6MPROB/
G7 SEVERE 1YPROB/G8 SEVERE 2YPROB/G9 SEVERE 5YPROB/
G10 SEVERE 6MJ/G11 SEVERE 12MJ/G12 SEVERE 1-3PRISON/
G13 SEVERE 3-5PRISON/G14 SEVERE 5-7PRISON/
G15 SEVERE 7-10PRISON/G16 SEVERE 10-12PRISON/
G17 SEVERE 15-20PRISON/G18 SEVERE 20-25PRISON/
G19 SEVERE 25-30PRISON/G20 LIFE WPAROLE/
G21 LIFE NOPAROLE/G22 DEATH/
VERSION (1)FILL-IN B AND G (2)B SET (3)G SET
(4)BOTH SET/A1 (1)FAIR (2)UNFAIR (3)SOME FAIR OR UNFAIR
(8)OTHER (9)NK/A1A TO A1B (0)INCONSISTENT
(1)FORCED PLEA (2)TOO LONG (3)CIRCUMSTANCES
(4)PREJUDICIAL (5)DEPENDS ON JUDGE ATTORNEY
(6)BASED ON PRIORS (7)OWN UNFAIR (8)OTHER (9)NK/
A2 (1)YES (2)NO (8)OTHER (9)NK/A2A TO A2B
(1)INNOCENT (2)TOO LONG (3)CODEF DIFF SENT
(4)CIRCUMSTANCES (5)FORCED PLEA (6)BASED ON PRIORS
(8)OTHER (9)NK/A3A (000)INDETERMINATE (997)LIFE
(888)OTHER (999)NK/A3B (888)OTHER (997)LIFE
(999)NK/A4 (1)YES (2)NO (8)OTHER (9)NK/A4A TO A4B
(1)JUST BECAUSE (8)OTHER (9)NK/A4C TO A4D (1)TOO LONG
(2)CIRCUMSTANCES (3)ILLEGAL SENT (8)OTHER (9)NK/
A5A (000)INDETERMINATE (888)OTHER (997)LIFE (999)NK/
A5B (888)OTHER (997)LIFE (999)NK/A5C TO A5D (1)FAIR
(8)OTHER (9)NK/A5E TO A5F (1)CIRCUMSTANCES (2)INNOCENT
(3)ILLEGAL SENT (4)SAME AS CODEF (8)OTHER (9)NK/
A5G TO A5H (1)CRIME WORSE (8)OTHER (9)NK/
A6 (1)YES (2)NO (3)SOME YES OR NO (8)OTHER (9)NK/
A7 (1)YES (2)NO (8)OTHER (9)NK/A8 (1)TOO HEAVY
(2)FAIR (3)TOO LIGHT (8)OTHER (9)NK/BVERSION
(1)FILL-IN (2)SET/B1 TO B2 (77)SET/C1 TO D4, D5 TO D24
(00)NO SENT (01)\$50 (02)\$100 (03)\$500 (04)6MPROB
(05)1YPROB (06)2YPROB (07)5YPROB (08)6MJ (09)12MJ
(10)18MJ (11)1-3PRISON (12)3-5PRISON (13)5-7PRISON
(14)7-10PRISON (15)10-12PRISON (16)12-15PRISON
(17)15-20PRISON (18)20-25PRISON (19)25-30PRISON
(20) LIFE WITHPAROLE (21)LIFE NOPAROLE (22)DEATH
(77)TREATMENT (88)OTHER (99)NK/
E1 (1)SAME SENT (2)DIFF SENT (8)OTHER (9)NK/
E1A TO E1B (1)CIRCUM VARY (8)OTHER (9)NK/
E2 (1)YES (2)NO (8)OTHER (9)NK/E2A (1)PRIOR
(2)FIRST (8)OTHER (9)NK/E2B TO E2C (1)CIRCUM VARY
(2)HAS NOT LEARNED (3)HARD GUY (4)DESERVES BREAK
(8)OTHER (9)NK/E3 (1)YES (2)NO (8)OTHER (9)NK/
E3A (1)MARRIED (2)SINGLE (8)OTHER (9)NK/E3B TO E3C
(1)CIRCUM VARY (2)HURTS FAMILY (8)OTHER (9)NK/
E4 (1)YES (2)NO (8)OTHER (9)NK/E4A (1)PLEADS

(2)TRIAL (8)OTHER (9)NK/E4B TO E4C (1)CIRCUM VARY
(2)SYSTEM WORKS (3)LYING,WASTING MONEY (8)OTHER (9)NK/
E5 (1)YES (2)NO (8)OTHER (9)NK/E5A (1)ADDICT (2)NO USE
(8)OTHER (9)NK/E5B TO E5C (1)CIRCUM VARY (2)DRUG PROG
(3)SUPPORT HABIT (8)OTHER (9)NK/E6 (1)YES (2)NO
(8)OTHER (9)NK/E6A (1)OLD (2)YOUNG (8)OTHER (9)NK/
E6B TO E6C (1)CIRCUM VARY (2)YOUNG NEED REHAB
(3)OLD KNOWS BETTER (8)OTHER (9)NK/E7 (1)YES (2)NO
(8)OTHER (9)NK/E7A (1)IN SCHOOL (2)NOT IN SCHOOL
(8)OTHER (9)NK/E7B TO E7C (1)CIRCUM VARY (2)TRYING TO
BETTER (8)OTHER (9)NK/E8 (1)YES (2)NO (8)OTHER (9)NK/
E8A (1)WITH JOB (2)WITHOUT JOB (8)OTHER (9)NK/
E8B TO E8C (1)CIRCUM VARY (2)WITH JOB NO NEED
(3)TRYING TO BETTER (8)OTHER (9)NK/E9 (1)YES (2)NO
(8)OTHER (9)NK/E9A (1)FEMALE (2)MALE (8)OTHER (9)NK/
E9B TO E9C (1)CIRCUM VARY (2)HURTS FAMILY (3)JUST
BECAUSE (8)OTHER (9)NK/F1 (1)12MJ (2)1-3PRISON
(3)NO DIFF (8)OTHER (9)NK/F2 (1)LIFE (2)DEATH
(3)NO DIFF (8)OTHER (9)NK/F3 (1)3-5PRISON (2)18MJ
(3)NO DIFF (8)OTHER (9)NK/F4 (1)5YPROB (2)6MJ (3)NO DIFF
(8)OTHER (9)NK/F5 (1)6MPROB (2)6MJ (3)NO DIFF (8)OTHER
(9)NK/F6 (1)2YPROB (2)\$50 (3)NO DIFF (8)OTHER (9)NK/
F7 (1)6MJ (2)2YPROB (3)NO DIFF (8)OTHER (9)NK/F8
(1)1YPROB (2)12MJ (3)NO DIFF (8)OTHER (9)NK/
F9 (1)18MJ (2)1YPROB (3)NO DIFF (8)OTHER (9)NK/
F10 (1)5YPROB (2)\$500 (3)NO DIFF (8)OTHER (9)NK/
F11 (1)5YPROB (2)1-3PRISON (3)NO DIFF (8)OTHER (9)NK/
F12 (1)20-25PRISON (2)LIFE (3)NO DIFF (8)OTHER (9)NK/
F13 (1)18MJ (2)1-3PRISON (3)NO DIFF (8)OTHER (9)NK/
F14 (1)2YPROB (2)12MJ (3)NO DIFF (8)OTHER (9)NK/
F15 (1)\$500 (2)2YPROB (3)NO DIFF (8)OTHER (9)NK/
F16 (1)6MPROB (2)\$50 (3)NO DIFF (8)OTHER (9)NK/
F17 (1)1-3PRISON (2)2YPROB (3)NO DIFF (8)OTHER (9)NK/
F18 (1)5YPROB (2)3-5PRISON (3)NO DIFF (8)OTHER (9)NK/
F19 (1)6MJ (2)1YPROB (3)NO DIFF (8)OTHER (9)NK/
F20 (1)\$100 (2)2YPROB (3)NO DIFF (8)OTHER (9)NK/
F21 (1)12MJ (2)1YPROB (3)NO DIFF (8)OTHER (9)NK/
F22 (1)2YPROB (2)18MJ (3)NO DIFF (8)OTHER (9)NK/
F23 (1)1-3PRISON (2)1YPROB (3)NO DIFF (8)OTHER (9)NK/
F24 (1)1YPROB (2)\$100 (3)NO DIFF (8)OTHER (9)NK/
F25 (1)18MJ (2)5YPROB (3)NO DIFF (8)OTHER (9)NK/
F26 (1)18MJ (2)\$500 (3)NO DIFF (8)OTHER (9)NK/
GVERSION (1)FILL-IN (2)SET/G1 TO G2 (77)SET/

MISSING VALUES A1 TO A2B (9)/A3A (999)/A3B (999)/
A4 TO A4D (9)/A5A (999)/A5B (999)/
A5C TO A8 (9)/B1 TO B14 (99)/B15 TO D4 (99)/D5 TO
D24 (99)/E1 TO E9C (9)/F1 TO F26 (9)/G1 TO G22 (99)/

FREQUENCIES GENERAL=ALL
OPTIONS 3,6,9
STATISTICS 1,2,9
READ INPUT DATA

New Jersey Inmate Survey Data 1980

Variable Frequency Distributions

05/30/81

FILE - N.J.

- CREATED 05/30/81

CODE1

CODE	FREQ	ADJ PCT	CUM PCT	CODE	FREQ	ADJ PCT	CUM PCT	CODE	FREQ	ADJ PCT	CUM PCT
1.	1	1	1	96.	1	1	34	193.	1	1	68
2.	1	1	1	98.	1	1	35	196.	1	1	69
3.	1	1	2	99.	1	1	36	198.	1	1	69
4.	1	1	3	100.	1	1	36	200.	1	1	70
7.	1	1	3	102.	1	1	37	208.	1	1	71
11.	1	1	4	104.	1	1	38	210.	1	1	71
12.	1	1	4	105.	1	1	38	212.	1	1	72
14.	1	1	5	106.	1	1	39	216.	1	1	73
15.	1	1	6	107.	1	1	39	218.	1	1	73
16.	1	1	6	110.	1	1	40	220.	1	1	74
18.	1	1	7	111.	1	1	41	228.	1	1	75
19.	1	1	8	112.	1	1	41	230.	1	1	75
20.	1	1	8	114.	1	1	42	232.	1	1	76
22.	1	1	9	116.	1	1	43	236.	1	1	76
26.	1	1	10	118.	1	1	43	240.	1	1	77
28.	1	1	10	122.	1	1	44	244.	1	1	78
31.	1	1	11	123.	1	1	45	248.	1	1	78
32.	1	1	11	124.	1	1	45	252.	1	1	79
34.	1	1	12	125.	1	1	46	254.	1	1	80
35.	1	1	13	128.	1	1	46	256.	1	1	80
36.	1	1	13	131.	1	1	47	266.	1	1	81
40.	1	1	14	139.	1	1	48	272.	1	1	82
42.	1	1	15	140.	1	1	48	274.	1	1	82
44.	1	1	15	141.	1	1	49	276.	1	1	83
48.	1	1	16	145.	1	1	50	280.	1	1	83
50.	1	1	17	146.	1	1	50	282.	1	1	84
52.	1	1	17	148.	1	1	51	286.	1	1	85
53.	1	1	18	150.	1	1	52	290.	1	1	85
54.	1	1	18	152.	1	1	52	296.	1	1	86
55.	1	1	19	156.	1	1	53	302.	1	1	87
56.	1	1	20	160.	1	1	54	306.	1	1	87
58.	1	1	20	162.	1	1	54	308.	1	1	88
59.	1	1	21	165.	1	1	55	312.	1	1	89
61.	1	1	22	166.	1	1	55	314.	1	1	89
64.	1	1	22	168.	1	1	56	320.	1	1	90
66.	1	1	23	169.	1	1	57	324.	1	1	90
67.	1	1	24	170.	1	1	57	330.	1	1	91
68.	1	1	24	171.	1	1	58	332.	1	1	92
69.	1	1	25	172.	1	1	59	340.	1	1	92
70.	1	1	25	175.	1	1	59	348.	1	1	93
73.	1	1	26	176.	1	1	60	354.	1	1	94
75.	1	1	27	177.	1	1	61	358.	1	1	94
77.	1	1	27	178.	1	1	61	360.	1	1	95
78.	1	1	29	179.	1	1	62	382.	1	1	96
82.	1	1	29	181.	1	1	62	402.	1	1	96
83.	1	1	29	182.	1	1	63	404.	1	1	97
84.	1	1	30	183.	1	1	64	406.	1	1	97
86.	1	1	31	184.	1	1	64	408.	1	1	98
89.	1	1	31	186.	1	1	65	410.	1	1	98
90.	1	1	32	187.	1	1	66	412.	1	1	99

92.	1	1	32	183.	1	1	66	414.	1	1	100
93.	1	1	33	189.	1	1	67				
94.	1	1	34	191.	1	1	68				

MEAN 160.153 STD ERR 8.742 RANGE 413.000

VALID CASES 157 MISSING CASES 0

N.J. INMATE SURVEY 1980 FREQUENCIES PAGE 4

05/30/81 FILE - N.J. - CREATED 05/30/81

CARD1

CODE	FREQ	ADJ PCT	CUM PCT	CODE	FREQ	ADJ PCT	CUM PCT	CODE	FREQ	ADJ PCT	CUM PCT
1.	157	100	100								

MEAN 1.000 STD ERR 0.0 RANGE 0.0

VALID CASES 157 MISSING CASES 0

N.J. INMATE SURVEY 1980 FREQUENCIES PAGE 5

05/30/81 FILE - N.J. - CREATED 05/30/81

VERSION

CODE	FREQ	ADJ PCT	CUM PCT	CODE	FREQ	ADJ PCT	CUM PCT	CODE	FREQ	ADJ PCT	CUM PCT
1.	41	26	26	3.	40	25	73				
2.	33	21	47	4.	43	27	100				

MEAN 2.541 STD ERR 0.092 RANGE 3.000

VALID CASES 157 MISSING CASES 0

N.J. INMATE SURVEY 1980 FREQUENCIES PAGE 6

05/30/81 FILE - N.J. - CREATED 05/30/81

INTERV

ADJ CUM ADJ CUM ADJ CUM

CODE	FREQ	PCT	PCT	CODE	FREQ	PCT	PCT	CODE	FREQ	PCT	PCT
0.	6	4	4	4.	9	6	35	8.	15	10	84
1.	10	6	10	5.	11	7	42	9.	25	16	100
2.	21	13	24	6.	20	13	55				
3.	9	6	29	7.	31	20	75				

MEAN 5.427 STD ERR 0.221 RANGE 9.000

VALID CASES 157 MISSING CASES 0

N.J. INMATE SURVEY 1980 FREQUENCIES PAGE 7

05/30/81 FILE - N.J. - CREATED 05/30/81

A1 FAIR SENTENCE IN STATE

CODE	FREQ	ADJ PCT	CUM PCT	CODE	FREQ	ADJ PCT	CUM PCT	CODE	FREQ	ADJ PCT	CUM PCT
1.	21	14	14	3.	19	12	98				
2.	111	72	86	8.	3	2	100				

M I S S I N G D A T A

CODE	FREQ	CODE	FREQ	CODE	FREQ
9.	3				

MEAN 2.104 STD ERR 0.079 RANGE 7.000

VALID CASES 154 MISSING CASES 3

N.J. INMATE SURVEY 1980 FREQUENCIES PAGE 8

05/30/81 FILE - N.J. - CREATED 05/30/81

A1A HOW UNFAIR1

CODE	FREQ	ADJ PCT	CUM PCT	CODE	FREQ	ADJ PCT	CUM PCT	CODE	FREQ	ADJ PCT	CUM PCT
0.	5	4	4	3.	5	4	41	6.	8	5	72
1.	4	3	7	4.	18	14	55	7.	5	4	76
2.	38	30	37	5.	14	11	66	8.	31	24	100

M I S S I N G D A T A

CODE	FREQ	CODE	FREQ	CODE	FREQ
9.	29				

MEAN 4.438 STD ERR 0.227 RANGE 8.000
 VALID CASES 128 MISSING CASES 29

N.J. INMATE SURVEY 1980 FREQUENCIES PAGE 9
 05/30/81 FILE - N.J. - CREATED 05/30/81

A1B HOW UNFAIR2

CODE	FREQ	PCT	ADJ CUM PCT	CODE	FREQ	PCT	ADJ CUM PCT	CODE	FREQ	PCT	ADJ CUM PCT
0.	5	6	6	3.	7	9	29	6.	7	9	51
1.	3	4	10	4.	6	8	37	7.	8	10	62
2.	8	10	21	5.	4	5	42	8.	30	38	100

M I S S I N G D A T A

CODE	FREQ	CODE	FREQ
9.	79		

MEAN 5.410 STD ERR 0.309 RANGE 8.000
 VALID CASES 78 MISSING CASES 79

N.J. INMATE SURVEY 1980 FREQUENCIES PAGE 10
 05/30/81 FILE - N.J. - CREATED 05/30/81

A2 OWN SENTENCE FAIR

CODE	FREQ	PCT	ADJ CUM PCT	CODE	FREQ	PCT	ADJ CUM PCT	CODE	FREQ	PCT	ADJ CUM PCT
1.	42	27	27	2.	114	73	99	8.	1	1	100

MEAN 1.771 STD ERR 0.053 RANGE 7.000
 VALID CASES 157 MISSING CASES 0

N.J. INMATE SURVEY 1980 FREQUENCIES PAGE 11
 05/30/81 FILE - N.J. - CREATED 05/30/81

A2A WHY OWN UNFAIR1

CODE	FREQ	PCT	ADJ CUM PCT	CODE	FREQ	PCT	ADJ CUM PCT	CODE	FREQ	PCT	ADJ CUM PCT
1.	22	19	19	4.	14	12	67	8.	24	21	100
2.	31	27	46	5.	6	5	72				
3.	10	9	55	6.	8	7	79				

M I S S I N G D A T A

CODE	FREQ	CODE	FREQ
9.	42		

MEAN 3.826 STD ERR 0.239 RANGE 7.000
 VALID CASES 115 MISSING CASES 42

N.J. INMATE SURVEY 1980 FREQUENCIES PAGE 12
 05/30/81 FILE - N.J. - CREATED 05/30/81

A2B WHY OWN UNFAIR2

CODE	FREQ	PCT	ADJ CUM PCT	CODE	FREQ	PCT	ADJ CUM PCT	CODE	FREQ	PCT	ADJ CUM PCT
2.	8	17	17	4.	8	17	51	6.	5	11	70
3.	8	17	34	5.	4	9	60	8.	14	30	100

M I S S I N G D A T A

CODE	FREQ	CODE	FREQ
9.	110		

MEAN 4.979 STD ERR 0.335 RANGE 6.000
 VALID CASES 47 MISSING CASES 110

N.J. INMATE SURVEY 1980 FREQUENCIES PAGE 13
 05/30/81 FILE - N.J. - CREATED 05/30/81

A3A MINIMUM SENT IMPOSED

CODE	FREQ	PCT	ADJ CUM PCT	CODE	FREQ	PCT	ADJ CUM PCT	CODE	FREQ	PCT	ADJ CUM PCT
0.	1	1	1	120.	9	6	47	276.	4	3	80
24.	10	7	7	132.	5	3	50	300.	3	2	82
36.	6	4	12	144.	9	6	56	312.	3	2	84

48.	5	3	15	156.	2	1	58	336.	1	1	85
60.	13	9	24	163.	2	1	59	360.	1	1	86
72.	2	1	25	180.	9	6	65	366.	1	1	86
84.	9	6	31	192.	1	1	66	456.	1	1	87
90.	1	1	32	204.	5	3	69	468.	1	1	88
96.	5	3	35	216.	4	3	72	888.	4	3	90
108.	7	5	40	228.	1	1	73	997.	14	10	100
113.	1	1	41	240.	7	5	78				

M I S S I N G D A T A

CODE	FREQ	CODE	FREQ	CODE	FREQ
------	------	------	------	------	------

999. 10

MEAN 241.762 STD ERR 23.773 RANGE 997.000

VALID CASES 147 MISSING CASES 10

N.J. INMATE SURVEY 1980 FREQUENCIES

PAGE 14

05/30/81 FILE - N.J. - CREATED 05/30/81

A3B MAXIMUM SENT IMPOSED

CODE	FREQ	ADJ PCT	CUM PCT	CODE	FREQ	ADJ PCT	CUM PCT	CODE	FREQ	ADJ PCT	CUM PCT
36.	4	3	3	192.	2	1	54	372.	1	1	87
48.	8	6	8	204.	5	3	57	384.	2	1	88
50.	6	4	12	216.	4	3	60	396.	1	1	89
72.	3	2	14	228.	1	1	61	420.	1	1	90
84.	10	7	21	240.	14	10	70	432.	1	1	90
96.	2	1	23	252.	1	1	71	444.	2	1	92
108.	2	1	24	264.	3	2	73	516.	1	1	92
120.	16	11	35	276.	2	1	74	540.	1	1	93
132.	2	1	37	288.	1	1	75	576.	1	1	94
144.	3	2	39	300.	8	6	81	888.	4	3	97
156.	2	1	40	312.	1	1	81	997.	5	3	100
168.	3	2	42	324.	1	1	82				
180.	15	10	52	360.	6	4	86				

M I S S I N G D A T A

CODE	FREQ	CODE	FREQ	CODE	FREQ
------	------	------	------	------	------

999. 12

MEAN 240.443 STD ERR 17.823 RANGE 961.000

VALID CASES 145 MISSING CASES 12

N.J. INMATE SURVEY 1980 FREQUENCIES

PAGE 15

58

05/30/81 FILE - N.J. - CREATED 05/30/81

A4 YOUR SENT FAIR FOR OTHERS

CODE	FREQ	ADJ PCT	CUM PCT	CODE	FREQ	ADJ PCT	CUM PCT	CODE	FREQ	ADJ PCT	CUM PCT
1.	40	26	26	2.	94	55	81	8.	29	19	100

M I S S I N G D A T A

CODE	FREQ	CODE	FREQ	CODE	FREQ
------	------	------	------	------	------

9. 4

MEAN 2.876 STD ERR 0.204 RANGE 7.000

VALID CASES 153 MISSING CASES 4

N.J. INMATE SURVEY 1980 FREQUENCIES

PAGE 16

05/30/81 FILE - N.J. - CREATED 05/30/81

A4A WHY FAIR1

CODE	FREQ	ADJ PCT	CUM PCT	CODE	FREQ	ADJ PCT	CUM PCT	CODE	FREQ	ADJ PCT	CUM PCT
1.	9	32	32	8.	19	68	100				

M I S S I N G D A T A

CODE	FREQ	CODE	FREQ	CODE	FREQ
------	------	------	------	------	------

9. 129

MEAN 5.750 STD ERR 0.629 RANGE 7.000

VALID CASES 28 MISSING CASES 129

N.J. INMATE SURVEY 1980 FREQUENCIES

PAGE 17

05/30/81 FILE - N.J. - CREATED 05/30/81

A4B WHY FAIR2

CODE	FREQ	ADJ PCT	CUM PCT	CODE	FREQ	ADJ PCT	CUM PCT	CODE	FREQ	ADJ PCT	CUM PCT
------	------	---------	---------	------	------	---------	---------	------	------	---------	---------

59

9. 4 100 100

CODE FREQ MISSING DATA CODE FREQ CODE FREQ

9. 153

MEAN 8.000 STD ERR 0.0 RANGE 0.0

VALID CASES 4 MISSING CASES 153

N.J. INMATE SURVEY 1980 FREQUENCIES PAGE 18

05/30/81 FILE - N.J. - CREATED 05/30/81

A4C WHY UNFAIR1

CODE FREQ ADJ CUM CODE FREQ ADJ CUM CODE FREQ ADJ CUM
1. 41 46 46 2. 14 16 62 8. 34 38 100

CODE FREQ MISSING DATA CODE FREQ CODE FREQ

9. 68

MEAN 3.831 STD ERR 0.351 RANGE 7.000

VALID CASES 89 MISSING CASES 68

N.J. INMATE SURVEY 1980 FREQUENCIES PAGE 19

05/30/81 FILE - N.J. - CREATED 05/30/81

A4D WHY UNFAIR2

CODE FREQ ADJ CUM CODE FREQ ADJ CUM CODE FREQ ADJ CUM
1. 3 25 25 2. 4 33 58 8. 5 42 100

CODE FREQ MISSING DATA CODE FREQ CODE FREQ

9. 145

60

MEAN 4.250 STD ERR 0.962 RANGE 7.000

VALID CASES 12 MISSING CASES 145

N.J. INMATE SURVEY 1980 FREQUENCIES PAGE 20

05/30/81 FILE - N.J. - CREATED 05/30/81

A5A MINIMUM FAIR SENT

CODE FREQ ADJ CUM CODE FREQ ADJ CUM CODE FREQ ADJ CUM
0. 11 11 11 84. 4 4 45 180. 2 2 67
8. 1 1 12 96. 3 3 48 240. 3 3 70
24. 11 11 23 108. 1 1 49 369. 4 4 74
36. 4 4 27 120. 9 9 57 609. 2 2 76
48. 3 3 30 132. 1 1 58 888. 23 23 99
60. 11 11 41 144. 7 7 65 997. 1 1 100

CODE FREQ MISSING DATA CODE FREQ CODE FREQ

999. 56

MEAN 290.762 STD ERR 35.227 RANGE 997.000

VALID CASES 101 MISSING CASES 56

N.J. INMATE SURVEY 1980 FREQUENCIES PAGE 21

05/30/81 FILE - N.J. - CREATED 05/30/81

A5B MAXIMUM FAIR SENT

CODE FREQ ADJ CUM CODE FREQ ADJ CUM CODE FREQ ADJ CUM
0. 19 14 14 84. 8 6 39 264. 1 1 71
9. 1 1 15 120. 19 14 53 300. 1 1 72
12. 2 1 16 144. 2 1 54 360. 7 5 77
18. 4 3 19 168. 3 2 56 609. 4 3 80
36. 9 7 26 180. 11 8 64 849. 2 1 81
48. 1 1 27 204. 2 1 66 888. 22 16 98
60. 7 5 32 216. 2 1 67 997. 3 2 100
72. 1 1 33 240. 4 3 70

CODE FREQ MISSING DATA CODE FREQ CODE FREQ

61

999. 22

MEAN 283.244 STD ERR 28.561 RANGE 997.000
VALID CASES 135 MISSING CASES 22

N.J. INMATE SURVEY 1980 FREQUENCIES PAGE 22
05/30/81 FILE - N.J. - CREATED 05/30/81

A5C IF SAME - WHY1

CODE	FREQ	ADJ CUM PCT	ADJ CUM PCT	CODE	FREQ	ADJ CUM PCT	ADJ CUM PCT
1.	15	54	54	8.	13	46	100

CODE	FREQ	M I S S I N G D A T A	CODE	FREQ
9.	129			

MEAN 4.250 STD ERR 0.672 RANGE 7.000
VALID CASES 28 MISSING CASES 129

N.J. INMATE SURVEY 1980 FREQUENCIES PAGE 23
05/30/81 FILE - N.J. - CREATED 05/30/81

A5D IF SAME - WHY2

CODE	FREQ	ADJ CUM PCT	ADJ CUM PCT	CODE	FREQ	ADJ CUM PCT	ADJ CUM PCT
1.	1	25	25	8.	3	75	100

CODE	FREQ	M I S S I N G D A T A	CODE	FREQ
9.	153			

MEAN 6.250 STD ERR 1.750 RANGE 7.000
VALID CASES 4 MISSING CASES 153

N.J. INMATE SURVEY 1980 FREQUENCIES PAGE 24

05/30/81 FILE - N.J. - CREATED 05/30/81

A5E IF LIGHTER - WHY1

CODE	FREQ	ADJ CUM PCT	ADJ CUM PCT	CODE	FREQ	ADJ CUM PCT	ADJ CUM PCT	CODE	FREQ	ADJ CUM PCT	ADJ CUM PCT
1.	53	50	50	3.	5	5	62	8.	38	36	100
2.	8	8	58	4.	2	2	64				

CODE	FREQ	M I S S I N G D A T A	CODE	FREQ
9.	51			

MEAN 3.736 STD ERR 0.316 RANGE 7.000
VALID CASES 106 MISSING CASES 51

N.J. INMATE SURVEY 1980 FREQUENCIES PAGE 25
05/30/81 FILE - N.J. - CREATED 05/30/81

A5F IF LIGHTER - WHY2

CODE	FREQ	ADJ CUM PCT	ADJ CUM PCT	CODE	FREQ	ADJ CUM PCT	ADJ CUM PCT	CODE	FREQ	ADJ CUM PCT	ADJ CUM PCT
1.	2	15	15	3.	1	8	46	8.	6	46	100
2.	3	23	38	4.	1	8	54				

CODE	FREQ	M I S S I N G D A T A	CODE	FREQ
9.	144			

MEAN 4.846 STD ERR 0.869 RANGE 7.000
VALID CASES 13 MISSING CASES 144

N.J. INMATE SURVEY 1980 FREQUENCIES PAGE 26
05/30/81 FILE - N.J. - CREATED 05/30/81

A5G IF HEAVIER - WHY 1

CODE	FREQ	ADJ CUM PCT	ADJ CUM PCT	CODE	FREQ	ADJ CUM PCT	ADJ CUM PCT	CODE	FREQ	ADJ CUM PCT	ADJ CUM PCT
1.	1	33	33	8.	2	67	100				

CODE	FREQ	MISSING DATA		CODE	FREQ
9.	154				

MEAN	STD ERR	RANGE
5.667	2.333	7.000

VALID CASES	MISSING CASES
3	154

N.J. INMATE SURVEY 1980 FREQUENCIES PAGE 27
 05/30/81 FILE - N.J. - CREATED 05/30/81

A5H IF HEAVIER - WHY2

CODE	FREQ	ADJ CUM PCT	ADJ CUM PCT	CODE	FREQ	ADJ CUM PCT	ADJ CUM PCT	CODE	FREQ	ADJ CUM PCT	ADJ CUM PCT
8.	1	100	100								

CODE	FREQ	MISSING DATA		CODE	FREQ
9.	156				

MEAN	RANGE
8.000	0.0

VALID CASES	MISSING CASES
1	156

N.J. INMATE SURVEY 1980 FREQUENCIES PAGE 28
 05/30/81 FILE - N.J. - CREATED 05/30/81

A6 DO OTHERS THINK FAIR

CODE	FREQ	ADJ CUM PCT	ADJ CUM PCT	CODE	FREQ	ADJ CUM PCT	ADJ CUM PCT	CODE	FREQ	ADJ CUM PCT	ADJ CUM PCT
1.	16	11	11	3.	15	10	94				
2.	107	73	84	8.	9	6	100				

CODE	FREQ	MISSING DATA		CODE	FREQ
64					

MEAN	STD ERR	RANGE
2.361	0.125	7.000

VALID CASES	MISSING CASES
147	10

N.J. INMATE SURVEY 1980 FREQUENCIES PAGE 29
 05/30/81 FILE - N.J. - CREATED 05/30/81

A7 DO YOU THINK FAIR

CODE	FREQ	ADJ CUM PCT	ADJ CUM PCT	CODE	FREQ	ADJ CUM PCT	ADJ CUM PCT	CODE	FREQ	ADJ CUM PCT	ADJ CUM PCT
1.	35	27	27	2.	64	49	76	8.	32	24	100

CODE	FREQ	MISSING DATA		CODE	FREQ
9.	26				

MEAN	STD ERR	RANGE
3.193	0.242	7.000

VALID CASES	MISSING CASES
131	26

N.J. INMATE SURVEY 1980 FREQUENCIES PAGE 30
 05/30/81 FILE - N.J. - CREATED 05/30/81

A8 SENTENCES GENERALLY

CODE	FREQ	ADJ CUM PCT	ADJ CUM PCT	CODE	FREQ	ADJ CUM PCT	ADJ CUM PCT	CODE	FREQ	ADJ CUM PCT	ADJ CUM PCT
1.	74	56	56	2.	27	21	77	8.	30	23	100

CODE	FREQ	MISSING DATA		CODE	FREQ
9.	26				

MEAN	STD ERR	RANGE
2.809	0.250	7.000

VALID CASES	MISSING CASES
131	26

1.	44	28	29	6.	5	3	82	11.	1	1	96
2.	28	18	46	7.	5	3	85	12.	1	1	97
3.	22	14	60	8.	11	7	92	13.	1	1	97
4.	16	10	71	9.	2	1	94	15.	4	3	100
5.	13	8	79	10.	3	2	96				

M I S S I N G D A T A

CODE	FREQ	CODE	FREQ	CODE	FREQ
99.	1				

MEAN	3.795	STD ERR	0.258	RANGE	14.000
VALID CASES	156	MISSING CASES	1		

N.J. INMATE SURVEY 1980 FREQUENCIES PAGE 36
 05/30/81 FILE - N.J. - CREATED 05/30/81

B5 SERIOUS RAPE

CODE	FREQ	ADJ PCT	CUM PCT	CODE	FREQ	ADJ PCT	CUM PCT	CODE	FREQ	ADJ PCT	CUM PCT
6.	1	1	1	10.	3	2	9	14.	16	10	30
7.	1	1	1	11.	1	1	10	15.	110	70	100
8.	4	3	4	12.	6	4	13				
9.	5	3	7	13.	10	6	20				

MEAN	14.057	STD ERR	0.154	RANGE	9.000
VALID CASES	157	MISSING CASES	0		

N.J. INMATE SURVEY 1980 FREQUENCIES PAGE 37
 05/30/81 FILE - N.J. - CREATED 05/30/81

B6 SERIOUS ARMED ROB

CODE	FREQ	ADJ PCT	CUM PCT	CODE	FREQ	ADJ PCT	CUM PCT	CODE	FREQ	ADJ PCT	CUM PCT
1.	4	3	3	6.	13	8	36	11.	8	5	83
2.	3	2	4	7.	16	10	46	12.	10	6	90
3.	10	6	11	8.	19	12	58	13.	5	3	93
4.	11	7	18	9.	12	8	66	14.	3	2	95
5.	15	10	28	10.	19	12	78	15.	8	5	100

68 M I S S I N G D A T A

CODE	FREQ	CODE	FREQ	CODE	FREQ
99.	1				

MEAN	7.910	STD ERR	0.279	RANGE	14.000
VALID CASES	156	MISSING CASES	1		

N.J. INMATE SURVEY 1980 FREQUENCIES PAGE 38
 05/30/81 FILE - N.J. - CREATED 05/30/81

B7 SERIOUS SALE CDS

CODE	FREQ	ADJ PCT	CUM PCT	CODE	FREQ	ADJ PCT	CUM PCT	CODE	FREQ	ADJ PCT	CUM PCT
1.	11	7	7	6.	8	5	33	11.	2	1	67
2.	9	6	13	7.	14	9	42	12.	12	8	75
3.	7	4	17	8.	15	10	51	13.	4	3	78
4.	6	4	21	9.	9	6	57	14.	6	4	81
5.	10	6	28	10.	14	9	66	15.	29	19	100

M I S S I N G D A T A

CODE	FREQ	CODE	FREQ	CODE	FREQ
99.	1				

MEAN	8.641	STD ERR	0.365	RANGE	14.000
VALID CASES	156	MISSING CASES	1		

N.J. INMATE SURVEY 1980 FREQUENCIES PAGE 39
 05/30/81 FILE - N.J. - CREATED 05/30/81

B8 SERIOUS CREDIT CARD

CODE	FREQ	ADJ PCT	CUM PCT	CODE	FREQ	ADJ PCT	CUM PCT	CODE	FREQ	ADJ PCT	CUM PCT
1.	27	17	17	6.	8	5	83	12.	1	1	97
2.	25	16	33	7.	3	2	85	14.	1	1	98
3.	27	17	51	8.	12	8	92	15.	3	2	100
4.	20	13	63	9.	3	2	94				
5.	22	14	78	10.	4	3	97				

M I S S I N G D A T A

CODE	FREQ	CODE	FREQ	CODE	FREQ
99.	1				

69

99. 1

MEAN 4.173 STD ERR 0.239 RANGE 14.000
VALID CASES 156 MISSING CASES 1

N.J. INMATE SURVEY 1980 FREQUENCIES PAGE 40
05/30/81 FILE - N.J. - CREATED 05/30/81

B9 SERIOUS HOMICIDE

CODE	FREQ	ADJ PCT	CUM PCT	CODE	FREQ	ADJ PCT	CUM PCT	CODE	FREQ	ADJ PCT	CUM PCT
1.	1	1	1	8.	5	3	9	13.	13	8	50
3.	1	1	1	9.	5	3	12	14.	10	6	56
4.	1	1	2	10.	21	14	26	15.	67	44	100
6.	2	1	3	11.	6	4	30				
7.	4	3	6	12.	13	12	42				

M I S S I N G D A T A

CODE	FREQ	CODE	FREQ	CODE	FREQ
99.	3				

MEAN 12.591 STD ERR 0.231 RANGE 14.000
VALID CASES 154 MISSING CASES 3

N.J. INMATE SURVEY 1980 FREQUENCIES PAGE 41
05/30/81 FILE - N.J. - CREATED 05/30/81

B10 SERIOUS INTENT HOMICIDE

CODE	FREQ	ADJ PCT	CUM PCT	CODE	FREQ	ADJ PCT	CUM PCT	CODE	FREQ	ADJ PCT	CUM PCT
3.	1	1	1	10.	13	8	14	14.	12	8	35
5.	2	1	2	11.	4	3	17	15.	101	65	100
8.	3	2	4	12.	10	6	23				
9.	3	2	6	13.	6	4	27				

M I S S I N G D A T A

CODE	FREQ	CODE	FREQ	CODE	FREQ
99.	2				

70

MEAN 13.671 STD ERR 0.188 RANGE 12.000
VALID CASES 155 MISSING CASES 2

N.J. INMATE SURVEY 1980 FREQUENCIES PAGE 42
05/30/81 FILE - N.J. - CREATED 05/30/81

B11 SERIOUS COP

CODE	FREQ	ADJ PCT	CUM PCT	CODE	FREQ	ADJ PCT	CUM PCT	CODE	FREQ	ADJ PCT	CUM PCT
1.	27	18	18	6.	8	5	58	11.	7	5	89
2.	13	9	26	7.	12	8	66	12.	5	3	92
3.	13	9	35	8.	12	8	74	13.	1	1	93
4.	11	7	42	9.	7	5	78	14.	2	1	94
5.	15	10	52	10.	9	6	84	15.	9	6	100

M I S S I N G D A T A

CODE	FREQ	CODE	FREQ	CODE	FREQ
99.	6				

MEAN 5.913 STD ERR 0.338 RANGE 14.000
VALID CASES 151 MISSING CASES 6

N.J. INMATE SURVEY 1980 FREQUENCIES PAGE 43
05/30/81 FILE - N.J. - CREATED 05/30/81

B12 SERIOUS ELDERLY ROB

CODE	FREQ	ADJ PCT	CUM PCT	CODE	FREQ	ADJ PCT	CUM PCT	CODE	FREQ	ADJ PCT	CUM PCT
1.	3	2	2	6.	5	3	16	11.	10	6	57
2.	2	1	3	7.	11	7	23	12.	17	11	68
3.	3	2	5	8.	15	10	33	13.	13	8	76
4.	7	5	10	9.	9	6	39	14.	4	3	79
5.	5	3	13	10.	18	12	50	15.	33	21	100

M I S S I N G D A T A

CODE	FREQ	CODE	FREQ	CODE	FREQ
99.	2				

71

MEAN 10.265 STD ERR 0.305 RANGE 14.000
 VALID CASES 155 MISSING CASES 2

N.J. INMATE SURVEY 1980 FREQUENCIES PAGE 44

05/30/81 FILE - N.J. - CREATED 05/30/81

B13 SERIOUS ARSON

CODE	FREQ	ADJ PCT	CUM PCT	CODE	FREQ	ADJ PCT	CUM PCT	CODE	FREQ	ADJ PCT	CUM PCT
1.	1	1	1	7.	6	4	8	12.	14	9	39
2.	1	1	1	8.	1	1	9	13.	12	8	47
3.	3	2	3	9.	7	5	14	14.	11	7	54
5.	1	1	4	10.	20	13	26	15.	71	46	100
6.	1	1	5	11.	6	4	30				

M I S S I N G D A T A

CODE	FREQ	CODE	FREQ	CODE	FREQ
99.	2				

MEAN 12.548 STD ERR 0.252 RANGE 14.000
 VALID CASES 155 MISSING CASES 2

N.J. INMATE SURVEY 1980 FREQUENCIES PAGE 45

05/30/81 FILE - N.J. - CREATED 05/30/81

B14 SERIOUS HANDGUN

CODE	FREQ	ADJ PCT	CUM PCT	CODE	FREQ	ADJ PCT	CUM PCT	CODE	FREQ	ADJ PCT	CUM PCT
1.	24	15	15	6.	9	6	76	11.	1	1	92
2.	25	16	31	7.	8	5	81	12.	2	1	94
3.	20	13	44	8.	5	3	85	13.	2	1	95
4.	11	7	51	9.	4	3	87	14.	2	1	96
5.	30	19	71	10.	7	4	92	15.	6	4	100

M I S S I N G D A T A

CODE	FREQ	CODE	FREQ	CODE	FREQ
99.	1				

MEAN 4.391 STD ERR 0.291 RANGE 14.000

VALID CASES 156 MISSING CASES 1

N.J. INMATE SURVEY 1980 FREQUENCIES PAGE 46

05/30/81 FILE - N.J. - CREATED 05/30/81

CODE2

CODE	FREQ	ADJ PCT	CUM PCT	CODE	FREQ	ADJ PCT	CUM PCT	CODE	FREQ	ADJ PCT	CUM PCT
1.	1	1	1	96.	1	1	34	193.	1	1	68
2.	1	1	1	98.	1	1	35	196.	1	1	69
3.	1	1	2	99.	1	1	36	198.	1	1	69
4.	1	1	3	100.	1	1	36	200.	1	1	70
7.	1	1	3	102.	1	1	37	208.	1	1	71
11.	1	1	4	104.	1	1	38	210.	1	1	71
12.	1	1	4	105.	1	1	38	212.	1	1	72
14.	1	1	5	106.	1	1	39	216.	1	1	73
15.	1	1	6	107.	1	1	39	218.	1	1	73
16.	1	1	6	110.	1	1	40	220.	1	1	74
18.	1	1	7	111.	1	1	41	228.	1	1	75
19.	1	1	8	112.	1	1	41	230.	1	1	75
20.	1	1	8	114.	1	1	42	232.	1	1	76
22.	1	1	9	116.	1	1	43	236.	1	1	76
26.	1	1	10	118.	1	1	43	240.	1	1	77
28.	1	1	10	122.	1	1	44	244.	1	1	78
31.	1	1	11	123.	1	1	45	248.	1	1	78
32.	1	1	11	124.	1	1	45	252.	1	1	79
34.	1	1	12	125.	1	1	46	254.	1	1	80
35.	1	1	13	128.	1	1	46	256.	1	1	80
36.	1	1	13	131.	1	1	47	266.	1	1	81
40.	1	1	14	139.	1	1	48	272.	1	1	82
42.	1	1	15	140.	1	1	48	274.	1	1	82
44.	1	1	15	141.	1	1	49	276.	1	1	83
48.	1	1	16	145.	1	1	50	280.	1	1	83
50.	1	1	17	146.	1	1	50	282.	1	1	84
52.	1	1	17	148.	1	1	51	286.	1	1	85
53.	1	1	18	150.	1	1	52	290.	1	1	85
54.	1	1	18	152.	1	1	52	296.	1	1	86
55.	1	1	19	156.	1	1	53	302.	1	1	87
56.	1	1	20	160.	1	1	54	306.	1	1	87
58.	1	1	20	162.	1	1	54	308.	1	1	88
59.	1	1	21	165.	1	1	55	312.	1	1	89
61.	1	1	22	166.	1	1	55	314.	1	1	89
64.	1	1	22	168.	1	1	56	320.	1	1	90
66.	1	1	23	169.	1	1	57	324.	1	1	90
67.	1	1	24	170.	1	1	57	330.	1	1	91
68.	1	1	24	171.	1	1	58	332.	1	1	92
69.	1	1	25	172.	1	1	59	340.	1	1	92
70.	1	1	25	175.	1	1	59	348.	1	1	93
73.	1	1	26	176.	1	1	60	354.	1	1	94
75.	1	1	27	177.	1	1	61	358.	1	1	94
77.	1	1	27	178.	1	1	61	360.	1	1	95
78.	1	1	28	179.	1	1	62	382.	1	1	96
82.	1	1	29	181.	1	1	62	402.	1	1	96

33.	1	1	29	182.	1	1	63	404.	1	1	97
34.	1	1	30	183.	1	1	64	406.	1	1	97
36.	1	1	31	184.	1	1	64	408.	1	1	98
39.	1	1	31	186.	1	1	65	410.	1	1	99
90.	1	1	32	187.	1	1	66	412.	1	1	99
92.	1	1	32	188.	1	1	66	414.	1	1	100
93.	1	1	33	189.	1	1	67				
94.	1	1	34	191.	1	1	68				

MEAN 160.153 STD ERR 8.742 RANGE 413.000

VALID CASES 157 MISSING CASES 0

N.J. INMATE SURVEY 1980 FREQUENCIES PAGE 47

05/30/81 FILE - N.J. - CREATED 05/30/81

CARD2

CODE	FREQ	ADJ PCT	CUM PCT	CODE	FREQ	ADJ PCT	CUM PCT	CODE	FREQ	ADJ PCT	CUM PCT
2.	157	100	100								

MEAN 2.000 STD ERR 0.0 RANGE 0.0

VALID CASES 157 MISSING CASES 0

N.J. INMATE SURVEY 1980 FREQUENCIES PAGE 48

05/30/81 FILE - N.J. - CREATED 05/30/81

B15 SERIOUS INTENT NO DEATH

CODE	FREQ	ADJ PCT	CUM PCT	CODE	FREQ	ADJ PCT	CUM PCT	CODE	FREQ	ADJ PCT	CUM PCT
1.	1	1	1	7.	5	3	11	12.	22	14	60
3.	1	1	1	8.	8	5	16	13.	15	10	70
4.	1	1	2	9.	6	4	20	14.	14	9	79
5.	4	3	5	10.	31	20	41	15.	32	21	100
6.	5	3	8	11.	8	5	46				

CODE	FREQ	CODE	FREQ	CODE	FREQ
99.	4				

MEAN 11.399 STD ERR 0.244 RANGE 14.000

74

VALID CASES 153 MISSING CASES 4

N.J. INMATE SURVEY 1980 FREQUENCIES

PAGE 49

05/30/81 FILE - N.J. - CREATED 05/30/81

B16 SERIOUS POSS CDS

CODE	FREQ	ADJ PCT	CUM PCT	CODE	FREQ	ADJ PCT	CUM PCT	CODE	FREQ	ADJ PCT	CUM PCT
1.	54	36	36	6.	2	1	78	11.	2	1	92
2.	12	8	44	7.	2	1	79	12.	2	1	93
3.	18	12	56	8.	7	5	84	14.	2	1	95
4.	12	8	64	9.	2	1	85	15.	8	5	100
5.	19	13	77	10.	8	5	91				

CODE	FREQ	CODE	FREQ
99.	7		

MEAN 4.327 STD ERR 0.329 RANGE 14.000

VALID CASES 150 MISSING CASES 7

N.J. INMATE SURVEY 1980 FREQUENCIES PAGE 50

05/30/81 FILE - N.J. - CREATED 05/30/81

B17 SERIOUS AUTO THEFT

CODE	FREQ	ADJ PCT	CUM PCT	CODE	FREQ	ADJ PCT	CUM PCT	CODE	FREQ	ADJ PCT	CUM PCT
1.	33	21	21	5.	22	14	88	9.	4	3	96
2.	36	23	45	6.	2	1	89	10.	3	2	98
3.	27	17	62	7.	2	1	90	12.	1	1	99
4.	18	12	74	9.	5	3	94	15.	2	1	100

CODE	FREQ	CODE	FREQ
99.	2		

MEAN 3.497 STD ERR 0.212 RANGE 14.000

VALID CASES 155 MISSING CASES 2

75

05/30/81 FILE - N.J. - CREATED 05/30/81

B18 SERIOUS INCPST

CODE	FREQ	ADJ PCT	CUM PCT	CODE	FREQ	ADJ PCT	CUM PCT	CODE	FREQ	ADJ PCT	CUM PCT
2.	1	1	1	7.	2	1	5	12.	2	1	12
3.	1	1	1	8.	4	3	7	13.	10	6	18
4.	2	1	3	10.	4	3	10	14.	10	6	25
5.	1	1	3	11.	1	1	10	15.	116	75	100

M I S S I N G D A T A

CODE	FREQ	CODE	FREQ	CODE	FREQ
99.	3				

MEAN 13.955 STD ERR 0.205 RANGE 13.000

VALID CASES 154 MISSING CASES 3

05/30/81 FILE - N.J. - CREATED 05/30/81

B19 SERIOUS CHECK FORGE

CODE	FREQ	ADJ PCT	CUM PCT	CODE	FREQ	ADJ PCT	CUM PCT	CODE	FREQ	ADJ PCT	CUM PCT
1.	39	25	25	6.	5	3	86	12.	1	1	98
2.	27	17	43	7.	5	3	89	14.	1	1	99
3.	25	16	59	8.	5	3	92	15.	2	1	100
4.	21	14	72	9.	4	3	95				
5.	16	10	83	10.	4	3	97				

M I S S I N G D A T A

CODE	FREQ	CODE	FREQ	CODE	FREQ
99.	2				

MEAN 3.671 STD ERR 0.231 RANGE 14.000

VALID CASES 155 MISSING CASES 2

05/30/81 FILE - N.J. - CREATED 05/30/81

B20 SERIOUS WHITE COLLAR

CODE	FREQ	ADJ PCT	CUM PCT	CODE	FREQ	ADJ PCT	CUM PCT	CODE	FREQ	ADJ PCT	CUM PCT
1.	23	15	15	6.	9	6	75	12.	2	1	95
2.	22	14	29	7.	5	3	78	13.	1	1	96
3.	23	15	44	8.	17	11	89	14.	1	1	97
4.	22	14	58	9.	4	3	92	15.	5	3	100
5.	16	10	69	10.	4	3	94				

M I S S I N G D A T A

CODE	FREQ	CODE	FREQ	CODE	FREQ
99.	3				

MEAN 4.747 STD ERR 0.273 RANGE 14.000

VALID CASES 154 MISSING CASES 3

05/30/81 FILE - N.J. - CREATED 05/30/81

B21 SERIOUS STORE THEFT

CODE	FREQ	ADJ PCT	CUM PCT	CODE	FREQ	ADJ PCT	CUM PCT	CODE	FREQ	ADJ PCT	CUM PCT
1.	11	7	7	6.	18	12	64	11.	1	1	94
2.	13	8	15	7.	16	10	74	12.	3	2	96
3.	21	13	29	8.	12	8	82	13.	3	2	97
4.	14	9	38	9.	8	5	87	14.	1	1	98
5.	23	15	53	10.	9	6	93	15.	3	2	100

M I S S I N G D A T A

CODE	FREQ	CODE	FREQ	CODE	FREQ
99.	1				

MEAN 5.731 STD ERR 0.258 RANGE 14.000

VALID CASES 156 MISSING CASES 1

05/30/81 FILE - N.J. - CREATED 05/30/81

322 SERIOUS INTENT INJURY

CODE	FREQ	ADJ PCT	CUM PCT	CODE	FREQ	ADJ PCT	CUM PCT	CODE	FREQ	ADJ PCT	CUM PCT
1.	1	1	1	7.	14	9	25	12.	12	8	76
3.	4	3	3	8.	17	11	35	13.	15	10	86
4.	4	3	6	9.	12	8	43	14.	8	5	91
5.	7	5	10	10.	24	15	59	15.	14	9	100
6.	8	5	15	11.	15	10	68				

M I S S I N G D A T A

CODE	FREQ	CODE	FREQ	CODE	FREQ
99.	2				

MEAN 9.806 STD ERR 0.259 RANGE 14.000

VALID CASES 155 MISSING CASES 2

05/30/81 FILE - N.J. - CREATED 05/30/81

B23 SERIOUS MARIJUANA

CODE	FREQ	ADJ PCT	CUM PCT	CODE	FREQ	ADJ PCT	CUM PCT	CODE	FREQ	ADJ PCT	CUM PCT
1.	15	10	10	6.	3	2	35	11.	5	3	70
2.	5	3	13	7.	12	8	43	12.	13	8	78
3.	17	11	24	8.	16	10	53	13.	4	3	81
4.	6	4	28	9.	5	3	56	14.	4	3	83
5.	8	5	33	10.	16	10	66	15.	26	17	100

M I S S I N G D A T A

CODE	FREQ	CODE	FREQ	CODE	FREQ
99.	2				

MEAN 8.284 STD ERR 0.375 RANGE 14.000

VALID CASES 155 MISSING CASES 2

324 SERIOUS STEREO

CODE	FREQ	ADJ PCT	CUM PCT	CODE	FREQ	ADJ PCT	CUM PCT	CODE	FREQ	ADJ PCT	CUM PCT
1.	45	29	29	6.	3	2	89	13.	1	1	98
2.	43	28	57	7.	4	3	92	14.	1	1	99
3.	22	14	71	8.	7	5	96	15.	2	1	100
4.	12	8	79	10.	1	1	97				
5.	13	8	87	11.	1	1	97				

M I S S I N G D A T A

CODE	FREQ	CODE	FREQ	CODE	FREQ
99.	2				

MEAN 3.161 STD ERR 0.221 RANGE 14.000

VALID CASES 155 MISSING CASES 2

05/30/81 FILE - N.J. - CREATED 05/30/81

C1 FAIR FIGHT INJURY

CODE	FREQ	ADJ PCT	CUM PCT	CODE	FREQ	ADJ PCT	CUM PCT	CODE	FREQ	ADJ PCT	CUM PCT
0.	1	1	1	6.	10	7	55	12.	8	5	87
1.	16	10	11	7.	5	3	58	13.	9	6	93
2.	10	7	18	8.	13	8	67	14.	1	1	93
3.	3	2	20	9.	5	3	70	77.	1	1	94
4.	25	16	36	10.	12	8	78	88.	9	6	100
5.	19	12	48	11.	6	4	82				

M I S S I N G D A T A

CODE	FREQ	CODE	FREQ	CODE	FREQ
99.	4				

MEAN 11.542 STD ERR 1.644 RANGE 88.000

VALID CASES 153 MISSING CASES 4

05/30/81

FILE - N.J.

- CREATED 05/30/81

C2

FAIR ATTEMPTED ROB

CODE	FREQ	ADJ PCT	CUM PCT	CODE	FREQ	ADJ PCT	CUM PCT	CODE	FREQ	ADJ PCT	CUM PCT
0.	1	1	1	9.	6	4	17	15.	8	5	88
2.	2	1	2	9.	5	3	20	16.	7	5	92
3.	3	2	4	10.	10	7	27	17.	3	2	94
4.	2	1	5	11.	18	12	39	18.	1	1	95
5.	4	3	8	12.	24	16	55	19.	3	2	97
6.	3	2	10	13.	21	14	68	88.	5	3	100
7.	5	3	13	14.	21	14	82				

CODE	FREQ	MISSING DATA		CODE	FREQ
CODE	FREQ	CODE	FREQ	CODE	FREQ
99.	5				

MEAN 14.066 STD ERR 1.146 RANGE 88.000
 VALID CASES 152 MISSING CASES 5

N.J. INMATE SURVEY 1980 FREQUENCIES

PAGE 60

05/30/81

FILE - N.J.

- CREATED 05/30/81

C3

FAIR B & F

CODE	FREQ	ADJ PCT	CUM PCT	CODE	FREQ	ADJ PCT	CUM PCT	CODE	FREQ	ADJ PCT	CUM PCT
1.	3	2	2	7.	2	1	35	13.	4	3	84
2.	4	3	5	3.	13	8	44	14.	2	1	85
3.	6	4	8	9.	17	11	55	15.	1	1	86
4.	16	10	19	10.	10	6	61	88.	22	14	100
5.	14	9	28	11.	17	11	72				
6.	10	6	34	12.	14	9	81				

CODE	FREQ	MISSING DATA		CODE	FREQ
CODE	FREQ	CODE	FREQ	CODE	FREQ
99.	2				

MEAN 19.226 STD ERR 2.268 RANGE 87.000
 VALID CASES 155 MISSING CASES 2

80

N.J. INMATE SURVEY 1980 FREQUENCIES

PAGE 61

05/30/81

FILE - N.J.

- CREATED 05/30/81

C4

FAIR PICKPOCKET

CODE	FREQ	ADJ PCT	CUM PCT	CODE	FREQ	ADJ PCT	CUM PCT	CODE	FREQ	ADJ PCT	CUM PCT
1.	33	21	21	6.	7	5	63	11.	2	1	84
2.	14	9	30	7.	2	1	64	12.	4	3	86
3.	7	5	35	8.	21	14	77	13.	1	1	87
4.	26	17	52	9.	5	3	81	88.	20	13	100
5.	10	6	58	10.	3	2	83				

CODE	FREQ	MISSING DATA		CODE	FREQ
CODE	FREQ	CODE	FREQ	CODE	FREQ
99.	2				

MEAN 15.342 STD ERR 2.266 RANGE 87.000
 VALID CASES 155 MISSING CASES 2

N.J. INMATE SURVEY 1980 FREQUENCIES

PAGE 62

05/30/81

FILE - N.J.

- CREATED 05/30/81

C5

FAIR RAPE

CODE	FREQ	ADJ PCT	CUM PCT	CODE	FREQ	ADJ PCT	CUM PCT	CODE	FREQ	ADJ PCT	CUM PCT
4.	1	1	1	15.	5	3	19	20.	13	8	77
5.	1	1	1	16.	11	7	26	21.	14	9	86
12.	5	3	5	17.	16	10	36	22.	9	6	92
13.	4	3	7	18.	11	7	43	77.	5	3	95
14.	13	8	15	19.	39	25	68	88.	8	5	100

CODE	FREQ	MISSING DATA		CODE	FREQ
CODE	FREQ	CODE	FREQ	CODE	FREQ
99.	2				

MEAN 23.265 STD ERR 1.499 RANGE 84.000
 VALID CASES 155 MISSING CASES 2

81

05/30/81 FILE - N.J. - CREATED 05/30/81

26 FAIR ARMED ROB

CODE	FREQ	ADJ PCT	CUM PCT	CODE	FREQ	ADJ PCT	CUM PCT	CODE	FREQ	ADJ PCT	CUM PCT
1.	1	1	1	8.	6	4	24	15.	8	5	91
2.	3	2	3	9.	7	5	29	16.	1	1	92
3.	2	1	4	10.	12	8	37	17.	2	1	93
4.	6	4	3	11.	16	10	47	19.	1	1	93
5.	4	3	10	12.	25	16	63	88.	10	7	100
6.	7	5	15	13.	21	14	77				
7.	8	5	20	14.	13	8	86				

M I S S I N G D A T A

CODE	FREQ	CODE	FREQ	CODE	FREQ
99.	4				

MEAN 15.595 STD ERR 1.578 RANGE 87.000

VALID CASES 153 MISSING CASES 4

05/30/81 FILE - N.J. - CREATED 05/30/81

C7 FAIR SALE CDS

CODE	FREQ	ADJ PCT	CUM PCT	CODE	FREQ	ADJ PCT	CUM PCT	CODE	FREQ	ADJ PCT	CUM PCT
0.	2	1	1	10.	6	4	23	18.	2	1	85
1.	4	3	4	11.	19	12	35	19.	4	3	88
2.	5	3	7	12.	22	14	49	20.	2	1	89
4.	4	3	10	13.	18	12	61	21.	2	1	90
5.	4	3	12	14.	15	10	70	77.	1	1	91
6.	2	1	14	15.	7	5	75	88.	14	9	100
7.	3	2	15	16.	5	3	78				
8.	5	3	19	17.	9	6	84				

M I S S I N G D A T A

CODE	FREQ	CODE	FREQ	CODE	FREQ
99.	2				

MEAN 18.974 STD ERR 1.837 RANGE 88.000

05/30/81 FILE - N.J. - CREATED 05/30/81

C8 FAIR CREDIT CARD

CODE	FREQ	ADJ PCT	CUM PCT	CODE	FREQ	ADJ PCT	CUM PCT	CODE	FREQ	ADJ PCT	CUM PCT
0.	2	1	1	5.	19	12	64	11.	3	2	84
1.	20	13	14	6.	3	5	69	12.	5	3	88
2.	18	12	26	8.	12	8	77	13.	2	1	89
3.	17	11	37	9.	5	3	80	14.	1	1	90
4.	22	14	51	10.	4	3	82	88.	16	10	100

M I S S I N G D A T A

CODE	FREQ	CODE	FREQ	CODE	FREQ
99.	3				

MEAN 13.377 STD ERR 2.069 RANGE 88.000

VALID CASES 154 MISSING CASES 3

05/30/81 FILE - N.J. - CREATED 05/30/81

C9 FAIR HOMICIDE

CODE	FREQ	ADJ PCT	CUM PCT	CODE	FREQ	ADJ PCT	CUM PCT	CODE	FREQ	ADJ PCT	CUM PCT
4.	1	1	1	13.	15	10	21	19.	16	11	89
5.	1	1	1	14.	17	11	32	20.	12	8	97
7.	1	1	2	15.	11	7	39	21.	3	2	99
10.	2	1	3	16.	21	14	53	22.	1	1	99
11.	3	2	5	17.	23	18	72	89.	1	1	100
12.	9	6	11	18.	10	7	78				

M I S S I N G D A T A

CODE	FREQ	CODE	FREQ	CODE	FREQ
99.	5				

MEAN 16.342 STD ERR 0.533 RANGE 84.000

VALID CASES 152 MISSING CASES 5

N.J. INMATE SURVEY 1980 FREQUENCIES

PAGE 67

05/30/81 FILE - N.J. - CREATED 05/30/81

C10 FAIR INTENT HOMICIDE

CODE	FREQ	ADJ PCT	CUM PCT	CODE	FREQ	ADJ PCT	CUM PCT	CODE	FREQ	ADJ PCT	CUM PCT
4.	1	1	1	14.	17	11	13	20.	20	13	92
6.	1	1	1	15.	8	5	23	21.	6	4	95
7.	1	1	2	16.	18	12	35	22.	4	3	98
8.	1	1	3	17.	19	12	47	88.	3	2	100
11.	3	2	5	18.	24	16	63				
13.	4	3	7	19.	24	16	79				

M I S S I N G D A T A

CODE	FREQ	CODE	FREQ	CODE	FREQ
99.	3				

MEAN 18.474 STD ERR 0.827 RANGE 84.000

VALID CASES 154 MISSING CASES 3

N.J. INMATE SURVEY 1980 FREQUENCIES

PAGE 68

05/30/81 FILE - N.J. - CREATED 05/30/81

C11 FAIR COP

CODE	FREQ	ADJ PCT	CUM PCT	CODE	FREQ	ADJ PCT	CUM PCT	CODE	FREQ	ADJ PCT	CUM PCT
0.	5	3	3	6.	6	4	46	12.	10	6	81
1.	15	10	13	7.	1	1	47	13.	6	4	85
2.	10	6	19	8.	14	9	56	14.	2	1	86
3.	5	3	23	9.	5	3	59	15.	1	1	87
4.	20	13	35	10.	12	8	67	16.	2	1	88
5.	11	7	43	11.	12	8	75	88.	18	12	100

M I S S I N G D A T A

CODE	FREQ	CODE	FREQ	CODE	FREQ
99.	2				

MEAN 16.090 STD ERR 2.125 RANGE 88.000

VALID CASES 155 MISSING CASES 2

N.J. INMATE SURVEY 1980 FREQUENCIES

PAGE 69

05/30/81 FILE - N.J. - CREATED 05/30/81

C12 FAIR ELDERLY ROB

CODE	FREQ	ADJ PCT	CUM PCT	CODE	FREQ	ADJ PCT	CUM PCT	CODE	FREQ	ADJ PCT	CUM PCT
2.	3	2	2	9.	1	1	17	16.	10	6	87
3.	2	1	3	10.	9	6	23	17.	4	3	90
4.	4	3	6	11.	15	10	32	18.	1	1	90
5.	1	1	6	12.	19	12	45	19.	4	3	93
6.	4	3	9	13.	21	14	58	20.	1	1	94
7.	4	3	12	14.	26	17	75	88.	10	6	100
8.	7	5	16	15.	9	6	81				

M I S S I N G D A T A

CODE	FREQ	CODE	FREQ	CODE	FREQ
99.	2				

MEAN 16.948 STD ERR 1.530 RANGE 86.000

VALID CASES 155 MISSING CASES 2

N.J. INMATE SURVEY 1980 FREQUENCIES

PAGE 70

05/30/81 FILE - N.J. - CREATED 05/30/81

C13 FAIR ARSON

CODE	FREQ	ADJ PCT	CUM PCT	CODE	FREQ	ADJ PCT	CUM PCT	CODE	FREQ	ADJ PCT	CUM PCT
0.	1	1	1	10.	2	1	6	17.	15	10	73
3.	1	1	1	11.	10	6	13	18.	10	6	79
4.	1	1	2	12.	13	8	21	19.	15	10	89
5.	1	1	3	13.	16	10	32	20.	6	4	93
6.	1	1	3	14.	22	14	46	21.	1	1	94
7.	2	1	5	15.	12	8	54	77.	2	1	95
9.	1	1	5	16.	15	10	63	88.	8	5	100

M I S S I N G D A T A

CODE	FREQ	CODE	FREQ	CODE	FREQ
99.	2				

MEAN 85

MEAN 19.239 STD ERR 1.438 RANGE 88.000
 VALID CASES 155 MISSING CASES 2

N.J. INMATE SURVEY 1980 FREQUENCIES PAGE 71
 05/30/81 FILE - N.J. - CREATED 05/30/81

C14 FAIR HANDGUN

CODE	FREQ	ADJ PCT	CUM PCT	CODE	FREQ	ADJ PCT	CUM PCT	CODE	FREQ	ADJ PCT	CUM PCT
0.	1	1	1	5.	16	10	45	10.	5	3	70
1.	10	6	7	6.	7	5	49	11.	17	11	81
2.	15	10	17	7.	7	5	54	12.	9	6	87
3.	11	7	24	8.	13	8	62	13.	1	1	88
4.	16	10	34	9.	8	5	67	88.	19	12	100

M I S S I N G D A T A

CODE	FREQ	CODE	FREQ	CODE	FREQ
99.	2				

MEAN 16.252 STD ERR 2.178 RANGE 88.000
 VALID CASES 155 MISSING CASES 2

N.J. INMATE SURVEY 1980 FREQUENCIES PAGE 72
 05/30/81 FILE - N.J. - CREATED 05/30/81

C15 FAIR INTENT NO DEATH

CODE	FREQ	ADJ PCT	CUM PCT	CODE	FREQ	ADJ PCT	CUM PCT	CODE	FREQ	ADJ PCT	CUM PCT
3.	1	1	1	11.	8	5	18	17.	11	7	88
4.	3	2	3	12.	14	9	27	18.	5	3	92
6.	2	1	4	13.	28	18	45	19.	6	4	95
7.	4	3	7	14.	29	19	64	20.	1	1	96
9.	1	1	7	15.	12	8	72	88.	6	4	100
10.	8	5	12	16.	14	9	81				

M I S S I N G D A T A

CODE	FREQ	CODE	FREQ	CODE	FREQ
99.	4				

MEAN 16.425 STD ERR 1.199 RANGE 85.000
 VALID CASES 153 MISSING CASES 4

N.J. INMATE SURVEY 1980 FREQUENCIES PAGE 73
 05/30/81 FILE - N.J. - CREATED 05/30/81

C16 FAIR POSS CES

CODE	FREQ	ADJ PCT	CUM PCT	CODE	FREQ	ADJ PCT	CUM PCT	CODE	FREQ	ADJ PCT	CUM PCT
0.	7	5	5	6.	7	5	44	12.	7	5	73
1.	15	10	14	7.	4	3	47	13.	4	3	76
2.	5	3	18	8.	12	8	55	15.	1	1	76
3.	5	3	21	9.	10	7	61	17.	1	1	77
4.	16	10	31	10.	7	5	66	77.	16	10	88
5.	13	8	40	11.	4	3	69	88.	19	12	100

M I S S I N G D A T A

CODE	FREQ	CODE	FREQ	CODE	FREQ
99.	4				

MEAN 23.601 STD ERR 2.646 RANGE 88.000
 VALID CASES 153 MISSING CASES 4

N.J. INMATE SURVEY 1980 FREQUENCIES PAGE 74
 05/30/81 FILE - N.J. - CREATED 05/30/81

C17 FAIR AUTO THEFT

CODE	FREQ	ADJ PCT	CUM PCT	CODE	FREQ	ADJ PCT	CUM PCT	CODE	FREQ	ADJ PCT	CUM PCT
1.	5	3	3	6.	17	11	56	11.	7	5	83
2.	8	5	8	7.	3	2	58	12.	3	2	85
3.	5	3	12	8.	16	10	68	13.	1	1	86
4.	29	19	31	9.	7	5	73	77.	1	1	86
5.	22	14	45	10.	9	6	79	88.	21	14	100

M I S S I N G D A T A

CODE	FREQ	CODE	FREQ	CODE	FREQ
99.	3				

MEAN 17.643 STD ERR 2.316 RANGE 87.000
 VALID CASES 154 MISSING CASES 3

N.J. INMATE SURVEY 1980 FREQUENCIES PAGE 75
 05/30/81 FILE - N.J. - CREATED 05/30/81

C18 PAIR INCEST

CODE	FREQ	ADJ PCT	CUM PCT	CODE	FREQ	ADJ PCT	CUM PCT	CODE	FREQ	ADJ PCT	CUM PCT
1.	1	1	1	13.	2	1	10	20.	11	7	63
2.	1	1	1	14.	4	3	12	21.	21	14	77
6.	1	1	2	15.	7	5	17	22.	8	5	82
7.	3	2	4	16.	11	7	24	77.	15	10	92
9.	2	1	5	17.	11	7	31	88.	13	8	100
11.	2	1	6	18.	9	6	37				
12.	3	2	8	19.	29	19	56				

M I S S I N G D A T A

CODE	FREQ	CODE	FREQ	CODE	FREQ
99.	3				

MEAN 29.253 STD ERR 2.044 RANGE 87.000
 VALID CASES 154 MISSING CASES 3

N.J. INMATE SURVEY 1980 FREQUENCIES PAGE 76
 05/30/81 FILE - N.J. - CREATED 05/30/81

C19 PAIR CHECK FORGE

CODE	FREQ	ADJ PCT	CUM PCT	CODE	FREQ	ADJ PCT	CUM PCT	CODE	FREQ	ADJ PCT	CUM PCT
0.	1	1	1	6.	8	5	61	12.	4	3	83
1.	16	10	11	7.	4	3	64	13.	2	1	85
2.	14	9	20	8.	11	7	71	14.	1	1	85
3.	13	8	28	9.	5	3	74	77.	1	1	86
4.	22	14	43	10.	2	1	75	88.	22	14	100
5.	21	14	56	11.	8	5	81				

M I S S I N G D A T A

CODE	FREQ	CODE	FREQ	CODE	FREQ

99. 2

MEAN 17.381 STD ERR 2.373 RANGE 88.000
 VALID CASES 155 MISSING CASES 2

N.J. INMATE SURVEY 1980 FREQUENCIES PAGE 77
 05/30/81 FILE - N.J. - CREATED 05/30/81

C20 FAIR WHITE COLLAR

CODE	FREQ	ADJ PCT	CUM PCT	CODE	FREQ	ADJ PCT	CUM PCT	CODE	FREQ	ADJ PCT	CUM PCT
1.	10	6	6	7.	10	6	59	13.	3	2	81
2.	14	9	15	8.	6	4	63	15.	2	1	82
3.	10	6	22	9.	4	3	65	20.	1	1	83
4.	13	8	30	10.	3	2	67	89.	27	17	100
5.	23	15	45	11.	11	7	74				
6.	11	7	52	12.	7	5	79				

M I S S I N G D A T A

CODE	FREQ	CODE	FREQ	CODE	FREQ
99.	2				

MEAN 20.355 STD ERR 2.518 RANGE 87.000
 VALID CASES 155 MISSING CASES 2

N.J. INMATE SURVEY 1980 FREQUENCIES PAGE 78
 05/30/81 FILE - N.J. - CREATED 05/30/81

C21 FAIR STORE THEFT

CODE	FREQ	ADJ PCT	CUM PCT	CODE	FREQ	ADJ PCT	CUM PCT	CODE	FREQ	ADJ PCT	CUM PCT
1.	3	2	2	7.	4	3	26	13.	9	6	76
2.	2	1	3	8.	13	8	34	14.	3	2	78
3.	2	1	5	9.	12	8	42	15.	2	1	79
4.	7	5	9	10.	10	6	49	18.	1	1	80
5.	12	8	17	11.	13	12	60	77.	1	1	81
6.	10	6	23	12.	15	10	70	88.	30	19	100

M I S S I N G D A T A

CODE	FREQ	CODE	FREQ	CODE	FREQ
89					

99. 3

MEAN 24.695 STD ERR 2.563 RANGE 87.000
VALID CASES 154 MISSING CASES 3

N.J. INMATE SURVEY 1980 FREQUENCIES

PAGE 79

05/30/81 FILE - N.J. - CREATED 05/30/81

C22 FAIR INTENT INJURY

CODE	FREQ	ADJ PCT	CUM PCT	CODE	FREQ	ADJ PCT	CUM PCT	CODE	FREQ	ADJ PCT	CUM PCT
2.	3	2	2	9.	10	7	24	15.	9	6	89
4.	4	3	5	10.	9	6	29	16.	4	3	92
5.	3	2	7	11.	21	14	43	17.	4	3	94
6.	6	4	10	12.	26	17	60	18.	1	1	95
7.	3	2	12	13.	24	16	76	19.	2	1	96
8.	7	5	17	14.	11	7	83	88.	6	4	100

MISSING DATA

CODE	FREQ	CODE	FREQ
99.	4		

MEAN 14.314 STD ERR 1.236 RANGE 86.000
VALID CASES 153 MISSING CASES 4

N.J. INMATE SURVEY 1980 FREQUENCIES

PAGE 80

05/30/81 FILE - N.J. - CREATED 05/30/81

C23 PAIR MARIJUANA

CODE	FREQ	ADJ PCT	CUM PCT	CODE	FREQ	ADJ PCT	CUM PCT	CODE	FREQ	ADJ PCT	CUM PCT
0.	1	1	1	8.	9	6	35	16.	5	3	80
1.	7	5	5	9.	7	5	40	17.	7	5	85
2.	5	3	8	10.	7	5	45	18.	3	2	86
3.	8	5	14	11.	13	8	53	19.	2	1	88
4.	10	6	20	12.	9	6	59	20.	1	1	88
5.	4	3	23	13.	13	8	67	21.	2	1	90
6.	7	5	27	14.	9	6	73	83.	16	10	100
7.	4	3	30	15.	6	4	77				

90

MISSING DATA

CODE FREQ CODE FREQ CODE FREQ

99. 2

MEAN 17.390 STD ERR 1.957 RANGE 88.000
VALID CASES 155 MISSING CASES 2

N.J. INMATE SURVEY 1980 FREQUENCIES

PAGE 81

05/30/81 FILE - N.J. - CREATED 05/30/81

C24 FAIR STEREO

CODE	FREQ	ADJ PCT	CUM PCT	CODE	FREQ	ADJ PCT	CUM PCT	CODE	FREQ	ADJ PCT	CUM PCT
0.	2	1	1	5.	19	12	70	10.	2	1	81
1.	28	18	19	6.	6	4	74	11.	4	3	84
2.	23	15	34	7.	1	1	75	12.	5	3	87
3.	13	6	43	8.	5	3	78	13.	1	1	88
4.	24	15	58	9.	3	2	80	88.	19	12	100

MISSING DATA

CODE FREQ CODE FREQ CODE FREQ

99. 2

MEAN 14.342 STD ERR 2.230 RANGE 88.000
VALID CASES 155 MISSING CASES 2

N.J. INMATE SURVEY 1980 FREQUENCIES

PAGE 82

05/30/81 FILE - N.J. - CREATED 05/30/81

D1 GOING FIGHT INJURY

CODE	FREQ	ADJ PCT	CUM PCT	CODE	FREQ	ADJ PCT	CUM PCT	CODE	FREQ	ADJ PCT	CUM PCT
1.	2	1	1	8.	6	4	25	14.	2	1	90
2.	2	1	3	9.	17	13	38	15.	1	1	91
4.	10	7	10	10.	14	10	48	16.	2	1	93
5.	5	4	14	11.	12	9	57	17.	1	1	93
6.	4	3	17	12.	24	18	74	88.	9	7	100
7.	5	4	21	13.	20	15	89				

91

MISSING DATA					
CODE	FREQ	CODE	FREQ	CODE	FREQ
99.	21				
MEAN	14.963	STD ERR	1.696	RANGE	87.000
VALID CASES	136	MISSING CASES	21		

N.J. INMATE SURVEY 1980 FREQUENCIES PAGE 83
 05/30/81 FILE - N.J. - CREATED 05/30/81

D2 GOING ATTEMPTED ROB

CODE	FREQ	ADJ PCT	CUM PCT	CODE	FREQ	ADJ PCT	CUM PCT	CODE	FREQ	ADJ PCT	CUM PCT
0.	1	1	1	11.	11	8	16	17.	12	9	95
5.	4	3	4	12.	19	13	30	18.	5	4	99
6.	1	1	4	13.	29	21	50	19.	1	1	99
8.	1	1	5	14.	29	21	71	88.	1	1	100
9.	1	1	6	15.	7	5	76				
10.	4	3	9	16.	15	11	87				

MISSING DATA					
CODE	FREQ	CODE	FREQ	CODE	FREQ
99.	16				
MEAN	13.908	STD ERR	0.581	RANGE	88.000
VALID CASES	141	MISSING CASES	16		

N.J. INMATE SURVEY 1980 FREQUENCIES PAGE 84
 05/30/81 FILE - N.J. - CREATED 05/30/81

D3 GOING B E E

CODE	FREQ	ADJ PCT	CUM PCT	CODE	FREQ	ADJ PCT	CUM PCT	CODE	FREQ	ADJ PCT	CUM PCT
0.	1	1	1	8.	6	4	24	14.	4	3	89
3.	1	1	1	9.	9	6	30	15.	1	1	90
4.	4	3	4	10.	10	7	37	17.	2	1	91
5.	7	5	9	11.	20	14	51	88.	12	9	100
6.	7	5	14	12.	28	20	71				
7.	7	5	19	13.	21	15	86				

92

MISSING DATA					
CODE	FREQ	CODE	FREQ	CODE	FREQ
99.	17				
MEAN	16.886	STD ERR	1.863	RANGE	88.000
VALID CASES	140	MISSING CASES	17		

N.J. INMATE SURVEY 1980 FREQUENCIES PAGE 85
 05/30/81 FILE - N.J. - CREATED 05/30/81

D4 GOING PICKPOCKET

CODE	FREQ	ADJ PCT	CUM PCT	CODE	FREQ	ADJ PCT	CUM PCT	CODE	FREQ	ADJ PCT	CUM PCT
1.	6	4	4	7.	3	2	42	13.	1	1	89
2.	10	7	12	8.	25	19	60	14.	1	1	90
3.	2	1	13	9.	18	13	74	77.	1	1	90
4.	14	10	24	10.	7	5	79	88.	13	10	100
5.	11	8	32	11.	8	6	85				
6.	10	7	40	12.	4	3	88				

MISSING DATA					
CODE	FREQ	CODE	FREQ	CODE	FREQ
99.	23				
MEAN	15.224	STD ERR	2.149	RANGE	87.000
VALID CASES	134	MISSING CASES	23		

N.J. INMATE SURVEY 1980 FREQUENCIES PAGE 86
 05/30/81 FILE - N.J. - CREATED 05/30/81

CODE3

CODE	FREQ	ADJ PCT	CUM PCT	CODE	FREQ	ADJ PCT	CUM PCT	CODE	FREQ	ADJ PCT	CUM PCT
1.	1	1	1	96.	1	1	34	193.	1	1	68
2.	1	1	1	98.	1	1	35	196.	1	1	69
3.	1	1	2	99.	1	1	36	198.	1	1	69
4.	1	1	3	100.	1	1	36	200.	1	1	70
7.	1	1	3	102.	1	1	37	209.	1	1	71
11.	1	1	4	104.	1	1	38	210.	1	1	71
12.	1	1	4	105.	1	1	38	212.	1	1	72

93

14.	1	1	5	106.	1	1	39	216.	1	1	73
15.	1	1	6	107.	1	1	39	218.	1	1	73
16.	1	1	6	110.	1	1	40	220.	1	1	74
18.	1	1	7	111.	1	1	41	229.	1	1	75
19.	1	1	8	112.	1	1	41	230.	1	1	75
20.	1	1	8	114.	1	1	42	232.	1	1	76
22.	1	1	9	116.	1	1	43	236.	1	1	76
26.	1	1	10	118.	1	1	43	240.	1	1	77
28.	1	1	10	122.	1	1	44	244.	1	1	78
31.	1	1	11	123.	1	1	45	248.	1	1	78
32.	1	1	11	124.	1	1	45	252.	1	1	79
34.	1	1	12	125.	1	1	46	254.	1	1	80
35.	1	1	13	128.	1	1	46	256.	1	1	80
36.	1	1	13	131.	1	1	47	266.	1	1	81
40.	1	1	14	139.	1	1	48	272.	1	1	82
42.	1	1	15	140.	1	1	48	274.	1	1	82
44.	1	1	15	141.	1	1	49	276.	1	1	83
48.	1	1	16	145.	1	1	50	280.	1	1	83
50.	1	1	17	146.	1	1	50	282.	1	1	84
52.	1	1	17	148.	1	1	51	286.	1	1	85
53.	1	1	18	150.	1	1	52	290.	1	1	85
54.	1	1	18	152.	1	1	52	296.	1	1	86
55.	1	1	19	156.	1	1	53	302.	1	1	87
56.	1	1	20	160.	1	1	54	306.	1	1	87
58.	1	1	20	162.	1	1	54	308.	1	1	88
59.	1	1	21	165.	1	1	55	312.	1	1	89
61.	1	1	22	166.	1	1	55	314.	1	1	89
64.	1	1	22	168.	1	1	56	320.	1	1	90
66.	1	1	23	169.	1	1	57	324.	1	1	90
67.	1	1	24	170.	1	1	57	330.	1	1	91
68.	1	1	24	171.	1	1	58	332.	1	1	92
69.	1	1	25	172.	1	1	59	340.	1	1	92
70.	1	1	25	175.	1	1	59	348.	1	1	93
73.	1	1	26	176.	1	1	60	354.	1	1	94
75.	1	1	27	177.	1	1	61	358.	1	1	94
77.	1	1	27	178.	1	1	61	360.	1	1	95
78.	1	1	28	179.	1	1	62	382.	1	1	96
82.	1	1	29	181.	1	1	62	402.	1	1	96
83.	1	1	29	182.	1	1	63	404.	1	1	97
84.	1	1	30	183.	1	1	64	406.	1	1	97
86.	1	1	31	184.	1	1	64	408.	1	1	98
89.	1	1	31	186.	1	1	65	410.	1	1	99
90.	1	1	32	187.	1	1	66	412.	1	1	99
92.	1	1	32	188.	1	1	66	414.	1	1	100
93.	1	1	33	189.	1	1	67				
94.	1	1	34	191.	1	1	68				

MEAN 160.153 STD ERR 8.742 RANGE 413.000

VALID CASES 157 MISSING CASES 0

N.J. INMATE SURVEY 1980 FREQUENCIES

PAGE 87

05/30/81 FILE - N.J. - CREATED 05/30/81

CARD3

94

CODE	FREQ	ADJ PCT	CUM PCT	CODE	FREQ	ADJ PCT	CUM PCT	CODE	FREQ	ADJ PCT	CUM PCT
3.	157	100	100								

MEAN 3.000 STD ERR 0.0 RANGE 0.0

VALID CASES 157 MISSING CASES 0

N.J. INMATE SURVEY 1980 FREQUENCIES

PAGE 88

05/30/81 FILE - N.J. - CREATED 05/30/81

D5 GOING RAPE

CODE	FREQ	ADJ PCT	CUM PCT	CODE	FREQ	ADJ PCT	CUM PCT	CODE	FREQ	ADJ PCT	CUM PCT
6.	1	1	1	16.	20	14	27	21.	1	1	94
12.	3	2	3	17.	24	17	44	77.	1	1	95
13.	5	4	6	19.	16	11	56	88.	7	5	100
14.	4	3	9	19.	48	34	90				
15.	5	4	13	20.	5	4	94				

CODE	FREQ	CODE	FREQ	CODE	FREQ
99.	17				

MEAN 21.286 STD ERR 1.378 RANGE 82.000

VALID CASES 140 MISSING CASES 17

N.J. INMATE SURVEY 1980 FREQUENCIES

PAGE 89

05/30/81 FILE - N.J. - CREATED 05/30/81

D6 GOING ARMED ROB

CODE	FREQ	ADJ PCT	CUM PCT	CODE	FREQ	ADJ PCT	CUM PCT	CODE	FREQ	ADJ PCT	CUM PCT
2.	1	1	1	10.	6	4	15	16.	14	10	91
5.	3	2	3	11.	13	9	24	17.	8	6	96
6.	5	4	6	12.	26	18	43	18.	1	1	97
7.	3	2	9	13.	23	20	62	19.	1	1	98
8.	2	1	10	14.	14	10	72	88.	3	2	100
9.	1	1	11	15.	12	9	81				

95

		MISSING DATA			
CODE	FREQ	CODE	FREQ	CODE	FREQ
99.	16				
MEAN	14.243	STD ERR	0.952	RANGE	86.000
VALID CASES	141	MISSING CASES	16		

N.J. INMATE SURVEY 1980 FREQUENCIES PAGE 90
 05/30/81 FILE - N.J. - CREATED 05/30/81

D7 GOING SALE CDS

CODE	FREQ	ADJ PCT	CUM PCT	CODE	FREQ	ADJ PCT	CUM PCT	CODE	FREQ	ADJ PCT	CUM PCT
1.	2	1	1	10.	6	4	17	17.	14	10	88
2.	1	1	2	11.	11	8	24	18.	4	3	91
3.	1	1	3	12.	15	11	35	19.	3	2	94
4.	1	1	4	13.	15	11	46	20.	4	3	96
5.	4	3	6	14.	16	12	58	77.	1	1	97
6.	2	1	8	15.	16	12	69	88.	4	3	100
9.	6	4	12	16.	13	9	78				

		MISSING DATA			
CODE	FREQ	CODE	FREQ	CODE	FREQ
99.	18				
MEAN	15.835	STD ERR	1.196	RANGE	87.000
VALID CASES	139	MISSING CASES	18		

N.J. INMATE SURVEY 1980 FREQUENCIES PAGE 91
 05/30/81 FILE - N.J. - CREATED 05/30/81

D8 GOING CREDIT CARD

CODE	FREQ	ADJ PCT	CUM PCT	CODE	FREQ	ADJ PCT	CUM PCT	CODE	FREQ	ADJ PCT	CUM PCT
0.	1	1	1	5.	16	12	30	10.	11	8	65
1.	6	4	5	6.	12	9	39	11.	17	13	78
2.	6	4	10	7.	7	5	44	12.	11	8	86
3.	4	3	13	8.	7	5	49	13.	1	1	87
4.	7	5	18	9.	11	8	57	88.	18	13	100

		MISSING DATA			
CODE	FREQ	CODE	FREQ	CODE	FREQ
99.	22				
MEAN	18.074	STD ERR	2.385	RANGE	88.000
VALID CASES	135	MISSING CASES	22		

N.J. INMATE SURVEY 1980 FREQUENCIES PAGE 92
 05/30/81 FILE - N.J. - CREATED 05/30/81

D9 GOING HOMICIDE

CODE	FREQ	ADJ PCT	CUM PCT	CODE	FREQ	ADJ PCT	CUM PCT	CODE	FREQ	ADJ PCT	CUM PCT
11.	2	1	1	16.	8	6	27	21.	10	7	98
12.	3	2	4	17.	23	16	44	22.	1	1	99
13.	3	2	6	18.	19	14	57	88.	2	1	100
14.	10	7	13	19.	20	14	71				
15.	12	9	21	20.	27	19	91				

		MISSING DATA			
CODE	FREQ	CODE	FREQ	CODE	FREQ
99.	17				
MEAN	18.614	STD ERR	0.733	RANGE	77.000
VALID CASES	140	MISSING CASES	17		

N.J. INMATE SURVEY 1980 FREQUENCIES PAGE 93
 05/30/81 FILE - N.J. - CREATED 05/30/81

D10 GOING INTENT HOMICIDE

CODE	FREQ	ADJ PCT	CUM PCT	CODE	FREQ	ADJ PCT	CUM PCT	CODE	FREQ	ADJ PCT	CUM PCT
0.	1	1	1	15.	5	4	10	19.	25	18	56
11.	2	1	2	16.	4	3	13	20.	41	29	85
12.	1	1	3	17.	17	12	25	21.	19	14	99
14.	5	4	6	18.	13	13	33	88.	2	1	100

		MISSING DATA			
CODE	FREQ	CODE	FREQ	CODE	FREQ
97					

99. 17

MEAN 19.471 STD ERR 0.734 RANGE 88.000

VALID CASES 140 MISSING CASES 17

N.J. INMATE SURVEY 1980 FREQUENCIES PAGE 94

05/30/81 FILE - N.J. - CREATED 05/30/81

D11 GOING COP

CODE	FREQ	ADJ PCT	CUM PCT	CODE	FREQ	ADJ PCT	CUM PCT	CODE	FREQ	ADJ PCT	CUM PCT
0.	1	1	1	8.	10	7	20	15.	4	3	85
1.	2	1	2	9.	9	6	27	16.	8	6	91
2.	4	3	5	10.	12	9	35	17.	5	4	94
3.	2	1	6	11.	11	8	43	19.	1	1	95
4.	5	4	10	12.	18	13	56	88.	7	5	100
6.	2	1	12	13.	22	16	72				
7.	2	1	13	14.	14	10	82				

MISSING DATA

99. 18

MEAN 14.392 STD ERR 1.469 RANGE 88.000

VALID CASES 139 MISSING CASES 18

N.J. INMATE SURVEY 1980 FREQUENCIES PAGE 95

05/30/81 FILE - N.J. - CREATED 05/30/81

D12 GOING ELDERLY ROB

CODE	FREQ	ADJ PCT	CUM PCT	CODE	FREQ	ADJ PCT	CUM PCT	CODE	FREQ	ADJ PCT	CUM PCT
2.	1	1	1	11.	12	9	22	17.	18	13	95
5.	2	1	2	12.	16	11	34	18.	4	3	98
6.	2	1	4	13.	21	15	49	19.	1	1	99
8.	2	1	5	14.	26	19	67	88.	2	1	100
9.	6	4	9	15.	10	7	74				
10.	6	4	14	16.	11	8	82				

MISSING DATA

99. 17

MEAN 14.386 STD ERR 0.791 RANGE 86.000

VALID CASES 140 MISSING CASES 17

N.J. INMATE SURVEY 1980 FREQUENCIES PAGE 96

05/30/81 FILE - N.J. - CREATED 05/30/81

D13 GOING ARSON

CODE	FREQ	ADJ PCT	CUM PCT	CODE	FREQ	ADJ PCT	CUM PCT	CODE	FREQ	ADJ PCT	CUM PCT
0.	1	1	1	13.	16	12	31	18.	11	8	85
9.	1	1	1	14.	20	15	46	19.	16	12	96
10.	2	1	3	15.	9	7	53	20.	1	1	97
11.	5	4	7	16.	17	12	65	21.	2	1	99
12.	18	13	20	17.	16	12	77	88.	2	1	100

MISSING DATA

99. 20

MEAN 16.109 STD ERR 0.791 RANGE 88.000

VALID CASES 137 MISSING CASES 20

N.J. INMATE SURVEY 1980 FREQUENCIES PAGE 97

05/30/81 FILE - N.J. - CREATED 05/30/81

D14 GOING HANDGUN

CODE	FREQ	ADJ PCT	CUM PCT	CODE	FREQ	ADJ PCT	CUM PCT	CODE	FREQ	ADJ PCT	CUM PCT
2.	4	3	3	7.	6	4	24	13.	22	16	89
3.	4	3	6	9.	16	11	36	14.	5	4	92
4.	3	2	8	10.	15	11	46	16.	2	1	94
5.	8	6	14	11.	17	12	59	17.	1	1	94
6.	9	6	20	12.	20	14	73	88.	8	6	100

MISSING DATA

99

CODE	FREQ	CODE	FREQ	CODE	FREQ
99.	17				
MEAN	14.271	STD ERR	1.564	RANGE	86.000
VALID CASES	140	MISSING CASES	17		

N.J. INMATE SURVEY 1980 FREQUENCIES PAGE 98
 05/30/81 FILE - N.J. - CREATED 05/30/81

D15 GOING INTENT NO DEATH

CODE	FREQ	ADJ PCT	CUM PCT	CODE	FREQ	ADJ PCT	CUM PCT	CODE	FREQ	ADJ PCT	CUM PCT
6.	1	1	1	14.	36	26	55	19.	5	4	96
9.	2	1	2	15.	10	7	62	20.	1	1	97
11.	3	2	4	16.	22	16	78	21.	1	1	98
12.	14	10	14	17.	16	12	89	88.	3	2	100
13.	20	14	29	13.	5	4	93				

MISSING DATA

CODE	FREQ	CODE	FREQ	CODE	FREQ
99.	18				
MEAN	16.209	STD ERR	0.927	RANGE	82.000
VALID CASES	139	MISSING CASES	18		

N.J. INMATE SURVEY 1980 FREQUENCIES PAGE 99
 05/30/81 FILE - N.J. - CREATED 05/30/81

D16 GOING POSS CDS

CODE	FREQ	ADJ PCT	CUM PCT	CODE	FREQ	ADJ PCT	CUM PCT	CODE	FREQ	ADJ PCT	CUM PCT
1.	2	1	1	9.	11	8	30	16.	1	1	82
3.	2	1	3	10.	13	9	40	17.	1	1	83
4.	3	2	5	11.	11	8	47	18.	1	1	83
5.	6	4	9	12.	23	17	64	77.	8	6	89
6.	12	9	18	13.	17	12	76	83.	15	11	100
7.	2	1	19	14.	4	3	79				
8.	4	3	22	15.	3	2	81				

MISSING DATA

CODE	FREQ	CODE	FREQ	CODE	FREQ
99.	18				
MEAN	22.324	STD ERR	2.366	RANGE	87.000
VALID CASES	139	MISSING CASES	18		

N.J. INMATE SURVEY 1980 FREQUENCIES PAGE 100
 05/30/81 FILE - N.J. - CREATED 05/30/81

D17 GOING AUTO THEFT

CODE	FREQ	ADJ PCT	CUM PCT	CODE	FREQ	ADJ PCT	CUM PCT	CODE	FREQ	ADJ PCT	CUM PCT
0.	1	1	1	7.	5	4	34	13.	9	6	91
1.	4	3	4	8.	10	7	41	15.	1	1	91
2.	2	1	5	9.	16	12	53	16.	1	1	92
4.	8	6	11	10.	11	8	60	88.	11	8	100
5.	15	11	22	11.	21	15	76				
6.	12	9	30	12.	12	9	84				

MISSING DATA

CODE	FREQ	CODE	FREQ	CODE	FREQ
99.	18				
MEAN	14.727	STD ERR	1.848	RANGE	88.000
VALID CASES	139	MISSING CASES	18		

N.J. INMATE SURVEY 1980 FREQUENCIES PAGE 101
 05/30/81 FILE - N.J. - CREATED 05/30/81

D18 GOING INCRST

CODE	FREQ	ADJ PCT	CUM PCT	CODE	FREQ	ADJ PCT	CUM PCT	CODE	FREQ	ADJ PCT	CUM PCT
2.	1	1	1	12.	3	2	13	19.	24	18	78
4.	1	1	1	13.	3	2	15	20.	2	1	79
6.	1	1	2	14.	12	9	24	21.	4	3	82
7.	1	1	3	15.	7	5	29	22.	1	1	83
9.	1	1	4	16.	14	10	40	77.	9	7	90
10.	1	1	4	17.	13	13	53	88.	14	10	100
11.	8	6	10	18.	9	7	60				

MISSING DATA

CODE	FREQ	CODE	FREQ	CODE	FREQ
99.	23				
MEAN	27.560	STD ERR	2.241	RANGE	86.000
VALID CASES	134	MISSING CASES	23		

N.J. INMATE SURVEY 1980 FREQUENCIES PAGE 102

05/30/81 FILE - N.J. - CREATED 05/30/81

D19 GOING CHECK FORGE

CODE	FREQ	ADJ PCT	CUM PCT	CODE	FREQ	ADJ PCT	CUM PCT	CODE	FREQ	ADJ PCT	CUM PCT
1.	4	3	3	6.	10	7	28	12.	10	7	77
2.	7	5	8	8.	8	6	33	13.	9	7	83
3.	2	1	9	9.	13	9	43	88.	23	17	100
4.	6	4	14	10.	10	7	50				
5.	9	7	20	11.	27	20	70				

MISSING DATA

CODE	FREQ	CODE	FREQ	CODE	FREQ
99.	19				
MEAN	21.691	STD ERR	2.548	RANGE	87.000
VALID CASES	138	MISSING CASES	19		

N.J. INMATE SURVEY 1980 FREQUENCIES PAGE 103

05/30/81 FILE - N.J. - CREATED 05/30/81

D20 GOING WHITE COLLAR

CODE	FREQ	ADJ PCT	CUM PCT	CODE	FREQ	ADJ PCT	CUM PCT	CODE	FREQ	ADJ PCT	CUM PCT
1.	1	1	1	6.	14	10	31	11.	20	15	70
2.	4	3	4	7.	6	4	36	12.	8	6	76
3.	6	4	8	8.	9	7	42	13.	9	7	83
4.	7	5	13	9.	9	7	49	14.	6	4	87
5.	10	7	21	10.	9	7	56	88.	17	13	100

MISSING DATA

102

MISSING DATA

CODE	FREQ	CODE	FREQ	CODE	FREQ
99.	22				
MEAN	18.422	STD ERR	2.298	RANGE	87.000
VALID CASES	135	MISSING CASES	22		

N.J. INMATE SURVEY 1980 FREQUENCIES PAGE 104

05/30/81 FILE - N.J. - CREATED 05/30/81

D21 GOING STORE THEFT

CODE	FREQ	ADJ PCT	CUM PCT	CODE	FREQ	ADJ PCT	CUM PCT	CODE	FREQ	ADJ PCT	CUM PCT
3.	1	1	1	9.	6	4	19	14.	11	8	82
5.	3	2	3	10.	6	4	23	15.	3	2	84
6.	5	4	6	11.	19	14	37	16.	4	3	87
7.	7	5	12	12.	29	21	58	17.	2	1	88
8.	4	3	14	13.	23	17	74	88.	16	12	100

MISSING DATA

CODE	FREQ	CODE	FREQ	CODE	FREQ
99.	18				
MEAN	20.173	STD ERR	2.094	RANGE	85.000
VALID CASES	139	MISSING CASES	18		

N.J. INMATE SURVEY 1980 FREQUENCIES PAGE 105

05/30/81 FILE - N.J. - CREATED 05/30/81

D22 GOING INTENT INJURY

CODE	FREQ	ADJ PCT	CUM PCT	CODE	FREQ	ADJ PCT	CUM PCT	CODE	FREQ	ADJ PCT	CUM PCT
0.	1	1	1	9.	3	2	9	15.	8	6	81
4.	1	1	1	10.	9	6	15	16.	14	10	91
5.	1	1	2	11.	11	8	23	17.	4	3	94
6.	4	3	5	12.	14	10	33	18.	2	1	95
7.	1	1	6	13.	35	25	57	19.	2	1	96
8.	2	1	7	14.	25	18	75	88.	5	4	100

MISSING DATA

103

```

CODE   FREQ      CODE   FREQ      CODE   FREQ
99.    16

MEAN    15.482    STD ERR    1.199    RANGE    88.000
VALID CASES 141    MISSING CASES 16

```

N.J. INMATE SURVEY 1980 FREQUENCIES PAGE 106
05/30/81 FILE - N.J. - CREATED 05/30/81

D23 GOING MARIJUANA

CODE	FREQ	ADJ PCT	CUM PCT	CODE	FREQ	ADJ PCT	CUM PCT	CODE	FREQ	ADJ PCT	CUM PCT
1.	2	1	1	9.	8	6	20	16.	2	1	87
2.	1	1	2	10.	17	13	33	17.	2	1	89
3.	2	1	4	11.	11	8	41	18.	2	1	90
5.	4	3	7	12.	22	16	57	19.	3	2	93
6.	5	4	10	13.	22	16	74	20.	1	1	93
7.	1	1	11	14.	10	7	81	88.	9	7	100
8.	4	3	14	15.	6	4	86				

```

CODE   FREQ      CODE   FREQ      CODE   FREQ
99.    23

MEAN    16.515    STD ERR    1.689    RANGE    87.000
VALID CASES 134    MISSING CASES 23

```

N.J. INMATE SURVEY 1980 FREQUENCIES PAGE 107
05/30/81 FILE - N.J. - CREATED 05/30/81

D24 GOING STEREO

CODE	FREQ	ADJ PCT	CUM PCT	CODE	FREQ	ADJ PCT	CUM PCT	CODE	FREQ	ADJ PCT	CUM PCT
1.	5	4	4	6.	10	7	41	11.	13	9	78
2.	10	7	11	7.	3	2	43	12.	7	5	83
3.	6	4	15	8.	13	9	53	13.	2	1	84
4.	11	8	23	9.	9	7	59	19.	1	1	85
5.	15	11	34	10.	12	9	68	88.	21	15	100

```

CODE   FREQ      CODE   FREQ      CODE   FREQ
99.    19

MEAN    19.333    STD ERR    2.501    RANGE    87.000
VALID CASES 133    MISSING CASES 19

```

N.J. INMATE SURVEY 1980 FREQUENCIES PAGE 108
05/30/81 FILE - N.J. - CREATED 05/30/81

E1 SAME OR DIFF SENTENCES

CODE	FREQ	ADJ PCT	CUM PCT	CODE	FREQ	ADJ PCT	CUM PCT	CODE	FREQ	ADJ PCT	CUM PCT
1.	68	44	44	2.	85	55	99	8.	1	1	100

```

CODE   FREQ      CODE   FREQ      CODE   FREQ
9.     3

MEAN    1.597    STD ERR    0.058    RANGE    7.000
VALID CASES 154    MISSING CASES 3

```

N.J. INMATE SURVEY 1980 FREQUENCIES PAGE 109
05/30/81 FILE - N.J. - CREATED 05/30/81

E1A IF DIFF1

CODE	FREQ	ADJ PCT	CUM PCT	CODE	FREQ	ADJ PCT	CUM PCT	CODE	FREQ	ADJ PCT	CUM PCT
1.	80	93	93	8.	6	7	100				

```

CODE   FREQ      CODE   FREQ      CODE   FREQ
9.     71

MEAN    1.436    STD ERR    0.193    RANGE    7.000
VALID CASES 86    MISSING CASES 71

```

N.J. INMATE SURVEY 1980 FREQUENCIES

PAGE 110

05/20/81 FILE - N.J. - CREATED 05/30/81

E1B IF DIFF2

CODE	FREQ	ADJ PCT	CUM PCT	CODE	FREQ	ADJ PCT	CUM PCT	CODE	FREQ	ADJ PCT	CUM PCT
------	------	---------	---------	------	------	---------	---------	------	------	---------	---------

M I S S I N G D A T A

CODE	FREQ	CODE	FREQ	CODE	FREQ
------	------	------	------	------	------

9. 157

VALID CASES 0 MISSING CASES 157

N.J. INMATE SURVEY 1980 FREQUENCIES

PAGE 111

05/30/81 FILE - N.J. - CREATED 05/30/81

E2 PRIOR VS. FIRST

CODE	FREQ	ADJ PCT	CUM PCT	CODE	FREQ	ADJ PCT	CUM PCT	CODE	FREQ	ADJ PCT	CUM PCT
1.	53	34	34	2.	96	62	97	8.	5	3	100

M I S S I N G D A T A

CODE	FREQ	CODE	FREQ	CODE	FREQ
------	------	------	------	------	------

9. 3

MEAN 1.851 STD ERR 0.099 RANGE 7.000

VALID CASES 154 MISSING CASES 3

N.J. INMATE SURVEY 1980 FREQUENCIES

PAGE 112

05/30/81 FILE - N.J. - CREATED 05/30/81

E2A WHO MORE

ADJ CUM	ADJ CUM	ADJ CUM
---------	---------	---------

106

CODE	FREQ	PCT	PCT	CODE	FREQ	PCT	PCT	CODE	FREQ	PCT	PCT
1.	93	91	91	2.	5	5	96	8.	4	4	100

M I S S I N G D A T A

CODE	FREQ	CODE	FREQ	CODE	FREQ
------	------	------	------	------	------

9. 55

MEAN 1.324 STD ERR 0.136 RANGE 7.000

VALID CASES 102 MISSING CASES 55

N.J. INMATE SURVEY 1980 FREQUENCIES

PAGE 113

05/30/81 FILE - N.J. - CREATED 05/30/81

E2B IF DIFF1

CODE	FREQ	ADJ PCT	CUM PCT	CODE	FREQ	ADJ PCT	CUM PCT	CODE	FREQ	ADJ PCT	CUM PCT
1.	6	6	6	3.	2	2	75	8.	15	15	100
2.	66	67	73	4.	10	10	85				

M I S S I N G D A T A

CODE	FREQ	CODE	FREQ	CODE	FREQ
------	------	------	------	------	------

9. 58

MEAN 3.071 STD ERR 0.221 RANGE 7.000

VALID CASES 99 MISSING CASES 58

N.J. INMATE SURVEY 1980 FREQUENCIES

PAGE 114

05/30/81 FILE - N.J. - CREATED 05/30/81

E2C IF DIFF2

CODE	FREQ	ADJ PCT	CUM PCT	CODE	FREQ	ADJ PCT	CUM PCT	CODE	FREQ	ADJ PCT	CUM PCT
2.	3	25	25	3.	6	50	75	8.	3	25	100

M I S S I N G D A T A

CODE	FREQ	CODE	FREQ	CODE	FREQ
------	------	------	------	------	------

107

9. 145

MEAN 4.000 STD ERR 0.707 RANGE 6.000

VALID CASES 12 MISSING CASES 145

N.J. INMATE SURVEY 1980 FREQUENCIES PAGE 115

05/30/81 FILE - N.J. - CREATED 05/30/81

E3 MARRIED VS. SINGLE

CODE	FREQ	ADJ CUM PCT	ADJ CUM PCT	CODE	FREQ	ADJ CUM PCT	ADJ CUM PCT	CODE	FREQ	ADJ CUM PCT	ADJ CUM PCT
1.	116	76	76	2.	33	22	98	8.	3	2	100

CODE		FREQ		MISSING DATA		CODE		FREQ	
9.		5							

MEAN 1.355 STD ERR 0.084 RANGE 7.000

VALID CASES 152 MISSING CASES 5

N.J. INMATE SURVEY 1980 FREQUENCIES PAGE 116

05/30/81 FILE - N.J. - CREATED 05/30/81

E3A WHO MORE

CODE	FREQ	ADJ CUM PCT	ADJ CUM PCT	CODE	FREQ	ADJ CUM PCT	ADJ CUM PCT	CODE	FREQ	ADJ CUM PCT	ADJ CUM PCT
1.	3	8	8	2.	27	75	83	8.	6	17	100

CODE		FREQ		MISSING DATA		CODE		FREQ	
9.		121							

MEAN 2.917 STD ERR 0.387 RANGE 7.000

VALID CASES 36 MISSING CASES 121

N.J. INMATE SURVEY 1980 FREQUENCIES

PAGE 117

05/30/81 FILE - N.J. - CREATED 05/30/81

E3B IF DIFF1

CODE	FREQ	ADJ CUM PCT	ADJ CUM PCT	CODE	FREQ	ADJ CUM PCT	ADJ CUM PCT	CODE	FREQ	ADJ CUM PCT	ADJ CUM PCT
1.	4	10	10	2.	22	55	65	8.	14	35	100

CODE		FREQ		MISSING DATA		CODE		FREQ	
9.		117							

MEAN 4.000 STD ERR 0.472 RANGE 7.000

VALID CASES 40 MISSING CASES 117

N.J. INMATE SURVEY 1980 FREQUENCIES PAGE 118

05/30/81 FILE - N.J. - CREATED 05/30/81

E3C IF DIFF2

CODE	FREQ	ADJ CUM PCT	ADJ CUM PCT	CODE	FREQ	ADJ CUM PCT	ADJ CUM PCT	CODE	FREQ	ADJ CUM PCT	ADJ CUM PCT
2.	1	50	50	8.	1	50	100				

CODE		FREQ		MISSING DATA		CODE		FREQ	
9.		155							

MEAN 5.000 STD ERR 3.000 RANGE 6.000

VALID CASES 2 MISSING CASES 155

N.J. INMATE SURVEY 1980 FREQUENCIES PAGE 119

05/30/81 FILE - N.J. - CREATED 05/30/81

E4 PLEA VS. TRIAL

CODE	FREQ	ADJ CUM PCT	ADJ CUM PCT	CODE	FREQ	ADJ CUM PCT	ADJ CUM PCT	CODE	FREQ	ADJ CUM PCT	ADJ CUM PCT
109											

CODE	FREQ	PCT	PCT	CODE	FREQ	PCT	PCT	CODE	FREQ	PCT	PCT
1.	85	56	56	2.	65	42	98	8.	3	2	100
MISSING DATA											
CODE	FREQ			CODE	FREQ			CODE	FREQ		
9.	4										
MEAN	1.562			STD ERR	0.084			RANGE	7.000		
VALID CASES	153			MISSING CASES	4						

N.J. INMATE SURVEY 1980 FREQUENCIES PAGE 120
 05/30/81 FILE - N.J. - CREATED 05/30/81

E4A WHO MORE

CODE	FREQ	ADJ CUM	PCT	PCT	CODE	FREQ	ADJ CUM	PCT	PCT	CODE	FREQ	ADJ CUM	PCT	PCT
1.	22	32	32		2.	39	57	90		8.	7	10	100	
MISSING DATA														
CODE	FREQ				CODE	FREQ				CODE	FREQ			
3.	89													
MEAN	2.294				STD ERR	0.243				RANGE	7.000			
VALID CASES	68				MISSING CASES	89								

N.J. INMATE SURVEY 1980 FREQUENCIES PAGE 121
 05/30/81 FILE - N.J. - CREATED 05/30/81

E4B IF DIFF1

CODE	FREQ	ADJ CUM	PCT	PCT	CODE	FREQ	ADJ CUM	PCT	PCT	CODE	FREQ	ADJ CUM	PCT	PCT
1.	1	1	1		3.	33	48	55		8.	31	45	100	
2.	4	6	7											
MISSING DATA														
CODE	FREQ				CODE	FREQ				CODE	FREQ			
110														

9.	88										
MEAN	5.159			STD ERR	0.314			RANGE	7.000		
VALID CASES	60			MISSING CASES	98						

N.J. INMATE SURVEY 1980 FREQUENCIES PAGE 122
 05/30/81 FILE - N.J. - CREATED 05/30/81

E4C IF DIFF2

CODE	FREQ	ADJ CUM	PCT	PCT	CODE	FREQ	ADJ CUM	PCT	PCT	CODE	FREQ	ADJ CUM	PCT	PCT
2.	1	50	50		8.	1	50	100						
MISSING DATA														
CODE	FREQ				CODE	FREQ				CODE	FREQ			
9.	155													
MEAN	5.000				STD ERR	3.000				RANGE	6.000			
VALID CASES	2				MISSING CASES	155								

N.J. INMATE SURVEY 1980 FREQUENCIES PAGE 123
 05/30/81 FILE - N.J. - CREATED 05/30/81

E5 DRUG USE VS. NO USE

CODE	FREQ	ADJ CUM	PCT	PCT	CODE	FREQ	ADJ CUM	PCT	PCT	CODE	FREQ	ADJ CUM	PCT	PCT
1.	55	36	36		2.	95	63	99		8.	1	1	100	
MISSING DATA														
CODE	FREQ				CODE	FREQ				CODE	FREQ			
9.	6													
MEAN	1.675				STD ERR	0.058				RANGE	7.000			
VALID CASES	151				MISSING CASES	6								

N.J. INMATE SURVEY 1980 FREQUENCIES

05/30/81 FILE - N.J. - CREATED 05/30/81

E5A WHO MORE

CODE	FREQ	ADJ PCT	CUM PCT	CODE	FREQ	ADJ PCT	CUM PCT	CODE	FREQ	ADJ PCT	CUM PCT
1.	19	20	20	2.	67	70	90	8.	10	10	100

CODE		FREQ	MISSING DATA		CODE	FREQ
9.		61				

MEAN	2.427	STD ERR	0.199	RANGE	7.000
VALID CASES	96	MISSING CASES	61		

N.J. INMATE SURVEY 1980 FREQUENCIES

05/30/81 FILE - N.J. - CREATED 05/30/81

E5B IF DIFF1

CODE	FREQ	ADJ PCT	CUM PCT	CODE	FREQ	ADJ PCT	CUM PCT	CODE	FREQ	ADJ PCT	CUM PCT
1.	3	3	3	3.	31	31	60				
2.	26	26	29	8.	40	40	100				

CODE		FREQ	MISSING DATA		CODE	FREQ
9.		57				

MEAN	4.690	STD ERR	0.276	RANGE	7.000
VALID CASES	100	MISSING CASES	57		

N.J. INMATE SURVEY 1980 FREQUENCIES

05/30/81 FILE - N.J. - CREATED 05/30/81

E5C IF DIFF2

CODE	FREQ	ADJ PCT	CUM PCT	CODE	FREQ	ADJ PCT	CUM PCT	CODE	FREQ	ADJ PCT	CUM PCT
2.	1	25	25	3.	1	25	50	8.	2	50	100

CODE		FREQ	MISSING DATA		CODE	FREQ
9.		153				

MEAN	5.250	STD ERR	1.601	RANGE	6.000
VALID CASES	4	MISSING CASES	153		

N.J. INMATE SURVEY 1980 FREQUENCIES

05/30/81 FILE - N.J. - CREATED 05/30/81

E6 OLD VS. YOUNG

CODE	FREQ	ADJ PCT	CUM PCT	CODE	FREQ	ADJ PCT	CUM PCT	CODE	FREQ	ADJ PCT	CUM PCT
1.	86	56	56	2.	66	43	99	8.	1	1	100

CODE		FREQ	MISSING DATA		CODE	FREQ
9.		4				

MEAN	1.477	STD ERR	0.059	RANGE	7.000
VALID CASES	153	MISSING CASES	4		

N.J. INMATE SURVEY 1980 FREQUENCIES

05/30/81 FILE - N.J. - CREATED 05/30/81

E6A WHO MORE

CODE	FREQ	ADJ PCT	CUM PCT	CODE	FREQ	ADJ PCT	CUM PCT	CODE	FREQ	ADJ PCT	CUM PCT
1.	53	80	80	2.	9	14	94	8.	4	6	100

CODE		FREQ	MISSING DATA		CODE	FREQ
9.						

9. 91

MEAN 1.561 STD ERR 0.207 RANGE 7.000

VALID CASES 66 MISSING CASES 91

N.J. INMATE SURVEY 1980 FREQUENCIES PAGE 129

05/30/81 FILE - N.J. - CREATED 05/30/81

E6B IF DIFF1

CODE	FREQ	ADJ PCT	CUM PCT	CODE	FREQ	ADJ PCT	CUM PCT	CODE	FREQ	ADJ PCT	CUM PCT
1.	1	1	1	3.	37	53	64				
2.	7	10	11	8.	25	36	100				

CODE	FREQ	ADJ PCT	CUM PCT	CODE	FREQ	ADJ PCT	CUM PCT
9.	87						

MEAN 4.657 STD ERR 0.303 RANGE 7.000

VALID CASES 70 MISSING CASES 87

N.J. INMATE SURVEY 1980 FREQUENCIES PAGE 130

05/30/81 FILE - N.J. - CREATED 05/30/81

E6C IF DIFF2

CODE	FREQ	ADJ PCT	CUM PCT	CODE	FREQ	ADJ PCT	CUM PCT	CODE	FREQ	ADJ PCT	CUM PCT
2.	1	11	11	3.	2	22	33	8.	6	67	100

CODE	FREQ	ADJ PCT	CUM PCT	CODE	FREQ	ADJ PCT	CUM PCT
9.	148						

MEAN 6.222 STD ERR 0.894 RANGE 6.000

VALID CASES 9 MISSING CASES 148

N.J. INMATE SURVEY 1980 FREQUENCIES

05/30/81 FILE - N.J. - CREATED 05/30/81

E7 SCHOOL VS. NO SCHOOL

CODE	FREQ	ADJ PCT	CUM PCT	CODE	FREQ	ADJ PCT	CUM PCT	CODE	FREQ	ADJ PCT	CUM PCT
1.	110	72	72	2.	40	26	98	8.	3	2	100

CODE	FREQ	ADJ PCT	CUM PCT	CODE	FREQ	ADJ PCT	CUM PCT
9.	4						

MEAN 1.399 STD ERR 0.084 RANGE 7.000

VALID CASES 153 MISSING CASES 4

N.J. INMATE SURVEY 1980 FREQUENCIES PAGE 132

05/30/81 FILE - N.J. - CREATED 05/30/81

E7A WHO MORE

CODE	FREQ	ADJ PCT	CUM PCT	CODE	FREQ	ADJ PCT	CUM PCT	CODE	FREQ	ADJ PCT	CUM PCT
1.	6	15	15	2.	33	80	95	8.	2	5	100

CODE	FREQ	ADJ PCT	CUM PCT	CODE	FREQ	ADJ PCT	CUM PCT
9.	116						

MEAN 2.146 STD ERR 0.217 RANGE 7.000

VALID CASES 41 MISSING CASES 116

N.J. INMATE SURVEY 1980 FREQUENCIES PAGE 133

05/30/81 FILE - N.J. - CREATED 05/30/81

E7B IF DIFF1

CODE	FREQ	ADJ PCT	CUM PCT	CODE	FREQ	ADJ PCT	CUM PCT	CODE	FREQ	ADJ PCT	CUM PCT
2.	25	54	54	8.	21	46	100				

MISSING DATA			
CODE	FREQ	CODE	FREQ
9.	111		

MEAN	4.739	STD ERR	0.446	RANGE	6.000
VALID CASES	46	MISSING CASES	111		

N.J. INMATE SURVEY 1980 FREQUENCIES PAGE 134

05/30/81 FILE - N.J. - CREATED 05/30/81

E7C IF DIFF2

CODE	FREQ	ADJ PCT	CUM PCT	CODE	FREQ	ADJ PCT	CUM PCT	CODE	FREQ	ADJ PCT	CUM PCT
1.	1	50	50	8.	1	50	100				

MISSING DATA			
CODE	FREQ	CODE	FREQ
9.	155		

MEAN	4.500	STD ERR	3.500	RANGE	7.000
VALID CASES	2	MISSING CASES	155		

N.J. INMATE SURVEY 1980 FREQUENCIES PAGE 135

05/30/81 FILE - N.J. - CREATED 05/30/81

E8 JOB VS. NOJOB

CODE	FREQ	ADJ PCT	CUM PCT	CODE	FREQ	ADJ PCT	CUM PCT	CODE	FREQ	ADJ PCT	CUM PCT
1.	92	60	60	2.	56	37	97	8.	5	3	100

MISSING DATA			
CODE	FREQ	CODE	FREQ

MEAN	1.595	STD ERR	0.103	RANGE	7.000
------	-------	---------	-------	-------	-------

VALID CASES	153	MISSING CASES	4
-------------	-----	---------------	---

N.J. INMATE SURVEY 1980 FREQUENCIES PAGE 136

05/30/81 FILE - N.J. - CREATED 05/30/81

E9A WHO MORE

CODE	FREQ	ADJ PCT	CUM PCT	CODE	FREQ	ADJ PCT	CUM PCT	CODE	FREQ	ADJ PCT	CUM PCT
1.	41	72	72	2.	15	26	98	8.	1	2	100

MISSING DATA			
CODE	FREQ	CODE	FREQ
9.	100		

MEAN	1.306	STD ERR	0.132	RANGE	7.000
VALID CASES	57	MISSING CASES	100		

N.J. INMATE SURVEY 1980 FREQUENCIES PAGE 137

05/30/81 FILE - N.J. - CREATED 05/30/81

E9B IF DIFF1

CODE	FREQ	ADJ PCT	CUM PCT	CODE	FREQ	ADJ PCT	CUM PCT	CODE	FREQ	ADJ PCT	CUM PCT
1.	3	5	5	3.	5	8	70				
2.	36	57	62	8.	19	30	100				

MISSING DATA			
CODE	FREQ	CODE	FREQ
9.	94		

MEAN	3.841	STD ERR	0.350	RANGE	7.000
VALID CASES	63	MISSING CASES	94		

N.J. INMATE SURVEY 1980 FREQUENCIES

PAGE 138

05/30/81 FILE - N.J. - CREATED 05/30/81

E8C IF DIFF2

CODE	FREQ	ADJ CUM PCT	ADJ CUM PCT	CODE	FREQ	ADJ CUM PCT	ADJ CUM PCT	CODE	FREQ	ADJ CUM PCT	ADJ CUM PCT
2.	1	50	50	3.	1	50	100				

CODE	FREQ	M I S S I N G D A T A	CODE	FREQ	CODE	FREQ
9.	155					

MEAN 5.000 STD ERR 3.000 RANGE 6.000

VALID CASES 2 MISSING CASES 155

N.J. INMATE SURVEY 1980 FREQUENCIES

PAGE 139

05/30/81 FILE - N.J. - CREATED 05/30/81

E9 MALE VS. FEMALE

CODE	FREQ	ADJ CUM PCT	ADJ CUM PCT	CODE	FREQ	ADJ CUM PCT	ADJ CUM PCT	CODE	FREQ	ADJ CUM PCT	ADJ CUM PCT
1.	110	72	72	2.	40	26	98	3.	2	100	

CODE	FREQ	M I S S I N G D A T A	CODE	FREQ	CODE	FREQ
9.	4					

MEAN 1.399 STD ERR 0.084 RANGE 7.000

VALID CASES 153 MISSING CASES 4

N.J. INMATE SURVEY 1980 FREQUENCIES

PAGE 140

05/30/81 FILE - N.J. - CREATED 05/30/81

E9A WHO MORE

118

CODE	FREQ	ADJ CUM PCT	ADJ CUM PCT	CODE	FREQ	ADJ CUM PCT	ADJ CUM PCT	CODE	FREQ	ADJ CUM PCT	ADJ CUM PCT
1.	2	5	5	2.	36	90	95	8.	2	5	100

CODE	FREQ	M I S S I N G D A T A	CODE	FREQ	CODE	FREQ
9.	117					

MEAN 2.250 STD ERR 0.214 RANGE 7.000

VALID CASES 40 MISSING CASES 117

N.J. INMATE SURVEY 1980 FREQUENCIES

PAGE 141

05/30/81 FILE - N.J. - CREATED 05/30/81

E9B IF DIFF1

CODE	FREQ	ADJ CUM PCT	ADJ CUM PCT	CODE	FREQ	ADJ CUM PCT	ADJ CUM PCT	CODE	FREQ	ADJ CUM PCT	ADJ CUM PCT
1.	2	6	6	3.	8	25	50				
2.	6	19	25	8.	16	50	100				

CODE	FREQ	M I S S I N G D A T A	CODE	FREQ	CODE	FREQ
9.	125					

MEAN 5.198 STD ERR 0.513 RANGE 7.000

VALID CASES 32 MISSING CASES 125

N.J. INMATE SURVEY 1980 FREQUENCIES

PAGE 142

05/30/81 FILE - N.J. - CREATED 05/30/81

E9C IF DIFF2

CODE	FREQ	ADJ CUM PCT	ADJ CUM PCT	CODE	FREQ	ADJ CUM PCT	ADJ CUM PCT	CODE	FREQ	ADJ CUM PCT	ADJ CUM PCT
2.	1	33	33	8.	2	67	100				

CODE	FREQ	M I S S I N G D A T A	CODE	FREQ	CODE	FREQ
119						

9. 154

MEAN 6.000 STD ERR 2.000 RANGE 6.000
VALID CASES 3 MISSING CASES 154

N.J. INMATE SURVEY 1980 FREQUENCIES PAGE 143
05/30/81 FILE - N.J. - CREATED 05/30/81

CODE4

CODE	FREQ	ADJ PCT	CUM PCT	CODE	FREQ	ADJ PCT	CUM PCT	CODE	FREQ	ADJ PCT	CUM PCT
1.	1	1	1	96.	1	1	34	193.	1	1	68
2.	1	1	1	98.	1	1	35	196.	1	1	69
3.	1	1	2	99.	1	1	36	198.	1	1	69
4.	1	1	3	100.	1	1	36	200.	1	1	70
7.	1	1	3	102.	1	1	37	208.	1	1	71
11.	1	1	4	104.	1	1	38	210.	1	1	71
12.	1	1	4	105.	1	1	38	212.	1	1	72
14.	1	1	5	106.	1	1	39	216.	1	1	73
15.	1	1	6	107.	1	1	39	218.	1	1	73
16.	1	1	6	110.	1	1	40	220.	1	1	74
18.	1	1	7	111.	1	1	41	228.	1	1	75
19.	1	1	8	112.	1	1	41	230.	1	1	75
20.	1	1	8	114.	1	1	42	232.	1	1	76
22.	1	1	9	116.	1	1	43	236.	1	1	76
26.	1	1	10	118.	1	1	43	240.	1	1	77
28.	1	1	10	122.	1	1	44	244.	1	1	78
31.	1	1	11	123.	1	1	45	248.	1	1	78
32.	1	1	11	124.	1	1	45	252.	1	1	79
34.	1	1	12	125.	1	1	46	254.	1	1	80
35.	1	1	13	128.	1	1	46	256.	1	1	80
36.	1	1	13	131.	1	1	47	266.	1	1	81
40.	1	1	14	139.	1	1	48	272.	1	1	82
42.	1	1	15	140.	1	1	48	274.	1	1	82
44.	1	1	15	141.	1	1	49	276.	1	1	83
48.	1	1	16	145.	1	1	50	280.	1	1	83
50.	1	1	17	146.	1	1	50	282.	1	1	84
52.	1	1	17	148.	1	1	51	286.	1	1	85
53.	1	1	18	150.	1	1	52	290.	1	1	85
54.	1	1	18	152.	1	1	52	296.	1	1	86
55.	1	1	19	156.	1	1	53	302.	1	1	87
58.	1	1	20	160.	1	1	54	306.	1	1	87
59.	1	1	20	162.	1	1	54	308.	1	1	88
61.	1	1	21	165.	1	1	55	312.	1	1	89
64.	1	1	22	166.	1	1	55	314.	1	1	89
66.	1	1	22	168.	1	1	56	320.	1	1	90
67.	1	1	23	169.	1	1	57	324.	1	1	90
68.	1	1	24	170.	1	1	57	330.	1	1	91
69.	1	1	24	171.	1	1	58	332.	1	1	92
70.	1	1	25	172.	1	1	59	340.	1	1	92
72.	1	1	25	175.	1	1	59	348.	1	1	93

120

73.	1	1	26	176.	1	1	60	354.	1	1	94
75.	1	1	27	177.	1	1	61	358.	1	1	94
77.	1	1	27	178.	1	1	61	360.	1	1	95
78.	1	1	28	179.	1	1	62	382.	1	1	96
82.	1	1	29	181.	1	1	62	402.	1	1	96
83.	1	1	29	182.	1	1	63	404.	1	1	97
84.	1	1	30	183.	1	1	64	406.	1	1	97
86.	1	1	31	184.	1	1	64	408.	1	1	98
89.	1	1	31	186.	1	1	65	410.	1	1	99
90.	1	1	32	187.	1	1	66	412.	1	1	99
92.	1	1	32	188.	1	1	66	414.	1	1	100
93.	1	1	33	189.	1	1	67				
94.	1	1	34	191.	1	1	68				

MEAN 160.255 STD ERR 8.735 RANGE 413.000
VALID CASES 157 MISSING CASES 0

N.J. INMATE SURVEY 1980 FREQUENCIES PAGE 144
05/30/81 FILE - N.J. - CREATED 05/30/81

CARD4

CODE	FREQ	ADJ PCT	CUM PCT	CODE	FREQ	ADJ PCT	CUM PCT	CODE	FREQ	ADJ PCT	CUM PCT
4.	157	100	100								

MEAN 4.000 STD ERR 0.0 RANGE 0.0
VALID CASES 157 MISSING CASES 0

N.J. INMATE SURVEY 1980 FREQUENCIES PAGE 145
05/30/81 FILE - N.J. - CREATED 05/30/81

F1 12MJ OR 1-3PRISON

CODE	FREQ	ADJ PCT	CUM PCT	CODE	FREQ	ADJ PCT	CUM PCT	CODE	FREQ	ADJ PCT	CUM PCT
1.	110	71	71	2.	42	27	97	3.	4	3	100

M I S S I N G D A T A
CODE FREQ CODE FREQ CODE FREQ

9. 1

121.

MEAN 1.321 STD ERR 0.042 RANGE 2.000
VALID CASES 156 MISSING CASES 1

N.J. INMATE SURVEY 1980 FREQUENCIES PAGE 146
05/30/81 FILE - N.J. - CREATED 05/30/81

F2 LIFE NOPAROLE OR DEATH

CODE	FREQ	ADJ PCT	CUM PCT	CODE	FREQ	ADJ PCT	CUM PCT	CODE	FREQ	ADJ PCT	CUM PCT
1.	96	62	62	2.	57	37	99	3.	2	1	100

M I S S I N G D A T A

CODE	FREQ	CODE	FREQ	CODE	FREQ
9.	2				

MEAN 1.394 STD ERR 0.041 RANGE 2.000
VALID CASES 155 MISSING CASES 2

N.J. INMATE SURVEY 1980 FREQUENCIES PAGE 147
05/30/81 FILE - N.J. - CREATED 05/30/81

F3 3-5PRISON OR 18MJ

CODE	FREQ	ADJ PCT	CUM PCT	CODE	FREQ	ADJ PCT	CUM PCT	CODE	FREQ	ADJ PCT	CUM PCT
1.	39	25	25	2.	113	72	97	3.	4	3	100

M I S S I N G D A T A

CODE	FREQ	CODE	FREQ	CODE	FREQ
9.	1				

MEAN 1.776 STD ERR 0.038 RANGE 2.000
VALID CASES 156 MISSING CASES 1

N.J. INMATE SURVEY 1980 FREQUENCIES PAGE 148
122 FILE - N.J. - CREATED 05/30/81

F4 5YPPOR OR 6MJ

CODE	FREQ	ADJ PCT	CUM PCT	CODE	FREQ	ADJ PCT	CUM PCT	CODE	FREQ	ADJ PCT	CUM PCT
1.	58	37	37	2.	99	63	100				

MEAN 1.531 STD ERR 0.039 RANGE 1.000
VALID CASES 157 MISSING CASES 0

N.J. INMATE SURVEY 1980 FREQUENCIES PAGE 149
05/30/81 FILE - N.J. - CREATED 05/30/81

F5 6MPROB OR 6MJ

CODE	FREQ	ADJ PCT	CUM PCT	CODE	FREQ	ADJ PCT	CUM PCT	CODE	FREQ	ADJ PCT	CUM PCT
1.	144	92	92	2.	13	8	100				

MEAN 1.083 STD ERR 0.022 RANGE 1.000
VALID CASES 157 MISSING CASES 0

N.J. INMATE SURVEY 1980 FREQUENCIES PAGE 150
05/30/81 FILE - N.J. - CREATED 05/30/81

F6 2YPROB OR 150

CODE	FREQ	ADJ PCT	CUM PCT	CODE	FREQ	ADJ PCT	CUM PCT	CODE	FREQ	ADJ PCT	CUM PCT
1.	1	1	1	2.	156	99	100				

MEAN 1.994 STD ERR 0.006 RANGE 1.000
VALID CASES 157 MISSING CASES 0

N.J. INMATE SURVEY 1980 FREQUENCIES PAGE 151
05/30/81 FILE - N.J. - CREATED 05/30/81
123

F7 6MJ OR 2YPROB

CODE	FREQ	ADJ PCT	CUM PCT	CODE	FREQ	ADJ PCT	CUM PCT	CODE	FREQ	ADJ PCT	CUM PCT
1.	63	40	40	2.	94	60	100				

MEAN	1.599	STD ERR	0.039	RANGE	1.000
------	-------	---------	-------	-------	-------

VALID CASES	157	MISSING CASES	0
-------------	-----	---------------	---

N.J. INMATE SURVEY 1980 FREQUENCIES

PAGE 152

05/30/81 FILE - N.J. - CREATED 05/30/81

F8 5YPROB OR 12MJ

CODE	FREQ	ADJ PCT	CUM PCT	CODE	FREQ	ADJ PCT	CUM PCT	CODE	FREQ	ADJ PCT	CUM PCT
1.	90	57	57	2.	67	43	100				

MEAN	1.427	STD ERR	0.040	RANGE	1.000
------	-------	---------	-------	-------	-------

VALID CASES	157	MISSING CASES	0
-------------	-----	---------------	---

N.J. INMATE SURVEY 1980 FREQUENCIES

PAGE 153

05/30/81 FILE - N.J. - CREATED 05/30/81

F9 18MJ OR 1YPROB

CODE	FREQ	ADJ PCT	CUM PCT	CODE	FREQ	ADJ PCT	CUM PCT	CODE	FREQ	ADJ PCT	CUM PCT
1.	7	4	4	2.	149	96	100				

MEAN	1.955	STD ERR	0.017	RANGE	1.000
------	-------	---------	-------	-------	-------

VALID CASES	156	MISSING CASES	1
-------------	-----	---------------	---

124

N.J. INMATE SURVEY 1980 FREQUENCIES

PAGE 154

05/30/81 FILE - N.J. - CREATED 05/30/81

F10 5YPROB OR 3500

CODE	FREQ	ADJ PCT	CUM PCT	CODE	FREQ	ADJ PCT	CUM PCT	CODE	FREQ	ADJ PCT	CUM PCT
1.	17	11	11	2.	140	89	100				

MEAN	1.892	STD ERR	0.025	RANGE	1.000
------	-------	---------	-------	-------	-------

VALID CASES	157	MISSING CASES	0
-------------	-----	---------------	---

N.J. INMATE SURVEY 1980 FREQUENCIES

PAGE 155

05/30/81 FILE - N.J. - CREATED 05/30/81

F11 5YPROB OR 1-3PRISON

CODE	FREQ	ADJ PCT	CUM PCT	CODE	FREQ	ADJ PCT	CUM PCT	CODE	FREQ	ADJ PCT	CUM PCT
1.	110	70	70	2.	47	30	100				

MEAN	1.299	STD ERR	0.037	RANGE	1.000
------	-------	---------	-------	-------	-------

VALID CASES	157	MISSING CASES	0
-------------	-----	---------------	---

N.J. INMATE SURVEY 1980 FREQUENCIES

PAGE 156

05/30/81 FILE - N.J. - CREATED 05/30/81

F12 20-25PRISON OR LIFE

CODE	FREQ	ADJ PCT	CUM PCT	CODE	FREQ	ADJ PCT	CUM PCT	CODE	FREQ	ADJ PCT	CUM PCT
1.	121	78	78	2.	33	21	99	3.	2	1	100

MEAN	1.237	STD ERR	0.037	RANGE	2.000
------	-------	---------	-------	-------	-------

VALID CASES	125	MISSING CASES	1
-------------	-----	---------------	---

125

VALID CASES 156 MISSING CASES 1

N.J. INMATE SURVEY 1980 FREQUENCIES

PAGE 157

05/30/81 FILE - N.J. - CREATED 05/30/81

F13 18MJ OR 1-3PRISON

CODE	FREQ	ADJ PCT	CUM PCT	CODE	FREQ	ADJ PCT	CUM PCT	CODE	FREQ	ADJ PCT	CUM PCT
1.	69	44	44	2.	86	55	99	3.	2	1	100

MEAN 1.573 STD ERR 0.042 RANGE 2.000

VALID CASES 157 MISSING CASES 0

N.J. INMATE SURVEY 1980 FREQUENCIES

PAGE 158

05/30/81 FILE - N.J. - CREATED 05/30/81

F14 2YPROB OR 12MJ

CODE	FREQ	ADJ PCT	CUM PCT	CODE	FREQ	ADJ PCT	CUM PCT	CODE	FREQ	ADJ PCT	CUM PCT
1.	129	82	82	2.	28	18	100				

MEAN 1.178 STD ERR 0.031 RANGE 1.000

VALID CASES 157 MISSING CASES 0

N.J. INMATE SURVEY 1980 FREQUENCIES

PAGE 159

05/30/81 FILE - N.J. - CREATED 05/30/81

F15 \$500 OR 2YPROB

CODE	FREQ	ADJ PCT	CUM PCT	CODE	FREQ	ADJ PCT	CUM PCT	CODE	FREQ	ADJ PCT	CUM PCT
1.	128	82	82	2.	29	18	100				

MEAN 1.185 STD ERR 0.031 RANGE 1.000

126

VALID CASES 157 MISSING CASES 0

N.J. INMATE SURVEY 1980 FREQUENCIES

PAGE 160

05/30/81 FILE - N.J. - CREATED 05/30/81

F16 6MDROB OR \$50

CODE	FREQ	ADJ PCT	CUM PCT	CODE	FREQ	ADJ PCT	CUM PCT	CODE	FREQ	ADJ PCT	CUM PCT
1.	6	4	4	2.	151	96	100				

MEAN 1.962 STD ERR 0.015 RANGE 1.000

VALID CASES 157 MISSING CASES 0

N.J. INMATE SURVEY 1980 FREQUENCIES

PAGE 161

05/30/81 FILE - N.J. - CREATED 05/30/81

F17 1-3PRISON OR 2YPROB

CODE	FREQ	ADJ PCT	CUM PCT	CODE	FREQ	ADJ PCT	CUM PCT	CODE	FREQ	ADJ PCT	CUM PCT
1.	25	16	16	2.	132	84	100				

MEAN 1.841 STD ERR 0.029 RANGE 1.000

VALID CASES 157 MISSING CASES 0

N.J. INMATE SURVEY 1980 FREQUENCIES

PAGE 162

05/30/81 FILE - N.J. - CREATED 05/30/81

F18 5YPROB OR 3-5PRISON

CODE	FREQ	ADJ PCT	CUM PCT	CODE	FREQ	ADJ PCT	CUM PCT	CODE	FREQ	ADJ PCT	CUM PCT
1.	139	89	89	2.	17	11	99	3.	1	1	100

MEAN 1.121 STD ERR 0.028 RANGE 2.000

VALID CASES 157 MISSING CASES 0

127

N.J. INMATE SURVEY 1980 FREQUENCIES

PAGE 163

05/30/81 FILE - N.J. - CREATED 05/30/81

F19 6MJ OR 1YPROB

CODE	FREQ	ADJ CUM PCT	ADJ CUM PCT	CODE	FREQ	ADJ CUM PCT	ADJ CUM PCT	CODE	FREQ	ADJ CUM PCT	ADJ CUM PCT
1.	31	20	20	2.	126	80	100				

MEAN 1.803 STD ERR 0.032 RANGE 1.000

VALID CASES 157 MISSING CASES 0

N.J. INMATE SURVEY 1980 FREQUENCIES

PAGE 164

05/30/81 FILE - N.J. - CREATED 05/30/81

F20 \$100 OR 2YPROB

CODE	FREQ	ADJ CUM PCT	ADJ CUM PCT	CODE	FREQ	ADJ CUM PCT	ADJ CUM PCT	CODE	FREQ	ADJ CUM PCT	ADJ CUM PCT
1.	147	94	94	2.	10	6	100				

MEAN 1.064 STD ERR 0.020 RANGE 1.000

VALID CASES 157 MISSING CASES 0

N.J. INMATE SURVEY 1980 FREQUENCIES

PAGE 165

05/30/81 FILE - N.J. - CREATED 05/30/81

F21 12MJ OR 1YPROB

CODE	FREQ	ADJ CUM PCT	ADJ CUM PCT	CODE	FREQ	ADJ CUM PCT	ADJ CUM PCT	CODE	FREQ	ADJ CUM PCT	ADJ CUM PCT
1.	9	6	6	2.	146	93	99	3.	2	1	100

MEAN 1.955 STD ERR 0.021 RANGE 2.000

VALID CASES 157 MISSING CASES 0

N.J. INMATE SURVEY 1980 FREQUENCIES

PAGE 166

05/30/81 FILE - N.J. - CREATED 05/30/81

F22 2YPROB OR 18MJ

CODE	FREQ	ADJ CUM PCT	ADJ CUM PCT	CODE	FREQ	ADJ CUM PCT	ADJ CUM PCT	CODE	FREQ	ADJ CUM PCT	ADJ CUM PCT
1.	142	90	90	2.	15	19	100				

MEAN 1.096 STD ERR 0.024 RANGE 1.000

VALID CASES 157 MISSING CASES 0

N.J. INMATE SURVEY 1980 FREQUENCIES

PAGE 167

05/30/81 FILE - N.J. - CREATED 05/30/81

F23 1-3PRISON OR 1YPROB

CODE	FREQ	ADJ CUM PCT	ADJ CUM PCT	CODE	FREQ	ADJ CUM PCT	ADJ CUM PCT	CODE	FREQ	ADJ CUM PCT	ADJ CUM PCT
1.	10	6	6	2.	147	94	100				

MEAN 1.936 STD ERR 0.020 RANGE 1.000

VALID CASES 157 MISSING CASES 0

N.J. INMATE SURVEY 1980 FREQUENCIES

PAGE 168

05/30/81 FILE - N.J. - CREATED 05/30/81

F24 1YPROB OR \$100

CODE	FREQ	ADJ CUM PCT	ADJ CUM PCT	CODE	FREQ	ADJ CUM PCT	ADJ CUM PCT	CODE	FREQ	ADJ CUM PCT	ADJ CUM PCT
1.	8	5	5	2.	149	95	100				

MEAN 1.949 STD ERR 0.018 RANGE 1.000

VALID CASES 157 MISSING CASES 0

N.J. INMATE SURVEY 1980 FREQUENCIES

PAGE 169

05/30/81 FILE - N.J. - CREATED 05/30/81

F25 18MJ OR 5YPROB

CODE	FREQ	ADJ PCT	CUM PCT	CODE	FREQ	ADJ PCT	CUM PCT	CODE	FREQ	ADJ PCT	CUM PCT
1.	59	38	38	2.	97	62	99	3.	1	1	100

MEAN 1.631 STD ERR 0.040 RANGE 2.000

VALID CASES 157 MISSING CASES 0

N.J. INMATE SURVEY 1980 FREQUENCIES

PAGE 170

05/30/81 FILE - N.J. - CREATED 05/30/81

F26 18MJ OR 3500

CODE	FREQ	ADJ PCT	CUM PCT	CODE	FREQ	ADJ PCT	CUM PCT	CODE	FREQ	ADJ PCT	CUM PCT
1.	9	6	6	2.	147	94	100				

MISSING DATA			
CODE	FREQ	CODE	FREQ
9.	1		

MEAN 1.942 STD ERR 0.019 RANGE 1.000

VALID CASES 156 MISSING CASES 1

N.J. INMATE SURVEY 1980 FREQUENCIES

PAGE 171

05/30/81 FILE - N.J. - CREATED 05/30/81

GVERSION

CODE	FREQ	ADJ PCT	CUM PCT	CODE	FREQ	ADJ PCT	CUM PCT	CODE	FREQ	ADJ PCT	CUM PCT
1.	74	47	47	2.	83	53	100				

130

MEAN 1.529 STD ERR 0.040 RANGE 1.000

VALID CASES 157 MISSING CASES 0

N.J. INMATE SURVEY 1980 FREQUENCIES

PAGE 172

05/30/81 FILE - N.J. - CREATED 05/30/81

G1 SEVERE 12-15 PRISON

CODE	FREQ	ADJ PCT	CUM PCT	CODE	FREQ	ADJ PCT	CUM PCT	CODE	FREQ	ADJ PCT	CUM PCT
4.	1	1	1	9.	4	3	9	14.	4	3	35
5.	1	1	1	10.	11	8	17	15.	10	7	42
6.	1	1	2	11.	3	2	19	77.	83	58	100
7.	3	2	4	12.	14	10	29				
8.	3	2	6	13.	5	3	32				

MISSING DATA			
CODE	FREQ	CODE	FREQ
99.	14		

MEAN 49.434 STD ERR 2.725 RANGE 73.000

VALID CASES 143 MISSING CASES 14

N.J. INMATE SURVEY 1980 FREQUENCIES

PAGE 173

05/30/81 FILE - N.J. - CREATED 05/30/81

G2 SEVERE 18MJ

CODE	FREQ	ADJ PCT	CUM PCT	CODE	FREQ	ADJ PCT	CUM PCT	CODE	FREQ	ADJ PCT	CUM PCT
1.	8	6	6	5.	8	6	34	11.	1	1	40
2.	16	12	17	6.	2	1	35	15.	1	1	40
3.	11	8	25	7.	4	3	38	77.	83	60	100
4.	4	3	28	10.	1	1	39				

MISSING DATA			
CODE	FREQ	CODE	FREQ
99.	18		

MEAN 47.453 STD ERR 3.065 RANGE 76.000

131

VALID CASES 139 MISSING CASES 18

N.J. INMATE SURVEY 1980 FREQUENCIES PAGE 174

05/30/81 FILE - N.J. - CREATED 05/30/81

G3 SEVERE \$50

CODE	FREQ	ADJ PCT	CUM PCT	CODE	FREQ	ADJ PCT	CUM PCT	CODE	FREQ	ADJ PCT	CUM PCT
1.	128	84	84	3.	6	4	99				
2.	17	11	95	7.	1	1	100				

MISSING DATA

CODE	FREQ	CODE	FREQ	CODE	FREQ
99.	5				

MEAN 1.230 STD ERR 0.055 RANGE 6.000

VALID CASES 152 MISSING CASES 5

N.J. INMATE SURVEY 1980 FREQUENCIES PAGE 175

05/30/81 FILE - N.J. - CREATED 05/30/81

G4 SEVERE \$100

CODE	FREQ	ADJ PCT	CUM PCT	CODE	FREQ	ADJ PCT	CUM PCT	CODE	FREQ	ADJ PCT	CUM PCT
1.	112	73	73	4.	3	2	98	10.	1	1	100
2.	31	20	93	5.	1	1	99				
3.	4	3	96	7.	1	1	99				

MISSING DATA

CODE	FREQ	CODE	FREQ	CODE	FREQ
99.	4				

MEAN 1.438 STD ERR 0.087 RANGE 9.000

VALID CASES 153 MISSING CASES 4

N.J. INMATE SURVEY 1980 FREQUENCIES PAGE 176

132

05/30/81 FILE - N.J. - CREATED 05/30/81

G5 SEVERE \$500

CODE	FREQ	ADJ PCT	CUM PCT	CODE	FREQ	ADJ PCT	CUM PCT	CODE	FREQ	ADJ PCT	CUM PCT
1.	60	43	43	4.	12	8	86	7.	2	1	98
2.	31	20	63	5.	12	8	94	8.	2	1	99
3.	23	15	78	6.	4	3	97	9.	1	1	100

MISSING DATA

CODE	FREQ	CODE	FREQ	CODE	FREQ
99.	4				

MEAN 2.405 STD ERR 0.140 RANGE 8.000

VALID CASES 153 MISSING CASES 4

N.J. INMATE SURVEY 1980 FREQUENCIES PAGE 177

05/30/81 FILE - N.J. - CREATED 05/30/81

G6 SEVERE \$6PROB

CODE	FREQ	ADJ PCT	CUM PCT	CODE	FREQ	ADJ PCT	CUM PCT	CODE	FREQ	ADJ PCT	CUM PCT
1.	105	68	68	4.	3	2	96	8.	1	1	100
2.	27	18	86	5.	3	2	98				
3.	13	8	94	6.	2	1	99				

MISSING DATA

CODE	FREQ	CODE	FREQ	CODE	FREQ
99.	3				

MEAN 1.591 STD ERR 0.092 RANGE 7.000

VALID CASES 154 MISSING CASES 3

N.J. INMATE SURVEY 1980 FREQUENCIES PAGE 178

05/30/81 FILE - N.J. - CREATED 05/30/81

G7 SEVERE 1YPROB

133

CODE	FREQ	ADJ CUM PCT	ADJ CUM PCT	CODE	FREQ	ADJ CUM PCT	ADJ CUM PCT	CODE	FREQ	ADJ CUM PCT	ADJ CUM PCT
1.	100	65	65	3.	13	8	98	6.	1	1	99
2.	39	25	90	4.	1	1	99	7.	1	1	100

CODE	FREQ	M I S S I N G D A T A	CODE	FREQ	CODE	FREQ
99.	2					

MEAN 1.510 STD ERR 0.071 RANGE 6.000
 VALID CASES 155 MISSING CASES 2

N.J. INMATE SURVEY 1980 FREQUENCIES PAGE 179

05/30/81 FILE - N.J. - CREATED 05/30/81

G9 SEVERE 2YPROB

CODE	FREQ	ADJ CUM PCT	ADJ CUM PCT	CODE	FREQ	ADJ CUM PCT	ADJ CUM PCT	CODE	FREQ	ADJ CUM PCT	ADJ CUM PCT
1.	70	45	45	4.	10	6	95	8.	1	1	99
2.	48	31	77	5.	4	3	98	10.	1	1	100
3.	19	12	89	6.	1	1	99				

CODE	FREQ	M I S S I N G D A T A	CODE	FREQ	CODE	FREQ
99.	3					

MEAN 1.994 STD ERR 0.109 RANGE 9.000
 VALID CASES 154 MISSING CASES 3

N.J. INMATE SURVEY 1980 FREQUENCIES PAGE 180

05/30/81 FILE - N.J. - CREATED 05/30/81

G9 SEVERE 5YPROB

CODE	FREQ	ADJ CUM PCT	ADJ CUM PCT	CODE	FREQ	ADJ CUM PCT	ADJ CUM PCT	CODE	FREQ	ADJ CUM PCT	ADJ CUM PCT
1.	31	20	20	5.	16	10	87	10.	1	1	99
2.	34	22	42	6.	7	4	92	13.	1	1	99
3.	31	20	62	7.	4	3	94	15.	1	1	100

134

4. 24 15 77 9. 6 4 98

CODE	FREQ	M I S S I N G D A T A	CODE	FREQ	CODE	FREQ
99.	1					

MEAN 3.359 STD ERR 0.181 RANGE 14.000
 VALID CASES 156 MISSING CASES 1

N.J. INMATE SURVEY 1980 FREQUENCIES PAGE 181

05/30/81 FILE - N.J. - CREATED 05/30/81

G10 SEVERE 6MJ

CODE	FREQ	ADJ CUM PCT	ADJ CUM PCT	CODE	FREQ	ADJ CUM PCT	ADJ CUM PCT	CODE	FREQ	ADJ CUM PCT	ADJ CUM PCT
1.	60	38	38	4.	9	6	92	7.	1	1	98
2.	45	29	67	5.	5	3	95	8.	2	1	99
3.	29	19	86	6.	4	3	97	10.	1	1	100

CODE	FREQ	M I S S I N G D A T A	CODE	FREQ	CODE	FREQ
99.	1					

MEAN 2.276 STD ERR 0.126 RANGE 9.000
 VALID CASES 156 MISSING CASES 1

N.J. INMATE SURVEY 1980 FREQUENCIES PAGE 182

05/30/81 FILE - N.J. - CREATED 05/30/81

G11 SEVERE 12MJ

CODE	FREQ	ADJ CUM PCT	ADJ CUM PCT	CODE	FREQ	ADJ CUM PCT	ADJ CUM PCT	CODE	FREQ	ADJ CUM PCT	ADJ CUM PCT
1.	31	20	20	5.	11	7	90	10.	2	1	99
2.	51	32	52	6.	8	5	96	15.	1	1	100
3.	27	17	69	8.	3	2	97				
4.	22	14	83	9.	1	1	98				

MEAN 3.013 STD ERR 0.165 RANGE 14.000
 135

VALID CASES 157 MISSING CASES 0

N.J. INMATE SURVEY 1980 FREQUENCIES

PAGE 183

05/30/81 FILE - N.J. - CREATED 05/30/81

G12 SEVERE 1-3PRISON

CODE	FREQ	ADJ PCT	CUM PCT	CODE	FREQ	ADJ PCT	CUM PCT	CODE	FREQ	ADJ PCT	CUM PCT
1.	8	5	5	5.	26	17	81	9.	3	2	99
2.	36	23	28	6.	16	10	91	15.	2	1	100
3.	34	22	50	7.	7	4	96				
4.	22	14	64	8.	2	1	97				

MISSING DATA

CODE	FREQ	CODE	FREQ	CODE	FREQ
99.	1				

MEAN 3.962 STD ERR 0.176 RANGE 14.000

VALID CASES 156 MISSING CASES 1

N.J. INMATE SURVEY 1980 FREQUENCIES

PAGE 184

05/30/81 FILE - N.J. - CREATED 05/30/81

G13 SEVERE 3-5PRISON

CODE	FREQ	ADJ PCT	CUM PCT	CODE	FREQ	ADJ PCT	CUM PCT	CODE	FREQ	ADJ PCT	CUM PCT
1.	1	1	1	5.	29	18	57	9.	2	1	96
2.	8	5	6	6.	37	24	80	10.	4	3	99
3.	24	15	21	7.	18	11	92	15.	2	1	100
4.	27	17	38	8.	5	3	95				

MEAN 5.210 STD ERR 0.168 RANGE 14.000

VALID CASES 157 MISSING CASES 0

N.J. INMATE SURVEY 1980 FREQUENCIES

PAGE 185

05/30/81 FILE - N.J. - CREATED 05/30/81

G14 SEVERE 5-7PRISON

CODE	FREQ	ADJ PCT	CUM PCT	CODE	FREQ	ADJ PCT	CUM PCT	CODE	FREQ	ADJ PCT	CUM PCT
1.	2	1	1	5.	27	17	33	9.	9	6	94
2.	2	1	3	6.	35	22	55	10.	4	3	97
3.	6	4	6	7.	27	17	73	11.	3	2	99
4.	15	10	16	8.	25	16	89	15.	2	1	100

MEAN 6.392 STD ERR 0.170 RANGE 14.000

VALID CASES 157 MISSING CASES 0

N.J. INMATE SURVEY 1980 FREQUENCIES

PAGE 186

05/30/81 FILE - N.J. - CREATED 05/30/81

G15 SEVERE 7-10PRISON

CODE	FREQ	ADJ PCT	CUM PCT	CODE	FREQ	ADJ PCT	CUM PCT	CODE	FREQ	ADJ PCT	CUM PCT
3.	3	2	2	3.	39	25	64	13.	1	1	96
4.	5	3	5	9.	20	13	76	14.	1	1	96
5.	8	5	10	10.	18	11	88	15.	6	4	100
6.	19	12	22	11.	5	3	91				
7.	26	17	39	12.	6	4	95				

MEAN 8.159 STD ERR 0.193 RANGE 12.000

VALID CASES 157 MISSING CASES 0

N.J. INMATE SURVEY 1980 FREQUENCIES

PAGE 187

05/30/81 FILE - N.J. - CREATED 05/30/81

G16 SEVERE 10-12PRISON

CODE	FREQ	ADJ PCT	CUM PCT	CODE	FREQ	ADJ PCT	CUM PCT	CODE	FREQ	ADJ PCT	CUM PCT
4.	2	1	1	8.	14	9	24	12.	20	13	87
5.	5	3	4	9.	31	20	44	13.	11	7	94
6.	9	6	10	10.	32	21	64	14.	2	1	95
7.	7	4	15	11.	15	10	74	15.	9	5	100

MISSING DATA

CODE	FREQ	CODE	FREQ	CODE	FREQ
159					

99. 1

MEAN 9.891 STD ERR 0.195 RANGE 11.000

VALID CASES 156 MISSING CASES 1

N.J. INMATE SURVEY 1980 FREQUENCIES PAGE 188

05/30/81 FILE - N.J. - CREATED 05/30/81

G17 SEVERE 15-20PRISON

CODE	FREQ	ADJ PCT	CUM PCT	CODE	FREQ	ADJ PCT	CUM PCT	CODE	FREQ	ADJ PCT	CUM PCT
2.	1	1	1	8.	3	2	5	12.	35	22	54
4.	1	1	1	9.	10	6	11	13.	23	15	68
5.	2	1	3	10.	16	10	22	14.	18	11	80
7.	1	1	3	11.	15	10	31	15.	32	20	100

MEAN 12.185 STD ERR 0.190 RANGE 13.000

VALID CASES 157 MISSING CASES 0

N.J. INMATE SURVEY 1980 FREQUENCIES PAGE 189

05/30/81 FILE - N.J. - CREATED 05/30/81

G18 SEVERE 20-25PRISON

CODE	FREQ	ADJ PCT	CUM PCT	CODE	FREQ	ADJ PCT	CUM PCT	CODE	FREQ	ADJ PCT	CUM PCT
6.	1	1	1	10.	6	4	7	14.	29	19	62
7.	1	1	1	11.	5	3	10	15.	59	38	100
8.	2	1	3	12.	21	13	24				
9.	1	1	3	13.	31	20	44				

CODE	FREQ	MISSING DATA CODE	FREQ	CODE	FREQ
99.	1				

MEAN 13.455 STD ERR 0.141 RANGE 9.000

VALID CASES 156 MISSING CASES 1

05/30/81 FILE - N.J. - CREATED 05/30/81

G19 SEVERE 25-30PRISON

CODE	FREQ	ADJ PCT	CUM PCT	CODE	FREQ	ADJ PCT	CUM PCT	CODE	FREQ	ADJ PCT	CUM PCT
5.	1	1	1	10.	5	3	6	13.	30	19	34
7.	2	1	2	11.	3	2	8	14.	27	17	51
9.	1	1	3	12.	10	6	14	15.	76	49	100

CODE	FREQ	MISSING DATA CODE	FREQ	CODE	FREQ
99.	2				

MEAN 13.800 STD ERR 0.137 RANGE 10.000

VALID CASES 155 MISSING CASES 2

N.J. INMATE SURVEY 1980 FREQUENCIES PAGE 191

05/30/81 FILE - N.J. - CREATED 05/30/81

G20 LIFE WPAROLE

CODE	FREQ	ADJ PCT	CUM PCT	CODE	FREQ	ADJ PCT	CUM PCT	CODE	FREQ	ADJ PCT	CUM PCT
6.	1	1	1	10.	7	4	8	14.	32	21	38
7.	2	1	2	11.	1	1	8	15.	96	62	100
8.	1	1	3	12.	7	4	13				
9.	1	1	3	13.	8	5	18				

CODE	FREQ	MISSING DATA CODE	FREQ	CODE	FREQ
99.	1				

MEAN 14.064 STD ERR 0.140 RANGE 9.000

VALID CASES 156 MISSING CASES 1

N.J. INMATE SURVEY 1980 FREQUENCIES PAGE 192

05/30/81 FILE - N.J. - CREATED 05/30/81

G21 LIFE NOPAROLE

CODE	FREQ	ADJ PCT	CUM PCT	CODE	FREQ	ADJ PCT	CUM PCT	CODE	FREQ	ADJ PCT	CUM PCT
1.	1	1	1	12.	4	3	5	14.	6	4	10
11.	2	1	2	13.	2	1	6	15.	137	90	100

M I S S I N G D A T A

CODE	FREQ	CODE	FREQ	CODE	FREQ
99.	5				

MEAN 14.711 STD ERR 0.108 RANGE 14.000

VALID CASES 152 MISSING CASES 5

N.J. INMATE SURVEY 1980 FREQUENCIES

PAGE 193

05/30/81 FILE - N.J. - CREATED 05/30/81

G22 DEATH

CODE	FREQ	ADJ PCT	CUM PCT	CODE	FREQ	ADJ PCT	CUM PCT	CODE	FREQ	ADJ PCT	CUM PCT
1.	2	1	1	11.	2	1	4	14.	1	1	6
3.	1	1	2	12.	1	1	5	15.	143	94	100
9.	1	1	3	13.	1	1	5				

M I S S I N G D A T A

CODE	FREQ	CODE	FREQ	CODE	FREQ
99.	5				

MEAN 14.605 STD ERR 0.161 RANGE 14.000

VALID CASES 152 MISSING CASES 5

N.J. INMATE SURVEY 1980 FREQUENCIES

PAGE 194

05/30/81 FILE - N.J. - CREATED 05/30/81

POSITIONAL INDEX

140 PAGE VARIABLE PAGE VARIABLE PAGE VARIABLE PAGE

CODE1	3	B18	51	D16	99	F3	147
CARD1	4	B19	52	D17	100	F4	148
VERSION	5	B20	53	D18	101	F5	149
INTERV	6	B21	54	D19	102	F6	150
A1	7	B22	55	D20	103	F7	151
A1A	8	B23	56	D21	104	F8	152
A1B	9	B24	57	D22	105	F9	153
A2	10	C1	58	D23	106	F10	154
A2A	11	C2	59	D24	107	F11	155
A2B	12	C3	60	E1	108	F12	156
A3A	13	C4	61	E1A	109	F13	157
A3B	14	C5	62	E1B	110	F14	158
A4	15	C6	63	E2	111	F15	159
A4A	16	C7	64	E2A	112	F16	160
A4B	17	C8	65	E2B	113	F17	161
A4C	18	C9	66	E2C	114	F18	162
A4D	19	C10	67	E3	115	F19	163
A5A	20	C11	68	E3A	116	F20	164
A5B	21	C12	69	E3B	117	F21	165
A5C	22	C13	70	E3C	118	F22	166
A5D	23	C14	71	E4	119	F23	167
A5E	24	C15	72	E4A	120	F24	168
A5F	25	C16	73	E4B	121	F25	169
A5G	26	C17	74	E4C	122	F26	170
A5H	27	C18	75	E5	123	GVERSION	171
A6	28	C19	76	E5A	124	G1	172
A7	29	C20	77	E5B	125	G2	173
A8	30	C21	78	E5C	126	G3	174
BVERSION	31	C22	79	E6	127	G4	175
B1	32	C23	80	E6A	128	G5	176
B2	33	C24	81	E6B	129	G6	177
B3	34	D1	82	E6C	130	G7	178
B4	35	D2	83	E7	131	G8	179
B5	36	D3	84	E7A	132	G9	180
B6	37	D4	85	E7B	133	G10	181
B7	38	CODE3	86	E7C	134	G11	182
B8	39	CARD3	87	E8	135	G12	183
B9	40	D5	88	E8A	136	G13	184
B10	41	D6	89	E8B	137	G14	185
B11	42	D7	90	E8C	138	G15	186
B12	43	D8	91	E9	139	G16	187
B13	44	D9	92	E9A	140	G17	188
B14	45	D10	93	E9B	141	G18	189
CODE2	46	D11	94	E9C	142	G19	190
CARD2	47	D12	95	CODE4	143	G20	191
B15	48	D13	96	CARD4	144	G21	192
B16	49	D14	97	F1	145	G22	193
B17	50	D15	98	F2	146		

N.J. INMATE SURVEY 1980 FREQUENCIES

PAGE 195

05/30/81 FILE - N.J. - CREATED 05/30/81

ALPHABETIC INDEX

141 PAGE VARIABLE PAGE VARIABLE PAGE VARIABLE PAGE

END