

# SERIOUS CRIME IN RHODE ISLAND: A Profile Report of Part I Offenses For 1981 & Other Data.

95812

(and)

U.S. Department of Justice  
National Institute of Justice

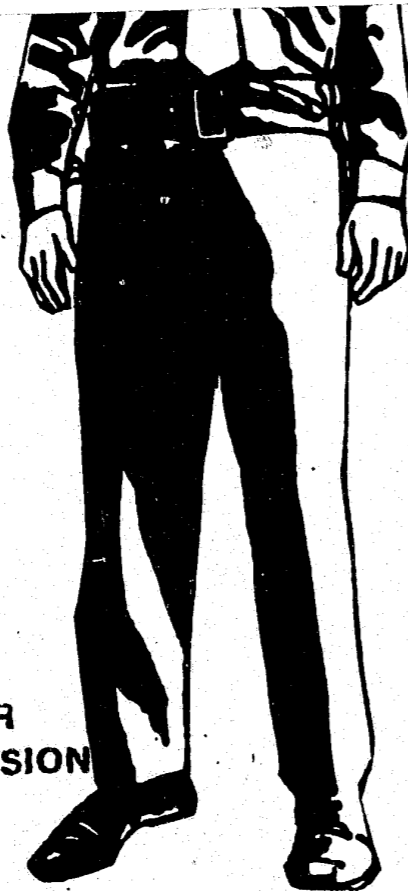
This document has been reproduced exactly as received from the person or organization originating it. Points of view or opinions stated in this document are those of the authors and do not necessarily represent the official position or policies of the National Institute of Justice.

Permission to reproduce this copyrighted material has been granted by

Public Domain  
BJS/U.S. Dept. of Justice

to the National Criminal Justice Reference Service (NCJRS).

Further reproduction outside of the NCJRS system requires permission of the copyright owner.



MAY, 1982

STATISTICAL ANALYSIS CENTER  
GOVERNOR'S JUSTICE COMMISSION  
STATE OF RHODE ISLAND

Report  
No. 6



FOREWARD

The following report contains information concerning the amount of serious crime that took place in Rhode Island during 1981. Specifically, it is a continuation of a statistical activity that incorporates the nationally tested, and accepted, Uniform Crime Reporting (UCR) standardized system.

The UCR system is based on crime reported to the police and therefore cannot measure crimes that are committed but never reported. It is important to understand that National Crime Surveys performed by the Department of Justice indicate that fewer than one-third of all Part I crimes committed are ever reported to the police. This amazingly high non-reporting rate means that annual crime fluctuations shown by the UCR system may be at least partially attributable to changes in or stabilization of reporting rates rather than real fluctuations.

Although serious crime in Rhode Island decreased 1.1% during 1981, the aggregate total (55,704 crimes) represents the second highest total over a ten (10) year comparison span. Moreover, violent crime rose 7.1% for year 1981 as opposed to year 1980. Of the seven basic crime categories, robbery increased the most at 11.6%; conversely homicide decreased the most at 15.4%.

Several new features of our annual UCR - Part I Crime report have been included in this year's production. For example, the very important data concerning arson has been included in our summary page. An outline comparing Providence with other New England cities of similar size is also a new feature. Additionally, the report highlights rates of crime per 100,000 population comparing the United States, Rhode Island and Providence within the context of the seven major crime categories.

This year the Rhode Island Statistical Analysis Center (SAC) was very fortunate to receive a significant amount of assistance in collecting its data from the Rhode Island State Police's UCR section. Also, key and timely information was received from the Connecticut, Maine and Massachusetts SACs. Our sincere appreciation is extended to all who provided us with professional aid.

W. Bradley Crowther  
Executive Director,  
Governor's Justice Commission

Norman Dakake  
Director  
Statistical Analysis Center

86 Weybosset Street, Providence, Rhode Island 02903 (401) 277-2620

The publication of this report is supported by Cooperative Agreement #81-BJ-CX-K017 awarded by the Bureau of Justice Statistics, U. S. Department of Justice. Permission to reproduce or transmit all or parts of this report may be received from the publishing State of Rhode Island agency listed above.

# SERIOUS CRIME - A SUMMARY

## 1980 vs 1981

THE CRIME	1980	1981	% Change
HOMICIDE (Murder, Manslaughter)	52	44	-15.4
RAPE	159	167	+5.0
ROBBERY	1,127	1,258	+11.6
ASSAULT	2,575	2,721	+5.7
BURGLARY (Breaking and Entering)	16,289	15,747	- 3.3
LARCENY	28,110	27,545	- 2.0
MOTOR VEHICLE THEFT	8,011	8,222	+ 2.6
TOTALS	56,323	55,704	- 1.1
<u>Other Part I Crime:</u>			
ARSON	1,466	1,460	-0.4
Estimated Dollar Losses (Arson)	\$11,317,197	\$18,123,890	+60.1



NCJRS

NOV 20 1981

ACQUISITIONS

Note: Arson was added to the Part I offenses as of 1979 by Congressional action. A separate, detailed report is anticipated to be released by the GJC during the summer of 1982.

# Violent vs. Non-Violent Crimes (Person/Property)

<u>PERSON (Violent) Crimes</u>		<u>Total % Change</u>
	<u>1980</u>	<u>1981</u>
HOMICIDE	52	44
RAPE	159	167
ROBBERY	1,127	1,258
ASSAULT	2,575	2,721
TOTALS	3,913	4,190

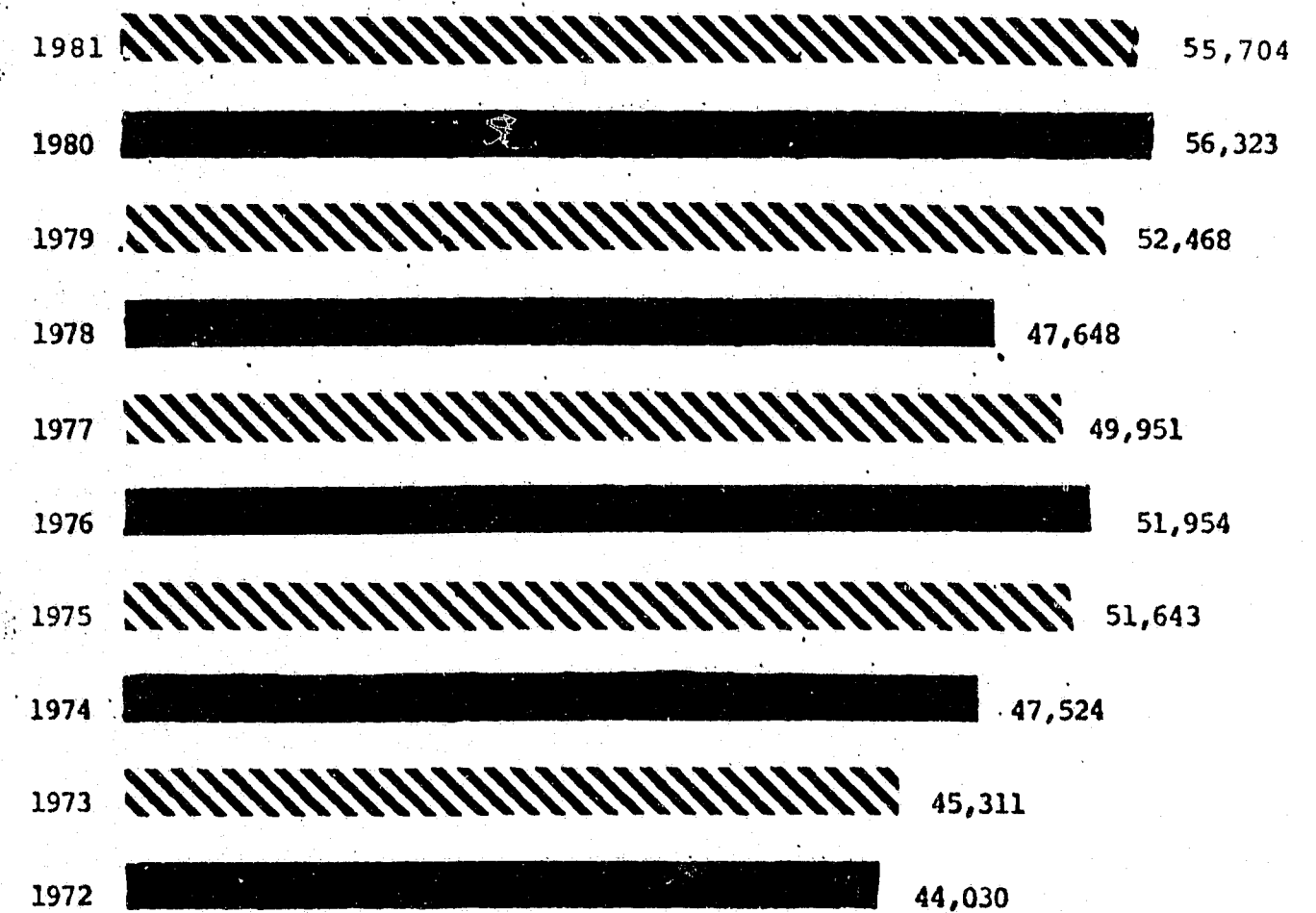
+ 7.1% ←

<u>PROPERTY (Non-Violent Crimes)</u>		<u>Total % Change</u>
	<u>1980</u>	<u>1981</u>
BURGLARY	16,289	15,747
LARCENY	28,110	27,545
MOTOR VEHICLE THEFT	8,011	8,222
TOTALS	52,410	51,514

- 1.7% ←



# A Ten Year Comparison of the Total Number of Serious Offenses in R.I.



# A Comparison of *Providence*, the State's Largest City, With Other New England Cities Having Population Between 100,000 & 160,000

<u>RANK</u>	<u>CITY</u>	<u>TOTAL SERIOUS CRIMES-1981</u>	<u>POPULATION</u>	<u>CRIME RATE PER 100,000 POPULATION</u> ←
1	HARTFORD, CONN.	24,522	136,392	17,979
2	NEW HAVEN, CONN.	16,175	126,109	12,826
3	BRIDGEPORT, CONN.	17,331	142,546	12,158
4	PROVIDENCE, R.I.	15,548	156,804	9,916
5	SPRINGFIELD, MASS.	14,442	152,319	9,418
6	PORTLAND, MAINE	9,296	100,260	9,272
7	STAMFORD, CONN.	7,817	102,453	7,630
8	WATERBURY, CONN.	7,240	103,266	7,011
9	WORCESTER, MASS.	10,545	161,799	6,517



A BRIEF REVIEW: HOW RHODE ISLAND AND PROVIDENCE COMPARED  
WITH THE NATIONAL CRIME RATE PER 100,000 POPULATION

## *Rates<sup>3]</sup> Per 100,000 population*

<u>CRIME</u>	<u>UNITED STATES<sup>1]</sup></u>	<u>RHODE ISLAND<sup>2]</sup></u>	<u>PROVIDENCE, R.I.<sup>2]</sup></u>
HOMICIDE	10	5	15
RAPE	36	18	35
ROBBERY	244	133	543
ASSAULT	291	287	479
BURGLARY	1,668	1,663	2,807
LARCENY	3,156	2,908	3,449
MOTOR VEHICLE THEFT	495	868	2,548
TOTAL CRIME INDEX	5,900	5,881	9,916

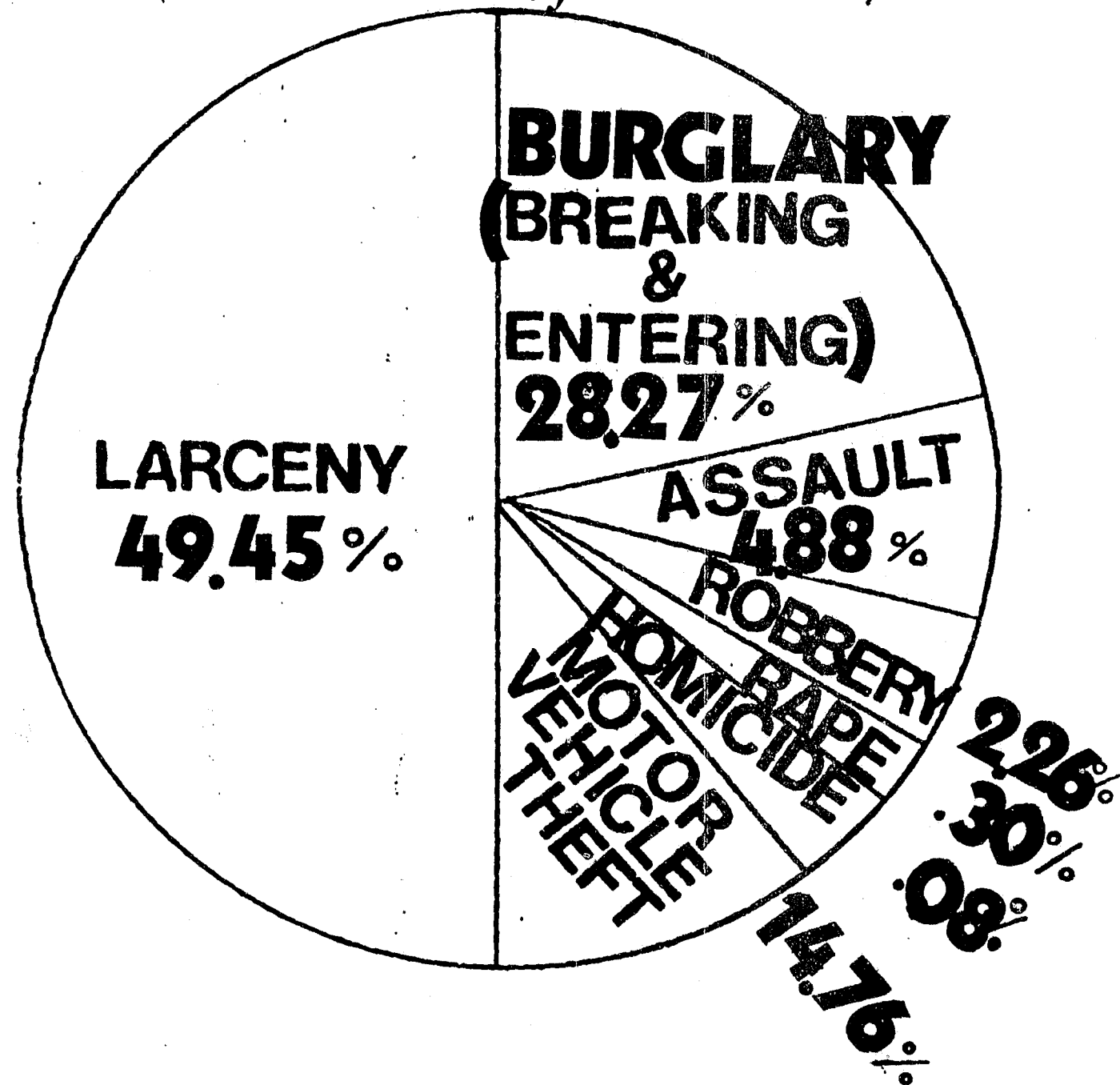
<sup>1]</sup> 1980 Rates-National annual data is generally released by the F.B.I. during the Fall season each year

<sup>2]</sup> 1981 Rates

<sup>3]</sup> All Numbers Rounded

**DISTRIBUTION OF SERIOUS  
CRIMES REPORTED IN R. I.**

*1981*  
**(Percent of Total)**



RHODE ISLAND - 1981 - PART I CRIMES  
NUMBER OF OFFENSES REPORTED

Reporting Jurisdiction	Homicide	Rape	Robbery	Assault	Burglary	Larceny	Motor Vehicle Theft	Totals per Jurisdiction
Barrington	-	1	1	19	118	265	15	419
Bristol	-	-	-	31	131	255	24	441
Warren	-	1	4	32	71	230	17	355
Coventry	2	5	7	107	477	923	52	1,573
East Greenwich	-	2	1	76	162	226	34	501
Warwick	5	13	27	445	1,229	3,264	931	5,914
West Greenwich	-	-	-	8	51	79	11	149
West Warwick	1	3	15	50	421	836	85	1,411
Jamestown	-	-	-	3	44	83	3	133
Little Compton	-	-	-	-	26	49	3	78
Middletown	-	8	17	111	366	662	70	1,234
Newport	1	12	45	70	784	2,039	357	3,308
Portsmouth	-	-	-	1	65	188	25	279
Tiverton	1	-	6	51	206	209	46	609
Burrillville	2	2	3	30	85	168	6	296
Central Falls	2	1	11	19	155	243	61	492
Cranston	1	8	47	91	1,237	1,940	559	3,883
Cumberland	-	5	7	14	284	768	72	1,150
East Providence	2	-	30	31	548	1,285	272	2,168
Foster	-	-	-	4	28	76	8	116
Glocester	-	-	-	4	75	106	5	190
Johnston	-	1	29	111	496	700	144	1,481
Lincoln	-	3	1	38	215	653	245	1,155
North Providence	-	-	24	88	444	636	184	1,376
North Smithfield	-	1	-	3	88	180	21	293
Pawtucket	-	6	83	143	1,259	1,780	483	3,754
Providence	23	55	852	751	4,401	5,470	3,996	15,548
Scituate	1	-	1	6	36	70	4	118
Smithfield	-	-	2	17	81	55	39	194
Woonsocket	-	16	21	68	705	1,191	172	2,173
Charlestown	-	-	-	1	60	43	9	113
Hopkinton	-	-	-	4	80	118	4	206
Narragansett	1	4	3	26	187	353	26	600
North Kingstown	-	4	5	97	311	602	73	1,092
South Kingstown	-	2	2	15	235	569	28	851
Westerly	-	1	-	1	161	389	62	614
Richmond	-	1	1	3	10	15	5	35
New Shoreham	-	1	-	-	40	49	2	92
DEM (Dept. Environ. Mgt.)	-	1	-	13	36	243	3	296
State Police	2	10	13	133	227	275	57	717
URI	-	-	-	6	112	170	9	297
<b>TOTALS</b>	<b>44</b>	<b>167</b>	<b>1,258</b>	<b>2,721</b>	<b>15,747</b>	<b>27,545</b>	<b>8,222</b>	<b>55,704</b>

RHODE ISLAND'S CRIME REPORTING JURISDICTIONS

Comparison Profiles: 1980 vs. 1981.

	Reported Offenses		% Change
	1980	vs 1981	
<u>BARRINGTON (pop. 16,174)*</u>			
Homicide - no change	0	vs 0	
Rape - increased by 1	0	vs 1	
Robbery - decreased by 1	2	vs 1	
Assault - decreased by 1	20	vs 19	
Burglary - decreased by 109	227	vs 118	
Larceny - decreased by 210	475	vs 265	
Motor Vehicle Theft - decreased by 7	22	vs 15	
	<u>746</u>	<u>419</u>	-43.8%
<u>BRISTOL (pop. 20,128)</u>			
Homicide - no change	0	vs 0	
Rape - no change	0	vs 0	
Robbery - decreased by 4	4	vs 0	
Assault - decreased by 33	64	vs 31	
Burglary - decreased by 59	190	vs 131	
Larceny - decreased by 12	267	vs 255	
Motor Vehicle Theft - increased by 2	22	vs 24	
	<u>547</u>	<u>441</u>	-19.4%
<u>WARREN (pop. 10,640)</u>			
Homicide - no change	0	vs 0	
Rape - decreased by 1	0	vs 1	
Robbery - decreased by 1	5	vs 4	
Assault - increased by 2	30	vs 32	
Burglary - decreased by 31	102	vs 71	
Larceny - decreased by 48	278	vs 230	
Motor Vehicle Theft - decreased by 6	23	vs 17	
	<u>438</u>	<u>355</u>	-19.0%
<u>COVENTRY (pop. 27,065)</u>			
Homicide - increased by 1	1	vs 2	
Rape - increased by 4	1	vs 5	
Robbery - increased by 1	6	vs 7	
Assault - decreased by 45	152	vs 107	
Burglary - increased by 91	386	vs 477	
Larceny - increased by 217	706	vs 923	
Motor Vehicle Theft - increased by 5	47	vs 52	
	<u>1,299</u>	<u>1,573</u>	+21.1%

	1980	vs	1981	% Change
<u>EAST GREENWICH (pop. 10,211)</u>				
Homicide - no change	0	vs	0	
Rape - increased by 2	0	vs	2	
Robbery - decreased by 3	4	vs	1	
Assault - increased by 3	73	vs	76	
Burglary - increased by 11	151	vs	162	
Larceny - decreased by 43	269	vs	226	
Motor Vehicle Theft - decreased by 1	35	vs	34	
	<u>532</u>		<u>501</u>	- 5.8%
<u>WARWICK (pop. 87,123)</u>				
Homicide - increased by 3	2	vs	5	
Rape - no change	13	vs	13	
Robbery - decreased by 7	34	vs	27	
Assault - increased by 51	394	vs	445	
Burglary - decreased by 463	1,692	vs	1,229	
Larceny - decreased by 61	3,325	vs	3,264	
Motor Vehicle Theft - decreased by 26	957	vs	931	
	<u>6,417</u>		<u>5,914</u>	- 7.8%
<u>WEST GREENWICH (pop. 2,738)</u>				
Homicide - no change	0	vs	0	
Rape - no change	0	vs	0	
Robbery - no change	0	vs	0	
Assault - decreased by 10	18	vs	8	
Burglary - decreased by 23	74	vs	51	
Larceny - decreased by 75	154	vs	79	
Motor Vehicle Theft - decreased by 7	18	vs	11	
	<u>264</u>		<u>149</u>	-43.6%
<u>WEST WARWICK (pop. 27,026)</u>				
Homicide - no change	1	vs	1	
Rape - increased by 2	1	vs	3	
Robbery - increased by 4	11	vs	15	
Assault - increased by 15	35	vs	50	
Burglary - increased by 174	247	vs	421	
Larceny - increased by 194	642	vs	836	
Motor Vehicle Theft - increased by 19	66	vs	85	
	<u>1,003</u>		<u>1,411</u>	+26.9%
<u>JAMESTOWN (pop. 4,040)</u>				
Homicide - no change	0	vs	0	
Rape - no change	0	vs	0	
Robbery - no change	0	vs	0	
Assault - increased by 2	1	vs	3	
Burglary - increased by 2	42	vs	44	
Larceny - decreased by 4	87	vs	83	
Motor Vehicle Theft - no change	3	vs	3	
	<u>133</u>		<u>133</u>	N/C

\*R.I. Final 1980 Population Count(s)-U.S. Bureau of Census



<u>LITTLE COMPTON</u> (pop. 3,085)	1980	vs	1981	% Change
Homicide - no change	0	vs	0	
Rape - no change	0	vs	0	
Robbery - no change	0	vs	0	
Assault - decreased by 3	3	vs	0	
Burglary - decreased by 16	42	vs	26	
Larceny - decreased by 32	81	vs	49	
Motor Vehicle Theft - decreased by 3	6	vs	3	
	<u>132</u>		<u>78</u>	-40.9%

<u>MIDDLETOWN</u> (pop. 17,216)	1980	vs	1981	% Change
Homicide - no change	0	vs	0	
Rape - increased by 4	4	vs	8	
Robbery - increased by 6	11	vs	17	
Assault - decreased by 25	136	vs	111	
Burglary - increased by 15	351	vs	366	
Larceny - no change	662	vs	662	
Motor Vehicle Theft - decreased by 24	94	vs	70	
	<u>1,258</u>		<u>1,234</u>	- 1.9%

<u>NEWPORT</u> (pop. 29,259)	1980	vs	1981	% Change
Homicide - decreased by 3	4	vs	1	
Rape - increased by 7	5	vs	12	
Robbery - decreased by 13	58	vs	45	
Assault - decreased by 16	86	vs	70	
Burglary - decreased by 23	807	vs	784	
Larceny - increased by 134	1,905	vs	2,039	
Motor Vehicle Theft - increased by 127	230	vs	357	
	<u>3,095</u>		<u>3,308</u>	+10.1%

<u>PORTSMOUTH</u> (pop. 14,257)	1980	vs	1981	% Change
Homicide - decreased by 2	2	vs	0	
Rape - no change	0	vs	0	
Robbery - decreased by 4	4	vs	0	
Assault - decreased by 1	2	vs	1	
Burglary - decreased by 10	75	vs	65	
Larceny - increased by 21	167	vs	188	
Motor Vehicle Theft - increased by 5	20	vs	25	
	<u>266</u>		<u>279</u>	+ 4.9%

<u>TIVERTON</u> (pop. 13,526)	1980	vs	1981	% Change
Homicide - increased by 1	0	vs	1	
Rape - decreased by 2	2	vs	0	
Robbery - no change	6	vs	6	
Assault - increased by 35	16	vs	51	
Burglary - increased by 24	182	vs	206	
Larceny - decreased by 17	316	vs	299	
Motor Vehicle Theft - increased by 5	41	vs	46	
	<u>563</u>		<u>609</u>	+ 8.2%

<u>BURRILLVILLE</u> (pop. 13,164)	1980	vs	1981	% Change
Homicide - increased by 2	0	vs	2	
Rape - increased by 2	0	vs	2	
Robbery - no change	3	vs	3	
Assault - increased by 14	16	vs	30	
Burglary - increased by 10	75	vs	85	
Larceny - decreased by 30	198	vs	168	
Motor Vehicle Theft - decreased by 14	20	vs	6	
	<u>312</u>		<u>296</u>	- 5.1%

<u>CENTRAL FALLS</u> (pop. 16,995)	1980	vs	1981	% Change
Homicide - increased by 1	1	vs	2	
Rape - increased by 1	0	vs	1	
Robbery - decreased by 3	14	vs	11	
Assault - increased by 1	18	vs	19	
Burglary - decreased by 31	186	vs	155	
Larceny - decreased by 86	329	vs	243	
Motor Vehicle Theft - decreased by 32	93	vs	61	
	<u>641</u>		<u>492</u>	-23.2%

<u>CRANSTON</u> (pop. 71,992)	1980	vs	1981	% Change
Homicide - decreased by 2	3	vs	1	
Rape - decreased by 5	13	vs	8	
Robbery - decreased by 1	48	vs	47	
Assault - increased by 10	81	vs	91	
Burglary - decreased by 8	1,245	vs	1,237	
Larceny - decreased by 9	1,949	vs	1,940	
Motor Vehicle Theft - increased by 131	428	vs	559	
	<u>3,767</u>		<u>3,883</u>	+ 3.1%

<u>CUMBERLAND</u> (pop. 27,069)	1980	vs	1981	% Change
Homicide - decreased by 1	1	vs	0	
Rape - increased by 5	0	vs	5	
Robbery - decreased by 3	10	vs	7	
Assault - decreased by 9	23	vs	14	
Burglary - decreased by 73	357	vs	284	
Larceny - increased by 21	747	vs	768	
Motor Vehicle Theft - decreased by 8	80	vs	72	
	<u>1,218</u>		<u>1,150</u>	- 6.0%

<u>EAST PROVIDENCE</u> - (pop. 50,980)	1980	vs	1981	% Change
Homicide - decreased by 6	8	vs	2	
Rape - decreased by 3	3	vs	0	
Robbery - decreased by 10	40	vs	30	
Assault - decreased by 39	70	vs	31	
Burglary - decreased by 224	772	vs	548	
Larceny - decreased by 361	1,646	vs	1,285	
Motor Vehicle Theft - decreased by 32	304	vs	272	
	<u>2,843</u>		<u>2,168</u>	-23.7%



<u>FOSTER</u> (pop. 3,370)	1980	vs	1981	% Change
Homicide - no change	0	vs	0	
Rape - no change	0	vs	0	
Robbery - decreased by 1	1	vs	0	
Assault - decreased by 5	9	vs	4	
Burglary - decreased by 7	35	vs	28	
Larceny - increased by 16	60	vs	76	
Motor Vehicle Theft - increased by 5	3	vs	8	
	<u>108</u>		<u>116</u>	+ 7.4%

<u>GLOCESTER</u> (pop. 7,550)	1980	vs	1981	% Change
Homicide - no change	0	vs	0	
Rape - no change	0	vs	0	
Robbery - decreased by 1	1	vs	0	
Assault - increased by 2	2	vs	4	
Burglary - decreased by 18	93	vs	75	
Larceny - increased by 23	83	vs	106	
Motor Vehicle Theft - increased by 3	2	vs	5	
	<u>181</u>		<u>190</u>	+ 5.0%

<u>JOHNSTON</u> (pop. 24,907)	1980	vs	1981	% Change
Homicide - no change	0	vs	0	
Rape - no change	1	vs	1	
Robbery - increased by 19	10	vs	29	
Assault - increased by 34	77	vs	111	
Burglary - decreased by 18	514	vs	496	
Larceny - decreased by 39	739	vs	700	
Motor Vehicle Theft - increased by 4	140	vs	144	
	<u>1,481</u>		<u>1,481</u>	N/C

<u>LINCOLN</u> (pop. 16,949)	1980	vs	1981	% Change
Homicide - decreased by 1	1	vs	0	
Rape - increased by 2	1	vs	3	
Robbery - decreased by 4	5	vs	1	
Assault - increased by 37	1	vs	38	
Burglary - increased by 18	197	vs	215	
Larceny - increased by 57	596	vs	653	
Motor Vehicle Theft - decreased by 23	268	vs	245	
	<u>1,069</u>		<u>1,155</u>	+ 8.0%

<u>NORTH PROVIDENCE</u> (pop. 29,188)	1980	vs	1981	% Change
Homicide - decreased by 2	2	vs	0	
Rape - no change	0	vs	0	
Robbery - increased by 9	15	vs	24	
Assault - increased by 50	38	vs	88	
Burglary - decreased by 95	539	vs	444	
Larceny - decreased by 4	640	vs	636	
Motor Vehicle Theft - decreased by 24	208	vs	184	
	<u>1,442</u>		<u>1,376</u>	- 4.6%

<u>NORTH SMITHFIELD</u> (pop. 9,972)	1980	vs	1981	% Change
Homicide - no change	0	vs	0	
Rape - no change	1	vs	1	
Robbery - decreased by 8	8	vs	0	
Assault - decreased by 4	7	vs	3	
Burglary - decreased by 37	125	vs	88	
Larceny - decreased by 23	203	vs	180	
Motor Vehicle Theft - decreased by 2	23	vs	21	
	<u>367</u>		<u>293</u>	-20.2%

<u>PAWTUCKET</u> (pop. 71,204)	1980	vs	1981	% Change
Homicide - decreased by 3	3	vs	0	
Rape - increased by 5	1	vs	6	
Robbery - increased by 26	57	vs	83	
Assault - increased by 20	123	vs	143	
Burglary - decreased by 15	1,274	vs	1,259	
Larceny - decreased by 116	1,896	vs	1,780	
Motor Vehicle Theft - decreased by 34	449	vs	483	
	<u>3,803</u>		<u>3,754</u>	- 1.3%

<u>PROVIDENCE</u> (pop. 156,804)	1980	vs	1981	% Change
Homicide - increased by 8	15	vs	23	
Rape - decreased by 19	74	vs	55	
Robbery - increased by 141	711	vs	852	
Assault - increased by 102	649	vs	751	
Burglary - increased by 414	3,987	vs	4,401	
Larceny - increased by 403	5,067	vs	5,470	
Motor Vehicle Theft - increased by 164	3,832	vs	3,996	
	<u>14,335</u>		<u>15,548</u>	+ 8.5%

<u>SCITUATE</u> (pop. 8,405)	1980	vs	1981	% Change
Homicide - increased by 1	0	vs	1	
Rape - decreased by 1	1	vs	0	
Robbery - increased by 1	0	vs	1	
Assault - decreased by 4	10	vs	6	
Burglary - decreased by 23	59	vs	36	
Larceny - decreased by 20	90	vs	70	
Motor Vehicle Theft - decreased by 10	14	vs	4	
	<u>174</u>		<u>118</u>	-32.2%

<u>SMITHFIELD</u> (pop. 16,886)	1980	vs	1981	% Change
Homicide - decreased by 2	2	vs	0	
Rape - decreased by 1	1	vs	0	
Robbery - decreased by 1	3	vs	2	
Assault - increased by 7	10	vs	17	
Burglary - decreased by 44	125	vs	81	
Larceny - decreased by 18	73	vs	55	
Motor Vehicle Theft - decreased by 9	48	vs	39	
	<u>262</u>		<u>194</u>	-26.0%

WOONSOCKET (pop. 45,914)	1980	vs	1981	% Change
Homicide - decreased by 1	1	vs	0	
Rape - increased by 7	9	vs	16	
Robbery - increased by 1	20	vs	21	
Assault - decreased by 1	69	vs	68	
Burglary - increased by 25	680	vs	705	
Larceny - decreased by 152	1,343	vs	1,191	
Motor Vehicle Theft - decreased by 82	254	vs	172	
	<u>2,376</u>		<u>2,173</u>	- 8.5%

CHARLESTOWN (pop. 4,800)

Homicide - no change	0	vs	0	
Rape - no change	0	vs	0	
Robbery - decreased by 1	1	vs	0	
Assault - decreased by 1	2	vs	1	
Burglary - increased by 6	54	vs	60	
Larceny - decreased by 5	48	vs	43	
Motor Vehicle Theft - no change	9	vs	9	
	<u>114</u>		<u>113</u>	- 1.0%

HOPKINTON (pop. 6,406)

Homicide - no change	0	vs	0	
Rape - no change	0	vs	0	
Robbery - decreased by 1	1	vs	0	
Assault - decreased by 20	24	vs	4	
Burglary - increased by 23	57	vs	80	
Larceny - decreased by 11	129	vs	118	
Motor Vehicle Theft - increased by 1	3	vs	4	
	<u>214</u>		<u>206</u>	- 3.7%

NARRAGANSETT (pop. 12,088)

Homicide - no change	1	vs	1	
Rape - decreased by 4	8	vs	4	
Robbery - decreased by 1	4	vs	3	
Assault - increased by 4	22	vs	26	
Burglary - decreased by 76	263	vs	187	
Larceny - decreased by 26	379	vs	353	
Motor Vehicle Theft - increased by 2	24	vs	26	
	<u>701</u>		<u>600</u>	-14.4%

NEW SHOREHAM (pop. 620)

Homicide - no change	0	vs	0	
Rape - no change	1	vs	1	
Robbery - no change	0	vs	0	
Assault - decreased by 3	3	vs	0	
Burglary - increased by 22	18	vs	40	
Larceny - increased by 26	23	vs	49	
Motor Vehicle Theft - increased by 2	0	vs	2	
	<u>45</u>		<u>92</u>	+104.4%

NORTH KINGSTOWN (pop. 21,938)

	1980	vs	1981	% Change
Homicide - decreased by 2	2	vs	0	
Rape - increased by 2	2	vs	4	
Robbery - decreased by 7	12	vs	5	
Assault - decreased by 15	112	vs	97	
Burglary - increased by 29	282	vs	311	
Larceny - decreased by 103	705	vs	602	
Motor Vehicle Theft - increased by 29	44	vs	73	
	<u>1,159</u>		<u>1,092</u>	- 5.8%

RICHMOND (pop. 4,018)

Homicide			0	
Rape			1	
Robbery	NO		1	
Assault	REPORT		1	
Burglary	FILED		3	
Larceny	IN		10	
Motor Vehicle Theft	1980		15	
			<u>5</u>	
			35	N/A

SOUTH KINGSTOWN (pop. 20,414)

Homicide - decreased by 1	1	vs	0	
Rape - increased by 1	1	vs	2	
Robbery - decreased by 1	3	vs	2	
Assault - no change	15	vs	15	
Burglary - decreased by 71	306	vs	235	
Larceny - decreased by 230	799	vs	569	
Motor Vehicle Theft - decreased by 19	47	vs	28	
	<u>1,172</u>		<u>851</u>	-27.4%

WESTERLY (pop. 18,580)

Homicide - no change	0	vs	0	
Rape - decreased by 2	3	vs	1	
Robbery - decreased by 2	2	vs	0	
Assault - decreased by 5	6	vs	1	
Burglary - increased by 50	111	vs	161	
Larceny - decreased by 10	399	vs	389	
Motor Vehicle Theft - increased by 24	38	vs	62	
	<u>559</u>		<u>614</u>	+ 9.8%

DEPT. OF ENVIRONMENTAL MGT.	1980	vs	1981	% Change
Homicide - no change	0	vs	0	
Rape - no change	1	vs	1	
Robbery - no change	0	vs	0	
Assault - decreased by 5	18	vs	13	
Burglary - increased by 10	26	vs	36	
Larceny - increased by 48	195	vs	243	
Motor Vehicle Theft - decreased by 3	6	vs	3	
	<u>246</u>		<u>296</u>	+20.3%
<u>STATE POLICE</u>				
Homicide - increased by 1	1	vs	2	
Rape - decreased by 1	11	vs	10	
Robbery - no change	13	vs	13	
Assault - increased by 6	127	vs	133	
Burglary - decreased by 61	288	vs	227	
Larceny - decreased by 39	314	vs	275	
Motor Vehicle Theft - decreased by 27	84	vs	57	
	<u>838</u>		<u>717</u>	-14.4%
<u>UNIV. OF RHODE ISLAND</u>				
Homicide - no change	0	vs	0	
Rape - decreased by 1	1	vs	0	
Robbery - no change	0	vs	0	
Assault - decreased by 7	13	vs	6	
Burglary - increased by 59	53	vs	112	
Larceny - increased by 44	126	vs	170	
Motor Vehicle Theft - decreased by 1	10	vs	9	
	<u>203*</u>		<u>297</u>	+46.3%

\*Represents only six months of reporting

#### DEFINITIONS

- HOMICIDE** - Murder and nonnegligent manslaughter, as defined in the Uniform Crime Reporting Program, is the willful (non-negligent) killing of one human being by another.
- The classification of this offense, as for all other crime index offenses, is based solely on police investigation as opposed to the determination of a court, medical examiner, coroner, jury, or other judicial body. Not included in the count for this offense classification are deaths caused by negligence, suicide, or accident.
- RAPE** - Rape (Forcible), as defined in the UCR Program, is the carnal knowledge of a female forcibly and against her will. Assaults or attempts to commit rape by force or threat of force are also included; however, statutory rape (without force) and other sex offenses are not included in this category.
- ROBBERY** - Robbery is the taking or attempting to take anything of value from the care, custody, or control of a person or persons by force or threat of force or violence and/or by putting the victim in fear.
- ASSAULT** - Assault (aggravated) is an unlawful attack by one person upon another for the purpose of inflicting severe or aggravated bodily injury. This type of assault is usually accompanied by the use of a weapon or by means likely to produce death or great bodily harm. Attempts are included since it is not necessary that an injury result when a gun, knife, or other weapon is used which could and probably would result in serious personal injury if the crime were successfully completed.
- BURGLARY** - The UCR Program defines burglary as the unlawful entry of a structure to commit a felony or theft. The use of force to gain entry is not required to classify an offense as burglary. Burglary is categorized into three subclassifications: forcible entry, unlawful entry where no force is used, and attempted forcible entry.
- LARCENY** - Larceny (theft) is the unlawful taking, carrying, leading, or riding away of property from the possession or constructive possession of another. It includes crimes such as shoplifting, pocket-picking, purse-snatching, thefts from motor vehicles, thefts of motor vehicle parts and accessories, bicycle thefts, etc., in which no use of force, violence, or fraud occurs. In the UCR Program, this crime category does not include embezzlement, "con" games, forgery, and worthless checks.

MOTOR VEHICLE THEFT - In the UCR Program, motor vehicle theft is defined as the theft or attempted theft of a motor vehicle. This definition excludes the taking of a motor vehicle for temporary use by those persons having lawful access.

ARSON - Arson is defined by the UCR Program as any willful or malicious burning or attempt to burn, with or without intent to defraud, a dwelling house, public building, motor vehicle or aircraft, personal property of another, etc.

Only fires determined through investigation to have been willfully or maliciously set are classified as arsons.

**END**