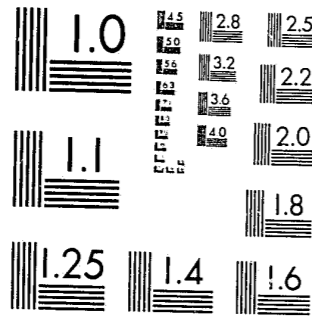


National Criminal Justice Reference Service



This microfiche was produced from documents received for inclusion in the NCJRS data base. Since NCJRS cannot exercise control over the physical condition of the documents submitted, the individual frame quality will vary. The resolution chart on this frame may be used to evaluate the document quality.



MICROCOPY RESOLUTION TEST CHART  
NATIONAL BUREAU OF STANDARDS-1963-A

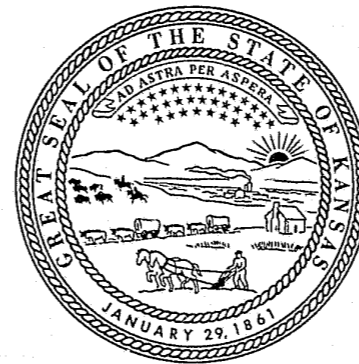
Microfilming procedures used to create this fiche comply with the standards set forth in 41CFR 101-11.504.

Points of view or opinions stated in this document are those of the author(s) and do not represent the official position or policies of the U. S. Department of Justice.

National Institute of Justice  
United States Department of Justice  
Washington, D. C. 20531

1/28/85

95414 CR-sent  
12-31-84



# JUVENILE JUSTICE INFORMATION SYSTEM

## ANNUAL REPORT 1983

95414

Kansas Bureau of Investigation  
Statistical Analysis Center



95414

U.S. Department of Justice 95414  
National Institute of Justice

This document has been reproduced exactly as received from the person or organization originating it. Points of view or opinions stated in this document are those of the authors and do not necessarily represent the official position or policies of the National Institute of Justice.

Permission to reproduce this copyrighted material has been granted by  
Kansas Bureau of Investigation

to the National Criminal Justice Reference Service (NCJRS).

Further reproduction outside of the NCJRS system requires permission of the copyright owner.

Office Of The Attorney General  
KANSAS BUREAU OF INVESTIGATION

Thomas E. Kelly  
Director

Statistical Analysis Center

Michael E. Boyer  
Supervisor

3420 Van Buren  
Topeka, Kansas 66611  
(913) 267-5000

JUVENILE JUSTICE INFORMATION SYSTEM  
(JJIS)  
1983 ANNUAL REPORT

Edited By  
M. Kathleen Bledsoe

State Of Kansas

John W. Carlin, Governor  
Robert T. Stephan, Attorney General

August 10, 1984

\* \* \* HIGHLIGHTS \* \* \*

\*TOTAL REPORTED REFERRALS IN 1983 DECREASED BY 41.8% FROM 1982. WITH ALL COUNTIES REPRESENTED, THERE WERE 11,093 REPORTS IN 1983 COMPARED TO 19,047 IN 1982. (PAGE 5)

\*JUVENILE OFFENDER REFERRALS IN 1983 ACCOUNTED FOR 75% (8,312) OF THE COURTS WORKLOAD, WHILE CHILD IN NEED OF CARE REFERRALS ACCOUNTED FOR 24.6% (2,732) OF THE WORKLOAD. (PAGE 7)

\*MALES ACCOUNTED FOR 74% OF THE TOTAL NUMBER OF JUVENILES REFERRED TO THE COURT IN 1983 (PAGE 9) AND FOR 83.2% OF ALL YOUTH REFERRED AS JUVENILE OFFENDERS. (PAGE 27)

\*RACIAL BREAKDOWNS INDICATE 68.1% OF THE TOTAL NUMBER OF REFERRALS WERE WHITE, 13.8% WERE BLACK. (PAGE 10)

\*THE AVERAGE AGE OF YOUTH REFERRED TO THE COURT IN 1983 WAS 13.6 YEARS. (PAGE 14)

\*YOUTH AGE 17 ACCOUNTED FOR 25.9% OF THE COURTS WORKLOAD IN JUVENILE OFFENDER REFERRALS AND WERE MOST FREQUENTLY REFERRED FOR LARCENY-TYPE OFFENSES. (PAGE 29)

\*FOR JUVENILE OFFENDER REFERRALS, 36% (2,994) OF THE CASES WERE DISMISSED AS NOT PROVEN OR WITH A WARNING. (PAGE 38)

\*CHILD IN NEED OF CARE TYPE REFERRALS DECREASED BY 64.2% IN 1983 (2,732) FROM 1982 (7,620). (PAGE 51)

\*NEARLY TWICE AS MANY FEMALES (63.6%) WERE REPORTED FOR RUNNING AWAY AS WERE MALES (36.4%) IN 1983. (PAGE 52)

ACKNOWLEDGMENTS

Numerous people deserve our utmost gratitude and sincerest thanks for their support and participation in the completion of the Juvenile Justice Information System 1983 Annual Report. Without these people an endeavor of this proportion would be most difficult.

To all the clerks of the district courts, court service officers and judges involved with the collection process;

To the Office of Judicial Administration, especially Dr. Howard Schwartz, Judicial Administrator, Mr. Mark Roberts and Mr. Lowell Long;

To the Department of Social and Rehabilitation Services, especially Mr. James Trast and Ms. Gwen Simpson and Ms. Aleene Griggs;

To SAC staff, Ms. Connie S. Wilch, Ms. Karen Bartlett, Ms. Judith R. Ashbaugh, and Ms. Mary Lou McPhail for the technical assistance necessary to produce a publication of this nature;

And, finally, to Ms. M. Kathleen Bledsoe, editor and author, to whom all credit for the quality of this publication rests.

All efforts from those named or unnamed are greatly appreciated. It is hoped that the working relationship developed over the past years will continue into the future.

Michael E. Boyer, Supervisor  
Statistical Analysis Center  
Kansas Bureau of Investigation

TABLE OF CONTENTS

	Page
HIGHLIGHTS . . . . .	iii
ACKNOWLEDGMENTS . . . . .	v
TABLE OF CONTENTS . . . . .	vii
LIST OF TABLES . . . . .	ix
LIST OF CHARTS . . . . .	xi
INTRODUCTION . . . . .	xiii
KANSAS MAP . . . . .	xv
JUDICIAL DISTRICTS BY COUNTY . . . . .	xvi
SECTION I. Reported Referrals 1983 . . . . .	1
A. Trends in Juvenile Court Referrals . . . . .	3
B. Reason For Referral . . . . .	7
C. Manner of Handling . . . . .	11
D. Seasonality of Referrals . . . . .	12
E. Age at Referral . . . . .	14
F. Source of Referral . . . . .	15
G. Care Pending Disposition . . . . .	15
H. Case Disposition . . . . .	16
I. Time From Referral To Disposition . . . . .	18
J. Summary . . . . .	19
SECTION II. Juvenile Offender Referrals, 1983 . . . . .	21
SECTION III. Child In Need of Care Referrals, 1983 . . . . .	47
APPENDICES	
A. Summary of Juvenile Referrals by Judicial Districts, 1983 . . . . .	69
B. Juvenile Population by County, 1983 . . . . .	81
C. Glossary of Terms, 1983 . . . . .	89
D. Juvenile Court Statistical Card . . . . .	95

LIST OF TABLES

	Page
Table 1 - Total Referrals, Three Year Trend, 1981 - 1983 . . . . .	5
Table 2 - Reason Referred By Judicial Districts, 1983 . . . . .	7
Table 3 - Category Of Referral, Three Year Trend, 1981 - 1983 . . . . .	8
Table 4 - Category Of Referral By Judicial Districts By Sex, 1983 . . . . .	9
Table 5 - Category Of Referral By Judicial Districts By Race, 1983. . . . .	10
Table 6 - Manner Of Handling By District, 1983 . . . . .	11
Table 7 - Month Of Referral By Judicial District, 1983 . . . . .	12
Table 8 - Age At Referral By Judicial District, 1983. . . . .	14
Table 9 - Source Of Referral By Judicial District, 1983 . . . . .	15
Table 10 - Care Pending Disposition By Judicial District, 1983 . . . . .	16
Table 11 - Case Disposition By Judicial District, 1983 . . . . .	17
Table 12 - Time Elapsed Between Referral And Disposition, 1983 . . . . .	18
Table 13 - Total Offender Referrals, 1982 - 1983 . . . . .	25
Table 14 - Offender Referrals By Sex And Race, 1983 . . . . .	27
Table 15 - Offender Referrals By Age, 1983 . . . . .	29
Table 16 - Offender Referrals By Time Elapsed Between Referral And Disposition, 1983 . . . . .	31
Table 17 - Offender Referrals By Manner Of Handling 1983 . . . . .	32
Table 18 - Manner Of Handling By Age, 1983 . . . . .	33

	Page
Table 19 - Manner Of Handling By Sex And Race, 1983 . . .	34
Table 20 - Care Pending Disposition By Age, 1983 . . .	35
Table 21 - Care Pending Disposition By Sex And Race, 1983 . . . . .	36
Table 22 - Offender Referrals By Disposition, 1983 . . .	38
Table 23 - Case Disposition By Sex And Race, 1983 . . .	40
Table 24 - Case Disposition By Age, 1983 . . . . .	42
Table 25 - Child In Need Of Care, Two Year Trend, 1982 - 1983 . . . . .	51
Table 26 - Child In Need Of Care By Sex And Race, 1983 . .	52
Table 27 - Child In Need Of Care By Age, 1983 . . . . .	53
Table 28 - Child In Need Of Care By Time Elapsed Between Referral And Disposition, 1983 . . .	55
Table 29 - Child In Need Of Care By Manner Of Handling, 1983 . . . . .	56
Table 30 - Manner Of Handling By Age, 1983 . . . . .	56
Table 31 - Manner Of Handling By Sex and Race, 1983 . . .	57
Table 32 - Care Pending Disposition By Age, 1983 . . . . .	58
Table 33 - Care Pending Disposition By Sex And Race, 1983 . . . . .	60
Table 34 - Child in Need of Care, Referral by Disposition, 1983 . . . . .	60
Table 35 - Case Disposition By Sex And Race, 1983 . . . . .	62
Table 36 - Case Disposition By Age, 1983 . . . . .	63

LIST OF CHARTS

	Page
Chart 1 - Total Juvenile Referrals, 1974 - 1984 . . . . .	4
Chart 2 - Referrals By Month, Two Year Trend, 1982 - 1983 . . . . .	13
Chart 3 - Total Juvenile Offender Referrals, 1974 - 1984 . . . . .	24
Chart 4 - Total Child In Need Of Care Referrals, 1974 - 1984 . . . . .	50

## INTRODUCTION

The data contained in this publication represent juvenile activity in the 31 Judicial Districts for calendar year 1983. The Juvenile Court Statistical Card, a copy of which is found in Appendix D, served as the source document for these data. Input was received from 103 Kansas counties (Decatur and Wallace counties reported no juvenile referrals in 1983) for the 1983 annual report.

The data collection effort for this publication is a coordinated effort between the Office of Judicial Administration, the Department of Social Rehabilitation Services and the Statistical Analysis Center of the Kansas Bureau of Investigation.

An effort has been made in this edition of the annual report to depict changes brought about by the new Juvenile Code that became effective on January 1, 1983. Included in this issue are tables from the 1983 issue of CRIME IN KANSAS depicting the total number of juveniles arrested, the reason for the arrest, and a table showing the manner in which law enforcement agencies disposed of total juvenile contacts (Section II, pages 43 & 44). Also included are tables containing information supplied by S.R.S. showing the number of juveniles admitted to the states' youth centers (Section II, page 45), and the number of children reported to S.R.S. as abused or neglected (Section III, pages 65 & 67).

Individuals interested in specific district or county statistics will find all 31 Judicial Districts listed by county in Appendix A.

As in the past, the issue of missing information (listed as "Unknown" on the tables) continues to be of concern. While every effort is made to obtain this information, in many cases the data is simply not available from the original source or procedural problems mitigate against totally complete data. Hopefully, with the implementation of a new reporting system, this concern will be eliminated in the future.

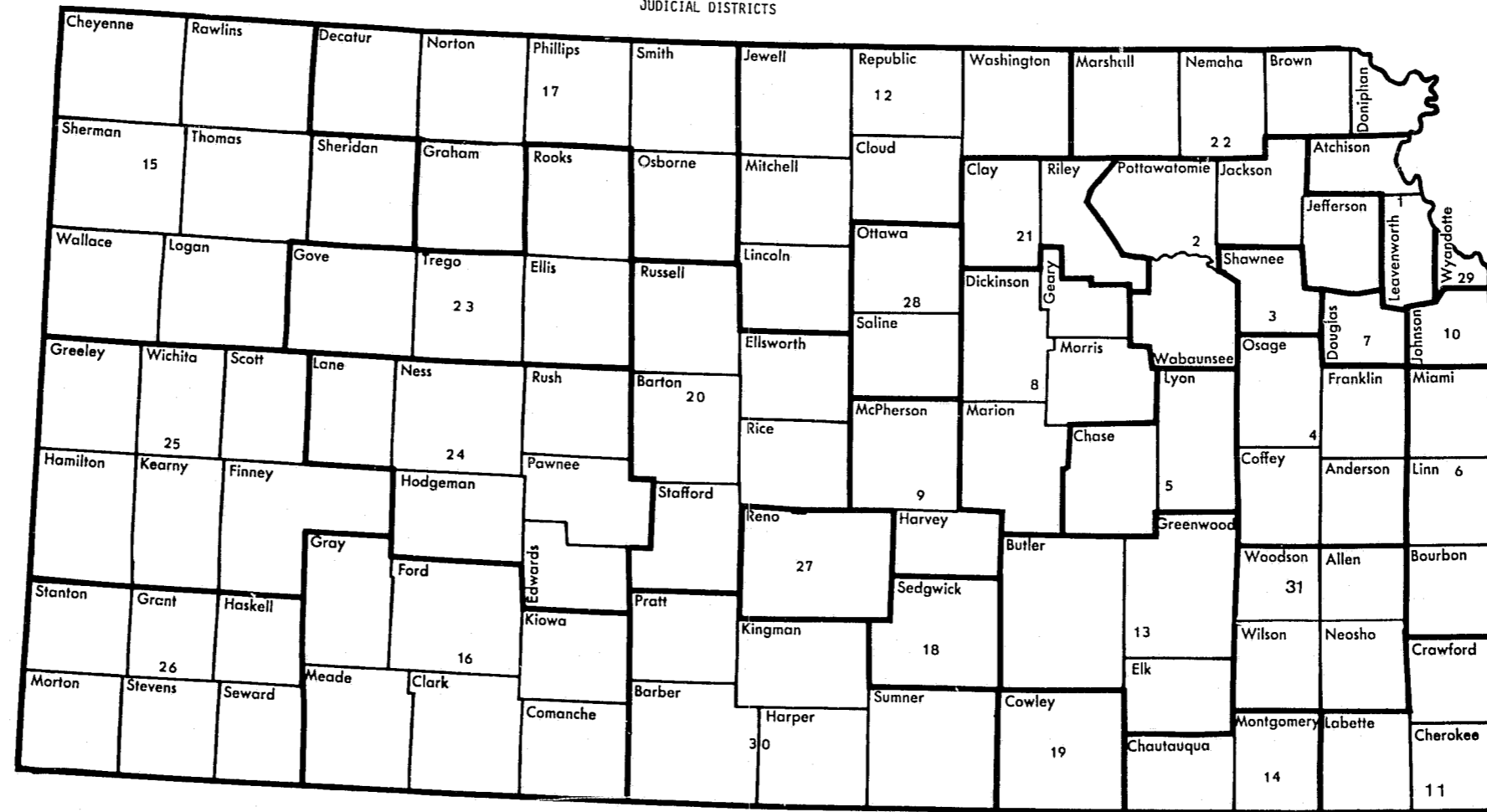
Any questions, criticisms or other reactions are greatly appreciated concerning either form or content, and will be received as constructive for future publications. Please address any comments to:

Michael E. Boyer, Supervisor  
Statistical Analysis Center  
Kansas Bureau of Investigation  
3420 Van Buren  
Topeka, Kansas 66611  
(913/267-5000)



STATE OF KANSAS  
JUDICIAL DISTRICTS

AX



KANSAS JUDICIAL DISTRICTS  
BY COUNTY AND CODE NUMBER

<u>JUDICIAL DISTRICT 1</u>		<u>JUDICIAL DISTRICT 10</u>	
Atchison	003	Johnson	046
Leavenworth	052		
<u>JUDICIAL DISTRICT 2</u>		<u>JUDICIAL DISTRICT 11</u>	
Jackson	043	Cherokee	011
Jefferson	044	Crawford	019
Pottawatomie	075	Labette	050
Wabaunsee	099		
<u>JUDICIAL DISTRICT 3</u>		<u>JUDICIAL DISTRICT 12</u>	
Shawnee	089	Cloud	015
		Jewell	045
<u>JUDICIAL DISTRICT 4</u>		Lincoln	053
Anderson	002	Mitchell	062
Coffey	016	Republic	079
Franklin	030	Washington	101
Osage	070		
<u>JUDICIAL DISTRICT 5</u>		<u>JUDICIAL DISTRICT 13</u>	
Chase	009	Butler	008
Lyon	056	Elk	025
		Greenwood	037
<u>JUDICIAL DISTRICT 6</u>		<u>JUDICIAL DISTRICT 14</u>	
Bourbon	006	Chautauqua	010
Linn	054	Montgomery	063
Miami	061		
<u>JUDICIAL DISTRICT 7</u>		<u>JUDICIAL DISTRICT 15</u>	
Douglas	023	Cheyenne	012
		Logan	055
<u>JUDICIAL DISTRICT 8</u>		Rawlins	077
Dickinson	021	Sheridan	090
Geary	031	Sherman	091
Marion	057	Thomas	097
Morris	064	Wallace	100
		<u>JUDICIAL DISTRICT 16</u>	
<u>JUDICIAL DISTRICT 9</u>		Clark	013
Harvey	040	Comanche	017
McPherson	059	Ford	029
		Gray	035
		Kiowa	049
		Meade	060

<u>JUDICIAL DISTRICT 17</u>	
Decatur	020
Graham	033
Norton	069
Osborne	071
Phillips	074
Smith	092
<u>JUDICIAL DISTRICT 18</u>	
Sedgwick	087
<u>JUDICIAL DISTRICT 19</u>	
Cowley	018
<u>JUDICIAL DISTRICT 20</u>	
Barton	005
Ellsworth	027
Rice	080
Russell	084
Stafford	093
<u>JUDICIAL DISTRICT 21</u>	
Clay	014
Riley	081
<u>JUDICIAL DISTRICT 22</u>	
Brown	007
Doniphan	022
Marshall	058
Nemaha	066
<u>JUDICIAL DISTRICT 23</u>	
Ellis	026
Gove	032
Rooks	082
Trego	098
<u>JUDICIAL DISTRICT 24</u>	
Edwards	024
Hodgeman	042
Lane	051
Ness	068
Pawnee	073
Rush	083

<u>JUDICIAL DISTRICT 25</u>	
Finney	028
Greeley	036
Hamilton	038
Kearny	047
Scott	086
Wichita	102
<u>JUDICIAL DISTRICT 26</u>	
Grant	034
Haskell	041
Morton	065
Seward	088
Stanton	094
Stevens	095
<u>JUDICIAL DISTRICT 27</u>	
Reno	078
<u>JUDICIAL DISTRICT 28</u>	
Ottawa	072
Saline	085
<u>JUDICIAL DISTRICT 29</u>	
Wyandotte	105
<u>JUDICIAL DISTRICT 30</u>	
Barber	004
Harper	039
Kingman	048
Pratt	076
Sumner	096
<u>JUDICIAL DISTRICT 31</u>	
Allen	001
Neosho	067
Wilson	103
Woodson	104

SECTION I  
Reported Referrals  
1983

SECTION I

REPORTED REFERRALS

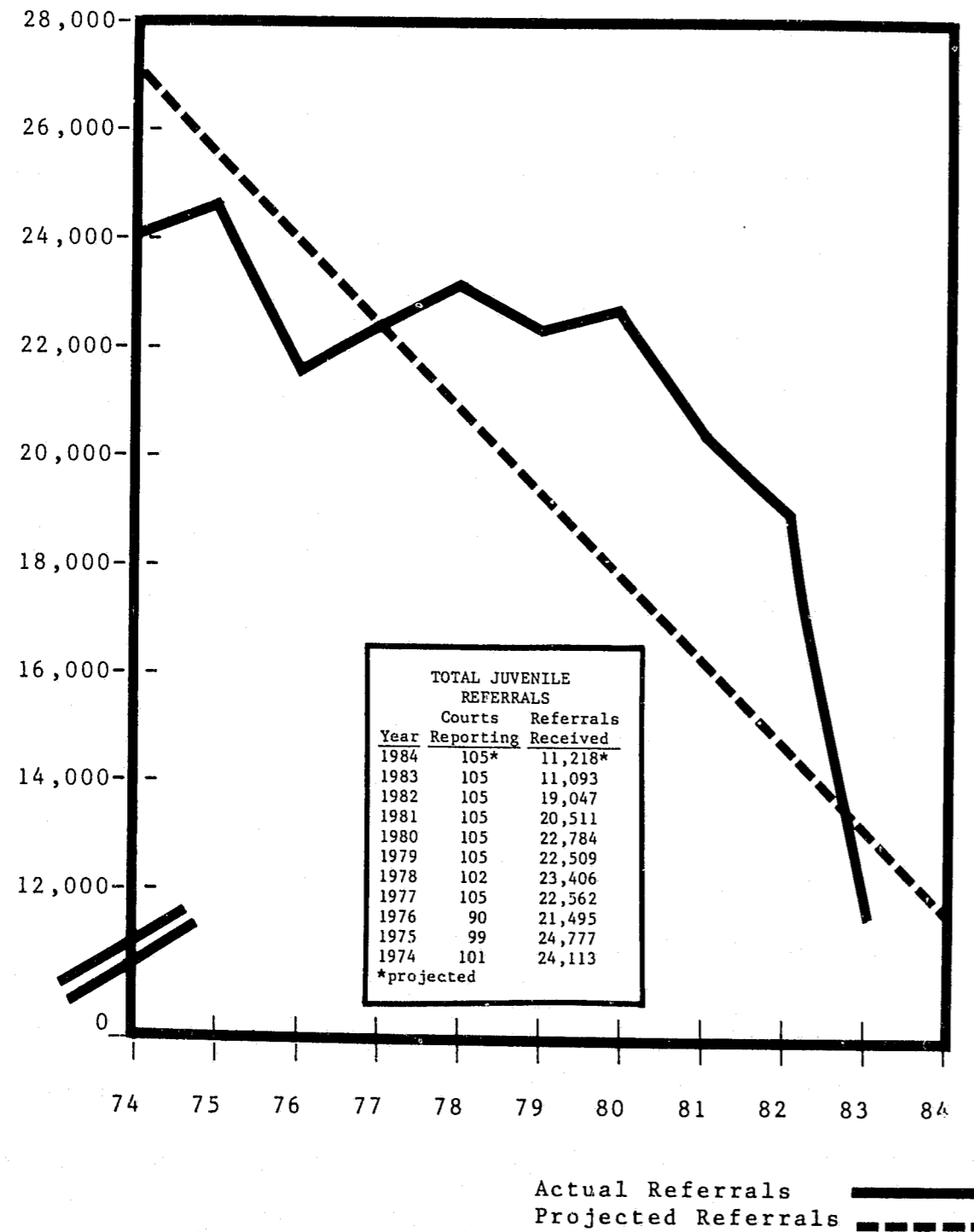
TRENDS IN JUVENILE REFERRALS

Statistical information was received on 11,093 referrals processed through the juvenile divisions of the District Courts in Kansas for calendar year 1983. Chart 1 illustrates the trend in juvenile referrals for the ten-year period from 1974 through 1983. Analysis of this chart indicates juvenile referrals reached a peak in 1975 with 24,777 youth coming to the attention of the courts. The 1983 referral total of 11,093 represents a 41.8% decrease from the 1982 total and slightly over fifty-five percent decrease from the peak referral period of 1975.

Chart 1 also provides a regression line of referrals for the past ten years and associated prediction points for 1984. The downward slope of the line represents the correlation between actual referrals and the passage of time and indicates that the total number of youth referred to the courts may continue to decrease in the future.

The 1983 juvenile referral data base includes input from 31 judicial districts representing 103 Kansas counties (Decatur and Wallace counties reported no 1983 juvenile referrals). The average referrals per court has decreased

Chart 1  
Total Juvenile Referrals  
1974 - 1984



from 181.4 referrals per court in 1982 to 107.7 referrals in 1983.

Table 1 displays the total number of juvenile referrals over a three year period (1981-83) for the four most densely populated judicial districts (District 3-Shawnee County, District 10-Johnson County, District 18-Sedgwick County, District 29-Wyandotte County) and a combined total for the remaining 27 judicial districts.

Table 1 shows a 45.9% decrease in the total number of juvenile referrals over the period, 1981 - 1983. District 3 exhibits the largest decrease (68.3%) in total number of juveniles referred during this time period, while District 18 reflects the smallest decrease (27.0%) in total number of youths referred. Similarly, Districts 3 and 18 demonstrate the largest decrease (64.4%) and the smallest decrease (21.6%), respectively, in total number of youth referred between 1982 and 1983.

TABLE 1  
TOTAL REFERRALS  
THREE YEAR TREND  
1981 - 1983

DISTRICTS	NUMBER OF REFERRALS 1983	NUMBER OF REFERRALS 1982	PERCENT CHANGE 83 - 82*	NUMBER OF REFERRALS 1981	PERCENT CHANGE 82 - 81*	PERCENT CHANGE 81 vs. 83*
District 3	804	2,260	-64.4	2,537	-10.9	-68.3
District 10	1,305	3,004	-56.6	3,033	- 1.0	-57.0
District 18	1,842	2,350	-21.6	2,523	- 6.9	-27.0
District 29	2,332	4,565	-48.9	4,751	- 3.9	-50.9
All Other Districts	4,810	6,868	-30.0	7,667	-10.4	-37.3
No. of Courts Reporting	105	105		105		
STATE TOTAL	11,093	19,047	-41.8	20,511	- 7.1	-45.9

\* All percentages rounded

REASON FOR REFERRAL

Referrals in 1983 were made for the reasons listed in Table 2. The table is divided into three groups based on the Kansas Juvenile Offenders Code (K.S.A. 1983 Supp. 38-1601 through 38-1685); the Kansas Code For Care of Children (K.S.A. 1983 Supp. 38-1501 through 38-1593); and a third general category containing referrals for petitions to marry, adoption proceedings, custody proceedings, requests to enlist and requests for emancipation. It should be noted the difficulty in overlaying the input document utilized for this report over the new Juvenile Code. This lack of relationship indicates the need for the new juvenile information system currently being developed.

The first category consists of offenses equivalent to the adult classifications of felony and misdemeanor, and referrals for traffic offenses. In this category, "Larceny-Other" was the most frequent offense reported (1,632) followed by "Burglary" (1,199). Analysis of the data shows a decrease of 5.1% in the number of referrals for "Larceny-Other" and a decrease of 14.0% in juveniles referred for "Burglary" in 1983 from 1982.

The second category shows those referrals classified as "Children In Need Of Care" (CINC). In this category "All Other Neglect" was the most frequent referral made to the courts (1,004).

Categories of referrals are detailed in Table 3. The three year trend shows that Juvenile Offender referrals consti-

TABLE 2  
REASON REFERRED  
BY JUDICIAL DISTRICTS  
1983

REASON REFERRED	STATE TOTAL	DISTRICT 3	DISTRICT 10	DISTRICT 18	DISTRICT 29	ALL OTHER DISTRICTS
Murder/Non-Neg Manslaughter	4	0	1	0	1	2
Neg Manslaughter	7	0	0	0	4	3
Rape	51	3	1	6	29	12
Robbery-Purse Snatching	43	1	1	5	29	7
Robbery-All Other	86	3	1	30	0	52
Assault-Aggravated	250	19	22	27	81	101
Assault-Non Aggravated	493	37	102	85	100	169
Burglary	1,199	88	28	320	265	498
Auto Theft-Unauthorized Use	119	12	4	23	0	80
Auto Theft-All Other	119	9	29	3	45	33
Larceny-Shoplifting	1,107	151	169	288	195	304
Larceny-All Other	1,632	70	324	431	207	600
Weapons	94	2	20	21	29	22
Other Sex Offenses	139	12	20	25	31	51
Drugs-Narcotic	94	10	0	11	11	62
Drugs-All Except Narcotic	222	19	98	34	23	48
Drunkenness	9	2	2	1	0	4
Disorderly Conduct	298	13	21	39	133	92
Vandalism	659	49	123	35	130	322
Other Offenses	131	12	8	11	37	63
Arson	58	8	3	9	6	32
Trespassing	228	48	39	17	42	82
Fraud-Forgery	178	10	25	24	14	105
Harassment	42	3	9	0	6	24
Criminal Damage to Prop	157	0	1	57	0	99
Fish and Game Violations	15	0	0	0	0	15
Possession of Stolen Prop	31	2	8	1	0	20
Deprivation of Property	37	1	1	10	0	25
Theft by Deception	2	0	0	0	0	2
Resisting Arrest	9	0	5	1	0	3
Alcohol Offense	363	6	82	11	24	240
Illegal Use of Fireworks	3	1	2	0	0	0
Obstruction of Justice	29	4	9	12	0	4
Drunk Driving	49	12	6	2	2	27
Reckless Driving	27	3	4	2	2	16
Driving Without License	67	2	12	20	2	31
All Other Traffic	96	4	5	51	5	31
Escape Court Placement	65	1	2	6	43	13
Warrant Issued	45	1	0	2	41	1
Probation Violation	55	1	0	0	51	3
<b>TOTAL JUVENILE OFFENDER</b>	<b>8,312</b>	<b>619</b>	<b>1,187</b>	<b>1,620</b>	<b>1,588</b>	<b>3,298</b>
Running Away	330	29	9	30	88	174
Truancy	185	15	16	1	47	106
Curfew Violation	39	0	0	1	6	32
Ungovernable Behavior	135	13	6	1	11	104
Other Reason Referred	19	3	3	0	0	13
Severance	23	0	0	17	0	6
Abuse	511	52	0	71	0	388
All Other Neglect	1,004	67	76	101	148	612
Physical Abuse	122	0	0	0	118	4
Sexual Abuse	61	5	0	0	47	9
Mental Abuse	23	0	0	0	19	4
Abandonment	20	0	0	0	8	12
Parents Unable to Care	203	0	0	0	196	7
Failure to Educate	25	0	0	0	25	0
Emotional Abuse	32	0	0	0	31	1
<b>TOTAL CHILD IN NEED OF CARE</b>	<b>2,732</b>	<b>184</b>	<b>110</b>	<b>222</b>	<b>744</b>	<b>1,472</b>
<b>ALL OTHER PROCEEDINGS</b>	<b>49</b>	<b>1</b>	<b>8</b>	<b>0</b>	<b>0</b>	<b>40</b>
<b>STATE TOTALS</b>	<b>11,093</b>	<b>804</b>	<b>1,305</b>	<b>1,842</b>	<b>2,332</b>	<b>4,810</b>

TABLE 3  
 CATEGORY OF REFERRAL  
 THREE YEAR TREND  
 1981 - 1983

CATEGORY OF REFERRAL	1983 STATE TOTAL	% OF 1983 STATE TOTAL*	1982 STATE TOTAL	% OF 1982 STATE TOTAL*	1981 STATE TOTAL	% OF 1981 STATE TOTAL*	% CHANGE 81 vs. 83
∞ Juvenile Offender	8,312	75.0	11,319	59.4	12,063	58.8	-31.0
Child in Need of Care	2,732	24.6	7,620	40.0	8,326	40.6	-67.2
Other Proceedings	49	.4	108	.6	122	.6	-59.8
STATE TOTAL	11,093	100.0	19,047	100.0	20,511	100.0	-45.9

\* All percentages rounded

tute slightly over sixty-two percent of the courts work load on an average while Children in Need of Care referrals are nearly thirty-seven percent of the volume. The data further show an overall decline of 31.0% in the number of Juvenile Offender referrals and slightly over sixty-seven percent decline in the number of CINC referrals between 1981 and 1983.

The relationship of the referral category to sex is given in Table 4. Of the 8,312 males referred to the court in 1983, 83.2% were referred as Juvenile Offenders and 16.4% were referred as Children in Need of Care. Further study shows District 18 (18.6%) and District 29 (19.5%) account for 38.1% of the total number of males referred as Juvenile Offenders, while 40.1% of the total come in the "All Other Districts" category.

In comparison, of the total number of females referred in 1983, 50.1% were referred as Juvenile Offenders and 49.3% were referred as Children in Need of Care. Further, of the females referred as Juvenile Offenders, District 18 accounts for 23.7% of the total, while 37.7% of the total come from "All Other Districts."

TABLE 4  
CATEGORY OF REFERRAL  
BY JUDICIAL DISTRICTS BY SEX  
1983

CATEGORY	STATE TOTAL		DISTRICT 3		DISTRICT 10		DISTRICT 18		DISTRICT 29		ALL OTHER DISTRICTS	
	M	F	M	F	M	F	M	F	M	F	M	F
JUVENILE OFFENDER	6,918	1,394	498	121	1,009	178	1,289	331	1,349	239	2,773	525
C I N C	1,361	1,371	95	80	60	50	97	125	374	370	735	737
OTHER REASON	33	16	1	0	7	1	0	0	0	0	25	15
TOTAL	8,312	2,781	594	210	1,076	229	1,386	456	1,723	609	3,533	1,277

C.I.N.C. = child in need of care.

Table 5 compares referral category to race. From the total number of white youths referred to the courts in 1983, 72.2% were referred as Juvenile Offenders and 27.3% were referred as Children in Need of Care. Similarly, 74.2% of the total number of black referrals were in the category of Juvenile Offenders and 25.6% were referred as Children in Need of Care. Data for the total number of Indian youths referred indicate that a proportionally smaller number were referred as Juvenile Offenders (53.1%) than were other races and a substantially higher number (44.4%) were referred as Children in Need of Care than were other races. It should be noted that throughout this publication any table having race as one of the primary variables should be viewed cautiously due to the sizable number of referrals whose race is listed as "Unknown."

TABLE 5  
CATEGORY OF REFERRAL  
BY JUDICIAL DISTRICT BY RACE  
1983

DISTRICTS	STATE TOTAL					JUVENILE OFFENDER					C I N C					OTHER REASON				
	W	B	I	O	U	W	B	I	O	U	W	B	I	O	U	W	B	I	O	U
DISTRICT 3	581	189	24	10	0	443	154	15	7	0	137	35	9	3	0	1	0	0	0	0
DISTRICT 10	1,284	14	0	6	1	1,169	14	0	3	1	107	0	0	3	0	8	0	0	0	0
DISTRICT 18	182	63	1	35	1,561	105	42	1	8	1,464	77	21	0	27	97	0	0	0	0	0
DISTRICT 29	1,392	915	4	21	0	910	665	1	12	0	482	250	3	9	0	0	0	0	0	0
ALL OTHER DISTRICTS	4,113	347	52	241	57	2,825	259	26	161	27	1,256	85	24	78	29	31	3	2	2	1
TOTAL	7,552	1,528	81	313	1,619	5,452	1,134	43	191	1,492	2,059	391	36	120	126	41	3	2	2	1

Race is W=White, B=Black, I=Indian, O=Other, U=Unknown  
C.I.N.C. = child in need of care.

MANNER OF HANDLING

Of fundamental importance in the handling of a juvenile is the decision whether or not to file a formal complaint or petition. Under the new Juvenile Code, cases should get into the court system only if a formal handling is desired on the part of the prosecutor. Similarly, a referral should be reported if a person was currently involved at the formal level. However, given the changes in January a number of cases are still indicated as being handled informally. Table 6 indicates that 77.6% of the 1983 juvenile referrals were reported as being handled in a formal manner. In contrast, data from 1982 show that 52.2% of that years referrals were handled in a formal manner.

The significant difference in the formal handling of juvenile referrals in 1983 may be directly attributed to the passage and implementation of the new Kansas Juvenile Code. Under the new code the courts no longer have the primary decision of whom to handle formally but, rather, receive referrals that have been filed by the prosecutor.

TABLE 6  
MANNER OF HANDLING BY DISTRICT  
1983

MANNER OF HANDLING	STATE TOTAL	DIST 3	DIST 10	DIST 18	DIST 29	ALL OTHER DISTRICTS
FORMAL	8,611	536	1,174	1,481	1,117	4,303
INFORMAL	2,482	268	131	361	1,215	507
TOTAL	11,093	804	1,305	1,842	2,332	4,810



SEASONALITY OF REFERRALS

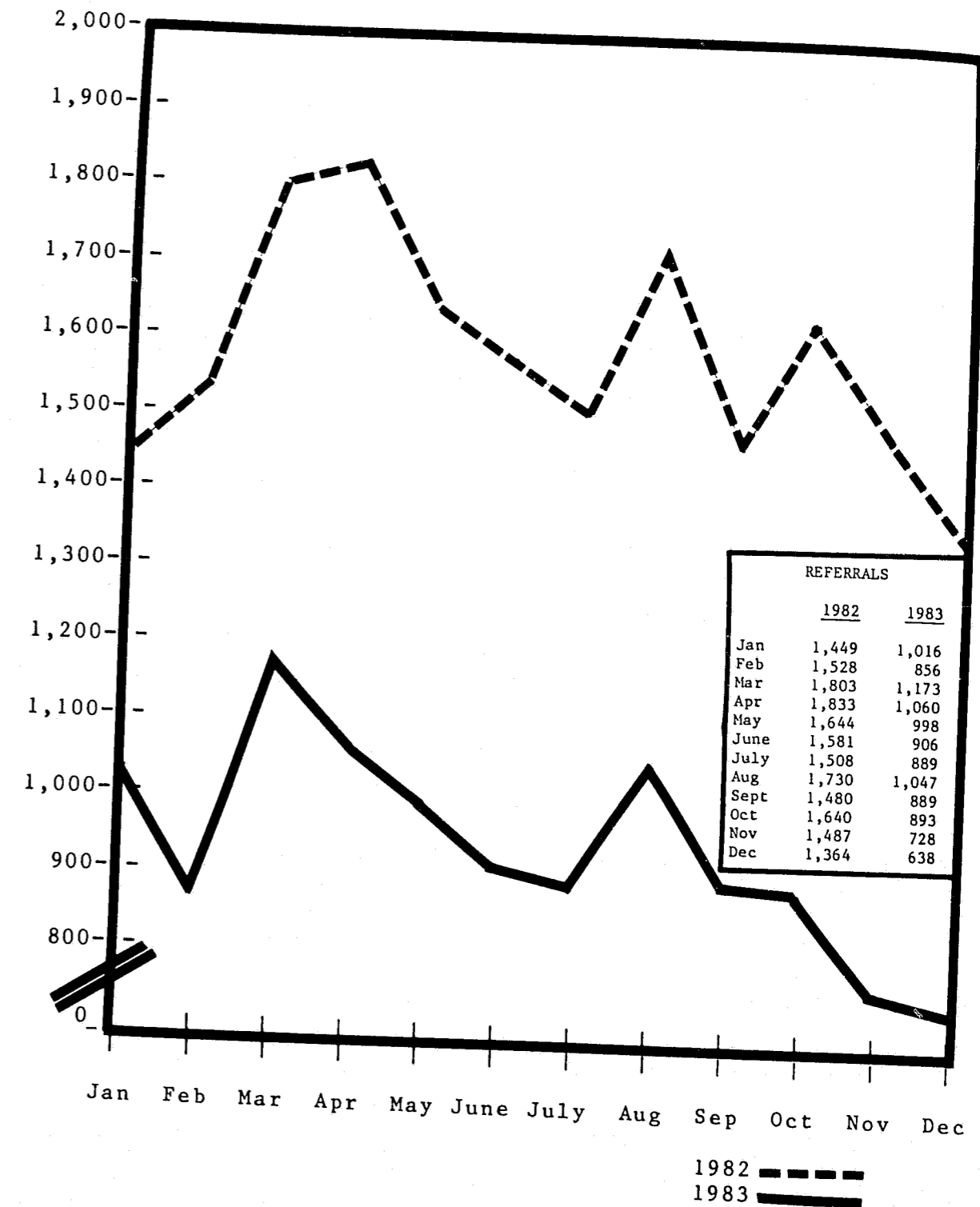
Table 7 gives the reader a monthly distribution of referrals for 1983. The 1983 data indicate March as having the highest number of youths referred and December was the month with the least number of youths referred.

Chart 2 presents monthly referrals for 1982 and 1983. In comparing the two years the reader should note that no one month is consistently a peak month. However, the month of December does consistently demonstrate the lowest number of referrals for any years presented and this may be related to a reluctance to make referrals during the holiday season.

TABLE 7  
MONTH OF REFERRAL BY JUDICIAL DISTRICTS  
1983

MONTH	STATE TOTAL	DIST 3	DIST 10	DIST 18	DIST 29	ALL OTHER DISTRICTS
JANUARY	1,016	80	22	146	356	412
FEBRUARY	856	51	54	139	227	385
MARCH	1,173	84	139	177	249	524
APRIL	1,060	87	137	157	183	496
MAY	998	104	80	126	231	457
JUNE	906	60	96	155	168	427
JULY	889	85	102	121	191	390
AUGUST	1,047	60	146	194	225	422
SEPTEMBER	889	40	120	167	210	352
OCTOBER	893	42	172	181	154	344
NOVEMBER	728	67	124	154	99	284
DECEMBER	638	44	113	125	39	317
TOTAL	11,093	804	1,305	1,842	2,332	4,810

CHART 2  
REFERRALS BY MONTH  
TWO YEAR TREND  
1982 - 1983



AGE AT REFERRAL

Table 8 shows the average age of youth referred in 1983 to be 13.6 years old. The data further reveal that youth 15 (15.8%), 16 (18.3%), and 17 (20.8%) years old comprise the largest group of youths referred to the court in 1983. However, while this age group continues to constitute nearly fifty-five percent of the number of youths referred to the courts, the number of referrals has decreased in these age brackets 41.4% in 1983 from 1982.

TABLE 8  
AGE AT REFERRAL BY JUDICIAL DISTRICTS  
1983

AGE	STATE TOTAL	DIST 3	DIST 10	DIST 18	DIST 29	ALL OTHER DISTRICTS
0 to 11 mo	182	11	5	34	52	80
1	156	4	7	13	47	85
2	128	10	4	4	39	71
3	123	9	7	6	43	58
4	122	9	4	6	40	63
5	88	9	1	5	30	43
6	103	10	5	8	30	50
7	110	3	5	6	42	54
8	127	13	3	6	40	65
9	163	10	5	6	46	96
10	226	15	18	31	66	96
11	345	20	30	53	84	158
12	621	39	61	141	135	245
13	1,017	91	118	206	198	404
14	1,357	90	198	250	277	542
15	1,752	136	219	291	357	749
16	2,031	146	285	391	350	859
17	2,312	172	322	380	399	1,039
18	63	5	8	3	22	25
19	8	0	0	2	6	0
Unknown	59	2	0	0	29	28
TOTAL	11,093	804	1,305	1,842	2,332	4,810

SOURCE OF REFERRAL

Analysis of the data supplied on source of referral shows that law enforcement agencies were responsible for eighty-two percent of the total number of referrals to the court in 1983 (Table 9). Social agencies are responsible for 9.1% of the total number of juveniles referred to the court in 1983. District 29 exhibits the highest referral rate from a social agency (7.6%).

TABLE 9  
SOURCE OF REFERRAL BY JUDICIAL DISTRICT  
1983

SOURCE OF REFERRAL	STATE TOTAL	PERCENT OF TOTAL*	DIST 3	DIST 10	DIST 18	DIST 29	ALL OTHER DISTRICTS
Law Enforcement Agency	9,049	82.0	729	1,194	1,714	1,826	3,586
School Department	155	1.3	14	22	1	14	104
Social Agency	1,018	9.1	39	72	107	177	623
Probation Officer	226	2.0	0	0	0	217	9
Parents or Relatives	231	2.0	4	5	3	1	218
Other Court	120	1.0	2	10	12	41	55
Other Source	294	2.6	16	2	5	56	215
TOTAL	11,093	100.0	804	1,305	1,842	2,332	4,810

\* All percentages rounded

CARE PENDING DISPOSITION

Table 10 shows the type of "out-of-home care" provided for juveniles prior to court disposition of the case. The table indicates 22.3% of the total number of juveniles referred in 1983 were placed in some type of custodial supervision prior to court disposition of the case. Further examination of the data show that of the total number of youth detained in

jail, 72.0% were from the combined "All Other Districts." Of the 610 juveniles placed in a detention home facility, District 29 detained 29.5% of the total.

TABLE 10  
CARE PENDING DISPOSITION BY JUDICIAL DISTRICT  
1983

CARE PENDING DISPOSITION	STATE TOTAL	PERCENT OF TOTAL*	DIST 3	DIST 10	DIST 18	DIST 29	ALL OTHER DISTRICTS
No Detention Overnight	8,617	78.0	602	1,208	1,526	1,735	3,546
Detention in Jail	565	5.0	6	3	2	147	407
Detention Home	610	5.4	125	94	155	180	56
Foster Family	926	8.3	50	0	141	193	542
Other Placement	375	3.3	21	0	18	77	259
TOTAL	11,093	100.0	804	1,305	1,842	2,332	4,810

\* All percentages rounded

CASE DISPOSITION

The manner in which a juvenile referral is resolved by the court is presented in Table 11. Of the 11,093 youth referred to the court in 1983, 123 juveniles were waived to adult court (1.1%). Cases that were either "Not Substantiated-Dismissed" or were "Substantiated-Dismissed" comprised 34.6% (3,843) of the court's workload. When looking at the reporting localities individually, considerable variation is found in the percentages of cases dismissed, from 61.6% in District 29 to 18.5% of the total number of youths referred in District 10. Probation was the disposition in 26.6% of the total number of cases, and this figure appears to be approximated across all localities, with the exception of District 29 which placed 40.6% of the youth referred on probation.

Referrals to other programs and diversion activities account for 8.3% of the court's total dispositions. Data indicate that District 10 disposed of 36.5% of their total referrals in this manner. Of the total number of youth referred in 1983, 2.5% were confined to some type of institutional care. Youth placed under the protective custody of a public agency, usually S.R.S., occurred in 11.8% of the referrals.

TABLE 11  
CASE DISPOSITION BY JUDICIAL DISTRICTS  
1983

DISPOSITION	STATE TOTAL	DIST 3	DIST 10	DIST 18	DIST 29	ALL OTHER DISTRICTS
Waived to Criminal Court	123	14	14	29	30	36
NOT SUBSTANTIATED						
Dismissed	2,473	216	120	236	928	973
COMPLAINT SUBSTANTIATED						
Dismissed - Warned	1,370	32	122	336	509	371
Held Open	102	0	19	0	5	78
Probation	2,951	186	329	747	233	1,456
Unsupervised Probation	78	9	0	0	0	69
Referred Elsewhere	788	126	2	2	279	379
Runaway Returned	57	2	0	0	28	27
Other	51	2	15	0	0	34
Restitution	130	1	1	39	0	89
Diversion Programs	843	96	476	83	0	188
Change of Venue	29	0	0	0	0	29
Inapplicable	139	10	63	5	0	61
CUSTODY TO						
Public Inst. Delinquents	211	24	14	42	23	108
Other Public Institution	65	13	1	27	0	24
Public Agency	1,309	67	92	278	242	630
Private Agency	38	3	0	2	1	32
Individual	182	0	5	10	41	126
Other	53	0	4	0	13	36
S.R.S. - Group Home	64	3	23	6	0	32
S.R.S.- Foster Care	36	0	5	0	0	31
Custody to Non-relative	1	0	0	0	0	1
TOTAL	11,093	804	1,305	1,842	2,332	4,810

TIME FROM REFERRAL TO DISPOSITION

The length of time between the date a juvenile is referred and final disposition of the referral is presented in Table 12. Examination of the data shows that of the total number of referrals, 20.1% (2,225) were disposed of in ten days or less. However, this percentage figure is not approximated on an individual district basis. District 18 and District 29 dispose of nearly one-fourth the total number of referrals in ten days or less, while District 3 disposes of 31.8% of all referrals in ten days or less. Analysis further indicates that 49.4% of all referrals are disposed of in thirty days or less.

TABLE 12  
TIME ELAPSED BETWEEN REFERRAL AND DISPOSITION  
1983

TIME BETWEEN REFERRAL AND DISPOSITION	STATE TOTAL	PERCENT OF TOTAL*	DIST 3	DIST 10	DIST 18	DIST 29	ALL OTHER DISTRICTS
10 DAYS OR LESS	2,225	20.1	256	195	464	653	657
11 - 20 DAYS	1,863	16.8	75	384	347	358	699
21 - 30 DAYS	1,387	12.5	77	203	150	364	593
31 - 40 DAYS	1,073	9.7	62	101	186	207	517
41 - 50 DAYS	912	8.2	74	60	216	172	390
51 - 75 DAYS	1,354	12.2	73	98	239	277	667
76 - 100 DAYS	734	6.6	40	57	112	121	404
101 - 150 DAYS	699	6.3	26	98	75	118	382
151 - 200 DAYS	340	3.1	31	33	22	48	206
201 - 250 DAYS	208	1.9	55	28	3	10	112
251 - 300 DAYS	101	.9	17	17	7	2	58
MORE THAN 301 DAYS	197	1.8	18	31	21	2	125
TOTAL	11,093	100.0	804	1,305	1,842	2,332	4,810

\* All percentages rounded

SUMMARY

The purpose of this section has been to present the pertinent data elements on the current input document for the Juvenile Justice Information System (JJIS) and to provide some narrative and pictorial interpretation of the data submitted by the courts in 1983. More discrete county and district data may be found in Appendix A of this publication.

Also included in this section have been tables highlighting known areas of concern when evaluating the functioning of the juvenile justice system in Kansas.

While problems did exist in this data collection system, both of a procedural and substantive nature, it was the best source of social-demographic information concerning activity through the juvenile justice system in Kansas at the time. With the implementation of the new data system during 1984, more discrete analysis and increased sophistication will be possible.

SECTION II  
Juvenile Offender Referrals  
1983

Preceding page blank

SECTION II

JUVENILE OFFENDER REFERRALS

The purpose of this section is to examine those referrals classified as Juvenile Offenders, those cases that are the equivalent of felonies and misdemeanors when committed by an adult.

Chart 3 graphically depicts the total number of Juvenile Offender type referrals from 1974 through 1983. The chart shows 1975 as the peak period with 15,220 youth referred. There were 8,312 youth referred as Juvenile Offenders in 1983; this number represents a decrease of 45.4% from the peak period of 1975.

Statutorily, persons under 10 years of age committing felony or misdemeanor type offenses are not defined as Juvenile Offenders under the new Juvenile Code. Through a processing oversight 266 cases were included with the Offender data. This oversight will be corrected in future publications.

Offender type referrals for a two year time period are presented in Table 13. The Table illustrates an overall decrease of 26.7% in total Offender-type referrals in 1983 from 1982. However, submitted data for individual categories show an increase over 1982 figures in six areas: "Negligent Manslaughter", "Rape", "Other Sex Offenses", "Disorderly Conduct", "Criminal Damage to Property" and "Probation Violation."

Preceding page blank

CHART 3  
TOTAL JUVENILE OFFENDER REFERRALS  
1974 - 1984

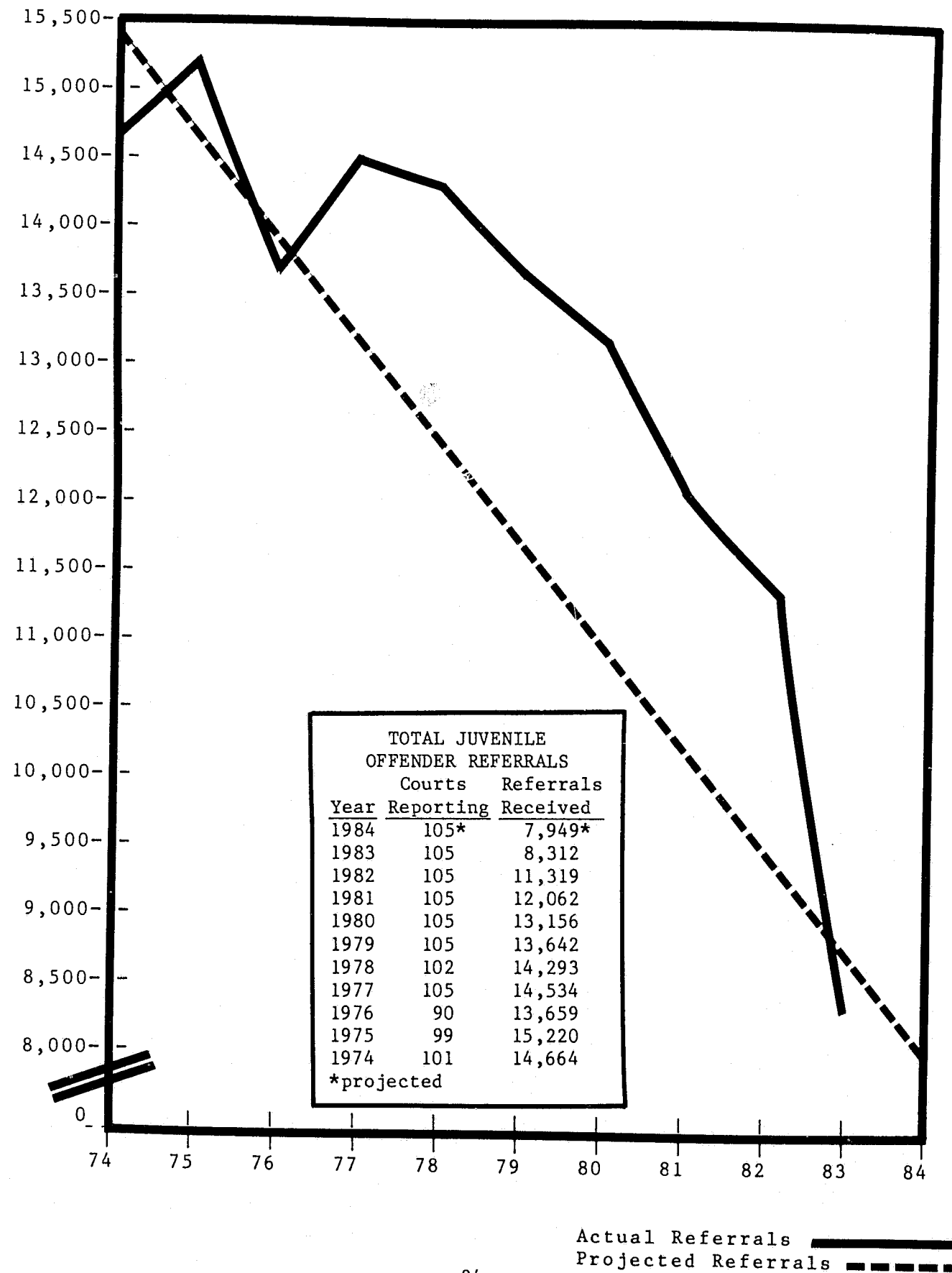


TABLE 13  
TOTAL OFFENDER REFERRALS  
1982 - 1983

REASON REFERRED	1983 TOTAL	1982 TOTAL	PERCENT OF CHANGE* 82 - 83
Murder and Non-Neg. Manslaughter	4	8	- 50.0
Neg. Manslaughter	7	4	+ 42.9
Rape	51	34	+ 33.3
Robbery-Purse Snatching	43	60	- 28.3
Robbery-All Other	86	150	- 42.7
Assault-Aggravated	250	291	- 14.1
Assault-Non-Aggravated	493	630	- 21.8
Burglary	1,199	1,395	- 14.1
Auto Theft-Unauthorized Use	119	153	- 22.2
Auto Theft-All Other	119	144	- 17.4
Larceny-Shoplifting	1,107	1,557	- 28.9
Larceny-All Other	1,632	1,720	- 5.1
Weapons	94	102	- 7.8
Other Sex Offenses	139	130	+ 6.5
Drugs-Narcotic	94	108	- 13.0
Drugs-All Except Narcotic	222	410	- 45.9
Drunkenness	9	45	- 80.0
Disorderly Conduct	298	297	+ 0.3
Vandalism	659	868	- 24.1
Other Offenses	131	313	- 58.2
Arson	58	67	- 13.4
Trespassing	228	433	- 47.3
Fraud-Forgery	178	215	- 17.2
Harassment	42	72	- 41.8
Criminal Damage to Property	157	145	+ 7.6
Fish and Game Violations	15	31	- 51.6
Possession of Stolen Property	31	55	- 43.6
Deprivation of Property	37	37	0.0
Theft by Deception	2	0	0.0
Resisting Arrest	9	11	- 18.2
Illegal Use of Fireworks	3	0	0.0
Alcohol Offense	363	647	- 43.9
Obstruction of Justice	29	35	- 17.1
Drunk Driving	49	300	- 83.7
Hit and Run	0	16	-100.0
Reckless Driving	27	234	- 88.5
Driving Without a License	67	135	- 50.4
All Other Traffic	96	186	- 48.4
Escape Court Placement	65	184	- 64.7
Warrant Issued	45	55	- 18.2
Probation Violation	55	41	+ 25.5
<b>TOTAL JUVENILE OFFENDER</b>	<b>8,312</b>	<b>11,318</b>	<b>- 26.7</b>

\*All percentages rounded

Table 14 shows reason referred by sex and race for 1983. The figures show that of the total number of youth referred as Offenders, 83.2% were male. Also indicated is that male referrals were most frequently referred for the offense of "Larceny-Other" in 1983. Males accounted for 81.8% of all referrals for crimes against persons, and 84.9% of all referrals for crimes against property. In contrast, females accounted for only 16.8% of the total number of Offender referrals. Females were referred most often for the offense "Shoplifting" and accounted for 36.1% of the total number of referrals in this category. Females were also referred for 36.5% of all "Fraud-Forgery" and 23.3% of the total "Assault-Non Aggravated" referrals.

Table 14 also indicates that of the juveniles referred as Offenders in 1983, 65.6% were white. White youth were most frequently referred for "Larceny-Other" (18.1%) and accounted for 60.4% of the youth referred in this category. White juveniles also accounted for 55.1% of all "Shoplifting" referrals and 77.9% of the drug referrals.

Black youth accounted for 13.6% of the total number of referrals. Blacks were most often referred for "Shoplifting" (20.6%) and accounted for 21.1% of the total number of youth referred in this category.

As has been noted elsewhere, all data pertaining to race must be examined cautiously due to the level of "Missing Information" (18.0%) for Juvenile Offender referrals.

TABLE 14  
OFFENDER REFERRALS BY SEX AND RACE  
1983

REASON REFERRED	STATE TOTAL	MALE	FEMALE	WHITE	BLACK	INDIAN	OTHER	UNKNOWN
Murder/Non-Neg Mansl.	4	3	1	3	0	1	0	0
Neg Manslaughter	7	2	5	6	1	0	0	0
Rape	51	48	3	24	21	0	0	6
Robbery-Purse Snatching	43	40	3	18	19	0	1	5
Robbery-All Other	86	82	4	53	6	0	1	26
Assault-Aggravated	250	211	39	163	51	3	5	28
Assault-Non Aggravated	493	378	115	307	89	3	12	82
Burglary	1,199	1,123	76	693	164	8	26	308
Auto Theft-Unauth. Use	119	101	18	92	9	1	1	16
Auto Theft-All Other	119	110	9	92	25	0	1	1
Larceny-Shoplifting	1,107	707	400	610	233	8	26	230
Larceny-All Other	1,632	1,423	209	986	191	6	34	415
Weapons	94	89	5	62	12	0	1	19
Other Sex Offenses	139	124	15	86	23	0	4	26
Drugs-Narcotic	94	75	19	71	8	1	3	11
Drugs-All Except Narc.	222	186	36	175	17	1	3	26
Drunkenness	9	6	3	8	0	0	0	1
Disorderly Conduct	298	246	52	192	63	0	9	34
Vandalism	659	605	54	558	57	2	10	32
Other Offenses	131	106	25	93	21	2	3	12
Arson	58	49	9	47	2	1	0	8
Trespassing	228	201	27	179	22	2	10	15
Fraud-Forgery	178	113	65	134	9	1	11	23
Harassment	42	31	11	38	2	0	2	0
Criminal Damage to Prop	157	148	9	86	6	0	7	58
Fish and Game Violations	15	15	0	14	0	0	1	0
Possession of Stolen Prop	31	28	3	26	3	0	2	0
Deprivation of Property	37	36	1	24	3	0	0	10
Theft by Deception	2	1	1	2	0	0	0	0
Resisting Arrest	9	8	1	9	0	0	0	0
Alcohol Offense	363	264	99	330	9	2	10	12
Illegal Use of Fireworks	3	3	0	2	1	0	0	0
Obstruction of Justice	29	26	3	15	0	0	2	12
Drunk Driving	49	43	6	45	1	0	1	2
Reckless Driving	27	27	0	21	2	0	2	2
Driving Without License	67	52	15	45	1	0	1	20
All Other Traffic	96	77	19	41	5	1	2	47
Escape Court Placement	65	45	20	45	16	0	0	4
Warrant Issued	45	40	5	20	24	0	0	1
Probation Violation	55	46	9	37	18	0	0	0
<b>TOTAL</b>	<b>8,312</b>	<b>6,918</b>	<b>1,394</b>	<b>5,452</b>	<b>1,134</b>	<b>43</b>	<b>191</b>	<b>1,492</b>

Reason referred by age is given in Table 15. Analysis of the data reveals that youth age 17 accounted for 25.9% of the court's workload in Juvenile Offender referrals. Data further show 17 year olds were most frequently referred (18.9%) for "Larceny-Other," and accounted for 24.9% of the total number of referrals in this category. This age group was responsible for nearly one-quarter (24.5%) of offenses committed against persons and 44.3% of all drug usage referrals.

Table 15 also demonstrates that youth 16 years of age accounted for 21.2% of the Offender referrals in 1983, sixteen year old youth were responsible for 22.7% of all offenses committed against persons, 23.1% of all "Burglary" offenses, and 32.0% of the total number referred for "Alcohol Offenses." The data further indicate that 16 year old youth were most frequently referred for offenses in the "Larceny-Other" category (17.5%) and accounted for 18.9% of the referrals in this category.

Fifteen year old youth accounted for 16.9% of the total referrals in 1983. Fifteen year olds accounted for 15.3% of all crime against persons, 17.7% of all referrals for "Larceny-Other" for which they are most frequently referred, and 22.7% of the total number of referrals for "Auto Theft."

TABLE 15  
OFFENDER REFERRALS BY AGE  
1983

REASON REFERRED	STATE TOTAL	10 & UNDER	11-12	13-14	15	16	17	18 & OVER	AGE UNKNOWN
Murder/Non-Neg Mansl.	4	0	1	0	0	1	2	0	0
Neg Manslaughter	7	3	0	0	2	1	1	0	0
Rape	51	3	9	12	3	15	8	1	0
Robbery-Purse Snatching	43	1	1	3	6	16	13	3	0
Robbery-All Other	86	0	7	19	15	20	24	1	0
Assault-Aggravated	250	8	25	57	38	49	69	3	1
Assault-Non Aggravated	493	21	54	115	79	106	112	4	2
Burglary	1,199	25	101	287	214	277	279	13	3
Auto Theft-Unauth. Use	119	2	2	33	24	33	24	0	1
Auto Theft-All Other	119	0	2	24	30	29	32	1	1
Larceny-Shoplifting	1,107	58	150	308	186	186	211	6	2
Larceny-All Other	1,632	46	160	405	288	309	406	17	1
Weapons	94	5	8	17	16	24	24	0	0
Other Sex Offenses	139	2	9	45	27	24	30	0	2
Drugs-Narcotic	94	1	2	14	10	25	42	0	0
Drugs-All Except Narc.	222	2	0	36	32	51	98	3	0
Drunkenness	9	0	0	0	2	1	6	0	0
Disorderly Conduct	298	7	12	49	70	71	86	2	1
Vandalism	659	44	84	140	99	149	138	1	4
Other Offenses	131	12	13	14	12	31	40	2	7
Arson	58	6	4	16	11	7	14	0	0
Trespassing	228	5	23	34	45	53	62	2	4
Fraud-Forgery	178	1	6	17	30	44	76	4	0
Harassment	42	1	2	11	13	10	4	0	1
Criminal Damage to Prop	157	7	23	30	20	29	47	1	0
Fish and Game Violations	15	0	0	3	11	1	0	0	0
Possession of Stolen Prop	31	0	3	14	7	2	5	0	0
Deprivation of Property	37	1	1	7	7	3	17	1	0
Theft by Deception	2	0	0	0	2	0	0	0	0
Resisting Arrest	9	0	0	2	3	1	3	0	0
Alcohol Offense	363	0	1	31	52	116	162	0	1
Illegal Use of Fireworks	3	0	0	1	1	0	1	0	0
Obstruction of Justice	29	0	0	4	4	5	16	0	0
Drunk Driving	49	0	0	0	1	10	37	1	0
Reckless Driving	27	0	0	6	2	7	11	1	0
Driving Without License	67	1	13	48	2	1	2	0	0
All Other Traffic	96	4	18	36	9	18	11	0	0
Escape Court Placement	65	0	7	14	13	17	14	0	0
Warrant Issued	45	0	2	7	4	12	18	2	0
Probation Violation	55	0	2	16	17	8	7	4	1
<b>TOTAL</b>	<b>8,312</b>	<b>266</b>	<b>745</b>	<b>1,875</b>	<b>1,407</b>	<b>1,762</b>	<b>2,152</b>	<b>73</b>	<b>32</b>



Reason referred by time elapsed between referral and court disposition is provided in Table 16. Table 16 shows that the court disposed of 43.4% of all crimes against persons within thirty days and disposed of 17.9% of this number in ten days or less. The Table also indicates the disposition rate for crimes against property to be 49% within thirty days, of which 16.4% are disposed of within ten days. Overall, of the 8,312 youth referred to the court in 1983 as Juvenile Offenders, 4,105 (49.4%) were disposed of within thirty days of referral.

Reason referred by manner handled is presented in Table 17. The data indicate that 78.5% of all Juvenile Offender referrals were handled with a formal complaint in 1983, which is a significantly higher percentage than the 63.5% of total offender referrals that were handled with a formal complaint in 1982.

Manner of handling by age is given in Table 18. The Table shows that youth age 15, 16 and 17 are responsible for sixty-four percent of the total referred as Juvenile Offenders in 1983 and that slightly over seventy-nine percent of each age group were handled with formal complaint.

TABLE 16  
OFFENDER REFERRALS BY TIME ELAPSED BETWEEN REFERRAL AND DISPOSITION  
1983

REASON REFERRED	STATE TOTAL	10 DAYS OR LESS	11 - 20 DAYS	21 - 30 DAYS	31 - 40 DAYS	41 - 50 DAYS	51 - 75 DAYS	76 - 100 DAYS	101- 150 DAYS	151- 200 DAYS	201- 250 DAYS	251- 300 DAYS	OVER 300 DAYS
Murder/Non-Neg Mansl.	4	0	0	0	0	1	1	1	0	0	1	0	0
Neg Manslaughter	7	0	0	1	1	0	1	1	0	3	0	0	0
Rape	51	7	4	5	2	3	11	7	6	1	5	0	0
Robbery-Purse Snatching	43	11	2	9	4	3	7	4	1	1	0	0	1
Robbery-All Other	86	8	9	8	10	7	13	13	10	4	1	0	3
Assault-Aggravated	250	36	42	25	25	26	44	19	12	11	4	0	6
Assault-Non Aggravated	493	105	71	62	43	56	72	35	24	7	10	4	4
Burglary	1,199	187	169	120	135	143	198	93	87	32	7	8	20
Auto Theft-Unauth. Use	119	21	20	19	10	12	17	6	7	2	0	1	4
Auto Theft-All Other	119	29	23	8	15	13	13	8	6	2	1	0	1
Larceny-Shoplifting	1,107	299	225	189	76	83	74	36	42	22	41	7	13
Larceny-All Other	1,632	183	351	249	174	144	239	93	97	38	23	13	28
Weapons	94	18	13	13	8	12	16	4	4	4	0	1	1
Other Sex Offenses	139	16	14	13	20	12	20	16	17	6	2	2	1
Drugs-Narcotic	94	8	9	11	11	9	18	10	9	3	2	1	3
Drugs-All Except Narc.	222	44	52	31	16	12	19	19	11	9	4	3	2
Drunkenness	9	2	3	0	0	0	0	2	0	2	0	0	0
Disorderly Conduct	298	58	51	54	33	15	21	22	21	9	6	4	4
Vandalism	659	92	120	85	84	46	104	49	33	20	15	6	5
Other Offenses	131	43	23	13	10	8	13	6	6	5	1	2	1
Arson	58	3	3	6	5	12	9	8	5	4	1	0	2
Trespassing	228	41	42	37	28	9	15	22	13	13	5	2	1
Fraud-Forgery	178	18	31	22	15	9	16	24	14	17	2	1	4
Harassment	42	8	10	7	9	3	2	0	1	1	1	0	0
Criminal Damage to Prop	157	7	27	15	21	13	26	28	14	3	1	2	0
Fish and Game Violations	15	1	6	2	2	2	0	0	0	0	2	0	0
Possession of Stolen Prop	31	10	2	3	1	1	5	0	3	3	3	0	0
Deprivation of Property	37	6	12	4	5	2	3	4	0	0	1	0	0
Theft by Deception	2	0	1	1	0	0	0	0	0	0	0	0	0
Resisting Arrest	9	2	4	1	1	0	0	0	1	0	0	0	0
Alcohol Offense	363	76	75	65	27	29	43	13	19	3	6	3	4
Illegal Use of Fireworks	3	1	0	0	0	1	0	1	0	0	0	0	0
Obstruction of Justice	29	6	0	4	7	1	4	1	2	0	1	2	1
Drunk Driving	49	8	7	2	4	6	9	6	2	1	2	2	0
Reckless Driving	27	4	4	0	2	3	4	3	4	0	1	0	2
Driving Without License	67	11	26	10	6	7	1	0	2	1	1	1	1
All Other Traffic	96	22	29	8	10	7	7	5	3	2	0	2	1
Escape Court Placement	65	37	7	5	4	2	1	5	2	0	0	0	2
Warrant Issued	45	22	8	8	0	2	1	1	0	2	0	0	1
Probation Violation	55	24	14	7	5	2	2	0	0	1	0	0	0
TOTAL	8,312	1,474	1,509	1,122	829	723	1,057	555	481	229	150	67	116

TABLE 17  
OFFENDER REFERRALS BY MANNER OF HANDLING  
1983

REASON REFERRED	STATE TOTAL	WITH COMPLAINT	WITHOUT COMPLAINT
Murder/Non-Neg Mansl.	4	4	0
Neg Manslaughter	7	7	0
Rape	51	38	13
Robbery-Purse Snatching	43	27	16
Robbery-All Other	86	76	10
Assault-Aggravated	250	174	76
Assault-Non Aggravated	493	372	121
Burglary	1,199	1,002	197
Auto Theft-Unauth. Use	119	98	21
Auto Theft-All Other	119	86	33
Larceny-Shoplifting	1,107	818	289
Larceny-All Other	1,632	1,406	226
Weapons	94	72	22
Other Sex Offenses	139	113	26
Drugs-Narcotic	94	77	17
Drugs-All Except Narc.	222	178	44
Drunkenness	9	3	6
Disorderly Conduct	298	180	118
Vandalism	659	507	152
Other Offenses	131	83	48
Arson	58	42	16
Trespassing	228	168	60
Fraud-Forgery	178	156	22
Harassment	42	28	14
Criminal Damage to Prop	157	145	12
Fish and Game Violations	15	13	2
Possession of Stolen Prop	31	22	9
Deprivation of Property	37	31	6
Theft by Deception	2	2	0
Resisting Arrest	9	8	1
Alcohol Offense	363	284	79
Illegal Use of Fireworks	3	3	0
Obstruction of Justice	29	25	4
Drunk Driving	49	38	11
Reckless Driving	27	21	6
Driving Without License	67	60	7
All Other Traffic	96	80	16
Escape Court Placement	65	19	46
Warrant Issued	45	14	31
Probation Violation	55	48	7
TOTAL	8,312	6,528	1,784

TABLE 18  
MANNER OF HANDLING BY AGE  
1983

MANNER OF HANDLING	STATE TOTAL	10 & UNDER	11-12	13-14	15	16	17	18 & OVER	AGE UNKNOWN
WITH COMPLAINT	6,528	172	572	1,496	1,120	1,393	1,706	59	10
WITHOUT COMPLAINT	1,784	94	173	379	287	369	446	14	22
TOTAL	8,312	266	745	1,875	1,407	1,762	2,152	73	32

Offender referrals by manner of handling by sex and race is presented in Table 19. Examination of the data by sex reveals that male youth were responsible for 83.2% of the total number referred as Juvenile Offenders in 1983 and that 79.1% were handled with a formal complaint. In contrast, females constitute 16.8% of the total number of Offender referrals in 1983 of which 75.8% were handled in a formal manner.

Analysis of the variables in this table indicates the courts handled 79.0% of white referrals, 63.7% of black referrals, 79.1% of Indian referrals, and 86.4% of "Other" race referrals with a formal complaint. However, the reader is again reminded to use caution in interpreting racial data given the large number of referrals containing missing information (18%).

TABLE 19  
MANNER OF HANDLING BY SEX AND RACE  
1983

MANNER OF HANDLING	STATE TOTAL	MALE	FEMALE	WHITE	BLACK	INDIAN	OTHER	UNKNOWN
WITH COMPLAINT	6,528	5,471	1,057	4,308	722	34	165	1,299
WITHOUT COMPLAINT	1,784	1,447	337	1,144	412	9	26	193
TOTAL	8,312	6,918	1,394	5,452	1,134	43	191	1,492

Table 20 shows the type of care an Offender referral received prior to final disposition by age group. This table indicates that 85.7% of all youths referred as Offenders were released to home supervision prior to the final disposition of their case. Further examination of the data indicates that of the 1,190 youth detained in custodial care, 31.3% were seventeen years old, 24.1% were sixteen years old and 19.5% were fifteen years old.

TABLE 20  
CARE PENDING DISPOSITION BY AGE  
1983

CARE PENDING	STATE TOTAL	10 & UNDER	11-12	13-14	15	16	17	18 & OVER	AGE UNKNOWN
No Detention Overnight	7,122	250	698	1,647	1,175	1,475	1,780	67	30
Detention in Jail	499	1	9	67	80	127	211	3	1
Detention Home	542	4	25	124	122	135	128	3	1
Foster Family	45	9	7	13	7	5	4	0	0
Other Placement	104	2	6	24	23	20	29	0	0
<b>TOTAL</b>	<b>8,312</b>	<b>266</b>	<b>745</b>	<b>1,875</b>	<b>1,407</b>	<b>1,762</b>	<b>2,152</b>	<b>73</b>	<b>32</b>

The type of care pending disposition by sex and race is shown in Table 21. This Table indicates that 85.7% of all youth referred as Juvenile Offenders were released to home supervision prior to the final disposition of their case. The Table also indicates that of the total number of male offenders referred to the court in 1983, 14.6% were detained in some type of custodial care prior to final disposition of their case; 12.8% of the 1,394 female offenders referred in 1983 were detained for custodial supervision prior to final disposition of their case.

White referrals account for 65.6% of all youth detained in custody prior to final disposition of the case. However, of the total number of white youth referred to the court in 1983 only 14.6% were detained in custody prior to final disposition. In comparison, black youth accounted for 13.6% of the total number of juveniles detained in custody prior to final disposition of the case while, of the total number of black youth referred, 18.4% were detained before final disposition.

TABLE 21  
CARE PENDING DISPOSITION BY SEX AND RACE  
1983

CARE PENDING	STATE TOTAL	MALE	FEMALE	WHITE	BLACK	INDIAN	OTHER	UNKNOWN
No Detention Overnight	7,122	5,906	1,216	4,657	925	29	165	1,346
Detention in Jail	499	442	57	376	93	9	14	7
Detention Home	542	451	91	299	97	5	7	134
Foster Family	45	33	12	39	4	0	2	0
Other Placement	104	86	18	81	15	0	3	5
TOTAL	8,312	6,918	1,394	5,452	1,134	43	191	1,492

Reason referred by disposition of the case is reported in Table 22. Of the 8,312 referrals made to the court for Offender-type offenses in 1983, 2,994 (36.0%) were dismissed either as not proved or warned; 34.5% of all referrals were granted probation; 9.6% of the total were placed in a diversionary program; and 3.1% were placed in the custody of an institution.

An analysis of individual offenses show wide differences in the overall disposition alternatives for all referrals. The data show that 25.0% of all "Burglary" referrals, 45.4% of all "Shoplifting" referrals, 26.8% of "Larceny-Other" referrals, and 43.6% of all "Vandalism" cases were dismissed as not proved or with a warning. The data also indicate that of the substantiated cases, probation was granted to the juvenile in 47.1% of all "Burglary" cases, 25.8% of all "Shoplifting" cases, and 43.6% of all "Larceny-Other" referrals. In the category of "Restitution," the juvenile was ordered by the court to make payment in only 0.1% of all "Burglary" referrals, 0.5% of "Shoplifting" referrals, and 0.9% of all "Larceny-Other" referrals. In the category of diversionary programs the court placed 2.3% of all youth referred for "Burglary," 17.3% of all juveniles referred for "Shoplifting," and 11.3% of all juveniles referred for "Larceny-Other." The court placed 5.8% of all youth referred for "Burglary," 1.7% of all juveniles referred for "Shoplifting," and 2.8% of all referrals for "Larceny-Other" in the custody and care of an institution.

TABLE 22  
OFFENDER REFERRALS BY DISPOSITION  
1983

REASON REFERRED	STATE TOTAL	COMPLAINT SUBSTANTIATED											CUSTODY TO							
		Waived to Criminal Court	Dismissed	Dismissed Warned	Held Open	Probation	Unsupervised Probation	Referred Elsewhere	Runaway Returned	Other	Restitution or Fined	Diversion Programs	Change of Venue	Public Inst. Delinquents	Other Public Institution	Public Agency	Private Agency	Individual	Other	S.R.S. Group Home
Murder/Non-Neg Mansl.	4	2	0	0	0	1	0	0	0	0	0	0	0	0	1	0	0	0	0	0
Neg Manslaughter	7	0	1	0	0	1	0	0	0	0	0	0	0	0	3	0	0	0	0	0
Rape	51	7	14	3	0	13	0	1	0	0	0	0	0	3	0	8	1	0	0	0
Robbery-Purse Snatching	43	3	13	8	0	9	0	3	0	0	0	0	3	2	0	1	0	0	1	0
Robbery-All Other	86	10	7	5	0	37	1	4	0	1	1	1	2	6	3	7	0	0	0	1
Assault-Aggravated	250	8	98	17	3	63	2	8	0	0	0	9	5	12	2	17	2	2	1	1
Assault-Non Aggravated	493	3	182	53	6	142	1	21	0	2	6	35	6	9	2	19	0	1	1	4
Burglary	1,199	33	220	80	7	565	5	48	1	3	1	28	16	54	16	103	3	5	7	4
Auto Theft-Unauth. Use	119	2	13	19	1	42	0	5	0	0	0	4	7	7	3	12	0	3	0	1
Auto Theft-All Other	119	1	26	11	1	37	0	4	1	0	1	6	6	10	1	13	0	0	1	0
Larceny-Shoplifting	1,107	5	151	352	3	286	6	18	0	5	7	192	23	14	5	33	1	0	2	4
Larceny-All Other	1,632	23	279	158	14	711	6	35	0	14	6	184	25	35	10	113	2	6	2	9
Weapons	94	2	18	20	0	29	0	5	1	0	1	8	2	2	0	2	2	0	0	2
Other Sex Offenses	139	0	44	13	1	39	2	6	0	0	0	9	0	7	1	15	0	1	0	1
Drugs-Narcotic	94	0	23	14	0	40	0	4	0	0	0	2	1	3	0	5	1	1	0	0
Drugs-All Except Narc.	222	1	42	42	1	63	1	2	0	0	0	53	4	2	1	7	1	0	0	2
Drunkenness	9	0	4	2	1	1	0	0	0	0	0	0	0	1	0	0	0	0	0	0
Disorderly Conduct	298	0	105	78	5	61	2	9	2	0	2	14	2	3	0	14	0	0	1	0
Vandalism	659	1	196	91	8	206	7	23	0	5	7	80	6	5	1	16	0	6	0	1
Other Offenses	131	2	33	21	2	39	0	8	1	1	2	6	0	3	1	8	1	3	0	0
Arson	58	1	17	6	0	20	0	1	0	0	0	0	0	3	2	7	0	0	0	1
Trespassing	228	1	49	38	0	59	5	7	0	2	0	56	1	1	0	4	2	0	1	2
Fraud-Forgery	178	5	36	23	0	66	2	6	0	0	1	11	6	3	1	15	3	0	0	0
Harassment	42	0	15	3	2	9	0	0	1	0	0	10	0	1	0	1	0	0	0	0
Criminal Damage to Prop	157	1	26	6	0	87	4	5	0	0	3	10	0	5	1	9	0	0	0	0
Fish and Game Violations	15	0	4	3	0	1	0	0	0	2	5	0	0	0	0	0	0	0	0	0
Possession of Stolen Prop	31	0	4	7	0	10	0	0	0	0	0	6	3	0	0	1	0	0	0	0
Deprivation of Property	37	0	8	0	3	19	1	3	0	0	0	0	1	0	0	1	0	0	0	1
Theft by Deception	2	0	0	0	0	2	0	0	0	0	0	0	0	0	0	0	0	0	0	0
Resisting Arrest	9	0	0	2	0	1	0	0	0	1	0	3	0	1	0	1	0	0	0	0
Alcohol Offense	363	0	71	77	5	105	4	7	0	6	32	46	3	0	0	3	1	1	0	2
Illegal Use of Fireworks	3	0	1	0	0	1	0	0	0	0	0	1	0	0	0	0	0	0	0	0
Obstruction of Justice	29	0	4	1	0	16	0	0	0	0	0	5	0	2	0	1	0	0	0	0
Drunk Driving	49	4	8	4	1	18	1	4	0	0	1	8	0	0	0	0	0	0	0	0
Reckless Driving	27	1	8	1	2	9	0	1	0	0	3	1	0	0	0	0	0	1	0	0
Driving Without License	67	0	9	10	0	15	2	6	0	0	16	9	0	0	0	0	0	0	0	0
All Other Traffic	96	1	23	8	0	27	1	4	0	0	26	1	0	0	0	4	0	1	0	0
Escape Court Placement	65	1	18	4	0	3	0	3	20	0	0	0	1	4	0	5	0	0	2	4
Warrant Issued	45	1	16	18	0	1	0	3	2	0	0	0	0	2	0	2	0	0	0	0
Probation Violation	55	0	7	3	0	16	0	3	0	0	0	0	1	5	1	19	0	0	0	0
TOTAL	8,312	119	1,793	1,201	66	2,870	53	257	29	42	121	799	124	205	51	470	20	33	19	40

Table 23 provides final disposition in relationship to sex and race of the Juvenile Offender. Table 23 shows that of the 119 juveniles waived to criminal court in 1983, 94.1% were male. Slightly over thirty-five percent of the total number of males referred to the court in 1983 were dismissed as not proved or warned while, in contrast, 40.2% of the total number of all females referred as a Juvenile Offender were dismissed. The court granted probation to 35.3% of the total number of male referrals in 1983, while only 30.8% of all female referrals were granted probation. Data further reveal that the court were more inclined to place female offenders in diversion programs (12.3%) than males (9.1%); and more inclined to remand male offenders (3.3%) to the custody of an institution than females (2.2%).

The correlation between race and final disposition indicate that, of the total number of Offenders waived to criminal court in 1983, 56.3% were white (67) and 16% (19) were black. The table also shows that 2,994 referrals were dismissed by the court in 1983 as not proved or warned, of which 62.4% were white, 22% were black and 1.7% were in the "Other" category. Probation was granted to 2,870 Offenders in 1983, of which 62.7% were white and 8.4% were black. The reader is reminded to use caution in deriving conclusions from the race variables presented in this table due to the large amount of missing information listed as "Unknown."



TABLE 23  
CASE DISPOSITION BY SEX AND RACE  
1983

DISPOSITION	STATE TOTAL	MALE	FEMALE	WHITE	BLACK	INDIAN	OTHER	UNKNOWN
Waived to Criminal Court	119	112	7	67	19	3	2	28
NOT SUBSTANTIATED Dismissed	1,793	1,501	292	1,144	381	13	37	218
COMPLAINT SUBSTANTIATED								
Dismissed - Warned	1,201	932	269	724	279	2	15	181
Held Open	66	57	9	56	5	0	5	0
Probation	2,870	2,441	429	1,798	241	8	75	748
Unsupervised Probation	53	45	8	41	4	0	8	0
Referred Elsewhere	257	224	33	198	50	4	4	1
Runaway Returned	29	22	7	22	6	0	0	1
Other	42	34	8	38	4	0	0	0
Restitution	121	94	27	76	6	0	2	37
Diversion Programs	799	627	172	664	26	6	19	84
Change of Venue	0	0	0	0	0	0	0	0
Inapplicable	124	102	22	109	7	0	4	4
CUSTODY TO								
Public Inst. Delinquents	205	177	28	128	31	1	3	42
Other Public Institution	51	49	2	19	4	1	0	27
Public Agency	470	405	65	280	57	4	10	119
Private Agency	20	2	2	13	1	0	6	0
Individual	33	29	4	27	3	1	1	1
Other	19	17	2	13	6	0	0	0
S.R.S. - Group Home	40	32	8	35	4	0	0	1
<b>TOTAL</b>	<b>8,312</b>	<b>6,918</b>	<b>1,394</b>	<b>5,452</b>	<b>1,134</b>	<b>43</b>	<b>191</b>	<b>1,492</b>

Final disposition by age is presented in Table 24. Individual age groups show that 17 year old youth account for 68.1% of the total number waived to criminal court, 26.7% of the total number were granted probation, 26.2% of the total number were placed in diversionary programs, and 28.1% of the total number were remanded to the custody of an institution.

Of the total number of sixteen year old juveniles, 1.6% were waived to criminal court, thirty-seven percent were granted probation, and 25.4% were placed in a custodial institution.

Analysis of the fifteen year old age group reveals that this group accounts for 16.9% of the courts' workload. Data indicate 17.1% of all youth granted probation were in this age group, 17.2% of all youth placed in a diversion program were in this age group, and 21.9% of all youth placed in an institution were fifteen years of age.

It should be noted that table 24 shows one youth age 13-14 and one youth age 15 as being waived to criminal court. Statutorily, it may be assumed that an error in reporting or coding was made.

Comparison arrest data from the 1983 edition of Crime In Kansas has been included as background to this publication. Provided are the number of reported arrests made by law enforcement agencies of juveniles by age groups and offense categories. Also included is a table indicating the manner by which the law enforcement agencies disposed of all juvenile contacts during 1983.

TABLE 24  
CASE DISPOSITION BY AGE  
1983

DISPOSITION	STATE TOTAL	10 & UNDER	11-12	13-14	15	16	17	18 & OVER	AGE UNKNOWN
Waived to Criminal Court	119	0	0	1	1	28	81	8	0
NOT SUBSTANTIATED									
Dismissed	1,793	105	174	388	297	350	441	18	20
COMPLAINT SUBSTANTIATED									
Dismissed - Warned	1,201	43	123	298	186	252	288	8	3
Held Open	66	0	2	13	11	16	24	0	0
Probation	2,870	54	252	628	492	652	765	25	2
Unsupervised Probation	53	0	5	9	4	11	22	1	1
Referred Elsewhere	257	18	22	58	38	44	74	2	1
Runaway Returned	29	0	2	8	5	8	6	0	0
Other	42	4	0	5	7	13	12	0	1
Restitution	121	1	17	35	16	11	41	0	0
Diversion Programs	799	16	81	202	137	146	209	7	1
Change of Venue	0	0	0	0	0	0	0	0	0
Inapplicable	124	0	6	29	27	32	29	1	0
CUSTODY TO									
Public Inst. Delinquents	205	1	5	35	51	47	62	3	1
Other Public Institution	51	0	4	14	5	18	10	0	0
Public Agency	470	18	46	130	111	101	63	0	1
Private Agency	20	2	0	2	5	7	4	0	0
Individual	33	4	0	8	6	5	9	0	1
Other	19	0	0	2	1	8	8	0	0
S.R.S. - Group Home	40	0	6	10	7	13	4	0	0
TOTAL	8,312	266	745	1,875	1,407	1,762	2,152	73	32

ARRESTS BY AGE  
TYPE OF OFFENSE  
1983\*

OFFENSE	<10	10-12	13-14	15	16	17	JUVENILE TOTAL
Murder	0	0	0	0	1	4	5
Rape	0	8	11	11	10	11	51
Robbery	0	9	9	10	36	37	101
Aggravated Assault	8	36	61	34	49	101	289
Burglary	44	174	350	243	284	319	1,414
Larceny(Theft)	216	562	1,061	633	657	756	3,885
Motor Vehicle Theft	0	14	86	81	82	78	341
Arson	33	18	18	9	10	6	94
TOTAL CRIME INDEX	301	821	1,596	1,021	1,129	1,312	6,180
Neg. Manslaughter	0	0	0	0	0	0	0
Other Assaults	40	115	193	120	165	154	787
Forgery	0	1	14	25	34	43	117
Fraud	0	0	6	6	9	27	48
Embezzlement	3	0	6	5	7	21	42
Stolen Property	1	9	27	19	18	28	102
Vandalism	149	221	273	142	188	168	1,141
Weapons	7	21	20	8	28	22	106
Prostitution	0	0	0	1	2	0	3
Other Sex Offenses	8	16	39	20	15	20	118
Sale-Narcotics	0	0	1	2	1	5	9
Sale-Marijuana	0	0	5	3	9	11	28
Sale-Synth Narc	0	0	0	0	0	2	2
Sale-Other	0	0	2	3	0	4	9
SALE SUBTOTAL	0	0	8	8	10	22	48
Poss-Narcotics	0	0	0	1	3	5	9
Poss-Marijuana	0	6	50	45	86	124	311
Poss-Synth Narc	0	2	0	4	4	4	14
Poss-Other	0	2	15	9	10	9	45
POSSESSION SUBTOTAL	0	10	65	59	103	142	379
DRUG OFFENSE TOTAL	0	10	73	67	113	164	427
Bookmaking	0	0	0	0	0	0	0
Numbers	0	0	0	0	0	0	0
Other	0	0	0	0	2	0	2
GAMBLING TOTAL	0	0	0	0	2	0	2
Family Offenses	1	0	1	4	5	8	19
DWI	2	2	2	14	82	169	271
Liquor Violations	2	2	48	89	232	303	676
Drunkenness	0	0	2	3	5	8	18
Disorderly Conduct	23	47	134	86	102	151	543
Vagrancy	0	0	0	2	2	5	9
All Other	94	174	396	295	382	428	1,769
Suspicion	2	2	5	2	5	7	23
Curfew-Loitering	11	37	150	134	123	148	603
Runaway	44	145	643	443	438	236	1,949
CLASS II OFFENSES	387	802	2,032	1,485	1,957	2,110	8,773
TOTAL	688	1,623	3,628	2,506	3,086	3,422	14,953

\*Source: CRIME IN KANSAS, 1983; Kansas Bureau Of Investigation  
Statistical Analysis Center; Uniform Crime Report.

JUVENILE DISPOSITION  
1983\*

DISPOSITION	NUMBER	PERCENT OF TOTAL
Handled within the Department and Released	5,604	35.4%
Referred to Juvenile Court or Probation Department	8,678	54.8
Referred to Welfare Agency	995	6.3
Referred to Other Police Agency	182	1.1
Referred to Criminal or Adult Court	389	2.4
TOTAL	15,848	100.0%

\*Source: CRIME IN KANSAS, 1983; Kansas Bureau Of Investigation Statistical Analysis Center; Uniform Crime Report.

Kansas Youth Centers admissions and releases in 1983 are shown below. This data was provided by the Department of Social and Rehabilitation Services, Research and Statistics Section.

Comparing data from the courts and from S.R.S. the reader will note a difference between the number of actual admissions and court ordered placements in the state's youth centers. This discrepancy in numbers may best be explained by noting that youth already placed in the custody of S.R.S. do not require further court action to be placed in a youth center. The decision to place a juvenile in a youth center after the juvenile is in custody of S.R.S. may be made by the Secretary based upon the assessment of the individual involved.

KANSAS YOUTH CENTERS  
ADMISSIONS AND RELEASES  
1983\*

Youth Center	Admissions	Releases
Atchison	85	2
Beloit	58	16
Larned	48	2
Osawatomie	40	9
Topeka	165	18
TOTAL	396	47

\* Source: Department of Social and Rehabilitation Services, Research and Statistics

## SUMMARY

Included in this section have been selected tables representing either notable comparisons or highlights of known areas of concern to those evaluating youth referred as Juvenile Offenders.

While numerous other comparisons could have been offered the decision was made to limit the number of comparisons presented. Additional information for any specific locality or category may be received by contacting the Statistical Analysis Center, Kansas Bureau of Investigation, Topeka, Kansas.

SECTION III  
Child in Need of Care Referrals  
1983

### SECTION III

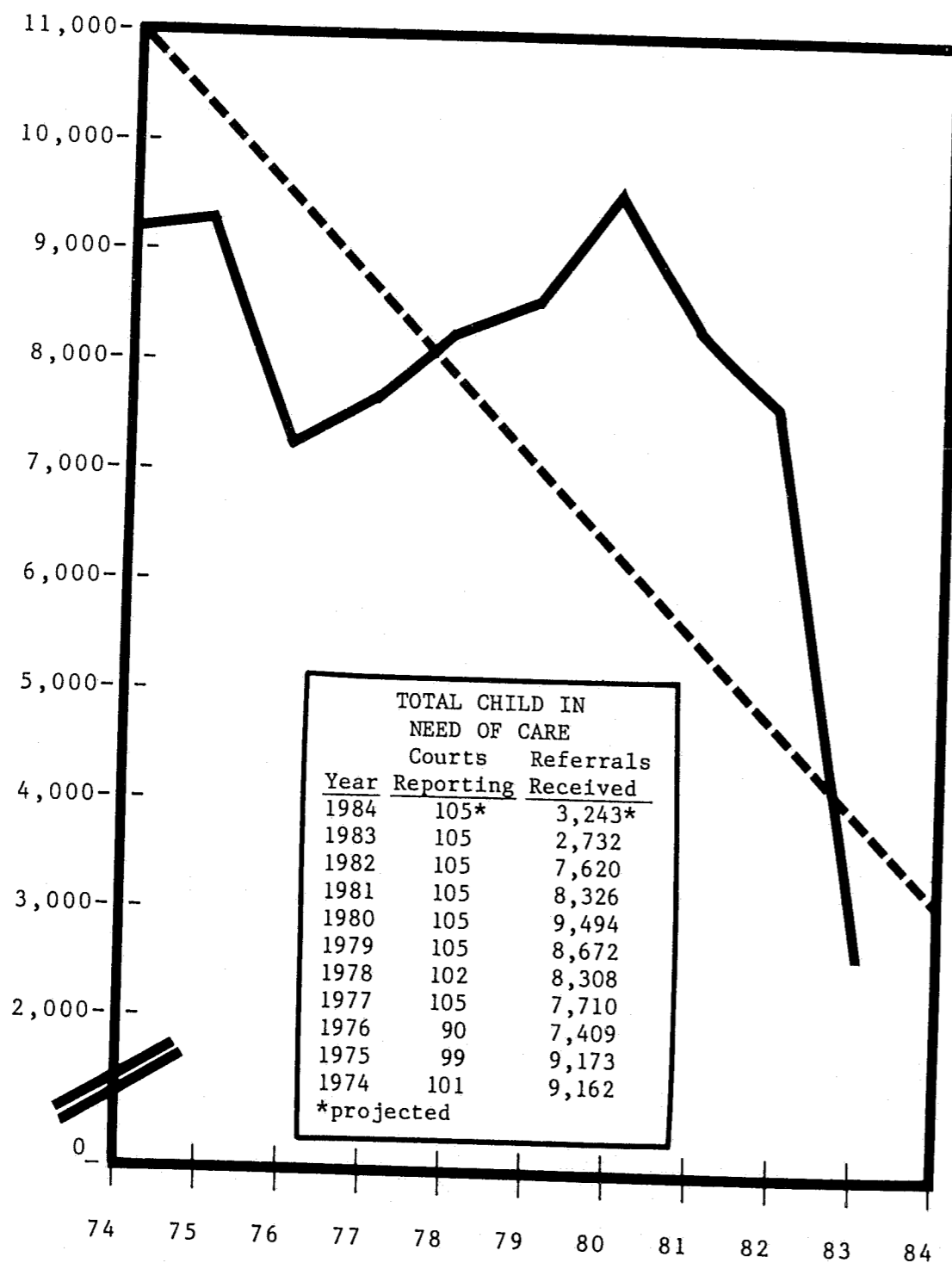
#### CHILD IN NEED OF CARE REFERRALS

There were 2,732 referrals reported in 1983 classified as Children in Need of Care (CINC). Chart 4 graphically displays CINC type referrals from 1974 through 1983 and a projected number for 1984. The chart shows the peak for CINC type referrals to be 9,494 youths in 1980. The data show a decrease of 71.2% in 1983 from the peak period in 1980.

Total CINC type referrals for a two year time period are displayed in Table 25. The table shows an overall decrease of 64.2% in the number of youth referred in 1983 from 1982. Realistically, the table should be viewed in two parts. Those referrals commonly classified as "status" offenses (i.e. running away, truancy, violation of curfew and ungovernable behavior) and those referrals where the individual is the victim of an act (i.e. abuse, neglect, etc.) rather than the perpetrator.

Analysis of the first group shows an overall decrease of slightly over 85% in the number of youth referred in 1983 from 1982. Further study of the data reveals that in the second group there was an overall decrease of 48.4% in the number of youth referred. The only category of referral that exhibits an exception to the overall decline in the number of youth referred is the "Abuse" category which shows an increase in referrals of 27.6%.

CHART 4  
TOTAL CHILD IN NEED OF CARE REFERRALS  
1974 - 1984



Actual Referrals ———  
Projected Referrals - - - - -

TABLE 25  
CHILD IN NEED OF CARE  
Two Year Trend  
1982 - 1983

REASON REFERRED	STATE TOTAL 1983	STATE TOTAL 1982	PERCENT CHANGE 82 - 83*
Running Away	330	1,534	- 78.5
Truancy	185	1,288	- 85.6
Violation of Curfew	39	159	- 75.5
Ungovernable Behavior	135	523	- 74.2
Other Reason Referred	19	191	- 90.1
Severance	23	23	0.0
Abuse	511	370	+ 27.6
All Other Neglect	1,004	1,753	- 42.7
Physical Abuse	122	420	- 71.0
Sexual Abuse	61	193	- 68.4
Mental Abuse	23	107	- 78.5
Abandonment	20	41	- 51.2
Parents Unable to Care For	203	623	- 67.4
Failure to Educate	25	93	- 73.1
Substandard Home	32	302	- 89.4
<b>TOTAL</b>	<b>2,732</b>	<b>7,620</b>	<b>- 64.2</b>

\*All percentages rounded



Table 26 presents CINC referrals by sex and race. The figures indicate that slightly more female (50.2%) than male (49.8%) youths were referred as Children in Need of Care in 1983. Individual categories show that females were referred for 63.6% of all runaways, 53% of all abuse referrals, 90.2% of all sexual abuse and 52.2% of all referrals in which parents were unable to care for the youth. The table further shows males were referred for 52.0% of all truancy, 84.6% of all curfew violations, 53.2% of all referrals shown as "All Other Neglect" and nearly sixty-one percent of the "Mental Abuse" referrals.

A review of CINC referrals by race indicates that white referrals constitute 75.4% of all referrals in 1983, 14.3% were black, 1.3% were Indian, 4.4% were in the "Other" race category and 4.6% were listed as "Unknown."

TABLE 26  
CHILD IN NEED OF CARE  
BY SEX AND RACE  
1983

REASON REFERRED	STATE TOTAL	MALE	FEMALE	WHITE	BLACK	INDIAN	OTHER	UNKNOWN
Running Away	330	120	210	269	20	2	20	19
Truancy	185	97	88	144	30	1	10	0
Curfew Violation	39	33	6	37	1	0	0	1
Ungovernable Behavior	135	93	42	123	9	0	2	1
Other Reason Referred	19	12	7	18	0	0	1	0
Severance	23	7	16	10	2	0	6	5
Abuse	511	240	271	402	38	17	27	27
All Other Neglect	1,004	534	470	743	129	14	45	73
Physical Abuse	122	67	55	74	46	1	1	0
Sexual Abuse	61	6	55	46	14	0	1	0
Mental Abuse	23	14	9	19	4	0	0	0
Abandonment	20	10	10	16	4	0	0	0
Parents Unable to Care	203	97	106	117	78	1	7	0
Failure to Educate	25	14	11	14	11	0	0	0
Emotional Abuse	32	17	15	27	5	0	0	0
TOTAL	2,732	1,361	1,371	2,059	391	36	120	126

Table 27 presents data on reason referred by age in 1983. Analysis of the given variables shows that 45.5% of all CINC referrals were ten years old and under and that 58.1% of all "Abuse" referrals and 60.4% of "All Other Neglect" referrals fell into this age category.

Data further show that the peak age of CINC referrals appears to be fifteen, which represents 12.4% of the total. Youths age 15 were most frequently referred for running away (20.1%) and in the category of "All Other Neglect" (25.7%).

TABLE 27  
CHILD IN NEED OF CARE  
BY AGE  
1983

REASON REFERRED	STATE TOTAL	10 & UNDER	11-12	13-14	15	16	17	18 & OVER	AGE UNKNOWN
Running Away	330	9	12	109	68	88	42	0	2
Truancy	185	16	20	78	55	13	3	0	0
Curfew Violation	39	0	0	3	10	15	9	0	2
Ungovernable Behavior	135	6	9	42	31	25	22	0	0
Other Reason Referred	19	0	2	4	2	6	5	0	0
Severance	23	22	0	0	0	0	0	0	1
Abuse	511	297	52	68	40	36	18	0	0
All Other Neglect	1,004	606	74	126	87	60	36	0	15
Physical Abuse	122	74	10	21	7	7	2	0	1
Sexual Abuse	61	19	12	11	12	1	5	0	1
Mental Abuse	23	15	2	2	2	0	0	0	1
Abandonment	20	12	1	3	1	2	1	0	0
Parents Unable to Care	203	123	18	23	22	8	6	1	2
Failure to Educate	25	18	2	3	2	0	0	0	0
Emotional Abuse	32	27	2	2	0	1	0	0	0
TOTAL	2,732	1,244	216	495	339	264	149	1	24

Table 28 demonstrates the reason a youth was referred by time elapsed between the referral date and the disposition date. Examination of the data shows that the court disposed of slightly over one-fourth of all CINC referrals in 1983 in ten days or less and nearly fifty percent of all cases in thirty days or less.

The data further reveal that the courts disposed of referrals made for "status" offenses (i.e. running away, truancy, curfew violation) more rapidly (55.1% in thirty days or less) than it disposed of cases where the individual is the victim (i.e. abuse, neglect, etc.) of which 47.2% were disposed of in thirty days or less.

Manner of handling CINC referrals is presented in Table 29. The data reveal that the court handled 74.9% of all CINC referrals with a formal petition in 1983, which is a complete reversal in the manner a referral was handled in 1982 where 62.2% of the CINC referrals were handled informally. This contrast in manner of handling in 1983 may be directly related to the enactment of the Kansas Code For Care of Children on January 1, 1983 which removed the court from the pre-filing involvement activities of the juvenile justice system.

A summary of manner of handling in relationship to age is given in Table 30. Figures indicate that nearly three-quarters of all 1983 referrals were handled on a formal basis, and this percentage is approximated across all age categories.

TABLE 28  
CHILD IN NEED OF CARE  
BY TIME ELAPSED BETWEEN REFERRAL AND DISPOSITION  
1983

REASON REFERRED	STATE TOTAL	10 DAYS OR LESS	11 - 20 DAYS	21 - 30 DAYS	31 - 40 DAYS	41 - 50 DAYS	51 - 75 DAYS	76 - 100 DAYS	101- 150 DAYS	151- 200 DAYS	201- 250 DAYS	251- 300 DAYS	OVER 300 DAYS
Running Away	330	122	55	35	27	10	28	10	12	11	4	3	13
Truancy	185	44	26	20	16	13	13	10	15	4	4	7	13
Curfew Violation	39	8	3	8	5	2	7	0	1	0	1	1	3
Ungovernable Behavior	135	28	23	10	8	11	21	8	13	4	2	1	6
Other Reason Referred	19	6	1	1	2	1	1	0	3	1	1	1	1
Severance	23	1	4	9	7	0	0	1	0	0	0	1	1
Abuse	511	74	51	36	59	51	66	56	46	28	16	6	22
All Other Neglect	1,004	250	132	103	76	63	107	67	91	54	28	11	22
Physical Abuse	122	54	12	7	6	11	17	6	8	0	0	1	0
Sexual Abuse	61	22	5	5	4	1	7	8	5	4	0	0	0
Mental Abuse	23	11	1	2	1	2	3	1	1	1	0	0	0
Abandonment	20	6	4	6	0	1	1	2	0	0	0	0	0
Parents Unable to Care	203	71	28	17	19	15	21	10	19	1	1	1	0
Failure to Educate	25	14	2	1	5	2	0	0	1	0	0	0	0
Emotional Abuse	32	25	0	2	0	3	0	0	1	0	0	0	0
TOTAL	2,732	736	347	262	235	186	292	179	216	109	57	33	80

TABLE 29  
CHILD IN NEED OF CARE  
BY MANNER OF HANDLING  
1983

REASON REFERRED	STATE TOTAL	WITH PETITION	WITHOUT PETITION
Running Away	330	149	181
Truancy	185	120	65
Curfew Violation	39	27	12
Ungovernable Behavior	135	110	25
Other Reason Referred	19	10	9
Severance	23	23	0
Abuse	511	486	25
All Other Neglect	1,004	867	137
Physical Abuse	122	46	76
Sexual Abuse	61	39	22
Mental Abuse	23	15	8
Abandonment	20	15	5
Parents Unable to Care	203	131	72
Failure to Educate	25	3	22
Emotional Abuse	32	5	27
<b>TOTAL</b>	<b>2,732</b>	<b>2,046</b>	<b>686</b>

TABLE 30  
MANNER OF HANDLING BY AGE  
1983

MANNER OF HANDLING	STATE TOTAL	10 & UNDER	11-12	13-14	15	16	17	18 & OVER	AGE UNKNOWN
WITH PETITION	2,046	989	151	332	261	186	115	0	12
WITHOUT PETITION	686	255	65	163	78	78	34	1	12
<b>TOTAL</b>	<b>2,732</b>	<b>1,244</b>	<b>216</b>	<b>495</b>	<b>339</b>	<b>264</b>	<b>149</b>	<b>1</b>	<b>24</b>

Table 31 displays manner of handling by sex and race in 1983. There appears to be slight differences in the manner the courts handled male (72.7% formally) and female (77.0% formally) CINC referrals. Also noted is the even distribution of referrals of males and females in 1983.

Analysis of the data included in Table 31 shows the courts handled 25.1% of all CINC referrals informally. Of the number that were handled with a formal petition in 1983, 76.8% were white and 10.8% were black.

TABLE 31  
MANNER OF HANDLING BY SEX AND RACE  
1983

MANNER OF HANDLING	STATE TOTAL	MALE	FEMALE	WHITE	BLACK	INDIAN	OTHER	UNKNOWN
WITH PETITION	2,046	990	1,056	1,572	220	28	116	110
WITHOUT PETITION	686	371	315	487	171	8	4	16
TOTAL	2,732	1,361	1,371	2,059	391	36	120	126

Care prior to final disposition by age is given in Table 32. The data show of the 2,732 youth referred as a CINC in 1983, 46.8% were placed in a custodial type environment and of the number placed in custodial care, slightly over fifty percent were ten or less years old.

Comparative analysis shows the court has a decided preference to provide alternative placement to a CINC referral (46.8%) over a Juvenile Offender referral (14.3%).

TABLE 32  
CARE PENDING DISPOSITION BY AGE  
1983

CARE PENDING	STATE TOTAL	10 & UNDER	11-12	13-14	15	16	17	18 & OVER	AGE UNKNOWN
No Detention Overnight	1,453	594	116	287	211	142	88	1	14
Detention in Jail	66	1	0	22	16	21	6	0	0
Detention Home	67	7	2	22	14	14	8	0	0
Foster Family	877	537	71	107	66	57	29	0	10
Other Placement	269	105	27	57	32	30	18	0	0
<b>TOTAL</b>	<b>2,732</b>	<b>1,244</b>	<b>216</b>	<b>495</b>	<b>339</b>	<b>264</b>	<b>149</b>	<b>1</b>	<b>24</b>

A breakdown of the care juveniles receive prior to final disposition of the case, by sex and race, is shown in Table 33. Males were placed in some type of custodial care environment in 43.9% of the cases and females were placed in 49.7% of the cases. The percentage difference between the sexes would seem to suggest a slight preference by the courts to give closer care to female referrals prior to final disposition of the case.

In the category of race the data show that white referrals accounted for slightly over three-fourths of all CINC referrals and black referrals accounted for slightly over 14% of the total referrals in 1983. White and black referrals were temporarily placed in 46.2% and 44.5% of all cases respectively. Further, analysis of the data shows that where CINC referrals are temporarily placed in custodial supervision, foster family care is the alternative placement rather than a locked type of facility.

Case disposition is compared in Table 34. The table indicates that 31.0% of all CINC referrals were dismissed as unproven or warned. Further 54.2% of runaways, 51.4% of truancy referrals, 20.5% of abuse referrals and 26.4% of neglect referrals were dismissed as unproven or warned. Of the total number of CINC referrals, 3.6% were to have a probation officer supervise them, 19.4% were referred to other agencies for counseling or services, 30.6% were placed in the custody of a public agency (usually S.R.S.) and 1.8% were placed in the care and custody of a group home or foster care.

TABLE 33  
CARE PENDING DISPOSITION BY SEX AND RACE  
1983

CARE PENDING	STATE TOTAL	SEX		RACE				
		MALE	FEMALE	WHITE	BLACK	INDIAN	OTHER	UNKNOWN
No Detention Overnight	1,453	764	689	1,108	217	15	66	47
Detention in Jail	66	34	32	57	3	0	4	2
Detention Home	67	26	41	51	7	1	2	6
Foster Family	877	418	459	631	125	19	37	65
Other Placement	269	119	150	212	39	1	11	6
<b>TOTAL</b>	<b>2,732</b>	<b>1,361</b>	<b>1,371</b>	<b>2,059</b>	<b>391</b>	<b>36</b>	<b>120</b>	<b>126</b>

TABLE 34  
CHILD IN NEED OF CARE  
REFERRAL BY DISPOSITION  
1983

REASON REFERRED	STATE TOTAL	COMPLAINT SUBSTANTIATED												CUSTODY TO									
		Waived to Criminal Court	Dismissed	Dismissed Warned	Held Open	Probation	Unsupervised Probation	Referred Elsewhere	Runaway Returned	Other	Restitution or Fined	Diversion Programs	Change of Venue	Public Inst. Delinquents	Other Public Institution	Public Agency	Private Agency	Individual	Other	S.R.S. Group Home	S.R.S. Foster Care	Custody to Non-Relative	
Running Away	330	0	130	49	5	15	1	29	25	0	0	0	0	0	0	0	0	0	0	0	0	0	0
Truancy	185	1	66	29	3	22	1	14	0	3	0	0	0	0	0	0	0	0	0	0	0	0	0
Curfew Violation	39	1	3	18	4	1	0	0	0	0	0	0	0	0	0	0	0	0	0	0	0	0	0
Ungovernable Behavior	135	0	30	11	3	18	2	17	1	1	1	0	0	0	0	0	0	0	0	0	0	0	0
Other Reason Referred	19	0	5	3	1	2	0	3	0	0	0	0	0	0	0	0	0	0	0	0	0	0	0
Severance	23	0	2	0	0	0	0	0	0	0	0	0	0	0	0	0	0	0	0	0	0	0	0
Abuse	511	0	86	19	11	3	9	97	0	0	0	0	0	0	0	0	0	0	0	0	0	0	0
All Other Neglect	1,004	1	240	25	9	13	4	204	1	4	2	2	0	0	0	0	0	0	0	0	0	0	0
Physical Abuse	122	0	27	8	0	0	2	51	0	0	0	0	0	0	0	0	0	0	0	0	0	0	0
Sexual Abuse	61	0	18	2	0	0	2	15	0	0	0	0	0	0	0	0	0	0	0	0	0	0	0
Mental Abuse	23	0	6	1	0	0	0	6	0	0	0	0	0	0	0	0	0	0	0	0	0	0	0
Abandonment	20	0	8	0	0	0	0	5	0	0	0	0	0	0	0	0	0	0	0	0	0	0	0
Parents Unable to Care	203	1	51	4	0	0	0	1	0	0	0	0	0	0	0	0	0	0	0	0	0	0	0
Failure to Educate	25	0	5	0	0	0	0	46	1	0	0	0	0	0	0	0	0	0	0	0	0	0	0
Emotional Abuse	32	0	1	0	0	0	0	17	0	0	0	0	0	0	0	0	0	0	0	0	0	0	0
<b>TOTAL</b>	<b>2,732</b>	<b>4</b>	<b>678</b>	<b>169</b>	<b>36</b>	<b>74</b>	<b>25</b>	<b>531</b>	<b>28</b>	<b>9</b>	<b>9</b>	<b>44</b>	<b>14</b>	<b>3</b>	<b>14</b>	<b>837</b>	<b>18</b>	<b>146</b>	<b>33</b>	<b>23</b>	<b>36</b>	<b>1</b>	<b>0</b>

Table 35, disposition by sex and race, indicates of the total number of CINC referrals dismissed by the courts 50.2% were male and 49.8% were female. Of the total number of males referred to the courts, four percent were to be supervised by a probation officer, males were referred to other agencies or programs for services in 20% of the cases and males were placed in the custody of a public agency (usually S.R.S.) in 29.8% of the cases. In comparison, females were to be supervised by a probation officer in only 3.3% of the cases, referred to other agencies or programs for services in 18.8% of the cases and placed in the custody of a public agency 33.9% of the time. The court seems to demonstrate a decided preference for placing females in some type of protective custody.

Case disposition in relationship to race shows that of the total number of white youth referred to the court in 1983, 31.2% were dismissed as unproven or warned, 19.7% were referred elsewhere for services and 30.8% were placed in the care and custody of a public agency. Further examination of the data show that 35.8% of the total number of black youth referred as CINC's were dismissed as unproven or warned, 25.3% were referred elsewhere for other services or programs and nearly 27% were given into the care and custody of a public agency.



**CONTINUED**

**1 OF 2**

TABLE 35  
CASE DISPOSITION BY SEX AND RACE  
1983

DISPOSITION	STATE TOTAL	MALE	FEMALE	WHITE	BLACK	INDIAN	OTHER	UNKNOWN
Waived to Criminal Court	4	2	2	2	2	0	0	0
NOT SUBSTANTIATED								
Dismissed	678	332	346	515	116	6	31	10
COMPLAINT SUBSTANTIATED								
Dismissed - Warned	169	93	76	127	24	1	4	13
Held Open	36	26	10	36	0	0	0	0
Probation	74	43	31	60	11	0	2	1
Unsupervised Probation	25	11	14	18	1	6	0	0
Referred Elsewhere	531	272	258	406	99	7	10	9
Runaway Returned	28	15	13	28	0	0	0	0
Other	9	4	5	6	1	0	0	2
Restitution	9	8	1	9	0	0	0	0
Diversion Programs	44	25	19	29	1	0	0	0
Change of Venue	14	7	7	11	0	0	1	2
CUSTODY TO								
Public Inst. Delinquents	3	2	1	2	0	0	0	1
Other Public Institution	14	9	5	10	2	0	1	1
Public Agency	870	405	465	634	105	10	42	79
Private Agency	18	6	12	8	3	0	5	2
Individual	146	71	75	114	22	0	8	2
Other	0	0	0	0	0	0	0	0
S.R.S. - Group Home	23	13	10	15	4	0	0	4
S.R.S. - Foster Home	36	15	21	28	0	6	2	0
Custody to Non-Relative	1	1	0	1	0	0	0	0
TOTAL	2,732	1,360	1,371	2,059	391	36	120	126

Data for disposition with respect to age are shown in Table 36. Examination of the variables in this category indicates youth age ten and under constitute 45.5% of the courts workload for CINC referrals while youth age 15 through 17 constitute 27.5% of the courts workload. Juveniles in age groups 15 through 17 account for 48.5% of all youth placed in the supervision of a probation officer, 20.5% of all youth referred elsewhere for counseling or services and 19.7% of the number of youth remanded to the custody of a public agency.

TABLE 36  
CASE DISPOSITION BY AGE  
1983

DISPOSITION	STATE TOTAL	10 & UNDER	11-12	13-14	15	16	17	18 & OVER	AGE UNKNOWN
Waived to Criminal Court	4	0	0	0	3	1	0	0	0
NOT SUBSTANTIATED									
Dismissed	678	278	40	140	82	80	50	0	8
COMPLAINT SUBSTANTIATED									
Dismissed - Warned	169	39	13	38	32	30	15	0	2
Held Open	36	13	1	6	6	8	2	0	0
Probation	74	6	3	19	24	7	15	0	0
Unsupervised Probation	25	15	2	6	2	0	0	0	0
Referred Elsewhere	531	300	56	59	50	44	15	1	6
Runaway Returned	28	0	2	8	9	6	3	0	0
Other	9	3	1	2	1	1	1	0	0
Restitution	9	0	0	0	3	2	4	0	0
Diversion Programs	44	4	4	18	9	6	3	0	0
Change of Venue	14	8	0	2	1	1	2	0	0
CUSTODY TO									
Public Inst. Delinquents	3	0	0	1	0	0	2	0	0
Other Public Institution	14	5	0	3	4	2	0	0	0
Public Agency	837	438	82	147	84	56	25	0	5
Private Agency	18	6	0	6	4	2	0	0	0
Individual	146	79	9	19	17	13	7	0	2
Other	33	21	2	3	3	1	2	0	1
S.R.S. - Group Home	23	2	1	13	2	2	3	0	0
S.R.S. - Foster Home	36	27	0	5	2	2	0	0	0
Custody to Non-Relative	1	0	0	0	1	0	0	0	0
TOTAL	2,732	1,244	216	495	339	264	149	1	24

Child abuse and neglect as reported to the Department of Social and Rehabilitation Services in 1983 is shown in the following two tables. The tables provide information in four functional areas of concern. First, the type of abuse or neglect and the total number of reports received in each category. Secondly, the number of children whom, after investigation, are thought to potentially be "At Risk" of being either abused or neglected. The third and fourth columns show the number of confirmed and unconfirmed reports.

The combined totals from the two tables represent 21,156 children that were reported to S.R.S. as suspected child abuse or neglect cases in 1983 and involves 12,409 families. In comparing 1983 data with 1982, the above combined totals represent a 9.3% increase in the number of children reported as abused or neglected in 1983 from 1982 (19,181) and involves 25% more families than were reported in 1982 (9,310).

Examination of the data presented in the table depicting child abuse shows that 62.7% of all abuse reports are for children thought to be physically abused. Of the 5,286 reports received by S.R.S. of children being physically abused in 1983, 30% were thought to be "At Risk" of potential abuse by their respective guardian, 36.7% were confirmed physical abuse reports and 33.3% of the reports were unfounded or could not be confirmed by S.R.S.

Eighteen percent of the reported abuse cases were for sexual abuse. Of the 1,515 reports received, 53.4% were

CHILD ABUSE\*  
1983

TYPE OF ABUSE	NUMBER OF REPORTS RECEIVED	NUMBER OF CHILDREN REPORTED AT RISK	NUMBER OF CONFIRMED REPORTS	NUMBER OF UNCONFIRMED REPORTS
Physical	5,286	1,588	1,937	1,761
Sexual	1,515	342	809	364
Emotional	1,247	436	469	342
Other	377	140	58	179
TOTAL	8,425	2,506	3,273	2,646

\* SOURCE: Dept. of Social and Rehabilitation Services, Division of Child In Need of Care.

confirmed, 22.6% were thought to be "At Risk" and twenty-four percent were unconfirmed reports.

Emotional abuse accounts for slightly less than fifteen percent of all reported abuse cases of which, after investigation by S.R.S., 35% were thought to be "At Risk," 37.6% were confirmed cases of emotional abuse and 27.4% were unconfirmed reports.

Comparative analysis of 1983 data with 1982 shows an overall increase of 22.2% more reports being made to S.R.S. for abuse. Examination of individual categories shows an increase of 10.9% in the number of physical abuse reports received, 29.1% increase in the number of sexual reports received and 38.1% increase in the number of children reported as emotionally abused.

An overview of the number of suspected child neglect reports in 1983 is provided in the second table. Evaluation of the data by category reveals that 41.7% of the reported neglect cases fell into the category of "Physical Neglect," followed closely by "Child in Need of Supervision" (35.9%). Of the reported number of physical neglect cases, 34.9% are considered children "At Risk," 27.1% of all reports were confirmed and 32.9% of all reports were considered unconfirmed after investigation. Further, a slightly higher percentage (36.5%) of children in need of supervision were considered to be in an "At Risk" situation in their living environment as were a slightly higher percentage (32.8%) of the cases

CHILD NEGLECT\*  
1983

TYPE OF NEGLECT	NUMBER OF REPORTS RECEIVED	NUMBER OF CHILDREN REPORTED AT RISK	NUMBER OF CONFIRMED REPORTS	NUMBER OF UNCONFIRMED REPORTS
Physical	5,312	1,856	1,440	1,746
Medical	814	297	275	242
Child in Need of Supervision	4,575	1,668	1,502	1,405
Other	2,030	957	540	533
TOTAL	12,731	4,778	3,757	3,926

\* SOURCE: Dept. of Social and Rehabilitation Services, Division of Child In Need of Care.

confirmed as needing supervision.

Comparative analysis of reported 1983 neglect data with data submitted in 1982 shows less than one percent (0.8%) increase in the number of children reported as neglected in 1983. However, further study shows there were considerably fewer children reported in the category of physical neglect (53.5%) in 1983 than 1982 and a very substantial increase (87.5%) in the number of children reported as needing supervision.

#### SUMMARY

The purpose of this section has been to present court referrals designated as Children In Need of Care. Abuse and neglect constitute the highest number of referrals, as expected, with females being most often reported.

While every attempt is made to offer numerous comparisons space does limit the number of those presented. Additional information may be obtained by contacting the Statistical Analysis Center, Kansas Bureau of Investigation, Topeka, Kansas.

#### APPENDIX A

Summary of Juvenile Referrals  
by Judicial District  
1983



TABLE A-1  
DISTRICT AND COUNTY  
BY SEX, RACE AND AGE  
1983

DISTRICT BY COUNTY	STATE TOTAL	SEX		RACE					AGE							
		MALE	FEMALE	WHITE	BLACK	INDIAN	OTHER	NOT KNOWN	10 & UNDER	11-12	13-14	15	16	17	18 +	NOT KNOWN
DISTRICT 1																
ATCHISON	129	81	48	104	21	1	3	0	25	11	29	25	14	23	1	1
LEAVENWORTH	259	189	70	207	43	0	2	7	47	30	62	36	35	49	0	0
TOTAL	388	270	118	311	64	1	5	7	72	41	91	61	49	72	1	1
DISTRICT 2																
JACKSON	13	9	4	13	0	0	0	0	2	0	2	2	5	2	0	0
JEFFERSON	52	38	14	50	0	2	0	0	13	3	16	6	8	6	0	0
POTTAWATOMIE	31	26	5	31	0	0	0	0	5	2	4	6	6	8	0	0
WABAUNSEE	6	6	0	6	0	0	0	0	0	0	0	1	1	4	0	0
TOTAL	102	79	23	100	0	2	0	0	20	5	22	15	20	20	0	0
DISTRICT 3																
SHAWNEE	804	594	210	581	189	24	10	0	103	59	181	136	146	172	5	2
TOTAL	804	594	210	581	189	24	10	0	103	59	181	136	146	172	5	2
DISTRICT 4																
ANDERSON	31	24	7	31	0	0	0	0	3	0	2	4	11	10	0	1
COFFEY	18	13	5	18	0	0	0	0	1	2	6	2	3	4	0	0
FRANKLIN	89	64	25	84	2	0	3	0	6	7	26	13	18	19	0	0
OSAGE	3	1	2	3	0	0	0	0	2	0	0	0	0	1	0	0
TOTAL	141	102	39	136	2	0	3	0	12	9	34	19	32	34	0	1
DISTRICT 5																
CHASE	15	5	10	15	0	0	0	0	13	0	1	0	0	1	0	0
LYON	243	181	62	206	20	0	14	3	19	37	54	34	50	49	0	0
TOTAL	258	186	72	221	20	0	14	3	32	37	55	34	50	50	0	0
DISTRICT 6																
BOURBON	46	38	8	42	1	0	2	1	9	5	8	5	4	13	1	1
LINN	18	10	8	17	0	0	0	1	2	3	4	1	6	2	0	0
MIAMI	42	34	8	38	3	0	1	0	2	0	6	7	11	16	0	0
TOTAL	106	82	24	97	4	0	3	2	13	8	18	13	21	31	1	1
DISTRICT 7																
DOUGLAS	420	295	125	327	53	33	4	3	67	40	101	72	57	67	4	12
TOTAL	420	295	125	327	53	33	4	3	67	40	101	72	57	67	4	12

A-1 CONT'D  
DISTRICT AND COUNTY  
BY SEX, RACE AND AGE  
1983

71

DISTRICT BY COUNTY	STATE TOTAL	SEX		RACE					AGE							
		MALE	FEMALE	WHITE	BLACK	INDIAN	OTHER	NOT KNOWN	10 & UNDER	11-12	13-14	15	16	17	18 +	NOT KNOWN
DISTRICT 8																
DICKINSON	88	57	31	87	1	0	0	0	25	11	14	12	6	19	1	0
GEARY	249	184	65	139	99	0	10	1	49	30	49	37	34	46	1	3
MARION	21	18	3	20	0	0	0	1	3	2	0	5	5	6	0	0
MORRIS	23	12	11	23	0	0	0	0	12	0	2	5	4	0	0	0
TOTAL	381	271	110	269	100	0	10	2	89	43	65	59	49	71	2	3
DISTRICT 9																
HARVEY	111	90	21	99	2	0	8	2	10	6	24	18	17	32	4	0
MCPHERSON	37	32	5	37	0	0	0	0	2	5	7	5	8	10	0	0
TOTAL	148	122	26	136	2	0	8	2	12	11	31	23	25	42	4	0
DISTRICT 10																
JOHNSON	1,305	1,076	229	1,284	14	0	6	1	64	91	316	219	285	322	8	0
TOTAL	1,305	1,076	229	1,284	14	0	6	1	64	91	316	219	285	322	8	0
DISTRICT 11																
CHEROKEE	75	48	27	68	2	4	0	1	26	5	11	10	13	10	0	0
CRAWFORD	98	65	33	94	3	0	0	1	23	1	25	12	25	12	0	0
LABETTE	96	64	32	92	4	0	0	0	11	9	25	15	13	23	0	0
TOTAL	269	177	92	254	9	4	0	2	60	15	61	37	51	45	0	0
DISTRICT 12																
CLOUD	38	27	11	38	0	0	0	0	7	4	5	3	12	7	0	0
JEWELL	10	8	2	10	0	0	0	0	2	0	3	3	1	1	0	0
LINCOLN	4	3	1	4	0	0	0	0	0	0	1	1	1	1	0	0
MITCHELL	0	0	0	0	0	0	0	0	0	0	1	1	1	1	0	0
REPUBLIC	13	9	4	13	0	0	0	0	0	0	0	0	0	0	0	0
WASHINGTON	14	9	5	14	0	0	0	0	0	0	1	3	7	2	0	0
TOTAL	79	56	23	79	0	0	0	0	9	4	14	12	26	14	0	0
DISTRICT 13																
BUTLER	107	92	15	103	1	0	3	0	5	11	18	11	19	39	4	0
ELK	7	7	0	7	0	0	0	0	5	0	0	0	1	1	0	0
GREENWOOD	37	28	9	36	0	1	0	0	5	3	7	3	4	14	1	0
TOTAL	151	127	24	146	1	1	3	0	15	14	25	14	24	54	5	0
DISTRICT 14																
CHAUTAUQUA	18	14	4	18	0	0	0	0	2	1	4	5	4	1	0	1
MONTGOMERY	206	164	42	148	27	0	3	28	25	17	38	25	43	58	0	0
TOTAL	224	178	46	166	27	0	3	28	27	18	42	30	47	59	0	1

A-1 CONT'D  
DISTRICT AND COUNTY  
BY SEX, RACE AND AGE  
1983

DISTRICT BY COUNTY	STATE TOTAL	SEX		RACE					AGE							
		MALE	FEMALE	WHITE	BLACK	INDIAN	OTHER	NOT KNOWN	10 & UNDER	11-12	13-14	15	16	17	18 +	NOT KNOWN
DISTRICT 15																
CHEYENNE	10	8	2	10	0	0	0	0	0	0	2	1	0	7	0	0
LOGAN	22	21	1	22	0	0	0	0	1	4	1	2	9	5	0	0
RAWLINS	15	9	6	14	0	0	1	0	6	0	2	1	0	6	0	0
SHERIDAN	1	1	0	1	0	0	0	0	0	0	0	0	0	1	0	0
SHERMAN	44	38	6	40	1	0	3	0	4	0	0	0	0	1	0	0
THOMAS	14	9	5	14	0	0	0	0	4	12	7	2	15	4	0	0
WALLACE	0	0	0	0	0	0	0	0	5	0	3	2	1	1	2	0
TOTAL	106	86	20	101	1	0	4	0	16	16	15	8	25	24	2	0
DISTRICT 16																
CLARK	4	4	0	4	0	0	0	0	0	0	0	1	2	1	0	0
COMANCHE	2	2	0	2	0	0	0	0	2	0	0	0	0	0	0	0
FORD	77	59	18	54	8	0	15	0	5	6	20	17	14	15	0	0
GRAY	7	4	3	7	0	0	0	0	0	1	1	0	2	3	0	0
KIOWA	29	26	3	28	1	0	0	0	4	4	5	8	4	4	0	0
MEADE	18	18	0	18	0	0	0	0	3	0	4	2	3	6	0	0
TOTAL	137	113	24	113	9	0	15	0	14	11	30	28	25	29	0	0
DISTRICT 17																
DECATUR	0	0	0	0	0	0	0	0	0	0	0	0	0	0	0	0
GRAHAM	15	10	5	14	1	0	0	0	5	1	2	1	5	1	0	0
NORTON	7	5	2	6	0	0	1	0	2	0	1	3	0	1	0	0
OSBORNE	15	12	3	15	0	0	0	0	5	2	3	3	0	2	0	0
PHILLIPS	11	7	4	9	0	0	2	0	0	1	6	3	0	1	0	0
SMITH	8	5	3	8	0	0	0	0	2	1	1	0	2	2	0	0
TOTAL	56	39	17	52	1	0	3	0	14	5	13	10	7	7	0	0
DISTRICT 18																
SEDGWICK	1,842	1,386	456	182	63	1	35	1,561	125	194	456	291	391	380	5	0
TOTAL	1,842	1,386	456	182	63	1	35	1,561	125	194	456	291	391	380	5	0
DISTRICT 19																
COWLEY	89	63	26	85	3	0	1	0	23	10	15	7	19	14	1	0
TOTAL	89	63	26	85	3	0	1	0	23	10	15	7	19	14	1	0
DISTRICT 20																
BARTON	134	94	40	130	1	0	0	3	31	10	18	18	26	30	0	1
ELLSWORTH	34	30	4	32	0	0	0	2	1	0	8	6	7	12	0	0
RICE	25	18	7	24	1	0	0	0	3	2	4	5	6	5	0	0
RUSSELL	17	13	4	17	0	0	0	0	3	0	1	5	1	7	0	0
STAFFORD	13	12	1	13	0	0	0	0	1	2	0	1	3	5	1	0
TOTAL	223	167	56	216	2	0	0	5	39	14	31	35	43	59	1	1

A-1 CONT'D  
DISTRICT AND COUNTY  
BY SEX, RACE AND AGE  
1983

DISTRICT BY COUNTY	STATE TOTAL	SEX		RACE					AGE							
		MALE	FEMALE	WHITE	BLACK	INDIAN	OTHER	NOT KNOWN	10 & UNDER	11-12	13-14	15	16	17	18 +	NOT KNOWN
DISTRICT 21																
CLAY	21	16	5	21	0	0	0	0	4	0	2	2	8	5	0	0
RILEY	72	58	14	64	6	0	1	1	16	6	12	11	15	11	1	0
TOTAL	93	74	19	85	6	0	1	1	20	6	14	13	23	16	1	0
DISTRICT 22																
BROWN	48	32	16	38	2	7	1	0	10	5	8	5	11	9	0	0
DONIPHAN	41	36	5	39	2	0	0	0	5	0	1	8	12	14	0	1
MARSHALL	43	30	13	43	0	0	0	0	4	3	11	8	10	7	0	0
NEMAHA	11	9	2	11	0	0	0	0	2	0	2	2	3	2	0	0
TOTAL	143	107	36	131	4	7	1	0	21	8	22	23	36	32	0	1
DISTRICT 23																
ELLIS	38	37	1	38	0	0	0	0	1	3	10	7	4	13	0	0
GOVE	7	7	0	7	0	0	0	0	0	0	1	3	0	3	0	0
ROOKS	18	14	4	18	0	0	0	0	2	0	5	1	5	5	0	0
TREGO	18	9	9	18	0	0	0	0	8	0	1	3	3	3	0	0
TOTAL	81	67	14	81	0	0	0	0	11	3	17	14	12	24	0	0
DISTRICT 24																
EDWARDS	10	9	1	10	0	0	0	0	1	0	1	1	3	4	0	0
HODGEMAN	2	2	0	1	1	0	0	0	0	0	0	0	0	2	0	0
LANE	1	1	0	1	0	0	0	0	0	0	0	1	0	0	0	0
NESS	17	13	4	17	0	0	0	0	1	2	3	3	4	4	0	0
PAWNEE	24	17	7	15	0	0	9	0	5	1	2	7	4	5	0	0
RUSH	14	12	2	13	0	0	1	0	2	0	1	3	0	5	0	3
TOTAL	68	54	14	57	1	0	10	0	9	3	7	15	11	20	0	3
DISTRICT 25																
FINNEY	217	144	73	121	5	0	91	0	15	11	38	40	52	58	1	2
GREELEY	2	1	1	2	0	0	0	0	0	0	1	1	0	0	0	0
HAMILTON	1	1	0	1	0	0	0	0	0	0	0	1	0	0	0	0
KEARNY	12	11	1	12	0	0	0	0	5	2	0	0	4	1	0	0
SCOTT	35	31	4	31	0	0	4	0	10	2	14	4	3	2	0	0
WICHITA	5	4	1	3	1	0	1	0	0	1	2	0	0	2	0	0
TOTAL	272	192	80	170	6	0	96	0	30	16	55	46	59	63	1	2
DISTRICT 26																
GRANT	32	23	9	20	0	0	11	1	8	2	8	3	4	7	0	0
HASKELL	1	1	0	1	0	0	0	0	0	0	0	0	0	1	0	0
MORTON	18	16	2	15	0	0	3	0	0	2	1	4	3	8	0	0
SEWARD	83	58	25	70	8	0	5	0	14	2	21	24	6	16	0	0
STANTON	3	2	1	2	0	0	1	0	0	1	0	2	0	0	0	0
STEVENS	12	10	2	12	0	0	0	0	0	4	3	2	1	2	0	0
TOTAL	149	110	39	120	8	0	20	1	22	11	33	35	14	34	0	0

A-1 CONT'D  
DISTRICT AND COUNTY  
BY SEX, RACE AND AGE  
1983

74

DISTRICT BY COUNTY	STATE TOTAL	SEX		RACE					AGE							NOT KNOWN	
		MALE	FEMALE	WHITE	BLACK	INDIAN	OTHER	NOT KNOWN	10 & UNDER	11-12	13-14	15	16	17	18 +		
DISTRICT 27																	
RENO	210	135	75	185	6	1	18	0	48	19	33	33	37	39	1	0	
TOTAL	210	135	75	185	6	1	18	0	48	19	33	33	37	39	1	0	
DISTRICT 28																	
OTTAWA	3	2	1	3	0	0	0	0	0	0	0	1	0	2	0	0	
SALINE	201	158	43	174	13	1	13	0	37	19	33	36	33	43	0	0	
TOTAL	204	160	44	177	13	1	13	0	37	19	33	37	33	45	0	0	
DISTRICT 29																	
WYANDOTTE	2,332	1,723	609	1,392	915	4	21	0	475	219	475	357	350	399	30	27	
TOTAL	2,332	1,723	609	1,392	915	4	21	0	475	219	475	357	350	399	30	27	
DISTRICT 30																	
BARBER	10	8	2	10	0	0	0	0	0	0	4	0	1	5	0	0	
HARPER	13	11	2	13	0	0	0	0	1	1	2	2	4	3	0	0	
KINGMAN	24	11	13	24	0	0	0	0	2	0	4	7	5	6	0	0	
PRATT	45	38	7	41	3	0	1	0	4	2	11	9	12	7	0	0	
SUMNER	94	71	23	92	1	0	0	1	6	8	24	19	18	19	0	0	
TOTAL	186	139	47	180	4	0	1	1	13	11	45	37	40	40	0	0	
DISTRICT 31																	
ALLEN	19	14	5	19	0	0	0	0	0	0	4	4	6	5	0	0	
NEOSHO	77	47	30	70	1	2	4	0	13	3	13	11	15	21	1	0	
WILSON	23	14	9	22	0	0	1	0	3	3	7	2	3	4	1	0	
WOODSON	7	7	0	7	0	0	0	0	0	0	0	2	0	4	0	1	
TOTAL	126	82	44	118	1	2	5	0	16	6	24	19	24	34	2	1	
STATE TOTAL	11,093	8,312	2,781	7,552	1,528	81	313	1,619	1,528	966	2,374	1,752	2,031	2,312	74	56	

TABLE A-2  
ALL JUDICIAL DISTRICTS  
BY SOURCE OF REFERRAL, LEGAL CATEGORY, AND MANNER OF HANDLING  
1983

JUDICIAL DISTRICT	STATE TOTAL	SOURCE OF REFERRAL							LEGAL CATEGORY			MANNER OF HANDLING	
		LAW ENF AGENCY	SCHOOL DEPT	SOCIAL AGENCY	PROB OFFICER	PARENT/RELATIVE	OTHER COURT	OTHER SOURCE	JUVENILE OFFENDER	C.I.N.C.	OTHER	FORMAL	INFORMAL
1	388	258	14	79	0	16	9	12	221	159	8	344	44
2	102	63	6	28	0	5	0	0	61	41	0	102	0
3	804	729	14	39	0	4	2	16	619	184	1	536	268
4	141	124	3	2	0	3	4	5	122	18	1	82	59
5	258	217	5	28	0	5	0	3	193	65	0	225	33
6	106	72	2	13	0	8	5	6	70	36	0	105	1
7	420	306	2	88	2	14	3	5	288	130	2	297	123
8	381	290	4	56	0	0	6	25	241	140	0	355	26
9	148	123	4	9	0	6	0	6	121	27	0	128	20
10	1,305	1,194	22	72	0	5	10	2	1,187	110	8	1,174	131
11	269	161	4	41	1	46	3	13	151	100	18	264	5
12	79	73	0	5	0	1	0	0	60	19	0	78	1
13	151	127	1	18	0	1	4	0	121	30	0	146	5
14	224	194	4	22	2	1	0	1	185	39	0	195	29
15	106	99	0	0	0	6	1	0	89	17	0	83	23
16	137	98	5	14	1	1	1	17	117	20	0	135	2
17	56	39	1	14	0	2	0	0	29	27	0	54	2
18	1,842	1,714	1	107	0	3	12	5	1,620	222	0	1,481	361
19	89	60	5	13	0	10	1	0	51	38	0	87	2
20	223	154	11	18	0	13	4	23	156	66	1	190	33
21	93	66	1	19	0	1	3	3	68	25	0	70	23
22	143	82	0	7	0	2	0	52	90	46	7	135	8
23	81	55	3	12	0	3	5	3	57	24	0	72	9
24	68	45	0	10	0	6	1	6	48	19	1	57	11
25	272	180	12	36	0	41	1	2	169	102	1	240	32
26	149	89	12	17	0	10	2	19	100	49	0	141	8
27	210	210	0	0	0	0	0	0	116	94	0	209	1
28	204	162	0	35	0	1	2	4	149	55	0	204	0
29	2,332	1,826	14	177	217	1	41	56	1,588	744	0	1,117	1,215
30	186	143	4	21	1	13	0	4	131	55	0	184	2
31	126	96	1	18	2	3	0	6	94	31	1	121	5
TOTAL	11,093	9,049	155	1,018	226	231	120	294	8,312	2,732	49	8,611	2,482

75

TABLE A-3  
REASON REFERRED  
ALL JUDICIAL DISTRICTS  
1983

REASON REFERRED	STATE TOTAL	J.D. 1	J.D. 2	J.D. 3	J.D. 4	J.D. 5	J.D. 6	J.D. 7	J.D. 8	J.D. 9	J.D. 10	J.D. 11	J.D. 12	J.D. 13	J.D. 14	J.D. 15
Murder/Non-Neg Manslaughter	4	0	0	0	0	0	0	1	0	0	1	0	0	0	0	1
Neg Manslaughter	7	0	0	0	0	1	0	0	0	0	0	0	0	0	0	0
Rape	51	3	0	3	0	1	0	3	1	0	1	0	0	0	0	1
Robbery-Purse Snatching	43	0	0	1	0	0	0	0	0	1	1	0	0	0	1	0
Robbery-All Other	86	3	0	3	2	0	0	2	2	0	1	6	3	3	1	0
Assault-Aggravated	250	6	0	19	2	10	1	13	3	2	22	5	4	1	9	0
Assault-Non Aggravated	493	19	10	37	11	3	4	13	18	11	102	7	1	5	1	4
Burglary	1,199	41	8	88	10	36	14	27	25	19	28	22	6	27	44	8
Auto Theft-Unauthorized Use	119	6	0	12	0	1	1	2	2	3	4	12	0	2	5	0
Auto Theft-All Other	119	4	3	9	0	0	5	1	0	6	29	0	0	0	0	1
Larceny-Shoplifting	1,107	25	2	151	10	16	2	49	30	13	169	9	2	3	10	10
Larceny-All Other	1,632	33	9	70	30	41	13	51	71	29	324	25	11	33	46	21
Weapons	94	1	0	2	0	1	0	5	2	0	20	0	0	0	1	1
Other Sex Offenses	139	4	3	12	0	2	0	7	4	1	20	2	2	2	2	0
Drugs-Narcotic	94	11	0	10	4	6	0	0	5	0	0	2	0	1	1	0
Drugs-All Except Narcotic	222	1	0	19	3	1	2	7	2	1	98	4	1	1	4	0
Drunkenness	9	0	0	2	1	0	1	1	0	0	2	0	0	0	1	0
Disorderly Conduct	298	10	3	13	2	2	1	10	4	4	21	1	4	1	2	3
Vandalism	659	20	15	49	15	0	11	12	16	10	123	18	12	15	4	13
Other Offenses	131	1	0	12	1	5	2	10	6	6	8	3	0	0	6	1
Arson	58	4	0	8	0	0	2	7	1	3	3	1	0	2	3	0
Trespassing	228	8	0	48	0	7	1	21	8	1	39	2	0	6	0	2
Fraud-Forgery	178	9	2	10	6	9	1	7	6	4	25	3	4	0	4	1
Harassment	42	1	0	3	1	2	0	2	1	0	9	0	0	0	5	0
Criminal Damage to Prop	157	0	0	0	1	13	4	8	9	2	1	4	1	1	5	0
Fish and Game Violations	15	2	2	0	0	0	0	0	0	0	0	0	0	1	0	0
Possession of Stolen Prop	31	0	0	2	3	6	0	1	1	0	8	0	2	1	1	0
Deprivation of Property	37	0	0	1	0	2	0	2	7	1	1	0	0	0	2	0
Theft by Deception	2	0	0	0	0	0	0	0	0	0	0	0	0	0	0	0
Resisting Arrest	9	0	0	0	0	0	0	0	0	0	5	0	0	0	0	0
Alcohol Offense	363	3	2	6	15	21	1	6	13	0	82	17	4	7	21	21
Illegal Use of Fireworks	3	0	0	1	0	0	0	0	0	0	2	0	0	0	0	0
Obstruction of Justice	29	0	0	4	0	0	0	0	0	0	9	0	0	1	0	0
Drunk Driving	49	1	1	12	2	2	2	2	0	3	6	3	0	5	0	1
Reckless Driving	27	1	1	3	0	2	0	2	1	0	4	2	1	1	1	0
Driving Without License	67	3	0	2	0	1	2	3	0	0	12	3	1	0	0	0
All Other Traffic	96	1	0	4	3	2	0	0	3	1	5	0	1	2	3	0
Escape Court Placement	65	0	0	1	0	0	0	12	0	0	2	0	0	0	0	0
Warrant Issued	45	0	0	1	0	0	0	0	0	0	0	0	0	0	1	0
Probation Violation	55	0	0	1	0	0	0	1	0	0	0	0	0	0	1	0
TOTAL JUVENILE OFFENDER	8,312	221	61	619	122	193	70	288	241	121	1,187	151	60	121	185	89

A-3 CONT'D  
 REASON REFERRED  
 ALL JUDICIAL DISTRICTS  
 1983

REASON REFERRED	STATE TOTAL	J.D. 1	J.D. 2	J.D. 3	J.D. 4	J.D. 5	J.D. 6	J.D. 7	J.D. 8	J.D. 9	J.D. 10	J.D. 11	J.D. 12	J.D. 13	J.D. 14	J.D. 15
Running Away	330	3	2	29	1	14	6	26	3	7	9	13	3	8	4	2
Truancy	185	10	3	15	2	4	3	9	7	3	16	5	4	0	0	0
Curfew Violation	39	6	0	0	3	0	0	0	0	0	0	0	0	0	1	0
Ungovernable Behavior	135	9	1	13	5	3	0	2	8	3	6	19	2	3	6	2
Other Reason Referred	19	1	0	3	0	2	0	1	0	0	3	1	1	0	0	0
Severance	23	0	0	0	0	0	0	3	0	0	0	0	0	0	0	0
Abuse	511	60	6	52	3	4	7	28	25	2	0	29	5	9	24	7
All Other Neglect	1,004	69	29	67	4	38	19	40	94	12	76	30	4	10	4	6
Physical Abuse	122	0	0	0	0	0	0	4	0	0	0	0	0	0	0	0
Sexual Abuse	61	0	0	5	0	0	1	5	3	0	0	0	0	0	0	0
Mental Abuse	23	0	0	0	0	0	0	4	0	0	0	0	0	0	0	0
Abandonment	20	1	0	0	0	0	0	0	0	0	0	3	0	0	0	0
Parents Unable to Care	203	0	0	0	0	0	0	7	0	0	0	0	0	0	0	0
Failure to Educate	25	0	0	0	0	0	0	0	0	0	0	0	0	0	0	0
Emotional Abuse	32	0	0	0	0	0	0	1	0	0	0	0	0	0	0	0
<b>TOTAL CHILD IN NEED OF CARE</b>	<b>2,732</b>	<b>159</b>	<b>41</b>	<b>184</b>	<b>18</b>	<b>65</b>	<b>36</b>	<b>130</b>	<b>140</b>	<b>27</b>	<b>110</b>	<b>100</b>	<b>19</b>	<b>30</b>	<b>39</b>	<b>17</b>
<b>ALL OTHER PROCEEDINGS</b>	<b>49</b>	<b>8</b>	<b>0</b>	<b>1</b>	<b>1</b>	<b>0</b>	<b>0</b>	<b>2</b>	<b>0</b>	<b>0</b>	<b>8</b>	<b>18</b>	<b>0</b>	<b>0</b>	<b>0</b>	<b>0</b>
<b>STATE TOTALS</b>	<b>11,093</b>	<b>388</b>	<b>102</b>	<b>804</b>	<b>141</b>	<b>258</b>	<b>106</b>	<b>420</b>	<b>381</b>	<b>148</b>	<b>1,305</b>	<b>269</b>	<b>79</b>	<b>151</b>	<b>224</b>	<b>106</b>

77



A-3 CONT'D  
 REASON REFERRED  
 ALL JUDICIAL DISTRICTS  
 1983

REASON REFERRED	J.D. 16	J.D. 17	J.D. 18	J.D. 19	J.D. 20	J.D. 21	J.D. 22	J.D. 23	J.D. 24	J.D. 25	J.D. 26	J.D. 27	J.D. 28	J.D. 29	J.D. 30	J.D. 31
Murder/Non-Neg Manslaughter	0	0	0	0	0	0	0	0	0	0	0	0	0	1	0	0
Neg Manslaughter	0	0	0	0	1	0	1	0	0	0	0	0	0	4	0	0
Rape	0	1	6	0	0	0	0	0	0	1	0	1	0	29	0	0
Robbery-Purse Snatching	1	0	5	0	1	0	0	0	0	2	0	1	0	29	0	0
Robbery-All Other	1	2	30	0	10	0	4	2	0	0	2	5	0	0	4	0
Assault-Aggravated	1	0	27	1	6	1	3	0	3	9	5	2	6	81	5	3
Assault-Non Aggravated	7	1	85	7	10	1	3	2	1	4	1	9	2	100	12	2
Burglary	15	3	320	1	51	15	13	1	11	30	26	2	14	265	21	8
Auto Theft-Unauthorized Use	3	0	23	5	7	3	6	3	2	2	5	2	7	0	1	0
Auto Theft-All Other	0	0	3	1	1	2	1	0	0	0	1	4	1	45	2	0
Larceny-Shoplifting	9	0	288	7	2	4	1	3	0	13	13	35	24	195	4	8
Larceny-All Other	27	10	431	9	18	10	16	9	2	25	7	3	13	207	16	22
Weapons	1	0	21	0	1	0	0	0	1	2	0	2	1	29	1	2
Other Sex Offenses	0	0	25	0	3	1	3	0	4	4	1	2	0	31	3	1
Drugs-Narcotic	0	0	11	0	2	1	0	0	0	1	7	0	14	11	6	1
Drugs-All Except Narcotic	3	0	34	0	4	0	2	3	0	6	0	2	1	23	0	0
Drunkenness	0	0	1	0	0	0	0	0	0	0	0	0	0	0	0	0
Disorderly Conduct	4	0	39	4	3	0	2	3	0	5	1	9	9	133	4	1
Vandalism	22	0	35	3	14	11	15	14	10	4	14	3	25	130	24	2
Other Offenses	2	1	11	2	2	0	0	1	1	4	1	3	4	37	0	1
Arson	0	0	9	0	5	2	0	0	0	0	0	0	0	6	1	1
Trespassing	4	1	17	0	0	0	0	0	2	9	0	0	2	42	4	4
Fraud-Forgery	4	0	24	2	2	4	0	2	1	10	5	0	8	14	6	5
Harassment	3	0	0	0	1	1	0	0	0	0	3	0	3	6	1	0
Criminal Damage to Prop	3	2	57	2	6	0	7	3	0	19	0	0	1	0	1	7
Fish and Game Violations	0	3	0	1	0	0	0	0	4	0	0	2	0	0	0	0
Possession of Stolen Prop	0	0	1	0	0	4	0	0	0	0	0	1	0	0	0	0
Deprivation of Property	0	0	10	2	0	2	0	6	0	1	0	0	0	0	0	0
Theft by Deception	0	0	0	0	0	0	0	0	0	0	0	0	2	0	0	0
Resisting Arrest	0	0	1	0	0	0	0	0	0	0	1	2	0	0	0	0
Alcohol Offense	5	3	11	0	1	3	9	2	3	13	5	22	6	24	14	23
Illegal Use of Fireworks	0	0	0	0	0	0	0	0	0	0	0	0	0	0	0	0
Obstruction of Justice	0	0	12	1	0	0	0	0	0	2	0	0	0	0	0	0
Drunk Driving	0	0	2	1	1	0	0	1	0	0	1	1	0	2	0	0
Reckless Driving	0	0	2	0	0	0	1	0	2	0	0	1	0	2	0	0
Driving Without License	2	1	20	1	0	0	2	1	1	2	1	2	1	2	1	3
All Other Traffic	0	0	51	1	4	3	1	1	0	1	0	0	4	5	0	0
Escape Court Placement	0	0	6	0	0	0	0	0	0	0	0	1	0	43	0	0
Warrant Issued	0	0	2	0	0	0	0	0	0	0	0	0	0	41	0	0
Probation Violation	0	1	0	0	0	0	0	0	0	0	0	0	0	51	0	0
TOTAL JUVENILE OFFENDER	117	29	1,620	51	156	68	90	57	48	169	100	116	149	1,588	131	94

A-3 CONT'D  
 REASON REFERRED  
 ALL JUDICIAL DISTRICTS  
 1983

REASON REFERRED	J.D. 16	J.D. 17	J.D. 18	J.D. 19	J.D. 20	J.D. 21	J.D. 22	J.D. 23	J.D. 24	J.D. 25	J.D. 26	J.D. 27	J.D. 28	J.D. 29	J.D. 30	J.D. 31
Running Away	1	0	30	2	2	2	3	2	0	49	2	2	2	88	10	5
Truancy	2	0	1	3	7	2	0	2	0	13	12	1	1	47	12	1
Curfew Violation	0	0	1	0	0	0	4	0	0	2	0	14	1	6	1	0
Ungovernable Behavior	1	1	1	6	2	1	0	4	3	3	2	5	1	11	10	2
Other Reason Referred	1	0	0	0	0	0	1	1	1	1	2	0	0	0	0	0
Severance	0	0	17	0	1	0	0	0	0	2	0	0	0	0	0	0
Abuse	7	16	71	14	13	10	13	11	6	8	16	39	22	0	4	0
All Other Neglect	8	10	101	11	41	10	24	4	9	22	15	33	28	148	17	21
Physical Abuse	0	0	0	0	0	0	0	0	0	0	0	0	0	118	0	0
Sexual Abuse	0	0	0	0	0	0	0	0	0	0	0	0	0	47	0	0
Mental Abuse	0	0	0	0	0	0	0	0	0	0	0	0	0	19	0	0
Abandonment	0	0	0	2	0	0	1	0	0	2	0	0	0	8	1	2
Parents Unable to Care	0	0	0	0	0	0	0	0	0	0	0	0	0	196	0	0
Failure to Educate	0	0	0	0	0	0	0	0	0	0	0	0	0	25	0	0
Emotional Abuse	0	0	0	0	0	0	0	0	0	0	0	0	0	31	0	0
<b>TOTAL CHILD IN NEED OF CARE</b>	<b>20</b>	<b>27</b>	<b>222</b>	<b>33</b>	<b>66</b>	<b>25</b>	<b>46</b>	<b>24</b>	<b>19</b>	<b>102</b>	<b>49</b>	<b>94</b>	<b>55</b>	<b>744</b>	<b>55</b>	<b>31</b>
<b>ALL OTHER PROCEEDINGS</b>	<b>0</b>	<b>0</b>	<b>0</b>	<b>0</b>	<b>1</b>	<b>0</b>	<b>7</b>	<b>0</b>	<b>1</b>	<b>1</b>	<b>0</b>	<b>0</b>	<b>0</b>	<b>0</b>	<b>0</b>	<b>1</b>
<b>STATE TOTALS</b>	<b>137</b>	<b>56</b>	<b>1,842</b>	<b>89</b>	<b>223</b>	<b>93</b>	<b>143</b>	<b>81</b>	<b>68</b>	<b>272</b>	<b>149</b>	<b>210</b>	<b>204</b>	<b>2,332</b>	<b>186</b>	<b>126</b>

APPENDIX B  
Juvenile Population  
by County, 1983

Preceding page blank

83

B-1  
JUVENILE POPULATIONS BY COUNTY  
 1983

COUNTY	AREA (SQ. MILES)*	1981 TOTAL POPULATION**	1983 JUVENILE POPULATION***	JUVENILE % TOTAL POPULATION
Allen	505	15,667	4,324	27.6
Anderson	577	8,455	2,266	26.8
Atchison	427	18,365	5,050	27.5
Barber	1,146	6,691	1,626	24.3
Barton	894	32,110	8,798	27.4
Bourbon	639	16,092	3,991	24.8
Brown	577	12,128	3,250	26.8
Butler	1,442	46,858	13,589	29.0
Chase	774	3,328	819	24.6
Chautauqua	647	5,146	1,122	21.8
Cherokee	586	22,313	6,069	27.2
Cheyenne	1,027	3,610	863	23.9
Clark	983	2,650	620	23.4
Clay	635	9,637	2,486	25.8
Cloud	711	12,297	2,890	23.5
Coffey	617	9,228	2,547	27.6
Comanche	800	2,423	582	24.0
Cowley	1,136	37,198	9,857	26.5
Crawford	598	37,929	8,686	22.9
Decatur	899	4,515	1,138	25.2
Dickinson	855	19,579	5,130	26.2
Doniphan	388	9,327	2,602	27.9
Douglas	471	68,282	14,203	20.8
Edwards	617	4,361	1,077	24.7
Elk	647	3,903	886	22.7

## B-1, CONT'D

## JUVENILE POPULATIONS BY COUNTY

COUNTY	AREA (SQ. MILES)*	1983		JUVENILE % TOTAL POPULATION
		1981 TOTAL POPULATION**	1983 JUVENILE POPULATION***	
Ellis	900	26,904	7,076	26.3
Ellsworth	717	6,514	1,629	25.0
Finney	1,301	24,417	8,351	34.2
Ford	1,091	25,520	7,426	29.1
Franklin	577	21,809	5,845	26.8
Geary	374	29,860	9,227	30.9
Gove	1,070	3,640	1,074	29.5
Graham	891	4,026	1,079	26.8
Grant	571	6,809	2,329	34.2
Gray	872	4,739	1,498	31.6
Greeley	783	1,791	528	29.5
Greenwood	1,133	8,925	2,151	24.1
Hamilton	992	2,456	651	26.5
Harper	801	7,680	1,820	23.7
Harvey	540	30,541	7,971	26.1
Haskell	580	3,737	1,244	33.3
Hodgeman	860	2,248	560	24.9
Jackson	656	12,013	3,592	29.9
Jefferson	510	16,138	4,615	28.6
Jewell	910	5,292	1,307	24.7
Johnson	476	276,487	78,799	28.5
Kearny	855	3,425	1,175	34.3
Kingman	864	8,884	2,345	26.4
Kiowa	720	4,090	1,051	25.7
Labette	654	25,565	7,133	27.9

## B-1, CONT'D

## JUVENILE POPULATIONS BY COUNTY

COUNTY	AREA (SQ. MILES)*	1983		JUVENILE % TOTAL POPULATION
		1981 TOTAL POPULATION**	1983 JUVENILE POPULATION***	
Lane	720	2,459	703	28.6
Leavenworth	466	55,269	15,917	28.8
Lincoln	72	3,944	899	22.8
Linn	606	8,266	2,133	25.8
Logan	1,073	3,506	943	26.9
Lyon	841	35,154	9,070	25.8
Marion	945	13,542	3,047	22.5
Marshall	883	12,369	2,882	23.3
McPherson	896	27,017	6,727	24.9
Meade	979	4,777	1,275	26.7
Miami	592	21,615	6,095	28.2
Mitchell	714	8,099	2,138	26.4
Montgomery	628	42,576	11,496	27.0
Morris	697	6,303	1,532	24.3
Morton	728	3,541	1,144	32.3
Nemaha	708	11,286	3,160	28.0
Neosho	587	19,221	5,305	27.6
Ness	1,081	4,608	1,124	24.4
Norton	872	6,788	1,575	23.2
Osage	707	15,336	4,263	27.8
Osborne	886	5,789	1,418	24.5
Ottawa	723	5,949	1,469	24.7
Pawnee	755	7,852	1,916	24.4
Phillips	897	7,282	1,842	25.3
Pottawatomie	820	14,665	4,194	28.6

## B-1, CONT'D

JUVENILE POPULATIONS BY COUNTY

COUNTY	AREA (SQ. MILES)*	1983		
		1981 TOTAL POPULATION**	1983 JUVENILE POPULATION***	JUVENILE % TOTAL POPULATION
Pratt	729	10,385	2,544	24.5
Rawlins	1,078	4,034	1,081	26.8
Reno	1,260	65,067	17,503	26.9
Republic	718	7,201	1,599	22.2
Rice	725	11,931	2,959	24.8
Riley	597	64,153	14,755	23.0
Rooks	886	7,101	1,931	27.2
Rush	724	4,229	981	23.2
Russell	867	9,066	2,176	24.0
Saline	720	50,411	13,661	27.1
Scott	724	5,877	1,822	31.0
Sedgwick	1,007	368,380	103,515	28.1
Seward	646	16,968	5,430	32.0
Shawnee	548	156,460	42,244	27.0
Sheridan	893	3,596	1,108	30.8
Sherman	1,055	7,369	2,085	28.3
Smith	893	5,884	1,324	22.5
Stafford	79	5,401	1,253	23.2
Stanton	676	2,463	820	33.3
Stevens	731	4,824	1,563	32.4
Sumner	1,186	27,969	7,719	27.6
Thomas	1,070	8,531	2,465	28.9
Trego	901	4,220	1,144	27.1
Wabaunsee	792	6,903	1,843	26.7
Wallace	911	1,963	583	29.7

B-1, CONT'D

JUVENILE POPULATIONS BY COUNTY

COUNTY	AREA (SQ. MILES)*	1983		JUVENILE % TOTAL POPULATION
		1981 TOTAL POPULATION**	1983 JUVENILE POPULATION***	
Washington	891	8,355	2,131	25.5
Wichita	724	2,934	965	32.9
Wilson	574	12,117	3,296	27.2
Woodson	497	4,710	1,060	22.5
Wyandotte	152	171,281	50,528	29.5
TOTAL	81,787	2,382,598	647,000	28.0

\* Center for Public Affairs, The University of Kansas, "Kansas Statistical Abstract 1980": Prepared by Wendy A. Murray, Lawrence, Kansas, 1980.

\*\* Provisional 1981 estimates of population totals as reported by the United States Department of Commerce, Bureau of the Census.

\*\*\* Juvenile population totals as estimated by the United States Department of Commerce, Bureau of the Census, 1981.



APPENDIX C  
Glossary of Terms  
1983

GLOSSARY

Juvenile Offender

- a person who does an act while a juvenile which if done by an adult would constitute the commission of a felony or misdemeanor as defined by K.S.A. 21-3105 and amendments thereto or who violates the provisions of K.S.A. 41-715 or 41-2721, and amendments thereto, but does not include:

(1) A person 14 or more years of age who commits a traffic offense in violation of chapter 8 of the Kansas Statutes Annotated or any city ordinance or county resolution which relates to the regulation of traffic on the roads, highways or streets or the operation of self-propelled or nonself-propelled vehicles of any kind.

(2) a person 16 years of age or over who commits an offense defined in chapter 32 of the Kansas Statutes Annotated;

(3) A person 16 years of age or over who is charged with a felony or with more than one offense of which one or more is a felony after having been adjudicated in two separate prior juvenile proceedings as having been committed by an adult and the adjudications occurred prior to the date of the commission of the new act charged;

(4) a person who has been prosecuted as an adult by reason of subsection (3) above and whose prosecution results in conviction of a crime;

- (5) a person whose prosecution as an adult is authorized pursuant to K.S.A. 1983 Supp. 38-1636 and amendments thereto; or
  - (6) a person who has been convicted of aggravated juvenile delinquency as defined by K.S.A. 21-3611 and amendments thereto.
- Child In Need of Care - a person less than 18 years of age who:
- (1) Is without adequate parental care, control or subsistence and the condition is not due solely to the lack of monetary means of the child's custodian;
  - (2) has been physically, mentally or emotionally abused or neglected or sexually abused;
  - (3) has been illegally placed for care or adoption;
  - (4) has been abandoned by or does not have a known living parent;
  - (5) is not attending school as required by law;
  - (6) does an act which is specifically forbidden by law to a juvenile but which is not prohibited when done by an adult;
  - (7) while less than 10 years of age commits any act which if done by an adult would constitute the commission of a felony or misdemeanor.

- Adjudication - the process by which a judicial decision is made as to the guilt or innocence of a juvenile who has been charged with felony or misdemeanor offense(s).
- Complaint - initiation of proceedings under the Juvenile Offender Code as prepared and filed by the prosecuting attorney stating the offenses the juvenile is alleged to have committed.
- Custody - an order written by the court which vests in an individual or agency the right to physical possession of a child and the right to determine placement of the child, subject to restrictions placed by the court. May be temporary, protective or legal.
- Detention Hearing - an alleged juvenile offender shall not be detained for more than 48 hours (excluding week-ends and legal holidays) without a hearing to determine that further detention is necessary prior to the case coming before the court for adjudication.
- Disposition - the decision made by the court as to the final placement of a Juvenile Offender.
- Juvenile Detention Facility - any secure public or private facility which is used for the lawful custody of accused or adjudicated juvenile offenders and which, if a city or county jail, must be in quarters separate from adult prisoners.

- Law Enforcement Officer - any person who by virtue of that person's office or public employment is vested by law with a duty to maintain public order or to make arrests for crimes.
- Petition - initiation of proceedings under the Child In Need of Care Code as prepared and filed by the prosecuting attorney stating the reason(s) a child is a Child in Need of Care.
- Placement - the designation by the individual or agency having custody of the child as to where and with whom the child may reside.
- Shelter Facility - any public or private facility or home other than juvenile detention facility that may be used for the purpose of providing either temporary placement for the care of a child in need of care prior to the issuance of a dispositional order.
- Warrant - a written order by a judge of the court directed to any law enforcement officer commanding the officer to take into custody the youth named in the order. KSA 38-1631 indicates a warrant shall include the reasons for the warrant.
- State Youth Center - a facility operated by the secretary of social and rehabilitation for secure custody and care of a juvenile offender.
- Youth Residential Facility - any home, foster home or structure which provides twenty-four-hour-a-day care for juveniles and which is licensed by the state to provide such care.

APPENDIX D

Juvenile Court Statistical Card  
1983

Preceding page blank

A. COURT \_\_\_\_\_

B. CHILD'S NAME OR NUMBER \_\_\_\_\_ (LAST) (FIRST) (MIDDLE)

C. ADDRESS \_\_\_\_\_ Area Code or Census Tract

D. DATE OF BIRTH -       mo. day yr.

E. AGE AT TIME OF REFERRAL -   STATE OF KANSAS S.R.S. Div of Admin Svcs

F. SEX: 1 - Male  2 - Female

G. RACE: 1 - White 2 - Black  3 - Indian 4 - Other

RS-203 Rev.6-78

ENTER ONLY ONE CODE IN THE DESIGNATED CODE BOX FOR EACH MAJOR CATEGORY FROM "H" TO "O"

<p>H. DATE OF REFERRAL <input type="text"/> <input type="text"/> <input type="text"/> <input type="text"/> <input type="text"/> <input type="text"/> mo. day yr.</p>	<p>L. REASON REFERRED <input type="text"/> <input type="text"/> Offenses applicable to both juveniles and adults (excluding traffic)</p>	<p>M. MANNER OF HANDLING <input type="checkbox"/> 1 Without Petition <input type="checkbox"/> 2 With Petition</p>
<p>I. REFERRED BY <input type="checkbox"/> 1 Law Enforcement Agency <input type="checkbox"/> 2 School Department <input type="checkbox"/> 3 Social Agency <input type="checkbox"/> 4 Probation Officer <input type="checkbox"/> 5 Parents or Relatives <input type="checkbox"/> 6 Other Court <input type="checkbox"/> 7 Other Source (Specify) _____</p>	<p>01 Murder and non-negligent manslaughter 02 Manslaughter by negligence 03 Forcible rape 04 Robbery: Purse snatching by force 05 Robbery: All except purse snatching 06 Assault: Aggravated 07 Assault: All except aggravated 08 Burglary - breaking or entering 09 Auto theft: Unauthorized use 10 Auto theft: All except unauthorized use 11 Larceny: Shoplifting 12 Larceny: All except shoplifting 13 Weapons - carrying, possessing, etc. 14 Sex offenses (except forcible rape) 15 Violation of drug laws: Narcotic 16 Violation of drug laws: All except narcotic 17 Drunkenness 18 Disorderly conduct 19 Vandalism 20 Other (Specify) _____ 21 Arson 22 Trespassing</p>	<p>N. DATE OF DISPOSITION <input type="text"/> <input type="text"/> <input type="text"/> <input type="text"/> <input type="text"/> <input type="text"/> mo. day yr.</p>
<p>J. PRIOR DELINQUENCY (Excluding Traffic) REFERRALS</p> <p>a. This Calendar Year - <input type="checkbox"/> 0 1 2 3 4 5 or more referrals</p> <p>b. In Prior Years - <input type="checkbox"/> 0 1 2 3 4 5 or more referrals</p>	<p>Offenses applicable to juveniles only (excluding traffic)</p> <p>31 Running away 34 Ungovernable behavior 32 Truancy 35 Possessing or drinking of liquor 33 Violation of curfew 36 Other (Specify) _____</p>	<p>O. DISPOSITION <input type="checkbox"/> <input type="checkbox"/> 00 Waived to Criminal Court</p> <p>Complaint Not Substantiated 01 Dismissed; Not Proved or Found Not Involved</p> <p>Complaint Substantiated No Transfer of Legal Custody 11 Dismissed; Warned, Adjusted, Counseled 12 Held Open Without Further Action 13 Probation Officer to Supervise 14 Referred to Another Agency or Individual for Supervision or Service 15 Runaway Returned to _____ 16 Other (Specify) _____</p>
<p>K. CARE PENDING DISPOSITION <input type="text"/> <input type="text"/></p> <p>00 No Detention or Shelter Care Overnight or Longer in: 01 Jail or Police Station 02 Detention Home 04 Foster Family Home 08 Other Place (Specify) _____</p> <p>In this category ("K") if more than one code is applicable, add the appropriate codes and enter total sum in coding box.</p>	<p>Traffic offenses 41 Driving while intoxicated 44 Driving without a license 42 Hit and run 45 All other traffic (Specify) _____ 43 Reckless driving</p>	<p>Transfer of Legal Custody to: 21 Public Institution for Delinquents 22 Other Public Institution 23 Public Agency or Department (Including Court) 24 Private Agency or Institution 25 Individual 26 Other (Specify) _____</p>
	<p>Neglect (abuse, desertion, inadequate care, etc.) 51 Abuse 52 All other neglect (Specify) _____</p> <p>Special proceedings (adoption, consent to marry, etc.) 61 Specify _____</p>	<p>99 Inapplicable - Specify Proceedings</p>

**END**