

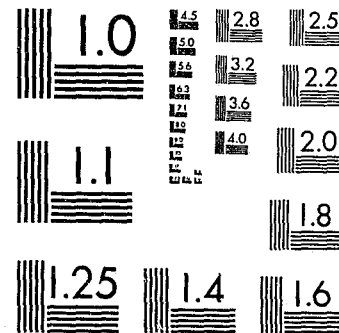
CR-ent
9-24-84

National Criminal Justice Reference Service



Vol. XVII, No. 2

This microfiche was produced from documents received for inclusion in the NCJRS data base. Since NCJRS cannot exercise control over the physical condition of the documents submitted, the individual frame quality will vary. The resolution chart on this frame may be used to evaluate the document quality.



MICROCOPY RESOLUTION TEST CHART
NATIONAL BUREAU OF STANDARDS-1963-A

Microfilming procedures used to create this fiche comply with the standards set forth in 41CFR 101-11.504.

Points of view or opinions stated in this document are those of the author(s) and do not represent the official position or policies of the U. S. Department of Justice.

National Institute of Justice
United States Department of Justice
Washington, D. C. 20531

7/19/85

94435

CHARACTERISTICS OF
INMATES DISCHARGED - 1982

U.S. Department of Justice
National Institute of Justice

94435

This document has been reproduced exactly as received from the person or organization originating it. Points of view or opinions stated in this document are those of the authors and do not necessarily represent the official position or policies of the National Institute of Justice.

Permission to reproduce this copyrighted material has been granted by
New York State Dept. of
Correctional Services

to the National Criminal Justice Reference Service (NCJRS).

Further reproduction outside of the NCJRS system requires permission of the copyright owner.

STATE OF NEW YORK
DEPARTMENT OF CORRECTIONAL SERVICES

THOMAS A. COUGHLIN III

COMMISSIONER

DIVISION OF PROGRAM PLANNING, RESEARCH AND EVALUATION
THE STATE OFFICE BUILDING CAMPUS
ALBANY, N.Y. 12226

94435

✓
CHARACTERISTICS OF INMATES DISCHARGED FROM
FACILITIES OF THE NEW YORK STATE DEPARTMENT OF
CORRECTIONAL SERVICES IN 1982

Martin F. Horn
Assistant Commissioner

DIVISION OF PROGRAM PLANNING, RESEARCH AND EVALUATION
Frank Tracy, Director

Henry C. Donnelly
Director of Records and Statistical Analysis

Report prepared by
William R. Chapman
Program Research Specialist

Bureau of Records and
Statistical Analysis

TABLE OF CONTENTS

	<u>Page</u>
Contents	i
Introduction and Highlights	ii
1. Total 1982 Discharges	1
2. Age, Sex, and County of Release	3
3. Time Served by Commitment Crime Category	8
4. Time Served by Felony Class Category	16
5. Time Served by Minimum Sentence Length	25
6. Time Served by Maximum Sentence	31

NCJRS
MAY

NCJRS

MAY 25 1984

ACQUISITIONS

ACQUISITIONS

CHARACTERISTICS OF INMATES DISCHARGED FROM
NEW YORK STATE DEPARTMENT OF CORRECTIONAL SERVICES FACILITIES
DURING 1982

Vol. XVII, No 2

This report is one of a series designed to provide relevant information about persons in the custody of the New York State Department of Correctional Services. This report presents information on the characteristics of inmates discharged from the custody of the Department of Correctional Services during the calendar year 1982. Our principle objective is to examine the length of time served in state prison according to various legal history criteria such as commitment offense type, felony class category of commitment offense, minimum sentence length and maximum sentence length.

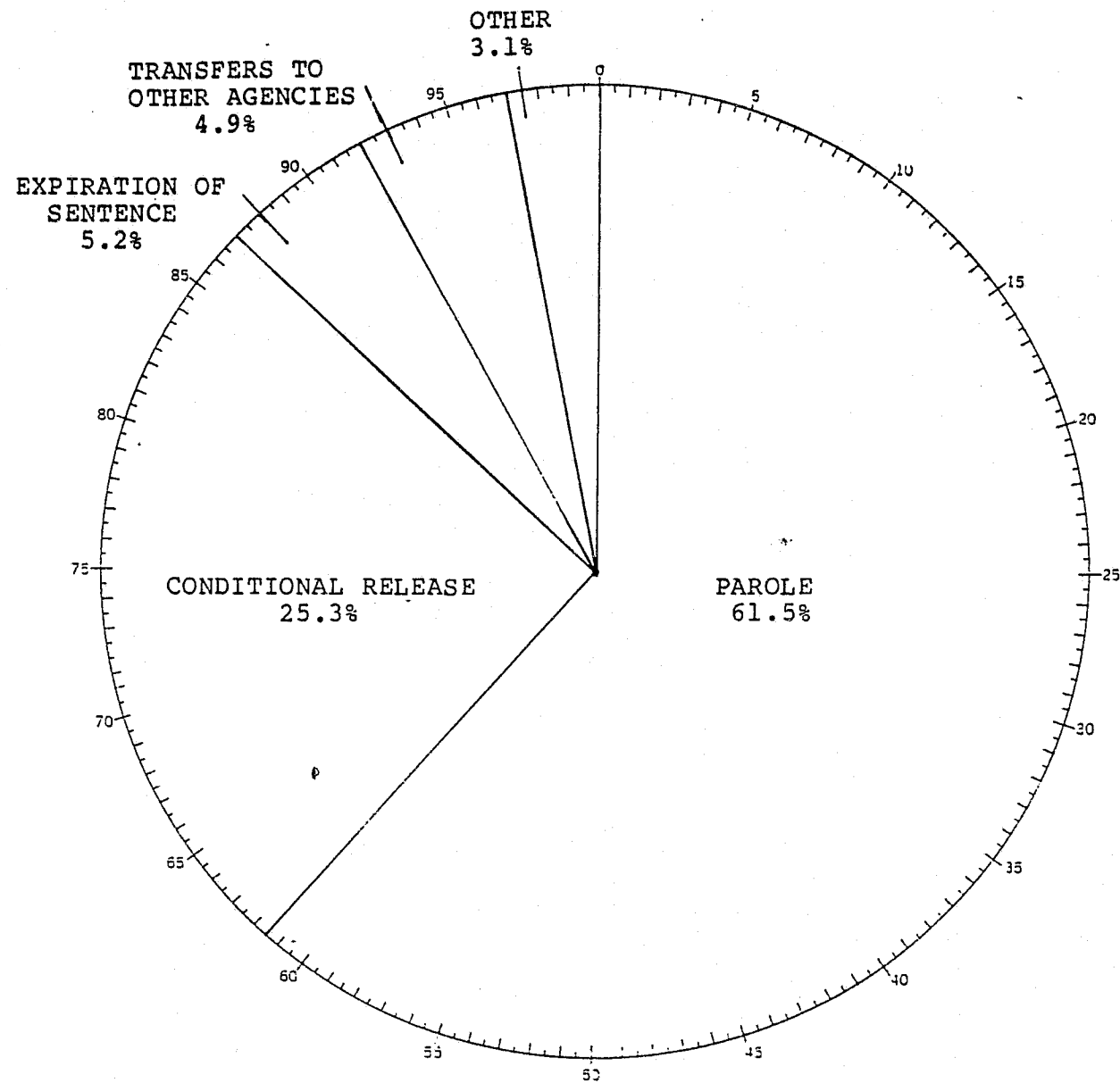
The information in this report is based on data files that are developed and maintained by the Division of Management Information Services and by the Division of Program Planning, Research and Evaluation.

H I G H L I G H T S

1. There were 10,259 total releases from Department of Correctional Services facilities during 1982. Of these, 7,639 (74.5%) were inmates released to parole supervision for the first time on their current sentence.
2. Ninety-six percent of 1982 first releases to parole supervision were males, 4% females.
3. Thirty-nine percent of 1982 first releases were 24 years of age or younger. Among male first releases 40% were 24 years of age or younger, among females only 25% were ages 24 or younger.
4. Among 1982 first releases 65% (N=4,939) had been committed from New York City, 13% (N=992) from suburban New York City counties, and 22% (N=1,708) from the remaining upstate New York counties.

5. Fifty-four percent (N=4,104) of 1982 first releases had been committed to state prison for violent felony crimes, 6% (N=404) for other coercive/violent crimes, 35% (N=2,688) for property and drug offenses and 5% were committed as Youthful Offenders.
6. Sixty-eight percent (N=5,216) of 1982 first releases were committed as first felony offenders; 32% (N=2,423) had been sentenced to state prison as second felony offenders.
7. For the total group of 1982 releases to parole supervision the median time served in state prison was 22.5 months. The average (or mean) time served in state prison was 27.7 months. The median total time served (jailtime + state prison time) for 1982 first releases was 27.1 months, the average total time served was 32.8 months.
8. Among 1982 first releases to parole supervision, 30% spent 17 months or less in state prison, 24% spent 18-23 months in state prison, 25% spent 24-35 months in state prison, and 21% spent 36 months or longer in state prison.
9. Among 1982 first releases to parole supervision the median time served in state prison for first felony offenders committed for violent felony offenses was 23.8 months; for first felony offenders committed for other felony offenses the median time served in state prison was 18.5 months. For second felony offenders committed for violent felony offenses the median time served in state prison was 35.5 months; for all other second felony offenders the median time served was 21.3 months.

CHARACTERISTICS OF INMATES DISCHARGED - 1982
TYPE OF RELEASE



Type of Release	Number	Percent
Total Releases	10,259	100.0%
Paroles	6,314	61.5%
Conditional Release	2,591	25.3%
Expiration of Sentence	537	5.2%
Transfers to Other Agencies	508	4.9%
Escapees, Absconders, Other	129	1.3%
Court Order	119	1.2%
Death	61	.6%

Section One

TYPE OF RELEASE

During any calendar year a large number of persons are released from the custody of the Department of Correctional Services. These releases occur for several different reasons.

The largest group of releases in 1982 were persons released to parole supervision by action of the Board of Parole. Inmates who have served their minimum period of imprisonment and have not yet reached their conditional release date are eligible for release consideration by the Board of Parole. Releases to parole supervision made up 61.5% (N=6,314) of 1982 releases.

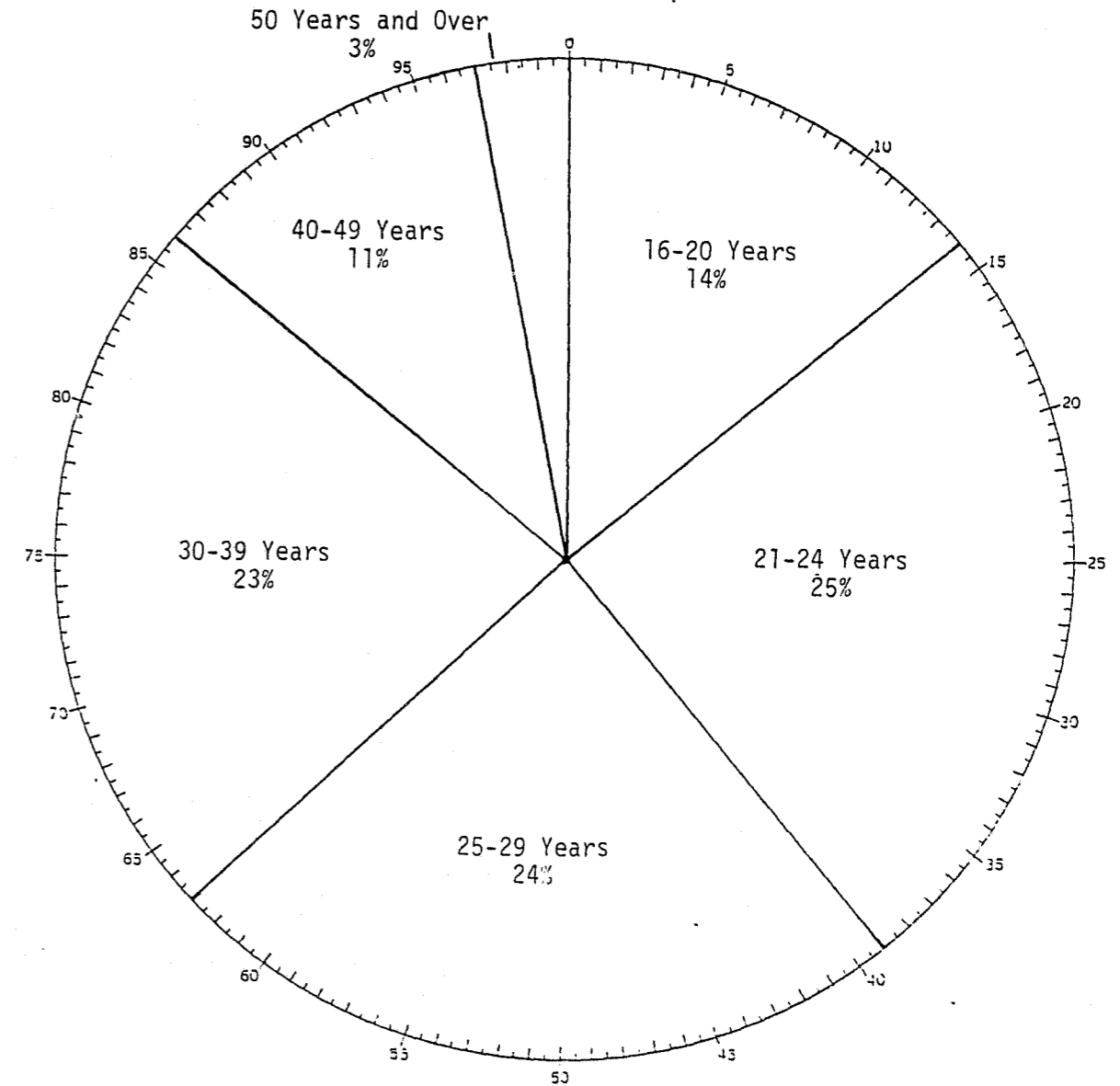
Twenty five percent (N=2,591) of 1982 releases consisted of persons released to parole supervision by Conditional Release. If an inmate has served two-thirds of his maximum sentence and has not lost any good time credit he is required by law to be released to parole supervision as a conditional release. Roughly 5% of persons released during 1983 were discharged via expiration of maximum sentence. Each year DOCS receives a number persons who are returned to prison for violation of parole. The large majority of those who are released by expiration of maximum sentence are persons who have been returned to prison for violation of parole and who subsequently serve time until the maximum expiration date is reached.

During the calendar year a number of persons are transferred to the custody of the Department of Mental Hygiene in order to receive mental health care services. Five percent of 1982 releases (N=508) were transfers to the Department of Mental Hygiene. During 1982, 36 persons escaped from DOCS' facilities. Another 91 persons absconded from Temporary Release supervision. One percent of 1982 releases (N=119) were persons released by Court Order. Sixty-one inmates died while in custody during 1982. Two inmates were discharged for other reasons.

First Releases to Parole Supervision

Information in the sections that follow is confined to the 7,639 inmates that were released to parole supervision (by action of the Board of Parole or by Conditional Release) for the first time on the current sentence. Persons who were returned as parole violators and subsequently re-released for parole supervision during 1982 or parole violators who served out the maximum sentence and were released in 1982 are excluded. Persons who were transferred to other agencies, released by court order, escaped or absconded, or died while in custody are also excluded. The analysis is restricted to first releases to parole supervision in order to more clearly present the relationship between time served in state prison and such legal criteria as crime type, sentence length and first or second felony offender status.

Figure 2
CHARACTERISTICS OF INMATES DISCHARGED 1982
FIRST RELEASES TO PAROLE SUPERVISION.
AGE AT RELEASE



First Releases to Parole Supervision

<u>Age at Release</u>	<u>Number</u>	<u>Percent</u>
Total	7,639	100%
16-20 years	1,059	14%
21-24 years	1,928	25%
25-29 years	1,837	24%
30-39 years	1,719	23%
40-49 years	865	11%
50 and over	231	3%

Section Two

1982 FIRST RELEASES TO PAROLE SUPERVISION.
AGE, SEX AND COUNTY OF COMMITMENT

A. Age at Release

Figure 2 presents the age-at-release distribution for persons released to parole supervision during 1982. Table 2.1 below presents a cross-tabulation of age-at-release by sex.

TABLE 2.1 AGE-AT-RELEASE BY SEX TYPE.
FIRST RELEASES TO PAROLE SUPERVISION 1982

AGE	COUNT ROW PCT COL PCT	SEX		ROW TOTAL
		MALE	FEMALE	
		1.I	2.I	
16-18 YR	1.	203 98.5 2.8	3 1.5 0.9	206 2.7
19-20 YR	2.	839 98.4 11.5	14 1.6 4.4	853 11.2
21-24 YR	3.	1867 96.8 25.5	61 3.2 19.2	1928 25.2
25-29 YR	4.	1740 94.7 23.8	97 5.3 30.6	1837 24.0
30-34 YR	5.	940 94.8 12.8	52 5.2 16.4	992 13.0
35-39 YR	6.	691 95.0 9.4	36 5.0 11.4	727 9.5
40-44 YR	7.	651 95.5 8.9	31 4.5 9.8	682 8.9
45-49 YR	8.	171 93.4 2.3	12 6.6 3.8	183 2.4
50-64 YR	9.	210 95.0 2.9	11 5.0 3.5	221 2.9
65 YR & OVER	10.	10 100.0 0.1	0 0. 0.	10 0.1
COLUMN TOTAL		7322 95.9	317 4.1	7639 100.0

B. County of Commitment

Table 2.3 on the following page presents the distribution of 1982 releases according to county of commitment. This table contains a crosstabulation of county of commitment by commitment crime category.

The proportion of 1982 releases that were committed from different regions of the state is reflected in Table 2.2 below. Roughly 65% of 1982 releases had been committed to state prison from the five New York City counties, another 13% were committed from the suburban New York City counties (Nassau, Rockland, Suffolk and Westchester) and 22% from the remaining upstate counties.

TABLE 2.2 COMMITMENT CRIME CATEGORY BY REGION OF COMMITMENT.
1982 FIRST RELEASES TO PAROLE SUPERVISION

CRIME3	COUNT ROW PCT COL PCT	REGION			ROW TOTAL
		NEW YORK CITY	SUBURBAN NEW YORK COUNTIES	UPSTATE COUNTIES	
		1.I	2.I	3.I	
1. VIOLENT FELONY	3134 76.4 63.5	411 10.0 41.4	559 13.6 32.7		4104 53.7
2. OTHER COERCIVE	314 64.9 6.4	34 7.0 3.4	136 28.1 8.0		484 6.3
3. PROPRTY DRUG OTH	1326 49.3 26.8	489 18.2 49.3	873 32.5 51.1		2688 35.2
4. YOUTHFUL OFFENDR	165 45.5 3.3	58 16.0 5.8	140 38.6 8.2		363 4.8
COLUMN TOTAL	4939 64.7	992 13.0	1708 22.4		7639 100.0

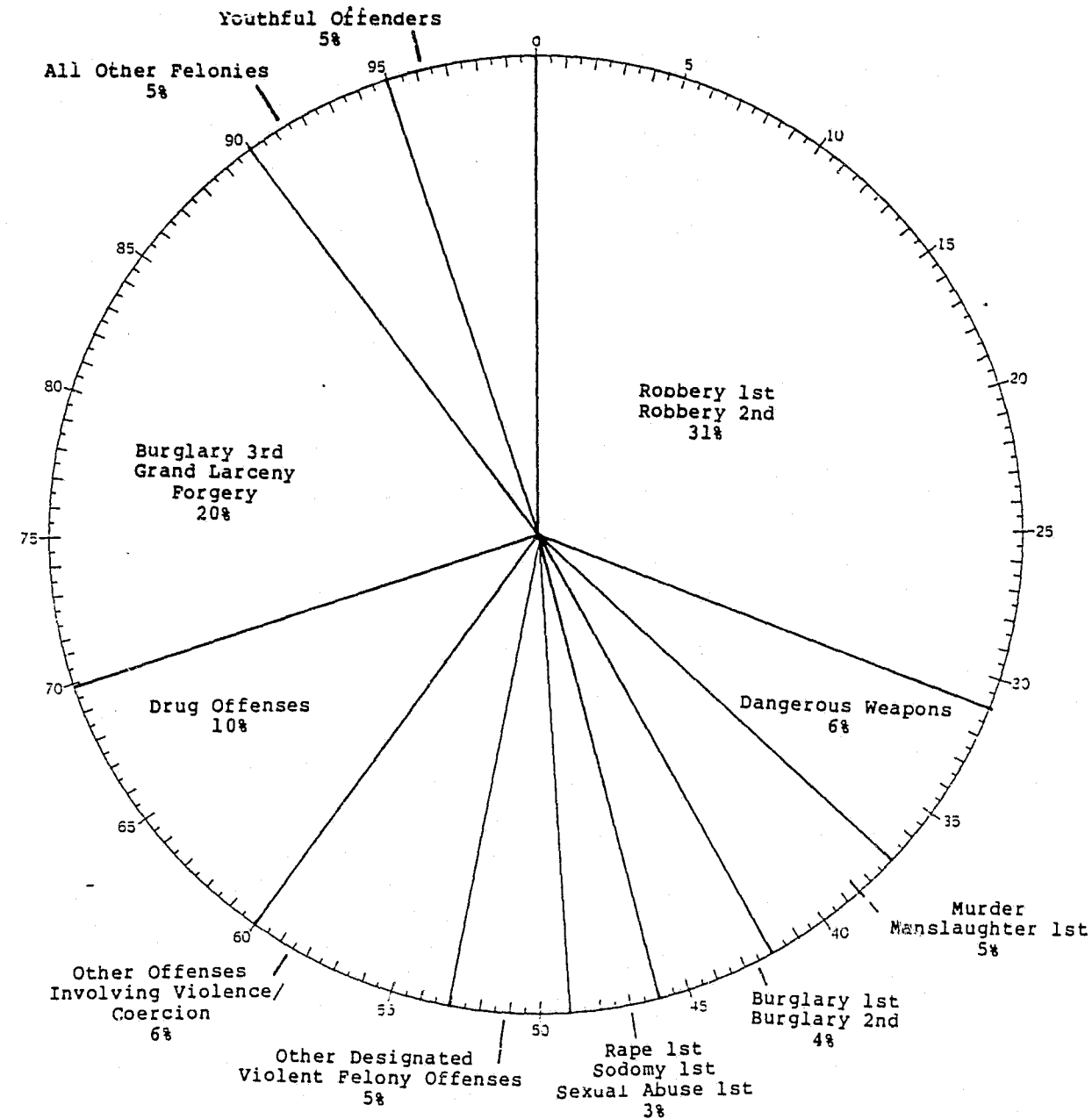
TABLE 2.3 COUNTY OF COMMITMENT BY GENERAL CRIME CATEGORY.
FIRST RELEASES TO PAROLE SUPERVISION 1982

COUNTY	COUNT ROW PCT	CRIMES				ROW TOTAL
		VIOLENT FELONY	OTHER COERCIVE	PROPERTY DRUG OTH	YOUTHFUL OFFENDR	
		1.I	2.I	3.I	4.I	
ALBANY	1.	46	10	74	4	134
		34.3	7.5	55.2	3.0	1.8
ALLEGANY	2.	1	1	1	0	3
		33.3	33.3	33.3	0.	0.0
BROOME	3.	21	4	34	2	61
		34.4	6.6	55.7	3.3	0.8
CATTARAUGUS	4.	7	0	8	0	15
		46.7	0.	53.3	0.	0.2
CAYUGA	5.	4	0	7	5	16
		25.0	0.	43.8	31.3	0.2
CHAUTAUQUA	6.	5	0	7	2	14
		35.7	0.	50.0	14.3	0.2
CHEMUNG	7.	12	0	31	6	49
		24.5	0.	63.3	12.2	0.6
CHENANGO	8.	1	1	4	0	6
		16.7	16.7	66.7	0.	0.1
CLINTON	9.	4	1	18	1	24
		16.7	4.2	75.0	4.2	0.3
COLUMBIA	10.	3	0	2	0	5
		60.0	0.	40.0	0.	0.1
CORTLAND	11.	3	1	16	2	22
		13.6	4.5	72.7	9.1	0.3
DELAWARE	12.	1	0	1	0	2
		50.0	0.	50.0	0.	0.0
DUTCHESS	13.	15	6	23	2	46
		32.6	13.0	50.0	4.3	0.6
ERIE	14.	87	34	92	16	229
		38.0	14.8	40.2	7.0	3.0
ESSEX	15.	1	0	6	0	7
		14.3	0.	85.7	0.	0.1
FRANKLIN	16.	3	0	9	4	16
		18.8	0.	56.3	25.0	0.2
FULTON	17.	3	0	4	1	8
		37.5	0.	50.0	12.5	0.1
GENESEE	18.	5	1	2	5	13
		38.5	7.7	15.4	38.5	0.2
GREENE	19.	0	2	6	0	8
		0.	25.0	75.0	0.	0.1
HAMILTON	20.	0	0	1	1	2
		0.	0.	50.0	50.0	0.0
HERKIMER	21.	1	0	1	0	2
		50.0	0.	50.0	0.	0.0
JEFFERSON	22.	6	0	4	1	11
		54.5	0.	36.4	9.1	0.1
KINGS	23.	875	64	245	29	1213
		72.1	5.3	20.2	2.4	15.9
LEWIS	24.	0	0	3	0	3
		0.	0.	100.0	0.	0.0
LIVINGSTON	25.	5	0	7	3	15
		33.3	0.	46.7	20.0	0.2
MADISON	26.	1	1	2	2	6
		16.7	16.7	33.3	33.3	0.1
MONROE	27.	94	13	95	12	214
		43.9	6.1	44.4	5.6	2.8
MONTGOMERY	28.	3	2	6	1	12
		25.0	16.7	50.0	8.3	0.2
NASSAU	29.	150	14	199	28	391
		38.4	3.6	50.9	7.2	5.1
NEW YORK	30.	1038	118	628	37	1821
		57.0	6.5	34.5	2.0	23.8
NIAGARA	31.	14	16	27	2	59
		23.7	27.1	45.8	3.5	0.8
ONEIDA	32.	27	5	30	2	64
		42.2	7.8	46.9	3.1	0.8
COLUMN TOTAL		4104	484	2688	363	7639
(CONTINUED)		53.7	6.3	35.2	4.8	100.0

TABLE 2.3 (continued)

COUNTY	COUNT ROW PCT	CRIMES				ROW TOTAL
		VIOLENT FELONY	OTHER COERCIVE	PROPERTY DRUG OTH	YOUTHFUL OFFENDR	
		1.I	2.I	3.I	4.I	
ONONDAGA	33.	61	11	104	21	197
		31.0	5.6	52.8	10.7	2.6
ONTARIO	34.	10	0	13	1	24
		41.7	0.	54.2	4.2	0.3
ORANGE	35.	21	4	43	14	82
		25.6	4.9	52.4	17.1	1.1
ORLEANS	36.	7	1	11	6	25
		28.0	4.0	44.0	24.0	0.3
OSWEGO	37.	6	1	8	2	15
		26.7	6.7	53.3	13.3	0.2
OTSEGO	38.	4	1	4	2	11
		36.4	9.1	36.4	18.2	0.1
PUTNAM	39.	2	1	2	0	5
		40.0	20.0	40.0	0.	0.1
QUEENS	40.	424	52	187	58	721
		58.8	7.2	25.9	8.0	9.4
RENSSELAER	41.	7	1	9	1	18
		38.9	5.6	50.0	5.6	0.2
RICHMOND	42.	54	7	32	4	97
		55.7	7.2	33.0	4.1	1.3
ROCKLAND	43.	19	3	34	4	60
		31.7	5.0	56.7	6.7	0.8
ST LAWRENCE	44.	1	1	11	2	15
		6.7	6.7	73.3	13.3	0.2
SARATOGA	45.	8	0	16	0	24
		33.3	0.	66.7	0.	0.3
SCHENECTADY	46.	19	2	16	5	42
		45.2	4.8	38.1	11.9	0.5
SCHOHARIE	47.	1	0	3	1	5
		20.0	0.	60.0	20.0	0.1
SCHUYLER	48.	1	1	2	0	4
		25.0	25.0	50.0	0.	0.1
SENECA	49.	1	0	2	0	3
		33.3	0.	66.7	0.	0.0
STEBEN	50.	6	1	10	3	20
		30.0	5.0	50.0	15.0	0.3
SUFFOLK	51.	119	8	158	8	293
		40.6	2.7	53.9	2.7	3.8
SULLIVAN	52.	8	5	26	1	40
		20.0	12.5	65.0	2.5	0.5
TIOGA	53.	0	1	3	0	4
		0.	25.0	75.0	0.	0.1
TOMPKINS	54.	4	2	9	0	15
		26.7	13.3	60.0	0.	0.2
ULSTER	55.	14	3	29	4	50
		28.0	6.0	58.0	8.0	0.7
WARREN	56.	2	1	15	1	19
		10.5	5.3	78.9	5.3	0.2
WASHINGTON	57.	1	0	2	0	3
		33.3	0.	66.7	0.	0.0
WAYNE	58.	4	0	9	2	15
		26.7	0.	60.0	13.3	0.2
WESTCHESTER	59.	123	9	98	18	248
		49.6	3.6	39.5	7.3	3.2
WYOMING	60.	0	0	4	0	4
		0.	0.	100.0	0.	0.1
YATES	61.	0	1	1	0	2
		0.	50.0	50.0	0.	0.0
BRONX	62.	743	73	234	37	1087
		68.4	6.7	21.5	3.4	14.2
COLUMN TOTAL		4104	484	2688	363	7639
		53.7	6.3	35.2	4.8	100.0

Figure 3
CHARACTERISTICS OF INMATES DISCHARGED - 1982
OFFENSE ON COMMITMENT



Commitment Crime Type	First Releases to Parole Supervision	
	Number	Percent
Total	7,639	100%
Violent Felony Crimes	4,104	54%
Robbery 1st and 2nd	2,394	31%
Dangerous Weapons	433	6%
Murder, Manslaughter 1st	350	5%
Burglary 1st and 2nd	328	4%
Rape 1st, Sodomy 1st and Sexual Abuse 1st	240	3%
Other Violent Felony Offenses	359	5%
Other Felony Crimes	3,172	41%
Other Offenses Involving Violence or Coercion	484	6%
Drug Offenses	794	10%
Burglary 3rd, Grand Larceny, Forgery	1,510	20%
All Other Felonies	384	5%
Youthful Offenders	363	5%

Section Three

A. Crime Type Distribution of 1982 Releases

As is reflected in Figure 3, fifty-four percent of first releases to parole supervision in 1982 had been committed to state prison for violent felony offenses. Most of the violent felony group is made up of persons sentenced to state prison for Robbery 1st and 2nd, Murder and Manslaughter 1st, Dangerous Weapons offenses and Burglary 1st and 2nd. Another 41% of releases had been committed for other felony offenses; most of these releases were persons sentenced to state prison for drug offenses and property offenses such as Grand Larceny, Forgery and Burglary 3rd.

B. Time Served by Commitment Offense Type.

In Table 3.1, 1982 releases are broken out by commitment offense category and by first or second felony offender status. Information on time served for each specific offense category is presented. Within each specific offense category information is presented on time served for first felony offenders and for second felony offenders^{A/}. As an example, Table 3.1 shows that during 1982 there were 777 persons released who had been committed to state prison for a first felony Robbery 1st conviction. The median time served in state prison for these first felony Robbery 1st releases was 28.1 months^{B/}, the average (or mean) state time served was 32.3 months, and the range of time served for the middle 60% of cases in this group was 19-42 months. The "range of mid 60% of cases" (in Table 3.1) refers to the range in months of time served for the middle 60% of cases in each category. This measure provides some indication of the range of time served for most of the releases in each specific crime category.

^{A/}Those releases identified as second felony offenders are persons who were sentenced by the court as a second (or predicate) felony offender. Additionally, a small percentage (less than 1%) of commitments to state prison are sentenced as Persistent (third time) Felony Offenders. These cases are included in the second felony group. A portion of those inmates placed in first felony category have been convicted of prior felony crimes and some have previous sentences to state prison. This occurs because the statutes for certain A-Felony crimes (e.g. several types of drug offenses) do not (or previously did not) contain provisions for sentencing as a second felony offender. Also, certain defendants may have served a prior state prison term as a Youthful Offender; this status does not require that the defendant be sentenced under second felony offender statutes.

^{B/}The median is a measure of central tendency which represents the value of the middle case (i.e. the case or cases at the 50th percentile) in a distribution of cases. It is less subject to distortion by extreme values than is the average.

In general, the New York State Penal Law provides for more severe minimum and maximum sentences for persons convicted and sentenced for a second felony offense. The data on time served in state prison in Table 3.1 show, not unexpectedly, that within each specific crime category, second felony offenders serve more time than do first felony offenders. For example, the median time served in state prison for persons committed as first felony offenders for Robbery 1st degree was 28.1 months. Persons convicted of Robbery 1st degree who were sentenced as second felony offenders show a median time served in state prison of 58.7 months. The median time served in state prison for first felony offenders convicted of violent felony offenses was 23.8 months; for second felony offenders convicted of violent felony offenses the median time served in state prison was 35.5 months.

In September of 1978 the New York State Legislature designated certain crimes as violent felony offenses. On the whole, persons committed for these designated violent felony offenses serve more time than do persons committed for other felony offenses. Looking at the information on state time served for the total group of releases in 1982 it can be seen that the median time served for the total group of violent felony offenders was 26.7 months compared to the median time served for all other offenders which was 19.6 months. Looking, for example, at burglary offenses, the information in Table 3.1 indicates that the median time served for Burglary 1st (32.8 months) and Burglary 2nd (22.0 months), both designated violent felony offenses, is longer than the median time served for those committed for Burglary 3rd (19.9 months).

The information in Table 3.1 allows us to compare the median state time served for different specific offense categories (e.g. murder, rape, drug offenses etc.). These data also permit comparison of state time served for first and second felony offenders within each specific offense category. This information provides some idea of how long persons serve in state prison for various types of offenses. It should be pointed out that most of the specific offense categories listed in Table 3.1 group together offenses that differ by felony class category. The Robbery 1st category contains persons committed for both Robbery 1st (Class B-Felony) and Attempted Robbery 1st (Class C-Felony). The Grand Larceny category contains persons committed for Grand Larceny 1st, 2nd and 3rd. The minimum-maximum sentence structure for each felony class (e.g. Class A-Felony, Class B-Felony) is different. The offense categories used in Table 3.1 were chosen to provide time served information for several commonly understood types of offenses but each offense category contains a mix of persons who differ by felony class category and by the range of sentences available to the court at the time of sentencing.

TABLE 3.1 MEDIAN AND AVERAGE TIME SERVED IN STATE PRISON (in months) BY COMMITMENT
CRIME CATEGORY AND FIRST OR SECOND FELONY OFFENDER STATUS.
FIRST RELEASES TO PAROLE SUPERVISION 1982

Commitment Offense	FIRST FELONY Time Served (in months)				SECOND FELONY Time Served in Months				TOTAL RELEASES Time Served in Months			
	Number	Median	Average	Range of Mid 60% of Cases	Number	Median	Average	Range of Mid 60% of Cases	Number	Median	Average	Range of Mid 60% of Cases
Total	5,216	21.4	26.3	14-33	2,423	25.2	30.8	17-43	7,639	22.5	27.7	15-37
A. Violent Felony Offenses (as defined by law)	2,976	23.8	29.7	15-38	1,128	35.5	39.8	21-58	4,104	26.7	32.5	17-45
Murder	19	146.0	139.4	21-228	0	--	--	--	19	146.0	139.4	21-228
Attempted Murder	36	42.5	47.2	23-66	11	70.0	67.2	57-78	47	53.0	51.9	29-72
Manslaughter 1st	247	54.4	54.9	30-72	37	69.3	65.7	58-81	284	57.6	56.3	32-75
Rape 1st	108	39.8	44.5	26-61	29	62.0	59.8	49-77	137	42.4	47.7	27-67
Robbery 1st	777	28.1	32.3	19-42	240	58.7	57.2	41-69	1,017	32.7	38.2	21-56
Robbery 2nd	1,024	19.8	21.9	14-29	353	34.2	37.0	23-49	1,377	22.7	25.8	15-34
Assault 1st	105	27.8	29.7	17-38	37	38.0	39.6	25-52	142	29.9	32.3	19-44
Assault 2nd	102	20.5	21.1	14-25	63	27.9	27.6	17-35	165	21.9	23.6	16-30
Burglary 1st	26	30.5	35.9	23-45	3	53.0	51.7	35-67	29	32.8	37.6	23-49
Burglary 2nd	193	19.0	19.9	13-26	106	28.5	31.6	21-41	299	22.0	24.1	15-32
Arson 2nd	39	23.6	26.8	17-32	5	29.5	35.2	29-41	44	24.3	27.8	18-35
Sodomy 1st	36	32.5	39.6	27-50	4	45.5	40.5	45-54	40	33.5	39.7	27-53
Sexual Abuse 1st	45	23.0	26.1	16-36	18	29.0	30.0	23-37	63	25.8	27.2	17-36
Dangerous Weapons	214	18.4	20.1	12-26	219	21.6	24.7	16-33	433	20.1	22.4	14-29
Kidnapping	5	32.0	31.8	24-36	3	65.0	63.0	33-100	8	36.5	43.5	29-39
B. Other Felony Offenses ^{A/}	1,877	18.5 ^{A/}	21.7	12-27	1,295	21.3	23.1	16-28	3,172	19.6	22.2	13-28
1. Offenses Involving Violence/Coercion	273	23.2	27.6	16-36	211	23.7	27.6	17-37	484	23.4	27.6	16-36
Manslaughter 2nd	74	37.0	40.6	23-54	26	46.2	48.9	30-63	100	40.5	42.8	24-60
Crim. Neg. Hom.	22	23.5	22.8	18-27	6	21.5	20.0	18-23	28	23.0	22.2	18-26
Rape 2nd, 3rd	8	24.0	28.1	12-32	4	35.0	42.0	34-53	12	27.0	32.8	18-48
Robbery 3rd	148	21.3	22.7	15-29	144	22.2	24.8	16-32	292	21.7	23.8	15-31
Attempted Assault 2nd	21	22.0	21.3	14-24	31	21.3	22.2	16-26	52	21.5	21.9	15-26
2. Property, Drug and Other Offenses	1,604	18.2	21.4	12-27	1,084	20.9	22.2	15-28	2,688	19.3	21.7	13-27
Burglary 3rd	522	18.4	19.5	13-24	584	21.4	22.5	16-28	1,106	19.9	21.1	15-26
Grand Larceny	134	16.6	17.8	11-21	164	18.6	19.9	15-24	298	17.8	19.0	13-23
Drugs	697	19.4	24.1	12-33	97	22.9	25.1	17-33	794	20.0	24.2	12-33
Forgery	41	17.1	17.9	12-23	65	20.6	21.4	14-29	106	18.7	20.0	13-26
All Other Felonies	210	17.4	20.2	12-25	174	20.7	21.8	15-28	384	18.2	20.9	13-27
C. Youthful Offenders	363	16.9	18.3	12-23	0	--	--	--	363	16.9	18.3	12-23

^{A/}Youthful Offenders were included in this category when the median, the average and other statistics on time served were calculated.

TABLE 3.2 COMMITMENT CRIME CATEGORY BY TIME SERVED IN STATE PRISON. FIRST RELEASES TO PAROLE SUPERVISION 1982

CRIME2	COUNT ROW PCT	TIMESRV2										ROW TOTAL
		UNDER 12 MOS	12-17 MONTHS	18-23 MONTHS	24-35 MONTHS	36-47 MONTHS	48-71 MONTHS	72-119 MONTHS	120-179 MONTHS	180-239 MONTHS	240 MOS AND OVER	
MURDER	1.	10.5	5.3	5.3	0	0	10.5	15.8	10.5	26.3	15.8	19
ATTEMPT MURDER	2.	4.3	0	6	6	7	15	11	0	0	0	47
MANSLAUGHTER 1ST	3.	1.1	3.2	6.0	14.4	12.0	38.0	24.3	0.7	0.4	0	284
RAPE 1ST	4.	1.5	5.8	6.6	23.4	17.5	27.7	17.5	0	0	0	137
ROBBERY 1ST	5.	3.4	9.2	15.1	27.8	15.8	21.4	7.0	0.1	0	0	1017
ROBBERY 2ND	6.	7.8	23.2	22.2	28.8	9.9	7.0	1.2	0	0	0	1377
ASSAULT 1ST	7.	4.9	12.7	14.8	32.4	16.9	16.9	1.4	0	0	0	142
ASSAULT 2ND	8.	10.3	17.6	30.3	30.9	8.5	2.4	0	0	0	0	165
BURGLARY 1ST	9.	3.4	3.4	13.8	44.8	10.3	17.2	6.9	0	0	0	29
BURGLARY 2ND	10.	9.7	19.4	30.8	24.7	11.4	3.7	0.3	0	0	0	299
ARSON 2ND	11.	0	18.2	25.0	36.4	13.6	4.5	2.3	0	0	0	44
SODOMY 1ST	12.	2.5	5.0	5.0	40.0	20.0	22.5	5.0	0	0	0	40
SEXUAL ABUSE 1ST	13.	7.9	15.9	20.6	30.2	17.5	7.9	0	0	0	0	63
DANGEROUS WEAPON	14.	11.3	26.1	27.3	24.2	6.9	4.2	0	0	0	0	433
KIDNAPPING	15.	0	0	0	37.5	37.5	12.5	12.5	0	0	0	8
MANSLAUGHTER 2ND	16.	1.0	7.0	9.0	22.0	21.0	34.0	6.0	0	0	0	100
NEGLIGENT HOMICIDE	17.	10.7	7.1	39.3	39.3	3.6	0	0	0	0	0	28
RAPE 2ND AND 3RD	18.	0	16.7	16.7	33.3	0	33.3	0	0	0	0	12
ROBBERY 3RD	19.	8.6	21.6	29.5	28.1	7.9	3.8	0.7	0	0	0	292
ATT ASSAULT 2ND	20.	3.8	23.1	38.5	28.8	5.8	0	0	0	0	0	52
BURGLARY 3RD	21.	9.2	26.7	33.9	24.5	4.5	1.1	0.1	0	0	0	1106
GRAND LARCENY	22.	13.1	34.2	32.9	16.4	2.0	1.0	0.3	0	0	0	298
DRUGS	23.	15.2	25.4	21.7	21.3	3.7	5.0	1.5	0.1	0	0	794
FORGERY	24.	14.2	29.2	28.3	22.6	4.7	0.9	0	0	0	0	106
ALL OTHER FELONY	25.	13.3	31.3	26.6	21.1	3.9	3.6	0	0.3	0	0	384
YOUTHFUL OFFENDER	26.	17.6	35.5	26.7	17.4	1.7	1.1	0	0	0	0	363
COLUMN TOTAL		33	535	1806	1892	674	587	226	7	6	3	7639
		8.9	21.5	23.6	24.3	9.1	9.0	3.0	2.1	1.1	0.0	100.0

Information (in Table 3.1) on the time served for the middle 60% of cases in each category provides an indication of the variation in time served that occurs within each commitment offense category. More information on the range of time served in months for each offense category is contained in Table 3.2. This table presents a crosstabulation of offense categories by time served in state prison.

C. Total Time Served by Commitment Offense Type

Many of the defendants who are sentenced to a state prison term have spent the period of time between arrest date and sentencing date in a local jail facility. Persons committed to state prison receive credit toward their state prison sentence for days served in a local jail while court proceedings are taking place. In general, jail time refers to any time spent in custody prior to the date at which the defendant begins serving a state prison sentence (see NYS State Penal Law Sec. 70.30). Jail time would include, for instance, time in custody while awaiting trial, or, time in custody following a conviction but prior to transfer to state prison. If a defendant received a sentence with a maximum term of 36 months and a minimum term of 12 months and had served 3 months in a local jail he would have to serve 9 months in state prison to complete his minimum period of imprisonment and become eligible for parole consideration.

For the 1982 release cohort we have elected to present information on the total amount of time served for specific offense categories. That is, we have added jail time to state prison time in order to examine the total amount of time served for those sentenced to state prison for different types of offenses. For the total group of first releases to parole supervision in 1982 (N=7,639) the median jail time served was 4.2 months (the average was 5.2 months, standard deviation = 4.4 months). For those released in 1982 who had committed violent felony offenses the median jail time was 4.9 months (average = 5.9, standard deviation = 4.8 months) and for those who had committed other felony offenses the median jail time served was 3.5 months (average = 4.4 months, standard deviation 3.8 months).

Table 3.3 presents the median and average total time served (i.e. jail time + state prison time) for persons who had committed different types of offenses. Information on total time served for both first felony and second felony offenders within each specific crime category is contained in Table 3.3.

For those offenses in the violent felony group the median total time served (found in Table 3.3) tends to be about 6 months longer than the median state time served (found in Table 3.1). For those committed for property, drug, or other less serious offenses the median total time served was about 4 months longer than the median state time served. In general the data in Table 3.3 and 3.4 reflect the total amount of time served in custody (jail time + state prison time) for particular types of crime. Table 3.4 presents a crosstabulation of offense category by total time served for those released during 1982.

TABLE 3.3 MEDIAN AND AVERAGE TOTAL TIME SERVED (Jailtime + State Prison Time) (in months)
 BY COMMITMENT CRIME CATEGORY AND FIRST OR SECOND FELONY OFFENDER STATUS.
 FIRST RELEASES TO PAROLE SUPERVISION 1982

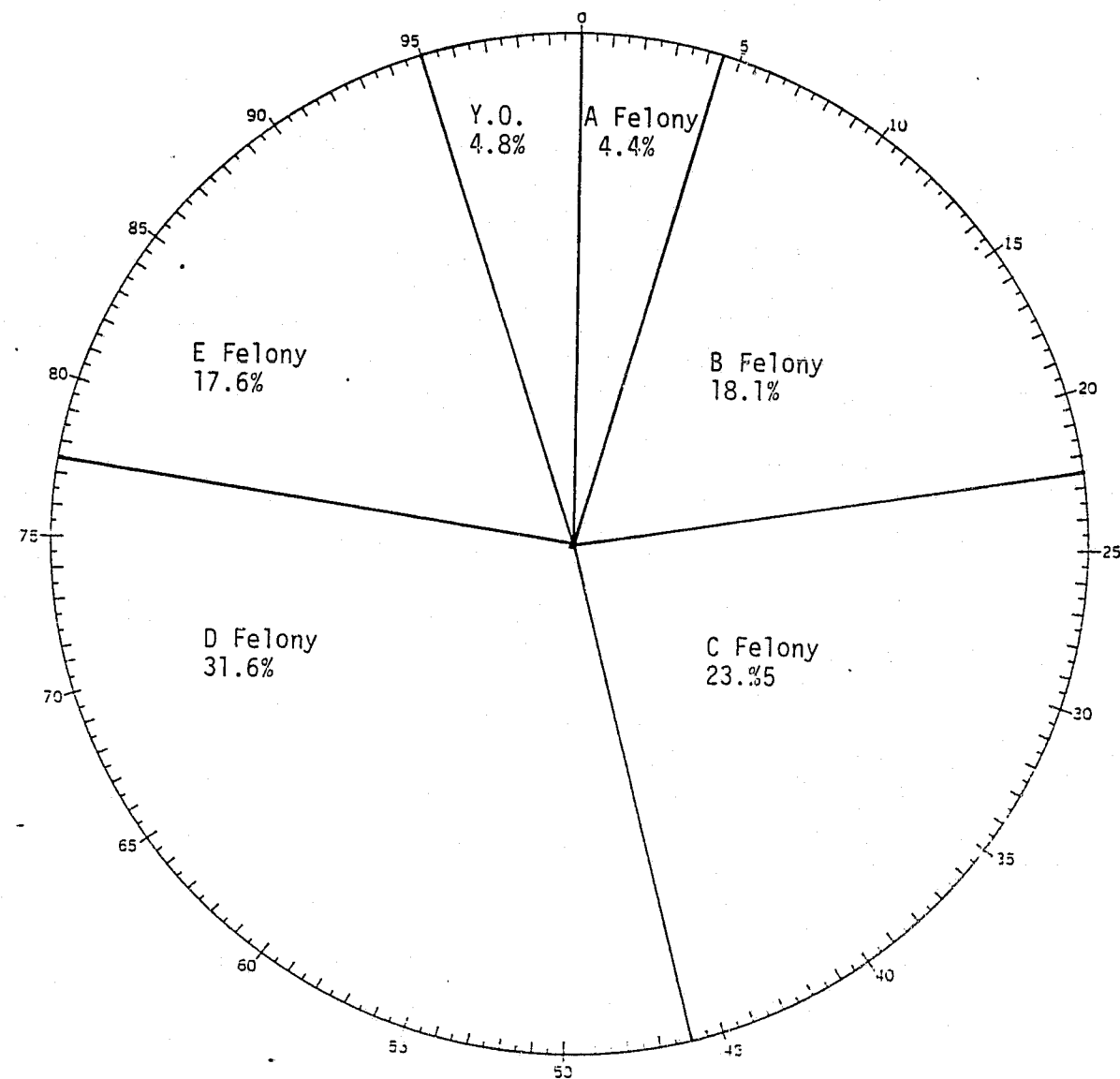
Commitment Offense	FIRST FELONY Time Served (in months)				SECOND FELONY Time Served in Months				TOTAL RELEASES Time Served in Months			
	Number	Median	Average	Range of Mid 60% of Cases	Number	Median	Average	Range of Mid 60% of Cases	Number	Median	Average	Range of Mid 60% of Cases
Total	5,216	25.3	31.1	18-39	2,423	31.6	36.7	23-49	7,639	27.3	32.9	19-42
A. Violent Felony Offenses (as defined by law)	2,976	29.8	35.2	20-45	1,128	43.2	46.5	28-65	4,104	32.4	38.3	23-53
Murder	19	146.0	140.3	30-228	0	--	--	--	19	146.0	140.3	30-228
Attempted Murder	36	49.5	53.7	29-72	11	76.0	75.0	66-79	47	59.8	58.7	36-78
Manslaughter 1st	247	60.7	61.6	37-77	37	73.0	71.2	66-83	284	64.0	62.8	39-79
Rape 1st	108	45.5	50.2	31-65	29	68.3	65.6	56-70	137	50.0	53.4	32-71
Robbery 1st	777	34.7	38.3	24-48	240	65.5	63.8	49-76	1,017	38.3	44.3	25-61
Robbery 2nd	1,024	24.8	27.3	19-34	353	42.2	44.5	31-56	1,377	28.4	31.7	20-40
Assault 1st	105	32.4	34.3	23-42	37	47.6	46.0	31-59	142	34.9	37.4	24-48
Assault 2nd	102	24.2	25.8	19-31	63	32.1	34.8	25-42	165	26.8	29.2	21-38
Burglary 1st	26	36.0	42.3	25-51	3	--	--	--	29	36.3	43.9	27-59
Burglary 2nd	193	23.7	24.6	17-31	106	35.2	37.5	25-48	299	26.7	29.2	19-36
Arson 2nd	39	33.3	33.5	24-39	5	43.0	42.2	36-49	44	34.0	34.5	25-42
Sodomy 1st	36	37.5	44.8	31-59	4	--	--	--	40	40.0	45.0	31-59
Sexual Abuse 1st	45	25.0	31.3	23-41	18	32.5	35.7	28-41	63	31.2	32.5	24-41
Dangerous Weapons	214	23.8	25.3	17-31	219	27.4	31.0	22-39	433	24.8	28.2	19-35
Kidnapping	5	38.0	37.6	36-39	3	--	--	--	8	39.5	49.3	36-49
B. Other Felony Offenses ^{A/}	1,877	23.4 ^{A/}	25.7	15-32	1,295	24.6	28.2	21-33	3,172	24.0	26.6	18-32
1. Offenses Involving Violence/Coercion	273	27.1	32.5	24-43	211	29.8	33.5	24-42	484	28.6	32.9	23-42
Manslaughter 2nd	74	47.8	47.7	31-63	26	82.0	98.8	72-120	100	48.4	49.7	32-64
Crim. Neg. Hom.	22	25.0	26.3	23-31	6	24.5	26.7	24-31	28	24.8	26.4	23-31
Rape 2nd, 3rd	8	24.5	31.0	25-32	4	--	--	--	12	31.5	35.9	20-55
Robbery 3rd	148	24.5	26.8	19-32	144	28.7	31.0	24-38	292	25.8	28.9	21-35
Attempted Assault 2nd	21	24.1	25.5	20-30	31	24.4	26.7	24-30	52	24.3	26.2	23-30
2. Property, Drug and Other Offenses	1,604	22.8	25.3	15-32	1,084	24.4	27.2	20-32	2,688	23.9	26.1	18-32
Burglary 3rd	522	22.8	23.6	17-29	584	24.6	27.6	21-81	1,106	24.1	25.7	18-31
Grand Larceny	134	20.0	21.1	12-24	164	23.9	24.9	18-30	298	22.9	23.2	17-28
Drugs	697	23.9	28.1	13-36	97	26.3	30.1	21-36	794	24.1	28.4	14-36
Forgery	41	19.8	21.4	13-27	65	23.6	25.7	18-33	106	22.1	24.1	17-32
All Other Felonies	210	20.8	23.7	14-28	174	24.2	26.9	19-33	384	23.6	25.2	17-31
C. Youthful Offenders	363	21.7	22.1	16-26	0	--	--	--	363	21.7	22.1	16-26

^{A/}Youthful Offenders were included in this category when the median, the average and other statistics on time served were calculated.

TABLE 3.4 COMMITMENT CRIME CATEGORY BY TOTAL TIME SERVED
(Jailtime + State Prison Time).
FIRST RELEASES TO PAROLE SUPERVISION 1982

CRIME2	COUNT ROW PCT	TIMESRV2										ROW TOTAL
		UNDER 12 MOS	12-17 MONTHS	18-23 MONTHS	24-35 MONTHS	36-47 MONTHS	48-71 MONTHS	72-119 MONTHS	120-179 MONTHS	180-239 MONTHS	240 MOS AND OVER	
MURDER	1.	2	1	0	5	0	10	15	10	5	3	19
ATTEMPT MURDER	2.	1	0	0	7	7	15	17	0	0	0	47
MANSLAUGHTER 1ST	3.	1	2	7	26	37	105	103	2	1	0	284
RAPE 1ST	4.	1	0	4	28	27	47	30	0	0	0	137
ROBBERY 1ST	5.	6	19	76	313	214	258	130	1	0	0	1017
ROBBERY 2ND	6.	10	88	295	546	254	156	28	0	0	0	1377
ASSAULT 1ST	7.	1	3	19	51	34	32	2	0	0	0	142
ASSAULT 2ND	8.	1	15	26	85	26	12	0	0	0	0	165
BURGLARY 1ST	9.	0	0	2	10	7	6	4	0	0	0	29
BURGLARY 2ND	10.	7	32	58	128	46	27	0	0	0	0	299
ARSON 2ND	11.	0	1	6	18	15	3	1	0	0	0	44
SODOMY 1ST	12.	0	0	3	11	11	11	4	0	0	0	40
SEXUAL ABUSE 1ST	13.	2	1	7	30	14	9	0	0	0	0	63
DANGEROUS WEAPON	14.	7	40	100	199	50	35	2	0	0	0	433
KIDNAPPING	15.	0	0	0	1	4	1	2	0	0	0	8
MANSLAUGHTER 2ND	16.	0	0	4	21	17	44	14	0	0	0	100
NEGLECT HOMICIDE	17.	0	2	4	21	1	0	0	0	0	0	28
RAPE 2ND AND 3RD	18.	0	2	1	4	1	4	0	0	0	0	12
ROBBERY 3RD	19.	8	19	53	154	33	23	2	0	0	0	292
ATT ASSAULT 2ND	20.	0	2	10	36	3	1	0	0	0	0	52
BURGLARY 3RD	21.	16	113	304	549	95	27	2	0	0	0	1196
GRAND LARCENY	22.	13	44	100	122	15	3	1	0	0	0	298
DRUGS	23.	21	188	134	231	119	79	21	1	0	0	794
FORGERY	24.	3	16	40	33	11	3	0	0	0	0	106
ALL OTHER FELONY	25.	12	68	106	149	28	20	0	1	0	0	384
YOUTHFUL OFFENDER	26.	6	90	121	133	7	7	0	0	0	0	363
COLUMN TOTAL		118	746	1480	2907	1076	929	367	7	6	3	7639
		1.5	9.8	19.4	38.1	14.1	12.2	4.3	0.1	0.1	0.0	100.0

Figure 4
 CHARACTERISTICS OF INMATES DISCHARGED - 1982
 FIRST RELEASES TO PAROLE SUPERVISION.
 FELONY CLASS OF COMMITMENT OFFENSE TYPE



Felony Class	First Releases To Parole Supervision			
	Total	Number	Percent	First Felony
Total	7,639	100.0%	5,216	2,423
A-I Felony	42	0.5%	42	--
A-II Felony	66	0.8%	66	--
A-III Felony	239	3.1%	239	--
E-Felony	1,383	18.1%	1,125	258
C-Felony	1,795	23.5%	1,362	433
D-Felony	2,411	31.6%	1,525	886
E-Felony	1,341	17.6%	495	846
Youthful Offender	362	4.8%	362	--

Section Four

A. Distribution of 1982 First Releases by Felony Class Category

Felony crimes are classified into one of several felony class categories: Class A (including Class A-I, A-II, A-III), Class B, Class C, Class D, Class E, and Youthful Offender Status. In general, the more serious offenses are Class A, Class B, or Class C felonies and the less serious offenses are classified as Class D or Class E felonies. Each felony class category has its own structure of minimum and maximum sentences that are available to the sentencing court.

The distribution of 1982 releases by felony class category is presented in Figure 4. The large majority of 1982 releases were committed to state prison for a crime that fell into one of four roughly equal felony class categories, i.e., Class B felonies (22.5%), Class C felonies (23.5%), Class D felonies (31.6%) and Class E felonies (17.6%).

B. Time Served in State Prison by Felony Class Category

In New York State the range of sentences available to the court depends upon the felony class category of the conviction offense. The range of sentences available to the court also depends upon whether the defendant is a first felony offender, a second (or predicate) felony offender or a persistent (third time) felony offender. The sentence structure (i.e. the range of minimum and maximum sentences) is, for most crimes, more severe for second and persistent felony offenders than for first felony offenders. In addition, the range of minimum and maximum sentences is more severe for Class B and Class C legislatively designated violent felony offenses than is the range of minimum-maximum terms for all other Class B and Class C felony offenses.

In general, New York State laws contain different sets of sentencing statutes that apply to different types of persons and offenses. Among first felony offenders, those arrested (after 9/1/78) and convicted of Class B and C violent felony offenses are eligible to receive more severe minimum and maximum sentences than other Class B and Class C felony offenders. Further, those persons sentenced as a second or persistent felony offender face more severe sentences than do first felony offenders. In addition, second felony offenders for whom both the immediate and the prior felony convictions were for violent felony crimes (i.e. are "Second Violent" Felony Offenders) are eligible for more severe minimum and maximum sentences than are other second felony offenders.

In Table 4.1 the 1982 release cohort has been broken into subgroups. The cohort is divided into first felony commitments and second felony commitments. These two groups were

again divided into violent and other felony offenses. Within each of these four subgroups, persons are grouped according to the felony class category of the conviction offense. The 1982 release cohort is broken into these subgroups in order to examine time served information within subgroups of commitments that are similar in the sentencing laws (i.e. the range of possible minimum and maximum sentences) that apply to them.

For each of the felony class subgroups in Table 4.1 information is presented on sentence length, state prison time served and total time served. For the cases in each felony class category the median and average minimum sentence (in months) is presented. For 82% of 1982 releases the minimum term was set by the judge at sentencing. For the remaining 18% of 1982 releases the minimum period of imprisonment (MPI) was set by the Board of Parole. Both median and average maximum sentences are listed for each felony class category. The data in Table 4.1 allows us to compare, for each felony class subgroup, the average minimum and maximum sentence, the average time served in state prison, and the average total time served.

In general, the data on time served in Table 4.1 show that for the felony class categories in each of the four subgroups, as the felony class category declines from Class A to Class E felony offenses the median and average state time served also decline. Looking, for instance, at first felony offenders committed for violent felony offenses the average state time served dropped in a regular manner from 150.8 months for a Class A felony to 17.4 months for a Class E violent felony.

Overall, second felony offenders have longer sentences and serve more time in state prison than do first felony offenders. Again, the information in Table 4 shows that the average state time served for a second felony offender committed for a Class B violent felony offense (N=249) is 62.9 months; the average time served in state prison for a first felony offender committed for a Class B violent felony offense (N=864) is 44.2 months. For those second felony offenders convicted of other Class B felony offenses (N=9) the average state time served is 32.3 months; for first felony offenders convicted of other Class B felony offenses (N=261) the average state time served is 16.6 months.

Within the first felony offender group Class B violent felony offenders serve more time in state prison (average 44.2 months) than do other Class B felony offenders (16.6 months). However, among first felony offenders the average state time served for Class C, D, and E violent felony offenses is not substantially different from other Class C, D, and E felony offenses. Among second felony offenses a similar pattern occurs. Among second felony offenders committed for Class B violent felony offenses, the average state time served is 62.9 months, for Class B other felony offenses it is 32.3 months. But the average state prison time for violent as compared to other second felony offenders is not substantially different for Class C, D, and E felonies.

TABLE 4.1 MEDIAN AND AVERAGE MINIMUM SENTENCE, MAXIMUM SENTENCE, STATE TIME SERVED, TOTAL TIME SERVED (Jailtime + State Prison Time) (all in months) BY FELONY CLASS CATEGORY AND FIRST OR SECOND FELONY OFFENDER STATUS. FIRST RELEASES TO PAROLE SUPERVISION 1982

	Number	Percent of Total	Minimum Sentence		Maximum Sentence		State Prison Time Served				Total (Jail + State) Time Served			
			Median	Average	Median	Average	Median	Average	Range of Mid 60% of Cases	Standard Deviation	Median	Average	Range of Mid 60% of Cases	Standard Deviation
Total 1st Felony	5,216	68.3%	20.0	26.2	53.8	76.6	21.4	26.2	14-33	19.1	25.2	31.0	18-39	19.3
Violent Felony	2,975	39.0%	24.0	29.0	60.0	81.1	23.8	29.7	15-38	21.8	29.7	35.2	20-45	21.6
A-I Felony	19	.3%	232.0	248.5	300.0	300.0	178.0	150.8	62-228	91.2	178.0	151.7	70-228	90.1
Class B VFO	864	11.3%	36.0	42.7	108.1	129.2	38.6	44.2	20-61	22.9	46.3	50.1	31-69	22.2
Class C VFO	1,199	15.7%	18.1	24.0	55.3	70.1	23.5	25.5	16-32	11.9	29.4	31.1	19-37	12.0
Class D VFO	866	11.3%	12.0	17.6	36.3	44.9	17.8	18.9	12-24	8.0	23.6	23.8	18-29	8.2
Class E VFO	27	.4%	16.0	15.7	36.5	36.9	15.8	17.4	11-22	9.3	20.0	20.5	12-24	8.8
Other Felony	2,241	29.3%	18.0	22.5	41.9	70.7	18.5	21.6	12-27	13.2	23.0	25.4	15-32	13.8
A-I Felony	23	.3%	163.3	179.3	300.0	300.0	44.5	56.6	31-79	30.9	59.0	60.5	35-79	30.4
A-II Felony	66	.9%	70.3	57.1	300.0	300.0	34.5	39.2	27-54	15.8	36.8	44.4	36-60	15.4
A-III Felony	239	3.1%	24.1	29.7	300.0	179.8	27.5	29.5	16-36	15.7	32.3	33.7	20-47	16.5
Class B Felony	261	3.4%	12.0	16.9	37.4	51.5	14.2	16.6	11-20	11.4	17.4	19.6	11-24	12.0
Class C Felony	163	2.1%	24.0	28.4	59.4	72.6	23.1	28.9	14-47	18.2	27.0	34.0	17-52	19.4
Class D Felony	659	8.6%	18.0	19.6	46.7	47.4	18.9	20.5	12-26	10.0	23.6	24.4	16-31	10.2
Class E Felony	468	6.1%	15.9	16.6	36.7	39.8	17.5	18.1	11-22	8.6	20.6	21.2	14-25	8.8
Y.O.	362	4.8%	15.6	17.1	41.8	41.9	16.9	18.3	12-23	7.9	21.5	21.9	16-26	7.8
Total 2nd Felony	2,423	31.7%	24.1	32.0	48.2	64.2	25.2	30.8	17-42	17.8	31.5	36.7	23-49	17.8
Violent Felony	1,128	14.8%	36.0	42.2	72.0	84.6	35.5	39.8	21-58	20.2	43.2	46.5	28-65	19.4
Class B VFO	249	3.2%	61.9	68.8	126.0	138.5	64.4	62.9	50-77	17.0	71.6	68.9	58-79	14.7
Class C VFO	378	5.0%	41.5	46.9	83.0	93.8	42.2	44.2	32-55	15.4	48.5	51.4	39-63	14.7
Class D VFO	402	5.3%	24.8	27.1	49.7	54.2	25.2	26.2	18-31	9.4	31.8	33.2	25-40	8.9
Class E VFO	99	1.3%	18.3	18.7	36.6	37.3	18.4	19.8	14-22	8.9	23.8	25.0	18-26	8.9
Other Felony	1,295	16.9%	18.5	23.1	36.5	46.4	21.3	23.1	16-28	10.3	24.5	28.1	21-33	10.5
Class B Felony	9	.1%	26.3	42.7	68.0	90.7	34.8	32.3	21-36	13.3	36.0	37.0	23-43	17.5
Class C Felony	55	.7%	36.5	39.9	73.0	79.9	39.0	40.8	25-56	17.2	47.7	46.5	31-60	16.7
Class D Felony	484	6.3%	24.2	26.9	48.4	53.9	25.7	26.9	19-32	9.5	31.7	32.3	24-39	9.8
Class E Felony	747	9.8%	18.3	18.9	37.9	36.6	18.2	19.2	14-22	7.2	23.7	23.9	18-27	7.1
Total Releases	7,639	100.0%	24.0	28.0	48.5	72.7	22.5	27.7	15-36	18.8	27.1	32.8	19-42	19.0

The data in Table 4.1 also show that the average minimum sentence for each felony class category fairly closely corresponds to the average state prison time served for persons in that category. Also, both the standard deviation and the range in months of time served for the middle 60% of cases in each category indicate that there is considerable variation around the average time served for persons in each felony class category.

The total time served (i.e. jail time plus state prison time) for persons in each felony class category tends to be about 5-6 months longer than time served in state prison. The patterns across felony class categories for total time served in state prison are similar to those observed in the information on time served in state prison except that total time served is, on the average, 5 months longer. The data on total time served provide some indication on the total months of incarceration for persons committed to state prison in each felony class category.

Table 4.2 presents a crosstabulation of felony class category by time served in state prison. Again the release cohort is broken into subgroups depending on first or second felony offender status and violent or other felony offender status. Time served in state prison for the total first releases to parole supervision cohort is also presented. Table 4.3 contains similar crosstabulations except that felony class categories are compared with total time served rather than just state time served.

TABLE 4.2 FELONY CRIME CLASS BY TIME SERVED IN STATE PRISON BY FIRST OR SECOND FELONY OFFENDER STATUS AND BY VIOLENT FELONY OR OTHER FELONY OFFENSE. FIRST RELEASES TO PAROLE SUPERVISION 1982

1. First Felony Commitments for Violent Felony Offenses

CRCLASS	COUNT ROW PCT COL PCT	TIMESRV2										ROW TOTAL	
		UNDER 12 MOS	12-17 MONTHS	18-23 MONTHS	24-35 MONTHS	36-47 MONTHS	48-71 MONTHS	72-119 MONTHS	120-179 MONTHS	180-239 MONTHS	240 MOS AND OVER		
A-I FELONY	1.	5.1	5.1	5.3	0	0	10.2	15.8	10.5	31.6	15.3	19	0.6
CLASS B FELONY	4.	17	32	103	229	163	216	101	3	0	0	864	29.0
CLASS C FELONY	5.	68	257	274	428	110	55	7	0	0	0	1199	40.3
CLASS D FELONY	6.	131	288	254	160	25	8	0	0	0	0	866	29.1
CLASS E FELONY	7.	6	10	9	1	0	1	0	0	0	0	27	0.9
COLUMN TOTAL		223	588	641	818	298	282	111	5	6	3	2975	100.0

2. First Felony Commitments for Other Felony Offenses

CRCLASS	COUNT ROW PCT COL PCT	TIMESRV2										ROW TOTAL	
		UNDER 12 MOS	12-17 MONTHS	18-23 MONTHS	24-35 MONTHS	36-47 MONTHS	48-71 MONTHS	72-119 MONTHS	120-179 MONTHS	180-239 MONTHS	240 MOS AND OVER		
A-I FELONY	1.	0	0	2	7	2	5	6	1			23	1.0
A-II FELONY	2.	2	0	5	31	12	15	1	0			66	2.9
A-III FELONY	3.	25	29	53	63	42	23	4	0			239	10.7
CLASS B FELONY	4.	63	109	60	24	0	6	0	1			261	11.7
CLASS C FELONY	5.	17	47	19	34	13	30	3	0			163	7.3
CLASS D FELONY	6.	93	188	185	159	29	12	2	0			659	29.4
CLASS E FELONY	7.	84	149	166	56	8	4	1	0			468	20.9
YOUTHFUL OFFENDR	8.	63	129	96	63	6	4	0	0			361	16.1
COLUMN TOTAL		347	651	586	428	112	97	17	2			2240	100.0

TABLE 4.2 (continued)

3. Second Felony Commitments for Violent Felony Offenses

CRCLASS	COUNT ROW PCT COL PCT	TIMESRV2							ROW TOTAL
		UNDER 12 MOS	12-17 MONTHS	18-23 MONTHS	24-35 MONTHS	36-47 MONTHS	48-71 MONTHS	72-119 MONTHS	
CLASS B FELONY	4	1.6	0.8	0.8	2.4	7.6	58.2	28.5	249
		11.1	2.4	1.2	2.1	9.6	52.9	76.3	22.1
CLASS C FELONY	5	1.3	1.1	3.2	23.0	34.4	31.5	21	378
		13.9	4.9	7.4	30.7	66.0	43.4	22.6	33.5
CLASS D FELONY	6	16	47	107	179	44	8	1	402
		4.0	11.7	26.6	44.5	10.9	2.0	0.2	35.6
		44.4	57.3	55.6	63.3	22.3	2.9	1.1	
CLASS E FELONY	7	11	29	42	11	4	2	0	99
		11.1	29.3	42.4	11.1	4.0	2.0	0	8.8
		30.6	35.4	25.8	3.9	2.0	0.7	0	
COLUMN TOTAL		36	82	163	283	197	276	93	1128
		3.2	7.3	14.5	25.1	17.5	24.3	8.2	100.0

4. Second Felony Commitments for Other Felony Offenses

CRCLASS	COUNT ROW PCT COL PCT	TIMESRV2							ROW TOTAL
		UNDER 12 MOS	12-17 MONTHS	18-23 MONTHS	24-35 MONTHS	36-47 MONTHS	48-71 MONTHS	72-119 MONTHS	
CLASS B FELONY	4	0	0	3	3	2	1	0	9
		0	0	33.3	33.3	22.2	11.1	0	0.7
		0	0	0.7	0.8	2.3	2.9	0	
CLASS C FELONY	5	1	1	5	17	16	11	4	55
		1.8	1.8	9.1	30.9	29.1	20.0	7.3	4.2
		1.3	0.3	1.2	4.7	18.4	32.4	80.0	
CLASS D FELONY	6	13	45	128	226	55	16	1	484
		2.7	9.3	26.4	46.7	11.4	3.3	0.2	37.4
		16.9	14.4	30.8	62.3	63.2	47.1	20.0	
CLASS E FELONY	7	6	267	280	117	14	6	0	747
		8.4	35.7	37.5	15.7	1.9	0.8	0	57.7
		31.8	85.3	67.3	32.2	16.1	17.6	0	
COLUMN TOTAL		77	315	416	363	87	34	5	1295
		5.9	24.2	32.1	28.0	6.7	2.6	0.4	100.0

Total First Releases in 1982

FIRSTREL	COUNT ROW PCT COL PCT	TIMESRV2											ROW TOTAL
		UNDER 12 MOS	12-17 MONTHS	18-23 MONTHS	24-35 MONTHS	36-47 MONTHS	48-71 MONTHS	72-119 MONTHS	120-179 MONTHS	180-239 MONTHS	240 MOS AND OVER	10	
FIRST RELEASES	1	683	1635	1806	1892	694	687	226	7	6	3		7639
		8.9	21.4	23.6	24.8	9.1	9.0	3.0	0.1	0.1	0.0		100.0
		100.0	100.0	100.0	100.0	100.0	100.0	100.0	100.0	100.0	100.0		100.0
COLUMN TOTAL		683	1635	1806	1892	694	687	226	7	6	3		7639
		8.9	21.4	23.6	24.8	9.1	9.0	3.0	0.1	0.1	0.0		100.0

TABLE 4.3 FELONY CRIME CLASS BY TOTAL TIME SERVED (Jailtime + State Prison Time) BY FIRST OR SECOND FELONY OFFENDER STATUS AND BY VIOLENT FELONY OR OTHER FELONY OFFENSE. FIRST RELEASES TO PAROLE SUPERVISION 1982

1. First Felony Commitments for Violent Felony Offenses

CRCLASS	COUNT ROW PCT COL PCT	TIMESRV2										ROW TOTAL
		UNDER 12 MOS	12-17 MONTHS	18-23 MONTHS	24-35 MONTHS	36-47 MONTHS	48-71 MONTHS	72-119 MONTHS	120-179 MONTHS	180-239 MONTHS	240 MOS AND OVER	
A-I FELONY	1	1	1	0	1	0	2	3	2	6	3	19
		5.3	5.3	0	5.3	0	10.5	15.8	10.5	31.6	15.8	0.6
		3.1	0.5	0	0.1	0	0.5	1.9	40.0	100.0	100.0	
CLASS B FELONY	4	5	5	19	218	198	267	149	3	0	0	864
		0.6	0.6	2.2	25.2	22.9	30.9	17.2	0.3	0	0	29.0
		15.6	2.6	3.5	19.3	37.8	70.4	93.1	60.0	0	0	
CLASS C FELONY	5	8	45	257	507	281	93	8	0	0	0	1199
		0.7	3.8	21.4	42.3	23.4	7.8	0.7	0	0	0	40.3
		25.0	23.4	47.2	44.9	53.6	24.5	5.0	0	0	0	
CLASS D FELONY	6	18	130	261	396	45	16	0	0	0	0	866
		2.1	15.0	30.1	45.7	5.2	1.8	0	0	0	0	29.1
		56.3	67.7	48.0	35.0	8.6	4.2	0	0	0	0	
CLASS E FELONY	7	0	11	7	8	0	1	0	0	0	0	27
		0	40.7	25.9	29.6	0	3.7	0	0	0	0	0.9
		0	3.7	1.3	0.7	0	0.3	0	0	0	0	
COLUMN TOTAL		32	192	544	1130	524	379	160	5	6	3	2975
		1.1	6.5	18.3	38.0	17.6	12.7	5.4	0.2	0.2	0.1	100.0

2. First Felony Commitments for Other Felony Offenses

CRCLASS	COUNT ROW PCT COL PCT	TIMESRV2										ROW TOTAL
		UNDER 12 MOS	12-17 MONTHS	18-23 MONTHS	24-35 MONTHS	36-47 MONTHS	48-71 MONTHS	72-119 MONTHS	120-179 MONTHS	180-239 MONTHS	240 MOS AND OVER	
A-I FELONY	1	0	0	8	13	21	5	7	1	3		23
		0	0	8.7	13.0	21.7	5	7	4.3	1		1.0
		0	0	0.4	0.4	3.6	21.9	50.0				
A-II FELONY	2	2	0	2	6	35	17	4	0	0		66
		3.0	0	3.0	9.1	53.0	25.8	6.1	0	0		2.9
		3.4	0	0.4	0.8	19.6	12.1	12.5	0	0		
A-III FELONY	3	8	27	25	71	55	44	9	0	0		239
		3.3	11.3	10.5	29.7	23.0	18.4	3.8	0	0		10.7
		13.6	5.3	4.5	9.3	30.7	31.4	28.1	0	0		
CLASS B FELONY	4	10	115	51	72	8	4	0	1			261
		3.8	44.1	19.5	27.6	3.1	1.5	0	0.4			11.7
		16.9	22.6	9.1	9.5	4.5	2.9	0	50.0			
CLASS C FELONY	5	1	27	34	41	16	36	8	0			163
		0.6	16.6	20.9	25.2	9.8	22.1	4.9	0			7.3
		1.7	5.3	6.1	5.4	8.9	25.7	25.0	0			
CLASS D FELONY	6	18	132	167	272	45	22	3	0			659
		2.7	20.0	25.3	41.3	6.8	3.3	0.5	0			29.4
		30.5	25.9	29.9	35.7	25.1	15.7	9.4	0			
CLASS E FELONY	7	14	119	156	164	8	6	1	0			468
		3.0	25.4	33.3	35.0	1.7	1.3	0.2	0			20.9
		23.7	23.4	28.0	21.6	4.5	4.3	3.1	0			
YOUTHFUL OFFENDR	8	6	89	121	132	7	6	0	0			361
		1.7	24.7	33.5	36.6	1.9	1.7	0	0			16.1
		10.2	17.5	21.7	17.3	3.9	4.3	0	0			
COLUMN TOTAL		59	509	558	761	179	140	32	2			2240
		2.6	22.7	24.9	34.0	8.0	6.3	1.4	0.1			100.0

TABLE 4.3 (continued)

3. Second Felony Commitments for Violent Felony Offenses

CRCLASS	COUNT ROW PCT COL PCT	TIMESRV2							ROW TOTAL
		UNDER 12 MOS	12-17 MONTHS	18-23 MONTHS	24-35 MONTHS	36-47 MONTHS	48-71 MONTHS	72-119 MONTHS	
CLASS B FELONY	4.	1	2	0	5	3	110	128	249
		0.4	0.8	0.	2.0	1.2	44.2	51.4	22.1
		16.7	20.0	0.	1.5	1.4	32.4	76.6	
CLASS C FELONY	5.	2	1	6	23	110	198	38	378
		0.5	0.3	1.6	6.1	29.1	52.4	10.1	33.5
		33.3	10.0	10.2	7.1	49.5	58.2	22.8	
CLASS D FELONY	6.	1	5	20	244	103	28	1	402
		0.2	1.2	5.0	65.7	25.6	7.0	0.2	35.6
		16.7	50.0	33.9	75.3	46.4	8.2	0.6	
CLASS E FELONY	7.	2	2	33	52	6	4	0	99
		2.0	2.0	33.3	52.5	6.1	4.0	0.	8.8
		33.3	20.0	55.9	16.0	2.7	1.2	0.	
COLUMN TOTAL		6	10	59	324	222	340	167	1128
		0.5	0.9	5.2	28.7	19.7	30.1	14.8	100.0

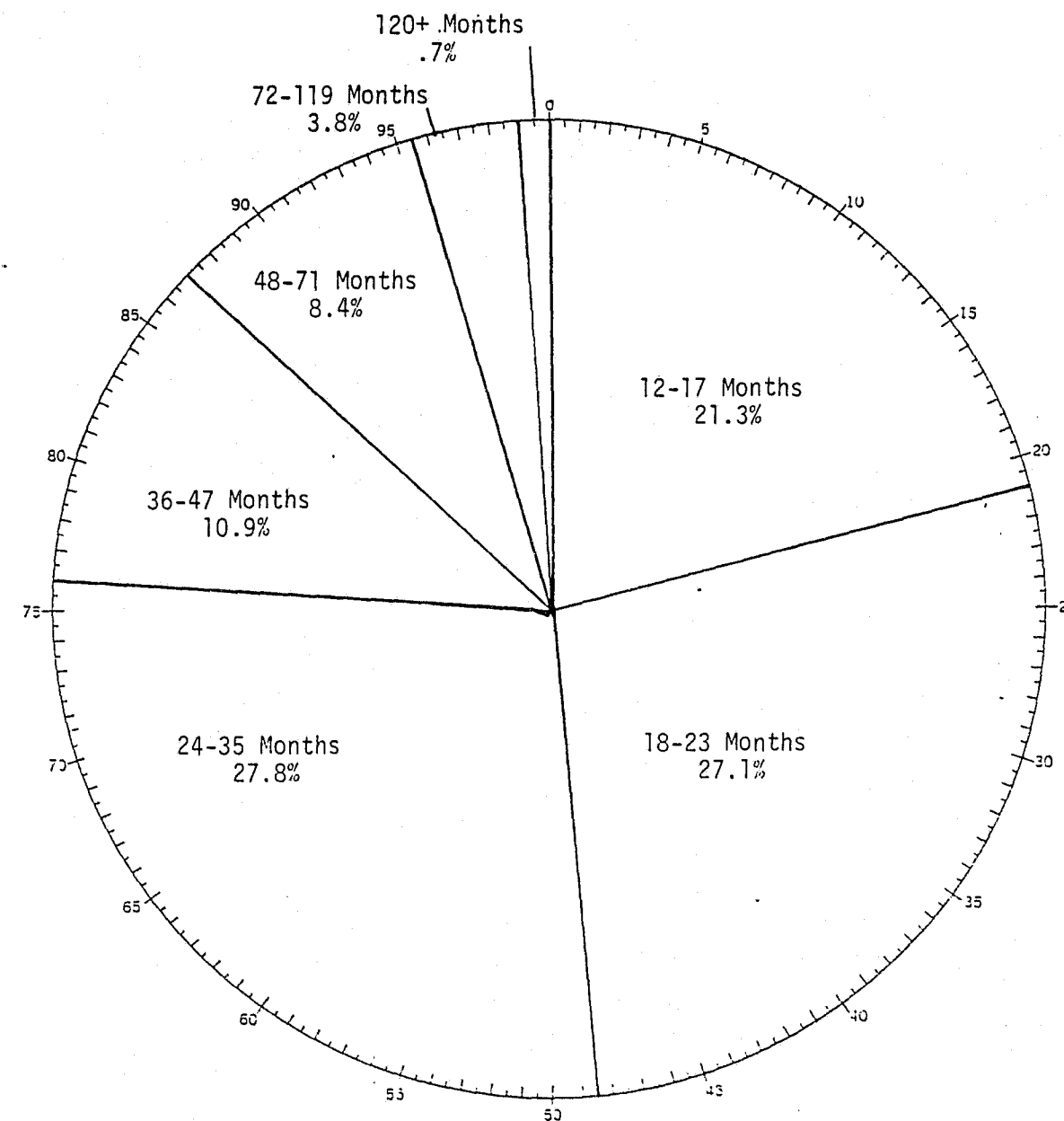
4. Second Felony Commitments for Other Felony Offenses

CRCLASS	COUNT ROW PCT COL PCT	TIMESRV2							ROW TOTAL
		UNDER 12 MOS	12-17 MONTHS	18-23 MONTHS	24-35 MONTHS	36-47 MONTHS	48-71 MONTHS	72-119 MONTHS	
CLASS B FELONY	4.	0	0	2	2	3	1	1	9
		0.	0.	22.2	22.2	33.3	11.1	11.1	0.7
		0.	0.	0.6	0.3	2.0	1.4	12.5	
CLASS C FELONY	5.	0	0	1	13	12	23	6	55
		0.	0.	1.8	23.6	21.8	41.8	10.9	4.2
		0.	0.	0.3	1.9	7.9	32.9	75.0	
CLASS D FELONY	6.	4	7	42	283	111	36	1	484
		0.8	1.4	8.7	58.5	22.9	7.4	0.2	37.4
		19.0	20.0	13.2	40.9	73.5	51.4	12.5	
CLASS E FELONY	7.	17	28	273	394	25	10	0	747
		2.3	3.7	36.5	52.7	3.3	1.3	0.	57.7
		81.0	80.0	85.8	56.9	16.6	14.3	0.	
COLUMN TOTAL		21	35	318	692	151	70	8	1295
		1.6	2.7	24.6	53.4	11.7	5.4	0.6	100.0

Total First Releases in 1982

FIRSTREL	COUNT ROW PCT COL PCT	TIMESRV2										ROW TOTAL
		UNDER 12 MOS	12-17 MONTHS	18-23 MONTHS	24-35 MONTHS	36-47 MONTHS	48-71 MONTHS	72-119 MONTHS	120-179 MONTHS	180-239 MONTHS	240 MOS AND OVER	
FIRST RELEASES	1.	118	746	1480	2907	1076	929	367	7	6	3	7639
		1.5	9.8	19.4	38.1	14.1	12.2	4.8	0.1	0.1	0.0	100.0
		100.0	100.0	100.0	100.0	100.0	100.0	100.0	100.0	100.0	100.0	
COLUMN TOTAL		118	746	1480	2907	1076	929	367	7	6	3	7639
		1.5	9.8	19.4	38.1	14.1	12.2	4.8	0.1	0.1	0.0	100.0

Figure 5
CHARACTERISTICS OF INMATES DISCHARGED - 1982
FIRST RELEASES TO PAROLE SUPERVISION
MINIMUM SENTENCE ON COMMITMENT



Minimum Sentence	First Releases to Parole Supervision	
	Number	Percent
Total	7,639	100.0%
12-17 Months	1,624	21.3%
18-23 Months	2,072	27.1%
24-35 Months	2,126	27.8%
36-47 Months	835	10.9%
48-71 Months	641	8.4%
72-119 Months	293	3.8%
120-179 Months	10	0.1%
180-239 Months	26	0.4%
240 + Months	12	0.2%

Section Five

A. Distribution of 1982 Releases by Minimum Sentence Length

Figure 5 contains the percent distribution by minimum sentence length of persons first released to parole supervision during 1982. Roughly half (48.4%) of 1982 first releases had received a minimum term of less than 24 months. Three-fourths (76.2%) of first releases had received a minimum term of less than 36 months.

B. Time Served Within Minimum Sentence Length Categories

Among 1982 first releases to parole supervision 81.8% (N=6,249) were committed to state prison with a minimum term specified by the sentencing court. The remaining 18.2% (N=1,390) were committed with unspecified minimum terms. For 82% (N=1,137) of these 1,390 cases with unspecified minimum terms the minimum Period of Imprisonment (MPI) set by the Board of Parole was available in our computer files and it was used as the minimum sentence. For the remaining 253 cases with unspecified minimum terms we estimated the minimum period of imprisonment based on a large file of recent MPI decisions.

Table 5.1 presents information on time served in state prison and total time served, within minimum sentence length categories. The 1982 release cohort was divided into the nine minimum sentence length groups listed in Table 5.1. Within each of these minimum sentence categories we present the median and the average time served in state prison and the median and average total time served.

Looking at Table 5.1 it can be seen that as the minimum sentence increases the length of time served in state prison and the total time incarcerated both increase. The average time served in state prison within each category tends to be a figure that is very close to the low end of minimum sentence range for each category (e.g. for those with minimum terms between 18 and 23 months the median time served in state prison is 18.6 months).

Table 5.1 also shows that the average time served in state prison and the average total time served for those cases grouped in the 120-179 month minimum sentence category, the 180-239 month category, and the 240 month or more category, is shorter than the lowest legally permissible minimum term within each category. The average total time served for cases whose minimum term is 120-179 months is, for instance, only 68.9 months. There are several reasons that account for this. The computer file on which these data are based reflect the original term handed down

TABLE 5.1 MEDIAN AND AVERAGE TIME SERVED IN STATE PRISON AND TOTAL TIME SERVED (Jailtime + State Prison Time) (in months) WITHIN MINIMUM SENTENCE LENGTH CATEGORIES. FIRST RELEASES TO PAROLE SUPERVISION 1982.

Minimum Sentence (in months)	Number	Time Served in State Prison (in months)		Total Time Served (Jailtime + State Prison Time) (in months)	
		Median	Mean	Median	Mean
12-17 months	1,624	14.5	15.1	19.3	19.3
18-23 months	2,072	18.6	19.5	23.7	24.2
24-35 months	2,126	25.0	26.1	31.0	31.6
36-47 months	835	36.0	37.6	42.6	44.2
48-71 months	641	54.3	53.8	60.3	60.8
72-119 months	293	71.3	72.7	76.6	77.1
120-179 months	10	63.0	63.9	72.0	68.9
180-239 months	26	71.5	78.5	73.0	81.3
240+ months	12	87.5	124.8	88.0	126.2
Total	7,639	22.5	27.7	27.3	32.9

by the sentencing court. Through further legal proceedings (e.g. appeals, rehearings) a portion of those persons committed to DOCS (usually persons with long minimum terms) are resentenced on reduced charges. These changes are not reflected on this file. In addition, several legislative changes have occurred over the recently passed years that affect the minimum terms of persons with long maximum sentences. In a separate report^A/Zausner examined 61 cases released between 1978 and 1982 who had originally been committed for Murder 1st or Murder 2nd and who were released prior to serving the court set minimum term. He found that of these 61 cases 34 (56%) had received a reduced sentence or a vacated sentence due to appeal proceedings in the courts. Another 25 (41%) received sentence reductions due to legislative changes affecting the parole eligibility of persons with long maximum terms. The remaining 3% (2 cases) received a commutation of sentence by the Governor.

In summary, a portion of those commitments with long sentence terms receive sentence reductions through the appeals process or due to legislative changes. Zausner found that 52% (N=61) of 117 persons released for Murder 1st and Murder 2nd during 1978-82 had received a sentence reduction. The computer file used in preparing the characteristics of releases report utilizes information based on the original sentence upon commitment and does not reflect court ordered sentence changes. Consequently, the figures on average state time served or total time served for persons in the three longest minimum sentence categories in Table 5.1 appear to suggest that some commitments do not serve out the minimum term when this is not the case. The median and average time served are pulled down due to cases who received new, shorter minimum terms. Implementation of the new Population Management System (PMS) will allow for more attention to updating sentences and legal history changes for persons in DOCS custody.

Table 5.2 (below) presents the crosstabulation of minimum sentence length by time served in state prison. Table 5.3 presents the crosstabulation of minimum sentence length by total time served (jail time plus state prison time). The tables contain a broader distribution of time served for cases in each minimum sentence category.

^A/"1978-82 Releases: Offenders Committed for Murder Released Prior to Court Set Minimum" Bureau of Records and Statistical Analysis, New York State Department of Correctional Services, Albany, N.Y. 1984.

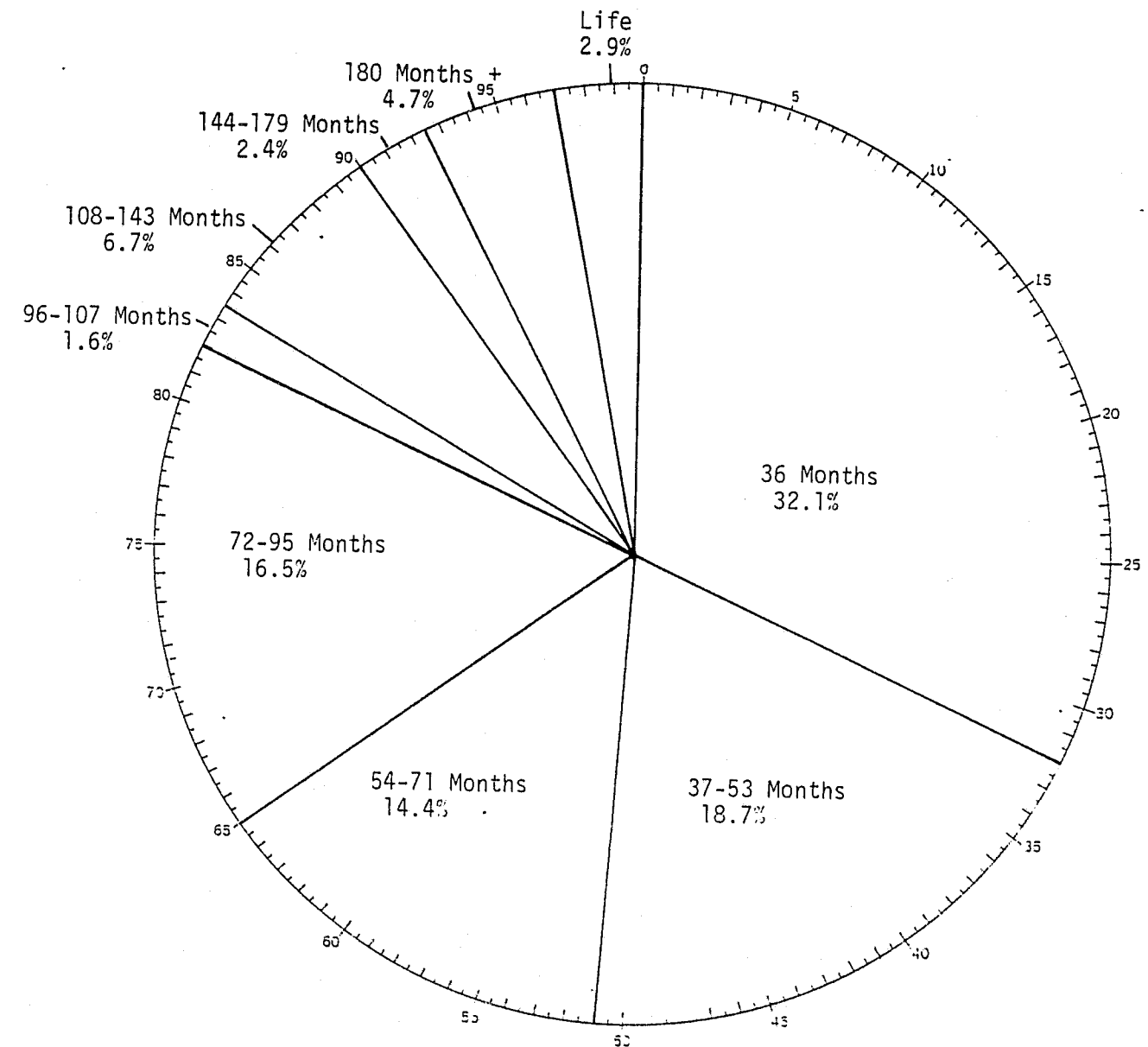
TABLE 5.2 MINIMUM SENTENCE BY TIME SERVED IN STATE PRISON. FIRST RELEASES TO PAROLE SUPERVISION 1982

MINTIMES	COUNT ROW PCT COL PCT	TIMESRV2										ROW TOTAL
		UNDER 12 MOS	12-17 MONTHS	18-23 MONTHS	24-35 MONTHS	36-47 MONTHS	48-71 MONTHS	72-119 MONTHS	120-179 MONTHS	180-239 MONTHS	240 MOS AND OVER	
12-17 MONTHS	1.	431 26.5 63.1	744 45.8 45.5	364 22.4 20.2	72 4.4 3.8	3 0.2 0.4	9 0.6 1.3	1 0.1 0.4	0 0 0	0 0 0	0 0 0	1624 21.3
18-23 MONTHS	2.	166 8.0 24.3	689 33.3 42.1	756 36.5 41.9	424 20.5 22.4	30 1.4 4.3	6 0.3 0.9	1 0.0 0.4	0 0 0	0 0 0	0 0 0	2072 27.1
24-35 MONTHS	3.	55 2.6 8.1	180 8.5 11.0	642 30.2 35.5	1013 47.6 53.5	194 9.1 28.0	39 1.8 5.7	3 0.1 1.3	0 0 0	0 0 0	0 0 0	2126 27.8
36-47 MONTHS	4.	16 1.9 2.3	11 1.3 0.7	33 4.0 1.8	337 40.4 17.8	317 38.0 45.7	107 12.8 15.6	14 1.7 6.2	0 0 0	0 0 0	0 0 0	835 10.9
48-71 MONTHS	5.	9 1.4 1.3	7 1.1 0.4	8 1.2 0.4	29 4.5 1.5	128 20.0 18.4	406 63.3 59.1	53 8.3 23.5	1 0.2 14.3	0 0 0	0 0 0	641 8.4
72-119 MONTHS	6.	4 1.4 0.6	3 1.0 0.2	1 0.3 0.1	11 3.8 0.6	19 6.5 2.7	110 37.5 16.0	139 47.4 61.5	3 1.0 42.9	3 1.0 50.0	0 0 0	293 3.8
120-179 MONTHS	7.	1 10.0 0.1	0 0 0	0 0 0	0 0 0	1 10.0 0.1	4 40.0 0.6	4 40.0 1.8	0 0 0	0 0 0	0 0 0	10 0.1
180-239 MONTHS	8.	0 0 0	0 0 0	0 0 0	6 23.1 0.3	2 7.7 0.3	5 19.2 0.7	9 34.6 4.0	3 11.5 42.9	1 3.8 16.7	0 0 0	26 0.3
240+ MONTHS	9.	1 8.3 0.1	1 8.3 0.1	2 16.7 0.1	0 0 0	0 0 0	0 0 0	8 8.3 0.1	2 16.7 0.9	0 0 0	2 16.7 33.3	12 0.2
COLUMN TOTAL		683 8.9	1635 21.4	1806 23.6	1892 24.8	694 9.1	687 9.0	226 3.0	7 0.1	6 0.1	3 0.0	7639 100.0

TABLE 5.3 MINIMUM SENTENCE BY TOTAL TIME SERVED
(Jailtime + State Prison Time).
FIRST RELEASES TO PAROLE SUPERVISION 1982

MINTIME3	COUNT ROW PCT COL PCT	TIMESRV2										ROW TOTAL
		UNDER 12 MOS	12-17 MONTHS	18-23 MONTHS	24-35 MONTHS	36-47 MONTHS	48-71 MONTHS	72-119 MONTHS	120-179 MONTHS	180-239 MONTHS	240 MOS AND OVER	
12-17 MONTHS	1. 54 3.3 45.8	606 37.3 81.2	522 32.1 35.3	418 25.7 14.4	13 0.8 1.2	10 0.6 1.1	1 0.1 0.3	0 0 0	0 0 0	0 0 0	1624 21.3	
18-23 MONTHS	2. 31 1.5 26.3	102 4.9 13.7	834 40.3 56.4	956 46.1 32.9	138 6.7 12.8	10 0.5 1.1	1 0.1 0.3	0 0 0	0 0 0	0 0 0	2072 27.1	
24-35 MONTHS	3. 20 0.9 16.9	25 1.2 3.4	95 4.5 6.4	1464 68.9 50.4	434 20.4 40.3	85 4.0 9.1	3 0.1 0.8	0 0 0	0 0 0	0 0 0	2126 27.8	
36-47 MONTHS	4. 6 0.7 5.1	7 0.8 0.9	15 1.8 1.0	50 6.0 1.7	456 54.6 42.4	272 32.6 29.3	29 3.5 7.9	0 0 0	0 0 0	0 0 0	835 10.9	
48-71 MONTHS	5. 3 0.5 2.5	4 0.6 0.5	12 1.9 0.8	9 1.4 0.3	17 2.7 1.6	481 75.0 51.8	114 17.8 31.1	1 0.2 14.3	0 0 0	0 0 0	641 8.4	
72-119 MONTHS	6. 3 1.0 2.5	0 0 0	1 0.3 0.1	6 2.0 0.2	14 4.8 1.3	62 21.2 6.7	201 68.6 54.8	3 1.0 42.9	3 1.0 50.0	0 0 0	293 3.8	
120-179 MONTHS	7. 0 0 0	1 0.1 0	0 0 0	0 0 0	0 0 0	3 30.0 0.3	6 60.0 1.6	0 0 0	0 0 0	0 0 0	10 0.1	
180-239 MONTHS	8. 0 0 0	0 0 0	0 0 0	3 11.5 0.1	4 15.4 0.4	19 19.3 0.5	10 38.5 2.7	3 11.5 42.9	1 3.8 16.7	0 0 0	26 0.3	
240+ MONTHS	9. 1 8.3 0.8	1 8.3 0.1	1 8.3 0.1	1 8.3 0.0	0 0 0	0 0 0	1 8.3 0.1	2 16.7 0.5	0 0 0	3 25.0 100.0	12 0.2	
COLUMN TOTAL	118 1.5	746 9.8	1480 19.4	2907 38.1	1076 14.1	929 12.2	367 4.8	7 0.1	6 0.1	3 0.0	7639 100.0	

-31-
Figure 6
CHARACTERISTICS OF INMATES DISCHARGED - 1982
FIRST RELEASES TO PAROLE SUPERVISION.
MAXIMUM SENTENCE ON COMMITMENT



Maximum Sentence	First Releases to Parole Supervision	
	Number	Percent
Total	7,637*	100.0%
36 Months	2,449	32.1%
37-53 Months	1,431	18.7%
54-71 Months	1,102	14.4%
72-95 Months	1,263	16.5%
96-107 Months	119	1.6%
108-143 Months	510	6.7%
144-179 Months	181	2.4%
180 Months and over	357	4.7%
Life	225	2.9%

*Data not available on two cases.

-Section Six-

A. Distribution of 1982 First Releases by Maximum Sentence

Figure 6 presents the distribution of 1982 releases by maximum sentence length. Roughly half of 1982 releases had received a maximum term of 48 months or less. Approximately two-thirds (65.2%) of 1982 releases received a maximum term less than 72 months.

B. Time Served by Maximum Sentence Length

Table 6.1 presents the median and average time served in state prison for persons in each maximum sentence category. The median and average total time served for persons in each felony class category is also listed.

As would be expected when the maximum sentence increases the average time served in state prison also increases. The Life maximum sentence category contains persons who were sentenced for serious offenses such as murder. It also contains a large number of persons sentenced for Class A-II and Class A-III drug offenses for which the minimum term was relatively short. The presence of these drug offenders in the Life maximum sentence category accounts for the relatively short median time served in state prison (37.6 months) for persons in this category. The median and average state time served for persons in the Life maximum category differ considerably because this category contains commitments for serious offenses such as murder for which the minimum term is long and it also contains commitments for drug offenses for which the minimum terms are comparatively short.

Table 6.2 below presents a crosstabulation of maximum sentence length by time served in state prison. Table 6.3 presents a crosstabulation of maximum sentence length by total time served. These tables contain a broader distribution of time served for each maximum sentence length category.

TABLE 6.1 MEDIAN AND AVERAGE TIME SERVED IN STATE PRISON AND TOTAL TIME SERVED (Jailtime + State Prison Time) (in months) WITHIN MAXIMUM SENTENCE LENGTH CATEGORIES. FIRST RELEASES TO PAROLE SUPERVISION 1982.

Maximum Sentence (in months)	Number	Time Served in State Prison (in months)		Total Time Served (Jailtime + State Prison Time) (in months)	
		Median	Mean	Median	Mean
36 months	2,449	16.4	16.6	21.4	20.9
37-53 months	1,431	22.3	22.5	27.3	27.2
54-71 months	1,102	22.8	23.0	29.1	28.6
72-95 months	1,263	29.9	30.7	35.9	36.9
96-107 months	119	43.6	42.9	50.8	50.8
108-143 months	510	45.7	45.8	53.3	52.4
144-179 months	181	63.2	59.9	71.6	67.0
180+ months	357	65.1	67.2	71.4	72.0
Life Maximum	225	37.6	48.6	42.4	53.3
Total	7,637	22.5	27.7	27.3	32.9

TABLE 6.2 MAXIMUM SENTENCE LENGTH BY TIME SERVED IN STATE PRISON.
FIRST RELEASES TO PAROLE SUPERVISION 1982

COUNT	TIMESRV2											ROW TOTAL	
	ROW PCT	UNDER	12-17	18-23	24-35	36-47	48-71	72-119	120-179	180-239	240 MOS		AND OVER
	COL PCT	12 MOS	MONTHS	MONTHS	MONTHS	MONTHS	MONTHS	MONTHS	MONTHS	MONTHS	AND OVER		
MAXSEN	1.	449	993	810	165	21	10	1	0	0	0	0	2449
36 MONTHS		18.3	40.5	33.1	6.7	0.9	0.4	0.0	0.0	0.0	0.0	0.0	32.1
		65.7	60.7	44.9	8.7	3.0	1.5	0.4	0.0	0.0	0.0	0.0	
	2.	96	272	458	555	30	17	3	0	0	0	0	1431
37-53 MONTHS		6.7	19.0	32.0	38.8	2.1	1.2	0.2	0.0	0.0	0.0	0.0	18.7
		14.1	16.6	25.4	29.3	4.3	2.5	1.3	0.0	0.0	0.0	0.0	
	3.	77	268	240	434	77	6	0	0	0	0	0	1102
54-71 MONTHS		7.0	24.3	21.8	39.4	7.0	0.5	0.0	0.0	0.0	0.0	0.0	14.4
		11.3	16.4	13.3	22.9	11.1	0.9	0.0	0.0	0.0	0.0	0.0	
	4.	32	84	259	485	312	89	2	0	0	0	0	1263
72-95 MONTHS		2.5	6.7	20.5	38.4	24.7	7.0	0.2	0.0	0.0	0.0	0.0	16.5
		4.7	5.1	14.3	25.6	45.0	13.0	0.9	0.0	0.0	0.0	0.0	
	5.	1	4	6	26	31	51	0	0	0	0	0	119
96-107 MONTHS		0.8	3.4	5.0	21.8	26.1	42.9	0.0	0.0	0.0	0.0	0.0	1.6
		0.1	0.2	0.3	1.4	4.5	7.4	0.0	0.0	0.0	0.0	0.0	
	6.	7	7	16	130	109	218	23	0	0	0	0	510
108-143 MONTHS		1.4	1.4	3.1	25.5	21.4	42.7	4.5	0.0	0.0	0.0	0.0	6.7
		1.0	0.4	0.9	6.9	15.7	31.7	10.2	0.0	0.0	0.0	0.0	
	7.	3	2	0	10	32	92	42	0	0	0	0	181
144-179 MONTHS		1.7	1.1	0.0	5.5	17.7	50.8	23.2	0.0	0.0	0.0	0.0	2.4
		0.4	0.1	0.0	0.5	4.6	13.4	18.6	0.0	0.0	0.0	0.0	
	8.	7	2	5	13	27	159	140	3	1	0	0	357
180 AND OVER		2.0	0.6	1.4	3.6	7.6	44.5	39.2	0.8	0.3	0.0	0.0	4.7
		1.0	0.1	0.3	0.7	3.9	23.1	61.9	42.9	25.0	0.0	0.0	
	9.	11	3	12	74	55	45	15	4	3	3	3	225
LIFE MAX		4.9	1.3	5.3	32.9	24.4	20.0	6.7	1.8	1.3	1.3	1.3	2.9
		1.6	0.2	0.7	3.9	7.9	6.6	6.6	57.1	75.0	100.0	0.0	
COLUMN TOTAL		683	1635	1806	1892	694	687	226	7	4	3	3	7637
		8.9	21.4	23.6	24.8	9.1	9.0	3.0	0.1	0.1	0.0	0.0	100.0

TABLE 6.3 MAXIMUM SENTENCE LENGTH BY TOTAL TIME SERVED
(Jailtime + State Prison Time).
FIRST RELEASES TO PAROLE SUPERVISION 1982

COUNT	TIMESRV2											ROW TOTAL	
	ROW PCT	UNDER	12-17	18-23	24-35	36-47	48-71	72-119	120-179	180-239	240 MOS		AND OVER
	COL PCT	12 MOS	MONTHS	MONTHS	MONTHS	MONTHS	MONTHS	MONTHS	MONTHS	MONTHS	AND OVER		
MAXSEN	1.	65	512	928	896	28	19	1	0	0	0	0	2449
36 MONTHS		2.7	20.9	37.9	36.6	1.1	0.8	0.0	0.0	0.0	0.0	0.0	32.1
		55.1	68.6	62.7	30.8	2.6	2.0	0.3	0.0	0.0	0.0	0.0	
	2.	20	147	200	957	83	21	3	0	0	0	0	1431
37-53 MONTHS		1.4	10.3	14.0	66.9	5.8	1.5	0.2	0.0	0.0	0.0	0.0	18.7
		16.9	19.7	13.5	32.9	7.7	2.3	0.8	0.0	0.0	0.0	0.0	
	3.	8	58	283	462	278	13	0	0	0	0	0	1102
54-71 MONTHS		0.7	5.3	25.7	41.9	25.2	1.2	0.0	0.0	0.0	0.0	0.0	14.4
		6.8	7.8	19.1	15.9	25.8	1.4	0.0	0.0	0.0	0.0	0.0	
	4.	10	16	43	527	399	263	5	0	0	0	0	1263
72-95 MONTHS		0.8	1.3	3.4	41.7	31.6	20.8	0.4	0.0	0.0	0.0	0.0	16.5
		8.5	2.1	2.9	18.1	37.1	28.3	1.4	0.0	0.0	0.0	0.0	
	5.	0	2	4	14	16	83	0	0	0	0	0	119
96-107 MONTHS		0.0	1.7	3.4	11.8	13.4	69.7	0.0	0.0	0.0	0.0	0.0	1.6
		0.0	0.3	0.3	0.5	1.5	8.9	0.0	0.0	0.0	0.0	0.0	
	6.	2	6	8	21	170	237	66	0	0	0	0	510
108-143 MONTHS		0.4	1.2	1.6	4.1	33.3	46.5	12.9	0.0	0.0	0.0	0.0	6.7
		1.7	0.8	0.5	0.7	15.8	25.5	18.0	0.0	0.0	0.0	0.0	
	7.	2	0	0	3	6	76	94	0	0	0	0	181
144-179 MONTHS		1.1	0.0	0.0	1.7	3.3	42.0	51.9	0.0	0.0	0.0	0.0	2.4
		1.7	0.0	0.0	0.1	0.6	8.2	25.6	0.0	0.0	0.0	0.0	
	8.	3	2	7	5	13	149	174	3	1	0	0	357
180 AND OVER		0.8	0.6	2.0	1.4	3.6	41.7	48.7	0.8	0.3	0.0	0.0	4.7
		2.5	0.3	0.5	0.2	1.2	16.0	47.4	42.9	25.0	0.0	0.0	
	9.	8	3	7	22	83	68	24	4	3	3	3	225
LIFE MAX		3.6	1.3	3.1	9.8	36.9	30.2	10.7	1.8	1.3	1.3	1.3	2.9
		6.8	0.4	0.5	0.8	7.7	7.3	6.5	57.1	75.0	100.0	0.0	
COLUMN TOTAL		118	746	1480	2907	1076	929	367	7	4	3	3	7637
		1.5	9.8	19.4	38.1	14.1	12.2	4.8	0.1	0.1	0.0	0.0	100.0

END