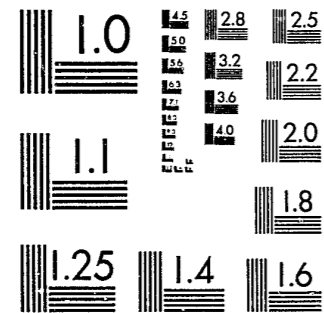


National Criminal Justice Reference Service



This microfiche was produced from documents received for inclusion in the NCJRS data base. Since NCJRS cannot exercise control over the physical condition of the documents submitted, the individual frame quality will vary. The resolution chart on this frame may be used to evaluate the document quality.



MICROCOPY RESOLUTION TEST CHART
NATIONAL BUREAU OF STANDARDS-1963-A

Microfilming procedures used to create this fiche comply with the standards set forth in 41CFR 101-11.504.

Points of view or opinions stated in this document are those of the author(s) and do not represent the official position or policies of the U. S. Department of Justice.

National Institute of Justice
United States Department of Justice
Washington, D. C. 20531

10/5/84

93432

Federal
Judicial
Workload
Statistics

During the twelve month period ended September 30, 1983

Prepared by the

Administrative Office of the
United States Courts



Statistical Analysis and Reports Division, Washington, DC

FEDERAL JUDICIAL WORKLOAD STATISTICS

DURING THE TWELVE MONTH PERIOD
ENDED SEPTEMBER 30, 1983



PREPARED BY THE
ADMINISTRATIVE OFFICE OF
THE UNITED STATES COURTS
STATISTICAL ANALYSIS AND REPORTS DIVISION

U.S. Department of Justice
National Institute of Justice

This document has been reproduced exactly as received from the person or organization originating it. Points of view or opinions stated in this document are those of the authors and do not necessarily represent the official position or policies of the National Institute of Justice.

Permission to reproduce this copyrighted material has been granted by
Public Domain/Administration
Office of the U.S. Courts

to the National Criminal Justice Reference Service (NCJRS).

Further reproduction outside of the NCJRS system requires permission of the copyright owner.

TABLE OF CONTENTS

	Page
U.S. Courts of Appeals	
Federal Circuit	
Summary of Workload	1
Twelve Circuit Courts of Appeals	
Summary of Workload	3
Filings Rise 9.5 Percent	3
Quarterly Comparison of Filings	4
Terminations Up 5.4 Percent	4
Pending Caseload Up 3.3 Percent	5
Cases Under Submission	6
U.S. District Courts	
Civil Workload	
Summary of Workload	7
Civil Filings - Twelve Month Period	7
Civil Filings - Three Month Period	10
Civil Terminations	10
Civil Pending Caseload	10
Civil Cases Pending Three Years or More	11
Criminal Workload	
Summary of Workload	13
Criminal Case Filings by District	13
Criminal Filings by Major Offense	13
Criminal Cases Pending	14
Filings and Terminations by Quarter	14
Cases and Motions Under Advisement in U.S. District Courts	15
U.S. Bankruptcy Courts	
Summary of Workload	17
Bankruptcy Filings Down 3.9 Percent	17
Filings by Quarter	20
Business and Non-Business Filings by Chapter	20
Bankruptcy Terminations Rise Only 1.0 Percent	21
Pending Estates	21
Adversary Proceedings	21

NCJRS

FEB 7 1984

ACQUISITIONS

APPENDIX TABLES

(The period covered, unless otherwise indicated, is for the twelve month period ended September 30, 1983.)

Table	Page
U.S. Courts of Appeals	
B-1 Cases Commenced and Terminated by Circuit	A-2
U.S. District Courts	
Civil	
C-1 Cases Commenced, Terminated, and Pending	A-4
C-2 Cases Commenced, by Basis of Jurisdiction and Nature of Suit	A-6
C-3 Cases Commenced, by Nature of Suit and District	A-8
C-3A Cases Pending, by Nature of Suit and District	A-12
C-3B Cases Terminated, by Nature of Suit and District	A-16
C-6A Cases Pending, by District and Length of Time Pending (Land Condemnation Cases are Omitted)	A-20
C-6B Land Condemnation Cases Pending by District and Length of Time Pending	A-21
Criminal	
D-1 Cases Commenced and Terminated	A-22
D-1 Defendants Commenced and Terminated	A-26
D-2 Cases Commenced by Major Offense (Excludes Transfers)	A-30
D-2 Defendants Commenced by Major Offense (Excludes Transfers)	A-32
D-3 Cases Commenced (Excludes Transfers)	A-34
D-3 Defendants Commenced (Excludes Transfers)	A-38
U.S. Bankruptcy Courts	
F-1 Bankruptcy Estates Commenced, Terminated, and Pending	A-42
F-3A Business Bankruptcy Code Cases Commenced, by Chapter of the Bankruptcy Code	A-44
F-3B Non-Business Bankruptcy Code Cases Commenced, by Chapter of the Bankruptcy Code	A-46
F-AP Adversary Proceedings Commenced, Terminated, and Pending under the Bankruptcy Code	A-49

U.S. COURTS OF APPEALS

FEDERAL CIRCUIT

Summary of Workload

The Federal Courts Improvement Act of 1982 (Public Law 97-164) established a new appellate court called the U.S. Court of Appeals for the Federal Circuit. This court, headquartered in Washington, DC, officially began its operations on October 1, 1982. The Federal Circuit was created by joining the appellate division of the U.S. Court of Claims with the U.S. Court of Customs and Patent Appeals. The court has retained the jurisdiction of both predecessor courts. Additionally, it has jurisdiction over final decisions of the U.S. district courts in patent infringement actions and final orders and decisions of the Merit Systems Protection Board and the various agency boards of contract appeals. The first annual summary of the new court's workload during the twelve month period ended September 30, 1983 appears in Table 1.

Table 1
U.S. Court of Appeals for the Federal Circuit
Appeals Filed, Terminated, and Pending
During the Twelve Month Period Ended September 30, 1983

Source of Appeal	Pending Oct. 1, 1982	Filed	Terminated								Pending Sept. 30, 1983	
			Total	With-drawn	Decided							
					Total	Affirmed		Reversed		Modified		
						Num-ber	Per-cent ¹	Num-ber	Per-cent ¹	Num-ber		Per-cent ¹
Total	263	930	600	183	417	331	79.4	45	10.8	41	9.8	593
Board of Contract Appeals	30	49	48	10	38	35	92.1	2	5.3	1	2.6	31
Court of International Trade	16	27	28	3	25	18	72.0	2	8.0	5	20.0	15
U.S. Claims Court	74	119	111	27	84	58	69.0	12	14.3	14	16.7	82
U.S. District Courts	-	216	66	33	33	22	66.7	3	9.1	8	24.2	150
International Trade Commission	6	5	5	1	4	2	50.0	1	25.0	1	25.0	6
Merit Systems Protection Board	77	335	181	62	119	113	95.0	3	2.5	3	2.5	231
Patent and Trademark Office	58	163	148	36	112	82	73.2	21	18.8	9	8.0	73
Secretary of Commerce	1	1	1	-	1	-	-	1	100.0	-	-	1
Writs ²	1	15	12	11	1	1	100.0	-	-	-	-	4

¹ Percents may not add up to 100.0 due to rounding.

² This category includes both writs of mandamus and other extraordinary writs.

The Act also created the U.S. Claims Court, a new Article I trial forum with basically the same trial jurisdiction as the former U.S. Court of Claims. Statistics for the U.S. Claims Court are published in the **Annual Report of the Director**.

During the twelve month period ended September 30, 1983, a total of 930 new appeals were docketed in the Federal Circuit. Most of the annual filings arose from decisions of the Merit Systems Protection Board (335 cases), the U.S. district courts (216 cases), and the Patent and Trademark Office (163 cases). Together, these three sources of appeals comprised over 75 percent of the yearly docketing activity in this court.

Appellate terminations in the Federal Circuit totaled 600 cases in the past year. The greatest number of overall dispositions involved appeals from the Merit Systems Protection Board with 181 cases. Other sources of appeals showing significant amounts of termination activity were the Patent and Trademark Office (148 cases) and the U.S. Claims Court (111 cases). Of the 600 terminations during the year ended September 30, 1983, 417 appeals were decided by the court. Approximately 79 percent of these cases were affirmed, 11 percent were reversed, and 10 percent were modified. The remaining 183 case dispositions were withdrawn prior to decision or dismissed after consideration by the court.

Since filings exceeded terminations by 330 cases, the pending caseload in the Federal Circuit grew substantially during the year. As of September 30, 1983, a total of 593 appeals were pending on the circuit's general docket, up 125.5 percent over the 263 appeals transferred from predecessor courts that were pending on October 1, 1982.

TWELVE CIRCUIT COURTS OF APPEALS

Summary of Workload

During the twelve month period ended September 30, 1983, the number of appeals filed and terminated in the twelve circuit courts reached the highest levels ever recorded. Total appellate filings reached 30,387 in 1983, up 9.5 percent from the 27,761 appeals docketed in 1982. Case terminations rose 5.4 percent during this period, from 28,151 appeals in 1982 to 29,666 appeals in 1983. Due to the increase in docketing activity during the year, the overall pending caseload in the U.S. courts of appeals grew by 3.3 percent. As of September 30, 1983, a total of 22,496 appeals were pending on the dockets of the 12 circuit courts, up from the 21,775 appeals pending one year ago. Table 2 provides a comparison, by circuit, of the appellate workload during the twelve month periods ended September 30, 1982 and 1983.

Table 2
U.S. Courts of Appeals
Appeals Commenced, Terminated, and Pending
During the Twelve Month Periods Ended September 30, 1982 and 1983

Circuit	Filings			Terminations			Pending		
	1982	1983	Percent Change	1982	1983	Percent Change	1982	1983	Percent Change
Total	27,761	30,387	9.5	28,151	29,666	5.4	21,775	22,496	3.3
District of Columbia	1,550	1,435	-7.4	1,648	1,514	-8.1	1,466	1,387	-5.4
First	1,046	963	-7.9	1,031	954	-7.5	538	547	1.7
Second	2,769	2,868	3.6	2,631	2,797	6.3	1,024	1,095	6.9
Third	2,236	2,580	15.4	2,416	2,548	5.5	1,462	1,494	2.2
Fourth	1,473	2,406	-2.7	2,626	2,361	-10.1	1,747	1,792	2.6
Fifth	2,770	3,416	29.3	2,748	3,265	18.8	2,200	2,351	6.9
Sixth	3,619	2,833	8.2	2,726	2,858	4.8	2,580	2,555	-1.0
Seventh	2,157	2,352	9.0	2,106	2,209	4.9	1,714	1,857	8.3
Eighth	1,616	1,765	9.2	1,604	1,569	-2.2	828	1,024	23.7
Ninth	4,224	4,862	15.1	4,467	4,851	8.6	4,021	4,032	0.3
Tenth	1,798	1,744	-3.0	1,968	1,621	-17.6	1,503	1,626	8.2
Eleventh	2,631	3,163	20.2	2,180	3,119	43.1	2,692	2,736	1.6

Filings Rise 9.5 Percent

In 1983, 8 of the 12 circuit courts experienced increases in docketing activity. The largest increases were reported in the Fifth and Eleventh Circuits, up 29.3 percent and 20.2 percent, respectively. For both of these courts, the growth in case filings can be attributed mainly to a large influx of state prisoner petitions during the year. This type of appeal rose by 457 petitions in the Fifth Circuit and by 292 petitions in the Eleventh Circuit. Other courts with significant increases in new filings were the Third Circuit (up 15.4 percent) and the Ninth Circuit (up 15.1 percent).

Four circuit courts (District of Columbia, First, Fourth, and Tenth) reported decreases in docketing activity during the year. The most notable declines were reported in the First Circuit (down 7.9 percent) and the District of Columbia Circuit (down 7.4 percent). In the First Circuit, the decline was caused by a 29.6 percent drop in new private civil appeals (exclusive of prisoner petitions). The reduction in the District of Columbia Circuit was the direct result of drops in non-prisoner U.S. civil appeals (down 117 cases) and criminal appeals (down 61 cases).

Among the various types of appeals filed nationwide, the largest numerical increases were in state prisoner petitions (958 cases) and non-prisoner private civil appeals (938 cases). On a percentage basis, the largest growth was in appeals of bankruptcy decisions, up 42.4 percent from 543 cases in 1982 to 773 cases in 1983. Two categories of appeals (criminal and administrative agency) recorded reductions in case filings during the year. The most significant drop occurred in the criminal category, where new appeals declined 2.5 percent to 4,775 cases.

Quarterly Comparison of Filings

Table 3 is a comparison of appeals commenced, by quarter, during each of the twelve month periods ended June 30, 1978 through 1983 and the first quarter of 1984. In the July through September 1983 period, a total of 7,579 new appeals were docketed in the twelve circuit courts, up 11.1 percent from the 6,822 appeals docketed during the same time last year. This year's quarterly total represents the largest number of new appeals ever reported in a July through September period.

Table 3
U.S. Courts of Appeals
Appeals Commenced by Quarter,
1978 through 1984

Statistical Year	First Quarter (Jul-Sept)	Second Quarter (Oct-Dec)	Third Quarter (Jan-Mar)	Fourth Quarter (Apr-Jun)	Twelve Month Total
1978	4,824	4,480	4,619	4,995	18,918
1979	5,144	4,806	5,146	5,123	20,219
1980	6,264	5,472	5,709	5,755	23,200
1981	6,268	6,311	6,653	7,130	26,362
1982	7,007	6,642	6,761	7,536	27,946
1983	6,822	7,033	7,620	8,155	29,630
1984	7,579	-	-	-	-
Percent Change 1984 over 1983	11.1	-	-	-	-
Percent Change 1983 over 1982	-2.6	5.9	12.7	8.2	6.0
1978	41.4	57.0	65.0	63.3	56.6

Terminations Up 5.4 Percent

During the past year, 7 of the 12 circuit courts reported increases in termination activity. The largest changes in case dispositions occurred in the Eleventh and Fifth Circuits, up 43.1 percent and 18.8 percent, respectively. Much of the termination growth in these two circuits involved state prisoner petitions, which more than doubled in each court during 1983. In the Eleventh Circuit, criminal terminations also increased dramatically, up from 652 in 1982 to 933 in 1983. Of the remaining five circuits with increases, the rate of growth ranged from a high of 8.6 percent in the Ninth Circuit to a low of 4.8 percent in the Sixth Circuit.

Five circuit courts experienced reductions in appellate terminations during the year. The Tenth Circuit reported the biggest decline in case dispositions, down 17.6 percent from 1,968 appeals in 1982 to 1,621 appeals in 1983. All categories of appeals except bankruptcy declined in this circuit during the year, with criminal type appeals recording the largest numerical drop (145 cases). Reductions in case dispositions were also noted in the Fourth Circuit (down 10.1 percent); the District of Columbia Circuit (down 8.1 percent); the First Circuit (down 7.5 percent); and the Eighth Circuit (down 2.2 percent).

Pending Caseload Up 3.3 Percent

With the large number of new filings being docketed in the appellate courts during the year, the overall pending caseload grew 3.3 percent to 22,496 appeals. Only the District of Columbia and Sixth Circuits were able to reduce the pending caseloads in 1983, down 5.4 percent and 1.0 percent, respectively. Ten of the 12 circuit courts reported higher pending caseloads on September 30, 1983. Of these, the most significant yearly increase was recorded by the Eighth Circuit, up 23.7 percent. This rise can be partly attributed to a 9.2 percent increase in new filings combined with a 2.2 percent decrease in case terminations during the year. The remaining nine circuits recorded increases in their pending caseloads ranging from 0.3 to 8.3 percent.

CASES UNDER SUBMISSION

The overall number of cases under submission for more than 90 days on September 30, 1983 was 2.0 percent less than the 765 cases reported in September 1982. The U.S. courts of appeals and the Temporary Emergency Court of Appeals reported 750 cases held under submission for the quarter ended September 30, 1983 as provided in Table 4. A total of 442 cases (58.9 percent) were held more than three but less than six months; 169 cases (22.5 percent) were held more than six but less than nine months; 70 cases (9.3 percent) were held more than nine months but less than one year; and 69 cases (9.2 percent) were held more than one year. The Tenth Circuit Court of Appeals reported 107 cases, 14.3 percent of the total cases under submission. Cases awaiting the submission of additional memoranda or awaiting an opinion in another case are not included in the totals.

Table 4
U.S. Courts of Appeals
Cases Under Submission More Than Three Months
On September 30, 1983

Court	Total	More than 3 but Less than 6 Months	More than 6 but Less than 9 Months	More than 9 Months but Less than 1 Year	More than 1 Year
Total on September 30, 1983	750	442	169	70	69
Courts of Appeals					
Federal	14	13	1	-	-
District of Columbia	85	24	27	15	19
First	12	12	-	-	-
Second	30	26	3	1	-
Third	12	8	2	2	-
Fourth	68	44	22	1	1
Fifth	74	59	13	1	1
Sixth	80	41	20	14	5
Seventh	64	51	6	2	5
Eighth	53	45	8	-	-
Ninth	102	46	27	17	12
Tenth	107	40	30	12	25
Eleventh	47	31	10	5	1
Temporary Emergency Court of Appeals	2	2	-	-	-
Total on September 30, 1982	765	444	180	83	58

U.S. DISTRICT COURTS

CIVIL WORKLOAD

Summary of Workload

The total number of civil cases filed, terminated, and pending in the U.S. district courts continued to increase during the twelve month period ended September 30, 1983. The record number of cases is indicative of the steady growth in the civil caseload over the past 20 years. Civil filings rose 18.0 percent during the year, from 212,503 in 1982 to 250,855 in 1983. The number of civil cases terminated increased to a total of 219,780 or 12.1 percent over the 196,069 cases terminated in 1982. Correspondingly, civil cases pending rose 14.7 percent, from 211,959 to 243,034 as of September 30, 1983. Table 5 provides a comparison, by district, of the civil workload during each of the twelve month periods ended September 30, 1982 and 1983. Additional data on civil activity in the U.S. district courts is provided in Appendix Tables C-1, C-2, C-3, C-3A, C-3B, C-6A, and C-6B.

Civil Filings - Twelve Month Period

During the twelve month period ended September 30, 1983, more than a quarter of a million civil cases were filed in the U.S. district courts. The 250,855 filings represent an increase of 18.0 percent over the 212,503 cases filed during the same period last year. Original proceedings accounted for 223,661 of the 250,855 filings. Although considerable increases occurred in many categories, the most substantial rises occurred in recovery of overpayments and enforcement of judgment cases and social security cases. The 44,152 recovery of overpayments filings are comprised mostly of suits filed by the Federal government to recover overpayments of veteran's benefits, which account for more than 85 percent of all such cases filed during the year. Social security cases accounted for 24,947 filings in 1983. This figure represents an 84.2 percent increase over the 13,541 cases filed last year. Nearly 78 percent of all social security cases filed this year were disability insurance cases.

Eighty-four U.S. district courts experienced increases in their filing caseload. Some of the most notable increases were reported by Texas, Southern (up 3,271 cases); Ohio, Southern (up 2,641 cases); Ohio, Northern (up 2,379 cases); and New York, Eastern (up 1,905 cases). Suits for recovery of overpayments of veteran's benefits and social security disability insurance cases are responsible for much of the increase in filing activity in Ohio, Southern and Northern. The overall increase in filings in New York, Eastern is primarily the result of a significant rise in the number of social security disability insurance cases and negotiable instruments cases. Other districts experiencing increases of 1,000 or more filings over the past year were Texas, Western; California, Central; Michigan, Eastern; Missouri, Eastern; and Oklahoma, Western.

Despite the overall increases in the civil filing caseload during the year, ten districts experienced decreases in filing activity. The largest decreases in civil filings occurred in Indiana, Southern (down 626 cases); Oklahoma, Northern (down 244 cases); and Minnesota (down 164 cases). The declines in Indiana, Southern and Oklahoma, Northern can be attributed to decreases in recovery of overpayments of veteran's benefits cases. There was also a significant decrease in the number of such claims filed in Minnesota, but an equally substantial decline occurred in employment civil rights filings.

Table 5
U.S. District Courts
Civil Cases Commenced, Terminated, and Pending
During the Twelve Month Periods Ended September 30, 1982 and 1983

CIRCUIT AND DISTRICT	FILINGS			TERMINATIONS			PENDING		
	PERIOD ENDED SEP. 30, 1982	PERIOD ENDED SEP. 30, 1983	PERCENT CHANGE	PERIOD ENDED SEP. 30, 1982	PERIOD ENDED SEP. 30, 1983	PERCENT CHANGE	PERIOD ENDED SEP. 30, 1982	PERIOD ENDED SEP. 30, 1983	PERCENT CHANGE
	TOTAL...	212,503	250,855	18.0	196,069	219,780	12.1	211,959	243,034
DC.....	3,794	3,988	5.1	3,425	3,850	12.4	3,055	3,193	4.5
1ST...	9,662	10,553	9.2	9,851	9,253	-6.1	11,441	12,741	11.4
ME.....	626	911	45.5	804	756	-6.0	850	1,005	18.2
MA.....	4,263	4,686	9.9	4,528	3,412	-24.7	6,443	7,717	19.8
NH.....	758	850	10.7	690	784	13.6	728	794	9.1
RI.....	837	808	-3.5	837	1,205	44.0	1,412	1,015	-28.1
PR.....	3,168	3,298	4.1	2,992	3,096	3.5	2,008	2,210	10.1
2ND...	18,666	22,019	18.0	16,505	18,668	13.1	23,314	26,665	14.4
CT.....	2,693	2,700	0.3	2,223	2,407	8.3	4,015	4,308	7.3
NY, N.....	1,438	1,765	22.7	1,300	1,303	0.2	2,171	2,633	21.3
NY, E.....	3,943	5,848	48.3	3,598	4,460	24.0	5,210	6,598	26.6
NY, S.....	8,879	9,803	10.4	8,097	8,951	10.5	9,548	10,400	8.9
NY, M.....	1,241	1,431	15.3	892	1,120	25.6	1,843	2,154	16.9
VT.....	472	472	0.0	395	427	8.1	527	572	8.5
3RD...	16,525	18,703	13.2	15,644	16,508	5.5	14,301	16,496	15.3
DE.....	796	864	8.5	667	835	25.2	752	781	3.9
NJ.....	4,458	5,044	13.1	4,078	4,054	-0.6	3,682	4,672	26.9
PA, E.....	5,947	6,487	9.1	5,960	6,194	3.9	5,095	5,388	5.8
PA, M.....	1,641	1,901	15.8	1,538	1,626	5.7	1,296	1,571	21.2
PA, W.....	3,048	3,701	21.4	2,783	3,069	10.3	2,155	2,787	29.3
VI.....	635	706	11.2	618	730	18.1	1,321	1,297	-1.8
4TH...	19,979	22,642	13.3	19,562	20,068	2.6	16,209	18,783	15.9
MD.....	3,816	4,350	14.0	3,326	3,906	17.4	3,650	4,094	12.2
NC, E.....	1,949	2,366	21.4	1,801	2,246	24.7	1,392	1,512	8.6
NC, M.....	1,332	1,425	7.0	1,351	1,210	-10.4	793	1,008	27.1
NC, W.....	1,314	1,887	43.6	1,344	1,613	20.0	841	1,115	32.6
SC.....	3,254	3,564	9.5	3,516	3,340	-5.0	2,870	3,094	7.8
VA, E.....	3,302	3,350	1.5	3,326	3,204	-3.7	2,094	2,240	7.0
VA, W.....	2,655	2,819	6.2	2,573	2,451	-4.8	1,535	1,903	24.0
WV, N.....	821	906	10.4	682	610	-10.6	1,133	1,429	26.1
WV, S.....	1,536	1,975	28.6	1,643	1,488	-9.4	1,901	2,388	25.6
5TH...	26,110	33,484	28.2	23,281	26,657	14.5	30,422	37,249	22.4
LA, E.....	5,774	6,720	16.4	5,320	6,174	16.1	6,895	7,441	7.9
LA, M.....	1,171	1,364	16.5	1,070	1,125	5.1	1,214	1,453	19.7
LA, S.....	3,026	3,167	4.7	2,803	2,801	-0.1	2,823	3,189	13.0
MS, N.....	1,137	1,433	26.0	928	1,184	27.6	1,047	1,296	23.8
MS, S.....	1,933	2,594	34.2	1,599	1,780	11.3	2,568	3,382	31.7
TX, N.....	3,322	3,664	10.3	3,511	3,303	-5.9	3,628	3,989	10.0
TX, E.....	2,518	2,407	-4.4	1,694	1,689	-0.3	3,451	4,169	20.8
TX, S.....	5,125	8,396	63.8	4,550	5,891	29.5	6,404	8,909	39.1
TX, W.....	2,104	3,739	77.7	1,795	2,710	51.0	2,392	3,421	43.0
6TH...	22,668	31,115	37.3	20,375	26,566	30.4	24,976	29,525	18.2
KY, E.....	1,426	1,942	36.2	2,006	2,086	4.0	3,021	2,877	-4.8
KY, M.....	1,395	1,968	41.1	1,175	1,616	37.5	1,849	2,201	19.0
MI, E.....	6,222	7,376	18.5	5,650	6,216	10.0	5,680	7,040	19.7
MI, M.....	1,646	2,479	50.6	2,006	1,940	-3.3	1,830	2,369	29.5
OH, N.....	4,094	6,473	58.1	2,849	5,894	106.9	5,180	5,759	11.2
OH, S.....	3,628	6,269	72.8	2,782	4,923	78.2	4,067	5,413	33.1
TN, E.....	1,676	1,908	13.8	1,544	1,644	6.5	864	1,128	30.6
TN, M.....	1,307	1,363	4.3	1,270	1,271	0.1	814	906	11.3
TN, W.....	1,274	1,337	4.9	1,113	976	-12.3	1,471	1,832	24.5

Table 5
U.S. District Courts
Civil Cases Commenced, Terminated, and Pending
During the Twelve Month Periods Ended September 30, 1982 and 1983
(continued)

CIRCUIT AND DISTRICT	FILINGS			TERMINATIONS			PENDING		
	PERIOD ENDED SEP. 30, 1982	PERIOD ENDED SEP. 30, 1983	PERCENT CHANGE	PERIOD ENDED SEP. 30, 1982	PERIOD ENDED SEP. 30, 1983	PERCENT CHANGE	PERIOD ENDED SEP. 30, 1982	PERIOD ENDED SEP. 30, 1983	PERCENT CHANGE
	7TH...	18,359	18,762	2.2	16,718	17,742	6.1	16,712	17,732
IL, M...	7,891	8,837	12.0	7,193	8,169	13.6	7,286	7,954	9.2
IL, C...	1,061	1,316	24.0	915	1,028	12.3	1,135	1,423	25.4
IL, S...	1,193	1,228	2.9	1,126	1,330	18.1	1,326	1,224	-7.7
IN, M...	2,056	1,933	-6.0	1,756	1,894	7.9	2,258	2,297	1.7
IN, S...	3,441	2,815	-18.2	2,999	2,488	-17.0	2,385	2,712	13.7
WI, E...	1,655	1,567	-5.3	1,509	1,523	0.9	1,536	1,580	2.9
WI, W...	1,062	1,066	0.4	1,220	1,310	7.4	786	542	-31.1
8TH...	14,765	17,749	20.2	13,574	16,144	18.9	13,015	14,620	12.3
AR, E...	1,936	2,268	17.1	1,880	2,115	12.5	1,924	2,077	8.0
AR, W...	982	1,161	18.2	989	1,095	10.7	914	980	7.2
IA, M...	579	793	37.0	515	676	31.3	479	596	24.4
IA, S...	1,036	1,111	7.2	899	923	2.7	1,095	1,283	17.2
MN...	3,622	3,458	-4.5	3,330	3,092	-7.2	2,269	2,635	16.1
MO, E...	2,358	3,482	47.7	2,024	2,948	45.7	1,789	2,323	29.8
MO, W...	2,097	2,869	36.8	1,938	2,735	41.1	2,305	2,439	5.8
NE...	1,225	1,603	30.9	1,021	1,576	54.4	1,366	1,333	-2.1
ND...	410	396	-3.4	332	387	16.6	404	413	2.2
SD...	520	608	16.9	646	597	-7.6	530	541	2.1
9TH...	29,108	34,334	18.0	26,156	30,612	17.0	27,753	31,475	13.4
AK.....	597	747	25.1	470	621	32.1	835	961	15.1
AZ.....	2,899	3,386	16.8	2,634	3,202	21.6	2,053	2,237	9.0
CA, M...	6,488	6,726	3.7	5,702	6,601	15.8	4,467	4,592	2.8
CA, E...	1,651	1,977	19.7	1,258	1,387	10.3	2,319	2,909	25.4
CA, C...	6,748	8,141	20.6	6,471	7,388	14.2	5,646	6,399	13.3
CA, S...	1,719	2,410	40.2	1,668	2,083	24.9	1,726	2,053	18.9
HI.....	715	1,295	81.1	609	862	41.5	1,124	1,557	38.5
ID.....	728	874	20.1	642	908	41.4	911	877	-3.7
MT.....	742	920	24.0	635	750	18.1	932	1,102	18.2
NV.....	1,175	1,433	22.0	879	988	12.4	1,426	1,871	31.2
OR.....	2,022	2,528	25.0	1,969	2,362	20.0	1,730	1,546	-9.3
WA, E...	949	990	4.3	759	835	10.0	922	1,077	16.8
WA, W...	2,328	2,743	17.8	2,295	2,484	8.2	2,577	2,836	10.1
GUAM...	255	102	-60.0	82	72	-12.2	937	967	3.2
NM...	92	62	-32.6	83	69	-16.9	98	91	-7.2
10TH...	11,732	14,191	21.0	10,493	12,562	19.7	10,108	11,737	16.1
CO.....	2,205	2,525	14.5	2,151	2,183	1.5	2,152	2,494	15.9
KS.....	2,086	2,383	14.2	1,974	2,169	9.9	2,358	2,572	9.1
NM.....	1,389	2,015	45.1	1,173	1,733	47.7	1,165	1,447	24.2
OK, N...	1,355	1,111	-18.0	1,169	1,052	-10.0	936	995	6.3
OK, E...	553	748	35.3	506	679	34.2	363	432	19.0
UT, M...	2,125	3,198	50.5	1,898	2,761	45.5	1,456	1,893	30.0
UT.....	1,508	1,667	10.5	1,155	1,469	27.2	1,351	1,549	14.7
WY.....	511	544	6.5	467	516	10.5	327	355	8.6
11TH...	21,135	23,315	10.3	20,485	21,150	3.2	20,653	22,818	10.5
AL, N...	3,263	3,800	16.5	2,826	3,398	20.2	2,221	2,623	18.1
AL, M...	1,418	1,513	6.7	1,162	1,498	28.9	1,103	1,118	1.4
AL, S...	1,330	1,543	16.0	1,116	1,303	16.8	936	1,176	25.6
FL, N...	939	1,007	7.2	747	944	26.4	881	944	7.2
FL, M...	3,838	4,144	8.0	3,590	3,808	6.1	4,366	4,702	7.7
FL, S...	3,994	4,639	16.1	5,887	4,156	-29.4	5,376	5,859	9.0
GA, N...	3,656	3,797	3.9	3,101	3,366	8.5	3,317	3,748	13.0
GA, M...	1,329	1,428	7.4	949	1,293	36.2	1,125	1,260	12.0
GA, S...	1,368	1,444	5.6	1,107	1,384	25.0	1,328	1,388	4.5

Civil Filings - Three Month Period

There were 65,806 cases filed during the three month period July through September 1983. This figure is up 15.9 percent from the 56,793 cases filed during the same period last year, but down slightly (0.3 percent) from the 65,997 cases filed during the preceding quarter. Table 6 provides a comparison, by quarter, of civil cases filed during each of the twelve month periods ended June 30, 1978 through 1983 and the first quarter of 1984.

Table 6
U.S. District Courts
Civil Cases Filed by Quarter,
1978 through 1984

Year	First Quarter (Jul-Sept)	Second Quarter (Oct-Dec)	Third Quarter (Jan-Mar)	Fourth Quarter (Apr-Jun)	Twelve Month Total
1978	35,581	32,809	33,109	37,271	138,770
1979	37,412	36,608	39,209	41,437	154,666
1980	42,820	39,212	42,145	44,612	168,789
1981	45,377	42,235	44,028	48,936	180,576
1982	50,427	47,037	51,509	57,220	206,193
1983	56,793	58,059	60,993	65,997	241,842
1984	65,806	-	-	-	-
Percent Change 1984 over 1983	15.9	-	-	-	-
Percent Change 1983 over					
1982	12.6	23.4	18.4	15.3	17.3
1978	59.6	77.0	84.2	77.1	74.3

Civil Terminations

During the twelve month period ended September 30, 1983, the U.S. district courts disposed of 219,780 cases, 12.1 percent more than the 196,069 cases disposed of a year ago. Among the 73 districts reporting increases in disposition activity, the most notable were Ohio, Northern (up 3,045 cases); Ohio, Southern (up 2,161 cases); and Texas, Southern (up 1,341 cases). The increases in termination activity in these districts are largely the result of dispositions of recovery of overpayments of veteran's benefits cases. The largest reductions in civil terminations were in Florida, Southern (down 1,731 cases); Massachusetts (down 1,116 cases); and Indiana, Southern (down 511 cases).

Civil Pending Caseload

The civil pending caseload rose to 243,034 cases during the twelve month period ended September 30, 1983, up 14.7 percent from the 211,959 cases pending last year. This 14.7 percent rate of increase is considerably higher than the rates of increase experienced in the last three comparable years (3.9 percent in 1980; 2.5 percent in 1981; and 8.4 percent in 1982).

Despite the substantial increase in the total number of civil cases pending during 1983, seven districts were able to reduce the pending caseloads. Among those districts reporting significant declines were Rhode Island (down 397 cases); Wisconsin, Western (down 244 cases); Kentucky, Eastern (down 144 cases); and Illinois, Southern (down 102 cases). The largest increases in pending caseloads were reported by Texas, Southern (up 2,505 cases); New York, Eastern (up 1,388 cases); and Ohio, Southern (up 1,346 cases). These substantial increases in pending caseloads can be attributed to the large influx of recovery of overpayment and social security cases in these districts. Other districts experiencing increases of 1,000 or more cases were Massachusetts; Michigan, Eastern; and Texas, Western.

Civil Cases Pending Three Years or More

In March 1981, the Judicial Conference adopted a resolution requiring judges to annually review their dockets and report the status of all cases pending three years or more. This resolution, together with the adoption of other resolutions in September 1961 and March 1963, expresses the concern of the Judicial Conference regarding the efforts to reduce the number of civil cases pending three years or more.

As of September 30, 1983, the total number of civil cases pending three years or more (excluding land condemnation cases) rose to 15,511. These cases represent a 6.6 percent increase over the 14,554 cases pending on June 30, 1983. Despite the overall increase, 26 districts experienced a decline in the number of these cases. The districts with the smallest number of three-year-old cases are Tennessee, Eastern; Northern Mariana Islands; and Wyoming, each with three. A comparison, by district, of the number of civil cases pending three years or more (excluding land condemnation cases) as of June 30, 1983 and September 30, 1983, is provided in Table 7.

Table 7
U.S. District Courts
Civil Cases Pending Three Years or More
On June 30, 1983 and September 30, 1983
(Land Condemnation Cases Omitted)

Circuit and District	Pending June 30, 1983	Pending Sept. 30, 1983	Percent Change*	Circuit and District	Pending June 30, 1983	Pending Sept. 30, 1983	Percent Change*
Total	14,554	15,511	6.6	7th Cir.	1,200	1,390	15.8
DC.....	204	207	1.5	IL, N.....	642	763	18.8
1st Cir.	1,280	1,344	5.0	IL, C.....	71	76	7.0
ME.....	74	88	18.9	IL, S.....	30	62	106.7
MA.....	951	1,013	6.5	IN, N.....	208	229	10.1
NH.....	25	21	-16.0	IN, S.....	136	136	-
RI.....	80	62	-22.5	WI, E.....	75	90	20.0
PR.....	150	160	6.7	WI, W.....	38	34	-10.5
2nd Cir.	2,438	2,548	4.5	8th Cir.	401	435	8.5
CT.....	728	733	0.7	AR, E.....	73	75	2.7
NY, N.....	256	259	1.2	AR, W.....	17	16	-5.9
NY, E.....	464	484	4.3	IA, N.....	5	7	-
NY, S.....	697	762	9.3	IA, S.....	36	45	25.0
NY, W.....	272	289	6.3	MN.....	82	91	11.0
VT.....	21	21	-	MO, E.....	43	47	9.3
3rd Cir.	766	783	2.2	MO, W.....	68	77	13.2
DE.....	44	43	-2.3	NE.....	57	56	-1.8
NJ.....	157	149	-5.1	ND.....	9	7	-
PA, E.....	200	197	-1.5	SD.....	11	14	27.3
PA, M.....	27	31	14.8	9th Cir.	2,031	2,097	3.2
PA, W.....	75	84	12.0	AK.....	86	80	-7.0
VI.....	263	279	6.1	AZ.....	162	162	-
4th Cir.	767	809	5.5	CA, N.....	246	267	8.5
MD.....	246	266	8.1	CA, E.....	204	219	7.4
NC, E.....	23	29	26.1	CA, C.....	306	292	-4.6
NC, M.....	58	50	-13.8	CA, S.....	92	91	-1.1
NC, W.....	31	8	-74.2	HI.....	146	185	26.7
SC.....	13	24	84.6	ID.....	45	53	17.8
VA, E.....	93	115	23.7	MT.....	44	42	-4.5
VA, W.....	58	56	-3.4	NV.....	100	101	1.0
WV, N.....	118	128	8.5	OR.....	44	37	-15.9
WV, S.....	127	133	4.7	WA, E.....	71	60	-15.5
5th Cir.	1,960	2,148	9.6	WA, W.....	272	290	6.6
LA, E.....	417	449	7.7	GU.....	211	215	1.9
LA, M.....	58	53	-8.6	NMI.....	2	3	-
LA, W.....	68	66	-2.9	10th Cir.	497	574	15.5
MS, N.....	15	19	26.7	CO.....	80	87	8.8
MS, S.....	378	465	23.0	KS.....	245	299	22.0
TX, N.....	231	238	3.0	NM.....	37	35	-5.4
TX, E.....	296	348	17.6	OK, N.....	54	64	18.5
TX, S.....	373	399	7.0	OK, E.....	5	8	-
TX, W.....	124	111	-10.5	OK, W.....	17	20	17.6
6th Cir.	2,122	2,199	3.6	UT.....	55	58	5.5
KY, E.....	727	704	-3.2	WY.....	4	3	-
KY, W.....	144	154	6.9	11th Cir.	888	977	10.0
MI, E.....	223	247	10.8	AL, N.....	28	29	3.6
MI, W.....	94	95	1.1	AL, M.....	31	29	-6.5
OH, N.....	487	522	7.2	AL, S.....	20	22	10.0
OH, S.....	257	275	7.0	FL, N.....	37	45	21.6
TN, E.....	2	3	-	FL, M.....	229	228	-0.4
TN, M.....	37	39	5.4	FL, S.....	334	356	6.6
TN, W.....	151	160	6.0	GA, N.....	124	131	5.6
				GA, M.....	34	55	61.8
				GA, S.....	51	82	60.8

* Percent not computed where base is less than ten.

CRIMINAL WORKLOAD

Summary of Workload

Criminal cases filed in the U.S. district courts during the twelve month period ended September 30, 1983, increased 6.9 percent from 33,097 cases filed last year (including transfers) to 35,390 cases this year. Case terminations increased by 5.6 percent with 33,664 cases terminated this year compared to 31,877 cases in 1982. A summary of cases filed and terminated during the twelve month periods ended September 30, 1979 through 1983 is shown in Table 8.

Table 8
U.S. District Courts
Criminal Cases Filed and Terminated
(Includes Transfers)
During the Twelve Month Periods Ended
September 30, 1979 through 1983

Criminal Cases	1979	1980	1981	1982	1983
Filings.....	31,196	29,387	31,280	33,097	35,390
Terminations....	31,559	28,606	29,705	31,877	33,664

Cases pending on September 30, 1983 rose to 19,291 from 17,565 cases pending on the same day last year, a rise of 9.8 percent. This increase resulted from 1,726 cases that were filed in excess of case terminations this year.

During the first quarter of statistical year 1984 (July 1, 1983 to September 30, 1983), there were 8,192 cases filed, a decrease of 5.8 percent from the 8,695 cases filed during this period last year. Also, during this period, case terminations decreased 2.6 percent from 7,680 cases last year to 7,484 cases terminated this year.

Criminal Case Filings by District

During the twelve month period ended September 30, 1983, case filings increased in 51 district courts and decreased in 43. Districts reporting increases of more than 50 percent were Louisiana, Middle (75.6 percent); Maine (67.1 percent); Vermont (65.7 percent); West Virginia, Northern (62.1 percent); Wyoming (57.6 percent); Oklahoma, Eastern (56.8 percent); New Hampshire (52.0 percent); Arkansas, Western (52.0 percent); and Oklahoma, Western (50.8 percent). In Oklahoma, Western filings for traffic violations, which increased by 238 cases or 191.0 percent over the 124 cases reported last year, contributed to the increase in that district.

Criminal Filings by Major Offense

Increases in case filings were reported in 4 of the 11 major offense categories. Only three of the four categories showed an increase of more than 10 percent. Reported case filings for burglary increased 28.5 percent; Drug Abuse Prevention and Control Act (DAPCA) filings increased 15.6 percent; and larceny and theft 10.6 percent. Filings for bank burglary which rose 221.7 percent this period (by 51 cases) contributed to the increase in the "Burglaries—Breaking and Entering" offense category. Narcotics and marijuana cases, which contributed to the increase in the DAPCA offense category, showed a 29.8 percent and a 13.1 percent increase, respectively. Appendix Table D-2 provides the number of cases filed for each major offense category during the twelve month period ended September 30, 1983.

Criminal Cases Pending

As of September 30, 1983, there were 19,291 cases reported as pending in the U.S. district court. This is a 9.8 percent increase over the 17,565 cases pending last year. Districts showing a 50 percent or more increase in cases pending were Maine (97.1 percent); Wyoming (80.8 percent); Tennessee, Eastern (67.3 percent); Hawaii (61.0 percent); Oklahoma, Eastern (53.6 percent); and Arkansas, Western (52.4 percent). The increase in cases pending in Maine; Arkansas, Western; Hawaii and Wyoming reflects the low rate of cases terminated during this twelve month period compared to the increase in filings this period for those districts.

Filings and Terminations by Quarter

Case filings for the quarter ended September 30, 1983 showed a decline consistent with the previous three quarters. There were 8,192 cases filed this quarter, a 16.9 percent decrease compared to 9,859 cases filed the quarter ended June 30, 1983. Case terminations which showed a constant increase over the previous three quarters, decreased 26.6 percent in the most recent quarter. Table 9 is a summary of criminal filings and terminations, by quarter, for the twelve month period ended September 30, 1983.

Table 9
Criminal Filings and Terminations, by Quarter
(Include Transfers)
For the Twelve Month Period Ended September 30, 1983

Filings and Terminations	Quarter Ended (Dec. 1982)	Quarter Ended (March 1983)	Quarter Ended (June 1983)	Quarter Ended (Sept. 1983)
Case Filings	7,008	10,331	9,859	8,192
Case Terminations	7,127	8,860	10,193	7,484
Filings for Defendants	10,211	13,450	13,417	11,411
Terminations for Defendants	9,952	11,765	13,938	10,221

CASES AND MOTIONS UNDER ADVISEMENT IN U.S. DISTRICT COURTS

For the third quarter of calendar year 1983, U.S. district judges reported 1,614 matters held under advisement over 60 days, a 24.4 percent increase over the 1,297 matters reported last year. There were 540 district judges, including 124 senior judges, who reported on the status of matters before the court, compared to 514 district judges for the same quarter last year (see Table 10). While 333 judges (61.7 percent) reported no matters held under advisement over 60 days, 207 judges (38.3 percent) reported matters held under advisement on September 30, 1983.

The 207 judges having matters held under advisement reported a total of 1,614 cases and motions. Of these, 997 cases and motions (61.8 percent) were held under advisement over 60 days but not more than six months; 441 cases and motions (27.3 percent) were held under advisement over six months but not more than one year; and 176 cases and motions (10.9 percent) were held over one year. The district judges of the Sixth Circuit reported the largest number of matters held under advisement with a total of 347 matters or 21.5 percent, while district judges in the District of Columbia Circuit reported 30 cases or 1.9 percent of all matters reported.

Table 10
U.S. District Courts
District Judges Reporting on Cases and Motions Held Under Advisement Over
60 Days On September 30, 1982 and 1983

Circuit	Total Judges Reporting	Senior Judges Reporting ¹	Judges not Reporting ²	Judges Having no Cases over 60 Days	Judges Having Cases over 60 Days
Total on September 30, 1983	540	124	85	333	207
District of Columbia	17	7	4	10	7
First	24	4	2	13	11
Second	55	11	6	28	27
Third	54	11	4	37	17
Fourth	49	9	2	36	13
Fifth	56	11	11	29	27
Sixth	44	9	17	21	23
Seventh	34	9	9	12	22
Eighth	46	13	2	34	12
Ninth	74	20	18	52	22
Tenth	35	12	5	26	9
Eleventh	52	8	5	35	17
Total on September 30, 1982	514	121	102	317	197

¹ Included in total.

² Does not include Senior Judges.

Table 11 provides the distribution by circuit of cases and motions held under advisement over 60 days in the U.S. district courts on September 30, 1983.

Table 11
U.S. District Courts
Cases and Motions Held Under Advisement Over 60 Days
On September 30, 1982 and 1983
Which Have Not Been Reported As Decided

Circuit	Total Held Over 60 Days	Held Over 60 Days not more than 6 Months	Held Over 6 Months not more than 1 Year	Held Over 1 Year
Total on September 30, 1983	1,614	997	441	176
District of Columbia	30	16	13	1
First	77	42	17	18
Second	244	186	46	12
Third	62	43	10	9
Fourth	40	23	8	9
Fifth	122	55	40	27
Sixth	347	183	141	23
Seventh	308	201	59	48
Eighth	49	35	10	4
Ninth	123	72	37	14
Tenth	79	52	24	3
Eleventh	133	89	36	8
Total on September 30, 1982	1,297	869	289	139

U.S. BANKRUPTCY COURTS

Summary of Workload

During the twelve month period ended September 30, 1983, the number of estates filed in the U.S. bankruptcy courts decreased to 515,477, down 3.9 percent from the 1982 level of 536,392. The number of estates terminated rose slightly to 439,395, up 1.0 percent compared to last year. The pending estate caseload continued an upward trend reaching an all-time high of 825,763. This is 10.1 percent above the 749,681 estates pending one year ago. Table 12 provides a comparison of the bankruptcy estate workload during the twelve month periods ended September 30, 1982 and 1983. Appendix Tables F-1, F-3A, and F-3B provide more detailed information on the bankruptcy workload for the twelve month period ended September 30, 1983.

Table 12
U.S. Bankruptcy Courts
Bankruptcy Estates Filed, Terminated, and Pending
During the Twelve Month Periods Ended
September 30, 1982 and 1983

Year	Filings	Terminations	Pending
1982	536,392	434,932	749,681*
1983	515,477	439,395	825,763
Percent Change 1983 over 1982			
	-3.9	1.0	10.1

* Revised.

Bankruptcy Filings Down 3.9 Percent

For the first time since the Bankruptcy Reform Act (P.L. 95-598) became effective on October 1, 1979, the number of bankruptcy estate filings declined. During the twelve month period ended September 30, 1983, a total of 515,477 estates were commenced in the U.S. bankruptcy courts. This figure represents a decrease of 20,915 estates from the 536,392 filed in 1982. The total estates filed includes 362,051 Code cases (153,157 of which are joint petitions) and 269 Act cases reopened during the period. Table 13 is a summary of estate increases or decreases for the first four complete years under the Bankruptcy Reform Act of 1978.

Table 13
U.S. Bankruptcy Courts
Bankruptcy Estates Filed
During the Twelve Month Periods Ended
September 30, 1980 through 1983

Year	Number of Estates	Increase or Decrease	Percent Change
1980	421,676	181,022	75.2
1981	522,537	100,861	23.9
1982	536,392	13,855	2.7
1983	515,477	-20,915	-3.9

Table 14 provides a comparison, by district, of bankruptcy cases and joint petitions filed during the twelve month periods ended September 30, 1982 and 1983. Increases in case filings were registered in 36 districts in spite of the overall decrease in filing activity. The largest increases were in California, Central (up 3,122 cases); Texas, Southern (up 1,546 cases); Oklahoma, Western (up 918 cases); and California, Southern (up 823 cases).

Table 14
 U.S. Bankruptcy Courts
 Bankruptcy Code Cases, Joint Petitions, and Adversary Proceedings Filed
 Under the Bankruptcy Code
 During the Twelve Month Periods Ended September 30, 1982 and 1983

Circuit and District	Bankruptcy Cases			Joint Petitions			Adversary Proceedings		
	1982	1983	Percent Change	1982	1983	Percent Change	1982	1983	Percent Change
Total	373,837	362,051	-3.2	162,157	153,157	-5.6	149,311	155,146	3.9
DC	708	791	11.7	88	114	29.5	473	456	-3.6
1st Cir.	7,833	7,089	-9.5	3,156	2,879	-8.8	4,014	4,009	-0.1
ME	877	687	-21.7	379	311	-17.9	559	532	-4.8
MA	3,376	2,708	-19.8	1,152	845	-26.6	1,814	1,635	-9.9
NH	731	590	-19.3	308	249	-19.2	430	301	-30.0
RI	1,073	975	-9.1	324	289	-10.8	532	415	-22.0
PR	1,776	2,129	19.9	993	1,185	19.3	679	1,126	65.8
2nd Cir.	23,951	18,692	-22.0	8,502	6,027	-29.1	7,521	6,599	-12.3
CT	2,707	2,269	-16.2	858	561	-34.6	1,483	1,186	-20.0
NY, N	4,758	3,466	-27.2	2,215	1,474	-33.5	1,148	840	-26.8
NY, E	6,737	5,152	-23.5	2,212	1,467	-33.7	1,593	1,520	-4.6
NY, S	4,083	3,225	-21.0	762	564	-26.0	1,900	1,841	-3.1
NY, W	5,375	4,321	-19.6	2,336	1,843	-21.1	1,185	1,076	-9.2
VT	291	259	-11.0	119	118	-0.8	212	136	-35.8
3rd Cir.	22,374	19,366	-13.4	10,507	8,108	-22.8	12,121	12,662	4.5
DE	503	492	-2.2	219	204	-6.8	130	104	-20.0
NJ	8,700	7,867	-9.6	3,617	2,862	-20.9	4,223	3,853	-8.8
PA, E	6,050	5,444	-10.0	2,567	2,067	-19.5	3,097	4,774	54.1
PA, M	2,141	1,872	-12.6	1,159	1,001	-13.6	1,410	1,335	-5.3
PA, W	4,966	3,657	-26.4	2,942	1,969	-33.1	3,259	2,589	-20.6
VI	14	34	142.9	3	5	66.7	2	7	250.0
4th Cir.	24,946	22,889	-8.2	11,085	9,782	-11.8	12,237	10,964	-10.4
MD	4,203	4,247	1.0	1,594	1,614	1.3	2,984	2,597	-13.0
NC, E	2,600	2,267	-12.8	1,324	1,113	-15.9	899	806	-10.3
NC, M	2,398	1,850	-22.9	1,099	783	-28.8	870	728	-16.3
NC, W	1,830	1,484	-18.9	985	778	-21.0	1,364	1,164	-14.7
SC	2,204	2,031	-7.8	1,060	881	-16.9	1,398	1,416	1.3
VA, E	6,157	5,792	-5.9	2,246	2,023	-9.9	1,949	1,815	-6.9
VA, W	3,361	3,088	-8.1	1,563	1,390	-11.1	1,367	1,237	-9.5
WV, N	966	731	-24.3	573	410	-28.4	814	490	-39.8
WV, S	1,227	1,399	14.0	641	790	23.2	592	711	20.1
5th Cir.	22,097	24,784	12.2	10,795	12,136	12.4	8,547	11,272	31.9
LA, E	2,662	2,940	10.4	1,158	1,395	20.5	416	626	50.5
LA, M	746	856	14.7	350	381	8.9	261	309	18.4
LA, W	2,567	3,084	20.1	1,377	1,719	24.8	444	665	49.8
MS, N	1,305	1,230	-5.7	630	536	-14.9	474	399	-15.8
MS, S	4,072	3,731	-8.4	1,715	1,556	-9.3	821	853	3.9
TX, N	3,608	3,838	6.4	1,726	1,813	5.0	2,420	2,856	18.0
TX, E	666	822	23.4	397	458	15.4	300	559	86.3
TX, S	3,853	5,399	40.1	1,965	2,697	37.3	2,021	3,163	56.5
TX, W	2,618	2,884	10.2	1,477	1,581	7.0	1,390	1,842	32.5
6th Cir.	62,716	55,047	-12.2	27,241	23,023	-15.5	18,809	18,561	-1.3
KY, E	2,825	2,542	-10.0	1,473	1,288	-12.6	561	575	2.5
KY, W	4,461	4,062	-8.9	2,133	1,820	-14.7	723	660	-8.7
MI, E	9,583	8,161	-14.8	3,185	2,643	-17.0	3,455	3,540	2.5
MI, W	4,450	3,760	-15.5	2,072	1,694	-18.2	2,224	2,110	-5.1
OH, N	13,891	11,153	-19.7	6,655	5,256	-21.0	4,870	4,836	-0.7
OH, S	12,358	10,869	-12.0	6,049	5,057	-16.4	2,294	2,451	6.8
TN, E	4,615	4,609	-0.1	2,097	2,043	-2.6	2,239	1,987	-11.3
TN, M	4,210	3,745	-11.0	1,606	1,437	-10.5	855	831	-2.8
TN, W	6,323	6,146	-2.8	1,971	1,785	-9.4	1,588	1,571	-1.1

Table 14
 U.S. Bankruptcy Courts
 Bankruptcy Code Cases, Joint Petitions, and Adversary Proceedings Filed
 Under the Bankruptcy Code
 During the Twelve Month Periods Ended September 30, 1982 and 1983
 (continued)

Circuit and District	Bankruptcy Cases			Joint Petitions			Adversary Proceedings		
	1982	1983	Percent Change	1982	1983	Percent Change	1982	1983	Percent Change
7th Cir.	44,456	44,153	-0.7	18,754	18,184	-3.0	12,222	10,735	-12.2
IL, N	18,469	17,748	-3.9	6,411	5,855	-8.7	5,013	4,158	-17.1
IL, C	4,874	4,815	-1.2	2,576	2,513	-2.4	1,208	1,029	-14.8
IL, S	1,649	1,736	5.3	858	884	3.0	589	559	-5.1
IN, N	5,381	5,280	-1.9	2,506	2,387	-4.7	737	824	11.8
IN, S	7,364	7,375	0.1	3,379	3,318	-1.8	2,577	2,268	-12.0
WI, E	4,472	4,973	11.2	1,841	2,055	11.6	1,756	1,577	-10.2
WI, W	2,247	2,226	-0.9	1,183	1,172	-0.9	342	320	-6.4
8th Cir.	23,391	21,418	-8.4	11,823	10,604	-10.3	9,902	8,854	-10.6
AR, E	2,004	2,063	2.9	894	987	10.4	758	693	-8.6
AR, W	797	832	4.4	452	450	-0.4	364	317	-12.9
IA, N	1,685	1,660	-1.5	970	978	0.8	1,106	1,050	-5.1
IA, S	1,900	1,841	-3.1	1,051	1,028	-2.2	616	616	-
MN	5,353	4,825	-9.9	2,620	2,273	-13.2	1,380	1,279	-7.3
MO, E	3,811	2,900	-23.9	1,597	1,121	-29.8	1,353	1,127	-16.7
MO, W	4,055	3,554	-12.4	2,105	1,760	-16.4	2,143	1,711	-20.2
NE	2,316	2,271	-1.9	1,307	1,211	-7.3	871	870	-0.1
ND	688	660	-4.1	372	355	-4.6	413	491	18.9
SD	782	812	3.8	455	441	-3.1	898	700	-22.0
9th Cir.	88,876	94,071	5.8	39,067	40,457	3.6	42,259	47,763	13.0
AK	374	344	-8.0	98	89	-9.2	593	552	-6.9
AZ	4,768	5,182	8.7	2,452	2,640	7.7	1,969	2,486	26.3
CA, N	14,172	14,134	-0.3	5,433	5,116	-5.8	6,443	7,371	14.4
CA, E	10,459	10,898	4.2	5,672	5,794	2.2	4,596	5,398	17.4
CA, C	32,136	35,258	9.7	11,961	13,107	9.6	18,361	20,860	13.6
CA, S	5,384	6,207	15.3	2,272	2,657	16.9	2,961	3,480	17.5
HI	740	671	-9.3	246	222	-9.8	240	272	13.3
ID	2,439	2,230	-8.6	1,583	1,400	-11.6	928	985	6.1
MT	902	1,024	13.5	485	556	14.6	338	235	-30.5
NV	2,722	2,963	8.9	1,149	1,250	8.8	1,187	1,507	27.0
OR	5,886	5,967	1.4	3,165	3,048	-3.7	1,403	1,726	23.0
WA, E	2,413	2,356	-2.4	1,274	1,155	-9.3	864	778	-10.0
WA, W	6,453	6,796	5.3	3,266	3,419	4.7	2,353	2,101	-10.7
GU	28	40	42.9	11	13	18.2	23	12	-47.8
NMI	-	1	-	-	1	-	-	12	-
10th Cir.	20,086	22,191	10.5	10,171	11,263	10.7	8,203	10,706	30.5
CO	5,927	6,072	2.4	2,916	2,927	0.4	2,629	2,489	-5.3
KS	4,375	4,249	-2.9	2,359	2,259	-4.2	1,670	1,696	1.6
NM	1,361	1,552	14.0	735	848	15.4	959	883	-7.9
OK, N	1,578	1,929	22.2	761	973	27.9	777	916	17.9
OK, E	518	649	25.3	291	382	31.3	140	202	44.3
OK, W	2,430	3,348	37.8	1,114	1,582	42.0	443	1,066	140.6
UT	3,300	3,573	8.3	1,674	1,837	9.7	1,462	3,338	128.3
WY	597	819	37.2	321	455	41.7	123	116	-5.7
11th Cir.	32,403	31,560	-2.6	10,988	10,570	-3.8	13,003	12,565	-3.4
AL, N	7,665	7,444	-2.9	2,320	2,358	1.6	1,491	1,552	4.1
AL, M	2,170	1,775	-18.2	823	657	-20.2	617	507	-17.8
AL, S	1,342	1,322	-1.5	499	480	-3.8	851	672	-21.0
FL, N	563	558	-0.9	196	229	16.8	309	277	-10.4
FL, M	4,990	4,838	-3.0	1,995	1,987	-0.4	2,055	2,310	12.4
FL, S	2,506	2,450	-2.2	786	683	-13.1	1,135	1,163	2.5
GA, N	7,807	7,844	0.5	2,527	2,518	-0.4	4,235	3,963	-6.4
GA, M	3,254	3,209	-1.4	1,148	1,027	-10.4	1,650	1,457	-11.7
GA, S	2,106	2,122	0.8	676	663	-1.9	660	664	0.6

Filings by Quarter

During the three month period July through September 1983, a total of 118,997 estates were commenced, down 8.1 percent from the previous quarter and down 14.5 percent from the 139,117 estates filed during the first quarter a year ago. The 118,997 estates filed during the period July through September 1983 is the lowest for any three month period since 1980. Table 15 is a summary, by quarter, of the number of bankruptcy estates filed from July 1, 1977 through September 30, 1983.

Table 15
U.S. Bankruptcy Courts
Bankruptcy Estates Filed by Quarter,
1978 through 1984

Statistical Year	First Quarter (Jul-Sept)	Second Quarter (Oct-Dec)	Third Quarter (Jan-Mar)	Fourth Quarter (Apr-Jun)	Twelve Month Total
1978	52,531	49,541	47,454	53,425	202,951
1979	52,098	55,275	55,544	63,559	226,476
1980	66,346	76,796	96,475	121,340	360,957
1981	127,071	127,533	130,545	133,914	519,063
1982	130,538	128,967	130,441	137,867	527,811
1983	139,117	138,048	128,914	129,518	535,597
1984	118,997	-	-	-	-
Percent Change 1984 over 1983	-14.5	-	-	-	-
Percent Change 1983 over 1982	6.6	7.0	-1.2	-6.1	1.5
1978	164.8	178.7	171.7	142.4	163.9

Business and Non-Business Filings by Chapter

Despite the decrease in overall filings during this period, Chapter 11 business and non-business reorganization filings rose substantially in 1983 to 24,892, up 28.8 percent compared to a year ago. On the other hand, Chapter 13 filings experienced slight decreases, down 3.9 percent. The most significant drop in filings occurred in non-business Chapter 7 cases, down 16,665 cases or 5.4 percent compared to the same period last year. Table 16 summarizes estate filings by chapter of the Bankruptcy Code during the twelve month periods ended September 30, 1981 through 1983.

Table 16
U.S. Bankruptcy Courts
Business and Non-Business Estate Filings
By Chapter of the Bankruptcy Code
During the Twelve Month Periods Ended September 30, 1981 through 1983

Year	Total Filings*	Chapter 7	Chapter 11	Chapter 13	Other
1981 Total	521,770	380,191	9,685	131,890	4
Non-Business	456,390	331,029	1,131	124,230	-
Business	65,380	49,162	8,554	7,660	4
1982 Total	535,994	368,273	19,319	148,394	8
Non-Business	448,543	308,316	2,753	137,474	-
Business	87,451	59,957	16,566	10,920	8
1983 Total	515,208	347,715	24,892	142,595	6
Non-Business	428,070	291,651	4,600	131,819	-
Business	87,138	56,064	20,292	10,770	6
Percent Change 1983 Total over 1982	-3.9	-5.8	28.8	-3.9	-

* Excluded are cases originally filed under the Bankruptcy Act and reopened after implementation of the Bankruptcy Reform Act of 1978.

Bankruptcy Terminations Rise Only 1.0 Percent

During the twelve month period ended September 30, 1983, termination activity in the U.S. bankruptcy courts increased slightly to 439,395 estates, up 1.0 percent over the 434,932 recorded last year. The 1983 total is comprised of 294,182 Code cases (which includes 126,637 joint petitions) and 18,576 Act cases originally filed prior to the Bankruptcy Reform Act of 1978.

Pending Estates

The pending estate caseload as of September 30, 1983 rose to 825,763 estates, up 76,082 from the 749,681 estates pending last year. The 10.1 percent rate of increase, however, is lower than the 15.5 percent rate recorded in 1982. The current pending totals include 549,876 Bankruptcy Code cases (240,967 of which are joint petitions) and 34,920 Act cases. California, Central and California, Southern reported the most significant rise in pending cases over the past year, up 21,657 and 5,140 estates, respectively.

Adversary Proceedings

During the twelve month period ended September 30, 1983, a total of 155,146 adversary proceedings were filed in the U.S. bankruptcy courts, a rise of 5,835 or 3.9 percent over the 149,311 in 1982. The number of adversary proceedings terminated rose significantly from 99,884 in 1982 to 131,442, up 31.6 percent compared to a year ago. Despite the substantial increase in termination activity, the pending adversary proceeding caseload reached a record high of 140,946 as of September 30, 1983, up 20.2 percent over the 117,242 recorded a year ago. A summary of the adversary proceeding workload during the twelve month periods ended September 30, 1981 through 1983 is provided in Table 17. Additional data is also provided in Table 14 showing a comparison, by district, of adversary proceedings filed in 1982 and 1983. Appendix Table F-AP provides a summary of the adversary proceeding activity, by district, during the twelve month period ended September 30, 1983.

A change in the Rules of Bankruptcy Procedure, effective August 1, 1983, altered the procedure by which requests for relief from automatic stays and Section 522(f) requests by debtors to avoid liens are brought before the court. These matters are no longer instituted by complaint, but are brought on by motion. Because of this change, these matters are no longer counted as adversary proceedings (as of August 1, 1983). A total of 18,071 such matters were filed during August and September 1983.

Table 17
U.S. Bankruptcy Courts
Bankruptcy Adversary Proceedings
Filed, Terminated, and Pending
During the Twelve Month Periods Ended
September 30, 1981 through 1983

Year	Filed	Terminated	Pending
1981	106,758	69,212	67,815
1982	149,311	99,884	117,242
1983	155,146	131,442	140,946
Percent Change 1983 over 1982	3.9	31.6	20.2

Note: As a result of a change in the Rules of Bankruptcy Procedure, effective August 1, 1983, requests for relief from automatic stays and Section 522(f) requests by debtors to avoid liens are brought before the court as motions instead of adversary proceedings.

**APPENDIX
OF
DETAILED
STATISTICAL TABLES**

**DURING THE TWELVE MONTH PERIOD
ENDED SEPTEMBER 30, 1983**

TABLE B-1. U.S. COURTS OF APPEALS
CASES COMMENCED AND TERMINATED DURING THE TWELVE MONTH PERIOD ENDED SEP. 30, 1983, BY CIRCUIT

CIRCUIT AND NATURE OF PROCEEDING	CASES PENDING OCT. 1 1982	CASES COM-MENCED	CASES TERM-INATED	CASES PENDING SEP. 30 1983	CASES DISPOSED OF BY CONSOLIDATION			CASES DISPOSED OF WITHOUT HEARING OR SUBMISSION			CASES DISPOSED OF AFTER HEARING OR SUBMISSION					PCT. REV.
					TOTAL	W/O JUD. ACT.	W/ JUD. ACT.	TOTAL	W/O JUD. ACT.	W/ JUD. ACT.	TOTAL	AFFIRM OR GRANTED	DIS- MISSED	REV. OR DENIED	OTHER	
ALL CIRCUITS.....	21,775	30,387	29,666	22,496	4,175	499	3,676	11,830	5,937	5,893	13,561	10,519	570	2,248	324	16.0
CRIMINAL.....	4,049	4,775	4,876	3,948	1,018	63	955	976	518	458	2,882	2,527	53	268	34	9.3
U. S. PRISONER PETITIONS	741	1,357	1,323	775	72	7	65	754	344	410	497	417	19	49	12	9.9
OTHER U. S. CIVIL.....	3,136	4,690	4,494	3,322	670	106	562	1,736	1,028	708	2,088	1,477	58	489	64	23.4
PRIV. PRISONER PETITIONS	2,304	4,395	4,070	2,629	178	17	161	2,286	721	1,565	1,606	1,247	61	247	51	15.4
OTHER PRIVATE CIVIL.....	7,834	10,616	10,101	8,349	1,543	251	1,292	3,708	2,463	1,245	4,850	3,670	196	888	96	18.3
BANKRUPTCY.....	426	775	657	542	87	14	73	254	187	67	316	222	21	70	3	22.2
ADMINISTRATIVE APPEALS.....	3,163	2,943	3,310	2,796	580	39	541	1,395	626	769	1,335	954	162	155	64	11.6
ORIGINAL PROCEEDINGS.....	122	838	835	125	27	-	27	721	50	671	87	5	-	82	-	-
DISTRICT OF COLUMBIA.....	1,466	1,435	1,514	1,387	350	45	305	669	146	523	495	349	28	71	47	14.2
CRIMINAL.....	78	60	85	53	16	1	15	26	1	25	43	39	1	1	2	2.3
U. S. PRISONER PETITIONS	20	39	44	15	4	-	4	35	5	30	5	3	-	2	-	-
OTHER U. S. CIVIL.....	358	406	474	292	113	22	91	187	42	145	174	120	5	35	14	20.1
PRIV. PRISONER PETITIONS	14	25	29	10	3	-	3	24	3	21	2	1	-	-	1	-
OTHER PRIVATE CIVIL.....	155	247	200	202	35	5	30	95	21	74	70	51	1	12	6	17.1
BANKRUPTCY.....	6	17	6	17	1	-	1	-	-	-	5	4	-	-	1	-
ADMINISTRATIVE APPEALS.....	824	596	629	791	173	17	156	261	74	187	195	131	21	20	23	10.3
ORIGINAL PROCEEDINGS.....	11	43	47	7	5	-	5	41	-	41	1	-	-	1	-	-
FIRST CIRCUIT.....	538	963	954	547	159	13	146	352	220	132	443	337	13	86	7	19.2
CRIMINAL.....	131	175	177	129	59	1	58	45	37	8	73	61	1	10	1	13.7
U. S. PRISONER PETITIONS	5	29	23	11	2	-	2	13	4	9	8	6	1	1	-	-
OTHER U. S. CIVIL.....	67	255	206	116	10	3	7	95	55	40	101	79	2	17	2	16.8
PRIV. PRISONER PETITIONS	27	52	48	31	1	-	1	21	14	7	26	20	-	6	-	23.1
OTHER PRIVATE CIVIL.....	247	347	388	206	75	8	67	122	79	43	191	137	6	44	4	23.0
BANKRUPTCY.....	13	21	23	11	1	-	1	8	4	4	14	8	1	5	-	35.7
ADMINISTRATIVE APPEALS.....	46	63	68	41	8	1	7	31	23	8	29	26	1	2	-	6.9
ORIGINAL PROCEEDINGS.....	2	21	21	2	3	-	3	17	4	13	1	-	-	1	-	-
SECOND CIRCUIT.....	1,024	2,868	2,797	1,095	287	37	250	1,280	832	448	1,230	920	40	232	38	14.5
CRIMINAL.....	250	495	494	251	107	8	99	111	89	22	276	239	5	27	5	9.8
U. S. PRISONER PETITIONS	27	127	102	52	1	-	1	60	44	16	41	35	2	4	-	9.8
OTHER U. S. CIVIL.....	127	416	401	142	41	8	33	185	120	65	175	134	1	38	2	21.7
PRIV. PRISONER PETITIONS	147	339	351	135	4	-	4	207	108	99	140	107	5	17	11	12.1
OTHER PRIVATE CIVIL.....	362	1,103	1,071	394	98	19	79	540	377	163	433	325	22	70	16	16.2
BANKRUPTCY.....	13	71	50	34	6	1	5	29	19	10	15	13	1	1	-	6.7
ADMINISTRATIVE APPEALS.....	83	241	244	80	29	1	28	129	66	63	86	66	4	12	4	14.0
ORIGINAL PROCEEDINGS.....	15	76	84	7	1	-	1	19	9	10	64	1	-	63	-	-
THIRD CIRCUIT.....	1,462	2,580	2,548	1,494	212	27	185	1,101	504	597	1,235	972	91	146	26	11.6
CRIMINAL.....	252	411	404	259	49	3	46	67	40	27	288	260	4	22	2	7.6
U. S. PRISONER PETITIONS	79	116	144	51	1	-	1	81	33	48	62	54	5	3	-	4.8
OTHER U. S. CIVIL.....	162	326	280	208	19	-	19	100	68	32	161	113	7	36	5	22.4
PRIV. PRISONER PETITIONS	205	335	391	149	4	-	4	266	70	196	121	101	7	10	3	8.3
OTHER PRIVATE CIVIL.....	557	1,029	947	639	99	19	80	387	230	157	461	359	30	61	11	13.2
BANKRUPTCY.....	20	79	57	42	3	-	3	23	21	2	31	25	1	5	-	16.1
ADMINISTRATIVE APPEALS.....	177	210	245	142	37	5	32	101	40	61	107	59	37	6	5	5.6
ORIGINAL PROCEEDINGS.....	10	74	80	4	-	-	-	76	2	74	4	1	-	3	-	-
FOURTH CIRCUIT.....	1,747	2,406	2,361	1,792	354	26	328	1,253	343	910	754	563	18	162	11	21.5
CRIMINAL.....	368	333	337	364	77	-	77	60	43	17	200	177	3	17	3	8.5
U. S. PRISONER PETITIONS	83	149	139	93	15	-	15	108	8	100	16	11	-	4	1	25.0
OTHER U. S. CIVIL.....	179	328	258	249	27	8	19	114	68	46	117	78	2	36	1	30.8
PRIV. PRISONER PETITIONS	371	661	684	348	52	4	48	569	19	550	63	44	3	15	1	23.8
OTHER PRIVATE CIVIL.....	505	687	612	500	76	13	63	247	145	102	289	208	3	75	3	26.0
BANKRUPTCY.....	27	56	43	40	4	1	3	23	17	6	16	10	-	6	-	37.5
ADMINISTRATIVE APPEALS.....	204	144	245	103	100	-	100	92	43	49	53	35	7	9	2	17.0
ORIGINAL PROCEEDINGS.....	10	48	43	15	3	-	3	40	-	40	-	-	-	-	-	-
FIFTH CIRCUIT.....	2,200	3,416	3,265	2,351	407	47	360	1,185	661	524	1,673	1,267	67	311	28	18.6
CRIMINAL.....	244	403	400	247	11	4	7	80	54	36	299	258	9	27	5	9.0
U. S. PRISONER PETITIONS	41	67	73	35	5	1	4	29	22	7	39	31	-	7	1	17.9
OTHER U. S. CIVIL.....	273	327	371	229	62	3	59	114	99	15	195	131	7	53	4	27.2
PRIV. PRISONER PETITIONS	183	721	583	321	7	-	7	352	132	220	224	161	16	44	3	9.6
OTHER PRIVATE CIVIL.....	1,102	1,450	1,328	1,224	215	36	179	352	274	78	761	579	23	146	13	18.2
BANKRUPTCY.....	26	92	71	47	21	3	18	15	11	4	35	24	4	7	-	20.0
ADMINISTRATIVE APPEALS.....	329	268	354	243	84	-	84	151	64	87	119	82	8	27	2	22.7
ORIGINAL PROCEEDINGS.....	2	88	85	5	2	-	2	82	5	77	1	1	-	-	-	-

TABLE B-1. U.S. COURTS OF APPEALS
CASES COMMENCED AND TERMINATED DURING THE TWELVE MONTH PERIOD ENDED SEP. 30, 1983, BY CIRCUIT

CIRCUIT AND NATURE OF PROCEEDING	CASES PENDING OCT. 1 1982	CASES COM-MENCED	CASES TERM-INATED	CASES PENDING SEP. 30 1983	CASES DISPOSED OF BY CONSOLIDATION			CASES DISPOSED OF WITHOUT HEARING OR SUBMISSION			CASES DISPOSED OF AFTER HEARING OR SUBMISSION					PCT. REV.
					TOTAL	W/O JUD. ACT.	W/ JUD. ACT.	TOTAL	W/O JUD. ACT.	W/ JUD. ACT.	TOTAL	AFFIRM OR GRANTED	DIS- MISSED	REV. OR DENIED	OTHER	
SIXTH CIRCUIT.....	2,580	2,833	2,858	2,555	277	21	256	947	619	328	1,634	1,312	29	255	38	15.6
CRIMINAL.....	379	384	431	332	71	-	71	103	59	44	257	232	2	22	1	8.6
U. S. PRISONER PETITIONS	125	121	149	97	6	-	6	39	26	13	104	95	2	7	-	6.7
OTHER U. S. CIVIL.....	361	449	412	388	30	2	28	137	83	54	245	187	5	41	12	16.7
PRIV. PRISONER PETITIONS	370	471	468	373	14	-	14	105	54	51	349	284	4	50	11	14.3
OTHER PRIVATE CIVIL.....	993	1,040	1,042	991	124	16	108	392	298	94	526	403	4	100	9	19.0
BANKRUPTCY.....	56	77	62	71	10	-	10	25	21	4	27	16	-	11	-	40.7
ADMINISTRATIVE APPEALS.....	291	259	273	277	21	3	18	127	74	53	125	95	2	23	5	18.4
ORIGINAL PROCEEDINGS.....	5	32	21	16	1	-	1	19	4	15	1	-	-	1	-	-
SEVENTH CIRCUIT.....	1,714	2,352	2,209	1,857	299	77	222	862	364	498	1,048	818	49	164	17	15.6
CRIMINAL.....	262	341	293	310	57	8	49	65	28	37	171	162	2	7	-	4.1
U. S. PRISONER PETITIONS	136	193	197	132	17	6	11	124	43	81	56	45	1	5	5	8.9
OTHER U. S. CIVIL.....	191	271	258	204	49	18	31	93								

TABLE C 1. U. S. DISTRICT COURTS
CIVIL CASES COMMENCED, TERMINATED AND PENDING DURING THE TWELVE MONTH PERIOD ENDED SEP. 30, 1983

CIRCUIT AND DISTRICT	TOTAL CIVIL CASES				U. S. CIVIL CASES				PRIVATE CIVIL CASES			
	PENDING SEP. 30, 1982	COM-MENCED	TERMI-NATED	PENDING SEP. 30, 1983	PENDING SEP. 30, 1982	COM-MENCED	TERMI-NATED	PENDING SEP. 30, 1983	PENDING SEP. 30, 1982	COM-MENCED	TERMI-NATED	PENDING SEP. 30, 1983
TOTAL...	211,959	250,855	219,780	243,034	58,098	103,485	86,047	75,536	153,861	147,370	133,733	167,498
DC.....	3,055	3,986	3,850	3,193	1,265	1,458	1,415	1,308	1,790	2,530	2,435	1,885
1ST...	11,441	10,553	9,253	12,741	2,969	4,297	3,634	3,632	8,472	6,256	5,619	9,109
ME.....	850	911	756	1,005	269	502	421	350	581	409	335	655
MA.....	6,443	4,686	3,412	7,717	1,447	1,761	1,372	1,836	4,996	2,925	2,040	5,881
NH.....	728	850	784	794	154	368	303	219	574	482	481	575
RI.....	1,412	808	1,205	1,015	298	317	378	237	1,114	491	827	778
PR.....	2,008	3,298	3,096	2,210	801	1,349	1,160	990	1,207	1,949	1,936	1,220
2ND...	23,314	22,019	18,668	26,665	5,024	6,759	5,253	6,530	18,290	15,260	13,415	20,135
CT.....	4,015	2,700	2,407	4,308	893	948	892	949	3,122	1,752	1,515	3,359
NY, N.....	2,171	1,765	1,303	2,633	574	511	390	695	1,597	1,254	913	1,938
NY, E.....	5,210	5,848	4,460	6,598	1,710	2,936	2,103	2,543	3,500	2,912	2,357	4,055
NY, S.....	9,548	9,803	8,951	10,400	1,218	1,623	1,262	1,579	8,330	8,180	7,689	8,821
NY, W.....	1,843	1,431	1,120	2,154	455	518	385	588	1,388	913	735	1,566
VT.....	527	472	427	572	174	223	221	176	353	249	206	396
3RD...	14,301	18,703	16,508	16,496	2,549	5,368	4,073	3,844	11,752	13,335	12,435	12,652
DE.....	752	864	835	781	109	215	174	150	643	649	661	631
NJ.....	3,682	5,044	4,054	4,672	826	1,606	1,172	1,260	2,856	3,438	2,882	3,412
PA, E.....	5,095	6,487	6,194	5,388	691	1,107	894	904	4,404	5,380	5,300	4,484
PA, M.....	1,296	1,901	1,626	1,571	361	803	603	561	935	1,098	1,023	1,010
PA, W.....	2,155	3,701	3,069	2,787	539	1,627	1,216	950	1,616	2,074	1,853	1,837
VI.....	1,321	706	730	1,297	23	10	14	19	1,298	696	716	1,278
4TH...	16,209	22,642	20,088	18,763	5,152	10,844	8,966	7,030	11,057	11,798	11,102	11,753
MD.....	3,650	4,350	3,906	4,094	933	1,759	1,766	926	2,717	2,591	2,140	3,168
NC, E.....	1,392	2,366	2,246	1,512	498	1,410	1,193	715	894	956	1,053	797
NC, M.....	793	1,425	1,210	1,008	304	1,006	784	526	489	419	426	482
NC, W.....	841	1,887	1,613	1,115	327	1,250	970	607	514	637	643	508
SC.....	2,870	3,564	3,340	3,094	1,090	1,636	1,384	1,342	1,780	1,928	1,956	1,752
VA, E.....	2,094	3,350	3,204	2,240	402	770	599	573	1,692	2,580	2,605	1,667
VA, M.....	1,535	2,819	2,451	1,903	551	1,720	1,383	888	984	1,099	1,066	1,015
VA, W.....	1,133	906	610	1,429	450	464	265	649	683	442	345	780
WV, N.....	1,133	906	610	1,429	450	464	265	649	1,304	1,146	866	1,584
WV, S.....	1,901	1,975	1,488	2,388	597	829	622	804				
5TH...	30,422	33,484	26,657	37,246	5,008	12,583	8,604	8,987	25,414	20,901	18,053	28,262
LA, E.....	6,895	6,720	6,174	7,441	638	1,681	1,438	881	6,257	5,039	4,736	6,560
LA, M.....	1,214	1,364	1,125	1,453	123	345	312	156	1,091	1,019	813	1,297
LA, W.....	2,823	3,167	2,801	3,189	604	1,198	1,086	716	2,219	1,969	1,715	2,473
MS, N.....	1,047	1,433	1,184	1,296	268	625	428	465	779	808	756	831
MS, S.....	2,568	2,594	1,780	3,382	356	1,003	625	734	2,212	1,591	1,155	2,648
TX, N.....	3,628	3,664	3,303	3,989	679	890	856	853	2,949	2,774	2,447	3,276
TX, E.....	3,451	2,407	1,689	4,169	678	588	413	853	2,773	1,819	1,276	3,316
TX, S.....	6,404	8,396	5,891	8,909	970	3,938	2,103	2,805	5,434	4,458	3,788	6,104
TX, W.....	2,392	3,739	2,710	3,421	692	2,315	1,343	1,664	1,700	1,424	1,367	1,757
6TH...	24,976	31,115	26,566	29,525	8,892	16,868	13,436	12,324	16,084	14,247	13,130	17,201
KY, E.....	3,021	1,942	2,086	2,877	1,879	1,199	1,426	1,652	1,142	743	660	1,225
KY, M.....	1,849	1,968	1,616	2,201	567	853	667	753	1,282	1,115	949	1,448
MI, E.....	5,880	7,376	6,216	7,040	1,499	3,105	2,184	2,420	4,381	4,271	4,032	4,620
MI, M.....	1,830	2,479	1,940	2,369	758	1,513	1,025	1,246	1,072	966	915	1,123
MI, W.....	5,180	6,473	5,894	5,759	1,741	3,985	3,309	2,417	3,439	2,488	2,585	3,342
OH, N.....	4,067	6,269	4,923	5,413	1,529	4,177	3,165	2,541	2,538	2,092	1,758	2,872
OH, S.....	864	1,908	1,644	1,128	347	851	738	460	517	1,057	906	668
TN, E.....	814	1,363	1,271	906	247	650	567	330	567	713	704	576
TN, M.....	1,471	1,337	976	1,832	325	535	355	505	1,146	802	621	1,327

TABLE C 1. U. S. DISTRICT COURTS
CIVIL CASES COMMENCED, TERMINATED AND PENDING DURING THE TWELVE MONTH PERIOD ENDED SEP. 30, 1983

CIRCUIT AND DISTRICT	TOTAL CIVIL CASES				U. S. CIVIL CASES				PRIVATE CIVIL CASES			
	PENDING SEP. 30, 1982	COM-MENCED	TERMI-NATED	PENDING SEP. 30, 1983	PENDING SEP. 30, 1982	COM-MENCED	TERMI-NATED	PENDING SEP. 30, 1983	PENDING SEP. 30, 1982	COM-MENCED	TERMI-NATED	PENDING SEP. 30, 1983
7TH...	16,712	16,762	17,742	17,732	4,439	6,494	5,923	5,010	12,273	12,268	11,819	12,722
IL, N....	7,286	8,837	8,169	7,954	1,451	2,295	1,690	2,056	5,835	6,542	6,479	5,898
IL, C....	1,135	1,316	1,028	1,423	272	385	314	343	863	931	714	1,080
IL, S....	1,326	1,228	1,330	1,224	367	450	467	350	959	778	863	874
IN, N....	2,258	1,933	1,894	2,297	773	803	876	700	1,485	1,130	1,018	1,597
IN, S....	2,385	2,815	2,488	2,712	856	1,473	1,363	966	1,529	1,342	1,125	1,746
MI, E....	1,536	1,567	1,523	1,580	460	619	645	434	1,076	948	878	1,146
MI, W....	786	1,066	1,310	542	260	469	568	161	526	597	742	381
8TH...	13,015	17,749	16,144	14,620	3,989	9,001	7,812	5,178	9,026	8,748	8,332	9,442
AR, E....	1,924	2,268	2,115	2,077	639	1,125	952	812	1,285	1,143	1,163	1,265
AR, W....	914	1,161	1,095	980	337	642	540	439	577	519	555	541
IA, N....	479	793	676	596	121	392	315	198	358	401	361	398
IA, S....	1,095	1,111	923	1,283	238	427	317	348	857	684	606	935
MN.....	2,269	3,458	3,092	2,635	778	2,072	1,825	1,025	1,491	1,386	1,267	1,610
MO, E....	1,789	3,482	2,948	2,323	413	1,664	1,367	710	1,376	1,818	1,581	1,613
MO, W....	2,305	2,869	2,735	2,439	733	1,470	1,335	868	1,572	1,399	1,400	1,571
NE.....	1,305	1,603	1,576	1,333	401	717	692	426	905	886	884	907
ND.....	404	396	387	413	155	195	207	143	249	201	180	270
SD.....	530	608	597	541	174	297	262	209	356	311	335	332
9TH...	27,753	34,334	30,612	31,475	10,113	15,643	14,625	11,131	17,640	18,691	15,987	20,344
AK.....	835	747	621	961	287	343	296	334	548	404	325	627
AZ.....	2,053	3,386	3,202	2,237	750	1,851	1,754	847	1,303	1,535	1,448	1,390
CA, N....	4,467	6,726	6,601	4,592	1,907	3,630	3,974	1,563	2,560	3,096	2,627	3,029
CA, E....	2,319	1,977	1,387	2,909	1,041	798	563	1,276	1,278	1,179	824	1,633
CA, C....	5,646	8,141	7,388	6,399	1,302	2,437	2,265	1,474	4,344	5,704	5,123	4,925
CA, S....	1,726	2,410	2,083	2,053	864	1,569	1,382	1,051	862	841	701	1,002
HI.....	1,124	1,295	862	1,557	237	668	406	499	887	627	456	1,058
ID.....	911	874	908	877	397	496	525	368	514	378	383	509
MT.....	932	920	750	1,102	281	334	294	321	651	586	456	781
NV.....	1,426	1,433	988	1,871	329	583	504	408	1,097	850		

TABLE C 2. U. S. DISTRICT COURTS
CIVIL CASES COMMENCED, BY BASIS OF JURISDICTION AND NATURE OF SUIT
DURING THE TWELVE MONTH PERIODS ENDED SEP. 30, 1982 AND 1983

NATURE OF SUIT	1983						
	1982	TOTAL	U. S. CASES		PRIVATE CASES		
			PLAINTIFF	DEFENDANT	FEDERAL QUESTION	DIVERSITY OF CITIZENSHIP	LOCAL JURISDICTION
TOTAL CASES.....	212,503	250,855	62,522	40,963	88,855	57,819	696
CONTRACT ACTIONS, TOTAL.....	69,842	87,644	49,577	958	6,966	30,055	88
INSURANCE.....	5,492	6,357	2	238	17	6,087	13
MARINE.....	5,619	5,608	58	32	5,507	-	11
MILLER ACT.....	926	1,248	87	-	1,161	-	-
NEGOTIABLE INSTRUMENTS.....	3,809	5,656	3,881	25	7	1,740	3
RECOVERY OF OVERPAYMENTS AND ENFORCEMENT OF JUDGMENTS	31,869	44,152	43,981	20	-	150	1
OTHER CONTRACT ACTIONS.....	22,127	24,623	1,568	643	274	22,078	60
REAL PROPERTY ACTIONS, TOTAL.....	9,320	9,401	4,839	657	1,260	2,616	29
CONDEMNATION OF LAND.....	1,105	826	738	28	40	20	-
FORECLOSURE.....	6,136	6,261	3,828	14	1,046	1,361	12
RENT, LEASE, AND EJECTMENT.....	387	386	85	22	12	262	5
TORTS TO LAND.....	579	597	51	61	150	334	1
OTHER REAL PROPERTY ACTIONS.....	1,113	1,331	137	532	12	639	11
TORT ACTIONS, TOTAL.....	34,783	36,674	177	2,794	8,289	25,147	267
PERSONAL INJURY:							
AIRPLANE.....	1,061	1,175	-	135	109	931	-
ASSAULT, LIBEL, AND SLANDER.....	898	1,001	-	70	104	816	11
EMPLOYERS' LIABILITY ACT.....	2,065	2,034	-	-	2,034	-	-
MARINE.....	5,289	4,972	5	158	4,029	778	2
MOTOR VEHICLE.....	6,821	6,874	-	583	183	6,017	91
MEDICAL MALPRACTICE.....	1,087	1,680	-	476	-	1,188	16
OTHER PERSONAL INJURY.....	13,453	14,661	6	1,115	332	13,067	141
PERSONAL PROPERTY DAMAGE:							
FRAUD INCLUDING TRUTH IN LENDING.....	1,636	1,856	80	10	917	845	4
OTHER PERSONAL PROPERTY DAMAGE.....	2,473	2,421	86	247	581	1,505	2
ACTIONS UNDER STATUTES, TOTAL.....	97,975	116,578	7,929	36,541	72,087	-	21
ANTITRUST.....	1,038	1,196	12	7	1,177	-	-
BANKRUPTCY SUITS:							
TRUSTEE.....	168	290	-	4	286	-	-
TRANSFER (915B).....	58	281	-	3	278	-	-
APPEAL (801).....	2,337	3,547	63	53	3,431	-	-
BANKS AND BANKING.....	285	313	68	60	185	-	-
CIVIL RIGHTS:							
VOTING.....	181	203	3	4	196	-	-
EMPLOYMENT.....	7,941	9,614	171	811	8,632	-	-
ACCOMMODATIONS.....	242	299	9	26	264	-	-
WELFARE.....	216	220	2	41	177	-	-
OTHER CIVIL RIGHTS.....	9,040	9,980	41	802	9,137	-	-
COMMERCE (ICC RATES, ETC.).....	1,051	894	100	21	873	-	-
ECONOMIC STABILIZATION ACT.....	37	31	2	11	18	-	-
ENVIRONMENTAL MATTERS.....	390	528	245	202	81	-	-

TABLE C 2. U. S. DISTRICT COURTS
CIVIL CASES COMMENCED, BY BASIS OF JURISDICTION AND NATURE OF SUIT
DURING THE TWELVE MONTH PERIODS ENDED SEP. 30, 1982 AND 1983

NATURE OF SUIT	1983						
	1982	TOTAL	U. S. CASES		PRIVATE CASES		
			PLAINTIFF	DEFENDANT	FEDERAL QUESTION	DIVERSITY OF CITIZENSHIP	LOCAL JURISDICTION
ACTIONS UNDER STATUTES, CONTINUED							
DEPORTATION.....	140	139	-	138	1	-	-
PRISONER PETITIONS:							
MOTIONS TO VACATE SENTENCE.....	1,177	1,368	-	1,368	-	-	-
HABEAS CORPUS.....	10,240	10,376	-	1,928	8,437	-	-
MANDAMUS AND OTHER.....	523	542	-	335	207	-	11
CIVIL RIGHTS.....	17,723	18,379	-	795	17,584	-	-
FORFEITURE AND PENALTY:							
AGRICULTURAL ACTS.....	75	68	-	-	-	-	-
FOOD AND DRUG ACT.....	304	414	414	-	-	-	-
AIR TRAFFIC REGULATIONS.....	61	56	56	-	-	-	-
OCCUPATIONAL SAFETY AND HEALTH ACT.....	219	114	114	-	-	-	-
OTHER FORFEITURE AND PENALTY SUITS.....	2,726	2,773	2,773	-	-	-	-
LABOR LAWS:							
FAIR LABOR STANDARDS ACT.....	1,476	1,368	753	15	600	-	-
LABOR MANAGEMENT RELATIONS ACT.....	4,197	4,240	159	40	4,041	-	-
LABOR MANAGEMENT REPORTING AND DISCLOSURE ACT.....	292	298	40	6	252	-	-
RAILWAY LABOR ACT.....	202	197	-	6	191	-	-
OTHER LABOR LITIGATION.....	4,147	5,164	184	104	4,876	-	-
PROTECTED PROPERTY RIGHTS:							
COPYRIGHT.....	1,921	2,156	-	-	2,156	-	-
PATENT.....	845	1,006	-	-	1,006	-	-
TRADEMARK.....	1,989	2,229	-	-	2,229	-	-
SECURITIES, COMMODITIES, AND EXCHANGES.....	2,667	2,912	164	62	2,686	-	-
SOCIAL SECURITY LAWS:							
HEALTH INSURANCE.....	490	502	-	502	-	-	-
BLACK LUNG CASES.....	164	81	-	81	-	-	-
DISABILITY INSURANCE.....	8,661	19,392	3	19,389	-	-	-
SUPPLEMENTAL SECURITY INCOME.....	2,581	4,191	-	4,191	-	-	-
RETIREMENT AND SURVIVORS BENEFITS.....	153	447	-	447	-	-	-
OTHER.....	1,492	334	-	334	-	-	-
STATE REAPPOINTMENT SUITS.....	33	3	-	-	3	-	-
TAX SUITS.....	4,442	3,958	1,756	2,192	-	-	-
CUSTOMER CHALLENGE.....	13	89	-	89	-	-	10
FREEDOM OF INFORMATION ACT OF 1974.....	400	463	1	436	26	-	-
OTHER STATUTORY ACTIONS.....	5,638	5,823	728	2,038	3,057	-	-
OTHER ACTIONS, TOTAL.....	583	558	-	13	253	1	291
DOMESTIC RELATIONS.....	3	5	-	-	-	-	5
INSANITY.....	125	139	-	-	-	-	139
PROBATE.....	1	4	-	-	-	-	4
SUITS INVOLVING LOCAL OFFICIALS.....	323	261	-	13	247	1	-
OTHER.....	131	149	-	-	6	-	143

TABLE C 3. U.S. DISTRICT COURTS
CIVIL CASES COMMENCED, BY NATURE OF SUIT AND DISTRICT
DURING THE TWELVE MONTH PERIOD ENDED SEP. 30, 1983

CIRCUIT AND DISTRICT	TOTAL CIVIL CASES	UNITED STATES CASES															
		TOTAL U.S. CIVIL	CONTRACT	LAND CONDEMNATION	OTHER REAL PROPERTY	TORT ACTIONS	ANTI-TRUST	CIVIL RIGHTS	PRISONER PETITIONS				FORFEITURES AND PENALTIES	LABOR SUITS	SOCIAL SECURITY	TAX SUITS	ALL OTHER
									MOTIONS TO VACATE SENTENCE	HABEAS CORPUS	CIVIL RIGHTS	MAN-DAMUS AND OTHER					
TOTAL...	250,855	103,485	50,535	766	4,730	2,971	19	1,910	1,368	1,928	795	335	3,425	1,307	24,947	4,037	4,412
DC.....	3,988	1,458	247	1	4	106	3	179	27	25	69	17	3	24	101	20	632
1ST...	10,553	4,297	1,637	51	425	138	-	45	16	18	10	2	194	98	1,360	131	172
ME.....	911	502	150	2	150	10	-	6	-	2	-	-	5	6	153	8	10
MA.....	4,686	1,761	795	48	54	72	-	25	12	10	7	2	152	45	373	79	87
NH.....	850	368	159	1	15	15	-	4	-	4	1	-	3	28	111	10	17
RI.....	608	317	190	-	3	12	-	3	-	-	-	-	3	8	64	27	7
PR.....	3,298	1,349	343	-	203	29	-	7	4	2	2	-	31	11	659	7	51
2ND...	22,019	6,759	1,952	8	206	315	3	143	111	232	52	45	261	142	2,496	293	500
CT.....	2,700	948	384	2	60	26	-	15	7	77	22	6	14	21	231	61	22
NY, N.....	1,765	511	60	1	26	38	1	11	1	15	4	3	21	14	260	17	39
NY, E.....	5,848	2,936	1,182	1	15	115	-	44	42	36	3	13	86	63	1,142	86	107
NY, S.....	9,803	1,623	180	4	24	116	2	65	54	99	23	22	89	19	540	96	290
NY, W.....	1,431	518	108	-	14	14	-	6	6	5	-	-	40	15	257	18	35
VT.....	472	223	38	-	67	6	-	2	-	-	-	-	11	10	66	15	7
3RD...	18,703	5,368	1,202	6	245	295	3	110	116	165	111	16	222	96	2,257	263	261
DE.....	864	215	63	2	57	4	1	-	4	-	-	-	4	2	43	23	12
NJ.....	5,044	1,606	327	1	70	131	-	36	25	5	1	1	75	26	718	94	96
PA, E.....	6,487	1,107	92	3	34	107	2	40	53	8	11	-	32	29	573	58	65
PA, M.....	1,901	803	58	-	27	17	-	17	12	147	93	14	9	10	331	31	37
PA, W.....	3,701	1,627	661	-	57	35	-	17	22	5	4	-	99	28	592	57	50
VI.....	706	10	1	-	-	1	-	-	-	-	2	1	3	1	-	-	1
4TH...	22,642	10,844	5,761	111	428	217	-	175	131	38	49	7	401	101	2,879	234	312
MD.....	4,350	1,759	1,145	15	57	34	-	54	30	4	8	1	29	13	229	86	54
NC, E.....	2,366	1,410	1,107	14	8	14	-	23	17	3	9	-	44	10	108	17	36
NC, M.....	1,425	1,006	863	4	1	5	-	5	12	-	1	-	10	10	71	9	15
NC, W.....	1,887	1,250	983	3	4	5	-	5	14	1	-	-	7	4	207	5	12
SC.....	3,564	1,636	500	3	330	54	-	12	14	3	1	-	43	4	627	16	29
VA, E.....	3,350	770	152	15	19	83	-	56	26	23	19	4	23	14	208	75	53
VA, M.....	2,819	1,720	691	2	3	13	-	11	4	1	6	2	137	19	769	11	51
VA, W.....	906	464	85	55	4	-	-	3	3	2	4	-	46	10	211	13	27
WV, S.....	1,975	829	234	-	2	9	-	6	11	1	1	-	62	17	449	2	35
5TH...	33,484	12,583	8,554	46	398	281	2	201	194	188	66	24	278	107	1,529	436	279
LA, E.....	6,720	1,681	1,122	2	51	96	1	20	15	4	3	1	20	14	268	37	27
LA, M.....	1,364	345	224	-	36	6	-	3	-	3	4	-	6	2	46	6	9
LA, W.....	3,167	1,198	598	3	221	25	-	9	11	-	-	-	5	7	274	24	21
MS, N.....	1,433	625	423	8	42	12	-	2	7	1	-	-	1	2	106	9	12
MS, S.....	2,594	1,003	695	-	19	19	-	19	9	3	1	1	7	5	200	9	16
TX, N.....	3,664	890	264	8	7	18	1	35	37	48	13	6	55	10	213	95	80
TX, E.....	2,407	588	257	17	2	10	-	29	5	48	22	3	6	8	150	23	10
TX, S.....	8,396	3,938	3,264	3	11	40	-	47	51	18	2	6	95	43	123	173	60
TX, W.....	3,739	2,315	1,707	5	9	55	-	37	59	63	21	7	83	16	149	60	44
6TH...	31,115	16,858	7,313	60	594	247	2	207	142	198	109	19	305	127	6,726	402	417
KY, E.....	1,942	1,199	258	19	58	13	-	4	18	91	46	6	114	5	519	14	34
KY, W.....	1,968	853	480	7	32	16	-	7	6	2	11	-	12	3	234	11	32
MI, E.....	7,376	3,105	314	1	24	78	-	58	31	45	27	-	61	21	2,225	133	87
MI, M.....	2,479	1,513	675	1	11	12	-	5	7	1	-	-	8	5	737	16	35
OH, N.....	6,473	3,985	2,292	7	250	46	-	48	22	2	4	2	22	37	1,109	66	78
OH, S.....	6,269	4,177	2,498	4	192	28	1	30	18	4	4	-	26	31	1,199	66	76
TN, E.....	1,908	851	341	10	12	23	1	18	11	-	3	-	35	8	330	29	30
TN, M.....	1,363	650	304	7	3	11	-	2	13	6	22	1	13	6	224	40	24
TN, W.....	1,337	535	151	4	12	20	-	34	18	52	12	10	14	11	149	27	21

TABLE C 3. U.S. DISTRICT COURTS
CIVIL CASES COMMENCED, BY NATURE OF SUIT AND DISTRICT
DURING THE TWELVE MONTH PERIOD ENDED SEP. 30, 1983

CIRCUIT AND DISTRICT	TOTAL PRIVATE CIVIL	PRIVATE CASES															
		CONTRACT	REAL PROPERTY	FELA	MARINE PERSONAL INJURY	MOTOR VEHICLE PERSONAL INJURY	OTHER PERSONAL INJURY	OTHER TORT ACTIONS	ANTI-TRUST	CIVIL RIGHTS	COMMERCE	PRISONER PETITIONS			COPYRIGHT PATENT TRADEMARK	LABOR SUITS	ALL OTHER
												HABEAS CORPUS	CIVIL RIGHTS	MAN-DAMUS AND OTHER			
TOTAL...	147,370	37,109	3,905	2,034	4,809	6,291	16,715	3,854	1,177	18,406	873	8,448	17,584	207	5,391	9,960	10,607
DC.....	2,530	496	26	15	-	485	471	54	16	319	5	52	76	8	57	262	188
1ST...	6,256	1,229	1,258	78	201	206	1,306	113	37	589	29	426	227	4	233	263	357
ME.....	409	101	8	13	9	12	104	6	9	45	-	9	9	1	21	17	45
MA.....	2,925	643	16	60	149	99	908	38	20	316	6	56	108	-	161	168	177
NH.....	482	124	6	-	2	47	127	20	-	57	-	34	20	-	15	12	18
RI.....	491	124	1	3	15	27	80	15	6	92	-	12	47	-	22	22	25
PR.....	1,949	237	1,227	2	26	21	87	34	2	79	23	15	43	3	14	44	92
2ND...	15,260	4,679	88	357	470	494	1,407	477	138	1,480	64	785	1,645	24	993	879	1,280
CT.....	1,752	337	18	38	7	70	216	211	14	296	9	70	229	2	71	60	104
NY, N.....	1,254	107	4	71	2	35	115	20	5	145	3	148	377	4	46	98	74
NY, E.....	2,912	578	22	78	89	190	510	47	29	344	3	143	156	3	249	221	250
NY, S.....	8,180	3,516	39	120	368	156	460	183	79	550	41	341	548	13	567	433	766
NY, W.....	913	90	3	45	4	15	60	10	8	106	6	78	315	2	44	51	66
VT.....	249	51	2	5	-	28	46	6	3	39	2	5	20	-	16	6	20
3RD...	13,335	3,190	128	436	325	1,025	1,757	341	129	1,221	130	517	1,651	6	430	1,080	969
DE.....	649	70	2	1	4	43	36	13	2	40	-	33	292	-	48	24	41
NJ.....	3,438	918	21	14	39	297	415	66	32	522	56	126	270	1	204	267	190
PA, E.....	5,380	1,363	46	330	263	424	811	187	63	359	63	148	455	2	120	409	337
PA, M.....	1,098	179	13	4	-	85	148	25	7	100	3	76	316	3	16	73	48
PA, W.....	2,074	585	18	87	17	86	181	43	25	181	8	100	313	-	39	289	102
VI.....	696	75	28	-	2	90	166	7	-	19	-						

TABLE C 3. U. S. DISTRICT COURTS
CIVIL CASES COMMENCED, BY NATURE OF SUIT AND DISTRICT
DURING THE TWELVE MONTH PERIOD ENDED SEP. 30, 1983

CIRCUIT AND DISTRICT	UNITED STATES CASES																					
	TOTAL CIVIL CASES	TOTAL U. S. CIVIL	CONTRACT	LAND CONDEMNATION	OTHER REAL PROPERTY	TORT ACTIONS	ANTI-TRUST	CIVIL RIGHTS	PRISONER PETITIONS				FORFEITURES AND PENALTIES	LABOR SUITS	SOCIAL SECURITY	TAX SUITS	ALL OTHER					
									MOTIONS TO VACATE SENTENCE	HABEAS CORPUS	CIVIL RIGHTS	MAN-DAMUS AND OTHER										
									89	204	126	62										
7TH...	18,762	6,494	3,285	4	524	185	-	136	89	204	126	62	174	93	965	349	298					
IL. N....	8,837	2,295	1,126	2	92	87	-	69	26	50	16	39	114	45	344	112	173					
IL. C....	1,316	385	149	-	47	21	-	13	8	10	2	-	4	6	74	20	31					
IL. S....	1,228	450	135	-	41	18	-	4	14	56	30	3	14	7	99	13	16					
IN. N....	1,933	803	405	-	111	14	-	16	17	4	1	-	11	3	114	88	19					
IN. S....	2,815	1,473	919	1	149	26	-	7	14	69	38	18	16	10	144	36	26					
MI. E....	1,567	619	300	-	41	12	-	22	4	2	1	-	9	17	139	57	15					
MI. W....	1,066	469	251	1	43	7	-	5	6	13	38	2	6	5	51	23	18					
8TH...	17,749	9,001	5,100	55	668	151	3	130	100	311	86	28	126	87	1,652	241	263					
AR. E....	2,268	1,125	470	1	192	14	-	9	11	1	-	-	7	11	370	12	27					
AR. W....	1,161	642	243	7	75	10	-	5	5	1	1	-	13	5	252	14	11					
IA. N....	793	392	170	-	72	13	-	2	2	2	-	-	4	5	64	50	7					
IA. S....	1,111	427	165	-	65	7	1	5	7	12	1	1	8	5	105	23	22					
MN.	3,458	2,072	1,578	3	11	36	-	14	8	50	6	7	17	6	248	42	46					
MO. E....	3,482	1,664	1,218	20	10	26	-	30	30	7	2	-	33	27	208	17	36					
MO. W....	2,869	1,470	641	12	7	20	1	28	22	236	75	19	21	10	283	33	62					
NE.	1,603	717	398	5	143	13	-	16	4	-	-	-	9	3	20	15	12					
ND.	396	195	86	6	35	3	1	1	2	2	-	-	4	2	35	14	13					
SD.	608	297	131	1	58	9	-	20	9	-	-	-	4	2	35	14	13					
9TH...	34,334	15,643	8,901	80	382	670	2	343	185	227	36	18	831	276	2,012	1,067	613					
AK.	747	343	90	1	10	26	1	9	3	1	-	-	17	6	11	138	30					
AZ.	3,386	1,851	1,358	4	15	30	-	16	17	24	2	-	42	27	140	133	43					
CA. N....	6,726	3,630	2,573	11	15	159	-	90	69	53	353	160	69	53	353	160	97					
CA. E....	1,977	798	143	14	28	66	-	35	24	1	3	1	46	26	305	72	34					
CA. C....	8,141	2,437	870	2	32	167	1	78	57	144	17	7	231	85	408	193	145					
CA. S....	2,410	1,569	926	1	11	72	-	46	21	15	5	2	243	11	163	18	35					
HI.	1,295	668	522	-	11	31	-	7	4	-	-	-	47	4	10	11	20					
ID.	874	496	197	1	104	14	-	3	7	9	86	55	7	9	86	55	15					
MT.	320	334	132	5	56	9	-	2	4	1	1	1	9	7	33	53	22					
NV.	1,433	583	343	3	5	20	-	8	33	9	25	43	33	9	25	43	71					
OR.	2,528	1,040	578	6	37	21	-	8	31	7	233	60	31	7	233	60	45					
WA. E....	990	467	267	7	28	16	-	6	3	8	80	38	50	22	165	92	44					
WA. W....	2,743	1,363	861	22	28	35	-	26	11	7	-	-	3	2	-	1	3					
GUAM....	102	49	28	3	1	3	-	3	-	-	-	-	-	-	-	-	-					
MI.	62	15	13	-	1	1	-	-	-	-	-	-	-	-	-	-	-					
10TH..	14,191	5,619	3,170	107	522	119	-	83	63	140	30	82	109	63	519	296	316					
CO.	2,525	657	220	41	12	42	-	34	9	32	7	2	36	23	85	55	59					
KS.	2,383	1,003	493	1	144	15	-	13	7	10	73	42	7	10	73	42	33					
NM.	2,015	1,093	754	9	71	23	-	15	16	1	41	35	20	3	137	21	29					
OK. N....	1,111	415	245	-	57	1	-	1	7	1	2	-	16	1	41	35	8					
OK. E....	748	340	143	38	68	5	-	1	7	4	47	7	7	4	47	7	11					
OK. W....	3,198	1,183	676	17	143	18	-	13	10	22	13	1	14	4	70	52	127					
UT.	1,667	735	514	-	18	10	-	4	8	14	61	69	8	14	61	69	26					
WY.	544	193	125	1	9	5	-	2	1	4	5	15	1	4	5	15	23					
11TH..	23,315	8,551	3,413	237	334	247	1	158	194	182	51	15	521	93	2,451	305	349					
AL. N....	3,800	1,968	927	1	13	29	-	32	19	33	16	-	23	10	807	29	29					
AL. M....	1,513	576	314	-	6	16	-	9	2	8	184	5	2	8	184	5	11					
AL. S....	1,543	613	414	-	13	6	-	5	16	1	-	-	5	7	112	22	12					
FL. N....	1,007	337	98	1	48	14	-	11	13	43	5	3	5	4	70	6	16					
FL. M....	4,144	1,357	568	-	108	48	-	24	39	7	5	1	56	27	341	70	63					
FL. S....	4,639	1,815	545	232	60	65	-	26	53	59	12	3	357	26	194	69	114					
GA. N....	3,797	856	158	1	14	25	1	35	30	23	10	7	15	3	210	31	20					
GA. M....	1,428	588	222	1	51	15	-	9	10	1	-	-	25	3	125	22	29					
GA. S....	1,444	441	167	1	21	29	-	7	10	2	-	-	25	3	125	22	29					

TABLE C 3. U. S. DISTRICT COURTS
CIVIL CASES COMMENCED, BY NATURE OF SUIT AND DISTRICT
DURING THE TWELVE MONTH PERIOD ENDED SEP. 30, 1983

CIRCUIT AND DISTRICT	PRIVATE CASES																	
	TOTAL PRIVATE CIVIL	CONTRACT	REAL PROPERTY	FELA	MARINE PERSONAL INJURY	MOTOR VEHICLE PERSONAL INJURY	OTHER PERSONAL INJURY	OTHER TORT ACTIONS	ANTI-TRUST	CIVIL RIGHTS	COMMERCE	PRISONER PETITIONS			COPYRIGHT PATENT TRADEMARK	LABOR SUITS	ALL OTHER	
												HABEAS CORPUS	CIVIL RIGHTS	MAN-DAMUS AND OTHER				
												701	1,197	35				
7TH...	12,268	2,531	1,003	101	33	358	794	263	108	2,141	82	701	1,197	35	453	1,518	950	
IL. N....	6,542	1,553	757	27	13	95	275	130	80	1,152	63	266	357	20	304	953	497	
IL. C....	931	115	3	5	3	24	60	15	7	135	3	84	241	7	22	115	92	
IL. S....	778	113	8	2	9	39	115	19	-	89	1	96	155	2	7	82	41	
IN. N....	1,130	144	158	15	1	90	108	25	5	232	4	66	121	1	15	79	66	
IN. S....	1,342	326	64	39	3	74	128	40	7	169	6	78	90	3	40	131	144	
MI. E....	948	186	9	9	4	22	60	23	5	254	2	71	106	-	49	92	56	
MI. W....	597	94	4	4	-	14	48	11	4	110	3	40	127	2	16	66	54	
8TH...	8,748	1,906	129	166	31	415	1,062	272	82	1,428	118	427	1,115	17	222	640	718	
AR. E....	1,143	232	14	4	10	60	114	25	8	285	9	70	188	-	7	38	79	
AR. W....	519	158	31	-	2	49	81	21	5	64	-	19	27	-	4	22	36	
IA. N....	401	77	15	1	-	22	73	12	3	40	16	20	64	-	10	29	19	
IA. S....	684	128	8	13	-	34	16	5	109	16	16	29	155	-	20	48	26	
MN.	1,386	303	9	37	2	35	206	30	24	246	18	28	43	2	83	137	183	
MO. E....	1,818	478	16	4	14	104	246	84	16	273	9	78	166	1	40	211	78	
MO. W....	1,399	209	8	12	2	35	120	37	16	201	34	125	374	12	33	96	85	
NE.	886	158	9	86	-	46	72	28	2	155	14	33	74	1	15	45	148	
ND.	201	78	15	7	-	9	28	3	2	18	-	4	3	1	2	8	23	
SD.	311	85	4	2	1	21	45	16	1	37	2	21	21	-	8	6	41	
9TH...	18,691	4,904	278	214	487	343	1,608	492	236	1,956	101	1,055	1,975	25	1,115	1,817	2,085	
AK.	404	139	15	-	27	6												

TABLE C 3A. U.S. DISTRICT COURTS
CIVIL CASES PENDING, BY NATURE OF SUIT AND DISTRICT AS OF SEP. 30, 1983

CIRCUIT AND DISTRICT	UNITED STATES CASES																
	TOTAL CIVIL CASES	TOTAL U.S. CIVIL	CONTRACT	LAND CONDEMNATION	OTHER REAL PROPERTY	TORT ACTIONS	ANTI-TRUST	CIVIL RIGHTS	PRISONER PETITIONS				FORFEITURES AND PENALTIES	LABOR SUITS	SOCIAL SECURITY	TAX SUITS	ALL OTHER
									MOTIONS TO VACATE SENTENCE	HABEAS CORPUS	CIVIL RIGHTS	MAN-DAMUS AND OTHER					
TOTAL...	243,034	75,536	21,130	3,356	3,921	4,046	36	2,458	1,056	1,000	626	210	2,614	1,403	25,674	3,477	4,529
DC.....	3,193	1,308	217	-	16	126	4	178	107	6	19	6	4	28	73	9	515
1ST...	12,741	3,632	871	119	318	235	1	85	11	13	5	3	123	137	1,379	126	206
AK.....	1,005	350	53	3	70	14	-	7	-	1	-	-	4	7	175	7	9
AL.....	7,717	1,836	561	111	73	149	1	59	8	8	3	2	91	86	448	99	137
AR.....	794	219	44	4	13	22	-	5	-	3	-	-	-	26	76	9	17
CA.....	1,015	237	94	-	3	15	-	3	-	-	1	-	5	8	92	6	10
CO.....	2,210	990	119	1	159	35	-	11	3	1	1	1	23	10	588	5	33
CT.....	765	6,530	1,148	11	223	563	6	199	62	110	57	33	273	161	2,867	277	540
DE.....	949	207	2	62	63	2	30	4	34	21	1	1	21	31	310	38	123
FL.....	695	71	2	38	61	1	21	1	14	6	2	2	27	15	346	29	57
GA.....	543	652	1	42	240	1	53	34	13	3	11	11	95	54	1,173	70	101
IA.....	132	6	28	155	2	77	11	47	25	19	19	19	92	24	648	105	208
IL.....	68	-	18	36	-	14	12	2	2	2	-	-	31	25	308	26	46
IN.....	67	18	-	35	8	-	-	-	-	-	-	-	7	8	82	9	5
IR.....	16,466	3,044	609	6	139	306	-	126	81	64	76	12	106	80	1,958	172	209
KS.....	781	150	2	23	8	-	1	3	-	-	-	-	-	3	10	14	10
LA.....	4,672	1,260	175	3	64	142	-	41	28	1	2	1	40	18	620	55	70
MA.....	5,388	904	63	-	19	93	-	48	35	3	8	-	23	21	484	54	53
MD.....	1,571	561	30	-	15	21	-	16	4	58	63	10	3	9	280	22	30
ME.....	2,787	950	200	-	16	40	-	19	11	1	1	1	38	28	533	25	36
MI.....	1,297	19	3	-	2	2	-	1	-	1	2	-	2	1	1	2	2
MN.....	18,783	7,030	2,134	342	279	254	-	168	86	27	37	5	297	122	2,766	212	301
MO.....	4,084	926	357	11	28	59	-	59	18	5	6	-	25	20	198	67	75
MS.....	1,512	715	433	21	7	18	-	21	10	2	9	-	22	12	101	23	36
NC.....	1,008	526	373	14	2	9	-	7	10	-	1	-	9	7	69	12	13
ND.....	1,115	607	359	5	4	5	-	3	8	1	-	-	4	3	200	8	7
NE.....	3,094	1,342	224	13	217	53	-	18	21	2	4	-	32	3	705	17	33
NH.....	2,240	573	99	31	6	86	-	32	8	17	10	3	12	9	197	34	29
NJ.....	1,903	888	152	2	6	11	-	13	1	-	1	2	90	23	526	16	45
NM.....	1,429	649	53	214	6	2	-	7	-	2	3	-	69	17	226	18	32
NY.....	2,388	804	84	31	3	11	-	8	10	-	3	-	34	28	544	17	31
OH.....	37,249	8,987	4,348	220	269	389	3	307	195	186	88	24	237	151	1,874	391	305
OK.....	7,441	881	312	1	39	126	2	29	20	4	-	-	11	16	253	34	33
OR.....	1,453	156	72	3	25	4	-	7	-	2	4	-	5	4	40	10	10
PA.....	3,189	716	180	8	128	37	-	12	7	1	-	-	5	8	282	23	25
PB.....	1,296	465	209	40	28	12	-	7	3	2	-	-	2	2	140	7	13
PI.....	3,382	734	330	5	19	33	-	26	6	3	1	1	8	5	259	12	26
PJ.....	3,989	713	67	19	9	21	-	56	45	23	10	5	40	24	232	96	66
PK.....	4,169	853	192	112	5	16	-	54	12	75	42	6	11	10	283	19	16
PL.....	8,909	2,805	1,971	21	9	67	-	67	47	11	4	7	121	65	186	158	70
PM.....	3,421	1,664	1,045	11	7	73	-	49	55	65	26	5	34	17	199	32	46
PN.....	29,525	12,324	2,467	218	573	316	7	288	87	140	107	26	231	144	6,938	368	414
PO.....	2,877	1,652	139	101	55	16	1	6	12	70	44	8	98	11	933	40	58
PP.....	2,201	753	203	46	28	27	1	19	4	-	7	-	9	6	333	27	43
PQ.....	7,040	2,420	216	2	22	110	-	67	25	25	20	2	51	19	1,686	94	81
PR.....	2,369	1,246	319	28	11	29	-	14	5	3	2	-	7	11	760	18	38
PS.....	5,759	2,417	587	13	257	54	2	55	9	2	4	2	23	36	1,237	68	68
PT.....	5,413	2,541	750	5	178	26	1	57	14	5	2	-	12	31	1,328	67	65
PV.....	1,128	460	105	10	7	11	1	8	3	-	-	-	11	3	272	12	17
PW.....	906	330	93	10	4	9	-	8	2	-	1	1	5	6	154	20	17
PX.....	1,832	505	55	3	11	34	-	54	13	35	27	13	15	21	175	22	27

TABLE C 3A. U.S. DISTRICT COURTS
CIVIL CASES PENDING, BY NATURE OF SUIT AND DISTRICT AS OF SEP. 30, 1983

CIRCUIT AND DISTRICT	PRIVATE CASES																	
	TOTAL PRIVATE CIVIL	CONTRACT	REAL PROPERTY	FELA	MARINE PERSONAL INJURY	MOTOR VEHICLE PERSONAL INJURY	OTHER PERSONAL INJURY	OTHER TORT ACTIONS	ANTI-TRUST	CIVIL RIGHTS	COMMERCIAL	PRISONER PETITIONS			COPYRIGHT PATENT TRADEMARK	LABOR SUITS	ALL OTHER	
												HABEAS CORPUS	CIVIL RIGHTS	MAN-DAMUS AND OTHER				
TOTAL...	167,498	39,328	2,863	2,645	6,813	7,059	27,418	4,804	2,197	24,137	764	6,347	17,280	105	5,160	9,426	11,152	
DC.....	1,885	346	19	10	1	328	496	42	22	250	4	7	31	3	40	133	153	
1ST...	9,109	1,710	485	151	398	334	2,938	165	86	1,105	32	98	476	4	295	380	452	
ME.....	655	129	7	15	18	13	291	24	12	47	1	2	11	-	22	21	42	
MA.....	5,881	1,056	31	131	317	193	2,166	78	69	740	13	70	235	1	221	274	295	
NH.....	575	136	6	-	1	62	221	20	"	63	-	10	11	-	13	10	20	
RI.....	778	173	4	3	21	35	140	16	"	135	1	7	147	-	30	31	28	
PR.....	1,220	216	437	2	41	31	120	27	5	120	17	9	72	3	9	44	67	
2ND...	20,135	5,177	126	568	644	664	2,881	616	330	2,552	59	662	2,335	17	956	970	1,578	
CT.....	3,359	552	34	81	17	130	830	267	50	667	11	64	278	1	97	108	172	
NY, N....	1,938	169	10	96	7	52	205	28	10	265	2	116	692	3	57	126	100	
NY, E....	4,055	640	27	139	158	237	1,057	65	48	582	3	102	262	3	243	218	271	
NY, S....	8,821	3,578	42	143	454	169	585	220	197	747	31	230	605	6	484	389	933	
NY, W....	1,566	145	7	103	8	33	106	19	20	237	10	148	465	3	63	119	80	
VT.....	396	93	6	6	-	43	98	9	5	54	2	2	33	1	12	10	22	
3RD...	12,652	2,747	151	405	326	1,091	2,204	373	157	1,392	80	256	1,286	5	370	750	1,059	
DE.....	631	106	4	2	10	67	50	16	2	45	1	12	196	-	57	24	39	
NJ.....	3,412	817	19	17	44	297	563	76	47	562	34	89	337	1	167	167	155	
PA, E....	4,484	992	33	294	248	347	862	190	71	395	32	82	326	1	88	276	247	
PA, M....	1,010	184	12	7	-	94	188	26	12	97	3	27	218	3	16	58	65	
PA, W....	1,837	510	9	85	15	99	244	45	24	259	10	26	202	-	36	182	91	
VI.....	1,278	138	74	-	9	187	297	20	1	34	-	20	7	-	6	23	462	
4TH...	11,753	2,567	148	180	273	693	2,0											

TABLE C 3A. U.S. DISTRICT COURTS
CIVIL CASES PENDING, BY NATURE OF SUIT AND DISTRICT AS OF SEP. 30, 1983

CIRCUIT AND DISTRICT	UNITED STATES CASES																
	TOTAL CIVIL CASES	TOTAL U.S. CIVIL	CONTRACT	LAND CONDEMNATION	OTHER REAL PROPERTY	TORT ACTIONS	ANTI-TRUST	CIVIL RIGHTS	PRISONER PETITIONS				FORFEITURES AND PENALTIES	LABOR SUITS	SOCIAL SECURITY	TAX SUITS	ALL OTHER
									MOTIONS TO VACATE SENTENCE	HABEAS CORPUS	CIVIL RIGHTS	MANDAMUS AND OTHER					
7TH...	17,732	5,010	1,927	50	425	199	1	201	61	95	88	37	112	94	1,087	362	271
IL, N.	7,954	2,056	1,115	1	62	73	1	98	22	10	8	24	55	36	326	139	106
IL, C.	1,423	343	84	-	48	30	-	13	4	13	7	-	2	8	78	29	27
IL, S.	1,224	350	57	4	41	21	-	5	8	27	29	1	12	9	99	15	22
IN, N.	2,297	700	177	39	99	21	-	31	10	2	1	-	13	7	201	77	22
IN, S.	2,712	966	386	4	108	28	-	25	12	38	23	12	17	14	191	46	62
MI, E.	1,580	434	77	-	53	18	-	23	4	1	2	-	9	15	154	61	17
MI, W.	542	161	31	2	14	8	-	6	1	4	18	-	4	5	38	15	15
8TH...	14,620	5,178	1,604	129	514	191	3	163	59	93	43	14	91	78	1,749	197	250
AR, E.	2,077	812	82	13	135	13	-	18	1	1	-	-	8	15	492	15	19
AR, N.	980	439	45	10	42	20	-	6	4	-	1	-	9	5	281	9	7
IA, M.	596	198	50	-	43	20	-	2	3	-	-	1	2	4	52	14	7
IA, S.	1,283	348	85	-	71	15	1	8	5	6	-	-	8	8	89	25	26
IA, W.	2,635	1,025	507	3	13	38	-	14	8	28	15	8	9	5	286	47	44
MO, E.	2,323	710	302	23	10	29	-	41	13	5	4	-	20	18	204	13	28
MO, W.	2,439	868	323	59	8	24	1	36	15	53	23	5	18	7	216	21	59
NE, E.	1,333	426	115	8	111	18	-	16	-	-	-	-	5	9	78	33	33
NE, W.	413	143	41	9	31	5	1	1	1	-	-	-	11	5	20	9	9
ND, E.	541	209	54	4	50	9	-	21	8	-	-	-	1	2	31	11	18
SD, E.																	
9TH...	31,475	11,131	3,277	921	452	932	4	434	139	116	42	14	641	244	2,164	871	880
AK, E.	961	334	75	4	32	35	1	12	2	1	-	-	21	6	15	75	55
AZ, E.	2,237	847	344	31	21	67	-	16	8	7	1	-	34	31	133	102	52
CA, N.	4,592	1,563	591	19	17	168	1	95	13	16	5	3	49	47	326	135	78
CA, E.	2,909	1,276	125	90	54	132	-	66	23	-	4	1	64	37	530	75	75
CA, C.	6,399	1,474	176	5	34	179	-	100	29	69	14	4	141	48	400	150	125
CA, S.	2,053	1,051	412	39	12	103	-	49	13	10	5	1	176	12	157	19	52
HI, E.	1,557	499	289	-	13	58	-	12	4	1	-	2	46	5	16	24	29
HI, W.	877	368	70	16	105	24	-	5	-	-	1	-	7	4	85	25	26
ID, E.	1,102	321	69	44	52	14	-	7	3	1	-	-	11	4	38	52	26
IL, N.	1,871	406	145	3	8	39	-	16	8	-	2	-	34	12	34	42	65
IL, S.	1,946	606	199	11	32	25	-	9	19	4	-	2	29	6	179	56	35
OR, N.	1,077	474	189	51	33	31	-	14	3	1	3	1	3	9	81	38	17
OR, W.	2,836	1,080	566	28	30	52	2	29	14	4	7	-	23	18	170	77	60
WA, N.	967	818	18	589	8	4	-	4	3	5	-	-	3	5	-	1	184
GUAM, E.	91	12	9	-	1	1	-	-	-	-	-	-	-	-	-	-	1
NY, E.																	
10TH...	11,737	3,180	1,079	151	395	195	1	109	34	57	13	22	82	59	443	230	310
CO, E.	2,494	561	109	47	27	56	-	51	6	15	6	-	36	20	71	55	62
CO, W.	2,572	593	196	7	111	48	1	13	7	30	-	20	8	9	75	36	32
KS, E.	1,447	547	245	22	55	26	-	14	10	1	-	-	12	5	105	12	40
KS, W.	995	273	76	8	81	3	-	5	3	1	-	-	10	2	40	32	12
OK, N.	432	144	27	36	20	7	-	12	-	-	3	-	3	3	31	7	5
OK, E.	1,893	547	206	28	79	17	-	11	1	9	3	2	8	6	54	20	103
OK, W.	1,549	417	184	1	15	35	-	9	6	1	-	-	5	12	62	55	32
UT, E.	355	98	36	2	7	3	-	4	1	-	1	-	-	2	5	13	24
NY, W.																	
11TH...	22,818	7,382	1,549	1,189	318	340	6	200	134	93	51	14	417	105	2,376	262	328
AL, N.	2,623	1,150	400	6	12	28	-	29	7	5	11	-	16	9	572	35	20
AL, M.	1,118	327	100	-	10	11	1	9	2	5	2	1	2	7	165	2	10
AL, S.	1,176	313	142	-	18	7	-	5	16	1	-	-	2	4	95	13	10
FL, N.	944	282	37	2	29	20	-	15	7	34	5	-	4	6	99	5	19
FL, M.	4,702	1,358	363	-	121	88	3	46	27	5	6	-	50	31	490	59	69
FL, S.	5,859	2,464	319	1,140	59	91	-	40	41	24	11	2	293	30	214	73	127
GA, N.	3,748	702	88	1	11	30	-	38	20	17	13	9	23	7	379	44	40
GA, M.	1,260	453	65	39	39	24	-	8	9	1	-	1	10	6	220	16	15
GA, S.	1,388	333	55	1	19	41	-	10	5	1	3	1	17	5	142	15	18

TABLE C 3A. U.S. DISTRICT COURTS
CIVIL CASES PENDING, BY NATURE OF SUIT AND DISTRICT AS OF SEP. 30, 1983

CIRCUIT AND DISTRICT	PRIVATE CASES																
	TOTAL PRIVATE CIVIL	CONTRACT	REAL PROPERTY	FELA	MARINE PERSONAL INJURY	MOTOR VEHICLE PERSONAL INJURY	OTHER PERSONAL INJURY	OTHER TORT ACTIONS	ANTI-TRUST	CIVIL RIGHTS	COMMERCE	PRISONER PETITIONS			COPYRIGHT PATENT TRADEMARK	LABOR SUITS	ALL OTHER
												HABEAS CORPUS	CIVIL RIGHTS	MANDAMUS AND OTHER			
7TH...	12,722	2,723	356	160	46	501	1,352	367	205	2,609	75	470	1,345	9	466	1,175	863
IL, N.	5,898	1,472	173	48	22	120	442	157	152	1,298	47	174	394	8	307	634	450
IL, C.	1,080	153	10	15	3	32	98	18	15	181	1	50	317	1	18	104	64
IL, S.	874	129	12	4	11	59	161	20	1	84	5	93	178	-	12	67	38
IN, N.	1,597	233	98	26	2	155	194	52	11	431	6	43	153	-	15	101	77
IN, S.	1,746	438	54	49	2	97	266	78	10	273	8	48	95	-	39	145	143
MI, E.	1,146	225	6	15	5	27	139	35	13	263	5	49	140	-	62	98	64
MI, W.	381	73	3	3	-	11	52	7	3	79	3	13	68	-	13	26	27
8TH...	9,442	2,061	160	208	40	471	1,402	319	124	1,749	97	319	1,036	12	201	561	682
AR, E.	1,265	230	15	7	9	65	156	21	11	394	5	59	187	-	9	35	62
AR, N.	541	162	27	1	4	55	92	20	6	76	-	12	29	-	5	17	35
IA, M.	398	102	18	2	-	26	97	17	3	40	10	6	39	-	6	18	14
IA, S.	935	206	18	16	-	54	121	36	11	148	10	13	169	-	19	63	51
IA, W.	1,610	302	9	42	8	41	310	38	34	324	13	27	75	1	79	104	203
MO, E.	1,613	414	22	3	16	84	231	83	16	281	7	56	129	1	33	149	88
MO, W.	1,571	263	11	12	2	45	171	47	34	256	35	107	354	8	20	113	93
NE, E.	907	199	14	108	-	53	105	28	5	167	13	23	44	1	18	49	80
NE, W.	270	93	17	15	-	17	55	11	3	21	-	-	3	-	4	7	24
ND, E.	332	90	9	2	1	31	64	18	1								

TABLE C 3B. U. S. DISTRICT COURTS
CIVIL CASES TERMINATED, BY NATURE OF SUIT AND DISTRICT
DURING THE TWELVE MONTH PERIOD ENDED SEP. 30, 1983

CIRCUIT AND DISTRICT	UNITED STATES CASES																	
	TOTAL CIVIL CASES	TOTAL U. S. CIVIL	CONTRACT	LAND CONDEMNATION	OTHER REAL PROPERTY	TORT ACTIONS	ANTI-TRUST	CIVIL RIGHTS	PRISONER PETITIONS				FORFEITURES AND PENALTIES	LABOR SUITS	SOCIAL SECURITY	TAX SUITS	ALL OTHER	
									MOTIONS TO VACATE SENTENCE	HABEAS CORPUS	CIVIL RIGHTS	MAN-DAMUS AND OTHER						
TOTAL...	219,780	86,047	43,499	1,441	4,490	3,071	28	1,834	1,236	1,908	790	342	3,205	1,540	14,586	3,919	4,158	
DC.....	3,850	1,415	732	3	2	217	3	22E	15	31	69	24	5	24	61	20	583	
1ST....	9,253	3,634	1,539	39	364	123	-	55	16	14	10	1	192	116	797	182	186	
ME.....	756	421	172	20	143	6	-	5	-	1	-	-	10	4	47	4	9	
MA.....	3,412	1,372	636	18	47	53	-	28	10	8	5	1	138	60	165	108	95	
NH.....	784	303	158	1	7	9	-	3	-	3	1	-	4	30	66	4	17	
RI.....	1,205	378	176	-	-	24	-	11	-	-	1	-	8	10	72	56	20	
PR.....	3,096	1,160	397	-	167	31	-	8	6	2	3	-	32	12	447	10	45	
2ND....	18,668	5,253	1,711	3	203	334	5	126	121	250	49	45	232	157	1,263	267	467	
CT.....	2,407	892	404	2	38	39	-	18	7	98	15	6	20	32	110	62	41	
NY, N....	1,303	390	117	-	23	36	-	8	-	9	5	3	31	21	79	25	33	
NY, E....	4,460	2,103	822	1	39	106	-	30	53	38	2	9	83	55	677	81	107	
NY, S....	8,951	1,262	187	-	25	114	5	65	57	99	26	26	52	26	271	57	252	
NY, H....	1,120	385	126	-	20	29	-	5	4	6	-	-	36	8	106	16	27	
VT.....	427	221	55	-	58	10	-	-	-	-	1	1	10	15	40	24	7	
3RD....	15,508	4,073	1,065	17	230	234	5	100	95	145	89	20	194	121	1,196	328	234	
DE.....	835	174	33	-	45	7	2	2	1	-	-	-	5	2	33	24	20	
NJ.....	4,054	1,172	288	2	72	84	-	30	17	6	-	1	64	29	392	113	74	
PA, E....	6,194	894	74	5	27	91	2	44	41	8	11	-	19	42	374	83	73	
PA, M....	1,626	603	81	7	24	21	-	12	12	127	75	18	7	12	147	38	22	
PA, H....	3,069	1,216	587	3	62	29	1	11	24	4	3	-	97	34	248	69	44	
VI.....	730	14	2	-	-	2	-	1	-	-	-	-	2	2	2	1	1	
4TH....	20,068	8,966	5,077	139	427	206	-	140	153	37	45	8	402	116	1,698	234	284	
MD.....	3,906	1,766	1,165	22	72	38	-	35	53	2	4	2	21	18	185	89	60	
NC, E....	2,246	1,193	928	32	8	11	-	22	16	4	5	-	43	15	72	17	20	
NC, M....	1,210	784	652	4	2	9	-	11	11	-	1	-	6	9	59	9	11	
NC, W....	1,613	970	833	-	1	10	-	6	14	-	-	-	4	5	84	6	7	
SC.....	3,340	1,384	416	16	321	42	-	10	33	10	454	25	33	10	454	25	38	
VA, E....	3,204	599	100	17	17	70	-	37	28	23	24	4	24	10	106	66	73	
VA, H....	2,451	1,383	644	3	1	12	-	9	9	1	6	2	133	16	511	10	26	
VA, W....	610	265	95	38	1	2	-	2	4	1	1	-	29	7	62	3	20	
HV, N....	1,488	622	244	7	4	12	-	8	4	3	2	-	109	26	165	9	29	
5TH....	26,657	8,604	5,361	127	378	240	2	189	159	139	59	23	290	117	869	373	278	
LA, E....	6,174	1,438	1,069	3	54	58	-	18	12	2	2	1	19	18	113	36	33	
LA, M....	1,125	312	232	-	27	4	-	-	1	3	4	-	4	1	30	4	2	
LA, H....	2,801	1,086	598	13	221	26	-	13	11	-	-	1	11	10	150	15	17	
MS, N....	1,184	428	240	61	31	16	-	4	7	3	1	-	2	2	37	10	14	
MS, S....	1,780	625	464	1	18	19	-	10	5	2	-	-	7	3	77	5	14	
TX, N....	3,303	856	292	18	5	28	1	28	31	41	16	3	68	18	156	74	77	
TX, E....	1,689	413	199	12	1	13	1	14	4	23	14	2	8	7	79	18	18	
TX, S....	5,891	2,103	1,460	8	13	32	-	61	47	20	1	7	93	40	120	137	64	
TX, H....	2,710	1,343	807	11	8	44	-	41	41	45	21	9	78	18	107	74	39	
6TH....	26,566	13,436	6,396	144	522	278	2	202	128	160	79	16	303	172	4,255	389	390	
KY, E....	2,086	1,426	187	49	57	13	-	2	19	66	30	5	74	7	873	8	36	
KY, H....	1,616	667	327	31	44	20	1	4	11	2	4	1	27	9	141	15	30	
MI, E....	5,216	2,184	268	-	19	70	-	54	27	43	19	2	46	36	1,407	104	89	
HI, N....	1,940	1,025	618	24	11	23	-	10	10	-	1	-	4	18	266	14	25	
OH, N....	5,894	3,309	2,163	13	241	51	-	56	20	2	9	2	38	36	505	85	87	
OH, S....	4,923	3,165	2,042	-	133	51	1	27	10	3	3	1	56	38	663	73	64	
TN, E....	1,644	738	349	24	7	31	-	19	8	-	3	-	39	11	193	28	26	
TN, M....	1,271	567	294	1	5	9	-	10	11	3	3	-	12	5	154	40	20	
TN, H....	976	355	147	2	5	10	-	20	12	41	7	5	7	12	53	21	13	

TABLE C 3B. U. S. DISTRICT COURTS
CIVIL CASES TERMINATED, BY NATURE OF SUIT AND DISTRICT
DURING THE TWELVE MONTH PERIOD ENDED SEP. 30, 1983

CIRCUIT AND DISTRICT	PRIVATE CASES																
	TOTAL PRIVATE CIVIL	CONTRACT	REAL PROPERTY	FELA	MARINE PERSONAL INJURY	MOTOR VEHICLE PERSONAL INJURY	OTHER PERSONAL INJURY	OTHER TORT ACTIONS	ANTI-TRUST	CIVIL RIGHTS	COMMERCE	PRISONER PETITIONS			COPYRIGHT TRADEMARK	LABOR SUITS	ALL OTHER
												HABEAS CORPUS	CIVIL RIGHTS	MAN-DAMUS AND OTHER			
TOTAL...	133,733	34,087	3,785	1,986	4,979	6,354	12,654	3,931	1,297	15,606	962	8,267	16,652	200	4,963	9,226	8,784
DC.....	2,435	424	21	17	1	504	474	60	26	244	4	53	89	6	47	282	183
1ST....	5,619	1,268	1,182	70	196	229	702	108	49	598	32	148	232	4	241	275	285
ME.....	335	105	3	20	10	17	33	8	5	49	-	10	26	1	13	19	16
MA.....	2,040	546	10	44	121	93	305	31	26	264	12	65	78	1	154	151	137
NH.....	481	126	4	-	9	46	131	16	3	59	-	29	19	-	15	10	14
RI.....	827	176	4	6	24	58	135	24	5	170	1	27	66	-	46	41	40
PR.....	1,936	315	1,161	-	32	15	98	29	4	56	19	17	43	2	13	54	78
2ND....	13,415	4,465	71	356	560	445	952	481	168	1,286	63	714	1,123	18	913	684	1,116
CT.....	1,515	288	12	33	8	54	107	234	13	277	8	63	180	3	64	57	108
NY, N....	913	139	2	86	6	46	72	20	9	124	3	92	150	1	35	69	59
NY, E....	2,357	530	20	94	79	163	269	36	38	262	3	153	123	2	194	176	215
NY, S....	7,689	3,377	32	102	463	140	405	174	98	483	37	336	469	12	565	337	658
NY, H....	735	77	2	33	4	19	58	12	7	111	11	66	184	-	47	40	64
VT.....	206	54	3	2	-	23	40	5	3	29	1	4	17	-	8	5	12
3RD....	12,435	3,021	133	414	327	967	1,545	296	161	1,117	140	471	1,541	5	402	983	912
DE.....	661	53	1	2	7	42	34	5	8	56	-	38	312	-	32	27	44
NJ.....	2,882	803	19	11	32	240	339	52	60	394	72	99	190	-	189	232	150
PA, E....	5,300	1,376	39	329	258	446	739	172	54	412	61	141	471	1	118	404	279
PA, M....	1,023	157	11	6	1	84	136	24	7	94	1	69	282	3	27	69	52
PA, H....	1,853	542	20	66	24	72	156	34	32	138	6	89	282	-	36	244	112
VI.....	716	90	43	-	5	83	141	9	-	23	-	35	4	1	-	7	275
4TH....	11,102	2,374	122	88	158	677	988	300	56	1,195	26	958	2,743	15	273	541	588
MD.....	2,140	489	20	41	35	109	133	57	17	230	8	163	493	2	44	152	147
NC, E....	1,053	121	5	1	9	27	35	7	3	67	1	142	544	-	43	13	35
NC, M....	426	70	3	2	-	9	26	3	4	71	-	53	116	-	26	18	25
NC, H....	643	153	8	-	-	17	20	18	4	128	-	85	125	-	27	21	37
SC.....	1,956	628	19	6	16	245	399	120	9	201	3	64	71	3	63	29	80
VA, E....	2,605	512	44	9	81	111	152	45	15	282	9	267	835	9	56	54	124
VA, H....	1,068	158	6	5	1	61	77	22	1	106	2	77	398	1	7	36	90
VA, W....	345	47	5	-	1	12	23	6	-	16	1	77	121	-	2	24	10
HV, N....	866	196	12	24	15	66	123	22	3	94	2	30	40	-	5	194	40
5TH....	18,053	4,865	285	135	2,732	790	1,778	752	154	1,772	67	1,117					

TABLE D-2 CASES. U. S. DISTRICT COURTS
CRIMINAL CASES COMMENCED BY MAJOR OFFENSE (EXCLUDES TRANSFERS) DURING THE TWELVE MONTH PERIODS ENDED SEP. 30, 1979 THROUGH 1983

NATURE OF PROCEEDINGS AND OFFENSE	1979	1980	1981	1982	1983	PER-CENT CHANGE 1983 OVER 1982 ¹
TOTAL.....	30,540	28,787	30,566	31,982	34,362	7.4
PROCEEDINGS COMMENCED BY						
INDICTMENT.....	17,907	16,617	17,711	18,772	19,900	6.0
INFORMATION--INDICTMENT WAIVED.....	465	540	484	1,622	3,255	0.7
INFORMATION--OTHER.....	10,426	9,401	9,564	7,859	7,222	-8.1
REMOVED FROM APPELLATE COURT.....	127	76	70	61	40	-34.4
REMOVED FROM STATE COURT.....	51	26	19	21	16	-23.8
REOPENED/REINSTATED.....	148	96	75	105	43	-59.1
APPEAL FROM U. S. MAGISTRATE.....	168	169	174	165	161	-2.4
JUVENILE DELINQUENCY PROCEEDINGS.....	81	96	93	86	85	-1.2
CONSENT BEFORE MAGISTRATE.....	1,157	1,730	2,333	3,192	3,569	11.8
RETRIAL ON MISTRIAL.....	2	19	15	58	58	-
RETRIAL--REMAND FROM APPEALS COURT.....	8	17	28	41	13	-68.3
GENERAL OFFENSES						
HOMICIDE TOTAL.....	153	153	175	154	144	-6.5
MURDER 1ST DEGREE.....	61	73	81	79	67	-15.2
MURDER 2ND DEGREE.....	30	29	39	29	38	31.0
MANSLAUGHTER.....	62	51	55	46	39	-15.2
ROBBERY, TOTAL.....	1,163	1,284	1,436	1,463	1,249	-14.6
BANK.....	1,081	1,170	1,340	1,355	1,144	-15.6
POSTAL.....	45	53	40	47	59	25.5
OTHER.....	37	61	56	61	46	-24.6
ASSAULT.....	549	564	530	605	509	-15.9
BURGLARY--BREAKING AND ENTERING, TOTAL.....	186	141	129	144	185	28.5
BANK.....	2	5	4	23	74	221.7
POSTAL.....	44	26	32	29	27	-6.9
INTERSTATE SHIPMENTS.....	-	2	4	2	4	100.0
OTHER.....	140	108	89	90	80	-11.1
LARCENY AND THEFT, TOTAL.....	3,293	3,042	2,956	3,018	3,337	10.6
BANK.....	117	134	133	173	177	2.3
POSTAL.....	826	621	527	531	537	1.1
INTERSTATE SHIPMENTS.....	260	325	284	273	226	-17.2
OTHER U. S. PROPERTY.....	1,271	1,124	1,149	1,126	1,502	33.4
TRANSPORTATION, ETC., OF STOLEN PROPERTY.....	206	251	284	383	401	4.7
OTHER.....	613	577	579	532	494	-7.2
EMBEZZLEMENT, TOTAL.....	1,497	1,685	1,899	2,060	2,014	-2.2
BANK.....	795	996	1,030	1,027	1,093	6.4
POSTAL.....	246	264	268	302	335	10.9
OTHER.....	456	425	601	731	586	-19.8
FRAUD, TOTAL.....	4,895	4,604	4,815	5,105	5,365	5.1
INCOME TAX.....	1,385	1,309	1,210	1,035	915	-11.8
LENDING INSTITUTION.....	416	399	511	484	475	-1.9
POSTAL.....	973	899	921	955	1,116	16.9
VETERANS AND ALLOTMENTS.....	17	10	12	14	47	235.7
SECURITIES AND EXCHANGE.....	27	12	13	18	35	94.4
SOCIAL SECURITY.....	328	358	239	263	221	-16.0
FALSE PERSONATION.....	55	34	50	45	33	-26.7
NATIONALITY LAWS.....	199	104	226	132	162	22.7
PASSPORT FRAUD.....	54	67	75	71	91	28.2
FALSE CLAIMS AND STATEMENTS.....	707	789	861	996	1,094	9.8
OTHER.....	734	613	697	1,082	1,176	7.7
AUTO THEFT.....	378	388	308	371	327	-11.9

TABLE D-2 CASES. U. S. DISTRICT COURTS
CRIMINAL CASES COMMENCED BY MAJOR OFFENSE (EXCLUDES TRANSFERS) DURING THE TWELVE MONTH PERIODS ENDED SEP. 30, 1979 THROUGH 1983

NATURE OF PROCEEDINGS AND OFFENSE	1979	1980	1981	1982	1983	PER-CENT CHANGE 1983 OVER 1982 ¹
FORGERY AND COUNTERFEITING, TOTAL.....	2,736	1,990	1,764	2,269	2,194	-3.3
TRANSPORTATION OF FORGED SECURITIES.....	227	233	190	217	166	-23.5
POSTAL FORGERY.....	107	91	103	114	104	-8.8
OTHER FORGERY.....	1,908	1,103	891	1,277	1,357	6.3
COUNTERFEITING.....	494	563	580	661	567	-14.2
SEX OFFENSES, TOTAL.....	148	137	150	137	130	-5.1
RAPE.....	103	97	91	83	86	3.6
OTHER.....	45	40	59	54	44	-18.5
DRUG ABUSE PREVENTION AND CONTROL ACT, TOTAL..... ²	3,060	3,386	3,771	4,330	5,004	15.6
MARIHUANA.....	710	818	1,257	1,756	1,986	13.1
NARCOTICS.....	1,598	1,745	1,765	1,710	2,220	29.8
CONTROLLED SUBSTANCES.....	752	823	749	864	798	-7.6
MISCELLANEOUS GENERAL OFFENSES, TOTAL.....	8,418	7,675	8,440	8,656	10,145	17.2
BRIBERY.....	158	157	156	146	173	18.5
DRUNK DRIVING AND TRAFFIC.....	5,490	4,866	5,073	5,114	6,611	29.3
ESCAPE..... ³	1,026	826	950	805	892	10.8
EXTORTION, RACKETEERING, AND THREATS.....	371	360	421	431	444	3.0
GAMBLING AND LOTTERY.....	37	50	30	33	30	-9.1
KIDNAPPING.....	62	75	56	60	73	21.7
PERJURY.....	153	102	108	129	131	1.6
WEAPONS AND FIREARMS.....	946	1,029	1,468	1,781	1,691	-5.1
OTHER.....	175	208	178	157	100	-36.3
SPECIAL OFFENSES						
IMMIGRATION LAWS.....	1,886	1,832	2,006	1,730	1,934	11.8
LIQUOR, INTERNAL REVENUE.....	29	32	28	15	22	46.7
FEDERAL STATUTES, TOTAL.....	2,149	1,874	2,165	1,925	1,803	-6.3
AGRICULTURAL ACTS.....	305	293	621	422	266	-37.0
ANTITRUST VIOLATIONS.....	25	53	70	92	79	-14.1
FOOD AND DRUG ACT.....	120	90	78	80	67	-16.3
MIGRATORY BIRD LAWS.....	74	87	74	79	123	55.7
MOTOR CARRIER ACT.....	66	69	99	66	83	25.8
NATIONAL DEFENSE LAWS.....	419	144	100	90	85	-5.6
CIVIL RIGHTS ACT..... ⁴	86	76	61	68	81	19.1
CONTEMPT.....	42	89	42	37	43	16.2
CUSTOMS LAWS.....	113	91	91	58	67	15.5
POSTAL LAWS.....	351	223	253	310	213	-31.3
OTHER.....	548	659	676	623	696	11.7

¹ PERCENT CHANGE IS COMPUTED ON 10 OR MORE CASES.

² THE COMPREHENSIVE DRUG ABUSE PREVENTION AND CONTROL ACT OF 1970 (PUBLIC LAW 91-513) BECAME EFFECTIVE MAY 1, 1971.

³ INCLUDES ESCAPE FROM CUSTODY, AIDING OR ABETTING AN ESCAPE, FAILURE TO APPEAR IN COURT AND BAIL JUMPING.

⁴ THESE INCLUDE CASES REMOVED FROM STATE COURTS UNDER PROVISION OF THE CIVIL RIGHTS ACT, 28 U. S. C. 1443.

TABLE D-2 DEFENDANTS. U.S. DISTRICT COURTS
CRIMINAL DEFENDANTS COMMENCED BY MAJOR OFFENSE (EXCLUDES TRANSFERS) DURING THE TWELVE MONTH PERIODS ENDED SEP. 30, 1979 THROUGH 1983

NATURE OF PROCEEDINGS AND OFFENSE	1979	1980	1981	1982	1983	PER- CENT CHANGE 1983 OVER 1982 ¹
TOTAL.....	41,012	39,376	41,961	43,949	47,373	7.8
PROCEEDINGS COMMENCED BY						
INDICTMENT.....	27,335	26,193	28,095	29,667	31,842	7.3
INFORMATION--INDICTMENT WAIVED.....	506	579	550	1,791	3,651	3.9
INFORMATION--OTHER.....	11,208	10,169	10,236	8,367	7,498	-10.4
REMOVED FROM APPELLATE COURT.....	209	133	136	105	51	-51.4
REMOVED FROM STATE COURT.....	62	28	27	21	25	19.0
REOPENED/REINSTATED.....	200	138	113	169	93	-45.0
APPEAL FROM U.S. MAGISTRATE.....	169	173	181	172	171	-0.6
JUVENILE DELINQUENCY PROCEEDINGS.....	101	112	139	99	98	-1.0
CONSENT BEFORE MAGISTRATE.....	1,206	1,781	2,418	3,286	3,648	11.0
RETRIAL ON MISTRIAL.....	2	32	21	102	111	8.8
RETRIAL--REMAND FROM APPEALS COURT.....	14	38	45	170	185	8.8
GENERAL OFFENSES						
HOMICIDE TOTAL.....	186	197	198	194	178	-8.3
MURDER 1ST DEGREE.....	90	110	100	112	89	-20.5
MURDER 2ND DEGREE.....	32	35	39	36	47	30.6
MANSLAUGHTER.....	64	52	59	46	42	-8.7
ROBBERY, TOTAL.....	1,576	1,748	1,952	1,996	1,621	-18.8
BANK.....	1,450	1,585	1,819	1,825	1,487	-18.5
POSTAL.....	70	82	53	68	73	7.4
OTHER.....	56	81	80	103	61	-40.8
ASSAULT.....	634	634	601	672	590	-12.2
BURGLARY--BREAKING AND ENTERING, TOTAL.....	240	186	183	179	241	34.6
BANK.....	4	7	4	27	86	225.9
POSTAL.....	58	35	56	37	36	-2.7
INTERSTATE SHIPMENTS.....	-	3	11	2	4	100.0
OTHER.....	178	141	110	113	113	-
LARCENY AND THEFT, TOTAL.....	3,997	4,038	3,793	4,034	4,335	7.5
BANK.....	144	192	175	237	231	-2.5
POSTAL.....	1,014	780	677	714	690	-3.4
INTERSTATE SHIPMENTS.....	433	614	484	497	410	-17.5
OTHER U.S. PROPERTY.....	1,416	1,290	1,322	1,292	1,764	36.5
TRANSPORTATION, ETC., OF STOLEN PROPERTY.....	333	507	508	686	683	-0.4
OTHER.....	657	655	627	608	557	-8.4
EMBEZZLEMENT, TOTAL.....	1,658	1,841	2,063	2,266	2,209	-2.5
BANK.....	866	1,078	1,107	1,114	1,200	7.7
POSTAL.....	249	267	279	311	344	10.6
OTHER.....	543	496	677	841	665	-20.9
FRAUD, TOTAL.....	6,200	5,927	6,287	6,612	7,012	6.0
INCOME TAX.....	1,557	1,488	1,431	1,185	1,059	-10.6
LENDING INSTITUTION.....	508	478	616	553	557	0.7
POSTAL.....	1,554	1,462	1,543	1,552	1,830	17.9
VETERANS AND ALLOTMENTS.....	17	10	12	14	47	235.7
SECURITIES AND EXCHANGE.....	33	22	18	21	54	57.1
SOCIAL SECURITY.....	338	372	246	274	232	-15.3
FALSE PERSONATION.....	61	42	54	52	36	-30.8
NATIONALITY LAWS.....	214	119	247	150	181	20.7
PASSPORT FRAUD.....	55	70	80	79	104	31.6
FALSE CLAIMS AND STATEMENTS.....	925	989	1,109	1,237	1,366	10.4
OTHER.....	938	875	931	1,495	1,546	3.4
AUTO THEFT.....	594	675	482	605	524	-13.4

TABLE D-2 DEFENDANTS. U.S. DISTRICT COURTS
CRIMINAL DEFENDANTS COMMENCED BY MAJOR OFFENSE (EXCLUDES TRANSFERS) DURING THE TWELVE MONTH PERIODS ENDED SEP. 30, 1979 THROUGH 1983

NATURE OF PROCEEDINGS AND OFFENSE	1979	1980	1981	1982	1983	PER- CENT CHANGE 1983 OVER 1982 ¹
FORGERY AND COUNTERFEITING, TOTAL.....	3,533	2,609	2,306	3,090	3,034	-1.8
TRANSPORTATION OF FORGED SECURITIES.....	338	288	251	312	244	-21.8
POSTAL FORGERY.....	137	135	169	169	197	16.6
OTHER FORGERY.....	2,337	1,361	1,070	1,603	1,669	4.1
COUNTERFEITING.....	721	825	816	1,006	924	-8.2
SEX OFFENSES, TOTAL.....	175	169	185	151	164	8.6
RAPE.....	119	122	107	90	103	20.0
OTHER.....	56	47	78	61	56	-8.2
DRUG ABUSE PREVENTION AND CONTROL ACT, TOTAL..... ²	6,815	7,119	8,458	9,292	10,624	14.3
MARIJUANA.....	1,744	1,917	3,296	3,826	4,067	6.3
NARCOTICS.....	3,537	3,566	3,613	3,745	4,943	32.0
CONTROLLED SUBSTANCES.....	1,534	1,636	1,549	1,721	1,614	-6.2
MISCELLANEOUS GENERAL OFFENSES, TOTAL.....	9,567	8,535	9,407	9,608	11,311	17.7
BRIBERY.....	224	207	210	200	247	23.5
DRUNK DRIVING AND TRAFFIC.....	5,502	4,895	5,092	5,135	6,642	29.3
ESCAPE ³	1,142	865	1,000	860	984	14.4
EXTORTION, RACKETEERING, AND THREATS.....	800	631	753	696	874	25.6
GAMBLING AND LOTTERY.....	192	150	134	158	179	13.3
KIDNAPPING.....	100	120	92	103	114	10.7
PERJURY.....	193	114	122	144	151	4.9
WEAPONS AND FIREARMS.....	1,217	1,314	1,816	2,148	2,006	-6.6
OTHER.....	197	229	188	164	114	-30.5
SPECIAL OFFENSES						
IMMIGRATION LAWS.....	2,601	2,840	2,830	2,582	2,883	11.7
LIQUOR, INTERNAL REVENUE.....	46	62	46	21	34	61.9
FEDERAL STATUTES, TOTAL.....	3,190	2,796	3,170	2,647	2,613	-1.3
AGRICULTURAL ACTS.....	407	397	893	535	426	-20.4
ANTITRUST VIOLATIONS.....	163	137	158	226	192	-15.1
FOOD AND DRUG ACT.....	185	138	131	125	94	-24.8
MIGRATORY BIRD LAWS.....	287	140	107	92	133	44.6
MOTOR CARRIER ACT.....	86	80	112	81	99	22.2
NATIONAL DEFENSE LAWS.....	454	277	137	117	121	3.4
CIVIL RIGHTS ⁴	221	108	114	101	203	31.0
CONTEMPT.....	48	97	85	42	55	31.0
CUSTOMS LAWS.....	173	161	163	93	120	29.0
POSTAL LAWS.....	382	235	276	333	223	-33.0
OTHER.....	784	1,026	994	902	947	5.0

¹ PERCENT CHANGE IS COMPUTED ON 10 OR MORE CASES.

² THE COMPREHENSIVE DRUG ABUSE PREVENTION AND CONTROL ACT OF 1970 (PUBLIC LAW 91-513) BECAME EFFECTIVE MAY 1, 1971.

³ INCLUDES ESCAPE FROM CUSTODY, AIDING OR ABETTING AN ESCAPE, FAILURE TO APPEAR IN COURT AND BAIL JUMPING.

⁴ THESE INCLUDE CASES REMOVED FROM STATE COURTS UNDER PROVISION OF THE CIVIL RIGHTS ACT, 28 U.S.C. 1443.

TABLE D-3 CASES, U. S. DISTRICT COURTS
CRIMINAL CASES COMMENCED (EXCLUDES TRANSFERS) DURING THE TWELVE MONTH PERIOD ENDED SEP. 30, 1983

CIRCUIT AND DISTRICT	TOTAL	GENERAL OFFENSES								
		HOMICIDE	ROBBERY	ASSAULT	BURGLARY	LARCENY	EMBEZZLEMENT	FRAUD	AUTO THEFT	FORGERY AND COUNTERFEITING
TOTAL...	34,362	144	1,249	509	185	3,337	2,014	5,367	327	2,194
DC.....	382	-	4	3	2	53	23	65	-	17
1ST...	828	3	14	10	-	131	74	179	2	104
ME.....	117	1	4	-	-	18	9	10	1	16
MA.....	305	1	6	6	-	50	34	77	1	28
NH.....	38	-	-	-	-	4	5	14	-	3
RI.....	74	-	-	2	-	3	7	30	-	10
PR.....	294	1	4	2	-	56	19	48	-	47
2ND...	1,938	2	87	8	4	282	169	423	8	130
CT.....	205	-	9	3	2	17	24	55	2	16
NY, N....	124	-	1	2	-	8	11	28	1	6
NY, E....	545	1	18	-	2	89	25	105	4	25
NY, S....	789	1	43	3	-	137	92	174	1	56
NY, W....	217	-	16	-	-	30	17	48	-	22
VT.....	58	-	-	-	-	1	-	13	-	5
3RD...	1,743	10	75	39	43	191	119	502	12	118
DE.....	55	-	2	-	-	2	2	10	4	12
NJ.....	528	-	19	3	1	70	54	210	3	23
PA, E....	456	1	13	3	-	27	22	157	4	49
PA, M....	219	-	5	3	-	20	12	80	1	6
PA, H....	184	-	16	3	-	17	16	34	-	13
VI.....	301	9	20	27	42	55	13	11	-	15
4TH...	4,861	9	140	75	8	538	162	570	32	206
MD.....	986	2	36	19	1	98	36	93	6	21
NC, E....	313	-	17	1	2	28	17	81	4	11
NC, M....	219	-	19	-	-	33	9	51	-	33
NC, H....	277	2	21	11	3	17	18	69	4	23
SC.....	346	-	18	6	-	31	32	53	7	49
VA, E....	2,299	4	23	33	1	282	22	153	3	34
VA, M....	147	1	5	3	-	18	8	24	7	11
VA, W....	107	-	-	1	1	8	11	16	-	11
WV, N....	167	-	1	1	-	23	9	30	1	13
5TH...	4,114	6	46	45	16	249	175	625	33	297
LA, E....	414	-	10	5	3	41	32	76	2	39
LA, M....	79	-	-	-	-	4	9	11	2	22
LA, W....	176	1	1	1	4	17	13	39	2	14
MS, N....	60	-	1	-	-	2	4	21	1	4
MS, S....	147	-	2	5	2	18	8	49	2	10
TX, N....	610	-	6	5	2	41	24	133	6	122
TX, E....	153	-	1	1	1	15	6	42	3	23
TX, S....	1,518	3	9	11	1	29	43	128	9	32
TX, W....	957	2	16	17	3	82	36	126	6	31
6TH...	2,767	1	102	28	10	422	265	594	78	335
KY, E....	153	-	13	4	1	8	9	21	5	21
KY, W....	324	1	8	1	3	136	11	37	4	22
MI, E....	542	-	16	8	1	99	47	120	20	44
MI, M....	178	-	-	1	-	13	41	29	1	34
MI, W....	420	-	29	2	3	61	61	85	14	72
OH, N....	246	-	14	3	1	28	36	49	3	32
OH, S....	285	-	10	3	-	22	26	112	15	24
TN, E....	394	-	5	3	1	36	20	70	7	49
TN, M....	225	-	7	3	-	19	14	71	9	37

TABLE D-3 DEFENDANTS, U. S. DISTRICT COURTS
CRIMINAL DEFENDANTS COMMENCED (EXCLUDES TRANSFERS) DURING THE TWELVE MONTH PERIOD ENDED SEP. 30, 1983

CIRCUIT AND DISTRICT	GENERAL OFFENSES--CONTINUED							SPECIAL OFFENSES			
	DAPCA (DRUG) LAWS			WEAPONS AND FIRE-ARMS	TRAFFIC	ESCAPE	OTHER	IMMI-GRATION LAWS	AGRI-CULTURAL ACTS	POSTAL LAWS*	OTHER
	MARI-HUANA	MAR-COTICS	CONTROL-LED SUB-STANCES								
... TOTAL	4,067	4,943	1,614	2,006	6,642	984	1,843	2,883	426	223	1,996
... DC	14	92	32	38	-	38	33	2	10	1	10
... 1ST	174	115	47	42	36	8	42	83	5	3	62
... ME	49	5	10	8	30	1	4	5	2	-	5
... MA	57	70	24	24	4	3	28	2	1	-	13
... NH	2	8	-	2	-	-	-	-	-	-	16
... RI	6	3	1	6	2	1	5	-	2	1	5
... PR	50	29	12	2	-	3	5	76	-	2	23
... 2ND	153	756	21	74	1	52	156	79	6	70	150
... CT	42	59	2	30	1	3	7	1	-	1	3
... NY, H	16	25	5	-	-	9	2	31	-	3	29
... NY, E	43	286	3	7	-	1	46	6	2	26	40
... NY, S	20	336	6	12	-	35	75	14	4	35	37
... NY, W	18	45	2	14	-	2	26	13	-	5	23
... VT	14	5	3	11	-	2	-	14	-	-	18
... 3RD	133	197	255	117	45	30	153	51	4	17	149
... DE	-	3	16	14	-	-	3	-	-	-	-
... NJ	40	23	78	18	5	3	53	4	-	9	49
... PA, E	2	104	79	31	22	1	53	2	-	4	52
... PA, M	38	14	34	8	6	15	16	3	-	3	22
... PA, H	23	43	41	21	-	2	9	-	-	1	23
... VI	30	10	7	25	12	9	19	42	4	-	3
... 4TH	747	385	145	316	1,571	92	257	8	25	10	309
... MD	179	177	58	27	311	12	27	2	-	5	37
... NC, E	73	3	2	36	42	6	23	-	3	-	30
... NC, H	4	28	12	31	-	2	7	2	3	-	26
... NC, W	19	14	7	30	7	6	34	2	4	2	42
... SC	132	8	8	59	4	7	20	-	3	1	43
... VA, E	296	97	15	58	1,203	47	111	1	10	2	67
... VA, M	8	4	10	44	4	4	10	-	2	-	22
... VA, W	24	20	25	7	-	3	12	-	-	-	1
... WV, N	12	34	8	24	-	5	13	1	-	-	41
... 5TH	718	490	312	287	119	195	120	1,495	62	19	239
... LA, E	97	49	87	42	-	3	20	24	2	2	25
... LA, M	2	15	9	11	1	2	2	-	-	3	1
... LA, W	12	4	5	10	-	6	6	7	11	1	39
... MS, N	11	1	8	10	1	2	3	1	-	4	5
... MS, S	19	16	11	15	-	-	8	6	3	-	4
... TX, N	11	123	29	70	4	46	24	38	-	3	35
... TX, E	50	-	3	3	-	21	7	7	1	2	19
... TX, S	388	151	68	88	20	74	26	1,028	41	2	83
... TX, W	128	131	92	38	93	41	24	364	4	2	28
... 6TH	199	313	113	229	150	49	206	19	89	21	169
... KY, E	12	22	4	34	-	8	40	-	-	1	34
... KY, W	37	13	5	20	17	6	27	-	28	-	17
... MI, E	66	167	16	37	-	9	26	10	-	9	18
... MI, M	5	9	5	24	1	2	23	3	2	2	8
... MI, W	4	29	4	34	1	5	26	2	-	1	34
... OH, N	15	25	51	20	8	4	17	-	1	5	13
... OH, S	16	21	14	24	-	5	13	-	6	1	16
... TN, E	17	2	8	25	123	2	6	1	41	2	12
... TN, M	27	25	6	11	-	8	26	3	11	-	17

TABLE D-3 CASES, U. S. DISTRICT COURTS
CRIMINAL CASES COMMENCED (EXCLUDES TRANSFERS) DURING THE TWELVE MONTH PERIOD ENDED SEP. 30, 1983

CIRCUIT AND DISTRICT	GENERAL OFFENSES									
	TOTAL	HOMICIDE	ROBBERY	ASSAULT	BURGLARY	LARCENY	EMBEZ-ZLEMENT	FRAUD	AUTO THEFT	FORGERY AND COUNTERFEITING
7TH...	1,594	3	53	37	14	273	180	398	23	79
IL, N....	738	-	17	4	10	163	85	204	3	23
IL, C....	205	-	7	2	2	15	32	60	1	9
IL, S....	151	-	7	4	1	30	9	27	4	5
IN, N....	91	-	6	2	-	11	8	13	6	16
IN, S....	164	2	5	14	-	17	23	26	3	10
WI, E....	173	1	11	5	-	24	12	57	4	10
WI, W....	72	-	-	6	1	13	11	11	2	6
8TH...	2,084	25	52	50	19	185	131	344	26	124
AR, E....	170	-	1	2	3	22	22	43	1	18
AR, W....	114	1	4	1	-	10	13	22	15	11
IA, N....	56	-	4	1	-	2	5	17	1	3
IA, S....	92	-	4	-	-	9	7	23	-	7
MN....	223	-	12	4	4	12	20	34	2	8
MO, E....	258	-	5	-	1	46	18	57	5	27
MO, W....	748	-	15	1	-	27	18	68	-	33
NE....	101	1	4	1	-	3	9	26	1	9
ND....	116	3	3	15	4	18	9	26	1	3
SD....	196	20	-	25	7	37	10	28	1	5
9TH...	8,061	60	512	132	52	531	471	779	18	351
AK....	163	-	6	4	-	17	14	25	-	7
AZ....	551	30	34	26	5	34	20	41	1	22
CA, N....	653	-	53	9	8	68	162	146	2	42
CA, E....	416	-	54	3	3	38	28	47	1	33
CA, C....	985	2	245	13	4	116	111	154	4	97
CA, S....	969	2	36	24	4	25	14	59	2	25
HI....	2,540	-	1	16	2	97	11	24	1	4
ID....	141	2	5	1	-	16	7	53	2	10
MT....	147	8	-	17	2	19	9	31	1	15
NV....	200	2	4	6	16	13	15	57	-	21
OR....	184	-	35	5	-	22	25	42	1	9
WA, E....	214	1	3	3	6	13	17	41	1	48
WA, W....	852	3	36	4	-	48	36	54	2	17
GUAM....	42	9	-	1	2	5	1	5	-	1
NH....	4	1	-	-	-	-	1	-	-	-
10TH...	2,031	21	67	27	9	184	106	366	25	159
CO....	342	2	19	2	-	43	39	64	2	24
KS....	252	2	5	2	1	20	14	69	4	19
NM....	224	12	11	6	4	17	11	34	6	8
OK, N....	151	-	2	1	1	12	9	23	5	36
OK, E....	149	-	1	1	1	14	5	44	4	20
OK, W....	659	1	9	3	1	49	8	93	3	27
UT....	150	1	19	9	-	16	12	26	-	12
NY....	104	3	1	3	1	13	8	13	1	11
11TH...	3,959	4	97	55	8	297	139	522	70	274
AL, N....	527	-	15	5	1	43	16	99	25	69
AL, M....	278	-	1	4	2	35	9	36	8	9
AL, S....	96	-	9	-	-	8	7	23	6	11
FL, N....	102	1	5	2	-	4	8	12	2	5
FL, M....	451	-	20	9	1	48	29	78	3	59
FL, S....	1,211	-	26	13	1	35	28	138	3	55
GA, N....	397	2	10	18	1	64	24	102	16	34
GA, M....	714	-	6	3	1	41	15	19	6	8
GA, S....	183	1	5	1	1	19	3	15	1	24

TABLE D-3 CASES, U. S. DISTRICT COURTS
CRIMINAL CASES COMMENCED (EXCLUDES TRANSFERS) DURING THE TWELVE MONTH PERIOD ENDED SEP. 30, 1983

GENERAL OFFENSES--CONTINUED							SPECIAL OFFENSES				CIRCUIT AND DISTRICT
DAPCA (DRUG) LAWS			WEAPONS AND FIRE-ARMS	TRAFFIC	ESCAPE	OTHER	IMMI-GRATION LAWS	AGRI-CULTURAL ACTS	POSTAL LAWS*	OTHER	
MARI-HUANA	NAR-COTICS	CONTROL-LED SUB-STANCES									
53	116	32	78	9	40	71	24	17	26	68	... 7TH
15	71	17	14	2	6	42	10	3	16	33	... IL, N
20	20	2	9	1	3	6	9	2	2	3	... IL, C
6	6	6	23	3	13	5	-	-	-	2	... IL, S
5	5	3	9	2	1	2	-	-	-	2	... IN, N
3	3	1	11	1	7	7	2	6	-	23	... IN, S
3	7	2	11	-	3	5	3	4	8	3	... WI, E
1	4	1	1	-	7	4	-	2	-	2	... WI, W
41	155	63	117	513	34	56	29	27	8	84	... 8TH
7	8	3	10	-	2	6	1	-	7	14	... AR, E
4	7	7	3	3	1	2	5	1	-	4	... AR, W
-	10	2	-	-	2	-	2	1	-	6	... IA, N
3	9	-	8	-	1	8	5	-	-	8	... IA, S
5	47	13	29	-	12	3	4	4	-	10	... MN
3	39	21	31	-	2	13	-	-	-	-	... MO, E
18	9	8	13	510	5	8	6	-	-	9	... MO, W
1	15	5	7	-	1	5	6	3	1	4	... NE
-	10	3	7	-	2	2	-	1	-	9	... ND
-	1	1	9	-	6	9	-	17	-	20	... SD
227	458	95	161	2,911	213	170	600	55	27	238	... 9TH
17	11	-	4	39	-	1	4	7	-	7	... AK
22	26	5	31	12	96	48	79	2	-	17	... AZ
9	54	9	13	25	6	12	7	-	7	21	... CA, N
12	31	18	21	28	18	13	34	13	4	17	... CA, E
9	90	14	19	-	19	32	26	1	7	22	... CA, C
101	143	26	17	1	48	9	376	-	1	56	... CA, S
24	27	4	6	2,281	2	15	3	-	2	20	... HI
2	2	-	6	3	1	3	18	3	2	5	... ID
1	8	2	8	-	2	4	3	6	-	11	... MT
2	20	8	4	-	4	13	7	4	2	2	... NV
3	11	2	6	-	9	2	4	1	1	6	... OR
2	3	-	17	-	2	3	35	5	1	13	... WA, E
20	31	2	9	519	6	9	4	13	-	39	... WA, W
3	1	5	-	3	-	4	-	-	-	2	... GUAM
-	-	-	-	-	-	2	-	-	-	-	... NH
70	86	64	125	427	47	69	67	27	7	78	... 10TH
2	17	18	13	38	4	8	17	5	2	23	... CO
7	3	6	25	13	24	11	17	1	2	7	... KS
7	25	8	21	10	1	11	21	5	-	6	... NM
7	15	8	11	-	3	4	1	-	-	11	... OK, N
12	2	4	11	-	-	11	-	9	-	10	... OK, E
29	15	12	17	362	10	8	1	1	2	8	... OK, W
1	5	5	13	1	2	12	8	2	1	5	... UT
5	4	3	14	3	3	4	2	4	-	8	... NY
488	367	84	251	852	137	113	38	17	10	136	... 11TH
23	3	6	50	135	10	16	1	1	-	9	... AL, N
14	4	-	16	112	7	2	-	2	3	14	... AL, S
9	9	1	6	-	-	2	1	1	1	2	... AL, M
13	9	12	-	3	3	7	1	-	-	15	... FL, N
30	23	35	35	4	18	27	11	1	-	20	... FL, M
356	289	20	91	-	68	25	24	5	2	32	... FL, S
3	25	6	25	3	26	15	-	1	3	19	... GA, N
27	2	-	16	528	5	11	-	-	1	25	... GA, W
13	3	4	12	67	-	8	-	6	-	-	... GA, S

* OBSTRUCTING MAIL, MAILING NON-MAILABLE MATERIAL AND OTHER POSTAL REGULATIONS.

TABLE D-3 DEFENDANTS, U.S. DISTRICT COURTS
CRIMINAL DEFENDANTS COMMENCED (EXCLUDES TRANSFERS) DURING THE TWELVE MONTH PERIOD ENDED SEP. 30, 1983

CIRCUIT AND DISTRICT	GENERAL OFFENSES									
	TOTAL	HOMICIDE	ROBBERY	ASSAULT	BURGLARY	LARCENY	EMBEZ- ZLEMENT	FRAUD	AUTO THEFT	FORGERY AND COUNTER- FEITING
TOTAL...	47,373	178	1,621	590	241	4,335	2,209	7,014	524	3,034
DC.....	453	-	6	3	2	57	23	70	-	22
1ST...	1,312	3	28	10	-	199	81	228	6	140
ME.....	191	1	7	-	-	22	10	10	4	18
MA.....	489	1	14	6	-	68	36	97	2	39
NH.....	65	-	-	-	-	7	5	22	-	3
RI.....	102	-	-	2	-	4	8	43	-	13
PR.....	465	1	7	2	-	98	22	56	-	67
2ND...	2,939	3	120	9	8	365	190	546	9	171
CT.....	313	-	16	3	6	17	27	73	2	20
NY, N....	188	-	2	2	-	10	12	35	1	6
NY, E....	826	1	32	1	2	112	25	149	5	39
NY, S....	1,204	2	50	3	-	187	102	210	1	75
NY, H....	319	-	20	-	-	38	24	63	-	26
VT.....	89	-	-	-	-	1	-	16	-	5
3RD...	2,646	14	98	47	63	260	133	707	19	154
DE.....	77	-	2	-	-	4	2	11	7	15
NJ.....	749	-	23	5	1	91	64	247	6	30
PA, E....	764	1	14	4	-	41	25	260	5	64
PA, M....	334	-	8	5	-	26	12	116	1	7
PA, N....	302	-	24	3	-	22	17	53	-	20
VI.....	420	13	27	30	62	76	13	20	-	18
4TH...	6,054	10	198	81	10	615	174	744	49	308
MD.....	1,230	2	53	20	1	106	41	121	7	44
NC, E....	424	-	27	1	2	30	21	97	8	20
NC, M....	293	-	23	-	-	44	9	60	-	42
NC, N....	387	2	27	12	3	23	18	31	5	39
SC.....	574	-	30	6	-	46	32	88	11	76
VA, E....	2,521	5	29	37	1	294	24	182	3	39
VA, M....	210	1	8	3	-	25	8	30	12	15
VA, N....	158	-	-	1	3	16	11	20	-	15
WV, N....	158	-	-	1	-	31	10	55	3	16
WV, S....	257	-	1	1	-	31	10	55	3	16
5TH...	5,979	9	63	53	21	313	197	795	59	413
LA, E....	585	-	12	5	3	45	36	86	2	45
LA, M....	109	-	-	-	-	4	10	13	2	34
LA, N....	221	1	1	1	5	20	14	59	2	17
MS, N....	82	-	1	-	-	2	4	24	1	4
MS, S....	203	-	3	5	4	25	8	58	2	16
TX, N....	857	-	6	5	3	52	26	176	21	185
TX, E....	226	1	4	1	1	20	6	52	3	25
TX, S....	2,337	4	13	12	1	45	57	172	20	44
TX, M....	1,359	3	23	24	4	100	36	155	6	43
6TH...	3,990	1	126	34	10	562	293	803	137	467
KY, E....	301	-	16	4	1	21	10	44	10	40
KY, M....	428	1	11	1	3	144	13	57	5	23
MI, E....	840	-	22	8	1	134	53	164	44	56
MI, M....	226	-	-	2	-	18	48	32	1	41
OH, N....	549	-	34	2	3	80	65	125	16	84
OH, S....	382	-	16	6	1	36	36	62	3	43
TN, E....	398	-	13	3	-	48	27	130	33	28
TN, M....	493	-	6	4	1	46	24	89	14	70
TN, N....	393	-	8	4	-	35	17	100	11	82

TABLE D-3 CASES, U.S. DISTRICT COURTS
CRIMINAL CASES COMMENCED (EXCLUDES TRANSFERS) DURING THE TWELVE MONTH PERIOD ENDED SEP. 30, 1983

GENERAL OFFENSES--CONTINUED							SPECIAL OFFENSES				CIRCUIT AND DISTRICT
DAPCA (DRUG) LAWS			WEAPONS AND FIRE-ARMS	TRAFFIC	ESCAPE	OTHER	IMMI-GRATION LAWS	AGRI-CULTURAL ACTS	POSTAL LAWS*	OTHER	
MARI-HUANA	NAR-COTICS	CONTROL-LED SUB-STANCES									
1,986	2,220	798	1,691	6,611	892	1,081	1,934	266	213	1,344	... TOTAL
10	60	30	33	-	38	25	2	7	1	9	... DC
29	49	17	32	36	8	24	70	4	3	39	... 1ST
6	2	-	7	30	1	2	3	2	-	5	... ME
10	25	14	17	4	3	18	1	1	-	9	... MA
1	4	-	2	-	-	-	-	-	-	5	... NH
3	3	1	4	2	1	3	-	1	1	3	... RI
9	15	2	2	-	3	1	66	-	2	17	... PR
54	346	16	62	1	41	82	46	6	68	100	... 2ND
8	28	1	27	1	3	4	1	-	1	3	... CT
9	10	3	-	-	5	2	14	-	3	21	... NY, N
21	172	2	4	-	1	19	5	2	25	25	... NY, E
6	110	6	10	-	28	47	13	4	34	24	... NY, S
7	25	2	12	-	2	10	8	-	5	13	... NY, W
3	4	2	9	-	2	-	5	-	-	14	... VT
30	78	110	96	45	27	98	36	3	14	97	... 3RD
-	1	8	12	-	-	2	-	-	-	-	... DE
6	8	26	15	5	3	32	4	-	8	38	... NJ
1	39	34	26	22	1	26	2	-	2	27	... PA, E
9	7	13	7	6	13	13	2	-	3	19	... PA, M
6	18	22	18	-	2	8	-	-	1	10	... PA, N
8	5	7	18	12	8	17	28	3	-	3	... VI
530	162	81	283	1,553	78	176	7	18	9	224	... 4TH
162	76	33	26	308	12	22	2	-	4	29	... MD
42	3	1	30	42	6	10	-	3	-	15	... NC, E
4	13	7	30	-	2	3	2	1	-	12	... NC, M
11	7	5	28	6	6	17	1	2	2	24	... NC, N
21	2	3	57	4	7	13	-	3	1	39	... SC
256	47	11	55	1,189	33	86	1	8	2	56	... VA, E
5	1	5	30	4	4	6	-	1	-	14	... VA, M
19	9	13	6	-	3	8	-	-	-	1	... VA, N
10	4	3	21	-	5	11	1	-	-	34	... WV, S
368	213	165	255	116	182	96	1,000	50	19	158	... 5TH
32	20	53	39	-	3	13	24	2	2	15	... LA, E
2	7	3	11	1	2	1	-	-	3	1	... LA, M
8	2	4	10	-	6	5	5	5	1	38	... LA, N
3	-	1	10	1	1	2	1	-	4	4	... MS, N
7	2	8	15	-	-	8	6	2	-	3	... MS, S
6	72	19	64	4	45	17	18	-	3	23	... TX, N
6	-	2	3	-	18	5	5	1	2	19	... TX, E
235	65	28	71	20	66	22	670	39	2	35	... TX, S
69	45	47	32	90	41	20	271	1	2	20	... TX, M
86	127	41	198	148	47	101	15	35	21	113	... 6TH
3	7	2	24	-	7	11	-	-	1	16	... KY, E
17	2	3	15	17	6	19	-	8	-	14	... KY, M
28	61	8	33	-	9	16	9	-	9	14	... MI, E
4	8	3	22	1	2	5	2	2	2	8	... MI, M
4	20	3	30	1	5	15	2	-	1	12	... OH, N
5	11	5	19	8	4	12	-	1	5	10	... OH, S
2	9	6	22	-	5	7	-	5	1	16	... TN, E
15	1	5	24	121	2	6	1	14	2	12	... TN, M
8	8	6	9	-	7	10	1	5	-	11	... TN, N

TABLE D-3 DEFENDANTS, U.S. DISTRICT COURTS
CRIMINAL DEFENDANTS COMMENCED (EXCLUDES TRANSFERS) DURING THE TWELVE MONTH PERIOD ENDED SEP. 30, 1983

CIRCUIT AND DISTRICT	TOTAL	GENERAL OFFENSES									FORGERY AND COUNTERFEITING
		HOMICIDE	ROBBERY	ASSAULT	BURGLARY	LARCENY	EMBEZZLEMENT	FRAUD	AUTO THEFT		
7TH...	2,253	6	72	40	14	389	197	490	26	132	
IL, N.	1,067	-	24	4	10	238	96	268	3	34	
IL, C.	254	-	10	2	2	16	32	72	1	11	
IL, S.	206	-	7	5	1	38	10	35	4	6	
IN, N.	173	-	7	2	-	24	9	13	6	28	
IN, S.	232	5	8	14	-	26	25	31	3	26	
MI, E.	229	1	16	6	-	29	13	59	6	12	
MI, W.	92	-	-	7	1	18	12	12	3	8	
8TH...	2,717	30	74	60	28	233	140	458	30	158	
AR, E.	235	-	1	2	5	29	24	59	1	24	
AR, W.	161	1	4	1	-	21	15	25	18	16	
IA, N.	100	-	7	6	-	3	5	37	2	4	
IA, S.	183	-	5	-	-	14	7	33	-	11	
MN.	324	-	18	6	4	17	20	42	2	9	
MO, E.	363	-	5	-	1	49	20	82	5	39	
MO, W.	810	-	24	1	-	30	18	86	-	37	
NE.	156	1	7	1	-	3	9	30	-	9	
ND.	154	5	3	18	9	20	12	35	1	4	
SD.	231	23	-	25	9	47	10	38	1	5	
9TH...	10,268	72	630	153	65	689	526	1,003	25	461	
AK.	188	-	7	5	-	23	15	31	-	9	
AZ.	844	33	41	34	5	45	23	52	1	29	
CA, N.	860	4	70	9	11	87	178	167	2	51	
CA, E.	643	-	77	3	3	50	31	78	3	64	
CA, C.	1,363	2	293	15	5	158	135	193	5	136	
CA, S.	1,540	6	44	29	8	34	17	82	2	31	
HI.	2,603	-	3	19	2	99	11	31	2	4	
ID.	188	2	6	1	-	22	7	60	2	10	
MT.	183	9	-	19	4	23	10	38	2	19	
NV.	359	2	5	6	19	41	15	90	1	28	
OR.	234	-	42	5	-	27	25	49	1	11	
WA, E.	238	1	3	3	6	14	18	45	1	49	
WA, W.	968	3	39	4	-	50	38	81	3	19	
GUAM.	53	9	-	1	2	6	2	6	-	1	
NMI.	4	1	-	-	-	1	1	-	-	-	
10TH...	2,636	24	82	35	10	240	109	446	45	209	
CO.	477	2	23	2	-	56	41	85	6	34	
KS.	304	4	7	4	1	25	14	79	5	26	
NM.	326	13	16	7	4	24	11	42	10	10	
OK, N.	210	-	2	2	1	16	10	28	8	40	
OK, E.	216	-	1	1	2	22	5	50	6	29	
OK, W.	733	1	11	3	1	56	8	101	8	39	
UT.	227	1	21	13	-	24	12	38	-	20	
WY.	143	3	1	3	1	17	8	23	2	11	
11TH...	6,126	6	124	65	10	413	146	724	119	399	
AL, N.	672	-	23	7	1	57	17	132	47	101	
AL, M.	549	-	3	5	2	41	9	64	12	9	
AL, S.	179	-	13	-	-	15	7	32	8	15	
FL, N.	186	1	6	2	-	5	8	12	2	5	
FL, M.	733	-	24	11	1	63	32	109	4	83	
FL, S.	2,400	-	31	15	2	65	31	213	8	98	
GA, N.	555	4	11	18	1	99	24	120	25	49	
GA, M.	771	-	7	3	1	45	15	25	12	8	
GA, S.	281	1	6	4	2	23	3	17	1	31	

TABLE D-3 DEFENDANTS, U.S. DISTRICT COURTS
CRIMINAL DEFENDANTS COMMENCED (EXCLUDES TRANSFERS) DURING THE TWELVE MONTH PERIOD ENDED SEP. 30, 1983

CIRCUIT AND DISTRICT	GENERAL OFFENSES--CONTINUED							SPECIAL OFFENSES				CIRCUIT AND DISTRICT
	DAPCA (DRUG) LAWS			WEAPONS AND FIREARMS	TRAFFIC	ESCAPE	OTHER	IMMIGRATION LAWS	AGRI-CULTURAL ACTS	POSTAL LAWS*	OTHER	
	MARI-HUANA	NAR-COTICS	CONTROLLED SUBSTANCES									
...	101	256	57	84	9	50	132	37	29	27	105	... 7TH
IL, N.	43	113	27	15	2	6	89	15	4	17	59	... IL, N
IL, C.	21	34	4	9	1	3	11	13	3	2	7	... IL, C
IL, S.	12	22	7	25	3	20	9	-	-	-	2	... IL, S
IN, N.	9	48	6	11	2	-	5	-	-	-	2	... IN, N
IN, S.	10	12	7	11	1	7	7	2	7	7	30	... IN, S
MI, E.	5	22	3	12	-	3	7	7	10	8	3	... MI, E
MI, W.	1	5	3	1	-	10	4	-	5	-	2	... MI, W
...	79	294	115	132	513	50	115	38	35	8	127	... 8TH
AR, E.	17	26	5	10	-	2	9	1	-	7	22	... AR, E
AR, W.	8	9	15	3	3	5	2	8	1	-	6	... AR, W
IA, N.	-	19	3	-	-	2	-	2	2	-	8	... IA, N
IA, S.	4	21	-	8	-	1	-	11	-	-	29	... IA, S
MN.	12	93	23	35	-	13	39	4	8	-	15	... MN
MO, E.	7	53	30	36	-	10	26	-	-	-	-	... MO, E
MO, W.	30	13	9	14	510	5	17	6	-	-	10	... MO, W
NE.	1	46	21	7	-	1	5	6	4	1	4	... NE
ND.	-	13	8	7	-	5	3	-	1	-	10	... ND
SD.	-	1	1	12	-	6	11	-	19	-	23	... SD
...	361	1,083	209	204	2,917	221	275	912	92	28	342	... 9TH
AK.	19	14	-	5	40	-	1	4	7	-	8	... AK
AZ.	40	142	27	43	12	97	69	117	3	-	31	... AZ
CA, N.	10	139	14	16	25	6	17	15	-	7	32	... CA, N
CA, E.	17	90	47	29	28	19	19	39	18	4	24	... CA, E
CA, C.	16	195	24	31	-	20	42	42	2	8	30	... CA, C
CA, S.	168	293	52	20	1	53	32	595	-	1	72	... CA, S
HI.	35	47	7	7	2,284	2	18	8	-	2	22	... HI
ID.	2	13	-	6	3	1	4	23	5	-	19	... ID
MT.	1	10	7	8	-	2	4	5	10	-	12	... MT
NV.	3	58	15	4	-	4	4	12	9	2	4	... NV
OR.	9	20	3	8	-	9	4	4	2	1	14	... OR
WA, E.	5	5	-	17	-	2	6	44	5	1	13	... WA, E
WA, W.	31	54	3	10	521	6	12	4	31	-	59	... WA, W
GUAM.	5	2	10	-	3	-	4	-	-	-	2	... GUAM
NMI.	-	-	-	-	-	-	2	-	-	-	-	... NMI
...	118	178	135	140	427	57	106	106	49	8	112	... 10TH
CO.	3	53	31	13	38	11	9	23	10	2	35	... CO
KS.	11	4	9	27	13	27	14	23	1	2	8	... KS
NM.	24	42	14	22	10	1	13	44	5	-	14	... NM
OK, N.	13	27	22	13	-	3	6	1	-	-	18	... OK, N
OK, E.	19	8	10	14	-	-	13	-	22	-	14	... OK, E
OK, W.	35	23	29	17	362	10	17	1	1	2	8	... OK, W
UT.	1	9	16	19	1	2	29	12	2	2	5	... UT
WY.	12	12	4	15	3	3	5	2	8	-	10	... WY
...	1,270	784	173	343	854	142	248	53	20	11	222	... 11TH
AL, N.	33	3	8	55	135	12	29	1	1	-	10	... AL, N
AL, M.	23	13	-	19	112	7	2	-	2	4	22	... AL, M
AL, S.	51	18	3	9	-	-	2	2	1	1	2	... AL, S
FL, N.	79	13	13	-	3	4	14	2	-	-	17	... FL, N
FL, M.	85	58	76	40	4	19	74	12	3	-	34	... FL, M
FL, S.	862	607	48	153	-	68	88	36	6	2	67	... FL, S
GA, N.	11	58	17	32	4	27	18	-	1	3	33	... GA, N
GA, M.	45	5	2	18	529	5	13	-	-	1	37	... GA, M
GA, S.	80	9	6	17	67	-	8	-	6	-	-	... GA, S

* OBSTRUCTING MAIL, MAILING NON-MAILABLE MATERIAL AND OTHER POSTAL REGULATIONS.

Table F-1
U.S. Bankruptcy Courts
Bankruptcy Estates Commenced, Terminated, and Pending
During the Twelve Month Period Ended September 30, 1983

Circuit and District	Filed			Terminated			Pending			Total Estates		
	Act Cases (Estates) ²	Code (Estates) ¹		Act Cases (Estates) ²	Code (Estates) ¹		Act Cases (Estates) ²	Code (Estates) ¹				
		Cases	Joint Petitions		Cases	Joint Petitions		Cases	Joint Petitions			
Total	269	362,051	153,157	515,477	18,576	294,182	126,637	439,395	34,920	549,876	240,967	825,763
DC	-	791	114	905	20	1,024	138	1,182	133	1,173	165	1,471
1st Cir.	10	7,089	2,879	9,978	481	5,759	2,266	6,506	1,297	11,274	4,765	17,336
ME	-	687	311	998	206	807	344	1,357	221	1,534	701	2,456
MA	4	2,708	845	3,557	192	2,799	958	3,949	544	4,100	1,405	6,049
NH	1	590	249	840	18	474	217	709	105	963	362	1,430
RI	2	975	289	1,266	25	930	309	1,264	107	1,007	335	1,449
PR	3	2,129	1,185	3,317	40	749	438	1,227	320	3,670	1,962	5,952
2nd Cir.	30	18,692	6,027	24,745	2,142	21,020	7,549	30,711	3,292	27,609	10,614	41,515
CT	3	2,269	561	2,833	45	2,246	626	2,917	172	2,262	611	3,086
NY, N	5	3,466	1,474	4,945	688	5,158	2,457	8,303	247	6,704	3,072	10,023
NY, E	6	5,152	1,467	6,625	556	5,904	1,901	8,361	421	6,276	2,801	9,298
NY, S	3	3,225	564	3,792	259	3,094	608	4,021	1,460	4,801	780	7,041
NY, W	11	4,321	1,843	6,175	592	4,357	1,792	6,741	989	7,344	3,417	11,750
VT	2	259	118	379	2	281	105	368	3	222	92	317
3rd Cir.	13	19,366	8,108	27,487	951	15,527	7,039	23,317	3,162	38,259	16,664	58,085
DE	-	492	204	696	2	377	156	535	32	924	406	1,362
NJ	12	7,867	2,862	10,741	166	7,308	2,935	10,409	683	15,272	6,164	22,119
PA, E	-	5,444	2,087	7,511	647	4,134	1,731	6,512	1,947	12,051	4,977	18,950
PA, M	1	1,872	1,001	2,874	88	1,864	940	2,872	147	2,358	1,202	3,705
PA, W	-	3,657	1,969	5,626	68	2,044	1,277	3,389	347	7,577	3,930	11,854
VI	-	34	5	39	-	-	-	-	6	79	10	95
4th Cir.	25	22,889	9,782	32,696	2,519	19,237	8,424	30,180	2,621	42,051	19,514	64,166
MD	-	4,247	1,614	5,861	167	3,615	1,417	5,199	707	7,288	2,884	10,859
NC, E	8	2,267	1,113	3,388	306	2,671	1,366	4,343	75	4,156	2,267	6,498
NC, M	4	1,850	783	2,637	471	1,716	750	2,937	269	5,735	2,714	8,718
NC, W	5	1,484	778	2,267	1,019	999	556	2,574	709	5,396	3,001	9,106
SC	-	2,031	881	2,912	31	1,219	570	1,820	63	3,213	1,489	4,765
VA, E	4	5,792	2,023	7,819	162	5,341	1,929	7,432	183	6,728	2,649	9,560
VA, W	4	3,088	1,390	4,482	265	2,224	1,007	3,496	479	6,168	2,773	9,420
WV, N	-	731	410	1,141	14	625	414	1,123	35	1,263	669	1,987
WV, S	-	1,399	790	2,189	84	757	415	1,256	101	2,104	1,088	3,293
5th Cir.	25	24,784	12,136	36,945	587	17,203	8,426	26,216	3,546	45,044	22,640	71,230
LA, E	-	2,940	1,395	4,335	87	2,575	1,143	3,805	117	3,036	1,391	4,544
LA, M	-	856	381	1,237	9	525	226	760	60	1,607	768	2,435
LA, W	4	3,084	1,719	4,807	70	1,415	739	2,224	115	6,075	3,377	9,567
MS, N	-	1,230	536	1,766	12	1,200	607	1,919	7	1,041	458	1,506
MS, S	-	3,731	1,556	5,287	72	3,733	1,511	5,316	583	6,398	2,748	9,729
TX, N	4	3,838	1,813	5,655	86	2,200	1,193	3,479	631	7,449	3,461	11,541
TX, E	-	822	458	1,280	24	568	359	951	122	1,382	760	2,264
TX, S	12	5,399	2,897	8,108	212	4,109	2,200	6,521	966	9,903	4,995	15,884
TX, W	5	2,884	1,581	4,470	15	778	448	1,241	945	8,153	4,682	13,780
6th Cir.	33	55,047	23,023	78,103	2,742	50,567	21,127	74,436	2,872	83,863	36,879	123,614
KY, E	-	2,542	1,288	3,830	139	1,276	648	2,063	435	5,570	2,897	8,892
KY, W	3	4,082	1,820	5,885	65	3,101	1,471	4,637	65	5,552	2,553	8,170
MI, E	8	8,161	2,643	10,812	605	9,170	3,126	12,901	163	9,020	2,631	12,182
MI, W	-	3,760	1,694	5,454	149	3,677	1,678	5,504	441	7,632	3,704	11,499
OH, N	10	11,153	5,256	16,419	532	12,588	5,727	18,627	693	16,705	8,571	25,717
OH, S	6	10,869	5,057	15,932	542	9,996	4,872	15,210	99	15,505	7,769	23,987
TN, E	-	4,609	2,043	6,652	125	2,987	1,301	4,413	76	7,485	3,287	10,851
TN, M	1	3,745	1,437	5,183	138	2,983	1,136	4,257	76	5,226	2,020	7,322
TN, W	5	6,146	1,785	7,936	447	4,809	1,368	6,624	379	11,188	3,447	15,014

Table F-1
U.S. Bankruptcy Courts
Bankruptcy Estates Commenced, Terminated, and Pending
During the Twelve Month Period Ended September 30, 1983
(continued)

Circuit and District	Filed			Terminated			Pending			Total Estates		
	Act Cases (Estates) ²	Code (Estates) ¹		Act Cases (Estates) ²	Code (Estates) ¹		Act Cases (Estates) ²	Code (Estates) ¹				
		Cases	Joint Petitions		Cases	Joint Petitions		Cases	Joint Petitions			
7th Cir.	26	44,153	18,184	62,363	2,220	37,871	16,170	56,261	4,472	56,103	22,559	83,134
IL, N	9	17,748	5,855	23,612	1,791	14,119	4,938	20,848	3,494	29,864	10,335	43,693
IL, C	3	4,815	2,513	7,331	88	4,795	2,525	7,408	95	4,954	2,614	7,663
IL, S	-	1,736	884	2,620	43	1,630	811	2,484	58	1,552	831	2,441
IN, N	6	5,280	2,387	7,673	67	4,568	2,103	6,738	96	5,322	2,481	7,899
IN, S	6	7,375	3,318	10,699	90	7,880	3,612	11,582	172	5,138	2,206	7,516
WI, E	2	4,973	2,055	7,030	123	3,304	1,355	4,782	248	6,051	2,456	8,755
WI, W	-	2,226	1,172	3,398	18	1,575	826	2,419	309	3,222	1,636	5,167
8th Cir.	31	21,418	10,604	32,053	1,258	19,767	9,865	30,890	1,183	27,518	13,968	42,669
AR, E	4	2,063	987	3,054	181	1,600	717	2,498	321	3,810	1,845	5,976
AR, W	-	832	450	1,282	25	678	387	1,090	30	1,283	760	2,073
IA, N	-	1,660	978	2,639	27	1,412	823	2,262	49	1,891	1,084	3,024
IA, S	2	1,841	1,028	2,871	35	1,766	999	2,800	12	1,914	1,067	2,993
MN	23	4,825	2,273	7,121	676	3,766	1,845	6,287	386	8,113	3,955	12,454
MO, E	1	2,900	1,121	4,022	37	3,078	1,614	5,619	89	2,863	1,184	4,136
MO, W	-	3,554	1,760	5,314	146	3,722	1,884	5,752	118	2,883	1,455	4,456
NE	-	2,271	1,211	3,482	67	1,907	1,067	3,041	136	2,667	1,484	4,287
ND	-	660	355	1,015	14	447	252	713	21	865	434	1,320
SD	-	812	441	1,253	60	491	277	828	21	1,229	700	1,950
9th Cir.	42	94,071	40,467	134,580	3,107	64,199	28,604	95,910	10,303	141,344	63,565	215,212
AK	-	344	89	433	6	241	72	319	73	696	180	949
AZ	8	5,182	2,640	7,830	160	3,549	1,805	5,514	337	8,517	4,480	13,334
CA, N	7	14,134	5,116	19,257	981	11,853	4,111	16,945	2,158	22,804	8,870	33,832
CA, E	1	10,898	5,794	16,693	575	9,677	5,233	15,485	1,180	19,362	10,715	31,257
CA, C	14	35,258	13,107	48,379	391	19,035	7,296	26,722	1,729	45,827	17,757	65,313
CA, S	-	6,207	2,857	8,864	291	2,398	1,035	3,724	2,979	12,834	5,713	21,266
HI	-	671	222	893	16	535	184	735	270	1,502	549	2,321
ID	-	2,230	1,400	3,630	91	2,101	1,332	3,524	191	2,527	2,374	6,092
MT	-	1,024	556	1,580	12	834	470	1,316	9	1,215	637	1,881
NV	3	2,963	1,250	4,216	78	1,382	632	2,102	295	6,024	2,466	8,785
OR	2	5,967	3,048	9,017	47	4,605	2,358	7,010	64	6,980	3,897	10,741
WA, E	-	7,356	1,155	8,511	257	2,192	1,111	3,560	705	3,505	1,728	5,938
WA, W	7	6,796	3,419	10,222	201	5,765	2,958					

TABLE F-3A U.S. BANKRUPTCY COURTS
BUSINESS AND NONBUSINESS BANKRUPTCY CODE CASES COMMENCED, BY CHAPTER OF THE BANKRUPTCY CODE,
DURING THE TWELVE MONTH PERIOD ENDED SEP. 30, 1983

CIRCUIT AND DISTRICT	TOTAL FILINGS	BUSINESS			TOTAL BUSINESS FILINGS*	NONBUSINESS			TOTAL NONBUSINESS FILINGS	TOTAL		
		CHAPTER 7	CHAPTER 11	CHAPTER 13		CHAPTER 7	CHAPTER 11	CHAPTER 13		CHAPTER 7	CHAPTER 11	CHAPTER 13
TOTAL...	362,051	242,669	20,837	98,539	64,216	39,573	17,608	7,029	297,835	203,096	3,229	91,510
DC.....	791	433	97	261	95	21	65	9	696	412	32	252
1ST...	7,089	4,418	668	2,003	1,844	880	620	344	5,245	3,538	48	1,659
ME.....	687	511	35	141	220	159	34	27	467	352	1	114
MA.....	2,708	1,981	269	458	527	259	253	15	2,181	1,722	16	443
NH.....	590	481	55	54	206	138	52	16	384	343	3	38
RI.....	975	825	55	95	198	138	51	9	777	687	4	86
PR.....	2,129	620	254	1,255	693	186	230	277	1,436	434	24	978
2ND...	18,692	14,118	1,149	3,425	3,689	2,229	1,110	350	15,003	11,889	39	3,075
CT.....	2,269	1,808	123	338	466	323	117	26	1,803	1,485	6	312
NY, N.....	3,466	2,943	160	363	805	565	154	86	2,661	2,378	6	277
NY, E.....	5,152	3,757	217	1,178	699	422	214	63	4,453	3,335	3	1,115
NY, S.....	3,225	2,457	433	335	743	317	413	13	2,482	2,140	20	322
NY, W.....	4,321	2,929	191	1,201	856	512	189	155	3,465	2,417	2	1,046
VT.....	259	224	25	10	120	90	23	7	139	134	2	3
3RD...	19,366	11,722	1,190	6,453	2,656	1,500	1,024	131	16,710	10,222	166	6,322
DE.....	492	331	28	133	63	29	26	8	429	302	2	125
NJ.....	7,867	4,299	435	3,132	851	483	361	6	7,016	3,816	74	3,126
PA, E.....	5,444	2,458	296	2,690	546	256	251	39	4,898	2,202	45	2,651
PA, M.....	1,872	1,589	132	151	513	348	128	37	1,359	1,241	4	114
PA, W.....	3,657	3,027	287	343	661	375	246	40	2,996	2,652	41	303
VI.....	34	18	12	4	22	9	12	1	12	9	-	3
4TH...	22,889	15,206	1,169	6,514	3,660	2,211	986	463	19,229	12,995	183	6,051
MD.....	4,247	3,163	221	863	445	257	156	32	3,802	2,906	65	831
NC, E.....	2,267	963	143	1,161	394	190	129	75	1,873	773	14	1,086
NC, M.....	1,850	400	128	1,322	340	154	127	59	1,510	246	1	1,263
NC, S.....	1,484	595	90	799	194	104	72	18	1,290	491	18	781
SC.....	2,031	895	158	978	279	148	97	34	1,752	747	61	944
VA, E.....	5,792	4,968	183	641	770	544	170	56	5,022	4,424	13	585
VA, M.....	3,088	2,274	145	669	801	489	141	171	2,287	1,785	4	498
VA, W.....	731	648	55	28	224	158	55	11	507	490	7	17
WV, N.....	1,399	1,300	46	53	213	167	39	7	1,186	1,133	7	46
WV, S.....	1,399	1,300	46	53	213	167	39	7	1,186	1,133	7	46
5TH...	24,784	15,297	2,169	7,318	5,924	3,433	1,975	516	16,660	11,864	194	6,802
LA, E.....	2,940	2,030	205	705	525	319	192	14	2,415	1,711	13	691
LA, M.....	856	670	57	129	117	54	49	14	739	616	8	115
LA, W.....	3,084	2,201	210	673	725	476	201	48	2,359	1,725	9	625
MS, N.....	1,230	1,007	55	168	174	116	48	10	1,056	891	7	158
MS, S.....	3,731	1,826	151	1,754	222	111	97	14	3,509	1,715	54	1,740
TX, N.....	3,838	2,615	501	722	1,606	994	478	134	2,232	1,621	23	588
TX, E.....	822	593	118	111	339	220	108	11	483	373	10	100
TX, S.....	5,399	2,746	583	2,079	1,626	864	544	218	3,773	1,882	39	1,852
TX, W.....	2,884	1,609	289	986	590	279	258	53	2,294	1,330	31	933
6TH...	55,047	36,810	1,801	16,435	7,075	4,578	1,631	865	47,972	32,232	170	15,570
KY, E.....	2,542	2,143	60	339	443	355	52	36	2,099	1,788	8	303
KY, M.....	4,062	3,202	142	718	423	281	119	23	3,639	2,921	23	695
MI, E.....	8,161	6,404	376	1,380	963	559	356	67	7,178	5,845	20	1,313
MI, M.....	3,760	2,057	189	1,514	719	398	185	136	3,041	1,659	4	1,378
MI, W.....	11,153	7,740	325	3,088	1,106	645	306	159	10,047	7,095	19	2,933
OH, N.....	10,869	7,534	275	3,060	1,496	1,067	270	172	9,373	6,467	5	2,901
OH, S.....	4,609	2,999	131	1,479	909	610	127	71	3,700	2,389	4	1,307
TN, E.....	3,745	2,744	129	872	743	557	115	71	3,002	2,187	14	801
TN, M.....	6,146	1,987	174	3,985	253	106	101	46	5,893	1,881	73	3,939
TN, W.....	6,146	1,987	174	3,985	253	106	101	46	5,893	1,881	73	3,939

TABLE F-3A U.S. BANKRUPTCY COURTS
BUSINESS AND NONBUSINESS BANKRUPTCY CODE CASES COMMENCED, BY CHAPTER OF THE BANKRUPTCY CODE,
DURING THE TWELVE MONTH PERIOD ENDED SEP. 30, 1983
(CONTINUED)

CIRCUIT AND DISTRICT	TOTAL FILINGS	BUSINESS			TOTAL BUSINESS FILINGS*	NONBUSINESS			TOTAL NONBUSINESS FILINGS	TOTAL		
		CHAPTER 7	CHAPTER 11	CHAPTER 13		CHAPTER 7	CHAPTER 11	CHAPTER 13		CHAPTER 7	CHAPTER 11	CHAPTER 13
7TH...	44,153	33,124	1,530	9,499	6,724	4,744	1,407	573	37,429	28,380	123	8,926
IL, N.....	17,748	10,440	631	6,677	2,088	1,192	615	281	15,660	9,248	16	6,396
IL, C.....	4,815	4,326	81	408	1,022	890	78	54	3,793	3,436	3	354
IL, S.....	1,736	1,449	39	248	440	365	36	39	1,296	1,084	3	209
IN, N.....	5,280	4,452	178	650	656	467	153	36	4,624	3,985	25	614
IN, S.....	7,375	6,786	249	340	737	476	224	37	6,638	6,310	25	303
IN, E.....	4,973	4,028	144	801	953	759	136	58	4,920	3,269	8	743
WI, N.....	2,226	1,643	208	375	828	595	165	68	1,398	1,048	43	307
8TH...	21,418	16,461	1,351	3,605	5,900	4,276	1,181	442	15,518	12,185	170	3,163
AR, E.....	2,063	720	102	1,241	296	132	91	73	1,767	588	11	1,168
AR, N.....	832	522	60	250	178	101	55	22	654	421	5	228
IA, N.....	1,660	1,463	123	73	810	650	121	38	850	613	2	35
IA, S.....	1,841	1,596	122	123	606	458	116	32	1,235	1,138	6	91
MN.....	4,825	3,691	240	894	1,455	1,123	232	100	3,370	2,568	8	794
MO, E.....	2,900	2,609	108	183	482	375	93	14	2,418	2,234	15	169
MO, M.....	3,554	3,019	217	318	790	592	153	45	2,764	2,427	64	273
NE.....	2,271	1,719	134	418	549	393	94	62	1,722	1,326	40	356
ND.....	660	536	99	25	350	242	99	9	310	294	-	16
SD.....	812	586	146	80	384	210	127	47	428	375	19	33
9TH...	94,071	61,438	6,808	25,823	18,667	10,872	5,364	2,429	75,404	50,566	1,444	23,394
AK.....	344	228	76	40	173	87	73	13	171	141	3	27
AZ.....	5,182	4,388	377	417	1,478	1,029	340	109	3,704	3,359	37	308
CA, N.....	14,134	7,665	1,051	5,417	3,393	1,742	784	866	10,741	5,923	267	4,551
CA, E.....	10,898	7,626	881	2,391	2,792	1,723	666	403	8,106	5,903	215	1,988
CA, C.....	35,258	22,104	2,171	10,983	5,455	3,184	1,751	520	29,803	18,920	420	10,463
CA, S.....	6,207	3,214	707	2,286	808	345	428	35	5,399	2,869	279	2,251
HI.....	671	460	87	123	277	182	75	19	394	278	12	104
ID.....	2,230	1,514	136	580	611	313	131	167	1,619	1,201	5	413
MT.....	1,024	884	96	44	277	180	86	11	747	704	10	33
NY.....	2,963	2,299	350	314	637	278	320	39	2,326	2,021	30	275
OR.....	5,967	4,605	262	1,100	1,465	1,070	240	155	4,502	3,535	22	945
WA, E.....	2,356	1,820	214	322	420	239	160	21	1,935	1,581	54	301
WA, N.....	6,796	4,598	397	1,801	871	494	307	70	5,925	4,104	90	1,731
GUAM.....	40	32	3	5	10	6	3	1	30	26	-	4
NM.....	1	1	-	-	-	1	-	-	1	1	-	-
10TH...	22,191	16,622	1,380	4								

TABLE F-3B U.S. BANKRUPTCY COURTS
BUSINESS AND NONBUSINESS BANKRUPTCY CODE ESTATES COMMENCED, BY CHAPTER OF THE BANKRUPTCY CODE,
DURING THE TWELVE MONTH PERIOD ENDED SEP. 30, 1983

CIRCUIT AND DISTRICT	TOTAL ESTATES	CHAPTER 7			TOTAL BUSINESS ESTATES*	CHAPTER 11			TOTAL NONBUSINESS ESTATES	CHAPTER 13		
		7	11	13		7	11	13		7	11	13
TOTAL...	515,208	347,715	24,892	142,595	87,138	56,064	20,292	10,776	428,070	291,651	4,600	131,819
DC.....	905	489	99	317	103	24	67	12	802	465	32	305
1ST...	9,958	6,082	728	3,158	2,339	1,119	662	558	7,629	4,963	66	2,600
ME.....	998	747	35	216	298	222	34	42	700	525	1	174
MA.....	3,553	2,618	280	655	577	297	260	20	2,976	2,321	20	635
MH.....	839	698	58	83	255	179	55	21	584	519	3	62
RI.....	1,264	1,056	57	141	230	168	52	10	1,034	898	5	131
PR.....	3,314	953	298	2,063	979	253	261	465	2,335	700	37	1,598
2ND...	24,719	18,472	1,215	5,032	4,535	2,852	1,169	514	20,184	15,620	46	4,518
CT.....	2,830	2,231	133	464	543	381	124	38	2,287	1,850	9	428
NY, N....	4,940	4,223	181	536	1,091	797	172	122	3,849	3,426	9	414
NY, E....	6,619	4,688	221	1,710	817	504	218	95	5,802	4,184	3	1,615
NY, S....	3,789	2,912	435	442	772	341	415	16	3,017	2,571	20	426
NY, H....	6,164	4,085	215	1,864	1,147	699	213	235	5,017	3,386	2	1,629
VT.....	377	333	30	14	165	130	27	8	212	203	3	6
3RD...	27,474	16,897	1,318	9,258	3,239	1,951	1,097	190	24,235	14,946	221	9,068
DE.....	696	458	31	207	69	33	27	9	627	425	4	198
NJ.....	10,729	5,680	465	4,583	928	546	371	10	9,801	5,134	94	4,573
PA, E....	7,511	3,501	322	3,688	637	326	260	51	6,874	3,175	62	3,637
PA, M....	2,873	2,460	163	250	718	505	156	57	2,155	1,955	7	193
PA, W....	5,626	4,777	325	524	864	531	271	62	4,762	4,246	54	462
VI.....	39	21	12	6	23	10	12	1	16	11	-	5
4TH...	32,671	21,497	1,348	5,826	4,755	2,980	1,094	681	27,916	18,517	254	9,145
MD.....	5,861	4,278	261	1,322	541	328	167	46	5,320	3,950	94	1,276
NC, E....	3,380	1,416	178	1,786	538	267	153	118	2,842	1,149	25	1,668
NC, M....	2,633	557	150	1,926	427	189	148	90	2,206	368	2	1,836
NC, S....	2,262	896	104	1,262	227	122	76	29	2,035	774	28	1,233
NC, W....	2,912	1,276	177	1,459	312	170	104	38	2,600	1,106	73	1,421
VA, E....	7,815	6,680	193	942	987	726	177	84	6,628	5,954	16	658
VA, M....	4,478	3,317	161	1,000	1,100	694	156	250	3,378	2,623	5	750
VA, W....	1,141	1,027	71	43	334	246	71	17	807	781	-	26
WV, N....	2,189	2,050	53	86	289	238	42	9	1,900	1,812	11	77
5TH...	36,920	22,897	2,480	11,543	7,901	4,848	2,215	838	29,019	18,049	265	10,705
LA, E....	4,335	2,999	241	1,095	698	457	219	22	3,657	2,542	22	1,073
LA, M....	1,237	966	68	203	152	74	54	24	1,085	892	14	179
LA, W....	4,803	3,443	288	1,072	1,054	735	274	85	3,709	2,708	14	987
MS, N....	1,766	1,442	70	254	240	158	60	12	1,526	1,274	10	242
MS, S....	5,287	2,557	173	2,557	251	130	103	18	5,036	2,427	70	2,539
TX, N....	5,651	3,912	556	1,183	2,175	1,421	528	226	3,476	2,491	28	957
TX, E....	1,280	935	147	198	472	319	132	21	808	616	15	177
TX, S....	8,096	4,138	618	3,340	2,091	1,176	570	345	6,005	2,962	48	2,995
TX, W....	4,465	2,505	319	1,641	728	368	275	85	3,737	2,137	44	1,556
6TH...	78,070	52,513	2,135	23,421	9,578	6,394	1,884	1,299	68,492	46,119	251	22,122
KY, E....	3,830	3,235	69	526	613	499	56	58	3,217	2,736	13	468
KY, W....	5,882	4,658	190	1,034	583	391	157	35	5,299	4,267	33	999
MI, E....	10,804	8,580	394	1,829	1,126	674	370	81	9,678	7,906	24	1,748
MI, M....	5,454	2,941	218	2,295	957	540	211	206	4,497	2,401	7	2,089
MI, W....	16,409	11,271	381	4,757	1,511	914	353	244	14,898	10,357	28	4,513
OH, N....	15,926	10,937	331	4,658	2,126	1,554	324	248	13,800	9,383	7	4,410
OH, S....	6,652	4,405	151	2,096	1,292	887	145	260	5,360	3,518	6	1,836
TN, E....	5,182	3,804	172	1,206	1,054	796	150	108	4,128	3,008	22	1,098
TN, M....	7,931	2,682	229	5,020	316	139	118	59	7,615	2,543	111	4,961

TABLE F-3B U.S. BANKRUPTCY COURTS
BUSINESS AND NONBUSINESS BANKRUPTCY CODE ESTATES COMMENCED, BY CHAPTER OF THE BANKRUPTCY CODE,
DURING THE TWELVE MONTH PERIOD ENDED SEP. 30, 1983
(CONTINUED)

CIRCUIT AND DISTRICT	TOTAL ESTATES	CHAPTER 7			TOTAL BUSINESS ESTATES*	CHAPTER 11			TOTAL NONBUSINESS ESTATES	CHAPTER 13		
		7	11	13		7	11	13		7	11	13
7TH...	62,337	47,050	1,871	13,416	9,341	6,784	1,677	880	52,996	40,266	194	12,536
IL, N....	23,603	13,855	693	9,055	2,615	1,537	672	406	20,988	12,318	21	8,649
IL, C....	7,328	6,569	109	650	1,566	1,372	104	90	5,762	5,197	5	560
IL, S....	2,620	2,159	59	402	651	533	53	65	1,969	1,626	6	337
IN, N....	7,667	6,447	224	996	907	661	181	65	6,760	5,786	43	931
IN, S....	10,693	9,838	320	535	974	640	280	54	9,719	9,198	40	481
WI, E....	7,028	5,655	172	1,201	1,340	1,095	157	88	5,688	4,560	15	1,113
WI, W....	3,398	2,527	294	577	1,288	946	230	112	2,110	1,581	64	465
8TH...	32,022	24,532	1,942	5,547	8,948	6,572	1,654	721	23,074	17,960	288	4,826
AR, E....	3,050	1,049	136	1,865	412	175	118	119	2,638	874	18	1,746
AR, W....	1,282	794	79	409	248	141	69	38	1,034	653	10	371
IA, N....	2,638	2,327	186	124	1,313	1,062	183	67	1,325	1,265	3	57
IA, S....	2,869	2,486	185	198	970	742	173	55	1,899	1,744	12	143
MO, E....	7,098	5,436	308	1,354	2,162	1,708	296	158	4,936	3,728	12	1,196
MO, W....	4,021	3,592	155	274	694	549	127	18	3,327	3,043	28	256
MO, N....	5,314	4,479	343	492	1,207	901	231	75	4,107	3,578	112	417
NE.....	3,482	2,633	183	666	826	607	120	99	2,026	1,588	63	365
ND.....	1,015	834	147	34	529	368	147	14	486	466	-	20
SD.....	1,253	902	220	131	587	319	190	78	666	583	30	53
9TH...	134,538	88,941	8,352	37,243	26,116	16,066	6,292	3,756	108,422	72,875	2,060	33,487
AK.....	433	296	87	50	218	114	84	20	215	182	3	30
AZ.....	7,822	6,668	472	682	2,207	1,610	411	186	5,615	5,058	61	496
CA, N....	19,250	10,356	1,324	7,569	4,662	2,446	936	1,279	14,588	7,910	388	6,290
CA, E....	16,692	11,734	1,194	3,764	4,285	2,750	872	663	12,407	8,984	322	3,101
CA, C....	48,365	30,896	2,481	14,988	7,253	4,548	1,942	763	41,112	26,348	539	14,225
CA, S....	8,864	4,586	871	3,407	987	473	463	51	7,877	4,113	408	3,356
HI.....	893	615	94	183	340	231	79	29	553	384	15	154
ID.....	3,630	2,459	185	986	975	503	178	294	2,655	1,956	7	692
MT.....	1,580	1,383	125	72	394	270	106	18	1,186	1,113	19	54
NV.....	4,213	3,318	416	479	825	392	371	62	3,388	2,926	45	417
OR.....	9,015	6,949	324	1,742	2,180	1,642	291	247	6,835	5,307	33	1,495
WA, E....	3,511	2,727	306	478	619	370	214	35	2,892	2,357	92	443
WA, W....	10,215	6,909	469	2,837	1,159	710	341	108	9,056	6,199	128	2,729
GUAM...	53	43	4	6	12	7	4	1	41	36	-	5
MHI....	2	2	-	-	-	-	-	-	2	2	-	-
10TH...	33,454	25,056	1,711	6,687	5,389	3,544	1,227	618	28,065	21,512	484	6,069
CO.....	8,999	5,754	300	2,945	1,588	1,046	233	309	7,411	4,708	67	2,636
KS.....	6,508	5,028	131	1,349	677	547	81	49	5,831	4,481	50	1,300
NM.....	2,400	2,016	162	222	198	93	96	9	2,201	1,923	66	213
OK, N....	2,902	2,659	100	143	385	297	77	12	2,516	2,362	23	131
OK, E....	1,031	946	44	41	325	281	44	-	706	665	-	41
OK, W....	4,930	4,268	284	378	539	313	213	13	4,391	3,955	71	365
UT.....	5,410	3,304	619	1,487	1,156	544	418	194	4,254	2,760	201	1,293
WY.....	1,274	1,081	71	122	520	423	65	32	754	658	6	90
11TH...	42,130	23,289	1,693	17,147	4,894	2,930	1,254	709	37,236	20,359	439	16,438
AL, N....	9,802	3,892	174	5,736	517	400	91	26	9,285	3,492	83	5,710
AL, H....	2,432	1,125	69	1,238	315	229	43	43	2,117	896	26	1,195
AL, S....	1,790											

TABLE F-AP
 U. S. BANKRUPTCY COURTS
 ADVERSARY PROCEEDINGS COMMENCED,
 TERMINATED, AND PENDING
 UNDER THE BANKRUPTCY CODE
 DURING THE TWELVE MONTH PERIOD ENDED SEP. 30, 1983

CIRCUIT AND DISTRICT	PENDING OCT. 1, 1982	FILED	TERMINATED	PENDING SEP. 30, 1983	CIRCUIT AND DISTRICT	PENDING OCT. 1, 1982	FILED	TERMINATED	PENDING SEP. 30, 1983
TOTAL...	117,242	155,146	131,442	140,946	7TH...	7,896	10,735	10,816	7,815
DC.....	451	456	555	352	IL, N....	3,028	4,158	4,328	2,858
1ST...	2,695	4,009	3,020	3,684	IL, C....	980	1,029	1,005	1,004
ME.....	382	532	440	474	IL, S....	439	559	695	303
MA.....	1,387	1,635	1,304	1,718	IN, N....	652	824	805	671
NH.....	275	301	220	356	IN, S....	1,488	2,268	2,381	1,375
RI.....	266	415	465	216	WI, E....	920	1,577	1,511	986
PR.....	385	1,126	591	920	WI, W....	389	320	91	618
2ND...	4,619	6,599	6,675	4,543	8TH...	5,078	8,854	8,671	5,261
CT.....	622	1,186	1,327	481	AR, E....	507	693	719	481
NY, N....	750	840	997	593	AR, W....	291	317	303	305
NY, E....	651	1,520	1,533	638	IA, N....	639	1,050	1,124	565
NY, S....	1,740	1,841	1,429	2,152	IA, S....	233	616	584	265
NY, W....	729	1,076	1,212	593	MN.....	762	1,279	1,289	752
VT.....	127	136	177	86	MO, E....	590	1,127	1,093	624
3RD...	12,959	12,662	12,279	13,342	MO, W....	859	1,711	1,779	791
DE.....	62	104	101	71	NE.....	564	870	592	842
NJ.....	3,080	3,853	4,001	2,932	ND.....	191	491	403	279
PA, E....	4,711	4,774	5,168	4,317	SD.....	442	700	785	357
PA, M....	699	1,335	1,382	652	9TH...	39,665	47,763	34,026	53,402
PA, W....	4,399	2,589	1,621	5,367	AK.....	607	552	565	594
VI.....	2	7	6	3	AZ.....	1,735	2,486	2,059	2,162
4TH...	8,581	10,964	12,447	7,098	CA, N....	7,319	7,371	6,010	8,680
MD.....	2,925	2,597	2,970	2,552	CA, E....	6,465	5,398	2,261	9,602
NC, E....	592	806	856	542	CA, C....	14,201	20,860	14,899	20,162
NC, M....	547	726	820	455	CA, S....	4,054	3,480	1,958	5,576
NC, W....	818	1,164	1,240	742	HI.....	223	272	160	335
SC.....	725	1,415	1,534	607	ID.....	421	985	942	464
VA, E....	809	1,815	1,856	768	MT.....	186	235	262	159
VA, W....	722	1,237	1,349	610	NV.....	1,285	1,507	590	2,202
WV, N....	949	490	1,151	286	OR.....	637	1,726	1,449	914
WV, S....	494	711	671	534	WA, E....	1,101	778	616	1,163
5TH...	9,982	11,272	4,814	16,440	WA, W....	1,504	2,101	2,255	1,350
LA, E....	404	626	666	364	GUAM...	27	12	-	35
LA, M....	212	309	26	495	NM.....	-	-	-	-
LA, W....	261	665	475	451	10TH...	4,205	10,706	7,820	7,091
MS, N....	261	399	485	175	CO.....	1,174	2,489	2,977	686
MS, S....	1,272	853	1,021	1,104	KS.....	647	1,696	1,511	832
TX, N....	2,381	2,856	1,141	4,096	NH.....	458	883	891	450
TX, E....	218	559	429	348	OK, N....	507	916	566	827
TX, S....	3,285	3,163	263	6,185	OK, E....	52	202	173	81
TX, W....	1,688	1,842	308	3,222	OK, W....	462	1,066	87	1,341
6TH...	14,153	18,561	18,353	14,361	UT.....	830	3,338	1,392	2,776
KY, E....	797	575	446	926	WY.....	75	116	92	98
KY, W....	391	660	617	434	11TH...	6,958	12,565	11,966	7,557
MI, E....	2,153	3,540	4,061	1,632	AL, N....	807	1,552	1,402	957
MI, M....	1,859	2,110	2,029	1,940	AL, M....	148	507	527	128
OH, N....	3,260	4,836	5,488	2,608	AL, S....	519	672	685	506
OH, S....	1,711	2,451	1,978	2,184	FL, N....	403	277	135	545
TN, E....	1,329	1,987	1,839	1,477	FL, M....	1,179	2,310	1,723	1,766
TN, M....	1,512	831	806	1,537	FL, S....	516	1,163	1,156	523
TN, W....	1,141	1,571	1,089	1,623	GA, N....	2,622	3,963	4,088	2,497
					GA, M....	535	1,457	1,563	429
					GA, S....	229	664	687	206

END