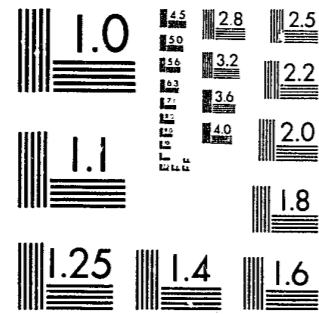


CR. sent
2-23-84

National Criminal Justice Reference Service



This microfiche was produced from documents received for inclusion in the NCJRS data base. Since NCJRS cannot exercise control over the physical condition of the documents submitted, the individual frame quality will vary. The resolution chart on this frame may be used to evaluate the document quality.



MICROCOPY RESOLUTION TEST CHART
NATIONAL BUREAU OF STANDARDS-1963-A

Microfilming procedures used to create this fiche comply with the standards set forth in 41CFR 101-11.504.

Points of view or opinions stated in this document are those of the author(s) and do not represent the official position or policies of the U. S. Department of Justice.

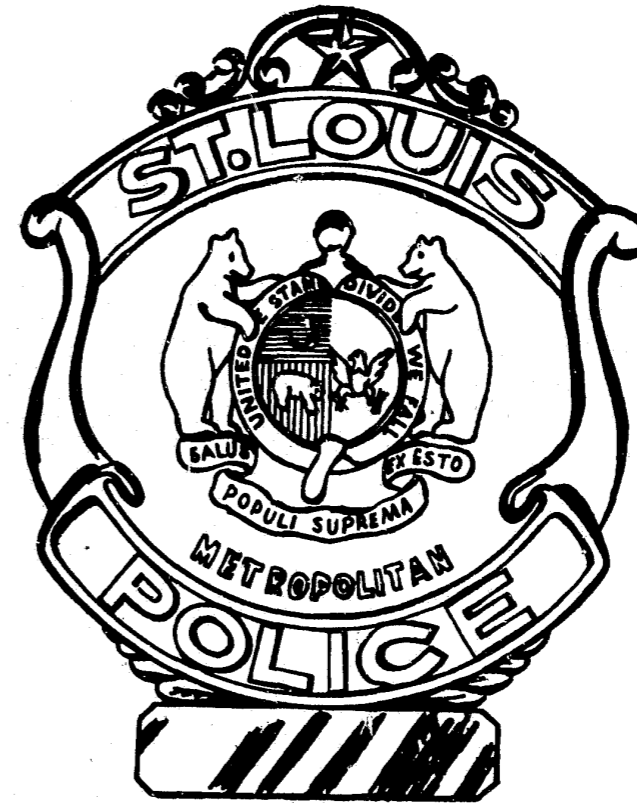
National Institute of Justice
United States Department of Justice
Washington, D. C. 20531

4/9/84

ST. LOUIS METROPOLITAN POLICE DEPARTMENT

1982

1983

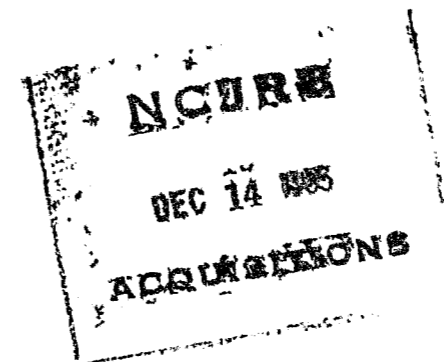


92243

ANNUAL REPORT

1982-83 ANNUAL REPORT

ST. LOUIS METROPOLITAN
POLICE DEPARTMENT



CONTENTS

2	Letter of Transmittal
4	Progress Report
7	Eight Officers Awarded Meritorious Service Citations
8	Table 1 Index Crimes By Month and Cleared by Arrest
8	Table 2 Index Crimes By Police District
9	Table 3 Persons Arrested for Part I and Part II Offenses
9	Table 4 Juveniles Arrested by Police District
10	Table 5 Persons Arrested for Certain Offenses by Race and Sex
11	Table 6 Auto Thefts and Recoveries, Value of Property Stolen and Recovered
11	Table 7 Complaints Against Police Officers
12	Table 8 Traffic Enforcement
12	Table 9 Number of Police Officers, Total Radio Calls, Total Fleet Mileage
13	Table 10 Distribution of Plant and Equipment
13	Table 11 Distribution of Commissioned Personnel by Rank
14	Table 12 Civilian Personnel
15	Organizational Chart
16	Financial Statements
28	Accountants' Report
Inside Back Cover:	
	Eight Civilians Honored for Twenty-five Years or More Service

U.S. Department of Justice
National Institute of Justice

92243

This document has been reproduced exactly as received from the person or organization originating it. Points of view or opinions stated in this document are those of the authors and do not necessarily represent the official position or policies of the National Institute of Justice.

Permission to reproduce this copyrighted material has been granted by

St. Louis Metropolitan Police
Department

to the National Criminal Justice Reference Service (NCJRS)

Further reproduction outside of the NCJRS system requires permission of the copyright owner.

MEMBERS

HOMER E. SAYAD
PRESIDENT
CHARLES E. VALIER
VICE PRESIDENT
THOMAS W. PURCELL
PURCHASING MEMBER
ROBERT F. WINTERSMITH
TREASURER
VINCENT C. SCHOEMEHL, JR.
MAYOR
ARTHUR R. COFFEY
SECRETARY TO THE BOARD

BOARD OF POLICE COMMISSIONERS

1200 CLARK AVENUE
CITY OF ST. LOUIS
MISSOURI 63103



Members of the Board of Aldermen:

In addition to statistical information on crime and related activities and a report from our auditors, this year's Annual Report contains a progress report on the 12 goals the Board adopted in 1981. Commissioned personnel who performed exceptionally and civilian employees who have received service pins for longevity will be recognized in the report.

For the second consecutive year index crime (murder, rape, robbery, aggravated assault, burglary, larceny, auto theft and arson) decreased in St. Louis. Index crime was down 3.1% in 1981 and continued downward by 4% in 1982. As we stated last year, crime is a community not a police problem. The people of St. Louis who report crimes, serve as witnesses and jurors, help victims and participate in crime prevention programs, such as Neighborhood Watch, deserve credit for the City's reduction of its crime problem.

At the risk of sounding repetitious--the three year pay bill is discussed in the Progress Report also--we express our gratitude to the Board of Aldermen and the Board of Estimate and Apportionment who contributed to the development and supported the passage into law of the 1983 Police Pay Bill. It was a significant achievement, well deserved by our commissioned personnel.

While there are more valid correlations, it is interesting to note that in 1970 St. Louis had 2220 police officers and ranked third in the nation for the number of police officers per 10,000 population. As of June, 1983, there are 1776 police officers in St. Louis and we rank 15th for the number of police officers per 10,000 population. During the same time span, 1970-1983, the number of civilian employees has been reduced by 124. That is a reduction of 568 employees; 20% of the Department's 1970 commissioned and civilian personnel.

In August, 1982, we authorized the formation of the Communication Advisory Committee. Thirteen commissioned officers, from the ranks of police officer through lieutenant, and two civilians were appointed to the Committee by Chief John F. Berner. Once each month the Committee meets with the Chief and the five lieutenant colonels; the Board meets with the entire group once each quarter. The purpose of the Committee

is to communicate to the Chief and his top managers issues of interest from the perspective of street personnel and civilian employees. Minutes of each meeting are distributed to all personnel with their paychecks. During its first year of operation, the committee raised 60 issues, of which 58 or 97% were resolved by the Chief and the five lieutenant colonels. By design, one half of the Committee will be replaced each year.

We take pride in advising you again that our personnel continue to impress us with their professional performance and dedication.

Homer E. Sayad
Col. Homer E. Sayad
President
Charles E. Valier
Col. Charles E. Valier
Vice-President
Thomas W. Purcell
Col. Thomas W. Purcell
Purchasing Member

Robert F. Wintersmith
Col. Robert F. Wintersmith
Treasurer
Vincent C. Schoemehl, Jr.
Vincent C. Schoemehl, Jr.
Mayor
Arthur R. Coffey
Arthur R. Coffey
Secretary



Homer E. Sayad, President



Charles E. Valier, Vice-President



Thomas W. Purcell, Purchasing Member



Robert F. Wintersmith,
Treasurer



Arthur R. Coffey, Secretary



Vincent J. Schoemehl, Jr.,
Mayor



Col. John F. Berner
Chief of Police

PROGRESS REPORT...

On the Board's Movement Toward Their 12 Goals

Shortly after taking office on March 5, 1981, the Board of Police Commissioners unanimously adopted 12 goals. The goals are restated here, along with comments, numbered as they were in the Board's first Annual Report, 1981.

The following four goals have been accomplished:

- (2) A fair policy on promotions based upon merit and performance.
- (4) A commitment toward insuring fair and adequate compensation for all Department employees.
- (7) A study of the organizational framework of the Department to determine the most effective way to deliver services.
- (10) To initiate the process for the selection of the next Chief of Police and to provide for an orderly transition to the time of the retirement of the present Chief.

Goal one addresses the Board's communications with state and local agencies. The best evidence of the effectiveness of the Board's communications with those agencies is the recently enacted three year pay law. Communication was a key element in unifying the Commissioners, the Board of Estimate and Apportionment and the four internal organizations, behind that single pay bill. Goal one has been accomplished to date, however that accomplishment must be sustained for the remainder of the Board's term.

- (1) An ongoing dialogue with other governmental institutions, i.e. the state legislature, the Board of Aldermen, the Board of Estimate and Apportionment of the City of St. Louis, to listen and to inform them of our plans, thoughts and problems.

Goal 12 is concerned with the Board's sensitivity to the City's fiscal resources and budgetary constraints. Since

86% of the Department's budget is appropriated for personnel, it is significant that during the Board's two year tenure, the commissioned force has been reduced by 174; the civilian employees lessened by 40; an overall personnel decrease of 214 employees. The personnel reductions cited were planned and executed over time. Through reorganization, the quality and quantity of police service has remained constant. Again, goal 12 has been accomplished to date, however that accomplishment must be sustained for the remainder of the Board's term.

- (12) To constantly keep in perspective the realities of the City's resources and budgetary constraints and their relation to the Department's plans and programs.

A significant effort has been made to achieve goals three and five. They should be accomplished by the printing of the next Annual Report.

- (3) A financial planning and budgetary process to provide a long range plan for the Department.
- (5) A comprehensive study and review of the physical facilities of the Department and the development of a long-term capital improvements program to upgrade the facilities to improve the operations of the Department and provide energy savings and other efficiencies.

Several steps have been taken toward the accomplishment of goal six. A three year office automation plan has been implemented; a word processing pilot program has been installed; a new micrographics process is being installed; the copying and additional computer needs of the Department are being studied.

- (6) To take advantage of modern technology--communications, computer programs, etc.--to assist the police officer to be a more effective law enforcement professional.

At our direction, Chief John F. Berner is in the process of reviewing the Department's current position on goal eight and determining what can be done to enhance it further.

- (8) A review of the Affirmative Action Program to assure the fulfillment of its objectives which are to provide minority groups access to and promotion within the Department.

In pursuit of goal nine, several local corporations have contributed to the progress of the Department by donating services. The reorganization of the Motor Services Division was enhanced by the insight provided by the Laclede Gas Co. Five private corporations were very helpful in reducing internal communications problems. The Board looks forward to further assistance from the private sector for the balance of its term.

- (9) To use the resources of the private sector of our community--corporations and individuals--to assist the Board in developing and implementing the latest management concepts and techniques in various operations of the Department.

The Board is continuing its review and improvement of Department policies which infringe on constitutional issues. The Board will persist in that effort for the remainder of its term.

- (11) A review of those Department policies which infringe on constitutional issues--such as strip searches.

Eight officers awarded Meritorious Service Citations

Eight St. Louis police officers were awarded Meritorious Service Citations during the year 1982.

The Meritorious Service Citation is the second highest award given by the Department and is awarded only to those officers who "distinguish themselves and bring credit to the Department by a highly creditable or unusual act in the performance of their duty."

On March 3, 1982, Police Officers Mark Karpinski and Larry Richards were honored for saving the life of an elderly woman as her home became engulfed in flames. (Officer Richards' picture is not shown.)

Police Officer Dennis Vineyard was also honored on March 3, 1982, for saving the lives of three persons who were in a burning building.

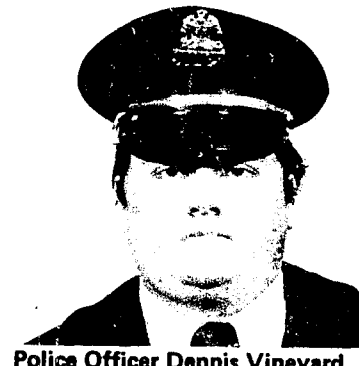
Police Officers Jeffrey Kowalski and Kurt Wagner were honored on July 21, 1982, for arresting two men who were wanted for rape and assault.

Police Officers Robert Broughton and Stephen Hobbs were honored on August 25, 1982, for rescuing nine persons from a burning building.

Police Officer Robert Duffin was awarded a Citation on December 1, 1982, for the way in which he handled a robbery attempt in Forest Park.



Police Officer Mark Karpinski



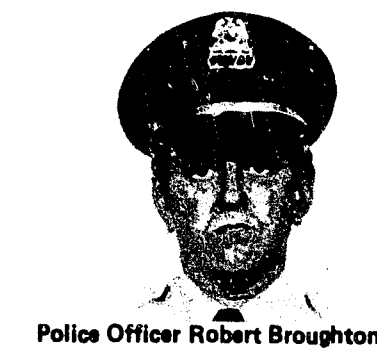
Police Officer Dennis Vineyard



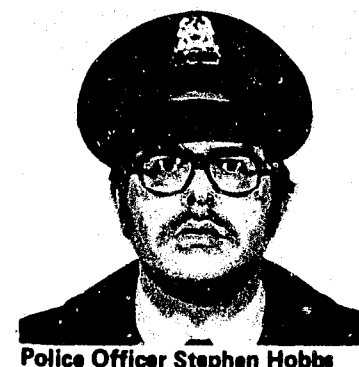
Police Officer Jeffrey Kowalski



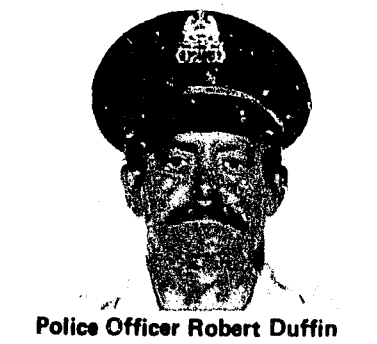
Police Officer Kurt Wagner



Police Officer Robert Broughton



Police Officer Stephen Hobbs



Police Officer Robert Duffin



TABLE 1 INDEX CRIMES BY MONTH AND CLEARED BY ARREST

January 1, 1982 through December 31, 1982

INDEX CRIME (1)	1982												1982		1981	
	JAN (2)	FEB (3)	MAR (4)	APR (5)	MAY (6)	JUNE (7)	JULY (8)	AUG (9)	SEPT (10)	OCT (11)	NOV (12)	DEC (13)	TOTAL (14)	by arrest (15)	Percent Clearance (16)	Percent Clearance (17)
TOTAL INDEX EXCEPT: Percent of Index	4401	3614	4663	4507	4557	5158	5534	5880	5382	5519	5474	5447	60136	12329	20.5	21.9
Murder & Non-Negligent Manslaughter:	19	13	21	17	17	18	20	24	26	14	16	21	226	143	63.3	81.8
Forcible Rape	28	21	25	21	22	23	27	23	13	18	14	25	260	175	67.3	65.4
Rape Attempts	5	3	5	5	7	3	6	9	4	1	1	7	56	37	66.1	56.7
Total:	33	24	30	26	29	26	33	32	17	19	15	32	316	212	67.1	64.2
Robbery	237	250	275	281	289	369	356	383	351	336	362	395	3884	832	21.4	21.3
Highway	42	28	27	30	24	39	45	55	41	35	35	57	458	141	30.8	39.1
Business	36	35	46	48	41	52	42	47	57	40	51	62	557	220	39.5	38.7
Miscellaneous	(216)	(206)	(224)	(231)	(208)	(278)	(279)	(326)	(302)	(251)	(289)	(347)	(3157)	(722)	(22.9)	(24.2)
*Weapon	(99)	(107)	(124)	(128)	(146)	(182)	(164)	(159)	(147)	(160)	(159)	(167)	(1742)	(471)	(27.0)	(27.2)
*No Weapon	99	107	124	128	146	182	164	159	147	160	159	167	1742	471	27.0	27.2
Total Except*	315	313	348	359	354	460	443	485	449	411	448	514	4899	1193	24.4	25.2
Aggravated Assault:	44	56	80	92	98	167	143	91	85	88	77	96	1117	580	51.9	53.6
Gun	72	50	98	77	109	106	108	115	75	87	91	95	1083	723	66.8	67.2
Knife or Cutting Instruments	159	115	174	196	233	278	261	232	189	193	162	144	2336	1564	67.0	69.8
Other Weapons	7	7	9	8	6	10	13	3	7	5	9	8	92	66	71.7	82.0
Hands, Fists, Etc.	(329)	(336)	(461)	(449)	(518)	(617)	(590)	(484)	(498)	(463)	(342)	(409)	(5496)	(4239)	(77.1)	(80.8)
*Other Assaults	(329)	(336)	(461)	(449)	(518)	(617)	(590)	(484)	(498)	(463)	(342)	(409)	(5496)	(4239)	(77.1)	(80.8)
Total Except*	282	228	361	373	446	561	525	441	356	373	339	343	4628	2933	63.4	65.0
Burglary	523	327	477	439	400	453	423	456	477	550	540	636	5701	914	16.0	21.0
Residence Day	408	372	504	453	522	580	733	692	539	528	492	541	6364	680	10.7	15.7
Residence Night	75	66	62	69	74	64	87	92	54	86	71	70	870	172	19.8	24.6
Other Day	304	301	351	341	315	396	384	389	381	307	369	376	4214	620	14.7	17.2
Other Night	(927)	(760)	(938)	(921)	(820)	(933)	(1047)	(1039)	(930)	(939)	(990)	(1132)	(11376)	(1672)	(14.7)	(19.5)
*Forcible Entry	(300)	(227)	(338)	(320)	(399)	(447)	(497)	(479)	(410)	(422)	(389)	(363)	(4591)	(519)	(11.3)	(15.1)
*No Force	(83)	(79)	(118)	(61)	(92)	(113)	(83)	(111)	(111)	(110)	(93)	(128)	(1182)	(195)	(16.5)	(20.4)
*Attempted	1310	1066	1394	1302	1311	1493	1627	1629	1451	1471	1472	1623	17149	2386	13.9	18.5
Total Except*	1310	1066	1394	1302	1311	1493	1627	1629	1451	1471	1472	1623	17149	2386	13.9	18.5
Larceny-Theft	1971	1616	2083	2052	2011	2183	2441	2766	2627	2715	2710	2463	27638	4933	17.9	17.7
Motor Vehicle Theft	471	354	426	378	389	417	445	503	456	516	474	451	5280	529	10.0	11.4
Arson*	20	28	36	40	33	31	34	29	25	25	16	47	364	24	6.6	14.0

*Not Included in Total

TABLE 2 INDEX CRIMES BY POLICE DISTRICT

January 1, 1982 through December 31, 1982

Police District (1)	Murder (2)		Forcible Rape (3)		Robbery (4)		Aggravated Assault (5)		Total Person Crime (6)		Burglary (7)		Larceny Theft (8)		Auto Theft (9)		TOTAL PROPERTY Crime (10)		GRAND TOTAL (11)		Population 1980
	Crimes	% of 1982 Total	Crimes	% of 1982 Total	Crimes	% of 1982 Total	Crimes	% of 1982 Total	Crimes	% of 1982 Total	Crimes	% of 1982 Total	Crimes	% of 1982 Total	Crimes	% of 1982 Total	Crimes	% of 1982 Total	Crimes	% of 1982 Total	
1	226	100.0	316	100.0	4899	100.0	4628	100.0	10069	100.0	17149	100.0	27638	100.0	5280	100.0	50067	100.0	60136	100.0	453,085
2	5	2.2	9	2.8	135	2.8	190	4.1	339	3.4	1474	8.6	2410	8.7	418	7.9	4302	8.6	4641	7.7	67,442
3	7	3.1	12	3.8	134	2.7	105	2.3	258	2.6	1130	6.6	3096	11.2	521	9.9	4747	9.5	5005	8.3	68,846
4	28	12.4	55	17.4	638	13.0	877	18.9	1598	15.9	3911	22.8	4993	18.1	886	16.8	9790	19.6	11388	18.9	87,520
5	17	7.5	15	4.7	509	10.4	267	5.8	808	8.0	1185	6.9	3565	12.9	521	9.9	5271	10.5	6079	10.1	11,266
6	36	15.9	48	15.2	588	12.0	639	13.8	1311	13.0	1891	11.0	2416	8.7	355	6.8	4666	9.3	5977	9.9	32,424
7	29	12.8	41	13.0	613	12.5	541	11.7	1224	12.2	1941	11.3	2478	9.0	769	14.6	5188	10.4	6412	10.7	59,392
8	48	21.2	54	17.1	987	20.1	943	20.4	2032	20.2	2383	13.9	2912	10.5	668	12.7	5963	11.9	7995	13.3	56,725
9	31	13.7	43	13.6	627	12.8	656	14.2	1357	13.5	1434	8.4	1932	7.0	464	8.8	3830	7.6	5187	8.6	35,084
9	25	11.1	39	12.3	668	13.6	410	8.9	1142	11.3	1800	10.5	3836	13.9	674	12.8	6310	12.6	7452	12.4	34,386

*Includes Attempts

**Arson Excluded (No district designation on report) Total on Table 1.

TABLE 3 PERSONS ARRESTED FOR PART I AND II OFFENSES BY AGE AND SEX

January 1, 1982 through December 31, 1982

CLASSIFICATION OF OFFENSES (1)	Male (2)		Female (3)		Both Sexes (4)		18 & Under (5)		17-20 (6)		21-24 (7)		25-34 (8)		35-44 (9)		45-54 (10)		55-64 (11)		65 & Over (12)	
	M	F	M	F	M	F	M	F	M	F	M	F	M	F	M	F	M	F	M	F	M	F
GRAND TOTAL - ALL CLASSES	26514	4648	31162	1481	218	4594	743	5284	1055	9295	1849	3244	522	1586	176	771	60	259	25			
Percentage - All Classes	85.1	14.9	100.0	4.8	.7	14.7	2.4	17.0	3.4	29.8	5.9	10.4	1.7	5.1	.6	2.5	.2	.8	.1			
PART I CLASSES - TOTAL	12415	1873	14288	1058	137	2496	312	2552	444	4311	678	1275	198	480	68	189	23	54	13			
Percentage - Part I	86.9	13.1	100.0	7.4	1.0	17.5	2.2	17.9	3.1	30.2	4.7	8.9	1.4	3.4	.5	1.3	.2	.4	.1			
Criminal Homicide																						
a) Murder & Non-Negligent Manslaughter	196	16	212	3	—	35	4	46	3	81	5	21	2	5	1	5	1	—	—			
b) Manslaughter by Negligence	5	—	5	—	—	—	—	1	—	3	—	—	—	1	—	—	—	—	—			
Forcible Rape	476	15	491	43	1	84	3	90	1	156	4	57	5	28	1	15	—	3	—			
Robbery	1197	60	1257	142	7	318	9	288	17	367	25	60	2	16	—	6	—	—	—			
Aggravated Assault	4122	608	4730	243	61	673	105	909	138	1473	197	511	74	207	21	77	8	29	4			
Burglary - Breaking or Entering	2155	87	2242	344	16	567	19	427	19	619	25	143	7	44	—	9	—	2	1			
Larceny - Theft	4221	1086	5307	282	52	814	172	780	266	1590	421	480	108	179	45	76	14	20	8			
Auto Theft	43	1	44	1	—	5	—	11	—	22	1	3	—	—	—	1	—	—	—			
Arson**	65	8	73	3	2	10	1	15	—	19	4	10	—	5	1	1	—	2	—			
PART II CLASSES - TOTAL	14099	2775	16874	423	81	2098	431	2732	611	4984	1171	1969	324	1106	108	582	37	205	12			
Percentage - Part II	83.6	16.4	100.0	2.5	.5	12.4	2.6	16.2	3.6	29.5	6.9	11.7	1.9	6.6	.6	3.4	.2	1.2	.1			
Other Assaults	751	134	885	10	2	125	26	181	30	289	54	88	16	41	5	14	1	3	—			
Arson**	—	—	—	—	—	—	—	—	—	—	—	—	—	—	—	—	—	—	—			
Forgery and Counterfeiting	179	104	283	1	1	25	11	29	27	76	44	26	15	16	4	5	2	1	—			
Fraud	14	7	21	2	—	1	—	—	4	6	1	2	2	1	—	—	—	—	—			
Embezzlement	—	—	—	—	—	—	—	—	—	—	—	—	—	—	—	—	—	—	—			
Stolen Property; Buying, Receiving, Possessing	98	10	108	34	—	6	1	11	2	27	5	12	2									

TABLE 5 PERSONS ARRESTED FOR CERTAIN OFFENSES BY RACE AND SEX
January 1, 1982 through December 31, 1982

CLASSIFICATION OF OFFENSES (1)	Arrested (Taken Into Custody)* (2)	White Arrested		Black Arrested		Other Arrested		TOTAL ARRESTED			
		Male (3)	Female (4)	Male (5)	Female (6)	Male (7)	Female (8)	White (9)	Black (10)	Other (11)	Total (12)
GRAND TOTAL -- ALL CLASSES	31162	7804	1225	18690	3419	20	4	9029	22109	24	31162
Percentage -- All Classes		25.0	3.9	60.0	11.0	.1	.0	29.0	70.9	.1	100.0
PART I CLASSES -- TOTAL	14288	3105	506	9299	1366	11	1	3611	10665	12	14288
Percentage -- Part I		21.7	3.5	65.1	9.6	.1	.0	25.3	74.6	.1	100.0
Criminal Homicide											
a) Murder & Non-Negligent Manslaughter	212	22	6	173	10	1	—	28	183	1	212
b) Manslaughter by Negligence	5	4	—	1	—	—	—	4	1	—	5
Forcible Rape	491	112	5	364	10	—	—	117	374	—	491
Robbery	1257	128	10	1069	50	—	—	138	1119	—	1257
Aggravated Assault	4730	1316	142	2798	465	8	1	1458	3263	9	4730
Burglary	2242	607	31	1547	56	1	—	638	1603	1	2242
Larceny--Theft	5307	908	311	3312	775	1	—	1219	4087	1	5307
Auto Theft	44	8	1	35	—	—	—	9	35	—	44
Arson***	73	25	1	40	7	—	—	26	47	—	73
PART II CLASSES -- TOTAL	16874	4699	719	9391	2053	9	3	5418	11444	12	16874
Percentage -- Part II		27.8	4.3	55.7	12.2	.1	.0	32.1	67.8	.1	100.0
Other Assaults	885	264	54	487	80	—	—	318	567	—	885
Arson***	—	—	—	—	—	—	—	—	—	—	—
Forgery and Counterfeiting	283	71	37	108	67	—	—	108	175	—	283
Fraud	21	3	2	11	5	—	—	5	16	—	21
Embezzlement	—	—	—	—	—	—	—	—	—	—	—
Stolen Property; Buying, Rec., Poss.	108	22	1	76	9	—	—	23	85	—	108
Vandalism	64	26	3	32	3	—	—	29	35	—	64
Weapons; Carrying, Possessing, etc.	1574	276	23	1176	99	—	—	299	1275	—	1574
Prostitution & Commercialized Vice	759	143	58	185	368	4	1	201	553	5	759
Sex Offenses (Except 2 & 16)**	137	74	2	60	1	—	—	76	61	—	137
Narcotic Drug Laws	2267	549	88	1491	139	—	—	637	1630	—	2267
Gambling	726	24	9	649	44	—	—	33	693	—	726
Offenses Against Family & Children	204	45	9	133	17	—	—	54	150	—	204
Driving Under Influence of Alcohol	2181	1093	87	958	43	—	—	1180	1001	—	2181
Liquor Laws	364	214	39	92	19	—	—	253	111	—	364
Drunkenness	465	155	8	292	9	1	—	163	301	1	465
Disorderly Conduct	2325	769	112	1184	257	3	—	881	1441	3	2325
Vagrancy	69	22	—	40	7	—	—	22	47	—	69
All Other Offenses	4369	924	186	2377	879	1	2	1110	3256	3	4369

*Juveniles and Adults
**Except Forcible Rape and Prostitution
***Arson Moved to Part I from Part II, no change in totals

TABLE 6 AUTO THEFTS AND RECOVERIES, VALUE OF PROPERTY STOLEN AND RECOVERED
January 1, 1982 through December 31, 1982

AUTO THEFTS AND RECOVERIES 1982 Compared with 1981 (1)	1982		1981		VALUE OF PROPERTY STOLEN AND RECOVERED 1982 Compared with 1981 (1)	1982			1981		
	Units (2)	Percent (3)	Units (4)	Percent (5)		Amount Stolen (2)	Amount Recovered (3)	Percent Recovered (4)	Amount Stolen (6)	Amount Recovered (7)	Percent Recovered (8)
TOTAL ALL RECOVERIES	4640	—	4870	—	GRAND TOTAL	38,068,888	13,420,958	35.3	38,049,281	14,179,934	37.3
Automobiles Stolen in City	5280	—	5881	—	Currency, Notes, Etc.	1,601,944	61,215	3.8	1,664,366	78,650	4.7
Recovered Automobiles	—	—	—	—	Jewelry and Precious Metals	3,594,908	116,349	3.2	3,348,569	200,653	6.0
a) Automobiles Reported Stolen in City and Recovered in City	2803	53.1	3064	52.1	Clothing and Furs	993,072	87,270	8.8	1,198,059	104,542	8.7
b) Automobiles Stolen Locally and Recovered by Other Jurisdictions	845	16.0	942	16.0	Locally Stolen Motor Vehicles	19,433,355	11,252,331	57.9	18,585,819	11,108,225	59.8
Total Recovery of Local Thefts	3648	69.1	4006	68.1	Office Equipment	447,198	69,625	15.6	488,299	79,580	16.3
c) Automobiles Recovered Locally and Stolen in Other Jurisdictions	992	—	864	—	Televisions, Radios, Stereos, Etc.	3,493,186	265,606	7.6	3,616,674	261,534	7.2
					Firearms	257,344	23,423	9.1	292,991	37,133	12.7
					Household Goods	524,345	35,556	6.8	717,866	49,137	6.8
					Consumable Goods	849,412	86,399	10.2	296,951	46,144	15.5
					Livestock	—	20	—	—	400	—
					Miscellaneous	6,873,924	1,423,164	20.7	7,839,687	2,213,936	28.2

TABLE 7 COMPLAINTS AGAINST POLICE OFFICERS
January 1, 1982 through December 31, 1982

Type of Complaint (1)	Exonerated (2)	Unfounded (3)	Not Sustained (4)	Sustained (5)	Withdrawn (6)	Pending (7)	TOTAL (8)
TOTAL	6	32	119	21	41	8	227*
Physical Abuse	0	12	51	2	18	2	85
Verbal Abuse	0	4	18	3	2	1	28
Improper Attitude/Manner	1	1	17	5	5	1	30
Lack of Police Action	0	2	0	0	0	0	2
Improper Handling of Assignment	3	6	17	10	12	4	52
Unjust Arrest, Summons, etc.	0	1	1	0	0	0	2
Money/Property Missing	0	4	9	0	2	0	15
Harassment	0	2	5	0	0	0	7
Property Damaged by Police	2	0	1	1	2	0	6

*Number of incidents complained about -- not total number of allegations

EXPLANATION OF COMPLAINT DISPOSITIONS:

EXONERATED: The action complained of did occur, but the investigation disclosed that the actions were reasonable, lawful and proper.
UNFOUNDED: The complaint was not based on facts, as shown by the investigation; or the incident complained of did not occur.
NOT SUSTAINED: Insufficient evidence available to either prove or disprove the allegations in the complaint.
WITHDRAWN: Complainant withdrew complaint; investigation terminated.
PENDING: Investigation still being conducted or awaiting decision of Board.

DISCIPLINARY ACTION

CITIZEN COMPLAINTS--1982

Resigned under investigation	3
Reduction to Probationary Police Officer	
1 year	1
6 months	3
30 days	1
Suspension	
60 days	2
2 days	1
Written Reprimand	12
Oral Reprimand	8
Reinstruction	14
Counseled	1

TABLE 8 TRAFFIC ENFORCEMENT ACCIDENTS AND FATALITIES 1977 through 1982

TRAFFIC ENFORCEMENT:

TYPE OF OFFENSE (1)	1977 (2)	1978 (3)	1979 (4)	1980 (5)	1981 (6)	1982 (7)
GRAND TOTAL	360,477	368,550	385,190	418,618	367,686	390,954
Hazardous:						
Speeding	23,421	25,945	25,956	29,456	29,412	24,729
Careless Driving	1,510	1,323	640	1,225	1,085	876
Electric Signal	13,028	12,020	10,501	8,704	9,121	8,542
Stop Sign	5,712	5,800	5,106	5,586	7,048	5,620
Improper Passing	1,763	1,923	1,609	1,782	1,744	1,159
Improper Turn	9,143	7,794	4,296	7,398	7,381	5,803
Pedestrian Violation	1,213	1,044	1,137	1,397	1,309	1,248
Driving While Intoxicated	1,924	1,265	396	382	366	428
Driving Under Inf. of Alcoh/Drugs	830	1,429	1,853	2,185	1,998	1,635
Motorist Viol. of Ped. Ord.	64	86	50	76	87	48
Following Another Veh. Too Closely	1,268	1,014	620	522	426	416
Bicycle Violations	146	120	104	101	94	146
Equipment Violations	1,941	1,907	1,598	1,461	1,823	1,639
All Other	3,913	4,767	7,098	7,420	5,368	5,754
Total Hazardous	65,876	66,437	60,964	67,695	67,262	58,043
Non-Hazardous:						
Parking	273,062	280,810	303,314	327,964	277,994	308,056
All Other	21,539	21,303	20,912	22,959	22,430	24,855
Total Non-Hazardous	294,601	302,113	324,226	350,923	300,424	332,911

ACCIDENTS AND FATALITIES:

TOTAL Accidents	26,978	29,102	25,637	20,470	19,697	17,615
Property Damage Accidents	20,056	22,003	19,446	14,734	14,240	12,533
Injury Accidents	6,848	7,036	6,133	5,673	5,409	5,037
Fatal Accidents	74	63	58	63	48	45
TOTAL Injured and Killed	10,348	10,525	9,098	8,317	8,146	7,464
Persons Injured	10,262	10,459	9,038	8,252	8,092	7,414
Persons Killed	86	66	60	65	54	50
(Pedestrian Fatalities)	(36)	(41)	(21)	(19)	(15)	(23)
(Other Fatalities)	(50)	(25)	(39)	(46)	(39)	(27)

TABLE 9 NUMBER OF POLICE OFFICERS, TOTAL RADIO CALLS, TOTAL FLEET MILEAGE 1959 through 1982

Year	Number of Police Officers*	Number of Calls*	Mileage**	Year	Number of Police Officers*	Number of Calls*	Mileage**
1959	1,966	451,165	9,988,414	1971	2,229	662,873	
1960	1,915	468,566	9,904,354	1972	2,232	696,370	13,285,939 (est.)**
1961	1,889	489,231	10,309,552	1973	2,232	870,473	13.6 million (est.)**
1962	1,809	544,929	10,503,809	1974	2,226	908,261	15.1 million (est.)*
1963	1,831	599,556	11,172,483	1975	2,150	815,189	14.8 million (est.)*
1964	1,852	629,526	10,906,386	1976	2,059	900,298	14.6 million (est.)*
1965	1,987	626,354	11,152,978	1977	2,068	891,968	14.5 million (est.)*
1966	2,035	651,575	11,457,725	1978	1,966	750,550	14.2 million (est.)*
1967	2,043	713,413	11,712,945	1979	1,984	717,330	14.0 million (est.)*
1968	2,013	758,970	11,713,871	1980	1,945	697,858	13.7 million (est.)*
1969	2,067	633,911	12,021,968	1981	1,878	776,053	13.3 million (est.)*
1970	2,220	631,142	13,006,554	1982	1,792	620,372	11,563,935*

*As of December 31
**Year ending March 31

TABLE 10 DISTRIBUTION PLANT AND EQUIPMENT (DISTRICT AREA AND POPULATION)

December 31, 1982

Divisions (1)	Year Built (2)	Land, Buildings & Improvements at cost 4/30/83 (3)	Population of District 1980 Census (4)	Area in Sq. Miles (5)	Cruising Patrols (6)	Autos (7)	Tri-Cars (8)	Trucks (9)	Cushman Vehicles (10)	Motorcycles (11)	Other (12)	Cell Boxes (13)
TOTAL		\$9,521,512	453,085	61.37	12	464	34	46	7	19	12	713
Board of Police Commissioners						9						
Chief's Office						29			4		2	
Bureau of Inspection						14			2			
Bureau of Field Operations:												
Commander's Staff						10						
Districts:												
First	1931	221,009	67,442	8.85	1	16	3					62
Second	1937	189,833	68,846	11.79	1	17	2	3	1		4	81
Third	1937	232,400	87,520	9.78	1	29	2					146
Fourth (In Headquarters)	---	---	11,266	3.86	1	16	1		1	4		111
Fifth	1939	208,624	32,424	4.34	1	18	2					78
Sixth	1930	203,831	59,392	11.16	1	18	2		3			66
Seventh*	1907	477,665	56,725	4.75	1	22	3					58
Eighth	1937	167,203	35,084	2.81	1	15	2					46
Ninth	1937	202,574	34,366	4.03	1	18	1		2			65
Juvenile Division**						15						
Tactical Deployment Division	1941	160,129				1						
Canine Section	1959	47,076				5		9			2	
Mobile Reserve Section						14						
Mounted Patrol Stables (Forest Park)		128,883										
Traffic Safety Division						14	12	4		15		
T.A.C.T.						9						
Court Liaison Division						1						
Prisoner Processing Division						1						
Correspondence Investigation Division						6						
Police Reserve						1			1			
Bureau of Investigation						113			3		1	
Bureau of Services						2						
Communications Division						1			1			
Laboratory Division						4			2			
Records/Identification						2						
Buildings Division**									6		1	
Supply Division**		173,750							1			
Headquarters and Gymnasium	1926	5,044,141										
Police Garage	1923	531,841				1		9			2	
Fleet Services (Extra Pool)												
Firearms Range		538,919					2	43	4			
Lend		993,634										

*New Station at Yalem Center, 724 N. Union Blvd.
**All Housed in Buildings and Supply Division Warehouse.

TABLE 11 DISTRIBUTION OF COMMISSIONED PERSONNEL BY RANK

December 31, 1982

(1)	(2)	(3)	(4)	(5)	(6)	(7)	(8)	(9)	(10)	(11)	(12)	(13)	(14)	(15)	(16)	(17)	(18)	(19)	(20)	(21)	(22)	(23)	(24)	(25)	(26)	(27)
	Board of Police Commissioners	Chief's Office	Bureau of Inspection	BFO Staff	First District	Second District	Third District	Fourth District	Fifth District	Ninth District	Sixth District	Seventh District	Eighth District	Juvenile Division	Prisoner Processing	Police Reserve	Mobile Reserve	Canine	Bureau of Services	Bureau of Investigation	Mounted Patrol	Traffic Safety	CID	Tactical Canine Deployment	Criminal Justice Liaison	TOTAL
TOTAL	6	93	26	11	92	88	200	128	100	114	109	139	97	43	61	2	31	22	65	239	18	49	29	18	12	1792
Police Comm. (Col.)	4*																									4*
Sec. to Board	1*																									1*
Chief of Police		1																								1
Lieut. Colonel		1	1	1															1	1						4
Major				4																						
Captain		1	1	3	1	1	1	1	1	1	1	1	1	1	1	1	1	1	1	3						4
Lieutenant		4	3	4	4	5	5	5	5	5	5	4	5	5	6	6	1	1	4	4						62
Sergeant		1	14	17	1	13	12	23	17	14	14	21	14	6	6	1	3	4	6	33	1	4	3	3	1	246
Patrolman																										
11 Yrs. & Over	4	36	4	1	59	52	84	46	42	44	43	69	32	31	23	1	16	14	47	131	11	35	25	9	10	869
6-10 Years		14		1	15	16	57	43	15	27	27	36	12	5	14		7	4	5	62	3	9		5	1	378
5 Years						1	9	5	9	4	4	1	5				3			2						43
4 Years						1	14	10	11	13	12	3	20		2				1	2						89
3 Years							7	1	2	5	3	3	5							1						27
Prob. Patrolman		22							1	1			3													29
Turnkey		1																								18

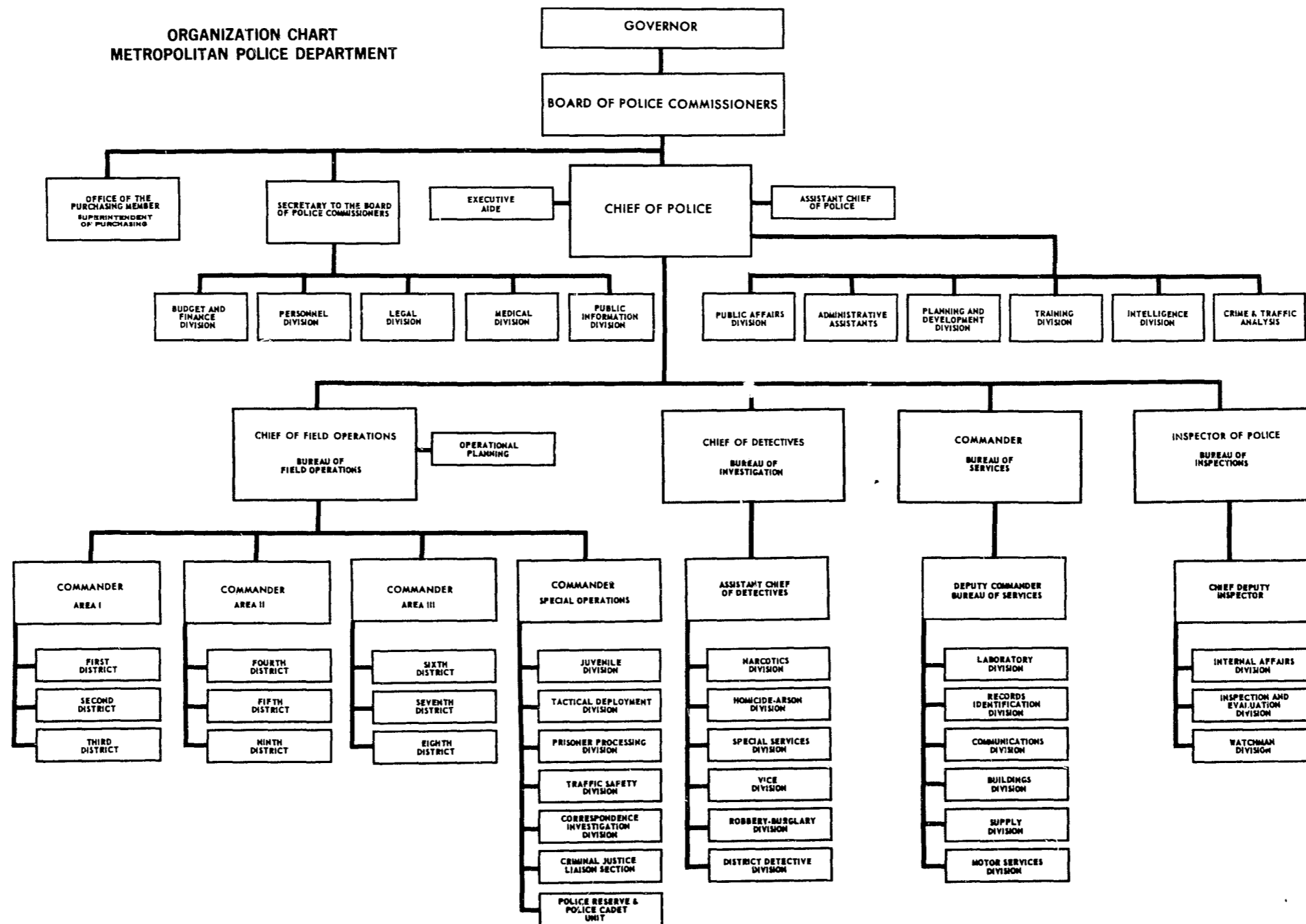
*Not included in Total

TABLE 12 CIVILIAN PERSONNEL
December 31, 1982

No.	Position	Salary Range	No.	Position	Salary Range
1	Accounting Supervisor	24,923.86 29,557.32	1	Librarian Assistant	11,663.08 14,149.72
2	Administrative Asst. I	14,815.32 17,862.26	2	Lubricationist	9,771.58 11,663.08
3	Administrative Asst. II	18,668.00 22,695.92	16	Mechanic Helpers	11,137.88 13,449.28
1	Auditor, Internal	17,862.26 21,575.06	1	Medical Director	29,557.32 35,146.54
13	Auto Mechanic	16,216.46 19,578.52	1	Medical Director Assistant	21,575.06 26,036.92
6	Auto Mechanic Trainee	12,819.04 15,480.92	1	Medical Director Associate	28,260.18 33,633.34
4	Body Repair Mechanic	16,216.46 19,578.52	1	Medical Director Adm.	23,781.42 28,260.18
1	Body Supervisor	18,668.00 22,695.92	1	Medical Secretary	14,149.72 17,021.94
4	Body Supervisor - Assistant	17,021.94 20,559.24	2	Microfilm Librarian	9,316.58 11,137.88
3	Carpenters	16,216.46 19,578.52	9	Microfilm Operator	9,771.58 11,663.08
1	Cashier	11,137.88 13,449.28	6	Motor Service Attendant	9,771.58 11,663.08
1	Cashier Assistant	10,227.10 12,258.58	1	MT/ST Operator	10,227.10 12,258.48
1	Chief Photographer	17,021.94 20,559.24	1	MT/ST Composer Operator	12,258.48 14,815.32
1	Chief Photographer Asst.	14,815.32 17,862.26	3	Multilith Operator	12,258.48 14,815.32
	Clerks:		1	Multilith Operator Lead	13,449.28 16,216.46
2	Accounts	11,137.88 13,449.28	1	Nurse Registered	14,815.32 17,862.26
1	Audit	11,663.08 14,149.72	1	Nurse Supervisor	17,021.94 20,559.24
1	Auto Theft	10,227.10 12,258.48	1	Office Supervisor	12,819.04 15,480.92
1	Board Room	11,663.08 14,149.72	3	Painters	15,480.92 18,668.00
6	Chief	12,258.48 14,815.32	1	Parts Manager	12,819.04 15,480.92
1	Chief Property	14,149.72 17,021.94	1	Parts Manager Assistant	11,137.88 13,449.28
1	C.I.D.	11,137.88 13,449.28	1	Paymaster	22,695.92 27,148.68
1	Command Post	11,137.88 13,449.28	1	Payroll Specialist	13,449.28 16,216.46
33	Complaint Evaluator	11,137.88 13,449.28	1	Personnel Analyst	23,781.42 28,260.18
5	Control Clerks	9,771.58 11,663.08	1	Personnel Assistant	17,862.26 21,575.06
6	Counter	9,316.58 11,137.88	1	Personnel Director	32,212.96 38,419.94
6	Counter I	9,771.58 11,663.08	1	Personnel Director Asst.	27,148.68 32,212.96
2	Court Scheduler	12,258.48 14,815.32	1	Personnel Director Int.	14,149.72 17,021.94
11	Crime Coding	9,771.58 11,663.08	1	Personnel Representative	12,258.48 14,815.32
1	Desk Dispatcher	11,137.88 13,449.28	2	Photographer I	14,149.72 17,021.94
38	Dispatcher	11,137.88 13,449.28	1	Photographer II	11,137.88 13,449.28
2	Distribution	9,316.58 11,137.88	1	Photo Technician	17,862.26 21,575.06
8	District	8,861.06 10,682.62	1	Physician, Chief	14,815.32 17,862.26
6	File	10,227.10 12,258.48	1	Physician Staff	26,036.92 30,885.14
3	Information	10,682.62 12,819.04	1	Planning & Development Dir.	16,216.46 19,578.52
1	Information I	12,258.48 14,815.32	2	Plumber	12,819.04 15,480.92
1	Invoice	10,682.62 12,819.04	1	Police Reserve Assistant	26,036.92 30,885.14
1	Inspection	10,682.62 12,819.04	3	Program Director	22,695.92 27,148.68
1	Lead Coding	10,682.62 12,819.04	1	Programmer Analyst I	24,923.86 29,557.32
1	Lead Control	10,227.10 12,258.48	2	Programmer Analyst II	27,148.68 32,212.96
2	Motor Service	9,316.58 11,137.88	3	Programmer Analyst Senior	13,449.28 16,216.46
13	Office	10,227.10 12,258.48	1	Public Affairs Assistant	14,149.72 17,021.94
1	Parts	9,771.58 11,663.08	1	Public Information Assistant	27,148.68 32,212.96
1	Perpetual Inventory	9,771.58 11,663.08	1	Public Info/Grants Director	16,216.46 19,578.52
5	Processing	11,137.88 13,449.28	1	Purchasing Assistant	9,771.58 11,663.08
3	Property	11,137.88 13,449.28	2	Radio Installer	9,771.58 11,663.08
1	Purchasing	9,771.58 11,663.08	7	Radio Technician	17,021.94 20,559.24
23	Radio	9,771.58 11,663.08	1	Repair Shop Supervisor	21,575.06 26,036.92
1	Receiving	9,771.58 11,663.08	2	Records Clerk	9,771.58 11,663.08
10	Records	9,771.58 11,663.08	2	Records Clerk Supervisor	14,149.72 17,021.94
5	Review	11,137.88 13,449.28	1	Record Service Coordinator	15,480.92 18,668.00
2	Security	10,227.10 12,258.48	1	Research Assistant	21,575.06 26,036.92
1	Senior	10,227.10 12,258.48	2	Research Associate	23,781.42 28,260.18
1	Statistical	12,258.48 14,815.32	1	Research Specialist	14,815.32 17,862.26
12	Teleprocessing	9,771.58 11,663.08	1	RJE Terminal Operator	11,663.08 14,149.72
4	Teleprocessing Clerk Senior	10,682.62 12,819.04	1	Satellite Supervisor	15,480.92 18,668.00
			1	Secretary to the Board	33,633.34 40,341.00
5	Computer Operator	13,449.28 16,216.46	1	Secretary	12,819.04 15,480.92
1	Computer Section Supv.	14,149.72 17,021.94	3	Secretary Legal	14,149.72 17,021.94
1	Controller	30,885.14 36,783.24	1	Security Attendant	10,227.10 12,258.48
1	Court Liaison Supervisor	14,815.32 17,862.26	1	Security Chauffeur	10,227.10 12,258.48
3	Criminalist I	21,575.06 26,036.92	3	Security Interviewer	11,137.88 13,449.28
2	Criminalist II	23,781.42 28,260.18	1	Service Manager	19,578.52 23,781.42
1	Criminalist, Chief	27,148.68 32,212.96	3	Shift Supervisor	18,668.00 22,695.92
43	Custodian I	9,316.58 11,137.88	3	Stable Attendant	9,316.58 11,137.88
1	Custodian II	9,771.58 11,663.08	14	Stenographer	11,137.88 13,449.28
2	Custodian Supv. Assistant	10,227.10 12,258.48	3	Stockhandler	9,771.58 11,663.08
6	Drivers	9,316.58 11,137.88	1	Superintendent of Buildings	23,781.42 28,260.18
2	Electricians	16,216.46 19,578.52	1	Superintendent of Bldg. Asst.	18,668.00 22,695.92
1	Employee Benefits Repr.	14,815.32 17,862.26	1	Superintendent of Purchasing	26,036.92 30,885.14
2	Evaluation Analyst	21,575.06 26,036.92	1	Superintendent of Supplies	23,781.42 28,260.18
5	Executive Secretary	14,149.72 17,021.94	1	Supv. Reports & Records	15,480.92 18,668.00
5	Fingerprint Technician	12,258.48 14,815.32	1	Systems Development Mgr.	28,260.18 33,633.34
1	Fingerprint Tech. Supv.	14,815.32 17,862.26	5	TV Technician	18,668.00 22,695.92
1	Groundskeeper	10,227.10 12,258.48	20	Typist A	9,771.58 11,663.08
1	IDMO Operator	10,227.10 12,258.48	1	Uniform Inspector	11,137.88 13,449.28
1	Junior Accountant	13,449.28 16,216.46	1	Warehouse Supervisor	12,819.04 15,480.92
2	Keypunch Operator I	9,771.58 11,663.08			
6	Keypunch Operator II	10,682.62 12,819.04	557	TOTAL--Actual Strength as of 12/31/82--545	
2	Keypunch Operator Lead	11,137.88 13,449.28			
5	Latent Fingerprint Exam.	17,021.94 20,559.24	19	Part-Time Employees	
4	Laborer	9,771.58 11,663.08	7	St. Louis Police Academy Employees	
1	Legal Advisor	32,212.96 38,419.94	7	Grant Employees	
1	Legal Advisor Assistant	28,260.18 33,633.34			
1	Librarian	16,216.46 19,578.52			



**ORGANIZATION CHART
METROPOLITAN POLICE DEPARTMENT**



THE METROPOLITAN POLICE DEPARTMENT OF THE
CITY OF ST. LOUIS, MISSOURI

Combined Balance Sheet
All Fund Types and Account Group

April 30, 1983
with comparative totals for 1982

Assets	Governmental Fund Types		Proprietary Fund Type - Internal Service Fund - Greater St. Louis Police Academy	Fiduciary Fund Types		Account Group - General Fixed Assets	Totals (memorandum only)	
	General Expenditures Fund	Special Revenue Funds		Expendable Trust Fund - Secretary's Fund	Agency Fund - Treasurer's Fund		1983	1982
Cash on hand and in banks	\$ -	-	1,968	97,298	25,193	-	124,459	99,460
Certificate of deposit	-	-	-	25,000	-	-	25,000	25,000
Receivables:								
Intergovernmental revenues	-	27,255	-	-	109,970	-	137,225	128,130
Due from City of St. Louis	2,106,256	-	-	-	-	-	2,106,256	2,309,835
Due from Greater St. Louis Police Academy	-	-	-	-	-	-	-	17,456
Inventory, at FIFO cost	240,656	-	24,650	-	-	-	265,306	220,524
Property, plant and equipment, at cost:								
Land	-	-	-	-	-	993,634	993,634	993,634
Buildings and improvements	-	-	-	-	-	8,527,878	8,527,878	7,742,240
Furniture and fixtures	-	-	58,101	-	-	2,713,164	2,771,265	2,491,520
Automotive equipment	-	-	-	-	-	4,227,015	4,227,015	3,725,083
Communication equipment	-	-	-	-	-	5,010,691	5,010,691	4,982,882
Guns and revolvers	-	-	-	-	-	215,978	215,978	208,781
Accumulated depreciation	-	-	(52,024)	-	-	-	(52,024)	(48,363)
Net property, plant and equipment	-	-	6,077	-	-	21,688,360	21,694,437	20,095,777
	\$ <u>2,346,912</u>	<u>27,255</u>	<u>32,695</u>	<u>122,298</u>	<u>135,163</u>	<u>21,688,360</u>	<u>24,352,683</u>	<u>22,896,182</u>

The accompanying notes to the financial statements are an integral part of this statement.

(Continued)

Liabilities and Fund Equity	Governmental Fund Types		Proprietary Fund Type - Internal Service Fund - Greater St. Louis Police Academy	Fiduciary Fund Types		Account Group - General Fixed Assets	Totals (memorandum only)	
	General Expenditures Fund	Special Revenue Funds		Expendable Trust Fund - Secretary's Fund	Agency Fund - Treasurer's Fund		1983	1982
Liabilities:								
Accounts payable	\$ 238,886	2,908	-	-	-	-	241,794	547,585
Accrued wages and over- time payable	1,867,370	9,197	-	-	-	-	1,876,567	1,766,972
Due to General Expendi- tures Fund	-	-	-	-	-	-	-	17,456
Due to City of St. Louis	-	15,150	-	-	135,163	-	150,313	150,783
Badge deposits	-	-	-	48,910	-	-	48,910	46,510
Deferred revenue - grants	-	-	26,618	-	-	-	26,618	10,199
Total liabilities	<u>2,106,256</u>	<u>27,255</u>	<u>26,618</u>	<u>48,910</u>	<u>135,163</u>	<u>-</u>	<u>2,344,202</u>	<u>2,539,505</u>
Fund equity:								
Contributed capital	-	-	6,077	-	-	-	6,077	9,738
Investment in general fixed assets	-	-	-	-	-	21,688,360	21,688,360	20,086,039
Fund balance:								
Reserved for inventory	240,656	-	-	-	-	-	240,656	193,112
Unreserved - designated	-	-	-	73,388	-	-	73,388	67,788
Total fund equity	<u>240,656</u>	<u>-</u>	<u>6,077</u>	<u>73,388</u>	<u>-</u>	<u>21,688,360</u>	<u>22,008,481</u>	<u>20,356,677</u>
	<u>\$ 2,346,912</u>	<u>27,255</u>	<u>32,695</u>	<u>122,298</u>	<u>135,163</u>	<u>21,688,360</u>	<u>24,352,683</u>	<u>22,896,182</u>

17

The accompanying notes to the financial statements are an integral part of this statement.

THE METROPOLITAN POLICE DEPARTMENT OF THE
CITY OF ST. LOUIS, MISSOURI

Combined Statement of Revenues, Expenditures,
and Changes in Fund Balances
Governmental Fund Types and Expendable Trust Fund

Year ended April 30, 1983
with comparative totals for 1982

	Governmental Fund Types		Fiduciary Fund Type - Expendable Trust Fund - Secretary's	Totals (memorandum only)	
	General Fund	Special Revenue Funds	Fund	1983	1982
Revenues:					
Grants and contracts	\$ -	110,003	-	110,003	205,848
Sale of unclaimed property	-	-	27,868	27,868	35,669
Donations, gifts, and other	-	-	5,278	5,278	1,113
Interest	-	-	6,072	6,072	2,050
Total revenues	<u>-</u>	<u>110,003</u>	<u>39,218</u>	<u>149,221</u>	<u>244,680</u>
Expenditures:					
Salaries and benefits	52,401,099	106,683	-	52,507,782	52,953,540
Supplies	2,031,235	3,097	-	2,034,332	2,243,488
Materials	396,910	-	-	396,910	342,078
Equipment	1,570,761	-	-	1,570,761	1,699,169
Contract services	3,692,610	-	-	3,692,610	3,818,143
Fixed and miscellaneous	385,231	223	-	385,454	399,890
Commissioned officer and recruit training	235,387	-	-	235,387	184,480
Reimbursable training	272,242	-	-	272,242	279,233
Scholarship program	-	-	87,259	87,259	92,615
Police Relief Association	-	-	27,868	27,868	35,669
Donations, gifts, and other	-	-	6,035	6,035	1,457
Distinguished service awards	-	-	-	-	500
Total expenditures	<u>60,985,475</u>	<u>110,003</u>	<u>121,162</u>	<u>61,216,640</u>	<u>62,050,262</u>
Excess of expenditures over revenues	(60,985,475)	-	(81,944)	(61,067,419)	(61,805,582)
Other financing sources (uses) - operating transfers in (out):					
City of St. Louis	61,120,563	-	-	61,120,563	61,815,189
Department	(105,000)	-	105,000	-	-
Total other financing sources	<u>61,015,563</u>	<u>-</u>	<u>105,000</u>	<u>61,120,563</u>	<u>61,815,189</u>
Excess of revenues and other sources over expenditures and other uses	30,088	-	23,056	53,144	9,607
Fund balance:					
Beginning of year	210,566	-	50,332	260,900	251,293
End of year	\$ <u>240,656</u>	<u>-</u>	<u>73,388</u>	<u>314,044</u>	<u>260,900</u>

The accompanying notes to the financial statements are an integral part of this statement.

THE METROPOLITAN POLICE DEPARTMENT OF THE
CITY OF ST. LOUIS, MISSOURI

Statements of Operations and Changes in Fund Equity
Proprietary Fund Type - Internal Service Fund -
Greater St. Louis Police Academy

Years ended April 30, 1983 and 1982

	<u>1983</u>	<u>1982</u>
Operating revenues:		
Officer and recruit training fees:		
Department:		
In-kind contribution	\$ 507,629	463,713
Less reimbursement through training fees	<u>272,242</u>	<u>279,233</u>
Total Department usage	<u>235,387</u>	<u>184,480</u>
St. Louis County:		
In-kind contribution	122,294	114,940
Training fees	<u>254,656</u>	<u>268,922</u>
Total St. Louis County usage	<u>376,950</u>	<u>383,862</u>
Other law enforcement agencies - training fees	<u>17,586</u>	<u>8,230</u>
Preservice recruit training fees	<u>20,100</u>	<u>-</u>
Total officer and recruit training fees	<u>650,023</u>	<u>576,572</u>
Grants and contracts	<u>3,032</u>	<u>400</u>
Total operating revenues	<u>653,055</u>	<u>576,972</u>
Operating expenses:		
Salaries and benefits	368,989	321,902
Special personal services	106,280	86,933
Supplies	78,778	83,216
Contract services	84,068	81,087
Fixed and miscellaneous	<u>14,940</u>	<u>3,834</u>
Total operating expenses	<u>653,055</u>	<u>576,972</u>
Operating income before other expenses	-	-
Other expenses - depreciation on assets acquired from contributed capital	<u>(3,661)</u>	<u>(3,659)</u>
Net loss	<u>\$ (3,661)</u>	<u>(3,659)</u>
Disposition of net loss:		
Net loss	(3,661)	(3,659)
Credit arising from transfer of depreciation to contributed capital	<u>3,661</u>	<u>3,659</u>
Net loss transferred to retained earnings	<u>\$ -</u>	<u>-</u>
Fund equity - contributed capital:		
Balance, beginning of year	9,738	13,397
Depreciation on assets acquired from contributed capital	<u>(3,661)</u>	<u>(3,659)</u>
Balance, end of year	<u>\$ 6,077</u>	<u>9,738</u>

The accompanying notes to the financial statements are an integral part of this statement.

THE METROPOLITAN POLICE DEPARTMENT OF THE
CITY OF ST. LOUIS, MISSOURI

Statements of Changes in Financial Position
Proprietary Fund Type - Internal Service Fund -
Greater St. Louis Police Academy

Years ended April 30, 1983 and 1982

	<u>1983</u>	<u>1982</u>
Sources of working capital:		
Provided by operations:		
Net loss	\$ (3,661)	(3,659)
Item not requiring working capital - depreciation	3,661	3,659
Working capital provided by operations	-	-
Decrease in deferred revenue - grants	-	42,429
Increase in working capital	<u>16,662</u>	-
	<u>\$ 16,662</u>	<u>42,429</u>
Uses of working capital:		
Increase in deferred revenue - grants	16,662	-
Decrease in working capital	-	42,429
	<u>\$ 16,662</u>	<u>42,429</u>
Elements of net increase (decrease) in working capital:		
Cash on hand and in banks	(1,032)	3,000
Inventory	(2,762)	(27,573)
Due to General Expenditures Fund	17,456	(17,456)
Due to City of St. Louis	3,000	(400)
Net increase (decrease) in working capital	<u>\$ 16,662</u>	<u>(42,429)</u>

The accompanying notes to the financial statements are an integral part of this statement.

THE METROPOLITAN POLICE DEPARTMENT OF THE
CITY OF ST. LOUIS, MISSOURI

Notes to Financial Statements

April 30, 1983

(1) Summary of Significant Accounting Policies

Basis of Presentation

Governmental Funds

Governmental Funds include the General Expenditures Fund and Special Revenue Funds. The Governmental Fund Type measurement focus is upon determination of financial position and changes in financial position (sources, uses, and balances of financial resources rather than upon net income determination).

General Expenditures Fund - The General Expenditures Fund is the general operating fund of the Department. It is used to account for all financial expenditures, except those required to be accounted for in another fund.

Special Revenue Funds - Special Revenue Funds are used to account for the proceeds of specific revenue sources that are legally restricted to expenditures for specified purposes. Funds included in this fund category are:

Federal grants:

Sting project income - target fence
DWI enforcement site

Contracts:

Drug Enforcement Administration - task force
Deputy Sheriff Training
Commercial Security Test Program
Pedestrian Safety
St. Louis Housing Authority

Proprietary Fund

Proprietary Funds are accounted for similar to businesses in the private sector. All assets and all liabilities (whether current or noncurrent) associated with their activity are included on their balance sheet. Their reported fund equity (net total assets) is segregated into contributed capital and retained earnings components. Proprietary Fund Type measurement focus is upon determination of net income, financial position, and changes in financial position.

Internal Service Fund - The Internal Service Fund is used to account for the financing of services provided by the Greater St. Louis Police Academy. These services are provided to the various criminal justice agencies within the City and County of St. Louis.

Fiduciary Funds

Fiduciary Funds are used to account for assets held in a trustee capacity or as an agent for individuals, private organizations, other governmental units, and/or other funds.

THE METROPOLITAN POLICE DEPARTMENT OF THE
CITY OF ST. LOUIS, MISSOURI

Notes to Financial Statements

Expendable Trust Fund - Secretary's Fund - This fund is used to account for specific amounts received through deposits, gifts, and donations.

Agency Fund - Treasurer's Fund - The Treasurer's Fund is maintained to account for monies due to the City of St. Louis as a result of revenues collected by the Department which are subsequently remitted to the City.

Account Group

General Fixed Assets Account Group - This group of accounts is established to account for all fixed assets of the Department, other than those accounted for in the Proprietary Fund.

Basis of Accounting

The financial statements of the Governmental and Fiduciary (Expendable Trust and Agency) Fund Types have been prepared on the modified accrual basis of accounting. Under the modified accrual basis of accounting, revenues are recorded when received in cash unless susceptible to accrual, i.e., measurable and available to finance operations, or of a material amount and not received at the normal time of receipt. Expenditures are recorded when the liability is incurred, except that vacation expense and banked overtime are recognized when paid.

The accrual basis of accounting is followed by the Proprietary Fund Type - Internal Service Fund for financial statement presentation purposes.

Appropriation Process

Annually, unit commanders submit proposed financial needs for the subsequent year to the controller of the Department. The data is summarized in budgetary form and submitted to the Board of Police Commissioners for review and approval. The final approved budgeted appropriations are certified to the Board of Estimate and Apportionment of the City of St. Louis for approval of the total budget amount.

Funds Disbursed by the City of St. Louis

The Comptroller of the City of St. Louis, upon receipt of properly approved vouchers, makes payments of expenditures on behalf of the Department. Operating transfers from the City of St. Louis are recorded when expenditures are recorded. Amounts due from the City of St. Louis relate to unpaid expenditures and accrued wages at year-end.

Inventory

Inventory is valued at first-in, first-out (FIFO) cost. Inventory in the General Expenditures Fund consists of automobile repair parts, gasoline, and ammunition supplies held for consumption. The cost is recorded as an expenditure at the time individual inventory items are used. The reserve for inventory is equal to the amount of inventory to indicate that the fund balance is not available for future expenditure.

THE METROPOLITAN POLICE DEPARTMENT OF THE
CITY OF ST. LOUIS, MISSOURI

Notes to Financial Statements

The Department also possesses various other expendable supplies (such as police uniforms, paper, and other office supplies) which are recorded as expenditures when purchased and are not reflected on the balance sheet as inventory.

Property, Plant and Equipment

General fixed assets have been acquired for general Department purposes. Assets purchased are recorded as expenditures in the General Expenditures and Special Revenue Funds and capitalized at cost in the General Fixed Assets Account Group.

Assets donated to the Department are recorded in the General Fixed Assets Account Group at fair market value at the time they are donated.

No depreciation is provided on general fixed assets.

It is the policy of the Department to act as self-insurers on all property. No reserves or provisions have been established in the various funds for self-insurance.

Equipment owned by the Internal Service Fund is stated at cost. Depreciation is provided over the estimated useful life of 10 years using the straight-line method.

Due to City of St. Louis

Services performed by The Metropolitan Police Department for which revenues are collected by the Department are deposited in the Treasurer's Fund and remitted to the City of St. Louis.

Certain grant programs require the expenditure of funds before the amount due from the grantor can be requested. It is the practice under such programs for the City of St. Louis to advance the cash needed to finance the required expenditures. Such balances due the City of St. Louis are liquidated upon receipt of funds due from grantors and contractors.

Deferred Revenue

Certain grantors advance funds to the Department through the Special Revenue and Internal Service Funds. Grant revenue is recognized to the extent that expenditures are made.

Fund Balance - Unreserved Designated

The fund balance in the Secretary's Fund is composed of amounts designated by the Board of Police Commissioners for payment of distinguished service awards and police officers' scholarships, and amounts received in gifts and donations designated for specific purposes.

(Continued)

THE METROPOLITAN POLICE DEPARTMENT OF THE
CITY OF ST. LOUIS, MISSOURI

Notes to Financial Statements

Interfund Transfers

During the year, the General Expenditures Fund transfers money to the Expendable Trust Fund to be used for reimbursing commissioned police officers for college tuition. These transfers are reported as other financing uses in the General Expenditures Fund and other financing sources in the Expendable Trust Fund.

Vacation and Banked Overtime

Vacation expense and banked overtime are recognized in the General Expenditures Fund when paid. Vacation accrues to Department employees on January 1. The employees must take their vacation before December 31. Banked overtime is accumulated up to 40 hours. Any overtime earned in excess of 40 hours is paid. The 40 hours of accumulated overtime can be taken as time off with departmental approval or is paid upon termination of employment. The amount of accrued vacation and banked overtime not reflected in the financial statements at April 30, 1983 was approximately \$2,631,000 and \$572,000, respectively.

"Memorandum Only" Total Columns

Included on the combined financial statements are total columns captioned "memorandum only" to indicate that they are presented only for informational purposes. Adjustments to eliminate interfund transactions have not been recorded in arriving at such amounts, and the memorandum totals are not intended to fairly present the financial position or results of operations of the Metropolitan Police Department taken as a whole.

Additionally, the 1982 totals presented in the "memorandum only" columns are included to provide a summarized comparison with comparable 1983 amounts and are not intended to present all information necessary for a fair presentation of financial position and results of operations in accordance with generally accepted accounting principles.

Presentation

Certain 1982 data have been reclassified to conform with the 1983 presentation.

(Continued)

THE METROPOLITAN POLICE DEPARTMENT OF THE
CITY OF ST. LOUIS, MISSOURI

Notes to Financial Statements

(2) Appropriation (Budget) to Actual Comparison

The following is a summary of the General Expenditures Fund disbursements compared to appropriation. The Department prepares its General Expenditures Fund appropriation on a cash basis.

	Appropriation		Operations	Disbursements		Under revised appropriation
	Original	Revised		Officer and recruit training	Total	
	Salaries and benefits	\$ 58,229,985				
Supplies	2,483,325	2,400,000	2,222,056	34,887	2,256,943	143,057
Materials	386,550	430,000	393,969	-	393,969	36,031
Equipment	2,101,240	1,725,000	1,598,327	745	1,599,072	125,928
Contract services	4,281,345	4,000,000	3,788,779	168,915	3,957,694	42,306
Fixed and miscellaneous	522,730	545,000	494,566	9,978	504,544	40,456
	<u>\$ 68,005,175</u>	<u>62,265,000</u>	<u>60,816,513</u>	<u>507,629</u>	<u>61,324,142</u>	<u>940,858</u>

Included in fixed and miscellaneous disbursements were operating transfers totaling \$105,000 to the Expendable Trust Funds.

The difference between the cash basis and the modified accrual basis of accounting for the General Expenditures Fund relates primarily to the recognition of accounts payable and accrued wages and overtime payable. A reconciliation between the cash basis and the modified accrual basis of accounting follows:

	Cash basis	Reconciling items				Modified accrual basis
		Increase in accrued wages and overtime payable over previous year	Increase (decrease) in accounts payable over previous year	Increase in inventory and other receivables over previous year	Operating transfers included in cash basis disbursements	
Operations:						
Salaries and benefits	\$ 52,318,816	105,098	(22,815)	-	-	52,401,099
Supplies	2,222,056	-	(164,054)	(26,767)	-	2,031,235
Materials	393,969	-	6,262	(3,321)	-	396,910
Equipment	1,598,327	-	(27,566)	-	-	1,570,761
Contract services	3,788,779	-	(96,169)	-	-	3,692,610
Fixed and miscellaneous	494,566	-	(4,335)	-	(105,000)	385,231
Total operations	60,816,513	105,098	(308,677)	(30,088)	(105,000)	60,477,846
Commissioned officer and recruit training	507,629	-	-	-	-	507,629
	<u>\$ 61,324,142</u>	<u>105,098</u>	<u>(308,677)</u>	<u>(30,088)</u>	<u>(105,000)</u>	<u>60,985,475</u>

(Continued)

THE METROPOLITAN POLICE DEPARTMENT OF THE
CITY OF ST. LOUIS, MISSOURI

Notes to Financial Statements

The Special Revenue Funds are comprised of several grants and contracts with various Federal, state, and local agencies. The budgets are prepared at the time the grant or contract document is presented for approval to the appropriate Federal, state, or local agency and may extend beyond one year. Annual budgets are not prepared on the grants and contracts currently in process and, accordingly, budget to actual comparisons are not presented.

(3) Property, Plant and Equipment

A summary of changes in general fixed assets follows:

	Balance, April 30, 1982	Additions	Deletions	Balance, April 30, 1983
Land	\$ 993,634	-	-	993,634
Buildings and improvements	7,742,240	814,260	28,622	8,527,878
Furniture and fixtures	2,433,419	334,220	54,475	2,713,164
Automotive equipment	3,725,083	1,271,768	769,836	4,227,015
Communication equipment	4,982,882	31,831	4,022	5,010,691
Guns and revolvers	208,781	11,547	4,350	215,978
	\$ <u>20,086,039</u>	<u>2,463,626</u>	<u>861,305</u>	<u>21,688,360</u>

The Department is currently planning on disposing of certain "FLAIR" communication equipment, totaling approximately \$2,500,000, included in the General Fixed Asset Account Group at April 30, 1983, as the equipment had become inefficient and costly to maintain. This equipment had been acquired primarily with Federal Government monies. Federal Government regulations stipulate that the Department may dispose of the equipment either by returning the equipment to the Federal Government or by donating the equipment to another approved government agency. It is anticipated that the equipment will be donated to the Miami, Florida Police Department. The final disposition of this equipment is pending authorization from the Board of Police Commissioners.

(4) Pension Plans

Police Officers

All commissioned police officers are covered under the Alternative Police Retirement System of St. Louis. Members of the Plan contribute at a rate of 7% of their base compensation. The City of St. Louis makes contributions to the Plan on behalf of its members. These contributions are not budgeted for in the Department's general appropriations process and are not reflected in the financial statements of the Department. The contributions from the City of St. Louis for the year were \$7,820,692. The unfunded accrued liability determined by the actuary as of September 30, 1982, the date of the most recent actuarial valuation in accordance with the provisions of Accounting Principles Board Opinion #8, was \$5,654,370. The assumed rate of return on investments used in this valuation was increased to 7-1/2% (from 7% in the prior valuation). The effect of this change has not been disclosed as the information is not available.

THE METROPOLITAN POLICE DEPARTMENT OF THE
CITY OF ST. LOUIS, MISSOURI

Notes to Financial Statements

Department Full-Time Civilian Personnel

Department full-time civilian personnel continuously employed for one year and at least 25 years of age are eligible for participation in the noncontributory Employees Retirement System of the City of St. Louis. Department contributions are budgeted for in the general appropriations process and are recorded in the General Expenditures Fund.

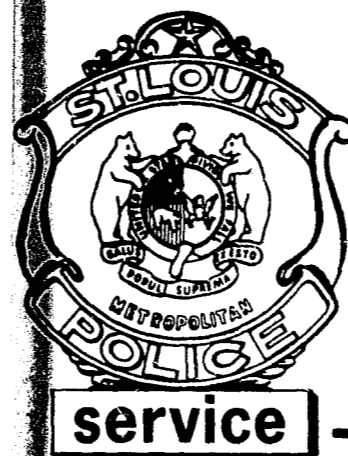
Contributions were made at a rate of 9.27% of the total civilians' salaries expended, which amounted to \$744,405 for the year. The Plan covers all eligible City of St. Louis employees who are not police officers or firemen. As a result, the excess, if any, of the actuarially computed value of vested benefits over the total pension fund and accruals, less prepayments or deferred charges, is not determinable for the Department personnel.

(5) Pending Litigation

A number of suits against the Department are presently pending for alleged civil rights violations and negligence in the line of duty. It is expected that the final settlement of these matters will not have a material adverse effect on the financial position or results of operations of the Department. On July 20, 1983 an incidence involving the accidental death of a citizen occurred in the line of duty of a Department Police officer. The effects and ultimate outcome of this incidence is unknown at this time.



Peat, Marwick, Mitchell & Co.
 Certified Public Accountants
 1010 Market Street
 St. Louis, Missouri 63101



Eight civilians awarded service pins for 25 years or more with the Department

Board of Police Commissioners
 The Metropolitan Police Department
 of the City of St. Louis, Missouri:

We have examined the combined balance sheet - All Fund Types and Account Group of The Metropolitan Police Department of the City of St. Louis, Missouri as of April 30, 1983 and the related combined statement of revenues, expenditures, and changes in fund balances - Governmental Fund Types and Expendable Trust Fund for the year then ended, and the statements of operations and changes in fund equity and changes in financial position of the Proprietary Fund Type - Internal Service Fund for the years ended April 30, 1983 and 1982. Our examinations were made in accordance with generally accepted auditing standards and, accordingly, included such tests of the accounting records and such other auditing procedures as we considered necessary in the circumstances.

In our opinion, the financial statements referred to above present fairly the financial position of the The Metropolitan Police Department of the City of St. Louis, Missouri at April 30, 1983 and the results of its operations for the year then ended and the results of operations and changes in financial position of its Proprietary Fund Type - Internal Service Fund for the years ended April 30, 1983 and 1982, in conformity with generally accepted accounting principles applied on a consistent basis.

Peat, Marwick, Mitchell & Co.

July 7, 1983, except as to
 note 5 which is as of
 August 2, 1983



Herbert Brown



James Herrick



Marie Hoagland



William Mayes



August Schaeffer



Edward Seago

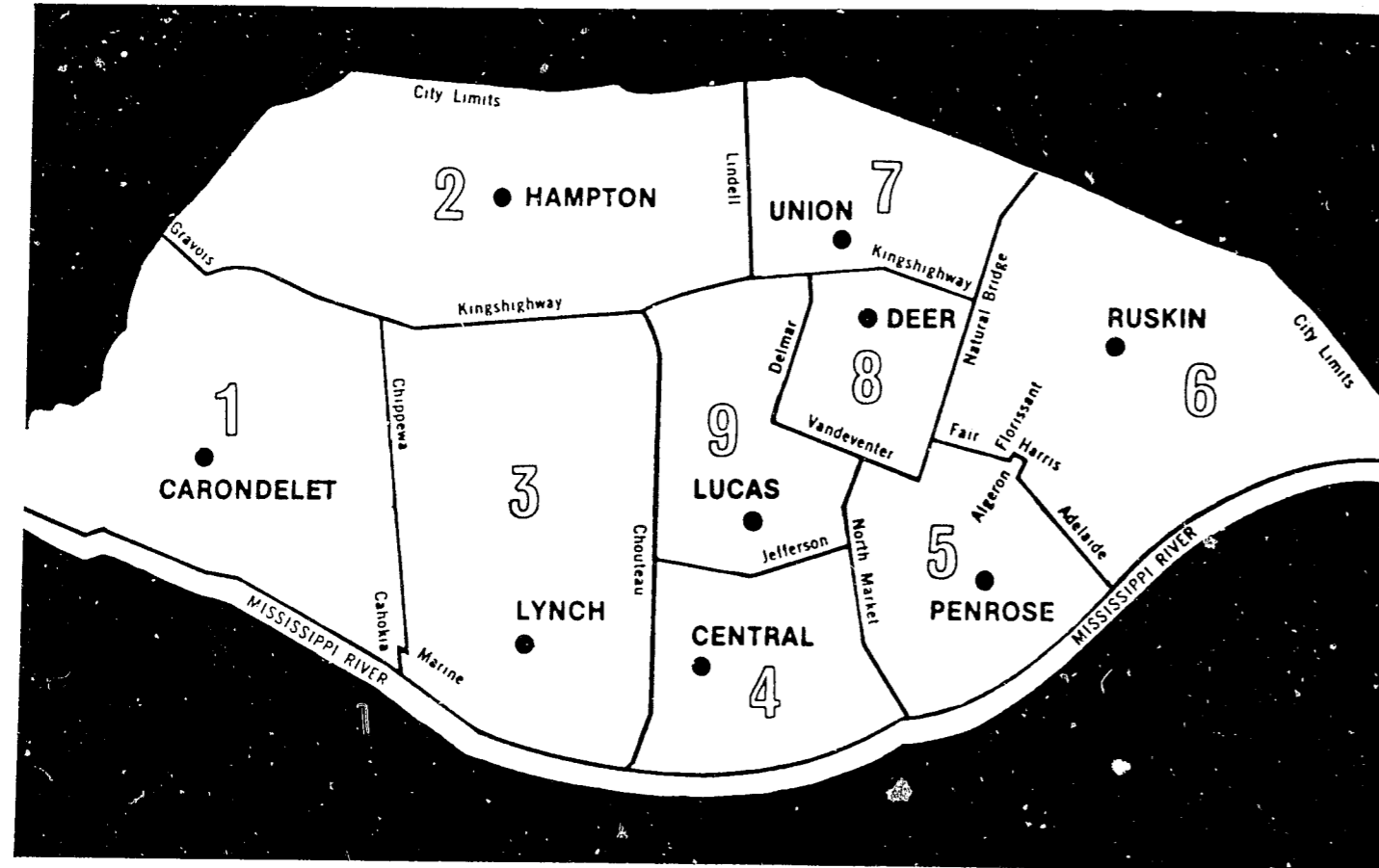


Dolores Spicuzza



Dr. George Thoma

BOUNDARIES OF POLICE DISTRICTS, NAMES, AND LOCATIONS OF DISTRICT STATIONS



District 1—909 Holly Hills Avenue—444-5411
 District 2—2634 Hampton Avenue—444-5421
 District 3—2727 South Twelfth Street—444-5431
 District 4—1200 Clark Avenue—444-5441
 District 5—1901 Penrose Street—444-5451

District 6—5076 West Florissant Avenue—444-5461
 District 7—5240 Enright Avenue—444-5471
 District 8—1430 Deer Street—444-5481
 District 9—3021 Lucas Avenue—444-5491

ST. LOUIS
 METROPOLITAN POLICE DEPARTMENT
 1200 Clark Avenue, St. Louis, Missouri 63103
 Address Correction Requested
 Return Postage Guaranteed

BULK RATE
 U.S. POSTAGE
PAID
 ST. LOUIS, MO.
 Permit No. 649

F. F. GLOM
 U.S. DEPT. OF JUST. OF LEAA
 NATL. CRIMNL. JUST. REF.
 WASHINGTON, D.C. 20530

END