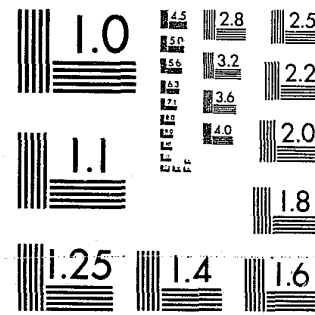


National Criminal Justice Reference Service



This microfiche was produced from documents received for inclusion in the NCJRS data base. Since NCJRS cannot exercise control over the physical condition of the documents submitted, the individual frame quality will vary. The resolution chart on this frame may be used to evaluate the document quality.



MICROCOPY RESOLUTION TEST CHART
NATIONAL BUREAU OF STANDARDS-1963-A

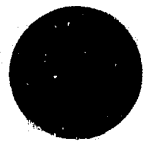
Microfilming procedures used to create this fiche comply with the standards set forth in 41CFR 101-11.504.

Points of view or opinions stated in this document are those of the author(s) and do not represent the official position or policies of the U. S. Department of Justice.

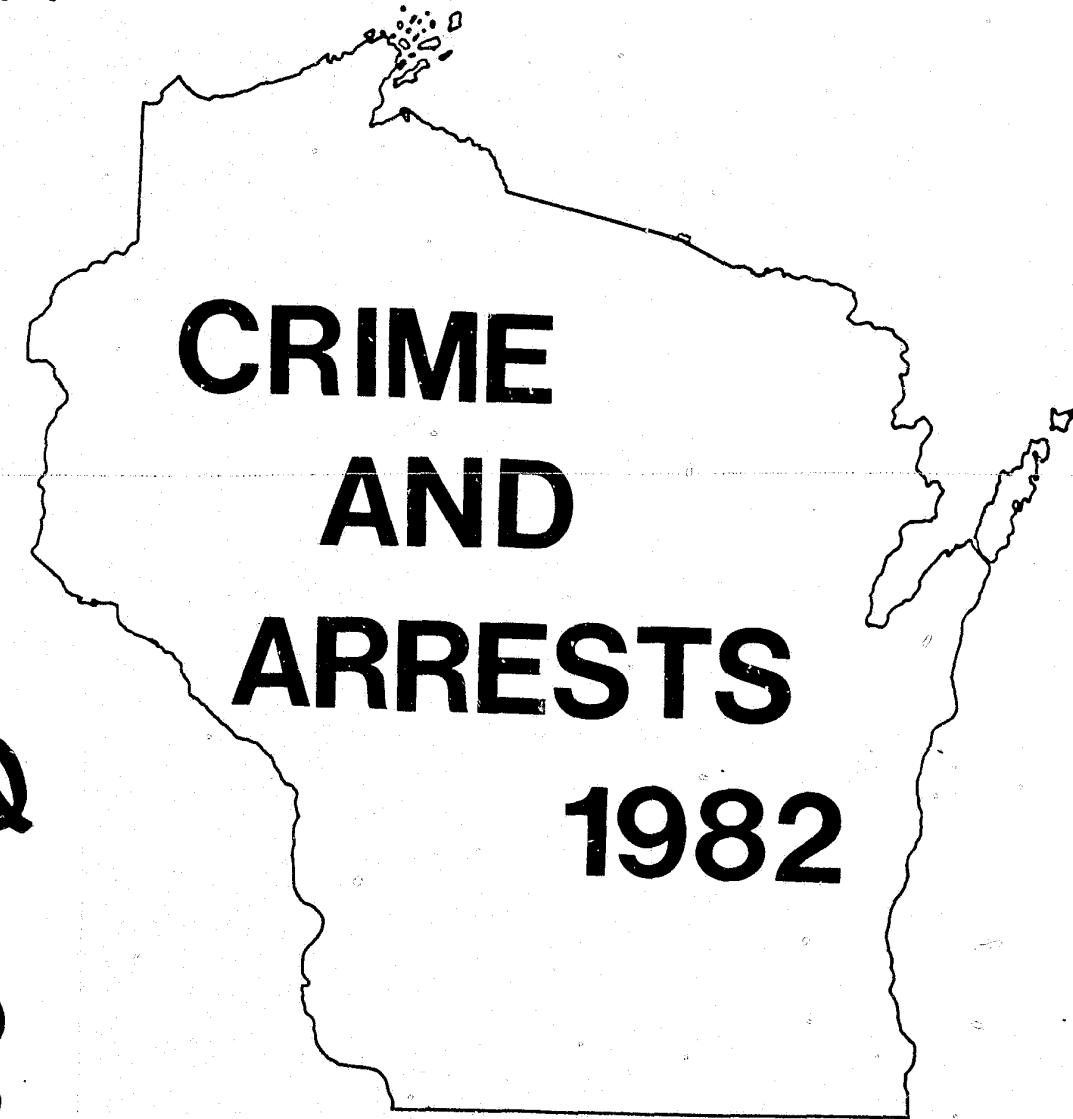
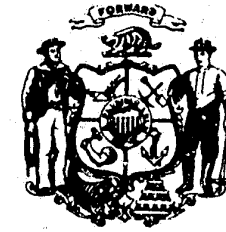
National Institute of Justice
United States Department of Justice
Washington, D. C. 20531

5/2/84

Wisconsin Council on Criminal Justice



Richard A. Flintrop
Executive Director



92056

WISCONSIN STATISTICAL
ANALYSIS CENTER

Wisconsin Crime and Arrests - 1982

U.S. Department of Justice
National Institute of Justice

This document has been reproduced exactly as received from the person or organization originating it. Points of view or opinions stated in this document are those of the authors and do not necessarily represent the official position or policies of the National Institute of Justice.

Permission to reproduce this copyrighted material has been granted by

Wisconsin Council on Criminal Justice
Statistical Analysis Center
to the National Criminal Justice Reference Service (NCJRS).

Further reproduction outside of the NCJRS system requires permission of the copyright owner.

Prepared by:

Thomas G. Eversen
Rita M. Hubanks
Roland Reboussin
Maggie J. Witwen

Wisconsin Statistical Analysis Center
30 West Mifflin Street, Suite 1000
Madison, Wisconsin 53702
(608) 266-3323

The Statistical Analysis Center

The Wisconsin Statistical Analysis Center is a program of the Wisconsin Council on Criminal Justice. The Center collects, analyzes, interprets and disseminates criminal justice data in Wisconsin.

The Center currently operates two major programs. The Uniform Crime Reporting Program, of which this publication is a part, entails the collection and analysis of crime and arrest data throughout the state. The Jail Information System collects and analyzes jail data from participating counties in Wisconsin.

In addition to operating these two programs, the Center also provides technical assistance to local criminal justice agencies. Further, it provides state and local government with access to federal resources in criminal justice statistical information. The Statistical Analysis Center also promotes the coordination and development of criminal justice statistical systems in Wisconsin.

Acknowledgements

Wisconsin Crime and Arrests - 1982 is the product of information provided by a variety of agencies. Without the excellent cooperation of the people in these agencies this publication would not have been possible. The Wisconsin Council on Criminal Justice gratefully acknowledges the assistance of Mr. William Walluks, Wisconsin Department of Justice, Crime Information Bureau; the University of Wisconsin, Madison Academic Computing Center; the Federal Bureau of Investigation, Uniform Crime Reporting Program; and especially the Administrators of local law enforcement agencies and their staff whose efforts made the data available.

Wisconsin Crime and Arrests - 1982 is a publication of the Wisconsin Statistical Analysis Center, a program of the Wisconsin Council on Criminal Justice. The Statistical Analysis Center is funded by a grant from the U.S. Department of Justice, Bureau of Justice Statistics.

Table of Contents

	<u>Page</u>
Introduction	1
Overview of 1981 and 1982 Crime and Arrests in Wisconsin	3
Statewide Index Offenses and Arrests	
Crime Index	6
Violent Offenses	9
Property Offenses	12
Murder	15
Forcible Rape	18
Robbery	21
Aggravated Assault	24
Burglary	27
Theft	30
Motor Vehicle Theft	33
Arson	36
Summary of Offense and Arrest Trends: 1972 - 1982	40
Number of Offenses, State of Wisconsin, 1972-1982	41
Total Clearance Rates, State of Wisconsin, 1972-1982	42
Offense Rates per 100,000 Population, State of Wisconsin, 1972-1982	43
Ratio of Arrests to Offenses, State of Wisconsin, 1972-1982	44
Index Offenses by County and Municipality - 1982	45
Table 1, Number of Crime Index Offenses and Percent Change, 1981-1982	48
Table 2, Offense Rates per 100,000 Population for Index Offenses, 1982	58
Table 3, Total Clearance Rates for Index Offenses, 1982	63
Table 4, Juvenile Clearances as a Percent of Total Clearances for Index Offenses, 1982	68
Arrests by County and Municipality - 1982	73
Table 5, Number of Adult Arrests, 1982	74
Table 6, Number of Juvenile Arrests, 1982	79
Statewide Arrests, by Offense - 1982	84
Statewide Adult Arrests, 1982	85
Statewide Juvenile Arrests, 1982	87
Glossary	89

Crime and Arrests in Wisconsin - 1982

Introduction

This report, prepared by the Wisconsin Statistical Analysis Center (SAC), presents data on crime and arrests in Wisconsin during 1982. From 1970 to 1980 the state Uniform Crime Reporting (UCR) Program, operated by the Crime Information Bureau of the Wisconsin Department of Justice (DOJ), collected, compiled, and reported crime and arrest data for Wisconsin. Beginning in 1971, DOJ also provided data to the national UCR system, a program of the Federal Bureau of Investigation (FBI). Effective December 31, 1981, the state program operated by DOJ was discontinued due to budget reductions. The 1981 data collected by DOJ were transmitted directly to the FBI, and the 1981 Wisconsin Crime and Arrests report, prepared by SAC, was based for the most part on information provided to SAC by the FBI. In 1982, Wisconsin law enforcement agencies transmitted their UCR data directly to the FBI, but in addition provided copies of the principal offense and arrest forms to the Statistical Analysis Center. This report is based on the data submitted to the SAC.

The National UCR Program

The national Uniform Crime Reporting program was initiated in 1930 by the International Association of Chiefs of Police (IACP). After soliciting input from law enforcement agencies throughout the country, an IACP committee developed uniform crime definitions and reporting procedures which could be used by law enforcement agencies in every state. The FBI was designated as the national clearinghouse for UCR data. The Committee on Uniform Crime Records of the IACP continues to serve the national program in an advisory capacity. In 1966 the National Sheriff's Association also established a Committee on Uniform Crime Reports to act as an advisory body to the program. The FBI regularly receives data on reported crime and arrests from law enforcement agencies throughout the country. The data are provided either by individual law enforcement agencies or by state UCR programs which collect and compile data for their states and convey the data to the FBI. From these data the FBI publishes its annual report, Crime in the United States.

The Wisconsin UCR Program

As indicated, the Wisconsin UCR program, which had been operated by DOJ, was discontinued in 1981. Wisconsin, therefore, does not currently have a state UCR program. The program operated by DOJ from 1970 to 1980 required that all law enforcement agencies submit UCR data either directly or through the county sheriff's office. It also required that DOJ submit the prescribed data to the FBI. DOJ expanded the national UCR program's classifications to collect more detailed and appropriate data on Wisconsin crime and arrests. From the statewide UCR data, DOJ published its annual report Wisconsin Crime and Arrests, as well as quarterly, semi-annual, and other summary reports.

In November 1981 the Wisconsin Council on Criminal Justice (WCCJ) received a grant from the United States Department of Justice, Bureau of Justice Statistics, to develop the Wisconsin Statistical Analysis Center. The SAC was mandated by executive order to collect and analyze criminal justice data, produce statistical reports on crime and the justice system, and promote the development of criminal justice information systems. SAC has

assumed a substantial number of the functions of the state UCR program to meet the information needs of state and local criminal justice decision-makers, elected officials, and interested citizens.

The 1982 Wisconsin Crime and Arrests Report

As stated earlier, this report is based on data provided to SAC by local law enforcement agencies. Local agencies provide SAC copies of four forms submitted by them to the FBI. These four forms are: the monthly return of offenses known to the police, the arson offense form, and the forms showing age, sex and race of persons arrested, for both adults and juveniles.

Unfortunately, data for all twelve months of 1982 were not available for every reporting agency. In general, the data presented in this report for individual jurisdictions are the reported data, with an indication of the number of months reported. County totals where appropriate and statewide totals, were estimated when there were instances of missing data. The problem of missing data is discussed in more detail on page 45 of this report.

The format of the present report is very similar to that of the 1981 report. Changes are noted in the text whenever a direct comparison of this report with the 1981 report might be inappropriate.

Issues in the Comparison of this with Earlier Reports

Care should be exercised in making comparisons of the data in this report with the data contained in previous annual reports. Adjustments may be required for the following reasons:

--Shifting of a law enforcement agency from one population category to another based on annual re-estimation of the jurisdiction's population.

--On occasion, the Federal Government designates an additional Wisconsin county as being included in a Standard Metropolitan Statistical Area. This could shift a Sheriff's Office from the Rural Areas Category to the Suburban Sheriff's group and shift the cities within the county from Non-Suburban Cities to Suburban Cities.

--Populations are estimated for non-census years. Rates for 1981 are calculated using 1980 census data.

--County totals shown in Tables 1-6 of this report are estimates which compensate for instances of missing data when appropriate. In the 1981 Wisconsin Crime and Arrests report, these totals were actual totals of data reported, even when data were missing. Thus, caution should be exercised in comparing county totals from 1981 and 1982.

--This report includes the most current 1981 data available. Both adult and juvenile 1981 arrest data for Milwaukee published in the 1981 Wisconsin Crime and Arrests have been revised. Readers interested in comparing 1981 and 1982 Milwaukee data are urged to contact SAC.

An Overview of 1981 and 1982 Crime and Arrests in Wisconsin

The following two tables present an overview of 1981 and 1982 crime and arrests in Wisconsin. The first table shows that every Index offense except robbery and aggravated assault declined from 1981 to 1982. Total Index offenses declined by 6.8 percent from 227,743 to 212,173. Property offenses declined by 7.2 percent from 218,809 to 203,098. Violent offenses however increased by 1.6 percent from 8,934 to 9,074. The increase in the violent crimes is due to the increase in robbery and aggravated assault, the two most numerous violent offenses. Comparable 1982 FBI figures for the entire United States show a four percent decrease in total Index offenses and in property crimes, and a three percent decrease in violent offenses.

In 1982, property offenses accounted for 96% of total Index offenses. The most frequent individual offense was theft, comprising 69% of total Index offenses. The least frequent was murder, the estimated 144 murders comprising less than 0.1 percent of total index offenses.

Total statewide juvenile and adult arrests are shown in the second table. The table shows that statewide, total arrests have decreased from 1981 to 1982 by 3.5 percent, from 259,220 in 1981 to 250,156 in 1982. This decrease is primarily accounted for by adult arrests, which decreased by 4.7 percent; juvenile arrests decreased by less than one percent.

An analysis of total Index offenses, violent offenses, property offenses, and each separate offense appears in the following section of this report. Ten-year trends in offenses, clearances and arrests are then presented.

ESTIMATED INDEX OFFENSES KNOWN TO WISCONSIN LAW ENFORCEMENT AGENCIES,¹
1981 AND 1982

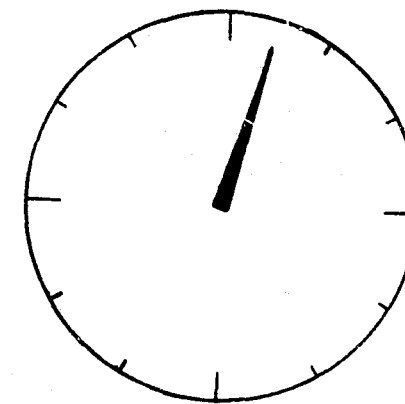
	1981 ²	1982	Percent Change
Murder	159	144	- 9.4
Forcible Rape	737	637	-13.6
Robbery	3,236	3,392	+ 4.8
Aggravated Assault	4,802	4,901	+ 2.1
TOTAL VIOLENT OFFENSES	8,934	9,074	+ 1.6
Burglary	50,851	46,661	- 8.2
Theft	156,060	146,509	- 6.1
Motor Vehicle Theft	10,293	8,678	-15.7
Arson	1,606	1,251	-22.1
TOTAL PROPERTY OFFENSES	218,809	203,098	- 7.2
TOTAL INDEX OFFENSES	227,743	212,173	- 6.8

ESTIMATED ARRESTS BY WISCONSIN LAW ENFORCEMENT AGENCIES
1981 AND 1982

	1981	1982	Percent Change
Juvenile Arrests	84,517	83,726	- 0.9
Adult Arrests	174,703	166,430	- 4.7
Total Arrests	259,220	250,156	- 3.5

¹ Data in this table are estimates. Data may not sum to totals due to rounding.
² Wisconsin 1981 data in this report may differ from data published in Wisconsin Crime and Arrests 1981 because of revised data submitted by local jurisdictions and because DNR arrests, not included in the 1981 report, are included in the 1981 data shown here.

WISCONSIN
CRIME CLOCK¹
1982



One
CRIME INDEX
OFFENSE
every 2½ minutes

One
VIOLENT CRIME
every 1 hour

One
PROPERTY CRIME
every 2½ minutes

One MURDER
every 2½ days

One FORCIBLE
RAPE every
12 hours

One ROBBERY
every 3 hours

One AGGRAVATED
ASSAULT every
2 hours

One BURGLARY
every 11 minutes

One THEFT
every 3½ minutes

One MOTOR VEHICLE
THEFT every 1 hour

One ARSON every
7 hours

¹ The crime clock should be viewed with caution. Since it is the most aggregate representation of UCR data, it is designed to convey the annual reported crime experience by showing the relative frequency of index offense occurrence. This method of display does not imply a regularity in the commission of index offenses; rather it shows the ratios of crimes to fixed periods of time.

CRIME INDEX OFFENSES

Definition:¹ Crime Index offenses are murder and nonnegligent manslaughter, forcible rape, robbery, aggravated assault, burglary, theft, motor vehicle theft, and arson. Attempts are included (an attempted murder is classified as an aggravated assault).

1982 Summary Analysis

- o There were an estimated 212,173 Crime Index offenses reported during 1982, a 6.8 percent decrease from 1981.
- o The rate of occurrence for total Index offenses in 1982 was 4,460.9 per 100,000 persons in Wisconsin. This is lower than the 1981 rate of 5,800 for the United States as a whole.
- o In the population grouping of Wisconsin cities, the larger the population category, the higher the rate of Index offenses.
- o Total Index offenses have increased by 58.1 percent between 1972 and 1982; the decrease in number of offenses from 1981 to 1982 is the first decrease in Wisconsin in the past five years.
- o An estimated total of 56,676 persons were arrested for Index offenses in 1982. Of these, 53.8 percent of those for whom complete information was available were adults.
- o Overall, 21.3 percent of Index offenses were cleared in 1982. This rate varies widely however from 74.4 percent for murder to 17.0 percent for burglary. Clearances solely involving juveniles comprised 37.3 percent of all clearances for Index offenses in 1982.

Total Index Offense Summary: 1981 and 1982²

<u>Year</u>	<u>Number of Estimated Offenses</u>	<u>Rate per 100,000 Population</u>
1981	227,743	4,839.7
1982	212,173	4,460.9
Percent Change	-6.8	-7.8

¹ Footnotes for this section may be found at the end of the section, page 39.

Offense Information

Total Index Offense Rates by Population Group³

<u>Population Group</u>	<u>1981 Rate per 100,000 Population</u>	<u>1982 Rate per 100,000 Population</u>	<u>1982 Estimated Total Index Offenses</u>	<u>Percent Change in Rate: 1981 - 1982</u>
<u>Police Agencies⁴</u>				
Over 250,000	7,173.9	7,414.0	46,653	+ 3.4
50,000 - 250,000	7,487.6	6,879.9	51,176	- 8.1
25,000 - 49,999	6,430.8	6,199.9	26,888	- 3.6
10,000 - 24,999	4,914.8	4,520.6	25,027	- 8.0
5,000 - 9,999	4,849.4	4,434.3	15,660	- 8.6
Under 5,000	4,162.1	3,861.8	9,800	- 7.2
<u>Sheriffs' Departments</u>				
Suburban ⁵	2,741.8	2,237.5	16,368	- 18.4
Rural	2,324.9	1,948.0	20,598	- 16.2
STATE TOTAL	4,839.7	4,460.9	212,173	- 7.8

Arrests/Clearances

Arrests for Total Index Offenses by Sex and Age Group: 1982

<u>Sex</u>	<u>Age Group</u>	<u>Estimated Arrests</u>	<u>Percent of Total Arrests</u>
Male	Adults	22,364	39.7%
	Juveniles	20,758	36.8%
Female	Adults	7,948	14.1%
	Juveniles	5,318	9.4%
TOTAL ⁶		56,676	100.0%

Arrests for Total Index Offenses by Race and Age Group: 1982

Race	Age Group	Estimated Arrests	Percent of Total Arrests
White	Adults	22,210	39.4%
	Juveniles	20,734	36.8%
Black	Adults	7,464	13.2%
	Juveniles	4,658	8.3%
American Indian	Adults	544	1.0%
	Juveniles	653	1.2%
Other	Adults	94	.2%
	Juveniles	31	
TOTAL ⁷		56,676	100.1%

Total Index Clearance Rates: 1981 and 1982

Year	Estimated Offenses	Percent Cleared-Total	Percent of Clearances Involving Only Juveniles
1981	227,743	20.8%	38.0%
1982	212,173	21.3%	37.3%

VIOLENT OFFENSES

Definition:¹ Four Crime Index Offenses involve face-to-face confrontation between victim and perpetrator, and are referred to as violent offenses. These are murder and nonnegligent manslaughter, forcible rape, robbery, and aggravated assault.

1982 Summary Analysis

- o There were an estimated 9,074 violent offenses reported during 1982, a 1.6 percent increase from 1981.
- o The rate of occurrence for violent offenses in 1982 was 190.8 per 100,000 persons in Wisconsin. This is about one-third the 1981 rate per 100,000 of 577 in the entire United States. This means that about one out of 524 Wisconsin residents was the victim of a violent offense or attempted offense in 1982.*
- o In the population grouping of Wisconsin cities the rate of violent offenses increased from 1981 to 1982 for all cities of over 10,000 population and decreased for cities of less than 10,000 population.
- o Violent offenses have increased by 108.2 percent between 1972 and 1982; 1982 is the fifth consecutive year of increase in violent offenses in Wisconsin.
- o An estimated total of 5,179 persons were arrested for violent offenses in 1982. Approximately 72.0 percent of those for whom complete information was available were adults.
- o Overall, 54.0 percent of violent offenses were cleared in 1982. The clearance rate for violent offenses ranges from 74.4 percent for murder to 44.4 percent for robbery. Clearances involving solely juveniles comprised 20.3 percent of all clearances for violent offenses in 1982.

Violent Offense Summary: 1981 and 1982²

Year	Number of Estimated Offenses	Rate per 100,000 Population
1981	8,934	189.9
1982	9,074	190.8
Percent Change	+1.6	+0.5

* This risk factor can only be considered a general indication because a given person may be victimized more than once and, in the case of robbery, there may be a number of victims resulting from one offense.

Offense Information

Violent Offense Rates by Population Group³

Population Group	1981 Rate per 100,000 Population	1982 Rate per 100,000 Population	1982 Estimated Violent Offenses	Percent Change in Rate: 1981 - 1982
<u>Police Agencies⁴</u>				
Over 250,000	540.0	571.6	3,597	+ 5.8
50,000 - 250,000	255.3	266.2	1,980	+ 4.3
25,000 - 49,999	160.8	161.6	701	+ 0.5
10,000 - 24,999	100.9	115.3	638	+ 14.3
5,000 - 9,999	109.4	100.8	356	- 7.9
Under 5,000	116.7	107.0	272	- 8.3
<u>Sheriffs' Departments</u>				
Suburban ⁵	131.3	102.8	752	- 21.7
Rural	70.1	73.4	776	+ 4.7
STATE TOTAL	189.9	190.8	9,074	+ 0.5

Arrests/Clearances

Arrests for Violent Offenses by Sex and Age Group: 1982

Sex	Age Group	Estimated Arrests	Percent of Total Arrests
Male	Adults	3,350	65.2
	Juveniles	1,264	24.6
Female	Adults	347	6.8
	Juveniles	177	3.4
TOTAL ⁶		5,179	100.0

Arrests for Violent Offenses by Race and Age Group: 1982

Race	Age Group	Estimated Arrests	Percent of Total Arrests
White	Adults	2,117	41.2
	Juveniles	716	13.9
Black	Adults	1,473	28.7
	Juveniles	688	13.4
American Indian	Adults	100	2.0
	Juveniles	37	.7
Other	Adults	7	.1
	Juveniles	--	--
TOTAL ⁷		5,179	100.0

Violent Offense Clearance Rates: 1981 and 1982

Year	Estimated Offenses	Percent Cleared-Total	Percent of Clearances Involving Only Juveniles
1981	8,934	55.8	18.8
1982	9,074	54.0	20.3

PROPERTY OFFENSES

Definition:¹ Four Crime Index offenses do not involve face-to-face confrontation between victim and perpetrator, and are referred to as property offenses. These offenses are burglary, theft, motor vehicle theft, and arson.

1982 Summary Analysis

- o There were an estimated 203,098 property offenses reported during 1982, a 7.2 percent decrease from 1981.
- o The rate of occurrence for property offenses in 1982 was 4,270.1 per 100,000 residents. This compares with a 1981 rate for the United States as a whole of 5,223.
- o Property offense rates decreased from 1981 to 1982 for every Wisconsin population group, except for jurisdictions over 250,000, where property offenses increased.
- o Property offenses have increased by 56.4 percent between 1972 and 1982; the decrease in number of offenses from 1981 to 1982 is the first decrease in the past five years.
- o An estimated total of 51,500 persons were arrested for property index offenses in 1982. Approximately 51.9 percent of those for whom complete information was available were adults.
- o Overall, 19.8 percent of property offenses were cleared in 1982. This rate varies from 17.0 percent for burglary to 28.9 percent for arson. Clearances solely involving juveniles comprised 39.4 percent of all clearances for property offenses in 1982.

Property Offense Summary: 1981 and 1982²

<u>Year</u>	<u>Number of Estimated Offenses</u>	<u>Rate per 100,000 Population</u>
1981	218,809	4,649.8
1982	203,098	4,270.1
Percent Change	-7.2	-8.2

Offense Information

Property Offense Rates by Population Group³

<u>Population Group</u>	<u>1981 Rate per 100,000 Population</u>	<u>1982 Rate per 100,000 Population</u>	<u>1982 Estimated Property Offenses</u>	<u>Percent Change in Rate: 1981 - 1982</u>
<u>Police Agencies⁴</u>				
Over 250,000	6,633.8	6,842.4	43,056	+ 3.1
50,000 - 250,000	7,232.3	6,613.7	49,196	- 8.6
25,000 - 49,999	6,270.0	6,038.3	26,188	- 3.7
10,000 - 24,999	4,813.9	4,405.2	24,389	- 8.5
5,000 - 9,999	4,740.0	4,333.5	15,304	- 8.6
Under 5,000	4,045.4	3,754.8	9,528	- 7.2
<u>Sheriffs' Departments</u>				
Suburban ⁵	2,610.5	2,134.6	15,616	- 18.2
Rural	2,254.8	1,874.6	19,821	- 16.9
STATE TOTAL	4,649.8	4,270.1	203,098	- 8.2

Arrests/Clearances

Arrests for Property Offenses by Sex and Age Group: 1982

<u>Sex</u>	<u>Age Group</u>	<u>Estimated Arrests</u>	<u>Percent of Total Arrests</u>
Male	Adults	19,014	37.1
	Juveniles	19,494	38.0
Female	Adults	7,601	14.8
	Juveniles	5,141	10.0
TOTAL ⁶		51,500	99.9

Arrests for Property Offenses by Race and Age Group: 1982

Race	Age Group	Estimated Arrests	Percent of Total Arrests
White	Adults	20,093	39.2
	Juveniles	20,018	39.1
Black	Adults	5,991	11.7
	Juveniles	3,970	7.8
American Indian	Adults	444	.9
	Juveniles	616	1.2
Other	Adults	87	.2
	Juveniles	31	.1
TOTAL ⁷		51,500	100.2

Property Offense Clearance Rates: 1981 and 1982

Year	Estimated Offenses	Percent Cleared-Total	Percent of Clearances Involving Only Juveniles
1981	218,809	19.3	40.4
1982	203,098	19.8	39.4

MURDER

Definition:¹ Murder and nonnegligent manslaughter, are the willful (non-negligent) killing of one human being by another. The classification of this offense, as for all other Crime Index offenses, is based on police investigation as opposed to the determination of a court, medical examiner, coroner, jury, or other judicial body. Not included in the count for this offense classification are deaths caused by negligence, suicide, or accident; justifiable homicides, which are the killings of felons by law enforcement officers in the line of duty or by private citizens during commission of the felony; and attempts to murder or assaults to murder, which are classified as aggravated assaults.

1982 Summary Analysis

- o There were an estimated 144 murders reported during 1982, a 9.4 percent decrease from 1981.
- o Murder accounted for 0.07 percent of the total Crime Index and 1.6 percent of all violent index offenses.
- o Approximately one murder was reported every 2½ days.
- o The murder rate was 3.0 victims per 100,000 population compared to 3.4 per 100,000 in 1981.
- o This 1982 rate of 3.0 per 100,000 contrasts with a 1981 rate of 9.8 per 100,000 in the United States.
- o The 1982 murder rate was highest in cities over 250,000 and lowest in jurisdictions between 10,000-24,999 and suburban sheriffs' jurisdictions.
- o Reported murders have averaged 142 since 1974.
- o An estimated 184 persons were arrested for murder in 1982, 93.5 percent of whom were adults.
- o The murder clearance rate decreased from 85.0 percent in 1981 to 74.4 percent in 1982.

Murder Summary: 1981 and 1982²

Year	Number of Estimated Offenses	Rate per 100,000 Population
1981	159	3.4
1982	144	3.0
Percent Change	-9.4	-11.8

Offense Information

Murder Rates by Population Group³

Population Group	1981 Rate per 100,000 Population	1982 Rate per 100,000 Population	1982 Estimated Murders	Percent Change in Rate: 1981 - 1982
<u>Police Agencies⁴</u>				
Over 250,000	11.2	9.5	60	- 15.2
50,000 - 250,000	2.6	2.2	16	- 15.4
25,000 - 49,999	1.8	2.4	10	+ 33.3
10,000 - 24,999	1.1	1.0	5	- 9.1
5,000 - 9,999	0.9	2.3	8	+155.6
Under 5,000	1.1	3.9	10	+254.6
<u>Sheriffs' Departments</u>				
Suburban ⁵	2.3	1.0	8	- 56.5
Rural	3.2	2.6	27	- 18.8
STATE TOTAL	3.4	3.0	144	- 11.8

Arrests/Clearances

Murder Arrests by Sex and Age Group: 1982

Sex	Age Group	Estimated Arrests	Percent of Total Murder Arrests
Male	Adults	149	81.0
	Juveniles	12	6.5
Female	Adults	23	12.5
	Juveniles	--	--
TOTAL ⁶		184	100.0

Murder Arrests by Race and Age Group: 1982

Race	Age Group	Estimated Arrests	Percent of Total Murder Arrests
White	Adults	100	54.4
	Juveniles	3	1.6
Black	Adults	68	37.0
	Juveniles	8	4.4
American Indian	Adults	4	2.2
	Juveniles	1	.5
Other	Adults	--	--
	Juveniles	--	--
TOTAL ⁷		184	100.1

Murder Clearance Rates: 1981 and 1982

Year	Estimated Offenses	Percent Cleared Total	Percent of Clearances Involving Only Juveniles
1981	159	85.0	6.5
1982	144	74.4	5.6

FORCIBLE RAPE

Definition:¹ Forcible rape is the carnal knowledge of a female forcibly and against her will. Assaults or attempts to commit rape by force or threat of force are also included; however, statutory rape (without force) and other sex offenses are not included in this category. Further, it should be noted that forcible rape is not the same as sexual assault as defined in Wisconsin Statutes.

1982 Summary Analysis

- o There were an estimated 637 rapes reported during 1982, a decrease of 13.6 percent from the 1981 figure.
- o Rapes constituted 0.3 percent of all index offenses and 7.0 percent of violent index offenses.
- o Approximately two rapes per day were reported in 1982.
- o The rate of rape per 100,000 population was 13.4 in 1982. This represents a 14.6 percent decrease from the 1981 rate.
- o This 1982 rate of 13.4 per 100,000 compares with a 1981 rate of 35.6 per 100,000 in the United States.
- o The highest rape rates in 1982 were in cities over 50,000 while the lowest rates occurred in jurisdictions included in rural and suburban sheriffs' departments.
- o Actual rape by force constituted 79.3 percent of all estimated rapes while attempted rape by force made up the remaining 20.7 percent.
- o While the number of estimated rapes has increased 69.4 percent from the 1972 figure of 376, the increase from 1977 (600 estimated rapes) to 1982 is 6.2 percent.
- o There were an estimated 396 persons arrested for rape in 1982. Approximately 80.3 percent of those for whom complete information was available were adults.
- o The 1982 total clearance rate for rape was 58.0 percent, an increase from the 1981 figure of 53.5 percent.

Forcible Rape Summary: 1981 and 1982²

<u>Year</u>	<u>Number of Estimated Offenses</u>	<u>Rate per 100,000 Population</u>
1981	737	15.7
1982	637	13.4
Percent Change	-13.6	-14.6

Offense Information

Rape Rates by Population Group³

<u>Population Group</u>	<u>1981 Rate per 100,000 Population</u>	<u>1982 Rate per 100,000 Population</u>	<u>1982 Estimated Rapes</u>	<u>Percent Change in Rate: 1981 - 1982</u>
<u>Police Agencies</u> ⁴				
Over 250,000	45.6	31.0	195	- 32.0
50,000 - 250,000	25.9	25.8	192	- 0.4
25,000 - 49,999	10.1	9.8	42	- 3.0
10,000 - 24,999	7.4	8.3	46	+ 12.2
5,000 - 9,999	11.3	9.5	34	- 15.9
Under 5,000	5.2	8.3	21	+ 59.6
<u>Sheriffs' Departments</u>				
Suburban ⁵	9.4	5.9	43	- 37.2
Rural	4.8	6.0	63	+ 25.0
STATE TOTAL	15.7	13.4	637	- 14.6

Rape - Type of Offense: 1981 and 1982

<u>Year</u>	<u>Forcible Rape</u>	<u>Attempted Rape</u>	<u>Total Rapes</u>
1981	578 - 78.4%	159 - 21.6%	737 - 100%
1982	505 - 79.3%	132 - 20.7%	637 - 100%

Arrests/Clearances

Rape Arrests by Sex and Age Group: 1982

Sex	Age Group	Estimated Arrests	Percent of Total Rape Arrests
Male	Adults	301	80.0
	Juveniles	74	19.7
Female	Adults	1	0.3
	Juveniles	--	--
TOTAL ⁶		396	100.0

Rape Arrests by Race and Age Group: 1982

Race	Age Group	Estimated Arrests	Percent of Total Rape Arrests
White	Adults	183	48.7
	Juveniles	38	10.1
Black	Adults	112	29.8
	Juveniles	36	9.6
American Indian	Adults	6	1.6
	Juveniles	--	--
Other	Adults	1	0.3
	Juveniles	--	--
TOTAL ⁷		396	100.1

Rape Clearance Rates: 1981 and 1982

Year	Estimated Offenses	Percent Cleared-Total	Percent of Clearances Involving Only Juveniles
1981	737	53.5	12.2
1982	637	58.0	11.2

ROBBERY

Definition:¹ Robbery is the taking or attempting to take anything of value from the care, custody or control of a person or persons by force or threat of force or violence and/or by putting the victim in fear.

1982 Summary Analysis

- o There were an estimated 3,392 robberies reported in 1982, a 4.8 percent increase from 1981.
- o Robbery accounted for 1.6 percent of the total Crime Index and 37.4 percent of all violent index offenses.
- o On the average, approximately nine robberies were reported each day.
- o The robbery rate was 71.3 per 100,000 population in 1982, compared to 68.8 per 100,000 in 1981.
- o This 1982 rate of 71.3 per 100,000 population compares with a 1981 rate of 250.6 per 100,000 in the United States.
- o The 1982 robbery rate per 100,000 was highest in jurisdictions over 250,000 and lowest in rural sheriffs' jurisdictions.
- o Patterns in the type of weapon used in robberies were nearly identical in 1981 and 1982 (see next page).
- o The number of estimated robberies has increased approximately 45.2 percent from the 1978 figure of 2,336.
- o An estimated total of 1,821 persons were arrested for robbery in 1982. Approximately 61.1 percent of those arrested were adults.
- o The 1982 total clearance rate for robbery was 44.4 percent, a slight decrease from the 1981 figure of 46.6 percent.

Robbery Summary: 1981 and 1982²

Year	Number of Estimated Offenses	Rate per 100,000 Population
1981	3,236	68.8
1982	3,392	71.3
Percent Change	+4.8	+3.6

Offense Information

Robbery Rates by Population Group³

Population Group	1981 Rate per 100,000 Population	1982 Rate per 100,000 Population	1982 Estimated Robberies	Percent Change in Rate: 1981 - 1982
<u>Police Agencies⁴</u>				
Over 250,000	284.2	332.0	2,089	+ 16.8
50,000 - 250,000	106.6	96.4	717	- 9.6
25,000 - 49,999	41.7	43.7	190	+ 4.8
10,000 - 24,999	23.9	26.2	145	+ 9.6
5,000 - 9,999	23.3	14.2	50	- 39.1
Under 5,000	16.7	18.1	46	+ 8.4
<u>Sheriffs' Departments⁵</u>				
Suburban	15.1	12.4	91	- 17.9
Rural	8.2	6.0	64	- 26.8
STATE TOTAL	68.8	71.3	3,392	+ 3.6

Robbery - Type of Weapon: 1981 and 1982

Year	Firearms	Knives or Cutting Instruments	Other Weapons	Strong-arm	Total Robberies
1981	1,306 - 40.4%	461 - 14.2%	162 - 5.0%	1,307 - 40.4%	3,236 - 100%
1982	1,312 - 38.7%	488 - 14.4%	193 - 5.7%	1,399 - 41.2%	3,392 - 100%

Arrests/Clearances

Robbery Arrests by Sex and Age Group: 1982

Sex	Age Group	Estimated Arrests	Percent of Total Robbery Arrests
Male	Adults	1,014	55.5
	Juveniles	657	35.9
Female	Adults	102	5.6
	Juveniles	55	3.0
TOTAL ⁶		1,821	100.0

Robbery Arrests by Race and Age Group: 1982

Race	Age Group	Estimated Arrests	Percent of Total Robbery Arrests
White	Adults	516	28.2
	Juveniles	266	14.6
Black	Adults	577	31.6
	Juveniles	435	23.8
American Indian	Adults	22	1.2
	Juveniles	11	.6
Other	Adults	1	--
	Juveniles	--	--
TOTAL ⁷		1,821	100.0

Robbery Clearance Rates: 1981 and 1982

Year	Estimated Offenses	Percent Cleared-Total	Percent of Clearances Involving Only Juveniles
1981	3,236	46.6	23.4
1982	3,392	44.4	30.7

AGGRAVATED ASSAULT

Definition:¹ Aggravated assault is an unlawful attack by one person upon another for the purpose of inflicting severe or aggravated bodily injury. This type of assault is usually accompanied by the use of a weapon or by means likely to produce death or great bodily harm. Attempts are included since it is not necessary that an injury results when a gun, knife, or other weapon is used which could and probably would result in serious personal injury if the crime were successfully completed.

1982 Summary Analysis

- o There were an estimated 4,901 aggravated assaults reported in 1982, a 2.1 percent increase over 1981.
- o Aggravated assault accounted for 2.3 percent of the total Crime Index and 54.0 percent of all violent index offenses.
- o One aggravated assault was reported approximately every two (2) hours.
- o The aggravated assault rate was 103.0 per 100,000 population in 1982, compared to 102.0 per 100,000 in 1981.
- o This 1982 rate of 103.0 for Wisconsin compares with a 1981 rate of 280.9 in the United States.
- o The 1982 aggravated assault rate per 100,000 was highest in jurisdictions over 50,000 and lowest in rural sheriffs' jurisdictions.
- o Patterns in the type of weapon used in aggravated assault were similar in 1981 and 1982.
- o The number of estimated aggravated assaults has increased approximately 60.5 percent from the 1978 figure of 3,053.
- o An estimated total of 2,778 persons were arrested for aggravated assault in 1982. Approximately 76.6 percent of those for whom complete information was available were adults.
- o The 1982 total clearance rate for aggravated assault was 59.6 percent, a slight decline from the 1981 figure of 61.5 percent.

Aggravated Assault Summary: 1981 and 1982²

<u>Year</u>	<u>Number of Estimated Offenses</u>	<u>Rate per 100,000 Population</u>
1981	4,802	102.0
1982	4,901	103.0
Percent Change	+2.1	+1.0

Offense Information

Aggravated Assault Rates by Population Group³

Population Group	1981 Rate per 100,000 Population	1982 Rate per 100,000 Population	1982 Estimated Aggravated Assaults	Percent Change in Rate: 1981 - 1982
<u>Police Agencies</u> ⁴				
Over 250,000	199.1	199.1	1,253	--
50,000 - 250,000	120.1	141.8	1,055	+ 18.1
25,000 - 49,999	107.2	105.7	458	- 1.4
10,000 - 24,999	68.5	79.8	442	+ 16.5
5,000 - 9,999	73.9	74.8	264	+ 1.2
Under 5,000	93.6	76.6	194	- 18.2
<u>Sheriffs' Departments</u>				
Suburban ⁵	104.5	83.4	610	- 20.2
Rural	53.8	58.8	622	+ 9.3
STATE TOTAL	102.0	103.0	4,901	+ 1.0

Aggravated Assault - Type of Weapon: 1981 and 1982

Year	Firearms	Knives or Cutting Instruments	Other Weapons	Personal Weapon	Total Aggravated Assaults
1981	1,234 - 25.7%	682 - 14.2%	619 - 12.9%	2,267 - 47.2%	4,802 - 100%
1982	1,172 - 23.9%	805 - 16.4%	678 - 13.8%	2,246 - 45.8%	4,901 - 100%

Arrests/Clearances

Aggravated Assault Arrests by Sex and Age Group: 1982

Sex	Age Group	Estimated Arrests	Percent of Total Aggravated Assault Arrests
Male	Adults	1,886	68.6
	Juveniles	521	19.0
Female	Adults	221	8.0
	Juveniles	122	4.4
TOTAL ⁶		2,778	100.0

Aggravated Assault Arrests by Race and Age Group: 1982

Race	Age Group	Estimated Arrests	Percent of Total Aggravated Assault Arrests
White	Adults	1,318	47.9
	Juveniles	409	14.9
Black	Adults	716	26.0
	Juveniles	209	7.6
American Indian	Adults	68	2.5
	Juveniles	25	.9
Other	Adults	5	.2
	Juveniles	--	--
TOTAL ⁷		2,778	100.0

Aggravated Assault Clearance Rates: 1981 and 1982

Year	Estimated Offenses	Percent Cleared-Total	Percent of Clearances Involving Only Juveniles
1981	4,802	61.5	17.7
1982	4,901	59.6	16.6

BURGLARY

Definition:¹ Burglary is defined as the unlawful entry of a structure to commit a felony or a theft. The use of force to gain entry is not required to classify an offense as burglary. Burglary in this program is categorized into three subclassifications: forcible entry, unlawful entry where no force is used, and attempted forcible entry.

1982 Summary Analysis

- o There were an estimated 46,661 burglaries reported in 1982, an 8.2 percent decrease over 1981.
- o Burglaries accounted for 22.0 percent of the total Crime Index and 23.0 percent of all property index offenses.
- o One burglary was reported approximately every 11 minutes.
- o The burglary rate was 981.0 per 100,000 population in 1982, compared to 1,080.6 per 100,000 in 1981.
- o This 1982 rate of 981.0 per 100,000 contrasts with a 1981 nationwide rate of 1,632.1 in the United States.
- o The burglary rate was highest in cities over 25,000.
- o Patterns in the type of entry for burglaries were similar in 1981 and 1982.
- o The number of estimated burglaries has increased 10.3 percent from the 1975 figure of 42,305.
- o An estimated total of 9,277 persons were arrested for burglary in 1982. Approximately 54.5 percent of those for whom complete information was available were juveniles.
- o The 1982 total clearance rate for burglary was 17.0 percent, a slight decline from the 1981 figure of 18.0 percent.

Burglary Summary: 1981 and 1982²

Year	Number of Estimated Offenses	Rate per 100,000 Population
1981	50,851	1,080.6
1982	46,661	981.0
Percent Change	- 8.2	- 9.2

Offense Information

Burglary Rates by Population Group³

Population Group	1981 Rate per 100,000 Population	1982 Rate per 100,000 Population	1982 Estimated Burglaries	Percent Change in Rate: 1981 - 1982
<u>Police Agencies⁴</u>				
Over 250,000	1,620.8	1,623.0	10,213	+ 0.1
50,000 - 250,000	1,650.3	1,484.3	11,041	- 10.1
25,000 - 49,999	1,153.2	1,183.8	5,134	+ 2.6
10,000 - 24,999	855.7	777.8	4,306	- 9.1
5,000 - 9,999	767.8	739.3	2,611	- 3.7
Under 5,000	834.1	751.9	1,908	- 9.8
<u>Sheriffs' Departments</u>				
Suburban ⁵	702.6	568.9	4,162	- 19.0
Rural	845.2	689.1	7,286	- 18.5
STATE TOTAL	1,080.6	981.0	46,661	- 9.2

Burglary - Type of Entry: 1981 and 1982

Year	Forcible Entry	Unlawful Entry Without Force	Attempted Forcible Entry	Total Burglaries
1981	35,769 - 70.3%	10,600 - 20.8%	4,482 - 8.8%	50,851 - 100%
1982	32,429 - 69.5%	9,664 - 20.7%	4,568 - 9.8%	46,661 - 100%

Arrests/Clearances

Burglary Arrests by Sex and Age Group: 1982

Sex	Age Group	Estimated Arrests	Percent of Total Burglary Arrests
Male	Adults	4,015	43.7
	Juveniles	4,731	51.5
Female	Adults	175	1.9
	Juveniles	273	3.0
TOTAL ⁶		9,277	100.1

Burglary Arrests by Race and Age Group: 1982

Race	Age Group	Estimated Arrests	Percent of Total Burglary Arrests
White	Adults	3,159	34.4
	Juveniles	3,996	43.5
Black	Adults	939	10.2
	Juveniles	735	8.2
American Indian	Adults	87	1.0
	Juveniles	250	2.7
Other	Adults	5	--
	Juveniles	3	--
TOTAL ⁷		9,277	100.0

Burglary Clearance Rates: 1981 and 1982

Year	Estimated Offenses	Percent Cleared-Total	Percent of Clearances Involving Only Juveniles
1981	50,851	18.0	38.3
1982	46,661	17.0	38.8

THEFT

Definition:¹ Theft is the unlawful taking, carrying, leading, or riding away of property from the possession or constructive possession of another. It includes crimes such as shoplifting, pocket-picking, purse-snatching, thefts from motor vehicles, thefts of motor vehicle parts and accessories, bicycle thefts, etc., in which no use of force, violence or fraud occurs. In the Uniform Crime Reporting program, this crime category does not include embezzlement, "con" games, forgery and worthless checks. Motor vehicle theft is also excluded from this category for crime reporting purposes inasmuch as it is a separate Crime Index offense.

1982 Summary Analysis

- o An estimated total of 146,509 thefts were reported in 1982. This figure is 6.1 percent less than in 1981.
- o Theft accounted for 69.0 of the total Crime Index and 72.1 percent of all property index offenses.
- o One theft was reported approximately every 3½ minutes.
- o The theft rate was 3,080.3 per 100,000 in 1982, down from 3,316.4 per 100,000 in 1981.
- o This 1982 rate of 3,080.3 per 100,000 is slightly lower than the 1981 rate of 3,122.3 per 100,000 in the United States.
- o The 1982 theft rate was highest in cities over 25,000 and lowest in both rural and suburban sheriffs' jurisdictions.
- o The number of estimated thefts has increased 63.4 percent from the 1972 figure of 89,640.
- o An estimated total of 39,359 persons were arrested for theft. Approximately 54.5 percent of those for whom complete information was available were adults.
- o The 1982 total clearance rate of 20.4 percent was slightly higher than the 1981 rate of 19.2 percent.

Theft Summary: 1981 and 1982²

<u>Year</u>	<u>Number of Estimated Offenses</u>	<u>Rate per 100,000 Population</u>
1981	156,060	3,316.4
1982	146,509	3,080.3
Percent Change	- 6.1	- 7.1

Offense Information

Theft Rates by Population Group³

<u>Population Group</u>	<u>1981 Rate per 100,000 Population</u>	<u>1982 Rate per 100,000 Population</u>	<u>1982 Estimated Thefts</u>	<u>Percent Change in Rate: 1981 - 1982</u>
<u>Police Agencies</u> ⁴				
Over 250,000	4,413.6	4,653.8	29,284	+ 5.4
50,000 - 250,000	5,245.1	4,864.3	36,183	- 8.6
25,000 - 49,999	4,856.3	4,654.1	20,185	- 4.2
10,000 - 24,999	3,772.4	3,483.1	19,283	- 7.7
5,000 - 9,999	3,790.9	3,459.7	12,218	- 8.7
Under 5,000	3,030.1	2,842.3	7,213	- 6.2
<u>Sheriffs' Departments</u>				
Suburban ⁵	1,749.0	1,448.4	10,596	- 17.2
Rural	1,294.2	1,092.0	11,547	- 15.6
STATE TOTAL	3,316.4	3,080.3	146,509	- 7.1

Arrests/Clearances

Theft Arrests by Sex and Age Group: 1982

<u>Sex</u>	<u>Age Group</u>	<u>Estimated Arrests</u>	<u>Percent of Total Theft Arrests</u>
Male	Adults	14,073	35.9
	Juveniles	13,172	33.6
Female	Adults	7,312	18.6
	Juveniles	4,653	11.9
TOTAL ⁶		39,359	100.0

Theft Arrests by Race and Age Group: 1982

Race	Age Group	Estimated Arrests	Percent of Total Theft Arrests
White	Adults	16,133	41.2
	Juveniles	14,467	36.9
Black	Adults	4,847	12.4
	Juveniles	3,034	7.7
American Indian	Adults	323	.8
	Juveniles	297	.8
Other	Adults	82	.2
	Juveniles	27	.1
TOTAL ⁷		39,359	100.1

Theft Clearance Rates: 1981 and 1982

Year	Estimated Offenses	Percent Cleared- Total	Percent of Clearances Involving Only Juveniles
1981	156,060	19.2	40.6
1982	146,509	20.4	39.7

MOTOR VEHICLE THEFT

Definition:¹ Motor vehicle theft is defined as the theft or attempted theft of a motor vehicle. This definition excludes the taking of a motor vehicle for temporary use by those persons having lawful access.

1982 Summary Analysis

- o There were an estimated 8,678 motor vehicle thefts reported in 1982, a 15.7 percent decrease over 1981.
- o Motor vehicle theft accounted for 4.1 percent of the total Crime Index and 4.3 percent of all property index offenses.
- o One motor vehicle theft was reported approximately every hour.
- o The motor vehicle theft rate was 182.5 per 100,000 population in 1982, down by one-sixth from 218.7 per 100,000 in 1981.
- o This 1982 rate of 182.5 per 100,000 contrasts with a 1981 rate of 468.7 per 100,000 in the entire United States.
- o The motor vehicle theft rate per 100,000 population was highest in jurisdictions over 250,000.
- o Patterns in the types of vehicles stolen were nearly identical in 1981 and 1982.
- o Estimated motor vehicle thefts have declined 31.1 percent from the 1979 figure of 12,587.
- o An estimated 2,463 persons were arrested for motor vehicle theft in 1982. Approximately 64.6 percent of those for whom complete information was available were juveniles.
- o The 1982 total clearance rate of 23.5 percent was somewhat lower than the 1981 rate of 26.5 percent.

Motor Vehicle Theft Summary: 1981 and 1982²

<u>Year</u>	<u>Number of Estimated Offenses</u>	<u>Rate per 100,000 Population</u>
1981	10,293	218.7
1982	8,678	182.5
Percent Change	-15.7*	-16.6

Offense Information

Motor Vehicle Theft Rates by Population Group³

Population Group	1981 Rate per 100,000 Population	1982 Rate per 100,000 Population	1982 Estimated Motor Vehicle Thefts	Percent Change in Rate: 1981 - 1982
<u>Police Agencies⁴</u>				
Over 250,000	558.1	521.7	3,283	- 6.5
50,000 - 250,000	272.3	213.7	1,589	- 21.5
25,000 - 49,999	221.9	171.2	742	- 22.8
10,000 - 24,999	149.6	119.7	663	- 20.0
5,000 - 9,999	155.7	122.9	434	- 21.1
Under 5,000	152.0	136.5	346	- 10.2
<u>Sheriffs' Departments⁵</u>				
Suburban	140.2	102.1	747	- 27.2
Rural	96.5	82.6	873	- 14.4
STATE TOTAL	218.7	182.5	8,678	- 16.6

Motor Vehicle Theft - Type of Vehicle: 1981 and 1982

Year	Autos	Trucks	All Other Vehicles	Motor Vehicle Thefts Total
1981	7,013 - 68.1%	1,107 - 10.8%	2,173 - 21.1%	10,293 - 100%
1982	5,883 - 67.8%	915 - 10.5%	1,880 - 21.7%	8,678 - 100%

Arrests/Clearances

Motor Vehicle Theft Arrests by Sex and Age Group: 1982

Sex	Age Group	Estimated Arrests	Percent of Total Motor Vehicle Theft Arrests
Male	Adults	810	33.1
	Juveniles	1,381	56.4
Female	Adults	58	2.4
	Juveniles	201	8.2
TOTAL ⁶		2,463	100.1

Motor Vehicle Theft Arrests by Race and Age Group: 1982

Race	Age Group	Estimated Arrests	Percent of Total Motor Vehicle Theft Arrests
White	Adults	651	26.6
	Juveniles	1,354	55.3
Black	Adults	185	7.6
	Juveniles	163	6.6
American Indian	Adults	32	1.3
	Juveniles	64	2.6
Other	Adults	--	--
	Juveniles	1	--
TOTAL ⁷		2,463	100.0

Motor Vehicle Theft Clearance Rates: 1981 and 1982

Year	Estimated Offenses	Percent Cleared-Total	Percent of Clearances Involving Only Juveniles
1981	10,293	26.5	38.1
1982	8,678	23.5	35.2

ARSON

Definition:¹ Arson is defined as any willful or malicious burning or attempt to burn, with or without intent to defraud, a dwelling house, public building, motor vehicle or aircraft, personal property of another, etc. Only fires determined through investigation to have been willfully or maliciously set are classified as arsons. Fires of suspicious or unknown origins are excluded.

1982 Summary Analysis

- o There were an estimated 1,251 arsons reported in 1982, a 22.1 percent decrease over 1981.
- o Arsons constituted 0.6 percent of the total Crime Index and 0.6 percent of all property index offenses.
- o Approximately 3½ arsons were reported every day.
- o The arson rate per 100,000 population was 26.3 in 1982, compared to 34.1 per 100,000 in 1981.
- o The arson rate per 100,000 population was highest in cities over 50,000.
- o An estimated total of 401 persons were arrested for arson in 1982. Approximately 56.6 percent of those for whom complete information was available were juveniles.
- o The 1982 total clearance rate for arson of 28.9 percent was somewhat less than the 1981 rate of 30.6 percent.

Arson Summary: 1981 and 1982²

<u>Year</u>	<u>Number of Estimated Offenses</u>	<u>Rate per 100,000 Population</u>
1981	1,606	34.1
1982	1,251	26.3
Percent Change	-22.1	-22.9

Offense Information

Arson Rates by Population Group³

<u>Population Group</u>	<u>1981 Rate per 100,000 Population</u>	<u>1982 Rate per 100,000 Population</u>	<u>1982 Estimated Arsons</u>	<u>Percent Change in Rate: 1981 - 1982</u>
<u>Police Agencies</u> ⁴				
Over 250,000	41.3	43.9	276	+ 6.3
50,000 - 250,000	64.5	51.5	383	- 20.2
25,000 - 49,999	38.6	29.3	127	- 24.4
10,000 - 24,999	36.2	24.7	137	- 31.8
5,000 - 9,999	25.6	11.7	41	- 54.3
Under 5,000	29.2	24.0	61	- 17.8
<u>Sheriffs' Departments</u>				
Suburban ⁵	18.7	15.2	111	- 18.7
Rural	18.9	10.9	115	- 42.3
STATE TOTAL	34.1	26.3	1,251	- 22.9

Arrests/Clearances

Arson Arrests by Sex and Age Group: 1982

<u>Sex</u>	<u>Age Group</u>	<u>Estimated Arrests</u>	<u>Percent of Total Arson Arrests</u>
Male	Adults	116	29.3
	Juveniles	210	53.0
Female	Adults	56	14.1
	Juveniles	14	3.5
TOTAL ⁶		401	99.9

Arson Arrests by Race and Age Group: 1982

Race	Age Group	Estimated Arrests	Percent of Total Arson Arrests
White	Adults	150	37.9
	Juveniles	201	50.8
Black	Adults	20	5.0
	Juveniles	18	4.6
American Indian	Adults	2	.5
	Juveniles	5	1.3
Other	Adults	--	--
	Juveniles	--	--
TOTAL ⁷		401	100.1

Arson Clearance Rates: 1981 and 1982

Year	Estimated Offenses	Percent Cleared-Total	Percent of Clearances Involving Only Juveniles
1981	1,606	30.6	47.4
1982	1,251	28.9	50.8

FOOTNOTES

- 1 All Index offense definitions are those used by the National Uniform Crime Reporting Program.
- 2 Figures in this and subsequent tables are estimated from available data. Figures may not add exactly due to rounding.
- 3 Data from two jurisdictions (i.e., Wisconsin State Patrol and the Department of Natural Resources) are excluded from this table.
- 4 Reported offenses from the various campuses of the University of Wisconsin are included in the population group of the city where the campus is located. Figures for 1981 reported in these tables have been revised as appropriate for purposes of comparison with 1982.
- 5 "Suburban Sheriffs' Departments" include the following counties: Brown, Calumet, Chippewa, Dane, Douglas, Eau Claire, Kenosha, LaCrosse, Marathon, Milwaukee, Outagamie, Ozaukee, Racine, Rock, St. Croix, Sheboygan, Washington, Waukesha and Winnebago.
- 6 Sex and age figures may not sum to this total because of changes requested by local jurisdictions to Tables 5 and 6. See page 84.
- 7 Race and age figures may not sum to this total because of changes requested by local jurisdictions to Tables 5 and 6. See page 84.

Summary of Offense and Arrest Trends: 1972 - 1982

The following four tables present statewide data on 1) the number of Index offenses, 2) offense rates for Index offenses, 3) clearance rates for Index offenses, and 4) the ratio of arrests to offenses for Index offenses for each year from 1972 through 1982. Each table shows percent change from 1972 to 1982. Certain adjustments, noted in footnotes to each table, were made in the total Crime Index and property offense categories to make the data comparable from year to year.

The total number of known Index offenses in Wisconsin increased sporadically from 1972 through 1981, but decreased in 1982 for the first time in five years. The number of Index offenses increased by 58.1 percent for the decade, from 133,381 in 1972 to 212,173 in 1982.¹ The increase in offense rates for the decade is slightly less than the increase in number of offenses, because the population of the state increased approximately 5.2 percent during this period.

The number of violent offenses increased by 108.2 percent for the decade, from 4,359 in 1972 to 9,074 in 1982. The number of property offenses increased by 56.4 percent for the decade, from 129,022 to 203,098. Thus, violent offenses increased nearly twice as fast as property offenses during the past decade. The increase in number of violent offenses is almost entirely due to the increase in robbery and aggravated assault, both of which more than doubled during the past decade. In terms of rates however, the frequency of aggravated assault did double while the rate of robbery did not.

Clearance rates for all offenses but one have declined over the past decade as the number of offenses has risen. The exception is forcible rape, for which the clearance rate has increased from 54.3% in 1972 to 58.0% in 1982.

Arrest ratios for all offenses are higher in 1982 than in 1981. This increase has resulted from the number of arrests remaining constant, while the number of offenses have declined. Arrest ratios for all but two offenses have declined during the past decade, indicating that during this time arrests have not increased as rapidly as offenses. The two exceptions are arrests for murder and for rape, for which the number of arrests has increased proportionally more than the number of offenses. For rape, this increase in arrests is paralleled by an increase in the number of clearances, however this is not the case for murder, where the clearance rate has declined while the arrest ratio has increased. Change in the arrest ratio over the past decade for the violent offenses is roughly parallel to the change in clearance rates. For property offenses however, clearance rates have dropped more than the arrest ratio. Thus, clearance rates have dropped despite an increase in the relative number of arrests.

¹ The numbers used in this section are taken from the four tables that follow. As noted in the footnotes to the tables, the 1982 Total Index and property offense figures include arson data but, since the 1972 data do not include arson, the 1972 to 1982 percent change figures do not reflect those additional 1982 offenses.

NUMBER OF OFFENSES, STATE OF WISCONSIN, 1972-1982

Offense	1972	1973	1974	1975	1976	1977	1978	1979	1980	1981 ¹	1982 ¹	Percent Change 1972-1982
Total Index Offenses	133,381	145,154	166,256	183,135	179,753	177,350	181,541	208,560	226,505	227,743	212,173	58.1
Violent Offenses	4,359	5,276	6,413	6,995	6,343	6,117	6,184	7,839	8,546	8,934	9,074	108.2
Property Offenses	129,022	139,878	159,843	176,140	173,410	171,233	175,357	200,721	217,959	218,809	203,098	56.4
Murder	127	122	140	154	140	130	118	160	136	159	144	13.4
Forcible Rape	376	492	514	489	542	600	677	758	697	737	637	69.4
Robbery	1,661	2,226	3,025	3,381	2,734	2,426	2,336	2,857	3,310	3,236	3,392	104.2
Aggravated Assault	2,195	2,436	2,734	2,971	2,927	2,961	3,053	4,064	4,403	4,802	4,901	123.3
Burglary	28,861	32,467	38,212	42,305	38,875	39,385	39,589	44,804	50,521	50,851	46,661	61.7
Theft ²	89,640	96,953	110,395	122,782	124,264	121,581	125,032	141,859	154,052	156,060	146,509	63.4
Motor Vehicle Theft	10,521	10,458	11,236	11,053	10,271	10,267	10,736	12,587	11,479	10,293	8,678	-17.5
Arson ³	--	--	--	--	--	--	--	1,471	1,907	1,606	1,251	--

¹ 1981 and 1982 figures are estimates; see text for further details.

² Theft of less than \$50 value was not an Index offense until 1973. In this table the number of thefts of less than \$50 value are included in the 1972 total Index, Property offense, and theft totals to maintain comparability over the eleven year period.

³ Arson was not reported as an Index offense until 1980. In this table arson figures are included in the total Index and Property offense totals for 1979 through 1982 but they are not reflected in the percent change from 1972 to 1982.

TOTAL CLEARANCE RATES, STATE OF WISCONSIN, 1972-1982

Offense	1972	1973	1974	1975	1976	1977	1978	1979	1980	1981 ¹	1982 ¹	Percent Change 1972-1982
Total Index Offenses	26.2%	23.9%	22.4%	20.1%	20.8%	21.8%	21.2%	19.9%	20.3%	20.8%	21.3%	-19.0
Violent Offenses	57.6%	53.7%	53.2%	55.0%	60.8%	60.0%	59.9%	55.8%	59.4%	55.8%	54.0%	- 6.3
Property Offenses	25.2%	22.8%	21.1%	18.7%	19.4%	20.5%	19.9%	18.5%	18.8%	19.3%	19.8%	-21.7
Murder	89.7%	82.4%	84.1%	87.3%	79.3%	85.4%	87.3%	88.1%	82.1%	85.0%	74.4%	-17.1
Forcible Rape	54.3%	46.7%	51.9%	50.1%	55.9%	52.3%	61.0%	52.1%	59.1%	53.5%	58.0%	6.8
Robbery	50.9%	45.7%	45.8%	47.4%	54.3%	51.9%	49.8%	46.1%	48.9%	46.6%	44.4%	-12.8
Aggravated Assault	61.5%	61.0%	60.1%	62.9%	66.9%	67.2%	66.4%	62.1%	66.6%	61.5%	59.6%	- 3.1
Burglary	24.4%	21.8%	22.6%	19.7%	21.0%	21.5%	20.5%	18.6%	17.9%	18.0%	17.0%	-30.3
Theft ²	24.6%	22.3%	20.1%	18.0%	18.2%	19.3%	18.9%	17.7%	18.4%	19.2%	20.4%	-17.1
Motor Vehicle Theft	32.3%	30.9%	26.3%	23.8%	27.8%	30.9%	28.9%	26.5%	26.5%	26.5%	23.5%	-27.2
Arson ³	--	--	--	--	--	--	--	--	25.9%	30.6%	28.9%	--

¹ 1981 and 1982 figures are estimates; see text for further details.

² Theft of less than \$50 value was not an Index offense until 1973. In this table the number of clearance rates for thefts of less than \$50 value are included in the 1972 total Index, Property offense, and theft clearance rates to maintain comparability over the eleven year period.

³ Arson was not reported as an Index offense until 1980. In this table arson clearance rates are included in the total Index and Property offense clearance rates for 1980 through 1982 but they are not reflected in the percent change from 1972 to 1982.

OFFENSE RATES PER 100,000 POPULATION, STATE OF WISCONSIN, 1972-1982

Offense	1972	1973	1974	1975	1976	1977	1978	1979	1980	1981 ¹	1982 ¹	Percent Change 1972-1982
Total Index Offenses	2,958.8	3,202.2	3,646.8	3,990.7	3,899.2	3,818.9	3,876.6	4,387.5	4,813.8	4,839.7	4,460.9	49.9
Violent Offenses	96.7	116.4	140.7	152.4	317.6	131.7	132.1	166.1	181.6	189.9	190.8	97.3
Property Offenses	2,862.1	3,085.8	3,506.1	3,838.3	3,761.6	3,687.2	3,744.5	4,221.4	4,632.2	4,649.8	4,270.1	48.3
Murder	2.8	2.7	3.1	3.4	3.0	2.8	2.5	3.4	2.9	3.4	3.0	7.1
Forcible Rape	8.3	10.9	11.3	10.7	11.8	12.9	14.5	16.1	14.8	15.7	13.4	61.4
Robbery	36.8	49.1	66.4	73.7	59.3	52.2	49.9	60.5	70.3	68.8	71.3	93.8
Aggravated Assault	48.7	53.7	60.0	64.7	63.5	63.8	65.2	86.1	93.6	102.0	103.0	111.5
Burglary	640.2	716.2	838.2	921.9	843.3	848.1	845.4	949.2	1,073.7	1,080.6	981.0	53.2
Theft ²	1,988.5	2,138.8	2,421.5	2,675.6	2,695.5	2,618.0	2,670.0	3,005.5	3,274.0	3,316.4	3,080.3	54.9
Motor Vehicle Theft	233.4	230.7	246.5	240.9	222.8	221.1	229.3	266.7	244.0	218.7	182.5	- 21.8
Arson ³	--	--	--	--	--	--	--	--	40.5	34.1	26.3	--

-43-

¹ 1981 and 1982 figures are estimates; see text for further details. Rates for 1981 are based on 1980 census.
² Theft of less than \$50 value was not an Index offense until 1973. In this table the offense rates for thefts of less than \$50 value are included in the 1972 total Index, Property offense, and theft offense rates to maintain comparability over the eleven year period.
³ Arson was not reported as an Index offense until 1980. In this table arson offense rates are included in the total Index and Property offense rates for 1980 through 1982 but they are not reflected in the percent change from 1972 to 1982.

RATIO OF ARRESTS TO OFFENSES, STATE OF WISCONSIN, 1972-1982

Offense	1972	1973	1974	1975	1976	1977	1978	1979	1980	1981 ¹	1982 ¹	Percent Change 1972-1982
Total Index Offenses	27.5%	27.2%	26.3%	24.6%	24.7%	24.8%	24.2%	23.1%	22.6%	24.0%	26.7%	- 3.3%
Violent Offenses	62.1%	59.0%	56.9%	60.9%	63.5%	60.8%	59.3%	55.2%	51.6%	52.5%	57.1%	- 8.1%
Property Offenses	26.4%	26.0%	25.1%	23.2%	23.2%	23.6%	23.0%	21.8%	21.5%	22.8%	25.4%	- 4.2%
Murder	119.7%	123.8%	131.4%	106.5%	138.6%	123.1%	111.9%	98.8%	99.3%	106.3%	127.8%	6.8%
Forcible Rape	50.0%	60.2%	57.8%	53.6%	75.5%	61.0%	68.2%	51.6%	48.1%	50.9%	62.2%	24.4%
Robbery	61.1%	54.3%	52.9%	56.9%	57.9%	56.6%	56.3%	53.7%	51.3%	50.0%	53.7%	-12.1%
Aggravated Assault	61.6%	59.4%	57.4%	64.2%	62.9%	61.5%	57.6%	55.1%	51.0%	52.6%	56.7%	- 8.0%
Burglary	20.7%	23.0%	23.9%	22.4%	22.7%	22.1%	21.5%	20.2%	18.8%	18.9%	19.9%	- 3.9%
Theft ²	27.7%	26.2%	24.9%	22.8%	22.8%	23.2%	22.6%	21.6%	21.8%	23.7%	26.9%	- 2.9%
Motor Vehicle Theft	30.5%	33.0%	30.7%	30.6%	30.3%	33.2%	32.7%	30.1%	29.5%	28.1%	28.4%	- 6.9%
Arson ³	--	--	--	--	--	--	--	30.2%	24.1%	29.8%	32.1%	--

¹ 1981 and 1982 figures are estimates; see text for further details.

² Theft of less than \$50 value was not an Index offense until 1973. In this table the arrest ratios for thefts of less than \$50 value are included in the 1972 total Index, Property offense, and theft arrest ratios to maintain comparability over the eleven year period.

³ Arson was not reported as an Index offense until 1980. In this table arson arrest ratios are included in the total Index and Property offense arrest ratios for 1980 through 1982 but they are not reflected in the present change from 1972 to 1982.

Index Offenses by County and Municipality - 1982

Table 1 shows Index offenses for 1981 and 1982 and percent changes from 1981 to 1982 for each jurisdiction. The four violent index offenses are totaled to equal violent crimes, and the four property index offenses are totaled to equal property crimes. The Crime Index is the sum of all eight offenses.

In Table 1 the number of months of data reported for each jurisdiction is listed. This information is vital to the interpretation of the table since the data presented are the reported data at the jurisdiction level, even when fewer than twelve months of data were available. Twelve months of data were reported for 70% of the jurisdictions, while eleven months or more were reported for 78% of the jurisdictions.

Data for a jurisdiction which reported for fewer than twelve months in 1982 cannot be directly compared with that jurisdiction's 1981 data or with data for other jurisdictions. Thus, no percent changes are shown for these jurisdictions. However, an approximate comparison can be made using an estimate of the twelve month total. This estimate can be calculated by multiplying the available data by a correction factor which is obtained by dividing twelve by the number of months reported. (For example, if nine months of data are available for an agency, the data can be estimated for twelve months by multiplying the data by 12/9 or 1.33.) However, the accuracy of this approximation diminishes when only a few months of data are available. It should be applied with great caution when less than six months of data are available. This method should also be applied with caution when the number of offenses involved is small. For example, if jurisdiction A had 72 thefts in nine months and prorated them to 96 (12/9 x 72 = 96) thefts for the year, while jurisdiction B had three thefts in nine months and prorated them to four thefts for the year, the estimate for jurisdiction A would be more reliable because it had a higher number of offenses.

The percent change in the number of index offenses reported from 1981 to 1982 is shown in Table 1 for each jurisdiction for which it was possible to calculate the change. The percent change is calculated using the formula:

$$\frac{(\text{Offenses in 1982}) - (\text{Offenses in 1981})}{\text{Offenses in 1981}} \times 100 = \text{percent change}$$

If the number of offenses for 1981 was zero, no percent change was calculated since percent change cannot be calculated from a zero base. In addition, as stated above, no percent change was calculated for a jurisdiction unless twelve months of data were available for both 1981 and 1982.

Table 1 shows county totals for each offense and percent change from 1981 to 1982. For those counties in which not every jurisdiction reported twelve months of data for 1981 or 1982, the county totals shown are estimates. The estimated county totals were obtained by summing the estimated annual totals for each jurisdiction within the county. These estimated annual totals were obtained as described above, by multiplying the available data by a correction factor. When no data at all were available for a jurisdiction for 1982, 1981 data were used as the 1982 estimate. When estimates are used for county totals, the totals are so labelled in Table 1 (e.g., the notation "(EST)" follows the total for Ashland County).

At the end of Table 1, statewide totals of reported offenses in each category and estimates of the actual statewide totals are shown. The statewide estimates were obtained by summing the estimated offenses for each jurisdiction.

Table 2 presents offense rates per 100,000 population for index offenses for each jurisdiction. The populations shown in this table are from Official Population Estimates for 1982, published by the Demographic Services Center of the Wisconsin Department of Administration. The population shown for each county sheriff's office is the total population of the county minus the populations of any municipalities in the county for which UCR data were reported separately. The rates shown in Table 2 are derived by taking the number of reported offenses, shown in Table 1, dividing by the population of the jurisdiction, shown in Table 2, and multiplying by 100,000. These rates permit comparisons among jurisdictions of different sizes.

As discussed in connection with Table 1, twelve months of data were available for 71% of jurisdictions. Since offense rates based on less than twelve months of data would be misleading, Table 2 presents rates only for those jurisdictions which reported twelve months of data. The county-wide and statewide rates shown in Table 2 are based on estimated numbers of offenses when necessary, as described in connection with Table 1.

Table 3 presents total clearance rates by offense and jurisdiction. Note that the 1981 edition of Wisconsin Crime and Arrests showed both total and juvenile-only clearance rates in Table 3. This year, Table 3 presents only total clearance rates, while clearance rates for juveniles are shown separately in Table 4.

In Table 3, the total clearance rate is the number of clearances, divided by the number of offenses and multiplied by 100. That is, clearances are represented as a percentage of reported offenses. Note that no clearance rate can be calculated for an offense category if there are no 1982 offenses reported, even though there may be reported clearances of prior years offenses. When no offenses have been reported, a blank space appears in Table 3. When a clearance rate of zero is shown, it means that at least one offense occurred, but that there were no clearances.

Since the clearance rate is the ratio of clearances to reported offenses, it is not particularly sensitive to the problems of missing data described above for Tables 1 and 2. It is reasonable to assume that this ratio would be fairly constant as long as the number of months of data available was reasonably large. Thus, clearance rates have been presented in Table 3 for all jurisdictions for which six months or more of clearance data were present. There were 38 jurisdictions (14% of the total) reporting fewer than six months of data and which were excluded from the table. An asterisk is printed next to the name of each of these jurisdictions.

County-wide and statewide rates shown in Table 3 are based on estimated clearances and offenses, calculated as described above in connection with Table 1, except that clearance and offense data for jurisdictions reporting no data at all for 1982 are not included in the estimated ratios. Since county estimates could be misleading if a large proportion of data were missing, they are not printed for those counties in which jurisdictions with less than six months of data make up more than a third of the county population. A number sign (#) is printed when county estimates are omitted for this reason.

Table 4 presents information on those clearances in which only juveniles were involved. In Table 4, juvenile-only clearances are presented as a percentage of all clearances for each offense. Note that this is a change from the definition used in the 1981 Wisconsin Crime and Arrests report, when juvenile-only clearances were presented as a percent of offenses. In the present report, the practice used in Wisconsin Crime and Arrests reports through 1980 is resumed and juvenile-only clearances are presented as a percent of total clearances. In Table 4, when a clearance rate of 0 is shown, it means that there was at least one clearance, but there were no juvenile clearances. When no clearances at all have been reported, a blank space appears in the table. In all other respects, Table 4 is constructed in the same way as Table 3 and all comments regarding Table 3 are relevant to Table 4.

TABLE 1—NUMBER OF CRIME INDEX OFFENSES

LAW ENFORCEMENT AGENCY	NUMBER OF MONTHS REPORTED, 1981		NUMBER OF MONTHS REPORTED, 1982		1981 TOTAL INDEX OFFENSES		1982 TOTAL INDEX OFFENSES		PERCENT CHANGE		1981 VIOLENT OFFENSES		1982 VIOLENT OFFENSES		PERCENT CHANGE		1981 PROPERTY OFFENSES		1982 PROPERTY OFFENSES		PERCENT CHANGE		1981 MURDER		1982 MURDER		PERCENT CHANGE		1981 FORCIBLE RAPE		1982 FORCIBLE RAPE		PERCENT CHANGE				
	1981	1982	1981	1982	1981	1982	1981	1982	1981	1982	1981	1982	1981	1982	1981	1982	1981	1982	1981	1982	1981	1982	1981	1982	1981	1982	1981	1982	1981	1982	1981	1982	1981	1982			
ADAMS CO SO	12	12	777	707	-9.0	7	19	171.4	770	688	-10.6	1	0	-100.0	0	4																					
ADAMS PD	12	12	80	93	16.3	3	1	-66.7	77	92	19.5	0	0	-100.0	0	1																					
COUNTY TOTAL			857	800	-6.7	10	20	100.0	847	780	-7.9	1	0	-100.0	0	5																					
ASHLAND CO SO	12	11	124	98		5	1		119	97		1	0		0	0																					
ASHLAND PD	12	12	689	464	-32.7	8	6	-25.0	681	458	-32.7	0	0		0	0																					
COUNTY TOTAL (EST)			813	571	-29.8	13	7	-46.2	800	564	-29.5	1	0	-100.0	0	0																					
BARRON CO SO	12	0	167			4			163			2			0	0																					
RICE LAKE PD	12	3	421	77		5	2		416	75		0	0		0	0																					
COUNTY TOTAL (EST)			588	475	-19.2	9	12	33.3	579	463	-20.0	2	2	.0	0	0																					
BAYFLD CO SO	12	7	295	164		11	7		284	157		0	1		0	0																					
WASHBURN PD	12	12	65	43	-33.8	1	0	-100.0	64	43	-32.8	0	0		0	0																					
COUNTY TOTAL (EST)			360	324	-10.0	12	12	.0	348	312	-10.3	0	2		0	0																					
BROWN CO SO	12	12	1361	1369	.6	32	27	-15.6	1329	1342	1.0	1	0	-100.0	4	0	-100.0																				
ASHWAUBN PD	10	11	785	722		5	17		780	705		0	0		0	0																					
DEPERE PD	12	12	684	562	-17.8	4	9	125.0	680	553	-18.7	0	0		3	0	-100.0																				
GREEN BAY PD	12	12	6070	5592	-7.9	136	158	16.2	5934	5434	-8.4	0	0		30	7	-76.7																				
UW-GREEN BAY	11	7	33	21		0	0		33	21		0	0		0	0																					
COUNTY TOTAL (EST)			9093	8347	-8.2	178	213	19.7	8915	8134	-8.8	1	0	-100.0	37	7	-81.1																				
BUFFALO CO SO	12	12	258	242	-6.2	4	16	300.0	254	226	-11.0	0	0		0	0																					
COUNTY TOTAL			258	242	-6.2	4	16	300.0	254	226	-11.0	0	0		0	0																					
BURNETT CO SO	4	0	193			2			191			0			0	0																					
COUNTY TOTAL (EST)			579	579	.0	6	6	.0	573	573	.0	0	0		0	0																					
CALUMET CO SO	12	12	192	200	4.2	3	4	33.3	189	196	3.7	0	0		0	0																					
BRILLION PD	12	12	88	82	-6.8	3	7	133.3	85	75	-11.8	0	0		0	0																					
CHILTON PD	12	11	50	56		1	0		49	56		1	0		0	0																					
NEW HOLSTN PD	12	12	66	71	7.6	0	1		66	70	6.1	0	0		0	0																					
COUNTY TOTAL (EST)			396	414	4.5	7	12	71.4	389	402	3.3	1	0	-100.0	0	0																					
CHIPWA CO SO	12	12	335	221	-34.0	5	3	-40.0	330	218	-33.9	4	0	-100.0	0	1																					
BLOOMER PD	12	12	106	51	-51.9	4	0	-100.0	102	51	-50.0	0	0		1	0	-100.0																				
CHPWA FLS PD	12	12	485	656	35.3	16	17	6.3	469	639	36.2	0	0		2	0																					
HALLIE PD	11	6	133	63		3	0		130	63		0	0		0	0																					
STANLEY PD	7	0	68			0			68			0			0	0																					
COUNTY TOTAL (EST)			1188	1171	-1.4	28	20	-28.6	1159	1151	-.7	4	0	-100.0	3	1	-66.7																				
CLARK CO SO	12	12	533	371	-30.4	11	3	-72.7	522	368	-29.5	1	0	-100.0	0	0																					
NEILLSVILLE	11	0	125			4			121			0			0	0																					
COUNTY TOTAL (EST)			669	507	-24.2	15	7	-53.3	654	500	-23.5	1	0	-100.0	0	0																					
CLMBIA CO SO	12	12	926	682	-26.3	34	17	-50.0	892	665	-25.4	0	0		2	2	.0																				
COLUMBUS PD	12	6	78	36		3	2		75	34		0	0		0	0																					
PORTAGE PD	12	11	302	241		5	0		297	241		0	0		2	0																					
WIS DELLS PD	12	12	265	251	-5.3	5	3	-40.0	260	248	-4.6	0	0		2	0	-100.0																				
COUNTY TOTAL (EST)			1571	1268	-19.3	47	24	-48.9	1524	1244	-18.4	0	0		6	2	-66.7																				
CRWFRD CO SO	12	12	277	267	-3.6	1	2	100.0	276	265	-4.0	0	0		0	0																					
PR DU CHN PD	12	12	301	305	1.3	5	3	-40.0	296	302	2.0	0	0		0	0																					
COUNTY TOTAL			578	572	-1.0	6	5	-16.7	572	567	-.9	0	0		0	0																					
DANE CO SO	12	12	2045	1700	-16.9	132	99	-25.0	1913	1601	-16.3	2	0	-100.0	9	5	-44.4																				
DEFORST PD	12	10	77	85		2	2		75	83		0	0		0	0																					
FITCHBURG PD	12	2	613	58		10	2		603	56		0	0		4	0																					
MADISON PD	12	12	14984	12711	-15.2	463	419	-9.5	14521	12292	-15.4	6	3	-50.0	66	63	-4.5																				
MADISON TN PD	12	12	860	699	-18.7	52																															

TABLE 1—NUMBER OF CRIME INDEX OFFENSES

LAW ENFORCEMENT AGENCY	NUMBER OF MONTHS REPORTED, 1981		NUMBER OF MONTHS REPORTED, 1982		1981 TOTAL INDEX OFFENSES		1982 TOTAL INDEX OFFENSES		PERCENT CHANGE		1981 VIOLENT OFFENSES		1982 VIOLENT OFFENSES		PERCENT CHANGE		1981 PROPERTY OFFENSES		1982 PROPERTY OFFENSES		PERCENT CHANGE		1981 MURDER		1982 MURDER		PERCENT CHANGE		1981 FORCIBLE RAPE		1982 FORCIBLE RAPE		PERCENT CHANGE	
	1981	1982	1981	1982	1981	1982	1981	1982	PERCENT CHANGE	1981	1982	PERCENT CHANGE	1981	1982	PERCENT CHANGE	1981	1982	PERCENT CHANGE	1981	1982	PERCENT CHANGE	1981	1982	PERCENT CHANGE	1981	1982	PERCENT CHANGE	1981	1982	PERCENT CHANGE	1981	1982	PERCENT CHANGE	
EAU CLR CO SO	12	12	456	459		7	26	24	-7.7	430	435	1.2	0	1	100.0	10	4	-60.0																
ALTOONA PD	12	12	188	147		-21.8	8	3	-62.5	180	144	-20.0	0	0	0	1	0	-100.0																
EAU CLAIRE PD	12	12	2708	2704		-.1	61	55	-9.8	2647	2649	.1	1	2	100.0	11	6	-45.5																
UW-EAU CLAIRE	12	12	233	205		-12.0	3	1	-66.7	230	204	-11.3	0	0	0	0	0	0																
COUNTY TOTAL			3585	3515		-2.0	98	83	-15.3	3487	3432	-1.6	1	3	200.0	22	10	-54.5																
FLRNC CO SO	12	1	101	2		-98.0	3	0	-100.0	98	2	-97.8	0	0	0	3	0	-100.0																
COUNTY TOTAL (EST)			101	2		-98.0	3	0	-100.0	98	2	-97.8	0	0	0	3	0	-100.0																
FDL CO SO	12	12	426	366		-14.1	14	6	-57.1	412	360	-12.6	1	5	400.0	1	0	-100.0																
FND DU LAC PD	12	12	2329	1780		-23.6	79	87	10.1	2250	1693	-24.8	0	0	0	1	3	200.0																
NORTH FDL PD	12	12	153	164		7.2	0	0	0	153	164	7.2	0	0	0	0	0	0																
RIPON PD	12	12	327	318		-2.8	3	7	133.3	324	311	-4.0	0	0	0	1	1	0																
COUNTY TOTAL			3235	2628		-18.8	96	100	4.2	3139	2528	-19.5	1	5	400.0	3	4	33.3																
FOREST CO SO	12	12	416	463		11.3	54	51	-5.6	362	412	13.8	1	0	-100.0	1	5	400.0																
CRANDON PD	7	12	32	51		59.4	1	1	100.0	31	50	61.3	0	0	0	0	0	0																
COUNTY TOTAL			471	514		9.1	56	52	-7.1	415	462	11.3	1	0	-100.0	1	5	400.0																
GRANT CO SO	11	12	534	506		-5.2	9	10	111.1	525	496	-5.5	2	0	0	0	1	0																
CUBA CITY PD	10	1	66	1		-98.5	5	0	-100.0	61	1	-98.4	0	0	0	4	0	-100.0																
LANCASTER PD	12	12	105	84		-20.0	1	2	100.0	104	82	-21.2	0	0	0	0	1	0																
PLATVLE PD	12	7	360	161		-55.3	13	5	-38.5	347	156	-55.1	0	0	0	4	0	-100.0																
COUNTY TOTAL (EST)			1127	878		-22.1	30	21	-30.0	1097	857	-21.9	2	0	-100.0	9	2	-77.8																
GREEN CO SO	9	0	275	0		-100.0	19	0	-100.0	256	0	-100.0	0	0	0	1	0	-100.0																
BRODHEAD PD	12	12	180	162		-10.0	0	3	150.0	180	159	-11.7	0	0	0	0	0	0																
MONROE PD	12	0	409	0		-100.0	2	0	-100.0	407	0	-100.0	1	0	0	0	0	0																
COUNTY TOTAL (EST)			956	938		-1.9	27	30	11.1	928	907	-2.3	1	1	100.0	1	1	0																
GR LAKE CO SO	8	12	142	134		-5.6	12	8	-33.3	130	126	-3.1	0	0	0	1	2	200.0																
BERLIN PD	12	12	215	248		13.0	18	2	-88.9	197	246	24.9	0	0	0	3	0	-100.0																
COUNTY TOTAL			428	382		-10.7	36	10	-72.2	392	372	-5.1	0	0	0	5	2	-60.0																
IOWA CO SO	12	11	346	268		-22.5	10	2	-80.0	336	266	-20.8	2	0	0	2	0	0																
DODGEVILLE PD	12	2	70	20		-71.4	1	0	-100.0	69	20	-71.0	0	0	0	0	0	0																
COUNTY TOTAL (EST)			416	412		-1.0	11	2	-81.8	405	410	1.2	2	0	-100.0	2	0	-100.0																
IRON CO SO	12	11	100	84		-16.0	0	0	0	100	84	-16.0	0	0	0	0	0	0																
COUNTY TOTAL (EST)			100	92		-8.0	0	0	0	100	92	-8.0	0	0	0	0	0	0																
JACKSON CO SO	12	12	421	411		-2.4	17	25	47.1	404	386	-4.5	0	0	0	0	1	0																
BK RIV FLS PD	12	12	190	169		-11.1	4	7	75.0	186	162	-12.9	0	0	0	0	1	0																
COUNTY TOTAL			611	580		-5.1	21	32	52.4	590	548	-7.1	0	0	0	0	2	0																
JEFF CO SO	8	5	321	201		-37.4	15	10	66.7	306	191	-37.3	0	0	0	1	0	0																
FT ATKNSON PD	12	12	503	466		-7.4	2	2	100.0	501	464	-7.4	0	0	0	0	1	0																
JEFFERSON PD	8	0	133	0		-100.0	1	0	-100.0	132	0	-100.0	0	0	0	1	0	0																
LKE MILLS PD	12	12	130	127		-2.3	1	0	-100.0	129	127	-1.6	0	0	0	0	0	0																
PALMYRA PD	12	12	0	73		100.0	0	4	100.0	0	69	100.0	0	0	0	0	0	0																
WATERLOO PD	12	12	86	65		-24.4	2	5	150.0	84	60	-28.6	0	0	0	0	0	0																
WATERTOWN PD	12	12	1003	738		-26.4	12	9	-25.0	991	729	-26.4	0	0	0	0	1	0																
COUNTY TOTAL (EST)			2403	2151		-10.5	41	46	12.2	2362	2105	-10.9	0	0	0	3	4	33.3																
JUNEAU CO SO	9	6	212	130		-38.7	7	1	-14.3	205	129	-37.1	2	0	0	1	0	0																
ELROY PD	12	12	54	32		-40.7	5	1	-80.0	49	31	-36.7	0	0	0	1	0	-100.0																
MAUSTON PD	12	12	170	220		29.4	2	3	50.0	168	217	29.2	0	0	0	0	0	0																
NEW LISBON PD	12	3	35	5		-85.7	1	1	100.0	34	4	-88.2	0	0	0	0	0	0																
COUNTY TOTAL (EST)			542	532		-1.8	17	10	-41.2	524	522	-.4	3	0	-100.0	2	0	-100.0																
KENOSHA CO SO	12	7	2319	1070		-54.3	96	44	-55.0	2223	1026	-54.3	5	1	20.0	12	6	-50.0																
KENOSHA PD	11	12	5815	6121		5.3	259	288	11.2	5556	5833	5.0	8																					

TABLE I--NUMBER OF CRIME INDEX OFFENSES

LAW ENFORCEMENT AGENCY	NUMBER OF MONTHS REPORTED, 1981		NUMBER OF MONTHS REPORTED, 1982		1981 TOTAL INDEX OFFENSES			1982 TOTAL INDEX OFFENSES			1981 VIOLENT OFFENSES			1982 VIOLENT OFFENSES			1981 PROPERTY OFFENSES			1982 PROPERTY OFFENSES			1981 MURDER		1982 MURDER		1981 FORCIBLE RAPE		1982 FORCIBLE RAPE	
	1981	1982	1981	1982	INDEX	INDEX	PERCENT CHANGE	INDEX	INDEX	PERCENT CHANGE	INDEX	INDEX	PERCENT CHANGE	INDEX	INDEX	PERCENT CHANGE	INDEX	INDEX	PERCENT CHANGE	INDEX	INDEX	PERCENT CHANGE	INDEX	INDEX	PERCENT CHANGE	INDEX	INDEX	PERCENT CHANGE	INDEX	INDEX
WASH CO SO	12	12	1140	1019	-10.6	43	32	-25.6	1097	987	-10.0	0	1	0	2	2	0	0	0	0	0	0	0	0	0	0	0	0	0	0
GERMNTN PD	12	11	339	357		10	6		349	351		1	0	0	2	2	0	0	0	0	0	0	0	0	0	0	0	0	0	0
HARTFORD PD	12	12	453	342	-24.5	2	6	200.0	451	336	-25.5	0	0	0	0	0	0	0	0	0	0	0	0	0	0	0	0	0	0	0
KEWASKUM PD	12	12	78	68	-12.8	2	6	200.0	76	62	-18.4	0	0	0	0	0	0	0	0	0	0	0	0	0	0	0	0	0	0	0
WEST BEND PD	12	12	1169	1247	6.7	22	19	-13.6	1147	1228	7.1	1	0	-100.0	1	0	-100.0	1	0	-100.0	1	0	-100.0	1	0	-100.0	1	0	-100.0	1
COUNTY TOTAL (EST)			3199	3065	-4.2	79	70	-11.4	3120	2996	-4.0	2	1	-50.0	3	5	66.7													
WASH CO SO	12	12	1989	1787	-10.2	35	66	88.6	1954	1721	-11.9	0	2	0	2	0	0	0	0	0	0	0	0	0	0	0	0	0	0	0
BROOKFLD PD	11	12	1276	1447		11	13		1265	1434		0	0	0	0	0	0	0	0	0	0	0	0	0	0	0	0	0	0	0
BUTLER PD	12	12	122	113	-7.4	2	3	50.0	120	110	-8.3	0	0	0	0	0	0	0	0	0	0	0	0	0	0	0	0	0	0	0
CHENEQUA PD	12	12	14	31	121.4	1	0	-100.0	13	31	138.5	0	0	0	0	0	0	0	0	0	0	0	0	0	0	0	0	0	0	0
DELAFIELD PD	12	12	184	147	-20.1	2	2	0	182	145	-20.3	0	0	0	0	0	0	0	0	0	0	0	0	0	0	0	0	0	0	0
ELM GROVE PD	12	12	227	154	-32.2	12	4	-66.7	215	150	-30.2	0	0	0	0	0	0	0	0	0	0	0	0	0	0	0	0	0	0	0
HARTLAND PD	12	12	219	221	.9	1	1	0	218	220	.9	0	0	0	0	0	0	0	0	0	0	0	0	0	0	0	0	0	0	0
MNMEE FLS PD	12	12	1216	1171	-3.7	26	22	-15.4	1190	1149	-3.4	1	1	0	2	2	-33.3	1	1	0	1	1	0	0	0	0	0	0	0	0
MUKWONAGO PD	12	12	124	141	13.7	0	0		124	141	13.7	0	0	0	0	0	0	0	0	0	0	0	0	0	0	0	0	0	0	0
MUSKEGO PD	12	12	217	294	35.5	5	3	-40.0	212	291	37.3	0	0	0	0	0	0	0	0	0	0	0	0	0	0	0	0	0	0	0
NEW BERLIN PD	12	12	966	906	-6.2	18	23	27.8	948	883	-6.9	1	0	-100.0	2	0	-100.0	1	0	-100.0	2	0	-100.0	1	0	-100.0	2	0	-100.0	1
OCONOMOWOC PD	12	12	458	433	-5.5	20	18	-10.0	438	415	-5.3	0	0	0	0	0	0	0	0	0	0	0	0	0	0	0	0	0	0	0
OCONOMOWOC PD	12	12	214	213	-.5	11	5	-54.5	203	208	2.5	0	0	0	0	0	0	0	0	0	0	0	0	0	0	0	0	0	0	0
PEWAUKEE PD	12	12	239	204	-14.6	3	2	-33.3	236	202	-14.4	0	0	0	0	0	0	0	0	0	0	0	0	0	0	0	0	0	0	0
SUMMIT PD	12	2	130	51		3	2		127	49		0	1	0	0	0	0	0	0	0	0	0	0	0	0	0	0	0	0	0
WAUKESHA PD	12	12	1653	1464	-11.4	62	45	-27.4	1591	1419	-10.8	0	1	0	4	0	-100.0	0	1	0	4	0	-100.0	0	0	0	0	0	0	0
COUNTY TOTAL (EST)			9364	9032	-3.5	213	219	2.8	9151	8813	-3.7	2	11	450.0	11	7	-36.4													
WAUPCA CO SO	12	12	731	638	-12.7	17	13	-23.5	714	625	-12.5	1	2	100.0	2	3	50.0	1	2	100.0	2	3	50.0	1	2	100.0	2	3	50.0	1
CLNTVLE PD	12	12	169	189	11.8	6	6	0	163	183	12.3	0	0	0	0	0	0	0	0	0	0	0	0	0	0	0	0	0	0	0
NEW LONDON PD	12	12	388	462	19.1	0	0		388	462	19.1	0	0	0	0	0	0	0	0	0	0	0	0	0	0	0	0	0	0	0
WAUPACA PD	12	11	193	148		1	2		192	146		0	0	0	0	0	0	0	0	0	0	0	0	0	0	0	0	0	0	0
COUNTY TOTAL (EST)			1481	1450	-2.1	24	21	-12.5	1457	1429	-1.9	1	2	100.0	2	4	100.0													
WAUSHR CO SO	9	12	581	675		15	28	40.0	566	647		0	0	0	1	2	100.0	0	0	0	1	2	100.0	0	0	0	1	2	100.0	0
COUNTY TOTAL			775	675	-12.9	20	28	40.0	755	647	-14.3	0	0	0	1	2	100.0													
WINBGO CO SO	12	12	802	717	-10.6	14	13	-7.1	788	704	-10.7	0	0	0	4	0	-100.0	0	0	0	4	0	-100.0	0	0	0	4	0	-100.0	0
MENASHA PD	11	12	938	859		7	15		931	844		0	0	0	1	0	0	0	0	0	1	0	0	0	0	0	0	0	0	0
MNSHA TN PD	12	12	680	675	-.7	16	34	112.5	664	641	-3.5	0	0	0	1	0	-100.0	0	0	0	1	0	-100.0	0	0	0	1	0	-100.0	0
NEENAH PD	12	12	1729	1477	-14.6	25	17	-32.0	1704	1460	-14.3	0	0	0	4	2	-50.0	0	0	0	4	2	-50.0	0	0	0	4	2	-50.0	0
OSHKOSH PD	11	12	2992	2918		50	50		2942	2868		0	3	0	2	2		0	3	0	2	2		0	3	0	2	2		
UW-OSHKOSH	12	12	256	277	8.2	5	5	0	251	272	8.4	0	0	0	2	0	-100.0	0	0	0	2	0	-100.0	0	0	0	2	0	-100.0	0
COUNTY TOTAL			7754	6923	-10.7	122	134	9.8	7632	6789	-11.0	0	3	0	14	4	-71.4													
WOOD CO SO	7	12	267	461		3	17		264	444		0	0	0	0	2		0	0	0	0	2		0	0	0	0	2		
MARSHFLD PD	12	12	745	804	7.9	5	16	220.0	740	788	6.5	0	0	0	0	0	0	0	0	0	0	0	0	0	0	0	0	0	0	0
WIS RFD PD	12	12	1061	1025	-3.4	34	49	44.1	1027	976	-5.0	0	0	0	0	0	0	0	0	0	0	0	0	0	0	0	0	0	0	0
COUNTY TOTAL			2264	2290	1.1	44	82	86.4	2220	2208	-.5	0	0	0	0	4														
WIS ST PAT	9	9	4	1		4	1		0	0		0	0	0	0	0		0	0	0	0	0	0	0	0	0	0	0	0	
DNR-LAW. ENF. BUR.	12	12	0	0		0	0		0	0		0	0	0	0	0		0	0	0	0	0	0	0	0	0	0	0	0	
STATE TOTAL			220349	200396		8650	8611		211699	191785		154	130		723	616														
REPORTED			227743	212173	-6.8	8934	9074	1.6	218809	203098	-7.2	159	144	-9.4	737	637	-13.6													
ESTIMATED																														

AND PERCENT CHANGE, 1981 AND 1982, CONTINUED

1981 ROBBERY		1982 ROBBERY		1981 AGGRAVATED ASSAULT		1982 AGGRAVATED ASSAULT		1981 BURGLARY		1982 BURGLARY		1981 THEFT		1982 THEFT		1981 MOTOR VEHICLE THEFT		1982 MOTOR VEHICLE THEFT		1981 ARSON		1982 ARSON	
INDEX	PERCENT CHANGE	INDEX	PERCENT CHANGE	INDEX	PERCENT CHANGE	INDEX	PERCENT CHANGE	INDEX	PERCENT CHANGE	INDEX	PERCENT CHANGE	INDEX	PERCENT CHANGE	INDEX	PERCENT CHANGE	INDEX	PERCENT CHANGE	INDEX	PERCENT CHANGE	INDEX	PERCENT CHANGE	INDEX	PERCENT CHANGE
5	3	-40.0	38	26	-31.6	298	289	-3.0	756	648	-14.3	40	42	5.0	3	8	166.7	14	12	0	0	0	0
3	1		4	3																			

TABLE 2—OFFENSE RATES PER 100,000 POPULATION FOR INDEX OFFENSES, 1982

LAW ENFORCEMENT AGENCY	POPULATION	TOTAL INDEX OFFENSES	VIOLENT OFFENSES	PROPERTY OFFENSES	MURDER	FORCIBLE RAPE	ROBBERY	AGGRAVATED ASSAULT	BURGLARY	THEFT	MOTOR VEHICLE THEFT	ARSON
ADAMS CO SO	12184	5802.7	155.9	5646.7	.0	32.8	.0	123.1	2634.6	2880.8	98.5	32.8
ADAMS PD	1805	5152.4	55.4	5097.0	.0	55.4	.0	.0	1218.8	3490.3	332.4	55.4
COUNTY RATE	13989	5718.8	143.0	5575.8	.0	35.7	.0	107.2	2451.9	2959.5	128.7	35.7
ASHLAND CO SO	7906	4981.2	64.4	4916.8	.0	.0	.0	64.4	1041.3	3703.7	161.0	10.7
ASHLAND PD	9315	4981.2	64.4	4916.8	.0	.0	.0	64.4	1041.3	3703.7	161.0	10.7
COUNTY RATE (EST)	17221	3315.2	41.2	3274.0	.0	.0	.0	41.2	842.0	2313.8	101.1	12.1
*BARRON CO SO	32025											
*RICE LAKE PD	8057											
COUNTY RATE (EST)	40082	1185.1	29.9	1155.1	5.0	.0	5.0	20.0	321.8	778.4	54.9	.0
*BAYFLD CO SO	11965											
WASHBURN PD	2144	2005.6	.0	2005.6	.0	.0	.0	.0	559.7	1306.0	93.3	46.6
COUNTY RATE (EST)	14109	2297.4	85.1	2212.4	12.2	.0	.0	72.9	947.7	1182.6	74.9	7.1
BROWN CO SO	60301	2270.3	44.8	2225.5	.0	.0	11.6	33.2	462.7	1611.9	141.0	10.0
*ASHWAUBN PD	14843											
DEPERE PD	15488	3628.6	58.1	3570.5	.0	.0	.0	58.1	774.8	2705.3	58.1	32.3
GREEN BAY PD	89401	6255.0	176.7	6078.2	.0	7.8	49.2	119.7	947.4	4901.5	182.3	47.0
**UW-GREEN BAY	0											
COUNTY RATE (EST)	180033	4636.2	118.1	4518.1	.0	3.9	29.5	84.6	728.8	3602.0	157.9	29.4
BUFFALO CO SO	14260	1697.1	112.2	1584.9	.0	.0	.0	112.2	547.0	967.7	70.1	.0
COUNTY RATE	14260	1697.1	112.2	1584.9	.0	.0	.0	112.2	547.0	967.7	70.1	.0
*BURNETT CO SO	12809											
COUNTY RATE (EST)	12809	4520.3	46.8	4473.4	.0	.0	23.4	23.4	2482.6	1897.1	93.7	.0
CALUMET CO SO	22652	882.9	17.7	865.3	.0	.0	.0	17.7	176.6	618.0	66.2	4.4
BRILLION PD	2903	2824.7	241.1	2583.5	.0	.0	34.4	206.7	447.8	2101.3	.0	34.4
*CHILTON PD	2987											
NEW HOLSTN PD	3373	2105.0	29.6	2075.3	.0	.0	.0	29.6	444.7	1541.7	59.3	29.6
COUNTY RATE (EST)	31915	1297.5	37.6	1259.9	.0	.0	3.1	34.5	247.2	943.1	60.1	9.4
CHIPWA CO SO	31152	709.4	9.6	699.8	.0	3.2	6.4	.0	189.4	500.8	9.6	.0
BLOOMER PD	3391	1504.0	.0	1504.0	.0	.0	.0	.0	59.0	1327.0	118.0	.0
CHPWA FLS PD	12423	5280.5	136.8	5143.7	.0	.0	32.2	104.6	1006.2	4008.7	120.7	8.0
*HALLIE PD	4505											
*STANLEY PD	2116											
COUNTY RATE (EST)	53587	2184.4	37.3	2147.1	.0	1.9	11.2	24.3	416.9	1633.9	87.4	8.8
CLARK CO SO	30264	1225.9	9.9	1216.0	.0	.0	.0	9.9	323.8	816.2	62.8	13.2
*NEILLSVILLE	2712											
COUNTY RATE (EST)	32976	1538.6	22.3	1516.3	.0	.0	6.6	15.7	373.3	1060.0	70.9	12.1
CLMBIA CO SO	29242	2332.3	58.1	2274.1	.0	6.8	10.3	41.0	666.8	1525.2	82.1	.0
*COLUMBUS PD	4086											
*PORTAGE PD	7823											
WIS DELLS PD	2362	10626.6	127.0	10499.6	.0	.0	84.7	42.3	2243.9	7874.7	381.0	.0
COUNTY RATE (EST)	43513	2913.9	55.2	2858.7	.0	4.6	11.5	39.1	768.0	1997.3	93.4	.0
CRWRD CO SO	10935	2441.7	18.3	2423.4	.0	.0	.0	18.3	658.4	1664.4	100.6	.0
PR DU CHN PD	5900	5169.5	50.8	5118.6	.0	.0	.0	50.8	491.5	4525.4	84.7	16.2
COUNTY RATE	16835	3397.7	29.7	3368.0	.0	.0	.0	29.7	599.9	2667.1	95.0	5.9
DANE CO SO	76159	2232.2	130.0	2102.2	.0	6.6	21.0	102.4	787.8	1209.3	86.7	18.4
*DEFORST PD	3628											
*FITCHBURG PD	13547											
MADISON PD	171590	7407.8	244.2	7163.6	1.7	36.7	95.6	110.1	1585.8	5287.6	238.9	51.3
MADISON TN PD	6197	11279.7	597.1	10682.6	.0	113.0	145.2	338.9	2549.6	7648.9	468.0	16.1
MCFARLND PD	3918	2118.4	25.5	2092.9	.0	.0	.0	25.5	433.9	1556.9	.0	102.1
MIDDLETON PD	12412	4382.9	209.5	4173.4	.0	40.3	32.2	137.0	1273.0	2836.0	64.5	.0
MONONA PD	8929	8914.8	347.2	8567.6	.0	22.4	44.8	280.0	1556.7	6809.3	168.0	33.6
OREGON PD	4080	3652.0	.0	3652.0	.0	.0	.0	.0	514.7	3039.2	98.0	.0
*SHORWD HLS PD	1823											
*STATE PROT SV	0											
STOUGHTON PD	7789	1502.1	12.8	1489.3	.0	.0	.0	12.8	321.0	1142.6	25.7	.0
SUN PRAR PD	13340	3395.8	67.5	3328.3	.0	7.5	30.0	30.0	532.2	2698.7	97.5	.0
UW-MADISON	0											
VERONA PD	3391	3509.3	442.3	3066.9	.0	29.5	.0	412.9	796.2	2123.3	147.4	.0
*WAUNAKEE PD	4134											
COUNTY RATE (EST)	330937	5941.1	200.7	5740.4	1.2	26.3	62.4	110.8	1286.4	4240.5	177.7	35.8
DODGE CO SO	48896	1190.3	71.6	1118.7	.0	6.1	6.1	59.3	425.4	617.6	61.4	14.3
BEAVER DAM PD	14141	5699.7	.0	5699.7	.0	.0	.0	.0	523.3	5013.8	148.5	14.1
*HORICON PD	3622											
MAYVILLE PD	4376	1234.0	22.9	1211.2	.0	.0	.0	22.9	274.2	914.1	22.9	.0
WAUPUN PD	5651	2937.5	17.7	2919.8	.0	.0	.0	17.7	778.6	2035.0	88.5	17.7
COUNTY RATE (EST)	76686	2308.1	57.4	2250.7	1.3	3.9	3.9	48.2	496.8	1654.8	84.8	14.3
*DOOR CO SO	16469											
ST BAY PD	9056	3898.0	66.3	3831.7	.0	22.1	.0	44.2	452.7	3257.5	121.5	.0
COUNTY RATE (EST)	25525	2229.2	23.5	2205.7	.0	7.8	.0	15.7	536.7	1625.9	43.1	.0
DOUGLAS CO SO	15301	2339.7	65.4	2274.4	.0	19.6	6.5	39.2	764.7	1385.5	111.1	13.1
*SUPERIOR PD	29612											
COUNTY RATE (EST)	44913	5947.8	63.8	5884.0	3.0	27.5	17.1	16.3	1329.2	4263.1	281.3	10.4
*DUNN CO SO	22081											
MENOMONIE PD	13349	5955.5	67.4	5888.1	.0	7.5	15.0	44.9	659.2	5019.1	194.8	15.0
COUNTY RATE (EST)	35430	3530.9	67.7	3463.2	.0	14.1	5.6	48.0	502.4	2783.0	169.3	8.5

TABLE 2—OFFENSE RATES PER 100,000 POPULATION FOR INDEX OFFENSES, 1982, CONTINUED

LAW ENFORCEMENT AGENCY	POPULATION	TOTAL INDEX OFFENSES	VIOLENT OFFENSES	PROPERTY OFFENSES	MURDER	FORCIBLE RAPE	ROBBERY	AGGRAVATED ASSAULT	BURGLARY	THEFT	MOTOR VEHICLE THEFT	ARSON
EAU CLR CO SO	25813	1778.2	93.0	1685.2	3.9	15.5	3.9	69.7	511.4	1069.2	73.6	31.0
ALTOONA PD	4851	3030.3	61.8	2968.5	.0	.0	20.6	41.2	845.2	2082.0	41.2	.0
EAU CLAIRE PD	51323	5268.6	107.2	5161.4	3.9	11.7	33.1	58.5	982.0	4021.6	132.5	25.3
UW-EAU CLAIRE	0											
COUNTY RATE	81987	4287.3	101.2	4186.0	3.7	12.2	23.2	62.2	830.6	3218.8	109.8	26.8
*FLRNC CO SO	4210											
COUNTY RATE (EST)	4210	570.1	.0	570.1	.0	.0	.0	.0	.0	570.1	.0	.0
FDL CO SO	42600	859.2	14.1	845.1	11.7	.0	2.3	.0	232.4	579.8	30.5	2.3
FND DU LAC PD	35865	4963.1	242.6	4720.5	.0	8.4	11.2	223.1	847.6	3702.8	150.6	19.5
NORTH FDL PD	4019	4080.6	.0	4080.6	.0	.0	.0	.0	671.8	3184.9	74.6	149.3
RIPON PD	7119	4466.9	98.3	4368.6	.0	14.0	.0	84.3	1222.1	3006.0	126.4	14.0
COUNTY RATE	89603	2932.9	111.6	2821.3	5.6	4.5	5.6	96.0	577.0	2139.4	88.2	16.7
FOREST CO SO	7342	6306.2	694.6	5611.5	.0	68.1	13.6	612.9	2833.0	2397.2	354.1	27.2
CRANDON PD	2035	2506.1	49.1	2457.0	.0	.0	.0	49.1	884.5	1523.3	49.1	.0
COUNTY RATE	9377	5481.5	554.5	4926.9	.0	53.3	10.7	490.6	2410.2	2207.5	287.9	21.3
GRANT CO SO	36502	1386.2	27.4	1358.8	.0	2.7	2.7	21.9	490.4	805.4	63.0	.0
*CUBA CITY PD	1985											
LANCASTER PD	3998	2101.1	50.0	2051.0	.0	25.0	25.0	.0	650.3	1325.7	50.0	25.0
*PLATVLE PD	9672											
COUNTY RATE (EST)	52157	1683.4	39.4	1643.9	.0	3.8	3.8	31.8	419.3	1158.3	57.8	8.5
*GREEN CO SO	16960											

TABLE 2—OFFENSE RATES PER 100,000 POPULATION FOR INDEX OFFENSES, 1982, CONTINUED

LAW ENFORCEMENT AGENCY	POPULATION	TOTAL INDEX OFFENSES	VIOLENT OFFENSES	PROPERTY OFFENSES	MURDER	FORCIBLE RAPE	ROBBERY	AGGRAVATED ASSAULT	BURGLARY	THEFT	MOTOR VEHICLE THEFT	ARSON
*MNTWC CO SO	34702											
KIEL PD	2640	2803.0	75.8	2727.3	.0	37.9	.0	37.9	719.7	2007.6	.0	.0
MNTWC PD	32654	5631.8	64.3	5567.5	.0	6.1	30.6	27.6	1041.2	4379.2	98.0	49.0
TWO RIV PD	13308	3193.6	60.1	3133.5	.0	.0	22.5	37.6	706.3	2367.0	22.5	37.6
COUNTY RATE (EST)	83304	3449.1	100.6	3348.5	.0	9.4	18.5	72.7	780.0	2446.5	93.9	28.1
MARTH CO SO	59517	1221.5	45.4	1176.1	.0	1.7	5.0	38.6	211.7	895.5	67.2	1.7
*MOSINEE PD	3064				.0	.0	29.8	.0	655.0	4435.8	148.9	39.5
ROTHSCHILD PD	3359	5329.0	29.8	5299.2	.0	46.4	92.9	742.8	1346.3	4224.7	183.7	46.4
SCHOFIELD PD	2154	6685.2	882.1	5803.2	.0	28.5	53.8	227.7	996.1	4057.3	98.0	12.6
WAUSAU PD	31632	5474.0	309.9	5164.1	.0	.0	.0	.0	.0	.0	.0	.0
*WESTON PD	11297				.0	9.9	20.7	107.2	504.4	2077.2	81.1	7.2
COUNTY RATE (EST)	111013	2807.8	137.8	2670.0	.0	9.9	20.7	107.2	504.4	2077.2	81.1	7.2
MRNTTE CO SO	25229	2917.3	138.7	2778.5	7.9	4.0	.0	126.8	1522.1	1113.8	114.9	27.7
MARINETTE PD	11977	5652.5	158.6	5493.9	.0	.0	25.0	133.6	667.9	4533.7	292.2	0
*PESHTIGO PD	2865				.0	.0	.0	.0	.0	.0	.0	.0
COUNTY RATE (EST)	40071	3953.0	149.7	3803.2	5.0	2.5	11.2	131.0	1214.1	2400.7	167.2	21.2
*MARQU CO SO	10790											
*MONTELO PD	1333											
COUNTY RATE (EST)	12123	2342.7	77.0	2265.7	11.0	11.0	.0	55.0	868.9	1308.8	66.0	22.0
MNMEE CO SO	0											
*MNMEE TR PD	3274											
COUNTY RATE (EST)	3274	14111.2	1252.3	12858.9	.0	.0	213.8	1038.5	6780.7	4978.6	946.9	152.7
*MLW CO SO	1697											
BAYSIDE PD	4666	1307.3	64.3	1243.0	.0	.0	42.9	21.4	128.6	1071.6	21.4	21.4
BROWN DEER PD	12965	3525.4	46.3	3479.1	.0	7.7	38.6	.0	656.7	2754.0	61.7	7.7
CUDAHDY PD	19587	5427.1	158.3	5268.8	.0	20.4	61.3	76.6	1373.4	3686.1	153.2	56.2
*FOX POINT PD	7554				.0	22.8	.0	.0	593.2	1619.9	91.3	17.1
FRANKLIN PD	17532	2344.3	22.8	2321.5	.0	.0	134.8	78.0	737.6	10107.1	231.2	156.0
GLENDAL PD	14099	11454.7	212.8	11241.9	.0	.0	6.0	29.9	161.5	4521.0	173.4	.0
GREENDALE PD	16722	4891.8	35.9	4855.9	.0	.0	3.1	37.5	959.1	4448.7	243.7	28.1
GREENFIELD PD	32009	5776.5	96.8	5679.7	3.1	3.1	53.1	37.5	959.1	4448.7	243.7	28.1
HLS CRNR PD	6951	4013.3	143.9	3869.9	14.4	14.4	28.8	86.3	704.9	3006.8	158.3	.0
MILWAUKEE PD	629254	7229.6	570.7	6759.0	9.5	30.8	331.7	198.6	1618.3	4575.9	521.4	43.4
*OAK CREEK PD	17423											
SHOREWOOD PD	14770	4461.7	189.6	4272.2	.0	13.5	162.5	13.5	1083.3	3094.1	94.8	.0
*SOUTH MILW PD	21006											
ST FRANCIS PD	10123	3457.5	266.7	3190.8	.0	69.1	29.6	167.9	661.9	2321.4	197.6	9.9
UW-MILW	0											
WAUWATOSA PD	51206	4938.9	130.8	4808.0	2.0	11.7	72.3	44.9	794.8	3864.8	135.0	23.4
WEST ALLIS PD	64627	6248.2	179.5	6068.7	.0	12.4	68.1	99.0	1400.3	4400.6	222.8	44.9
WEST MILW PD	3719	5861.3	80.7	5781.1	.0	.0	26.9	53.8	1559.6	3791.3	430.2	.0
WHTFSH BAY PD	14751	2562.5	108.5	2454.1	.0	6.8	47.5	54.2	284.7	2108.3	54.2	6.8
*WIS ST FR PK	0											
COUNTY RATE (EST)	960659	6649.0	433.3	6215.8	6.8	24.8	236.5	165.2	1374.7	4401.5	400.5	39.1
MONROE CO SO	21628											
*SPARTA PD	7052	1585.9	60.1	1525.8	4.6	4.6	9.2	41.6	545.6	869.2	101.7	9.2
*TOMAH PD	7142											
COUNTY RATE (EST)	35822	2563.8	57.3	2506.5	5.8	2.8	13.0	35.6	564.2	1799.1	131.5	11.7
*OCONTO CO SO	22428											
*OCONTO PD	4344											
*OCONTO FLS PD	2550											
COUNTY RATE (EST)	29322	2656.4	7.4	2649.0	.0	.0	.0	7.4	930.1	1624.0	94.9	.0
*ONEIDA CO SO	20839											
MINOCQUA PD	3364	8412.6	683.7	7728.9	29.7	.0	29.7	624.3	1040.4	6212.8	475.6	.0
RHNLNDR PD	7836	6546.7	38.3	6508.4	.0	.0	.0	38.3	1148.5	5066.4	280.8	12.8
COUNTY RATE (EST)	32039	3870.3	118.6	3751.7	3.1	.0	31.2	84.3	942.6	2565.6	221.6	21.8
OUTGMIE CO SO	48326											
APPLETON PD	53117	2104.5	51.7	2052.7	2.1	6.2	6.2	37.2	531.8	1413.3	97.3	10.3
*COMB LKS PD	2508	5797.4	172.6	5624.8	.0	52.5	22.5	97.5	1515.5	4015.6	76.9	16.9
*KAUKAUNA PD	11613											
KIMBERLY PD	5947	5481.8	134.5	5347.2	.0	16.8	.0	117.7	487.6	4725.1	84.1	50.4
LIT CHUTE PD	8339	3705.5	.0	3705.5	.0	.0	.0	.0	659.6	2938.0	107.9	.0
COUNTY RATE (EST)	130050	4110.0	132.3	3977.7	0.8	25.4	14.6	90.7	1022.7	2848.9	92.3	13.8
OZKEE CO SO	18222											
CEDARBURG PD	8903	1553.1	5.5	1547.6	.0	5.5	.0	.0	488.4	998.8	49.4	11.0
GRAFTON PD	8395	2414.9	134.8	2280.1	11.2	.0	.0	123.6	337.0	1887.0	33.7	22.5
MEQUON PD	16331	2406.2	95.3	2310.9	11.9	.0	35.7	47.6	107.2	2084.6	59.6	59.6
PT WASH PD	8577	2737.1	24.5	2712.6	.0	6.1	6.1	12.2	471.5	2204.4	30.6	6.1
SAUKVILLE PD	3473	2961.4	46.6	2914.8	.0	11.7	23.3	11.7	419.7	2366.8	116.6	11.7
THNSVLE PD	3301	3685.6	28.8	3656.8	.0	28.8	.0	.0	489.5	2965.7	201.6	.0
COUNTY RATE (EST)	67202	2389.8	49.1	2340.7	3.0	6.0	8.9	31.2	391.4	1872.0	59.5	17.9
PEPIN CO SO	5527											
DURAND PD	2110	1049.4	72.4	977.0	.0	18.1	18.1	36.2	361.9	579.0	36.2	.0
COUNTY RATE (EST)	7637	1505.8	78.6	1427.3	.0	13.1	39.3	26.2	340.4	1047.5	39.3	.0
*PIERCE CO SO	21382											
*PRESCOTT PD	2706	4382.1	223.0	4159.0	.0	.0	.0	223.0	301.8	3699.8	157.4	.0
RIV FALLS PD	7622											
*UW-RIV FALLS	0											
COUNTY RATE (EST)	31710	3501.5	72.5	3429.0	.0	.0	9.5	63.1	631.8	2680.5	97.8	18.9
POLK CO SO	33672											
COUNTY RATE (EST)	33672	3085.6	77.2	3008.4	.0	17.8	.0	59.4	980.0	1773.0	219.8	35.6

TABLE 2—OFFENSE RATES PER 100,000 POPULATION FOR INDEX OFFENSES, 1982, CONTINUED

LAW ENFORCEMENT AGENCY	POPULATION	TOTAL INDEX OFFENSES	VIOLENT OFFENSES	PROPERTY OFFENSES	MURDER	FORCIBLE RAPE	ROBBERY	AGGRAVATED ASSAULT	BURGLARY	THEFT	MOTOR VEHICLE THEFT	ARSON
PORTAGE CO SO	30554	1682.3	140.7	1541.5	.0	3.3	6.5	130.9	297.8	1135.7	98.2	9.8
*PLOVER PD	5981											
STV PNT PD	22906	6369.5	126.6	6242.9	8.7	8.7	21.8	87.3	1008.5	5094.7	109.1	30.6
COUNTY RATE (EST)	59441	3596.1	141.3	3454.8	3.4	5.0	11.8	121.1	613.8	2717.2	106.9	16.8
PRICE CO SO	12757											
PARK FALLS PD	3162	1630.5	39.2	1591.3	.0	7.8	7.8	23.5	525.2	1003.4	62.7	.0
COUNTY RATE (EST)	15919	1758.9	50.3	1708.7	.0	6.3	6.3	37.7	496.3	1162.1	50.3	.0
RACINE CO SO	29435											
BURLINGTON PD	8133	4895.5	475.6	4419.9	.0	6.8	34.0	434.9	992.0	3176.5	210.6	40.8
BURLTN TN PD	5625	5115.0	233.6	4881.3	12.3	.0	24.6	196.7	1131.2	3590.3	159.8	.0
CALEDONIA PD	21615	6186.7	177.8	6008.9	.0	.0	71.1	106.7	1564.4	4248.9	177.8	17.8
MT PLSNT PD	20142	2452.0	92.5	2359.5	.0	.0	32.4	60.1	495.0	1785.8	27.8	50.9
RACINE PD	83298	1866.7	69.5	1797.2	.0	9.9	14.9	44.7	635.5	1062.5	64.5	34.8
STURTVANT PD	3998	9253.5	773.1	8480.4	6.0	33.6	243.7	489.8	2440.6	5728.8	201.7	109.2
COUNTY RATE (EST)	172246	4652.3	25.0	4627.3	.0	.0	25.0	1100.6	3276.6	250.1		

TABLE 2—OFFENSE RATES PER 100,000 POPULATION FOR INDEX OFFENSES, 1982, CONTINUED

LAW ENFORCEMENT AGENCY	POPULATION	TOTAL INDEX OFFENSES	VIOLENT OFFENSES	PROPERTY OFFENSES	MURDER	FORCIBLE RAPE	ROBBERY	AGGRAVATED ASSAULT	BURGLARY	THEFT	MOTOR VEHICLE THEFT	ARSON
WASH CO SO	43720	2330.7	73.2	2257.5	2.3	4.6	6.9	59.5	661.0	1482.2	96.1	18.3
*GERMINTN PD	11178											
HARTFORD PD	7182	4761.9	83.5	4678.4	.0	.0	41.8	41.8	654.4	3856.9	125.3	41.8
KEWASKUM PD	2343	2902.3	256.1	2646.2	.0	42.7	.0	213.4	384.1	2048.7	213.4	.0
WEST BEND PD	21127	5902.4	89.9	5812.5	.0	.0	14.2	75.7	643.7	4960.5	146.7	61.5
COUNTY RATE (EST)	85550	3583.2	81.3	3501.9	1.2	6.1	11.8	62.3	618.4	2738.5	117.0	28.1
WKESHA CO SO	76158	2346.4	86.7	2259.8	2.6	2.6	9.2	72.2	740.6	1424.7	76.2	18.4
BROOKFLD PD	33761	4286.0	38.5	4247.5	.0	.0	23.7	14.8	625.0	3524.8	97.7	.0
BUTLER PD	2044	5528.4	146.8	5381.6	.0	48.9	.0	97.8	831.7	4109.6	293.5	146.8
CHENEQUA PD	544	5698.5	.0	5698.5	.0	.0	.0	.0	1286.8	4227.9	183.8	.0
DELAFIELD PD	4222	3481.8	47.4	3434.4	.0	.0	.0	.0	781.6	2358.0	94.7	.0
ELM GROVE PD	6441	2390.9	62.1	2328.8	.0	.0	23.7	31.1	667.6	1630.2	31.1	.0
HARTLAND PD	5795	3813.6	17.3	3796.4	.0	17.3	.0	.0	1018.1	2657.5	120.8	.0
MNMBEE FLS PD	27544	4251.4	79.9	4171.5	3.6	7.3	18.2	50.8	1110.9	2904.4	123.4	32.7
MUKWONAGO PD	4011	3515.3	.0	3515.3	.0	.0	.0	.0	673.1	2642.7	174.5	24.9
MUSKEGO PD	15583	1886.7	19.3	1867.4	.0	.0	.0	19.3	327.3	1469.6	64.2	6.4
NEW BERLIN PD	30377	2982.5	75.7	2906.8	.0	.0	16.5	59.3	744.0	2018.0	102.1	42.8
OCONOMOWOC PD	9795	4420.6	183.8	4236.9	.0	10.2	20.4	153.1	592.1	3532.4	102.1	10.2
OCONMWC TN PD	7556	2819.0	66.2	2752.8	13.2	.0	.0	52.9	833.8	1786.7	119.1	13.2
PEWAUKEE PD	4510	4523.3	44.3	4478.9	.0	.0	44.3	.0	532.2	3835.9	22.2	88.7
*SUMMIT PD	3877											
WAUKESHA PD	51138	2862.8	88.0	2774.8	2.0	.0	23.5	62.6	721.6	1889.0	150.6	13.7
COUNTY RATE (EST)	283356	3187.5	77.3	3110.2	3.9	2.5	15.5	55.4	739.0	2245.6	106.6	19.1
WAUPCA CO SO	29914	2132.8	43.5	2089.3	6.7	10.0	.0	26.7	692.0	1303.7	86.9	6.7
CLINTVILLE PD	4595	4113.2	130.6	3982.6	.0	21.8	65.3	43.5	674.6	3112.1	174.1	21.8
NEW LONDON PD	6383	7238.0	.0	7238.0	.0	.0	.0	.0	752.0	6329.3	125.3	31.3
*WAUPACA PD	4528											
COUNTY RATE (EST)	45420	3192.4	46.2	3146.2	4.4	8.8	6.6	26.4	708.9	2318.4	110.1	11.0
WAUSHR CO SO	18919	3567.8	148.0	3419.8	.0	10.6	5.3	132.1	1073.0	2193.6	137.4	15.9
COUNTY RATE	18919	3567.8	148.0	3419.8	.0	10.6	5.3	132.1	1073.0	2193.6	137.4	15.9
WINBGO CO SO	33130	2164.2	39.2	2125.0	.0	.0	6.0	33.2	658.0	1385.5	78.5	3.0
MENASHA PD	14604	5882.0	102.7	5779.2	.0	.0	13.7	89.0	1253.1	4293.3	171.2	61.6
MNSHA TN PD	12917	5225.7	263.2	4962.5	.0	.0	.0	263.2	913.5	3894.1	131.6	23.2
NEENAH PD	22244	6640.0	76.4	6563.6	.0	9.0	31.5	36.0	1164.4	5187.9	116.9	94.4
OSHKOSH PD	49916	5845.8	100.2	5745.7	6.0	4.0	36.1	54.1	1065.8	4479.5	140.2	60.1
UW-OSHKOSH	0											
COUNTY RATE	132811	5212.7	100.9	5111.8	2.3	3.0	22.6	73.0	993.9	3942.4	125.7	49.7
WOOD CO SO	37536	1228.2	45.3	1182.9	.0	5.3	8.0	32.0	519.5	620.7	42.6	.0
MARSHFLD PD	18163	4426.6	88.1	4338.5	.0	11.0	33.0	44.0	517.5	3694.3	121.1	5.5
WIS RPDS PD	17977	5701.7	272.6	5429.2	.0	.0	11.1	261.4	1134.8	4149.7	139.1	5.6
COUNTY RATE	73676	3108.2	111.3	2996.9	.0	5.4	14.9	90.9	669.1	2239.5	85.5	2.7
*WIS ST PAT	0											
DNR-LAW. ENF. BUR.	0											
STATE RATE (EST)	4756279	4460.9	190.8	4270.1	3.0	13.4	71.3	103.0	981.0	3080.3	182.5	26.3

* INDICATES THAT REPORTS ARE PRESENT FOR FEWER THAN 12 MONTHS

** THE STATE UNIVERSITIES, THE STATE PROTECTIVE SERVICE, THE WISCONSIN STATE PATROL, AND THE WISCONSIN DEPARTMENT OF NATURAL RESOURCES ARE CONSIDERED TO HAVE ZERO POPULATION FOR UNIFORM CRIME REPORTING PURPOSES. SEE ALSO FOOTNOTES 3 AND 4, PAGE 39.

TABLE 3—TOTAL CLEARANCE RATES FOR INDEX OFFENSES, 1982

LAW ENFORCEMENT AGENCY	TOTAL INDEX OFFENSES	VIOLENT OFFENSES	PROPERTY OFFENSES	MURDER	FORCIBLE RAPE	ROBBERY	AGGRAVATED ASSAULT	BURGLARY	THEFT	MOTOR VEHICLE THEFT	ARSON
ADAMS CO SO	10.5	57.9	9.2								
ADAMS PD	24.7	100.0	23.9	50.0			60.0	5.6	10.8	33.3	75.0
COUNTY %	12.1	60.0	10.9	60.0			60.0	6.1	13.0	38.9	60.0
ASHLAND CO SO	27.6	100.0	26.8				100.0	31.8	22.4	33.3	.0
ASHLAND PD	14.9	83.3	14.0				83.3	7.2	15.7	13.3	100.0
COUNTY % (EST)	17.2	85.9	16.4				85.9	15.4	16.6	16.9	47.8
*BARRON CO SO											
*RICE LAKE PD											
#COUNTY %											
BAYFLD CO SO	18.3	100.0	14.6			100.0		14.1	11.1	80.0	
WASHBURN PD	23.3		23.3					8.3	21.4	100.0	100.0
COUNTY % (EST)	19.0	100.0	15.8			100.0		13.6	12.8	83.8	100.0
BROWN CO SO	15.2	70.4	14.1					14.3	90.0	10.0	14.2
ASHWAUBN PD	23.1	76.5	21.8					.0	86.7	6.8	22.1
DEPERE PD	18.0	44.4	17.5						44.4	19.2	15.8
GREEN BAY PD	26.4	57.6	25.5		28.6	31.8		14.6	70.1	14.6	27.1
UW-GREEN BAY	4.8		4.8					.0	5.0	.0	60.0
COUNTY % (EST)	23.6	60.3	22.6		28.6	28.2		13.7	73.0	13.7	23.8
BUFFALO CO SO	25.2	81.3	21.2					81.3	20.5	19.6	50.0
COUNTY % (EST)	25.2	81.3	21.2					81.3	20.5	19.6	50.0
*BURNETT CO SO											
#COUNTY %											
CALUMET CO SO	13.0	100.0	11.2					12.5	8.6	33.3	.0
BRILLION PD	58.5	100.0	54.7					84.6	47.5	50.0	100.0
CHILTON PD	25.0		25.0			100.0		30.0	22.7	50.0	
NEW HOLSTN PD	26.8	100.0	25.7					26.7	26.9	.0	.0
COUNTY % (EST)	26.1	100.0	23.9			100.0		29.5	21.9	31.8	33.3
CHIPWA CO SO	4.5	.0	4.6					10.2	2.6	.0	.0
BLOOMER PD	45.1		45.1					50.0	44.4	50.0	
CHPWA FLS PD	24.1	64.7	23.0			50.0		9.6	25.1	60.0	100.0
HALLIE PD	12.7		12.7					.0	14.3	22.2	.0
*STANLEY PD											
COUNTY % (EST)	17.7	55.0	17.0		.0	33.3		8.5	18.4	32.0	21.2
CLARK CO SO	5.7	100.0	4.9					8.2	1.6	31.6	.0
*NEILLSVILLE											
COUNTY % (EST)	4.1	40.7	3.6			.0		6.5	1.1	25.7	.0
CLMBIA CO SO	11.1	82.4	9.3					11.3	6.5	45.8	
COLUMBUS PD	8.6	50.0	2.9			100.0		50.0	.0	3.6	
PORTAGE PD	29.5		29.5					26.5	28.9	71.4	
WIS DELLS PD	10.4	33.3	10.1					9.4	7.5	66.7	
COUNTY % (EST)	14.5	70.8	13.4			100.0		14.0	11.2	55.3	
CRWFRD CO SO	16.5	100.0	15.8					19.4	11.0	72.7	
PR DU CHN PD	41.3	66.7	41.1					66.7	34.5	41.2	80.0
COUNTY % (EST)	29.7	80.0	29.3					80.0	23.8	29.0	75.0
DANE CO SO	24.1	38.4	23.2					35.3	14.5	34.8	21.4
DEFOREST PD	11.8	50.0	10.8					15.4	8.7	100.0	
*FITCHBURG PD											
MADISON PD	17.7	45.6	16.8					8.4	19.3	13.2	35.2
MADISON TN PD	3.7	10.8	3.3			66.7		3.2	3.4	.0	100.0
MCFARLND PD	16.9	.0	17.1					5.9	21.3	.0	.0
MIDDLETON PD	16.0	19.2	15.8					25.3	10.2	75.0	
MONONA PD	34.5	87.1	32.8			.0		27.3	34.2	13.3	.0
OREGON PD	10.1		10.1					19.0	6.5	75.0	
SHORWD HLS PD	11.3	.0	11.6					50.0	5.5	.0	.0
STATE PROT SV	10.1	.0	10.3					.0	9.1	100.0	
STOUGHTON PD	32.5	100.0	31.9					32.0	31.5	50.0	
SUN PRAR PD	23.0	44.4	22.5					8.5	24.7	38.5	
UW-MADISON	3.4	16.7	3.4					2.1	3.4	9.1	
VERONA PD	24.4	86.7	15.4			.0</					

TABLE 3—TOTAL CLEARANCE RATES FOR INDEX OFFENSES, 1982, CONTINUED

LAW ENFORCEMENT AGENCY	TOTAL INDEX OFFENSES	VIOLENT OFFENSES	PROPERTY OFFENSES	MURDER	FORCIBLE RAPE	ROBBERY	AGGRAVATED ASSAULT	BURGLARY	THEFT	MOTOR VEHICLE THEFT	ARSON
EAU CLR CO SO	16.3	79.2	12.9	.0	100.0	.0	83.3	16.7	8.3	47.4	25.0
ALTOONA PD	24.5	33.3	24.3				50.0	29.3	22.8	.0	
EAU CLAIRE PD	25.5	67.3	24.6	50.0	33.3	88.2	63.3	18.5	26.3	16.2	38.5
LW-EAU CLAIRE	3.9	.0	3.9				.0	.0	4.0	.0	.0
COUNTY % (EST)	23.0	68.7	21.9	33.3	60.0	78.9	68.6	18.6	22.6	22.2	31.8
*FLRNC CO SO											
#COUNTY %											
FDL CO SO	10.4	100.0	8.9	100.0	100.0	100.0	91.3	12.1	6.9	23.1	.0
FND DU LAC PD	34.0	90.8	31.1				75.0	25.0	32.0	42.6	42.9
NORTH FDL PD	10.4		10.4					7.4	9.4	66.7	16.7
RIPON PD	23.3	71.4	22.2	.0			83.3	17.2	24.3	22.2	.0
COUNTY % (EST)	28.0	90.0	25.5	100.0	75.0	80.0	90.7	20.3	26.4	38.0	26.7
FOREST CO SO	35.9	100.0	27.9	100.0	100.0	100.0	100.0	24.5	25.6	73.1	.0
CRANDON PD	25.5	100.0	24.0				100.0	33.3	19.4	.0	
COUNTY % (EST)	34.8	100.0	27.5	100.0	100.0	100.0	100.0	25.2	24.6	70.4	.0
GRANT CO SO	9.3	80.0	7.9	100.0	.0	87.5	5.0	6.1	6.1	52.2	
*CUBA CITY PD											
LANCASTER PD	27.4	100.0	25.6	100.0	100.0		60.0	34.6	18.9	50.0	100.0
PLATVLE PD	32.9	60.0	32.1					12.5	32.2	100.0	.0
COUNTY % (EST)	18.3	73.6	17.0	100.0	50.0	73.3	9.0	17.7	17.7	60.2	22.6
*GREEN CO SO											
BRODHEAD PD	15.4	100.0	13.8				100.0	17.5	10.6	66.7	33.3
*MONROE PD											
#COUNTY %											
*GR LAKE CO SO											
BERLIN PD	41.9	50.0	41.9				100.0	71.2	31.1	42.9	100.0
#COUNTY %											
IOWA CO SO	3.4	100.0	2.6				100.0	6.3	.6	11.1	.0
*DODGEVILLE PD											
COUNTY % (EST)	16.9	100.0	16.5				100.0	5.5	20.4	11.1	.0
IRON CO SO	19.0		19.0					25.6	12.5	20.0	
COUNTY % (EST)	19.0		19.0					25.6	12.5	20.0	
JACKSON CO SO	12.7	84.0	8.0	.0	50.0	90.9	90.9	9.7	6.4	13.6	
BK RIV FLS PD	29.0	85.7	26.5	.0	100.0	100.0	100.0	20.7	28.5	.0	
COUNTY % (EST)	17.4	84.4	13.5	.0	75.0	92.3	92.3	11.5	14.6	12.0	
*JEFF CO SO											
FT ATKINSON PD	19.7	100.0	19.4	100.0	100.0			7.8	21.0	50.0	.0
*JEFFERSON PD											
LKE MILLS PD	7.9		7.9					6.3	7.6	33.3	
PALMYRA PD	30.1	100.0	26.1			100.0		.0	30.2	25.0	.0
WATERLOO PD	24.6	40.0	23.3			40.0		9.5	31.6	.0	
WATERTOWN PD	34.4	55.6	34.2	100.0	20.0	100.0		19.8	37.7	57.7	.0
#COUNTY %											
JUNEAU CO SO	2.3	.0	2.3					6.0	.0	.0	
ELROY PD	46.9	100.0	45.2			100.0		40.0	42.1	100.0	
MAUSTON PD	32.3	66.7	31.8			.0	100.0	11.9	36.5	50.0	.0
*NEW LISBON PD											
COUNTY % (EST)	18.0	70.0	17.0			.0	100.0	9.4	19.7	50.0	.0
KENOSHA CO SO	17.2	38.6	16.3	.0	33.3	35.7	43.5	12.4	16.1	28.8	23.1
KENOSHA PD	21.5	44.4	20.4	100.0	57.1	31.7	61.3	12.6	23.3	21.4	15.3
TWIN LAKES PD	18.5	66.7	16.6			.0	100.0	6.8	20.8	33.3	.0
LW-PARKSIDE	3.9		3.9						3.9		
COUNTY % (EST)	20.3	43.7	19.2	63.6	50.7	31.8	57.4	12.4	21.3	23.5	16.9
*KEWAUNE CO SO											
*ALGOMA PD											
*KEWAUNEE PD											
#COUNTY %											
LA CRS CO SO	17.8	75.0	14.7	.0		77.1		15.1	13.0	35.7	83.3
HOLMEN PD	20.2	100.0	19.3			100.0		.0	22.1	33.3	
LA CROSSE PD	20.8	63.6	20.0	100.0	71.4	10.0	71.2	7.6	22.3	28.4	100.0
*ONALASKA PD											
WEST SALEM PD	25.9		25.9					30.8	24.3	50.0	
COUNTY % (EST)	21.3	70.6	20.1	100.0	62.5	10.0	76.6	9.1	22.2	29.7	88.9
*LAFTE CO SO											
DARLNTN PD	48.9	.0	50.0			.0		25.0	53.8	.0	
#COUNTY %											
LNGLDF CO SO	47.1	94.7	37.4				94.7	70.7	13.8	66.7	
ANTIGO PD	26.4	100.0	25.4				100.0	7.7	30.0	.0	100.0
COUNTY % (EST)	39.0	95.0	32.2				95.0	54.5	21.9	25.0	100.0
LINCOLN CO SO	2.2		2.2					1.1	3.4	.0	
MERRILL PD	15.5	.0	15.7	.0		.0		8.6	16.7	37.5	
*TOMAHAWK PD											
COUNTY % (EST)	8.7	.0	8.8	.0		.0		3.6	10.2	24.6	

TABLE 3—TOTAL CLEARANCE RATES FOR INDEX OFFENSES, 1982, CONTINUED

LAW ENFORCEMENT AGENCY	TOTAL INDEX OFFENSES	VIOLENT OFFENSES	PROPERTY OFFENSES	MURDER	FORCIBLE RAPE	ROBBERY	AGGRAVATED ASSAULT	BURGLARY	THEFT	MOTOR VEHICLE THEFT	ARSON
*MNTWC CO SO											
KIEL PD	13.5	100.0	11.1		100.0						
MNTWC PD	30.6	61.9	30.2		100.0	40.0	100.0	10.5	11.3	37.5	18.8
TWO RIV PD	32.0	75.0	31.2			66.7	80.0	47.9	26.0	.0	60.0
#COUNTY %											
MARTH CO SO	23.1	96.3	20.3	100.0	100.0	95.7		26.6	16.7	65.0	100.0
*MOSINEE PD											
ROTHSCHILD PD	55.9	100.0	55.6			100.0		31.8	60.4	40.0	.0
SCHOFIELD PD	31.9	89.5	23.2			100.0		17.2	22.0	75.0	100.0
WAUSAU PD	23.2	28.6	22.8			.0		15.9	24.6	19.4	25.0
WESTON PD	43.8	100.0	42.4					67.6	33.6	80.0	
COUNTY % (EST)	27.5	52.3	26.2			18.2	34.8	58.8	23.9	25.8	50.0
MRNTTE CO SO	9.1	40.0	7.6	100.0	.0		37.5	9.1	4.3	20.7	.0
MARINETTE PD	21.6	52.6	20.7			33.3	56.3	36.3	17.5	34.3	
*PESHTIGO PD											
COUNTY % (EST)	13.4	40.0	12.4	100.0	.0	22.2	40.0	13.2	11.1	26.9	.0
MARQTE CO SO	17.1	71.4	14.6	100.0	100.0		60.0	13.6	11.6	66.7	
*MONTELLO PD											
COUNTY % (EST)	12.7	71.4	10.7	100.0	100.0		60.0	10.1	8.4	66.7	.0
MNMEE CO SO	10.9	.0	11.0			.0	.0	11.1	.0	100.0	150.0
*MNMEE TR PD											
#COUNTY %											
*MLW CO SO											
BAYSIDE PD	14.8	33.3	13.8			.0	100.0	16.7	10.0	100.0	100.0
BROWN DEER PD	20.6	16.7	20.6			.0	20.0	16.5	21.8	.0	100.0
CUDAHY PD	21.6	54.8	20.6			.0	33.3	10.0	24.7	16.7	27.3
FOX POINT PD	16.0	100.0	15.1			100.0		6.9	17.5	100.0	.0
FRANKLIN PD	14.8	75.0	14.3			75.0		20.2	12.0	18.8	.0
GLENDALE PD	32.2	53.3	31.8				31.6	45.2	30.8	11.8	63.6
GREENDALE PD	60.9	50.0	61.0				100.0	51.9	63.6	.0	
GREENFIELD PD	37.7	38.7	37.7	100.0	.0		23.5	17.6	42.3	34.6	22.2
HLS CRNR PD	21.5	50.0	20.4			.0	50.0	8.2	23.0	27.3	
MILWAUKEE PD	17.2	55.4	14.0			78.3	79.4	52.3	55.8	22.0	11.8
*OAK CREEK PD											
SHOREWOOD PD	21.5	31.0	21.1				33.3	25.0	100.0	58.1	8.5
SOUTH MILW PD	14.3	41.4	12.3	100.0			66.7	4.3	13.0	50.0	60.0
ST FRANCIS PD	20.6	48.1	18.4				57.1	6.0	20.4	35.0	.0
UW-MILW	27.3	50.0	27.0			.0	100.0	10.0	27.8	50.0	66.7
WAUWATOSA PD	31.3	38.8	31.1	.0	66.7	18.9	65.2	9.3	36.1	18.8	8.3
WEST ALLIS PD	22.6	46.6	21.9			12.5	38.6	56.3	7.3	26.2	32.6
WEST MILW PD	6.0	33.3	5.6			.0	50.0	1.7	5.0	25.0	10.3
WHITISH BAY PD	18.5	25.0	18.3			100.0	.0	33.3	42.9	14.8	25.0
WIS ST FR PK	7.5	25.0	6.9			100.0	.0	6.7	7.3	.0	.0
COUNTY % (EST											

TABLE 3—TOTAL CLEARANCE RATES FOR INDEX OFFENSES, 1982, CONTINUED

LAW ENFORCEMENT AGENCY	TOTAL INDEX OFFENSES	VIOLENT OFFENSES	PROPERTY OFFENSES	MURDER	FORCIBLE RAPE	ROBBERY	AGGRAVATED ASSAULT	BURGLARY	THEFT	MOTOR VEHICLE THEFT	ARSON
PORTAGE CO SO	11.3	25.6	10.0		.0	50.0	25.0	12.1	8.1	26.7	.0
PLOVER PD	18.8	57.1	15.7				57.1	16.0	11.9	60.0	
STV PNT PD	22.7	37.9	22.4	100.0	.0	40.0	35.0	11.7	24.5	20.0	28.6
COUNTY % (EST)	19.6	34.4	19.0	100.0	.0	42.9	33.1	12.3	20.2	28.5	20.0
PRICE CO SO	51.0	100.0	49.8		100.0	100.0	100.0	70.1	36.7	87.5	
PARK FALLS PD	36.1	100.0	33.3					33.3	33.3		
COUNTY % (EST)	47.1	100.0	45.6	100.0	100.0	100.0		64.6	35.7	87.5	
RACINE CO SO	21.2	68.6	16.1		50.0	20.0	72.7	18.2	15.7	11.3	16.7
BURLINGTON PD	38.9	73.7	37.3	100.0		100.0	68.8	13.0	45.2	30.8	
BURLTN TN PD	27.9	60.0	26.9	100.0		50.0	66.7	28.4	25.5	40.0	100.0
CALEDONIA PD	24.2	75.0	22.2			42.9	92.3	41.1	16.6	16.7	36.4
MT PLSNT PD	13.3	64.3	11.3		50.0	66.7	66.7	7.8	10.7	23.1	71.4
RACINE PD	21.8	45.2	19.6	80.0	42.9	23.2	55.9	10.9	23.1	16.7	38.5
STURTVANT PD	8.6	.0	8.6				.0	11.4	6.1	30.0	
COUNTY % (EST)	22.1	50.8	19.7	83.3	43.8	25.3	60.9	13.3	22.1	17.7	38.5
RICHL CO SO	15.6	23.5	14.6	100.0	33.3	.0	17.4	25.6	6.8	120.0	.0
RICHL CTR PD	36.0	100.0	34.4	100.0			100.0	31.0	33.7	75.0	
COUNTY % (EST)	21.7	29.7	20.9	100.0	33.3	.0	24.0	27.1	15.8	100.0	.0
ROCK CO SO	18.4	68.0	15.1		66.7	50.0	71.8	17.7	11.8	48.6	.0
BELOIT PD	22.4	44.7	21.0	50.0	16.7	32.0	53.0	13.5	23.5	17.8	.0
BELOIT TN PD	14.6	50.0	12.9	100.0	.0	46.2		12.7	9.7	81.8	
EDGERTON PD	11.6	100.0	10.9	100.0				17.6	6.4	28.6	50.0
EVNSVILLE PD	7.0	7.0	7.0					7.4	6.9	.0	
JNESVILLE PD	26.4	73.9	25.1	80.0	52.9	78.6		15.3	-27.7	40.7	46.4
MILTON PD	31.5	31.5	31.5					36.4	29.4	100.0	50.0
COUNTY % (EST)	23.2	55.1	21.7	50.0	66.7	36.6	61.6	15.0	23.4	33.5	34.2
RUSK CO SO	7.8	100.0	5.2				100.0	1.6	5.2	25.0	.0
LADYSMITH PD	27.0	50.0	26.1	100.0			33.3	23.5	25.8	100.0	
COUNTY % (EST)	14.5	80.0	12.4	100.0			77.8	5.6	14.4	25.0	21.7
ST CRX CO SO	20.7	50.0	20.6		100.0	.0		24.4	16.3	43.5	33.3
HUDSON PD	10.4	33.3	9.3	100.0	100.0	.0	22.2	6.7	10.1	10.0	
NEW RICH PD	17.8	50.0	17.5	100.0	.0			11.1	17.4	23.1	
COUNTY % (EST)	16.9	37.5	16.5	100.0	100.0	.0	22.2	18.1	14.8	30.4	33.3
SAUK CO SO	21.9	61.5	20.8	100.0	50.0	.0	80.0	26.8	14.6	68.8	50.0
BARABOO PD	33.6	62.5	33.2		.0	100.0	66.7	35.1	31.8	56.5	
LAKE DLTN PD	10.0	50.0	6.5		.0		100.0	.0	6.5	100.0	
REEDSBURG PD	23.7	100.0	23.2			100.0		61.5	14.4	100.0	
SAUK-PR PD	4.3	4.3	4.3					.0	5.4	.0	.0
COUNTY % (EST)	25.0	61.5	24.3	100.0	33.3	66.7	76.9	28.6	21.4	60.5	32.4
SAWYER CO SO	35.6	88.2	33.2		100.0	50.0	92.3	42.2	22.4	73.3	
COUNTY % (EST)	35.6	88.2	33.2	100.0	50.0	92.3	42.2	42.2	22.4	73.3	
SHAWANO CO SO	29.2	100.0	26.2	100.0		100.0	100.0	12.1	35.5	31.3	.0
SHAWANO PD	37.5	75.0	36.6		.0	.0	100.0	51.9	35.5	33.3	
COUNTY % (EST)	33.5	90.9	31.7	100.0	.0	66.7	100.0	19.2	35.5	32.1	.0
SHEB CO SO	14.7	57.1	14.3	100.0	50.0	.0	100.0	10.6	15.2	20.0	.0
PLYMOUTH PD	29.3	.0	29.4				.0	27.5	30.3	.0	50.0
SHEBOGAN PD	28.0	71.1	27.5	100.0	.0	38.5	91.3	15.8	30.4	37.3	45.0
*SHEBGN FLS PD											
COUNTY % (EST)	25.8	67.4	25.3	100.0	40.0	35.7	88.0	15.2	27.8	30.3	41.7
TAYLOR CO SO	28.4	100.0	26.2				100.0	27.4	25.4	25.0	
MEDFORD PD	19.1	100.0	18.0				100.0	7.3	20.8	100.0	
COUNTY % (EST)	24.8	100.0	22.9			100.0	100.0	20.6	23.4	48.6	
TRMP CO SO	10.4	33.3	10.2				33.3	9.9	9.6	18.2	
COUNTY % (EST)	10.4	33.3	10.2				33.3	9.9	9.6	18.2	
VERNON CO SO	6.4	70.0	4.2	100.0	100.0		57.1	7.1	2.5	5.9	50.0
VIROQUA PD	8.9	66.7	7.4			.0	100.0	7.1	7.9	.0	
COUNTY % (EST)	7.1	69.2	5.2	100.0	100.0	.0	66.7	7.1	4.4	4.3	50.0
VILAS CO SO	18.8	75.0	18.4	100.0		100.0	50.0	20.2	16.8	22.5	.0
COUNTY % (EST)	18.8	75.0	18.4	100.0		100.0	50.0	20.2	16.8	22.5	.0
WALWTH CO SO	8.8	68.8	7.9	75.0		40.0	85.7	11.1	5.2	34.5	57.1
DELAVAN PD	34.4	100.0	32.6		66.7	200.0	83.3	42.9	30.4	60.0	
DLVN TN PD	23.4	80.0	20.4		100.0		75.0	18.2	19.6	66.7	.0
EAST TROY PD	51.6	.0	52.8			.0		53.8	52.8	50.0	
EST TRY TN PD	23.6	100.0	19.9	100.0	100.0		100.0	31.6	15.0	33.3	
ELKHORN PD	7.2	.0	7.2			.0		11.4	5.8	9.1	
LKE GENVA PD	30.6	.0	30.9			.0		1.8	36.8	13.6	
UW-WHITWATER	22.6	75.0	19.0		.0		100.0	15.4	20.5	.0	
WHITWATER PD	23.4	83.3	22.4	100.0	50.0	100.0		22.6	21.5	80.0	
WILMS BAY PD	29.0	29.0	29.0					50.0	20.0	33.3	
COUNTY % (EST)	21.3	72.6	20.2	80.0	81.1	46.7	80.8	18.4	20.0	32.9	50.0
WASHBN CO SO	7.0	66.7	5.6	100.0		50.0	100.0	5.1	1.8	35.7	33.3
COUNTY % (EST)	7.0	66.7	5.6	100.0		50.0	100.0	5.1	1.8	35.7	33.3

TABLE 3—TOTAL CLEARANCE RATES FOR INDEX OFFENSES, 1982, CONTINUED

LAW ENFORCEMENT AGENCY	TOTAL INDEX OFFENSES	VIOLENT OFFENSES	PROPERTY OFFENSES	MURDER	FORCIBLE RAPE	ROBBERY	AGGRAVATED ASSAULT	BURGLARY	THEFT	MOTOR VEHICLE THEFT	ARSON
WASH CO SO	16.5	75.0	14.6	100.0	.0	100.0	76.9	13.8	13.7	23.8	62.5
GERMNTN PD	18.8	50.0	18.2		100.0	100.0	.0	13.6	19.3	8.3	
HARTFORD PD	24.3	33.3	24.1			.0	66.7	23.4	22.7	66.7	33.3
KEWASKUM PD	32.4	100.0	25.8	100.0			100.0	11.1	25.0	60.0	
WEST BEND PD	42.5	78.9	41.9			66.7	81.3	38.2	41.5	67.7	53.8
COUNTY % (EST)	28.6	72.3	27.6	100.0	61.4	60.4	75.1	20.9	28.2	41.1	54.2
WKESHA CO SO	8.8	18.2	8.5		.0	.0	21.8	11.3	6.4	20.7	7.1
BROOKFLD PD	34.8	30.8	34.9			12.5	60.0	9.0	40.0	15.2	
BUTLER PD	18.6	66.7	17.3	100.0			50.0	5.9	17.9	16.7	66.7
CHENEQUA PD	12.9		12.9					28.6	8.7	.0	
DELAFIELD PD	18.4	50.0	17.9			.0	100.0	24.2	14.8	50.0	
ELM GROVE PD	23.4	50.0	22.7			.0	100.0	16.3	24.8	50.0	
HARTLAND PD	20.8	100.0	20.5		100.0			10.2	22.7	57.1	
MNMBE FLS PD	21.5	63.6	20.7	100.0	56.0	60.0	64.3	10.8	24.5	23.5	11.1
MUKWONAGO PD	29.8		29.8					14.8	32.1	42.9	100.0
MUSKEGO PD	39.5	100.0	38.8					33.3	40.6	20.0	100.0
NEW BERLIN PD	15.6	52.2	14.6			20.0	100.0	61.1	17.3	12.2	38.5
OCONOMOWOC PD	50.3	94.4	48.4	100.0	100.0	100.0	93.3	20.7	52.3	70.0	100.0
OCOMWOC TN PD	10.8	80.0	9.1	100.0			75.0	9.5	6.7	44.4	.0
PEWAUKEE PD	17.1	.0	18.4			.0		21.6	16.2	.0	50.0
*SUMMIT PD											
WAUKESHA PD	46.5	66.7	45.9	.0		41.7	78.1	42.3	48.6	31.2	28.6
COUNTY % (EST)	27.4	52.1	26.8	72.7	57.1	27.3	57.3	18.5	29.3	31.5	29.6
WAUPCA CO SO	22.7	69.2	21.8	100.0	66.7		62.5	14.0	23.1	57.7	100.0
CLNTVLE PD	24.3	33.3	24.0		100.0	33.3	.0	12.9	26.6	12.5	100.0
NEW LONDON PD	40.5		40.5					60.4	38.1	60.0	50.0
WAUPACA PD	55.4	50.0	55.5				50.0	69.7	49.1	85.7	
COUNTY % (EST)	32.2	57.1	31.9	100.0	75.0	33.3	50.0	27.0	32.2	51.5	80.0
WAUHR CO SO	23.6	50.0	22.4		100.0	.0	48.0	29.1	18.3	34.6	33.3
COUNTY % (EST)	23.6	50.0	22.4	100.0	.0	48.0	29.1	29.1	18.3	34.6	33.3
WINBGO CO SO	11.9	76.9	10.7			50.0	81.8	7.3	10.0	46	

TABLE 4—JUVENILE CLEARANCES AS A PERCENT OF TOTAL CLEARANCES, 1982, CONTINUED

LAW ENFORCEMENT AGENCY	TOTAL INDEX OFFENSES	VIOLENT OFFENSES	PROPERTY OFFENSES	MURDER	FORCIBLE RAPE	ROBBERY	AGGRAVATED ASSAULT	BURGLARY	THEFT	MOTOR VEHICLE THEFT	ARSON
*MNTWC CO SO											
KIEL PD	30.0	50.0	25.0								
MNTWC PD	45.7	7.7	46.6								
TWO RIV PD	57.4	50.0	57.7								
#COUNTY %											
MARTH CO SO	39.9	11.5	45.1								
*MOSINEE PD											
ROTHSCHILD PD	46.0	100.0	45.5								
SCHOFIELD PD	17.4	11.8	20.7								
WAUSAU PD	47.1	32.1	48.3								
WESTON PD	29.6	25.0	29.9								
COUNTY % (EST)	41.1	21.3	43.1								
MRNTTE CO SO	34.3	7.1	41.5								
MARINETTE PD	56.8	30.0	58.8								
*PESHIGO PD											
COUNTY % (EST)	49.8	16.7	54.0								
MARQTE CO SO	22.2	.0	27.3								
*MONTELLO PD											
COUNTY % (EST)	22.2	.0	27.3								
MNMEE CO SO	33.3	.0	33.3								
*MNMEE TR PD											
#COUNTY %											
*MLW CO SO											
BAYSIDE PD	11.1	.0	12.5								
BROWN DEER PD	30.9	.0	31.2								
CUDAHY PD	34.8	17.6	36.2								
FOX POINT PD	13.3	.0	14.3								
FRANKLIN PD	44.3	.0	46.6								
GLENDAL PD	38.3	25.0	38.7								
GREENDALE PD	50.4	33.3	50.5								
GREENFIELD PD	23.4	66.7	22.6								
HLS CRNR PD	61.7	20.0	65.5								
MILWAUKEE PD	33.2	22.4	36.8								
*OAK CREEK PD											
SHOREWOOD PD	14.1	55.6	11.3								
SOUTH MILW PD	63.6	62.5	63.9								
ST FRANCIS PD	23.6	69.2	13.6								
UW-MILW	18.6	.0	19.0								
WAUWATOSA PD	39.1	26.9	39.5								
WEST ALLIS PD	22.5	13.0	23.1								
WEST MILW PD	15.4	.0	16.7								
WHTFSH BAY PD	35.7	25.0	36.4								
WIS ST FR PK	70.0	.0	77.8								
COUNTY % (EST)	33.2	23.2	35.3								
MONROE CO SO	22.6	25.0	22.4								
SPARTA PD	30.8	.0	33.3								
*TOMAH PD											
COUNTY % (EST)	26.7	12.5	27.8								
*OCONTO CO SO											
OCONTO PD	53.8	.0	58.3								
*OCONTO FLS PD											
#COUNTY %											
*ONEIDA CO SO											
MINOCQUA PD	20.2	16.7	20.7								
RHNLNDR PD	55.1	33.3	55.5								
#COUNTY %											
OUTGMIE CO SO	38.5	13.0	41.2								
APPLETON PD	38.7		22.6								
*COMB LKS PD											
KAUKAUNA PD	57.5	40.9	63.1								
KIMBERLY PD	60.4	42.9	61.5								
LIT CHUTE PD	65.4		65.4								
COUNTY % (EST)	42.7	26.0	44.0								
OZKEE CO SO	13.2	.0	13.2								
CEDARBURG PD	30.8	.0	34.3								
GRAPTON PD	46.2	.0	48.8								
MEQUON PD	18.1	.0	18.9								
PT WASH PD	68.5	100.0	67.9								
SAUKVILLE PD	52.2	.0	52.2								
THNSVLE PD	42.1	.0	53.3								
COUNTY %	35.3	5.6	36.8								
PEPIN CO SO	57.1	33.3	63.6								
DURAND PD	16.7	100.0	11.8								
COUNTY %	34.4	50.0	32.1								
*PIERCE CO SO											
PRESCOTT PD	50.0	.0	50.0								
RIV FALLS PD	39.3	.0	44.2								
UW-RIV FALLS	.0	.0	.0								
#COUNTY %											
POLK CO SO	54.5	20.0	57.8								
COUNTY %	54.5	20.0	57.8								

TABLE 4—JUVENILE CLEARANCES AS A PERCENT OF TOTAL CLEARANCES, 1982, CONTINUED

LAW ENFORCEMENT AGENCY	TOTAL INDEX OFFENSES	VIOLENT OFFENSES	PROPERTY OFFENSES	MURDER	FORCIBLE RAPE	ROBBERY	AGGRAVATED ASSAULT	BURGLARY	THEFT	MOTOR VEHICLE THEFT	ARSON
PORTAGE CO SO	24.1	.0	29.8								
PLOVER PD	5.6	.0	7.1								
STV PNT PD	33.5	18.2	34.1								
COUNTY % (EST)	30.2	6.9	31.9								
PRICE CO SO	35.8	.0	37.6								
PARK FALLS PD	34.6	.0	39.1								
COUNTY %	35.6	.0	37.9								
RACINE CO SO	42.3	26.0	49.8								
BURLINGTON PD	36.4	28.6	37.2								
BURLTN TN PD	47.4	33.3	48.4								
CALEDONIA PD	58.6	13.3	64.6								
MT PLSNT PD	38.0	22.2	41.5								
RACINE PD	47.7	24.4	52.6								
STURTVANT PD	18.8	.0	18.8								
COUNTY %	46.5	24.6	51.2								
RICHL CO SO	19.6	37.5	15.8								
RICHL CTR PD	37.8	.0	40.5								
COUNTY %	28.6	27.3	28.8								
ROCK CO SO	33.8	11.8	40.4								
BELOIT PD	40.5	21.6	43.0								
BELOIT TN PD	22.6	.0	26.7								
EDGERTON PD	68.8	.0	73.3								
EVSVILLE PD	.0	.0	.0								
JNESVILLE PD	34.8	13.8	36.5								
MILTON PD	58.8	.0	58.8								
COUNTY % (EST)	37.6	16.6	40.1								
RUSK CO SO	.0	.0	.0								
LADYSMITH PD	48.4	.0	51.7								
COUNTY % (EST)	31.4	.0	37.7								
ST CRX CO SO	27.5	.0	27.8								
HUDSON PD	25.9	.0	30.4								
NEW RICH PD	75.7	.0	77.8								
COUNTY %	39.6	.0	41.3								
SAUK CO SO	29.0	37.5	28.3								
BARABOO PD	64.8	60.0	64.9								
LAKE DLTN PD	20.0	.0	33.3								
REEDSBURG PD	77.5	.0	79.5								
SAUK-PR PD	80.0	.0	80.0								
COUNTY % (EST)	55.1	37.5	55.9								
SAWYER CO SO	34.5	13.3	37.1								
COUNTY %	34.5	13.3	37.1								
SHAWANO CO SO	39.4	.0	45.9								
SHAWANO PD	50.4	50.0	50.4								
COUNTY %	45.8	15.0	48.6								
SHEB CO SO	41.2	25.0	41.9								
PLYMOUTH PD	30.8	.0	30.8								
SHEROYAN PD	53.3	29.6	54.1								
*SHERGN FLS PD											
COUNTY % (EST)	51.6	29.0	52.2								
TAYLOR CO SO	32.1	.0	36.0								
MEDFORD PD	40.7	.0	44.0								
COUNTY % (EST)	34.8	.0	38.5								
TRMP CO SO	31.7	.0	32.5								
COUNTY %	31.7	.0	32.5								
VERNON CO SO	31.6	14.3	41.7								
VIROQUA PD	9.1	.0	11.1								
COUNTY %	23.3	11.1	28.6								
VILAS CO SO	49.6	.0	50.9								
COUNTY %	49.6	.0	50.9								
WALWTH CO SO	16.3	.0	41.3								
DELAVAN PD	60.1	18.2									

TABLE 4--JUVENILE CLEARANCES AS A PERCENT OF TOTAL CLEARANCES, 1982, CONTINUED

LAW ENFORCEMENT AGENCY	TOTAL INDEX OFFENSES	VIOLENT OFFENSES	PROP-RTY OFFENSES	MURDER	FORCIBLE RAPE	ROBBERY	AGGRAVATED ASSAULT	BURGLARY	THEFT	MOTOR VEHICLE THEFT	ARSON
WASH CO SO	42.3	8.3	47.9	0	0	0	10.0	52.5	42.7	70.0	60.0
GERMINTN PD	50.7	66.7	50.0	50.0	100.0	0	0	66.7	47.4	100.0	0
HARTFORD PD	55.4	0	56.8	0	0	0	0	18.2	63.5	50.0	100.0
KEWAUKUM PD	45.5	33.3	50.0	0	0	40.0	0	0	50.0	66.7	0
WEST BEND PD	46.6	33.3	47.0	0	0	50.0	30.8	42.3	48.5	33.3	28.6
COUNTY % (EST)	46.9	22.2	48.4	0	34.3	34.3	20.0	44.7	49.1	48.9	46.2
WASH CO SO	31.0	8.3	32.4	0	0	0	8.3	32.8	24.6	75.0	100.0
BROOKFLD PD	37.1	25.0	37.2	0	0	0	33.3	52.6	36.6	40.0	0
BUTLER PD	66.7	0	73.7	0	0	0	0	0	73.3	100.0	100.0
CHENEQUA PD	50.0	0	50.0	0	0	0	0	100.0	0	0	0
DELAFIELD PD	55.6	0	57.7	0	0	0	0	100.0	37.5	50.0	0
ELM GROVE PD	30.6	0	32.4	0	0	0	0	71.4	23.1	0	0
HARTLAND PD	56.5	0	57.8	0	0	0	0	83.3	57.1	25.0	0
MINNEE FLS PD	38.5	14.3	39.9	0	0	33.3	11.1	48.5	37.8	50.0	100.0
MILWAUKEE PD	64.5	0	64.3	0	0	0	0	100.0	55.9	100.0	100.0
MUSKEGO PD	43.1	33.3	43.4	0	0	0	33.3	47.1	44.1	0	0
NEW BERLIN PD	49.6	33.3	51.2	0	0	0	36.4	43.6	52.0	60.0	80.0
OCONOMOWOC PD	38.1	35.3	38.3	0	0	50.0	35.7	50.0	38.1	14.3	100.0
OCONOMOWOC PD	56.5	0	68.4	0	0	0	0	30.0	77.8	75.0	0
FEWAUKEE PD	60.5	0	60.5	0	0	0	0	62.5	64.3	0	0
SUMMIT PD	46.5	16.7	47.9	0	0	40.0	12.0	55.8	45.6	37.5	100.0
WALKESHA PD	41.0	17.5	42.1	0	0	33.3	17.8	50.8	39.7	48.4	75.0
COUNTY % (EST)	43.4	8.3	44.3	0	0	100.0	0	28.9	48.4	40.9	50.0
WAUPACA CO SO	14.5	0	15.4	0	0	0	0	24.1	13.3	6.7	50.0
CLINTVILLE PD	60.9	50.0	61.4	0	0	100.0	0	50.0	60.5	100.0	100.0
NEW LONDON PD	64.7	0	64.7	0	0	0	0	48.3	67.5	100.0	0
WALPACA PD	36.6	0	37.0	0	0	0	0	8.7	44.2	83.3	0
COUNTY % (EST)	40.3	7.1	43.4	0	0	8.3	0	42.4	46.1	33.3	0
WALSHR CO SO	40.3	7.1	43.4	0	0	8.3	0	42.4	45.1	33.3	0
COUNTY %	30.6	0	34.7	0	0	0	0	43.8	37.0	16.7	0
WINBGO CO SO	19.3	33.3	19.2	0	0	33.3	0	9.4	26.9	0	0
MENASHA PD	50.6	11.1	55.0	0	0	11.1	0	85.7	51.7	50.0	100.0
MNSHA TN PD	54.0	73.3	54.9	0	0	0	42.9	57.1	53.8	50.0	100.0
NEENAH PD	27.1	16.2	27.7	0	0	12.5	20.8	14.3	31.1	15.8	0
OSHKOSH PD	10.0	0	10.3	0	0	0	0	0	10.8	0	0
LW-OSHKOSH	32.5	15.4	33.4	0	0	10.0	17.7	23.4	36.6	16.7	66.7
COUNTY %	25.0	0	30.5	0	0	0	0	45.5	18.8	40.0	0
WOOD CO SO	35.4	57.1	34.3	50.0	75.0	50.0	0	43.3	32.8	45.5	0
MARSHFIELD PD	42.3	17.6	43.9	0	0	17.6	0	51.4	41.4	85.7	0
WIS RPDS PD	37.2	25.0	38.1	25.0	50.0	20.6	0	47.1	35.7	55.5	0
COUNTY %	0	0	0	0	0	0	0	0	0	0	0
WIS ST PAT	0	0	0	0	0	0	0	0	0	0	0
DNR-LAW ENF BUR	37.3	20.3	39.4	5.6	11.2	30.7	16.6	38.8	39.7	35.2	50.8
STATE % (EST)											

** INDICATES THAT REPORTS ARE PRESENT FOR FEWER THAN 6 MONTHS
 # INDICATES THAT LESS THAN 6 MONTHS OF CLEARANCE DATA ARE PRESENT FOR JURISDICTIONS THAT REPRESENT MORE THAN 33.3% OF THE TOTAL COUNTY POPULATION

Arrests by County and Municipality - 1982

Tables 5 and 6 present data on adults and juveniles arrested by Wisconsin law enforcement agencies during 1982. The tables present the total number of arrests, the total number of Part I arrests, the total number of Part II arrests, and the number of arrests for each Part I offense for each reporting agency for adults and juveniles respectively. Table 6 also presents the total number of juvenile arrests for status offenses. Status offenses are those which are only offenses because the offender is a juvenile. The UCR offenses considered to be status offenses are liquor law, curfew, and runaway violations. Since status offenses are Part II offenses, they are also included in the total number of Part II arrests. The number of Part II arrests for offenses other than status offenses can be found by subtracting the number of status offense arrests from the number of Part II arrests.

As indicated in the introduction to this report, data are not available for all twelve months of 1982 for every reporting agency. In Tables 5 and 6 the number of months of arrest data available for each reporting agency is listed. Although only the known data are presented for each jurisdiction, an estimated yearly total can be calculated for any jurisdiction with less than twelve months of data reported. The estimated totals can be calculated by multiplying the numbers in the table by a correction factor which can be obtained by dividing twelve by the number of months of data reported. (Thus, if eleven months of data are presented for an agency, for example, the agency's figures should be multiplied by 12/11, or 1.09.) Naturally, the more months of data reported, the more accurate will be the yearly estimates. Estimates based on a small number of months of reported data should be interpreted cautiously.

Tables 5 and 6 show, for each county, county total arrests for each offense. For those counties in which not every jurisdiction reported twelve months of data for 1982, the county totals shown are estimates. These estimates were obtained as in Table 1, by calculating and summing the estimated annual totals for each jurisdiction within the county. As in previous tables, when estimates are used for county totals, the notation "(EST)" follows the "County Total" label.

At the end of each table there are statewide totals of the reported arrests in each category and estimates of the actual statewide totals. The estimated totals were obtained by calculating estimated yearly totals, as described above, for each reporting agency with less than twelve months of data and summing the estimates for these agencies and the reported figures for the other agencies.

These tables also contain population figures for each jurisdiction. Table 5 contains adult population figures. Table 6 contains juvenile population figures. The juvenile population figures were derived from 1982 population estimates using adult and juvenile population proportions provided in the 1980 census. The population figures presented for county sheriffs' offices are the county populations minus the populations of any municipalities in the county for which UCR data are reported separately. These figures, based on the Official Population Estimates for 1982, Wisconsin Department of Administration, Demographic Services Center, can be used to calculate arrest rates for any of the jurisdictions or the State. Arrest rates are calculated by dividing the number of arrests by the relevant population and multiplying the quotient by 100,000. This rate per 100,000 is comparable across jurisdictions of varying size.

TABLE 5—NUMBER OF ADULT ARRESTS, 1982

LAW ENFORCEMENT AGENCY	ADULT POPULATION	NUMBER OF MONTHS REPORTED	TOTAL ADULT ARRESTS	TOTAL PART I ARRESTS	MURDER	NEGLIGENT MANSLAUGHTER	FORCIBLE RAPE	ROBBERY	AGGRAVATED ASSAULT	BURGLARY	THEFT	MOTOR VEHICLE THEFT	ARSON	TOTAL PART II ARRESTS
ADAMS CO SO	9175	12	269	29	0	0	0	3	6	16	4	0	0	240
ADAMS PD	1289	12	44	10	0	0	0	1	1	7	1	0	0	34
COUNTY TOT.	10464		313	39	0	0	1	3	7	23	5	0	0	274
ASHLAND CO SO	5276	11	94	14	0	0	0	0	4	8	2	0	0	80
ASHLAND PD	7089	12	400	57	0	0	0	2	5	47	2	1	0	343
COUNTY TOT. (EST)	12365		503	72	0	0	0	2	9	56	4	1	0	430
BARRON CO SO	22455	0												
RICE LAKE PD	6043	3	84	18	0	0	0	1	6	11	0	0	0	66
COUNTY TOT. (EST)	28498		480	110	1	0	0	4	41	60	3	0	0	370
BAYFIELD CO SO	8500	7	57	16	1	0	0	4	6	5	0	0	0	41
WASHBURN PD	1531	12	17	4	0	0	0	0	1	3	0	0	0	13
COUNTY TOT. (EST)	10031		115	31	2	0	0	7	11	12	0	0	0	83
BROWN CO SO	38692	12	928	75	0	0	0	4	3	64	4	0	0	853
ASHWAUBENON PD	9648	11	84	81	0	0	0	4	0	77	0	0	0	3
DEPERE PD	10795	11	255	67	0	0	0	1	2	64	0	0	0	188
GREEN BAY PD	64548	12	2291	867	0	1	0	15	23	63	740	21	4	1424
UV-GREEN BAY	0	7	0	0	0	0	0	0	0	0	0	0	0	0
COUNTY TOT. (EST)	123683		3589	1103	0	1	0	15	32	68	958	25	4	2485
BUFFALO CO SO	10011	12	173	20	0	0	0	2	11	4	3	0	0	153
COUNTY TOT.	10011		173	20	0	0	0	2	11	4	3	0	0	153
BURNETT CO SO	9287	1	27	7	0	0	0	4	2	1	0	0	0	20
COUNTY TOT. (EST)	9287		324	84	0	0	0	48	24	12	0	0	0	240
CALUMET CO SO	14720	12	248	16	0	0	0	1	8	7	0	0	0	232
BRILLION PD	1896	12	102	8	0	0	0	2	2	4	0	0	0	94
CHILTON PD	2151	11	49	14	0	0	0	0	5	8	1	0	0	35
NEW HOLSTEIN PD	2297	12	55	8	0	0	0	0	5	3	0	0	0	47
COUNTY TOT. (EST)	21064		458	47	0	0	0	3	20	23	1	0	0	411
CHIPPEWA CO SO	20307	12	202	17	0	0	0	0	8	5	4	0	0	185
BLOOMER PD	2428	12	21	3	0	0	0	0	0	3	0	0	0	18
CHIPPEWA FALLS PD	9131	12	606	85	0	0	1	8	14	55	6	1	0	521
HALLIE PD	2919	11	42	24	0	0	1	2	0	21	0	0	0	18
STANLEY PD	1547	0												
COUNTY TOT. (EST)	36332		959	145	0	1	1	10	24	94	12	3	0	814
CLARK CO SO	20280	12	271	37	0	0	0	2	17	17	1	0	0	234
NEILLSVILLE	2045	0												
COUNTY TOT. (EST)	22325		303	42	0	0	0	2	17	21	2	0	0	260
COLUMBIA CO SO	20352	12	693	57	0	2	0	1	3	15	33	3	0	636
COLUMBUS PD	2999	6	32	1	0	0	0	1	0	0	0	0	0	31
PORTAGE PD	5766	11	240	48	0	0	0	0	9	35	4	0	0	192
WISCONSIN DELLS PD	1734	12	183	21	0	0	0	0	6	11	4	0	0	162
COUNTY TOT. (EST)	30851		1202	132	0	2	0	1	5	31	82	11	0	1069
CRAWFORD CO SO	7313	12	121	23	0	0	0	1	12	7	2	1	0	98
PRAIRIE DU CHIEN PD	4219	12	226	16	0	0	0	1	2	13	0	0	0	210
COUNTY TOT.	11532		347	39	0	0	0	2	14	20	2	1	0	308
DANE CO SO	51416	12	2224	450	5	6	17	17	96	110	181	11	7	1774
DEFOREST PD	2369	10	14	1	0	0	0	0	0	1	0	0	0	13
FITCHBURG PD	10472	2	19	6	0	0	0	1	1	3	1	0	0	13
MADISON PD	136414	12	4140	1225	3	0	16	30	90	101	940	29	17	2914
MADISON TOWN PD	5205	12	478	45	0	0	2	1	9	4	28	1	0	433
MC FARLAND PD	2605	12	27	0	0	0	0	0	0	0	0	0	0	27
MIDDLETON PD	9222	12	640	58	0	0	0	0	36	22	0	0	0	582
MONONA PD	6911	12	220	121	0	0	1	0	5	115	0	0	0	99
OREGON PD	2762	12	60	2	0	0	0	0	2	0	0	0	0	58
SHOREWOOD HILLS PD	1411	11	31	9	0	0	0	0	5	4	0	0	0	22
STATE PROT. SERVICE	0	9	27	1	0	0	0	0	0	1	0	0	0	26
STOUGHTON PD	5624	12	197	26	0	0	0	1	4	19	2	0	0	171
SUN PRAIRIE PD	8724	12	263	22	0	0	0	2	3	0	17	0	0	241
UV-MADISON	0	12	256	56	0	0	0	1	2	53	0	0	0	200
VERONA PD	2377	12	107	18	0	0	1	0	1	12	1	0	0	89
WAUNAKEE PD	2691	10	37	3	0	0	0	2	0	1	0	0	0	34
COUNTY TOT. (EST)	248203		8857	2075	8	6	36	51	211	276	1413	50	24	6781
DODGE CO SO	33771	12	633	115	1	1	1	2	31	10	62	7	0	518
BEAVER DAM PD	10351	12	389	136	0	0	0	0	0	2	128	6	0	253
HORICON PD	2496	0												
MAYVILLE PD	3142	12	89	11	0	0	0	0	2	7	2	0	0	78
WAUPUN PD	4380	12	178	10	0	0	0	2	1	5	2	0	0	168
COUNTY TOT. (EST)	54140		1889	289	1	1	1	2	36	15	213	18	2	1100
DOOR CO SO	11742	1	6	0	0	0	0	0	0	0	0	0	0	6
STURGEON BAY PD	6738	12	294	34	0	0	1	0	3	4	26	0	0	260
COUNTY TOT. (EST)	18480		366	34	0	0	1	0	3	4	26	0	0	332
DOUGLAS CO SO	10471	12	234	30	0	0	0	4	3	16	5	2	0	204
SUPERIOR PD	22091	9	1058	116	1	0	5	0	1	18	87	3	1	942
COUNTY TOT. (EST)	32562		1645	185	1	0	7	0	5	27	132	9	3	1460
DUNN CO SO	14911	0												
MENOMONIE PD	11520	12	1053	128	0	0	0	0	8	115	4	1	0	925
COUNTY TOT. (EST)	26431		1225	174	0	1	1	0	4	20	137	10	1	1051

TABLE 5—NUMBER OF ADULT ARRESTS, 1982, CONTINUED

LAW ENFORCEMENT AGENCY	ADULT POPULATION	NUMBER OF MONTHS REPORTED	TOTAL ADULT ARRESTS	TOTAL PART I ARRESTS	MURDER	NEGLIGENT MANSLAUGHTER	FORCIBLE RAPE	ROBBERY	AGGRAVATED ASSAULT	BURGLARY	THEFT	MOTOR VEHICLE THEFT	ARSON	TOTAL PART II ARRESTS
EAU CLAIRE CO SO	17419	12	499	61	0	0	2	0	10	11	36	2	0	438
ALTOONA PD	3342	12	129	9	0	0	0	2	0	0	7	0	0	120
EAU CLAIRE PD	39827	12	2386	473	1	0	0	14	24	58	375	1	0	1913
UV-EAU CLAIRE	0	12	101	11	0	0	0	0	0	11	0	0	0	90
COUNTY TOT.	60588		3115	554	1	0	2	16	34	69	429	3	0	2561
FLORENCE CO SO	2951	1	2	0	0	0	0	0	0	0	0	0	0	2
COUNTY TOT. (EST)	2951		24	0	0	0	0	0	0	0	0	0	0	24
FOND DU LAC CO SO	28379	12	315	25	1	0	0	1	0	7	14	2	0	290
FOND DU LAC PD	26146	12	2064	298	0	0	2	4	27	26	229	9	1	1766
NO. FOND DU LAC PD	2737	12	130	5	0	0	0	0	0	1	3	0	1	125
RIPON PD	5460	12	136	33	0	0	0	0	2	12	19	0	0	103
COUNTY TOT.	62722		2645	361	1	0	2	5	29	46	265	11	2	2284
FOREST CO SO	5035	12	239	42	0	0	2	0	12	17	11	0	0	197
CRANDON PD	1445	12	23	6	0	0	0	0	2	4	0	0	0	17
COUNTY TOT.	6480		262	48	0	0	2	0	14	21	11	0	0	214
GRANT CO SO	24582	12	374	49	0	0	2	0	1	15	26	5	0	325
CUBA CITY PD	1380	0												
LANCASTER PD	2903	12	32	6	0	0	1	1	0	1	3	0	0	26
PLATTEVILLE PD	7854	7	168	40	0	0	0	0	3	0	37	0	0	128
COUNTY TOT. (EST)	36719		741	136	0	0	8	1	8	21	94	5	0	605
GREEN CO SO	11480	0												
BRODHEAD PD	2181	12	88	15	0	0	0	1	1	5	8	0	0	73
MONROE PD	7548	0												
COUNTY TOT. (EST)	21209		747	96	1	2	0	2	7	25	56	2	0	651
GREEN LAKE CO SO	9643	12	136	46	0	0	2	0	9	22	12	1	0	90
BERLIN PD	3995	12	146	49	0	0	2	0	0	17	28	1	1	97
COUNTY TOT.	13638		282	95	0	0	4	0	9	39	40	2	1	187
IOWA CO SO	11297	12	122	17	0	0	0	0	2	3	11	1	0	105
DODGEVILLE PD	2610	2	11	8	0	0	0	0	0	0	8	0	0	3
COUNTY TOT. (EST)	13907		188	65	0	0	0	0	2	3	59	1	0	123
IRON CO SO	5020	11	195	5	0	0	0	0	0	5	6	0	0	190
COUNTY TOT. (EST)	5020		213	5	0	0	0	0	0	5	0	0	0	207
JACKSON CO SO	9330	12	345	38	0	0	0	0	12	9	15	2	0	307
BLK RIVER FALLS PD	2605	12	214	18	0	0	0	0	3	0	15	0	0	196
COUNTY TOT.	11935		559	56	0	0	0	0	15	9	30	2	0	503
JEFFERSON CO SO	22528	2												

TABLE 5—NUMBER OF ADULT ARRESTS, 1982, CONTINUED

LAW ENFORCEMENT AGENCY	ADULT POPULATION	NUMBER OF MONTHS REPORTED	TOTAL ADULT ARRESTS	TOTAL PART I ARRESTS	MURDER	NEGLIGENT MANSLAUGHTER	FORCIBLE RAPE	ROBBERY	AGGRAVATED ASSAULT	BURGLARY	THEFT	MOTOR VEHICLE	ARSON	TOTAL PART II ARRESTS
MANITOWOC CO SO	22749	5	177	22	0	0	1	0	3	15	1	2	0	155
KIEL PD	1861	12	60	6	0	0	1	0	0	1	2	2	0	54
MANITOWOC PD	24327	12	1704	268	1	0	0	4	14	16	225	8	0	1436
TWO RIVERS PD	9542	12	363	39	0	0	0	0	2	12	25	0	0	324
COUNTY TOT. (EST)	58479		2552	366	1	0	3	4	23	65	254	15	0	2186
MARATHON CO SO	39086	12	513	45	0	0	1	4	6	19	12	2	1	468
MOSINEE PD	2129	1	2	0	0	0	0	0	0	0	0	0	0	2
ROTHSCHILD PD	2271	12	109	48	0	0	0	0	0	6	42	0	0	61
SCHOFIELD PD	1583	12	186	46	0	0	1	2	11	5	24	3	0	140
WAUSAU PD	23906	12	798	230	0	0	2	3	16	41	165	3	0	568
WESTON PD	7513	5	88	18	0	0	0	0	5	4	9	0	0	70
COUNTY TOT. (EST)	76488		1841	412	0	0	4	9	45	81	265	8	1	1429
MARINETTE CO SO	17474	12	169	36	2	0	0	0	14	12	4	4	0	133
MARINETTE PD	8767	12	498	87	0	0	0	1	8	18	51	9	0	411
PESHIGO PD	2129	0	0	0	0	0	0	0	0	0	0	0	0	0
COUNTY TOT. (EST)	28370		729	144	2	0	0	3	24	39	63	15	0	585
MARQUETTE CO SO	7809	11	118	28	2	0	0	0	1	17	8	0	0	90
MONTICELLO PD	1004	0	0	0	0	0	0	0	0	0	0	0	0	0
COUNTY TOT. (EST)	8813		151	36	2	0	0	0	1	23	10	0	0	116
MENOMINEE CO SO	1837	12	5	4	0	0	0	0	0	3	0	1	0	1
MENOMINEE TRIBAL PD	0	0	0	0	0	0	0	0	0	0	0	0	0	0
COUNTY TOT. (EST)	1837		563	55	0	0	0	6	18	18	9	4	0	508
MILWAUKEE CO SO	1320	0	0	0	0	0	0	0	0	0	0	0	0	0
BAYSIDE PD	3388	12	56	5	0	0	0	0	1	0	1	2	0	51
BROWN DEER PD	9580	12	146	65	0	0	0	4	0	5	56	0	0	81
CUDAHDY PD	14201	12	600	119	0	0	0	2	3	12	100	2	0	481
FOX POINT PD	5756	12	123	8	0	0	0	0	1	2	4	1	0	115
FRANKLIN PD	12272	12	494	51	0	0	2	0	9	12	33	4	0	443
GLENDALE PD	10814	12	599	277	0	0	5	2	10	260	0	0	0	322
GRAFTON PD	11204	12	709	294	0	0	0	2	1	4	287	0	0	415
GREENFIELD PD	24519	12	1339	583	0	0	0	1	4	50	518	10	0	756
HALES CORNERS PD	5116	12	198	34	1	0	0	1	2	3	26	1	0	164
MILWAUKEE PD	459355	12	37145	9059	92	2	128	636	646	1048	6255	213	39	28086
OAK CREEK PD	11778	0	0	0	0	0	0	0	0	0	0	0	0	0
ST FRANCIS PD	7724	12	157	62	0	0	2	0	1	6	53	0	0	95
SHOREWOOD PD	11654	12	200	52	0	0	1	2	1	13	33	0	0	148
SOUTH MILWAUKEE PD	15145	11	443	62	0	0	1	0	25	5	30	1	0	381
UW-MILWAUKEE	0	12	370	131	0	0	0	0	4	5	121	1	0	239
WAUWATOSA PD	39423	12	1407	513	1	0	0	6	7	15	479	4	1	894
WEST ALLIS PD	49957	12	2573	592	0	0	0	8	28	19	523	14	0	1981
WEST MILWAUKEE PD	3124	12	89	7	0	0	0	0	0	0	3	4	0	82
WHITEFISH BAY PD	10709	12	285	27	0	0	0	0	2	2	22	1	0	238
WIS. STATE FAIR PK.	0	11	273	8	0	0	1	0	0	0	7	0	0	265
COUNTY TOT. (EST)	707045		54723	12710	97	6	135	684	942	1320	9189	290	45	42013
MONROE CO SO	14335	12	491	89	1	0	2	2	5	18	46	14	1	402
SPARTA PD	5141	8	148	16	0	0	0	1	0	6	9	0	0	132
TOMAH PD	5492	5	118	11	0	0	0	0	0	2	7	2	0	107
COUNTY TOT. (EST)	24968		996	139	1	0	2	4	5	32	76	19	1	857
OCONTO CO SO	15293	2	44	3	0	0	0	0	0	0	3	0	0	41
OCONTO PD	3149	11	67	12	0	0	0	0	1	3	7	1	0	55
OCONTO FALLS PD	1849	2	2	2	0	0	0	0	0	0	2	0	0	0
COUNTY TOT. (EST)	20291		349	43	0	0	0	0	1	3	38	1	0	306
ONEIDA CO SO	14810	4	96	19	0	0	2	4	1	4	5	1	2	77
MINOCQUA PD	2557	12	245	51	0	0	0	0	2	3	44	2	0	194
RHINELANDER PD	5893	12	282	45	0	0	0	0	1	13	30	0	1	237
COUNTY TOT. (EST)	23260		815	153	0	0	6	12	6	28	89	5	7	662
OUTAGAMIE CO SO	31465	12	1825	309	1	0	8	6	1	115	165	9	4	1516
APPLETON PD	38068	12	4165	440	0	0	9	6	33	105	283	2	2	3725
COMBINED LOCKS PD	1552	0	0	0	0	0	0	0	0	0	0	0	0	0
KAUKAUNA PD	7967	11	163	25	0	0	0	1	1	9	14	0	0	138
KIMBERLY PD	4026	12	256	46	0	0	0	0	3	2	40	1	0	210
LITTLE CHUTE PD	5504	12	205	18	0	0	0	0	0	2	15	1	0	187
COUNTY TOT. (EST)	88582		6672	845	1	0	17	13	38	234	523	13	6	5827
OZAUKEE CO SO	12080	12	559	33	0	0	0	1	1	17	10	4	0	526
CEDARBURG PD	6446	12	160	27	0	0	0	0	1	11	14	0	0	133
GRAFTON PD	5591	12	288	73	2	0	0	1	6	7	57	0	0	215
MEQUON PD	11350	12	327	64	0	0	3	1	1	14	43	2	0	263
PORT WASHINGTON PD	5995	12	257	32	0	0	0	0	4	3	24	1	0	225
SAUKVILLE PD	2125	12	52	7	0	0	0	1	0	3	2	1	0	45
THIENSVILLE PD	2581	12	63	5	0	0	0	0	2	0	3	1	0	58
COUNTY TOT.	46168		1706	241	2	1	3	4	15	55	153	9	0	1465
PEPIN CO SO	3680	12	33	6	0	0	2	0	1	3	0	0	0	27
DURAND PD	1582	12	25	7	0	0	0	0	0	2	5	0	0	18
COUNTY TOT.	5262		58	13	0	0	2	0	1	5	5	0	0	45
PIERCE CO SO	14509	0	0	0	0	0	0	0	0	0	0	0	0	0
PRESCOTT PD	1840	9	116	4	0	0	0	0	0	0	4	0	0	112
RIVER FALLS PD	6197	12	390	30	0	0	0	0	6	3	21	0	0	360
UW-RIVER FALLS	0	5	16	13	0	0	0	0	0	0	13	0	0	3
COUNTY TOT. (EST)	22546		811	163	0	0	0	0	18	15	94	12	24	649
POLK CO SO	23570	12	457	86	0	0	0	3	5	22	40	11	5	371
COUNTY TOT.	23570		457	86	0	0	0	3	5	22	40	11	5	371

TABLE 5—NUMBER OF ADULT ARRESTS, 1982, CONTINUED

LAW ENFORCEMENT AGENCY	ADULT POPULATION	NUMBER OF MONTHS REPORTED	TOTAL ADULT ARRESTS	TOTAL PART I ARRESTS	MURDER	NEGLIGENT MANSLAUGHTER	FORCIBLE RAPE	ROBBERY	AGGRAVATED ASSAULT	BURGLARY	THEFT	MOTOR VEHICLE	ARSON	TOTAL PART II ARRESTS
PORTAGE CO SO	20335	12	423	39	0	0	0	1	10	5	17	6	0	384
PLOVER PD	3744	8	34	13	0	0	0	0	3	2	8	0	0	21
STEVENS POINT PD	18600	12	733	217	1	1	0	0	5	8	200	1	1	516
COUNTY TOT. (EST)	42679		1207	276	1	1	0	1	20	16	229	7	1	932
PRICE CO SO	8904	12	159	31	0	0	1	2	1	7	17	3	0	128
PARK FALLS PD	2255	12	60	11	0	0	0	0	3	3	5	0	0	49
COUNTY TOT.	11159		219	42	0	0	1	2	4	10	22	3	0	177
RACINE CO SO	20197	12	917	113	0	0	0	0	3	1	105	4	0	804
BURLINGTON PD	5604	12	328	96	0	0	0	1	2	3	90	0	0	232
BURLINGTON TOWN PD	3876	12	287	59	0	0	0	6	3	17	33	0	0	228
CALEDONIA PD	14093	12	329	29	0	0	0	3	1	7	18	0	0	300
MT. PLEASANT PD	14180	12	146	23	0	0	0	3	1	3	15	1	0	123
RACINE PD	58725	12	3614	824	5	1	7	38	74	125	544	22	8	2790
STURTEVANT PD	2519	5	60	6	0	0	0	0	0	2	4	0	0	54
COUNTY TOT. (EST)	119194		5765	1158	5	1	7	51	84	161	815	27	8	4607
RICHLAND CO SO	8749	12	169	40	2	0	0	1	1	18	14	4	0	129
RICHLAND CENTER PD	3941	12	67	27	1	0	0	0	1	7	15	3	0	40
COUNTY TOT.	12690		236	67	3	0	0	1	2	25	29	7	0	169
ROCK CO SO	22848	12	976	83	0	0	2	4	2	27	37	11	0	893
BELOIT PD	24006	12	1854	562	1	0	0	17	70	68	388	14	4	1292
BELOIT TOWN PD	6019	12	264	30	0	0	1	0	3	9	17	0	0	234
EDGERTON PD	3027	12	130	7	0	0	1	0	0	2	4	0	0	123
EVANSVILLE PD	2073	12	73	11	0	0	0	0	0	4	7	0	0	62
JANESVILLE PD	35509	12	2230	440	3	0	5	10	18	58	328	16	2	1790
MILTON PD	2917	11	112	15	0	0	0	0	3	3	7	2	0	97
COUNTY TOT. (EST)	96399		5649	1149	4	0	9	31	96	171	789	43	6	4500
RUSK CO SO	8050	10	124	30	0	0	0	0	1	10	17	1	1	94
LADYSM														

TABLE 6—NUMBER OF JUVENILE ARRESTS, 1982, CONTINUED

LAW ENFORCEMENT AGENCY	JUVENILE POPULATION	NUMBER OF MONTHS REPORTED	TOTAL JUVENILE ARRESTS	TOTAL PART I ARRESTS	MURDER	NEGLIGENT MANSLAUGHTER	FORCIBLE RAPE	ROBBERY	AGGRAVATED ASSAULT	BURGLARY	THEFT	MOTOR VEHICLE	ARSON	TOTAL PART II ARRESTS	TOTAL STATUS ARRESTS
EAU CLAIRE CO SO	8394	12	226	50	0	0	1	0	1	20	26	2	0	176	113
ALTOONA PD	1509	12	106	25	0	0	0	1	7	17	0	0	0	81	42
EAU CLAIRE PD	11496	12	757	383	0	0	0	3	50	317	11	1	1	374	89
UW-EAU CLAIRE	0	12	2	1	0	0	0	1	0	0	0	0	0	1	0
COUNTY TOT.	21399		1091	459	0	0	1	4	3	77	360	13	1	632	244
FLORENCE CO SO	1259	1	0	0	0	0	0	0	0	0	0	0	0	0	0
COUNTY TOT. (EST)	1259		0	0	0	0	0	0	0	0	0	0	0	0	0
FOND DU LAC CO SO	14221	12	210	44	1	0	0	0	0	26	13	4	0	166	117
FOND DU LAC PD	9719	12	742	243	0	0	1	11	45	167	18	0	0	499	78
NO. FOND DU LAC PD	1282	12	130	8	0	0	0	0	0	7	1	0	0	122	5
RIPON PD	1659	12	60	36	0	0	0	1	3	31	1	0	0	24	3
COUNTY TOT.	26881		1142	331	1	0	1	12	74	218	24	0	0	811	203
FOREST CO SO	2307	12	66	46	0	0	0	1	8	24	13	0	0	20	6
CRANDON PD	590	12	19	9	0	0	0	0	2	7	0	0	0	10	1
COUNTY TOT.	2897		85	55	0	0	0	1	10	31	13	0	0	30	7
GRANT CO SO	11920	12	64	8	0	0	0	0	1	7	0	0	0	56	5
CUBA CITY PD	605	6	10	3	0	0	0	0	2	1	0	0	0	7	5
LANCASTER PD	1095	12	37	33	0	0	0	0	10	11	0	2	0	14	6
PLATTEVILLE PD	1818	7	83	13	0	0	0	0	0	12	1	0	0	70	26
COUNTY TOT. (EST)	15438		263	59	0	0	0	0	15	41	2	2	0	204	66
GREEN CO SO	5480	0	0	0	0	0	0	0	0	0	0	0	0	0	0
BROFHEAD PD	939	12	65	18	0	0	0	2	8	5	2	1	0	47	20
MONROE PD	2584	0	0	0	0	0	0	0	0	0	0	0	0	0	0
COUNTY TOT. (EST)	9003		355	82	0	0	1	2	1	25	47	4	1	273	112
GREEN LAKE CO SO	3741	12	122	36	0	0	0	1	18	15	2	0	0	86	4
BERLIN PD	1562	12	61	37	0	0	0	0	21	16	0	0	0	24	1
COUNTY TOT.	5303		183	73	0	0	0	1	39	31	2	0	0	110	5
IOWA CO SO	5346	12	115	34	0	0	0	0	10	22	2	0	0	81	42
DODGEVILLE PD	1020	2	2	2	0	0	0	0	0	2	0	0	0	0	0
COUNTY TOT. (EST)	6366		127	46	0	0	0	0	10	34	2	0	0	81	42
IRON CO SO	1603	11	154	6	0	0	0	0	4	2	0	0	0	148	88
COUNTY TOT. (EST)	1603		168	7	0	0	0	0	4	2	0	0	0	161	96
JACKSON CO SO	4105	12	166	64	0	0	1	5	1	30	19	7	1	102	56
BLK RIVER FALLS PD	841	12	99	26	0	0	0	2	1	22	0	0	0	73	46
COUNTY TOT.	4946		265	90	0	0	1	7	2	31	41	7	1	175	102
JEFFERSON CO SO	9516	5	2	2	0	0	0	0	0	0	0	0	0	0	0
FORT ATKINSON PD	2654	12	201	40	0	0	0	0	2	0	0	0	0	0	0
JEFFERSON PD	1626	0	0	0	0	0	0	0	10	30	0	0	0	161	95
LAKE MILLS PD	950	12	60	8	0	0	0	0	0	7	1	0	0	52	17
PALMYRA PD	346	12	39	14	0	0	0	0	2	11	0	0	0	25	8
WATERLOO PD	699	12	37	7	0	0	0	0	2	5	0	0	0	30	15
WATERTOWN PD	3240	12	402	150	0	0	0	4	2	27	11	4	2	252	112
COUNTY TOT. (EST)	19031		919	274	0	0	0	4	4	44	207	12	3	645	288
JUNEAU CO SO	4753	5	3	1	0	0	0	0	0	0	0	0	0	2	0
ELROY PD	433	12	20	3	0	0	0	0	1	0	0	0	0	17	14
MAUSTON PD	873	12	93	37	0	0	0	0	4	33	0	0	0	56	21
NEW LISBON PD	410	3	0	0	0	0	0	0	0	0	0	0	0	0	0
COUNTY TOT. (EST)	6469		120	42	0	0	0	0	7	35	0	0	0	78	35
KENOSHA CO SO	12966	7	110	68	0	0	1	2	0	18	16	30	1	42	9
KENOSHA PD	21806	12	1295	599	0	0	4	15	15	97	431	37	0	696	235
TWIN LAKES PD	1012	11	39	7	0	0	0	0	2	5	0	0	0	32	9
UW-PARKSIDE	0	12	1	0	0	0	0	0	0	0	0	0	0	1	0
COUNTY TOT. (EST)	35784		1527	723	0	0	6	18	15	130	464	88	2	804	260
KEWAUNEE CO SO	4772	0	0	0	0	0	0	0	0	0	0	0	0	0	0
ALGOMA PD	918	5	9	1	0	0	0	0	1	0	0	0	0	8	7
KEWAUNEE PD	691	3	0	0	0	0	0	0	0	0	0	0	0	0	0
COUNTY TOT. (EST)	6381		77	12	0	0	0	0	9	3	0	0	0	64	52
LA CROSSE CO SO	9580	12	120	49	0	0	0	0	2	22	2	1	0	71	14
HOLMEN PD	980	12	59	14	0	0	0	1	0	13	0	0	0	45	18
LA CROSSE PD	9502	12	1525	463	0	0	0	6	30	406	17	4	0	1062	583
ONALASKA PD	3150	2	18	4	0	0	0	0	0	4	0	0	0	14	7
WEST SALEM PD	932	12	66	13	0	0	0	0	4	8	1	0	0	53	32
COUNTY TOT. (EST)	24144		1878	563	0	0	0	9	56	473	20	5	0	1315	689
LAFAYETTE CO SO	5151	0	0	0	0	0	0	0	0	0	0	0	0	0	0
DARLINGTON PD	521	12	49	7	0	0	0	0	3	4	0	0	0	42	25
COUNTY TOT. (EST)	5672		49	7	0	0	0	0	3	4	0	0	0	42	417
LANGLADE CO SO	3746	3	58	28	0	0	0	0	19	6	3	0	0	30	13
ANTIGO PD	2500	7	139	32	0	0	0	1	4	24	3	0	0	107	49
COUNTY TOT. (EST)	6246		470	167	0	0	0	2	83	65	17	0	0	303	136
LINCOLN CO SO	4503	12	283	68	0	0	0	4	21	30	13	0	0	215	83
MERRILL PD	2532	12	606	131	0	0	0	0	15	110	6	0	0	475	207
TOMAHAWK PD	937	0	0	0	0	0	0	0	0	0	0	0	0	0	0
COUNTY TOT. (EST)	7972		926	214	0	0	0	4	40	151	19	0	0	712	298

TABLE 6—NUMBER OF JUVENILE ARRESTS, 1982, CONTINUED

LAW ENFORCEMENT AGENCY	JUVENILE POPULATION	NUMBER OF MONTHS REPORTED	TOTAL JUVENILE ARRESTS	TOTAL PART I ARRESTS	MURDER	NEGLIGENT MANSLAUGHTER	FORCIBLE RAPE	ROBBERY	AGGRAVATED ASSAULT	BURGLARY	THEFT	MOTOR VEHICLE	ARSON	TOTAL PART II ARRESTS	TOTAL STATUS ARRESTS
MANITOWOC CO SO	11953	5	69	25	0	0	0	0	2	4	16	3	0	44	25
KIEL PD	779	12	39	6	0	0	0	0	1	0	5	0	0	33	14
MANITOWOC PD	8327	12	1032	329	0	0	0	6	1	23	289	4	6	703	129
TWO RIVERS PD	3766	12	287	90	0	0	0	2	0	20	68	0	0	197	84
COUNTY TOT. (FST)	24825		1524	485	0	0	0	8	7	53	400	11	6	1039	287
MARATHON CO SO	20431	12	669	83	0	0	0	0	1	16	48	16	2	586	402
MOSINEE PD	935	1	5	0	0	0	0	0	0	0	0	0	0	5	1
ROTHSCHILD PD	1088	12	116	52	0	0	0	0	0	4	48	0	0	64	32
SCHOFIELD PD	571	12	102	14	0	0	0	1	4	0	7	1	1	88	56
WAUSAU PD	7716	12	766	288	0	0	0	1	9	47	220	10	1	478	247
WESTON PD	3784	6	75	20	0	0	0	0	0	2	18	0	0	55	28
COUNTY TOT. (EST)	34525		1863	477	0	0	0	2	14	71	359	27	4	1386	805
MARINETTE CO SO	7755	12	61	32	0	0	0	0	1	20	9	2	0	29	11
MARINETTE PD	3210	12	612	158	0	0	0	1	10	37	100	10	0	454	278
PESHIGO PD	736	0	0	0	0	0	0	0	0	0	0	0	0	0	0
COUNTY TOT. (EST)	11701		862	223	0	0	0	1	11	60	139	12	0	639	355
MARQUETTE CO SO	2981	11	42	17	0										

TABLE 6—NUMBER OF JUVENILE ARRESTS, 1982, CONTINUED

LAW ENFORCEMENT AGENCY	JUVENILE POPULATION	NUMBER OF MONTHS REPORTED	TOTAL JUVENILE ARRESTS	TOTAL PART I ARRESTS	MURDER	NEGLIGENT MANSLAUGHTER	FORCIBLE RAPE	ROBBERY	AGGRAVATED ASSAULT	BURGLARY	THEFT	MOTOR VEHICLE	ARSON	TOTAL PART II ARRESTS	TOTAL STATUS ARRESTS
PORTAGE CO SO	10219	12	70	36	0	0	0	1	0	16	9	10	0	34	11
PLEOVER PD	2237	8	30	5	0	0	0	0	0	3	2	0	0	25	12
STEVENS POINT PD	4306	12	325	120	0	0	0	2	2	9	101	6	0	205	76
COUNTY TOT. (EST)	16762		440	164	0	0	0	3	2	30	113	16	0	277	105
PRICE CO SO	3853	12	99	33	0	0	1	0	1	16	15	0	0	66	45
PARK FALLS PD	907	12	41	18	0	0	0	0	0	2	16	0	0	23	15
COUNTY TOT.	4760		140	51	0	0	1	0	1	18	31	0	0	89	60
RACINE CO SO	9238	12	410	127	0	0	1	1	8	35	80	0	2	283	20
BURLINGTON PD	2529	12	272	85	0	0	0	0	3	13	60	6	3	187	102
BURLINGTON TOWN PD	1749	12	212	52	0	0	0	0	0	18	32	2	0	160	98
CALEDONIA PD	7522	12	115	134	0	0	0	2	0	37	93	0	2	1017	350
MT. PLEASANT PD	5962	12	102	28	0	0	1	1	0	6	15	4	1	74	33
RACINE PD	24573	12	1912	952	0	0	7	39	42	155	677	27	5	960	396
STURTEVANT PD	1479	5	33	1	0	0	0	0	0	0	1	0	0	32	13
COUNTY TOT. (EST)	53052		4138	1380	0	0	9	43	53	264	959	39	13	2758	1030
RICHLAND CO SO	3917	12	7	6	0	0	0	0	4	0	0	2	0	1	1
RICHLAND CENTER PD	1191	12	50	17	0	0	0	0	0	3	10	4	0	33	9
COUNTY TOT.	5108		57	23	0	0	0	0	4	3	10	6	0	34	10
ROCK CO SO	10836	12	228	68	0	0	0	4	0	23	33	8	0	160	40
BELOIT PD	10045	12	897	515	0	0	1	11	33	86	373	11	0	382	123
BELOIT TOWN PD	2423	12	74	36	0	0	0	0	0	14	21	1	0	38	14
EDGERTON PD	1166	12	89	14	0	0	0	0	0	4	5	3	2	75	44
EVANSVILLE PD	687	12	23	1	0	0	0	0	0	1	0	0	0	22	12
JANESVILLE PD	15656	12	805	385	0	0	0	4	4	49	316	11	1	420	102
MILTON PD	1292	11	198	68	0	0	0	1	33	34	0	0	0	130	71
COUNTY TOT. (EST)	42105		2332	1093	0	0	1	19	38	213	785	34	3	1239	412
RUSK CO SO	3818	10	16	4	0	0	0	0	0	2	2	0	0	12	5
LADYSMITH PD	986	12	38	21	0	0	0	0	0	0	21	0	0	17	2
COUNTY TOT. (EST)	4804		57	26	0	0	0	0	0	2	23	0	0	31	8
ST. CROIX CO SO	11673	12	272	25	0	0	0	0	15	5	4	1	1	247	190
HUDSON PD	1542	12	107	20	0	0	0	1	2	13	3	1	87	51	
NEW RICHMOND PD	1278	12	63	39	0	0	0	0	1	35	3	0	0	24	11
COUNTY TOT.	14493		442	84	0	0	0	1	18	53	10	2	358	252	
SAUK CO SO	8019	12	296	70	1	0	0	0	1	31	27	10	0	226	149
BARABOO PD	2080	12	213	63	0	0	0	2	1	4	48	8	0	150	60
LAKE DELTON PD	321	12	17	4	0	0	0	0	0	1	3	0	0	13	10
REEDSBURG PD	1375	12	121	76	0	0	0	0	1	48	24	3	0	45	32
SAUK-PRAIRIE PD	1374	11	124	5	0	0	0	0	0	0	5	0	0	119	90
COUNTY TOT. (EST)	13169		782	218	1	0	0	2	3	81	107	21	0	564	349
SAWYER CO SO	3835	12	121	46	0	0	0	0	2	18	18	6	2	75	28
COUNTY TOT.	3835		121	46	0	0	0	0	2	18	18	6	2	75	28
SHAWANO CO SO	9295	12	23	7	0	0	0	0	1	1	3	2	0	16	4
SHAWANO PD	1701	12	254	122	0	0	0	0	3	10	105	4	0	132	86
COUNTY TOT.	10996		277	129	0	0	0	0	4	11	108	6	0	148	90
SHEBOYGAN CO SO	13599	12	320	80	1	0	0	0	0	16	55	8	0	240	148
PLYMOUTH PD	1627	12	163	51	0	0	0	0	0	3	48	0	0	112	51
SHEBOYGAN PD	12811	12	1904	557	0	0	0	4	6	84	426	33	4	1347	865
SHEBOYGAN FALLS PD	1531	1	2	2	0	0	0	0	0	0	2	0	0	0	0
COUNTY TOT. (EST)	29568		2411	712	1	0	0	4	6	103	553	41	4	1699	1074
TAYLOR CO SO	5245	11	231	45	0	0	0	0	0	13	29	3	0	186	97
MEDFORD PD	1061	12	44	13	0	0	0	0	1	3	8	1	0	31	28
COUNTY TOT. (EST)	6306		296	62	0	0	0	0	1	17	40	4	0	234	134
TREMPEALEAU CO SO	7937	12	31	18	0	0	0	0	1	4	11	2	0	13	0
COUNTY TOT.	7937		31	18	0	0	0	0	1	4	11	2	0	13	0
VERNON CO SO	6501	12	37	13	0	0	0	0	0	9	3	0	1	24	17
VIROQUA PD	822	12	27	3	0	0	0	0	0	2	1	0	0	24	12
COUNTY TOT.	7323		64	16	0	0	0	0	0	11	4	0	1	48	29
VILAS CO SO	4245	12	162	59	0	0	0	0	3	24	26	6	0	103	35
COUNTY TOT.	4245		162	59	0	0	0	0	3	24	26	6	0	103	35
WALWORTH CO SO	10654	12	253	67	0	0	0	1	0	31	26	8	1	186	92
DELAVAN PD	1756	12	277	69	0	0	0	2	0	13	54	0	0	208	110
DELAVAN TOWN PD	1183	12	60	17	0	0	0	0	0	5	9	3	0	43	17
EAST TROY PD	721	8	32	14	0	0	0	0	0	2	11	1	0	18	5
EAST TROY TOWN PD	1233	12	28	18	0	0	1	0	1	10	6	0	0	10	3
ELKHORN PD	1211	12	87	26	0	0	0	0	0	1	23	2	0	61	26
LAKE GENEVA PD	1295	12	271	73	0	0	0	0	0	0	67	6	0	198	113
UW-WHITEWATER	0	11	15	0	0	0	0	0	0	0	0	0	0	15	10
WHITEWATER PD	1226	12	251	54	0	0	0	0	2	9	42	1	0	197	101
WILLIAMS BAY PD	434	12	14	3	0	0	0	0	0	1	2	0	0	11	7
COUNTY TOT. (EST)	19713		1305	348	0	0	1	3	3	73	246	22	1	957	487
WASHBURN CO SO	3782	12	170	91	0	0	0	1	2	29	53	3	3	79	30
COUNTY TOT.	3782		170	91	0	0	0	1	2	29	53	3	3	79	30

TABLE 6—NUMBER OF JUVENILE ARRESTS, 1982, CONTINUED

LAW ENFORCEMENT AGENCY	JUVENILE POPULATION	NUMBER OF MONTHS REPORTED	TOTAL JUVENILE ARRESTS	TOTAL PART I ARRESTS	MURDER	NEGLIGENT MANSLAUGHTER	FORCIBLE RAPE	ROBBERY	AGGRAVATED ASSAULT	BURGLARY	THEFT	MOTOR VEHICLE	ARSON	TOTAL PART II ARRESTS	TOTAL STATUS ARRESTS	
WASHINGTON CO SO	15350	12	735	139	0	1	0	1	2	63	68	3	1	596	355	
GERMANTOWN PD	3622	11	97	42	0	0	2	1	1	5	33	0	0	55	21	
HARTFORD PD	2277	12	200	62	0	0	0	0	0	6	54	1	0	138	47	
KEWASKUM PD	757	12	84	6	0	0	0	0	0	4	2	0	0	78	33	
WEST BEND PD	6824	12	748	272	0	0	0	0	0	0	24	230	13	3	476	
COUNTY TOT. (EST)	28830		1873	525	0	1	2	3	4	98	392	19	5	1348	731	
WAUKESHA CO SO	27502	12	1250	234	0	0	6	6	14	94	83	29	2	1016	675	
BROOKFIELD PD	10398	12	743	182	0	0	0	0	1	10	170	1	0	561	89	
BUTLER PD	519	12	115	22	0	0	0	0	0	0	18	1	3	93	43	
CHENEQUA PD	156	12	3	3	0	0	0	0	0	0	3	0	0	0	0	
DELAFIELD PD	1229	12	34	16	0	0	0	0	0	0	7	0	0	18	12	
ELM GROVE PD	1668	12	176	13	0	0	0	0	0	11	3	2	0	163	71	
HARTLAND PD	2051	12	104	33	0	0	0	0	0	6	7	1	0	71	34	
MEMONONEE FALLS PD	8291	12	454	153	0	0	0	1	3	28	118	2	1	301	110	
MUKWONAGO PD	1408	12	120	34	0	0	0	0	0	6	22	5	1	86	33	
MUSKEGO PD	5407	12	270	48	0	0	0	0	0	0	6	22	5	1	86	33
NEW BERLIN PD	9721	12	421	72	0	0	0	0	2	10	36	0	0	222	94	
OCONOMOWOC PD	2821	12	496	108	0	0	0	0	0	14	50	5	3	349	175	
OCONOMOWOC TOWN PD	2441	12	57	14	0	0	0	0	2	16	87	0	1	388	156	
PEWAUKEE PD	1109	12	106	51	0	0	0	0	0	0	13	1	0	43	9	
SUMMIT PD	1179	2	60	8	0	0	0	0	0	5	41	2	0	55	28	
WAUKESHA PD	15341	12	1827	498	0	0	0	0	0	2	4	5	0	52	37	
COUNTY TOT. (EST)	91241		6536	1529	0	0	6	23	22	399	992	67	20	5007	2296	
WAUPACA CO SO	8933	12	205	40	0	0	0	0	0	19	11	10	0	165	122	
CLINTONVILLE PD	1098	12	176	42	0	0	0	0	0	1	38	3	0	134	73	
NEW LONDON PD	1895	12	238	85	0	0	0	0	0	8	77	0	0	153	61	
WAUPACA PD	1168	11	171	60	0	0	0	0	0	15	40	5	0	111	50	
COUNTY TOT. (EST)	13094		806	232	0	0	0	0	0	44	170	18	0	573	311	
WAUSHARA CO SO	5203	12	200	67	0	0	0	0	0	1	25	36	5	0	133	54
COUNTY TOT.	5203		200	67	0	0	0	0	0	1	25					

CONTINUED

1 OF 2

Statewide Arrests, by Offense

The following two tables present statewide data on adult and juvenile arrests in Wisconsin during 1982. The tables are listings of the UCR adult and juvenile arrest forms that are submitted by law enforcement agencies each month. As such, they show the total number of adult and juvenile arrests for each offense by sex, age, and race. Like other state and county level data presented in this report, these tables present estimated totals. Note that the statewide arrests in the 1981 Wisconsin Crime and Arrests report showed actual, reported data, rather than estimates. In order to make comparisons between these tables and the analogous tables from the 1981 report, the 1981 data must first be adjusted as described in the 1981 report.

Note that the state total in these listings is lower than the corresponding totals shown in Tables 5 and 6. This is because of increases or decreases made to Tables 5 and 6, at the request of local jurisdictions, which could not be included in the detailed statewide listings.

STATEWIDE ADULT ARREST LISTING, 1982

		18	19	20	21	22	23	24	25-29	30-34	35-39	40-44	45-49	50-54	55-59	60-64	65 & OVER	TOTAL	WHITE	BLACK	AMER. IND.	ASIAN	HISP.	NON-HISP.	
1A	MURDER NON-NEGL. MANSLAUGHTER	M	7	12	8	6	3	4	4	25	32	14	11	8	7	2	3	2	148	99	68	4	0	13	152
		F	1	1	2	1	1	1	1	5	3	2	3	2	0	0	0	0	23						
1B	MANSLAUGHTER BY NEGLIGENCE	M	1	0	0	3	2	1	1	4	4	1	2	0	1	2	0	0	22	24	3	0	0	0	20
		F	0	0	1	1	0	0	0	1	0	0	0	0	0	0	0	0	5						
2	FORCIBLE RAPE	M	21	20	14	17	9	17	18	67	49	26	21	11	1	2	4	3	301	183	112	6	1	20	275
		F	0	0	0	0	0	1	0	0	0	0	0	0	0	0	0	0	1						
3	ROBBERY	M	138	102	103	86	87	62	67	197	96	40	22	8	3	2	1	0	1014	516	577	22	0	88	1002
		F	11	8	11	5	9	8	7	20	5	15	2	0	0	1	0	0	102						
4	AGGRAVATED ASSAULT	M	115	128	156	111	136	92	114	410	259	157	68	54	36	24	10	12	1886	1318	716	68	4	138	1706
		F	14	17	11	16	11	22	11	47	25	26	10	6	1	1	1	2	221						
5	BURGLARY, BREAKING AND ENTERING	M	901	683	468	302	244	185	196	604	206	103	47	27	15	15	2	3	4002	3145	939	87	5	123	3816
		F	58	22	8	13	12	7	9	25	10	9	0	1	0	0	0	0	174						
6	THEFT (EXCEPT MOTOR VEHICLE)	M	2205	1552	1232	895	720	595	505	1917	1242	812	482	407	420	291	243	529	14048	16108	4847	323	82	625	20150
		F	577	516	461	369	362	311	292	1181	695	561	394	327	346	284	212	424	7312						
7	MOTOR VEHICLE THEFT	M	179	109	99	61	50	38	44	89	67	29	21	7	4	3	3	6	810	651	185	32	0	25	763
		F	5	6	5	13	2	0	7	5	4	5	3	0	0	0	1	2	58						
8	OTHER ASSAULT	M	262	267	229	235	268	208	219	747	510	246	142	95	56	31	19	13	3546	2610	1196	190	5	151	3644
		F	28	47	31	33	34	20	22	101	47	43	23	15	4	4	2	1	455						
9	ARSON	M	18	8	10	11	1	2	9	20	14	10	7	1	1	0	2	1	116	150	20	2	0	8	133
		F	31	4	0	0	0	0	3	5	7	3	1	0	1	0	0	0	56						
10	FORGERY, COUNTERFEITING	M	54	89	85	76	66	42	88	204	133	51	35	9	17	7	3	4	964	1058	338	20	0	17	1295
		F	44	52	38	38	29	37	27	90	34	38	11	6	2	2	0	1	451						
11	FRAUD	M	131	114	132	154	153	140	118	527	429	280	200	115	110	58	27	18	2707	3745	712	78	3	32	4137
		F	50	72	105	103	114	131	118	434	284	197	110	49	32	21	2	9	1832						
12	EMBEZZLEMENT	M	12	4	1	2	3	1	4	5	11	0	0	3	1	0	0	0	47	53	2	6	0	0	53
		F	0	1	0	0	0	0	1	0	0	0	0	1	0	0	0	0	14						
13	STOLEN PROPERTY BUYING, RECEIV. POSSESSING	M	96	92	82	46	38	27	20	85	36	30	14	7	5	4	3	1	587	519	152	12	0	25	628
		F	12	6	25	8	4	7	4	17	3	4	1	0	0	0	0	2	96						
14	VANDALISM	M	680	464	378	319	275	208	180	647	339	172	78	58	32	14	12	4	3861	3474	686	79	2	109	3966
		F	42	43	37	29	29	20	13	65	35	30	16	5	6	5	2	1	339						
15	WEAPONS	M	249	226	201	180	168	175	168	562	389	233	117	74	56	43	23	24	2888	2270	1069	70	2	183	2649
		F	24	26	34	40	40	35	34	105	74	37	21	15	12	10	13	4	523						
16	PROSTITUTION	M	17	18	21	27	24	16	34	137	92	71	38	33	24	23	14	8	597	636	874	5	9	26	1452
		F	1	4	3	2	1	4	2	6	3	1	1	2	2	1	2	0	927						
17	SFX OFFENSE (EXCEPT FORCI- BLE RAPE)	M	80	49	60	52	60	54	57	180	138	129	74	68	36	20	10	16	1083	946	151	15	6	43	987
		F	1	4	3	2	1	4	2	6	3	1	1	2	1	2	0	35							
18	DRUG ABUSE VIOLATIONS	M	754	703	718	623	570	501	473	1394	686	190	107	50	16	11	4	0	6802	6402	1524	82	3	182	7130
		F	128	124	125	101	96	92	91	280	88	40	13	13	10	3	2	1	1208						
18 0	SALES, MANUFACTURING	M	93	106	129	128	92	104	88	312	184	61	25	15	7	5	1	0	1349	1241	344	7	0	45	1378
		F	7	11	24	17	23	19	21	67	25	10	4	7	4	1	1	0	243						
18A	OPIMUM, COCAINE DERIVATIVES	M	8	13	15	28	20	27	23	76	80	15	6	4	1	0	0	0	318	317	45	0	0	16	281
		F	2	2	2	0	5	3	7	11	5	4	1	1	0	0	0	0	44						
18B	MARIJUANA SALES MANUF.	M	70	64	93	76	59	60	56	161	87	18	11	5	4	4	1	0	771	726	172	5	0	15	809
		F	2	6	12	14	16	13	12	39	10	4	1	0	1	0	0	0	132						
18C	SYNTHETIC NARCOTIC SALES MANUF.	M	6	19	5	5	4	9	1	33	22	22	6	5	1	0	0	0	138	106	68	0	0	11	145
		F	1	1	5	0	0	2	1	10	7	0	0	5	3	0	1	0	36						
18D	OTHER DANGEROUS DRUG SALES	M	9	9	16	18	9	7	7	42	19	6	1	1	1	0	0	0	146	116	58	2	0	3	167
		F	2	2	5	3	2	1	1	6	3	2	2	0	1	0	0	0	30						
18D5	POSSESSION SUBTOTAL	M	661	597	589	496	478	397	385	1082	502	128	83	35	9	6	3	0	5452	5160	1180	75	3	137	5753
		F	121	113	101	84	72	73	70	213	63	30	9	6	6	2	1	1	966						
18E	OPIMUM, COCAINE POSSESSION	M	9	10	26	15	18	26	25	59	35	7	9	3	0	0	0	0	242	228	53	2	0	4	257
		F	4	2	4	7	4	3	2	10	2	1	0	0	1	0	0	0	40						
18F	MARIJUANA POSSESSION	M	622	572	544	458	422	358	340	937	429	110	61	31	6	4	3	0	4897	4677	987	63	2	123	5110
		F	107	103	93	72	61	66	64	129	49	22	5	5	3	2	1	1	833						
18G	SYNTHETIC NARCOTICS POSSESSION	M	13	7	6	11	16	2	5	35	23	6	11	1	2	1	0	0	141	110	75	2	0	8	171
		F	3	5	0	1	2	2	2	14	11	1	4	0	1	0	0	0	46						
18H	OTHER DANGEROUS DRUG POSSESSION	M	17	8	13	11	21	11	15	51	16	5	2	0	1	1	0	0	172	146	65	7	1	2	215
		F	7	4	4	4	5	2	2	10	1	6	0	1	1	0	0	0	47						
19	GAMBLING TOTAL	M																							

STATEWIDE JUVENILE ARREST LISTING, 1982

		9 and under	10-12	13-14	15	16	17	TOTAL 18 and under	WHITE	BLACK	AMER. IND.	ASIAN	HISP.	NON- HISP.	
1A	MURDER NON-NEGL. MANSLAUGHTER	M	0	0	1	1	1	9	12	3	8	1	0	1	11
1B	MANSLAUGHTER BY NEGLIGENCE	M	0	0	0	1	1	2	4	3	0	1	0	0	4
2	FORCIBLE RAPE	M	0	3	18	22	16	15	74	38	36	0	0	4	67
3	ROBBERY	M	3	47	161	114	135	198	657	266	436	11	0	65	638
4	AGGRAVATED ASSAULT	M	8	32	104	94	110	176	524	410	212	25	0	15	548
5	BURGLARY, BREAKING AND ENTERING	M	75	450	976	993	1042	1208	4745	4008	755	252	3	175	4649
6	THEFT (EXCEPT MOTOR VEHICLE)	M	603	1753	3381	2443	2489	2498	13167	14470	3034	297	27	312	17230
7	MOTOR VEHICLE THEFT	M	4	36	222	474	332	321	1388	1361	164	64	1	29	1388
8	OTHER ASSAULT	M	26	116	306	219	273	333	1274	1005	498	108	0	61	1456
9	ARSON	M	34	51	51	33	21	22	211	202	18	5	0	5	210
10	FORGERY, COUNTERFEITING	M	1	18	41	49	98	66	273	351	20	5	0	3	349
11	FRAUD	M	1	8	19	63	47	58	197	249	47	6	0	3	295
12	EMBEZZLEMENT	M	0	1	2	1	2	8	8	1	0	0	0	0	7
13	STOLEN PROPERTY BUYING, RECEIV. POSSESSING	M	4	37	145	128	184	183	683	602	151	11	0	22	720
14	VANDALISM	M	394	662	1048	648	718	818	4288	4269	276	135	4	69	4438
15	WEAPONS	M	9	112	237	215	220	265	1059	849	286	26	1	31	1056
16	PROSTITUTION	M	0	0	0	0	12	8	20	22	114	1	0	1	131
17	SEX OFFENSE (EXCEPT FORCIBLE RAPE)	M	13	77	150	77	83	79	480	382	144	2	1	8	499
18	DRUG ABUSE VIOLATIONS	M	3	27	277	384	630	804	2127	2340	232	35	0	36	2450
18.0	SALES, MANUFACTURING SUBTOTAL	M	1	4	41	46	60	89	240	235	39	4	0	1	247
18A	OPIUM, COCAINE DERIVATIVES	M	0	0	0	0	1	11	12	10	3	3	0	0	12
18B	MARIJUANA SALES, MANUF.	M	1	2	32	35	47	65	181	186	21	0	0	1	181
18C	SYNTHETIC NARCOTIC SALES/MANUF.	M	0	1	1	4	1	3	10	9	4	0	0	0	11
18D5	POSSESSION SUBTOTAL	M	2	23	236	339	571	715	1886	2105	192	31	0	35	2203
18D	OTHER DANGEROUS DRUG SALES	M	0	1	8	7	11	10	37	30	11	1	0	0	42
18E	OPIUM, COCAINE POSSESSION	M	0	0	0	1	4	7	12	16	0	0	0	0	15
18F	MARIJUANA POSSESSION	M	2	20	209	316	548	687	1782	1982	177	31	0	30	2072
18G	SYNTHETIC NARCOTICS POSSESSION	M	0	0	3	5	3	5	16	26	1	0	0	0	27
18H	OTHER DANGEROUS DRUG POSSESSION	M	0	3	24	17	16	16	76	80	14	0	0	5	89
19	GAMBLING TOTAL	M	0	0	0	4	6	6	16	3	14	0	0	1	16
19C	ALL OTHER GAMBLING	M	0	0	0	4	6	6	16	3	14	0	0	1	16
20	OFFENSE AGAINST FAMILY, CHILDREN	M	8	4	8	2	15	8	45	68	9	8	0	0	74
21	DRIVING UNDER INFLUENCE	M	0	2	6	14	126	432	580	683	7	5	0	3	685
22	LIQUOR LAWS	M	4	48	454	960	2341	3706	7513	11459	105	79	4	60	11356
24	DISORDERLY CONDUCT	M	162	571	1220	1073	1410	1836	6273	6532	832	250	4	142	7166
25	VAGRANCY	M	0	5	2	3	8	14	32	47	0	0	0	0	47
26	ALL OTHER OFFENSES (EXCEPT TRAFFIC)	M	191	611	1410	1401	1978	2567	8158	9221	789	334	6	198	10152
28	CURFEW, LOITERING LAWS	M	6	120	620	802	989	775	3313	3275	1125	177	2	145	4168
29	RUN-AWAYS	M	47	250	998	1034	1105	637	4071	8217	326	273	13	110	8383
	TOTAL		1871	6324	16861	15952	19624	21556	82188	70368	9643	2111	66	1499	77889

GLOSSARY

ADULT: A person 18 years of age or older.

ARREST: Taking into physical or other legal custody for committing an offense in the local reporting jurisdiction. Arrests for all criminal offenses are scored. Arrests for ordinance violations are included. Arrests for traffic offenses, with the exception of driving under the influence of intoxicants, are not scored. Included are those persons released without having been formally charged (See Juvenile Arrest).

ARREST RATE: The number of arrests for a particular offense, or group of offenses, per 100,000 population. The formula is:

$$\frac{\text{Number of Arrests}}{\text{Population}} \times 100,000$$

CLEARANCE: An offense is cleared, or solved for crime reporting purposes, when at least one person is arrested, charged with commission of the offense and turned over to the court for prosecution. Provision is also made for clearance in certain "exceptional" situations.

CLEARANCE RATE (TOTAL): The number of clearances divided by the total number of offenses, expressed as a percent. The formula is:

$$\frac{\text{Number of Clearances}}{\text{Number of Offenses}} \times 100\%$$

Offenses are reported as they become known to law enforcement agencies. Clearances are scored as they are made. Therefore, it is possible for the clearance rate to exceed 100 percent for a time period. Both clearances by arrest and exceptional clearances are included.

CRIME FACTORS: Historically, the causes and origins of crime have been the subjects of investigation by many disciplines. No definitive conclusions have yet been reached; many factors affect the volume and type of crime that occurs from place to place. Caution should therefore be exercised in comparing statistical data of individual communities or counties solely on the basis of their population.

More appropriate use can be made of the statistics by relating the experience of a particular area to group averages, or by employing a ranking procedure, and encompassing both crime and other socio-economic information.

CRIME INDEX: The total of eight serious offenses used as indicators of crime. Crime Index offenses are murder and nonnegligent manslaughter, forcible rape, robbery, aggravated assault, burglary, theft, motor vehicle theft and arson. Definitions of each of these offenses are given in the section "Statewide Index Offenses and Arrests."

JUVENILE: A person under 18 years of age.

JUVENILE ARREST: Juveniles are scored as having been "arrested" for purposes of Uniform Crime Reporting procedures, although under Wisconsin Statutes law enforcement custody of a child is not legally considered an arrest. Arrests, in the case of juveniles, include those who have committed a crime and are taken into custody under circumstances such that were the juvenile an adult, an arrest would be scored. All violations by juveniles where some police or other official action is taken beyond a mere admonishment, including status offenses, are included. Law enforcement contacts with juveniles where no offense has been committed are not scored as arrests. Juveniles taken into custody for their own protection, such as in neglect cases, are not scored as being arrested if they have not committed a crime. (See Arrest.)

JUVENILE CRIME: Two different measures are available through Uniform Crime Reporting. They are juvenile arrests (number, rate, and percentage of total arrests), and juvenile involvement in clearances (juvenile clearance rate).

JUVENILE INVOLVEMENT IN CLEARANCES: The percent of clearances for a given offense involving only juveniles.

$$\frac{\text{Number of Clearances Involving Only Juveniles}}{\text{Total Number of Clearances}} \times 100\%$$

OFFENSE RATE: The number of known offenses per 100,000 population. The formula is:

$$\frac{\text{Number of Offenses}}{\text{Population}} \times 100,000$$

Offense rates per population unit are employed to remove the effect of differing sizes of law enforcement service areas, permitting the examination of reported crime on an equalized population basis. "Per 100,000 population" is generally utilized to preclude rates for infrequently occurring offenses from being unmeaningfully low.

More sophisticated crime or victimization rate measures may also be utilized, such as residential burglaries per 100,000 residences, motor vehicle thefts per 100,000 registered vehicles, or forcible rapes per 100,000 females in typically victimized age groups.

PERCENT CHANGE: The formula is:

$$\frac{\text{Value in Current Period} - \text{Value in Base Period}}{\text{Value in Base Period}} \times 100\%$$

POPULATION: Totals as well as juvenile and adult sub-totals are based on Official Population Estimates for 1982, Wisconsin Department of Administration, Demographic Services Center. Population for 1981 (used in this report for computing 1981 rates) was population reported in the 1980 census.

END