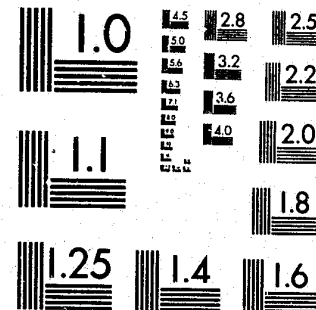


National Criminal Justice Reference Service

ncjrs

This microfiche was produced from documents received for inclusion in the NCJRS data base. Since NCJRS cannot exercise control over the physical condition of the documents submitted, the individual frame quality will vary. The resolution chart on this frame may be used to evaluate the document quality.



MICROCOPY RESOLUTION TEST CHART
NATIONAL BUREAU OF STANDARDS-1963-A

Microfilming procedures used to create this fiche comply with the standards set forth in 41CFR 101-11.504.

Points of view or opinions stated in this document are those of the author(s) and do not represent the official position or policies of the U. S. Department of Justice.

National Institute of Justice
United States Department of Justice
Washington, D. C. 20531

1/13/84

PENNSYLVANIA
BUREAU OF CORRECTION

1982 ANNUAL STATISTICAL REPORT



DICK THORNBURGH
Governor

WILLIAM W. SCRANTON, III
Lieutenant Governor

RONALD J. MARRS
Commissioner

ERIKIND DE RAMUS
Deputy Commissioner

Division of Planning, Planning and Research
LAW T. SHAWARD, II, Director

91670

91670

PENNSYLVANIA BUREAU OF CORRECTION
PO BOX 598
CAMP HILL, PENNSYLVANIA 17011

1982 ANNUAL STATISTICAL REPORT

Division of Finance, Planning & Research
Lee T. Bernard, II
Director

John H. Mease, Chief
Records & Statistics Section

Michael P. Cannon, Chief
Data Processing Section

91670

U.S. Department of Justice
National Institute of Justice

This document has been reproduced exactly as received from the person or organization originating it. Points of view or opinions stated in this document are those of the authors and do not necessarily represent the official position or policies of the National Institute of Justice.

Permission to reproduce this copyrighted material has been granted by
Pennsylvania Bureau of
Corrections
to the National Criminal Justice Reference Service (NCJRS).

Further reproduction outside of the NCJRS system requires permission of the copyright owner.

TABLE OF CONTENTS

	<u>PAGE</u>
PREFACE	iii
INTRODUCTION	1
Legislative Mandate	1
Administrative Responsibility	1
Purpose of the Report	1
Definitions	2
CRIMES AND OFFENSE CATEGORIES	4-7
NARRATIVE SUMMARY	8
POPULATION - GENERAL, BY INSTITUTION	9-19
POPULATION - RACE AND SEX	20-21
POPULATION - BY OFFENSE	22-24
POPULATION - BY COMMITTING COUNTY	25-27
RECEPTIONS	28
COURT COMMITMENTS	29-33
INTERNAL POPULATION MOVEMENTS	34-35
PAROLES	36-37
TIME SERVED STATISTICS	38-43
GENERAL STATISTICS ON LIFERS	44-48
EXECUTION CASES	49
ESCAPES	50
FURLOUGHS	51
ASSAULTS	52
COST PER DAY	53
COMPLEMENT	54

RONALD J. MARKS
Commissioner



ERSKIND DERAMUS
Deputy Commissioner

PENNSYLVANIA BUREAU OF CORRECTION
P. O. BOX 598
CAMP HILL, PENNSYLVANIA 17011
(717) 787-7480

May, 1983

PREFACE

I am pleased to present the Pennsylvania Bureau of Correction's 1982 Annual Statistical Report. This report provides pertinent information concerning the size and characteristics of the inmate population.

During 1982, the Bureau of Correction experienced an increase of 12.2 percent in inmate population. At the close of 1982, 2,842 inmates were double celled.

During the past 2 years inmate population has increased by 25%. This overcrowding, which is part of national phenomenon, has severely strained the resources and capacities of our institutions. The next few years will be a time of challenge for the Bureau of Correction as we are forced to accommodate even larger populations.

Respectfully submitted,

Ronald J. Marks
Ronald J. Marks
Commissioner

INTRODUCTION

This report presents a descriptive, statistical summary of the inmates confined within the Pennsylvania Bureau of Correction for the calendar year 1982.

The data provided in the Pennsylvania Bureau of Correction's 1982 Annual Statistical Report are for the most part self-explanatory. A summary narrative has been provided to quickly identify major points of interest.

Legislative Mandate

The Pennsylvania Bureau of Correction was established by Sections 911, 912, 913, 914, 914.1, 915 and 916 of the Act of April 9, 1929 (P.L. 177, No. 175). The Bureau of Correction is currently an administrative agency of the Office of the General Counsel (Act of October 15, 1980; P.L. 950, No. 164).

Administrative Responsibility

The Bureau of Correction operates seven state correctional institutions, two state regional correctional facilities, sixteen community service centers, an inmate population in excess of 10,500 and a staff in excess of 3,200.

Definitions

1. **State correctional institution** - These institutions represent the Bureau's major correctional facilities, located at Camp Hill, Dallas, Graterford, Huntingdon, Muncy, Pittsburgh and Rockview. The State Correctional Institution at Muncy is a female institution. These institutions receive offenders with a maximum sentence of 2 years or more.

2. **State regional correctional facility** - These are specialized facilities in two of the Commonwealth's six "Common Human Service Regions" which usually receive inmates sentenced from six months to two years. The two regional correctional facilities are located at Greensburg and Mercer.

3. **Community service centers** - The Bureau of Correction provides residential facilities for adult offenders as a transitional step between release from a state institution and return to independent living within the community. The centers provide custodial structure and a strong emphasis on guidance and counseling. This program provides selected offenders a continuum of the rehabilitative process by the state and regional correctional facilities. The centers further serve as an essential reintegration phase for community return. The Bureau of Correction currently operates sixteen (16) such centers; two of which are exclusively for female offenders.

4. **Group homes** - Private or publicly owned facilities who offer specialized rehabilitative treatment modalities for qualified resident inmates of the Bureau of Correction's Community Services Division. These facilities compliment the Community Service Center residency program and must provide twenty-four (24) hour supervision, living quarters and specialized services that aid in the transition and reintegration of the resident into the community.

5. **Specified population movements** - Generally, most admission and release movements used in this report are self-explanatory. To aid the reader of this report, certain movements are further defined as follows:

- a. **Authorized temporary absences** - Court authorized appearances for inmate writs, hearings, funerals, etc. Always under jurisdiction of the local court.
- b. **Bureau transfers** - generally referred to as 'intrasystem' transfers between state correctional institutions, state regional correctional facilities, community service centers, and group homes under the jurisdiction of the Bureau of Correction. Includes all permanent and temporary transfers within the Bureau of Correction.
- c. **Detained by other authorities** - Generally represents Bureau of Correction inmates who were arrested while on furlough or captured while on escape status and are facing new charges, or serving another sentence in another jurisdiction, or are suspects in a crime and are being elsewhere pending transfer back to the Bureau of Correction.

- d. **Detentioners** - Inmates awaiting trial or sentencing after a trial, but in all cases without a sentence transferred from a county prison and detained in the Bureau of Correction for medical or security reasons.
- e. **Furlough** - Inmates are released on furlough for purpose of family visits, job applications, and pre-release planning. Inmates on furlough are not supervised but are still under the jurisdiction of the Bureau of Correction.
- f. **Interstate compact** - Inmates transferred to the Bureau of Correction to serve time due another state under the Interstate Compact for Corrections (ICC) or an inmate under the ICC returning to the state which the time is being served.
- g. **Intersystem transfers** - Includes transfers between state correctional facilities (regionals included) and county prisons, state and local mental hospitals, and other state and jurisdictions.
- h. **Miscellaneous** - Generally includes inmates released to and received from authorities for various reasons, and administrative releases to adjust and or correct inmate population counts.
- i. **Weekenders** - Inmates committed to service time only on weekends or when not working. At the present time, weekend sentences are only served at the Greensburg State Regional Correctional Facility.

CRIMES AND OFFENSE CATEGORIES

Source

In order to enable the reader to better comprehend the definition of crimes and offenses referred to in this report, all offense classifications found under the "Crime Index Offenses" (formerly Part I crimes) have been defined. The majority of definitions are taken from the Pennsylvania Consolidated Statutes, Title 18, "Crimes and Offenses," 1980 Edition, though some definitions have been obtained from the Uniform Crime Report: Commonwealth of Pennsylvania, 1980 Annual Report, for purpose of clarity and offense specificity.

Differentiation of Crimes

For reporting purposes, crimes are broken down into two major categories: (1) Crime Index Offenses (formerly Part I Offenses) and (2) Part II Offenses. According to the Pennsylvania State Police, Crime Index Offenses are...

...crimes that are considered by law enforcement to be the most serious crimes that readily come to the attention of police and occur with a frequency great enough to be reported as a separate category. Crime Index Offenses are used nationally as a basis for comparison of criminal activity.

Crime Index Offenses are further differentiated into major categories. The Crime Index categories of murder, nonnegligent manslaughter, forcible rape, robbery and aggravated assault comprise the general category of "Violent Crime," while the categories of burglary, larceny-theft, and motor vehicle theft comprise the general category of "Property Crime."

Those offenses which are not classified as Index Crime Offenses are simply classified as Part II offenses. There are 19 distinct Part II Offense categories; however, for purposes of brevity, all categories are not included in the commitment table, nor are they defined.

Definitions of Crime Index Offenses

Criminal homicide

- (a) Offense defined - a person is guilty of criminal homicide if he intentionally, knowingly, recklessly or negligently causes the death of another human being.
- (b) Classification - Criminal homicide shall be classified as murder, voluntary manslaughter, or involuntary manslaughter.

Murder

- (a) Murder of the first degree - A criminal homicide constitutes murder of the first degree when it is committed by an intentional killing.

- (b) Murder of the second degree - A criminal homicide constitutes murder of the second degree when it is committed while defendant was engaged as a principal or an accomplice in the perpetration of a felony.
- (c) Murder of the third degree - All other kinds of murder shall be murder of the third degree. Murder of the third degree is a felony of the first degree.

Voluntary manslaughter

- (a) General rule - a person who kills an individual without lawful justification commits voluntary manslaughter if at the time of the killing he is acting under a sudden and intense passion resulting from serious provocation by:
 - (1) the individual killed; or
 - (2) another whom the actor endeavors to kill, but he negligently or accidentally causes the death of the individual killed.

Involuntary manslaughter

- (a) General rule - A person is guilty of involuntary manslaughter when as a direct result of the doing of an unlawful act in a reckless or grossly negligent manner, or the doing of a lawful act in a reckless or grossly negligent manner, he causes the death of another person.

Rape

A person commits a felony of the first degree when he engages in sexual intercourse with another person not his spouse:

- (1) by forcible compulsion;
- (2) by threat of forcible compulsion that would prevent resistance by a person of reasonable resolution;
- (3) who is unconscious; or
- (4) who is so mentally deranged or deficient that such person is incapable of consent.

Robbery

- (a) Offense defined -
 - (1) A person is guilty of robbery if, in the course of committing a theft, he:
 - (I) Inflicts serious bodily injury upon another;
 - (II) Threatens another with or intentionally puts him in fear of immediate serious bodily injury;
 - (III) Commits or threatens immediately to commit any felony of the first or second degree;
 - (IV) Inflicts bodily injury upon another or threatens another with or intentionally puts him in fear of immediate bodily injury; or
 - (V) Physically takes or removes property from the person of another by force however slight.

- (2) An act shall be deemed "in the course of committing a theft" if it occurs in an attempt to commit theft or in flight after the attempt or commission.

Aggravated assault

- (a) **Offense defined** - A person is guilty of aggravated assault if he:
- (1) attempts to cause serious bodily injury to another, or causes such injury intentionally, knowingly or recklessly under circumstances manifesting extreme indifference to the value of human life;
 - (2) attempts to cause or intentionally, knowingly or recklessly causes serious bodily injury to a police officer making or attempting to make a lawful arrest;
 - (3) attempts to cause or intentionally or knowingly causes bodily injury to a police officer making or attempting to make a lawful arrest; or
 - (4) attempts to cause or intentionally or knowingly causes bodily injury to another with a deadly weapon.
- (b) **Grading** - Aggravated assault under paragraph (a) (1) and (a) (2) of this section is a felony of the second degree. Aggravated assault under paragraphs (a) (3) and (a) (4) of this section is a misdemeanor of the first degree.

Burglary

- (a) **Offense defined** - a person is guilty of burglary if he enters a building or occupied structure, or separately secured or occupied portion thereof, with intent to commit a crime therein, unless the premises are at the time open to the public or the actor is licensed or privileged to enter.

Larceny-theft

- (a) **Definition** - Larceny-theft is the unlawful taking or stealing of property or articles of value without the use of force, violence, or fraud. It includes crimes such as shoplifting, pocket-picking, purse-snatching, thefts from autos, theft of auto parts and accessories, bicycle theft, etc. For the purposes of Uniform Crime Reporting, this offense category does not include embezzlement, "con" games, forgery or worthless checks. Motor vehicle theft is a separate Index Crime and, therefore, is also excluded.

Motor vehicle theft

- (a) **Definition** - Motor vehicle theft is the illegal taking of a motor vehicle, or driving the vehicle without the owner's consent. Attempted motor vehicle thefts are included. This category includes theft of motor-driven vehicles, such as automobiles, trucks, buses, motorcycles, motor scooters, and snowmobiles. Specifically excluded is the temporary use when the vehicle is actually returned by the user, and lawful access to the vehicle has been granted or can be assumed.

Arson

- (a) **Endangering persons** - A person commits a felony of the first degree if he intentionally starts a fire or causes an explosion, whether on his own property or on that of another, and thereby recklessly places another person in danger of death or bodily injury.
- (b) **Endangering property** - A person commits a felony of the second degree if he:
- (1) Starts a fire or causes an explosion with intent of destroying or occupied structure of another;
 - (2) Intentionally starts a fire or causes an explosion, whether on his own property or on that of another and thereby recklessly places a building or occupied structure of another in danger of damage or destruction; or
 - (3) Starts a fire or causes an explosion with intent of destroying or damaging any property, whether his own or of another, to collect insurance for such loss.

NARRATIVE SUMMARY

Inmate Populations

For the second straight year Pennsylvania experienced significant growth in inmate population and was double celling 2,842 inmates at the close of 1982.

During 1982, population in the Bureau of Correction increased by 1,152 inmates or 12.2% from 9,420 to 10,572. This represents an average increase of 96 inmates per month.

Some major characteristics of the Bureau's inmate population are described below.

1. 44.9% are white.
2. 96.7% are males.
3. 28.2% are under twenty-five years of age.
4. 24.5% are serving time for robbery, 19.9% for murder (all types), and 17.6% for burglary.
5. Excluding regional correctional facilities, 34.5% and 9.0% are from Philadelphia and Allegheny counties respectively.
6. Excluding regional correctional facilities, 10.8% are serving life sentences.
7. Average age of inmate was 30.4.
8. 27.9% are serving minimum sentences greater than five years.

Receptions

During 1982, 5,167 inmates were received in the nine state and regional correctional facilities. Of all receptions, 75.6% were court commitments and 23.7% were returned by state and county paroling authorities.

Nearly one-half of all court commitments represented three offenses: burglary (21.3%) robbery (20.7%), and theft (9.1%). 71.7% of all court commitments were for Crime Index Offenses.

Excluding state regional correctional facilities, 47.9% of all court commitments were white and 91.4% were males. Nearly one-half of these court commitments were from three counties: Philadelphia (34.5%), Allegheny (9.0%), and Montgomery (7.0%).

Releases

During 1982, 3,860 inmates were paroled or reparaoled by state (3,067) and local (793) paroling authorities. Another 446 inmates were released unconditionally by expiration of maximum sentence (329) or by court order (117). These figures include inmates released to another sentence.

Inmates released from state correctional institutions served an average of two years, seven months, twenty-three days while inmates released from regional correctional facilities served an average of eleven months, four days.

TABLE 1

Inmate Populations Verses Rated Capacity as of December 31, 1982

Institution	Number of Inmates	Rated Capacity*	Percent of Capacity
Camp Hill	1,704	1,456	117.0
Dallas	1,367	1,052	129.9
Graterford	2,194	2,039	107.6
Greensburg	306	191	160.2
Huntingdon	1,513	1,171	129.2
Mercer	278	200	139.0
Muncy	333	308	108.1
Pittsburgh	1,312	1,170	112.1
Rockview	1,276	1,043	122.3
Community Service Centers	289	325	88.9
Total	10,572	8,955	118.1

* As of October, 1982

TABLE 2
Year-End Populations in the Bureau of Correction by Facility
1980 to 1982

Correctional Facility	December 31st			Change, 1981-82	
	1980	1981	1982	Amount	Percent
Camp Hill	1,258	1,467	1,704	237	16.2
Dallas	997	1,117	1,367	250	22.4
Graterford	1,930	2,129	2,194	65	3.1
Greensburg	258	322	306	-16	-5.0
Huntingdon	1,101	1,261	1,513	252	20.0
Mercer	157	240	278	38	15.8
Muncy	252	298	333	35	11.7
Pittsburgh	1,077	1,188	1,312	124	10.4
Rockview	959	1,123	1,276	153	13.6
Community Service Centers	249	269	280	11	4.1
Group Homes	5	6	9	3	50.0
Total	8,243	9,420	10,572	1,152	12.2

TABLE 3
Average Populations in the Bureau of Correction
1980 to 1982

Correctional Facility	1980	1981	1982	Change, 1981-82	
				Amount	Percent
Camp Hill	1,224	1,348	1,592	244	18.1
Dallas	1,000	1,041	1,261	220	21.1
Graterford	1,840	2,045	2,143	98	4.8
Greensburg	271	287	341	54	18.8
Huntingdon	1,079	1,172	1,390	218	18.6
Mercer	177	201	280	79	39.3
Muncy	246	283	330	47	16.6
Pittsburgh	1,091	1,167	1,266	99	8.5
Rockview	933	1,038	1,223	185	17.8
Community Service Centers	248	278	284	6	2.2
Group Homes	5	7	8	1	14.3
Total	8,114	8,867	10,118	1,251	14.1

TABLE 4

Month-End Populations in the Bureau of Correction
January, 1980 to December, 1982

Month	1980	1981	1982
January 31	7,865	8,311	9,518
February 28	7,920	8,386	9,642
March 31	8,008	8,418	9,776
April 30	8,040	8,645	9,922
May 31	8,083	8,760	10,011*
June 30	8,135	8,859	10,161
July 31	8,199	8,959	10,251
August 31	8,137	8,986	10,247
September 30	8,210	9,074	10,336
October 31	8,232	9,246	10,443
November 30	8,299	9,343	10,540
December 31	8,243	9,420	10,572

* This is the first time the Bureau's population exceeded 10,000 inmates.

Figure 1

POPULATIONS IN THE BUREAU OF CORRECTION, 1980 TO 1982

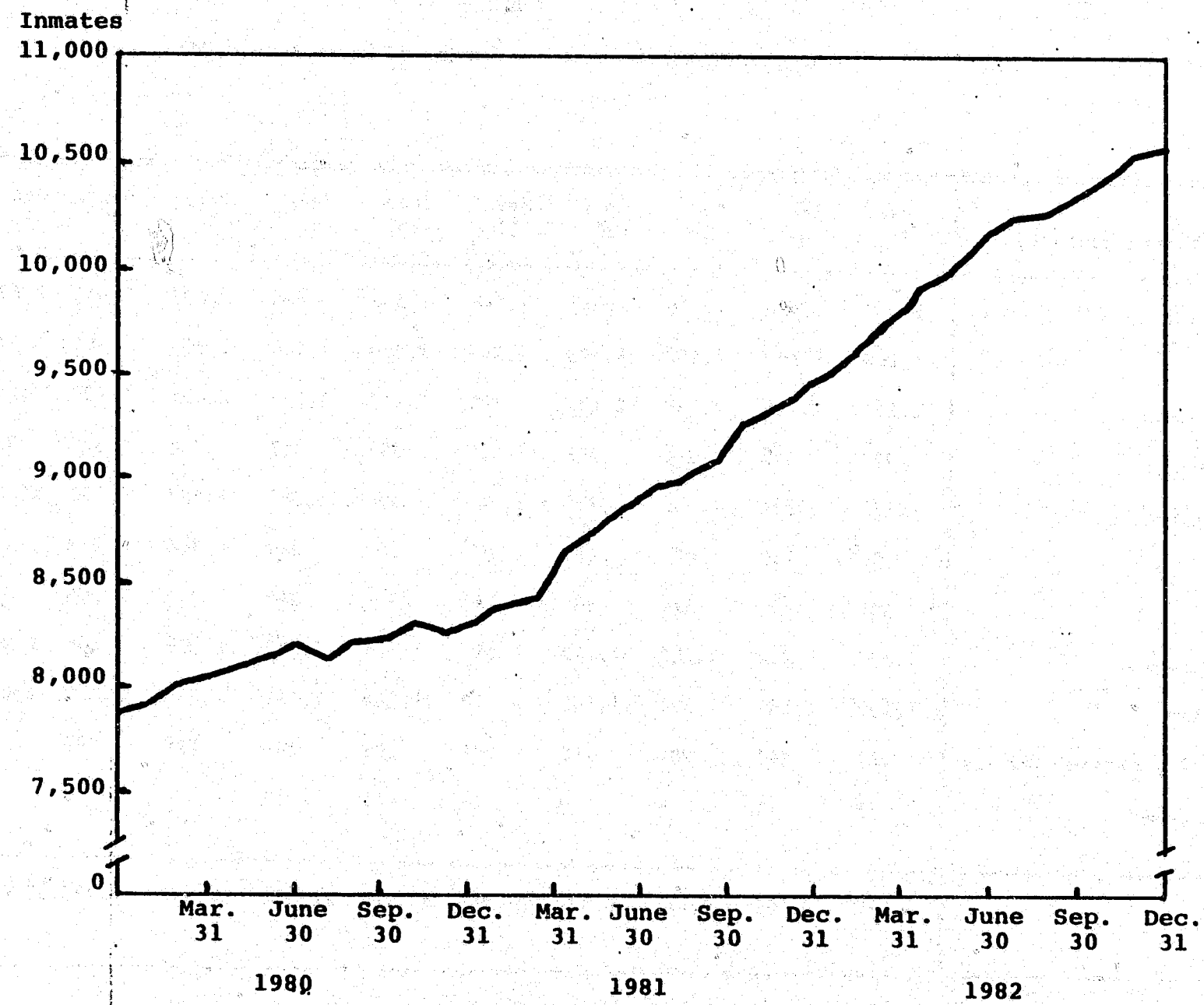


TABLE 5

Month-End Populations in the Bureau of Correction, 1982

Correctional Facility	Jan. 31	Feb. 28	Mar. 31	Apr. 30	May 31	June 30	July 31	Aug. 31	Sept. 30	Oct. 31	Nov. 30	Dec. 31
Camp Hill	1,467	1,494	1,516	1,544	1,546	1,583	1,608	1,623	1,649	1,675	1,696	1,704
Dallas	1,140	1,152	1,187	1,223	1,243	1,258	1,265	1,306	1,309	1,330	1,355	1,367
Graterford	2,121	2,126	2,131	2,157	2,153	2,152	2,136	2,086	2,137	2,149	2,172	2,194
Greensburg	338	345	334	341	329	352	357	348	347	352	345	306
Huntingdon	1,277	1,321	1,336	1,334	1,364	1,380	1,387	1,403	1,433	1,453	1,477	1,531
Mercer	251	269	272	295	291	282	290	288	272	274	295	278
Muncy	301	310	314	323	324	331	344	343	344	352	345	333
Pittsburgh	1,220	1,212	1,222	1,240	1,261	1,275	1,303	1,290	1,266	1,285	1,302	1,312
Rockview	1,137	1,142	1,179	1,191	1,212	1,244	1,243	1,253	1,272	1,265	1,263	1,276
Community Service Centers	261	267	281	266	277	293	306	298	299	296	282	280
Group Homes	5	4	4	8	11	11	12	9	8	12	8	9
Total	9,518	9,642	9,776	9,922	10,011	10,161	10,251	10,247	10,336	10,443	10,540	10,572

TABLE 6

**Month-End Populations in Bureau of Correction
January to March, 1983**

Facility	Jan. 31	Feb. 28	Mar. 31
Camp Hill	1,712	1,721	1,719
Dallas	1,368	1,362	1,360
Graterford	2,223	2,260	2,275
Greensburg	323	354	393
Huntingdon	1,542	1,550	1,575
Mercer	266	259	286
Muncy	340	344	362
Pittsburgh	1,307	1,346	1,356
Rockview	1,260	1,276	1,252
Community Service Centers	294	305	315
Group Homes	11	9	12
Total	10,646	10,786	10,905

TABLE 7

Age Distribution of Inmate Population on December 31, 1982, by Facility

	Camp Hill	Dallas	Grater- ford	Greens- burg	Hunting- don	Mercer	Muncy	Pitts- burgh	Rock- view	Community Service Centers	Total	Percent
Below 18	52	0	0	1	0	2	2	1	0	0	58	0.5
18-19	222	9	23	25	20	41	4	12	5	3	364	3.4
20-24	820	244	297	122	297	125	76	155	379	50	2,565	24.3
25-29	350	399	539	68	444	57	77	322	409	71	2,736	25.9
30-34	109	330	584	36	331	23	71	328	240	68	2,120	20.1
35-39	46	156	338	37	222	15	38	230	118	38	1,238	11.7
40-44	32	84	168	8	109	8	24	111	62	15	621	5.9
45-49	21	49	105	3	36	3	21	57	29	11	335	3.2
50-54	3	38	48	3	29	3	12	34	14	11	195	1.8
55-59	6	20	42	0	17	1	5	29	11	10	141	1.3
60-64	4	26	12	3	2	0	3	17	4	4	75	0.7
65 & over	3	12	7	0	2	0	0	8	2	4	38	0.4
Unknown	36	0	31	0	4	0	0	8	3	4	86	0.8
Total	1,704	1,367	2,194	306	1,513	278	333	1,312	1,276	289	10,572	100.0
Average age	24.4	32.2	32.7	31.0	31.7	33.5	29.2	27.2	25.2	33.2	30.4	-
Percent under 25	64.2	18.5	14.6	48.4	21.0	60.4	24.6	12.8	30.1	18.3	28.3	-
Percent 40 & over	4.0	16.8	17.4	5.6	12.9	5.4	19.5	19.5	9.6	19.0	13.3	-

TABLE 8

Inmates in the Bureau of Correction by Minimum Sentence
on December 31, 1981 and 1982

Minimum Sentence*	December 31, 1981		December 31, 1982	
	Number	Percent of Total	Number	Percent of Total
1 year and under **	1,195	17.69	1,286	16.88
Over 1 TO 2 years	1,267	18.75	1,536	20.17
Over 2 to 3 years	992	14.68	1,141	14.98
Over 3 to 5 years	1,367	20.23	1,523	20.00
Over 5 to 10 years	1,481	21.92	1,587	20.84
Over 10 to 20 years	357	5.28	429	5.63
Over 20 years	98	1.45	114	1.50
Total	6,757	100.00	7,616	100.00

* Based on predominate sentence and excludes all classes of inmates without a minimum sentence.

** Includes inmates in state regional correctional facilities as follows:
512 on 12/31/81 and 537 on 12/31/82.

Figure 2

**INMATES IN THE BUREAU OF CORRECTION ON DECEMBER 31, 1982,
BY MINIMUM SENTENCE**

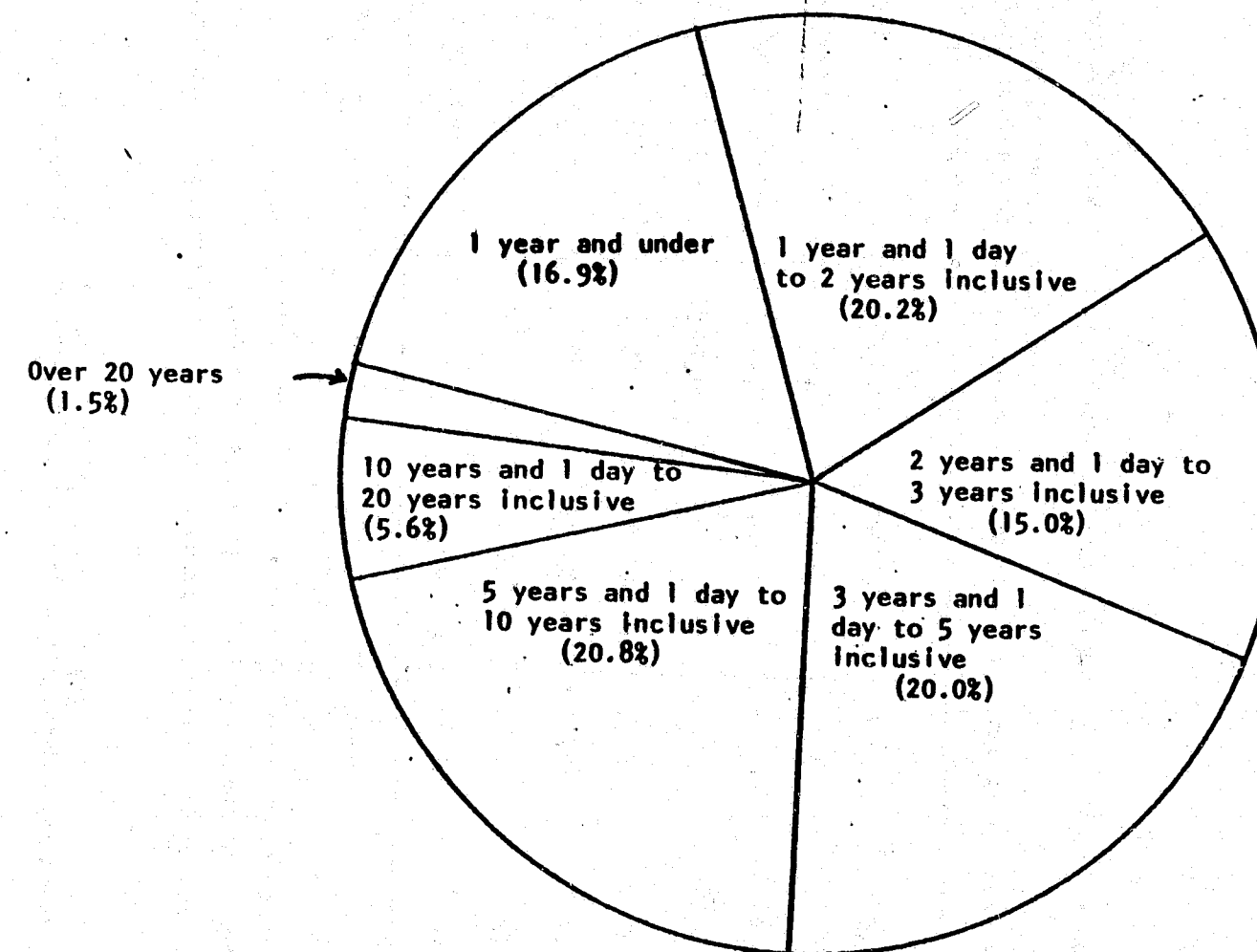


TABLE 9

**Inmates in the Bureau of Correction on December 31, 1982
by Minimum Sentence and by Facility**

Facility	Minimum Sentence							Total
	1 yr. and under	Over 1 to 2 yrs.	Over 2 to 3 yrs.	Over 3 to 5 yrs.	Over 5 to 10 yrs.	Over 10 to 20 yrs.	Over 20 years	
Camp Hill	159	313	192	251	215	49	10	1,189
Dallas	60	158	157	293	303	58	9	1,038
Graterford	179	225	185	247	317	132	43	1,328
Greensburg	289	0	2	0	1	0	0	292
Huntingdon	68	188	149	227	349	86	27	1,094
Mercer	248	6	1	0	2	0	0	257
Muncy	76	73	30	33	35	3	4	254
Pittsburgh	52	124	105	176	242	92	21	812
Rockview	126	393	251	222	77	6	0	1,075
Community Service Centers	29	56	69	74	46	3	0	277
Total	1,286	1,536	1,141	1,523	1,587	429	114	7,616
Percent of Total	16.9	20.2	15.0	20.0	20.8	5.6	1.5	100.0

NOTE: Above totals do not include parole violators because they are serving backtime of original sentence.

TABLE 10

Populations in the Bureau of Correction on December 31, 1982
by Facility, by Race and by Sex

Correctional Facility	Race		Sex		Total	Percent White	Percent Male
	White	Non- white	Male	Female			
Camp Hill	846	858	1,704	0	1,704	49.6	100.0
Dallas	616	751	1,367	0	1,367	45.1	100.0
Graterford	500	1,694	2,194	0	2,194	22.8	100.0
Greensburg	191	115	306	0	306	62.4	100.0
Huntingdon	779	734	1,513	0	1,513	51.5	100.0
Mercer	226	52	278	0	278	81.3	100.0
Muncy	152	181	15	318	333	45.6	4.5
Pittsburgh	575	737	1,312	0	1,312	43.8	100.0
Rockview	697	579	1,276	0	1,276	54.6	100.0
Community Service Centers	156	124	252	28	280	55.7	90.0
Group Homes	5	4	5	4	9	55.6	55.6
Total	4,743	5,829	10,222	350	10,572	44.9	96.7

TABLE 11

Number of Inmates in the Bureau of Correction on
December 31, 1982., by Race, Sex, and Committing County

Counties	Race		Sex		Total	Percent White	Percent Male
	White	Non- white	Male	Female			
Adams	28	4	31	1	32	87.5	96.9
Allegheny	472	854	1,277	49	1,326	35.6	96.3
Armstrong	26	0	26	0	26	100.0	100.0
Beaver	63	48	105	6	111	56.8	96.6
Bedford	11	0	11	0	11	*	*
Berks	154	91	233	12	245	62.9	95.1
Blair	64	6	70	0	70	91.4	100.0
Bradford	13	0	12	1	13	*	*
Bucks	149	42	187	4	191	78.0	97.9
Butler	85	7	89	3	92	92.4	96.7
Cambria	52	19	69	2	71	73.2	97.2
Cameron	5	0	5	0	5	*	*
Carbon	10	1	9	2	11	*	*
Centre	49	8	57	0	57	86.0	100.0
Chester	83	73	148	8	156	53.2	96.9
Clarion	14	0	14	0	14	*	*
Clearfield	69	0	67	2	69	100.0	97.1
Clinton	32	0	30	2	32	100.0	93.8
Columbia	39	2	39	2	41	95.1	95.1
Crawford	62	14	94	2	96	65.4	97.9
Cumberland	46	20	77	9	86	76.7	89.3
Dauphin	186	316	473	29	502	37.1	96.2
Delaware	129	175	298	6	304	42.4	98.0
Elk	8	0	8	0	8	*	*
Erie	224	142	356	10	366	61.2	97.3
Fayette	93	27	115	5	120	77.5	95.8
Forest	16	0	16	0	16	*	*
Franklin	51	13	64	0	64	79.7	100.0
Fulton	10	0	10	0	10	*	*
Greene	19	1	20	0	20	*	*
Huntingdon	24	4	27	1	28	85.7	96.4
Indiana	25	4	28	1	29	86.2	96.6
Jefferson	16	0	16	0	16	*	*
Juniata	7	0	7	0	7	*	*
Lackawanna	97	11	106	2	108	89.8	98.1
Lebanon	119	60	173	6	179	66.5	96.6
Lawrence	57	25	80	2	82	69.5	97.6
Lebanon	43	9	50	2	52	82.7	96.2
Lehigh	73	34	102	5	107	68.2	95.3
Lucerne	120	10	126	4	130	92.3	96.9
Lycoming	97	24	108	13	121	80.2	89.3
McKean	27	0	25	2	27	100.0	92.6
Mercer	94	49	141	2	143	65.7	96.6
Mifflin	32	1	33	0	33	97.0	100.0
Monroe	24	4	25	3	28	85.7	89.3
Montgomery	291	299	542	48	590	49.3	91.9
Montour	7	0	7	0	7	*	*
Northampton	70	45	114	1	115	60.9	99.1
Northumberland	74	3	74	3	77	96.1	96.1
Perry	18	0	17	1	18	*	*
Philadelphia	485	3,217	3,628	74	3,702	13.1	98.0
Pike	14	0	12	2	14	*	*
Potter	11	0	11	0	11	*	*
Schuylkill	25	1	26	0	26	96.2	100.0
Snyder	4	0	4	0	4	*	*
Somerset	41	0	40	1	41	100.0	97.6
Sullivan	2	0	2	0	2	*	*
Susquehanna	15	1	14	2	16	*	*
Tioga	49	4	51	2	53	92.5	96.2
Union	15	1	16	0	16	*	*
Venango	40	0	40	0	40	100.0	100.0
Warren	40	1	40	1	41	97.6	97.6
Washington	85	25	108	2	110	77.3	98.2
Wayne	17	0	17	0	17	*	*
Westmoreland	94	28	120	2	122	77.0	98.4
Wyoming	26	1	27	0	27	96.3	100.0
York	153	96	238	11	249	61.4	95.6
Other	10	9	17	2	19	*	*
Total	4,743	5,829	10,222	350	10,572	44.9	96.7

* Not calculated for base populations less than 25.

TABLE 12
Major Offense Categories

Court Commitments During 1982				Incarcerated as of December 31, 1982			
Rank	Offense	Number	Percent	Rank	Offense	Number	Percent
1.	Burglary	830	21.26	1.	Robbery	2,593	24.53
2.	Robbery	808	20.69	2.	Murder	2,102	19.89
3.	Larceny-theft*	356	9.11	3.	Burglary	1,863	17.62
4.	Nar. drug laws	275	7.03	4.	Forcible rape	789	7.46
5.	Murder	272	6.97	5.	Agg. assault	492	4.65
6.	Agg. assault	234	5.99	6.	Larceny-theft*	489	4.63
7.	Forcible rape	166	4.25	7.	Nar. drug laws	437	4.13
8.	Rec. stolen property	144	3.69	8.	Manslaughter	233	2.20
9.	Simple assault	107	2.74	9.	Rec. stolen property	214	2.02
10.	Manslaughter	90	2.31	10.	Prison breach	158	1.49
All Other Crime Index and Part II Offenses		623	15.96			1,202	11.38
Total		3,905	100.00			10,572	100.00

* Includes auto theft.

Figure 3

PERCENT DISTRIBUTION OF INMATES IN THE
BUREAU OF CORRECTION ON DECEMBER, 31, 1982
BY MAJOR OFFENSE

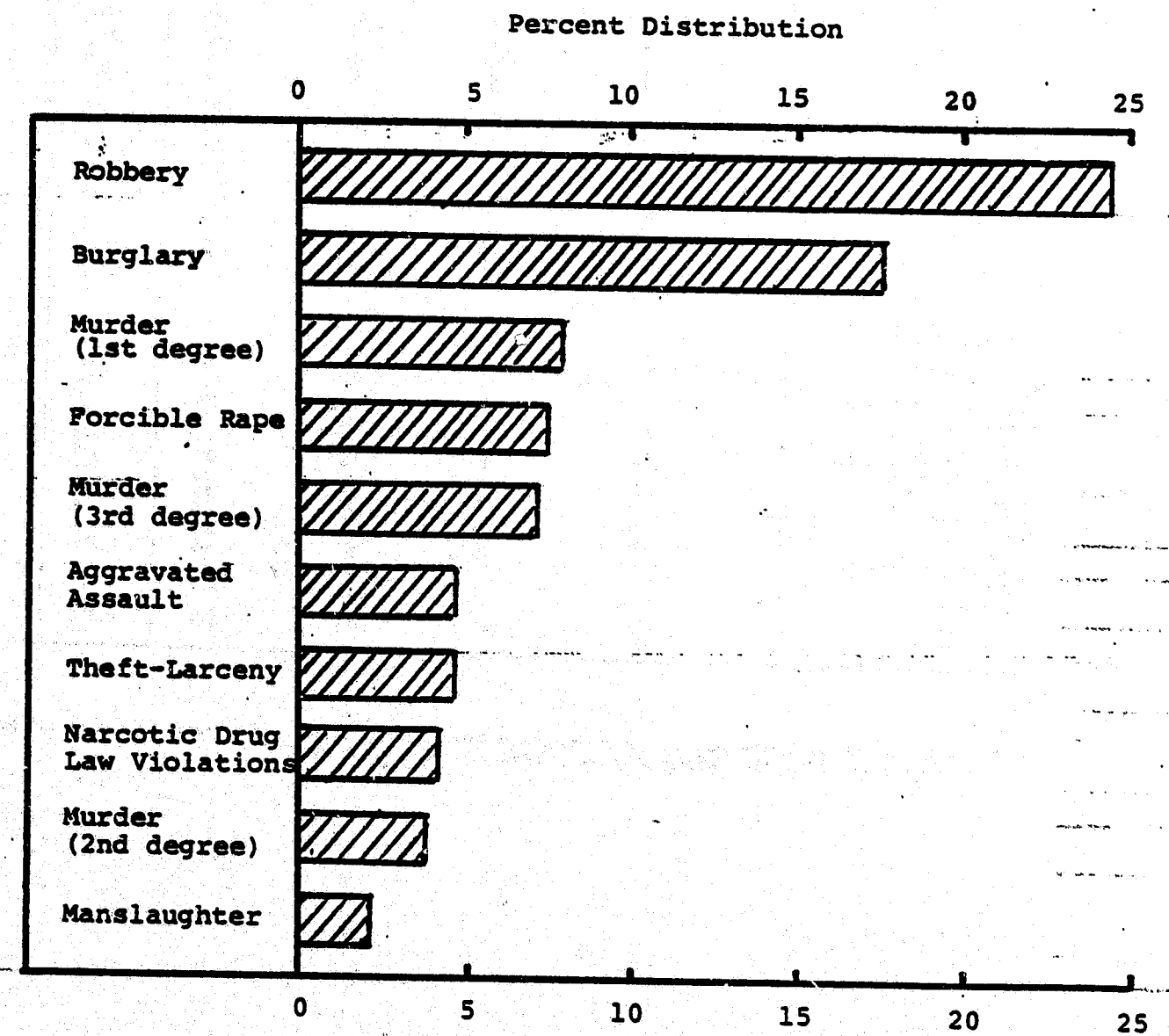


TABLE 13

Major Offense Distribution of Inmate Population on December 31, 1982 by Type of Correctional Facility

Offense Classification	State Regional Correctional Facilities	Community Service Centers	SCI Honey	All Other SCI's	Total	Percent
Crime Index Offenses						
Criminal Homicide	9	72	103	2,151	2,335	22.09
Murder						
First degree	0	3	30	807	840	7.95
Second degree	0	14	14	382	410	3.88
Third degree	1	33	43	666	743	7.05
Unspecified	0	0	3	104	107	1.01
Nonlethal						
Voluntary	2	17	11	137	167	1.58
Involuntary	6	3	2	35	46	0.42
Forcible Rape	4	10	0	773	787	7.46
Robbery	63	76	36	2,416	2,591	24.53
Aggravated Assault	25	15	11	441	492	4.65
Burglary	167	40	21	1,633	1,861	17.62
Theft	84	7	58	313	462	4.37
Motor Vehicle Theft	5	0	0	22	27	0.26
Arson	8	3	5	90	106	1.00
Total Crime Index Offenses	367	223	234	7,843	8,667	81.98
Part II Offenses						
Simple Assault	38	1	4	86	129	1.22
Fraud	8	2	10	60	80	0.76
Receiving Stolen Property	37	6	10	161	214	2.02
Forgery	7	4	20	122	153	1.45
Statutory Rape	0	2	0	33	37	0.35
Deviate Sexual Intercourse	3	0	1	148	152	1.44
Narcotic Drug Laws	33	28	28	326	415	3.91
Weapons	9	1	2	58	70	0.66
Prison Breach	3	4	6	143	156	1.49
Kidnapping	1	4	1	69	75	0.71
All Others	48	11	11	200	270	2.55
Total Part II Offenses	211	63	93	1,408	1,772	16.79
Unknown*	6	3	6	113	130	1.23
Total Inmates	584	289	333	9,366	10,572	100.00

* Primarily unsentenced inmates detained in the Bureau of Correction for medical and/or security reasons and parole violators not yet officially recommended by the PA Board of Probation and Parole.

TABLE 14

The Top Ten Counties with Regard to 1982 Commitments and End-of-Year Population

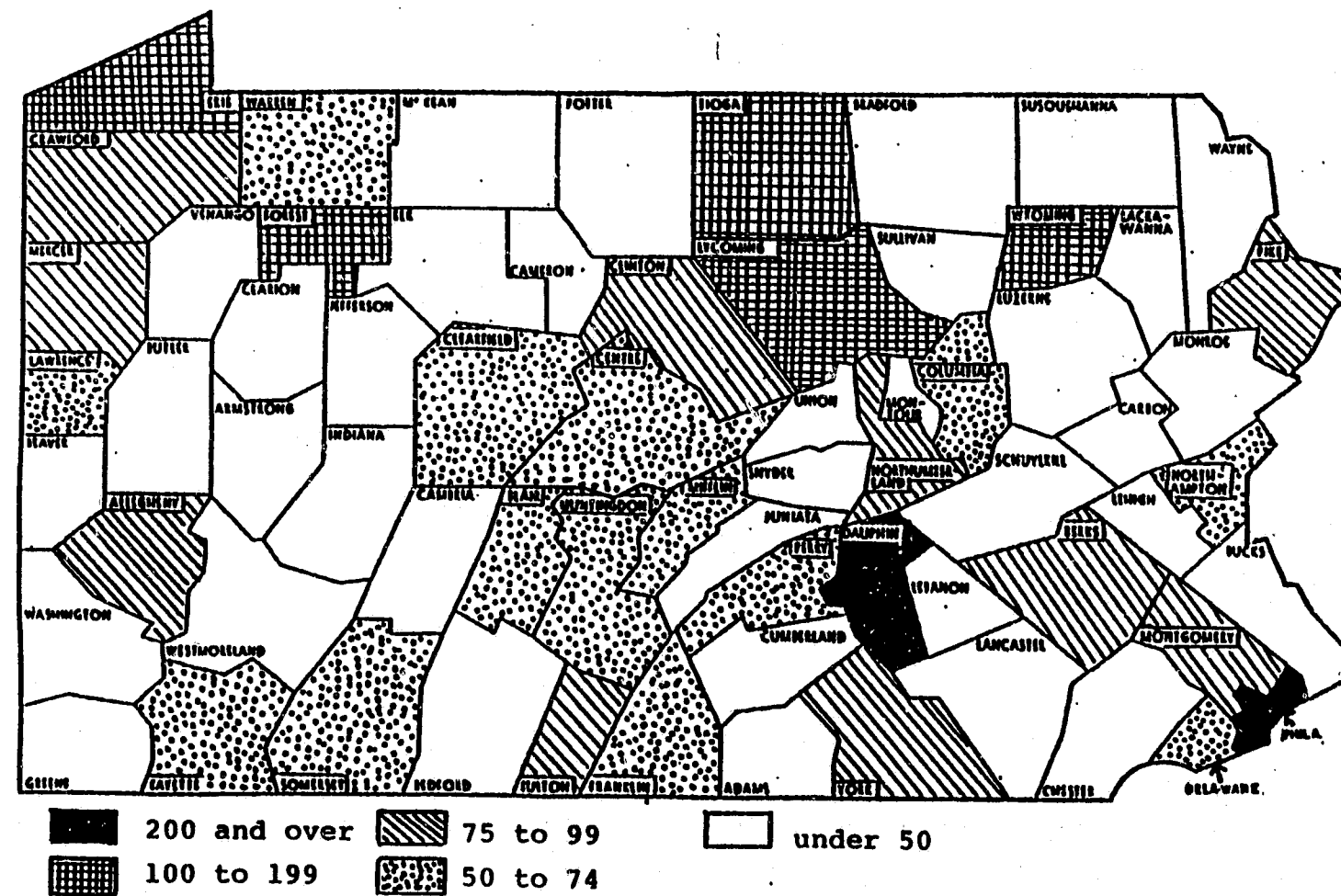
Rank	Highest Committing Counties in 1982			Bureau Commitments as of 1982		
	County	Commitments*	Percent	County	Commitments*	Percent
1.	Philadelphia	1,041	34.54	Philadelphia	3,701	35.07
2.	Allegheny	272	9.02	Allegheny	1,113	10.55
3.	Montgomery	210	6.97	Montgomery	590	5.59
4.	Dauphin	143	4.74	Dauphin	501	4.75
5.	Delaware	100	3.32	Delaware	304	2.88
6.	Berks	95	3.15	Erie	286	2.71
7.	Erie	91	3.02	York	249	2.36
8.	Bucks	81	2.69	Berks	245	2.32
9.	York	73	2.42	Bucks	191	1.81
10.	Lancaster	66	2.19	Lancaster	179	1.70
	Remaining Counties	842	27.94	Remaining Counties	3,194	30.26
Total		3,014**	100.00		10,553**	100.00

* For comparison purposes, totals do not include court commitments to state regional correctional facilities at Greensburg and Mercer.

** Total does not include out-of-state cases.

Figure 4

**RATIO OF INMATES IN STATE CORRECTIONAL INSTITUTIONS PER 100,000 CIVILIAN
POPULATION ON DECEMBER 31, 1982, BY COMMITTING COUNTY**



Note: Excludes inmates in Regional Correctional Facilities at Greensburg and Mercer.

TABLE 15
Number of Inmates in the Bureau of Correction on
December 31, 1982, by Type of Facility and by Committing County

Committing County	State Correctional Institutions	State Regional Correctional Facilities	Community Service Centers	Total	Rate per 100,000 Civilian Population*	
					Rate	Rank
Adams	32	0	0	32	46.86	39
Allegheny	1,073	213	38	1,326	76.75	15
Armstrong	24	2	0	26	30.86	56
Bever	93	16	2	111	46.47	40
Bedford	11	0	0	11	23.51	59
Berks	235	0	10	245	78.40	13
Blair	69	1	0	70	50.50	29
Bradford	12	0	1	13	20.66	61
Bucks	187	0	4	191	39.86	46
Butler	56	28	8	92	43.27	41
Cambria	68	0	3	71	38.74	49
Cameron	2	3	0	5	29.97	57
Carbon	10	0	1	11	20.64	62
Centre	54	0	1	55	50.55	28
Chester	154	0	2	156	49.26	33
Clarion	10	4	0	14	23.06	60
Clearfield	52	16	1	69	63.41	23
Clinch	30	0	2	32	82.11	11
Columbia	41	0	0	41	66.16	22
Crawford	77	13	6	96	93.40	8
Cumberland	85	0	1	86	48.17	36
Dauphin	485	1	16	502	215.65	2
Delaware	292	0	12	304	54.77	26
Elk	3	3	2	8	13.04	66
Erie	274	80	12	366	102.22	5
Fayette	104	14	2	120	66.49	20
Forest	8	8	0	16	157.73	3
Franklin	64	0	0	64	56.32	24
Fulton	10	0	0	10	77.87	14
Greene	15	5	0	20	37.06	52
Huntingdon	28	0	0	28	66.27	21
Indiana	23	5	1	29	26.01	58
Jefferson	8	8	0	16	16.56	64
Juniata	7	0	0	7	36.48	53
Lackawanna	99	0	9	108	47.39	38
Lancaster	173	0	6	179	49.40	32
Lawrence	59	22	1	82	56.00	25
Lebanon	32	0	0	32	47.89	37
Lehigh	105	0	4	107	39.29	48
Lebanon	126	1	3	130	37.60	50
Lycening	114	0	7	121	102.18	6
McKean	17	10	0	27	33.57	54
Mercer	107	26	10	143	91.19	10
Mifflin	32	0	1	33	70.35	18
Monroe	28	0	0	28	40.34	44
Montgomery	576	0	14	590	91.67	9
Moutour	7	0	0	7	41.98	43
Northampton	110	0	5	115	51.02	27
Northumberland	73	0	4	77	76.71	16
Perry	17	0	1	18	50.39	31
Philadelphia	3,635	1	66	3,702	219.23	1
Pike	14	0	0	14	76.62	17
Pottar	6	4	1	11	39.49	47
Schuylkill	24	0	0	24	16.19	65
Snyder	4	0	0	4	11.91	67
Somerset	40	0	1	41	50.47	30
Sullivan	2	0	0	2	31.50	55
Susquehanna	14	0	2	16	42.24	42
Tioga	50	0	3	53	129.35	4
Union	16	0	0	16	48.68	34
Venango	21	16	3	40	37.24	51
Warren	29	9	3	41	67.44	19
Washington	83	23	4	110	40.08	45
Wayne	17	0	0	17	48.24	35
Westmoreland	68	30	4	122	18.35	63
Wyoming	26	0	1	27	102.15	7
York	242	0	7	249	79.56	12
Out-of-State	13	2	4	19	-	-
Total	9,499	584	289	10,372	84.19	-

* Since there are only two State Regional Correctional Facilities (Greensburg and Mercer) and they receive only short-term commitments from surrounding counties, their populations are not included in this rate. Since 1982 estimates are not available, population rates are based on U.S. Bureau of Census populations as of April 1, 1980.

TABLE 16
1982 Admissions to the Bureau of Correction by Committing County

County	Court Commitments			Parole Violators			County Prison Transfers	Total Admissions
	State Corr. Institution	Regional Corr. Facilities	Total	State	County	Total		
Adams	9	0	9	8	0	8	2	19
Allentown	272	391	663	133	27	160	0	843
Armstrong	4	1	5	4	1	5	0	10
Bever	23	21	44	8	0	8	0	52
Bedford	3	0	3	0	0	0	0	3
Berks	95	0	95	30	0	30	0	125
Blair	25	0	25	10	0	10	0	35
Bradford	3	0	3	1	0	1	0	4
Bucks	81	0	81	13	0	13	7	101
Butler	18	33	51	6	0	6	0	57
Cambria	22	0	22	10	0	10	0	32
Cameron	2	5	7	0	0	0	0	7
Carbon	6	0	6	3	0	3	0	9
Centre	16	0	16	9	0	9	0	25
Chester	37	0	37	10	0	10	5	52
Clarion	0	5	5	1	1	2	0	7
Clearfield	12	16	28	8	0	8	0	36
Clinton	13	0	13	10	0	10	0	23
Columbia	12	0	12	4	0	4	0	16
Crawford	22	34	56	13	0	13	0	69
Cumberland	28	0	28	21	0	21	0	49
Dauphin	143	0	143	75	0	75	1	219
Delaware	100	0	100	21	0	21	3	124
Elk	2	5	7	0	1	1	0	8
Erie	91	93	184	43	3	46	0	230
Fayette	35	28	63	11	0	11	0	74
Forest	4	6	10	0	0	0	0	10
Franklin	22	0	22	4	0	4	0	26
Fulton	3	0	3	1	0	1	0	6
Greene	7	5	12	3	0	3	0	15
Huntingdon	13	0	13	3	0	3	2	18
Indiana	4	4	8	0	0	0	0	8
Jefferson	3	7	10	2	0	2	0	12
Juniata	2	0	2	2	0	2	0	4
Lackawanna	43	0	43	13	0	13	0	56
Lancaster	66	0	66	18	0	18	1	85
Lawrence	20	30	50	4	1	5	0	55
Lebanon	17	0	17	8	0	8	3	28
Lehigh	21	0	21	13	0	13	1	35
Lebanon	36	0	36	12	0	12	2	50
Lycening	48	0	48	34	0	34	0	82
McKean	6	14	20	0	0	0	0	20
Merger	31	39	70	12	3	17	0	87
Mifflin	13	0	13	5	0	5	0	18
Morroe	14	0	14	1	0	1	0	15
Montgomery	210	0	210	69	1	70	5	285
Montour	3	0	3	1	0	1	0	4
Northampton	46	0	46	3	0	3	0	49
Northumberland	33	0	33	10	0	10	0	43
Perry	9	0	9	1	0	1	0	10
Philadelphia	1,041	0	1,041	428	0	428	4	1,473
Pike	8	0	8	0	0	0	0	8
Pottter	3	11	14	0	0	0	0	14
Schuylkill	9	0	9	0	0	0	1	10
Snyder	2	0	2	1	0	1	0	3
Somerset	13	0	13	4	0	4	0	17
Sullivan	1	0	1	1	0	1	0	2
Susquehanna	6	0	6	2	0	2	0	8
Tioga	32	0	32	8	0	8	0	40
Union	9	0	9	1	0	1	1	11
Venango	8	20	28	3	0	3	0	31
Warren	7	9	16	2	2	4	0	20
Washington	17	21	38	6	0	6	0	44
Wayne	9	0	9	3	0	3	0	12
Westmoreland	18	74	92	7	2	9	0	101
Wyoming	8	0	8	4	0	4	0	12
York	73	0	73	19	0	19	0	92
Other	18	1	19	0	0	0	0	19
Total	3,032	873	3,905	1,190	44	1,234	38	5,167
Percent of Total	58.7	16.9	75.6	22.8	0.9	23.7	0.7	100.0

TABLE 17
1982 Court Commitments Received in State Correctional Institutions,
by Race, Sex and Committing County

County	Race		Sex		Total	Racial distribution	
	White	Non-white	Male	Female		Percent White	Percent Non-white
Adams	8	1	8	1	9	88.9	11.1
Allentown	98	174	222	50	272	36.0	64.0
Armstrong	4	0	4	0	4	100.0	0.0
Bever	15	8	20	3	23	87.0	13.0
Bedford	3	0	3	0	3	100.0	0.0
Berks	61	34	85	10	95	88.4	11.6
Blair	22	3	25	0	25	100.0	0.0
Bradford	3	0	3	0	3	100.0	0.0
Bucks	68	13	78	3	81	96.3	3.7
Butler	16	2	18	2	20	90.0	10.0
Cambria	17	5	20	2	22	90.9	9.1
Cameron	2	0	2	0	2	100.0	0.0
Carbon	3	1	4	2	6	66.7	33.3
Centre	13	3	16	0	16	100.0	0.0
Chester	16	21	35	2	37	94.6	5.4
Clarion	0	0	0	0	0	-	-
Clearfield	12	0	12	0	12	100.0	0.0
Clinton	13	0	12	1	13	100.0	0.0
Columbia	12	0	10	2	12	100.0	0.0
Crawford	20	2	20	2	22	90.9	9.1
Cumberland	24	4	25	3	28	89.3	10.7
Dauphin	51	92	124	19	143	86.7	13.3
Delaware	49	51	98	2	100	98.0	2.0
Elk	2	0	2	0	2	100.0	0.0
Erie	38	33	84	7	91	92.3	7.7
Fayette	29	6	31	4	35	88.6	11.4
Forest	4	0	4	0	4	100.0	0.0
Franklin	15	7	22	0	22	100.0	0.0
Fulton	5	0	5	0	5	100.0	0.0
Greene	7	0	7	0	7	100.0	0.0
Huntingdon	12	1	12	1	13	92.3	7.7
Indiana	4	0	4	0	4	100.0	0.0
Jefferson	3	0	3	0	3	100.0	0.0
Juniata	2	0	2	0	2	100.0	0.0
Lackawanna	38	5	39	4	43	90.7	9.3
Lancaster	45	21	63	3	66	95.6	4.4
Lawrence	15	5	18	2	20	90.0	10.0
Lebanon	10	7	15	2	17	88.2	11.8
Lehigh	14	7	18	3	21	85.7	14.3
Lebanon	35	1	34	2	36	94.4	5.6
Lycening	40	8	35	13	48	72.9	27.1
McKean	6	0	6	0	6	100.0	0.0
Merger	18	13	30	1	31	93.5	6.5
Mifflin	13	0	13	0	13	100.0	0.0
Morroe	13	1	11	3	14	78.6	21.4
Montgomery	108	102	172	38	210	81.9	18.1
Montour	3	0	3	0	3	100.0	0.0
Northampton	27	19	41	5	46	89.1	10.9
Northumberland	30	3	22	11	33	66.7	33.3
Perry	9	0	8	1	9	100.0	0.0
Philadelphia	174	867	1,012	29	1,041	97.2	2.8
Pike	8	0	7	1	8	100.0	0.0
Pottter	3	0	3	0	3	100.0	0.0
Schuylkill	9	0	9	0	9	100.0	0.0
Snyder	2	0	2	0	2	100.0	0.0
Somerset	13	0	12	1	13	100.0	0.0
Sullivan	1	0	1	0	1	100.0	0.0
Susquehanna	6	0	5	1	6	100.0	0.0
Tioga	28	4	31	1	32	96.9	3.1
Union	9	0	9	0	9	100.0	0.0
Venango	8	0	8	0	8	100.0	0.0
Warren	7	0	6	1	7	100.0	0.0
Washington	10	7	17	0	17	100.0	0.0
Wayne	9	0	8	1	9	100.0	0.0
Westmoreland	13	5	16	2	18	88.9	11.1
Wyoming	7	1	8	0	8	87.5	12.5
York	37	36	64	9	73	87.7	12.3
Other	11	7	12	6	18	66.7	33.3
Total	1,432	1,580	2,772	260	3,032	47.9	52.1

Note: For comparison purposes, this table does not include court commitments to state regional correctional facilities at Greensburg and Mercer. Females are not committed to state regional facilities and the 873 male commitments were predominately white (67.22).

TABLE 18
1982 Court Commitments for Crime
Index and Part II Offenses Received
in the Bureau, by Race, Sex, and Type of Facility

Offense Classification	Race		Sex		Type of Corr. Facility			Percent of Total
	White	Non-white	Male	Female	State	Regional	Total	
<u>Crime Index Offenses</u>								
Murder								
First degree	33	36	63	4	69	0	69	1.77
Second degree	16	27	42	1	43	0	43	1.10
Third degree	58	73	119	12	131	0	131	3.36
Unspecified	13	16	29	0	29	0	29	0.74
Manlaughter								
Voluntary	18	31	41	8	47	2	49	1.26
Involuntary	31	10	39	2	31	10	41	1.05
Forcible rape	99	107	166	0	161	5	166	4.25
Robbery	231	577	783	25	706	102	808	20.69
Aggravated assault	100	134	221	13	196	40	236	5.99
Burglary	550	280	813	17	605	221	830	21.26
Larceny - theft	167	165	270	62	210	122	332	8.50
Motor vehicle theft	18	6	24	0	16	8	24	0.61
Arson	34	9	41	2	32	11	43	1.10
Total Crime Index Offenses	1,328	1,471	2,633	146	2,278	521	2,799	71.68
<u>Part II Offenses</u>								
Simple assault	69	38	104	3	51	56	107	2.74
Forgery	46	25	51	20	59	12	71	1.82
Fraud	36	23	47	12	47	12	59	1.51
Stolen property	83	61	134	10	88	56	144	3.69
Weapons	15	34	49	0	33	16	49	1.26
Drunken driving	29	7	36	0	2	34	36	0.92
Prison breach	40	8	39	9	42	6	48	1.23
Conspiracy	22	35	52	5	44	13	57	1.46
Kidnapping	7	5	12	0	10	2	12	0.31
Statutory rape	7	6	13	0	11	2	13	0.33
Deviate sexual intercourse	28	13	40	1	35	6	41	1.05
Narcotic drug violations	190	85	247	28	195	80	275	7.03
Other Part II Offenses	139	55	168	26	137	37	194	4.97
Total Part II Offenses	711	395	992	114	736	352	1,106	28.32
Total	2,039	1,866	3,645	260	3,032	873	3,905	100.00

TABLE 19
1982 Court Commitments Received in the Bureau of Correction
for Part I Offenses, by Committing County

County	Murder		Manlaughter		Forcible rape	Robbery	Agg. assault	Burglary	Theft	Auto Theft	Arson	Part I Offenses Total
	First degree	Second degree	Third degree*	Vol.	Invol.							
Adams	-	-	-	-	-	3	1	1	-	-	-	5
Allegheny	8	6	14	12	4	143	33	138	91	3	7	473
Armstrong	-	-	2	-	-	1	-	1	-	-	-	4
Beaver	2	-	2	-	1	4	-	8	3	2	-	23
Bedford	-	-	-	-	-	-	1	2	-	-	-	3
Berks	1	1	1	2	-	12	6	41	4	-	2	74
Blair	-	-	-	-	1	5	1	3	4	-	1	16
Bradford	-	-	1	-	-	-	1	-	-	-	-	2
Bucks	2	-	1	1	-	7	-	18	3	-	-	35
Butler	2	-	2	-	1	3	-	11	10	-	1	34
Cambria	1	-	3	-	-	3	1	4	1	-	-	14
Cameron	-	-	-	-	-	-	-	-	-	-	-	0
Carbon	-	-	-	-	-	2	-	1	-	-	-	3
Centre	-	-	-	-	-	2	1	5	-	2	-	10
Chester	1	-	3	-	1	5	4	8	-	-	2	25
Clarion	-	-	-	-	-	-	-	4	-	-	-	4
Clearfield	-	-	-	-	-	1	2	8	1	-	-	13
Cleburne	-	-	-	-	-	-	-	-	-	-	-	0
Columbia	-	-	-	-	1	1	-	2	-	-	-	3
Crawford	1	-	-	-	1	-	-	1	-	3	1	6
Cumberland	-	-	3	-	1	3	3	18	5	1	1	35
Dauphin	-	2	15	2	2	7	8	16	9	-	4	17
Delaware	3	8	3	1	-	5	5	19	4	-	-	91
Elk	-	-	-	-	-	27	5	19	4	-	-	75
Erie	2	-	3	-	4	2	-	1	-	-	1	4
Fayette	4	-	-	1	5	6	20	7	35	18	2	97
Forest	-	-	-	-	-	1	10	4	14	6	-	48
Franklin	-	-	4	-	-	-	-	4	3	-	-	7
Fulton	-	-	-	-	-	1	-	1	8	1	-	16
Greene	-	-	-	-	-	1	1	6	-	-	-	2
Huntington	-	-	-	1	-	1	-	6	1	-	1	10
Indiana	-	-	-	-	-	-	-	6	1	-	-	9
Jefferson	-	-	-	-	-	2	-	3	1	-	-	6
Juniata	-	-	-	-	-	1	-	3	-	-	-	4
Lackawanna	1	-	-	-	-	-	-	-	-	-	-	0
Lancaster	2	-	3	2	-	3	5	9	1	-	1	28
Lawrence	1	-	1	1	1	12	3	18	1	-	1	45
Lebanon	-	-	2	-	-	8	2	13	1	-	1	29
Lehigh	-	-	-	1	1	-	-	3	3	-	1	9
Lebanon	1	1	7	1	1	2	3	4	3	-	-	16
Lycening	-	-	1	-	1	2	3	10	3	-	-	27
McKean	1	-	-	-	-	1	-	13	3	-	3	22
Mercer	-	1	2	-	-	3	1	7	3	-	-	15
Mifflin	-	-	-	-	-	2	6	22	3	-	2	46
Monroe	1	-	-	-	-	2	-	4	2	1	-	9
Montgomery	-	2	6	2	1	5	2	3	-	-	-	8
Montour	-	-	-	-	-	41	5	54	42	1	-	159
Northampton	-	-	-	-	-	2	-	-	-	-	-	2
Northumberland	-	1	-	-	-	7	1	19	2	-	1	32
Perry	-	-	1	-	2	1	2	5	8	1	1	21
Philadelphia	29	19	67	22	5	69	97	183	46	2	3	903
Pike	-	-	-	-	-	1	-	2	2	-	-	5
Potter	-	-	1	-	-	-	-	1	2	-	-	4
Schuykill	1	-	-	-	-	3	1	1	1	-	-	7
Snyder	-	-	-	-	-	1	-	1	-	-	-	2
Somerset	-	-	-	-	-	-	-	1	3	-	-	7
Sullivan	1	-	-	-	-	-	-	1	-	-	-	1
Susquehanna	1	-	2	-	-	-	-	-	-	-	-	3
Tioga	1	-	-	1	-	3	-	7	2	-	-	14
Union	-	-	-	-	-	-	-	5	1	-	-	7
Venango	-	-	1	-	-	6	-	3	7	-	-	18
Warren	1	-	2	1	2	3	5	13	2	1	1	9
Washington	-	-	1	-	3	1	-	1	2	-	-	31
Wayne	-	1	4	-	1	4	6	19	8	1	4	62
Westmoreland	-	-	-	-	-	14	3	3	-	-	-	6
Wyoming	2	1	1	-	-	8	3	7	3	-	-	43
York	-	-	-	-	1	2	-	-	1	-	-	4
Other	-	-	-	-	-	-	-	-	-	-	-	-
Total	69	43	160	49	41	166	808	234	830	332	43	2,799

* Includes unspecified murder.

TABLE 20
1982 Court Commitments Received in the Bureau of Correction
for Selected Part II Offenses, by Committing County

County	Simple assault	Fraud	Receiving stolen property	Forgery	Statutory rape	Deviate sexual intercourse	Narcotic drug law	Weapons	Drunk driving	Prison breach
Allegheny	15	8	13	8	2	10	42	11	17	2
Armstrong	-	-	-	1	-	-	-	-	-	3
Beaver	3	1	6	1	1	-	4	2	1	-
Bedford	-	-	-	-	-	-	-	-	-	-
Berks	1	1	2	6	-	1	5	-	-	2
Blair	-	2	2	2	-	1	2	-	-	-
Bradford	-	-	1	-	-	-	-	-	-	-
Bucks	-	1	1	-	1	-	10	-	-	6
Buclar	-	-	3	-	-	-	7	-	2	-
Cambria	-	1	2	-	-	-	3	-	1	-
Cameron	1	-	2	-	-	-	-	-	-	-
Carbon	-	-	-	-	-	1	1	-	-	-
Centre	1	-	2	-	-	-	3	1	-	1
Chester	-	1	4	-	-	-	-	-	-	-
Clarion	-	-	-	1	-	-	-	-	-	-
Clearfield	2	2	-	-	-	-	4	-	1	3
Clinch	1	-	1	-	-	1	5	-	-	-
Columbia	1	-	-	-	-	-	5	-	-	-
Crawford	-	2	2	5	2	-	2	1	-	-
Cumberland	-	1	-	-	-	1	6	-	-	2
Dauphin	-	6	4	2	-	1	27	4	-	-
Delaware	3	-	2	1	-	1	8	-	-	-
Elk	-	-	1	1	-	-	1	-	-	-
Erie	20	4	6	3	1	2	20	3	3	-
Fayette	2	-	3	-	-	1	8	-	-	-
Forest	2	-	-	-	-	-	-	-	-	-
Franklin	-	-	-	4	-	-	2	-	-	1
Fulton	-	-	-	-	-	-	1	-	-	-
Greene	-	-	-	-	-	-	-	-	-	2
Huntingdon	1	-	1	-	-	-	-	-	-	1
Indiana	2	-	1	-	-	-	-	-	-	2
Jefferson	-	-	-	-	-	-	-	-	-	-
Junata	2	1	1	1	-	-	3	1	-	2
Lackawanna	4	2	4	-	-	2	4	-	-	-
Lancaster	2	-	5	-	-	1	2	-	-	2
Lawrence	-	-	-	2	-	1	4	-	-	-
Lebanon	1	-	2	1	-	-	1	1	-	-
Lehigh	1	2	1	2	-	-	1	-	-	-
Luzerne	1	3	2	-	-	2	7	1	-	4
Lycoming	1	-	1	-	-	-	1	-	-	-
McKean	3	-	2	1	-	-	5	3	-	2
Merger	-	1	1	-	-	-	2	-	-	1
Mifflin	-	-	-	-	-	-	2	-	-	-
Monroe	1	-	-	-	-	-	-	-	-	-
Montgomery	1	3	3	14	1	-	17	-	-	1
Monter	-	-	-	-	-	-	1	-	-	-
Northampton	1	-	4	-	-	-	3	1	-	2
Northumberland	1	1	2	1	-	-	3	-	-	-
Perry	-	2	-	-	-	-	-	-	-	-
Philadelphia	10	6	19	8	2	8	14	17	-	2
Pike	-	-	-	-	-	1	1	-	-	-
Pottor	2	-	-	-	1	-	4	-	-	-
Schuylkill	1	-	-	-	-	1	-	-	-	-
Snyder	-	-	-	-	-	-	-	-	-	-
Somerset	-	-	1	1	-	-	3	-	-	-
Sullivan	-	-	-	-	-	-	1	-	-	2
Susquehanna	-	-	-	-	-	-	6	-	-	1
Tioga	2	2	1	2	1	-	-	-	-	-
Union	-	1	-	-	-	1	1	-	1	-
Venango	3	-	1	-	-	-	4	-	1	-
Warren	-	-	1	-	-	-	-	-	-	-
Washington	1	-	1	1	1	1	-	-	-	-
Wayne	3	2	7	-	-	-	4	1	7	1
Westmoreland	1	-	-	-	-	-	1	-	-	-
Wyoming	1	-	-	-	-	1	15	-	-	3
York	2	1	3	2	-	-	-	-	-	-
Other	1	2	-	-	-	1	1	2	-	-
Total	107	59	144	71	13	41	273	49	36	48

TABLE 21
Court Commitments for Criminal Homicides
Received in the Bureau of Correction, 1973-1982

Year	First Degree	Murder Second Degree	Third Degree	Sub- total	Manslaughter		Sub- total	Total
					Vol.	Invol.		
1973	87	169	-	256	108	25	133	389
1974	86	212	-	298	98	19	117	415
1975	91	108	113	312	109	23	132	444
1976	61	55	196	312	117	15	132	444
1977	57	45	173	275	58	38	96	371
1978	59	31	129	219	66	32	98	317
1979	53	28	132	213	47	33	80	293
1980	64	35	136	235	56	31	87	322
1981	77	51	181	309	52	40	92	401
1982	69	43	160	272	49	41	90	362

TABLE 22
Incarcel Population Movement (Inward) in the Bureau of Correction
1981 and 1982

Incarcel	State Correctional Institutions		State Regional Correctional Facilities		Total	
	1981	1982	1981	1982	1981	1982
Authorized temporary absence	6,334	6,814	450	570	6,784	7,384
Ball	21	19	0	0	21	19
Deceased by other authorities	65	80	2	0	67	80
Returned escapees	72	90	7	2	79	92
Perilous returns	2,162	2,273	569	310	2,731	2,583
Local hospitals	809	714	39	31	848	745
Transfers:						
Between Transfers	5,412	6,109	135	209	5,547	6,318
Permanent	705	661	12	18	717	679
Temporary						
Incarcel Transfers						
To county prisons	46	44	1	1	50	45
Sentenced	175	141	7	3	182	144
Detention	138	163	0	0	138	163
To Facility State Hospital	30	31	10	5	40	36
To other mental hospitals	2	4	0	0	2	4
Interstate compact						
Weekends	0	0	211	37	211	37
Miscellaneous	207	140	5	1	212	141
Total	16,181	17,285	1,446	1,187	17,627	18,472

TABLE 23
Incarcel Population Movement (Outgoing) in the Bureau of Correction
1981 and 1982

Incarcel	State Correctional Institutions		State Regional Correctional Facilities		Total	
	1981	1982	1981	1982	1981	1982
Released	6,384	6,911	459	606	6,843	7,517
Authorized temporary absence	41	32	3	5	44	37
Ball						
Deaths	0	1	0	0	0	1
Natural	23	19	0	0	23	19
Mental	3	1	0	0	3	1
Detention	69	99	5	0	74	99
Deceased by other authorities	73	108	7	1	80	109
Returned escapees	72	90	7	2	79	92
Perilous returns	2,154	2,321	585	323	2,739	2,644
Local hospitals	818	720	41	31	859	751
Transfers:						
Between Transfers	5,235	6,005	312	315	5,547	6,320
Permanent	705	663	12	17	717	680
Temporary						
Incarcel Transfers						
To county prisons	10	7	7	6	17	13
Sentenced	157	137	6	3	163	140
Detention	134	202	0	0	134	202
To Facility State Hospital	46	27	13	9	59	36
To other mental hospitals	3	6	0	0	3	6
Interstate compact						
Weekends	0	0	227	41	227	41
Miscellaneous	193	129	0	0	193	129
Total	16,066	17,396	1,677	1,357	17,743	18,753

TABLE 24

Paroling Actions by the Pennsylvania Board of Probation
and Parole Involving Inmates in the Bureau of Correction
1975 through 1982

Year	Paroles granted	Paroles refused	Total actions	Percent granted
1975	2,312	899	3,211	72.0
1976	2,583	1,086	3,669	70.4
1977	2,857	704	3,561	80.2
1978	2,460	669	3,129	78.6
1979	2,376	732	3,108	76.4
1980	2,391	619	3,010	79.4
1981	2,367	702	3,069	77.1
1982	2,404	691	3,095	77.7

Source: Pennsylvania Board of Probation and Parole, Monthly Statistical Reports.

TABLE 25

Conditional Releases on Parole
from the Bureau of Correction, 1973 - 1982

Year	Pennsylvania Board of Probation & Parole					County paroles	Total conditional releases
	After orig. min. sentence	After comm. of min. sent.	Total first paroles	Re- paroles	Total state paroles		
1973	2,143	35	2,178	449	2,627	773	3,400
1974	2,212	30	2,242	510	2,752	884	3,636
1975	2,063	26	2,089	492	2,581	901	3,482
1976	2,282	20	2,302	618	2,920	741	3,661
1977	2,615	20	2,635	618	3,253	636	3,891
1978	2,359	24	2,383	552	2,935	593	3,528
1979	2,284	19	2,303	408	2,711	640	3,351
1980	2,154	15	2,169	386	2,555	750	3,305
1981	2,155	4	2,159	534	2,693	758	3,451
1982	2,403	2	2,405	662	3,067	793	3,860

Note: This chart illustrates the number of inmates in the Bureau of Correction receiving parole within a given time frame. The chart reflects the date on which parole becomes effective and will, therefore, be slightly different from figures issued by the Board of Probation and Parole which reports actions on the date the Board makes a determination.

TABLE 26

**Average Time Served by Inmates Released from the Bureau
of Correction During 1976 to 1982, by
Type of Correctional Facility**

Year	State Correctional institutions		Regional Correctional facilities		Total	
	Number released	Average months served	Number released	Average months served	Number released	Average months served
1976	2,300	25.4	299	7.7	2,599	23.6
1977	2,530	26.3	333	7.5	2,863	24.2
1978	2,407	28.4	317	8.6	2,724	26.0
1979	2,383	31.1	471	9.6	2,854	27.5
1980	2,288	31.9	611	10.3	2,899	27.2
1981	2,318	31.1	631	11.4	2,949	26.8
1982	2,351	31.8	804	11.1	3,155	26.4

Note: Does not include parole violations. State correctional institutions receive commitments with maximum sentences of two years and over. Regional correctional facilities receive commitments with maximum sentences under two years.

TABLE 27

Bureau of Correction-Average Time Served (in months), 1976 to 1982

Offense	1976	1977	Year of Release		1980	1981	1982
			1978	1979			
Murder	75.0	66.1	74.3	81.7	81.8	76.8	77.3
Manslaughter	33.4	29.9	33.7	32.9	33.1	29.4	31.3
Rape	44.3	44.7	38.6	44.0	45.5	45.9	47.9
Robbery	28.0	29.9	30.2	31.8	34.1	33.1	32.6
Aggravated Assault	21.5	23.1	21.2	20.8	23.9	26.4	25.3
Burglary	21.0	22.1	21.6	22.6	23.4	22.3	23.7
Theft	15.1	14.9	15.5	16.9	15.6	17.3	16.5
Drugs	16.7	20.1	19.0	20.4	19.5	18.7	16.9
Stolen Property	13.5	17.8	15.3	16.2	14.4	15.1	15.0
Simple Assault	12.7	12.7	14.7	16.5	13.6	12.3	16.2
Other	17.2	18.1	18.9	18.8	20.2	18.8	18.6

The above chart shows average time served by inmates released in the specified year. It excludes inmates incarcerated for parole violations.

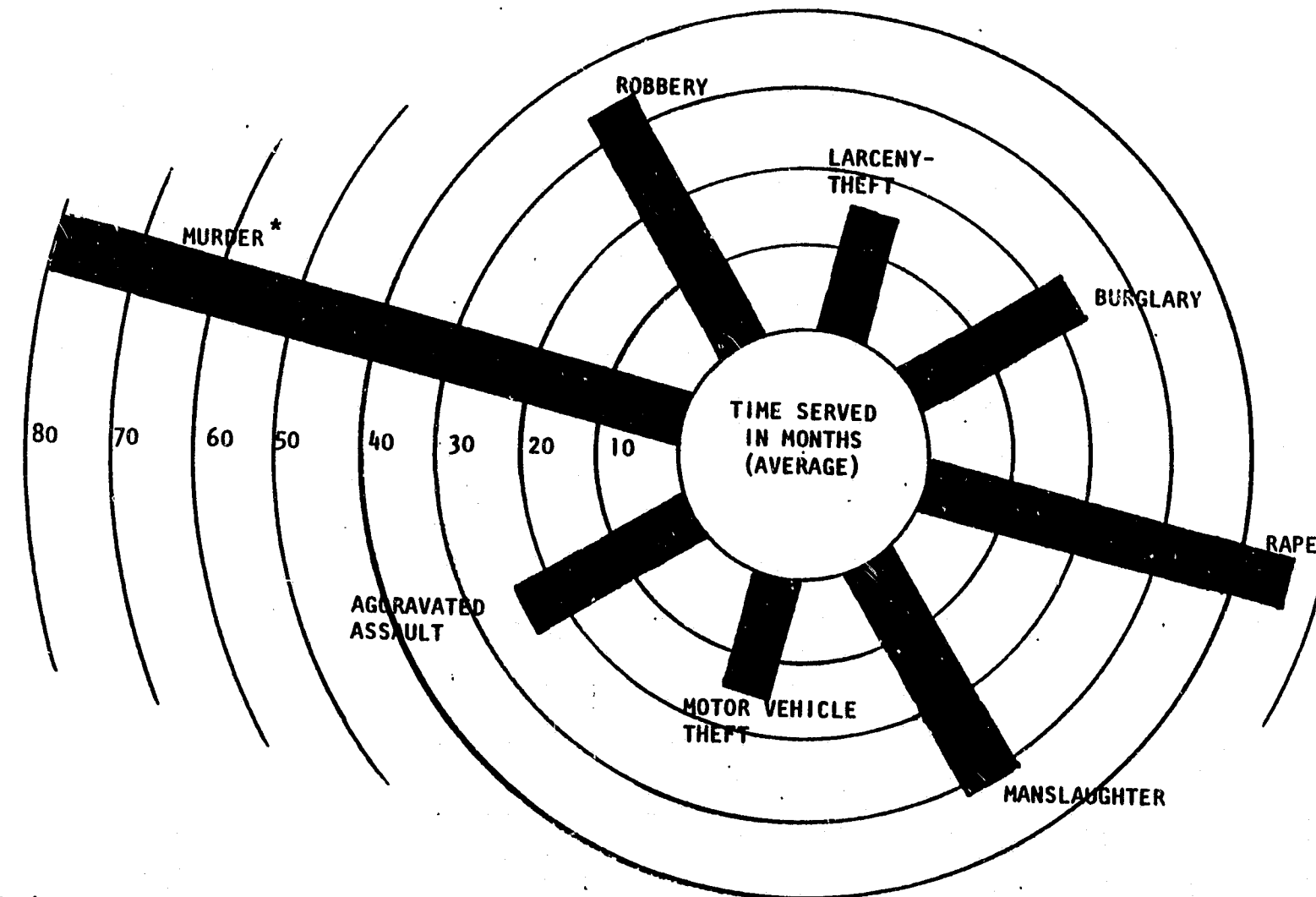
TABLE 28
Average Years Served by Inmates Released for Murder Offenses
1976 to 1982

Year	First Degree		Second Degree		Third Degree		Unspecified*		Total	
	Number	Years served	Number	Years served	Number	Years served	Number	Years served	Number	Years served
1976	23	14.1	87	4.9	6	1.0	2	3.4	118	6.5
1977	18	12.4	92	5.5	36	1.9	4	1.6	150	5.3
1978	27	14.8	98	6.2	42	2.5	5	1.9	170	6.5
1979	18	16.7	93	7.0	47	3.3	6	4.3	164	6.9
1980	17	16.9	49	7.6	65	4.0	7	4.3	145	7.0
1981	14	11.4	48	8.4	70	4.5	12	4.2	144	6.5
1982	8	14.1	39	9.1	77	4.9	5	3.2	129	6.7

* Offense generally reported as criminal homicide (degree not reported).

Figure 5

**TIME SERVED BY INMATES RELEASED FROM THE BUREAU OF CORRECTION
DURING 1982, BY CRIME INDEX OFFENSE**



* Primarily second degree (30.2%) and third degree (55.4%) murder.

TABLE 29

Average Time Served by Selected Offense of Inmates Released from
Bureau of Correction During 1982, by Type of Facility

Offense Classification	State Institutions Time Served				Regional Facilities Time Served				Total Time Served			
	Number	Yr.	Mo.	Da.	Number	Yr.	Mo.	Da.	Number	Yr.	Mo.	Da.
Crime Index Offenses												
Murder:												
1st degree	8	14	0	20	0	0	0	0	8	14	0	20
2nd degree	37	9	3	1	2	6	3	1	39	9	3	1
3rd degree	73	4	10	27	4	4	0	0	77	4	10	27
Unspecified	5	3	2	22	0	0	0	0	5	3	2	22
Manslaughter:												
Voluntary	48	3	4	9	3	2	7	8	51	3	3	22
Involuntary	22	1	9	8	10	0	9	4	32	1	5	13
Forcible rape	103	4	0	1	9	2	10	12	112	3	11	2
Robbery	540	3	1	15	107	1	0	15	647	2	9	15
Aggravated assault	154	2	4	9	42	0	11	7	196	2	0	17
Burglary	310	2	3	19	190	0	10	24	700	1	11	4
Larceny-theft*	191	1	6	15	104	0	9	23	295	1	3	11
Motor Vehicle Theft	14	1	4	4	10	1	0	26	24	1	2	23
Arson	39	2	11	23	11	1	3	17	50	2	7	8
Selected Part II Offenses												
Simple Assaults	64	1	8	0	40	0	8	24	113	1	3	3
Forgery	45	3	2	5	12	1	2	13	57	2	9	8
Fraud	25	1	5	16	11	0	11	8	36	1	3	17
Stolen property (receiving)	62	1	5	26	50	0	10	17	112	1	2	16
Weapons	25	1	7	3	16	0	7	1	41	1	2	10
Kidnapping	12	3	8	29	1	1	0	29	13	3	6	15
Statutory rape	13	2	4	13	4	0	10	17	17	2	0	4
Prostitution	7	0	11	17	2	0	7	0	9	0	10	17
Drunken driving	2	0	10	24	31	0	4	12	33	0	4	23
Narcotic drug violations	139	1	10	4	65	0	8	20	204	1	5	23
Deviate sexual intercourse	24	3	7	27	5	1	7	10	29	3	3	18
Prison breach	102	1	3	3	3	0	10	27	105	1	2	29
Total Released**	2,351	2	7	23	804	0	11	4	3,155	2	2	13

* Does not include motor vehicle theft.

** Includes offenses not listed above.

NOTE: Above figures do not include parole violators; but include inmates released to a detainer sentence.

TABLE 30

Average Time Served by Selected Offense of Inmates Released from
Bureau of Correction During 1982, by Sex

Offense Classification	Male Time Served				Female Time Served				Total Time Served			
	Number	Yr.	Mo.	Da.	Number	Yr.	Mo.	Da.	Number	Yr.	Mo.	Da.
Crime Index Offenses												
Murder:												
1st degree	8	14	0	20	0	0	0	0	8	14	0	20
2nd degree	37	9	3	1	1	4	9	25	39	9	3	1
3rd degree	67	4	10	13	10	4	9	11	77	4	10	10
Unspecified	5	3	2	22	0	0	0	0	5	3	2	22
Manslaughter:												
Voluntary	47	3	3	27	4	3	2	2	51	3	3	22
Involuntary	28	1	6	11	4	0	11	0	32	1	5	13
Forcible rape	112	3	11	2	0	0	0	0	112	3	11	2
Robbery	632	2	9	26	15	1	5	18	647	2	9	15
Aggravated assault	180	2	1	14	16	1	2	26	196	2	0	17
Burglary	687	1	11	9	13	1	2	13	700	1	11	4
Larceny-theft*	248	1	3	23	47	1	1	10	295	1	3	11
Motor vehicle theft	24	1	2	23	0	0	0	0	24	1	2	23
Arson	50	2	7	8	0	0	0	0	50	2	7	8
Selected Part II Offenses												
Simple assaults	105	1	2	13	8	1	11	24	113	1	3	3
Forgery	34	1	7	14	23	4	5	18	57	2	9	8
Fraud	25	1	4	4	11	1	2	9	36	1	3	17
Stolen property (receiving)	108	1	2	22	4	0	9	1	112	1	2	16
Weapons	41	1	2	10	0	0	0	0	41	1	2	10
Kidnapping	13	3	6	15	0	0	0	0	13	3	6	15
Statutory rape	16	2	0	29	1	1	0	0	17	2	0	6
Prostitution	4	1	4	28	3	0	5	10	9	0	10	17
Drunken driving	33	0	4	23	0	0	0	0	33	0	4	23
Narcotic drug violations	178	1	6	9	26	1	2	7	204	1	5	23
Deviate sexual intercourse	28	3	4	17	1	1	0	13	29	3	3	18
Prison breach	88	1	4	11	17	0	8	0	105	1	2	29
Total Released**	2,938	2	2	25	217	1	8	22	3,155	2	2	13

* Does not include motor vehicle theft.

** Includes offenses not listed above.

NOTE: Above figures do not include parole violators; but include inmates released to a detainer sentence.

TABLE 31

Number of Inmates Serving Life Sentences in the
Bureau of Correction on December 31, 1973 to 1982, by Race and Sex

Dec. 31	Race		Sex		Total	Percent White	Percent Non-White
	White	Non- white	Male	Female			
1973	168	265	425	8	433	38.8	61.2
1974	183	315	485	13	498	36.7	63.3
1975	202	370	558	14	572	35.3	64.7
1976	228	422	634	16	650	35.1	64.9
1977	257	450	689	18	707	36.4	63.6
1978	269	487	735	21	756	35.6	64.4
1979	301	525	800	26	826	36.4	63.6
1980	321	557	853	25	878	36.6	63.4
1981	364	598	931	31	962	37.8	62.2
1982	405	669	1,039	35	1,074	37.7	62.3

Figure 6

NUMBER OF LIFERS IN THE BUREAU OF CORRECTION ON

DECEMBER 31, 1973 TO 1982

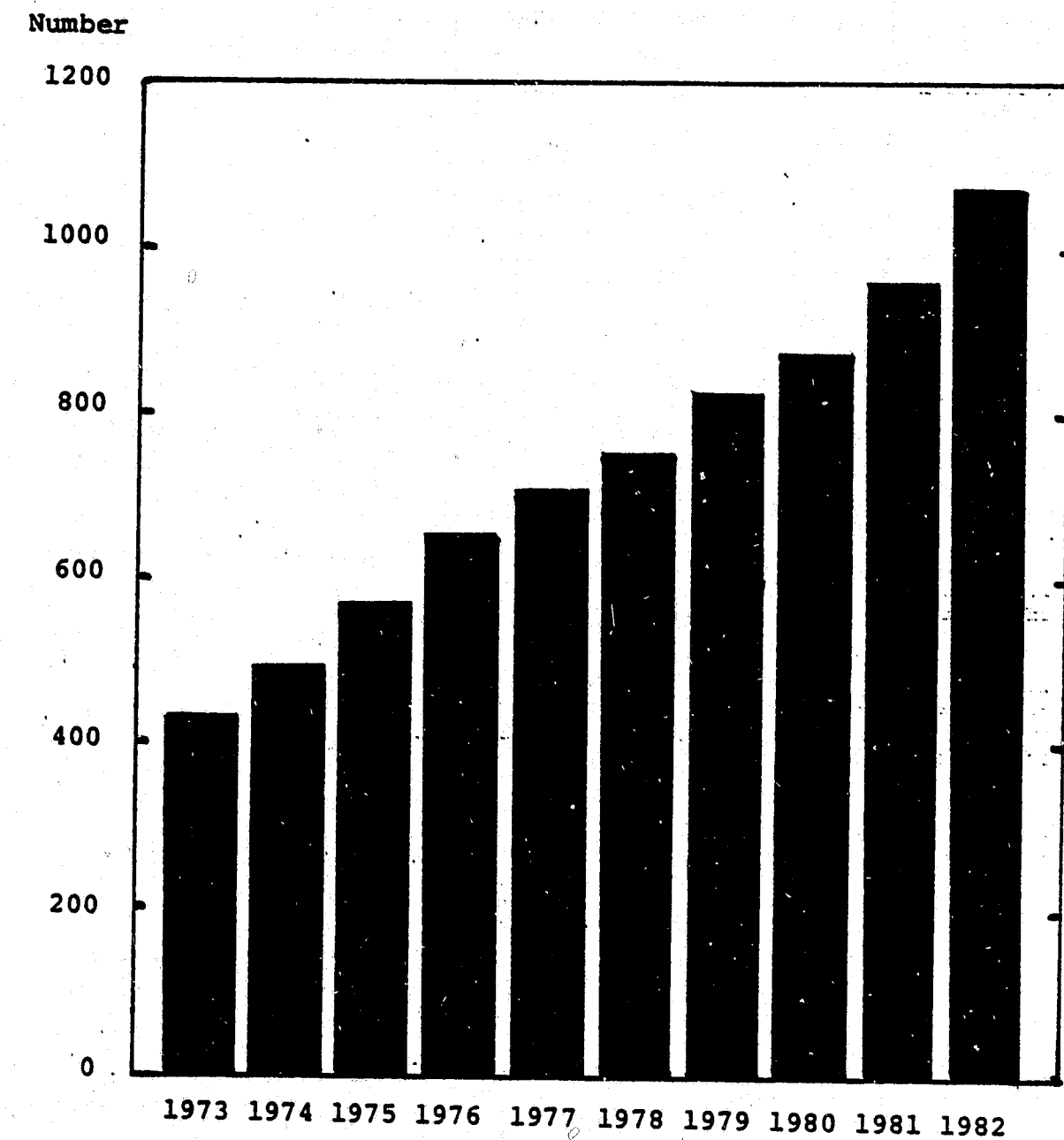


TABLE 32

Number of Offenders Serving Life Sentences
as of December 31, 1982, by Institution and Race

Institution	White	Non- white	Total	Percent of total inmate population	Percent white
Camp Hill	47	98	145	8.5	32.4
Dallas	80	91	171	12.5	46.8
Graterford	57	252	309	14.1	18.4
Huntingdon	110	92	202	13.4	54.5
Muncy	21	19	40	12.0	52.5
Pittsburgh	74	111	185	14.1	40.0
Rockview	16	6	22	1.7	72.7
Total	405	669	1,074	11.1	37.7

TABLE 33

Age Distribution of Lifers Received During 1982, By Race

Age	White	Non- White	Total	Percent of Total
16 to 20	9	19	28	27.2
21 to 25	9	12	21	20.4
26 to 30	9	7	16	15.5
31 to 35	6	8	14	13.6
36 to 40	5	5	10	9.7
41 to 45	3	2	5	4.9
46 to 50	3	3	6	5.8
51 to 55	2	1	3	2.9
Total	46	57	103	100.0
Average	30.4	27.4	28.8	-

Note: Lowest age is 16, highest age is 53.

TABLE 34

Counties Committing Lifers During 1982

County	Number	Percent of Total
Philadelphia	43	41.75
Allegheny	15	14.56
Delaware	10	9.72
Bucks	3	2.91
Dauphin	3	2.91
Fayette	3	2.91
Butler	2	1.94
Chester	2	1.94
Erie	2	1.94
Lancaster	2	1.94
Luzerne	2	1.94
Montgomery	2	1.94
Susquehanna	2	1.94
York	2	1.94
All Others	10	9.72
Total	103	100.00

* The following counties committed one lifer: Cambria, Crawford, Lackawanna, Lawrence, McKean, Mercer, Northumberland, Schuylkill, Tioga and Westmoreland.

TABLE 35

Profile of Execution Cases in the Bureau of Correction on December 31, 1982, By Institution

Item	Grater-ford	Hunting-don	Pitts-burgh	Total
Committing county:				
Beaver	0	0	2	2
Bucks	1	1	0	2
Dauphin	0	1	1	2
Delaware	1	0	0	1
Erie	0	0	1	1
Fayette	0	0	1	1
Lancaster	0	0	1	1
Montgomery	0	0	1	1
Philadelphia	8	3	0	11
Washington	0	0	1	1
Westmoreland	1	0	1	2
Race:				
White	3	3	7	13
Non-white	8	2	2	12
Age:				
20-24	3	0	1	4
25-29	1	1	1	3
30-34	3	1	3	7
35-39	2	2	2	6
40 & over	2	1	2	5
Average	32.7	34.8	34.2	33.7
Total	11	5	9	25

NOTE: Includes eight cases who received death verdicts but not yet formerly sentenced by a judge pending appeals.

TABLE 36

Analysis of 1982 Escapes from Bureau of Correction

Facility or region	Still at large 12/31/82	Captured and detained by other authorities as of 12/31/82	Escapees returned within:								Total
			Same day	1 to 5 days	6 to 10 days	11 to 20 days	21 to 30 days	31 to 90 days	91 to 180 days	Over 180 days	
Camp Hill	5	0	9	1	1	1	1	0	0	0	18
Dallas	2	0	1	0	0	1	0	1	0	0	5
Graterford	0	0	0	0	0	0	0	1	2	0	3
Greensburg	0	0	0	0	0	0	0	1	0	0	1
Huntingdon	0	0	1	2	0	0	0	0	0	0	3
Muncy	7	0	0	5	0	1	0	1	0	0	14
Pittsburgh	0	0	0	0	0	1	0	0	0	0	1
Rockview	1	1	5	3	0	0	0	0	1	0	11
CSC's:											
Region I	9	3	0	2	0	0	0	2	4	2	22
Region II	1	0	2	1	0	4	2	1	2	1	14
Region III	2	0	0	5	2	3	1	3	1	0	17
Total	27	4	18	19	3	11	4	10	10	3	109
Percent	24.8	3.7	16.5	17.4	2.7	10.1	3.7	9.2	9.2	2.7	100.0

Note: 71.5 of all 1982 escapees were returned during the year.

TABLE 37
Number of Furloughs Granted During 1982,
by Month and Correctional Facility

Month	Camp Hill	Dallas	Grater-ford	Greens-burg	Hunting-don	Mercer	Muncy	Pitts-burgh	Rock-view	Total
January	27	21	51	15	7	8	15	16	20	180
February	17	24	21	20	18	1	9	10	30	150
March	20	28	48	16	12	5	24	15	20	188
April	37	34	28	26	11	4	20	6	30	196
May	36	22	53	11	14	3	21	18	32	210
June	14	14	31	7	9	12	16	17	21	141
July	66	44	89	18	28	6	32	29	46	358
August	28	25	17	8	10	7	10	16	41	162
September	25	27	31	13	15	2	21	17	36	187
October	24	40	35	15	8	4	10	17	50	203
November	35	37	30	23	17	10	20	16	44	232
December	65	55	93	68	20	19	17	32	57	426
Total	394	371	527	240	169	81	215	209	427	2,633

NOTE: An inmate may have been on furlough more than once during the year.

TABLE 38
Institutional Assaults During 1982

Assaults	For Quarter Ending				Yearly Total
	March	June	September	December	
No. of Inmates Assaults Against Inmates	11	24	21	21	77
No. of Inmates Assaulted	12	24	21	24	81
No. of Inmates Requiring Outside Medical Attention	3	8	7	8	26
No. of Incidents of Inmates Assaulting Employees	18	16	18	15	67
No. of Employees Assaulted	38	33	20	25	116
No. of Employees Injured but not Requiring Outside Medical Attention	25	17	12	10	64
No. of Employees Injured Requiring Outside Medical Attention	10	8	7	14	39

TABLE 39
Average Cost and Population
Calendar Year 1982

Institution	Cost Per Day	Average Population
Camp Hill	30.16	1,592
Dallas	32.53	1,261
Graterford	31.12	2,143
Greensburg	33.56	341
Huntingdon	25.80	1,390
Mercer	36.59	280
Muncy	50.09	330
Pittsburgh	33.93	1,266
Rockview	30.01	1,223
Community Service Centers	32.47	292
Total	32.70 *	10,118

* Includes Central Office administrative costs and expenses required to maintain the facilities at the former Retreat State Hospital which is going to be converted to a correctional institution.

TABLE 40
Complement Control Report by Facility
As of December 31, 1962

Facility	Job Classification									Total
	Admin. & Clerical	Cust.	Tech.	Edu.	Med.	Voc. & Maint.	Human Serv.	Insp. & Invest.	Ind.	
Camp Hill										
Filled	62	233	30	12	11	46	36	4	28	462
Vacant	1	5	0	0	0	0	1	0	1	8
Dallas										
Filled	40	243	16	6	4	38	21	2	12	382
Vacant	1	0	0	0	0	0	0	0	1	2
Greaserford										
Filled	70	350	36	5	6	46	38	5	30	586
Vacant	6	12	3	1	5	0	1	0	1	29
Greensburg										
Filled	16	56	9	2	5	5	10	0	4	107
Vacant	0	2	0	0	0	0	0	0	0	2
Huntingdon										
Filled	42	196	16	6	7	37	23	3	25	355
Vacant	0	0	0	0	0	2	0	0	0	2
Mercer										
Filled	18	68	9	0	2	5	11	0	0	113
Vacant	0	3	0	0	0	0	2	0	0	5
Muncy										
Filled	25	94	7	8	10	18	10	2	3	177
Vacant	1	5	2	0	1	0	0	0	0	9
Pittsburgh										
Filled	55	238	26	8	12	36	26	4	12	407
Vacant	0	0	1	1	1	0	0	0	0	3
Rehoboth										
Filled	0	0	0	0	0	5	0	0	0	5
Vacant	0	0	0	0	0	0	0	0	0	0
Rockview										
Filled	47	211	15	7	7	46	25	4	18	380
Vacant	0	9	0	1	0	0	0	0	0	10
Community Services										
Filled	18	0	45	0	0	0	84	2	0	149
Vacant	2	0	5	0	0	0	11	1	0	19
Central Office										
Filled	61	0	7	1	0	1	3	11	12	96
Vacant	3	0	2	0	0	0	0	0	1	6
Total Filled	454	1,679	216	55	64	283	287	37	144	3,219
Total Vacant	14	36	13	3	7	2	15	1	4	95

END