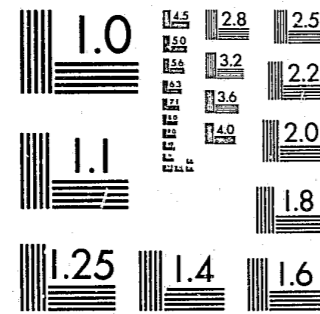


National Criminal Justice Reference Service



This microfiche was produced from documents received for inclusion in the NCJRS data base. Since NCJRS cannot exercise control over the physical condition of the documents submitted, the individual frame quality will vary. The resolution chart on this frame may be used to evaluate the document quality.



MICROCOPY RESOLUTION TEST CHART  
NATIONAL BUREAU OF STANDARDS-1963-A

Microfilming procedures used to create this fiche comply with the standards set forth in 41CFR 101-11.504.

Points of view or opinions stated in this document are those of the author(s) and do not represent the official position or policies of the U. S. Department of Justice.

National Institute of Justice  
United States Department of Justice  
Washington, D. C. 20531

2/10/84

1981 Court Commitments to the  
Massachusetts Department of Correction

U.S. Department of Justice  
National Institute of Justice

This document has been reproduced exactly as received from the person or organization originating it. Points of view or opinions stated in this document are those of the authors and do not necessarily represent the official position or policies of the National Institute of Justice.

Permission to reproduce this copyrighted material has been granted by  
Massachusetts Department  
of Correction

to the National Criminal Justice Reference Service (NCJRS).

Further reproduction outside of the NCJRS system requires permission of the copyright owner.

Prepared By:

Linda K. Holt  
Program Development  
Specialist

Massachusetts Department of Correction

Michael V. Fair  
Commissioner

June, 1982

ION #12828  
By John J. Manton, State Purchasing Agent

91493  
6716

Abstract

This report is a statistical description of the 1,695 individuals committed by the courts to a term of incarceration in the Massachusetts Department of Correction during the year 1981. The tables in this report contain information on the nature of present offense, personal background characteristics and criminal history of these individuals. Some highlights of the statistics presented in this report are:

- There was a 37 percent increase in the number of commitments during the year from 1,234 in 1980 to 1,695 in 1981.
- There were 674 commitments to Walpole (28 percent higher than 1980); 653 commitments to Concord (39 percent higher than 1980); and 368 commitments to Framingham (56 percent higher than 1980).
- The median minimum sentence for Walpole commitments is seven years; the median maximum sentence for Concord commitments is ten years; and the median maximum sentence for Framingham commitments is less than one year.
- Offenses against the person accounted for half of all commitments. Armed robbery accounted for almost a quarter of all commitments alone.
- The median age at commitment was 24 years. Walpole commitments tend to be the oldest, Concord commitments tend to be the youngest.
- Almost two-thirds of the commitment population are whites; almost two-thirds are single; sixteen percent have been in the military; forty-eight percent come from the Boston SMSA; most have limited work experience concentrated in the area of manual labor; the median educational level is eleventh grade; and one third of the population have prior drug use.
- Forty-five percent of the population is serving their first incarceration of any type. The median age of first court appearance is sixteen years.

Table of Contents

<u>Title</u>	<b>NCJRS</b>	<u>Page Number</u>
Abstract		1
Contents	AUG 81 1982	2-4
Introduction	<b>ACQUISITIONS</b>	5
Number of Commitments in 1981		6
Figure 1. Number of Commitments to DOC, 1971 to 1981		7
Figure 2. Number of Commitments by Committing Institution, 1971 to 1981		8
A Description of 1981 Commitments		10
Present Offense Characteristics		10
Table 1. Court From Which Committed		18
Table 2. Jail Credits Earned		19
Table 3. Minimum Sentence		20
Table 4. Maximum Sentence		21
Table 5. Sentence Type		22
Table 6. Present Offense: General Category		23
Table 7. Present Offense: Person Offenses		24
Table 8. Present Offense: Sex Offenses		25
Table 9. Present Offense: Property Offenses		26
Table 10. Present Offense: Drug Offenses		27
Table 11. Present Offense: Other Offenses		28
Table 12. Time Until Original Parole Eligibility Date		29
Table 13. Age at Commitment		30
Personal Background Characteristics		
Table 14. Sex		31
Table 15. Race		32

Table 16. Ethnic Composition	33
Table 17. Marital Status	34
Table 18. Military Discharge	35
Table 19. Prior Address: Selected Cities and Towns	36
Table 20. Prior Address: County	37
Table 21. Prior Address: SMSA	38
Table 22. Occupation	39
Table 23. Time at Most Skilled Position	40
Table 24. Time on Job of Longest Duration	41
Table 25. Last Grade Completed	42
Table 26. Known Drug Use	43

Criminal History Variables

Table 27. Total Number of Court Appearances	44
Table 28. Number of Charges for Person Offenses	45
Table 29. Number of Charges for Property Offenses	46
Table 30. Number of Charges for Sex Offenses	47
Table 31. Number of Charges for Drug Offenses	48
Table 32. Number of Charges for Drunkenness Offenses	49
Table 33. Number of Charges for Escape Offenses	0
Table 34. DYS Commitment Indicator	51
Table 35. Number of Prior House of Correction Incarcerations	52
Table 36. Number of Prior State or Federal Incarcerations	53
Table 37. Number of Prior Adult Incarcerations	54
Table 38. Number of Juvenile Paroles	55
Table 39. Number of Juvenile Parole Violations	56

Table 40. Number of Adult Paroles	58
Table 41. Number of Adult Parole Violations	57
Table 42. Number of Juvenile and Adult Paroles	59
Table 43. Number of Juvenile and Adult Parole Violations	60
Table 44. Age at First Court Appearance	61
Table 45. Age at First Drunkenness Court Appearance	62
Table 46. Age at First Drug Related Court Appearance	63

Introduction

This report is a statistical description of individuals committed by the courts to the Massachusetts Department of Correction during 1981. The tables in this report contain information on the nature of the present offense, personal background characteristics and criminal history of admissions from the courts. The information on which this report is based is prepared by the Data Processing Unit of the Research Division.

This report includes all new court commitments as well as those who began serving a new sentence during the year (forthwith and from and after sentences). If an individual was committed to the Department more than once during 1981, that individual is counted as multiple court commitments. Several categories of offenders are not included in this report: those who began serving "B" and "C" sentences during 1981 (sentences received for crimes committed on parole) and those who were sentenced during 1981 but were still in a House of Correction awaiting placement in a DOC facility on January 1, 1982. There were 7 individuals awaiting placement on January 1, 1982.

The following information is helpful in reading the tables in this report. Each table is divided according to committing institution. Since each committing institution receives a very different type of offender, it is important to consider each column in the table as well as the total column.

The top number in each cell represents the number of individuals who fall into the corresponding category in the table. The bottom number in each cell appears in parentheses and represents the percentage of the number of individuals in a particular category to the total number of commitments from that institution (column percents).

Number of Commitments

There were 1,695 commitments during 1981, a 37 percent increase from the previous year. Figure 1 shows changes in the number of commitments from 1971 to 1981. This graph indicates that the number of commitments to the DOC is much higher than in any of the last ten years. Figure 2 shows the number of commitments to each committing institution. This graph indicates that commitments to each institution were also higher than in any of the preceding ten years. There are a number of factors that are related to the dramatic increase in commitments that occurred during 1981. Three of those factors are discussed here.

One factor that is associated with an increase in commitments to the DOC is a change in the use of "awaiting booking" status for offenders sentenced to the DOC. In the past a large number of offenders would be placed in Houses of Correction after sentencing to await space in a DOC facility. These individuals are not counted as commitments until they

Figure 1.  
Number of Commitments to DOC,  
1971 to 1981

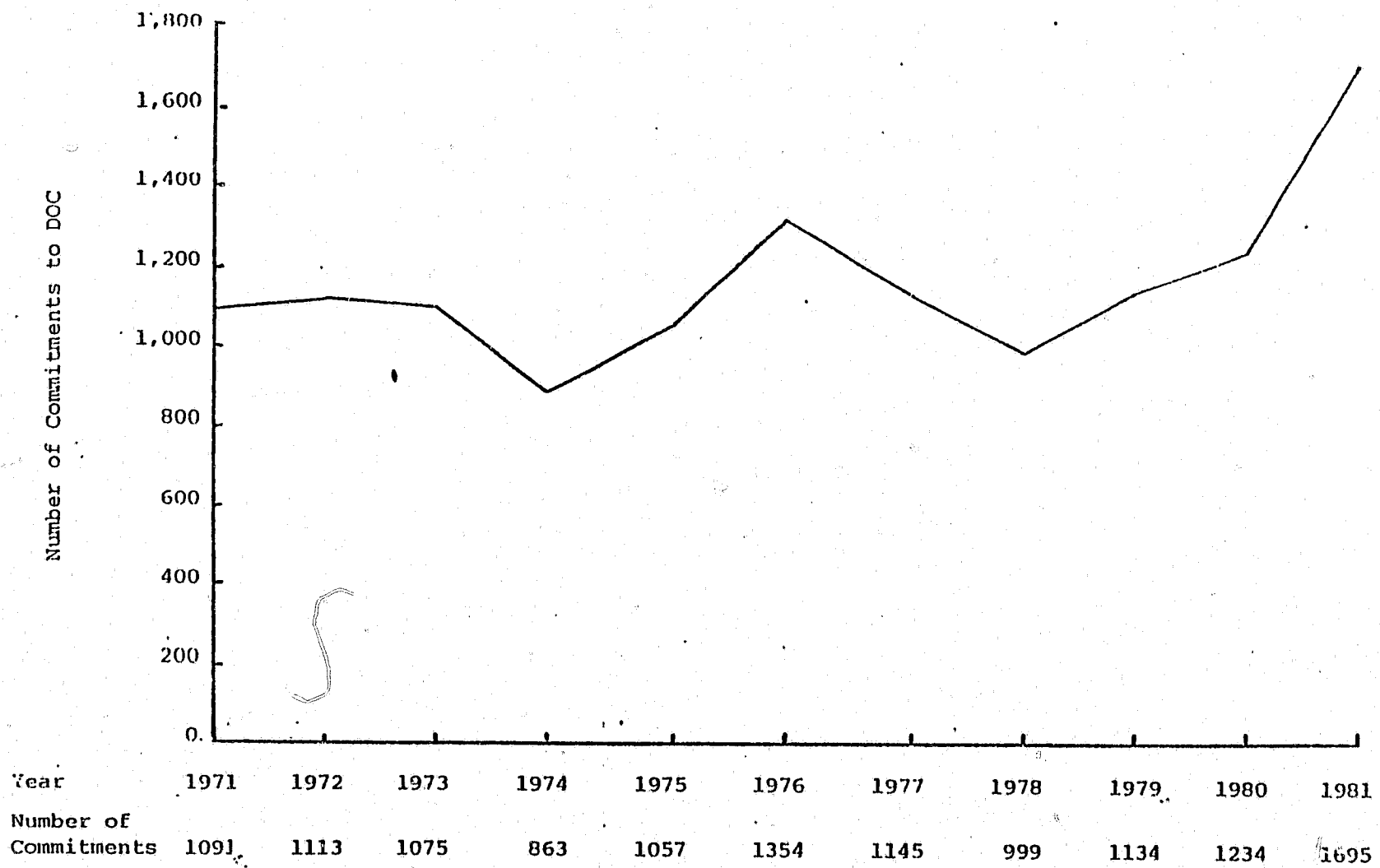
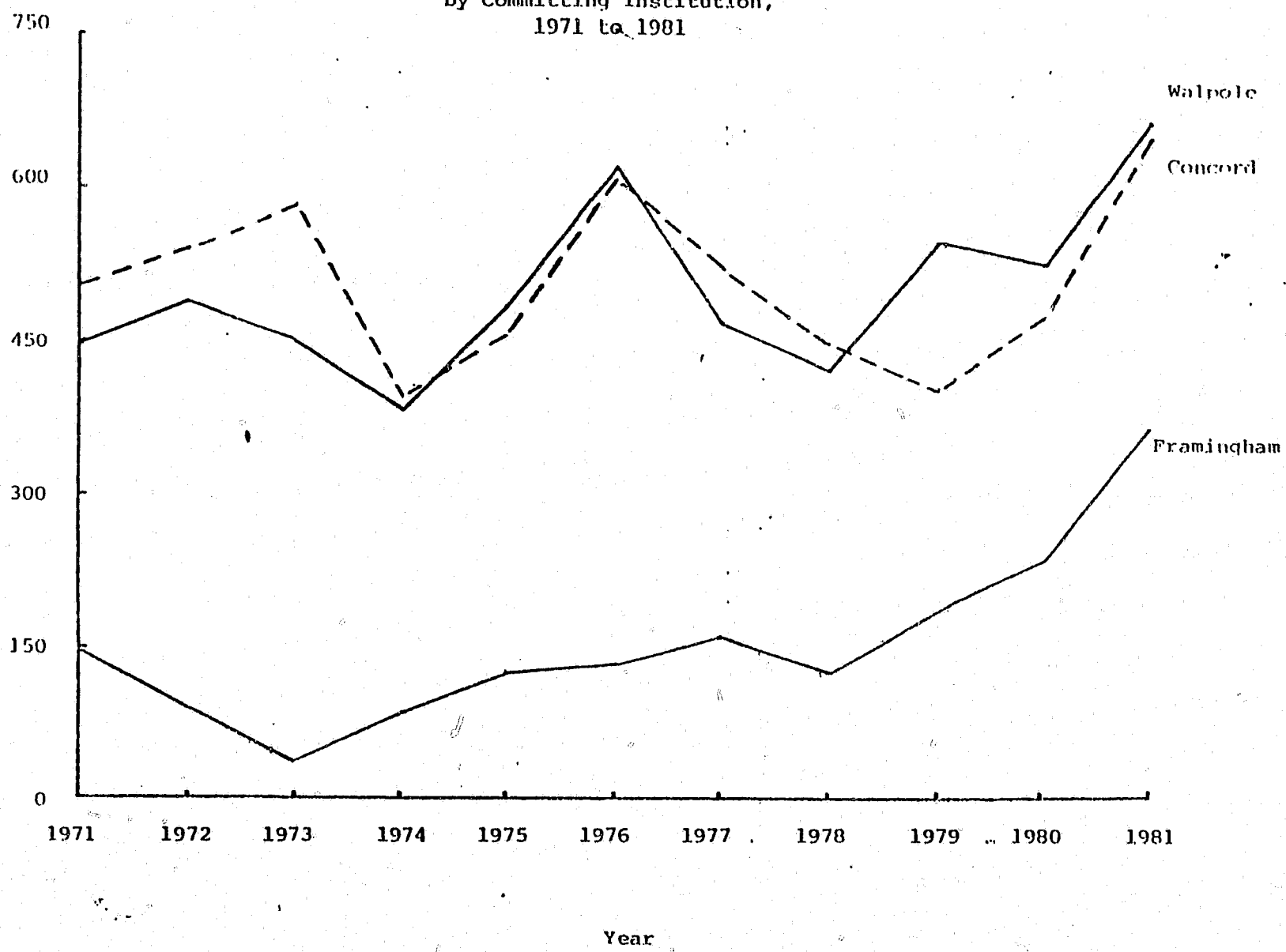


Figure 2.  
Number of Commitments to DOC  
by Committing Institution,  
1971 to 1981



enter a DOC facility. This status is presently used infrequently because of increased population in county facilities. On January 1, 1982 there were 7 individuals in an awaiting booking status; on January 1, 1981 there were 131 individuals in that status. This change in status of 124 individuals affected the number of commitments occurring during 1981.

A second factor associated with an increase in commitments is an increased use of DOC facilities for the placement of women offenders. In 1980 there were 236 women committed to the DOC and 126 women committed to county facilities. In 1981 there were 368 women committed to the DOC, an increase of 56 percent over the previous year; there were 96 women committed to county facilities, a decrease of 24 percent over the same time period.

A third factor associated with an increase in commitments is a change in statutes regarding drug offenders. In 1980 there were 55 commitments to the DOC for drug offenses while in 1981 there were 196 commitments, an increase of 141 commitments or 256 percent in a single year. While offenses in other categories did increase, their rate of increase was markedly less than offenses in the drug category.

These three factors do not account for all of the increase in the number of commitments to the DOC. They do represent three policy changes that affected admission to DOC facilities during 1981.

#### A Description of 1981 Court Commitments

In this section a general description of the population of individuals committed to the Department during 1981 will be given. This description includes a discussion of the present offense, personal background of the offender and criminal history of the offender. Where appropriate, comparisons among the three committing institutions will be done.

#### Nature of Present Offense

In discussing the present offense of the commitment group, only the most serious offense, the offense for which the person received the longest sentence is discussed.

Court of Commitment. Eighty-three percent of the commitments to the Department of Correction are from Superior Courts. Three courts, Suffolk Superior, Middlesex Superior and Worcester Superior account for almost half of the commitments to the Department. All Walpole commitments come from Superior Courts and almost all Concord commitments come from Superior Courts. Only 29 percent of the commitments to Framingham are from Superior Courts; most commitments to Framingham are from municipal and district courts. Municipal courts are lower courts of Suffolk county; district courts are lower courts of all other counties.

Jail Credits. Jail credits measure that amount of time spent incarcerated by the individual while awaiting trial. A large number of jail credits is usually indicative of a serious crime or a low income offender. Seventy-one percent of Walpole commitments have one or more days of jail credits. This contrasts with 63 percent of Concord commitments and 23 percent of Framingham commitments. The median number of jail credits for all commitments during 1981 is 6.

Minimum Sentence. Only those individuals who receive a state prison sentence (Walpole commitments and some Framingham commitments) receive a minimum sentence. Generally minimum prison sentences must be for two and one-half years or more but in some cases can be shorter. Some drug offenses carry short prison sentences, for example. The median minimum sentence for Walpole commitments was seven years. There were 25 commitments to Framingham who will serve prison sentences. The median minimum sentence for those women is six years.

Maximum Sentence. All individuals committed to the Department have a maximum sentence. For Concord commitments this is their only sentence. Generally maximum sentences are two and one-half years or longer. For some offenses such as drug offenses, larceny and escapes a shorter sentence can be given. A large proportion of Framingham commitments will serve county sentences, those with a maximum length of less than two and one half years.

Of the 368 commitments to Framingham, 25 (7 percent) will serve prison sentences, 61 (16 percent) will serve reformatory sentences and 282 (77 percent) will serve county sentences.

Type of Sentence. The majority of individuals committed to the Department will serve simple sentences. Concurrent sentences are served by 30 percent of the commitment population. Less frequently used are aggregate, forthwith and from and after sentences.

Type of Offense. Type of offense varies by committing institution. The majority of Walpole and Concord commitments are for offenses against the person while offenses against property are the modal offense category for Framingham commitments.

Offenses against the person account for half of all commitments to the Department. Armed robbery accounts for 24 percent of all commitments. There were 142 commitments for homicides (first and second degree murder, manslaughter and vehicular homicide). The seven cases listed as "other" person offenses include 3 cases of mayhem and 4 cases of putting in fear for the purpose of stealing.

Property offenses accounted for 20 percent of all commitments to the Department and 36 percent of all commitments to Framingham. Burglary was the most common property offense for Walpole and Concord commitments; larceny was the most common offense for Framingham commitments.



Sex offenses account for 10 percent of all commitments to the DOC. There were 138 commitments for rape during 1981 and 27 commitments for assault with intent to rape. Additionally there were 2 commitments for unnatural acts and one commitment for lewd behavior.

Drug offenses accounted for 12 percent of all commitments to the DOC during 1981. As mentioned previously this is a large increase from the previous year. The most common drug offense is a violation of the Controlled Substance Act with a Class A substance.

Offenses in the "other" category account for very small proportions of Walpole and Concord commitments and 28 percent of commitments to Framingham. The most common offenses in this category are prostitution for which 39 women were committed and disturbing the peace for which 32 women were committed. The five offenses labelled "other" in the table include: unlawful possession of alcoholic beverage, interfering with a police officer, annoying phone calls, massage without a license and failure to appear in court.

Time Until Parole Eligibility. An indication of how much time offenders will actually serve is the time until their parole eligibility date. About one-half of all offenders will be released at their original parole eligibility date. For Walpole commitments the median time to serve is from 3 to 5 years. For Concord commitments the median time to serve is from 10 to 12

months. For Framingham commitments the median time to serve is less than three months.

Age at Incarceration. The median age at incarceration is twenty-four years old. The age of new commitments to the DOC ranged from fifteen years to seventy years.

#### Personal Background Characteristics

In discussing the personal background characteristics of the commitment population, all information is reported as the status of the offender at the time of commitment. Most of this information is self reported by the offender and is not verified in any way.

Sex. All Walpole and Concord commitments are males, all Framingham commitments are females. During 1981, 22 percent of the commitments were females and 78 percent were males.

Race and Ethnicity. Two-thirds of the 1981 commitment group were white and 31 percent were black. There were also three Native Americans and four Asians committed to the DOC. There were 22 Hispanics and 1 other individual whose race was not identified. Eight percent of the commitment group are Hispanics. This includes white hispanics, black hispanics and other hispanics.

Marital Status. Most of the commitments are single (66 percent). Seventeen percent of the commitment group were married at the time of their commitment, 10 percent were divorced, 6 percent separated and 1 percent widowed.

Military History. Sixteen percent of the commitment group have a history of military service. Of those with military service most were discharged honorably.

Prior Address. Almost all commitments to the DOC come from Massachusetts. Three counties, Suffolk, Worcester and Middlesex account for 58 percent of all commitments.

Occupation. Almost all of the individuals committed to the Department have previous work experience. For half of the commitment group the primary work experience came in the area of manual labor. The median time in the position of longest duration is 7 to 9 months.

Education. The median educational level for this population is eleventh grade. One third of the commitment group has completed high school, nine percent have some college education.

Drug Use. About one-third of the commitment group evidenced a history of prior drug use. Fifteen percent of the commitment group had a history of heroin use. Drug use history is generally based on offender self reports or criminal history records.

#### Criminal History

Information about the criminal history of individuals committed to the DOC is taken from reports prepared by the Board of Probation. These reports identify the number of court appearances and the offenses that the individual was charged with as well as case disposition information. In this section the individual's history of court appearances, incarcerations and paroles will be discussed.

Prior Court Appearances. The median number of court appearances for the commitment group is ten. The number of court appearances for person, property, sex, narcotics, drunkenness and escape offenses are also shown.

Prior Incarcerations. Half of the commitment group is serving their first adult incarceration. Twenty percent had a commitment as a juvenile, thirty-nine percent have been incarcerated in county correctional facilities and twenty-three percent have been incarcerated in a state or federal correctional facility.

Parole History. The number of paroles and parole violations that an individual experienced prior to this commitment are shown. About 25 percent of the commitment group experienced paroles in the past. Over 60 percent of those with a history of paroles also have one or more parole violations.

Age at Entry into Criminal Justice System. Age of the individual at their first court appearance and their first court appearance for a drug related offense or for a drunkenness related offense are shown. The median age at the time of first court appearance is 17 years of age.

COURT FROM WHICH COMMITTED	WALPOLE	CONCORD	FRAMINGHAM	TOTAL
Sarnstable	17 ( 3)	13 ( 2)	2 ( 1)	32 ( 2)
Berkshire	14 ( 2)	5 ( 1)	1 ( 0)	20 ( 1)
Bristol	32 ( 5)	61 ( 9)	7 ( 2)	100 ( 6)
Dukes	0 ( 0)	2 ( 0)	0 ( 0)	2 ( 0)
Essex	52 ( 8)	65 ( 10)	12 ( 3)	129 ( 8)
Franklin	1 ( 0)	1 ( 0)	1 ( 0)	3 ( 0)
Hampden	84 ( 12)	39 ( 6)	12 ( 3)	135 ( 8)
Hampshire	14 ( 2)	2 ( 0)	1 ( 0)	17 ( 1)
Middlesex	104 ( 15)	114 ( 17)	13 ( 4)	231 ( 14)
Norfolk	38 ( 6)	35 ( 5)	3 ( 1)	76 ( 4)
Plymouth	27 ( 4)	53 ( 8)	3 ( 1)	83 ( 5)
Suffolk	209 ( 31)	146 ( 22)	24 ( 7)	379 ( 22)
Worcester	81 ( 12)	90 ( 14)	26 ( 7)	197 ( 12)
Municipal Courts	0 ( 0)	13 ( 2)	84 ( 23)	97 ( 6)
District Courts	0 ( 0)	15 ( 2)	179 ( 49)	194 ( 11)
TOTAL	673	654	368	1695

JAIL CREDITS	WALPOLE	CONCORD	FRAMINGHAM	TOTAL
None	194 ( 29)	241 ( 37)	282 ( 77)	717 ( 42)
1 to 10	66 ( 10)	102 ( 16)	36 ( 10)	204 ( 12)
11 to 50	90 ( 13)	93 ( 14)	24 ( 7)	207 ( 12)
51 to 100	67 ( 10)	90 ( 14)	15 ( 4)	172 ( 10)
101 to 150	82 ( 12)	67 ( 10)	3 ( 1)	152 ( 9)
151 to 200	62 ( 9)	35 ( 5)	3 ( 1)	100 ( 6)
Over 200	112 ( 17)	26 ( 4)	5 ( 1)	143 ( 8)
<b>TOTAL</b>	<b>673</b>	<b>654</b>	<b>368</b>	<b>1695</b>

MINIMUM SENTENCE	WALPOLE	CONCORD	FRAMINGHAM	TOTAL
1 Year	1 ( 0)	0 ( 0)	0 ( 0)	1 ( 0)
2½ Years	13 ( 2)	0 ( 0)	0 ( 0)	13 ( 1)
3 Years	105 ( 16)	0 ( 0)	8 ( 2)	113 ( 7)
4 Years	82 ( 12)	0 ( 0)	3 ( 1)	85 ( 5)
5 Years	98 ( 15)	0 ( 0)	1 ( 0)	99 ( 6)
6 Years	61 ( 9)	0 ( 0)	2 ( 1)	63 ( 4)
7 Years	44 ( 7)	0 ( 0)	3 ( 1)	47 ( 3)
8 Years	42 ( 6)	0 ( 0)	3 ( 1)	45 ( 3)
9 Years	30 ( 4)	0 ( 0)	1 ( 0)	31 ( 2)
10 Years	39 ( 6)	0 ( 0)	0 ( 0)	39 ( 2)
11 to 12 Years	30 ( 4)	0 ( 0)	0 ( 0)	30 ( 2)
13 to 15 Years	30 ( 4)	0 ( 0)	1 ( 0)	31 ( 2)
16 to 19 Years	12 ( 2)	0 ( 0)	1 ( 0)	13 ( 1)
20 to 24 Years	3 ( 0)	0 ( 0)	0 ( 0)	3 ( 0)
25 or More Years	6 ( 1)	0 ( 0)	0 ( 0)	6 ( 0)
Life	77 ( 11)	0 ( 0)	2 ( 1)	79 ( 5)
Indeterminate	0 ( 0)	654 (100)	343 ( 93)	997 ( 59)

MAXIMUM SENTENCE	WALPOLE	CONCORD	FRAMINGHAM	TOTAL
Less than 1 month	0 ( 0)	0 ( 0)	84 ( 23)	84 ( 5)
Less than 1 Year	0 ( 0)	3 ( 0)	138 ( 38)	141 ( 8)
1 Year	0 ( 0)	3 ( 0)	60 ( 16)	63 ( 4)
2 Years	0 ( 0)	58 ( 9)	33 ( 9)	91 ( 5)
3 Years	2 ( 0)	2 ( 0)	0 ( 0)	4 ( 0)
4 Years	2 ( 0)	0 ( 0)	1 ( 0)	3 ( 0)
5 Years	101 ( 15)	116 ( 18)	17 ( 5)	234 ( 14)
6 Years	27 ( 4)	42 ( 6)	5 ( 1)	74 ( 4)
7 Years	77 ( 11)	11 ( 2)	4 ( 1)	92 ( 5)
8 Years	23 ( 3)	6 ( 1)	0 ( 0)	29 ( 2)
9 Years	16 ( 2)	0 ( 0)	0 ( 0)	16 ( 1)
10 Years	162 ( 24)	187 ( 29)	13 ( 4)	362 ( 21)
11 to 12 Years	46 ( 7)	51 ( 8)	4 ( 1)	101 ( 6)
13 to 15 Years	48 ( 7)	49 ( 7)	2 ( 1)	99 ( 6)
16 to 19 Years	8 ( 1)	33 ( 5)	0 ( 0)	41 ( 2)
20 to 24 Years	70 ( 10)	0 88 ( 13)	4 ( 1)	162 ( 10)
25 or More Years	14 ( 2)	5 ( 1)	1 ( 0)	20 ( 1)
Life	0 77 ( 11)	0 ( 0)	2 ( 1)	79 ( 5)

SENTENCE TYPE	WALPOLE	CONCORD	FRAMINGHAM	TOTAL
One Sentence Only	345 ( 51)	397 ( 61)	229 ( 62)	971 ( 57)
Concurrent Sentences	202 ( 30)	187 ( 29)	113 ( 31)	502 ( 30)
Aggregate Sentences	7 ( 1)	22 ( 3)	13 ( 4)	42 ( 2)
Forthwith Sentences	101 ( 15)	1 ( 0)	5 ( 1)	107 ( 6)
Forthwith-County Sentence	1 ( 0)	0 ( 0)	0 ( 0)	1 ( 0)
From and After Sentence	17 ( 3)	47 ( 7)	8 ( 2)	72 ( 4)
<b>TOTAL</b>	<b>673</b>	<b>654</b>	<b>368</b>	<b>1695</b>

PRESENT OFFENSE: GENERAL CATEGORY	WALPOLE	CONCORD	FRAMINGHAM	TOTAL
Person	398 ( 59)	393 ( 60)	64 ( 17)	855 ( 50)
Sex	102 ( 15)	63 ( 10)	3 ( 1)	168 ( 10)
Property	95 ( 14)	120 ( 18)	131 ( 36)	346 ( 20)
Drug	61 ( 9)	69 ( 11)	57 ( 15)	187 ( 11)
Other	17 ( 3)	9 ( 1)	113 ( 31)	139 ( 8)
<b>TOTAL</b>	<b>673</b>	<b>654</b>	<b>368</b>	<b>1695</b>

PRESENT OFFENSE: PERSON OFFENSES	WALPOLE	CONCORD	FRAMINGHAM	TOTAL
Not Applicable	275 ( 41)	261 ( 40)	304 ( 83)	840 ( 50)
Murder 1	33 ( 5)	0 ( 0)	0 ( 0)	33 ( 2)
Murder 2	40 ( 6)	0 ( 0)	2 ( 1)	42 ( 2)
Manslaughter	40 ( 6)	17 ( 3)	10 ( 3)	67 ( 4)
Assault w.i. Murder	24 ( 4)	8 ( 1)	0 ( 0)	32 ( 2)
Armed Robbery	168 ( 25)	233 ( 36)	12 ( 3)	413 ( 24)
Unarmed Robbery	37 ( 5)	75 ( 11)	3 ( 1)	115 ( 7)
Armed Assault	37 ( 5)	36 ( 6)	14 ( 4)	87 ( 5)
Unarmed Assault	3 ( 0)	12 ( 2)	19 ( 5)	34 ( 2)
Extortion	3 ( 0)	1 ( 0)	3 ( 1)	7 ( 0)
Kidnapping	7 ( 1)	10 ( 2)	0 ( 0)	17 ( 1)
Conspiracy	1 ( 0)	0 ( 0)	0 ( 0)	1 ( 0)
Other Person Offense	5 ( 1)	1 ( 0)	1 ( 0)	7 ( 0)
<b>TOTAL</b>	<b>673</b>	<b>654</b>	<b>368</b>	<b>1695</b>

PRESENT OFFENSE:  
SEX OFFENSES

	WALPOLE	CONCORD	FRAMINGHAM	TOTAL
Not Applicable	571 ( 85)	591 ( 90)	365 ( 99)	1527 ( .90)
Rape	65 ( 10)	35 ( 5)	1 ( 0)	101 ( 6)
Assault w.i. Rape	8 ( 1)	9 ( 1)	0 ( 0)	17 ( 1)
Rape of a Minor	21 ( 3)	16 ( .2)	0 ( 0)	37 ( 2)
Assault w.i. Rape Minor	7 ( 1)	3 ( 0)	0 ( 0)	10 ( 1)
Unnatural Acts	1 ( 0)	0 ( 0)	1 ( 0)	2 ( 0)
Other Sex Offense	0 ( 0)	0 ( 0)	1 ( 0)	1 ( 0)
<b>TOTAL</b>	<b>673</b>	<b>654</b>	<b>368</b>	<b>1695</b>

PRESENT OFFENSE:  
PROPERTY OFFENSES

	WALPOLE	CONCORD	FRAMINGHAM	TOTAL
Not Applicable	578 ( 86)	534 ( 82)	237 ( 64)	1349 ( 80)
Arson	6 ( 1)	13 ( 2)	0 ( 0)	19 ( .1)
Armed Burglary	5 ( 1)	6 ( 1)	2 ( 1)	13 ( 1)
Burglary	65 ( 10)	83 ( 13)	19 ( 5)	167 ( 10)
Burglary Tools	3 ( 0)	3 ( 0)	1 ( 0)	7 ( 0)
Larceny from Person	0 ( 0)	2 ( 0)	7 ( 2)	9 ( 1)
Larceny	3 ( 0)	1 ( 0)	70 ( 19)	74 ( 4)
Motor Vehicle Theft	2 ( 0)	5 ( 1)	1 ( 0)	8 ( 0)
Forgery & Uttering	3 ( 0)	3 ( 0)	15 ( 4)	21 ( 1)
Fraud	0 ( 0)	0 ( 0)	1 ( 0)	1 ( 0)
Receiving Stolen Goods	8 ( 1)	3 ( 0)	10 ( 3)	21 ( 1)
Property Injuries	0 ( 0)	1 ( 0)	5 ( 1)	6 ( 0)
<b>TOTAL</b>	<b>673</b>	<b>654</b>	<b>368</b>	<b>1695</b>

PRESENT OFFENSE:  
DRUG OFFENSES

	WALPOLE	CONCORD	FRAMINGHAM	TOTAL
Not Applicable	612 ( 91)	585 ( 89)	311 ( 85)	1508 ( 89)
Possession of Heroin	0 ( 0)	2 ( 0)	3 ( 1)	5 ( 0)
Being Near Narcotics	0 ( 0)	0 ( 0)	1 ( 0)	1 ( 0)
Possession of Syringe	0 ( 0)	1 ( 0)	5 ( 1)	6 ( 0)
Under the Influence	0 ( 0)	0 ( 0)	1 ( 0)	1 ( 0)
Controlled Substance	13 ( 2)	26 ( 4)	6 ( 2)	45 ( 3)
Class A	33 ( 5)	19 ( 3)	20 ( 5)	72 ( 4)
Class B	15 ( 2)	20 ( 3)	15 ( 4)	50 ( 3)
Class C	0 ( 0)	1 ( 0)	0 ( 0)	1 ( 0)
Class D	0 ( 0)	0 ( 0)	4 ( 1)	4 ( 0)
Class E	0 ( 0)	0 ( 0)	2 ( 1)	2 ( 0)
<b>TOTAL</b>	<b>673</b>	<b>654</b>	<b>368</b>	<b>1695</b>

PRESENT OFFENSE:  
OTHER OFFENSES

	WALPOLE	CONCORD	FRAMINGHAM	TOTAL
Not Applicable	656 ( 97)	645 ( 99)	255 ( 69)	1556 ( 92)
Escape	2 ( 0)	2 ( 0)	8 ( 2)	12 ( 1)
Weapons	12 ( 2)	7 ( 1)	9 ( 2)	28 ( 2)
Disturbing the Peace	1 ( 0)	0 ( 0)	32 ( 9)	33 ( 2)
Prostitution	0 ( 0)	0 ( 0)	39 ( 11)	39 ( 2)
Motor Vehicle Offense	0 ( 0)	0 ( 0)	4 ( 1)	4 ( 0)
Contempt of Court	1 ( 0)	0 ( 0)	3 ( 1)	4 ( 0)
Drunkèness	0 ( 0)	0 ( 0)	9 ( 2)	9 ( 1)
Usury	1 ( 0)	0 ( 0)	0 ( 0)	1 ( 0)
Other Offense	0 ( 0)	0 ( 0)	5 ( 1)	5 ( 0)
Trespass	0 ( 0)	0 ( 0)	4 ( 1)	4 ( 0)
<b>TOTAL</b>	<b>673</b>	<b>654</b>	<b>368</b>	<b>1695</b>



TIME UNTIL ORIGINAL PAROLE ELIGIBILITY	WALPOLE	CONCORD	FRAMINGHAM	TOTAL
No Parole Eligibility	2 ( 0)	8 ( 1)	130 ( 35)	140 ( 8)
Past Parole Eligibility	2 ( 0)	8 ( 1)	2 ( 1)	12 ( 1)
1 to 3 months	7 ( 1)	55 ( 8)	120 ( 33)	182 ( 11)
4 to 6 months	4 ( 1)	101 ( 15)	54 ( 15)	159 ( 9)
7 to 9 months	9 ( 1)	63 ( 10)	12 ( 3)	84 ( 5)
10 to 12 months	41 ( 6)	159 ( 24)	25 ( 7)	225 ( 13)
13 to 18 months	47 ( 7)	139 ( 21)	2 ( 1)	188 ( 11)
19 to 24 months	90 ( 13)	109 ( 17)	9 ( 2)	208 ( 12)
2 to 3 years	102 ( 15)	6 ( 1)	3 ( 1)	111 ( 7)
3 to 5 years	146 ( 22)	5 ( 1)	6 ( 2)	157 ( 9)
5 to 10 years	124 ( 18)	1 ( 0)	2 ( 1)	127 ( 7)
10 to 15 years	60 ( 9)	0 ( 0)	3 ( 1)	63 ( 4)
15 or more years	6 ( 1)	0 ( 0)	0 ( 0)	6 ( 0)
Life	33 ( 5)	0 ( 0)	0 ( 0)	33 ( 2)
TOTAL	673	654	368	1695

AGE AT INCARCERATION	WALPOLE	CONCORD	FRAMINGHAM	TOTAL
Fifteen or Sixteen	0 ( 0)	2 ( 0)	0 ( 0)	2 ( 0)
Seventeen	12 ( 2)	19 ( 3)	8 ( 2)	39 ( 2)
Eighteen	20 ( 3)	58 ( 9)	16 ( 4)	94 ( 6)
Nineteen	25 ( 4)	68 ( 10)	20 ( 5)	113 ( 7)
Twenty	29 ( 4)	72 ( 11)	37 ( 10)	138 ( 8)
Twenty-One	40 ( 6)	74 ( 11)	20 ( 5)	134 ( 8)
Twenty-Two	32 ( 5)	74 ( 11)	31 ( 8)	137 ( 8)
Twenty-Three	37 ( 5)	47 ( 7)	26 ( 7)	110 ( 6)
Twenty-Four	32 ( 5)	37 ( 6)	21 ( 6)	90 ( 5)
Twenty-Five	31 ( 5)	30 ( 5)	19 ( 5)	80 ( 5)
26 to 29	149 ( 22)	98 ( 15)	75 ( 20)	322 ( 19)
30 to 39	183 ( 27)	65 ( 10)	66 ( 18)	314 ( 19)
40 and Older	83 ( 12)	10 ( 2)	28 ( 8)	121 ( 7)
Unknown	0 ( 0)	0 ( 0)	1 ( 0)	1 ( 0)
TOTAL	673	654	368	1695

SEX	WALPOLE	CONCORD	FRAMINGHAM	TOTAL
Male	673 (100)	654 (100)	0 ( 0)	1327 ( 78)
Female	0 ( 0)	0 ( 0)	368 (100)	368 ( 22)
TOTAL	673	654	368	1695

RACE	WALPOLE	CONCORD	FRAMINGHAM	TOTAL
White	432 ( 64)	460 ( 70)	240 ( 65)	1132 ( 67)
Black	235 ( 35)	176 ( 27)	122 ( 33)	533 ( 31)
Native American	0 ( 0)	2 ( 0)	1 ( 0)	3 ( 0)
Asiatic	1 ( 0)	2 ( 0)	1 ( 0)	4 ( 0)
Hispanic	5 ( 1)	14 ( 2)	3 ( 1)	22 ( 1)
Unknown	0 ( 0)	0 ( 0)	1 ( 0)	1 ( 0)
TOTAL	673	654	368	1695

ETHNIC COMPOSITION	WALPOLE	CONCORD	FRAMINGHAM	TOTAL
Hispanic	51 ( 8)	80 ( 12)	13 ( 4)	144 ( 8)
Non-Hispanic	622 ( 92)	574 ( 88)	354 ( 96)	1550 ( 91)
Unknown	0 ( 0)	0 ( 0)	1 ( 0)	1 ( 0)
TOTAL	673	654	368	1695

MARITAL STATUS	WALPOLE	CONCORD	FRAMINGHAM	TOTAL
Married	160 ( 24)	92 ( 14)	38 ( 10)	290 ( 17)
Single	388 ( 58)	489 ( 75)	239 ( 65)	1116 ( 66)
Divorced	87 ( 13)	39 ( 6)	46 ( 13)	172 ( 10)
Widowed	1 ( 0)	2 ( 0)	9 ( 2)	12 ( 1)
Common-Law	3 ( 0)	5 ( 1)	0 ( 0)	8 ( 0)
Separated	34 ( 5)	27 ( 4)	34 ( 9)	95 ( 6)
Unknown	0 ( 0)	0 ( 0)	2 ( 1)	2 ( 0)
TOTAL	673	654	368	1695

MILITARY DISCHARGE	WALPOLE	CONCORD	FRAMINGHAM	TOTAL
No Service	485 ( 72)	400 ( 61)	361 ( 98)	1246 ( 74)
Honorable	100 ( 15)	63 ( 10)	0 ( 0)	163 ( 10)
Bad Conduct	30 ( 4)	13 ( 2)	0 ( 0)	43 ( 3)
Medical	2 ( 0)	3 ( 0)	0 ( 0)	5 ( 0)
Discharge Unknown	15 ( 2)	9 ( 1)	0 ( 0)	24 ( 1)
Unknown	41 ( 6)	166 ( 25)	7 ( 2)	214 ( 13)
<b>TOTAL</b>	<b>673</b>	<b>654</b>	<b>368</b>	<b>1695</b>

PRIOR ADDRESS: SELECTED CITIES AND TOWNS	WALPOLE	CONCORD	FRAMINGHAM	TOTAL
Boston	201 ( 30)	167 ( 26)	112 ( 30)	480 ( 28)
Brockton	9 ( 1)	28 ( 4)	6 ( 2)	43 ( 3)
Cambridge	11 ( 2)	20 ( 3)	12 ( 3)	43 ( 3)
Fall River	7 ( 1)	22 ( 3)	13 ( 4)	42 ( 2)
Framingham	4 ( 1)	2 ( 0)	5 ( 1)	11 ( 1)
Holyoke	14 ( 2)	4 ( 1)	5 ( 1)	23 ( 1)
Lawrence	4 ( 1)	10 ( 2)	11 ( 3)	25 ( 1)
Lowell	14 ( 2)	16 ( 2)	3 ( 1)	33 ( 2)
Lynn	19 ( 3)	10 ( 2)	7 ( 2)	36 ( 2)
New Bedford	13 ( 2)	16 ( 2)	9 ( 2)	38 ( 2)
Quincy	11 ( 2)	8 ( 1)	2 ( 1)	21 ( 1)
Somerville	12 ( 2)	12 ( 2)	5 ( 1)	29 ( 2)
Springfield	52 ( 8)	29 ( 4)	19 ( 5)	100 ( 6)
Worcester	42 ( 6)	50 ( 8)	49 ( 13)	141 ( 8)
Other Massachusetts	200 ( 30)	226 ( 35)	98 ( 27)	524 ( 31)
Out of State	60 ( 9)	34 ( 5)	10 ( 3)	104 ( 6)
Unknown	0 ( 0)	0 ( 0)	2 ( 1)	2 ( 0)
<b>TOTAL</b>	<b>673</b>	<b>654</b>	<b>368</b>	<b>1695</b>

PRIOR ADDRESS: COUNTY	WALPOLE	CONCORD	FRAMINGHAM	TOTAL
Worcester	72 ( 11)	96 ( 15)	72 ( 20)	240 ( 14)
Franklin	2 ( 0)	2 ( 0)	1 ( 0)	5 ( 0)
Middlesex	92 ( 14)	88 ( 13)	55 ( 15)	235 ( 14)
Suffolk	213 ( 32)	183 ( 28)	113 ( 31)	509 ( 30)
Norfolk	24 ( 4)	29 ( 4)	4 ( 1)	57 ( 3)
Bristol	28 ( 4)	57 ( 9)	28 ( 8)	113 ( 7)
Plymouth	28 ( 4)	48 ( 7)	6 ( 2)	82 ( 5)
Essex	47 ( 7)	61 ( 9)	37 ( 10)	145 ( 9)
Hampshire	9 ( 1)	1 ( 0)	5 ( 1)	15 ( 1)
Hampden	75 ( 11)	37 ( 6)	29 ( 8)	141 ( 8)
Berkshire	11 ( 2)	5 ( 1)	3 ( 1)	19 ( 1)
Barnstable	10 ( 1)	13 ( 2)	3 ( 1)	26 ( 2)
Nantucket	2 ( 0)	0 ( 0)	0 ( 0)	2 ( 0)
Out of State	60 ( 9)	34 ( 5)	10 ( 3)	104 ( 6)
Unknown	0 ( 0)	0 ( 0)	2 ( 1)	2 ( 0)
<b>TOTAL</b>	<b>673</b>	<b>654</b>	<b>368</b>	<b>1695</b>

PRIOR ADDRESS: SMSA	WALPOLE	CONCORD	FRAMINGHAM	TOTAL
Boston	336 ( 50)	303 ( 46)	173 ( 47)	812 ( 48)
Brockton	10 ( 1)	34 ( 5)	7 ( 2)	51 ( 3)
Fall River	7 ( 1)	26 ( 4)	13 ( 4)	46 ( 3)
Fitchburg/Leominster	4 ( 1)	13 ( 2)	4 ( 1)	21 ( 1)
Lawrence/Haverhill	13 ( 2)	17 ( 3)	16 ( 4)	46 ( 3)
Lowell	16 ( 2)	22 ( 3)	5 ( 1)	43 ( 3)
New Bedford	13 ( 2)	20 ( 3)	10 ( 3)	43 ( 3)
Pittsfield	6 ( 1)	4 ( 1)	3 ( 1)	13 ( 1)
Providence/Pawtucket/ Warwick	3 ( 0)	5 ( 1)	3 ( 1)	11 ( 1)
Springfield	81 ( 12)	38 ( 6)	31 ( 8)	150 ( 9)
Worcester	53 ( 8)	58 ( 9)	55 ( 15)	166 ( 10)
Other Massachusetts	71 ( 11)	80 ( 12)	36 ( 10)	187 ( 11)
Out of State	60 ( 9)	34 ( 5)	10 ( 3)	104 ( 6)
Unknown	0 ( 0)	0 ( 0)	2 ( 1)	2 ( 0)
<b>TOTAL</b>	<b>673</b>	<b>654</b>	<b>368</b>	<b>1695</b>

OCCUPATION	WALPOLE	CONCORD	FRAMINGHAM	TOTAL
Professional	5 ( 1)	3 ( 0)	6 ( 2)	14 ( 1)
Semi-Professional	12 ( 2)	5 ( 1)	7 ( 2)	24 ( 1)
Business	24 ( 4)	7 ( 1)	10 ( 3)	41 ( 2)
Sales, Clerical	19 ( 3)	13 ( 2)	72 ( 20)	104 ( 6)
Manual	401 ( 60)	405 ( 62)	58 ( 16)	864 ( 51)
Services	124 ( 18)	106 ( 16)	134 ( 36)	364 ( 21)
Agriculture	2 ( 0)	4 ( 1)	0 ( 0)	6 ( 0)
Armed Services	4 ( 1)	2 ( 0)	0 ( 0)	6 ( 0)
Housekeeper	0 ( 0)	0 ( 0)	1 ( 0)	1 ( 0)
Student	9 ( 1)	15 ( 2)	1 ( 0)	25 ( 1)
Unemployed	7 ( 1)	8 ( 1)	35 ( 10)	50 ( 3)
Unknown	66 ( 10)	86 ( 13)	44 ( 12)	196 ( 12)
<b>TOTAL</b>	<b>673</b>	<b>654</b>	<b>368</b>	<b>1695</b>

TIME SPENT AT MOST SKILLED POSITION	WALPOLE	CONCORD	FRAMINGHAM	TOTAL
Less than 1 month	35 ( 5)	50 ( 8)	49 ( 13)	134 ( 8)
1 to 2 months	40 ( 6)	49 ( 7)	22 ( 6)	111 ( 7)
3 to 4 months	74 ( 11)	101 ( 15)	36 ( 10)	211 ( 12)
5 to 6 months	65 ( 10)	57 ( 9)	33 ( 9)	155 ( 9)
7 to 9 months	28 ( 4)	38 ( 6)	21 ( 6)	87 ( 5)
10 to 12 months	17 ( 3)	15 ( 2)	28 ( 8)	60 ( 4)
1 to 2 years	110 ( 16)	89 ( 14)	40 ( 11)	239 ( 14)
2 to 5 years	107 ( 16)	81 ( 12)	40 ( 11)	228 ( 13)
5 or more years	62 ( 9)	31 ( 5)	15 ( 4)	108 ( 6)
Unknown	135 ( 20)	143 ( 22)	84 ( 23)	362 ( 21)
<b>TOTAL</b>	<b>673</b>	<b>654</b>	<b>368</b>	<b>1695</b>

TIME SPENT IN JOB OF  
LONGEST DURATION

	WALPOLE	CONCORD	FRAMINGHAM	TOTAL
Less than 1 month	34 ( 5)	48 ( 7)	49 ( 13)	131 ( 8)
1 to 2 months	38 ( 6)	51 ( 8)	21 ( 6)	110 ( 6)
3 to 4 months	72 ( 11)	99 ( 15)	33 ( 9)	204 ( 12)
5 to 6 months	61 ( 9)	58 ( 9)	31 ( 8)	150 ( 9)
7 to 9 months	30 ( 4)	38 ( 6)	23 ( 6)	91 ( 5)
10 to 12 months	18 ( 3)	15 ( 2)	29 ( 8)	62 ( 4)
1 to 2 years	113 ( 17)	90 ( 14)	43 ( 12)	246 ( 15)
2 to 5 years	110 ( 16)	81 ( 12)	40 ( 11)	231 ( 14)
5 or more years	62 ( 9)	31 ( 5)	15 ( 4)	108 ( 6)
Unknown	135 ( 20)	143 ( 22)	84 ( 23)	362 ( 21)
TOTAL	673	654	368	1695

LAST GRADE COMPLETED

	WALPOLE	CONCORD	FRAMINGHAM	TOTAL
3rd or less	33 ( 5)	46 ( 7)	20 ( 5)	99 ( 6)
4th	6 ( 1)	3 ( 0)	0 ( 0)	9 ( 1)
5th	8 ( 1)	4 ( 1)	5 ( 1)	17 ( 1)
6th	9 ( 1)	10 ( 2)	4 ( 1)	23 ( 1)
7th	31 ( 5)	19 ( 3)	10 ( 3)	60 ( 4)
8th	58 ( 9)	60 ( 9)	20 ( 5)	138 ( 8)
9th	86 ( 13)	104 ( 16)	47 ( 13)	237 ( 14)
10th	82 ( 12)	103 ( 16)	50 ( 14)	235 ( 14)
11th	63 ( 9)	97 ( 15)	59 ( 16)	219 ( 13)
High School Graduate	234 ( 35)	147 ( 22)	100 ( 27)	481 ( 28)
Some College	47 ( 7)	33 ( 5)	32 ( 9)	112 ( 7)
College Graduate	12 ( 2)	11 ( 2)	10 ( 3)	33 ( 2)
Unknown	4 ( 1)	17 ( 3)	11 ( 3)	32 ( 2)
TOTAL	673	654	368	1695

KNOWN DRUG USE	WALPOLE	CONCORD	FRAMINGHAM	TOTAL
No mention of drugs	424 ( 63)	454 ( 69)	221 ( 60)	1099 ( 65)
Non-specific	33 ( 5)	34 ( 5)	19 ( 5)	86 ( 5)
Heroin	104 ( 15)	57 ( 9)	87 ( 24)	248 ( 15)
Marijuana only	59 ( 9)	48 ( 7)	23 ( 6)	130 ( 8)
Other Drug use	47 ( 7)	44 ( 7)	5 ( 1)	96 ( 6)
Unknown	6 ( 1)	17 ( 3)	13 ( 4)	36 ( 2)
<b>TOTAL</b>	<b>673</b>	<b>654</b>	<b>368</b>	<b>1695</b>

TOTAL NUMBER OF COURT APPEARANCES	WALPOLE	CONCORD	FRAMINGHAM	TOTAL
First Offense	28 ( 4)	45 ( 7)	67 ( 18)	140 ( 8)
Two	26 ( 4)	37 ( 6)	26 ( 7)	89 ( 5)
Three	35 ( 5)	53 ( 8)	23 ( 6)	111 ( 7)
Four	27 ( 4)	40 ( 6)	8 ( 2)	75 ( 4)
Five	26 ( 4)	43 ( 7)	13 ( 4)	82 ( 5)
Six to Eight	90 ( 13)	128 ( 20)	36 ( 10)	254 ( 15)
Nine to Eleven	83 ( 12)	99 ( 15)	29 ( 8)	211 ( 12)
Twelve to Fifteen	91 ( 14)	72 ( 11)	27 ( 7)	190 ( 11)
Sixteen to Twenty	103 ( 15)	59 ( 9)	33 ( 9)	195 ( 12)
More than Twenty	158 ( 23)	55 ( 8)	52 ( 14)	265 ( 16)
Unknown	6 ( 1)	23 ( 4)	54 ( 15)	83 ( 5)
<b>TOTAL</b>	<b>673</b>	<b>654</b>	<b>368</b>	<b>1695</b>



NUMBER OF CHARGES FOR PERSON OFFENSES	WALPOLE	CONCORD	FRAMINGHAM	TOTAL
None	56 ( 8)	88 ( 13)	151 ( 41)	295 ( 17)
One	78 ( 12)	111 ( 17)	60 ( 16)	249 ( 15)
Two	90 ( 13)	111 ( 17)	28 ( 8)	229 ( 14)
Three	83 ( 12)	75 ( 11)	16 ( 4)	174 ( 10)
Four	53 ( 8)	73 ( 11)	16 ( 4)	142 ( 8)
Five	52 ( 8)	47 ( 7)	16 ( 4)	115 ( 7)
Six to Eight	123 ( 18)	77 ( 12)	13 ( 4)	213 ( 13)
Nine or More	132 ( 20)	50 ( 8)	14 ( 4)	196 ( 12)
Unknown	6 ( 1)	22 ( 3)	54 ( 15)	82 ( 5)
<b>TOTAL</b>	<b>673</b>	<b>654</b>	<b>368</b>	<b>1695</b>

NUMBER OF CHARGES FOR PROPERTY OFFENSES	WALPOLE	CONCORD	FRAMINGHAM	TOTAL
None	116 ( 17)	116 ( 18)	78 ( 21)	310 ( 18)
One	57 ( 8)	73 ( 11)	41 ( 11)	171 ( 10)
Two	44 ( 7)	58 ( 9)	33 ( 9)	135 ( 8)
Three	31 ( 5)	37 ( 6)	20 ( 5)	88 ( 5)
Four	33 ( 5)	39 ( 6)	17 ( 5)	89 ( 5)
Five	35 ( 5)	45 ( 7)	14 ( 4)	94 ( 6)
Six to Eight	93 ( 14)	78 ( 12)	33 ( 9)	204 ( 12)
Nine or More	258 ( 38)	186 ( 28)	78 ( 21)	522 ( 31)
Unknown	6 ( 1)	22 ( 3)	54 ( 15)	82 ( 5)
<b>TOTAL</b>	<b>673</b>	<b>654</b>	<b>368</b>	<b>1695</b>

NUMBER OF CHARGES FOR SEX OFFENSES	WALPOLE	CONCORD	FRAMINGHAM	TOTAL
None	501 ( 74)	532 ( 81)	291 ( 79)	1324 ( 78)
One	66 ( 10)	53 ( 8)	12 ( 3)	131 ( 8)
Two	38 ( 6)	25 ( 4)	7 ( 2)	70 ( 4)
Three	21 ( 3)	9 ( 1)	2 ( 1)	32 ( 2)
Four	15 ( 2)	7 ( 1)	0 ( 0)	22 ( 1)
Five	14 ( 2)	2 ( 0)	1 ( 0)	17 ( 1)
Six to Eight	7 ( 1)	3 ( 0)	0 ( 0)	10 ( 1)
Nine or More	5 ( 1)	1 ( 0)	1 ( 0)	7 ( 0)
Unknown	6 ( 1)	22 ( 3)	54 ( 15)	82 ( 5)
<b>TOTAL</b>	<b>673</b>	<b>654</b>	<b>368</b>	<b>1695</b>

NUMBER OF CHARGES FOR NARCOTICS OFFENSES	WALPOLE	CONCORD	FRAMINGHAM	TOTAL
None	359 ( 53)	345 ( 53)	183 ( 50)	887 ( 52)
One	105 ( 16)	119 ( 18)	32 ( 9)	256 ( 15)
Two	49 ( 7)	49 ( 7)	25 ( 7)	123 ( 7)
Three	39 ( 6)	38 ( 6)	18 ( 5)	95 ( 6)
Four	31 ( 5)	23 ( 4)	11 ( 3)	65 ( 4)
Five	16 ( 2)	12 ( 2)	12 ( 3)	40 ( 2)
Six to Eight	31 ( 5)	30 ( 5)	17 ( 5)	78 ( 5)
Nine or More	37 ( 5)	16 ( 2)	16 ( 4)	69 ( 4)
Unknown	6 ( 1)	22 ( 3)	54 ( 15)	82 ( 5)
<b>TOTAL</b>	<b>673</b>	<b>654</b>	<b>368</b>	<b>1695</b>

NUMBER OF CHARGES FOR DRUNKENNESS OFFENSES

	WALPOLE	CONCORD	FRAMINGHAM	TOTAL
None	500 ( 74)	522 ( 80)	266 ( 72)	1288 ( 76)
One	74 ( 11)	75 ( 11)	24 ( 7)	173 ( 10)
Two	36 ( 5)	19 ( 3)	13 ( 4)	68 ( 4)
Three	17 ( 3)	10 ( 2)	2 ( 1)	29 ( 2)
Four	10 ( 1)	0 ( 0)	3 ( 1)	13 ( 1)
Five	6 ( 1)	4 ( 1)	0 ( 0)	10 ( 1)
Six to Eight	14 ( 2)	1 ( 0)	1 ( 0)	16 ( 1)
Nine or More	10 ( 1)	1 ( 0)	5 ( 1)	16 ( 1)
Unknown	6 ( 1)	22 ( 3)	54 ( 15)	82 ( 5)
<b>TOTAL</b>	<b>673</b>	<b>654</b>	<b>368</b>	<b>1695</b>

NUMBER OF CHARGES FOR ESCAPE OFFENSES

	WALPOLE	CONCORD	FRAMINGHAM	TOTAL
None	558 ( 83)	580 ( 89)	276 ( 75)	1414 ( 83)
One	78 ( 12)	35 ( 5)	19 ( 5)	132 ( 8)
Two	18 ( 3)	13 ( 2)	13 ( 4)	44 ( 3)
Three	8 ( 1)	2 ( 0)	3 ( 1)	13 ( 1)
Four	4 ( 1)	1 ( 0)	0 ( 0)	5 ( 0)
Five	1 ( 0)	0 ( 0)	0 ( 0)	1 ( 0)
Six to Eight	0 ( 0)	1 ( 0)	2 ( 1)	3 ( 0)
Nine or More	0 ( 0)	0 ( 0)	1 ( 0)	1 ( 0)
Unknown	6 ( 1)	22 ( 3)	54 ( 15)	82 ( 5)
<b>TOTAL</b>	<b>673</b>	<b>654</b>	<b>368</b>	<b>1695</b>

DYS COMMITMENT INDICATOR	WALPOLE	CONCORD	FRAMINGHAM	TOTAL
No Prior Commitments	496 ( 74)	524 ( 80)	278 ( 76)	1298 ( 77)
One or More Prior Commitments	171 ( 25)	108 ( 17)	36 ( 10)	315 ( 19)
Unknown	6 ( 1)	22 ( 3)	54 ( 15)	82 ( 5)
<b>TOTAL</b>	<b>673</b>	<b>654</b>	<b>368</b>	<b>1695</b>

NUMBER OF HOUSE OF CORRECTION INCARCERATIONS	WALPOLE	CONCORD	FRAMINGHAM	TOTAL
None	343 ( 51)	394 ( 60)	242 ( 66)	979 ( 58)
One	147 ( 22)	126 ( 19)	39 ( 11)	312 ( 18)
Two	79 ( 12)	57 ( 9)	14 ( 4)	150 ( 9)
Three	48 ( 7)	27 ( 4)	7 ( 2)	82 ( 5)
Four	26 ( 4)	18 ( 3)	3 ( 1)	47 ( 3)
Five	8 ( 1)	6 ( 1)	2 ( 1)	16 ( 1)
Six or More	16 ( 2)	4 ( 1)	7 ( 2)	27 ( 2)
Unknown	6 ( 1)	22 ( 3)	54 ( 15)	82 ( 5)
<b>TOTAL</b>	<b>673</b>	<b>654</b>	<b>368</b>	<b>1695</b>

PRIOR STATE OR FEDERAL INCARCERATIONS	WALPOLE	CONCORD	FRAMINGHAM	TOTAL
None	432 ( 64)	589 ( 90)	227 ( 62)	1248 ( 74)
One	111 ( 16)	27 ( 4)	44 ( 12)	182 ( 11)
Two	64 ( 10)	7 ( 1)	24 ( 7)	95 ( 6)
Three	35 ( 5)	9 ( 1)	11 ( 3)	55 ( 3)
Four	12 ( 2)	0 ( 0)	3 ( 1)	15 ( 1)
Five	7 ( 1)	0 ( 0)	2 ( 1)	9 ( 1)
Six or More	6 ( 1)	0 ( 0)	3 ( 1)	9 ( 1)
Unknown	6 ( 1)	22 ( 3)	54 ( 15)	82 ( 5)
<b>TOTAL</b>	<b>673</b>	<b>654</b>	<b>368</b>	<b>1695</b>

NUMBER OF PRIOR ADULT INCARCERATIONS	WALPOLE	CONCORD	FRAMINGHAM	TOTAL
None	249 ( 37)	378 ( 58)	176 ( 48)	803 ( 47)
One	134 ( 20)	130 ( 20)	67 ( 18)	331 ( 20)
Two	104 ( 15)	55 ( 8)	29 ( 8)	188 ( 11)
Three	75 ( 11)	34 ( 5)	21 ( 6)	130 ( 8)
Four	40 ( 6)	16 ( 2)	7 ( 2)	63 ( 4)
Five	17 ( 3)	10 ( 2)	3 ( 1)	30 ( 2)
Six or More	48 ( 7)	9 ( 1)	11 ( 3)	68 ( 4)
Unknown	6 ( 1)	22 ( 3)	54 ( 15)	82 ( 5)
<b>TOTAL</b>	<b>673</b>	<b>654</b>	<b>368</b>	<b>1695</b>

NUMBER OF JUVENILE PAROLES	WALPOLE	CONCORD	FRAMINGHAM	TOTAL
None	583 ( 87)	616 ( 94)	306 ( 83)	1505 ( 89)
One	43 ( 6)	10 ( 2)	6 ( 2)	59 ( 3)
Two	21 ( 3)	1 ( 0)	2 ( 1)	24 ( 1)
Three	13 ( 2)	2 ( 0)	0 ( 0)	15 ( 1)
Four or More	7 ( 1)	3 ( 0)	0 ( 0)	10 ( 1)
Unknown	6 ( 1)	22 ( 3)	54 ( 15)	82 ( 5)
<b>TOTAL</b>	<b>673</b>	<b>654</b>	<b>368</b>	<b>1695</b>

NUMBER OF JUVENILE PAROLE VIOLATIONS	WALPOLE	CONCORD	FRAMINGHAM	TOTAL
Never Paroled	583 ( 87)	616 ( 94)	306 ( 83)	1505 ( 89)
None	47 ( 7)	8 ( 1)	5 ( 1)	60 ( 4)
One	25 ( 4)	4 ( 1)	3 ( 1)	32 ( 2)
Two	7 ( 1)	2 ( 0)	0 ( 0)	9 ( 1)
Three	3 ( 0)	1 ( 0)	0 ( 0)	4 ( 0)
Four or More	2 ( 0)	1 ( 0)	0 ( 0)	3 ( 0)
Unknown	6 ( 1)	22 ( 3)	54 ( 15)	82 ( 5)
<b>TOTAL</b>	<b>673</b>	<b>654</b>	<b>368</b>	<b>1695</b>

NUMBER OF ADULT PAROLE VIOLATIONS

	WALPOLE	CONCORD	FRAMINGHAM	TOTAL
Never Paroled	435 ( 65)	579 ( 89)	256 ( 70)	1270 ( 75)
None	79 ( 12)	27 ( 4)	26 ( 7)	132 ( 8)
One	99 ( 15)	21 ( 3)	20 ( 5)	140 ( 8)
Two	39 ( 6)	4 ( 1)	11 ( 3)	54 ( 3)
Three	11 ( 2)	1 ( 0)	0 ( 0)	12 ( 1)
Four or More	4 ( 1)	0 ( 0)	1 ( 0)	5 ( 0)
Unknown	6 ( 1)	22 ( 3)	54 ( 15)	82 ( 5)
<b>TOTAL</b>	<b>673</b>	<b>654</b>	<b>368</b>	<b>1695</b>

NUMBER OF ADULT PAROLES

	WALPOLE	CONCORD	FRAMINGHAM	TOTAL
None	435 ( 65)	579 ( 89)	256 ( 70)	1270 ( 75)
One	136 ( 20)	37 ( 6)	39 ( 11)	212 ( 13)
Two	56 ( 8)	12 ( 2)	12 ( 3)	80 ( 5)
Three	28 ( 4)	3 ( 0)	4 ( 1)	35 ( 2)
Four or More	12 ( 2)	1 ( 0)	3 ( 1)	16 ( 1)
Unknown	6 ( 1)	22 ( 3)	54 ( 15)	82 ( 5)
<b>TOTAL</b>	<b>673</b>	<b>654</b>	<b>368</b>	<b>1695</b>

TOTAL NUMBER OF PAROLES	WALPOLE	CONCORD	FRAMINGHAM	TOTAL
None	414 ( 62)	571 ( 87)	254 ( 69)	1239 ( 73)
One	123 ( 18)	38 ( 6)	35 ( 10)	196 ( 12)
Two	55 ( 8)	14 ( 2)	16 ( 4)	85 ( 5)
Three	31 ( 5)	3 ( 0)	6 ( 2)	40 ( 2)
Four or More	44 ( 7)	6 ( 1)	3 ( 1)	53 ( 3)
Unknown	6 ( 1)	22 ( 3)	54 ( 15)	82 ( 5)
<b>TOTAL</b>	<b>673</b>	<b>654</b>	<b>368</b>	<b>1695</b>

TOTAL NUMBER OF PAROLE VIOLATIONS	WALPOLE	CONCORD	FRAMINGHAM	TOTAL
Never Paroled	414 ( 62)	571 ( 87)	254 ( 69)	1239 ( 73)
None	86 ( 13)	29 ( 4)	27 ( 7)	142 ( 8)
One	101 ( 15)	22 ( 3)	19 ( 5)	142 ( 8)
Two	34 ( 5)	6 ( 1)	13 ( 4)	53 ( 3)
Three	19 ( 3)	3 ( 0)	0 ( 0)	22 ( 1)
Four or More	13 ( 2)	1 ( 0)	1 ( 0)	15 ( 1)
Unknown	6 ( 1)	22 ( 3)	54 ( 15)	82 ( 5)
<b>TOTAL</b>	<b>673</b>	<b>654</b>	<b>368</b>	<b>1695</b>



AGE AT FIRST COURT APPEARANCE

-61-

	WALPOLE	CONCORD	FRAMINGHAM	TOTAL
12 or less	90 ( 13)	59 ( 9)	17 ( 5)	166 ( 10)
13	47 ( 7)	31 ( 5)	13 ( 4)	91 ( 5)
14	70 ( 10)	63 ( 10)	18 ( 5)	151 ( 9)
15	79 ( 12)	76 ( 12)	21 ( 6)	176 ( 10)
16	44 ( 7)	71 ( 11)	8 ( 2)	123 ( 7)
17	89 ( 13)	119 ( 18)	47 ( 13)	255 ( 15)
18	68 ( 10)	52 ( 8)	28 ( 8)	148 ( 9)
19	25 ( 4)	40 ( 6)	24 ( 7)	89 ( 5)
20	24 ( 4)	25 ( 4)	23 ( 6)	72 ( 4)
21	20 ( 3)	14 ( 2)	20 ( 5)	54 ( 3)
22	15 ( 2)	17 ( 3)	13 ( 4)	45 ( 3)
23	13 ( 2)	12 ( 2)	9 ( 2)	34 ( 2)
24	11 ( 2)	6 ( 1)	13 ( 4)	30 ( 2)
25	9 ( 1)	7 ( 1)	9 ( 2)	25 ( 1)
26 to 29	33 ( 5)	23 ( 4)	19 ( 5)	75 ( 4)
30 to 39	19 ( 3)	16 ( 2)	20 ( 5)	55 ( 3)
40 and older	11 ( 2)	1 ( 0)	12 ( 3)	24 ( 1)
Unknown	6 ( 1)	22 ( 3)	54 ( 15)	82 ( 5)

-62-

AGE AT FIRST DRUNKENNESS COURT APPEARANCE

	WALPOLE	CONCORD	FRAMINGHAM	TOTAL
Not Applicable	498 ( 74)	524 ( 80)	273 ( 74)	1295 ( 76)
14 or less	4 ( 1)	2 ( 0)	3 ( 1)	9 ( 1)
15 to 17	50 ( 7)	26 ( 4)	2 ( 1)	78 ( 5)
18 to 19	43 ( 6)	34 ( 5)	5 ( 1)	82 ( 5)
20 to 21	30 ( 4)	16 ( 2)	5 ( 1)	51 ( 3)
22 to 25	24 ( 4)	19 ( 3)	4 ( 1)	47 ( 3)
26 to 29	10 ( 1)	7 ( 1)	11 ( 3)	28 ( 2)
30 to 39	8 ( 1)	3 ( 0)	7 ( 2)	18 ( 1)
40 and over	0 ( 0)	1 ( 0)	4 ( 1)	5 ( 0)
Unknown	6 ( 1)	22 ( 3)	54 ( 15)	82 ( 5)
TOTAL	673	654	368	1695

AGE AT FIRST DRUG RELATED  
COURT APPEARANCE

	WALPOLE	CONCORD	FRAMINGHAM	TOTAL
Not Applicable	358 ( 53)	348 ( 53)	192 ( 52)	898 ( 53)
14 or less	4 ( 1)	11 ( 2)	1 ( 0)	16 ( 1)
15 to 17	63 ( 9)	83 ( 13)	21 ( 6)	167 ( 10)
18 to 19	60 ( 9)	66 ( 10)	25 ( 7)	151 ( 9)
20 to 21	52 ( 8)	46 ( 7)	24 ( 7)	122 ( 7)
22 to 24	43 ( 6)	38 ( 6)	30 ( 8)	111 ( 7)
25 to 29	43 ( 6)	25 ( 4)	11 ( 3)	79 ( 5)
30 to 39	36 ( 5)	14 ( 2)	8 ( 2)	58 ( 3)
40 and over	8 ( 1)	1 ( 0)	2 ( 1)	11 ( 1)
Unknown	6 ( 1)	22 ( 3)	54 ( 15)	82 ( 5)
TOTAL	673	654	368	1695

**END**