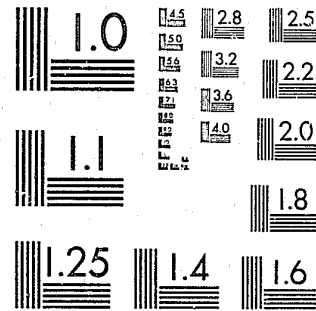


National Criminal Justice Reference Service



This microfiche was produced from documents received for inclusion in the NCJRS data base. Since NCJRS cannot exercise control over the physical condition of the documents submitted, the individual frame quality will vary. The resolution chart on this frame may be used to evaluate the document quality.



MICROCOPY RESOLUTION TEST CHART  
NATIONAL BUREAU OF STANDARDS-1963-A

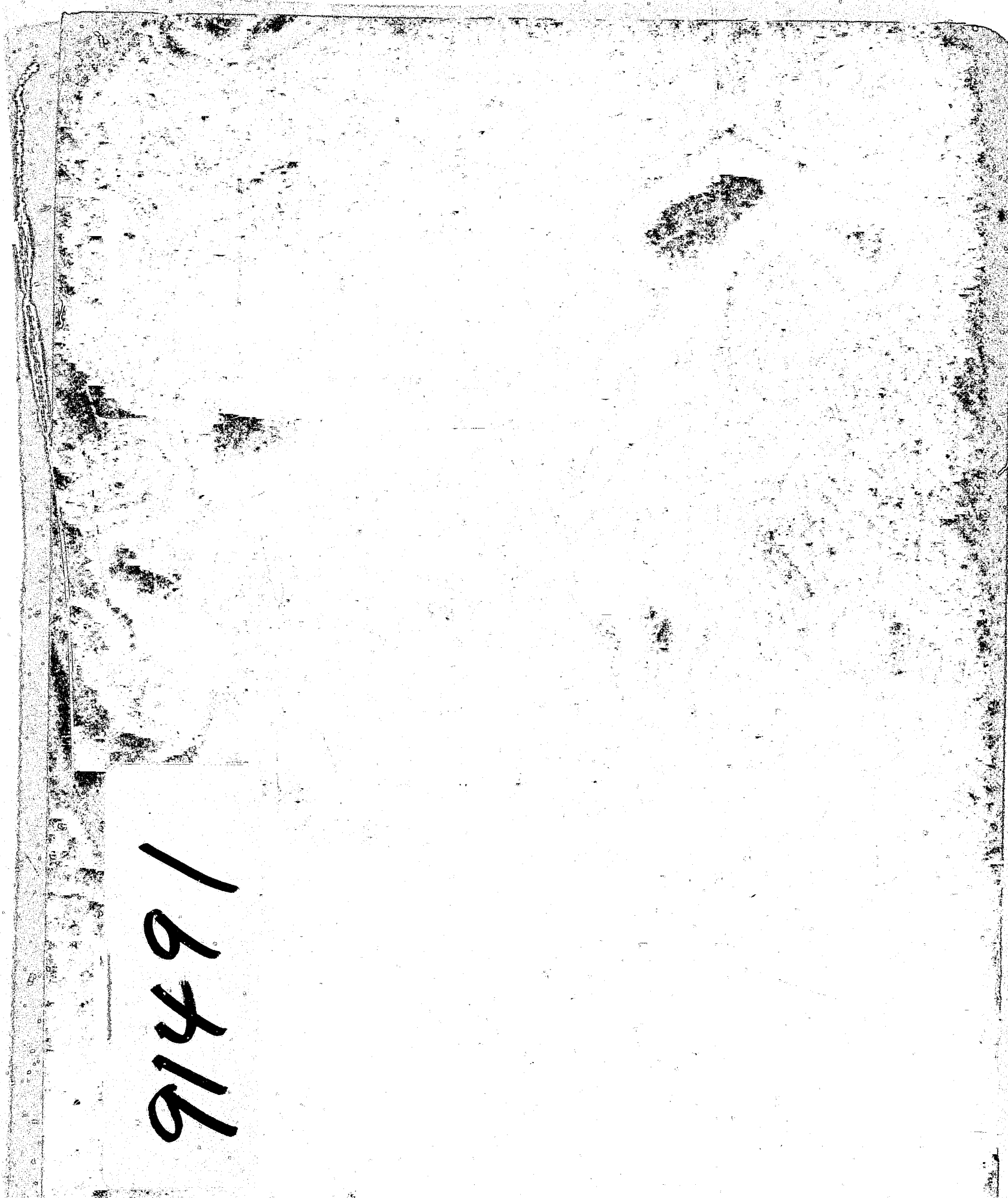
Microfilming procedures used to create this fiche comply with the standards set forth in 41CFR 101-11.504.

Points of view or opinions stated in this document are those of the author(s) and do not represent the official position or policies of the U. S. Department of Justice.

National Institute of Justice  
United States Department of Justice  
Washington, D. C. 20531

12/30/83

91491



1981 STATISTICS  
FOR CONVICTIONS IN  
MASSACHUSETTS SUPERIOR COURTS

Charles Metzler  
Manager of Data Processing

Massachusetts Department Of Correction

Michael V. Fair  
Commissioner

July 1982

PUBLICATION # 12874  
Approved By John J. Manton, State Purchasing Agent

U.S. Department of Justice  
National Institute of Justice

This document has been reproduced exactly as received from the person or organization originating it. Points of view or opinions stated in this document are those of the authors and do not necessarily represent the official position or policies of the National Institute of Justice.

Permission to reproduce this copyrighted material has been granted by

Massachusetts Department  
of Correction

to the National Criminal Justice Reference Service (NCJRS).

Further reproduction outside of the NCJRS system requires permission of the copyright owner.

16713

Table of Contents

<u>Title</u>	<u>Page Number</u>
Introduction.....	1
<u>Comparative Statistics (1972 - 1981)</u>	
Total Number of Convictions.....	2
Incarceration Rates.....	3
Probation Rates.....	4
Rates for the Disposition of Filed Cases.....	5
Rates for the Disposition of Fines.....	6
Average Disposition Rates (1972 - 1981).....	7
1981 Statistics.....	8

NCJRS

AUG 31 1983

ACQUISITIONS

INTRODUCTION

The purpose of this report is to document the total number of convictions and their dispositions from the Massachusetts Superior Courts from the years 1972 to 1981. This data is categorized according to twenty four different offenses which were selected based on seriousness and frequency.

The statistics in this report were collected and compiled from Massachusetts Superior Courts Return Forms which are submitted to the Massachusetts Department of Correction in accordance with the General Laws Chapter 124 Section 8. This data is not available from the lower courts.

One noteworthy pattern emerges from this data. The 1981 incarceration rates for all crimes has either remained the same or is higher than the 10 year average indicating that Superior Court judges were sentencing convicted offenders to prison at a relatively higher rate during 1981.

TABLE 1  
 NUMBER OF CONVICTIONS IN THE  
 MASSACHUSETTS SUPERIOR COURTS FROM 1972 TO 1981  
 CLASSIFIED BY OFFENSE

OFFENSE	NUMBER OF CONVICTIONS BY YEAR										AVERAGE
	1972	1973	1974	1975	1976	1977	1978	1979	1980	1981	
MANSLAUGHTER	45	66	81	103	70	69	71	68	71	72	72
RAPE	110	125	112	165	206	187	263	259	266	251	194
INDECENT ASSAULT	37	41	46	31	36	64	69	56	49	80	51
ABUSE OF F. CHILD	74	47	72	44	23	31	39	20	75	34	46
ROBBERY	813	1039	930	1114	1094	1065	1152	978	995	1028	1021
ASSLT & ATT MURDER	86	65	80	76	83	90	188	125	125	117	104
ASSLT W/DANG WEAPON	430	477	492	470	527	572	790	731	766	466	572
KIDNAPPING	39	35	60	58	75	69	70	88	84	62	64
ASSLT & BATTERY	309	441	393	500	517	665	702	497	413	322	476
ARSON	49	95	61	55	115	133	171	157	159	26	112
BREAK & ENTER	1752	1505	1343	1112	1308	1358	1230	881	748	793	1203
POSS BURG TOOLS	294	278	245	211	239	262	321	149	104	74	218
LARCENY	1083	988	1026	1128	950	1193	1477	911	804	921	1048
FORGERY	615	513	402	401	309	306	410	334	493	319	410
LARC OF AUTO	116	144	119	111	86	120	128	59	53	29	97
UNLAW APP OF AUTO	112	142	113	103	131	80	183	73	74	37	105
REC. STOLEN GOODS	447	366	344	310	346	423	576	297	353	230	369
PROPERTY INJURIES	136	149	194	216	204	371	363	532	193	224	258
WEAPONS	201	183	222	242	232	283	580	204	274	120	254
COMMON NIGHTWALKER	13	16	49	50	53	37	109	17	1	3	35
DRUG OFFENSES	1806	1528	1512	1361	1214	1351	1072	1081	944	938	1281
DRIVING TO ENDANGER	273	288	283	267	215	278	342	141	43	30	216
DRIVING U/INFL	404	505	385	209	166	231	252	145	42	22	236
VIOL M.V. LAWS	1181	1096	1025	1104	1024	1359	1535	493	217	161	920

TABLE 2  
 INCARCERATION RATES FOR CONVICTIONS IN THE  
 MASSACHUSETTS SUPERIOR COURTS  
 FROM 1972 TO 1981  
 CLASSIFIED BY OFFENSE

OFFENSE	INCARCERATION RATES BY YEAR										AVERAGE
	1972	1973	1974	1975	1976	1977	1978	1979	1980	1981	
MANSLAUGHTER	64	73	77	81	67	80	74	75	77	82	75
RAPE	69	63	60	61	69	68	55	65	59	66	64
INDECENT ASSAULT	30	54	63	45	44	56	39	48	57	58	49
ABUSE OF F. CHILD	42	36	24	43	57	52	49	70	68	68	51
ROBBERY	63	72	61	67	69	64	54	63	60	66	64
ASSLT & ATT MURDER	70	71	71	70	73	64	41	58	62	73	65
ASSLT W/DANG WEAPON	42	45	38	43	44	41	33	46	40	52	42
KIDNAPPING	74	66	58	62	65	61	53	64	49	74	63
ASSLT & BATTERY	23	29	25	25	26	28	27	27	25	41	28
ARSON	29	29	36	29	41	47	35	40	36	45	37
BREAK & ENTER	39	39	35	41	47	39	42	49	53	58	44
POSS BURG TOOLS	37	37	38	46	50	38	40	48	39	70	44
LARCENY	31	36	27	36	38	31	23	29	27	31	31
FORGERY	40	53	31	48	35	30	29	21	23	59	37
LARC OF AUTO	35	35	38	35	43	30	31	27	25	69	37
UNLAW APP OF AUTO	30	25	39	26	31	19	28	29	34	38	30
REC. STOLEN GOODS	34	27	31	32	35	39	33	41	39	52	36
PROPERTY INJURIES	14	12	20	17	30	30	25	13	30	36	23
WEAPONS	38	43	41	47	61	65	36	50	55	70	51
COMMON NIGHTWALKER	15	0	10	4	11	5	6	29	100	33	21
DRUG OFFENSES	24	27	22	27	30	27	26	28	32	38	28
DRIVING TO ENDAGER	5	7	6	7	13	18	11	19	21	27	13
DRIVING U/INFL	3	5	3	11	11	13	11	12	10	14	9
VIOL M.V. LAWS	10	15	9	12	10	15	13	17	15	23	14

TABLE 3  
PROBATION RATES FOR CONVICTIONS IN THE  
MASSACHUSETTS SUPERIOR COURTS  
FROM 1972 TO 1981

CLASSIFIED BY OFFENSE

OFFENSE	PROBATION RATES BY YEAR										AVERAGE
	1972	1973	1974	1975	1976	1977	1978	1979	1980	1981	
MANS LAUGHTER	27	26	21	19	31	20	20	15	18	15	21
RAPE	21	27	30	28	24	26	25	27	35	30	27
INDECENT ASSAULT	57	41	33	45	53	36	48	39	24	35	41
ABUSE OF F. CHILD	55	62	71	55	43	45	44	25	31	29	46
ROBBERY	34	26	34	28	28	34	24	30	34	29	30
ASSLT & ATT MURDER	24	28	18	20	18	32	24	30	26	17	24
ASSLT W/DANG WEAPON	47	45	51	43	45	50	33	40	46	33	43
KIDNAPPING	15	23	33	29	23	30	17	23	40	15	25
ASSLT & BATTERY	45	42	49	49	52	49	42	49	52	37	47
ARSON	71	61	54	62	55	37	43	50	54	50	54
BREAK & ENTER	55	53	57	48	44	48	38	38	35	35	45
POSS BURG TOOLS	50	49	53	45	39	48	27	36	37	22	41
LARCENY	47	48	58	44	50	51	39	50	58	56	50
FORGERY	41	39	62	32	50	35	38	54	64	32	45
LARC OF AUTO	52	53	41	38	43	50	29	44	45	21	42
UNLAW APP OF AUTO	50	59	48	54	64	68	33	42	45	19	48
REC. STOLEN GOODS	56	51	49	50	48	41	39	40	46	25	45
PROPERTY INJURIES	57	39	48	42	45	45	43	72	51	46	49
WEAPONS	41	35	40	35	26	19	36	33	28	21	31
COMMON NIGHTWALKER	62	56	49	64	81	86	24	24	0	0	45
DRUG OFFENSES	60	52	58	49	49	47	41	49	46	42	49
DRIVING TO ENDAGER	18	16	27	16	29	30	29	29	30	13	24
DRIVING U/INFL	16	11	19	24	38	35	42	37	29	27	28
VIOL M.V. LAWS	16	17	19	15	18	16	18	18	27	16	18

TABLE 4  
RATES FOR THE DISPOSITION OF FILED CASES IN THE  
MASSACHUSETTS SUPERIOR COURTS  
FROM 1972 TO 1981

CLASSIFIED BY OFFENSE

OFFENSE	RATES FOR FILED CASES BY YEAR										AVERAGE
	1972	1973	1974	1975	1976	1977	1978	1979	1980	1981	
MANS LAUGHTER	0	0	1	0	0	0	4	10	4	3	2
RAPE	7	6	8	10	7	5	19	6	4	4	8
INDECENT ASSAULT	11	2	4	10	3	8	13	11	16	8	9
ABUSE OF F. CHILD	0	2	4	2	0	3	8	5	0	3	3
ROBBERY	2	1	3	5	3	2	21	5	6	4	5
ASSLT & ATT MURDER	6	0	6	11	8	1	34	10	11	8	10
ASSLT W/DANG WEAPON	8	8	6	12	10	8	28	11	11	12	11
KIDNAPPING	8	11	8	9	9	9	30	13	11	11	12
ASSLT & BATTERY	15	14	18	17	16	14	21	18	18	18	17
ARSON	0	9	5	9	3	14	20	8	8	3	8
BREAK & ENTER	5	7	7	10	7	9	17	12	10	6	9
POSS BURG TOOLS	13	12	9	9	8	12	29	15	24	8	14
LARCENY	18	13	12	16	9	15	30	16	13	11	15
FORGERY	18	7	7	18	14	33	30	22	11	7	17
LARC OF AUTO	9	11	19	24	10	18	34	20	26	10	18
UNLAW APP OF AUTO	13	11	9	18	5	10	31	21	22	43	18
REC. STOLEN GOODS	9	18	14	15	14	17	22	13	13	20	16
PROPERTY INJURIES	23	23	26	27	18	18	25	12	13	16	20
WEAPONS	15	19	15	16	11	12	24	15	12	8	15
COMMON NIGHTWALKER	0	0	2	6	4	5	53	24	0	67	16
DRUG OFFENSES	14	19	17	20	19	19	27	19	18	15	19
DRIVING TO ENDAGER	10	13	9	15	16	10	21	26	23	57	20
DRIVING U/INFL	7	4	2	12	13	15	10	19	45	50	18
VIOL M.V. LAWS	32	28	34	35	38	32	27	37	53	57	37



TABLE 5

RATES FOR THE DISPOSITION OF FINES FOR CONVICTIONS IN THE  
MASSACHUSETTS SUPERIOR COURTS  
FROM 1972 TO 1981

## CLASSIFIED BY OFFENSE

OFFENSE	RATES FOR THE DISPOSITION OF FINES BY YEAR										AVERAGE
	1972	1973	1974	1975	1976	1977	1978	1979	1980	1981	
MANSLAUGHTER	9	2	9	0	1	0	1	0	0	0	1
RAPE	2	3	2	1	0	0	*	1	*	*	1
INDECENT ASSAULT	0	2	0	0	0	0	0	2	0	0	*
ABUSE OF F. CHILD	0	0	1	0	0	0	0	0	1	0	*
ROBBERY	*	1	2	0	*	1	1	1	*	*	1
ASSLT & ATT MURDER	0	2	5	0	0	2	1	2	0	1	1
ASSLT W/DANG WEAPON	2	2	3	2	1	2	5	3	3	3	3
KIDNAPPING	3	0	0	0	3	0	0	1	0	0	1
ASSLT & BATTERY	17	16	8	10	6	9	10	6	4	4	9
ARSON	0	0	3	0	1	2	2	3	2	2	2
BREAK & ENTER	*	*	*	1	2	1	2	1	1	1	1
POSS BURG TOOLS	0	2	0	*	3	1	4	1	0	0	1
LARCENY	3	3	3	4	3	3	8	5	2	3	4
FORGERY	*	*	0	1	1	2	3	3	2	2	1
LARC OF AUTO	1	0	0	3	3	2	5	8	0	0	2
UNLAW APP OF AUTO	4	6	4	1	0	4	8	8	0	0	4
REC. STOLEN GOODS	2	4	5	3	3	3	6	5	2	3	4
PROPERTY INJURIES	7	25	7	13	7	7	7	3	6	3	9
WEAPONS	5	4	4	2	2	4	4	1	5	2	3
COMMON NIGHTWALKER	23	44	39	26	4	3	17	24	0	0	18
DRUG OFFENSES	1	2	3	5	3	7	5	5	4	4	4
DRIVING TO ENDAGER	68	65	59	61	42	42	39	26	26	3	43
DRIVING U/INFL	76	81	75	53	35	37	37	32	17	9	45
VIOL M.V. LAWS	38	40	38	38	34	36	42	28	5	4	30

\* = less than 0.5%

TABLE 6

AVERAGE DISPOSITION RATES FOR CONVICTIONS IN THE  
MASSACHUSETTS SUPERIOR COURTS  
FROM 1972 TO 1981

## CLASSIFIED BY OFFENSE

OFFENSE	AVERAGE DISPOSITION RATES			FINE
	INCARCERATION	PROBATION	FILED	
MANSLAUGHTER	75	21	2	1
RAPE	64	27	8	1
INDECENT ASSAULT	49	41	9	*
ABUSE OF F. CHILD	51	46	3	*
ROBBERY	64	30	5	1
ASSLT & ATT MURDER	65	24	10	1
ASSLT W/DANG WEAPON	42	43	11	3
KIDNAPPING	63	25	12	1
ASSLT & BATTERY	28	47	17	9
ARSON	37	54	8	2
BREAK & ENTER	44	45	9	1
POSS BURG TOOLS	44	41	14	1
LARCENY	31	50	15	4
FORGERY	37	45	17	1
LARC OF AUTO	30	48	18	2
REC. STOLEN GOODS	36	45	16	4
PROPERTY INJURIES	23	49	20	9
WEAPONS	51	31	15	3
COMMON NIGHTWALKER	21	45	16	18
DRUG OFFENSES	28	49	19	4
DRIVING TO ENDANGER	13	24	20	43
DRIVING U/INFL	9	28	18	45
VIOL M.V. LAWS	14	18	38	30

\* = less than 0.5%

TABLE 7

DISPOSITION RATES FOR CONVICTIONS IN SUPERIOR COURTS  
FOR 1981

OFFENSE	TOTAL NUMBER OF CONVICTIONS	ON FILE		PROBATION		FINE		IMPRISONMEN	
		N	%	N	%	N	%	N	%
MANSLAUGHTER	72	2	3	11	15	0	0	59	82
RAPE	251	9	4	75	30	1	**	166	66
INDECENT ASSAULT	80	6	8	28	35	0	0	46	58
ABUSE OF F. CHILD	34	1	3	10	29	0	0	23	68
ROBBERY	1028	40	4	301	29	5	**	682	66
ASSLT & ATT MURDER	117*	9	8	20	17	1	1	85	73
ASSLT W/DANG WEAPON	466	56	12	154	33	13	3	243	52
KIDNAPPING	62	7	11	9	15	0	0	46	74
ASSLT & BATTERY	322*	58	18	119	37	12	4	132	41
ARSON	126	4	3	63	50	2	2	57	45
BREAK & ENTER	793*	51	6	276	35	7	1	458	58
POSS BURG TOOLS	74	6	8	16	22	0	0	52	70
LARCENY	921	97	11	514	56	25	3	285	31
FORGERY	319	23	7	102	32	6	2	188	59
LARC OF AUTO	29	3	10	6	21	0	0	20	69
UNLAW APP OF AUTO	37	16	43	7	19	0	0	14	38
REC. STOLEN GOODS	230	45	20	58	25	7	3	120	52
PROPERTY INJURIES	224	35	16	102	46	6	3	81	36
WEAPONS	120	9	8	25	21	2	2	84	70
COMMON NIGHTWALKER	3	2	67	0	0	0	0	1	33
DRUG OFFENSES	938	145	15	393	42	41	4	359	38
DRIVING TO ENDANGER	30	17	57	4	13	1	3	8	27
DRIVING U/INFL	22	11	50	6	27	2	9	3	14
VIOL M.V. LAWS	161	92	57	25	16	7	4	37	23

\* Includes individuals convicted but not yet sentenced.

\*\* Less than 0.5%

**END**