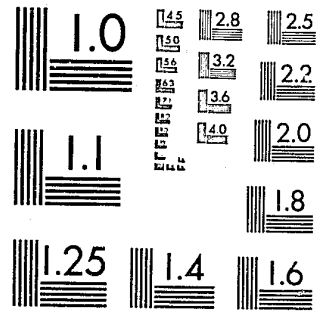


National Criminal Justice Reference Service



This microfiche was produced from documents received for inclusion in the NCJRS data base. Since NCJRS cannot exercise control over the physical condition of the documents submitted, the individual frame quality will vary. The resolution chart on this frame may be used to evaluate the document quality.



MICROCOPY RESOLUTION TEST CHART
NATIONAL BUREAU OF STANDARDS-1963-A

Microfilming procedures used to create this fiche comply with the standards set forth in 41CFR 101-11.504.

Points of view or opinions stated in this document are those of the author(s) and do not represent the official position or policies of the U. S. Department of Justice.

National Institute of Justice
United States Department of Justice
Washington, D. C. 20531

12/31/84

91283

61ST ANNUAL REPORT

FOR THE YEAR ENDING JUNE 30 1982



COL. CLINTON L. PAGANO
SUPERINTENDENT

THOMAS H. KEAN, GOVERNOR

IRWIN I. KIMMELMAN, ATTORNEY GENERAL



State of New Jersey

DEPARTMENT OF LAW AND PUBLIC SAFETY
DIVISION OF STATE POLICE

POST OFFICE BOX 7068
WEST TRENTON, NEW JERSEY 08625
(609) 882-2000

COLONEL C. L. PAGANO
Superintendent

IRWIN I. KIMMELMAN
Attorney General

December 30, 1982

The Honorable Irwin I. Kimmelman
Attorney General of the
State of New Jersey

Sir:

I respectfully submit the Annual Report of the Division of State Police for the fiscal year July 1, 1981 through June 30, 1982, our sixty-first year of service to the people of New Jersey.

I wish to express our gratitude to you for your confidence and support.

Sincerely,

Colonel Clinton L. Pagano,
Superintendent

91283

U.S. Department of Justice
National Institute of Justice

This document has been reproduced exactly as received from the person or organization originating it. Points of view or opinions stated in this document are those of the authors and do not necessarily represent the official position or policies of the National Institute of Justice.

Permission to reproduce this copyrighted material has been granted by

New Jersey State Police

to the National Criminal Justice Reference Service (NCJRS)

Further reproduction outside of the NCJRS system requires permission of the copyright owner.



GOVERNOR THOMAS H. KEAN



ATTORNEY GENERAL IRWIN I. KIMMELMAN

TABLE OF CONTENTS

HEADQUARTERS OFFICERS	i
TROOP COMMANDERS	ii
POWERS AND DUTIES	1
ORGANIZATION	1
ORGANIZATIONAL CHART	2
EMERGENCY MANAGEMENT SECTION	
Operational Planning Bureau	3
Emergency Services Bureau	4
Training and Grant Management Bureau	4
Regional Organization Bureau	5
ADMINISTRATION SECTION	
Logistics Bureau	7
Personnel Bureau	8
Training Bureau	9
Fiscal Control Bureau	12
DIVISION STAFF SECTION	
Computer Bureau	13
Internal Affairs Bureau	13
Public Information Bureau	14
Planning Bureau	14
Division Services Bureau	15
FIELD OPERATIONS SECTION	
Marine Law Enforcement Bureau	17
Communications Bureau	17
Traffic Bureau	19
Helicopter Bureau	22
Highway Patrol Bureau	22
State Governmental Security Bureau	24
INVESTIGATIONS SECTION	
Criminal Investigation Bureau	25
Special Investigation and Services Bureau	27
Organized Crime Bureau	28
Narcotic Bureau	29
Alcoholic Beverage Control Enforcement Bureau	30
SPECIAL STAFF SECTION	
Intelligence Bureau	33
Central Security Bureau	35
Casino Gaming Bureau	35
Atlantic City Special Investigations Bureau	36
RECORDS AND IDENTIFICATION SECTION	
Criminal Justice Records Bureau	37
State Bureau of Identification	38
SPECIAL AND TECHNICAL SERVICES SECTION	
Forensic Sciences Bureau	41
State Regulatory Bureau	42
Technical Bureau	43

NCJRS

SEP 77 1987

ACQUISITIONS



Colonel Clinton L. Pagano
Superintendent



Lt. Col. Frank Wladich



Lt. Col. Justin Dintino



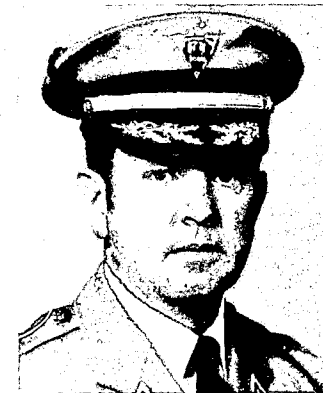
Major Harold E. Spedding



Major Edward R. Martin



Major William J. Burke



Major Joseph A. Flynn



Major Charles H. Coe



Major Louis E. Grossi



Major Joseph E. Barry



Major John P. McGann



Captain Charles J. Dalton



Captain Raymond L. Maralla



Captain Frank J. Mara



Captain George F. Mucci

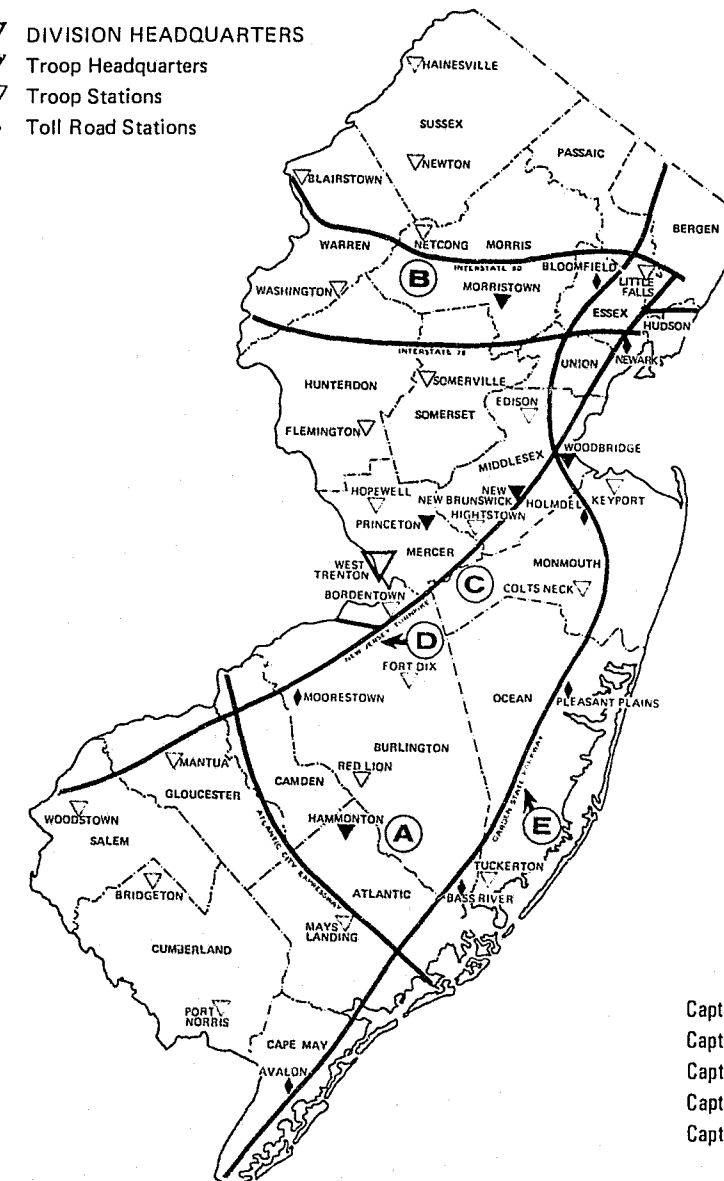


Captain Richard H. Kelly

HEADQUARTERS OFFICERS

Colonel Clinton L. Pagano	Superintendent
Lt. Colonel Frank M. Wladich	Deputy Superintendent
Lt. Colonel Justin J. Dintino	Executive Officer
Major Harold E. Spedding	Emergency Management Section
Major John P. McGann	Administration Section
Major Edward R. Martin	Division Staff Section
Major William J. Burke	Field Operations Section
Major Joseph A. Flynn	Investigations Section
Major Charles H. Coe	Special Staff Section
Major Louis E. Grossi	Records & Identification Section
Major Joseph E. Barry	Special & Technical Services Section
Captain Hugh K. Highet	Assistant to Deputy Superintendent
Captain Ross V.N. Bayer	Assistant Emergency Management Section
Captain John E. Wambold	Assistant Administration Officer
Captain Clifford C. Chippendale	Assistant Division Staff Section
Captain Anthony Blanda	Assistant Field Operations Officer
Captain Louis H. Taranto	Assistant Investigations Officer
Captain Harry Patterson	Assistant Special Staff Section
Captain Wallace P. Miller	Assistant Records & Identification Section
Captain Vincent M. Peterson	Assistant Special & Technical Services Section
Captain William J. Maher	Logistics Bureau
Captain George T. Coyle	Personnel Bureau
Captain John T. Lintott	Training Bureau
Captain Daniel J. Jordan	Fiscal Control Bureau
Captain Herbert E. Plump	Computer Bureau
Captain Robert E. Santelli	Internal Affairs Bureau
Captain Francis M. Callahan	Planning Bureau
Captain Donald J. Boyle	Marine Law Enforcement Bureau
Captain Charles S. Purgavie	Communications Bureau
Captain Dominick J. Caruso	Traffic Bureau
Chief John H. Wyckoff	Highway Patrol Bureau
Captain Steven Rosacha	State Governmental Security Bureau
Captain Richard J. Regan	Criminal Investigation Bureau
Captain John H. Harms	Special Investigations & Services Bureau
Captain Raymond Castellano	Organized Crime Bureau
Captain Joseph J. Craparotta	Narcotic Bureau
Captain Maurice M. Lombardi	ABC Enforcement Bureau
Captain John J. Carney	Intelligence Bureau
Captain Robert C. Winters	Casino Gaming Bureau
Captain Joseph F. Delaney	State Bureau of Identification
Captain John J. Liddy	Forensic Sciences Bureau

- ▽ DIVISION HEADQUARTERS
- ▼ Troop Headquarters
- ▽ Troop Stations
- ◆ Toll Road Stations



TROOP COMMANDERS

Captain Charles J. Dalton	Troop A (South Jersey)
Captain Raymond L. Maralla	Troop B (North Jersey)
Captain Frank J. Mara	Troop C (Central Jersey)
Captain George F. Mucci	Troop D (N.J. Turnpike)
Captain Richard H. Kelly	Troop E (G.S. Parkway)

POWERS & DUTIES

Under the executive leadership of the Superintendent, the Division has full police powers and is authorized to enforce any law or ordinance anywhere within the State. Members of the Division of State Police are subject to the call of the Governor. They are peace officers of the State, and are empowered to furnish police protection; to render first aid to the injured and succor the helpless; and to exercise, in general, the same powers and authority as are conferred by law upon police officers and constables.

The Division of State Police has the power to prevent crime; to pursue and apprehend offenders; and to obtain legal evidence necessary to insure the conviction of such offenders in the courts. Division members are authorized by law to execute any lawful warrant or order of arrest issued against any person, and to make arrests without warrant for violations of the law in their presence, and for felonies committed, the same as are or may be authorized by law for other peace officers.

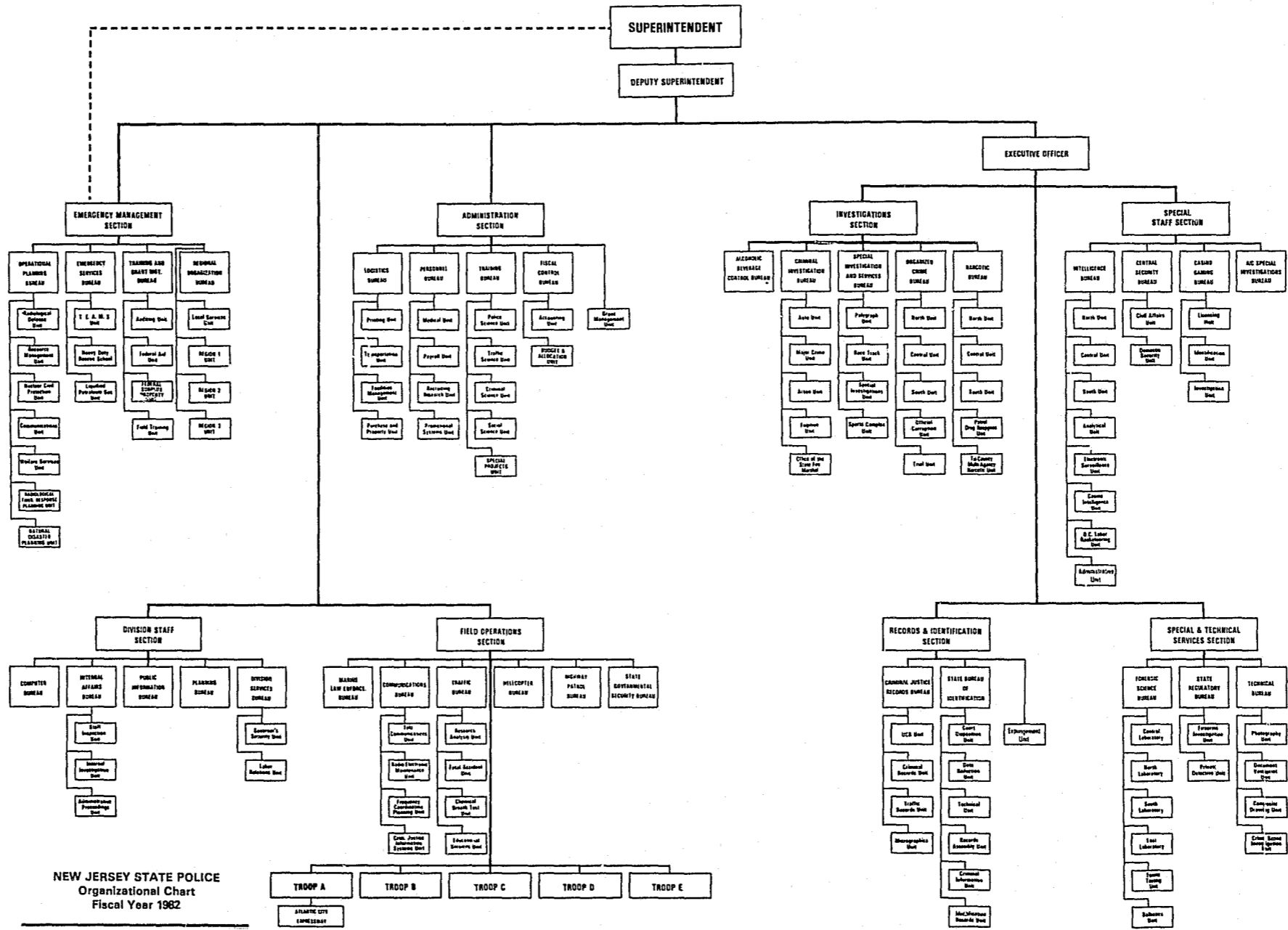
Members of the Division of State Police provide statewide enforcement of the criminal, motor vehicle, marine, and alcohol beverage control laws. They are authorized to cooperate with any state department, or any state or local authority in the preservation of law and order. The Division may not however, be used as a posse in any municipality except upon order of the Governor when requested by the governing body of such municipality. This does not preclude the assignment of Division personnel to aid election superintendents on election day in the enforcement of the State's election laws. The Division directs and controls the State Emergency Management program and when directed by the Governor assists local police authorities in controlling civil riots and other unlawful civil disturbances of major proportions. Division members may also act as wardens in the protection of the forests and the fish and game of the State.

ORGANIZATION

The Division of State Police, one of nine Divisions of the Department of Law and Public Safety, was established in 1921. The Division is headed by a Superintendent and supported by a Deputy Superintendent, Executive Officer and staff whose areas of responsibilities are divided into eight categories: Emergency Management, Division Staff, Administration, Field Operations, Investigations, Special Staff, Records and Identification, and Special & Technical Services. Through his staff, the Superintendent directs the activities of the five police commands which are: Troop A (Southern New Jersey), Troop B (Northern New Jersey), Troop C (Central New Jersey), Troop D (New Jersey Turnpike), and Troop E (Garden State Parkway).

The Deputy Superintendent is the Chief of Staff and serves as Acting Superintendent in the absence of the Superintendent. He is responsible for the execution of staff tasks, the efficient and prompt response of the staff, and the coordinated efforts of its members. The Executive Officer is the principal staff advisor to the Deputy Superintendent and serves as Acting Chief of Staff in his absence. He is responsible for directing and coordinating the personnel and functions of the Investigations, Special Staff, Records and Identification and, Special and Technical Services Sections.

The organizational structure of the Division of State Police, as depicted in the Organizational Chart, is designed to provide maximum efficiency in the performance of the diversified functions of the Division.



EMERGENCY MANAGEMENT

The Supervisor of the Emergency Management Section holds the rank of Major and also serves as Deputy State Director, Office of Emergency Management. Under the command of the Superintendent, who is State Director, Office of Emergency Management, he performs a staff function and reports directly to the Superintendent. His delegated authority primarily includes the directing, coordinating and controlling of the Operational Planning Bureau, Emergency Services Bureau, Training and Grant Management Bureau and Regional Organization Bureau. He is also responsible for planning, directing and coordinating emergency operations within the State which are beyond local control.

OPERATIONAL PLANNING BUREAU

The Bureau supervises and coordinates the activities of the Communications, Resources Management, Welfare Services, Radiological Defense, Nuclear Civil Protection Planning, Radiological Emergency Response Planning, and Natural Disaster Planning Units, and is primarily responsible for the preparation, coordination, review, approval, and implementing of State Emergency Operating Plans designed to protect the citizens, public and private property from all types and levels of disasters that could occur within the State, (such as the current planning for Radiological Emergency Operations at Nuclear Power Stations).

The Bureau also conducts training of municipal, county, and State Emergency Management personnel in the areas of Emergency Planning and Operations in Emergency Operating Centers during disaster situations. Operation, manning, staff training, and procedural development for the State Emergency Operating Center are also key responsibilities of the Bureau.

RADIOLOGICAL DEFENSE UNIT — This Unit is responsible for developing and maintaining a statewide radiological defense system to measure and report on fallout conditions in the event of a nuclear attack or emergency. The Unit prepares and updates emergency plans, and organizes State and local governments for radiological defense operations, and provides for the care and maintenance of a \$15 million inventory of radiation detection instruments to support nuclear attack and peacetime disaster activities. Over 2,500 kits of instruments are processed annually in a central maintenance shop under this program.

RESOURCES MANAGEMENT UNIT — The Resources Management Unit develops and coordinates a statewide program for utilization of essential resources during an emergency and the ensuing recovery period.

NUCLEAR CIVIL PROTECTION PLANNING UNIT — This Unit is responsible for the planning and shelter survey effort designed to protect the population of New Jersey either in-place (near residence or work) in the event of a short warning nuclear attack; or by temporary relocation from areas of high risk of the direct effects of nuclear weapons to areas at lower risk. An advisory function is performed for development and maintenance of elements of radiation emergency plans for fixed nuclear facilities.

COMMUNICATIONS UNIT — This Unit is responsible for planning and implementing statewide programs designed to provide Emergency Communications for the support of disaster recovery operations and to provide an adequate Emergency Warning System for the State.

WELFARE SERVICES UNIT — This Unit is responsible for defense and disaster welfare operations in designated disaster areas. The Unit prepares predisaster plans, coordinates State Welfare Operations, collects information on Welfare Resources and acts as liaison with Federal private welfare agencies.

RADIOLOGICAL EMERGENCY RESPONSE PLANNING UNIT — The Radiological Emergency Response Planning Unit maintains plans for protecting the population near the State's nuclear generating stations. The Unit is responsible for coordinating training of personnel, purchasing equipment and developing annual exercises for each nuclear generating station.

NATURAL DISASTER PLANNING UNIT — This Unit is responsible for the development and maintenance of a comprehensive "State of New Jersey Emergency and Disaster Operations Plan." It also provides training to State Departments/Agencies and volunteer organizations in their emergency and disaster functions and responsibilities.

EMERGENCY SERVICES BUREAU

The Emergency Services Bureau supervises and coordinates the activities of the T.E.A.M.S. (Technical, Emergency and Mission Specialists) Unit, the Rescue Training School, and the Liquefied Petroleum Gas Unit.

T.E.A.M.S UNIT — T.E.A.M.S. personnel, strategically located at Troops A, B, and C are called upon to conduct underwater recovery, rappel and other rescue/evacuation type operations. They also respond to incidents abnormal in nature, including hazardous chemical spills, radiation accidents and hostage situations, and are sometimes called upon to participate in raids conducted by the Division's Investigations Section.

RESCUE TRAINING SCHOOL — Provides training to volunteer ambulance and rescue personnel, firefighters, police as well as representatives of private industry. The training curriculum includes classroom as well as practical exercises in Organization, Use of Techniques, Casualty Handling, and Appreciation of Damage to Buildings and Utilities.

LIQUIFIED PETROLEUM GAS UNIT — The Unit is responsible for the enforcement of liquefied petroleum gas transportation regulations, which govern the operation and handling of equipment that is used to transport Liquefied Petroleum Gas.

TRAINING AND GRANT MANAGEMENT BUREAU

The Training and Grant Management Bureau consists of four units: Auditing, Federal Aid, Federal Surplus Property and Field Training.

The **AUDITING UNIT** is responsible for managing State and Federal emergency management funds allocated for State use, and distribution of Federal emergency

management funds earmarked for municipal and county use. The **FEDERAL AID UNIT** processes all state, county and local applications for Federal emergency management matching funds. The **FEDERAL SURPLUS PROPERTY UNIT** takes custody of Federal surplus property for donation to eligible applicants. The **FIELD TRAINING UNIT** conducts basic, advanced and specialized Emergency Management training programs for emergency personnel.

REGIONAL ORGANIZATION BUREAU

The Regional Organization Bureau is comprised of the North, Central and South Regional Units and the Local Services Unit. The **REGIONAL UNITS** coordinate the Emergency Management activities in all twenty-one counties of the State. The **LOCAL SERVICES UNIT** coordinates Emergency Management education of the public through the use of exhibits and seminars.

ADMINISTRATION

The Supervisor of the Administration Section holds the rank of Major. Under the command of the Superintendent, he performs a staff function and reports directly to the Chief of Staff. He conducts formal communications with all Staff Officers. His delegated authority primarily includes the directing, coordinating and controlling of the Logistics Bureau, Personnel Bureau, Training Bureau, Fiscal Control Bureau, and Grant Management Unit.

EMPLOYEE ASSISTANCE PROGRAM — On March 12, 1982 an Employee Assistance Program was instituted within the Administration Section. The general purpose of the New Jersey State Police Employee Assistance Program is to help enlisted personnel overcome behavioral-medical or personal problems. The Program provides information, confidential professional assistance and subsequent referral services.

GRANT MANAGEMENT UNIT — The Grant Management Unit is responsible for coordinating the administration of all State Police projects or programs which are funded by Federal, State or private grants.

LOGISTICS BUREAU

The Logistics Bureau is responsible for providing logistical support as required by the Division of State Police in everyday operations and during civil disturbances and emergencies. This responsibility encompasses the procurement and maintenance of transportation, equipment, supplies and facilities that are necessary for the Division to complete its mission. The Logistics Bureau is comprised of the following units: Facilities Management, Transportation, Purchase and Property Control, and Printing.

FACILITIES MANAGEMENT UNIT — The Facilities Management Unit is responsible for the preliminary planning and technical specifications for the construction of new facilities and for the continual renovation of buildings to meet the needs of the Division. Liaison is maintained with the Division of Building and Construction from the inception of a project through the project close-out and subsequent occupancy of the building. The Unit acts as the administrator of all warranty conditions as related to the guarantee period, and provides representation for the Division at all job site meetings during construction. The Capital Improvement Budget is prepared and submitted by this Unit.

This Unit is also responsible for maintaining records of all real property and construction projects, including administration and coordination with the Bureau of Real Estate and Insurance Management on all leased facilities and associated insurance coverages.

Additionally, programmed preventative maintenance of all State Police owned and leased buildings within the Division constitutes a major area of responsibility for this Unit. This encompasses 35 State owned and 30 leased buildings. Examples of improvements: All interior and exterior repainting of State Police buildings is being performed by the maintenance staff.

TRANSPORTATION UNIT — The Transportation Unit is responsible for the acquisition, replacement and maintenance of the entire State Police fleet of 1,688 vehicles, and of approximately 80 stationary generators and other combustion engines utilized by the Division. The updating of vehicle and equipment specifications, operational procedures and practices, as well as continuous testing and evaluations of vehicle components and equipment are also the responsibility of this Unit. Through this effort, the Division is able to keep abreast of all new modifications and changes, and operationally maintain the fleet at its required peak efficiency.

The present maintenance program of rebuilding engines, differentials, and transmissions, and the repair of vehicles, has saved considerable "downtime" and money for the Division. To enhance the continued operation of the fleet, this Unit also handles the acquisition of fuel and necessary replacement parts for the patrol fleet, emergency generators, and all other combustion engines owned by the Division.

Processing of all correspondence, reports, forms and related clerical duties pertaining to all the vehicles presently in the fleet, new vehicle purchases, sale of old vehicles and maintenance records are handled by this Unit. There were 220 replaced vehicles processed.

PURCHASE AND PROPERTY CONTROL UNIT — This Unit is responsible for the acquisition, storage and distribution of all uniforms and related equipment for members of the Division of State Police as well as all stationery, janitorial and office equipment and supplies required and utilized by the entire Division. Inventories are maintained on all permanent articles and equipment, clothing, weapons, janitorial and office equipment, stationery and supplies on hand.

The Unit is also responsible for the storage, distribution, inventory transferring and disposing of all police and riot equipment, office furniture and related office equipment, and mechanical tools and equipment for the entire Division of State Police.

PRINTING UNIT — The Printing Unit composes, prints and provides all standard forms, guides, booklets, manuals, reports, rosters and training materials used by the Division of State Police. One of the greatest assets the Unit provides the Division is its capability to immediately produce local and regional maps of areas which are in various stages of civil unrest or emergency situations. The Unit also prints composite drawings of suspected criminals, missing persons and wanted persons for immediate distribution which has been very effective.

During the year, the Printing Unit received 1,631 requests for printed material providing the Division of State Police, and other Departments and Divisions within the State Government, with over 9 million forms and copies. Printing projects included the following: operational maps, missing and wanted persons' fliers and posters, composite drawing and instructional materials for use in training courses, manuals and booklets.

PERSONNEL BUREAU

The Personnel Bureau maintains records of all enlisted members of the Division of State Police as well as all Civil Service employees working for the Division. Bureau personnel are responsible for payroll, health benefits, insurance, pension, interviewing and hiring applicants for all civilian positions.

During the past year, 2,027 personnel action requests were prepared and forwarded to the Department of Civil Service. Additionally, interviews were arranged and conducted for over 400 individuals certified to the Division by the Department of Civil Service as eligible for employment.

The Division's authorized strength at the close of the year was 2,059 although the actual strength was 1,917. There were 1,328 Civil Service employees working for the Division which represents a decrease of 85 employees or 6.8%.

MEDICAL UNIT — The Medical Unit is responsible for maintaining the sick leave and medical files on all Division members. They also process medical bills and handle inquiries concerning medical and health insurance plans. Liaison is maintained between this Unit and the four Division physicians. Medical examinations for State Police applicants are arranged by this Unit.

PAYROLL UNIT — The Payroll Unit is responsible for processing all personnel pay actions within the Division. A total of 2,950 actions were processed this year. The Unit is also responsible for timekeeping records; regular and supplemental payrolls; medical and health insurance payroll deduction records, enrollment and changes in coverage.

RECRUITING AND RESEARCH UNIT — The Recruiting and Research Unit supervises and administratively controls all the required phases necessary in the selection process for employment as a New Jersey State Trooper. The Unit presents career programs to various civic and fraternal groups, high schools and institutions of higher learning, human rights and government sponsored agencies and organizations in a continuing effort to recruit qualified applicants. The Unit is responsible for researching and developing the various phases in the selection process relative to fair and equitable employment practices and has the administrative responsibility to respond to various affirmative action guidelines both at the State and Federal levels. The Unit processed over 7,000 applicants seeking Trooper positions.

PROMOTIONAL SYSTEMS UNIT — The Promotional Systems Unit is responsible for administering promotions of Division personnel consistent with State Police policy and promotional agreements between the State of New Jersey and the State Troopers Fraternal Association and the State Troopers N.C.O. Association.

TRAINING BUREAU

The New Jersey State Police Training Bureau is located at Sea Girt, New Jersey. Bureau personnel train state police as well as personnel from municipal, county and other law enforcement agencies. The Training Bureau is divided into five units. The unit concept enables the Training Bureau to best utilize instructors and facilities, and present new and improved programs.

SPECIAL PROJECTS UNIT — The Special Projects Unit was established to conduct research concerning the validation of police training standards. One of the first

assignments that this unit was given was identified as "Project 96." It began with female training concepts and was expanded to include the validation of all facets of police training.

Minimum standards of performance were developed through Project 96. Procedures were put into effect to assist poor performing recruits to meet minimum standards.

As a result of refined methodology, all research documentation has been placed into a computerized format. This includes information developed during interviews and field observations.

This unit is responsible for scheduling all Training Bureau courses, coordinating medical research, and reviewing and updating all course outlines and lesson plans. The unit is also responsible for coordinating the State Police and Seton Hall University Affiliation Program.

POLICE SCIENCE UNIT — This unit is directly responsible for the basic training of State Police and municipal police officers. This year 141 new troopers graduated from the 98th class. Each graduate is eligible for twenty-nine semester hours of credit. The accredited college courses are offered as part of the basic program and are conducted by qualified members of the Training Bureau Staff.

An eleven-week Basic Police Training course for newly appointed police and law enforcement personnel is offered as a service to various law enforcement agencies in the State. A total of 127 trainees graduated from the two courses conducted this year. Basic police related subjects, as well as college accredited courses, were administered by qualified Training Bureau personnel. Graduates of this program can obtain up to twenty-two credits from Seton Hall University upon graduation. Other unit functions include administration of the Division's Annual Firearms and Physical In-Service training, Training and Certification of State and Municipal Firearms Instructors, and evaluation of weapons, ammunition and related equipment.

CRIMINAL SCIENCE UNIT — The Criminal Science Unit instructs Basic Municipal Police Trainees and State Police recruits in criminal related subjects which include the New Jersey Penal Code, Arrest, Search and Seizure, Investigation Procedures, Interview Procedures, Rules of Evidence, Narcotics, Judicial System, U.S. Constitution, Civil Rights Code, Courtroom Testimony, Hostage Negotiations, Crime Scene Preservation, and Alcoholism Treatment and Rehabilitation Act (A.T.R.A.).

The unit also instructs in special and advanced courses. These include Criminal Investigation, Drug Enforcement, Sex Crime Investigation and Analysis, and Organized Crime. These courses are offered to all law enforcement agencies throughout the State, as well as invitation to out-of-state law enforcement agencies for specific programs. The Criminal Science Unit was involved in the development and presentation of criminal related subjects for In-Service and Special Training Programs.

TRAFFIC SCIENCE UNIT — The unit instructs Basic Municipal and State Police classes in traffic-related subjects which include Motor Vehicle Law, Traffic Accident Investigation, Defensive Driving, Crash Injuries Management (as coordinated through the Department of Health), and Evasive Driving.

Courses in Advanced Traffic Accident Investigation, Crash Injuries Management, Traffic Law Enforcement, and Driving While Intoxicated (D.W.I.) are offered to all police agencies throughout the state. A two-day Evasive Driving Course has been developed for experienced municipal and state police officers.

Traffic Accident Investigation — The in-depth investigative role of the police officer regarding traffic accidents. Among other subjects, he learns to develop scale diagrams, establish minimum speeds from skid marks, and compute critical curve speeds.

Crash Injuries Management — Instruction and certification are provided to the basic municipal and state police candidates in cardio-pulmonary resuscitation, bandaging and splinting, medico-legal aspects, extrication from auto, and emergency birth.

Traffic Law Enforcement — A one-week course designed to ameliorate attitudinal disciplines of the police officer with those of the public. This course also updates motor vehicle law changes, case law, and selective assignment programs.

D.W.I. (Driving While Intoxicated) — A one-week course that concentrates on the detection and apprehension of the drinking driver, the problems encountered with a drunk driver, controlled exercises, and chemical testing of intoxicated subjects and the psychological analysis and evaluation of the D.W.I. suspect.

SOCIAL SCIENCE UNIT — The Social Science Unit is responsible for teaching Psychology and Sociology to State Police Recruits and Municipal Trainees. They are also responsible for teaching Language and Communication to State Police Recruits.

Police Supervision courses are conducted for Municipal Police and State Police supervisors. This course consists of an in-depth study into the principles of police supervision.

An Instructor Training and In-Service Development Program is offered. This program is designed to train qualified police instructors for municipal and county police departments, followed by the development of the in-service training modules for statewide use.

A four-day Juvenile Justice Training course has been developed as a means to assist law enforcement personnel in dealing with delinquency problems. This comprehensive training program is available to all law enforcement personnel throughout the State and is designed to develop, in policemen, skills and knowledge pertinent to the handling of juveniles in a uniform, unbiased, helpful, understanding, and preventive manner.

A Spousal Stress course was conducted for the immediate families of the members of the State Police class. The course included instruction on stress in the police marriage, firearms safety, the role of the Trooper in Society, State Police Tradition, Division Benefits and Salary.

SUMMARY OF ACTIVITIES — During this year, the Training Bureau conducted various classes for State Police personnel, training a total of 977. There were 98 police training classes conducted which totalled 3,161 federal, state, county and municipal police officers.

FISCAL CONTROL BUREAU

The Fiscal Control Bureau is responsible for preparation of the annual budget request for the Division of State Police, and maintaining records of expenditures and balances in the various accounts including Federal Grants. This Bureau also processes receipts from the New Jersey Turnpike, the Atlantic City Expressway, New Jersey Sports and Exposition and New Jersey Highway Authorities, licensing of private detectives, firearms registration and permits, plus the reproduction of reports. Records are kept of contracts, orders, and invoices.

The General State Operation expenditures for the Division for this year are as follows:

Personal Services	\$ 52,776,280
Materials and Supplies	6,050,825
Services other than Personal	4,540,367
Maintenance and Fixed Charges	1,844,269
Special Purpose	13,124,241
Capital Construction, Improvement and Equipment	2,328,566
State Aid	840,211
	<u>\$ 81,504,759</u>

DIVISION STAFF

The Supervisor of the Division Staff Section holds the rank of Major. Under the command of the Superintendent, he performs a staff function and reports directly to the Chief of Staff. He conducts formal communications with all Staff Officers. His delegated authority primarily includes the directing, coordinating and controlling of the Computer Bureau, Internal Affairs Bureau, Public Information Bureau, Planning Bureau and Division Services Bureau.

COMPUTER BUREAU

The State Police Computer Bureau is responsible for the planning, coordinating, and direction of data processing activities for the entire Division of State Police. This group also performs data processing services for many other Criminal Justice Agencies within the State. Computer Bureau personnel perform systems analysis tasks and program sophisticated computerized systems to assist users in the planning and implementation of automated data processing applications.

Computer Bureau personnel have the responsibility of defining the data processing needs of the various Criminal Justice Agencies throughout the State, and insuring that these needs are satisfied in the most expeditious manner. This includes liaison with State Criminal Justice Agencies and out-of-state agencies. Bureau personnel have regular communications with agencies such as the National Crime Information Center, the Federal Bureau of Investigation, SEARCH Group Incorporated, National Law Enforcement Telecommunications System, and various other progressive out-of-state computer centers. The Bureau Chief serves as New Jersey's SEARCH Group Incorporated representative.

The major State Police areas of data processing involvement are Communications, Records and Identification, Criminal Investigation, Transportation, Logistics, Intelligence, Uniform Crime Reporting, and Traffic.

INTERNAL AFFAIRS BUREAU

The Internal Affairs Bureau coordinates the efforts of the Staff Inspection Unit, the Internal Investigation Unit, and the Administrative Proceedings Unit. The Bureau reports on the status of all complaints, investigations and inspections and insures the maintenance of records.

STAFF INSPECTION UNIT — The Staff Inspection Unit conducts field inspections to assure that the activities of the Division are conducted in accordance with its policies, procedures, rules and regulations and orders. Remedial recommendations are made to provide direction for necessary change.

INTERNAL INVESTIGATION UNIT — The system of conducting and managing internal investigations concerning misconduct complaints against sworn members is designed to strike an equitable balance between the rights of the complainants and the rights of the members. The requirement to inform the complainant of the outcome is an important factor within this system. The Unit registers, monitors and maintains permanent records on every internal investigation conducted within the New Jersey State Police.

ADMINISTRATIVE PROCEEDINGS UNIT — The Administrative Proceedings Unit is responsible for presenting Internal Investigations to the Advisory Board, which is

composed of six officers at the rank of Captain for their review and opinion to the Superintendent in the pursuit of Administrative Justice. This Unit prepares for Administrative Court Martials, acts as administrator at these hearings and memorializes the proceedings.

PUBLIC INFORMATION BUREAU

This Bureau is responsible for the proper dissemination of information concerning the functions and activities of the Division of State Police in an effort to maintain good public relations. During the year, there were 650 official news releases and 2,010 photographs issued from the Public Information Bureau at Division Headquarters. News of a general police nature was issued daily from all State Police stations upon request from local newspapers and radio stations. The dissemination of spot news regarding events of special interest was supervised by the Public Information Bureau Officer. Research material for 390 feature articles was prepared for magazine and newspaper publication. Spot broadcasts and taped messages concerning special events and safety campaigns were supplied to radio and television stations. Exhibits depicting various phases of police work were monitored and shown at many county fairs and other large public gatherings. Brochures and other Division publications were designed, edited and distributed by the Public Information Bureau. There were 68 graphic arts and 48 photographic assignments completed this year.

The New Jersey Committee on Public Information, representing all recognized news gathering agencies in the State, meets regularly to screen applicants for New Jersey press credentials. The Division of State Police prints, registers and issues both wallet and visor cards to all qualified applicants. There were 3,600 credentials issued this year.

A news clipping file is maintained in this Bureau. News of a general nature is clipped, mounted, identified by publication and date, bound and filed by month. News of a specific nature is similarly processed and filed by topic. This file, plus special reports and periodic surveys, affords a good means of evaluating the effects of our program.

PLANNING BUREAU

This Bureau is responsible for planning Division operations, both short and long range, and for coordinating and preparing Division orders, instructions and procedures, which insures that they are not in conflict with existing orders or rules and regulations. Members of this Bureau conduct studies and research to assist in the solving of police problems, and lend assistance to other Sections in the preparation and improvement of their plans as may be required.

All legislative bills and appellate court decisions pertaining to the Division are reviewed and brought to the attention of the personnel concerned. All legislation that is enacted, which is of interest to or has a direct or indirect bearing on the Division, is brought to the attention of the Superintendent. A member of this Bureau serves as coordinator between the Division of State Police and the Division of Administrative Procedures in the promulgation of rules affecting the general public, and maintains liaison with the New Jersey Lobby in Washington, D.C. concerning pending legislation bearing upon our Division.

The Planning Bureau is responsible for the preparation of the monthly major accomplishments reports and the calendar and fiscal year annual reports, for the Division of State Police. These reports are submitted to the Attorney General as required.

Bureau personnel conduct research projects into various planning activities, including but not limited to assisting other police departments with patrol scheduling; responding to inquiries and questionnaires from various criminal justice agencies; developing Division manpower allocation recommendations; studies and recommendations reference local police services performed by the Division of State Police; and assist in drafting and negotiating contracts for State Police service with the Turnpike, Parkway, Atlantic City Expressway and Meadowlands. This Bureau assisted in the planning of the National Governor's Association annual conference in Atlantic City and the 1982 inauguration of Governor Thomas H. Kean.

DIVISION SERVICES BUREAU

The Division Services Bureau is comprised of two units: Governor's Security Unit, and Labor Relations Unit.

GOVERNOR'S SECURITY UNIT — The Governor's Security Unit has the primary responsibility for maintaining security for the Governor and Attorney General and their families. Personnel assigned to this Unit accompany their charges throughout the state functioning both as an Aide and for the purpose of providing security. Personnel maintain offices at the Governor's official residence, and Drumthwacket, and have the responsibility of maintaining security of the residence and its occupants.

The Unit participated in security and transportation accommodations for the National Governor's Association meeting in Atlantic City. Personnel also provided security for the Governor's elect during the transition of State Government.

LABOR RELATIONS UNIT — The Labor Relations Unit is responsible for the administration and review of grievances, assists in contract administration and serves as part of the negotiations advisory team. The Unit also provides liaison between the employee groups and the Superintendent in order to maintain effective two way communications.

FIELD OPERATIONS

The Supervisor of the Field Operations Section holds the rank of Major. Under the command of the Superintendent, he performs a staff function and reports directly to the Chief of Staff. He conducts formal communications with all Staff Officers. His delegated authority primarily includes the directing, coordinating and controlling of the Marine Law Enforcement Bureau, Communications Bureau, Traffic Bureau, Helicopter Bureau, Highway Patrol Bureau, and State Governmental Security Bureau. He is also responsible for the coordination of inter-troop and inter-agency operations dealing with special events, crowd control, prison riots, disasters, traffic programs, interstate highways and other police related activities as they apply to the Division.

MARINE LAW ENFORCEMENT BUREAU

The Marine Law Enforcement Bureau, established on January 24, 1981, within the Division of State Police under the Field Operations Section is the primary provider of police services on the waters of this State. The Bureau is comprised of a headquarters command and repair facility supporting the seven stations strategically located throughout the State. The patrol area consists of, but is not limited to, New Jersey's territorial seas, inland waters and sole State waters, both tidal and non-tidal.

The Bureau provides response to waterborne emergencies requiring police investigation and/or assistance; rescue and aid to the distressed boater; and basic criminal investigative services, including vessel and related equipment thefts; and identifies and recovers stolen property used on the waters of this State and apprehends smugglers through patrol coverage.

In addition the Bureau provides boating safety management through boating safety courses; regulating and patrolling marine regattas, races and events; and has the sole responsibility for the investigation of boating accidents and the administration of boating accident programs.

Bureau personnel enforce the State's boating laws; assist Federal, State and local agencies; and provide coordination in the placement of aids to navigation. They provide for the removal of minor debris from the water; and enforcement of the Fish and Game Laws.

This year the Marine Law Enforcement Bureau initiated 436 criminal investigations, investigated 264 boating accidents, initiated 5,489 boater contacts, responded to 735 requests for assistance from boaters and provided services for 1,395 other requests. The Bureau conducted boating safety courses for 4,089 individuals.

COMMUNICATIONS BUREAU

The Communications Bureau is comprised of the Telecommunications Unit, and the Radio/Electronics Maintenance Unit, the Frequency Coordination Planning Unit and the Criminal Justice Information Systems Unit. The Bureau is responsible to insure an efficient and expedient means of inter-state and intra-state communications.

NEW JERSEY CRIMINAL JUSTICE INFORMATION SYSTEM — The New Jersey Criminal Justice Information System (NJCJIS) is linked to the National Crime Information Center (NCIC), Washington, D.C. via a high speed data circuit. This computerized police information system provides the law enforcement agencies of the State with instant access to records concerning stolen vehicles, stolen license plates, stolen guns, stolen articles, wanted persons, missing persons, stolen securities and stolen boats. This year the inquiries made of the SCIC/NCIC data base totaled 2,619,000 which resulted in 67,833 'hits'.

State Police stations and the five Troop Headquarters are equipped with CJIS terminals. The stations in Troops A, B, and C are set up to service the CJIS needs of participant agencies which have no terminals of their own.

Another 160 terminals are located at the various Federal, State, county, and municipal agencies throughout the State. In addition, 8 computer systems are tied into the CJIS computer. These control points support another 203 terminals in-house and at connected agencies.

The Communications Bureau is responsible for developing and updating administrative and operational procedures vital to all terminals. It is also responsible for the preparation of all operating manuals and guides which are then provided to police and civilian communications/terminal operators. During the fiscal year 154 persons attended the terminal operator training course.

TELECOMMUNICATIONS UNIT — The Telecommunications Unit is responsible for the 24 hour per day operation of NJCJIS Agencies. Monitor related responsibilities for message traffic via NLETS and NJLETS extend to an additional 162 telecommunication machine equipped participants.

Telecommunications Summary

Message Alarms Broadcasted	7,453
Message Alarms Cancelled	3,068
NJ LETS Miscellaneous Messages	331,336
NJ DMV Vehicle Lookups	195,307
Telephone Calls Processed	248,251
Civil Defense Tests and Daily Statewide Warning Center Checks	31,540
Radio Transmissions	3,881,386
National LETS Messages	1,713,641

RADIO-ELECTRONICS MAINTENANCE UNIT — The Division of State Police maintains a "State Wide" radio communications system providing mobile contact with patrols and allied State Agencies. This system provides communications for the several divisions within the Department of Law and Public Safety as well as the Departments of Defense, Corrections, Treasury, Environmental Protection, and Institutions and Agencies.

The Radio/Electronics Maintenance Unit provides repairs on all two-way radio equipment *i.e.*, base stations, mobiles and portables. In addition, visual-audible warning systems such as sirens, roof top lights and public address systems are installed and maintained as well as in-house security systems such as burglar alarms, intercoms and closed circuit television systems. Radar and electronic speed detectors are also maintained by this unit as well as electronic scales for the weight enforcement program.

FREQUENCY COORDINATION PLANNING UNIT — In 1968, the Division accepted the responsibility of coordinating police frequencies in New Jersey from the Associated Public Safety Communications Officers Inc., (APCO). APCO is responsible on a National level for the management of the coordination process by action of the Federal Communications Commission (FCC).

Frequency Coordination is primarily the rendering of assistance to county, municipal and state public safety agencies in the selection of frequencies and determining effected radiated power. The staff reviews the proposed use of radio within the state and makes recommendations to the FCC and to the applicants a course of action. In this fiscal year 278 formal applications were processed. Additionally, there were 464 comments offered to the surrounding states. This procedure protects the interests and radio integrity of the many users.

TRAFFIC BUREAU

The Traffic Bureau, composed of the Research & Analysis Unit, Fatal Accident Unit, Chemical Breath Test Unit, Educational Services Unit, Operational Units functioning in Troop areas, and an Administrative Unit at Division Headquarters has as its primary purpose the supplementing of existing police patrols at locations throughout the state where high accident rates or special traffic hazards exist.

The Operational Units are an integral part of the Traffic Sections at the Troop Headquarters and are the responsibility of the Troop Commander. These units consist of Radar Teams, Mobil Task Force Patrols, Tactical Patrol Units, Weigh Teams and Commercial Truck Inspection Teams.

The Traffic Bureau, through the five Troop Traffic Sections, directs and coordinates all Traffic related activities within the Division of State Police. This includes formulating plans, orders, instructions and conducting the necessary training related thereto concerning traffic direction, enforcement and accident investigation. The Bureau is guided by analysis of current programs together with continuing research of new concepts and philosophies.

Units which are directly concerned with traffic, as well as those serving in a support capacity, are continually striving for results both individually and collectively. The vitally important field of traffic safety cannot be neglected. To achieve a total Division goal, priority of needs must be established, and with the loss of life, serious injuries and property damage on our streets and highways, the priority for highway traffic safety is self-evident.

In an effort to reduce motor vehicle accidents and to ensure the safe and efficient movement of persons and goods on the publicly travelled highways of New Jersey, traffic enforcement continued at a high level. Division personnel issued 169,350 warnings and 363,417 summonses, of which 275,488 or 75.8% were for hazardous driving violations which contribute to or cause the majority of motor vehicle accidents.

RESEARCH AND ANALYSIS UNIT — The Research and Analysis Unit provides information to management for use in formulating and evaluating the effectiveness of the traffic safety effort within the Division. This Unit evaluates on-going programs and, explores new methods, techniques and philosophies having relationship to highway traffic safety.

FATAL ACCIDENT UNIT — The Fatal Accident Unit reinvestigates all fatal accidents initially investigated by municipal police departments and reviews all fatal accidents investigated by the Division of State Police. There were 1,037 fatal accidents in the State this year that resulted in 1,073 fatalities. In 41% of the assignments completed by this Unit, recommendations were made to the Driver Improvement Section in the Division of Motor Vehicles for further action to be taken against negligent drivers.

CHEMICAL BREATH TEST UNIT — The Chemical Breath Test Unit is required to evaluate and recommend breath testing instruments for certification, instruct and recommend all breath test operators for certification, instruct and recommend members of the State Police as breath test coordinators, inspect certified breath testing instruments, maintain a file of certified, suspended and revoked operators, conduct periodic refresher courses, instruct in methods of detection and apprehension of the drinking driver and to continue an ongoing program that is necessary in taking the drinking driver off the highway.

Division personnel assigned to this Unit conducted 31 five-day courses with 779 graduates, and 128 one-day refresher courses with 2,600 graduates during the year. Unit personnel serviced, on a bi-monthly basis, 101 State Police instruments and 613 instruments utilized by other law enforcement agencies.

This year, of all persons involved in a fatal accident, alcohol was a factor in 58%. Division personnel continued their diligent effort against the drinking driver by arresting 11,947 persons for that violation. During this year 10.9% of the persons arrested for drinking driving were involved in a motor vehicle accident.

EDUCATIONAL SERVICES UNIT — The Educational Services Unit is involved in various activities throughout the year, i.e., classroom and assembly instruction and lectures on safety procedures; inspections of outside patrols; trips with patrol members; school bus checks; and workshops for school bus drivers.

This Unit was organized in 1929 in 31 elementary schools for the purpose of preventing pedestrian accidents at school crossings. The value of this program over the years can be measured by one significant fact; not one fatal or serious-injury accident has occurred at a school pedestrian crossing while a patrol member has been on duty. There are 20,140 students that are patrol members who protect 460,015 at 938 schools throughout the state.

TRAFFIC PROGRAMS — The other traffic programs in operation within the Division and their activities for the year are enumerated in this section.

Tactical Patrol Unit — The Tactical Patrol Unit was federally funded in 1972 and became fully operational in November 1973 and consists of specially trained men who are assigned to each Troop Headquarters. This Unit is dedicated to enforcing traffic laws, reducing motor vehicle accidents and providing police services. They are assigned to patrol areas identified as having a high accident experience to concentrate on specific violations which contribute toward these accidents.

During the year, members of the Tactical Patrol Units issued 21,561 summonses and 7,685 warnings. They also effected 222 other arrests that included narcotics violations, weapons violations, possession of stolen property and stolen motor vehicles. Tactical patrols also effected 862 drinking driver arrests.

The Tactical Patrol Units assisted 4,316 motorists disabled on the highways of the State.

Mobil Task Force Patrol — Mobile Task Force Patrol operations are confined to the New Jersey Turnpike with assigned complements of 12 troopers. These patrols, working in groups of two or four vehicles on a designated portion of roadway, provide concentrated patrol efforts in critical areas of high accident frequency with strict enforcement of all moving violations that cause accidents. There were 21,210 summonses issued by the Task Force Patrol during this fiscal year.

Radar Program — In conjunction with the National 55 m.p.h. speed enforcement emphasis, the State Police originally instituted a federally funded "Speed Compliance Accident Reduction Program." This project provided funding for the purchase of 294 "moving Radar" devices to provide the capability of mobil speed enforcement on all state and inter-jurisdictional highways. The ultimate goal of the project is to achieve crash and injury reductions through voluntary speed compliance by motorists throughout the state.

A total of 1,746 Radar operators and 132 instructors have currently been trained and certified and 524 units are operational throughout the Division.

RADAR SPEED ENFORCEMENT

	<u>Radar</u>
July	12,286
August	13,207
September	12,506
October	13,107
November	11,949
December	9,967
January	10,419
February	13,074
March	13,162
April	11,956
May	14,359
June	12,363
Total	148,355

Truck Weighing Program — The Truck Weighing Program insures compliance with state laws pertaining to weight and dimensional restrictions on trucks. The Division of State Police recently purchased new metrodyne portable scales through a federal grant, and with the receipt of these scales, additional personnel were trained and new Interstate Weigh Teams established (Troop "A" - 2 Teams; Troop "B" - 3 Teams; Troop "C" - 1 Team). These new teams are pursuing the Division's Weigh Program on the Interstate Highway System in New Jersey. In addition, the New Jersey Turnpike and Garden State Parkway are also actively involved in the enforcement of the weigh and dimensional laws. The four stationary scale sites in New Jersey are open and in use. Division personnel checked a total of 104,637 trucks during this period throughout the state. Of this number 72,057 were weighed resulting in 4,329 weigh violations and 2,629 dimensional violations for a total of 6,958 violations.

	<u>"A"</u>	<u>"B"</u>	<u>"C"</u>	<u>"D"</u>	<u>"E"</u>	<u>Total</u>
Trucks Checked	45,281	24,757	19,451	14,143	1,005	104,637
Trucks Weighed	44,812	10,705	12,258	3,855	427	72,057
Weigh Violations	352	1,757	931	1,262	27	4,329
Trucks Measured	1,027	3,743	1,750	5,299	73	11,892
Dimensional Violations	61	1,514	286	761	7	2,629
Total Violations	413	3,271	1,217	2,023	34	6,958

Supplemental Patrol Program — Originally instituted with monies obtained through a Federal Grant in March 1978, the Division of State Police instituted a Supplemental Patrol Program which has been continued by Federal grants open to personnel on a voluntary basis, the program's goals are to reduce motor vehicle accidents on highways of the state in selected geographic areas through the apprehension and arrest of speed violators, drinking drivers and other accident causing violations. The success of this program is indicated by the issuance of 15,441 summonses; 9,215 for speeding, 981 for drinking-driving and 2,182 for other violations. There were 105 Pedestrian Contacts made, 1,873 motorists aided and 2,743 warnings issued.

Commercial Vehicle Inspection Program — To further promote highway safety, the Division of State Police employs a Commercial Vehicle Inspection Program to insure compliance with the Self-Inspection Regulations effective in New Jersey in November 1970. Trucks registered over 6,000 pounds are checked for compliance with both State Regulations and Title 49 of the Federal Regulations.

Presently, the Highway Patrol Bureau has total responsibility for insuring compliance in the areas encompassed by Troops "A", "B" and "C". Troops "D" and "E" Troopers have total responsibility on the New Jersey Turnpike and the Garden State Parkway respectively, and during this year, the following figures reflect the involvement of Division personnel. A total of 2223 trucks were stopped, 1,745 were checked for compliance with Title 49. As a result of these checks 4,876 violations were discovered, including 885 which were serious enough to place 452 vehicles out of service.

HELICOPTER BUREAU

The Helicopter Bureau is responsible for maintaining liaison with and providing assistance to the ground patrol with the investigations of a criminal, traffic or general police nature. The services of this Bureau are also available to other departments within state government and also to other police departments at a county and municipal level. The Bureau also provides a Med-Evac service to all medical facilities and first aid squads in the state.

The Bureau has six turbine powered helicopters, five of which have a passenger capacity of five persons each including the pilot. Two of these helicopters are used for the Med-Evac program and are capable of carrying two litters. The sixth helicopter has a capacity for nine persons including the pilot and co-pilot, as well as the capability for three litters for Med-Evac transports.

Bureau personnel logged 2,221 patrol flight hours; 50 observer hours and 226,500 patrol miles during the year and were involved in 10 traffic related activities, plus 31 speed timing flights; 78 criminal activities; 54 general police activities; 845 special activities; 93 Med-Evac transports with 95 patient and 14 other transports; 83 technical services; and 28 Med-Evac lectures/demonstrations or static displays.

HIGHWAY PATROL BUREAU

The Highway Patrol Bureau, formerly known as the Enforcement Bureau, Division of Motor Vehicles, became part of the Division of State Police on February 10, 1979 for the purpose of consolidating statewide law enforcement agencies. Comprised of 144 uniformed personnel with full police authority in both criminal and traffic matters, the Highway Patrol Bureau has responsibilities in many diversified areas:

TRUCK WEIGHING UNITS — Personnel assigned to truck weighing activities utilize a combination of permanent and portable scales in an effort to detect overweight and over-dimensional commercial vehicle violations and discourage offenders. This year, sworn personnel issued summonses for 4,794 overweight violations, 644 overlength offenses and 19 overwidth infractions.

TRUCK ENFORCEMENT UNITS — Uniformed personnel assigned to the Truck Enforcement Unit have received special training in commercial vehicle inspection techniques and conduct roadside and terminal examinations on a statewide basis to assure compliance with Title 49. A total of 16,353 commercial vehicles were inspected, resulting in the detection of 4,344 out-of-service violations and 60,060 other Title 49 violations of a less serious nature.

INVESTIGATION UNIT — This unit is responsible for a myriad of investigative activities, both criminal and traffic in scope. Investigative assignments include matters dealing with stolen cars, misrepresentations on driver license and registration applications, counterfeit certificates of ownership and license documents, complaints and fraud involving new and used car dealers.

TRAINING UNIT — The Training Unit conducted instructional programs in motor vehicle law, accident investigation, radar instruction and defensive driving for more than 2,415 state, county and municipal police officers in all 21 counties during the past fiscal year. In addition, the eight-man Training Unit conducted traffic safety lectures for more than 481 New Jersey citizens during the same period. This unit also tested 366 applicants for commercial driver instructor licenses and completed 593 state vehicle accident investigations.

SPECIAL SERVICES UNIT — The Special Services Unit has responsibility for overseeing the licensing and operation of commercial driving schools and automobile race tracks. During the past fiscal year, this unit inspected premises at New Jersey's 22 automobile race tracks and licensed 18 additional commercial driving schools, along with conducting inspection activities at 96 auto racing events and 206 examinations of commercial driving school records.

DRIVER LICENSING UNITS — While part of this Division, Highway Patrol Bureau personnel still maintain supervisory and enforcement responsibility in 20 driver qualification centers. Sworn personnel supervised the handling of 795,623 driver license applicants and prosecuted more than 1,288 individuals for misstatements and fraudulent applications.

SUPPLEMENTAL PATROL ACTIVITY — Because of its priority in policing the county roads system (roads numbered in the 500 series), the Highway Patrol Bureau's federally-funded enforcement activity was known as the "500 Patrol." Implemented in 1977, the weekend patrol teams focus their attention on those county roadways experiencing a significantly high number of alcohol-related accidents. During 8,962 patrol man-hours, enforcement personnel arrested 574 drunken drivers and issued summonses for 1,323 radar-detected speeding offenses. In addition, 3,204 summonses were issued for other violations. Patrol personnel also effected 35 criminal and juvenile arrests during this twelve month period.

MOTOR CARRIER UNITS — Sworn personnel in these units patrol our roadways in an effort to detect violations of the Motor Carrier Road Tax Act and other offenses involving commercial vehicles. The Motor Carrier Teams operate in conjunction with the Truck Weighing and Truck Enforcement Units to encourage uniform compliance with all laws affecting commercial carriers.

SCHOOL BUS INSPECTION UNITS — Personnel assigned to these units conduct methodical examination of school buses operated by municipal and private contract carriers to determine compliance with Title 18. Enforcement personnel in this key area checked 5,597 school buses during the past fiscal year and identified more than 5,688 out-of-service violations and 10,281 lesser infractions.

STATE GOVERNMENTAL SECURITY BUREAU

The State Governmental Security Bureau, consisting of Troopers, Capitol Police and Security Guards, is responsible for the security of all State offices within the State House Complex. The Bureau includes all persons performing security functions within the complex. Responsibilities include traffic control, investigation of crime and patrolling of the grounds and buildings within the complex. Other responsibilities include escorting of state monies, policing of legislative chambers when they are in session, public hearings and other public gatherings at state offices. Building access control is conducted at facilities throughout the complex. Security and transportation is also provided for the Governor, Chief Justice and dignitaries.

As a result of absorbing security guards in this bureau, a twenty-one (21) hour Security Guard Training Program has been successfully initiated by the State Governmental Security Bureau. This training program is continuing on a need basis. To date, 264 persons have attended the three (3) day course.

INVESTIGATIONS

The Supervisor of the Investigations Section holds the rank of Major. Under the administrative direction of the Executive Officer, he performs a staff function. He conducts formal communications with all Staff Officers. His delegated authority primarily includes the directing, coordinating and controlling of the Criminal Investigation Bureau, Special Investigation and Services Bureau, Organized Crime Bureau, Narcotic Bureau, and Alcoholic Beverage Control Enforcement Bureau.

CRIMINAL INVESTIGATION BUREAU

The Criminal Investigation Bureau is comprised of five units: Auto Unit, Major Crime Unit, Arson Unit, Fugitive Unit, and the Office of the State Fire Marshal.

AUTO UNIT — The primary function of the Auto Unit is the investigation of commercial vehicle theft. This includes trucks and heavy equipment, as well as automobiles. Detectives assigned to the Auto Unit are thoroughly trained to identify vehicles through various methods, for example, restoring altered or obliterated VIN's by use of heat or acid and the location of the VIN numbers at confidential locations. Unit personnel are also familiar with all systems and procedures used by the Division of Motor Vehicles in recording and filing data.

In addition to assisting Division personnel in identifying stolen and abandoned vehicles, assistance is rendered to federal, state, and local agencies. Continuous liaison is maintained with International, National, and State Auto Theft Association members involved in complex investigations. Members of the Auto Unit lecture at the various police academies throughout the State to educate the municipal police in the latest auto theft techniques and the means to combat them.

Unit personnel conducted 890 auto theft investigations during the year, effected 53 arrests on 113 counts related to auto theft, and recovered 175 stolen vehicles valued at \$1,271,450. In addition to recovered vehicles, \$52,000 in stolen property was recovered. Identification of 543 vehicles that were abandoned, mutilated or burned was made for Division personnel and other agencies.

MAJOR CRIME UNIT — The Unit is staffed with personnel that are specially trained and equipped to provide assistance in the investigation of homicides and kidnappings. These investigations require highly trained investigators. The Major Crime Unit provides this type of expertise to all law enforcement agencies upon request. The support rendered has resulted in the solution of many homicides which heretofore would have remained unsolved.

The Unit provides expertise in the proper care and evaluation of the crime scene, and the proper handling of evidence. Unit members assist and give guidance at autopsies, and assure that all medico-legal aspects of the investigation are covered. The Unit is solely responsible to investigate all shootings and incidents resulting in serious injury or death of or by sworn members of the Division of State Police.

Personnel of the Unit continually update their knowledge by attending medico-legal and other homicide investigation schools and seminars. They are kept abreast of all the new and modern techniques and scientific equipment available. All Unit personnel are active

members of the Harvard Associates of Police Science. Because of the increasing number of kidnap/hostage situations, Unit personnel have received specialized training to properly cope with these occurrences.

The Unit members have given numerous lectures at law enforcement training schools and seminars. During the past year, the Major Crime Unit received and investigated a total of 40 homicides or homicide related complaints. Ten of these cases have been closed, 17 are still pending court and 13 pending further investigation.

ARSON UNIT — The Arson Unit continues to provide the State of New Jersey with Statewide Arson investigative capabilities. Unit personnel initiate and coordinate investigations, as well as, assist other agencies in the detection and investigation of arson. They also provide expertise in the determination of the cause and origin of fires, which are the most critical areas in arson investigation. Additionally, they appear in court as expert witnesses. During this year, the Unit received a total of 614 requests for assistance from state, county, and local police, and fire departments. During this period, the Unit arrested 95 persons on a total of 160 charges, which cleared 84 cases of arson, and has on numerous occasions, assisted state and local police in arrest and prosecution of arsonists. The Arson Unit has met an increased demand for lectures during this year, and has given a total of 88 lectures to Civic Groups, Fire and Police Departments to acquaint them with the operations and objectives of the Unit.

The Unit maintains one of the most comprehensive and up-to-date data systems in the nation on all fires occurring in New Jersey as well as convicted arsonists. At the present time, this system has in excess of 30,000 entries. The Arson Unit employs two Arson Analysts. The services of these analysts are made available to all local police agencies to assist them in correlating dates, times, location, and fire patterns in their communities and has proven an invaluable aid to Arson Investigators throughout the State.

The Bomb and Explosives Investigative Team within the Arson Unit is responsible for the handling of all bomb investigations, theft of explosives and the collection of data on bomb incidents for the entire state.

FUGITIVE UNIT — The New Jersey State Police having long realized the need and value of a statewide Fugitive Tracking System, applied for and received a Federal Grant to implement such a program with input from and dissemination to, local, county, and federal law enforcement agencies charged with the apprehension of fugitives from justice.

The Fugitive Unit opened 193 investigations. Of these a total of 232 were closed, 120 cases were cleared by arrest, 7 fugitives were found already incarcerated in prison, 20 fugitives had been previously arrested, and 85 were closed for administrative reasons.

The primary objective of the Fugitive Unit is to significantly reduce the number of Class I offenders, wanted fugitives from justice. The Fugitive Tracking System has been tested and proven effective in bringing this about.

The Fugitive Unit publishes the *New Jersey 12 Most Wanted List*. This list is formulated to generate both official and public awareness of the fact that these dangerous subjects are at large. The accused selected are chosen from candidates submitted by the various prosecutors' offices and prison system.

Since the inception of this program in May of 1979, 22 of the 33 subjects placed on this list have been apprehended.

The investigations regarding the escape of JoAnne Chesimard from Clinton Reformatory on November 2, 1979; fugitive Marilyn J. Buck, who is involved in the October 20, 1981 Brinks Robbery; and the December 21, 1981 shooting of Trooper Lamonaco continue to be the top priorities of the New Jersey State Police Fugitive Unit.

OFFICE OF THE STATE FIRE MARSHAL — The Office of the State Fire Marshal became part of the Division of State Police, on December 26, 1979 by Executive Order No. 84. Comprised of eight personnel the Office of the State Fire Marshal under the supervision of the Criminal Investigation Bureau Chief supervises fire prevention, control and safety procedures in all State owned, leased or occupied buildings and performs all related duties previously imposed by law or executive order.

A major function of the office in conjunction with the Division of Systems and Communications is to develop a Fire Incident Reporting System for the collection, analysis and dissemination of information and data relating to the causes and origins of fires in the State.

SPECIAL INVESTIGATIONS AND SERVICES BUREAU

The Special Investigations and Services Bureau is comprised of four units; Polygraph Unit, Race Track Unit, Special Investigations Unit, and Sports Complex Unit. The activities of these units for this year are enumerated upon in the following paragraphs.

POLYGRAPH UNIT — The Unit conducts polygraph examinations for all state, county and municipal law enforcement agencies in New Jersey during the course of criminal investigations.

The Unit also provides service to other agencies and some out-of-state agencies with the proper authorization. The Polygraph Unit was involved in 737 criminal investigations, resulting in the examination of 883 persons.

The Polygraph Unit is presently composed of four polygraph examiners all trained at the Keeler Polygraph Institute in Chicago, Illinois. They are court accepted experts and active members of the New Jersey Polygraph Association and the American Polygraph Association which sets the professional standards for examiners.

RACE TRACK UNIT — Racetrack Unit members are responsible for investigating all criminal activity that occurs on the grounds of the four pari-mutuel wagering facilities in the State. Primarily Unit members investigate any and all pre-race blood or post-race urine analysis findings where a foreign substance has been found to exist, mutuel thefts, questionable races, mutuel ticket frauds and hidden ownership of racehorses. The Unit members, who are considered to be the investigative arm of the New Jersey Racing Commission, assist the Racing Commission Investigators, Harness Track Security, (HTS) and the Thoroughbred Racing Protective Bureau, (TRPB) in maintaining integrity throughout the racing industry. The New Jersey Racing Commission requires that all persons, horsemen and employees at the pari-mutuel wagering racetracks, be fingerprinted and Unit members check any and all arrest records and forward their recommendations concerning the licensing of these individuals, to the Commission. Three-way name checks are also conducted on owners, trainers, officials and stock transferees.

The Unit conducted a total of 9,653 criminal background and other investigations during the year. Included in these are 362 criminal investigations which resulted in 203 arrests through 51 "positive" investigations, and 2,153 miscellaneous requests or investigations which resulted in 179 arrests.

SPECIAL INVESTIGATIONS UNIT — The Special Investigations Unit conducts confidential investigations for the Governor, Attorney General, and the Superintendent of State Police, Casino Control Commission, Division of Criminal Justice, and the State Commission of Investigation. Unit personnel conduct various types of security clearance investigations, process requests for assistance or information from out-of-state agencies, federal authorities and local law enforcement agencies. They also investigate crimes or suspicious circumstances of an unusual nature that are not normally handled by other investigative units of the Division of State Police.

The unit conducts investigations of applicants for New Jersey State Private Detective licenses as well as the background investigations of Campus Police, Railroad Police, Airport Police and Capitol Police applicants for commission. Requests for investigations by INTERPOL are also processed by this unit. Ten railroad police commissions were approved.

This unit conducted a total of 2,009 criminal and security clearance investigations of which 982 were in-depth field investigations.

SPORTS COMPLEX UNIT — The Sports Complex Unit was established at the request of the New Jersey Sports & Exposition Authority and the Unit's primary responsibility is the investigation of criminal activity at the Sports Complex. The Sports Complex is located in East Rutherford, New Jersey, and is operated by the New Jersey Sports & Exposition Authority. The Sports Complex is composed of three separate facilities: Meadowlands Racetrack, Giants Stadium, and the Brendan Byrne Arena. During triple events the Sports Complex can accommodate 150,000 patrons on site at one time.

Personnel of the Sports Complex Unit maintain liaison with Troop "B" and Troop "D" in coordinating traffic flow and other police activity in the area during major or multiple scheduled events.

This year Unit personnel conducted 893 criminal investigations which resulted in 385 arrests. Unit members provided criminal patrol coverage for 302 Racetrack events, 57 Stadium events, and 285 Arena events.

ORGANIZED CRIME BUREAU

The Organized Crime Bureau is charged with the responsibility of identification and investigation of those groups engaged in organized crime, as well as those involved in major criminal activity who are not members of the traditional organized crime spectrum. The current complexity and diversification of this criminal effort represents a serious threat to society, requiring the utilization of highly sophisticated investigative techniques in conjunction with continuing communications and cooperation with law enforcement agencies at all levels of state and federal government.

The investigative force of the Bureau is assigned to field units strategically located throughout the state in order to enhance the ability to fulfill the assigned responsibilities. Additionally, the Bureau maintains an administration section located at Division Headquarters in West Trenton.

The Organized Crime Bureau conducted 213 investigations and held 66 raids based on criminal activities. As a result, a total of 152 arrests were effected, with \$595,794 in monies and property recovered or confiscated.

OFFICIAL CORRUPTION UNIT — The Official Corruption Unit of the Bureau is charged with the responsibility for the analysis and investigation of allegations of official corruption on a statewide basis. This unit functions in conjunction with the Division of Criminal Justice, utilizing the legal expertise of personnel from that Division to supplement the State Police investigative efforts in this area.

TRIAL UNIT — The Trial Unit provides investigative assistance to the Division of Criminal Justice for the preparation and presentation of criminal cases which originate from State Police investigations. This assistance is afforded cases at the State Grand Jury level as well as the pretrial and trial stages.

NARCOTIC BUREAU

The Narcotic Bureau continues to cooperate with all State Police Stations, local, county and federal enforcement agencies. This posture of extensive communication and cooperation provides the Bureau with an excellent capability to collect, evaluate and properly disseminate significant intelligence data.

The Bureau presently has a complement of 55 Detectives and five civilian clerks. The bureau is administered from Division Headquarters, West Trenton, with regional offices strategically located at the Hackensack Station for North Jersey, and Berlin Station for South Jersey.

The trafficking of controlled dangerous substances has expanded to such a great degree that the present policy of the Narcotic Bureau is the identifying of targets at the level of initial distribution within this State, and then to conduct extensive investigations in order to apprehend and convict a complete narcotic importing and distributing organization.

Narcotic Bureau personnel effected 676 arrests, conducted 78 raids, confiscated various controlled dangerous substances and recovered other property, e.g., firearms, vehicles, monies and paraphernalia valued at \$26,292,474.46.

As well as the two regional offices mentioned above, the Narcotic Bureau also has the following specialized units.

TRI-COUNTY MULTI-AGENCY NARCOTIC UNIT — The counties of Hunterdon, Sussex and Warren, along with the Narcotic Bureau, entered into an agreement to conduct controlled dangerous substance investigations geared to result in arrests and prosecutions at the level of distribution which supplies the consumer within their confines. The unit maintains an office in a State facility in Glen Gardner and is supervised by a Narcotic Bureau Detective Sergeant First Class. In addition, five full time State Police Officers are assigned, along with county and local officers.

PATROL DRUG RESPONSE UNIT — The Patrol Drug Response Unit, with an office located at Newark, continues to be responsible for assisting all State Police Road Stations, toll roads and interstate highways regarding substantial seizures of drugs. The ability of the PDRU to respond immediately facilitates the gathering and dissemination of vital intelligence information.

ALCOHOLIC BEVERAGE CONTROL ENFORCEMENT BUREAU

The Alcoholic Beverage Control Enforcement Bureau was transferred to the Division of State Police, Criminal Investigation Section, on June 2, 1979, by Executive Directive No. 1979-3. The Bureau is comprised of 72 Alcoholic Beverage Control Inspectors. In addition seven members of the New Jersey State Police are assigned supervisory roles to coordinate all alcoholic beverage investigations.

The Bureau has the responsibility of initiating and investigating complaints which are violations of Title 33, Intoxicating Liquors and Title 13, Administrative Code violations. There are 11,630 liquor licenses throughout the 21 counties of the State which are policed by this Bureau.

The Alcoholic Beverage Control Bureau is comprised of eight units: Special Interest Unit, Retail and Liquor Gauging Unit, Rehabilitation Unit, License Application Unit, Wholesale Ancillary Unit, Intoxicated Patrons Assistance Program Unit and North and South Undercover Units.

SPECIAL INTEREST UNIT— The Special Interest Unit conducts investigations relative to ascertaining and documenting violations of the New Jersey Intoxicating Liquor Laws. The thrust of these inquiries are concerned primarily with the Undisclosed Interest and/or Fronts, Farm-out and/or Leasing License, Disqualified Employees and Failure to Maintain True Books of Account.

This Unit completed 74 investigations this period, resulting in 236 established violations which were referred to the Division of Alcoholic Beverage Control Prosecution Bureau for appropriate action.

RETAIL & LIQUOR GAUGING UNIT— This Unit makes unannounced retail and liquor gauging inspections and investigations in all plenary retail and club licensed premises to determine proper licensing, qualifications of employees, possession of narcotics, gambling paraphernalia, indecent and lewd material, illegal storage and transportation of alcoholic beverages. Inspectors also gauge and test the contents of open bottles for evidence of tampering.

This year Inspectors conducted 348 retail inspections and uncovered 127 violations involving 84 licensed premises. Also, 286 liquor gauging inspections were made and 40 questionable bottles of alcoholic beverages were detained involving 21 licensed premises. A total of 3,494 bottles of alcoholic beverages were tested in licensed premises.

During the summer, this Unit makes unannounced inspections and investigations of amusement games at recognized amusement parks, seashore resorts and agriculture fairs, licensed by the Office of Amusement Games Control, for proper licensing of employees, proper prizes and operation of the game and any deceptive, misleading or fraudulent advertising or practice. Agents uncovered a total of 308 violations this year.

REHABILITATION UNIT— In order for a person to work in or own a licensed premises, he must be free of any criminal conviction which involves Moral Turpitude. Any individual who has a conviction of this type of crime and desires to work in or own a

licensed premises must apply for a Rehabilitation Permit or have his disqualification removed. This Unit investigates the background of these individuals to determine if the applicant qualifies.

The Unit's function is to keep the undesirable person from entering the liquor industry. Last year 164 applicants applied for either a Rehabilitation Permit or a Disqualification Removal. Another 52 applicants applied for the annual renewal of their Rehabilitation Permit.

LICENSE APPLICATION UNIT— The function of the License Application Unit is to investigate all applications for State Licensing which consists of 19 various types of licenses. In addition, investigations are conducted on a municipal level when a member of the governing body purchases a license or becomes a stockholder in a corporation involved in the liquor industry.

This Unit also conducts investigations of licenses on the wholesale level. Records pertaining to the purchase and sales of alcoholic beverages are examined to make certain that administrative violations are not being made. In addition, complaints against wholesalers for alleged kickbacks, illegal transportation of alcoholic beverages, stolen liquor and employing persons with a criminal record are conducted.

WHOLESALE ANCILLARY UNIT— This Unit was formed to work directly with the Enforcement Unit of the Division of Gaming Enforcement in the investigation of those liquor wholesalers who have applied for Casino Service Industry Licenses. Specialized investigations concerning organized crime and corruption within the alcoholic industry are investigated by this Unit.

INTOXICATED PATRONS ASSISTANCE PROGRAMS UNIT— The Intoxicated Patrons Assistance Program Unit, a new Unit whose goals are to reduce alcohol related fatal accidents by limiting the number of intoxicated persons who are served alcoholic beverages in State licensed premises, originated September 1, 1979, with federal funds.

During this period the IPAP Unit, working in conjunction with State Police uniformed personnel and ATRA Service Forces, conducted details throughout the State. They surveyed 1,751 licensed premises of which 60 were cited for sale or service of alcoholic beverages to actual or apparently intoxicated persons. A total of 78 patrons were taken into protective custody and turned over to ATRA personnel who either transported them home or to a detoxification center. Of these, 48 were determined to be drivers and 30 non-drivers.

Based on the above and in view of the favorable publicity received, it appears the program is making some impact on the main goal of the project; namely, to increase voluntary compliance by retail establishments in not serving apparently or actually intoxicated persons and the subsequent effect this will have on alcohol related roadway fatalities.

NORTH AND SOUTH UNDERCOVER UNITS— Both of these Units have the same function. They are broken into two units for the purpose of covering the 21 counties within the State. Investigations conducted by these Units generally involve sales to minors, intoxicated patrons, sales without a license, narcotics, gambling, lewd shows, prostitution and sales beyond the scope of a license.

The North Unit, which has an office in Newark has the responsibility of nine counties which include the heavily populated metropolitan area of North Jersey. It is estimated that within these nine counties there are over 9,600 licensed establishments. This year 1,516 investigations were conducted by the North Unit which resulted in 835 violations causing 167 arrests and action against 718 licensed premises.

The South Unit, which has an office in Bellmawr, handles 12 counties. There are 2,300 licensed establishments within the South Unit's area of responsibility.

This year 536 investigations were conducted by this Unit which resulted in 206 premises being cited for 559 violations with 81 persons being arrested.

SPECIAL STAFF

The Supervisor of the Special Staff Section holds the rank of Major. Under the administrative direction of the Executive Officer, he performs a staff function. He conducts formal communications with all Staff Officers. His delegated authority includes the directing, coordinating and controlling of the personnel and functions of the Intelligence Bureau, Central Security Bureau, Casino Gaming Bureau, and the Atlantic City Special Investigations Bureau.

INTELLIGENCE BUREAU

The primary function of the Intelligence Bureau is to gather intelligence data used in the formulation of strategic public policy issues designed to provide criminal justice practitioners and administrators with a more accurate assessment of organized crime and the major criminal problems confronting the State of New Jersey. To fulfill this mandate, the Intelligence Bureau advises the Superintendent of any pertinent changes in the current structure of organized crime's legitimate and/or illegitimate enterprises. In addition, the Bureau projects future trends in organized crime movement in order to develop strategies for the effective and efficient allocation of resources. The Bureau has continued to initiate strategic and tactical studies examining and recommending new methods of reducing and/or controlling organized criminal involvement in the areas of narcotics, labor racketeering, sophisticated organized conspiracies, and political corruption.

The secondary responsibility of the Intelligence Bureau is to collect tactical data focused on assisting the operational units of the Division. Tactical analysts assigned to the various regional units collate and assess incoming raw intelligence data on a daily basis, and provide recommendations for further investigation. This provides a mechanism whereby the analytical unit can be apprised of any significant changes in the criminal structure and operations of organized crime within the State. To combat organized crime most effectively, the Statewide Intelligence System (SWIS) was initiated in 1970 to establish liaison with state, local and federal law enforcement agencies throughout New Jersey. SWIS representatives continue to assure that a coordinated effort at collecting, analyzing and disseminating intelligence information is maintained. Currently, 416 law enforcement agencies participate in this program in New Jersey.

ANALYTICAL UNIT — The Analytical Unit is comprised of 11 intelligence research analysts. Analysts are devoted to the analysis of data regarding the casino gaming industry, the analysis of data relative to economic crimes; and the study of organized crime. Since the primary function of this Unit is to conduct strategic intelligence assessments for the Attorney General and the Superintendent, an integrated strategic/tactical analytical concept has been initiated whereby the data analyzed in tactical assessments is subsequently utilized to provide strategic assessments of illicit marketplaces and the criminal organizations which supply these marketplaces. Toward this goal, analysts are assigned to assist the investigative components of the Division and Federal and local law enforcement agencies. In addition, the Analytical Unit has conducted several analytical seminars designed to broaden the scope of an investigative inquiry into a particular criminal phenomenon.

ADMINISTRATIVE UNIT — This Unit assists the out-of-state law enforcement agency in its investigations to combat organized crime. Consisting of one enlisted member, one civilian analyst and one typist, requests for information both verbal and written are answered daily. During the past year this unit processed 2,295 information requests from numerous law enforcement agencies throughout the country and is responsible for analyzing telephonic communication in the State. During the past year, this unit processed 831 toll requests and 36,831 individual listings.

ELECTRONIC SURVEILLANCE UNIT — This Unit is primarily responsible for maintaining an inventory of all court authorized audio and video electronic surveillances conducted by the Division. Unit personnel are responsible for the installation, maintenance and removal of all equipment and the processing of audio evidence for the operational units. During this year, the Unit implemented 20 wiretaps, 1 microphone eavesdrops, 5 "Dialed Number Retrievals", 4 video surveillance and 7 Government security checks. They investigated 8 illegal wiretaps; processed 492 "official" evidential recordings; duplicated 2,066 audio and 5 video tapes; and made 38 evidential composites.

COLLATION AND EVALUATION UNIT — This Unit is responsible for reviewing all the reports submitted to the Intelligence Bureau. The primary function of the collator is to determine if the data meets the criteria set forth in the Intelligence Bureau Manual and to assign priorities for further investigation. In addition, the collator records and answers any queries received from other agencies. During the past year, this unit processed 8 incoming investigations from the State Attorney General's Office; 1,254 intelligence reports submitted by the regional field units; and 652 reports transmitted to other Divisions, Sections, Bureaus and Units.

ORGANIZED CRIME LABOR RACKETEERING UNIT — The Organized Crime Labor Racketeering Unit was established in 1976 to examine organized crime's involvement in labor unions in New Jersey. To partially fulfill this function, a comprehensive analytical study was undertaken and completed scrutinizing the existing labor laws. The five field detectives assigned to this unit continue to collect an extensive amount of intelligence data which is continually being analyzed. Several investigations have been initiated in cooperation with the U.S. Department of Labor and the U.S. Attorney's Office.

CASINO INTELLIGENCE UNIT — The Casino Intelligence Unit functions as an integral part of the Intelligence Bureau. The primary responsibility is to gather intelligence data concerning organized crime and criminal activities related to, and as a product of, the legal casino gaming industry in New Jersey. Unit personnel collect and formulate background information concerning the corporations and their key personnel which function as serious prospective investors in the casino gaming industry in this State. They also gather, identify and monitor activities and maintain files on persons involved in illegal endeavors generally associated with the gaming industry, *i.e.*, credit frauds, cheats, card mechanics, slot cheats, prostitutes and con operatives. The Unit also provides data and strategic intelligence that will aid in the formulation of future legislation and regulation concerning the casino gaming industry.

CENTRAL SECURITY BUREAU

The Central Security Bureau, reports to the Supervisor of the Special Staff Section. The Bureau's mission is to identify, reduce, control and prevent social-political organized crime and terrorism in the State of New Jersey.

In order to fulfill this mission, strategic intelligence assessments have been designed and developed to provide a descriptive analysis of social-political organized crime systems and terrorist groups operating in the State. The Bureau depicts their capabilities and assesses the efforts of law enforcement in the control against these groups.

The Bureau must also continually develop tactical intelligence data designed to provide operational units of law enforcement agencies with the necessary data to investigate and combat social-political and terrorist organized criminal activity, and identify those persons in these groups.

CASINO GAMING BUREAU

The Casino Gaming Bureau within the Special Staff Section is comprised of the Casino Investigation Unit (Enforcement), Casino Licensing Unit and the Casino Identification Unit. The Bureau performs an investigative function for the Division of Gaming Enforcement and is responsible for enforcing the Casino Control Act through the function of applicant investigations, complaint investigations and auditing of operations at the casinos. Applicants include all entities and persons participating in the gaming industry, as well as all related service industries.

CASINO INVESTIGATION UNIT — The Casino Investigation Unit (Enforcement) functions as the law enforcement arm of the Division of Gaming Enforcement and Casino Control Commission, ensuring compliance and enforcement of state statutes under the Casino Control Act. This unit is actively involved in every phase of the casino licensing process, including pre-operation inspection and checks, operational inspection and checks, developing tactical intelligence information, law enforcement duties, slot machine inspection and approval, enforcement of Alcoholic Beverage Control statutes and regulations, and continual inspections of gaming schools. The unit investigates all violations of the law, including collusions of skimming, payoffs, cheating, theft, narcotics, illegal gambling, loan sharking, formal patron complaints, prostitution, and any other violation of law that might take place in a casino-hotel complex.

THE CASINO LICENSING UNIT is responsible for investigating all individual applications of personnel applying for casino employee licenses. This includes all casino and hotel employees, casino key personnel, and gaming school instructors. The depth of these investigations depend on the individual positions applied for. The Service Industry Licensing Section of the Unit is responsible for the investigations of all businesses who are contemplating to do all forms of business with the casino industry in Atlantic City, New Jersey. These various businesses consist of gaming equipment suppliers, non-gaming equipment suppliers, alcohol beverage dispensing firms, junkets and travel agencies. In addition, investigations are conducted on labor unions which are attempting to organize memberships, and collect dues from casino employees. The section also investigates applicants who are applying to be licensed and operate a gaming school.

THE CASINO IDENTIFICATION UNIT is charged with fingerprinting and photographing the thousands of employee license applicants, which is the first stage of the employee license applications.

The personnel of the Casino Gaming Bureau are required to possess a multitude of special skills and knowledge, and have received special detailed technical training to efficiently and professionally perform their assigned duties.

ATLANTIC CITY SPECIAL INVESTIGATIONS BUREAU

A commitment for policing the casino industry and the residue of ancillary services is clearly vested in the Special Staff Section. The designation of an Atlantic City Special Investigations Bureau creates a unique and separate identity for this new Bureau. The primary mission of the Bureau is initiating and developing criminal investigations with respect to syndicated and organized predatory crimes committed in Atlantic City proper.

Reporting to the Supervisor of the Special Staff Section, the Bureau is also responsible for the coordination and monitoring of all criminal investigations in the greater Atlantic City area which emanate from within the Division of State Police.

The Bureau is also charged with maintaining cooperative relationships with all law enforcement agencies who have the authority to enforce the criminal law in Atlantic City and the surrounding area.

RECORDS AND IDENTIFICATION

The Supervisor of the Records and Identification Section holds the rank of Major. Under the administrative direction of the Executive Officer, he performs a staff function. He conducts formal communications with all Staff Officers. His delegated authority primarily includes the directing, coordinating and controlling of the Expungement Unit, Criminal Justice Records Bureau and State Bureau of Identification.

EXPUNGEMENT UNIT — The Expungement Unit is responsible for complying with lawful court orders for the expungement or the sealing of criminal records and to object to the motions or orders that conflict with the intent of the law. The unit received and processed 16,842 pieces of correspondence.

The Expungement Unit helps to insure an individual's right to privacy by providing security in the sealing and expunging of criminal records ordered by the court. The unit is also responsible for processing individuals who wish to review their criminal record for content and accuracy. During this period 168 individuals received their criminal record.

CRIMINAL JUSTICE RECORDS BUREAU

The Criminal Justice Records Bureau is comprised of four units: Uniform Crime Reporting; Criminal Records; Traffic Records and Micrographics. The Bureau receives and processes reports and maintains files regarding traffic and criminal investigations. The Bureau also collects and analyzes statewide crime statistics. The Bureau is designated as the agent for the reproduction of reports for the Division. It is guided by the dictates of the New Jersey State Statutes and court rules as to what reports are legally recoverable by authorized agencies. The Bureau reproduces, certifies, and releases these applicable records, internal records and photographs for pre-set fees. There were 13,756 reports reproduced at a recovery of \$142,152 and 1,924 photographs at a recovery of \$7,938, resulting in a total of \$150,090 being returned to the state treasury. The Bureau is responsible for reproducing "No-Fee" copies for other State agencies as well as copies attached to correspondence in files. The total number of pages copied this year was 107,297.

Administrative personnel of the Criminal Justice Records Bureau processed 736 requests for discovery during the past fiscal year. Personnel activity reports for all members of the Division were also processed. Additionally statistical reports are prepared on a monthly, calendar, and fiscal year basis which provides information to staff.

UNIFORM CRIME REPORTING UNIT — The Uniform Crime Reporting Unit is responsible for the collection, compilation, and analysis of crime statistics reported by all police agencies in the State. As required by law, each police agency in the State submits prescribed reports to the Uniform Crime Reporting Unit. Each report received by the Unit is recorded, examined and reviewed for mathematical accuracy and for reasonableness as to the interpretation of offense classifications. A copy of the corrected report is forwarded to the Federal Bureau of Investigation for each contributor to the program.

Field Representatives of the Uniform Crime Reporting Unit made personal contacts with contributing law enforcement agencies for the purpose of report corrections, instructions

for new reporters, surveying and updating internal record systems, verification of statistics submitted and conducting statistical crime analyses. In a continuous educational program, the Unit delivered lectures to police officers attending instructional classes at the Burlington, Camden, Monmouth, Ocean and Union County Police Academies.

In October 1981, the fourteenth annual "Crime in New Jersey" publication was presented to the Governor, the Legislature, the news media, police departments, various libraries and other related law enforcement agencies. This report presents an equitable and accurate account of the reported crime in the State. During this year, the Unit also compiled and released two reports, depicting crime index trends.

CRIMINAL RECORDS UNIT — This Unit's responsibilities led to the processing of 21,855 investigation reports, 16,972 arrest reports, 5,520 property reports, 2,294 vehicle reports and 71,452 supplementary reports for up-dating various investigations conducted by members of the Division. The Unit also responded to 20,722 inquiries for criminal records by authorized criminal justice agencies. The total number of reports processed by this Unit was 118,093.

TRAFFIC RECORDS UNIT — The Traffic Records Unit is responsible for processing all State Police reports of motor vehicle accidents and drinking drivers. The Unit processed 31,840 traffic type reports. In addition, the Unit is responsible for providing traffic statistics for analysis purposes and for the processing of Troop Car accidents.

MICROGRAPHICS UNIT — The Micrographics Unit is responsible for document life perpetuation through microfilming. This function allows for a more efficient method of storage and retrieval and is available to the entire Division. Personnel of the Unit prepared and filmed more than 1,400,218 documents during the past fiscal year.

STATE BUREAU OF IDENTIFICATION

The State Bureau of Identification serves as the central repository for criminal history record information for all New Jersey criminal justice agencies. Sophisticated computer technology has been applied to input, update, and disseminate criminal history record information in an accurate, timely manner to authorized agencies. Automated criminal history summary, arrest and conviction information, is currently available "on-line" for rapid transmittal via SCIS Field Terminals. Fully detailed criminal history information is available on an "off-line" basis and forwarded via mail to all authorized requestors. Presently, there are 201 SCIS Field Terminals with the capacity of accessing the CCH files. Further expansion is anticipated during 1983. The State Bureau of Identification consists of six operational Units: Court Disposition Reporting Unit, Data Reduction Unit, Technical Unit, Records Assembly Unit, Criminal Information Unit, and the Records Identification Unit. The effective utilization of automated criminal history records systems permitted the Bureau to process 1,908,467 criminal inquiries, 1,186,472 criminal record updates/modifications and the dissemination of 956,618 criminal history records. The protection of society, as well as federal security and privacy requirement, dictate that this service be maintained at a high level of efficiency.

COURT DISPOSITION REPORTING UNIT — This Unit is responsible for the manual initiation and audit control of all court disposition reporting forms not initiated by the automated systems employed by the Bureau. The Unit initiated 10,372 CDR-6 Probation Reports and 7,631 CDR-7 Conditional Discharge Reports during the year. A field staff of eight personnel are responsible for the training and auditing of the criminal justice components reporting to the State Bureau of Identification. The field staff contacted 8,104 agencies.

DATA REDUCTION UNIT — This Unit is responsible for the data input and verification of all criminal history record information to the computerized criminal history file along with input to the automated name index. During the year, 128,084 index records were added to the automated name index file. At the end of the year, the CCH System contained the criminal history records of 463,105 individuals arrested since January 1, 1972.

TECHNICAL UNIT — This Unit is responsible for classifying incoming fingerprints, conducting searches by classification (machine and manual), filing and related duties necessary for maintaining the master print file. During this year, there were 58,503 criminal identifications made from previous records and 25,451 non-criminal identifications made by the Unit.

RECORDS ASSEMBLY UNIT — This Unit is responsible for the manual assembly of record inquiries for licensing and employment purposes along with the assembly of any historical record not contained in the computerized criminal history file. During the year, the Unit assembled 17,548 records.

CRIMINAL INFORMATION UNIT — This Unit is responsible for maintaining the manual index and historical data jacket files. Further, they process all telephonic inquiries for criminal history record information and name search all inquiries received on correspondence. During the year, the Unit responded to 5,029 telephone inquiries and processed 98,902 correspondence inquiries.

IDENTIFICATION RECORDS UNIT — This Unit is responsible for the quality control processing of all incoming documents. Further, the Unit types all manual CHRI responses assembled by the Records Assembly Unit and is responsible for the mailing of all Bureau correspondence. During the year, the Unit received 252,354 fingerprints and 352,025 documents.

SPECIAL & TECHNICAL SERVICES

The Supervisor of the Special and Technical Services Section holds the rank of Major. Under the administrative direction of the Executive Officer, he performs a staff function. He conducts formal communications with all Staff Officers. His delegated authority primarily includes the directing, coordinating and controlling of the Forensic Sciences Bureau, State Regulatory Bureau, and Technical Bureau.

FORENSIC SCIENCES BUREAU

The units of the Forensic Sciences Bureau provide scientific analysis of specimens related to the investigation of criminal matters submitted by the criminal justice agencies of the State. The Bureau provides expert testimony in all of the county and municipal courts of the State relative to the forensic analyses conducted. The Bureau also provides a wide range of instruction and training to members of law enforcement agencies of the State relative to evidence collection, police photography, identification skills and in other related fields.

REGIONAL CRIME LABORATORIES — The New Jersey State Police Laboratory system includes four Forensic Laboratories located for geographical convenience at the following locations: the North Regional Lab at Little Falls, Passaic Co., the South Regional Lab in Hammonton, Atlantic Co., the East Regional Lab in Sea Girt, Monmouth Co., and the Central Regional Lab at West Trenton, Mercer Co. These Laboratories provide full time crime laboratory services in the inspection and analysis of crime related evidence. Drug analysis, toxicology, trace and bio-chemistry examinations are conducted. Our chemists are able to enhance vital information, through research and development, and provide the Forensic Science community with this data via the publishing of papers and books. The North Regional Laboratory also serves as the "confirmation" laboratory for the Equine Testing Unit.

The laboratories are staffed by 83 chemists and technicians and 23 clerical persons. There were 25,869 cases submitted to the laboratories for analysis during this period. There were 21,493 cases completed this year. Personnel completed 360,164 examinations on 109,203 specimens submitted. The laboratory personnel received 6,790 subpoenas which led to 841 court appearances.

EQUINE TESTING UNIT — The Equine Testing Unit is committed to pre-race and post-race testing of standardbred and thoroughbred horses, with laboratories situated at the Meadowlands and Freehold Raceways. The analysis also encompasses the testing of horses at the Atlantic City and Monmouth Park Racetracks, and testing in non-pari-mutuel races (sire stakes) in Cumberland, Middlesex, Monmouth and Ocean Counties.

The laboratories are staffed with technical personnel who perform all testing and screening for numerous drugs. A breakdown of testing conducted at the Meadowlands and Freehold Laboratories this period resulted in 42,872 pre-race specimens being analyzed, 18 of which were found to be positive in that they contained prohibited medication or drugs. In post-race testing 28,185 specimens were examined with a total of 13 found to be positive.

In addition, 8,065 post-race specimens from horses engaged in non-pari-mutuel races (sire stakes) were analyzed for drugs, with one positive test result.

BALLISTICS UNIT — The Ballistics Units located at the Central, South and East Regional Laboratories provide technical services to all law enforcement agencies in matters which pertain to the use of firearms during the commission of crimes. Highly trained specialists conduct tests of all types of firearms and perform microscopic examinations of discharged bullets and shells to identify the particular firearm in which they were discharged. Other related services include the restoration of obliterated serial numbers, the examination of clothing for gunpowder residue and the performance of tests to determine the distance from which a shot was fired. Expert testimony is provided during criminal trials. Ballistics personnel also receive, inventory and destroy contraband firearms which are confiscated during investigations throughout the State.

During the year, there were 1,697 cases received for examination and 1,665 cases completed. Unit personnel tested 2,123 firearms, made 1,771 microscopic comparisons and examined 6,772 specimens of evidence. There were 91 obliterated serial numbers on weapons restored and test patterns were fired to determine the distance from which shots were fired in 105 investigations. There were 561 subpoenas received and Ballistics experts appeared and testified in 106 trials. A total of 6,398 contraband firearms were received, inventoried and 7,179 were destroyed during the year.

STATE REGULATORY BUREAU

The State Regulatory Bureau, comprised of the Firearms Investigation Unit, and the Private Detective Unit, performs a regulatory function in the overseeing and administration of licensing throughout the State and in coordination with federal agencies.

FIREARMS INVESTIGATION UNIT — In administering the state firearms control laws, the Firearms Investigation Unit is required to promulgate standards and qualifications for the manufacture and sale of firearms as well as develop forms for distribution to firearms dealers, police departments and superior courts. A central repository of registration forms relating to the acquisition of firearms in this State is maintained by the Unit. Since July 1, 1978 there have been 752,834 firearms registered with the Division. The Unit maintains a file on all firearms applications processed by municipal police departments as well as the Division of State Police. Since the enactment of the State gun control program 961,452 applications have been processed and recorded, including 60,393 this period.

The Unit has a total responsibility to investigate applicants for a New Jersey License to retail, wholesale and manufacture firearms, and to investigate employees who will actively engage in the sale or purchase of firearms. During this period there were 1,052 investigations of such applicants. In addition, the Unit is required to investigate illegal firearm transactions occurring throughout the State, and to assist other law enforcement agencies in firearm related investigations. The Unit conducted 115 criminal investigations resulting in 13 arrests. Recovered firearms totalled 70 with a value of \$42,000.00

Each dealer, by statute, is required to keep a record of the acquisition and disposition of firearms. Unit detectives periodically inspect these records to assure that the dealer is complying with existing statutes as well as regulations promulgated pursuant to these statutes. In this period, 429 inspections were conducted which include examining the dealer's security system to assure that minimum standards to safeguard firearms and ammunition at the business premises are met.

PRIVATE DETECTIVE UNIT — The Private Detective Unit has the statutory responsibilities for the administration and enforcement of all laws regulating the Private Detective Industry, including pursuers and private detective/security agencies and their employees within the State of New Jersey. Personnel of this Unit screen all applicants for licenses in accordance with the Private Detective Act of 1939 and the New Jersey Administrative Code. Unit personnel maintain files and computer printouts of all licensed private detective agencies and their employees, conduct inspections and audits of agencies, and investigate complaints and violations of the Private Detective Act, making arrests when necessary.

Private detective licenses are issued for a two year period whereupon they become renewable. There are 750 licensed private detective agencies in the State of New Jersey. This year 358 licenses were issued of which 193 were corporations, 1 a partnership, and 164 were individual. Unit personnel conducted 23,459 record checks on agencies' employees. A total of \$601,985 in license and employee fees were received, recorded, and forwarded to the Budget Bureau.

TECHNICAL BUREAU

The Technical Bureau is comprised of four units: Photography Unit; Document Examination/Voiceprint Identification Unit; Composite Drawing Unit; and the Crime Scene Investigation Unit. The Bureau provides a highly specialized technical service to all law enforcement, State regulatory agencies, and Federal Departments.

PHOTOGRAPHY UNIT — The Photography Unit provides a support service to the Technical Bureau with its many varied photographic capabilities.

There were 957 forensic evidence photography requests completed this year which required 52,983 applications in the photographic recording of weapons, explosives, arsons, powder marks, criminalistic comparisons, indented writing, laundry, jewelry, latent prints and narcotics. The applications require all phases of black and white, color, ultra-violet, infra-red and x-ray photography.

Operational photography, logistics support, training and repair services are provided to all bureaus and units within the Division in addition to limited requests of State and municipal law enforcement agencies. The processes required to fulfill these requests included 9,282 black and white negatives 23,027 color film negatives, 30,412 black and white prints, and 15,229 color photograph prints.

DOCUMENT EXAMINATION/VOICEPRINT IDENTIFICATION UNIT — The Document Examination/Voiceprint Identification Unit provides a highly specialized and technical service to all law enforcement and State regulatory agencies, as well as to Federal Departments.

Documents of evidential value are encountered throughout the full range of criminal activities. Examinations include, but are not limited to, handwriting identification, typewriter recognition, microscopic and chemical analysis of inks and papers, charred and water-soaked documents, indented writing, erasures, obliterations and alterations.

Spectrographic analysis is accomplished by conversion of a magnetic tape medium into graphic renditions for contrast and comparisons.

Both document examinations and voiceprint identifications are used as a means to aid the investigator and the courts in arriving at successful conclusions.

There were 1,613 new document examination cases received and 1,591 cases were completed, which included the examination of 103,866 specimens.

Voice identification cases totaled 14 for the year with the examination of 792 spectrograms. Court appearances totaled 38 during the year.

COMPOSITE DRAWING UNIT — The Composite Drawing Unit is responsible for answering requests received from law enforcement agencies throughout the State and adjoining states. Requests are accomplished by rendering freehand sketches of descriptions given by victims or eyewitnesses involved in criminal investigations.

The Unit is additionally responsible for the reconstruction of unidentified decomposed bodies, drawing the facial features from unidentifiable skeletal remains with the aid of an anthropologist; alterations of wanted person mug photos, crime scene sketches and preparation of wanted fliers.

During the year, there were 277 composite drawings made.

CRIME SCENE INVESTIGATION UNIT (CSI) — There are three units: North Unit, located at Netcong Troop B State Police Station, Central Unit, located at Princeton Troop C State Police Headquarters and South Unit, located at Hammonton Troop A Headquarters. The CSI personnel investigate all types of crimes, *i.e.*, homicides, rapes, arsons, assaults, etc. They furnish either full, partial or advisory services that involve crime photography, latent fingerprint processing, criminal identification, evidence collecting and labeling and submission. During this period the Unit handled 2,062 criminal investigations including 109 homicides, 91 sexual assaults, 102 robberies, 88 aggravated assaults, 100 arsons, and 802 burglaries. The Unit also investigated 654 non-criminal cases some of which were 277 motor vehicle fatalities, 48 suicides and 51 sudden deaths.