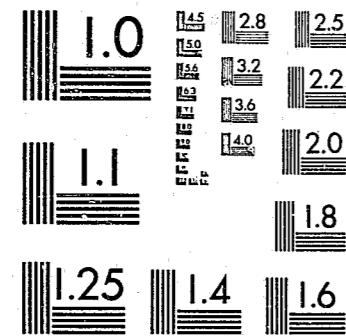


National Criminal Justice Reference Service



This microfiche was produced from documents received for inclusion in the NCJRS data base. Since NCJRS cannot exercise control over the physical condition of the documents submitted, the individual frame quality will vary. The resolution chart on this frame may be used to evaluate the document quality.



MICROCOPY RESOLUTION TEST CHART
NATIONAL BUREAU OF STANDARDS-1963-A

Microfilming procedures used to create this fiche comply with the standards set forth in 41CFR 101-11.504.

Points of view or opinions stated in this document are those of the author(s) and do not represent the official position or policies of the U. S. Department of Justice.

National Institute of Justice
United States Department of Justice
Washington, D. C. 20531

2/1/84

91138

OREGON LAW ENFORCEMENT AGENCIES
REPORT OF
CRIMINAL OFFENSES AND ARRESTS
1982

This report was prepared by the Law Enforcement Data System from information provided through the Oregon Uniform Crime Reporting program by Oregon Law Enforcement Agencies for 1982.

Additional information relating to this report or the Oregon Uniform Crime Reporting program may be obtained by writing to:

Law Enforcement Data System,
State of Oregon
Executive Department, Data Systems Division
155 Cottage Street N.E.
Salem, Oregon 97310
(503) 378-3057

Published April 1982

U.S. Department of Justice
National Institute of Justice

This document has been reproduced exactly as received from the person or organization originating it. Points of view or opinions stated in this document are those of the authors and do not necessarily represent the official position or policies of the National Institute of Justice.

Permission to reproduce this copyrighted material has been granted by
Oregon Law Enforcement Data System
to the National Criminal Justice Reference Service (NCJRS).

Further reproduction outside of the NCJRS system requires permission of the copyright owner.

TABLE OF CONTENTS

	<u>Page</u>
PERTINENT FACTS ABOUT CRIME IN OREGON IN 1982.	1
SUMMARY.	2
ALL OFFENSES DISTRIBUTED BY TYPE	4
TOTAL CRIMINAL OFFENSES DISTRIBUTED BY METROPOLITAN COUNTIES AND THREE LARGEST CITIES	4
STATE OF OREGON 1982 ARRESTS FOR CRIMINAL OFFENSES	5
STATE INDEX CRIME DISTRIBUTED BY OFFENSE	6
TOTAL INDEX CRIME DISTRIBUTED BY METROPOLITAN COUNTIES AND THREE LARGEST CITIES	6
STATE VIOLENT INDEX CRIME DISTRIBUTION BY OFFENSE.	7
STATE VIOLENT INDEX CRIME DISTRIBUTION BY METROPOLITAN COUNTIES AND THREE LARGEST CITIES	7
REPORTED OFFENSES. NCJRS	8
REPORTED ARRESTS AUG 62	9
OFFENSES REPORTED BY TYPE OF CIRCUMSTANCE.	10
VIOLENT CRIME BY FORCE ELEMENT ACQUISITIONS	16
REPORTED LOSS AND RECOVERED VALUES BY TYPE OF PROPERTY FOR 1982.	18
OFFENSES AND ARRESTS GROUPED BY TYPES OF OFFENSE	19
DRIVING UNDER THE INFLUENCE ARRESTS.	23
OREGON COUNTIES POPULATION AND CRIME VOLUME AND RATE RANKINGS FOR 1982.	24
STATE FIVE-YEAR OFFENSE PROFILE.	27
FIVE-YEAR OFFENSE PROFILE BY COUNTY.	28
FULL TIME LAW ENFORCEMENT OFFICERS AND EMPLOYEES	36
1982 STATEWIDE SUMMARY OF LAW ENFORCEMENT OFFICERS ASSAULTED	37
OFFENSES BY AGENCY FOR 1981 AND 1982	42

PERTINENT FACTS ABOUT CRIME IN OREGON IN 1982

- . Total reported criminal offenses in Oregon decreased 4.7% in 1982 compared to 1981.
- . Index Crime decreased 7.2% in 1982 compared to 1981.
- . The decrease in Index Crime offenses was mainly in property crimes which decreased in every category.
- . Violent Index Crime decreased 1.2% in 1982 compared to 1981. Decreases were reported in Rape and Robbery.
- . Twenty-one more Murders were reported in 1982 than in 1981 for an increase of 18.3%.
- . Both Aggravated and Simple Assaults increased in 1982 over 1981.
- . Agencies in Multnomah County reported 37.0% of the state's Index Crime and 58.5% of the state's Violent Index Crime.
- . Agencies in Clackamas, Lane, Marion, Multnomah and Washington counties reported 62.8% of all offenses, 70.0% of all Index offenses and 78.7% of the Violent Index offenses. These counties have 58.3% of the state's population.
- . The cities of Portland, Salem and Eugene combined reported 38.0% of the Index Crime and 56.5% of the Violent Index Crime. These cities have 21.2% of the state's population.
- . Arrests for all offenses decreased by 1.7% in 1982 compared to 1981. Arrests for Index Crimes increased by 1.2% over 1981.
- . 22.2% of all criminal arrests were for Driving Under the Influence of Intoxicants. 28.9% of arrests of adults were for Driving Under the Influence of Intoxicants.
- . Juvenile arrests declined by 5.3% for all offenses compared to 1981. Juvenile arrests for Index Crime declined by 6.7%.
- . Juvenile arrests for Violent Index Crimes increased 19.6% compared to 1981.
- . Juveniles accounted for 35% of all arrests for Index offenses in 1982 compared to 38% in 1981. In 1975 Juveniles arrests accounted for 53% of all arrests for Index Crimes. That percentage has steadily declined each of the last eight years.

SUMMARY

Oregon police agencies reported 174,531 Index Crimes in 1982. This was a decrease of 7.2% in Index Crime compared to 1981. The Index Crime rate in 1982 was 6571.2 per 100,000 population. This was a decrease in rate of 7.0%. Increases occurred in two Index Crime categories. Murder increased by 18.3% and Aggravated Assault increased by 3.7% compared to 1981. Decreases were led by Motor Vehicle Theft which declined by 12.1%, followed by Burglary with a 9.9% decrease. Robberies declined 7.4%, Larceny decreased 6.2%. There were 5.5% fewer Rapes and 3.1% less Arsons reported than in 1981.

Arrests for Index Crimes increased 1.2% over 1981. Adult arrests increased 6.1% and Juvenile arrests declined by 6.7%. Juveniles accounted for 35% of the arrests for Index Crimes in 1982 compared to 38% in 1981. The arrest rate for Index Crime was 1516.2 per 100,000 population. This was a 1.4% increase in the arrest rate compared to 1981.

The 171,029 Part II Crimes reported in 1982 was a 2.1% decrease compared to 1981. The Part II Crime rate was 6439.3 per 100,000 population for a decrease in rate of 1.9% compared to 1981.

Nine categories of Part II Crime increased as follows: Gambling +55.8%, Prostitution +29.0%, Offenses Against Family +22.8%, Forgery and Counterfeiting +17.8%, Other Sex Offenses +13.0%, All Other Offenses Except Traffic +11.6%, Stolen Property Offenses +9.0%, Simple Assault +5.7% and Curfew Violations +9.4%. Decreases were reported in nine Part II offense categories as follows: Fraud -15.2%, Weapons -12.5%, Vandalism -10.3%, D.U.I.I. -8.4%, Drug Abuse -3.4%, Embezzlement -2.4%, Liquor Law Violations -4.8%, Disorderly Conduct -4.8% and Runaway Juveniles -1.0%.

Arrests for Driving Under the Influence of Intoxicants declined by 8.2% compared to 1981. D.U.I.I. arrests accounted for 22.2% of all arrests and 32.9% of Part II arrests for 1982. A total of 83,105 arrests for Part II offenses were reported. This was a decline of 3.1% compared to 1981.

Juveniles accounted for 19.6% of the Part II arrests compared to 19.8% in 1981. The number of Juveniles arrested for Part II offenses declined by 4.1% compared to 1981. Of the 16,257 Juvenile arrests 5,434 or 33.4% were arrested for Curfew Violations or as Runaways.

The arrest rate for Part II crimes was 3128.8 per 100,000 population, a decrease of 3.0% in rate.

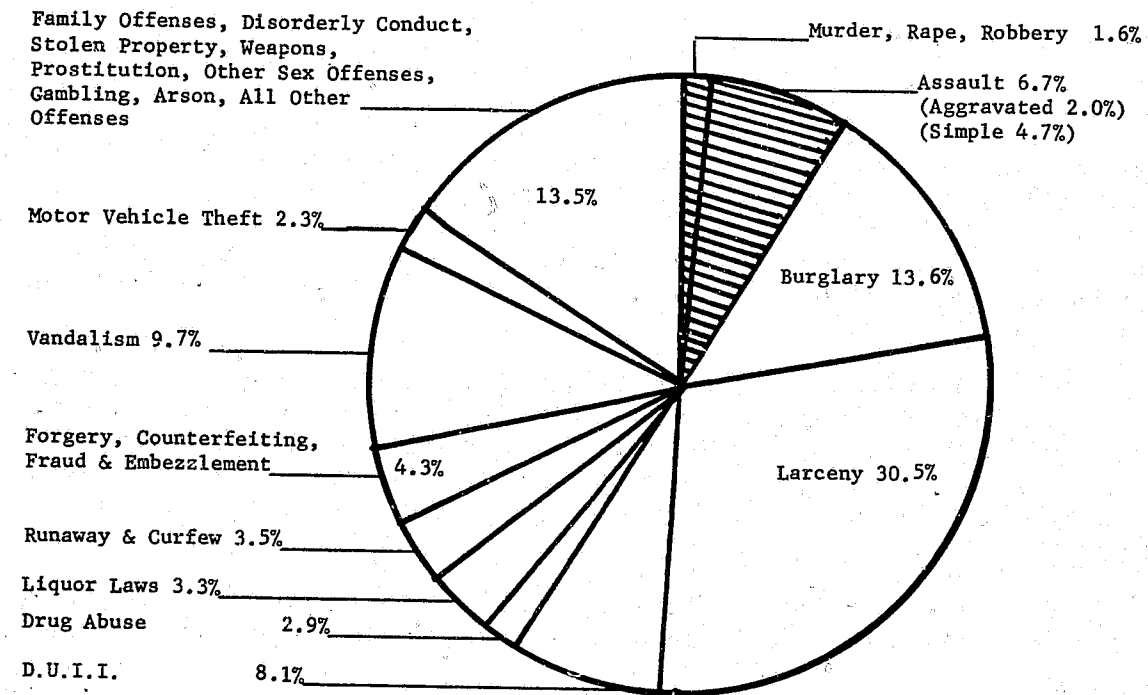
The total arrest rate for all offenses was 4645.1 per 100,000 population compared to 4720.1 in 1981 for a reduction in total arrest rate of 1.6%.

Property and money valued at \$116,571,993 were reported stolen or destroyed by criminal acts in 1982. This was a 5.7% decrease compared to 1981. \$26,973,711 was reported as recovered or 15.0% less than in 1981. Recovered Stolen Motor Vehicles valued at \$13,117,523 accounted for 48.6% of the total recovered property value.

58.1% of the reported stolen vehicles were reported recovered. This percentage has declined from 74.2% recovered five years ago.

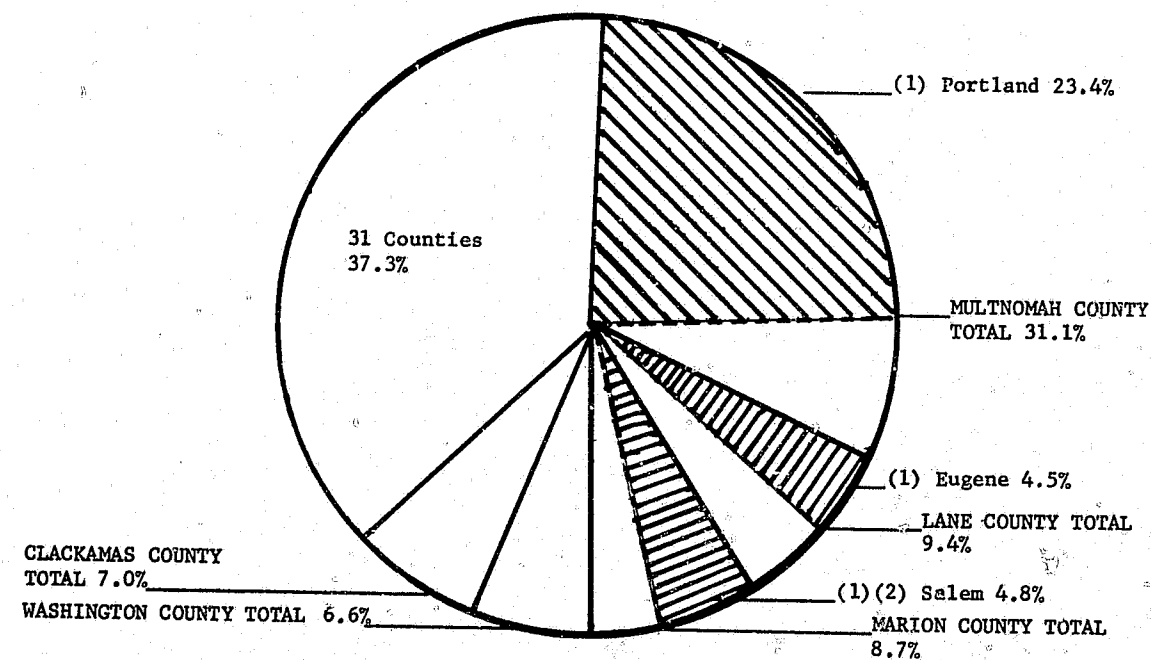
The average loss per criminal incident was the highest for Arson at \$6,659 per offense followed by Motor Vehicle Theft at \$2,977, Burglary \$822, Robbery \$570, Blackmail/Extortion \$467, Fraud \$379, Larceny \$292, Forgery/Counterfeiting \$190 and Vandalism \$142. The largest total loss was reported from Burglary at \$38,740,867.

ALL OFFENSES DISTRIBUTED BY TYPE



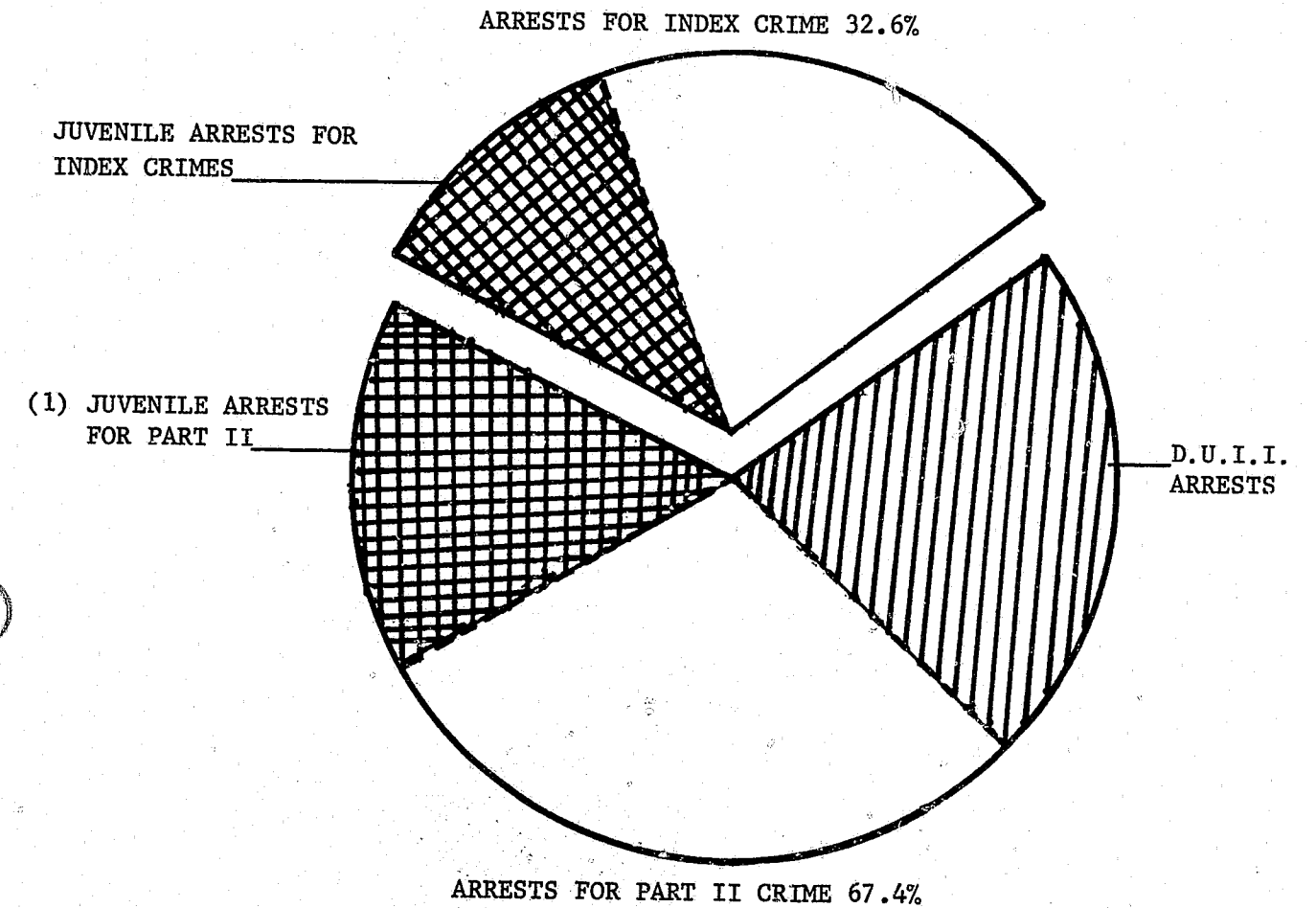
- Police reported 345,560 offenses in 1982.
- The crime rate for all offenses was 13,010.5 per 100,000 population

TOTAL CRIMINAL OFFENSES DISTRIBUTED BY METROPOLITAN COUNTIES AND THREE LARGEST CITIES



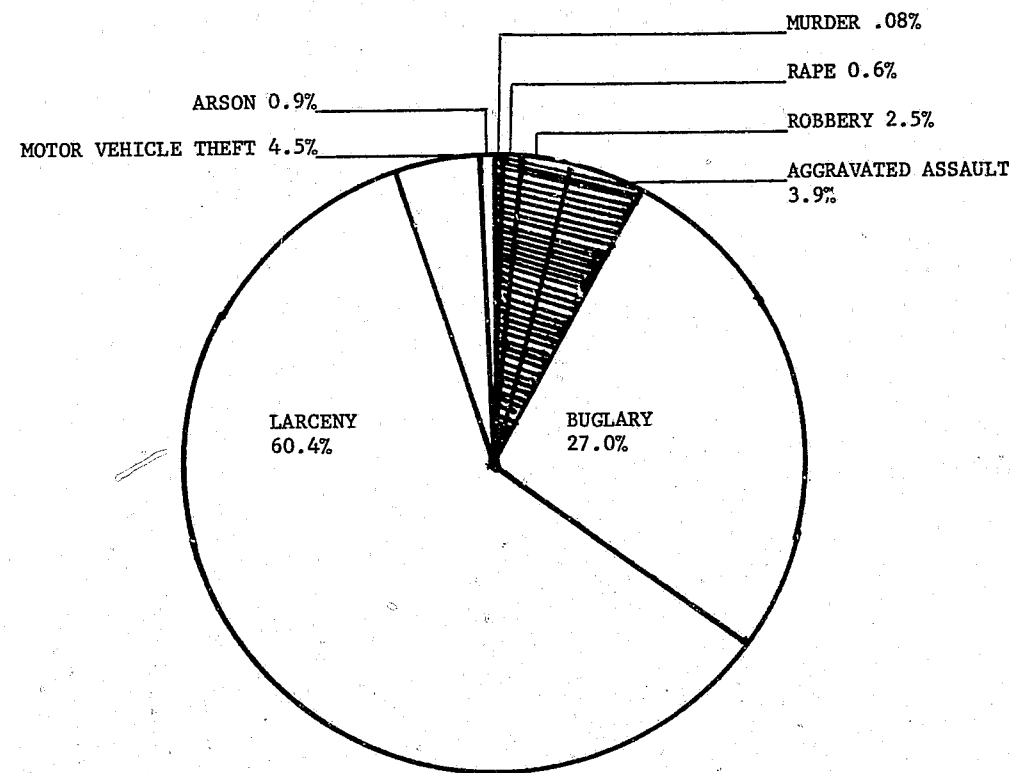
- (1) Included in county total
- (2) Includes offenses occurring in Polk County not included in Marion County percentage of total

STATE OF OREGON 1982
ARRESTS FOR CRIMINAL OFFENSES



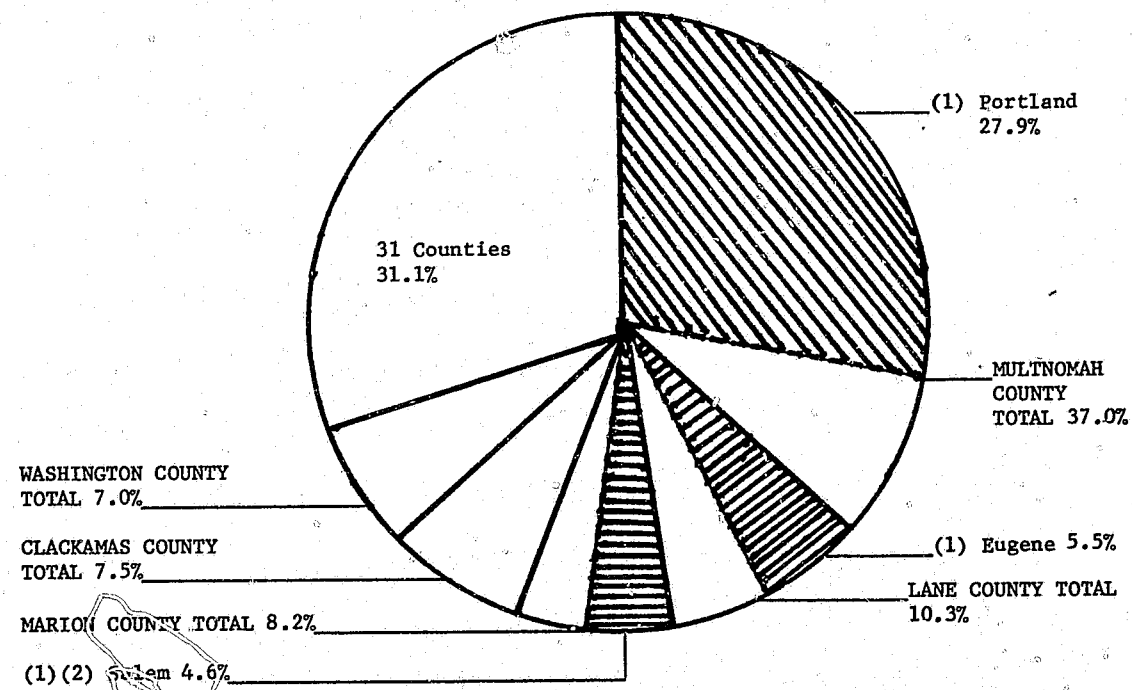
- There were 123,382 reported arrests in 1982
- 32.6% of all arrests were for Index Crimes
- 24.6% of all arrests were juvenile
- 35.0% of all arrests for Index Crime were juveniles
- 22.2% of all arrests were for D.U.I.I.
- 80.0% of all arrests were of males
- (1) Includes 456 Juvenile arrests for D.U.I.I.

STATE INDEX CRIME DISTRIBUTED BY OFFENSE



- Police reported 174,531 Index Crimes
- 7.2% of reported Index Crime was violent crime

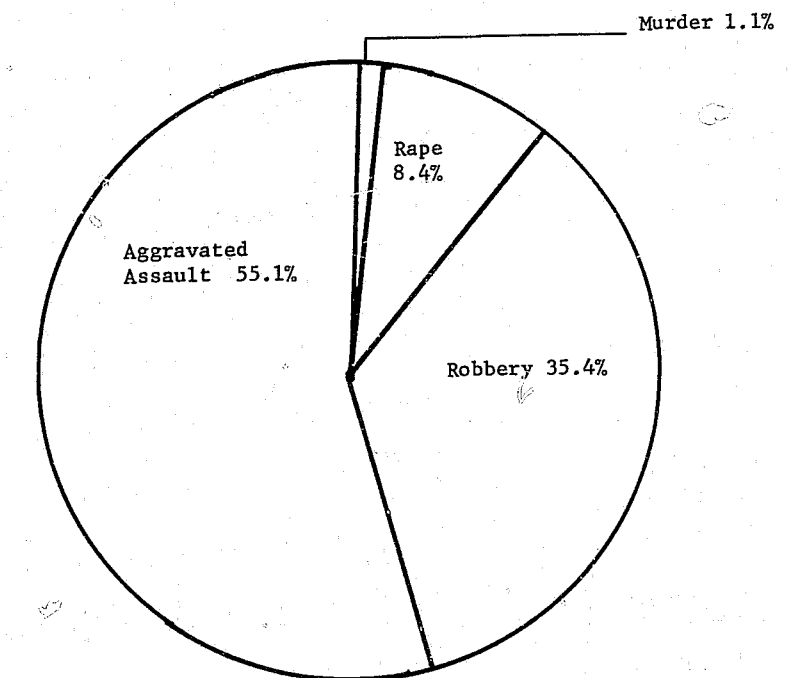
TOTAL INDEX CRIME DISTRIBUTED BY METROPOLITAN COUNTIES AND THREE LARGEST CITIES



- 5 Counties reported 69.9% of all Index Crime
- These counties reported 78.7% of the Violent Index Crime

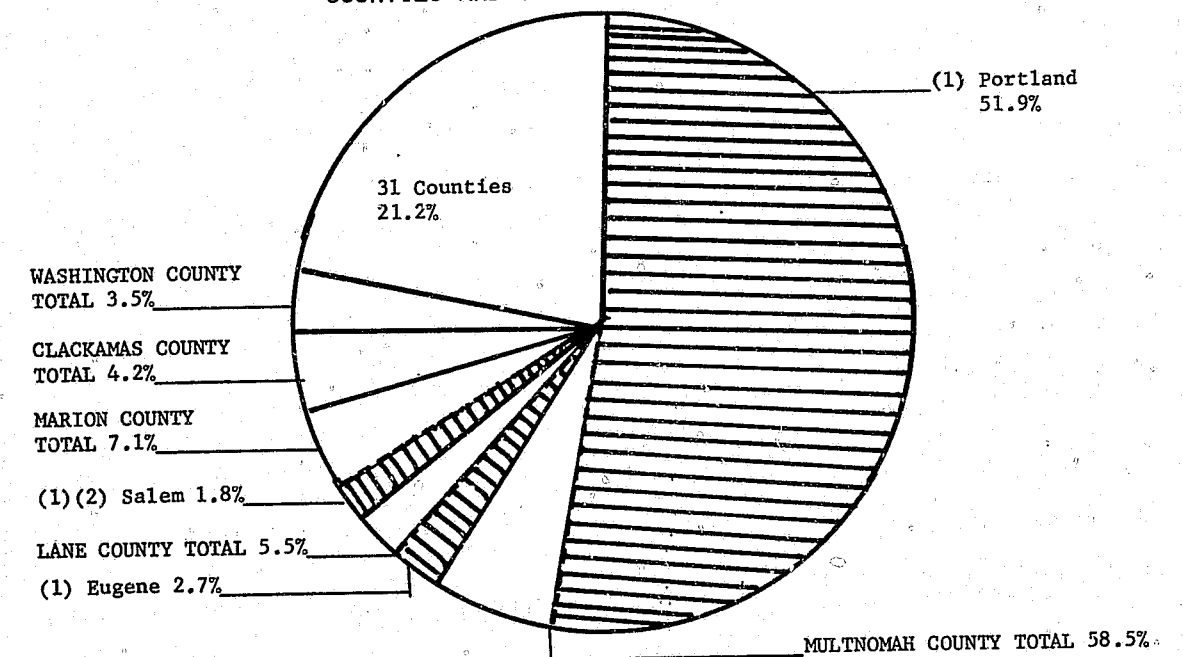
(1) Included in county percentage total
 (2) Salem percentage includes 439 offenses occurring in Polk County not included in Marion County percentage

STATE VIOLENT INDEX CRIME DISTRIBUTION BY OFFENSE



- Police reported 12,489 Violent Index Crimes in 1982
- The violent Index Crime rate was 470.2 per 100,000 population

STATE VIOLENT INDEX CRIME DISTRIBUTION BY METROPOLITAN COUNTIES AND THREE LARGEST CITIES



- 78.7% of Violent Index Crime occurred in 5 counties
- 56.5% of Violent Index Crime were reported in three cities which have 21.2% of the state's population
- 51.9% of Violent Index Crime was reported in Portland which has 13.8% of the state's population

(1) Included in county total
 (2) Includes 8 offenses occurring in Polk County not included in Marion County percentage total

REPORTED OFFENSES

PART I - OREGON CRIME INDEX OFFENSES	January thru December 1981	January thru December 1982	Percent Change	Crime rate per 100,000 population	
				1981	1982
01 Murder	115	136	+ 18.3	4.3	5.1
02 Forcible Rape	1,111	1,050	- 5.5	41.8	39.5
03 Robbery	4,773	4,422	- 7.4	179.4	166.5
04 Aggravated Assault	6,637	6,881	+ 3.7	249.5	259.1
05 Burglary	52,290	47,109	- 9.9	1,965.8	1,773.7
06 Larceny - Theft	112,447	105,468	- 6.2	4,227.3	3,970.9
07 Motor Vehicle Theft	9,017	7,922	- 12.1	339.0	298.3
09 Arson	1,593	1,543	- 3.1	59.9	58.1
PART I - INDEX TOTALS	187,983	174,531	- 7.2	7,067.0	6,571.2

PART II OFFENSES

042 Simple Assault	15,294	16,173	+ 5.7	575.0	608.9
10 Forgery-Counterfeiting	3,898	4,592	+ 17.8	146.5	172.9
11 Fraud	11,907	10,092	- 15.2	447.6	380.0
12 Embezzlement	168	164	- 2.4	6.3	6.2
13 Stolen Property	468	510	+ 9.0	17.6	19.2
14 Vandalism	37,523	33,671	- 10.3	1,410.6	1,267.7
15 Weapons	2,170	1,898	- 12.5	81.6	71.5
16 Prostitution	1,156	1,491	+ 29.0	43.5	56.1
17 Other Sex Offenses	4,686	5,297	+ 13.0	176.2	199.4
180 Drug Abuse	10,378	10,023	- 3.4	390.2	377.4
19 Gambling	86	134	+ 55.8	3.2	5.0
20 Offenses Against Family	1,458	1,790	+ 22.8	54.8	67.4
210 D.U.I.I.	30,432	27,867	- 8.4	1,144.1	1,049.2
220 Liquor Laws	11,855	11,286	- 4.8	445.7	424.9
240 Disorderly Conduct	5,309	5,055	- 4.8	199.6	190.3
26 All Other Offenses (Except Traffic)	25,819	28,815	+ 11.6	970.6	1,084.7
280 Curfew	2,167	2,370	+ 9.4	81.5	89.2
29 Runaway	9,899	9,801	- 1.0	372.1	369.0
PART II TOTAL	174,673	171,029	- 2.1	6,566.7	6,439.3
PART I and PART II TOTALS	362,656	345,560	- 4.7	13,633.7	13,010.5

REPORTED ARRESTS

	1981 Arrests			1982 Arrests		
	Adult	Juvenile	Total	Adult	Juvenile	Total
0101 Willful Homicide	106	11	117	110	10	120
020 Forcible Rape	279	35	314	270	59	329
030 Robbery	943	205	1,148	895	279	1,174
040 Aggravated Assault	4,508	633	5,141	5,767	706	6,473
050 Burglary	3,056	3,765	6,821	3,034	3,063	6,097
060 Larceny - Theft	14,692	9,192	23,884	15,096	8,989	24,085
070 Motor Vehicle Theft	905	1,054	1,959	844	807	1,651
090 Arson	178	224	402	156	189	345
PART I - INDEX TOTAL	24,667	15,119	39,786	26,172	14,102	40,274
080 Simple Assault	3,409	653	4,062	4,159	757	4,916
100 Forgery-Counterfeiting	796	186	982	812	227	1,039
110 Fraud	1,555	130	1,685	1,442	94	1,536
120 Embezzlement	3	2	5	2		2
130 Stolen Property	337	224	561	358	205	563
140 Vandalism	2,621	1,994	4,615	2,484	1,912	4,396
150 Weapons	1,321	237	1,558	1,090	193	1,283
160 Prostitution	1,117	104	1,221	1,361	62	1,423
170 Other Sex Offenses	1,104	197	1,301	1,117	217	1,334
180 Drug Abuse	7,118	1,244	8,362	6,833	969	7,802
190 Gambling	159	3	162	73	2	75
200 Offenses Against Family	140		140	200	18	218
210 D.U.I.I.	29,250	577	29,827	26,914	456	27,370
220 Liquor Laws	9,223	4,011	13,234	9,291	3,667	12,958
240 Disorderly Conduct	2,892	406	3,298	2,792	446	3,238
0102 Manslaughter	34	2	36	21	1	22
260 All Other (Except Traffic)	7,740	1,534	9,274	7,902	1,597	9,499
280 Curfew (Juvenile)		1,957	1,957		1,970	1,970
290 Runaway (Juvenile)		3,489	3,489		3,464	3,464
PART II TOTALS	68,819	16,950	85,769	66,851	16,257	83,108
PART I and PART II ARREST TOTALS	93,486	32,069	125,555	93,023	30,359	123,382

	1981		1982	
	NUMBER OF OFFENSES	LOSS VALUE	NUMBER OF OFFENSES	LOSS VALUE
<u>01 MURDER</u>				
1 Spouse kills spouse	11		14	
2 Parent kills child	3		3	
3 Other family killings	6		13	
4 Triangle/lovers quarrel	6		12	
5 Other arguments	27		40	
6 In the act/suspect of a felony	17		16	
7 Victim of rape or kidnap	2		3	
8 Child killed - other	4		1	
9 Unknown circumstance	39		34	
Murder Total	115	NOT APPLICABLE	136	NOT APPLICABLE

	1981		1982	
	NUMBER OF OFFENSES	LOSS VALUE	NUMBER OF OFFENSES	LOSS VALUE
<u>02 RAPE</u>				
1 Forcible	818		811	
2 Attempt forcible	293		239	
Rape Total	1,111	NOT APPLICABLE	1,050	NOT APPLICABLE

	1981		1982	
	NUMBER OF OFFENSES	LOSS VALUE	NUMBER OF OFFENSES	LOSS VALUE
<u>03 ROBBERY (by location)</u>				
1 Highway, street, alley, etc.	1,253	\$ 331,482	1,233	\$ 300,711
2 Commercial business	1,051	579,439	935	532,188
3 Service station	250	79,233	163	61,324
4 Convenience store	354	41,202	365	35,588
5 Residence	524	966,281	604	1,126,174
6 Bank	134	265,284	172	264,128
7 All other locations	1,207	258,274	950	200,304
Robbery Total	4,773	\$ 2,521,195	4,422	\$ 2,520,417

	1981		1982	
	NUMBER OF OFFENSES	LOSS VALUE	NUMBER OF OFFENSES	LOSS VALUE
<u>05 BURGLARY</u>				
1 Residence	35,197	\$30,890,510	31,078	\$28,535,646
2 Non-residence	17,093	9,341,994	16,031	10,205,221
Burglary Total	52,290	\$40,232,504	47,109	\$38,740,867

	1981		1982	
	NUMBER OF OFFENSES	LOSS VALUE	NUMBER OF OFFENSES	LOSS VALUE
<u>05 BURGLARY (by means of entry)</u>				
1 Forcible entry	30,992	NOT APPLICABLE	27,664	NOT APPLICABLE
2 Unlawful entry/no force	17,135		15,356	
3 Attempt forcible entry	4,163		4,089	
Burglary total	52,290	NOT APPLICABLE	47,109	NOT APPLICABLE

	1981		1982	
	NUMBER OF OFFENSES	LOSS VALUE	NUMBER OF OFFENSES	LOSS VALUE
<u>06 LARCENY (by value)</u>				
1 \$200 and over	34,124	\$29,363,820	32,695	\$26,357,820
2 \$50 to \$200	35,177	3,868,867	32,168	3,506,174
3 Under \$50	43,146	1,046,794	40,605	891,923
Larceny Total	112,447	\$34,279,481	105,468	\$30,755,917

	1981		1982	
	NUMBER OF OFFENSES	LOSS VALUE	NUMBER OF OFFENSES	LOSS VALUE
<u>06 LARCENY (by nature)</u>				
1 Pocket picking	554	\$ 100,449	527	\$ 106,851
2 Purse snatching	854	107,972	738	192,878
3 Shoplifting	14,705	656,556	16,136	770,614
4 From motor vehicles	28,108	8,223,373	26,472	7,766,712
5 Motor vehicle parts/acces.	14,704	2,899,905	12,867	2,855,210
6 Bicycles	12,551	1,933,806	11,285	1,815,947
7 From buildings	18,963	8,587,268	18,984	8,040,792
8 From coin-op machines	595	46,752	632	46,499
9 All others	21,413	11,723,400	17,827	9,160,414
Larceny Total	112,447	\$34,279,481	105,468	\$30,755,917

	1981		1982	
	NUMBER OF OFFENSES	LOSS VALUE	NUMBER OF OFFENSES	LOSS VALUE
<u>07 MOTOR VEHICLE THEFT</u>				
1 Automobiles	5,506	\$15,797,385	4,698	\$13,211,596
2 Motorcycles	1,546	1,666,373	1,434	1,523,761
3 Trucks, busses, vans	1,798	8,523,390	1,671	8,151,787
4 Snowmobiles	8	20,634	16	18,200
5 All others	159	1,112,992	103	675,908
	<u>9,017</u>	<u>\$27,120,774</u>	<u>7,922</u>	<u>\$23,581,252</u>
Motor Vehicle Theft				

<u>09 ARSON</u>				
1 Residence, single family	356	\$ 2,802,159	375	\$ 3,853,140
2 Residence (apt., hotel, etc.)	137	503,477	142	503,477
3 Storage	73	242,441	51	359,626
4 Industrial/manufacturing	23	954,325	17	318,526
5 Commercial business	120	2,051,130	149	2,846,186
6 Community/public	167	1,083,121	130	1,315,205
7 Other buildings	72	120,065	84	195,226
	<u>948</u>	<u>\$ 7,756,718</u>	<u>948</u>	<u>\$ 9,391,386</u>
Total structure				
1 Motor vehicle	222	\$ 287,469	190	318,526
2 Other mobile property	15	350,425	21	61,650
	<u>237*</u>	<u>\$ 637,894</u>	<u>211</u>	<u>\$ 380,176</u>
Total mobile				
1 All other	408	\$ 1,525,541	348	\$ 503,478
	<u>1,593</u>	<u>\$ 9,920,153</u>	<u>1,543</u>	<u>\$10,275,040</u>
Arson Total				

INDEX LOSS VALUE TOTAL	\$ 114,074,107	\$ 105,873,493
------------------------	----------------	----------------

	1981		1982	
	NUMBER OF OFFENSES	LOSS VALUE	NUMBER OF OFFENSES	LOSS VALUE
<u>10 FORGERY/COUNTERFEITING</u>				
1 Checks	2,741	\$ 784,411	3,213	\$ 623,488
2 Credit cards	626	51,799	726	74,021
3 Currency	104	4,180	137	3,264
4 Securities	20	39,180	20	19,882
5 All other	407	55,088	496	152,788
	<u>3,898</u>	<u>\$ 934,658</u>	<u>4,592</u>	<u>\$ 873,443</u>
Forgery/Contf. Total				

<u>11 FRAUD</u>				
1 Checks	7,183	\$ 937,016	5,669	\$ 1,179,332
2 Credit cards	526	48,509	457	51,778
3 By deception	1,340	1,622,645	1,327	2,211,223
4 Of services	2,686	179,904	2,422	102,785
5 All other	172	58,125	217	278,131
	<u>11,907</u>	<u>\$ 2,846,199</u>	<u>10,092</u>	<u>\$ 3,823,249</u>
Fraud Total				

<u>12 EMBEZZLEMENT</u>	168	\$ 353,654	164	\$ 1,192,247
------------------------	-----	------------	-----	--------------

<u>14 VANDALISM</u>				
1 Residence	7,100	\$ 683,549	6,494	\$ 723,842
2 Non-residence	6,977	1,156,794	6,007	987,854
3 Vehicle	15,577	2,264,123	13,651	1,947,419
4 All other	7,869	1,171,130	7,519	1,120,534
	<u>37,523</u>	<u>\$ 5,275,596</u>	<u>33,671</u>	<u>\$ 4,779,649</u>
Vandalism Total				

	1981		1982	
	NUMBER OF OFFENSES	LOSS VALUE	NUMBER OF OFFENSES	LOSS VALUE
17 OTHER SEX OFFENSES				
1 Statutory rape	204		221	
2 Contributing to delinquency	96		107	
3 Molest - physical	1,169		1,256	
4 Molest - obscene phone call	445		933	
5 Peeper	203		102	
6 Indecent exposure	1,523		1,507	
7 Sodomy (forcible & statutory)	611		640	
8 All others	435		531	
		NOT APPLICABLE		NOT APPLICABLE
Sex Offense Total	4,686		5,297	

18 DRUG ABUSE (Arrests)				
1 Narcotic	515		585	
2 Marijuana	7,066		6,363	
3 Synthetic narcotic	110		91	
4 Other dangerous drug	671		763	
		NOT APPLICABLE		NOT APPLICABLE
Drug Abuse Total	8,362		7,802	

20 OFFENSES AGAINST FAMILY				
1 Child abandonment	53		45	
2 Child neglect	564		637	
3 Child abuse	679		654	
4 Non-support	7		3	
*5 Custodial interference			247	
6 All others	155		204	
		NOT APPLICABLE		NOT APPLICABLE
Family Offense Total	1,458		1,790	

* Included with 26-1 All Other-Kidnap in 1981 and prior years.

	1981		1982	
	NUMBER OF OFFENSES	LOSS VALUE	NUMBER OF OFFENSES	LOSS VALUE
21 DRIVING UNDER THE INFLUENCE (Arrests - blood alcohol tests)				
1 Under .10	2,026		2,000	
2 .10 to .15	4,393		4,174	
3 .15 to .20	8,033		7,226	
4 .20 and over	5,709		5,272	
5 Test refused	8,487		8,145	
6 Test not given	1,179		553	
		NOT APPLICABLE		NOT APPLICABLE
D.U.I.I. Arrest Total	29,827		27,370	

26 ALL OTHER (Except Traffic)				
012 Manslaughter	2	\$	5	\$
* 1 Kidnap	695		424	
2 Trespass	8,844		8,978	
3 Escape	512		445	
4 Garbage/littering	1,069		896	
5 Obscene material/display	23		25	
6 Threat	1,809		1,963	
7 Harrassment/nuisance	5,126		8,341	
8 Blackmail/extortion	74	28,407	64	29,912
9 All others	7,665	23,226	7,679	
All Other Total	25,819	\$ 51,633	28,820	\$ 29,912

PART II LOSS VALUE TOTAL	\$ 9,461,740	\$ 10,698,500
--------------------------	--------------	---------------

LOSS VALUE - GRAND TOTAL	\$ 123,535,847	\$ 116,571,993
--------------------------	----------------	----------------

* Custodial Interference, formerly included with Kidnapping in 1981 and prior years, is now a sub category of Offenses Against Family.

VIOLENT CRIME BY FORCE ELEMENT

	1981	1982
<u>01 MURDER - by force element</u>		
Handgun	39	50
Rifle	12	18
Shotgun	6	6
Gun-unknown type	2	
Knife/cutting instrument	26	28
Blunt instrument	9	10
Hands, fists, feet, etc.	4	6
Other means (includes arson, poison, strangulation, etc.)	17	18
Total	115	136

<u>02 FORCIBLE RAPE - by force element</u>		
Firearm	58	47
Knife/cutting instrument	154	126
Other dangerous weapon	30	23
Hands, fists, feet, etc.	869	854
Total	1,111	1,050

VIOLENT CRIME BY FORCE ELEMENT

	1981	1982
<u>03 ROBBERY - by force element</u>		
Firearm	1,764	1,596
Knife/cutting instrument	567	531
Other dangerous weapon	324	245
Hands, fists, feet, etc.	2,118	2,050
Total	4,773	4,422

<u>041-043 AGGRAVATED ASSAULT - by force element</u>		
Firearm	1,408	1,384
Knife/cutting instrument	1,168	1,229
Other dangerous weapon	1,737	1,823
Hands, fists, feet, etc. (serious injury)	2,324	2,445
Total	6,637	6,881

<u>042 OTHER ASSAULTS -</u>		
Hands, fists, feet, etc. (little or no injury)	15,294	16,173

1982 REPORTED LOSS AND RECOVERED VALUES BY TYPE OF PROPERTY

<u>Property Category</u>	<u>Loss Value</u>	<u>Recovered Value</u>	<u>Percent Recovered</u>
Currency, securities, stamps, etc	\$ 12,990,750	\$ 887,009	6.8
Jewelry, precious metals, watches	14,875,298	1,044,236	7.0
Clothing, furs and related accessories	2,611,316	314,533	12.0
Consumable goods(food, liquor,gas, etc.)	1,163,136	156,669	13.5
Furniture, household & appliances	4,701,937	501,963	10.7
Television, radios, stereos, etc.	8,747,553	646,478	7.4
Office equipment	888,854	224,903	25.3
Motor vehicles(theft, arson, vandalism)	24,537,329	18,546,602	75.6
Bicycles	2,233,936	404,321	18.1
Boats & marine equipment	1,422,320	377,614	26.5
Aircraft & related accessories	183,993	81,436	44.3
Trailers, campers & misc. vehicles	820,270	273,683	33.4
Vehicle parts & accessories	4,516,698	265,164	5.9
Tools	5,609,570	384,585	6.9
Farm & Garden	1,372,541	153,442	11.2
Logging equipment(blocks, cables, etc.)	191,616	9,253	4.8
Heavy construction equipment	1,203,198	467,828	38.9
Buildings(damaged by arson/vandalism)	10,643,780	15,262	1
Building materials	265,363	27,334	10.3
Timber & raw wood products	468,243	18,181	3.9
Sports equipment	1,177,970	85,182	7.2
Firearms	2,659,984	457,628	17.2
Cameras & related accessories	2,680,773	226,298	8.4
Musical instruments	753,828	99,645	13.2
Saddles & tack	245,510	17,998	7.3
Livestock	746,516	120,795	16.2
Miscellaneous	8,859,972	1,165,669	13.2
Total	116,571,993	\$26,973,711	23.1

OFFENSES AND ARRESTS GROUPED BY TYPE OF OFFENSE

These three groups are titled and defined as follows:

PERSON-TO-PERSON. Offenses where the victim is present and the act is violent, threatening, or has the potential of being physically harmful.

PROPERTY. Offenses that involve taking something of value by theft or deception, or the destruction of property.

REGULATORY-BEHAVIORAL. Offenses that violate laws relating to conduct or responsibility. Although not necessarily violent or property offenses in themselves, they may contribute to other offenses.

- . These three groupings of offenses by type are unique to Oregon
- . Past local and national reports regarding person-to-person (violent) and property offenses have been based solely on Index Offense categories.
- . Exact comparable data is not available on a national scale.

-61-

CLASSIFICATION	NUMBER OF OFFENSES	PERCENT OF ALL 1982 OFFENSES	NUMBER OF ARRESTS			PERCENT OF ALL 1982 ARRESTS	PROPERTY LOSS VALUE	PERCENT OF ALL 1982 LOSS VALUE
			ADULT	JUVENILE	TOTAL			
PERSON-TO-PERSON	35,190	10.2	12,339	2,029	14,368	11.6	\$ 2,743,207	2.4
PROPERTY	210,333	60.9	24,228	15,486	39,714	32.2	113,828,786	97.6
REGULATORY-BEHAVIORAL	100,037	28.9	56,456	12,844	69,300	56.2	Not Applicable	
GRAND TOTAL	345,560		93,023	30,359	123,382		\$116,571,993	

The next three pages display these groupings in expanded detail.

PERSON-TO-PERSON OFFENSES

CLASSIFICATION	NUMBER OF OFFENSES	PERCENT OF ALL 1982 OFFENSES	NUMBER OF ARRESTS			PERCENT OF ALL 1982 ARRESTS	PROPERTY LOSS VALUE	PERCENT OF ALL 1982 LOSS VALUE
			ADULT	JUVENILE	TOTAL			
Murder	136	0.04	110	10	120	0.1	\$	
Manslaughter (1)	5	0.001	21	1	22	0.02		
Forcible Rape	1,050	0.3	270	59	329	0.3		
Robbery	4,422	1.3	895	279	1,174	1.0	2,520,417	2.2
Purse Snatch*	738	0.2					192,878	0.2
Aggravated Assault	6,881	0.2	5,767	706	6,473	5.2		
Other Assaults (1)	16,173	4.9	4,159	757	4,916	4.0		
Assault Total	(23,054)	(6.7)	(9,926)	(1,463)	(11,389)	(9.2)		
Other Sex Offenses (1)	5,297	1.5	1,117	217	1,334	1.1		
Kidnapping (1)*	424	0.1						
Blackmail/Extortion (1)	64	0.002					29,912	0.003
Totals	35,191	10.2	12,339	2,029	14,368	11.6	\$ 2,743,207	2.4

The 1982 Person-to-person crime rate per 100,000 is 1324.7

The 12,339 Adult arrests for Violent Person-to-Person Offenses are 13.3% of all adult arrests.

The 2,029 Juvenile arrests for Violent Person-to-Person Offenses are 6.7% of all juvenile arrests.

* Arrest data is either not available or specifically identifiable for this offense

(1) Not Index Crime Offenses

PROPERTY CRIME OFFENSES

CLASSIFICATION	NUMBER OF OFFENSES	PERCENT OF ALL 1982 OFFENSES	NUMBER OF ARRESTS			PERCENT OF ALL 1982 ARRESTS	PROPERTY LOSS VALUE	PERCENT OF ALL 1982 LOSS VALUE
			ADULT	JUVENILE	TOTAL			
Burglary	47,109	13.6	3,034	3,063	6,097	4.9	\$ 38,740,867	33.2
Larceny	104,730	30.3	15,096	8,989	24,085	19.5	30,563,039	26.2
Motor Vehicle Theft	7,922	2.3	844	807	1,651	1.3	23,581,252	20.2
Arson	1,543	0.4	156	189	345	0.3	10,275,040	8.8
Forgery	4,592	1.3	812	227	1,039	0.8	873,443	0.7
Fraud	10,092	2.9	1,442	94	1,536	1.2	3,823,249	3.3
Embezzlement	164	0.05	2		2		1,192,247	1.0
Stolen Property	510	0.1	358	205	563	0.5	Not Applicable	
Vandalism	33,671	9.7	2,484	1,912	4,396	3.6	4,779,649	4.1
Totals	210,333	60.9	24,228	15,486	39,714	32.2	\$113,828,786	97.6

The Property Offense rate per 100,000 population is 7919.2
 The 24,228 Adult arrests for Property Offenses are 26.0% of all adult arrests
 The 15,486 Juvenile arrests for Property Offense are 51.0% of all juvenile arrests

REGULATORY AND BEHAVIORAL OFFENSES

CLASSIFICATION	NUMBER OF OFFENSES	PERCENT OF ALL 1982 OFFENSES	NUMBER OF ARRESTS			PERCENT OF ALL 1982 ARRESTS
			ADULT	JUVENILE	TOTAL	
Weapons	1,898	0.5	1,090	193	1,283	1.0
Prostitution	1,491	0.4	1,361	62	1,423	1.2
Drug Abuse	10,023	2.9	6,833	969	7,802	6.3
Gambling	134	0.04	73	2	75	0.06
Offenses Against Family	1,790	0.5	200	18	218	0.2
D.U.I.I.	27,867	8.1	26,914	456	27,370	22.2
Liquor Laws	11,285	3.3	9,291	3,667	12,958	10.5
Disorderly Conduct	5,055	1.5	2,792	446	3,238	2.6
All Other (Except Traffic)	28,323	8.2	7,902	1,597	9,499	7.7
Curfew	2,370	0.7		1,970	1,970	1.6
Runaway	9,801	2.8		3,464	3,464	2.8
Totals	100,037	28.9	56,456	12,844	69,300	56.2

Regulatory-Behavioral Offense crime rate per 100,000 population is 3766.4
 The 56,456 Adult arrests for this group of offenses are 60.7% of all adult arrests
 The 12,844 Juvenile arrests for these offenses are 42.3% of all juvenile arrests

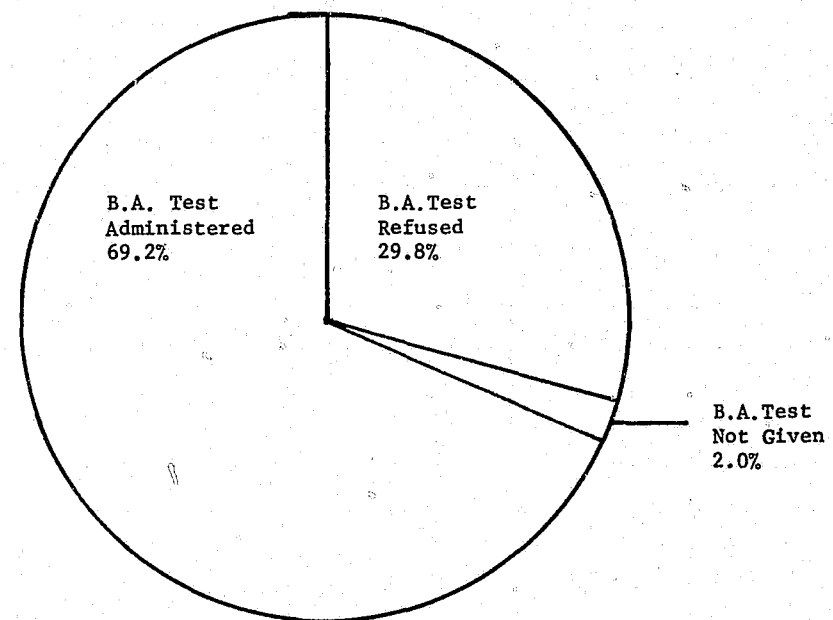
DRIVING UNDER THE INFLUENCE ARRESTS AND
BLOOD ALCOHOL TEST RESULTS FOR 1982

• There were 27,370 arrests for Driving Under the Influence of Intoxicants in Oregon during 1982. D.U.I. arrests declined 8.2% when compared to 1981 but still accounted for 22.2% of all arrests.

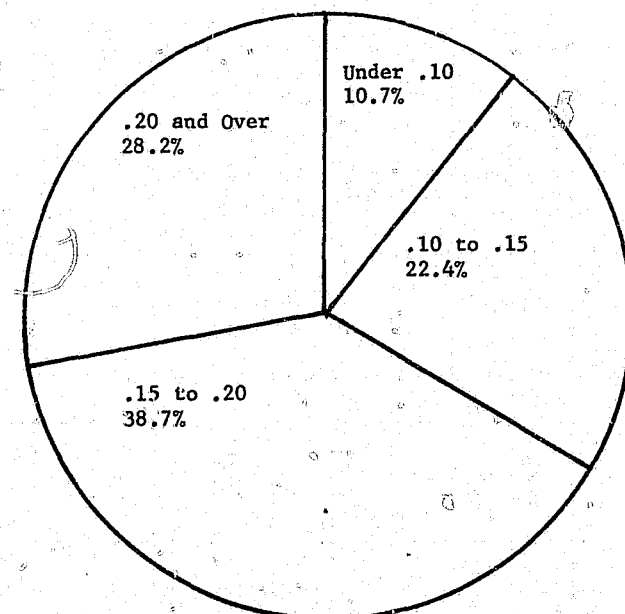
Adults accounted for 98.3% of these arrests and 83.9% of the arrests involved males.

• Blood Alcohol test information was reported on all arrests in 1982. The results are depicted in the charts below.

BLOOD ALCOHOL TEST INFORMATION
ON 27,370 ARRESTS FOR D.U.I.I.



BLOOD ALCOHOL TEST RESULTS FOR 18,672 TESTS



OREGON COUNTIES POPULATION AND CRIME VOLUME AND RATE RANKINGS FOR 1982

COUNTY	POPULATION		INDEX CRIME OFFENSES			INDEX VIOLENT CRIME			INDEX PROPERTY CRIME			PART II OFFENSES			TOTAL CRIMINAL OFFENSES							
		RANK	NUMBER OF OFFENSES	RANK	RATE PER 100,000	RANK	NUMBER OF OFFENSES	RANK	RATE PER 100,000	RANK	NUMBER OF OFFENSES	RANK	RATE PER 100,000	RANK	NUMBER OF OFFENSES	RANK	RATE PER 100,000	RANK				
BAKER	16,240	25	583	26	3589.9	27	17	29	104.7	33	566	26	3485.2	26	959	25	5905.2	16	1,542	25	9495.1	23
BENTON	69,600	9	3,450	9	4956.9	12	134	15	192.5	22	3,316	9	4764.4	12	3,656	14	5252.9	21	7,106	13	10209.7	17
CLACKAMAS	245,100	3	13,079	4	5336.2	9	528	4	215.4	19	12,551	4	5120.8	6	11,100	4	4528.8	26	24,179	4	9,865.0	21
CLATSOP	32,700	19	1,451	18	4437.3	21	55	21	168.2	25	1,396	18	4269.1	19	2,504	18	7657.5	9	3,955	18	12094.8	11
COLUMBIA	36,200	18	1,187	21	3279.0	28	58	20	160.2	27	1,129	21	3,118.8	28	1,711	20	4726.5	25	2,898	20	8005.5	28
COOS	61,750	11	3,342	11	5412.1	7	218	8	353.0	5	3,124	11	5059.1	8	5,222	11	8456.7	2	8,564	10	13868.8	4
CROOK	12,900	27	520	27	4031.0	24	20	27	155.0	28	500	26	3876.0	24	1,011	24	7837.2	8	1,531	26	11868.2	13
CURRY	17,200	24	826	23	4802.3	16	36	24	209.3	20	790	24	4593.0	15	772	26	4488.4	27	1,598	24	9290.7	24
DESCHUTES	64,350	10	3,180	13	4941.7	13	105	17	169.4	24	3,071	12	4772.3	11	3,358	16	5218.3	22	6,538	15	10160.0	19
DOUGLAS	92,050	7	3,877	8	4214.1	23	185	10	201.1	20	3,692	8	4010.9	23	5,326	9	5789.1	17	9,203	9	10003.3	20
GILLIAM	1,960	35	55	35	2806.1	33	2	36	102.0	31	53	35	2704.1	33	83	35	4234.7	29	138	29	7040.8	32
GRANT	7,910	29	135	32	1706.7	35	18	30	227.6	29	117	32	1479.1	35	280	31	3539.8	33	415	31	5246.5	34
HARNEY	7,515	31	216	30	2880.0	32	9	31	120.0	31	207	29	2760.0	31	330	29	4400.0	28	546	29	7280.0	29
HOOD RIVER	15,870	26	764	25	4814.1	15	38	23	239.4	14	726	25	4574.7	16	755	27	4757.4	24	1,519	27	9571.5	22
JACKSON	133,725	6	7,016	6	5247.6	10	298	6	222.9	16	6,718	6	5024.7	10	10,752	5	8041.9	7	17,768	6	13289.5	7
JEFFERSON	12,225	28	418	28	3426.2	26	31	25	254.1	11	387	28	3172.1	27	668	28	5475.4	19	1,086	28	8901.6	26
JOSEPHINE	59,000	14	3,440	10	5830.5	4	225	7	381.4	4	3,215	10	5449.2	4	6,160	7	10440.7	1	9,600	8	16271.2	2
KLAMATH	59,200	13	2,634	14	4449.3	20	187	9	315.9	7	2,447	14	4133.4	21	4,148	13	7006.8	14	6,782	13	11456.1	14

OREGON COUNTIES POPULATION AND CRIME VOLUME AND RATE RANKINGS FOR 1982

COUNTY	POPULATION		INDEX CRIME OFFENSES				INDEX VIOLENT CRIME			INDEX PROPERTY CRIME			PART II OFFENSES			TOTAL CRIMINAL OFFENSES						
		RANK	NUMBER OF OFFENSES	RANK	RATE PER 100,000	RANK	NUMBER OF OFFENSES	RANK	RATE PER 100,000	RANK	NUMBER OF OFFENSES	RANK	RATE PER 100,000	RANK	NUMBER OF OFFENSES	RANK	RATE PER 100,000	RANK	NUMBER OF OFFENSES	RANK	RATE PER 100,000	RANK
LAKE*	7,625	30	92	33	1210.5	36	8	32	105.3	32	84	3	1105.3	36	149	33	1960.5	36	241	33	3171.1	36
LANE	270,650	2	17,986	2	6646.7	3	685	3	253.1	13	17,301	2	6393.6	3	14,573	3	5385.4	20	32,559	2	12032.2	12
LINCOLN	36,600	17	2,013	17	5500.0	6	158	13	431.7	2	1,855	17	5068.3	7	2,636	17	7202.2	13	4,649	17	12702.2	9
LINN	88,850	8	4,340	7	4887.4	14	166	12	186.9	23	4,174	7	4700.5	13	5,668	7	6382.9	15	10,008	7	11270.3	16
MALHEUR	27,175	20	1,273	20	4685.3	18	69	18	254.0	12	1,204	20	4431.4	18	1,494	22	5498.7	18	2,767	21	10184.0	18
MARION	207,350	5	14,341	3	6918.0	2	887	2	427.9	3	13,454	3	6490.1	2	15,805	2	7624.2	10	30,146	3	14542.2	3
MORROW	7,260	33	222	29	3057.9	30	24	26	330.6	6	1	30	2727.3	32	300	30	4132.2	31	522	30	7190.1	31
MULTNOMAH	564,500	1	64,520	1	11429.6	1	7,301	1	1293.4	1	57,211	1	10136.2	1	42,983	1	7614.3	11	107,503	1	19043.9	1
POLK	45,060	16	2,236	16	4962.3	11	121	16	268.5	10	1,111	16	4693.7	14	3,634	15	8064.8	6	5,870	16	13027.1	8
SHERMAN	2,210	34	66	34	3000.0	31	3	34	136.4	30	63	34	2863.6	30	93	34	4227.3	30	159	34	7227.3	30
TILLAMOOK	21,150	23	839	23	3966.9	25	20	28	94.7	36	819	23	3872.3	25	1,554	21	7347.5	12	2,393	22	11314.4	15
UMATILLA	60,000	12	3,214	12	5356.7	8	181	11	301.7	8	3,033	13	5055.0	9	4,855	11	8091.7	5	8,069	11	13448.3	6
UNION	24,410	21	1,042	22	4270.5	22	54	22	221.3	18	988	22	4049.2	22	1,214	23	4983.6	23	2,256	23	9245.9	25
WALLOWA	7,390	32	146	31	1975.6	34	7	33	94.7	35	139	31	1880.9	34	215	32	2909.3	35	361	32	4885.0	35
WASCO	22,700	22	1,283	19	5652.0	5	67	19	295.2	9	1,216	19	5356.8	5	1,858	19	8185.0	3	3,141	19	13837.0	5
WASHINGTON	259,700	4	12,174	5	4687.7	17	431	5	166.0	26	11,743	5	4521.8	17	10,551	6	4062.8	32	22,725	5	8750.5	27
WHEELER	1,425	36	43	36	3071.4	29	2	35	142.9	29	41	36	2928.6	29	43	36	3071.4	34	86	36	6142.9	33
YAMHILL	56,575	15	2,528	15	4474.3	19	137	14	224.5	15	2,391	15	4231.9	20	4,609	12	8157.5	4	7,137	12	12361.9	10

* Lake County offenses are missing 9 months from the Lakeview Police Department

STATE - FIVE YEAR OFFENSE PROFILE

STATE OF OREGON	1978	1979	1980	1981	1982
Population	2,522,786	2,576,693	2,639,915	2,660,435	2,656,185
Murder	120	109	130	115	136
Rape	1,008	1,099	1,085	1,111	1,050
Robbery	3,221	3,334	3,977	4,773	4,422
Aggravated Assault	7,894	9,159	7,551	6,637	6,881
Burglary	39,415	40,699	45,517	52,290	47,109
Larceny/Theft	86,977	96,921	106,155	112,447	105,468
Motor Vehicle Theft	9,989	10,141	9,402	9,017	7,922
Arson	1,379	1,451	1,631	1,593	1,543
PART I-INDEX TOTAL	150,003	162,913	175,448	187,983	174,531
PART II TOTAL	159,756	174,754	176,433	174,673	171,029
GRAND TOTAL	309,759	337,667	351,881	362,656	345,560
INDEX CRIME RATE	5945.4	6321.8	6645.8	7067.0	6571.2
TOTAL CRIME RATE	12277.4	13103.1	13328.8	13633.7	13010.5

The above table provides Index Offenses, Part I Offense Totals and Offense Crime Rates per 100,000 population for the State of Oregon 1978 thru 1982.

The population data for the years 1978 thru 1979 have been adjusted based on a straight line interpolation between the 1970 and 1980 censuses.

FIVE-YEAR OFFENSE PROFILE BY COUNTY

BAKER COUNTY	1978	1979	1980	1981	1982
Population			16,175	16,300	16,240
Murder		2	1		
Rape	5	3	4	1	
Robbery	3	4	2	3	
Aggravated Assault	37	46	36	14	17
Burglary	136	165	174	161	135
Larceny/Theft	384	486	529	502	413
Motor Vehicle Theft	44	37	30	28	15
Arson	18	7	5	9	3
PART I-INDEX TOTAL	627	750	781	718	583
PART II TOTAL	1,748	1,981	1,405	987	959
GRAND TOTAL	2,375	2,731	2,186	1,705	1,542

BENTON COUNTY	1978	1979	1980	1981	1982
Population			68,700	70,050	69,600
Murder		2			1
Rape	8	28	27	28	13
Robbery	19	20	21	14	29
Aggravated Assault	75	167	144	87	91
Burglary	641	717	702	828	651
Larceny/Theft	2,834	2,910	3,298	2,925	2,548
Motor Vehicle Theft	129	186	118	154	109
Arson	35	23	19	14	8
PART I-INDEX TOTAL	3,741	4,053	4,329	4,050	3,450
PART II TOTAL	3,591	4,113	3,802	3,971	3,656
GRAND TOTAL	7,332	8,166	8,131	8,021	7,106

CLACKAMAS COUNTY	1978	1979	1980	1981	1982
Population			243,000	246,100	245,100
Murder	8	3	9	9	13
Rape	38	63	60	48	58
Robbery	103	109	137	165	146
Aggravated Assault	401	596	462	338	311
Burglary	3,377	3,380	3,707	4,731	4,440
Larceny/Theft	5,584	6,317	6,642	7,613	7,208
Motor Vehicle Theft	784	783	795	829	769
Arson	117	110	119	134	134
PART I-INDEX TOTAL	10,412	11,361	11,938	13,867	13,079
PART II TOTAL	10,941	11,752	11,554	11,077	11,100
GRAND TOTAL	21,353	23,113	23,492	24,944	24,179

CLATSOP COUNTY	1978	1979	1980	1981	1982
Population			32,500	32,600	32,700
Murder	3		1	1	
Rape	9	5	6	10	4
Robbery	12	25	15	15	16
Aggravated Assault	73	125	95	32	35
Burglary	447	495	424	462	402
Larceny/Theft	972	1,231	1,109	1,040	900
Motor Vehicle Theft	85	106	103	104	78
Arson	15	14	15	10	16
PART I-INDEX TOTAL	1,616	2,001	1,771	1,674	1,451
PART II TOTAL	2,292	2,696	2,897	2,696	2,504
GRAND TOTAL	3,908	4,697	4,668	4,370	3,955

COLUMBIA COUNTY	1978	1979	1980	1981	1982
Population			35,775	36,150	36,200
Murder	4	2	1		3
Rape	8	5	8	4	1
Robbery	4	10	8	8	11
Aggravated Assault	143	94	117	72	43
Burglary	307	328	368	373	345
Larceny/Theft	701	700	736	802	716
Motor Vehicle Theft	59	69	64	61	61
Arson	14	11	16	8	7
PART I-INDEX TOTAL	1,240	1,219	1,318	1,328	1,187
PART II TOTAL	1,849	2,141	1,771	1,737	1,711
GRAND TOTAL	3,089	3,360	3,089	3,065	2,898

FIVE-YEAR OFFENSE PROFILE BY COUNTY

COOS COUNTY	1978	1979	1980	1981	1982
Population			63,850	63,300	61,750
Murder	5	3	9	1	2
Rape	10	16	30	15	14
Robbery	36	46	34	34	31
Aggravated Assault	344	318	284	194	171
Burglary	803	953	1,165	929	952
Larceny/Theft	1,909	2,237	2,245	2,136	1,997
Motor Vehicle Theft	274	263	238	176	149
Arson	47	38	51	29	26
PART I-INDEX TOTAL	3,428	3,874	4,056	3,514	3,342
PART II TOTAL	4,211	4,935	5,087	5,155	5,222
GRAND TOTAL	7,639	8,809	9,143	8,669	8,564

CROOK COUNTY	1978	1979	1980	1981	1982
Population			13,100	13,200	12,900
Murder	1			3	
Rape	1	2	6		
Robbery	1	1		3	4
Aggravated Assault	38	104	53	11	16
Burglary	144	134	126	125	135
Larceny/Theft	332	377	372	364	350
Motor Vehicle Theft	30	30	37	25	12
Arson	7	6	4	13	3
PART I-INDEX TOTAL	554	654	598	544	520
PART II TOTAL	978	1,089	944	862	1,011
GRAND TOTAL	1,532	1,743	1,542	1,406	1,531

CURRY COUNTY	1978	1979	1980	1981	1982
Population			17,100	17,400	17,200
Murder	2	4	2	4	
Rape	1	5	1	5	6
Robbery	2	8	5	5	2
Aggravated Assault	27	51	43	43	28
Burglary	191	226	225	183	223
Larceny/Theft	480	613	600	553	526
Motor Vehicle Theft	37	47	38	33	34
Arson	6	4	8	15	7
PART I-INDEX TOTAL	746	958	922	836	826
PART II TOTAL	1,141	1,323	1,180	1,216	772
GRAND TOTAL	1,887	2,281	2,102	2,052	1,598

DESCHUTES COUNTY	1978	1979	1980	1981	1982
Population			62,500	63,650	64,350
Murder	1	5	2	4	4
Rape	6	8	8	12	20
Robbery	23	28	22	24	24
Aggravated Assault	202	257	129	62	61
Burglary	586	756	871	817	699
Larceny/Theft	1,841	2,291	2,769	2,737	2,219
Motor Vehicle Theft	160	237	168	181	133
Arson	31	42	19	39	20
PART I-INDEX TOTAL	2,850	3,624	3,988	3,876	3,180
PART II TOTAL	3,498	3,596	3,695	3,827	3,358
GRAND TOTAL	6,348	7,220	7,683	7,703	6,538

DOUGLAS COUNTY	1978	1979	1980	1981	1982
Population			93,400	92,300	92,050
Murder	6	1	3	1	2
Rape	23	34	27	30	29
Robbery	40	32	50	31	28
Aggravated Assault	400	439	348	138	126
Burglary	926	1,150	1,266	1,191	992
Larceny/Theft	2,320	2,840	2,957	2,962	2,497
Motor Vehicle Theft	285	225	255	214	183
Arson	47	36	36	23	20
PART I-INDEX TOTAL	4,047	4,757	4,942	4,590	3,877
PART II TOTAL	5,711	6,640	6,465	5,952	5,326
GRAND TOTAL	9,758	11,397	11,407	10,542	9,203

FIVE-YEAR OFFENSE PROFILE BY COUNTY

GILLIAM COUNTY	1978	1979	1980	1981	1982
Population			2,050	2,025	1,960
Murder					
Rape		3			
Robbery			2		1
Aggravated Assault			6	1	1
Burglary	4	9	11	12	15
Larceny/Theft	23	23	26	22	32
Motor Vehicle Theft	4	2	4	2	6
Arson	5	5	4	1	
PART I-INDEX TOTAL	36	42	53	38	55
PART II TOTAL	87	149	136	133	83
GRAND TOTAL	123	191	189	171	138

GRANT COUNTY	1978	1979	1980	1981	1982
Population			8,200	8,150	7,970
Murder		1	3		3
Rape			1	4	
Robbery		1		1	
Aggravated Assault	10	11	10	9	15
Burglary	44	21	57	45	35
Larceny/Theft	103	101	165	121	74
Motor Vehicle Theft	15	12	11	7	7
Arson	6	1	2	7	1
PART I-INDEX TOTAL	178	148	249	194	135
PART II TOTAL	241	310	345	361	280
GRAND TOTAL	419	458	594	555	415

HARNEY COUNTY	1978	1979	1980	1981	1982
Population			8,230	8,000	7,515
Murder	1				
Rape			1	2	
Robbery	6	2	1	1	3
Aggravated Assault	43	17	18	13	6
Burglary	46	43	66	48	38
Larceny/Theft	242	200	161	160	158
Motor Vehicle Theft	23	20	8	12	9
Arson	3	1		3	2
PART I-INDEX TOTAL	364	283	255	239	215
PART II TOTAL	480	403	395	305	330
GRAND TOTAL	844	686	650	544	546

HOOD RIVER COUNTY	1978	1979	1980	1981	1982
Population			15,800	15,725	15,870
Murder	2				2
Rape	2	4	1	1	2
Robbery	3	4	6	3	4
Aggravated Assault	52	74	42	14	30
Burglary	134	184	157	135	175
Larceny/Theft	345	484	422	467	516
Motor Vehicle Theft	40	51	53	35	28
Arson	6	7	13	5	7
PART I-INDEX TOTAL	584	808	694	660	764
PART II TOTAL	763	926	826	779	755
GRAND TOTAL	1,347	1,734	1,520	1,439	1,519

JACKSON COUNTY	1978	1979	1980	1981	1982
Population			132,750	133,700	133,725
Murder	2	5	5	3	6
Rape	38	47	47	23	30
Robbery	92	78	80	89	63
Aggravated Assault	361	427	229	194	199
Burglary	1,800	1,773	2,028	1,996	1,629
Larceny/Theft	4,503	4,991	5,553	5,216	4,769
Motor Vehicle Theft	423	428	380	304	239
Arson	115	99	98	55	81
PART I-INDEX TOTAL	7,364	7,848	8,420	7,880	7,016
PART II TOTAL	11,855	11,773	12,774	11,775	10,752
GRAND TOTAL	19,219	19,621	21,194	19,655	17,768

FIVE-YEAR OFFENSE PROFILE BY COUNTY

JEFFERSON COUNTY	1978	1979	1980	1981	1982
Population			11,700	11,950	12,225
Murder		1			1
Rape	3	3	3	2	1
Robbery	5	2	2	3	7
Aggravated Assault	58	75	72	33	22
Burglary	89	121	117	126	102
Larceny/Theft	217	319	345	305	239
Motor Vehicle Theft	35	27	38	32	43
Arson	7	5	16	10	3
PART I-INDEX TOTAL	414	551	593	511	418
PART II TOTAL	771	998	1,066	1,060	668
GRAND TOTAL	1,185	1,549	1,659	1,571	1,086

JOSEPHINE COUNTY	1978	1979	1980	1981	1982
Population			59,400	61,200	59,000
Murder	7	1	2	2	
Rape	12	7	7	19	10
Robbery	34	13	24	30	30
Aggravated Assault	54	57	52	168	185
Burglary	580	660	835	938	821
Larceny/Theft	1,407	1,649	1,977	2,165	2,239
Motor Vehicle Theft	157	155	173	117	124
Arson	15	16	33	14	31
PART I-INDEX TOTAL	2,266	2,558	3,103	3,453	3,440
PART II TOTAL	3,372	4,890	5,586	5,882	6,160
GRAND TOTAL	5,638	7,448	8,689	9,335	9,600

KLAMATH COUNTY	1978	1979	1980	1981	1982
Population			59,000	58,625	59,200
Murder	8	1	5	4	8
Rape	22	19	21	11	15
Robbery	22	26	25	32	25
Aggravated Assault	188	209	172	137	139
Burglary	812	727	632	550	579
Larceny/Theft	1,613	1,770	1,908	1,760	1,713
Motor Vehicle Theft	178	202	177	150	128
Arson	40	45	44	46	27
PART I-INDEX TOTAL	2,883	2,999	2,984	2,690	2,634
PART II TOTAL	4,398	4,570	4,885	4,173	4,148
GRAND TOTAL	7,281	7,569	7,869	6,863	6,782

LAKE COUNTY	1978	1979	1980*	1981*	1982
Population			7,550	7,600	7,625
Murder	1	1		1	1
Rape	1				
Robbery		1	1	4	7
Aggravated Assault	10	4	4	4	23
Burglary	27	9	17	20	54
Larceny/Theft	39	27	26	31	6
Motor Vehicle Theft	11	8	4	9	1
Arson	1	3	7	7	
PART I-INDEX TOTAL	90	53	59	66	92
PART II TOTAL	60	109	98	120	149
GRAND TOTAL	150	162	157	186	241

LANE COUNTY	1978	1979	1980	1981	1982
Population			275,200	275,000	270,650
Murder	10	8	6	6	14
Rape	126	112	113	118	98
Robbery	269	317	327	253	256
Aggravated Assault	426	410	510	387	317
Burglary	4,569	5,010	5,169	5,404	4,408
Larceny/Theft	10,589	12,127	13,403	13,302	12,172
Motor Vehicle Theft	1,050	1,013	911	799	629
Arson	121	131	139	112	92
PART I-INDEX TOTAL	17,160	19,128	20,583	20,391	17,986
PART II TOTAL	17,101	18,166	17,576	15,687	17,573
GRAND TOTAL	34,261	37,294	38,159	36,078	32,559

*Lake County history includes the Lakeview Police Department only for the following number of months for each of the years listed:

1978 - 3 months reported
 1979 - 1 month reported
 1980 - 0 months reported
 1981 - 0 months reported
 1982 - 3 months reported

FIVE-YEAR OFFENSE PROFILE BY COUNTY

LINCOLN COUNTY	1978	1979	1980	1981	1982
Population			35,330	35,530	36,600
Murder			2	2	
Rape	7	3	12	11	14
Robbery	8	20	11	21	29
Aggravated Assault	155	124	191	88	115
Burglary	548	461	571	673	575
Larceny/Theft	1,074	1,072	1,130	1,213	1,178
Motor Vehicle Theft	120	104	117	119	92
Arson	25	23	16	29	10
PART I-INDEX TOTAL	1,937	1,807	2,050	2,156	2,013
PART II TOTAL	1,643	1,675	2,655	2,697	2,636
GRAND TOTAL	3,580	3,462	4,705	4,853	4,649

LINN COUNTY	1978	1979	1980	1981	1982
Population			89,750	90,500	88,850
Murder		1	5		5
Rape	17	12	23	36	25
Robbery	58	51	53	53	39
Aggravated Assault	408	305	199	65	97
Burglary	1,548	1,367	1,413	1,245	1,179
Larceny/Theft	3,033	3,014	2,899	2,949	2,810
Motor Vehicle Theft	305	282	240	185	155
Arson	46	54	44	42	30
PART I-INDEX TOTAL	5,415	5,086	4,876	4,575	4,340
PART II TOTAL	6,376	6,276	6,578	5,957	5,668
GRAND TOTAL	11,791	11,362	11,454	10,532	10,008

MALHEUR COUNTY	1978	1979	1980	1981	1982
Population			26,980	27,225	27,175
Murder	1		1	1	4
Rape	4	10	2	5	1
Robbery	15	8	11	10	7
Aggravated Assault	74	104	111	82	57
Burglary	244	208	233	249	181
Larceny/Theft	819	951	1,000	1,053	967
Motor Vehicle Theft	58	70	56	50	51
Arson	12	18	14	7	5
PART I-INDEX TOTAL	1,227	1,369	1,431	1,457	1,273
PART II TOTAL	1,763	2,186	1,676	1,755	1,494
GRAND TOTAL	2,990	3,555	3,107	3,212	2,767

MARION COUNTY	1978	1979	1980*	1981*	1982*
Population			205,950	209,730	207,350
Murder	11	13	6	14	7
Rape	79	72	69	99	69
Robbery	156	188	244	212	187
Aggravated Assault	400	231	225	416	624
Burglary	3,075	3,270	3,759	4,177	3,407
Larceny/Theft	7,427	8,983	9,663	9,802	9,403
Motor Vehicle Theft	685	788	663	647	540
Arson	85	71	113	110	104
PART I-INDEX TOTAL	11,918	13,616	14,742	15,472	14,341
PART II TOTAL	12,743	15,181	15,002	15,322	15,805
GRAND TOTAL	24,661	28,797	29,744	30,794	30,146

MORROW COUNTY	1978	1979	1980	1981	1982
Population			7,500	7,475	7,260
Murder				1	1
Rape		3	1	1	
Robbery	3			1	5
Aggravated Assault	7	7	6	20	18
Burglary	39	40	35	73	40
Larceny/Theft	74	98	103	164	146
Motor Vehicle Theft	22	11	6	11	7
Arson	4	2	4		5
PART I-INDEX TOTAL	149	161	155	271	222
PART II TOTAL	306	299	199	340	300
GRAND TOTAL	455	460	354	611	522

*Crime data does not include that portion of Salem in Polk County.

FIVE-YEAR OFFENSE PROFILE BY COUNTY

MULTNOMAH COUNTY	1978	1979	1980	1981	1982
Population			562,300	561,400	564,500
Murder			38	44	54
Rape	466	538	483	503	510
Robbery	2,096	2,136	2,618	3,507	3,207
Aggravated Assault	2,471	3,077	2,747	3,236	3,542
Burglary	13,524	13,157	15,034	19,863	18,557
Larceny/Theft	26,646	27,722	31,639	37,392	34,699
Motor Vehicle Theft	3,662	3,600	3,376	3,480	3,227
Arson	387	469	592	687	736
PART I-INDEX TOTAL	49,290	50,793	56,543	68,708	64,520
PART II TOTAL	37,442	37,956	36,833	40,794	42,983
GRAND TOTAL	86,732	88,749	93,376	109,502	107,503

POLK COUNTY	1978	1979	1980*	1981*	1982*
Population			45,560	46,650	45,060
Murder	1		2		1
Rape	16	5	15	10	15
Robbery	8	10	28	19	16
Aggravated Assault	147	212	227	212	89
Burglary	356	447	755	776	600
Larceny/Theft	876	1,250	1,675	1,464	1,421
Motor Vehicle Theft	61	76	98	95	72
Arson	9	14	25	15	22
PART I-INDEX TOTAL	1,474	2,014	2,825	2,591	2,236
PART II TOTAL	2,499	2,986	4,001	3,976	3,634
GRAND TOTAL	3,973	5,010	6,826	6,567	5,870

SHERMAN COUNTY	1978	1979	1980	1981	1982
Population			2,190	2,225	2,210
Murder	1	1			
Rape		1			
Robbery	1	1		2	3
Aggravated Assault	6	5	2	1	1
Burglary	7	6	14	12	10
Larceny/Theft	40	38	32	42	44
Motor Vehicle Theft	3	10	5	3	7
Arson	1	2	3	1	2
PART I-INDEX TOTAL	59	64	57	61	66
PART II TOTAL	64	93	77	118	93
GRAND TOTAL	123	157	134	179	159

TILLAMOOK COUNTY	1978	1979	1980	1981	1982
Population			21,150	21,100	21,150
Murder			1	3	
Rape	6	7	2	5	2
Robbery	5	5	7	5	1
Aggravated Assault	31	76	82	32	17
Burglary	138	210	261	278	241
Larceny/Theft	388	557	569	531	527
Motor Vehicle Theft	31	59	36	40	41
Arson	3	9	7	4	10
PART I-INDEX TOTAL	597	923	965	898	839
PART II TOTAL	864	1,728	2,107	1,569	1,554
GRAND TOTAL	1,461	2,651	3,072	2,467	2,393

UMATILLA COUNTY	1978	1979	1980	1981	1982
Population			59,100	59,900	60,000
Murder		2	1	6	3
Rape	16	7	17	17	16
Robbery	23	27	36	31	32
Aggravated Assault	223	223	264	108	130
Burglary	651	668	639	710	786
Larceny/Theft	1,700	1,819	2,135	2,080	2,067
Motor Vehicle Theft	231	199	180	163	151
Arson	26	40	34	32	29
PART I-INDEX TOTAL	2,870	2,985	3,306	3,147	3,214
PART II TOTAL	4,324	4,363	4,953	4,870	4,855
GRAND TOTAL	7,194	7,348	8,259	8,017	8,069

*Crime data includes that portion of Salem in Polk County.

FIVE-YEAR OFFENSE PROFILE BY COUNTY

UNION COUNTY	1978	1979	1980	1981	1982
Population			24,050	24,450	24,410
Murder	2			1	2
Rape	5	3	3	4	9
Robbery	3	4	4	8	6
Aggravated Assault	57	80	63	46	37
Burglary	206	169	220	240	232
Larceny/Theft	582	679	762	663	709
Motor Vehicle Theft	57	51	63	50	38
Arson	7	12	8	8	9
PART I-INDEX TOTAL	919	998	1,123	1,020	1,042
PART II TOTAL	1,527	1,714	1,693	1,332	1,214
GRAND TOTAL	2,446	2,712	2,816	2,352	2,256

WALLOWA COUNTY	1978	1979	1980	1981	1982
Population			7,275	7,300	7,390
Murder	1				
Rape			1	1	
Robbery					1
Aggravated Assault	10	13	21	3	6
Burglary	31	24	31	48	50
Larceny/Theft	86	136	162	112	83
Motor Vehicle Theft	10	15	6	4	6
Arson	2	3		2	
PART I-INDEX TOTAL	140	191	221	170	146
PART II TOTAL	244	229	328	289	215
GRAND TOTAL	384	420	549	459	361

WASCO COUNTY	1978	1979	1980	1981	1982
Population			21,900	22,400	22,700
Murder	1		1	1	1
Rape	3	3	7	3	3
Robbery	13	9	7	16	13
Aggravated Assault	36	97	86	56	50
Burglary	205	260	235	273	268
Larceny/Theft	564	611	760	985	878
Motor Vehicle Theft	65	80	50	72	66
Arson	6	8	11	14	4
PART I-INDEX TOTAL	893	1,068	1,157	1,420	1,283
PART II TOTAL	1,000	1,638	1,737	2,026	1,858
GRAND TOTAL	1,893	2,706	2,894	3,446	3,141

WASHINGTON COUNTY	1978	1979	1980	1981	1982
Population			247,800	253,800	259,700
Murder	2	5	4	9	10
Rape	60	54	61	70	71
Robbery	152	135	183	153	174
Aggravated Assault	741	881	320	213	176
Burglary	2,561	2,876	3,492	3,786	3,569
Larceny/Theft	5,978	6,650	6,776	7,153	7,489
Motor Vehicle Theft	672	718	755	683	618
Arson	82	97	86	64	67
PART I-INDEX TOTAL	10,248	11,416	11,677	12,131	12,174
PART II TOTAL	10,679	11,513	11,291	11,420	10,551
GRAND TOTAL	20,927	22,929	22,968	22,551	22,725

WHEELER COUNTY	1978	1979	1980	1981	1982
Population			1,500	1,425	1,425
Murder					
Rape					
Robbery					
Aggravated Assault	6	1	2	4	2
Burglary	8	13	24	17	14
Larceny/Theft	18	42	13	24	25
Motor Vehicle Theft	1		2	1	2
Arson	3	3	1	2	
PART I-INDEX TOTAL	36	59	42	48	43
PART II TOTAL	43	76	63	43	43
GRAND TOTAL	79	135	105	91	86

FIVE-YEAR OFFENSE PROFILE BY COUNTY

YAMHILL COUNTY	1978	1979	1980	1981	1982
Population			55,600	56,300	56,575
Murder	1	1	1	1	1
Rape	16	17	17	9	13
Robbery	11	15	13	16	23
Aggravated Assault	180	242	179	104	100
Burglary	611	662	684	796	601
Larceny/Theft	1,234	1,556	1,582	1,637	1,682
Motor Vehicle Theft	153	177	141	147	87
Arson	25	22	25	29	21
PART I-INDEX TOTAL	2,231	2,692	2,642	2,739	2,528
PART II TOTAL	3,150	4,270	4,753	4,803	4,609
GRAND TOTAL	5,381	6,962	7,395	7,542	7,137

FULL TIME LAW ENFORCEMENT OFFICERS AND EMPLOYEES - 1982

Full-time criminal Law Enforcement Officers.

This category covers the Sheriff, Chief, Superintendent, Command and Supervisory Officers, Detectives, State Police Troopers, Deputies, Patrol persons and Recruits.

This category does not include: Corrections officers and corrections staff, Civil and tax deputies, part-time officers, reserve officers or part-time employees.

Full-time civilian employees.

This category pertains to the office, records division, communications and other employees directly related to the operation support of the criminal law enforcement functions of the department.

Number of Officers		Number of Support Staff		Total Law Enforcement Employees	
Male	4,228	Male	239	Male	4,466
Female	206	Female	1,088	Female	1,294
Total	4,434	Total	1,326	Total	5,760
Number per 1,000 population 1.66					

When compared to 1981, the above reported numbers represent:

- 0.7% over all decrease in number of officers state-wide
- 0.5% decrease of support employees
- 0.7% decrease in total number of law enforcement employees

LAW ENFORCEMENT OFFICERS ASSAULTED SUPPLEMENTARY REPORT - 1982

TYPE OF ACTIVITY	TOTAL ASSLT WEAPON (A)	FIREARM (B)	KNIFE OTHER INSTR (C)	OTHER DANGR WEAPON (D)	HANDS FIST FEET (E)	TWO MAN VEH (F)	ONE MAN VEHICLE ALONE (G)	ASST. (H)	DETECT OR SPEC ASSIGN ALONE (I)	ASST. (J)	OTHER ALONE (K)	AST. (L)	POLICE ASSAULTS CLEARED (M)			
1. RESPONDING TO DISTURBANCE CALLS	261	5	5	15	236	73	41	133	1	1	4	8	250			
2. BURGLARIES IN PROGRESS/PURSuing	11			1	10	1	2	6		2			8			
3. ROBBERIES IN PROGRESS/PURSuing	4				4			3		1			4			
4. ATTEMPTING OTHER ARRESTS	205	1		9	195	49	33	95	2	10	2	14	199			
5. CIVIL DISORDER (RIOT, MASS DISOB)	16	1		2	13	2	5	6			1	2	16			
6. HANDLING, TRANSPORTING PRISONERS	131		1	7	123	19	22	37		2	8	43	127			
7. INVESTIGATING SUSPICIOUS PER/CIR	66	1		3	62	11	29	25	1				60			
8. AMBUSH - NO WARNING							3	4		1	1	1	8			
9. MENTALLY DERANGED	10	1	2	1	6							1	178			
10. TRAFFIC PURSUITS AND STOPS	181	4	2	10	165	16	82	82			6	7	56			
11. ALL OTHER	59	2		9	48	14	17	14	1		22	76	906			
12. TOTAL 1-11	944	15	10	7	862	185	234	405	5	17						
13. NUMBER WITH PERSONAL INJURY	446	3		2	415											
14. NUMBER WITHOUT PERSONAL INJURY	498	12	1	29	447											
15. TIME OF ASSAULTS	12.01 AM TO 2.00	2.01 AM TO 4.00	4.01 AM TO 6.00	6.01 AM TO 8.00	8.01 AM TO 10.00	10.01 AM TO 12.00	12.01 PM TO 2.00	2.01 PM TO 4.00	4.01 PM TO 6.00	6.01 PM TO 8.00	8.01 PM TO 10.00	10.01 PM TO 12.00	50	87	138	184

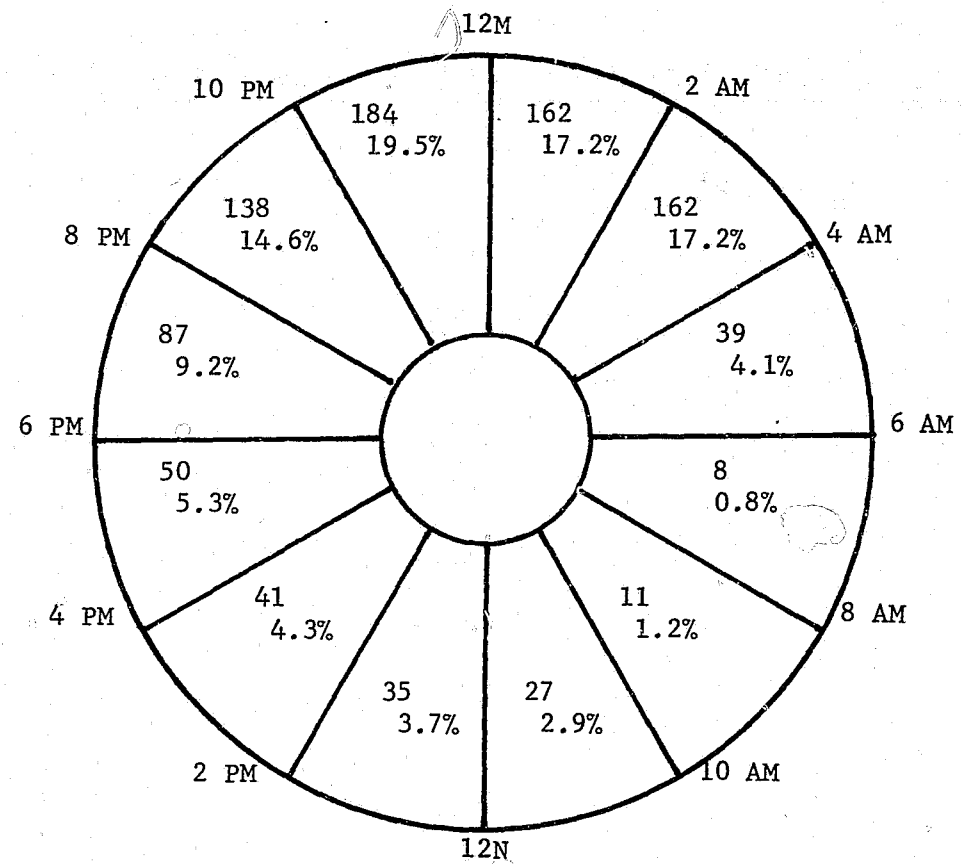
A Grant County Sheriffs Deputy was killed in the line of duty on March 6, 1982.

NUMBER OF OFFICERS ASSAULTED
BY ACTIVITY AND WEAPON
1982

WEAPON	TYPE OF ACTIVITY											TOTAL
	Responding to Disturbance	Burglary in Progress	Robbery in Progress	Attempting Other Arrests	Civil Disorder	Handling Prisoners	Suspicious Person or Circumstance	Ambush no Warning	Mentally Deranged Person	Traffic Stops	All Other	
FIREARM	81	10		2	1			1		5	5	24
	82	5		1	1		1		1	4	2	15
KNIFE	81	7				3	2			1	1	14
	82	5				1			2	2		10
OTHER DANGEROUS WEAPON	81	15		2	6	2	2	1	1	13	9	52
	82	15	1		9	2	7	3		10	9	57
PHYSICAL FORCE (No weapon)	81	219	6	2	193	13	98	53	3	13	64	817
	82	236	10	4	195	13	123	62		165	48	862
TOTAL	81	251	6	6	199	16	103	56	5	14	79	907
	82	261	11	4	205	16	131	66		181	59	944

NUMBER OF OFFICERS ASSAULTED BY COUNTY FOR YEARS 1979 thru 1982

	<u>79</u>	<u>80</u>	<u>81</u>	<u>82</u>		<u>79</u>	<u>80</u>	<u>81</u>	<u>82</u>
Baker	14	8	18	6	Lake	2	0	1	3
Benton	33	28	12	10	Lane	116	120	69	62
Clackamas	46	56	39	41	Lincoln	4	20	14	33
Clatsop	41	30	12	25	Linn	13	35	31	34
Columbia	1	11	8	7	Malheur	0	3	0	0
Coos	49	49	35	37	Marion	41	56	64	63
Crook	5	1	1	6	Morrow	1	1	0	5
Curry	3	4	3	4	Multnomah	338	288	371	325
Deschutes	9	10	21	28	Polk	2	6	0	5
Douglas	26	48	14	29	Sherman	0	0	0	0
Gilliam	0	1	0	1	Tillamook	3	3	2	9
Grant	2	0	1	1	Umatilla	18	32	36	29
Harney	4	2	1	2	Union	8	2	9	9
Hood River	2	4	3	1	Wallowa	0	0	1	0
Jackson	36	43	42	48	Wasco	12	6	7	13
Jefferson	4	3	1	1	Washington	27	30	36	58
Josephine	2	13	16	14	Wheeler	0	0	0	0
Klamath	10	24	29	28	Yamhill	10	9	10	7
					TOTAL	882	946	907	944



NUMBER OF OFFICER ASSAULTS BY TYPE OF DEPARTMENT
1979 thru 1982

	With Injury				Without Injury			
	1979	1980	1981	1982	1979	1980	1981	1982
Sheriff Department	56	73	51	69	52	63	48	62
Police Department	353	282	327	344	358	367	352	329
State Police	17	36	25	33	46	125	104	107
TOTAL	426	391	403	446	456	555	504	498

NUMBER OF OFFICERS ASSAULTED BY COUNTY IN 1982

WITH INJURY AND WITHOUT INJURY

	Total	With Injury	Without Injury		Total	With Injury	Without Injury
Baker	6	3	3	Lake	3		3
Benton	10	1	9	Lane	62	29	33
Clackamas	41	15	26	Lincoln	33	18	15
Clatsop	25	7	18	Linn	34	12	22
Columbia	7	4	3	Malheur			
Coos	37	17	20	Marion	63	35	28
Crook	6	1	5	Morrow	5	1	4
Curry	4	1	3	Multnomah	325	196	129
Deschutes	28	12	16	Polk	5	1	4
Douglas	29	8	21	Sherman			
Gilliam	1	1		Tillamook	9	1	8
Grant	1	1		Umatilla	29	7	22
Harney	2		2	Union	9	4	5
Hood River	1		1	Wallowa			
Jackson	48	22	26	Wasco	13	6	7
Jefferson	1		1	Washington	58	21	37
Josephine	14	9	5	Wheeler			
Klamath	28	11	17	Yamhill	7	2	5
				TOTAL	944	446	498

AGENCY SUMMARY AND DETAIL TABLES

This section of the report has been organized to provide:

1. A summary of each department's and each county's annual activity.
2. A detailed report of each department's and each county's annual activity by crime category.

The summary and detail tables provide a comparison between 1982 and 1981 data.

The summary information is located on the upper pages and the detailed information by crime category for the same departments and counties is located on the facing lower pages.

The counties are listed in alphabetical order with all reporting departments in each county listed in alphabetical order within the county.

Y E A R	NUMBER OF POLICE OFCRS	TOTAL AGENCY STAFF	NUMBER OF OFCRS ASLTD	AGENCY	POPULATION	PART I - INDEX OFFENSES	PERCENT CHANGE	PART II OFFENSES	PERCENT CHANGE	TOTAL OFFENSES	PERCENT CHANGE	PART I - INDEX ARRESTS	PART II ARRESTS	TOTAL ARRESTS	INDEX OFFENSES CLEARED	PERCENT INDEX OFFENSES CLEARED
81	8	10		BAKER CO. SO	6,720	162		187		299		28	31	59	27	16.7
82	8	10		BAKER CO. SO	6,550	99	-38.9	98	-28.5	197	-34.1	31	29	60	1	1.0
81	13	18	18	Baker PD	9,580	515		655		1170		94	279	373	194	37.7
82	12	17	5	Baker PD	9,690	444	-13.8	683	+4.3	1127	-3.7	104	299	403	115	25.9
81	27	27	3	State Police		41		198		234		16	182	198	5	12.2
82	25	27	1	State Police		40	-2.4	157	-18.6	197	-15.8	13	150	163	11	27.5
81	1	1		O.L.C.C.				2		2						
82	1	1		O.L.C.C.				21	+950.0	21	+950.0		1	1		
81	49	56	21	BAKER COUNTY TOTAL	16,300	718		987		1765		138	492	630	226	31.5
82	45	54	6	BAKER COUNTY TOTAL	16,240	583	-18.8	959	-2.8	1542	-9.6	148	479	627	127	21.8
81	24	25		BENTON CO. SO	24,615	573		1005		1578		214	371	585	161	28.1
82	28	32	2	BENTON CO. SO	24,040	516	-9.9	934	-7.1	1450	-8.1	146	334	480	97	18.8
81	39	61	6	Corvallis PD	42,275	2677		2161		4838		685	645	1330	657	24.5
82	39	61	4	Corvallis PD	42,440	2334	-12.8	1916	-11.3	4250	-12.2	553	574	1127	483	20.7
81	1	1		Monroe PD	475	37		48		85		5	16	21	8	21.6
82	1	1		Monroe PD	470	26	-29.7	51	+6.3	77	-9.9	1	5	6	2	7.7
81	18	24	1	Ore.St.Univ. PD		606		245		851		46	51	97	74	12.2
82	16	20		Ore.St.Univ. PD		421	-30.5	205	-16.3	626	-26.4	31	43	74	35	8.3
81	7	7	3	Philomath PD	2,685	118		184		302		51	88	139	51	43.2
82	6	7		Philomath PD	2,650	122	+3.4	199	+8.2	321	+6.3	29	137	166	36	29.5
81	16	16	2	State Police		39		298		337		30	277	307	6	15.4
82	13	14	4	State Police		31	-20.5	336	+12.8	367	+8.9	13	289	302	10	32.3
81	1	1		O.L.C.C.				30		30			8	8		
82	1	1		O.L.C.C.				15	-50.0	15	-50.0					
81	106	135	12	BENTON COUNTY TOTAL	70,050	4053		3971		8021		1081	1456	2487	957	23.6
82	104	136	10	BENTON COUNTY TOTAL	69,600	3450	-14.8	3656	-7.9	7106	-11.4	773	1382	2155	663	19.2
81	109	126	9	CLACKAMAS CO. SO	152,755	8269		4339		12608		998	823	1821	751	9.1
82	110	138	7	CLACKAMAS CO. SO	153,725	7802	-5.6	4353	+0.3	12155	-3.6	1157	866	2023	954	12.2
81	13	18		Canby PD	7,785	369		498		867		79	173	257	57	15.4
82	12	17		Canby PD	7,670	377	+2.2	493	-1.0	870	-0.3	140	228	368	110	29.2
81	11	18	4	Gladstone PD	9,805	585		598		1183		105	423	528	108	18.5
82	12	19		Gladstone PD	9,680	515	-12.0	598	0	1113	-5.9	89	402	491	76	14.8
81	29	46	2	Lake Oswego PD	23,240	1094		821		1915		111	223	334	260	23.8
82	33	50	8	Lake Oswego PD	22,810	862	-21.2	955	+16.3	1817	-5.1	95	619	714	156	18.1
81	21	29	5	Milwaukie PD	17,930	1092		872		1964		239	445	684	191	17.5
82	23	30	4	Milwaukie PD	17,720	1008	-7.7	698	-20.0	1706	-13.1	177	309	486	174	17.3

Months of Reporting	PART I - INDEX OFFENSES,																	PART II OFFENSES, DRUG ABUSE ARRESTS														
	01	02	03	04	05	06	07	08	09	042	10	11	12	13	14	15	16	17	18	181	182	183	184	19	20	21	22	24	26	28	29	
	Murder	Force Rape	Robbery	Aggravated Assault	Burglary	Larceny	Motor Vehicle Theft	Arson	Other Assaults	Forgery/Contft.	Fraud	Embezzle	Stolen Property	Vandalism	Weapons	Prostitution	Other Sex Offense	DRUG ARREST TOTAL	Narcotic	Marijna	Synthetic	Danger Drugs	Gamble	Family Offense	D.U.I. ARRESTS	Liquor Laws ARRESTS	Disorder Conduct ARRESTS	All Other (Except Traffic)	Curfew/Loiter ARRESTS	Runaway		
12	BAKER CO. SO	81			6	60	90	5	1	19	35		29	1	1	2	2	2	2					2	9				15		21	
12	Baker PD	82			6	25	62	6		2	25		31	1	1	1	1	1	1					1	3	3			21		15	
12	State Police	81		1	4	96	391	17	4	66	30	127	2	177	7	10	8	8	8					6	2	76	52	14	38	31	15	
12	O.L.C.C.	82			10	99	325	7	3	46	31	124	1	169	4	6	35	30	5					2	59	65	23	49	33	9		
12	O.L.C.C.	81			4	5	21	6	4	4	1	4		2		5	21	21								128	19		3			
12	O.L.C.C.	82			1	11	26	2		2			8				14	13								110	14					
12	O.L.C.C.	81									1																		13			
12	O.L.C.C.	82																														
12	BAKER COUNTY TOTAL	81	1	3	14	161	302	28	9	83	31	167	2	208	8	17	31	31						2	213	71	14	56	31	36		
12	BAKER COUNTY TOTAL	82			17	135	413	15	3	50	31	149	1	208	5	7	50	44				6	6	3	172	83	23	85	33	9		
12	BENTON CO. SO	81	5	2	19	238	278	28	3	58	2	19	4	192	10	35	23	1	24					11	131	29	13	220		201		
12	Benton PD	82	3	2	19	176	289	22	5	52	6	20		189	13	31	46	8	38					11	112	23	3	200	4	194		
12	Corvallis PD	81	19	12	33	508	1973	108	4	145	25	119	1	734	13	131	26	2	22	1	1	2	2	64	137	39	38	429	8	98		
12	Corvallis PD	82	1	9	25	55	390	1774	78	2	154	42	89	2	10	562	19	68	25	1	23			41	181	64	37	393	32	95		
12	Monroe PD	81			3	6	23	4		5	1	4		4	1	1	2							2	10					1		
12	Monroe PD	82				8	14	4		4		10		1	19	1								2	1				5			
12	Ore.St.Univ.PD	81	3		5	43	544	7	4	4	10	7	1	4	144		11	2						2	2	3	5	37		2		
12	Ore.St.Univ.PD	82			4	41	371	2	1	5	1	1		7	125		14	4							6	6	1	26				
12	Philomath PD	81			5	21	90	2		10	7			34	3	7	10		9					7	20	11	6	30		13		
12	Philomath PD	82			7	31	84			27	8	29		1	25	1	7		7					2	20	19	11	48		5		
12	State Police	81			2	12	17	3	3	4		11		3	4		3	43	2	41					193	21		9				
12	State Police	82			1	6	5	16	3	5	3	8		1	9	1		55	2	51				2	187	21	5	7		1		
12	O.L.C.C.	81										13																				
12	O.L.C.C.	82										3																				
12	O.L.C.C.	81	28	14	87	828	2925	154	14	226	45	205	2	15	1111	31	188	108	5	100	1	2	2	86	493	111	62	747	8	313		
12	BENTON COUNTY TOTAL	82	1	13	29	91	651	2548	109	8	247	60	170	2	20	929	35	113	137	11	123			58	507	133	57	690	36	295		
12	CLACKAMAS CO. SO	81	7	25	85	175	3141	4305	505	26	477	72	193	1	8	1329	19	3	204	28	2	20	6		1	42	341	34	30	784	3	394
12	Clackamas PD	82	9	35	79	203	3043	3945	460	28	503	91	223		9	1501	12	1	176	30	5	19	5	18	63	370	38	34	806		517	
12	Canby PD	81		6	7	88	244	17	5	35	31	126		105	4	16	19		12	4	3				2	72	22	2	32	12	23	
12	Canby PD	82		3	2	5	83	260	22	5	14	46		1	109	4	6	41	3	35	1	2			3	58	31	10	61	10	39	
12	Gladstone PD	81		1	8	20	139	374	40	3	9	7	13		1	118	2	23	20	1	17			6	90	71	13	177	15	27		
12	Gladstone PD	82		1	7	20	112	333	39	3	24	2	9		1	121	6	17	5	2	3			1	94	22	8	251	9	16		
12	Lake Oswego PD	81	1	1	18	15	415	589	40	15	53	39	34		2	228	3	45	9	7				3	68	24	17	169	4	104		
12	Lake Oswego PD	82		1	11	17	281	510	26	16	52	18	34	2	2	206	3	48	17	2	13			4	111	44	18	282	14	73		
12	Milwaukie PD	81		2	10	21	356	634	65	4	100	15	36		5	230	7	24	20	15	1			1	160	29	22	136	30	59		
12	Milwaukie PD	82		5	17	5	377	556	43	5	100	9	21		4	164	7	24	4	3						132	12	8	118	23	68	

Y E A R	NUMBER OF POLICE OFCRS	TOTAL AGENCY STAFF	NUMBER OF OFCRS ASLTD	AGENCY	POPULATION	PART I - INDEX OFFENSES	PERCENT CHANGE	PART II OFFENSES	PERCENT CHANGE	TOTAL OFFENSES	PERCENT CHANGE	PART I - INDEX ARRESTS	PART II ARRESTS	TOTAL ARRESTS	INDEX OFFENSES CLEARED	PERCENT INDEX OFFENSES CLEARED
81	9	11	5	Mollala PD	3,100	264		518		782		75	253	328	84	31.8
82	9	11	5		3,080	312	+18.2	413	-20.3	725	-7.3	122	152	274	107	34.3
81	25	42	4	Oregon City PD	14,920	1122		1363		2485		422	885	1307	319	28.4
82	25	41	5		14,610	1177	+4.9	1497	+9.8	2674	+7.6	466	948	1414	341	29.0
81	7	8	2	Sandy PD	3,275	301		415		716		90	205	295	119	39.3
82	7	8	5		3,425	292	-3.0	401	-3.4	693	-3.2	92	193	285	148	50.7
81	15	22	3	West Linn PD	13,340	410		442		852		86	234	320	85	26.7
82	15	22	4		12,380	376	-3.4	483	+9.3	879	+3.2	102	231	333	94	23.7
81	65	65	5	State Police		361		968		1329		154	905	1059	77	21.3
82	65	75	8			338	-6.4	995	+2.8	1333	+0.3	122	772	894	43	12.7
81	2	4		O.L.C.C.				243		243			36	36		
82	10	9						214	-11.9	214	-11.9		28	28		
81	306	389	39	CLACKAMAS COUNTY TOTAL	246,100	13867		11077		24944		2359	4610	6969	2051	14.8
82	321	420	41		245,100	13079	-5.7	11100	+0.2	24179	-3.1	2562	4748	7310	2203	16.8
81	11	12	2	CLATSOP CO. SO	12,310	230		308		538		38	117	155	31	13.5
82	11	14	3		12,360	196	-11.8	256	-16.9	452	-16.0	56	163	219	48	24.5
81	16	23	1	Astoria PD	9,900	559		951		1510		146	515	661	155	27.7
82	16	23	13		9,950	474	-15.2	964	+1.4	1438	-4.8	132	526	658	129	27.2
81	4	4		Cannon Beach PD	1,200	97		111		208		21	69	90	27	27.8
82	4	5	3		1,205	32	-63.8	86	-22.5	124	-40.4	14	65	79	15	39.5
81	3	3		Gearhart PD	975	42		29		69		11	13	24	13	32.5
82	2	2			930	47	+17.5	36	+24.1	83	+20.3	5	9	14	7	14.9
81				Hammond PD	525											
82	1	1			510											
81	16	22	7	Seaside PD	5,220	430		680		1110		81	402	483	113	26.3
82	16	21	4		5,255	414	-3.7	577	-15.1	991	-10.7	106	527	433	119	28.7
81	4	4		Warrenton PD	2,490	177		120		297		22	64	86	35	19.8
82	4	4			2,460	149	-15.8	115	-4.2	264	-11.1	73	101	174	76	51.0
81	18	18	2	State Police		141		460		601		47	431	478	23	16.3
82	19	20	2			133	-5.7	436	-5.2	569	-5.3	56	411	467	19	14.3
81	1	1		O.L.C.C.				37		37			3	3		
82									34	-8.1	34	-8.1		4	4	
81	73	87	12	CLATSOP COUNTY TOTAL	32,600	1674		2696		4370		366	1614	1980	397	23.7
82	73	90	25		32,700	1451	-13.3	2504	-7.1	3955	-9.5	442	1606	2048	413	28.5

NOT A REPORTING AGENCY IN 1981

Months of Reporting	PART I - INDEX OFFENSES,																	PART II OFFENSES,													
	011	02	03	04	05	06	07	09	042	10	11	12	13	14	15	16	17	DRUG ABUSE ARRESTS													
	Murder	Force Rape	Robbery	Aggravated Assault	Burglary	Larceny	Motor Vehicle Theft	Arson	Other Assaults	Forgery/Contft.	Fraud	Embezzle	Stolen Property	Vandalism	Weapons	Prostitution	Other Sex Offense	DRUG ARREST TOTAL	Narcotic	Marijuna	Synthetic	Danger Drugs	Gambling	Family Offense	D.U.I. ARRESTS	Liquor License ARRESTS	Disorder Conduct ARRESTS	All Other (Except Traffic)	Curfew/Loiter ARRESTS	Runaway	
12				5	47	172	30	8	52	2	6		2	82	9	1	13	19	6	31				11	58	62	12	69	7	41	
12	Mollala PD		1		36	247	27	1	43	17	12		4	90	4		10	6		6				17	58	35	9	69	3	27	
12	Oregon City PD	1	11	16	57	238	744	57	3	155	57	38	1	255	31	1	40	58	3	47	1	7		13	251	226	57	127	30	46	
12	Sandy PD	2	5	15	23	239	812	78	3	175	52	40	1	256	29		71	46	1	42	3		12	297	273	60	153	24	60		
12	West Linn PD	1	1	5	16	53	189	26	1	39	7	11	2	97	2		9	6		6				1	49	59	9	81	1	20	
12	State Police	5	11	21	98	118	39	69	30	23	23	3	33	7		7	57			55		2	3	668	44	11	43	2	51		
12	O.L.C.C.	1	6	5	8	90	128	28	17	36	108	16	2	23	7		19	35		34		1	17	1	641	25	8	16	1		
12	CLACKAMAS COUNTY TOTAL	9	48	165	358	4731	7613	829	134	959	260	556	2	29	2819	92	3	392	272	12	219	13	28	1	82	1920	631	179	1811	101	929
12	CLATSOP CO. SO	2		10	99	108	11		24	7	12			57			5	18		18			3	38	34	2	26		12		
12	Astoria PD	2	9	2	151	357	32	6	87	4	25	2	2	285	6		10	14		13			3	70	204	28	178	53	18		
12	Cannon Beach PD			3	22	69	3		10	2	2		4	240	6		26	31	14	16		1	1	15	72	217	37	160	29	18	
12	Gearhart PD			1	5	23	4		9		10	1	1	13	1		11	11	1	10			1	14	17	6	8		1		
12	Hammond PD	NOT A REPORTING AGENCY IN 1981																													
12	Seaside PD	1		4	3	73	329	19	1	78	13	78	3	181	11		10	29	3	26			1	64	126	28	55	12	22		
12	Warrenton PD	2		5	3	81	302	21	2	80	9	16	1	182	9		9	20	3	17			1	3	59	84	33	54	5	15	
12	State Police	4	1	4	39	65	25	3	7	7	6			26	2		3	4		4			5	37	23	6	13		2		
12	O.L.C.C.			2	3	37	71	15	15		6			10	3			15	1	14		2		348	21	2	8		2		
12	CLATSOP COUNTY TOTAL	1	10	15	32	462	1040	104	10	215	28	149	2	6	597	24		30	76	3	71	1	1	1	11	652	373	70	322	67	65
		4	16	35	402	900	78	16	252	29	81	1	7	545	22		41	92	20	71		1	3	22	578	406	86	304	36	55	

Y E A R	NUMBER OF POLICE OFCRS	TOTAL AGENCY STAFF	NUMBER OF OFCRS ASLTD	AGENCY	POPULATION	PART I - INDEX OFFENSES	PERCENT CHANGE	PART II OFFENSES	PERCENT CHANGE	TOTAL OFFENSES	PERCENT CHANGE	PART I - INDEX ARRESTS	PART II ARRESTS	TOTAL ARRESTS	INDEX OFFENSES CLEARED	PERCENT INDEX OFFENSES CLEARED
81	13	16			20,855	513		303		816		89	207	296	94	18.3
82	11	13		COLUMBIA CO. SO	20,620	465	-9.4	250	-17.5	715	-12.4	99	94	193	88	18.9
81	5	6	2	Clatskanie PD	1,625	44		64		108		36	46	82	19	43.2
82	5	6			1,625	45	+2.3	81	+26.6	126	+16.7	16	75	91	17	37.8
81	5	6	1	Rainier PD	1,620	87		201		288		34	113	147	33	37.9
82	5	6	3		1,610	58	-53.3	220	+9.5	278	-3.5	32	168	200	19	32.8
81	15	26		St. Helens PD	7,035	432		583		1015		158	491	629	121	28.0
82	14	26			7,200	362	-16.2	576	-1.2	938	-7.6	172	460	632	77	21.3
81	5	7		Scappoose PD	3,260	136		239		375		29	156	185	34	25.0
82	5	7	1		3,285	132	-2.9	175	-26.8	307	-18.1	42	90	132	47	35.6
81	3	4	1	Vernonia PD	1,755	78		81		159		14	52	66	16	20.5
82	4	4	1		1,760	84	+7.7	178	+119.8	262	+64.8	31	106	137	25	29.8
81	14	14	4	State Police		38		204		242		37	203	240	12	31.6
82	14	15	2			41	+7.9	209	+2.5	250	+3.3	19	178	197	10	24.4
81				O.L.C.C.				62		62						
82	1	1						22	-64.5	22	-64.5					
81	60	79	8	COLUMBIA COUNTY TOTAL	36,150	1328		1787		3065		377	1268	1645	329	24.8
82	59	78	7		36,200	1187	-10.6	1711	-1.5	2898	-5.4	411	1171	1582	283	23.8
81	31	38	8	COOS CO. SO	25,641	952		1075		2027		204	384	588	262	27.5
82	26	34	12		25,370	888	-11.7	1107	+3.0	1995	-1.6	208	594	802	230	25.9
81	6	6	1	Bandon PD	2,430	83		114		197		34	120	154	39	47.0
82	6	6	1		2,360	61	-2.5	136	+19.3	197	0	45	104	149	32	52.5
81	29	37	2	Coos Bay PD	14,273	148		2023		3171		303	768	1071	300	26.1
82	28	36	4		13,710	129	-1.7	2303	+13.8	3432	+8.2	254	954	1208	273	24.2
81	7	11		Coquille PD	4,500	165		145		310		49	133	182	59	35.8
82	7	10			4,350	161	-2.4	152	+4.8	313	+1.0	56	136	192	50	31.1
81	4	4		Eastside PD	1,570	34		59		93		6	47	53	7	20.6
82	4	4			1,500	23	-32.4	70	+18.6	93	0	7	61	68	2	8.7
81				Lakeside PD*	1,450	16		27		43		1	11	12	5	31.3
82	1	1			1,440	20		42		62		12	30	42	5	25.0
81	6	11	7	Myrtle Point PD	2,990	146		146		292		75	74	149	39	26.7
82	6	11	7		2,925	117	-19.9	158	+8.2	275	-5.8	56	81	137	32	27.4
81	15	20	12	North Bend PD	9,670	803		620		1423		344	262	606	321	40.0
82	14	18	9		9,320	786	-2.1	512	-17.4	1298	-8.8	304	220	524	294	37.4

*Lakeside PD - Department was disbanded as of 4/1/81
Reestablished as a department as of 5/1/82

Months of Reporting	PART I - INDEX OFFENSES,																	PART II OFFENSES,												
																		DRUG ABUSE ARRESTS												
	011	02	03	04	05	06	07	09	042	10	11	12	13	14	15	16	17	18	181	182	183	184	19	20	21	22	24	26	28	29
	Murder	Force Rape	Robbery	Aggravd Assault	Burglary	Larceny	Motor Vehicle Theft	Arson	Other Assaults	Forgery/Conft.	Fraud	Embezzle	Stolen Property	Vandalism	Weapons	Prostitution	Other Sex Offense	DRUG ARREST TOTAL	Narcotic	Marijua	Synthetic	Danger Drugs	Gamble	Family Offense	D.U.I. ARRESTS	Liquor Laws ARRESTS	Disorder Conduct ARRESTS	All Other (Except Traffic)	Curfew/Loiter ARRESTS	Runaway
12	COLUMBIA CO. SO	81		1	44	189	263	15	1	11	5	27		117			13	17	1	13					66	35	2	53		8
12	Clatskanie PD	82	2		5	26	165	239	27	1	44	6	14		87		10	5		5				5	24	11	2	48		12
12	Rainier PD	81		1	1	16	65	4		6	6			20	1		4	1	4	4				24	24	2	8	2	1	
12	St. Helens PD	81		3	10	90	311	15	3	66	29	46		160	6		10	13	1	10	2		1	3	82	122	17	55	4	19
12	Scappoose PD	81		1	6	38	79	12		12	11	46		45	1		3	9		8			1	57	44	8	22		4	
12	Vernonia PD	81	1	1	6	22	40	9		4	2	58		47	1		4	4	1	1		2		24	27	4	8		3	
12	State Police	81	3	1	3	7	15	6	3	4		9		34	2		4	14	3	11				154	10		7			
12	O.L.C.C.	81		1	3	11	18	3	4	6	1	1		3	4		8	19	2	14		3			137	10	1	5		
12	COLUMBIA COUNTY TOTAL	81	4	8	72	373	802	61	8	114	49	183	2	392	12		43	62	5	52	2	3	1	7	443	267	93	210	22	37
12	COOS CO. SO	81	4	9	136	330	425	42	6	22	7	32	2	266	10		26	61	1	49	8	3		17	110	61	13	183		175
12	Bandon PD	81	1	1	13	25	41	3		1	3	1		17	1		1	14		12	2			48	25	5	6		6	
12	Coos Bay PD	81	6	11	15	298	750	77	11	212	30	115	13	348	19		16	45		43		1	44	289	85	63	390	7	85	
12	Coquille PD	81	2	7	51	100	4	1		8	2	12		60			6	9		8				2	27	20	6	14		13
12	Eastside PD	81		2	34	117	3	3		16	5	10		62			4	2	1	1				1	20	39	8	19		15
12	Lakeside PD*	81		1	10	12				3	1			11	1		2	10		10					39	3	2	4		2
12	Myrtle Point PD	81	1	4	44	88	9	3		8				8			4		4					2	6	4	7	8		10
12	North Bend PD	81	3	1	3	36	70	3	1	28	4	1		26	3		2	5		8				5	18	16	6	14		21
12		82	1	3	9	8	122	632	28	83	14	14		228	2		13	8	1	7				7	113	18	24	76		
12		82		3	7	199	555	21	1	80	13	25	2	196	6		8	10		8	1	1		1	75	19	18	51		

*Lakeside PD - Department was disbanded as of 4/1/81
Reestablished as a department as of 5/1/82

Y E A R	NUMBER OF POLICE OFCRS	TOTAL AGENCY STAFF	NUMBER OF OFCRS ASLTD	AGENCY	POPULATION	PART I - INDEX OFFENSES	PERCENT CHANGE	PART II OFFENSES	PERCENT CHANGE	TOTAL OFFENSES	PERCENT CHANGE	PART I - INDEX ARRESTS	PART II ARRESTS	TOTAL ARRESTS	INDEX OFFENSES CLEARED	PERCENT INDEX OFFENSES CLEARED
81	3	3		Powers PD	800	45		73		118		9	57	66	12	26.7
82	3	3			775	28	-37.8	39	-46.6	67	-43.2	5	23	28	9	32.1
81	28	28	5	State Police		122		836		958		57	758	815	21	17.2
82	24	27	4			129	+5.7	633	-24.3	762	-20.5	46	543	589	14	10.9
81				O.L.C.C.				37		37						
82	1	1						70	+89.2	70	+89.2		7	7		
81	129	158	35	COOS COUNTY TOTAL	63,300	3514		5,555		8669		1082	2614	3696	1065	30.3
82	120	151	37		61,750	3342	-4.9	5222	+1.3	8564	-1.2	993	2753	3746	941	28.2
81	6	8		CROOK CO. SO	7,950	197		180		377		45	81	126	38	19.3
82	7	9	1		7,650	206	+4.6	237	+31.7	443	+17.5	42	71	113	41	19.9
81	10	16	1	Prineville PD	5,250	326		550		876		142	363	505	67	20.6
82	9	16	5		5,250	284	-12.9	677	+23.1	961	+9.7	110	382	492	71	25.0
81	6	6		State Police		21		128		149		20	110	130	4	19.0
82	7	7				30	+42.9	86	-32.8	116	-22.1	27	69	96	8	26.7
81				O.L.C.C.				4		4						
82	1	1						11	+175.0	11	+175.0		7	7		
81	22	30	1	CROOK COUNTY TOTAL	13,200	544		862		1406		207	554	761	109	20.0
82	24	33	6		12,900	520	-4.4	1011	+17.3	1531	+8.9	179	529	708	120	23.1
81	19	29		CURRY CO. SO	11,200	406		319		725		79	88	167	69	17.0
82	16	27	1		11,180	378	-6.9	258	-19.1	636	-12.3	53	91	144	71	18.8
81	7	12		Brookings PD	3,490	188		288		476		64	242	306	43	22.9
82	7	12	1		3,420	249	+32.4	183	-36.5	432	-9.2	89	154	243	82	32.9
81	4	4		Gold Beach PD	1,605	144		295		439		21	91	112	21	14.6
82	4	4	1		1,520	133	-7.6	155	-47.5	288	-34.4	46	62	108	20	15.0
81			1	Port Orford PD*	1,105	76		57		133					22	28.9
82					1,080	45	-40.8	38	-33.3	83	-37.6				8	17.8
81	10	10	2	State Police		22		250		272		11	225	236	1	4.5
82	9	10	1			21	-4.5	127	-49.2	148	-45.6	7	84	91	5	23.8
81				O.L.C.C.				7		7						
82	1	1						11	+57.1	11	+57.1					
81	40	55	3	CURRY COUNTY TOTAL	17,400	836		1216		2052		175	646	821	156	18.7
82	37	54	4		17,200	826	-1.2	772	-36.5	1598	-22.1	175	391	566	186	22.5

*Port Orford PD reports were submitted by Curry Co. SO

Months of Reporting	PART I - INDEX OFFENSES,																	PART II OFFENSES, DRUG ABUSE ARRESTS												
	01	02	03	04	05	06	07	09	042	10	11	12	13	14	15	16	17	18	181	182	183	184	19	20	21	22	24	26	28	29
	Murder	Force Rape	Robbery	Aggravd Assault	Burglary	Larceny	Motor Vehicle Theft	Atson	Other Assaults	Forgery/Contft.	Fraud	Embezzle	Stolen Property	Vandalism	Weapons	Prostitution	Other Sex Offense	DRUG ARREST TOTAL	Narcotic	Marijna	Synthetic	Danger Drugs	Gamble	Family Offense	D.U.I. ARREST	Liquor Laws ARREST	Disorder Conduct Arrest	All Other (Except Traffic)	Curfew/Loiter ARREST	Runaway
12			1	2	12	29	1		6					19	1									1	13	6	4	14		6
12	81			1	8	18	1		2				13										1	3	3	2	9		4	
12	82		2	6	53	61	10	10	16	6	25	2	10	4		7	135	21	114					496	50	13	12		8	
12	81		2	7	42	57	11	10	21	9	10	5	15	6		4	86	5	73				1	376	32	3	12		6	
12	82										2																	18		
12	81	1	15	34	194	929	2136	176	29	382	62	207	3	15	991	42	72	289	23	250	10	6	1	73	1139	276	141	747	10	306
12	82	2	14	31	171	952	1997	149	26	427	65	217	7	14	901	34	74	231	10	199	4	18		54	1299	309	121	758	32	302
12			1	4	66	111	10	5	15	5	16		51	3		14	12		12				1	6	9		38		15	
12	81		2	4	73	124	3		21	5	24		1	62		25	6		5			4	11	16	3	49		13		
12	82		3	5	56	242	11	7	46	7	29		5	110		14	40		38			1	74	79	7	137	20	27		
12	81		2	10	60	203	8	1	60	23	143			119	5	10	20		20			3	47	73	8	158	6	30		
12	82			2	3	11	4	1		1				1	1	11	43		43					42	8	1	8			
12	81			2	2	23	1	2	3				7				20		20						26	16		3		
12	82																									7		10		
12	81		3	3	11	125	364	25	13	61	13	46	5	162	4	39	95		93			2	2	122	96	8	184	20	42	
12	82		4	16	135	350	12	3	84	28	162	1	188	3	35	46		45				1	7	84	112	11	220	6	43	
12		3	2	21	98	261	18	3	18	2	12	1	97	2	9	26	4	21				4	19		6	33		42		
12	81		1	12	119	215	24	5	22	7	20		68	1	9	16	12	4				4	24	1	5	42		24		
12	82		3	8	38	125	8	6	13		34		50	1		29		26	1	2				103	36	20	9	6		
12	81			11	57	173	5		3	1	14		44		5	8		8						49	54	14	9		1	
12	82			2	26	109	4	3	12	5	31	3	68	1	5	5		5				3	35	9	2	63	9	19		
12	81	1		11	19	42	2	1	6	1	3	1	17		4			2					2		28	4	1	11	7	1
12	82			3	13	26	1	1	1		8		14		2													10	4	
12	81			1	3	13	2	1	1		1		14		2								2					6		1
12	82			1	2	16	1	2	2		4		4	2			60	5	33						137	13	1	2		
12	81				3	15	2	1	1		2		7			3	26	4	15				1	46	8		2			
12	82																											3		
12	81	4	5	43	183	553	33	15	51	8	87	5	236	6	18	120	9	107	1	3			11	294	78	29	142	9	71	
12	82	6	2	28	223	526	34	7	45	12	74		174	3	22	53	16	29				6	147	67	20	81	7	27		

*Port Orford PD reports were submitted by Curry Co. SO

Y E A R	NUMBER OF POLICE OFCRS	TOTAL AGENCY STAFF	NUMBER OF OFCRS ASLTD	AGENCY	POPULATION	PART I - INDEX OFFENSES	PERCENT CHANGE	PART II OFFENSES	PERCENT CHANGE	TOTAL OFFENSES	PERCENT CHANGE	PART I - INDEX ARRESTS	PART II ARRESTS	TOTAL ARRESTS	INDEX OFFENSES CLEARED	PERCENT INDEX OFFENSES CLEARED
81	27	37	8	DESCHUTES CO. SO	38,960	1356		698		2054		245	291	536	232	17.1
82	28	42	8		39,205	1125	-17.0	614	-12.0	1739	-15.3	213	273	486	187	16.6
81	31	46	9	Bend PD	17,425	1712		2048		3760		480	1408	1888	571	29.8
82	32	45	12		17,800	1388	-18.9	1707	-16.7	3095	-17.7	584	1141	1725	531	38.3
81	14	21		Redmond PD	6,575	559		546		1105		203	389	592	145	23.9
82	15	22	4		6,615	486	-13.1	541	-0.9	1027	-7.1	186	349	535	145	29.8
81	3	3		Sisters PD	690	66		35		101		7	9	16	3	4.5
82	3	8			730	49	-25.8	14	-60.0	63	-37.6	15	17	32	3	6.1
81	30	30	4	State Police		183		483		666		66	419	485	38	20.8
82	32	36	4			132	-27.9	407	-15.7	539	-19.1	61	343	404	32	24.2
81	1	2		O.L.C.C.				17		17			20	20		
82	1	2						75	+341.2	75	+341.2		13	13		
81	106	144	21	DESCHUTES COUNTY TOTAL	63,650	3876		3827		7703		1001	2536	3537	929	24.0
82	111	155	28		64,350	3180	-18.0	3358	-12.3	6538	-15.1	1059	2136	3195	698	28.2
81	75	109	1	DOUGLAS CO. SO	57,875	1800		2135		3935		505	1086	1591	458	23.4
82	60	89	2		58,355	1556	-13.6	1,447	-8.8	3503	-11.0	413	883	1296	354	22.8
81	5	6	1	Canyonville PD	1,265	100		148		248		23	33	56	40	40.0
82	3	4			1,260	62	-38.0	93	-37.2	155	-37.5	16	47	63	23	37.1
81	8	13		Myrtle Creek PD	3,345	231		427		658		68	201	269	69	29.9
82	8	13	1		3,235	196	-15.2	476	-35.4	472	-28.3	70	170	240	58	29.6
81	3	3		Oakland PD	880	23		98		121		2	94	96	5	21.7
82	3	3	1		860	13	-43.5	52	-46.9	65	-46.3	6	61	67	1	7.7
81	12	18		Reedsport PD	4,935	363		337		600		27	105	132	43	16.3
82	12	17			4,880	248	-5.7	362	+7.4	610	+1.7	59	188	247	68	27.4
81	30	40	6	Roseburg PD	16,200	1555		1327		2882		707	668	1375	615	39.5
82	29	39	14		15,880	1250	-19.6	1176	-11.4	2426	-15.8	490	522	1012	431	34.5
81	9	13	2	Sutherlin PD	4,480	277		378		635		79	187	266	69	24.9
82	9	13			4,350	221	-20.2	335	-11.4	556	-15.1	46	99	145	43	19.5
81	7	12	1	Winston PD	3,300	205		206		411		88	114	202	69	33.7
82	7	12	4		3,230	176	-14.1	342	+66.0	518	+26.0	63	112	175	58	33.0
81	42	42	3	State Police		136		868		1004		65	774	839	30	22.1
82	37	40	7			155	+14.0	652	-24.9	807	-19.6	66	517	583	41	26.5
81	1	1		O.L.C.C.				28		28						
82	1	1						91	+225.0	91	+225.0		13	13		
81	192	257	14	DOUGLAS COUNTY TOTAL	92,300	4590		3952		10542		1566	3262	4828	1398	30.5
82	169	231	29		92,050	3877	-15.5	5326	-10.5	9203	-12.7	1239	2612	3841	1077	27.8

Months of Reporting	PART I - INDEX OFFENSES,																	PART II OFFENSES, DRUG ABUSE ARRESTS													
	01	02	03	04	05	06	07	09	042	10	11	12	13	14	15	16	17	18	181	182	183	184	19	20	21	22	24	26	28	29	
	Murder	Force Rape	Robbery	Aggravtd Assault	Burglary	Larceny	Motor Vehicle Theft	Arson	Other Assaults	Forgery/Contft.	Fraud	Embezzle	Stolen Property	Vandalism	Weapons	Prostitution	Other Sex Offense	DRUG ARREST TOTAL	Narcotic	Marijina	Synthetic	Danger Drugs	Gamble	Family Offense	D.U.I. ARRESTS	Liquor Laws ARRESTS	Disorder Conduct ARRESTS	All Other (Except Traffic)	Curfew/ARRESTS	Runaway	
12	81	1	2	8	19	359	895	57	15	66	8	87		198	5	1	18	49	13	34		2	1	6	142	16	6	97		6	
12	82	3	2	1	9	367	689	49	5	86	8	71	1	3	173		17	23	5	18				10	89	15	12	55		10	
12	81		8	13	28	304	1281	75	3	126	38	158	1	7	317	28	1	36	179	2	168	1	8	11	755	294	15	188		4	
12	82	1	8	16	36	201	1064	52	10	170	30	136	2	8	296	35	1	36	130	9	99	2	20	2	6	425	245	20	204	2	3
12	81			2	6	88	483	24	6	28	12	68			155	2	1	8	37		35			8	200	477	19	31			
12	82			5	9	82	371	17	2	44	7	25	1	118	2		16	25		25				5	199	41	16	51			
12	81			1	1	17	45	2		4		6			13	1		2								2		3		2	
12	82					8	39	2		1		3			3										1			2		1	
12	81	3	2		8	49	83	23	15	24	8	15		1	19	3	1	4	98	5	92		1		210	52	6	12		3	
12	82		10	2	7	41	56	13	3	13	2	8			20	2		16	69	3	61		5		171	46	4	16			
12	81											3														20					
12	82											8														13			51		
12	81	4	12	24	62	817	2737	181	39	248	66	337	1	8	697	39	4	68	363	20	329	1	13	1	23	1309	369	46	335		15
12	82	4	20	24	61	699	2219	133	20	314	47	251	3	12	610	39	1	85	247	17	203	2	25	2	21	885	360	52	379	2	14
12	81	1	16	13	88	585	992	92	13	226	46	197		1	451	19	1	37	249	5	256	2	6		17	266	167	36	326	17	108
12	82		7	8	66	475	922	76	2	204	41	110		1	408	16		55	181	161	1	19		22	188	136	53	457	5	81	
12	81				1	26	72	1		7		81			16			3	1	1					10	6	5	15		3	
12	82				6	12	41	2		3	1	21			18	1		2	7	5	2				15	5	1	12		6	
12	81				14	48	160	7	2	24	4	124			83	3		7	31	17	17		3	6	31	26	33	47	2	13	
12	82				1	6	56	129	4	16	4	22			54	2		7	5	5				3	6	31	26	33	47	2	13
12	81		1		1	5	14	2		4		2			11			30	27	2	1				24	6	2	9		2	
12	82				3	10				4		2			5			4	4	4					13	11	4	6		1	
12	81	2	1	1	56	195	6	2	21	3	58				114		1	4	3	3					53	19	7	48		3	
12	82	2	1	7	48	177	10	3	42	15	14				93	6		24	18	17			3	40	67	9	56		11		
12	81	10	8	17	313	1148	58	1	125	15	94	1	1	336	18		32	66	2	56	1	7			312	30	28	202	7	33	
12	82	1	2	14	21	268	874	64	6	142	34	87		1	250	9		41	25	23			4	244	26	27	244	2	27		
12	81			1	6	75	175	19	1	28	15	86		3	63	4		6	33	1	29		3	2	37	19	16	38	1	10	
12	82			1	5	62	143	8	2	16	9	117	1		84	1		16	6	1	5		1	4	35	6	8	33		4	
12	81		1	2	60	131	9	2	23	2	33		2	47	3		7	4	4						38	9	13	20	1	10	
12	82	1		1	46	124	4		33	14	121		1	52	1		8	8	4					2	32	8	12	35	11	7	
12	81		1	7	8	23	75	20	2	12	19	25		2	16	13		3	106	4	101		1	1	534	53	7	24		6	
12	82		18	3	14	22	77	15	6	14	11	12		3	18	9		28	104	93				3	316	34	5	15		5	
12	81											2																	14		
12	82										19															13			59		
12	81	1	30	31	138	1191	2962	214	23	465	104	700	1	9	1137	60	2	120	523	12	474	3	32	4	25	1325	335	144	743	28	188
12	82	2	29	28	126	992	2497	183	20	474	129	564	3	7	982	45	1	181	358	1	317	3	37	1	41	909	338	139	962	22	149

Y E A R	NUMBER OF POLICE OFCRS	TOTAL AGENCY STAFF	NUMBER OF OFCRS ASLTD	AGENCY	POPULATION	PART I - INDEX OFFENSES	PERCENT CHANGE	PART II OFFENSES	PERCENT CHANGE	TOTAL OFFENSES	PERCENT CHANGE	PART I - INDEX ARRESTS	PART II ARRESTS	TOTAL ARRESTS	INDEX OFFENSES CLEARED	PERCENT INDEX OFFENSES CLEARED
81	1	1		GILLIAM CO. SO	745	5		13		18			3	3		
82	1	1		GILLIAM CO. SO	755	16	+220.0	16	+23.1	32	+77.8	3	27	30	4	25.0
81	1	1		Arlington PD	500	11		4		15					1	9.1
82	1	1		Arlington PD	455	8	-27.3	4	0	12	-20.0				1	12.5
81	1	1		Condon PD	780	11		12		23		11	5	16	8	72.7
82	1	2	1	Condon PD	750	19	+72.7	13	+8.3	32	+39.1	13	5	18	6	31.6
81	11	11		State Police		11		104		115		11	99	110	2	18.2
82	7	8		State Police		12	+9.1	46	-55.8	58	-49.6	9	48	57	2	16.7
81				O.L.C.C.				4		4						
81	14	14		GILLIAM COUNTY TOTAL	2,025	38		133		171		22	107	129	11	28.9
82	10	12	1	GILLIAM COUNTY TOTAL	1,960	55	+44.7	83	-37.6	138	-19.3	25	80	105	13	23.6
81	4	5	1	GRANT CO. SO	5,045	87		67		154		16	39	55	18	20.7
82	4	5	1	GRANT CO. SO	4,915	50	-42.5	62	-7.5	112	-27.3	21	39	60	18	36.0
81	4	8		John Day PD	2,005	64		161		225		18	110	128	20	31.3
82	4	8		John Day PD	1,975	59	-7.8	161	0	220	-2.2	18	107	125	17	28.8
81	2	2		Prairie City PD	1,100	23		41		64		16	44	60	8	34.8
82	2	2		Prairie City PD	1,080	7	-69.6	1	-48.8	28	-56.3	3	13	16	4	57.1
81	5	5		State Police		20		85		100		6	71	77	5	23.0
82	5	5		State Police		19	-5.0	26	-67.5	45	-55.0	11	24	35	5	26.3
81				O.L.C.C.				10		10			2	2		
82				O.L.C.C.				10	0	10	0					
81	15	20	1	GRANT COUNTY TOTAL	8,150	194		311		555		56	266	322	51	26.3
82	15	20	1	GRANT COUNTY TOTAL	7,970	135	-30.4	280	-22.4	415	-25.2	53	183	236	44	32.6
81	2	3		HARNEY CO. SO	2,935	71		27		98		17	17	34	8	11.3
82	2	3		HARNEY CO. SO	3,165	41	-42.3	30	+11.1	71	-27.6	7	13	20	4	9.8
81	7	13	1	Burns PD	3,475	122		154		276		39	108	147	26	21.3
82	6	10	2	Burns PD	2,895	136	+11.5	195	+26.6	331	+19.9	48	144	192	35	23.7
81	2	2		Hines PD	1,590	23		22		45		2	17	19	3	13.0
82	2	2		Hines PD	1,455	28	+21.7	25	+13.6	53	+17.8	3	20	23	9	32.1
81				Paiute Tribal PD*		1		5		6			19	19		
82				Paiute Tribal PD*												

*Paiute Tribal PD no longer a reporting agency as of 6/1/81

Months of Reporting	PART I - INDEX OFFENSES										PART II OFFENSES																					
	011	02	03	04	05	06	07	09	042	10	11	12	13	14	15	16	17	18	181	182	183	184	19	20	21	22	24	26	28	29		
	Murder	Force Rape	Robbery	Aggravd Assault	Burglary	Larceny	Motor Vehicle Theft	Arson	Other Assaults	Forgery/Contft.	Fraud	Embezzle	Stolen Property	Vandalism	Weapons	Prostitution	Other Sex Offense	DRUG ARREST TOTAL	Narcotic	Marijina	Synthetic	Danger Drugs	Gamble	Family Offense	D.U.I. ARRESTS	Liquor Laws ARRESTS	Disorder ARRESTS	All Other (Excp Traffic)	Curfew/Loiter ARRESTS	Runaway		
12	GILLIAM CO. SO	81				1	4		1					7			1					1										
12		82			3	11	2							6																		
12	Arlington PD	81			2	7	1	1			1																					
12		82			4	3	1							3			1															
12	Condon PD	81			6	4	1		1		3			1																		
12		82			1	6	1		1	3				4																		
12	State Police	81		1	3	7			2	1	2			4				22	1	21					36	27						
12		82			2	7	2		1					7				8		8					24	10						
12	O.L.C.C.	81																														
12		82																														
12	GILLIAM COUNTY TOTAL	81		1	12	22	2	1	4	1	6			12	3		1	25	1	21					36	27						
12		82		1	15	32	6		2	3			13	1		1	8		8						26	10						
12	GRANT CO. SO	81	4	1	4	26	45	3	4	2	1	7		19			5								8	5	2	8				
12		82	1		5	18	25	1	3	1	5			11	3		3								3	4	5	18				
12	John Day PD	81			2	11	48	3	12	7	5			23	3		5	16	10	2	4			2	37	23	4	13	6	6		
12		82	2		7	8	40	2	13	2	18	1		28	2		4	12	10	2	4			2	30	30	4	14	5	2		
12	Prairie City PD	81			4	18	1		6		1			5	2		4	6							4	5	4	7	8	3		
12		82			3	3		1	5					3	2		1	6						1	4	1		1				
12	State Police	81			3	4	10	3	1	1	5			3			1	6		6					29	31						
12		82			9	6	4							2			1	3		3					14	3						
12	O.L.C.C.	81									7																					
12		82									1																					
12	GRANT COUNTY TOTAL	81	4	1	9	45	71	7	21	9	25			30	5		14	28	16	2	10			2	78	68	10	32	14	9		
12		82	3		15	35	74	7	21	3	24	1		44	5		9	15	13	2				3	51	38	9	44	5	2		
12	HARNEY CO. SO	81			1	13	44	8			2			18			1	1			1						1	3		3		
12		82			1	5	33	1						17																		
12	Burns PD	81	2	1	4	22	89	4	14		5			47	2		2	1	1					1	63	2	6	13				
12		82			3	26	99	6	19	2	6			49	2		2	9	9						68	3	24	19				
12	Hines PD	81			3	9	10	1		1			1	3											13	3	3	1				
12		82			2	6	18	2	2					5			1	5	5						8		5	4				
12	Paiute Tribal PD*	81						1									1								1	13	2					
12		82																														

*Paiute Tribal PD no longer a reporting agency as of 6/1/81

Y E A R	NUMBER OF POLICE OFCRS	TOTAL AGENCY STAFF	NUMBER OF OFCRS ASLTD	AGENCY	POPULATION	PART I - INDEX OFFENSES	PERCENT CHANGE	PART II OFFENSES	PERCENT CHANGE	TOTAL OFFENSES	PERCENT CHANGE	PART I - INDEX ARRESTS	PART II ARRESTS	TOTAL ARRESTS	INDEX OFFENSES CLEARED	PERCENT INDEX OFFENSES CLEARED
81	6	6		State Police		22		98		120		13	74	87	4	18.2
82	6	6				11	-50.0	71	-27.6	82	-31.7	4	72	76	1	9.1
81				O.L.C.C.				9		9						
82								9	0	9	0					
81	17	24	1	HARNEY COUNTY	2,000	289		305		544		71	235	306	41	17.2
82	16	21	2	TOTAL	7,515	216	-9.6	330	+8.2	546	-0.4	62	249	311	49	22.7
81	19	22		HOOD RIVER CO. SO	11,425	383		265		648		67	148	215	45	11.7
82	18	20			11,500	431	+12.5	287	+8.3	718	+10.8	67	131	198	55	12.8
81	9	11		Hood River PD	4,300	260		283		543		83	198	281	63	24.2
82	9	11			4,370	307	+18.1	308	+8.8	615	+13.3	129	247	376	134	43.6
81	9	9	3	State Police		17		220		237		12	208	220	4	23.5
82	7	7	1			26	+52.9	152	-30.9	178	-24.9	4	154	158	2	7.7
81				O.L.C.C.				11		11			3	3		
82								8	-27.3	8	-27.3					
81	37	42	3	HOOD RIVER COUNTY	15,725	660		779		1439		162	557	719	112	17.0
82	34	38	1	TOTAL	15,870	764	+15.8	755	-3.1	1519	+5.6	200	532	732	191	25.0
81	52	65	10	JACKSON CO. SO	59,595	1864		2940		4824		542	1187	1729	418	22.3
82	45	57	18		58,640	1512	-18.9	2522	-14.2	4034	-16.4	504	993	1497	389	25.7
81	21	28	5	Ashland PD	14,940	952		2184		3136		160	937	1097	180	18.9
82	21	28	5		15,180	720	-24.4	1881	-13.9	2601	-17.1	161	760	921	168	23.3
81	1	1		Buete Falls PD	445	22		24		46		8	3	13	10	45.5
82	1	1			445	8	-63.6	24	0	32	-30.4	2	18	20	3	37.5
81	10	13	1	Central Point PD	6,325	357		375		732		85	167	252	75	21.0
82	10	13	2		6,370	381	+6.7	505	+34.7	886	+21.0	131	218	349	135	35.4
81	6	8	5	Eagle Point PD	2,800	193		301		494		47	140	187	52	26.9
82	6	8	1		2,800	133	-31.1	273	-9.3	406	-17.8	31	93	124	20	15.0
81				Gold Hill PD*	(900)											
82	1	1			895	26		11		37		5	14	19	6	23.1
81	4	4	1	Jacksonville PD	2,000	64		98		162		11	50	61	14	21.9
82	4	4			1,970	56	-12.5	93	-5.1	149	-8.0	20	70	90	26	46.4
81	60	76	3	Medford PD	40,215	3970		4428		8398		1190	2483	3673	1039	26.2
82	62	76	9		40,000	3682	-7.3	3827	-13.6	7509	-10.6	1348	2117	3465	1211	32.9
81	6	7		Phoenix PD	2,350	100		38		158		11	12	23	8	8.0
82	5	6	1		2,350	95	-5.0	124	+113.8	219	+38.6	23	51	74	20	21.1
81	4	4		Rogue River PD	1,360	72		97		169		11	27	38	1	1.4
82	4	4			1,365	62	-13.9	156	+60.8	218	+29.0	13	42	55	11	17.7

MONTHLY REPORTING PERIOD	PART I - INDEX OFFENSES														PART II - OFFENSES																
	01	02	03	04	05	06	07	09	042	10	11	12	13	14	15	16	17	18	181	182	183	184	19	20	21	22	24	26	28	29	
	Murder	Force Rape	Robbery	Aggravated Assault	Burglary	Larceny	Motor Vehicle Theft	Arson	Other Assaults	Forgery/Contft.	Fraud	Embezzle	Stolen Property	Vandalism	Weapons	Prostitution	Other Sex Offense	DRUG ARREST TOTAL	Narcotic	Marijuana	Synthetic	Danger Drugs	Gamble	Family Offense	D.U.I. ARRESTS	Liquor Laws ARRESTS	Disorder Conduct ARRESTS	All Other (Except Traffic)	Curfew/Letter ARRESTS	Runaway	
12	81			5	4	12		1						1	1		7			7											
12	82		1		1	8		1	1					4			2			1											
12	81																														
12	82																														
HARNEY COUNTY TOTAL	81	2	1	13	48	160	12	3	14	13	10		1	69	3	4	9			8	1				115	43	12	20		6	
82			3	6	38	158	9	2	22	2	6			75	2	4	16			15		1		1	115	28	29	41		2	
HOOD RIVER CO. SO	81		1	5	93	257	24	2	32	5	21		1	74	4	6	12			11			2	69	6	5	25		5		
82	2	2	3	8	122	271	19	4	38	11	13		1	87	2	2	10			13	1	11		3	55	4	10	37		1	
Hood River PD	81		1	9	41	197	11	1	22	14	30			83	2	3	17			17				1	109	15	5	7			
82			1	18	46	231	8	3	13	12	6			98	1	11	31			30					129	21	10	7	2	1	
State Police	81		1		1	13		2	7	5	3			2	1		27			24					158	10		1			
82				4	7	14	1		5		4			6			10			10			1		112	10	1	2			
O.L.C.C.	81																														
82																															
HOOD RIVER COUNTY TOTAL	81	1	3	14	135	467	35	5	61	24	54		1	159	7	9	55			2	32		3	356	34	10	37		5		
82	2	2	4	30	175	516	28	7	56	23	23		1	191	3	2	22			54	1	51	2	1	3	296	35	21	52	2	2
JACKSON CO. SO	81	1	2	18	60	527	1172	95	9	281	33	380		12	539	28	48	117		4	108		5	10	415	107	51	572	5	142	
82	5	10	9	51	425	955	48	9	315	23	330		1	4	422	11	2	82	107	2	101	1	3	14	286	72	36	491	22	172	
Ashland PD	81	1	2	6	34	263	603	32	11	66	13	166		2	311	5	1	76	154	4	146	1	3	1	15	188	257	20	901	44	37
82		1	2	20	153	518	21	5	62	28	156		2	4	224	6	1	54	57	2	50	2	3	20	171	260	17	674	17	25	
Butte Falls PD	81			3	9	10			3	1	2																				
82				5	3				1																						
Central Point PD	81		1	5	17	104	211	15	4	28	12	34		2	100	5	12	20		1	19			8	81	15	18	41	14	6	
82		2	2	35	82	241	17	2	18	9	28		4	100	8	20	15		2	13				11	44	53	19	103	25	13	
Eagle Point PD	81		1	2	33	151	4	2	6	3	14		1	53	10	15	40			39			2	16	44	3	42		12		
82		2	3		25	98	3	2	8	5	17			27	12	13	18			16	1	1	5	10	28	4	67	5	15		
Gold Hill PD*	81																														
82				2	7	15	1	1																							
Jacksonville PD	81			2	14	45	3		6	2	26																				
82				3	6	47			2	3	14																				
Medford PD	81	1	15	52	53	938	2767	127	17	418	75	686	52	14	797	39	2	114	352	20	307	10	15	57	499	516	228	601	95	148	
82	1	12	45	44	813	2624	113	30	395	67	496	17	7	732	37	3	109	229	15	197	3	14	78	411	384	184	552	149	134		
Phoenix PD	81		1	7	15	75	2		7	3	12																				
82				4	23	60	4	4	3	4	15		1	23										2	25	10	1	11		6	
Rogue River PD	81		1	2	25	42	2		8		19																				
82			1	12	44	4	1		11	4	50																				

Y E A R	NUMBER OF POLICE OFCRS	TOTAL AGENCY STAFF	NUMBER OF OFCRS ASLTD	AGENCY	POPULATION	PART I - INDEX OFFENSES	PERCENT CHANGE	PART II OFFENSES	PERCENT CHANGE	TOTAL OFFENSES	PERCENT CHANGE	PART I - INDEX ARRESTS	PART II ARRESTS	TOTAL ARRESTS	INDEX OFFENSES CLEARED	PERCENT INDEX OFFENSES CLEARED
81	3	4		Shady Cove PD	1,120	50		122		172		3	23	28	8	16.0
82	2	2			1,130	56	+12.0	77	-36.9	133	-22.7	2	11	13	7	12.5
81	5	6		Talent PD	2,550	26		16		42		10	18	28	8	34.8
82	5	6	2		2,580	58	+123.1	90	+462.5	148	+252.4	18	82	100	13	22.4
81	47	47	16	State Police		190		1067		1257		66	950	1016	38	77.4
82	47	52	10			227	+19.5	1,029	-3.6	1256	-0.08	72	864	936	62	27.3
81	2	3		O.L.C.C.				65		65			100	100		
82	1	2						140	+115.4	140	+115.4		170	170		
81	221	266	41	JACKSON COUNTY TOTAL	133,700	7380		17775		19655		2146	6099	8245	1843	23.4
82	214	260	48		133,725	7016	-11.0	10752	-8.7	17768	-9.6	2330	5503	7833	2071	29.5
81	8	12		JEFFERSON CO. SO	9,150	204		308		512		11	91	102	17	8.3
82	8	12			9,395	166	-18.6	224	-27.3	390	-23.8	32	116	148	54	32.5
81	0	0		Culver PD	510	17		33		50		2	9	11	4	23.3
82	1	1			510	25	+47.1	25	-24.2	50	0				4	16.0
81	5	6	1	Madras PD	2,290	253		541		794		71	162	233	67	26.5
82	5	6			2,320	201	-20.6	258	-52.3	459	-42.2	72	108	180	38	18.9
81	5	5		State Police		37		173		210		14	167	181	8	21.6
82	5	5	1			26	-29.7	134	-22.5	160	-23.8	18	125	143	7	26.9
81				O.L.C.C.				5		5			2	2		
82	1							27	+440.0	27	+440.0					
81	18	23	1	JEFFERSON COUNTY TOTAL	11,950	571		1060		1571		98	431	529	96	18.8
82	20	24	1		12,225	478	-18.2	668	-37.0	1086	-30.9	122	349	471	103	24.6
81	49	60	3	JOSEPHINE CO. SO	44,490	1592		2541		4133		256	792	1048	552	34.7
82	46	57	7		43,960	1236	+9.0	3111	+22.4	4847	+17.3	377	1005	1382	633	36.5
81				Cave Junction PD*	1,010			7		7			4	4		
82																
Contracted with Josephine Co. SO as of 3/1/81																
81	30	41	12	Grants Pass PD	15,630	1797		2581		4373		488	1027	1515	448	24.9
82	30	40	4		15,040	1622	-9.7	2343	-9.2	3965	-9.4	521	952	1473	494	30.5
81	27	27	1	State Police		64		735		799		36	647	683	13	23.4
82	22	24	3			82	+28.1	666	-9.4	748	-6.4	44	495	539	11	13.4
81				O.L.C.C.				18		18			4	4		
82	1	1						40	+122.2	40	+122.2					
81	107	129	16	JOSEPHINE COUNTY TOTAL	61,200	3453		5882		9335		780	2474	3254	1015	29.4
82	99	122	14		59,000	3440	-0.4	6160	+4.7	9600	+2.8	942	2471	3413	1138	33.1

Months of Reporting	PART I - INDEX OFFENSES.																	PART II OFFENSES, DRUG ABUSE ARRESTS													
	01	02	03	04	05	06	07	09	042	10	11	12	13	14	15	16	17	18	181	182	183	184	19	20	21	22	24	26	28	29	
	Hurd	Force Rape	Robbery	Aggravd Assault	Burglary	Larceny	Motor Vehicle Theft	Arson	Other Assaults	Forgery/Contft.	Fraud	Embezzle	Stolen Property	Vandalism	Weapons	Prostitution	Other Sex Offense	DRUG ARREST TOTAL	Narcotic	Marijna	Synthetic	Danger Drugs	Gamble	Family Offense	D.U.I. ARRESTS	Liquor Laws ARRESTS	Disorder Conduct ARRESTS	All Other (Except Traffic)	Curfew/Loiter ARRESTS	Runaway	
12	81			2	17	28	3							27	5										12	2	3	22		2	
12	82			6	20	27	2	1	5	3	14		10	2			3	3					1	3		1	10		5		
12	81		1	1	9	12	3		2	1	2		3			3	2	2							4	4	2				
12	82			3	18	34	3		6	1	4		6			2	9	1	8					17	31	1	4	9	1		
12	81		1	6	11	42	100	18	24	14	60		35	18		5	142	132					1	588	86	14	12	6	2		
12	82		3	2	30	40	103	23	26	23	17	47	1	35	11	10	155	1	147			7	1	1	478	118	18	25	2		
12	81										5						1								98		36				
12	82										23														168		104				
12	81	3	23	89	194	1996	5216	304	53	845	158	1370	52	33	1925	110	3	252	837	30	762	11	84	1	96	1778	1146	345	2262	164	359
12	82	6	30	63	199	1629	4769	239	81	849	164	1195	20	21	1618	89	6	300	607	23	549	7	28	2	132	1489	1137	295	2067	238	385
12	81			1	13	53	119	15	3	10	3	26		2	60	3	13	2	2				5	64	3	3	44		60		
12	82	1		3	3	47	82	28	2	9	2	26			30		12	1	1				3	78	1	3	22		40		
9	81				8	8	1		2	2	9			5	3		1	1						1		2	2				
12	82				1	5	17	2						18														5	1		
12	81		1	2	18	64	152	13	3	45	3	16		124	11	12	5	2	3				1	45	32	7	126	1	8		
12	82		1	2	16	46	123	13		18	1	12		54	5	2	6	3					2	28	18	2	71	2	2		
12	81		1		2	1	26	3	4	1	4			7	3	1	32	32						76	39	2	6				
12	82			2	2	4	17		1	3	4	1		3	1		31	30					1	53	31		3				
12	81																									2		3			
12	82										3																	12			
12	81	2	3	33	126	305	32	10	38	14	51		2	196	20	26	46	2	38				6	186	76	14	187	1	68		
12	82	1	1	7	22	102	239	43	3	30	7	42		105	6	14	38	1	33				6	159	50	5	113	2	43		
12	81	1	11	7	123	311	372	61	6	137	17	277		6	473	31	3	277	12	243			30	220	61	18	631	4	148		
12	82		4	10	167	509	968	69	9	161	43	223		13	535	44	1	49	353	10	236			46	147	162	25	849	11	151	
2	81																														
		Contracted with Josephine Co. SO as of 3/1/81																													
12	81	1	8	21	37	413	1263	51	3	154	41	374	3	6	423	14	54	98	1	89			16	448	167	37	317	69	123		
12	82		5	19	17	298	1233	48	2	177	53	214		4	428	12	1	52	68	63			1	17	307	177	26	523	111	115	
12	81			2	8	14	30	5	5	12	10	16		4	10	19			151	6	140				399	20	10	9		2	
12	82		1	1	1	14	38	7	20	11	3	20		3	17	12			6	137	6	118			13	3	11		8		
12	81										3															4		9			
12	82										9															19		29			
12	81	2	19	30	168	938	2165	117	14	304	68	671	3	16	909	65	5	105	527	19	475			46	1062	233	63	1167	73	273	
12	82		10	30	185	821	2239	124	31	349	101	466		20	980	74	2	87	558	16	417			1	64	757	371	54	1412	122	274

Y E A R	NUMBER OF POLICE OFFICERS	TOTAL AGENCY STAFF	NUMBER OF OFFICERS ASLTD	AGENCY	POPULATION	PART I - INDEX OFFENSES	PERCENT CHANGE	PART II OFFENSES	PERCENT CHANGE	TOTAL OFFENSES	PERCENT CHANGE	PART I - INDEX ARRESTS	PART II ARRESTS	TOTAL ARRESTS	INDEX OFFENSES CLEARED	PERCENT INDEX OFFENSES CLEARED
81	22	29	1	KLAMATH CO. SO	40,525	650		586		1,236		108	274	382	77	11.8
82	21	27	4	KLAMATH CO. SO	40,775	684 +5.2		732 +24.9		1416 +14.6		120	227	347	98	14.3
81	30	37	8	Klamath Falls PD	16,770	1406		1980		3386		447	1028	1475	484	34.4
82	30	37	8	Klamath Falls PD	17,100	1398 -0.6		1996 +3.4		3394 +1.7		548	1172	1720	528	37.8
81				Malin PD*	530	NOT A REPORTING AGENCY IN 1981										
82				Malin PD*	525	NOT A REPORTING AGENCY IN 1982										
81	2	3	1	Merrill PD	800	24		21		45		10	12	22	7	27.2
82	3	3	1	Merrill PD	800	19 -20.8		24 +14.3		43 -4.4		9	25	34	3	15.8
81	47	47	19	State Police		610		1615		2225		377	1885	1712	216	35.4
82	46	51	15	State Police		533 -12.6		1347 -16.6		1880 -15.5		289	1002	1291	168	31.5
81	1	1		O.L.C.C.				21		21			24	24		
82	1	1		O.L.C.C.				49 +133.3		49 +133.3			18	18		
81	102	117	29	KLAMATH COUNTY TOTAL	58,625	2690		4173		6863		942	2673	3615	784	29.1
82	102	120	28	KLAMATH COUNTY TOTAL	59,200	2634 -2.1		4155 -0.6		6782 -1.2		966	2444	3410	797	30.3
81	6	6		LARE CO. SO	4860	35		19		54		7	2	9	7	20.0
82	6	6	1	LARE CO. SO	4,815	57 +62.9		42 +121.1		99 +83.3		13	22	35	14	24.6
81	5	5		Lakeview PD*	2,740	NO REPORTS RECEIVED DURING 1981										
82	5	5		Lakeview PD*	2,810	3		1		4		1	1	2	1	
81	4	4	1	State Police		31		79		110		24	97	121	9	29.0
82	4	4	2	State Police		32 +3.2		139 -10.1		121 -6.9		12	83	95	7	21.9
81				O.L.C.C.				2		2			2	2		
82				O.L.C.C.				17 +750.0		17 +750.0						
81	15	15	1	LAKE COUNTY TOTAL	7,600	66		120		186		31	101	132	16	24.2
82	15	15	3	LAKE COUNTY TOTAL	7,625	92 -39.4		149 +24.2		241 +29.6		26	106	132	22	23.9
81	99	184	23	LANE CO. SO	103,695	3406		2489		5895		522	1148	1670	537	16.4
82	81	140	10	LANE CO. SO	102,595	2787 -18.2		1909 -23.3		4696 -20.3		283	507	790	426	15.3
81	2	2		Coburg PD	700	36		29		65		7	18	25	5	13.9
82	3	3		Coburg PD	685	55 +52.8		88 +203.4		143 +120.0		10	24	34	11	20.0
81	13	21		Cottage Grove PD	7,325	558		519		1077		148	245	393	162	29.0
82	13	20		Cottage Grove PD	7,190	495 -11.3		468 -9.8		963 -10.6		109	228	337	116	23.4
81				Creswell PD*	1,880	228		139		367		38	36	74	48	21.1
82			3	Creswell PD*	1,870	173 -24.1		177 +27.3		350 -4.6		23	50	73	32	18.5
81	154	221	18	Eugene PD	106,100	10682		6406		17088		2329	3679	6008	2192	20.5
82	146	209	25	Eugene PD	104,000	9556 -10.5		6034 -5.8		15590 -8.8		2041	3371	5412	2072	21.7

*Creswell PD reports submitted by Lane County SO
*Lakeview PD has nine months missing in 1982

Month of Reporting	PART I - INDEX OFFENSES.																	PART II OFFENSES.													
	01	02	03	04	05	06	07	09	042	10	11	12	13	14	15	16	17	DRUG ABUSE ARRESTS						ARRESTS							
	Murder	Force Rape	Robbery	Aggravd Assault	Burglary	Larceny	Motor Vehicle Theft	Arson	Other Assaults	Forgery/Contft.	Fraud	Embezzle	Stolen Property	Vandalism	Weapons	Prostitution	Other Sex Offense	DRUG ARREST TOTAL	Narcotic	Marijuna	Synthetic	Danger Drugs	Gamble	Family Offense	D.U.I. L. ARRESTS	Liquor License ARRESTS	Disorder Conducts	All Other (Except Traffic)	Curfew/Loiter ARRESTS	Runaway	
12	81	1	2	3	87	144	438	21	4	44	9	11		2	163	1	18	23	2	15		6	2	2	84	45	12	62	3	95	
12	82	1	2	1	34	200	421	20	5	53	6	8			210		21	14	3	8		3	1	5	70	17	22	161	2	96	
12	81	1	5	20	60	253	1013	71	7	176	20	215	2	3	507	49	20	44	2	41		1	1	11	229	358	97	134	33	79	
12	82	5	9	18	56	221	1021	57	11	254	20	246	4	2	368	23	33	42		41		1		19	246	472	107	135	75	77	
	Malin PD*																														
12	81			1		7	13	3							5		1									5		1		1	
12	82					6	12	1		1		3			1		3	1	2						8		6	1	1		
12	81	2	4	8	40	169	297	55	35	71	38	182	3	2	119	13	16	94		91	1	2		1	969	36	19	60	1		
12	82	2	4	6	49	152	259	50	11	118	16	234	5		81	15	1	8	111	2	106	3		4	581	75	27	57	4	1	
12	81											2														24		11			
12	82										5															17		23			
12	81	4	11	32	137	350	1760	150	46	291	88	360	5	7	792	63	33	161	4	147	1	9	3	14	1287	463	129	267	58	176	
12	82	8	15	25	139	579	1713	128	27	426	47	496	9	2	660	38	1	63	170	6	157	7	1	28	905	581	162	377	81	175	
12	81				1	9	18	7		2		1			4	1	1											6			
12	82				5	14	34	3	1	2					10			6		5	1					4	4	15	1		
12	81	NO REPORTS RECEIVED DURING 1981																													
12	82						3																			1					
12	81	1	1		3	11	13	2		3			4	4	3		9		9							48	21				
12	82		1		2	9	17	3		3			5	4		4	6		6							39	27				
12	81																												9		
12	82																												6		
12	81	1	1		4	20	31	5		3	3	1		4	8	4	1	9		9			1	48	23			9			
12	82		1		7	23	54	6	1	5				15	4	4	12		11	1					40	31	4	24	1		
12	81	2	28	31	45	1224	1920	144	12	296	25	35		3	720	19	1	62	102	2	95	5		27	328	105	18	411	24	247	
12	82	4	24	26	29	942	1663	90	9	243	16	35			510	7	1	59	46	1	44	1		22	93	27	29	529	9	244	
12	81			2	2	5	26	1		1	1	3			9															7	
12	82				7	10	37	1		7	1	8	1		11		12	6											16	3	
12	81		5	2	5	85	440	14	7	60	8	19			182		7	11	14		14				4	14		19	58	24	47
12	82		1	7	7	68	393	17	2	47	9	18		2	132	4	9	14		13	1			6	48	38	13	45	33	30	
12	81	1	6	1	3	89	112	16		20	4	3			60	4	1	2		2				2	10			18		9	
12	82		3	3	2	54	106	5		25	2	12			52	2	6	6		6					2	17		1	31	2	7
12	81	1	50	167	210	2470	7373	374	37	523	134	337		42	1528	190	8	218	436	43	359	15	19	2	33	552	720	277	1369	39	280
12	82	6	22	149	163	1910	6933	330	43	569	262	354	2	37	1264	88	224	334	11	305	4	14		29	364	735	287	1321	29	259	

*Creswell PD reports submitted by Lane County SO
-61-

CONTINUED

1 OF 2

Y E A R	NUMBER OF POLICE OFCRS	TOTAL AGENCY STAFF	NUMBER OF OFCRS ASLTD	AGENCY	POPULATION	PART I - INDEX OFFENSES	PERCENT CHANGE	PART II OFFENSES	PERCENT CHANGE	TOTAL OFFENSES	PERCENT CHANGE	PART I - INDEX ARRESTS	PART II ARRESTS	TOTAL ARRESTS	INDEX OFFENSES CLEARED	PERCENT INDEX OFFENSES CLEARED
81	9	14	1	Florence FD	4,475	281		369		650		87	201	288	58	20.6
82	9	13	1	Florence FD	4,375	283	+0.7	392	+6.2	675	+3.8	99	317		73	25.8
81	5	9	2	Junction City PD	3,250	324		280		604		70	191	261	77	23.8
82	6	10	2	Junction City PD	3,170	223	-31.2	233	-16.8	456	-24.5	96	292	388	42	18.8
81	5	9	2	Oakridge PD	3,625	148		151		299		68	76	144	43	29.1
82	3	7		Oakridge PD	3,560	123	-16.9	116	-11.5	239	-14.3	44	149	193	47	38.2
81	58	79	3	Springfield PD	41,540	3763		3198		6961		1225	1972	3197	925	24.6
82	54	73	3	Springfield PD	40,850	3343	-11.2	3039	-5.0	6382	-8.3	1076	1769	2845	755	22.6
81			2	Veneta PD*	2,410	346		285		631		62	148	205	66	19.1
82			2	Veneta PD*	2,355	350	+1.2	317	+11.2	667	+5.7	66	97	163	67	19.1
81	62	62	18	State Police		619		1738		2357		217	1562	1779	106	17.1
82	64	69	16	State Police		598	-3.4	1641	-5.6	2239	-5.0	221	1387	1608	104	17.4
81	2	2		O.L.C.C.				681		681			34	34		
82	1	2		O.L.C.C.				159	-76.7	159	-76.7		23	23		
81	409	603	69	LANE COUNTY TOTAL	275,000	20391		15687		36078		4773	9300	14073	4239	20.8
82	380	546	62	LANE COUNTY TOTAL	270,650	17986	-11.8	14573	-7.1	32559	-9.8	4068	8214	12282	3745	20.8
81	20	26	1	LINCOLN CO. SO	17,790	506		439		945		116	246	362	99	19.6
82	21	30	5	LINCOLN CO. SO	18,375	490	-3.2	373	-15.0	863	-8.7	96	240	336	74	15.1
81	17	22	2	Lincoln City PD	5,575	295		257		552		77	126	203	73	24.7
82	15	20	8	Lincoln City PD	5,800	340	+16.3	318	+23.7	658	+19.2	119	124	243	97	28.5
81	18	25	5	Newport PD	7,660	888		825		1713		311	453	764	280	31.5
82	15	20	7	Newport PD	7,850	724	-18.5	907	+9.9	1631	-4.8	322	552	874	309	42.7
81	7	11	1	Toledo PD	3,190	156		453		609		66	249	315	73	46.8
82	7	11	3	Toledo PD	3,215	158	+1.3	351	-22.5	509	-16.4	75	216	291	79	50.0
81	3	3	2	Waldport PD*	1,315	23		27		50		8	14	22	8	34.8
82	3	3	4	Waldport PD*	1,360	61		85		146		22	47	69	15	24.6
81	30	30	3	State Police		288		652		940		90	606	696	54	18.8
82	28	30	6	State Police		240	-16.7	536	-17.8	776	-17.4	81	439	520	28	11.7
81	1	1		O.L.C.C.				44		44						
82	1	1		O.L.C.C.				66	+50.0	66	+50.0					
81	96	118	14	LINCOLN COUNTY TOTAL	35,530	2156		2697		4833		668	1694	2362	587	27.2
82	90	115	33	LINCOLN COUNTY TOTAL	36,600	2013	-6.6	2636	-2.3	4649	-4.2	715	1618	2333	602	29.9

*Veneta PD reports submitted by Lane County SO

*Waldport PD did not begin reporting until 10/1/81

Months of Reporting	PART I - INDEX OFFENSES																	PART II OFFENSES													
	011	02	03	04	05	06	07	09	042	10	11	12	13	14	15	16	17	DRUG ABUSE ARRESTS													
	Murder	Force Rape	Robbery	Aggravd Assault	Burglary	Larceny	Motor Vehicle Theft	Arson	Other Assaults	Forsy/Conff.	Fraud	Embezzle	Stolen Property	Vandalism	Weapons	Prosti-tution	Other Sex Offense	DRUG ARREST TOTAL	Narcotic	Marijna	Synthe	Danger Drugs	Gamble	Family Offense	D.U.I. ARRESTS	Liquor License ARRESTS	Disorder ARRESTS	All Other (Excp Traffic)	Curfew/Loiter ARRESTS	Runaway	
12																															
12	Florence PD	81		1	29	72	169	8	1	12	12	11		2	114	7	16	27							3	93	10	9	46	3	10
12	Junction City PD	82	2	1	22	60	194	3	1	22	8	7		78			4	49	4	44				6	118	38	7	88	5	4	
12	Oakridge PD	81		1	2	53	151	11	5	14	5	19		62	2	3	32		23	1	8		1	6	47	29	15	44	16	9	
12	Springfield PD	81	1	20	45	39	1007	168	31	344	80	209		7	619	53	3	62	198	4	185		11	2	37	369	548	69	369	142	191
12	Veneta PD*	81	2	35	59	37	989	2093	111	17	223	91	127	40	480	34		120	193	11	171	1	10	4	76	283	434	84	595	165	170
12	State Police	81	1	6	6	37	193	313	44	19	38	29	34	2	62	14	1	26	289	18	263			1	953	144	14	37	3	12	
12	O.L.C.C.	81	2	10	5	38	165	319	44	15	48	57	29	1	4	63	17	27	275	12	250	5	8		834	102	18	43	1	6	
12	LANE COUNTY TOTAL	81	6	118	263	387	5464	1302	799	112	1385	300	724	62	3508	295	15	408	1098	63	971	15	49	5	142	2234	1638	422	2423	251	848
12	LINCOLN CO. SO	81	1	1	5	7	198	267	21	6	59	8	15		119	2	20	24		22	1	1	1	2	101	20	9	52		25	
12	Lincoln City PD	81	2	5	8	114	147	16	3	43	6	14		70	2	13	18		16	2				8	88	33	7	42		31	
12	Newport PD	81	6	8	33	241	536	33	11	77	32	91		175	4	23	29		22	1	6		2	6	60	8	5	24		13	
12	Toledo PD	81	1	1	30	31	84	9		4	95		1	87	1	7	16		16					2	130	29	13	21	12	11	
12	Waldport PD*	81			1	2	25	30	3		1	2	1		19	1	2	11		11					16	2	1	12		4	
12	State Police	81	1	3	10	77	169	19	9	15	4	3		20	3	3	36		33		3				500	37	5	19		1	
12	O.L.C.C.	81	6	1	8	71	139	14	1	14	25		1	29	3	9	55		54		1		1	295	21	3	18		3		
12	LINCOLN COUNTY TOTAL	81	2	11	21	88	673	1213	119	29	187	55	258	5	454	18	61	119	1	102	2	14	1	17	997	134	58	218	13	82	
12		82	4	29	115	575	1178	92	10	204	71	295	2	1	403	20	1	47	125	2	116	5	2	2	29	831	142	59	253	9	110

*Veneta PD reports submitted by Lane County SO
* Waldport PD did not begin reporting until 10/1/81

Y E A R	NUMBER OF POLICE OFCS	TOTAL AGENCY STAFF	NUMBER OF OFCS ASLTD	AGENCY	POPULATION	PART I - INDEX OFFENSES	PERCENT CHANGE	PART II OFFENSES	PERCENT CHANGE	TOTAL OFFENSES	PERCENT CHANGE	PART I - INDEX ARRESTS	PART II ARRESTS	TOTAL ARRESTS	INDEX OFFENSES CLEARED	PERCENT INDEX OFFENSES CLEARED
81	57	64		LINN CO. SO	45,860	1493		1757		3250		355	625	980	292	19.6
82	47	51	7	LINN CO. SO	43,955	1392	-6.8	1689	-3.9	3081	-5.2	344	722	1066	333	23.9
81	31	42	16	Albany PD	27,000	1738		1632		3370		667	954	1621	605	34.8
82	32	41	11	Albany PD	27,625	1604	-7.7	1770	+8.6	3374	+0.1	632	1045	1677	567	35.3
81	20	26	4	Lebanon PD	10,550	817		880		1697		230	299	529	295	36.1
82	20	26	4	Lebanon PD	10,350	782	-4.3	752	-14.5	1534	-9.6	228	264	492	236	30.2
81	16	23	3	Sweet Home PD	7,090	373		737		1116		115	230	345	91	24.4
82	15	26	3	Sweet Home PD	6,920	439	+17.7	626	-15.1	1065	-4.1	137	305	442	112	25.5
81	30	30	8	State Police		154		913		1067		64	858	922	23	14.9
82	27	29	9	State Police		123	-20.1	780	-14.6	903	-15.4	71	746	817	31	25.1
81	1	1		O.L.C.C.				38		38			8	8		
82	1	1		O.L.C.C.				51	+34.2	51	+34.2		5	5		
81	155	186	31	LINN COUNTY TOTAL	90,500	4575		5957		10532		1431	2974	4405	1306	28.5
82	142	174	34	LINN COUNTY TOTAL	88,850	4340	-5.1	5668	-4.9	10008	-5.0	1412	3087	4499	1279	29.5
81	10	11		MALHEUR CO. SO	13,835	143		69		212		19	50	69	12	8.4
82	10	11		MALHEUR CO. SO	13,730	168	+17.5	100	+44.9	268	+26.4	21	83	104	13	7.1
81	6	10		Nyssa PD	2,810	104		93		197		21	58	79	27	26.0
82	6	10		Nyssa PD	2,760	40	-61.5	56	-39.8	96	-51.3	12	45	57	18	45.0
81	16	22		Ontario PD	8,940	1042		1273		2315		278	505	783	267	25.6
82	16	25		Ontario PD	9,125	939	-9.9	990	-22.2	1929	-16.7	277	410	687	273	29.1
81	4	4		Vale PD	1,640	73		129		202		17	67	84	29	39.7
82	4	4		Vale PD	1,560	69	-5.5	91	-29.5	160	-20.8	21	51	72	24	34.8
81	24	24		State Police		95		178		273		33	149	182	18	18.9
82	21	22		State Police		56	-41.1	225	+26.4	281	+2.9	26	207	233	13	23.2
81	1	1		O.L.C.C.				13		13			3	3		
82	1	1		O.L.C.C.		1		32	+146.2	33	+153.8				1	100.0
81	61	72		MALHEUR COUNTY TOTAL	27,225	1457		1733		3212		368	832	1200	353	24.2
82	58	73		MALHEUR COUNTY TOTAL	27,175	1273	-12.6	1494	-14.9	2767	-13.9	357	796	1153	341	26.8
81	61	66	9	MARION CO. SO	97,353	4321		2899		7220		751	784	1535	730	16.9
82	63	79	6	MARION CO. SO	96,483	4278	-1.0	3667	+26.5	7945	+10.0	1117	1241	2358	975	22.8
81	2	3	1	Aumsville PD	1,455	46		130		176		13	49	62	14	30.4
82	3	4		Aumsville PD	1,455	67	+45.7	163	+25.4	230	+30.7	38	27	65	22	30.8
81				Aurora PD*	(525)											
82	1	1		Aurora PD*	515	13		2		15		1		1	1	7.7

NO REPORTS RECEIVED DURING 1981

		PART I - INDEX OFFENSES																	PART II OFFENSES																				
Months of Reporting																				DRUG ABUSE ARRESTS																			
		011	02	03	04	05	06	07	09	042	10	11	12	13	14	15	16	17	18	181	182	183	184	19	20	21	22	24	26	28	29								
		Murder	Force Rape	Robbery	Aggravd Assault	Burglary	Larceny	Motor Vehicle Theft	Arson	Other Assaults	Forgery/Contft.	Fraud	Embezzle	Stolen Property	Vandalism	Weapons	Prostitution	Other Sex Offense	DRUG ARREST TOTAL	Narcotic	Marijua	Synthetic	Danger Drugs	Gamble	Family Offense	D.U.I. ARRESTS	Liquor ARRESTS	Disorder Conduct ARRESTS	All Other (Except Traffic)	Curfew/Loiter ARRESTS	Runaway								
12	LINN CO. SC	81	14	9	23	476	899	62	10	186	26	67	1	7	438	61	48	67	14	31	1	3	12	30	111	72	21	444	1	147									
12		82	7	5	26	447	841	58	8	159	23	60	2	395	60	63	110	12	96	3	7	2	48	98	105	10	441	1	157										
12	Albany PD	81	9	28	9	507	1098	74	18	265	73	15	7	200	16	46	46	1	35	3	7	25	148	107	35	378	64	89											
12		82	4	8	21	457	1030	54	8	285	116	82	1	193	16	48	24	4	18	2	2	50	145	124	75	369	94	71											
12	Lebanon PD	81	6	13	8	191	650	19	10	71	48	130		257	9	30	26	4	18	2	2	1	13	65	93	15	91	7	27										
12		82	7	9	19	128	596	16	7	63	45	19	1	258	6	14	29	1	25	3	3	2	13	65	93	15	91	7	27										
12	Sweet Home PD	81	5	2	15	92	244	13	2	51	10	161	2	143	2	16	17	1	17			3	9	54	27	77	194		30										
12		82	2	1	15	118	285	15	3	60	4	94	3	136	4	1	18	27	2	25			15	74	61	18	105		25										
12	State Police	81	2	1	10	39	78	17	7	23	12	14		16	8	1	79	1	76			2			656	35	70	8	11										
12		82	1	1	3	15	29	58	12	4	20	5	9	9	9	3	76	2	67			7			591	23	9	13	1	1									
12	O.L.C.C.	81										22														5													
12		82									6															5													
	LINN COUNTY	81	36	53	65	1245	2949	185	42	596	141	509	1	10	1054	96	141	237	16	205	4	12	16	77	1034	362	118	1111	71	304									
	TOTAL	82	5	25	39	97	1179	2810	155	30	587	193	270	7	933	95	146	266	21	231			3	115	969	373	134	1069	105	289									
12	MALHEUR CO. SO	81				42	97	3	1	5	3	1		26		8	5	5							19	8		4		1									
12		82	2			8	38	113	7	12	1	10		31		9	3	3							1	25	6	1	7	4									
12	Nyssa PD	81			1	5	15	83		1		1		19	1	3								3	43	2	4	1		6									
12		82			1	1	5	32	1	4		1		7		1		1							23	4	5			11									
12	Ontario PD	81	1	5	5	68	153	774	51	5	26	19	103	3	273	9	1	13	13						53	112	101	86	266	54	68								
12		82	2	1	6	43	115	737	31	4	63	16	73	3	171	8	48	59	1	52				1	42	95	67	38	201	36	24								
12	Vale PD	81			1	4	9	58	1	7		3		34	1	3									33	12	4	23		4									
12		82			2	7	57	3		10	1	4		14	2	1	3								24	9	8	16	1	2									
12	State Police	81			3	5	30	41	15	1	9	1	5		9		9	7	6					1	1	107	6	7	3	18									
12		82			3	16	27	9	1	7		2		1	6		5	10	8	1	1				140	30	1	6	2	14									
12	O.L.C.C.	81										2														3		3											
12		82					1					4																	17										
	MALHEUR COUNTY	81	1	5	10	82	249	1053	50	7	48	23	115	3	361	11	1	63	25	24				57	314	132	95	300	54	97									
	TOTAL	82	4	1	7	57	181	967	51	5	96	18	94	4	229	10	1	65	73	1	64	2	6	1	43	307	116	53	247	39	55								
12	MARION CO. SO	81	6	27	53	194	1451	2398	183	9	235	26	58	5	870	27	76	35	1	32				35	306	30	26	611	4	230									
12		82	1	9	57	400	1046	2572	172	21	188	37	86	20	976	29	1	91	48	4	29	15	2	88	538	38	41	936	1	235									
12	Aumsville PD	81			1	12	33			9		1		18		2	9	9						1	17		3	49											
12		82	8			19	36	4		5	2			48		21	3	3						2	4		2	45		7									
12	Aurora PD*	81	NO REPORTS RECEIVED DURING 1981																																				
12		82				4	8	1						2																									

Y E A R	NUMBER OF POLICE OFCRS	TOTAL AGENCY STAFF	NUMBER OF OFCRS ASLTD	AGENCY	POPULATION	PART I - INDEX OFFENSES	PERCENT CHANGE	PART II OFFENSES	PERCENT CHANGE	TOTAL OFFENSES	PERCENT CHANGE	PART I - INDEX ARRESTS	PART II ARRESTS	TOTAL ARRESTS	INDEX OFFENSES CLEARED	PERCENT INDEX OFFENSES CLEARED
81	5	5		Hubbard PD	1,760	58		58		111		6	28	29	5	9.4
82	5	5			1,740	40	-24.5	23	-60.3	63	-43.2	11	20	31		
81	3	3		Jefferson PD	1,750	76		76		152		9	18	27	8	10.5
82	3	3			1,710	54	-28.9	54	-28.9	108	-28.9	9	24	33	7	16.7
81	5	5		Mt. Angel PD	2,910	143		217		360		57	121	178	31	21.7
82	4	4	1		2,890	142	-0.7	89	-59.0	231	-35.8	34	50	84	28	19.7
81	132	201	33	Salem PD Within Marion Co.	82,082	8595		8148		16738		2667	3059	5666	1846	21.5
82	139	204			80,435	7524	-12.5	8080	-0.8	15604	-6.8	2559	3318	5877	1589	21.1
81	10	15		Silverton PD	5,315	281		396		677		68	146	214	107	38.1
82	9	10			5,240	270	-3.9	390	-1.5	690	-2.5	99	198	297	103	38.1
81	8	14		Stayton PD	4,600	343		644		987		74	139	213	95	27.7
82	8	15			4,530	342	-0.3	589	-8.5	931	-5.7	99	149	248	125	36.5
81	2	3		Turner PD	1,115	73		49		122		12	1	13	10	13.7
82	2	3			1,120	42	-42.5	45	-8.2	87	-28.7	13	8	21	17	40.5
81	18	28	1	Woodburn PD	11,390	928		888		1816		314	547	861	286	30.8
82	22	32	3		11,230	1113	+19.9	1206	+35.8	2319	+27.7	432	657	1089	384	34.5
81	65	65	8	State Police		612		1602		2214		355	1270	1625	269	44.0
82	56	65	11			456	-25.5	1345	-16.0	1801	-18.7	265	1089	1354	176	38.6
81	1	2		O.L.C.C.		1		240		241			53	53		
82	2	2						152	-36.7	152	-36.9		43	43		
81	302	400	52	MARION COUNTY TOTAL	209,780	15472		15322		30794		4266	6210	10476	3401	22.0
82	317	427			207,350	14341	-7.3	15805	+3.2	30146	-2.1	4677	6824	11501	5016	35.0
81	138	207	57	SALEM PD TOTAL	93,075	9131		8683		17814		2703	3225	5928	1900	20.8
82	145	210	40		91,400	7993	-12.5	8648	-0.4	16641	-6.6	2661	3596	6257	1638	20.5
81	6	12		MORROW CO. SO	4,780	90		84		174		10	39	49	19	21.1
82	7	13			3,815	55	-38.9	76	-9.5	131	-24.7	21	33	54	14	24.5
81	4	4		Boardman PD	1,285	93		126		219		10	30	40	16	17.2
82	4	4			1,190	76	-18.3	96	-23.8	172	-21.5	21	45	66	23	30.3
81	4	4		Heppner PD	1,460	32		41		73		7	24	31	4	12.5
82	4	4			1,385	30	-6.3	42	+2.4	72	-1.4	11	31	42	11	36.7
81	1			Irrigon PD*			NO REPORTS RECEIVED DURING 1981									
82	1		4										9	19	28	13
81	2	2		State Police		36		80		136		24	83	107	12	21.4
82	2	2	1			29	-48.2	57	-28.8	86	-36.8	20	47	67	6	20.7

PART I - INDEX OFFENSES

PART II OFFENSES

Months of Reporting	PART I - INDEX OFFENSES										PART II OFFENSES																				
	011	02	03	04	05	06	07	09	042	10	11	12	13	14	15	16	17	18	181	182	183	184	19	20	21	22	24	26	28	29	
	Hurder	Force Rape	Robbery	Aggravd Assault	Burglary	Larceny	Motor Vehicle Theft	Arson	Other Assaults	Forgery/Contft.	Fraud	Embezzle	Stolen Property	Vandalism	Weapons	Prostitution	Other Sex Offense	DRUG ARREST TOTAL	Narcotic	Marijna	Synthetic	Danger Drugs	Gamble	Family Offense	D. U. I. I. ARRESTS	Liquor Laws ARRESTS	Disorder Conduct ARRESTS	All Other (Except Traffic)	Curfew/Loiter ARRESTS	Runaway	
12	Hubbard PD	81				12	39	2			1			36												19	1		2		
12	Hubbard PD	82				10	30							12												8	5		2		
12	Jefferson PD	81			1	26	45	4	13	2				33				2		2					2	7		10		6	
12	Jefferson PD	82			2	15	31	6	4					15			1								1	2	3	4	10	11	
12	Mt. Angel PD	81	2	1	2	27	96	11	14	13	6			36	4		3	7		3	4				1	59	11	3	20	3	15
12	Mt. Angel PD	82	1		9	23	98	10	8	1	3			26			5								2	9	7	2	13	4	5
12	Salem PD Within Marion Co.	81	6	50	186	78	2202	5706	358	59	892	163	350	2	85	1744	176	245	171	9	131	2	29	1	88	668	152	246	1526	106	284
12	Salem PD Within Marion Co.	82	5	41	122	54	1887	5105	264	46	955	203	356	122	1550	119	220	276	25	215		56	5	109	591	303	213	1760	127	319	
12	Silverton PD	81			1	25	40	205	8	2				120		1	4	7		6					5	45	36	6	77	8	10
12	Silverton PD	82			20	49	195	6	2		23		1	100	1		8	9		9				1	7	82	40	12	69	5	9
12	Stayton PD	81	1	1	15	68	243	11	4	20	2	26		172	2		15	2		2					5	45	33	11	231	3	18
12	Stayton PD	82	1		21	65	245	8	2	16	4	29		166	4		8	17		15		2		6	36	34	7	161	10	21	
12	Turner PD	81		1	1	32	37	2	4					27	1		1			1											4
12	Turner PD	82	1		2	12	23	4	8					24			1	1		1							2	1	8		
12	Woodburn PD	81	1	3	6	71	192	624	23	8	29	15	57	1	228	18	25	28		24	2	2			16	90	88	35	171	18	45
12	Woodburn PD	82	1	5	8	200	785	33	3	65	25	62	1	3	244	8	1	21	53	2	32		19	1	19	151	104	46	209	6	71
12	State Police	81	1	16	12	28	115	376	40	24	34	76	195	1	2	31	22	18	111	1	108		2		812	170	18	83		5	
12	State Police	82	1	7	3	30	77	275	32	31	29	79	34	2	30	13	5	50	134	6	125		3	1	2	688	98	15	142		1
12	O.L.C.C.	81			1									63																	105
12	O.L.C.C.	82									27																				99
12	MARION COUNTY TOTAL	81	14	99	212	416	4177	9802	642	110	1259	302	780	3	96	3535	251	389	372	11	817	8	36	3	173	2068	555	348	2892	142	637
12	MARION COUNTY TOTAL	82	7	69	187	624	3407	9403	540	104	1276	355	620	1	149	3193	174	7426	561	37	429		95	10	236	2109	652	343	3454	153	679
12	SALEM PD TOTAL	81	6	52	144	85	2399	6002	383	60	940	167	364	2	85	1888	184	254	184	9	143	2	30	1	96	709	172	266	1627	113	307
12	SALEM PD TOTAL	82	5	41	126	55	2019	5414	278	52	1024	211	364		124	1705	126	1739	325	26	232		67	5	120	630	417	220	1841	129	336
12	MORROW CO. SO	81			1	21	63	5	4		16			14			5	2		2					1	14	8		20		
12	MORROW CO. SO	82			4	10	38	3	13	1	6			18	1		5	6		6					2	6	3	3	14		
12	Boardman PD	81	1	1	7	23	61	3	17		20			25	3		2	2		2					1	8	6		35		1
12	Boardman PD	82			1	6	13	50	3	3	12	1	2		23	4		7	5		5				1	8	10	1	19		1
12	Heppner PD	81			4	9	19		3		5			15			1									11	5		3		1
12	Heppner PD	82			5	5	20		6		2			11	1		1			1						7	6	4	2		1
12	Irrigon PD*	81	NO REPORTS RECEIVED DURING 1981																												
12	Irrigon PD*	82	1		2	2	5	21	1	3	3			3												6	7		2		
12	State Police	81			1	8	20	21	6		4			6	1		4	4		4						50	4	1	5		
12	State Police	82			2	1	7	17	2	9	1			3	2		3	7		7						19	3	1	7		

Y E A R	NUMBER OF POLICE OFCRS	TOTAL AGENCY STAFF	NUMBER OF OFCRS ASLTD	AGENCY	POPULATION	PART I - INDEX OFFENSES	PERCENT CHANGE	PART II OFFENSES	PERCENT CHANGE	TOTAL OFFENSES	PERCENT CHANGE	PART I - INDEX ARRESTS	PART II ARRESTS	TOTAL ARRESTS	INDEX OFFENSES CLEARED	PERCENT INDEX OFFENSES CLEARED
81				O.L.C.C.				8		8						
82								4	-50.0	4	-50.0					
81	17	23		MORROW COUNTY	7,475	271		339		610		51	196	227	51	18.8
82	18	24	5	TOTAL	7,260	222	-18.1	300	-11.5	522	-14.4	82	175	257	67	30.2
81	212	296	17	MULTNOMAH CO. SO	154,285	14352		6139		20491		2701	2479	3180	2195	15.3
82	222	303	22		155,480	12943	-9.8	6317	+2.9	19260	-6.0	2755	2526	5281	1924	14.9
81	42	59	32	Gresham PD	33,920	2564		1884		4448		432	767	1199	391	15.2
82	42	59	17		34,375	2188	-14.7	1831	-2.8	4019	-9.6	507	832	1339	421	19.2
81	677	861	318	Portland PD*	366,960	51016		30194		81210		6995	13717	20712		
82	699	889	280		368,100	48715	-4.5	32270	+6.9	80985	-0.3	6867	14179	21046	8097	16.6
81	42	47		Portland Airport		261		194		455		23	98	121	18	6.9
82	35	40	1			225	-13.8	180	-7.2	405	-11.0	17	112	129	15	6.7
81	8	8		Transit District		84		489		573		1	5	4	2	2.4
82	14	15				48	-42.9	485	-0.8	533	-7.0		4	4		
81	9	11	1	Troutdale PD	6,235	346		129		475		46	57	103	57	16.5
82	8	10	1		6,545	331	-4.3	278	+115.5	609	+28.2	46	103	149	65	19.6
81	15	15	2	State Police		85		511		596		37	421	458	15	17.6
82	10	10	4			70	-17.6	560	+9.6	630	-5.7	57	362	419	7	10.0
81	9	9		O.L.C.C.				1254		1254			182	182		
82	6	6						1062	-15.3	1062	-15.3		126	126		
81	1014	1306	370	MULTNOMAH COUNTY	561,400	68708		40794		109502		10235	17724	27959		
82	1036	1332	325	TOTAL	564,500	64520	-6.1	42983	+5.4	107503	-1.8	10249	18244	28493	10529	16.3
81	18	22		POLK CO. SO	17,262	670		1004		1674		101	307	408	130	19.4
82	18	24			16,005	556	-17.0	1000	-0.4	1556	-7.0	125	324	449	97	17.4
81	15	16		Dallas PD	8,760	650		1014		1664		124	288	412	228	35.1
82	13	14	1		8,770	501	-22.9	939	-7.4	1440	-13.5	160	470	580	197	39.3
81	8	9		Independence PD	4,025	432		582		1014		58	158	216	92	21.3
82	8	9	2		3,940	419	-3.0	610	+4.8	1029	+1.5	97	221	318	77	18.4
81	8	9		Monmouth PD	5,610	285		676		961		89	190	279	62	21.8
82	9	10	1		5,380	267	-6.3	441	-34.8	708	-26.3	84	190	274	69	25.8
81	6	6	4	Salem PD	10,993	536		560		1096		96	166	262	54	10.1
82	6	6		Within Polk Co.	10,965	469	-12.5	568	+1.4	1037	-5.4	102	278	380	49	10.4

* Clearance data is not available for 1981 due to a major conversion of the computerized information system.

Y E A R	NUMBER OF POLICE OFCRS	TOTAL AGENCY STAFF	NUMBER OF OFCRS ASLTD	AGENCY	POPULATION	PART I - INDEX OFFENSES	PERCENT CHANGE	PART II OFFENSES	PERCENT CHANGE	TOTAL OFFENSES	PERCENT CHANGE	PART I - INDEX ARRESTS	PART II ARRESTS	TOTAL ARRESTS	INDEX OFFENSES CLEARED	PERCENT INDEX OFFENSES CLEARED
81	4	4		State Police		18		115		133			98	98		
82	4	4	1	State Police		24	+33.3	70	-39.1	94	-29.3	17	67	84	3	12.5
81				O.L.C.C.				25		25			4	4		
82	1	1		O.L.C.C.				6	-76.0	6	-76.0					
81	59	66	4	POLK COUNTY	46,650	2591		3976		6567		468	1211	1679	566	21.8
82	59	68		TOTAL	45,060	2236	-13.7	3634	-8.6	5870	-10.6	585	1500	2085	492	22.0
81	3	4		SHERMAN CO. SO	2,225	50		48		98		8	37	45	4	8.0
82	3	4		SHERMAN CO. SO	2,210	48	-4.0	37	-22.9	85	-13.3	12	30	42	6	12.5
81	3	3		State Police		11		70		81		6	61	67	2	18.2
82	2	2		State Police		18	+63.6	51	-27.1	69	-14.8	10	41	51	6	33.3
81				O.L.C.C.				5		5						
82				O.L.C.C.				5		5						
81	6	7		SHERMAN COUNTY	2,225	61		118		179		14	98	112	6	9.8
82	5	6		TOTAL	2,210	66	+8.2	93	-21.2	159	-11.2	22	71	93	12	18.2
81	19	28	1	TILLAMOOK CO. SO	15,075	552		486		1038		110	395	505	104	18.8
82	17	21	1	TILLAMOOK CO. SO	15,095	448	-18.8	571	+17.5	1019	-1.8	122	443	565	98	21.9
81				Garibaldi PD*	1,025	NO REPORTS RECEIVED DURING 1981										
82	2	2		Garibaldi PD*	1,065	15		12		27		4	4	8	3	20.0
81				Rockaway PD*	1,050	NO REPORTS RECEIVED DURING 1981										
82	2	2	1	Rockaway PD*	1,070	8		11		19		1	10	11	2	25.0
81	8	11		Tillamook PD	3,950	227		485		662		61	270	331	68	30.0
82	8	11	1	Tillamook PD	3,920	247	+8.8	342	-21.4	589	-11.0	99	252	351	101	40.9
81	13	13	1	State Police		119		622		741		60	546	606	23	19.3
82	15	16	6	State Police		121	+1.7	603	-3.1	724	-2.3	42	540	582	21	17.4
81				O.L.C.C.				21		21						
82	1	1		O.L.C.C.				15	-28.6	15	-28.6					
81	40	52	2	TILLAMOOK COUNTY	21,100	898		1569		2467		231	1211	1442	195	21.7
82	45	53	9	TOTAL	21,150	839	-6.6	1554	-1.0	2393	-3.0	268	1249	1517	225	26.8
81	10	17	2	UMATILLA CO. SO	23,955	396		410		806		53	116	169	93	23.5
82	11	19		UMATILLA CO. SO	22,495	330	-16.7	298	-27.3	628	-22.1	41	139	180	96	29.1
81				Athena PD*	955											
82	2	2	1	Athena PD*	955	37		20		57		20	17	37	15	40.5

*Garibaldi PD began reporting as of 9/1/82
 *Rockaway PD began reporting as of 9/1/82
 *Athena PD began reporting as of 1/1/82

Months of Reporting	PART I - INDEX OFFENSES													PART II OFFENSES DRUG ABUSE ARRESTS																	
	01	02	03	04	05	06	07	09	042	10	11	12	13	14	15	16	17	18	181	182	183	184	19	20	21	22	24	26	28	29	
	Murder	Force Rape	Robbery	Aggravated Assault	Burglary	Larceny	Motor Vehicle Theft	Arson	Other Assaults	Forgery/Contft.	Fraud	Embezzle	Stolen Property	Vandalism	Weapons	Prostitution	Other Sex Offense	DRUG ARREST TOTAL	Narcotic	Marijuana	Synthetic	Danger Drugs	Gamble	Family Offense	D.U.I. ARRESTS	Liquor Laws ARRESTS	Disorder Conduct ARRESTS	All Other (Except Traffic)	Curfew/Loiter ARRESTS	Runaway	
12	81				3	12		2	2		8			1	1		7	29		29			1		49	5	2	6			
12	82			1	11	11		1	1		1			1			1	18		18					32	10		4		1	
12	81										8												1						6		
12	82										2																		6		
	81	10	19	212	776	1464	95	15	107	46	904		11	786	27	1	52	130	3	119		8	3	43	368	150	76	947	26	133	
	82	1	15	16	89	600	1421	72	22	254	60	446	1	11	694	35	2	78	128	1	113		14	5	60	385	284	84	824	38	150
12	81			1	11	36	2		2	2	1			17			6	3		3				2	3	15	1	7		1	
12	82			1	7	33	5	1	4	1				5	1		2		2					2	8			14			
12	81			1	1	6	1	1	2		6		1	2	2		4	2		2					48		1	2			
12	82			1	3	11	2	1	2	5	1			1			1	5		5					32	1		3			
12	81																														
12	82																														
	81			2	1	12	42	3	1	4	2	7		1	19	2	10	5		5				2	31	15	2	9		1	
	82			2	1	10	44	7	2	6	6	1		6	1	1	7		7				2	40	1		19				
12	81	3	2	3	14	205	304	21		38	2	19			117	1	7	31		31				11	120	160	3	87	3	78	
12	82			1	9	153	261	20	4	33	17	9		2	91	3	13	48		2	44	1	1	6	115	178	7	74	1	27	
4	81	NO REPORTS RECEIVED DURING 1981																													
4	82				1	1	12	1		2				3			2								2			2			
4	81	NO REPORTS RECEIVED DURING 1981																													
4	82				1	6		1						3			1		1						4	3		2			
12	81				13	39	161	17		12	19	29			94	4	6	28		23		5		4	97	37	11	58	16	15	
12	82		1		4	52	177	3		25	30		1	69	2	11	24		23		1		1	64	99	9	31	2	8		
12	81	3	2	5	34	66	5		10	2	32		1	23	3	13	80		2	76		2			240	170	5	80			
12	82		1		3	34	71	7	5	12	4	3			21	1	21	67		1	64		2			243	179	1	26		
12	81										3																				
12	82																														
	81	3	5	5	32	278	591	40	4	60	12	83		1	234	10	26	139		2	130		7	15	457	387	19	182	19	93	
	82		2	1	17	241	527	41	10	73	26	42		3	187	6	47	140		3	132		4	7	428	459	17	148	3	35	
12	81	1	3		8	103	263	16	2	30	5	99			91	1	21	21		18		1	2	4	35	20	5	68		2	
12	82	1	4	4	18	102	191	10		16	4	50	2		74		31	4		1	2		1	7	26	20	8	45		2	
12	81																														
12	82				2	7	27	1		1	1	1			8			3		3						1	4		2		

* Garibaldi PD began reporting as of 9/1/82
 * Rockaway PD began reporting as of 9/1/82
 * Athena PD began reporting as of 1/1/82

Y E A R	NUMBER OF POLICE OFCRS	TOTAL AGENCY STAFF	NUMBER OF OFCRS ASLTD	AGENCY	POPULATION	PART I - INDEX OFFENSES	PERCENT CHANGE	PART II OFFENSES	PERCENT CHANGE	TOTAL OFFENSES	PERCENT CHANGE	PART I - INDEX ARRESTS	PART II ARRESTS	TOTAL ARRESTS	INDEX OFFENSES CLEARED	PERCENT INDEX OFFENSES CLEARED
81	13	19	10	Hermiston PD	9,700	613		1067		1680		187	600	787	201	32.8
82	13	20	11	Hermiston PD	9,630	671 +9.5		1456 +36.5		2127 +26.6		189	679	868	196	29.2
81	7	11	1	Milton-Freewater PD	5,300	372		419		791		61	144	205	67	18.0
82	7	12	2	Milton-Freewater PD	5,415	447 +20.2		344 -17.9		791 0		79	144	223	33	7.4
81	23	28	14	Pendleton PD	14,600	1055		1642		2697		270	975	1245	306	29.0
82	22	27	7	Pendleton PD	14,550	1014 -3.9		1300 -20.8		2314 -14.2		307	807	1114	307	30.3
81	2	2		Pilot Rock PD	1,665	37		70		107		15	48	63	1	2.7
82	2	2		Pilot Rock PD	1,640	46 +24.3		39 -44.3		85 -20.6		13	31	44	8	17.4
81	2	2		Stanfield PD	1,640	77		41		118		8	24	32	6	7.8
82	3	3		Stanfield PD	1,620	63 -18.2		70 +70.7		133 +12.7		16	27	43	11	17.5
81	7	13	3	Umatilla PD	3,040	242		329		571		90	163	253	52	21.3
82	7	12		Umatilla PD	2,990	171 -29.3		384 +16.7		555 -2.8		58	186	244	34	19.9
81	6	8		Umatilla Tribal PD		26		44		70		3	20	23	3	11.5
82	6	8	1	Umatilla Tribal PD		67		121		188		5	57	62	8	11.9
81				Weston PD*	715											
82	1	1	1	Weston PD*	705	30		16		46		13	14	27		
81	49	49	6	State Police		329		828		1157		151	767	918	69	21.0
82	47	50	6	State Police		313 +2.7		772 -6.8		1110 -4.1		127	666	793	73	21.6
81	1	2		O.L.C.C.				24		24			5	5		
82	1	1		O.L.C.C.				35 +45.8		35 +45.8						
81	120	151	36	UMATILLA COUNTY TOTAL	59,900	3347		4870		8017		898	2862	3760	798	25.4
82	122	157	29	UMATILLA COUNTY TOTAL	60,000	3214 +2.1		4855 -0.3		8069 +0.6		868	2767	3635	788	24.5
81	5	7		UNION CO. SO	9,000	131		169		300		18	41	59	30	22.9
82	5	6		UNION CO. SO	8,760	110 -16.0		105 -37.9		215 -28.3		23	33	56	16	14.5
81	4	5		Elgin PD	1,720	36		50		86		15	24	39	10	27.8
82	4	5	1	Elgin PD	1,665	61 +69.4		45 -10.0		106 +23.3		18	27	45	9	14.8
81	14	22	8	La Grande PD	11,625	719		903		1622		163	285	448	205	28.5
82	15	23	8	La Grande PD	11,920	707 -1.7		841 -6.9		1548 -4.6		174	290	464	133	18.8
81	2	2		Union PD	2,105	56		41		97		6	35	41	8	14.3
82	2	2		Union PD	2,065	56 0		52 +26.8		108 +11.3		12	46	58	16	28.6
81	19	19	1	State Police		78		155		233		43	154	197	7	9.0
82	18	20		State Police		108 +38.5		158 +1.9		266 +14.2		53	140	193	19	17.6
81				O.L.C.C.				14		14						
82				O.L.C.C.				13 -7.1		13 -7.1			3	3		
81	44	55	9	UNION COUNTY TOTAL	24,450	1020		1332		2352		245	539	784	260	25.5
82	44	56	9	UNION COUNTY TOTAL	24,410	1042 +2.2		1214 -8.9		2256 -4.1		280	539	819	193	18.5

*Weston PD began reporting as of 1/1/82
 *Umatilla Tribal PD did not begin reporting until 10/1/81

Month of Reporting	PART I - INDEX OFFENSES																	PART II OFFENSES													
	011	02	03	04	05	06	07	09	042	10	11	12	13	14	15	16	17	18	181	182	183	184	19	20	21	22	24	26	28	29	
	Murder	Force Rape	Robbery	Aggravd Assault	Burglary	Larceny	Motor Vehicle Theft	Arson	Other Assaults	Forgery/Contft.	Fraud	Embezzle	Stolen Property	Vandalism	Weapons	Prostitution	Other Sex Offense	DRUG ARREST TOTAL	Narcotic	Marijha	Synthetic	Danger Drugs	Gamble	Family Offense	D.U.I.I. ARRESTS	Liquor License ARRESTS	Disorder Conduct ARRESTS	All Other (Except Traffic)	Curfew/Loiter ARRESTS	Runaway	
12	81	2	8	7	116	441	30	9	87	20	103	1		145	22	26	47	41	1	5			10	226	147	16	57	43	19		
12	82	2	5	12	129	481	35	7	146	47	244	1	8	156	14	13	46	3	35		8		6	242	154	14	84	79	28		
12	81	1	4	13	68	268	18		28	7	90			116	5	3	2		2				3	56	42	8	14		6		
12	82	1	4	17	92	316	17		15	12	68			142	5	7	2		2					51	22	19	19		1		
12	81	1	4	9	57	220	49	10	99	14	36	3	10	362	12	19	90	2	85		3		20	157	308	27	398	12	79		
12	82	1	5	13	47	251	653	35	9	103	22	53	7	3	225	9	22	43	4	37		2	2	18	180	224	34	267	21	57	
12	81				9	25	2	1	2	2	2			21	1		1		1				1	23	12	7	10		3		
12	82				15	30		1	2	2	1			17			1	4	4				1	8	12	3	1				
12	81	1		1	2	53	2		2	1	2			12			1	1	1						13	3	1	6		6	
12	82			1	4	13	4	1	12	1				26		2									13	3	1	6		6	
12	81		1	5	6	68	149	13	39	8	47			89	7	6	9	9					6	74	12	1	18		17		
12	82		1	1	5	50	104	8	45	13	47	3	1	75	8	2	7	6						82	9	3	45	2	24		
3	81				1	20	2	1	4					6	2										6			20		1	
12	82				6	18	41	2	21	3	1			16	1	3	4	4					2	20	4	1	33		12		
12	81				4	26								12			3	3							5			2			
12	81	3	6	4	14	106	156	31	9	40	30	0	7	3	38	4	9	64	4	59		1			525	55	5	26		2	
12	82		4	4	19	105	158	39	9	28	31	4	1	2	37	3	15	61	3	57				3	469	58	6	24		1	
12	81																								5			11			
12	82																											30			
12	81	6	17	31	108	710	2080	163	32	311	86	337	11	13	880	54	3	91	235	6	216	2	11		44	1116	604	69	627	55	129
12	82	3	16	32	130	786	2067	151	29	339	142	430	14	14	788	40	2	96	177	11	153	1	12	2	37	1092	515	89	538	102	131
12	81				1	41	85	2	2	10	7	25			54		9	5	4			1		1	3	3		49		2	
12	82	1			5	37	64	3	4		22			26		1	6	2	2					4	2	5		33			
12	81				3	7	19	7	8		3			20			3								4	4	2	6		1	
12	82		1		2	16	39	3	3	1	3			13	1	10								1	3	9	6	3	1		
12	81	2	5	31	149	497	32	3	78	19	179	4	223	2	39	11	4	5					4	66	61	11	128	1	83		
12	82	1	3	6	24	118	532	22	58	38	77	1	208	6	34	22	1	20				1	1	20	78	41	21	197	2	48	
12	81	1		1	2	31	2		2		2			19		1	5	3				2		1	3	16	3	5	1		
12	82				1	25	30		4		4		1	18	1		2	2	2					2	2	32	3	18		1	
12	81		2	2	9	24	31	7	3	6	4	5		14	4	2	6	1	5						89	19	3	3		2	
12	82		5		5	36	44	10	8	10	4	5		14		6	1	1						3	89	18	4	8			
12	81										2																	6			
12	82																											3		9	
12	81	1	4	8	46	240	663	30	8	104	30	216	4	330	6	34	27	5	17		5		6	163	103	16	197	2	88		
12	82	2	9	6	37	232	709	38	9	79	43	111	2	279	8	1	56	27	1	25		1	1	30	174	108	34	268	3	44	

-73- *Weston PD began reporting as of 1/1/82

Y E A R	NUMBER OF POLICE OFCRS	TOTAL AGENCY STAFF	NUMBER OF OFCRS ASLTD	AGENCY	POPULATION	PART I - INDEX OFFENSES	PERCENT CHANGE	PART II OFFENSES	PERCENT CHANGE	TOTAL OFFENSES	PERCENT CHANGE	PART I - INDEX ARRESTS	PART II ARRESTS	TOTAL ARRESTS	INDEX OFFENSES CLEARED	PERCENT INDEX OFFENSES CLEARED
81	7	11		WALLOWA CO. SO	5,320	92		81		173		11	126	137	3	3.3
82	7	11		WALLOWA CO. SO	5,375	75	-18.5	83	+2.5	158	-8.7	9	85	94	15	20.0
81	4	4	1	Enterprise PD	1,980	68		157		225		13	71	84	9	13.2
82	4	4		Enterprise PD	2,015	67	-1.5	101	-35.7	168	-25.3	17	38	55	17	25.4
81	4	4		State Police		10		39		49		4	37	41		
82	4	4		State Police		4	-60.0	21	-46.2	25	-49.0	1	18	19		
81				O.L.C.C.				12		12						
82				O.L.C.C.				10	-16.7	10	-16.7		2	2		
81	15	19	1	WALLOWA COUNTY TOTAL	7,300	170		289		459		28	233	263	12	7.1
82	15	19		WALLOWA COUNTY TOTAL	7,390	146	-14.1	215	-25.6	361	-21.4	27	143	170	32	21.9
81	19	20		WASCO CO. SO	11,085	329		372		701		55	280	335	45	13.7
82	17	23	4	WASCO CO. SO	10,834	325	-1.2	495	+33.1	820	+17.0	75	311	386	61	18.8
81				Rajneeshpuram PD												
82				Rajneeshpuram PD	606											
Department not established until 10/1/82 No crimes reported by Rajneeshpuram PD for 1982																
81	21	25	6	The Dalles PD	11,315	1067		1238		2305		289	523	812	273	23.6
82	16	20	4	The Dalles PD	11,260	925	-13.3	959	-22.5	1884	-18.3	236	487	723	204	22.1
81	17	17	1	State Police		24		410		434		19	399	418	4	16.7
82	17	18	5	State Police		33	+37.5	378	-7.8	411	-5.3	19	349	368	8	24.2
81	1	1		O.L.C.C.				6		6			5	5		
82				O.L.C.C.				26	+333.3	26	+333.3		13	13		
81	58	63	7	WASCO COUNTY TOTAL	22,400	1710		2026		3446		363	1207	1570	322	22.7
82	52	63	13	WASCO COUNTY TOTAL	22,700	1583	-9.6	1858	-8.3	3141	-8.9	330	1160	1490	273	21.3
81	123	142	3	WASHINGTON CO. SO	19,035	5299		3296		8595		1049	1321	2370	1106	20.9
82	119	142	8	WASHINGTON CO. SO	148,265	5200	+1.9	3572	+8.4	8772	+2.1	1178	1646	2824	1236	23.8
81	2	2		Banks PD	510	29		66		93		6	62	68	5	17.2
82	1	1		Banks PD	510	35	+20.7	12	-81.8	47	-50.5	8	3	11	6	17.1
81	45	54	1	Beaverton PD	31,500	2285		1539		3824		631	804	1435	574	25.1
82	46	58	17	Beaverton PD	33,640	2378	+4.1	1461	-5.1	3839	+0.4	719	625	1344	587	24.7
81	8	9	1	Cornelius PD	4,760	205		268		473		30	156	186	41	20.0
82	8	9	6	Cornelius PD	4,880	316	+54.1	404	+50.7	720	+52.2	86	245	331	90	28.5
81	15	20	4	Forest Grove PD	11,910	681		693		1374		128	479	607	110	16.2
82	16	22	3	Forest Grove PD	11,910	620	-9.0	774	+11.7	1394	+1.5	159	410	569	139	22.4
81	2	2		Gaston PD	470	14		27		41		7	26	33	6	42.9
82	2	2		Gaston PD	555	11	-21.4	15	-44.4	26	-36.6	10	21	31	1	9.1
81	36	40	17	Hillsboro PD	28,650	1727		2039		3766		328	1161	1489	325	18.8
82	36	41	14	Hillsboro PD	29,240	1620	-6.2	1641	-19.5	3261	-13.4	357	875	1232	351	21.7

Month of Reporting	PART I - INDEX OFFENSES									PART II OFFENSES																						
	01	02	03	04	05	06	07	08	09	10	11	12	13	14	15	16	17	18	19	20	21	22	23	24	25	26	27	28	29			
	Murder	Force Rape	Robbery	Aggravated Assault	Burglary	Larceny	Motor Vehicle Theft	Arson	Other Assaults	Forsy/Contf.	Fraud	Embezzle	Stolen Property	Vandalism	Weapons	Prostitution	Other Sex Offense	DRUG ARREST TOTAL	Narcotic	Marijuana	Synthetic	Danger Drugs	Gamble	Family Offense	D.U.I. ARRESTS	Liquor Laws ARRESTS	Disorder Conduct ARRESTS All Other	(Except Traffic)	Curfew/Loiter ARRESTS	Runaway		
12	81			3	33	54	1	1	4	1	1			15				14	13	1						42	56	2	10	1	1	
12	82			1	37	33	4						2	9	3			6	5					2	41	25	3	5		3		
12	81		1		15	48	3	1	7		25			41	1		7	10	10						1	15	23	7	21			
12	82				6	13	47	1	4		28			18			6								2	4	16	2	13	2	1	
12	81					10				2					1			7		7						9	17		2			
12	82					3			1		2							5		5						7	4		1			
12	81																											5				
12	82																											5				
12	81		1		3	48	112	4	2	11	3	26		56	2		7	31	30	1				1	66	96	9	38	1	1		
12	82			1	6	50	83	6		5	41		2	27	3		6	11	10					4	52	47	5	24	2	4		
12	81	1	1	4	15	79	212	15	2	28	4	1		82	4		6	19	19					3	169	35	9	44		4		
12	82	1		5	17	90	194	15	3	64	4	4	2	81	4		17	15	2	11				4	200	28	6	60				
3	82	Dept not established until 10/1/82 No crimes reported by Rajneeshpuram PD for 1982																														
12	81		2	11	41	192	754	56	11	118	14	13	1	391	17		23	9	8					28	179	31	43	233	4	46		
12	82		2	8	31	175	664	44	1	88	13	10	3	299	19		25	7	1	6				8	177	44	47	126	3	29		
12	81		1		2	19	1	1	3	3	3	1		3	1		39	39							352	13		5				
12	82		1		2	3	20	7	8	2	3			9	3		7	64	6	49					222	11	2	8				
12	81																										5		3			
12	82																										13		21			
12	81	1	3	16	56	273	985	72	14	149	37	33	1	476	22		29	67	66					31	680	84	54	285	4	50		
12	82	1	3	13	50	268	878	6	4	160	74	57	5	389	26		49	86	9	66				12	599	96	55	215	3	29		
12	81	4	21	73	39	1829	2984	329	14	338	61	69	2	1021	16	1	127	109	7	99				17	439	396	31	452	3	344		
12	82	5	28	71	44	1753	2970	319	10	406	52	81	4	893	12		147	146	15	125	2	4	2	20	617	528	34	526	4	361		
12	81				6	23				2	1			11				4		4						11	42		4		2	
12	82				3	32				1				6				1									1				3	
12	81	1	7	29	32	589	1506	119	8	157	35	36	1	345	25		68	184	8	164	7	3		25	132	300	32	208	20	68		
12	82	1	11	41	17	555	1652	92	9	170	45	42	10	336	20		64	120	13	106	1			34	142	162	17	204	9	101		
12	81		2	1	12	64	112	9	5	8	5	10	1	48	5		6	3		2	1			1	91	42	1	14		14		
12	82				3	34	58	211	9	1	17	10	18				8	15	1	13				2	149	31	1	30	2	23		
12	81			3	20	220	405	23	10	40	15	9	3	1	153	6		21	50	49				7	165	126	25	41	24	29		
12	82		2	5	4	174	409	19	7	53	46	34	1	183	2		31	39	4	29	1	5		2	177	81	18	68	4	29		
12	81				5	8	1			1				3	1										1	8	13		1			
12	82				4	6	1							5												8	4					
12	81	3	8	17	71	474	1054	91	9	212	24	50	2	524	21	1	70	73	7	61	2	3			342	377	25	138	29	66		
12	82	2	6	16	61	441	1004	76	14	201	62	54	1	376	22	2	64	62	1	58				1	8	265	191	18	174	26	96	

Y E A R	NUMBER OF POLICE OFFCRS	TOTAL AGENCY STAFF	NUMBER OF OFFCRS ASLTD	AGENCY	POPULATION	PART I - INDEX OFFENSES	PERCENT CHANGE	PART II OFFENSES	PERCENT CHANGE	TOTAL OFFENSES	PERCENT CHANGE	PART I - INDEX ARRESTS	PART II ARRESTS	TOTAL ARRESTS	INDEX OFFENSES CLEARED	PERCENT INDEX OFFENSES CLEARED
81	2	2		North Plains PD	725	36		23		59			3	3	6	16.7
82	2	2			750	22	-38.9	6	-73.9	28	-52.5				1	4.5
81	5	5		Sherwood PD	2,425	47		45		92		6	34	40	4	8.5
82	5	5			2,550	119		156		275		19	70	89	15	12.6
81	22	29	2	Tigard PD	15,100	994		807		1801		194	533	727	178	17.9
82	22	29	1		18,000	1117	+12.4	857	+6.2	1974	+9.6	200	439	639	158	14.1
81				Tualatin PD*	8,700	503		336		839		86	142	228	84	16.7
82					9,400	477	-5.2	413	+22.9	890	+6.1	98	191	289	105	22.0
81	35	35	8	State Police		311		1085		1396		73	951	1024	39	12.5
82	33	36	9			259	-16.7	1048	-3.4	1307	-6.4	68	794	862	28	10.8
81	2	2		O.L.C.C.				196		196			13	13		
82	3	3						192	-2.0	192	-2.0		6	6		
81	297	342	36	WASHINGTON COUNTY TOTAL	253,800	12131		10420		22551		2538	3685	8223	2478	20.4
82	293	350	58		259,700	12174	+0.4	10551	+1.3	22725	+0.8	2902	5325	8227	2717	22.3
81	1	1		WHEELER CO. SO	1,425	35		27		62		12	15	27	10	28.6
82	1	1			1,425	37	+5.7	36	+33.3	73	+17.7	13	30	43	12	32.4
81	1	1		State Police		13		8		21		6	11	17	2	15.4
82	1	1				6	-53.8	7	-12.5	13	-38.1	5	5	10	1	16.7
81				O.L.C.C.				8		8			1	1		
82													4	4		
81	2	2		WHEELER COUNTY TOTAL	1,425	48		43		91		18	27	45	12	25.0
82	2	2			1,425	43	-10.4	43	0	86	-5.5	18	39	57	13	30.2
81	29	34		YAMHILL CO. SO	20,400	649		1560		2209		131	362	493	101	15.6
82	25	34	1		20,140	589	-9.2	1566	+0.4	2155	-2.4	152	453	605	107	18.2
81	2	2		Amity PD	1,070	13		51		64		3	45	48	1	7.7
82	2	2			1,050			8		8		4	7	11		
81	1	1	3	Carlton PD	1,300	47		56		103		7	24	31	9	19.1
82	1	1	2		1,275	39	-17.0	25	-53.4	64	-37.9	7	16	23	8	20.5
81	2	2		Dayton PD	1,400	9		6		15		5	10	15	1	11.1
82	2	2			1,375	21	+133.3	26	+333.3	47	+213.3	10	22	32	4	19.0
81	2	2		Dundee PD	1,285	86		111		197		37	41	78	38	44.2
82	2	2			1,275	53	-38.4	72	-35.1	125	-36.5	12	41	53	12	22.6
81	1	1		Lafayette PD	1,240	51		40		91		11	15	26	7	13.7
82					1,225											

Department disbanded during 1982
*Tualatin PD reports are submitted by Washington County SO

Months of Reporting	PART I - INDEX OFFENSES											PART II OFFENSES																				
	011	02	03	04	05	06	07	09	042	10	11	12	13	14	15	16	17	18	181	182	183	184	19	20	21	22	24	26	28	29		
	Murder	Force Rape	Robbery	Aggravated Assault	Burglary	Larceny	Motor Vehicle Theft	Arson	Other Assaults	Forgery/Contft.	Fraud	Embezzle	Stolen Property	Vandalism	Weapons	Prostitution	Other Sex Offense	DRUG ARREST TOTAL	Narcotic	Marijma	Synthc	Danger Drugs	Gamble	Family Offense	D.U.I. ARRESTS	Liquor Laws ARRESTS	Disorderly Conduct ARRESTS	All Other (except Traffic)	Curfew/Loiter ARRESTS	Runaway		
12	North Plains PD	81			2	24	2		4					5			1	1		1					1					8		
12		82			5	13	4							4	1																	
3	Sherwood PD	81	1	1	1	26	82	5	5		3			12	3		3	3	3	5	5			1	4	10	2	8	1	2		
12		82												40			3	5		5				3	29	17		17	1	7		
12	Tigard PD	81	4	21	24	316	574	48	7	22	28	43		161	6	34	66	9	50			7		8	94	178	7	82	60	27		
12		82	1	7	26	10	324	696	45	8	92	20	43	1	206	9	1	24	53	5	46		9	95	88	9	131	33	48			
12	Tualatin PD*	81	1	5	5	165	290	28	4	35	11	14		100	1	13	25	21	3	1			4	31	41	6	48	1	22			
12		82		1	7	2	166	277	22	2	52	29	15		92	2	12	35	1	31	3		5	47	48	2	61		31			
12	State Police	81	17	4	8	101	145	29	7	31	5	46		33	8	28	76	2	72					726	19	6	21		9			
12		82	15	5	3	60	137	26	13	27	109	41	5	38	6	44	77	7	69				1	626	14	4	17	2	10			
12	O.L.C.C.	81									8															13		159				
12		82								1																6		166				
12	WASHINGTON COUNTY TOTAL	81	9	70	153	213	3786	7153	683	64	885	184	288	3	7	2416	92	2	368	594	33	526	13	22	64	2104	1557	135	1179	138	583	
12		82	10	71	174	176	3569	7489	618	67	1040	374	338	7	16	2266	75	3	398	553	47	483	7	16	3	84	2155	1171	103	1394	82	709
12	WHEELER CO. SO	81			2	3	6		2					10			2									8	1	2	2			
12		82			2	13	20	2		1				6		1	7		7							11	3	10		1		
12	State Police	81			2	14	18	1		1	1						1							2	2	3	3					
12		82			1	5			2					1										2	1				1			
12	O.L.C.C.	81																										7				
12		82																								4						
12	WHEELER COUNTY TOTAL	81			4	17	24	1	2	1	1			10			3								2	11	4	12	2			
12		82			2	14	25	2		3				7			1	7		7				2	16	3	11		1			
12	YAMHILL CO. SO	81	4	5	46	264	295	32	3	27	8	116	1	221	12	15	40		40			3	8	139	87	9	719	5	71			
12		82	5	9	60	176	306	28	5	31	10	78	8	197	7	12	32	1	29			2	19	10	149	122	13	777	1	52		
3	Amity PD	81	1			2	9	1		4				5			4		3						2	12	2	33		2		
5		82								1															3		1	4				
12	Carlton PD	81			11	34	1	1	4	1	3			23			2						1		7	7	2	8				
12		82			2	7	30		2					8										6	1	2	4		2			
12	Dayton PD	81		1	1	1	6		1								1		1					4	1		1					
12		82		1		5	12	3																16	1		2					
12	Dundee PD	81		1	3	25	55	1	1	2	7	23	5	10			6		2		1	1		20	7		18		2			
12		82			2	17	33	1		2	4	9		9	1		7		7					15	3	4	15	2	3			
12	Lafayette PD	81			2	14	30	4	1	1	2			20										7	5	1	2					
12		82	Department disbanded during 1982																													

*Tualatin PD reports are submitted by Washington County SO

Y E A R	NUMBER OF POLICE OFCRS	TOTAL AGENCY STAFF	NUMBER OF OFCRS ASLTD	AGENCY	POPULATION	PART I - INDEX OFFENSES	PERCENT CHANGE	PART II OFFENSES	PERCENT CHANGE	TOTAL OFFENSES	PERCENT CHANGE	PART I - INDEX ARRESTS	PART II ARRESTS	TOTAL ARRESTS	INDEX OFFENSES CLEARED	PERCENT INDEX OFFENSES CLEARED
81	20	25	3	McMinnville PD	14,415	1090		1827		2917		219	592	811	317	29.1
82	20	25			14,610	1084	-0.6	1823	-0.2	2907	-0.3	275	426	701	385	35.5
81	17	25		Newberg PD	10,525	463		498		961		145	270	415	144	31.1
82	17	26	2		10,950	447	-3.5	470	-5.6	917	-4.6	160	310	470	149	33.3
81	4	5		Sheridan PD	2,235	150		211		361		34	98	132	35	25.5
82	4	5			2,200	139	-7.3	209	-0.9	348	-3.6	22	73	95	34	24.5
81	4	5	1	Willamina PD	1,760	143		144		287		26	52	78	26	18.2
82	3	3	1		1,800	125	-12.6	113	-21.5	238	-17.1	40	42	82	23	18.4
81	1	1		Yamhill PD	670											
82	1	1			675	4		2		6						
81	20	20	3	State Police		38		253		291		23	241	264	5	13.2
82	17	18	1			27	-28.9	268	+5.9	295	-1.4	15	243	258	5	18.5
81	1	1		O.L.C.C.				46		46						
82								27	-41.3	27	-41.3					
81	104	124	10	YAMHILL COUNTY	56,300	2739		4803		7542		641	1750	2391	684	25.0
82	94	122	7	TOTAL	56,575	2528	-7.7	4609	-4.0	7137	-5.4	697	1633	2330	727	28.8
81	4466	5798	907	STATE TOTALS	2,660,435	187983		174613		362656		39786	85769	125555	36657	19.5
82	4434	5760	944		2,656,185	174531	-7.2	171029	-2.1	345560	-4.7	40274	83108	123382	36801	21.1
81	882	1021	129	State Police		4926		13126		23092		2273	16149	18422	1159	23.3
82	835	958	140	Totals		4527	-8.8	16119	-11.1	20646	-10.6	1991	13356	15347	998	22.0
81	33	39		O.L.C.C. Totals		1		2762		2763			509	509		
82	36	51				1	0	2723	-1.4	2724	-1.4		505	505	1	100.0

Months of Reporting	PART I - INDEX OFFENSES													PART II OFFENSES - DRUG ABUSE ARRESTS																		
	011	02	03	04	05	06	07	09	042	10	11	12	13	14	15	16	17	18	181	182	183	184	19	20	21	22	24	26	28	29		
	Murder	Force Rape	Robbery	Aggravd Assault	Burglary	Larceny	Motor Vehicle Theft	Arson	Other Assaults	Forgery/Contft.	Fraud	Embezzle	Stolen Property	Vandalism	Weapons	Prosti-tution	Other Sex Offense	DRUG ARREST TOTAL	Narcotic	Marijna	Synthc	Danger Drugs	Gamble	Family Offense	D.U.I. ARRESTS	Liquor Laws ARRESTS	Disorder Conduct ARRESTS	ALL OTHER (Except Traffic)	Curfew/Loiter ARRESTS	Runaway		
12	McMinnville PD	81	3	6	14	244	746	71	6	130	13	55	4	399	3	39	37	1	30		6	1	36	127	191	27	430	11	98			
12	Newberg PD	82	3	9	17	222	798	30	5	164	8	73	1	6	330	13	59	20	2	18		1	31	101	137	35	481	11	95			
12	Sheridan PD	81	2	2	8	100	310	17	8	38	21	18	3	88	11	10	15		13	1	1		2	83	98	20	36	5	8			
12	Willamina PD	81	1	2	2	41	88	2	1	11	2	10		58		3	2		2				4	26	13	4	36	5	4			
12	Yamhill PD	81			7	26	91	1		14	3	3		35	3	3	2		2				1	3	7	3	22		10			
12	State Police	81			1	9	18	5	5	8	2	2		7		3	11		10		1			188	18	2	5		2			
12	O.L.C.C.	81			2	5	12	5	2	3	5		5	1	7	1	4	14		14			1		188	21	5	9		2		
12	YAMHILL COUNTY TOTAL	81	1	9	16	104	796	1637	147	29	245	43	272	12	394	26	109	122	1	110	2	9	5	36	648	422	85	1394	24	206		
12	STATE TOTALS	81	115	1111	4773	6637	52270	12447	9017	1573	15294	3878	11	27	68468	31523	10	1156	468	8362	515	7064	110	671	86	1458	27827	3234	3298	25819	1957	9899
12	STATE TOTALS	82	136	1050	4422	6881	47107	105468	7922	1543	16173	4576	16	32	164510	33671	1898	1491	5297	7802	585	6363	91	763	134	1790	27370	2958	3238	28810	1985	9801
12	State Police Totals	81	11	77	83	276	1281	2511	454	273	473	402	742	14	28	562	180	2	196	1931	77	1801	1	32	3	7	1095	1324	163	473	14	95
12	State Police Totals	82	8	96	56	271	1127	2308	398	263	491	548	688	43	21	549	140	6	307	1789	64	1621	7	97	23	25	8748	1150	151	540	12	65
12	O.L.C.C. Totals	81			1					1	352							1		1					488		1776					
12	O.L.C.C. Totals	82					1				183												4		475		2101					

END