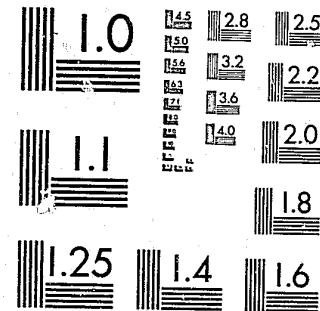


National Criminal Justice Reference Service

ncjrs

This microfiche was produced from documents received for inclusion in the NCJRS data base. Since NCJRS cannot exercise control over the physical condition of the documents submitted, the individual frame quality will vary. The resolution chart on this frame may be used to evaluate the document quality.



MICROCOPY RESOLUTION TEST CHART
NATIONAL BUREAU OF STANDARDS-1963-A

Microfilming procedures used to create this fiche comply with the standards set forth in 41CFR 101-11.504.

Points of view or opinions stated in this document are those of the author(s) and do not represent the official position or policies of the U. S. Department of Justice.

National Institute of Justice
United States Department of Justice
Washington, D. C. 20531

12/29/83

YOUTH CORRECTIONAL INSTITUTION
ANNANDALE
New Jersey

ANNUAL REPORT
July 1, 1981-June 30, 1982

Stephen M. Domovich
Superintendent

91125

AUG 22 1983

SUMMARY ANNUAL REPORT

Fiscal Year
1981 - 1982YOUTH CORRECTIONAL INSTITUTION
ANNANDALE, NEW JERSEY

ACQUISITIONS

During the past year continued progress was made toward achieving the goals of the institution and Department. Employee-inmate rapport and communication improved during the past fiscal year.

Annandale Population

The highest count in the history of this facility was 832 inmates on March 24 and June 28. It is now possible to house a maximum of 668 inmates. This makes it difficult to provide the necessary services to such a large group. We not only have a space problem but do not have the number of professional staff to meet all the needs of every inmate.

Treatment and Rehabilitation of Addicted PrisonersT.R.A.P.

During the FY 1981-1982 operating period the TRAP Program exhausted the remaining federal (LEAA) funds and became self-sufficient. The number of staff positions declined to three. Staff retained were suitably credentialed for substance abuse treatment.

Treatment shifted to more emphasis on group therapies due to staff cuts. Approximately fifty percent of all program admissions completed treatment as TRAP Program graduates during the fiscal year. Program admissions for the year numbered 155 inmates.

At the conclusion of the year, the TRAP Program moved to Unit A and created a staging area in the dormitory of Cottage 1.

Garden State College Program

The Garden State College Program during the past fiscal year offered a total of ten college level courses with a total enrollment of 103 students.

Twelve students graduated from Mercer County Community College on May 26, 1982. Two students received Associate of Arts Degrees and ten received Certificates of Proficiency in Data Processing.

A total of twelve inmates enrolled in state or county colleges after being paroled.

Graduation

On October 26, 1981, the 19th Annual Commencement Exercises were held in the school auditorium with 618 young men being given recognition for earning educational diplomas, certificates, and/or awards. Greetings were extended by Mr. Peter Roselli, Director, Office of Educational Services, and Mr. Peter Krochta, chairman of the Board of Trustees.

U.S. Department of Justice
National Institute of Justice

This document has been reproduced exactly as received from the person or organization originating it. Points of view or opinions stated in this document are those of the authors and do not necessarily represent the official position or policies of the National Institute of Justice.

Permission to reproduce this copyrighted material has been granted by

New Jersey Youth Correctional
Institution

to the National Criminal Justice Reference Service (NCJRS).

Further reproduction outside of the NCJRS system requires permission of the copyright owner.

Child-Study Team

The institutional Child Study Team has been functioning effectively for nearly an entire year. In addition to Annandale, Stokes and High Point, CST services were extended on a referral basis to include Clinton, Rahway, Avenel, Warren Residential and Essexfields. Other CST services provided this year included several in-service training sessions for all teachers, regular teacher consultations, individual inmate counseling, vision and hearing screenings, and other services including inmate referrals both within the institution and to outside agencies.

Level I monitoring by the Department of Education showed the CST to be meeting state mandates in providing services.

One hundred and eleven Team staffings were completed.

Annual Alcoholics Anonymous Meeting

On April 27, 1982, Annandale held its 34th Annual A.A. Meeting. Eighty-two inmates attended with 32 visitors from the community. The traditional coffee and cake were offered after the program.

State Parole Board

The State Parole Board has two persons permanently assigned to the institution and the impact of the paroling authority upon all aspects of the institution has stretched our resources to their limits. YCIA has the highest degree of paroles at first eligibility - ninety-one percent as reported by the State Parole Board.

A.C.A. Accreditation

Accreditation continued to be in a deferred status pending the completion of the renovation to the YCIA kitchen and dining room.

Modular Unit

During June 1982, a forty-eight bed modular unit was completed, located between Cottage 10 and the fenced area. On June 24 it was filled with inmates assigned to the TRAP Program. Cottage 3 then was utilized as a regular housing unit.

Kitchen Renovation

On December 1, 1981, the kitchen and dining room were vacated so that contractors could start work in renovating on the site. The inmates dining room was temporarily moved to the chapel in the Industrial Building and the staff dining room was moved to the basement of the Administration Building. This was a nine-month contract, however, it appears that the project will not be completed within the allotted time. During the interim, food is prepared at Clinton Correctional Institution, using the regithermic system.

Dairy

On November 24, 1981, fifty-eight milking cows and 27 dry cows were received from Marlboro which put Annandale back into the milking business. A pipe line milker was installed and the milk is being delivered to Jones Farm in a bulk tank truck for pasteurization, packaging and distribution.

Internal Affairs

On July 1, 1981, the Control Unit was officially disbanded and the Annandale Internal Affairs Unit was established. The new unit is composed of two investigators appointed by the Commissioner: Bruce D. Assante and Debbe E. Swidor, both formerly Annandale custody staff. The unit's responsibilities include all major investigations, staff and inmate allegations, cooperative investigations with outside agencies, investigation and apprehension of all escapees, and all duties as requested by the Chief Investigator and the Superintendent. The unit also coordinates criminal arrests at the institution, issues summons and warrant complaints and prepares all cases for prosecution. The new unit was originally located in the office of the former Control Unit on the second floor of the Administration Building. In April 1982, the unit relocated to the new suite of offices in the basement of the Administration Building - the new location being much more spacious and effective than the former. The design and construction of the offices was personally supervised by the superintendent.

During the period of July 1, 1981 through June 30, 1982, the Internal Affairs investigators issued 59 summons complaints for various violations of criminal statutes. The investigators have made more than 30 court appearances; handled 7 escapes and 9 escape attempts; completed 19 investigations; 12 staff investigations; 4 assaults on staff members; 6 inmate suicide attempts and cooperative investigations with 20 outside agencies. The unit also completed investigations on 12 other incidents as well as a comprehensive investigation on quasi-religious militant activities that led to the reclassification and permanent transfer of inmates to other institutions.

Annual Open House and Staff Recognition Program

Annandale's Annual Open House and Staff Recognition Program was held on May 13, 1982. Over 100 persons were in attendance with the Commissioner being the principal speaker. Mr. Peter Krochta, chairman of the Board of Trustees, also spoke at this affair. Recognition was given to 47 staff members.

ADMISSIONS, RELEASES, POPULATION: There was a total of 953 inmates assigned to Annandale. This figure was 94 less than the 1,047 inmates received during the previous fiscal year. Two hundred and sixty-four of the inmates received were transferred directly from their respective counties. This entailed the interviewing and selection of inmates by YCIA staff members and the Institution fulfilling all the functions normally dealt with at Yardville Reception Center. The remaining 689 inmates were received by the Classification Committee at Yardville. The total intake gave us an average monthly intake of 79 inmates which was less than the monthly average of 87 inmates the previous year. Several of these new arrivals require constant medical attention because of serious cases of asthma and other medical maladies requiring attention.

On June 30, 1982, Annandale had 160 State Prison cases included in its population. These were individuals who were originally committed to the Youth Complex with warrants and then received State Prison sentences, direct transfers from Prison Reception Unit, and persons sentenced to the State Prison from county jails.

The average population was 793 as compared to 628 last year. Juvenile Commitments this year were fourteen percent.

Six hundred and eighty-four inmates were paroled from Annandale during the 1981-82 fiscal year.

A total of 100 inmates were returned to the Reception Center for re-classification for disciplinary or administrative reasons.

A total of 36 inmates were recalled by the courts as compared to 30 the previous year.

The average age of inmates on admission was 22.2 years. This is higher than the last year's average age of 19.8.

The average length of stay in the institution was 9.7 months which was more than 8.9 months the previous year.

During the past year, Annandale's inmate wages amounted to \$214,089.70. The Garden State School District paid \$3,900.80 to inmates who were para-professionals.

PERSONNEL: There were 347 employees at Annandale as of June 30, 1982. This includes budgeted, temporary and federally funded positions. Approximately 221 prospective employees were interviewed by the Personnel Office and 98 new employees were hired during the past fiscal year. There was a total of 50 resignations which includes 9 resignation not in good standing.

A total of 201 correction personnel are employed at present out of a possible 204 - this includes correction officers and custodial supervisors.

There were 16 personnel transferred from this institution to other institutions; 18 employees were granted a leave of absence; 7 employees retired and one took ordinary disability retirement. There were three employee deaths during the year.

There were 72 individuals involved in SLI during the past fiscal year. There was a total of 117 employee accidents during the year.

There were six voluntary demotions and 32 promotional examinations processed.

There was a total of 48 disciplinary actions resulting in 19 official written reprimands; one verbal reprimand; 19 minor disciplinary actions (1 to 5 days suspension); 7 major disciplinary actions (suspension of over 5 days) and 2 resignations resulting from major disciplinary actions.

There was a total of 23 grievances processed; 4 were settled at the second step; 7 at the third step; and 10 at the fourth step and 2 were withdrawn.

The Social Service Department continued to function with 7 members on the staff and one seasonal assistant.

The Education Department functioned with a total of 44 full-time members on the staff, including supervisory personnel, teachers, recreation aides, clerical staff, vocational instructors, and a librarian.

Approximately 395 employees attended the following in-service training sessions during this twelve month period: Department policies on the use of force, chemical and gasses, use of batons, pat strip and cell searches, range procedures, weapons nomenclature, gate procedures, use of video equipment, investigations of reports, and standard log book uses. Other training sessions included: Classification, New Recruit Orientation, Basic Recruit Training, Train the Trainer sessions, Institutional Crime Scene Investigation and Preservation of Evidence, Primary Supervisors Training, Stress Awareness, EPIS Seminar, Prison Fire Safety Seminar, Retirement Seminar, New Employees Orientation, Computer Familiarization, Spanish, Personnel Practices and Methods, Civil Service Procedure, Disciplinary Seminar, S.O.P. Review, Middle Management, Report Writing, Religion Within the Institution, Dairy Seminar, CPR (High Point), Pathology of Inmates, Interpretation of Legal Documents, Community Release Program, and Suicide Prevention.

INMATE DISCIPLINE AND MORALE: The inmate morale was good throughout the year and major incidents were at a minimum. It is felt that some of the reasons for maintaining good morale were the accessibility of staff to all inmates. New and constant changes in the program, as well as good communication between staff and inmates have related in reducing friction and misunderstanding.

Additionally, a strong voluntary chaplaincy and Bible study activity were developed and provided support for interested individuals. Revamped educational/recreation programs afforded meaningful programming for a greater number of inmates.

During the past year there was a total of 207 furloughs; 99 unescorted and 108 escorted. A total of 855 furlough applications were screened.

During the year there were 18 escapes or attempted escapes involving 25 inmates; 11 from the main institution; 2 from High Point; 2 from Stokes; 2 from furlough; and one from half-way house.

There were 72 unusual incidents created by some of our more disturbed inmates - incidents involving visitors, drugs, etc.

There were 27 assault incidents involving 36 inmates and 24 staff members.

There was a total of 4,412 disciplinary reports received by inmates.

A maximum custody yard with special egress has commenced completion and use of same will occur this coming year.

The Annandale Brotherhood of Jaycees are maintaining the cost of the cottage telephones by their picture project, however, costs for telephone services has been discontinued by New Jersey Telephone Company as a result of their high profit. The Jaycees will be sponsoring other activities for the inmate population.

CLASSIFICATION: The number of cases acted on by the Classification Committee was 4,694 as compared to 4,380 the previous year. This includes 2,431 personal appearances and 2,263 cases for discussion.

DIRECT TREATMENT PROGRAM: Dr. Hubert Felger, Psychiatric Consultant, continues to do an outstanding job in providing psychiatric evaluations and individual therapy for our inmate population at least two days each week. He has provided a total of 1,193 inmate sessions on an individual basis during the fiscal year. These figures include 187 new psychiatric evaluations and 1,006 individual treatment evaluations. During the fiscal year, Dr. Felger made 110 visits to the institution.

Dr. Arlyne Pomerantz, Clinical Psychologist, head of the Psychology Department, conducted 550 individual psychological interviews, 44 other evaluations, provided 35 State Prison evaluations, and carried 11 individual therapy cases. She attended 40 group therapy sessions and 124 clinical supervisory sessions.

Dr. Karl Golling, Clinical Psychologist, resigned effective May 25, 1982. While at Annandale he provided 498 individual interviews, 139 other evaluations, 82 State Prison evaluations, and carried 9 individual therapy cases. He attended 98 group therapy sessions.

Dr. Sudha Jain, Clinical Psychologist, began July 1981. During the fiscal year she conducted 384 individual psychological interviews, 105 State Prison evaluations, 164 other evaluations, carried 53 individual therapy cases and attended 74 group therapy sessions.

Dr. Tulio Maya, Clinical Psychologist, began employment in June 1982. During the one month at YCIA he provided 30 evaluations, 7 State Prison evaluations, 13 other evaluations, and carried three individual cases.

Mr. Henry Kogler, part-time Psychological Consultant, conducted 144 individual evaluations, 142 other evaluations, 82 State Prison evaluations, and carried three individual cases.

Dr. George Saxton, part-time Clinical Psychologist, conducted 96 group therapy meetings, 94 clinical supervisory sessions, five individual interviews, two State Prison evaluations, and carried two individual cases.

A total of 2,813 individual psychiatric and psychological sessions were conducted during the fiscal year.

The Social Service Department performed an outstanding service to the population this year. There was a total of 15,651 inmates seen by this department as a result of referrals from both staff and inmate requests; and 459 telephone calls between the inmates and their families were arranged through this department. This department provided initial screening for 855 furlough requests during the past year. Ninety-nine inmates were granted unescorted furloughs and 103 inmates were granted escorted furloughs.

During the past year, two students from Somerset County College completed their social work internship at Annandale. This program continued for the past eight years, provides the Social Service Department with help and gives the students a learning experience.

WORK OPPORTUNITIES - VOCATIONAL TRAINING:

The staff continued to instill good work habits among the residents, the majority of whom were not work oriented. Due to the nature of the institution, work for vocationally trained inmates remains accessible. In addition to the large farm and grounds area to care for, maintenance of 142 buildings and 41 vehicles of all types remain a very large job. Several work groups continued to function at both satellite units during the past year.

EDUCATION PROGRAMS:

The fully certified educational staff remained intact during the year and insured continuity in all phases of education program. Academic classes ranging from literacy through post-secondary were conducted. Due to increased inmate population, classroom schedules were reassessed and changes were made to increase class enrollment, thereby providing more students with an opportunity to be in school. Social Education Programs, Driver Education, Art, Music, Learning Disabilities, Child Study Team Services and Programmed Instruction were also conducted. New Jersey High School Equivalency Certificates were earned by 99 residents and 10 were eligible for tenth and eleventh grade certificates. The Driver Education Program continued with enthusiasm permitting students to obtain valid permits and drivers licenses even though the program was reduced to a half-day class midway through the year. The Driver Education teacher was assigned a half-day Basic Education Class. This course is coordinated with the Division of Motor Vehicles Department. A total of 66 students participated in the Driver Education Program during the past year.

The Garden State College Program offered 10 college level courses during the year - five during each semester, with an enrollment of 103 students.

Thirty-eight inmate paraprofessionals were assigned to various jobs throughout the institution during the past year. Eight inmates worked as paraprofessionals within the Division of Juvenile Services at the YCIA Stokes Unit.

Educational programs played an important part in the total program at Stokes and High Point. These programs were enlarged during the past year.

FOOD SERVICE:

Annandale's Food Service Department continued to provide a wholesome nutritious diet to residents at the institution. There were no significant changes in the standard menus. A total of 988,008 meals were served to inmates, employees and guests.

HEALTH SERVICES:

Dr. Frank Lisi continues to be the physician at Annandale on a full-time basis. Six nurses are employed on a full-time basis. A pharmacist functions on a part-time basis in a pharmacy located in the infirmary area. The Medical Department saw 62,004 inmates on a daily sick call. This is an increase from the previous year.

Dr. Morse continues to be the dentist at Annandale on a full-time basis. Dr. Crowley provides dental services on a part-time basis. One Dental Assistant is employed on a full-time basis and one on a part-time basis. A dental extern worked four weeks during the past summer. The number of inmates seen in the dental clinic increased during the year to 2,540 as compared to 1,849 during the previous year.

RECREATION PROGRAM: All major sports continue to be made available to the population with emphasis on intramural rather than varsity competition. However, varsity teams were fielded in softball and basketball with community groups providing the opposition. At both satellite units, basketball and softball teams were entered in leagues and games played in the community.

General recreation was scheduled during the inmates leisure time and included active, semi-active and passive activities. The institutional library was made available to inmates during their leisure time.

MAINTENANCE AND REPAIR: The age of the institution and lack of work experience and skills of the population places heavy demands on the staff of this department. Two thousand, nine hundred and thirty repairs were made by the Maintenance Department. Additional repairmen have again been requested in the budget in order for this department to function more efficiently.

The following major projects were completed during the year: renovation of the dairy; converting the chapel to an inmate dining hall; renovation of the basement of Cottage 9 into a chapel; renovation of the Administration Building basement for staff dining room and office space; new exterior lighting around Industrial Building and Center; and approximately 500' of sidewalk.

FAIR OPERATIONS: The beef operation was phased out on November 18, 1981. A total of 45 steer were sent to Joe Chu for processing. The finished product was shipped to Central Distribution, Trenton. Six steer were transferred to Skillman and two steer were sold at the auction market.

Fifty-eight milking cows and 27 dry cows were received from Marlboro on November 24, 1981, which put Annandale back into the milking business. A total of 302,480 quarts of milk was produced. Five cows and 28 calves were sold at the auction market and 12 cull cows were delivered to Joe Chu for processing.

Four hundred and fifty-two slaughter hogs were sent to A&B Slaughter House, Allentown, Pa. Twenty-two sows were sold to Hackettstown Auction Market. Two boars and 10 shoats were sold to Hackettstown. Three sows were sent to slaughter and one hog was transferred from Greystone Park to Annandale.

Alfalfa, corn, oats, wheat and barley were cultivated and harvested. In Addition, corn, tomatoes, onions and radishes were raised to supplement the inmate diet.

OFF GROUNDS RESIDENTIAL UNITS, WORK DETAILS: The average daily population at Stokes Forest was 61 as compared to 58 last year. The average daily population at High Point was 59 as compared to 58 last year. Both units continue to work with the Department of Environmental Protection and provide a unique blend of work and treatment opportunity to residents assigned. Community participation of both units continue and volunteers working at the unit assist in education, religious activities and recreational facilities.

OTHER AREAS OF CONCERN: Rev. Richard Fwing, Catholic Chaplain, continues to conduct Catholic Services on Monday afternoons and special holidays, and on Tuesday and Thursday conducts Mass in Spanish. He holds group counselling every Tuesday morning and is on call mornings for special counselling on an individual basis. Rev. Gerald Scott, Protestant Chaplain, conducts Protestant Services on Sunday mornings and Pastor Downs conducts Bible Study groups. Minister Suluki holds regular meetings on Monday evenings, Jamah Services every Friday, and special classes throughout the week for those of the Muslim faith.

Regularly scheduled visiting programs continue to be a very important part of the total program. A total of 24,070 visitors visited 14,530 inmates during the past fiscal year. \$67,357.43 was deposited to 4,756 accounts during these visits.

One thousand, seven hundred and ninety-four officers made a total of 1,061 trips escorting 2,562 inmates, requiring 12,872½ man hours and covering 98,004 miles. Man hours for Court trips amounted to 8,101½ hours. Man hours for Administrative trips were 1,857 hours and for treatment amounted to 2,907 hours. Mileage for Court trips amounted to 47,126 miles, mileage for Administrative purposes were 34,239 miles and mileage for treatment amounted to 27,039 miles.

DEVELOPMENTS OF NOTE: During the fiscal year, 207 residents received furloughs. This was 12 less than the previous year. There were 10 violations during the past year: one inmate escaped; one inmate was intoxicated; 5 failed to contact the Parole Officer and 3 inmates returned late. Eight were on unescorted furlough and two were on escorted furloughs.

One hundred and fifteen inmates participated in Annandale's Work Release Program. The high count for the year was in December 1981 when 37 residents were involved. As of June 30, 1982, twenty-five inmates were working in the program. Thirteen employers were active during the past year with 9 employing inmates at the end of the fiscal year. The work releasees grossed a total of \$240,599; Federal Tax, \$23,448; FICA, \$15,936; New Jersey State Tax, \$4,117; SUI, \$2,360; and Net Income, \$196,462.

The Board of Trustees continue to meet on the second Wednesday of every month. They are no longer the paroling authority, however, they maintain contact with inmates to keep abreast with inmate concerns, problems and issues.

DONATIONS: The Salvation Army donated 800 packages of personal grooming items to inmates housed at YCIA and the two satellite units. These gifts were distributed on Christmas Day - approximate value, \$4,000.

The Holiday Project from Allentown donated personal items to each inmate; these were distributed on Christmas Day - approximate value, \$200.00.

Several publishing companies and individuals donated approximately 550 used books to the institution library.

Mr. Peter Krochta, member of the Board of Trustees, donated used furniture to the institution - also 60 pens to be distributed to inmates.

Guideposts Outreach Ministries, Carmel, N.Y., donated 250 Christmas Cards to inmates.

Mr. Francis Smith of High Point Unit, donated a used air conditioner for the new classroom trailer - approximate value, \$200.00.

Waterloo Village donated \$240.00 to the Jaycee Account at Stokes for incentive trips and Jaycee sponsored functions.

The Easton Sport Shop donated some sport shirts and pool cues to the Stokes Forest Unit - approximate value, \$75.00.

The Explorer Post #193 of High Point donated the following items to the High Point Unit - approximate value, \$3,657.00: recreation equipment, tools, camera, bookshelf and equipment for school, fish, fish tank and equipment, records, air conditioner repair, school supplies, shop supplies, stove parts for wood stove for shop, t.v. antenna, cut-up lumber for tables, corn for ducks, goslings, wire repair kit, Christmas gifts for inmates, books, films for class, lamps, phone, light bulb for projector, Boy Scout Charter, stucco for shop walls, fishing equipment, garden supplies, tile for bathroom, toaster, tire machine wheel balancer, acetylene torch repair, magazine subscriptions, basketball trips, Sussex County Fair, Franklin Museum Trip, refreshments for trips, Halloween Party, and other items.

Mr. John Cianciulli donated a four-man tent to the Stokes Unit - approximate value, \$100.00.

Mr. Barry McDone donated two irons to the Stokes Unit - approximate value, \$20.00.

The Lafayette Federated Church donated 60 pairs of gloves to the Stokes Unit - approximate value, \$75.00.

Mr. Henry Crookall donated a sewing machine to the Stokes Unit - approximate value, \$200.00, and a stereo, approximate value, \$100.00.

Mr. Steve Tomaszewski donated wood from barn and tin sheeting from roof - approximate value, \$500.00.

The Jaycee Chapter at Stokes Forest Unit donated the following items during the fiscal year - approximate value, \$799.50: recreation equipment, supplies for Christmas and Halloween parties, telephone service, fans for dorms, art supplies and classroom aides, circus tickets and recovering pool table.

PLANS AND ASPIRATIONS: The institution continued its efforts to bring itself into compliance with Accreditation Standards even though we are presently in the deferred status of same. We are now in compliance with all goals established except those which require additional budgetary funds. Achieving the Accreditation Standards continues to be one of our prime objectives.

Employment and programs for inmates is a major concern of the institution with the increase in population. At the present time there are no State Use projects at this facility. This is being explored and, hopefully, additional jobs will be created so that Annandale will continue not to have any idle population.

The Youth Correctional Institution Complex Board of Trustees has continued to be supportive of programs at Annandale and were extremely interested in working conditions and the welfare of the inmate population. I am taking this opportunity to thank them, along with the Commissioner of Corrections and his staff, for their full support.

I also want to take this opportunity to personally thank all members of our staff, the "Annandale Team" for their help in making this past year a successful one for the institution.

Stephen M. Domovich

Stephen M. Domovich
Superintendent

June 30, 1982

END