

STATE OF DELAWARE

HANDBOOK
OF
CRIMINAL
JUSTICE
DATA
FISCAL
1981



Prepared by
the Statistical Analysis Center

90251

HANDBOOK
OF
CRIMINAL JUSTICE DATA
1981

NCJRS

AUG 1 1983

ACQUISITIONS

STATISTICAL ANALYSIS CENTER
SUITE 207, TREADWAY TOWERS
DOVER, DELAWARE

MICHAEL H. RABASCA
DIRECTOR

PATRICK W. VANDER VEEN
STATISTICIAN

U.S. Department of Justice
National Institute of Justice

This document has been reproduced exactly as received from the person or organization originating it. Points of view or opinions stated in this document are those of the authors and do not necessarily represent the official position or policies of the National Institute of Justice.

Permission to reproduce this copyrighted material has been granted by
Delaware Statistical Analysis
Center

to the National Criminal Justice Reference Service (NCJRS).

Further reproduction outside of the NCJRS system requires permission of the copyright owner.

This Handbook is a compendium of data from a variety of criminal justice sources. The intent is to bring together a summary of the year using the most often utilized measures of activity. The data sets in this booklet are not meant to be transactional, but rather are an indication of the amount of activity or work a particular component of the criminal justice community was engaged in at the same time as another component.

The sources most often cited in this booklet are:

- The Uniform Crime Report (monthly)
- State of Delaware Department of Correction Bureau of Adult and Juvenile Correction Statistical Report (monthly)
- The Delaware Judiciary, 1981 Annual Report (annual)
- Delaware Violent Crimes Compensation Board Seventh Annual Report
- State of Delaware, Governor's Recommended Budget for Fiscal Year 1983 and Financial Report for Fiscal Years 1981 and 1982

CRIME IN DELAWARE
FISCAL 1981

The State of Delaware contains 32 traditional law enforcement agencies; 30 municipal police departments, New Castle County Police and the Delaware State Police. These departments are staffed by approximately 1,103 full-time, sworn officers.

In addition the state maintains a Marine Police Force, Environmental Control Officers, Fish and Wildlife Officers, Parks and Recreation Officers, Capitol Security and the Fire Marshalls Office, all containing sworn officers with arrest powers, for a total of 67 additional law enforcement officers.

The data in this section is from the Delaware Uniform Crime Report (UCR), and the Arrests by Age, Sex and Race Reports. These reports are compiled by the State Bureau of Identification Division of the Delaware State Police.

NATIONAL RANKING AMONG 50 STATES
COMPARISON OF RATES PER 100,000 PERSONS
DELAWARE

<u>Crime</u>	<u>Year 1970 National Rank</u>	<u>Year 1980 National Rank</u>
Murder	22	32
Rape	18	32
Robbery	17	24
Aggravated Assault	10	17
Burglary	15	21
Larceny	14	7
Motor Vehicle Theft	7	15

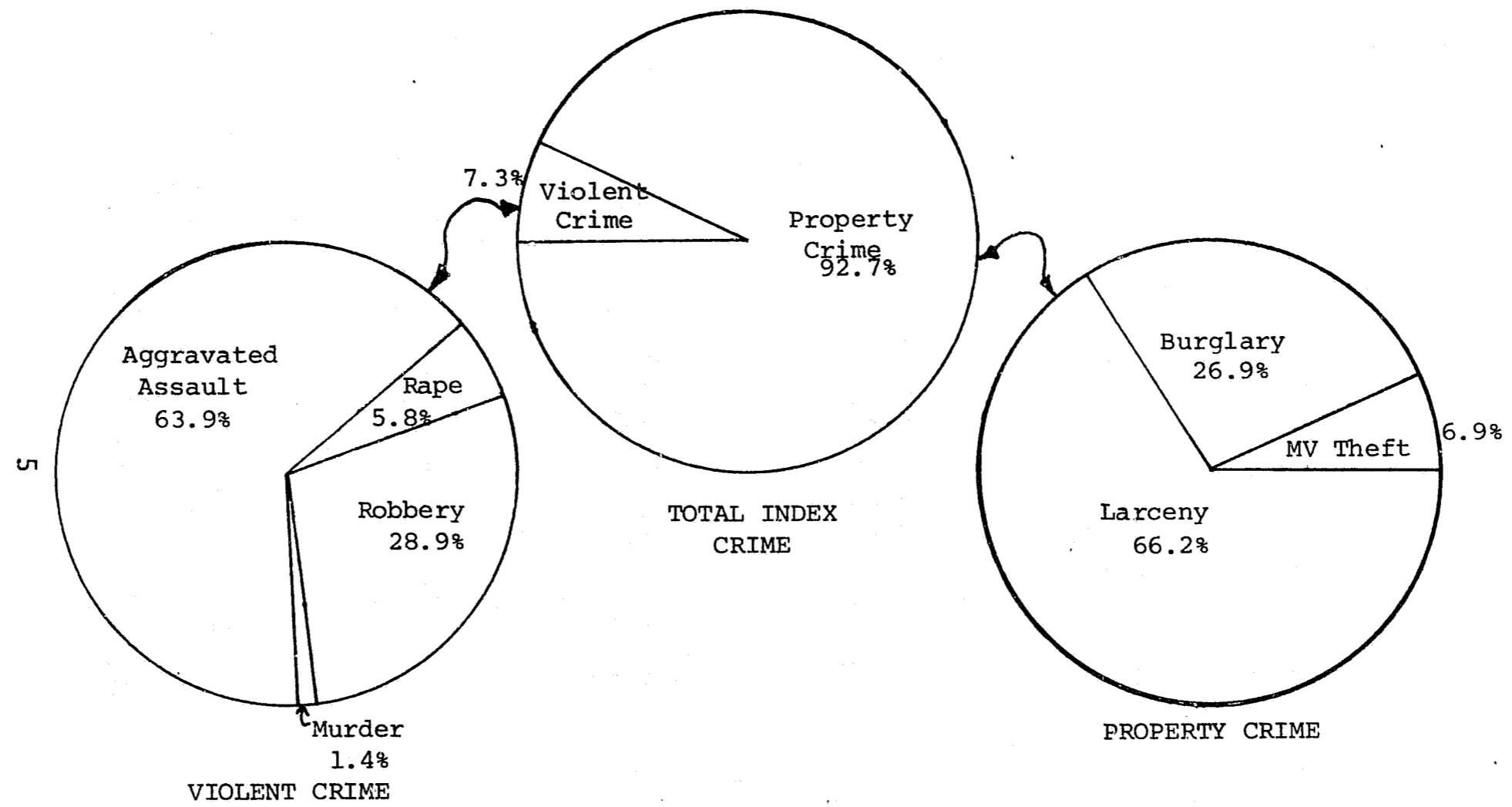
Table 1.0

OFFENSES REPORTED TO POLICE
FISCAL 1981

	<u>State</u>	<u>New Castle</u>	<u>Kent</u>	<u>Sussex</u>		
Murder	40	29	6	5	Violent	Index Crime (Part I)
Rape	172	108	35	29		
Robbery	842	722	76	44		
Agg. Assault	1869	1108	417	344		
Burglary	9924	7491	1167	1266	Property	
Larceny	24493	18050	3615	2828		
4 M/V Theft	2593	2158	254	181		
Part I *	46592	34740	6343	5509	Totals	
Part II	6464	4175	1058	1231		
Part III	29582	22719	3449	3414		
Grand Total	82638	61634	10850	10154		
Drug **	1457	1038	200	219		

NOTE - Definitions of Part I, Part II, Part III Offenses May be Found in the Appendix
 *Part I Totals also include Non-Aggravated Assaults
 **Drug Offenses included in Part III Total

Table 1.1



STATEWIDE OFFENSES BY TYPE

Figure 1.0

CRIME BY MONTH STATEWIDE
FISCAL 1981

<u>Month</u>	<u>Part I</u>	<u>Part II</u>	<u>Part III</u>	<u>Total</u>	<u>Drug</u>
Jul 1980	4090	598	2444	7132	97
Aug	4717	578	2828	8123	77
Sep	4067	556	2304	7127	132
Oct	3507	497	2269	6273	115
Nov	3788	507	2291	6586	112
Dec	4202	481	2511	7194	127
9 Jan 1981	3364	574	2135	6073	89
Feb	3443	644	2255	6342	131
Mar	3596	638	2597	6831	150
Apr	3649	449	2708	6806	161
May	3895	451	2406	6752	135
Jun	4274	491	2634	7399	131
Totals	46592	6464	29582	82638	1457
Averages	3883	539	2465	6887	121

Table 1.2

CRIME BY MONTH NEW CASTLE COUNTY
FISCAL 1981

<u>Month</u>	<u>Part I</u>	<u>Part II</u>	<u>Part III</u>	<u>Total</u>	<u>Drug</u>
Jul 1980	3035	411	1882	5328	69
Aug	3461	333	2089	5883	45
Sep	3012	332	1847	5191	82
Oct	2633	334	1795	4762	89
Nov	2902	344	1797	5043	87
Dec	3103	285	1802	5190	97
Jan 1981	2529	370	1678	4577	66
Feb	2613	382	1766	4761	91
Mar	2728	444	2040	5212	98
Apr	2737	276	2151	5164	121
May	2879	304	1881	5064	97
Jun	3108	360	1991	5459	96
Total	34740	4175	22719	61634	1038
Averages	2895	348	1893	5136	87

Table 1.3

CRIME BY MONTH KENT COUNTY
FISCAL 1981

<u>Month</u>	<u>Part I</u>	<u>Part II</u>	<u>Part III</u>	<u>Total</u>	<u>Drug</u>
Jul 1980	518	82	264	864	11
Aug	663	112	329	1104	13
Sep	557	114	307	978	23
Oct	475	52	236	763	9
Nov	418	80	250	748	11
Dec	629	84	406	1119	16
∞ Jan 1981	464	87	238	789	7
Feb	469	130	225	824	13
Mar	466	83	337	886	40
Apr	525	111	292	928	23
May	542	61	244	847	16
Jun	617	62	321	1000	18
Total	6343	1058	3449	10850	200
Averages	528	88	287	904	16

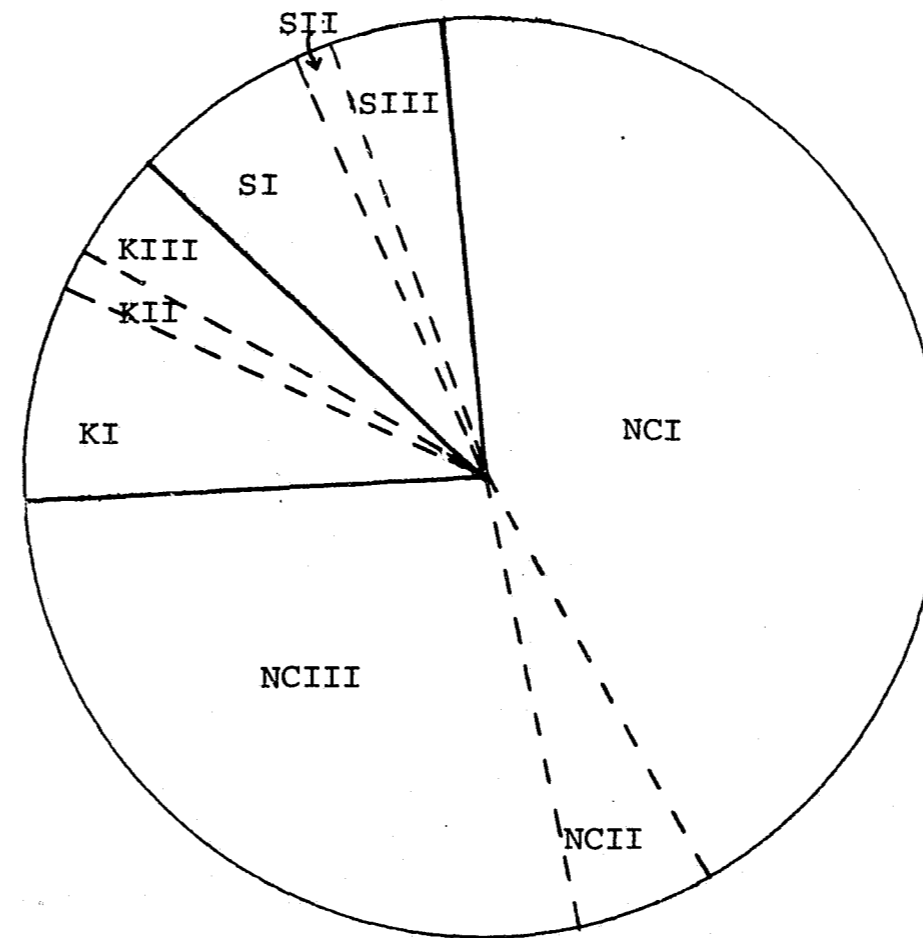
Table 1.4

CRIME BY MONTH SUSSEX COUNTY
FISCAL 1981

<u>Month</u>	<u>Part I</u>	<u>Part II</u>	<u>Part III</u>	<u>Total</u>	<u>Drug</u>
Jul 1980	537	105	298	940	17
Aug	593	133	410	1136	19
Sep	498	110	350	958	27
Oct	399	111	238	748	17
Nov	468	83	244	795	14
Dec	470	112	303	885	14
Jan 1981	371	117	219	707	16
Feb	361	132	264	757	27
Mar	402	111	220	753	12
Apr	387	62	265	714	17
May	474	86	281	841	22
Jun	549	69	322	940	17
Total	5509	1231	3414	10154	219
Averages	459	103	284	846	18

Table 1.5

<u>New Castle</u>	<u>% Statewide</u>
Part I	42.0 (NCI)
Part II	5.1 (NCII)
Part III	27.5 (NCIII)
<u>Kent</u>	
Part I	7.6 (KI)
Part II	1.3 (KII)
Part III	4.2 (KIII)
<u>Sussex</u>	
Part I	6.7 (SI)
Part II	1.5 (SII)
Part III	4.1 (SIII)
	<u>100.0</u>



REPORTED OFFENSES BY COUNTY AND CRIME CLASS

Figure 1.1

ADULT ARRESTS BY CRIME AND COUNTY
FISCAL 1981

	<u>State</u>	<u>New Castle</u>	<u>Kent</u>	<u>Sussex</u>		
	Murder	36	28	6	2	
	Rape	64	53	0	11	Violent
	Robbery	228	174	33	21	
	Assault	724	382	162	180	Index Crime (Part I)
II	Burglary	876	587	132	157	
	Larceny	2934	1855	650	429	Property
	M/V Theft	186	142	30	14	
	Part I*	7412	4877	1324	1211	
	Part II	2799	1654	522	623	
	Part III	9517	7154	1045	1318	Totals
	Grand Total	19728	13685	2891	3152	
	Drug**	829	600	116	113	

Note - Definitions of Part I, Part II, Part III Offenses may be found in the Appendix

*Part I Totals also include Non-Aggravated Assaults

**Drug Offenses included in Part III Total

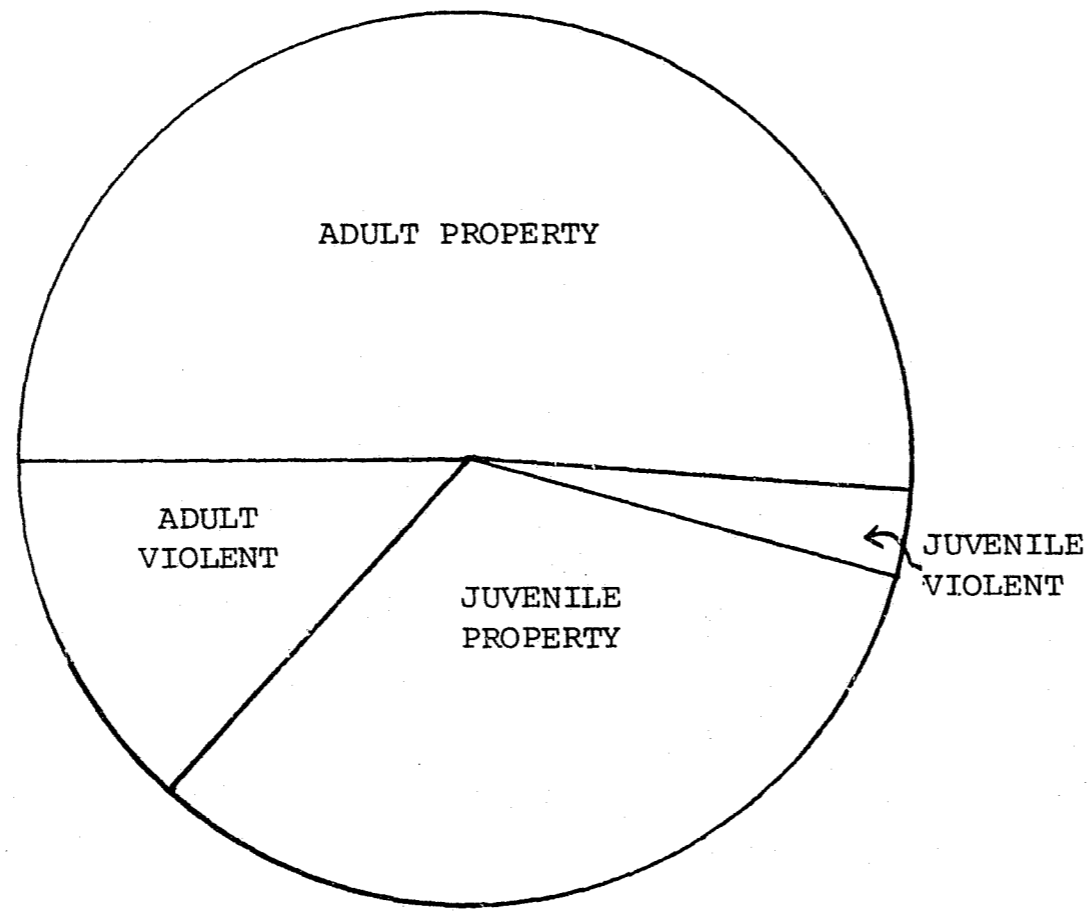
Table 2.1

JUVENILE ARRESTS BY CRIME AND COUNTY
FISCAL 1981

	<u>State</u>	<u>New Castle</u>	<u>Kent</u>	<u>Sussex</u>		
Murder	2	2	0	0	Violent	Index Crime (Part I)
Rape	14	4	8	2		
Robbery	95	82	9	4		
Assault	120	77	30	13		
Burglary	799	565	128	106	Property	
Larceny	1603	1069	327	207		
M/V Theft	130	81	30	19		
Part I*	3178	2164	583	431	Totals	
Part II	323	204	57	62		
Part III	2633	1855	330	448		
Grand Total	6134	4223	970	941		
Drug**	368	273	46	49		

Note - Definitions of Part I, Part II, Part III Offenses may be found in the Appendix
 *Part I Totals also include Non-Aggravated Assaults
 **Drug Offenses included in Part III Total

Table 2.2



<u>Adult</u>	64.7%
Property	51.2%
Violent	13.5%
<u>Juvenile</u>	35.3%
Property	32.4%
Violent	2.9%

PROPORTION OF ALL ARRESTS FOR INDEX CRIMES
BY AGE AND TYPE

Figure 2.1

ARRESTS BY MONTH STATEWIDE
FISCAL 1981

Month	Adult				Juvenile			
	Part I	Part II	Part III	Total	Part I	Part II	Part III	Total
Jul 1980	622	240	917	1779	220	22	227	469
Aug	721	271	1031	2023	304	40	281	625
Sep	636	203	852	1691	261	22	279	562
Oct	652	229	794	1675	291	22	229	542
Nov	534	218	643	1395	256	32	175	463
Dec	599	155	636	1390	263	14	155	432
Jan 1981	547	217	675	1439	227	25	179	431
Feb	620	307	708	1635	247	27	179	453
Mar	652	285	797	1734	293	40	253	586
Apr	577	272	779	1628	270	36	240	546
May	611	194	812	1617	254	19	203	476
Jun	641	208	873	1722	292	24	233	549
Total	7412	2799	9517	19728	3178	323	2633	6134
Averages	618	233	793	1644	265	27	219	511

Table 2.3

14

ARRESTS BY MONTH NEW CASTLE COUNTY
FISCAL 1981

Month	Adult				Juvenile			
	Part I	Part II	Part III	Total	Part I	Part II	Part III	Total
Jul 1980	424	125	683	1232	137	14	163	314
Aug	457	158	701	1316	191	21	141	353
Sep	435	113	616	1164	191	15	220	426
Oct	400	135	592	1127	178	9	166	353
Nov	330	132	466	928	183	30	126	339
Dec	403	92	476	971	192	9	114	315
Jan 1981	354	128	538	1020	162	16	134	312
Feb	413	175	548	1136	160	17	131	308
Mar	409	169	628	1206	201	25	182	408
Apr	411	166	637	1214	194	20	170	384
May	413	133	622	1168	182	12	150	344
Jun	423	128	647	1203	193	16	158	367
Total	4877	1654	7154	13685	2164	204	1855	4223
Averages	406	138	596	1140	180	17	155	352

15

Table 2.4

ARRESTS BY MONTH KENT COUNTY
FISCAL 1981

Month	Adult			Adult Total	Juvenile			Juvenile Total
	Part I	Part II	Part III		Part I	Part II	Part III	
Jul 1980	93	47	80	220	51	2	29	82
Aug	134	45	115	294	67	9	44	120
Sep	108	45	100	253	45	7	18	70
Oct	142	44	110	304	54	2	33	89
Nov	93	35	90	218	44	0	23	67
Dec	112	33	75	220	39	3	20	62
Jan 1981	97	28	71	196	32	7	19	58
Feb	113	63	73	249	47	4	21	72
Mar	130	60	95	285	48	8	41	97
Apr	81	53	63	197	47	8	23	78
May	106	29	83	218	43	3	26	72
Jun	115	40	82	237	66	4	33	103
Totals	1324	522	1045	2891	583	57	330	970
Averages	110	44	87	241	49	5	28	81

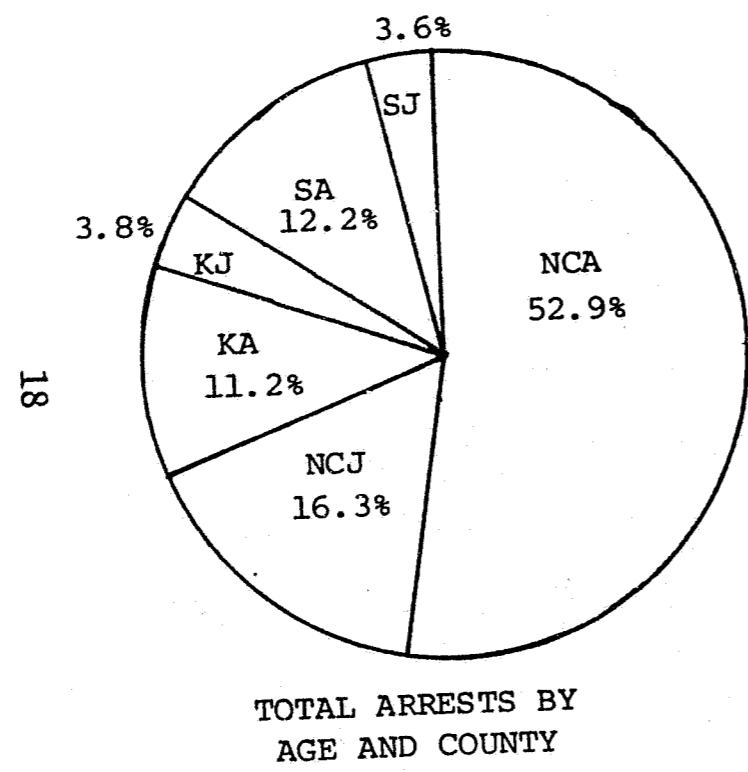
16

Table 2.5

ARRESTS BY MONTH SUSSEX COUNTY
FISCAL 1981

<u>Month</u>	<u>Adult</u>				<u>Juvenile</u>			
	<u>Part I</u>	<u>Part II</u>	<u>Part III</u>	<u>Total</u>	<u>Part I</u>	<u>Part II</u>	<u>Part III</u>	<u>Total</u>
Jul 1980	105	68	154	327	32	6	35	73
Aug	130	68	215	413	46	10	96	152
Sep	93	45	136	274	25	0	41	66
Oct	110	50	84	244	59	11	30	100
Nov	111	51	87	249	29	2	26	57
Dec	84	30	85	199	32	2	21	55
Jan 1981	96	61	66	223	33	2	26	61
Feb	94	69	87	250	40	6	27	73
Mar	113	56	74	243	44	7	30	81
Apr	85	53	79	217	29	8	47	84
May	92	32	107	231	29	4	27	60
Jun	98	40	144	282	33	4	42	79
Totals	1211	623	1318	3152	431	62	448	941
Averages	101	52	110	263	36	5	37	78

Table 2.6



LEGEND
 A=Adult
 J=Juvenile
 NC=New Castle
 K=Kent
 S=Sussex
 I=Part I Crime
 II=Part II Crime
 III=Part III Crime

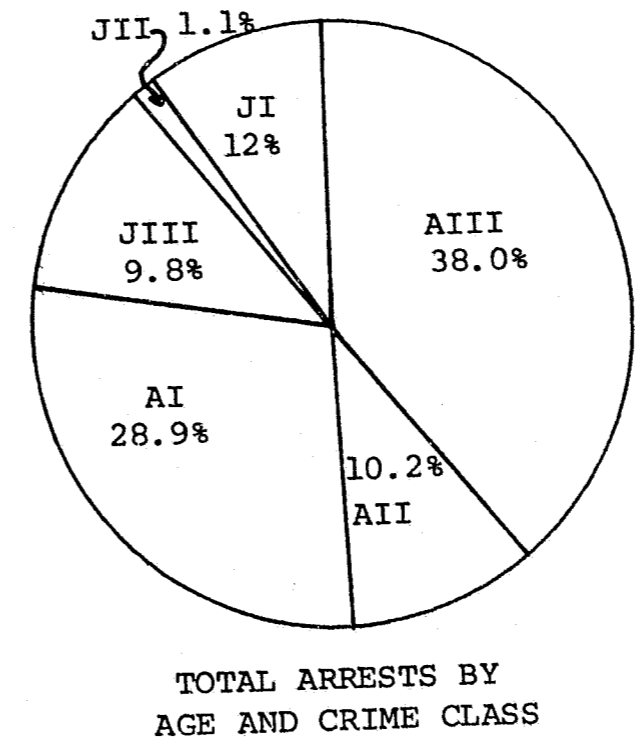
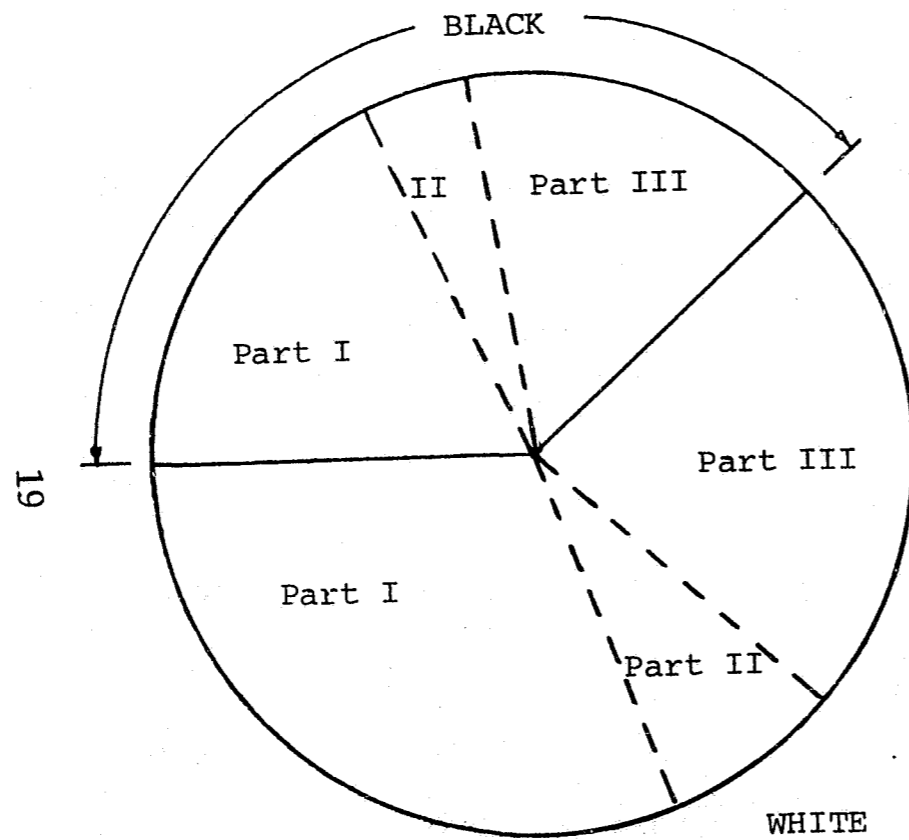


Figure 2.2





	<u>White</u>	<u>Black</u>	<u>Total</u>
Part I	23.4%	18.2%	41.6%
Part II	7.6%	4.4%	12.0%
Part III	30.5%	15.5%	46.0%
Total	61.5%	38.1%	99.4%*

ARRESTS BY RACE AND CRIME CLASS STATEWIDE

*Remaining 0.6% is due to "other" racial categories

Figure 2.3

ARRESTS BY SEX AND RACE STATEWIDE
PART I CRIMES FISCAL 1981

	<u>Adult</u>		<u>Juvenile</u>		<u>Total</u>
	<u>Male</u>	<u>Female</u>	<u>Male</u>	<u>Female</u>	
Black	2653	705	1064	284	4706
White	3328	832	1574	317	6051
Total	5991	1542	2641	605	10779
% Black	44.3	30.8	62.1	46.9	43.7

20

PART II CRIMES FISCAL 1981

	<u>Adult</u>		<u>Juvenile</u>		<u>Total</u>
	<u>Male</u>	<u>Female</u>	<u>Male</u>	<u>Female</u>	
Black	601	446	79	26	1152
White	1050	705	190	29	1974
Total	1656	1152	270	55	3133
% Black	36.3	38.7	29.3	47.3	36.8

ARRESTS BY SEX AND RACE STATEWIDE
PART III CRIMES FISCAL 1981

	<u>Adult</u>		<u>Juvenile</u>		<u>Total</u>
	<u>Male</u>	<u>Female</u>	<u>Male</u>	<u>Female</u>	
Black	2934	556	429	89	4009
White	5081	819	1642	357	7899
Total	8021	1377	2074	447	11928
% Black	36.6	40.4	20.7	19.9	33.6

21

TOTAL CRIMES FISCAL 1981

	<u>Adult</u>		<u>Juvenile</u>		<u>Total</u>
	<u>Male</u>	<u>Female</u>	<u>Male</u>	<u>Female</u>	
Black	6189	1707	1572	399	9867
White	9459	2356	3406	703	15924
Total	15580	4071	4985	1107	25831
% Black	39.7	41.9	31.5	36.0	38.2

Table 2.7

ARRESTS BY RACE AND SEX NEW CASTLE COUNTY
PART I CRIMES FISCAL 1981

	<u>Adult</u>		<u>Juvenile</u>		<u>Total</u>
	<u>Male</u>	<u>Female</u>	<u>Male</u>	<u>Female</u>	
Black	1731	448	711	192	3082
White	2227	543	1108	204	4082
Total	3961	995	1820	396	7172
% Black	43.7	45.0	39.1	48.5	43.0

22

PART II CRIMES FISCAL 1981

	<u>Adult</u>		<u>Juvenile</u>		<u>Total</u>
	<u>Male</u>	<u>Female</u>	<u>Male</u>	<u>Female</u>	
Black	370	285	48	18	721
White	608	389	127	12	1136
Total	981	675	175	30	1861
% Black	37.7	42.2	27.4	60.0	38.7

ARRESTS BY RACE AND SEX NEW CASTLE COUNTY
PART III CRIMES FISCAL 1981

	<u>Adult</u>		<u>Juvenile</u>		<u>Total</u>
	<u>Male</u>	<u>Female</u>	<u>Male</u>	<u>Female</u>	
Black	2372	435	297	67	3172
White	3690	584	1169	234	5677
Total	6067	1020	1468	301	8856
% Black	39.1	42.6	20.2	22.3	35.8

23

TOTAL CRIMES FISCAL 1981

	<u>Adult</u>		<u>Juvenile</u>		<u>Total</u>
	<u>Male</u>	<u>Female</u>	<u>Male</u>	<u>Female</u>	
Black	4474	1168	1056	277	6975
White	6525	1516	2404	450	10895
Total	11009	2690	3463	727	17889
% Black	40.6	43.4	30.5	38.1	39.0

Table 2.8

ARRESTS BY RACE AND SEX KENT COUNTY
PART I CRIMES FISCAL 1981

	<u>Adult</u>		<u>Juvenile</u>		<u>Total</u>
	<u>Male</u>	<u>Female</u>	<u>Male</u>	<u>Female</u>	
Black	483	157	219	54	913
White	523	177	255	62	1017
Total	1008	335	476	120	1939
% Black	47.9	46.9	46.0	45.0	47.1

24

PART II CRIMES FISCAL 1981

	<u>Adult</u>		<u>Juvenile</u>		<u>Total</u>
	<u>Male</u>	<u>Female</u>	<u>Male</u>	<u>Female</u>	
Black	106	72	14	3	195
White	199	149	26	13	387
Total	306	221	41	16	584
% Black	34.6	32.6	34.1	18.0	33.4

ARRESTS BY SEX AND RACE KENT COUNTY
PART III CRIMES FISCAL 1981

	<u>Adult</u>		<u>Juvenile</u>		<u>Total</u>
	<u>Male</u>	<u>Female</u>	<u>Male</u>	<u>Female</u>	
Black	286	64	54	8	412
White	588	87	196	55	926
Total	874	151	251	64	1340
% Black	32.7	42.4	21.5	12.5	30.7

TOTAL CRIMES FISCAL 1981

	<u>Adult</u>		<u>Juvenile</u>		<u>Total</u>
	<u>Male</u>	<u>Female</u>	<u>Male</u>	<u>Female</u>	
Black	875	293	287	65	1520
White	1310	413	477	130	2330
Total	2100	707	768	200	3863
% Black	40.0	41.4	37.4	32.5	39.3

Table 2.9

ARRESTS BY SEX AND RACE SUSSEX COUNTY
PART I CRIMES FISCAL 1981

	<u>Adult</u>		<u>Juvenile</u>		<u>Total</u>
	<u>Male</u>	<u>Female</u>	<u>Male</u>	<u>Female</u>	
Black	439	100	134	38	711
White	578	112	211	51	952
Total	1022	212	345	89	1668
% Black	43.0	47.2	38.8	42.7	42.6

PART II CRIMES FISCAL 1981

	<u>Adult</u>		<u>Juvenile</u>		<u>Total</u>
	<u>Male</u>	<u>Female</u>	<u>Male</u>	<u>Female</u>	
Black	125	89	17	5	236
White	243	167	37	4	451
Total	369	256	54	9	688
% Black	33.9	34.8	31.4	55.6	34.3

ARRESTS BY SEX AND RACE SUSSEX COUNTY
PART III CRIMES FISCAL 1981

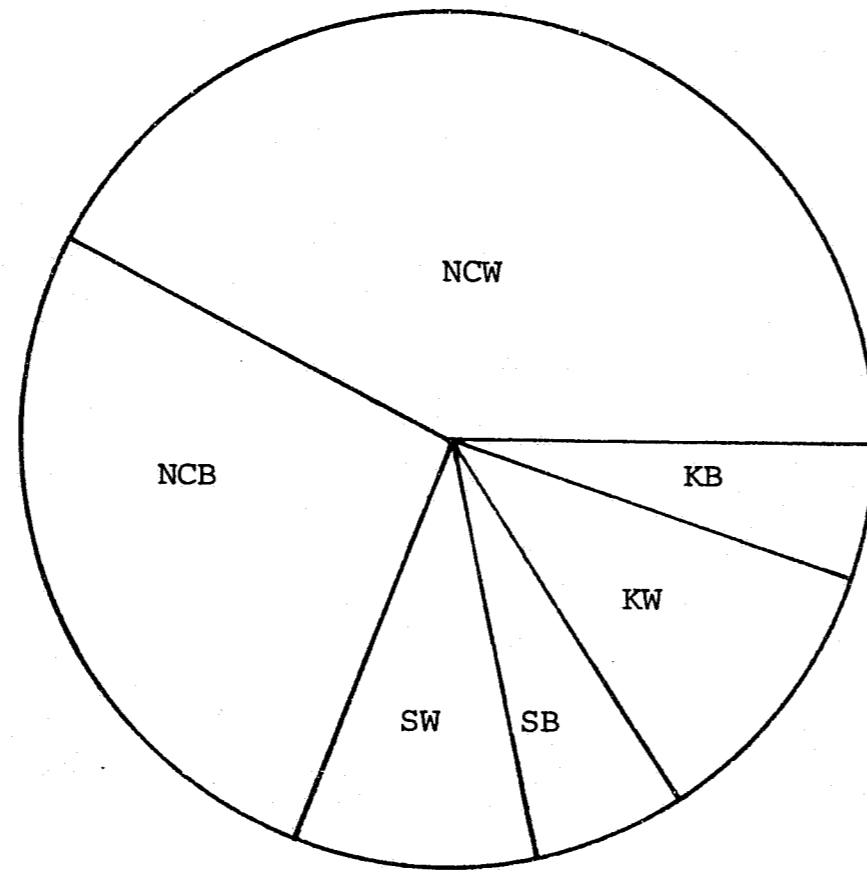
	<u>Adult</u>		<u>Juvenile</u>		<u>Total</u>
	<u>Male</u>	<u>Female</u>	<u>Male</u>	<u>Female</u>	
Black	276	57	78	14	425
White	803	148	277	68	1296
Total	1080	206	355	82	1732
% Black	25.6	27.7	22.0	17.1	24.7

27

TOTAL CRIMES
FISCAL 1981

	<u>Adult</u>		<u>Juvenile</u>		<u>Total</u>
	<u>Male</u>	<u>Female</u>	<u>Male</u>	<u>Female</u>	
Black	840	246	229	57	1372
White	1624	427	525	123	2699
Total	2471	674	754	180	4079
% Black	34.0	36.5	30.4	31.7	33.6

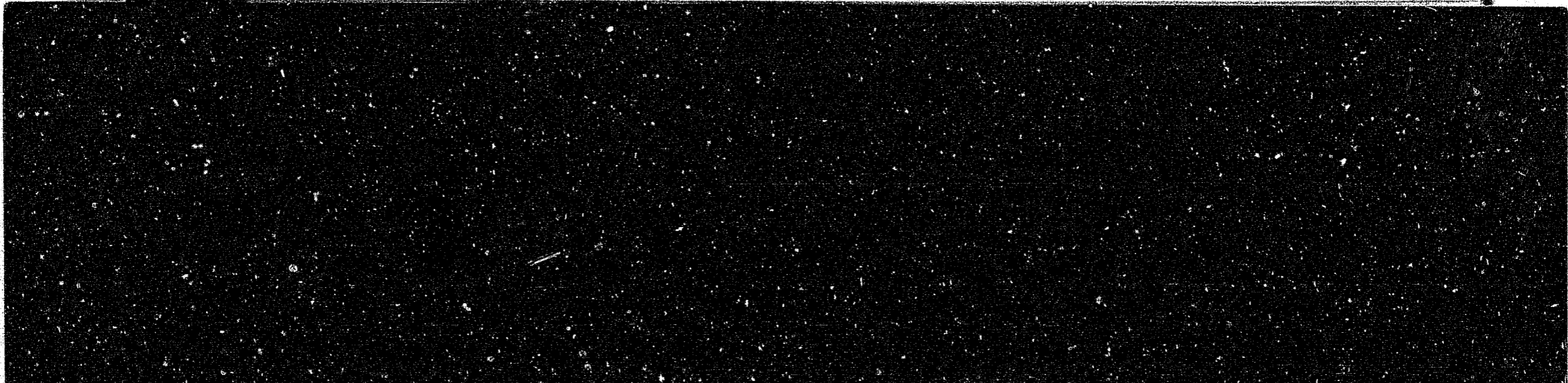
Table 2.10

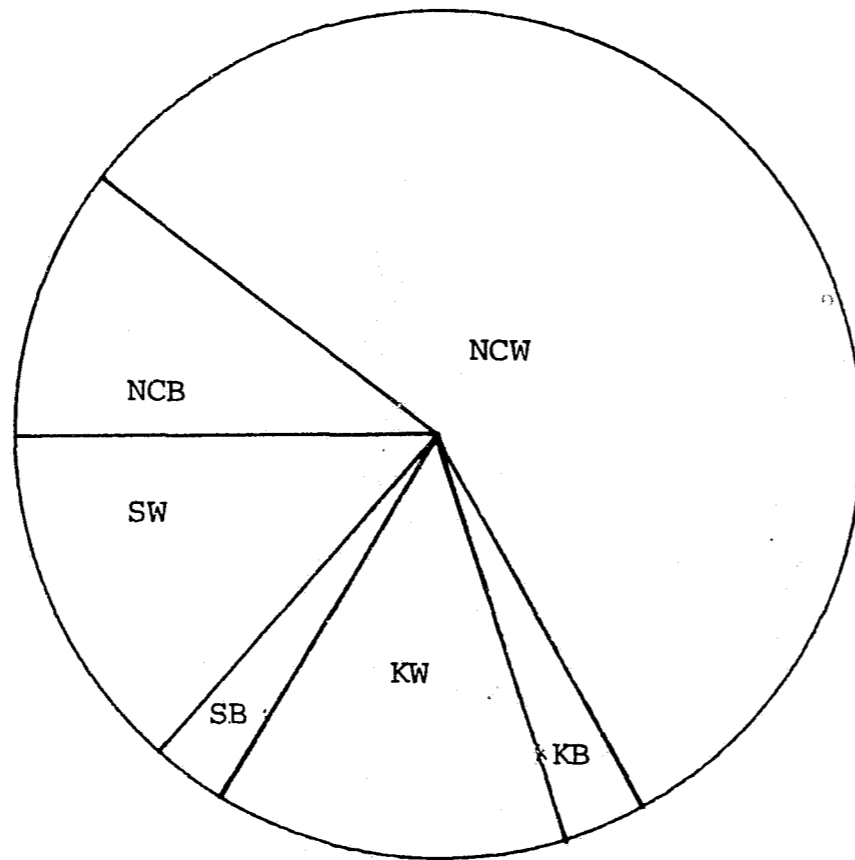


		<u>Legend</u>
New Castle		
Black	27%	(NCB)
White	42%	(NCW)
Kent		
Black	5.3%	(KB)
White	10.2%	(KW)
Sussex		
Black	5.9%	(SB)
White	9.0%	(SW)

PROPORTION OF ALL ARRESTS STATEWIDE ACCOUNTED FOR
BY COUNTY AND RACE
(0.6% due to "other" race categories)

Figure 2.4





		<u>Legend</u>
New Castle		
Black	10.3%	(NCB)
White	56.7%	(NCW)
Kent		
Black	3.0%	(KB)
White	13.4%	(KW)
Sussex		
Black	3.1%	(SB)
White	13.5%	(SW)

POPULATION DISTRIBUTION STATEWIDE
BY RACE AND COUNTY

Figure 2.5

PUBLIC DEFENDER

The Public Defenders Office exists to preserve the Federal Constitutional Right of indigent defenders to the assistance of counsel by providing them with expert legal representation at all stages of the adjudication process. The expenditures for the Public Defenders Office for 1981 were:

Expenditures Fiscal 1981 (in thousands)

Salaries	991.3
Other Employee Costs	13.4
Travel	0.5
Contractual Services	212.7
Supplies & Materials	18.9
Capital Outlay	12.5
Data Processing	--
Grants & Subsidies	--
Other Items	4.5
Debt Service	--

Total 1253.8

Number of Positions 66 (3 CETA)

Public Defender data is from the Governors Recommended Budget for Fiscal Year 1983 and Financial Report for Fiscal Years 1981 and 1982.

PUBLIC DEFENDER
Activity 1981

Cases Assigned	8,154
Clients Represented	9,796
Motions Filed	603
Fact Findings/Investigations	9,797
Arraignments	4,702
Sentencings	1,349
Appeals	185
Clients Represented at Pardon and Parole Hearings	98
Capias	87
Polygraphs	125

JUDICIARY

There are 8 courts in the Delaware Judicial System. The courts, their number and the number of judges in each court are:

1 Supreme Court	5 Justices
3 Courts of Chancery	3 Chancellors
3 Superior Courts	11 Judges
3 Family Courts	12 Judges
3 Courts of Common Pleas	5 Judges
19 Justice of the Peace Courts	50 Magistrates
13 Aldermans Courts	13 Aldermen

The total operating costs and the costs attributed to criminal justice are shown in Table 5.0. The dollars allocated to criminal justice were estimated by assuming the criminal justice costs were the same percentage of total costs as criminal filings were of total filings for each court.

Data for this section is compiled from the "Delaware Judiciary/1981 Annual Report" prepared by the Administrative Office of the Courts.

Judicial Expenditures
Fiscal 1981¹

<u>Court</u>	<u>Total</u>	<u>\$ To Crim. Justice</u>
Supreme Court	602,600	232,603
Superior Court	2,296,800	1,072,605
Common Pleas	995,800	727,929
Family Court	4,548,000	1,787,364
Justice of Peace	2,781,600	420,022
Municipal Court	626,046	267,322
	11,850,846	4,507,846
Administration	1,966,600	601,780
Law Libraries	167,600	51,286
Prothonatary ²	1,024,830	478,596
Sheriff	847,989	259,485
Totals	15,857,865	5,898,993

¹Does not include Public Guardians, Court of Chancery, Violent Crimes Compensation Board, Foster Care Review Board, Register in Chancery, Register of Wills.

²Based upon Superior Court Criminal filings %.

Table 5.0

CRIMINAL CASELOADS BY COURT AND COUNTY FILINGS
FISCAL 1981

	<u>Superior</u> ¹	<u>Common Pleas</u> ²	<u>Family Court</u> ¹		<u>J.P.</u>	<u>Municipal</u>	<u>Aldermans</u>
			<u>Adult</u>	<u>Juv.</u>			
New Castle	2511	6910	1904	6538	13089	8761	1058
Kent	466	1616	351	1253	4366	--	--
Sussex	328	2176	361	1353	5334	--	688
State	<u>3305</u>	<u>10702</u>	<u>2616</u>	<u>9143</u>	<u>22789</u>	<u>8761</u>	<u>1746</u>

¹The unit of count is the defendant or case

²The unit of count is the charge

Data does not include traffic offenses

Table 5.1

34

CRIMINAL FILINGS AS A PERCENT OF TOTAL FILINGS¹
BY COURT AND COUNTY 1981

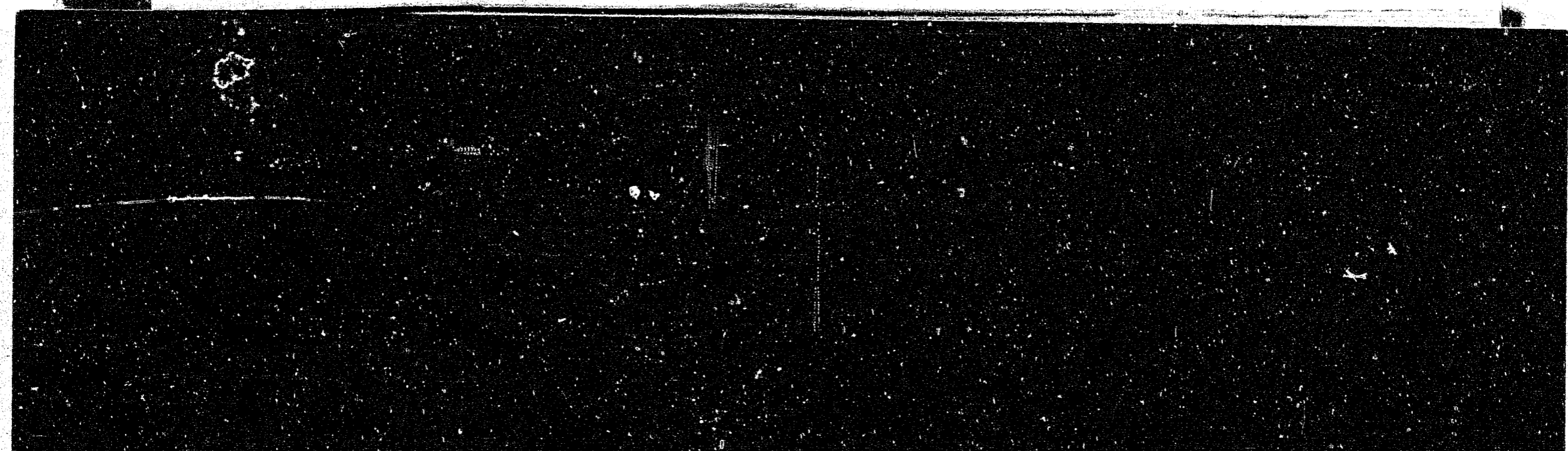
	<u>Superior</u>	<u>Common Pleas</u>	<u>Family Court</u>	<u>J.P.</u> ²	<u>Municipal</u>	<u>Aldermans</u>
New Castle	46.6	70.4	44.1	16.4	42.7	11.1
Kent	47.9	78.2	30.1	12.3	--	0.0
Sussex	<u>46.1</u>	<u>78.9</u>	<u>31.3</u>	<u>11.6</u>	<u>--</u>	<u>10.4</u> ³
State	<u>46.7</u>	<u>73.1</u>	<u>39.3</u>	<u>15.1</u>	<u>42.7</u>	<u>10.5</u>

¹Criminal+Civil+Traffic+Others

²Includes Tital 7/Fish and Game

³Rehoboth Data Missing

Table 5.2



CRIMINAL DISPOSITIONS BY COURT & COUNTY
1981

	<u>Superior</u>	<u>Common Pleas</u>	<u>Family Court</u>		<u>J.P.</u>	<u>Municipal</u>	<u>Aldermans</u>
			<u>Adult</u>	<u>Juv.</u>			
New Castle	2529	6741	1868	6577	13384	8649	1016
Kent	463	1620	353	1185	4331	--	
Sussex	308	2122	362	1349	5221	--	925
State	<u>3300</u>	<u>10483</u>	<u>2583</u>	<u>9111</u>	<u>22936</u>	<u>8649</u>	<u>1941</u>

Table 5.3

55

DISPOSITIONS BY TYPE & COUNTY SUPERIOR COURT FISCAL 1981

	<u>Trial</u>			<u>Guilty Plea</u>	<u>Nolle Prosequi</u>	<u>Cases Dismissed</u>	<u>Other² Disposition</u>	<u>Totals</u>
	<u>Guilty</u>	<u>Not Guilty</u>	<u>No Disp¹</u>					
New Castle	166	76	27	1373	820	16	51	2529
Kent	27	7	2	333	85	0	9	463
Sussex	16	9	0	193	65	5	20	308
State	<u>209</u>	<u>92</u>	<u>29</u>	<u>1899</u>	<u>970</u>	<u>21</u>	<u>80</u>	<u>3300</u>

¹Hung Jury and Mistrials

²Remand/Transfers, Diversions, Consolidations

Table 5.4

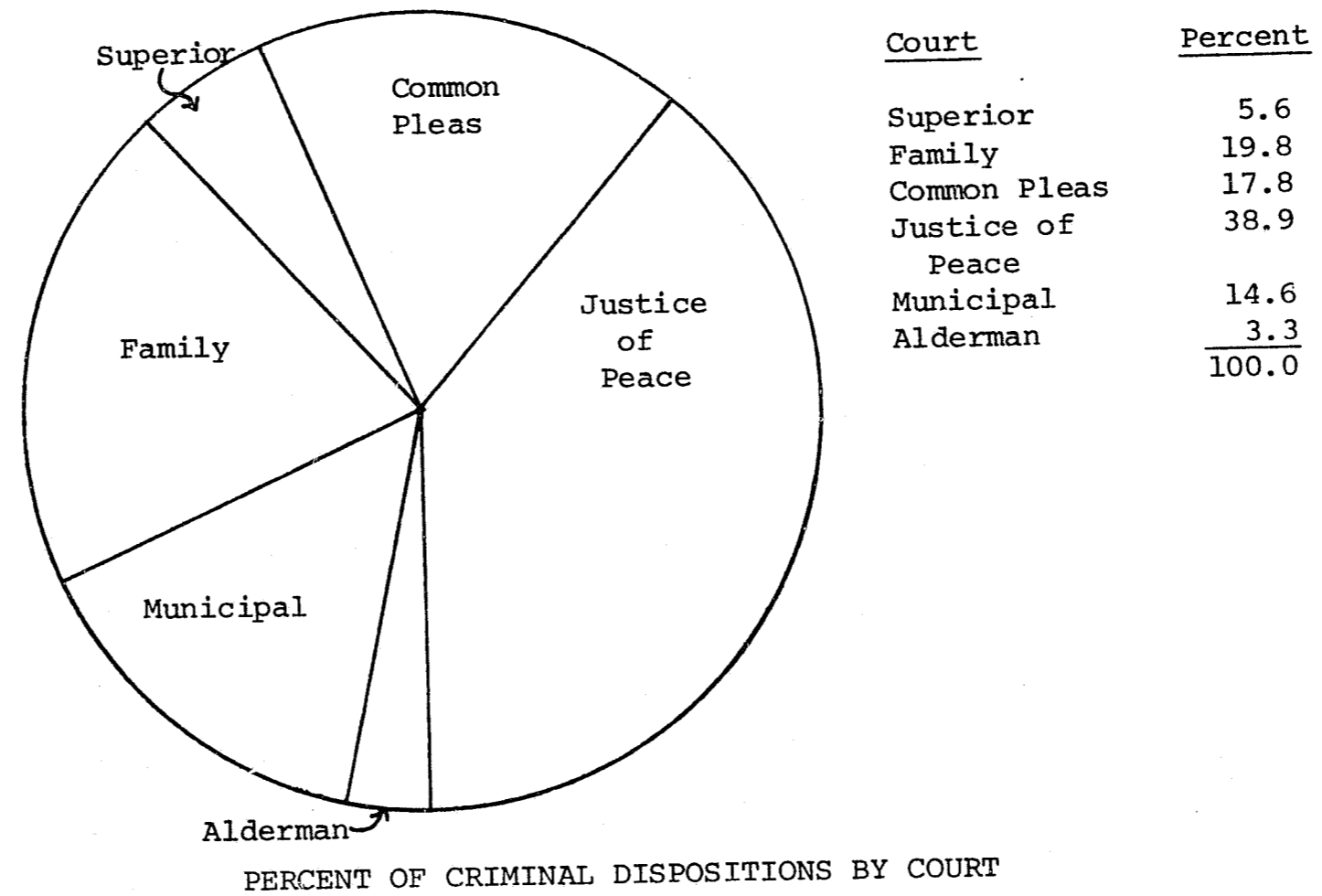
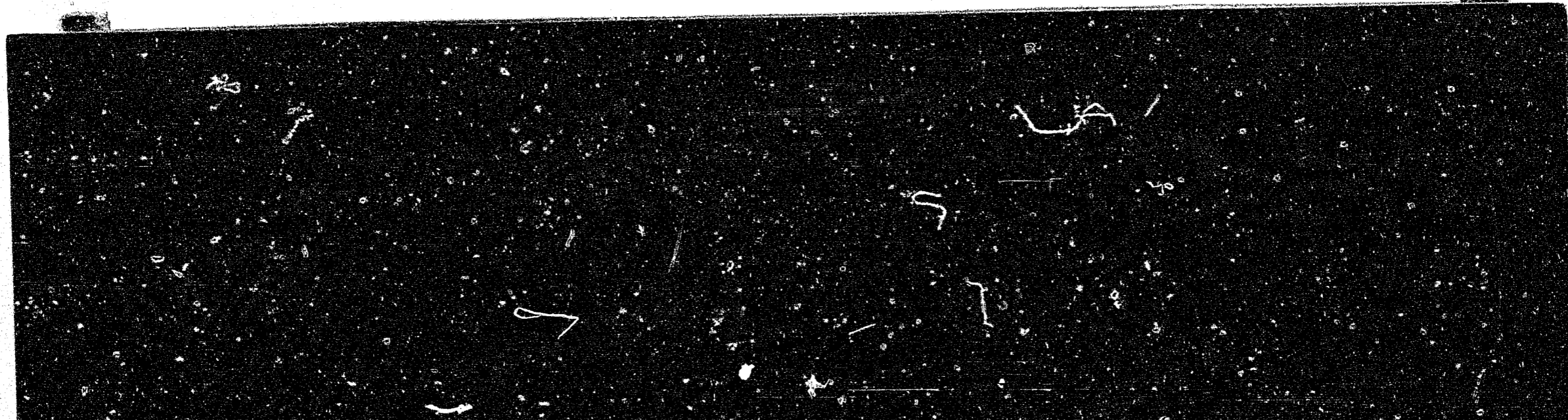


Figure 5.0



VIOLENT CRIMES COMPENSATION BOARD

The Violent Crimes Compensation Board was created to provide for and assist those who suffer injury or death as a result of criminal victimization. The Board provides compensation in order to relieve some of the hardships imposed upon the innocent.

Expenditures Fiscal 1981

Operations	\$140,349.67	37%
Victim Payments	<u>241,804.00</u>	63%
Expended	\$382,153.67	100%

Average Victim Award = \$1,560.03
Number of Awards = 155

Claims Summary 1981

Claims Received =	<u>203</u>	Claims Processed =	<u>204</u>
Carry Over =	57	Awards Granted =	<u>155</u>
New =	146	Denied =	42
		Pending =	7

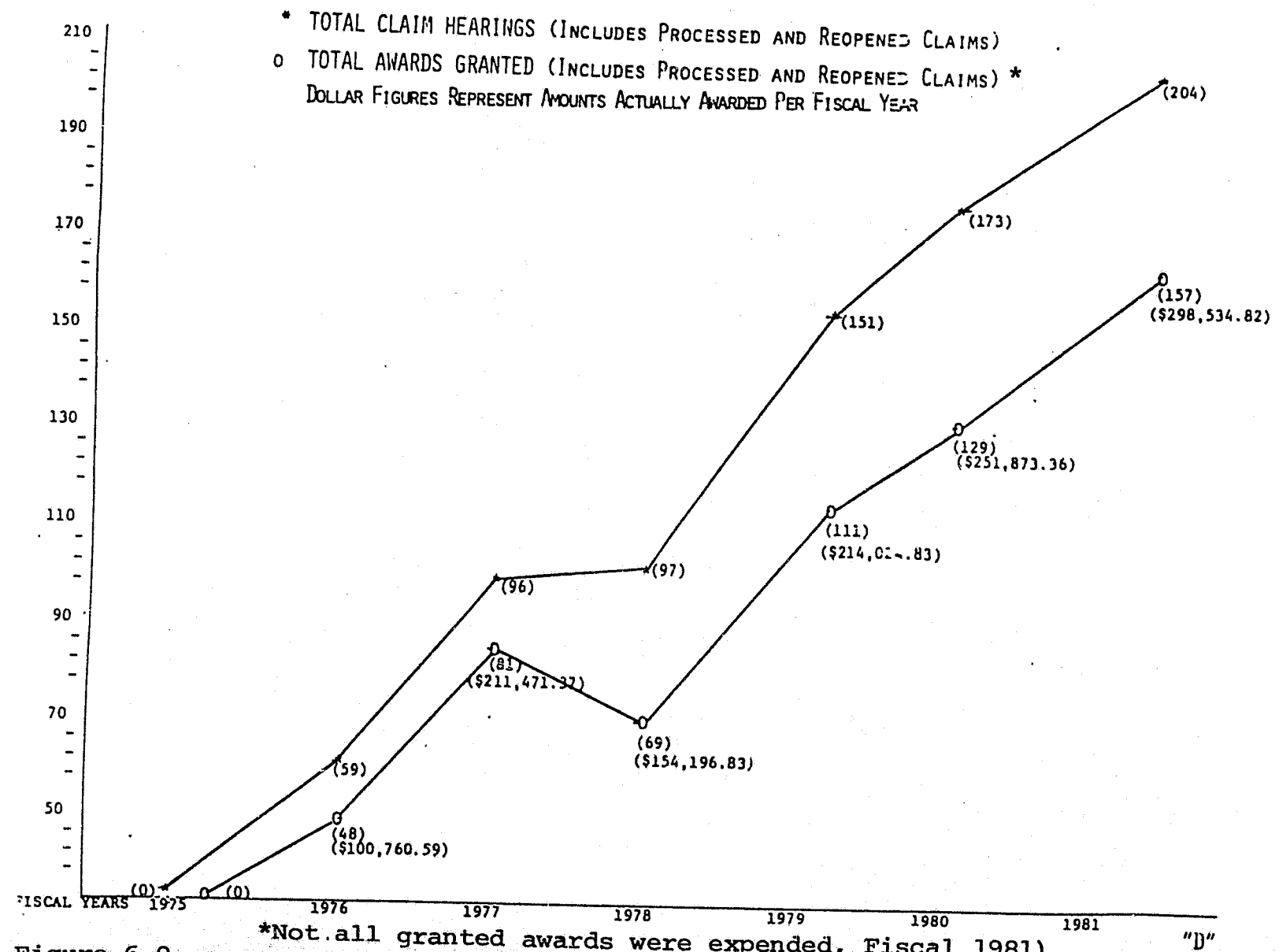


Figure 6.0

*Not all granted awards were expended, Fiscal 1981)

ADULT CORRECTIONS

The Department of Corrections maintained 6 Adult Correctional Facilities for the state in 1981. They are:

1. Delaware Correctional Center
2. Kent Correctional Institution
3. Sussex Correctional Institution
4. Plummer Center
5. Pre-Trial Annex
6. Womens Correctional Center

The budget for Adult Correction for Fiscal Year 1981 is listed below (in thousands of dollars).

Adult Corrections Expenditures Fiscal 1981 (in thousands)

Salaries	14164.2
Other Employee Costs	106.8
Travel	13.0
Contractual Services	2375.6
Supplies & Materials	1950.1
Capital Outlay	376.2
Data Processing	0
Grants & Subsidies	5.8
Other Items	1801.2
Debt Service	<u>2357.4</u>
Total	23150.3

There were 901 positions assigned to the Department of Correction for Adult Corrections for Fiscal 1981 (includes the Commissioners Office)

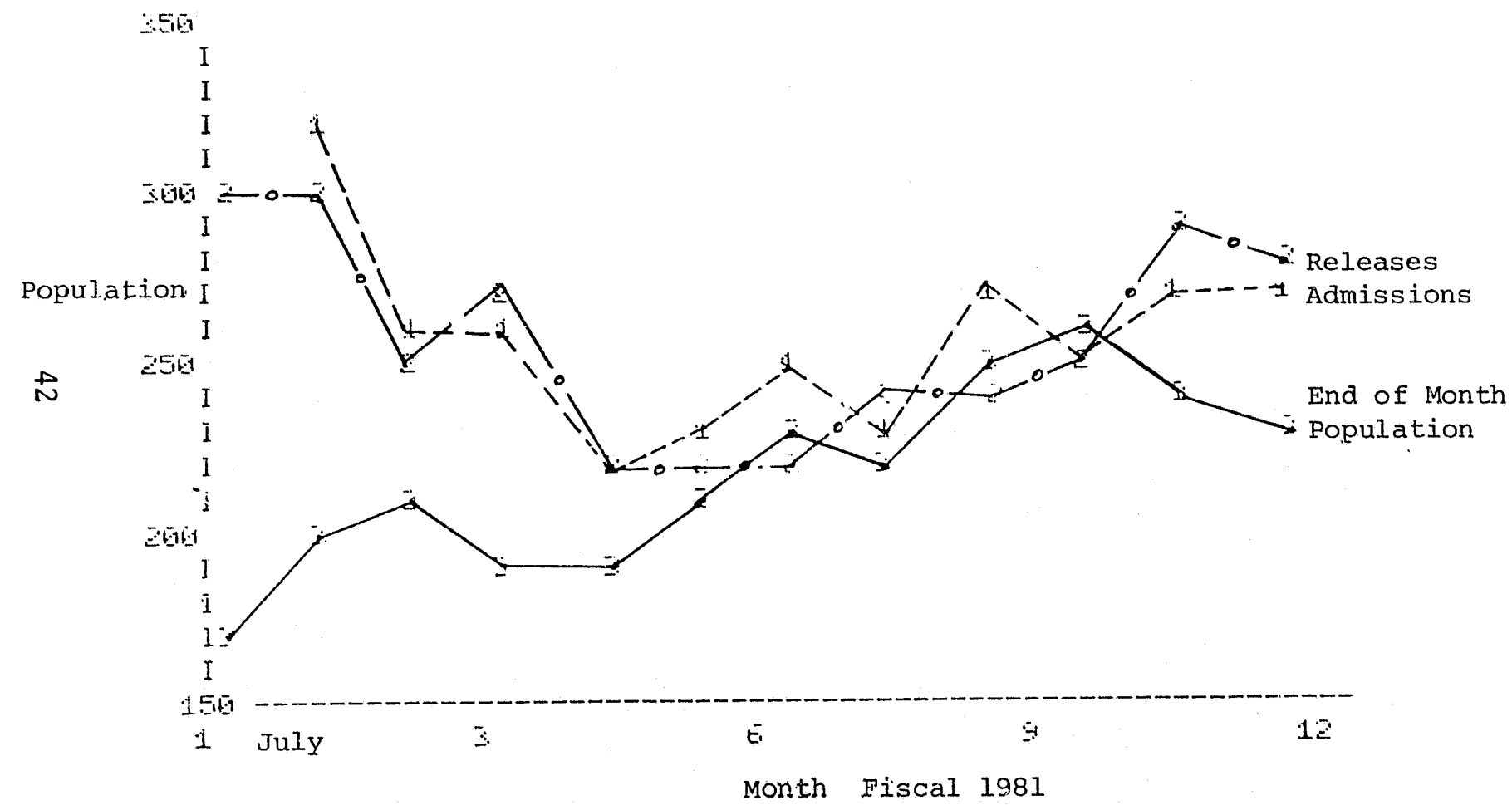
Figure 6.0

Data in this section is from the Department of Corrections monthly reports "Statistical Reports" (Document #38-01) in addition this section contains unpublished data from the Department of Corrections. Expenditure data is from the Governors Recommended Budget, Fiscal Year 1983.

ADULT CORRECTIONS
ADMISSIONS, RELEASES AND END OF MONTH POPULATION FOR DETENTION

<u>Month</u>	<u># Admitted</u>	<u># Released</u>	<u>End of Month Population</u>
Jul 1980	307	300	175
Aug	328	300	203
Sep	266	254	215
Oct	263	279	199
Nov	226	227	198
Dec	236	224	210
Jan 1981	250	222	238
Feb	230	243	225
Mar	273	243	255
Apr	264	258	261
May	272	291	242
Jun	271	280	233
Totals	3186	3121	
Averages Per Month	265.5	260	221.2

DETENTION POPULATION MOVEMENT FISCAL 1981



42

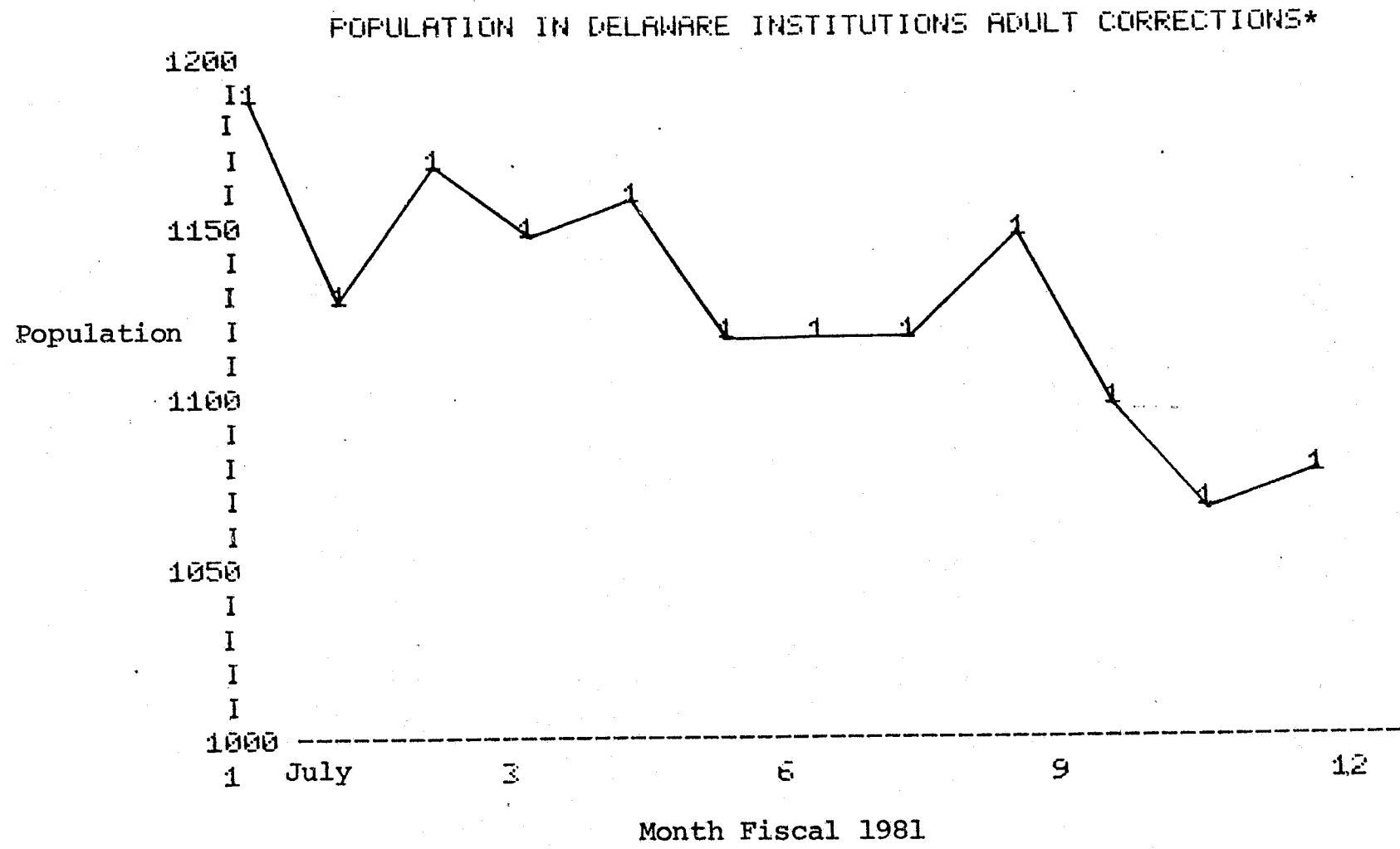
Figure 7.1

ADULT CORRECTIONS
POPULATION IN CUSTODY BY MONTH *

<u>Month</u>	<u>Delaware Institutions</u>	<u>Supervised Custody</u>	<u>Federal Institutions</u>	<u>Hospitals</u>	<u>Total</u>
Jul 1980	1193	33	53	1	1280
Aug	1135	87	53	2	1277
Sep	1174	95	51	0	1320
Oct	1152	115	51	1	1319
Nov	1161	105	51	4	1321
Dec	1129	100	50	2	1281
Jan 1981	1125	91	50	2	1268
Feb	1124	103	48	2	1277
Mar	1157	110	48	0	1315
Apr	1105	147	48	1	1301
May	1071	147	46	0	1264
Jun	1083	192	43	1	1319
Average Per Month	1134	110	49	1.3	1295

*Does not include Detentioners

43



*Does not include Detentioners

Figure 7.2

45

POPULATION UNDER SUPERVISED CUSTODY ADULT CORRECTIONS

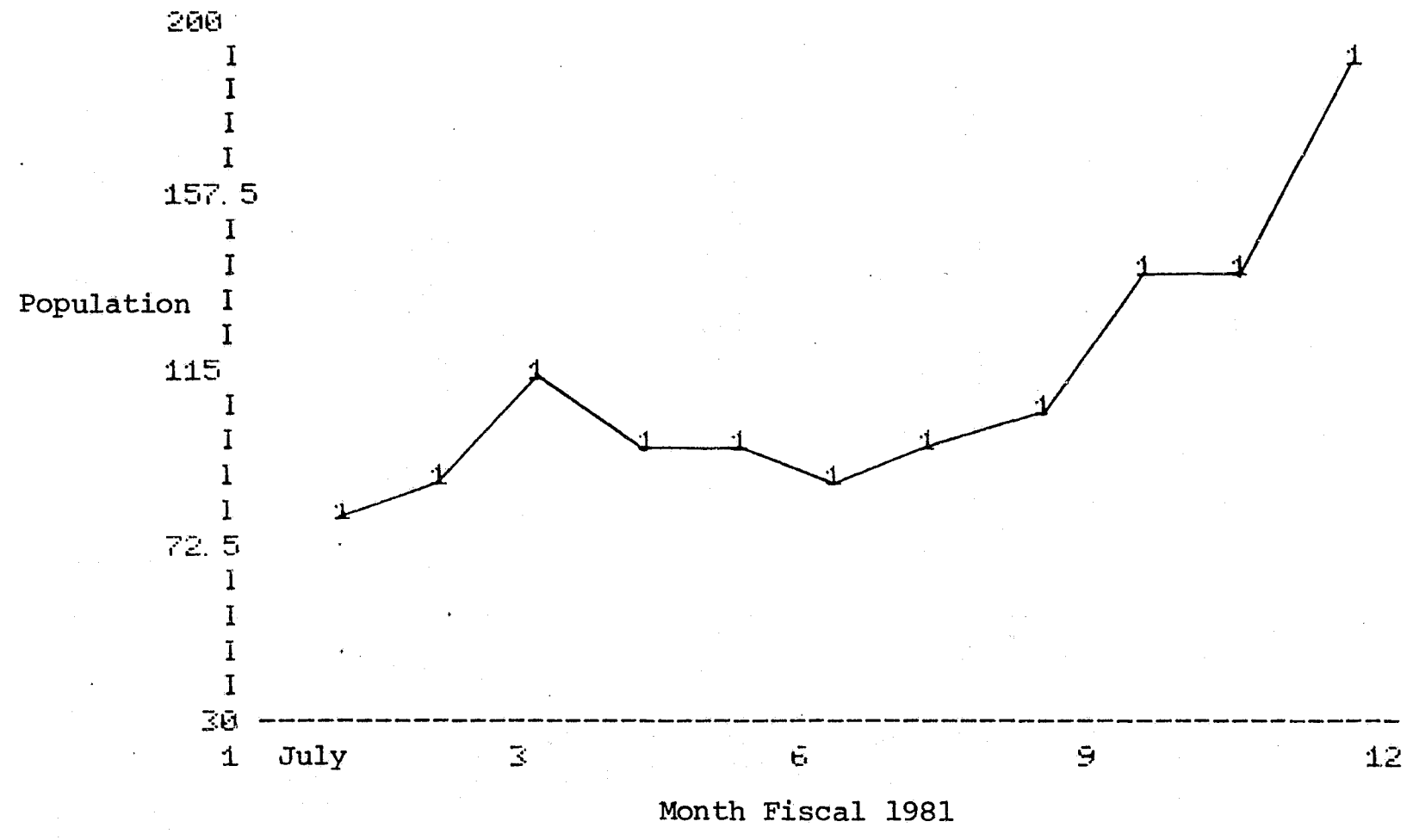
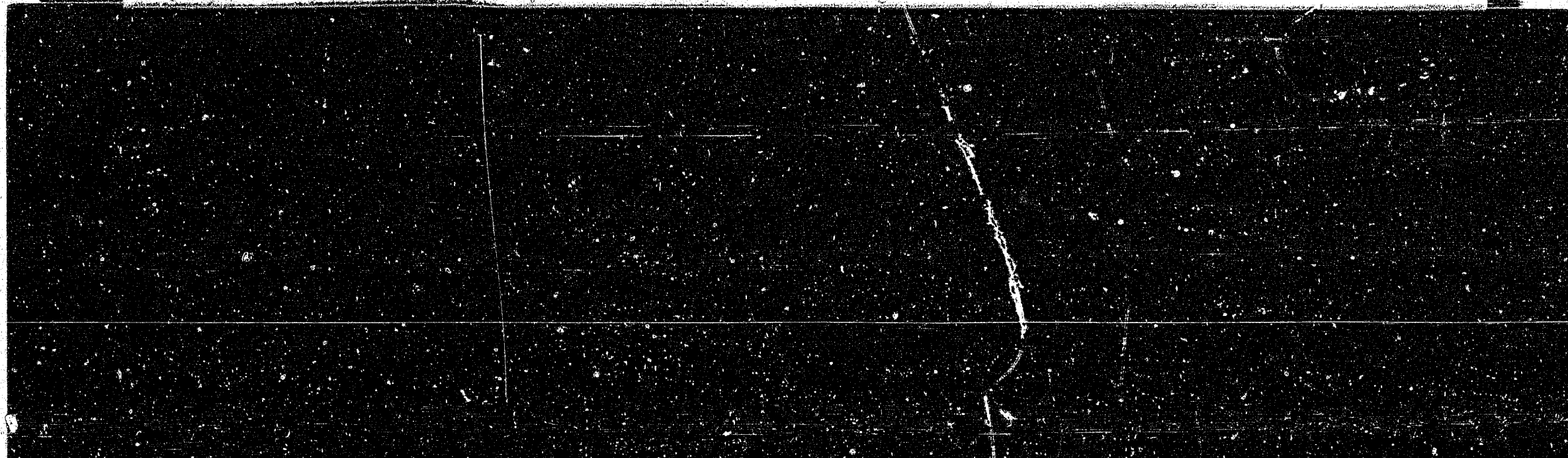


Figure 7.3

ADULT CORRECTIONS
POPULATION BY MONTH AND PROGRAM

<u>Month</u>	<u>Community Service</u>	<u>Work Referral</u>	<u>Work Release</u>	<u>Totals</u>
Jul 1980	111	215	111	437
Aug	103	237	130	470
Sep	112	233	97	442
Oct	113	226	122	461
Nov	114	244	80	438
Dec	113	233	86	432
Jan 1981	119	246	75	440
Feb	130	249	97	476
Mar	131	238	98	467
Apr	136	235	126	497
May	130	208	116	454
Jun	138	224	119	481
Average Per Month	121	232	105	458



47

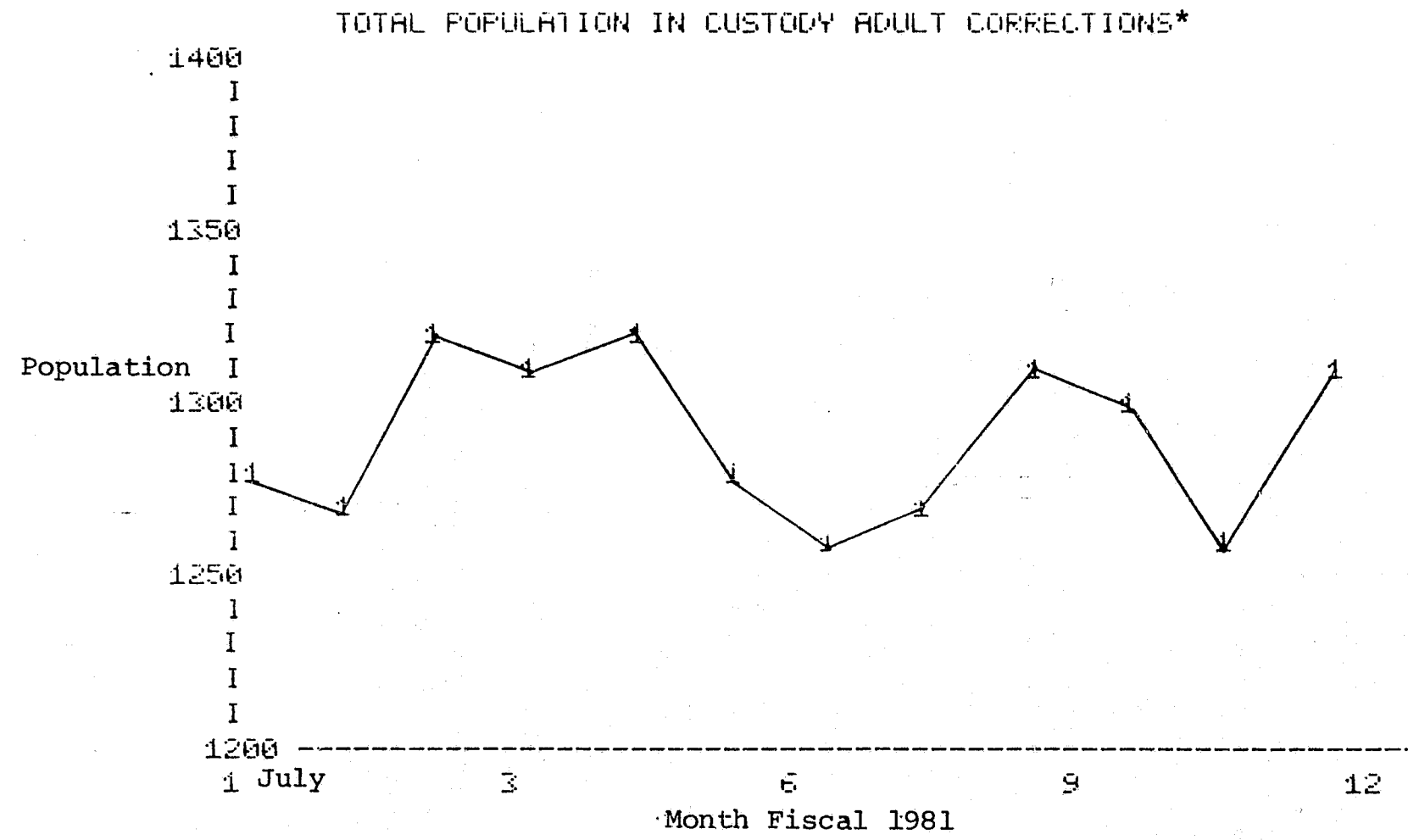


Figure 7.4

*Includes Delaware Institutions (less detention) supervised custody, federal institutions and hospitals.

JUVENILE CORRECTIONS

The Department of Corrections maintained 4 juvenile correctional facilities in 1981. They are Ferris School, Woods Haven-Kruse, Bridge House and Stevenson House.

The expenditures for Juvenile Corrections are listed below.

Juvenile Corrections Expenditures
Fiscal 1981 (In Thousands)

Salaries	2626.0
Other Employee Costs	4.4
Travel	2.3
Contractual Services	458.4
Supplies & Materials	147.7
Capital Outlay	48.8
Data Processing	--
Grants & Subsidies	0.1
Other Items	4.4
Debt Service	<u>596.6</u>
Total	3861.7

Number of Positions 172

Data for Juvenile Corrections is from the Department of Corrections Monthly & Statistical Reports, and the Governor's Recommended Budget Fiscal Year 1983.

JUVENILE DETENTION¹ POPULATION BY MONTH

	<u>Admissions</u>	<u>Releases</u>	<u>Population²</u>
Jul 1980	85	96	21
Aug	110	90	41
Sep	78	88	35
Oct	93	95	34
Nov	83	79	37
Dec	68	85	20
Jan 1981	92	72	40
Feb	76	75	41
Mar	99	101	41
Apr	76	77	39
May	74	78	37
Jun	<u>83</u>	<u>90</u>	43
Total	1017	1026	
Average	84.75	85.5	35.75

¹Stevenson and Bridge House

²End of Month

CONTINUED

1 OF 2

JUVENILE CORRECTIONS

The Department of Corrections maintained 4 juvenile correctional facilities in 1981. They are Ferris School, Woods Haven-Kruse, Bridge House and Stevenson House.

The expenditures for Juvenile Corrections are listed below.

Juvenile Corrections Expenditures

Fiscal 1981 (In Thousands)

Salaries	2626.0
Other Employee Costs	4.4
Travel	2.3
Contractual Services	458.4
Supplies & Materials	147.7
Capital Outlay	48.8
Data Processing	--
Grants & Subsidies	0.1
Other Items	4.4
Debt Service	<u>596.6</u>

Total 3861.7

Number of Positions 172

Data for Juvenile Corrections is from the Department of Corrections Monthly & Statistical Reports, and the Governor's Recommended Budget Fiscal Year 1983.

JUVENILE DETENTION¹ POPULATION BY MONTH

	<u>Admissions</u>	<u>Releases</u>	<u>Population²</u>
Jul 1980	85	96	21
Aug	110	90	41
Sep	78	88	35
Oct	93	95	34
Nov	83	79	37
Dec	68	85	20
Jan 1981	92	72	40
Feb	76	75	41
Mar	99	101	41
Apr	76	77	39
May	74	78	37
Jun	<u>83</u>	<u>90</u>	43
Total	1017	1026	
Average	84.75	85.5	35.75

¹Stevenson and Bridge House

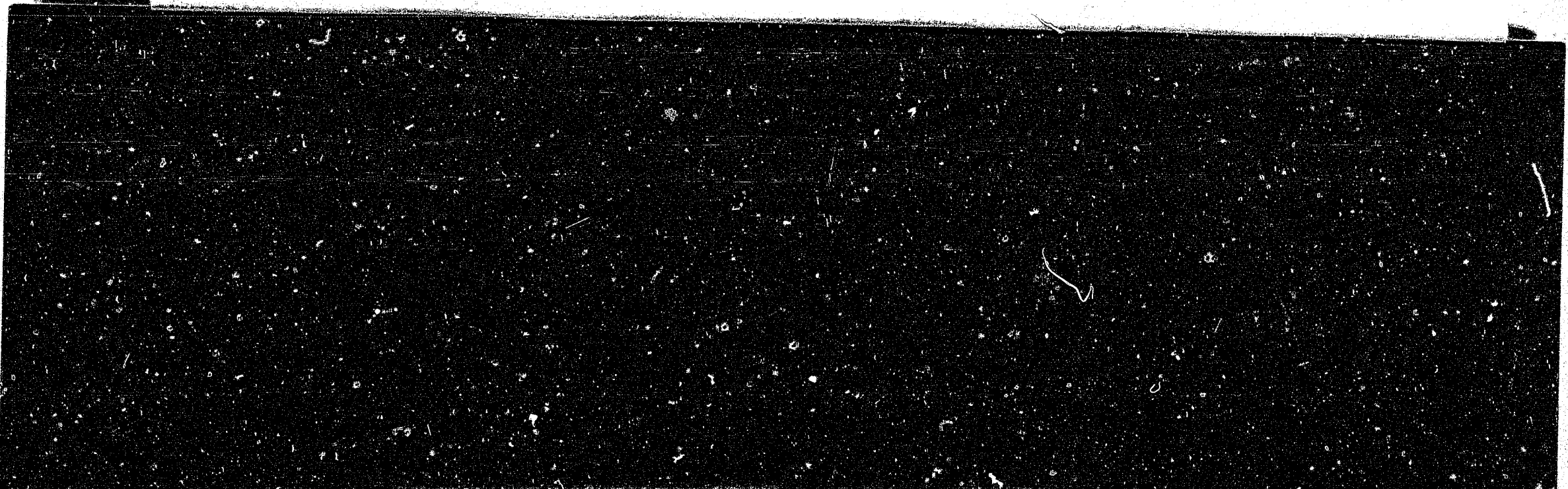
²End of Month

JUVENILE CORRECTIONS

<u>Month</u>	<u>Population in Custody</u>		<u>Additions*</u>		<u>Removals*</u>	
	<u>Males¹</u>	<u>Females²</u>	<u>Males</u>	<u>Females</u>	<u>Males</u>	<u>Females</u>
Jul 1980	177	25	35	4	20	1
Aug	175	25	37	2	34	2
Sep	179	21	35	0	36	5
Oct	183	19	44	2	39	4
Nov	190	21	46	4	39	2
Dec	188	22	37	6	39	3
Jan 1981	188	19	47	1	48	4
Feb	203	21	74	4	67	3
Mar	207	23	52	5	39	3
Apr	215	18	66	0	61	4
May	219	21	42	9	29	3
Jun	222	21	37	7	26	4
Totals			552	44	441	38
Averages	196	21	46	7	37	3

50

*Includes Detentioners
¹Males=Ferris
²Females=Woodshaven Kruse



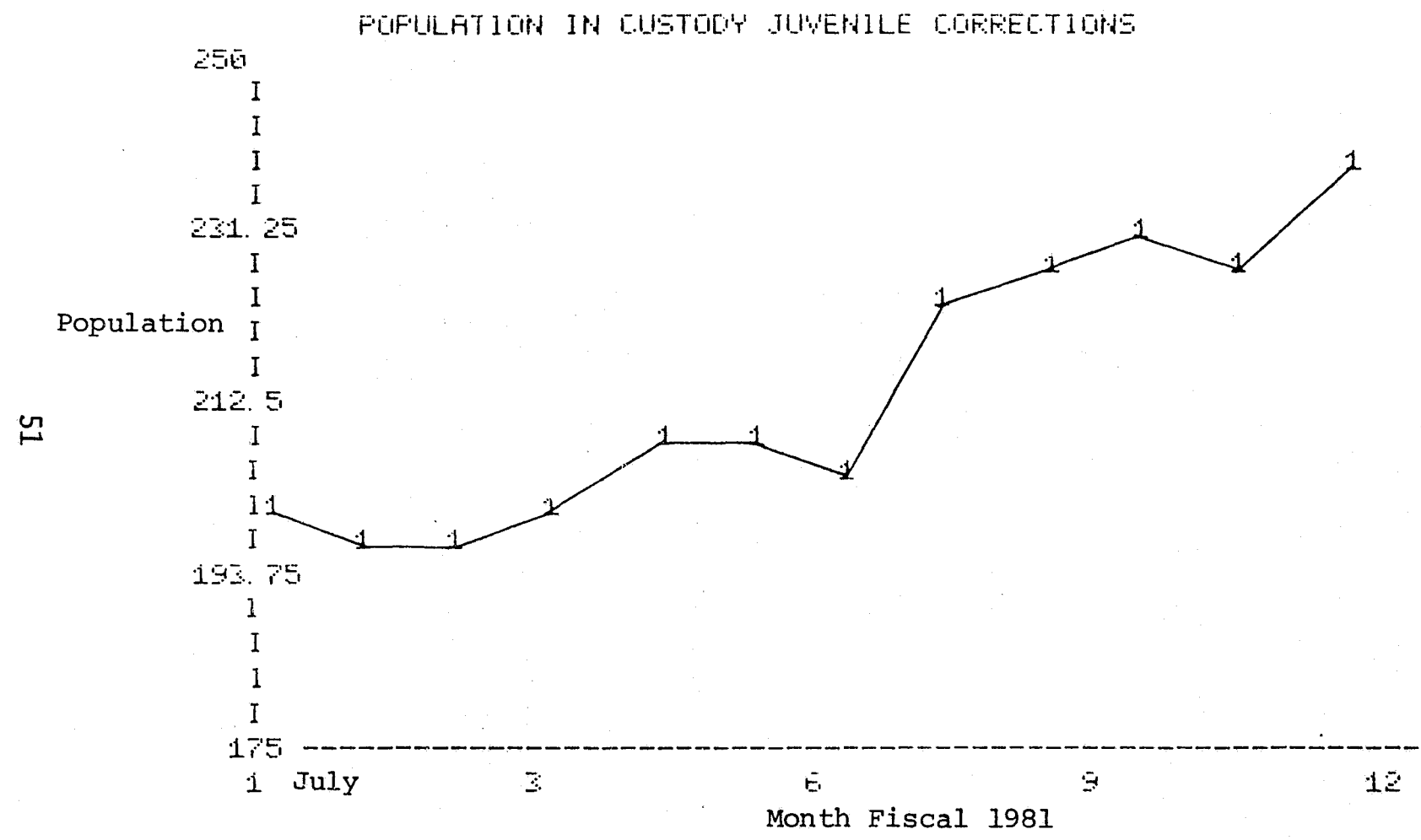


Figure 8.1

BOARD OF PAROLE

The Board of Parole is an autonomous agency which has full authority to grant parole to adult offenders committed to the Department of Corrections. A person may be eligible for parole upon completing 1/3 of the sentence imposed less any good time credits earned. Expenditures for the Board of Parole for Fiscal 1981 were:

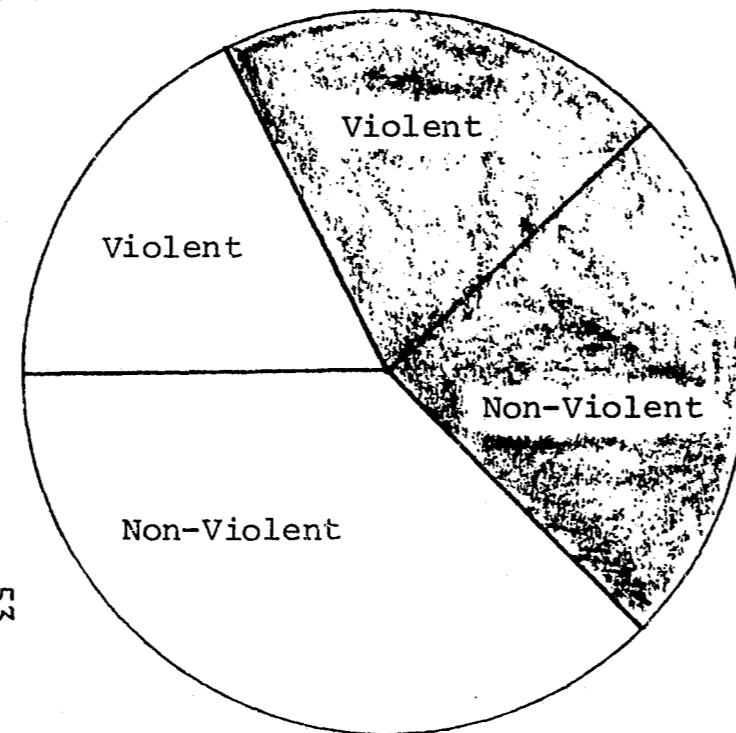
Expenditures Fiscal 1981 (in thousands)

Salaries	121.1
Other Employee Costs	--
Travel	3.1
Contractual Services	6.5
Supplies & Materials	1.5
Capital Outlay	0.3
Total	132.5

Total number of positions for the Board is 7

1981 Activity

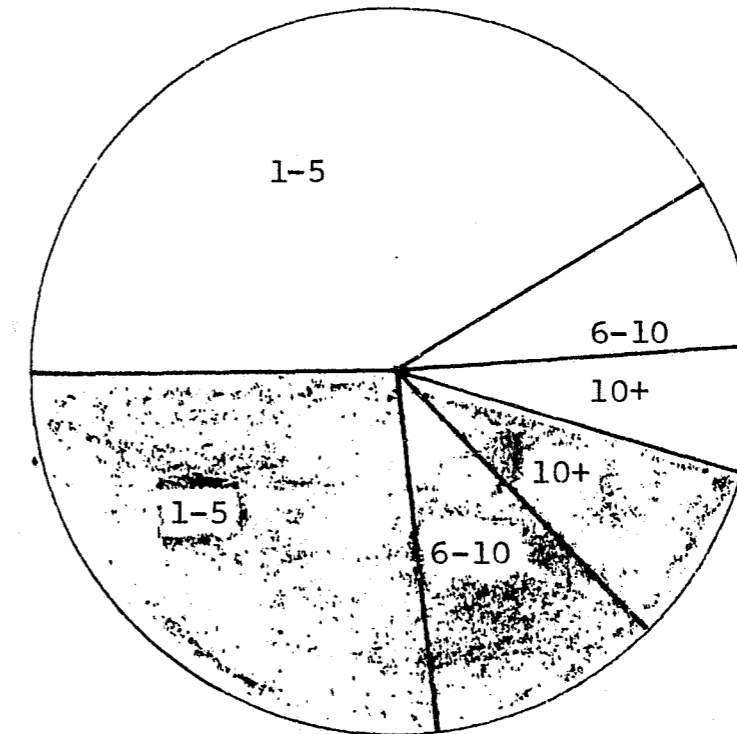
# Hearings	796	Parole Cases	607
# Reviews	<u>52</u>	Revocation Cases	90
Total	848	Pardon Cases	29
		Misc. Cases	<u>122</u>
		Total	848



53

Parole By Crime Type

	Paroled	Denied	Total
Violent	108	124	232
Non-Violent	224	151	375
	332	275	607



Parole by Sentence Length

Sentence	Paroled	Denied	Total
1 - 5 yrs	253	162	415
6 -10 yrs	43	64	107
10+ yrs	36	49	85
	332	275	607

Figure 9.0

PROBATION AND PAROLE POPULATION
FISCAL 1981

<u>Month</u>	<u>New Cases</u>	<u>Cases Closed</u>		<u>Cases At End of Month</u>	
		<u>Expired</u>	<u>Revoked</u>	<u>Probation</u>	<u>Parole</u>
Jul 1980	302	193	25	3510	576
Aug	213	185	38	3509	570
Sep	297	194	29	3565	573
Oct	268	172	32	3606	583
Nov	248	174	20	3596	588
54 Dec	273	187	41	3600	600
Jan 1981	265	188	32	3632	592
Feb	300	187	31	3667	594
Mar	335	178	30	3681	628
Apr	247	200	28	3733	631
May	235	186	35	3700	646
Jun	286	212	25	3721	668
Total	3269	2256	366		
Averages	272	188	31	3627	604

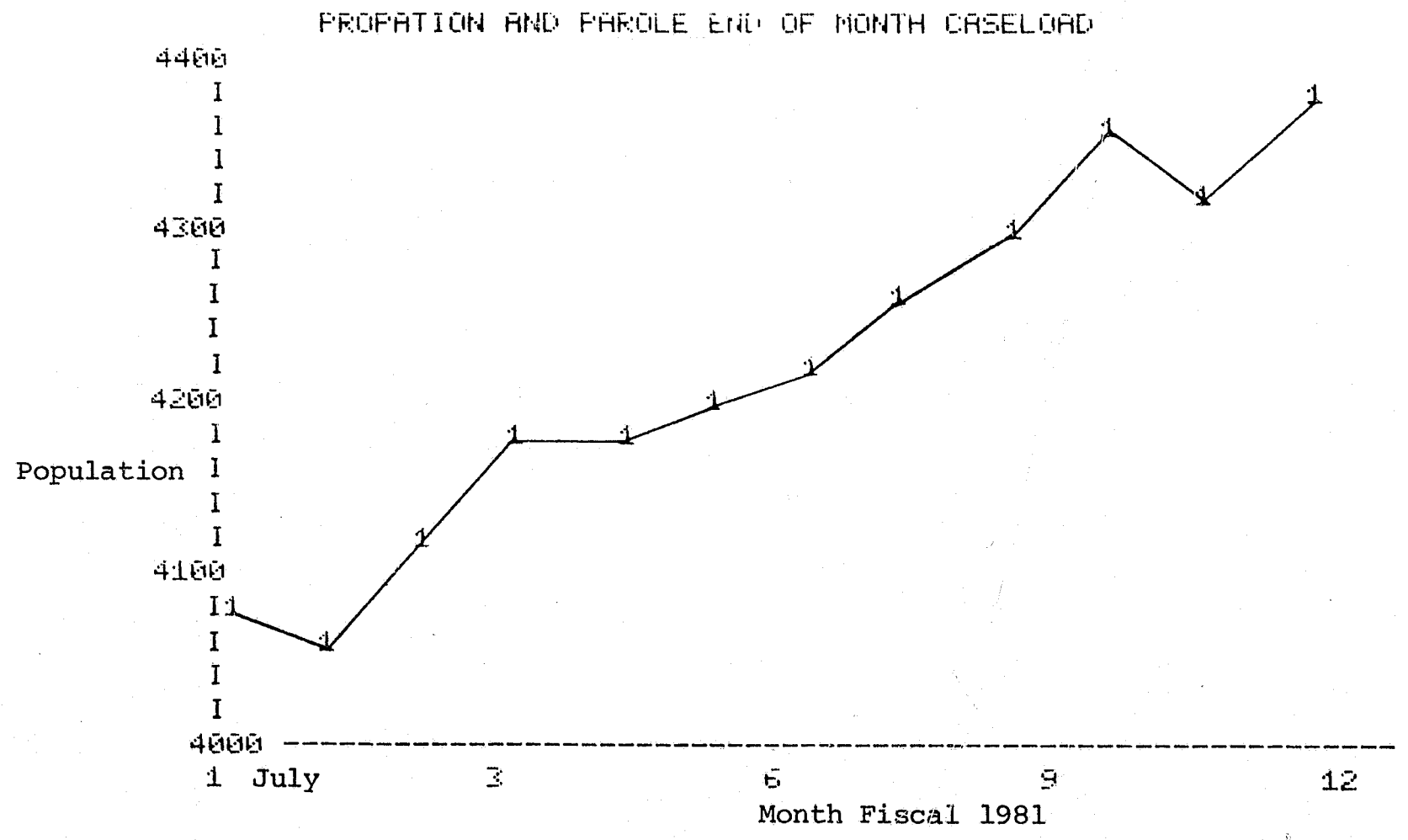
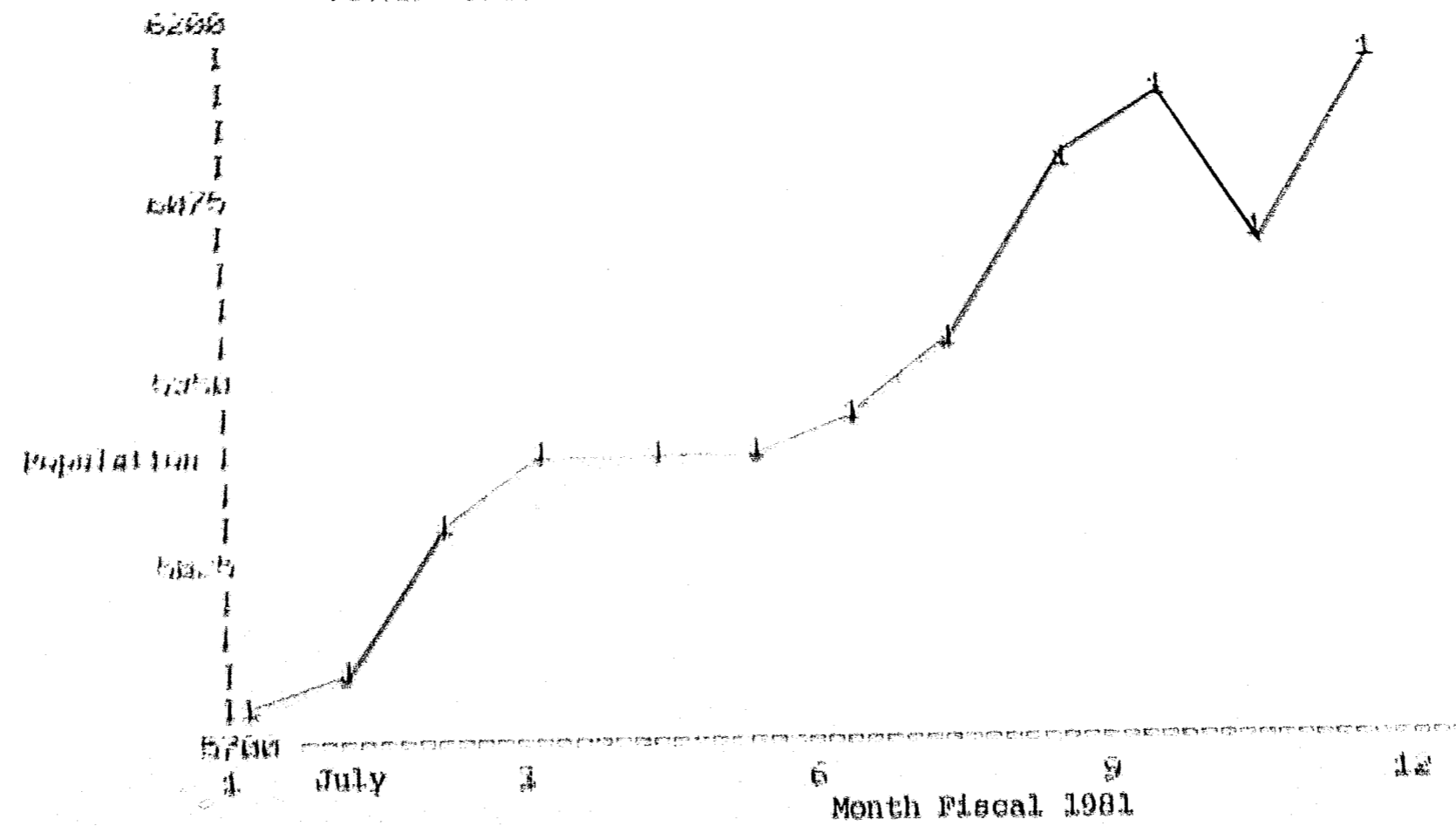


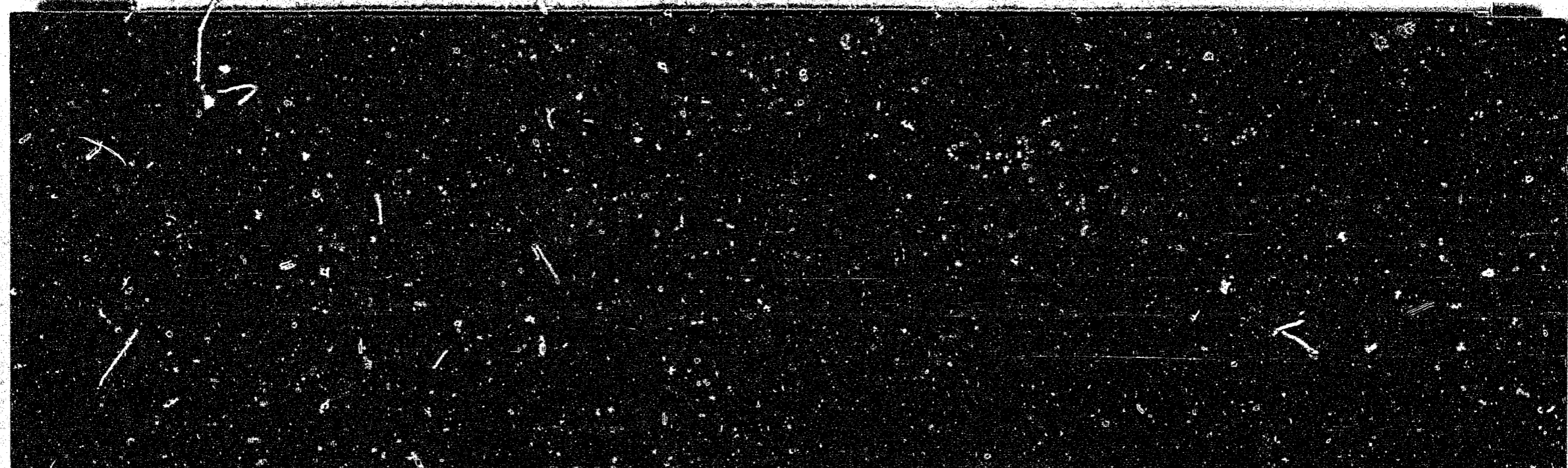
Figure 9.1

TOTAL POPULATION*UNDER SUPERVISION END OF MONTH

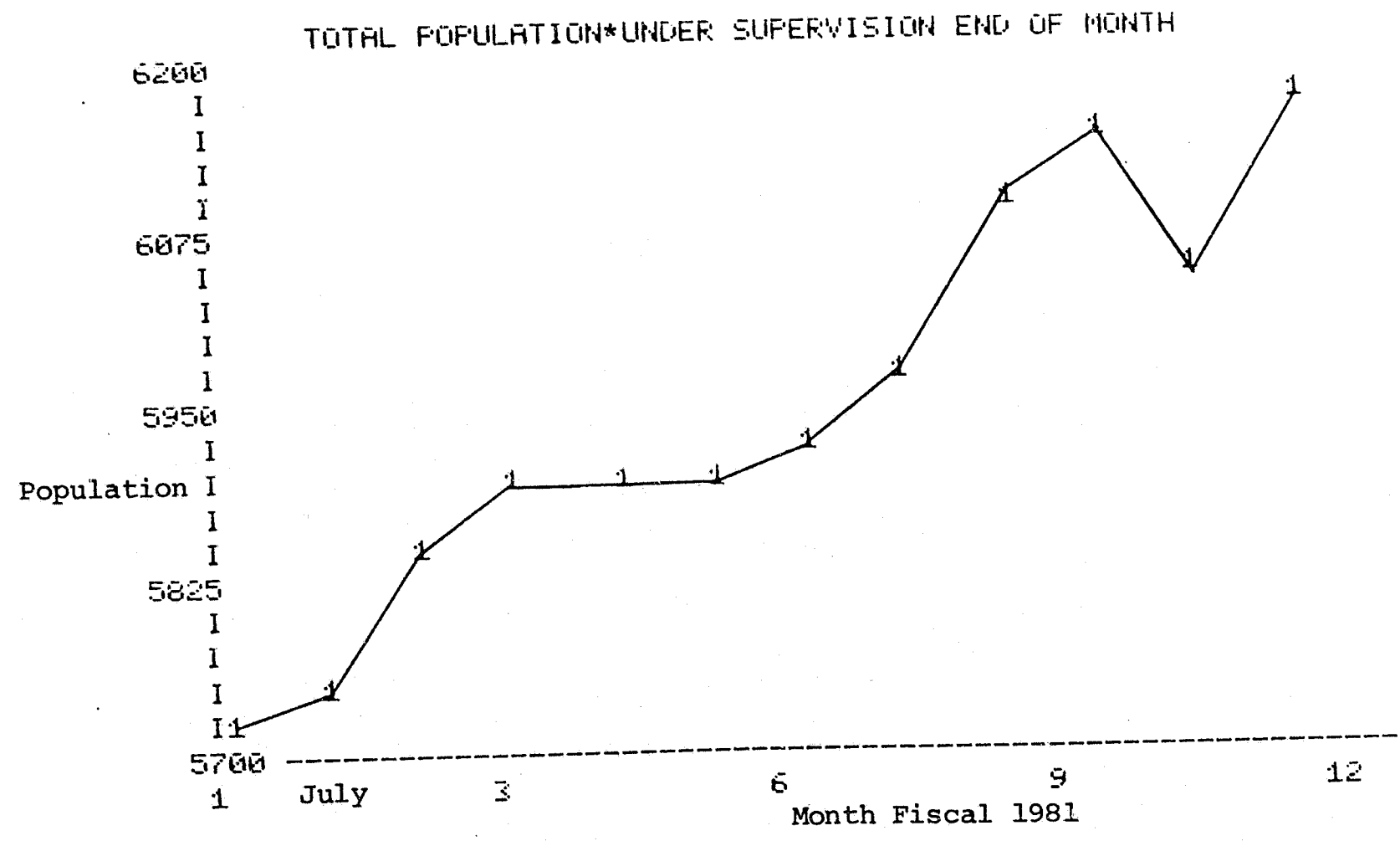


*Adult, Juvenile, Probation and Parole

Figure 10

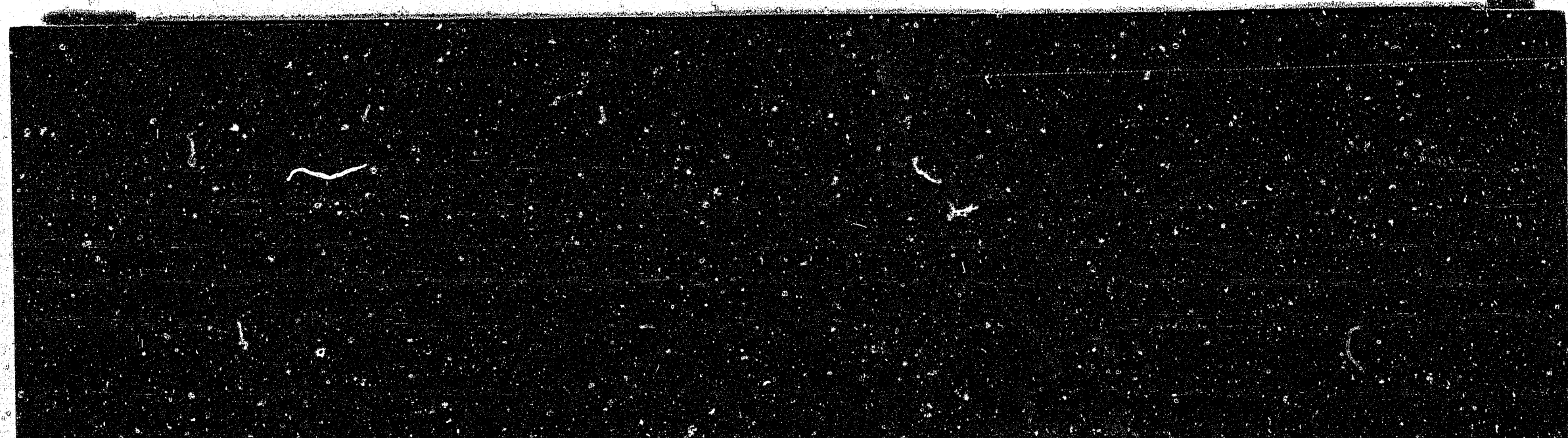


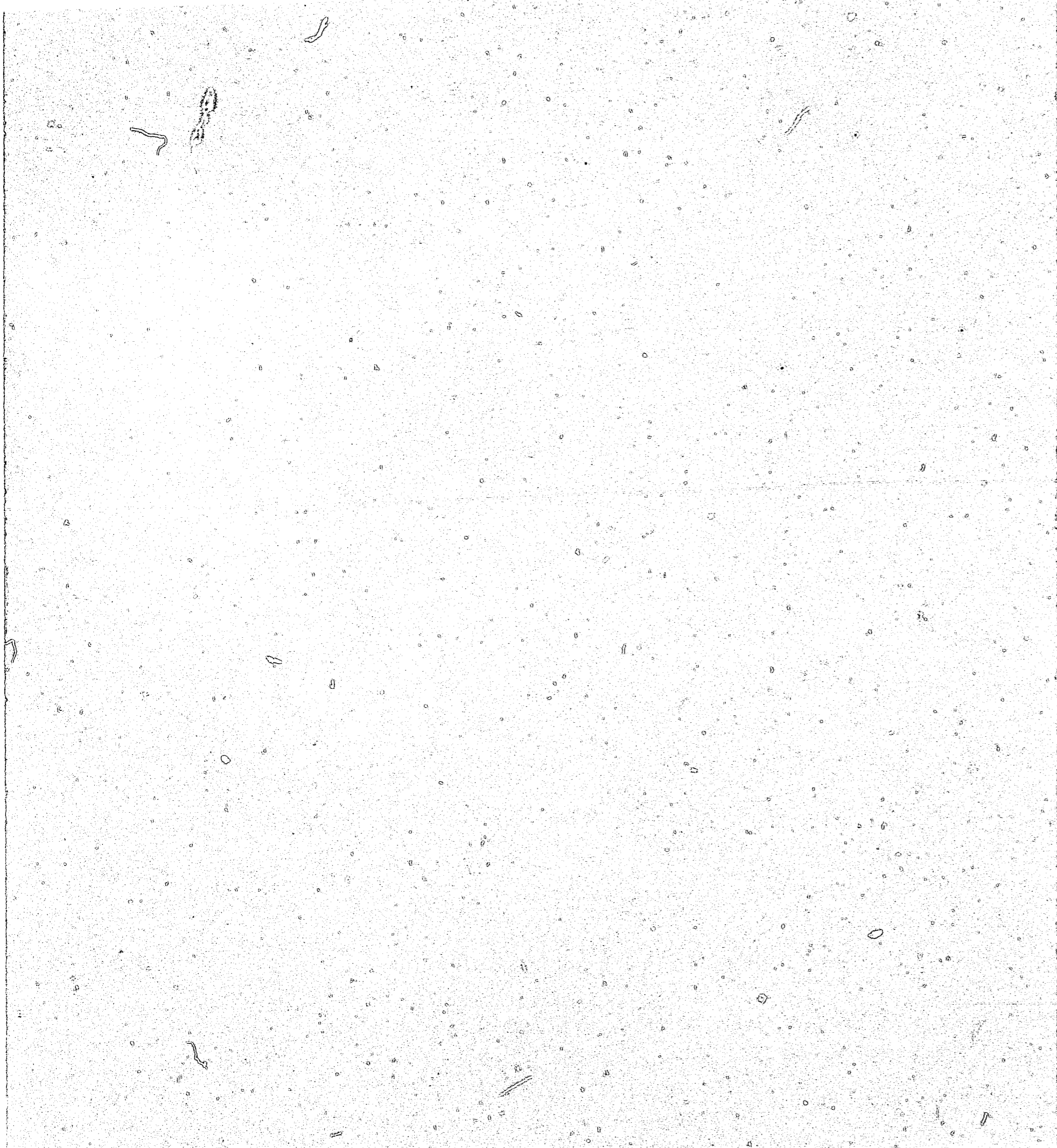
56



*Adult, Juvenile, Probation and Parole

Figure 10





APPENDIX

PART I CRIMES

Murder
Non-Negligent Manslaughter
Forcible Rape
Robbery
Assaults Aggravated
Burglary
Theft
Motor Vehicle Theft
Arson and Arson Related

58

PART II CRIMES

Treason and Treason Related
Desertion
Illegal entry and Related
Forgery and Forgery Related
Fraud and Fraud Related
Embezzlement and Embezzle Related
Stolen Property and Related
Sex Offense and Related
Commercial Sex and Related
Sex Assaults
Receiving Stolen Vehicle
Strip Stolen Vehicle
Possess Stolen Vehicle
Interstate Transportation Stolen Vehicle

PART III CRIMES

Stated Charge Not Clear	Traffic Offense and Related
Arrest Data Not Received	Health Safety and Related
Kidnap and Related	Civil Rights and Related
Abortion and Related	Invade Privacy and Related
Extortion and Related	Smuggling and Related
Damage Prop. and Related	Election Laws and Related
Dangerous Drugs and Related	Antitrust and Related
Obscene Material and Related	Tax Revenue and Related
Family Offense and Related	Conservation and Related
Gambling and Related	Vagrancy and Related
Liquor and Related	Crimes Against Person
Drunkenness and Related	Property Crimes and Related
Obstruct Police and Related	Morals-Decency Crimes
Obstruction and Related	Public Order Crimes
Bribery and Related	Local Statute and Related
Weapon Offense and Related	Burglary Tools-Possess
Public Peace and Related	Aircraft Theft

59

NOTE: The following Crimes Classes are not Counted:

Recovered Vehicle
Miscellaneous - No Arrest and Related

END