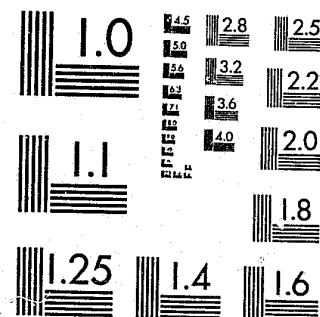


National Criminal Justice Reference Service

ncjrs

This microfiche was produced from documents received for inclusion in the NCJRS data base. Since NCJRS cannot exercise control over the physical condition of the documents submitted, the individual frame quality will vary. The resolution chart on this frame may be used to evaluate the document quality.



MICROCOPY RESOLUTION TEST CHART
NATIONAL BUREAU OF STANDARDS-1963-A

Microfilming procedures used to create this fiche comply with the standards set forth in 41CFR 101-11.504.

Points of view or opinions stated in this document are those of the author(s) and do not represent the official position or policies of the U. S. Department of Justice.

National Institute of Justice
United States Department of Justice
Washington, D. C. 20531

11/30/83

90106

U.S. Department of Justice
National Institute of Justice

This document has been reproduced exactly as received from the person or organization originating it. Points of view or opinions stated in this document are those of the authors and do not necessarily represent the official position or policies of the National Institute of Justice.

Permission to reproduce this copyrighted material has been granted by
New Jersey Bureau of Parole

to the National Criminal Justice Reference Service (NCJRS).

Further reproduction outside of the NCJRS system requires permission of the copyright owner.

ANNUAL ARRESTS AND DISPOSITIONS REPORT

State of New Jersey
Department of Corrections
Division of Policy and Planning

BUREAU OF PAROLE

Whittlesey Road
P.O. Box 7387, Trenton, New Jersey 08628
(July 1, 1980 -- June 30, 1981)

NCJRS

JUL 7 1983

ACQUISITIONS

Fred B. Holley, Chief
Bureau of Parole

Victor R. D'Ilio,
Assistant Chief

and

Anthony Venanzi
Senior Parole Officer

-1-

INTRODUCTION

The Bureau of Parole will discontinue the preparation and distribution of the Annual Arrests and Dispositions Report with this document. The manual recordkeeping necessary to properly compile the data presented has become unwieldy, and the electronic system used to tally certain aspects of the report did not have the capacity to add certain features to make comparisons more meaningful. It was, in fact, old and program changes not cost effective. Material presented by institutional designation no longer has the significance that it once implied in relation to type of sentence, age groupings and classification of offender. Changes in the law limiting certain areas of authority while broadening scopes of responsibility have also impacted on various comparisons and interpretations. Types and numbers of arrests can be found appended to the Bureau's Monthly Report. Commitments by the courts and parole violation data are reported in the Bureau's Annual Report. Data presented in the following format has outlived its significance. Should the Bureau resume a comprehensive arrest/dispositions report in the future, in all probability, it will be set forth in a completely different format.

The charts and discussion materials presented herein do not reflect information concerning those New Jersey cases supervised by out-of-state agencies. As explained in the past three reports, the Bureau of Interstate Services no longer provides the Bureau of Parole with data on the aforementioned cases for inclusion in this study. As a result, valid five year comparison of various statistics, traditionally reflected in Table No. 5, cannot be generated. Instead, meaningful comparisons can only be made between statistics dealing with the last four years.

ANNUAL ARRESTS AND DISPOSITIONS REPORT

The statistical information presented in this report is intended to serve as a factual indicator of the number, types, and dispositions of arrests of all parolees in New Jersey. We have no similar data on New Jersey parolees in other states who are no longer the responsibility of the New Jersey Bureau of Parole.

It is beyond the scope of this survey to answer questions about the reasons underlying the results.

Although all of the recorded arrests occurred during the period of July 1 1980 through June 30, 1981, many were not completely adjudicated until after the close of the fiscal year. Accordingly, the report is prepared one year thereafter in order to record as many dispositions as possible.

These arrests, as reported solely by the nine district parole offices of the Bureau of Parole, resulted from violations of the conditions of parole (Technical Violations) and/or Municipal Ordinances, State or Federal Statutes (New Offenses).

The criterion for recording the data is similar to the Uniform Crime Reporting procedure, i.e. one person, one arrest, regardless of the number of charges lodged.

Specifically, the data in addition to identifying information includes:

- (1) Number of parolees arrested and the number of arrests.
- (2) Disposition of recorded arrests for new offenses.
- (3) Disposition of arrests for technical parole violations.
- (4) Age at time of arrest and length of time on parole when arrested.
- (5) Types of arrests.

As shown in Table No. 5, the Bureau was responsible for the supervision of 13,428 parolees in the fiscal year 1980-81. There was an average of 9,598 on parole at any given time during the year. (See Table No. 1)

Some conclusions derived from this report may be stated as follows:

- (1) The number of total arrests for juvenile delinquency rose 32.3% in fiscal 1981 over those arrested for the same offense in fiscal 1978. (Table No. 5)
- (2) When compared with fiscal '78, the number of arrests for parole violation increased by 53 or 18.5% (Table No. 5)
- (3) During the same period of time there has been a significant change in the numbers of arrests for violation of local ordinances and motor vehicle laws. (Table No. 5)
- (4) Disorderly persons arrests have shown a decrease (5%) during the period of study (Table No. 5)

- (5) In the four years compared herein (fiscal '78, '79, '80, and fiscal '81) an average of 25% of the individuals supervised were arrested notwithstanding some change in caseload size or in total numbers of arrests. (Table No. 5)
- (6) Slightly over three-quarters (77%) of the individuals arrested were 21 years of age and over. (Table No. 4)
- (7) Sixty-three percent (63%) of all arrests occurred within the first year on parole, 76% within 18 months and 92% within three years on parole. (Table No. 4)
- (8) Forty-three percent (43%) of all recorded arrest for New Offenses were disposed of as guilty by court action as compared to the dismissal rate of 15%; the remaining 42% of arrests were not processed for inclusion in the above figures because:
 - a) the disposition was still pending in court.
 - b) maximum sentence expired while awaiting disposition.
 - c) returned as parole violator before disposition was rendered (Table No. 2)
- (9) A total of 3,791 individuals accounted for all of the 5,756 arrests. (Table No. 1)
- (10) Sixty-two percent (209) of the 338 arrests for Technical Parole Violations resulted in return to the institution as parole violators. (Table No. 3)
- (11) Only 3.6% (209) of the total number of arrests (5,756) were returned to the institution for violating technical conditions of parole not requiring court action. (See note and Table No. 3)
- (12) Of the 5,418 arrests for New Offenses requiring court action 18.9% (1,024) resulted in a court commitment to a penal or correctional institution. (See note and Table No. 2)

It must be remembered that factors which influence the number of violators that are returned to institutions vary. Therefore, statistical comparisons between institutions should be made with caution.

Note: The percentage of those committed by the court as compared to those returned exclusively for technical reasons differs substantially, mainly because the screening process employed by the Bureau of Parole eliminates many cases that would otherwise be included as statistical arrest. Not all cases that were reviewed for parole violations resulted in an arrest as is the case with those brought before the court. The Bureau does not keep separate statistics for this, but a conservative estimate would be a figure as high if not higher than the number of cases that are brought to the attention of the court.

Parole violators are arrested only after a thorough review of the case is made by supervisory personnel. All of the cases so reviewed do not result in return. The probable cause hearing process cuts down the figure more and after the hearing the figure is reduced again by the action of the paroling authority who elect not to revoke.

When the overall violation rate is compared to the total number of cases under supervision by the Bureau, the percentage of return is substantially less. As an example, of all the individuals arrested 31% were returned to various institutions by order of a court commitment or as a result of technical violation of parole as compared to 12% of the average number on parole or 9% of the total supervised. Stated conversely, 91% of the total number of cases under supervision were "successful," i.e. were not returned to an institution. Consequently, the recidivism rate becomes more meaningful when the basis used is clearly defined.

TABLE NO. 1

CASELOAD - ARRESTS AND RETURNED VIOLATORS
(By Institutions*)

7-1-80 thru 6-30-81

INSTITUTIONS*	UNDER SUPER-VISION 7/1/80	UNDER SUPER-VISION 7/1/81	TOTAL NO. SUPER-VISED 1980-81	AVERAGE NUMBER ON PAROLE	NO. PAROLEES ARRESTED			NO. OF ARRESTS			COMMITTED BY INSTITUTION**		
					NEW OFFENSES	TECHNICAL VIOLATIONS	TOTAL	NEW OFFENSES	TECHNICAL VIOLATIONS	TOTAL	BY COURT	BY PAROLING AUTHORITY	TOTAL
TSG	21	26	40	26	14	3	17	20	3	23	2	1	3
CIN	307	303	447	338	69	19	88	108	20	128	11	4	15
OS/F	32	23	43	25	2	0	2	2	0	2	0	0	0
TSB	216	297	449	250	184	10	194	293	10	303	93	12	105
YCIA	1,367	1,318	2,090	1,386	630	58	688	969	59	1,028	190	24	214
YCIB	1,546	1,461	2,096	1,571	648	46	694	1,014	47	1,061	185	34	219
YRCC	1,341	1,259	2,003	1,376	646	59	705	1,058	62	1,120	216	24	240
SP	3,202	3,689	5,129	3,946	1,120	128	1,248	1,747	130	1,877	300	46	346
ADTC	60	67	81	71	0	0	0	0	0	0	0	0	0
OS/M	526	525	837	526	148	7	155	207	7	214	27	1	28
CO	0	108	213	83	0	0	0	0	0	0	0	0	0
TOTALS	8,619	9,076	13,428	9,598	3,461	330	3,791	5,418	338	5,756	1,024	146	1,170

*Legend

TSG - Training School for Girls
 CIN - Correctional Institution for Women
 OS/F - Female Parolees Supervised for Other States
 TSB - Training School for Boys
 YCIA - Youth Correctional Institution, Annandale
 YCIB - Youth Correctional Institution, Bordentown
 YRCC - Youth Reception and Correction Center
 SP - State Prison
 ADTC - Adult Diagnostic and Treatment Center
 OS/M - Male Parolees Supervised for Other States
 CO - County Cases

**Based on No. of Arrests
 (not parolees):
 Figure does not include
 those individuals revoked
 by the State Parole Board
 but not as yet returned
 to Prison Complex, rather
 remaining in county
 facilities.

TABLE No. 2

DISPOSITION OF RECORDED ARRESTS FOR NEW OFFENSES
(By Institutions*)

7-1-80 thru 6-30-81

		TSG	CIW	TSB	YCIA	YCIB	YRCC	SP	ADTC	O/S MALE	O/S FEMALE	TOTAL
Adjudged guilty or delinquent by court action 43%	Committed to penal or correctional institution	2	11	93	190	185	216	300	0	27	0	1,024
	Suspended sentence or fined, and returned as parole violator	1	0	11	13	11	9	15	0	0	0	60
	Suspended sentence or fined, and continued under supervision	5	14	25	145	126	150	204	0	23	1	693
	Served county jail sentence, and returned as parole violator	0	4	1	11	20	14	28	0	1	0	79
	Served county jail sentence, and continued under supervision	0	12	5	60	75	69	102	0	7	0	330
	Placed on probation, and returned as parole violate	0	0	0	0	3	1	3	0	0	0	7
	Placed on probation, and continued under supervision	0	4	16	37	25	28	28	0	2	0	140
	Returned for adjustment	0	0	0	1	0	4	0	0	0	0	5
	Maximum expired while serving county jail sentence	0	0	0	2	1	2	3	0	5	0	13
	TOTAL	8	45	151	459	446	493	683	0	65	1	2,351
Dismissed by court action 15%	Continued under supervision	3	7	46	148	138	124	255	0	34	0	755
	Returned as parole violator	1	0	6	6	9	6	10	0	1	0	39
	TOTAL	4	7	52	154	147	130	265	0	35	0	794
Miscel- laneous 42%	Disposition still pending	5	19	32	179	204	187	402	0	58	0	1,086
	Maximum expired while awaiting disposition	2	8	23	49	34	52	124	0	40	1	333
	Returned as parole violator awaiting disposition	1	29	35	128	183	200	269	0	9	0	854
	TOTAL	8	56	90	356	421	439	795	0	107	1	2,273
	GRAND TOTAL	20	108	293	969	1,014	1,062	1,743	0	207	2	5,418

*Legend

TSG - Training School for Girls
 CIW - Correctional Institution for Women
 TSB - Training School for Boys
 YCIA - Youth Correctional Institution, Annandale
 YCIB - Youth Correctional Institution, Bordentown
 YRCC - Youth Reception and Correction Center
 SP - State Prison
 ADTC - Adult Diagnostic and Treatment Center
 O/S MALE - Male Parolees supervised for other states
 O/S FEMALE - Female parolees supervised for other states

TABLE NO. 3

DISPOSITION OF ARRESTS FOR TECHNICAL PAROLE VIOLATIONS
(By Institutions*)

7-1-80 thru 6-30-81

	TSG	CIW	TSB	YCIA	YCIB	YRCC	SP	ADTC	O/S MALE	O/S FEMALE	TOTAL
Returned as parole violator	0	16	7	36	25	44	78	0	3	0	209
Returned for adjustment	0	0	0	1	0	2	0	0	0	0	3
Released and continued under supervision	2	1	3	9	8	5	27	0	2	0	57
Turned over to police for new offense	0	1	0	1	6	4	6	0	0	0	18
Disposition pending	1	2	0	12	8	9	17	0	2	0	51
TOTAL	3	20	10	59	47	64	128	0	7	0	338

*Legend

TSG - Training School for Girls
 CIW - Correctional Institution for Women
 TSB - Training School for Boys
 YCIA - Youth Correctional Institution, Annandale
 YCIB - Youth Correctional Institution, Bordentown
 YRCC - Youth Reception and Correction Center
 SP - State Prison
 ADTC - Adult Diagnostic and Treatment Center
 O/S MALE - Male Parolees supervised for other states
 O/S FEMALE - Female Parolees supervised for other states

TABLE NO. 4

AGE AT TIME OF ARREST AND LENGTH OF TIME ON PAROLE WHEN ARRESTED

7-1-80 thru 6-30-81

	AGE -- (YEARS)					LENGTH OF TIME													
	15	16-17	18-20	21 and Over	Total Arrests	1 Week	2 Wks.	3 Wks.	1-3 Mos.	4-6 Mos.	7-12 Mos.	13-18 Mos.	19-24 Mos.	3rd Year	4th Year	5th Year	Over 5 Years	Total Arrests	
Training School for Girls	0	4	7	12	23	0	0	2	1	6	9	4	1	0	0	0	0	23	
Correctional Institution for Women	0	3	5	120	128	4	0	2	29	17	30	16	11	13	4	1	1	128	
Training School for Boys	25	200	70	8	303	0	2	4	96	62	80	31	20	4	3	1	0	303	
Youth Correctional Inst., Annandale	0	33	309	686	1028	7	6	7	163	179	243	169	81	99	44	21	9	1028	
Youth Correctional Inst., Bordentown	1	0	26	1034	1061	3	5	2	114	179	215	169	108	143	72	17	34	1061	
Youth Reception and Correction Center	1	105	433	581	1120	8	9	7	192	197	330	150	78	72	40	19	18	1120	
State Prison	1	2	24	1850	1877	16	13	19	368	520	197	135	143	34	17	22	22	1877	
Adult Treatment and Diagnostic Center	0	0	0	0	0	0	0	0	0	0	0	0	0	0	0	0	0	0	
Male (Out-of-State)	7	13	15	179	214	6	7	1	37	33	52	30	18	14	6	4	6	214	
Female (Out-of-State)	0	0	0	2	2	0	0	0	0	1	0	1	0	0	0	0	0	2	
TOTALS	35	360	889	4472	5756	44	42	42	1001	1062	1476	772	455	489	203	80	90	5756	
	.6%	6.3%	15.4%	77.7%		*	.7%	.7%	.7%	17%	18%	26%	13%	8%	8%	4%	1%		
						1 Week	.7%												
						2 Weeks		1.4%											
						3 Weeks			2%										
						1-3 Mos.			19%										
						4-6 Mos.				37%									
						7-12 Mos.					63%								
						13-18 Mos.						76%							
						19-24 Mos.							84%						
						2 Years								92%					
*Figures in excess of 1% have been rounded																			
(Cumulative)																			

*Figures in excess of 1% have been rounded off to nearest percent

TABLE NO. 5

4 YEAR COMPARISON (1978-81)

7-1-80 thru 6-30-81

FISCAL YEAR	CASELOAD		INDIVIDUALS ARRESTED			TOTAL ARRESTS		RECOMMITMENTS OR RETURNS RESULTING FROM ARRESTS	
	NUMBER OF INDIVIDUALS SUPERVISED	% of INCREASE	NUMBER	% of NUMBER SUPERVISED	% of INCREASE	NUMBER	% of INCREASE	NUMBER	% of INCREASE
1980 - 81	13,428	+5.3	3,791	30.3	+25.7	5,756	+12.6	1,170	-36.2
1979 - 80	12,766	+2.0	2,828	22.1	-13.6	4,201	-16.0	757	-60.3
1978 - 79	12,489	-2.1	3,275	26.2	+ 8.6	5,004	- 2.1	1,896	+ 3.3
1977 - 78	12,753	*	3,015	23.6	*	5,112	*	1,835	*
1976 - 77	12,489	+0.5	4,422	35.4	+12.6	6,298	-14.8	2,179	-17.6

Fiscal Year	Arrest for Indictable Offenses		Arrest for Juv. Delinquency		Arrests Under Dis. Persons Statute		Arrests for Motor Vehicle Violations		Arrests Under Local Ordinances		Arrests as Material Witnesses		Arrests for Tech. Violations	
	Number of Arrests	% of Total Arrests	Number of Arrests	% of Total Arrests	Number of Arrests	% of Total Arrests	Number of Arrests	% of Total Arrests	Number of Arrests	% of Total Arrests	Number of Arrests	% of Total Arrests	Number of Arrests	% of Total Arrests
1980 - 81	3,433	59.6	344	5.9	1,489	25.8	113	1.9	33	.5	6	.1	338	5.8
1979 - 80	2,443	58.1	313	1.4	1,063	25.3	104	2.4	19	.4	4	.09	255	6.0
1978 - 79	2,786	55.7	327	6.5	1,366	27.2	154	3.0	80	1.5	4	.4	287	5.7
1977 - 78	2,755	53.8	260	5.1	1,568	30.7	156	3.1	82	1.6	6	.1	285	5.6
1976 - 77	3,385	54.4	328	5.2	1,852	29.7	205	3.3	118	1.8	4	.06	329	5.2
4 Year Differential	+24.6		+32.3		-5.0		-27.5		-59.7		0		+18.5	

*Although 5 year figures are presented, no attempt should be made to compare the 1976-1977 figures with any others presented--(See Introduction).

The four year comparisons are made "on line" in the upper chart; in the block labeled four year differential in the lower.

END