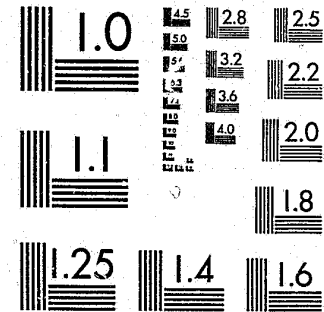


CR-Sent
10-7-83

National Criminal Justice Reference Service



This microfiche was produced from documents received for inclusion in the NCJRS data base. Since NCJRS cannot exercise control over the physical condition of the documents submitted, the individual frame quality will vary. The resolution chart on this frame may be used to evaluate the document quality.



MICROCOPY RESOLUTION TEST CHART
NATIONAL BUREAU OF STANDARDS-1963-A

Microfilming procedures used to create this fiche comply with the standards set forth in 41CFR 101-11.504.

Points of view or opinions stated in this document are those of the author(s) and do not represent the official position or policies of the U. S. Department of Justice.

National Institute of Justice
United States Department of Justice
Washington, D. C. 20531

11/30/83

SERIES J-2 No. 12

**PENNSYLVANIA
JUVENILE COURT
DISPOSITIONS
1982**

960096

JUVENILE COURT JUDGES' COMMISSION
JUVENILE STATISTICS DIVISION
P.O. BOX 1234
FEDERAL SQUARE STATION
HARRISBURG, PENNSYLVANIA 17108

COMMONWEALTH OF PENNSYLVANIA
Hon. Dick Thornburgh, Governor

JUVENILE COURT JUDGES' COMMISSION
Judge Maxwell E. Davison, Chairman
Ronald Sharp, Executive Director

STATISTICAL UNIT
James Boylan, Chief

SYSTEMS AND PROGRAMMING
Ken Rosenberry, Penn State University

**PENNSYLVANIA
JUVENILE COURT
DISPOSITIONS
1982**



FOREWORD

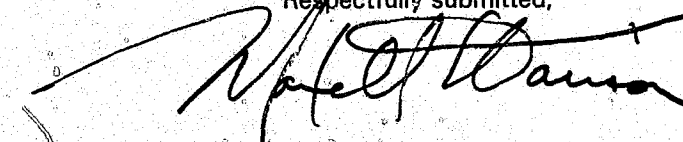
The Juvenile Court Judges' Commission is firmly committed to supplying reliable Juvenile Court data. It is our hope that the information contained in this report will be informative and meaningful in providing more effective services.

This report provides an overview of Juvenile Court operations in Pennsylvania. This statistical data represents dispositional information submitted by the Commonwealth's Juvenile Courts to the Juvenile Court Judges' Commission for the calendar year ending 1982. Please note that the report is limited to dispositional data on delinquency cases and does not include dependency cases.

Due to a major redesign effort of our statistical system, the report format has changed considerably from past years. We are confident that the new information presented in this year's report will help each court in their planning, research, and evaluative processes. Specifically, the detailed tables on selected offenses by county can provide more insight to court management in their planning functions. More detailed information that is beyond the scope of this report is available in our statistical office data files. Our statistical office is available to discuss any additional data needed.

This report would not have been possible without the efforts and support of Pennsylvania Juvenile Court Judges and their probation staffs. Special thanks is due the Pennsylvania Council of Chief Juvenile Probation Officers for their support and assistance in developing the new data system that is the basis for this report. It is on behalf of all of the dedicated people comprising Pennsylvania's Juvenile justice system that the Commission presents this report.

Respectfully submitted,



Maxwell E. Davison
Chairman

TABLE OF CONTENTS

Table	Page
STATEWIDE SUMMARY TABLES	
A Disposition Summary, Delinquency Cases	1
B Placement Summary	1
C Delinquency Dispositions, 1978 — 1982	2
D Mean and Median Time Lapse	2
E Disposition by Race and Sex	3
F Disposition by Race	4
G Attorney Representation by Disposition	5
COUNTY TABLES	
1 Total Dispositions and Rate Per 100,000 Juvenile Population	6
2 Total Dispositions by Source of Referral	7
3 Total Dispositions by Type	8
4 Total Placements by Type of Service	10
5 Total Dispositions by Race	11
6 Total Dispositions by Race and Sex	12
7 Mean and Median Time Lapse From Referral to Disposition	13
8 Number of Alleged Offenses for Which Juveniles Were Referred	14
9 Total Number and Type of Alleged Offenses	15
10 Number of Substantiated Offenses	16
11 Total Number and Type of Substantiated Offenses	17
12 Total Dispositions by Age	18
13 Juveniles Detained by Type of Detention and Number of Days	20
14 Secure Detention by Most Serious Alleged Offense	21
15 Secure Detention by Disposition	22
16 Secure Detention by Most Serious Substantiated Offense	24

SUMMARY OF JUVENILE COURT DISPOSITIONS, 1982

There were 31,866 delinquent children disposed of in the Pennsylvania Juvenile Courts during 1982. Probation supervision represents the largest dispositional category (19.48%), followed by dismissal (15.4%), consent decree (14.12%), informal adjustments (13.87%), placements (11.96%), complaint withdrawn (11.08%), and all remaining dispositions accounting for (14.09%) of the dispositions.

TABLE A: DISPOSITION SUMMARY, DELINQUENCY CASES, 1982

Type of Disposition	Number	Percent
Total Dispositions	31,866	100.00
Transfer to other Juvenile Court	917	2.87
Complaint withdrawn	3,533	11.08
Dismissed, warned	3,069	9.63
Informal Adjustment	4,421	13.87
Fines and costs ordered	611	1.91
Dismissed not substantiated	1,841	5.77
Referred to another agency	322	1.01
Consent decree	4,500	14.12
Probation	6,209	19.48
Continued on previous disposition	1,176	3.69
Certified to criminal court	433	1.35
Other	1,023	3.21
Placements	3,811	12.01

The following table represents a detailed breakdown of placements by type of placement service. Type of placement service was unknown for all of Philadelphia County placements or (1,146 children), and type of placement service was unknown for 106 additional cases, 82 of which were in Delaware County.

TABLE B: PLACEMENT SUMMARY, 1982

Type of Placement	Number	Percent
Total placements	3,811	100.00
Unknown type	1,252	32.86
Institutional (Residential)	1,266	33.22
Group Home	468	12.29
Foster Care	191	5.01
Security	129	3.39
Drug and Alcohol	157	4.11
Day Treatment	132	3.46
Outward Bound	204	5.36
Independent Living	11	0.28
Other Placement	1	0.02

1982 Delinquency dispositions in the State were down 12.3% from 1981. Philadelphia and Allegheny Counties which comprise half of the delinquency dispositions in the State were also down from 1981, Philadelphia by 13.8% and Allegheny by 15.7%. In the 65 other counties of Pennsylvania, dispositions were down by 10.2%. The following summary table shows delinquency dispositions for the five year period 1978 - 1982.

TABLE C: DELINQUENCY DISPOSITIONS, 1978 - 1982

	1978	1979	1980	1981	1982	Percent Change	
						78-82	81-82
Philadelphia	12,568	12,521	11,765	13,182	11,365	-9.6	-13.8
Allegheny	5,774	5,651	5,651	5,294	4,462	-22.7	-15.7
State Minus Phila. & Allegheny	18,639	18,340	17,822	17,865	16,039	-13.9	-10.2
State Total	36,981	36,512	35,238	36,341	31,866	-13.8	-12.3

The average time lapse from referral to disposition during 1982 was 69.37 days. This is a decrease of 8.39 days or 10.8% below the 1981 figure. Informal adjustments took an average of 31 days from referral to disposition while those cases where the complaint was withdrawn took an average of 147 days. The following table summarizes the mean and median time lapse for all dispositions by the specific type of disposition.

TABLE D: MEAN AND MEDIAN TIME LAPSE BY TYPE OF DISPOSITION, 1982

Type of Disposition	N	Mean	Median
Total Dispositions	31,866	69	40
Transfer to other Juvenile Court	917	39	17
Complaint Withdrawn	3,533	147	78
Dismissed, warned, counseled	3,069	80	50
Informal Adjustment	4,421	31	15
Fines and Costs Ordered	611	90	41
Dismissed: Not Substantiated	1,841	86	60
Referred to Another Agency	322	59	30
Consent Decree	4,500	53	35
Probation	6,209	69	50
Continued on Previous Disposition	1,176	49	24
Certified to Criminal Court	433	78	41
Other Disposition	1,023	62	28
Placements	3,811	70	44

TABLE E: DISPOSITION BY RACE AND SEX

Disposition	Total Dispositions	Unknown			White			Black			Spanish			Other		
		Unknown	Male	Female	Unknown	Male	Female	Unknown	Male	Female	Unknown	Male	Female	Unknown	Male	Female
Transfer to Other Juvenile Court	917	0	11	1	123	453	80	86	111	27	0	20	2	0	3	0
Complaint Withdrawn	3,533	1	6	0	385	840	152	251	1,558	208	0	108	15	0	8	1
Dismissed, Warned, Counseled	3,069	0	21	3	302	1,503	259	168	625	117	3	48	8	1	8	3
Informal Adjustment	4,421	0	23	1	32	2,662	456	15	828	213	0	151	22	0	15	3
Fines and Costs	611	0	9	2	1	400	96	0	75	14	0	11	2	0	1	0
Dismissed, Not Substantiated	1,841	6	3	1	600	466	117	434	162	34	3	10	2	1	1	1
Referred to Other Agency	322	0	0	1	1	204	69	1	30	9	0	5	0	0	1	1
Consent Decree	4,500	0	12	4	27	2,232	319	2	1,397	338	0	149	7	0	11	2
Probation	6,209	0	18	1	645	2,605	256	305	1,856	279	2	222	10	0	9	1
Continued on Previous Disposition	1,176	0	4	1	137	292	26	124	513	28	0	47	0	0	4	0
Certified to Criminal Court	433	0	0	0	2	163	5	5	244	7	0	6	0	0	1	0
Other	1,023	0	4	1	1	449	110	2	345	62	0	41	5	0	1	2
Placement	3,811	0	9	4	434	1,474	137	357	1,165	70	5	143	5	0	6	2
Total	31,866	7	120	20	2,690	13,743	2,082	1,750	8,909	1,406	13	961	78	2	69	16

TABLE F: DISPOSITION BY RACE

Disposition	Total Dispositions	Unknown		White		Black		Spanish		Other	
		N	%	N	%	N	%	N	%	N	%
Transfer to Other Juvenile Court	917	12	1.31	656	71.54	224	24.43	22	2.40	3	0.33
Complaint Withdrawn	3,533	7	0.20	1,377	38.98	2,017	57.09	123	3.48	9	0.25
Dismissed, Warned, Counseled	3,069	24	0.78	2,064	67.25	910	29.65	59	1.92	12	0.39
Informal Adjustment	4,421	24	0.54	3,150	71.25	1,056	23.89	173	3.91	18	0.41
Fines and Costs	611	11	1.80	497	81.34	89	14.57	13	2.13	1	0.16
Dismissed, Not Substantiated	1,841	10	0.54	1,183	64.26	630	34.22	15	0.81	3	0.16
Referred to Other Agency	322	1	0.31	274	85.09	40	12.42	5	1.55	2	0.62
Consent Decree	4,500	16	0.36	2,578	57.29	1,737	38.60	156	3.47	13	0.29
Probation	6,209	19	0.31	3,506	56.47	2,440	39.30	234	3.77	10	0.16
Continued on Previous Disposition	1,176	5	0.43	455	38.69	665	56.55	47	4.00	4	0.34
Certified to Criminal Court	433	0	0	170	39.26	256	59.12	6	1.39	1	0.23
Other	1,023	5	0.49	560	54.74	409	39.98	46	4.50	3	0.29
Placement	3,811	13	0.34	2,045	53.66	1,592	41.77	153	4.01	8	0.21
Total	31,866	147	0.46	18,515	58.10	12,065	37.86	1,052	3.30	87	0.27

TABLE G: ATTORNEY REPRESENTATION BY DISPOSITION
(Does Not Include Philadelphia County)

Disposition	Total Dispositions	Unknown		Court Appointed		Private		Public Defender		Waived	
		N	%	N	%	N	%	N	%	N	%
Transfer to Other Juvenile Court	869	473	54.43	29	3.34	27	3.11	224	25.78	116	13.35
Complaint Withdrawn	1,267	1,120	88.40	6	0.47	26	2.05	68	5.37	47	3.71
Dismissed, Warned, Counseled	2,445	1,138	46.54	43	1.76	80	3.27	355	14.52	829	33.91
Informal Adjustment	3,099	2,057	66.38	4	0.13	57	1.84	73	2.36	908	29.30
Fines and Costs	548	370	67.52	2	0.36	8	1.46	42	7.66	126	22.99
Dismissed, Not Substantiated	1,841	382	20.75	75	4.07	271	14.72	713	38.73	400	21.73
Referred to Other Agency	318	178	55.97	32	10.06	6	1.89	66	20.75	36	11.32
Consent Decree	2,174	669	30.77	53	2.44	348	16.01	510	23.46	594	27.32
Probation	3,956	140	3.54	227	5.74	778	19.67	2,293	57.96	518	13.09
Continued on Previous Disposition	555	105	18.92	47	8.47	20	3.60	280	50.45	103	18.56
Certified to Criminal Court	196	21	10.71	35	17.86	27	13.78	112	57.14	1	0.51
Other	568	418	73.59	10	1.76	14	2.46	103	18.13	23	4.05
Placement	2,665	61	2.29	255	9.57	219	8.22	2,028	76.10	102	3.83
Total	20,501	7,132	34.79	818	3.99	1,881	9.18	6,867	33.50	3,803	18.55

TABLE 3: TOTAL DISPOSITIONS BY TYPE

Table with columns: County, Total Dispositions, Transfer to Other Juvenile Court, Complaint Withdrawn, Dismissed Warned Counseled, Informal Adjustment, Fines & Costs, Dismissed Not Substantiated. Lists various Pennsylvania counties and their respective statistics.

TABLE 3: TOTAL DISPOSITIONS BY TYPE (Continued)

Table with columns: County, Referred to Another Agency/Individual, Consent Decree, Probation, Continued on Previous Disposition, Certified to Criminal Court, Other Disposition, Placement. Continues the list of Pennsylvania counties with detailed disposition counts.

TABLE 16: SECURE DETENTION BY MOST SERIOUS SUBSTANTIATED OFFENSE
(Does Not Include Delaware and Philadelphia Counties)

County	Total Secure Detention Experiences	No Substantiated Offense	Rape	Robbery	Arson	Aggravated Assault	Burglary	Theft	Retail Theft	Drugs	Simple Assault	Other Offenses
Adams	5	1	0	0	0	0	1	2	0	0	0	1
Allegheny	1,082	95	8	91	14	35	181	216	23	27	61	331
Armstrong	4	1	0	1	0	1	0	0	0	0	0	1
Beaver	3	3	0	0	0	0	0	0	0	0	0	0
Bedford	1	0	0	0	0	1	0	0	0	0	0	0
Berks	111	10	0	14	1	4	40	13	2	1	6	20
Blair	60	2	0	3	0	0	13	10	0	0	5	27
Bradford	13	5	0	1	0	0	6	0	0	0	0	1
Bucks	173	21	0	10	0	10	47	30	1	7	10	37
Butler	25	6	0	0	0	1	8	7	0	0	0	3
Cambria	80	19	1	2	1	1	16	17	1	2	3	17
Cameron	2	1	0	0	0	0	0	1	0	0	0	0
Carbon	7	1	0	2	0	1	2	1	0	0	0	0
Centre	16	2	0	0	1	0	2	3	0	0	0	8
Chester	99	44	0	6	0	1	11	19	0	1	4	13
Clarion	2	0	0	0	0	0	1	0	0	0	0	1
Clearfield	14	2	0	0	0	0	6	3	0	0	0	3
Clinton	15	7	0	0	0	0	1	1	0	0	0	6
Columbia	11	3	0	0	0	1	3	1	0	0	2	1
Crawford	26	4	0	0	1	1	7	9	0	0	0	4
Cumberland	75	17	0	2	0	0	13	10	1	1	4	22
Dauphin	125	29	0	11	1	9	39	10	1	2	5	18
Fik	2	1	0	0	0	0	0	1	0	0	0	0
Erie	173	18	0	9	0	2	56	34	1	1	18	34
Fayette	31	7	0	2	2	1	5	11	0	0	1	2
Forest	4	3	0	0	0	0	0	0	0	0	0	1
Franklin	18	6	0	0	1	1	3	6	0	0	0	1
Fulton	0	—	—	—	—	—	—	—	—	—	—	—
Greene	10	1	0	0	1	0	1	4	0	0	0	3
Huntingdon	8	0	0	0	2	0	3	1	0	0	1	1
Indiana	13	1	0	0	0	0	9	2	0	0	0	1
Jefferson	8	1	0	0	0	0	3	0	0	1	2	1
Juniata	3	2	0	0	0	0	1	0	0	0	0	0
Lackawanna	43	4	0	2	0	1	12	8	0	1	1	14
Lancaster	145	10	0	22	9	4	38	31	0	1	10	20
Lawrence	32	4	0	3	1	4	3	8	3	0	2	4
Lebanon	14	6	0	0	0	3	3	0	0	0	1	1
Lehigh	90	4	1	4	0	4	27	20	1	2	4	23
Luzerne	51	5	0	2	1	3	12	13	0	1	9	5
Lycoming	2	0	0	2	0	0	0	0	0	0	0	0
McKean	2	0	0	0	0	0	0	1	0	0	0	1
Mercer	99	10	0	4	2	1	21	18	1	1	4	37
Mifflin	3	0	0	0	0	0	1	1	0	0	0	1
Monroe	23	2	0	4	1	1	7	7	0	0	1	0
Montgomery	241	31	2	14	0	17	62	65	6	8	11	25
Montour	5	1	0	0	0	0	1	2	0	0	0	1
Northampton	74	14	2	2	2	6	33	10	0	1	2	2
Northumberland	27	6	0	0	0	3	4	10	1	0	0	3
Perry	1	0	0	0	0	0	1	0	0	0	0	0
Pike	3	1	0	0	0	0	0	0	0	0	1	1
Potter	2	1	0	0	0	0	0	0	0	0	0	1
Schuylkill	66	26	0	1	0	2	21	4	0	0	3	9
Snyder	1	0	0	0	0	0	0	1	0	0	0	0
Somerset	12	2	0	1	0	1	5	2	0	0	1	0
Sullivan	0	—	—	—	—	—	—	—	—	—	—	—
Susquehanna	0	—	—	—	—	—	—	—	—	—	—	—
Tioga	11	2	0	0	0	0	2	3	0	1	2	1
Union	2	1	0	0	0	0	0	0	0	0	0	1
Venango	4	0	0	0	0	0	0	3	0	0	0	1
Warren	7	0	0	0	0	0	2	1	0	0	0	4
Washington	55	8	0	0	2	5	8	9	0	0	4	19
Wayne	1	0	0	0	0	1	0	0	0	0	0	0
Westmoreland	122	15	0	1	2	11	35	23	0	7	8	20
Wyoming	2	1	0	0	0	1	0	0	0	0	0	0
York	119	24	1	20	1	4	24	30	1	1	3	10
TOTAL	3,478	491	15	236	46	142	805	682	43	67	189	762

END