

**ALABAMA
STATISTICAL
ANALYSIS CENTER**



**CRIME IN
TUSKEGEE:
AN ANALYSIS**

90082

STATE OF ALABAMA
CRIMINAL JUSTICE INFORMATION CENTER
R. W. BLAYLOCK
Director

CRIME IN TUSKEGEE: AN ANALYSIS

Published By
The Alabama Criminal Justice Information Center
R. W. Blaylock, Director

This report is the undertaking of the Statistical Analysis Center (SAC), a component of the Alabama Criminal Justice Information Center. SAC's responsibilities entail collection, analysis, and dissemination of criminal justice information.

This report is one example of the analytic capabilities of the Alabama Criminal Justice Information Center.

prepared by:

Therese M. Ford

NCJRS

statistical software:

Jimmy Blackwell

JUN 20 1971
ACQUISITIONS

graphics software:

Mark Blasingame

John Shiver

U.S. Department of Justice
National Institute of Justice

This document has been reproduced exactly as received from the person or organization originating it. Points of view or opinions stated in this document are those of the authors and do not necessarily represent the official position or policies of the National Institute of Justice.

Permission to reproduce this copyrighted material has been granted by

Alabama Criminal Justice
Information Center

to the National Criminal Justice Reference Service (NCJRS).

Further reproduction outside of the NCJRS system requires permission of the copyright owner.

PREFACE

The Alabama Criminal Justice Information Center has developed an incident-based crime reporting system which utilizes comparable data elements of the Uniform Crime Report (UCR) Summaries. These incident-based reports were designed to serve a twofold purpose: to provide data to ACJIC to generate UCR; and, to develop an internal record keeping system for the individual agency.

The Tuskegee Police Department is scheduled to begin submitting incident-based crime reports to ACJIC in July for UCR purposes. However, they began utilizing these forms in 1977 to organize the department's record keeping system.

Chief Herbert Sears of Tuskegee requested an analysis on these incident-based crime reports for the period January through April, 1979. A breakdown of types of crimes by location, day of the week, and time of day was requested.

This report is intended to provide pertinent information to Chief Sears about Tuskegee's criminal activity as well as illustrating the potential benefits available to other law enforcement agencies utilizing the incident-based crime reporting forms.

INTRODUCTION

Tuskegee is a city of approximately 12,470* persons. It is centrally located in Macon County and contains 46% of the county's population.

Tuskegee is divided into five (5) patrol districts and this report will use these five districts as a means of pinpointing criminal activity by type of offense, time of day, and day of week.

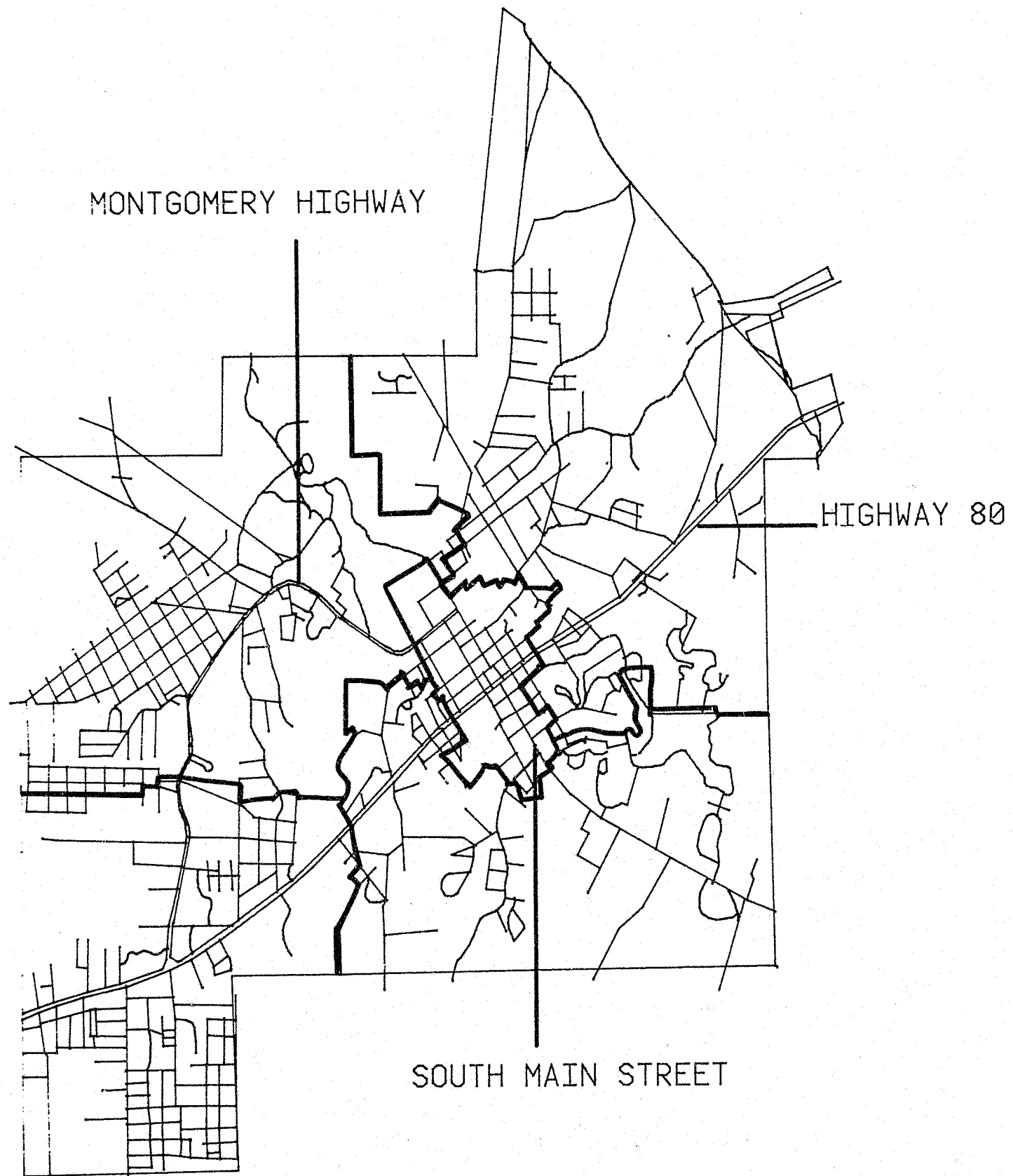
Procedures used in the development of this report include entering the crime data into the system and writing statistical software which correlates the crime variables with each other. These statistical breakdowns are the basis for this report.

This report will include a written narrative, tables and figures as a means of explaining data. All incidents reported to the Tuskegee Police Department are used in this report.

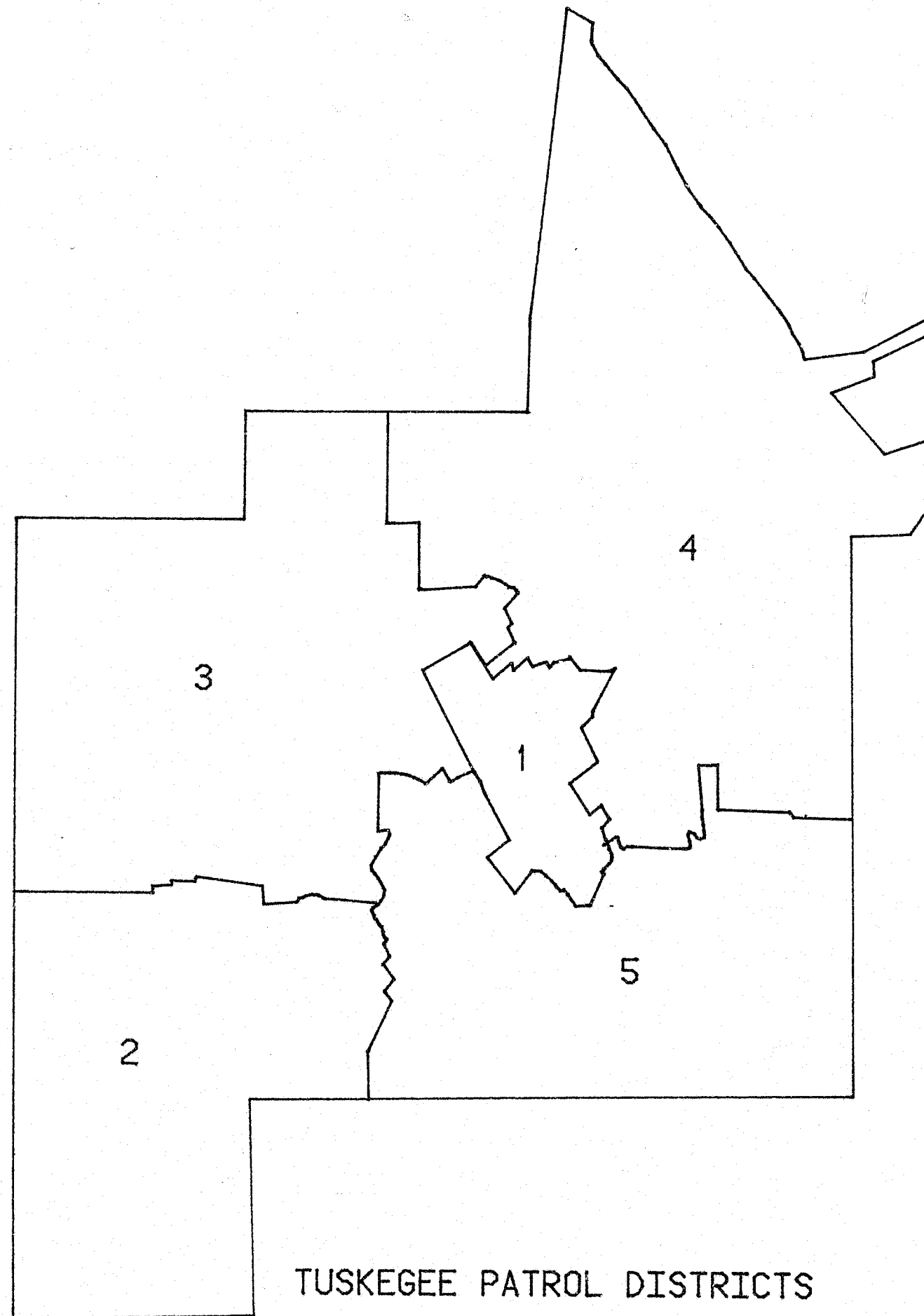
A map of the City of Tuskegee is included in this report. The boundaries of the patrol districts are outlined over the city map. Due to the size of the map, street names are not included but three main highways are labeled for reference points. Also included is a layout of the patrol districts for Tuskegee.

This report covers the period January through April, 1979.

* FBI population estimates as of January 23, 1979.



MAP OF TUSKEGEE
- 2 -

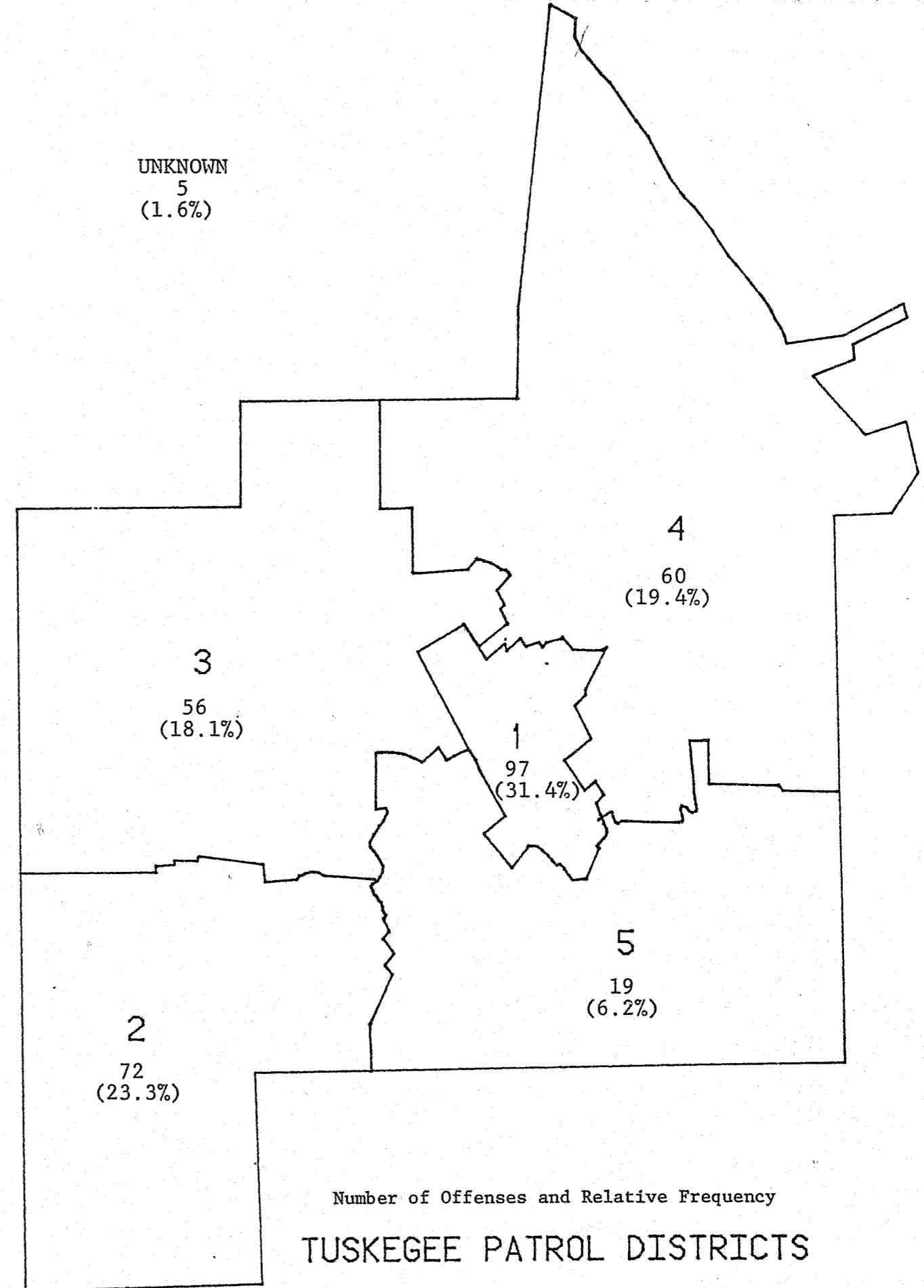


TUSKEGEE PATROL DISTRICTS

Frequency Count

A total of 309 offenses were reported to the Tuskegee Police Department between January and April, 1979. These offenses are broken down into 25 categories. The following list is comprised from these offenses and the list includes the absolute frequency and per cent figures.

REPORTED INCIDENTS January - April, 1979		
Offense	Frequency	Per Cent
Robbery	1	.3%
Assault	31	10.0%
Burglary	121	39.2%
Grand Larceny	42	13.6%
Petit Larceny	6	1.9%
Auto Theft	6	1.9%
Vandalism	28	9.1%
Disturbance	25	8.1%
Arson	2	.6%
Firearm Violation	3	1.0%
Dead Person	3	1.0%
Sex Offenses	2	.6%
Auto Accidents	16	5.2%
Missing Person	1	.3%
Complaint	2	.6%
Overdose	2	.6%
Fire	4	1.3%
Leaving Scene of Accident	1	.3%
Auto Parts Theft	1	.3%
Trespass	1	.3%
Bomb Threat	1	.3%
Resisting Arrest	1	.3%
Kidnapping	1	.3%
Possession of Drugs	2	.6%
Other	6	1.9%
TOTAL	309	100.0%



Burglary effected the greatest number of offenses with 121 incidents or 39.2%. Grand Larceny showed the next highest incidence with 42 reported cases or 13.6% of the total number of offenses. Assault, vandalism and disturbance calls effected 10.0%, 9.1%, and 8.1%, respectively.

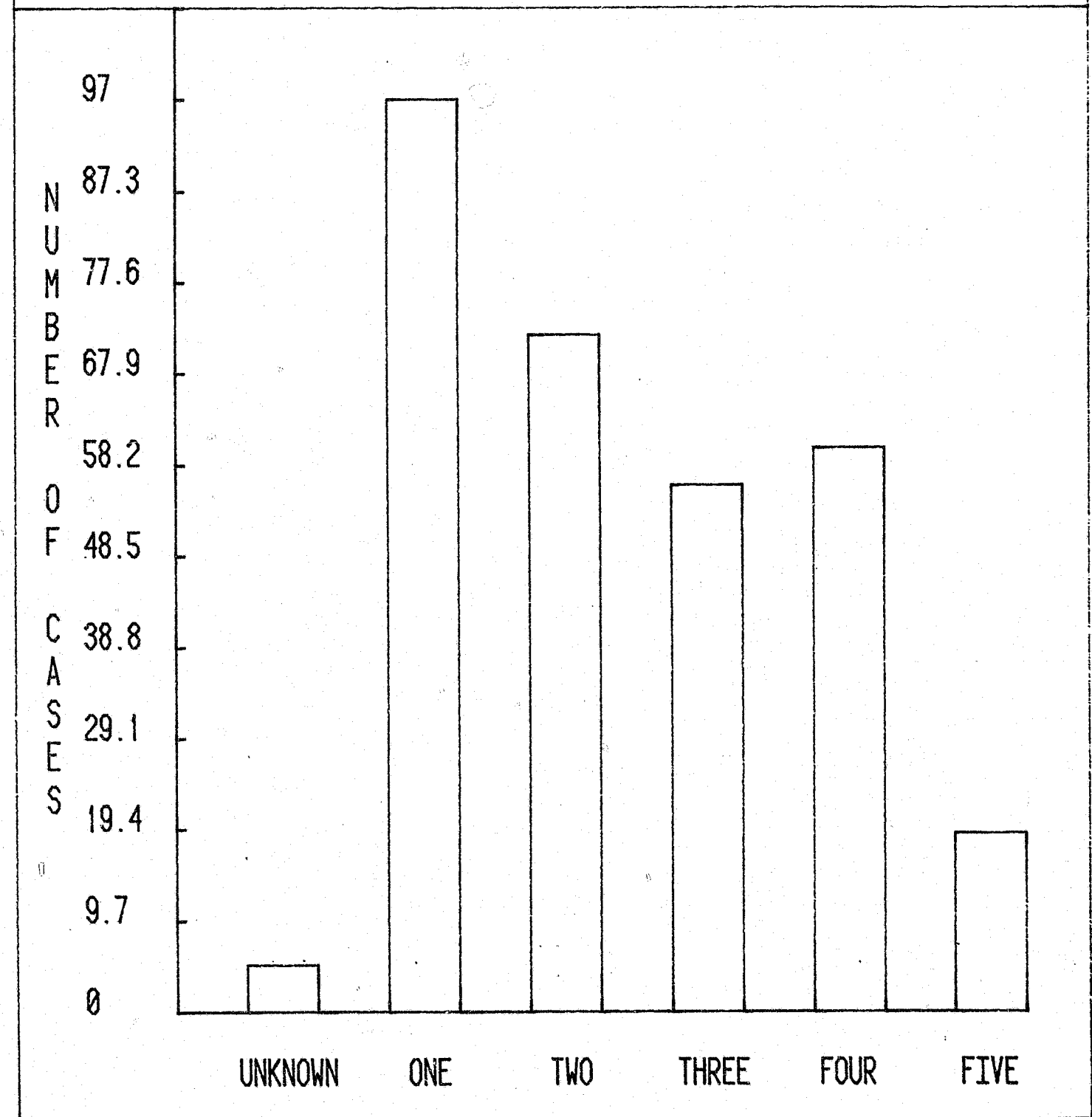
One hundred forty-eight, or 47.9% of the reported incidents were felonies; 74, or 23.9%, were misdemeanors with the remaining 87 incidents, or 28.2%, being unknown as to crime type.

A frequency count by police district shows that 97 incidents were recorded in District 1, accounting for 31.4% of the reported offenses. District 2 reported 72 incidents or 23.3% of the offenses. District 3 accounted for 56 reported offenses or 18.1% of the total incidents. District 4 reported 60 offenses or 19.4%; and, District 5 reported 19 cases or 6.1%. There were five offenses reported in which the police district was unknown.

The premise type accounting for the majority of the reported offenses in Tuskegee was residences. There were 164 offenses committed at residences accounting for 53.1% of the reported offenses. There were 52 offenses reported in the "other" category comprising 16.8% of the reported incidences. Locations classified as commercial accounted for 39 offenses or 12.6% of the reported offenses.

The following breakdown of incident by premise type includes the actual frequency of offenses and the relative frequency of offenses reported to the Tuskegee Police Department.

TUSKEGEE INCIDENTS BY DISTRICT



INCIDENTS BY PREMISE TYPE

Robbery

Commercial	1	100%
------------	---	------

Assault

Unknown	2	6%
Residence	21	68%
Commercial	2	6%
Other	6	19%

Burglary

Unknown	5	4%
Commercial	27	22%
Service Station	4	3%
Chain Store	2	2%
Residence	60	50%
School	11	9%
Other	12	10%

Grand Larceny

Unknown	1	2%
Highway/Street/Alley	4	10%
Commercial	3	7%
Chain Store	3	7%
Residence	21	50%
School	1	2%
Other	9	22%

Petit Larceny

Unknown	1	17%
Commercial	1	17%
Residence	3	49%
Other	1	17%

Auto Theft

Highway/Street/Alley	1	17%
Commercial	3	50%
Other	2	33%

Vandalism

Unknown	3	10%
Highway/Street/Alley	1	4%
Service Station	1	4%
Residence	15	53%
Church	1	4%
Other	7	25%

Disturbance

Highway/Street/Alley	2	8%
Commercial	1	4%
Residence	18	72%
Other	4	16%

Arson

Residence	2	100%
-----------	---	------

Firearm Violation

Residence	1	33%
Other	2	67%

Dead Person

Residence	3	100%
-----------	---	------

Sex Offenses

Residence	1	50%
Other	1	50%

Auto Accident

Unknown	2	13%
Highway/Street/Alley	4	25%
Commercial	1	6%
Chain Store	1	6%
Residence	3	19%
Other	5	31%

Missing Person

Residence	1	100%
-----------	---	------

Complaint

Service Station	1	50%
Residence	1	50%

Overdose

Residence	2	100%
-----------	---	------

Fire

Residence	4	100%
-----------	---	------

Leaving Scene of Accident

Highway/Street/Alley	1	100%
----------------------	---	------

Auto Parts Theft

School	1	100%
--------	---	------

Trespass

Residence	1	100%
-----------	---	------

Bomb Threat

Residence	1	100%
-----------	---	------

Resisting Arrest

Other	1	100%
-------	---	------

Kidnapping

Residence	1	100%
-----------	---	------

Possession of Drugs

Residence	1	50%
Other	1	50%

Other

Highway/Street/Alley	1	17%
Residence	4	66%
Other	1	17%

Incident by District

These tables illustrate the frequency of offenses by patrol district. The percentage of offenses occurring by patrol district is also included.

Robbery

District Four	1	100%
---------------	---	------

Assault

Unknown	1	3%
District One	6	19%
District Two	10	32%
District Three	3	10%
District Four	8	26%
District Five	3	10%

Burglary

District One	41	34%
District Two	21	17%
District Three	34	28%
District Four	19	16%
District Five	6	5%

Grand Larceny

Unknown	1	2%
District One	13	31%
District Two	13	31%
District Three	5	12%
District Four	6	15%
District Five	4	9%

Petit Larceny

Unknown	1	17%
District Two	2	33%
District Three	1	17%
District Four	2	33%

Auto Theft

District One	4	67%
District Four	2	33%

Vandalism

District One	8	29%
District Two	11	39%
District Three	3	11%
District Four	4	14%
District Five	2	7%

Disturbance

Unknown	1	4%
District One	6	24%
District Two	8	32%
District Three	2	8%
District Four	7	28%
District Five	1	4%

Arson

District One	1	50%
District Three	1	50%

Firearm Violations

District One	1	33%
District Two	2	67%

Dead Person

District One	1	33%
District Four	2	67%

Sex Offenses

District One	1	50%
District Three	1	50%

Auto Accident

District One	9	56%
District Two	1	6%
District Three	2	13%
District Four	3	19%
District Five	1	6%

Missing Person

District Three	1	100%
----------------	---	------

Complaint

District One	1	50%
District Five	1	50%

Overdose

District Two	1	50%
District Four	1	50%

Fire

District One	1	25%
District Three	2	50%
District Four	1	25%

Leaving Scene of Accident

District Five 1 100%

Auto Parts Theft

District Two 1 100%

Trespass

District Four 1 100%

Bomb Threat

District One 1 100%

Resisting Arrest

District One 1 100%

Kidnapping

District Two 1 100%

Possession of Drugs

District Three 1 50%
District Four 1 50%

Other

Unknown 1 17%
District One 2 33%
District Two 1 17%
District Four 2 33%

TOTAL CASES = 309

The time of occurrence is stated according to the 24-hour clock and the offenses are counted in one-hour intervals. The following breakdown is by patrol district and includes the number of offenses and time of occurrence.

DISTRICT: UNKNOWN 5 Offenses

Assault
between 1700 and 1800 1

Grand Larceny
between 0600 and 0700 1

Petit Larceny
unknown 1

Disturbance
between 1500 and 1600 1

Other
between 1500 and 1600 1

* * * * *

DISTRICT: ONE 97 Offenses

Assault
between 0200 and 0300 4
between 1000 and 1100 1
between 1500 and 1600 1
between 2100 and 2200 1
between 2300 and 2400 1

Burglary
unknown 5
between 0001 and 0100 4
between 0100 and 0200 2
between 0200 and 0300 2
between 0400 and 0500 1
between 0700 and 0800 1
between 0800 and 0900 1
between 1300 and 1400 1

Burglary (cont.)	
between 1400 and 1500	1
between 1500 and 1600	1
between 1600 and 1700	5
between 1700 and 1800	4
between 1900 and 2000	4
between 2100 and 2200	5
between 2200 and 2300	3
between 2300 and 2400	1
Grand Larceny	
unknown	1
between 0600 and 0700	1
between 0700 and 0800	1
between 1200 and 1300	1
between 1400 and 1500	1
between 1600 and 1700	1
between 1700 and 1800	2
between 1800 and 1900	1
between 1900 and 2000	1
between 2000 and 2100	1
between 2200 and 2300	1
between 2300 and 2400	1
Auto Theft	
unknown	1
between 1200 and 1300	1
between 1700 and 1800	1
between 2200 and 2300	1
Vandalism	
unknown	1
between 0001 and 0100	1
between 0700 and 0800	1
between 1100 and 1200	1
between 1600 and 1700	2
between 2000 and 2100	1
between 2200 and 2300	1
Disurbance Calls	
between 0800 and 0900	1
between 1200 and 1300	2
between 1300 and 1400	1
between 1900 and 2000	2
Arson	
between 1800 and 1900	1

Firearm Violation	
between 1900 and 2000	1
Dead Person	
between 1400 and 1500	1
Sex Offenses	
between 0100 and 0200	1
Auto Accident	
unknown	1
between 0200 and 0300	1
between 0800 and 0900	1
between 1000 and 1100	1
between 1200 and 1300	1
between 1400 and 1500	1
between 1800 and 1900	1
between 1900 and 2000	1
between 2200 and 2300	1
Complaint	
between 2000 and 2100	1
Fire	
between 2100 and 2200	1
Bomb Threat	
between 2200 and 2300	1
Resisting Arrest	
between 0100 and 0200	1
Other	
between 2100 and 2200	1
between 2300 and 2400	1

* * * * *

DISTRICT: TWO 72 Offenses

Assault	
unknown	1
between 0001 and 0100	1
between 0200 and 0300	1
between 0900 and 1000	1
between 1000 and 1100	1
between 1100 and 1200	1
between 1900 and 2000	2
between 2000 and 2100	1
between 2200 and 2300	1

Burglary		
unknown		2
between 0100 and 0200		1
between 0600 and 0700		2
between 0700 and 0800		6
between 0800 and 0900		2
between 0900 and 1000		1
between 1000 and 1100		1
between 1500 and 1600		1
between 1600 and 1700		1
between 1700 and 1800		1
between 1800 and 1900		1
between 2000 and 2100		1
between 2300 and 2400		1
Grand Larceny		
between 0100 and 0200		1
between 0800 and 0900		1
between 1000 and 1100		1
between 1200 and 1300		2
between 1300 and 1400		1
between 1800 and 1900		1
between 1900 and 2000		1
between 2000 and 2100		2
between 2100 and 2200		1
between 2200 and 2300		1
between 2300 and 2400		1
Petit Larceny		
between 1700 and 1800		1
between 2300 and 2400		1
Vandalism		
between 0200 and 0300		2
between 0300 and 0400		1
between 0900 and 1000		2
between 1100 and 1200		1
between 1200 and 1300		1
between 1400 and 1500		1
between 1500 and 1600		1
between 2000 and 2100		1
between 2300 and 2400		1
Disturbance Calls		
unknown		1
between 0500 and 0600		1
between 0900 and 1000		1
between 1600 and 1700		1
between 1800 and 1900		2
between 2100 and 2200		1
between 2300 and 2400		1

Firearm Violation		
between 1300 and 1400		1
between 1700 and 1800		1
Auto Accident		
between 2000 and 2100		1
Overdose		
between 1700 and 1800		1
Auto Parts Theft		
between 1500 and 1600		1
Kidnapping		
between 1900 and 2000		1
Other		
between 2200 and 2300		1

* * * * *

DISTRICT: THREE 56 Offenses

Assault		
unknown		1
between 1400 and 1500		1
between 2200 and 2300		1
Burglary		
unknown		2
between 0001 and 0100		2
between 0100 and 0200		1
between 0200 and 0300		1
between 0300 and 0400		1
between 0400 and 0500		1
between 0600 and 0700		4
between 0700 and 0800		5
between 0800 and 0900		1
between 0900 and 1000		3
between 1000 and 1100		1
between 1300 and 1400		1
between 1400 and 1500		1
between 1500 and 1600		1
between 1700 and 1800		2
between 1800 and 1900		2
between 1900 and 2000		1
between 2000 and 2100		3
between 2300 and 2400		1

Grand Larceny	
unknown	2
between 0001 and 0100	1
between 0800 and 0900	1
between 1700 and 1800	1
Petit Larceny	
between 2200 and 2300	1
Vandalism	
between 1500 and 1600	1
between 1900 and 2000	1
between 2100 and 2200	1
Disturbance Calls	
between 1500 and 1600	2
Arson	
between 2100 and 2200	1
Sex Offenses	
between 1600 and 1700	1
Auto Accident	
between 0400 and 0500	2
Missing Person	
between 0001 and 0100	1
Fire	
between 0400 and 0500	1
between 1000 and 1100	1
Possession of Drugs	
between 0100 and 0200	1

DISTRICT: FOUR	60 Offenses
Robbery	
between 1400 and 1500	1
Assault	
between 0600 and 0700	1
between 1100 and 1200	1
between 1500 and 1600	2
between 1700 and 1800	2
between 1800 and 1900	1
between 1900 and 2000	1

Burglary	
unknown	5
between 0500 and 0600	1
between 0600 and 0700	1
between 0700 and 0800	1
between 0800 and 0900	1
between 1000 and 1100	1
between 1100 and 1200	3
between 1200 and 1300	1
between 1600 and 1700	3
between 1900 and 2000	1
between 2100 and 2200	1
Grand Larceny	
between 0500 and 0600	1
between 1200 and 1300	1
between 1500 and 1600	1
between 1700 and 1800	1
between 1800 and 1900	1
between 2000 and 2100	1
Petit Larceny	
between 0001 and 0100	1
between 2100 and 2200	1
Auto Theft	
between 0800 and 0900	1
between 1700 and 1800	1
Vandalism	
between 0100 and 0200	1
between 1400 and 1500	1
between 1800 and 1900	1
between 2100 and 2200	1
Disturbance Calls	
between 0600 and 0700	1
between 0700 and 0800	1
between 0800 and 0900	1
between 1000 and 1100	1
between 1500 and 1600	1
between 2000 and 2100	2
Dead Person	
between 0200 and 0300	1
between 0700 and 0800	1
Auto Accident	
between 0100 and 0200	1
between 0900 and 1000	1
between 1900 and 2000	1

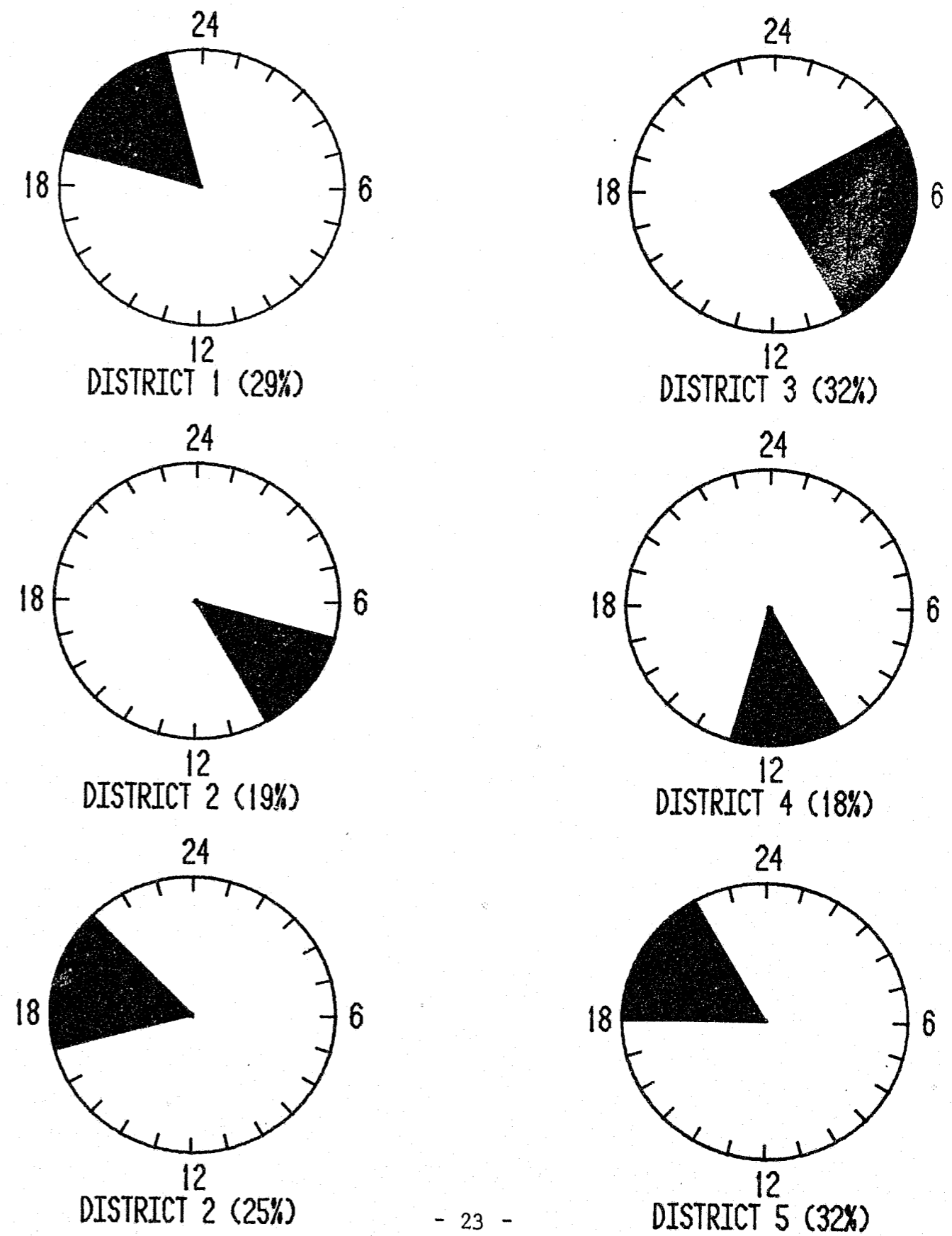
Overdose between 1200 and 1300	1
Fire between 0001 and 0100	1
Trespass unknown	1
Possession of Drugs between 1000 and 1100	1
Other between 1100 and 1200	1
between 1900 and 2000	1

DISTRICT: FIVE

19 Offenses

Assault	
between 1800 and 1900	1
between 2100 and 2200	1
between 2300 and 2400	1
Burglary	
unknown	1
between 1000 and 1100	1
between 1100 and 1200	1
between 1800 and 1900	1
between 2100 and 2200	1
between 2200 and 2300	1
Grand Larceny	
between 0001 and 0100	1
between 1200 and 1300	1
between 1800 and 1900	2
Vandalism	
between 0001 and 0100	1
between 0600 and 0700	1
Disturbance	
unknown	1
Auto Accident	
between 1500 and 1600	1
Complaint	
between 0700 and 0800	1
Leaving Scene of an Accident	
between 1200 and 1300	1

PEAK OCCURRENCES BY DISTRICT FOR TUSKEGEE



In a breakdown of patrol district and time of occurrence, data shows that in District 1, 29% of the offenses reported occurred between 7 and 11 p.m. In District 2, 19% of the offenses were reported between 7 and 10 a.m. and 25% between 5 and 9 p.m. District 3 had 32% of its offenses occurring between 4 and 10 a.m. Eighteen per cent of District 4 offenses were reported between 10 a.m. and 1 p.m. District 5 shows 32% of its reported offenses occurring between 6 and 10 p.m.

(For a complete breakdown see Appendix.)

The following breakdown depicts the twenty-four hour clock with the number of offenses reported for each time interval with the relative frequency of occurrence for each time interval.

TIME	FREQUENCY	PER CENT
unknown	27	9%
0001 - 0100	14	4%
0100 - 0200	10	3%
0200 - 0300	10	3%
0300 - 0400	2	1%
0400 - 0500	5	2%
0500 - 0600	3	1%
0600 - 0700	12	4%
0700 - 0800	18	6%
0800 - 0900	11	4%
0900 - 1000	9	3%
1000 - 1100	11	4%
1100 - 1200	9	3%
1200 - 1300	13	4%
1300 - 1400	5	2%
1400 - 1500	9	3%
1500 - 1600	16	5%
1600 - 1700	14	4%
1700 - 1800	19	6%
1800 - 1900	16	5%
1900 - 2000	19	6%
2000 - 2100	15	5%
2100 - 2200	17	5%
2200 - 2300	14	4%
2300 - 2400	11	4%
TOTAL =	309	100%

In a day of the week breakdown, data shows that 50% of the offenses occur Thursday through Saturday. The following list depicts the total number of offenses reported by day of the week with per cent figures included.

unknown	7	2%
Sunday	38	12%
Monday	39	13%
Tuesday	36	12%
Wednesday	35	11%
Thursday	45	15%
Friday	52	17%
Saturday	57	18%
TOTAL	309	100%

Follows is a breakdown comparing patrol district with the offense and the day of the week.

DISTRICT: UNKNOWN	5 Offenses
Assault	
Sunday	1
Grand Larceny	
Monday	1
Petit Larceny	
Thursday	1
Disturbance	
Thursday	1
Other	
Monday	1

DISTRICT: ONE

97 Offenses

Assault	
Unknown	1
Wednesday	3
Thursday	1
Saturday	1
Burglary	
Unknown	1
Sunday	6
Monday	4
Tuesday	7
Wednesday	3
Thursday	5
Friday	7
Saturday	8
Grand Larceny	
Unknown	1
Sunday	1
Monday	1
Tuesday	3
Wednesday	2
Thursday	4
Saturday	1
Auto Theft	
Monday	1
Wednesday	2
Saturday	1
Vandalism	
Unknown	1
Sunday	1
Tuesday	1
Wednesday	2
Thursday	1
Friday	1
Saturday	1
Disturbance	
Monday	1
Wednesday	1
Thursday	1
Friday	2
Saturday	1
Arson	
Thursday	1

Firearm Violation

Thursday	1
Dead Person	
Tuesday	1
Sex Offenses	
Monday	1
Auto Accident	
Monday	2
Tuesday	3
Wednesday	1
Friday	1
Saturday	2
Complaint	
Monday	1
Fire	
Friday	1
Bomb Threat	
Friday	1
Resisting Arrest	
Sunday	1
Other	
Wednesday	1
Thursday	1

DISTRICT: TWO

72 Offenses

Assault	
Sunday	1
Wednesday	2
Thursday	2
Friday	2
Saturday	3
Burglary	
Unknown	1
Sunday	1
Monday	6
Tuesday	3
Wednesday	3
Thursday	5
Friday	2

Grand Larceny	3
Sunday	4
Monday	1
Tuesday	1
Wednesday	1
Thursday	2
Friday	1
Saturday	1
Petit Larceny	1
Sunday	1
Tuesday	1
Vandalism	2
Sunday	1
Monday	1
Thursday	1
Friday	3
Saturday	4
Disturbance	2
Sunday	2
Wednesday	1
Friday	3
Saturday	3
Virearm Violation	1
Sunday	1
Saturday	1
Auto Accident	1
Friday	1
Overdose	1
Tuesday	1
Auto Parts Theft	1
Tuesday	1
Kidnapping	1
Friday	1
Other	1
Sunday	1

* * * * *

DISTRICT: THREE

56 Offenses

Assault	1
Unknown	1
Tuesday	1
Saturday	1
Burglary	6
Sunday	6
Monday	4
Tuesday	1
Wednesday	4
Thursday	7
Friday	6
Saturday	6
Grand Larceny	1
Sunday	1
Tuesday	1
Wednesday	1
Saturday	2
Petit Larceny	1
Friday	1
Vandalism	1
Sunday	1
Thursday	1
Friday	1
Disturbance	1
Thursday	1
Saturday	1
Arson	1
Thursday	1
Sex Offenses	1
Friday	1
Auto Accident	2
Saturday	2
Missing Person	1
Wednesday	1

Fire		
Monday		1
Saturday		1
Possession of Drugs		
Saturday		1
* * * * *		
DISTRICT: FOUR		60 Offenses
Robbery		
Thursday		1
Assault		
Sunday		1
Monday		1
Tuesday		1
Wednesday		1
Thursday		1
Friday		1
Saturday		2
Burglary		
Unknown		1
Sunday		3
Tuesday		4
Thursday		4
Friday		5
Saturday		2
Grand Larceny		
Wednesday		2
Thursday		2
Friday		1
Saturday		1
Petit Larceny		
Wednesday		2
Auto Theft		
Sunday		1
Friday		1
Vandalism		
Thursday		3
Friday		1

Disturbance		
Monday		2
Tuesday		1
Saturday		4
Dead Person		
Sunday		1
Monday		1
Auto Accident		
Sunday		1
Wednesday		1
Friday		1
Overdose		
Friday		1
Fire		
Wednesday		1
Trespass		
Monday		1
Possession of Drugs		
Friday		1
Other		
Wednesday		1
Saturday		1
* * * * *		
DISTRICT: FIVE		19 Offenses
Assault		
Tuesday		1
Friday		1
Saturday		1
Burglary		
Monday		3
Friday		1
Saturday		2
Grand Larceny		
Wednesday		1
Thursday		1
Friday		1
Saturday		1

Vandalism	
Friday	1
Saturday	1
Disturbance	
Sunday	1
Auto Accident	
Friday	1
Complaint	
Tuesday	1
Leaving Scene of Accident	
Saturday	1

SUMMARY

From January through April of 1979 there were 309 incidents reported to the Tuskegee Police Department. Of these incidents, 47.9% were felonies, 23.9% were misdemeanors and the remaining 28.2% were in the unknown category.

The City of Tuskegee is divided into five patrol districts with the number of reported offenses for each district as follows:

District 1	97 Offenses	31.4%
District 2	72 Offenses	23.3%
District 3	56 Offenses	18.1%
District 4	60 Offenses	19.4%
District 5	19 Offenses	6.2%
Unknown	5 Offenses	1.6%

In District 1, 29% of the reported offenses occurred between 7 and 11 p.m. District 2 shows 19% of its offenses occurring between 7 and 10 a.m. and 25% of the offenses between 5 and 9 p.m. District 3 effected 32% of its offenses between 4 and 10 a.m. In District 4, 18% of the offenses were reported between 10 a.m. and 1 p.m. Thirty-two per cent of District 5 offenses occurred between 5 and 10 p.m.

Burglary accounted for the greatest number of reported offenses, 121 or 39.2% of the incidents. Thirty-four per cent of the burglaries were reported in District 1; and, District 3 accounted for 28% of the reported burglaries.

Grand larceny accounted for 42 of the incidents or 13.6% of all offenses reported to the police. District 1 and 2 each had 31% of the grand larceny offenses.

This is only a sample of the analytic capabilities of the Statistical Analysis Center. By utilizing the inherent potential contained within the incident-based crime reporting system, various analyses are possible, i.e., victim analysis, crime analysis, and various breakdowns such as this report. It is possible that such analyses will enable law enforcement agencies to better understand and consequently, combat criminal activity more effectively.

APPENDIX

District	Time	# of Offenses
District 4 (cont.)	0800 - 0900	3
	0900 - 1000	1
	1000 - 1100	3
	1100 - 1200	5
	1200 - 1300	3
	1400 - 1500	2
	1500 - 1600	4
	1600 - 1700	3
	1700 - 1800	4
	1800 - 1900	3
	1900 - 2000	4
	2000 - 2100	3
	2100 - 2200	3
District 5	Unknown	2
	0001 - 0100	2
	0600 - 0700	1
	0700 - 0800	1
	1000 - 1100	1
	1100 - 1200	1
	1200 - 1300	2
	1500 - 1600	1
	1800 - 1900	4
	2100 - 2200	2
2200 - 2300	1	
2300 - 2400	1	

END