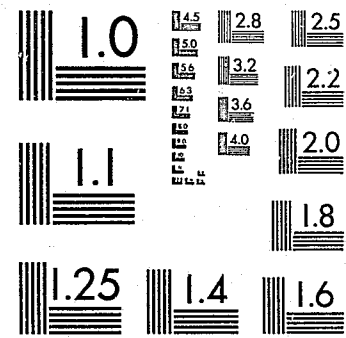




This microfiche was produced from documents received for inclusion in the NCJRS data base. Since NCJRS cannot exercise control over the physical condition of the documents submitted, the individual frame quality will vary. The resolution chart on this frame may be used to evaluate the document quality.



MICROCOPY RESOLUTION TEST CHART  
NATIONAL BUREAU OF STANDARDS-1963-A

Microfilming procedures used to create this fiche comply with the standards set forth in 41CFR 101-11.504.

Points of view or opinions stated in this document are those of the author(s) and do not represent the official position or policies of the U. S. Department of Justice.

National Institute of Justice  
United States Department of Justice  
Washington, D. C. 20531

11/14/83

TABLE OF CONTENTS

I. INTRODUCTION ..... III

II. LIST OF ABBREVIATIONS ..... V

III. POPULATION ANALYSIS

A. ADMISSIONS

1. TOTAL SENTENCE LENGTH..... 1

2. CURRENT OFFENSE..... 2

3. SENTENCING COURT..... 3

4. COUNTY OF CONVICTION..... 4

5. RACE AND SEX..... 7

6. AGE..... 8

7. EDUCATION..... 10

8. MARITAL STATUS..... 11

9. ADMITTING LOCATION..... 12

B. SEPARATIONS

1. TOTAL SENTENCE LENGTH ..... 15

2. CURRENT OFFENSE..... 16

3. SENTENCING COURT..... 17

4. COUNTY OF CONVICTION..... 18

5. RACE AND SEX..... 21

6. AGE..... 22

7. EDUCATION..... 24

8. MARITAL STATUS..... 25

9. SEPARATION LOCATION..... 26

C. STOCK POPULATION

1. CURRENT OFFENSE..... 29

2. SENTENCING COURT..... 30

3. COUNTY OF CONVICTION..... 31

4. RACE AND SEX..... 34

5. AGE..... 35

6. EDUCATION..... 37

7. MARITAL STATUS..... 38

D. AVERAGE POPULATION BY LOCATION..... 39

NCJRS

MAY 21 1983

ACQUISITIONS

U.S. Department of Justice  
National Institute of Justice  
89919

This document has been reproduced exactly as received from the person or organization originating it. Points of view or opinions stated in this document are those of the authors and do not necessarily represent the official position or policies of the National Institute of Justice.

Permission to reproduce this copyrighted material has been granted by  
North Carolina Department  
of Corrections

to the National Criminal Justice Reference Service (NCJRS).  
Further reproduction outside of the NCJRS system requires permission of the copyright owner.

IV. SELECTED ACTIVITY ANALYSIS

- A. PAROLE POPULATION ANALYSIS
  - 1. COUNTY OF SUPERVISION - RACE AND SEX.....42
  - 2. TYPE TERMINATION - TIME UNDER SUPERVISION....45
- B. CONDITIONAL RELEASE PROGRAM
  - 1. COUNTY OF SUPERVISION - RACE AND SEX.....46
  - 2. TYPE TERMINATION - TIME UNDER SUPERVISION....49
- C. RULE VIOLATIONS
  - 1. LOCATION - TYPE VIOLATION.....50
- D. WORK RELEASE
  - 1. LOCATION - HOW PLACED (NEW PARTICIPANTS).....53
  - 2. LOCATION - WHY REMOVED (REMOVALS).....56
  - 3. LOCATION - TIME ON PROGRAM.....59
- E. TEMPORARY LEAVES
  - 1. LOCATION - TYPE VISIT.....62
  - 2. TYPE VIOLATION - NUMBER OF VISITS.....65

## INTRODUCTION

### PURPOSE OF PUBLICATION

THE PURPOSE OF THIS PUBLICATION IS TWOFOLD: (1) TO SUPPLY CORRECTIONS MANAGEMENT A BROAD BASE OF POPULATION AND PROGRAM INFORMATION FOR THE PURPOSE OF EVALUATING PRESENT OPERATIONS AND PLANNING FUTURE COURSES OF ACTION; AND (2) TO PROVIDE VARIOUS RESEARCH GROUPS A CONTINUING DATA BASE FOR CROSS-SECTIONAL STUDIES OVER TIME. SUCH A PUBLICATION HAS BEEN RECOGNIZED AS AN ESSENTIAL COMPONENT OF SUCCESSFUL, MODERN CORRECTION PLANNING.

### INFORMATION SYSTEM

THE SOURCE OF DATA FOR THIS INFORMATION SYSTEM IS THE INMATE MASTER FILE. THE MASTER FILE IS MAINTAINED ON A DAILY UPDATE BASIS WITH INPUTS FROM EACH CORRECTION UNIT IN THE STATE SYSTEM. BY UTILIZING COMPUTER STORAGE DEVICES, THE MASTER FILE IS EASILY ACCESSIBLE AND LENDS ITSELF READILY TO FLEXIBLE PROGRAMMING METHODS.

THE METHOD OF DATA RETRIEVAL HAS BEEN DESIGNED TO INCORPORATE A WIDE DEGREE OF FLEXIBILITY IN ACCOMPLISHING THE ABOVE MENTIONED OBJECTIVES. THE RETRIEVAL PROGRAM SCANS THE MASTER FILE, PULLING RELEVANT BITS OF INFORMATION ON EACH PRIMARY ACTIVITY WHICH HAS TRANSPIRED OVER A SPECIFIED TIME INTERVAL. THE LOWER AND UPPER LIMITS OF THIS INTERVAL MAY BE DETERMINED AND ENTERED INTO THE SYSTEM AT RUN TIME.

THE RESULTING PRINTED OUTPUT DOES NOT INCLUDE ALL THE INFORMATION WHICH HAS BEEN STORED; HENCE, THIS IS A SELECTIVE INFORMATION SYSTEM. A MORE COMPREHENSIVE BANK OF INFORMATION EXISTS ON EACH ACTIVITY AND MAY BE PRINTED UPON REQUEST.

IN KEEPING WITH THE STATED OBJECTIVES OF THIS SYSTEM, IT HAS BEEN NECESSARY TO COMPROMISE SOMEWHAT ON IDEAL METHODS OF DATA DISPLAY. FOR MANAGEMENT PURPOSES A MORE COMPACT DISPLAY MAY BE DESIRED; HOWEVER, THE DETAIL REQUIREMENTS OF RESEARCH HAVE BEEN PARTIALLY CONSIDERED IN A DESIGN WHICH SHOULD MEET THE NEEDS OF BOTH TYPES OF USERS.

### STATISTICAL DISCREPANCIES AND DATA LIMITATIONS

STATISTICAL DISCREPANCIES IN THE TABLES PRESENTED IN THIS PUBLICATION STEM FROM THREE AREAS: CODING INACCURACIES, INCOMPLETE VERIFICATION OF DATA, AND INSUFFICIENT INFORMATION. AS BETTER CODING AND EDITING PROCEDURES ARE DEVELOPED IN THE INMATE RECORDS SYSTEM, THE QUALITY OF THIS PUBLICATION WILL CONTINUALLY IMPROVE. THE PROBLEM OF INSUFFICIENT INFORMATION IS NOT SO EASILY SOLVED BUT AS LAG TIME IN REPORTING CONVERGES TOWARD A REAL TIME SYSTEM, THESE DIFFICULTIES WILL ALSO BE MINIMIZED.



STATISTICAL DISCREPANCIES AND DATA LIMITATIONS (CONT'D)

WHEN POSSIBLE, THIS REPORTING LAG HAS BEEN DENOTED AND QUANTIFIED IN THE TABLES UNDER THE HEADINGS OF UNKNOWN, NOT REPORTED, MISCELLANEOUS, OR OTHER.

THE DEGREE TO WHICH THIS PUBLICATION SERVES AS A FUNCTIONAL AID TO DECISION MAKING IS, OF COURSE, DEPENDENT ON THE MUTUAL EXCHANGE OF IDEAS BETWEEN USERS AND COMPILERS. EACH USER IS ENCOURAGED TO MAKE HELPFUL SUGGESTIONS TOWARD THE IMPROVEMENT OF THIS PUBLICATION AND THE INFORMATION SYSTEM IN GENERAL.

PUBLICATION OF THE ABSTRACT IN THE PRESENT FORM, BEGINNING WITH AN ABSTRACT FOR JANUARY THROUGH DECEMBER, 1969, HAS BEEN A POSITIVE INFLUENCE IN IMPROVING THE DATA IN THE INMATE MASTER FILE. DEVELOPMENT OF THE ABSTRACT HAS REVEALED DATA ERRORS WHICH MIGHT OTHERWISE HAVE GONE UNNOTICED. CERTAIN OBVIOUS ERRORS AND INCONSISTENCIES APPEAR IN THIS ABSTRACT AND EVERY EFFORT IS BEING MADE TO CORRECT THEM.

THE SEPARATION OF MISDEMEANANTS AND FELONS GIVES RISE TO A NUMBER OF PARADOXES. THE CATEGORIZATION OF INMATES AS MISDEMEANANTS AND FELONS IS BASED UPON THE SENTENCE PRESENTLY BEING SERVED. IN A NUMBER OF INSTANCES (PP. 1, 15, AND 29-38) MISDEMEANANTS ARE SHOWN AS SERVING VERY LONG SENTENCES OF 10 YEARS AND MORE. THESE MAY GENERALLY BE ACCOUNTED FOR BY CASES IN WHICH INMATES ARE SERVING CONSECUTIVE FELONY AND MISDEMEANOR SENTENCES. IN CASES WHERE INMATES HAVE COMPLETED THEIR FELONY SENTENCES AND ARE SERVING CONSECUTIVE MISDEMEANOR SENTENCES, THEY ARE LISTED AS MISDEMEANANTS. HOWEVER, THE FELONY SENTENCES ACCOUNT FOR THE GREATER PART OF THE LONG TERMS.

NOTE: EFFECTIVE APRIL 1, 1978, "SAFEKEEPERS ON APPEAL" ARE INCLUDED IN THIS ABSTRACT AS REGULAR INMATES.

PAROLE REVOCATION DATA PRIOR TO SECOND QUARTER, 1980, WAS SLIGHTLY UNDER REPORTED.

PRIOR TO SECOND QUARTER, 1980, THE POPULATION ANALYSIS TABLES ON PAGES 1, 15, AND 29-38 LISTED POPULATION BY 'LENGTH OF TERM' (WHICH INCLUDED CREDIT FOR 'GOOD' TIME AND 'GAIN' TIME) INSTEAD OF BY SENTENCE LENGTH.

LIST OF ABBREVIATIONS

ADMIN.....ADMINISTRATIVE  
AGITAT.....AGITATION  
COND REL.....CONDITIONAL RELEASE  
COND REL REV.....CONDITIONAL RELEASE REVOCATION  
FEL.....FELON  
MIS.....MISDEMEANANT  
NEW ADM.....NEW ADMISSION  
NOT REP.....NOT REPORTED  
SK.....SAFEKEEPER FOR TRIAL  
PAR REV.....PAROLE REVOCATION  
PROB REV.....PROBATION REVOCATION  
+.....OR MORE

R17

A D M I S S I O N S

01/01/82 12/31/82

TYPE ADMISSIONS

TOTAL SENT LENGTH	NEW ADM		PROB REV		CAPTURE		PAR REV		COND REL REV		TOTAL		TOTAL
	MIS	FEL	MIS	FEL	MIS	FEL	MIS	FEL	MIS	FEL	MIS	FEL	
6 MONTHS OR LESS	1314	553	182	9	2	0	9	0	0	0	1507	562	2069
6 MONTHS TO 1 YEAR	1894	171	405	33	12	0	29	1	0	0	2340	205	2545
1 TO 2 YEARS	1630	565	513	156	67	7	141	28	4	0	2355	756	3111
2 TO 5 YEARS	330	2205	91	400	143	128	61	205	17	67	642	3005	3647
5 TO 10 YEARS	23	816	6	105	25	125	18	207	4	51	76	1304	1380
10 YEARS TO LIFE	2	766	2	25	3	118	4	182	1	23	12	1114	1126
LIFE/DEATH	0	105	0	1	0	4	0	18	0	2	0	130	130
NOT REPORTED/SK	614	833	34	3	2	1	0	0	0	0	650	837	1487
TOTAL	5807	6014	1233	732	254	383	262	641	26	143	7582	7913	15495

1

NOTE: EACH SENTENCE CATEGORY  
INCLUDES UPPER LIMIT - DOES  
NOT INCLUDE LOWER LIMIT



P17

## A D M I S S I O N S

01/01/82 12/31/82

CURRENT OFFENSE	TYPE ADMISSIONS												TOTAL
	NEW ADM		PROB REV		CAPTURE		PAR REV		COND REL REV		TOTAL		
	MIS	FEL	MIS	FEL	MIS	FEL	MIS	FEL	MIS	FEL	MIS	FEL	
MURDER 1ST DEGREE	0	97	0	0	0	3	0	6	0	0	0	106	106
MURDER 2ND DEGREE	0	177	0	0	0	5	0	14	0	2	0	198	198
MANSLAUGHTER	16	175	2	5	0	6	1	22	0	2	19	210	229
ROBBERY	0	744	0	49	0	47	0	98	0	14	0	952	952
BURGLARY	0	104	0	6	0	3	0	9	0	6	0	128	128
ASSAULT	734	294	154	41	18	16	20	23	1	1	927	375	1302
BREAK & ENT.-LAPCN	1807	2199	499	364	100	205	123	288	23	100	2552	3156	5708
AUTO THEFT	117	76	43	18	15	10	14	12	1	2	190	118	308
RAPE	0	234	0	5	0	2	0	4	0	1	0	246	246
SEXUAL ASSAULT	0	2	0	1	0	3	0	4	0	0	0	10	10
SEX CRIME -MISC-	77	87	13	4	1	1	2	11	0	1	93	104	197
BURNINGS	1	86	0	8	0	1	0	3	0	2	1	100	101
FORGERY	31	263	14	81	1	38	1	56	0	10	47	448	495
KIDNAPPING & ABDUC	0	33	0	1	0	5	0	2	0	1	0	42	42
NARCOTICS & DRUGS	70	955	26	104	6	13	6	45	0	0	108	1117	1225
WORTHLESS CHECKS	153	0	52	0	9	0	11	1	1	0	226	1	227
APAND. & NON-SUPRT	273	1	17	1	1	0	0	1	0	0	291	3	294
TRAFFIC VIOLATIONS	758	37	123	4	14	2	21	2	0	0	916	45	961
DRUNK/DISORDERLY	27	0	4	0	0	0	0	0	0	0	31	0	31
TRESPASS	259	2	61	0	12	0	10	0	0	0	342	2	344
DRIVING DRUNK	1077	0	139	0	11	0	21	0	0	0	1248	0	1248
OTHERS	235	192	69	37	65	22	29	39	0	1	398	291	689
NOT REPORTED	172	256	17	3	1	1	3	1	0	0	193	261	454
TOTAL	5807	6014	1233	732	254	383	262	641	26	143	7582	7913	15495

P17

A D M I S S I O N S

01/01/82 12/31/82

SENTENCING COURT	NEW ADM		PROB REV		CAPTURE		PAR REV		COND REL REV		TOTAL		TOTAL
	MIS	FEL	MIS	FEL	MIS	FEL	MIS	FEL	MIS	FEL	MIS	FEL	
SUPERIOR	1527	6014	387	732	61	383	72	641	11	143	2058	7913	9971
DISTRICT	4280	0	846	0	190	0	190	0	15	0	5521	0	5521
MAYOR'S CITY RECDR	0	0	0	0	1	0	0	0	0	0	1	0	1
COUNTY RECORDER	0	0	0	0	2	0	0	0	0	0	2	0	2
MAGISTRATE	0	0	0	0	0	0	0	0	0	0	0	0	0
JUSTICE OF PEACE	0	0	0	0	0	0	0	0	0	0	0	0	0
DOMESTIC RELATIONS	0	0	0	0	0	0	0	0	0	0	0	0	0
NOT REPORTED	0	0	0	0	0	0	0	0	0	0	0	0	0
<b>TOTAL</b>	<b>5807</b>	<b>6014</b>	<b>1233</b>	<b>732</b>	<b>254</b>	<b>383</b>	<b>262</b>	<b>641</b>	<b>26</b>	<b>143</b>	<b>7582</b>	<b>7913</b>	<b>15495</b>

P17

## A D M I S S I O N S

01/01/82 12/31/82

## TYPE ADMISSIONS

COUNTY OF CONVICT.	NEW ADM		PROB REV		CAPTURE		PAR REV		COND REL REV		TOTAL		TOTAL
	MIS	FEL	MIS	FEL	MIS	FEL	MIS	FEL	MIS	FEL	MIS	FEL	
ALAMANCE	188	84	122	25	6	6	12	18	1	1	329	134	463
ALEXANDER	23	8	10	1	2	0	1	0	0	1	36	10	46
ALLEGHANY	7	5	1	0	1	0	1	0	1	0	11	5	16
ANSON	39	22	9	8	4	2	3	5	0	1	55	38	93
ASHE	12	10	2	1	1	2	3	3	0	0	18	16	34
AVERY	9	4	1	0	0	0	1	3	0	0	11	7	18
BEAUFORT	55	57	22	6	0	2	3	3	0	0	80	68	148
BERTIE	20	10	5	4	1	1	0	2	0	0	26	17	43
BLADEN	43	17	10	4	3	0	1	5	0	0	57	26	83
BRUNSWICK	36	27	3	1	6	1	1	2	0	0	46	31	77
BUNCOMBE	129	201	20	31	3	11	4	18	0	4	156	265	421
BURKE	34	39	9	1	5	5	5	2	1	1	54	48	102
CABARRUS	283	104	17	14	6	6	3	10	0	5	309	139	448
CALDWELL	21	28	8	1	6	0	6	4	1	1	42	34	76
CAMDEN	8	2	0	0	0	0	0	1	0	0	8	3	11
CARTERET	17	38	7	3	4	4	3	1	0	2	31	48	79
CASWELL	18	13	4	0	1	1	1	4	0	1	24	19	43
CATAWBA	74	61	13	11	8	5	3	15	1	2	99	94	193
CHATHAM	26	18	6	5	0	2	1	4	0	1	33	30	63
CHEROKEE	9	5	1	0	1	0	0	0	0	0	11	5	16
CHOWAN	29	11	0	2	1	1	1	2	0	1	31	17	48
CLAY	5	4	0	1	1	0	0	1	0	0	6	6	12
CLEVELAND	58	78	6	9	0	5	2	9	0	2	66	103	169
COLUMBUS	87	38	17	1	4	3	5	3	0	0	113	45	158
CRAVEN	54	77	25	13	0	5	1	6	0	1	80	102	182
CUMBERLAND	195	283	46	32	8	13	5	29	2	5	256	362	618
CURRITUCK	6	5	0	0	0	0	0	2	0	0	6	7	13
DARE	14	15	2	1	0	2	0	2	0	0	16	20	36
DAVIDSON	70	44	42	9	9	2	5	4	3	2	129	61	190
DAVIE	13	7	3	2	0	1	0	2	0	0	16	12	28
DUPLIN	52	55	4	7	2	1	2	4	0	0	60	67	127
DURHAM	45	155	22	11	1	18	4	13	1	2	73	209	282
EDGECOMBE	65	52	12	1	1	2	2	3	0	1	80	59	139
FORSYTH	445	266	62	66	4	14	16	34	0	8	527	388	915
FRANKLIN	23	24	7	5	0	2	2	1	0	1	32	33	65

F17

A D M I S S I O N S

01/01/82 12/31/82

TYPE ADMISSIONS

COUNTY OF CONVICT.	NEW ADM		PROB REV		CAPTURE		PAR REV		COND REL REV		TOTAL		TOTAL
	MIS	FEL	MIS	FEL	MIS	FEL	MIS	FEL	MIS	FEL	MIS	FEL	
GASTON	139	96	9	2	7	10	4	21	1	3	160	132	292
GATES	8	4	2	0	1	0	0	0	0	0	11	4	15
GRAHAM	0	3	1	0	0	0	0	0	0	0	1	3	4
GRANVILLE	35	22	8	5	1	3	2	3	1	1	47	34	81
GREENE	18	21	2	2	0	0	4	2	0	0	24	25	49
GUILFORD	218	334	45	63	16	56	26	49	3	7	308	509	817
HALIFAX	90	82	18	6	4	3	5	4	0	0	117	95	212
HARNETT	87	48	23	7	3	2	1	2	0	3	114	62	176
HAYWOOD	20	25	5	2	0	5	0	0	0	2	25	34	59
HENDERSON	47	37	13	6	3	4	3	2	2	0	58	49	117
HERTFORD	32	20	8	2	1	2	3	2	0	1	44	27	71
Hoke	30	20	13	3	2	4	1	5	0	1	46	33	79
HYDE	10	5	3	1	0	0	0	1	0	0	13	7	20
IREDELL	84	37	42	9	9	4	5	10	1	6	141	66	207
JACKSON	9	11	1	0	1	1	0	0	1	2	12	14	26
JOHNSTON	69	67	38	14	3	4	7	9	1	2	118	96	214
JONES	8	3	0	1	0	0	0	0	0	0	8	4	12
LEE	91	54	11	6	0	4	0	1	0	0	102	65	167
LENOIR	57	73	17	6	5	4	5	7	0	0	84	90	174
LINCOLN	19	26	1	3	2	3	2	5	0	0	24	37	61
MACON	8	4	0	0	0	1	0	0	0	0	8	5	13
MADISON	2	5	1	0	0	0	0	0	0	0	3	5	8
MARTIN	37	43	5	5	4	1	1	4	0	0	47	53	100
MCDOWELL	28	21	3	3	0	0	1	2	0	1	32	27	59
MECKLENBURG	216	418	5	4	14	25	7	52	0	14	242	513	755
MITCHELL	9	3	0	1	0	0	0	0	0	0	9	4	13
MONTGOMERY	25	27	5	2	2	1	1	2	0	2	33	34	67
MOORE	33	40	6	10	0	5	4	3	0	3	43	61	104
NASH	94	83	13	8	3	5	4	6	0	2	114	104	218
NEW HANOVER	130	164	26	30	10	23	7	26	0	6	173	249	422
NORTHAMPTON	20	10	3	2	0	0	1	0	1	0	25	12	37
ONslow	57	160	13	26	0	4	0	10	0	2	70	202	272
ORANGE	53	64	14	2	2	1	1	11	0	2	70	80	150
PAMLICO	2	8	0	3	0	0	0	1	0	0	2	12	14
PASQUOTANK	34	49	14	5	0	3	0	5	0	0	48	62	110

P17

## A D M I S S I O N S

01/01/82 12/31/82

## TYPE ADMISSIONS

COUNTY OF CONVICT.	NEW ADM		PROB REV		CAPTURE		PAR REV		COND REL REV		TOTAL		TOTAL
	MIS	FEL	MIS	FEL	MIS	FEL	MIS	FEL	MIS	FEL	MIS	FEL	
PENDER	22	19	3	0	1	1	1	3	0	0	27	23	50
PERQUIMANS	10	23	2	0	0	0	0	1	0	0	12	24	36
PERSON	21	39	5	5	3	0	0	1	0	0	29	45	74
PITT	72	117	19	17	3	1	3	10	0	1	97	146	243
POLK	7	20	0	0	1	1	1	3	0	0	9	24	33
RANDOLPH	70	46	11	8	1	4	3	9	0	1	85	68	153
RICHMOND	64	83	10	7	0	5	0	13	0	7	74	115	189
ROBESON	176	184	33	23	14	9	7	16	1	5	231	237	468
ROCKINGHAM	119	100	29	24	0	5	3	9	0	1	151	139	290
ROWAN	209	78	20	12	4	8	6	6	0	1	239	105	344
RUTHERFORD	58	61	3	0	2	2	5	4	0	0	68	67	135
SAMPSON	50	65	9	7	1	6	1	7	0	1	61	86	147
SCOTLAND	66	46	13	5	5	0	2	9	1	2	87	62	149
STANLY	33	42	6	3	1	4	3	2	0	1	43	52	95
STOKES	14	25	5	3	0	0	0	4	0	0	19	32	51
SURRY	75	59	21	11	1	4	2	3	0	3	99	80	179
SWAIN	4	5	2	1	0	1	0	0	0	0	6	7	13
TRANSYLVANIA	15	15	2	0	0	0	2	0	0	2	19	17	36
TYRRELL	7	10	4	0	0	0	0	1	0	0	11	11	22
UNION	73	72	4	14	2	4	4	7	0	2	83	99	182
VANCE	34	30	23	8	1	2	0	7	0	1	58	48	106
WAKE	239	422	54	38	11	20	6	37	0	8	310	525	835
WARREN	7	10	2	5	2	0	0	1	0	0	11	16	27
WASHINGTON	22	16	1	1	0	1	2	3	0	1	25	22	47
WATAUGA	8	19	3	1	3	2	1	2	0	0	15	24	39
WAYNE	44	126	20	10	4	1	8	11	0	1	76	149	225
WILKES	90	31	14	2	10	2	3	3	0	1	117	39	156
WILSON	40	72	27	9	1	4	2	7	2	1	72	93	165
YADKIN	21	15	2	3	0	0	5	1	0	0	28	19	47
YANCEY	3	5	0	0	1	1	0	1	0	0	4	7	11
NOT REPORTED	103	195	0	0	0	0	0	0	0	0	103	195	298
TOTAL	5807	6014	1233	732	254	383	262	641	26	143	7582	7913	15495

P17

## A D M I S S I O N S

01/01/82 12/31/82

## TYPE ADMISSIONS

RACE AND SEX	NEW ADM		PROB REV		CAPTURE		PAR REV		COND REL REV		TOTAL		TOTAL
	MIS	FEL	MIS	FEL	MIS	FEL	MIS	FEL	MIS	FEL	MIS	FEL	
WHITE MALE	2458	2620	525	295	181	243	128	240	18	71	3310	3469	6779
BLACK MALE	2737	2769	541	366	56	118	121	359	6	59	3461	3671	7132
INDIAN MALE	138	151	26	18	11	9	6	15	2	6	183	199	382
ORIENTAL MALE	0	0	0	0	0	0	0	0	0	0	0	0	0
OTHER MALE	18	30	4	0	0	2	0	2	0	1	22	35	57
WHITE FEMALE	169	219	50	24	6	6	3	7	0	3	228	259	487
BLACK FEMALE	276	212	82	29	0	5	4	17	0	3	362	266	628
INDIAN FEMALE	10	8	3	0	0	0	0	1	0	0	13	9	22
ORIENTAL FEMALE	0	1	1	0	0	0	0	0	0	0	1	1	2
OTHER FEMALE	1	4	1	0	0	0	0	0	0	0	2	4	6
TOTAL	5807	6014	1233	732	254	383	262	641	26	143	7582	7913	15495



R17

## A D M I S S I O N S

01/01/82 12/31/82

## TYPE ADMISSIONS

AGE	NEW ADM		PROB REV		CAPTURE		PAR REV		COND REL REV		TOTAL		TOTAL
	MIS	FEL	MIS	FEL	MIS	FEL	MIS	FEL	MIS	FEL	MIS	FEL	
14 AND UNDER	0	0	0	0	0	0	0	0	0	0	0	0	0
15	1	13	0	0	0	0	0	0	0	0	1	13	14
16	36	54	5	3	0	0	0	0	0	0	41	57	98
17	184	243	61	29	6	4	6	1	0	1	257	278	535
18	210	349	80	62	9	5	12	9	6	14	317	439	756
19	228	386	99	62	29	17	13	19	12	32	381	516	897
20	275	388	97	73	17	24	13	19	3	29	405	533	938
21	242	385	69	55	19	26	13	20	2	23	345	509	854
22	293	325	79	62	16	28	12	31	2	17	402	463	865
23	274	384	49	48	22	21	14	42	1	13	360	508	868
24	257	342	55	49	8	25	23	41	0	6	343	463	806
25	236	326	77	38	18	28	13	37	0	3	344	432	776
26	262	281	46	29	14	19	16	42	0	2	338	373	711
27	209	261	41	27	7	25	7	34	0	1	264	348	612
28	248	235	39	29	6	16	9	32	0	1	302	313	615
29	226	198	36	18	14	19	8	30	0	0	284	265	549
30	205	206	36	22	7	19	14	34	0	1	262	282	544
31	165	164	41	15	5	18	9	27	0	0	220	224	444
32	202	160	27	21	6	10	3	29	0	0	238	220	458
33	153	137	26	16	3	9	6	28	0	0	188	190	378
34	160	137	24	9	5	8	4	17	0	0	193	171	364
35	164	129	30	12	5	9	10	19	0	0	209	169	378
36	150	96	22	2	10	11	7	20	0	0	189	129	318
37	110	81	26	5	4	7	4	9	0	0	144	102	246
38	116	65	16	4	3	6	7	12	0	0	142	87	229
39	81	78	17	3	2	5	1	7	0	0	101	93	194
40	87	58	7	5	4	3	2	16	0	0	100	82	182
41	73	47	17	5	3	2	7	5	0	0	100	59	159
42	69	53	5	6	3	1	2	7	0	0	79	67	146
43	77	44	13	2	0	0	2	3	0	0	92	49	141
44	77	36	13	2	2	4	3	8	0	0	95	50	145
45	70	23	10	4	0	3	1	5	0	0	81	35	116
46	60	28	8	1	2	4	3	8	0	0	73	41	114
47	50	24	6	2	1	2	2	1	0	0	59	29	88
48	53	40	9	1	0	1	0	2	0	0	62	44	106

R17

## A D M I S S I O N S

01/01/82 12/31/82

## TYPE ADMISSIONS

AGE	NEW ADM		PROB REV		CAPTURE		PAR REV		COND REL REV		TOTAL		TOTAL
	MIS	FEL	MIS	FEL	MIS	FEL	MIS	FEL	MIS	FEL	MIS	FEL	
49	59	22	5	2	0	1	2	2	0	0	66	27	93
50	57	23	4	0	0	0	3	2	0	0	64	25	89
51	37	22	6	1	1	1	2	4	0	0	46	28	74
52	50	18	2	1	1	0	0	0	0	0	53	19	72
53	29	15	4	0	0	0	0	2	0	0	33	17	50
54	53	22	6	1	1	1	2	3	0	0	62	27	89
55	27	28	6	1	1	0	2	2	0	0	36	31	67
56	29	9	2	1	0	0	1	2	0	0	32	12	44
57	18	12	6	0	0	0	0	2	0	0	24	14	38
58	26	13	3	1	0	0	0	3	0	0	29	17	46
59	24	5	2	0	0	0	1	1	0	0	27	6	33
60	18	12	0	0	0	0	1	2	0	0	19	14	33
61	17	4	0	0	0	0	1	0	0	0	18	4	22
62	12	4	0	0	0	0	0	0	0	0	12	4	16
63	10	6	0	0	0	1	0	1	0	0	10	8	18
64	5	8	0	0	0	0	1	0	0	0	6	8	14
65	9	4	0	0	0	0	0	1	0	0	9	5	14
66	3	1	0	2	0	0	0	0	0	0	3	3	6
67	4	0	0	0	0	0	0	0	0	0	4	0	4
68	5	4	0	0	0	0	0	0	0	0	5	4	9
69	3	1	0	0	0	0	0	0	0	0	3	1	4
70	3	1	0	0	0	0	0	0	0	0	3	1	4
71	2	2	0	1	0	0	0	0	0	0	2	3	5
72	0	0	1	0	0	0	0	0	0	0	1	0	1
73	0	0	0	0	0	0	0	0	0	0	0	0	0
74	0	1	0	0	0	0	0	0	0	0	0	1	1
75	1	0	0	0	0	0	0	0	0	0	1	0	1
76	0	0	0	0	0	0	0	0	0	0	0	0	0
77	2	1	0	0	0	0	0	0	0	0	2	1	3
78	0	0	0	0	0	0	0	0	0	0	0	0	0
79	0	0	0	0	0	0	0	0	0	0	0	0	0
80 AND OVER	1	0	0	0	0	0	0	0	0	0	1	0	1
TOTAL	5807	6014	1233	732	254	383	262	641	26	143	7582	7913	15495

F17

A D M I S S I O N S

01/01/82 12/31/82

TYPE ADMISSIONS

EDUCATION	NEW ADM		PROB REV		CAPTURE		PAR REV		COND REL REV		TOTAL		TOTAL
	MIS	FEL	MIS	FEL	MIS	FEL	MIS	FEL	MIS	FEL	MIS	FEL	
NO SCHOOLING	38	18	5	1	0	0	1	2	0	0	44	21	65
1ST GRADE	15	7	2	1	0	0	0	0	0	0	17	8	25
2ND GRADE	24	13	5	1	0	0	0	5	0	0	29	19	48
3RD GRADE	67	34	5	2	1	0	3	5	0	0	76	41	117
4TH GRADE	83	63	5	4	3	1	0	7	0	0	91	75	166
5TH GRADE	82	49	13	5	2	1	4	9	0	1	101	65	166
6TH GRADE	163	119	21	13	6	10	6	19	3	4	199	165	364
7TH GRADE	281	275	65	24	9	25	18	24	0	10	373	358	731
8TH GRADE	699	695	146	82	42	57	36	92	5	28	928	954	1882
9TH GRADE	946	1047	254	167	59	86	43	118	11	42	1313	1460	2773
10TH GRADE	1044	1041	251	141	58	65	49	113	5	36	1407	1396	2803
11TH GRADE	822	755	187	127	21	57	43	93	2	16	1075	1048	2123
12TH GRADE	1098	1267	200	131	44	62	42	117	0	5	1384	1582	2966
1 YEAR COLLEGE	118	145	31	13	1	5	6	6	0	1	156	170	326
2 YEARS COLLEGE	128	185	27	13	5	9	7	16	0	0	167	223	390
3 YEARS COLLEGE	41	48	4	2	0	2	1	5	0	0	46	57	103
4 OR MORE YRS COL.	55	73	9	5	3	1	3	5	0	0	70	84	154
NOT REPORTED	103	180	3	0	0	2	0	5	0	0	106	187	293
TOTAL	5807	6014	1233	732	254	383	262	641	26	143	7582	7913	15495

P17

## A D M I S S I O N S

01/01/82 12/31/82

MARITAL STATUS	TYPE ADMISSIONS												TOTAL
	NEW ADM		PROB REV		CAPTURE		PAR REV		COND REL REV		TOTAL		
	MIS	FEL	MIS	FEL	MIS	FEL	MIS	FEL	MIS	FEL	MIS	FEL	
SINGLE	2859	3450	720	478	127	194	161	319	24	133	3891	4574	8465
MARRIED	1235	1317	234	122	69	106	45	181	2	10	1585	1736	3321
SEPARATED	803	476	149	73	28	29	26	53	0	0	1006	631	1637
DIVORCED	720	537	119	56	26	50	25	66	0	0	890	709	1599
WIDOWED	89	69	11	3	1	1	2	7	0	0	103	80	183
OTHER	0	0	0	0	0	0	0	0	0	0	0	0	0
NOT REPORTED	101	165	0	0	3	3	3	15	0	0	107	183	290
TOTAL	5807	6014	1233	732	254	383	262	641	26	143	7582	7913	15495

P17

## A D M I S S I O N S

01/01/82 12/31/82

## TYPE ADMISSIONS

ADMITTING LOCATION	NEW ADM		PROB REV		CAPTURE		PAR REV		COND REL REV		TOTAL		TOTAL
	MIS	FEL	MIS	FEL	MIS	FEL	MIS	FEL	MIS	FEL	MIS	FEL	
INSTITUTIONS													
CENTRAL PRISON	57	1818	10	100	0	36	1	5	0	2	68	1961	2029
CORR CTR FOR WOMEN	456	443	137	53	3	10	6	19	0	6	602	531	1133
CALEDONIA	0	0	0	0	0	3	0	2	0	0	0	5	5
ODOM	0	0	0	0	0	0	0	1	0	0	0	1	1
HALIFAX	0	0	0	0	0	5	2	5	0	0	2	10	12
PIEDMONT CORR CTR	24	1101	10	142	0	8	0	3	0	0	34	1254	1288
YOUTH SERVICES													
WESTERN CORR CTR	206	358	67	34	2	2	8	4	16	54	299	452	751
BURKE	0	0	0	0	7	1	5	5	0	0	12	6	18
SANDHILLS	25	45	9	8	4	16	1	7	1	1	40	77	117
HARNETT	7	422	3	57	0	5	0	3	1	25	11	512	523
POLK	6	424	7	99	0	3	0	2	1	27	14	615	629
MORRISON	0	0	0	0	4	8	1	3	0	0	5	11	16
FOUNTAIN	0	0	0	0	2	4	11	6	0	0	13	10	23
EASTERN AREA													
CARTERET	0	0	0	0	2	2	7	11	0	0	9	13	22
CURRITUCK	0	0	0	0	0	3	0	2	0	0	0	5	5
DUPLIN	1	0	0	0	1	4	2	5	0	0	4	9	13
GATES	0	0	0	0	5	3	1	8	0	0	6	11	17
GOLDSBORO YOUTH CT	0	0	0	0	5	1	7	8	0	0	12	9	21
GREENE	743	20	183	8	4	1	3	12	0	3	933	44	977
MARTIN	0	0	0	0	4	2	10	16	0	0	14	18	32
PENDER	0	0	0	0	0	0	0	2	0	0	0	2	2
WASHINGTON	0	0	0	0	0	4	0	3	0	0	0	7	7
NEW HANOVER	1	1	0	0	11	13	11	23	0	0	23	37	60
WAYNE CORR CTR	21	653	6	115	1	5	1	4	0	6	29	783	812
NORTH CENTRAL													
DURHAM	0	0	0	0	1	6	2	13	0	0	3	19	22
FRANKLIN	0	0	0	0	0	3	0	1	0	0	0	4	4
GRANVILLE	0	0	0	0	2	1	1	8	0	0	3	9	12
JOHNSTON	0	2	0	0	0	0	0	2	0	0	0	4	4
NASH ADV CTR	0	0	0	0	2	1	3	11	0	0	5	12	17
ORANGE	0	0	0	0	2	3	2	5	0	0	4	8	12
PERSON	0	0	0	0	2	6	3	8	0	0	5	14	19
SANFORD ADV CTR	0	0	0	0	0	3	2	13	0	0	2	16	18
UMSTEAD YOUTH CTR	0	0	0	0	1	3	0	2	0	0	1	5	6
VANCE	0	0	0	0	0	1	0	2	0	0	0	3	3
WAKE ADV CTR	0	0	0	0	0	3	0	5	0	0	0	8	8
WARREN	0	0	0	0	5	0	0	0	0	0	5	0	5
GOLDSBORO STATE HO	0	0	0	0	0	0	0	0	0	0	0	0	0
DORTHEA DIX	0	0	0	0	0	0	0	0	0	0	0	0	0
TRIANGLE CORR CENT	833	35	202	11	23	4	12	33	1	1	1071	84	1155

R17

## A D M I S S I O N S

01/01/82 12/31/82

## TYPE ADMISSIONS

ADMITTING LOCATTON	NEW ADM		PROB REV		CAPTURE		PAR REV		COND REL REV		TOTAL		TOTAL
	MIS	FEL	MIS	FEL	MIS	FEL	MIS	FEL	MIS	FEL	MIS	FEL	
SOUTH CENTRAL													
ANSON	0	0	0	0	6	6	3	2	0	0	9	14	23
BLADEN	0	0	0	0	4	6	4	18	0	0	8	24	32
MCCAIN COPR CTR	13	319	4	52	2	2	4	7	2	11	25	391	416
MONTGOMERY	0	0	0	0	4	3	3	2	0	0	7	5	12
MOORE	0	0	0	0	0	0	0	1	0	0	0	1	1
RICHMOND	784	20	162	5	3	0	1	7	0	0	950	32	982
ROBESON	0	0	0	0	22	12	9	20	0	0	31	32	63
SAMPSON	0	0	0	0	0	3	0	2	0	0	0	5	5
SCOTLAND	0	0	0	0	0	1	0	5	0	0	0	6	6
COLUMBUS	0	0	0	0	0	1	0	3	0	0	0	4	4
NORTH PIEDMONT													
ALAMANCE	0	0	0	0	8	12	16	27	0	0	24	39	63
CASWELL	0	0	0	0	0	4	0	1	0	0	0	5	5
DAVIDSON	0	0	0	0	6	3	8	8	0	0	14	11	25
DAVIE	0	0	0	0	1	3	0	2	0	0	1	5	6
FORSYTH ADV CTR	1	0	0	0	2	4	7	32	0	0	10	36	46
GUILFORD 1	0	0	0	0	3	17	11	31	0	0	14	48	62
GUILFORD 2	1106	33	264	8	10	10	16	17	2	0	1398	68	1466
RANDOLPH	0	0	0	0	0	0	1	1	0	0	1	1	2
ROCKINGHAM	0	0	0	0	0	1	4	3	0	0	4	4	8
STOKES	0	0	0	0	1	1	5	4	0	0	6	5	11
YADKIN	0	0	0	0	0	2	0	0	0	0	0	2	2
BLANCH	0	0	0	0	0	2	0	0	0	0	0	2	2



P17

## A D M I S S I O N S

01/01/82 12/31/82

## TYPE ADMISSIONS

ADMITTING LOCATTON	NEW ADM		PROB REV		CAPTURE		PAR REV		COND PEL REV		TOTAL		TOTAL
	MIS	FEL	MIS	FEL	MIS	FEL	MIS	FEL	MIS	FEL	MIS	FEL	
SOUTH PIEDMONT													
CABARRUS	0	0	0	0	6	10	3	12	0	0	9	22	31
GASTON	9	0	2	0	8	6	1	7	0	0	20	13	33
TREDELL	0	1	0	1	0	6	0	0	0	0	0	8	8
LINCOLN	0	0	0	0	3	9	5	21	0	0	8	30	38
CHARLOTTE ADV CTR	0	0	0	0	9	11	9	46	0	0	18	57	75
MECKLENBURG 2	1450	117	157	21	7	3	3	5	0	6	1617	152	1769
ROWAN	0	0	0	0	13	10	14	10	0	0	27	20	47
STANLY	0	0	0	0	0	2	1	0	0	0	1	2	3
UNION	0	0	0	0	0	0	1	3	0	0	1	3	4
CATAWRA	0	0	0	0	7	9	3	18	0	0	10	27	37
CLEVELAND	0	0	0	0	0	2	0	1	0	0	0	3	3
WESTERN AREA													
ALEXANDER	1	0	0	0	6	2	1	5	0	0	8	7	15
AVERY	0	2	0	0	0	0	0	0	0	0	0	2	2
CALDWELL	0	0	0	0	1	1	2	1	0	0	3	2	5
CPAGBY	5	135	0	18	1	1	0	3	0	1	6	158	164
HAYWOOD	44	2	7	0	3	6	1	5	0	0	55	13	68
HENDERSON	0	0	0	0	5	13	4	13	0	0	9	26	35
MCDOWELL	0	1	0	0	0	9	2	1	0	0	2	11	13
RUTHERFORD	0	0	0	0	3	7	5	14	0	0	8	21	29
WATAUGA	14	2	3	0	5	4	3	3	2	0	27	9	36
WILKES	0	0	0	0	12	5	9	11	0	0	21	16	37
YANCEY	0	0	0	0	0	0	1	1	0	0	1	1	2
NOT REPORTED	0	0	0	0	0	1	0	0	0	0	0	1	1
TOTAL	5807	6014	1233	732	254	383	262	641	26	143	7582	7913	15495

P17

S E P A R A T I O N S

01/01/82 12/31/82

TOTAL SENT. LENGTH	DISCHARGE		COURT		PAPOLE		COND REL		DEATH		ESCAPE		PARDON		TOTAL		TOTAL
	MIS	FEL	MIS	FEL	MIS	FEL	MIS	FEL	MIS	FEL	MIS	FEL	MIS	FEL	MIS	FEL	
6 MONTHS OR LESS	319	484	5	10	1108	11	1	0	2	1	3	0	0	0	1438	506	1944
6 MONTHS TO 1 YEAR	413	121	9	1	1782	61	1	1	0	0	16	0	0	0	2221	184	2405
1 TO 2 YEARS	539	211	9	0	1548	471	6	1	1	0	61	7	0	0	2164	690	2854
2 TO 5 YEARS	104	493	1	15	354	2184	9	120	0	1	128	124	0	0	596	2937	3533
5 TO 10 YEARS	24	154	1	19	50	1076	5	123	0	6	24	106	0	0	104	1484	1588
10 YEARS TO LIFE	11	51	0	13	12	683	0	39	0	10	4	95	0	0	27	891	918
LIFE/DEATH	0	2	0	4	0	36	0	1	0	2	0	3	0	0	0	48	48
NOT REPORTED/SK	106	86	235	709	272	4	0	0	0	2	2	1	0	0	615	802	1417
TOTAL	1516	1602	260	771	5126	4526	22	285	3	22	238	336	0	0	7165	7542	14707

15

NOTE: EACH SENTENCE CATEGORY  
INCLUDES UPPER LIMIT - DOES  
NOT INCLUDE LOWER LIMIT

P17

## S E P A R A T I O N S

01/01/82 12/31/82

## TYPE SEPARATION

CURRENT OFFENSE	DISCHARGE		COURT		PAROLE		COND REL		DEATH		ESCAPE		PARDON		TOTAL		TOTAL
	MIS	FEL	MIS	FEL	MIS	FEL	MIS	FEL	MIS	FEL	MIS	FEL	MIS	FEL	MIS	FEL	
MURDER 1ST DEGREE	0	3	0	54	0	32	0	0	0	2	0	2	0	0	0	93	93
MURDER 2ND DEGREE	0	6	0	10	1	103	0	2	0	4	0	4	0	0	1	129	130
HANSLAUGHTER	8	31	0	12	11	231	0	6	0	5	0	4	0	0	19	289	308
ROBBERY	0	103	0	97	0	553	0	59	0	3	0	34	0	0	0	849	849
BURGLARY	0	8	0	15	1	14	0	8	0	0	0	4	0	0	1	49	50
ASSAULT	297	114	55	29	527	248	1	3	1	3	15	12	0	0	896	409	1305
BREAK & ENT.-LAPCN	479	612	39	127	1683	1969	18	167	2	3	99	187	0	0	2320	3065	5385
AUTO THEFT	35	34	3	6	125	68	0	4	0	0	14	11	0	0	177	123	300
RAPE	0	19	0	57	0	48	0	7	0	0	0	1	0	0	0	132	132
SEXUAL ASSAULT	0	14	0	0	0	24	0	2	0	0	0	0	0	0	0	40	40
SEX CRIME -MISC-	17	41	11	20	52	54	0	1	0	0	1	1	0	0	81	117	198
BURNINGS	0	34	0	15	2	47	0	8	0	0	0	1	0	0	2	105	107
FORGERY	5	112	1	31	22	303	0	7	0	0	1	35	0	0	29	488	517
KIDNAPPING & ABDUC	0	5	0	6	0	11	0	2	0	1	0	5	0	0	0	30	30
NARCOTICS & DRUGS	21	292	1	53	63	566	0	8	0	0	6	10	0	0	91	929	1020
WORTHLESS CHECKS	29	0	8	0	161	1	1	0	0	0	9	0	0	0	208	1	209
ABAND. & NON-SUPRT	19	0	2	0	268	1	0	0	0	0	0	0	0	0	289	1	290
TPAFFIC VIOLATIONS	129	14	5	3	649	18	1	0	0	0	12	2	0	0	796	37	833
DRUNK/DISORDERLY	3	0	3	0	25	0	0	0	0	0	0	0	0	0	31	0	31
TPESPASS	84	0	21	3	253	1	1	0	0	0	10	0	0	0	369	4	373
DPIVING DRUNK	188	0	12	0	950	0	0	0	0	0	13	0	0	0	1163	0	1163
OTHERS	161	148	16	28	270	216	0	1	0	0	56	22	0	0	503	415	918
NOT REPORTED	41	12	83	205	63	18	0	0	0	1	2	1	0	0	189	237	426
TOTAL	1516	1602	260	771	5126	4526	22	285	3	22	238	336	0	0	7165	7542	14707

R17

SEPARATIONS

01/01/82 12/31/82

SENTENCING COURT	TYPE SEPARATION														TOTAL		
	DISCHARGE		COURT		PAROLE		COND REL		DEATH		ESCAPE		PARDON			TOTAL	
	MIS	FEL	MIS	FEL	MIS	FEL	MIS	FEL	MIS	FEL	MIS	FEL	MIS	FEL		MIS	FEL
SUPERIOR	450	1602	128	771	1368	4526	11	285	1	22	50	336	0	0	2016	7542	9558
DISTRICT	1065	0	132	0	3758	0	11	0	2	0	180	0	0	0	5148	0	5148
MAYOR'S CITY RECDR	1	0	0	0	0	0	0	0	0	0	0	0	0	0	1	0	1
COUNTY RECORDER	0	0	0	0	0	0	0	0	0	0	0	0	0	0	0	0	0
MAGISTRATE	0	0	0	0	0	0	0	0	0	0	0	0	0	0	0	0	0
JUSTICE OF PEACE	0	0	0	0	0	0	0	0	0	0	0	0	0	0	0	0	0
DOMESTIC RELATIONS	0	0	0	0	0	0	0	0	0	0	0	0	0	0	0	0	0
NOT REPORTED	0	0	0	0	0	0	0	0	0	0	0	0	0	0	0	0	0
TOTAL	1516	1602	260	771	5126	4526	22	285	3	22	238	336	0	0	7165	7542	14707

P17

S E P A R A T I O N S

01/01/82 12/31/82

TYPE SEPARATION

COUNTY OF CONVICT.	DISCHARGE		COURT		PAROLE		COND REL		DEATH		ESCAPE		PARDON		TOTAL		TOTAL
	MIS	FEL	MIS	FEL	MIS	FEL	MIS	FEL	MIS	FEL	MIS	FEL	MIS	FEL	MIS	FEL	
ALAMANCE	58	21	1	5	214	63	0	2	0	0	6	4	0	0	279	95	374
ALEXANDER	5	3	0	0	25	11	0	0	0	0	2	0	0	0	32	14	46
ALLEGHANY	2	0	1	0	8	2	0	0	0	0	1	0	0	0	12	2	14
ANSON	16	12	1	0	43	30	0	1	0	0	3	1	0	0	63	44	107
ASHE	4	3	0	3	16	9	0	0	0	0	1	2	0	0	21	17	38
AVERY	2	1	2	2	5	10	0	0	0	0	0	0	0	0	9	13	22
BEAUFORT	10	11	1	6	57	46	0	2	0	0	1	2	0	0	69	67	136
BERTIE	4	7	0	0	21	19	0	0	0	0	1	0	0	0	26	26	52
BLADEN	9	5	2	1	41	18	1	0	0	0	4	0	0	0	57	24	81
BRUNSWICK	9	7	1	7	26	21	0	0	0	0	6	1	0	0	42	36	78
BUNCOMBE	43	59	4	8	111	137	2	11	0	2	3	13	0	0	163	230	393
BURKE	8	11	1	3	40	22	0	1	0	0	4	5	0	0	53	42	95
CABARRUS	45	25	0	3	246	74	1	4	0	0	5	5	0	0	297	111	408
CALDWELL	17	9	0	3	41	23	3	1	0	0	6	1	0	0	67	37	104
CANDEN	2	1	0	0	5	2	0	1	0	0	0	0	0	0	7	4	11
CARTERET	9	14	1	4	22	26	2	3	0	0	4	5	0	0	38	52	90
CASWELL	10	3	2	3	10	16	0	0	0	0	1	1	0	0	23	23	46
CATAWBA	11	24	1	7	68	86	0	5	0	1	7	4	0	0	87	127	214
CHATHAM	8	8	0	3	26	23	0	1	0	0	0	2	0	0	34	37	71
CHEROKEE	3	3	0	0	8	8	0	0	0	0	1	0	0	0	12	11	23
CHowan	5	2	1	0	24	23	0	2	0	0	1	1	0	0	31	28	59
CLAY	2	0	0	1	2	5	0	0	0	0	0	0	0	0	4	6	10
CLEVELAND	7	26	0	3	67	63	0	3	0	0	0	5	0	0	74	100	174
COLUMBUS	16	11	5	2	78	33	0	0	0	0	4	2	0	0	103	48	151
Craven	15	25	0	11	54	30	0	2	0	0	0	2	0	0	69	70	139
CUMBERLAND	50	89	22	23	161	175	0	17	0	0	7	14	0	0	240	318	558
CURRITUCK	2	3	0	2	6	2	0	1	0	0	0	0	0	0	8	8	16
DARE	7	6	0	4	9	17	0	1	0	0	0	1	0	0	16	30	46
DAVIDSON	33	15	2	4	64	40	0	3	0	0	9	2	0	0	108	64	172
DAVIE	0	1	1	1	12	3	0	0	0	0	0	2	0	0	13	7	20
DUPLIN	13	18	2	2	40	53	0	1	0	0	2	0	0	0	57	74	131
DURHAM	25	61	10	24	25	117	1	12	0	1	1	14	0	0	62	229	291
EDGECOMBE	15	14	1	3	39	30	0	2	0	0	0	2	0	0	55	51	106
FORSYTH	79	57	13	4	381	206	1	21	1	0	4	9	0	0	479	297	776
FRANKLIN	6	5	1	1	18	22	0	0	0	0	0	3	0	0	25	31	56

P17

## SEPARATIONS

01/01/82 12/31/82

## TYPE SEPARATION

COUNTY OF CONVICT.	DISCHARGE		COURT		PAROLE		COND REL		DEATH		ESCAPE		PARDON		TOTAL		TOTAL
	MIS	FEL	MIS	FEL	MIS	FEL	MIS	FEL	MIS	FEL	MIS	FEL	MIS	FEL	MIS	FEL	
GASTON	27	15	0	9	128	96	0	5	0	0	6	8	0	0	161	133	294
GATES	1	2	0	0	12	4	0	0	0	0	1	0	0	0	14	6	20
GRAHAM	1	0	0	0	1	1	0	0	0	0	0	0	0	0	2	1	3
GRANVILLE	11	8	1	1	33	34	0	0	0	0	1	2	0	0	46	45	91
GREENE	7	4	0	3	15	10	0	0	0	0	0	0	0	0	22	17	39
GUILFORD	58	105	14	11	193	267	2	17	0	2	16	47	0	0	283	449	732
HALIFAX	25	14	5	4	71	72	0	5	0	0	3	3	0	0	104	98	202
HARNETT	25	16	2	7	86	33	0	6	0	1	4	2	0	0	117	65	182
HAYWOOD	7	10	0	7	16	17	0	2	0	0	0	6	0	0	23	37	60
HENDERSON	22	16	2	3	33	25	0	2	0	0	3	5	0	0	60	51	111
HERTFORD	8	3	0	5	39	21	0	1	0	0	1	2	0	0	48	32	80
HOKE	8	11	1	0	31	35	1	0	0	0	2	3	0	0	43	49	92
HYDE	1	0	1	2	11	8	0	0	0	0	0	0	0	0	13	10	23
IREDELL	39	10	0	2	56	34	0	3	0	0	9	2	0	0	104	51	155
JACKSON	1	1	1	1	11	10	0	0	0	0	0	1	0	0	13	13	26
JOHNSTON	36	18	1	10	78	48	0	2	0	1	3	3	0	0	118	82	200
JONES	0	1	0	1	4	3	0	0	0	0	1	0	0	0	5	5	10
LEE	20	6	2	11	77	24	0	1	0	0	0	3	0	0	99	45	144
LENOIR	12	14	0	6	55	77	0	2	0	1	5	5	0	0	72	105	177
LINCOLN	3	17	1	0	18	26	1	0	0	0	2	3	0	0	25	46	71
MACON	0	3	0	1	8	1	0	0	0	0	0	1	0	0	8	6	14
MADISON	1	1	1	0	2	6	0	1	0	0	0	0	0	0	4	8	12
MARTIN	11	10	0	8	34	28	0	2	0	0	5	1	0	0	50	49	99
MCDOWELL	5	5	0	2	16	28	0	1	0	0	0	0	0	0	21	36	57
HECKLENBURG	63	94	16	17	185	334	0	18	0	1	8	21	0	0	272	485	757
MITCHELL	1	0	0	1	2	1	0	0	0	0	0	0	0	0	3	2	5
MONTGOMERY	5	4	0	8	21	20	0	0	0	0	2	1	0	0	28	33	61
MOORE	10	15	1	2	39	45	0	3	0	1	0	6	0	0	50	72	122
NASH	24	10	3	7	58	54	0	4	0	1	2	4	0	0	87	80	167
NEW HANOVER	49	42	5	14	127	146	1	11	0	2	10	16	0	0	192	231	423
NORTHAMPTON	6	3	0	2	15	9	0	0	0	0	0	0	0	0	21	14	35
ONSLOW	11	40	1	13	49	108	0	3	0	0	1	2	0	0	62	166	228
OPANGE	15	22	2	11	44	40	0	4	0	0	2	0	0	0	63	77	140
PAMLICO	2	3	0	3	5	8	0	0	0	0	0	0	0	0	7	14	21
PASQUOTANK	9	15	1	12	35	33	0	1	0	1	0	1	0	0	45	63	108



P17

S E P A R A T I O N S

01/01/82 12/31/82

COUNTY OF CONVICT.	TYPE SEPARATION																TOTAL
	DISCHARGE		COURT		PAROLE		COND REL		DEATH		ESCAPE		PARDON		TOTAL		
	MIS	FEL	MIS	FEL	MIS	FEL	MIS	FEL	MIS	FEL	MIS	FEL	MIS	FEL	MIS	FEL	
PENDER	4	7	0	0	12	13	0	1	0	0	1	1	0	0	17	22	39
PERQUIMANS	3	4	0	1	5	17	0	0	0	0	0	0	0	0	8	22	30
PERSON	10	5	2	7	14	28	0	0	0	0	2	0	0	0	28	40	68
PITT	13	23	3	12	97	83	0	7	0	0	4	2	0	0	117	127	244
POLK	2	0	0	0	6	19	0	0	0	0	0	0	0	0	8	19	27
RANDOLPH	20	19	0	22	67	44	1	2	0	0	0	5	0	0	88	92	180
RICHMOND	15	29	2	10	48	83	1	9	0	0	0	4	0	0	66	135	201
ROBESON	31	45	2	5	164	129	1	7	0	0	13	9	0	0	211	195	406
ROCKINGHAM	19	25	5	9	107	74	0	8	0	0	0	3	0	0	131	119	250
ROWAN	43	25	2	2	184	81	1	6	0	0	3	9	0	0	233	123	356
RUTHERFORD	12	7	0	0	57	43	0	2	0	0	1	2	0	0	70	54	124
SAMPSON	9	22	3	3	39	65	0	3	0	0	1	5	0	0	52	98	150
SCOTLAND	16	10	0	9	49	37	0	3	0	0	6	0	0	0	71	59	130
STANLY	14	9	0	3	36	33	0	5	0	0	2	4	0	0	52	54	106
STOKES	4	8	0	3	17	19	0	1	0	0	1	1	0	0	22	32	54
SURRY	17	10	0	13	79	41	0	14	0	0	1	6	0	0	97	84	181
SWAIN	2	1	1	0	9	1	0	0	0	0	0	1	0	0	12	3	15
TRANSYLVANIA	3	0	1	2	7	14	0	0	0	1	0	0	0	0	11	17	28
TYRRELL	1	1	0	4	11	5	0	0	0	0	0	0	0	0	12	10	22
UNION	18	32	3	4	61	52	0	6	0	0	2	1	0	0	84	95	179
VANCE	7	15	0	6	31	42	0	3	0	1	1	2	0	0	39	69	108
WAKE	87	128	23	161	184	223	0	13	1	2	9	18	0	0	304	545	849
WARREN	4	4	0	1	5	11	0	1	0	0	1	0	0	0	10	17	27
WASHINGTON	4	3	1	1	17	13	0	0	0	0	0	1	0	0	22	18	40
WATAUGA	7	4	1	6	9	15	0	0	0	0	2	1	0	0	19	26	45
WAYNE	14	22	0	10	53	81	1	1	0	1	5	2	0	0	73	117	190
WILKES	23	8	1	1	78	19	0	0	1	0	9	2	0	0	112	30	142
WILSON	16	17	2	7	43	48	1	2	0	0	1	5	0	0	63	79	142
YADKIN	8	5	0	0	15	20	0	0	0	0	1	0	0	0	24	25	49
YANCEY	1	0	0	1	1	2	0	0	0	0	1	1	0	0	3	4	7
NOT REPORTED	15	16	71	146	0	0	0	0	0	1	0	0	0	0	86	163	249
TOTAL	1516	1602	260	771	5126	4526	22	285	3	22	238	336	0	0	7165	7542	14707

P17

## S E P A R A T I O N S

01/01/82 12/31/82

## TYPE SEPARATION

RACE AND SEX	DISCHARGE		COURT		PAROLE		COND REL		DEATH		ESCAPE		PARDON		TOTAL		TOTAL
	MIS	FEL	MIS	FEL	MIS	FEL	MIS	FEL	MIS	FEL	MIS	FEL	MIS	FEL	MIS	FEL	
WHITE MALE	689	691	112	340	2221	1933	12	146	2	13	169	220	0	0	3205	3343	6548
BLACK MALE	694	727	97	331	2357	2200	4	119	1	9	50	100	0	0	3203	3486	6689
INDIAN MALE	22	29	5	9	133	97	2	6	0	0	11	9	0	0	173	150	323
ORIENTAL MALE	0	0	0	0	0	1	0	0	0	0	0	0	0	0	0	1	1
OTHER MALE	2	3	3	16	15	10	0	0	0	0	1	1	0	0	21	30	51
WHITE FEMALE	37	74	24	32	146	135	1	10	0	0	7	3	0	0	215	254	469
BLACK FEMALE	71	73	19	42	246	141	3	4	0	0	0	3	0	0	339	263	602
INDIAN FEMALE	1	4	0	0	8	8	0	0	0	0	0	0	0	0	9	12	21
ORIENTAL FEMALE	0	0	0	0	0	1	0	0	0	0	0	0	0	0	0	1	1
OTHER FEMALE	0	1	0	1	0	0	0	0	0	0	0	0	0	0	0	2	2
TOTAL	1516	1602	260	771	5126	4526	22	285	3	22	238	336	0	0	7165	7542	14707

R17

## S E P A R A T I O N S

01/01/82 12/31/82

## TYPE SEPARATION

AGE	DISCHARGE		COURT		PAROLE		COND REL		DEATH		ESCAPE		PARDON		TOTAL		TOTAL
	MIS	FEL	MIS	FEL	MIS	FEL	MIS	FEL	MIS	FEL	MIS	FEL	MIS	FEL	MIS	FEL	
14 AND UNDER	0	0	0	0	0	1	0	0	0	0	0	0	0	0	0	1	1
15	0	2	0	1	1	1	0	0	0	0	0	0	0	0	1	4	5
16	1	8	1	5	17	5	0	0	0	0	0	0	0	0	19	18	37
17	31	35	5	25	101	45	2	12	0	0	6	4	0	0	145	121	266
18	59	55	11	22	203	127	4	52	0	0	9	6	0	0	286	262	548
19	80	75	11	35	213	162	5	62	0	1	28	17	0	0	337	352	689
20	94	93	13	24	251	209	5	70	0	0	17	25	0	0	390	421	811
21	86	87	9	28	246	273	5	40	0	0	17	25	0	0	363	453	816
22	73	112	11	34	276	281	0	28	0	0	17	26	0	0	377	481	858
23	87	111	5	45	237	285	0	11	0	0	24	21	0	0	353	473	826
24	68	105	11	43	225	283	0	3	0	0	7	21	0	0	311	455	766
25	56	97	12	47	238	317	0	2	0	1	18	22	0	0	324	486	810
26	70	84	12	28	237	267	0	1	0	1	14	18	0	0	333	399	732
27	58	69	10	41	201	232	0	1	0	1	7	21	0	0	276	365	641
28	60	64	14	30	221	228	0	3	0	0	6	15	0	0	301	340	641
29	50	58	5	32	197	180	0	0	0	1	15	19	0	0	267	290	557
30	44	55	14	41	175	177	0	0	0	1	7	12	0	0	240	286	526
31	42	45	6	31	152	152	0	0	0	0	4	12	0	0	204	240	444
32	61	61	5	22	154	159	0	0	0	0	4	9	0	0	224	251	475
33	31	43	8	15	134	130	0	0	0	0	2	10	0	0	175	198	373
34	38	38	3	17	128	114	0	0	0	1	2	8	0	0	171	178	349
35	55	46	9	18	140	104	1	0	0	0	5	6	0	0	210	174	384
36	40	33	10	16	125	87	0	0	0	0	7	10	0	0	182	146	328
37	27	18	4	13	97	79	0	0	0	1	3	5	0	0	131	116	247
38	27	25	8	10	101	65	0	0	0	0	3	3	0	0	139	103	242
39	24	17	6	14	64	50	0	0	0	0	1	5	0	0	95	86	181
40	23	13	2	14	66	53	0	0	0	0	4	4	0	0	95	84	179
41	25	18	8	7	66	36	0	0	0	2	2	0	0	0	101	63	164
42	12	11	1	15	70	34	0	0	1	0	2	0	0	0	86	60	146
43	20	9	2	9	66	38	0	0	0	0	0	0	0	0	88	56	144
44	23	9	2	7	65	21	0	0	0	1	2	2	0	0	92	40	132
45	15	13	2	3	59	29	0	0	0	0	0	1	0	0	76	46	122
46	11	9	3	7	49	30	0	0	1	0	1	4	0	0	65	50	115
47	8	11	4	6	47	30	0	0	1	0	1	1	0	0	61	48	109
48	16	6	5	8	48	31	0	0	0	2	0	1	0	0	69	48	117

R17

## SEPARATIONS

01/01/82 12/31/82

## TYPE SEPARATION

AGE	DISCHARGE		COURT		PAPOLE		COND REL		DEATH		ESCAPE		PARDON		TOTAL		TOTAL
	MIS	FEL	MIS	FEL	MIS	FEL	MIS	FEL	MIS	FEL	MIS	FEL	MIS	FEL	MIS	FEL	
49	11	9	5	4	50	20	0	0	0	0	0	1	0	0	66	34	100
50	7	5	3	5	53	20	0	0	0	0	0	1	0	0	63	31	94
51	8	7	2	10	37	17	0	0	0	0	1	0	0	0	48	34	82
52	7	5	1	3	46	12	0	0	0	0	0	0	0	0	54	20	74
53	9	5	1	1	21	14	0	0	0	1	0	0	0	0	31	21	52
54	9	3	0	5	50	15	0	0	0	1	0	1	0	0	59	25	84
55	6	8	1	9	30	18	0	0	0	1	1	0	0	0	38	36	74
56	2	6	2	3	26	12	0	0	0	0	0	0	0	0	30	21	51
57	11	2	2	2	20	7	0	0	0	0	0	0	0	0	33	11	44
58	7	4	1	2	25	8	0	0	0	0	0	0	0	0	33	14	47
59	4	3	0	0	19	10	0	0	0	0	0	0	0	0	23	13	36
60	6	2	0	2	14	8	0	0	0	1	0	0	0	0	20	13	33
61	4	1	0	2	11	5	0	0	0	0	0	0	0	0	15	8	23
62	3	0	2	0	8	6	0	0	0	1	0	0	0	0	13	7	20
63	0	0	2	0	6	5	0	0	0	0	1	0	0	0	9	5	14
64	1	0	1	4	4	4	0	0	0	1	0	0	0	0	6	9	15
65	2	2	0	1	5	12	0	0	0	0	0	0	0	0	7	15	22
66	0	2	0	0	5	4	0	0	0	1	0	0	0	0	5	7	12
67	3	1	1	0	4	1	0	0	0	0	0	0	0	0	8	2	10
68	0	1	2	2	5	3	0	0	0	0	0	0	0	0	7	6	13
69	1	0	0	1	3	3	0	0	0	1	0	0	0	0	4	5	9
70	0	0	0	1	3	1	0	0	0	1	0	0	0	0	3	3	6
71	0	0	1	0	0	1	0	0	0	0	0	0	0	0	1	1	2
72	0	0	0	0	0	2	0	0	0	0	0	0	0	0	0	2	2
73	0	0	0	0	0	1	0	0	0	0	0	0	0	0	0	1	1
74	0	0	0	1	0	0	0	0	0	0	0	0	0	0	0	1	1
75	0	0	0	0	0	0	0	0	0	0	0	0	0	0	0	0	0
76	0	0	0	0	0	1	0	0	0	0	0	0	0	0	0	1	1
77	0	1	0	0	1	1	0	0	0	0	0	0	0	0	1	2	3
78	0	0	0	0	0	0	0	0	0	0	0	0	0	0	0	0	0
79	0	0	0	0	0	0	0	0	0	0	0	0	0	0	0	0	0
80 AND OVER	0	0	1	0	0	0	0	0	0	0	0	0	0	0	1	0	1
TOTAL	1516	1602	260	771	5126	4526	22	285	3	22	238	336	0	0	7165	7542	14707

R17

## S E P A R A T I O N S

01/01/82 12/31/82

## TYPE SEPARATION

EDUCATION	DISCHARGE		COURT		PAROLE		COND REL		DEATH		ESCAPE		PARDON		TOTAL		TOTAL
	MIS	FEL	MIS	FEL	MIS	FEL	MIS	FEL	MIS	FEL	MIS	FEL	MIS	FEL	MIS	FEL	
NO SCHOOLING	9	2	4	8	30	19	0	1	0	0	0	0	0	0	43	30	73
1ST GRADE	3	5	1	1	11	6	0	1	0	0	0	0	0	0	15	13	28
2ND GRADE	8	3	1	2	21	15	0	0	0	1	0	0	0	0	30	21	51
3RD GRADE	13	7	4	8	56	31	0	0	0	0	1	0	0	0	74	46	120
4TH GRADE	10	12	5	11	73	37	0	0	0	3	2	1	0	0	90	64	154
5TH GRADE	23	21	3	8	78	50	0	1	0	1	2	3	0	0	106	84	190
6TH GRADE	45	34	5	14	139	107	1	4	0	0	6	8	0	0	196	167	363
7TH GRADE	77	69	7	35	266	191	1	19	0	4	7	23	0	0	358	341	699
8TH GRADE	189	200	19	55	671	585	4	45	0	2	39	59	0	0	922	946	1868
9TH GRADE	303	281	33	83	862	818	12	90	1	3	61	66	0	0	1272	1341	2613
10TH GRADE	269	281	35	91	973	866	1	71	1	1	55	55	0	0	1334	1365	2699
11TH GRADE	200	197	23	80	690	604	1	33	0	3	14	54	0	0	928	971	1899
12TH GRADE	249	357	32	157	965	902	1	18	1	1	40	56	0	0	1288	1491	2779
1 YEAR COLLEGE	33	42	7	20	103	87	0	0	0	1	2	4	0	0	145	154	299
2 YEARS COLLEGE	40	50	4	29	119	105	0	0	0	0	6	4	0	0	169	188	357
3 YEARS COLLEGE	9	12	1	8	28	34	0	0	0	0	0	1	0	0	38	55	93
4 OR MORE YRS COL.	16	14	7	15	35	46	1	0	0	0	3	0	0	0	62	75	137
NOT REPORTED	20	15	69	146	6	23	0	2	0	2	0	2	0	0	95	190	285
TOTAL	1516	1602	260	771	5126	4526	22	285	3	22	238	336	0	0	7165	7542	14707

R17

## S E P A R A T I O N S

01/01/82 12/31/82

MARITAL STATUS	TYPE SEPARATION														TOTAL		
	DISCHARGE		COURT		PAROLE		COND REL		DEATH		ESCAPE		PARDON			TOTAL	
	MIS	FEL	MIS	FEL	MIS	FEL	MIS	FEL	MIS	FEL	MIS	FEL	MIS	FEL		MIS	FEL
SINGLE	839	937	110	340	2560	2435	21	259	1	10	127	179	0	0	3658	4160	7818
MARRIED	272	350	38	152	1116	1205	0	22	1	1	60	80	0	0	1487	1810	3297
SEPARATED	185	150	16	51	726	392	0	2	0	5	26	30	0	0	953	630	1583
DIVORCED	190	146	20	78	640	393	1	0	1	3	23	43	0	0	875	663	1538
WIDOWED	11	7	5	6	75	60	0	0	0	2	1	1	0	0	92	76	168
OTHER	0	0	0	0	0	0	0	0	0	0	0	0	0	0	0	0	0
NOT REPORTED	19	12	71	144	9	41	0	2	0	1	1	3	0	0	100	203	303
TOTAL	1516	1602	260	771	5126	4526	22	285	3	22	238	336	0	0	7165	7542	14707



R17

## S E P A R A T I O N S

01/01/82 12/31/82

## TYPE SEPARATION

SEPARATION LOCATION	DISCHARGE		COURT		PAPOLE		COND REL		DEATH		ESCAPE		PARDON		TOTAL		TOTAL
	MIS	FEL	MIS	FEL	MIS	FEL	MIS	FEL	MIS	FEL	MIS	FEL	MIS	FEL	MIS	FEL	
<b>INSTITUTIONS</b>																	
CENTRAL PRISON	38	27	55	542	20	33	0	1	3	10	0	2	0	0	116	615	731
CORR CTR FOR WOMEN	88	118	43	74	318	212	0	2	0	0	4	5	0	0	453	411	864
CALEDONIA	0	20	0	2	0	10	0	0	0	3	0	0	0	0	0	35	35
ODOM	0	9	0	1	0	9	0	0	0	2	0	0	0	0	0	21	21
HALIFAX	3	5	0	0	29	49	0	1	0	0	0	8	0	0	32	63	95
PIEDMONT CORR CTR	0	8	0	14	0	40	0	0	0	0	0	0	0	0	0	62	62
<b>YOUTH SERVICES</b>																	
WESTERN CORR CTR	45	48	9	38	122	29	0	8	0	0	2	2	0	0	178	125	303
BURKE	14	7	0	0	43	35	3	13	0	0	7	1	0	0	67	56	123
SANDHILLS	13	23	1	0	29	57	1	20	0	0	4	20	0	0	48	120	168
HARNETT	0	17	0	22	2	38	0	4	0	0	0	5	0	0	2	86	88
POLK	2	30	0	36	2	43	0	5	0	1	0	1	0	0	4	116	120
MORRISON	19	45	0	1	78	47	4	13	0	0	4	8	0	0	105	114	219
FOUNTAIN	27	41	0	1	111	82	4	25	0	0	2	4	0	0	144	153	297
<b>EASTERN AREA</b>																	
CARTERET	21	46	0	1	71	82	0	3	0	0	3	3	0	0	95	135	230
CURRITUCK	0	9	0	0	0	13	0	0	0	0	0	2	0	0	0	24	24
DUPLIN	12	17	0	0	34	60	0	5	0	0	2	6	0	0	48	88	136
GATES	36	37	0	1	137	78	0	3	0	0	6	4	0	0	179	123	302
GOLDSBORO YOUTH CT	10	10	0	0	57	61	1	2	0	0	8	2	0	0	76	75	151
GREENE	16	33	3	1	132	100	0	4	0	0	4	1	0	0	155	139	294
MARTIN	17	19	0	0	133	134	0	4	0	0	4	3	0	0	154	160	314
PENDER	1	4	0	0	1	31	0	0	0	0	0	0	0	0	2	35	37
WASHINGTON	0	5	0	1	1	19	0	1	0	1	0	3	0	0	1	30	31
NEW HANOVER	57	34	1	1	174	171	0	9	0	1	12	13	0	0	244	229	473
WAYNE CORP CTR	1	12	0	3	1	22	0	1	0	0	0	0	0	0	2	38	40
<b>NORTH CENTRAL</b>																	
DURHAM	21	32	0	1	58	91	0	7	0	0	1	9	0	0	80	140	220
FRANKLIN	0	10	0	0	1	6	0	0	0	0	0	0	0	0	1	16	17
GRANVILLE	19	11	0	0	46	48	0	1	0	0	2	2	0	0	67	62	129
JOHNSTON	1	11	0	0	1	24	0	0	0	0	0	0	0	0	2	35	37
NASH ADV CTR	36	22	0	0	77	89	0	5	0	0	2	3	0	0	115	119	234
ORANGE	15	20	0	0	44	56	1	3	0	0	2	1	0	0	62	80	142
PERSON	21	23	1	0	24	45	0	0	0	0	2	6	0	0	48	74	122
SANFORD ADV CTR	18	11	0	0	102	82	0	8	0	0	0	5	0	0	120	106	226
UMSTEAD YOUTH CTR	17	13	0	2	41	11	0	6	0	0	2	4	0	0	60	36	96
VANCE	2	1	0	0	0	24	0	0	0	0	0	1	0	0	2	26	28
WAKE ADV CTR	5	16	0	1	20	69	0	4	0	0	1	3	0	0	26	93	119
WARREN	38	0	0	0	19	6	0	0	0	0	4	0	0	0	61	6	67
GOLDSBORO STATE HO	0	0	0	0	0	0	0	0	0	0	0	0	0	0	0	0	0
DORTHEA DIX	0	0	0	0	0	0	0	0	0	0	0	0	0	0	0	0	0
TRIANGLE CORR CENT	115	79	33	2	278	171	0	6	0	0	11	21	0	0	437	279	716

R17

## S E P A R A T I O N S

01/01/82 12/31/82

## TYPE SEPARATION

SEPARATION LOCATION	DISCHARGE		COURT		PAROLE		COND REL		DEATH		ESCAPE		PARDON		TOTAL		TOTAL	
	MIS	FEL	MIS	FEL	MIS	FEL	MIS	FEL	MIS	FEL	MIS	FEL	MIS	FEL	MIS	FEL		
SOUTH CENTRAL																		
ANSON	27	25	1	0	80	47	0	2	0	0	5	4	0	0	113	78	191	
BLADEN	22	29	2	2	130	89	0	3	0	0	5	5	0	0	159	128	287	
MCCAIN COPR CTR	47	57	17	3	161	116	0	0	0	2	5	2	0	0	230	180	410	
MONTGOMERY	12	8	0	0	50	33	1	6	0	0	4	5	0	0	67	52	119	
MOORE	0	6	0	0	0	15	0	0	0	0	0	0	0	0	0	21	21	
RICHMOND	17	8	9	0	46	47	1	1	0	0	3	0	0	0	76	56	132	
ROBESON	51	27	3	0	179	124	0	4	0	0	23	15	0	0	256	170	426	
SAMPSON	0	9	0	1	0	10	0	1	0	0	0	0	0	0	0	21	21	
SCOTLAND	3	11	0	2	1	20	0	1	0	0	0	0	0	0	4	34	38	
COLUMBUS	1	9	0	3	0	11	0	0	0	0	0	2	0	0	1	25	26	
NORTH PIEDMONT																		
ALAMANCE	47	24	0	0	139	78	0	1	0	0	6	11	0	0	192	114	306	
CASWELL	0	8	0	1	3	14	0	0	0	0	0	1	0	0	3	24	27	
DAVIDSON	41	23	0	1	115	72	0	3	0	0	7	2	0	0	163	101	264	
DAVIE	1	12	0	0	1	20	0	0	0	0	0	2	0	0	2	34	36	
FORSYTH ADV CTR	31	22	1	2	222	168	1	14	0	0	1	7	0	0	256	213	469	
GUILFORD 1	29	40	0	1	120	145	0	18	0	0	5	19	0	0	154	223	377	
GUILFORD 2	46	21	35	1	137	71	0	2	0	0	11	11	0	0	229	106	335	
RANDOLPH	0	10	0	0	0	13	0	1	0	0	0	0	0	0	0	24	24	
ROCKINGHAM	0	9	0	0	30	45	0	0	0	0	0	0	0	0	30	54	84	
STOKES	27	22	0	0	89	45	0	8	0	0	0	2	0	0	116	77	193	
YADKIN	0	8	0	0	2	13	0	0	0	0	0	0	0	0	2	21	23	
BLANCH	0	5	0	1	0	1	0	0	0	0	0	0	0	0	0	7	7	

R17

## S E P A R A T I O N S

01/01/82 12/31/82

SEPARATION <sup>m</sup>	LOCATION	DISCHARGE		COURT		PAROLE		COND REL		DEATH		ESCAPE		PARDON		TOTAL		TOTAL	
		MIS	FEL	MIS	FEL	MIS	FEL	MIS	FEL	MIS	FEL	MIS	FEL	MIS	FEL	MIS	FEL		
		TYPE SEPARATION																	
SOUTH PIEDMONT																			
CABARRUS		29	28	0	1	168	80	0	4	0	0	6	8	0	0	203	121	324	
GASTON		26	16	1	0	66	56	0	8	0	0	8	6	0	0	101	86	187	
IREDELL		1	4	0	0	1	16	0	0	0	0	0	2	0	0	2	22	24	
LINCOLN		21	24	0	0	100	82	1	1	0	0	2	8	0	0	124	115	239	
CHARLOTTE ADV CTR		28	36	2	1	170	255	1	16	0	0	8	11	0	0	209	319	528	
MECKLENBURG 2		56	6	30	0	103	19	0	1	0	0	5	2	0	0	194	28	222	
ROWAN		50	33	0	0	197	86	1	4	0	0	8	8	0	0	256	131	387	
STANLY		0	8	0	0	2	15	0	0	0	0	0	2	0	0	2	25	27	
UNION		0	6	0	0	3	19	0	0	0	0	0	0	0	0	3	25	28	
CATAWBA		12	36	0	2	78	83	0	7	0	0	7	11	0	0	97	139	236	
CLEVELAND		0	4	0	0	0	13	0	0	0	0	0	2	0	0	0	19	19	
WESTERN AREA																			
ALEXANDER		18	12	1	0	63	27	0	0	0	0	8	1	0	0	90	40	130	
AVERY		0	5	0	0	0	10	0	0	0	0	0	0	0	0	0	15	15	
CALDWELL		12	14	0	1	55	38	1	0	0	0	0	1	0	0	68	54	122	
CRAGGY		0	3	0	3	0	17	0	0	0	0	0	0	0	0	0	23	23	
HAYWOOD		27	18	2	0	76	71	0	4	0	0	1	8	0	0	106	101	207	
HENDERSON		33	46	2	0	76	87	1	5	0	0	6	16	0	0	118	154	272	
MCDOWELL		0	5	0	0	1	22	0	0	0	1	0	0	0	0	1	28	29	
RUTHERFORD		12	13	0	0	70	74	0	1	0	0	1	5	0	0	83	93	176	
WATAUGA		34	8	3	0	60	19	0	1	0	0	2	4	0	0	99	32	131	
WILKES		27	9	5	0	126	55	0	3	0	0	12	5	0	0	170	72	242	
YANCEY		0	2	0	0	0	5	0	1	0	1	0	0	0	0	0	9	9	
NOT REPORTED		0	0	0	0	0	3	0	0	0	0	0	0	0	0	0	3	3	
TOTAL		1516	1602	260	771	5126	4526	22	285	3	22	238	336	0	0	7165	7542	14707	

R17

## END OF PERIOD STOCK POPULATION

01/01/82 12/31/82

CURRENT OFFENSE	TOTAL SENTENCE LENGTH																TOTAL	TOTAL		
	6 MONTHS		6 MO-1 YR		1 YR-2 YR		2 YR-5 YR		5 YR-10 YR		10 YRS +		LIFE/DEATH		NOT REP/SK				TOTAL	
	MIS	FEL	MIS	FEL	MIS	FEL	MIS	FEL	MIS	FEL	MIS	FEL	MIS	FEL	MIS	FEL			MIS	FEL
MURDER 1ST DEGREE	0	0	0	0	0	0	0	4	0	12	0	21	0	403	0	35	0	475	475	
MURDER 2ND DEGREE	0	0	0	0	0	0	0	4	0	28	0	844	0	322	0	2	0	1200	1200	
HANSLAUGHTER	0	3	2	0	4	1	1	83	1	165	0	274	0	0	0	0	8	526	534	
ROBBERY	0	10	0	2	0	12	0	233	0	648	1	1830	0	113	0	10	1	2858	2859	
BURGLARY	0	0	0	0	0	0	0	4	0	79	0	268	0	110	0	7	0	468	468	
ASSAULT	22	18	78	2	188	16	73	208	9	242	3	147	1	3	11	9	385	645	1030	
BREAK & ENT.-LARCEN	84	86	213	23	533	125	285	1782	50	1350	10	644	0	2	13	18	1188	4030	5218	
AUTO THEFT	3	3	18	1	46	7	35	73	4	45	1	16	0	1	0	3	87	149	236	
RAPE	0	1	0	0	0	4	0	42	0	73	0	384	0	290	0	5	0	799	799	
SEXUAL ASSAULT	0	0	0	0	0	0	0	3	0	23	0	77	0	4	0	0	0	107	107	
SEX CRIME -MISC-	3	3	4	0	13	3	3	58	0	77	0	53	0	3	0	5	23	202	225	
BURNINGS	0	1	0	1	0	3	0	35	0	57	0	73	0	11	0	2	0	183	183	
FORGERY	2	6	2	7	10	63	6	224	0	185	1	70	0	0	0	2	21	557	578	
KIDNAPPING & ABDUC	0	0	0	0	0	0	0	3	0	22	0	148	0	66	0	1	0	240	240	
NARCOTICS & DRUGS	5	46	16	19	15	126	11	423	1	231	0	126	0	1	2	9	50	981	1031	
WORTHLESS CHECKS	10	0	16	0	29	0	26	0	4	0	1	0	0	0	2	0	88	0	88	
ABAND. & NON-SUPRT	35	0	9	0	7	0	0	1	0	2	0	0	0	0	0	0	51	3	54	
TRAFFIC VIOLATIONS	19	3	135	1	172	9	35	15	5	4	0	2	0	0	4	2	370	36	406	
DRUNK/DISORDERLY	4	0	1	0	0	0	2	0	0	0	0	0	0	0	0	0	7	0	7	
TRESPASS	9	0	20	0	29	0	20	0	4	1	0	1	0	0	2	0	84	2	86	
DRIVING DRUNK	48	0	142	0	122	0	26	0	3	0	0	0	0	0	5	0	346	0	346	
OTHERS	14	10	17	8	48	24	33	125	11	58	6	36	0	3	5	0	134	264	398	
NOT REPORTED	2	0	9	2	6	2	6	8	1	7	0	10	0	1	22	38	46	68	114	
TOTAL	260	190	682	66	1222	395	542	3348	93	3309	23	5024	1	1333	66	148	2889	13793	16682	

P17 8

END OF PERIOD STOCK POPULATION

01/01/82 12/31/82

SENTENCING COURT	TOTAL SENTENCE LENGTH																TOTAL	TOTAL		
	6 MONTHS		6 MO-1 YR		1 YR-2 YR		2 YR-5 YR		5 YR-10 YR		10 YRS +		LIFE/DEATH		NOT REP/SK				TOTAL	
	MIS	FEL	MIS	FEL	MIS	FEL	MIS	FEL	MIS	FEL	MIS	FEL	MIS	FEL	MIS	FEL			MIS	FEL
SUPERIOR	62	190	127	66	415	395	176	3328	24	3309	12	5024	1	1333	31	148	848	13793	14641	
DISTRICT	194	0	552	0	806	0	365	0	69	0	10	0	0	0	35	0	2031	0	2031	
MAYOR'S CITY RECDR	1	0	1	0	0	0	0	0	0	0	0	0	0	0	0	0	2	0	2	
COUNTY RECORDER	2	0	2	0	1	0	1	0	0	0	1	0	0	0	0	0	7	0	7	
MAGISTRATE	0	0	0	0	0	0	0	0	0	0	0	0	0	0	0	0	0	0	0	
JUSTICE OF PEACE	1	0	0	0	0	0	0	0	0	0	0	0	0	0	0	0	1	0	1	
DOMESTIC RELATIONS	0	0	0	0	0	0	0	0	0	0	0	0	0	0	0	0	0	0	0	
NOT REPORTED	0	0	0	0	0	0	0	0	0	0	0	0	0	0	0	0	0	0	0	
TOTAL	260	190	682	66	1222	395	542	3328	93	3309	23	5024	1	1333	66	148	2889	13793	16682	

R17

## END OF PERIOD STOCK POPULATION

01/01/82 12/31/82

## TOTAL SENTENCE LENGTH

COUNTY OF CONVICT.	6 MONTHS		6 MO-1 YR		1 YR-2 YR		2 YR-5 YR		5 YR-10 YR		10 YRS +		LIFE/DEATH		NOT REP/SK		TOTAL		TOTAL
	MIS	FEL	MIS	FEL	MIS	FEL	MIS	FEL	MIS	FEL	MIS	FEL	MIS	FEL	MIS	FEL	MIS	FEL	
ALAMANCE	26	4	27	1	50	9	20	56	2	40	1	60	0	17	0	1	126	188	314
ALEXANDER	1	1	9	0	7	0	3	4	1	4	1	6	0	5	0	1	22	21	43
ALLEGHANY	0	0	1	0	1	0	4	2	0	3	0	3	0	0	0	1	6	9	15
ANSON	1	0	4	0	4	4	2	22	1	18	0	29	0	3	0	1	12	77	89
ASHE	1	1	0	0	4	0	1	2	1	10	0	10	0	5	0	1	7	29	36
AVERY	0	0	3	1	1	0	1	1	0	5	0	6	0	4	0	0	5	17	22
BEAUFORT	1	1	14	1	8	1	0	32	0	29	0	42	0	16	0	1	23	123	146
BERTIE	1	0	0	0	6	0	2	2	1	11	0	17	0	4	0	0	10	40	50
BLADEN	0	1	5	1	12	1	6	10	0	20	1	14	0	9	1	1	25	57	82
BRUNSWICK	0	0	5	0	6	1	9	6	5	14	0	19	0	4	1	0	26	44	70
BUNCOMBE	3	7	14	3	19	11	8	110	1	115	1	119	0	33	0	0	45	398	443
BURKE	2	1	4	0	10	1	7	20	3	24	0	35	0	8	0	1	26	90	116
CABARRUS	19	1	12	0	50	11	10	73	0	61	0	94	0	16	1	6	92	262	354
CALDWELL	0	0	3	0	8	1	6	11	2	25	0	27	0	4	0	1	19	69	88
CAMDEN	0	0	1	0	1	0	0	0	0	7	0	5	0	1	0	0	2	13	15
CARTERET	1	2	3	1	4	6	2	14	1	24	0	31	0	5	0	0	11	83	94
CASWELL	1	0	3	2	6	2	3	2	1	11	1	13	0	9	0	0	15	39	54
CATAWBA	0	2	12	2	12	6	12	42	1	57	2	59	0	11	1	0	40	179	219
CHATHAM	0	1	2	0	5	0	0	10	0	10	0	33	0	8	1	0	8	62	70
CHEROKEE	0	0	0	0	0	2	4	3	1	2	0	9	0	0	0	0	5	16	21
CHOWAN	0	0	3	0	1	2	1	10	0	9	0	11	0	0	0	0	5	32	37
CLAY	0	0	0	0	2	0	1	1	1	3	0	2	0	0	0	0	4	6	10
CLEVELAND	2	2	5	2	11	2	4	50	1	52	0	64	0	19	0	0	23	191	214
COLUMBUS	5	0	7	0	20	4	14	26	2	13	0	43	0	8	4	1	52	95	147
CRAVEN	3	1	6	0	14	5	5	24	0	44	0	58	0	20	0	2	28	154	182
CUMBERLAND	8	14	29	4	39	24	7	137	0	135	0	261	0	88	3	4	86	667	753
CUPRITUCK	0	0	0	0	1	0	0	4	0	6	0	6	0	1	0	0	1	17	18
DARE	0	0	4	0	1	2	0	4	0	9	0	10	0	2	0	1	5	28	33
DAVIDSON	1	0	9	1	26	2	25	28	6	35	2	82	0	18	2	1	71	167	238
DAVIE	0	0	4	0	1	0	1	9	0	3	1	13	0	3	0	0	7	28	35
DUPLIN	4	1	9	0	5	3	6	25	1	35	1	39	0	9	0	1	26	113	139
DURHAM	1	4	10	2	14	11	7	80	2	74	1	141	0	33	2	7	37	352	389
EDGECOMBE	3	4	10	0	26	0	8	31	3	27	0	35	0	11	0	4	50	112	162
FORSYTH	19	12	26	6	66	26	18	193	4	148	0	211	0	64	5	1	138	661	799
FRANKLIN	4	0	3	0	9	2	3	10	1	10	0	35	0	9	0	1	20	67	87

TOTAL SENTENCE LENGTH

COUNTY OF CONVICT.	6 MONTHS		6 MO-1 YR		1 YR-2 YR		2 YR-5 YR		5 YR-10 YR		10 YRS +		LIFE/DEATH		NOT REP/SK		TOTAL		TOTAL
	MIS	FEL	MIS	FEL	MIS	FEL	MIS	FEL	MIS	FEL	MIS	FEL	MIS	FEL	MIS	FEL	MIS	FEL	
GASTON	1	6	11	0	32	4	15	86	2	73	0	103	0	25	1	2	62	299	361
GATES	0	0	0	0	1	1	0	1	0	2	0	6	0	2	0	0	1	12	13
GRAHAM	0	0	0	0	0	0	0	2	0	0	0	0	0	1	0	1	0	4	4
GRANVILLE	0	0	8	1	9	0	6	17	0	11	0	24	0	9	0	1	23	63	86
GREENE	1	0	2	0	3	2	2	9	2	14	0	12	0	4	0	0	10	41	51
GUILFORD	7	4	23	2	67	28	42	250	7	234	1	454	0	79	5	3	152	1054	1206
HALIFAX	4	6	10	0	19	4	15	53	0	39	0	44	0	22	1	2	49	170	219
HARNETT	3	2	11	1	10	0	10	31	2	23	0	32	0	16	1	0	37	105	142
HAYWOOD	0	0	1	1	14	1	2	21	0	13	0	26	0	4	0	2	17	68	85
HENDERSON	5	1	10	2	13	8	11	28	3	23	0	29	0	4	0	1	42	96	138
HERTFORD	1	0	5	0	4	0	1	15	0	16	0	19	0	4	0	1	11	55	66
HCKE	2	1	3	0	5	0	3	23	0	19	0	19	0	13	1	0	14	75	89
HYDE	0	0	2	1	0	0	1	0	0	3	0	3	0	0	0	1	3	8	11
IFEDELL	3	1	22	0	34	1	20	23	2	35	1	45	0	17	0	1	82	123	205
JACKSON	0	0	0	0	2	0	2	6	0	3	0	11	0	1	0	0	4	21	25
JOHNSTON	0	2	14	1	29	6	17	41	1	46	0	50	0	18	0	0	61	164	225
JONES	1	0	0	1	0	0	0	2	0	3	0	5	0	2	3	0	4	13	17
LEE	5	2	8	5	8	4	7	23	1	28	0	29	0	8	0	1	29	95	124
LENOIR	2	0	7	0	22	2	6	36	2	39	0	54	0	17	0	1	39	149	188
LINCOLN	1	0	1	0	3	0	4	22	0	12	0	30	0	5	0	1	9	70	79
MACON	1	0	1	0	1	0	1	1	0	4	0	3	0	1	0	1	4	10	14
MADISON	0	0	0	0	1	2	0	0	0	4	0	4	0	2	0	0	1	12	13
MARTIN	1	0	5	0	6	2	1	26	0	18	0	25	0	8	1	2	14	81	95
MCDOWELL	1	2	5	0	9	2	8	12	0	14	0	18	0	6	0	1	23	55	78
PECKLENBURG	10	8	14	3	31	15	9	225	1	252	2	436	0	89	5	6	72	1034	1106
PITCHELL	4	0	2	0	2	0	0	2	0	1	0	8	0	0	0	1	8	12	20
MONTGOMERY	1	0	1	0	5	2	4	9	0	10	0	14	0	7	0	1	11	43	54
MOORE	1	2	2	1	11	5	2	41	1	36	0	39	0	8	0	1	17	133	150
NASH	2	1	15	0	26	3	11	48	1	41	0	69	0	19	0	0	55	181	236
NEW HANOVER	7	16	16	1	23	12	19	113	2	123	0	188	1	45	1	4	69	502	571
NORTHAMPTON	1	1	2	0	3	0	5	7	0	6	0	15	0	1	0	0	11	30	41
ONSLOW	3	2	5	4	9	25	3	83	0	64	0	86	0	31	0	1	20	296	316
ORANGE	3	4	5	0	10	4	2	35	0	26	1	67	0	10	2	2	23	148	171
PAMLICO	0	1	0	0	0	0	0	3	0	4	0	3	0	0	0	0	0	11	11
PASQUOTANK	2	0	1	1	5	2	0	16	0	23	0	21	0	6	0	0	8	69	77

R17

FND OF PERIOD STOCK POPULATION

01/01/82 12/31/82

TOTAL SENTENCE LENGTH

COUNTY OF CONVICT.	6 MONTHS		6 MO-1 YR		1 YR-2 YR		2 YR-5 YR		5 YR-10 YR		10 YRS +		LIFE/DEATH		NOT REP/SK		TOTAL		TOTAL
	MIS	FEL	MIS	FEL	MIS	FEL	MIS	FEL	MIS	FEL	MIS	FEL	MIS	FEL	MIS	FEL	MIS	FEL	
PENDER	0	0	10	0	6	2	1	8	0	11	0	12	0	2	0	1	17	36	53
PERQUIMANS	2	0	0	0	2	1	0	17	0	5	0	7	0	5	0	0	4	31	35
PERSON	2	1	4	0	4	1	2	21	1	16	0	25	0	3	0	0	13	67	80
PITT	1	3	7	1	15	19	6	51	0	53	0	84	0	27	0	3	29	241	270
POLK	0	0	3	0	1	0	4	14	1	8	0	7	0	3	0	0	9	32	41
RANDOLPH	6	1	6	0	16	3	1	37	0	33	0	47	0	14	1	0	30	135	165
RICHMOND	5	1	5	1	13	3	1	44	0	41	0	84	0	14	0	4	24	192	216
ROBESON	1	13	42	1	33	12	12	99	0	97	1	124	0	51	0	3	89	400	489
ROCKINGHAM	7	2	14	0	35	9	3	67	1	63	1	96	0	18	1	2	62	257	319
ROWAN	9	2	13	0	37	6	14	50	3	59	1	93	0	13	1	0	78	223	301
RUTHERFORD	0	1	2	1	13	6	5	35	1	42	2	36	0	7	0	0	23	128	151
SAMPSON	3	3	7	4	11	6	5	35	0	29	0	57	0	21	0	0	26	155	181
SCOTLAND	1	0	15	0	14	3	5	15	0	41	0	51	0	11	0	2	35	123	158
STANLY	0	0	3	0	12	5	1	28	0	22	0	51	0	7	0	1	16	114	130
STOKES	1	3	0	0	5	1	0	12	1	12	0	22	0	6	0	0	7	56	63
SURRY	6	9	11	1	15	3	6	33	0	30	0	44	0	8	0	1	38	129	167
SWAIN	0	0	0	0	1	1	0	4	0	3	0	2	0	0	0	0	1	10	11
TRANSYLVANIA	1	0	3	2	5	0	2	5	0	9	0	12	0	5	0	1	11	34	45
TYRRELL	0	2	0	0	0	0	0	3	0	4	0	1	0	0	0	0	0	10	10
UNION	2	1	14	0	6	6	7	56	0	42	0	61	0	20	0	2	29	188	217
VANCE	0	0	5	0	20	3	4	27	1	26	0	31	0	9	0	1	30	97	127
WAKE	26	14	20	3	29	19	10	160	1	128	0	192	0	83	0	19	86	618	704
WARREN	0	0	3	0	3	1	0	7	1	5	0	7	0	7	0	1	7	28	35
WASHINGTON	0	0	5	0	4	0	1	10	0	6	0	11	0	3	0	1	10	31	41
WATAUGA	0	0	0	2	1	0	0	5	1	9	0	12	0	3	0	2	2	33	35
WAYNE	3	6	12	1	14	3	1	62	2	82	0	79	0	32	0	0	32	265	297
WILKES	1	1	11	0	19	2	14	15	7	20	1	38	0	8	0	0	53	84	137
WILSON	2	3	4	1	19	5	5	29	0	41	0	70	0	14	0	3	30	166	196
YADKIN	1	2	4	0	3	1	1	7	2	6	0	9	0	2	0	0	11	27	38
YANCEY	0	0	0	0	0	0	2	3	1	3	0	4	0	1	0	0	3	11	14
NOT REPORTED	0	0	0	1	0	0	0	3	0	8	0	22	0	5	21	25	21	64	85
TOTAL	260	190	682	66	1222	395	542	3328	93	3309	23	5024	1	1333	66	148	2889	13793	16682



F17

END OF PERIOD STOCK POPULATION

01/01/82 12/31/82

RACE AND SEX	TOTAL SENTENCE LENGTH																TOTAL	TOTAL		
	6 MONTHS		6 MO-1 YR		1 YR-2 YR		2 YR-5 YR		5 YR-10 YR		10 YRS +		LIFE/DEATH		NOT REP/SK				TOTAL	
	MIS	FEL	MIS	FEL	MIS	FEL	MIS	FEL	MIS	FEL	MIS	FEL	MIS	FEL	MIS	FEL			MIS	FEL
WHITE MALE	102	94	291	29	519	173	286	1455	57	1453	11	1972	0	478	30	61	1296	5715	7011	
BLACK MALE	130	69	328	25	605	156	219	1618	35	1663	12	2793	1	784	31	76	1361	7184	8545	
INDIAN MALE	3	6	22	0	22	11	14	97	0	67	0	109	0	30	0	1	61	321	382	
ORIENTAL MALE	0	0	0	0	0	0	0	0	0	0	0	2	0	0	0	0	0	2	2	
OTHER MALE	1	0	1	0	2	0	1	3	0	14	0	17	0	5	0	2	5	41	46	
WHITE FEMALE	11	11	14	8	33	22	8	71	0	42	0	62	0	22	3	4	69	242	311	
BLACK FEMALE	13	9	21	4	40	32	13	76	1	66	0	65	0	13	1	4	89	269	358	
INDIAN FEMALE	0	1	4	0	1	0	0	6	0	4	0	3	0	1	0	0	5	15	20	
ORIENTAL FEMALE	0	0	1	0	0	1	0	0	0	0	0	0	0	0	0	0	1	1	2	
OTHER FEMALE	0	0	0	0	0	0	1	2	0	0	0	1	0	0	1	0	2	3	5	
TOTAL	260	190	682	66	1222	395	542	3328	93	3309	23	5024	1	1333	66	148	2889	13793	16682	

TOTAL SENTENCE LENGTH

AGE	6 MONTHS		6 MO-1 YR		1 YR-2 YR		2 YR-5 YR		5 YR-10 YR		10 YRS +		LIFE/DEATH		NOT REP/SK		TOTAL		TOTAL
	MIS	FEL	MIS	FEL	MIS	FEL	MIS	FEL	MIS	FEL	MIS	FEL	MIS	FEL	MIS	FEL	MIS	FEL	
14 AND UNDER	0	0	0	0	0	1	0	0	0	0	0	0	0	0	0	0	0	1	1
15	0	0	0	0	1	1	0	5	0	0	0	3	0	0	0	0	1	0	10
16	2	1	5	2	14	5	3	23	0	5	0	10	0	0	0	0	24	46	70
17	4	7	28	4	63	17	28	111	3	37	0	35	0	4	6	4	132	219	351
18	14	11	20	4	78	23	29	205	2	92	0	91	0	9	4	8	149	443	592
19	12	9	29	6	75	15	45	248	16	168	2	98	0	24	2	5	181	573	754
20	5	19	45	0	91	31	40	311	6	201	3	166	0	23	3	5	193	756	949
21	13	20	29	1	50	25	37	247	2	242	0	226	0	36	1	3	132	800	932
22	21	12	39	5	61	24	39	210	4	222	1	219	0	43	4	14	169	749	918
23	9	13	23	4	64	28	31	213	4	264	2	278	0	49	4	6	137	855	992
24	14	19	31	7	60	22	27	205	8	215	2	287	0	39	2	5	144	799	943
25	9	9	32	3	54	22	26	177	3	170	1	300	0	60	5	11	130	752	882
26	10	7	25	2	53	15	23	152	6	187	1	302	0	61	3	4	121	730	851
27	8	11	14	1	40	28	11	142	5	162	0	271	0	72	1	4	79	691	770
28	10	3	24	2	46	18	22	116	5	145	0	288	0	76	0	11	107	659	766
29	7	8	23	1	46	6	26	117	1	125	2	251	1	65	5	6	111	579	690
30	8	4	24	2	41	8	20	100	4	125	1	257	0	64	4	4	102	564	666
31	8	4	22	5	33	18	11	87	2	121	0	208	0	73	0	1	76	517	593
32	12	3	20	3	45	10	10	83	3	95	0	199	0	56	1	4	91	453	544
33	9	4	19	1	23	12	11	66	2	96	1	170	0	57	0	4	65	410	475
34	11	4	15	1	30	6	8	68	1	85	1	152	0	57	2	5	68	378	446
35	7	2	21	1	27	9	7	49	2	81	1	139	0	54	1	1	46	336	402
36	5	2	21	2	19	6	10	46	2	44	1	119	0	36	3	3	61	258	319
37	6	3	13	1	27	5	7	41	2	40	1	90	0	43	2	3	58	226	284
38	4	3	12	0	18	2	7	26	1	41	1	93	0	26	2	4	45	195	240
39	4	1	7	1	17	5	7	35	0	36	0	75	0	44	0	4	35	201	236
40	6	2	8	1	12	2	8	25	2	41	1	79	0	28	2	3	39	181	220
41	5	1	9	1	10	3	6	17	2	24	0	55	0	26	1	2	33	129	162
42	5	2	7	1	12	7	3	29	0	24	0	60	0	20	0	0	27	143	170
43	3	0	11	1	6	1	5	18	2	15	0	44	0	19	2	3	29	101	130
44	4	1	12	0	12	3	3	18	1	26	0	49	0	13	0	4	32	114	146
45	5	0	9	0	10	0	3	15	0	18	0	38	0	18	0	0	27	89	116
46	1	0	9	0	7	2	1	17	1	18	0	43	0	8	2	0	21	88	109
47	0	1	6	0	9	0	4	8	0	14	0	28	0	10	1	1	20	62	82
48	3	1	7	2	8	2	1	14	0	13	0	36	0	16	0	1	19	85	104

017

END OF PERIOD STOCK POPULATION

01/01/82 12/31/82

TOTAL SENTENCE LENGTH

AGE	6 MONTHS		6 MO-1 YR		1 YR-2 YR		2 YR-5 YR		5 YR-10 YR		10 YRS +		LIFE/DEATH		NOT REP/SK		TOTAL		TOTAL
	MIS	FEL	MIS	FEL	MIS	FEL	MIS	FEL	MIS	FEL	MIS	FEL	MIS	FEL	MIS	FEL	MIS	FEL	
49	0	0	6	0	9	4	3	9	0	9	0	25	0	7	0	0	18	54	72
50	0	0	9	0	8	0	1	5	0	12	0	21	0	7	0	2	18	47	65
51	1	0	5	0	6	1	1	6	0	6	1	27	0	16	0	2	14	58	72
52	2	0	8	0	3	1	3	5	1	6	0	21	0	10	1	1	18	44	62
53	0	0	7	0	2	0	1	9	0	11	0	20	0	9	0	2	10	51	61
54	4	0	3	0	6	2	3	6	0	14	0	14	0	10	0	0	16	46	62
55	0	1	6	0	2	0	1	9	0	10	0	13	0	2	0	4	10	39	49
56	2	1	1	0	7	0	1	2	0	10	0	6	0	7	0	1	11	27	38
57	1	0	0	0	0	0	2	2	0	10	0	20	0	2	0	1	3	35	38
58	1	0	2	0	4	1	3	9	0	2	0	15	0	1	0	0	10	28	38
59	0	0	6	0	2	1	0	2	0	5	0	15	0	7	0	0	8	30	38
60	1	1	1	0	1	1	0	4	0	6	0	14	0	6	0	0	4	32	36
61	1	0	1	0	2	0	1	4	0	1	0	6	0	2	0	0	7	13	20
62	0	0	1	0	2	1	0	2	0	4	0	7	0	3	0	0	3	17	20
63	0	0	0	1	2	0	0	3	0	0	0	7	0	4	0	1	2	16	18
64	0	0	2	0	0	0	0	0	0	0	0	6	0	0	0	0	2	10	12
65	0	0	1	0	2	0	0	2	0	2	0	3	0	0	0	0	3	10	13
66	0	0	0	0	0	1	0	0	0	1	0	5	0	5	0	0	0	10	12
67	0	0	0	0	0	0	0	0	0	1	0	3	0	0	0	0	0	4	4
68	0	0	1	0	0	0	1	1	0	0	0	5	0	0	0	1	2	7	9
69	0	0	1	0	0	0	0	0	0	1	0	4	0	1	0	0	1	6	7
70	0	0	0	0	0	0	0	0	0	0	0	0	0	1	0	0	0	1	1
71	0	0	0	0	0	0	0	0	0	0	0	0	0	0	0	0	0	1	3
72	0	0	1	0	0	0	0	0	0	0	0	1	0	0	0	0	1	1	4
73	0	0	0	0	0	0	1	0	0	1	0	1	0	0	0	0	0	3	2
74	1	0	0	0	0	0	0	0	0	0	0	2	0	0	0	0	0	3	3
75	0	0	0	0	1	0	0	0	0	1	0	0	0	1	0	0	1	3	4
76	0	0	0	0	0	0	0	0	0	0	0	0	0	0	0	0	0	1	2
77	0	0	0	0	1	0	0	0	0	0	0	0	0	0	0	0	0	0	0
78	0	0	0	0	0	0	0	0	0	0	0	0	0	0	0	0	1	0	1
79	0	0	0	0	0	0	0	0	0	0	0	0	0	0	0	0	0	0	0
80 AND OVER	0	0	0	0	0	0	0	0	0	0	0	0	0	0	0	0	0	0	0
TOTAL	260	190	692	66	1222	395	542	3328	93	3309	23	5024	1	1333	66	148	2889	13793	16682

P17

END OF PERIOD STOCK POPULATION

01/01/82 12/31/82

TOTAL SENTENCE LENGTH

EDUCATION	6 MONTHS		6 MO-1 YR		1 YR-2 YR		2 YR-5 YR		5 YR-10 YR		10 YRS +		LIFE/DEATH		NOT REP/SK		TOTAL		TOTAL
	MIS	FEL	MIS	FEL	MIS	FEL	MIS	FEL	MIS	FEL	MIS	FEL	MIS	FEL	MIS	FEL	MIS	FEL	
NO SCHOOLING	0	0	7	0	6	1	1	9	0	12	0	25	0	14	0	3	14	64	78
1ST GRADE	1	0	2	0	2	0	1	3	0	4	0	12	0	3	0	1	6	23	29
2ND GRADE	1	0	2	0	4	1	2	7	0	8	0	37	0	5	0	1	9	59	68
3RD GRADE	1	0	12	1	8	0	4	17	0	19	0	43	0	16	0	2	25	98	123
4TH GRADE	2	1	7	0	13	5	5	27	0	30	1	65	0	28	0	2	28	158	186
5TH GRADE	4	2	7	0	17	2	4	21	2	40	0	96	0	26	0	2	34	189	223
6TH GRADE	6	3	25	2	29	9	11	64	1	86	1	158	0	53	1	4	74	379	453
7TH GRADE	11	6	35	3	62	15	37	166	6	165	0	258	0	64	2	8	153	685	838
8TH GRADE	29	25	79	8	152	45	80	447	17	439	5	640	0	180	9	22	371	1806	2177
9TH GRADE	47	30	96	12	237	76	112	654	18	624	4	965	1	214	7	20	522	2595	3117
10TH GRADE	43	38	133	6	250	56	107	622	22	624	4	907	0	238	9	18	568	2509	3077
11TH GRADE	47	27	117	5	180	58	65	447	9	448	2	637	0	172	8	14	428	1808	2236
12TH GRADE	54	42	137	22	189	101	89	634	14	597	3	879	0	255	11	26	497	2556	3053
1 YEAR COLLEGE	6	5	6	4	25	6	5	66	2	68	1	105	0	28	1	4	46	286	332
2 YEARS COLLEGE	3	8	9	1	28	14	11	80	2	72	2	110	0	15	1	4	56	304	360
3 YEARS COLLEGE	1	2	4	0	7	1	3	28	0	19	0	35	0	7	0	1	15	93	108
4 OR MORE YRS COL.	4	1	3	2	10	3	4	25	0	41	0	37	0	12	2	3	23	124	147
NOT REPORTED	0	0	1	0	3	2	1	11	0	13	0	15	0	3	15	13	20	57	77
TOTAL	260	190	682	66	1222	395	542	3328	93	3309	23	5024	1	1333	66	148	2889	13793	16682

P17

END OF PERIOD STOCK POPULATION

01/01/82 12/31/82

MARITAL STATUS	TOTAL SENTENCE LENGTH														TOTAL	TOTAL			
	6 MONTHS		6 MO-1 YR		1 YR-2 YR		2 YR-5 YR		5 YR-10 YR		10 YRS +		LIFE/DEATH				NOT REP/SK		
	MIS	FEL	MIS	FEL	MIS	FEL	MIS	FEL	MIS	FEL	MIS	FEL	MIS	FEL			MIS	FEL	
SINGLE	132	112	337	37	705	229	325	2127	56	1998	12	2618	0	567	30	68	1597	7756	9353
MARRIED	54	39	146	19	247	79	102	653	19	665	6	1420	0	498	6	28	580	3401	3981
SEPARATED	37	23	100	10	128	45	54	262	10	261	3	368	0	75	5	16	337	1060	1397
DIVORCED	34	16	86	0	126	37	53	257	5	335	1	441	1	110	9	19	315	1215	1530
WIDOWED	3	0	13	0	13	5	7	21	1	28	0	130	0	59	0	4	37	247	284
OTHER	0	0	0	0	0	0	0	0	0	0	0	0	0	0	0	0	0	0	0
NOT REPORTED	0	0	0	0	3	0	1	8	2	22	1	47	0	24	16	13	23	114	137
TOTAL	260	190	682	66	1222	395	542	3328	93	3309	23	5024	1	1333	66	148	2889	13793	16682

AVERAGE POPULATION  
OCTOBER THRU DECEMBER 1982

PRESENT LOCATION

INSTITUTIONS

CENTRAL PRISON	1342
CORR. CTR. FOR WOMEN	635
OTHER WOMEN	
CALEDONIA	798
ODOM	554
HALIFAX	160
PIEDMONT CORR CTR	556

YOUTH INSTITUTIONS

WESTERN CORR. CENTER	503
BURKE	54
SANDHILLS YTH CTR	217
HARNETT	652
POLK	616
MORRISON YOUTH	354
FOUNTAIN YOUTH	188

EASTERN AREA

CARTERET	157
CURRITUCK	191
CUPLIN	103
GATES	153
GOLDSBORO YOUTH CTR	67
GREENE	165
MARTIN	121
PENDER	164
PITT	
WASHINGTON	168
NEW HANOVER	265
WAYNE CORR CTR	199

AVERAGE POPULATION  
OCTOBER THRU DECEMBER 1982

PRESENT LOCATION

NORTH CENTRAL AREA

DURHAM	151
FRANKLIN	162
GRANVILLE	86
JOHNSTON	202
NASH ADV CENTER	99
ORANGE	95
PERSON	135
SANFORD ADV. CENTER	84
UMSTEAD YOUTH CTR.	77
VANCE	141
WAKE ADV. CENTER	107
WARREN	83
TRIANGLE CORR CENTER	477

SOUTH CENTRAL AREA

ANSON	120
BLADEN	178
MCCAIN	374
MONTGOMERY	113
MOORE	144
RICHMOND	73
POBESON	244
SAMPSON	144
SCOTLAND	171
COLUMBUS	203

AVERAGE POPULATION  
OCTOBER THRU DECEMBER 1982

PRESENT LOCATION

NORTH PIEDMONT AREA

ALAMANCE	153
CASWELL	164
DAVIDSON	173
DAVIE	159
FORSYTH	136
GUILFORD 1	158
GUILFORD 2	189
RANDOLPH	168
ROCKINGHAM	140
STOKES	138
YADKIN	163
BLANCH	106

SOUTH PIEDMONT AREA

CABARRUS	132
GASTON	124
IREDELL	164
LINCOLN	161
MECKLENBERG 1	195
MECKLENBURG 2	187
ROWAN	196
STANLY	165
UNION	145
CATAWBA	175
CLEVELAND	169

WESTERN AREA

ALEXANDER	124
AVERY	164
CALDWELL	106
CRAIGY	210
HAYWOOD	91
HENDERSON	131
MCDOWELL	137
RUTHERFORD	129
WATAUGA	120
WILKES	149
YANCEY	129

TOTAL 17195



**CONTINUED**

**1 OF 2**

R17

## END OF PERIOD PAROLE POPULATION

01/01/82 12/31/82

CNTY OF SUPERVISION	RACE AND SEX								TOTAL		TOTAL
	WHT-MALE		NON-W MALE		WHT FEMALE		NON-W-FEM		TOTAL		
	MIS	FEL	MIS	FEL	MIS	FEL	MIS	FEL	MIS	FEL	
ALAMANCE	14	18	10	42	0	1	1	4	25	65	90
ALEXANDER	1	9	0	6	0	0	0	0	1	15	16
ALLEGHANY	1	1	0	0	0	0	0	0	1	1	2
ANSON	1	1	3	14	0	0	1	0	5	15	20
ASHE	2	2	0	0	0	0	0	0	2	2	4
AVERY	0	5	0	2	0	0	0	1	0	8	8
BEAUFORT	6	12	7	22	0	0	1	2	14	36	50
BERTIE	0	2	2	15	0	0	2	1	4	18	22
BLADEN	8	4	6	8	0	0	0	2	14	14	28
BRUNSWICK	2	11	0	12	0	0	0	1	2	24	26
BUNCOMBE	8	68	1	37	1	6	0	1	10	112	122
BURKE	7	18	1	3	0	0	0	0	8	21	29
CABARRUS	16	36	11	29	1	2	2	0	30	67	97
CALDWELL	7	21	1	3	0	1	0	0	8	25	33
CAMDEN	0	0	0	3	0	0	0	0	0	3	3
CARTERET	3	18	1	12	0	1	0	0	4	31	35
CASWELL	1	2	2	7	0	0	0	0	3	9	12
CATAWBA	8	42	4	28	1	2	1	1	14	73	87
CHATHAM	1	6	2	5	0	0	0	3	3	14	17
CHEROKEE	1	4	0	1	0	0	0	0	1	5	6
CHOWAN	0	5	6	5	0	0	0	0	6	10	16
CLAY	0	1	0	0	0	0	0	0	0	1	1
CLEVELAND	3	17	5	18	0	3	0	1	8	39	47
COLUMBUS	5	13	9	20	0	0	0	1	14	34	48
GRAVEN	7	10	4	14	0	0	0	0	11	24	35
CUMBERLAND	10	34	12	81	1	4	0	5	23	124	147
CURRITUCK	1	0	0	3	0	1	0	0	1	4	5
DARE	2	7	0	1	0	0	0	0	2	8	10
DAVIDSON	7	26	8	24	3	2	0	1	18	53	71
DAVIE	4	4	1	1	0	1	0	0	5	6	11
DUPLIN	2	13	1	15	0	0	0	1	3	29	32
DURHAM	5	24	5	100	0	0	0	6	10	130	140
EDGECOMBE	1	8	11	25	0	0	0	1	12	34	46
FORSYTH	17	64	28	103	0	3	5	3	50	173	223
FRANKLIN	1	6	6	5	0	0	1	0	8	11	19

END OF PERIOD PAROLE POPULATION

01/01/82 12/31/82

CNTY OF SUPERVISION	RACE AND SEX								TOTAL		TOTAL
	WHT-MALE		NON-W MALE		WHT FEMALE		NON-W-FEM		MIS	FEL	
	MIS	FEL	MIS	FEL	MIS	FEL	MIS	FEL			
GASTON	14	60	7	32	0	3	1	0	22	95	117
GATES	0	1	1	6	0	0	0	0	1	7	8
GRAHAM	0	1	1	0	0	0	0	0	1	1	2
GRANVILLE	0	4	3	16	0	0	0	2	3	22	25
GREENE	1	3	4	7	0	0	0	0	5	10	15
GUILFORD	21	81	24	150	1	3	1	7	47	241	288
HALIFAX	0	11	6	31	0	0	0	2	6	44	50
HARNETT	5	16	7	7	0	0	0	0	12	23	35
HAYWOOD	2	10	0	3	0	1	0	0	2	14	16
HENDERSON	4	23	0	6	0	2	0	0	4	31	35
HERTFORD	1	1	5	12	0	0	0	0	6	13	19
POKE	2	7	3	27	0	0	0	0	5	34	39
HYDE	0	2	0	2	0	0	0	0	0	4	4
IREDELL	8	14	7	15	1	0	1	0	17	29	46
JACKSON	0	4	1	2	0	0	1	0	2	6	8
JOHNSTON	4	11	5	14	0	1	2	1	11	27	38
JONES	0	1	0	7	0	0	0	0	0	8	8
LEE	4	19	5	25	2	0	0	1	11	45	56
LENOIR	6	8	9	33	0	1	0	3	15	45	60
LINCOLN	1	18	1	12	0	1	0	1	2	32	34
MACON	0	1	0	0	0	0	0	0	0	1	1
MADISON	0	3	0	0	0	0	0	0	0	3	3
MARTIN	0	3	2	21	0	0	0	0	2	24	26
MCDOWELL	3	24	0	2	0	0	0	0	3	26	29
MECKLENBURG	16	71	27	213	0	5	3	10	46	299	345
MITCHELL	1	2	0	0	0	0	0	0	1	2	3
MONTGOMERY	1	6	2	5	0	0	0	0	3	11	14
MOORE	4	12	3	21	0	0	2	1	9	34	43
NASH	4	18	10	36	0	2	0	3	14	59	73
NEW HANOVER	12	49	10	66	1	4	1	4	24	123	147
NORTHAMPTON	1	1	4	9	0	0	0	0	5	10	15
ONSLow	5	17	1	14	0	4	0	1	6	36	42
ORANGE	2	16	1	17	0	1	0	0	3	34	37
PAHLICO	3	4	0	0	0	0	0	0	3	4	7
PASQUOTANK	0	4	4	7	1	0	0	0	5	11	16

R17

## END OF PERIOD PAROLE POPULATION

01/01/82 12/31/82

CNTY OF SUPERVISION	RACE AND SEX								TOTAL		TOTAL
	WHT-MALE		NON-W MALE		WHT FEMALE		NON-W-FEM		MIS	FEL	
	MIS	FEL	MIS	FEL	MIS	FEL	MIS	FEL	MIS	FEL	
PFANDER	0	3	1	9	0	0	0	0	1	12	13
PERQUIMANS	2	5	0	8	0	1	0	2	2	16	18
PERSON	0	8	1	13	0	1	0	1	1	23	24
PITT	9	19	14	37	0	5	2	4	25	65	90
POLK	0	10	2	1	0	0	0	0	2	11	13
RANDOLPH	11	27	1	9	0	1	0	0	12	37	49
RICHMOND	1	31	2	31	0	1	1	0	4	63	67
ROBESON	6	20	37	98	0	0	3	7	46	125	171
ROCKINGHAM	19	25	7	19	2	1	0	2	28	47	75
ROWAN	16	29	10	32	0	0	1	1	27	62	89
RUTHERFORD	6	22	8	11	0	3	0	2	14	38	52
SAMPSON	3	21	10	14	0	0	0	3	13	38	51
SCOTLAND	5	11	10	20	0	0	0	2	15	33	48
STANLY	2	16	2	9	0	1	0	1	4	27	31
STOKES	8	10	1	5	0	0	1	0	10	15	25
SURRY	8	26	1	5	2	0	1	0	12	31	43
SWAIN	0	1	1	0	0	0	0	0	1	1	2
TPANSYLVANIA	2	5	0	2	0	1	0	0	2	8	10
TYRRELL	0	0	0	4	0	0	0	0	0	4	4
UNION	5	14	4	21	0	0	0	0	9	35	44
VANCE	2	8	3	26	0	0	0	0	5	34	39
WAKE	5	75	11	148	5	20	1	40	22	283	305
WARREN	0	1	1	4	0	0	0	0	1	5	6
WASHINGTON	0	5	0	4	0	0	0	0	0	9	9
WATAUGA	0	7	0	0	0	0	0	0	0	7	7
WAYNE	4	25	7	34	0	0	0	1	11	60	71
WILKES	26	34	3	6	0	1	0	0	29	41	70
WILSON	4	11	4	26	0	0	2	4	10	41	51
YADKIN	0	9	0	0	1	1	0	1	1	11	12
YANCEY	0	3	0	0	0	1	0	0	0	4	4
ABSCONDED	54	147	57	238	5	18	4	15	120	418	538
OUT OF STATE	72	319	56	274	4	19	5	5	137	616	753
NOT REPORTED	145	5	185	8	8	0	26	2	364	15	379
TOTAL	692	1989	739	2598	40	130	73	164	1544	4881	6425

P17

PAROLE TERMINATIONS

01/01/82 12/31/82

TIME UNDER SUPERVISION

TYPE TERMINATION	1 MO-2 MO		2 MO-4 MO		4 MO-6 MO		6 MO-1 YR		1 YR-2 YR		2 YR-5 YR		5 YRS+		TOTAL		TOTAL	
	MIS	FEL	MIS	FEL	MIS	FEL	MIS	FEL	MIS	FEL	MIS	FEL	MIS	FEL	MIS	FEL		
	649	276	605	176	665	176	2050	758	818	1404	14	485	7	89	4808	3364		8172
COMPLETION																		
VIOLATIONS																		
ABSCONDED	1	0	0	5	3	7	38	92	50	123	16	76	0	2	108	305	413	
ALCOHOL/DRUGS	1	0	4	2	2	2	6	7	4	20	0	1	0	0	17	32	49	
RESIDENCE	0	0	1	0	0	0	1	4	3	1	0	0	0	0	5	6	11	
EMPLOYMENT	0	0	0	1	0	0	4	5	4	6	0	0	0	0	8	12	20	
REFUSED TREATMENT	0	0	0	0	1	0	0	2	1	0	0	0	0	0	2	2	4	
ADMINISTRATIVE	0	0	0	1	0	0	2	2	1	2	0	0	0	0	3	5	8	
ASSAULTIVE	1	0	1	0	0	0	5	14	3	9	0	2	0	0	10	27	37	
RESTITUT. ARREARS	0	0	0	0	0	0	1	6	6	6	0	0	0	0	7	12	19	
OTHER TECHNICAL	0	0	0	1	2	1	3	12	5	14	1	4	0	0	11	32	43	
ARRESTS																		
MURDER 1ST DEGREE	0	0	0	0	0	0	0	0	0	0	0	0	0	0	0	0	0	
MURDER 2ND DEGREE	0	0	0	0	0	0	0	0	0	0	0	0	0	0	0	0	0	
HANSLAUGHTER	0	0	0	0	0	0	0	0	0	1	0	1	0	0	0	2	2	
ROBBERY	0	0	0	0	0	0	0	0	0	0	0	1	0	0	0	1	1	
BURGLARY	0	0	0	0	0	0	0	0	0	0	0	3	0	0	4	18	22	
ASSAULT	0	0	0	0	0	0	1	10	3	5	0	5	0	0	17	71	88	
BREAK & ENT.-LAPCH	0	0	1	1	0	3	9	25	7	37	0	0	0	0	1	6	7	
AUTO THEFT	0	0	0	0	0	0	1	5	0	1	0	0	0	0	0	1	1	
RAPE	0	0	0	0	0	0	0	0	0	0	0	0	0	0	0	0	0	
SEXUAL ASSAULT	0	0	0	0	0	0	0	0	0	0	0	0	0	0	0	0	0	
SEX CRIME -MISC-	0	0	0	0	0	0	0	0	0	0	0	0	0	0	1	4	5	
BURNINGS	0	0	0	0	0	0	0	0	0	1	0	0	0	0	0	0	0	
FORGERY	0	0	0	0	0	0	1	0	0	0	0	0	0	0	0	0	0	
KIDNAPPING & ABDUC	0	0	0	0	0	0	0	0	0	0	0	0	0	0	4	9	13	
NARCOTICS & DRUGS	0	0	0	0	0	0	2	1	2	7	0	1	0	0	3	0	3	
WORTHLESS CHECKS	0	0	1	0	0	0	1	0	1	0	0	0	0	0	1	0	1	
ABAND. & NON-SUPRT	0	0	0	0	0	0	1	0	0	0	0	0	0	0	7	2	9	
TRAFFIC VIOLATIONS	0	0	0	0	0	0	1	1	6	0	0	0	0	0	0	1	5	
DRUNK/DISORDERLY	0	0	0	0	1	1	0	2	0	1	0	0	0	0	1	4	5	
TRESPASS	0	0	0	0	0	0	2	2	1	4	0	0	0	0	3	6	9	
DRIVING DRUNK	0	0	0	0	0	0	2	2	1	4	0	0	0	0	0	7	7	
OTHERS	1	2	8	7	7	8	33	26	0	29	0	4	0	0	49	76	125	
NOT REPORTED	1	2	8	7	7	8	33	26	0	29	0	4	0	0	49	76	125	
TOTAL	653	278	621	194	681	200	2162	977	915	1676	31	589	7	91	5070	4005	9075	

R17

## END OF PERIOD CONDITIONAL RELEASE POPULATION

01/01/82 12/31/82

## RACE AND SEX

CNTY OF SUPERVISION	WHT-MALE		NON-W MALE		WHT FEMALE		NON-W-FEM		TOTAL		TOTAL
	MIS	FEL	MIS	FEL	MIS	FEL	MIS	FEL	MIS	FEL	
ALAMANCE	0	1	0	1	0	0	0	0	0	2	2
ALEXANDER	0	0	0	0	0	0	0	0	0	0	0
ALLEGHANY	0	0	0	0	0	0	0	0	0	0	0
ANSON	0	1	0	0	0	0	0	0	0	1	1
ASHE	0	0	0	0	0	0	0	0	0	0	0
AVERY	0	0	0	0	0	0	0	0	0	0	0
BEAUFORT	0	1	0	1	0	0	0	0	0	2	2
BERTIE	0	1	0	2	0	0	0	0	0	3	3
BLADEN	0	0	0	0	0	0	1	0	1	0	1
BRUNSWICK	0	4	0	0	0	0	0	0	0	4	4
BUNCOMBE	2	5	0	4	0	1	0	0	2	10	12
BURKE	0	3	0	0	0	0	0	0	0	3	3
CABARRUS	0	4	0	1	0	0	1	0	1	5	6
CALDWELL	2	2	0	0	0	0	0	0	2	2	4
CAMDEN	0	0	0	0	0	0	0	0	0	0	0
CARTERET	0	2	1	0	0	0	0	0	1	2	3
CASWELL	0	0	0	0	0	0	0	0	0	0	0
CATAWBA	0	3	0	4	0	0	0	0	0	7	7
CHATHAM	0	1	0	2	0	0	0	0	0	3	3
CHEROKEE	0	0	0	0	0	0	0	0	0	0	0
CHOWAN	0	0	0	1	0	0	0	0	0	1	1
CLAY	0	0	0	0	0	0	0	0	0	0	0
CLEVELAND	0	2	0	0	0	0	0	0	0	2	2
COLUMBUS	0	0	0	0	0	0	0	0	0	0	0
CRAVEN	0	1	0	1	0	0	0	0	0	2	2
CUMBERLAND	0	11	0	15	0	1	0	0	0	27	27
CURRITUCK	0	1	0	0	0	0	0	0	0	1	1
DARE	0	0	0	0	0	0	0	0	0	0	0
DAVIDSON	0	5	0	0	0	0	0	0	0	5	5
DAVIE	0	0	0	0	0	0	0	0	0	0	0
DUPLIN	0	1	0	1	0	0	0	0	0	2	2
DURHAM	0	5	0	10	0	0	0	0	0	15	15
EDGECOMBE	0	0	0	2	0	0	0	0	0	2	2
FORSYTH	1	9	0	9	0	1	0	0	1	19	20
FRANKLIN	0	0	0	0	0	0	0	0	0	0	0

P17

END OF PERIOD CONDITIONAL RELEASE POPULATION

01/01/82 12/31/82

CNTY OF SUPERVISION	RACE AND SEX								TOTAL		TOTAL
	WHT-MALE		NON-W MALE		WHT FEMALE		NON-W-FEM		MIS	FEL	
	MIS	FEL	MIS	FEL	MIS	FEL	MIS	FEL			
GASTON	0	5	0	3	0	1	0	0	0	9	9
GATES	0	0	0	0	0	0	0	0	0	0	0
GRAHAM	0	1	0	0	0	0	0	0	0	1	1
GRANVILLE	0	0	0	0	0	0	0	0	0	0	0
GREENE	0	0	0	0	0	0	0	0	0	0	0
GUILFORD	0	10	0	15	0	0	0	0	0	25	25
HALIFAX	0	1	0	1	0	0	0	0	0	2	2
HARNETT	0	1	0	4	0	0	0	0	0	5	5
HAYWOOD	0	1	0	0	0	0	0	0	0	1	1
HENDERSON	0	2	0	0	0	0	0	0	0	2	2
HERTFORD	0	0	0	2	0	0	0	0	0	2	2
Hoke	0	0	0	0	0	0	0	0	0	0	0
HYDE	0	0	0	0	0	0	0	0	0	0	0
IREDELL	0	3	0	1	0	0	0	0	0	4	4
JACKSON	0	1	0	0	0	0	0	0	0	1	1
JOHNSTON	0	0	0	2	0	0	0	0	0	2	2
JONES	0	0	0	0	0	0	0	0	0	0	0
LEE	0	4	0	0	0	0	0	0	0	4	4
LENOIR	0	2	0	0	0	0	0	0	0	2	2
LINCOLN	0	1	0	0	0	0	0	0	0	1	1
MACON	0	0	0	0	0	0	0	0	0	0	0
MADISON	0	0	0	0	0	0	0	0	0	0	0
MARTIN	0	0	0	1	0	0	0	0	0	1	1
MCDOWELL	0	2	0	0	0	0	0	0	0	2	2
MECKLENBURG	0	10	0	19	0	1	0	0	0	30	30
MITCHELL	0	0	0	0	0	0	0	0	0	0	0
MONTGOMERY	0	1	0	0	0	0	0	0	0	1	1
MOORE	0	2	0	2	0	0	0	0	0	4	4
NASH	0	2	0	2	0	0	0	0	0	4	4
NEW HANOVER	0	6	1	6	0	0	0	3	1	15	16
NORTHAMPTON	0	0	0	1	0	0	0	0	0	1	1
ONslow	0	1	0	0	0	0	0	0	0	1	1
ORANGE	0	1	0	1	0	0	0	1	0	3	3
PAMLICO	0	0	0	0	0	0	0	0	0	0	0
PASQUOTANK	0	0	0	0	0	0	0	0	0	0	0

R17

END OF PERIOD CONDITIONAL RELEASE POPULATION

01/01/82 12/31/82

RACE AND SEX

CNTY OF SUPERVISION	WHT-MALE		NON-W MALE		WHT FEMALE		NON-W-FEM		TOTAL		TOTAL
	MIS	FEL	MIS	FEL	MIS	FEL	MIS	FEL	MIS	FEL	
FENDEP	0	1	0	2	0	0	0	0	0	3	3
PERQUIMANS	0	0	0	0	0	0	0	0	0	0	0
PERSON	0	1	0	0	0	0	0	0	0	1	1
PITT	0	1	0	6	0	0	0	0	0	7	7
POLK	0	1	0	0	0	0	0	0	0	1	1
RANDOLPH	1	6	0	2	0	1	0	0	1	9	10
RICHMOND	1	2	0	1	0	1	0	0	1	4	5
ROBESON	0	2	0	8	0	0	0	0	0	10	10
ROCKINGHAM	0	7	0	2	0	0	0	0	0	9	9
ROWAN	0	2	1	2	0	0	0	0	1	4	5
RUTHERFORD	0	2	0	0	0	0	0	0	0	2	2
SAMPSON	0	1	0	0	0	0	0	0	0	1	1
SCOTLAND	0	1	0	0	0	0	0	0	0	1	1
STANLY	0	2	0	1	0	1	0	0	0	4	4
STOKES	0	1	0	0	0	0	0	0	0	1	1
SURRY	1	9	0	2	0	0	0	0	1	11	12
SWAIN	0	0	0	0	0	0	0	0	0	0	0
TRANSYLVANIA	0	0	0	0	0	0	0	0	0	0	0
TYRRELL	0	0	0	0	0	0	0	0	0	0	0
UNION	0	2	0	1	0	0	0	0	0	3	3
VANCE	0	1	0	1	0	0	0	0	0	2	2
WAKE	0	10	0	10	0	0	0	2	0	22	22
WARREN	0	0	0	0	0	0	0	0	0	0	0
WASHINGTON	0	1	0	0	0	0	0	0	0	1	1
WATAUGA	0	0	0	0	0	0	0	0	0	0	0
WAYNE	0	1	0	0	0	0	0	0	0	1	1
WILKES	0	0	1	0	0	0	0	0	1	0	1
WILSON	0	0	0	3	0	0	0	0	0	3	3
YADKIN	0	1	0	0	0	0	0	0	0	1	1
YANCEY	0	0	0	0	0	0	0	0	0	0	0
ABSCONDED	2	29	1	30	0	1	0	0	3	60	63
OUT OF STATE	2	35	2	22	1	1	0	1	5	59	64
NOT REPORTED	0	0	0	0	0	0	0	0	0	0	0
TOTAL	12	239	7	207	1	10	2	7	22	463	485



F17

END OF PERIOD CONDITIONAL RELEASE TERMINATIONS

01/01/82 12/31/82

TIME UNDER SUPERVISION

TYPE TERMINATION	1 MO-2 MO		2 MO-4 MO		4 MO-6 MO		6 MO-1 YR		1 YR-2 YR		2 YR-5 YR		5 YRS +		TOTAL		TOTAL	
	MIS	FEL	MIS	FEL	MIS	FEL	MIS	FEL	MIS	FEL	MIS	FEL	MIS	FEL	MIS	FEL		
COMPLETION	0	0	0	0	2	1	3	28	31	328	4	79	0	10	40	446	486	
VIOLATIONS																		
ABSCONDED	0	0	0	0	0	0	0	7	5	27	1	12	0	0	6	46	52	
ALCOHOL/DRUGS	0	0	0	0	0	0	1	2	1	5	0	0	0	0	2	7	9	
RESIDENCE	0	0	0	0	0	0	0	0	0	1	0	0	0	0	0	1	1	
EMPLOYMENT	0	0	0	0	0	0	0	0	0	5	0	0	0	0	0	5	5	
REFUSED TREATMENT	0	0	0	0	0	0	0	0	0	0	0	0	0	0	0	0	0	
ADMINISTRATIVE	0	0	0	0	0	0	0	0	0	1	0	0	0	0	0	1	1	
ASSAULTIVE	0	0	0	0	0	0	0	0	2	4	0	0	0	0	2	4	6	
RESTITUT. ARREARS	0	0	0	0	1	0	0	0	2	0	0	0	0	0	3	0	3	
OTHER TECHNICAL	0	0	0	0	0	0	0	2	2	3	0	0	0	0	2	5	7	
ARRESTS																		
MURDER 1ST DEGREE	0	0	0	0	0	0	0	0	0	0	0	0	0	0	0	0	0	
MURDER 2ND DEGREE	0	0	0	0	0	0	0	0	0	0	0	0	0	0	0	0	0	
HANSLAUGHTER	0	0	0	0	0	0	0	0	0	1	0	0	0	0	0	1	1	
ROBBERY	0	0	0	0	0	0	0	0	0	1	0	1	0	0	0	2	2	
BURGLARY	0	0	0	0	0	0	0	0	0	0	0	0	0	0	0	0	0	
ASSAULT	0	0	0	0	0	0	0	1	0	1	1	0	0	0	1	2	3	
BREAK & ENT.-LAPCN	0	0	0	1	0	1	1	4	6	24	0	1	0	0	7	31	38	
AUTO THEFT	0	0	0	0	0	0	0	1	0	2	0	0	0	0	0	3	3	
RAPE	0	0	0	0	0	0	0	0	0	0	0	0	0	0	0	0	0	
SEXUAL ASSAULT	0	0	0	0	0	0	0	0	0	0	0	0	0	0	0	0	0	
SEX CRIME -MISC-	0	0	0	0	0	0	0	0	0	0	0	0	0	0	0	0	0	
BURNINGS	0	0	0	0	0	0	0	0	0	0	0	0	0	0	0	0	0	
FORGERY	0	0	0	0	0	0	0	0	0	3	0	0	0	0	0	3	3	
KIDNAPPING & ABDUC	0	0	0	0	0	0	0	0	0	0	0	0	0	0	0	0	0	
NARCOTICS & DRUGS	0	0	0	0	0	0	0	0	0	0	0	1	0	0	0	1	1	
WORTHLESS CHECKS	0	0	0	0	0	0	0	0	0	1	0	0	0	0	0	1	1	
ABAND. & NON-SUPRT	0	0	0	0	0	0	0	1	0	0	0	0	0	0	0	1	1	
TRAFFIC VIOLATIONS	0	0	0	0	0	0	0	1	0	2	0	0	0	0	0	3	3	
DRUNK/DISORDERLY	0	0	0	0	0	0	0	0	0	0	0	0	0	0	0	0	0	
TRESPASS	0	0	0	0	0	0	0	0	0	1	0	0	0	0	0	1	1	
DRIVING DRUNK	0	0	0	0	0	0	0	0	0	3	0	0	0	0	0	3	3	
OTHERS	0	0	0	0	0	0	0	0	1	0	0	0	0	0	1	0	1	
NOT REPORTED	0	0	0	0	0	1	1	4	1	16	0	1	0	0	2	22	24	
TOTAL	0	0	0	1	3	3	6	51	51	429	6	95	0	10	66	589	655	

P17

RULE VIOLATIONS 01/01/82 12/31/82

LOCATION	MINOR*		SECURITY		PERSON		PROPERTY		CHM ABUSE		INSUBORD		OTHER		TOTAL		TOTAL
	MIN**	MAJ	MIN	MAJ	MIN	MAJ	MIN	MAJ	MIN	MAJ	MIN	MAJ	MIN	MAJ	MIN	MAJ	
INSTITUTIONS																	
CENTRAL PRISON	160	34	5	254	1	172	4	91	1	97	14	410	0	27	185	1085	1270
CORR CTR FOR WOMEN	22	22	3	71	1	33	0	16	1	50	15	117	1	7	43	316	359
CALEDONIA	65	82	2	287	0	118	13	129	0	81	26	809	1	29	107	1535	1642
OCOM	56	21	5	117	0	22	2	43	0	34	23	191	0	27	86	455	541
HALIFAX	8	1	0	11	0	2	1	3	0	5	1	16	0	1	10	39	49
PIEDMONT CORR CTR	36	12	4	139	0	58	2	88	2	27	13	163	0	9	57	496	553
YOUTH SERVICES																	
WESTERN CORR CTP	18	67	1	248	0	106	1	83	0	19	3	618	0	16	23	1157	1180
BURKE	53	1	3	17	0	2	3	7	0	7	6	5	0	1	65	40	105
SANDHILLS	34	15	0	48	1	24	2	21	0	55	5	87	1	13	43	263	306
HARNETT	133	16	28	276	7	91	32	34	7	33	468	632	52	125	727	1207	1934
POLK	141	393	15	428	1	309	19	144	1	54	311	1706	2	107	490	3141	3631
MORRISON	82	66	9	164	3	82	5	69	0	58	46	471	1	42	146	952	1098
FOUNTAIN	98	50	46	59	17	39	17	30	9	14	97	94	3	26	277	312	589
EASTERN AREA																	
CARTEPET	68	13	3	22	1	2	2	4	0	46	58	39	1	8	133	134	267
CURRITUCK	10	7	0	16	0	5	1	9	0	6	7	65	0	0	18	108	126
DUPLIN	0	10	0	11	0	4	0	5	0	18	0	26	0	3	0	77	77
GATES	24	1	2	23	1	2	1	11	0	26	22	48	0	4	50	115	165
GOLDSBORO YOUTH CT	24	30	0	25	0	10	0	7	0	27	0	61	0	11	24	171	195
GREENE	5	7	0	5	0	2	1	5	0	21	4	34	0	1	10	75	85
MARTIN	3	4	1	14	0	3	0	3	0	19	3	26	0	2	7	71	78
FENDER	12	16	0	26	0	18	0	4	0	8	16	144	0	11	28	227	255
WASHINGTON	22	12	0	21	0	13	0	11	0	15	0	113	0	8	22	193	215
NEW HANOVER	12	61	1	39	0	10	2	11	0	38	14	122	0	26	29	307	336
WAYNE CORR CTP	18	23	0	39	0	33	4	16	0	4	12	107	0	10	34	232	266
NORTH CENTRAL																	
DURHAM	4	2	0	22	0	3	0	1	0	24	0	30	0	1	4	83	87
FRANKLIN	0	19	0	24	0	8	0	15	0	6	0	140	0	10	0	222	222
GRANVILLE	0	8	0	11	0	11	0	8	0	16	0	83	0	2	0	139	139
JOHNSTON	7	25	0	41	0	11	1	17	0	12	11	174	0	9	19	289	308
NASH ADV CTR	5	5	0	13	0	2	0	1	0	20	0	24	0	3	5	68	73
ORANGE	5	4	0	8	0	3	0	2	2	14	0	23	0	1	7	55	62
PERSON	0	26	0	28	0	7	0	13	0	45	4	76	0	22	4	217	221
SANFORD ADV CTR	2	6	0	14	0	3	1	8	0	31	16	16	0	2	19	80	99
UMSTEAD YOUTH CTR	44	12	0	13	0	7	0	6	1	35	1	36	0	13	46	122	168
VANCE	5	9	0	20	0	5	0	4	1	18	0	85	0	6	6	147	153
WAKE ADV CTR	17	4	0	24	0	1	0	2	0	15	9	14	0	8	26	68	94
WARREN	0	14	0	30	0	29	0	18	0	8	0	187	1	6	1	292	293
GOLDSBORO STATE HO	0	0	0	0	0	0	0	0	0	0	0	0	0	0	0	0	0
CORTHEA DIX	0	0	0	0	0	0	0	0	0	0	0	0	0	0	0	0	0
TRIANGLE CORR CFNT	26	49	5	77	0	15	10	41	0	73	46	375	0	52	87	682	769

LOCATION	TYPE VIOLATION																TOTAL
	MINOP*		SECURITY		PERSON		PROPERTY		CHM ABUSE		INSUBORD		OTHER		TOTAL		
	MIN**	MAJ	MIN	MAJ	MIN	MAJ	MIN	MAJ	MIN	MAJ	MIN	MAJ	MIN	MAJ	MIN	MAJ	
SOUTH CENTRAL																	
ANSON	1	3	0	29	0	7	0	2	0	40	0	33	0	3	1	117	118
BLADEN	5	5	0	23	0	7	0	5	0	41	1	44	0	10	6	135	141
MCCAIN COPP CTR	10	13	2	51	0	65	0	19	0	23	2	248	0	14	14	433	447
MONTGOMERY	0	10	0	19	0	9	0	9	0	18	0	31	0	11	0	107	107
MOORE	19	11	0	24	0	4	0	3	1	6	0	73	0	5	20	126	146
RICHMOND	0	2	0	9	0	2	0	0	0	7	0	8	0	8	0	32	32
ROBESON	3	9	0	46	0	12	0	10	0	42	0	87	1	3	4	209	213
SAMPSON	12	9	2	11	0	5	2	2	0	25	4	98	0	4	20	154	174
SCOTLAND	0	2	0	3	0	6	0	8	0	8	0	95	0	1	0	123	123
COLUMBUS	0	10	0	25	0	10	0	12	0	22	2	60	0	20	2	159	161
NORTH PIEDMONT																	
ALAMANCE	1	10	0	29	0	5	0	2	0	51	0	60	0	6	1	162	163
CASWELL	24	4	0	21	0	4	0	0	1	10	15	49	0	0	40	88	128
DAVIDSON	0	8	0	9	0	12	0	6	0	42	0	101	0	4	0	182	182
DAVIE	2	11	0	40	0	19	1	14	0	10	0	105	0	7	3	206	209
FORSYTH ADV CTR	21	4	0	32	0	1	0	3	0	25	3	16	0	0	24	81	105
GUILFORD 1	0	2	0	31	0	1	0	2	0	46	0	21	0	2	0	105	105
GUILFORD 2	12	5	0	28	0	10	2	7	0	20	3	80	0	3	17	153	170
RANDOLPH	2	14	0	23	0	8	0	3	0	9	0	34	0	0	2	91	93
ROCKINGHAM	13	8	0	28	0	1	1	3	0	13	24	70	0	4	38	127	165
STOKES	9	5	0	8	0	0	0	3	0	24	2	32	0	2	11	74	85
YADKIN	52	26	0	12	0	4	0	11	0	9	0	42	0	4	52	108	160
BLANCH	0	7	0	111	0	27	0	62	0	1	0	152	0	3	0	363	363

R17

## RULE VIOLATIONS

01/01/82 12/31/82

LOCATION	MINOR*		SECURITY		PERSON		PROPERTY		CHM ABUSE		INSUBORD		OTHER		TOTAL		TOTAL	
	TYPE VIOLATION																	
	MIN**	MAJ	MIN	MAJ	MIN	MAJ	MIN	MAJ	MIN	MAJ	MIN	MAJ	MIN	MAJ	MIN	MAJ		
SOUTH PIEDMONT																		
CABARRUS	0	2	0	26	0	2	0	2	0	26	0	23	0	2	0	83	83	
GASTON	63	2	8	33	0	7	4	8	0	24	19	33	0	1	94	108	202	
IREDELL	3	1	2	17	0	8	0	6	1	28	3	38	0	2	9	100	109	
LINCOLN	0	1	0	18	0	15	0	9	0	45	1	29	0	2	1	119	120	
CHAPLOTTE ADV CTR	2	3	0	36	0	5	0	2	0	41	1	10	0	6	3	103	106	
MECKLENBURG 2	0	5	0	25	0	21	0	11	0	26	0	63	0	13	0	164	164	
ROWAN	1	0	0	20	0	3	0	2	0	35	0	37	0	1	1	98	99	
STANLY	0	1	0	28	0	17	0	4	0	12	0	82	0	5	0	149	149	
UNION	0	3	0	10	0	8	0	1	0	14	0	53	0	2	0	91	91	
CATAWBA	1	0	0	21	0	2	0	7	0	35	1	12	0	1	2	78	80	
CLEVELAND	4	5	4	21	0	7	1	7	0	21	2	54	0	2	11	113	124	
WESTERN AREA																		
ALEXANDER	2	2	0	14	0	3	0	3	0	26	0	33	0	0	2	81	83	
AVERY	5	11	0	20	0	6	0	5	0	7	4	96	0	4	9	149	158	
CALDWELL	4	0	2	11	0	2	0	0	0	16	1	26	0	0	7	55	62	
CRAGGY	3	20	0	13	0	19	0	21	0	20	0	139	0	4	3	236	239	
HAYWOOD	0	4	0	12	0	0	0	2	0	26	0	6	0	0	0	50	50	
HENDERSON	0	2	0	23	0	5	0	1	0	25	0	24	0	8	0	88	88	
MCDOWELL	4	10	2	21	0	8	0	12	0	18	1	59	0	3	7	131	138	
RUTHERFORD	0	4	0	13	0	1	0	0	0	19	0	9	0	0	0	46	46	
WATAUGA	5	9	0	15	0	15	2	8	0	11	4	82	1	1	12	141	153	
WILKES	4	4	0	23	2	4	0	4	0	66	3	18	0	1	9	120	129	
YANCEY	0	5	0	23	0	6	0	1	0	12	0	36	0	6	0	89	89	
NOT REPORTED	1	0	0	0	0	0	0	0	0	0	0	1	0	0	1	1	2	
TOTAL	1507	1419	155	3739	35	1648	137	1278	28	2124	1337	9869	65	823	3264	20900	24164	

52

SUM OF ALL VIOLATIONS.  
MULTIPLE VIOLATIONS MAY  
OCCUR IN ANY GIVEN INCIDENT.

\* REFERS TO OFFENSE CATEGORY  
\*\* REFERS TO SEVERITY OF INCIDENT

F17

ON WORK RELEASE

01/01 #2 12/31/82

LOCATION	HOW PLACED						TOTAL
	PAROLE		COURT		TOTAL		
	MIS	FEL	MIS	FEL	MIS	FEL	
INSTITUTIONS							
CENTRAL PRISON	0	0	0	0	0	0	0
CCRR CTP FOR WOMEN	3	57	17	26	20	83	103
CALEDONIA	0	0	0	0	0	0	0
ODOM	0	0	0	0	0	0	0
HALIFAX	0	0	0	0	0	0	0
PIEDMONT CORR CTR	0	0	0	0	0	0	0
YOUTH SERVICES							
WESTERN CORR CTP	0	0	0	0	0	0	0
BURKE	0	0	0	0	0	0	0
SANDHILLS	0	0	0	0	0	0	0
HARNETT	0	0	0	0	0	0	0
POLK	0	0	0	0	0	0	0
MORRISON	0	0	0	0	0	0	0
FOUNTAIN	0	5	1	9	1	14	15
EASTERN AREA							
CARTERET	2	56	7	37	9	93	102
CURRITUCK	0	0	0	0	0	0	0
DUPLIN	1	17	3	13	4	30	34
GATES	6	33	10	9	16	42	58
GOLDSBORO YOUTH CT	2	23	1	15	3	38	41
GREENE	1	35	13	28	14	63	77
MARTIN	1	54	11	14	12	68	80
PENDER	0	0	0	0	0	0	0
WASHINGTON	0	0	0	0	0	0	0
NEW HANOVER	0	46	22	30	22	76	98
WAYNE CORR CTR	0	0	0	0	0	0	0
NORTH CENTRAL							
DURHAM	1	32	10	38	11	70	81
FRANKLIN	0	0	0	0	0	0	0
SPANVILLE	3	17	6	13	9	30	39
JOHNSTON	0	0	0	0	0	0	0
NASH ADV CTR	6	44	18	33	24	77	101
ORANGE	4	25	18	19	22	44	66
PERSON	3	26	8	6	11	32	43
SANFORD ADV CTR	10	76	17	13	27	89	116
UMSTEAD YOUTH CTR	0	0	0	0	0	0	0
VANCE	0	0	0	0	0	0	0
WAKE ADV CTR	0	43	33	69	33	112	145
WARREN	0	0	0	0	0	0	0
GOLDSBORO STATE HO	0	0	0	0	0	0	0
DORTHEA DIX	0	0	0	0	0	0	0
TRIANGLE CORR CENT	3	60	49	80	52	140	192

R17

## ON WORK RELEASE

01/01/82 12/31/82

LOCATTON	HOW PLACED						TOTAL
	PAROLE		COURT		TOTAL		
	MIS	FEL	MIS	FEL	MIS	FEL	
SOUTH CENTRAL							
ANSON	2	19	14	24	16	43	59
BLADEN	2	39	8	13	10	52	62
HCCAIN CORR CTR	0	0	0	0	0	0	0
MONTGOMERY	4	30	5	8	9	38	47
MOORE	0	0	0	0	0	0	0
RICHMOND	2	18	10	15	12	33	45
ROBESON	2	49	32	56	34	105	139
SAMPSON	0	0	0	0	0	0	0
SCOTLAND	0	0	0	0	0	0	0
CCLUMRUS	0	0	0	0	0	0	0
NORTH PIEDMONT							
ALAMANCE	2	32	55	33	57	65	122
CASWELL	0	0	0	0	0	0	0
DAVIDSON	3	25	13	15	16	40	56
DAVIE	0	0	0	0	0	0	0
FORSYTH ADV CTR	4	21	46	59	50	140	190
GUILFORD 1	5	72	42	113	47	185	232
GUILFORD 2	0	0	0	0	0	0	0
RANDOLPH	0	0	0	0	0	0	0
ROCKINGHAM	0	0	0	0	0	0	0
STOKES	0	0	3	1	3	1	4
YADKIN	0	0	0	0	0	0	0
BLANCH	0	0	0	0	0	0	0

54

P17

ON WORK RELEASE

01/01/82 12/31/82

LOCATION	HOW PLACED						TOTAL
	PAROLE		COURT		TOTAL		
	MIS	FEL	MIS	FEL	MIS	FEL	
SOUTH PIEDMONT							
CABARRUS	5	34	31	10	36	44	80
GASTON	2	22	5	3	7	25	32
IREDELL	0	0	0	0	0	0	0
LINCOLN	6	55	8	20	14	75	89
CHARLOTTE ADV CTR	6	109	36	57	42	166	208
MECKLENBURG 2	0	0	0	0	0	0	0
ROWAN	10	41	59	21	69	62	131
STANLY	0	0	0	0	0	0	0
UNION	0	0	0	0	0	0	0
CATAWBA	9	78	16	30	25	108	133
CLEVELAND	0	0	0	0	0	0	0
WESTERN AREA							
ALEXANDER	1	15	7	9	8	24	32
AVERY	0	0	0	0	0	0	0
CALDWELL	0	9	5	13	5	22	27
CRAGGY	0	0	0	0	0	0	0
HAYWOOD	10	20	12	14	22	34	56
HENDERSON	2	46	20	37	22	83	105
MCDOWELL	0	1	0	1	0	2	2
RUTHERFORD	4	47	13	27	17	74	91
WATAUGA	2	4	0	3	2	7	9
WILKES	5	31	19	8	24	39	63
YANCEY	0	0	0	0	0	0	0
NOT REPORTED	0	0	0	0	0	0	0
TOTAL	134	1526	703	1042	837	2568	3405

R17

OFF WORK RELEASE

01/01/82 12/31/82

LOCATION	WHY REMOVED																TOTAL	TOTAL		
	DISCHARGE		PAROLE		ESCAPE		INFRAC		ADMIN		HEALTH		JOB		OTHER				TOTAL	
	MIS	FEL	MIS	FEL	MIS	FEL	MIS	FEL	MIS	FEL	MIS	FEL	MIS	FEL	MIS	FEL			MIS	FEL
INSTITUTIONS																				
CENTRAL PRISON	0	0	0	0	0	0	0	0	0	0	0	0	0	0	0	0	0	0	0	
COPR CTR FOR WOMEN	3	11	9	59	3	3	4	15	0	9	0	0	1	0	0	0	0	0		
CALEDONIA	0	0	0	0	0	0	0	0	0	0	0	0	0	0	0	2	20	108		
ODOH	0	0	0	0	0	0	0	0	0	0	0	0	0	0	0	0	0	0		
HALIFAX	0	0	0	0	0	0	0	0	0	0	0	0	0	0	0	0	0	0		
PIEDMONT CORR CTR	0	0	0	0	0	0	0	0	0	0	0	0	0	0	0	0	0	0		
YOUTH SERVICES																				
WESTERN CORR CTR	0	0	0	0	0	0	0	0	0	0	0	0	0	0	0	0	0	0		
BURKE	0	0	0	0	0	0	0	0	0	0	0	0	0	0	0	0	0	0		
SANDHILLS	0	0	0	0	0	0	0	0	0	0	0	0	0	0	0	0	0	0		
HARNETT	0	0	0	0	0	0	0	0	0	0	0	0	0	0	0	0	0	0		
POLK	0	0	0	0	0	0	0	0	0	0	0	0	0	0	0	0	0	0		
MORRISON	0	0	0	0	0	0	0	0	0	0	0	0	0	0	0	0	0	0		
FOUNTAIN	0	0	0	6	0	0	0	2	1	3	0	0	0	0	1	0	2	11		
EASTERN AREA																				
CARTERET	2	11	2	38	0	0	1	5	0	11	0	2	2	14	0	0	7	81		
CURRITUCK	0	0	0	0	0	0	0	0	0	0	0	0	0	0	0	0	0	0		
DUPLIN	1	0	1	12	0	0	1	1	1	4	0	0	0	0	0	0	0	0		
GATES	2	2	11	23	0	2	0	4	1	8	0	0	1	11	0	0	15	50		
GOLDSBORO YOUTH CT	0	4	3	17	0	1	0	1	0	6	0	0	1	11	0	0	15	50		
GREENE	1	5	9	27	2	1	0	11	1	11	0	1	0	1	0	2	3	33		
MARTIN	0	0	8	28	1	1	3	13	0	6	0	0	1	23	0	0	13	66		
PENDER	0	0	0	0	0	0	0	0	0	0	0	0	1	23	0	0	13	73		
WASHINGTON	0	0	0	0	0	0	0	0	0	0	0	0	0	0	0	0	0	0		
NEW HANOVER	6	5	12	41	1	2	1	5	1	10	0	2	1	7	2	6	24	78		
WAYNE CORR CTR	0	0	0	0	0	0	0	0	0	0	0	0	0	0	0	0	0	0		
NORTH CENTRAL																				
DURHAM	4	7	9	29	0	6	1	7	0	9	0	0	0	4	1	14	15	76		
FRANKLIN	0	0	0	0	0	0	0	0	0	0	0	0	0	0	0	0	0	0		
GRANVILLE	1	1	5	18	0	1	0	0	0	0	0	0	0	0	0	0	0	0		
JOHNSTON	0	0	0	0	0	0	0	0	0	0	0	0	1	4	0	0	10	32		
NASH ADV CTR	3	4	10	50	0	0	1	3	2	21	0	0	0	0	0	0	0	0		
ORANGE	2	5	9	27	1	0	1	3	2	21	0	0	4	8	0	1	20	87		
PERSON	3	2	1	17	0	2	4	8	1	11	0	1	5	10	0	1	22	55		
SANFORD ADV CTR	2	3	18	38	0	2	1	2	6	23	0	0	1	7	0	3	10	50		
UMSTEAD YOUTH CTR	0	0	0	0	0	0	0	0	0	0	0	0	2	15	0	0	29	83		
VANCE	0	0	0	0	0	0	0	0	0	0	0	0	0	0	0	0	0	0		
WAKE ADV CTR	6	13	16	59	0	3	0	0	4	40	0	0	0	0	0	0	0	0		
WARREN	0	0	0	0	0	0	0	0	0	0	0	0	1	3	0	0	27	118		
GOLDSBORO STATE HO	0	0	0	0	0	0	0	0	0	0	0	0	0	0	0	0	0	0		
DORTHEA DIX	0	0	0	0	0	0	0	0	0	0	0	0	0	0	0	0	0	0		
TRIANGLE CORR CENT	7	11	20	40	2	8	9	23	18	66	0	0	4	8	0	4	60	160		



R17

## OFF WORK RELEASE

01/01/82 12/31/82

LOCATION	WHY REMOVED																TOTAL		TOTAL
	DISCHARGE		PAROLE		ESCAPE		INFRAC		ADMIN		HEALTH		JOB		OTHER		TOTAL		
	MIS	FEL	MIS	FEL	MIS	FEL	MIS	FEL	MIS	FEL	MIS	FEL	MIS	FEL	MIS	FEL	MIS	FEL	
SOUTH CENTRAL																			
ANSON	0	7	9	18	0	1	5	5	3	7	0	0	3	9	0	0	20	47	67
BLADEN	1	8	7	30	1	2	1	2	1	9	0	1	1	4	0	1	12	57	69
MCCAIN CORR CTR	0	0	0	0	0	0	0	0	0	0	0	0	0	0	0	0	0	0	0
MONTGOMERY	3	2	2	13	0	0	1	4	2	14	0	0	0	6	0	1	8	40	48
MOORE	0	0	0	0	0	0	0	0	0	0	0	0	0	0	0	0	0	0	0
RICHMOND	2	2	8	22	0	0	0	1	3	3	0	1	0	4	0	0	0	0	0
ROBESON	2	1	15	49	1	4	2	6	1	14	0	1	8	24	0	0	13	33	46
SAMPSON	0	0	0	0	0	0	0	0	0	0	0	0	0	0	0	0	29	99	128
SCOTLAND	0	0	0	0	0	0	0	0	0	0	0	0	0	0	0	0	0	0	0
COLUMBUS	0	0	0	0	0	0	0	0	0	0	0	0	0	0	0	0	0	0	0
NORTH PIEDMONT																			
ALAMANCE	12	5	32	34	2	4	4	8	3	7	1	2	3	13	0	0	57	73	130
CASWELL	0	0	0	0	0	0	0	0	0	0	0	0	0	0	0	0	0	0	0
DAVIDSON	2	2	10	22	0	0	0	1	1	3	4	1	0	4	0	9	17	42	59
DAVIE	0	0	0	0	0	0	0	0	0	0	0	0	0	0	0	0	0	0	0
FORSYTH ADV CTR	5	5	28	83	0	1	4	13	4	22	0	0	0	0	0	0	0	0	0
GUILFORD 1	5	11	19	54	3	10	11	43	4	15	0	0	2	18	0	2	42	144	186
GUILFORD 2	0	0	0	0	0	0	0	0	0	0	0	0	0	0	0	0	44	153	197
RANDOLPH	0	0	0	0	0	0	0	0	0	0	0	0	0	0	0	0	0	0	0
ROCKINGHAM	0	0	0	0	0	0	0	0	0	0	0	0	0	0	0	0	0	0	0
STOKES	0	0	1	0	0	0	0	0	0	0	0	0	0	0	0	0	0	0	0
YADKIN	0	0	0	0	0	0	0	0	0	1	0	0	0	0	0	0	1	1	2
BLANCH	0	0	0	0	0	0	0	0	0	0	0	0	0	0	0	0	0	0	0

R17

OFF WORK RELEASE

01/01/82 12/31/82

LOCATION	WHY REMOVED																TOTAL MIS FEL	TOTAL	
	DISCHARGE		PAROLE		ESCAPE		INFRAC		ADMIN		HEALTH		JOB		OTHER				
	MIS	FEL	MIS	FEL	MIS	FEL	MIS	FEL	MIS	FEL	MIS	FEL	MIS	FEL	MIS	FEL			
SOUTH PIEDMONT																			
CABARRUS	4	1	27	31	0	2	3	3	2	8	0	0	4	14	0	0	40	59	99
GASTON	0	1	3	7	0	0	1	1	1	10	1	0	1	3	0	0	7	22	29
IREDELL	0	0	0	0	0	0	0	0	0	0	0	0	0	0	0	0	0	0	0
LINCOLN	1	2	8	40	0	2	3	5	2	11	0	2	0	25	0	0	14	87	101
CHARLOTTE ADV CTR	0	8	24	80	4	2	7	32	2	6	0	2	2	25	2	8	41	163	204
MECKLENBURG 2	0	0	0	0	0	0	0	0	0	0	0	0	0	0	0	0	0	0	0
ROWAN	2	6	39	24	0	1	5	5	5	11	0	0	5	14	1	0	57	61	118
STANLY	0	0	0	0	0	0	0	0	0	0	0	0	0	0	0	0	0	0	0
UNION	0	0	0	0	0	0	0	0	0	0	0	0	0	0	0	0	0	0	0
CATAWBA	2	13	16	44	1	5	0	9	4	25	0	0	2	5	0	1	25	102	127
CLEVELAND	0	0	0	0	0	0	0	0	0	0	0	0	0	0	0	0	0	0	0
WESTERN AREA																			
ALEXANDER	1	1	4	7	0	0	0	3	5	10	0	0	2	7	0	0	12	28	40
AVERY	0	0	0	0	0	0	0	0	0	0	0	0	0	0	0	0	0	0	0
CALDWELL	0	2	5	13	0	0	0	1	1	0	0	0	0	3	0	0	6	19	25
Craggy	0	0	0	0	0	0	0	0	0	0	0	0	0	0	0	0	0	0	0
HAYWOOD	3	2	7	11	0	3	3	3	2	4	1	1	4	3	1	0	21	27	48
HENDERSON	1	6	9	26	2	7	5	17	0	7	0	1	1	18	0	1	18	85	103
MCDOWELL	0	0	0	2	0	0	0	0	0	0	0	0	0	0	0	0	0	2	2
RUTHERFORD	1	5	14	32	1	3	0	0	1	8	0	1	1	26	0	1	18	76	94
WATAUGA	1	1	0	3	0	0	1	0	0	1	0	0	0	3	0	3	2	11	13
WILKES	3	1	23	24	0	0	2	1	1	12	1	0	2	13	0	0	32	51	83
YANCEY	0	0	0	0	0	0	0	0	0	0	0	0	0	0	0	0	0	0	0
NOT REPORTED	0	0	0	0	0	0	0	0	0	0	0	0	0	0	0	0	0	0	0
TOTAL	94	178	453	1200	25	79	85	265	91	463	8	21	66	402	8	62	830	2670	3500

F17

END OF PERIOD WORK RELEASE POPULATION

01/01/82 12/31/82

LOCATION	TIME ON PROGRAM												TOTAL		TOTAL
	1 MONTH		1-6 MON		6-12 MON		1-2 YEAR		2-3 YRS		3 YRS +		TOTAL		
	MIS	FEL	MIS	FEL	MIS	FEL	MIS	FEL	MIS	FEL	MIS	FEL	MIS	FEL	
INSTITUTIONS															
CENTRAL PRISON	0	0	0	0	0	0	0	0	0	0	0	0	0	0	0
CORR CTR FOR WOMEN	0	3	2	15	0	7	0	1	0	0	0	0	0	0	26
CALEDONIA	0	0	0	0	0	0	0	0	0	0	0	0	0	0	0
ODOM	0	0	0	0	0	0	0	0	0	0	0	0	0	0	0
HALIFAX	0	0	0	0	0	0	0	0	0	0	0	0	0	0	0
PIEDMONT CORR CTR	0	0	0	0	0	0	0	0	0	0	0	0	0	0	0
YOUTH SERVICES															
WESTERN CORR CTR	0	0	0	0	0	0	0	0	0	0	0	0	0	0	0
BURKE	0	0	0	0	0	0	0	0	0	0	0	0	0	0	0
SANDHILLS	0	0	0	0	0	0	0	0	0	0	0	0	0	0	0
HARNETT	0	0	0	0	0	0	0	0	0	0	0	0	0	0	0
POLK	0	0	0	0	0	0	0	0	0	0	0	0	0	0	0
MORRISON	0	0	0	0	0	0	0	0	0	0	0	0	0	0	0
FOUNTAIN	0	1	0	4	0	1	0	0	0	0	0	0	0	6	6
EASTERN AREA															
CARTERET	1	4	1	21	0	1	0	1	0	0	0	0	2	27	29
CURRITUCK	0	0	0	0	0	0	0	0	0	0	0	0	0	0	0
DUPLIN	2	7	0	7	0	0	0	0	0	0	0	0	2	14	16
GATES	0	0	3	13	0	4	0	1	0	0	0	0	3	18	21
GOLDSBORO YOUTH CT	0	1	0	10	0	2	0	0	0	0	0	0	0	13	13
GREENE	0	1	2	17	0	4	0	1	0	0	0	0	2	22	24
MARTIN	0	0	0	7	0	1	0	1	0	0	0	0	0	13	13
PENDER	0	0	0	0	0	0	0	0	0	0	0	0	0	0	0
WASHINGTON	0	0	0	0	0	0	0	0	0	0	0	0	0	0	0
NEW HANOVER	0	4	2	15	1	6	0	1	0	0	0	0	3	26	29
WAYNE CORR CTR	0	0	0	0	0	0	0	0	0	0	0	0	0	0	0
NORTH CENTRAL															
DURHAM	1	6	0	11	0	3	0	0	0	0	0	0	1	20	21
FRANKLIN	0	0	0	0	0	0	0	0	0	0	0	0	0	0	0
GRANVILLE	0	1	0	4	0	3	0	0	0	0	0	0	0	8	8
JOHNSTON	0	0	0	0	0	0	0	0	0	0	0	0	0	0	0
NASH ADV CTR	0	0	4	12	0	3	0	1	0	0	0	0	6	21	27
ORANGE	1	1	0	4	0	1	0	0	0	0	0	0	1	6	7
PERSON	2	1	0	2	0	0	0	0	0	0	0	0	2	3	5
SANFORD ADV CTR	1	1	0	2	0	0	0	1	0	0	0	0	2	27	29
UMSTEAD YOUTH CTR	0	8	1	14	0	4	0	1	0	0	0	0	0	0	0
VANCE	0	0	0	0	0	0	0	0	0	0	0	0	0	0	0
WAKE ADV CTR	0	8	9	27	1	6	0	2	0	0	0	0	10	43	53
WARREN	0	0	0	0	0	0	0	0	0	0	0	0	0	0	0
GOLDSBORO STATE HO	0	0	0	0	0	0	0	0	0	0	0	0	0	0	0
DORTHEA DIX	0	0	0	0	0	0	0	0	0	0	0	0	0	0	0
TRIANGLE CORR CENT	3	4	4	7	0	1	0	0	0	0	0	0	7	12	19

P17

END OF PERIOD WORK RELEASE POPULATION

01/01/82 12/31/82

LOCATION	TIME ON PROGRAM												TOTAL		TOTAL
	1 MONTH		1-6 MON		6-12 MON		1-2 YEAR		2-3 YRS		3 YRS +		TOTAL		
	MIS	FEL	MIS	FEL	MIS	FEL	MIS	FEL	MIS	FEL	MIS	FEL	MIS	FEL	
SOUTH CENTRAL															
ANSON	0	3	1	7	0	3	0	2	0	0	0	1	1	16	17
BLADEN	2	1	0	16	0	7	0	1	0	0	0	0	2	25	27
MCCAIN CORR CTR	0	0	0	0	0	0	0	0	0	0	0	0	0	0	0
MONTGOMERY	2	2	0	7	0	2	0	0	0	0	0	0	2	11	13
MOORE	0	0	0	0	0	0	0	0	0	0	0	0	0	0	0
RICHMOND	0	5	1	7	0	3	0	0	0	0	0	0	1	15	16
ROBESON	2	9	4	30	1	0	0	1	0	0	0	1	7	41	48
SAMPSON	0	0	0	0	0	0	0	0	0	0	0	0	0	0	0
SCOTLAND	0	0	0	0	0	0	0	0	0	0	0	0	0	0	0
COLUMBUS	0	0	0	0	0	0	0	0	0	0	0	0	0	0	0
NORTH PIEDMONT															
ALAMANCE	4	2	9	15	2	6	0	3	0	0	0	0	15	26	41
CASWELL	0	0	0	0	0	0	0	0	0	0	0	0	0	0	0
DAVIDSON	0	0	2	8	0	1	0	1	0	0	0	0	2	10	12
DAVIE	0	0	0	0	0	0	0	0	0	0	0	0	0	0	0
FORSYTH ADV CTR	5	5	9	33	0	13	0	0	0	0	0	0	14	51	65
GUILFORD 1	5	22	8	41	0	7	0	1	0	0	0	0	13	71	84
GUILFORD 2	0	0	0	0	0	0	0	0	0	0	0	0	0	0	0
PANDOLPH	0	0	0	0	0	0	0	0	0	0	0	0	0	0	0
ROCKINGHAM	0	0	0	0	0	0	0	0	0	0	0	0	0	0	0
STOKES	1	0	1	0	0	0	0	0	0	0	0	0	2	0	2
YADKIN	0	0	0	0	0	0	0	0	0	0	0	0	0	0	0
BLANCH	0	0	0	0	0	0	0	0	0	0	0	0	0	0	0

R17

## END OF PERIOD WORK RELEASE POPULATION

01/01/82 12/31/82

LOCATION	TIME ON PROGRAM												TOTAL		TOTAL
	1 MONTH		1-6 MON		6-12 MON		1-2 YEAR		2-3 YRS		3 YRS +		TOTAL		
	MIS	FEL	MIS	FEL	MIS	FEL	MIS	FEL	MIS	FEL	MIS	FEL	MIS	FEL	
SOUTH PIEDMONT															
CABARRUS	2	1	5	5	0	3	0	0	0	0	0	0	7	9	16
GASTON	0	0	2	8	0	0	0	0	0	0	0	0	2	8	10
IPEDELL	0	0	0	0	0	0	0	0	0	0	0	0	0	0	0
LINCOLN	0	2	1	14	0	3	0	1	0	0	0	0	1	20	21
CHARLOTTE ADV CTR	3	10	4	29	0	9	0	2	0	0	0	0	7	50	57
HECKLENBURG 2	0	0	0	0	0	0	0	0	0	0	0	0	0	0	0
ROWAN	6	4	11	14	0	0	0	1	0	0	0	0	17	19	36
STANLY	0	0	0	0	0	0	0	0	0	0	0	0	0	0	0
UNION	0	0	0	0	0	0	0	0	0	0	0	0	0	0	0
CATAWBA	0	12	3	30	0	7	0	1	0	0	0	0	3	50	53
CLEVELAND	0	0	0	0	0	0	0	0	0	0	0	0	0	0	0
WESTERN AREA															
ALEXANDER	2	0	0	5	0	3	0	1	0	0	0	0	2	9	11
AVERY	0	0	0	0	0	0	0	0	0	0	0	0	0	0	0
CALDWELL	0	0	0	0	0	0	0	0	0	0	0	0	0	0	0
CPAGGY	0	3	1	6	0	3	0	2	0	0	0	0	1	14	15
HAYWOOD	0	0	0	0	0	0	0	0	0	0	0	0	0	0	0
HENDERSON	0	4	2	9	0	1	0	0	0	0	0	0	2	14	16
MCDOWELL	1	8	7	12	0	2	0	0	0	0	0	0	8	22	30
RUTHERFORD	0	0	0	1	0	0	0	0	0	0	0	0	0	1	1
WATAUGA	2	4	1	20	0	6	0	3	0	1	0	0	3	34	37
WILKES	0	0	0	0	0	0	0	1	0	0	0	0	0	1	1
YANCEY	0	1	5	10	0	1	0	1	0	0	0	0	5	13	18
NOT REPORTED	0	0	0	0	0	0	0	0	0	0	0	0	0	0	0
TOTAL	50	157	105	517	5	127	0	31	0	1	0	2	160	835	995

TEMPORARY LEAVES

01/01/82 12/31/82

LOCATION	JOB	TYPE VISIT												TOTAL		TOTAL
		MEDICAL		TRAINING		FUNERAL		ILLNESS		OTHER		TOTAL				
		MIS	FEL	MIS	FEL	MIS	FEL	MIS	FEL	MIS	FEL	MIS	FEL			
INSTITUTIONS																
CENTRAL PRISON	0	0	0	0	1	16	0	0	0	1	0	6	1	23	24	
CORR CTR FOR WOMEN	0	0	5	26	0	0	0	0	0	0	0	0	0	0	378	
CALEDONIA	0	0	0	0	0	0	0	0	0	0	0	0	0	0	0	
CDOM	0	0	0	0	0	0	0	0	0	0	0	0	0	0	0	
HALIFAX	0	0	0	0	0	0	0	0	0	0	0	0	0	0	0	
PIEDMONT CORR CTR	0	0	0	0	0	0	0	0	0	0	0	0	0	0	0	
YOUTH SERVICES																
WESTERN CORR CTR	0	0	0	0	0	1	0	0	0	1	0	6	6	9	15	
BURKE	0	0	0	0	0	0	0	0	0	0	0	0	0	1	1	
SANDHILLS	0	0	0	0	0	1	0	0	0	0	0	0	0	3	3	
HARNETT	0	0	0	0	0	0	0	0	0	0	0	0	0	2	2	
POLK	0	0	0	0	0	0	0	0	0	0	0	0	0	12	12	
MORRISON	0	0	0	0	0	0	0	0	0	0	0	0	0	16	16	
FOUNTAIN	0	0	0	0	0	0	0	0	0	0	0	0	0	6	6	
EASTERN AREA																
CARTERET	0	0	0	0	0	0	0	0	0	0	0	0	0	1	1	
CURRITUCK	0	0	0	0	0	13	0	0	0	0	0	0	0	0	0	
DUPLIN	0	0	0	0	0	0	0	0	0	0	0	0	0	0	0	
GATES	0	0	0	2	0	0	0	0	0	0	0	0	0	0	0	
GOLDSBORO YOUTH CT	0	0	0	0	0	1	0	0	0	0	0	0	0	0	0	
GREENE	0	0	0	0	0	0	0	0	0	0	0	0	0	0	0	
MARTIN	0	0	8	10	2	7	0	0	0	0	0	0	0	10	13	
PENDER	0	0	0	0	0	0	0	0	0	0	0	0	0	3	4	
WASHINGTON	0	0	0	0	0	1	0	0	0	0	0	0	0	15	15	
NEW HANOVER	0	0	0	0	0	1	0	0	0	0	0	0	0	10	14	
WAYNE CORP CTR	0	0	0	0	0	0	0	0	0	0	0	0	0	2	4	
NORTH CENTRAL																
DURHAM	0	0	0	6	3	51	0	0	1	8	0	10	0	75	79	
FRANKLIN	0	0	0	0	0	0	0	0	0	0	0	0	0	9	9	
GRANVILLE	0	0	0	0	0	0	0	0	0	0	0	0	0	7	10	
JOHNSTON	0	0	0	0	0	0	0	0	0	0	0	0	0	3	3	
NASH ADV CTR	0	0	0	0	0	0	0	0	0	0	0	0	0	3	8	
ORANGE	0	0	0	0	0	0	0	0	0	0	0	0	0	4	8	
PERSON	0	0	0	0	15	0	0	0	0	0	0	0	0	4	8	
SANFORD ADV CTR	0	0	0	0	0	0	0	0	0	0	0	0	0	1	20	
UMSTEAD YOUTH CTR	0	0	0	0	4	1	0	0	0	0	0	0	0	1	8	
VANCE	0	0	0	0	4	8	0	0	0	0	0	0	0	6	38	
WAKE ADV CTR	0	0	0	0	0	0	0	0	0	0	0	0	0	5	14	
WARREN	0	0	1	86	1	15	0	0	0	0	0	0	0	9	14	
GOLDSBORO STATE HO	0	0	0	0	0	0	0	0	0	0	0	0	0	0	0	
DORTHEA DIX	0	0	0	0	0	0	0	0	0	0	0	0	0	0	0	
TRIANGLE CORR CFNT	0	0	0	0	4	5	0	1	0	0	0	0	0	0	0	
														12	16	

TEMPORARY LEAVES

01/01/82 12/31/82

LOCATION	TYPE VISIT												TOTAL		TOTAL
	JOB		MEDICAL		TRAINING		FUNERAL		ILLNESS		OTHER		MIS	FEL	
	MIS	FEL	MIS	FEL	MIS	FEL	MIS	FEL	MIS	FEL	MIS	FEL			
SOUTH CENTRAL															
ANSON	0	0	0	0	0	0	0	0	1	0	1	0	2	6	8
BLADEN	0	0	0	0	0	0	0	0	0	0	4	0	4	6	10
MCCAIN COPR CTR	0	0	0	0	0	1	0	0	0	0	2	0	2	9	11
MONTGOMERY	0	0	0	0	0	0	0	0	0	0	0	0	0	4	6
MOORE	0	0	0	0	0	0	0	0	0	0	0	0	0	0	0
RICHMOND	0	0	0	0	0	0	0	0	0	1	2	0	2	8	10
ROBESON	0	0	0	0	0	3	0	0	0	0	0	0	0	0	0
SAMPSON	0	0	0	0	0	0	0	0	0	0	0	0	0	2	2
SCOTLAND	0	0	0	0	0	0	0	0	0	0	0	0	0	0	0
COLUMBUS	0	0	0	0	0	0	0	0	0	0	0	0	0	0	0
NORTH PIEDMONT															
ALAMANCE	0	0	0	0	3	11	0	0	0	3	3	0	6	20	26
CASWELL	0	0	0	0	0	0	0	0	2	1	2	0	4	8	8
DAVIDSON	0	0	0	0	0	1	0	0	0	1	0	0	1	7	11
DAVIE	0	0	0	0	0	0	0	0	0	4	0	0	4	7	7
FORSYTH ADV CTR	0	0	0	0	0	6	0	0	0	7	0	0	7	13	13
GUILFORD 1	0	0	0	0	0	0	0	0	0	0	0	0	0	20	20
GUILFORD 2	0	0	0	0	0	0	0	0	1	3	8	0	9	8	17
RANDOLPH	0	0	0	0	0	0	0	0	0	2	0	0	2	12	12
ROCKINGHAM	0	0	0	0	0	0	0	0	0	2	0	0	2	4	4
STOKES	0	0	0	0	0	2	0	0	0	0	2	0	2	5	6
YADKIN	0	0	0	0	0	0	0	0	0	1	0	0	1	5	5
BLANCH	0	0	0	0	0	0	0	0	0	0	0	0	0	0	0

R17

TEMPORARY LEAVES

01/01/82 12/31/82

TYPE VISIT

LOCATION	JOB		MEDICAL		TRAINING		FUNERAL		ILLNESS		OTHER		TOTAL		TOTAL
	MIS	FEL	MIS	FEL	MIS	FEL	MIS	FEL	MIS	FEL	MIS	FEL	MIS	FEL	
SOUTH PIEDMONT															
CABARRUS	0	0	0	0	1	13	0	0	0	2	5	10	6	25	31
GASTON	0	0	0	0	0	0	0	0	0	0	2	1	2	1	3
IPEDELL	0	0	0	0	0	0	0	0	0	0	0	1	0	1	1
LINCOLN	0	0	0	0	2	9	0	0	1	2	2	6	5	17	22
CHARLOTTE ADV CTR	0	0	0	0	0	4	0	0	0	0	3	6	3	10	13
MECKLENBURG 2	0	0	0	0	3	0	0	0	2	0	6	3	11	3	14
ROMAN	0	0	0	0	0	4	0	0	0	0	2	3	2	7	9
STANLY	0	0	0	0	0	0	0	0	0	0	0	3	0	3	3
UNION	0	0	0	0	0	0	0	0	0	0	0	4	0	4	4
CATAWBA	0	0	0	0	0	6	0	0	3	9	2	5	5	20	25
CLEVELAND	0	0	0	0	0	0	0	0	0	2	0	6	0	8	8
WESTERN AREA															
ALEXANDER	0	0	0	0	0	0	0	0	0	0	3	6	3	6	9
AVERY	0	0	0	0	0	0	0	0	0	0	0	6	0	6	6
CALDWELL	0	0	0	0	0	0	0	0	1	3	1	3	2	6	8
Craggy	0	0	0	0	0	0	0	0	0	0	0	7	0	7	7
HAYWOOD	0	0	0	0	1	0	0	0	2	5	4	8	7	13	20
HENDERSON	0	0	0	0	0	0	0	0	0	9	1	9	1	18	19
MCDOWELL	0	0	0	0	0	0	0	0	0	0	0	7	0	7	7
RUTHERFORD	0	0	0	0	0	1	0	0	1	2	1	4	2	7	9
WATAUGA	0	0	0	0	0	0	0	0	7	1	5	4	12	5	17
WILKES	0	0	0	0	2	1	0	0	2	4	13	5	17	10	27
YANCEY	0	0	0	0	0	0	0	0	0	0	0	3	0	3	3
NOT REPORTED	0	0	0	0	0	0	0	0	0	0	0	0	0	0	0
TOTAL	0	0	14	130	48	197	0	6	37	179	138	688	237	1200	1437



P17

TEMPORARY LEAVES

01/01/82 12/31/82

TYPE VIOLATION	NUMBER OF VISITS						TOTAL
	FIRST		OTHER		TOTAL		
	MIS	FEL	MIS	FEL	MIS	FEL	
INFLUENCE ALCOHOL	0	0	0	0	0	0	0
LATE	0	0	0	0	0	0	0
FAIL TO RETURN	0	0	0	0	0	0	0
DISTURB NO CRIME	0	0	0	0	0	0	0
CHARGED WITH CRIME	0	0	0	0	0	0	0
INFRACTION	0	0	0	0	0	0	0
TOTAL	0	0	0	0	0	0	0

65

**END**