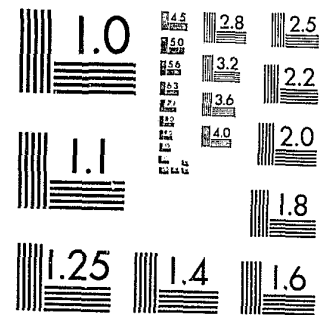


National Criminal Justice Reference Service



This microfiche was produced from documents received for inclusion in the NCJRS data base. Since NCJRS cannot exercise control over the physical condition of the documents submitted, the individual frame quality will vary. The resolution chart on this frame may be used to evaluate the document quality.



MICROCOPY RESOLUTION TEST CHART  
NATIONAL BUREAU OF STANDARDS-1963-A

Microfilming procedures used to create this fiche comply with the standards set forth in 41CFR 101-11.504.

Points of view or opinions stated in this document are those of the author(s) and do not represent the official position or policies of the U. S. Department of Justice.

National Institute of Justice  
United States Department of Justice  
Washington, D. C. 20531

10/7/83

cb. 9883

MINORS DETAINED IN  
CALIFORNIA

JA  
1

Department of the Youth Authority

89488

December, 1981

State of California  
 EDMUND G. BROWN JR.  
 GOVERNOR

Youth and Adult Correctional Agency  
 HOWARD WAY  
 SECRETARY



TABLE OF CONTENTS

	PAGE NO.
Highlights . . . . .	iv
Data Collection System . . . . .	1
Annual Survey . . . . .	1
Monthly Report. . . . .	2
The 1980 Annual Jail Survey. . . . .	2
Reported Detentions. . . . .	4
Type of Facilities Detaining Minors. . . . .	4
Type II . . . . .	4
Type I. . . . .	5
Temporary Holding Facilities. . . . .	5
Detention of Status Offenders. . . . .	6
Detentions in Excess of 24 Hours . . . . .	6
Jail Detentions and the Availability of Juvenile Halls . . . . .	8
Summary of Detentions by County. . . . .	10
Detention Trends . . . . .	12
Definitions of Facility and Secure Detention . . . . .	15
Facility. . . . .	15
Secure Detention . . . . .	15
Other Problems Encountered re Annual Survey. . . . .	17
Problems Encountered re Monthly Report of 24-Hour Detentions . . . .	17

Department of the  
 Youth Authority

ANTONIO C. AMADOR  
 DIRECTOR

CHARLES A. KUHL,  
 CHIEF DEPUTY DIRECTOR

JAMES C. BARNETT,  
 DEPUTY DIRECTOR  
 PREVENTION AND COMMUNITY  
 CORRECTIONS BRANCH

CHON GUTIERREZ,  
 DEPUTY DIRECTOR  
 MANAGEMENT SERVICES BRANCH

RUTH E. KRANOVICH,  
 DEPUTY DIRECTOR  
 PAROLE SERVICES BRANCH

MORRIS JENNINGS,  
 DEPUTY DIRECTOR  
 PLANNING, RESEARCH, EVALUATION  
 AND DEVELOPMENT BRANCH

GEORGE R. ROBERTS,  
 DEPUTY DIRECTOR  
 INSTITUTIONS AND CAMPS BRANCH

DIVISION OF RESEARCH

KEITH S. GRIFFITHS  
 Chief of Research

CARL JESNESS, PH.D.  
 Research Manager III

ROBERT F. WEDGE  
 Research Analyst II

Dalys Lum  
 Office Assistant II

81-17

(Continu

U.S. Department of Justice  
 National Institute of Justice

This document has been reproduced exactly as received from the person or organization originating it. Points of view or opinions stated in this document are those of the authors and do not necessarily represent the official position or policies of the National Institute of Justice.

Permission to reproduce this copyrighted material has been granted by  
 California Youth Authority

to the National Criminal Justice Reference Service (NCJRS)

Further reproduction outside of the NCJRS system requires permission of the copyright owner.

TABLE OF CONTENTS (Cont'd)

	PAGE NO.
APPENDIX A: Annual Survey of Minors in Jails, Lockups, and Holding Facilities . . . . .	20
APPENDIX B: Monthly Report of Juvenile Confinements in Jails or Lockups . . . . .	22
APPENDIX C: Number of Juvenile Detentions for Any Length of Time, by County and Facility . . . . .	24
APPENDIX D: Juveniles Confined in Jails or Lockups for More Than 24 Hours During 1980. . . . .	41

LIST OF TABLES

TABLE NO.		PAGE NO.
1	Distribution of 1980 Annual Survey Showing Number of Agencies that Did and Did Not Detain One or More Minors in 1980 . . . . .	3
2	Number of Juvenile Detentions Reported on the 1980 Annual Survey. . . . .	5
3	Number of Minors Detained in 1980, by Type of Detention Facility, as Defined by the Board of Corrections . . . . .	6
4	Minors Detained in Excess of 24 Hours in 1980. . . . .	7
5	Minors Detained in Excess of 24 Hours: Length of Stay and Type of Release. . . . .	9
6	Detentions and Detention Rates in Counties With and Without Juvenile Halls . . . . .	10
7	Juvenile Detentions By County: Total Detentions, Detention Rates, and Detentions Over 24 Hours - 1980 . . . . .	11
8	Total Detentions of Any Length of Time Reported 1976-1980. . . . .	13
9	Minors Reported Detained in Excess of 24 Hours 1976 to 1980. . . . .	14

Highlights

- In 1980, an annual survey was sent to 525 California law enforcement agencies asking how many minors had been detained for any length of time.
- The results of the survey showed that 130,346 minors had been detained in 292 local jails and lockups.
- 82.9% of the detained minors were males.
- 23% of the minors were detained in sheriff facilities and 77% in police facilities.
- 133 agencies reported detaining one or more status offenders.
- There were 1,560 minors detained for more than 24 hours in 41 facilities.
- More than 1 of every 5 minors detained over 24 hours was 15 years old or younger.
- The average length of stay for these minors was 12.2 days; the median was 2.6 days.
- 6 of the state's 58 counties did not detain any minors in jails.
- The number of minors reported detained for any length of time appears to have fluctuated since 1976, but this may be due to reporting inconsistencies. It is estimated that the number of detentions has been fairly constant, being at somewhat over 100,000 each year.
- The number of minors detained in jails in excess of 24 hours appears to be decreasing. There were 3,476 such detentions in 1976, compared to 1,560 in 1980. However, part of this decrease may be due to irregularities in the reporting system.
- The degree of accuracy surrounding reported juvenile detentions is somewhat in question. Errors in reporting are known to exist and the CYA should continue efforts to resolve these errors to make the reporting system as accurate as possible under the given conditions.

#### Acknowledgements

We wish to thank all the personnel in the law enforcement agencies throughout the state who undertook the task of completing the data collection forms that represent the basis of this report. Thanks also go to the Prevention and Community Corrections staff who assisted in collecting these data.

"How many minors are detained each year in California's local jails and lockup facilities?" This question is of interest to many in the field of juvenile justice. However, information on this matter has been sorely lacking. For instance, the only figures previously available have been those published by the State's Bureau of Criminal Statistics (BCS). Each year BCS has conducted a one-day survey of all local jails to obtain a "head count" of the number of minors in jail detention on that particular day. On one day in 1980 (the fourth Thursday in September), BCS reports that there were 155 minors in custody in county and city jails. This figure is of little use when trying to answer the question posed at the beginning of this report. In 1976, the California Youth Authority decided to try to collect data that would provide more comprehensive information on the number of minors in jails.

#### Data Collection System

In 1976, the CYA developed two forms to serve as the basis of a system that would collect data on the number of minors detained in jails. These forms are the Annual Survey of Minors in Jails and Lockups and the Monthly Report of Juvenile Confinements in Jails or Lockups.

Annual Survey. The first of the forms is an annual survey which is sent once a year to all city and county law enforcement agencies by the CYA's Prevention and Community Corrections Branch (P & CC). The survey primarily asks two questions: how many minors were securely detained for any length of time during the year, and were any minors detained for more than 24 hours. When a facility indicates that detentions in excess of 24 hours occurred, P & CC schedules a jail inspection, as mandated by the Welfare and Institutions Code, to determine whether the facility meets

the standards required for this type of detention. See Appendix A for the 1980 annual survey form.

Monthly Report. In addition to receiving an inspection, those facilities identified as having held minors in excess of 24 hours are required to report monthly the number of such detentions, the reasons for detention, the length of stay in detention, and the dispositions at release. The form developed for this purpose is the Monthly Report of Juvenile Confinements in Jails or Lockups (see Appendix B).

The next section presents the results of the 1980 survey of California jails and lockups. A following section presents summary data based on the monthly reports of minors held in secure detention in excess of 24 hours.

The 1980 Annual Jail Survey

The 1980 survey was mailed to 525 law enforcement agencies and facilities. Ultimately, all 525 surveys were returned. About two-thirds of the surveys returned within a relatively short time, but for one-third of the surveys, it was necessary for Youth Authority staff to make one or more followup contacts. In addition, a number of surveys were completed incorrectly, and it was necessary to contact those agencies in order to obtain better information.

Table 1 lists the number of surveys distributed, the number of agencies that reported they did not detain minors in 1980, and the number of agencies that reported they did detain minors in 1980.

TABLE 1

Distribution of 1980 Annual Survey Showing Number of Agencies that Did and Did Not Detain One or More Minors in 1980

	<u>Total</u>	<u>Sheriff</u>	<u>Police</u>
Surveys Distributed	525	157	368
Agencies Reporting No Detentions	233	82	151
Above Agencies Reporting No Existing Holding Facility	51	8	43
Agencies Reporting One or More Detentions	292	75	217
Agencies That Detained But Could Not Provide Numbers	15	0	15



Of the 525 agencies contacted, 233 reported that they did not detain any minors. This figure includes 51 agencies that stated they had no holding facilities of any kind, or that the facility no longer existed. There were 292 agencies that reported one or more minors were detained. This figure includes 15 agencies that detained but were unable to provide the number of minors detained.

In 1980, 525 agencies were surveyed; the 1979 survey included 502 agencies. The increase is due to the fact that the 19 precincts of the Los Angeles Police Department were counted individually in 1980, and as one agency in 1979. In addition, 11 agencies were added in 1980, and six sheriff substations were deleted from the list (having closed in 1979 or earlier).

Reported Detentions

The results of the 1980 survey are shown in Table 2. During 1980 there were 130,346 reported detentions of juveniles, of which 82.9% were males and 17.1% were females. Sheriff facilities reported 23% of the detentions, and 77% were reported detained in police facilities. The numbers of reported detentions by individual facilities are shown in Appendix C.

Type of Facilities Detaining Minors

The State Board of Corrections has classified jails according to their detention capabilities and policies. The classifications are as follows:

Type II. These facilities may hold both pretrial and sentenced prisoners for as long as the process and sentence requires. Most county jails fall into this category.

TABLE 2

Number of Juvenile Detentions Reported on the 1980 Annual Survey

130,346	Total Detentions (of any length of time)
99,099	Males <sup>a</sup> - 82.9%
20,498	Females - 17.1%
29,921	Detention in Sheriff Facilities (n = 75) - 23.0%
100,425	Detentions in Police Facilities (n = 202) <sup>b</sup> - 77.0%

<sup>a</sup>Number of males and females do not equal total because number of detentions by sex was not provided by some facilities.

<sup>b</sup>Figure does not include 15 police agencies that were unable to provide number of detentions.

Type I. These can hold persons for up to 48 hours excluding weekends and holidays, usually pending arraignment. Such facilities can hold sentenced prisoners for longer terms if special conditions are met. Most city jails and sheriff substations are Type I facilities.

Temporary Holding Facilities. Persons are held for less than 24 hours, usually much less, pending questioning, arraignment if it will occur soon, or transportation to a Type I facility.

Table 3 shows the number of minors detained in these three types of facilities. The largest percentage of minors were detained in Type I facilities (55.8%). The next largest group of detentions occurred in temporary holding facilities (38%), with 6.2% of the detentions being in Type II facilities.

TABLE 3

Number of Minors Detained in 1980, by Type of Detention Facility, as Defined by the Board of Corrections

Facility Type	No. of Facilities	Reported Detentions	
		n	%
Type II: may detain over 24 hours; can hold both pretrial and sentenced prisoners	41	8,040	6.2
Type I: may detain up to 48 hours	110	72,708	55.8
Temporary Holding Facilities	141	49,598	38.0

Detention of Status Offenders

Welfare and Institutions Code Section 207c allows for the secure detention of status offenders under certain conditions and for specified periods of time. A question was included on the 1980 survey asking whether status offenders had been detained under the provisions of this code. A total of 133 agencies responded that they had detained one or more status offenders in 1980. These agencies are identified in Appendix C.

Detentions in Excess of 24 Hours

This section summarizes the data reported on YA 10.402, "Monthly Report of Juvenile Confinements in Jails or Lockups." There were 42 facilities in 1980 that submitted monthly reports indicating that one or more minors were detained for more than 24 hours.\* This is a decrease from the 48 facilities that detained minors more than 24 hours during 1979.

\*Another 10 facilities submitted forms during 1980, but none of these facilities held a minor over 24 hours, and in each case reported zero detentions.

In 1980, there were a reported 1,560 minors held over 24 hours. Table 4 presents the basic data on these cases, showing that 88.2% were males, over three-quarters were 16 or 17-years-old, and two-thirds were detained on felony charges, as adult court remands, or as CYA detainees. There were 35 youths held over 24 hours whose charge was a 601 W & I status offense.

TABLE 4

Minors Detained in Excess of 24 Hours in 1980  
(No. of Reporting Facilities = 42)

	No.	%
Total Detentions <sup>a</sup>	1,560	100.0
Sex: Male	1,376	88.2
Female	173	11.1
Age: 17	795	51.0
16	423	27.1
15	182	11.7
14	86	5.5
13	35	2.2
12 or under	36	2.3
Reason for Detention:		
Felony	960	61.5
Adult Court Remand	66	4.2
CYA Detainee	37	2.4
Misdemeanor	373	23.9
601 W & I	35	2.2
Other	90	5.8

<sup>a</sup>Numbers may not add to total of 1,560 because of some incomplete reporting by the agencies,

Table 5 summarizes data on the length of stay and type of release for minors detained over 24 hours. The average length of stay in detention was 12.2 days, but this average is inflated due to the fact that 227 minors (16.1%) spent more than 15 days in detention. The median length of stay was 2.6 days, meaning half the youths were detained for 2.6 days or less.

Most youths were transferred from the jails to a juvenile hall (36.1%) or released to the custody of their parents or a probation officer (25.5%). A small number, 34, were released after having completed serving some kind of sentence in jail.

Jail Detentions and Availability of Juvenile Halls

The detention data on the annual survey and the monthly reports were divided into two groups: facilities in counties with local juvenile halls and facilities in counties with no juvenile halls. These data are shown in Table 6.

The vast majority of detentions occurred in the 41 counties with halls, but this is related to the fact that the counties with halls include all the large, highly populated and urbanized counties. With regard to detentions for any length of time, the detention rates in the two groups was almost the same: 57.6 per 1,000 juveniles in counties with halls vs. 57.2 per 1,000 in counties with no halls.

Looking at detentions of more than 24 hours, we find 1,236 in counties with halls (a rate of 0.6 per 1,000) and 323 detentions in counties with no halls (a rate of 9.2 per 1,000). Counties with no juvenile halls understandably detained minors over 24 hours at a higher rate than counties that had access to juvenile halls.

TABLE 5

Minors Detained in Excess of 24 Hours:  
Length of Stay and Type of Release

	<u>No.</u>	<u>%</u>
Total Releases <sup>a</sup>	1,414	100.0
Length of Stay:		
24 to 48 hours	626	44.3
49 to 72 hours	195	13.8
73 to 96 hours	93	6.6
97 to 120 hours	71	5.0
6 to 8 days	93	6.6
9 to 11 days	53	3.7
12 to 14 days	56	4.0
15 or more days	227	16.1
Average Length of stay	12.2 days	
Median length of stay	2.6 days	
Type of Release:		
To Juvenile Hall	511	36.1
To Other Jurisdiction	246	17.4
To Parents or Probation	361	25.5
Released, No charge	51	3.6
Released, Served Sentence	34	2.4
Other Releases	172	12.2

<sup>a</sup>Numbers may not add to 1,414 because of some incomplete reporting by the agencies.



TABLE 6

Detentions and Detention Rates in Counties With and Without Juvenile Halls

	Counties With Halls	Counties Without Halls
No. of Counties	41	17
No. that Detained Minors in Jails	36	16
Total Detentions	128,342	2,004
Rate Per 1,000 Minors	57.6	57.2
No. that Detain in Excess of 24 Hours	19	10
Detentions in Excess of 24 Hours	1,236	323
Rate Per 1,000 Minors	0.6	9.2

Summary of Detentions by County

Table 7 summarizes the detention data, both temporary and 24-hour, for each county. Six counties reported no detentions: Butte, Lake, Madera, San Francisco, Siskiyou, and Sutter. The counties with the highest rates of detention per 1,000 juvenile population were Inyo (124), Los Angeles (106), Mariposa (118), Mono (129), Sonoma (107), and Trinity (137).

TABLE 7

Juvenile Detentions By County: Total Detentions, Detention Rates, and Detentions Over 24 Hours- 1980

County	Total Detentions			Detentions Over 24 Hours	
	No. of Facilities	Total	Rate <sup>a</sup>	No. of Facilities	Total
Alameda	12	8,225	78	1	1
Alpine	1	5	57	0	0
Amador	2	39	26	0	0
Butte	0	0	-	0	0
Calaveras	1	98	61	1	28
Colusa	1	109	81	1	55
Contra Costa	9	3,685	53	0	0
Del Norte	1	141	85	0	0
El Dorado	2	279	35	1	36
Fresno	9	3,149	58	0	0
Glenn	1	106	47	1	63
Humboldt	4	197	19	0	0
Imperial	5	558	44	0	0
Inyo	2	202	124	1	53
Kern	8	745	18	1	10
Kings	3	236	28	1	64
Lake	0	0	-	0	0
Lassen	1	67	38	1	70
Los Angeles	83	74,612	106	10	607
Madera	0	0	-	0	0
Marin	5	639	29	0	0
Mariposa	1	107	118	1	25
Mendocino	2	172	25	0	0
Merced	3	249	18	1	32
Modoc	1	32	40	1	12
Mono	2	85	129	0	0
Monterey	6	664	25	0	0
Napa	2	86	9	0	0
Nevada	2	59	14	1	35
Orange	20	9,440	48	1	54
Placer	2	272	22	0	0
Plumas	1	54	37	0	0
Riverside	9	2,900	48	2	273
Sacramento	3	62	1	0	0
San Benito	1	161	67	0	0
San Bernardino	14	4,567	55	2	40
San Diego	7	4,243	25	1	2
San Francisco	0	0	-	0	0
San Joaquin	4	946	28	1	21
San Luis Obispo	6	565	50	1	3
San Mateo	10	938	16	0	0
Santa Barbara	3	1,175	43	1	7
Santa Clara	8	3,084	22	2	32
Santa Cruz	1	442	28	0	0
Shasta	1	5	0.5	1	1
Sierra	2	19	68	0	0
Siskiyou	0	0	-	0	0
Solano	4	736	33	0	0
Sonoma	9	2,928	107	1	1
Stanislaus	2	364	13	1	4
Sutter	0	0	-	0	0
Tehama	1	3	1	1	2
Trinity	1	161	137	1	4
Tulare	5	985	37	1	14
Tuolumne	1	194	63	1	10
Ventura	5	1,520	25	1	1
Yolo	2	24	2	0	0
Yuba	1	12	2	0	0

<sup>a</sup>Rate of detentions (of any length) per 1,000 juvenile population ages 12 to 17.

Detention Trends

Data have been collected on the number of minors detained in jails during each year since 1976. It is therefore possible to examine the detention data over a period of several years. However, looking at the data for possible trends may not be a very reliable process due to various problems encountered in the reporting. These problems will be discussed in detail in a later section.

Table 8 shows the results of the annual surveys from 1976 to 1980. The table includes footnotes indicating the probable reliability of the data. Even though the number of detentions seem to have fluctuated over time, due to inconsistencies in the reporting system it is probably safe to say that "somewhat over 100,000 minors have been temporarily detained in jails or lockups each year since 1976," and that "there has been no apparent significant increase or decrease in the number of minors temporarily detained."

Table 9 presents data on the number of minors reported detained in excess of 24 hours since 1976. The trend data for 24-hour detentions may be somewhat more reliable since the definitions and the form have changed very little. The only external factor influencing the figures would be the continuing attempts of CYA to educate law enforcement staff in how to correctly fill out the monthly reports. This may have resulted in more accurate figures for the later years, meaning the decrease in detentions shown in Table 9 may not be as precipitous as it appears.

The following sections describe the problems that have been encountered with the reporting system.

TABLE 8

Total Detentions of Any Length of Time Reported  
1976-1980

<u>Year</u>	<u>No. of Facilities</u>	<u>Detentions</u>
1976	286	166,224 <sup>a</sup>
1977	284	144,316 <sup>b</sup>
1978	253	89,114 <sup>c</sup>
1979	282	114,174 <sup>d</sup>
1980	292	130,346 <sup>e</sup>

<sup>a</sup>In this first annual survey, secure detention was not defined in the instructions. As a result, many agencies reported total arrests rather than detentions.

<sup>b</sup>Note <sup>a</sup> also applies to the 1977 survey data. Many agencies reported arrests. The above decrease from 1976 to 1977 is parallel to a general statewide decrease in arrests.

<sup>c</sup>The 1978 survey instructions were revised to include the words confinement and secure detention. The numbers reported probably more accurately reflect detentions. However, the term "secure detentions" caused some holding facilities to fail to report their detentions. Note the decrease in the number of reporting facilities, from 284 to 253.

<sup>d</sup>A complete definition of secure detention was included on the 1979 survey. The reported figures are more accurate than in either 1976 or 1977. The increase in detentions from 1978 to 1979 is nearly entirely attributable to an increase in the number of facilities that reported.

<sup>e</sup>In 1980, the definition of secure detention was again revised. The increase in detentions is due to the fact that the 19 precincts of the Los Angeles Police Department reported detentions in 1980 whereas they did not in 1979.

TABLE 9

Minors Reported Detained in Excess of 24 Hours  
1976 to 1980

<u>Year</u>	<u>No. of Facilities</u>	<u>24-Hour Detentions</u>
1976	52	3,476 <sup>a</sup>
1977	42	2,203 <sup>b</sup>
1978	41	2,146 <sup>c</sup>
1979	48	2,160 <sup>d</sup>
1980	42	1,560 <sup>e</sup>

<sup>a</sup>In 1976, data were collected only for the 6-month period July to December. The figure shown is an estimate for the full year.

<sup>b</sup>The system was in effect for the full year 1977. Because the system was new, data were accepted at "face value" and errors were not suspected or detected. The decrease from 1976 to 1977 is probably factual, since AB 3121 became effective in 1977 banning the detention of status offenders.

<sup>c</sup>In 1978, errors began to be detected and corrected where possible.

<sup>d</sup>Errors became more obvious in 1979, and CYA increased efforts to correct errors. However, it is probable that the detention figure is "off-base" since some minors may have been counted twice.

<sup>e</sup>The situation remained the same in 1980, with a high error rate. How much of the decrease in detentions is factual is unknown. It should be noted that there were fewer facilities reporting in 1980.

Definitions of Facility and Secure Detention

Since its inception, the reporting system has encountered difficulties with the definition of a jail or lockup, and with the definition of "secure detention." To some extent, this lack of understanding or agreement on the part of over 500 law enforcement agencies has hampered the task of collecting complete and accurate data.

Facility. A jail or a lockup has been defined as any police or sheriff station or substation, holding room, or comparable facility. This definition has not allayed all confusion, especially among city police departments. The annual surveys have been addressed to "such-and-such city jail." The use of the word jail has resulted in many police departments commenting in writing on the survey that they are not a jail and have no detention facilities. The confusion that exists is exemplified by such comments as "We detained no juveniles. We have no jail, only a temporary holding cell." In 1979, instructions on the form were revised to include a requirement for reporting detentions in holding cells.

Secure Detention. In 1976 and 1977, the annual surveys did not include a definition of secure detention. The surveys asked "What was the total number of minors detained (booked), regardless of length of stay, in your facility?" Because the terms "detained" and "booked" were not precise, the numbers reported were in many cases in error. It became apparent that many facilities had reported the number of arrests or bookings rather than the number of minors actually placed in secure detention. As a result, the detentions reported in 1976 and 1977 were probably too high.

In 1978, the annual survey asked for the "total number of minors confined in your facility, regardless of length of stay?" Confinement was defined at the top of the form as "the placement of a minor in secure detention." As a result the number of reported detentions in 1978 decreased and is considered to more closely reflect the actual number of detentions.

The 1979 annual survey included the following definition:

"Secure detention is defined as any situation in which a minor is booked, admitted, entered, or held in a secure facility behind a locked door, gate, or fence. This does not include detention in open reception areas, interrogation rooms, or public areas of a station or facility, police cars, field interrogations or investigations. This does include placement of a minor in a temporary holding room (locked) or holding cell, even if for only a brief period while awaiting transfer to another facility or to be picked up by parents." This definition was thought to be succinct, but some degree of confusion remained. So, in 1980 the annual survey contained the following revised definition:

"Secure detention is defined as any situation in which a minor is booked, admitted, entered, or held in a secure facility behind a locked door, gate, or fence. Secure detention includes placement of a minor in a temporary holding room (locked) or holding cell, even if for only a brief period while awaiting transfer to another facility or to be picked up by parents. Secure detention does not include holding in open reception areas, interrogation rooms, or public areas of a station, facility, or police car." Although this definition seemed foolproof, some agencies were still uncertain. Efforts are continuing in the development of a universally understood definition of secure detention.

#### Other Problems Encountered re Annual Survey

Many law enforcement agencies, especially those in small towns and cities, have difficulty reporting an accurate number of juvenile detentions. Some do not maintain records on how many youths that were booked were also temporarily placed in detention. Some agencies record detention information on individual reports but do not have the capability of summarizing this information, other than going through the records by hand. This is a difficult task, and is often not done, especially when the files contain several hundred or several thousand booking reports.

Those agencies unable or unwilling, due to shortage of staff, to search their records by hand usually do one of three things: 1) they report that they detained minors but the numbers are not available; 2) they report zero detentions; or 3) they report the total number of booked minors, even though not all were placed in detention.

#### Problems Encountered re Monthly Report of 24-Hour Detentions

For the monthly report, there are no problems with the definition of a facility or secure detention: if the minor is held over 24 hours, the minor is to be included on the report. However, some problems do exist. The form contains several sections in which data on the minors are to be reported (see Appendix B): the number of minors, their ages, and the reasons for detention. While the total numbers in each section should be equal, this was not always the case. Miscounts often occurred. For instance, it may have been reported that six minors were detained but ages were only provided for 5 (through clerical error).

The same problem exists for the sections of the form where data are to be reported on releases. It may have been reported that four minors were released, but release dispositions may have been provided for only two of the minors. These errors and inconsistencies are reflected in the tables in this report, where numbers just "do not add up" as they should.

A more serious problem involves the actual count of minors held over 24 hours. Although every effort has been made to provide explicit instructions on the form, we have become aware that errors are being made. The form is to be completed monthly. Each month the agency is to include on the form those minors admitted during the month that were detained beyond 24 hours. At the same time, each minor released during the month that had been detained over 24 hours is to be recorded. We now know that in some cases these procedures were not followed correctly. One problem that occurs is that if a minor (who had been held over 24 hours) was not released during the month and was still in custody, the minor was counted again as a detention for the next month. This would inflate the number of reported detentions, since some minors would be counted more than once. Similar problems exist in recording the length of stay of those minors held over 24 hours. If a minor is still in custody at the end of the month, the minor should not be reported as a release. Upon actual release, the minor should be recorded, showing the total time in custody. However, some agencies record length of stay during the month for minors still in custody. This fact would make our tabled average length of stay an underestimate.

The magnitude of error is demonstrated by the following figures. The 42 reporting facilities submitted 377 monthly reports in 1980. There were 50 monthly reports from 18 of the facilities that contained obvious errors. Less than half of the errors were reconciled and corrected.

The problem is compounded by several factors. Due to staff shortages, etc., the completion of the report is given low priority by some of the law enforcement agencies. The task is often assigned to a dispatcher or a night jailor. The CYA has great difficulty in contacting the appropriate person at an agency who has knowledge of or responsibility for the form. The CYA may finally resolve a problem and correctly train the agency staff person, only to find that person quits his or her job or is reassigned and the new person knows nothing about the form. And at this end, the CYA has not been able to assign a clear priority to the collection of detention data, nor is sufficient staff time always available to correctly carry out the task.

With these problems and qualifications, it is recognized that the data on the number of minors detained in jails cannot be totally accurate. Nevertheless, these data are more useful than a one-day count of minors in jails. The data identify those facilities (for the most part) that do detain minors. In addition, the statewide total number provides a "better-than-ballpark" estimate of the number of minors being held in detention in local jails and lockups.

The CYA is continuously working on resolving the problems associated with the data collection system. The monthly report form is again being revised in an attempt to make the instructions more comprehensible. Correspondence, both written and telephonic, is used to identify and correct errors. CYA staff may find it necessary to visit some facilities and provide on-site technical assistance. With the assistance and cooperation of local law enforcement agencies, the reporting system can be made to provide a reliable and accurate count of the number of minors detained in jails and lockups.

APPENDIX A  
1980  
ANNUAL SURVEY OF MINORS IN JAILS, LOCKUPS,  
AND HOLDING FACILITIES

\_\_\_\_\_ (COLS. 1-7)

AGENCY
ADDRESS

PLEASE SEE REVERSE FOR DEFINITIONS AND INSTRUCTIONS

I. STATEMENT REGARDING DETENTION OF MINORS 17 YEARS OR YOUNGER.  
(See definition of "detention" on reverse side.)

DURING 1980, IN THIS FACILITY: (Check one box)

- 1.  No minors were detained.
- 2.  Minors were temporarily detained, but never for more than 24 hours.
- 3.  Minors were detained, and one or more minors were detained over 24 hours.  
(8)

II. NUMBER OF MINORS DETAINED, FOR ANY LENGTH OF TIME, DURING 1980:

\_\_\_\_\_ Total minors detained  
(9-12)

\_\_\_\_\_ Males  
(13-16)

\_\_\_\_\_ Females  
(17-20)

III. SPECIAL SURVEY QUESTION:

- 1.  YES One or more minors described under W & I Code Section 601 (Status Offenders) were temporarily detained under the provisions of W & I Code Section 207c.
- 2.  NO  
(21)

COMMENTS

---



---



---



---



---



---

NAME	DATE
TITLE	AREA CODE & TELEPHONE NUMBER



APPENDIX A (Cont'd)  
INSTRUCTIONS AND DEFINITIONS

The purpose of this survey is (1) to identify those facilities that detained minors in excess of 24 hours during 1980, and (2) to determine the number of minors placed in secure detention for any length of time during 1980.

DEFINITION OF SECURE DETENTION

Secure detention is defined as any situation in which a minor is booked, admitted, entered, or held in a secure facility behind a locked door, gate, or fence. Secure detention includes placement of a minor in a temporary holding room (locked) or holding cell, even if for only a brief period while awaiting transfer to another facility or to be picked up by parents. Secure detention does not include holding in open reception areas, interrogation rooms, or public areas of a station, facility, or police car.

INSTRUCTIONS FOR COMPLETING FORM

I. Statement Regarding Detention of Minors: Read each of the three statements under Item I and check the one box that correctly applies to your situation. If no minors were detained, as described in the above definition, check the first box, sign the form, and return it.

If you detained one or more minors for any length of time, complete the remainder of the form, sign, and return it.

II. Number of Minors Detained: From your records, or to the best of your knowledge, enter the number of minors detained during 1980.

III. Special Survey Question: The Youth Authority needs to determine which facilities detain minors under the provisions of W & I Code Section 207c, pertaining to status offenders. Check yes or no regarding whether status offenders have been temporarily detained in your facility during 1980.

When you have completed and signed this form, please return it to the following address:

(When properly folded this form may be used for mailing)

Department of the Youth Authority  
Prevention and Community Corrections Branch  
4241 Williamsborough Drive, Suite 219  
Sacramento, CA 95823

(1-5) CODING REFERENCE	(6-7) MONTH	(8-9) YEAR

BEFORE MARKING FORM, SEE INSTRUCTIONS ON REVERSE SIDE.

NAME OF DEPARTMENT \_\_\_\_\_

NAME OF FACILITY \_\_\_\_\_

FACILITY ADDRESS \_\_\_\_\_ ZIP CODE \_\_\_\_\_

(CARD 1)		Report Only Detentions Exceeding 24 Hours.		(CARD 2)	
MINORS BOOKED IN DETENTION THIS MONTH				MINORS RELEASED FROM FACILITY THIS MONTH	
1.	<p>Minors detained in excess of 24 hours. Do not include minors booked and held over from a previous month.</p> <p>OF THESE <input type="text"/> (10-12) were males <input type="text"/> (13-15) were females <input type="text"/> (16-18)</p>	6.	<p>Of those minors released during this month, how long were they detained (from the first day of detention)? Include minors held over from previous month(s).</p> <p>a. <input type="text"/> (10-12) 24 - 48 hours (2nd Day)</p> <p>b. <input type="text"/> (13-15) 48 - 72 hours (3rd Day)</p> <p>c. <input type="text"/> (16-18) 72 - 96 hours (4th Day)</p> <p>d. <input type="text"/> (19-21) 96 - 120 hours (5th Day)</p> <p>e. <input type="text"/> (22-24) 6 - 8 Days</p> <p>f. <input type="text"/> (25-27) 9 - 11 Days</p> <p>g. <input type="text"/> (28-30) 12 - 14 Days</p> <p>h. <input type="text"/> (31-33) 15 or more Days</p> <p>(1) <input type="text"/> (34-36) List number of days for all minors in Line h (example: 3 detentions at 20 days each equals 60 days)</p>		
2.	On <input type="text"/> (19-20) days during the month this facility exceeded its authorized male juvenile detention capacity				
3.	On <input type="text"/> (21-22) days during the month this facility exceeded its authorized female juvenile detention capacity.				
4.	Age of minors specified in Item 1 at time of detention. How many were:				
a.	<input type="text"/> (23-25) 12 years or under				
b.	<input type="text"/> (26-28) 13 years				
c.	<input type="text"/> (29-31) 14 years				
d.	<input type="text"/> (32-34) 15 years				
e.	<input type="text"/> (35-37) 16 years				
f.	<input type="text"/> (38-40) 17 years				
5.	Reason for detention of minors booked into detention this month and held over 24 hours. For multiple violations, use most serious offense, or court order or remand (use only one reason per minor).				
a.	<input type="text"/> (41-43) Felony, Section 707(b) W&I Code (see instructions)				
b.	<input type="text"/> (44-46) Other felony, not included above				
c.	<input type="text"/> (47-49) Misdemeanor violation				
d.	<input type="text"/> (50-52) 601 W&I Code violation				
e.	<input type="text"/> (53-55) Certification to adult court				
f.	<input type="text"/> (56-58) CYA detainees				
g.	<input type="text"/> (59-61) Other reason				
				7. Release dispositions of minors identified in Question 6.	
				a. Of those involving continued detention, how many were:	
				(1) <input type="text"/> (37-39) Transfers to juvenile hall	
				(2) <input type="text"/> (40-42) Transfers to other jurisdictions (Commitments to state, county camps, other law enforcement agencies, etc.)	
				b. Of those involving release from detention, how many were:	
				(1) <input type="text"/> (43-45) Released - no charge or no further proceedings	
				(2) <input type="text"/> (46-48) Released to probation or parents/guardians for further non-custody proceedings.	
				(3) <input type="text"/> (49-51) Released - served sentence	
				(4) <input type="text"/> (52-54) Other releases	

D.P. USE  
1  
COL. 80

D.P. USE  
2  
COL. 80

I hereby certify to the best of my knowledge and belief, in compliance with Section 209 of the Welfare & Institutions Code, that the above is a true and accurate accounting of all persons under 18 years confined in this jail or lockup for a period exceeding 24 hours during the month for which I am reporting.

SIGNATURE OF REPORTING PERSON \_\_\_\_\_ TITLE \_\_\_\_\_ TELEPHONE NUMBER \_\_\_\_\_

APPENDIX B (Cont'd)

INSTRUCTIONS FOR COMPLETING MONTHLY REPORT OF JUVENILE CONFINEMENTS

**Who Shall Report:** Every jail or lockup that books and detains a minor *in excess of 24 hours* during a calendar month shall report for that period.

**Instructions:** Place numbers clearly inside appropriate boxes.

Example: Month   Year

Example: Total Detentions (Item 1)

**Item 1:** Record only the number of minors booked into detention during the current month and who remained over 24 hours. Do *not* include minors booked in a previous month and held over in the current month.

**Items 2 and 3:** Capacity Standards: Normally, during inspection, the Department of the Youth Authority rates facility capacity in accordance with established minimum standards. If capacity for the detention of minors for your facility is unknown, a copy of these standards may be obtained by writing to: Chief, Division of Field Services, Department of the Youth Authority, 4241 Williamsborough Drive, Rm. 219, Sacramento, CA 95823.

**Item 5:** Record one primary reason that each minor was detained for more than 24 hours: whether being held on felony or misdemeanor charges, detained or sentenced on court order, remanded, a CYA hold, or other.

**Felony, Section 707(b) Offenses**

- |                                |  |
|--------------------------------|--|
| Murder                         | Assault With Intent to Commit Murder                     |
| Arson of an Inhabited Building | Attempted Murder   |
| Armed Robbery                  | Assault With Firearm or Destructive Device               |
| Forcible Rape                  | Assault With Force Likely to Produce Great Bodily Injury |
| Kidnapping for Ransom          | Discharge of a Firearm Into an Occupied Building         |
| Kidnapping With Bodily Harm    |  |
| Kidnapping for Robbery         |  |

**Item 6:** For each minor released during the month (including minors held over from previous month(s)), calculate how long the minor was in detention, counting from the first day of detention. For those minors detained 15 or more days, list number in Item 6h. Record the sum of all days spent in detention by those minors listed in 6h.

**Item 7:** Record all release dispositions. Section 7a is for minors transferred to another custody situation; 7b is for minors released from custody. Minors released by citation, court order, or other policy for further legal processing should be listed in 7b(2). "Other releases", 7b(4) might include such as "released to foster care", etc.

Any questions regarding use of this form may be referred to Division of Field Services — (916) 323-3321.

FOLD, STAPLE, & MAIL.

Chief, Division of Field Services  
Department of the Youth Authority  
4241 Williamsborough Drive, Rm. 219  
Sacramento, CA 95823

APPENDIX C

1980 Annual Jail Survey

Number of Juvenile Detentions for Any Length of Time, by County and Facility

County and Facility	Total Detentions	Males	Females	24-Hr. Detentions	W & I 601 Detentions
<u>Alameda Co. - Total</u>	8,225*	3,464	514		
Sheriff's Dept.					
County Jail	55	53	2		
Santa Rita	3	2	1	Yes <sup>a</sup>	
Police Depts.					
Alameda	0	0	0		
Albany	316	280	31		
Berkeley	0	0	0		
Emeryville	50	43	7		Yes
Fremont	2,215	2,025	190		Yes
Hayward	665	n/a	n/a		
Livermore	0	0	0		
Newark	729	562	167		Yes
Oakland	3,577	n/a	n/a		Yes
Piedmont	n/a	n/a	n/a		
Pleasanton	615	499	116		
San Leandro	n/a	n/a	n/a		
Union City	n/a	n/a	n/a		
<u>Alpine Co. - Total</u>	5	4	1		
Sheriff's Dept.					
County Jail***	0	0	0		
Bear Valley Substation	5	4	1		
<u>Amador Co. - Total</u>	39	37	2		
Sheriff's Dept.	32	30	2		
Police Depts.					
Ione	0	0	0		
Jackson	7	7	0		Yes
Plymouth	0	0	0		
Sutter Creek	0	0	0		
<u>Butte Co. - Total</u>	0	0	0		
Sheriff's Dept.	0	0	0		
Police Depts.					
Biggs***	0	0	0		
Chico	0	0	0		
Gridley	0	0	0		
Oroville	0	0	0		

(Continued)

County and Facility	Total Detentions	Males	Females	24-Hr. Detentions	W & I 601 Detentions
<u>Calaveras Co. - Total</u>	98	80	18		
Sheriff's Dept.	98	80	18	Yes	
Police Dept.					
Angels Camp	0	0	0		
<u>Colusa Co. - Total</u>	109	89	20		
Sheriff's Dept.	109	89	20	Yes	Yes
Police Depts.					
Colusa***	0	0	0		
Williams	0	0	0		
<u>Contra Costa Co. - Total</u>	3,685	2,891	794		
Sheriff's Dept.					
(3 facilities)	0	0	0		
Police Depts.					
Antioch	110	92	18		Yes
Brentwood	0	0	0		
Clayton***	0	0	0		
Concord	1,121	932	189		Yes
El Cerrito	221	199	22		Yes
Hercules (Pinole)	62	57	5		
Kensington	0	0	0		
Martinez	0	0	0		
Pinole	0	0	0		
Pittsburg	439	353	86		
Pleasant Hill	589	380	209		
Richmond	584	509	75		Unknown
San Pablo	559	369	190		
Walnut Creek	n/a	n/a	n/a		
<u>Del Norte Co. - Total</u>	141	113	28		
Sheriff's Dept.	141	113	28	Yes	Yes
Police Dept.					
Crescent City	0	0	0		
<u>El Dorado Co. - Total</u>	279	244	35		
Sheriff's Dept.					
So. Lake Tahoe Substation	271	238	33	Yes	
County Jail - Placerville	0	0	0		
Police Depts.					
Placerville	8	6	2		
So. Lake Tahoe	0	0	0		

(Continued)

County and Facility	Total Detentions	Males	Females	24-Hr. Detentions	W & I 601 Detentions
<u>Fresno Co. - Total</u>	3,149	2,327	822		
Sheriff's Dept.					
(2 facilities)	0	0	0		
Police Depts.					
Coalinga	51	44	7		
Clovis	411	289	122		Yes
Firebaugh***	0	0	0		
Fowler City	0	0	0		
Fresno	2,189	1,550	639		
Huron	4	4	0		
Kerman	131	110	21		
Kingsburg	30	24	6		
Mendota	109	107	2		Yes
Orange Cove***	0	0	0		
Parlier***	0	0	0		
Reedley	184	159	25		Yes
Sanger	40	40	0		
Selma	0	0	0		
<u>Glenn Co. - Total</u>	106	87	19		
Sheriff's Dept.	106	87	19	Yes	Yes
Police Depts.					
Orland***	0	0	0		
Willows***	0	0	0		
<u>Humboldt Co. - Total</u>	197	159	38		
Sheriffs Dept.					
County Jail - Eureka	133	107	26		
Garberville Substation	14	11	3		
Hoopa Substation	30	26	4		
Police Depts.					
Arcata	20	15	5		Yes
Eureka***	0	0	0		
Ferndale***	0	0	0		
Fortuna	0	0	0		
Rio Dell	0	0	0		
<u>Imperial Co. - Total</u>	558	485	73		
Sherrif's Dept.					
County Jail - El Centro	0	0	0		
Honor Camp	0	0	0		
Winterhaven Substation	37	31	6		Yes
Police Depts.					
Brawley	212	184	28		
Calxico	201	173	28		Yes

(Continued)

County and Facility	Total Detentions	Males	Females	24-Hr. Detentions	W & I 601 Detentions
<u>Imperial Co. - (Cont'd)</u>					
Police Depts. (Cont'd)					
Calipatria	83	77	6		
El Centro	0	0	0		
Holtville	25	20	5		Yes
Imperial	0	0	0		
Westmorland	0	0	0		
<u>Inyo Co. - Total</u>					
Sheriff's Dept.	85	64	21	Yes	Yes
Police Dept.					
Bishop	117	90	27		Yes
<u>Kern Co. - Total</u>					
Sheriff's Dept. (Co. Jail)	6	6	0	Yes	Yes
7 Other Facilities	0	0	0		
Police Depts.					
Arvin	117	102	15		
Bakersfield	0	0	0		
California City***	0	0	0		
China Lake	1	1	0		Yes
Delano	256	214	42		Yes
Maricopa***	0	0	0		
McFarland***	0	0	0		
Ridgecrest	121	97	24		Yes
Shafter	200	173	27		
Taft	21	20	1		
Tehachapi	23	20	3		
Wasco	0	0	0		
<u>Kings Co. - Total</u>					
Sheriff's Dept.	62	62	0	Yes	
Police Depts.					
Corcoran	169	148	21		Yes
Hanford***	0	0	0		
Lemoore	5	4	1		
<u>Lake Co. - Total</u>					
Sheriff's Dept.	0	0	0		
Police Dept.					
Lakeport***	0	0	0		

(Continued)

County and Facility	Total Detentions	Males	Females	24-Hr. Detentions	W & I 601 Detentions
<u>Lassen Co. - Total</u>					
Sheriff's Dept.	67	58	9	Yes	Yes
Police Dept.					
Susanville	0	0	0		
Sierra Army Depot	0	0	0		
<u>Los Angeles Co. - Total</u>					
Sheriff's Dept.					
Altadena	508	429	79		Yes
Antelope Valley	1,357*	1,066	271		Yes
Avalon	11	9	2		
Carson	1,595	1,319	276		Yes
Central Jail	411	411	0	Yes	
City of Industry	2,327*	1,968	358		Yes
Crescenta Valley	417	339	78		
East Los Angeles	1,256	1,052	204		Yes
Firestone Park	1,263	1,162	101		
Hall of Justice	**				
Lakewood	3,044	2,387	657		Yes
Lennox	2,170	1,915	255		
Lomita	549	472	77		Yes
Lynwood	1,698	1,516	182		
Malibu	1,132	906	226		Yes
Mira Loma Rehab. Facility	**				
Norwalk	2,240	1,910	330		
Pico Rivera	778	730	48		Yes
San Dimas	694	583	111		Yes
Santa Clarita Valley	848	675	173		
Sybil Brand Women's Facility	50	0	50	Yes	
Temple City	1,834	1,522	312		Yes
Wayside-Minimum	0	0	0		
Wayside-Maximum	0	0	0		
West Hollywood	543	428	115		
USC Medical Station	126	116	10	Yes	Yes
Police Depts.					
Alhambra	n/a	n/a	n/a		Yes
Arcadia	31	22	9		
Azusa	367	324	43		Yes
Baldwin Park	632	521	111		Yes
Bell-Cudahy	1,030	727	303		
Bell Gardens	282	248	34		
Beverly Hills	312	282	30		
Burbank	625	491	134		Yes
Claremont	95	86	9		Yes

(Continued)

County and Facility	Total Detentions	Male	Females	24-Hr. Detentions	W & I 601 Detentions
<u>Los Angeles Co. (Cont'd)</u>					
Police Depts. (Cont'd)					
Compton	1,287	1,204	83		Yes
Covina	976	653	323		Yes
Culver City	463	405	58	Yes	Yes
Downey	503	277	226		
El Monte	923	767	156		
El Segundo	191	163	28		Yes
Gardena	608	576	32		Yes
Glendale	918	687	231		Yes
Glendora	374	319	55		Yes
Hawthorne	2,095	1,734	361		Yes
Hermosa Beach	150	130	20		Yes
Huntington Park	680	400	280		Yes
Inglewood	931	805	126	Yes	Yes
Irwindale	62	55	7		Yes
La Verne	235	185	50		
<u>Los Angeles - Total Precincts</u>					
Devonshire	657	532	125		Yes
Foothill	1,965	1,470	495		
Harbor	627	565	62		
Hollenbeck	1,500	1,200	300		
Hollywood	192	104	88		
Newton Street	0	0	0		
Northeast Div.	1,275	1,045	230		
North Hollywood	1,284	982	302		
Parker Center	0	0	0		
Rampart	1,679	1,500	179		
77th Street Station	1,050	1,000	50		
Southeast Station	2,500	1,875	625		Yes
Southwest Station	2,520	1,860	660		
Van Nuys Valley Jail	0	0	0		
Venice	1,454	1,241	213		
Watts Station	**				
West Los Angeles	347	261	86		Yes
West Valley	1,500	1,100	400		Yes
Wilshire	1,420	1,020	400		Yes
Long Beach	5,069	3,826	1,243	Yes	Yes
Manhattan Beach	301	250	51		Yes
Maywood	219	171	48		
Monrovia	142	114	28	Yes	Yes
Montebello	618	522	96		
Monterey Park	337	n/a	n/a		
Palos Verdes Estates	149	89	60		
Pasadena	908	791	117		

(Continued)

County and Facility	Total Detentions	Males	Females	24-Hr. Detentions	W & I 601 Detentions
<u>Los Angeles Co. - (Cont'd)</u>					
Police Depts. (Cont'd)					
Pomona	882	742	140		Yes
Redondo Beach	930	745	185	Yes	Yes
San Fernando	303	275	28		
San Gabriel	525	329	196		Yes
San Marino	40	35	5		
Santa Monica	40	35	5		Yes
Sierra Madre	122	104	18		
Signal Hill	75	60	15		Yes
South Gate	1,608	1,330	278		
South Pasadena	82	78	4		
Torrance	1,555	1,169	386		Yes
Vernon	40	n/a	n/a		
West Covina	1,192	876	316		Yes
Whittier	884	729	155		
<u>Madera Co. - Total</u>					
Sheriff's Dept.	0	0	0		
Police Depts.					
Chowchilla	0	0	0		
Madera	0	0	0		
<u>Marin Co. - Total</u>					
639	513	126			
Sheriff's Dept.					
County Jail	1	1	0	Yes	Yes
Corr. Facility/ Honor Camp	0	0	0		
Police Depts.					
Belvedere***	0	0	0		
Corte Madera	0	0	0		
Fairfax	25	15	10		
Larkspur***	0	0	0		
Mill Valley	0	0	0		
Novato	514	427	87		
Ross***	0	0	0		
San Anselmo	0	0	0		
San Rafael	75	50	25		
Sausalito	24	20	4		Yes
Tiburon	0	0	0		
<u>Mariposa Co. - Total</u>					
107	84	23			
Sheriff's Dept.					
107	84	23		Yes	Yes

(Continued)

County and Facility	Total Detentions	Males	Females	24-Hr. Detention	W & I 601 Detentions
<u>Mendocino Co. - Total</u>	172*	51	19		
Sheriff's Dept. (2 facilities)	0	0	0		
Police Depts.					
Fort Bragg	70	51	19		Yes
Ukiah	0	0	0		
Willits	102	n/a	n/a		
<u>Merced Co. - Total</u>	249	218	31		
Sheriff's Dept.					
County Jail	27	27	0	Yes	
Rehab. Center	0	0	0		
Police Depts.					
Atwater	0	0	0		
Dos Palos	70	66	4		
Gustine***	0	0	0		
Livingston	0	0	0		
Los Banos	152	125	27		
Merced	0	0	0		
<u>Modoc Co. - Total</u>	32	28	4		
Sheriff's Dept.	32	28	4	Yes	
Police Dept.					
Alturas***	0	0	0		
<u>Mono Co. - Total</u>	85	76	9		
Sheriff's Dept.					
Bridgeport Co. Jail	72	63	9	Yes	
Mammoth Substation	13	13	0		
<u>Monterey Co. - Total</u>	664	551	113		
Sheriff's Dept. (2 facilities)	0	0	0		
Police Depts.					
Carmel	0	0	0		
Del Rey Oaks	0	0	0		
Gonzales	74	69	5		Yes
Greenfield	0	0	0		
King City	83	62	21		Yes
Marina	200	159	41		Yes
Monterey	211	177	34		
Pacific Grove	76	65	11		
Salinas	0	0	0		
Sand City	0	0	0		
Seaside	20	19	1		
Soledad***	0	0	0		

(Continued)

County and Facility	Total Detentions	Males	Females	24-Hr. Detentions	W & I 601 Detentions
<u>Napa Co. - Total</u>	86	61	25		
Sheriff's Dept.	0	0	0		
Police Depts.					
Calistoga	0	0	0		
Napa	72	48	24		
St. Helena	14	13	1		
<u>Nevada Co. - Total</u>	59	53	6		
Sheriff's Dept.					
County Jail	20	18	2		Yes
Truckee Substation	39	35	4		Yes
Police Depts.					
Grass Valley	0	0	0		
Nevada City***	0	0	0		
<u>Orange Co. - Total</u>	9,440*	6,647	2,613		
Sheriff's Dept.					
Men's Jail	56	56	0	Yes	
Women's Jail	15	0	15	Yes	
Industrial Farm	0	0	0		
Theo Lacy	0	0	0		
Police Depts.					
Anaheim	635	564	71		Yes
Brea	0	0	0		
Buena Park	1,173	943	230		Yes
Costa Mesa	0	0	0		
Cypress	0	0	0		
Fountain Valley	n/a	n/a	n/a		
Fullerton	180	n/a	n/a		
Garden Grove	n/a	n/a	n/a		
Huntington Beach	2,071	1,697	374		
Irvine	0	0	0		
Laguna Beach	250	212	38		
La Habra	282	237	45		
La Palma	147	129	18		
Los Alamitos	n/a	n/a	n/a		
Newport Beach	2,838	1,341	1,497		Yes
Orange	20	20	0		
Placentia	380	336	44		Yes
San Clemente	147	122	25		Yes
Santa Ana	0	0	0		
Seal Beach	220	183	37		Yes
Stanton	226	187	39		
Tustin	20	20	0		
Westminster	780	600	180		Yes

(Continued)



County and Facility	Total Detentions	Males	Females	24-Hr. Detentions	W & I 601 Detentions
<u>Placer Co. - Total</u>	272	215	57		
Sheriff's Dept. (2 facilities)	0	0	0		
Police Depts.					
Auburn***	0	0	0		
Colfax***	0	0	0		
Lincoln	0	0	0		
Rocklin	68	59	9		Yes
Roseville	204	156	48		
<u>Plumas Co. - Total</u>	54	46	8		
Sheriff's Dept.					
County Jail	54	46	8	Yes	
Chester Substation***	0	0	0		
<u>Riverside Co. - Totals</u>	2,900*	2,489	415		
Sheriff's Dept.					
Banning Substation	435	401	34	Yes	Yes
Blythe Substation	116*	93	27	Yes	
Indio Substation	1,219	1,099	120	Yes	Yes
Lake Elsinore Station	70	57	13		Yes
4 Other Facilities	0	0	0		
Police Depts.					
Beaumont	0	0	0		
Blythe***	0	0	0		
Coachella	0	0	0		
Corona	0	0	0		
Hemet	121	96	25		Yes
Indio	0	0	0		
Palm Springs	583	451	132		Yes
Perris	200	176	24		
Riverside	85	60	25		Yes
San Jacinto	71	56	15		
<u>Sacramento Co. - Totals</u>	62	52	10		
Sheriff's Dept. (3 facilities)	0	0	0		
Police Depts.					
Folsom	57	48	9		Yes
Galt	5	4	1		Yes
Isleton	0	0	0		
Sacramento	n/a	n/a	n/a		Yes

(Continued)

County and Facility	Total Detentions	Males	Females	24-Hr. Detentions	W & I 601 Detentions
<u>San Benito Co. - Total</u>	161	155	6		
Sheriff's Dept.	161	155	6		
Police Depts.					
Hollister***	0	0	0		
San Juan Bautista***	0	0	0		
<u>San Bernardino Co. - Total</u>	4,567	3,716	851		
Sheriff's Dept.					
Barstow Substation	337	305	32	Yes	Yes
Big Bear Lake	257	219	38		
Glen Helen Rehab.	2	2	0	Yes	
Needles Substation	26	24	2		
29 Palms	27	23	4		Yes
Victorville	175	115	60		Yes
2 Other Facilities	0	0	0		
Police Depts.					
Adelanto***	0	0	0		
Barstow	305	241	64		
Chino	297	264	33		
Colton***	0	0	0		
Fontana	n/a	n/a	n/a		Yes
Montclair	331	274	57		Yes
Needles	0	0	0		
Ontario	1,094	915	179		
Redlands	476	388	88		Yes
Rialto	643	548	95		Yes
San Bernardino	0	0	0		
Upland	597	398	199		
<u>San Diego Co. - Total</u>	4,243*	3,171	747		
Sheriff's Dept.	0	0	0		
Police Depts.					
Carlsbad	0	0	0		
Chula Vista	1,152	1,007	145		Yes
Coronado	165	113	52		
El Cajon	0	0	0		
Escondido	480	416	64		Yes
Imperial Beach	325	n/a	n/a		Yes
La Mesa	523	380	143		Yes
National City	1,256	1,005	251		Yes
Oceanside	342	250	92		
San Diego	0	0	0		

(Continued)

County and Facility	Total Detentions	Male	Female	24-Hr. Detentions	W & I 601 Detentions
<u>San Francisco Co. - Total</u>	0	0	0		
Sheriff's Dept. (3 facilities)	0	0	0		
Police Dept. San Francisco	0	0	0		
<u>San Joaquin Co. - Total</u>	946	774	172		
Sheriff's Dept. County Jail	10	0	0	Yes	
2 Other Facilities	0	0	0		
Police Depts. Escalon	0	0	0		
Lodi	473	395	78		Yes
Manteca	439	349	90		
Ripon	0	0	0		
Stockton	24	20	4		
Tracy	0	0	0		
<u>San Luis Obispo Co. - Total</u>	565	468	97		
Sheriff's Dept.	2	2	0	Yes	
Police Depts. Arroyo Grande	35	33	2		
Grover City***	0	0	0		
Morro Bay	90	79	11		
Paso Robles	132	115	17		Yes
Pismo Beach	266	204	62		Yes
San Luis Obispo	40	35	5		
<u>San Mateo Co. - Total</u>	938	845	193		
Sheriff's Dept. (4 facilities)	0	0	0		
Police Depts. Atherton	27	22	5		
Belmont	15	13	2		
Brisbane	0	0	0		
Broadmoor	0	0	0		
Burlingame	0	0	0		
Colma***	0	0	0		
Foster	0	0	0		
Half Moon Bay	100	77	23		Yes
Hillsborough	0	0	0		
Menlo Park	14	11	3		
Millbrae	97	90	7		

(Continued)

County and Facility	Total Detentions	Male	Female	24-Hr. Detentions	W & I 601 Detentions
<u>San Mateo County (Cont'd)</u>					
Police Depts. (Cont'd) Pacifica	195	185	10		
Redwood City	0	0	0		
San Bruno	424	385	139		Yes
San Carlos	n/a	n/a	n/a		
San Mateo	66	62	4		
South San Francisco	n/a	n/a	n/a		Yes
<u>Santa Barbara Co. - Total</u>	1,175*	882	257		
Sheriff's Dept. County Jail	10	7	3	Yes	
3 Other Facilities	0	0	0		
Police Depts. Carpinteria	36	n/a	n/a		Yes
Guadalupe***	0	0	0		
Lompoc	0	0	0		
Santa Barbara	0	0	0		
Santa Maria	1,129	875	254		
<u>Santa Clara Co. - Total</u>	3,084*	2,249	503		
Sheriff's Dept. County Jail	24	24	0	Yes	
Women's Facility	6	0	6	Yes	
2 Other Facilities	0	0	0		
Police Depts. Campbell	0	0	0		
Gilroy	946	772	174		
Los Altos	0	0	0		
Los Gatos	0	0	0		
Milpitas	0	0	0		
Morgan Hill	332	n/a	n/a		
Mountain View	n/a	n/a	n/a		Yes
Palo Alto	120	85	35		Yes
San Jose	n/a	n/a	n/a		Yes
Santa Clara	1,656	1,368	288		
Sunnyvale	0	0	0		
<u>Santa Cruz Co. - Total</u>	442	322	120		
Sheriff's Dept. (3 Facilities)	0	0	0		
Police Depts. Capitola	0	0	0		
Santa Cruz***	0	0	0		
Scotts Valley	0	0	0		
Watsonville	442	322	120		

(Continued)

County and Facility	Total Detentions	Males	Females	24-Hr. Detentions	W & I 601 Detentions
<u>Shasta Co. - Total</u>	5	5	0		
Sheriff's Dept. (3 Facilities)	0	0	0		
Police Depts.					
Anderson	0	0	0		
Redding	5	5	0		
<u>Sierra Co. - Total</u>	19	17	2		
Sheriff's Dept.					
County Jail	13	12	1		Yes
Loyalton Substation	6	5	1		Yes
<u>Siskiyou Co. - Total</u>	0	0	0		
Sheriff's Dept.	0	0	0		
Police Depts.					
Dorris	0	0	0		
Dunsmuir	0	0	0		
Etna***	0	0	0		
Fort Jones	0	0	0		
Montague***	0	0	0		
Mt. Shasta	0	0	0		
Tulelake	0	0	0		
Weed***	0	0	0		
Yreka	0	0	0		
<u>Solano Co. - Total</u>	736	631	105		
Sheriff's Dept. (3 Facilities)	0	0	0		
Police Depts.					
Benicia	596	519	77		
Dixon	0	0	0		
Fairfield	125	100	25		
Rio Vista	3	3	0		
Suisun City***	0	0	0		
Vacaville***	0	0	0		
Vallejo	12	9	3		
<u>Sonoma Co. - Total</u>	2,928	1,499	1,429		
Sheriff's Dept.					
County Jail	1	1	0	Yes	
Honor Farm	0	0	0		
Guerneville Holding Facility	115	75	40		Yes

(Continued)

County and Facility	Total Detentions	Males	Females	24-Hr. Detentions	W & I 601 Detentions
Police Depts.					
Cloverdale	9	4	5		
Cotati	91	73	18		
Healdsburg	100	75	25		
Petaluma	612	572	40		
Rohnert Park	55	55	0		
Santa Rosa	1,769	495	1,274		
Sebastopol	176	149	27		Yes
Sonoma	0	0	0		
<u>Stanislaus Co. - Total</u>	364	307	57		
Sheriff's Dept. (2 Facilities)	0	0	0		
Police Depts.					
Ceres	0	0	0		
Hughson	0	0	0		
Modesto	0	0	0		
Newman***	0	0	0		
Oakdale	12	10	2		Yes
Patterson	0	0	0		
Riverbank***	0	0	0		
Turlock	352	297	55		Yes
Waterford***	0	0	0		
<u>Sutter Co. - Total</u>	0	0	0		
Sheriff's Dept. (2 Facilities)	0	0	0		
Police Dept.					
Yuba City	0	0	0		
<u>Tehama Co. - Total</u>	3	2	1		
Sheriff's Dept.	3	2	1	Yes	Yes
Corning	0	0	0		
Red Bluff	0	0	0		
<u>Trinity Co. - Total</u>	161	149	12		
Sheriff's Dept.	161	149	12	Yes	Yes
<u>Tulare Co. - Total</u>	985*	311	135		
Sheriff's Dept.					
County Jail	10	9	1	Yes	
2 Other Facilities	0	0	0		

(Continued)

County and Facility	Detentions	Males	Females	24-Hr. Detentions	W & I 601 Detentions
<u>Tulare Co. (Cont'd)</u>					
Police Depts.					
Dinuba	143	119	24		Yes
Exeter	175	105	70		
Farmersville***	0	0	0		
Lindsay	0	0	0		
Porterville	0	0	0		
Tulare	539	n/a	n/a		Yes
Visalia	118	78	40		
Woodlake	0	0	0		
<u>Tuolumne Co. - Total</u>					
Sheriff's Dept.	194	174	20	Yes	Yes
Police Dept.					
Sonora	0	0	0		
<u>Ventura Co. - Total</u>					
Sheriff's Dept. (4 Facilities)	0	0	0		
Police Depts.					
Fillmore	0	0	0		
Ojai	0	0	0		
Oxnard	1,200	1,080	120		Yes
Port Hueneme	166	148	18		
Santa Paula	153	139	14		Yes
Simi Valley	n/a	n/a	n/a		
Ventura	1	1	0		
<u>Yolo Co. - Total</u>					
Sheriff's Dept. (2 Facilities)	0	0	0		
Police Depts.					
Davis	14	11	3		
Winters	10	10	0		
Woodland	0	0	0		

(Continued)

County and Facility	Total Detentions	Males	Females	24-Hr. Detention	W & I 601 Detention
<u>Yuba Co. - Total</u>					
Sheriff's Dept.	12	9	3		
Police Depts.					
Marysville	0	0	0		
Wheatland	12	9	3		Yes
	0	0	0		

\* Total does not equal sum of males and females due to an error in reporting (or missing data for detentions by sex).

\*\* Facility reported closed in 1980.

\*\*\* On survey, agency staff stated that they had no jail or holding facility of any kind.

<sup>a</sup> Detained due to false identification/birthdate.

n/a - This notation means that minors were detained, but records are not maintained and an actual count is unavailable.

APPENDIX D

Juveniles Confined in Jails or Lockups for More than 24 Hours During 1980

Reporting Facility	Juveniles Detained									Juveniles Released									
	Total Deten-tions	Sex		Age Under 15 Yrs.	Reason for Detention					Total Releas-es	Release Dispositions						Mean Length of Stay (Days)	No. With Stay of 14 Days or More	Month Report-ing
		M	F		602 Off.	601 Off.	Adult Court	CYA De-tainee	Other		Further Detention		No Further Detention						
											Trans. J.H.	Trans. Other Juris.	Rel. Out-right	Prob./ Parents	Served Sent.	Other			
Alameda Co. Jail	1	1	0	0	1	0	0	0	0	1	1	0	0	0	0	0	10.0	0	1
Calaveras Co. Jail	28	28	0	4	28	0	0	0	0	28	3	10	0	14	1	0	11.6	6	10
Colusa Co. Jail	55	49	6	0	46	6	1	1	1	52	13	19	3	11	0	0	7.8	6	12
El Dorado Co. Jail	36	30	6	6	28	2	0	0	6	36	11	0	0	25	0	0	2.1	0	11
Glenn Co. Jail	63	50	13	11	63	0	0	0	0	58	12	16	0	29	0	0	5.0	6	12
Inyo Co. Jail	53	40	2	8	50	2	0	0	1	44	0	9	0	32	0	3	5.3	4	12
Kern Co. Jail	10	10	0	0	8	0	1	1	0	6	0	3	1	0	0	0	53.5	6	10
Kings Co. Jail	64	64	0	8	54	1	8	0	1	65	36	5	0	15	1	2	6.3	8	12
Lassen Co. Jail	70	60	10	13	68	0	0	0	2	66	4	15	2	39	5	2	3.9	4	12
Los Angeles Co. Jail	342	342	0	30	305	1	0	0	36	246	69	7	11	18	10	131	23.5	67	10
Los Angeles USC Med. Ctr.	126	116	10	0	96	2	6	10	9	126	90	32	1	3	0	0	3.5	12	3
Los Angeles Sybil Brand	50	0	50	1	40	0	10	0	0	44	17	6	10	0	3	8	14.2	12	9
Los Angeles Co. Culver City P.D.	2	1	1	0	2	0	0	0	0	2	0	0	0	2	0	0	3.0	12	0
Los Angeles Co. Long Beach P.D.	57	51	6	16	47	10	0	0	0	57	8	3	14	30	0	0	1.5	12	0
Los Angeles Co. Redondo Beach P.D.	2	1	1	1	0	2	0	0	0	2	2	0	0	0	0	0	1.5	1	0

APPENDIX D (Cont'd)

Juveniles Confined in Jails or Lockups for More than 24 Hours During 1980

Reporting Facility	Juveniles Detained									Juveniles Released							Mean Length of Stay (Days)	No. With Stay of 14 Days or More	Month Reporting
	Total Detentions	Sex		Age Under 15 Yrs.	Reason for Detention					Total Releases	Release Dispositions								
		M	F		602 Off.	601 Off.	Adult Court	CYA Detainee	Other		Further Detention		No Further Detention						
											Trans. J.H.	Trans. Other Juris.	Rel. Out-right	Prob./Parents	Served Sent.	Other			
Los Angeles Co. Santa Monica P.D.	1	0	1	0	0	0	0	0	0	1	0	0	0	1	0	0	1.5	0	1
Los Angeles Co. Tarrance P.D.	1	1	0	0	1	0	0	0	0	1	1	0	0	0	0	0	1.5	0	1
Los Angeles Co. El Monte P.D.	1	1	0	0	0	0	0	0	0	1	0	1	0	0	0	0	1.5	0	11
Los Angeles Co. Inglewood P.D.	25	22	3	4	25	0	0	0	0	25	4	4	5	6	0	6	1.6	0	12
Mariposa Co. Jail	25	21	4	2	7	8	0	8	2	24	3	9	0	4	6	0	6.0	2	11
Merced Co. Jail	32	32	0	0	11	0	6	0	14	31	15	2	0	1	1	1	18.9	13	8
Modoc Co. Jail	12	11	1	0	11	0	0	0	0	11	1	3	1	6	0	0	5.4	1	9
Nevada Co. Jail	35	35	0	0	21	0	0	10	4	30	2	20	0	3	1	0	11.9	10	9
Orange Co. Jail	54	50	4	0	49	0	0	0	5	54	6	38	1	5	2	1	52.1	40	12
Riverside Co. Jail - Indio	157	146	11	24	157	0	0	0	0	157	97	7	0	53	0	1	1.6	0	12
Riverside Co. Jail - Blythe	116	93	23	18	111	0	0	0	5	116	56	3	0	53	0	0	1.9	0	12
San Bernardino Co. Jail - Glen Helen	1	1	0	0	1	0	0	0	0	1	0	1	0	0	0	0	28.0	1	9
San Bernardino Co. Jail - Barstow	39	33	6	7	39	0	0	0	0	39	33	1	0	3	0	2	1.6	0	11



APPENDIX D (Cont'd)

Juveniles Confined in Jails or Lockups for More than 24 Hours During 1980

Reporting Facility	Juveniles Detained									Juveniles Released									
	Total Detentions	Sex		Age Under 15 Yrs.	Reason for Detention					Total Releases	Release Dispositions						Mean Length of Stay (Days)	No. With Stay of 14 Days or More	Month Reporting
		M	F		602 Off.	601 Off.	Adult Court	CYA Detainee	Other		Further Detention		No Further Detention						
											Trans. J.H.	Trans. Other Juris.	Rel. Out-right	Prob./Parents	Served Sent.	Other			
San Diego Co. Jail	2	2	0	0	0	0	2	0	0	8	6	2	0	0	0	0	46.0	7	1
San Joaquin Co. Jail	21	20	1	0	20	0	1	0	0	11	2	6	0	0	0	0	8.1	2	12
San Luis Obispo Co. Jail	3	3	0	0	0	0	0	3	0	1	0	1	0	0	0	0	78.0	1	4
Santa Barbara Co. Jail	7	4	3	0	6	0	0	0	0	7	1	2	0	0	1	2	15.5	2	12
Santa Clara Co. Jail - Men	24	24	0	0	5	0	18	0	1	26	4	14	0	4	1	3	70.2	20	12
Santa Clara Co. Jail - Women	8	0	8	0	2	0	6	0	0	4	0	0	0	1	0	3	14.1	2	12
Shasta Co. Jail	1	0	1	0	1	0	0	0	0	1	1	0	0	0	0	0	7.0	0	5
Sonoma Co. Jail	1	1	0	0	1	0	0	0	0	1	0	0	0	0	0	1	12.0	0	5
Stanislaus Co. Jail	4	4	0	0	4	0	0	0	0	9	0	1	2	0	2	4	57.6	5	2
Tehama Co. Jail	2	2	0	0	1	0	1	0	0	2	0	0	0	0	0	0	8.5	0	1
Trinity Co. Jail	4	4	0	2	3	1	0	0	0	4	2	1	0	1	0	0	4.3	0	12
Tulare Co. Jail	14	13	1	0	9	0	3	0	0	7	4	2	0	0	0	1	9.2	1	12
Tuolumne Co. Jail	10	10	0	2	9	0	1	0	0	8	6	3	0	0	0	0	4.5	0	12
Ventura Co. Jail	1	1	0	0	1	0	0	0	0	1	1	0	0	0	0	0	3.5	0	5

Note: Numbers may not add up to row totals due to incomplete reporting.

43

**END**