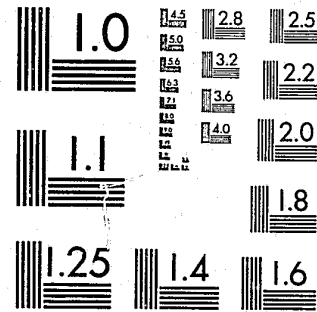


National Criminal Justice Reference Service



This microfiche was produced from documents received for inclusion in the NCJRS data base. Since NCJRS cannot exercise control over the physical condition of the documents submitted, the individual frame quality will vary. The resolution chart on this frame may be used to evaluate the document quality.



MICROCOPY RESOLUTION TEST CHART  
NATIONAL BUREAU OF STANDARDS-1963-A

Microfilming procedures used to create this fiche comply with the standards set forth in 41CFR 101-11.504.

Points of view or opinions stated in this document are those of the author(s) and do not represent the official position or policies of the U. S. Department of Justice.

National Institute of Justice  
United States Department of Justice  
Washington, D. C. 20531

9/26/83



# Rape in Arkansas 1981

October, 1982

89098

Arkansas Crime Information Center





A Research and Statistics Division Report

U.S. Department of Justice  
National Institute of Justice

This document has been reproduced exactly as received from the person or organization originating it. Points of view or opinions stated in this document are those of the authors and do not necessarily represent the official position or policies of the National Institute of Justice.

Permission to reproduce this copyrighted material has been granted by

Public Domain/Arkansas  
Crime Information Center

to the National Criminal Justice Reference Service (NCJRS).

Further reproduction outside of the NCJRS system requires permission of the copyright owner.

RAPE IN ARKANSAS

1981

October, 1982

Arkansas Crime Information Center  
One Capitol Mall  
Little Rock, AR 72201

## PREFACE

The definition of rape (Arkansas Criminal Code; §41-1803; pages 129-130; effective January, 1976) is:

*A person commits rape if he engages in sexual intercourse or deviate sexual activity with another person:*

- (a) by forcible compulsion; or*
- (b) who is incapable of consent because he is physically helpless; or*
- (c) who is less than eleven (11) years old.*

The definition of forcible rape in the Uniform Crime Reporting (UCR) Program is:

*Forcible rape is the carnal knowledge of a female through the use of force or the threat of force. Assaults to commit forcible rape are also included; however, statutory rape (without force) is not counted in this category.*

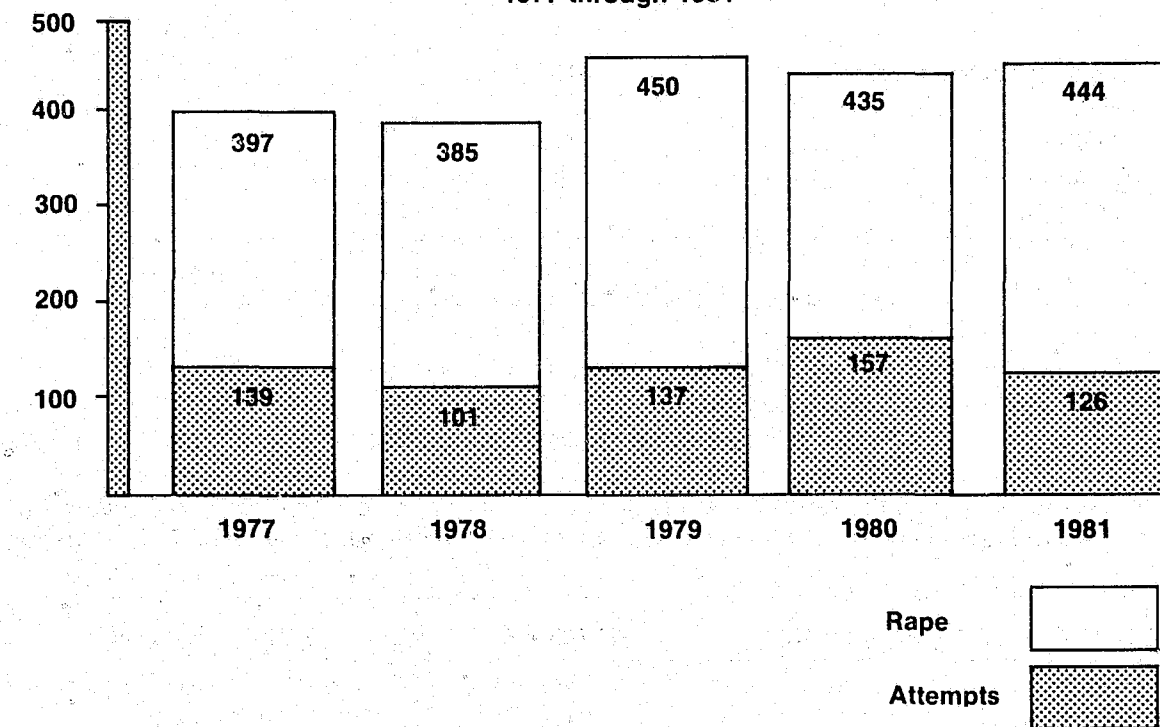
There is a wide disparity between these two definitions. This report utilizes the Uniform Crime Reporting definition of rape. The report includes all data collected, with the cooperation of law enforcement agencies from their offense reports, utilizing the UCR statistics reporting to the Arkansas Crime Information Center.

Throughout this report, except where noted, rape and attempted rape are combined statistically.

**RAPE IN ARKANSAS, 1981**

There were 570 rapes and attempted rapes in Arkansas reported through the Uniform Crime Reporting Program. Of these, 444 were rapes and 126 were attempted rapes reported by law enforcement agencies. There was an average of 191 law enforcement agencies submitting Uniform Crime Reports each month in 1981. This represents law enforcement reports covering 96.5% of the state population.

**COMPARISON OF ACTUAL AND ATTEMPTED RAPES  
1977 through 1981**



**RAPE, 1981**

	NUMBER	% DISTRIBUTION
Rape	444	77.9
Attempted Rape	126	22.1
<b>TOTAL</b>	<b>570</b>	<b>100</b>

**VICTIMS OF RAPE, 1981**

The victims of rape in Arkansas were predominantly white (60%) and less than 25 years of age (64%). The youngest victim was 1 year old and the oldest, 82. The victim characteristics by race and age are:

VICTIM CHARACTERISTICS	NUMBER	% DISTRIBUTION
<b>RACE</b>		
White	345	60.5
Black	225	39.5
<b>AGE</b>		
Juveniles (under 18)	184	32.3
18-24	183	32.1
25-34	134	23.5
35 and over	64	11.2
Unknown	5	0.9
<b>TOTAL</b>	<b>570</b>	<b>100</b>

**VICTIM-OFFENDER RACE RELATIONSHIP**

The first race listed is the race of the *victim*, and the second race is that of the *offender(s)*. For example: *white/black* means that the victim was white and the offender was black (1 or more).

VICTIM/OFFENDER(S) RACE	NUMBER	% DISTRIBUTION
White/White	266	46.7
Black/Black	212	37.2
Total Intra-racial Rapes (same race)	478	83.9
White/Black	73	12.8
Black/White	7	1.2
White/White & Black*	0	0
Black/White & Black*	1	0.2
Total Inter-racial Rapes (different races)	81	14.2
White/Unknown	6	1.0
Black/Unknown	5	0.9
Unknown/Black	0	0
Unknown/Unknown	0	0
Total Unknown Rapes	11	1.9
<b>TOTAL RAPES</b>	<b>570</b>	<b>100</b>

\*A rape involving both white and black offenders is counted as an inter-racial rape.

**RAPE REPORTING TIME LAPSE**

Where time lapse was known, almost two-thirds of the rapes were reported to law enforcement agencies within four hours of the commission of the offense.

HOURS REPORTING TIME	NUMBER	% DISTRIBUTION
Less than 1	195	34.2
1 - 4	155	27.2
4+ - 8	51	8.9
8+ - 12	16	2.8
12+ - 24	33	5.8
More than 24	87	15.3
Unknown	33	5.8

**RELATIONSHIP OF OFFENDER TO VICTIM**

The number of rapes committed by an unknown offender (46%) is almost equal to the number committed by an offender known to the victim (47%). Those committed by a family member (5.6%) although known to the victim, are grouped in a separate category.

RELATIONSHIP	NUMBER	% DISTRIBUTION
Unknown to victim	264	46.3
Known by victim	268	47.0
Family member	32	5.6
Unknown (data not available)	6	1.0

**NUMBER OF OFFENDERS PER RAPE**

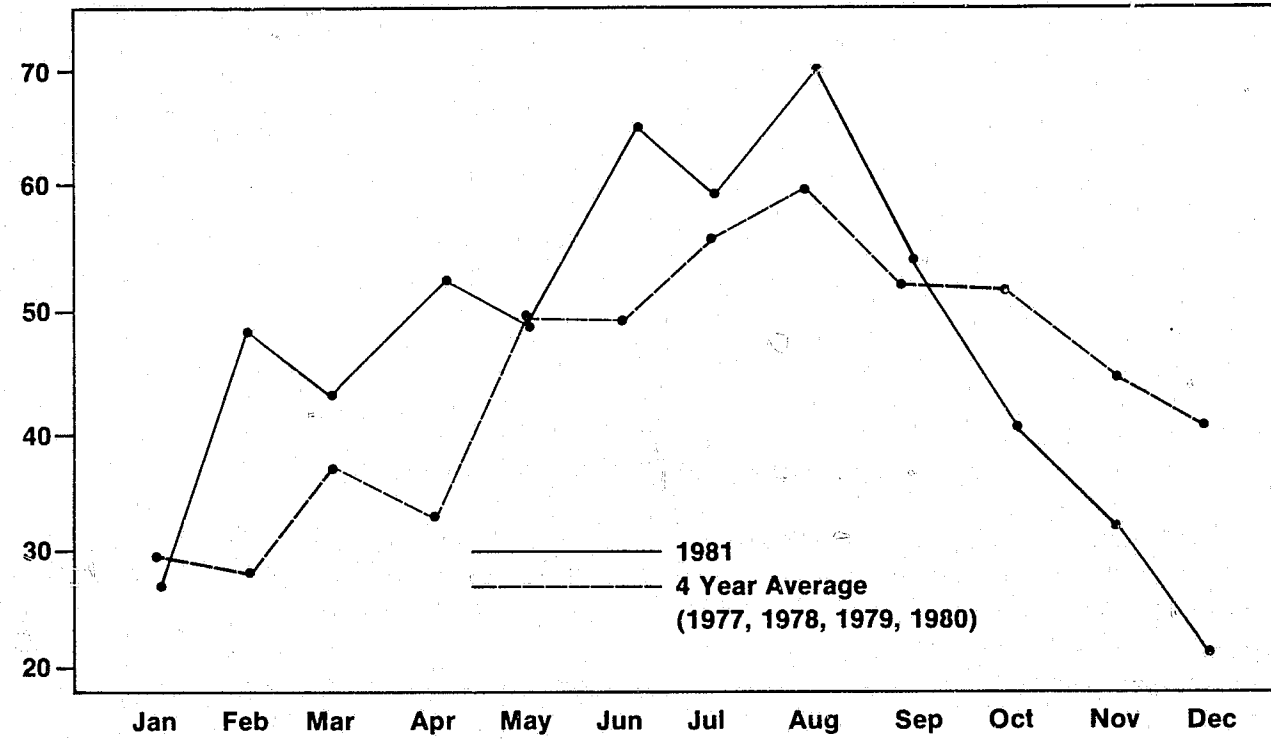
There were two or more offenders in only 11.7% of the rapes or attempted rapes.

OFFENDER(S) PER OFFENSE	NUMBER	% DISTRIBUTION
One	503	88.2
Two	47	8.2
Three	10	1.8
Four	8	1.4
More than four	1	0.2
Unknown	1	0.2

**RAPES BY MONTH**

(1981 compared to an average of the years 1977, 1978, 1979, and 1980)

In 1981 more rapes occurred in August than in any other month. In 1980 the largest number of rapes occurred in July. In 1979 the largest number of rapes occurred in September and October. In 1978 and 1977 the largest number of rapes occurred in August.



MONTH	NUMBER	% DISTRIBUTION
January	29	5.1
February	48	8.4
March	44	7.7
April	53	9.3
May	49	8.6
June	64	11.2
July	59	10.3
August	66	11.6
September	54	9.5
October	42	7.4
November	34	6.0
December	24	4.2
Unknown	4	0.7
<b>TOTAL RAPES</b>	<b>570</b>	<b>100</b>

**RAPE BY DAY OF WEEK**

Approximately one-third of the rapes were committed on Saturday and Sunday.

DAY OF RAPE	NUMBER	% DISTRIBUTION
Sunday	85	14.9
Monday	65	11.4
Tuesday	72	12.6
Wednesday	71	12.5
Thursday	74	13.0
Friday	77	13.5
Saturday	104	18.2
Unknown	22	3.9

**RAPE BY TIME OF DAY**

Over one-third of all rapes, when time of day was known, were between midnight and 4 a.m.

TIME OF DAY	NUMBER	% DISTRIBUTION
A.M. 12:01 - 2	99	17.4
2:01 - 4	85	14.9
4:01 - 6	35	6.1
6:01 - 8	15	2.6
8:01 - 10	13	2.3
10:01 - Noon	24	4.2
P.M. 12:01 - 2	19	3.3
2:01 - 4	27	4.7
4:01 - 6	26	4.6
6:01 - 8	49	8.6
8:01 - 10	64	11.2
10:01 - Midnight	67	11.8
Unknown	47	8.3

### RAPE SITUATIONS

#### LOCATION OF ORIGINAL CONTACT/ACCOST:

The largest location category for both original contact and actual rape is the victim's residence (44% and 43% respectively.) However, compared to 1980 this category has been reduced by **almost 10%**.

ORIGINAL CONTACT/ACCOST	NUMBER	% DISTRIBUTION
Victim's residence	249	43.9
Suspect's residence	36	6.3
Other residences	26	4.6
Automobiles	22	3.8
Public outdoor areas (streets, parks, etc.)	122	21.4
Bars and Lounges	25	4.4
Fields, vacant lots, etc.	8	1.4
Motels	5	0.9
All other locations	54	9.5
Unknown	23	3.8

#### WEAPON USED TO EXERT FORCE UPON VICTIM:

The offender used no external weapon in almost three out of four of the rapes.

WEAPON USED	NUMBER	% DISTRIBUTION
Firearm	56	9.8
Knife/Sharp instrument	76	13.4
Club/Blunt Instrument	17	3.0
Verbal threats, fists, etc.	410	71.9
Unknown	11	1.9

#### LOCATION OF ACTUAL RAPES AND ATTEMPTED RAPES:

In 1980, slightly over one-half of all rapes occurred in the victims residence. In 1981, this had dropped to 42%.

LOCATION OF RAPE	NUMBER	% DISTRIBUTION
Victim's residence	241	42.5
Suspect's residence	53	9.3
Other residences	31	5.4
Automobiles	35	6.1
Public outdoor areas (streets, parks, etc.)	91	16.0
Fields, vacant lots, etc.	51	9.0
Motels	12	2.1
All other locations	36	6.1
Unknown	20	3.5

### MEDICAL ATTENTION SOUGHT OR REQUIRED BY VICTIMS

Of the total 444 victims (this does not include attempts) 373 (77.2%) received a routine medical examination. In 52 of the total 570 rapes, it was not known whether the victim sustained injuries. Of the 518 known, 420 (81%) were not seriously injured, 98 (19%) sustained injuries.

#### RAPE OFFENDERS (SUSPECTS)

One-half of the offenders were between the ages of 20 and 30 years. If offenders of unknown age are removed from the sample 68%, or two-thirds of the offenders are in this age group.

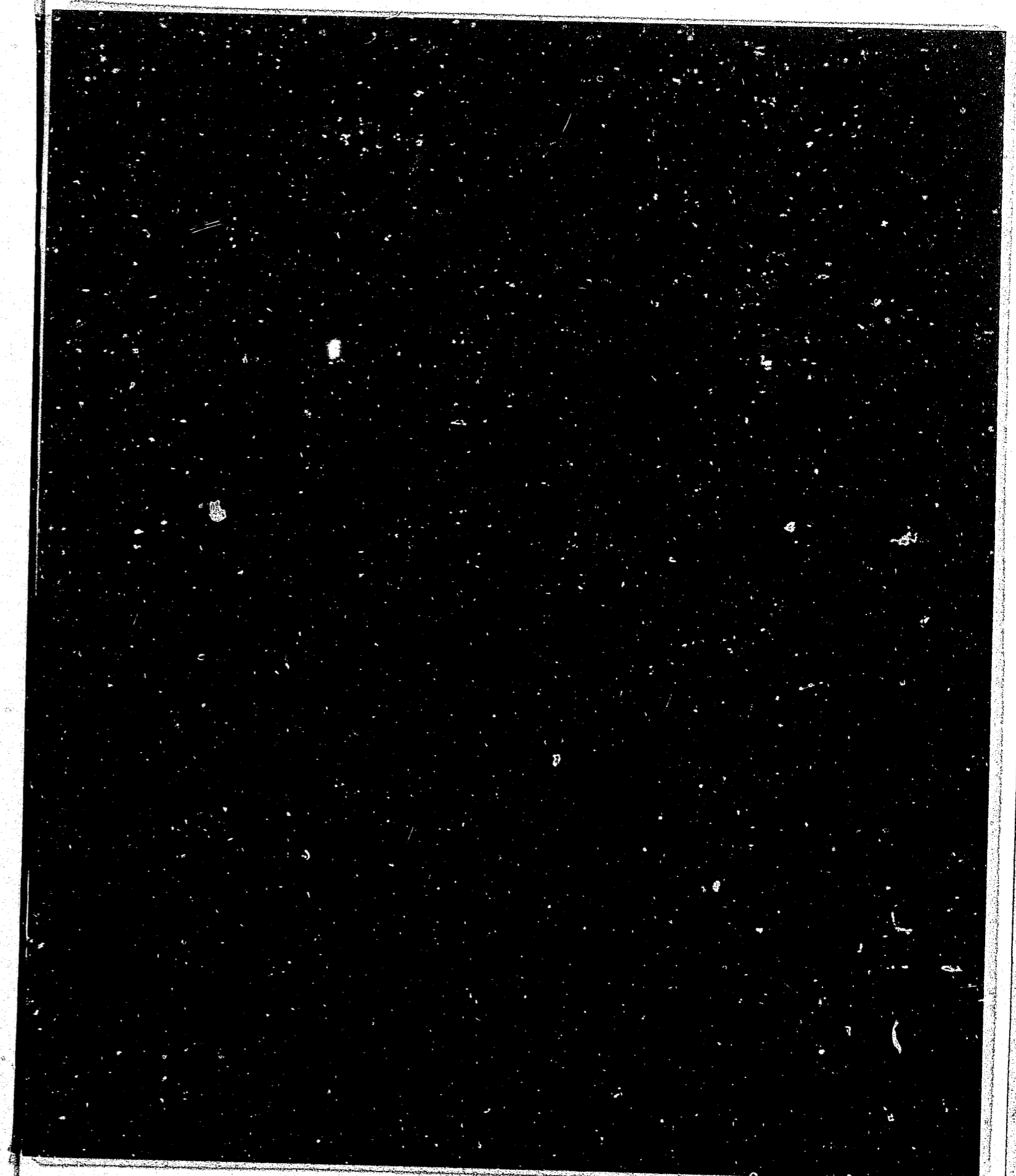
AGE OF OFFENDER	WHITE	BLACK	UNKNOWN
Under 20	43 ( 6.5%)	63 ( 9.6%)	0 (0.0%)
20 - 30	160 (24.2%)	171 (25.9%)	0 (0.0%)
Over 30	81 (12.3%)	58 ( 8.8%)	2 (0.3%)
Unknown	24 ( 3.6%)	49 ( 7.4%)	9 (1.4%)
<b>TOTAL</b>	<b>308 (46.6%)</b>	<b>341 (51.7%)</b>	<b>11 (1.7%)</b>

## RAPES BY COUNTY 1981

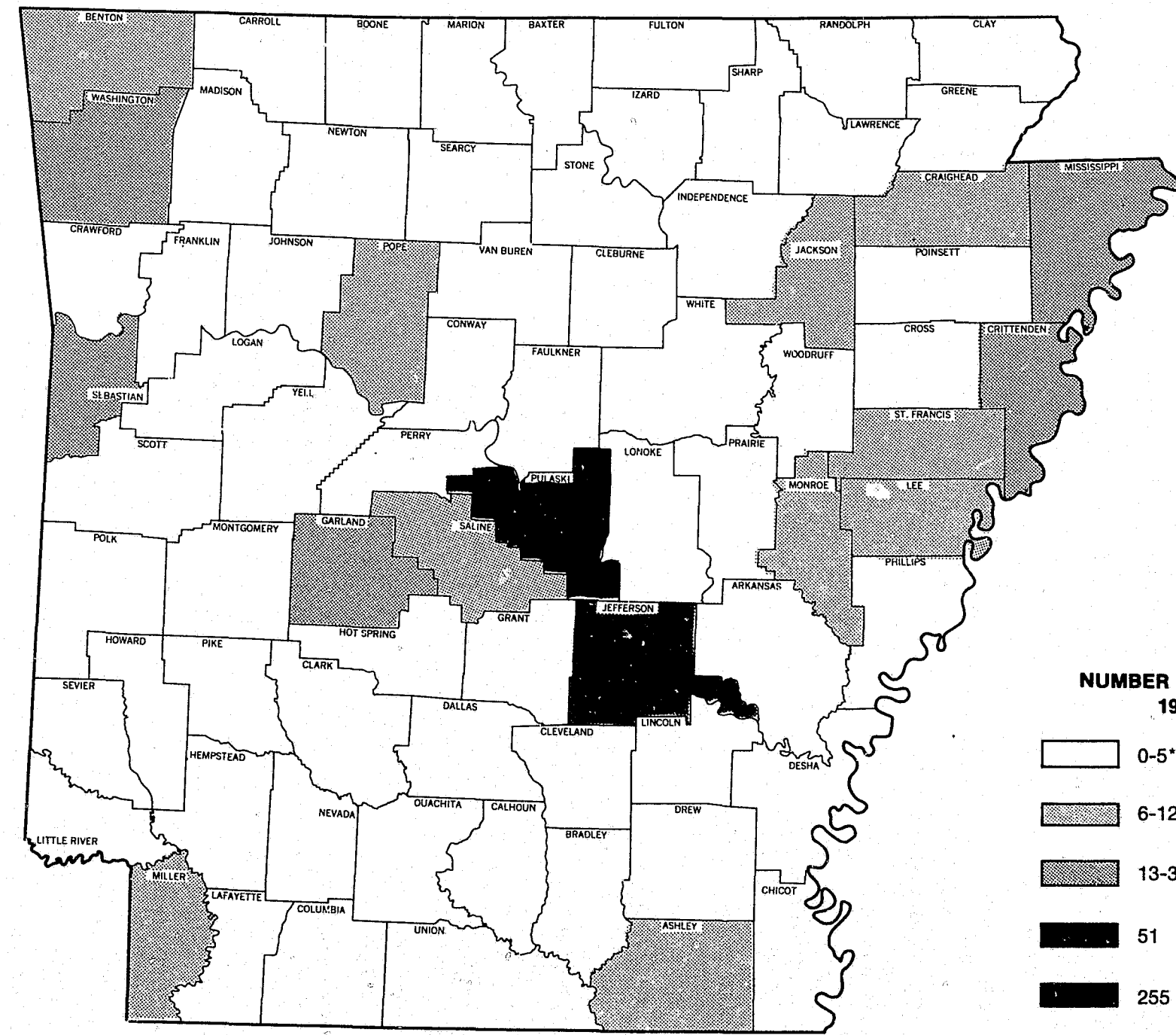
The following map shows the total number of rapes, by county. All non-shaded counties fall into one of the following categories:

1. The law enforcement agencies in the county reported 0-5 rapes.
2. The law enforcement agencies in the county did not submit Uniform Crime Reports.

The list following the map gives the number of rapes included in this report, by law enforcement agency.







**NUMBER OF RAPES  
1981**

- 0-5\*
- 6-12
- 13-30
- 51
- 255

\*Or Non Reporting

**NUMBER OF RAPES AND ATTEMPTED RAPES  
(By Reporting Agency)\***

AGENCY	ACTUAL	ATTEMPTED	AGENCY	ACTUAL	ATTEMPTED
ASHLEY COUNTY	6	1	DESHA COUNTY	2	0
Sheriff	5	0	Sheriff	1	0
Crossett	1	0	McGehee	1	0
Hamburg	0	1			
BAXTER COUNTY	1	0	DREW COUNTY	4	0
Sheriff	1	0	Sheriff	1	0
			Monticello	3	0
BENTON COUNTY	6	1	FAULKNER COUNTY	3	0
Sheriff	1	0	Sheriff	2	0
Bentonville	1	0	Conway	1	0
Rogers	4	1			
BOONE COUNTY	2	0	FULTON COUNTY	1	0
Sheriff	2	0	Sheriff	1	0
BRADLEY COUNTY	2	0	GARLAND COUNTY	9	4
Sheriff	1	0	Sheriff	3	1
Warren	1	0	Hot Springs	6	3
CARROLL COUNTY	1	0	GREENE COUNTY	2	0
Sheriff	1	0	Paragould	2	0
CHICOT COUNTY	3	1	HEMPSTEAD COUNTY	2	0
Sheriff	2	1	Hope	2	0
Eudora	1	0			
			HOT SPRING COUNTY	3	0
			Sheriff	2	0
			Malvern	1	0
CLARK COUNTY	0	1			
Arkadelphia	0	1	INDEPENDENCE COUNTY	2	0
			Sheriff	2	0
COLUMBIA COUNTY	3	0	JACKSON COUNTY	3	3
Magnolia	3	0	Sheriff	1	0
			Newport	2	3
CONWAY COUNTY	3	0	JEFFERSON COUNTY	38	13
Sheriff	2	0	Sheriff	10	3
Morrilton	1	0	Pine Bluff	28	10
CRAIGHEAD COUNTY	4	2	JOHNSON COUNTY	1	0
Jonesboro	4	2	Sheriff	1	0
CRAWFORD COUNTY	3	1	LAWRENCE COUNTY	3	0
Sheriff	1	0	Sheriff	3	0
Van Buren	2	1			
CRITTENDEN COUNTY	20	1			
Sheriff	5	0			
West Memphis	15	1			

**NUMBER OF RAPES AND ATTEMPTED RAPES (continued)**

AGENCY	ACTUAL	ATTEMPTED	AGENCY	ACTUAL	ATTEMPTED
LEE COUNTY	4	2	PULASKI COUNTY	183	72
Sheriff	1	1	Sheriff	35	8
Marianna	3	1	Jacksonville	1	3
			Little Rock	101	50
LOGAN COUNTY	1	0	North Little Rock	45	11
Booneville	1	0	Sherwood	1	0
LONOKE COUNTY	5	0	RANDOLPH COUNTY	2	0
Sheriff	2	0	Sheriff	2	0
England	1	0			
Cabot	2	0	ST. FRANCIS COUNTY	6	1
			Sheriff	1	1
MILLER COUNTY	6	1	Forrest City	5	0
Sheriff	1	1			
Texarkana	5	0	SALINE COUNTY	6	0
			Sheriff	3	0
MISSISSIPPI COUNTY	24	5	Benton	3	0
Sheriff	14	2			
Blytheville	4	1	SEBASTIAN COUNTY	25	5
Osceola	6	2	Sheriff	2	1
			Fort Smith	23	4
MONROE COUNTY	6	0			
Sheriff	3	0	SHARP COUNTY	2	0
Brinkley	3	0	Sheriff	2	0
NEWTON COUNTY	1	0	STONE COUNTY	2	0
Sheriff	1	0	Sheriff	2	0
OUACHITA COUNTY	1	0	UNION COUNTY	3	2
Camden	1	0	Sheriff	1	2
			El Dorado	1	0
PERRY COUNTY	3	0	Smackover	1	0
Sheriff	3	0			
			VAN BUREN COUNTY	1	1
PHILLIPS COUNTY	1	1	Sheriff	1	0
Sheriff	1	0	Fairfield Bay	0	1
Helena	0	1			
			WASHINGTON COUNTY	9	4
POINSETT COUNTY	2	0	Sheriff	3	0
Sheriff	2	0	Fayetteville	3	2
			Springdale	2	2
POLK COUNTY	3	0	U of A Fayetteville	1	0
Sheriff	3	0			
			WHITE COUNTY	12	3
POPE COUNTY	6	1	Sheriff	9	0
Sheriff	2	0	Searcy	2	2
Russellville	4	1	Beebe	1	0
			Kensett	0	1
PRAIRIE COUNTY	3	0			
Sheriff	3	0	<b>STATE TOTAL</b>	<b>444</b>	<b>126</b>

\*Agencies reporting no rapes are not listed.

**END**

**END**