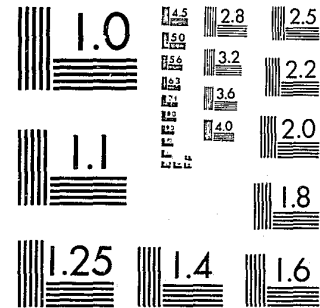


National Criminal Justice Reference Service



This microfiche was produced from documents received for inclusion in the NCJRS data base. Since NCJRS cannot exercise control over the physical condition of the documents submitted, the individual frame quality will vary. The resolution chart on this frame may be used to evaluate the document quality.



MICROCOPY RESOLUTION TEST CHART
NATIONAL BUREAU OF STANDARDS-1963-A

Microfilming procedures used to create this fiche comply with the standards set forth in 41CFR 101-11.504.

Points of view or opinions stated in this document are those of the author(s) and do not represent the official position or policies of the U. S. Department of Justice.

National Institute of Justice
United States Department of Justice
Washington, D. C. 20531

4/12/83



DIVISION OF PAROLE AND
COMMUNITY SERVICES

OHIO DEPARTMENT OF REHABILITATION
AND CORRECTION

ANNUAL
REPORT
FISCAL YEAR
1981

- Adult Parole Authority
- Community Services
- Adult Detention Facilities and Services

87461

James A. Rhodes, Governor
State of Ohio

George F. Denton, Director
Ohio Department of Rehabilitation and Correction

John W. Shoemaker, Acting Chief
Division of Parole and Community Services

John W. Shoemaker, Chief
Adult Parole Authority

James T. Barbee, Administrator
Bureau of Adult Detention Facilities and Services

Nick Gatz, Administrator
Bureau of Community Services

Clarence W. Clark, Chairman
Parole Board

Nick J. Sanborn, Superintendent
Parole Supervision

George W. Farmer, Superintendent
Probation Development

Mary York, Superintendent
Administration and Research

U.S. Department of Justice
National Institute of Justice

This document has been reproduced exactly as received from the person or organization originating it. Points of view or opinions stated in this document are those of the authors and do not necessarily represent the official position or policies of the National Institute of Justice.

Permission to reproduce this copyrighted material has been granted by

Ohio Department of
Rehabilitation

to the National Criminal Justice Reference Service (NCJRS).

Further reproduction outside of the NCJRS system requires permission of the copyright owner.

GEORGE F. DENTON, DIRECTOR

JOHN W. SHOEMAKER, ACTING CHIEF

LETTER OF TRANSMITTAL

To the Honorable James A. Rhodes, Governor; George F. Denton, Director,
Department of Rehabilitation and Correction; and Members of the Legislature.

Complying with Section 5149.12 of the Ohio Revised Code, we submit the Annual
Report of the Division of Parole and Community Services for the fiscal year ending
June 30, 1981.

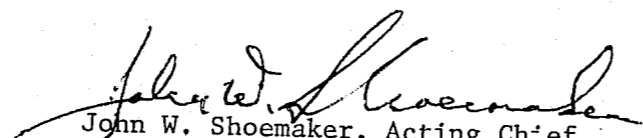

John W. Shoemaker, Acting Chief
Division of Parole and Community Services

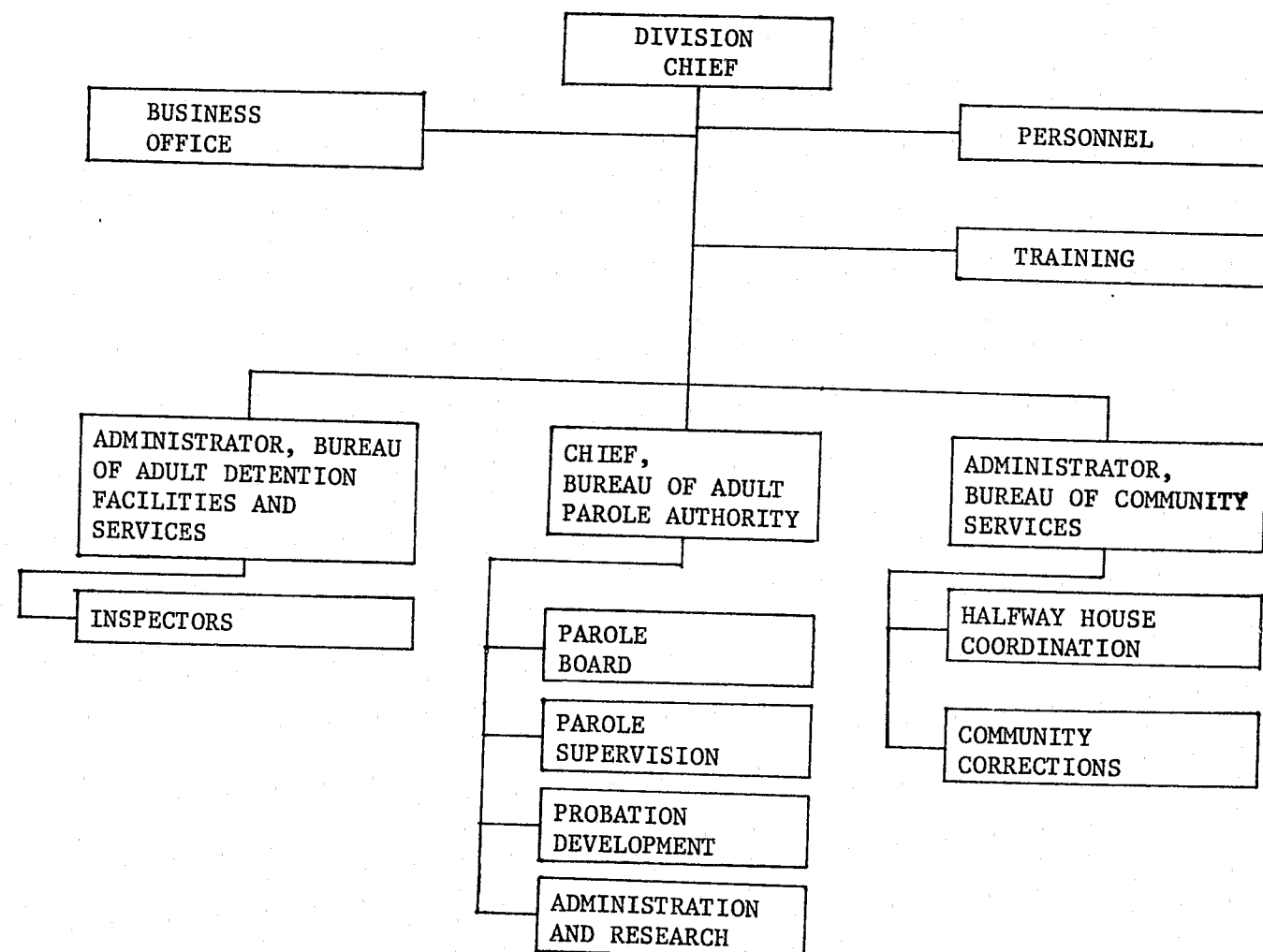
TABLE OF CONTENTS

Organization of the Division of Parole and Community Services	1
Budget and Fiscal Management	2
Personnel and Training	3
Bureaus	
The Adult Parole Authority	4
Parole Supervision	4
Interstate Compact	5
Educational and Vocational Furlough	5
Parole Board	6
Probation Development	6
Administration and Research	9
Bureau of Community Services	10
Certification and Funding of Halfway Houses	10
Community Corrections Act	10
Bureau of Adult Detention Facilities and Services	11
APPENDIX	
Table I Parole Data by Institution	13
Table II Parole Board Hearings by Institution	14
Table III Shock Parole Hearings by Institution	15
Table IV Comparison of Parole Releases to Parole Returns	15
Table V Shock Probation Releases	16
Table VI Prison Population	17
Chart 1 Growth of Parole	18
Chart 2 Growth of Probation Development	19
Chart 3 Rate of Paroles Granted	20

ORGANIZATION
OF THE
DIVISION OF PAROLE AND COMMUNITY SERVICES

The Division of Parole and Community Services is one of four divisions within the Department of Rehabilitation and Correction and is responsible for community based correctional programs, facilities, and services. The Division is comprised of three bureaus - the Adult Parole Authority, Community Services, and Adult Detention Facilities, each headed by an administrator who reports to the Chief of the Division. Division offices include personnel, business and training.

ORGANIZATIONAL CHART
OF THE
DIVISION OF PAROLE AND COMMUNITY SERVICES



Budget and Fiscal Management

This office is responsible for the Division's fiscal planning, budget preparation and general business operations and maintenance. Expenditures for the Division during fiscal year 1981 were \$14,772,530.66, a 7.0 percent increase over the previous fiscal year's expenditures. This increase was due primarily to increases in personal services, maintenance, and special purposes. The table below shows the Division's budget divided into five separate accounting categories:

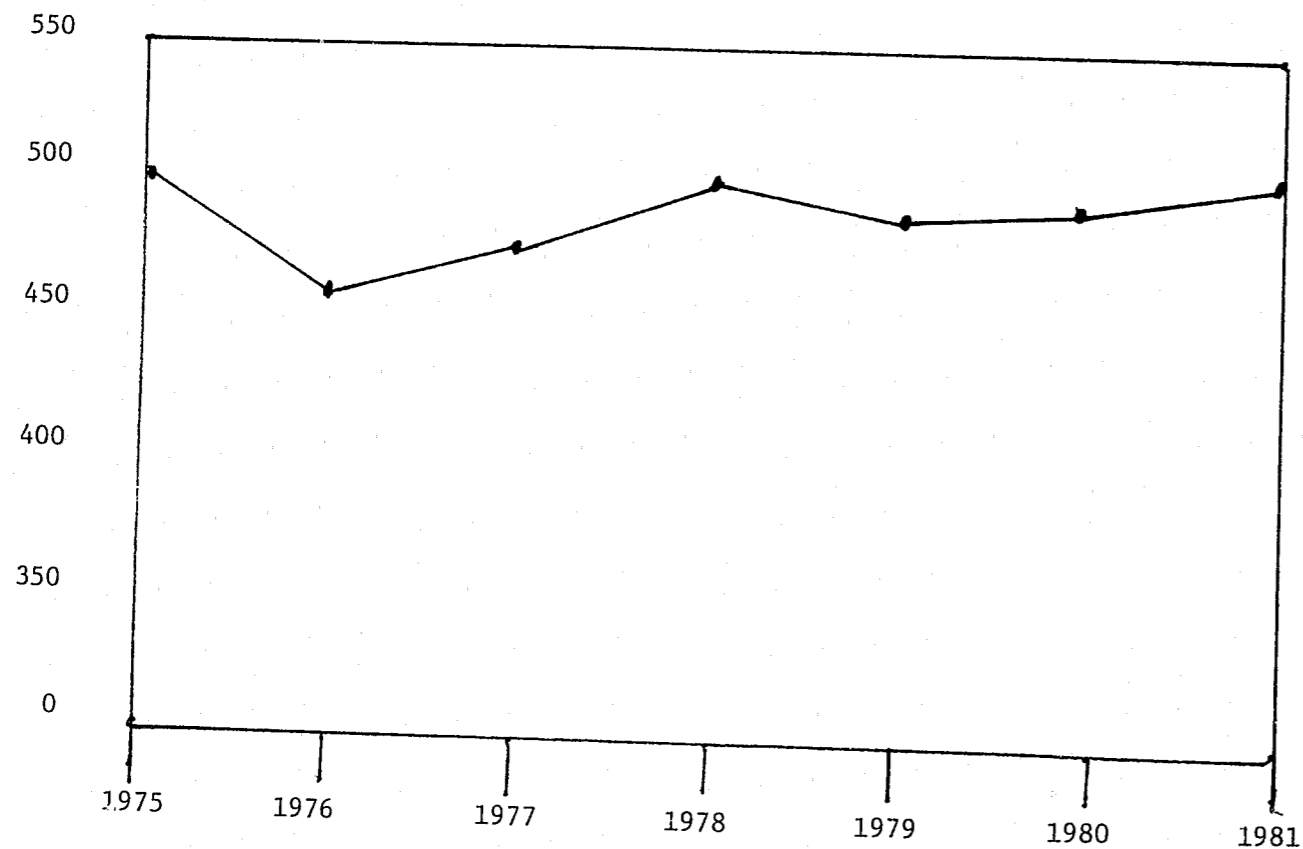
UNIT	PERSONAL SERVICES	MAINTENANCE	FOOD	EQUIPMENT	SPECIAL PURPOSE
101 Administrative	\$156,061.34				
401 Business and Personnel Offices	\$128,198.48	\$176,540.43		\$1,401.75	
408 General Clerical	\$1,347,602.12				
504 Employee Education and Training	\$25,797.85	\$21,648.54			
601 Probation 501 505 504	\$3,017,739.75	\$472,300.18		\$5,750.15	\$1,060,985.72 \$1,170,375.00 \$116,843.00
602 Parole	\$3,001,868.45	\$591,793.07		\$31,203.71	\$722,891.60
603 Furlough	\$207,624.57	\$13,176.12			\$620,465.65
605 Furlough Centers	\$745,734.35	\$192,299.12	\$89,835.65	\$20,419.58	
606 Parole Board	\$466,953.86	\$33,898.00		\$426.00	
607 Jail Inspection	\$99,397.42			\$325.00	
609 Other Community 506	\$63,808.30				\$169,165.90
TOTAL	\$9,260,786.49	\$1,501,655.46	\$89,835.65	\$59,526.19	\$3,860,726.87

PERSONNEL AND TRAINING

The personnel office performs specialized functions such as payroll processing, employee counselling, job analysis, grievances and disciplinary hearings, applicant interviewing, processing of Worker's Compensation claims, and general personnel management.

In fiscal year 1981, the Division's state funded positions increased from 486 to 519, with an additional 2 positions funded through a federal program. The turnover rate decreased during fiscal year 1981 to 15.51% compared to 24.4% for the previous year.

NUMBER OF PERSONNEL
FROM FISCAL YEARS 1975-1981



The training office continued to present the on-going programs of firearms training and qualification, self-defense, entrance training for probation and parole officers, and management seminars for supervisors.

Special programs offered were: a seminar or introduction to management for females in supervision; seminars on jail management, on employment of offenders, and on drug abuse, training for senior officers on feedback and management by objectives; and training on the furlough program.

BUREAUS

The Adult Parole Authority

The Bureau of Adult Parole Authority consists of four sections with statutorily defined duties.

Parole Supervision Section

Ohio Revised Code 5149.04: "Persons paroled or conditionally pardoned shall be under the jurisdiction of the adult parole authority and shall be supervised by the parole supervision section through its staff of parole and field officers in such manner as to insure as nearly as possible the parolee's rehabilitation while at the same time providing maximum protection to the general public. All state and local officials shall furnish such information to the parole supervision section as is requested by the superintendent of the section in the performance of his duties."

This section is responsible for state-wide administration of release programs which include parole, furlough, and supervision of out-of-state offenders.

Parole: The state is divided into five regions, each having a supervisor and consisting of district offices headed by Unit Supervisors. It is these field offices which provide supervision of parolees, generally for a period of one year. If the parolee completes supervision successfully, he is granted a final release. If, however, he violates a condition of his parole, he may be returned to an institution. At the end of fiscal year 1981, the number of Ohio parole and compact cases under supervision was 9515, a 7% increase over the number on June 30, 1980. The average parole officer caseload also increased from 68.8 in fiscal year 1980 to 75 in fiscal year 1981. During fiscal year 1981, there were 4587 final releases granted compared to 3842 in fiscal year 1980; 428 revoked for technical violations of their paroles; and 1349 revoked for the commission of a new crime. With 7308 parole releases during the year, and 1777 returns, the ratio of total returns to releases was 24.3, as compared to 18.8 for the previous year.

Besides field supervision, the Parole Supervision Section is comprised of centrally located support staff performing specialized functions which directly relate to the parole process. These are the Placement Office, the Case Review Unit, and the Office of Specialized Services.

The Placement Office coordinates institutional parole planning with the placement of parolees in the community. In addition, the office responds to inquiries from inmates, their relatives, and prospective employers regarding release plans for inmates.

The Case Review Unit reviews and evaluates field supervision reports and recommends appropriate action to the Superintendent. Final authority on individual case decisions rests with the Chief of the Adult Parole Authority. This unit also reviews parole violation cases to assure that due process procedures have been met and provides consultation to field staff on matters prior to the on-site hearing. In those cases where it is found that a parole violation occurred and a return to the institution is authorized, Case Review then prosecutes the violators before the Parole Board at the revocation hearing.

Parole Supervision - Cont'd

The Office of Specialized Services is responsible for the development of special community services for parolees such as employment and drug/alcohol treatment programs. Examples of such programs are two federally funded offender employment projects emphasizing institutional job readiness skills and job placement after parole, and on-the-job training.

It was also during fiscal year 1981 that representatives of the Parole Supervision Section, the Probation Development Section, and Administration and Research developed and began implementation of a new case management system which was designed to assist staff in the rapid, accurate assessment and classification of probationers and parolees with assignment based upon a workload concept rather than caseload. Supervision under this system would entail information gathering, risk and need assessment, classification, case planning, service delivery, monitoring, and evaluation in order to facilitate a client's positive adjustment in the community while minimizing the risk to the community.

Interstate Compact: The Interstate Compact Unit is under the direction of the Chief of the Adult Parole Authority, who, in turn, delegates his authority to a Deputy Administrator. Authorized by Congress in 1934, the Compact is an agreement among states to accept the transfer of probationers and parolees from one state to another. The Interstate Compact Unit is responsible for processing all interstate transfers of probationers and parolees and following up with subsequent correspondence and actions relating to the cases.

During fiscal year 1981, this unit processed 1566 placement investigations. There were 1218 Ohio probationers and parolees transferred to other states for supervision. There were 1116 out-of-state probationers and parolees accepted for supervision in Ohio. Closed out-of-state cases during the year totaled 1220. The average number of cases in Ohio under supervision of the Interstate Compact was 1517.

Educational and Vocational Furlough: While parole is the most frequently used release program, the furlough of inmates for employment or educational purposes is used to release trustworthy inmates into the community prior to being released on parole. Offenders released on furlough are able to engage in vocational training, academic training, or public works employment, while being confined in a halfway house or furlough center at such times as not actively engaged in an approved educational, vocational, or employment program. Furloughees are supervised and assisted in their programs by furlough counselors. The use and outcome of furlough in the last three fiscal years are as follows:

	<u>FY 1981</u>	<u>FY 1980</u>	<u>FY 1979</u>
Furloughs Granted	649	591	913
Furloughees Granted Parole	425	549	482
Furloughees Revoked	110	174	80

Parole Board

Ohio Revised Code 5149.06: "The parole board shall consist of seven members, one of whom shall be designated as chairman by the director of the department of rehabilitation and correction and who shall continue as chairman until a successor is designated and such other personnel as are necessary for the orderly performance of the duties of the board."

Assisted by seven hearing officers, the seven-member parole board is a decision making body which considers the cases of inmates eligible for release prior to the expiration of their sentences, and also decides whether the parole of an alleged violator is to be revoked or not. Additionally, the Parole Board reviews the circumstances of any individuals applying for clemency and makes a recommendation to the Governor for appropriate action.

In fiscal year 1981, the Parole Board conducted a total of 14,632 hearings. Of this number, more than 80% were release hearings. The outcome of these hearings are as follows:

Regular Parole Hearings	5523 paroles and 18 furloughs
Shock Parole Hearings	1288 paroles and 8 furloughs
Furlough to Parole Hearings	425 paroles
Furlough Hearings	650 furloughs
Rescinded Paroles and Furloughs	81 paroles and 27 furloughs

The release rate of 61.5% remained the same as compared with the release rate of 61.6% in fiscal year 1980.

Shock Parole (Section 2967.31, Ohio Revised Code): Effective since January 1, 1974, this law makes first offenders eligible for release after serving a minimum of six months in the institution, without diminution or jail-time credit. A highly restrictive program, shock parole does not apply to all prisoners. To merit consideration, an inmate must have been sentenced for an offense other than aggravated murder or murder, must not be presumed to be a dangerous offender, must not have been previously confined in an Ohio, federal, military, or other state penal institution for more than 30 days, and must not have been adjudicated by any court or competent jurisdiction to be a psychopathic offender as defined in Section 2947.24 of the Ohio Revised Code. Inmates ineligible for shock parole due to the fact that they have been convicted of a felony of the first degree, and those offenders convicted under Chapter 2925 of the Revised Code who are not serving periods of actual incarceration time, but are otherwise eligible, may apply for shock parole consideration when there are mitigating circumstances indicating that they are not dangerous offenders.

During fiscal year 1981, the Parole Board conducted 2134 shock parole hearings - an increase of 44% over the previous year. Fiscal year 1981 also showed a 70% increase in the number of shock paroles granted.

Recent studies have shown that shock parole shortens an inmate's sentence by an average of 6.95 months, yet releasees on shock parole do better on parole than do regular parolees.

Probation Development Section

Ohio Revised Code 5149.06: "The primary duty of the section on probation development and supervision is to assist counties in developing their own probation services on either single-county or multi-county basis. The section may, however, within limits of available personnel and funds available, supervise selected probationers from local courts. The probation and supervision section consists of a superintendent of probation and such other personnel as are necessary for performance of the section's duties."

Probation Development - Cont'd

Prior to the creation of this Section in March, 1965, probation in Ohio had been the responsibility of local jurisdictions, and many counties lacked sufficient staff to provide adequate services. In July, 1966 at the courts requests, the Probation Development Section began providing state probation officers to Ohio's Common Pleas Courts. Presently, the Section provides probation services in the form of presentence investigations and offender supervision to Common Pleas Courts in 52 of Ohio's 88 counties.

The growth of state probation services since 1966 is highlighted in the following table:

Year	Number of Counties Served	Cases Under Supervision*	PSI's** by State Officers	Number of State Officers	Number of PV's*** Per Year
1966	5	0	19	2	0
1967	14	207	91	7	9
1968	16	325	244	11	17
1969	23	583	523	20	32
1970	26	683	967	24	54
1971	31	1077	1306	37	47
1972	43	2032	2264	69	80
1973	48	2690	2850	78	181
1974	53	2963	4045	87	192
1975	55	3508	4956	94	221
1976	55	4120	5191	100	217
1977	55	4280	5066	97	246
1978	53	3943	4960	99	286
1979	51	4207	5682	102	258
1980	52	4499	5579	102	251
1981	48	5176	5915	102	249

* Caseload on June 30 of the respective fiscal year
 ** Presentence Investigation
 *** Probation Violators Committed to Penal Institution

Shock Probation (Section 2947.061, Ohio Revised Code): In 1965, a law was passed permitting judges to release a felon from prison within weeks instead of years. The rationale behind the law was that some offenders require only short term confinement in an institution to "shock" them into abandoning criminal careers.

Under the "shock" statute, offenders may be sentenced to an institution and then released by the judge within 130 days, after serving at least 30 days. During calendar year 1981, 1463 offenders were released under this statute. The number of offenders released over the sixteen year period of this law's existence totals 16,075.

A probation subsidy program, with Lucas and Montgomery Counties participating, continued during fiscal year 1981. State funds totaling \$1,060,985.72 were expended for this purpose.

In March, 1980, the Investigations Unit, formerly an arm of the Parole Board, was transferred to the Probation Development section. This unit came into existence in July 1974 as a direct result of the shock parole statute when an immediate need for information concerning the offender's background became apparent.



Shaded area designates counties serviced by the Probation Development Section of the Adult Parole Authority.

Probation Development - Cont'd

The scope of investigations extended to providing a report on all parole, furlough, or home furlough candidates while maintaining the responsibility of any pardon or commutation investigations requested by the Parole Board. In May, 1980, the unit began completing investigations on all admissions, and by July, 1981 this was accomplished except for first degree felons at the Columbus Correctional Facility.

During fiscal year 1981, 8351 investigations were completed, a 17% increase over the prior year.

Administrative and Research Section

Ohio Revised Code 5149.07: "The section on administration and research shall have responsibility for maintaining personnel and fiscal records, preparation of budget requests, publications of the adult parole authority, maintenance of central files and records pertaining to the work of the authority and for coordination of the authority's record keeping with that of other areas of the department of rehabilitation and correction...."

The administration and research section, under the direction of the chief of the authority, shall conduct research relative to the functioning of clemency, probation, and parole as part of the adult corrections program in this state, which research shall be designed to yield information upon which the division of parole and community services, the department of rehabilitation and correction, the governor, and the general assembly can base policy decisions."

Records Management: The Adult Parole Authority maintains over 29,000 active records on parolees and inmates. The record office is the center for information needed for most decision making in the Adult Parole Authority. To keep these records current requires many transactions, which include adding correspondence and documents to the microfiche files, retrieving files for agency personnel, and posting actions taken by the Parole Board, Parole Supervision, and the institutions.

In addition to the active records, the Adult Parole Authority maintains over 50,000 files on offenders who, at one time, were under parole supervision or who were released from the institutions after serving the maximum sentence. Altogether over 20,000,000 documents are stored in the Adult Parole Authority's record system. The master card index file, used for quick retrieval of information, is kept permanently for all offenders who have come into the state correctional system and contains over 250,000 cards.

The record office is also responsible for processing all mail for the Division. Each year, over 7 tons of mail is received, processed, distributed, or sent out.

Research and Statistics: The Administration and Research Section is responsible for maintaining current statistics concerning the agency operation and for conducting research on the programs of the agency and on relevant issues. On-going statistical reports are used by administrative personnel for monitoring and decision-making purposes. Evaluations of various programs are preliminary to expansion, adjustment, or termination of such programs. This office also coordinates research efforts with other divisions of the Department, and with other agencies in Ohio and out-of-state. One example is the Uniform Parole Reports with the National Council on Crime and Delinquency. Through participation in this nation-wide project, the Adult Parole Authority can compare Ohio's parole performance with those of other states. Latest comparisons show Ohio's return rate (return of parolees to institutions for violations) to be 9.7% compared to the national rate of 12.1%.

The Bureau of Community Services

The Bureau of Community Services was established on July 1, 1976 when the Director of the Department of Rehabilitation and Correction established the bureau pursuant to Sections 5120.06 and 5120.10 O.R.C. Primarily, the responsibilities of this bureau are the certification and funding of halfway houses, and the administration of the Community Corrections Program.

Certification and Funding of Halfway Houses

Halfway houses serve as a transition from prison to parole. They provide assurance and support, and, in some cases, a structured environment as a special condition of parole.

Recognizing the value of these halfway houses, the Ohio legislature appropriates funds to help them operate. In fiscal year 1981, these facilities provided service to 1237 offenders; 376 parolees, 625 probationers, 168 furlougees, and 68 "others". The average cost to maintain these men was \$20.62 per day per man. The Division of Parole and Community Services dispensed \$2,568,314 to these houses to care for parolees, probationers, and furlougees throughout the state.

Besides overseeing the funding, the Bureau also inspects halfway houses and certifies them. In fiscal year 1981, there was 20 approved and certified halfway houses throughout the state with a combined capacity of 561.

Community Corrections Act

The Community Corrections Act was passed by the legislature in July, 1979. It was designed as a demonstration project to reduce the number of institutional commitments of dangerous offenders. The courts sentenced 9113 offenders to prison during fiscal year 1981, and the prison population on July 1, 1980 was a record high of 14,246.

The Community Corrections Act offers participating counties incentives to divert offenders from prison and supervise them in the community. These incentives include subsidy funds, training, and technical assistance. Twenty counties were invited to participate and share an allocation of \$1,710,000 for 1981.

Ten counties agreed to participate: Cuyahoga, Summit, Franklin, Marion, Clark, Licking, Muskingum, Meigs, Ross, and Pike. These counties produced 41 percent of the 7728 commitments to prison in 1980.

Before funding could begin, however, the state's financial problems forced radical cutbacks, and the community corrections allocation was reduced by 93 percent to \$117,636. The remaining six funded counties received allocations as follows:

The Bureau of Community Services - Cont'd

Community Corrections Act Funding, Fiscal Year 1981

<u>County</u>	<u>Amount</u>	<u>Number Commitments 1980</u>
Licking	\$36,726.00	115
Marion	26,166.00	68
Meigs	5,046.00	33
Muskingum	29,640.75	88
Pike-Ross	20,057.25	76
TOTAL	\$117,636.00	380 (4.9% of all prison commitments in 1980)

The Bureau of Adult Detention
Facilities and Services

The Bureau of Adult Detention Facilities and Services has the responsibility for developing and implementing the Minimum Standards for Jails in Ohio. County and municipal jails are inspected by the four State Jail Inspectors for compliance with the standards. The Inspectors also provide technical assistance to aid in standards compliance and investigate certain prisoner complaints. The Bureau is charged with approving all plans for new jail construction or major renovation.

At the conclusion of Fiscal Year 1981, 84 of the 88 county jails had been inspected at least once with the Bureau's 1978 adopted standards. In addition, 28 of the 288 city jails and lockups had also been formally inspected. These inspections coupled with the 171 informal self-audits received from the municipal jails have uncovered several concerns.

First, the county jail inspections revealed that more than half (61%) of those inspected this fiscal year had no written policies and procedures for their jail. The average compliance rate with the standards requiring such written regulations was a mere 20%. Because this deficiency was also apparent among city jails via the self-audits, the Bureau developed sample policy and procedures with the aid of the National Institute of Corrections and trained 341 jail administrators representing 197 jurisdictions at 10 regional workshops during the fiscal year. Since the conclusion of the workshops, 41 jurisdictions have compiled manuals and have submitted them to Bureau staff for review.

Second, jail administrators of both city and county facilities have noted inadequate staff as one of their major problems. The Bureau's inspection forms indicate that the average ratio of staff to prisoners in Ohio's county jails is approximately one to sixteen and 34% of those inspected this fiscal year have a ratio in excess of one staff person for every 20 prisoners. These jails are averaging 41% compliance with staffing standards and only 14% compliance in properly training the staff on duty.

Finally, jail officials are also indicating that the age of their facility and/or lack of adequate space is causing problems in attempting to comply with the state jail standards. Self-audit findings and on-site inspections reveal that 52% of the county jails inspected in Fiscal 1981 were built in the 1800's, or 59% prior to 1930. Only 30% of the county facilities were constructed within the past 20 years and 18% within

The Bureau of Adult Detention Facilities and Services - Cont'd

the past 10 years. By contrast, 58% of the city jails responding to the self-audit are less than 20 years old, with 39% being built in the 1970's. Only 12% of the city jails responding were built prior to 1930. It is interesting to note that although physical limitations can prevent total compliance with the jail standards, just 11% of the full service jail standards relate to physical concerns. The remaining 89% are operational requirements. The average overall compliance rate for county jails inspected in fiscal 1981 is 43%, ranging from a high of 83% compliance to a low of 22% compliance.

TABLE I
PAROLE DATA BY INSTITUTION
FISCAL YEAR 1981

INSTITUTION	REGULAR PAROLES GRANTED	SHOCK PAROLES GRANTED	TOTAL PAROLED	NEW SENTENCES		TECHNICAL PV'S		TOTAL RETURNED	FINAL RELEASES GRANTED
				REGULAR	SHOCK	REGULAR	SHOCK		
CCF	518	46	564	1120	4	230	3	1437	407
OSR	1116	324	1440	27	6	144	20	197	884
LOCI	878	41	919	26	2	2	0	30	562
MCI	795	62	857	21	0	7	0	28	472
ORW	357	142	499	48	1	18	2	69	495
LECI	1174	528	1702	0	0	0	0	0	986
CCI	891	93	984	14	0	2	0	16	539
SOCF	331	0	331	0	0	0	0	0	242
SOTC	41	52	93	0	0	0	0	0	0
TOTAL	6101	1288	7389	1256	93	403	25	1777	4587
			- 81	paroles rescinded					
			7308						

TABLE II
 PAROLE BOARD HEARINGS BY INSTITUTION
 FISCAL YEAR 1981

TYPE OF HEARING	CCF	LOCI	MCI	CCI	OSR	LECI	ORW	SOCF	SOTC	TOTAL
Total Regular Hearings	885	1157	1097	1406	1725	1780	377	631	43	9101
Paroled	444	769	703	829	1005	1116	288	331	38	5523
Continued	441	388	394	577	720	664	89	300	5	3578
Shock Parole Hearings	68	63	103	188	584	875	188	0	65	2134
Furlough to Parole Hearings	5	107	83	62	63	57	64	0	3	444
Furlough Hearings	23	242	200	120	88	109	127	0	9	918
Clemency Hearings	2	14	35	22	0	0	6	2	0	81
Parole Revocation Hearings	1466	37	29	16	216	0	72	1	0	1837
Furlough Revocation Hearings	21	30	13	20	11	10	11	0	1	117
TOTAL HEARINGS	2470	1650	1560	1834	2687	2831	845	634	121	14632

TABLE III
SHOCK PAROLE HEARINGS BY INSTITUTION
FISCAL YEAR 1981

INSTITUTION	CCF	LOCI	MCI	CCI	OSR	LECI	ORW	SOCF	SOTC	TOTAL
Total Shock Parole Hearings	68	63	103	188	584	875	188	0	65	2134
Paroled	46	41	62	93	324	528	142	0	52	1288
Continued	9	10	14	38	105	88	25	0	6	295
Denied	13	12	26	56	155	254	21	0	6	543
Denied and Furloughed	0	0	1	1	0	5	0	0	1	8
Percent Paroled	67.0	65.0	60.0	49.0	55.0	60.0	75.0	--	80.0	60.0

TABLE IV
COMPARISON OF PAROLE RELEASES
TO PAROLE RETURNS TO INSTITUTIONS
FISCAL YEARS 1974-1981

FISCAL YEAR	1974	1975	1976	1977	1978	1979	1980	1981
Number of Parole Releases	3416	3746	4489	5029	5346	5850	7348	7308
Number of Returns for Technical Violations	102	130	119	297	326	336	344	428
Number of Recommissioned Cases	572	521	515	595	722	771	1042	1349
Total Returns	674	651	634	892	1048	1107	1386	1777
Ratio of Technical Returns to Releases	2.9	3.47	2.6	5.9	6.1	5.7	4.6	5.85
Ratio of Recommissioned Cases to Releases	16.7	13.9	11.5	11.8	13.5	13.2	14.1	18.45
Ratio of Total Returns to Releases	19.7	17.3	14.1	17.7	19.6	18.9	18.8	24.3
Average Parole Caseload Per Officer	43	40	61	65	66	65	68.8	75.0

TABLE V
SHOCK PROBATION RELEASES*

CALENDAR YEAR	NUMBER OF SHOCK CASES	SHOCK CASES RECOMMITTED**	PERCENT RECOMMITTED
1966	85	5	5.8%
1967	183	26	14.2%
1968	294	18	6.1%
1969	480	48	10.0%
1970	632	68	10.7%
1971	907	83	9.2%
1972	1292	115	8.9%
1973	1132	137	12.9%
1974	1079	118	10.9%
1975	1528	157	10.3%
1976	1478	166	11.2%
1977	1522	152	9.9%
1978	1247	150	12.0%
1979	1280	136	10.6%
1980	1473	134	9.0%
1981	1463	143	9.8%
TOTAL	16,075	1,656	10.3%

* Data taken from Department of Rehabilitation and Correction Statistical Summary Report.

** Does not show probationers who absconded supervision.

TABLE VI
PRISON POPULATION

FISCAL YEAR	MALES	FEMALES	TOTAL
1966	10,741	409	11,150
1967	10,032	361	10,393
1968	10,041	342	10,383
1969	9,702	325	10,027
1970	9,305	300	9,605
1971	9,087	282	9,369
1972	8,646	274	8,920
1973	7,667	277	7,944
1974	8,225	291	8,516
1975	10,301	406	10,707
1976	11,806	479	12,285
1977	12,440	607	13,047
1978	12,609	612	13,221
1979	13,048	591	13,639
1980	12,796	596	13,392
1981	13,579	667	14,246

Source: 1966-1970 figures taken from "Adult Correctional Institution Population Characteristics: Bureau of Statistics, Department of Mental Hygiene and Correction, Reports for 1966, 1967, 1968, 1969, and 1970. 1971 and 1972 figures obtained from "Monthly Statistical Summary" June 1971 and June 1972, Bureau of Statistics, Department of Mental Hygiene and Correction. 1973 figures from unpublished report of Bureau of Statistics, Department of Mental Hygiene and Correction. 1974 through 1981 figures derived from Division of Classification and Statistics, Department of Rehabilitation and Correction

CHART 1
GROWTH OF PAROLE: OHIO PAROLE AND COMPACT SUPERVISION
END OF YEAR CASELOAD
FISCAL YEARS 1974 to 1981

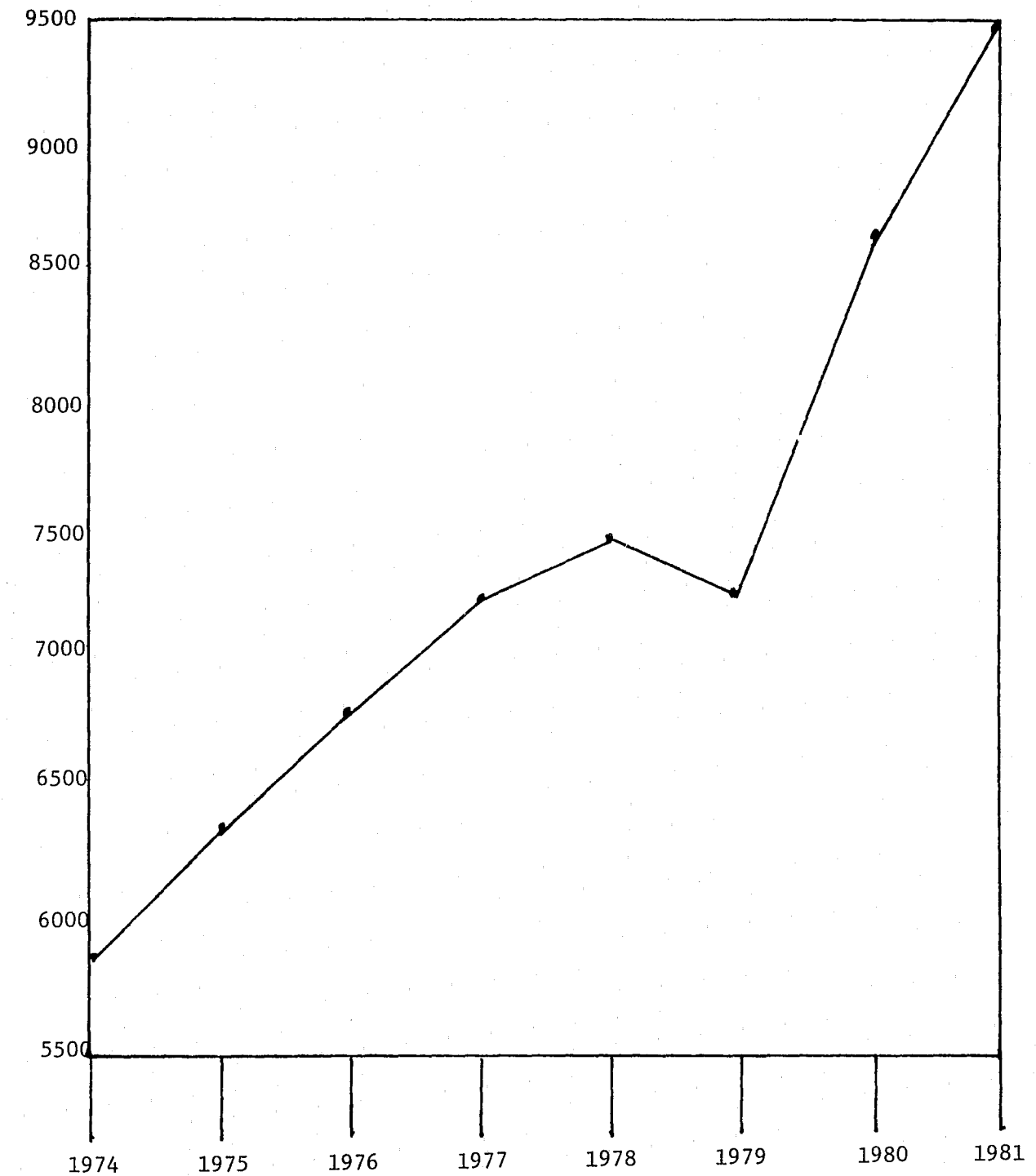


CHART 2
 GROWTH OF PROBATION DEVELOPMENT:
 SUPERVISION CASES AND PRESENTENCE INVESTIGATIONS
 FISCAL YEARS 1974 to 1981

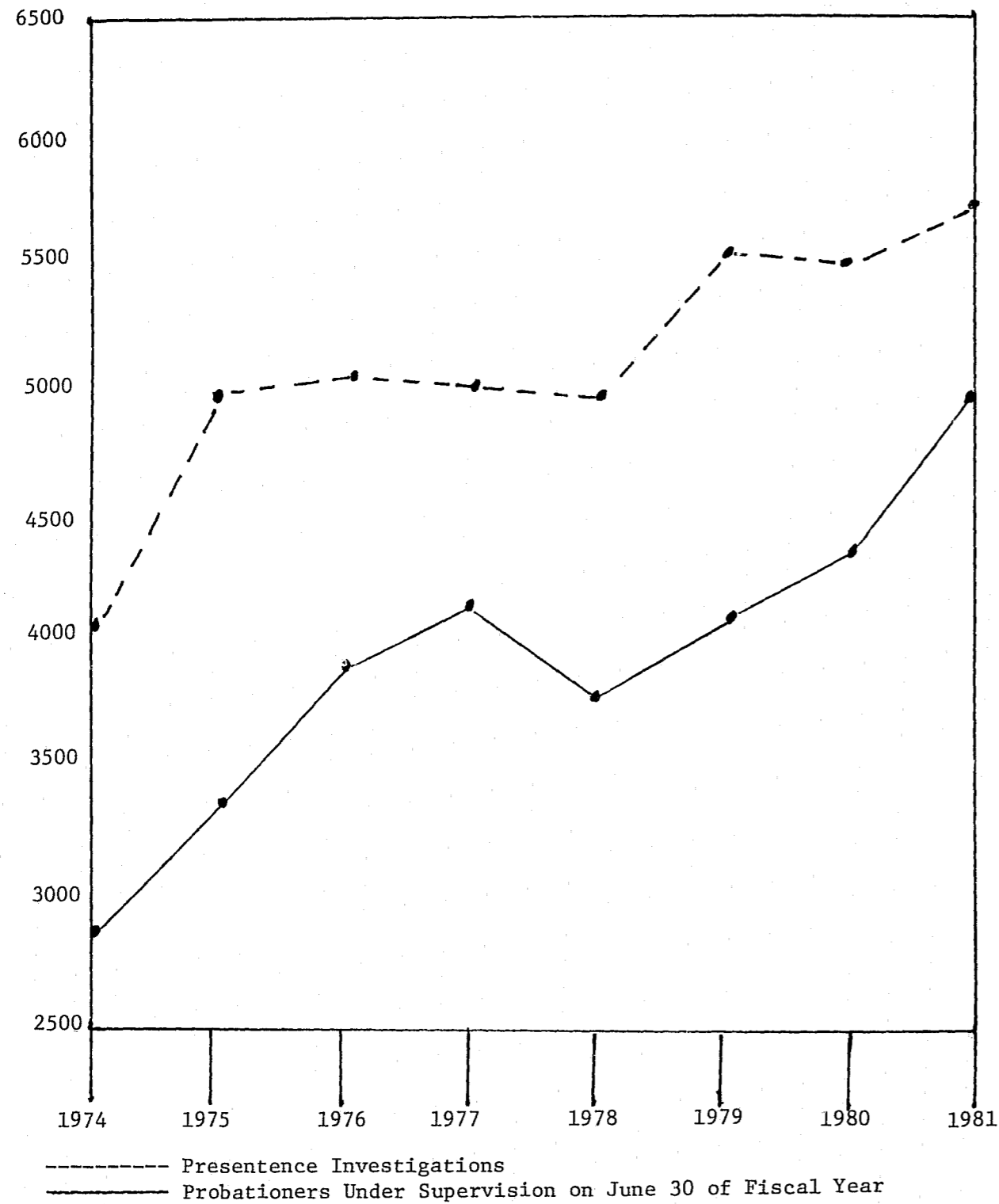
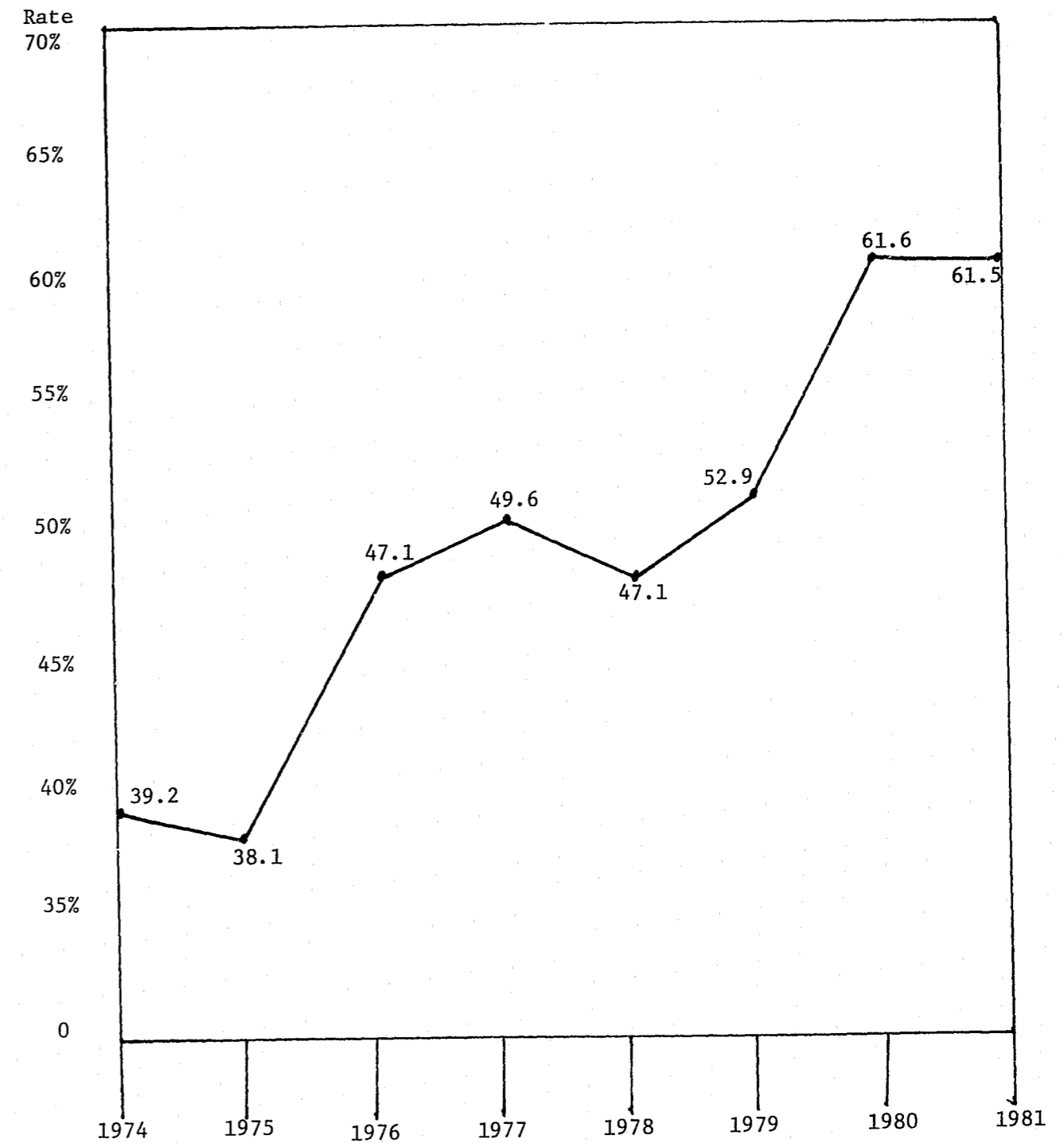


CHART 3
 RATE OF PAROLES GRANTED
 CALENDAR YEARS 1974-1981



END