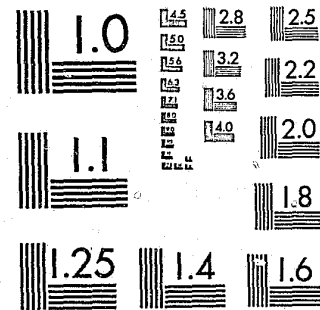


National Criminal Justice Reference Service



This microfiche was produced from documents received for inclusion in the NCJRS data base. Since NCJRS cannot exercise control over the physical condition of the documents submitted, the individual frame quality will vary. The resolution chart on this frame may be used to evaluate the document quality.



MICROCOPY RESOLUTION TEST CHART
NATIONAL BUREAU OF STANDARDS-1963-A

Microfilming procedures used to create this fiche comply with the standards set forth in 41CFR 101-11.504.

Points of view or opinions stated in this document are those of the author(s) and do not represent the official position or policies of the U. S. Department of Justice.

National Institute of Justice
United States Department of Justice
Washington, D. C. 20531

8/17/83

Nebraska Commission on Law Enforcement and Criminal Justice

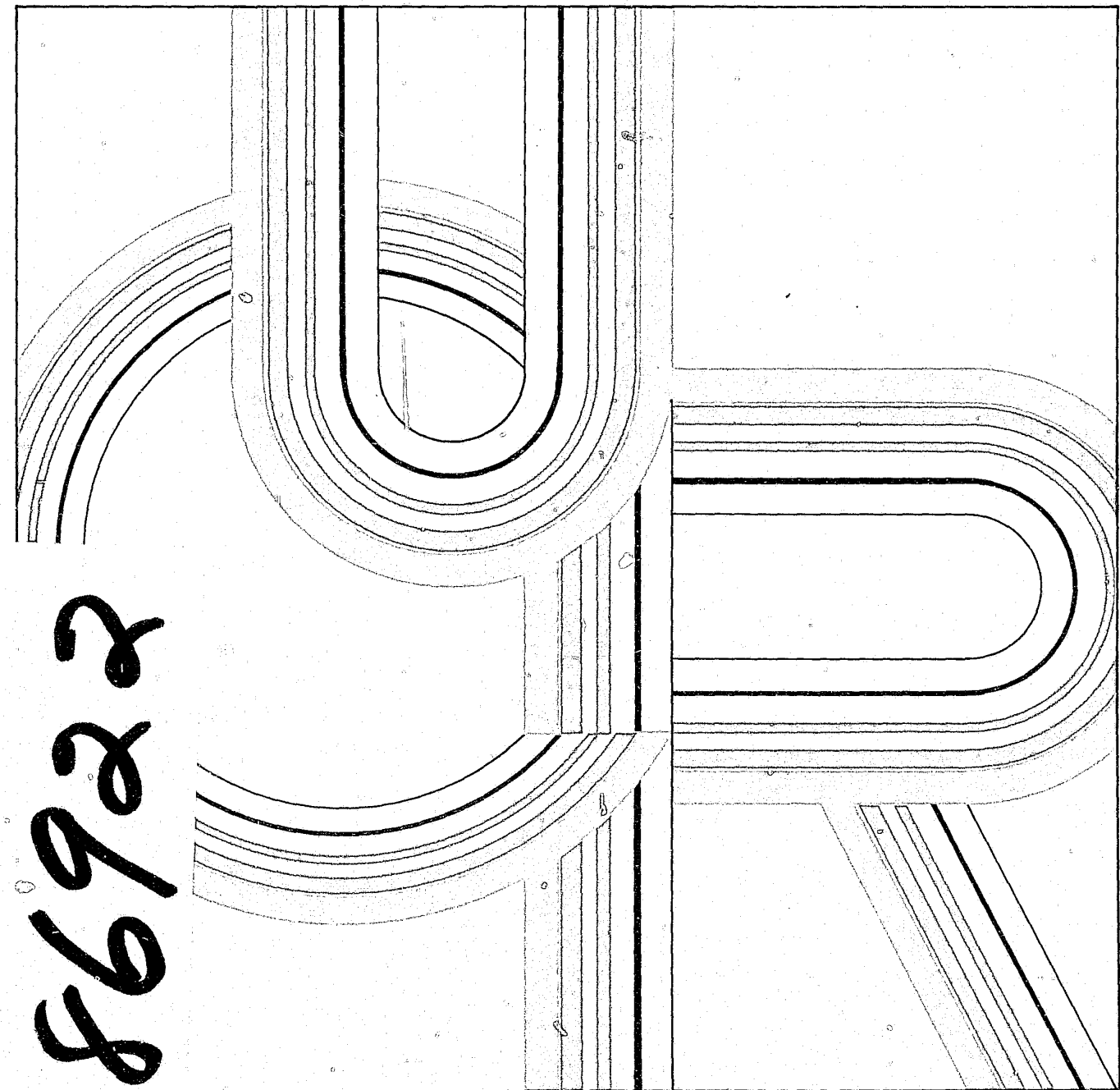
NCJRS

NOV 1 1982

ACQUISITIONS

CRIME IN NEBRASKA

UNIFORM CRIME REPORTS — 1981



86922

UNIFORM CRIME REPORTS — 1981

Issued by:

The Nebraska Commission on Law Enforcement and Criminal Justice
(Nebraska Crime Commission)
301 Centennial Mall South
P.O. Box 94946
Lincoln, Nebraska 68509

NCJRS

DE 1

ACQUISITIONS

Commission Members

Charles Thone
Norman Krivosha
Paul L. Douglas
Col. Elmer Kohmetscher
Charles L. Benson
John M. Paris
Jim Livingston
William B. Rist
Clyde Storie
Patrick Kelly
W.W. Nuernberger
Mrs. Irene Abernethy
Ross Di Mauro
Joseph C. Steele
Mrs. Clifford Jorgensen
Gaylon L. Kuchel
Jeffrey H. Jacobsen
Shirley J. Kuhle
Shirley Howell
Joseph Friend

Governor
Chief Justice of the Supreme Court
Chairman, Attorney General
Superintendent, Nebraska State Patrol
Director, Nebraska Department of Correctional Services
Vice-Chairman, General Public, Dawes County
Chief of Police, Scottsbluff
District Court Judge, Beatrice
Thurston County Sheriff
Sarpy County Attorney
Juvenile Court Judge, Lincoln
Hall County Supervisor, Grand Island
Assistant Chief of Police, Bellevue
State Court Administrator
Nebraska Committee on Children and Youth
Professor, University of Nebraska at Omaha
Buffalo County Public Defender
Nebraska Task Force on Domestic Violence
Mayor, Fairbury
Public Safety Director, Omaha

Robert L. Tagg, Executive Director

Prepared by:

Uniform Crime Reporting Section
Marilyn K. Kumm, Statistical Analyst

U.S. Department of Justice
National Institute of Justice

This document has been reproduced exactly as received from the person or organization originating it. Points of view or opinions stated in this document are those of the authors and do not necessarily represent the official position or policies of the National Institute of Justice.

Permission to reproduce this copyrighted material has been granted by

Nebraska Commission on Law Enforcement & Criminal Justice Uniform Crime Reporting Section
to the National Criminal Justice Reference Service (NCJRS).

Further reproduction outside of the NCJRS system requires permission of the copyright owner.

Nebraska Publication Clearinghouse Number L2500S001—1981

STATEWIDE CRIME SUMMARY

1981

- The number of crime index offenses reported in 1981 represented a 19 percent increase over 1977.
- The number of crimes per 1,000 population rose from 34.8 in 1977 to 40.5 in 1981, a 16 percent increase.
- A total of 64,769 index offenses were reported or known to law enforcement agencies in 1981.
- 2,805 violent crimes were reported in 1981:

Murder, Manslaughter	49
Forcible Rape	319
Robbery	1,111
Felony Assault	1,326

- 61,964 crimes against property were reported in 1981:

Burglary	13,949
Larceny-Theft	44,040
Motor Vehicle Theft	3,187
Arson	788

- Larceny-theft accounted for 68 percent of the total crime index.
- 14,732 index offenses were reported cleared in 1981, a clearance rate of 22.7 percent.
- 51,052 arrests were reported in 1981, a decrease of six-tenths of one percent over 1980.
- Persons under age 18 accounted for 22.9 percent of the total arrests.
- 399 assaults on law enforcement officers were reported in 1981, a five percent increase over 1980.

Contents

Uniform Crime Reporting Program	1
Nebraska Crime Trends, 1977-1981	4
Crime Index Offenses—1981	9
Murder, Manslaughter	12
Forcible Rape	15
Robbery	18
Assault	20
Burglary	22
Larceny-Theft	24
Motor Vehicle Theft	26
Arson	27
Nebraska Arrest Data	29
Officers Killed and Assaulted	41
Law Enforcement Employee Data	43
Offense Data by County	50
Arrest Data by County	60

List of Tables

1 Crime Trends by Population Groups, 1977-1981	5
2 Crime Index Trends, 1977-1981	7
3 Index Offenses, 1981	10
4 Crimes of Violence and Crimes Against Property, 1981	11
5 Type and Value of Property Stolen, Recovered	11
6 Murder Victims by Age, Sex and Race	12
7 Murder Perpetrators by Age, Sex and Race	13
8 Murder, Manslaughter Circumstances	13
9 Murder—Type of Weapon	13
10 Forcible Rape and Attempt to Rape—Age Groups of Victims	16
11 Forcible Rape—Type of Property Stolen, Recovered	17
12 Rape—Place of Occurrence	17
13 Rape—Relationship of Victim to Offender	17
14 Robbery—Place of Occurrence	18
15 Robbery—Type of Property Stolen, Recovered	18
16 Burglary—Place and Time of Occurrence	23
17 Burglary—Type of Property Stolen, Recovered	23
18 Larceny—Theft	25
19 Larceny-Theft—Type of Property Stolen, Recovered	25
20 Motor Vehicle Theft—Type of Property Stolen, Recovered	27
21 Arson—Type of Property and Property Loss	28
22 Total Arrests	30
23 Comparison of Arrests	31
24 Comparison of Adult and Juvenile Arrests	32
25 Juvenile and Adult Arrests, 1980-1981	33
26 Total Arrests by Age	34
27 Total Arrests by Sex	35
28 Total Arrests by Race	37
29 Arrests by Race, Age 18 and Over	38
30 Arrests by Race Under Age 18	39
31 Drug Abuse Arrests by Sex and Race	40
32 Drug Abuse Arrests, 1980-1981	40
33 Officers Assaulted by Time, 1980-1981	41
34 Officers Assaulted—Type of Activity, 1980-1981	42
35 Officers Assaulted—Type of Weapon	42
36 Officers Assaulted—Type of Assignment	43
37 Law Enforcement Employee Data—County Sheriffs' Departments	44
38 Law Enforcement Employee Data—Cities Over 5,000 Population	46
39 Law Enforcement Employee Data—Cities Under 5,000 Population	47

List of Figures

1 Percent of State's Total Crime by Population Groups, 1977-1981	6
2 Percent Change in Index Offenses over 1977	8
3 Murder, Manslaughter by Month	14
4 Relationship of Victim to Offender— Murder-Manslaughter	14
5 Forcible Rape by Month	15
6 Analysis of Forcible Rape by Type	16
7 Robbery by Month	19
8 Analysis of Robbery by Type of Weapon	19
9 Felony Assault by Month	20
10 Felony Assault by Type of Weapon	21
11 Burglary by Month	22
12 Larceny-Theft by Month	24
13 Motor Vehicle Theft by Month	26
14 Arson by Month	27

Nebraska Uniform Crime Reporting Program

Introduction

The Nebraska Uniform Crime Reporting (UCR) Program involves the collection, compilation and analysis of crime statistics reported by Nebraska law enforcement agencies in accordance with guides and regulations prescribed by law.

The Nebraska Commission on Law Enforcement and Criminal Justice, hereafter referred to as the Commission, administers the Program under the following statute:

Chapter 81-1425

"(6) collect, develop and maintain statistical information, records, and reports as the Commission may determine relevant to its functions."

Chapter 81-1426

"Public officers and agencies, information, records, reports; furnish to the Commission:

"(1) The Commission may obtain from all public officers or agencies whose functions include the control, apprehension, trial, or correction of criminal offenders in this state, such information, records, and reports as the Commission may determine relevant to its functions." "(2) It shall be the duty of all public officers and agencies whose functions include the control, apprehension, trial, or correction of criminal offenders to provide such information, records, and reports as the Commission shall reasonably require."

Historical Background

The counterpart of the Nebraska UCR Program is the National UCR Program under the direction of the Federal Bureau of Investigation (FBI). The National Program was the result of a need for nation-wide and uniform compilation of law enforcement statistics. Uniform Crime Reports were first collected in 1930 after being developed by a committee of the International Association of Chiefs of Police (IACP). Today, the IACP continues to serve in an advisory capacity to the FBI in its operation of the Program. In 1966 the National Sheriffs' Association (NSA) established a Committee on Uniform Crime Records to serve in an advisory capacity to the National UCR Program while actively encouraging sheriffs throughout the nation to participate in the UCR Program.

In recent years, the FBI has actively assisted individual states in the development of state UCR Programs which are compatible with the national Program. Nebraska was one of the first states to develop a state UCR Program. After a three-month evaluation, the Nebraska UCR Program became operational on January 1, 1971. Commencing on that date all crime statistics flow through one central agency, this Commission, before submission to the National UCR Program. The State Patrol, all sheriffs' departments and all police departments of municipalities of 1,000 population and over are required to submit Uniform Crime Reports by the seventh day after the end of the month. During 1980, a total of 204 law enforcement agencies were required to submit UCR's. All UCR's are verified and all mathematical computations are checked. Any errors or

questionable data are corrected by telephone contact with the agency in question. After verification and processing of data, a magnetic tape is built and submitted to the National UCR Program. This Commission publishes quarterly and annual reports based upon data submitted.

Uniform Crime Classifications

Uniformity of reporting depends upon the proper classification of offenses by the law enforcement agencies. The basic guidelines for classifying offenses are formulated by the Federal Bureau of Investigation. It must be emphasized that the following classifications are not meant to be legal definitions as they are written in the Nebraska Penal Code. The purpose of these classifications is to establish a uniform national system for classifying similar offenses even though their legal definitions may vary considerably from state to state.

Part I Offenses

- (1) **Homicide—**
 - (a) **Murder—**any unlawful killing of a human being in which the element of malice aforethought was present in the murder. Manslaughter—any unlawful killing of a human being without the element of malice aforethought.
 - (b) **Death by Negligence—**any death that occurs because of the negligence of some person other than the victim and that is not in the commission of an unlawful act.
- (2) **Rape—**
 - (a) **Rape by Force—**the carnal knowledge of a female forcibly and against her will, but excluding statutory rape and other sex offenses.
 - (b) **Assault to Rape—**all assaults and attempts to rape.
- (3) **Robbery—**the felonious and forcible taking of the property of another against his will by violence or by putting him in fear. Robbery differs from larceny in that it is aggravated by the element of force.
 - (a) **Armed Robbery—Any Weapon—**when any object is so employed as to constitute force or the threat of force, it will be considered a weapon. This would include firearms, knives, clubs, brass knuckles, blackjacks, broken bottles, acid, explosives, etc. Cases involving possible pretended weapons or cases involving weapons not seen by the victim but which the robber claims to have with him are counted in this category.
 - (b) **Strong Arm—No Weapon—**includes muggings and similar offenses when no weapon is used but strong-arm tactics are employed to deprive the victim of his property. This is limited to hands, arms, fists, feet, etc. As in armed robbery, all attempts are included.
- (4) **Assault—**an attempt or offer, with unlawful force or violence, to do physical injury to another. General Rule—all assaults will be classified in the following

categories, excluding assaults with intent to rob or rape.

- (a) Gun—all assaults and attempted assaults involving the use of any type of firearm. This includes revolvers, automatic pistols, shotguns, zip guns, rifles, pellet guns, etc.
 - (b) Knife or Cutting Instrument—all assaults and attempted assaults involving the use of cutting or stabbing objects such as knives, razors, hatchets, axes, cleavers, scissors, glass, broken bottles, daggers, ice picks, etc.
 - (c) Other Dangerous Weapons—assaults or attempted assaults when any object other than a gun, knife, or cutting instrument is used. This includes clubs, bricks, jack handles, bottles, explosives, acid, lye, poison, scalding water and cases of attempted drownings, burnings, etc.
 - (d) Hands, Fists, Feet, Etc. (Felony)—any assaults with hands, fists, feet, etc. which could result in a felony conviction. In order to be classified as a felony, the victim must suffer great bodily harm.
- (5) **Burglary**—any unlawful entry or attempted forcible entry of any structure to commit a felony or larceny. For Uniform Crime Reporting purposes, burglary with larceny is classified and scored only as burglary; the larceny is excluded. Breaking and entering of a motor vehicle is classified as larceny.
- (a) Forcible Entry—All offenses where force of any kind is used to unlawfully enter a locked structure to commit a felony or with intent to steal something. This includes entry by use of a master key, celluloid or other device that leaves no outward mark but is used to open a lock. Concealment inside a building followed by breaking out of the structure is scored here.
 - (b) Unlawful Entry—No Force—any unlawful entry when you fail to discover any evidence of forcible entry.
 - (c) Attempted Forcible Entry—when determined that forcible entry has been attempted.
- (6) **Larceny-Theft (Except Auto Theft)**—the unlawful taking of the property of another with intent to deprive him of ownership. This involves all larcenies and thefts resulting from pocket picking, purse snatching, shoplifting, larceny from auto, larceny of auto parts and accessories, bicycle theft, larceny from buildings and larceny from any coin-operated machines. Any theft that is not a robbery or any theft that does not result from a breaking and entering is scored here. Embezzlements, unlawful conversions, larceny by bailee, frauds or bad check cases are excluded.
- (7) **Motor Vehicle Theft**—larceny or attempted larceny of automobiles. All thefts and attempted thefts of motor vehicles are included. This includes all vehicles which can be registered as a motor vehicle in this state. Those incidents in which the alleged offender had unlawful access to the vehicle as in a family situation or the unauthorized use by others having lawful access to the vehicle such as chauffeur, employee, etc. are excluded.
- (8) **Arson**—includes all arrests for violations of state law and municipal ordinances relating to arson and attempted arson.

Part II Offenses

- (9) **Other Assaults (Misdemeanor)**—consists of all assaults and attempted assaults which are simple or minor in nature.
- (10) **Forgery and Counterfeiting**—all offenses dealing with the making, altering, uttering or possessing with intent to defraud anything false in the semblance of that which is true.
- (11) **Fraud**—Fradulent conversion and obtaining money or property by false pretense. Includes bad checks, confidence games, etc.
- (12) **Embezzlement**—the misappropriation or misapplication of money or property entrusted to one's care, custody or control.
- (13) **Stolen Property**—all offenses of buying, receiving, possessing or concealing stolen property as well as all attempts to commit any of these offenses.
- (14) **Vandalism-Destruction of Property**—all willful or malicious destruction, injury, disfigurement or defacement of any public or private property, real or personal, without the consent of the owner or person having custody or control by cutting, tearing, breaking, marking, painting, drawing, covering with filth or any other such means as may be specified by law or ordinance.
- (15) **Weapons**—includes violations of weapons laws such as manufacture, sale or possession of deadly weapons; carrying deadly weapons; furnishing deadly weapons to minors; aliens possessing deadly weapons, and all attempts to commit any of the above offenses.
- (16) **Prostitution and Commercialized Vice**—includes the sex offenses of a commercialized nature such as prostitution; keeping bawdy house, disorderly house or house of ill repute; pandering, procuring, transporting or detaining women for immoral purposes, etc. and all attempts to commit any of the above.
- (17) **Sex Offenses**—includes all sex offenses other than forcible rape, prostitution and commercialized vice. This encompasses offenses against chastity, common decency, morals and the like such as adultery and fornication, buggery, incest, indecent exposure, sodomy, carnal abuse (no force) and all attempts to commit any of the above.
- (18) **Drug Abuse Violations**—statistics for these arrests are requested on the basis of the narcotics used. This includes all arrests for the violation of state and local ordinances, specifically those relating to the unlawful possession, sale, use, growing, manufacturing and making of narcotic drugs. Four divisions of narcotic drugs are recognized. These are:
- (a) opium and cocaine and their derivatives (morphine, heroin, codeine),
 - (b) marijuana,
 - (c) synthetic narcotics which can cause true addiction (demerol, methadones) and
 - (d) other dangerous non-narcotic drugs, (barbituates, benzedrine).
- (19) **Gambling**—includes all charges relating to promoting, permitting or engaging in gambling. This classification is broken into three divisions:

- (a) bookmaking (horse and sport book),
- (b) numbers and lottery and
- (c) all other gambling.

- (20) **Offenses Against Family and Children**—includes all charges of nonsupport, neglect or abuse of family and children such as desertion, abandonment or nonsupport, neglect or abuse of child, or nonpayment of alimony.
- (21) **Driving Under the Influence**—limited to driving or operating any vehicle while drunk or under the influence of liquor or narcotic drugs.
- (22) **Liquor Laws**—with the exception of drunkenness and driving under the influence, all state or local liquor law violations are placed in this class. Federal violations are not included. Include manufacturing, selling, transporting, furnishing as in maintaining unlawful drinking places, bootlegging, operating a still, furnishing liquor to a minor and using vehicle for illegal transportation of liquor.
- (23) **Drunkenness-Intoxication**—(No longer a criminal offense in Nebraska)
- (24) **Disorderly Conduct-Disturbing the Peace**—includes all disorderly persons who can not be classified under offenses 1 through 23 or under offense 25.
- (25) **Vagrancy**—includes arrests for failure of an individual to give a good account of himself, begging, loitering, etc.
- (26) **All Other Offenses**—includes all violations of state and local laws not otherwise classified.
- (27) **Suspicion**—limited to suspicion arrests when the persons arrested are released by the police:
- (28) **Curfew and Loitering Law Violations**—(Juveniles) all arrests made for violations of local curfew or loitering ordinances.
- (29) **Runaways**—(Juveniles) limited to juveniles taken into custody who have run away from the reporting jurisdiction.

Crime Index

The extent, fluctuation and distribution of crime in the State is measured by the crime index. The crime index is composed of the following offenses: murder, manslaughter, forcible rape, robbery, felony assault, burglary, larceny-theft and motor vehicle theft. Many categories of crime are not of sufficient importance to be included in the index; some serious crimes, such as kidnapping, do not occur with enough regularity to be meaningful in the index. With these considerations in mind, the above offenses were selected as a group to serve as a measure of crime.

Clearances

For UCR purposes, an offense can be cleared by arrest or by exceptional means. An offense can be cleared by arrest when the offender is identified, there is enough evidence to charge him and he is actually taken into custody. The arrest of one person can clear several offenses and several persons may clear one offense. When some element beyond police control precludes formal charges against the offender, such as the victim's refusal to prosecute or death of the offender, an offense can be cleared by exceptional means. There is no distinction

made between cleared by arrest and cleared by exceptional means in this publication. A distinction is made between total clearances and those involving only persons under 18 years of age (juveniles). A juvenile clearance is counted only when juveniles are exclusively involved in the clearance of an offense.

Crime Rates

Crime rates relate the incidence of crime to population. Estimates of current permanent population are used in computing crime rates. Crime rates allow for comparisons between several areas with different populations over a period of time without the information being biased by population differences. To compute a crime rate, first divide the population of the area by 100,000 and then divide the crime index by that answer. Throughout this report a crime rate per 1,000 population is used to be more meaningful for the State.

Crime Factors

Statistics gathered under the UCR Program are law enforcement statistics. The agencies report the offense and arrest data according to the standard offense classifications and not according to state statutes or local ordinances. Offenses are related to municipality and county in which they occur, rather than to the agency which may investigate, arrest or otherwise dispose of the case. The clearance is attributed to the municipality or county in which the offense occurred, even though the arresting agency may not be the department originally reporting the offense.

The factors which influence crime rates are dependent upon many characteristics of the community, and therefore, when attempting to interpret the crime statistics presented herein, one should be aware of the social structure and the factors that lead to or cause criminal behavior.

Awareness of the presence of certain crime factors, which may influence the resulting volume and type of statistics presented, is necessary if fair and equitable conclusions are to be drawn. These crime influencing factors are present, to some degree, in every community and their presence affects, in varying degrees, the crime experience of that community. Attempts at comparison of crime figures between communities should not be made without first considering the individual factors present in each community. Below are some of the conditions which will by type and volume affect the crime that occurs from place to place:

Density and size of the community population and the metropolitan area of which it is a part.

Composition of the population with reference particularly to age, sex and race.

Economic status of the population.

Relative stability of population, include commuters, seasonal and other transient types.

Climate, including seasonal weather changes.

Educational, recreational and religious characteristics.

Standards governing appointments to the police force.

Policies of the prosecuting officials and the courts.

Attitude of the public toward law enforcement problems.

The administrative and investigative efficiency of the local law enforcement agency, including the degree of adherence to crime reporting standards.

Caution should always be used when using the crime statistics presented herein, however, it should also be kept in mind that the data presented is the most accurate

currently available. The law enforcement personnel who provide the data are to be commended for their efforts to provide accurate data. Without their sincere cooperation,

this publication would not be possible. Crime is a social problem and therefore, should be a concern of the entire community.

Nebraska Crime Index Trends, 1977-1981

Crime reported in Nebraska in 1981 increased 19 percent over 1977. The number of crimes per 1,000 population rose from 34.8 in 1977 to 40.5 in 1981, a 16 percent increase. The violent crimes of murder-manslaughter, forcible rape, robbery, and felony assault decreased nine percent over 1977. The violent crime rate decreased from 2.0 in 1977 to 1.8 in 1981. The property crimes of burglary, larceny-theft, and motor vehicle theft increased 21 percent over 1977. The property crime rate increased from 32.4 in 1977 to 38.8 in 1981.

An analysis of crime trends by population groups revealed that cities over 250,000 population (the City of Omaha) had an 11 percent increase in the total crime index over 1977. Cities of 100,000 to 250,000 population (the City of Lincoln) had a 22 percent increase over 1977.

Cities of 5,000 to 100,000 population had a 28 percent increase and cities under 5,000 population had a 40 percent increase over 1977. Counties, which include the rural area and cities under 1,000 population reflected a 21 percent increase over 1977. The State agencies which report offenses occurring on State property (the State Patrol and the University of Nebraska-Lincoln) had an eight percent increase over 1977.

The index offenses have shown the following changes over 1977: murder, manslaughter decreased 14 percent, forcible rape increased 14 percent, robbery increased 10 percent, felony assault decreased 23 percent, burglary increased 21 percent, larceny-theft increased 25 percent, and motor vehicle theft decreased 17 percent.

Table 1

Crime Trends by Population Groups*, 1977-1981

Population Group	Year	Offense								Percent Change
		Murder	Rape	Robbery	Felony Assault	Burglary	Larceny-Theft	Motor Vehicle Theft	Total Crime Index	
250,000 and Over	77	31	172	809	906	4,930	12,895	2,277	22,020	
	78	24	162	878	792	5,048	12,811	1,744	21,459	-3
	79	40	193	954	830	5,140	14,875	2,320	24,352	+13
	80	38	213	1,053	679	5,351	15,138	1,958	24,430	+1
	81	28	186	899	470	5,933	15,239	1,596	24,351	-1
100,000 to 250,000	77	5	34	69	172	1,532	6,421	480	8,713	
	78	3	42	49	177	1,640	5,749	402	8,062	-7
	79	3	45	83	317	1,898	6,885	370	9,601	+19
	80	6	57	75	341	2,589	7,816	377	11,261	+17
	81	5	41	90	290	2,274	7,538	363	10,601	-6
5,000 to 100,000	77	7	31	68	242	2,387	9,723	603	13,061	
	78	6	32	50	275	2,248	10,370	654	13,635	+4
	79	10	39	69	424	2,595	12,156	877	16,170	+19
	80	13	44	82	411	2,885	13,419	770	17,624	+9
	81	7	27	77	306	2,750	12,901	674	16,742	-5
Under 5,000	77	2	3	9	73	348	1,222	75	1,732	
	78	1	6	4	91	409	1,208	93	1,812	+5
	79	1	10	10	96	445	1,669	159	2,390	+32
	80	1	12	8	83	466	1,797	153	2,520	+5
	81	1	13	2	72	438	1,792	112	2,430	+4
Counties	77	11	39	51	275	2,210	4,392	381	7,359	
	78	11	40	34	239	1,955	4,263	430	6,972	-5
	79	10	39	37	275	2,195	4,979	495	8,032	+15
	80	10	31	62	212	2,408	5,473	463	8,659	+8
	81	8	48	42	169	2,393	5,814	426	8,900	+3
State Agencies	77	1	0	0	55	68	656	14	794	
	78	0	0	0	26	86	653	11	776	-2
	79	0	3	1	11	99	658	12	784	+1
	80	0	1	1	18	121	664	5	810	+4
	81	0	2	1	13	111	722	11	860	+6

*Estimates are used for agencies that did not report all 12 months of any one year. Agencies who did not submit any reports for any one year are excluded from the crime trends.

Figure 1
 Percent of State's Total Crime
 by Population Groups, 1977-1981

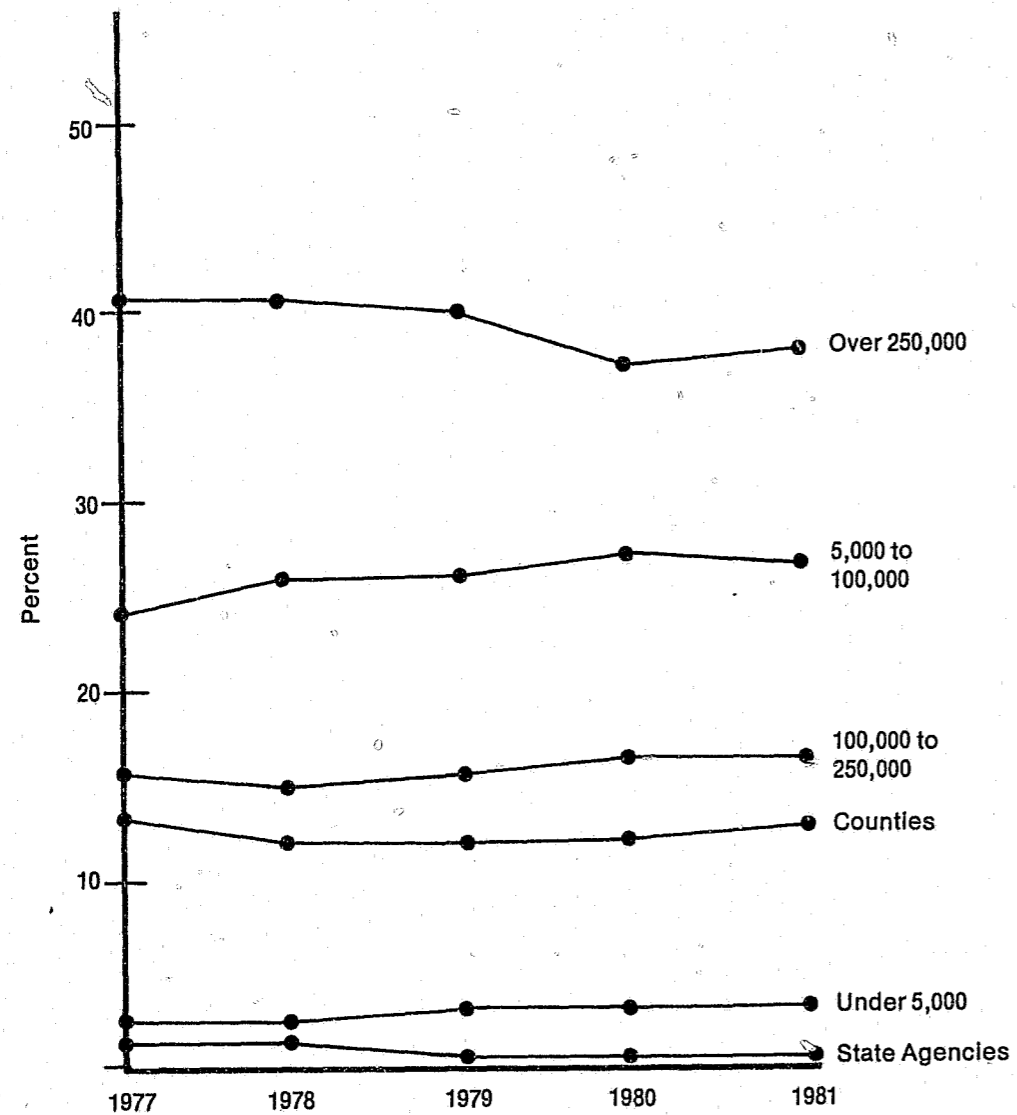


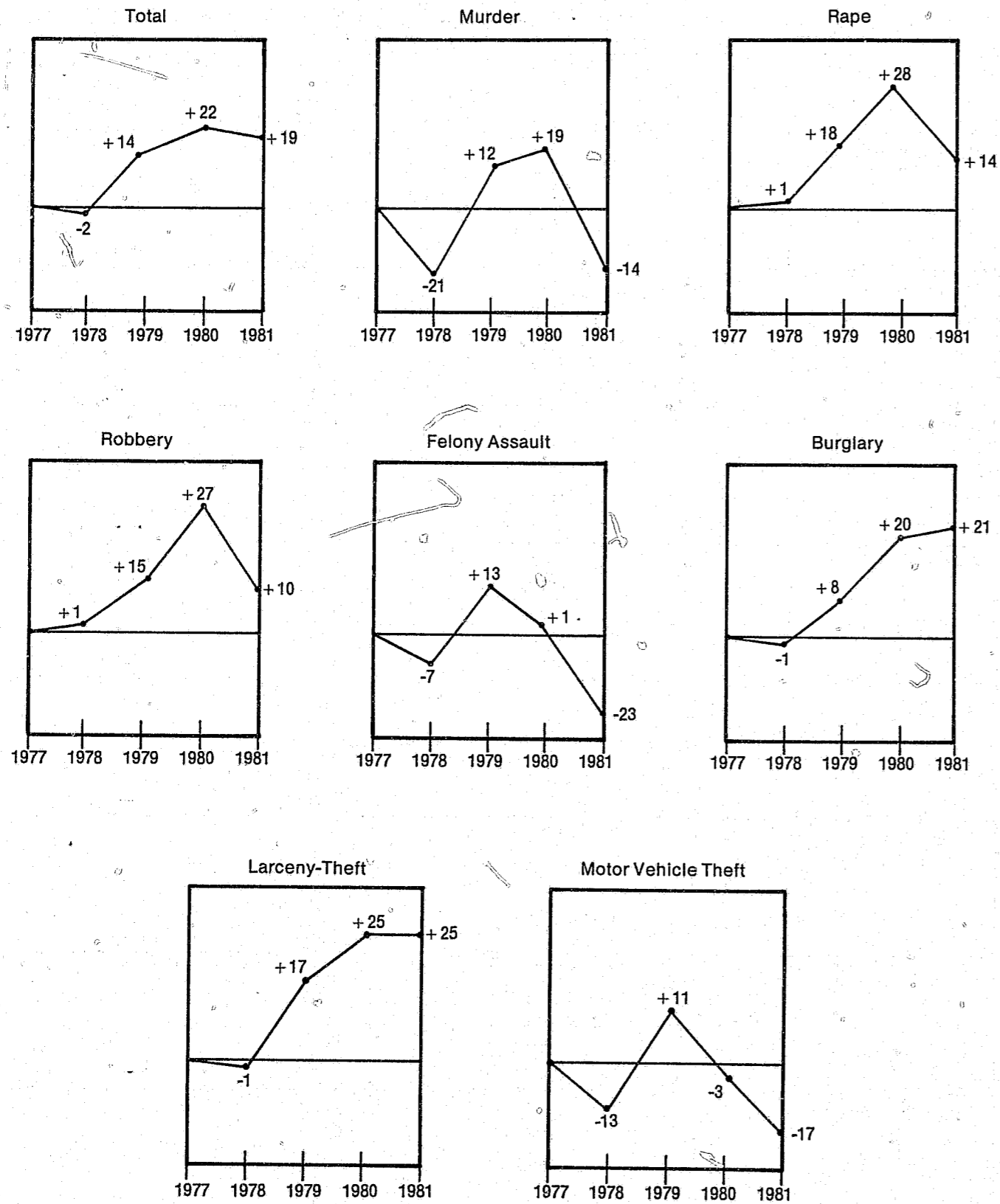
Table 2

Crime Index Trends, 1977-1981

Index Offense	Year	Number of Offenses	Percent Change
Murder, Manslaughter	1977	57	
	1978	45	-21
	1979	64	+42
	1980	68	+6
	1981	49	-28
Forcible Rape	1977	279	
	1978	282	+1
	1979	329	+17
	1980	358	+9
	1981	317	-11
Robbery	1977	1,006	
	1978	1,015	+1
	1979	1,156	+14
	1980	1,281	+11
	1981	1,111	-13
Felony Assault	1977	1,723	
	1978	1,600	-7
	1979	1,953	+22
	1980	1,744	-11
	1981	1,320	-24
Burglary	1977	11,475	
	1978	11,386	-1
	1979	12,372	+9
	1980	13,820	+12
	1981	13,899	+1
Larceny-Theft	1977	35,309	
	1978	35,054	-1
	1979	41,222	+18
	1980	44,307	+7
	1981	44,006	-1
Motor Vehicle Theft	1977	3,830	
	1978	3,334	-13
	1979	4,233	+27
	1980	3,726	-12
	1981	3,182	-15
Total Crime Index	1977	53,679	
	1978	52,716	-2
	1979	61,329	+16
	1980	65,304	+6
	1981	63,884	-2

Figure 2

Percent Change in Index Offenses Over 1977



Crime Index Offenses—1981

Volume

A total of 64,769 index offenses were reported or known to law enforcement agencies in 1981. The violent crimes of murder, manslaughter, forcible rape, robbery and felony assault accounted for 4.3 percent of the total index offenses. The property crimes of burglary, larceny-theft, motor vehicle theft, and arson accounted for 95.7 percent of the total offenses.

Felony assault accounted for 47.3 percent of the violent crimes and larceny-theft was the most frequently reported of all crimes, accounting for 68.0 percent of the total index.

Crime Rates

Based on an estimated population figure of 1,576,000 the crime rate per 1,000 population was 41.1 in 1981. The crime rate for violent crimes was 1.8 per 1,000 population. There were 39.3 property crimes per 1,000 population.

Clearances

A total of 14,732 index offenses were reported cleared during 1981, a clearance rate of 22.7 percent. Murder, manslaughter had the highest clearance rate, 89.8 percent. Violent crimes had a clearance rate of 57.7 percent and crimes against property had a clearance rate of 21.2 percent.

The difference between the clearance rate for crimes of violence and crimes against property can be attributed to the fact that there are more property crimes to be solved and investigations of violent crimes are usually more intense. The element of confrontation between the victim and the perpetrator, as well as witness identification of the perpetrator, contributes to the higher rate of clearance.

Table 3
Index Offenses, 1981

Index Offense	Number of Index Offenses	Rate Per 1,000 Population ¹	Percent Distribution	Percent Cleared
Murder, Manslaughter	49	.03	.1	89.8
Forcible Rape	319	.2	.5	72.4
Rape by Force	243			75.7
Attempt to Rape	76			61.8
Robbery	1,111	.7	1.7	33.0
Firearm	423			36.2
Knife or Cutting Instrument	156			31.4
Other Dangerous Weapon	57			24.6
Strong Arm — No Weapon	475			31.8
Felony Assault	1,326	.8	2.0	73.6
Firearm	346			72.8
Knife or Cutting Instrument	329			74.8
Other Dangerous Weapon	312			72.4
Hands, Fists, Feet, Etc.	339			74.3
Burglary	13,949	8.9	21.5	18.0
Forcible Entry	10,404			19.7
Unlawful Entry — No Force	2,768			13.8
Attempted Forcible Entry	777			11.2
Larceny-Theft	44,040	27.9	68.0	21.5
Motor Vehicle Theft	3,187	2.0	4.9	31.9
Autos	1,750			36.5
Trucks and Buses	668			28.3
Other Vehicles	769			24.7
Arson	788	.5	1.2	16.9
Structural	456			25.7
Mobile	134			6.0
Other	198			4.0
Total	64,769	41.1	100.0	22.7

¹1981 Estimate of Population — 1,576,000

Table 4
Crimes of Violence and Crimes Against Property, 1981

Index Offense	Number of Offenses	Percent Distribution	Rate Per 1,000 Population
Crimes of Violence	2,805	4.3	1.8
Murder, Manslaughter	49	1.7	.03
Forcible Rape	319	11.4	.2
Robbery	1,111	39.6	.7
Felony Assault	1,326	47.3	.8
Crimes Against Property	61,964	95.7	39.3
Burglary	13,949	22.5	8.9
Larceny-Theft	44,040	71.1	27.9
Motor Vehicle Theft	3,187	5.1	2.0
Arson	788	1.3	.5
Total	64,769	100.0	41.1

Table 5
Type and Value of Property Stolen, Recovered*

Type of Property	Value Stolen	Value Recovered	Percent Recovered
Currency, Notes, Etc.	\$ 1,396,143	\$ 312,785	22.4
Jewelry and Precious Metals	1,853,207	396,807	21.4
Clothing and Furs	282,016	51,470	18.3
Motor Vehicles	4,672,397	3,726,019	79.7
Office Equipment	127,452	13,191	10.3
Televisions, Radios, Cameras, Etc.	1,462,178	150,537	10.3
Firearms	265,065	42,526	16.0
Household Goods	596,661	75,684	12.7
Consumable Goods	313,426	98,812	31.5
Livestock	197,419	7,223	3.7
Miscellaneous	4,701,698	768,104	16.3
Total	\$15,867,662	\$5,643,158	35.6

*Does not include the City of Omaha as the Omaha P.D. does not provide values of property stolen.

Murder, Manslaughter

Murder is defined as the unlawful killing of a human being in which the element of malice aforethought was present. Manslaughter is defined as any unlawful killing of a human being without the element of malice aforethought. Suicides, accidental deaths and justifiable or excusable homicides are excluded.

Volume and Rate

During 1981, a total of 49 murder, manslaughters were reported by law enforcement agencies in Nebraska. Murder, manslaughter accounted for 1.7 percent of all violent crimes (murder-manslaughter, forcible rape, robbery and felony assault) and one-tenth of one percent of all index offenses. In 1981, there were .03 murders per 1,000 population.

Murder, Manslaughter Analysis

In all cases of murder, manslaughter reported under the UCR Program, a supplementary report is submitted by the reporting agency. The supplementary report provides the age, sex and race of the victim(s), weapon used to commit the offense, relationship of the victim to the offender, and circumstances or motive leading to the crime.

The frequency of murder during 1981 was highest in the months of July and August when 7 murders were reported in each month.

In 1981, male victims accounted for 76 percent of the total murder victims, with 35.1 percent of those being in the age group of 18-29. Female victims accounted for 24 percent of the total murder victims. Victim analysis by race disclosed that 61.2 percent were White, 36.7 percent were Black and 2.1 percent were Indian.

Of the 41 known perpetrators, males accounted for 87.8 percent and 58.3 percent of those were in the age group of 18-29. Female perpetrators accounted for 12.2 percent. White perpetrators accounted for 46.3 percent of the perpetrators, Blacks accounted for 51.2 percent and Indians accounted for 2.4 percent.

Most murders, 73 percent, were committed by a relative or acquaintance of the victim. A further breakdown indicated that 12 percent were committed by a relative; 61 percent were committed by an acquaintance; 16 percent were committed by strangers and in 10 percent of the cases the perpetrator(s) were unknown.

44 murder, manslaughters were cleared in 1981. Juvenile clearances accounted for 4.5 percent of the total clearances.

Handguns were used in 40.8 percent of the murders and a knife or other cutting instrument was used in 24.5 percent of the incidents.

Table 6

Murder Victims by Age, Sex and Race

Age Group	Number	Percent Distribution	Sex		Race		
			Male	Female	White	Black	Indian
5 and Under	3	6.1	2	1	2	1	0
6-17	4	8.2	3	1	1	3	0
18-29	19	38.8	13	6	15	4	0
30-39	9	18.4	8	1	2	6	1
40-49	4	8.2	2	2	2	2	0
50-59	4	8.2	4	0	3	1	0
60-69	2	4.1	2	0	1	1	0
70-Above	4	8.2	3	1	4	0	0
Total	49	100.0	37	12	30	18	1

Table 7
Murder Perpetrators by Age, Sex and Race

Age Group	Number	Percent Distribution	Sex		Race		
			Male	Female	White	Black	Indian
6-17	3	7.3	3	0	1	2	0
18-29	25	61.0	21	4	15	9	1
30-39	6	14.6	6	0	1	5	0
40-49	4	9.8	3	1	1	3	0
50-59	2	4.9	2	0	1	1	0
60-69	1	2.4	1	0	0	1	0
70-Above	0	0	0	0	0	0	0
Total	41	100.0	36	5	19	21	1

Table 8
Murder, Manslaughter Circumstances

Circumstance	Number	Percent Distribution
Spouse Kills Spouse	1	2.0
Parent/Child	2	4.1
Money/Property Argument	6	12.2
Drinking Argument	1	2.0
Romantic Triangle	2	4.1
Other Quarrel	11	22.5
Killed by Felon	5	10.2
Other	12	24.5
Motive Unknown	9	18.4
Total	49	100.0

Table 9
Murder, Manslaughter — Type of Weapon

Type of Weapon	Number	Percent Distribution
Handgun	20	40.8
Shotgun	3	6.1
Rifle	8	16.3
Knife	12	24.5
Personal Weapon	3	6.1
Other	2	4.1
Unknown	1	2.0
Total	49	100.0

Forcible Rape

Figure 3

Murder, Manslaughter by Month

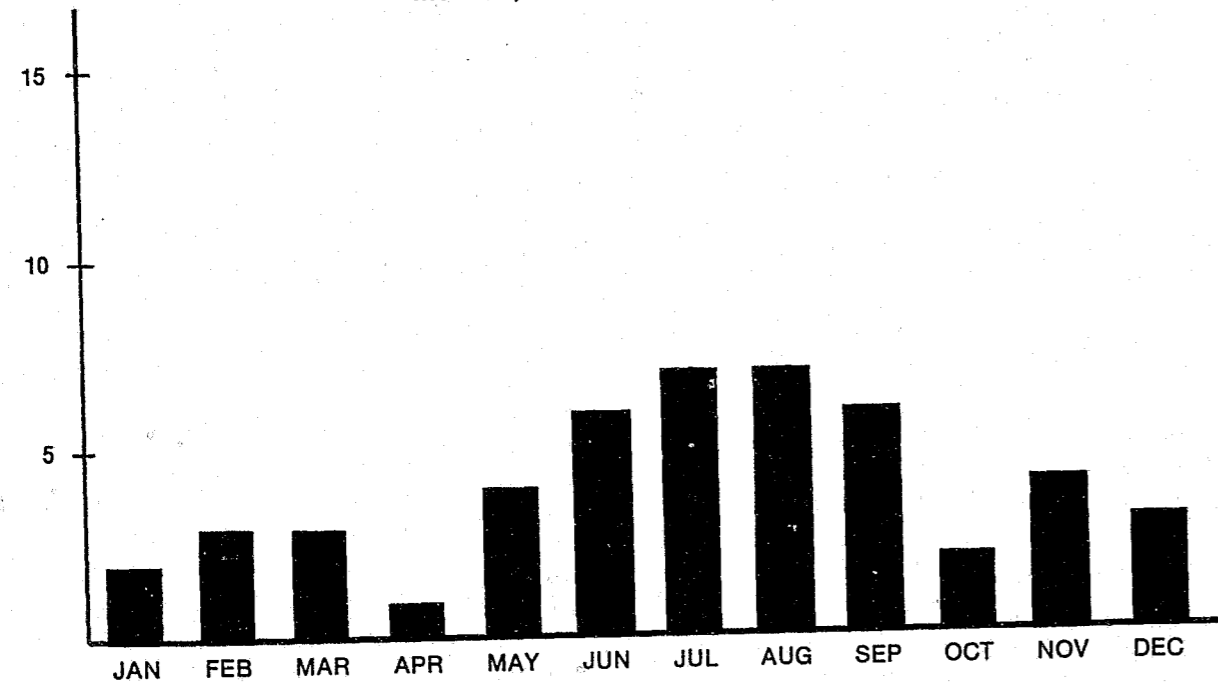
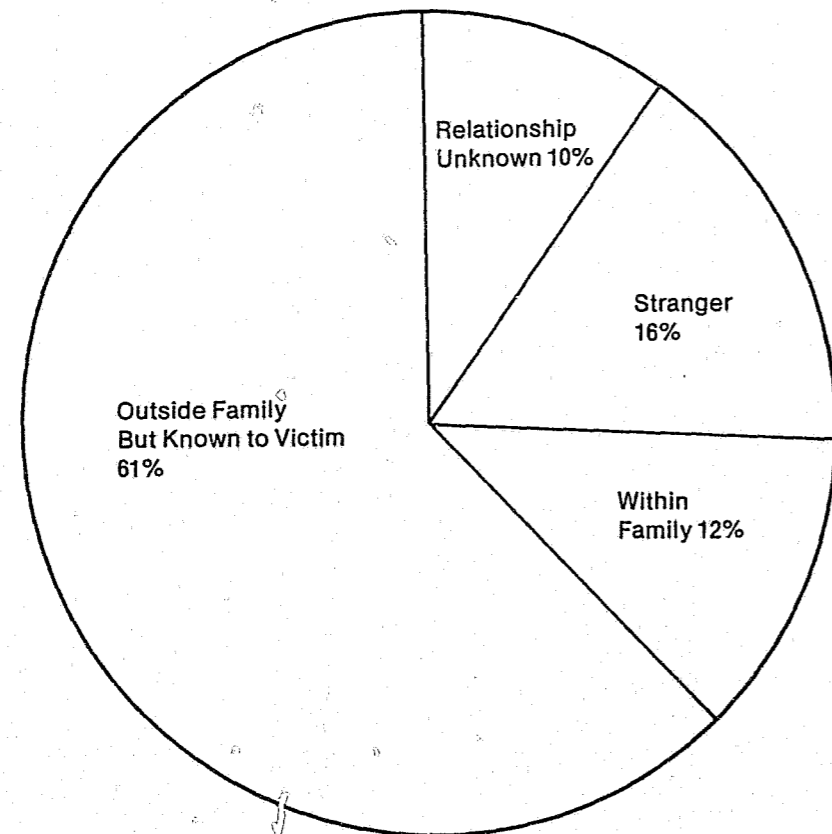


Figure 4

Relationship of Victim to Offender — Murder, Manslaughter



Forcible rape is defined as the carnal knowledge of a female forcibly, and against her will. All assaults and attempts to rape are counted. Carnal abuse, without force (statutory rape) and other sex offenses are not included.

Volume and Rate

During 1981, law enforcement agencies in Nebraska reported a total of 319 forcible rapes. Forcible rape accounted for 11.4 percent of all violent crimes (murder, manslaughter, forcible rape, robbery, felony assault) and 0.5 percent of all index offenses. In 1981, there were 0.2 rapes per 1,000 population. 231 forcible rapes, 72.4 percent, were cleared during 1981.

Analysis of Forcible Rape

Rape by force accounted for 76.1 percent of all forcible rapes and 23.9 percent were attempts to rape.

The age group accounting for the highest percentage of persons arrested for forcible rape, 25.7 percent, occurred within the 25-29 age group. Juvenile arrests accounted for 12.1 percent of all persons arrested for forcible rape.

Of persons arrested for forcible rape, 71.4 percent were White, 24.3 percent were Black, 2.4 percent were Indian and 2.1 percent were of other races.

Rape Circumstances

Law enforcement agencies are asked to submit a supplementary report on the circumstances surrounding any rape by force and attempt to rape. Supplementary reports were received on 131 cases; the Omaha P.D. did not submit any supplementary reports. Victims under the age of 25 accounted for 74.1 percent of the total victims. Of those victims under 25, 50.5 percent were between 18 and 24 and 24.7 percent were between 11 and 15. The victim was most likely to be attacked in her own home. In 45.8 percent of the incidents the perpetrator was a stranger. In 25.2 percent of the incidents a weapon was used and it was most likely to be a knife. The victim was attacked by more than one offender in 10 incidents. Interracial rapes accounted for 22.9 percent of the incidents.

Figure 5

Forcible Rape by Month

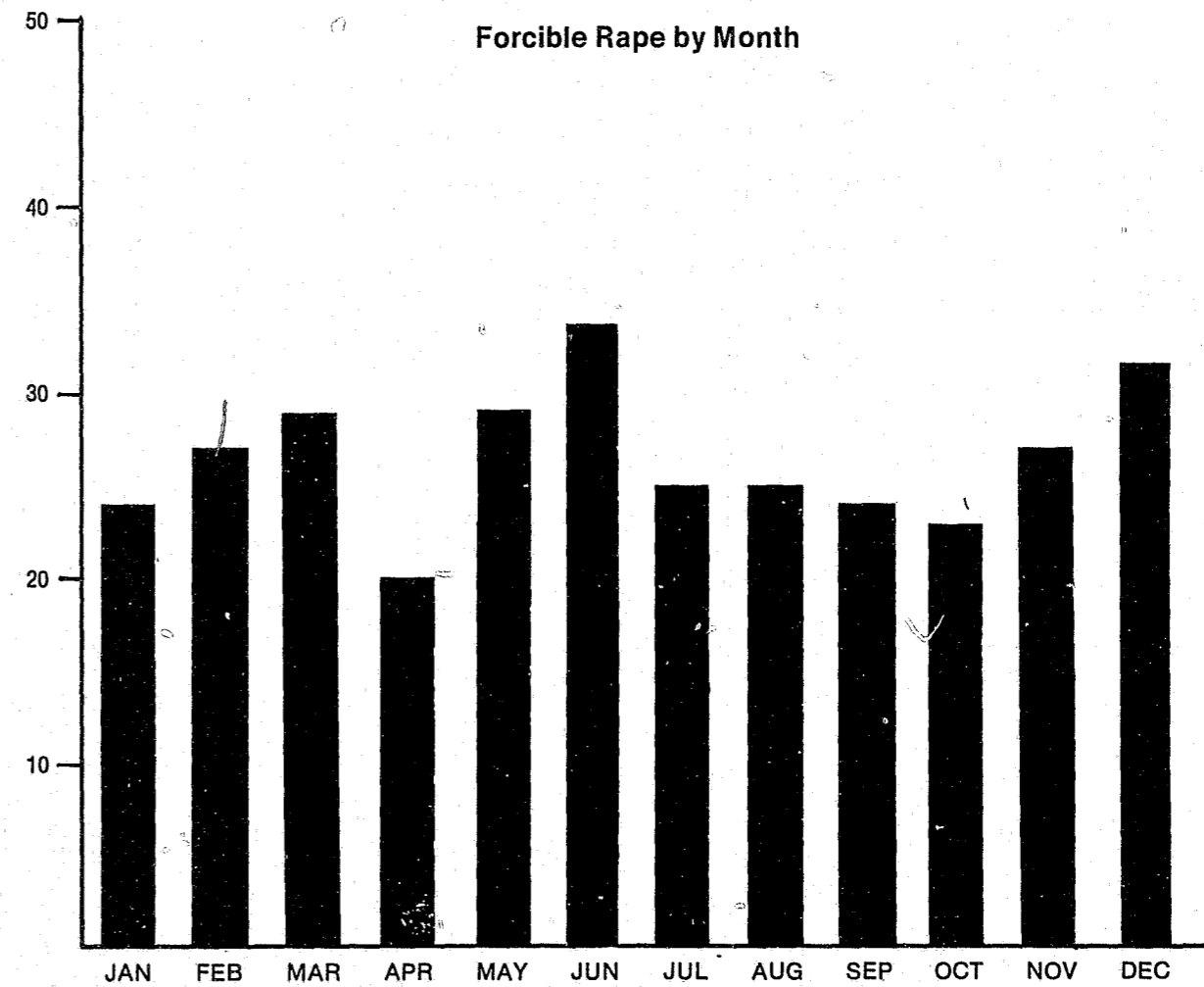


Figure 6
Analysis of Forcible Rape by Type

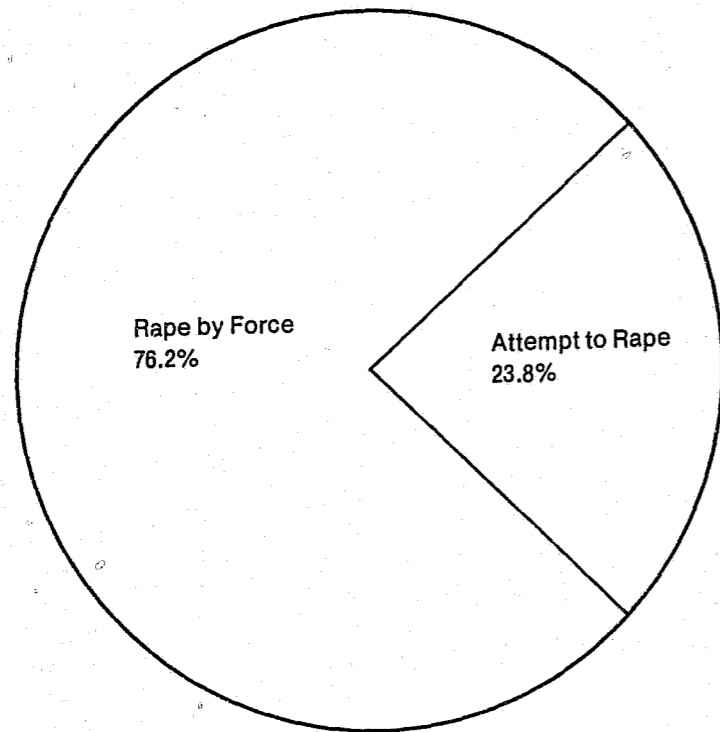


Table 10
Forcible Rape and Attempt to Rape
Age Groups of Victims

Age Group	Number	Percent Distribution
10 and Under	11	8.4
11-15	24	18.3
16-17	13	9.9
18-24	49	37.4
25-29	18	13.7
30-39	11	8.4
40-49	1	0.8
50-59	2	1.5
60-Above	2	1.5
Total	131	100.0

Table 11
Forcible Rape
Type of Property Stolen, Recovered*

Type of Property	Value Stolen	Value Recovered
Currency, Notes, Etc.	\$ 92	\$ 0
Jewelry and Precious Metals	0	0
Clothing and Furs	0	0
Motor Vehicles	0	0
Office Equipment	0	0
Television, Radios, Cameras, Etc.	208	0
Firearms	0	0
Household Goods	0	0
Consumable Goods	0	0
Livestock	0	0
Miscellaneous	0	0
Total	\$ 300	\$ 0

*Does not include the City of Omaha as the Omaha P.D. does not provide the values of property stolen.

Table 12
Rape-Place of Occurrence

Location	Number	Percent Distribution
Victim's Residence	58	44.3
Offender's Residence	15	11.5
Other Residence (Relative, Friend's, Etc.)	3	2.3
Hotel, Motel	3	2.3
Vacant Lot, Parking Lot	1	0.8
Road, Street, Ditch or Alley	10	7.6
Vehicle	19	14.5
Building (Office, Commercial Business, School, Etc.)	1	0.8
Wooded Area, Field or Park	12	9.2
Other	4	3.1
Not Stated	5	3.8
Total	131	100.0

Table 13
Rape-Relationship of Victim to Offender

Relationship	Number	Percent Distribution
Relative	12	9.2
Acquaintance/Known to Victim	53	40.5
Stranger	59	45.0
Unknown	7	5.3
Total	131	100.0

Robbery

Robbery is the taking or attempting to take anything of value from the care, custody, or control of a person or persons by force or threat of force or violence and/or by putting the victim in fear. Robbery takes place in the presence of the victim. The victim, who usually is the owner or person having custody of the property is directly confronted by the perpetrator and is threatened with force or fear that force will be used. Robberies are reported in the following categories: firearm, knife or cutting instrument, other dangerous weapon, and strong arm—no weapon.

Volume and Rate

During 1981, a total of 1,111 robberies were reported by law enforcement agencies in Nebraska. Robbery accounted for 39.6 percent of all violent crimes and 1.7 percent of all index offenses. In 1981, there were 0.7 robberies per 1,000 population. A total of 367 robberies, 33 percent, were cleared by law enforcement agencies in 1981.

Analysis of Robbery

A firearm was used in 38.1 percent of all robberies, a knife or other cutting instrument was used in 14 percent, other dangerous weapons were used in 5.1 percent and strong arm tactics were used in 42.8 percent of all robberies.

Robberies occurring on streets, highways, alleys, etc., accounted for 50.7 percent of all robberies. Robbery of a gas or service station accounted for 4.0 percent. In 141 robberies, the victim was robbed in his residence.

The age group of 25-29 accounted for the highest percentage, 17.0 percent, of persons arrested for robbery. The arrest of juveniles accounted for 24.9 percent of all arrests for robbery.

Of persons arrested for robbery, 42.6 percent were White, 50.4 percent were Black, and 6.5 percent were Indian, and 0.5 percent were of other races.

Table 14
Robbery—Place of Occurrence

Classification	Number of Offenses*	Percent Distribution	Total Value	Average Value
Highway (Streets, Alleys, Etc.)	563 (70)	50.7	\$ 6,272	\$ 89.60
Commercial House	220 (37)	19.8	17,857	482.62
Gas or Service Station	44 (18)	4.0	5,035	279.72
Convenience Store	57 (29)	5.1	9,688	334.07
Residence	141 (30)	12.7	24,906	830.20
Bank	31 (6)	2.8	43,230	7,205.00
Miscellaneous	55 (22)	4.9	2,319	105.41
Total	1,111 (212)	100.0	\$109,307	\$ 515.60

*Numbers in parentheses are the robberies which occurred outside of the City of Omaha. These numbers were used to compute average values as the Omaha P.D. does not provide values of property stolen.

Table 15
Robbery—Type of Property Stolen, Recovered*

Type of Property	Value Stolen	Value Recovered
Currency, Notes, Etc.	\$ 85,570	\$42,646
Jewelry, Precious Metals	6,670	345
Clothing and Furs	788	55
Motor Vehicles	7,700	7,000
Office Equipment	0	0
Televisions, Radios, Cameras, Etc.	4,522	1,500
Firearms	1,430	1,070
Household Goods	7	0
Consumable Goods	244	1
Livestock	0	0
Miscellaneous	2,376	394
Total	\$109,307	\$53,011

*Does not include the City of Omaha as the Omaha P.D. does not provide values of property stolen.

Figure 7
Robbery by Month

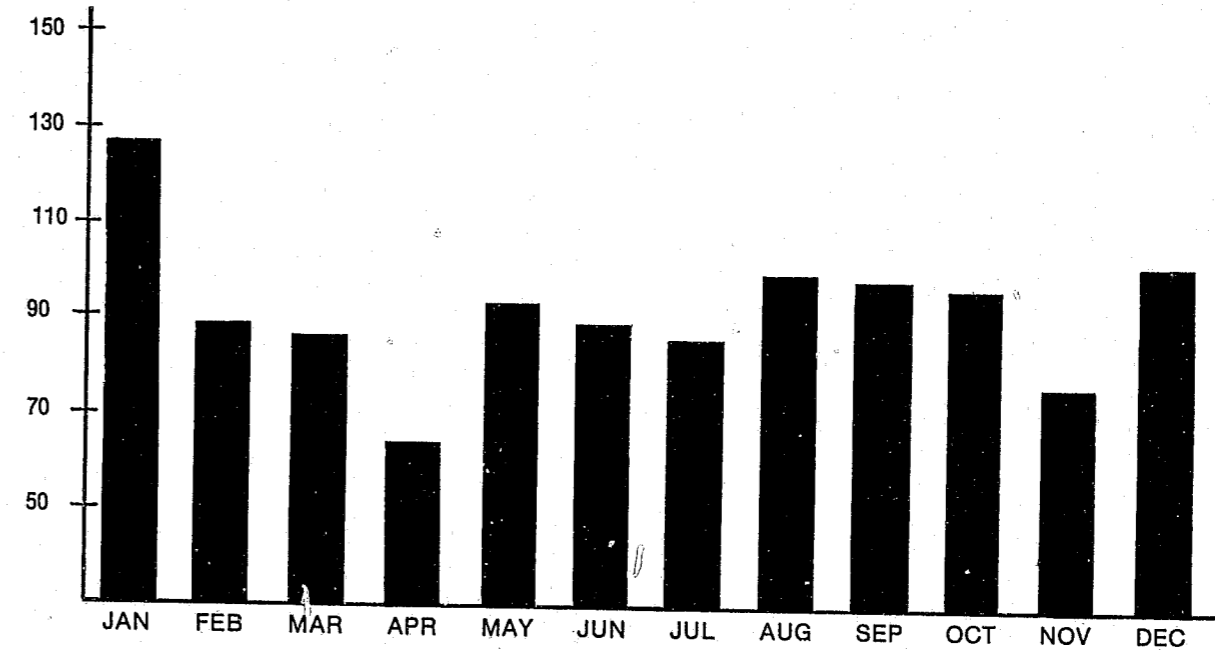
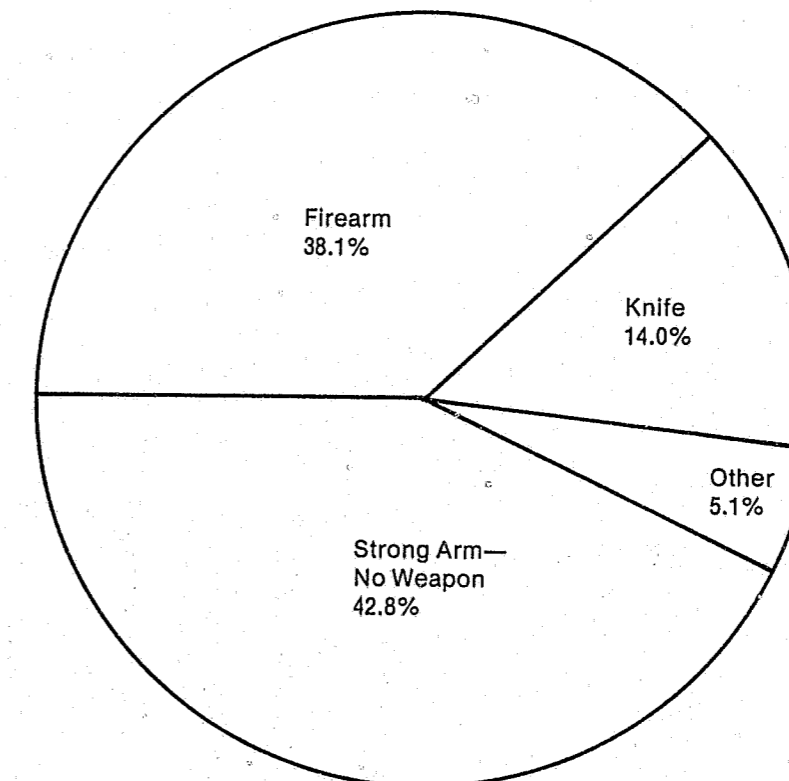


Figure 8
Analysis of Robbery by Type of Weapon



Felony Assault

Felony assault is an unlawful attack by one person upon another for the purpose of inflicting severe or aggravated bodily injury. Felony assault usually is accompanied by the use of a weapon or by means likely to produce death or great bodily injury.

Volume and Rate

During 1981, there were 1,326 felony assaults reported by law enforcement agencies in Nebraska. Felony assaults accounted for 47.3 percent of all violent crimes and 2.0 percent of all index offenses. In 1981, there were 0.8 felony assaults per 1,000 population. 976 felony assaults, 73.6 percent, were cleared.

Analysis of Felony Assault

A firearm was used in 25.6 percent of all felony assaults and hands, fists, and feet were used in 26.1 percent. The use of a knife accounted for 24.8 percent and the use of

other dangerous weapons accounted for 23.5 percent of all felony assaults.

The age group of 25-29 accounted for the highest percentage of persons arrested for felony assaults, 19.2 percent. Arrests of juveniles accounted for 10.5 percent of all arrests for felony assault.

Of all arrests for felony assault, 69.7 percent were White, 24.1 percent were Black, 5.8 percent were Indian and 0.4 percent were of other races.

During 1981, agencies provided victim/offender relationships on each assault reported, including misdemeanor assault. The assault is categorized as either relationship established or stranger-to-stranger. Victim/offender relationships were received on 3,639 assaults. The victim of an assault knew the perpetrator in 72.6 percent of the incidents and did not know the perpetrator in 26.4 percent of the incidents.

Figure 9

Felony Assault by Month

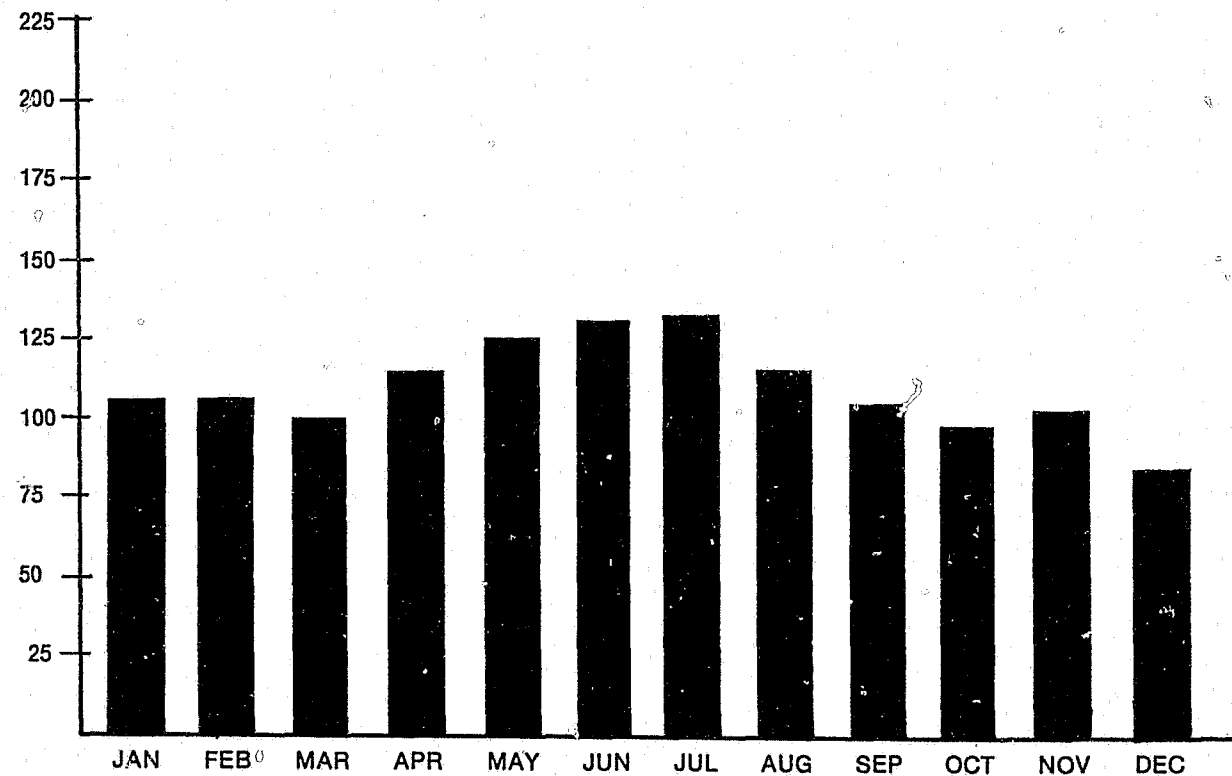
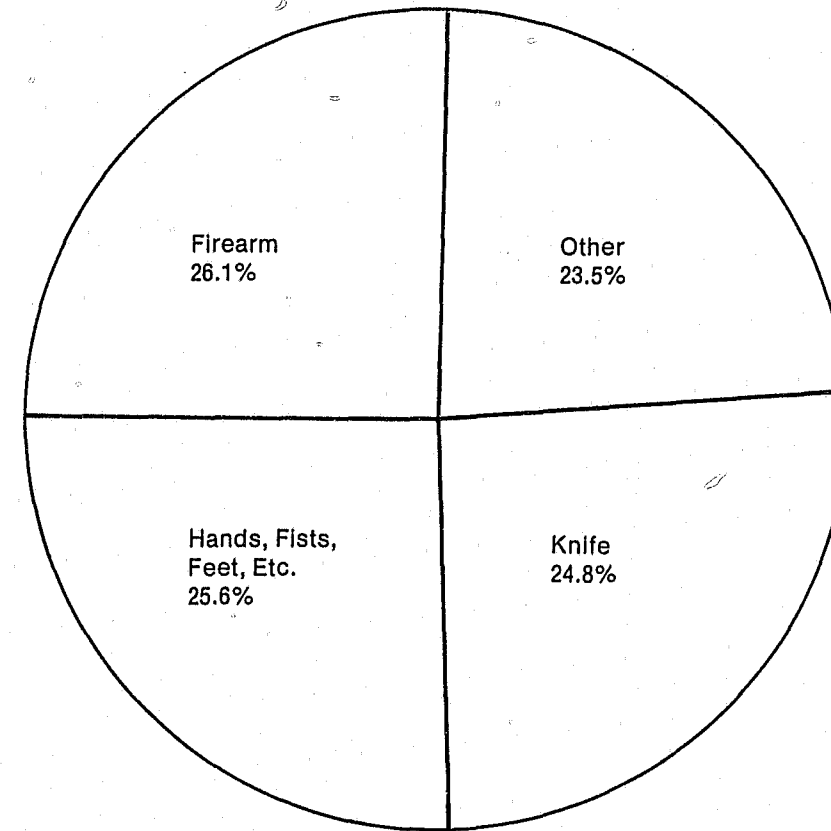


Figure 10

Felony Assault by Type of Weapon



Burglary

Burglary is defined as any unlawful entry or attempted forcible entry of any structure to commit a felony or theft. Burglary is divided into three categories: forcible entry, unlawful entry—no force, and attempted forcible entry.

Volume and Rate

During 1981, a total of 13,949 burglaries were reported by law enforcement agencies in Nebraska. Burglary accounted for 22.5 percent of all property crimes (burglary, larceny-theft, motor vehicle theft and arson) and 21.5 percent of all index offenses. In 1981, there were 8.9 burglaries per 1,000 population. 2,516 burglaries, 18.0 percent, were cleared.

Analysis of Burglary

Of all burglaries, 59.5 percent involved residences and 40.5 percent involved non-residences. Of the residential burglaries, 27.7 percent, occurred during the hours of 6:00 a.m. and 6:00 p.m., 28.4 percent occurred between 6:00 p.m. and 6:00 a.m., and in 43.8 percent the time of entry was unknown. Non-residential burglaries occurred most frequently during the night, 56.9 percent. Burglaries during the day accounted for 3.9 percent and in 39.2 percent the time of entry was unknown.

The age group of 18 accounted for the highest percentage of persons arrested for burglary, 11.5 percent. Juvenile arrests accounted for 42.3 percent of all arrests for burglary.

Of all persons arrested for burglary, 81.0 percent were White, 15.4 percent were Black, 3.5 percent were Indian and 0.2 percent were of other races.

Figure 11

Burglary by Month

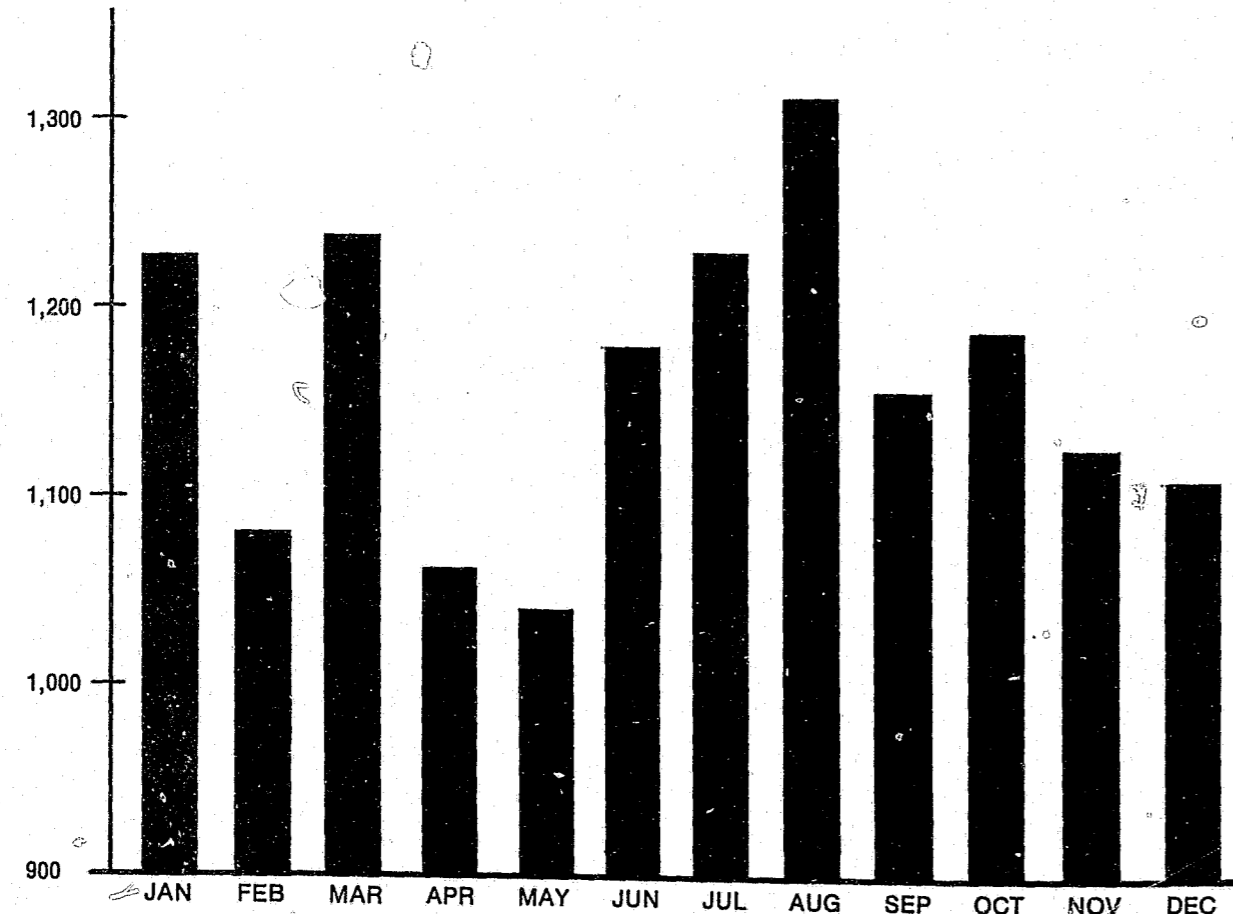


Table 16
Burglary—Place and Time of Occurrence

Classification	Number of Offenses ¹	Percent Distribution	Total Value	Average Value
Residence	8,300 (4,356)	59.5	\$2,968,367	\$681.44
Night	2,361 (1,333)	28.4	997,377	748.22
Day	2,302 (1,030)	27.7	779,291	756.59
Unknown	3,637 (1,993)	43.8	1,191,699	597.94
Non-Residence	5,649 (3,660)	40.5	1,969,832	538.21
Night	3,214 (2,345)	56.9	1,302,357	555.38
Day	218 (128)	3.9	33,802	264.08
Unknown	2,217 (1,187)	39.2	633,673	533.84
Total	13,949 (8,016)	100.0	\$4,938,199	\$616.04

¹Numbers in parentheses are the burglaries which occurred outside of the City of Omaha. These numbers were used to compute average values as the Omaha P.D. does not provide values of property stolen.

Table 17
Burglary
Type of Property Stolen, Recovered*

Type of Property	Value Stolen	Value Recovered
Currency, Notes, Etc.	\$ 714,305	\$152,586
Jewelry, Precious Metals	1,405,860	334,140
Clothing and Furs	89,864	13,587
Motor Vehicles	167,279	128,954
Office Equipment	103,846	8,748
Televisions, Radios, Cameras, Etc.	727,245	79,674
Firearms	131,001	17,160
Household Goods	453,873	48,814
Consumable Goods	97,613	9,575
Livestock	2,552	47
Miscellaneous	1,044,761	95,366
Total	\$4,938,199	\$888,651

*Does not include the City of Omaha as the Omaha P.D. does not provide values of property stolen.

Larceny-Theft

Larceny-theft is the unlawful taking of the property of another with the intent of depriving him of ownership. Larceny-theft as an index offense includes larcenies under \$50 in value.

Volume and Rate

During 1981, a total of 44,040 larceny-thefts were reported by law enforcement agencies in Nebraska. Larceny-theft accounted for 71.1 percent of crimes against property (burglary, larceny-theft, motor vehicle theft and arson) and 68 percent of all index offenses. In 1981, there were 27.9 larceny-thefts per 1,000 population. In 1981 there were 9,447 larceny-thefts cleared, 21.5 percent.

Analysis of Larceny-Theft

Of the total larcenies reported, 34.1 percent were under \$50 in value, 37.5 percent were \$50-\$200 in value and 28.4 percent were over \$200 in value. The theft of items from motor vehicle parts and accessories accounted for 20.3 percent of the total number of thefts. Thefts from motor vehicles accounted for 17.7 percent and thefts from buildings accounted for 17.2 percent.

The age group of 13-14 accounted for the highest percentage of persons arrested for larceny-theft, 9.8 percent. Juveniles accounted for 38.5 percent of the total number arrested.

Of persons arrested for larceny-theft, 80.3 percent were White, 15.9 percent were Black, 3.4 percent were Indian and 0.4 percent were of other races.

Figure 12

Larceny-Theft by Month

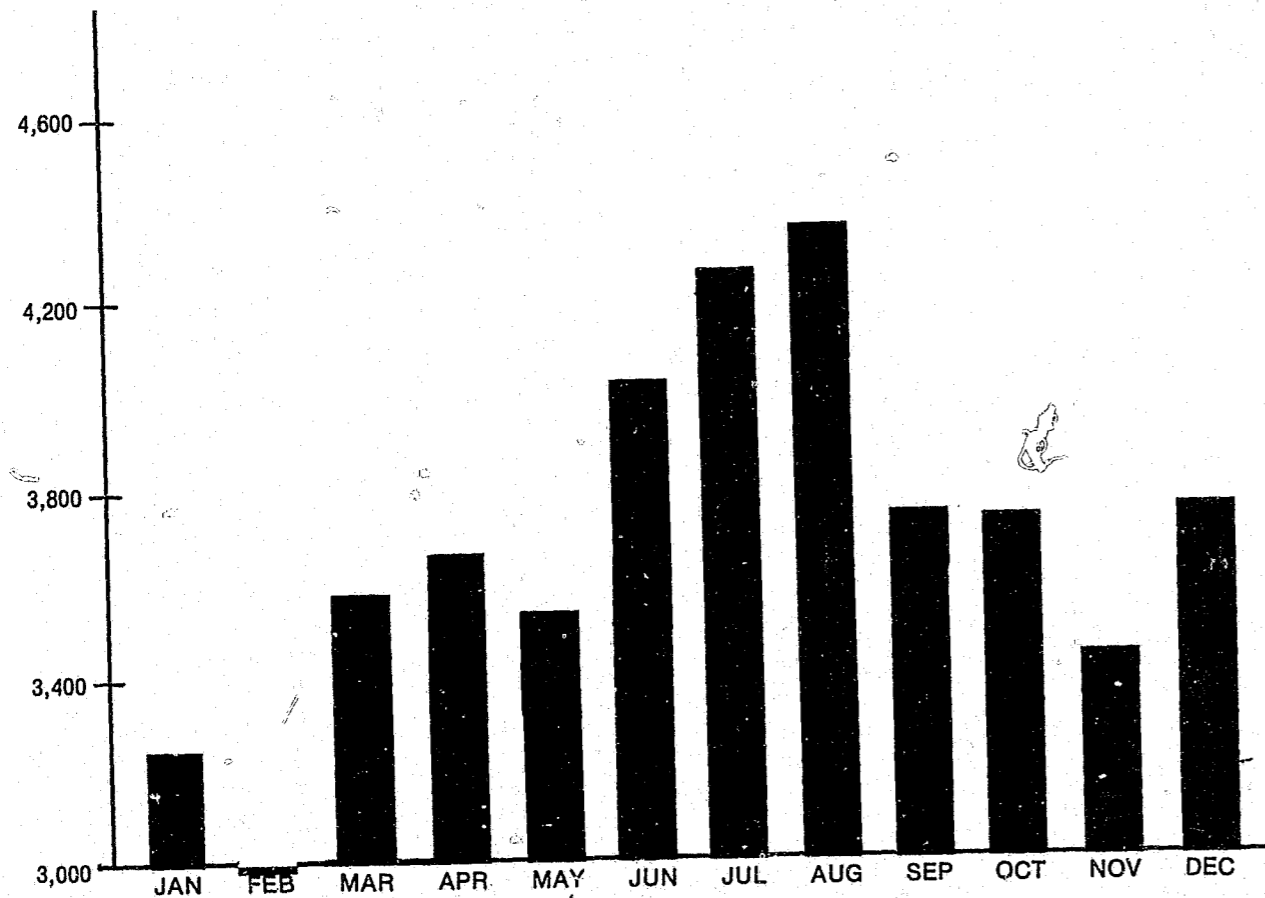


Table 18
Larceny—Theft

Classification	Number of Offenses ¹	Percent Distribution	Total Value	Average Value
Pocket-Picking	100 (45)	.2	\$ 3,571	\$ 79.36
Purse Snatching	263 (107)	.6	8,937	83.52
Shoplifting	5,555 (3,109)	12.6	116,887	37.60
From Motor Vehicles	7,776 (5,503)	17.7	1,163,697	211.47
Motor Vehicle Parts, Accessories	8,922 (4,204)	20.3	608,727	144.79
Bicycles	5,194 (3,898)	11.8	467,523	119.94
From Buildings	7,585 (4,785)	17.2	1,522,187	318.12
From Coin-Operated Machines	422 (342)	0.9	28,222	82.52
From Farmyard or Open Field	1,661 (1,661)	3.8	944,944	568.90
All Other	6,562 (5,147)	14.9	1,331,801	258.75
Total	44,040 (28,801)	100.0	\$6,196,496	\$215.15

¹Numbers in parentheses are the larceny-thefts which occurred outside of the City of Omaha. These numbers were used to compute average values as the Omaha P.D. does not provide values of property stolen.

Table 19
Larceny—Theft
Type of Property Stolen, Recovered*

Type of Property	Value Stolen	Value Recovered
Currency, Notes, Etc.	\$ 590,351	\$116,409
Jewelry, Precious Metals	440,677	62,322
Clothing and Furs	187,985	35,413
Office Equipment	25,606	4,443
Televisions, Radios, Cameras, Etc.	719,736	65,693
Firearms	129,925	23,646
Household Goods	140,756	26,445
Consumable Goods	143,661	17,769
Livestock	194,867	7,176
Miscellaneous	3,624,932	654,045
Total	\$6,196,496	\$1,013,361

*Does not include the City of Omaha as the Omaha P.D. does not provide values of property stolen.

Motor Vehicle Theft

Motor vehicle theft is defined as the theft or attempted theft of a motor vehicle. Thefts of farm equipment, bulldozers, airplanes and construction equipment are not included in the definition of a motor vehicle. Motor vehicle theft is divided into the following categories: autos, trucks and buses, and other vehicles.

Volume and Rate

During 1981, 3,187 motor vehicle thefts were reported by law enforcement agencies in Nebraska. Motor vehicle thefts accounted for 5.1 percent of all crimes against property (burglary, larceny-theft, motor vehicle theft, and arson) and 4.9 percent of all index offenses. In 1981, there were 2.0 motor vehicle thefts per 1,000 population. There were 1,018 motor vehicle thefts cleared in 1981, 31.9 percent.

Analysis of Motor Vehicle Theft

During 1981, law enforcement agencies provided additional information regarding types of vehicles stolen. The agencies reported 1,750 autos, 688 trucks and buses and 769 other vehicles stolen.

During 1981, there were 2,482 motor vehicles recovered; 76.1 percent were recovered within the same jurisdiction where they were stolen and 23.9 percent were recovered in another jurisdiction.

The age group accounting for the highest percentage of persons arrested for motor vehicle theft, 14.3 percent, occurred in the age group 17. Juveniles accounted for 48.1 percent of all arrests for motor vehicle theft.

Of the persons arrested for motor vehicle theft, 80.3 percent were White, 14.7 percent were Black, 5 percent were Indian.

Figure 13

Motor Vehicle Theft by Month

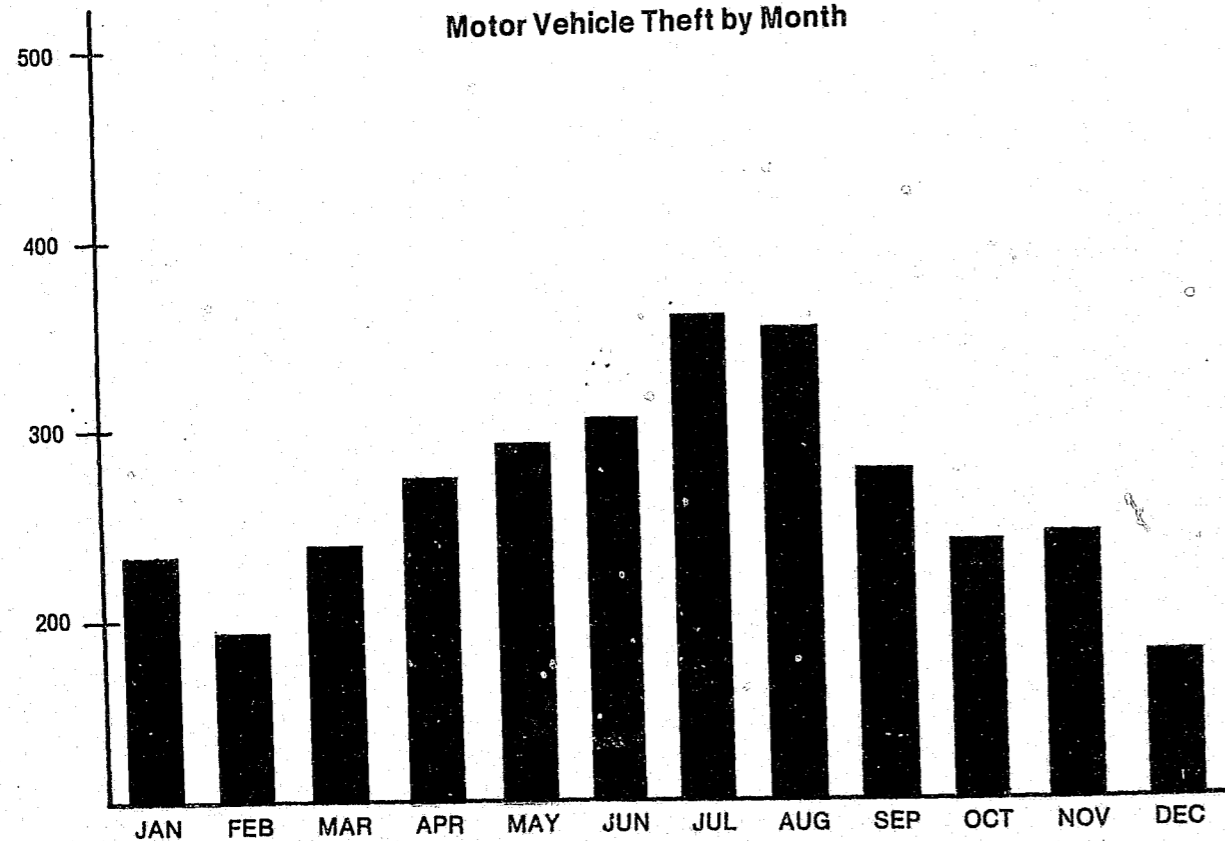


Table 20

Motor Vehicle Theft
Type of Property Stolen, Recovered*

Type of Property	Value Stolen	Value Recovered
Currency, Notes, Etc.	\$ 5,825	\$ 1,144
Jewelry, Precious Metals	0	0
Clothing and Furs	3,379	2,415
Motor Vehicles	4,497,418	3,590,065
Office Equipment	0	0
Televisions, Radios, Cameras, Etc.	10,467	3,670
Firearms	2,709	650
Household Goods	2,025	425
Consumable Goods	71,908	71,467
Livestock	0	0
Miscellaneous	29,629	18,299
Total	\$4,623,360	\$3,688,135

*Does not include the City of Omaha as the Omaha P.D. does not provide values of property stolen.

Arson

Arson is any willful or malicious burning or attempt to burn, with or without intent to defraud, a dwelling house, public building, motor vehicle or aircraft, personal property of another, etc. The reporting of arson offenses began in January, 1979, with the offenses being reported by the State Fire Marshal. Arson became an index offense in 1980.

Volume and Rate

During 1981, there were 788 offenses of arson reported. This represents 0.5 arsons per 1,000 population. Arson accounted for 1.3 percent of the property crimes (burglary, larceny-theft, motor vehicle theft and arson) and 1.2 percent of all index offenses. There were 133 arsons cleared in 1981, 16.9 percent. Clearances involving only persons

under 18 years of age accounted for 42.1 percent of the total clearances.

Analysis of Arson

The total estimated value of property damage due to arson amounted to \$5,313,524 in 1981. Property damage to 456 structures was \$4,768,539. The 134 mobile arsons (motor vehicles and mobile property — trailers, recreational vehicles, airplanes) resulted in \$396,030 worth of property damage. In 198 other types of arson, the property damage was \$148,955.

Of the 251 residential arsons, 24.3 percent of the residences were uninhabited at the time of the arson.

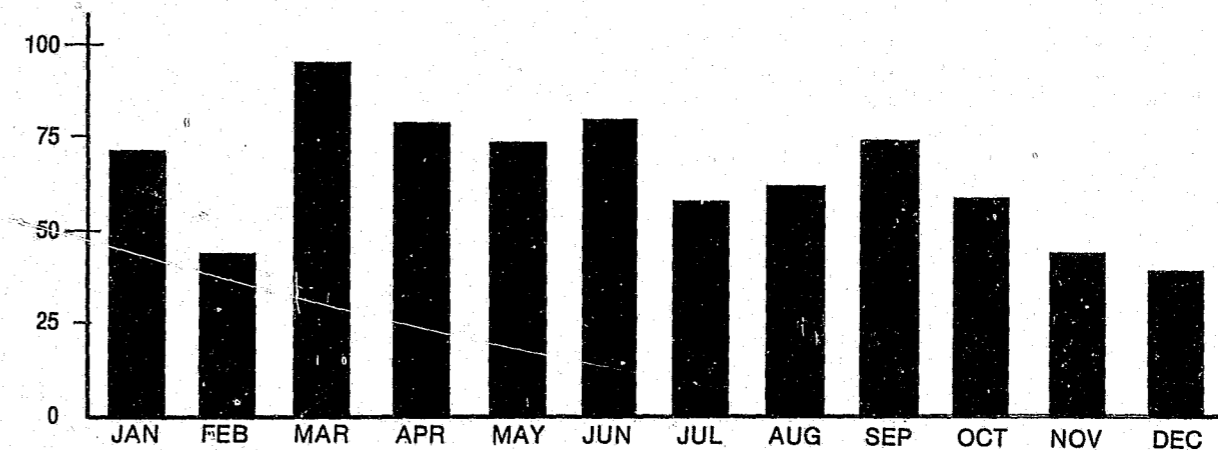


Table 21

Arson—Type of Property and Property Loss

Property Classification		Actual Offenses	Percent Distribution	Value of Property Damage	Average Loss	
S T R U C T U R E S	Single Occupancy Residential: Houses, Townhouses, Duplexes, Etc.	209	26.5	\$2,028,665	\$9,706.53	
	Other Residential: Apartments, Hotels, Motels, Dormitories, Etc.	42	5.3	58,620	1,395.71	
	Storage: Barns, Garages, Warehouses, Etc.	68	8.6	496,589	7,302.78	
	Industrial/Manufacturing	3	0.4	25,000	8,333.33	
	Other Commercial: Stores, Restaurants, Offices, Etc.	65	8.2	1,267,460	19,499.38	
	Community/Public: Churches, Jails, Schools, Colleges, Hospitals, Etc.	58	7.4	881,555	15,199.22	
	All Other Structures: Out Buildings, Monuments, Buildings Under Construction	11	1.4	10,650	968.18	
	M O B I L E	Motor Vehicles Autos, Trucks, Buses, Motorcycles, Etc.	115	14.6	261,180	2,271.13
		Other Mobile Property: Trailers, Recreational Vehicles, Airplanes, Boats, Etc.	19	2.4	134,850	7,097.37
	Other: Crops, Timber, Fences, Signs, Etc.		198	25.1	148,955	752.30
Total		788	100.0	\$5,313,524	\$6,743.05	

Arrest Data

Under the Uniform Crime Reporting Program, an arrest is counted each time a person is taken into custody, summoned, notified or cited. When a person under 18 years of age commits an offense and the circumstances are such that if the offender were an adult an arrest would be made, the offender is counted as an arrest by the reporting agency.

For reporting purposes, one arrest is counted each time a person is taken into custody, regardless of the number of charges placed against him. If an individual is arrested more than once during the year, an arrest is counted each time. When several persons are arrested in connection with the same offense, each is counted as an arrest.

It should be kept in mind that arrest practices and emphasis on certain crimes vary from place to place. Each reporting agency is responsible for reporting arrests made by the State Patrol in its jurisdiction.

Volume and Rate

Law enforcement agencies in Nebraska reported 51,052 arrests in 1981 for Part I and Part II offenses. This represents a decrease of six-tenths of one percent over 1980. There were 32.4 arrests per 1,000 population in Nebraska in 1981 as compared with 32.8 arrests per 1,000 population in 1980.

Arrests for Part I offenses accounted for 23.9 percent of the total arrests. Of the arrests for Part I offenses, larceny-theft accounted for the greatest portion, 68.6 percent. The greatest percentage of arrests for Part II offenses was for all other offenses.

During 1981, arrests for crimes of violence (murder, manslaughter, forcible rape, robbery and felony assault) accounted for 9.2 percent of all arrests for Part I offenses and 2.2 percent of the total arrests.

Arrests for crimes against property (burglary, larceny-theft and motor vehicle theft), motor vehicle theft and arson) accounted for 90.6 percent of all arrests for Part I offenses and 21.6 percent of the total arrests.

Arrests for Part I offenses decreased seven-tenths of one percent over the number reported during 1980. Arrests for death by negligence, burglary, larceny-theft and arson all showed increases over 1980.

Arrests for Part II offenses decreased six-tenths of one percent over 1980. Arrests for suspicion had the greatest increase, 62 percent.

Arrests by Age

The number of persons under the age of 18 (juveniles) arrested during 1981 decreased four percent over 1980. The arrests of persons age 18 and over (adults) increased five-tenths of one percent.

Persons under the age of 25 accounted for 72.8 percent

of the arrests for the index offenses and of these, persons under the age of 18 accounted for 51.6 percent. The age group of 13-14 accounted for the greatest number of arrests in any age group for the index offenses.

The arrests of persons under the age of 25 accounted for the following percentages of the total arrests for each index offense: murder, manslaughter (43.5); forcible rape (42.9); robbery (68.6); felony assault (51.7); burglary (84.2); larceny-theft (71.7); motor vehicle theft (81.1); and arson (78.3).

Of those persons under the age of 25 arrested for index offenses, persons under the age of 18 accounted for 30 percent for murder, manslaughter; 28.3 percent for forcible rape; 36.4 percent for robbery; 20.4 percent for felony assault; 50.2 percent for burglary; 53.8 percent for larceny-theft; 59.3 percent for motor vehicle theft; and 58 percent for arson.

Arrests by Sex

In 1981, males accounted for 81.7 percent of all arrests. Males accounted for 77.5 percent of the arrests for Part I offenses and 83 percent of all arrests for Part II offenses. Total male arrests decreased 0.6 percent over 1980 and female arrests decreased 0.9 percent. Females were arrested for larceny-theft more times than for any other offense. The greatest number of male arrests were recorded for driving under the influence followed by all other offenses.

Arrests by Race

A distribution analysis of total arrests by race for 1981 indicated 85.1 percent were White, 11.2 percent were Black, 3.5 percent were American Indian/Alaskan Native, and 0.2 percent were Asian or Pacific Islander. The arrest involvement by race for the index offenses revealed that 78.5 percent were White, 17.4 percent were Black, 3.7 percent were Indian/Alaskan Native and 0.4 percent were Asian or Pacific Islander.

An analysis of arrests by race for crimes of violence (murder, manslaughter, forcible rape, robbery and felony assault) revealed that 59.2 percent were White, 34.6 percent were Black, 5.6 percent were American Indian/Alaskan Native and 0.6 were Asian or Pacific Islander.

An analysis of arrests by race for crimes against property (burglary, larceny-theft, motor vehicle theft and arson) revealed that 80.5 percent were White, 15.7 percent were Black, 3.4 percent were American Indian/Alaskan Native, and 0.4 percent were Asian or Pacific Islander.

An analysis of arrests by race for Part II offenses revealed that 87.1 percent were White, 9.2 percent were Black, 3.5 percent were American Indian/Alaskan Native, and 0.2 percent were Asian or Pacific Islander.

Table 22

Total Arrests

Offense Classification	Number	Percent Distribution	Rate per 100,000 Population ¹
Murder, Manslaughter	46	.09	2.9
Death by Negligence	27	.05	1.7
Forcible Rape	140	.27	8.9
Robbery	401	.79	25.4
Felony Assault	532	1.04	33.8
Burglary	1,968	3.85	124.9
Larceny-Theft	8,367	16.39	530.9
Motor Vehicle Theft	566	1.11	35.9
Arson	143	.28	9.1
Total Part I Offenses	12,190	23.88	773.5
Misdemeanor Assault	2,253	4.41	143.0
Forgery and Counterfeiting	516	1.01	32.7
Fraud—O.M.F.P.	2,041	4.00	129.5
Embezzlement	26	.05	1.7
Stolen Property—Buying, Receiving, Possessing	847	1.66	53.7
Vandalism—Destruction of Property	2,204	4.32	139.8
Weapons—Carrying, Possessing, Etc.	584	1.14	37.1
Prostitution and Commercialized Vice	441	.86	28.0
Sex Offenses	447	.88	28.4
Drug Abuse Violations	2,671	5.23	169.5
Gambling	95	.19	6.0
Offenses Against Family and Children	256	.50	16.2
Driving Under the Influence	8,383	16.42	531.9
Liquor Laws	4,373	8.57	277.5
Disorderly Conduct—Disturbing the Peace	4,062	7.96	257.7
Vagrancy	427	.84	27.1
All Other Offenses (Except Traffic)	8,172	16.01	518.5
Suspicion	139	.27	8.8
Curfew and Loitering Law Violations	458	.90	29.1
Runaways	467	.91	29.6
Total Part II Offenses	38,862	76.12	2,465.9
Total	51,052	100.00	3,239.3

¹1981 Estimate of Population — 1,576,000

Table 23

Comparison of Arrests, 1980-1981

Offense Classification	1980	1981	Percent Change
Murder, Manslaughter	59	46	-22
Death by Negligence	25	27	+8
Forcible Rape	173	140	-19
Robbery	474	401	-15
Felony Assault	593	532	-10
Burglary	1,830	1,968	+8
Larceny-Theft	8,333	8,367	+4
Motor Vehicle Theft	659	566	-14
Arson	136	143	+5
Total Part I Offenses	12,282	12,190	-7
Misdemeanor Assault	2,108	2,253	+7
Forgery and Counterfeiting	429	516	+20
Fraud—O.M.F.P.	2,227	2,041	-8
Embezzlement	28	26	-7
Stolen Property—Buying, Receiving, Possessing	847	847	—
Vandalism—Destruction of Property	2,398	2,204	-8
Weapons—Carrying, Possessing, Etc.	471	584	+24
Prostitution and Commercialized Vice	279	441	+58
Sex Offenses	341	447	+31
Drug Abuse Violations	2,388	2,671	+12
Gambling	208	95	-54
Offenses Against Family and Children	272	256	-6
Driving Under the Influence	7,972	8,383	+5
Liquor Laws	3,991	4,373	+10
Disorderly Conduct—Disturbing the Peace	4,398	4,062	-8
Vagrancy	389	427	+10
All Other Offenses (Except Traffic)	9,337	8,172	-12
Suspicion	86	139	+62
Curfew and Loitering Law Violations	455	458	+7
Runaways	462	467	+1
Total Part II Offenses	39,086	38,862	-.6
Total	51,368	51,052	-.6

Table 24

Comparison of Adult and Juvenile Arrests

Offense Classification	Total Arrests	Adult	Juvenile	Percent Distribution	
				Adult	Juvenile
Murder, Manslaughter	46	40	6	87.0	13.0
Death by Negligence	27	27	0	100.0	0
Forcible Rape	140	123	17	87.9	12.1
Robbery	401	301	100	75.1	24.9
Felony Assault	532	476	56	89.5	10.5
Burglary	1,968	1,136	832	57.7	42.3
Larceny-Theft	8,367	5,142	3,225	61.5	38.5
Motor Vehicle Theft	566	294	272	51.9	48.1
Arson	143	78	65	54.5	45.5
Total Part I Offenses	12,190	7,617	4,573	62.5	37.5
Misdemeanor Assault	2,253	1,912	341	84.9	15.1
Forgery and Counterfeiting	516	426	90	82.6	17.4
Fraud—O.M.F.P.	2,041	1,953	88	95.7	4.3
Embezzlement	26	24	2	92.3	7.7
Stolen Property—Buying, Receiving, Etc.	847	636	211	75.1	24.9
Vandalism—Destruction of Property	2,204	1,232	972	55.9	44.1
Weapons—Carrying, Possessing, Etc.	584	506	78	86.6	13.4
Prostitution and Commercialized Vice	441	417	24	94.6	5.4
Sex Offenses	447	374	73	83.7	16.3
Drug Abuse Violations	2,671	2,189	482	82.0	18.0
Gambling	95	95	0	100.0	0
Offenses Against Family and Children	256	255	1	99.6	0.4
Driving Under the Influence	8,383	8,117	266	96.8	3.2
Liquor Laws	4,373	2,626	1,747	60.0	40.0
Disorderly Conduct	4,062	3,523	539	86.7	13.3
Vagrancy	427	407	20	95.3	4.7
All Other Offenses	8,172	6,956	1,216	85.1	14.9
Suspicion	139	100	39	71.9	28.1
Curfew and Loitering Law Violations	458		458	0	100.0
Runaways	467		467	0	100.0
Total Part II Offenses	38,862	31,748	7,114	81.7	18.3
Total	51,052	39,365	11,687	77.1	22.9

Table 25

Juvenile and Adult Arrests, 1980-1981

Offense Classification	Juvenile			Adult		
	1980	1981	Percent Change	1980	1981	Percent Change
Murder, Manslaughter	4	6	+50	55	40	-27
Death by Negligence	2	0	—	23	27	+17
Forcible Rape	20	17	-15	153	123	-20
Robbery	107	100	-7	355	301	-15
Felony Assault	57	56	-16	526	476	-10
Burglary	747	832	+11	1,083	1,136	+5
Larceny-Theft	3,409	3,225	-5	4,924	5,142	+4
Motor Vehicle Theft	305	272	-11	354	294	-17
Arson	45	65	+44	91	78	-14
Total Part I Offenses	4,706	4,573	-3	7,576	7,617	+ .5
Misdemeanor Assault	352	341	-3	1,756	1,912	+9
Forgery and Counterfeiting	82	90	+10	347	426	+23
Fraud—O.M.F.P.	108	88	-19	2,119	1,953	-8
Embezzlement	0	2	—	28	24	-14
Stolen Property—Buying, Receiving, Possessing	256	211	-18	591	636	+8
Vandalism—Destruction of Property	1,093	972	-11	1,305	1,232	-6
Weapons—Carrying, Possessing, Etc.	51	78	+53	420	506	+20
Prostitution and Commercialized Vice	24	24	—	255	417	+64
Sex Offenses	56	73	+30	285	374	+31
Drug Abuse Violations	456	482	+6	1,932	2,189	+13
Gambling	3	0	—	205	95	-54
Offenses Against Family and Children	11	1	-91	261	255	-2
Driving Under the Influence	313	266	-15	7,659	8,117	+6
Liquor Laws	1,733	1,747	+1	2,258	2,626	+16
Disorderly Conduct—Disturbing the Peace	611	539	-12	3,787	3,523	-7
Vagrancy	1	20	+1900	388	407	+5
All Other Offenses	1,376	1,216	-12	7,961	6,956	-13
Suspicion	31	39	+26	55	100	+82
Curfew and Loitering Law Violations	455	458	+1			
Runaways	462	467	+1			
Total Part II Offenses	7,474	7,114	-5	31,612	31,748	+ .4
Total	12,180	11,687	-4	39,188	39,365	+ .5

Table 26

Total Arrests by Age

Offense Classification	Under 10	10-12	13-14	15	16	17	Total Under 18
Murder, Manslaughter	0	0	1	0	0	5	6
Death by Negligence	0	0	0	0	0	0	0
Forcible Rape	1	0	5	4	4	3	17
Robbery	0	8	24	17	29	22	100
Felony Assault	0	5	12	12	10	17	56
Burglary	36	77	179	137	189	214	832
Larceny-Theft	238	444	824	508	590	621	3,225
Motor Vehicle Theft	1	13	55	54	68	81	272
Arson	15	18	16	10	0	6	65
Total Part I Offenses	291	565	1,116	742	890	969	4,573
Misdemeanor Assault	14	43	83	47	68	86	341
Forgery and Counterfeiting	1	5	18	12	23	31	90
Fraud—O.M.F.P.	0	10	10	10	18	40	88
Embezzlement	0	0	0	0	1	1	2
Stolen Property—Buy., Receiv., Possess.	1	13	38	34	56	69	211
Vandalism—Destruction of Property	119	158	179	114	194	208	972
Weapons—Carrying, Possessing, Etc.	4	15	5	22	31	78	247
Prostitution and Commercialized Vice	0	0	1	2	7	14	24
Sex Offenses	7	10	17	16	10	13	73
Drug Abuse Violations	0	4	49	57	141	231	482
Gambling	0	0	0	0	0	0	0
Offenses Against Family and Children	0	0	0	0	1	0	1
Driving Under the Influence	0	0	4	6	89	167	266
Liquor Laws	1	10	68	198	596	874	1,747
Disorderly Conduct—Disturbing the Peace	11	43	84	65	130	206	539
Vagrancy	2	1	5	1	4	7	20
All Other Offenses	47	86	186	181	302	414	1,216
Suspicion	1	5	8	3	9	13	39
Curfew and Loitering Law Violations	2	28	82	90	149	167	458
Runaways	1	23	142	92	146	63	467
Total Part II Offenses	208	443	989	933	1,966	2,575	7,114
Total	499	1,008	2,105	1,675	2,856	3,544	11,687

Total Arrests by Age Continued

18	19	20	21	22	23	24	25-29	30-34	35-39	40-44	45-49	50-54	55-59	60-64	Over 65	Total 18 & Over
2	1	4	4	1	1	1	11	4	3	1	3	3	0	0	1	40
1	3	2	0	1	1	0	10	4	0	2	0	1	0	2	0	27
7	7	7	6	2	7	7	36	19	9	2	8	5	0	0	1	123
30	28	23	27	15	23	29	68	33	10	6	3	4	2	0	0	301
19	24	36	34	31	47	28	102	63	32	27	15	6	4	6	2	476
227	170	129	101	86	66	46	160	72	35	13	19	7	2	0	3	1,136
624	534	442	388	310	244	233	745	455	292	238	164	145	103	71	154	5,142
41	38	35	21	22	15	15	47	21	16	13	5	1	3	0	1	294
6	13	10	6	8	3	1	14	7	4	4	2	0	0	0	0	78
957	818	688	587	476	407	360	1,193	678	401	306	219	172	114	79	162	7,617
129	121	152	119	132	113	118	396	233	156	102	58	40	25	11	7	1,912
40	50	34	27	36	27	25	86	37	33	9	3	9	0	3	7	426
79	104	134	134	135	116	109	403	292	164	128	67	44	27	10	7	1,953
0	1	2	3	3	0	1	6	5	2	0	0	1	0	0	0	24
73	68	59	48	42	39	37	117	54	36	25	16	13	6	1	2	636
175	150	152	107	93	72	69	197	90	59	28	18	9	6	0	7	1,232
24	23	37	35	33	35	32	112	69	46	20	10	9	12	4	5	506
37	41	46	49	39	28	24	85	35	10	6	7	5	2	2	1	417
20	11	19	28	21	21	23	59	51	39	27	17	19	7	7	5	374
275	283	274	223	175	134	145	391	177	62	21	9	11	4	1	4	2,189
0	1	1	4	5	2	3	12	12	13	19	6	4	6	2	5	95
3	5	10	7	10	16	15	66	38	35	25	14	8	2	1	0	255
365	505	581	535	495	439	395	1,468	1,004	700	461	372	321	233	131	112	8,117
964	771	197	111	84	55	41	119	65	65	42	27	33	21	13	13	2,626
284	291	318	293	219	190	166	587	395	249	185	103	118	64	31	30	3,523
60	34	40	31	24	22	29	67	33	21	15	8	10	8	2	3	407
544	576	578	525	472	378	368	1,237	796	482	333	199	220	114	73	61	6,956
20	12	10	6	8	3	2	18	8	4	2	1	1	1	2	2	100
3,092	3,047	2,644	2,285	2,026	1,690	1,602	5,426	3,394	2,176	1,448	935	880	538	294	271	31,748
4,049	3,865	3,332	2,872	2,502	2,097	1,962	6,619	4,072	2,577	1,754	1,154	1,052	652	373	433	39,365

Table 27
Total Arrests by Sex

Offense Classification	Persons Arrested		Percent	
	Male	Female	Male	Female
Murder, Manslaughter	41	5	89.1	10.9
Death by Negligence	23	4	85.2	14.8
Forcible Rape	140	0	100.0	0
Robbery	363	38	90.5	9.5
Felony Assault	468	64	88.0	12.0
Burglary	1,839	129	93.4	6.6
Larceny-Theft	5,927	2,440	70.8	29.2
Motor Vehicle Theft	520	46	91.9	8.1
Arson	128	15	89.5	10.5
Total Part I Offenses	9,449	2,741	77.5	22.5
Misdemeanor Assault	1,966	287	87.3	12.7
Forgery and Counterfeiting	362	154	70.2	29.8
Fraud—O.M.F.P.	1,235	806	60.5	39.5
Embezzlement	20	6	76.9	23.1
Stolen Property—Buying, Receiving, Possessing	748	99	88.3	11.7
Vandalism—Destruction of Property	2,022	182	91.7	8.3
Weapons—Carrying, Possessing, Etc.	532	52	91.1	8.9
Prostitution and Commercialized Vice	240	201	54.4	45.6
Sex Offenses	434	13	97.1	2.9
Drug Abuse Violations	2,264	407	84.8	15.2
Gambling	73	22	76.8	23.2
Offenses Against Family and Children	195	61	76.2	23.8
Driving Under the Influence	7,473	910	89.1	10.9
Liquor Laws	3,487	886	79.7	20.3
Disorderly Conduct—Disturbing the Peace	3,497	565	86.1	13.9
Vagrancy	348	79	81.5	18.5
All Other Offenses	6,718	1,454	82.2	17.8
Suspicion	122	17	87.8	12.2
Curfew and Loitering Law Violations	332	126	72.5	27.5
Runaways	184	283	39.4	60.6
Total Part II Offenses	32,252	6,610	83.0	17.0
Total	41,701	9,351	81.7	18.3

Table 28
Total Arrests by Race

Offense Classification	Total Arrested	White	Black	American Indian or Alaskan Native	Asian or Pacific Islander
Murder, Manslaughter	46	20	23	3	0
Death by Negligence	27	24	2	1	0
Forcible Rape	140	100	34	3	3
Robbery	401	171	202	26	2
Felony Assault	532	371	128	31	2
Burglary	1,968	1,595	303	68	3
Larceny-Theft	8,367	6,719	1,331	281	36
Motor Vehicle Theft	566	454	83	28	0
Arson	143	124	15	4	0
Total Part I Offenses	12,190	9,578	2,121	445	46
Misdemeanor Assault	2,253	1,766	363	119	5
Forgery and Counterfeiting	516	380	123	12	1
Fraud—O.M.F.P.	2,041	1,784	230	25	2
Embezzlement	26	17	9	0	0
Stolen Property—Buying, Receiving, Possessing	847	590	245	11	1
Vandalism—Destruction of Property	2,204	1,960	169	66	9
Weapons—Carrying, Possessing, Etc.	584	383	192	7	2
Prostitution and Commercialized Vice	441	262	170	5	4
Sex Offenses	447	397	40	10	0
Drug Abuse Violations	2,671	2,386	233	50	2
Gambling	95	39	55	0	1
Offenses Against Family and Children	256	230	23	3	0
Driving Under the Influence	8,383	7,939	202	225	17
Liquor Laws	4,373	4,183	74	112	4
Disorderly Conduct—Disturbing the Peace	4,062	3,306	411	339	6
Vagrancy	427	272	123	32	0
All Other Offenses	8,172	6,961	880	318	13
Suspicion	139	121	18	0	0
Curfew and Loitering Law Violations	458	429	23	5	1
Runaways	467	457	5	5	0
Total Part II Offenses	38,862	33,862	3,588	1,344	68
Total	51,052	43,440	5,709	1,789	114

Table 29

Total Arrests by Race, Age 18 and Over

Offense Classification	Total Arrested	White	Black	American Indian or Alaskan Native	Asian or Pacific Islander
Murder, Manslaughter	40	19	18	3	0
Death by Negligence	27	24	2	1	0
Forcible Rape	123	90	27	3	3
Robbery	301	116	159	24	2
Felony Assault	476	327	117	30	2
Burglary	1,136	891	196	47	2
Larceny-Theft	5,142	4,017	875	221	29
Motor Vehicle Theft	294	212	60	22	0
Arson	78	65	10	3	0
Total Part I Offenses	7,617	5,761	1,464	354	38
Misdemeanor Assault	1,912	1,467	332	108	5
Forgery and Counterfeiting	426	306	111	9	0
Fraud—O.M.F.P.	1,953	1,726	202	24	1
Embezzlement	24	16	8	0	0
Stolen Property—Buying, Receiving, Possessing	636	421	206	9	0
Vandalism—Destruction of Property	1,232	1,062	122	46	2
Weapons—Carrying, Possessing, Etc.	506	326	174	5	1
Prostitution and Commercialized Vice	417	249	160	4	4
Sex Offenses	374	334	31	9	0
Drug Abuse Violations	2,189	1,934	212	42	1
Gambling	95	39	55	0	1
Offenses Against Family and Children	255	229	23	3	0
Driving Under the Influence	8,117	7,677	202	222	16
Liquor Laws	2,626	2,461	64	97	4
Disorderly Conduct—Disturbing the Peace	3,523	2,828	368	321	6
Vagrancy	407	254	123	30	0
All Other Offenses	6,956	5,826	822	296	12
Suspicion	100	84	16	0	0
Total Part II Offenses	31,748	27,239	3,231	1,225	53
Total	39,365	33,000	4,695	1,579	91

Table 30

Total Arrests by Race Under Age 18

Offense Classification	Total Arrested	White	Black	American Indian or Alaskan Native	Asian or Pacific Islander
Murder, Manslaughter	6	1	5	0	0
Death by Negligence	0	0	0	0	0
Forcible Rape	17	10	7	0	0
Robbery	100	55	43	2	0
Felony Assault	56	44	11	1	0
Burglary	832	704	107	21	1
Larceny-Theft	3,225	2,702	456	60	7
Motor Vehicle Theft	272	242	23	6	0
Arson	65	59	5	1	0
Total Part I Offenses	4,573	3,817	657	91	8
Misdemeanor Assault	341	299	31	11	0
Forgery and Counterfeiting	90	74	12	3	1
Fraud—O.M.F.P.	88	58	28	1	1
Embezzlement	2	1	1	0	0
Stolen Property—Buying, Receiving, Possessing	211	169	39	2	1
Vandalism—Destruction of Property	972	898	47	20	7
Weapons—Carrying, Possessing, Etc.	78	57	18	2	1
Prostitution and Commercialized Vice	24	13	10	1	0
Sex Offenses	73	63	9	1	0
Drug Abuse Violations	482	452	21	8	1
Gambling	0	0	0	0	0
Offenses Against Family and Children	1	1	0	0	0
Driving Under the Influence	266	262	0	3	1
Liquor Laws	1,747	1,722	10	15	0
Disorderly Conduct—Disturbing the Peace	539	478	43	18	0
Vagrancy	20	18	0	2	0
All Other Offenses	1,216	1,135	58	22	1
Suspicion	39	37	2	0	0
Curfew and Loitering Law Violations	458	429	23	5	1
Runaways	467	457	5	5	0
Total Part II Offenses	7,114	6,623	357	119	15
Total	11,687	10,440	1,014	210	23

Table 31

Drug Abuse Arrests by Sex and Race

	Total	Sex		Race			
		Male	Female	White	Black	Indian	Asian
Sale/Manufacturing	468	382	86	425	37	6	0
Opium, Cocaine, Derivatives	101	76	25	90	10	1	0
Marijuana	278	230	48	252	24	2	0
Synthetic Narcotics	21	19	2	21	0	0	0
Non-Narcotic Drugs	68	57	11	62	3	3	0
Possession	2,203	1,887	316	1,961	196	44	2
Opium, Cocaine, Derivatives	139	105	34	112	26	1	0
Marijuana	1,880	1,632	248	1,688	168	21	2
Synthetic Narcotics	106	84	22	88	1	18	0
Non-Narcotic Drugs	78	66	12	73	1	4	0
Total	2,671	2,269	402	2,386	233	50	2

Table 32

Drug Abuse Arrests, 1980-1981

Offense Classification	1980	1981	Percent Change	1981 Percent Distribution
Sale/Manufacturing	454	468	+3	17.5
Opium, Cocaine, Derivatives	128	101	-21	3.8
Marijuana	250	278	+11	10.4
Synthetic Narcotics	13	21	+62	0.8
Non-Narcotic Drugs	63	68	+8	2.5
Possession	1,934	2,203	+14	82.5
Opium, Cocaine, Derivatives	145	139	-4	5.2
Marijuana	1,618	1,880	+16	70.4
Synthetic Narcotics	69	106	+54	4.0
Non-Narcotic Drugs	102	78	-24	2.9
Total	2,388	2,671	+12	100.0

Officers Assaulted

The killing or assaulting of a law enforcement officer is an increasingly serious problem faced by the law enforcement administrator and should be of the gravest concern to the public at large. Such acts directly affect the functioning of proper law enforcement operations and thus reduce the ability of our law enforcement agencies to combat crime and maintain law and order. The ambitious young man who today considers a career in law enforcement must also consider the risk of being killed or assaulted by a member of the society he is sworn to protect.

Assaults on Law Enforcement Officers

During 1981, there were a total of 399 assaults on state, county, and municipal law enforcement officers. This represents a 5 percent increase over 1980. While every assault does not result in personal injury to the officer involved, many of them do result in physical harm to the officer and loss of duty time. During 1981, personal injury was involved in 40.6 percent of the assaults. A total of 1,526 duty hours were lost due to the assaults.

Most of the assaults occurred while responding to disturbance calls and most of these assaults were inflicted with personal weapons such as hands, fists, or feet.

Table 33

Officers Assaulted by Time, 1980-1981

Time	1980		1981	
	Number of Assaults	Percent Distribution*	Number of Assaults	Percent Distribution*
12:00 midnight—2:00 a.m.	81	21.3	86	21.6
2:00 a.m.—4:00 a.m.	50	13.1	42	10.5
4:00 a.m.—6:00 a.m.	10	2.6	17	4.3
6:00 a.m.—8:00 a.m.	4	1.0	9	2.3
8:00 a.m.—10:00 a.m.	4	1.0	1	0.3
10:00 a.m.—12:00 noon	3	0.8	8	2.0
12:00 noon—2:00 p.m.	16	4.2	8	2.0
2:00 p.m.—4:00 p.m.	17	4.5	11	2.8
4:00 p.m.—6:00 p.m.	30	7.9	31	7.8
6:00 p.m.—8:00 p.m.	37	9.7	47	11.8
8:00 p.m.—10:00 p.m.	48	12.6	56	14.0
10:00 p.m.—12:00 midnight	81	21.3	83	20.8

*Percent distribution may not total 100.0 due to rounding.

Table 34

Officers Assaulted—Type of Activity, 1980-1981

Circumstances	Total Assaults in 1980	Total Assaults in 1981	Percent Change	Percent Distribution*
Disturbance Calls	143	146	+2	36.6
Burglaries in Progress	5	3	-40	0.8
Robberies in Progress	1	9	+800	2.3
Attempting Other Arrests	85	87	+2	21.8
Civil Disorder	5	4	-20	1.0
Prisoners in Custody	41	44	+7	11.0
Suspicious Persons/Circumstances	21	28	+33	7.0
Ambush	2	1	-50	0.3
Mentally Deranged	6	7	+17	1.8
Traffic Pursuits	40	50	+25	12.5
All Other	32	20	-38	5.0
Total	381	399	+5	100.0

*Percent distribution may not total 100.0 due to rounding.

Table 35

Officers Assaulted—Type of Weapon

Circumstances	Firearm	Knife, Cutting Instrument	Other Weapon	Hands, Fists, Feet
Disturbance Calls	10	5	10	121
Burglaries in Progress	0	0	1	2
Robberies in Progress	9	0	0	0
Attempting Other Arrests	1	1	6	79
Civil Disorder	0	0	0	4
Prisoners in Custody	1	2	0	41
Suspicious Persons/Circumstances	8	1	5	14
Ambush	1	0	0	0
Mentally Deranged	0	1	1	5
Traffic Pursuits	1	0	7	42
All Other	1	1	5	13
Total	32	11	35	321
Number With Personal Injury	2	5	14	141
Number Without Personal Injury	30	6	21	180

Table 36

Officers Assaulted—Type of Assignment

Circumstances	Two-Man Vehicle	One-Man Vehicle		Detective/Special Assignment		Other	
		Alone	Assisted	Alone	Assisted	Alone	Assisted
Disturbance Calls	16	15	103	0	0	2	10
Burglaries in Progress	0	1	2	0	0	0	0
Robberies in Progress	2	0	6	1	0	0	0
Attempting Other Arrests	10	10	58	0	4	1	4
Civil Disorder	1	1	1	0	1	0	0
Prisoners in Custody	4	10	20	1	0	1	8
Suspicious Persons/Circumstances	4	8	11	0	3	1	1
Ambush	0	1	0	0	0	0	0
Mentally Deranged	1	1	4	1	0	0	0
Traffic Pursuits	12	7	29	0	0	0	2
All Other	2	8	7	0	0	2	1
Total	52	62	241	3	8	7	26

Law Enforcement Employee Data

The Nebraska Uniform Crime Reporting Program surveys law enforcement agencies each year concerning employee data. At the end of October, 1981, there were 3,292 persons employed full-time in 175 law enforcement agencies.

Of the 3,292 employees, 2,453 were sworn personnel and 839 were civilian employees. Based upon an estimated population of 1,576,000 there were 1.6 sworn officers per 1,000 persons in the State. The rate of law enforcement of-

ficers per 1,000 population for any given agency in the State is influenced by many factors. The determination of law enforcement strength for a certain area is based on such factors as population density, size and character of the community, geographic location and other conditions which exist in the area.

Females accounted for four percent of the sworn personnel and 70 percent of the civilian personnel.

Table 37
Law Enforcement Employee Data—
County Sheriffs' Departments

Agency	Total Full-time Employees	Sworn Officers		Civilians		Sworn Personnel Per 1,000 Population	Number of Assaults on Sworn Personnel
		Male	Female	Male	Female		
Adams	18	11	0	5	2	1.4	0
Antelope	9	5	0	4	0	0.9	0
Arthur		No Report					0
Banner	1	1	0	0	0	1.1	*
Blaine		No Report					*
Boone	4	2	1	1	0	0.6	*
Box Butte	14	4	0	4	6	1.0	3
Boyd	1	1	0	0	0	0.4	*
Brown	6	2	1	1	2	0.7	0
Buffalo	29	12	1	6	10	1.2	0
Burt	9	4	2	0	3	1.4	0
Butler		No Report					*
Cass	11	5	0	0	6	0.4	1
Cedar	4	2	0	0	2	0.3	0
Chase	7	2	1	0	4	1.1	0
Cherry	10	5	0	1	4	1.3	0
Cheyenne	5	4	1	0	0	1.2	2
Clay	7	4	0	0	3	0.5	0
Colfax	9	3	0	0	6	0.6	0
Cuming	3	2	0	0	1	0.3	*
Custer	6	6	0	0	0	0.6	0
Dakota	11	6	0	0	5	1.0	0
Dawes	9	3	0	4	2	1.3	0
Dawson	16	9	1	5	1	1.4	0
Deuel	2	1	1	0	0	1.5	1
Dixon	4	3	0	0	1	0.4	1
Dodge	21	12	0	4	5	1.1	0
Douglas	119	90	3	11	15	1.4	3
Dundy		No Report					
Fillmore	4	3	0	0	1	0.5	2
Franklin	5	3	0	2	0	0.7	0
Frontier	9	5	0	0	4	1.4	0
Furnas	1	1	0	0	0	0.3	0
Gage	13	8	1	2	2	0.8	0
Garden	5	2	0	1	2	1.1	1
Garfield		No Report					*
Gosper	4	3	0	0	1	1.4	0
Grant	1	1	0	0	0	1.1	0
Greeley	2	1	0	0	1	0.3	0
Hall		No Report					0
Hamilton	9	4	0	0	5	0.7	0
Harlan	8	3	0	1	4	1.1	*
Hayes	1	1	0	0	0	0.7	*
Hitchcock	7	2	0	5	0	0.5	1
Holt	9	3	0	1	5	0.4	1
Hooker	1	1	0	0	0	1.0	0
Howard	3	2	0	0	1	0.3	1
Jefferson	4	4	0	0	0	0.8	0

Table 37
Law Enforcement Employee Data—
County Sheriffs' Departments—Continued

Agency	Total Full-time Employees	Sworn Officers		Civilians		Sworn Personnel Per 1,000 Population	Number of Assaults on Sworn Personnel
		Male	Female	Male	Female		
Johnson	9	2	0	3	4	0.6	0
Kearney	5	4	0	0	1	1.0	0
Keith	12	6	0	1	5	1.6	0
Keya Paha	1	1	0	0	0	0.8	0
Kimball	6	1	1	1	3	0.7	0
Knox	5	4	0	0	1	0.5	1
Lancaster	68	51	2	4	11	2.5	6
Lincoln		No Report					0
Logan	2	2	0	0	0	2.0	*
Loup		No Report					*
McPherson	1	1	0	0	0	1.7	*
Madison	19	11	3	0	5	1.6	0
Merrick	7	3	0	0	4	0.5	0
Morrill	6	2	0	0	4	0.7	0
Nance	5	4	0	0	1	1.1	*
Nemaha	7	5	2	0	0	1.4	0
Nuckolls	2	2	0	0	0	0.5	0
Otoe	5	5	0	0	0	7.7	0
Pawnee	4	3	0	1	0	0.8	1
Perkins		No Report					*
Phelps	7	3	1	1	2	1.0	0
Pierce		No Report					*
Platte	21	10	0	5	6	0.9	0
Polk	6	3	0	0	3	0.5	0
Red Willow	3	2	0	0	1	0.5	0
Richardson	6	2	1	1	2	0.6	0
Rock	4	2	0	0	2	0.8	*
Saline	12	8	0	0	4	1.4	0
Sarpy	66	51	0	0	15	1.1	4
Saunders	13	7	0	1	5	0.5	0
Scotts Bluff	26	11	0	8	7	0.8	2
Seward	16	7	0	4	5	0.9	0
Sheridan	18	9	0	4	5	1.7	0
Sherman	3	2	0	0	1	0.7	0
Sioux		No Report					0
Stanton	3	3	0	0	0	0.6	1
Thayer	9	6	0	0	3	0.8	2
Thomas	2	1	0	1	1	1.0	0
Thurston		No Report					0
Valley	5	2	0	0	3	0.7	*
Washington	9	5	0	1	3	0.5	0
Wayne	5	3	0	0	2	0.6	0
Webster	4	3	0	0	1	0.8	*
Wheeler		No Report					*
York	10	6	0	0	4	0.8	2
State Agencies							
Nebraska State Patrol	524	397	5	62	60		4
University of Nebraska— Lincoln	45	29	3	4	9		1

Table 38
Law Enforcement Employee Data—
Cities Over 5,000 Population

Agency	Total Full-time Employees	Sworn Officers		Civilians		Sworn Personnel Per 1,000 Population	Number of Assaults on Sworn Personnel
		Male	Female	Male	Female		
Alliance	28	21	1	0	6	2.2	2
Beatrice	25	17	0	1	7	1.3	2
Bellevue	38	28	2	3	5	1.4	0
Blair	13	11	0	0	2	1.7	2
Chadron	17	10	1	1	5	1.8	0
Columbus	37	26	0	0	11	1.5	9
Falls City	13	9	0	0	4	1.7	0
Fremont	35	26	2	1	6	1.2	0
Gering	14	12	0	0	2	1.5	2
Grand Island	48	42	1	0	5	1.3	3
Hastings	43	31	2	0	10	1.4	5
Holdrege	12	7	1	1	3	1.4	0
Kearney	32	26	2	0	4	1.3	4
LaVista	16	11	0	0	5	1.2	5
Lexington	12	8	0	1	3	1.2	0
Lincoln	296	217	13	13	53	1.3	94
McCook	21	13	2	1	5	1.8	0
Nebraska City	13	12	0	0	1	1.7	2
Norfolk	40	30	3	1	6	1.7	6
North Platte	59	38	3	11	7	1.7	0
Ogallala	17	10	0	1	6	1.8	0
Omaha	692	536	20	45	91	1.7	191
Papillion		No Report					0
Plattsmouth	8	7	0	0	1	1.1	2
Ralston	9	8	0	0	1	1.6	0
Scottsbluff	35	27	2	2	4	2.0	0
Seward	12	8	0	1	3	1.4	1
Sidney	14	11	0	0	3	1.8	2
So. Sioux City	20	15	0	2	3	1.6	2
Wayne	9	5	0	1	3	1.0	0
York	18	12	0	1	5	1.5	0

*Did not submit UCR's during 1981.

Table 39
Law Enforcement Employee Data—
Cities Under 5,000 Population

Agency	Total Full-time Employees	Sworn Officers		Civilians		Sworn Personnel Per 1,000 Population	Number of Assaults on Sworn Personnel
		Male	Female	Male	Female		
Albion	3	3	0	0	0	1.5	0
Alma	2	2	0	0	0	1.5	0
Arapahoe	2	1	0	0	1	0.9	*
Ashland	6	4	0	0	2	1.7	3
Atkinson	3	3	0	0	0	2.0	0
Auburn	7	6	0	1	0	1.7	0
Aurora	7	6	0	0	1	1.6	0
Bayard	3	3	0	0	0	2.1	0
Bloomfield	3	3	0	0	0	2.1	0
Bridgeport	3	3	0	0	0	1.8	0
Broken Bow	10	5	0	0	5	1.2	1
Burwell		No Report					*
Cambridge	2	2	0	0	0	1.6	0
Central City	5	5	0	0	0	1.6	0
Chappell		No Report					0
Crawford	3	2	1	0	0	2.3	0
Cozad	8	4	0	0	4	0.9	0
Creighton		No Report					0
Crete	13	8	1	0	4	1.8	2
Dakota City	3	3	0	0	0	2.1	0
David City	4	4	0	0	0	1.6	0
Elgin	2	2	0	0	0	2.5	*
Elkhorn	4	4	0	0	0	3.0	0
Fairbury	9	8	0	0	1	1.6	0
Friend	2	2	0	0	0	1.9	0
Geneva	3	3	0	0	0	1.2	0
Genoa	3	2	1	0	0	2.7	0
Gibbon		No Report					0
Gordon	7	4	2	0	1	2.7	0
Gothenburg	9	5	0	0	4	1.4	0
Hartington	1	1	0	0	0	0.6	0
Humboldt	1	1	0	0	0	0.8	0
Humphrey	3	3	0	0	0	3.7	0
Imperial		No Report					0
Kimball	7	6	0	0	1	1.9	0
Laurel	1	1	0	0	0	1.0	*
Louisville	2	2	0	0	0	1.9	1
Loup City		No Report					0

*Did not submit UCR's during 1981.

Table 39
**Law Enforcement Employee Data—
 Cities Under 5,000 Population Continued**

Agency	Total Full-time Employees	Sworn Officers		Civilians		Sworn Personnel Per 1,000 Population	Number of Assaults on Sworn Personnel
		Male	Female	Male	Female		
Lyman		No Report					0
Lyons	2	2	0	0	0	1.6	0
Madison	3	3	0	0	0	1.7	0
Milford	4	4	0	0	0	1.9	0
Minden	4	4	0	0	0	1.4	1
Mitchell	4	4	0	0	0	2.0	1
Neligh		No Report					0
Newman Grove	3	3	0	0	0	3.3	0
Oakland	2	1	1	0	0	1.4	0
O'Neill	10	6	0	0	4	1.5	0
Ord	6	4	0	0	2	1.5	0
Oshkosh	3	3	0	0	0	2.8	0
Osmond		No Report					*
Oxford	1	1	0	0	0	0.9	0
Petersburg	1	1	0	0	0	2.6	0
Pierce	2	2	0	0	0	1.3	0
Plainview	2	2	0	0	0	1.3	0
Randolph		No Report					*
Red Cloud	2	2	0	0	0	1.5	0
Schuyler	5	5	0	0	0	1.1	3
Scribner	2	1	1	0	0	2.0	0
Shelton	3	2	1	0	0	2.9	0
Spencer	1	1	0	0	0	1.7	*
Stanton		No Report					0
Superior	4	4	0	0	0	1.6	0
Syracuse	4	3	0	1	0	1.9	1
Tecumseh	4	3	0	0	1	1.6	0
Tekamah	4	4	0	0	0	2.1	0
Tilden		No Report					0
Valentine	5	5	0	0	0	1.8	0
Valley	2	2	0	0	0	1.2	1
Wahoo	6	6	0	0	0	1.7	1
Wausa	2	1	0	0	1	1.5	0
Weeping Water	2	1	0	0	1	0.9	4
West Point	5	5	0	0	0	1.4	3
Wilber	4	4	0	0	0	2.6	0
Wisner		No Report					0
Wood River	1	1	0	0	0	0.8	1

*Did not submit UCR's during 1981.

Offense Data by County

Estimates are provided for those agencies who did not report data for all 12 months. Estimates of population were provided by the Federal Bureau of Investigation.

OFFENSE DATA	Number of Months Reported	Population	Crime Rate Per 1,000 Population	Total Crime Index	Index Offenses Cleared	Murder, Manslaughter	Forcible Rape	Robbery	Felony Assault	Burglary	Larceny-Theft	Motor Vehicle Theft	Arson
Adams County Sheriff's Office	12	30,880	41.8	1,291	266	1	0	5	14	204	1,009	53	5
Hastings P.D.	12	7,683	26.2	201	14	1	0	0	2	26	155	14	3
	12	23,197	47.0	1,090	252	0	0	5	12	178	854	39	2
Antelope County Sheriff's Office	10	8,462	5.9	50	8	0	0	0	0	4	41	0	5
Neligh P.D.	3	5,740	8.4	48	8	0	0	0	0	4	41	0	3
Elgin P.D.	0	1,906	1.0	2	0	0	0	0	0	0	0	0	2
	0	816		No Reports Submitted									0
Arthur County	10	513	1.9	1	1	0	0	0	0	1	0	0	0
Banner County	0	925		No Reports Submitted									1
Blaine County	0	866		No Reports Submitted									0
Boone County Sheriff's Office	0	7,440	26.9	2	0	0	0	0	0	0	0	0	2
Albion P.D.	0	5,044		No Reports Submitted									0
Petersburg P.D.	12	2,011		No Reports Submitted									2
	12	385	5.2	0	0	0	0	0	0	0	0	0	0
Box Butte County Sheriff's Office	12	13,794	46.3	638	130	0	1	4	15	89	497	26	6
Alliance P.D.	12	3,853	15.1	58	5	0	0	0	3	1	52	2	0
	12	9,941	58.3	580	125	0	1	4	12	88	445	24	6
Boyd County Sheriff's Office	0	3,347		No Reports Submitted									0
Spencer P.D.	0	2,751		No Reports Submitted									0
	0	596		No Reports Submitted									0
Brown County	4	4,385	19.8	87	6	0	0	0	6	15	66	0	0
Buffalo County Sheriff's Office	12	35,025	40.4	1,415	346	0	6	6	30	252	1,045	69	7
Kearney P.D.	12	11,118	16.4	182	22	0	0	2	5	46	123	5	1
Gibbon P.D.	12	21,312	57.9	1,233	324	0	6	4	25	206	922	64	6
Shelton P.D.	8	1,543	0	0	0	0	0	0	0	0	0	0	0
	8	1,052	0	0	0	0	0	0	0	0	0	0	0
Burt County Sheriff's Office	5	8,874	11.7	104	33	0	0	0	3	16	57	3	25
Lyons P.D.	12	4,335	14.3	62	20	0	0	0	2	12	26	0	22
Oakland P.D.	11	1,234	2.4	3	0	0	0	0	0	0	3	0	0
Tekamah P.D.	12	1,404	6.4	9	4	0	0	0	0	0	8	1	0
	12	1,901	15.8	30	9	0	0	0	1	4	20	2	3

OFFENSE DATA	Number of Months Reported	Population	Crime Rate Per 1,000 Population	Total Crime Index	Index Offenses Cleared	Murder, Manslaughter	Forcible Rape	Robbery	Felony Assault	Burglary	Larceny-Theft	Motor Vehicle Theft	Arson
Butler County Sheriff's Office	0	9,389	6.1	57	2	0	0	0	0	10	45	0	2
David City P.D.	7	6,878		No Reports Submitted									1
	7	2,511	22.3	56	2	0	0	0	0	10	45	0	1
Cass County Sheriff's Office	12	20,182	24.9	503	61	1	1	1	22	145	305	17	11
Plattsmouth P.D.	12	11,686	22.9	268	21	1	0	0	3	86	159	10	9
Weeping Water P.D.	10	6,343	36.6	232	37	0	0	1	17	59	146	7	2
Louisville P.D.	4	1,122	1.8	2	2	0	1	0	1	0	0	0	0
	4	1,031	1.0	1	1	0	0	0	1	0	0	0	0
Cedar County Sheriff's Office	12	11,428	7.3	83	10	0	0	0	1	23	56	2	1
Hartington P.D.	12	7,546	10.1	76	8	0	0	0	1	23	49	2	1
Randolph P.D.	0	1,735	4.0	7	2	0	0	0	0	0	7	0	0
Laurel P.D.	0	1,118		No Reports Submitted									0
	0	1,029		No Reports Submitted									0
Chase County Sheriff's Office	12	4,786	7.9	38	6	0	0	0	0	17	20	1	0
Imperial P.D.	9	2,830	9.5	27	3	0	0	0	0	10	17	0	0
	9	1,956	5.6	11	3	0	0	0	0	7	3	1	0
Cherry County Sheriff's Office	12	6,805	21.5	146	51	0	0	1	9	6	121	9	0
Valentine P.D.	12	3,959	5.6	22	20	0	0	1	0	2	18	1	0
	12	2,846	43.6	124	31	0	0	0	9	4	103	8	0
Cheyenne County Sheriff's Office	12	10,101	36.8	372	140	0	1	0	8	71	270	21	1
Sidney P.D.	12	4,059	29.6	120	64	0	0	0	4	28	81	7	0
	12	6,042	41.7	252	76	0	1	0	4	43	189	14	1
Clay County	12	8,187	12.9	106	15	0	0	0	2	28	65	10	1
Colfax County Sheriff's Office	12	9,949	16.6	165	21	0	0	0	3	41	112	7	2
Schuyler P.D.	12	5,357	9.5	51	0	0	0	0	0	14	36	0	1
	12	4,592	24.8	114	21	0	0	0	3	27	76	7	1
Cuming County Sheriff's Office	0	11,759	5.7	67	12	0	0	0	1	10	53	2	1
West Point P.D.	11	6,786		No Reports Submitted									1
Wisner P.D.	10	3,625	13.0	47	8	0	0	0	1	9	35	1	1
	10	1,348	14.8	20	4	0	0	0	0	1	18	1	0

OFFENSE DATA	Number of Months Reported	Population	Crime Rate Per 1,000 Population	Total Crime Index	Index Offenses Cleared	Murder, Manslaughter	Forcible Rape	Robbery	Felony Assault	Burglary	Larceny-Theft	Motor Vehicle Theft	Arson
Custer County Sheriff's Office	12	13,934	18.0	251	57	0	1	0	8	57	170	8	7
Broken Bow P.D.	12	9,929	10.8	107	22	0	1	0	3	34	63	0	6
Dakota County Sheriff's Office	12	16,670	50.9	848	90	0	1	10	13	201	564	57	2
So. Sioux City P.D.	12	6,075	25.8	157	13	0	0	2	2	58	81	13	1
Dakota City P.D.	12	9,163	70.0	641	71	0	1	8	10	133	447	42	0
Dawes County Sheriff's Office	5	1,432	34.9	50	6	0	0	0	1	9	37	2	1
Chadron P.D.	12	9,713	43.2	420	78	0	0	0	11	48	346	14	1
Crawford P.D.	12	2,374	0	0	0	0	0	0	0	0	0	0	0
Dawson County Sheriff's Office	12	6,018	69.8	420	78	0	0	0	11	48	346	14	1
Cozad P.D.	12	1,321	0	0	0	0	0	0	0	0	0	0	0
Gothenburg P.D.	12	22,309	37.7	842	197	0	6	2	14	162	623	32	3
Lexington P.D.	12	7,378	21.1	156	49	0	5	1	11	37	86	15	1
Deuel County Sheriff's Office	12	4,486	58.6	263	55	0	1	0	1	46	208	7	0
Chappell P.D.	6	3,503	36.5	128	52	0	0	1	0	18	107	1	1
Dixon County	12	6,942	42.5	295	41	0	0	0	2	61	222	9	1
Dodge County Sheriff's Office	12	2,471	14.6	36	12	0	0	2	3	23	6	1	1
Fremont P.D.	12	1,377	12.3	17	8	0	0	2	1	11	2	1	0
Scribner P.D.	12	1,094	17.4	19	4	0	0	0	2	12	4	0	1
Douglas County Sheriff's Office	12	7,191	15.2	109	22	0	0	0	1	28	75	3	2
Omaha P.D.	12	36,130	32.6	1,179	153	0	4	4	8	219	899	42	3
Elkhorn P.D.	12	10,948	21.0	230	36	0	1	1	0	72	144	11	1
Ralston P.D.	12	24,164	39.3	949	117	0	3	3	8	147	755	31	2
Valley P.D.	3	1,018	0	0	0	0	0	0	0	0	0	0	0
Dundy County	9	397,974	68.1	27,095	6,592	31	198	920	499	6,595	16,619	1,726	507
	12	66,854	30.5	2,040	363	3	12	20	22	607	1,235	115	26
	12	322,883	76.9	24,826	6,190	28	186	899	470	5,933	15,239	1,596	475
	12	1,353	21.4	29	5	0	0	0	1	1	19	3	5
	12	5,149	27.2	140	30	0	0	1	2	30	102	4	1
	3	1,735	34.6	60	4	0	0	0	4	24	24	8	0

OFFENSE DATA	Number of Months Reported	Population	Crime Rate Per 1,000 Population	Total Crime Index	Index Offenses Cleared	Murder, Manslaughter	Forcible Rape	Robbery	Felony Assault	Burglary	Larceny-Theft	Motor Vehicle Theft	Arson
Fillmore County Sheriff's Office	11	7,960	16.3	130	28	0	0	0	9	37	68	16	0
Geneva P.D.	3	5,543	14.8	82	23	0	0	0	1	21	56	4	0
Franklin County	11	2,417	19.9	48	5	0	0	0	8	16	12	12	0
Frontier County	12	4,400	1.8	8	8	0	0	0	1	3	4	0	0
Furnas County Sheriff's Office	12	3,673	16.9	62	5	0	0	0	0	18	38	6	0
Arapahoe P.D.	0	6,773	7.8	54	4	0	0	1	1	6	33	9	4
Cambridge P.D.	12	3,331	11.4	38	4	0	0	1	1	4	20	8	4
Oxford P.D.	10	1,113	No Reports Submitted										0
Gage County Sheriff's Office	12	1,218	2.5	3	0	0	0	0	0	2	0	1	0
Beatrice P.D.	12	1,111	11.7	13	0	0	0	0	0	0	13	0	0
Garden County Sheriff's Office	12	24,640	26.2	647	107	3	1	1	12	159	451	17	3
Oshkosh P.D.	5	11,670	8.9	104	11	1	0	1	1	47	49	2	3
Garfield County Sheriff's Office	0	12,970	41.9	543	96	2	1	0	11	112	402	15	0
Burwell P.D.	0	2,828	3.9	11	3	0	0	0	0	2	9	0	0
Gosper County	0	1,760	6.3	11	3	0	0	0	0	2	9	0	0
Grant County	9	1,068	0	0	0	0	0	0	0	0	0	0	0
Greeley County	7	2,377	No Reports Submitted										0
Hall County Sheriff's Office	12	984	No Reports Submitted										0
Grand Island P.D.	12	1,393	No Reports Submitted										0
Wood River P.D.	12	2,152	No Reports Submitted										0
Hamilton County Sheriff's Office	12	889	1.1	1	1	0	0	0	0	0	1	0	0
Aurora P.D.	12	3,475	0.3	1	0	0	0	0	0	0	0	0	1
	12	48,019	49.5	2,378	515	0	2	10	6	479	1,763	99	19
	12	13,275	18.2	242	72	0	1	1	3	67	157	9	4
	12	33,416	62.6	2,093	436	0	1	9	2	388	1,590	88	15
	12	1,328	32.4	43	7	0	0	0	1	24	16	2	0

OFFENSE DATA	Number of Months Reported	Population	Crime Rate Per 1,000 Population	Total Crime Index	Index Offenses Cleared	Murder, Manslaughter	Forcible Rape	Robbery	Felony Assault	Burglary	Larceny-Theft	Motor Vehicle Theft	Arson
Harlan County Sheriff's Office	9	4,054	0.7	3	0	0	0	0	0	1	2	0	0
Alma P.D.	0	2,686	1.1	3	0	0	0	0	0	1	2	0	0
	0	1,368	No Reports Submitted										
Hayes County	0	1,381	No Reports Submitted										
Hitchcock County	11	4,110	14.4	59	9	0	1	0	3	10	43	1	1
Holt County Sheriff's Office	12	13,648	7.8	107	9	0	0	1	1	0	94	11	0
O'Neill P.D.	12	8,077	5.4	44	1	0	0	0	0	0	42	2	0
Atkinson P.D.	12	4,083	15.4	63	8	0	0	1	1	0	52	9	0
	12	1,488	0	0	0	0	0	0	0	0	0	0	0
Hooker County	6	993	32.2	32	11	0	0	0	0	20	12	0	0
Howard County	12	6,771	9.3	63	8	0	0	0	3	12	44	4	0
Jefferson County Sheriff's Office	12	9,894	24.4	241	42	0	0	0	1	72	151	13	4
Fairbury P.D.	12	4,969	16.7	83	13	0	0	0	1	28	46	5	3
	12	4,925	32.1	158	29	0	0	0	0	44	105	8	1
Johnson County Sheriff's Office	12	5,302	14.5	77	7	0	0	0	0	18	55	3	1
Tecumseh P.D.	12	3,381	16.0	54	5	0	0	0	0	14	37	3	0
	12	1,921	12.0	23	2	0	0	0	0	4	18	0	1
Kearney County Sheriff's Office	12	7,067	19.0	134	39	0	3	0	5	35	81	7	3
Minden P.D.	12	4,149	16.1	67	24	0	0	0	0	21	40	4	2
	12	2,918	23.0	67	15	0	3	0	5	14	41	3	1
Keith County Sheriff's Office	12	9,411	54.2	510	102	0	0	3	13	61	409	23	1
Ogallala P.D.	12	3,744	37.1	139	30	0	0	0	3	30	98	7	1
	12	5,667	65.5	371	72	0	0	3	10	31	311	16	0
Keya Paha County	3	1,306	0.8	1	1	0	0	0	0	0	0	1	0
Kimball County Sheriff's Office	12	4,918	30.1	148	18	0	1	0	1	38	97	10	1
Kimball P.D.	12	1,781	17.4	31	5	0	1	0	1	13	13	3	0
	12	3,137	37.3	117	13	0	0	0	0	25	84	7	1

OFFENSE DATA	Number of Months Reported	Population	Crime Rate Per 1,000 Population	Total Crime Index	Index Offenses Cleared	Murder, Manslaughter	Forcible Rape	Robbery	Felony Assault	Burglary	Larceny-Theft	Motor Vehicle Theft	Arson
Knox County Sheriff's Office	12	11,544	12.0	139	42	1	1	0	7	34	86	5	5
Creighton P.D.	9	8,144	13.6	111	38	1	1	0	5	27	69	4	4
Bloomfield P.D.	11	1,350	3.7	5	0	0	0	0	0	1	4	0	0
Wausa P.D.	12	1,402	5.7	8	0	0	0	0	0	3	4	0	1
	12	648	23.1	15	4	0	0	0	2	3	9	1	0
Lancaster County Sheriff's Office	12	194,268	62.4	12,114	2,960	5	46	91	305	2,548	8,650	391	78
Lincoln P.D.	12	21,093	28.8	607	171	0	3	0	14	169	392	17	12
UNL Campus Police	12	173,175	61.5	10,651	2,708	5	41	90	290	2,274	7,538	363	50
	12	—	—	856	81	0	2	1	1	105	720	11	16
Lincoln County Sheriff's Office	12	36,244	48.5	1,757	332	1	1	13	36	327	1,302	74	3
North Platte P.D.	12	11,580	14.9	173	16	0	1	1	4	43	113	10	1
	12	24,664	64.2	1,584	316	1	0	12	32	284	1,189	64	2
Logan County	0	987	No Reports Submitted										
Loup County	0	860	No Reports Submitted										
McPherson County	0	598	No Reports Submitted										
Madison County Sheriff's Office	12	31,892	29.9	954	142	4	1	1	22	101	788	29	8
Norfolk P.D.	12	8,730	12.3	107	1	0	0	0	0	6	100	0	1
Madison P.D.	0	19,421	42.9	833	141	4	1	1	22	86	683	29	7
Tilden P.D.	7	1,810	No Reports Submitted										
Newman Grove P.D.	12	1,014	0	0	0	0	0	0	0	0	0	0	0
	12	917	15.3	14	0	0	0	0	0	9	5	0	0
Merrick County Sheriff's Office	12	9,015	20.9	188	28	0	0	0	1	63	112	9	3
Central City P.D.	12	5,911	26.7	158	9	0	0	0	1	60	86	8	3
	12	3,104	9.7	30	19	0	0	0	0	3	26	1	0
Morrill County Sheriff's Office	12	6,179	9.1	56	19	0	1	0	6	11	35	1	2
Bayard P.D.	10	3,022	5.3	16	12	0	1	0	4	5	5	1	0
Bridgeport P.D.	12	1,459	21.9	32	4	0	0	0	2	4	26	0	0
	12	1,698	4.7	8	3	0	0	0	0	2	4	0	2
Nance County Sheriff's Office	0	4,783	0	0	0	0	0	0	0	0	0	0	0
Genoa P.D.	5	3,678	No Reports Submitted										
	5	1,105	0	0	0	0	0	0	0	0	0	0	0

OFFENSE DATA	Number of Months Reported	Population	Crime Rate Per 1,000 Population	Total Crime Index	Index Offenses Cleared	Murder, Manslaughter	Forcible Rape	Robbery	Felony Assault	Burglary	Larceny-Theft	Motor Vehicle Theft	Arson
Nemaha County		8,442	21.6	182	50	0	2	0	2	50	118	6	4
Sheriff's Office	12	4,932	21.9	108	19	0	0	0	0	34	69	2	3
Auburn P.D.	12	3,510	21.1	74	31	0	2	0	2	16	49	4	1
Nuckolls County		6,790	7.1	48	11	0	0	0	0	28	16	4	0
Sheriff's Office	12	4,264	8.0	34	7	0	0	0	0	20	12	2	0
Superior P.D.	11	2,526	5.5	14	4	0	0	0	0	8	4	2	0
Otoe County		15,241	25.4	387	100	0	0	0	5	127	236	9	10
Sheriff's Office	12	6,530	13.3	87	12	0	0	0	1	40	41	0	5
Nebraska City P.D.	12	7,130	40.1	286	87	0	0	0	3	83	187	8	5
Syracuse P.D.	12	1,581	8.9	14	7	0	0	0	1	4	8	1	0
Pawnee County	12	3,956	16.7	66	12	0	0	0	0	26	37	0	3
Perkins County	0	3,654	No Reports Submitted										0
Phelps County		9,788	37.9	371	64	0	0	1	12	56	287	13	2
Sheriff's Office	12	4,160	31.0	129	17	0	0	0	4	27	93	3	2
Holdrege P.D.	12	5,628	43.0	242	47	0	0	1	8	29	194	10	0
Pierce County		8,544	3.3	28	1	0	0	0	0	5	19	4	1
Sheriff's Office	0	4,615	No Reports Submitted										1
Pierce P.D.	10	1,548	18.1	28	1	0	0	0	0	5	19	4	0
Plainview P.D.	4	1,494	0	0	0	0	0	0	0	0	0	0	0
Osmond P.D.	0	887	No Reports Submitted										0
Platte County		29,065	28.7	835	115	0	2	3	8	161	619	39	3
Sheriff's Office	12	10,811	15.3	165	25	0	0	0	1	44	114	4	2
Columbus P.D.	12	17,451	36.8	642	88	0	2	3	6	113	483	34	1
Humphrey P.D.	12	803	34.9	28	2	0	0	0	1	4	22	1	0
Polk County	12	6,387	14.9	95	21	0	0	1	5	20	67	0	2
Red Willow County		12,708	30.7	390	63	0	0	0	0	30	338	20	2
Sheriff's Office	10	4,283	8.4	36	1	0	0	0	0	8	28	0	0
McCook P.D.	12	8,425	42.0	354	62	0	0	0	0	22	310	20	2

OFFENSE DATA	Number of Months Reported	Population	Crime Rate Per 1,000 Population	Total Crime Index	Index Offenses Cleared	Murder, Manslaughter	Forcible Rape	Robbery	Felony Assault	Burglary	Larceny-Theft	Motor Vehicle Theft	Arson
Richardson County		11,212	18.4	206	48	0	3	0	5	26	158	9	5
Sheriff's Office	12	4,804	11.0	53	11	0	1	0	2	8	37	3	2
Falls City P.D.	12	5,226	26.0	136	36	0	2	0	3	13	113	5	0
Humboldt P.D.	8	1,182	14.4	17	1	0	0	0	0	5	8	1	3
Rock County	0	2,375	No Reports Submitted										0
Saline County		13,130	20.6	271	27	1	0	0	6	64	184	13	3
Sheriff's Office	12	5,610	17.5	98	7	1	0	0	3	31	61	2	0
Wilber P.D.	12	1,531	0	0	0	0	0	0	0	0	0	0	0
Crete P.D.	12	4,909	33.0	162	20	0	0	0	3	22	123	11	3
Friend P.D.	10	1,080	10.2	11	0	0	0	0	0	11	0	0	0
Sarpy County		85,627	29.6	2,532	647	0	15	22	74	483	1,779	139	20
Sheriff's Office	12	48,536	19.7	958	215	0	12	7	27	225	622	61	4
Bellevue P.D.	12	21,841	42.9	937	243	0	1	11	4	151	708	51	11
Papillion P.D.	12	6,426	41.1	264	54	0	0	2	29	42	175	14	2
LaVista P.D.	12	8,824	42.3	373	135	0	2	2	14	65	274	13	3
Saunders County		18,894	31.1	248	70	0	4	0	11	58	159	9	7
Sheriff's Office	12	12,993	10.9	141	20	0	2	0	3	36	88	7	5
Wahoo P.D.	12	3,607	20.0	72	37	0	1	0	2	15	53	1	0
Ashland P.D.	12	2,294	15.3	35	13	0	1	0	6	7	18	1	2
Scotts Bluff County		38,695	43.9	1,697	294	1	6	6	48	221	1,371	42	2
Sheriff's Office	12	14,079	18.4	259	12	0	0	0	3	26	223	5	2
Scottsbluff P.D.	12	14,245	69.1	984	153	0	4	5	24	118	800	33	0
Gering P.D.	12	7,819	49.5	387	105	0	0	1	16	61	306	3	0
Mitchell P.D.	12	1,999	28.5	57	23	1	2	0	5	12	36	1	0
Lyman P.D.	10	553	18.1	10	1	0	0	0	0	4	6	0	0
Seward County		15,855	29.8	472	117	0	0	0	22	86	351	8	5
Sheriff's Office	7	7,990	21.0	168	11	0	0	0	5	48	108	3	4
Seward P.D.	12	5,742	37.3	214	73	0	0	0	16	26	169	2	1
Milford P.D.	12	2,123	42.4	90	33	0	0	0	1	12	74	3	0
Sheridan County		7,621	25.5	194	67	0	1	0	8	28	147	8	2
Sheriff's Office	12	5,437	2.2	12	9	0	0	0	2	1	5	2	2
Gordon P.D.	12	2,184	83.3	182	58	0	1	0	6	27	142	6	0

Arrest Data By County

OFFENSE DATA	Number of Months Reported	Population	Crime Rate Per 1,000 Population	Total Crime Index	Index Offenses Cleared	Murder, Manslaughter	Forcible Rape	Robbery	Felony Assault	Burglary	Larceny-Theft	Motor Vehicle Theft	Arson
Sherman County		4,252	5.9	25	0	0	0	0	0	1	23	0	1
Sheriff's Office	10	2,874	8.7	25	0	0	0	0	0	1	23	0	1
Loup City P.D.	12	1,378	0	0	0	0	0	0	0	0	0	0	0
Sioux County	11	1,853	9.2	17	8	0	0	0	1	3	13	0	0
Stanton County		6,581	12.2	80	13	0	3	0	1	17	50	7	2
Sheriff's Office	12	4,972	14.9	74	12	0	3	0	1	15	47	6	2
Stanton P.D.	11	1,609	3.7	6	1	0	0	0	0	2	3	1	0
Thayer County	12	7,624	10.9	83	4	0	0	0	0	17	61	4	1
Thomas County	12	980	0	0	0	0	0	0	0	0	0	0	0
Thurston County	0	7,248	No Reports Submitted										5
Valley County		5,674	19.2	109	25	0	1	0	8	27	72	1	0
Sheriff's Office	11	2,993	9.0	27	6	0	0	0	2	9	16	0	0
Ord P.D.	12	2,681	30.6	82	19	0	1	0	6	18	56	1	0
Washington County		15,635	20.3	318	34	0	3	0	4	76	218	14	3
Sheriff's Office	12	9,184	12.4	114	8	0	2	0	2	33	63	12	2
Blair P.D.	12	6,451	31.6	204	26	0	1	0	2	43	155	2	1
Wayne County		9,781	15.0	147	24	0	0	0	2	28	114	2	1
Sheriff's Office	12	4,648	12.5	58	4	0	0	0	1	13	43	1	0
Wayne P.D.	12	5,133	17.3	89	20	0	0	0	1	15	71	1	1
Webster County		4,900	3.3	16	0	0	0	0	0	3	13	0	0
Sheriff's Office	0	3,587	No Reports Submitted										0
Red Cloud P.D.	12	1,313	12.2	16	0	0	0	0	0	3	13	0	0
Wheeler County	0	1,064	No Reports Submitted										0
York County		14,895	27.8	414	165	0	1	1	4	70	319	17	2
Sheriff's Office	12	7,126	17.4	124	39	0	1	0	4	39	71	7	2
York P.D.	12	7,769	37.3	290	126	0	0	1	0	31	248	10	0
Nebraska State Patrol	12	—		37	15	0	0	0	12	6	2	0	17

09

ARREST DATA BY AGENCY	Total Arrests		Total Adult													Total Juvenile																	
	Total	Adult	Murder, Manslaughter	Death by Negligence	Forcible Rape	Robbery	Felony Assault	Burglary—Breaking or Entering	Larceny—Theft (Except Motor Vehicle Theft)	Motor Vehicle Theft	Misdemeanor Assault	Arson	Forgery and Counterfeiting	Fraud—O.M.F.P.	Embezzlement	Stolen Property—Buying, Receiving, Possessing	Vandalism—Destruction of Property	Weapons—Carrying, Possessing, Etc.	Prostitution and Commercialized Vice	Sex Offenses—Except Forcible Rape and Prostitution	Narcotic Drug Laws—TOTAL	Gambling—TOTAL	Offenses Against Family and Children—Nonsupport	Driving Under the Influence	Liquor Laws	Disorderly Conduct Disturbing the Peace	Vagrancy	All Other Offenses (Except Traffic)	Suspicion	Curfew and Loitering Law Violations	Runaways		
Adams County Sheriff's Office	997	788	209	1	0	0	4	16	48	184	13	21	5	8	143	0	8	32	1	0	1	26	0	1	171	51	104	1	133	0	0	25	
Hastings P.D.	514	355	159	0	0	0	4	9	21	162	3	16	5	1	3	0	4	29	0	0	0	18	0	0	79	51	97	0	5	0	0	7	
Antelope County Sheriff's Office	31	27	4	0	0	0	0	0	6	8	0	0	0	0	0	0	0	2	0	0	0	3	0	0	8	2	0	0	2	0	0	0	
Neligh P.D.	31	27	4	0	0	0	0	0	6	8	0	0	0	0	0	0	0	2	0	0	0	3	0	0	8	2	0	0	2	0	0	0	
Elgin P.D.	0	0	0	0	0	0	0	0	0	0	0	0	0	0	0	0	0	0	0	0	0	0	0	0	0	0	0	0	0	0	0	0	
No Reports Submitted																																	
Arthur County	2	2	0	0	0	0	0	0	0	0	0	0	0	0	0	0	0	0	0	0	0	2	0	0	0	0	0	0	0	0	0	0	0
Banner County No Reports Submitted																																	
Blaine County No Reports Submitted																																	
Boone County Sheriff's Office	12	5	7	0	0	0	0	0	0	0	0	0	0	0	1	1	0	0	0	0	0	0	0	0	7	0	0	0	0	0	3	0	
Albion P.D.	No Reports Submitted																																
Petersburg P.D.	12	5	7	0	0	0	0	0	0	0	0	0	0	0	1	1	0	0	0	0	0	0	0	0	7	0	0	0	0	0	3	0	
Box Butte County Sheriff's Office	615	415	200	0	0	2	2	15	49	105	9	38	1	6	4	0	1	43	0	0	4	42	0	3	120	28	354	0	73	0	1	17	
Alliance P.D.	105	99	6	0	0	0	0	1	4	8	0	1	0	0	0	0	1	0	0	0	1	0	3	45	8	3	0	29	0	0	1		
Alliance P.D. 510 316 194 0 0 2 2 14 45 97 9 35 1 6 4 0 0 43 0 0 4 41 0 0 75 20 51 0 44 0 1 16																																	
Boyd County Sheriff's Office Spencer P.D. No Reports Submitted																																	
Brown County	23	22	1	0	0	0	0	0	2	0	0	1	0	0	0	0	0	0	0	0	0	0	0	10	0	2	0	8	0	0	0		
Buffalo County Sheriff's Office	1,237	1,054	183	0	3	2	4	5	15	105	5	28	5	12	209	0	7	29	2	0	1	35	0	17	223	140	51	0	321	1	0	17	
Kearney P.D.	592	513	79	0	2	0	3	3	7	5	0	3	0	6	209	0	6	8	0	0	0	10	0	17	50	8	3	0	238	1	0	15	
Gibbon P.D.	645	541	104	0	1	2	1	2	8	100	5	25	5	6	0	0	1	21	2	0	1	25	0	0	173	132	48	0	85	0	0	2	
Shelton P.D.	0	0	0	0	0	0	0	0	0	0	0	0	0	0	0	0	0	0	0	0	0	0	0	0	0	0	0	0	0	0	0	0	
Burt County Sheriff's Office	70	44	26	0	0	0	0	3	1	9	2	2	0	0	1	0	0	5	2	0	0	1	0	0	12	11	8	1	8	1	4	0	
Lyons P.D.	10	10	0	0	0	0	0	2	0	0	0	0	0	0	0	0	0	0	0	0	0	0	0	5	0	2	0	1	0	0	0		
Oakland P.D.	4	3	1	0	0	0	0	0	0	0	0	0	0	0	0	0	0	0	0	0	0	0	0	1	0	3	0	1	0	0	0		
Tekamah P.D.	40	22	18	0	0	0	0	0	0	6	1	0	0	0	1	0	0	2	2	0	0	1	0	0	6	11	2	1	2	1	4	0	
Butler County Sheriff's Office	12	10	2	0	0	0	0	0	3	0	0	0	1	0	0	0	0	0	0	0	0	0	0	5	3	0	0	0	0	0	0	0	
David City P.D.	12	10	2	0	0	0	0	0	3	0	0	0	1	0	0	0	0	0	0	0	0	0	0	5	3	0	0	0	0	0	0	0	
Cass County Sheriff's Office	337	253	84	1	0	1	0	11	15	35	0	16	4	2	65	0	0	17	2	0	2	10	0	8	41	27	8	0	71	0	0	1	
Plattsmouth P.D.	209	192	17	1	0	0	3	2	7	16	0	9	2	2	64	0	0	4	0	0	1	10	0	8	32	4	3	0	45	0	0	1	
Weeping Water P.D.	106	45	61	0	0	0	0	8	8	19	0	3	2	0	1	0	0	13	2	0	1	0	0	5	16	3	0	25	0	0	0		
Louisville P.D.	7	7	0	0	1	0	0	0	0	0	0	4	0	0	0	0	0	0	0	0	0	0	0	2	0	0	0	0	0	0	0	0	
Louisville P.D.	15	9	6	0	0	0	0	1	0	0	0	0	0	0	0	0	0	0	0	0	0	0	0	4	7	2	0	1	0	0	0		

ARREST DATA BY AGENCY	Total Arrests	Total Adult	Total Juvenile	Murder, Manslaughter	Death by Negligence	Forcible Rape	Robbery	Felony Assault	Burglary—Breaking or Entering	Larceny—Theft (Except Motor Vehicle Theft)	Motor Vehicle Theft	Misdemeanor Assault	Arson	Forgery and Counterfeiting	Fraud—O.M.F.P.	Embezzlement	Stolen Property—Buying, Receiving, Possessing	Vandalism—Destruction of Property	Weapons—Carrying, Possessing, Etc.	Prostitution and Commercialized Vice	Sex Offenses Except Forcible Rape and Prostitution	Narcotic Drug Laws—TOTAL	Gambling—TOTAL	Offenses Against Family And Children—Nonsupport	Driving Under the Influence	Liquor Laws	Disorderly Conduct Disturbing the Peace	Vagrancy	All Other Offenses (Except Traffic)	Suspicion	Curfew and Loitering Law Violations	Runaways
Cedar County Sheriff's Office	47	30	17	0	0	0	0	1	3	12	1	0	0	0	0	0	0	4	0	0	0	2	0	0	9	3	1	0	9	0	0	2
Hartington P.D.	13	2	11	0	0	0	0	0	0	7	0	0	0	0	0	0	0	4	0	0	0	0	0	0	1	0	0	1	0	0	0	
Laurel P.D.	No Reports Submitted																															
Chase County Sheriff's Office	22	14	8	0	0	0	0	0	1	6	0	0	0	1	1	0	0	0	0	0	0	0	0	0	1	0	5	0	7	0	0	0
Imperial P.D.	0	0	0	0	0	0	0	0	0	0	0	0	0	0	0	0	0	0	0	0	0	0	0	0	0	0	0	0	0	0	0	0
Cherry County Sheriff's Office	384	367	17	0	0	0	3	0	5	39	6	11	0	0	0	1	12	0	0	0	14	0	5	95	7	77	6	103	0	0	0	
Valentine P.D.	115	103	12	0	0	0	0	0	1	21	1	6	0	0	0	1	8	0	0	0	5	0	0	33	7	26	0	6	0	0	0	
Cheyenne County Sheriff's Office	398	298	98	0	0	1	1	4	28	54	9	20	0	4	9	0	10	16	0	0	1	18	0	5	25	28	17	0	129	0	0	17
Sidney P.D.	191	175	30	0	0	0	1	0	19	20	0	5	0	0	9	0	2	2	0	0	1	13	0	3	11	8	2	0	100	0	0	9
Clay County	109	100	9	0	0	0	0	1	9	2	0	2	0	0	3	0	0	8	0	0	0	1	0	5	41	1	11	0	21	0	0	4
Colfax County Sheriff's Office	96	62	34	0	0	0	0	0	5	0	2	4	0	0	3	0	0	2	0	0	1	11	0	0	19	40	3	0	3	0	0	3
Schuyler P.D.	77	43	34	0	0	0	0	0	0	0	0	0	0	0	0	0	0	0	0	0	1	11	0	0	4	0	0	0	0	0	0	0
Cuming County Sheriff's Office	100	61	39	0	0	0	0	0	1	6	0	0	0	1	0	0	3	5	0	0	0	11	0	0	8	43	1	1	19	0	1	0
West Point P.D.	87	56	31	0	0	0	0	0	0	0	0	0	0	1	0	0	3	5	0	0	0	8	0	0	8	37	1	1	19	0	0	0
Wisner P.D.	13	5	8	0	0	0	0	0	0	3	0	0	0	0	0	0	0	0	0	0	0	3	0	0	0	6	0	0	0	0	1	0
Custer County Sheriff's Office	274	189	85	0	1	1	0	2	16	22	5	8	2	2	49	0	0	41	1	0	0	7	0	2	34	54	19	0	8	0	0	0
Broken Bow P.D.	134	79	55	0	1	0	0	1	5	17	5	8	0	2	0	0	0	38	1	0	0	3	0	2	9	23	16	0	3	0	0	0
Dakota County Sheriff's Office	581	466	115	0	0	1	3	7	14	78	2	20	0	5	1	0	4	21	3	0	2	33	0	7	134	48	88	0	93	3	12	2
So. Sioux City P.D.	247	186	61	0	0	0	3	1	0	7	2	10	0	4	1	0	1	5	3	0	1	8	0	7	74	26	12	0	78	2	1	1
Dakota City P.D.	289	251	48	0	0	1	0	4	13	63	0	9	0	1	0	0	0	18	0	0	0	20	0	0	52	22	70	0	15	1	11	1
Dawes County Sheriff's Office	289	228	61	0	0	0	0	0	9	58	2	10	0	3	1	0	1	4	0	0	0	9	0	0	89	13	43	0	41	0	0	6
Chadron P.D.	31	30	1	0	0	0	0	0	0	0	0	0	0	0	0	0	0	0	0	0	0	2	0	0	18	0	1	0	10	0	0	0
Crawford P.D.	244	186	58	0	0	0	0	0	9	58	2	9	0	3	1	0	0	4	0	0	0	5	0	0	68	13	41	0	27	0	0	4
Lexington P.D.	14	12	2	0	0	0	0	0	0	0	0	1	0	0	0	1	0	0	0	0	0	2	0	0	3	0	1	0	4	0	0	2
Dawson County Sheriff's Office	835	702	133	0	0	2	4	10	43	78	17	24	0	9	43	1	5	12	5	0	12	51	0	9	229	53	27	1	181	3	8	8
Cozad P.D.	528	501	27	0	0	2	2	9	25	28	12	12	0	6	40	1	2	0	3	0	7	45	0	8	160	11	1	0	150	0	0	4
Gothenburg P.D.	114	64	50	0	0	0	0	0	5	10	1	4	0	0	3	0	2	7	0	0	1	2	0	1	27	10	1	0	25	3	8	4
Lexington P.D.	58	42	16	0	0	0	2	0	6	11	3	0	0	0	0	1	3	2	0	0	2	2	0	0	10	10	6	0	0	0	0	0
Deuel County Sheriff's Office	29	21	8	0	0	0	2	0	8	0	1	5	0	0	1	0	0	3	0	0	0	0	0	0	4	0	1	0	3	0	0	1
Chappell P.D.	23	18	5	0	0	0	2	0	6	0	1	4	0	0	1	0	0	0	0	0	0	0	0	0	4	0	1	0	3	0	0	1
Dixon County	6	3	3	0	0	0	0	0	2	0	0	1	0	0	0	0	3	0	0	0	0	0	0	0	0	0	0	0	0	0	0	0
Dixon County	66	47	19	0	0	0	0	0	1	13	2	3	0	0	0	0	3	8	0	0	1	0	0	0	15	3	12	0	5	0	0	0

ARREST DATA BY AGENCY	Total Arrests		Total Adult		Total Juvenile		Murder, Manslaughter	Death by Negligence	Forcible Rape	Robbery	Felony Assault	Burglary—Breaking or Entering	Larceny—Theft (Except Motor Vehicle Theft)	Motor Vehicle Theft	Misdemeanor Assault	Arson	Forgery and Counterfeiting	Fraud—Q.M.F.P.	Embezzlement	Stolen Property—Buying Receiving, Possessing	Vandalism—Destruction of Property	Weapons—Carrying, Possessing, Etc.	Prostitution and Commercialized Vice	Sex Offenses Except Forcible Rape and Prostitution	Narcotic Drug Laws—TOTAL	Gambling—TOTAL	Offenses Against Family And Children—Nonsupport	Driving Under the Influence	Liquor Laws	Disorderly Conduct Disturbing the Peace	Vagrancy	All Other Offenses (Except Traffic)	Suspicion	Curfew and Loitering Law Violations	Runaways
	Total	Adult	Total	Adult	Total	Juvenile																													
Dodge County	1,188	957	231	0	0	4	1	2	35	151	11	37	0	7	44	0	2	26	3	0	4	44	1	5	223	141	84	0	327	0	0	36			
Sheriff's Office	259	219	40	0	0	2	0	0	8	20	2	7	0	2	41	0	2	0	0	0	2	23	0	3	52	36	0	0	52	0	0	7			
Fremont P.D.	929	738	191	0	0	2	1	2	27	131	9	30	0	5	3	0	0	26	3	0	21	1	2	171	105	84	0	275	0	0	29				
Scribner P.D.	0	0	0	0	0	0	0	0	0	0	0	0	0	0	0	0	0	0	0	0	0	0	0	0	0	0	0	0	0	0	0				
Douglas County	13,425	10,625	2,800	32	13	68	284	178	658	3,121	197	721	57	196	601	22	480	639	347	431	142	673	37	62	912	315	1,029	349	1,776	1	82	2			
Sheriff's Office	822	615	207	2	4	8	10	5	66	109	20	63	5	9	38	0	35	49	14	0	6	60	0	2	109	81	28	0	98	0	0	1			
Omaha P.D.	12,481	9,924	2,557	30	9	60	274	172	590	3,003	177	657	52	186	561	22	444	574	332	431	135	603	35	59	761	219	995	349	1,669	0	82	0			
Elkhorn P.D.	30	23	7	0	0	0	0	0	1	6	0	0	0	0	0	0	0	0	0	0	6	0	1	9	1	1	0	5	0	0	0				
Ralston P.D.	76	50	26	0	0	0	0	0	1	2	0	1	0	1	2	0	1	16	1	0	1	4	2	0	26	13	4	0	1	0	0	0			
Valley P.D.	16	13	3	0	0	0	0	1	0	1	0	0	0	0	0	0	0	0	0	0	0	0	0	0	7	1	1	0	3	1	0	1			
Dundy County	6	5	1	0	0	0	0	0	0	1	0	1	0	0	0	0	0	0	1	0	0	0	2	0	0	0	0	0	0	0	0	0	1		
Fillmore County	86	68	18	0	0	0	0	0	8	7	4	4	0	1	12	0	1	0	0	0	1	5	0	0	25	5	6	0	5	0	0	2			
Sheriff's Office	85	67	18	0	0	0	0	0	8	7	4	4	0	1	12	0	1	0	0	0	1	5	0	0	25	5	5	0	5	0	0	2			
Geneva P.D.	1	1	0	0	0	0	0	0	0	0	0	0	0	0	0	0	0	0	0	0	0	0	0	0	0	0	1	0	0	0	0	0			
Franklin County	8	7	1	0	0	0	0	1	0	2	0	2	0	0	0	0	0	0	0	0	0	0	0	0	0	0	2	0	0	1	0	0	0		
Frontier County	39	35	4	0	0	0	0	0	1	5	0	1	0	0	0	0	0	0	0	0	0	0	0	1	0	0	6	22	1	0	1	1	0	0	
Furnas County	64	53	11	0	0	0	0	0	6	5	0	0	0	1	0	0	0	0	2	0	1	7	0	1	21	4	0	0	14	0	0	2			
Sheriff's Office	52	48	4	0	0	0	0	0	5	5	0	0	0	1	0	0	0	0	2	0	1	2	0	1	19	0	0	0	14	0	0	2			
Arapahoe P.D.									No Reports Submitted																										
Cambridge P.D.	12	5	7	0	0	0	0	0	1	0	0	0	0	0	0	0	0	0	0	0	0	0	0	5	0	0	2	4	0	0	0	0	0		
Oxford P.D.	0	0	0	0	0	0	0	0	0	0	0	0	0	0	0	0	0	0	0	0	0	0	0	0	0	0	0	0	0	0	0	0	0		
Gage County	592	349	243	2	0	1	1	4	13	73	3	13	0	5	74	0	5	29	3	0	8	36	0	10	68	69	22	0	128	0	0	5			
Sheriff's Office	118	114	4	1	0	1	0	4	4	3	0	0	0	3	73	0	0	0	0	0	0	12	0	7	5	1	1	0	7	0	0	0			
Beatrice P.D.	474	235	239	1	0	1	0	4	9	70	3	13	0	2	1	0	5	29	3	0	8	24	0	3	63	88	21	0	121	0	0	5			
Garden County	16	16	0	0	0	0	0	0	0	3	0	5	0	1	0	0	0	1	0	0	1	0	0	3	0	0	0	0	2	0	0	0			
Sheriff's Office	16	16	0	0	0	0	0	0	0	3	0	5	0	1	0	0	0	1	0	0	1	0	0	3	0	0	0	0	2	0	0	0			
Oshkosh P.D.	0	0	0	0	0	0	0	0	0	0	0	0	0	0	0	0	0	0	0	0	0	0	0	0	0	0	0	0	0	0	0	0			
Garfield County	No Reports Submitted																																		
Sheriff's Office	No Reports Submitted																																		
Burwell P.D.	No Reports Submitted																																		
Gosper County	No Reports Submitted																																		
Grant County	10	8	2	0	0	0	0	0	0	1	0	0	0	0	0	0	0	0	0	0	0	0	0	0	0	0	0	5	0	0	0	0	0		
Greeley County	0	0	0	0	0	0	0	0	0	0	0	0	0	0	0	0	0	0	0	0	0	0	0	0	0	0	0	0	0	0	0	0	0		
Hall County	2,971	2,216	755	0	0	1	6	6	111	498	20	141	4	44	7	0	29	93	15	0	25	86	0	5	703	180	97	4	738	0	67	91			
Sheriff's Office	915	768	147	0	0	0	3	4	56	74	6	36	3	14	4	0	9	4	8	0	8	33	0	4	349	8	39	1	202	0	2	48			
Grand Island P.D.	2,045	1,440	605	0	0	1	3	2	53	423	14	105	1	30	3	0	20	85	6	0	17	53	0	1	353	172	68	3	534	0	65	43			
Wood River P.D.	11	8	3	0	0	0	0	0	2	1	0	0	0	0	0	0	0	0	4	1	0	0	0	1	0	0	0	2	0	0	0				
Hamilton County	285	207	78	0	0	1	3	0	3	16	4	6	0	1	12	0	0	14	0	0	0	18	0	0	75	61	10	0	49	4	1	7			
Sheriff's Office	194	163	31	0	0	1	3	0	1	7	1	4	0	1	12	0	0	3	0	0	11	0	0	64	27	2	0	48	4	0	7				
Aurora P.D.	91	44	47	0	0	0	0	0	2	9	3	2	0	0	0	0	0	11	0	0	0	7	0	0	11	34	8	0	3	0	1	0			

ARREST DATA BY AGENCY	Total Arrests	Total Adult	Total Juvenile	Murder, Manslaughter	Death by Negligence	Forcible Rape	Robbery	Felony Assault	Burglary—Breaking or Entering	Larceny—Theft (Except Motor Vehicle Theft)	Motor Vehicle Theft	Misdemeanor Assault	Arson	Forgery and Counterfeiting	Fraud—O.M.F.P.	Embezzlement	Stolen Property—Buying, Receiving, Possessing	Vandalism—Destruction of Property	Weapons—Carrying, Possessing, Etc.	Prostitution and Commercialized Vice	Sex Offenses Except Force, Rape and Prostitution	Narcotic Drug Laws—TOTAL	Gambling—TOTAL	Offenses Against Family and Children—Non-support	Driving Under the Influence	Liquor Laws	Disorderly Conduct Disturbing the Peace	Vagrancy	All Other Offenses (Except Traffic)	Suspicion	Curfew and Loitering Law Violations	Runaways	
Harlan County Sheriff's Office	44	35	9	0	0	0	0	1	0	0	1	0	0	1	1	0	0	0	1	0	0	2	0	0	22	10	1	0	4	0	0	0	
Alma P.D.	44	35	9	0	0	0	0	1	0	0	1	0	0	1	1	0	0	0	1	0	0	2	0	0	22	10	1	0	4	0	0	0	
No Reports Submitted																																	
Hayes County																																	
No Reports Submitted																																	
Hitchcock County	36	31	5	0	0	1	0	2	3	3	1	1	0	2	1	0	0	1	2	0	0	0	0	0	0	7	0	1	0	11	0	0	0
Holt County Sheriff's Office	64	64	0	0	0	0	0	0	0	12	3	1	0	0	21	0	1	0	0	0	0	0	0	0	3	21	0	0	2	0	0	0	0
O'Neill P.D.	42	42	0	0	0	0	0	0	0	5	0	1	0	0	21	0	1	0	0	0	0	0	0	3	9	0	0	0	2	0	0	0	0
Atkinson P.D.	22	22	0	0	0	0	0	0	0	7	3	0	0	0	0	0	0	0	0	0	0	0	0	0	0	12	0	0	0	0	0	0	0
Hooker County	17	10	7	0	0	0	0	0	1	2	0	0	0	0	0	0	0	6	0	0	1	0	0	0	1	6	0	0	0	0	0	0	0
Howard County	64	30	34	0	0	0	0	1	3	2	0	1	0	0	0	0	0	2	0	0	0	1	0	0	6	34	0	0	9	0	0	5	
Jefferson County Sheriff's Office	177	110	67	0	0	0	0	1	18	30	10	12	0	4	13	0	3	1	0	1	7	0	1	16	22	8	0	23	0	0	7		
Fairbury P.D.	46	41	5	0	0	0	0	1	7	5	2	0	0	3	13	0	0	1	0	0	2	0	1	8	0	3	0	0	0	0	0	0	
Tecumseh P.D.	131	69	62	0	0	0	0	0	11	25	8	12	0	1	0	0	2	1	0	1	5	0	0	8	22	5	0	23	0	0	7		
Johnson County Sheriff's Office	120	84	36	0	0	0	0	0	1	8	0	6	1	0	20	0	1	8	0	0	0	13	0	1	19	23	11	0	8	0	0	0	
Tecumseh P.D.	75	54	21	0	0	0	0	0	1	0	0	5	1	0	20	0	1	4	0	0	0	9	0	1	10	6	9	0	8	0	0	0	
Tecumseh P.D.	45	30	15	0	0	0	0	0	0	8	0	1	0	0	0	0	4	0	0	0	4	0	0	9	17	2	0	0	0	0	0	0	
Kearney County Sheriff's Office	330	281	49	0	1	1	2	3	25	16	2	8	0	2	39	0	3	15	1	0	1	15	0	1	96	43	9	0	42	0	0	5	
Minden P.D.	201	189	12	0	1	0	2	0	20	13	2	2	0	1	39	0	3	1	0	0	8	0	1	74	3	0	0	30	0	0	1		
Minden P.D.	129	92	37	0	0	1	0	3	5	3	0	6	0	1	0	0	14	1	0	1	7	0	0	22	40	9	0	12	0	0	4		
Keith County Sheriff's Office	506	409	97	0	0	0	0	10	11	75	7	40	0	0	17	0	1	22	7	0	3	23	0	11	109	66	40	0	53	2	0	9	
Ogallala P.D.	150	139	11	0	0	0	0	2	2	11	3	4	0	0	17	0	0	1	4	0	0	21	0	2	49	10	3	0	17	1	0	3	
Ogallala P.D.	356	270	86	0	0	0	0	8	9	64	4	36	0	0	0	0	1	21	3	0	3	2	0	9	60	56	37	0	36	1	0	6	
Keya Paha County	5	4	1	0	0	0	0	0	0	0	3	0	0	0	0	0	0	0	0	0	0	0	0	0	1	1	0	0	0	0	0	0	
Kimball County Sheriff's Office	71	59	12	0	0	1	0	0	7	12	9	0	0	0	1	0	0	4	0	0	1	1	0	0	12	1	7	0	14	0	1	0	
Kimball P.D.	24	21	3	0	0	1	0	0	2	0	5	0	0	0	1	0	0	0	0	0	1	1	0	0	2	0	0	0	10	0	1	0	
Kimball P.D.	47	38	9	0	0	0	0	0	5	12	4	0	0	0	0	0	4	0	0	0	0	0	0	0	10	1	7	0	4	0	0	0	
Knox County Sheriff's Office	146	111	35	1	0	1	0	8	10	19	2	6	1	1	17	0	0	29	0	0	0	5	0	1	13	7	2	0	23	0	0	0	
Creighton P.D.	132	106	28	1	0	1	0	6	10	18	1	6	1	1	17	0	0	22	0	0	0	5	0	1	12	6	2	0	22	0	0	0	
Bloomfield P.D.	0	0	0	0	0	0	0	0	0	0	0	0	0	0	0	0	0	0	0	0	0	0	0	0	0	0	0	0	0	0	0	0	
Wausa P.D.	1	1	0	0	0	0	0	0	0	0	0	0	0	0	0	0	0	0	0	0	0	0	0	0	1	0	0	0	0	0	0	0	
Wausa P.D.	13	4	9	0	0	0	0	2	0	1	1	0	0	0	0	0	0	7	0	0	0	0	0	0	0	1	0	0	1	0	0	0	
Lancaster County Sheriff's Office	10,894	8,710	2,184	4	5	18	51	97	368	1,984	101	596	26	84	264	3	113	568	80	7	171	610	43	14	2,130	772	1,245	57	1,473	0	0	2	
Lincoln P.D.	801	716	85	0	0	1	0	7	26	39	12	18	0	5	186	0	5	19	4	0	3	63	8	0	198	59	28	0	120	0	0	0	
UNL Campus Police	9,833	7,749	2,084	4	5	16	51	90	337	1,908	89	565	21	79	77	3	97	521	85	7	167	502	35	14	1,904	713	1,184	57	1,302	0	0	2	
UNL Campus Police	260	245	15	0	0	1	0	0	5	39	0	13	5	0	1	0	11	26	1	0	1	45	0	0	28	0	33	0	51	0	0	0	
Lincoln County Sheriff's Office	1,546	1,244	302	1	0	1	13	14	46	222	16	33	0	21	37	0	11	43	1	0	14	70	4	13	357	92	52	1	463	1	15	5	
North Platte P.D.	534	476	58	0	0	0	3	11	24	8	8	8	0	6	30	0	2	2	0	0	2	28	2	2	13	166	38	6	1	176	1	3	4
North Platte P.D.	1,012	768	244	1	0	1	13	11	35	198	8	25	0	15	7	0	9	41	1	0	12	42	2	0	191	54	46	0	287	0	12	1	
Logan County																																	
No Reports Submitted																																	

ARREST DATA BY AGENCY		Total Arrests	Total Adult	Total Juvenile	Murder, Manslaughter	Death by Negligence	Forcible Rape	Robbery	Felony Assault	Burglary—Breaking or Entering	Larceny—Theft, (Except Motor Vehicle Theft)	Motor Vehicle Theft	Misdemeanor Assault	Arson	Forgery and Counterfeiting	Fraud—O.M.F.P.	Embezzlement	Stolen Property—Buying, Receiving, Possessing	Vandalism—Destruction of Property	Weapons—Carrying, Possessing, Etc.	Production of Commercialized Vice	Sex Offenses Except Forcible Rape and Prostitution	Narcotic Drug Laws—TOTAL	Gambling—TOTAL	Offenses Against Family and Children—Nonsupport	Driving Under the Influence	Liquor Laws	Disorderly Conduct Disturbing the Peace	Vagrancy	All Other Offenses (Except Traffic)	Suspicion	Offense and Letting Law Violators	Runaways
Loup County County		No Reports Submitted																															
McPherson County		No Reports Submitted																															
Madison County	686	468	218	0	0	0	0	2	20	69	1	8	0	9	6	0	13	34	6	0	1	36	0	3	147	127	49	1	86	0	50	18	
Sheriff's Office	34	28	6	0	0	0	0	0	2	2	0	1	0	3	1	0	7	2	4	0	1	2	0	1	3	1	0	1	3	0	0	0	
Norfolk P.D.	647	438	209	0	0	0	0	2	18	67	1	7	0	6	5	0	6	32	2	0	0	34	0	2	142	123	49	0	83	0	50	18	
Madison P.D.	No Reports Submitted																																
Tilden P.D.	0	0	0	0	0	0	0	0	0	0	0	0	0	0	0	0	0	0	0	0	0	0	0	0	0	0	0	0	0	0	0	0	
Newman Grove P.D.	5	2	3	0	0	0	0	0	0	0	0	0	0	0	0	0	0	0	0	0	0	0	0	0	0	2	3	00	0	0	0	0	
Merrick County	329	250	79	0	0	0	0	0	9	21	5	0	1	1	0	0	0	2	0	0	1	18	0	0	72	60	2	0	133	0	0	4	
Sheriff's Office	255	212	43	0	0	0	0	0	7	5	0	0	1	0	0	0	0	0	0	0	1	13	0	0	55	34	2	0	133	0	0	4	
Central City P.D.	74	38	36	0	0	0	0	0	2	16	5	0	0	1	0	0	0	2	0	0	0	5	0	0	17	26	0	0	0	0	0	0	
Morrill County	172	153	19	0	0	1	0	8	2	6	1	4	3	1	2	0	0	0	1	0	0	5	0	1	60	21	12	0	41	0	0	3	
Sheriff's Office	104	96	8	0	0	1	0	4	2	3	1	0	2	1	2	0	0	0	0	0	0	4	0	1	42	3	0	0	38	0	0	0	
Bayard P.D.	28	23	5	0	0	0	0	4	0	1	0	4	0	0	0	0	0	0	1	0	0	0	0	0	6	1	6	0	2	0	0	3	
Bridgeport P.D.	40	34	6	0	0	0	0	0	0	2	0	0	1	0	0	0	0	0	0	0	0	1	0	0	12	17	6	0	1	0	0	0	
Nance County	No Reports Submitted																																
Sheriff's Office	No Reports Submitted																																
Genoa P.D.	0	0	0	0	0	0	0	0	0	0	0	0	0	0	0	0	0	0	0	0	0	0	0	0	0	0	0	0	0	0	0	0	0
Nemaha County	229	188	41	0	0	2	0	2	23	13	5	9	3	5	11	0	5	6	1	0	0	17	0	2	38	17	13	0	52	0	0	5	
Sheriff's Office	96	87	9	0	0	0	0	0	8	3	2	7	3	4	0	0	4	1	0	0	0	3	0	2	19	2	4	0	34	0	0	0	
Auburn P.D.	133	101	32	0	0	2	0	2	15	10	3	2	0	1	11	0	1	5	1	0	0	14	0	0	19	15	9	0	18	0	0	5	
Nuckolls County	52	45	7	0	0	0	0	0	6	2	0	0	0	2	3	0	0	3	0	0	0	2	0	1	17	8	0	0	7	0	0	1	
Sheriff's Office	52	45	7	0	0	0	0	0	6	2	0	0	0	2	3	0	0	3	0	0	0	2	0	1	17	8	0	0	7	0	0	1	
Superior P.D.	0	0	0	0	0	0	0	0	0	0	0	0	0	0	0	0	0	0	0	0	0	0	0	0	0	0	0	0	0	0	0	0	
Otoe County	363	263	100	0	0	0	0	2	15	55	4	37	1	3	51	0	10	21	2	0	3	15	0	5	42	42	11	0	36	0	0	8	
Sheriff's Office	121	110	11	0	0	0	0	0	2	4	0	3	0	1	50	0	3	0	0	0	1	10	0	5	29	0	2	0	8	0	0	3	
Nebraska City P.D.	220	145	75	0	0	0	0	1	13	45	4	33	1	2	1	0	2	21	1	0	2	5	0	0	11	39	8	0	26	0	0	5	
Syracuse P.D.	22	8	14	0	0	0	0	1	0	6	0	1	0	0	0	0	5	0	1	0	0	0	0	0	2	3	1	0	2	0	0	0	
Pawnee County	35	28	8	0	0	0	0	0	3	7	0	2	2	0	1	0	0	0	0	0	0	1	0	0	11	5	0	0	4	0	0	0	
Perkins County	No Reports Submitted																																
Phelps County	281	243	38	0	0	0	0	0	13	19	4	3	0	8	59	0	6	11	2	0	1	8	0	3	54	7	35	0	47	0	0	1	
Sheriff's Office	180	175	5	0	0	0	0	0	9	5	2	3	0	7	59	0	0	0	0	0	1	3	0	3	34	4	4	0	45	0	0	1	
Holdrege P.D.	101	68	33	0	0	0	0	0	4	14	2	0	0	1	0	0	6	11	2	0	0	5	0	0	20	3	31	0	2	0	0	0	
Pierce County	9	0	9	0	0	0	0	0	0	0	0	0	0	0	0	0	0	0	0	0	0	0	0	0	0	0	0	0	0	0	9	0	
Sheriff's Office	No Reports Submitted																																
Pierce P.D.	0	0	0	0	0	0	0	0	0	0	0	0	0	0	0	0	0	0	0	0	0	0	0	0	0	0	0	0	0	0	0	0	
Plainview P.D.	9	0	9	0	0	0	0	0	0	0	0	0	0	0	0	0	0	0	0	0	0	0	0	0	0	0	0	0	0	0	9	0	
Osmond P.D.	No Reports Submitted																																
Platte County	829	587	242	0	0	0	0	5	22	78	9	21	0	5	28	0	13	30	10	0	2	57	0	2	98	206	44	0	176	0	19	4	
Sheriff's Office	115	92	23	0	0	0	0	0	22	7	4	4	0	0	18	0	2	0	0	0	1	13	0	1	6	6	1	0	29	0	0	1	
Columbus P.D.	633	449	184	0	0	0	0	5	0	70	5	16	0	5	10	0	11	26	8	0	1	43	0	1	89	149	40	0	137	0	14	3	
Humphrey P.D.	81	46	35	0	0	0	0	0	0	1	0	1	0	0	0	0	0	4	2	0	0	1	0	0	3	51	3	0	10	0	5	0	

64

ARREST DATA BY AGENCY	99																															
	Total Arrests	Total Adult	Total Juvenile	Murder, Manslaughter	Death by Negligence	Forcible Rape	Robbery	Felony Assault	Burglary—Breaking or Entering	Larceny—Theft (Except Motor Vehicle Theft)	Motor Vehicle Theft	Misdemeanor Assault	Arson	Forgery and Counterfeiting	Fraud—O.M.F.P.	Embezzlement	Stolen Property—Buying, Receiving, Possessing	Vandalism—Destruction of Property	Weapons—Carrying, Possessing, Etc.	Prostitution and Commercialized Vice	Sex Offenses Except Forcible Rape and Prostitution	Narcotic Drug Laws—TOTAL	Gambling—TOTAL	Offenses Against Family And Children—Nonsupport	Driving Under the Influence	Liquor Laws	Disorderly Conduct Disturbing the Peace	Vagrancy	All Other Offenses (Except Traffic)	Suspicion	Carrying and Littering Law Violations	Runaways
Polk County	167	132	35	0	0	0	3	4	0	5	0	6	0	0	4	0	4	6	0	0	4	6	0	1	23	43	9	0	47	0	0	2
Red Willow County Sheriff's Office	208	163	45	0	0	0	0	0	10	27	0	4	0	1	0	0	0	13	0	0	1	14	0	0	74	31	28	0	4	0	1	0
McCook P.D.	203	159	44	0	0	0	0	0	8	27	0	4	0	1	0	0	0	10	0	0	1	14	0	0	74	31	28	0	4	0	1	0
Richardson County Sheriff's Office	312	229	83	0	0	2	0	3	19	46	9	11	3	7	14	0	0	27	0	0	0	24	0	6	49	20	8	0	53	0	0	11
Falls City P.D.	102	91	11	0	0	1	0	1	12	7	1	5	3	5	14	0	0	0	0	0	0	4	0	6	17	6	0	0	16	0	0	4
Humboldt P.D.	205	138	69	0	0	1	0	2	7	38	8	6	0	2	0	0	0	26	0	0	0	20	0	0	32	12	8	0	37	0	0	7
Humboldt P.D.	4	0	4	0	0	0	0	0	0	1	0	0	0	0	0	0	0	1	0	0	0	0	0	0	2	0	0	0	0	0	0	0
Rock County	No Reports Submitted																															
Saline County Sheriff's Office	223	148	75	1	2	0	0	1	3	18	0	5	0	1	16	0	0	2	2	0	1	41	0	1	40	59	8	0	6	0	13	3
Wilber P.D.	70	69	1	1	2	0	0	0	2	3	0	3	0	1	16	0	0	1	2	0	1	19	0	1	11	0	3	0	4	0	0	0
Crete P.D.	20	7	13	0	0	0	0	1	0	0	0	0	0	0	0	0	0	1	0	0	0	0	0	0	3	13	0	0	0	0	0	2
Friend P.D.	133	72	61	0	0	0	0	0	1	15	0	2	0	0	0	0	0	0	0	0	0	22	0	0	26	46	5	0	2	0	13	1
Friend P.D.	0	0	0	0	0	0	0	0	0	0	0	0	0	0	0	0	0	0	0	0	0	0	0	0	0	0	0	0	0	0	0	0
Sarpy County Sheriff's Office	3,423	2,077	1,346	1	1	14	9	31	88	446	22	134	18	18	16	0	60	125	42	1	20	324	10	9	581	544	294	0	317	119	120	59
Belleveue P.D.	880	653	227	0	1	9	4	9	36	111	5	27	0	7	8	0	28	6	28	1	3	121	9	7	235	66	257	0	115	0	0	18
Papillion P.D.	1,487	874	613	0	0	3	3	3	33	200	13	29	10	8	1	0	19	57	9	0	11	115	0	2	166	261	257	0	73	119	79	12
LaVista P.D.	178	75	103	0	0	0	1	4	7	3	0	4	0	1	1	0	0	0	1	0	0	18	1	0	30	9	3	0	42	0	32	21
LaVista P.D.	878	475	403	1	0	2	1	15	12	132	4	74	8	2	2	0	13	62	4	0	6	70	0	0	150	208	8	0	87	0	9	8
Saunders County Sheriff's Office	265	189	76	0	0	3	0	7	23	43	1	13	0	4	3	0	3	22	7	0	2	10	0	4	40	28	2	0	41	0	1	8
Wahoo P.D.	121	105	16	0	0	1	0	3	10	16	1	7	0	0	0	1	7	3	0	1	5	0	3	30	0	1	0	25	0	0	7	
Ashland P.D.	111	60	51	0	0	1	0	2	9	23	0	5	0	4	3	0	1	11	0	0	1	1	0	0	5	28	0	0	15	0	0	1
Ashland P.D.	33	24	9	0	0	1	0	2	4	4	0	1	0	0	0	0	1	4	4	0	0	4	0	1	5	0	1	0	0	0	1	0
Scotts Bluff County Sheriff's Office	1,676	1,347	329	2	0	5	3	26	44	213	11	56	0	11	1	0	7	29	14	2	3	60	0	3	434	269	243	0	218	0	0	22
Scottsbluff P.D.	209	166	43	1	0	0	0	1	5	6	8	12	0	2	0	0	3	2	0	0	0	23	0	3	47	32	31	0	26	0	0	7
Gering P.D.	960	826	134	0	0	3	3	13	25	103	2	20	0	6	0	0	2	17	7	2	2	27	0	0	317	221	175	0	8	0	0	7
Mitchell P.D.	401	277	124	0	0	0	0	10	8	101	0	12	0	1	0	0	2	7	7	0	1	3	0	0	46	5	27	0	167	0	0	4
Lyman P.D.	98	72	26	1	0	2	0	2	5	3	1	11	0	2	1	0	0	1	0	0	0	7	0	0	23	11	8	0	16	0	0	4
Lyman P.D.	8	6	2	0	0	0	0	0	1	0	0	1	0	0	0	0	0	2	0	0	0	0	0	0	1	0	2	0	1	0	0	
Seward County Sheriff's Office	437	360	77	0	0	0	0	8	11	43	1	18	1	3	2	0	3	23	1	0	3	53	0	1	123	81	23	0	29	0	0	10
Seward P.D.	70	68	2	0	0	0	0	0	2	8	0	0	1	0	1	0	2	4	0	0	0	8	0	1	31	0	4	0	7	0	0	1
Milford P.D.	288	236	52	0	0	0	0	7	3	20	0	16	0	3	0	0	0	9	1	0	3	44	0	0	83	58	14	0	18	0	0	9
Milford P.D.	79	56	23	0	0	0	0	1	6	15	1	2	0	0	1	0	1	10	0	0	0	1	0	0	9	23	5	0	4	0	0	0
Sheridan County Sheriff's Office	486	415	71	0	0	1	0	2	12	39	5	39	0	6	13	0	3	21	0	0	1	4	0	1	64	51	62	3	153	0	1	5
Gordon P.D.	257	236	21	0	0	0	0	0	1	5	4	14	0	0	13	0	0	0	0	0	1	3	0	1	62	19	44	3	83	0	1	3
Gordon P.D.	229	179	50	0	0	1	0	2	11	34	1	25	0	6	0	0	3	21	0	0	0	1	0	0	2	32	18	0	70	0	0	2
Sherman County Sheriff's Office	5	5	0	0	0	0	0	0	0	0	0	0	0	0	0	0	5	0	0	0	0	0	0	0	0	0	0	0	0	0	0	0
Loup City P.D.	5	5	0	0	0	0	0	0	0	0	0	0	0	0	0	0	5	0	0	0	0	0	0	0	0	0	0	0	0	0	0	0
Loup City P.D.	0	0	0	0	0	0	0	0	0	0	0	0	0	0	0	0	0	0	0	0	0	0	0	0	0	0	0	0	0	0	0	0
Sioux County	5	3	2	0	0	0	0	0	3	0	0	0	0	0	0	0	2	0	0	0	0	0	0	0	0	0	0	0	0	0	0	0
Stanton County Sheriff's Office	43	36	7	0	0	3	0	0	7	0	4	0	0	0	0	0	1	1	0	0	0	3	0	0	7	3	0	0	14	0	0	0
Stanton P.D.	36	33	3	0	0	3	0	0	7	0	2	0	0	0	0	0	0	1	0	0	0	0	0	0	7	0	0	0	13	0	0	0
Stanton P.D.	7	3	4	0	0	0	0	0	0	0	2	0	0	0	0	0	1	0	0	0	0	0	0	0	3	0	0	1	0	0	0	

ARREST DATA BY AGENCY	Total Arrests		Total Adult																	Total Juvenile																
	Total	Adult	Murder	Death by Negligence	Forcible Rape	Robbery	Felony Assault	Burglary—Breaking or Entering	Larceny—Theft (Except Motor Vehicle Theft)	Motor Vehicle Theft	Misdemeanor Assault	Arson	Forgery and Counterfeiting	Fraud—O. M. F. P.	Embezzlement	Stolen Property—Buying, Receiving, Possessing	Vandalism—Destruction of Property	Weapons—Carrying, Possessing, Etc.	Prostitution and Commercialized Vice	Sex Offenses Except Forcible Rape and Prostitution	Marijuana Laws—TOTAL	Gambling—TOTAL	Offenses Against Family and Children—Nonsupport	Driving Under the Influence	Liquor Laws	Disorderly Conduct Disturbing the Peace	Vagrancy	All Other Offenses (Except Traffic)	Suspicion	Carrying and Carrying Lawful Weapons	Runaways					
Thayer County	145	130	15	0	0	0	0	0	6	0	3	0	0	0	0	0	1	1	0	0	18	0	3	63	32	4	0	14	0	0	0					
Thomas County	0	0	0	0	0	0	0	0	0	0	0	0	0	0	0	0	0	0	0	0	0	0	0	0	0	0	0	0	0	0	0					
Thurston County	No Reports Submitted																																			
Valley County	125	70	55	0	0	0	0	6	3	10	1	6	0	0	0	0	3	1	0	0	5	0	0	18	69	1	0	2	0	0	0					
Sheriff's Office	15	12	3	0	0	0	3	1	4	1	1	0	0	0	0	0	0	0	0	0	1	0	0	4	0	0	0	0	0	0	0					
Ord P.D.	110	58	52	0	0	0	3	2	6	0	5	0	0	0	0	3	1	0	0	4	0	01	4	69	1	0	2	0	0	0						
Washington County	349	289	60	0	0	0	0	6	19	0	9	0	2	18	0	13	1	1	0	1	24	0	13	57	36	12	0	135	0	0	2					
Sheriff's Office	184	178	16	0	0	0	0	3	7	0	3	0	0	16	0	7	0	0	0	1	6	0	13	17	2	1	0	116	0	0	2					
Blair P.D.	155	111	44	0	0	0	0	3	12	0	6	0	2	2	0	6	1	1	0	0	18	0	0	40	34	11	0	19	0	0	0					
Wayne County	136	114	22	0	0	0	1	5	18	1	1	0	3	58	0	1	6	1	0	0	0	0	1	28	1	2	9	0	0	0						
Sheriff's Office	71	64	7	0	0	0	1	3	5	0	1	0	3	58	0	0	0	0	0	0	0	0	0	0	0	0	0	0	0	0	0					
Wayne P.D.	65	50	15	0	0	0	0	2	13	1	0	0	0	0	0	1	6	1	0	0	0	0	1	28	1	2	9	0	0	0						
Webster County	4	1	3	0	0	0	0	0	0	0	0	0	0	0	0	0	3	0	0	0	0	0	0	1	0	0	0	0	0	0	0					
Sheriff's Office	No Reports Submitted																																			
Red Cloud P.D.	4	1	3	0	0	0	0	0	0	0	0	0	0	0	0	0	3	0	0	0	0	0	0	1	0	0	0	0	0	0	0					
Wheeler County	No Reports Submitted																																			
York County	758	463	295	0	0	1	0	3	12	89	8	15	4	1	23	0	7	43	1	0	1	36	0	8	133	124	41	0	138	1	49	20				
Sheriff's Office	262	237	25	0	0	1	0	3	10	18	2	1	1	1	23	0	4	1	1	0	1	15	0	8	78	21	10	0	54	1	0	8				
York P.D.	496	226	270	0	0	0	0	0	2	71	6	14	3	0	0	3	42	0	0	0	21	0	0	55	103	31	0	84	0	49	12					
Nebraska State Patrol	39	37	2	0	0	0	0	20	2	1	1	3	0	2	1	0	0	0	2	0	3	0	0	0	0	0	0	4	0	0	0					

END