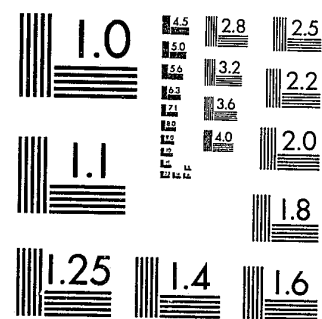


National Criminal Justice Reference Service



This microfiche was produced from documents received for inclusion in the NCJRS data base. Since NCJRS cannot exercise control over the physical condition of the documents submitted, the individual frame quality will vary. The resolution chart on this frame may be used to evaluate the document quality.



MICROCOPY RESOLUTION TEST CHART  
NATIONAL BUREAU OF STANDARDS-1963-A

Microfilming procedures used to create this fiche comply with the standards set forth in 41CFR 101-11.504.

Points of view or opinions stated in this document are those of the author(s) and do not represent the official position or policies of the U. S. Department of Justice.

National Institute of Justice  
United States Department of Justice  
Washington, D. C. 20531

3/1/83

RELEASES FROM JUVENILE INSTITUTIONS  
CALENDAR YEAR 1979



U.S. Department of Justice  
National Institute of Justice  
This document has been reproduced exactly as received from the person or organization originating it. Points of view or opinions stated in this document are those of the authors and do not necessarily represent the official position or policies of the National Institute of Justice.  
Permission to reproduce this copyrighted material has been granted by  
Wisconsin Division of Corrections  
to the National Criminal Justice Reference Service (NCJRS).  
Further reproduction outside of the NCJRS system requires permission of the copyright owner.

67349

DEPARTMENT OF HEALTH AND SOCIAL SERVICES  
DIVISION OF CORRECTIONS  
OFFICE OF INFORMATION MANAGEMENT  
MADISON, WISCONSIN 53707

STATISTICAL BULLETIN C-52

DECEMBER 1980

STATE OF WISCONSIN

DEPARTMENT OF HEALTH AND SOCIAL SERVICES

DONALD E. PERCY, SECRETARY

DIVISION OF CORRECTIONS

ELMER O. CADY, ADMINISTRATOR

LEE ROY BLACK, PH.D., DEPUTY ADMINISTRATOR

STEVE H. KRONZER, ASSISTANT ADMINISTRATOR

OFFICE OF INFORMATION MANAGEMENT

PAUL H. KUSUDA, INTERIM DIRECTOR

TED H. JOHNSON, SYSTEMS AND MANAGEMENT ANALYSIS SECTION

CARL F. SAM, OPERATIONS SECTIONS

NCJRS

OCT 21 1982

JUVENILES RELEASED FROM  
DIVISION OF CORRECTIONS JUVENILE INSTITUTIONS  
IN 1979

ACQUISITIONS

Selected characteristics of juveniles who were first-released and re-released during the years 1975-1979 are reported in Tables A through D. Information regarding juveniles released to aftercare in calendar year 1979 is found in Tables 1 through 14. Information regarding juveniles directly discharged or discharged by court order from juvenile correctional institutions in calendar year 1979 is found in Table 3 and in Appendices A (males) and B (females).

Table A  
Selected Characteristics of First-Released Juvenile Males  
1975-1979

Characteristics	1975	1976	1977	1978	1979
Average (mean) months stay in institution	9.5	8.8	7.8	8.2	8.4
Median age at release	16.8	16.6	16.2	16.6	16.7
Percent released to:					
Southern Region	--	--	11.8	9.0	11.0
Southeastern Region	--	--	21.8	19.9	20.4
Milwaukee Region	24.2	29.7	30.8	30.9	25.9
Eastern Region	--	--	15.1	16.4	19.9
Western Region	--	--	11.7	12.2	11.4
Northern Region	--	--	8.8	11.6	11.4
Percent with excellent institutional adjustment	11.8	9.9	10.1	7.3	8.8
Percent with excellent educational progress in institution	23.8	18.6	15.3	9.5	14.9
Percent with excellent vocational progress in institution	9.2	6.2	3.3	1.7	4.6
Percent from foster homes before admission	8.2	3.9	5.0	4.8	5.3
Percent to foster homes after release	11.3	8.7	7.5	10.0	10.3
Total number of first-released juvenile males	476	597	544	599	456

The average (mean) length of stay for first-released juvenile males reversed its downward trend for the second successive year, rising from 8.2 months to 8.4 months. The proportion of juvenile males with excellent vocational progress in the institutions almost doubled. There was also an increase in the percentages of those who had an excellent institution adjustment and those who made excellent educational progress in the institution.

Table B  
Selected Characteristics of First-Released Juvenile Females  
1975-1979

Characteristics	1975	1976	1977	1978	1979
Average (mean) months stay in institution	9.4	6.4	4.7	6.1	7.2
Median age at release	16.7	16.3	16.2	16.6	16.0
Percent released to:					
Southern Region	--	--	9.1	11.4	10.4
Southeastern Region	--	--	7.6	15.9	16.7
Milwaukee Region	28.6	41.2	45.5	28.4	20.8
Eastern Region	--	--	9.1	6.8	22.9
Western Region	--	--	9.1	18.2	20.8
Northern Region	--	--	19.6	19.3	8.4
Percent with excellent institutional adjustment	2.9	1.2	7.6	6.8	--
Percent with excellent educational progress in institution	18.6	14.1	6.1	4.5	4.2
Percent with excellent vocational progress in institution	2.9	1.2	3.0	--	4.1
Percent from foster homes before admission	21.4	10.6	10.6	14.8	27.1
Percent to foster homes after release	25.7	37.6	30.3	36.4	39.6
Total number of first-released juvenile females	70	85	66	88	48

The average (mean) length of stay for first-released juvenile females also continued its upward trend, rising from 6.1 months to 7.2 months. The percentages of those with excellent institutional adjustment and excellent educational progress in the institution declined from 1976 to 1979. The percentage of juvenile females released to the Eastern Region rose by about 237 percent, while the percentage released to the Milwaukee Region declined by roughly 27 percent.

Table C  
Selected Characteristics of Re-Released Juvenile Males  
1975-1979

Characteristics	1975	1976	1977	1978	1979
Average (mean) months stay in institution	10.5	10.9	8.8	9.5	9.1
Median age at release	17.1	17.0	17.1	17.1	17.1
Percent re-released to:					
Southern Region	--	--	14.3	9.8	15.7
Southeastern Region	--	--	21.9	20.3	17.4
Milwaukee Region	26.0	19.8	16.2	28.7	19.8
Eastern Region	--	--	16.2	14.0	19.0
Western Region	--	--	18.1	16.1	10.7
Northern Region	--	--	13.3	11.1	17.4
Percent with excellent institutional adjustment	9.0	14.4	5.7	4.2	4.1
Percent with excellent educational progress in institution	23.0	19.8	15.2	11.9	15.7
Percent with excellent vocational progress in institution	6.0	5.4	5.7	9.1	5.0
Total number of re-released juvenile males	100	111	105	143	121

The median age of juvenile males re-released was unchanged from the previous two years. The percentage of juvenile males re-released to Milwaukee Region decreased by almost a third from the five-year high in 1978. The percentage of those with excellent institutional adjustment continued a downward trend and those with excellent vocational progress dropped from 9.1 percent to 5.0 percent. However, the percentage of those with excellent educational progress increased from 11.9 percent to 15.7 percent.

Table D  
Selected Characteristics of Re-Released Juvenile Females  
1975-1979

Characteristics	1975	1976	1977	1978	1979
Average (mean) months stay in institution	8.0	6.1	4.7	8.5	9.7
Median age at release	17.1	16.6	17.2	16.9	16.6
Percent re-released to:					
Southern Region	--	--	22.2	15.4	22.2
Southeastern Region	--	--	--	7.6	22.2
Milwaukee Region	--	--	44.5	23.1	22.2
Eastern Region	--	--	--	15.4	11.1
Western Region	--	--	--	23.1	22.3
Northern Region	--	--	33.3	15.4	--
Percent with excellent institutional adjustment	3.2	7.7	--	--	11.1
Percent with excellent educational progress in institution	19.4	7.7	11.1	--	44.4
Percent with excellent vocational progress in institution	12.9	--	--	--	22.2
Total number of re-released juvenile females	31	26	9	13	9

The average length of stay for re-released juvenile females rose, from 8.5 months to a five-year high of 9.7 months. The percentage of those with excellent institutional adjustment or excellent educational or vocational progress also rose to a five-year high.

Prepared by: Harold W. Jacobs, Planning Analyst  
Office of Information Management  
Division of Corrections  
P.O. Box 7925  
Madison, Wisconsin 53707

Table 1  
 Juvenile Male Releases From Wisconsin Juvenile Correctional Institutions  
 REGION AND TYPE OF RELEASE  
 1975-1979

	Number					Percent				
	1975*	1976*	1977	1978	1979	1975	1976	1977	1978	1979
<u>Total</u>	<u>576</u>	<u>708</u>	<u>649</u>	<u>742</u>	<u>577</u>	<u>100.0</u>	<u>100.0</u>	<u>100.0</u>	<u>100.0</u>	<u>100.0</u>
<u>First Releases</u>	<u>476</u>	<u>597</u>	<u>544</u>	<u>599</u>	<u>456</u>	<u>82.6</u>	<u>84.3</u>	<u>83.8</u>	<u>80.7</u>	<u>79.0</u>
Southern Region	-	-	60	54	50	-	-	9.3	7.3	8.7
Southeastern Region	-	-	111	119	93	-	-	17.1	16.0	16.1
Milwaukee Region	115	177	165	185	118	20.0	25.0	25.4	24.9	20.4
Eastern Region	-	-	94	98	91	-	-	14.5	13.3	15.8
Western Region	-	-	71	73	52	-	-	10.9	9.8	9.0
Northern Region	-	-	43	70	52	-	-	6.6	9.4	9.0
<u>Re-Releases</u>	<u>100</u>	<u>111</u>	<u>105</u>	<u>143</u>	<u>121</u>	<u>17.4</u>	<u>15.7</u>	<u>16.2</u>	<u>19.3</u>	<u>21.0</u>
Southern Region	-	-	15	14	19	-	-	2.3	1.9	3.3
Southeastern Region	-	-	23	29	21	-	-	3.6	3.9	3.6
Milwaukee Region	26	22	17	41	24	4.5	3.1	2.6	5.5	4.2
Eastern Region	-	-	17	20	23	-	-	2.6	2.7	4.0
Western Region	-	-	19	23	13	-	-	2.9	3.1	2.3
Northern Region	-	-	14	16	21	-	-	2.2	2.2	3.6

\* Other specific regional figures for 1975 and 1976 are unavailable.

Table 1-A

Juvenile Female Releases from Wisconsin Juvenile Correctional Institutions  
REGION AND TYPE OF RELEASE  
1975-1979

	Number					Percent				
	1975*	1976*	1977	1978	1979	1975	1976	1977	1978	1979
<u>Total</u>	<u>101</u>	<u>111</u>	<u>75</u>	<u>101</u>	<u>57</u>	<u>100.0</u>	<u>100.0</u>	<u>100.0</u>	<u>100.0</u>	<u>100.0</u>
<u>First Releases</u>	<u>70</u>	<u>85</u>	<u>66</u>	<u>88</u>	<u>48</u>	<u>69.3</u>	<u>76.6</u>	<u>88.0</u>	<u>87.1</u>	<u>84.2</u>
Southern Region	-	-	6	10	5	-	-	9.1	9.9	8.8
Southeastern Region	-	-	5	14	8	-	-	7.6	13.9	14.0
Milwaukee Region	20	35	30	25	10	28.6	41.2	45.5	24.8	17.6
Eastern Region	-	-	6	6	11	-	-	9.1	5.9	19.3
Western Region	-	-	6	16	10	-	-	9.1	15.8	17.5
Northern Region	-	-	13	17	4	-	-	19.6	16.8	7.0
<u>Re-Releases</u>	<u>31</u>	<u>26</u>	<u>9</u>	<u>13</u>	<u>9</u>	<u>30.7</u>	<u>23.4</u>	<u>12.0</u>	<u>12.9</u>	<u>15.8</u>
Southern Region	-	-	2	2	2	-	-	2.7	2.0	3.5
Southeastern Region	-	-	-	1	2	-	-	-	0.9	3.5
Milwaukee Region	6	10	4	3	2	6.0	10.0	5.3	3.0	3.5
Eastern Region	-	-	-	2	1	-	-	-	2.0	1.8
Western Region	-	-	-	3	2	-	-	-	3.0	3.5
Northern Region	-	-	3	2	-	-	-	4.0	2.0	-

\* Other specific regional figures for 1975 and 1976 are unavailable.

Table 2

Releases from Wisconsin Juvenile Correctional Institutions  
 REGION AND TYPE OF RELEASE  
 January 1 - December 31, 1979

TYPE OF RELEASE	Juvenile Males							Juvenile Females						
	Total	South. Reg.	S.E. Reg.	Milw. Reg.	East. Reg.	West. Reg.	North. Reg.	Total	South. Reg.	S.E. Reg.	Milw. Reg.	East. Reg.	West. Reg.	North. Reg.
<u>Number</u>	<u>791</u>	<u>83</u>	<u>163</u>	<u>240</u>	<u>142</u>	<u>79</u>	<u>84</u>	<u>71</u>	<u>7</u>	<u>14</u>	<u>15</u>	<u>14</u>	<u>14</u>	<u>7</u>
First release	456	50	93	118	91	52	52	48	5	8	10	11	10	4
Second or subsequent release	121	19	21	24	23	13	21	9	2	2	2	1	2	-
Direct discharge	195	14	42	86	28	14	11	10	-	3	2	2	1	2
Discharge by court order	19	-	7	12	-	-	-	4	-	1	1	-	1	1
Death	-	-	-	-	-	-	-	-	-	-	-	-	-	-
<u>Percent</u>	<u>100.0</u>	<u>100.0</u>	<u>100.0</u>	<u>100.0</u>	<u>100.0</u>	<u>100.0</u>	<u>100.0</u>	<u>100.0</u>	<u>100.0</u>	<u>100.0</u>	<u>100.0</u>	<u>100.0</u>	<u>100.0</u>	<u>100.0</u>
First Release	57.6	60.2	57.0	49.2	64.1	65.8	61.9	67.6	71.4	57.1	66.7	78.6	71.4	57.1
Second or subsequent release	15.3	22.9	12.9	10.0	16.2	16.5	25.0	12.7	28.6	14.3	13.3	7.1	14.3	-
Direct discharge	24.7	16.9	25.8	35.8	19.7	17.7	13.1	14.1	-	21.4	13.3	14.3	7.1	28.6
Discharge by court order	2.4	-	4.3	5.0	-	-	-	5.6	-	7.2	6.7	-	7.2	14.3
Death	-	-	-	-	-	-	-	-	-	-	-	-	-	-

Table 3

Releases from Wisconsin Juvenile Correctional Institutions  
 REGION, COUNTY, AND TYPE OF RELEASE  
 January 1 - December 31, 1979

County and Region to Which Released	Juvenile Males						Juvenile Females				
	Total Released	Total	First Release	Re-Release	Direct Discharge	Discharge Court Order	Total	First Release	Re-Release	Direct Discharge	Discharge Court Order
<u>Total</u>	<u>883</u>	<u>803</u>	<u>462</u>	<u>123</u>	<u>198</u>	<u>20</u>	<u>80</u>	<u>49</u>	<u>9</u>	<u>18</u>	<u>4</u>
<u>Southern Region</u>	<u>90</u>	<u>83</u>	<u>50</u>	<u>19</u>	<u>14</u>	-	<u>7</u>	<u>5</u>	<u>2</u>	-	-
Columbia	1	1	-	-	1	-	-	-	-	-	-
Dane	30	28	14	11	3	-	2	1	1	-	-
Dodge	5	5	2	2	1	-	-	-	-	-	-
Grant	1	1	1	-	-	-	-	-	-	-	-
Green	1	1	1	-	-	-	-	-	-	-	-
Iowa	-	-	-	-	-	-	-	-	-	-	-
Jefferson	4	4	1	-	3	-	-	-	-	-	-
Juneau	5	5	3	1	1	-	-	-	-	-	-
Lafayette	-	-	-	-	-	-	-	-	-	-	-
Richland	-	-	-	-	-	-	-	-	-	-	-
Rock	35	30	23	3	4	-	5	4	1	-	-
Sauk	8	8	5	2	1	-	-	-	-	-	-
<u>Southeastern Region</u>	<u>177</u>	<u>163</u>	<u>93</u>	<u>21</u>	<u>42</u>	<u>7</u>	<u>14</u>	<u>8</u>	<u>2</u>	<u>3</u>	<u>1</u>
Kenosha	43	37	18	5	10	4	6	4	1	1	-
Ozaukee	3	3	-	-	2	1	-	-	-	-	-
Racine	52	47	27	2	17	1	5	2	1	1	1
Walworth	8	7	2	-	5	-	1	-	-	1	-
Washington	9	9	4	3	1	1	-	-	-	-	-
Waukesha	62	60	42	11	7	-	2	2	-	-	-
<u>Milwaukee Region</u>	<u>255</u>	<u>240</u>	<u>118</u>	<u>24</u>	<u>86</u>	<u>12</u>	<u>15</u>	<u>10</u>	<u>2</u>	<u>2</u>	<u>1</u>



Table 3 (Continued)

County and Region to Which Released	Juvenile Males						Juvenile Females				
	Total Released	Total	First Release	Re-Release	Direct Discharge	Discharge Court Order	Total	First Release	Re-Release	Direct Discharge	Discharge Court Order
<u>Eastern Region</u>	<u>156</u>	<u>142</u>	<u>91</u>	<u>23</u>	<u>28</u>	-	<u>14</u>	<u>11</u>	<u>1</u>	<u>2</u>	-
Brown	48	43	30	4	9	-	5	5	-	-	-
Calumet	-	-	-	-	-	-	-	-	-	-	-
Door	1	-	-	-	-	-	1	1	-	-	-
Fond du Lac	9	9	6	1	2	-	-	-	-	-	-
Green Lake	-	-	-	-	-	-	-	-	-	-	-
Kewaunee	-	-	-	-	-	-	-	-	-	-	-
Manitowoc	1	1	1	-	-	-	-	-	-	-	-
Marquette	5	4	3	1	-	-	1	1	-	-	-
Marquette	-	-	-	-	-	-	-	-	-	-	-
Menominee	9	6	1	-	5	-	3	1	-	2	-
Oconto	1	1	-	1	-	-	-	-	-	-	-
Outagamie	26	24	14	6	4	-	2	1	1	-	-
Shawano	12	12	6	2	4	-	-	-	-	-	-
Sheboygan	11	9	3	5	1	-	2	2	-	-	-
Waupaca	19	19	16	2	1	-	-	-	-	-	-
Waushara	2	2	2	-	-	-	-	-	-	-	-
Winnebago	12	12	9	1	2	-	-	-	-	-	-
<u>Western Region</u>	<u>93</u>	<u>79</u>	<u>52</u>	<u>13</u>	<u>14</u>	-	<u>14</u>	<u>10</u>	<u>2</u>	<u>1</u>	<u>1</u>
Barron	2	2	1	1	-	-	-	-	-	-	-
Buffalo	-	-	-	-	-	-	-	-	-	-	-
Burnett	1	-	-	-	-	-	1	1	-	-	-
Chippewa	6	6	2	2	2	-	-	-	-	-	-
Clark	3	2	1	1	-	-	1	1	-	-	-
Crawford	7	5	4	1	-	-	2	2	-	-	-

Table 3 (Concluded)

County and Region to Which Released	Juvenile Males						Juvenile Females				
	Total Released	Total	First Release	Re-Release	Direct Discharge	Discharge Court Order	Total	First Release	Re-Release	Direct Discharge	Discharge Court Order
Dunn	1	1	1	-	-	-	-	-	-	-	-
Eau Claire	21	17	12	3	2	-	4	3	1	-	-
Jackson	2	2	1	-	1	-	-	-	-	-	-
La Crosse	19	18	12	3	3	-	1	-	1	-	-
Monroe	2	1	1	-	-	-	1	-	-	1	-
Pepin	1	1	1	-	-	-	-	-	-	-	-
Pierce	4	4	3	-	1	-	-	-	-	-	-
Polk	10	7	6	-	1	-	3	3	-	-	-
Rusk	4	4	-	1	3	-	-	-	-	-	-
St. Croix	6	5	4	-	1	-	1	-	-	-	1
Trempealeau	-	-	-	-	-	-	-	-	-	-	-
Vernon	2	2	1	1	-	-	-	-	-	-	-
Washburn	2	2	2	-	-	-	-	-	-	-	-
<u>Northern Region</u>	<u>91</u>	<u>84</u>	<u>52</u>	<u>21</u>	<u>11</u>	<u>-</u>	<u>7</u>	<u>4</u>	<u>-</u>	<u>2</u>	<u>1</u>
Adams	1	1	-	-	1	-	-	-	-	-	-
Ashland	3	3	2	-	1	-	-	-	-	-	-
Bayfield	-	-	-	-	-	-	-	-	-	-	-
Douglas	15	12	8	4	-	-	3	2	-	-	1
Florence	-	-	-	-	-	-	-	-	-	-	-
Forest	-	-	-	-	-	-	-	-	-	-	-
Iron	-	-	-	-	-	-	-	-	-	-	-
Langlade	2	2	1	1	-	-	-	-	-	-	-
Lincoln	24	23	16	7	-	-	1	-	-	1	-
Marathon	20	19	14	2	3	-	1	-	-	1	-
Oneida	4	2	1	1	-	-	2	2	-	-	-
Portage	9	9	5	3	1	-	-	-	-	-	-
Price	2	2	1	-	1	-	-	-	-	-	-
Sawyer	2	2	-	-	2	-	-	-	-	-	-
Taylor	-	-	-	-	-	-	-	-	-	-	-
Vilas	4	4	2	-	2	-	-	-	-	-	-
Wood	5	5	2	3	-	-	-	-	-	-	-
<u>Out-of-State</u>	<u>13</u>	<u>10</u>	<u>6</u>	<u>2</u>	<u>1</u>	<u>1</u>	<u>2</u>	<u>1</u>	<u>-</u>	<u>2</u>	<u>-</u>
<u>Unknown</u>	<u>8</u>	<u>2</u>	<u>-</u>	<u>-</u>	<u>2</u>	<u>-</u>	<u>6</u>	<u>-</u>	<u>-</u>	<u>6</u>	<u>-</u>

Table 4  
 Juvenile Male Releases from Wisconsin Juvenile Correctional Institutions  
 MONTHS IN INSTITUTION AND TYPE OF RELEASE  
 January 1 - December 31, 1979

MONTHS IN INSTITUTION	First Release							Re-Release						
	Total	South. Reg.	S.E. Reg.	Milw. Reg.	East. Reg.	West. Reg.	North. Reg.	Total	South. Reg.	S.E. Reg.	Milw. Reg.	East. Reg.	West. Reg.	North. Reg.
<u>Number</u>	<u>456</u>	<u>50</u>	<u>93</u>	<u>118</u>	<u>91</u>	<u>52</u>	<u>52</u>	<u>121</u>	<u>19</u>	<u>21</u>	<u>24</u>	<u>23</u>	<u>13</u>	<u>21</u>
Less than 3 months	22	4	2	6	5	2	3	7	2	-	4	1	-	-
3 thru 5 months	126	12	32	26	28	10	18	20	1	4	2	5	1	7
6 thru 8 months	132	21	29	22	23	20	17	34	7	5	4	6	3	9
9 thru 11 months	81	4	14	29	19	8	7	29	3	5	8	6	4	3
12 thru 14 months	44	2	5	21	6	6	4	17	4	2	5	3	3	-
15 thru 17 months	25	3	6	7	5	2	2	9	1	4	1	2	-	1
18 thru 20 months	7	2	2	-	2	1	-	2	-	1	-	-	-	1
21 thru 23 months	7	1	1	2	-	2	1	2	1	-	-	-	1	-
24 months and over	12	1	2	5	3	1	-	1	-	-	-	-	1	-
<u>Percent</u>	<u>100.0</u>	<u>100.0</u>	<u>100.0</u>	<u>100.0</u>	<u>100.0</u>	<u>100.0</u>	<u>100.0</u>	<u>100.0</u>	<u>100.0</u>	<u>100.0</u>	<u>100.0</u>	<u>100.0</u>	<u>100.0</u>	<u>100.0</u>
Less than 3 months	4.8	8.0	2.1	5.1	5.5	3.9	5.8	5.6	10.5	-	16.7	4.4	-	-
3 thru 5 months	27.6	24.0	34.4	22.0	30.7	19.2	34.6	16.5	5.3	19.1	8.3	21.7	7.7	33.3
6 thru 8 months	29.0	42.0	31.2	18.7	25.3	38.5	32.7	28.1	36.8	23.8	16.7	26.1	23.1	42.8
9 thru 11 months	17.8	8.0	15.1	24.6	20.9	15.4	13.5	24.0	15.8	23.8	33.3	26.1	30.7	14.3
12 thru 14 months	9.7	4.0	5.4	17.8	6.6	11.5	7.7	14.0	21.0	9.5	20.8	13.0	23.1	-
15 thru 17 months	5.5	6.0	6.5	5.9	5.5	3.9	3.8	7.4	5.3	19.0	4.2	8.7	-	4.8
18 thru 20 months	1.5	4.0	2.1	-	2.2	1.9	-	1.7	-	4.8	-	-	-	4.8
21 thru 23 months	1.5	2.0	1.1	1.7	-	3.8	1.9	1.7	5.3	-	-	-	7.7	-
24 months and over	2.6	2.0	2.1	4.2	3.3	1.9	-	0.8	-	-	-	-	7.7	-
Median Length of Stay in Institution	7.6 months							8.9 months						

Table 4-A

Juvenile Female Releases from Wisconsin Juvenile Correctional Institutions  
 MONTHS IN INSTITUTION AND TYPE OF RELEASE  
 January 1 - December 31, 1979

MONTHS IN INSTITUTION	First Release							Re-Release						
	Total	South. Reg.	S.E. Reg.	Milw. Reg.	East. Reg.	West. Reg.	North. Reg.	Total	South. Reg.	S.E. Reg.	Milw. Reg.	East. Reg.	West. Reg.	North. Reg.
<u>Number</u>	<u>48</u>	<u>5</u>	<u>8</u>	<u>10</u>	<u>11</u>	<u>10</u>	<u>4</u>	<u>9</u>	<u>2</u>	<u>2</u>	<u>2</u>	<u>1</u>	<u>2</u>	<u>-</u>
Less than 3 months	2	-	-	1	-	1	-	-	-	-	-	-	-	-
3 thru 5 months	17	2	2	4	5	3	1	2	1	-	-	1	-	-
6 thru 8 months	12	1	4	2	3	1	1	4	1	1	1	-	1	-
9 thru 11 months	11	2	-	3	1	3	2	1	-	-	1	-	-	-
12 thru 14 months	3	-	-	-	1	2	-	1	-	-	-	-	1	-
15 thru 17 months	3	-	2	-	1	-	-	-	-	-	-	-	-	-
18 thru 20 months	-	-	-	-	-	-	-	-	-	-	-	-	-	-
21 thru 23 months	-	-	-	-	-	-	-	-	-	-	-	-	-	-
24 months and over	-	-	-	-	-	-	-	1	-	1	-	-	-	-
<u>Percent</u>	<u>100.0</u>	<u>100.0</u>	<u>100.0</u>	<u>100.0</u>	<u>100.0</u>	<u>100.0</u>	<u>100.0</u>	<u>100.0</u>	<u>100.0</u>	<u>100.0</u>	<u>100.0</u>	<u>100.0</u>	<u>100.0</u>	<u>-</u>
Less than 3 months	4.2	-	-	10.0	-	10.0	-	-	-	-	-	-	-	-
3 thru 5 months	35.4	40.0	25.0	40.0	45.4	30.0	25.0	22.2	50.0	-	-	100.0	-	-
6 thru 8 months	25.0	20.0	50.0	20.0	27.3	10.0	25.0	44.5	50.0	50.0	50.0	-	50.0	-
9 thru 11 months	22.9	40.0	-	30.0	9.1	30.0	50.0	11.1	-	-	50.0	-	-	-
12 thru 14 months	6.3	-	-	-	9.1	20.0	-	11.1	-	-	-	-	50.0	-
15 thru 17 months	6.2	-	25.0	-	9.1	-	-	-	-	-	-	-	-	-
18 thru 20 months	-	-	-	-	-	-	-	-	-	-	-	-	-	-
21 thru 23 months	-	-	-	-	-	-	-	-	-	-	-	-	-	-
24 months and over	-	-	-	-	-	-	-	11.1	-	50.0	-	-	-	-
Median Length of Stay in Institution	7.2 months							7.3 months						

Table 5

Juvenile Male Releases from Wisconsin Juvenile Correctional Institutions  
 AGE AT RELEASE AND TYPE OF RELEASE  
 January 1 - December 31, 1979

AGE	First Release							Re-Release						
	Total	South. Reg.	S.E. Reg.	Milw. Reg.	East. Reg.	West. Reg.	North. Reg.	Total	South. Reg.	S.E. Reg.	Milw. Reg.	East. Reg.	West. Reg.	North. Reg.
<u>Number</u>	<u>456</u>	<u>50</u>	<u>93</u>	<u>118</u>	<u>91</u>	<u>52</u>	<u>52</u>	<u>121</u>	<u>19</u>	<u>21</u>	<u>24</u>	<u>23</u>	<u>13</u>	<u>21</u>
12 years	-	-	-	-	-	-	-	-	-	-	-	-	-	-
13 years	7	-	-	4	2	-	1	-	-	-	-	-	-	-
14 years	42	4	12	14	7	3	2	2	-	-	-	2	-	-
15 years	76	7	15	23	18	8	5	17	1	3	5	7	-	1
16 years	143	19	29	33	30	18	14	31	4	9	5	6	2	5
17 years	185	20	35	43	34	23	30	70	14	9	14	8	11	14
18 years	3	-	2	1	-	-	-	1	-	-	-	-	-	1
<u>Percent</u>	<u>100.0</u>	<u>100.0</u>	<u>100.0</u>	<u>100.0</u>	<u>100.0</u>	<u>100.0</u>	<u>100.0</u>	<u>100.0</u>	<u>100.0</u>	<u>100.0</u>	<u>100.0</u>	<u>100.0</u>	<u>100.0</u>	<u>100.0</u>
12 years	-	-	-	-	-	-	-	-	-	-	-	-	-	-
13 years	1.5	-	-	3.4	2.2	-	1.9	-	-	-	-	-	-	-
14 years	9.2	8.0	12.9	11.9	7.7	5.8	3.9	1.7	-	-	-	8.7	-	-
15 years	16.7	14.0	16.1	19.5	19.8	15.4	9.6	14.0	5.3	14.3	20.8	30.4	-	4.8
16 years	31.4	38.0	31.2	28.0	33.0	34.6	26.9	25.6	21.0	42.9	20.8	26.1	15.4	23.8
17 years	40.6	40.0	37.6	36.4	37.3	44.2	57.7	57.9	73.7	42.8	58.4	34.8	84.6	66.7
18 years	0.6	-	2.2	0.8	-	-	-	0.8	-	-	-	-	-	4.7
<u>Median Age at Release</u>	<u>16.7</u>	<u>16.7</u>	<u>16.7</u>	<u>16.5</u>	<u>16.6</u>	<u>16.8</u>	<u>17.1</u>	<u>17.1</u>	<u>17.3</u>	<u>16.8</u>	<u>17.1</u>	<u>16.4</u>	<u>17.4</u>	<u>17.3</u>

Table 5-A

Juvenile Female Releases from Wisconsin Juvenile Correctional Institutions  
 AGE AT RELEASE AND TYPE OF RELEASE  
 January 1 - December 31, 1979

AGE	First Release							Re-Release						
	Total	South. Reg.	S.E. Reg.	Milw. Reg.	East. Reg.	West. Reg.	North. Reg.	Total	South. Reg.	S.E. Reg.	Milw. Reg.	East. Reg.	West. Reg.	North. Reg.
Number	48	5	8	10	11	10	4	9	2	2	2	1	2	-
12 years	-	-	-	-	-	-	-	-	-	-	-	-	-	-
13 years	2	-	-	1	1	-	-	-	-	-	-	-	-	-
14 years	6	1	3	1	1	-	-	-	-	-	-	-	-	-
15 years	16	2	2	2	3	3	4	1	-	-	-	-	1	-
16 years	15	2	2	2	5	4	-	6	1	2	1	1	1	-
17 years	8	-	1	3	1	3	-	2	1	-	1	-	-	-
18 years	1	-	-	1	-	-	-	-	-	-	-	-	-	-
Percent	100.0	100.0	100.0	100.0	100.0	100.0	100.0	100.0	100.0	100.0	100.0	100.0	100.0	-
12 years	-	-	-	-	-	-	-	-	-	-	-	-	-	-
13 years	4.2	-	-	10.0	9.1	-	-	-	-	-	-	-	-	-
14 years	12.5	20.0	37.5	10.0	9.1	-	-	-	-	-	-	-	-	-
15 years	33.3	40.0	25.0	20.0	27.3	30.0	100.0	11.1	-	-	-	-	50.0	-
16 years	31.2	40.0	25.0	20.0	45.4	40.0	-	66.7	50.0	100.0	50.0	100.0	50.0	-
17 years	16.7	-	12.5	30.0	9.1	30.0	-	22.2	50.0	-	50.0	-	-	-
18 years	2.1	-	-	10.0	-	-	-	-	-	-	-	-	-	-
Median Age at Release	16.0	15.7	15.5	15.5	16.1	16.5	15.5	16.6	-	-	-	-	-	-

Table 6

Juvenile Male Releases from Wisconsin Juvenile Correctional Institutions  
 RACE AND TYPE OF RELEASE  
 January 1 - December 31, 1979

RACE	First Release							Re-Release						
	Total	South. Reg.	S. E. Reg.	Milw. Reg.	East. Reg.	West. Reg.	North. Reg.	Total	South. Reg.	S. E. Reg.	Milw. Reg.	East. Reg.	West. Reg.	North. Reg.
<u>Number</u>	<u>456</u>	<u>50</u>	<u>93</u>	<u>118</u>	<u>91</u>	<u>52</u>	<u>52</u>	<u>121</u>	<u>19</u>	<u>21</u>	<u>24</u>	<u>23</u>	<u>13</u>	<u>21</u>
<u>White</u>	<u>332</u>	<u>46</u>	<u>70</u>	<u>44</u>	<u>77</u>	<u>50</u>	<u>45</u>	<u>94</u>	<u>16</u>	<u>15</u>	<u>12</u>	<u>21</u>	<u>11</u>	<u>19</u>
<u>White (Mexican Origin)</u>	<u>14</u>	<u>1</u>	<u>4</u>	<u>7</u>	<u>1</u>	<u>-</u>	<u>1</u>	<u>3</u>	<u>1</u>	<u>2</u>	<u>-</u>	<u>-</u>	<u>-</u>	<u>-</u>
<u>Non-White</u>	<u>110</u>	<u>3</u>	<u>19</u>	<u>67</u>	<u>13</u>	<u>2</u>	<u>6</u>	<u>24</u>	<u>2</u>	<u>4</u>	<u>12</u>	<u>2</u>	<u>2</u>	<u>2</u>
Black	85	3	18	64	-	-	-	17	2	3	12	-	-	-
Native American	24	-	1	2	13	2	6	7	-	1	-	2	2	2
Other	1	-	-	1	-	-	-	-	-	-	-	-	-	-
<u>Percent</u>	<u>100.0</u>	<u>100.0</u>	<u>100.0</u>	<u>100.0</u>	<u>100.0</u>	<u>100.0</u>	<u>100.0</u>	<u>100.0</u>	<u>100.0</u>	<u>100.0</u>	<u>100.0</u>	<u>100.0</u>	<u>100.0</u>	<u>100.0</u>
<u>White</u>	<u>72.8</u>	<u>92.0</u>	<u>75.3</u>	<u>37.3</u>	<u>84.6</u>	<u>96.2</u>	<u>86.6</u>	<u>77.7</u>	<u>84.2</u>	<u>71.4</u>	<u>50.0</u>	<u>91.3</u>	<u>84.6</u>	<u>90.5</u>
<u>White (Mexican Origin)</u>	<u>3.1</u>	<u>2.0</u>	<u>4.3</u>	<u>5.9</u>	<u>1.1</u>	<u>-</u>	<u>1.9</u>	<u>2.5</u>	<u>5.3</u>	<u>9.5</u>	<u>-</u>	<u>-</u>	<u>-</u>	<u>-</u>
<u>Non-White</u>	<u>24.1</u>	<u>6.0</u>	<u>20.4</u>	<u>56.8</u>	<u>14.3</u>	<u>3.8</u>	<u>11.5</u>	<u>19.8</u>	<u>10.5</u>	<u>19.1</u>	<u>50.0</u>	<u>8.7</u>	<u>15.4</u>	<u>9.5</u>
Black	18.6	6.0	19.3	54.2	-	-	-	14.0	10.5	14.3	50.0	-	-	-
Native American	5.3	-	1.1	1.7	14.3	3.8	11.5	5.8	-	4.8	-	8.7	15.4	9.5
Other	0.2	-	-	0.9	-	-	-	-	-	-	-	-	-	-

Table 6-A

Juvenile Female Releases from Wisconsin Juvenile Correctional Institutions  
 RACE AND TYPE OF RELEASE  
 January 1 - December 31, 1979

RACE	First Release							Re-Release						
	Total	South. Reg.	S.E. Reg.	Milw. Reg.	East. Reg.	West. Reg.	North. Reg.	Total	South. Reg.	S.E. Reg.	Milw. Reg.	East. Reg.	West. Reg.	North. Reg.
<u>Number</u>	<u>48</u>	<u>5</u>	<u>8</u>	<u>10</u>	<u>11</u>	<u>10</u>	<u>4</u>	<u>9</u>	<u>2</u>	<u>2</u>	<u>2</u>	<u>1</u>	<u>2</u>	<u>-</u>
White	31	4	7	2	9	7	2	6	2	1	-	1	2	-
White (Mexican Origin)	-	-	-	-	-	-	-	-	-	-	-	-	-	-
Non-White	17	1	1	8	2	3	2	3	-	1	2	-	-	-
Black	11	1	1	8	-	1	-	3	-	1	2	-	-	-
Native American	6	-	-	-	2	2	2	-	-	-	-	-	-	-
Other	-	-	-	-	-	-	-	-	-	-	-	-	-	-
<u>Percent</u>	<u>100.0</u>	<u>100.0</u>	<u>100.0</u>	<u>100.0</u>	<u>100.0</u>	<u>100.0</u>	<u>100.0</u>	<u>100.0</u>	<u>100.0</u>	<u>100.0</u>	<u>100.0</u>	<u>100.0</u>	<u>100.0</u>	<u>-</u>
White	64.6	80.0	87.5	20.0	81.8	70.0	50.0	66.7	100.0	50.0	-	100.0	100.0	-
White (Mexican Origin)	-	-	-	-	-	-	-	-	-	-	-	-	-	-
Non-White	35.4	20.0	12.5	80.0	18.2	30.0	50.0	33.3	-	50.0	100.0	-	-	-
Black	22.9	20.0	12.5	80.0	-	10.0	-	33.3	-	50.0	100.0	-	-	-
Native American	12.5	-	-	-	18.2	20.0	50.0	-	-	-	-	-	-	-
Other	-	-	-	-	-	-	-	-	-	-	-	-	-	-



Table 7

Juvenile Male Releases from Wisconsin Juvenile Correctional Institutions  
 INSTITUTIONAL ADJUSTMENT AND TYPE OF RELEASE  
 January 1 - December 31, 1979

INSTITUTIONAL ADJUSTMENT	First Release							Re-Release						
	Total	South. Reg.	S.E. Reg.	Milw. Reg.	East. Reg.	West. Reg.	North. Reg.	Total	South. Reg.	S.E. Reg.	Milw. Reg.	East. Reg.	West. Reg.	North. Reg.
<u>Number</u>	<u>456</u>	<u>50</u>	<u>93</u>	<u>118</u>	<u>91</u>	<u>52</u>	<u>52</u>	<u>121</u>	<u>19</u>	<u>21</u>	<u>24</u>	<u>23</u>	<u>13</u>	<u>21</u>
Excel lent	40	5	12	10	10	2	1	5	-	1	1	3	-	-
Better than average	159	20	36	43	26	17	17	48	9	10	8	8	4	9
Average	213	23	38	48	45	28	31	54	8	5	12	11	8	10
Poorer than average	42	2	7	15	10	5	3	9	2	3	1	-	1	2
Extremely poor	1	-	-	1	-	-	-	3	-	1	2	-	-	-
Unknown	1	-	-	1	-	-	-	2	-	1	-	1	-	-
<u>Percent</u>	<u>100.0</u>	<u>100.0</u>	<u>100.0</u>	<u>100.0</u>	<u>100.0</u>	<u>100.0</u>	<u>100.0</u>	<u>100.0</u>	<u>100.0</u>	<u>100.0</u>	<u>100.0</u>	<u>100.0</u>	<u>100.0</u>	<u>100.0</u>
Excel lent	8.8	10.0	12.9	8.5	11.0	3.8	1.9	4.1	-	4.8	4.2	13.0	-	-
Better than average	34.9	40.0	38.7	36.4	28.6	32.7	32.7	39.7	47.4	47.6	33.3	34.8	30.8	42.9
Average	46.7	46.0	40.9	40.7	49.4	53.9	59.6	44.6	42.1	23.8	50.0	47.8	61.5	47.6
Poorer than average	9.2	4.0	7.5	12.7	11.0	9.6	5.8	7.4	10.5	14.3	4.2	-	7.7	9.5
Extremely poor	0.2	-	-	0.9	-	-	-	2.5	-	4.8	8.3	-	-	-
Unknown	0.2	-	-	0.8	-	-	-	1.7	-	4.7	-	4.4	-	-

Table 7-A

Juvenile Female Releases from Wisconsin Juvenile Correctional Institutions  
 INSTITUTIONAL ADJUSTMENT AND TYPE OF RELEASE  
 January 1 - December 31, 1979

INSTITUTIONAL ADJUSTMENT	First Release							Re-Release						
	Total	South. Reg.	S.E. Reg.	Milw. Reg.	East. Reg.	West. Reg.	North. Reg.	Total	South. Reg.	S.E. Reg.	Milw. Reg.	East. Reg.	West. Reg.	North. Reg.
<u>Number</u>	<u>48</u>	<u>5</u>	<u>8</u>	<u>10</u>	<u>11</u>	<u>10</u>	<u>4</u>	<u>9</u>	<u>2</u>	<u>2</u>	<u>2</u>	<u>1</u>	<u>2</u>	<u>-</u>
Excel lent	-	-	-	-	-	-	-	1	-	-	-	1	-	-
Better than average	19	2	-	6	4	5	2	5	2	1	1	-	1	-
Average	20	3	5	3	5	3	1	3	-	1	1	-	1	-
Poorer than average	9	-	3	1	2	2	1	-	-	-	-	-	-	-
Extremely poor	-	-	-	-	-	-	-	-	-	-	-	-	-	-
Unknown	-	-	-	-	-	-	-	-	-	-	-	-	-	-
<u>Percent</u>	<u>100.0</u>	<u>100.0</u>	<u>100.0</u>	<u>100.0</u>	<u>100.0</u>	<u>100.0</u>	<u>100.0</u>	<u>100.0</u>	<u>100.0</u>	<u>100.0</u>	<u>100.0</u>	<u>100.0</u>	<u>100.0</u>	<u>-</u>
Excel lent	-	-	-	-	-	-	-	11.1	-	-	-	100.0	-	-
Better than average	39.6	40.0	-	60.0	36.4	50.0	50.0	55.6	100.0	50.0	50.0	-	50.0	-
Average	41.7	60.0	62.5	30.0	45.4	30.0	25.0	33.3	-	50.0	50.0	-	50.0	-
Poorer than average	18.7	-	37.5	10.0	18.2	20.0	25.0	-	-	-	-	-	-	-
Extremely Poor	-	-	-	-	-	-	-	-	-	-	-	-	-	-
Unknown	-	-	-	-	-	-	-	-	-	-	-	-	-	-

Table 8  
 Juvenile Male Releases from Wisconsin Juvenile Correctional Institutions  
 MARITAL STATUS OF NATURAL PARENTS AND TYPE OF RELEASE  
 January 1 - December 31, 1979

MARITAL STATUS OF YOUTH'S NATURAL PARENTS AT ADMISSION	First Release							Re-Release						
	Total	South. Reg.	S.E. Reg.	Milw. Reg.	East. Reg.	West. Reg.	North. Reg.	Total	South. Reg.	S.E. Reg.	Milw. Reg.	East. Reg.	West. Reg.	North. Reg.
<u>Number</u>	<u>456</u>	<u>50</u>	<u>93</u>	<u>118</u>	<u>91</u>	<u>52</u>	<u>52</u>	<u>121</u>	<u>19</u>	<u>21</u>	<u>24</u>	<u>23</u>	<u>13</u>	<u>21</u>
Parents not married	26	-	9	11	2	-	4	11	1	1	3	3	1	2
Parents married	193	24	44	37	40	24	24	37	3	9	10	7	1	7
Parents divorced or separated	189	24	34	53	38	22	18	57	13	9	6	11	10	8
Parent widowed	35	1	4	12	8	6	4	9	1	1	4	1	1	1
Both natural parents dead	4	-	1	2	1	-	-	-	-	-	-	-	-	-
Other	1	1	-	-	-	-	-	1	-	1	-	-	-	-
Unknown	8	-	1	3	2	-	2	6	1	-	1	1	-	3
<u>Percent</u>	<u>100.0</u>	<u>100.0</u>	<u>100.0</u>	<u>100.0</u>	<u>100.0</u>	<u>100.0</u>	<u>100.0</u>	<u>100.0</u>	<u>100.0</u>	<u>100.0</u>	<u>100.0</u>	<u>100.0</u>	<u>100.0</u>	<u>100.0</u>
Parents not married	5.7	-	9.7	9.3	2.2	-	7.7	9.1	5.3	4.8	12.5	13.0	7.7	9.5
Parents married	42.3	48.0	47.3	31.4	43.9	46.2	46.2	30.6	15.8	42.8	41.7	30.4	7.7	33.3
Parents divorced or separated	41.4	48.0	36.5	44.9	41.8	42.3	34.6	47.1	68.4	42.8	25.0	47.8	76.9	38.1
Parent widowed	7.7	2.0	4.3	10.2	8.8	11.5	7.7	7.4	5.3	4.8	16.7	4.4	7.7	4.8
Both natural parents dead	0.9	-	1.1	1.7	1.1	-	-	-	-	-	-	-	-	-
Other	0.2	2.0	-	-	-	-	-	0.8	-	4.8	-	-	-	-
Unknown	1.8	-	1.1	2.5	2.2	-	3.8	5.0	5.2	-	4.1	4.4	-	14.3

Table 8-A

Juveniles Female Releases from Wisconsin Juvenile Correctional Institutions  
 MARITAL STATUS OF NATURAL PARENTS AND TYPE OF RELEASE  
 January 1 - December 31, 1979

MARITAL STATUS OF YOUTH'S NATURAL PARENTS AT ADMISSION	First Release							Re-Release						
	Total	South. Reg.	S.E. Reg.	Milw. Reg.	East. Reg.	West. Reg.	North. Reg.	Total	South. Reg.	S.E. Reg.	Milw. Reg.	East. Reg.	West. Reg.	North. Reg.
<u>Number</u>	<u>48</u>	<u>5</u>	<u>8</u>	<u>10</u>	<u>11</u>	<u>10</u>	<u>4</u>	<u>9</u>	<u>2</u>	<u>2</u>	<u>2</u>	<u>1</u>	<u>2</u>	<u>-</u>
Parents not married	1	-	-	-	1	-	-	-	-	-	-	-	-	-
Parents married	10	1	4	2	1	2	-	1	-	1	-	-	-	-
Parents divorced or separated	32	2	4	6	8	8	4	7	2	1	1	1	2	-
Parent widowed	2	1	-	-	1	-	-	1	-	-	1	-	-	-
Both natural parents dead	-	-	-	-	-	-	-	-	-	-	-	-	-	-
Other	-	-	-	-	-	-	-	-	-	-	-	-	-	-
Unknown	3	1	-	2	-	-	-	-	-	-	-	-	-	-
<u>Percent</u>	<u>100.0</u>	<u>100.0</u>	<u>100.0</u>	<u>100.0</u>	<u>100.0</u>	<u>100.0</u>	<u>100.0</u>	<u>100.0</u>	<u>100.0</u>	<u>100.0</u>	<u>100.0</u>	<u>100.0</u>	<u>100.0</u>	<u>-</u>
Parents not married	2.1	-	-	-	9.1	-	-	-	-	-	-	-	-	-
Parents married	20.8	20.0	50.0	20.0	9.1	20.0	-	11.1	-	50.0	-	-	-	-
Parents divorced or separated	66.7	40.0	50.0	60.0	72.7	80.0	100.0	77.8	100.0	50.0	50.0	100.0	100.0	-
Parent widowed	4.2	20.0	-	-	9.1	-	-	11.1	-	-	50.0	-	-	-
Both natural parents dead	-	-	-	-	-	-	-	-	-	-	-	-	-	-
Other	-	-	-	-	-	-	-	-	-	-	-	-	-	-
Unknown	6.2	20.0	-	20.0	-	-	-	-	-	-	-	-	-	-

Table 9

Juvenile Male Releases from Wisconsin Juvenile Correctional Institutions  
 SOCIO-ECONOMIC LEVEL AND TYPE OF RELEASE  
 January 1 - December 31, 1979

SOCIO-ECONOMIC LEVEL OF FAMILY	First Release							Re-Release						
	Total	South. Reg.	S.E. Reg.	Milw. Reg.	East. Reg.	West. Reg.	North. Reg.	Total	South. Reg.	S.E. Reg.	Milw. Reg.	East. Reg.	West. Reg.	North. Reg.
<u>Number</u>	<u>456</u>	<u>50</u>	<u>93</u>	<u>118</u>	<u>91</u>	<u>52</u>	<u>52</u>	<u>121</u>	<u>19</u>	<u>21</u>	<u>24</u>	<u>23</u>	<u>13</u>	<u>21</u>
Upper	3	-	2	-	1	-	-	1	-	-	1	-	-	-
Upper-middle	52	8	17	8	7	7	5	10	2	1	1	3	1	2
Lower-middle	214	30	37	41	43	33	30	56	7	10	8	8	11	12
Upper-lower	144	8	28	46	34	11	17	40	7	8	8	11	-	6
Lower-lower	42	4	9	22	6	1	-	14	3	2	6	1	1	1
Unknown	1	-	-	1	-	-	-	-	-	-	-	-	-	-
<u>Percent</u>	<u>100.0</u>	<u>100.0</u>	<u>100.0</u>	<u>100.0</u>	<u>100.0</u>	<u>100.0</u>	<u>100.0</u>	<u>100.0</u>	<u>100.0</u>	<u>100.0</u>	<u>100.0</u>	<u>100.0</u>	<u>100.0</u>	<u>100.0</u>
Upper	0.7	-	2.1	-	1.1	-	-	0.8	-	-	4.2	-	-	-
Upper-middle	11.4	16.0	18.3	6.8	7.7	13.5	9.6	8.3	10.5	4.8	4.2	13.0	7.7	9.5
Lower-middle	46.9	60.0	39.8	34.7	47.2	63.5	57.7	46.3	36.9	47.6	33.3	34.8	84.6	57.1
Upper-lower	31.6	16.0	30.1	39.0	37.4	21.1	32.7	33.0	36.8	38.1	33.3	47.8	-	28.6
Lower-lower	9.2	8.0	9.7	18.6	6.6	1.9	-	11.6	15.8	9.5	25.0	4.4	7.7	4.8
Unknown	0.2	-	-	0.9	-	-	-	-	-	-	-	-	-	-

Table 9-A  
 Juvenile Female Releases from Wisconsin Juvenile Correctional Institutions  
 SOCIO-ECONOMIC LEVEL AND TYPE OF RELEASE  
 January 1 - December 31, 1979

SOCIO-ECONOMIC LEVEL OF FAMILY	First Release							Re-Release						
	Total	South. Reg.	S.E. Reg.	Milw. Reg.	East. Reg.	West. Reg.	North. Reg.	Total	South. Reg.	S.E. Reg.	Milw. Reg.	East. Reg.	West. Reg.	North. Reg.
<u>Number</u>	<u>48</u>	<u>5</u>	<u>8</u>	<u>10</u>	<u>11</u>	<u>10</u>	<u>4</u>	<u>9</u>	<u>2</u>	<u>2</u>	<u>2</u>	<u>1</u>	<u>2</u>	<u>-</u>
Upper	-	-	-	-	-	-	-	-	-	-	-	-	-	-
Upper-middle	2	-	1	-	-	1	-	1	-	-	-	-	1	-
Lower-middle	20	1	4	3	6	3	3	2	1	-	-	-	1	-
Upper-lower	23	3	3	6	4	6	1	6	1	2	2	1	-	-
Lower-lower	3	1	-	1	1	-	-	-	-	-	-	-	-	-
<u>Percent</u>	<u>100.0</u>	<u>100.0</u>	<u>100.0</u>	<u>100.0</u>	<u>100.0</u>	<u>100.0</u>	<u>100.0</u>	<u>100.0</u>	<u>100.0</u>	<u>100.0</u>	<u>100.0</u>	<u>100.0</u>	<u>100.0</u>	<u>-</u>
Upper	-	-	-	-	-	-	-	-	-	-	-	-	-	-
Upper-middle	4.2	-	12.5	-	-	10.0	-	11.1	-	-	-	-	50.0	-
Lower-middle	41.7	20.0	50.0	30.0	54.5	30.0	75.0	22.2	50.0	-	-	-	50.0	-
Upper-lower	47.9	60.0	37.5	60.0	36.4	60.0	25.0	66.7	50.0	100.0	100.0	100.0	-	-
Lower-lower	6.2	20.0	-	10.0	9.1	-	-	-	-	-	-	-	-	-

Table 10

Juvenile Male Releases from Wisconsin Juvenile Correctional Institutions  
 EDUCATIONAL PROGRESS AND TYPE OF RELEASE  
 January 1 - December 31, 1979

EDUCATIONAL PROGRESS	First Release							Re-Release						
	Total	South. Reg.	S.E. Reg.	Milw. Reg.	East. Reg.	West. Reg.	North. Reg.	Total	South. Reg.	S.E. Reg.	Milw. Reg.	East. Reg.	West. Reg.	North. Reg.
<u>Number</u>	<u>456</u>	<u>50</u>	<u>93</u>	<u>118</u>	<u>91</u>	<u>52</u>	<u>52</u>	<u>121</u>	<u>19</u>	<u>21</u>	<u>24</u>	<u>23</u>	<u>13</u>	<u>21</u>
Not applicable	12	-	3	1	4	1	3	8	-	3	-	3	-	2
Excellent	68	11	17	18	11	7	4	19	8	4	3	1	2	1
Satisfactory	347	38	65	89	74	40	41	86	10	12	19	18	10	17
No progress	23	1	8	9	1	3	1	6	1	-	2	1	1	1
Regression	-	-	-	-	-	-	-	-	-	-	-	-	-	-
No evaluation made	6	-	-	1	1	1	3	2	-	2	-	-	-	-
<u>Percent</u>	<u>100.0</u>	<u>100.0</u>	<u>100.0</u>	<u>100.0</u>	<u>100.0</u>	<u>100.0</u>	<u>100.0</u>	<u>100.0</u>	<u>100.0</u>	<u>100.0</u>	<u>100.0</u>	<u>100.0</u>	<u>100.0</u>	<u>100.0</u>
Not applicable	2.6	-	3.2	0.9	4.4	1.9	5.8	6.6	-	14.3	-	13.0	-	9.5
Excellent	14.9	22.0	18.3	15.2	12.1	13.5	7.7	15.7	42.1	19.1	12.5	4.4	15.4	4.8
Satisfactory	76.1	76.0	69.9	75.4	81.3	76.9	78.8	71.1	52.6	57.1	79.2	78.3	76.9	80.9
No progress	5.1	2.0	8.6	7.6	1.1	5.8	1.9	5.0	5.3	-	8.3	4.3	7.7	4.8
Regression	-	-	-	-	-	-	-	-	-	-	-	-	-	-
No evaluation made	1.3	-	-	0.9	1.1	1.9	5.8	1.6	-	9.5	-	-	-	-

Table 10-A

Juvenile Female Releases from Wisconsin Juvenile Correctional Institutions  
 EDUCATIONAL PROGRESS AND TYPE OF RELEASE  
 January 1 - December 31, 1979

EDUCATIONAL PROGRESS	First Release							Re-Release						
	Total	South. Reg.	S.E. Reg.	Milw. Reg.	East. Reg.	West. Reg.	North. Reg.	Total	South. Reg.	S.E. Reg.	Milw. Reg.	East. Reg.	West. Reg.	North. Reg.
<u>Number</u>	<u>48</u>	<u>5</u>	<u>8</u>	<u>10</u>	<u>11</u>	<u>10</u>	<u>4</u>	<u>9</u>	<u>2</u>	<u>2</u>	<u>2</u>	<u>1</u>	<u>2</u>	<u>-</u>
Not applicable	-	-	-	-	-	-	-	-	-	-	-	-	-	-
Excellent	2	2	-	-	-	-	-	4	1	1	-	-	2	-
Satisfactory	42	3	6	10	10	10	3	5	1	1	2	1	-	-
No progress	3	-	2	-	1	-	-	-	-	-	-	-	-	-
Regression	-	-	-	-	-	-	-	-	-	-	-	-	-	-
No evaluation made	1	-	-	-	-	-	1	-	-	-	-	-	-	-
<u>Percent</u>	<u>100.0</u>	<u>100.0</u>	<u>100.0</u>	<u>100.0</u>	<u>100.0</u>	<u>100.0</u>	<u>100.0</u>	<u>100.0</u>	<u>100.0</u>	<u>100.0</u>	<u>100.0</u>	<u>100.0</u>	<u>100.0</u>	<u>-</u>
Not applicable	-	-	-	-	-	-	-	-	-	-	-	-	-	-
Excellent	4.2	40.0	-	-	-	-	-	44.4	50.0	50.0	-	-	100.0	-
Satisfactory	87.5	60.0	75.0	100.0	90.9	100.0	75.0	55.6	50.0	50.0	100.0	100.0	-	-
No progress	6.2	-	25.0	-	9.1	-	-	-	-	-	-	-	-	-
Regression	-	-	-	-	-	-	-	-	-	-	-	-	-	-
No evaluation made	2.1	-	-	-	-	-	25.0	-	-	-	-	-	-	-



Table II

Juvenile Male Releases from Wisconsin Juvenile Correctional Institutions  
 VOCATIONAL PROGRESS AND TYPE OF RELEASE  
 January 1 - December 31, 1979

VOCATIONAL PROGRESS	First Release							Re-Release						
	Total	South. Reg.	S.E. Reg.	Milw. Reg.	East. Reg.	West. Reg.	North. Reg.	Total	South. Reg.	S.E. Reg.	Milw. Reg.	East. Reg.	West. Reg.	North. Reg.
<u>Number</u>	<u>456</u>	<u>50</u>	<u>93</u>	<u>118</u>	<u>91</u>	<u>52</u>	<u>52</u>	<u>121</u>	<u>19</u>	<u>21</u>	<u>24</u>	<u>23</u>	<u>13</u>	<u>21</u>
Not applicable	189	24	45	61	34	19	6	40	4	10	12	6	3	5
Excellent	21	5	5	6	1	1	3	6	-	2	-	2	2	-
Satisfactory	218	19	34	42	54	30	39	68	13	7	9	15	8	16
No progress	9	-	5	2	1	1	-	4	1	-	3	-	-	-
Regression	1	-	-	-	-	-	1	-	-	-	-	-	-	-
No evaluation made	18	2	4	7	1	1	3	3	1	2	-	-	-	-
<u>Percent</u>	<u>100.0</u>	<u>100.0</u>	<u>100.0</u>	<u>100.0</u>	<u>100.0</u>	<u>100.0</u>	<u>100.0</u>	<u>100.0</u>	<u>100.0</u>	<u>100.0</u>	<u>100.0</u>	<u>100.0</u>	<u>100.0</u>	<u>100.0</u>
Not applicable	41.4	48.0	48.4	51.7	37.4	36.6	11.5	33.0	21.0	47.6	50.0	26.1	23.1	23.8
Excellent	4.6	10.0	5.4	5.1	1.1	1.9	5.8	5.0	-	9.6	-	8.7	15.4	-
Satisfactory	47.8	38.0	36.5	35.6	59.3	57.7	75.0	56.2	68.4	33.3	37.5	65.2	61.5	76.2
No progress	2.0	-	5.4	1.7	1.1	1.9	-	3.3	5.3	-	12.5	-	-	-
Regression	0.2	-	-	-	-	-	1.9	-	-	-	-	-	-	-
No evaluation made	4.0	4.0	4.3	5.9	1.1	1.9	5.8	2.5	5.3	9.5	-	-	-	-

Table II-A

Juvenile Female Releases from Wisconsin Juvenile Correctional Institutions  
 VOCATIONAL PROGRESS AND TYPE OF RELEASE  
 January 1 - December 31, 1979

VOCATIONAL PROGRESS	First Release							Re-Release						
	Total	South. Reg.	S.E. Reg.	Milw. Reg.	East. Reg.	West. Reg.	North. Reg.	Total	South. Reg.	S.E. Reg.	Milw. Reg.	East. Reg.	West. Reg.	North. Reg.
<u>Number</u>	<u>48</u>	<u>5</u>	<u>8</u>	<u>10</u>	<u>11</u>	<u>10</u>	<u>4</u>	<u>9</u>	<u>2</u>	<u>2</u>	<u>2</u>	<u>1</u>	<u>2</u>	<u>11</u>
Not applicable	25	4	6	2	4	7	2	3	1	-	1	-	1	-
Excellent	2	1	-	1	-	-	-	2	-	1	-	-	-	-
Satisfactory	20	-	2	7	7	3	1	4	1	1	1	1	-	-
No progress	-	-	-	-	-	-	-	-	-	-	-	-	-	-
Regression	-	-	-	-	-	-	-	-	-	-	-	-	-	-
No evaluation made	1	-	-	-	-	-	1	-	-	-	-	-	-	-
<u>Percent</u>	<u>100.0</u>	<u>100.0</u>	<u>100.0</u>	<u>100.0</u>	<u>100.0</u>	<u>100.0</u>	<u>100.0</u>	<u>100.0</u>	<u>100.0</u>	<u>100.0</u>	<u>100.0</u>	<u>100.0</u>	<u>100.0</u>	<u>100.0</u>
Not applicable	52.1	80.0	75.0	20.0	36.4	70.0	50.0	33.3	50.0	-	50.0	-	50.0	-
Excellent	4.1	20.0	-	10.0	-	-	-	22.2	-	50.0	-	-	50.0	-
Satisfactory	41.7	-	25.0	70.0	63.6	30.0	25.0	44.5	50.0	50.0	50.0	100.0	-	-
No progress	-	-	-	-	-	-	-	-	-	-	-	-	-	-
Regression	-	-	-	-	-	-	-	-	-	-	-	-	-	-
No evaluation made	2.1	-	-	-	-	-	25.0	-	-	-	-	-	-	-

Table 12

Juvenile Male Releases from Wisconsin Juvenile Correctional Institutions  
 INSTITUTION AND TYPE OF RELEASE  
 January 1 - December 31, 1979

INSTITUTION RELEASED FROM	First Release							Re-Release						
	Total	South. Reg.	S.E. Reg.	Milw. Reg.	East. Reg.	West. Reg.	North. Reg.	Total	South. Reg.	S.E. Reg.	Milw. Reg.	East. Reg.	West. Reg.	North. Reg.
<u>Number</u>	<u>456</u>	<u>50</u>	<u>93</u>	<u>118</u>	<u>91</u>	<u>52</u>	<u>52</u>	<u>121</u>	<u>19</u>	<u>21</u>	<u>24</u>	<u>23</u>	<u>13</u>	<u>21</u>
Camp Flambeau	46	6	6	-	13	14	7	12	-	1	-	2	6	3
Ethan Allen School	237	30	72	112	15	8	-	63	16	19	24	3	1	-
Lincoln Hills School	173	14	15	6	63	30	45	46	3	1	-	18	6	18
<u>Percent</u>	<u>100.0</u>	<u>100.0</u>	<u>100.0</u>	<u>100.0</u>	<u>100.0</u>	<u>100.0</u>	<u>100.0</u>	<u>100.0</u>	<u>100.0</u>	<u>100.0</u>	<u>100.0</u>	<u>100.0</u>	<u>100.0</u>	<u>100.0</u>
Camp Flambeau	10.1	12.0	6.5	-	14.3	26.9	13.5	9.9	-	4.8	-	8.7	46.2	14.3
Ethan Allen School	52.0	60.0	77.4	94.9	16.5	15.4	-	52.1	84.2	90.5	100.0	13.0	7.7	-
Lincoln Hills School	37.9	28.0	16.1	5.1	69.2	57.7	86.5	38.0	15.8	4.7	-	78.3	46.1	85.7

Table 12-A

Juvenile Female Releases from Wisconsin Juvenile Correctional Institutions  
 INSTITUTION AND TYPE OF RELEASE  
 January 1 - December 31, 1979

INSTITUTION RELEASED FROM	First Release							Re-Release						
	Total	South. Reg.	S.E. Reg.	Milw. Reg.	East. Reg.	West. Reg.	North. Reg.	Total	South. Reg.	S.E. Reg.	Milw. Reg.	East. Reg.	West. Reg.	North. Reg.
<u>Number</u>	<u>48</u>	<u>5</u>	<u>8</u>	<u>10</u>	<u>11</u>	<u>10</u>	<u>4</u>	<u>9</u>	<u>2</u>	<u>2</u>	<u>2</u>	<u>1</u>	<u>2</u>	<u>-</u>
Lincoln Hills School	48	5	8	10	11	10	4	9	2	2	2	1	2	-
<u>Percent</u>	<u>100.0</u>	<u>100.0</u>	<u>100.0</u>	<u>100.0</u>	<u>100.0</u>	<u>100.0</u>	<u>100.0</u>	<u>100.0</u>	<u>100.0</u>	<u>100.0</u>	<u>100.0</u>	<u>100.0</u>	<u>100.0</u>	<u>-</u>
Lincoln Hills School	100.0	100.0	100.0	100.0	100.0	100.0	100.0	100.0	100.0	100.0	100.0	100.0	100.0	-

Table 13

Juvenile Male Releases from Wisconsin Juvenile Correctional Institutions  
LIVING ARRANGEMENT BEFORE ADMISSION AND TYPE OF RELEASE  
January 1 - December 31, 1979

LIVING ARRANGEMENT BEFORE ADMISSION	First Release							Re-Release						
	Total	South. Reg.	S.E. Reg.	Milw. Reg.	East. Reg.	West. Reg.	North. Reg.	Total	South. Reg.	S.E. Reg.	Milw. Reg.	East. Reg.	West. Reg.	North. Reg.
<u>Number</u>	<u>456</u>	<u>50</u>	<u>93</u>	<u>118</u>	<u>91</u>	<u>52</u>	<u>52</u>	<u>121</u>	<u>19</u>	<u>21</u>	<u>24</u>	<u>23</u>	<u>13</u>	<u>21</u>
With both parents (step parents)	194	25	41	37	39	27	25	32	2	5	7	6	5	7
With one parent (step parent)	154	14	31	47	29	18	15	29	7	3	4	5	5	5
With relative(s)	10	-	1	5	3	1	-	1	-	-	-	1	-	-
In foster home	24	4	7	2	5	2	4	8	3	2	-	-	-	3
In child caring agency	54	6	11	19	11	2	5	45	5	10	13	9	2	6
In Mendota or Winnebago State Hospital	-	-	-	-	-	-	-	-	-	-	-	-	-	-
Other	19	1	2	7	4	2	3	6	2	1	-	2	1	-
Unknown	1	-	-	1	-	-	-	-	-	-	-	-	-	-
<u>Percent</u>	<u>100.0</u>	<u>100.0</u>	<u>100.0</u>	<u>100.0</u>	<u>100.0</u>	<u>100.0</u>	<u>100.0</u>	<u>100.0</u>	<u>100.0</u>	<u>100.0</u>	<u>100.0</u>	<u>100.0</u>	<u>100.0</u>	<u>100.0</u>
With both parents (step parents)	42.5	50.0	44.1	31.4	42.8	51.9	48.1	26.4	10.5	23.8	29.2	26.1	38.5	33.3
With one parent (step parent)	33.8	28.0	33.3	39.8	31.9	34.6	28.8	24.0	36.9	14.3	16.6	21.7	38.4	23.8
With relative(s)	2.2	-	1.1	4.2	3.3	1.9	-	0.8	-	-	-	4.4	-	-
In foster home	5.3	8.0	7.5	1.7	5.5	3.9	7.7	6.6	15.8	9.5	-	-	-	14.3
In child caring agency	11.8	12.0	11.8	16.1	12.1	3.9	9.6	37.2	26.3	47.6	54.2	39.1	15.4	28.6
In Mendota or Winnebago State Hospital	-	-	-	-	-	-	-	-	-	-	-	-	-	-
Other	4.2	2.0	2.2	5.9	4.4	3.8	5.8	5.0	10.5	4.8	-	8.7	7.7	-
Unknown	0.2	-	-	0.9	-	-	-	-	-	-	-	-	-	-

Table 13-A

Juvenile Female Releases from Wisconsin Juvenile Correctional Institutions  
LIVING ARRANGEMENT BEFORE ADMISSION AND TYPE OF RELEASE  
January 1 - December 31, 1979

LIVING ARRANGEMENT BEFORE ADMISSION	First Release							Re-Release						
	Total	South. Reg.	S.E. Reg.	Milw. Reg.	East. Reg.	West. Reg.	North. Reg.	Total	South. Reg.	S.E. Reg.	Milw. Reg.	East. Reg.	West. Reg.	North. Reg.
<u>Number</u>	<u>48</u>	<u>5</u>	<u>8</u>	<u>10</u>	<u>11</u>	<u>10</u>	<u>4</u>	<u>9</u>	<u>2</u>	<u>2</u>	<u>2</u>	<u>1</u>	<u>2</u>	<u>-</u>
With both parents (step parents)	13	1	3	4	4	1	-	-	-	-	-	-	-	-
With one parent (step parent)	15	2	2	2	3	6	-	2	1	1	-	-	-	-
With relative(s)	5	-	-	2	2	-	1	-	-	-	-	-	-	-
In foster home	13	1	3	1	2	3	3	4	1	-	2	1	-	-
In child caring agency	2	1	-	1	-	-	-	2	-	1	-	-	1	-
In Mendota or Winnebago State Hospital	-	-	-	-	-	-	-	-	-	-	-	-	-	-
Other	-	-	-	-	-	-	-	1	-	-	-	-	1	-
<u>Percent</u>	<u>100.0</u>	<u>100.0</u>	<u>100.0</u>	<u>100.0</u>	<u>100.0</u>	<u>100.0</u>	<u>100.0</u>	<u>100.0</u>	<u>100.0</u>	<u>100.0</u>	<u>100.0</u>	<u>100.0</u>	<u>100.0</u>	<u>-</u>
With both parents (step parents)	27.1	20.0	37.5	40.0	36.3	10.0	-	-	-	-	-	-	-	-
With one parent (step parent)	31.2	40.0	25.0	20.0	27.3	60.0	-	22.2	50.0	50.0	-	-	-	-
With relative(s)	10.4	-	-	20.0	18.2	-	25.0	-	-	-	-	-	-	-
In foster home	27.1	20.0	37.5	10.0	18.2	30.0	75.0	44.5	50.0	-	100.0	100.0	-	-
In child caring agency	4.2	20.0	-	10.0	-	-	-	22.2	-	50.0	-	-	50.0	-
In Mendota or Winnebago State Hospital	-	-	-	-	-	-	-	-	-	-	-	-	-	-
Other	-	-	-	-	-	-	-	11.1	-	-	-	-	50.0	-

Table 14

Juvenile Male Releases from Wisconsin Juvenile Correctional Institutions  
LIVING ARRANGEMENT AFTER RELEASE AND TYPE OF RELEASE  
January 1 - December 31, 1979

LIVING ARRANGEMENT AFTER RELEASE	First Release							Re-Release						
	Total	South. Reg.	S.E. Reg.	Milw. Reg.	East. Reg.	West. Reg.	North. Reg.	Total	South. Reg.	S.E. Reg.	Milw. Reg.	East. Reg.	West. Reg.	North. Reg.
<u>Number</u>	<u>456</u>	<u>50</u>	<u>93</u>	<u>118</u>	<u>91</u>	<u>52</u>	<u>52</u>	<u>121</u>	<u>19</u>	<u>21</u>	<u>24</u>	<u>23</u>	<u>13</u>	<u>21</u>
With both parents (step parents)	105	9	26	14	24	16	16	36	5	8	5	8	3	7
With one parent (step parent)	60	5	8	18	10	9	10	17	5	2	2	4	3	1
With relative(s)	12	4	2	1	4	1	-	5	-	2	1	-	-	2
In foster home	47	9	4	7	11	6	10	14	4	3	1	2	1	3
In child caring agency	148	12	33	57	32	12	2	26	2	4	12	5	2	1
In Mendota or Winnebago State Hospital	1	-	-	1	-	-	-	-	-	-	1	-	-	1
Other	83	11	20	20	10	8	14	23	3	2	3	4	4	7
<u>Percent</u>	<u>100.0</u>	<u>100.0</u>	<u>100.0</u>	<u>100.0</u>	<u>100.0</u>	<u>100.0</u>	<u>100.0</u>	<u>100.0</u>	<u>100.0</u>	<u>100.0</u>	<u>100.0</u>	<u>100.0</u>	<u>100.0</u>	<u>100.0</u>
With both parents (step parents)	23.0	18.0	28.0	11.9	26.4	30.8	30.8	29.8	26.3	38.1	20.8	34.8	23.1	33.3
With one parent (step parent)	13.2	10.0	8.6	15.3	11.0	17.3	19.2	14.0	26.3	9.5	8.3	17.4	23.1	4.8
With relative(s)	2.6	8.0	2.1	0.9	4.4	1.9	-	4.1	-	9.5	4.2	-	-	9.5
In foster home	10.3	18.0	4.3	5.9	12.1	11.5	19.2	11.6	21.1	14.3	4.2	8.7	7.7	14.3
In child caring agency	32.5	24.0	35.5	48.3	35.1	23.1	3.9	21.5	10.5	19.1	50.0	21.7	15.4	4.8
In Mendota or Winnebago State Hospital	0.2	-	-	0.8	-	-	-	-	-	-	-	-	-	-
Other	18.2	22.0	21.5	16.9	11.0	15.4	26.9	19.0	15.8	9.5	12.5	17.4	30.7	33.3

Table 14-A

Juvenile Female Releases from Wisconsin Juvenile Correctional Institutions  
 LIVING ARRANGEMENT AFTER RELEASE AND TYPE OF RELEASE  
 January 1 - December 31, 1979

LIVING ARRANGEMENT AFTER RELEASE	First Release							Re-Release						
	Total	South. Reg.	S.E. Reg.	Milw. Reg.	East. Reg.	West. Reg.	North. Reg.	Total	South. Reg.	S.E. Reg.	Milw. Reg.	East. Reg.	West. Reg.	North. Reg.
<u>Number</u>	<u>48</u>	<u>5</u>	<u>8</u>	<u>10</u>	<u>11</u>	<u>10</u>	<u>4</u>	<u>9</u>	<u>2</u>	<u>2</u>	<u>2</u>	<u>1</u>	<u>2</u>	<u>-</u>
With both parents (step parents)	10	-	5	2	2	1	-	-	-	-	-	-	-	-
With one parent (step parent)	9	2	1	1	2	1	2	3	-	1	-	1	1	-
With relative(s)	1	-	-	-	1	-	-	-	-	-	-	-	-	-
In foster home	19	3	2	5	3	4	2	3	1	-	1	-	1	-
In child caring agency	9	-	-	2	3	4	-	1	-	-	1	-	-	-
In Mendota or Winnebago State Hospital	-	-	-	-	-	-	-	-	-	-	-	-	-	-
Other	-	-	-	-	-	-	-	2	1	1	-	-	-	-
<u>Percent</u>	<u>100.0</u>	<u>100.0</u>	<u>100.0</u>	<u>100.0</u>	<u>100.0</u>	<u>100.0</u>	<u>100.0</u>	<u>100.0</u>	<u>100.0</u>	<u>100.0</u>	<u>100.0</u>	<u>100.0</u>	<u>100.0</u>	<u>-</u>
With both parents (step parents)	20.8	-	62.5	20.0	18.2	10.0	-	-	-	-	-	-	-	-
With one parent (step parent)	18.7	40.0	12.5	10.0	18.2	10.0	50.0	33.3	-	50.0	-	100.0	50.0	-
With relative(s)	2.1	-	-	-	9.1	-	-	-	-	-	-	-	-	-
In foster home	39.6	60.0	25.0	50.0	27.3	40.0	50.0	33.4	50.0	-	50.0	-	50.0	-
In child caring agency	18.8	-	-	20.0	27.2	40.0	-	11.1	-	-	50.0	-	-	-
In Mendota or Winnebago State Hospital	-	-	-	-	-	-	-	-	-	-	-	-	-	-
Other	-	-	-	-	-	-	-	22.2	50.0	50.0	-	-	-	-

Appendix A

Characteristics of Juvenile Males Directly Discharged or Discharged by Court Order  
from Wisconsin Juvenile Correctional Institutions  
January 1 - December 31, 1979

CHARACTERISTICS	Number							Percent						
	Total	South. Reg.	S.E. Reg.	Milw. Reg.	East. Reg.	West. Reg.	North. Reg.	Total	South. Reg.	S.E. Reg.	Milw. Reg.	East. Reg.	West. Reg.	North. Reg.
<u>Type of Release</u>	<u>214</u>	<u>14</u>	<u>49</u>	<u>98</u>	<u>28</u>	<u>14</u>	<u>11</u>	<u>100.0</u>	<u>100.0</u>	<u>100.0</u>	<u>100.0</u>	<u>100.0</u>	<u>100.0</u>	<u>100.0</u>
Direct discharge	195	14	42	86	28	14	11	91.1	100.0	85.7	87.8	100.0	100.0	100.0
Discharge by court order	19	-	7	12	-	-	-	8.9	-	14.3	12.2	-	-	-
<u>Age at Release</u>	<u>214</u>	<u>14</u>	<u>49</u>	<u>98</u>	<u>28</u>	<u>14</u>	<u>11</u>	<u>100.0</u>	<u>100.0</u>	<u>100.0</u>	<u>100.0</u>	<u>100.0</u>	<u>100.0</u>	<u>100.0</u>
12 years	-	-	-	-	-	-	-	-	-	-	-	-	-	-
13 years	-	-	-	-	-	-	-	-	-	-	-	-	-	-
14 years	2	-	-	1	2	-	1	0.9	-	-	1.0	-	-	9.1
15 years	5	-	1	2	2	-	-	2.3	-	2.0	2.0	7.1	-	-
16 years	15	-	4	8	3	-	-	7.0	-	8.2	8.2	10.7	-	-
17 years	13	-	2	6	2	3	-	6.1	-	4.1	6.1	7.2	21.4	-
18 years	179	14	42	81	21	11	10	83.7	100.0	85.7	82.7	75.0	78.6	90.9
<u>Months in Institution</u>	<u>214</u>	<u>14</u>	<u>49</u>	<u>98</u>	<u>28</u>	<u>14</u>	<u>11</u>	<u>100.0</u>	<u>100.0</u>	<u>100.0</u>	<u>100.0</u>	<u>100.0</u>	<u>100.0</u>	<u>100.0</u>
Less than 3 months	28	2	9	12	2	2	1	13.1	14.3	18.4	12.3	7.1	14.3	9.1
3 through 5 months	53	1	10	26	5	7	4	24.8	7.2	20.4	26.5	17.9	50.0	36.3
6 through 8 months	39	6	11	9	9	1	3	18.2	42.9	22.5	9.2	32.1	7.1	27.3
9 through 11 months	26	2	11	11	1	1	-	12.1	14.3	22.5	11.2	3.6	7.1	-
12 through 14 months	29	1	3	16	6	1	2	13.6	7.1	6.1	16.3	21.4	7.1	18.2
15 through 17 months	14	1	3	9	1	-	-	6.5	7.1	6.1	9.2	3.6	-	-
18 through 20 months	8	-	1	6	1	-	-	3.7	-	2.0	6.1	3.6	-	-
21 through 23 months	7	1	1	1	3	1	-	3.3	7.1	2.0	1.0	10.7	7.2	-
24 months and over	10	-	-	8	-	1	1	4.7	-	-	8.2	-	7.2	9.1



Appendix A (Continued)

CHARACTERISTICS	Number							Percent						
	Total	South. Reg.	S.E. Reg.	Milw. Reg.	East. Reg.	West. Reg.	North. Reg.	Total	South. Reg.	S.E. Reg.	Milw. Reg.	East. Reg.	West. Reg.	North. Reg.
<u>Race</u>	<u>214</u>	<u>14</u>	<u>49</u>	<u>98</u>	<u>28</u>	<u>14</u>	<u>11</u>	<u>100.0</u>	<u>100.0</u>	<u>100.0</u>	<u>100.0</u>	<u>100.0</u>	<u>100.0</u>	<u>100.0</u>
White	132	14	39	43	14	13	9	61.7	100.0	79.6	43.9	50.0	92.9	81.8
White (Mexican Origin)	4	-	-	3	-	1	-	1.9	-	-	3.1	-	7.1	-
Non-White	78	-	10	52	14	-	2	36.4	-	20.4	53.0	50.0	-	18.2
Black	63	-	10	51	2	-	-	29.4	-	20.4	52.0	7.1	-	-
Native American (Indian)	14	-	-	1	11	-	2	6.5	-	-	1.0	39.3	-	18.2
Other	1	-	-	-	1	-	-	0.5	-	-	-	3.6	-	-
<u>Living Arrangement Prior to Admission</u>	<u>214</u>	<u>14</u>	<u>49</u>	<u>98</u>	<u>28</u>	<u>14</u>	<u>11</u>	<u>100.0</u>	<u>100.0</u>	<u>100.0</u>	<u>100.0</u>	<u>100.0</u>	<u>100.0</u>	<u>100.0</u>
With both parents (stepparents)	87	6	24	30	14	5	8	40.7	42.9	49.0	30.6	50.0	35.7	72.7
With one parent (stepparent)	78	1	18	49	5	4	1	36.4	7.1	36.7	50.0	17.9	28.6	9.1
With relative(s)	6	-	-	4	2	-	-	2.8	-	-	4.1	7.1	-	-
In foster home	13	3	3	1	5	1	-	6.1	21.4	6.1	1.0	17.9	7.1	-
In child caring agency	18	2	3	7	2	3	1	8.4	14.3	6.1	7.1	7.1	21.4	9.1
In Mendota or Winne- bago State Hospital	-	-	-	-	-	-	-	-	-	-	-	-	-	-
Other	12	2	1	7	-	1	1	5.6	14.3	2.1	7.2	-	7.2	9.1

Appendix A (Concluded)

CHARACTERISTICS	Number							Percent						
	Total	South. Reg.	S.E. Reg.	Milw. Reg.	East. Reg.	West. Reg.	North. Reg.	Total	South. Reg.	S.E. Reg.	Milw. Reg.	East. Reg.	West. Reg.	North. Reg.
<u>Living Arrangement Following Release</u>	<u>214</u>	<u>14</u>	<u>49</u>	<u>98</u>	<u>28</u>	<u>14</u>	<u>11</u>	<u>100.0</u>	<u>100.0</u>	<u>100.0</u>	<u>100.0</u>	<u>100.0</u>	<u>100.0</u>	<u>100.0</u>
With both parents (stepparents)	80	8	23	23	13	5	8	37.4	57.2	46.9	23.5	46.4	35.7	72.7
With one parent (stepparent)	67	1	15	42	5	2	2	31.3	7.1	30.6	42.9	17.9	14.3	18.2
With relative(s)	16	1	4	7	2	1	1	7.5	7.1	8.2	7.1	7.1	7.1	9.1
In foster home	2	1	1	-	-	-	-	0.9	7.2	2.0	-	-	-	-
In child caring agency	2	-	1	1	-	-	-	0.9	-	2.1	1.0	-	-	-
In Mendota or Winnebago State Hospital	-	-	-	-	-	-	-	-	-	-	-	-	-	-
Other	47	3	5	25	8	6	-	22.0	21.4	10.2	25.5	28.6	42.9	-
<u>Educational Progress at Institution</u>	<u>214</u>	<u>14</u>	<u>49</u>	<u>98</u>	<u>28</u>	<u>14</u>	<u>11</u>	<u>100.0</u>	<u>100.0</u>	<u>100.0</u>	<u>100.0</u>	<u>100.0</u>	<u>100.0</u>	<u>100.0</u>
Not applicable	4	1	-	3	-	-	-	1.9	7.1	-	3.1	-	-	-
Excellent	30	4	10	11	2	1	2	14.0	28.6	20.4	11.2	7.1	7.1	18.2
Satisfactory	125	5	26	52	22	12	8	58.4	35.7	53.1	53.1	78.6	85.7	72.7
No progress	45	4	10	27	3	1	-	21.0	28.6	20.4	27.5	10.7	7.2	-
Regression	-	-	-	-	-	-	-	-	-	-	-	-	-	-
No evaluation made	10	-	3	5	1	-	1	4.7	-	6.1	5.1	3.6	-	9.1
<u>Vocational Progress at Institution</u>	<u>214</u>	<u>14</u>	<u>49</u>	<u>98</u>	<u>28</u>	<u>14</u>	<u>11</u>	<u>100.0</u>	<u>100.0</u>	<u>100.0</u>	<u>100.0</u>	<u>100.0</u>	<u>100.0</u>	<u>100.0</u>
Not applicable	63	2	14	31	7	2	7	29.4	14.3	28.6	31.6	25.0	14.3	63.6
Excellent	20	1	10	7	1	-	1	9.3	7.1	20.4	7.1	3.6	-	9.1
Satisfactory	87	7	15	37	15	12	1	40.7	50.0	30.6	37.8	53.5	85.7	9.1
No progress	26	3	6	13	4	-	-	12.2	21.4	12.2	13.3	14.3	-	-
Regression	2	-	-	2	-	-	-	0.9	-	-	2.0	-	-	-
No evaluation made	16	1	4	8	1	-	2	7.5	7.2	8.2	8.2	3.6	-	18.2

Appendix B

Characteristics of Juvenile Female Directly Discharged or Discharged by Court Order  
from Wisconsin Juvenile Correctional Institutions  
January 1 - December 31, 1979

CHARACTERISTICS	Number							Percent						
	Total	South. Reg.	S.E. Reg.	Milw. Reg.	East. Reg.	West. Reg.	North. Reg.	Total	South. Reg.	S.E. Reg.	Milw. Reg.	East. Reg.	West. Reg.	North. Reg.
<u>Type of Release</u>	<u>14</u>	<u>-</u>	<u>4</u>	<u>3</u>	<u>2</u>	<u>2</u>	<u>3</u>	<u>100.0</u>	<u>-</u>	<u>100.0</u>	<u>100.0</u>	<u>100.0</u>	<u>100.0</u>	<u>100.0</u>
Direct discharge	10	-	3	2	2	1	2	71.4	-	75.0	66.7	100.0	50.0	66.7
Discharge by court order	4	-	1	1	-	1	1	28.6	-	25.0	33.3	-	50.0	33.3
<u>Age at Release</u>	<u>14</u>	<u>-</u>	<u>4</u>	<u>3</u>	<u>2</u>	<u>2</u>	<u>3</u>	<u>100.0</u>	<u>-</u>	<u>100.0</u>	<u>100.0</u>	<u>100.0</u>	<u>100.0</u>	<u>100.0</u>
12 years	-	-	-	-	-	-	-	-	-	-	-	-	-	-
13 years	-	-	-	-	-	-	-	-	-	-	-	-	-	-
14 years	-	-	-	-	-	-	-	-	-	-	-	-	-	-
15 years	-	-	-	-	-	-	-	-	-	-	-	-	-	-
16 years	3	-	1	-	1	1	-	21.4	-	25.0	-	50.0	50.0	-
17 years	7	-	3	1	1	-	2	50.0	-	75.0	33.3	50.0	-	66.7
18 years	4	-	-	2	-	1	1	28.6	-	-	66.7	-	50.0	33.3
<u>Months in Institution</u>	<u>14</u>	<u>-</u>	<u>4</u>	<u>3</u>	<u>2</u>	<u>2</u>	<u>3</u>	<u>100.0</u>	<u>-</u>	<u>100.0</u>	<u>100.0</u>	<u>100.0</u>	<u>100.0</u>	<u>100.0</u>
Less than 3 months	1	-	-	1	-	-	-	7.2	-	-	33.3	-	-	-
3 through 5 months	6	-	1	1	1	-	3	42.9	-	25.0	33.3	50.0	-	100.0
6 through 8 months	2	-	-	-	1	1	-	14.3	-	-	-	50.0	50.0	-
9 through 11 months	2	-	1	1	-	-	-	14.3	-	25.0	33.4	-	-	-
12 through 14 months	1	-	-	-	-	1	-	7.1	-	-	-	-	50.0	-
15 through 17 months	-	-	-	-	-	-	-	-	-	-	-	-	-	-
18 through 20 months	1	-	1	-	-	-	-	7.1	-	25.0	-	-	-	-
21 through 23 months	1	-	1	-	-	-	-	7.1	-	25.0	-	-	-	-
24 months and over	-	-	-	-	-	-	-	-	-	-	-	-	-	-

Appendix B (Continued)

CHARACTERISTICS	Number							Percent						
	Total	South. Reg.	S.E. Reg.	Milw. Reg.	East. Reg.	West. Reg.	North. Reg.	Total	South. Reg.	S.E. Reg.	Milw. Reg.	East. Reg.	West. Reg.	North. Reg.
<u>Race</u>	<u>14</u>	<u>-</u>	<u>4</u>	<u>3</u>	<u>2</u>	<u>2</u>	<u>3</u>	<u>100.0</u>	<u>-</u>	<u>100.0</u>	<u>100.0</u>	<u>100.0</u>	<u>100.0</u>	<u>100.0</u>
White	8	-	3	1	-	1	3	57.1	-	75.0	33.3	-	50.0	100.0
White (Mexican Origin)	-	-	-	-	-	-	-	-	-	-	-	-	-	-
Non-White	6	-	1	2	2	1	-	42.9	-	25.0	66.7	100.0	50.0	-
Black	3	-	1	2	-	-	-	21.4	-	25.0	66.7	-	-	-
Native American (Indian)	3	-	-	-	2	1	-	21.5	-	-	-	100.0	50.0	-
Other	-	-	-	-	-	-	-	-	-	-	-	-	-	-
<u>Living Arrangement Prior to Admission</u>	<u>14</u>	<u>-</u>	<u>4</u>	<u>3</u>	<u>2</u>	<u>2</u>	<u>3</u>	<u>100.0</u>	<u>-</u>	<u>100.0</u>	<u>100.0</u>	<u>100.0</u>	<u>100.0</u>	<u>100.0</u>
With both parents (stepparents)	3	-	2	-	-	-	1	21.4	-	50.0	-	-	-	33.3
With one parent (stepparent)	6	-	-	3	2	1	-	42.9	-	-	100.0	100.0	50.0	-
With relative(s)	1	-	1	-	-	-	-	7.1	-	25.0	-	-	-	-
In foster home	2	-	-	-	-	1	1	14.3	-	-	-	-	50.0	33.3
In child caring agency	2	-	1	-	-	-	1	14.3	-	25.0	-	-	-	33.4
In Mendota or Winnebago State Hospital	-	-	-	-	-	-	-	-	-	-	-	-	-	-
Other	-	-	-	-	-	-	-	-	-	-	-	-	-	-

Appendix B (Concluded)

CHARACTERISTICS	Number							Percent						
	Total	South. Reg.	S.E. Reg.	Milw. Reg.	East. Reg.	West. Reg.	North. Reg.	Total	South. Reg.	S.E. Reg.	Milw. Reg.	East. Reg.	West. Reg.	North. Reg.
<u>Living Arrangement Following Release</u>	<u>14</u>	<u>-</u>	<u>4</u>	<u>3</u>	<u>2</u>	<u>2</u>	<u>3</u>	<u>100.0</u>	<u>-</u>	<u>100.0</u>	<u>100.0</u>	<u>100.0</u>	<u>100.0</u>	<u>100.0</u>
With both parents (stepparents)	5	-	2	-	-	1	2	35.7	-	50.0	-	-	50.0	66.7
With one parent (stepparent)	5	-	1	1	1	1	1	35.7	-	25.0	33.3	50.0	50.0	33.3
With relative(s)	2	-	1	-	1	-	-	14.3	-	25.0	-	50.0	-	-
In foster home	1	-	-	1	-	-	-	7.1	-	-	33.3	-	-	-
In child caring agency	-	-	-	-	-	-	-	-	-	-	-	-	-	-
In Mendota or Winnebago State Hospital	-	-	-	-	-	-	-	-	-	-	-	-	-	-
Other	1	-	-	1	-	-	-	7.2	-	-	33.4	-	-	-
<u>Educational Progress at Institution</u>	<u>14</u>	<u>-</u>	<u>4</u>	<u>3</u>	<u>2</u>	<u>2</u>	<u>3</u>	<u>100.0</u>	<u>-</u>	<u>100.0</u>	<u>100.0</u>	<u>100.0</u>	<u>100.0</u>	<u>100.0</u>
Not applicable	-	-	-	-	-	-	-	-	-	-	-	-	-	-
Excellent	3	-	1	-	-	-	2	21.4	-	25.0	-	-	-	66.7
Satisfactory	8	-	3	2	1	1	1	57.2	-	75.0	66.7	50.0	50.0	33.3
No progress	2	-	-	-	1	1	-	14.3	-	-	-	50.0	50.0	-
Regression	-	-	-	-	-	-	-	-	-	-	-	-	-	-
No evaluation made	1	-	-	1	-	-	-	7.1	-	-	33.3	-	-	-
<u>Vocational Progress at Institution</u>	<u>14</u>	<u>-</u>	<u>4</u>	<u>3</u>	<u>2</u>	<u>2</u>	<u>3</u>	<u>100.0</u>	<u>-</u>	<u>100.0</u>	<u>100.0</u>	<u>100.0</u>	<u>100.0</u>	<u>100.0</u>
Not applicable	7	-	2	-	2	1	2	50.0	-	50.0	-	100.0	50.0	66.7
Excellent	-	-	-	-	-	-	-	-	-	-	-	-	-	-
Satisfactory	5	-	2	2	-	1	-	35.7	-	50.0	66.7	-	50.0	-
No progress	-	-	-	-	-	-	-	-	-	-	-	-	-	-
Regression	-	-	-	-	-	-	-	-	-	-	-	-	-	-
No evaluation made	2	-	-	1	-	-	1	14.3	-	-	33.3	-	-	33.3

**END**