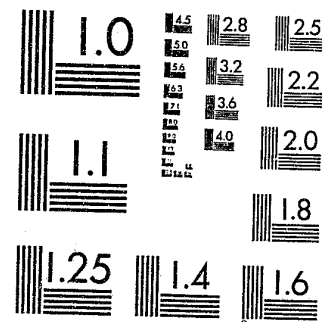


National Criminal Justice Reference Service

ncjrs

This microfiche was produced from documents received for inclusion in the NCJRS data base. Since NCJRS cannot exercise control over the physical condition of the documents submitted, the individual frame quality will vary. The resolution chart on this frame may be used to evaluate the document quality.



MICROCOPY RESOLUTION TEST CHART
NATIONAL BUREAU OF STANDARDS-1963-A

Microfilming procedures used to create this fiche comply with the standards set forth in 41CFR 101-11.504.

Points of view or opinions stated in this document are those of the author(s) and do not represent the official position or policies of the U. S. Department of Justice.

National Institute of Justice
United States Department of Justice
Washington, D. C. 20531

2/24/83

86292

ANNUAL REPORT OF PAROLEE EARNINGS

State of New Jersey

Department of Corrections

Division of Policy and Planning

BUREAU OF PAROLE

Trenton, N. J.

Calendar Year 1979

U.S. Department of Justice
National Institute of Justice

This document has been reproduced exactly as received from the person or organization originating it. Points of view or opinions stated in this document are those of the authors and do not necessarily represent the official position or policies of the National Institute of Justice.

Permission to reproduce this copyrighted material has been granted by

New Jersey Bureau of
Parole

to the National Criminal Justice Reference Service (NCJRS).

Further reproduction outside of the NCJRS system requires permission of the copyright owner.

Fred B. Holley, Chief
Bureau of Parole

Victor R. D'Illio,
Assistant Chief

and

Sue S. Lindbom,
Senior Parole Officer

NEW JERSEY BUREAU OF PAROLE

ANNUAL REPORT OF

PAROLEE EARNINGS

1979

ACQUISITIONS

The earnings of parolees for the calendar year 1979 are compiled, classified and capsulated from data submitted by the nine district parole offices in the Bureau of Parole. (See attached table)

There were 10,248 parolees under supervision in New Jersey in 1979 (a decrease of 490 from 1978) and they earned, as qualified herewith \$25,758,251.

In comparison to 1978 this was a decrease of \$49,669.

Fifty-five per cent (5,590) of those under supervision during the year were classified as employed (worked all or part of the period under supervision, which period of supervision could be from one week to the full year) and twenty-three per cent (2,395) were unemployed throughout their entire period of supervision, although employable. The other twenty-two per cent (2,263) were classified as unemployable by reason of being missing or in custody for the entire period of supervision during the year, or attending school, being engaged in homemaking, or being incapacitated.

The rates for District Offices follow:

DISTRICT OFFICE	PER CENT											
	UNEMPLOYABLE				UNEMPLOYED				EMPLOYED			
	1976	1977	1978	1979	1976	1977	1978	1979	1976	1977	1978	1979
No. 1 — Morris, Passaic, Sussex, Warren and Bergen (portion)	21%	21%	23%	26%	26%	22%	16%	13%	53%	57%	61%	61%
No. 2 — Essex (portion)	28%	29%	29%	29%	34%	31%	27%	26%	38%	40%	44%	45%
No. 3 — Middlesex, Monmouth and Ocean	24%	23%	24%	26%	29%	23%	19%	19%	47%	54%	58%	55%
No. 4 — Hudson and Bergen (portion)	26%	26%	21%	21%	29%	26%	26%	27%	45%	48%	53%	52%
No. 5 — Somerset and Union	17%	19%	14%	16%	27%	22%	29%	26%	56%	59%	57%	58%
No. 6 — Burlington, Hunterdon and Mercer	25%	20%	21%	22%	29%	25%	22%	25%	46%	55%	57%	53%
No. 7 — Camden, Gloucester and Salem	24%	20%	12%	11%	35%	36%	32%	38%	41%	44%	56%	51%
No. 8 — Atlantic, Cape May, Cumberland	23%	25%	20%	22%	31%	26%	24%	15%	46%	49%	56%	63%
No. 9 — Essex (portion)	16%	16%	18%	16%	38%	35%	30%	29%	46%	49%	52%	55%

The over-all rates for the past five years follow:

	1975	1976	1977	1978	1979
Employed	45%	46%	51%	55%	55%
Unemployed	25%	31%	27%	24%	23%
Unemployable	30%	23%	22%	21%	22%

Forty-eight per cent of the 10,248 parolees supervised were under supervision for a period of 10 months to the full year in 1979; 15% from 7 months to 9 months; 18% from 4 months to 6 months; and 19% from 1 day to 3 months. Caution should be used in drawing inferences from the foregoing data and accordingly the average earnings of employed parolees is presented below for comparative purposes only.

Institution Average:

	1975	1976	1977	1978	1979
Training School for Girls	\$ 913	\$1,988	\$ 600	\$ 749	\$1,526
Correctional Institution for Women	\$2,264	\$2,472	\$2,378	\$2,839	\$3,369
Out-of-State Females	\$2,608	\$2,185	\$3,977	\$3,894	\$4,435
Training School for Boys, Jamesburg	\$1,841	\$1,796	\$2,107	\$1,582	\$1,667
Youth Correctional Institution, Annandale	\$2,426	\$2,711	\$2,900	\$3,157	\$3,456
Youth Correctional Institution, Bordentown	\$3,262	\$3,228	\$3,669	\$4,211	\$4,277
Yardville Reception and Correction Center	\$2,951	\$2,984	\$3,746	\$3,899	\$3,894
State Prison	\$4,659	\$5,040	\$5,100	\$4,951	\$5,384
Out-of-State Males	\$4,896	\$5,143	\$5,620	\$7,703	\$6,393
Psychiatric Hospital (Males)	\$7,129	\$8,385	\$6,804	\$4,923	\$7,917

Parole District Office Average:

	1976	1977	1978	1979
District Office No. 1	\$3,062	\$3,490	\$3,805	\$3,774
District Office No. 2	\$3,938	\$4,017	\$4,128	\$4,711
District Office No. 3	\$3,889	\$3,664	\$5,092	\$4,609
District Office No. 4	\$3,486	\$5,198	\$4,621	\$5,065
District Office No. 5	\$3,123	\$3,405	\$3,979	\$3,971
District Office No. 6	\$3,860	\$3,710	\$4,453	\$4,753
District Office No. 7	\$5,059	\$5,233	\$4,599	\$6,565
District Office No. 8	\$4,098	\$4,060	\$4,151	\$4,076
District Office No. 9	\$3,911	\$3,719	\$4,432	\$4,480

Over-all Average:


1975 — \$3,595 1976 — \$3,757 1977 — \$4,030 1978 — \$4,369 1979 — \$4,578

In contrast to the foregoing, employed parolees under supervision for the entire calendar year (12 full months) earned on the average the following:

	1976	1977	1978	1979
Training School for Girls	\$2,398	\$ 900	\$ 237	\$ 509
Correctional Institution for Women	\$3,596	\$4,183	\$3,224	\$3,216
Out-of-State Females	\$6,191	\$5,994	\$2,939	\$2,036
Training School for Boys, Jamesburg	\$2,723	\$2,775	\$1,851	\$1,939
Youth Correctional Institution, Annandale	\$3,354	\$2,860	\$4,121	\$3,545
Youth Correctional Institution, Bordentown	\$3,736	\$4,418	\$4,734	\$4,238
Youth Reception and Correction Center	\$3,989	\$4,353	\$4,943	\$4,090
State Prison	\$7,176	\$7,075	\$7,533	\$6,163
Out-of-State Males	\$7,139	\$8,283	\$9,143	\$7,915
Psychiatric Hospital (Males)	\$7,063	\$9,223	\$3,328	\$6,737

Fred B. Holley, Chief
Bureau of Parole

By


Victor R. D'Illo,
Assistant Chief
and
Sue S. Lindbom,
Senior Parole Officer

STATE OF NEW JERSEY

BUREAU OF PAROLE

REPORT ON EARNINGS OF PAROLEES

Calendar Year 1979

INSTI- TUTION*	UNEM- PLOYED	UNEM- PLOYABLE	EMPLOYED	ESTIMATED EARNINGS	VERIFIED EARNINGS	PERIOD SUPERVISED				INSTITU- TIONAL TOTAL
						1 DAY TO 3 MOS.	4 MOS. TO 6 MOS.	7 MOS. TO 9 MOS.	10 MOS. TO 12 MOS.	
T.S.G.	9	7	6	\$ 8,184	\$ 975	4	4	5	9	22
C.I.W.	154	109	125	157,388	263,760	64	62	59	203	388
O./S.F.	6	3	19	36,459	38,937	6	4	4	14	28
TOTAL FEMALE	169	119	150	202,031	303,672	74	70	68	226	438
T.S.B.	111	96	100	89,458	77,309	81	60	59	107	307
Y.C.I.A.	504	372	997	1,583,834	1,862,686	384	312	320	857	1,873
Y.C.I.B.	451	482	959	1,826,444	2,275,655	311	293	302	986	1,892
Y.R.C.C.	424	392	857	1,588,132	1,749,051	341	347	254	731	1,673
S.P.	627	720	1,993	3,667,479	7,057,596	592	560	447	1,741	3,340
O./S.M.	105	71	494	1,514,939	1,643,265	116	167	121	266	670
HOSP. (S.O.)	4	11	40	94,040	222,660	10	6	9	30	55
TOTAL MALE	2,226	2,141	5,440	10,364,326	14,888,222	1,835	1,745	1,512	4,718	9,810
TOTALS	2,395	2,263	5,590	10,566,357	15,191,894	1,909	1,815	1,580	4,944	10,248

GRAND TOTAL EARNINGS

\$ 25,758,251

*Legend

- T.S.G. — TRAINING SCHOOL FOR GIRLS
C.I.W. — CORRECTIONAL INSTITUTION FOR WOMEN
O./S.F. — OUT-OF-STATE FEMALES
T.S.B. — TRAINING SCHOOL FOR BOYS, JAMESBURG
Y.C.I.A. — YOUTH CORRECTIONAL INSTITUTION, ANNANDALE
- Y.C.I.B. — YOUTH CORRECTIONAL INSTITUTION, BORDENTOWN
Y.R.C.C. — YARDVILLE RECEPTION & CORRECTION CENTER
S.P. — STATE PRISON
O./S.M. — OUT-OF-STATE MALES
P.H.M. — PSYCHIATRIC HOSPITAL MALES (SEX OFFENDERS)

END