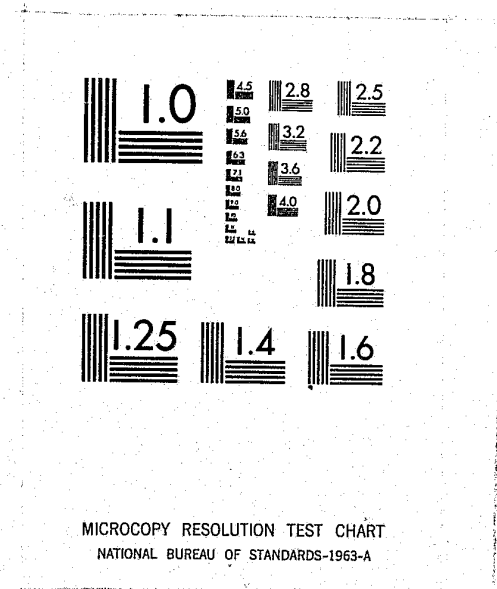


National Criminal Justice Reference Service

**ncjrs**

This microfiche was produced from documents received for inclusion in the NCJRS data base. Since NCJRS cannot exercise control over the physical condition of the documents submitted, the individual frame quality will vary. The resolution chart on this frame may be used to evaluate the document quality.



Microfilming procedures used to create this fiche comply with the standards set forth in 41CFR 101-11.504.

Points of view or opinions stated in this document are those of the author(s) and do not represent the official position or policies of the U. S. Department of Justice.

National Institute of Justice  
United States Department of Justice  
Washington, D. C. 20531

2/24/83

86291

86291

ANNUAL REPORT OF PAROLEE EARNINGS

State of New Jersey  
Department of Corrections  
Division of Policy and Planning

BUREAU OF PAROLE  
Trenton, N. J.

Calendar Year 1978

U.S. Department of Justice  
National Institute of Justice

This document has been reproduced exactly as received from the person or organization originating it. Points of view or opinions stated in this document are those of the authors and do not necessarily represent the official position or policies of the National Institute of Justice.

Permission to reproduce this copyrighted material has been granted by

New Jersey Bureau of Parole

to the National Criminal Justice Reference Service (NCJRS).

Further reproduction outside of the NCJRS system requires permission of the copyright owner.

Fred B. Holley, Acting Chief  
Bureau of Parole

Victor R. D'Ilio  
Supervising Parole Officer

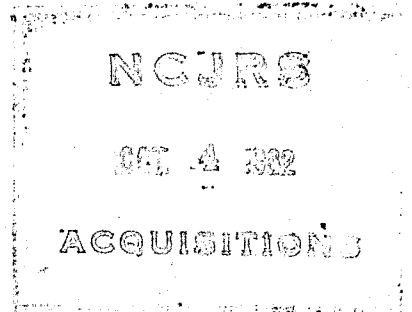
and

Sue S. Lindbom  
Senior Parole Officer

NEW JERSEY BUREAU OF PAROLE

ANNUAL REPORT OF  
PAROLEE EARNINGS

1978



The earnings of parolees for the calendar year 1978 are compiled, classified and capsulated from data submitted by the nine district parole offices in the Bureau of Parole. (See attached table)

There were 10,738 parolees under supervision in New Jersey in 1978 (an increase of 250 from 1977) and they earned, as qualified herewith, \$25,807,920.

In comparison to 1977 this was an increase of \$4,355,166.

Fifty-five per cent (5,907) of those under supervision during the year were classified as employed (worked all or part of the period under supervision which period of supervision could be from one week to the full year) and twenty-four per cent (2,584) were unemployed throughout their entire period of supervision, although employable. The other twenty-one per cent (2,247) were classified as unemployable by reason of being missing or in custody for the entire period of supervision during the year, or attending school, being engaged in homemaking, or being incapacitated.

The rates for District Offices follow:

DISTRICT OFFICE	P E R C E N T											
	UNEMPLOYABLE				UNEMPLOYED				EMPLOYED			
	1975	1976	1977	1978	1975	1976	1977	1978	1975	1976	1977	1978
No. 1 — Morris, Passaic, Sussex, Warren and Bergen (portion)	23%	21%	21%	23%	27%	26%	22%	16%	50%	53%	57%	61%
No. 2 — Essex (portion)	31%	28%	29%	29%	31%	34%	31%	27%	38%	38%	40%	44%
No. 3 — Middlesex, Monmouth and Ocean	24%	24%	23%	24%	30%	29%	23%	18%	46%	47%	54%	58%
No. 4 — Hudson and Bergen (portion)	28%	26%	26%	21%	29%	29%	26%	26%	43%	45%	48%	53%
No. 5 — Somerset and Union	20%	17%	19%	14%	25%	27%	22%	29%	55%	56%	59%	57%
No. 6 — Burlington, Hunterdon and Mercer	28%	25%	20%	21%	30%	29%	25%	22%	42%	46%	55%	57%
No. 7 — Camden, Gloucester and Salem	19%	24%	20%	12%	34%	35%	36%	32%	47%	41%	44%	56%
No. 8 — Atlantic, Cape May, Cumberland	29%	23%	25%	20%	30%	31%	26%	24%	41%	46%	49%	56%
No. 9 — Essex (portion)	22%	16%	16%	18%	34%	38%	35%	30%	44%	46%	49%	52%

The over-all rates for the past five years follow:

	1974	1975	1976	1977	1978
Employed	52%	45%	46%	51%	55%
Unemployed	27%	25%	31%	27%	24%
Unemployable	21%	30%	23%	22%	21%

Forty-seven per cent of the 10,738 parolees supervised were under supervision for a period of 10 months to the full year in 1978; 16% from 7 months to 9 months; 18% from 4 months to 6 months and 19% from 1 day to 3 months. Caution should be used in drawing inferences from the foregoing data and accordingly the average earnings of employed parolees is presented below for comparative purposes only.

Institution Average:

	1974	1975	1976	1977	1978
Training School for Girls	\$ 458	\$ 913	\$1,988	\$ 600	\$ 749
Correctional Institution for Women	\$1,707	\$2,264	\$2,472	\$2,378	\$2,839
Out-of-State Females	\$2,139	\$2,608	\$2,185	\$3,977	\$3,894
Training School for Boys, Jamesburg	\$1,582	\$1,841	\$1,796	\$2,107	\$1,582
Youth Correctional Institution, Annandale	\$2,788	\$2,426	\$2,711	\$2,900	\$3,157
Youth Correctional Institution, Bordentown	\$3,486	\$3,262	\$3,228	\$3,669	\$4,211
Yardville Reception and Correction Center	\$2,916	\$2,951	\$2,984	\$3,748	\$3,899
State Prison	\$4,535	\$4,659	\$5,040	\$5,100	\$4,951
Out-of-State Males	\$4,864	\$4,896	\$5,143	\$5,620	\$7,703
Psychiatric Hospital (Males)	\$8,308	\$7,129	\$8,385	\$6,804	\$4,923

Parole District Office Average:

	1975	1976	1977	1978
District Office No. 1	\$2,943	\$3,062	\$3,490	\$3,805
District Office No. 2	\$3,531	\$3,938	\$4,017	\$4,128
District Office No. 3	\$3,992	\$3,889	\$3,664	\$5,092
District Office No. 4	\$4,477	\$3,486	\$5,198	\$4,621
District Office No. 5	\$2,914	\$3,123	\$3,405	\$3,979
District Office No. 6	\$4,103	\$3,860	\$3,710	\$4,453
District Office No. 7	\$3,736	\$5,059	\$5,233	\$4,599
District Office No. 8	\$3,513	\$4,098	\$4,060	\$4,151
District Office No. 9	\$3,345	\$3,911	\$3,719	\$4,432

Over-all Average:

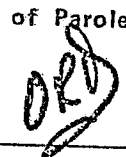
1974 - \$3,564    1975 - \$3,595    1976 - \$3,757    1977 - \$4,030    1978 - \$4,369

In contrast to the foregoing, employed parolees under supervision for the entire calendar year (12 full months) earned on the average the following:

	1975	1976	1977	1978
Training School for Girls	\$1,179	\$2,398	\$ 900	\$ 237
Correctional Institution for Women	\$3,451	\$3,596	\$4,183	\$3,224
Out-of-State Females	\$2,713	\$6,191	\$5,994	\$2,939
Training School for Boys, Jamesburg	\$1,787	\$2,723	\$2,775	\$1,851
Youth Correctional Institution, Annandale	\$3,179	\$3,354	\$2,860	\$4,121
Youth Correctional Institution, Bordentown	\$4,005	\$3,736	\$4,418	\$4,734
Youth Reception and Correction Center	\$3,859	\$3,989	\$4,353	\$4,943
State Prison	\$6,695	\$7,176	\$7,075	\$7,533
Out-of-State Males	\$6,437	\$7,139	\$8,283	\$9,143
Psychiatric Hospital (Males)	\$6,498	\$7,063	\$9,223	\$3,328

Fred B. Holley, Acting Chief  
Bureau of Parole

By

  
Victor R. D'Illo  
Supervising Parole Officer  
and  
Sue S. Lindbom  
Senior Parole Officer

## STATE OF NEW JERSEY

## BUREAU OF PAROLE

## REPORT ON EARNINGS OF PAROLEES

Calendar Year 1978

INSTI- TUTION*	UNEM- PLOYED	UNEM- PLOYABLE	EMPLOYED	ESTIMATED EARNINGS	VERIFIED EARNINGS	PERIOD SUPERVISED				INSTITU- TIONAL TOTAL
						1 DAY TO 3 MOS.	4 MOS. TO 6 MOS.	7 MOS. TO 9 MOS.	10 MOS. TO 12 MOS.	
T.S.G.	16	3	8	\$ 2,550	\$ 3,438	10	5	5	7	27
C.I.W.	155	125	138	111,130	280,622	94	75	60	189	418
O./S.F.	10	6	16	8,740	53,564	5	12	3	12	32
TOTAL FEMALE	181	134	162	122,420	337,624	109	92	68	208	477
T.S.B.	136	85	133	110,104	100,396	98	87	66	103	354
Y.C.I.A.	658	403	1,144	1,452,887	2,159,527	429	397	362	1,017	2,205
Y.C.I.B.	507	492	1,130	1,959,521	2,799,635	329	380	287	1,133	2,129
Y.R.C.C.	430	380	979	1,564,409	2,253,513	310	340	277	862	1,789
S.P.	591	681	1,867	3,419,750	5,824,060	688	503	514	1,434	3,139
O./S.M.	75	63	461	1,058,043	2,493,402	101	119	101	278	599
HOSP. (S.O.)	6	9	31	72,915	79,714	12	12	3	19	46
TOTAL MALE	2,403	2,113	5,745	9,637,629	15,710,247	1,967	1,838	1,610	4,846	10,261
TOTALS	2,584	2,247	5,907	9,760,049	16,047,871	2,076	1,930	1,678	5,054	10,738

GRAND TOTAL EARNINGS

\$ 25,807,920

## \*Legend

T.S.G. — TRAINING SCHOOL FOR GIRLS

Y.C.I.B. — YOUTH CORRECTIONAL INSTITUTION, BORDENTOWN

C.I.W. — CORRECTIONAL INSTITUTION FOR WOMEN

Y.R.C.C. — YARDVILLE RECEPTION &amp; CORRECTION CENTER

O./S.F. — OUT-OF-STATE FEMALES

S.P. — STATE PRISON

T.S.B. — TRAINING SCHOOL FOR BOYS, JAMESBURG

O./S.M. — OUT-OF-STATE MALES

Y.C.I.A. — YOUTH CORRECTIONAL INSTITUTION, ANNANDALE

P.H.M. — PSYCHIATRIC HOSPITAL MALES (SEX OFFENDERS)

**END**