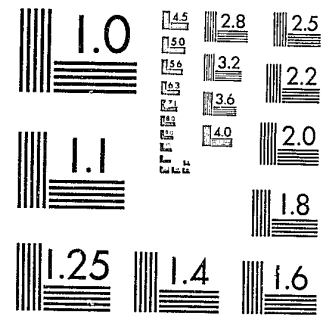


CR-SENT
2-15-83

National Criminal Justice Reference Service



This microfiche was produced from documents received for inclusion in the NCJRS data base. Since NCJRS cannot exercise control over the physical condition of the documents submitted, the individual frame quality will vary. The resolution chart on this frame may be used to evaluate the document quality.



MICROCOPY RESOLUTION TEST CHART
NATIONAL BUREAU OF STANDARDS-1963-A

Microfilming procedures used to create this fiche comply with the standards set forth in 41CFR 101-11.504.

Points of view or opinions stated in this document are those of the author(s) and do not represent the official position or policies of the U. S. Department of Justice.

National Institute of Justice
United States Department of Justice
Washington, D. C. 20531

4/14/83

86174

PENNSYLVANIA
BUREAU OF CORRECTION
1981 ANNUAL STATISTICAL
REPORT OF PENNSYLVANIA
COUNTY PRISONS AND JAILS



DICK THORNBURGH
Governor

WILLIAM W. SCRANTON, III
Lieutenant Governor

RONALD J. MARKS
Commissioner

ERSKIND DERAMUS
Deputy Commissioner

*Division of Finance, Planning & Research
Lee T. Bernard, II, Director*

REPORT
OF
ACQUISITIONS

PENNSYLVANIA BUREAU OF CORRECTION
PO BOX 598
CAMP HILL, PENNSYLVANIA 17011

1981 ANNUAL STATISTICAL REPORT OF
PENNSYLVANIA COUNTY PRISONS AND JAILS

Division of Finance, Planning and Research
Lee T. Bernard, II
Director

John H. Mease, Chief
Records and Statistics Section

Nancy L. Bleyer
Statistical Assistant
Records and Statistics Section

September, 1982

U.S. Department of Justice
National Institute of Justice

86174

This document has been reproduced exactly as received from the person or organization originating it. Points of view or opinions stated in this document are those of the authors and do not necessarily represent the official position or policies of the National Institute of Justice.

Permission to reproduce this copyrighted material has been granted by

Pennsylvania Bureau of
Corrections

to the National Criminal Justice Reference Service (NCJRS).

Further reproduction outside of the NCJRS system requires permission of the copyright owner.



September, 1982

PREFACE

I am pleased to present the Pennsylvania Bureau of Correction's 1981 Annual Statistical Report for Pennsylvania County Prisons and Jails. This report provides pertinent information regarding the Commonwealth's county prison population and, therefore, represents an important document for county wardens, sheriffs, president judges, commissioners and various other officials.

The importance of maintaining a statistical program which documents the Commonwealth's prison population is especially evident in light of recent overcrowding conditions found within many of our county prisons.

The Bureau has recently acquired modern data processing equipment through a grant from the Pennsylvania Commission on Crime and Delinquency. Because the manual reports are being presently converted to computer programs, several reports were not able to be included in this year's report. These new data processing capabilities will be incorporated into next year's annual statistical report.

Respectfully submitted,

Ronald J. Marks
Ronald J. Marks
Commissioner

TABLE OF CONTENTS

	<u>PAGE</u>
PREFACE	iii
INTRODUCTION	1
History of the Report	1
Purpose	1
Explanatory Notes	1-2
Source of Information	3
Comment	3
SELECTIVE NARRATIVE SUMMARY	4
POPULATION - GENERAL, BY COUNTY	5-13
POPULATION - RACE AND SEX	14-16
POPULATION - SMSA AND BY COUNTY	17-18
PRISONERS - SENTENCED AND DETENTIONERS	19-22
PRISONERS RELEASED	23-25
SUMMARY INFORMATION	26
WORK RELEASE	27
ESCAPES	28
FOOTNOTES	29

INTRODUCTION

The Commonwealth's county prison system is just as diverse as the political and cultural make-up of the counties themselves. However, one characteristic binds them together—the recent increase in the county prison population. This report will enable the reader to comprehend the increasing demands placed upon these county facilities, especially when they are reviewed in terms of increasing populations during 1981, causing a few county prisons to send inmates to other county prisons due to over-crowded conditions.

History of the Report

Statewide collection of county correctional statistics has been in operation since February 27, 1847 when the program was made statutory by the Pennsylvania legislature. The program operated under the jurisdiction of the Department of State until 1872 when it was transferred to the Board of Public Charities (now known as the Department of Public Welfare). The program was again transferred in 1956 when it was placed under the Department of Justice's Bureau of Correction. The program remained there until 1968 when it was moved to the Pennsylvania Commission on Crime and Delinquency (then known as the Governor's Justice Commission, then under the Department of Justice). The county correctional statistics program made its last move in 1976 when it was transferred back to the supervision of the Bureau of Correction, where it has been since that time.

Purpose

The purpose of this annual statistical report is to provide summary data on county prison inmate populations, inmate population movements, as well as providing population trends for the county prisons and jails.

Explanatory Notes

Class of county - This term defines the legislative decennial classification as it relates to the size of the county population. The county class and corresponding population ranges are as follows:

1. First class (more and 1,800,000 inhabitants);
2. Second class (800,000 to 1,800,000);
3. Second class A (500,000 to 800,000);
4. Third class (225,000 to 500,000);
5. Fourth class (150,000 to 225,000);
6. Fifth class (95,000 to 150,000);
7. Sixth class (45,000 to 95,000);
8. Seventh class (20,000 to 45,000); and
9. Eighth class (less than 20,000 inhabitants).

Conditional releases - This term identifies those prison parolees who are released under the supervision of the Pennsylvania Board of Probation and Parole (PBPP) or who are paroled directly by the Court of Record (often referred to as "county parole"). Unless specified, these two groups will be combined in this report.

County prisons and jails - Generally, first through fifth class counties have "prisons" and sixth through eighth class counties have "jails", though local terminology may vary (e.g., Allegheny County Jail). Generally, the county prisons are administered

by a prison board and an appointed warden; county jails are usually administered by an elected sheriff. In recent years the county prisons and jails have primarily received only the short-term sentenced prisoners and pre-trial detentioners. In this report the term "prisons" shall refer to both prisons and jails.

Court sentences - This term identifies those county prisoners committed by a Court of Record to serve sentences for felony and misdemeanor offenses. It has been the practice in recent years not to sentence convicted felons to county prisons; these prisoners are generally sentenced to a state regional correctional facility or a state correctional institution operated by the Bureau of Correction.

Detentioners received - This term identifies those individuals detained prior to trial as well as other prisoners not sentenced directly to the local prisons where they are contained. Detentioners include those individuals who were: (1) held for trial, further hearing, or as a material witness, (2) held for various federal, state or other police authorities, and (3) held for mental examination or observation.

Detentioners released - This term identifies those individuals released by the following methods: (1) bail, (2) holding authority (i.e., court, minor judiciary, coroner, etc.), (3) sentenced to local county prison, (4) sentenced to state correctional institutions, (5) sentenced to state regional correctional facilities, (6) by various federal, state, and police authorities, and (7) mental patients released.

Minor judiciary sentences - This term identifies those individuals who receive sentences by the minor judiciary (district magistrates, justices, etc.) for county prison commitment. (Note: The municipal court in Philadelphia County handles this type of case.)

Rate per 100,000 civilian population - This term represents the ratio of a prison population with respect to the civilian population of the county.

Standard Metropolitan Statistical Area (SMSA) - A county or group of contiguous counties which contains at least one city of 50,000 inhabitants or more, or "turn cities" with a combined population of at least 50,000. In addition to the county or counties containing such a city or cities, contiguous counties are included in an SMSA if, according to certain criteria, they are essentially metropolitan in character and are socially and economically integrated with the central city.

Unconditional releases - This term identifies those sentenced county prisoners who were given a final discharge and are no longer under any type of supervision after their release from county prison. Unconditional releases include the following: (1) expiration of maximum sentence, (2) by court order, (3) by minor judiciary order, and (4) by payment of fines and costs.

Yearly average daily population - This term represents the cumulative daily inmate population count as of midnight, divided by the number of days in the calendar year.

Source of Information

Information found in this report is based entirely upon monthly and quarterly population statistical reports submitted by the county prisons to the Bureau's Records and Statistics Section, organized under the Finance, Planning and Research Division. The data is then edited, corrected, and summarized for input into this report.

Comment

The Bureau's Data Processing Section is currently in the process of installing a new UNIVAC System 80 Computer. Subsequently, detailed data involving defendants sentenced in 1981 to serve time in a local county correctional facility will not be presented in this report. This report will not include data on age, type of offense, sentence length, and time served. This report will primarily present data on populations and population movements.

Population counts should be used with caution because several county prisons are including in their count prisoners who were transferred to other county prisons due to over-crowding and prisoners transferred to other facilities, such as mental hospitals, halfway houses, and etc.

SELECTIVE NARRATIVE SUMMARY

Population Trends

1981 was the fourth consecutive year which both the yearly average daily population and the December 31st county prison population displayed an increase. The yearly average daily population for 1981 was 8,851, up from 7,493 in 1980, yielding an increase of 18.1 percent. The county prison population for December 31, 1981 was 8,977, up from 7,553 in 1980, yielding an increase of 18.9 percent.

Characteristics of Inmate Population

A review of the statewide county prison inmate population on December 31, 1981 revealed the following:

1. 51.2% were white; 48.8% were non-white;
2. 95.8% were males; 4.2% were females;
3. 31.3% were sentenced; 68.7% were detentioners (unsentenced); and
4. 5.8% were on work release

Admissions

During 1981, defendants sentenced by a Court of Record to serve time in local county prisons increased by 18.2%; defendants sentenced by district magistrates decreased 11.2%; and detentioners (unsentenced) received increased by 9.0%.

The Largest County Prisons

Nineteen counties had a yearly average daily population exceeding 100 inmates, which accounted for 83.7% of the Commonwealth's total yearly average daily population. Philadelphia County's Holmesburg Prison had the highest yearly average daily population with 1,193.

Ratio of Prisoners Per 100,000 Civilian Population

Three counties displayed a ratio of 100 inmates or more per a civilian population of 100,000 during 1981. These counties (with their ratio of prisoners per 100,000 civilian population in parenthesis) were: Philadelphia (182), Dauphin (130) and Lebanon (115).

TABLE 1
Monthly Average Daily Populations in County Prisons
and Jails, January to June 1982

County	Jan.	Feb.	March	April	May	June
Adams	44	48	49	49	59	55
Allegheny	584	578	586	593	576	565
Armstrong	21	31	40	37	35	36
Beaver	74	76	88	84	74	73
Bedford	33	39	27	28	26	28
Berks	264	259	256	245	245	239
Blair	96	95	97	99	101	101
Bradford	19	19	23	28	25	27
Bucks	259	261	257	256	257	257
Butler	61	62	55	54	55	52
Cambria	113	121	127	132	128	124
Cameron	2	2	(c)	(c)	(c)	(c)
Carbon	23	18	20	23	20	17
Centre	35	38	34	33	33	33
Chester	318	335	316	298	312	318
Clarion	13	11	11	9	10	8
Clearfield	64	70	83	81	90	88
Clinton	29	32	29	30	32	31
Columbia	34	32	40	45	46	47
Crawford	45	48	50	52	52	44
Cumberland	96	88	94	98	100	102
Dauphin	313	313	311	308	314	301
Delaware	457	472	483	479	471	473
Elk	3	2	5	5	5	2
Erie	202	194	206	217	227	220
Fayette	46	51	49	47	48	51
Forest	0	0	0	0	0	0
Franklin	83	82	82	91	88	79
Fulton	(c)	(c)	(c)	(c)	(c)	(c)
Greene	9	9	10	9	10	16
Huntingdon	26	25	29	33	27	24
Indiana	28	31	29	30	29	31
Jefferson	8	13	15	14	13	13
Juniata	22	22	22	20	16	19
Lackawanna	136	140	134	121	114	119
Lancaster	287	310	307	294	294	302
Lawrence	33	35	39	43	47	47
Lebanon	138	142	143	133	141	142
Lehigh	211	219	226	212	209	230
Luzerne	218	215	230	232	234	230
Lycoming	106	112	116	115	100	98
McKean	14	17	14	12	10	11
Mercer	43	47	51	50	51	47
Mifflin	22	23	25	23	20	17
Monroe	29	33	32	26	30	29
Montgomery	306	317	320	316	315	312
Montour	29	32	27	31	30	30
Northampton	198	215	205	221	234	227
Northumberland	83	84	78	67	66	69
Perry	8	9	7	8	10	11
Philadelphia	3,363	3,370	3,385	3,402	3,391	3,271
Pike	13	13	15	15	14	14
Potter	7	8	9	6	6	6
Schuylkill	77	78	84	77	75	69
Snyder	22	24	22	19	17	17
Somerset	47	50	51	52	46	48
Sullivan	(c)	(c)	(c)	(c)	(c)	(c)
Susquehanna	13	17	13	12	8	13
Tioga	21	24	26	23	24	23
Union	14	17	17	16	17	19
Venango	26	30	29	31	31	29
Warren	42	44	44	39	42	43
Washington	81	100	109	107	91	95
Wayne	19	20	24	23	19	18
Westmoreland	47	51	51	55	53	51
Wyoming	7	7	8	8	7	8
York	211	227	252	252	251	235
Total	9,295	9,507	9,616	9,568	9,521	9,354

Figure 1
Populations in County Prisons and Jails
1972-1981

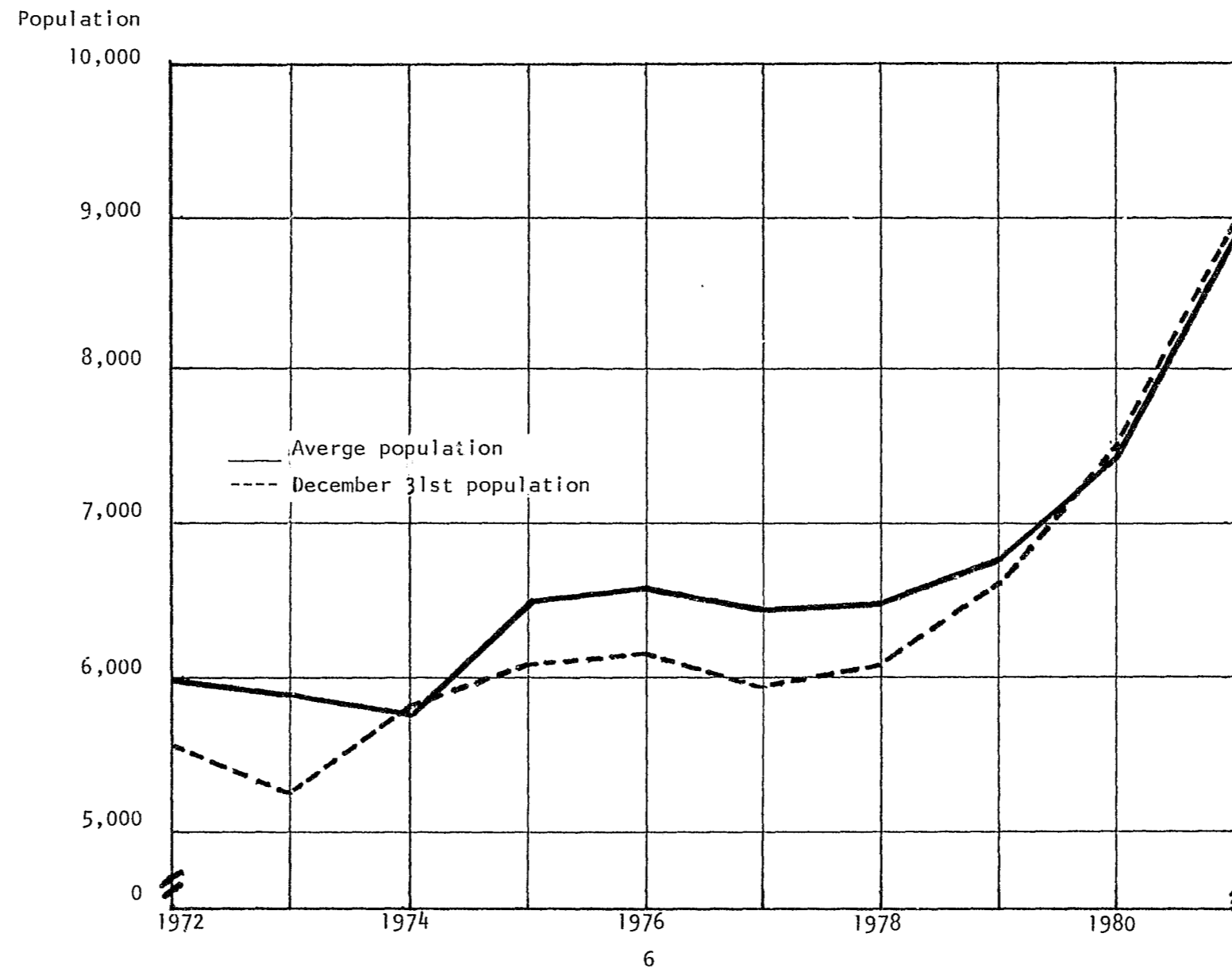


TABLE 2
 Month-End Populations in County Prisons and Jails,
 January to June 1982

County	Jan. 31	Feb. 28	Mar. 31	April 30	May 31	June 30
Adams	47	44	51	52	58	54
Allegheny	602	599	567	576	585	579
Armstrong	25	42	34	35	37	37
Beaver	80	84	91	77	72	82
Bedford	36	36	25	34	21	27
Berks	262	256	245	234	236	234
Blair	97	91	95	100	106	99
Bradford	20	23	21	31	22	23
Bucks	262	268	262	252	251	260
Butler	62	65	57	56	56	45
Cambria	125	122	135	129	121	129
Cameron	2	3	(c)	(c)	(c)	(c)
Carbon	21	19	22	24	16	22
Centre	36	37	40	34	38	33
Chester	320	346	292	291	329	305
Clarion	13	10	11	11	10	8
Clearfield	63	83	78	92	96	87
Clinton	29	30	30	31	33	31
Columbia	36	32	46	45	49	51
Crawford	43	42	56	55	45	37
Cumberland	94	89	94	104	100	100
Dauphin	322	310	314	301	319	309
Delaware	470	469	481	468	471	459
Elk	4	3	6	5	5	3
Erie	195	204	210	222	232	221
Fayette	52	48	50	42	51	57
Foresc	0	0	0	0	0	0
Franklin	82	80	93	92	85	86
Fulton	(c)	(c)	(c)	(c)	(c)	(c)
Greene	9	10	7	8	12	14
Huntingdon	23	26	29	30	28	26
Indiana	28	34	26	30	31	25
Jefferson	12	15	15	14	15	11
Juniata	21	23	21	16	18	20
Lackawanna	144	138	125	123	115	126
Lancaster	298	307	301	292	298	290
Lawrence	36	36	42	44	47	43
Lebanon	143	142	135	143	144	144
Lehigh	202	221	219	202	222	231
Luzerne	218	226	229	235	234	228
Lycoming	109	118	112	100	98	97
McKean	16	13	14	10	11	11
Mercer	48	49	50	45	49	45
Mifflin	17	27	23	21	19	17
Monroe	29	34	26	29	26	29
Montgomery	309	340	310	318	315	315
Montour	29	32	29	29	29	30
Northampton	195	211	201	229	239	218
Northumberland	88	80	77	68	65	68
Perry	9	6	8	9	11	11
Philadelphia	3,378	3,441	3,398	3,426	3,353	3,233
Pike	13	14	15	12	13	15
Potter	10	10	8	6	6	8
Schuylkill	79	85	80	82	32	66
Snyder	26	23	23	19	16	16
Somerset	46	46	51	48	47	55
Sullivan	(c)	(c)	(c)	(c)	(c)	(c)
Susquehanna	16	16	12	12	11	15
Tioga	23	25	27	22	24	20
Union	16	20	16	15	19	19
Venango	31	27	37	31	28	27
Warren	46	47	41	38	43	42
Washington	95	106	103	106	92	87
Wayne	19	23	23	23	16	18
Westmoreland	44	47	56	50	49	55
Wyoming	7	8	7	9	5	10
York	204	241	261	248	246	242
Total	9,436	9,702	9,563	9,535	9,470	9,305

TABLE 3
Month-End Populations in County Prisons and Jails,
January 1980 to June 1982

Month	1980	1981	1982
January 31	7,055	8,382	9,436
February 28	7,128	8,712	9,702
March 31	7,081	8,653	9,563
April 30	7,193	8,473	9,535
May 31	7,350	8,678	9,470
June 30	7,483	8,858	9,305
July 31	7,608	8,898	-
August 31	7,892	9,160	-
September 30	8,010	9,343	-
October 31	7,910	9,472	-
November 30	8,006	9,499	-
December 31	7,553	8,977	-

See Chart Below:

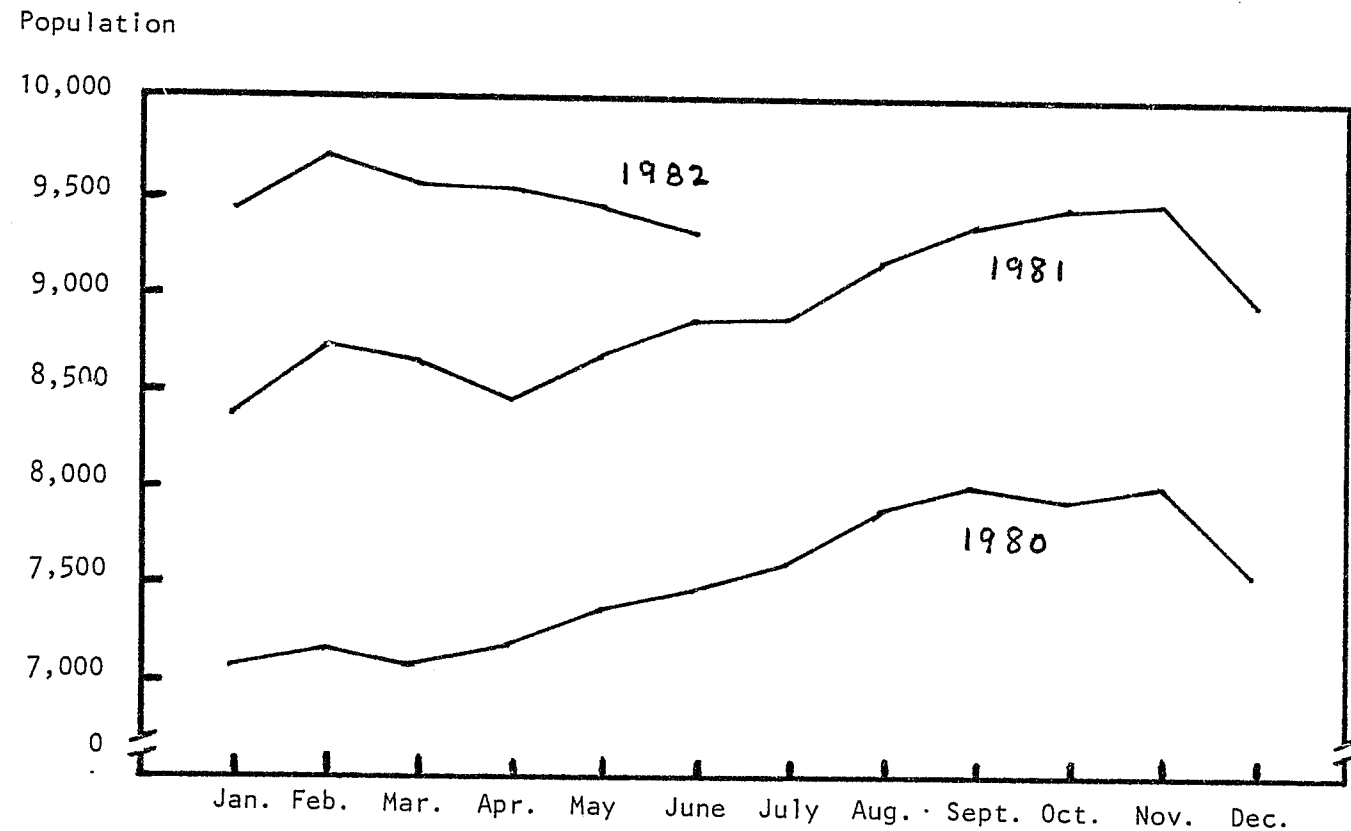


TABLE 4
Yearly Average Populations in Pennsylvania
County Prisons and Jail, 1980 and 1981

County	1980	1981	Change 1980 - 1981	
			Amount	Percent
Adams	78	45	7	18.4
Allegheny	488	561	73	15.0
Armstrong	13	17	(a)	(a)
Beaver	70	72	2	2.9
Bedford	19	27	(a)	(a)
Berks	207	252	45	21.7
Blair	91	95	4	4.4
Bradford	22	19	(a)	(a)
Bucks	206	242	36	17.5
Butler	46	47	1	2.2
Cambria	99	106	7	7.1
Cameron	3	3	(a)	(a)
Carbon	12	19	(a)	(a)
Centre	35	33	-2	-5.7
Chester	278	306	28	10.1
Clarion	16	10	(a)	(a)
Clearfield	62	79	17	27.4
Clinton	18	25	(a)	(a)
Columbia	42	50	8	19.0
Crawford	48	51	3	6.3
Cumberland	82	92	10	12.2
Dauphin	236	302	66	28.0
Delaware	379	442	63	16.6
Elk	4	5	(a)	(a)
Erie	192	204	12	6.3
Fayette	43	44	1	0.2
Forest	(b)	(b)	(b)	(b)
Franklin	73	74	1	1.4
Fulton	2	(c)	(a)	(c)
Greene	7	15	(a)	(a)
Huntingdon	18	20	(a)	(a)
Indiana	23	31	(a)	(a)
Jefferson	10	9	(a)	(a)
Juniata	5	16	(a)	(a)
Lackawanna	96	136	40	41.7
Lancaster	228	263	35	15.4
Lawrence	41	40	-1	-2.4
Lebanon	98	125	27	27.6
Lehigh	204	231	27	13.2
Luzerne	189	202	13	6.9
Lycoming	77	95	18	23.4
McKean	18	20	(a)	(a)
Mercer	49	44	-5	-10.2
Mifflin	34	32	-2	-5.9
Monroe	24	26	(a)	(a)
Montgomery	273	293	20	7.3
Montour	24	28	(a)	(a)
Northampton	179	212	33	18.4
Northumberland	74	79	5	6.8
Perry	7	8	(a)	(a)
Philadelphia	2,435	3,072	637	26.2
House of Correction	774	1,047	273	35.3
Holmesburg	889	1,193	304	34.2
Detention Center	772	832	60	7.8
Pike	9	12	(a)	(a)
Potter	8	9	(a)	(a)
Schuylkill	73	79	6	8.2
Snyder	8	15	(a)	(a)
Somerset	33	42	9	27.3
Sullivan	(c)	(c)	(c)	(c)
Susquehanna	13	11	(a)	(a)
Tioga	13	16	(a)	(a)
Union	14	16	(a)	(a)
Venango	26	31	5	19.2
Warren	22	41	(a)	(a)
Washington	91	84	-7	-7.7
Wayne	12	16	(a)	(a)
Westmoreland	43	46	3	7.0
Wyoming	11	9	(a)	(a)
York	180	205	25	13.9
Total	7,493	8,851	1,358	18.1

TABLE 5
Populations in Pennsylvania County Prisons and
Jails on December 31, 1980 and 1981

County	1980	1981	Change 1980 - 1981	
			Amount	Percent
Adams	47	36	-11	-23.4
Allegheny	473	560	87	18.4
Armstrong	14	16	(a)	(a)
Beaver	79	66	-13	-16.5
Bedford	21	32	(a)	(a)
Berks	200	258	58	29.0
Blair	87	90	3	3.4
Bradford	17	13	(a)	(a)
Bucks	204	251	47	23.0
Butler	26	53	27	103.8
Cambria	75	101	26	34.7
Cameron	3	4	(a)	(a)
Carbon	15	26	(a)	(a)
Centre	31	32	1	3.2
Chester	286	311	25	8.7
Clarion	9	12	(a)	(a)
Clearfield	67	62	-5	-7.5
Clinton	21	31	(a)	(a)
Columbia	44	28	-16	-36.4
Crawford	56	47	-9	-16.1
Cumberland	65	93	28	43.1
Dauphin	256	312	56	21.9
Delaware	391	431	40	10.2
Elk	4	2	(a)	(a)
Erie	196	202	6	3.1
Fayette	35	41	6	17.1
Forest	0	0	(a)	(a)
Franklin	70	78	8	11.4
Fulton	(c)	(c)	(c)	(c)
Greene	10	10	(a)	(a)
Huntingdon	18	26	(a)	(a)
Indiana	29	25	-4	-13.8
Jefferson	10	9	(a)	(a)
Juniata	11	22	(a)	(a)
Lackawanna	89	134	45	50.6
Lancaster	214	273	59	27.6
Lawrence	36	29	-7	-19.4
Lebanon	122	129	7	5.7
Lehigh	219	213	-6	-2.7
Luzerne	183	214	31	16.9
Lycoming	83	104	21	25.3
McKean	25	13	-12	-48.0
Mercer	53	36	-17	-32.1
Mifflin	35	27	-8	-22.9
Monroe	24	28	(a)	(a)
Montgomery	243	279	36	14.8
Montour	22	28	(a)	(a)
Northampton	187	200	13	7.0
Northumberland	67	84	17	25.4
Perry	4	7	(a)	(a)
Philadelphia	2,541	3,299	758	29.8
House of Correction	835	1,124	289	34.6
Holmesburg	917	1,293	376	41.0
Detention Center	789	882	93	11.8
Fike	7	11	(a)	(a)
Potter	8	5	(a)	(a)
Schuylkill	78	76	-2	-2.6
Snyder	12	20	(a)	(a)
Somerset	28	49	21	75.0
Sullivan	(c)	(c)	(c)	(c)
Susquehanna	14	13	(a)	(a)
Tioga	6	21	(a)	(a)
Union	12	15	(a)	(a)
Venango	22	27	(a)	(a)
Warren	42	39	-3	-7.1
Washington	74	66	-8	-10.8
Wayne	10	12	(a)	(a)
Westmoreland	35	42	7	20.0
Wyoming	8	8	(a)	(a)
York	180	196	16	8.9
Total	7,553	8,977	1,427	18.9

TABLE 6
Population Trends in Pennsylvania County Prisons and Jails from 1972 to 1981

Year	December 31st Pop.	Percent Change	Yrly. Avg. Daily Pop.	Percent Change
1972	5,527	-	5,996	-
1973	5,209	-5.8	5,899	-1.6
1974	5,799	11.3	5,745	-2.6
1975	6,093	5.1	6,481	12.8
1976	6,156	1.0	6,573	1.4
1977	5,940	-3.5	6,425	-2.3
1978	6,081	2.4	6,414	-0.2
1979	6,608	8.7	6,714	4.7
1980	7,553	14.3	7,493	11.6
1981	8,977	18.9	8,851	18.1

TABLE 7

1981 Average Populations in Pennsylvania County Prisons and
Jails by County Classification

County Classification	Number of Co. Prisons	Average Pop.	Range of Average Prison Population within County Classification			
			Low	County	High	County
1st Class	3	1,024	832	Detention Center (Phila)	1,193	Holmesburg (Phila.)
2nd & 2A Class	3	432	293	Montgomery	561	Allegheny
3rd Class	12	217	46	Westmoreland	306	Chester
4th Class	6	80	44	Fayette	106	Cambria
5th Class	9	70	33	Center	125	Lebanon
6th Class	20	30	5	Elk	79	Clearfield
7th Class	8	13	8	Northumberland	16	Union & Wayne
8th Class	6	11	(b)	Forest	28	Montour
Total	67	132	-	-	-	-

NOTE: Philadelphia County is the only county which has more than one county correctional facility. (It has three - the Detention Center, Holmesburg and the House of Correction.) Two eighth class county jails, Fulton and Sullivan, were closed during 1981 and are not included above.

TABLE 8

County Prisons Averaging Over One Hundred Inmates During 1981

County Prison	Yearly average population	Percent of State total	Rate per 100,000 Civilian pop.
Philadelphia	3,072	35.9	182.0
Holmesburg	(1,193)	(14.0)	-
House of Correction	(1,047)	(12.2)	-
Detention Center	(832)	(9.7)	-
Allegheny	561	6.6	38.7
Delaware	442	5.2	79.6
Chester	306	3.6	96.6
Dauphin	302	3.5	130.0
Montgomery	293	3.4	45.5
Lancaster	263	3.1	72.6
Berks	252	2.9	80.6
Bucks	242	2.8	50.5
Lehigh	231	2.7	84.8
Northampton	212	2.5	94.0
York	205	2.4	65.5
Erie	204	2.4	72.9
Luzerne	202	2.4	58.9
Lackawanna	136	1.6	59.7
Lebanon	125	1.5	115.1
Cambria	106	1.2	57.8
Sub-total	7,154	83.7	89.5
State total	8,551	100.0	72.1

TABLE 9
Populations in Pennsylvania County Prisons and Jails on
December 31, 1980 and 1981, by Race

County	1980			1981			Percent Non-White on Dec. 31st	
	White	Non-White	Total	White	Non-White	Total	1980	1981
Adams	42	5	47	29	7	36	10.6	19.4
Allegheny	167	306	473	187	373	560	64.7	66.6
Armstrong	13	1	14	15	1	16	7.1	6.2
Beaver	52	27	79	42	24	66	34.2	36.4
Bedford	21	0	21	31	1	32	0.0	3.1
Berks	148	52	200	184	74	258	26.0	28.7
Blair	84	3	87	85	5	90	3.4	5.6
Bradford	17	0	17	13	0	13	0.0	0.0
Bucks	160	44	204	194	57	251	21.6	22.7
Butler	25	1	26	52	1	53	3.8	1.9
Cambria	63	12	75	84	17	101	16.0	16.8
Cameron	3	0	3	4	0	4	0.0	0.0
Carbon	14	1	15	26	0	26	6.7	0.0
Centre	29	2	31	30	2	32	6.5	6.3
Chester	158	128	286	188	123	311	44.8	39.5
Clarion	9	0	9	12	0	12	0.0	0.0
Clearfield	67	0	67	60	2	62	0.0	3.2
Clinton	20	1	21	30	1	31	4.8	3.2
Columbia	44	0	44	28	0	28	0.0	0.0
Crawford	54	2	56	36	11	47	3.6	23.4
Cumberland	58	7	65	87	6	93	10.8	6.5
Dauphin	115	141	256	122	190	312	55.1	60.9
Delaware	141	250	391	212	219	431	63.9	50.8
Elk	4	0	4	2	0	2	0.0	0.0
Erie	136	60	196	132	70	202	30.6	34.7
Fayette	27	8	35	32	9	41	22.9	22.0
Forest	0	0	0	0	0	0	0.0	0.0
Franklin	59	11	70	65	13	78	15.7	16.7
Fulton	(c)	(c)	(c)	(c)	(c)	(c)	(c)	(c)
Greene	10	0	10	10	0	10	0.0	0.0
Huntingdon	14	4	18	25	1	26	22.2	3.8
Indiana	29	0	29	25	0	25	0.0	0.0
Jefferson	10	0	10	9	0	9	0.0	0.0
Juniata	10	1	11	20	2	22	9.1	9.1
Lackawanna	88	1	89	120	14	134	1.1	10.4
Lancaster	151	63	214	181	92	273	29.4	33.7
Lawrence	26	10	36	24	5	29	27.8	17.2
Lebanon	117	5	122	115	14	129	4.1	10.9
Lehigh	149	70	219	141	72	213	32.0	33.8
Luzerne	173	10	183	208	6	214	5.5	2.8
Lycoming	63	20	83	96	8	104	24.1	7.7
McKean	24	1	25	13	0	13	4.0	0.0
Mercer	35	18	53	21	15	36	34.0	41.7
Mifflin	34	1	35	27	0	27	2.9	0.0
Monroe	24	0	24	25	3	28	0.0	10.7
Montgomery	155	88	243	159	120	279	36.2	43.0
Montour	22	0	22	28	0	28	0.0	0.0
Northampton	146	41	187	165	35	200	21.9	17.5
Northumberland	67	0	67	81	3	84	0.0	3.6
Perry	4	0	4	7	0	7	0.0	0.0
Philadelphia	462	2,079	2,541	617	2,682	3,299	81.8	81.3
Pike	7	0	7	11	0	11	0.0	0.0
Potter	8	0	8	5	0	5	0.0	0.0
Schuylkill	76	2	78	76	0	76	2.6	0.0
Snyder	12	0	12	19	1	20	0.0	5.0
Somerset	28	0	28	49	0	49	0.0	0.0
Sullivan	(c)	(c)	(c)	(c)	(c)	(c)	(c)	(c)
Susquehanna	10	4	14	12	1	13	28.6	7.7
Tioga	6	0	6	21	0	21	0.0	0.0
Union	12	0	12	15	0	15	0.0	0.0
Venango	19	3	22	26	1	27	13.6	3.7
Warren	42	0	42	39	0	39	0.0	0.0
Washington	59	15	74	45	21	66	20.3	31.8
Wayne	9	1	10	12	0	12	10.0	0.0
Westmoreland	25	10	35	33	9	42	28.6	21.4
Wyoming	8	0	8	8	0	8	0.0	0.0
York	125	55	180	130	66	196	30.6	33.7
Total	3,989	3,564	7,553	4,600	4,377	8,977	47.2	48.8

TABLE 10
Populations in Pennsylvania County Prisons and Jails on
December 31, 1980 and 1981, By Sex

County	1980			1981		
	Male	Female	Total	Male	Female	Total
Adams	47	0	47	36	0	36
Allegheny	443	30	473	516	44	560
Armstrong	14	0	14	16	0	16
Beaver	70	9	79	64	2	66
Bedford	21	0	21	32	0	32
Berks	188	12	200	251	7	258
Blair	81	6	87	86	4	90
Bradford	17	0	17	13	0	13
Bucks	198	6	204	237	14	251
Butler	23	3	26	50	3	53
Cambria	74	1	75	95	6	101
Cameron	3	0	3	4	0	4
Carbon	15	0	15	26	0	26
Centre	31	0	31	32	0	32
Chester	286	0	286	311	0	311
Clarion	9	0	9	12	0	12
Clearfield	67	0	67	56	6	62
Clinton	21	0	21	31	0	31
Columbia	43	1	44	24	4	28
Crawford	56	0	56	45	2	47
Cumberland	61	4	65	82	11	93
Dauphin	228	28	256	287	25	312
Delaware	380	11	391	419	12	431
Elk	4	0	4	2	0	2
Erie	188	8	196	198	4	202
Fayette	35	0	35	41	0	41
Forest	0	0	0	0	0	0
Franklin	67	3	70	67	11	78
Fulton	(c)	(c)	(c)	(c)	(c)	(c)
Greene	10	0	10	10	0	10
Huntingdon	18	0	18	26	0	26
Indiana	29	0	29	25	0	25
Jefferson	10	0	10	9	0	9
Juniata	11	0	11	22	0	22
Lackawanna	87	2	89	130	4	134
Lancaster	207	7	214	256	17	273
Lawrence	35	1	36	27	2	29
Lebanon	118	4	122	121	8	129
Lehigh	207	12	219	191	22	213
Luzerne	169	14	183	206	8	214
Lycoming	80	3	83	102	2	104
McKean	25	0	25	11	2	13
Mercer	51	2	53	35	1	36
Mifflin	32	3	35	25	2	27
Monroe	24	0	24	28	0	28
Montgomery	243	0	243	279	0	279
Montour	22	0	22	28	0	28
Northampton	180	7	187	190	10	200
Northumberland	66	1	67	82	2	84
Perry	4	0	4	7	0	7
Philadelphia	2,463	78	2,541	3,188	111	3,299
Pike	7	0	7	10	1	11
Potter	7	1	8	5	0	5
Schuylkill	77	1	78	76	0	76
Snyder	12	0	12	20	0	20
Somerset	28	0	28	48	1	49
Sullivan	(c)	(c)	(c)	(c)	(c)	(c)
Susquehanna	14	0	14	13	0	13
Tioga	6	0	6	21	0	21
Union	12	0	12	15	0	15
Venango	21	1	22	25	2	27
Warren	42	0	42	39	0	39
Washington	67	7	74	58	8	66
Wayne	10	0	10	12	0	12
Westmoreland	34	1	35	40	2	42
Wyoming	8	0	8	8	0	8
York	166	14	180	180	16	196
Total	7,272	281	7,553	8,601	376	8,977

TABLE 11
Racial Distribution of Inmates Confined in Pennsylvania
County Prison and Jails as of December 31, 1972-1981

Year	White	Percent	Non-White	Percent	Total
1972	2,269	41.1	3,258	58.9	5,527
1973	2,372	45.5	2,837	54.5	5,209
1974	2,831	48.8	2,968	51.2	5,799
1975	2,988	49.0	3,105	51.0	6,093
1976	3,252	52.8	2,904	47.2	6,156
1977	3,168	53.3	2,772	46.7	5,940
1978	3,317	54.5	2,764	45.5	6,081
1979	3,603	54.5	3,005	45.5	6,608
1980	3,989	52.8	3,564	47.2	7,553
1981	4,600	51.2	4,377	48.8	8,977

TABLE 12
Number and Ratio of Prisoners Per 100,000 Civilian Population
on December 31, 1980 and 1981, by County

County	1980		1981	
	Prisoners	Ratio	Prisoners	Ratio*
Adams	47	68.8	36	52.7
Allegheny	473	32.6	560	38.6
Armstrong	14	18.0	16	20.6
Beaver	79	38.6	66	32.3
Bedford	21	44.9	32	68.4
Berks	200	64.0	258	82.6
Blair	87	63.7	90	65.9
Bradford	17	27.0	13	20.7
Bucks	204	42.6	251	52.4
Butler	26	17.6	53	35.8
Cambria	75	40.9	101	55.1
Cameron	3	45.0	4	59.9
Carbon	15	28.2	26	48.8
Centre	31	27.5	32	28.4
Chester	286	90.3	311	98.2
Clarion	9	20.8	12	27.7
Clearfield	67	80.2	62	74.2
Clinton	21	53.9	31	79.5
Columbia	44	70.7	28	45.2
Crawford	56	63.0	47	52.9
Cumberland	65	36.5	93	52.1
Dauphin	256	110.2	312	134.3
Delaware	391	70.4	431	77.7
Elk	4	10.4	2	52.1
Erie	196	70.1	202	72.2
Fayette	35	21.8	41	25.7
Forest	0	0.0	0	0.0
Franklin	70	61.6	78	68.6
Fulton	(e)	(e)	(e)	(e)
Greene	10	24.8	10	24.7
Huntingdon	18	42.6	26	61.5
Indiana	29	31.4	25	27.1
Jefferson	10	20.7	9	18.6
Juniata	11	57.3	22	114.7
Lackawanna	89	39.1	134	58.8
Lancaster	214	59.1	273	75.3
Lawrence	36	33.6	29	27.1
Lebanon	122	111.1	129	118.8
Lehigh	219	80.0	213	78.2
Luzerne	183	53.3	214	62.4
Lycoming	83	70.1	104	87.8
McKean	25	49.4	13	25.7
Mercer	53	41.3	36	28.1
Mifflin	35	74.6	27	57.6
Monroe	24	34.6	28	40.3
Montgomery	243	37.8	279	43.3
Montour	22	131.9	28	167.9
Northampton	187	83.0	200	88.7
Northumberland	67	66.7	84	83.7
Perry	4	11.2	7	19.6
Philadelphia	2,541	150.5	3,299	195.4
Pike	7	38.3	11	60.2
Potter	8	45.1	5	28.2
Schuylkill	78	48.6	76	47.3
Snyder	12	35.7	20	59.6
Somerset	28	34.5	49	60.3
Sullivan	(e)	(e)	(e)	(e)
Susquehanna	14	37.0	13	34.3
Tioga	6	14.6	21	51.3
Union	12	36.5	15	45.6
Venango	22	34.1	27	41.9
Warren	42	88.5	39	82.2
Washington	74	34.1	66	30.4
Wayne	10	28.4	12	34.1
Westmoreland	35	8.9	42	10.7
Wyoming	8	30.3	8	30.3
York	180	57.5	196	62.6
Total	7,553	63.6	8,977	75.7

* Ratio based on U.S. Bureau of Census populations on April 1, 1980.

TABLE 13

1981 County Prison Population and 1980 Civilian Population For
Standard Metropolitan Statistical Areas in Pennsylvania

Standard Metropolitan Statistical Area	Prison Population		Civilian Population*	
	Avg. Daily Pop.	Percent of Total	Population	Percent of Total
Allentown - Bethlehem - Easton SMSA (Includes Carbon, Lehigh & Northampton Counties, Pa.; excludes Warren County, N.J.)	462	5.2	551,052	4.6
Altoona SMSA (Includes Blair County)	95	1.1	136,621	1.2
Erie SMSA (Includes Erie County)	204	2.3	279,780	2.4
Harrisburg SMSA (Includes Dauphin, Cumberland & Perry Counties)	402	4.5	446,576	3.8
Johnstown SMSA (Includes Cambria & Somerset Counties)	148	1.7	264,506	2.2
Lancaster SMSA (Includes Lancaster County)	263	3.0	362,346	3.1
Northeast Pa. SMSA (Includes Monroe, Lackawanna & Luzerne Counties)	364	4.1	640,396	5.4
Philadelphia SMSA (Includes Bucks, Chester, Delaware, Montgomery and Philadelphia Counties; excludes Burlington, Camden & Gloucester Counties, N.J.)	4,355	49.2	3,682,709	31.0
Pittsburgh SMSA (Includes Allegheny, Beaver, Washington & Westmoreland Counties)	763	8.6	2,263,894	19.1
Reading SMSA (Includes Berks County)	252	2.8	312,509	2.6
Williamsport SMSA (Includes Lycoming County)	95	1.1	118,416	1.0
York SMSA (Includes Adams and York Counties)	250	2.9	381,255	3.2
SMSA Total	7,653	86.5	9,440,060	79.6
Outside SMSA	1,198	13.5	2,423,835	20.4
Pennsylvania Total	8,851	100.0	11,863,895	100.0

* U.S. Bureau of Census populations as of April 1, 1980. Estimated civilian populations for 1981 not yet available.

TABLE 14

Prisoners Sentenced to Pennsylvania County Prisons
and Jails During 1980 and 1981

County	1980		1981	
	By Court of Record	By Minor Judiciary	By Court of Record	By Minor Judiciary
Adams	99	90	72	82
Allegheny	154	195	142	276
Armstrong	4	73	19	50
Beaver	50	27	42	8
Bedford	10	51	7	76
Berks	203	220	189	117
Blair	74	217	62	237
Bradford	25	24	46	20
Bucks	175	20	280	41
Butler	54	73	45	88
Cambria	66	13	104	13
Cameron	0	0	4	0
Carbon	21	11	75	15
Centre	61	75	47	60
Chester	196	381	254	395
Clarion	10	45	8	31
Clearfield	84	67	84	32
Clinton	25	47	38	19
Columbia	67	55	54	22
Crawford	89	140	97	111
Cumberland	126	64	146	70
Dauphin	277	171	399	192
Delaware	337	285	406	225
Elk	9	20	14	21
Erie	170	258	215	213
Fayette	0	38	11	151
Forest	(d)	(d)	(d)	(d)
Franklin	113	112	110	87
Fulton	5	5	(c)	(c)
Greene	26	56	47	62
Huntingdon	36	36	35	27
Indiana	31	60	21	56
Jefferson	7	31	2	12
Juniata	3	4	10	1
Lackawanna	80	42	110	29
Lancaster	328	70	360	44
Lawrence	12	50	21	34
Lebanon	139	93	107	94
Lehigh	139	8	201	21
Luzerne	141	38	113	21
Lycoming	128	123	152	105
McKean	28	35	42	25
Mercer	37	70	46	75
Mifflin	71	34	73	0
Monroe	68	19	81	16
Montgomery	309	85	309	73
Montour	17	22	14	27
Northampton	86	138	84	75
Northumberland	98	64	115	48
Perry	8	0	10	0
Philadelphia	1,203	225	1,728	170
Pike	9	5	13	4
Potter	25	0	19	1
Schuylkill	107	25	73	45
Snyder	14	5	17	14
Somerset	42	0	49	0
Sullivan	(c)	(c)	(c)	(c)
Susquehanna	20	8	19	4
Tioga	9	30	18	26
Union	19	5	18	6
Venango	27	139	33	83
Warren	80	29	73	18
Washington	169	102	149	91
Wayne	17	5	31	6
Westmoreland	29	49	22	23
Wyoming	13	10	12	16
York	176	130	201	117
Total	6,255	4,642	7,359	4,121

TABLE 15
Pre-Trial Detentioners Received in Pennsylvania
County Prisons and Jails During 1981

County	Types of Population Movements			Total detentioners received
	Held for trial or further hearing	Held for various authorities	Held for mental examination	
Adams	262	13	0	275
Allegheny	5,804	2,040	75	7,919
Armstrong	219	13	0	232
Beaver	612	5	1	618
Bedford	201	19	0	220
Berks	1,627	27	0	1,654
Blair	588	3	0	591
Bradford	106	42	1	149
Bucks	2,456	173	2	2,631
Butler	1,185	3	0	1,188
Cambria	651	25	0	676
Cameron	58	0	0	58
Carbon	109	7	0	116
Centre	291	52	1	344
Chester	1,514	126	0	1,640
Clarion	215	22	0	237
Clearfield	305	17	0	322
Clinton	96	38	0	134
Columbia	232	19	0	251
Crawford	309	193	0	502
Cumberland	464	41	0	505
Dauphin	2,346	148	0	2,494
Delaware	2,356	139	0	2,495
Elk	58	3	0	61
Erie	1,332	88	0	1,420
Fayette	590	12	0	602
Forest	17	1	0	18
Franklin	583	41	0	624
Fulton	(c)	(c)	(c)	(c)
Greene	214	45	0	259
Huntingdon	102	7	0	109
Indiana	51	179	0	240
Jefferson	74	11	0	85
Juniata	81	29	0	110
Lackawanna	495	136	0	631
Lancaster	1,232	2	0	1,234
Lawrence	350	129	0	479
Lebanon	366	144	0	510
Lehigh	1,393	77	0	1,470
Luzerne	476	284	0	760
Lycoming	291	395	0	686
McKean	108	13	0	121
Mercer	312	142	0	454
Mifflin	235	9	0	244
Monroe	715	27	2	744
Montgomery	1,797	0	0	1,797
Montour	29	2	0	31
Northampton	1,107	0	0	1,107
Northumberland	383	28	0	411
Perry	84	0	0	84
Philadelphia	20,129	749	0	20,878
Pike	70	6	0	76
Potter	32	97	0	129
Schuylkill	230	24	0	254
Snyder	85	4	0	89
Somerset	356	5	0	361
Sullivan	(c)	(c)	(c)	(c)
Susquehanna	89	3	0	92
Tioga	366	7	0	373
Union	82	104	0	186
Venango	218	28	0	246
Warren	134	101	0	235
Washington	686	180	0	866
Wayne	94	2	0	96
Westmoreland	845	18	1	864
Wyoming	75	5	0	80
York	1,751	150	0	1,901
Total	59,733	6,452	83	66,268

Figure 2
Detentioners and Sentenced Prisoners
Received in County Prisons and Jails
1972 - 1981

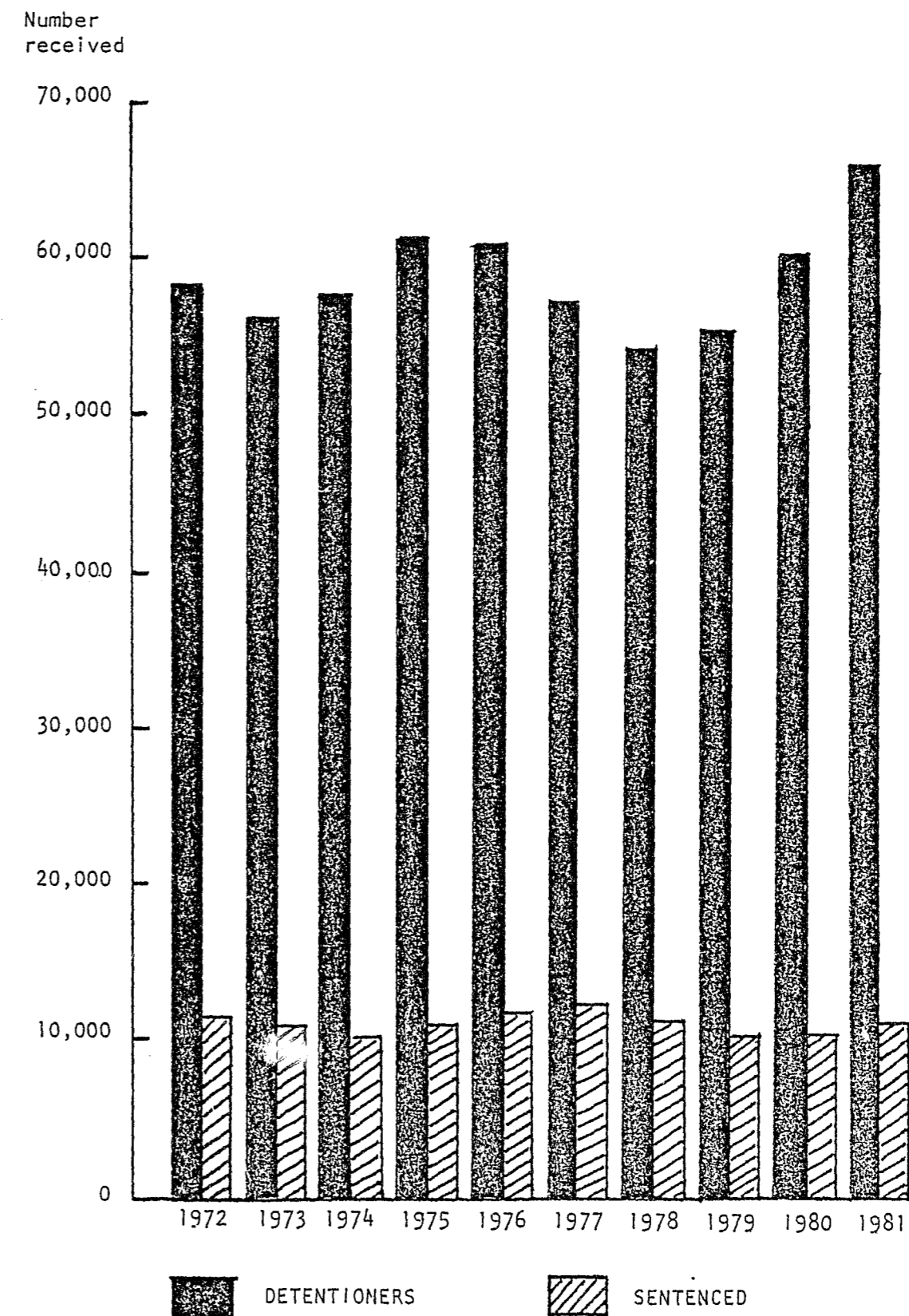


TABLE 18

Detentioners Released from Pennsylvania County Prisons
and Jails During 1981

County	on bail	By holding authorities (court & etc.)	Sentenced to local county prison	Sentenced to State correctional institutions	Sentenced to State Reg. corr. facility	By various Fed., State and police authorities	Mental patients released	Total detentioners released
Adams	135	90	46	12	0	8	1	292
Allegheny	2,966	2,450	68	743	538	887	186	7,838
Armstrong	69	129	0	10	8	0	0	216
Beaver	358	141	8	52	43	0	9	611
Bedford	78	122	0	0	2	7	0	209
Berks	663	718	126	87	0	42	35	1,671
Blair	128	385	75	3	1	2	0	594
Bradford	62	46	31	2	0	8	5	154
Bucks	301	1,823	146	60	0	274	35	2,639
Butler	320	792	16	5	27	12	0	1,172
Cambria	241	333	55	24	0	25	1	679
Cameron	44	8	0	1	1	0	2	56
Carbon	50	47	13	2	0	6	1	119
Centre	192	83	58	10	0	9	4	356
Chester	495	680	285	7	19	146	0	1,632
Clarion	57	147	4	4	6	23	0	241
Clearfield	121	81	22	2	17	8	7	258
Clinton	53	49	19	11	4	8	0	144
Columbia	92	118	13	22	0	16	0	261
Crawford	152	160	16	29	30	122	0	509
Cumberland	260	112	61	30	0	34	0	497
Dauphin	715	1,288	164	155	0	148	35	2,505
Delaware	1,095	883	327	32	70	149	0	2,556
Elk	26	24	8	0	8	3	0	69
Erie	611	493	78	90	89	37	0	1,398
Fayette	238	255	0	26	12	75	7	613
Forest	2	7	0	0	0	0	1	10
Franklin	214	193	89	33	0	48	4	581
Fulton	(c)	(c)	(c)	(c)	(c)	(c)	(c)	(c)
Greene	87	105	4	9	6	12	6	229
Huntingdon	60	17	8	5	0	9	1	100
Indiana	144	50	10	8	6	0	7	225
Jefferson	36	25	3	4	2	5	1	76
Juniata	41	43	2	2	3	15	0	106
Lackawanna	306	165	31	0	9	84	0	595
Lancaster	357	609	197	48	0	66	1	1,278
Lawrence	141	184	6	27	26	132	0	516
Lebanon	98	338	90	11	0	1	0	538
Lehigh	567	713	160	0	11	61	0	1,512
Luzerne	394	229	36	1	5	102	1	768
Lycoming	199	490	0	0	0	0	0	689
McKean	42	52	24	5	9	13	0	145
Mercer	133	126	22	53	48	82	1	465
Mifflin	20	170	0	4	0	3	0	197
Monroe	281	379	31	4	0	22	11	728
Montgomery	573	947	267	173	1	0	0	1,967
Montour	20	8	7	1	0	2	0	38
Northampton	386	698	1	5	0	0	10	1,100
Northumberland	132	177	37	28	0	8	0	382
Perry	44	36	1	0	0	0	0	81
Philadelphia	9,549	7,808	985	967	0	833	105	20,247
Pike	40	13	2	0	0	1	1	57
Potter	51	58	0	3	15	0	2	129
Schuylkill	101	55	41	0	3	13	6	219
Snyder	24	55	2	7	1	5	1	95
Somerset	90	204	0	4	3	27	1	329
Sullivan	(c)	(c)	(c)	(c)	(c)	(c)	(c)	(c)
Susquehanna	37	40	6	10	0	5	1	99
Tioga	132	164	16	32	0	6	0	350
Union	24	66	8	3	1	91	0	193
Venango	71	133	1	1	10	16	0	232
Warren	66	62	9	24	30	63	0	254
Washington	271	345	91	14	32	151	0	904
Wayne	50	32	7	5	0	0	1	95
Westmoreland	381	367	10	22	23	14	31	848
Wyoming	51	13	1	1	2	2	1	71
York	693	891	112	57	0	155	0	1,908
Total	25,436	27,524	3,956	2,990	1,121	4,096	522	65,645

TABLE 19

**Major Types of Admissions to and Releases from Pennsylvania
County Prisons and Jails 1972-1981**

Year	Admissions			Releases		
	Court Commitments*	Minor Judiciary Commitments*	Adult Detentioners	Unconditional*	Conditional (paroles)*	Adult Detentioners
1972	6,163	5,807	58,775	7,758	4,031	58,585
1973	6,186	4,830	56,354	6,779	3,955	56,564
1974	6,916	3,704	57,799	5,806	4,119	57,381
1975	7,646	3,822	61,874	6,092	4,891	62,107
1976	7,773	4,241	61,082	6,247	5,539	61,055
1977	7,102	5,486	57,543	7,143	5,550	57,259
1978	6,336	4,966	54,435	6,246	4,810	54,106
1979	6,169	4,457	55,845	5,425	4,835	55,607
1980	6,225	4,642	60,816	5,641	4,823	60,281
1981	7,359	4,121	66,268	5,335	5,328	65,645

* Represents prisoners sentenced to serve time in local county correctional facilities.

NOTE: Since the above data does not include admissions and releases such as transfers, outmate and weekend movements, and miscellaneous movements (too numerous to mention), the above totals will not balance with end-of-year population counts.

TABLE 20
Summary Information on Pennsylvania County Prisons

County	Year Built	1981 Yearly Avg. Daily Pop.	Average Cost Per Day **	County	Year Built	1981 Yearly Avg. Daily Pop.	Average Cost Per Day **
Adams	1947	45	17.50	Lancaster	1850	263	32.55
Allegheny	1888	561	24.75	Lawrence	1964	40	15.74
Armstrong	1871*	17	22.00	Lebanon	1980	125	19.90
Beaver	1962	72	31.92	Lehigh	1867	231	27.00
Bedford	1895	27	17.50	Luzerne	1868	202	19.46
Berks	1931	252	22.12	Lycoming	1867	95	18.51
Blair	1868	95	21.71	McKean	1880	20	37.68
Bradford	1871	19	38.61	Mercer	1976	44	14.08
Bucks	1884	242	35.53	Mifflin	1856*	32	23.00
Butler	1956	47	33.00	Monroe	1862	26	29.00
Cambria	1890	106	35.00	Montgomery	1851	293	31.02
Cameron	1867	3	5.50	Montour	1892	28	16.50
Carbon	1869	19	32.50	Northampton	1873	212	35.00
Centre	1964	33	30.00	Northumberland	1876	79	19.55
Chester	1959	306	23.94	Perry	1900	8	26.00
Clarion	1873	10	45.00	Philadelphia	-	3,072	40.51
Clearfield	1981	79	21.24	House of Correction	1927	1,047	40.51
Clinton	1851	25	9.40	Holmesburg	1876	1,193	40.51
Columbia	1876	50	19.83	Detention Centers	1963	832	40.51
Crawford	1849	51	25.80				
Cumberland	1753	92	28.00	Pike	1895	12	16.84
Dauphin	1956	302	28.50	Potter	1863	9	25.00
Delaware	1931	442	34.38	Schuylkill	1854	79	35.00
Elk	1885	5	27.50	Snyder	1885*	15	20.12
Erie	1975	204	25.60	Somerset	1981	42	40.00
Fayette	1883*	44	38.00	Sullivan	1895	(c)	(c)
Forest	1895	(b)	(b)	Susquehanna	1867	11	28.00
Franklin	1972	74	22.89	Tioga	1860	16	40.00
Fulton	1851	(c)	(c)	Union	1972	16	50.00
Greene	1980	15	35.00	Venango	1905	31	54.31
Huntingdon	1979	20	35.00	Warren	1980	41	25.00
Indiana	1973	31	26.50	Washington	1898	84	20.33
Jefferson	1927	9	20.00	Wayne	1934	16	30.00
Juniata	1980	16	31.75	Westmoreland	1976	46	32.00
Lackawanna	1880	136	24.00	Wyoming	1843	9	25.10
				York	1979	205	27.37

* Armstrong - Renovated in 1981
Fayette - Renovated in 1964
Mifflin - Renovated in 1978
Snyder - Renovated in 1980

** As of January 1, 1982

TABLE 21
Number of County Prisoners on Work Release as of December 31, 1981

County	Number	Percent of total pop.	County	Number	Percent of total pop.
Adams	5	13.9	Lancaster	47	17.2
Allegheny	1	0.2	Lawrence	2	6.9
Armstrong	3	18.7	Lebanon	6	4.5
Beaver	11	16.7	Lehigh	10	4.7
Bedford	0	0.0	Luzerne	21	9.8
Berks	0	0.0	Lycoming	26	25.0
Blair	5	5.6	McKean	0	0.0
Bradford	2	15.4	Mercer	2	5.6
Bucks	53	21.1	Mifflin	2	7.4
Butler	4	7.5	Monroe	5	17.0
Cambria	10	9.9	Montgomery	30	10.8
Cameron	1	25.0	Montour	0	0.0
Carbon	8	30.8	Northampton	27	13.1
Centre	1	3.1	Northumberland	17	20.2
Chester	17	5.5	Perry	0	0.0
Clarion	3	25.0	Philadelphia	37	1.1
Clearfield	13	21.0	House of Correction	37	3.3
Clinton	4	12.9	Holmesburg	0	0.0
Columbia	3	10.7	Detention Centers	0	0.0
Crawford	5	10.6			
Cumberland	7	7.5	Pike	0	0.0
Dauphin	16	5.1	Potter	0	0.0
Delaware	12	2.8	Schuylkill	13	17.1
Elk	0	0.0	Snyder	1	5.0
Erie	2	1.0	Somerset	9	18.4
Fayette	0	0.0	Sullivan	(c)	(c)
Forest	0	0.0	Susquehanna	1	7.7
Franklin	17	21.8	Tioga	2	9.5
Fulton	(c)	(c)	Union	0	0.0
Greene	0	0.0	Venango	3	11.1
Huntingdon	4	15.4	Warren	6	15.4
Indiana	2	8.0	Washington	2	3.0
Jefferson	0	0.0	Wayne	1	8.3
Juniata	0	0.0	Westmoreland	0	0.0
Lackawanna	15	11.2	Wyoming	1	12.5
			York	22	6.1
			Total	517	5.8

TABLE 22
Escapes from County Prisons and Jails, 1977 to 1981

County	1977	1978	1979	1980	1981
Adams	0	1	4	1	1
Allegheny	18	0	11	1	5
Armstrong	0	1	0	0	4
Beaver	0	2	6	1	7
Bedford	0	0	0	0	0
Berks	10	8	5	12	6
Blair	2	3	2	1	0
Bradford	0	2	1	2	6
Bucks	54	44	48	73	85
Butler	0	0	0	0	0
Cambria	0	0	0	0	0
Cameron	0	0	0	0	0
Carbon	0	2	2	0	1
Centre	4	2	5	3	1
Chester	0	0	0	0	0
Clarion	2	1	2	2	0
Clearfield	0	8	3	0	0
Clinton	1	1	3	0	1
Columbia	4	0	2	2	3
Crawford	0	0	1	0	0
Cumberland	2	1	2	1	1
Dauphin	1	1	0	0	5
Delaware	3	8	3	7	4
Elk	0	0	0	0	0
Erie	0	0	1	0	0
Fayette	3	7	0	0	1
Forest	0	0	0	0	0
Franklin	2	3	6	7	0
Fulton	0	0	1	(c)	(c)
Greene	0	5	0	3	0
Huntingdon	6	0	0	5	0
Indiana	0	1	0	0	1
Jefferson	1	0	1	0	0
Juniata	3	1	0	0	0
Lackawanna	0	0	0	0	0
Lancaster	0	0	0	1	2
Lawrence	0	0	4	3	3
Lebanon	4	4	3	2	2
Lehigh	0	0	0	0	0
Luzerne	4	2	11	7	12
Lycoming	11	4	1	1	4
McKean	0	1	0	0	2
Mercer	1	0	1	2	0
Mifflin	0	0	3	0	1
Monroe	1	0	0	0	0
Montgomery	1	2	7	11	3
Montour	1	0	2	0	0
Northampton	3	4	3	1	18
Northumberland	0	2	0	4	0
Perry	0	0	0	0	0
Philadelphia	17	23	17	14	25
Pike	0	0	0	1	0
Potter	0	0	0	2	0
Schuylkill	0	1	4	7	1
Snyder	0	0	0	1	0
Somerset	0	1	5	6	3
Sullivan	(c)	(c)	(c)	(c)	(c)
Susquehanna	4	1	5	5	0
Tioga	0	0	10	0	0
Union	0	0	0	4	0
Venango	2	0	0	0	2
Warren	0	1	0	1	3
Washington	5	0	1	0	0
Wayne	1	0	0	0	1
Westmoreland	0	0	0	0	0
Wyoming	0	1	0	12	3
York	2	0	0	1	0
Total	173	149	186	207	217

Note: Above figures may or may not include escapes of inmates while on furlough or work release. These data are not verified for accuracy and should be used with caution.

FOOTNOTES

- a. Not Calculated for base populations under 25.
- b. Less than one yearly average prisoner.
- c. Closed
- d. Forest County Jail is functioning only as a 48 hour holding facility. Sentenced prisoners are transferred to Warren County Jail and are included in Warren's totals.

END