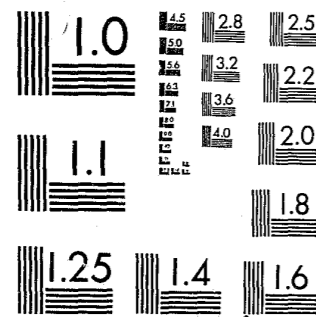


National Criminal Justice Reference Service



This microfiche was produced from documents received for inclusion in the NCJRS data base. Since NCJRS cannot exercise control over the physical condition of the documents submitted, the individual frame quality will vary. The resolution chart on this frame may be used to evaluate the document quality.



MICROCOPY RESOLUTION TEST CHART
NATIONAL BUREAU OF STANDARDS-1963-A

Microfilming procedures used to create this fiche comply with the standards set forth in 41CFR 101-11.504.

Points of view or opinions stated in this document are those of the author(s) and do not represent the official position or policies of the U. S. Department of Justice.

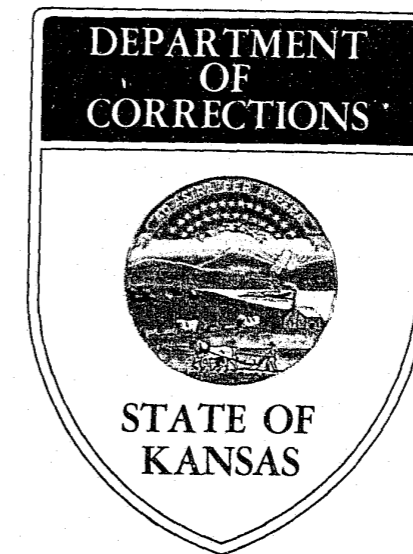
National Institute of Justice
United States Department of Justice
Washington, D. C. 20531

1/04/83

MFed

1979 ANNUAL JAIL INSPECTION REPORT

85803



JOHN CARLIN
GOVERNOR

PATRICK D. MCMANUS
SECRETARY OF CORRECTIONS

KANSAS DEPARTMENT OF CORRECTIONS

Topeka, Kansas

January 14, 1980

Honorable John Carlin
Governor of the State of Kansas
2nd Floor, State Capitol Building
Topeka, Kansas 66612

Dear Governor Carlin:

Submitted with this letter is the 1979 Annual Jail Inspection Report. The 1979 Annual Jail Inspection Report is outlined by Judicial District. This will provide yourself as well as other concerned individuals with pertinent information regarding the status of jail/detention facilities in the prospective jurisdictions in Kansas.

If you should have any questions regarding this report, I would welcome the opportunity to discuss with you the contents of this report.

Sincerely,



PATRICK D. McMANUS
Secretary of Corrections

NCJRS
SEP 30 1982
ACQUISITIONS

State of Kansas

JOHN CARLIN
Governor

Kansas Department
of Corrections

PATRICK D. McMANUS
Secretary

1979 ANNUAL JAIL INSPECTION REPORT

Deputy Secretary of
Community Services

Leo Taylor

Chief Jail Inspector
Harold D. Samuels

U.S. Department of Justice
National Institute of Justice

This document has been reproduced exactly as received from the person or organization originating it. Points of view or opinions stated in this document are those of the authors and do not necessarily represent the official position or policies of the National Institute of Justice.

Permission to reproduce this copyrighted material has been granted by
Kansas Department of Corrections

to the National Criminal Justice Reference Service (NCJRS).

Further reproduction outside of the NCJRS system requires permission of the copyright owner.

Eastern Regional Jail Inspector

Max R. Gilmore

Western Regional Jail Inspector

Larry Dixon

TABLE OF CONTENTS

	<u>PAGE NO.</u>
DEFINITION OF TERMS-----	1
A GENERAL OVERVIEW OF THE STATUS OF LOCAL CONFINEMENT FACILITIES---	2
Distribution of Facilities by Age Group-----	4
FACILITIES IN THE PLANNING PROCESS, FACILITIES UNDERGOING MAJOR RENOVATION, FACILITIES UNDERGOING NEW CONSTRUCTION AND JAILS NO LONGER IN USE-----	6
FACILITIES THAT MEET THE KANSAS ADVISORY JAIL STANDARDS AND PROCEDURES BY JUDICIAL DISTRICTS-----	8
FIRST JUDICIAL DISTRICT-----	8
Atchison City Holding-----	8
SECOND JUDICIAL DISTRICT-----	8
Holton City Lockup-----	8
FOURTH JUDICIAL DISTRICT-----	8
Franklin County Jail-----	8
Woodson County Jail-----	8
Anderson County Holding-----	8
Coffey County Holding-----	8
Osage County Holding-----	8
Osage City Holding-----	8
FIFTH JUDICIAL DISTRICT-----	8
Lyon County Jail-----	8
SIXTH JUDICIAL DISTRICT-----	8
Bourbon County Jail-----	8
Linn County Jail-----	8
SEVENTH JUDICIAL DISTRICT-----	8
Douglas County Jail-----	8
EIGHTH JUDICIAL DISTRICT-----	9
Junction City Lockup-----	9
TENTH JUDICIAL DISTRICT-----	9
Johnson County Jail-----	9
Leawood City Holding-----	9
Northeast Facility Holding-----	9
Overland Park Holding-----	9
Prairie Village Holding-----	9
Shawnee City Holding-----	9

PAGE NO.

FACILITIES THAT MEET THE KANSAS ADVISORY JAIL STANDARDS AND
PROCEDURES BY JUDICIAL DISTRICTS (Continued)

ELEVENTH JUDICIAL DISTRICT-----	9
Galena City Lockup-----	9
Parsons City Lockup-----	9
Pittsburg City Lockup-----	9
TWELFTH JUDICIAL DISTRICT-----	9
Cloud County Jail-----	9
Mitchell County Jail-----	9
THIRTEENTH JUDICIAL DISTRICT-----	9
Eureka City Lockup-----	9
Douglas City Holding-----	9
FIFTEENTH JUDICIAL DISTRICT-----	10
Stockton City Holding-----	10
SEVENTEENTH JUDICIAL DISTRICT-----	10
Rawlins County Jail-----	10
EIGHTEENTH JUDICIAL DISTRICT-----	10
Haysville City Holding-----	10
Mulvane City Holding-----	10
NINETEENTH JUDICIAL DISTRICT-----	10
Arkansas City Lockup-----	10
Winfield City Lockup-----	10
Kingman County Holding-----	10
TWENTIETH JUDICIAL DISTRICT-----	10
Hoisington City Holding-----	10
Stafford County Holding-----	10
Wilson City Holding-----	10
TWENTY-FIRST JUDICIAL DISTRICT-----	10
Riley County Jail-----	10
TWENTY-SECOND JUDICIAL DISTRICT-----	11
Marshall County Jail-----	11
Nemaha County Jail-----	11
TWENTY-THIRD JUDICIAL DISTRICT-----	11
Ellis County Jail-----	11
Wallace County Lockup-----	11
TWENTY-FIFTH JUDICIAL DISTRICT-----	11
Garden City Lockup-----	11
Greeley County Lockup-----	11

PAGE NO.

FACILITIES THAT MEET THE KANSAS ADVISORY JAIL STANDARDS AND PROCEDURES BY JUDICIAL DISTRICTS (Continued)

TWENTY-SIXTH JUDICIAL DISTRICT-----	11
Stanton County Jail-----	11
TWENTY-NINTH JUDICIAL DISTRICT-----	11
Kansas City, Kansas City Jail-----	11
Bonner Springs City Holding-----	11
OPERATIONAL CONFINEMENT FACILITIES WITH DEFICIENCIES BY JUDICIAL DISTRICTS*-----	13
FIRST JUDICIAL DISTRICT-----	13
Atchison County Jail-----	13
Leavenworth County Jail-----	13
SECOND JUDICIAL DISTRICT-----	14
Jackson County Jail-----	14
Jefferson County Jail-----	14
Pottawatomie County Jail-----	14
Wabaunsee County Jail-----	15
THIRD JUDICIAL DISTRICT-----	16
Shawnee County Jail-----	16
FOURTH JUDICIAL DISTRICT-----	17
Allen County Jail-----	17
SIXTH JUDICIAL DISTRICT-----	18
Miami County Jail-----	18
EIGHTH JUDICIAL DISTRICT-----	19
Dickinson County Jail-----	19
Geary County Jail-----	19
Morris County Jail-----	20
Herington City Lockup-----	20
NINTH JUDICIAL DISTRICT-----	21
Harvey County Jail-----	21
McPherson County Jail-----	21
ELEVENTH JUDICIAL DISTRICT-----	22
Cherokee County Jail-----	22
Crawford County Jail-----	22
Labette County Jail-----	23
Neosho County Jail-----	25
Wilson County Jail-----	25
Baxter Springs Lockup-----	25
Chanute City Lockup-----	26

PAGE NO.

OPERATIONAL CONFINEMENT FACILITIES WITH DEFICIENCIES BY JUDICIAL DISTRICTS (Continued)

TWELFTH JUDICIAL DISTRICT-----	27
Lincoln County Jail-----	27
Republic County Jail-----	27
Washington County Jail-----	27
THIRTEENTH JUDICIAL DISTRICT-----	29
Butler County Jail-----	29
Chautauqua County Jail-----	29
Elk County Jail-----	30
Greenwood County Jail-----	30
Augusta City Holding Facility-----	30
FOURTEENTH JUDICIAL DISTRICT-----	31
Montgomery County Jail-----	31
Coffeyville City Lockup-----	31
FIFTEENTH JUDICIAL DISTRICT-----	32
Graham County Jail-----	32
Rooks County Jail-----	32
Sherman County Jail-----	32
Thomas County Jail-----	32
SIXTEENTH JUDICIAL DISTRICT-----	34
Clark County Jail-----	34
Ford County Jail-----	34
Kiowa County Jail-----	35
Meade County Jail-----	35
SEVENTEENTH JUDICIAL DISTRICT-----	36
Cheyenne County Jail-----	36
Decatur County Jail-----	36
Norton County Jail-----	37
Osborne County Jail-----	37
Smith County Jail-----	37
EIGHTEENTH JUDICIAL DISTRICT-----	39
Sedgwick County Jail-----	39
NINETEENTH JUDICIAL DISTRICT-----	40
Barber County Jail-----	40
Cowley County Jail-----	40
Harper County Jail-----	40
Pratt County Jail-----	41
Sumner County Jail-----	41

PAGE NO.

OPERATIONAL CONFINEMENT FACILITIES WITH DEFICIENCIES BY JUDICIAL DISTRICTS (Continued)

TWENTIETH JUDICIAL DISTRICT-----	42
Barton County Jail-----	42
Rice County Jail-----	42
Russell County Jail-----	43
Russell City Holding-----	43
TWENTY-FIRST JUDICIAL DISTRICT-----	44
Clay County Jail-----	44
TWENTY-SECOND JUDICIAL DISTRICT-----	45
Brown County Jail-----	45
Doniphan County Jail-----	45
Horton City Holding-----	45
TWENTY-THIRD JUDICIAL DISTRICT-----	47
Oakley City Lockup-----	47
TWENTY-FOURTH JUDICIAL DISTRICT-----	48
Edwards County Jail-----	48
Hodgeman County Jail-----	48
Lane County Jail-----	49
Ness County Jail-----	49
Pawnee County Jail-----	49
TWENTY-FIFTH JUDICIAL DISTRICT-----	50
Scott County Jail-----	50
Wichita County Lockup-----	50
Finney County Jail-----	51
Kearny County Jail-----	51
TWENTY-SIXTH JUDICIAL DISTRICT-----	52
Grant County Jail-----	52
Morton County Jail-----	52
Seward County Jail-----	53
Stevens County Jail-----	53
Haskell County Lockup-----	54
TWENTY-SEVENTH JUDICIAL DISTRICT-----	55
Reno County Jail-----	55
TWENTY-EIGHTH JUDICIAL DISTRICT-----	56
Ottawa County Jail-----	56
Saline County Jail-----	56
TWENTY-NINTH JUDICIAL DISTRICT-----	57
Wyandotte County Jail-----	57
MOST COMMON DEFICIENCIES ENCOUNTERED-----	58

*For location of Operational Detention Facilities, consult alphabetized County index immediately following Table of Contents.

PAGE NO.

FACILITIES THAT MEET THE KANSAS ADVISORY JAIL STANDARDS AND PROCEDURES-----

7

JAILS

Bourbon County-----	8
Cloud County-----	9
Douglas County-----	8
Ellis County-----	11
Franklin County-----	8
Johnson County-----	9
Kansas City, Kansas Facility-----	11
Linn County-----	8
Lyon County-----	8
Marshall County-----	11
Mitchell County-----	9
Nemaha County-----	11
Rawlins County-----	10
Riley County-----	10
Stanton County-----	11
Woodson County-----	8

LOCKUPS

Arkansas City-----	10
Eureka City-----	9
Galena City-----	9
Garden City City-----	11
Holton City-----	8
Junction City-----	9
Parsons City-----	9
Pittsburg City-----	9
Greeley County-----	11
Wallace County-----	11
Winfield City-----	10

HOLDING

Anderson County-----	8
Atchison City-----	8
Bonner Springs City-----	11
Coffey County-----	8
Douglas City-----	9
Haysville City-----	10
Hoisington City-----	10
Kingman County-----	10
Leawood City-----	9
Mulvane City-----	10
Northeast Facility-----	9
Osage City-----	8
Osage County-----	8
Overland Park-----	9
Prairie Village-----	9
Shawnee City-----	9
Stafford County-----	10
Stockton City-----	10
Wilson City-----	10

PAGE NO.

OPERATIONAL CONFINEMENT FACILITIES WITH DEFICIENCIES----- 12

JAILS

Allen County-----	17
Atchison County-----	13
Barber County-----	40
Barton County-----	42
Brown County-----	45
Butler County-----	29
Chautauqua County-----	29
Cherokee County-----	22
Cheyenne County-----	36
Clark County-----	34
Clay County-----	44
Cowley County-----	40
Crawford County-----	22
Decatur County-----	36
Dickinson County-----	19
Doniphan County-----	45
Edwards County-----	48
Elk County-----	30
Finney County-----	51
Ford County-----	34
Geary County-----	19
Graham County-----	32
Grant County-----	52
Greenwood County-----	30
Harper County-----	40
Harvey County-----	21
Hodgeman County-----	48
Jackson County-----	14
Jefferson County-----	14
Kearny County-----	51
Kiowa County-----	35
Labette County-----	23
Lane County-----	49
Leavenworth County-----	13
Lincoln County-----	27
Meade County-----	35
Miami County-----	18
Montgomery County-----	31
Morris County-----	20
Morton County-----	52
McPherson County-----	21
Neosho County-----	25
Ness County-----	49
Norton County-----	37
Osborne County-----	38
Ottawa County-----	56

PAGE NO.

OPERATIONAL CONFINEMENT FACILITIES WITH DEFICIENCIES (Continued)

Pawnee County-----	49
Pottawatomie County-----	14
Pratt County-----	41
Reno County-----	55
Republic County-----	27
Rice County-----	42
Rooks County-----	32
Russell County-----	43
Saline County-----	56
Scott County-----	50
Sedgwick County-----	39
Seward County-----	53
Shawnee County-----	16
Sherman County-----	32
Smith County-----	38
Stevens County-----	53
Sumner County-----	41
Thomas County-----	33
Wabaunsee County-----	15
Washington County-----	27
Wilson County-----	25
Wyandotte County-----	57

LOCKUPS

Baxter Springs City-----	25
Chanute City-----	26
Coffeyville City-----	31
Haskell County-----	54
Herington City-----	20
Oakley City-----	47
Wichita County-----	50

HOLDING

Augusta City-----	30
Horton City-----	45
Russell City-----	43

DEFINITION OF TERMS

- JAIL-----A facility operated by a unit of local government for the physical detention or confinement, for a period of one year or less, of persons charged with, or convicted of, criminal offenses.
- LOCKUP-----A facility operated by a unit of local government for the physical detention or confinement, for a period of seventy-two hours or less, of persons charged with, or convicted of, criminal offenses.
- HOLDING FACILITY-----A facility operated by a unit of local government for the temporary physical detention of persons awaiting processing, booking, appearance before a court of competent jurisdiction, or discharge.
- CAPACITY-----The bed space for which the facility was originally designed to accommodate.
- RECOMMENDED CAPACITY---The bed space that should be available using a formula of fifty-two square feet of cell space per bed for existing facilities.
- URGENT-----A situation or hazard which presents an immediate threat to the health and safety of inmates or employees, or the potential for escape.
- NECESSARY-----A situation or hazard which presents a potential threat to the health and safety of inmates or employees if they are continually exposed over a prolonged period.
- DESIRABLE-----A condition which does not present an immediate or potential threat to the health and safety of inmates or employees; but which, if changed, would improve the habitability of the facility or the staff's management abilities.

A GENERAL OVERVIEW OF THE STATUS OF LOCAL CONFINEMENT FACILITIES

As enumerated in K.S.A. 1976 Supp. 75-5228, the Secretary of Corrections is given three major responsibilities in performing the jail inspection function:

1. The promulgation of advisory standards relating to the safety and sanitation of correctional and detention facilities;
2. The periodic inspection of correctional detention facilities;
3. The presentation of evidence to local officials and judicial personnel that a particular facility, within their jurisdiction, needs major improvement or should be closed.

The program responsibility entails on-site inspection of jails, including such basic areas as administration, facility construction, personnel, housekeeping, food service and medical care, emergency procedures, sanitation and safety, programs, counseling and recreation. The program staff also investigates complaints concerning the operation of jails and/or treatment of prisoners.

The Jail Inspection Staff have responded to the requests of local law enforcement officials for assistance in training of local jail staff. Because of the increasing demand for local jail training in the State, it is anticipated that considerable attention to those demands will be required.

During calendar year 1979, considerable time was spent by the Jail Inspection Staff coordinating and conducting joint inspections of local jail/detention facilities with the State Fire Marshal's Office and the State Department of Health and Environment. The Jail Inspection Staff

investigated 38 letters of complaint received from individual inmates and/or their friends and relatives. There were a total of 79 allegations derived from the 38 complaints. Fifteen of these allegations, or 19%, were found to be valid. Because of the nature of the complaints, it required on-site investigations of each letter of complaint. Many hours were also devoted to providing technical assistance with respect to the custody, care, and treatment of inmates, including review and comment on plans for the construction and major modification or renovation of local jail/detention facilities. A total of 93 on-site contacts were made during 1979 with local officials regarding technical assistance.

The Jail Inspection Staff inspected a total of 124 operational jail/detention facilities during the calendar year 1979. Of these 124 jail/detention facilities, there were 84 jails, 18 lockups, and 22 holding facilities operating within the 105 counties. There were also 14 additional jail/detention facilities identified as no longer in use, undergoing major renovation, or under new construction.

Distribution of Facilities by Age Group

Age of Facility	Jails	Lockups	Holding Facilities	TOTAL
1 year or less	3	2	2	7
2 - 10 years	20	4	6	30
11 - 20 years	9	4	4	17
21 - 30 years	21	0	0	21
31 - 40 years	3	1	4	8
41 - 50 years	15	1	1	17
51 - 60 years	9	5	4	18
61 - 70 years	2	1	1	4
71 - 80 years	2	0	0	2

At the close of the calendar year 1979, there were 84 jails, 21 lockups, and 22 holding facilities operating within the 105 counties. Combined, these facilities confined an average of 8.6 individuals on any given day in 1979. The facilities range in age from 1 year to 80 years, with a mean age of 27.7 years as derived from group data.

FACILITIES IN THE PLANNING PROCESS,
FACILITIES UNDERGOING MAJOR RENOVATION,
FACILITIES UNDERGOING NEW CONSTRUCTION,

AND
JAILS NO LONGER IN USE

Listed below are those counties or municipalities which are in the process of planning renovation or construction; or are, indeed, presently renovating existing facilities or constructing new ones.

PLANNING NEW FACILITIES

1. Brown County
2. Clay County
3. Jewell County
4. Kingman County
5. Marion County
6. Norton County
7. Seward County
8. Sumner County

PLANNING MAJOR RENOVATION

1. Decatur County
2. Emporia City
3. Logan County
4. Phillips County
5. Shawnee County

RENOVATING EXISTING FACILITIES

1. Atchison County
2. Commanche County
3. Greenwood County
4. Miami County
5. Rooks County
6. Sedgwick County

CONSTRUCTING NEW FACILITIES

1. Ellsworth County
2. Finney County
3. Trego County

Listed below are the jail/detention facilities that were identified in 1979 as no longer in use:

JAILS

1. Chase County
2. Commanche County
3. Ellsworth County
4. Gove County
5. Gray County
6. Hamilton County
7. Jewell County
8. Marion County
9. Phillips County
10. Rush County
11. Sheridan County
12. Trego County

LOCKUPS

1. Columbus City
2. Derby City

FACILITIES THAT MEET THE
KANSAS ADVISORY JAIL STANDARDS AND PROCEDURES

LISTED BY JUDICIAL DISTRICT
ARE THE FACILITIES THAT
MEET THE KANSAS JAIL STANDARDS AND PROCEDURES

	<u>Date of Construction</u>	<u>Average Daily Population</u>
<u>First Judicial District</u>		
Atchison City Holding	1939	less than one
<u>Second Judicial District</u>		
Holton City Lockup	1977	less than one
<u>Fourth Judicial District</u>		
Franklin County Jail	1972	8
Woodson County Jail	1969	less than one
Anderson County Holding	1926	less than one
Coffey County Holding	1923	less than one
Osage County Holding	1923	less than one
Osage City Holding	unknown	less than one
<u>Fifth Judicial District</u>		
Lyon County Jail	1977	18
<u>Sixth Judicial District</u>		
Bourbon County Jail	1977	20
Linn County Jail	1979	2
<u>Seventh Judicial District</u>		
Douglas County Jail	1976	29

	<u>Date of Construction</u>	<u>Average Daily Population</u>
<u>Eighth Judicial District</u>		
Junction City Lockup	1977	3
<u>Tenth Judicial District</u>		
Johnson County Jail	Renovated 1974	55
Leawood City Holding	1972	less than one
Northeast Facility Holding	1973	2
Overland Park Holding	1975	2
Prairie Village Holding	1970	less than one
Shawnee City Holding	1979	less than one
<u>Eleventh Judicial District</u>		
Galena City Lockup	1978	less than one
Parsons City Lockup	1937	less than one
Pittsburg City Lockup	1969	less than one
<u>Twelfth Judicial District</u>		
Cloud County Jail	Renovated 1978	8
Mitchell County Jail	1959	5
<u>Thirteenth Judicial District</u>		
Eureka City Lockup	1967	1
Douglas City Holding	1966	less than one

	<u>Date of Construction</u>	<u>Average Daily Population</u>
<u>Fifteenth Judicial District</u>		
Stockton City Holding	1940	less than one
<u>Seventeenth Judicial District</u>		
Rawlins County Jail	Renovated 1976	2
<u>Eighteenth Judicial District</u>		
Haysville City Holding	1979	less than one
Mulvane City Holding	1967	less than one
<u>Nineteenth Judicial District</u>		
Arkansas City Lockup	Renovated 1977	less than one
Winfield City Lockup	1963	less than one
Kingman County Holding	1959	3
<u>Twentieth Judicial District</u>		
Hoisington City Holding	1939	less than one
Stafford County Holding	1977	1
Wilson City Holding	1964	less than one
<u>Twenty-First Judicial District</u>		
Riley County Jail	Renovated 1976	18

	<u>Date of Construction</u>	<u>Average Daily Population</u>
<u>Twenty-Second Judicial District</u>		
Marshall County Jail	1979	4
Nemaha County Jail	1978	4
<u>Twenty-Third Judicial District</u>		
Ellis County Jail	1975	9
Wallace County Lockup	Renovated 1977	less than one
<u>Twenty-Fifth Judicial District</u>		
Garden City Lockup	1920	2
Greeley County Lockup	1975	less than one
<u>Twenty-Sixth Judicial District</u>		
Stanton County Jail	1978	2
<u>Twenty-Ninth Judicial District</u>		
Kansas City, Kansas City Jail	1969	18
Bonner Springs City Holding	Renovated 1977	less than one

At the close of the 1979 jail/detention facility evaluations, there were 16 jails, 11 lockups and 19 holding facilities that met the Kansas Advisory Jail Standards and Procedures.

JAILS-LOCKUPS-HOLDING FACILITIES
WITH DEFICIENCIES
BY JUDICIAL DISTRICT

NAME OF FACILITY	DATE CONSTRUCTED	CAPACITY	RECOMMENDED CAPACITY	AVERAGE DAILY POPULATION	FIRST JUDICIAL DISTRICT DEFICIENCIES	PRIORITY OF CORRECTIVE ACTION		
						URGENT	NECESSARY	DESIRABLE
ATCHISON COUNTY JAIL*	1941	12	12	2	(01) Inadequate administrative space.** (02) Cell areas do not maintain fifty-two (52) square feet per inmate.** (03) No exercise area.** (04) Does not comply with State Fire Marshal's regulations.** (05) Electrical cords and/or fixtures are accessible to inmates.** (06) No emergency electrical power.** (07) No intercom system between jail office and cell block areas.** (08) Inadequate ventilation.** (09) Furnishings and fixtures in need of repair.** (10) Painted surfaces need repainting.** (11) Overall sanitation needs to be improved.** (12) No standard inmate clothing issued.** (13) Does not maintain adequate separation of inmates.** (14) Inadequate interior lighting.	X	X X X X X X X X	X X X X
LEAVENWORTH COUNTY JAIL	1938	65	65	39.5	(01) Inadequate interior lighting. (02) No insect screens. (03) No exercise area. (04) Security equipment in need of repair or replacement.	X	X X	X

* Reports from either the State Fire Marshal's Office or the State Department of Health and Environment are available.
 ** This deficiency existed in previous inspection reports but no corrective action has been taken.

NAME OF FACILITY	DATE CONSTRUCTED	CAPACITY	RECOMMENDED CAPACITY	AVERAGE DAILY POPULATION	SECOND JUDICIAL DISTRICT			
					DEFICIENCIES			
					PRIORITY OF CORRECTIVE ACTION			
					URGENT	NECESSARY	DESIRABLE	
JACKSON COUNTY JAIL*	1929	16	10	4	(01) Cell areas do not maintain fifty-two (52) square feet per inmate.** (02) No floor drains in cell block areas.** (03) Does not comply with State Fire Marshal's regulations.** (04) Inadequate interior lighting.** (05) Electrical cords and/or fixtures are accessible to inmates.** (06) Inadequate ventilation.** (07) No standard inmate clothing issued.** (08) Painted surfaces in need of repainting.	X	X	X
JEFFERSON COUNTY JAIL*	1933	14	14	5	(01) No exercise area.** (02) Inadequate ventilation.** (03) No standard inmate clothing issued.**		X	X
POTTAWATOMIE COUNTY JAIL*	1970	18	18	5	(01) Electrical cords and/or fixtures are accessible to inmates.** (02) Does not maintain adequate separation of inmates.** (03) Does not comply with State Fire Marshal's regulations.** (04) Inadequate collection of soiled laundry. (05) Inadequate and/or improper plumbing fixtures.	X	X	X

* Reports from either the State Fire Marshal's Office or the State Department of Health and Environment are available.

** This deficiency existed in previous inspection reports but no corrective action has been taken.

NAME OF FACILITY	DATE CONSTRUCTED	CAPACITY	RECOMMENDED CAPACITY	AVERAGE DAILY POPULATION	<u>SECOND JUDICIAL DISTRICT</u> DEFICIENCIES	PRIORITY OF CORRECTIVE ACTION		
						URGENT	NECESSARY	DESIRABLE
WABAUNSEE COUNTY JAIL*	1900	18	18	3	(01) Inadequate administrative space.** (02) No security and/or insect screens on windows.** (03) No emergency electrical power.** (04) Inadequate ventilation.** (05) Does not maintain adequate separation of inmates.** (06) No floor drains in cell block areas.** (07) No exercise area.** (08) Inadequate and/or improper plumbing fixtures.** (09) No cells for holding chemically or mentally impaired persons. (10) Inadequate equipped processing area. (11) Inadequate interior lighting. (12) No thirty (30) day menu available. (13) Painted surfaces need repainting. (14) Overall sanitation needs to be improved. (15) Hazardous materials and/or equipment in cell areas.	X	X X X X X X X X X	X X X X

* Reports from either the State Fire Marshal's Office or the State Department of Health and Environment are available.
 ** This deficiency existed in previous inspection reports but no corrective action has been taken.

NAME OF FACILITY	DATE CONSTRUCTED	CAPACITY	RECOMMENDED CAPACITY	AVERAGE DAILY POPULATION	THIRD JUDICIAL DISTRICT DEFICIENCIES	PRIORITY OF CORRECTIVE ACTION		
						URGENT	NECESSARY	DESIRABLE
SHAWNEE COUNTY JAIL*	1965	96	60	96.8	(01) Inadequate administrative space.** (02) Cell areas do not maintain fifty-two (52) square feet per inmate.** (03) No exercise area. (04) Inadequate ventilation.** (05) No emergency electrical power.** (06) Does not comply with State Fire Marshal's regulations.** (07) Electrical cords and/or fixtures are accessible to inmates.** (08) No intercom system between jail office and cell block areas.** (09) Inadequate interior lighting.** (10) Inadequately equipped maximum security cells. (11) Inadequate dormitory areas. (12) Overall sanitation needs to be improved. (13) Security equipment in need of repair or replacement. (14) No bunks in juvenile cells. (15) Overall sanitation needs to be improved.	X X X X X	X X X X X X X X	X X
<p>* Reports from either the State Fire Marshal's Office or the State Department of Health and Environment are available. ** This deficiency existed in previous inspection reports but no corrective action has been taken.</p>								

NAME OF FACILITY	DATE CONSTRUCTED	CAPACITY	RECOMMENDED CAPACITY	AVERAGE DAILY POPULATION	<u>FOURTH JUDICIAL DISTRICT</u> DEFICIENCIES	PRIORITY OF CORRECTIVE ACTION		
						URGENT	NECESSARY	DESIRABLE
ALLEN COUNTY JAIL	1958	12	12	7	(01) Hazardous materials and/or equipment in cell areas. (02) Inadequate interior lighting.	X	X	

* Reports from either the State Fire Marshal's Office or the State Department of Health and Environment are available.
 ** This deficiency existed in previous inspection reports but no corrective action has been taken.

NAME OF FACILITY	DATE CONSTRUCTED	CAPACITY	RECOMMENDED CAPACITY	AVERAGE DAILY POPULATION	<u>SIXTH JUDICIAL DISTRICT</u> DEFICIENCIES	PRIORITY OF CORRECTIVE ACTION		
						URGENT	NECESSARY	DESIRABLE
MIAMI COUNTY JAIL*	1967	22	22	10	(01) Does not comply with State Fire Marshal's regulations.** (02) No exercise area. (03) Does not provide three (3) meals daily. (04) Security equipment in need of repair or replacement. (05) Hazardous materials and/or equipment in cell areas.	X	X	X

* Reports from either the State Fire Marshal's Office or the State Department of Health and Environment are available.
 ** This deficiency existed in previous inspection reports but no corrective action has been taken.

NAME OF FACILITY	DATE CONSTRUCTED	CAPACITY	RECOMMENDED CAPACITY	AVERAGE DAILY POPULATION	EIGHTH JUDICIAL DISTRICT DEFICIENCIES	PRIORITY OF CORRECTIVE ACTION		
						URGENT	NECESSARY	DESIRABLE
DICKINSON COUNTY JAIL*	1956	29	29	9	(01) No exercise area.** (02) No emergency electrical power.**		X	X
GEARY COUNTY JAIL*	1951	45	24	15	(01) Inadequate administrative space.** (02) Cell areas do not maintain fifty-two (52) square feet per inmate.** (03) No exercise area.** (04) Does not comply with State Fire Marshal's regulations.** (05) Inadequate interior lighting.** (06) Inadequate ventilation.** (07) Does not comply with regulations of Department of Health and Environment.** (08) Painted surfaces need repainting. (09) Hazardous materials and/or equipment in cell areas. (10) Inadequate and/or improper plumbing fixtures. (11) Does not maintain adequate separation of inmates. (12) No emergency electrical power. (13) Electrical cords and/or fixtures are accessible to inmates.	X	X X X	X X

* Reports from either the State Fire Marshal's Office or the State Department of Health and Environment are available.
** This deficiency existed in previous inspection reports but no corrective action has been taken.

NAME OF FACILITY	DATE CONSTRUCTED	CAPACITY	RECOMMENDED CAPACITY	AVERAGE DAILY POPULATION	EIGHTH JUDICIAL DISTRICT DEFICIENCIES	PRIORITY OF CORRECTIVE ACTION		
						URGENT	NECESSARY	DESIRABLE
MORRIS COUNTY JAIL*	1969	8	8	2	(01) Inadequate administrative space.** (02) No exercise area.** (03) Does not maintain adequate separation of inmates.** (04) Inadequate interior lighting.** (05) No standard inmate clothing issued.** (10) Painted surfaces need repainting.**		X X X	 X X
HERINGTON CITY LOCKUP (Dickinson County)	1974	8	8	less than one	(01) Security equipment in need of repair or replacement.**	X		

* Reports from either the State Fire Marshal's Office or the State Department of Health and Environment are available.
 ** This deficiency existed in previous inspection reports but no corrective action has been taken.

NAME OF FACILITY	DATE CONSTRUCTED	CAPACITY	RECOMMENDED CAPACITY	AVERAGE DAILY POPULATION	<u>NINTH JUDICIAL DISTRICT</u> DEFICIENCIES	PRIORITY OF CORRECTIVE ACTION		
						URGENT	NECESSARY	DESIRABLE
HARVEY COUNTY JAIL*	1965	46	28	15	(01) Cell areas do not maintain fifty-two (52) square feet per inmate.** (02) No exercise area.** (03) Does not comply with State Fire Marshal's regulations.** (04) Electrical cords and/or fixtures are accessible to inmates.** (05) Inadequate interior lighting.** (06) No intercom system between jail office and cell block areas.** (07) Inadequate electrical installations.	X	X	X
McPHERSON COUNTY JAIL*	1958	27	27	8.3	(01) No exercise area.** (02) Does not comply with State Fire Marshal's regulations.** (03) Overall sanitation needs to be improved.** (04) Inadequate interior lighting.	X	X	X

* Reports from either the State Fire Marshal's Office or the State Department of Health and Environment are available.
 ** This deficiency existed in previous inspection reports but no corrective action has been taken.

NAME OF FACILITY	DATE CONSTRUCTED	CAPACITY	RECOMMENDED CAPACITY	AVERAGE DAILY POPULATION	ELEVENTH JUDICIAL DISTRICT DEFICIENCIES	PRIORITY OF CORRECTIVE ACTION		
						URGENT	NECESSARY	DESIRABLE
CHEROKEE COUNTY JAIL*	1950	14	14	5	(01) Inadequate administrative space.** (02) No exercise area.** (03) Does not comply with State Fire Marshal's regulations.** (04) Inadequate ventilation.** (05) No cells for holding chemically or mentally impaired persons. (06) Inadequate supervision of inmates. (07) No thirty (30) day menu available. (08) No written inmate rules. (09) No standard inmate clothing issue. (10) No insect screens. (11) No emergency electrical power.	X	X	X
CRAWFORD COUNTY JAIL*	1925	19	19	10	(01) Does not comply with State Fire Marshal's regulations.** (02) Inadequate administrative space. (03) Shower stalls need repainting. (04) No intercom system between jail office and cell block areas. (05) Inadequate or improper cell furnishings.	X	X	X

* Reports from either the State Fire Marshal's Office or the State Department of Health and Environment are available.
** This deficiency existed in previous inspection reports but no corrective action has been taken.

NAME OF FACILITY	DATE CONSTRUCTED	CAPACITY	RECOMMENDED CAPACITY	AVERAGE DAILY POPULATION	<u>ELEVENTH JUDICIAL DISTRICT</u> DEFICIENCIES	PRIORITY OF CORRECTIVE ACTION		
						URGENT	NECESSARY	DESTRIBLE
LABETTE COUNTY JAIL (CONTINUED)*					(21) Painted surfaces need repainting. (22) Hazardous materials and/or equipment in cell areas. (23) No written inmate rules. (24) No isolation cells for inmates suspected of contagious disease.	X	X	X

* Reports from either the State Fire Marshal's Office or the State Department of Health and Environment are available.
 ** This deficiency existed in previous inspection reports but no corrective action has been taken.

NAME OF FACILITY	DATE CONSTRUCTED	CAPACITY	RECOMMENDED CAPACITY	AVERAGE DAILY POPULATION	<u>ELEVENTH JUDICIAL DISTRICT</u> DEFICIENCIES	PRIORITY OF CORRECTIVE ACTION		
						URGENT	NECESSARY	DESIRABLE
NEOSHO COUNTY JAIL*	1948	10	10	8	(01) Does not provide three (3) meals daily. (02) Painted surfaces need repainting. (03) Overall sanitation needs to be improved.		X	X X
WILSON COUNTY JAIL*	1976	14	14	2	(01) No standard inmate clothing issued.** (02) Inadequate supervision of inmates.**	X		X
BAXTER SPRINGS LOCKUP* (Cherokee County)	1926	4	4	less than one	(01) No security and/or insect screens on windows.** (02) Electrical cords and/or fixtures are accessible to inmates.** (03) No intercom system between jail office and cell block areas.** (04) Inadequate ventilation.** (05) Inadequate and/or improper plumbing fixtures.** (06) Inadequate supervision of inmates.** (07) Inadequate interior lighting. (08) Hazardous materials and/or equipment in cell areas.	X X X	X X X X	

* Reports from either the State Fire Marshal's Office or the State Department of Health and Environment are available.
 ** This deficiency existed in previous inspection reports but no corrective action has been taken.

NAME OF FACILITY	DATE CONSTRUCTED	CAPACITY	RECOMMENDED CAPACITY	AVERAGE DAILY POPULATION	<u>ELEVENTH JUDICIAL DISTRICT</u> DEFICIENCIES	PRIORITY OF CORRECTIVE ACTION		
						URGENT	NECESSARY	DESIRABLE
CHANUTE CITY LOCKUP* (Neosho County)	1925	6	6	1	(01) No security and/or insect screens on windows.** (02) Inadequate shower facilities.** (03) Does not comply with State Fire Marshal's regulations.** (04) No floor drains in cell block areas.**	X	X	X

* Reports from either the State Fire Marshal's Office or the State Department of Health and Environment are available.
 ** This deficiency existed in previous inspection reports but no corrective action has been taken.

NAME OF FACILITY	DATE CONSTRUCTED	CAPACITY	RECOMMENDED CAPACITY	AVERAGE DAILY POPULATION	TWELFTH JUDICIAL DISTRICT DEFICIENCIES	PRIORITY OF CORRECTIVE ACTION		
						URGENT	NECESSARY	DESIRABLE
LINCOLN COUNTY JAIL*	1930	6	6	1.5	(01) Does not comply with State Fire Marshal's regulations.	X		
REPUBLIC COUNTY JAIL*	1939	13	7	3	(01) Inadequate administrative space.** (02) No security and/or insect screens on windows.** (03) Furnishings not securely fastened.** (04) Inadequate ventilation.** (05) Security equipment in need of repair or replacement.** (06) Does not maintain adequate separation of inmates.** (07) Steam heat radiators are accessible to inmates.** (08) Inadequate or improper plumbing fixtures. (09) Inadequate interior lighting. (10) Painted surfaces need to be repainted.	X	X X X X	X
WASHINGTON COUNTY JAIL*	1899	4	4	less than one	(01) Inadequate administrative space.** (02) Does not comply with State Fire Marshal's regulations.** (03) No emergency electrical power.** (04) No intercom system between jail office and cell block areas.** (05) Inadequate ventilation.** (06) Does not maintain adequate separation of inmates.**	X	X X X X	

* Reports from either the State Fire Marshal's Office or the State Department of Health and Environment are available.
 ** This deficiency existed in previous inspection reports but no corrective action has been taken.

NAME OF FACILITY	DATE CONSTRUCTED	CAPACITY	RECOMMENDED CAPACITY	AVERAGE DAILY POPULATION	TWELFTH JUDICIAL DISTRICT DEFICIENCIES	PRIORITY OF CORRECTIVE ACTION		
						URGENT	NECESSARY	DESIRABLE
WASHINGTON COUNTY JAIL* (CONTINUED)					(07) No written safety, security and emergency procedures.** (08) Inadequate and/or improper plumbing fixtures.	X	X	

* Reports from either the State Fire Marshal's Office or the State Department of Health and Environment are available.
 ** This deficiency existed in previous inspection reports but no corrective action has been taken.

NAME OF FACILITY	DATE CONSTRUCTED	CAPACITY	RECOMMENDED CAPACITY	AVERAGE DAILY POPULATION	THIRTEENTH JUDICIAL DISTRICT DEFICIENCIES	PRIORITY OF CORRECTIVE ACTION		
						URGENT	NECESSARY	DESIRABLE
BUTLER COUNTY JAIL*	1971	45	45	23	(01) Hazardous materials and/or equipment in cell areas.	X		
CHAUTAUQUA COUNTY JAIL*	1921	14	5	1	(01) Cell areas do not maintain fifty-two (52) square feet per inmate.** (02) No security and/or insect screens on windows.** (03) Does not comply with State Fire Marshal's regulations.** (04) Sufficient furnishings are not provided.** (05) No emergency electrical power.** (06) No intercom system between jail office and cell block areas.** (07) Inadequate ventilation.** (08) No standard inmate clothing issued.** (09) No thirty (30) day menu available.** (10) Inadequate supervision of inmates.** (11) Security equipment in need of repair or replacement.** (12) No written safety, security and emergency procedures. (13) Hazardous materials and/or equipment in cell areas. (14) No written inmate rules.	X	X X X X	X X X

* Reports from either the State Fire Marshal's Office or the State Department of Health and Environment are available.
** This deficiency existed in previous inspection reports but no corrective action has been taken.

NAME OF FACILITY	DATE CONSTRUCTED	CAPACITY	RECOMMENDED CAPACITY	AVERAGE DAILY POPULATION	THIRTEENTH JUDICIAL DISTRICT DEFICIENCIES	PRIORITY OF CORRECTIVE ACTION		
						URGENT	NECESSARY	DESIRABLE
ELK COUNTY JAIL*	1960	10	10	2	(01) Inadequate supervision of inmates.**	X		
GREENWOOD COUNTY JAIL*	1955	16	16	10	(01) Does not comply with State Fire Marshal's regulations.** (02) No exercise area. (03) Inadequate interior lighting. (04) No thirty (30) day menu available. (05) Security equipment in need of repair or replacement. (06) Hazardous materials and/or equipment in cell areas.	X	X	X
AUGUSTA CITY HOLDING FACILITY*	1920	8	3	1	(01) Inadequate administrative space.** (02) Cell areas do not maintain fifty-two (52) square feet per inmate.** (03) Does not comply with State Fire Marshal's regulations.** (04) Inadequate interior lighting.** (05) No intercom system between jail office and cell block areas.** (06) Inadequate ventilation.** (07) Inadequate and/or improper plumbing fixtures.**	X	X X X X	

* Reports from either the State Fire Marshal's Office or the State Department of Health and Environment are available.
 ** This deficiency existed in previous inspection reports but no corrective action has been taken.

NAME OF FACILITY	DATE CONSTRUCTED	CAPACITY	RECOMMENDED CAPACITY	AVERAGE DAILY POPULATION	FOURTEENTH JUDICIAL DISTRICT DEFICIENCIES	PRIORITY OF CORRECTIVE ACTION		
						URGENT	NECESSARY	DESIRABLE
MONTGOMERY COUNTY JAIL*	1931	54	26	18	(01) Cell areas do not maintain fifty-two (52) square feet per inmate.** (02) Security equipment in need of repair or replacement.** (03) Hazardous materials and/or equipment in cell areas.** (04) No exercise area. (05) Inadequate administrative space. (06) Inadequate interior lighting. (07) No written safety, security and emergency procedures. (08) Inadequate food service personnel. (09) Inadequate insect and pest control. (10) Overall sanitation needs to be improved. (11) Does not maintain adequate separation of inmates. (12) No intercom system between jail office and cell block areas.	X	X	X
COFFEYVILLE CITY LOCKUP (Montgomery County)	1964	12	12	2	(01) Overall sanitation needs to be improved.			X

* Reports from either the State Fire Marshal's Office or the State Department of Health and Environment are available.
 ** This deficiency existed in previous inspection reports but no corrective action has been taken.

NAME OF FACILITY	DATE CONSTRUCTED	CAPACITY	RECOMMENDED CAPACITY	AVERAGE DAILY POPULATION	FIFTEENTH JUDICIAL DISTRICT DEFICIENCIES	PRIORITY OF CORRECTIVE ACTION		
						URGENT	NECESSARY	DESIRABLE
GRAHAM COUNTY JAIL*	1958	15	8	2	(01) Cell areas do not maintain fifty-two (52) square feet per inmate.** (02) No exercise area.** (03) Inadequate shower facilities.** (04) Inadequate ventilation.** (05) Does not maintain adequate separation of inmates.** (06) Electrical cords and/or fixtures are accessible to inmates. (07) Inadequate meal scheduling. (08) Hazardous materials and/or equipment in cell areas.	X	X	X X
ROOKS COUNTY JAIL*	1930	8	8	3	(01) Inadequate administrative space. (02) Does not maintain adequate separation of inmates.		X X	
SHERMAN COUNTY JAIL*	1972	12	10	2	(01) Does not comply with State Fire Marshal's regulations. (02) No written safety, security and emergency procedures. (03) No emergency electrical power. (04) Does not maintain adequate separation of inmates.	X X	X X	

* Reports from either the State Fire Marshal's Office or the State Department of Health and Environment are available.
** This deficiency existed in previous inspection reports but no corrective action has been taken.

NAME OF FACILITY	DATE CONSTRUCTED	CAPACITY	RECOMMENDED CAPACITY	AVERAGE DAILY POPULATION	<u>FIFTEENTH JUDICIAL DISTRICT</u> DEFICIENCIES	PRIORITY OF CORRECTIVE ACTION		
						URGENT	NECESSARY	DESIRABLE
THOMAS COUNTY JAIL*	1976	9	9	4.5	(01) Does not comply with State Fire Marshal's regulations.** (02) Inadequate supervision of inmates.**	X		

* Reports from either the State Fire Marshal's Office or the State Department of Health and Environment are available.
 ** This deficiency existed in previous inspection reports but no corrective action has been taken.

NAME OF FACILITY	DATE CONSTRUCTED	CAPACITY	RECOMMENDED CAPACITY	AVERAGE DAILY POPULATION	SIXTEENTH JUDICIAL DISTRICT DEFICIENCIES	PRIORITY OF CORRECTIVE ACTION		
						URGENT	NECESSARY	DESIRABLE
CLARK COUNTY JAIL*	1950	5	3	1	(01) Inadequate administrative space.** (02) No exercise area.** (03) Does not maintain adequate separation of inmates.** (04) No standard inmate clothing issued.** (05) Inadequate supervision of inmates.** (06) No written safety, security and emergency procedures.** (07) Cell areas do not maintain fifty-two (52) square feet per inmate. (08) Does not comply with State Fire Marshal's regulations.	X X X	X X X	X X
FORD COUNTY JAIL*	1931	38	12	10	(01) Inadequate administrative space.** (02) Cell areas do not maintain fifty-two (52) square feet per inmate.** (03) No exercise area.** (04) Does not maintain adequate separation of inmates.** (05) Inadequate interior lighting.** (06) No emergency electrical power.** (07) Inadequate ventilation.** (08) No standard inmate clothing issued.** (09) Painted surfaces need repainting.** (10) Does not provide three (3) meals daily. (11) Overall sanitation needs to be improved.** (12) No intercom system between jail offices and cell block area.		X X X X X X X X X	X X X

* Reports from either the State Fire Marshal's Office or the State Department of Health and Environment are available.
** This deficiency existed in previous inspection reports but no corrective action has been taken.

NAME OF FACILITY	DATE CONSTRUCTED	CAPACITY	RECOMMENDED CAPACITY	AVERAGE DAILY POPULATION	<u>SIXTEENTH JUDICIAL DISTRICT</u> DEFICIENCIES	PRIORITY OF CORRECTIVE ACTION		
						URGENT	NECESSARY	DESIRABLE
FORD COUNTY JAIL* (CONTINUED)					(13) Does not comply with regulations of the Department of Health and Environment.		X	
KIOWA COUNTY JAIL*	1973	9	9	1	(01) No emergency electrical power.** (02) Inadequate administrative space. (03) Overall sanitation needs to be improved.		X X	X
MEADE COUNTY JAIL*	1933	6	6	1	(01) Inadequate administrative space.** (02) No exercise area.** (03) Inadequate ventilation.** (04) Inadequate and/or improper plumbing fixtures.** (05) No standard inmate clothing issued.** (06) Inadequate supervision of inmates.** (07) Furnishings not securely fastened.** (08) Electrical cords and/or fixtures are accessible to inmates. (09) Hazardous materials and/or equipment in cell areas. (10) No written safety, security and emergency procedures.	X X X	X X X	X X

* Reports from either the State Fire Marshal's Office or the State Department of Health and Environment are available.
 ** This deficiency existed in previous inspection reports but no corrective action has been taken.

NAME OF FACILITY	DATE CONSTRUCTED	CAPACITY	RECOMMENDED CAPACITY	AVERAGE DAILY POPULATION	SEVENTEENTH JUDICIAL DISTRICT DEFICIENCIES	PRIORITY OF CORRECTIVE ACTION		
						URGENT	NECESSARY	DESIRABLE
CHEYENNE COUNTY JAIL*	1924	6	6	less than one	(01) Inadequate administrative space.** (02) No security and/or insect screens on windows.** (03) No floor drains in cell block areas.** (04) No exercise area.** (05) Does not comply with State Fire Marshal's regulations.** (06) No emergency electrical power.** (07) No intercom system between jail office and cell block areas.** (08) Inadequate ventilation.** (09) No standard inmate clothing issued.** (10) Inadequate supervision of inmates.** (11) No written safety, security and emergency procedures.** (12) Inadequate and/or improper plumbing fixtures.** ** (13) Does not maintain adequate separation of inmates.	X	X X X X X X	X
DECATUR COUNTY JAIL*	1926	3	3	1	(01) Inadequate administrative space.** (02) No security and/or insect screens on windows.** (03) No exercise area.** (04) Does not comply with State Fire Marshal's regulations.** (05) Inadequate and/or improper plumbing fixtures.** (06) Inadequate ventilation.** (07) No standard inmate clothing issued.**	X	X X X X	X

* Reports from either the State Fire Marshal's Office or the State Department of Health and Environment are available.
 ** This deficiency existed in previous inspection reports but no corrective action has been taken.

NAME OF FACILITY	DATE CONSTRUCTED	CAPACITY	RECOMMENDED CAPACITY	AVERAGE DAILY POPULATION	SEVENTEENTH JUDICIAL DISTRICT DEFICIENCIES	PRIORITY OF CORRECTIVE ACTION		
						URGENT	NECESSARY	DESIRABLE
DECATUR COUNTY JAIL* (CONTINUED)					(08) Does not maintain adequate separation of inmates.** (09) Hazardous materials and/or equipment in cell areas. (10) Security area not properly controlled from public access. (11) No modesty panels for bathing facilities. (12) No written safety, security and emergency procedures.	X	X	X
NORTON COUNTY JAIL*	1929	7	4	less than one	(01) Inadequate administrative space.** (02) Cell areas do not maintain fifty-two (52) square feet per inmate.** (03) No security and/or insect screens on windows.** (04) No exercise area.** (05) Stairway will not accommodate an ambulance cot.** (06) Does not maintain adequate separation of inmates.** (07) Does not comply with State Fire Marshal's regulations.** (08) Furnishings not securely fastened.** (09) Inadequate and/or improper plumbing fixtures.** (10) Inadequate interior lighting.** (11) Inadequate ventilation.** (12) Overall sanitation needs to be improved.** (13) Inadequate food preparation area.** (14) No written safety, security and emergency procedures.	X	X	X

* Reports from either the State Fire Marshal's Office or the State Department of Health and Environment are available.
 ** This deficiency existed in previous inspection reports but no corrective action has been taken.

NAME OF FACILITY	DATE CONSTRUCTED	CAPACITY	RECOMMENDED CAPACITY	AVERAGE DAILY POPULATION	SEVENTEENTH JUDICIAL DISTRICT DEFICIENCIES	PRIORITY OF CORRECTIVE ACTION		
						URGENT	NECESSARY	DESIRABLE
OSBORNE COUNTY JAIL*	1956	7	7	1.1	(01) Inadequate administrative space. (02) Hazardous materials and/or equipment in cell areas.	X	X	
SMITH COUNTY JAIL*	1976	10	10	6	(01) No exercise area. (02) No emergency electrical power.		X	X

* Reports from either the State Fire Marshal's Office or the State Department of Health and Environment are available.
 ** This deficiency existed in previous inspection reports but no corrective action has been taken.

NAME OF FACILITY	DATE CONSTRUCTED	CAPACITY	RECOMMENDED CAPACITY	AVERAGE DAILY POPULATION	EIGHTEENTH JUDICIAL DISTRICT DEFICIENCIES	PRIORITY OF CORRECTIVE ACTION		
						URGENT	NECESSARY	DESIRABLE
SEDGWICK COUNTY JAIL*	1958	212	135	165	(01) Inadequate administrative space.** (02) Cell areas do not maintain fifty-two (52) square feet per inmate.** (03) Does not comply with State Fire Marshal's regulations.** (04) Inadequate interior lighting.** (05) Inadequate ventilation.** (06) Inadequate clothing exchange.** (07) Does not maintain adequate separation of inmates.** (08) Inadequate insect and pest control. (09) Finishes and fixtures in need of repair.	X	X X X X	X X

* Reports from either the State Fire Marshal's Office or the State Department of Health and Environment are available.
 ** This deficiency existed in previous inspection reports but no corrective action has been taken.

NAME OF FACILITY	DATE CONSTRUCTED	CAPACITY	RECOMMENDED CAPACITY	AVERAGE DAILY POPULATION	<u>NINETEENTH JUDICIAL DISTRICT</u> DEFICIENCIES	PRIORITY OF CORRECTIVE ACTION		
						URGENT	NECESSARY	DESIRABLE
BARBER COUNTY JAIL*	1956	4	4	less than one	(01) Inadequate administrative space.** (02) No exercise area.** (03) Furnishings not securely fastened.** (04) Painted surfaces need repainting. (05) Does not comply with State Fire Marshal's regulations. (06) Hazardous materials and/or equipment in cell areas.	X	X	X
COWLEY COUNTY JAIL*	1963	64	40	23	(01) No standard inmate clothing issued.** (02) Does not comply with State Fire Marshal's regulations.** (03) Cell areas do not maintain fifty-two (52) square feet per inmate.	X	X	X
HARPER COUNTY JAIL*	1976	16	16	3	(01) No intercom system between jail office and cell block areas. (02) Hazardous materials and/or equipment in cell areas.	X	X	

* Reports from either the State Fire Marshal's Office or the State Department of Health and Environment are available.
 ** This deficiency existed in previous inspection reports but no corrective action has been taken.

NAME OF FACILITY	DATE CONSTRUCTED	CAPACITY	RECOMMENDED CAPACITY	AVERAGE DAILY POPULATION	NINETEENTH JUDICIAL DISTRICT DEFICIENCIES	PRIORITY OF CORRECTIVE ACTION		
						URGENT	NECESSARY	DESIRABLE
PRATT COUNTY JAIL*	1976	30	30	10	(01) No written safety, security and emergency procedures. (02) Hazardous materials and/or equipment in cell areas.	X		
SUMNER COUNTY JAIL*	1951	31	18	11	(01) Cell areas do not maintain fifty-two (52) square feet per inmate.** (02) No security and/or insect screens on windows.** (03) No floor drains in cell block areas.** (04) No exercise area.** (05) Does not comply with State Fire Marshal's regulations.** (06) Inadequate interior lighting.** (07) No emergency electrical power.** (08) Inadequate ventilation.** (09) Hazardous materials and/or equipment in cell areas. (10) Does not maintain adequate separation of inmates.	X	X	X

* Reports from either the State Fire Marshal's Office or the State Department of Health and Environment are available.
 ** This deficiency existed in previous inspection reports but no corrective action has been taken.

NAME OF FACILITY	DATE CONSTRUCTED	CAPACITY	RECOMMENDED CAPACITY	AVERAGE DAILY POPULATION	TWENTIETH JUDICIAL DISTRICT DEFICIENCIES	PRIORITY OF CORRECTIVE ACTION		
						URGENT	NECESSARY	DESIRABLE
BARTON COUNTY JAIL*	1954	30	30	20	(01) No exercise area. (02) Does not maintain adequate separation of inmates.** (03) No written safety, security and emergency procedures. (04) Painted surfaces need repainting. (05) Does not comply with State Fire Marshal's regulations.	X	X	X
RICE COUNTY JAIL*	1929	26	14	9	(01) Cell areas do not maintain fifty-two (52) square feet per inmate.** (02) No security and/or insect screens on windows.** (03) No floor drains in cell block areas.** (04) No exercise area.** (05) Does not comply with State Fire Marshal's regulations.** (06) No intercom system between jail office and cell block areas.** (07) Inadequate ventilation.** (08) No standard inmate clothing issued.** (09) Inadequate supervision of inmates.** (10) No written safety, security and emergency procedures.** (11) Inadequate administrative space. (12) Electrical cords and/or fixtures are accessible to inmates.	X	X	X

* Reports from either the State Fire Marshal's Office or the State Department of Health and Environment are available.
 ** This deficiency existed in previous inspection reports but no corrective action has been taken.

NAME OF FACILITY	DATE CONSTRUCTED	CAPACITY	RECOMMENDED CAPACITY	AVERAGE DAILY POPULATION	TWENTIETH JUDICIAL DISTRICT DEFICIENCIES	PRIORITY OF CORRECTIVE ACTION		
						URGENT	NECESSARY	DESTRABLE
RICE COUNTY JAIL* (CONTINUED)					(13) Inadequate and/or improper plumbing fixtures. (14) No written disciplinary procedures.**		X X	
RUSSELL COUNTY JAIL*	1957	22	14	3	(01) No exercise area.** (02) No emergency electrical power.** (03) Heating unit inadequate to maintain a minimum of 68 degrees.** (04) Inadequate ventilation.** (05) Inadequate and/or improper plumbing fixtures. (06) No written safety, security and emergency procedures. (07) Inadequate administrative space. (08) Cell areas do not maintain fifty-two (52) square feet per inmate. (09) Hazardous materials and/or equipment in cell areas.	X	X X X X	X
RUSSELL CITY HOLDING (Russell County)	1969	2	2	less than one	(01) Hazardous materials and/or equipment in cell areas. (02) Bedding is not being issued in a clean condition.	X		X

* Reports from either the State Fire Marshal's Office or the State Department of Health and Environment are available.
** This deficiency existed in previous inspection reports but no corrective action has been taken.

NAME OF FACILITY	DATE CONSTRUCTED	CAPACITY	RECOMMENDED CAPACITY	AVERAGE DAILY POPULATION	<p style="text-align: center;">TWENTY-FIRST JUDICIAL DISTRICT</p> <p style="text-align: center;">DEFICIENCIES</p>	PRIORITY OF CORRECTIVE ACTION		
						URGENT	NECESSARY	DESTRABLE
CLAY COUNTY JAIL*	1909	15	5	3	(01) Inadequate administrative space.** (02) Cell areas do not maintain fifty-two (52) square feet per inmate.** (03) Does not comply with State Fire Marshal's regulations.** (04) No floor drains in cell block areas.** (05) No holding cell for processing of inmates.** (06) Inadequate ventilation.** (07) Inadequate and/or improper plumbing fixtures.** (08) No exercise area.	X	X X	X X X

* Reports from either the State Fire Marshal's Office or the State Department of Health and Environment are available.
 ** This deficiency existed in previous inspection reports but no corrective action has been taken.

NAME OF FACILITY	DATE CONSTRUCTED	CAPACITY	RECOMMENDED CAPACITY	AVERAGE DAILY POPULATION	<u>TWENTY-SECOND JUDICIAL DISTRICT</u> DEFICIENCIES	PRIORITY OF CORRECTIVE ACTION		
						URGENT	NECESSARY	DESIRABLE
BROWN COUNTY JAIL*	1924	8	8	7	(01) Cell areas do not maintain fifty-two (52) square feet per inmate.** (02) No exercise area.** (03) Does not comply with State Fire Marshal's regulations.** (04) Furnishings not securely fastened.** (05) Inadequate interior lighting.** (06) Inadequate ventilation.** (07) Does not maintain adequate separation of inmates.** (08) No emergency electrical power.	X	X	X
DONIPHAN COUNTY JAIL*	1957	14	7	4	(01) No exercise area.** (02) No intercom system between jail office and cell block areas.** (03) Inadequate ventilation.** (04) No standard inmate clothing issued.** (05) Does not comply with State Fire Marshal's regulations.** (06) Inadequate and/or improper plumbing fixtures.	X	X	X
HORTON CITY HOLDING (Brown County)	1914	3	3	2	(01) No security and/or insect screens on windows.** (02) Electrical cords and/or fixtures are accessible to inmates.**	X	X	

* Reports from either the State Fire Marshal's Office or the State Department of Health and Environment are available.
 ** This deficiency existed in previous inspection reports but no corrective action has been taken.

NAME OF FACILITY	DATE CONSTRUCTED	CAPACITY	RECOMMENDED CAPACITY	AVERAGE DAILY POPULATION	<u>TWENTY-SECOND JUDICIAL DISTRICT</u> DEFICIENCIES	PRIORITY OF CORRECTIVE ACTION		
						URGENT	NECESSARY	DESIRABLE
HORTON CITY HOLDING (Brown County) (Continued)					(03) Does not comply with State Fire Marshal's regulations.** (04) No intercom system between jail office and cell block areas.	X	X	

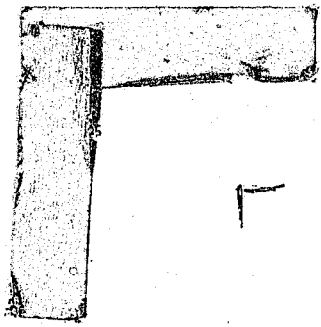
* Reports from either the State Fire Marshal's Office or the State Department of Health and Environment are available.
 ** This deficiency existed in previous inspection reports but no corrective action has been taken.

NAME OF FACILITY	DATE CONSTRUCTED	CAPACITY	RECOMMENDED CAPACITY	AVERAGE DAILY POPULATION	<p style="text-align: center;">TWENTY-THIRD JUDICIAL DISTRICT</p> <p style="text-align: center;">DEFICIENCIES</p>	PRIORITY OF CORRECTIVE ACTION		
						URGENT	NECESSARY	DESIRABLE
OAKLEY CITY LOCKUP* (Logan County)	1948	3	3	3	(01) Inadequate administrative space.** (02) No floor drains in cell block areas.** (03) No exercise area.** (04) No holding cell for processing of inmates.** (05) Does not maintain adequate separation of inmates.** (06) Inadequate interior lighting.** (07) No emergency electrical power.** (08) No written safety, security and emergency procedures.** (09) Overall sanitation needs to be improved. (10) Inadequate ventilation.	X	X X X X X	X X X

* Reports from either the State Fire Marshal's Office or the State Department of Health and Environment are available.
 ** This deficiency existed in previous inspection reports but no corrective action has been taken.

NAME OF FACILITY	DATE CONSTRUCTED	CAPACITY	RECOMMENDED CAPACITY	AVERAGE DAILY POPULATION	TWENTY-FOURTH JUDICIAL DISTRICT DEFICIENCIES	PRIORITY OF CORRECTIVE ACTION		
						URGENT	NECESSARY	DESIRABLE
EDWARDS COUNTY JAIL*	1928	11	11	1	(01) Furnishings not securely fastened.** (02) No exercise area.** (03) Does not comply with State Fire Marshal's regulations.** (04) Painted surfaces need repainting.** (05) Inadequate and/or improper plumbing fixtures. ** (06) Does not maintain adequate separation of inmates. ** (07) No written safety, security and emergency procedures.	X	X	X
HODGEMAN COUNTY JAIL*	1927	8	6	less than one	(01) Inadequate administrative space.** (02) Cell areas do not maintain fifty-two (52) square feet per inmate.** (03) No security and/or insect screens on windows.** (04) No floor drains in cell block areas.** (05) No exercise area.** (06) Does not comply with the State Fire Marshal's regulations.** (07) Does not maintain adequate separation of inmates. ** (08) Inadequate ventilation.** (09) No standard inmate clothing issued.** (10) Sufficient bedding not provided.** (11) No written safety, security and emergency procedures. (12) Inadequate supervision of inmates.	X	X X X X	X X

* Reports from either the State Fire Marshal's Office or the State Department of Health and Environment are available.
 ** This deficiency existed in previous inspection reports but no corrective action has been taken.



CONTINUED

1 OF 2

NAME OF FACILITY	DATE CONSTRUCTED	CAPACITY	RECOMMENDED CAPACITY	AVERAGE DAILY POPULATION	TWENTY-FOURTH JUDICIAL DISTRICT			
					DEFICIENCIES			
					URGENT	NECESSARY	DESIRABLE	
HODGEMAN COUNTY JAIL* (CONTINUED)					(13) Does not comply with regulations of the Department of Health and Environment. (14) Inadequate key control. (15) Does not maintain adequate separation of inmates.	X	X	
LANE COUNTY JAIL*	1935	8	8	1	(01) Inadequate and/or improper plumbing fixtures.** (02) Inadequate shower facilities.** (03) No standard inmate clothing issued.**		X	X X
NESS COUNTY JAIL*	1955	6	6	less than one	(01) No exercise area.** (02) Does not comply with State Fire Marshal's regulations.	X		X
PAWNEE COUNTY JAIL*	1952	15	15	6	(01) No exercise area.** (02) Does not comply with State Fire Marshal's regulations. (03) Inadequate supervision of inmates. (04) Inadequate administrative space. (05) Does not maintain adequate separation of inmates. (06) Does not comply with regulations of the Department of Health and Environment.	X X	X X X	X

* Reports from either the State Fire Marshal's Office or the State Department of Health and Environment are available.
 ** This deficiency existed in previous inspection reports but no corrective action has been taken.

NAME OF FACILITY	DATE CONSTRUCTED	CAPACITY	RECOMMENDED CAPACITY	AVERAGE DAILY POPULATION	<u>TWENTY-FIFTH JUDICIAL DISTRICT</u> DEFICIENCIES	PRIORITY OF CORRECTIVE ACTION		
						URGENT	NECESSARY	DESIRABLE
FINNEY COUNTY JAIL*	1920	34	15	7	(01) Inadequate administrative space.** (02) Cell areas do not maintain fifty-two (52) square feet per inmate.** (03) No floor drains in cell block areas.** (04) No exercise area.** (05) Does not comply with State Fire Marshal's regulations.** (06) Does not maintain adequate separation of inmates.** (07) Inadequate interior lighting.** (08) No emergency electrical power.** (09) No intercom system between jail office and cell block areas.** (10) Does not provide three (3) meals daily.** (11) No holding cell for processing of inmates.** (12) Furnishings not securely fastened.** (13) Inadequate supervision of inmates.	X	X X X X X X	X X
KEARNY COUNTY JAIL*	1965	21	15	2	(01) Inadequate administrative space.** (02) No exercise area.** (03) No intercom system between jail office and cell block areas.**		X X	X

* Reports from either the State Fire Marshal's Office or the State Department of Health and Environment are available.
 ** This deficiency existed in previous inspection reports but no corrective action has been taken.

NAME OF FACILITY	DATE CONSTRUCTED	CAPACITY	RECOMMENDED CAPACITY	AVERAGE DAILY POPULATION	<p style="text-align: center;">TWENTY-FIFTH JUDICIAL DISTRICT</p> <p style="text-align: center;">DEFICIENCIES</p>	PRIORITY OF CORRECTIVE ACTION		
						URGENT	NECESSARY	DESIRABLE
SCOTT COUNTY JAIL*	1949	8	6	4	(01) No written safety, security and emergency procedures.** (02) Cell areas do not provide fifty-two (52) square feet of space per inmate. (03) No holding cell for processing inmates. (04) No cells for holding chemically or mentally impaired persons. (05) No exercise area. (06) Inadequate and/or improper plumbing fixtures. (07) Inadequate interior lighting. (08) Electrical cords and/or fixtures are accessible to inmates. (09) Does not provide three (3) meals daily. (10) No thirty (30) day menu available. (11) Hazardous materials and/or equipment in cell areas. (12) No security and/or insect screens on windows.	X	X	X
WICHITA COUNTY LOCKUP (Wichita County)	1920	4	4	less than one	(01) No emergency electrical power. (02) Inadequate ventilation.		X X	

* Reports from either the State Fire Marshal's Office or the State Department of Health and Environment are available.
 ** This deficiency existed in previous inspection reports but no corrective action has been taken.

NAME OF FACILITY	DATE CONSTRUCTED	CAPACITY	RECOMMENDED CAPACITY	AVERAGE DAILY POPULATION	TWENTY-SIXTH JUDICIAL DISTRICT DEFICIENCIES	PRIORITY OF CORRECTIVE ACTION		
						URGENT	NECESSARY	DESIRABLE
GRANT COUNTY JAIL	1972	28	22	1	(01) No emergency electrical power. (02) Inadequate interior lighting. (03) Bedding is not being issued in a clean condition. (04) Painted surfaces need repainting. (05) Overall sanitation needs to be improved. (06) Hazardous materials and/or equipment in cell areas. (07) Cell areas are not secured at all times. (08) Does not comply with State Fire Marshal's regulations. (09) Does not comply with the regulations of the Department of Health and Environment.	X	X X	X X X
MORTON COUNTY JAIL*	1964	13	9	1	(01) Inadequate administrative space.** (02) Cell areas do not maintain fifty-two (52) square feet per inmate.** (03) No exercise area.** (04) No emergency electrical power.** (05) No intercom system between jail office and cell block areas.** (06) No written safety, security and emergency procedures.** (07) Inadequate supervision of inmates.** (08) Does not comply with State Fire Marshal's regulations.** (09) Does not comply with the regulations of the Department of Health and Environment.	X X	X X	X

* Reports from either the State Fire Marshal's Office or the State Department of Health and Environment are available.
** This deficiency existed in previous inspection reports but no corrective action has been taken.

NAME OF FACILITY	DATE CONSTRUCTED	CAPACITY	RECOMMENDED CAPACITY	AVERAGE DAILY POPULATION	<u>TWENTY-SIXTH JUDICIAL DISTRICT</u> DEFICIENCIES	PRIORITY OF CORRECTIVE ACTION		
						URGENT	NECESSARY	DESTRABLE
SEWARD COUNTY JAIL*	1957	42	24	12	(01) Cell areas do not maintain fifty-two (52) square feet per inmate.** (02) No exercise area.** (03) Inadequate ventilation.** (04) No emergency electrical power.** (05) Electrical cords and/or fixtures are accessible to inmates.** (06) No standard inmate clothing issued.** (07) Does not comply with regulations of Department of Health and Environment.** (08) Does not maintain adequate separation of inmates.** (09) No written safety, security and emergency procedures.**	X	X	X
STEVENS COUNTY JAIL*	1958	12	10	2	(01) No exercise area.** (02) No emergency electrical power.** (03) No standard inmate clothing issued.** (04) No cells for holding chemically or mentally impaired persons. (05) No written safety, security and emergency procedures. (06) No written disciplinary procedures.	X	X	X

* Reports from either the State Fire Marshal's Office or the State Department of Health and Environment are available.
 ** This deficiency existed in previous inspection reports but no corrective action has been taken.

NAME OF FACILITY	DATE CONSTRUCTED	CAPACITY	RECOMMENDED CAPACITY	AVERAGE DAILY POPULATION	<p style="text-align: center;">TWENTY-SIXTH JUDICIAL DISTRICT</p> <p style="text-align: center;">DEFICIENCIES</p>	PRIORITY OF CORRECTIVE ACTION		
						URGENT	NECESSARY	DESIRABLE
HASKELL COUNTY LOCKUP (Sublette County)	1978	4	4	less than one	(01) Inadequate supervision of inmates.	X		

* Reports from either the State Fire Marshal's Office or the State Department of Health and Environment are available.
 ** This deficiency existed in previous inspection reports but no corrective action has been taken.

NAME OF FACILITY	DATE CONSTRUCTED	CAPACITY	RECOMMENDED CAPACITY	AVERAGE DAILY POPULATION	<u>TWENTY-SEVENTH JUDICIAL DISTRICT</u> DEFICIENCIES	PRIORITY OF CORRECTIVE ACTION		
						URGENT	NECESSARY	DESIRABLE
RENO COUNTY JAIL*	1971	65	65	54	(01) Electrical cords and/or fixtures are accessible to inmates.** (02) Inadequate administrative space. (03) No exercise area. (04) Inadequate supervision of inmates. (05) Painted surfaces need repainting. (06) Overall sanitation needs to be improved. (07) Does not comply with State Fire Marshal's regulations. (08) Does not comply with regulations of the Department of Health and Environment.	X	X	X

* Reports from either the State Fire Marshal's Office or the State Department of Health and Environment are available.
 ** This deficiency existed in previous inspection reports but no corrective action has been taken.

NAME OF FACILITY	DATE CONSTRUCTED	CAPACITY	RECOMMENDED CAPACITY	AVERAGE DAILY POPULATION	TWENTY-EIGHTH JUDICIAL DISTRICT			
					DEFICIENCIES			
					URGENCY	NECESSARY	DESIRABLE	
OTTAWA COUNTY JAIL*	1915	7	4	less than	(01) Cell areas do not maintain fifty-two (52) square feet per inmate.** (02) Inadequate administrative space.** (03) No exercise area.** (04) Inadequate and/or improper plumbing fixtures.** (05) Does not maintain adequate separation of inmates.** (06) Inadequate interior lighting. (07) Hazardous materials and/or equipment in cell areas. (08) No written safety, security and emergency procedures.	X X	X X X X	X
SALINE COUNTY JAIL*	1962	133	66	65	(01) Inadequate administrative space.** (02) No exercise area.** (03) Cell areas do not maintain fifty-two (52) square feet per inmate.** (04) Does not maintain adequate separation of inmates. (05) Inadequate and/or improper plumbing fixtures. (06) Inadequate dormitory areas. (07) Inadequate supervision of inmates. (08) Does not comply with regulations of the Department of Health and Environment.	X	X X X X X	X

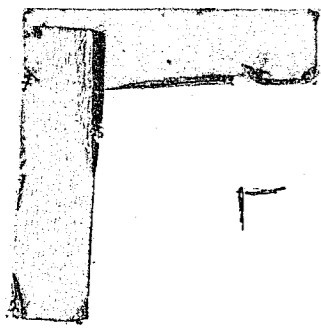
* Reports from either the State Fire Marshal's Office or the State Department of Health and Environment are available.
 ** This deficiency existed in previous inspection reports but no corrective action has been taken.

NAME OF FACILITY	DATE CONSTRUCTED	CAPACITY	RECOMMENDED CAPACITY	AVERAGE DAILY POPULATION	<u>TWENTY-NINTH JUDICIAL DISTRICT</u> DEFICIENCIES	PRIORITY OF CORRECTIVE ACTION		
						URGENT	NECESSARY	DESIRABLE
WYANDOTTE COUNTY JAIL*	1929	153	56	60	(01) Cell areas do not maintain fifty-two (52) square feet per inmate.** (02) No security and/or insect screens on windows.** (03) No exercise area.** (04) Inadequate ventilation.** (05) Inadequate interior lighting. (06) Painted surfaces need repainting.** (07) Overall sanitation needs to be improved.** (08) Inadequate and/or improper plumbing fixtures.** (09) Does not comply with regulations of Department of Health and Environment.** (10) Improperly equipped detoxification cell. (11) Electrical cords and/or fixtures are accessible to inmates. (12) Emergency electrical system in need of repair. (13) Hazardous materials and/or equipment in cell areas. (14) Does not comply with State Fire Marshal's regulations.**	X	X	X

* Reports from either the State Fire Marshal's Office or the State Department of Health and Environment are available.
 ** This deficiency existed in previous inspection reports but no corrective action has been taken.

MOST COMMON DEFICIENCIES ENCOUNTERED

	DEFICIENCIES	Priority of Corrective Action		
		Urgent	Necessary	Desirable
1	Inadequate supervision of inmates.	17		
2	Does not comply with State Fire Marshal's regulations.	42		
3	Hazardous materials and/or equipment in cell areas.	24		
4	Security equipment in need of repair or replacement.	9		
5	Electrical cords and/or fixtures are accessible to inmates.	16		
6	No written safety, security and emergency procedures.	20		
7	Inadequate administrative space.		33	
8	Inadequate ventilation		29	
9	Cell areas do not maintain fifty-two (52) square feet per inmate.		28	
10	No emergency electrical power.		21	
11	No intercom system between jail office and cell block areas.		18	
12	Does not maintain adequate separation of inmates.		29	
13	Inadequate interior lighting.		25	
14	Inadequate and/or improper plumbing fixtures.		20	
15	No security and/or insect screens on windows.		17	
16	Furnishings not securely fastened.		8	
17	No standard inmate clothing issued.			17
18	No exercise area.			45
19	No floor drains in cell block areas.			10
20	Painted surfaces need repainting.			13
21	Overall sanitation needs to be improved.			14
22	All other deficiencies.	3	56	34
TOTAL	For each Level of Corrective Action	131	284	133
TOTAL	Deficiencies		548	



END