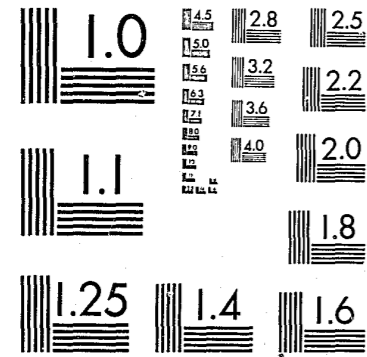


National Criminal Justice Reference Service



This microfiche was produced from documents received for inclusion in the NCJRS data base. Since NCJRS cannot exercise control over the physical condition of the documents submitted, the individual frame quality will vary. The resolution chart on this frame may be used to evaluate the document quality.



MICROCOPY RESOLUTION TEST CHART  
NATIONAL BUREAU OF STANDARDS-1963-A

Microfilming procedures used to create this fiche comply with the standards set forth in 41CFR 101-11.504.

Points of view or opinions stated in this document are those of the author(s) and do not represent the official position or policies of the U. S. Department of Justice.

National Institute of Justice  
United States Department of Justice  
Washington, D. C. 20531

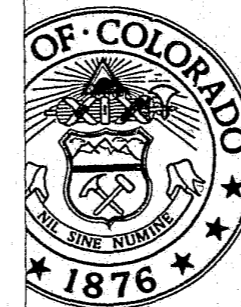
1/05/83

STATISTICAL  
SUMMARY  
OF  
THE

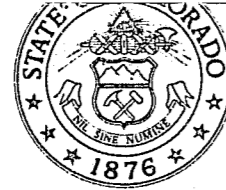
**COLORADO JUDICIARY**

JULY 1, 1978  
TO  
JUNE 30, 1979

5612



of the State Court Administrator



# Judicial Department

COLORADO STATE JUDICIAL BUILDING  
TWO EAST FOURTEENTH AVENUE  
DENVER, COLORADO 80203  
(303) 861-1111

E. KEITH STOTT, JR.  
DEPUTY STATE COURT ADMINISTRATOR

JAMES D. THOMAS  
STATE COURT ADMINISTRATOR

November 1, 1979

To the Honorable Members of the Supreme Court:

It is my pleasure to transmit herewith our first Statistical Summary of the Colorado Judiciary. As distinct from the Annual Statistical Report, which contains detailed statistical information, this report is designed for the general reader. This new report treats the funding, jurisdiction, and workload of the court system in an overview fashion.

I hope that this new approach to reporting on the judicial branch will prove helpful and informative to those interested in the activities of the court system.

Sincerely,

James D. Thomas  
State Court Administrator

NCJRS  
ACQUISITIONS

U.S. Department of Justice  
National Institute of Justice

This document has been reproduced exactly as received from the person or organization originating it. Points of view or opinions stated in this document are those of the authors and do not necessarily represent the official position or policies of the National Institute of Justice.

Permission to reproduce this copyrighted material has been granted by

Colorado Office of the State  
Court Administrator

to the National Criminal Justice Reference Service (NCJRS).

Further reproduction outside of the NCJRS system requires permission of the copyright owner.

STATISTICAL SUMMARY

OF THE

COLORADO JUDICIARY

July 1, 1978

to

June 30, 1979

Office of the State Court Administrator  
Two East Fourteenth Avenue  
Denver, Colorado 80203

Paul V. Hodges  
Chief Justice  
Colorado Supreme Court

James D. Thomas  
State Court Administrator

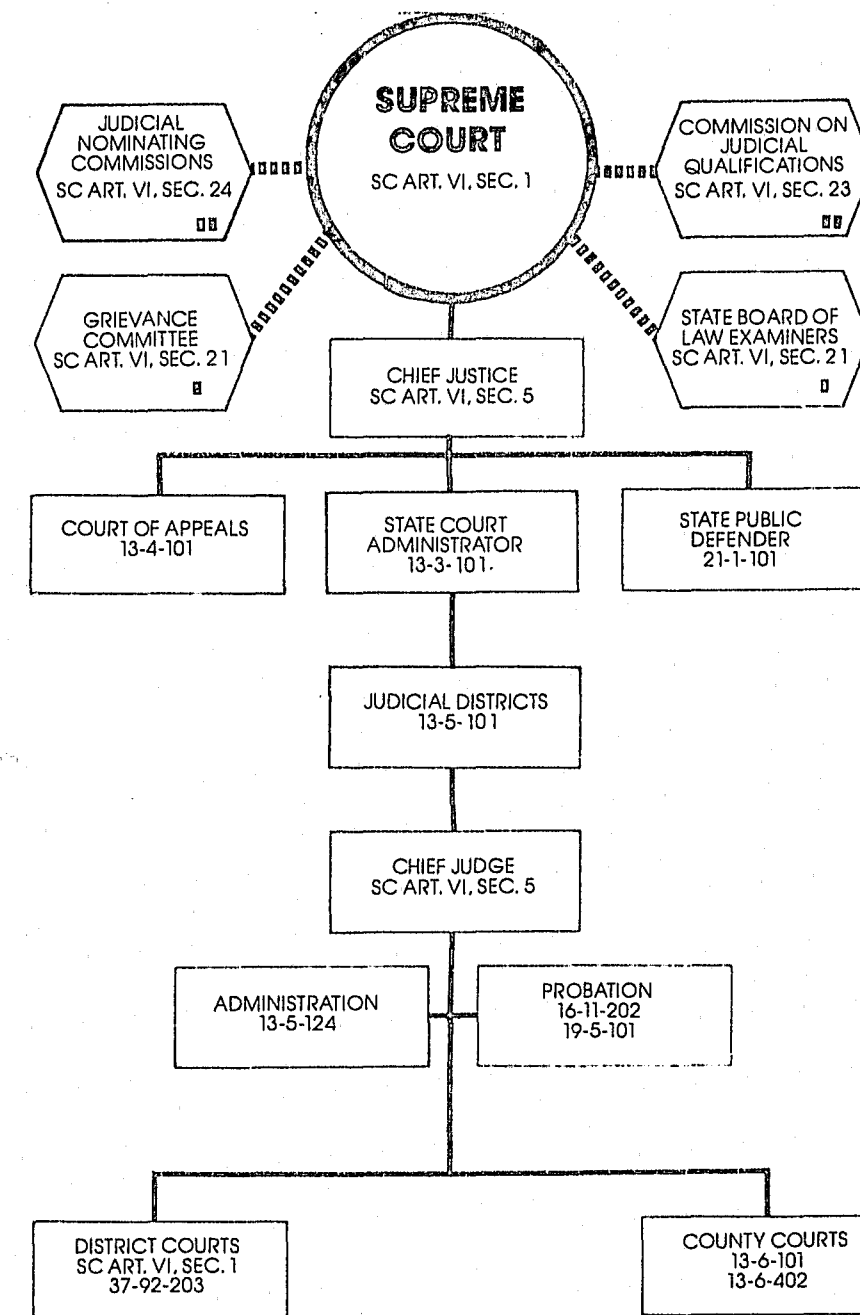
TABLE OF CONTENTS

THE COLORADO JUDICIAL SYSTEM	1
SUMMARY OF ACTIVITY IN THE COLORADO JUDICIARY	11
THE SUPREME COURT	13
THE COURT OF APPEALS	19
THE DISTRICT COURTS	23
THE WATER COURTS	29
THE COUNTY COURTS	33
PROBATION	37

LIST OF TABLES, MAPS AND CHARTS

Organizational Chart	1	Table XIV.	
Map of Judicial Districts	2	District Court Caseload, FY 1975-76 - FY 1978-79	23
Judicial Department Accrued Revenue to the State - FY 1978-79	7	Table XV.	
Judicial Department Expenditures FY 1971-72 - FY 1978-79	8	District Court Filings and Percentage Increase FY 1975-76 - FY 1978-79 By District	24
Distribution of Judicial Department Expenditures for FY 1978-79	9	Table XVI.	
Table I.		District Court Filings by Type of Case and Terminations by Type of Case Filed - FY 1978-79	25
Caseload of the Supreme Court, FY 1964-65 - FY 1978-79	13	Map of Water Districts	29
Table II.		Table XVII.	
Distribution of Case Filings in the Supreme Court, FY 1969-70 - FY 1978-79	14	Caseload of the Water Courts, FY 1975-76 - FY 1978-79	31
Table III.		Table XVIII.	
Distribution by Type of Case Filed in the Supreme Court, FY 1975-76 - FY 1978-79	14	Number of Filings and Number of New Claims in Colorado Water Courts, FY 1975-76 - FY 1978-79	32
Table IV.		Table XIX.	
Distribution of Case Terminations in the Supreme Court, FY 1964-65 - FY 1978-79	15	County Court Caseload FY 1972-73 - FY 1978-79	33
Table V.		Table XX.	
Average Number of Written Opinions per Supreme Court Justice, FY 1964-65 - 1978-79	16	Court Trials and Jury Trials in the County Court - FY 1978-79	34
Table VI.		Table XXI.	
Distribution of Supreme Court Cases at Issue the Final Day of the Fiscal Year, 1978-79	16	Number and Percent Distribution of County Court Civil and Small Claims Filings by Money Amount - FY 1978-79	35
Table VII.		Table XXII.	
Distribution of Supreme Court Cases not at Issue the Final Day of the Fiscal Year, 1978-79	16	Felony Preliminaries in the County Court By Type - FY 1978-79	36
Table VIII.		Table XXIII.	
Distribution of Cases Pending in the Supreme Court the Last Day of Fiscal Year, FY 1964-65 - FY 1978-79	17	Number and Percent Distribution of Felony Complaints Disposed of in County Court - FY 1978-79	36
Table IX.		Table XXIV.	
Caseload of the Court of Appeals, FY 1969-70 - FY 1978-79	19	Probation Department Supervision and Investigation Caseloads - State Totals FY 1975-76 to FY 1978-79	37
Table X.		Table XXV.	
Distribution of Case Filings in the Court of Appeals, FY 1969-70 - FY 1978-79	20	Probation Department Supervision Caseloads by District - FY 1978-79	38
Table XI.		Table XXVI.	
Distribution of Case Terminations in the Court of Appeals, FY 1969-70 - FY 1978-79	20	Adult Probation Department Investigations by District - FY 1978-79	39
Table XII.		Table XXVII.	
Distribution of Court of Appeals Cases the Final Day of the Fiscal Year, FY 1978-79	21	Juvenile Probation Department Investigations by District - FY 1978-79	39
Table XIII.		Table XXVIII.	
Distribution of Cases Pending in the Court of Appeals the Last Day of the Fiscal Year, FY 1969-70 - FY 1978-79	21	Restitution Paid to Victims by Juvenile and Adult Probationers - FY 1978-79	40

**JUDICIAL**  
SC ART. VI, SEC. 1



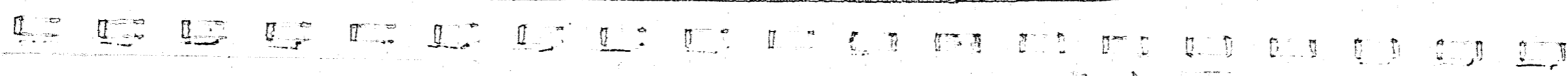
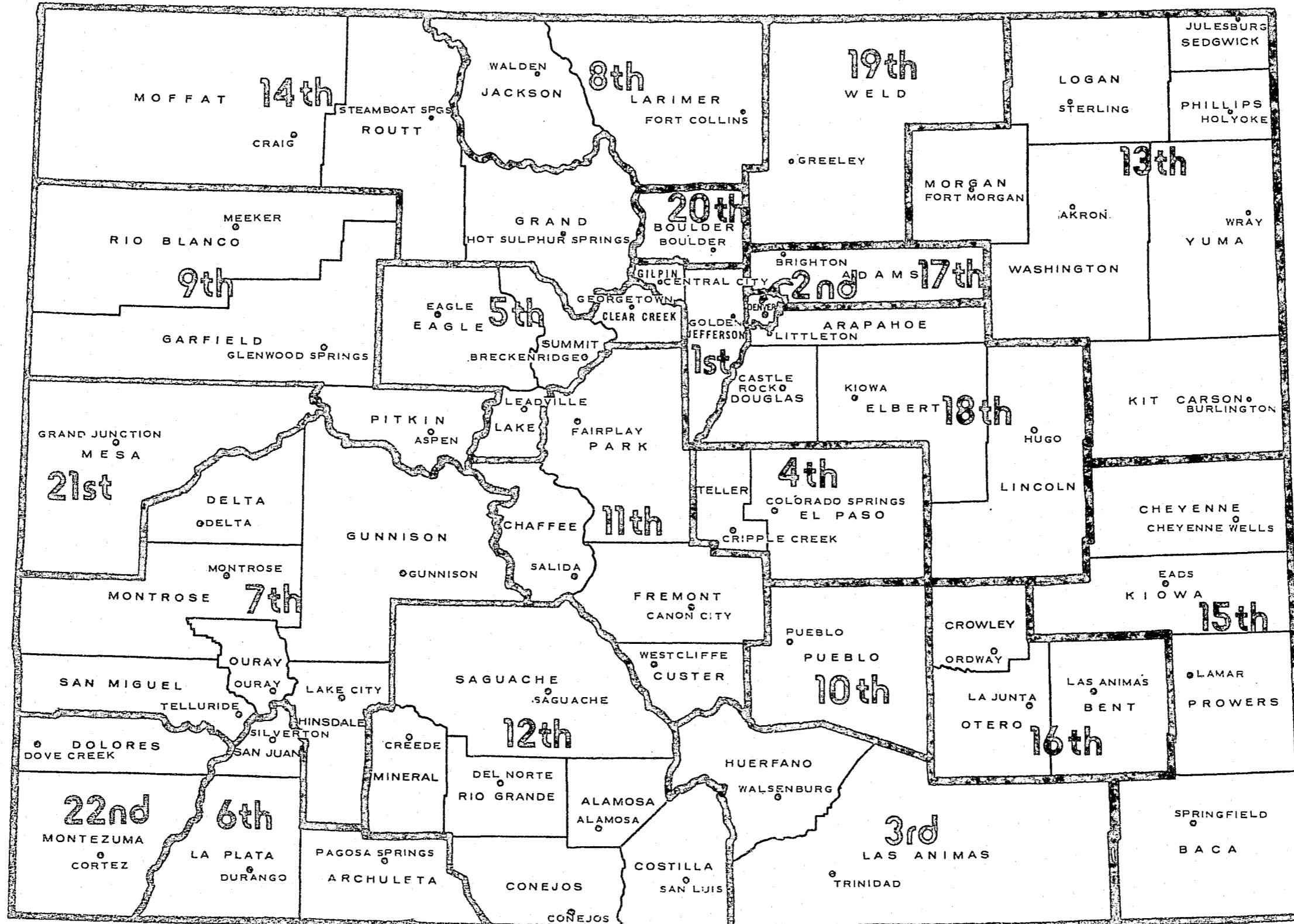
MUNICIPAL COURTS  
13-10-104

CREATED AND MAINTAINED BY LOCAL GOVERNMENTS BUT SUBJECT TO SUPREME COURT RULES AND PROCEDURES.

THIS IS A COMPOSITE REPRESENTATION OF 22 JUDICIAL DISTRICTS. THE SECOND JUDICIAL DISTRICT, WHICH INCLUDES THE DENVER DISTRICT, JUVENILE, SUPERIOR, COUNTY AND PROBATE COURTS VARIES SUBSTANTIALLY FROM THIS COMPOSITE.

■■■■■ AUTONOMOUS OR SEMI-AUTONOMOUS BODIES

# JUDICIAL DISTRICTS OF COLORADO



DESCRIPTION OF THE  
COLORADO JUDICIAL SYSTEM

The Colorado court system consists of the Supreme Court, an intermediate Court of Appeals, district courts and county courts. A special probate court and juvenile court exist in the City and County of Denver, along with a separate superior court. The Colorado Constitution authorizes municipal courts, which are not state funded, in home rule cities, with jurisdiction limited to municipal ordinance violations.

The state judicial system was reorganized as a result of a constitutional amendment adopted in 1962. The county court as it existed prior to the amendment was eliminated, and juvenile, probate, and mental health jurisdiction was transferred to district court, except in the City and County of Denver, where separate juvenile and probate courts were created.

A second constitutional amendment approved in 1966 established a system in which vacancies for justices and judges are filled by appointments, and judges run for retention in office on noncompetitive ballots. This amendment also created a Judicial Qualifications Commission with authority to recommend to the Supreme Court the removal or retirement of a justice or judge of a court of record for specific reasons, as delineated in the amendment. The 1966 amendment specified that the Chief Justice is the executive head of the court system.

Effective January 1, 1970, the State of Colorado assumed the full responsibility for funding all courts of record, including juvenile and adult probation, other than the Denver County Court and municipal courts. A statewide public defender system was initiated and became funded by the state at that time.

## Jurisdiction

### The Supreme Court

The Colorado Supreme Court is composed of seven justices who serve 10-year terms.

The Supreme Court has both appellate and original jurisdiction. The latter is restricted to original and remedial writs as may be provided by rule of court with authority to hear and determine the same.

The Supreme Court has initial appellate jurisdiction over: 1) cases in which the constitutionality of a statute, a municipal charter provision, or an ordinance is in question; 2) cases concerned with decisions or actions of the Public Utilities Commission; 3) writs of habeas corpus; 4) water cases involving priorities or adjudications; and 5) summary proceedings initiated under Title 1, C.R.S. 1973, as amended (Election Code). The Supreme Court also has certiorari review over appeals which lie initially to the Court of Appeals.

### The Court of Appeals

The Court of Appeals is composed of ten judges who serve eight-year terms.

The Court of Appeals has initial appellate jurisdiction over appeals from final judgments of the district courts and the Denver Probate, Juvenile, and Superior Courts, except for those matters which lie directly to the Supreme Court. The Court of Appeals does not have any original jurisdiction as such, but has the authority to issue any writs, directives, orders, and mandates necessary to the determination of cases within its jurisdiction. The Court of Appeals also has initial jurisdiction over specific administrative boards and agencies.

### The District Courts

The district court is Colorado's trial court of general jurisdiction. It has original jurisdiction in domestic relations, civil, juvenile, probate, mental health, and criminal cases, except in the City and County of Denver,

where probate and mental health matters are heard by the Probate Court and all juvenile matters by the Juvenile Court.

Except in the City and County of Denver where the appellate court is Denver Superior Court, district courts have appellate jurisdiction over all final judgments in county court. The district court reviews such cases on the record, except that, in its discretion, it may remand the case for a new trial with such instructions as it may deem necessary, or it may direct that the case be tried de novo before the district court. If a municipal court is a court of record, appeals lie to the district court in the same manner as county court appeals.

### The Water Courts

The Water Right Determination and Administration Act of 1969 set up seven water divisions according to drainage patterns of the rivers in the state. Each was assigned a water engineer and in each the location of a water court was designated to investigate and rule on all water matters in its jurisdiction. The water judges are appointed by the Supreme Court from among the district court judges.

The water judges have jurisdiction in the determination of water rights, uses and administration of water, and all other water matters within the jurisdiction.

### The County Courts

The county court is a court of limited jurisdiction, as provided by law. It has concurrent original jurisdiction with the district court in civil actions (including torts) in which the debt, damage, or the value of the personal property claimed does not exceed \$1,000.

In the small claims division of the county court, parties may file civil actions in which the debt, damage, tort, injury, or value of personal property does not exceed \$500. Neither party may be represented by an attorney, and the judge or referee hearing the dispute shall not be bound by formal rules or statutes or procedures other than those adopted by the Supreme Court specifically for the small claims court.

The county court has concurrent original jurisdiction with the district court over misdemeanors and in the issuance of warrants, conduct of preliminary examination,



JUDICIAL DEPARTMENT ACCRUED REVENUE  
TO THE STATE - FY 1978-79

Accrued Revenue to the General Fund

The Judicial Department collects revenue from a variety of sources composed essentially of three types - fees, fines, and services, such as the \$1 tax per civil case filed and the \$1 tax for each case affecting vital statistics (birth certificates, adoption, change of name domestic relations, etc.). Cash received is transmitted to the state's general fund. An additional \$51,280 of cash payments by indigents for attorney fees was used to augment the appropriation for court appointed counsel due to a change in the appropriations bill.

Tax - Civil Cases	\$ 127,456
Tax - Vital Statistics	30,481
Copy Work, Certifications, etc.	230,141
Water Case Filings	137,732
Civil Docket Fees	2,649,781
Probate Fees	199,809
Water Case Mailings	5,930
Judgment Fees	11,016
Jury Fees	155,220
Criminal Fees, Court Costs, Bond Forfeits	1,429,549
Probation Fees	237,849
Partial Attorney Fee Paid by Indigent	29,063 <sup>a</sup>
Felony, Misdemeanor Fines	763,123
Game, Fish and Parks (50%)	29,602
Miscellaneous Fees	107,707
Unclaimed Funds	12,202
Bad Debt Expense	(175,249)
Collection Service Fees	(4,498)
TOTAL	\$5,976,914

Accrued Revenue to the Highway Users Fund

Traffic Fines and Forfeits	\$2,252,754
D.U.I. - Outside City Limits	592,995
D.U.I. - Inside City Limits (50%)	336,054
Bad Debt Expense	(40,688)
Collection Service Fees	(7,949)
TOTAL	\$3,133,166

Accrued Revenue to the Game, Fish and Parks Funds

Game, Fish and Parks (50%)	\$ 29,546
Collection Service Fees	(97)
TOTAL	\$ 29,449
GRAND TOTAL	\$9,139,529

<sup>a</sup>The actual total of collections and accrued revenue from indigents in FY 1978-79 is \$80,343 an increase of about \$32,000 over last fiscal year.

issuance of bind over orders, and the admission to bail in felonies and misdemeanors.

The county court also has appellate jurisdiction over municipal court judgments, if the municipal court is not a court of record.

Description of Probation

Probation is a dispositional/sentencing alternative available to the courts. The offender serves his or her sentence in the community, subject to the conditions imposed by the court, supervised by a probation officer, rather than in a correctional institution. Should the probationer breach the conditions imposed, the court may revoke probation and institutionalize the offender, or modify the conditions of probation.

Supervision of adult offenders may result from probation being granted as a sentence or incarceration being ordered and then suspended, with the defendant being placed under the supervision of the probation department. Deferred judgment and sentence orders place the defendant under the probation department's supervision for a specified period, and defendants under deferred prosecution may also be supervised by the probation department.

Juvenile offenders may be supervised under an informal adjustment, continued adjudication, and probation.

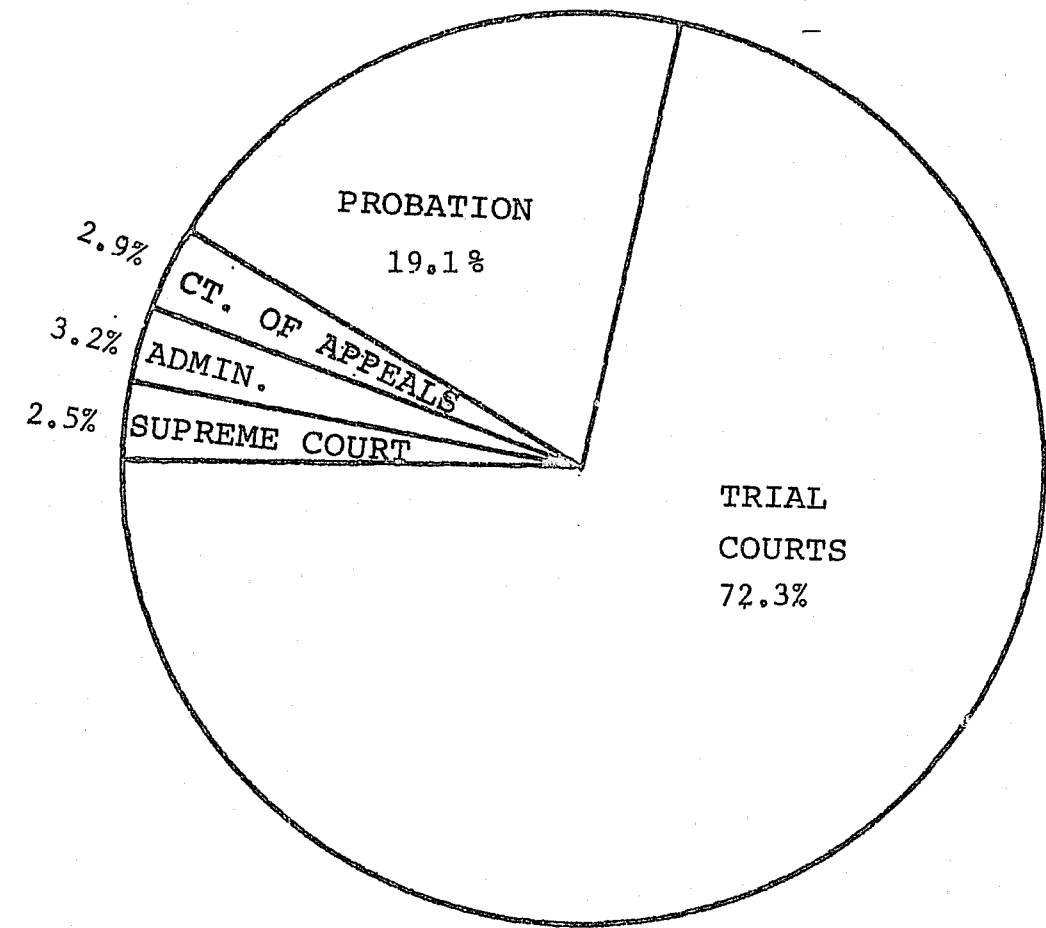
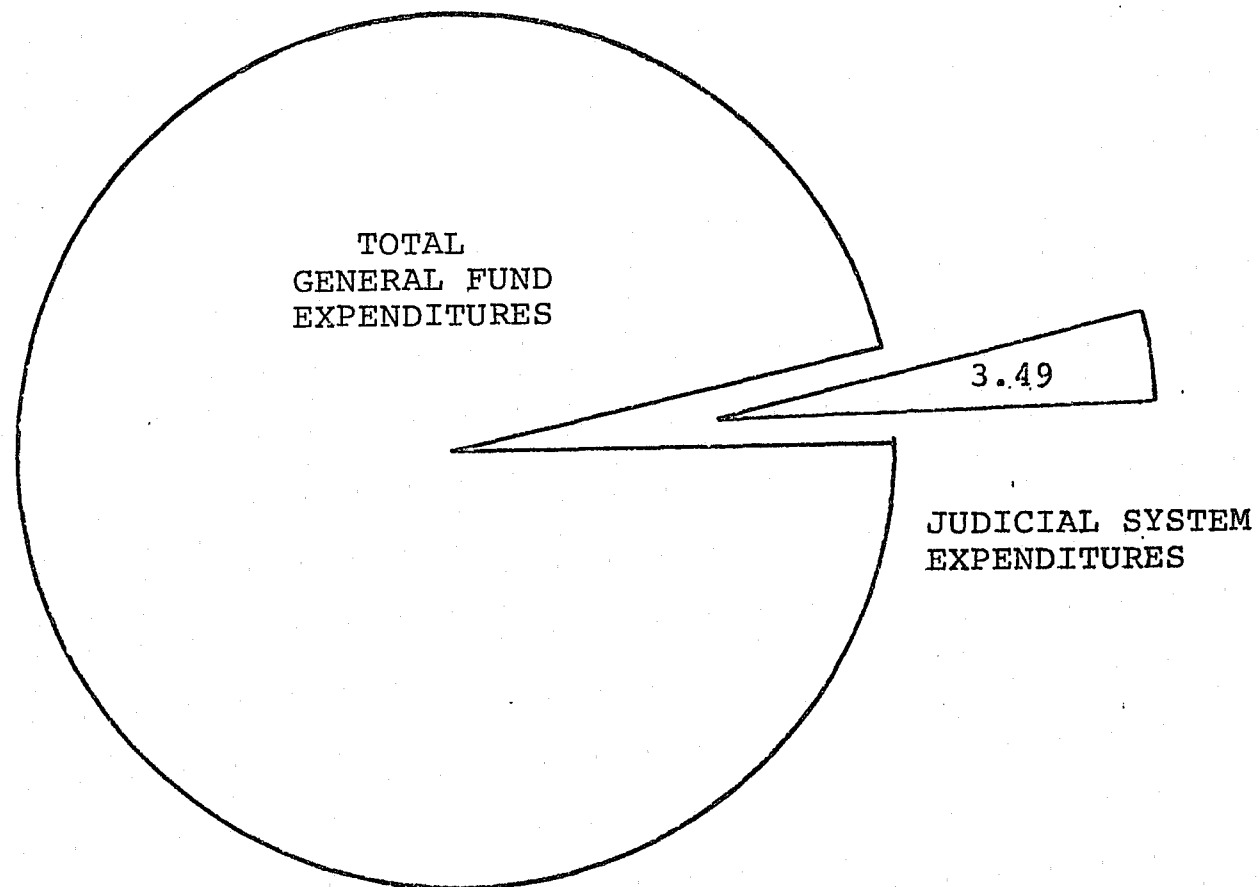
In addition, probation officers are responsible for providing to the court background investigative information on persons brought before the court.

JUDICIAL DEPARTMENT EXPENDITURES  
FY 1971-72 THROUGH FY 1978-79

	TOTAL GENERAL FUND EXPENDITURES	JUDICIAL SYSTEM EXPENDITURES FROM THE GENERAL FUND <sup>a</sup>	% OF JUDICIAL TO GENERAL FUND EXPENDITURE
FY 1971-72	\$447,242,508	\$17,093,633	3.82
FY 1972-73	\$509,074,634	\$18,895,926	3.71
FY 1973-74	\$700,389,391	\$20,753,573	2.96
FY 1974-75	\$774,281,729	\$23,985,106	3.10
FY 1975-76	\$863,041,322	\$26,787,411	3.10
FY 1976-77	\$874,528,000	\$31,273,172	3.58
FY 1977-78	\$957,609,000	\$34,534,408	3.61
FY 1978-79	\$1,036,180,000 <sup>b</sup>	\$36,186,896	3.49

<sup>a</sup>Does not include Public Defender or Judicial/Heritage Complex maintenance.

<sup>b</sup>Estimated.



	STATE GENERAL FUND	AUGMENTING FUNDS	TOTAL FUNDS
SUPREME COURT	\$ 906,192	\$	\$ 906,192
COURT OF APPEALS Administration	996,313	26,415	1,022,728
Printing opinions of both appellate courts	60,312		60,312
TRIAL COURTS Direct Services	25,290,859	120,782	25,411,641
ADP Services	1,119,764	177,248	1,297,012
PROBATION	6,901,678	168,115	7,069,793
ADMINISTRATION	911,778	254,941	1,166,719
JUDICIAL DEPARTMENT EXPENDITURES	36,186,896	747,501	36,934,397
JUDICIAL/HERITAGE COMPLEX MAINTENANCE (not included above)	177,037		177,037
	STATE GENERAL FUND	AUGMENTING FUNDS	TOTAL FUNDS
PUBLIC DEFENDER (not included above)	\$ 3,303,946	\$254,744	\$3,558,690

SUMMARY OF ACTIVITY IN THE COLORADO JUDICIARY  
FY 1978-79

Coloradoans turned to the courts in increasing numbers this year for adjudication and resolution of issues ranging from money disputes to criminal matters to constitutional questions. Civil cases were predominately responsible for caseload increases throughout the system. Complex water cases flowed through the courts, affecting the district court workload. The county courts are dealing with an increasing number of civil cases as a result of the jurisdictional change and the establishment of the small claims divisions.

Even with the caseload increases, the courts exerted every effort to close cases swiftly and justly.

The Supreme Court this year maintained a high level of terminations, closing an average of 125 cases per justice.

In the Court of Appeals, the success of its special programs and the major efforts of the judges resulted in a 12 percent increase in terminations. Nevertheless, 94 more cases were filed than terminated this year.

Despite the slight decrease in mental health and juvenile filings in the district courts, the increases in the other case types meant an overall increase of 5.9 percent. This is due in large part to increases in civil and domestic relations cases.

The dramatic increase in claims in the water courts was due to the Huston case, which claims underground water rights throughout the state. The number of water cases filed went down about 22 percent this year.

The fiscal year saw a general filing increase in all county court case types, with civil and small claims cases showing remarkable growth.

With over a 12 percent increase in new adult probationers, only the fact that officers terminated more cases than they received kept the situation manageable. Officers were also better able to handle the influx of adult offenders due to a stable situation in the number of juveniles entering the system.

The following detailed description of the Colorado Judiciary and its activities and accomplishments during FY 1978-79 is an indication that in Colorado, citizens can be proud of their effective and responsive judicial system.

FISCAL YEAR	CASES PENDING JULY 1	APPEALS FILED	TOTAL CASELOAD	APPEALS TERMINATED	CASES PENDING JUNE 30
1964-65	565	484	1049	447	602
1965-66	602	581	1183	437	746
1966-67	746	640	1386	542	844
1967-68	844	574	1418	519	899
1968-69	899	620	1519	496	1023
1969-70	1023	568	1591	484 <sup>a</sup>	847
1970-71	847	544	1391	581 <sup>b</sup>	511
1971-72	511	517	1028	605	423
1972-73	423	606	1029	602	427
1973-74	427	611	1038	559	479
1974-75	479	553	1032	666	366
1975-76	366	651	1017	674	343
1976-77	343	735	1078	704	374
1977-78	374	854	1228	893	335
1978-79	350 <sup>c</sup>	941	1291	877	414

a In addition, 260 backlog cases were transferred to the Court of Appeals.

b In addition, 299 backlog cases were transferred to the Court of Appeals.

c Revised pending figure.

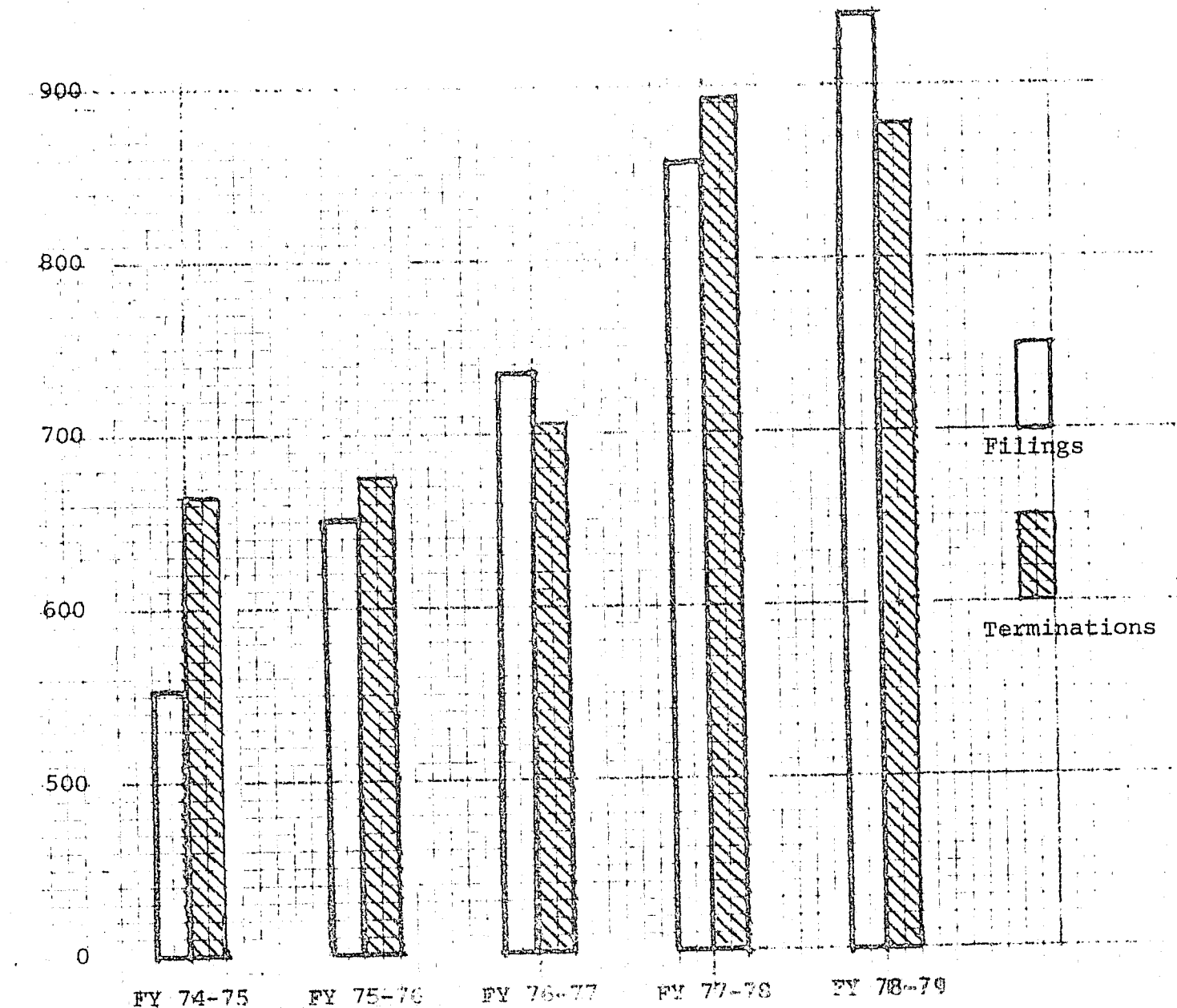


TABLE II. DISTRIBUTION OF CASE FILINGS IN THE SUPREME COURT, FY 1969-70 TO FY 1978-79

FISCAL YEAR	DIRECT FILINGS	TRANSFERS FROM COURT OF APPEALS	REOPENED CASES	TOTAL FILINGS
1969-70	564	4	0	568
1970-71	528	16	0	544
1971-72	508	9	0	517
1972-73	582	20	4	606
1973-74	575	30	6	611
1974-75	517	33	3	553
1975-76	569	81	1	651
1976-77	658	75	2	735
1977-78	784	66	4	854
1978-79	852	89	0	941

TABLE III. DISTRIBUTION BY TYPE OF CASE FILED IN THE SUPREME COURT, FY 1975-76 TO FY 1978-79

	FY 75-76	FY 76-77	FY 77-78	FY 78-79
Criminal Appeals	75	84	99	96
Original Proceedings	188	238	251	284
Petitions in Certiorari	274	284	353	375
Civil Appeals (including water cases, P.U.C. decisions and constitutional questions)	76	80	63	81
Interlocutories	16	21	26	25
Statutory Review	0	1	0	3
Habeas Corpus	19	19	26	49
Bail Reduction	0	0	1	0
Interrogatories	2	1	3	0
Reopened Cases	1	2	4	0
Rules 21.1	0	2	0	1
Attorney Registration Suspension	0	1	0	0
Request for Stay Pending Appeal	0	2	0	1
Original Proceedings (in Discipline)	0	0	28	26
T O T A L	651	735	854	941

TABLE IV. DISTRIBUTION OF CASE TERMINATIONS  
IN THE SUPREME COURT, FY 1964-65 TO FY 1978-79

FISCAL YEAR	DISPOSED OF BY WRITTEN OPINION	DISPOSED OF WITHOUT OPINION	TOTAL DISPOSITIONS	TRANSFERRED TO COURT OF APPEALS	TOTAL TERMS	% OF WRITTEN OPINIONS TO DISPOSITIONS
1964-65	254	193	447		447	56.8
1965-66	251	186	437		437	57.4
1966-67	325	217	542		542	60.0
1967-68	321	198	519		519	61.8
1968-69	299	197	496		496	60.3
1969-70	230	254	484		484	47.5
1970-71	346	235	581	260	744	47.5
1971-72	352	245	597	299	880	59.6
1972-73	291	308	599	8	605	59.0
1973-74	303	253	556	3	602	48.6
1974-75	343	315	658	3	559	54.5
1975-76	293	377	670	8	666	52.1
1976-77	285	411	696	4	674	43.7
1977-78	322	564 <sup>a</sup>	886	8	704	40.9
1978-79	284	587 <sup>a</sup>	871	7	893	36.3
				6	877	32.6

<sup>a</sup>Includes 13 cases awaiting formal closing.

TABLE V. AVERAGE NUMBER OF WRITTEN OPINIONS  
PER SUPREME COURT JUSTICE, FY 1964-65 TO FY 1978-79

FISCAL YEAR	NUMBER OF WRITTEN OPINIONS BY JUSTICES <sup>a</sup>	AVERAGE NUMBER OF WRITTEN OPINIONS PER JUSTICE
1964-65	254	36.3
1965-66	251	35.9
1966-67	315	45.0
1967-68	305	43.6
1968-69	274	39.1
1969-70	225	32.1
1970-71	314	44.9
1971-72	319	45.6
1972-73	291	41.6
1973-74	303	43.3
1974-75	343	49.0
1975-76	293	41.9
1976-77	285	40.7
1977-78	322	46.0
1978-79	284	40.6

<sup>a</sup> Opinions written by visiting judges in FY 1966-67 - 1971-72 not included.

TABLE VI. DISTRIBUTION OF SUPREME COURT CASES AT  
ISSUE THE FINAL DAY OF THE FISCAL YEAR 1978-79

	CERT.	APPEALS	GRIEVANCES	TOTAL
Cases at issue awaiting oral argument	20	40	0	60
Cases orally argued awaiting opinion	25	45	0	70
Cases submitted without argument	4	39	7	50
Opinion announced awaiting action on rehearing	<u>2</u>	<u>18</u>	<u>0</u>	<u>20</u>
	51	142	7	200

TABLE VII. DISTRIBUTION OF SUPREME COURT CASES NOT  
AT ISSUE THE FINAL DAY OF THE FISCAL YEAR 1978-79

	TOTAL
<b>PENDING CASES</b>	
Certiorari granted, awaiting briefs on merits	33
Appeals pending	101
Appeals on Limited Remand	3
Appeals Held in Abeyance	1
<b>GRIEVANCE MATTERS</b>	
Pending and Miscellaneous Grievance Matters	13
Referred to Grievance Committee	<u>7</u>
	158

TABLE VIII. DISTRIBUTION OF CASES PENDING IN  
THE SUPREME COURT THE LAST DAY OF FISCAL YEAR, FY 1964-65 TO FY 1978-79

FISCAL YEAR	CASES AT ISSUE <sup>a</sup>	CASES AWAITING DECISION ON CERTIORARI ACCEPTANCE	CASES NOT YET AT ISSUE	TOTAL PENDING	PERCENT AT ISSUE OR AWAITING DECISION ON CERTIORARI
1964-65	379		223	602	63.0
1965-66	477		269	746	63.9
1966-67	474		370	844	56.2
1967-68	565		334	899	62.8
1968-69	643		380	1023	62.9
1969-70	562		285	847	66.4
1970-71	337		174	511	65.9
1971-72	278		145	423	65.7
1972-73	194		233	427	45.4
1973-74	230		249	479	48.0
1974-75	304		62	366	83.1
1975-76	282		61	343	82.2
1976-77	295		79	374	78.9
1977-78	244		91	335	72.8
1978-79	200	56	158	414	61.8

<sup>a</sup> Prior to FY 1978-79, cases at issue and those awaiting decision on certiorari acceptance were combined.

TABLE IX. CASELOAD OF THE COURT OF APPEALS,  
FY 1969-70 TO FY 1978-79

FISCAL YEAR	CASES PENDING JULY 1	NEW CASES <sup>b</sup>	TOTAL CASELOAD	TERMI-NATIONS	CASES PENDING JUNE 30
1969-70 <sup>a</sup>	0	373	373	165	208
1970-71	208	616	824	448	376
1971-72	376	426	802	447	355
1972-73	355	468	823	467	356
1973-74	356	444	800	441	359
1974-75	359	858	1217	625	592
1975-76	592	915	1507	833 <sup>c</sup>	674
1976-77	674	1128	1802	918	884
1977-78	884	1119	2003	1000 <sup>d</sup>	1003
1978-79	1003	1214	2217	1120	1097

<sup>a</sup> Since the Court opened January 1, 1970, FY 1969-70 figures are for six months.

<sup>b</sup> Includes reopened cases and cases remanded from the U.S. and the Colorado Supreme Courts.

<sup>c</sup> One FY 1975-76 opinion was withdrawn in FY 1976-77.

<sup>d</sup> One FY 1977-78 opinion was withdrawn in FY 1978-79.

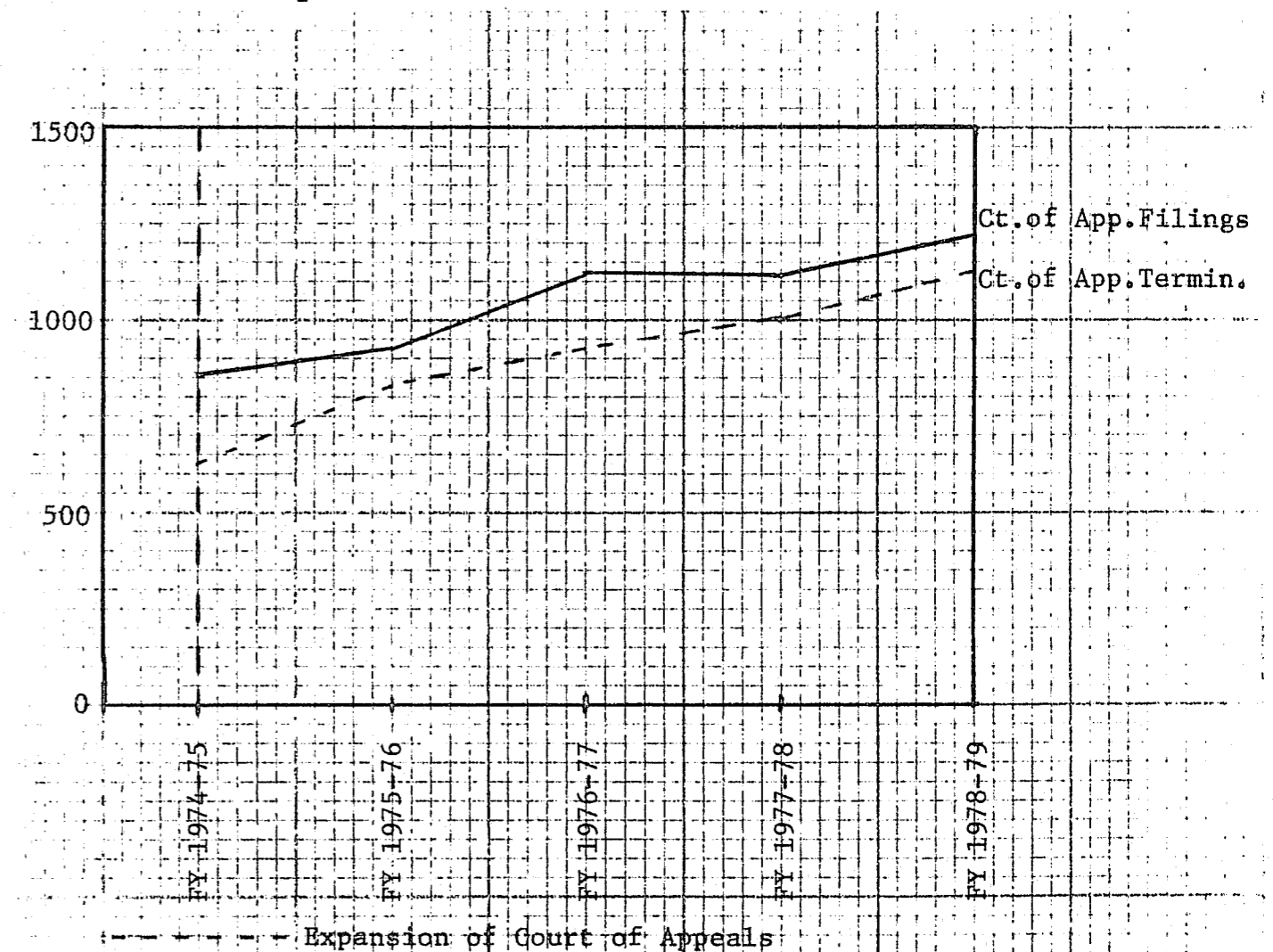




TABLE X. DISTRIBUTION OF CASE FILINGS<sup>a</sup> IN THE COURT OF APPEALS  
FY 1969-70 TO FY 1978-79

	69-70 <sup>b</sup>	70-71	71-72	72-73	73-74	74-75	75-76	76-77	77-78	78-79
Civil Appeals <sup>c</sup>	93	279	363	390	386	536	566	634	715	795
Transfers from Supreme Court	260	299	8	3	3	3	3	6	3	2
Industrial Comm.	20	38	55	75	55	36	85	165	82	73
Criminal Appeals Transfers from Supreme Court						278	259	321	315	340
TOTAL	373	616	426	468	444	858	915	1128	1119	1214

TABLE XI. DISTRIBUTION OF CASE TERMINATIONS IN THE COURT OF APPEALS  
FY 1969-70 TO FY 1978-79

	69-70 <sup>b</sup>	70-71	71-72	72-73	73-74	74-75	75-76	76-77	77-78	78-79
Closed by published opinion <sup>d</sup>	139	390	368	357	337	467	559 <sup>f</sup>	445	554	308
Closed by unpublished opinion <sup>e</sup>								148	97 <sup>f</sup>	438
Closed without opinion	22	42	70	90	74	125	193	250	283	285
Transferred to Supreme Court	4	16	9	20	30	33	81 <sup>f</sup>	75	66 <sup>f</sup>	89
TOTAL	165	448	447	467	441	625	833 <sup>f</sup>	918	1000 <sup>f</sup>	1120

<sup>a</sup>Includes reopened cases and cases remanded from the U.S. and the Colorado Supreme Courts.

<sup>b</sup>Since the Court opened January 1, 1970, FY 1969-70 figures are for six months.

<sup>c</sup>Includes appeals from courts, and administrative Boards and agencies within jurisdiction except Industrial Commission.

<sup>d</sup>Prior to December 8, 1977, referred to as written opinion.

<sup>e</sup>From July 1, 1976 - December 8, 1977, referred to as memorandum opinion.

<sup>f</sup>Opinion withdrawn in the following fiscal year.

TABLE XII. DISTRIBUTION OF COURT OF APPEALS CASES  
THE FINAL DAY OF THE FISCAL YEAR, FY 1978-79

Cases at issue awaiting oral argument	
Criminal appeals	103
Civil appeals	97
Industrial Commission appeals	10
TOTAL	<u>210</u>
Cases orally argued awaiting opinion	
Criminal appeals	16
Civil appeals	86
Industrial Commission appeals	2
TOTAL	<u>104</u>
Cases submitted without oral argument	81
TOTAL cases at issue	395 <sup>a</sup>
TOTAL cases not yet at issue	<u>702</u>
TOTAL cases open	1097

<sup>a</sup>42 cases not included: opinions written but awaiting action on rehearing.

TABLE XIII. DISTRIBUTION OF CASES PENDING IN THE COURT OF APPEALS THE LAST DAY OF THE FISCAL YEAR, FY 1969-70 TO FY 1978-79

FISCAL YEAR	CASE AT ISSUE <sup>a</sup>	CASES NOT YET AT ISSUE	TOTAL PENDING <sup>a</sup>	PERCENT AT ISSUE TO TOTAL
1969-70	119	89	208	57.2
1970-71	240	136	376	63.8
1971-72	183	172	355	51.5
1972-73	148	208	356	41.6
1973-74	175	184	359	48.7
1974-75	169	423	592	28.5
1975-76	252	421	673 <sup>b</sup>	37.4
1976-77	257	627	884	29.1
1977-78	261	741	1002 <sup>c</sup>	26.0
1978-79	395	702	1097	36.0

<sup>a</sup> Cases in which opinions were written but were awaiting action on rehearing were not included.

<sup>b</sup> One FY 1975-76 opinion was withdrawn in FY 1976-77, changing the pending count to 674.

<sup>c</sup> One FY 1977-78 opinion was withdrawn in FY 1978-79, changing the pending count to 1003.

TABLE XIV. DISTRICT COURT CASELOAD<sup>a</sup> - FY 1975-76 to FY 1978-79

	FY 75-76 <sup>b</sup>	FY 76-77 <sup>b</sup>	FY 77-78	FY 78-79
<b>DOMESTIC RELATIONS</b>				
Cases Pending July 1	24,588	17,840	19,850	23,122
New Cases Filed	30,361	30,406	31,677	33,888
Post Judgment Actions	7,619	8,914	7,713	7,924
TOTAL Caseload	62,568	57,160	59,240	64,934
Cases Terminated	44,728	37,310	27,720	28,968
Post Judgment Terminations			8,398	10,144
Cases Pending June 30	17,840	19,850	23,122	25,822
<b>CIVIL<sup>c</sup></b>				
Cases Pending July 1	29,383	27,825	24,843	27,501
New Cases Filed	27,843	25,771	27,523	30,566
Post Judgment Actions	7,992	9,465	7,111	6,932
TOTAL Caseload	65,218	63,061	59,477	64,999
Cases Terminated	37,393	38,218	24,080	25,071
Post Judgment Terminations			7,896	7,884
Cases Pending June 30	27,825	24,843	27,501	32,044
<b>PROBATE</b>				
Cases Pending July 1	18,722	19,053	19,205	20,439
New Cases Filed	6,015	5,862 <sup>d</sup>	6,570	6,963
Post Judgment Actions	282	551	697	638
TOTAL Caseload	25,019	25,466	26,472	28,040
Cases Terminated	5,966	6,261	5,504	9,536 <sup>d</sup>
Post Judgment Terminations			529	793
Cases Pending June 30	19,053	19,205	20,439	17,707
<b>JUVENILE</b>				
Cases Pending July 1	8,795	7,618	11,564	14,038
New Cases Filed	16,405	16,777	16,550	16,497
Post Judgment Actions	6,433	6,060	6,317	7,162
TOTAL Caseload	31,633	30,455	34,431	37,697
Cases Terminated	24,015	18,891	13,751	13,361
Post Judgment Terminations			6,642	7,603
Cases Pending June 30	7,618	11,564	14,038	16,733
<b>MENTAL HEALTH</b>				
Cases Pending July 1	731	807	1,169	1,268
New Cases Filed	1,674	1,931	2,183	2,073
Post Judgment Actions	249	539	750	970
TOTAL Caseload	2,654	3,277	4,102	4,311
Cases Terminated	1,847	2,108	2,120	1,993
Post Judgment Terminations			714	1,038
Cases Pending June 30	807	1,169	1,268	1,280
<b>CRIMINAL</b>				
Cases Pending July 1	10,031	10,605	12,415	11,603
New Cases Filed	11,641	11,661	11,404	11,614
Post Judgment Actions	2,693	4,029	3,621	3,673
TOTAL Caseload	24,365	26,295	27,440	26,890
Cases Terminated	13,760	13,880	9,296	9,661
Post Judgment Terminations			6,541	4,667
Cases Pending June 30	10,605	12,415	11,603	12,562
<b>TOTAL</b>				
Cases Pending July 1	92,250	83,748	89,046	97,971
New Cases Filed	93,939	92,408	95,907	101,601
Post Judgment Actions	25,268	29,558 <sup>d</sup>	26,209	27,299
TOTAL Caseload	211,457	205,714	211,162	226,871
Cases Terminated	127,709	116,668	82,471	88,593 <sup>e</sup>
Post Judgment Terminations			30,720	32,129
Cases Pending June 30	83,748	89,046	97,971	106,149

<sup>a</sup>All district courts plus Denver Superior, Denver Juvenile, and Denver Probate.

<sup>b</sup>Terminations and post judgment terminations are combined.

<sup>c</sup>Does not include water cases.

<sup>d</sup>Includes only nine months in Denver Probate Court due to data processing failure.

TABLE XV.<sup>a</sup>  
DISTRICT COURT FILINGS AND PERCENTAGE INCREASE  
FY 1975-76 - FY 1978-79, BY DISTRICT

DISTRICT	FILINGS				Percent Increase 77-78-78-79	Percent Increase 75-76-78-79
	1975-76	1976-77	1977-78	1978-79		
1	8,556	9,001	9,913	10,321	4.1	20.6
2	19,107	16,618	15,896	17,673	11.2	-7.5
superior	2,551	1,883	2,065	2,265	9.7	-11.2
juvenile	4,234	3,901	3,794	3,674	-3.2	-13.2
probate	1,739	1,798	2,087	2,161	3.5	24.3
3	824	719	806	896	11.2	8.7
4	11,550	11,511	11,937	12,368	3.6	7.1
5	1,244	1,219	1,495	1,696	13.4	36.3
6	914	1,072	1,211	1,289	6.4	41.0
7	1,365	1,417	1,688	1,671	-1.0	22.4
8	3,434	3,510	3,453	3,817	10.5	11.2
9	1,277	1,169	1,323	1,551	17.2	21.5
0	4,365	4,497	4,370	4,750	8.7	8.8
1	1,341	1,631	1,921	1,992	3.7	48.5
2	1,049	1,170	1,343	1,274	-5.1	21.4
3	2,009	1,784	2,116	1,895	-10.4	-5.7
4	1,050	1,076	1,226	1,387	13.1	32.1
5	728	690	824	807	-2.1	10.9
6	956	974	1,006	902	-10.3	-5.6
7	7,230	7,658	7,444	7,493	.7	3.6
8	7,181	7,644	8,507	9,151	7.6	27.4
9	3,363	3,219	3,367	3,851	14.4	14.5
0	4,940	5,204	4,759	5,250	10.3	6.3
1	2,419	2,539	2,782	2,896	4.1	19.7
2	513	504	574	571	-.5	11.3
GRAND TOTAL	93,939	92,408	95,907	101,601	5.9	8.2

Other cases not included.

TYPE OF CASE	FILINGS BY TYPE OF CASE		TERMINATIONS BY TYPE OF CASE FILED	
	Number	Percent Distribution	Number	Percent Distribution
<b>DOMESTIC RELATIONS</b>				
Dissolution of Marriage <sup>1</sup>	25,199	74.7	21,645	74.7
Legal Separation <sup>2</sup>	457	1.4	416	1.5
Invalidity of Marriage <sup>3</sup>	126	.4	115	.4
Child Custody <sup>4</sup>	232	.7	122	.4
Reciprocal Non-Support <sup>5</sup>				
Inter-state	6,745	19.9	5,835	20.2
Intra-State	747	2.2	677	2.3
Misc. <sup>6</sup>	382	.7	158	.5
<b>TOTAL</b>	<b>33,888</b>	<b>100.0</b>	<b>28,968</b>	<b>100.0</b>
<b>CIVIL<sup>7</sup></b>				
Personal Injury - Motor Vehicle <sup>7</sup>	1,516	5.0	1,290	5.1
Personal Injury - Other	1,269	4.1	958	3.8
Property Damage	968	3.2	819	3.3
Wrongful Death	120	.4	113	.5
Real & Personal Property <sup>8</sup>	5,153	16.9	4,263	17.0
Admin. Review & Local Govt. <sup>9</sup>	531	1.7	528	2.1
Money Demands	16,689	54.6	13,512	53.9
County Court Appeals	117	.4	85	.3
Misc. <sup>10</sup>	4,203	13.7	3,503	14.0
<b>TOTAL<sup>11</sup></b>	<b>30,566</b>	<b>100.0</b>	<b>25,071</b>	<b>100.0</b>
<b>PROBATE</b>				
Intestates	1,435	20.6	1,942	20.4
Testates	3,601	51.7	3,989	41.8
Guardianships <sup>12</sup>	440	6.3	1,853	19.4
Conservatorships	760	10.9	1,014	10.6
Small Estates	209	3.0	199	2.1
Misc. <sup>13</sup>	518	7.5	542	5.7
<b>TOTAL<sup>14</sup></b>	<b>6,963</b>	<b>100.0</b>	<b>9,539</b>	<b>100.0</b>
<b>JUVENILE<sup>15</sup></b>				
Delinquency Petitions	6,304	38.2	5,378	40.2
CHINS Petitions <sup>16</sup>	764	4.6	725	5.4
Dependency-Neglect Petitions <sup>17</sup>	2,181	13.2	1,723	13.0
Relinquishments	506	3.1	481	3.6
Adoptions	2,193	13.3	1,962	14.7
Paternity & Support <sup>18</sup>	3,835	23.3	2,530	18.9
Misc. <sup>19</sup>	714	4.3	562	4.2
<b>TOTAL</b>	<b>16,497</b>	<b>100.0</b>	<b>13,361</b>	<b>100.0</b>
<b>MENTAL HEALTH</b>				
Mental Illness - Evaluation <sup>20</sup>	775	37.4	755	37.9
Mental Illness - Short Term <sup>21</sup>	918	44.3	904	45.4
Mental Illness - Long Term <sup>22</sup>	53	2.6	45	2.2
Developmentally Disabled Admissions <sup>23</sup>	33	1.6	25	1.2
Alcoholism Commitments <sup>24</sup>	212	10.2	225	11.3
Misc. <sup>25</sup>	82	3.9	39	2.0
<b>TOTAL</b>	<b>2,073</b>	<b>100.0</b>	<b>1,993</b>	<b>100.0</b>
<b>CRIMINAL</b>				
Offenses Against the Person <sup>26</sup>	1,931	16.6	1,607	16.6
Offenses Against Property <sup>27</sup>	5,330	45.9	4,533	46.9
Offenses Involving Fraud <sup>28</sup>	854	7.4	681	7.0
Offenses Involving Govt. Operations <sup>29</sup>	245	2.1	213	2.2
Drug & Narcotic Offenses	720	6.2	661	6.9
Misc. Offenses <sup>30</sup>	1,542	13.3	1,276	13.2
Municipal & County Court Appeals	540	4.6	354	3.7
Other Non-Offense Filings <sup>31</sup>	452	3.9	336	3.5
<b>TOTAL</b>	<b>11,614</b>	<b>100.0</b>	<b>9,661</b>	<b>100.0</b>

\*

Footnotes for

THE DISTRICT COURTS

Table XVI. District Court Filings by Type of Case and Terminations by Type of Case Filed - FY 1978-79

DOMESTIC RELATIONS

- <sup>1</sup>Prior to January 1, 1972, known as Divorce.
- <sup>2</sup>Prior to January 1, 1972, known as Separate Maintenance.
- <sup>3</sup>Prior to January 1, 1972, known as Annulment.
- <sup>4</sup>Separate petitions for custody proceedings, not to be confused with custody hearings within dissolution actions.
- <sup>5</sup>Petitions under the Uniform Reciprocal Support Act.
- <sup>6</sup>Includes determination of status and other miscellaneous cases.

CIVIL

- <sup>7</sup>Includes related property damage.
- <sup>8</sup>Includes Quiet Titles, Condemnations, Replevins, Foreclosures, Mechanics' Liens, etc.
- <sup>9</sup>Includes reviews of Workmen's and Unemployment Compensation, P.U.C. and other administrative or regulatory agencies, cases involving city and county government, etc.
- <sup>10</sup>Includes Habeas Corpus, Mandamus and other Remedial Writs, Injunctions, etc.
- <sup>11</sup>Does not include water cases filed in water courts.

PROBATE

- <sup>12</sup>Includes both juvenile and adult guardianships.
- <sup>13</sup>Includes foreign wills, separate trusteeships, etc.
- <sup>14</sup>Includes 4369 statistical terminations of old cases in Denver.

JUVENILE

- <sup>15</sup>Does not include Informal Adjustment cases handled by the probation department and not by the court.
- <sup>16</sup>Children in Need of Supervision petitions.
- <sup>17</sup>Includes Child Abuse cases.
- <sup>18</sup>Includes Paternity only, Support only, and Paternity and Support cases.
- <sup>19</sup>Includes Guardianships, Contributing to Delinquency, Requests for Marriage, etc.

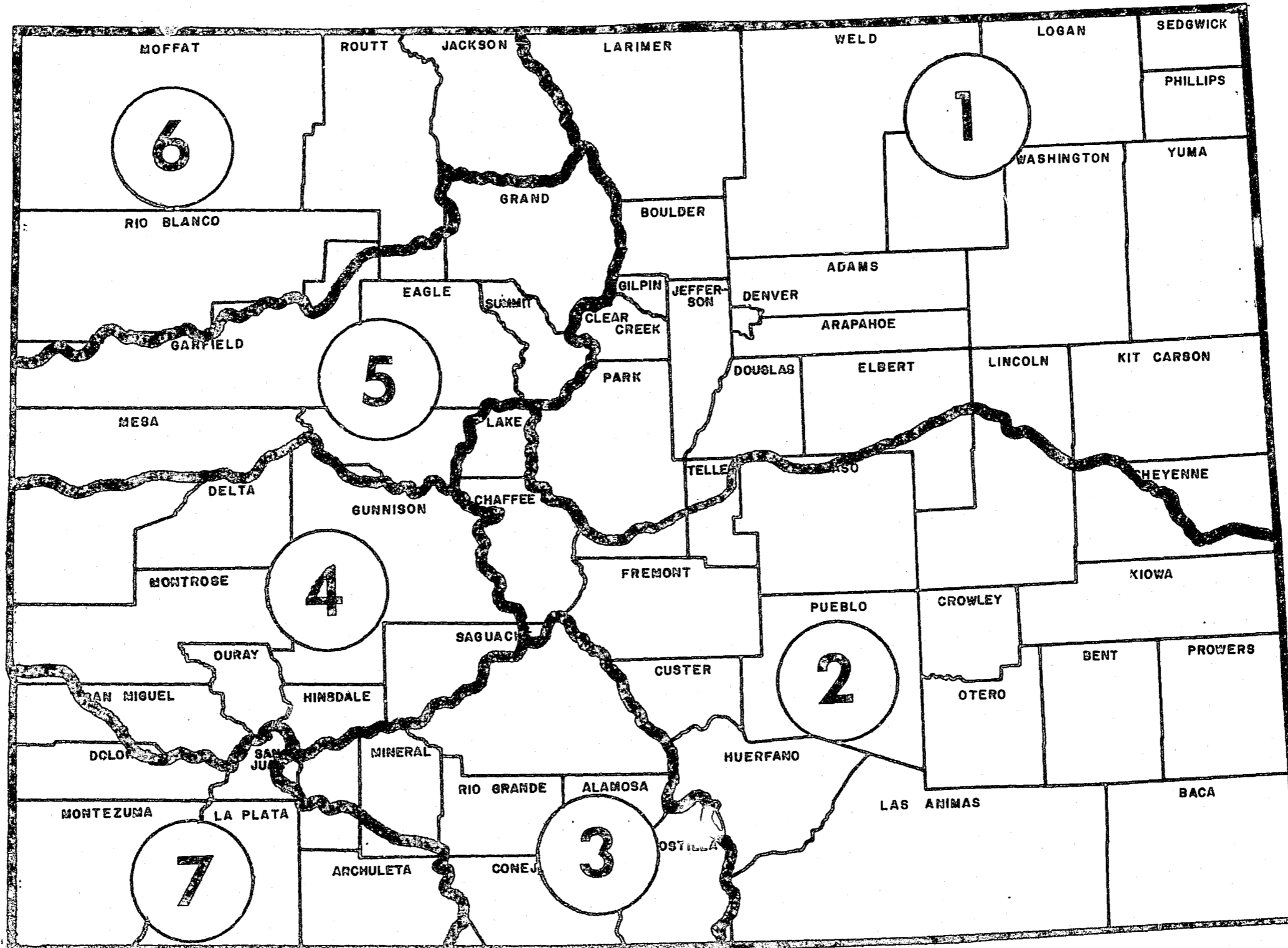
MENTAL HEALTH

- <sup>20</sup>Petition for Evaluation.
- <sup>21</sup>Certification for Short-term Treatment.
- <sup>22</sup>Petitions for Long-term Treatment.
- <sup>23</sup>Includes Short and Long-term Treatment Admission.
- <sup>24</sup>Petition for Involuntary Commitment of Alcoholic.
- <sup>25</sup>Includes Other, Petition for Sterilization, and Objection to Admission or Retention.

CRIMINAL

- <sup>26</sup>Includes murder, manslaughter, assault, rape, etc.
- <sup>27</sup>Includes arson, burglary, theft, robbery, etc.
- <sup>28</sup>Includes forgery, fraud by credit card, bad checks, etc.
- <sup>29</sup>Includes escape and offenses relating to custody, bribery and corrupt influences, perjury, and other Article 8 offenses.
- <sup>30</sup>Includes offenses involving the Family Relation; Offenses Relating to Morals; Offenses Against Public Peace, Order and Decency; Criminal Non-Support, etc.
- <sup>31</sup>Includes extraditions, revocations, parole and release from commitments hearings, etc.

Preceding page blank



WATER DISTRICTS of COLORADO

	FY 75-76 <sup>a</sup>	FY 76-77 <sup>a</sup>	FY 77-78	FY 78-79
<b>DIVISION ONE</b>				
Cases Pending July 1	3,134	1,885	1,181	1,511
New Cases Filed	329	363	716	450
Post Judgment Actions	33	43	49	98
TOTAL Caseload	<u>3,496</u>	<u>2,291</u>	<u>1,946</u>	<u>2,059</u>
Cases Terminated	1,611	1,110	352	515
Post Judgment Terminations			83	12
Cases Pending June 30	1,885	1,181	<u>1,511</u>	<u>1,532</u>
<b>DIVISION TWO</b>				
Cases Pending July 1	304	280	198	249
New Cases Filed	212	217	268	229
Post Judgment Actions	30	33	16	34
TOTAL Caseload	<u>546</u>	<u>530</u>	<u>482</u>	<u>512</u>
Cases Terminated	266	332	211	193
Post Judgment Terminations			22	39
Cases Pending June 30	280	198	<u>249</u>	<u>280</u>
<b>DIVISION THREE</b>				
Cases Pending July 1	1,403	658	576	542
New Cases Filed	141	172	176	137
Post Judgment Actions	11	23	234	38
TOTAL Caseload	<u>1,555</u>	<u>853</u>	<u>986</u>	<u>717</u>
Cases Terminated	897	277	194	253
Post Judgment Terminations			250	19
Cases Pending June 30	658	576	<u>542</u>	<u>445</u>
<b>DIVISION FOUR</b>				
Cases Pending July 1	239	213	203	368
New Cases Filed	188	291	330	380
Post Judgment Actions	74	72	81	0
TOTAL Caseload	<u>501</u>	<u>576</u>	<u>614</u>	<u>748</u>
Cases Terminated	288	373	234	414
Post Judgment Terminations			12	0
Cases Pending June 30	213	203	<u>368</u>	<u>334</u>
<b>DIVISION FIVE</b>				
Cases Pending July 1	318	473	522	676
New Cases Filed	486	278	478	377
Post Judgment Actions	16	4	30	37
TOTAL Caseload	<u>820</u>	<u>755</u>	<u>1,030</u>	<u>1,090</u>
Cases Terminated	347	233	353	326
Post Judgment Terminations			1	14
Cases Pending June 30	473	522	<u>676</u>	<u>750</u>
<b>DIVISION SIX</b>				
Cases Pending July 1	159	153	184	402
New Cases Filed	170	145	305	161
Post Judgment Actions	30	24	0	24
TOTAL Caseload	<u>359</u>	<u>322</u>	<u>489</u>	<u>587</u>
Cases Terminated	206	138	87	139
Post Judgment Terminations			0	80
Cases Pending June 30	153	184	<u>402</u>	<u>368</u>
<b>DIVISION SEVEN</b>				
Cases Pending July 1	115	102	226	247
New Cases Filed	114	216	135	140
Post Judgment Actions	10	159	50	29
TOTAL Caseload	<u>239</u>	<u>477</u>	<u>411</u>	<u>416</u>
Cases Terminated	137	251	105	77
Post Judgment Terminations			59	31
Cases Pending June 30	102	226	<u>247</u>	<u>308</u>
<b>TOTAL</b>				
Cases Pending July 1	5,672	3,764	3,090	3,995
New Cases Filed	1,640	1,682	2,408	1,874
Post Judgment Actions	204	358	460	260
TOTAL Caseload	<u>7,516</u>	<u>5,804</u>	<u>5,958</u>	<u>6,129</u>
Cases Terminated	3,752	2,714	1,536	1,917
Post Judgment Terminations			427	195
Cases Pending June 30	3,764	3,090	<u>3,995</u>	<u>4,017</u>

TABLE XVIII. NUMBER OF FILINGS AND NUMBER OF NEW CLAIMS IN COLORADO WATER COURTS, FY 1975-76 THROUGH FY 1978-79

DIVISION	FY 1975-76		FY 1976-77		FY 1977-78		FY 1978-79	
	FILINGS	CLAIMS	FILINGS	CLAIMS	FILINGS	CLAIMS	FILINGS	CLAIMS
1	329	885	363	1782	716	1579	450	6006
2	212	908	217	825	268	1483	229	3771
3	141	231	172	367	176	1126	137	240
4	188	215	291	395	330	681	380	582
5	486	317	278	603	478	789	377	673
6	170	259	145	296	305	368	161	246
7	114	249	216	291	135	201	140	343
TOTAL	1640	3064	1682	4559	2408	6227	1874	11861
PERCENT CHANGE			+2.6	+48.8	+43.2	+36.6	-22.2	+90.5

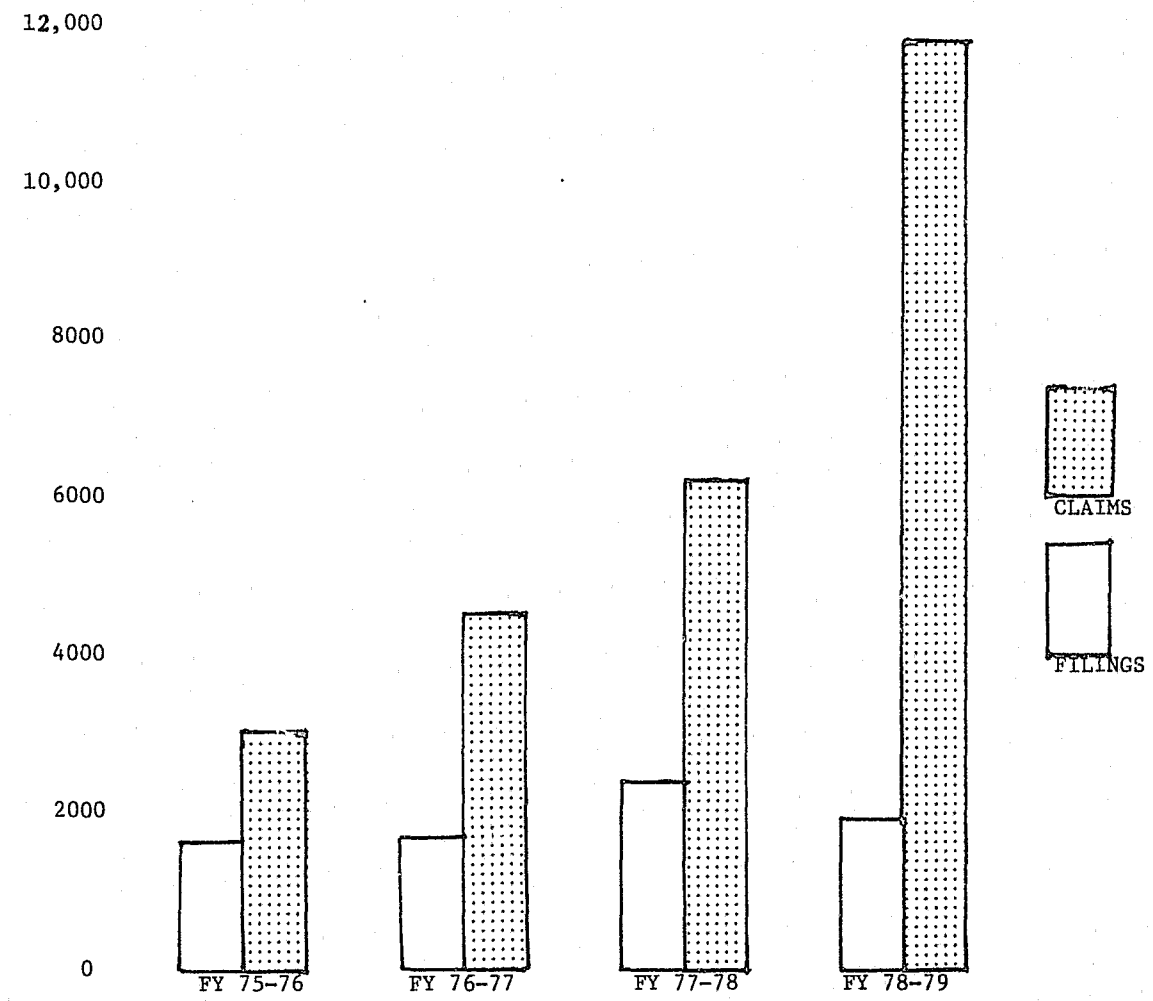




TABLE XIX. COUNTY COURT<sup>1</sup> CASELOAD  
FY 1972-73 TO FY 1978-79

	FY 72-73	FY 73-74	FY 74-75	FY 75-76	FY 76-77	FY 77-78	FY 78-79
CIVIL							
Cases Pending July 1	4,252	5,370	6,438	8,248	8,695	9,486	8,906 <sup>3</sup>
New Cases Filed	15,815	19,256	24,281	30,643	32,268	32,508	35,952
Total Caseload	20,067	24,626	30,719	38,891	40,963	41,994	44,858
Cases Terminated	14,697	18,188	22,471	30,196	31,477	30,691	34,295
Cases Pending June 30	5,370	6,438	8,248	8,695	9,486	11,303	10,563
SMALL CLAIMS <sup>2</sup>							
Cases Pending July 1					0	1,324	1,657 <sup>3</sup>
New Cases Filed					5,181	7,955	9,502
Total Caseload					5,181	9,279	11,159
Cases Terminated					3,857	6,987	8,616
Cases Pending June 30					1,324	2,292	2,543
TRAFFIC							
Cases Pending July 1	20,127	25,517	30,273	35,982	34,759	41,419	43,802 <sup>3</sup>
New Cases Filed	118,430	126,472	139,311	132,768	138,792	144,990	152,805
Total Caseload	138,557	151,989	169,584	168,750	173,551	186,409	196,607
Cases Terminated	113,040	121,716	133,602	133,991	132,132	140,912	147,653
Cases Pending June 30	25,517	30,273	35,982	34,759	41,419	45,497	48,954
MISDEMEANOR							
Cases Pending July 1	4,941	7,188	9,030	11,022	11,226	12,208	11,152 <sup>3</sup>
New Cases Filed	16,289	19,247	22,308	23,823	24,169	25,340	27,081
Total Caseload	21,230	26,435	31,338	34,845	35,395	37,548	38,233
Cases Terminated	14,042	17,405	20,316	23,619	23,187	23,561	25,963
Cases Pending June 30	7,188	9,030	11,022	11,226	12,208	13,987	12,270
TOTAL							
Cases Pending July 1	29,320	38,075	45,741	55,252	54,680	64,437	65,517 <sup>3</sup>
New Cases Filed	150,534	164,975	185,900	187,234	200,410	210,793	225,340
Total Caseload	179,854	203,050	231,641	242,486	255,090	275,230	290,857
Cases Terminated	141,779	157,309	176,389	187,806	190,653	202,151	216,527
Cases Pending June 30	38,075	45,741	55,252	54,680	64,437	73,079	74,330

<sup>1</sup> All County Courts with the exception of Denver County Court.

<sup>2</sup> Since the Small Claims division was created October 1, 1976, FY 1976-77 figures are for nine months.

<sup>3</sup> Due to a statewide audit of pending cases on June 30, 1979, the July 1, 1978 pending count is a mathematically derived figure.

Table XX.

Court Trials and Jury Trials  
in the County Court - FY 1978-79

	Without Denver	With Denver
Civil Trials		
Court Trials	1789	3410
Jury Trials	46	54
Small Claims		
Court Trials	2804	3885
Traffic		
Court Trials	6954	7253
Jury Trials	656	834
Misdemeanor		
Court Trials	1274	1526
Jury Trials	198	251
Total		
Court Trials	12821	16074
Jury Trials	900	1139

Table XXI.

Number and Percent Distribution of County Court  
Civil and Small Claims Filings  
by Money Amount - FY 1978-79

	Without Denver		With Denver	
	No.	%	No.	%
Civil Filings				
Under \$500	24537	68.3	33332	58.2
\$501 - \$1000	8128	22.6	20026	35.0
Nonmoney <sup>1</sup>	3287	9.1	3918	6.8
TOTAL	35952	100.0	57276	100.0
Small Claims Filings				
Under \$100	1945	20.5	2573	21.0
\$101 - 300	4008	42.2	5444	44.5
\$301 - 500	3549	37.3	4225	34.5
TOTAL	9502	100.0	12242	100.0

<sup>1</sup>Includes 146 temporary restraining orders.

Felony Preliminaries in the County Court  
By Type - FY 1978-79

	Without Denver	With Denver
Total Felony Advisements <sup>1</sup>	9373	9373
Felony Complaints Lodged	4821	7382
Preliminary Hearings	1280	2439

<sup>1</sup>Prior to FY 1978-79, the Felony Advisements figures did not include advisements in which Felony Complaints had been lodged.

TABLE XXIII. NUMBER AND PERCENT DISTRIBUTION OF FELONY COMPLAINTS DISPOSED OF IN COUNTY COURT<sup>1</sup> - FY 1978-79

	NUMBER OF FELONY COMPLAINTS DISPOSED OF	PERCENT DISTRIBUTION OF
Dismissals		
At Preliminary Hearing	423	5.3
W/Out Preliminary Hearing	1656	20.8
TOTAL	2079	26.1
Reductions to a Misdemeanor		
At Preliminary Hearing	284	3.6
W/Out Preliminary Hearing	737	9.2
TOTAL	1021	12.8
Bindovers to District Court		
At Preliminary Hearing	1747	21.9
W/Out Preliminary Hearing	3124	39.2
TOTAL	4871	61.1
Total Felony Dispositions		
At Preliminary Hearing	2454	30.8
W/Out Preliminary Hearing	5517	69.2
TOTAL	7971	100.0

<sup>1</sup>Includes Denver.

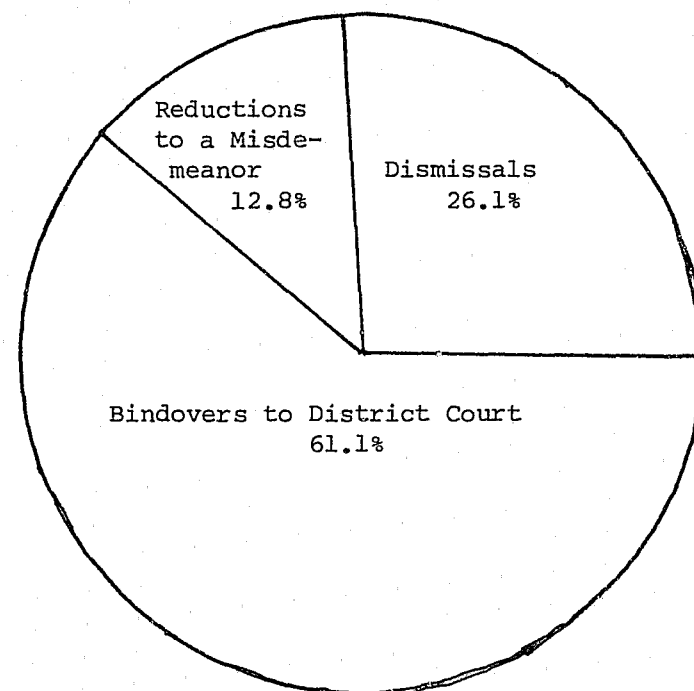


TABLE XXIV. PROBATION DEPARTMENT SUPERVISION  
AND INVESTIGATION CASELOADS - STATE TOTALS  
FY 1975-76 TO FY 1978-79

	FY 75-76	FY 76-77	FY 77-78	FY 78-79	PERCENT CHANGE	
					77-78 78-79	75-76 78-79
<b>ADULT</b>						
On Supervision July 1	8,281	8,779	10,498 <sup>a</sup>	12,121 <sup>a</sup>	15.5	46.4
New Cases	8,482	8,380	10,025	11,288	12.6	33.1
Total Caseload	16,763	17,159	20,523	23,409	14.1	39.6
Terminations	7,984	6,588	8,443	9,985	18.3	25.1
On Supervision June 30	8,779	10,571	12,080	13,424	11.1	52.9
Total Investigations	14,559	14,491	14,535	15,403	6.0	5.8
<b>JUVENILE</b>						
On Supervision July 1	4,306	4,489 <sup>a</sup>	4,861	5,100 <sup>a</sup>	4.9	18.4
New Cases	5,111	4,864	5,449	5,285	-3.0	3.4
Total Caseload	9,417	9,353	10,310	10,385	.7	10.3
Terminations	4,894	4,492	5,324	5,538	4.0	13.2
On Supervision June 30	4,523	4,861	4,986	4,847	-2.8	7.2
Total Investigations	19,630	19,913	19,856	19,641	-1.1	.1
<b>TOTAL</b>						
On Supervision July 1	12,587	13,268 <sup>a</sup>	15,359 <sup>a</sup>	17,221 <sup>a</sup>	12.1	36.8
New Cases	13,593	13,244	15,474	16,573	7.1	21.9
Total Caseload	26,180	26,512	30,833	33,794	9.6	29.1
Terminations	12,878	11,080	13,767	15,523	12.8	20.5
On Supervision June 30	13,302	15,432	17,066	18,271	7.1	37.4
Total Investigations	34,189	34,404	34,391	35,044	1.9	2.5

<sup>a</sup>Revised pending figure.

TABLE XXV. PROBATION DEPARTMENT SUPERVISION  
CASELOADS BY DISTRICT - FY 1978-79

	1st		2nd		3rd		4th		5th		6th	
	Adult	Juv.	Adult	Juv.	Adult	Juv.	Adult	Juv.	Adult	Juv.	Adult	Juv.
On Suprvsn. 7/1	1093	845	2488	932 <sup>a</sup>	88	25	1557	361	84	46	150	63
New Cases	1139	812	2086	1121	28	45	1514	480	148	43	75	20
Total Caseload	2232	1657	4574	2053	116	70	3071	841	232	89	225	83
Terminations	799	889	2496	965	51	44	1276	470	85	63	50	32
On Suprvsn. 6/30	1433	768	2078	1088	65	26	1795	371	147	26	175	51
	7th		8th		9th		10th		11th		12th	
	Adult	Juv.	Adult	Juv.	Adult	Juv.	Adult	Juv.	Adult	Juv.	Adult	Juv.
On Suprvsn. 7/1	134	34	294	319	185	39	1056 <sup>a</sup>	398	143	173	200	88
New Cases	506	60	136	187	189	58	617	341	226	345	173	105
Total Caseload	640	94	430	506	374	97	1673	739	369	518	373	193
Terminations	241	44	119	251	200	55	775	490	117	317	109	103
On Suprvsn. 6/30	399	50	311	255	174	42	898	249	252	201	264	90
	13th		14th		15th		16th		17th		18th	
	Adult	Juv.	Adult	Juv.	Adult	Juv.	Adult	Juv.	Adult	Juv.	Adult	Juv.
On Suprvsn. 7/1	121	64	83	47	70	41	94	47	1255	604	1417	442
New Cases	114	46	69	46	48	53	76	37	1081	334	1381	338
Total Caseload	235	110	152	93	118	94	170	84	2336	938	2798	780
Terminations	103	54	58	42	32	65	44	45	977	499	1311	401
On Suprvsn. 6/30	132	56	94	51	86	29	126	39	1359	439	1487	379
	19th		20th		21st		22nd		State			
	Adult	Juv.	Adult	Juv.	Adult	Juv.	Adult	Juv.	Adult	Juv.		
On Suprvsn. 7/1	808	105	453 <sup>a</sup>	204 <sup>a</sup>	314	187	34	36	12121 <sup>a</sup>	5100 <sup>a</sup>		
New Cases	498	134	805	311	356	310	23	59	11288	5285		
Total Caseload	1306	239	1258	515	670	497	57	95	23409	10385		
Terminations	466	121	387	185	264	337	25	66	9985	5538		
On Suprvsn. 6/30	840	118	871	330	406	160	32	29	13424	4847		

<sup>a</sup>Revised pending figure.

TABLE XXVI ADULT PROBATION DEPARTMENT INVESTIGATIONS BY DISTRICT, FY 1978-79

	1st	2nd	3rd	4th	5th	6th	7th	8th	9th	10th	11th	12th
PR Bond	0	2380	0	900	0	0	0	1	0	413	1	10
County Court Pre-Sentence	838	152	9	626	54	27	70	1	104	573	59	119
District Ct. Pre-Sentence	451	1020	25	901	81	67	67	134	65	183	99	27
Deferred Pros./Def. Sent.	0	649	2	286	10	5	0	6	4	0	58	15
Other	269	257	8	413	11	4	0	0	5	183	20	1
Total Investigations	1558	4458	44	3126	156	103	137	142	178	1352	237	172

	13th	14th	15th	16th	17th	18th	19th	20th	21st	22nd	State Total
PR Bond	0	0	0	0	0	0	8	6	0	0	3719
County Court Pre-Sentence	2	7	0	13	686	310	170	168	94	3	4085
District Ct. Pre-Sentence	63	32	7	34	292	344	239	119	113	18	4381
Deferred Pros./Def. Sent.	15	9	2	11	121	2	81	85	89	9	1459
Other	1	21	0	0	236	253	8	34	27	8	1759
Total Investigations	81	69	9	58	1335	909	506	412	323	38	15403

TABLE XXVII JUVENILE PROBATION DEPARTMENT INVESTIGATIONS BY DISTRICT, FY 1978-79

	1st	2nd	3rd	4th	5th	6th	7th	8th	9th	10th	11th	12th
Preliminary	1588	835	8	241	0	16	16	0	0	0	51	50
Intake	1	1087	15	0	7	52	21	1	2	0	290	32
Social Summary (Pre-Dispo.)	246	791	9	405	27	21	32	8	41	53	24	28
Detention	0	5643	10	1	0	14	0	9	0	0	9	26
Other	15	791	2	675	22	18	3	96	4	0	32	26
Total Investigations	1850	9147	44	1322	56	121	72	114	47	53	406	162

	13th	14th	15th	16th	17th	18th	19th	20th	21st	22nd	State Total
Preliminary	3	5	0	0	41	0	913	281	39	8	4095
Intake	0	7	38	13	139	338	145	295	151	31	2665
Social Summary (Pre-Dispo.)	22	17	11	20	350	126	132	143	141	40	2687
Detention	0	3	3	0	124	0	181	434	115	13	6585
Other	1	5	1	5	1608	164	43	30	49	19	3609
Total Investigations	26	37	53	38	2262	628	1414	1183	495	111	19641

TABLE XXVIII.

RESTITUTION PAID TO VICTIMS  
 BY JUVENILE AND ADULT PROBATIONERS  
 FY 1978-79

<u>District</u>	<u>Amount Disbursed</u>
1	\$183,225.38
Denver Adult	227,239.11
Denver Juvenile	29,377.39
3	6,206.86
4	219,551.13
5	33,328.57
6	5,556.65
7	38,906.53
8	52,153.17
9	31,830.58
10	66,093.96
11	27,216.34
12	34,106.80
13	24,390.94
14	25,458.42
15	16,132.02
16	21,085.22
17	134,906.69
18	135,312.89
19	63,241.75
20	33,824.62
21	100,153.19
22	10,199.56
State Total	\$ 1,519,497.77

**END**