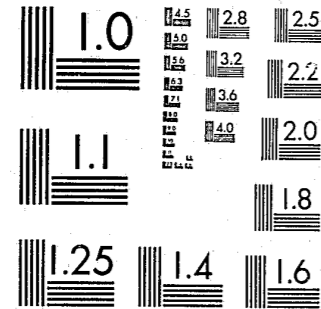


National Criminal Justice Reference Service



This microfiche was produced from documents received for inclusion in the NCJRS data base. Since NCJRS cannot exercise control over the physical condition of the documents submitted, the individual frame quality will vary. The resolution chart on this frame may be used to evaluate the document quality.



MICROCOPY RESOLUTION TEST CHART  
NATIONAL BUREAU OF STANDARDS-1963-A

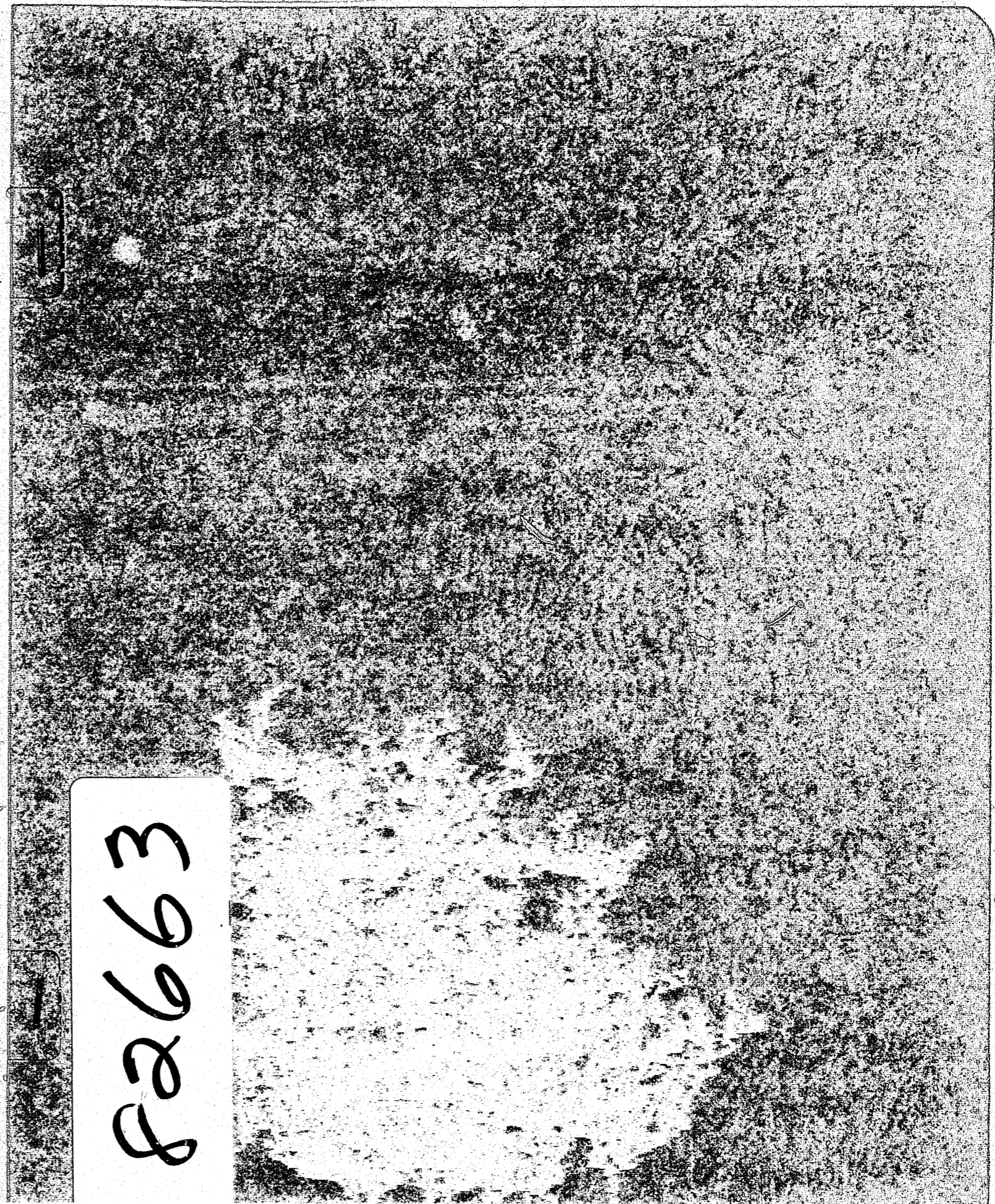
Microfilming procedures used to create this fiche comply with the standards set forth in 41CFR 101-11.504.

Points of view or opinions stated in this document are those of the author(s) and do not represent the official position or policies of the U. S. Department of Justice.

National Institute of Justice  
United States Department of Justice  
Washington, D. C. 20531

4/7/83

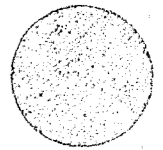
82663







STATE OF NEW YORK  
 DEPARTMENT OF CORRECTIONAL SERVICES  
 THE STATE OFFICE BUILDING CAMPUS  
 ALBANY, N.Y. 12226



THOMAS A. COUGHLIN III  
 COMMISSIONER

FLORENCE FRUCHER  
 ASSOCIATE COMMISSIONER

X  
 UNUSUAL INCIDENT REPORT  
 TWELVE MONTH SUMMARY  
 SEPTEMBER 1979 - AUGUST 1980

PART I, NUMBER OF INCIDENTS The total number of inmate incidents over the 12 month period was 1,641 or an average of nearly 137 per month. 2,266 inmates annually or an average of approximately 189 each month were involved in unusual incidents. Thus, the ratio of inmates per incident was approximately 1.4 during this period. Both numbers of inmates involved and numbers of incidents have tended to decline over the period, although individual months have fluctuated. The number of incidents during this period has decreased about 19 percent from September 1979 through August 1980 while inmates involved has declined 25.6 percent over the same period.

8-26-80

UNUSUAL INCIDENT REPORT  
 TWELVE MONTH SUMMARY, SEPTEMBER 1979 - AUGUST 1980  
 NUMBER OF INMATES INVOLVED AND NUMBER OF INCIDENTS

|                | Number  |           |
|----------------|---------|-----------|
|                | Inmates | Incidents |
| TOTAL          | 2,266   | 1,641     |
| September 1979 | 207     | 147       |
| October        | 223     | 159       |
| November       | 221     | 151       |
| December       | 215     | 153       |
| January 1980   | 176     | 137       |
| February       | 179     | 122       |
| March          | 182     | 136       |
| April          | 165     | 121       |
| May            | 146     | 115       |
| June           | 203     | 131       |
| July           | 195     | 148       |
| August 1980    | 154     | 119       |

U.S. Department of Justice  
 National Institute of Justice

This document has been reproduced exactly as received from the person or organization originating it. Points of view or opinions stated in this document are those of the authors and do not necessarily represent the official position or policies of the National Institute of Justice.

Permission to reproduce this copyrighted material has been granted by

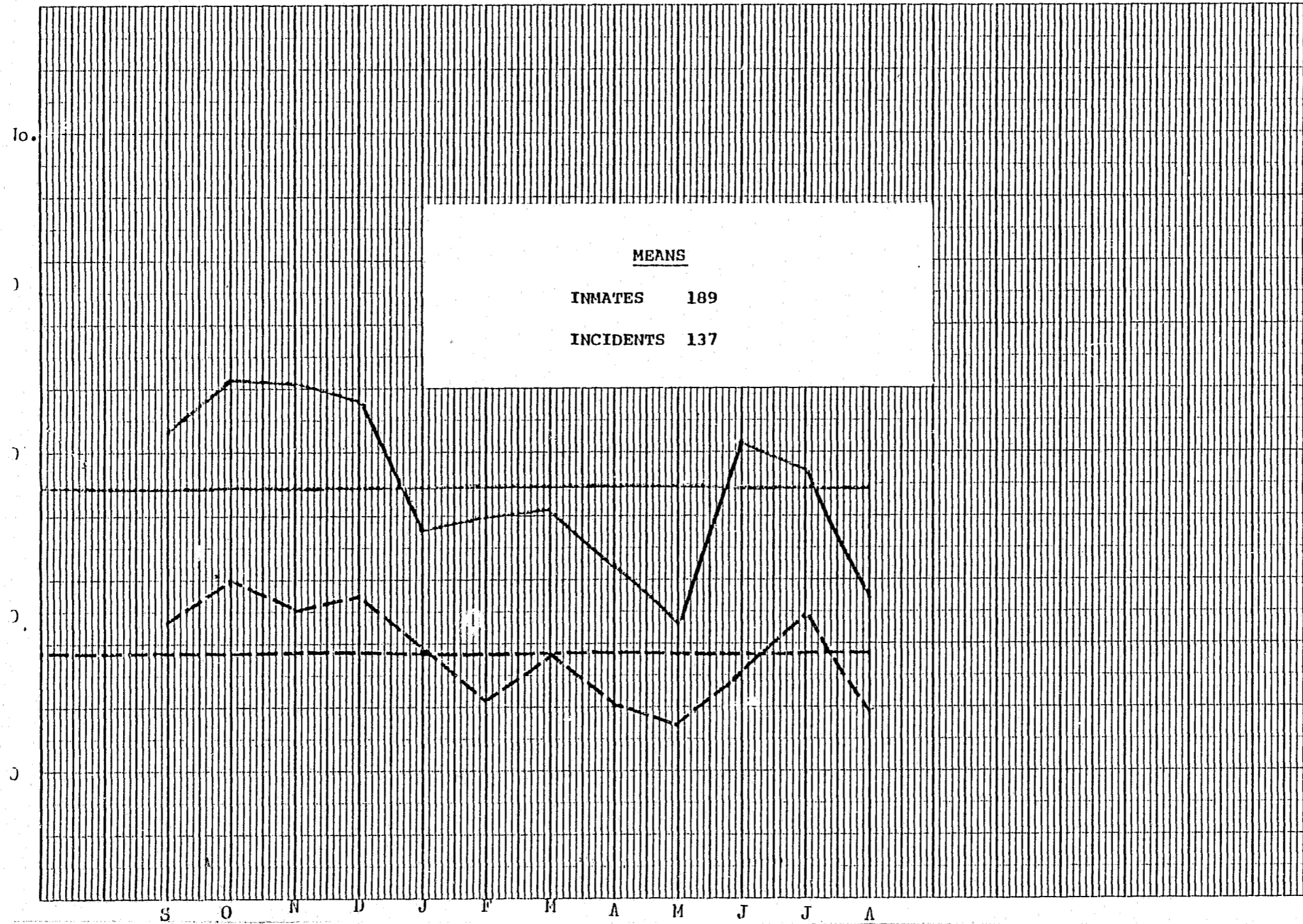
New York State Department  
 of Correctional Services

to the National Criminal Justice Reference Service (NCJRS)

Further reproduction outside of the NCJRS system requires permission of the copyright owner.

----- INMATES  
----- INCIDENTS

TWELVE MONTH SUMMARY, SEPTEMBER 1979 - AUGUST 1980  
NUMBER OF INMATES INVOLVED & NUMBER OF INCIDENTS



FEB 1 1982

TYPE OF INMATE ACTION BY INCIDENT The most common type of inmate action during the period was contraband (actions involving) which accounted for slightly over one-fourth of inmate actions. In second place were assault on staff incidents: one-fifth of total inmate actions during this period. The third most frequent inmate actions was assault on inmate(s) which accounted for a little over 12 percent while actions involving fire were in fourth place - 10.8 percent of total inmate actions. Suicide attempts (7.2%) ranked fifth while no other single type of inmate actions represented 5 percent or more of the total. It appears that incidents involving contraband have decreased slightly during the period while incidents involving assault on staff have increased slightly; thus, with some exceptions, assault on staff has tended to become as frequent as incidents involving contraband. Assault on other inmate incidents have tended to fall slightly during the period while incidents involving fire as well as attempted suicide incidents have not diminished.

INMATE ASSAULTS Assaults on staff averaged about 28 per month over the period, with a low of 17 in December 1979 and a high of 43 the following month (January 1980). Assaults on staff at the beginning and at the end of the twelve month period were close to the monthly average. The larger maximum security facilities including Attica, Auburn, Clinton, Elmira, Great Meadow and Green Haven accounted for 73.0 percent of inmate assaults on staff. Green Haven, with 79, had the largest number of assaults on staff in this group while Elmira (16) had the smallest number. The only other facility with over 16 assaults on staff was Fishkill (medium security) with 18.

Assaults on other inmate(s) averaged about 17 per month during this period, with a low of 11 in August 1980 and a high of 24 the preceding month (July 1980). Assaults on other inmates appear to be declining slightly over the period. The larger maximum security facilities accounted for 67.2 percent of total inmate assaults on other inmates. Auburn, with 34, had the largest number of assaults on other inmate(s) in this group while Elmira (11) had the smallest number. No other facility had more than 8 assaults on other inmates during the period.

INMATE ASSAULTS BY ETHNIC GROUP OF ASSAILANT AND VICTIM A total of 154 inmate assaults on other inmates have been tabulated. Omitted are about 50 assaults in which the assailant was unknown or not coded as an assailant. It appears that in slightly over three-eighths of the assaults (58 cases) a black inmate has assaulted another black inmate. In 14.3 percent of the assaults a Puerto Rican inmate has assaulted a black inmate and in 10.4 percent a Puerto Rican inmate has assaulted another Puerto Rican inmate. White and black inmates have fought each other in 16.8 percent of these assaults (26 cases). In half of the 26 cases blacks

attacked whites and the reverse was true for the remainder. Black inmates were involved in 72.1 percent of all assaults (111 cases). In 76 out of these 111 assaults, a black inmate was the aggressor (68.5%). Puerto Rican inmates were involved in 37.7 percent of total assaults (58 cases). In 50 out of these 58 assaults, a Puerto Rican inmate was the aggressor (86.2%). White inmates were involved in the smallest number of assaults, 53 or 34.3 percent and in only 28 of these 53 assaults was a white inmate the aggressor (52.8%). Thus, in 76 out of 154 total assaults a black inmate was the assailant (49.3%) while in 50 assaults a Puerto Rican was the assailant (32.5%) and in only 28 assaults (18.2%) was the assailant white. It is evident that there has been a greater tendency for blacks to attack blacks, and a greater tendency for whites to attack either blacks or whites than to attack Puerto Ricans while Puerto Ricans have a greater tendency to attack blacks. Both whites and blacks rarely assault Puerto Ricans. About 53 percent of the current inmate population is black while 27 percent are white and 19 percent are Puerto Rican.

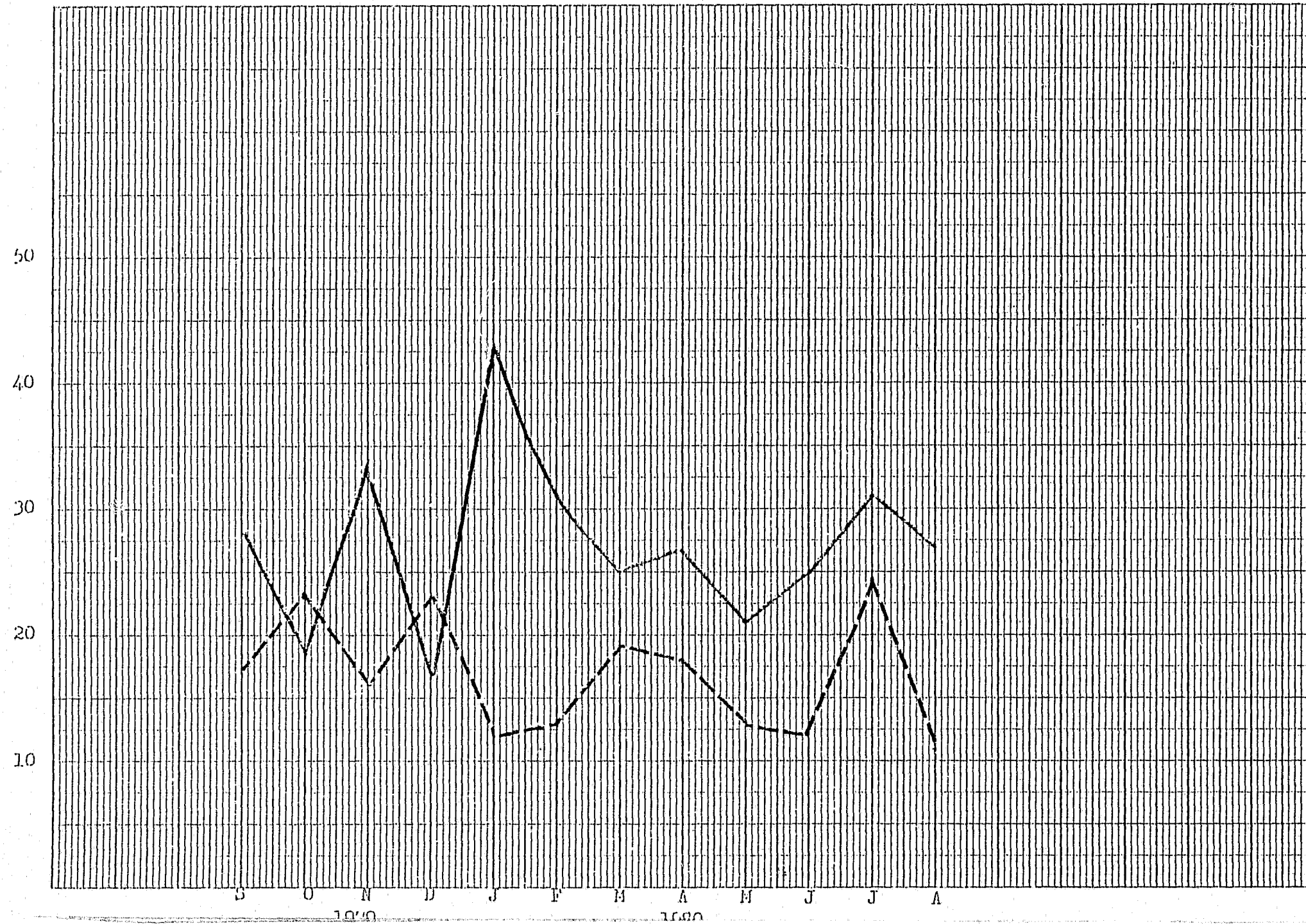
UNUSUAL INCIDENT REPORT - ASSAULTS

10 X 10 TO 15 INCH 7 X 10 INCHES  
KIEPPEL & ESSER CO. MADE IN U.S.A.

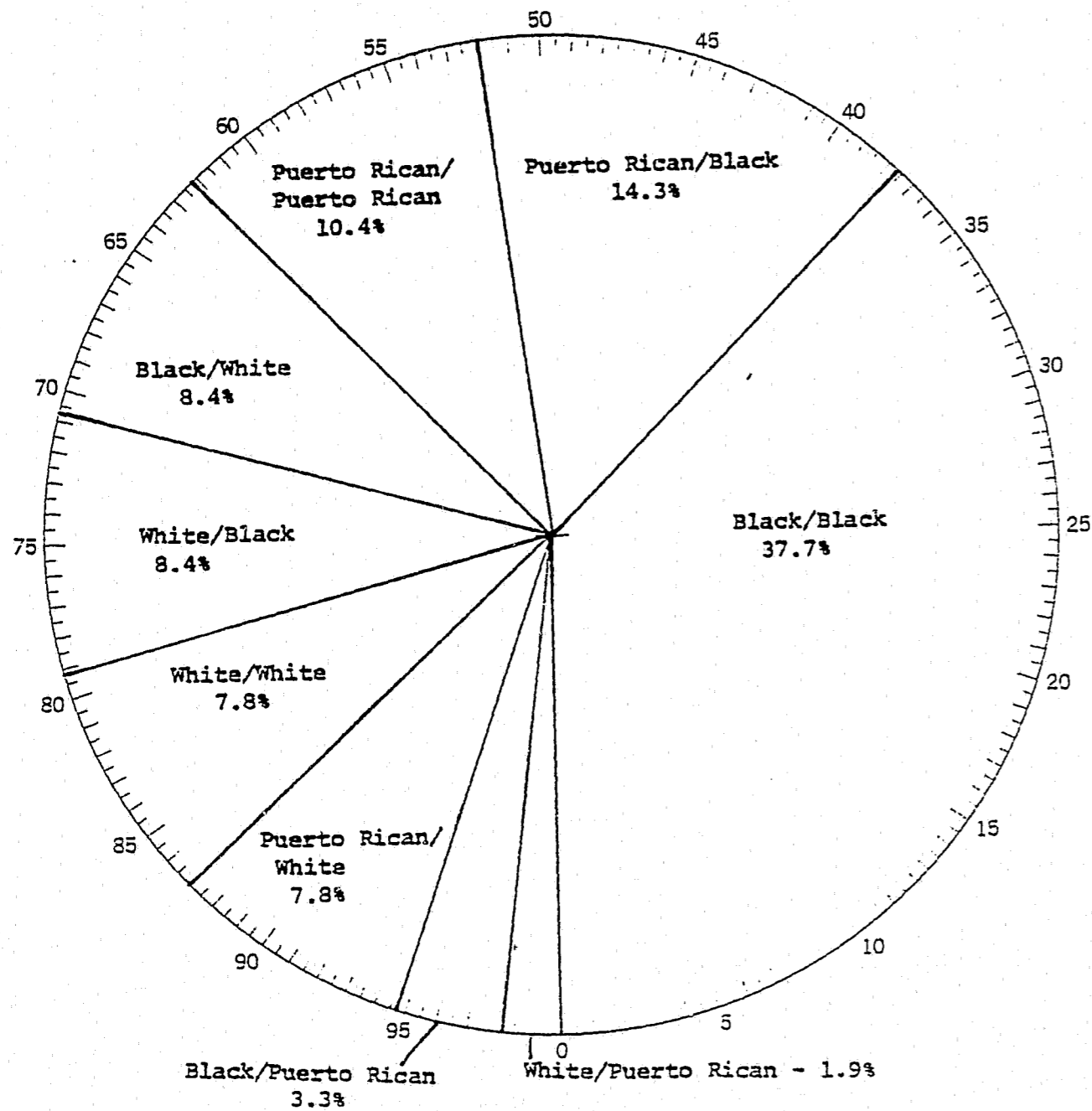
46 1320

----- ON STAFF  
----- ON INMATE(S)

TWELVE MONTH SUMMARY, SEPTEMBER 1979 - AUGUST 1980  
ASSAULT ON STAFF INCIDENTS & ASSAULT ON OTHER INMATE(S) INCIDENTS



UNUSUAL INCIDENT REPORT SUMMARY  
 SEPTEMBER 1979 - AUGUST 1980  
 INMATE ASSAULTS: ETHNIC GROUP OF ASSAILANT/VICTIM



| Assailant/Victim          | Inmate Assaults |         |
|---------------------------|-----------------|---------|
|                           | Number          | Percent |
| TOTAL                     | 154             | 100.0   |
| Black/Black               | 58              | 37.7    |
| Puerto Rican/Black        | 22              | 14.3    |
| Puerto Rican/Puerto Rican | 16              | 10.4    |
| Black/White               | 13              | 8.4     |
| White/Black               | 13              | 8.4     |
| White/White               | 12              | 7.8     |
| Puerto Rican/White        | 12              | 7.8     |
| Black/Puerto Rican        | 5               | 3.3     |
| White/Puerto Rican        | 3               | 1.9     |

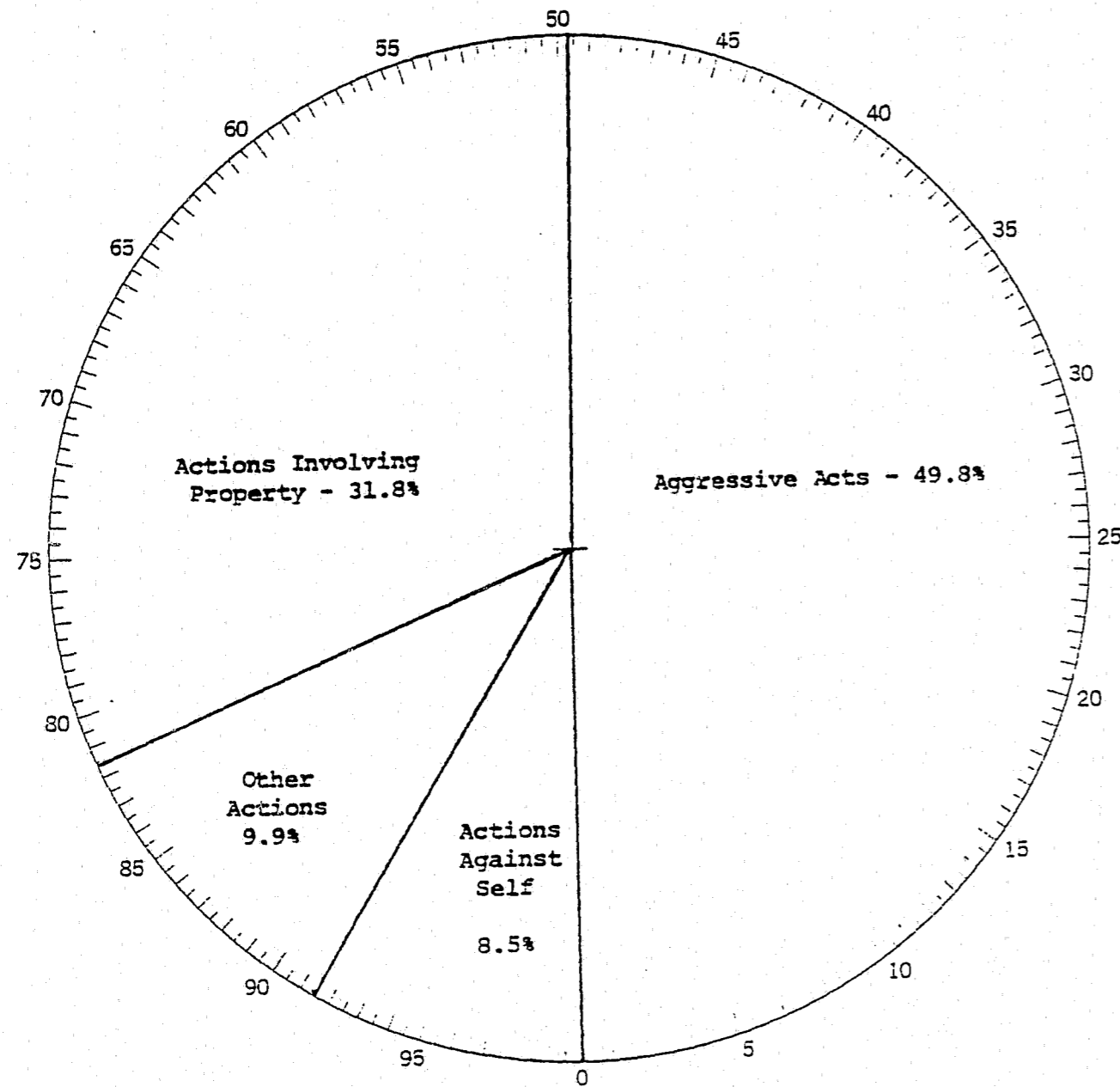
**PART II, INMATE PARTICIPATION** The first part of this report has dealt with the number of unusual incidents which occurred at DOCS facilities during the twelve month period, September 1979 through August 1980. The remaining sections deal with the number of inmates who participated in these incidents during the corresponding period.

**NUMBER OF INMATES BY MAJOR ACTION TYPE** The number of inmates involved in unusual incidents is summarized by major action type for the 12 month period. The predominant action type has been "aggressive acts" which accounted for slightly under one-half (49.8%) of total inmate actions during the period. Actions involving property, the second most important type of inmate action, accounted for 31.8 percent of inmate actions. There appears to be an inverse relationship between aggressive acts and actions against self. At the beginning of the period (September 1979) aggressive acts were below the 12 month average (at 47.1%) while actions involving property were above the average (at 41.7%). At the end of the period (August 1980) aggressive acts were close to the 12 month average (at 49.4%) while actions involving property were slightly below the average (at 30.5%).

UNUSUAL INCIDENT REPORT  
 TWELVE MONTH SUMMARY, SEPTEMBER 1979 - AUGUST 1980  
 NUMBER OF INMATES BY MAJOR TYPE OF INMATE ACTION

| Month          | Total | Major Types of Action |                      |                            |               |
|----------------|-------|-----------------------|----------------------|----------------------------|---------------|
|                |       | Aggressive Acts       | Actions Against Self | Actions Involving Property | Other Actions |
| TOTAL INMATES  | 2,264 | 1,127                 | 193                  | 719                        | 225           |
| September 1979 | 206   | 97                    | 12                   | 86                         | 11            |
| October        | 223   | 101                   | 23                   | 72                         | 27            |
| November       | 221   | 134                   | 13                   | 65                         | 9             |
| December       | 214   | 87                    | 24                   | 83                         | 20            |
| January 1980   | 176   | 88                    | 17                   | 48                         | 23            |
| February       | 179   | 97                    | 16                   | 54                         | 12            |
| March          | 182   | 89                    | 21                   | 55                         | 17            |
| April          | 165   | 91                    | 6                    | 48                         | 20            |
| May            | 146   | 66                    | 23                   | 48                         | 9             |
| June           | 203   | 100                   | 10                   | 54                         | 39            |
| July           | 195   | 101                   | 15                   | 59                         | 20            |
| August         | 154   | 76                    | 13                   | 47                         | 18            |

UNUSUAL INCIDENT REPORT SUMMARY  
 SEPTEMBER 1979 - AUGUST 1980  
 MAJOR TYPE OF INMATE ACTION

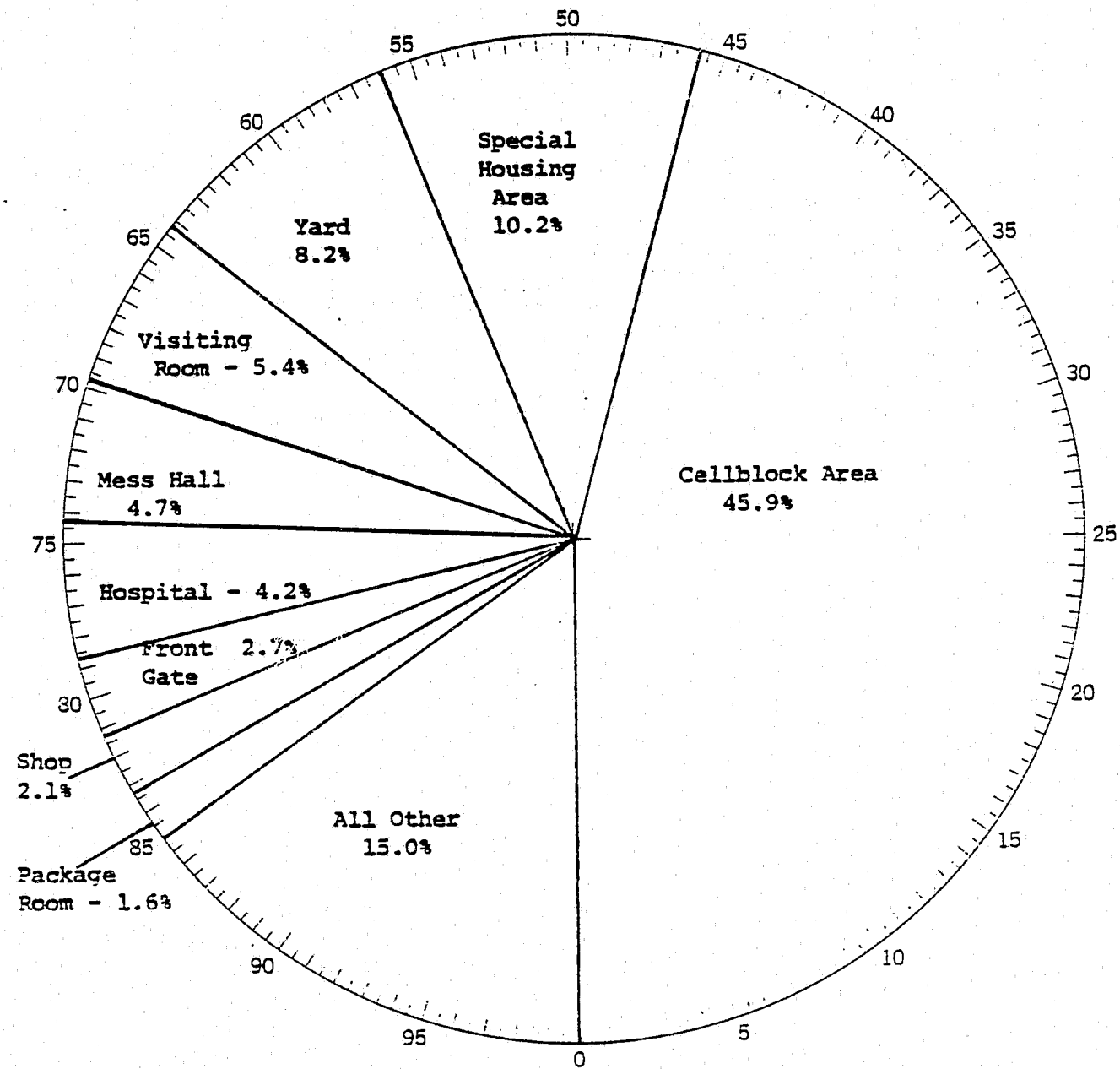


| Major Action Type          | Inmates |         |
|----------------------------|---------|---------|
|                            | Number  | Percent |
| TOTAL                      | 2,264   | 100.0   |
| Aggressive Acts            | 1,127   | 49.8    |
| Actions Against Self       | 193     | 8.5     |
| Actions Involving Property | 719     | 31.8    |
| Other Actions              | 225     | 9.9     |

LOCATION OF INCIDENT The principal location of unusual incidents during the twelve month period was the cell or cellblock area where 45.9 percent of the inmates who were involved in unusual incidents, participated. The second most common location was the special housing area (10.2%) and the third most frequent was the yard (8.2%). The only other specific locations which averaged 4 percent or more of inmate actions over this period were visiting room (5.4%), mess hall (4.7%) and hospital (4.2%). Seasonal factors have some affect on monthly proportions of incidents occurring in the yard area (which includes ball park, etc.) versus cellblock area, although the cellblock is always the most frequent location.



UNUSUAL INCIDENT REPORT SUMMARY  
 SEPTEMBER 1979 - AUGUST 1980  
 LOCATION OF INCIDENT



| Location of Incident | Inmates |         |
|----------------------|---------|---------|
|                      | Number  | Percent |
| TOTAL                | 2,264   | 100.0   |
| Call Block           | 1,040   | 45.9    |
| Special Housing      | 230     | 10.2    |
| Yard                 | 185     | 8.2     |
| Visiting Room        | 123     | 5.4     |
| Mess Hall            | 107     | 4.7     |
| Hospital             | 95      | 4.2     |
| Front Gate           | 60      | 2.7     |
| Shop                 | 47      | 2.1     |
| Package Room         | 37      | 1.6     |
| All Other            | 340     | 15.0    |

UNUSUAL INCIDENT REPORT - TWELVE MONTH SUMMARY  
 TYPE OF INMATE ACTION PER INCIDENT\*, SEPTEMBER 1979 - AUGUST 1980

| Type of Inmate Action          | Total | Month      |      |      |      |           |      |      |      |     |      |      |        |
|--------------------------------|-------|------------|------|------|------|-----------|------|------|------|-----|------|------|--------|
|                                |       | Sept. 1979 | Oct. | Nov. | Dec. | Jan. 1980 | Feb. | Mar. | Apr. | May | June | July | August |
| TOTAL                          | 1,668 | 150        | 163  | 151  | 156  | 138       | 123  | 137  | 124  | 117 | 138  | 151  | 120    |
| Accident                       | 49    | 2          | 8    | 2    | 4    | 3         | 4    | 6    | 4    | 3   | 8    | 3    | 2      |
| Inmate Altercation             | 77    | 8          | 7    | 12   | 5    | 4         | 5    | 6    | 6    | 7   | 9    | 2    | 6      |
| Assault on Staff               | 333   | 28         | 19   | 34   | 17   | 43        | 31   | 25   | 27   | 21  | 25   | 36   | 27     |
| Assault on Inmate              | 201   | 17         | 23   | 16   | 23   | 12        | 13   | 19   | 18   | 13  | 12   | 24   | 11     |
| Contraband                     | 426   | 50         | 43   | 51   | 50   | 24        | 23   | 29   | 31   | 34  | 36   | 28   | 27     |
| Inmate Death                   | 37    | 2          | 3    | 4    | 4    | 4         | 2    | 2    | 6    | 1   | 4    | 4    | 1      |
| Destruction of Property        | 17    | 1          | --   | 2    | 2    | 2         | 1    | 2    | 1    | 1   | 1    | 3    | 1      |
| Disruptive Behavior            | 38    | 2          | 5    | 6    | 2    | 4         | 2    | 1    | 5    | --  | 4    | 1    | 6      |
| Escape                         | 20    | 1          | 2    | 1    | 1    | 3         | --   | 1    | 1    | 2   | 4    | 2    | 2      |
| Attempted Escape               | 10    | --         | 1    | --   | 2    | --        | --   | 1    | --   | 1   | 3    | --   | 2      |
| Fire                           | 180   | 17         | 12   | 8    | 16   | 15        | 22   | 20   | 12   | 12  | 12   | 22   | 12     |
| Self-Inflicted Injury          | 61    | 6          | 10   | 4    | 4    | 4         | 5    | 7    | 4    | 7   | 4    | 1    | 5      |
| Sodomy                         | 4     | 1          | --   | --   | --   | --        | --   | 1    | 1    | 1   | --   | --   | --     |
| Refusal to Follow Instructions | 9     | 1          | 2    | --   | 1    | --        | --   | 1    | 1    | 1   | 1    | 1    | --     |
| Suicide                        | 3     | --         | --   | --   | --   | --        | --   | --   | --   | 1   | --   | 2    | --     |
| Attempted Suicide              | 120   | 6          | 13   | 9    | 17   | 13        | 10   | 13   | 2    | 11  | 6    | 12   | 8      |
| Theft                          | 9     | 1          | 3    | 1    | 1    | --        | --   | --   | --   | --  | 1    | 2    | --     |
| Mass Demonstration             | 4     | 1          | 1    | --   | --   | 1         | 1    | --   | --   | --  | --   | --   | --     |
| Other                          | 70    | 6          | 11   | 1    | 7    | 6         | 4    | 3    | 5    | 1   | 8    | 8    | 10     |

\*The total number of incidents in this table may be slightly higher than noted elsewhere because in a very small number of incidents more than one type of inmate action occurs.

UNUSUAL INCIDENT REPORT  
 TWELVE MONTH SUMMARY, SEPTEMBER 1979 - AUGUST 1980  
 ASSAULT ON STAFF

|                          | Total | Sept.<br>1979 | Oct. | Nov. | Dec. | Jan.<br>1980 | Feb. | Mar. | Apr. | May | June | July | August |
|--------------------------|-------|---------------|------|------|------|--------------|------|------|------|-----|------|------|--------|
| TOTAL                    | 333   | 28            | 19   | 34   | 17   | 43           | 31   | 25   | 27   | 21  | 25   | 36   | 27     |
| Attica - Gen. Conf.      | 29    | 6             | 2    | 1    | --   | 7            | 6    | 2    | --   | 1   | 1    | 1    | 2      |
| Clinton - Gen. Conf.     | 51    | 2             | 1    | 4    | 5    | 4            | 8    | --   | 4    | 3   | 8    | 10   | 2      |
| Ossining - Gen. Conf.    | 11    | --            | 3    | --   | --   | 2            | 1    | 1    | --   | --  | 1    | --   | 3      |
| Bedford Hills (Female)   | 7     | --            | --   | --   | 2    | --           | 1    | --   | --   | 2   | --   | 1    | 1      |
| Auburn                   | 23    | 2             | 2    | 1    | 3    | 2            | 1    | 4    | 1    | 3   | --   | 2    | 2      |
| Great Meadow             | 45    | 5             | 2    | 7    | 3    | 4            | 4    | 3    | 5    | 6   | 2    | --   | 4      |
| Wallkill                 | 1     | --            | --   | --   | 1    | --           | --   | --   | --   | --  | --   | --   | --     |
| Green Haven              | 79    | 3             | 3    | 9    | 3    | 13           | 5    | 5    | 10   | 4   | 5    | 12   | 7      |
| Clinton Annex            | 3     | --            | --   | --   | --   | --           | 1    | --   | --   | --  | --   | 2    | --     |
| Elmira - Gen. Conf.      | 16    | 3             | --   | --   | --   | 4            | --   | 2    | 1    | 1   | 3    | 1    | 1      |
| Coxsackie                | 2     | --            | --   | --   | --   | 1            | 1    | --   | --   | --  | --   | --   | --     |
| Arthur Kill              | 6     | 2             | --   | 1    | --   | --           | --   | 2    | 1    | --  | --   | --   | --     |
| Ossining - Reception     | 2     | --            | --   | 1    | --   | --           | 1    | --   | --   | --  | --   | --   | --     |
| Clinton - Merle Cooper   | 6     | --            | --   | 2    | --   | 1            | --   | --   | 2    | --  | --   | --   | 1      |
| Clinton - Recept./Class. | 0     | 2             | --   | --   | --   | --           | 1    | 2    | --   | --  | 1    | 2    | --     |
| Great Meadow - Trans.    | 4     | --            | 1    | --   | --   | 1            | 1    | --   | 1    | --  | --   | --   | --     |
| Woodbourne               | 1     | --            | --   | --   | --   | --           | --   | --   | --   | --  | --   | --   | 1      |
| Eastern                  | 9     | 1             | 2    | 1    | --   | 1            | --   | 2    | 1    | 1   | --   | --   | --     |
| Queensboro               | 1     | --            | --   | --   | --   | --           | --   | --   | --   | --  | --   | 1    | --     |
| Fishkill - Gen. Conf.    | 18    | 2             | 1    | 6    | --   | 2            | --   | 2    | --   | --  | 2    | 3    | --     |
| Mid-Orange               | 1     | --            | --   | --   | --   | --           | --   | --   | --   | --  | --   | --   | 1      |
| Camp Adirondack          | 1     | --            | --   | --   | --   | --           | --   | --   | --   | --  | 1    | --   | --     |
| Taconic                  | 2     | --            | --   | 1    | --   | 1            | --   | --   | --   | --  | --   | --   | --     |
| Downstate                | 7     | --            | 2    | --   | --   | --           | --   | --   | 1    | --  | 1    | 1    | 2      |



UNUSUAL INCIDENT REPORT  
 TWELVE MONTH SUMMARY, SEPTEMBER 1979 - AUGUST 1980  
 ASSAULT ON OTHER INMATE

|                          | <u>Total</u> | <u>Sept.</u><br><u>1979</u> | <u>Oct.</u> | <u>Nov.</u> | <u>Dec.</u> | <u>Jan.</u><br><u>1980</u> | <u>Feb.</u> | <u>Mar.</u> | <u>Apr.</u> | <u>May</u> | <u>June</u> | <u>July</u> | <u>August</u> |
|--------------------------|--------------|-----------------------------|-------------|-------------|-------------|----------------------------|-------------|-------------|-------------|------------|-------------|-------------|---------------|
| TOTAL                    | 201          | 17                          | 23          | 16          | 23          | 12                         | 13          | 19          | 18          | 13         | 12          | 24          | 11            |
| Attica - Gen. Conf.      | 21           | 1                           | 4           | 2           | 4           | 2                          | --          | 2           | 1           | 2          | 2           | --          | 1             |
| Clinton - Gen. Conf.     | 24           | --                          | 1           | 6           | 4           | --                         | 2           | 3           | 2           | 2          | 3           | --          | 1             |
| Ossining - Gen. Conf.    | 4            | 1                           | --          | --          | --          | 1                          | --          | --          | --          | --         | --          | 2           | --            |
| Bedford Hills (Female)   | 6            | --                          | 1           | --          | 2           | --                         | --          | --          | --          | --         | 1           | 1           | 1             |
| Auburn                   | 34           | 3                           | 4           | 1           | 4           | 2                          | 2           | 4           | 5           | 3          | 1           | 4           | 1             |
| Great Meadow             | 18           | 3                           | 3           | 1           | 1           | --                         | 1           | 4           | --          | 1          | 1           | 2           | 1             |
| Wallkill                 | 2            | --                          | --          | --          | --          | 1                          | --          | 1           | --          | --         | --          | --          | --            |
| Green Haven              | 27           | 5                           | 1           | 3           | 3           | 1                          | 4           | --          | 1           | 1          | 3           | 3           | 2             |
| Clinton Annex            | 6            | 1                           | 2           | --          | 1           | --                         | 1           | --          | --          | 1          | --          | --          | --            |
| Elmira - Gen. Conf.      | 11           | --                          | --          | 1           | --          | 2                          | 1           | --          | 3           | 1          | --          | 2           | 1             |
| Coxsackie                | 5            | 1                           | 1           | --          | 1           | --                         | 1           | --          | --          | --         | --          | 1           | --            |
| Arthur Kill              | 3            | --                          | 1           | 1           | --          | --                         | --          | --          | 1           | --         | --          | --          | --            |
| Elmira - Recept./Class.  | 1            | 1                           | --          | --          | --          | --                         | --          | --          | --          | --         | --          | --          | --            |
| Ossining - Reception     | 3            | --                          | --          | --          | --          | --                         | --          | --          | 2           | --         | --          | 1           | --            |
| Clinton - Recept./Class. | 8            | --                          | 2           | 1           | 1           | --                         | --          | 3           | --          | 1          | --          | --          | --            |
| Great Meadow - Trans.    | 3            | --                          | --          | --          | --          | --                         | --          | --          | 1           | --         | --          | 2           | --            |
| Woodbourne               | 2            | --                          | --          | --          | 1           | --                         | --          | --          | --          | --         | --          | 1           | --            |
| Eastern                  | 6            | --                          | 2           | --          | --          | --                         | 1           | --          | --          | --         | --          | 2           | 1             |
| Camp Monterey            | 1            | --                          | --          | --          | --          | --                         | --          | --          | --          | --         | --          | 1           | --            |
| Camp Summit              | 3            | --                          | --          | --          | --          | --                         | --          | 2           | --          | --         | --          | --          | 1             |
| Fishkill - Gen. Conf.    | 7            | --                          | 1           | --          | --          | 3                          | --          | --          | --          | 1          | 1           | 1           | --            |
| Mid-Orange               | 3            | 1                           | --          | --          | --          | --                         | --          | --          | 1           | --         | --          | --          | 1             |
| Albion                   | 2            | --                          | --          | --          | --          | --                         | --          | --          | 1           | --         | --          | 1           | --            |
| Taconic                  | 1            | --                          | --          | --          | 1           | --                         | --          | --          | --          | --         | --          | --          | --            |

UNUSUAL INCIDENT REPORT  
 TWELVE MONTH SUMMARY, SEPTEMBER 1979 - AUGUST 1980  
 INMATE ASSAULTS BY ETHNIC GROUP OF ASSAILANT AND VICTIM 1/

| <u>Assailant/Victim</u> | <u>Total</u> | <u>Month</u>                |             |             |             |                            |             |             |             |            |             |             |               |
|-------------------------|--------------|-----------------------------|-------------|-------------|-------------|----------------------------|-------------|-------------|-------------|------------|-------------|-------------|---------------|
|                         |              | <u>Sept.</u><br><u>1979</u> | <u>Oct.</u> | <u>Nov.</u> | <u>Dec.</u> | <u>Jan.</u><br><u>1980</u> | <u>Feb.</u> | <u>Mar.</u> | <u>Apr.</u> | <u>May</u> | <u>June</u> | <u>July</u> | <u>August</u> |
| TOTAL                   | 154          | 13                          | 15          | 10          | 18          | 8                          | 14          | 19          | 10          | 6          | 14          | 18          | 9             |
| Black/Black             | 58           | 3                           | 4           | 3           | 6           | 5                          | 3           | 8           | 4           | 4          | 3           | 9           | 6             |
| White/White             | 12           | 1                           | 2           | 1           | 1           | --                         | 3           | --          | --          | --         | --          | 3           | 1             |
| Black/White             | 13           | 1                           | 2           | 1           | 3           | 1                          | 1           | 2           | --          | --         | 1           | 1           | --            |
| White/Black             | 13           | --                          | 1           | 3           | --          | --                         | 1           | 2           | --          | --         | 3           | 2           | 1             |
| Puerto Rican/P.R.       | 16           | 3                           | 2           | --          | 3           | --                         | --          | 1           | 1           | 1          | 3           | 2           | --            |
| Puerto Rican/White      | 12           | --                          | 1           | --          | 2           | --                         | 4           | 2           | 1           | 1          | 1           | --          | --            |
| Puerto Rican/Black      | 22           | 3                           | 1           | 2           | 3           | 2                          | 2           | 4           | 3           | --         | 1           | --          | 1             |
| White/Puerto Rican      | 3            | 1                           | 1           | --          | --          | --                         | --          | --          | --          | --         | 1           | --          | --            |
| Black/Puerto Rican      | 5            | 1                           | 1           | --          | --          | --                         | --          | --          | 1           | --         | 1           | 1           | --            |

1/ Only includes cases where ethnic group of both assailant(s) and victim(s) are known.

UNUSUAL INCIDENT REPORT - TWELVE MONTH SUMMARY  
NUMBER OF INMATES BY LOCATION, SEPTEMBER 1979 - AUGUST 1980

| <u>Location</u>      | <u>Total</u> | <u>Month</u>                |             |             |             |                            |             |             |             |            |             |             |               |
|----------------------|--------------|-----------------------------|-------------|-------------|-------------|----------------------------|-------------|-------------|-------------|------------|-------------|-------------|---------------|
|                      |              | <u>Sept.</u><br><u>1979</u> | <u>Oct.</u> | <u>Nov.</u> | <u>Dec.</u> | <u>Jan.</u><br><u>1980</u> | <u>Feb.</u> | <u>Mar.</u> | <u>Apr.</u> | <u>May</u> | <u>June</u> | <u>July</u> | <u>August</u> |
| Total                | 2,264        | 206                         | 223         | 221         | 214         | 176                        | 179         | 182         | 165         | 146        | 203         | 195         | 154           |
| Cell Block           | 1,040        | 91                          | 92          | 94          | 105         | 86                         | 112         | 94          | 69          | 57         | 80          | 101         | 59            |
| Yard                 | 185          | 23                          | 25          | 50          | 9           | --                         | 6           | 6           | 16          | 9          | 18          | 7           | 16            |
| Mess Hall            | 107          | 6                           | 5           | 16          | 17          | 8                          | 10          | 11          | 3           | 11         | 8           | 3           | 9             |
| Special Housing      | 230          | 19                          | 20          | 13          | 12          | 27                         | 22          | 24          | 22          | 14         | 23          | 17          | 17            |
| Shop                 | 47           | 3                           | 12          | 1           | --          | 4                          | 1           | 4           | 8           | 6          | 8           | --          | --            |
| Hospital             | 95           | 6                           | 12          | 8           | 11          | 13                         | 7           | 2           | 8           | 7          | 6           | 11          | 4             |
| Inmate Reception     | 3            | --                          | --          | --          | --          | --                         | --          | --          | --          | --         | 1           | 1           | 1             |
| Kitchen              | 20           | 3                           | --          | 2           | --          | 6                          | 1           | 3           | --          | 1          | 1           | 2           | 1             |
| Classroom            | 16           | --                          | 4           | 1           | 1           | --                         | --          | 3           | --          | 1          | --          | --          | 6             |
| Adjustment Office    | 29           | 4                           | --          | 3           | 1           | 1                          | 4           | 2           | 4           | 1          | 2           | 3           | 4             |
| Farm                 | 9            | --                          | 1           | 1           | 1           | --                         | --          | 1           | --          | --         | --          | 1           | 4             |
| Assembly Hall        | 6            | --                          | --          | --          | 6           | --                         | --          | --          | --          | --         | --          | --          | --            |
| Recreation Room      | 12           | 1                           | 2           | --          | 3           | --                         | --          | --          | --          | --         | --          | 5           | 1             |
| Gymnasium            | 20           | 2                           | --          | --          | 2           | 2                          | 2           | 2           | 5           | 3          | 1           | 1           | --            |
| Visiting Room        | 123          | 23                          | 20          | 20          | 9           | 3                          | 3           | 5           | 3           | 7          | 14          | 7           | 9             |
| Package Room         | 37           | 4                           | 1           | 2           | 5           | 7                          | 3           | 2           | 4           | 3          | 2           | 2           | 2             |
| Front Gate <u>1/</u> | 60           | N/A                         | N/A         | N/A         | 4           | 2                          | 2           | 3           | 7           | 13         | 9           | 13          | 7             |
| Rear Gate <u>1/</u>  | 4            | N/A                         | N/A         | N/A         | --          | 1                          | --          | --          | 1           | 1          | 1           | --          | --            |
| Lobby <u>1/</u>      | 21           | N/A                         | N/A         | N/A         | 3           | --                         | 2           | 2           | 1           | 4          | 2           | 4           | 3             |
| Other                | 200          | 21                          | 29          | 10          | 25          | 16                         | 4           | 18          | 14          | 8          | 27          | 17          | 11            |

1/ Front gate, rear gate and lobby locations added in December 1979.



**END**