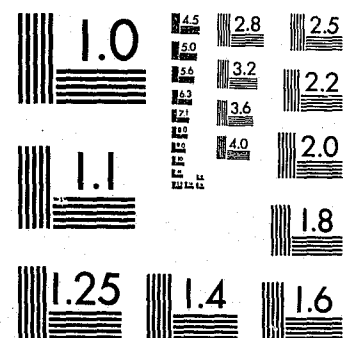


National Criminal Justice Reference Service



This microfiche was produced from documents received for inclusion in the NCJRS data base. Since NCJRS cannot exercise control over the physical condition of the documents submitted, the individual frame quality will vary. The resolution chart on this frame may be used to evaluate the document quality.



MICROCOPY RESOLUTION TEST CHART
NATIONAL BUREAU OF STANDARDS-1963-A

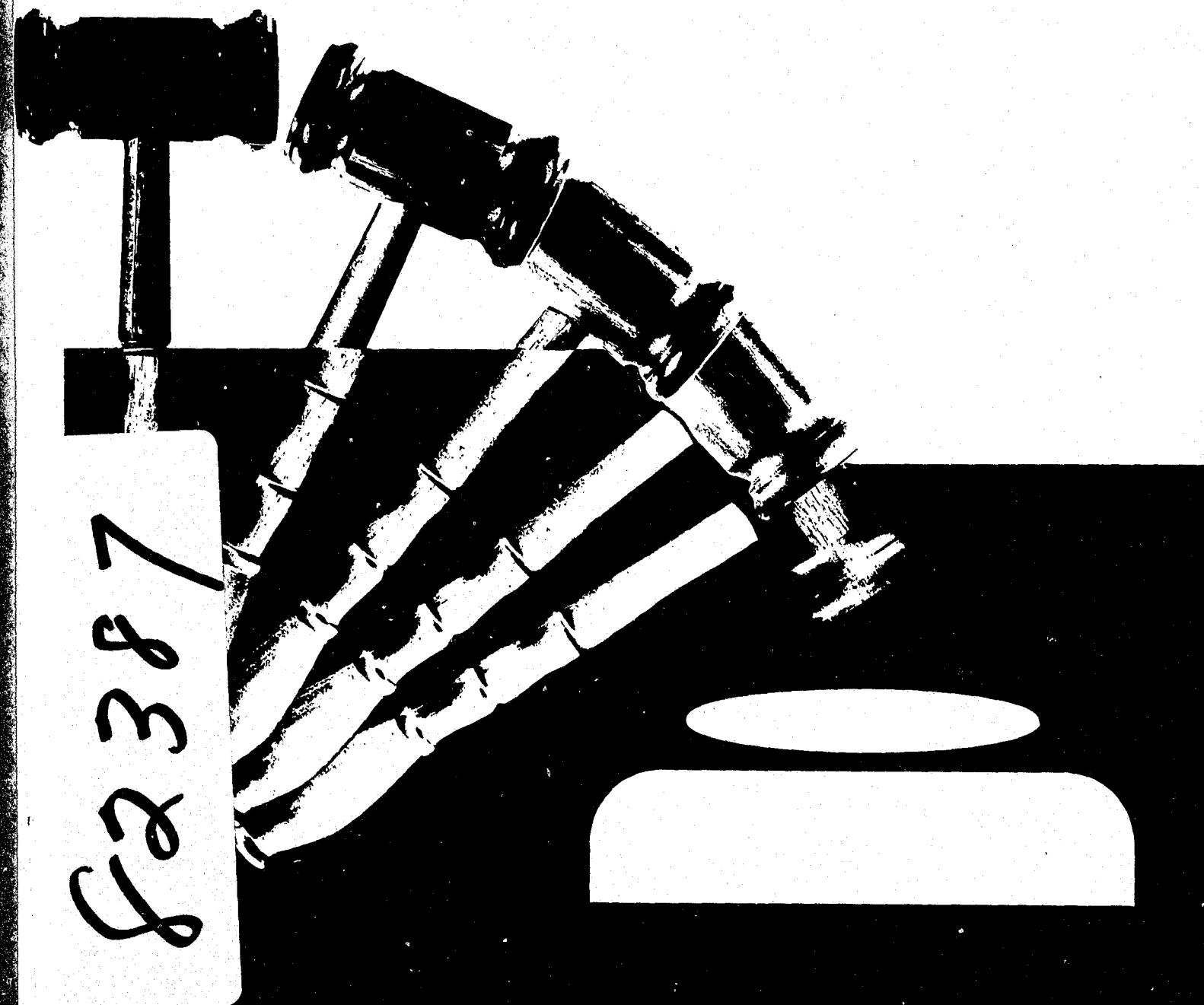
Microfilming procedures used to create this fiche comply with the standards set forth in 41CFR 101-11.504.

Points of view or opinions stated in this document are those of the author(s) and do not represent the official position or policies of the U. S. Department of Justice.

National Institute of Justice
United States Department of Justice
Washington, D. C. 20531

Federal Judicial Workload Statistics

For the twelve month period ended September 30, 1981



Prepared by the Administrative Office of the United States Courts
Statistical Analysis and Reports Division Washington, D.C. 20544

FEDERAL JUDICIAL WORKLOAD STATISTICS

DURING THE TWELVE-MONTH PERIOD
ENDED SEPTEMBER 30, 1981



NCJRS

JAN 22 1982

ACQUISITION

PREPARED BY THE
ADMINISTRATIVE OFFICE OF
THE UNITED STATES COURTS
STATISTICAL ANALYSIS AND REPORTS DIVISION
WASHINGTON, D.C. 20544

For sale by the Superintendent of Documents, U.S. Government Printing Office, Washington, D.C. 20402

U.S. Department of Justice
National Institute of Justice

This document has been reproduced exactly as received from the person or organization originating it. Points of view or opinions stated in this document are those of the authors and do not necessarily represent the official position or policies of the National Institute of Justice.

Permission to reproduce this copyrighted material has been granted by
Public Domain/Administrative Office
of the U.S. Courts

to the National Criminal Justice Reference Service (NCJRS).

Further reproduction outside of the NCJRS system requires permission of the copyright owner.

Table of Contents

	Page
U.S. Courts of Appeals	
Summary of Workload	1
U.S. District Courts	
Civil Cases	3
Summary of Workload	3
Civil Filings	3
Civil Terminations	6
Civil Pending Caseload	6
Civil Cases Pending Three Years or More	6
Criminal Workload	
Summary of Workload	8
Criminal Cases by Offense Level and Type of Proceeding	9
Criminal Filings in Major Offense Categories	10
Pending Caseload on September 30	10
Federal Probation System	
Probation System Workload	12
Persons Received for Supervision	12
Persons Removed From Supervision	13
Persons Under Supervision	14
Persons Under Supervision by District	14
U.S. Bankruptcy Courts	
Summary of Workload	16
Report on Cases Under Submission in the U.S. Courts of Appeals and Cases and Motions Under Advisement in the U.S. District Courts	
Cases Under Submission	20
Cases Under Advisement	21

Appendix Tables

(The period covered, unless otherwise indicated, is for the
twelve month period ended September 30, 1981.)

Table		Page
	U.S. Courts of Appeals	
B-1	Cases Commenced and Terminated by Circuit	A-2
	U.S. District Courts	
	Civil	
C-1	Cases Commenced, Terminated, and Pending	A-4
C-2	Cases Commenced, by Basis of Jurisdiction and Nature of Suit	A-6
C-3	Cases Commenced, by Nature of Suit and District	A-8
C-3A	Cases Pending, by Nature of Suit and District	A-12

**Appendix Tables
(continued)**

(The period covered, unless otherwise indicated, is for the twelve month period ended September 30, 1981.)

Table		Page
Criminal		
D-1	Cases	
	Cases Commenced and Terminated	A-16
D-1	Defendants	
	Defendants Commenced and Terminated	A-20
D-2	Defendants and Cases	
	Defendants and Cases Commenced by Major Offense (Excludes Transfers)	A-24
D-3	Cases	
	Cases Commenced (Excludes Transfers)	A-26
D-3	Defendants	
	Defendants Commenced (Excludes Transfers)	A-34
Federal Probation System		
E-1	Persons Received for and Removed from Supervision	A-42
E-2	Persons Under Supervision	A-46
Bankruptcy		
F-1	Bankruptcy Estates Commenced, Terminated, and Pending	A-48
F-1AP	Adversary Proceedings Commenced, Terminated, and Pending Under the Bankruptcy Code	A-50
F-2A	Voluntary Bankruptcy Code Cases Commenced, by Chapter of the Bankruptcy Code	A-52
F-2B	Involuntary and Section 304 Bankruptcy Code Cases Commenced, by Chapter of the Bankruptcy Code	A-54
F-3A	Business Bankruptcy Code Cases Commenced, by Chapter of the Bankruptcy Code	A-56
F-3B	Non-Business and Section 304 Bankruptcy Code Cases Commenced, by Chapter of the Bankruptcy Code	A-58
F-3C	Joint Petition Business Bankruptcy Code Cases Commenced, by Chapter of the Bankruptcy Code	A-60
F-3D	Joint Petition Non-Business Bankruptcy Code Cases Commenced, by Chapter of the Bankruptcy Code	A-62

U.S. COURTS OF APPEALS

Summary of Workload

During the twelve month period ended September 30, 1981, the workload of the U.S. courts of appeals reached the highest level ever recorded in a reporting period. Part of the growth in appellate case activity can be attributed to the change in the reporting criteria. This change took effect on July 1, 1980 and allowed the inclusion of types of cases which were not included in prior years.

A total of 27,156 appeals were filed in the U.S. courts of appeals during the past twelve months, a sizable increase of 16.6 percent over the 23,290 cases filed in 1980. The largest increases in case filings were reported in the Second and Tenth Circuits, up 41.0 percent and 25.7 percent, respectively. The only circuit to experience a decline in filing activity was the District of Columbia Circuit, where case filings decreased 6.7 percent from the previous year. Case dispositions increased significantly during this period, rising 18.5 percent from 21,943 cases in 1980 to 26,010 cases in 1981. The largest increases in appellate terminations were reported in the Ninth Circuit (up 34.5 percent) and the Second Circuit (up 34.1 percent). The Eighth, Seventh, and Fifth Circuits also reflected substantial increases of 27.9 percent, 25.9 percent, and 21.2 percent, respectively. The only circuits to record declines in termination activity during the year were the Third Circuit (down 2.2 percent) and the Fourth Circuit (down 1.4 percent). Due to the large number of appeals filed during the past twelve months, the pending appellate caseload grew to 22,194 cases, a rise of 5.4 percent over 1980. Only the District of Columbia and Ninth Circuits were able to reduce their pending caseload during the year, declining 9.6 percent and 7.4 percent, respectively. The most substantial growth in pending caseload was in the Third Circuit (19.6 percent); the Fourth Circuit (18.8 percent); and the Tenth Circuit (18.2 percent). Table 1 provides a comparison of the appellate caseload during the twelve month periods ended September 30, 1980 and 1981.

Table 1
U.S. Courts of Appeals
Appeals Commenced, Terminated, and Pending
During the Twelve Month Periods Ended September 30, 1980 and 1981

	Twelve Months Ended September 30	Filings	Terminations	Pending September 30
1980	23,290	21,943	21,048	21,048
1981	27,156	26,010	22,194	22,194
Percent Change 1981 over 1980	16.6	18.5	5.4	

Of all appeals filed during this twelve month period, original proceedings showed the largest increase among the various types of appeals, up 28.6 percent from 591 cases in 1980 to 760 cases in 1981. The number of civil and administrative agency appeals also increased substantially during this period, up 19.1 percent and 17.1 percent, respectively. All categories of appeals registered increases in the number of case filings during the year. (See Appendix Table B-1 for additional data on the activity of the U.S. courts of appeals.)

Table 2 is a comparison of appeals filed, by quarter, during each of the twelve month periods ended June 30, 1977 through 1981. The 7,062 cases filed during the period July through September 1981 were 12.7 percent greater than the 6,268 cases filed during the comparable period last year. This total represents the highest number of cases filed during any of the preceding first quarter periods.

Table 2
U.S. Courts of Appeals
Appeals Commenced by Quarter
During the Twelve Month Periods Ended June 30, 1977 through 1981
And the Three Month Quarter Ended September 30, 1981

Statistical Year	First Quarter (Jul-Sept)	Second Quarter (Oct-Dec)	Third Quarter (Jan-Mar)	Fourth Quarter (Apr-Jun)	Twelve Month Total
1977	4,853	4,612	4,953	4,700	19,118
1978	4,824	4,480	4,619	4,995	18,918
1979	5,144	4,806	5,146	5,123	20,219
1980	6,264	5,472	5,709	5,755	23,200
1981	6,268	6,311	6,653	7,130	26,362
1982	7,062	-	-	-	-
Percent Change 1982 over 1981 ...	12.7	-	-	-	-
Percent Change 1981 over					
1980	0.1	15.3	16.5	23.9	13.6
1979	21.9	31.3	29.3	39.2	30.4
1978	29.9	40.9	44.0	42.7	39.3
1977	29.2	36.8	34.3	51.7	37.9

U.S. DISTRICT COURTS

CIVIL CASES

Summary of Workload

During the twelve month period ended September 30, 1981, a total of 185,622 civil cases were filed in the U.S. district courts, an increase of 8.3 percent over the 171,346 cases filed during the same period a year ago. Dispositions of civil cases also rose during this period, up 10.0 percent from 164,359 cases in 1980 to 180,833 cases in 1981. Despite the substantial rise in disposition activity, the number of civil cases pending continued to rise, reaching 195,460 cases as of September 30, 1981. This figure represents an increase of 2.5 percent over the 190,671 cases pending a year ago, and is the largest pending civil caseload ever in the U.S. district courts. Table 4 provides a comparison, by district, of the civil caseload during each of the twelve month periods ended September 30, 1980 and 1981.

Civil Filings

The 185,622 civil cases filed during the twelve month period ended September 30, 1981 is the largest number of civil cases ever filed during a comparable period. The rate of increase (8.3 percent) is up slightly from the 6.9 percent increase of a year ago. The most significant increase in civil filings was in prisoner civil rights cases, which increased 26.4 percent from 13,629 in 1980 to 17,228 in 1981.

There were 72 districts that experienced increases in filings over 1980. The largest percentage increases were in Michigan, Western (51.5 percent); Nevada (48.7 percent); Wisconsin, Western (48.3 percent); and Louisiana, Middle (47.3 percent). Of the 23 districts reporting declines in filing activity, the most significant declines (other than the Canal Zone, where the court is being phased out) were Guam (down 50.2 percent); California, Southern (down 31.4 percent); Hawaii (down 28.5 percent); and Florida, Southern (down 25.5 percent).

Table 3 is a comparison, by quarter, of civil cases filed during the twelve month periods ended June 30, 1977 through 1981 and for the quarter ended September 30, 1981. The 50,444 civil cases filed during the quarter ended September 30, 1981 is the largest number ever filed during a comparable period.

Table 3
U.S. District Courts
Civil Cases Filed by Quarter
During the Twelve Month Periods Ended June 30, 1977 through 1981
And the Three Month Quarter Ended September 30, 1981

Statistical Year	First Quarter (Jul-Sept)	Second Quarter (Oct-Dec)	Third Quarter (Jan-Mar)	Fourth Quarter (Apr-Jun)	Twelve Month Total
1977	32,627	31,241	32,156	34,543	130,567
1978	35,989	32,940	32,786	37,055	138,770
1979	37,763	36,608	38,943	41,352	154,666
1980	43,113	39,061	41,764	44,851	168,789
1981	45,398	42,357	43,088	49,733	180,576
1982	50,444	-	-	-	-
Percent Change 1982 over 1981 ...	11.1	-	-	-	-
Percent Change 1981 over					
1980	5.3	8.4	3.2	10.9	7.0
1977	39.1	35.6	34.0	44.0	38.3

Table 4
CIVIL CASES COMMENCED, TERMINATED AND PENDING IN
UNITED STATES DISTRICT COURTS
FOR THE TWELVE MONTH PERIODS ENDED SEP. 30, 1980 AND 1981

CIRCUIT AND DISTRICT	FILINGS			TERMINATIONS			PENDING		
	PERIOD ENDED SEP. 30, 1980	PERIOD ENDED SEP. 30, 1981	PERCENT CHANGE	PERIOD ENDED SEP. 30, 1980	PERIOD ENDED SEP. 30, 1981	PERCENT CHANGE	PERIOD ENDED SEP. 30, 1980	PERIOD ENDED SEP. 30, 1981	PERCENT CHANGE
TOTAL ALL DISTRICTS..	171,346	185,622	8.3	164,359	180,833	10.0	190,671	195,460	2.5
DISTRICT OF COLUMBIA.	3,502	3,405	-2.8	3,356	3,510	4.6	2,791	2,686	-3.8
FIRST CIRCUIT.....	7,940	8,370	5.4	8,150	11,841	45.3	15,101	11,630	-23.0
MAINE.....	597	758	27.0	435	543	24.5	813	1,028	26.4
MASSACHUSETTS.....	3,132	3,666	17.0	3,367	7,654	127.3	10,696	6,708	-37.3
NEW HAMPSHIRE.....	604	648	7.3	500	584	16.8	586	650	10.9
RHODE ISLAND.....	672	821	22.2	563	565	0.4	1,156	1,412	22.1
PUERTO RICO.....	2,935	2,477	-15.6	3,284	2,495	-24.0	1,850	1,832	-1.0
SECOND CIRCUIT.....	15,661	17,473	11.6	14,266	15,573	9.2	19,253	21,153	9.9
CONNECTICUT.....	1,802	2,274	26.2	1,596	1,811	13.5	3,082	3,545	15.0
NEW YORK NORTHERN.....	1,072	1,346	25.6	754	859	13.9	1,546	2,033	31.5
NEW YORK EASTERN.....	3,555	4,125	16.0	3,255	3,417	5.0	4,157	4,865	17.0
NEW YORK SOUTHERN.....	7,613	8,202	7.7	7,291	8,036	10.2	8,600	8,766	1.9
NEW YORK WESTERN.....	1,231	1,123	-8.8	1,086	1,075	-1.0	1,446	1,494	3.3
VERMONT.....	388	403	3.9	284	375	32.0	422	450	6.6
THIRD CIRCUIT.....	14,304	15,002	4.9	13,871	14,475	4.4	12,893	13,420	4.1
DELAWARE.....	646	608	-5.9	643	560	-12.9	575	623	8.3
NEW JERSEY.....	4,132	4,154	0.5	3,924	4,293	9.4	3,441	3,302	-4.0
PENNSYLVANIA EASTERN.....	5,171	5,399	4.4	4,964	5,313	7.0	5,022	5,108	1.7
PENNSYLVANIA MIDDLE.....	1,507	1,579	4.8	1,504	1,438	-4.4	1,052	1,193	13.4
PENNSYLVANIA WESTERN.....	2,094	2,457	19.2	2,191	2,274	3.8	1,667	1,890	13.4
VIRGIN ISLANDS.....	754	765	1.5	645	597	-7.5	1,136	1,304	14.8
FOURTH CIRCUIT.....	16,687	17,696	6.0	15,695	17,719	12.9	15,817	15,794	-0.2
MARYLAND.....	3,256	3,315	1.8	2,764	3,180	15.1	3,025	3,160	4.5
NC. CAROLINA EASTERN.....	1,634	1,564	-4.3	1,593	1,644	3.2	1,324	1,244	-6.1
NC. CAROLINA MIDDLE.....	714	803	12.5	814	771	-5.3	780	812	4.1
NC. CAROLINA WESTERN.....	877	949	10.5	714	906	26.9	808	871	7.8
SOUTH CAROLINA.....	2,496	3,033	21.5	2,559	2,688	5.0	2,787	3,132	12.4
VIRGINIA EASTERN.....	3,813	4,008	5.1	3,623	3,819	5.4	1,929	2,118	9.8
VIRGINIA WESTERN.....	1,796	2,021	12.5	1,781	1,859	4.4	1,292	1,454	12.5
W. VIRGINIA NORTHERN.....	843	721	-14.5	591	662	12.0	949	1,008	6.2
W. VIRGINIA SOUTHERN.....	1,258	1,262	0.3	1,256	2,190	74.4	2,923	1,995	-31.8
FIFTH CIRCUIT.....	38,982	41,604	6.7	38,384	41,174	7.3	47,166	47,596	0.9
ALABAMA NORTHERN.....	2,028	2,449	20.8	1,868	2,276	21.8	1,611	1,784	10.7
ALABAMA MIDDLE.....	839	984	17.3	659	796	20.8	659	847	28.5
ALABAMA SOUTHERN.....	832	1,000	20.2	762	911	19.6	623	722	14.1
FLORIDA NORTHERN.....	731	740	1.2	647	615	-5.0	564	689	22.2
FLORIDA MIDDLE.....	3,645	3,633	-0.3	3,485	3,405	-2.3	3,890	4,118	5.9
FLORIDA SOUTHERN.....	5,311	3,958	-25.5	5,598	6,308	12.7	9,619	7,269	-24.4
GEORGIA NORTHERN.....	2,721	2,986	5.7	2,938	3,042	3.5	2,816	2,762	-2.0
GEORGIA MIDDLE.....	944	884	-6.4	866	860	-0.7	721	745	3.3
GEORGIA SOUTHERN.....	942	1,228	31.4	1,000	1,060	6.0	889	1,067	20.0
LOUISIANA EASTERN.....	5,384	5,548	3.0	5,980	5,462	-8.7	6,355	6,441	1.4
LOUISIANA MIDDLE.....	717	1,056	47.3	473	918	94.1	1,113	1,113	14.2
LOUISIANA WESTERN.....	1,985	2,367	19.2	1,780	1,994	12.0	2,227	2,600	16.7
MISSISSIPPI NORTHERN.....	1,011	1,006	-0.5	963	967	0.4	759	838	4.9
MISSISSIPPI SOUTHERN.....	1,829	1,650	-9.8	1,466	1,342	-8.5	1,886	2,234	18.5
TEXAS NORTHERN.....	2,672	3,718	39.1	2,670	3,324	24.5	3,423	3,817	11.5
TEXAS EASTERN.....	1,776	1,940	9.2	1,514	1,941	28.2	2,628	2,627	-0.0
TEXAS SOUTHERN.....	3,850	4,518	17.4	3,589	4,052	12.9	5,363	5,829	8.7
TEXAS WESTERN.....	1,743	1,887	8.3	1,541	1,749	13.5	1,945	2,083	7.1
CANAL ZONE.....	22	2	-90.9	585	152	-74.0	161	11	-93.2

Table 4
CIVIL CASES COMMENCED, TERMINATED AND PENDING IN
UNITED STATES DISTRICT COURTS
FOR THE TWELVE MONTH PERIODS ENDED SEP. 30, 1980 AND 1981

CIRCUIT AND DISTRICT	FILINGS			TERMINATIONS			PENDING		
	PERIOD ENDED SEP. 30, 1980	PERIOD ENDED SEP. 30, 1981	PERCENT CHANGE	PERIOD ENDED SEP. 30, 1980	PERIOD ENDED SEP. 30, 1981	PERCENT CHANGE	PERIOD ENDED SEP. 30, 1980	PERIOD ENDED SEP. 30, 1981	PERCENT CHANGE
SIXTH CIRCUIT.....	17,566	20,225	15.1	16,557	19,977	20.7	22,437	22,685	1.1
KENTUCKY EASTERN.....	1,138	1,219	7.1	840	1,825	117.3	4,207	3,601	-14.4
KENTUCKY WESTERN.....	1,206	1,401	16.2	1,217	1,172	-3.7	1,400	1,629	16.4
MICHIGAN EASTERN.....	5,558	5,517	-0.7	5,820	5,608	-3.7	5,400	5,309	-1.7
MICHIGAN WESTERN.....	1,071	1,623	51.5	1,022	1,740	70.3	2,307	2,190	-5.1
OHIO NORTHERN.....	3,159	3,435	8.7	2,822	3,067	8.7	3,567	3,935	10.3
OHIO SOUTHERN.....	2,444	3,165	29.5	2,256	2,921	29.5	2,958	3,202	8.2
TENNESSEE EASTERN.....	1,246	1,512	21.3	1,101	1,487	35.1	707	732	3.5
TENNESSEE MIDDLE.....	864	1,111	28.6	752	1,192	58.5	858	777	-9.5
TENNESSEE WESTERN.....	880	1,242	41.1	727	965	32.7	1,033	1,310	26.8
SEVENTH CIRCUIT.....	13,781	15,261	10.7	12,742	13,602	6.7	13,412	15,071	12.4
ILLINOIS NORTHERN.....	6,602	7,017	6.3	5,667	6,415	13.2	5,986	6,588	10.1
ILLINOIS CENTRAL.....	993	1,041	4.8	981	774	-21.1	722	989	37.0
ILLINOIS SOUTHERN.....	1,126	1,194	6.0	1,062	1,106	4.1	1,171	1,259	7.5
INDIANA NORTHERN.....	1,444	1,541	6.7	1,340	1,312	-2.1	1,729	1,958	13.2
INDIANA SOUTHERN.....	1,870	2,119	13.3	1,795	2,042	13.8	1,866	1,943	4.1
WISCONSIN EASTERN.....	1,212	1,557	28.5	1,287	1,284	-0.2	1,117	1,390	24.4
WISCONSIN WESTERN.....	534	752	41.3	610	669	9.7	821	944	15.0
EIGHTH CIRCUIT.....	10,431	11,536	10.6	10,561	10,198	-3.4	10,483	11,821	12.8
ARKANSAS EASTERN.....	1,394	1,809	29.8	1,501	1,528	1.8	1,567	1,868	17.7
ARKANSAS WESTERN.....	637	883	38.6	652	783	13.2	820	920	12.2
IOWA NORTHERN.....	441	450	2.0	451	362	-19.7	327	415	26.9
IOWA SOUTHERN.....	791	849	7.3	843	731	-13.3	839	957	14.1
MINNESOTA.....	1,681	1,902	13.1	1,561	1,803	15.5	1,877	1,976	5.3
MISSOURI EASTERN.....	1,816	1,889	4.0	1,824	1,730	-5.2	1,256	1,455	12.3
MISSOURI WESTERN.....	1,779	1,779	0.0	1,817	1,601	-11.9	1,968	2,146	9.0
NEBRASKA.....	1,038	1,030	-0.8	947	924	-2.4	956	1,102	10.6
NORTH DAKOTA.....	404	400	-1.0	449	321	-28.5	247	326	32.0
SOUTH DAKOTA.....	450	545	21.1	476	415	-12.8	526	656	24.7
NINTH CIRCUIT.....	23,593	25,402	7.7	22,135	23,998	8.4	23,331	24,735	6.0
ALASKA.....	504	629	26.8	482	567	17.6	636	708	11.3
ARIZONA.....	1,490	2,041	37.0	1,653	1,979	19.7	1,726	1,788	3.6
CALIFORNIA NORTHERN.....	5,177	5,006	-3.3	4,993	4,954	-0.8	3,629	3,681	1.4
CALIFORNIA EASTERN.....	1,490	1,332	-10.6	1,168	1,209	3.5	1,803	1,926	6.8
CALIFORNIA CENTRAL.....	5,714	6,723	17.7	5,510	6,137	11.4	4,722	5,308	12.4
CALIFORNIA SOUTHERN.....	2,017	1,383	-31.4	1,834	1,633	-11.0	1,925	1,675	-13.0
HAWAII.....	765	547	-28.5	595	585	-1.7	1,056	1,018	-3.6
IDAHO.....	610	668	9.5	668	592	-11.4	743	819	10.2
MONTANA.....	578	759	31.3	495	613	23.8	679	825	21.5
NEVADA.....	700	1,041	48.7	653	663	1.5	753	1,131	50.2
OREGON.....	1,676	2,122	26.6	1,593	2,085	31.1	1,694	1,727	1.9
WASHINGTON EASTERN.....	509	719	41.3	408	674	65.2	687	732	6.6
WASHINGTON WESTERN.....	2,028	2,156	6.3	1,903	2,148	12.9	2,496	2,544	1.9
UTAH.....	271	135	-50.2	113	87	-23.0	716	764	6.7
NORTHERN MARIANAS.....	64	91	42.2	67	68	1.5	66	89	34.8
TENTH CIRCUIT.....	8,899	9,648	8.4	8,642	8,766	1.4	7,987	8,869	11.0
COLORADO.....	1,824	2,376	30.3	1,995	1,882	-5.7	1,604	2,098	30.8
KANSAS.....	1,996	1,689	-15.4	1,763	1,655	-6.1	2,212	2,246	1.5
NEW MEXICO.....	1,022	1,094	7.0	854	1,069	25.2	924	949	2.7
OKLAHOMA NORTHERN.....	709	719	1.4	672	771	14.7	802	750	-6.5
OKLAHOMA EASTERN.....	514	502	-2.3	490	549	12.0	363	316	-13.0
OKLAHOMA WESTERN.....	1,491	1,739	16.6	1,589	1,444	-9.1	934	1,229	31.6
UTAH.....	935	1,130	20.9	873	1,017	16.5	885	998	12.8
WYOMING.....	408	399	-						

Civil Terminations

During the twelve month period ended September 30, 1981, a total of 180,833 civil cases were disposed of in the U.S. district courts. This represents a jump of 10.0 percent over the number of cases disposed of in 1980. During 1981, a total of 62 districts experienced increases in disposition activity. The largest increases were in Massachusetts (up 127.3 percent) and Kentucky, Eastern (up 117.3 percent). These substantial increases are the result of dispositions of Interstate Commerce Commission cases and Social Security cases, respectively. Other districts with large increases in termination activity include Louisiana, Middle (up 94.1 percent); West Virginia, Southern (up 74.4 percent); and Michigan, Western (up 70.3 percent). Among the 33 districts reporting declines in disposition activity, the most significant declines (other than the Canal Zone) were in North Dakota (down 28.5 percent); Puerto Rico (down 24.0 percent); and Guam (down 23.0 percent).

Civil Pending Caseload

Despite the substantial increase in disposition activity in the U.S. district courts during 1981, the civil pending caseload reached 195,460 cases as of September 30, 1981. This represents an increase of only 2.5 percent over the 190,671 cases pending a year ago. The rate of increase in the pending caseload has declined steadily over the past few years, dropping from 8.1 percent in 1979 to 3.9 percent in 1980, to the current level of 2.5 percent. Seventeen districts were able to reduce their civil pending caseload, with the largest declines (other than the Canal Zone) reported by Massachusetts (down 37.3 percent); West Virginia, Southern (down 31.8 percent); and Florida, Southern (down 24.4 percent). The largest increases in pending caseload were reported by Nevada (up 50.2 percent) and Illinois, Central (up 37.0 percent).

Civil Cases Pending Three Years or More

In March 1981, the Judicial Conference adopted a resolution requiring judges to annually review their dockets and report the status of all cases pending three years or more. This resolution reiterates the concern of the Judicial Conference regarding three-year-old cases, which was established with the adoption of other resolutions in September 1961 and March 1963.

As of June 30, 1981, a total of 15,275 civil cases were pending three years or more. As of September 30, 1981, this number rose slightly to 15,612 cases. Table 5 is a comparison, by district, of the number of civil cases pending three years or more as of June 30, 1981 and September 30, 1981. The 15,612 civil cases pending should decline substantially over the next year as judges direct more attention to the disposition of these matters.

Table 5
U.S. District Courts
Civil Cases Pending Three Years or More
As of June 30, 1981 and September 30, 1981
(Land Condemnation Cases Omitted)

Circuit and District	Pending June 30	Pending September 30	Percent Change	Circuit and District	Pending June 30	Pending September 30	Percent Change
Total	15,275	15,612	2.2	Sixth Circuit	2,896	2,928	1.1
District of Columbia	249	249	-	Kentucky:			
First Circuit	1,939	2,163	11.6	Eastern	1,581	1,544	-2.3
Maine	55	63	14.5	Western	111	110	-0.9
Massachusetts	1,673	1,855	10.9	Michigan:			
New Hampshire	23	28	21.7	Eastern	273	292	7.0
Rhode Island	104	129	24.0	Western	257	244	-5.1
Puerto Rico	84	88	4.8	Ohio:			
Second Circuit	1,916	2,031	6.0	Northern	333	365	9.6
Connecticut	516	536	3.9	Southern	215	235	9.3
New York:				Tennessee:			
Northern	222	264	18.9	Eastern	1	2	100.0
Eastern	393	420	6.9	Middle	48	45	-6.3
Southern	597	617	3.4	Western	77	91	18.2
Western	183	187	2.2	Seventh Circuit	956	1,018	6.5
Vermont	5	7	40.0	Illinois:			
Third Circuit	720	687	-4.6	Northern	468	504	7.7
Delaware	47	57	21.3	Central	38	45	18.4
New Jersey	123	128	4.1	Southern	33	36	9.1
Pennsylvania:				Indiana:			
Eastern	280	255	-8.9	Northern	157	169	7.6
Middle	20	24	20.0	Southern	91	108	18.7
Western	115	109	-5.2	Wisconsin:			
Virgin Islands	135	114	-15.6	Eastern	30	68	-15.0
Fourth Circuit	1,056	900	-14.8	Western	89	88	-1.1
Maryland	145	151	4.1	Eighth Circuit	594	617	3.9
North Carolina:				Arkansas:			
Eastern	66	55	-16.7	Eastern	113	112	-0.9
Middle	116	106	-8.6	Western	59	50	-15.3
Western	53	50	-5.7	Iowa:			
South Carolina	105	79	-24.8	Northern	4	5	25.0
Virginia:				Southern	40	41	2.5
Eastern	103	113	9.7	Minnesota	142	137	-3.5
Western	77	84	9.1	Missouri:			
West Virginia:				Eastern	15	20	33.3
Northern	79	77	-2.5	Western	144	169	17.4
Southern	312	185	-40.7	Nebraska	40	53	32.5
Fifth Circuit	2,543	2,576	1.1	North Dakota	4	4	-
Alabama:				South Dakota	33	26	-21.2
Northern	50	50	-	Ninth Circuit	1,885	1,930	2.4
Middle	15	15	-	Alaska	46	48	4.3
Southern	30	33	10.0	Arizona	214	215	0.5
Florida:				California:			
Northern	22	27	22.7	Northern	200	194	-3.0
Middle	320	327	2.2	Eastern	176	168	-4.5
Southern	257	261	1.6	Central	325	308	-5.2
Georgia:				Southern	149	128	-14.1
Northern	112	116	3.6	Hawaii	150	163	8.7
Middle	12	16	33.3	Idaho	45	58	28.9
Southern	61	68	11.5	Montana	36	38	5.6
Louisiana:				Nevada	94	91	-3.2
Eastern	409	413	1.0	Oregon	76	84	10.5
Middle	65	59	-9.2	Washington:			
Western	54	53	-1.9	Eastern	72	74	2.8
Mississippi:				Western	173	169	-2.3
Northern	18	18	-	Guam	128	192	50.0
Southern	100	101	1.0	Northern Marianas	1	-	-100.0
Texas:				Tenth Circuit	521	517	-0.4
Northern	263	249	-5.3	Colorado	102	84	-17.6
Eastern	140	141	0.7	Kansas	240	257	7.1
Southern	485	495	2.1	New Mexico	21	20	-4.8
Western	118	120	1.7	Oklahoma:			
Canal Zone	12	8	-33.3	Northern	61	64	4.9
				Eastern	5	4	-20.0
				Western	42	38	-9.5
				Utah	48	48	-
				Wyoming	2	4	100.0

CRIMINAL WORKLOAD

Summary of Workload

The criminal workload in the U.S. district courts increased during the twelve month period ended September 30, 1981, reversing the downward trend of previous years. The number of cases filed, including transfers, increased by 6.4 percent from 29,387 cases in 1980 to 31,280 cases in 1981. There were 29,705 cases terminated this year, which is 3.8 percent more than the 28,606 cases terminated during 1980. With the significant rise in case filings and a smaller rise in terminations, the pending caseload rose by 10.6 percent. There were 16,387 cases pending on September 30, 1981 compared to 14,812 cases pending on the same day last year. Table 6 is a comparison of the criminal workload for the twelve month periods ended September 30, 1980 and 1981.

Table 6
U.S. District Courts
Criminal Cases and Defendants (Including Transfers)
During the Twelve Month Periods Ended September 30, 1980 and 1981

Criminal Workload	Cases		Percent Change	Defendants		Defendants Per Case
	1980	1981		1980	1981	
Filings	29,387	31,280	6.4	39,914	42,669	1.4
Terminations	28,606	29,705	3.8	38,538	40,400	1.4
Pending September 30	14,812*	16,387	10.6	21,296*	23,565	1.4

* Revised

The increase in the criminal workload in 1981 is significant compared to the steady decline over the previous four years, as shown in Table 7.

Table 7
U.S. District Courts
Criminal Cases (Including Transfers)
During the Twelve Month Periods Ended September 30, 1977 through 1981

Criminal Cases	1977	1978	1979	1980	1981
Filings	39,464	34,255	31,196	29,387	31,280
Terminations	42,575	34,695	32,088	28,606	29,705

Appendix Table D-1 provides the number of cases and defendants filed, terminated, and pending, by district, for the twelve month period ended September 30, 1981.

In the three month period, from July 1, 1981 through September 30, 1981, case filings increased by 5.6 percent over the same period last year. There were 8,204 cases filed in the current three months compared to 7,769 filed in 1980. Cases terminated during the three month period rose by 4.7 percent, from 7,332 in 1980 to 7,677 in 1981.

Criminal Cases by Offense Level and Type of Proceeding

There were 30,379 cases filed, excluding transfers, during the twelve month ended September 30, 1981. Appendix Table D-2 provides the number of cases and defendants commenced in the U.S. district courts by offense level and method by which commenced. A breakdown of the 30,379 case filings is provided in Table 8.

Table 8
U.S. District Courts
Criminal Cases by Offense Level (Excluding Transfers)
During the Twelve Month Period Ended September 30, 1981

Offense Level	Cases	Percent of Total
Total	30,379	100.0
Felony Cases	20,461	67.4
Misdemeanor Cases	9,302	30.6
Petty Offense Cases	616	2.0

Criminal cases commenced by indictment accounted for 58.3 percent of all cases filed this year. The increase of 7.3 percent, from 16,513 indictments in 1980 to 17,711 this year, is similar to the overall 7.0 percent increase in cases filed, excluding transfers. Cases heard on consent before a magistrate continued to increase significantly with a 35.0 percent increase from 1,629 cases in 1980 to 2,199 in 1981. Table 9 shows the method by which criminal cases were filed in the U.S. district courts during 1980 and 1981.

Table 9
U.S. District Courts
Criminal Cases Filed (Excluding Transfers)
During the Twelve Month Periods Ended September 30, 1980 and 1981

Proceedings Commenced by	1980	1981	Percent Change
Total	28,400	30,379	7.0
Indictment	16,513	17,711	7.3
Information - Indictment Waived	535	486	-9.2
Information - Other	9,249	9,536	3.1
Remanded from Appellate Court	67	69	3.0
Removed from State Court	24	19	-20.8
Reopened/Reinstated	90	84	-6.7
Appeal from U.S. Magistrate	168	170	1.2
Juvenile Delinquency Proceeding	95	69	-27.4
Consent before Magistrate	1,629	2,199	35.0
Retrial on Mistrial	19	12	-36.8
Retrial - Remand from Appeals Court	11	24	118.2

Criminal Filings in Major Offense Categories

Appendix Table D-2 shows criminal case filings by major offense groups. Table 10 provides data on six offense categories in which the case filings increased during the twelve month period ended September 30, 1981.

Table 10
U.S. District Courts
Offense Categories in Which Case Filings Increased
During the Twelve Month Period Ended September 30, 1981

Offense	1980	1981	Percent Increase
Homicide	151	177	17.2
Embezzlement	1,671	1,891	13.2
Drug Laws	3,311	3,734	12.8
Robbery	1,277	1,416	10.9
Sex Offenses	137	147	7.3
Fraud	4,562	4,791	5.0

Table 11 provides data on five offense categories in which the case filings decreased.

Table 11
U.S. District Courts
Offense Categories in Which Case Filings Decreased
During the Twelve Month Period Ending September 30, 1981

Offense	1980	1981	Percent Decrease
Auto Theft	377	306	-18.8
Forgery and Counterfeiting	1,986	1,736	-12.6
Burglary	138	126	-8.7
Assault	558	531	-4.8
Larceny and Theft	3,015	2,934	-2.7

Pending Caseload on September 30

Nationally, the pending caseload in the U.S. district courts increased by 10.6 percent, from 14,812 cases pending on September 30, 1980, to 16,387 cases pending on the same day last year. Table 13 shows the change in the pending caseload in each of the 95 district courts. There were 63 districts which experienced an increase in the pending caseload; 28 districts had decreases in pending cases; and four districts had the same number of cases pending at the end of each year. The 12 districts which reported increases of more than 35 percent in the pending caseload are indicated in Table 12.

Table 12
U.S. District Courts
Selected Districts with an Increase in Pending Caseload
During the Twelve Month Period Ended September 30, 1981

District	1980	1981	Percent Increase
Rhode Island	48	98	104.2
Tennessee, Western	144	234	62.5
Alabama, Southern	26	42	61.5
Wisconsin, Eastern	57	90	57.9
Puerto Rico	59	90	52.5
Virginia, Eastern	203	304	49.8
Georgia, Middle	32	46	43.8
Kentucky, Western	83	119	43.4
Pennsylvania, Middle	85	121	42.4
Georgia, Northern	176	250	42.0
Connecticut	118	163	38.1
Mississippi, Southern	49	67	36.7

Table 13
U.S. District Courts
Criminal Cases Pending
During the Twelve Month Period Ended September 30, 1981

Circuit and District	September 30		Percent Change	Circuit and District	September 30		Percent Change
	1980	1981			1980	1981	
Total	14,812	16,387	10.6	Sixth Circuit	946	1,099	16.2
District of Columbia	233	249	6.9	Kentucky:			
First Circuit	423	532	25.8	Eastern	75	84	12.0
Maine	44	40	-9.1	Western	83	119	43.4
Massachusetts	251	287	14.3	Michigan:			
New Hampshire	21	17	-	Eastern	258	237	-8.1
Rhode Island	48	98	104.2	Western	56	70	25.0
Puerto Rico	59	90	52.5	Ohio:			
Second Circuit	1,767	1,877	6.2	Northern	124	120	-3.2
Connecticut	118	163	38.1	Southern	88	89	1.1
New York:				Tennessee:			
Northern	87	102	17.2	Eastern	31	33	6.5
Eastern	711	736	3.5	Middle	87	113	29.9
Southern	656	699	6.6	Western	144	234	62.5
Western	120	80	-33.3	Seventh Circuit	775	859	10.8
Vermont	75	97	29.3	Illinois:			
Third Circuit	860	922	7.2	Northern	476	480	0.8
Delaware	23	24	-	Central	46	57	23.9
New Jersey	238	260	9.2	Southern	44	53	20.5
Pennsylvania:				Indiana:			
Eastern	223	248	11.2	Northern	50	57	14.0
Middle	85	121	42.4	Southern	78	78	-
Western	114	96	-15.8	Wisconsin:			
Virgin Islands	177	173	-2.3	Eastern	57	90	57.9
Fourth Circuit	1,003	1,130	12.7	Western	24	44	-
Maryland	257	321	24.9	Eighth Circuit	640	683	6.7
North Carolina:				Arkansas:			
Eastern	165	114	-30.9	Eastern	68	59	-13.2
Middle	39	46	17.9	Western	24	34	-
Western	52	49	-5.8	Iowa:			
South Carolina	148	159	7.4	Northern	12	33	-
Virginia:				Southern	49	44	-10.2
Eastern	203	304	49.8	Minnesota	113	100	-11.5
Western	54	54	-	Missouri:			
West Virginia:				Eastern	66	72	9.1
Northern	17	23	-	Western	144	180	25.0
Southern	68	60	-11.8	Nebraska	39	52	33.3
Fifth Circuit	3,437	3,882	12.9	North Dakota	33	29	-12.1
Alabama:				South Dakota	92	80	-13.0
Northern	75	76	1.3	Ninth Circuit	4,106	4,491	9.4
Middle	53	69	30.2	Alaska	41	51	24.4
Southern	26	42	61.5	Arizona	696	660	-5.2
Florida:				California:			
Northern	63	72	14.3	Northern	254	336	32.3
Middle	212	251	18.4	Eastern	179	236	31.8
Southern	959	982	2.4	Central	723	748	3.5
Georgia:				Southern	1,071	1,141	6.5
Northern	176	250	42.0	Hawaii	528	698	30.3
Middle	32	46	43.8	Idaho	32	34	6.3
Southern	105	69	-34.3	Montana	79	65	-17.7
Louisiana:				Nevada	120	145	20.8
Eastern	130	120	-7.7	Oregon	99	97	-2.0
Middle	35	22	-37.1	Washington:			
Western	57	48	-15.8	Eastern	47	34	-27.7
Mississippi:				Western	196	223	13.8
Northern	20	32	-	Guam	31	21	-32.3
Southern	49	67	36.7	Northern Marianas	10	12	-
Texas:				Tenth Circuit	622	663	6.6
Northern	236	250	5.9	Colorado	150	174	16.0
Eastern	64	64	-	Kansas	104	120	15.4
Southern	797	1,020	28.0	New Mexico	147	138	-6.1
Western	331	401	21.1	Oklahoma:			
Canal Zone	17	1	-	Northern	21	31	-
				Eastern	27	21	-22.2
				Western	86	94	9.3
				Utah	62	62	-
				Wyoming	25	23	-

FEDERAL PROBATION SYSTEM

Probation System Workload

The number of persons under supervision of the Federal Probation System on September 30, 1981, continued to decline from 63,361 last year to 58,494 at the end of this reporting period. (See Appendix Table E-2.) This was more than three times the numerical decrease reported last year. As shown in Appendix Table E-1, persons beginning new terms or reinstated to active supervision numbered 29,192, down 1,678 or 5.4 percent from last year. The 32,707 persons removed from supervision during this period was 1,250 or 3.7 percent fewer than the number removed last year. Removals thus, exceeded persons received by 3,515. The remainder of the decrease in persons under supervision was the result of statistical removals following reconciliations of the Administrative Office computer files with the files of the probation offices.

Persons Received for Supervision

As shown in Table 14, the 29,192 persons received for supervision during the twelve month period ended September 30, 1981 was 5.4 percent lower than 30,870 received last year. The total received for supervision this year was composed of 9,854 persons from institutions and 19,338 persons from the district courts. The number received from institutions was down 19.8 percent while the number received from the courts increased 4.1 percent. This increase resulted from a rise in the number of probationers received from U.S. magistrates during the year. The number of probationers received from district courts remained nearly constant compared to last year.

Table 14
Persons Received for Supervision in the Federal Probation System
During the Twelve Month Periods Ended September 30, 1979 through 1981
(Excludes Transfers)

Type of Supervision	September 30			Change 1981 Over 1980	
	1979	1980	1981	Number	Percent
Total	32,663	30,870	29,192	-1,678	-5.4
From District Courts	20,462	18,577	19,338	761	4.1
Court Probation	13,342	11,914	11,920	6	0.1
U.S. Magistrate Probation	4,897	4,669	5,449	780	16.7
Pretrial Diversion	2,223	1,994	1,969	-25	-1.3
From Institutions	12,201	12,293	9,854	-2,439	-19.8
Parole	6,874	7,567	6,203	-1,364	-18.0
Mandatory Release	3,119	2,490	1,839	-651	-26.1
Special Parole	2,097	1,948	1,486	-462	-23.7
Military Parole	111	288	326	38	13.2

The decrease in the number of persons received from institutions resulted from declines of 18 percent in parole; 26.1 percent in mandatory release; and 23.7 percent in special parole. The only category to register an increase was military parole which rose by only 38 persons received.

Table 15 provides the data for the three-month periods July through September, 1980 and 1981. The increase of 445 or 6.4 percent in persons received for all types of supervision sharply contrasts with the decline shown overall in the 12 month figures. The 13.3 percent increase in persons received from the courts is more pronounced in the three-month tables than the 4.1 percent rise for the year. The decline of 4.8 percent in persons received from institutions from July to September this year is also less severe than the decrease reported for the year.

Table 15
Persons Received for Supervision
(Excludes Transfers)
Three Month Periods July through September 1980 and 1981

Type of Supervision	1980	1981	Percent Change
Total	6,938	7,383	6.4
District Courts	4,295	4,868	13.3
Court Probation	2,653	2,989	12.7
U.S. Magistrate Probation	1,144	1,393	12.8
Pretrial Diversion	498	486	-2.4
From Institutions	2,643	2,515	-4.8
Parole	1,637	1,530	-6.5
Mandatory Release	516	476	-7.8
Special Parole	395	423	7.1
Military Parole	95	86	-9.5

Persons Removed From Supervision

During the twelve month period ended September 30, 1981, there were 32,707 persons removed from active supervision to inactive status or had their supervision terminated (excluding transfers). This total is 1,250 less than the 33,957 removed during the same period last year. There were 13,558 persons removed from court-imposed probation terms this year. This is 1,052 persons less than last year. There were 2,073 mandatory release terms terminated or made inactive, a decrease of 836 from last year's total. The number of special parolees removed from supervision also declined from 2,553 last year to 2,105 during the past twelve months. The only type of supervision to register an increase in persons removed from supervision was parole, up from 6,651 last year to 7,605 this year.

Technical Note

Because records pertaining to persons received or removed during a specific reporting period can be processed after that period has occurred, the number of persons reported under supervision on a particular date changes in ensuing reports. Appendix Table E-1, therefore, shows a different figure for persons under supervision at the beginning of this year than was reported at the end of last year. Comparisons in the text, however, are based on the ending figure reported last year.

Persons Under Supervision

On September 30, 1981 there were 58,494 persons under supervision, down by 4,867 or 7.7 percent since the close of last year. As shown in Table 16, the total numbers of persons under supervision from the district courts and supervised after release from institutions were reduced by 2,431 and 2,436, respectively. Court probationers under supervision were down from 43,155 last year to 40,724 this year. Probationers supervised on terms imposed by U.S. magistrates, however, increased by 183 to 7,096 at the end of this year. Persons serving under conditions of pretrial diversion numbered 2,064 at the end of this year, a drop of 147 from last year.

Table 16
Persons Under Supervision
On September 30, 1980 and 1981

Type of Supervision	September 30		Change	
	1980	1981	Number	Percent
Total	63,361	58,494	-4,867	-7.7
District Courts	43,155	40,724	-2,431	-5.6
Court Probation	34,031	31,564	-2,467	-7.2
U.S. Magistrate Probation	6,913	7,096	183	2.6
Pretrial Diversion	2,211	2,064	-147	-6.6
From Institutions	20,206	17,770	-2,436	-12.1
Parole	14,562	13,066	-1,496	-10.3
Mandatory Release	1,547	1,221	-326	-21.1
Special Parole	3,743	3,042	-701	-18.7
Military Parole	354	441	87	24.6

There were 1,496 fewer parolees being supervised when the period ended, for a new total of 13,066. The number of persons serving on special parole terms fell to 3,042 this year, down 701 or 18.7 percent from last year. The 1,221 mandatory releasees under supervision at year's end was also a decrease of 326 or 21.1 percent since the end of last year. Military parolees under supervision rose from 354 at the end of last year to 441 on September 30 of this year.

Persons Under Supervision by District

There were 71 districts that experienced reductions in caseloads during the past year. For the 23 districts that reported increases, the largest increase was only 41 cases. The Canal Zone reduced its caseload by 134 or nearly one-half (49.3 percent) as preparations continued toward closing the district court and probation office on April 1, 1978 in accordance with the Panama Canal Treaty. Fourteen other districts had decreases of 100 or more in total persons under supervision. All are large districts which are among the top 22 in total caseload. (See Table 17.) The combined decrease in these 14 districts was 3,180, accounting for nearly 60 percent of the overall decline in the national caseload.

Table 17
Federal Probation System
Persons Under Supervision by District on September 30, 1980 and 1981

Circuit and District	September 30		Increase or Decrease	Percent Change	Circuit and District	September 30		Increase or Decrease	Percent Change
	1980	1981				1980	1981		
Total	63,361	58,494	-4,867	-7.7	Sixth Circuit	5,618	5,293	-325	-5.8
District of Columbia	1,878	1,662	-216	-11.5	Kentucky:				
First Circuit	1,648	1,481	-167	-10.1	Eastern	431	393	-38	-8.8
Maine	117	100	-17	-14.5	Western	451	487	36	8.0
Massachusetts	1,004	878	-126	-12.5	Michigan:				
New Hampshire	90	102	12	13.3	Eastern	1,503	1,237	-266	-17.7
Rhode Island	102	107	5	4.9	Western	311	328	17	5.5
Puerto Rico	335	294	-41	-12.2	Ohio:				
Second Circuit	5,404	4,957	-447	-8.3	Northern	991	903	-88	-8.9
Connecticut	469	405	-64	-13.6	Southern	640	620	-20	-3.1
New York:					Tennessee:				
Northern	263	243	-20	-7.6	Eastern	410	375	-35	-8.5
Eastern	2,288	2,092	-196	-8.6	Middle	392	432	40	10.2
Southern	1,887	1,749	-138	-7.3	Western	489	518	29	5.9
Western	433	396	-37	-8.5	Seventh Circuit	4,476	3,990	-486	-10.9
Vermont	64	72	8	12.5	Illinois:				
Third Circuit	4,947	4,244	-703	-14.2	Northern	2,415	2,115	-300	-12.4
Delaware	142	125	-17	-12.0	Central	337	345	8	2.4
New Jersey	1,513	1,416	-97	-6.4	Southern	335	296	-39	-11.6
Pennsylvania:					Indiana:				
Eastern	1,791	1,442	-349	-19.5	Northern	477	395	-82	-17.2
Middle	277	258	-19	-6.9	Southern	536	486	-50	-9.3
Western	905	767	-138	-15.2	Wisconsin:				
Virgin Islands	319	236	-83	-26.0	Eastern	265	253	-12	-4.5
Fourth Circuit	6,442	5,989	-453	-7.0	Western	111	100	-11	-9.9
Maryland	1,598	1,470	-128	-8.0	Eighth Circuit	3,269	3,163	-106	-3.2
North Carolina:					Arkansas:				
Eastern	739	697	-42	-5.7	Eastern	351	335	-16	-4.6
Middle	608	561	-47	-7.7	Western	220	188	-32	-14.5
Western	650	671	21	3.2	Iowa:				
South Carolina	960	835	-125	-13.0	Northern	121	117	-4	-3.3
Virginia:					Southern	206	174	-32	-15.5
Eastern	1,035	978	-57	-5.5	Minnesota	530	524	-6	-1.1
Western	430	352	-78	-18.1	Missouri:				
West Virginia:					Eastern	723	703	-20	-2.8
Northern	140	123	-17	-12.1	Western	535	549	14	2.6
Southern	282	302	20	7.1	Nebraska	180	187	7	3.9
Fifth Circuit	14,769	13,998	-771	-5.2	North Dakota	160	132	-28	-17.5
Alabama:					South Dakota	243	254	11	4.5
Northern	885	817	-68	-7.7	Ninth Circuit	11,650	10,578	-1,072	-9.2
Middle	289	284	-5	-1.7	Alaska	183	186	3	1.6
Southern	284	248	-36	-12.7	Arizona	1,305	1,071	-234	-17.9
Florida:					California:				
Northern	266	286	20	7.5	Northern	1,457	1,290	-167	-11.5
Middle	1,161	1,099	-62	-5.3	Eastern	901	830	-71	-7.9
Southern	1,342	1,348	6	0.4	Central	3,885	3,403	-482	-12.4
Georgia:					Southern	1,217	1,120	-97	-8.0
Northern	985	980	-5	-0.5	Hawaii	251	292	41	16.3
Middle	347	333	-14	-4.0	Idaho	200	196	-4	-2.0
Southern	285	274	-11	-3.9	Montana	310	314	4	1.3
Louisiana:					Nevada	311	315	4	1.3
Eastern	746	711	-35	-4.7	Oregon	615	591	-24	-3.9
Middle	159	145	-14	-8.8	Washington:				
Western	475	442	-33	-6.9	Eastern	191	190	-1	-0.5
Mississippi:					Western	767	709	-58	-7.6
Northern	196	201	5	2.6	Guam	57	71	14	24.6
Southern	327	242	-85	-26.0	Tenth Circuit	3,260	3,139	-121	-3.7
Texas:					Colorado	739	689	-50	-6.8
Northern	1,750	1,673	-77	-4.4	Kansas	452	472	20	4.4
Eastern	404	422	18	4.5	New Mexico	620	588	-32	-5.2
Southern	2,904	2,723	-181	-6.2	Oklahoma:				
Western	1,692	1,632	-60	-3.5	Northern	282	273	-9	-3.2
Canal Zone	272	138	-134	-49.3	Eastern	173	148	-25	-14.5
					Western	478	466	-12	-2.5
					Utah	344	332	-12	-3.5
					Wyoming	172	171	-1	-0.6

U.S. BANKRUPTCY COURTS

Summary of Workload

During the twelve month period ended September 30, 1981, there were 521,637 bankruptcy estates filed in the U.S. bankruptcy courts. Total filings increased by 100,211 estates or 23.8 percent, from the 421,426 estates filed in 1980. During 1981, a total of 362,233 Bankruptcy Code cases were filed (158,637 cases of which are joint petitions) and 767 Bankruptcy Act cases were reopened. At the same time, bankruptcy estate terminations jumped from 204,817 in 1980 to 357,036 in 1981, an increase of 74.3 percent. The bankruptcy termination figure includes 212,192 Bankruptcy Code cases (87,405 cases of which are joint petitions) and 57,439 Bankruptcy Act cases. Despite the rise in bankruptcy terminations, the pending caseload increased 33.7 percent, from 488,845 estates in 1980 to 653,446 in 1981. The 653,446 bankruptcy estates pending include 392,702 Bankruptcy Code cases (172,737 cases of which are joint petitions) and 88,007 Bankruptcy Act cases. Table 18 compares the bankruptcy estate workload during the twelve month periods ended September 30, 1980 and 1981.

Table 18
U.S. Bankruptcy Courts
Bankruptcy Estates Commenced, Terminated, and Pending
During the Twelve Month Periods Ended September 30, 1980 and 1981

Twelve Months Ended September 30	Filings	Terminations	Pending September 30
1980	421,426	204,817	488,845
1981	521,637	357,036	653,446
Percent Change 1981 over 1980	23.8	74.3	33.7

Note: Because all statistical data for the twelve month period ended September 30, 1981, was not available, the 1981 totals are understated slightly.

Filings have increased in each quarter since the second quarter of 1979, with the total for the fourth quarter in 1981 reaching 133,914 estates, the largest total ever for a three month period. The first quarter of 1982, however, experienced a slight decrease, down 3.2 percent to 129,645 estates, from the preceding quarter. Table 19 provides a comparison of bankruptcy estates commenced, by quarter, for statistical years 1975 through 1982.

The twelve month period ended September 30, 1981, completes two full years of bankruptcy activity in the U.S. bankruptcy courts under the Bankruptcy Reform Act of 1978 (Public Law 95-598 STAT, 2549, approved November 6, 1978). Table 20 provides a comparison of the number of Bankruptcy Code cases, joint petitions, and adversary proceedings filed during the twelve month periods ended September 30, 1980 and 1981.

As reflected in Table 20, all but five districts had increases in the number of Bankruptcy Code cases filed in 1981. The largest percentage increases were experienced in the Virgin Islands (112.5); South Carolina (102.5); Texas, Eastern (97.6); and Texas, Southern (95.0). The five districts showing decreases in Bankruptcy Code cases filed were Alaska (down 12.8 percent); Texas, Western (down 7.8 percent); Kentucky, Western (down 5.1 percent); Hawaii (down 2.7 percent); and Oklahoma, Western (down 1.8 percent).

Substantial increases in filings were also reported in both joint petitions (30.6 percent) and adversary proceedings (105.4 percent).

Table 19
U.S. Bankruptcy Courts
Bankruptcy Estates Filed by Quarter
During the Twelve Month Periods Ended June 30, 1975 through 1981
And the Three Month Quarter Ended September 30, 1981

Statistical Year	First Quarter (Jul-Sept)	Second Quarter (Oct-Dec)	Third Quarter (Jan-Mar)	Fourth Quarter (Apr-Jun)	Twelve Month Total
1975	53,856	62,802	67,994	69,832	254,484
1976	60,987	66,783	59,597	59,182	246,549
1977	54,261	53,860	51,649	54,629	214,399
1978	52,531	49,541	47,454	53,425	202,951
1979	52,098	55,275	55,544	63,559	226,476
1980	66,298	76,417	96,560	121,682	360,957
1981	127,071	127,533	130,545	133,914	519,063
1982	129,645	-	-	-	-
Percent Change 1982 over 1981 ...	2.0	-	-	-	-
Percent Change 1981 over					
1980	91.7	66.9	35.2	10.1	43.8
1979	143.9	130.7	135.0	110.7	129.2
1978	141.9	157.4	175.1	150.7	155.8
1977	134.2	136.8	152.8	145.1	142.1
1976	108.4	91.0	119.0	126.3	110.5
1975	135.9	103.1	92.0	91.8	104.0

Note: Because all statistical data for the twelve month period ended September 30, 1981, was not available, the 1981 totals are understated slightly.

**REPORT ON CASES UNDER SUBMISSION IN THE U.S. COURTS OF APPEALS
AND CASES AND MOTIONS UNDER ADVISEMENT IN THE U.S. DISTRICT COURTS**

Cases Under Submission

The U.S. courts of appeals, Court of Claims, and Court of Customs and Patent Appeals reported 761 cases held under submission more than three months on September 30, 1981. This was 13.2 percent greater than the 672 cases reported in September 1980. A total of 433 cases (56.9 percent) were held more than three months but less than six months; 191 (25.1 percent) were held more than six months but less than nine months; 84 (11.0 percent) were held more than nine months but less than one year; and 53 (7.0 percent) were held more than one year. Cases awaiting the submission of additional memoranda or awaiting an opinion in another case are not included.

Compared to a year ago, the overall number of cases under submission has increased, however, cases pending over one year declined 11.7 percent to 53 cases on September 30, 1981. The Temporary Emergency Court of Appeals reported that there were no cases under submission over three months on September 30, 1981. Cases in the courts of appeals and other federal courts were distributed as shown in Table 21.

Table 21
Cases Under Submission More Than Three Months
On September 30, 1980 and 1981

Court	Total	More than 3 but less than 6 months	More than 6 but less than 9 months	More than 9 months but less than 1 year	More than 1 year
Total on September 30, 1981	761	433	191	84	53
Courts of Appeals					
District of Columbia	51	24	16	6	5
First	11	10	1	-	-
Second	10	7	2	1	-
Third	-	-	-	-	-
Fourth	46	35	9	2	-
Fifth	183	105	53	23	2
Sixth	61	33	13	12	3
Seventh	59	35	14	6	4
Eighth	22	18	4	-	-
Ninth	216	125	42	26	23
Tenth	95	36	35	8	16
Court of Claims	4	2	2	-	-
Court of Customs and Patent Appeals	3	3	-	-	-
Temporary Emergency Court of Appeals	-	-	-	-	-
Total on September 30, 1980	672	403	147	62	60

Cases Under AdviseMENT

U.S. district judges reported 1,179 matters held under advisement over 60 days on September 30, 1981. That was 30.6 percent fewer than the 1,700 matters reported in September 1980. This decrease, however, is largely due to a substantial number of judges who either did not report or reported too late for publication. This resulted in a large number of judges listed as not reporting and an unknown number of undecided matters that were not tallied.

Table 22 shows that 462 district judges, including 116 senior judges, reported on the status of matters before the court. While 307 judges (66.5 percent) reported no matters under advisement over 60 days, 155 judges (33.5 percent) reported matters under advisement over 60 days. A total of 117 active judges were listed as not reporting this year, compared to 22 last year.

Table 22
U.S. District Courts
District Judges Reporting on Cases Held Under AdviseMENT
On September 30, 1980 and 1981

Circuit	Total Judges reporting	Senior Judges reporting ¹	Judges not reporting ²	Judges having no cases over 60 days	Judges having cases over 60 days
Total on September 30, 1981	462	116	117	307	155
District of Columbia					
First	13	6	8	10	3
Second	17	7	5	7	10
Third	42	10	13	25	17
Fourth	48	10	8	35	13
Fifth	42	8	3	31	11
Sixth	89	19	33	58	31
Seventh	46	7	10	23	23
Eighth	32	8	6	15	17
Ninth	39	13	3	31	8
Tenth	66	19	21	48	18
Total on September 30, 1980	28	9	7	24	4
Total on September 30, 1980	560	110	22	357	203

¹ Included in total.

² Does not include Senior Judges.

The 155 judges having matters pending reported a total of 306 cases and 873 motions held under advisement over 60 days on September 30, 1981. Of these, 210 cases and 503 motions (60.5 percent) were held under advisement over 60 days but not more than six months; 59 cases and 198 motions (21.8 percent) were held under advisement over six months but not more than one year; and 37 cases and 172 motions (17.7 percent) were held over one year. The Seventh Circuit reported the largest number of pending matters with 453 matters.

Table 23 provides the distribution by circuit of cases and motions held under advisement over 60 days in the U.S. district courts on September 30, 1981.

Table 23
U.S. District Courts
Cases and Motions Held Under Advisement Over 60 Days
On September 30, 1980 and 1981
Which Have Not Been Reported As Decided

Circuit	Total held over 60 days		Held over 60 days not more than 6 months		Held over 6 months not more than 1 year		Held over 1 year	
	Cases	Motions	Cases	Motions	Cases	Motions	Cases	Motions
Total on September 30, 1981	306	873	210	503	59	198	37	172
District of Columbia	-	9	-	7	-	1	-	1
First	27	15	14	10	11	1	2	4
Second	22	107	8	69	13	30	1	8
Third	10	35	8	25	2	9	-	1
Fourth	14	29	10	25	2	2	2	2
Fifth	50	131	29	104	8	19	13	8
Sixth	30	56	22	35	2	9	6	12
Seventh	82	371	75	145	4	105	3	121
Eighth	39	61	21	42	10	9	8	10
Ninth	22	53	19	36	1	12	2	5
Tenth	10	6	4	5	6	1	-	-
Total on September 30, 1980	444	1,256	277	701	85	348	82	207

APPENDIX OF DETAILED STATISTICAL TABLES

*DURING THE TWELVE-MONTH PERIOD
ENDED SEPTEMBER 30, 1981*

TABLE C 2. U.S. DISTRICT COURTS
CIVIL CASES COMMENCED, BY BASIS OF JURISDICTION AND NATURE OF SUIT
FOR THE TWELVE MONTH PERIODS ENDED SEP. 30, 1980 AND 1981

NATURE OF SUIT	1980	1981					
		TOTAL	U.S. CASES		PRIVATE CASES		
			PLAINTIFF	DEFENDANT	FEDERAL QUESTION	DIVERSITY OF CITIZENSHIP	LOCAL JURISDICTION
TOTAL CASES.....	171,346	185,622	39,146	24,651	74,543	46,507	775
CONTRACT ACTIONS, TOTAL.....	50,477	54,059	24,818	632	6,113	22,418	78
INSURANCE.....	3,813	4,448	31	86	27	4,292	12
MARINE.....	4,754	5,237	42	29	5,160	-	6
MILLER ACT.....	802	749	-	-	749	-	-
NEGOTIABLE INSTRUMENTS.....	4,359	3,467	2,309	19	16	1,117	6
RECOVERY OF OVERPAYMENTS AND ENFORCEMENT OF JUDGMENTS	16,236	20,671	20,449	16	11	193	2
OTHER CONTRACT ACTIONS.....	20,473	19,487	1,987	482	150	16,816	52
REAL PROPERTY ACTIONS, TOTAL.....	10,385	7,962	4,609	503	623	2,159	68
CONDEMNATION OF LAND.....	3,832	1,184	1,019	66	79	19	1
FORECLOSURE.....	4,875	4,777	3,351	-	438	953	35
RENT, LEASE, AND EJECTMENT.....	313	321	98	28	-	188	7
TORTS TO LAND.....	496	562	40	58	106	355	3
OTHER REAL PROPERTY ACTIONS.....	871	1,118	101	351	-	644	22
TORT ACTIONS, TOTAL.....	32,779	33,750	131	3,067	8,344	21,927	281
PERSONAL INJURY:							
AIRPLANE.....	872	826	-	86	24	708	8
ASSAULT, LIBEL, AND SLANDER.....	712	777	-	51	17	701	8
EMPLOYERS' LIABILITY ACT.....	1,985	1,893	-	-	1,893	-	-
MARINE.....	5,020	5,310	-	171	4,351	785	3
MOTOR VEHICLE.....	6,181	6,304	-	525	20	5,638	121
MEDICAL MALPRACTICE.....	769	910	-	320	-	589	1
OTHER PERSONAL INJURY.....	12,502	13,427	-	1,691	48	11,559	129
PERSONAL PROPERTY DAMAGE:							
FRAUD INCLUDING TRUTH IN LENDING.....	2,520	1,893	56	23	1,241	566	7
OTHER PERSONAL PROPERTY DAMAGE.....	2,218	2,410	75	200	750	1,381	4
ACTIONS UNDER STATUTES, TOTAL.....	77,226	89,238	9,582	20,438	59,182	-	36
ANTI-TRUST.....	1,447	1,333	35	7	1,291	-	-
BANKRUPTCY SUITS:							
TRUSTEE.....	236	175	-	2	173	-	-
TRANSFER (S15B).....	58	42	1	-	41	-	-
APPEAL (801).....	1,480	1,797	22	36	1,739	-	-
BANKS AND BANKING.....	212	262	35	35	192	-	-
CIVIL RIGHTS:							
VICTIM.....	151	133	7	6	120	-	-
JOB.....	5,216	6,659	369	667	5,623	-	-
ACCOMMODATIONS.....	311	309	4	18	287	-	-
WELFARE.....	230	250	1	52	197	-	-
OTHER CIVIL RIGHTS.....	7,424	8,682	65	783	7,834	-	-
COMMERCE (ICC RATES, ETC.).....	1,014	1,099	81	14	1,004	-	-
ECONOMIC STABILIZATION ACT.....	36	49	12	12	25	-	-
ENVIRONMENTAL MATTERS.....	545	555	248	220	87	-	-

TABLE C 2. U.S. DISTRICT COURTS
CIVIL CASES COMMENCED, BY BASIS OF JURISDICTION AND NATURE OF SUIT
FOR THE TWELVE MONTH PERIODS ENDED SEP. 30, 1980 AND 1981

NATURE OF SUIT	1980	TOTAL	1981				
			U.S. CASES		PRIVATE CASES		
			PLAINTIFF	DEFENDANT	FEDERAL QUESTION	DIVERSITY OF CITIZENSHIP	LOCAL JURISDICTION
ACTIONS UNDER STATUTES, CONTINUED							
DEPORTATION.....	124	119	4	115	-	-	-
PRISONER PETITIONS:							
MOTIONS TO VACATE SENTENCE.....	1,318	1,192	-	1,192	-	-	-
PAROLE COMMISSION REVIEW.....	36	71	-	71	-	-	-
PRISON OFFICIALS - HABEAS CORPUS.....	8,650	9,572	-	1,688	7,873	-	-
PRISON OFFICIALS - MANDAMUS, ETC.....	469	563	-	374	186	-	11
CIVIL RIGHTS.....	13,649	17,228	-	854	16,373	-	3
FORFEITURE AND PENALTY:							
AGRICULTURAL ACTS.....	37	103	103	-	-	-	1
FCCD AND DRUG ACT.....	689	463	463	-	-	-	-
LIQUOR LAWS.....	4	3	3	-	-	-	-
RAILROAD AND TRUCKING REGULATIONS.....	11	4	4	-	-	-	-
AIR TRAFFIC REGULATIONS.....	45	46	46	-	-	-	-
OCCUPATIONAL SAFETY AND HEALTH ACT.....	220	263	263	-	-	-	-
OTHER FORFEITURE AND PENALTY SUITS.....	2,122	2,269	2,269	-	-	-	-
LABOR LAWS:							
FAIR LABOR STANDARDS ACT.....	1,881	1,752	1,149	24	579	-	-
LABOR MANAGEMENT RELATIONS ACT.....	4,039	4,115	260	37	3,818	-	-
LABOR MANAGEMENT REPORTING AND DISCLOSURE ACT.....	203	261	63	5	193	-	-
RAILWAY LABOR ACT.....	162	219	1	7	211	-	-
OTHER LABOR LITIGATION.....	2,518	3,298	300	124	2,874	-	-
PROTECTED PROPERTY RIGHTS:							
COPYRIGHT.....	1,400	1,554	-	-	1,554	-	-
PATENT.....	790	835	2	10	823	-	-
TRADEMARK.....	1,577	1,794	-	-	1,794	-	-
SECURITIES, COMMODITIES, AND EXCHANGES.....	1,705	1,806	144	12	1,650	-	-
SOCIAL SECURITY LAWS:							
BLACK LUNG CASES.....	175	136	-	136	-	-	-
OTHER.....	8,739	10,138	-	10,138	-	-	-
STATE REAPPORTIONMENT SUITS.....	1	5	-	-	-	-	-
TAX SUITS.....	3,366	3,962	2,658	1,283	5	-	-
CUSTOMER CHALLENGE.....	7	6	-	6	-	-	-
FREEDOM OF INFORMATION ACT OF 1974.....	554	473	-	447	-	-	21
OTHER STATUTORY ACTIONS.....	4,335	5,643	970	2,063	26	-	-
OTHER ACTIONS, TOTAL.....	479	613	6	11	281	3	312
DOMESTIC RELATIONS.....	10	13	-	-	-	-	13
INSANITY.....	125	137	-	-	-	-	137
PROBATE.....	1	2	-	-	-	-	2
SUITS INVOLVING LOCAL OFFICIALS.....	189	294	5	9	278	2	-
OTHER.....	154	167	1	2	3	1	160

TABLE C-3. U.S. DISTRICT COURTS
CIVIL CASES COMMENCED, BY NATURE OF SUIT AND DISTRICT
FOR THE TWELVE MONTH PERIOD ENDED SEP. 30, 1981

Table with columns for Circuit and District, Total Civil Cases, and various case categories including Prisoner Petitions, Real Property, Motor Vehicle Personal Injury, and others.

TABLE C-3. U.S. DISTRICT COURTS
CIVIL CASES COMMENCED, BY NATURE OF SUIT AND DISTRICT
FOR THE TWELVE MONTH PERIOD ENDED SEP. 30, 1981

Detailed table showing Civil Cases Commenced by Nature of Suit and District for the twelve month period ended Sep. 30, 1981. Columns include Circuit and District, Total Private Civil, Contract, Real Property, Fela, Marine Personal Injury, Motor Vehicle Personal Injury, Other Personal Injury, Other Tort Actions, Anti-Trust, Civil Rights, Commerce, Habeas Corpus, Civil Rights, Man-Damus and Other, Copyright Patent Trademark, Labor Suits, and All Other.

TABLE D-2 DEFENDANTS AND CASES, U.S. DISTRICT COURTS
CRIMINAL DEFENDANTS AND CASES COMMENCED BY MAJOR OFFENSE (EXCLUDES TRANSFERS) DURING THE TWELVE MONTH PERIOD ENDED SEP. 30, 1981

NATURE OF PROCEEDING AND OFFENSE	TOTAL		FELONY		MISDEMEANORS		OTHER*	
	DEFENDANTS	CASES	DEFENDANTS	CASES	DEFENDANTS	CASES	DEFENDANTS	CASES
TOTAL	41,681	30,379	31,200	20,461	9,781	9,302	700	616
PROCEEDINGS COMMENCED BY								
INDICTMENT.....	28,069	17,711	27,469	17,235	518	416	82	60
INFORMATION--INDICTMENT WAIVED.....	549	486	543	482	6	4	-	-
INFORMATION--OTHER.....	10,212	9,536	2,729	2,428	7,005	6,687	478	421
REMANDED FROM APPELLATE COURT.....	136	69	134	67	2	2	-	-
REMOVED FROM STATE COURT.....	27	19	19	11	6	6	2	2
REOPENED/REINSTATED.....	114	84	107	79	6	4	1	1
APPEAL FROM U.S. MAGISTRATE.....	177	170	2	2	54	52	121	116
JUVENILE DELINQUENCY PROCEEDINGS.....	80	69	68	61	6	2	6	6
CONSENT BEFORE MAGISTRATE.....	2,256	2,199	72	63	2,174	2,126	10	10
RETRIAL ON MISTRIAL.....	17	12	15	10	2	2	-	-
RETRIAL--REMAND FROM APPEALS COURT.....	44	24	42	23	2	1	-	-
GENERAL OFFENSES								
HOMICIDE TOTAL	200	177	198	175	2	2	-	-
MURDER 1ST DEGREE.....	101	82	101	82	-	-	-	-
MURDER 2ND DEGREE.....	39	39	39	39	-	-	-	-
MANSLAUGHTER.....	60	56	58	54	2	2	-	-
ROBBERY, TOTAL	1,932	1,416	1,932	1,416	-	-	-	-
BANK.....	1,800	1,321	1,800	1,321	-	-	-	-
POSTAL.....	53	40	53	40	-	-	-	-
OTHER.....	79	55	79	55	-	-	-	-
ASSAULT	601	531	465	402	66	60	70	65
BURGLARY--BREAKING AND ENTERING, TOTAL	181	126	178	123	3	3	-	-
BANK.....	4	4	4	4	-	-	-	-
POSTAL.....	58	31	58	31	-	-	-	-
INTERSTATE SHIPMENTS.....	11	4	11	4	-	-	-	-
OTHER.....	108	87	105	84	3	3	-	-
LARCENY AND THEFT, TOTAL	3,764	2,934	2,575	1,801	1,186	1,131	3	2
BANK.....	173	132	166	125	7	7	-	-
POSTAL.....	673	525	670	522	3	3	-	-
INTERSTATE SHIPMENTS.....	482	281	452	259	30	22	-	-
OTHER U.S. PROPERTY.....	1,317	1,145	540	402	775	742	2	1
TRANSPORTATION, ETC., OF STOLEN PROPERTY.....	454	274	494	274	-	-	-	-
OTHER.....	625	577	253	219	371	357	1	1
EMBEZZLEMENT, TOTAL	2,053	1,891	1,703	1,555	350	326	-	-
BANK.....	1,102	1,026	952	919	110	107	-	-
POSTAL.....	279	268	248	237	31	31	-	-
OTHER.....	672	597	463	399	209	198	-	-
FRAUD, TOTAL	6,249	4,791	5,021	3,631	1,216	1,149	12	11
INCOME TAX.....	1,418	1,195	880	688	538	507	-	-
LENDING INSTITUTION.....	611	509	577	481	34	28	-	-
POSTAL.....	1,535	919	1,534	918	1	1	-	-
VETERANS AND ALLOTMENTS.....	12	12	5	5	7	7	-	-
SECURITIES AND EXCHANGE.....	17	12	17	12	-	-	-	-
SOCIAL SECURITY.....	248	242	-	-	248	242	-	-
FALSE PERSONATION.....	54	50	50	46	1	1	3	3
NATIONALITY LAWS.....	247	226	247	226	-	-	-	-
PASSPORT FRAUD.....	79	75	79	75	-	-	-	-
FALSE CLAIMS AND STATEMENTS.....	1,102	857	1,092	847	9	9	1	1
OTHER.....	926	694	540	333	378	354	8	7
AUTO THEFT	478	306	470	299	8	7	-	-

TABLE D-2 DEFENDANTS AND CASES, U.S. DISTRICT COURTS
CRIMINAL DEFENDANTS AND CASES COMMENCED BY MAJOR OFFENSE (EXCLUDES TRANSFERS) DURING THE TWELVE MONTH PERIOD ENDED SEP. 30, 1981

NATURE OF PROCEEDING AND OFFENSE	TOTAL		FELONY		MISDEMEANORS		OTHER*	
	DEFENDANTS	CASES	DEFENDANTS	CASES	DEFENDANTS	CASES	DEFENDANTS	CASES
FORGERY AND COUNTERFEITING, TOTAL	2,276	1,736	2,232	1,696	44	40	-	-
TRANSPORTATION OF FORGED SECURITIES.....	243	181	243	181	-	-	-	-
POSTAL FORGERY.....	165	100	165	100	-	-	-	-
OTHER FORGERY.....	1,057	879	1,016	842	41	37	-	-
COUNTERFEITING.....	811	576	808	573	3	3	-	-
SEX OFFENSES, TOTAL	182	147	163	128	18	18	1	1
RAPE.....	105	89	104	88	1	1	-	-
OTHER.....	77	58	59	40	17	17	1	1
DRUG ABUSE PREVENTION AND CONTROL ACT, TOTAL	8,411	3,734	7,766	3,128	645	606	-	-
MARIJUANA.....	3,271	1,234	2,774	756	497	475	-	-
DRUGS.....	3,589	1,754	3,496	1,671	93	83	-	-
CONTROLLED SUBSTANCES.....	1,551	746	1,456	656	55	48	-	-
MISCELLANEOUS GENERAL OFFENSES, TOTAL	9,359	8,409	4,011	3,100	5,192	5,155	156	154
EBRIERY.....	210	157	181	131	29	26	-	-
DRUNK DRIVING AND TRAFFIC.....	5,065	5,049	-	-	40	26	-	-
ESCAPE.....	999	949	959	911	40	38	139	137
EXTORTION, RACKETEERING, AND THREATS.....	743	418	742	417	1	1	-	-
GAMBLING AND LOTTERY.....	134	30	122	28	2	2	-	-
KIDNAPPING.....	50	54	90	54	-	-	-	-
PERJURY.....	122	108	121	107	1	1	-	-
WEAPONS AND FIREARMS.....	1,806	1,464	1,759	1,425	47	39	-	-
OTHER.....	150	180	27	27	146	136	17	17
SPECIAL OFFENSES								
IMMIGRATION LAWS.....	2,826	1,997	2,764	1,946	8	7	54	44
LIQUOR, INTERNAL REVENUE.....	46	28	42	25	4	3	-	-
FEDERAL STATUTES, TOTAL	3,123	2,156	1,680	1,036	1,039	785	404	335
AGRICULTURAL ACTS.....	888	619	461	315	353	242	74	62
ANTI-TRUST VIOLATIONS.....	158	70	158	70	-	-	-	-
FOOD AND DRUG ACT.....	131	78	59	30	72	48	-	-
MIGRATORY BIRD LAWS.....	106	73	25	22	1	1	76	50
MOTOR CARRIER ACT.....	112	99	10	7	44	36	58	56
NATIONAL DEFENSE LAWS.....	1	1	1	1	-	-	-	-
CIVIL RIGHTS.....	113	61	54	48	19	13	-	-
CONTEMPT.....	49	41	-	-	49	41	-	-
CUSTOMS LAWS.....	163	91	162	90	1	1	-	-
POSTAL LAWS.....	276	253	56	50	86	81	134	122
OTHER.....	1,126	770	650	403	414	322	62	48

* PRIMARILY PETTY OFFENSES TRIED BY A JUDGE.

TABLE D-3 CASES, U.S. DISTRICT COURTS
CRIMINAL CASES COMMENCED (EXCLUDES TRANSFERS) DURING THE TWELVE MONTH PERIOD ENDED SEP. 30, 1981

CIRCUIT AND DISTRICT	TOTAL	GENERAL OFFENSES								
		HOMICIDE	ROBBERY	ASSAULT	BURGLARY	LARCENY	EMBEZ- ZLEMENT	FRAUD	AUTO THEFT	FORGERY AND COUNTER- FEITING
TOTAL ALL DISTRICTS.. FELONY ONLY.....	30,375 20,461	177 175	1,416 1,416	531 402	126 123	2,934 1,801	1,891 1,555	4,791 3,631	306 299	1,736 1,696
DISTRICT OF COLUMBIA. FELONY ONLY.....	537 478	- -	17 17	1 -	1 1	57 46	35 28	70 51	1 1	34 34
FIRST CIRCUIT..... FELONY ONLY.....	1,023 915	- -	25 25	13 9	2 2	99 93	53 49	223 200	14 14	79 79
MAINE..... FELONY ONLY.....	60 48	- -	- -	- -	- -	4 3	5 5	12 8	2 2	3 3
MASSACHUSETTS..... FELONY ONLY.....	418 368	- -	24 24	8 4	1 1	67 62	28 27	101 87	3 3	34 34
NEW HAMPSHIRE..... FELONY ONLY.....	43 36	- -	- -	- -	1 1	2 2	4 5	14 14	1 1	5 5
RHODE ISLAND..... FELONY ONLY.....	126 119	- -	- -	- -	- -	15 15	7 5	58 55	8 8	12 12
PUERTO RICO..... FELONY ONLY.....	376 344	- -	1 1	5 5	- -	11 11	7 7	38 36	- -	25 25
SECOND CIRCUIT..... FELONY ONLY.....	2,150 1,660	- -	114 114	26 20	1 1	271 164	242 150	474 383	8 8	126 126
CONNECTICUT..... FELONY ONLY.....	223 208	- -	9 9	2 2	- -	10 10	22 22	74 64	2 2	5 9
NEW YORK NORTHERN..... FELONY ONLY.....	121 104	- -	4 4	2 2	- -	5 5	33 28	34 25	1 1	4 4
NEW YORK EASTERN..... FELONY ONLY.....	705 476	- -	45 45	5 3	1 1	124 49	70 20	107 66	1 1	36 36
NEW YORK SOUTHERN..... FELONY ONLY.....	866 679	- -	40 40	16 12	- -	117 86	91 63	194 175	4 4	62 62
NEW YORK WESTERN..... FELONY ONLY.....	152 118	- -	15 15	1 1	- -	8 7	21 12	49 38	- -	9 9
VERMONT..... FELONY ONLY.....	83 75	- -	1 1	- -	- -	7 7	5 5	16 15	- -	6 6
THIRD CIRCUIT..... FELONY ONLY.....	1,667 1,288	19 18	103 103	57 45	18 18	204 172	100 78	530 333	12 12	110 110
DELAWARE..... FELONY ONLY.....	43 36	- -	6 6	1 1	- -	1 1	- -	11 5	3 3	6 6
NEW JERSEY..... FELONY ONLY.....	613 364	- -	12 12	3 1	1 1	71 53	49 31	269 111	6 6	45 45
PENNSYLVANIA EASTERN..... FELONY ONLY.....	350 315	- -	28 28	7 7	2 2	28 17	19 17	100 85	1 1	15 19
PENNSYLVANIA MIDDLE..... FELONY ONLY.....	196 172	3 3	7 7	5 5	- -	18 14	14 14	76 76	1 1	12 12
PENNSYLVANIA WESTERN..... FELONY ONLY.....	198 165	1 1	27 27	4 2	- -	18 17	14 13	51 39	1 1	16 16
VIRGIN ISLANDS..... FELONY ONLY.....	267 236	15 14	23 23	37 31	15 15	68 62	4 3	17 17	- -	12 12

TABLE D-3 CASES, U.S. DISTRICT COURTS
CRIMINAL CASES COMMENCED (EXCLUDES TRANSFERS) DURING THE TWELVE MONTH PERIOD ENDED SEP. 30, 1981

GENERAL OFFENSES--CONTINUED						SPECIAL OFFENSES				CIRCUIT AND DISTRICT
DAFCA (DRUG) LAWS			WEAPONS AND FIRE- ARMS	TRAFFIC	OTHER	IMMI- GRATION LAWS	LIQUOR, INTER- NAL REVENUE	POSTAL LAWS*	OTHER	
MARI- HUANA	MAR- CTICS	CCNTROL- LEC SUB- STANCES								
1,234 755	1,754 1,671	746 698	1,464 1,425	5,049 -	2,043 1,803	1,997 1,946	28 25	253 50	1,903 986	TOTAL ALL DISTRICTS. FELONY ONLY.
11 11	200 190	44 42	28 25	- -	32 28	- -	- -	1 -	5 4	DISTRICT OF COLUMBIA. FELONY ONLY.
22 15	66 66	20 20	32 32	1 -	59 56	199 180	- -	7 2	109 73	FIRST CIRCUIT. FELONY ONLY.
2 2	2 2	2 2	6 6	- -	2 2	2 2	- -	- -	17 10	MAINE. FELONY ONLY.
13 6	29 25	12 12	19 19	1 -	45 23	5 5	- -	- 5	23 12	MASSACHUSETTS. FELONY ONLY.
- -	3 3	- -	1 1	- -	3 3	- -	- -	- 1	7 7	NEW HAMPSHIRE. FELONY ONLY.
- -	2 2	4 4	5 5	- -	3 3	- -	- -	- 1	1 8	RHODE ISLAND. FELONY ONLY.
6 6	30 30	2 2	1 1	- -	6 6	189 170	- -	1 1	7 54	PUERTO RICO. FELONY ONLY.
33 28	291 276	64 60	77 77	2 -	136 130	55 55	- -	96 3	134 65	SECOND CIRCUIT. FELONY ONLY.
1 1	34 34	5 5	21 21	- -	15 15	5 5	- -	3 2	11 7	CONNECTICUT. FELONY ONLY.
2 3	12 12	1 1	3 3	- -	4 4	6 6	- -	- -	8 6	NEW YORK NORTHERN. FELONY ONLY.
10 10	134 133	28 28	24 24	1 -	38 35	7 7	- -	- 31	43 17	NEW YORK EASTERN. FELONY ONLY.
11 6	100 87	21 19	15 15	- -	72 69	18 18	- -	1 59	47 46	NEW YORK SOUTHERN. FELONY ONLY.
2 2	3 3	8 8	5 5	1 -	3 3	9 9	- -	- 3	23 15	NEW YORK WESTERN. FELONY ONLY.
6 6	7 7	1 1	9 9	- -	4 4	10 10	- -	- -	11 4	VERMONT. FELONY ONLY.
10 9	68 61	75 74	64 63	23 -	131 119	35 34	- -	31 6	77 33	THIRD CIRCUIT. FELONY ONLY.
- -	1 1	5 4	6 6	- -	2 2	- -	- -	- -	1 1	DELAWARE. FELONY ONLY.
3 3	19 18	15 15	17 16	2 -	37 30	14 14	- -	- 21	1 29	NEW JERSEY. FELONY ONLY.
3 3	28 28	39 39	30 30	6 -	19 18	3 3	- -	1 4	7 14	PENNSYLVANIA EASTERN. FELONY ONLY.
1 -	2 2	2 2	30 30	- -	18 29	2 1	- -	- 2	4 9	PENNSYLVANIA MIDDLE. FELONY ONLY.
- -	2 2	2 2	5 5	6 -	29 28	1 1	- -	- -	8 4	PENNSYLVANIA WESTERN. FELONY ONLY.
3 3	11 11	11 11	5 5	- -	8 7	- -	- -	- 6	22 9	VIRGIN ISLANDS. FELONY ONLY.
- -	7 7	3 3	1 1	9 -	36 34	17 17	- -	3 -	3 3	

Table D-3 Defendants. U.S. District Courts
Criminal Defendants Commenced (Excludes Transfers) During the Twelve Month Period Ended September 30, 1981

CIRCUIT AND DISTRICT	TOTAL	GENERAL OFFENSES								
		HOMICIDE	ROBBERY	ASSAULT	BURGLARY	LARCENY	EMBEZ- ZLEMENT	FRAUD	AUTC THEFT	FORGERY AND COUNTER- FEITING
TOTAL ALL DISTRICTS.. FELONY ONLY.....	41,661 31,200	200 198	1,932 1,932	601 465	181 178	3,764 2,575	2,053 1,703	6,249 5,021	478 470	2,276 2,232
DISTRICT OF COLUMBIA.. FELONY ONLY.....	661 595	- -	20 20	1 -	1 1	66 54	36 29	73 54	1 1	38 38
FIRST CIRCUIT..... FELONY ONLY.....	1,393 1,265	- -	28 28	13 9	5 5	145 138	62 58	291 267	16 16	97 97
MAINE..... FELONY ONLY.....	105 97	- -	- -	- -	- -	4 3	5 5	13 9	2 2	5 5
MASSACHUSETTS..... FELONY ONLY.....	605 552	- -	26 26	8 4	4 4	91 85	37 36	158 143	4 4	37 37
NEW HAMPSHIRE..... FELONY ONLY.....	62 51	- -	- -	- -	1 1	2 2	6 5	18 18	1 1	12 12
RHODE ISLAND..... FELONY ONLY.....	156 148	- -	- -	- -	- -	31 31	7 5	61 58	9 9	12 12
PUERTO RICO..... FELONY ONLY.....	457 421	- -	2 2	5 5	- -	17 17	7 7	41 39	- -	31 31
SECOND CIRCUIT..... FELONY ONLY.....	3,261 2,700	- -	182 182	31 25	1 1	350 234	265 163	649 550	20 20	170 170
CONNECTICUT..... FELONY ONLY.....	319 302	- -	16 16	2 2	- -	15 15	22 22	84 73	7 7	15 15
NEW YORK NORTHERN..... FELONY ONLY.....	174 153	- -	4 4	2 2	- -	6 6	42 37	43 33	1 1	6 6
NEW YORK EASTERN..... FELONY ONLY.....	1,133 885	- -	61 61	5 3	1 1	164 84	76 21	156 114	5 5	56 56
NEW YORK SOUTHERN..... FELONY ONLY.....	1,290 1,065	- -	77 77	21 17	- -	148 113	96 66	274 250	7 7	74 74
NEW YORK WESTERN..... FELONY ONLY.....	223 186	- -	23 23	1 1	- -	8 7	24 12	72 61	- -	13 13
VERMONT..... FELONY ONLY.....	122 109	- -	1 1	- -	- -	9 9	5 5	20 19	- -	6 6
THIRD CIRCUIT..... FELONY ONLY.....	2,329 1,907	26 25	157 157	71 57	20 20	279 243	106 84	711 498	13 12	140 140
DELAWARE..... FELONY ONLY.....	51 43	- -	8 8	1 -	- -	1 1	- -	13 6	3 3	6 6
NEW JERSEY..... FELONY ONLY.....	827 554	- -	32 32	4 2	1 1	100 81	51 33	332 160	7 7	55 55
PENNSYLVANIA EASTERN..... FELONY ONLY.....	578 535	- -	42 42	10 3	3 3	51 45	22 20	158 142	1 1	28 28
PENNSYLVANIA MIDDLE..... FELONY ONLY.....	259 235	3 3	10 10	5 3	- -	25 21	15 15	121 115	1 1	12 12
PENNSYLVANIA WESTERN..... FELONY ONLY.....	288 252	1 1	32 32	4 2	- -	26 25	14 13	70 58	1 1	22 22
VIRGIN ISLANDS..... FELONY ONLY.....	326 288	22 21	33 33	47 39	16 16	76 70	4 3	17 17	- -	17 17

Table D-3 Defendants. U.S. District Courts
Criminal Defendants Commenced (Excludes Transfers) During the Twelve Month Period Ended September 30, 1981

GENERAL OFFENSES--CONTINUED										SPECIAL OFFENSES				CIRCUIT AND DISTRICT
DAPCA (DRUG) LAWS					WEAPONS AND FIRE- ARMS	TRAFFIC	OTHER	IMMI- GRATION LAWS	LIQUOR, INTER- NAL REVENUE	POSTAL LAWS*	OTHER			
MARI- HUANA	NAR- CTICS	CCNTRC- LED SUB- STANCES												
3,271 2,774	3,585 3,496	1,551 1,496			1,806 1,759	5,065	2,670 2,415	2,826 2,764	46 42	276 56	2,847 1,624	TOTAL ALL DISTRICTS.. FELONY ONLY.		
16 15	267 253	65 63			31 28	-	39 35	-	-	1 -	6 4	DISTRICT OF COLUMBIA.. FELONY ONLY.		
97 87	128 126	44 44			33 33	1	76 73	203 184	-	8 3	146 99	FIRST CIRCUIT.. FELONY ONLY.		
40 40	6 6	2 2			6 6	-	2 2	3 3	-	-	21 14	MAINE.. FELONY ONLY.		
34 26	50 50	28 28			19 19	1	61 58	7 7	-	6 2	36 23	MASSACHUSETTS.. FELONY ONLY.		
-	5 5	-			1 1	-	3 3	-	-	-	13 3	NEW HAMPSHIRE.. FELONY ONLY.		
-	5 5	7 7			6 6	-	4 4	3 3	-	-	10 8	RHODE ISLAND.. FELONY ONLY.		
21 21	62 62	7 7			1 1	-	6 6	190 171	-	1 1	66 51	PUERTO RICO.. FELONY ONLY.		
91 85	616 601	125 121			118 118	2	234 228	80 76	-	105 3	222 123	SECOND CIRCUIT.. FELONY ONLY.		
4 2	74 74	10 10			24 24	-	23 23	6 6	-	3 2	14 10	CONNECTICUT.. FELONY ONLY.		
5 5	27 27	1 1			5 5	-	10 10	8 8	-	-	14 9	NEW YORK NORTHERN.. FELONY ONLY.		
30 30	280 275	61 61			46 46	1	73 70	7 7	-	32 1	79 46	NEW YORK EASTERN.. FELONY ONLY.		
32 27	219 206	32 30			21 21	-	119 116	7 25	-	67 -	78 36	NEW YORK SOUTHERN.. FELONY ONLY.		
7 7	6 6	17 15			6 6	1	5 5	15 15	-	3 -	22 15	NEW YORK WESTERN.. FELONY ONLY.		
13 12	10 10	4 4			16 16	-	4 4	19 15	-	-	15 7	VERMONT.. FELONY ONLY.		
38 37	141 132	149 147			82 81	23	188 174	44 43	-	34 7	107 49	THIRD CIRCUIT.. FELONY ONLY.		
-	1 1	5 4			10 10	-	2 2	-	-	-	1 1	DELAWARE.. FELONY ONLY.		
11 11	40 39	36 36			19 18	2	56 49	19 19	-	-	40 28	NEW JERSEY.. FELONY ONLY.		
18 18	53 53	77 77			35 35	6	38 37	4 3	-	1 4	10 19	PENNSYLVANIA EASTERN.. FELONY ONLY.		
1 1	5 5	5 5			6 6	-	33 32	3 1	-	2 -	6 10	PENNSYLVANIA MIDDLE.. FELONY ONLY.		
8 8	31 31	22 21			10 10	-	15 14	1 -	-	-	8 4	PENNSYLVANIA WESTERN.. FELONY ONLY.		
6 -	11 3	4 4			2 2	9	44 40	20 20	-	4 -	10 3	VIRGIN ISLANDS.. FELONY ONLY.		

Table F-1AP
U.S. Bankruptcy Courts
Adversary Proceedings Commenced, Terminated, and Pending
Under the Bankruptcy Code
During the Twelve Month Period Ended September 30, 1981

Circuit and District	Pending October 1, 1980	Filed	Terminated	Pending September 30, 1981
Total	30,267	105,934	69,180	67,021
District of Columbia	22	207	139	90
First Circuit	889	2,999	1,945	1,943
Maine	107	306	175	238
Massachusetts	461	1,448	865	1,044
New Hampshire	40	419	252	207
Rhode Island	170	381	366	185
Puerto Rico	111	445	287	269
Second Circuit	1,659	5,999	3,983	3,675
Connecticut	291	1,100	810	581
New York:				
Northern	269	860	611	518
Eastern	521	1,708	1,061	1,168
Southern	311	1,204	683	832
Western	221	942	660	503
Vermont	46	185	158	73
Third Circuit	2,467	8,471	3,730	7,208
Delaware	32	113	92	53
New Jersey	945	3,307	2,093	2,159
Pennsylvania:				
Eastern*	539	1,370	1	1,908
Middle	210	1,177	788	599
Western	741	2,496	749	2,488
Virgin Islands	-	8	7	1
Fourth Circuit	2,015	8,054	4,618	5,451
Maryland	530	1,702	427	1,805
North Carolina:				
Eastern	255	1,040	734	561
Middle	80	575	368	287
Western	112	559	177	494
South Carolina	74	728	460	342
Virginia:				
Eastern	442	1,515	1,287	670
Western	210	811	556	465
West Virginia:				
Northern	143	702	360	485
Southern	169	422	249	342
Fifth Circuit	3,798	15,072	9,756	9,114
Alabama:				
Northern	320	1,411	999	732
Middle	91	476	450	117
Southern	92	467	311	248
Florida:				
Northern	82	310	121	271
Middle	368	1,333	991	710
Southern	192	621	523	290
Georgia:				
Northern	513	3,296	2,330	1,479
Middle	309	1,326	1,159	476
Southern	102	502	461	143
Louisiana:				
Eastern	82	278	159	201
Middle	70	182	94	158
Western	65	415	346	134
Mississippi:				
Northern	58	373	196	235
Southern	177	485	48	614
Texas:				
Northern	518	1,617	808	1,327
Eastern	26	138	60	104
Southern	495	1,087	218	1,364
Western	238	755	482	511

Table F-1AP
U.S. Bankruptcy Courts
Adversary Proceedings Commenced, Terminated, and Pending
Under the Bankruptcy Code
During the Twelve Month Period Ended September 30, 1981
(continued)

Circuit and District	Pending October 1, 1980	Filed	Terminated	Pending September 30, 1981
Sixth Circuit	5,316	15,651	10,363	10,604
Kentucky:				
Eastern	156	477	184	449
Western	174	831	654	351
Michigan:				
Eastern	1,052	2,652	2,190	1,514
Western	305	1,741	814	1,232
Ohio:				
Northern	1,177	4,430	2,895	2,712
Southern	862	1,878	1,467	1,273
Tennessee:				
Eastern	672	2,018	1,499	1,191
Middle	664	607	12	1,259
Western	254	1,017	648	623
Seventh Circuit	3,660	11,028	9,016	5,672
Illinois:				
Northern	1,187	4,458	3,365	2,280
Central	422	1,168	947	643
Southern	97	451	279	269
Indiana:				
Northern	290	839	658	471
Southern	1,266	2,562	2,590	1,238
Wisconsin:				
Eastern	305	1,272	1,013	564
Western	93	278	164	207
Eighth Circuit	1,851	7,975	6,201	3,625
Arkansas:				
Eastern	207	486	363	330
Western	80	282	138	224
Iowa:				
Northern	300	824	816	308
Southern	96	660	515	241
Minnesota	294	945	695	544
Missouri:				
Eastern	167	872	651	388
Western	218	2,301	1,900	619
Nebraska	250	883	515	598
North Dakota	80	259	200	139
South Dakota	159	483	408	234
Ninth Circuit	6,659	23,022	13,460	16,221
Alaska	72	375	84	363
Arizona	421	1,252	706	967
California:				
Northern	1,128	3,346	1,527	2,947
Eastern	525	2,458	331	2,652
Central	2,593	8,674	6,734	4,533
Southern	390	1,460	460	1,390
Hawaii	59	154	90	123
Idaho	173	637	473	337
Montana	62	256	186	132
Nevada	114	685	210	589
Oregon	216	1,040	819	437
Washington:				
Eastern	304	803	396	711
Western	600	1,875	1,444	1,031
Guam	2	7	-	9
Northern Marianas	-	-	-	-
Tenth Circuit	1,931	7,456	5,969	3,418
Colorado	509	2,981	2,543	947
Kansas	426	1,556	1,415	567
New Mexico	247	728	600	375
Oklahoma:				
Northern	320	661	510	471
Eastern	19	110	84	45
Western	155	272	160	267
Utah	214	1,045	561	698
Wyoming	41	103	96	48

* Data not available for August 1981.

TABLE F2A. U.S. BANKRUPTCY COURTS
VOLUNTARY BANKRUPTCY CODE CASES COMMENCED, BY CHAPTER OF THE BANKRUPTCY CODE
DURING THE TWELVE MONTH PERIOD ENDED SEP. 30, 1981

CIRCUIT AND DISTRICT	TOTAL FILINGS	TOTAL VOLUNTARY FILINGS	CHAPTER 7	CHAPTER 7 STOCK BROKER	CHAPTER 7 COMMODITY BROKER	CHAPTER 9	CHAPTER 11	CHAPTER 11 RAILROAD	CHAPTER 13
TOTAL ALL DISTRICTS..	362,233	360,905	263,326	-	1	2	8,440	-	89,136
DISTRICT OF COLUMBIA..	727	724	610	-	-	-	32	-	82
FIRST CIRCUIT.....	7,097	7,038	4,986	-	-	-	434	-	1,618
MAINE.....	1,020	1,016	694	-	-	-	33	-	289
MASSACHUSETTS.....	3,361	3,324	2,461	-	-	-	189	-	674
NEW HAMPSHIRE.....	812	808	732	-	-	-	34	-	42
RHODE ISLAND.....	1,038	1,030	854	-	-	-	23	-	153
Puerto Rico.....	666	660	245	-	-	-	155	-	460
SECOND CIRCUIT.....	26,763	26,604	21,670	-	-	-	767	-	4,167
CONNECTICUT.....	2,649	2,622	2,194	-	-	-	106	-	322
NEW YORK NORTHERN.....	5,152	5,143	4,521	-	-	-	81	-	541
NEW YORK EASTERN.....	8,551	8,515	6,800	-	-	-	131	-	1,584
NEW YORK SOUTHERN.....	4,001	3,929	3,262	-	-	-	291	-	376
NEW YORK WESTERN.....	6,142	6,131	4,654	-	-	-	146	-	1,331
VERMONT.....	268	264	239	-	-	-	12	-	13
THIRD CIRCUIT.....	18,566	18,438	13,650	-	-	1	777	-	4,010
DELAWARE.....	598	597	513	-	-	-	14	-	70
NEW JERSEY.....	7,413	7,363	5,222	-	-	-	243	-	1,898
PENNSYLVANIA EASTERN*	4,437	4,405	2,456	-	-	-	213	-	1,696
PENNSYLVANIA MIDDLE..	2,141	2,131	1,991	-	-	-	75	-	65
PENNSYLVANIA WESTERN..	3,943	3,909	3,409	-	-	1	224	-	275
Virgin Islands.....	34	33	19	-	-	-	8	-	6
FOURTH CIRCUIT.....	27,212	27,135	18,650	-	-	-	655	-	7,830
MARYLAND.....	5,057	5,038	4,568	-	-	-	156	-	314
NO. CAROLINA EASTERN..	3,243	3,237	1,297	-	-	-	84	-	1,856
NO. CAROLINA MIDDLE..	2,935	2,928	705	-	-	-	54	-	2,165
NO. CAROLINA WESTERN..	2,083	2,071	302	-	-	-	45	-	1,224
SOUTH CAROLINA.....	1,841	1,834	1,152	-	-	-	48	-	634
VIRGINIA EASTERN.....	6,411	6,399	5,581	-	-	-	93	-	725
VIRGINIA WESTERN.....	3,372	3,368	2,482	-	-	-	115	-	771
W. VIRGINIA NORTHERN..	962	960	851	-	-	-	26	-	43
W. VIRGINIA SOUTHERN..	1,308	1,300	1,172	-	-	-	34	-	94
FIFTH CIRCUIT.....	50,465	50,246	30,430	-	-	-	1,355	-	18,461
ALABAMA NORTHERN.....	7,623	7,611	2,855	-	-	-	66	-	4,690
ALABAMA MIDDLE.....	2,150	2,149	784	-	-	-	10	-	1,355
ALABAMA SOUTHERN.....	1,261	1,259	635	-	-	-	12	-	612
FLORIDA NORTHERN.....	576	573	485	-	-	-	28	-	60
FLORIDA MIDDLE.....	4,413	4,394	4,011	-	-	-	161	-	222
FLORIDA SOUTHERN.....	2,033	2,002	1,666	-	-	-	136	-	200
GEORGIA NORTHERN.....	6,865	6,846	4,076	-	-	-	145	-	2,625
GEORGIA MIDDLE.....	3,081	3,078	2,113	-	-	-	29	-	536
GEORGIA SOUTHERN.....	1,961	1,956	857	-	-	-	30	-	1,069
LOUISIANA EASTERN.....	2,366	2,363	1,942	-	-	-	62	-	359
LOUISIANA MIDDLE.....	610	607	505	-	-	-	24	-	78
LOUISIANA WESTERN.....	2,240	2,236	1,677	-	-	-	24	-	535
MISSISSIPPI NORTHERN..	1,240	1,239	1,159	-	-	-	17	-	63
MISSISSIPPI SOUTHERN..	3,950	3,941	1,867	-	-	-	74	-	2,000
TEXAS NORTHERN.....	3,082	3,040	1,976	-	-	-	166	-	898
TEXAS EASTERN.....	577	570	480	-	-	-	26	-	64
TEXAS SOUTHERN.....	3,783	3,742	2,003	-	-	-	213	-	1,526
TEXAS WESTERN.....	2,656	2,640	1,339	-	-	-	132	-	1,169

TABLE F2A. U.S. BANKRUPTCY COURTS
VOLUNTARY BANKRUPTCY CODE CASES COMMENCED, BY CHAPTER OF THE BANKRUPTCY CODE
DURING THE TWELVE MONTH PERIOD ENDED SEP. 30, 1981
(CONTINUED)

CIRCUIT AND DISTRICT	TOTAL FILINGS	TOTAL VOLUNTARY FILINGS	CHAPTER 7	CHAPTER 7 STOCK BROKER	CHAPTER 7 COMMODITY BROKER	CHAPTER 9	CHAPTER 11	CHAPTER 11 RAILROAD	CHAPTER 13
SIXTH CIRCUIT.....	63,992	63,854	43,965	-	-	-	774	-	19,115
KENTUCKY EASTERN.....	2,831	2,827	2,327	-	-	-	38	-	462
KENTUCKY WESTERN.....	4,755	4,752	3,911	-	-	-	59	-	782
MICHIGAN EASTERN.....	9,756	9,714	8,046	-	-	-	217	-	1,451
MICHIGAN WESTERN.....	5,184	5,172	2,675	-	-	-	77	-	2,420
OHIO NORTHERN.....	14,371	14,347	10,464	-	-	-	106	-	3,777
OHIO SOUTHERN.....	12,693	12,678	8,807	-	-	-	79	-	3,792
TENNESSEE EASTERN.....	4,402	4,390	2,728	-	-	-	52	-	1,610
TENNESSEE MIDDLE.....	4,090	4,074	2,956	-	-	-	79	-	1,039
TENNESSEE WESTERN.....	5,910	5,900	2,051	-	-	-	67	-	3,782
SEVENTH CIRCUIT...	45,512	45,406	34,806	-	1	-	693	-	9,506
ILLINOIS NORTHERN....	19,191	19,145	11,366	-	-	-	340	-	7,438
ILLINOIS CENTRAL.....	5,256	5,247	4,649	-	-	-	30	-	568
ILLINOIS SOUTHERN....	1,581	1,572	1,346	-	-	-	20	-	206
INDIANA NORTHERN....	5,496	5,485	4,965	-	-	-	55	-	465
INDIANA SOUTHERN....	7,857	7,839	7,435	-	-	-	110	-	294
WISCONSIN EASTERN....	3,888	3,862	3,342	-	-	-	76	-	464
WISCONSIN WESTERN....	2,243	2,236	1,703	-	-	-	62	-	471
EIGHTH CIRCUIT.....	23,973	23,871	19,415	-	-	-	463	-	3,993
ARKANSAS EASTERN....	1,863	1,854	539	-	-	-	50	-	1,265
ARKANSAS WESTERN....	730	728	372	-	-	-	24	-	332
IOWA NORTHERN.....	1,768	1,761	1,553	-	-	-	45	-	123
IOWA SOUTHERN.....	2,519	2,513	2,342	-	-	-	31	-	140
MINNESOTA.....	5,440	5,409	4,421	-	-	-	105	-	883
MISSOURI EASTERN....	3,671	3,650	3,450	-	-	-	39	-	161
MISSOURI WESTERN....	4,067	4,075	3,501	-	-	-	75	-	499
NEBRASKA.....	2,653	2,645	2,102	-	-	-	48	-	455
NORTH DAKOTA.....	576	573	535	-	-	-	13	-	25
SOUTH DAKOTA.....	666	663	560	-	-	-	33	-	70
NINTH CIRCUIT.....	76,964	76,654	59,191	-	-	1	2,056	-	15,446
ALASKA.....	417	410	311	-	-	-	63	-	36
ARIZONA.....	4,257	4,247	3,931	-	-	-	148	-	268
CALIFORNIA NORTHERN..	13,298	13,255	9,003	-	-	1	324	-	3,527
CALIFORNIA EASTERN..	10,025	10,000	7,851	-	-	-	259	-	1,850
CALIFORNIA CENTRAL..	23,656	23,566	18,990	-	-	-	547	-	4,625
CALIFORNIA SOUTHERN..	4,227	4,213	2,771	-	-	-	182	-	1,260
HAWAII.....	743	727	416	-	-	-	40	-	281
IDAHO.....	2,200	2,198	1,561	-	-	-	31	-	606
MONTANA.....	1,272	1,273	1,212	-	-	-	23	-	38
NEVADA.....	2,634	2,620	2,326	-	-	-	140	-	154
NEVADA.....	5,596	5,566	4,752	-	-	-	57	-	757
OREGON.....	2,352	2,347	1,875	-	-	-	95	-	377
WASHINGTON EASTERN..	6,148	6,125	4,156	-	-	-	147	-	1,822
WASHINGTON WESTERN..	38	37	36	-	-	-	-	-	1
GUAM.....	-	-	-	-	-	-	-	-	-
NORTHERN MARIANAS...	-	-	-	-	-	-	-	-	-
TENTH CIRCUIT.....	20,958	20,895	15,953	-	-	-	434	-	4,508
COLORADO.....	6,433	6,418	3,771	-	-	-	95	-	2,552
KANSAS.....	4,301	4,297	3,176	-	-	-	41	-	1,080
NEW MEXICO.....	1,421	1,414	1,214	-	-	-	64	-	136
OKLAHOMA NORTHERN..	1,536	1,536	1,432	-	-	-	13	-	91
OKLAHOMA EASTERN....	467	463	451	-	-	-	5	-	7
OKLAHOMA WESTERN....	2,401	2,386	2,201	-	-	-	59	-	126
UTAH.....	3,833	3,818	3,248	-	-	-	143	-	427
WYOMING.....	566	563	460	-	-	-	14	-	89

* Data not available for September 1981.

TABLE F2B. U.S. BANKRUPTCY COURTS
INVOLUNTARY AND SECTION 304 BANKRUPTCY CODE CASES COMMENCED, BY CHAPTER OF THE BANKRUPTCY CODE
DURING THE TWELVE MONTH PERIOD ENDED SEP. 30, 1981

CIRCUIT AND DISTRICT	TOTAL FILINGS	TOTAL INVOLUNTARY FILINGS	CHAPTER 7	CHAPTER 7 STOCK BROKER	CHAPTER 7 COMMODITY BROKER	CHAPTER 11	SECTION 304
TOTAL ALL DISTRICTS..	362,233	1,327	1,169	-	-	158	1
DISTRICT OF COLUMBIA.	727	3	3	-	-	9	-
FIRST CIRCUIT.....	7,097	59	50	-	-	-	-
MAINE.....	1,020	4	4	-	-	3	-
MASSACHUSETTS.....	3,361	37	34	-	-	1	-
NEW HAMPSHIRE.....	812	4	3	-	-	4	-
RHODE ISLAND.....	1,038	8	4	-	-	1	-
PUERTO RICO.....	866	6	5	-	-	-	-
SECOND CIRCUIT.....	26,763	159	151	-	-	8	-
CONNECTICUT.....	2,649	27	26	-	-	1	-
NEW YORK NORTHERN.....	5,152	9	8	-	-	1	-
NEW YORK EASTERN.....	8,551	36	35	-	-	4	-
NEW YORK SOUTHERN.....	4,001	72	68	-	-	1	-
NEW YORK WESTERN.....	6,142	11	10	-	-	-	-
VERMONT.....	268	4	4	-	-	-	-
THIRD CIRCUIT.....	18,566	128	118	-	-	10	-
DELAWARE.....	598	1	1	-	-	3	-
NEW JERSEY.....	7,413	50	47	-	-	2	-
PENNSYLVANIA EASTERN*	4,437	32	30	-	-	2	-
PENNSYLVANIA MIDDLE..	2,141	10	8	-	-	3	-
PENNSYLVANIA WESTERN..	3,943	24	31	-	-	-	-
VIRGIN ISLANDS.....	34	1	1	-	-	6	-
FOURTH CIRCUIT.....	27,212	77	71	-	-	1	-
MARYLAND.....	5,057	19	18	-	-	-	-
N. CAROLINA EASTERN..	3,243	6	6	-	-	1	-
N. CAROLINA MIDDLE..	2,935	7	6	-	-	1	-
N. CAROLINA WESTERN..	2,083	12	11	-	-	-	-
SOUTH CAROLINA.....	2,083	7	7	-	-	-	-
SOUTH CAROLINA.....	1,841	7	7	-	-	-	-
VIRGINIA EASTERN.....	6,411	12	12	-	-	1	-
VIRGINIA WESTERN.....	3,372	4	3	-	-	-	-
W. VIRGINIA NORTHERN..	962	2	2	-	-	2	-
W. VIRGINIA SOUTHERN..	1,308	8	6	-	-	-	-
FIFTH CIRCUIT.....	50,469	222	189	-	-	33	1
ALABAMA NORTHERN.....	7,623	12	8	-	-	4	-
ALABAMA MIDDLE.....	2,150	1	1	-	-	-	-
ALABAMA SOUTHERN.....	1,261	2	2	-	-	-	-
FLORIDA NORTHERN.....	576	3	3	-	-	5	-
FLORIDA MIDDLE.....	4,413	19	14	-	-	4	1
FLORIDA SOUTHERN.....	2,033	20	26	-	-	2	-
GEORGIA NORTHERN.....	6,865	19	17	-	-	-	-
GEORGIA MIDDLE.....	3,081	3	3	-	-	-	-
GEORGIA SOUTHERN.....	1,961	5	5	-	-	-	-
LOUISIANA EASTERN.....	2,366	3	3	-	-	-	-
LOUISIANA MIDDLE.....	610	3	3	-	-	-	-
LOUISIANA WESTERN.....	2,240	4	4	-	-	-	-
MISSISSIPPI NORTHERN..	1,240	1	1	-	-	1	-
MISSISSIPPI SOUTHERN..	3,950	9	8	-	-	8	-
TEXAS NORTHERN.....	3,082	42	34	-	-	1	-
TEXAS EASTERN.....	577	7	6	-	-	7	-
TEXAS SOUTHERN.....	3,783	41	34	-	-	1	-
TEXAS WESTERN.....	2,656	18	17	-	-	-	-

TABLE F2B. U.S. BANKRUPTCY COURTS
INVOLUNTARY AND SECTION 304 BANKRUPTCY CODE CASES COMMENCED, BY CHAPTER OF THE BANKRUPTCY CODE
DURING THE TWELVE MONTH PERIOD ENDED SEP. 30, 1981
(CONTINUED)

CIRCUIT AND DISTRICT	TOTAL FILINGS	TOTAL INVOLUNTARY FILINGS	CHAPTER 7	CHAPTER 7 STOCK BROKER	CHAPTER 7 COMMODITY BROKER	CHAPTER 11	SECTION 304
SIXTH CIRCUIT.....	63,992	128	122	-	-	16	-
KENTUCKY EASTERN.....	2,831	4	4	-	-	-	-
KENTUCKY WESTERN.....	4,755	3	3	-	-	-	-
MICHIGAN EASTERN.....	9,756	42	37	-	-	5	-
MICHIGAN WESTERN.....	5,184	12	12	-	-	-	-
OHIO NORTHERN.....	14,371	24	22	-	-	2	-
OHIO SOUTHERN.....	12,693	15	11	-	-	4	-
TENNESSEE EASTERN....	4,402	12	8	-	-	4	-
TENNESSEE MIDDLE.....	4,090	16	16	-	-	-	-
TENNESSEE WESTERN....	5,910	10	9	-	-	1	-
SEVENTH CIRCUIT....	45,512	106	91	-	-	15	-
ILLINOIS NORTHERN....	19,191	46	34	-	-	12	-
ILLINOIS CENTRAL.....	5,256	9	9	-	-	-	-
ILLINOIS SOUTHERN....	1,561	9	9	-	-	-	-
INDIANA NORTHERN....	5,496	11	11	-	-	-	-
INDIANA SOUTHERN....	7,857	18	18	-	-	-	-
WISCONSIN EASTERN....	3,888	6	3	-	-	3	-
WISCONSIN WESTERN....	2,243	7	7	-	-	-	-
EIGHTH CIRCUIT.....	23,573	102	97	-	-	5	-
ARKANSAS EASTERN.....	1,863	9	8	-	-	1	-
ARKANSAS WESTERN.....	730	2	1	-	-	1	-
IOWA NORTHERN.....	1,768	7	7	-	-	-	-
IOWA SOUTHERN.....	2,515	6	6	-	-	-	-
MINNESOTA.....	5,440	31	30	-	-	1	-
MISSOURI EASTERN.....	3,671	21	21	-	-	-	-
MISSOURI WESTERN.....	4,087	12	12	-	-	-	-
NEBRASKA.....	2,652	8	8	-	-	-	-
NORTH DAKOTA.....	576	3	3	-	-	-	-
SOUTH DAKOTA.....	666	3	1	-	-	2	-
NINTH CIRCUIT.....	76,564	270	219	-	-	51	-
ALASKA.....	417	7	6	-	-	1	-
ARIZONA.....	4,357	10	7	-	-	3	-
CALIFORNIA NORTHERN..	13,298	43	32	-	-	11	-
CALIFORNIA EASTERN..	10,025	25	20	-	-	5	-
CALIFORNIA CENTRAL..	23,656	90	74	-	-	16	-
CALIFORNIA SOUTHERN..	4,227	14	12	-	-	2	-
HAWAII.....	743	6	5	-	-	1	-
IDAHO.....	2,200	2	2	-	-	-	-
MONTANA.....	1,273	-	-	-	-	-	-
NEVADA.....	2,634	14	8	-	-	6	-
OREGON.....	5,596	30	28	-	-	2	-
WASHINGTON EASTERN..	2,352	5	5	-	-	-	-
WASHINGTON WESTERN..	6,148	23	19	-	-	4	-
GUAM.....	38	1	1	-	-	-	-
NORTHERN MARIANAS....	-	-	-	-	-	-	-
TENTH CIRCUIT.....	20,958	63	58	-	-	5	-
COLORADO.....	6,433	15	15	-	-	-	-
KANSAS.....	4,301	4	4	-	-	-	-
NEW MEXICO.....	1,421	7	5	-	-	2	-
OKLAHOMA NORTHERN..	1,536	-	-	-	-	-	-
OKLAHOMA EASTERN....	467	4	4	-	-	-	-
OKLAHOMA WESTERN....	2,401	15	15	-	-	-	-
UTAH.....	3,833	15	13	-	-	2	-
WYOMING.....	566	3	2	-	-	1	-

* Data not available for September 1981.

TABLE F3A. U.S. BANKRUPTCY COURTS
BUSINESS BANKRUPTCY CODE CASES COMMENCED, BY CHAPTER OF THE BANKRUPTCY CODE
DURING THE TWELVE MONTH PERIOD ENDED SEP. 30, 1981

CIRCUIT AND DISTRICT	TOTAL FILINGS	TOTAL BUSINESS FILINGS	CHAPTER 7	CHAPTER 7 STOCK BROKER	CHAPTER 7 COMMODITY BROKER	CHAPTER 9	CHAPTER 11	CHAPTER 11 RAILROAD	CHAPTER 13
TOTAL ALL DISTRICTS..	362,233	46,582	34,356	-	1	2	7,795	-	4,828
DISTRICT OF COLUMBIA..	727	48	23	-	-	-	401	-	162
FIRST CIRCUIT.....	7,097	1,266	703	-	-	-	-	-	48
MAINE.....	1,020	257	177	-	-	-	32	-	14
MASSACHUSETTS.....	3,361	388	202	-	-	-	172	-	6
NEW HAMPSHIRE.....	812	141	103	-	-	-	32	-	11
RHODE ISLAND.....	1,038	167	130	-	-	-	139	-	83
Puerto Rico.....	866	313	91	-	-	-	-	-	-
SECOND CIRCUIT.....	26,152	3,047	2,061	-	-	-	722	-	264
CONNECTICUT.....	2,649	397	282	-	-	-	97	-	18
NEW YORK NORTHERN.....	5,152	571	460	-	-	-	78	-	33
NEW YORK EASTERN.....	8,551	865	637	-	-	-	128	-	100
NEW YORK SOUTHERN.....	4,001	506	225	-	-	-	270	-	11
NEW YORK WESTERN.....	6,142	637	402	-	-	-	137	-	98
VERMONT.....	268	71	55	-	-	1	12	-	4
THIRD CIRCUIT.....	18,566	2,381	1,547	-	-	-	703	-	130
DELAWARE.....	598	48	50	-	-	-	14	-	4
NEW JERSEY.....	7,413	961	675	-	-	-	230	-	56
PENNSYLVANIA EASTERN..	4,437	466	375	-	-	-	189	-	24
PENNSYLVANIA MIDDLE..	2,141	252	193	-	-	1	68	-	13
PENNSYLVANIA WESTERN..	3,943	597	370	-	-	-	195	-	31
VIRGINIA ISLANDS.....	34	17	8	-	-	-	7	-	2
FOURTH CIRCUIT.....	27,212	2,614	1,795	-	-	-	586	-	233
MARYLAND.....	5,057	372	217	-	-	-	132	-	23
NC. CAROLINA EASTERN..	3,233	318	203	-	-	-	71	-	44
NC. CAROLINA MIDDLE..	2,935	255	171	-	-	-	53	-	31
NC. CAROLINA WESTERN..	2,083	157	107	-	-	-	39	-	11
SOUTH CAROLINA.....	1,841	245	188	-	-	-	40	-	17
VIRGINIA EASTERN.....	6,411	540	427	-	-	-	84	-	29
VIRGINIA WESTERN.....	3,372	482	305	-	-	-	110	-	67
W. VIRGINIA NORTHERN..	962	147	118	-	-	-	24	-	5
W. VIRGINIA SOUTHERN..	1,308	58	59	-	-	-	33	-	6
FIFTH CIRCUIT.....	50,469	6,724	4,856	-	-	-	1,255	-	613
ALABAMA NORTHERN.....	7,623	628	518	-	-	-	63	-	47
ALABAMA MIDDLE.....	2,150	290	199	-	-	-	10	-	81
ALABAMA SOUTHERN.....	1,261	166	136	-	-	-	11	-	19
FLORIDA NORTHERN.....	576	164	126	-	-	-	24	-	14
FLORIDA MIDDLE.....	4,413	499	499	-	-	-	148	-	52
FLORIDA SOUTHERN.....	2,033	334	203	-	-	-	125	-	6
GEORGIA NORTHERN.....	6,865	666	510	-	-	-	133	-	43
GEORGIA MIDDLE.....	3,081	272	235	-	-	-	25	-	12
GEORGIA SOUTHERN.....	1,961	266	176	-	-	-	28	-	62
LOUISIANA EASTERN.....	2,366	289	226	-	-	-	57	-	6
LOUISIANA MIDDLE.....	610	104	77	-	-	-	23	-	4
LOUISIANA WESTERN.....	2,240	349	277	-	-	-	16	-	49
MISSISSIPPI NORTHERN..	1,240	190	171	-	-	-	54	-	3
MISSISSIPPI SOUTHERN..	3,950	108	53	-	-	-	169	-	75
TEXAS NORTHERN.....	3,082	526	462	-	-	-	26	-	6
TEXAS EASTERN.....	577	167	135	-	-	-	198	-	62
TEXAS SOUTHERN.....	3,783	635	379	-	-	-	122	-	71
TEXAS WESTERN.....	2,658	447	254	-	-	-	-	-	-

TABLE F3A. U.S. BANKRUPTCY COURTS
BUSINESS BANKRUPTCY CODE CASES COMMENCED, BY CHAPTER OF THE BANKRUPTCY CODE
DURING THE TWELVE MONTH PERIOD ENDED SEP. 30, 1981
(CONTINUED)

CIRCUIT AND DISTRICT	TOTAL FILINGS	TOTAL BUSINESS FILINGS	CHAPTER 7	CHAPTER 7 STOCK BROKER	CHAPTER 7 COMMODITY BROKER	CHAPTER 9	CHAPTER 11	CHAPTER 11 RAILROAD	CHAPTER 13
SIXTH CIRCUIT.....	63,992	5,375	3,889	-	-	-	734	-	752
KENTUCKY EASTERN.....	2,831	409	337	-	-	-	38	-	34
KENTUCKY WESTERN.....	4,755	326	258	-	-	-	54	-	14
MICHIGAN EASTERN.....	9,756	666	411	-	-	-	203	-	52
MICHIGAN WESTERN.....	5,184	673	568	-	-	-	77	-	228
OHIO NORTHERN.....	14,371	815	581	-	-	-	103	-	131
OHIO SOUTHERN.....	12,653	1,028	851	-	-	-	80	-	97
TENNESSEE EASTERN.....	4,402	454	354	-	-	-	52	-	88
TENNESSEE MIDDLE.....	4,090	555	408	-	-	-	73	-	74
TENNESSEE WESTERN.....	5,510	209	121	-	-	-	54	-	39
SEVENTH CIRCUIT.....	45,512	4,487	3,427	-	1	-	650	-	409
ILLINOIS NORTHERN.....	19,151	1,501	960	-	1	-	330	-	210
ILLINOIS CENTRAL.....	5,256	715	638	-	-	-	28	-	49
ILLINOIS SOUTHERN.....	1,581	273	234	-	-	-	18	-	21
INDIANA NORTHERN.....	5,456	400	341	-	-	-	46	-	13
INDIANA SOUTHERN.....	7,857	452	335	-	-	-	99	-	18
WISCONSIN EASTERN.....	3,866	622	508	-	-	-	76	-	38
WISCONSIN WESTERN.....	2,243	524	411	-	-	-	53	-	60
EIGHTH CIRCUIT.....	23,973	4,508	3,715	-	-	-	429	-	364
ARKANSAS EASTERN.....	1,863	215	107	-	-	-	45	-	63
ARKANSAS WESTERN.....	730	121	59	-	-	-	23	-	39
IOWA NORTHERN.....	1,768	656	559	-	-	-	41	-	56
IOWA SOUTHERN.....	2,519	519	464	-	-	-	31	-	24
MINNESOTA.....	5,440	932	797	-	-	-	99	-	36
MISSOURI EASTERN.....	3,671	456	409	-	-	-	34	-	37
MISSOURI WESTERN.....	4,087	726	620	-	-	-	69	-	37
NEBRASKA.....	2,653	426	329	-	-	-	40	-	55
NORTH DAKOTA.....	576	187	165	-	-	-	12	-	10
SOUTH DAKOTA.....	666	272	206	-	-	-	35	-	31
NINTH CIRCUIT.....	76,564	12,523	9,297	-	-	1	1,894	-	1,231
ALASKA.....	417	199	130	-	-	-	62	-	7
ARIZONA.....	4,357	959	747	-	-	-	140	-	72
CALIFORNIA NORTHERN..	13,298	2,068	1,317	-	-	1	300	-	450
CALIFORNIA EASTERN.....	10,025	1,817	1,358	-	-	-	253	-	206
CALIFORNIA CENTRAL....	23,656	2,879	2,181	-	-	-	491	-	207
CALIFORNIA SOUTHERN..	4,227	668	466	-	-	-	156	-	46
HAWAII.....	743	243	162	-	-	-	40	-	41
IDAHO.....	2,200	370	271	-	-	-	30	-	69
MONTANA.....	1,273	238	209	-	-	-	22	-	7
NEVADA.....	2,634	442	283	-	-	-	134	-	25
OREGON.....	5,596	1,124	956	-	-	-	54	-	84
WASHINGTON EASTERN..	2,352	603	450	-	-	-	91	-	62
WASHINGTON WESTERN..	6,146	875	699	-	-	-	121	-	55
GUAM.....	38	8	8	-	-	-	-	-	-
NORTHERN MARIANAS.....	-	-	-	-	-	-	-	-	-
TENTH CIRCUIT.....	20,558	4,605	3,043	-	-	-	396	-	570
COLORADO.....	6,433	1,611	1,152	-	-	-	90	-	369
KANSAS.....	4,301	452	533	-	-	-	36	-	83
NEW MEXICO.....	1,421	150	89	-	-	-	55	-	6
OKLAHOMA NORTHERN....	1,536	256	231	-	-	-	13	-	12
OKLAHOMA EASTERN.....	467	125	119	-	-	-	5	-	1
OKLAHOMA WESTERN.....	2,401	149	107	-	-	-	40	-	2
UTAH.....	3,833	941	720	-	-	-	142	-	79
WYOMING.....	566	125	82	-	-	-	15	-	18

* Data not available for September 1981.

Table F3B. U.S. Bankruptcy Courts
 NonBusiness and Section 304 Bankruptcy Code Cases Commenced, by Chapter of the Bankruptcy Code
 During the Twelve Month Period Ended September 30, 1981

CIRCUIT AND DISTRICT	TOTAL FILINGS	TOTAL NONBUSINESS FILINGS	CHAPTER 7	CHAPTER 11	CHAPTER 13	SECTION 304
TOTAL ALL DISTRICTS..	362,233	315,250	230,139	803	84,308	1
DISTRICT OF COLUMBIA.	727	679	590	7	82	-
FIRST CIRCUIT.....	7,097	5,631	4,333	42	1,456	-
MAINE.....	1,020	763	521	1	241	-
MASSACHUSETTS.....	3,361	2,973	2,293	20	660	-
NEW HAMPSHIRE.....	812	671	632	3	36	-
RHODE ISLAND.....	1,038	871	728	1	142	-
Puerto Rico.....	866	553	159	17	377	-
SECOND CIRCUIT....	26,763	23,716	19,760	53	3,903	-
CONNECTICUT.....	2,649	2,252	1,938	10	304	-
NEW YORK NORTHERN....	5,152	4,561	4,069	4	508	-
NEW YORK EASTERN....	8,551	7,686	6,198	4	1,484	-
NEW YORK SOUTHERN....	4,001	3,495	3,105	25	365	-
NEW YORK WESTERN....	6,142	5,505	4,262	10	1,233	-
VERMONT.....	268	157	188	-	9	-
THIRD CIRCUIT.....	18,566	16,165	12,221	84	3,880	-
DELAWARE.....	598	550	484	-	66	-
NEW JERSEY.....	7,413	6,452	4,594	16	1,842	-
PENNSYLVANIA EASTERN*	4,437	4,031	2,333	26	1,672	-
PENNSYLVANIA MIDDLE..	2,141	1,789	1,728	9	52	-
PENNSYLVANIA WESTERN..	3,943	3,346	3,070	32	244	-
VIRGIN ISLANDS.....	34	17	12	1	4	-
FOURTH CIRCUIT....	27,212	24,558	16,926	75	7,597	-
MARYLAND.....	5,057	4,665	4,369	25	291	-
NO. CAROLINA EASTERN..	3,243	2,925	1,100	13	1,812	-
NO. CAROLINA MIDDLE..	2,935	2,660	540	2	2,138	-
NO. CAROLINA WESTERN..	2,083	1,926	706	7	1,213	-
SOUTH CAROLINA.....	1,841	1,556	971	8	617	-
VIRGINIA EASTERN.....	6,411	5,871	5,166	9	656	-
VIRGINIA WESTERN.....	3,372	2,890	2,180	6	704	-
W. VIRGINIA NORTHERN..	562	615	775	2	38	-
W. VIRGINIA SOUTHERN..	1,308	1,210	1,119	3	88	-
FIFTH CIRCUIT.....	50,465	43,744	25,763	133	17,848	1
ALABAMA NORTHERN....	7,623	6,995	2,345	7	4,643	-
ALABAMA MIDDLE.....	2,150	1,860	586	-	1,274	-
ALABAMA SOUTHERN....	1,261	1,095	501	1	593	-
FLORIDA NORTHERN....	576	412	362	4	46	-
FLORIDA MIDDLE.....	4,413	3,714	3,526	18	170	-
FLORIDA SOUTHERN....	2,033	1,698	1,489	15	194	1
GEORGIA NORTHERN....	6,865	6,179	3,583	14	2,582	-
GEORGIA MIDDLE.....	3,061	2,809	1,881	4	924	-
GEORGIA SOUTHERN....	1,961	1,695	686	2	1,007	-
LOUISIANA EASTERN....	2,366	2,077	1,719	5	353	-
LOUISIANA MIDDLE....	610	506	431	1	74	-
LOUISIANA WESTERN....	2,240	1,891	1,404	1	486	-
MISSISSIPPI NORTHERN..	1,240	1,050	989	1	60	-
MISSISSIPPI SOUTHERN..	3,950	3,842	1,822	21	1,999	-
TEXAS NORTHERN.....	3,082	2,156	1,328	5	823	-
TEXAS EASTERN.....	577	410	351	1	58	-
TEXAS SOUTHERN.....	3,783	3,144	1,658	22	1,464	-
TEXAS WESTERN.....	2,658	2,211	1,102	11	1,098	-

Table F3B. U.S. Bankruptcy Courts
 NonBusiness and Section 304 Bankruptcy Code Cases Commenced, by Chapter of the Bankruptcy Code
 During the Twelve Month Period Ended September 30, 1981
 (continued)

CIRCUIT AND DISTRICT	TOTAL FILINGS	TOTAL NONBUSINESS FILINGS	CHAPTER 7	CHAPTER 11	CHAPTER 13	SECTION 304
SIXTH CIRCUIT.....	63,952	58,617	40,158	56	18,363	-
KENTUCKY EASTERN....	2,831	2,422	1,994	-	428	-
KENTUCKY WESTERN....	4,755	4,429	3,656	-	768	-
MICHIGAN EASTERN....	9,756	9,690	7,672	5	1,399	-
MICHIGAN WESTERN....	5,184	4,311	2,119	19	2,192	-
OHIO NORTHERN.....	14,371	13,556	9,905	5	3,646	-
OHIO SOUTHERN.....	12,693	11,665	7,967	3	3,655	-
TENNESSEE EASTERN....	4,402	3,908	2,382	4	1,522	-
TENNESSEE MIDDLE....	4,090	3,535	2,564	6	965	-
TENNESSEE WESTERN....	5,910	5,701	1,929	14	3,748	-
SEVENTH CIRCUIT...	45,512	41,025	31,470	58	9,497	-
ILLINOIS NORTHERN....	19,191	17,690	10,440	22	7,228	-
ILLINOIS CENTRAL....	5,256	4,541	4,020	2	519	-
ILLINOIS SOUTHERN....	1,581	1,308	1,121	2	185	-
INDIANA NORTHERN....	5,496	5,056	4,635	9	452	-
INDIANA SOUTHERN....	7,857	7,405	7,118	11	276	-
WISCONSIN EASTERN....	3,888	3,266	2,837	3	426	-
WISCONSIN WESTERN....	2,243	1,719	1,299	9	411	-
EIGHTH CIRCUIT....	23,973	19,465	15,797	39	3,629	-
ARKANSAS EASTERN....	1,863	1,648	440	6	1,202	-
ARKANSAS WESTERN....	730	609	314	2	293	-
IOWA NORTHERN.....	1,768	1,112	1,041	4	67	-
IOWA SOUTHERN.....	2,515	2,000	1,884	-	116	-
MINNESOTA.....	5,440	4,508	3,654	7	847	-
MISSOURI EASTERN....	3,671	3,215	3,062	5	148	-
MISSOURI WESTERN....	4,087	3,361	2,893	6	462	-
NEBRASKA.....	2,653	2,224	1,781	8	440	-
NORTH DAKOTA.....	576	389	373	1	15	-
SOUTH DAKOTA.....	666	354	355	-	39	-
NINTH CIRCUIT.....	76,964	64,441	50,113	213	14,115	-
ALASKA.....	417	218	187	2	29	-
ARIZONA.....	4,357	3,358	3,191	11	196	-
CALIFORNIA NORTHERN..	13,298	11,230	7,718	35	3,477	-
CALIFORNIA EASTERN..	10,025	8,208	6,513	11	1,684	-
CALIFORNIA CENTRAL..	23,656	20,777	16,883	72	3,822	-
CALIFORNIA SOUTHERN..	4,227	3,539	2,297	28	1,214	-
HAWAII.....	743	500	259	1	240	-
IDAHO.....	2,200	1,830	1,292	1	537	-
MONTANA.....	1,273	1,035	1,003	1	31	-
NEVADA.....	2,434	2,152	2,051	12	129	-
OREGON.....	5,596	4,462	3,784	5	673	-
WASHINGTON EASTERN..	2,352	1,749	1,430	4	315	-
WASHINGTON WESTERN..	6,148	5,273	3,476	30	1,767	-
GUAM.....	38	30	29	-	1	-
NORTHERN MARIANAS....	-	-	-	-	-	-
TENTH CIRCUIT.....	20,958	16,949	12,968	43	3,938	-
COLORADO.....	6,433	4,822	2,634	5	2,183	-
KANSAS.....	4,201	3,649	2,647	5	997	-
NEW MEXICO.....	1,421	1,271	1,130	11	130	-
OKLAHOMA NORTHERN..	1,536	1,260	1,201	-	79	-
OKLAHOMA EASTERN....	467	342	336	-	6	-
OKLAHOMA WESTERN....	2,401	2,252	2,109	19	124	-
UTAH.....	3,833	2,892	2,541	3	348	-
WYOMING.....	566	441	370	-	71	-

* Data not available for September 1981.

TABLE F3C. U.S. BANKRUPTCY COURTS
JOINT PETITION BUSINESS BANKRUPTCY CODE CASES COMMENCED, BY CHAPTER OF THE BANKRUPTCY CODE
DURING THE TWELVE MONTH PERIOD ENDED SEP. 30, 1981

CIRCUIT AND DISTRICT	TOTAL FILINGS	TOTAL BUSINESS FILINGS	CHAPTER 7	CHAPTER 7 STOCK BROKER	CHAPTER 7 COMMODITY BROKER	CHAPTER 9	CHAPTER 11	CHAPTER 11 RAILROAD	CHAPTER 13
TOTAL ALL DISTRICTS..	158,627	16,249	14,717	-	-	-	744	-	2,788
DISTRICT OF COLUMBIA..	100	1	1	-	-	-	-	-	-
FIRST CIRCUIT.....	2,935	280	176	-	-	-	18	-	86
MAINE.....	460	67	55	-	-	-	1	-	27
MASSACHUSETTS.....	1,271	44	35	-	-	-	4	-	5
NEW HAMPSHIRE.....	387	41	34	-	-	-	3	-	4
RHODE ISLAND.....	355	27	34	-	-	-	-	-	3
Puerto Rico.....	422	71	14	-	-	-	10	-	47
SECOND CIRCUIT.....	10,425	861	652	-	-	-	12	-	137
CONNECTICUT.....	937	85	71	-	-	-	3	-	11
NEW YORK NORTHERN.....	2,506	153	177	-	-	-	2	-	14
NEW YORK EASTERN.....	3,365	273	212	-	-	-	-	-	61
NEW YORK SOUTHERN.....	848	25	20	-	-	-	-	-	5
NEW YORK WESTERN.....	2,652	203	153	-	-	-	7	-	43
VERMONT.....	107	22	19	-	-	-	-	-	3
THIRD CIRCUIT.....	8,764	583	467	-	-	-	37	-	79
DELAWARE.....	270	10	7	-	-	-	1	-	2
NEW JERSEY.....	3,162	218	171	-	-	-	10	-	37
PENNSYLVANIA EASTERN*	1,864	44	29	-	-	-	5	-	10
PENNSYLVANIA MIDDLE..	1,265	130	117	-	-	-	5	-	8
PENNSYLVANIA WESTERN..	2,202	181	143	-	-	-	16	-	22
VIRGINIA ISLANDS.....	1	-	-	-	-	-	-	-	-
FOURTH CIRCUIT.....	12,326	741	567	-	-	-	48	-	126
MARYLAND.....	2,018	74	52	-	-	-	7	-	15
NO. CAROLINA EASTERN..	1,783	116	77	-	-	-	14	-	25
NO. CAROLINA MIDDLE..	1,331	62	43	-	-	-	1	-	18
NO. CAROLINA WESTERN..	1,205	26	19	-	-	-	3	-	4
SOUTH CAROLINA.....	965	58	49	-	-	-	3	-	8
VIRGINIA EASTERN.....	2,350	156	136	-	-	-	17	-	31
VIRGINIA WESTERN.....	1,462	170	122	-	-	-	3	-	17
W. VIRGINIA NORTHERN..	552	61	56	-	-	-	1	-	4
W. VIRGINIA SOUTHERN..	456	18	13	-	-	-	1	-	4
FIFTH CIRCUIT.....	20,205	2,126	1,726	-	-	-	107	-	293
ALABAMA NORTHERN.....	2,048	157	137	-	-	-	8	-	12
ALABAMA MIDDLE.....	716	96	61	-	-	-	2	-	33
ALABAMA SOUTHERN.....	446	63	57	-	-	-	-	-	6
FLORIDA NORTHERN.....	216	51	45	-	-	-	4	-	2
FLORIDA MIDDLE.....	1,837	225	188	-	-	-	12	-	25
FLORIDA SOUTHERN.....	624	21	16	-	-	-	4	-	1
GEORGIA NORTHERN.....	2,207	114	96	-	-	-	1	-	17
GEORGIA MIDDLE.....	1,080	65	64	-	-	-	-	-	1
GEORGIA SOUTHERN.....	634	72	45	-	-	-	4	-	23
LOUISIANA EASTERN.....	965	105	95	-	-	-	8	-	2
LOUISIANA MIDDLE.....	297	51	45	-	-	-	4	-	2
LOUISIANA WESTERN.....	1,215	204	164	-	-	-	7	-	33
MISSISSIPPI NORTHERN..	539	76	70	-	-	-	4	-	2
MISSISSIPPI SOUTHERN..	1,708	1	1	-	-	-	-	-	-
TEXAS NORTHERN.....	1,641	365	327	-	-	-	13	-	45
TEXAS EASTERN.....	335	66	52	-	-	-	10	-	4
TEXAS SOUTHERN.....	2,084	208	158	-	-	-	12	-	38
TEXAS WESTERN.....	1,515	166	105	-	-	-	14	-	47

TABLE F3C. U.S. BANKRUPTCY COURTS
JOINT PETITION BUSINESS BANKRUPTCY CODE CASES COMMENCED, BY CHAPTER OF THE BANKRUPTCY CODE
DURING THE TWELVE MONTH PERIOD ENDED SEP. 30, 1981
(CONTINUED)

CIRCUIT AND DISTRICT	TOTAL FILINGS	TOTAL BUSINESS FILINGS	CHAPTER 7	CHAPTER 7 STOCK BROKER	CHAPTER 7 COMMODITY BROKER	CHAPTER 9	CHAPTER 11	CHAPTER 11 RAILROAD	CHAPTER 13
SIXTH CIRCUIT.....	27,101	2,023	1,538	-	-	-	58	-	427
KENTUCKY EASTERN.....	1,560	166	157	-	-	-	-	-	-
KENTUCKY WESTERN.....	2,283	105	97	-	-	-	6	-	8
MICHIGAN EASTERN.....	2,594	85	74	-	-	-	4	-	23
MICHIGAN WESTERN.....	2,436	250	221	-	-	-	3	-	8
OHIO EASTERN.....	6,630	342	244	-	-	-	5	-	124
OHIO SOUTHERN.....	6,035	566	435	-	-	-	4	-	94
TENNESSEE EASTERN.....	1,939	163	128	-	-	-	10	-	43
TENNESSEE MIDDLE.....	1,447	202	156	-	-	-	7	-	48
TENNESSEE WESTERN.....	1,772	58	36	-	-	-	13	-	33
SEVENTH CIRCUIT...	19,085	1,707	1,447	-	-	-	6	-	16
ILLINOIS NORTHERN....	6,670	405	281	-	-	-	46	-	214
ILLINOIS CENTRAL.....	2,780	267	330	-	-	-	-	-	-
ILLINOIS SOUTHERN....	2,595	143	123	-	-	-	26	-	98
INDIANA NORTHERN....	2,534	154	143	-	-	-	4	-	33
INDIANA SOUTHERN....	3,551	136	124	-	-	-	2	-	16
WISCONSIN EASTERN....	1,577	243	220	-	-	-	6	-	9
WISCONSIN WESTERN....	1,142	259	226	-	-	-	2	-	6
EIGHTH CIRCUIT.....	12,094	2,314	2,003	-	-	-	2	-	21
ARKANSAS EASTERN.....	855	68	32	-	-	-	70	-	31
ARKANSAS WESTERN.....	458	57	25	-	-	-	-	-	241
IDAHO NORTHERN.....	969	374	325	-	-	-	2	-	34
IDAHO SOUTHERN.....	1,373	304	275	-	-	-	6	-	26
MINNESOTA.....	2,670	428	358	-	-	-	5	-	44
MISSOURI EASTERN.....	1,560	215	207	-	-	-	7	-	22
MISSOURI WESTERN.....	2,056	411	368	-	-	-	8	-	22
NEBRASKA.....	1,448	209	167	-	-	-	3	-	5
NORTH DAKOTA.....	320	54	65	-	-	-	21	-	22
SOUTH DAKOTA.....	385	154	121	-	-	-	2	-	36
NINTH CIRCUIT.....	34,865	5,751	4,675	-	-	-	10	-	7
ALASKA.....	114	45	31	-	-	-	279	-	23
ARIZONA.....	2,331	507	432	-	-	-	-	-	797
CALIFORNIA NORTHERN..	4,618	605	563	-	-	-	10	-	4
CALIFORNIA EASTERN....	5,606	1,058	839	-	-	-	20	-	55
CALIFORNIA CENTRAL....	9,014	1,096	945	-	-	-	31	-	215
CALIFORNIA SOUTHERN..	1,543	252	225	-	-	-	64	-	157
HAWAII.....	272	67	40	-	-	-	44	-	31
IDAHO.....	1,481	250	186	-	-	-	26	-	107
MONTANA.....	742	137	127	-	-	-	1	-	26
NEVADA.....	1,131	163	127	-	-	-	9	-	55
OREGON.....	3,071	600	536	-	-	-	5	-	5
WASHINGTON EASTERN..	1,136	306	241	-	-	-	20	-	16
WASHINGTON WESTERN..	3,185	420	372	-	-	-	8	-	56
GUAM.....	21	1	1	-	-	-	24	-	41
NORTHERN MARIANAS....	-	-	-	-	-	-	17	-	31
TENTH CIRCUIT.....	10,725	1,522	1,465	-	-	-	-	-	-
COLORADO.....	3,314	848	576	-	-	-	69	-	288
KANSAS.....	2,323	344	288	-	-	-	14	-	50
NEW MEXICO.....	744	56	24	-	-	-	6	-	8
OKLAHOMA NORTHERN....	725	112	103	-	-	-	8	-	4
OKLAHOMA EASTERN.....	225	45	45	-	-	-	1	-	8
OKLAHOMA WESTERN.....	1,049	17	14	-	-	-	-	-	3
UTAH.....	2,007	467	376	-	-	-	33	-	58
WYOMING.....	310	53	39	-	-	-	4	-	10

* Data not available for September 1981.

Table F3D. U.S. Bankruptcy Courts
 Joint Petition NonBusiness Bankruptcy Code Cases Commenced, by Chapter of the Bankruptcy Code
 During the Twelve Month Period Ended September 30, 1981

CIRCUIT AND DISTRICT	TOTAL FILINGS	TOTAL NONBUSINESS FILINGS	CHAPTER 7	CHAPTER 11	CHAPTER 12	SECTION 304
TOTAL ALL DISTRICTS..	158,627	140,388	100,453	316	39,579	-
DISTRICT OF COLUMBIA..	100	99	83	-	16	-
FIRST CIRCUIT.....	2,935	2,655	1,798	12	845	-
MAINE.....	460	373	219	-	154	-
MASSACHUSETTS.....	1,271	1,227	885	2	340	-
NEW HAMPSHIRE.....	367	346	317	2	27	-
RHODE ISLAND.....	395	358	287	-	71	-
PUERTO RICO.....	422	351	90	8	253	-
SECOND CIRCUIT.....	10,425	9,624	7,356	12	2,216	-
CONNECTICUT.....	937	852	656	1	195	-
NEW YORK NORTHERN.....	2,506	2,313	1,990	1	322	-
NEW YORK EASTERN.....	3,369	3,056	2,222	1	873	-
NEW YORK SOUTHERN.....	848	823	698	3	122	-
NEW YORK WESTERN.....	2,658	2,455	1,749	6	700	-
VERMONT.....	107	85	81	-	4	-
THIRD CIRCUIT.....	8,764	8,181	6,039	35	2,107	-
DELAWARE.....	270	260	224	-	36	-
NEW JERSEY.....	3,162	2,944	1,802	8	1,134	-
PENNSYLVANIA EASTERN*	1,864	1,820	1,069	15	736	-
PENNSYLVANIA MIDDLE..	1,265	1,135	1,054	4	37	-
PENNSYLVANIA WESTERN..	2,202	2,021	1,849	8	164	-
VIRGIN ISLANDS.....	1	1	1	-	-	-
FOURTH CIRCUIT.....	12,326	11,585	7,352	32	4,201	-
MARYLAND.....	2,018	1,944	1,772	11	161	-
NO. CAROLINA EASTERN..	1,783	1,667	576	8	1,083	-
NO. CAROLINA MIDDLE..	1,331	1,269	253	1	1,015	-
NO. CAROLINA WESTERN..	1,209	1,183	419	7	757	-
SOUTH CAROLINA.....	965	907	512	1	354	-
VIRGINIA EASTERN.....	2,350	2,154	1,831	2	361	-
VIRGINIA WESTERN.....	1,462	1,292	948	-	344	-
W. VIRGINIA NORTHERN..	552	491	462	1	28	-
W. VIRGINIA SOUTHERN..	656	638	579	1	58	-
FIFTH CIRCUIT.....	20,209	18,083	10,964	48	7,071	-
ALABAMA NORTHERN.....	2,048	1,851	886	4	1,001	-
ALABAMA MIDDLE.....	716	620	207	-	413	-
ALABAMA SOUTHERN.....	446	383	189	-	194	-
FLORIDA NORTHERN.....	218	167	144	2	21	-
FLORIDA MIDDLE.....	1,837	1,612	1,503	10	99	-
FLORIDA SOUTHERN.....	624	603	501	6	96	-
GEORGIA NORTHERN.....	2,307	2,153	1,196	3	954	-
GEORGIA MIDDLE.....	1,080	1,015	748	1	266	-
GEORGIA SOUTHERN.....	634	562	231	-	331	-
LOUISIANA EASTERN.....	965	860	693	2	165	-
LOUISIANA MIDDLE.....	297	246	196	-	50	-
LOUISIANA WESTERN.....	1,215	1,011	730	1	280	-
MISSISSIPPI NORTHERN..	539	463	427	-	36	-
MISSISSIPPI SOUTHERN..	1,708	1,707	808	7	892	-
TEXAS NORTHERN.....	1,641	1,256	716	1	539	-
TEXAS EASTERN.....	335	268	223	1	45	-
TEXAS SOUTHERN.....	2,084	1,876	925	9	938	-
TEXAS WESTERN.....	1,515	1,249	637	1	711	-

Table F3D. U.S. Bankruptcy Courts
 Joint Petition NonBusiness Bankruptcy Code Cases Commenced, by Chapter of the Bankruptcy Code
 During the Twelve Month Period Ended September 30, 1981
 (continued)

CIRCUIT AND DISTRICT	TOTAL FILINGS	TOTAL NONBUSINESS FILINGS	CHAPTER 7	CHAPTER 11	CHAPTER 13	SECTION 304
SIXTH CIRCUIT.....	27,101	25,078	16,921	16	8,141	-
KENTUCKY EASTERN.....	1,560	1,374	1,120	-	254	-
KENTUCKY WESTERN.....	2,283	2,174	1,810	-	364	-
MICHIGAN EASTERN.....	2,994	2,909	2,435	3	471	-
MICHIGAN WESTERN.....	2,436	2,086	920	-	1,166	-
OHIO NORTHERN.....	6,630	6,288	4,419	4	1,865	-
OHIO SOUTHERN.....	6,035	5,531	3,640	3	1,888	-
TENNESSEE EASTERN.....	1,939	1,756	1,102	1	653	-
TENNESSEE MIDDLE.....	1,447	1,245	866	2	377	-
TENNESSEE WESTERN.....	1,773	1,715	609	3	1,103	-
SEVENTH CIRCUIT...	19,089	17,382	13,408	27	3,947	-
ILLINOIS NORTHERN....	6,670	6,265	3,513	8	2,744	-
ILLINOIS CENTRAL.....	2,780	2,413	2,100	1	312	-
ILLINOIS SOUTHERN....	795	652	547	1	104	-
INDIANA NORTHERN....	2,534	2,360	2,133	5	242	-
INDIANA SOUTHERN....	3,591	3,455	3,256	5	154	-
WISCONSIN EASTERN....	1,577	1,334	1,146	1	187	-
WISCONSIN WESTERN....	1,142	883	673	6	204	-
EIGHTH CIRCUIT....	12,094	9,780	7,751	21	2,008	-
ARKANSAS EASTERN.....	855	787	194	1	592	-
ARKANSAS WESTERN.....	458	401	189	2	210	-
IOWA NORTHERN.....	969	595	551	2	42	-
IOWA SOUTHERN.....	1,372	1,065	990	-	79	-
MINNESOTA.....	2,670	2,242	1,780	3	459	-
MISSOURI EASTERN.....	1,560	1,345	1,252	3	90	-
MISSOURI WESTERN.....	2,056	1,645	1,418	5	222	-
NEBRASKA.....	1,448	1,239	954	5	280	-
NORTH DAKOTA.....	320	226	216	-	10	-
SOUTH DAKOTA.....	385	231	207	-	24	-
NINTH CIRCUIT.....	34,865	29,118	22,317	88	6,713	-
ALASKA.....	114	69	58	1	10	-
ARIZONA.....	2,331	1,824	1,690	8	126	-
CALIFORNIA NORTHERN..	4,818	4,009	2,675	9	1,325	-
CALIFORNIA EASTERN..	5,606	4,548	3,548	4	956	-
CALIFORNIA CENTRAL..	9,014	7,918	6,436	28	1,454	-
CALIFORNIA SOUTHERN..	1,543	1,651	1,003	13	635	-
HAWAII.....	272	205	85	-	119	-
IDAHO.....	1,481	1,231	838	-	393	-
MONTANA.....	742	605	564	-	21	-
NEVADA.....	1,131	968	892	4	72	-
OREGON.....	3,071	2,471	2,093	4	374	-
WASHINGTON EASTERN..	1,136	830	667	3	160	-
WASHINGTON WESTERN..	3,189	2,769	1,728	14	1,027	-
GUAM.....	21	20	19	-	1	-
NORTHERN MARIANAS....	-	-	-	-	-	-
TENTH CIRCUIT.....	10,725	8,803	6,464	25	2,314	-
COLORADO.....	3,214	2,466	1,185	3	1,278	-
KANSAS.....	2,323	1,979	1,427	3	549	-
NEW MEXICO.....	764	728	638	8	82	-
OKLAHOMA NORTHERN..	729	617	560	-	57	-
OKLAHOMA EASTERN.....	229	184	179	-	5	-
OKLAHOMA WESTERN....	1,049	1,032	967	8	57	-
UTAH.....	2,007	1,540	1,298	3	239	-
WYOMING.....	310	257	210	-	47	-

* Data not available for September 1981.



END