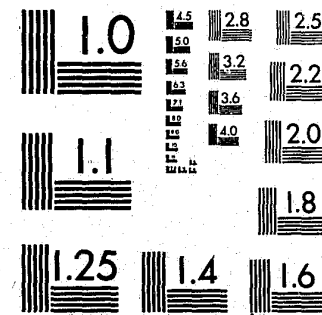


National Criminal Justice Reference Service

ncjrs

This microfiche was produced from documents received for inclusion in the NCJRS data base. Since NCJRS cannot exercise control over the physical condition of the documents submitted, the individual frame quality will vary. The resolution chart on this frame may be used to evaluate the document quality.



MICROCOPY RESOLUTION TEST CHART
NATIONAL BUREAU OF STANDARDS-1963-A

Microfilming procedures used to create this fiche comply with the standards set forth in 41CFR 101-11.504.

Points of view or opinions stated in this document are those of the author(s) and do not represent the official position or policies of the U. S. Department of Justice.

National Institute of Justice
United States Department of Justice
Washington, D. C. 20531

MF-1

A COMPARISON OF CHARACTERISTICS OF YOUTH AUTHORITY WARDS IN INSTITUTIONS AND ON PAROLE

June 30 each year, 1972 - 1981

U.S. Department of Justice
National Institute of Justice

This document has been reproduced exactly as received from the person or organization originating it. Points of view or opinions stated in this document are those of the authors and do not necessarily represent the official position or policies of the National Institute of Justice.

Permission to reproduce this copyrighted material has been granted by
California Youth Authority

to the National Criminal Justice Reference Service (NCJRS).

Further reproduction outside of the NCJRS system requires permission of the copyright owner.

October 1981

MENT OF THE YOUTH AUTHORITY

8232201

State of California
EDMUND G. BROWN JR.
GOVERNOR

Youth and Adult Correctional Agency
HOWARD WAY
SECRETARY



Department of the Youth Authority

KEITH S. GRIFFITHS
Chief of Research

MAX ZEIGLER
Manager
Information Systems

PEGGY L. WADE
Research Analyst II

HARMON L. ORSBORN
Research Analyst I

Patricia L. Vitt
Office Technician

LDA

PEARL S. WEST,
DIRECTOR

CHARLES A. KUHL,
CHIEF DEPUTY DIRECTOR

JAMES C. BARNETT,
DEPUTY DIRECTOR
PREVENTION AND COMMUNITY
CORRECTIONS BRANCH

CHON GUTIERREZ,
DEPUTY DIRECTOR
MANAGEMENT SERVICES BRANCH

RUTH E. KRANOVICH,
DEPUTY DIRECTOR
PAROLE SERVICES BRANCH

MORRIS JENNINGS,
DEPUTY DIRECTOR
PLANNING, RESEARCH, EVALUATION
AND DEVELOPMENT BRANCH

GEORGE R. ROBERTS,
DEPUTY DIRECTOR
INSTITUTIONS AND CAMPS BRANCH

INTRODUCTION

DEC 18 1981

The following tables show characteristics, by percents of totals, for Youth Authority wards in institutions and camps and on parole as of June 30th of each year from 1972 through 1981.

Since the data in this report are limited to male and female wards in training schools and on parole, certain types of cases are excluded. The principal exclusions are as follows:

1. Wards in reception centers
2. Wards in institutions on contract or temporary detention status
3. Wards in Department of Mental Health facilities
4. Wards in county jails on revoke status
5. Wards awaiting delivery to institutions
6. Wards who are absent from institutions for various reasons, i.e., out-to-court, furlough, escape, etc.
7. Wards on parole from other states who are residing in California.

In order to provide uniformity over the years, the following adjustments were made in the data:

1. For the years 1972-1974, the age shown in all tables is based on median age at last birthday. The age shown in 1975-1981 is a computer calculated mean age based on actual age in years and months and is not significantly different from the median age as manually calculated in prior years.

2. Because they have housed only a small number of wards, separate tables for Southern Community Drug Center and SPACE are not shown. Also, data are not shown separately for males in Los Guilucos as the school has been closed. However, these data are included in the totals (Table 1) for the applicable years of operation.

3. Only one table is included for females in institutions. For the year 1972, the data reflects Los Guilucos and Ventura Schools and CDC female wards. Since 1973, Ventura has been the only institution housing female wards except the few wards which may have been in CDC, SCDC, or SPACE.

4. The commitment offense groups shown in the tables are composed of the following offenses (Note: Major grouping has been changed beginning in 1975):

(a) Violent type offenses: homicide, robbery, all types of assaults, rape (violent), and kidnap/extortion (Note: Rape and kidnap are not included in the years 1972, '73, '74);

(b) Property type offenses: burglary, theft (including auto), forgery and check offenses, and arson (Note: Arson not included for the years 1972, '73, '74);

(c) Narcotic and drug offenses: all offenses relating to narcotics and dangerous drugs;

(d) Miscellaneous juvenile offenses (formerly called Welfare and Institutions Code violations): all age-related offenses such as incorrigibility, truancy, runaway, foster home or county camp failure, and escape from county camp or juvenile hall (in later years this group is almost solely escape);

(e) Other offenses: all offenses not specifically mentioned above.

The tables shown below are those that appear in this report. The percents may in some instances not add to 100.0 because of independent rounding.

Table 1. Characteristics of Youth Authority Male Wards in Institutions

Table 2. Characteristics of Youth Authority Female Wards in Institutions

Table 3. Characteristics of Youth Authority Male Wards on Parole

Table 4. Characteristics of Youth Authority Female Wards on Parole

Table 5. Characteristics of Youth Authority Male Wards in Selected Institutions

HIGHLIGHTS

1. The number of male wards in institutions on June 30, 1981 reached the highest point in the decade; however, not as high as in the mid 1960's.
2. The proportion of minorities in male institutions increased from 56 percent in 1972 to 71 percent in 1981, and from 48 percent to 61 percent in female institutions. The percent of male wards in institutions that were Black increased from 33 percent in 1972 to 39 percent in 1981, while Spanish-speaking wards increased from 21 percent to 30 percent.
3. The proportion of male wards in institutions on criminal court commitments was 49 percent in 1972 then rose to 50 percent in 1975. It then decreased to 44 percent in the years 1978 through 1980 and rose to 48 percent in 1981. Female wards on criminal court commitments rose from 23 percent in 1972 to a high of 47 percent in 1977 and has since declined to 36 percent (1981).
4. For males, the violent type offense percentages increased since 1975 from 50 percent to 60 percent in 1981. Female wards on violent type offenses rose from 41 percent (1975) to 63 percent (1981). The proportion of wards in institutions on drug type offenses has now declined below the early 1960 level.
5. Male wards on first commitment status as a percent of the total in residence increased from 63 percent in 1972 to 84 percent in 1981.

SUMMARY

This 10-year summary includes the fiscal year ending figures for the period June 30, 1972 through June 30, 1981. Over the 10-year span of this report, the California youth population in the 10-20 age group peaked in 1976 and 1977 (4.2 million) and has since been declining. The 10-17 year age group was at its high in 1975, but is now decreasing to the extent it is off-setting the increase in the 18-20 year age group. It is estimated that the 18-20 year age group will peak in 1981.

The fluctuations in the institutional populations over the decade were due to a combination of factors--probation subsidy, changes in Youthful Offender Parole Board members, changes in board policy, law changes, judicial decisions, etc.

It should be noted that the 1981 institutional population was the highest in 10 years. The parole population declined steadily over the early part of the decade, with the low occurring in 1979, but has increased over the last two years.

In examining the ward characteristics over the last decade, there are some very distinct changes in the nature of the ward population.

SEX

The percentage of male and female wards in institutions in 1972 was about 92 percent male and 8 percent female. In the following years, the percentage

of male wards rose to 96 percent while the percentage of female wards declined to 4 percent.

The parole population was about 86 percent male wards in 1972 and this has since increased to approximately 96 percent.

COURT OF COMMITMENT

The proportion of males in institutions on juvenile court commitments was 51 percent in 1972 and decreased to under 50 percent in 1975, but then increased to 56 percent over the past three years and then decreased to 52 percent in 1981. Female juvenile court wards represented about 77 percent of the female population in 1972, decreasing to 53 percent in 1977, and closing the decade at 64 percent.

AREA OF COMMITMENT

In 1971, the Southern California area contributed approximately 61 percent of the male institutional population. This percentage fluctuated between 60 and 64 percent over the decade except in 1975 and 1980 when it exceeded 65 percent. The 1981 percentage was 65 percent.

COMMITMENT OFFENSE

The commitment offense perhaps best illustrates the changing characteristics of Youth Authority wards. Since 1975, the proportion of wards in institutions on violent type offenses (homicide, robbery, assault, violent rape, and kidnapping) increased from 50 percent to 60 percent for males and from 41 percent to 63 percent for females. The proportion of property offenses

(burglary, theft and arson) has also increased steadily--from 33 percent in 1975 to 41 percent (1979) for males and from 18 percent to 31 percent (1981) for females. The percentages for males have dropped over the last two years to 35 percent.

Wards under commitment for narcotic and drug offenses, which were noteworthy by their percentage increases in the late sixties and reaching their peak in the early seventies, have now receded to where they are a minor contribution to the total.

Conversely to the trend in violent-type offenses, wards committed for miscellaneous juvenile offenses (formerly Welfare and Institutions Code violations) have drastically declined over the decade. For males, the proportion has dropped from 11 percent in 1972 to less than 1 percent in 1981. The female decrease has been even more dramatic, falling from 36 percent down to zero for the past four years.

ADMISSION STATUS

The proportion of first commitments in the institutional population has gradually risen over the past 10 years. For male wards the percentage has increased from 63 percent in 1972 to 84 percent in 1981. For female wards, the increase has been from 66 percent in 1972 to 88 percent in 1981.

ETHNIC GROUP

In 1972, the percentage of White male wards in institutions was 44 percent; it has since dropped to 29 percent in 1981. In contrast, there has been an upward trend in the proportion of minority wards in institutions, Blacks

comprised some 33 percent in 1972 and rose to 39 percent in 1981. The Spanish-speaking ethnic group rose gradually over the years from 21 percent to 30 percent.

FULL BOARD STATUS

The percentage of wards in institutions with Full Board designations has increased over the 10-year period almost parallel to the increase in the proportion of wards with violent type offenses. On June 30, 1981, males in institutions on Full Board status represented 61 percent of the male population.

AGE

The average age for males in institutions started the decade at 19.0 years and then rose to a high of 19.1 in 1974. Since 1976, it has varied in direct relationship to the ratio of juvenile and criminal commitments in the 18.6 to 18.8 age range. The age for females has risen gradually over the decade from 17.9 years to 18.7 years in 1977, but has since declined to 18.4 years.

TABLE 1
CHARACTERISTICS OF YOUTH AUTHORITY WARDS, MALES IN INSTITUTIONS
TOTAL a/
JUNE 30 EACH YEAR, 1972 - 1981
(Showing percents of totals)

MALES IN INSTITUTIONS	JUNE 30									
	1972	1973	1974	1975	1976	1977	1978	1979	1980	1981
Total Institution Population	3188	3376	3705	3730	3696	3198	3503	4064	4323	4781
Court										
Juvenile.....	50.8	51.5	51.0	49.9	51.2	52.8	55.6	56.2	55.7	52.2
Criminal.....	49.2	48.5	49.0	50.1	48.8	47.2	44.4	43.8	44.3	47.8
Area or County										
Southern California area..	61.0	63.1	62.3	65.1	63.7	60.6	60.6	62.2	65.4	64.9
Los Angeles County.....	36.2	38.7	37.4	37.7	38.3	38.2	38.2	40.2	44.6	45.4
9 other counties.....	24.8	24.4	24.9	27.4	25.4	22.4	22.4	22.0	20.8	19.5
San Francisco Bay area....	21.1	19.1	19.8	18.3	19.8	21.4	21.1	19.7	17.5	19.0
Sacramento Valley area....	6.1	7.0	7.1	6.3	6.7	6.7	5.7	6.0	5.8	6.0
San Joaquin Valley area...	8.0	7.6	7.4	6.4	6.7	8.1	8.5	8.4	7.6	6.8
22 other counties.....	3.8	3.3	4.0	3.9	3.1	3.2	4.1	3.6	3.7	3.3
Commitment Offense										
Violent type offenses <u>b/</u> ..	35.8	38.8	43.0	50.1	53.0	56.4	54.6	54.2	57.4	59.7
Property type offenses <u>b/</u> ..	31.2	33.3	34.1	33.7	35.2	35.9	39.5	41.1	37.5	35.2
Narcotic & drug offenses..	12.8	8.2	6.2	5.5	2.8	2.2	2.0	1.6	1.7	2.0
Misc. Juv. Offenses.....	10.8	9.4	7.7	5.4	3.9	2.5	0.7	0.4	0.1	-
Other offenses.....	9.4	10.3	9.0	5.3	5.1	3.0	3.2	2.7	3.3	3.1
Admission Status										
1st Commitment.....	62.5	62.8	68.0	71.2	77.5	78.1	78.0	79.7	82.1	84.2
1st Return.....	21.0	21.9	18.2	17.8	15.0	16.3	17.3	16.1	14.8	13.4
2nd Return.....	9.3	8.5	8.4	7.0	5.0	3.8	3.5	3.5	2.7	2.0
3rd Return or more.....	7.2	6.8	5.4	4.0	2.5	1.8	1.2	0.7	0.4	0.4
Ethnic Group										
White.....	44.0	40.1	41.1	38.4	36.7	36.0	36.2	33.3	32.0	29.4
Spanish-speaking/surname..	20.6	22.0	20.0	21.8	24.6	26.1	28.1	29.5	30.6	29.8
Black.....	32.6	35.5	36.3	37.2	36.2	35.3	33.3	34.7	35.1	38.6
Other.....	2.8	2.3	2.6	2.6	2.5	2.6	2.4	2.5	2.3	2.2
Full Board Status										
On Full Board.....	24.4	32.3	35.8	38.7	35.3	48.2	57.2	54.4	58.9	60.6
Not on Full Board.....	75.6	67.7	64.2	61.3	64.7	51.8	42.8	45.6	41.1	39.4
Age in years.....	19.0	19.0	19.1	19.0	18.8	18.7	18.6	18.6	18.7	18.8

a/ Includes all operating institutions during time shown, both CYA and CDC.
b/ Offenses included changed in 1975. See introduction.

TABLE 2
CHARACTERISTICS OF YOUTH AUTHORITY WARDS, FEMALES IN INSTITUTIONS
TOTAL a/
JUNE 30 EACH YEAR, 1972 - 1981
(Showing percents of totals)

FEMALES IN INSTITUTIONS	JUNE 30									
	1972	1973	1974	1975	1976	1977	1978	1979	1980	1981
Total Institution Population	277	205	209	166	145	87	130	165	186	209
Court										
Juvenile.....	76.9	70.7	65.1	71.1	68.3	52.9	60.0	64.2	62.4	64.1
Criminal.....	23.1	29.3	34.9	28.9	31.7	47.1	40.0	35.8	37.6	35.9
Area or County										
Southern California area..	65.0	74.1	67.5	62.0	64.1	62.1	56.9	57.6	56.5	59.3
Los Angeles County.....	29.6	36.6	34.0	28.9	29.7	32.2	31.5	30.3	37.1	41.1
9 other counties.....	25.4	27.4	33.5	23.1	34.4	29.9	25.4	27.3	19.4	18.2
San Francisco Bay area....	20.2	17.1	19.1	24.7	18.6	24.1	24.6	24.2	18.8	20.6
Sacramento Valley area....	5.1	4.9	4.8	4.8	9.0	6.9	5.4	5.5	5.9	7.2
San Joaquin Valley area...	6.5	1.5	4.8	7.8	6.2	5.7	6.2	9.1	12.9	8.6
22 other counties.....	3.2	2.4	3.8	0.6	2.1	1.1	6.9	3.6	5.9	4.3
Commitment Offense										
Violent type offenses <u>b/</u> ..	23.5	31.2	40.7	40.6	51.8	66.7	69.2	68.5	67.2	62.8
Property type offenses <u>b/</u> ..	14.8	14.1	20.1	18.1	26.6	23.0	24.6	27.3	25.3	30.9
Narcotic & drug offenses..	11.9	15.6	13.4	10.3	6.3	6.9	3.1	4.2	3.2	2.9
Misc. Juv. Offenses.....	36.1	28.3	18.7	24.2	9.1	-	-	-	-	-
Other offenses.....	13.7	10.8	7.1	6.6	6.2	3.4	3.1	-	4.3	3.3
Admission Status										
1st Commitment.....	66.1	66.3	71.3	71.1	82.0	79.3	86.2	81.8	88.7	88.0
1st Return.....	21.3	19.5	20.6	19.9	13.8	17.2	13.1	15.8	8.1	11.0
2nd Return.....	8.7	10.7	7.2	6.6	2.8	2.3	0.7	2.4	2.2	1.0
3rd Return or more.....	3.9	3.5	0.9	2.4	1.4	1.1	-	-	1.1	-
Ethnic Group										
White.....	52.3	47.3	50.7	44.0	35.2	27.6	30.8	43.6	40.3	39.2
Spanish-speaking/surname..	16.2	16.1	13.9	19.3	22.8	20.7	27.7	21.2	26.9	23.9
Black.....	28.5	33.7	33.0	34.3	38.6	50.6	40.8	30.3	28.5	34.5
Other.....	2.9	2.9	2.4	2.4	3.4	1.1	0.7	4.9	4.3	2.4
Full Board Status										
On Full Board.....	10.8	16.1	28.2	27.1	31.7	59.8	66.9	66.1	64.0	60.3
Not on Full Board.....	89.2	83.9	71.8	72.9	68.3	40.2	33.1	33.9	36.0	39.7
Age in years.....	17.9	18.3	18.5	18.2	18.2	18.7	18.5	18.3	18.3	18.4

a/ Includes all operating institutions during time shown, both CYA and CDC.
b/ Offenses included changed in 1975. See introduction.

TABLE 3
CHARACTERISTICS OF YOUTH AUTHORITY WARDS, MALES ON PAROLE
TOTAL
JUNE 30 EACH YEAR, 1972 - 1981
(Showing percents of totals)

MALES ON PAROLE	JUNE 30									
	1972	1973	1974	1975	1976	1977	1978	1979	1980	1981
Total Parole Caseload.....	10723	9185	7699	7234	7024	7107	6987	6112	6403	6605
Court										
Juvenile.....	54.7	51.1	49.3	46.9	45.8	48.0	48.9	54.4	54.8	55.1
Criminal.....	45.3	48.9	50.7	53.1	54.2	52.0	51.1	45.6	45.2	44.9
Area or County										
Southern California area..	63.5	51.0	59.9	58.2	60.9	61.2	60.8	58.6	59.1	60.4
Los Angeles County.....	37.1	33.9	32.1	30.6	32.3	32.8	33.7	33.8	35.2	37.5
9 other counties.....	26.4	27.1	27.8	27.6	28.6	28.4	27.1	24.8	23.9	22.9
San Francisco Bay area....	19.9	21.0	20.7	21.7	20.4	21.5	21.7	23.1	22.2	20.1
Sacramento Valley area....	6.2	6.8	7.6	7.8	7.1	7.0	7.3	6.5	6.7	7.1
San Joaquin Valley area...	6.7	7.0	7.6	7.9	7.0	6.5	7.0	7.7	8.0	8.0
22 other counties.....	3.7	4.1	4.3	4.5	4.6	3.8	3.2	4.1	3.9	4.4
Commitment Offense										
Violent type offenses <u>a/</u> ..	21.1	23.2	26.4	33.1	38.2	42.7	45.3	46.3	45.0	46.4
Property type offenses <u>a/</u> ..	36.9	37.2	38.7	40.6	41.6	41.7	43.3	45.2	48.4	47.1
Narcotic & drug offenses..	17.0	16.4	13.2	10.3	7.4	5.1	3.6	2.7	2.6	2.5
Misc. Juv. Offenses.....	15.0	13.5	12.2	10.1	7.4	5.9	3.7	2.2	0.8	0.4
Other offenses.....	10.0	9.7	9.5	5.8	5.4	4.7	4.0	3.6	3.3	3.6
Parole Status										
1st Parole.....	62.2	64.2	65.7	68.7	72.9	78.5	79.3	79.5	79.2	80.2
2nd Parole.....	21.7	21.1	20.8	19.0	17.3	14.8	15.7	16.3	16.5	16.0
3rd Parole or more.....	16.1	14.7	13.5	12.3	9.8	6.7	5.0	4.2	4.3	3.8
Ethnic Group										
White.....	51.1	50.1	48.5	47.2	44.6	41.1	39.8	39.4	36.7	36.1
Spanish-speaking/surname..	17.7	18.3	18.9	19.1	19.5	21.2	22.4	24.3	26.7	27.7
Black.....	29.2	29.4	30.6	31.2	33.5	35.0	35.3	33.8	34.0	33.6
Other.....	2.0	2.2	2.1	2.4	2.4	2.7	2.5	2.5	2.6	2.6
FB/SS Status										
On Full Board.....	2.9	3.6	4.6	5.1	7.0	8.3	11.7	21.7	35.1	43.4
On Special Service.....	7.3	7.6	7.9	8.3	9.4	11.7	11.2	6.1	2.1	0.5
On FB/SS.....	6.0	7.4	9.7	14.4	15.4	15.7	21.2	20.8	9.0	2.7
Neither.....	83.8	81.4	77.8	72.2	68.2	64.2	55.9	51.4	53.8	53.4
Age in years.....	20.3	20.5	20.6	20.5	20.5	20.3	20.3	20.0	20.1	20.2

a/ Offenses included changed in 1975. See introduction.

TABLE 4
CHARACTERISTICS OF YOUTH AUTHORITY WARDS, FEMALES ON PAROLE
TOTAL
JUNE 30 EACH YEAR, 1972 - 1981
(Showing percents of totals)

FEMALES ON PAROLE	JUNE 30									
	1972	1973	1974	1975	1976	1977	1978	1979	1980	1981
Total Parole Caseload.....	1,794	1,456	1,137	867	570	441	407	342	325	310
Court										
Juvenile.....	84.4	82.1	81.4	78.3	73.3	69.2	68.6	70.8	71.1	71.0
Criminal.....	15.6	17.9	18.6	21.7	26.7	30.8	31.4	29.2	28.9	29.0
Area or County										
Southern California area..	63.2	60.8	58.5	57.1	57.4	58.0	55.0	50.9	51.4	54.8
Los Angeles County.....	31.4	27.0	23.9	22.7	22.1	25.2	21.1	20.2	22.8	26.5
9 other counties.....	31.8	33.8	34.6	34.4	35.3	32.8	33.9	30.7	28.6	28.3
San Francisco Bay area....	22.6	23.6	22.9	21.5	22.1	22.2	24.6	27.8	28.6	24.5
Sacramento Valley area....	4.8	5.3	6.2	8.5	8.9	9.3	7.6	7.3	5.5	5.5
San Joaquin Valley area...	6.6	6.6	8.0	7.6	6.8	6.6	9.3	8.5	9.5	10.0
22 other counties.....	2.8	3.8	4.5	5.3	4.8	3.9	3.4	5.6	4.9	5.2
Commitment Offense										
Violent type offenses a/..	10.6	12.9	14.0	19.5	27.4	42.0	45.0	49.7	51.7	53.9
Property type offenses a/..	14.2	14.7	15.1	20.5	26.1	30.2	30.5	34.5	37.8	36.1
Narcotic & drug offenses..	13.4	13.2	13.4	12.3	12.1	12.2	11.8	4.7	4.6	3.9
Misc. Juv. Offenses.....	43.9	46.2	44.6	39.6	25.6	8.2	6.1	5.0	2.2	1.0
Other offenses.....	17.9	13.0	12.9	8.1	8.8	7.5	6.6	6.1	3.7	5.2
Admission Status										
1st Parole.....	63.7	66.6	68.7	72.0	73.9	80.5	79.4	83.9	83.1	77.7
2nd Return.....	24.7	22.5	22.5	20.8	19.5	15.2	16.5	12.0	12.9	17.7
3rd Parole or more.....	11.6	10.9	8.8	7.2	6.6	4.3	4.1	4.1	4.0	4.6
Ethnic Group										
White.....	55.4	55.0	54.2	53.2	50.2	40.1	39.1	38.9	40.9	39.4
Spanish-speaking/surname..	13.8	15.2	16.6	15.8	16.7	22.7	21.1	23.7	24.3	26.8
Black.....	27.2	26.4	25.6	27.5	29.6	34.0	37.3	33.9	31.4	29.7
Other.....	3.7	3.4	3.6	3.6	3.5	3.2	2.5	3.5	3.4	4.1
FB/SS Status										
On Full Board.....	1.7	2.1	2.6	4.5	5.1	9.1	14.0	24.3	34.8	46.5
On Special Service.....	1.1	1.8	3.3	5.2	6.3	11.8	12.0	6.4	2.8	0.5
On FB/SS.....	0.8	1.6	1.8	3.8	7.0	11.1	15.2	17.0	10.5	2.6
Neither.....	96.3	94.5	92.3	86.5	81.6	68.0	58.7	52.3	52.0	58.3
Age in years.....	19.3	19.6	19.7	19.6	19.5	19.5	19.7	19.5	19.6	19.7

a/ Offenses included changed in 1975. See introduction.

TABLE 5
CHARACTERISTICS OF YOUTH AUTHORITY WARDS, MALES IN INSTITUTIONS
FRED C. NELLES
JUNE 30 EACH YEAR, 1972 - 1981
(Showing percents of totals)

FRED C. NELLES	JUNE 30									
	1972	1973	1974	1975	1976	1977	1978	1979	1980	1981
Total Institution Population	347	378	383	384	369	327	368	432	447	543
Court										
Juvenile.....	89.0	97.9	98.4	98.7	98.6	98.8	97.8	98.1	97.3	93.6
Criminal.....	11.0	2.1	1.6	1.3	1.4	1.2	2.2	1.9	2.7	6.4
Area or County										
Southern California area..	98.6	98.9	98.4	99.5	98.4	98.5	95.4	98.8	98.0	96.5
Los Angeles County.....	49.3	48.7	49.1	44.8	48.5	56.0	56.5	58.8	66.4	71.6
9 other counties.....	49.3	50.2	49.3	54.7	49.9	42.5	38.9	40.0	31.6	24.9
San Francisco Bay area....	0.9	0.5	0.5	0.3	1.6	0.6	2.4	0.7	0.7	1.1
Sacramento Valley area....	-	-	-	-	-	-	0.8	-	0.7	0.9
San Joaquin Valley area...	0.6	-	0.8	-	-	0.6	1.1	0.5	0.4	1.1
22 other counties.....	-	0.5	0.3	0.3	-	0.3	0.3	-	0.2	0.4
Commitment Offense										
Violent type offenses a/..	32.9	41.7	49.9	54.4	58.0	67.6	56.3	60.9	60.2	65.6
Property type offenses a/..	30.3	27.9	24.3	28.2	27.4	24.2	37.2	32.9	33.8	29.6
Narcotic & drug offenses..	6.9	2.6	1.3	1.8	1.1	0.9	-	0.5	1.3	1.1
Misc. Juv. Offenses.....	18.7	15.8	10.7	8.3	9.2	4.0	1.4	0.5	-	-
Other offenses.....	11.2	12.0	13.8	7.2	4.4	3.3	5.2	5.3	4.7	3.7
Admission Status										
1st Commitment.....	68.3	74.1	85.6	88.5	92.4	91.7	92.7	95.1	95.7	94.8
1st Return.....	21.0	16.1	9.7	9.4	5.2	7.6	6.3	4.6	4.0	5.2
2nd Return.....	7.2	6.9	3.4	1.6	1.9	0.3	1.1	0.3	0.2	-
3rd Return or more.....	3.5	3.0	1.3	0.5	0.5	0.3	-	-	-	-
Ethnic Group										
White.....	37.2	34.9	35.8	33.6	29.3	27.2	28.5	20.6	17.4	14.7
Spanish-speaking/surname..	28.5	26.2	18.5	29.7	29.5	32.7	33.2	41.0	40.7	34.8
Black.....	32.9	37.3	43.9	33.9	39.8	38.8	37.0	35.4	40.7	49.2
Other.....	1.4	1.6	1.8	2.8	1.4	1.2	1.3	3.0	1.2	1.3
Full Board Status										
On Full Board.....	18.2	30.7	36.8	39.3	40.9	55.7	59.0	59.3	58.2	64.3
Not on Full Board.....	81.8	69.3	63.2	60.7	59.1	44.3	41.0	40.7	41.8	35.7
Age in years.....	17.0	16.6	16.6	16.5	16.5	16.6	16.5	16.5	16.7	16.8

a/ Offenses included changed in 1975. See introduction.

TABLE 5 (Continued)
CHARACTERISTICS OF YOUTH AUTHORITY WARDS, MALES IN INSTITUTIONS
O. H. CLOSE
JUNE 30 EACH YEAR, 1972 - 1981
(Showing percents of totals)

O. H. CLOSE	JUNE 30									
	1972	1973	1974	1975	1976	1977	1978	1979	1980	1981
Total Institution Population	357	328	341	344	342	352	353	372	357	399
Court										
Juvenile.....	93.8	91.5	93.3	92.2	93.0	92.3	93.5	97.8	98.6	97.5
Criminal.....	6.2	8.5	6.7	7.8	7.0	7.7	6.5	2.2	1.4	2.5
Area or County										
Southern California area..	24.4	10.7	5.3	8.7	8.8	10.8	12.5	8.6	15.7	17.8
Los Angeles County.....	11.8	6.7	4.1	3.8	4.7	4.5	4.0	3.0	8.4	8.8
9 other counties.....	12.6	4.0	1.2	4.9	4.1	6.3	8.5	5.6	7.3	9.0
San Francisco Bay area....	42.6	44.2	48.1	48.8	49.1	47.2	45.0	46.5	40.6	43.9
Sacramento Valley area....	9.5	16.8	17.6	13.4	18.7	17.0	12.7	14.5	12.6	14.8
San Joaquin Valley area...	16.2	20.4	19.1	20.3	17.3	18.8	21.2	19.6	20.2	17.3
22 other counties.....	7.3	7.9	10.0	8.7	6.1	6.3	8.5	10.8	10.9	6.3
Commitment Offense										
Violent type offenses a/..	31.7	30.8	35.5	44.2	45.3	48.0	42.5	34.1	42.6	50.9
Property type offenses a/..	31.9	32.0	38.4	38.4	39.5	39.5	51.6	63.2	51.8	44.6
Narcotic & drug offenses..	3.9	2.1	1.5	1.7	2.0	0.3	1.1	-	0.5	0.5
Misc. Juv. Offenses.....	19.9	22.9	16.4	9.9	10.2	7.4	1.7	0.3	0.3	-
Other offenses.....	12.6	12.2	8.2	5.9	2.9	4.9	3.1	2.4	4.8	4.0
Admission Status										
1st Commitment.....	76.5	76.5	78.3	82.3	85.4	87.5	90.7	90.6	86.3	93.0
1st Return.....	16.2	17.4	17.0	13.7	12.9	10.5	8.5	8.9	12.3	7.0
2nd Return.....	3.9	3.9	3.6	3.2	1.2	1.4	0.8	0.5	1.4	-
3rd Return or more.....	3.4	2.1	1.1	0.9	0.6	0.6	-	-	-	-
Ethnic Group										
White.....	49.6	49.1	48.4	47.7	47.7	50.0	49.9	52.4	46.5	37.6
Spanish-speaking/surname..	16.8	18.3	19.1	16.0	13.5	20.2	21.5	21.8	23.2	23.6
Black.....	29.7	29.3	28.7	31.1	32.7	25.0	25.5	22.3	26.1	35.6
Other.....	3.9	3.4	3.8	5.2	6.1	4.8	3.1	3.5	4.2	3.2
Full Board Status										
On Full Board.....	19.6	26.8	23.2	28.2	27.5	38.4	44.8	34.9	46.2	52.6
Not on Full Board.....	80.4	73.2	76.8	71.8	72.5	61.6	55.2	65.1	53.8	47.4
Age in years.....	16.5	16.7	16.7	16.9	16.8	16.8	16.8	16.4	16.5	16.4

a/ Offenses included changed in 1975. See introduction.

TABLE 5 (Continued)
CHARACTERISTICS OF YOUTH AUTHORITY WARDS, MALES IN INSTITUTIONS
EL PASO DE ROBLES
JUNE 30 EACH YEAR, 1972 - 1981
(Showing percents of totals)

EL PASO DE ROBLES	JUNE 30									
	1972 ^a	1973	1974 ^a	1975	1976	1977	1978	1979	1980	1981
Total Institution Population			196	391	399	339	395	407	457	460
Court										
Juvenile.....			59.2	72.1	75.9	78.2	82.8	81.1	86.9	80.7
Criminal.....			40.8	27.9	24.1	21.8	17.2	18.9	13.1	19.3
Area or County										
Southern California area..			98.5	98.2	93.7	90.6	89.6	87.7	90.2	90.2
Los Angeles County.....			50.0	48.1	46.9	51.9	50.4	52.3	57.8	57.6
9 other counties.....			48.5	50.1	46.8	38.7	39.2	35.4	32.4	32.6
San Francisco Bay area....			0.5	0.5	2.8	4.1	5.1	5.7	3.5	3.9
Sacramento Valley area....			-	-	0.8	1.2	-	1.0	0.9	0.7
San Joaquin Valley area...			0.5	0.8	1.8	2.9	3.3	4.4	4.2	3.5
22 other counties.....			0.5	0.5	1.0	1.2	2.0	1.2	1.3	1.7
Commitment Offense										
Violent type offenses b/..			44.5	50.1	56.9	55.5	57.2	54.8	63.2	61.9
Property type offenses b/..			32.7	31.7	31.5	36.0	36.2	39.8	31.3	34.2
Narcotic & drug offenses..			7.7	3.8	1.3	2.4	2.0	1.7	1.8	1.3
Misc. Juv. Offenses.....			7.1	8.2	6.3	3.8	0.8	0.7	-	-
Other offenses.....			8.0	6.2	4.1	2.4	3.8	2.9	3.7	2.6
Admission Status										
1st Commitment.....			74.0	74.9	79.7	80.2	81.0	84.0	86.0	88.7
1st Return.....			13.2	15.6	12.8	16.8	14.7	13.5	12.0	9.8
2nd Return.....			7.2	6.9	4.8	0.9	3.5	1.7	2.0	1.5
3rd Return or more.....			5.6	2.6	2.8	2.1	0.8	0.8	-	-
Ethnic Group										
White.....			51.0	37.9	32.1	33.0	29.4	26.5	21.9	18.3
Spanish-speaking/surname..			15.3	26.3	31.1	33.0	35.2	38.6	36.1	37.6
Black.....			32.7	35.0	35.1	32.4	34.2	33.9	40.0	42.0
Other.....			1.0	0.8	1.7	1.5	1.2	1.0	2.0	2.2
Full Board Status										
On Full Board.....			43.4	36.8	35.8	48.1	61.3	52.1	63.5	60.4
Not on Full Board.....			56.6	63.2	64.2	51.9	38.7	47.9	36.5	39.6
Age in years.....			18.6	18.4	18.1	18.1	17.9	18.0	18.0	18.0

a/ Closed June 1972, reopened May 1974.

b/ Offenses included changed in 1975. See introduction.

TABLE 5 (Continued)
CHARACTERISTICS OF YOUTH AUTHORITY WARDS, MALES IN INSTITUTIONS
KARL HOLTON
JUNE 30 EACH YEAR, 1972 - 1981
(Showing percents of totals)

KARL HOLTON	JUNE 30									
	1972	1973	1974	1975	1976	1977	1978	1979	1980	1981
Total Institution Population	377	383	372	389	376	305	335	381	400	418
Court										
Juvenile.....	83.6	71.0	70.7	61.2	62.8	59.3	59.1	73.8	66.3	68.7
Criminal.....	16.4	29.0	29.3	38.8	37.2	40.7	40.9	26.2	33.8	31.3
Area or County										
Southern California area..	18.8	18.0	11.6	15.9	21.8	22.3	11.6	14.7	16.0	15.1
Los Angeles County.....	7.4	11.2	6.2	7.2	12.2	15.1	6.3	8.1	9.3	9.6
9 other counties.....	11.4	6.8	5.4	8.7	9.6	7.2	5.3	6.6	6.7	5.5
San Francisco Bay area....	42.7	47.8	49.2	44.2	46.0	43.6	51.0	43.8	43.0	45.0
Sacramento Valley area....	15.4	13.8	15.3	17.0	13.0	12.8	14.0	14.7	16.3	15.6
San Joaquin Valley area...	15.6	14.4	16.7	14.1	12.8	15.4	14.3	19.4	17.3	15.3
22 other counties.....	7.4	6.0	7.3	8.7	6.4	5.9	9.0	7.3	7.5	9.1
Commitment Offense										
Violent type offenses a/..	30.8	39.7	42.6	48.3	53.2	55.7	53.4	48.3	46.5	49.0
Property type offenses a/..	34.5	31.4	31.0	34.2	34.0	38.0	40.9	47.5	49.3	46.2
Narcotic & drug offenses..	9.8	6.3	4.0	5.9	2.1	0.3	1.2	0.3	1.2	1.0
Misc. Juv. Offenses.....	18.3	10.4	11.3	6.2	5.3	1.6	0.3	0.8	-	-
Other offenses.....	6.6	12.2	11.1	5.4	5.3	4.3	4.2	3.2	3.0	3.8
Admission Status										
1st Commitment.....	61.0	64.2	71.0	77.4	79.3	77.4	74.3	79.8	81.5	82.5
1st Return.....	24.9	24.5	19.6	15.2	14.1	16.1	21.8	16.5	16.8	15.8
2nd Return.....	9.6	7.8	6.5	5.7	5.9	4.9	3.0	3.4	1.8	1.7
3rd Return or more.....	4.5	3.4	2.9	1.8	0.8	1.6	0.9	0.3	-	-
Ethnic Group										
White.....	52.8	48.3	48.9	50.6	48.9	44.3	46.3	42.0	47.8	46.4
Spanish-speaking/surname..	13.8	13.3	11.3	12.9	14.6	19.0	17.3	18.4	18.5	21.5
Black.....	29.4	36.0	35.5	32.1	31.6	30.5	33.1	34.9	30.0	29.2
Other.....	4.0	2.4	4.3	4.4	4.8	6.2	3.3	4.7	3.7	3.0
Full Board Status										
On Full Board.....	23.3	31.9	37.6	37.8	35.9	52.1	53.7	48.0	50.5	48.6
Not on Full Board.....	76.7	68.1	62.4	62.2	64.1	47.9	46.3	52.0	49.5	51.4
Age in years.....	18.0	18.3	18.3	18.6	18.6	18.6	18.5	18.0	18.4	18.4

a/ Offenses included changed in 1975. See introduction.

TABLE 5 (Continued)
CHARACTERISTICS OF YOUTH AUTHORITY WARDS, MALES IN INSTITUTIONS
DeWITT NELSON
JUNE 30 EACH YEAR, 1972 - 1981
(Showing percents of totals)

DeWITT NELSON	JUNE 30									
	1972 ^a	1973	1974	1975	1976	1977	1978	1979	1980	1981
Total Institution Population	289	332	404	380	371	282	332	336	341	392
Court										
Juvenile.....	33.2	27.7	31.4	28.4	24.3	28.7	33.4	31.2	27.6	25.5
Criminal.....	66.8	72.3	68.6	71.6	75.7	71.3	66.6	68.8	72.4	74.5
Area or County										
Southern California area..	39.4	31.6	31.9	29.5	31.5	22.3	33.1	23.8	24.9	25.3
Los Angeles County.....	26.3	21.4	17.1	15.3	19.4	14.9	22.0	17.3	17.6	19.6
9 other counties.....	13.1	10.2	14.8	14.2	12.1	7.4	11.1	6.5	7.3	5.7
San Francisco Bay area....	33.2	34.3	38.1	40.8	39.4	50.7	41.6	44.3	41.1	45.9
Sacramento Valley area....	10.0	13.0	10.2	10.8	11.6	9.9	10.2	10.4	12.3	8.9
San Joaquin Valley area...	11.8	14.8	12.9	13.9	14.0	12.4	11.1	17.3	16.1	14.5
22 other counties.....	5.5	6.3	6.9	5.0	3.5	4.6	3.9	4.2	5.6	5.4
Commitment Offense										
Violent type offenses b/..	33.9	32.8	39.9	41.0	43.1	51.1	51.5	54.8	59.5	59.4
Property type offenses b/..	38.4	41.8	44.8	45.3	46.1	40.8	41.9	38.7	36.7	35.5
Narcotic & drug offenses..	12.8	9.0	4.2	4.7	3.5	4.6	2.4	3.6	0.9	2.5
Misc. Juv. Offenses.....	7.9	4.8	4.7	3.7	1.1	1.4	0.9	0.3	0.3	0.3
Other offenses.....	7.0	11.6	6.4	5.2	6.2	2.1	3.3	2.7	2.6	2.3
Admission Status										
1st Commitment.....	61.6	65.1	63.6	66.6	71.2	73.4	72.0	76.5	75.7	80.1
1st Return.....	20.1	20.1	19.5	20.8	18.6	22.0	23.8	18.8	20.5	17.1
2nd Return.....	8.0	8.4	9.9	7.1	7.3	3.5	3.3	4.2	2.9	2.3
3rd Return or more.....	10.3	6.3	6.9	5.5	3.0	1.1	0.9	0.5	0.9	0.5
Ethnic Group										
White.....	36.7	41.3	36.6	37.4	32.6	29.8	27.7	24.1	32.8	31.1
Spanish-speaking/surname..	20.8	16.6	19.1	17.1	19.9	14.9	22.3	25.9	24.6	26.5
Black.....	39.4	38.9	40.4	43.4	44.2	54.3	48.5	47.6	39.3	40.3
Other.....	3.1	3.3	4.0	2.2	3.2	1.1	1.5	2.4	3.3	2.1
Full Board Status										
On Full Board.....	15.6	25.6	23.5	26.8	29.1	41.5	56.0	55.7	61.6	64.3
Not on Full Board.....	84.4	74.4	76.5	73.2	70.9	58.5	44.0	44.3	38.4	35.7
Age in years.....	19.5	19.6	19.6	19.7	19.7	19.7	19.4	19.6	19.8	19.9

a/ Opened December 1971.

2/ Offenses included changed in 1975. See introduction.

TABLE 5 (Continued)
CHARACTERISTICS OF YOUTH AUTHORITY WARDS, MALES IN INSTITUTIONS
PRESTON
JUNE 30 EACH YEAR, 1972 - 1981
(Showing percents of totals)

PRESTON	JUNE 30									
	1972	1973	1974	1975	1976	1977	1978	1979	1980	1981
Total Institution Population	339	373	423	390	379	358	399	480	525	570
Court										
Juvenile.....	38.1	35.1	38.3	32.8	29.8	33.2	44.1	36.0	37.0	36.5
Criminal.....	61.9	64.9	61.7	67.2	70.2	66.8	55.9	64.0	63.0	63.5
Area or County										
Southern California area..	31.9	43.7	38.1	44.9	35.6	35.5	29.8	32.3	38.9	39.5
Los Angeles County.....	21.8	28.2	23.4	25.6	24.5	24.3	18.0	19.8	27.4	29.5
9 other counties.....	10.1	15.5	14.7	19.3	11.1	11.2	11.8	12.5	11.5	10.0
San Francisco Bay area....	35.1	29.2	34.3	26.7	31.9	34.4	34.6	35.6	32.6	37.4
Sacramento Valley area....	11.2	10.7	13.0	11.0	11.9	8.1	10.3	10.8	9.7	9.1
San Joaquin Valley area...	15.6	11.5	9.9	8.7	11.6	15.4	18.0	15.6	12.2	9.5
22 other counties.....	6.2	4.8	4.7	8.7	9.0	6.7	7.3	5.6	6.7	4.6
Commitment Offense										
Violent type offenses <u>a/</u> ..	44.0	40.8	45.4	53.3	53.4	57.3	59.1	55.6	58.3	58.1
Property type offenses <u>a/</u> ..	28.0	33.5	34.3	30.0	35.6	36.3	34.6	39.0	35.4	34.4
Narcotic & drug offenses..	11.2	9.4	3.6	5.4	2.4	2.2	2.5	2.3	2.1	2.6
Misc. Juv. Offenses.....	5.0	6.7	6.4	5.4	2.1	1.4	0.3	0.6	-	-
Other offenses.....	11.8	9.6	10.3	5.9	6.4	2.8	3.5	2.5	4.2	4.9
Admission Status										
1st Commitment.....	51.0	53.4	56.0	52.3	58.6	60.6	71.0	66.3	69.3	72.5
1st Return.....	25.4	27.0	22.0	26.4	27.2	26.3	22.8	25.0	24.2	20.7
2nd Return.....	13.6	10.5	12.8	15.4	10.0	10.6	4.5	6.7	5.3	5.3
3rd Return or more.....	10.0	9.1	9.2	5.9	4.2	2.5	1.8	2.0	1.1	1.6
Ethnic Group										
White.....	44.2	48.5	48.0	45.6	45.9	41.9	43.6	44.2	42.3	44.0
Spanish-speaking/surname..	16.2	20.1	18.9	23.6	27.7	30.2	32.3	29.2	27.0	23.2
Black.....	37.5	30.3	31.2	28.5	25.3	24.6	20.3	24.4	28.4	30.5
Other.....	2.1	1.1	1.9	2.4	1.1	3.4	3.8	2.2	2.3	2.3
Full Board Status										
On Full Board.....	38.9	44.2	50.1	55.1	47.8	53.6	62.4	63.3	64.8	65.6
Not on Full Board.....	61.1	55.8	49.9	44.9	52.2	46.4	37.6	36.7	35.2	34.4
Age in years.....	19.6	19.7	19.8	19.9	19.9	19.6	19.2	19.4	19.6	19.7

a/ Offenses included changed in 1975. See introduction.

TABLE 5 (Continued)
CHARACTERISTICS OF YOUTH AUTHORITY WARDS, MALES IN INSTITUTIONS
YOUTH TRAINING SCHOOL
JUNE 30 EACH YEAR, 1972 - 1981
(Showing percents of totals)

YOUTH TRAINING SCHOOL	JUNE 30									
	1972	1973	1974	1975	1976	1977	1978	1979	1980	1981
Total Institution Population	961	1041	929	890	871	700	738	954	1014	1135
Court										
Juvenile.....	32.2	42.8	40.6	30.1	36.4	31.3	33.7	36.2	33.5	28.2
Criminal.....	67.8	57.2	59.4	69.9	63.6	68.7	66.3	63.8	66.5	71.8
Area or County										
Southern California area..	94.9	96.1	97.5	97.6	97.7	99.1	99.2	98.8	98.5	98.1
Los Angeles County.....	61.9	62.9	66.4	68.3	67.9	67.9	69.8	72.1	72.9	71.0
9 other counties.....	33.0	33.2	31.1	29.3	29.8	31.2	29.4	26.7	25.6	27.1
San Francisco Bay area....	2.1	2.0	0.9	0.9	1.0	0.1	0.3	0.5	0.9	0.8
Sacramento Valley area....	0.4	0.2	0.2	0.1	0.7	0.3	0.1	0.1	0.1	0.5
San Joaquin Valley area...	2.1	1.4	1.0	0.7	0.5	0.1	0.1	0.2	0.3	0.3
22 other counties.....	0.5	0.3	0.4	0.7	0.1	0.3	0.3	0.3	0.2	0.4
Commitment Offense										
Violent type offenses <u>a/</u> ..	41.7	45.7	50.5	59.8	60.0	62.2	64.5	65.3	67.0	69.9
Property type offenses <u>a/</u> ..	26.8	29.1	26.2	26.4	29.3	31.1	31.8	29.6	28.2	25.0
Narcotic & drug offenses..	14.0	7.4	6.7	6.0	2.6	2.1	1.6	2.1	2.3	3.1
Misc. Juv. Offenses.....	7.8	7.3	6.7	3.4	1.4	1.3	0.4	-	0.1	-
Other offenses.....	9.7	10.5	9.9	4.5	6.7	3.3	1.6	2.9	2.4	2.0
Admission Status										
1st Commitment.....	59.2	56.7	62.1	64.0	74.2	74.9	71.0	71.7	77.5	79.9
1st Return.....	22.2	22.6	20.2	19.4	16.2	17.6	22.8	22.6	17.2	17.4
2nd Return.....	10.4	11.0	10.6	8.3	5.4	4.6	4.5	4.9	4.6	2.1
3rd Return or more.....	8.2	9.7	7.1	8.2	4.2	3.0	1.8	0.8	0.7	0.6
Ethnic Group										
White.....	38.5	30.1	28.7	23.9	25.4	23.7	23.4	19.4	17.9	17.3
Spanish-speaking/surname..	23.4	25.1	25.1	25.4	27.8	29.1	30.2	33.5	34.9	36.0
Black.....	35.9	42.6	44.1	49.0	45.5	45.4	44.7	45.7	46.4	45.6
Other.....	2.2	2.3	2.1	1.6	1.3	1.7	1.7	1.4	0.8	1.1
Full Board Status										
On Full Board.....	32.7	41.9	49.7	53.5	46.0	60.9	69.2	64.7	67.8	71.2
Not on Full Board.....	67.3	58.1	50.3	46.5	54.0	39.1	30.8	35.3	32.2	28.8
Age in years.....	19.9	19.6	19.7	20.1	19.6	19.6	19.6	19.6	19.8	19.8

a/ Offenses included changed in 1975. See introduction.

TABLE 5 (Continued)
CHARACTERISTICS OF YOUTH AUTHORITY WARDS, MALES IN INSTITUTIONS
VENTURA
JUNE 30 EACH YEAR, 1972 - 1981
(Showing percents of totals)

VENTURA	JUNE 30									
	1972	1973	1974	1975	1976	1977	1978	1979	1980	1981
Total Institution Population	132	133	188	190	189	171	181	294	326	363
Court										
Juvenile.....	28.0	34.8	34.0	31.1	38.6	38.6	34.8	45.2	49.4	39.4
Criminal.....	72.0	61.6	66.0	68.9	61.4	61.4	65.2	54.8	50.6	60.6
Area or County										
Southern California area..	97.7	95.5	97.3	98.4	94.7	95.3	91.2	85.7	85.6	89.3
Los Angeles County.....	53.8	51.9	52.7	48.9	46.6	55.0	51.9	46.3	48.5	51.5
9 other counties.....	43.9	43.6	44.6	49.5	48.1	40.3	39.3	39.4	37.1	37.8
San Francisco Bay area....	1.5	2.3	1.1	1.1	1.1	1.8	3.9	8.5	6.7	6.6
Sacramento Valley area....	-	1.5	0.5	0.5	2.1	1.2	2.2	2.7	3.1	1.1
San Joaquin Valley area...	-	0.8	0.5	-	2.1	1.8	0.6	-	2.8	1.9
22 other counties.....	0.8	-	0.5	-	-	-	2.2	3.1	1.8	1.1
Commitment Offense										
Violent type offenses a/..	31.0	33.1	33.6	47.9	53.4	57.3	53.0	55.5	56.1	58.4
Property type offenses a/..	25.0	38.4	38.3	30.5	33.3	33.9	41.4	40.8	39.0	36.6
Narcotic & drug offenses..	28.8	12.0	15.4	12.1	6.3	4.1	2.2	2.4	1.8	1.1
Misc. Juv. Offenses.....	7.6	10.5	6.4	4.2	2.1	2.9	1.1	0.3	-	-
Other offenses.....	7.6	6.0	6.3	5.2	4.8	1.8	2.3	1.0	3.1	3.9
Admission Status										
1st Commitment.....	70.5	63.9	72.3	72.6	79.9	76.0	88.4	86.7	89.6	90.1
1st Return.....	10.6	21.8	13.3	20.0	14.3	19.3	7.2	9.5	8.3	9.4
2nd Return.....	10.6	6.1	5.8	5.3	3.7	2.3	3.3	3.4	1.5	0.3
3rd Return or more.....	8.4	8.4	8.5	2.1	2.1	2.3	1.1	0.4	0.6	0.3
Ethnic Group										
White.....	50.0	56.4	61.2	62.6	55.0	53.8	59.1	54.4	52.5	42.4
Spanish-speaking/surname..	18.9	23.3	18.6	11.6	20.6	19.3	22.1	18.4	23.9	24.2
Black.....	30.3	19.6	19.7	24.7	23.3	26.9	14.9	23.5	19.0	27.8
Other.....	0.8	0.8	0.5	1.0	1.0	-	3.9	3.7	4.6	5.6
Full Board Status										
On Full Board.....	6.8	16.5	25.5	29.5	30.2	42.7	52.5	58.8	58.3	59.2
Not on Full Board.....	93.2	83.5	74.5	70.5	69.8	57.3	47.5	41.2	41.7	40.8
Age in years.....	19.9	19.6	19.8	19.9	19.6	19.5	19.4	19.0	19.1	19.3

a/ Offenses included changed in 1975. See introduction.

TABLE 5 (Continued)
CHARACTERISTICS OF YOUTH AUTHORITY WARDS, MALES IN INSTITUTIONS
CAMPS
JUNE 30 EACH YEAR, 1972 - 1981
(Showing percents of totals)

CAMPS	JUNE 30									
	1972	1973	1974	1975	1976	1977	1978	1979	1980	1981
Total Institution Population	263	336	381	340	377	340	350	372	428	462
Court										
Juvenile.....	22.4	20.2	18.6	21.1	19.9	31.2	36.9	33.9	39.3	35.7
Criminal.....	77.6	79.8	81.4	78.8	80.1	68.8	63.1	66.1	60.7	64.3
Area or County										
Southern California area..	45.6	57.7	58.0	58.8	54.1	39.7	48.3	53.5	62.1	51.1
Los Angeles County.....	25.1	34.5	36.0	36.2	32.9	24.7	31.1	34.1	42.8	38.1
9 other counties.....	20.5	23.2	22.0	22.6	21.2	15.0	17.2	19.4	19.3	13.0
San Francisco Bay area....	32.7	19.3	18.6	20.3	25.7	29.1	25.7	22.0	17.5	20.3
Sacramento Valley area....	6.8	11.0	10.0	10.9	9.0	14.4	7.1	8.3	6.8	10.4
San Joaquin Valley area...	7.6	6.5	6.8	4.7	7.2	12.1	12.0	10.5	8.2	10.6
22 other counties.....	7.2	5.4	6.6	5.3	4.0	4.7	6.9	5.6	5.4	7.6
Commitment Offense										
Violent type offenses a/..	27.4	27.6	31.3	35.3	42.4	46.5	39.7	40.6	46.5	46.3
Property type offenses a/..	41.1	44.3	48.8	49.1	48.3	47.9	52.3	56.8	49.5	49.6
Narcotic & drug offenses..	20.5	19.0	14.2	10.6	6.4	4.1	5.4	1.3	2.1	1.9
Misc. Juv. Offenses.....	3.8	3.3	2.1	1.5	0.5	-	0.6	-	-	-
Other offenses.....	7.2	5.8	3.6	3.6	2.4	1.5	2.0	1.3	1.9	2.2
Admission Status										
1st Commitment.....	61.6	67.3	69.0	74.4	84.9	84.7	84.0	84.4	86.2	85.1
1st Return.....	21.7	21.1	20.5	17.9	11.4	11.2	14.6	12.9	13.3	12.1
2nd Return.....	9.9	5.4	8.2	5.3	2.4	3.5	1.1	2.4	0.5	2.8
3rd Return or more.....	6.8	6.3	2.3	2.4	1.3	0.6	0.3	0.3	-	-
Ethnic Group										
White.....	57.4	43.2	46.5	39.1	39.3	41.5	44.6	42.2	35.3	36.6
Spanish-speaking/surname..	22.1	26.2	21.5	23.2	29.4	27.6	27.1	27.4	36.9	28.8
Black.....	16.7	27.4	28.6	33.5	28.9	27.9	24.6	28.0	25.7	32.9
Other.....	3.8	3.3	3.4	4.2	2.4	3.0	3.7	2.4	2.1	1.7
Full Board Status										
On Full Board.....	8.0	8.6	10.0	11.8	6.4	25.3	38.3	32.5	44.4	40.3
Not on Full Board.....	92.0	91.4	90.0	88.2	93.6	74.7	61.7	67.5	55.6	59.7
Age in years.....	19.9	19.9	19.9	19.8	19.7	19.4	19.2	19.4	19.4	19.5

a/ Offenses included changed in 1975. See introduction.

TABLE 5 (Continued)
 CHARACTERISTICS OF YOUTH AUTHORITY WARDS, MALES IN INSTITUTIONS
 DEPARTMENT OF CORRECTIONS FACILITIES
 JUNE 30 EACH YEAR, 1972 - 1981
 (Showing percents of totals)

DEPARTMENT OF CORRECTIONS FACILITIES	JUNE 30									
	1972	1973	1974	1975	1976	1977	1978	1979	1980	1981
Total Institution Population	56	53	49	13	6	7	34	20	7	13
Court										
Juvenile.....	7.1	5.7	12.2	-	-	-	-	-	-	-
Criminal.....	92.9	94.3	87.8	100.0	100.0	100.0	100.0	100.0	100.0	100.0
Area or County										
Southern California area..	80.4	81.1	85.7	76.9	66.7	57.1	64.7	55.0	85.7	76.9
Los Angeles County.....	51.8	56.6	46.9	53.8	66.7	42.9	52.9	30.0	14.3	46.2
9 other counties.....	28.6	24.5	38.8	23.1	-	14.3	11.8	25.0	71.4	30.7
San Francisco Bay area....	7.1	5.7	10.2	7.7	-	-	14.7	20.0	14.3	23.1
Sacramento Valley area....	7.1	5.7	-	-	16.7	14.3	-	5.0	-	-
San Joaquin Valley area...	3.6	5.7	2.0	-	-	-	14.7	5.0	-	-
22 other counties.....	1.8	1.9	2.0	15.4	16.7	28.6	5.9	5.0	-	-
Commitment Offense										
Violent type offenses <u>a/</u> ..	41.1	35.9	30.7	61.5	100.0	42.9	73.6	75.0	42.9	69.2
Property type offenses <u>a/</u> ..	21.4	41.5	40.8	23.1	-	28.6	17.6	20.0	42.8	23.1
Narcotic & drug offenses..	17.9	13.2	12.2	15.4	-	14.3	5.9	5.0	14.3	7.7
Misc. Juv. Offenses.....	1.8	3.8	4.1	-	-	-	-	-	-	-
Other offenses.....	17.8	5.6	12.2	-	-	14.3	2.9	-	-	-
Admission Status										
1st Commitment.....	42.9	41.5	36.7	46.2	33.3	42.9	52.9	30.0	85.7	69.2
1st Return.....	19.6	24.5	30.7	23.1	33.3	14.3	26.5	40.0	-	7.7
2nd Return.....	14.3	15.2	20.4	30.8	33.3	14.3	17.6	25.0	14.3	23.1
3rd Return or more.....	23.2	18.9	12.2	-	-	28.6	2.9	5.0	-	-
Ethnic Group										
White.....	30.4	34.0	34.7	38.5	50.0	71.4	14.7	10.0	57.1	7.7
Spanish-speaking/surname..	28.6	34.0	36.7	23.1	16.7	-	73.5	55.0	14.3	61.5
Black.....	35.7	30.2	26.5	38.5	16.7	28.6	11.8	30.0	28.6	30.8
Other.....	5.4	1.9	2.0	-	16.7	-	-	5.0	-	-
Full Board Status										
On Full Board.....	57.1	52.8	38.8	46.2	66.7	57.1	70.6	95.0	71.4	84.6
Not on Full Board.....	42.9	47.2	61.2	53.8	33.3	42.9	29.4	5.0	28.6	15.4
Age in years.....	20.7	21.1	21.0	21.1	20.5	20.9	20.4	20.4	20.1	21.7

a/ Offenses included changed in 1975. See introduction.

END