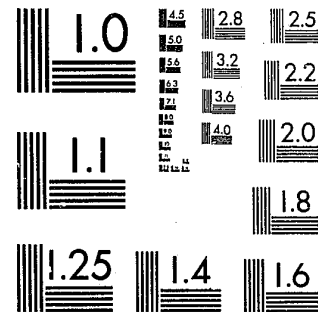


National Criminal Justice Reference Service

ncjrs

This microfiche was produced from documents received for inclusion in the NCJRS data base. Since NCJRS cannot exercise control over the physical condition of the documents submitted, the individual frame quality will vary. The resolution chart on this frame may be used to evaluate the document quality.



MICROCOPY RESOLUTION TEST CHART
NATIONAL BUREAU OF STANDARDS-1963-A

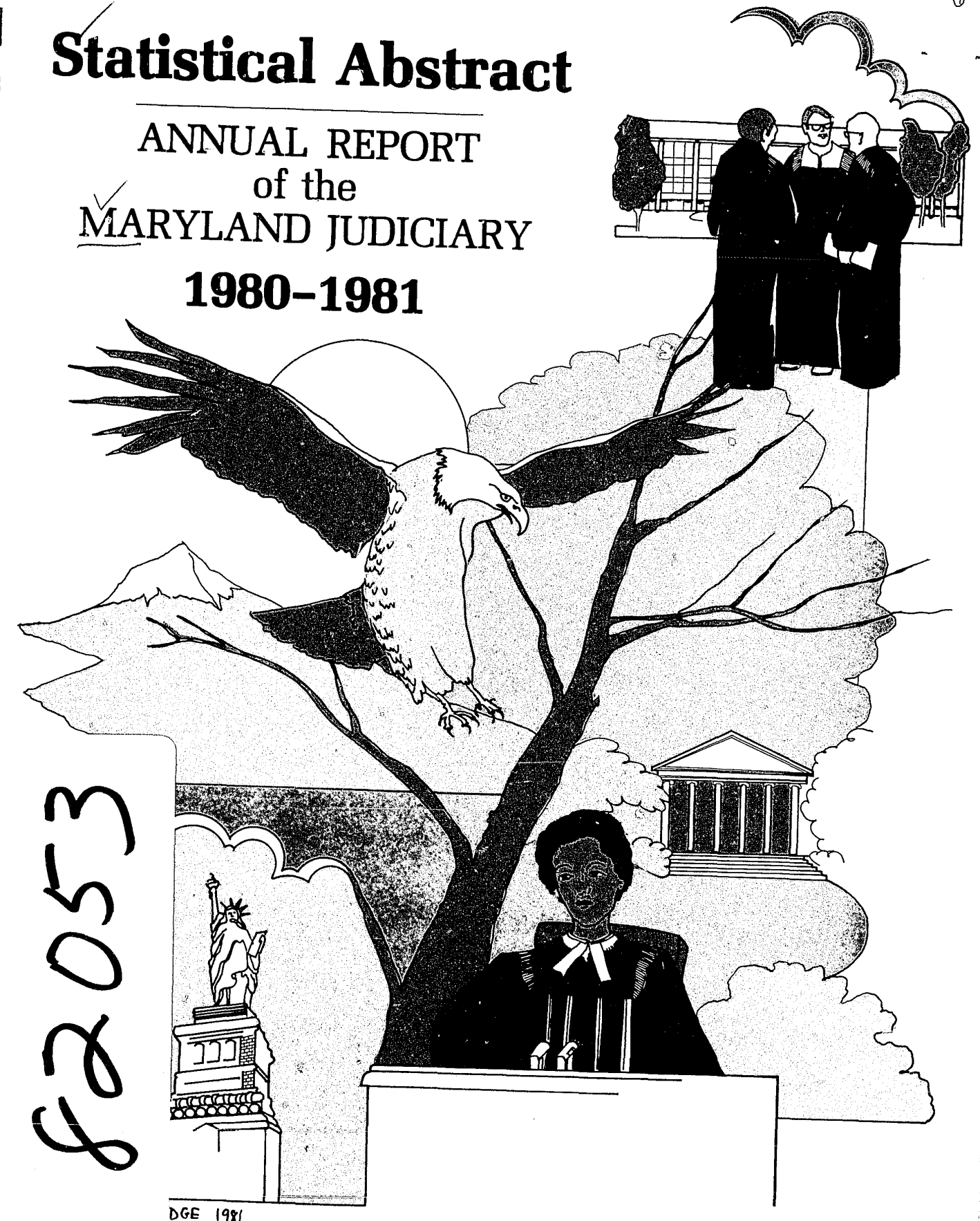
Microfilming procedures used to create this fiche comply with the standards set forth in 41CFR 101-11.504.

Points of view or opinions stated in this document are those of the author(s) and do not represent the official position or policies of the U. S. Department of Justice.

National Institute of Justice
United States Department of Justice
Washington, D. C. 20531

Statistical Abstract

ANNUAL REPORT of the MARYLAND JUDICIARY 1980-1981



DGE 1981

Report Prepared By:

The Judicial Special Projects, Research,
and Planning Services Unit

of the
Administrative Office of the Courts

U.S. Department of Justice
National Institute of Justice

92053

This document has been reproduced exactly as received from the person or organization originating it. Points of view or opinions stated in this document are those of the authors and do not necessarily represent the official position or policies of the National Institute of Justice.

Permission to reproduce this copyrighted material has been granted by

Michael V. O'Malley

MD. Admin. Office of the Courts

to the National Criminal Justice Reference Service (NCJRS).

Further reproduction outside of the NCJRS system requires permission of the copyright owner.

NCJRS

NOV 4 1981

ACQUISITIONS

TABLE OF CONTENTS

DEFINITIONS	1
THE COURT OF APPEALS	9
THE COURT OF SPECIAL APPEALS	19
THE CIRCUIT COURTS	29
THE DISTRICT COURT	83
APPENDIX	97
STATE BOARD OF LAW EXAMINERS	99
STANDING COMMITTEE ON RULES OF PRACTICE AND PROCEDURE	100
APPELLATE JUDICIAL NOMINATING COMMISSION	102
TRIAL COURT JUDICIAL NOMINATING COMMISSIONS	102

TABLES

CA-1	Appeals Docketed by Term - Court of Appeals
CA-2	Origin of Appeals by Appellate Judicial Circuit - Court of Appeals
CA-3	Applications for Certiorari
CA-4	Average Time Intervals for Disposition of Appeals (In Days and Months)
CA-5	Status of Court of Appeals Cases During Fiscal 1981
CA-6	Miscellaneous Docket (Applications for Certiorari)
CA-7	Disposition of Court of Appeals Cases - Fiscal 1981
CSA-1	Appeals Docketed by Term - Court of Special Appeals
CSA-2	Origin of Appeals by Appellate Judicial Circuit - Court of Special Appeals
CSA-3	Status of Court of Special Appeals Cases During Fiscal 1981
CSA-4	Average Time Intervals for Disposition of Appeals (In Days and Months)
CSA-5	Disposition of Court of Special Appeals Cases During Fiscal 1981
CSA-6	Disposition of Applications for Leave to Appeal During Fiscal 1981
CSA-7	Relationship Between Court of Special Appeals Cases and Circuit Court Trials
CC-1	Law, Equity, Criminal, and Juvenile - Filed, Terminated and Pending
CC-2	Percentages of Original Cases Filed and Reopened Cases Heard

CC-3	Categories of Filings - Original Cases Filed and Reopened Cases Heard
CC-4	Categories of Terminations - Terminations of Original Cases Filed and of Reopened Cases Heard
CC-5	Terminations as a Percentage of Filings in the Circuit Courts
CC-6	Five-Year Comparative Table - All Cases - Filings and Terminations
CC-7	Five-Year Comparative Table - Law Cases - Filings and Terminations
CC-8	Five-Year Comparative Table - Equity Cases - Filings and Terminations
CC-9	Five-Year Comparative Table - Criminal Cases - Filings and Terminations
CC-10	Five-Year Comparative Table - Juvenile Causes - Filings and Terminations
CC-11	Cases Tried by County and Circuit
CC-12	Cases Tried by Major Jurisdiction
CC-13	Percentage of Circuit Court Case Filings Originating from the District Court
CC-14	Law Cases - Ratio of Trials to Dispositions
CC-15	Five-Year Comparative Table - Law Cases Tried
CC-16	Criminal Cases - Ratio of Trials to Dispositions
CC-17	Five-Year Comparative Table - Criminal Cases Tried
CC-18	Five-Year Comparative Table - Equity Cases Tried
CC-19	Law, Equity, Criminal, and Juvenile Hearings

CC-20	Average Days from Filing to Disposition
CC-21	Law -- Average Days from Filing to Disposition by Age of Cases and Cumulative Percentages of Dispositions Within Specific Time Periods
CC-22	Equity -- Average Days from Filing to Disposition by Age of Cases and Cumulative Percentages of Dispositions Within Specific Time Periods
CC-23	Criminal -- Average Days from Filing to Disposition by Age of Cases and Cumulative Percentages of Dispositions Within Specific Time Periods
CC-24	Juvenile -- Average Days from Filing to Disposition by Age of Cases and Cumulative Percentages of Dispositions Within Specific Time Periods
CC-25	Population and Caseload Per Circuit Court Judge
CC-26	Five-Year Comparative Table - Cases Filed and Terminated Per Judge
CC-27	Cases Filed in the Circuit Court Per Thousand Population
CC-28	Ratio of Jury Trials to Population
CC-29	Five-Year Comparative Graph - Civil Cases Filed
CC-30	Appeals from District Court and Administrative Agencies
CC-31	Five-Year Comparative Chart - Appeals from District Court and Administrative Agencies
CC-32	Five-Year Comparative Table - Appeals from Administrative Agencies
CC-33	Five-Year Comparative Table - Appeals from the District Court
CC-34	Five-Year Comparative Table - Post Conviction Cases Filed

CC-35	Applications for Review of Criminal Sentences
DC-1	Motor Vehicle, Criminal, and Civil Cases Filed or Processed in the District Court of Maryland
DC-2	Motor Vehicle Cases Processed by the District Court of Maryland
DC-3	Criminal Cases Processed by the District Court of Maryland
DC-4	Civil Cases Filed in the District Court of Maryland
DC-5	Five-Year Comparative Table - Motor Vehicle, Criminal, and Civil Cases Filed in the District Court
DC-6	Five-Year Comparative Table - Motor Vehicle Cases Processed by the District Court
DC-7	Four-Year Comparative Table - Criminal Cases by the Number of Defendants Charged - Processed in the District Court
DC-8	Five-Year Comparative Table - Civil Cases Filed in the District Court
DC-9	Population and Caseload Per District Court Judge
DC-10	Cases Filed or Processed in the District Court Per Thousand Population

Definitions As Used In This Volume

ADOPTION, GUARDIANSHIP -- This includes all adoptions and guardianships including regular adoptions, guardianship with right to adoption and guardianship with right to consent to long-term case short of adoption. Guardianships of incompetents are reported in "Other - General Equity."

ADULT -- A person who is 18 years old or older charged with an offense relating to juveniles to be heard in Juvenile Court.

APPEAL -- The resorting to a higher court to reverse or correct a decision of a tribunal below. This includes appeals to the circuit court, the Court of Appeals and Court of Special Appeals.

Appeals to the circuit courts include:

1. Record - The judge's review of a written or electronic recording of the proceedings in the District Court.
2. De Novo - The retrial of an entire case initially tried in the District Court.
3. Administrative Agency - Appeals from decisions rendered by Administrative Agencies. For example:

County Commissioner
Department of Taxation and Assessments
Employment Security
Funeral Director
Liquor License Commissioners
Physical Therapy
State Comptroller (Sales Tax, etc.)
State Motor Vehicle Authority
Supervisors of Elections
Tax Court
Workmen's Compensation Commission
Zoning Appeals
Any other administrative body from which an appeal is authorized.

APPLICATION FOR LEAVE TO APPEAL -- Procedural method by which a petitioner seeks leave of the Court of Special Appeals to grant an appeal. When granted, the matter addressed is transferred to the direct appeal docket of the Court for customary briefing and argument. Maryland Rules of Procedure permit the filing of such applications in matters dealing with post conviction, inmate grievances and

denial of or grant of excessive bail in habeas corpus proceedings.

CASE -- A matter having a unique docket number; includes original and reopened (post-judgment) matters. (Note: In Fiscal 1981, reopened matters only include those cases which had a hearing.)

CASELOAD -- The total number of cases filed or pending with a court during a specific period of time. Cases may include all categories of matters (law, equity, juvenile and criminal).

C.I.N.A. -- Child in Need of Assistance -- Refers to a child who needs the assistance of the court because:

1. The child is mentally handicapped or
2. Is not receiving ordinary and proper care and attention and
3. The parents, guardian or custodian are unable or unwilling to give proper care and attention.

C.I.N.S. -- Child in Need of Supervision -- Refers to a child who requires guidance, treatment or rehabilitation because of habitual truancy, ungovernableness or behavior that would endanger himself or others. Also included in this category is the commission of an offense applicable only to children.

CONDEMNATION -- The process by which property of a private owner is taken for public use without the owner's consent but upon the award and payment of just compensation.

CONTESTED CONFESSED JUDGMENT -- Contesting by a debtor of a judgment entered for a creditor immediately upon filing of a written statement by the creditor to the court.

CONTRACTS -- A case involving a dispute over an oral or written agreement between two or more parties.

Breaches of verbal or written contracts
Landlord/tenant appeals from District Court
Some attachments and removals
Some claims for summary judgments

DELINQUENCY -- Commission of an act by a juvenile which would be a crime if committed by an adult.

DISPOSITION -- Entry of final judgment in a case.

DISTRICT COURT -- CONTESTED -- Only applies to civil, a case that has gone to trial and both parties (plaintiff and defendant) appear.

DISTRICT COURT CRIMINAL CASE -- Single defendant charged per single incident. It may include multiple charges arising from the same incident.

DISTRICT COURT FILING -- The initiation of a civil action or case in the District Court. District Court criminal and motor vehicle cases are reported as "processed" rather than as "filed."

DIVORCE, NULLITY -- A proceeding to dissolve a marriage. Original filings under this category include divorce a vinculo matrimonii, divorce a mensa et thoro, and annulment. A reopened case under this category includes hearings held after final decree or other termination in the original case. A reopened case may involve review of matters other than the divorce itself as long as the original case was a divorce. (Examples of the latter may be a contempt proceeding for nonpayment of support, noncompliance with custody agreement, modification of support, custody, etc.)

DOCKET -- Formal record of court proceedings.

EQUITY HEARING -- See "Trials."

FILING -- Formal commencement of a judicial proceeding by submitting the necessary papers pertaining to it. Original filing under one docket number and subsequent reopenings (post-judgment) under the same number are counted as separate filings. (Note: In Fiscal 1981, reopened filings include only those reopened cases which had a hearing.)

FISCAL YEAR -- The period of time from July 1 of one year through June 30 of the next. For example: July 1, 1980, to June 30, 1981.

HEARINGS

Criminal or Law -- Any activity occurring in the courtroom or in the judges' chambers on the record and/or in the presence of a clerk is considered a hearing (except motions to continue or trials). Electronic recording equipment, for definition purposes, is the equivalent to the presence of a court reporter.

Examples of Hearings in Criminal

Arraignment
Demurrer
Motion to Quash
Motion to Dismiss
Motion for Change of Venue
Discovery Motions
Motion to Suppress
Motion to Sever

Examples of Hearings in Law

Motion to Compel an Answer to an Interrogatory
Motion Ne Recipiatur
Motion for Judgment by Default
Demurrer
Motion for Summary Judgment
Motion to Vacate, Open, or Modify Confession of Judgment

Equity -- A presentation either before a judge or before a master empowered to make recommendations, on the record or in the presence of a clerk or court reporter, for purposes other than continuance or final determination of the facts of the case. Electronic recording equipment, for definition purposes, is the equivalent to the presence of a court reporter.

Examples of Hearings in Equity

Preliminary motions presented in court, except motions for continuance
Determination of alimony pendente lite, temporary custody, etc., in a divorce case
Contempt or modification hearings

Juvenile -- A presentation before a judge, master, or examiner on the record in the presence of a clerk or court reporter. Electronic recording equipment, for definition purposes, is the equivalent to the presence of a court reporter.

Examples of Hearings in Juvenile

Preliminary motions presented in court
Arraignment or preliminary inquiry
Detention (if after filing of petition)
Merits or adjudication
Disposition
Restitution

Waiver
Review
Violation of probation

INDICTMENT -- The product of a grand jury proceeding against an individual.

INFORMATION -- Written accusation of a crime prepared by the State's Attorney's Office.

JURY TRIAL PRAYER - MOTOR VEHICLE -- A request for trial by jury in the circuit court for a charge normally heard in the District Court. A jury trial prayed for a motor vehicle case carries a sentence of more than six months.

JURY TRIAL PRAYER - OTHER (CRIMINAL) -- A request for a trial by jury in the circuit court for charges normally heard in the District Court, except traffic charges or nonsupport.

JUVENILE DISPOSITIONS

Jurisdiction Waived -- The court transfers jurisdiction over the case to adult criminal court (applies only to delinquency cases).

Charge Sustained Dismissed -- The court determines the allegations in the delinquency petition are true, but further determines that the child does not need treatment or rehabilitation; and, therefore, the charges of delinquency cannot be supported (applies only to delinquency cases).

Charge Sustained Probation -- The court determines the allegations in the petition are true and places the child under the supervision of a probation officer or in a community-based program. (Applies to conditional and unconditional probation, group home or foster care placement, delinquency, CINS and CINA cases.)

Charge Sustained Institutional Commitment -- The court determines the allegations in the petition to be true, and orders the child to be committed to a secure residential facility. (Applies to both correctional and mental health facilities and delinquency, CINS, and CINA cases.)

Charge Not Sustained -- The court does not determine the allegations in the petition to be true (applies to delinquency, CINS, and CINA cases).

Other Conclusion or Disposition -- Includes juvenile causes disposed of by informal action and other dispositions such as change of venue, transfer to equity court of case related to custody proceeding, stet, and nolle prosequi.

MISCELLANEOUS DOCKET -- Established for and maintained primarily as a method of recording and identifying those preliminary proceedings or collateral matters before the Court of Appeals other than direct appeals.

MOTOR TORTS -- Personal injury and property damage cases resulting from automobile accidents. (This does not include consent cases.)

MOTOR VEHICLE APPEALS -- An appeal of a District Court verdict in a traffic charge.

NOLLE PROSEQUI -- A formal entry upon the record by the plaintiff in a civil suit, or the State's attorney in a criminal case, to no longer prosecute the case.

NONSUPPORT -- A criminal case involving the charge of nonsupport.

ORIGINAL FILING -- See "Filing."

OTHER APPEALS (CRIMINAL) -- An appeal of a District Court verdict except one arising from a traffic charge or nonsupport.

OTHER DOMESTIC RELATIONS -- Matters related to the family other than divorce, guardianship, adoption or paternity. Examples of this category include support, custody, and U.R.E.S.A. cases.

OTHER GENERAL EQUITY -- This category includes, among other things, injunctions, change of name, foreclosure and guardianship of incompetent persons.

OTHER LAW -- This category includes:

Conversion
Detinue
Ejectment
Issues from Orphans' Court
Attachments on Original Process

Mandamus
Replevin
Trespass

OTHER TORTS -- Personal injury and property damage cases resulting from:

Assault and battery - an unlawful force to inflict bodily injury upon another.
Certain attachments.
Consent tort.
False imprisonment - the plaintiff is confined within boundaries fixed by the defendant for some period of time.
Libel and slander - a defamation of character.
Malicious prosecution - without just cause an injury was done to somebody through the means of a legal court proceeding.
Negligence - any conduct falling below the standards established by law for the protection of others from unreasonable risk of harm.
Miscellaneous.

PATERNITY -- A suit to determine fatherhood responsibility of a child born out of wedlock. A reopened case under this category may involve matters other than the finding of paternity suit. Examples of the latter include reopening the paternity action after having been stettered, contempt proceeding for nonpayment of child support and modification proceedings to change amount or terms of the decree.

PENDING CASE -- Case in which no final disposition has occurred.

POST CONVICTION -- Proceeding instituted to set aside a conviction or to correct a sentence that was unlawfully imposed.

REOPENED FILING -- The first hearing held on a case after a final judgment on the original matter has been entered.

STET -- Proceedings are stayed; one of the ways a case may be terminated.

TERMINATION -- Same as "Disposition."

TRIALS

CRIMINAL

Court Trial -- A contested hearing on the facts of the case to decide the guilt or innocence of the defendant where one or more witnesses has been sworn.

Jury Trial -- A contested hearing on the facts of the case to decide the guilt or innocence of the defendant, where the jury has been sworn.

EQUITY

Court Trial -- A hearing on the merits of the case either before a judge or before a master empowered to make recommendations, to present evidence for the final disposition, where testimony is given by one or more persons.

Jury Trial -- A contested hearing on the facts of the case to decide in favor of either party where a jury has been sworn.

LAW

Court Trial -- A contested hearing (excluding preliminary motion) on the facts of the case to decide in favor of either party where testimony is given by one or more persons.

Jury Trial -- A contested hearing on the facts of the case to decide in favor of either party where the jury has been sworn.

UNREPORTED CATEGORY -- A filing counted for case type (law, equity, criminal, or juvenile) but not for category within the case type.

THE COURT OF APPEALS

THE COURT OF APPEALS

Statistics found in this section of the Statistical Abstract are generally tabulated by fiscal year although the Court of Appeals follows a year related to the Term of Court, which always begins on the second Monday in September. For each Term of Court there is a term docket which relates to appeals heard during that term. In the statistics that follow, the reader should carefully note those that are tabulated by fiscal year, and those that pertain to a particular docket of a Term of Court.

During the fiscal year July 1, 1980, through June 30, 1981, the Court of Appeals had 203 regular appeals before it for consideration. Forty-seven of those appeals were carried over from the 1979 Term docket, 2 were advanced from the 1981 Term docket, and the remaining (154) were filed on the 1980 Term docket.

Approximately 18.8 percent (29) of the 154 appeals on the 1980 Term docket were from Baltimore City (Sixth Appellate Judicial Circuit). The Third and Fourth Appellate Circuits recorded 30 each, followed by the Second with 26, the Fifth with 22, and the First with 17. Along with Baltimore City, Montgomery County had the

highest number of appeals to the Court of Appeals with 29. Prince George's County was next with 24, Baltimore County, 21, and Anne Arundel County noted only 16. The combined total of the four metropolitan counties plus Baltimore City was 119 or 77.3 percent of the total 1980 docket.

By the close of the 1981 Fiscal Year, the Court of Appeals had disposed of all but 51 of the regular appeals pending before it. Those appeals had been heard but had not been disposed of by opinion due to the constraints of time. During Fiscal 1981, the Court considered and decided 145 appeals and filed 132 majority opinions, 111 of which were reported. Twenty-three opinions were per curiam. Members of the Court also filed 13 dissenting opinions, 1 concurring opinion, and 4 opinions dissenting in part and concurring in part. Appeals on the 1980 docket averaged 3.8 months from docketing to argument and an additional 3.7 months until decision.

Of the 154 appeals on the 1980 docket, 49 were cases that by-passed the Court of Special Appeals without being heard there. Only 3.3 percent or 5 appeals on the 1980 docket were dismissed prior to argument or submission to the Court of Appeals.

During Fiscal 1981, 628 petitions for issuance of Writs of Certiorari were filed in the Court of Appeals

while 655 were terminated. Criminal petitions considered constituted 52.7 percent (345) while the remaining 47.3 percent (310) were of a civil nature. The Court granted 19.7 percent (129) of the total petitions; 79 of which were civil and 50 of which were criminal.

Also during Fiscal 1981, the Court of Appeals admitted 833 persons to the practice of law, including 78 attorneys from other jurisdictions. It also conducted 29 disciplinary proceedings involving members of the Maryland Bar.

TABLE CA-1
APPEALS DOCKETED BY TERM
COURT OF APPEALS

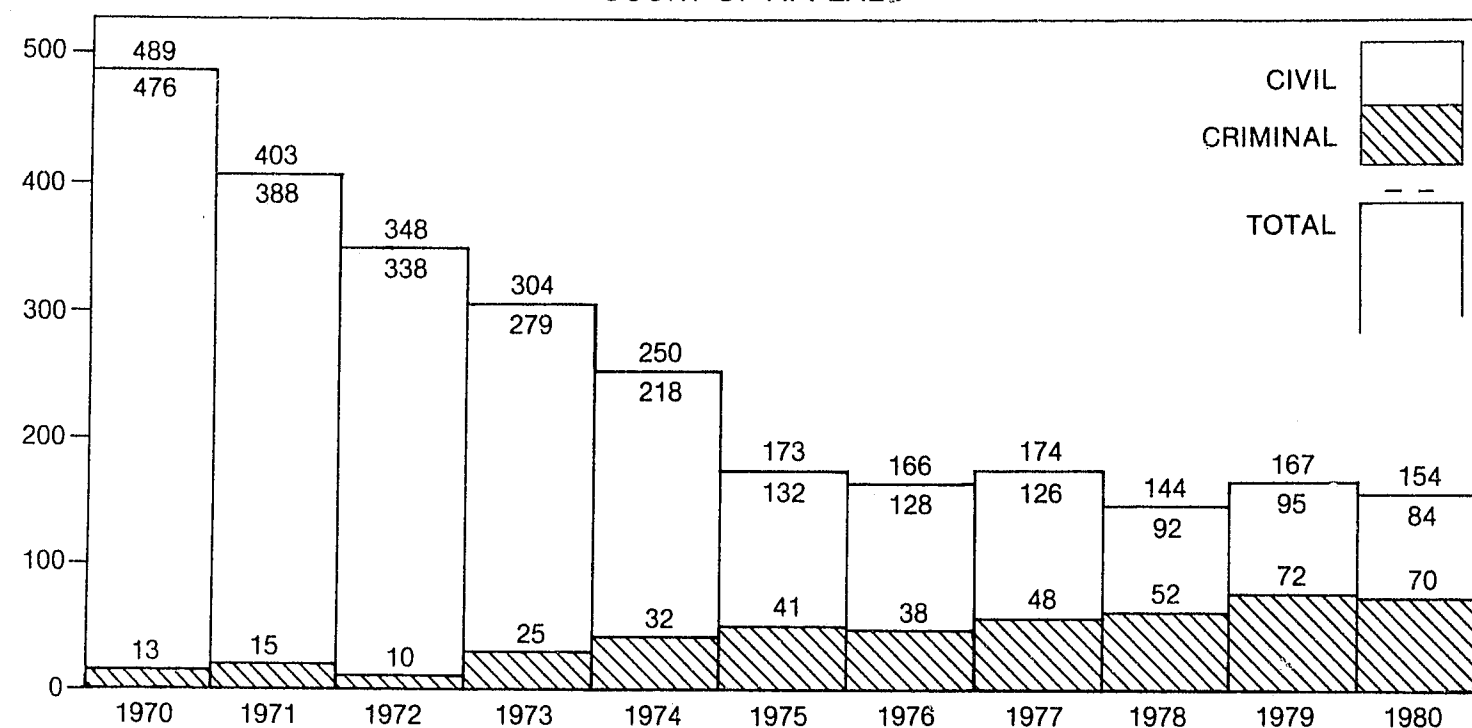


TABLE CA-2
ORIGIN OF APPEALS
BY APPELLATE JUDICIAL CIRCUIT
COURT OF APPEALS

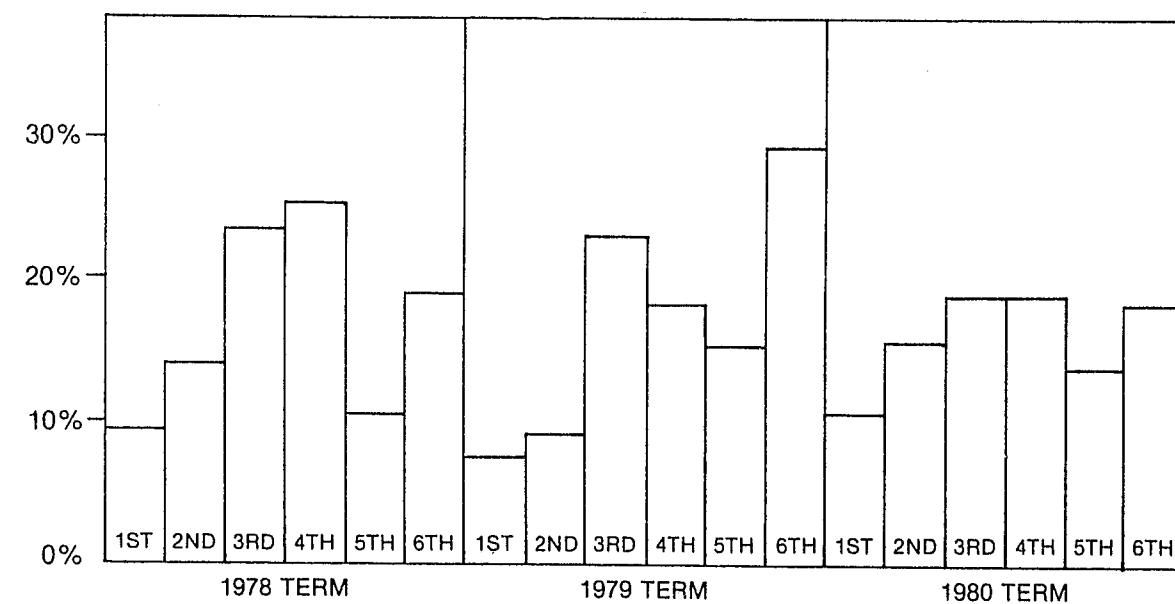


TABLE CA-3

APPLICATIONS FOR CERTIORARI

	Total Dispositions	Number Granted	Percentage
1976-77	480	114	23.7
1977-78	491	92	18.7
1978-79	463	101	21.8
1979-80	495	121	24.4
1980-81	655	129	19.7

TABLE CA-4

AVERAGE TIME INTERVALS
FOR DISPOSITION OF APPEALS

(In Days and Months)

Docket	Original Filing to Disposition in Circuit Court	Disposition in Circuit Court to Docketing in Court of Appeals	Docketing to Argument	Argument to Decision
1976	15.4	7.2	2.6	1.6
1977	13.9	7.1	2.7	1.7
1978	16.9	8.6	3.5	2.8
1979	486 16.2	281 9.4	112 3.7	83 2.8
1980	432 14.4	331 11.0	115 3.8	110 3.7

TABLE CA-5

STATUS OF
COURT OF APPEALS CASES
DURING FISCAL 1981

	<u>Civil</u>	<u>Criminal</u>	<u>Total</u>
Appeals During FY 81	110	93	203
<u>Status</u>			
Disposed of	77	75	152
Dismissed Prior to Argument	3	2	5
Transferred to Court of Special Appeals	1	1	2
Considered and Decided	73	72	145
Pending	33	18	51
<u>Origin</u>			
1979 Docket	24	23	47
1980 Docket	84	70	154
1981 Docket	2	0	2

TABLE CA-6

MISCELLANEOUS DOCKET
(Applications for Certiorari)

	<u>Granted</u>	<u>Stayed</u>	<u>Dismissed</u>	<u>Denied</u>	<u>Withdrawn</u>	<u>Total</u>
Applications	129	1	2	521	2	655
CIVIL	79	1	1	228	1	310
CRIMINAL	50		1	293	1	345

TABLE CA-7

DISPOSITION OF
COURT OF APPEALS CASES

JULY 1, 1980 - JUNE 30, 1981
FISCAL 1981

	<u>Law</u>	<u>Equity</u>	<u>Juvenile</u>	<u>Criminal</u>	<u>Total</u>
Affirmed	24	9	0	36	69
Reversed	19	9	2	25	55
Dismissed - Opinion Filed	0	1	0	0	1
Dismissed Without Opinion	2	2	0	2	6
Remanded Without Affirmance or Reversal	0	1	0	8	9
Affirmed in Part, Reversed in Part	0	2	0	1	3
Modified and Affirmed	1	1	0	0	2
Dismissed Prior to Argument or Submission	2	1	0	2	5
Transferred to Court of Special Appeals	1	0	0	1	2
Total Cases Disposed During Fiscal Year 1981	49	26	2	75	152
Total Cases Pending at Close of Fiscal Year 1981	25	8	0	18	51
Total Cases Disposed and Pending During Fiscal Year 1981	74	34	2	93	203

TABLE CA-5

STATUS OF
COURT OF APPEALS CASES
DURING FISCAL 1981

	<u>Civil</u>	<u>Criminal</u>	<u>Total</u>
Appeals During FY 81	110	93	203
<u>Status</u>			
Disposed of	77	75	152
Dismissed Prior to Argument	3	2	5
Transferred to Court of Special Appeals	1	1	2
Considered and Decided	73	72	145
Pending	33	18	51
<u>Origin</u>			
1979 Docket	24	23	47
1980 Docket	84	70	154
1981 Docket	2	0	2

TABLE CA-6

MISCELLANEOUS DOCKET
(Applications for Certiorari)

	<u>Granted</u>	<u>Stayed</u>	<u>Dismissed</u>	<u>Denied</u>	<u>Withdrawn</u>	<u>Total</u>
Applications	129	1	2	521	2	655
CIVIL	79	1	1	228	1	310
CRIMINAL	50		1	293	1	345

TABLE CA-7

DISPOSITION OF
COURT OF APPEALS CASES
JULY 1, 1980 - JUNE 30, 1981
FISCAL 1981

	<u>Law</u>	<u>Equity</u>	<u>Juvenile</u>	<u>Criminal</u>	<u>Total</u>
Affirmed	24	9	0	36	69
Reversed	19	9	2	25	55
Dismissed - Opinion Filed	0	1	0	0	1
Dismissed Without Opinion	2	2	0	2	6
Remanded Without Affirmance or Reversal	0	1	0	8	9
Affirmed in Part, Reversed in Part	0	2	0	1	3
Modified and Affirmed	1	1	0	0	2
Dismissed Prior to Argument or Submission	2	1	0	2	5
Transferred to Court of Special Appeals	1	0	0	1	2
Total Cases Disposed During Fiscal Year 1981	49	26	2	75	152
Total Cases Pending at Close of Fiscal Year 1981	25	8	0	18	51
Total Cases Disposed and Pending During Fiscal Year 1981	74	34	2	93	203

THE COURT OF SPECIAL APPEALS

Preceding page blank

THE COURT OF SPECIAL APPEALS

In studying the statistics in this section of the Statistical Abstract, the reader should bear in mind that the remarks as to Term of Court and fiscal year found in the previous section, are applicable here as well. During the fiscal year, July 1, 1980, through June 30, 1981, the Court of Special Appeals had 2,082 regular appeals before it for consideration. Three hundred fifty-seven of those were from the 1979 Term docket and had been heard during the previous fiscal year, but had not been disposed of by opinion due to the short space of time between hearing and close of the fiscal year. Three cases were advanced from the 1981 Term docket while 1,722 were filed on the 1980 Term docket. The latter figure reflected an increase of 3.05 percent from the 1,671 appeals recorded on the 1979 docket.

Although the Court had 2,082 regular appeals before it for consideration in Fiscal 1981, there actually were 1,645 appeals filed during the fiscal year from the 1980 and 1981 Term dockets. These 1,645 appeals do not include 818 civil notices of appeal which were filed in the Clerk's Office pursuant to Maryland Rules 1022-1024. These appeals were either scheduled for prehearing

conference or proceeded through the regular appellate process as stipulated in Maryland Rule 1024 a.1. Cases finally disposed of by prehearing conference are never placed on the regular docket or listed as filings. Cases not finally disposed of by this process will be placed on subsequent dockets and will then be included among filings.

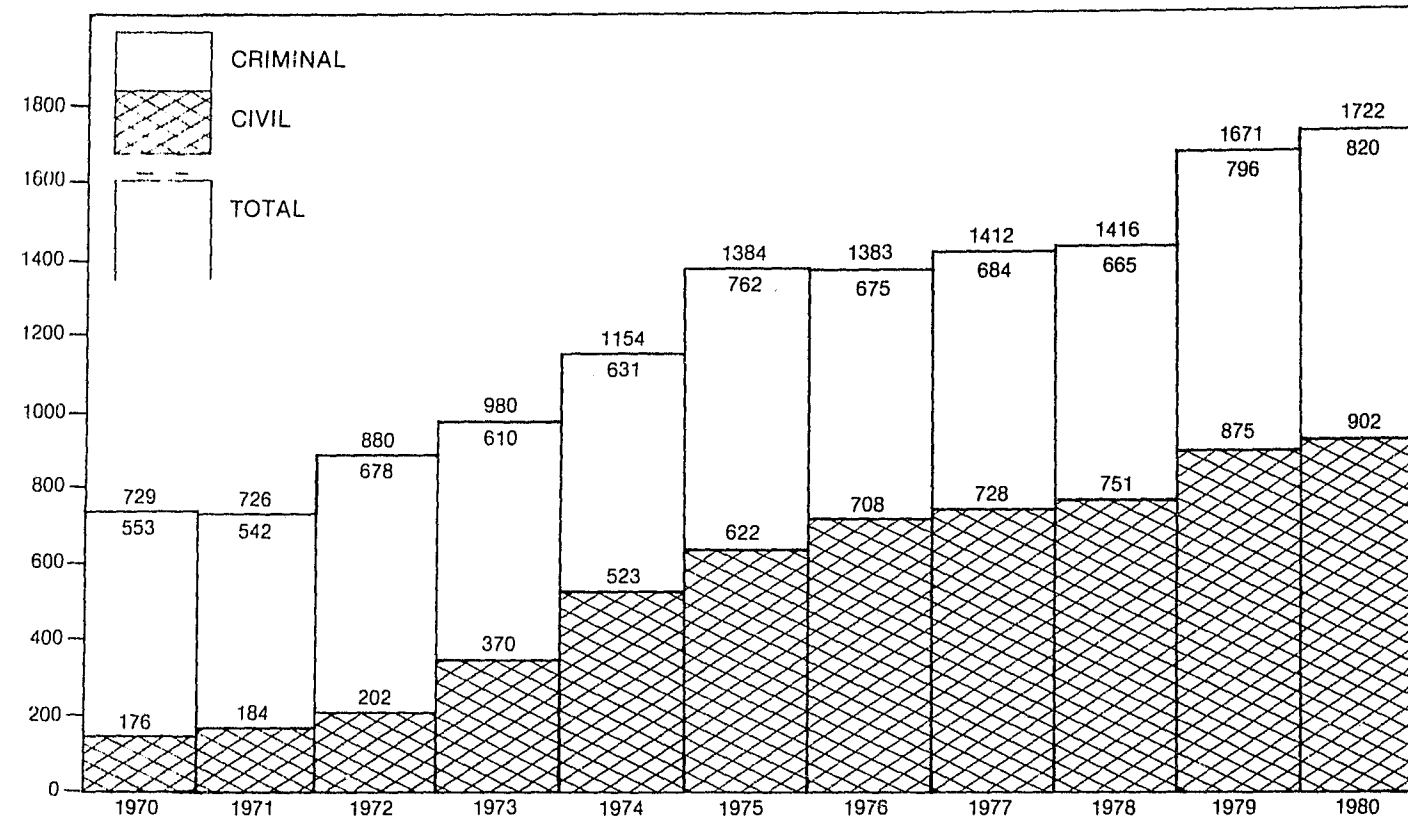
Of the 1,722 appeals on the 1980 docket, 443 (25.7 percent) originated in the Sixth Appellate Judicial Circuit (Baltimore City), followed by the Third Appellate Circuit with 379, and the Fourth with 326. The Fifth, Second and First Appellate Circuits tallied 230, 189, and 155, respectively. Montgomery County noted 267 appeals, followed closely by Prince George's with 262. Baltimore and Anne Arundel Counties recorded nearly identical totals of 154 and 153. The total 836 appeals from these four counties, when added to the 443 from Baltimore City, accounted for nearly three-fourths (74.27 percent) of the 1980 docket.

By the close of the 1981 fiscal year, the Court of Special Appeals had disposed of 1,923 appeals, leaving only 159 pending. The latter number had been argued, but had not been concluded by opinion. The Court actually considered and decided 1,356 appeals and filed 1,346 majority opinions in disposing of them. Reported opinions

totaled 235 and those unreported, 1,111. There were also 16 dissenting opinions and 7 concurring opinions filed. Appeals averaged 5.5 months from docketing to argument and 1.2 months from argument to disposition.

In addition to its massive regular docket, the Court also considered 136 applications for leave to appeal. It granted 10 of those applications.

TABLE CSA-1
APPEALS DOCKETED BY TERM
COURT OF SPECIAL APPEALS



*Does not include 818 civil notices of appeal which were filed in the Clerk's Office pursuant to Maryland Rules 1022-1024. These appeals were either scheduled for prehearing conference or proceeded through the regular appellate process as stipulated in Maryland Rule 1024 a.1.

TABLE CSA-2
ORIGIN OF APPEALS
BY APPELLATE JUDICIAL CIRCUIT
COURT OF SPECIAL APPEALS

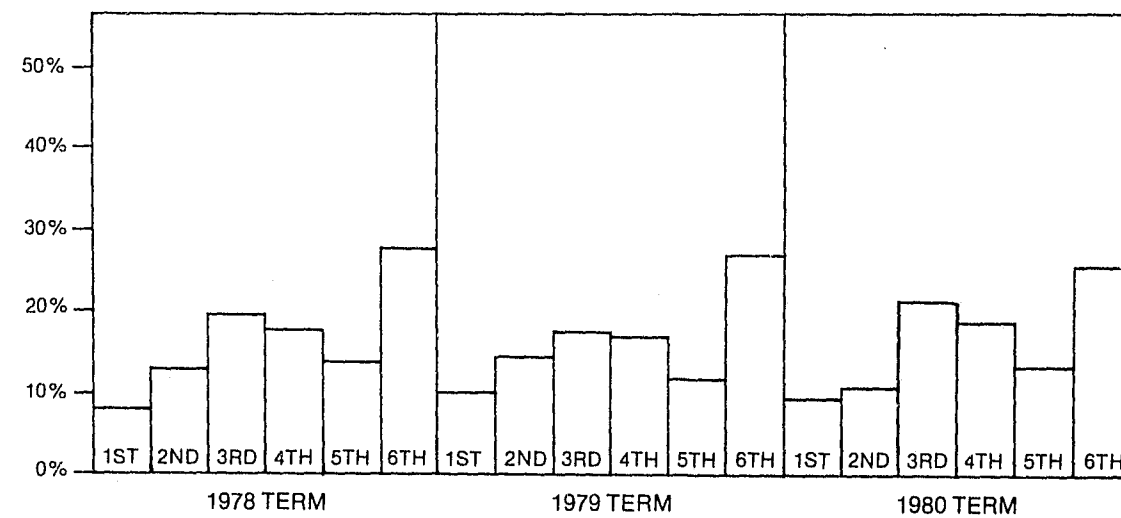


TABLE CSA-3

STATUS OF
COURT OF SPECIAL APPEALS CASES
DURING FISCAL 1981

	Civil	Criminal	Total
Appeals Disposed and Pending During FY 81	1,083	999	2,082
<u>Status</u>			
Disposed of	1,008	915	1,923
Dismissed Prior to Argument	346	145	491
Transferred to Court of Appeals	51	20	71
Stayed	5	0	5
Considered and Decided	606	750	1,356
Pending	75	84	159
<u>Origin</u>			
1979 Docket	180	177	357
1980 Docket	902	820	1,722
1981 Docket	1	2	3

TABLE CSA-4

AVERAGE TIME INTERVALS
FOR DISPOSITION OF APPEALS

(In Days and Months)

<u>Docket</u>	<u>Original Filing to Disposition in Court Below</u>	<u>Disposition in Circuit Court to Docketing in Court of Special Appeals</u>	<u>Docketing to Argument</u>	<u>Argument to Decision</u>
1976	11.3	2.6	4.6	1.1
1977	11.5	2.7	4.9	0.7
1978	16.3	3.4	5.0	1.2
1979	465 15.5	110 3.7	171 5.7	27 0.9
1980	431 14.4	119 4.0	166 5.5	35 1.2

TABLE CSA-7

RELATIONSHIP BETWEEN COURT OF SPECIAL APPEALS
CASES AND CIRCUIT COURT TRIALS

FISCAL 1981

<u>Jurisdiction</u>	<u>Court of Special Appeals 1980 Docket</u>	<u>Circuit Court Fiscal 1981 Trials</u>	<u>Ratio of Appeals To Trials</u>
FIRST CIRCUIT	84	668	.12
Dorchester	20	94	.21
Somerset	7	131	.05
Wicomico	41	293	.13
Worcester	16	150	.10
SECOND CIRCUIT	71	803	.08
Caroline	10	42	.23
Cecil	26	488	.05
Kent	11	66	.16
Queen Anne's	12	152	.07
Talbot	12	55	.21
THIRD CIRCUIT	189	3,188	.05
Baltimore	154	2,469	.06
Harford	35	719	.04
FOURTH CIRCUIT	95	622	.15
Allegany	23	273	.08
Garrett	6	84	.07
Washington	66	265	.24
FIFTH CIRCUIT	230	2,774	.08
Anne Arundel	153	1,458	.10
Carroll	32	701	.04
Howard	45	615	.07
SIXTH CIRCUIT	284	3,394	.08
Frederick	17	265	.06
Montgomery	267	3,129	.08
SEVENTH CIRCUIT	326	2,202	.14
Calvert	19	140	.13
Charles	23	133	.17
Prince George's	262	1,802	.14
St. Mary's	22	127	.17
EIGHTH CIRCUIT	443	6,137	.07
Baltimore City	443	6,137	.07
STATE	1,722	19,788	.08

TABLE CSA-5

DISPOSITION OF
COURT OF SPECIAL APPEALS CASES
DURING FISCAL 1981

	Law	Equity	Juvenile	Criminal	Total
Affirmed	199	167	29	580	975
Reversed	77	35	11	128	251
Dismissed - Opinion Filed	18	17	1	1	37
Dismissed - Without Opinion	0	1	0	0	1
Remanded Without Affirmance or Reversal	5	2	1	3	11
Affirmed in Part, Reversed in Part	19	19	1	37	76
Modified and Affirmed	1	3	0	1	5
Stayed	3	2	0	0	5
Dismissed Prior to Argument or Submission	188	136	22	145	491
Transferred to Court of Appeals	28	21	2	20	71
Total Cases Disposed During Fiscal Year 1981	538	403	67	915	1,923
Total Cases Pending at Close of Fiscal Year 1981	34	37	4	84	159
Total Cases Disposed and Pending During Fiscal Year 1981	572	440	71	999	2,082

TABLE CSA-6

DISPOSITION OF APPLICATIONS FOR LEAVE TO APPEAL
DURING FISCAL 1981

	Granted	Dismissed	Denied	Remanded	Total
Post Conviction	10	4	103	14	131
Inmate Grievance			4	1	5
TOTALS	10	4	107	15	136

THE CIRCUIT COURTS

THE CIRCUIT COURTS

FILINGS

Law, equity, juvenile and criminal case filings amounted to 146,768 in Fiscal 1981. This figure also includes 2,410 juvenile causes heard at the District Court level in Montgomery County. With respect to total circuit court caseload, 36.6 percent of the filings were in equity, 31.4 percent in criminal, 17.3 percent in juvenile, and 14.7 percent in the law category.

The Fiscal 1981 filings of 146,768 decreased by 3.4 percent over the 151,946 filings recorded last year. Decreases were registered in all categories except criminal: Law filings, off 14.6 percent; equity filings, minus 11.9 percent; juvenile, down 4.8 percent; and criminal, up 18.1 percent. One of the reasons why filings decreased in Fiscal 1981 was not because the volume of work necessarily diminished in the circuit courts. A new statistical system was initiated which counted reopened cases from the hearing stage rather than the petition stage. In previous years, reopened cases were counted at the time the petition was filed. Thus, decreases were noted in three categories primarily due to a new system of counting reopened case filings.

In Fiscal 1981, 17,268 law cases filed in the five major jurisdictions of Baltimore County, Anne Arundel County, Montgomery County, Prince George's County, and Baltimore City accounted for 79.9 percent of the total 21,608 State caseload. This represents an 11.4 percent decline from the 19,496 filings recorded for these jurisdictions in Fiscal 1980. The other 19 counties recorded 4,340 law cases; only 20.0 percent of the total law filings and representing a 25.5 percent decrease over the 5,823 cases counted last year. Declines were noted in law filings in Anne Arundel County (32.8 percent), Baltimore City (15.9 percent), Baltimore County (8.7 percent), and Prince George's County (4.2 percent). Montgomery County showed a 5.0 percent increase in law filings despite the new method of counting.

Equity case filings in the four major jurisdictions and Baltimore City accounted for 38,126 cases or 71.0 percent of the State filings recorded at 53,728. The figures in the major jurisdictions dropped 13.9 percent over the 44,297 cases filed in Fiscal 1980. The other 19 counties consumed only 29.0 percent of the total caseload in Fiscal 1981, which amounted to 15,602 cases. This represents a decline of 6.5 percent over the 16,679 cases recorded last year. Declining rates of change were calculated for Anne Arundel County (30.9 percent),

Baltimore City (15.6 percent), Baltimore County (11.4 percent), and Prince George's County (9.8 percent). Again, Montgomery County showed an increase, but a small one of 1.8 percent.

The Circuit Court for Montgomery County reported that, in exercising jurisdiction formerly held by an orphans' court, it conducted 52 hearings and signed 1,588 orders during Fiscal 1981. The Circuit Court for Harford County exercises the same jurisdiction and recorded 9 hearings and signed 713 orders.

Criminal case filings statewide totaled 46,061 in Fiscal 1981. The 37,164 criminal filings for the four major jurisdictions and Baltimore City represent a 15.2 percent decrease as compared to the 32,258 filings recorded last year. These areas continue to consume the large majority of the State's criminal caseload (80.7 percent) compared to the amount of cases filed in the other 19 counties (19.3 percent). The other 19 counties recorded 8,897 criminal cases compared to 6,749 cases recorded last year, resulting in a 31.8 percent increment. Sizeable increases were noted in metropolitan areas of the State; Montgomery County (37.0 percent), Anne Arundel County (33.0 percent), Prince George's County (30.5

percent), Baltimore County (16.5 percent), and Baltimore City (9.9 percent).

Applications for review of criminal sentences amounted to 183, of which 9 were withdrawn by the applicants. There were 270 applications in 1979-80 and 251 applications in 1978-79. This year the original sentence was decreased in 18 instances and unchanged in 140. No sentences were increased. Since the inception of the procedure to review criminal sentences in 1966, 4,136 applications have been filed.

There were 25,371 juvenile causes recorded statewide in Fiscal 1981. This includes the 2,410 causes filed in the District Court for Montgomery County. The four major jurisdictions and Baltimore City were responsible for 20,679 filings or 81.5 percent of the total juvenile caseload; a 5.6 percent decrease over last year's figure of 21,907. The other 19 counties recorded 4,692 juvenile filings or 18.5 percent of the total State caseload; a slight decline of 0.9 percent over last year's figure of 4,737. Increases were noted in the following areas: Anne Arundel County (20.6 percent), Prince George's County (15.1 percent), and Baltimore County (2.7 percent). A decline was registered in Baltimore City (17.5 percent) and in Montgomery County (4.6 percent).

TERMINATIONS

Terminations reported totaled 124,787 in Fiscal 1981 for the four major categories of law, equity, criminal, and juvenile. This figure includes 1,529 juvenile terminations heard at the District Court level in Montgomery County. There were 152,720 case terminations reported in Fiscal 1980. In Fiscal 1981, termination statistics were lower than actual terminations by an unknown amount because of unmatched case numbers and other problems with the implementation of the new statistical system. Thus, terminated figures and this analysis should be read with a certain amount of caution.

This year the 13,787 law cases terminated in the five major jurisdictions of Baltimore County, Anne Arundel County, Montgomery County, Prince George's County and Baltimore City accounted for 78.5 percent of the State's 17,574 law terminations. This represents a 16.2 percent decline over the 16,447 cases terminated for these jurisdictions in Fiscal 1980. The other 19 counties terminated 3,787 law cases; only 21.5 percent of the total law terminations. This shows a 30.0 negative rate of change over the 5,413 cases terminated last year. Statewide, the 17,574 law terminations diminished 19.6 percent over last year's figure of 21,860. In the metropolitan areas, the following decline in law

terminations were noted: Anne Arundel County (52.2 percent), Baltimore City (19.4 percent), Montgomery County (11.0 percent), and Prince George's County (3.0 percent). One jurisdiction, Baltimore County, showed an increase in law terminations over the previous fiscal year of 4.7 percent.

Case terminations in the equity category totaled 44,688 statewide, a decline of 25.9 percent over the 60,313 cases terminated last year. The four major jurisdictions and Baltimore City were responsible for 74.7 percent of the terminations or 30,399 cases. This showed a decline of 31.1 percent over the 44,131 terminated last year.

The other 19 counties disposed of 14,289 cases or the remaining 25.3 percent of the equity cases terminated in the State. These terminations amounted to an 11.7 percent decline from the 16,182 equity cases terminated the previous year. Declines in the metropolitan areas of the State were as follows: Baltimore City (42.1 percent), Baltimore County (36.8 percent), Anne Arundel County (28.8 percent), Prince George's County (17.7 percent), and Montgomery County (1.6 percent).

The number of criminal terminations in the State amounted to 40,624 in Fiscal 1981; a 2.9 percent drop over the 41,836 dispositions recorded last year. Baltimore

City and the four major jurisdictions disposed of 33,537 cases; 82.6 percent of the total but a decrease of 3.1 percent over the 34,607 terminated in Fiscal 1980. Nineteen other counties disposed of 7,087 criminal cases this year compared to 7,229 cases last year, resulting in a slight decline of 2.0 percent. The total share of the State's criminal terminations by the 19 other counties was 17.4 percent. Accelerations were registered in Montgomery County (17.9 percent), Prince George's County (7.0 percent), and Anne Arundel County (4.3 percent). Decreases were found in Baltimore County (16.5 percent) and Baltimore City (3.6 percent).

A total of 21,901 juvenile causes were terminated statewide in Fiscal 1981 which represents a fall of 23.7 percent when compared to the 28,711 terminations reported last year. This year's figure includes the 1,529 juvenile causes terminated at the District Court level in Montgomery County. Baltimore City and the four major jurisdictions account for 81.5 percent of the total State dispositions and this illustrates a demonstrative decline in the number terminated last year (17,846 as compared to 23,707) or a decline of 24.7 percent. The other 19 counties terminated 4,055 juvenile causes this year as compared to 5,004 last year; a difference of 18.0 percent. These counties were responsible for a small 18.5 percent of the State's juvenile terminations. Higher rates of

change were seen in Anne Arundel County (11.2 percent) and Baltimore County (0.5 percent) while declines were noted in Montgomery County (43.5 percent), Baltimore City (34.2 percent), and Prince George's County (11.2 percent).

TRIALS

In Fiscal 1981 there were 17,574 dispositions of law cases statewide, of which 2,647 were dispositions by trial and accounted for 15.1 percent of the total. The majority of the trials were nonjury (1,721) compared to the number of jury trials (926). The law jury trial to disposition ratio was lowest in Somerset County at 0.0 percent and highest in Queen Anne's County at 20.8 percent. The median was 5.3 percent which occurred in Dorchester County. The median is the figure that occurs in the middle if all of the cases are ranked from the lowest to the highest number. Four metropolitan counties and Baltimore City were responsible for 696 or 75.2 percent of all law jury trials. The other 19 counties held 230 law jury trials, making up only 24.8 percent of the total.

Nonjury law trials were held in 1,721 cases in Maryland. Anne Arundel County, Baltimore County, Montgomery County, Prince George's County, and Baltimore City heard 1,424 or 82.7 percent of the total nonjury law trials, while the other 19 counties heard 297 or 17.3

percent of the cases. The law nonjury trial to disposition ratio was highest in Montgomery County at 32.4 percent and lowest in Worcester County at 2.0 percent. The median law nonjury trial ratio was 9.8 percent and occurred in Allegany County.

The circuit courts reported 40,624 criminal terminations for the fiscal year. A total of 11,065 or 27.2 percent were disposed of by trial. Most trials (9,387 or 84.8 percent) were nonjury trials compared to the number of jury trials (1,678 or 15.2 percent). The majority of jury trials (1,138) were held in the four largest counties and Baltimore City, contributing 67.8 percent to the total 1,678 jury trials held in the State. The other 19 counties contributed to 32.2 percent of the total and recorded 540 jury trials. The criminal jury trial to disposition ratio was lowest in Worcester County at 0.4 percent and highest in Cecil County at 17.7 percent. The median criminal jury trial to disposition ratio was 4.1 percent.

The four largest jurisdictions and Baltimore City made up an even larger share, 7,139 or 76.0 percent of the total 9,387 nonjury criminal trials, than the previously mentioned jury trials. Nineteen other counties held 2,248 or just 24.0 percent of the nonjury criminal trials. The criminal nonjury trial to disposition ratio was lowest in

Charles County at 2.5 percent and highest in Somerset County at 83.1 percent. The median criminal nonjury trial to disposition ratio was 23.1 percent.

During the year, 19,395 requests for criminal jury trials were prayed at the District Court level to the circuit court. This represents a 15.5 percent increase over the 16,787 requests made in Fiscal 1980 and a 61.6 percent surge over the 11,999 requests in Fiscal 1978.

For more detailed information, see Tables CC-11, CC-12, CC-14, and CC-16 in the Statistical Abstract.

TABLE CC-1

LAW, EQUITY, CRIMINAL, AND JUVENILE
FILED, TERMINATED AND PENDING
IN THE FIRST JUDICIAL CIRCUIT OF MARYLAND

JULY 1, 1980 - JUNE 30, 1981
FISCAL 1981

	PENDING	FILED			TERMINATED			PENDING
	BEGINNING OF YEAR	CASES AND APPEALS	CASES	APPEALS	CASES AND APPEALS	CASES	APPEALS	END OF YEAR
TOTAL - FIRST CIRCUIT	2,753	6,005	5,604	401	5,026	4,856	170	3,732
LAW	699	758	650	108	616	602	14	841
EQUITY	1,541	2,655	2,655	xx	2,562	2,562	xx	1,634
CRIMINAL	467	2,063	1,770	293	1,395	1,239	156	1,135
JUVENILE	46	529	529	xx	453	453	xx	122
DORCHESTER COUNTY	656	1,156	1,099	57	995	973	22	817
LAW	147	108	74	34	93	81	12	162
EQUITY	429	729	729	xx	684	684	xx	474
CRIMINAL	71	225	202	23	140	130	10	156
JUVENILE	9	94	94	xx	78	78	xx	25
SOMERSET COUNTY	218	550	537	13	493	485	8	275
LAW	34	34	30	4	28	26	2	40
EQUITY	147	281	281	xx	285	285	xx	143
CRIMINAL	36	176	167	9	124	118	6	88
JUVENILE	1	59	59	xx	56	56	xx	4
WICOMICO COUNTY	941	2,307	2,174	133	2,095	2,022	73	1,153
LAW	240	235	190	45	202	202	0	273
EQUITY	547	1,150	1,150	xx	1,126	1,126	xx	571
CRIMINAL	136	712	624	88	582	509	73	266
JUVENILE	18	210	210	xx	185	185	xx	43
WORCESTER COUNTY	938	1,992	1,794	198	1,443	1,376	67	1,487
LAW	278	381	356	25	293	293	0	366
EQUITY	418	495	495	xx	467	467	xx	446
CRIMINAL	224	950	777	173	549	482	67	625
JUVENILE	18	166	166	xx	134	134	xx	50

NOTE: (1) The beginning inventory figures have been adjusted to reflect additions and deletions of cases resulting from routine maintenance, file conversion, etc., at the beginning of the fiscal year.
(2) Criminal totals have been adjusted to reflect cases statistically closed although still remaining on the open file.
(3) Terminations in the law category for appeals are available for June 1981 only.

TABLE CC-1

LAW, EQUITY, CRIMINAL, AND JUVENILE
FILED, TERMINATED AND PENDING
IN THE SECOND JUDICIAL CIRCUIT OF MARYLAND

JULY 1, 1980 - JUNE 30, 1981
FISCAL 1981

	PENDING	FILED			TERMINATED			PENDING
	BEGINNING OF YEAR	CASES AND APPEALS	CASES	APPEALS	CASES AND APPEALS	CASES	APPEALS	END OF YEAR
TOTAL - SECOND CIRCUIT	2,257	4,436	4,268	168	3,738	3,639	99	2,955
LAW	495	500	447	53	365	336	29	630
EQUITY	1,171	2,423	2,423	xx	2,204	2,204	xx	1,390
CRIMINAL	486	1,064	949	115	758	688	70	792
JUVENILE	105	449	449	xx	411	411	xx	143
CAROLINE COUNTY	281	750	735	15	661	649	12	370
LAW	53	90	82	8	66	58	8	77
EQUITY	200	507	507	xx	478	478	xx	229
CRIMINAL	20	102	95	7	68	64	4	54
JUVENILE	8	51	51	xx	49	49	xx	10
CECIL COUNTY	1,149	1,975	1,895	80	1,811	1,769	42	1,313
LAW	239	188	171	17	131	128	3	296
EQUITY	555	1,047	1,047	xx	1,055	1,055	xx	547
CRIMINAL	302	548	485	63	418	379	39	432
JUVENILE	53	192	192	xx	207	207	xx	38
KENT COUNTY	219	414	384	30	385	365	20	248
LAW	56	63	48	15	71	54	17	48
EQUITY	134	220	220	xx	222	222	xx	132
CRIMINAL	24	92	77	15	59	56	3	57
JUVENILE	5	39	39	xx	33	33	xx	11
QUEEN ANNE'S COUNTY	317	735	714	21	598	584	14	454
LAW	71	76	71	5	77	77	0	70
EQUITY	150	383	383	xx	338	338	xx	195
CRIMINAL	79	189	173	16	119	105	14	149
JUVENILE	17	87	87	xx	64	64	xx	40
TALBOT COUNTY	291	562	540	22	283	272	11	570
LAW	76	83	75	8	20	19	1	139
EQUITY	132	266	266	xx	111	111	xx	287
CRIMINAL	61	133	119	14	94	84	10	100
JUVENILE	22	80	80	xx	58	58	xx	44

NOTE: (1) The beginning inventory figures have been adjusted to reflect additions and deletions of cases resulting from routine maintenance, file conversion, etc., at the beginning of the fiscal year.
(2) Criminal totals have been adjusted to reflect cases statistically closed although still remaining on the open file.
(3) Terminations in the law category for appeals are available for June 1981 only.

TABLE CC-1

LAW, EQUITY, CRIMINAL, AND JUVENILE
FILED, TERMINATED AND PENDING
IN THE THIRD JUDICIAL CIRCUIT OF MARYLAND

JULY 1, 1980 - JUNE 30, 1981
FISCAL 1981

	PENDING	FILED			TERMINATED			PENDING
	BEGINNING OF YEAR	CASES AND APPEALS	CASES	APPEALS	CASES AND APPEALS	CASES	APPEALS	END OF YEAR
TOTAL - THIRD CIRCUIT	15,046	19,642	18,339	1,303	17,489	16,813	676	17,199
LAW	5,097	3,629	3,164	465	3,587	3,576	11	5,139
EQUITY	6,283	7,357	7,357	xx	6,689	6,689	xx	6,951
CRIMINAL	2,376	5,807	4,969	838	4,656	3,991	665	3,527
JUVENILE	1,290	2,849	2,849	xx	2,557	2,557	xx	1,582
BALTIMORE COUNTY	12,354	15,857	14,783	1,074	14,177	13,595	582	14,034
LAW	4,444	3,081	2,711	370	3,125	3,114	11	4,400
EQUITY	4,803	5,626	5,626	xx	5,062	5,062	xx	5,367
CRIMINAL	2,019	4,862	4,158	704	3,850	3,279	571	3,031
JUVENILE	1,088	2,288	2,288	xx	2,140	2,140	xx	1,236
HARFORD COUNTY	2,692	3,785	3,556	229	3,312	3,218	94	3,165
LAW	653	548	453	95	462	462	0	739
EQUITY	1,480	1,731	1,731	xx	1,627	1,627	xx	1,584
CRIMINAL	357	945	811	134	806	712	94	496
JUVENILE	202	561	561	xx	417	417	xx	346

NOTE: (1) The beginning inventory figures have been adjusted to reflect additions and deletions of cases resulting from routine maintenance, file conversion, etc., at the beginning of the fiscal year.
(2) Criminal totals have been adjusted to reflect cases statistically closed although still remaining on the open file.
(3) Terminations in the law category for appeals are available for June 1981 only.

TABLE CC-1

LAW, EQUITY, CRIMINAL, AND JUVENILE
FILED, TERMINATED AND PENDING
IN THE FOURTH JUDICIAL CIRCUIT OF MARYLAND

JULY 1, 1980 - JUNE 30, 1981
FISCAL 1981

	PENDING BEGINNING OF YEAR	FILED			TERMINATED			PENDING END OF YEAR
		CASES AND APPEALS	CASES	APPEALS	CASES AND APPEALS	CASES	APPEALS	
TOTAL - FOURTH CIRCUIT	4,743	4,980	4,753	227	4,359	4,216	143	5,364
LAW	1,501	713	628	85	569	554	15	1,645
EQUITY	2,640	2,252	2,252	xx	1,951	1,951	xx	2,941
CRIMINAL	498	1,164	1,022	142	1,069	941	128	593
JUVENILE	104	851	851	xx	770	770	xx	185
ALLEGANY COUNTY	2,416	1,650	1,574	76	1,293	1,216	77	2,773
LAW	980	316	305	11	165	150	15	1,131
EQUITY	1,271	640	640	xx	523	523	xx	1,388
CRIMINAL	113	331	266	65	271	209	62	173
JUVENILE	52	363	363	xx	334	334	xx	81
GARRETT COUNTY	372	706	689	17	656	647	9	322
LAW	108	88	82	6	98	98	0	98
EQUITY	219	350	350	xx	337	337	xx	232
CRIMINAL	40	137	126	11	104	95	9	73
JUVENILE	5	131	131	xx	117	117	xx	19
WASHINGTON COUNTY	1,955	2,624	2,490	134	2,410	2,353	57	2,169
LAW	413	309	241	68	306	306	0	416
EQUITY	1,150	1,262	1,262	xx	1,091	1,091	xx	1,321
CRIMINAL	345	696	630	66	694	637	57	347
JUVENILE	47	357	357	xx	319	319	xx	85

NOTE: (1) The beginning inventory figures have been adjusted to reflect additions and deletions of cases resulting from routine maintenance, file conversion, etc., at the beginning of the fiscal year.
(2) Criminal totals have been adjusted to reflect cases statistically closed although still remaining on the open file.
(3) Terminations in the law category for appeals are available for June 1981 only.

TABLE CC-1

LAW, EQUITY, CRIMINAL, AND JUVENILE
FILED, TERMINATED AND PENDING
IN THE FIFTH JUDICIAL CIRCUIT OF MARYLAND

JULY 1, 1980 - JUNE 30, 1981
FISCAL 1981

	PENDING BEGINNING OF YEAR	FILED			TERMINATED			PENDING END OF YEAR
		CASES AND APPEALS	CASES	APPEALS	CASES AND APPEALS	CASES	APPEALS	
TOTAL - FIFTH CIRCUIT	14,383	16,690	15,878	812	14,409	14,003	406	16,664
LAW	3,361	2,625	2,277	348	2,076	2,068	8	3,910
EQUITY	8,761	6,741	6,741	xx	6,044	6,044	xx	9,458
CRIMINAL	1,603	4,439	3,975	464	3,651	3,253	398	2,391
JUVENILE	658	2,885	2,885	xx	2,638	2,638	xx	905
ANNE ARUNDEL COUNTY	10,264	10,730	10,259	471	9,193	8,987	206	11,801
LAW	2,210	1,717	1,467	250	1,227	1,221	6	2,700
EQUITY	6,635	4,597	4,597	xx	4,028	4,028	xx	7,204
CRIMINAL	851	2,547	2,326	221	2,186	1,986	200	1,212
JUVENILE	568	1,869	1,869	xx	1,752	1,752	xx	685
CARROLL COUNTY	1,857	2,451	2,322	129	2,363	2,281	82	1,945
LAW	377	280	250	30	253	251	2	404
EQUITY	999	929	929	xx	1,002	1,002	xx	926
CRIMINAL	444	753	654	99	660	580	80	537
JUVENILE	37	489	489	xx	448	448	xx	78
HOWARD COUNTY	2,262	3,509	3,297	212	2,853	2,735	118	2,918
LAW	774	628	560	68	596	596	0	806
EQUITY	1,127	1,215	1,215	xx	1,014	1,014	xx	1,328
CRIMINAL	308	1,139	995	144	805	687	118	642
JUVENILE	53	527	527	xx	438	438	xx	142

NOTE: (1) The beginning inventory figures have been adjusted to reflect additions and deletions of cases resulting from routine maintenance, file conversion, etc., at the beginning of the fiscal year.
(2) Criminal totals have been adjusted to reflect cases statistically closed although still remaining on the open file.
(3) Terminations in the law category for appeals are available for June 1981 only.

TABLE CC-1

LAW, EQUITY, CRIMINAL, AND JUVENILE
FILED, TERMINATED AND PENDING
IN THE SIXTH JUDICIAL CIRCUIT OF MARYLAND

JULY 1, 1980 - JUNE 30, 1981
FISCAL 1981

	PENDING BEGINNING OF YEAR	FILED			TERMINATED			PENDING END OF YEAR
		CASES AND APPEALS	CASES	APPEALS	CASES AND APPEALS	CASES	APPEALS	
TOTAL - SIXTH CIRCUIT	17,895	15,533	14,935	598	11,031	10,797	234	22,397
LAW	5,796	3,571	3,260	311	2,331	2,317	14	7,036
EQUITY	9,522	6,605	6,605	xx	5,029	5,029	xx	11,098
CRIMINAL	1,794	2,723	2,436	287	1,947	1,727	220	2,570
JUVENILE	783	2,634	2,634	xx	1,724	1,724	xx	1,693
FREDERICK COUNTY	1,559	2,311	2,240	71	2,130	2,097	33	1,740
LAW	301	300	270	30	319	315	4	282
EQUITY	1,005	1,284	1,284	xx	1,273	1,273	xx	1,016
CRIMINAL	220	503	462	41	343	314	29	380
JUVENILE	33	224	224	xx	195	195	xx	62
MONTGOMERY COUNTY	16,336	13,222	12,695	527	8,901	8,700	201	20,657
LAW	5,495	3,271	2,990	281	2,012	2,002	10	6,754
EQUITY	8,517	5,321	5,321	xx	3,756	3,756	xx	10,082
CRIMINAL	1,574	2,220	1,974	246	1,604	1,413	191	2,190
JUVENILE*	750	2,410	2,410	xx	1,529	1,529	xx	1,631

*Juvenile causes processed at District Court level.

NOTE: (1) The beginning inventory figures have been adjusted to reflect additions and deletions of cases resulting from routine maintenance, file conversion, etc., at the beginning of the fiscal year.
(2) Criminal totals have been adjusted to reflect cases statistically closed although still remaining on the open file.
(3) Terminations in the law category for appeals are available for June 1981 only.

TABLE CC-1

LAW, EQUITY, CRIMINAL, AND JUVENILE
FILED, TERMINATED AND PENDING
IN THE SEVENTH JUDICIAL CIRCUIT OF MARYLAND

JULY 1, 1980 - JUNE 30, 1981
FISCAL 1981

	PENDING BEGINNING OF YEAR	FILED			TERMINATED			PENDING END OF YEAR
		CASES AND APPEALS	CASES	APPEALS	CASES AND APPEALS	CASES	APPEALS	
TOTAL - SEVENTH CIRCUIT	19,142	26,469	25,626	843	22,316	21,984	332	23,295
LAW	4,470	3,941	3,430	511	3,370	3,344	26	5,041
EQUITY	11,551	12,276	12,276	xx	9,834	9,834	xx	13,993
CRIMINAL	2,178	4,821	4,489	332	4,251	3,945	306	2,748
JUVENILE	943	5,431	5,431	xx	4,861	4,861	xx	1,513
CALVERT COUNTY	629	1,640	1,611	29	1,542	1,511	31	727
LAW	112	139	115	24	153	127	26	98
EQUITY	388	829	829	xx	818	818	xx	399
CRIMINAL	45	306	301	5	248	243	5	103
JUVENILE	84	366	366	xx	323	323	xx	127
CHARLES COUNTY	1,149	2,724	2,646	78	2,519	2,472	47	1,354
LAW	237	246	212	34	274	274	0	209
EQUITY	480	1,317	1,317	xx	1,047	1,047	xx	750
CRIMINAL	337	684	640	44	771	724	47	250
JUVENILE	95	477	477	xx	427	427	xx	145
PRINCE GEORGE'S COUNTY	16,588	20,415	19,739	676	16,879	16,647	232	20,124
LAW	3,973	3,328	2,904	424	2,763	2,763	0	4,538
EQUITY	10,182	9,163	9,163	xx	7,178	7,178	xx	12,167
CRIMINAL	1,738	3,555	3,303	252	3,000	2,768	232	2,293
JUVENILE	695	4,369	4,369	xx	3,938	3,938	xx	1,126
ST. MARY'S COUNTY	776	1,690	1,630	60	1,376	1,354	22	1,090
LAW	148	228	199	29	180	180	0	196
EQUITY	501	967	967	xx	791	791	xx	677
CRIMINAL	58	276	245	31	232	210	22	102
JUVENILE	69	219	219	xx	173	173	xx	115

NOTE: (1) The beginning inventory figures have been adjusted to reflect additions and deletions of cases resulting from routine maintenance, file conversion, etc., at the beginning of the fiscal year.
(2) Criminal totals have been adjusted to reflect cases statistically closed although still remaining on the open file.
(3) Terminations in the law category for appeals are available for June 1981 only.

TABLE CC-1

LAW, EQUITY, CRIMINAL, AND JUVENILE
FILED, TERMINATED AND PENDING
IN THE EIGHTH JUDICIAL CIRCUIT OF MARYLAND

JULY 1, 1980 - JUNE 30, 1981
FISCAL 1981

	PENDING BEGINNING OF YEAR	FILED			TERMINATED			PENDING END OF YEAR
		CASES AND APPEALS	CASES	APPEALS	CASES AND APPEALS	CASES	APPEALS	
TOTAL - EIGHTH CIRCUIT BALTIMORE CITY	39,916	53,013	50,134	2,879	46,419	44,614	1,805	46,510
TOTAL - LAW COURTS	9,286	5,871	4,752	1,119	4,660	4,626	34	10,497
TOTAL - EQUITY COURTS	19,279	13,419	13,419	xx	10,375	10,375	xx	22,323
TOTAL - CRIMINAL COURTS*	8,378	23,980	22,220	1,760	22,897	21,126	1,771	9,461
TOTAL - JUVENILE COURT	2,973	9,743	9,743	xx	8,487	8,487	xx	4,229

*One case represents one charge (count) rather than one incident. An audit conducted in 1980 found that by using charge statistics Baltimore City reported 2.19 times the number of filings and 2.01 times the number of terminations as would have been reported under a system comparable to other counties.

NOTE: (1) The beginning inventory figures have been adjusted to reflect additions and deletions of cases resulting from routine maintenance, file conversion, etc., at the beginning of the fiscal year.
(2) Criminal totals have been adjusted to reflect cases statistically closed although still remaining on the open file.
(3) Terminations in the law category for appeals are available for June 1981 only.

TABLE CC-1

LAW, EQUITY, CRIMINAL, AND JUVENILE
FILED, TERMINATED AND PENDING
IN THE STATE OF MARYLAND

JULY 1, 1980 - JUNE 30, 1981
FISCAL 1981

	PENDING BEGINNING OF YEAR	FILED			TERMINATED			PENDING END OF YEAR
		CASES AND APPEALS	CASES	APPEALS	CASES AND APPEALS	CASES	APPEALS	
TOTAL - STATE OF MARYLAND	116,135	146,768	139,567	7,201	124,787	120,922	3,865	138,116
LAW	30,705	21,608	18,608	3,000	17,574	17,423	151	34,739
EQUITY	60,748	53,728	53,728	xx	44,688	44,688	xx	69,788
CRIMINAL	17,780	46,061	41,860	4,201	40,624	36,910	3,714	23,217
JUVENILE*	6,902	25,371	25,371	xx	21,901	21,901	xx	10,372

*Includes juvenile causes processed by the District Court for Montgomery County.

NOTE: (1) The beginning inventory figures have been adjusted to reflect additions and deletions of cases resulting from routine maintenance, file conversion, etc., at the beginning of the fiscal year.
(2) Criminal totals have been adjusted to reflect cases statistically closed although still remaining on the open file.
(3) Terminations in the law category for appeals are available for June 1981 only.

TABLE CC-2

PERCENTAGES OF ORIGINAL CASES FILED AND REOPENED CASES HEARD

JULY 1, 1980 THROUGH JUNE 30, 1981

FISCAL 1981

	LAW		EQUITY		CRIMINAL		JUVENILE		TOTAL	
	Number	Percent	Number	Percent	Number	Percent	Number	Percent	Number	Percent
FIRST CIRCUIT	758	12.6	2,655	44.2	2,063	34.4	529	8.8	6,005	100.0
Dorchester	108	9.3	729	63.1	225	19.5	94	8.1	1,156	100.0
Somerset	34	6.2	281	51.1	176	32.0	59	10.7	550	100.0
Wicomico	235	10.2	1,150	49.8	712	30.9	210	9.1	2,307	100.0
Worcester	381	19.1	495	24.8	950	47.7	166	8.4	1,992	100.0
SECOND CIRCUIT	500	11.3	2,423	54.6	1,064	24.0	449	10.1	4,436	100.0
Caroline	90	12.0	507	67.6	102	13.6	51	6.8	750	100.0
Cecil	188	9.5	1,047	53.0	548	27.7	192	9.8	1,975	100.0
Kent	63	15.2	220	53.2	92	22.2	39	9.4	414	100.0
Queen Anne's	76	10.3	383	52.1	189	25.7	87	11.9	735	100.0
Talbot	83	14.8	266	47.3	133	23.7	80	14.2	562	100.0
THIRD CIRCUIT	3,629	18.5	7,357	37.4	5,807	29.6	2,849	14.5	19,642	100.0
Baltimore	3,081	19.4	5,626	35.5	4,862	30.7	2,288	14.4	15,857	100.0
Harford	548	14.5	1,731	45.7	945	25.0	561	14.8	3,785	100.0
FOURTH CIRCUIT	713	14.3	2,252	45.2	1,164	23.4	851	17.1	4,980	100.0
Allegany	316	19.1	640	38.8	331	20.1	363	22.0	1,650	100.0
Garrett	88	12.5	350	49.6	137	19.4	131	18.5	706	100.0
Washington	309	11.8	1,262	48.1	696	26.5	357	13.6	2,624	100.0
FIFTH CIRCUIT	2,625	15.7	6,741	40.4	4,439	26.6	2,885	17.3	16,690	100.0
Anne Arundel	1,717	16.0	4,597	42.9	2,547	23.7	1,869	17.4	10,730	100.0
Carroll	280	11.4	929	37.9	753	30.7	489	20.0	2,451	100.0
Howard	628	17.9	1,215	34.6	1,139	32.5	527	15.0	3,509	100.0
SIXTH CIRCUIT	3,571	23.0	6,605	42.5	2,723	17.5	2,634	17.0	15,533	100.0
Frederick	300	13.0	1,284	55.5	503	21.8	224	9.7	2,311	100.0
Montgomery*	3,271	24.7	5,321	40.2	2,220	16.8	2,410	18.3	13,222	100.0
SEVENTH CIRCUIT	3,941	14.9	12,276	46.4	4,821	18.2	5,431	20.5	26,469	100.0
Calvert	139	8.5	829	50.5	306	18.7	366	22.3	1,640	100.0
Charles	246	9.0	1,317	48.4	684	25.1	477	17.5	2,724	100.0
Prince George's	3,328	16.3	9,163	44.9	3,555	17.4	4,369	21.4	20,415	100.0
St. Mary's	228	13.5	967	57.2	276	16.3	219	13.0	1,690	100.0
EIGHTH CIRCUIT	5,871	11.1	13,419	25.3	23,980	45.2	9,743	18.4	53,013	100.0
Baltimore City**	5,871	11.1	13,419	25.3	23,980	45.2	9,743	18.4	53,013	100.0
STATE	21,608	14.7	53,728	36.6	46,061	31.4	25,371	17.3	146,768	100.0

*Juvenile causes heard at District Court level.

**One case represents one charge (count) rather than one incident. An audit conducted in 1980 found that by using charge statistics Baltimore City reported 2.19 times the number of filings and 2.01 times the number of terminations as would have been reported under a system comparable to other counties.

TABLE CC-3

CATEGORIES OF FILINGS
ORIGINAL CASES FILED AND REOPENED CASES HEARD
JULY 1, 1980 - JUNE 30, 1981
FISCAL 1981

	Dorchester	Somerset	Wicomico	Worcester	Caroline	Cecil	Kent	Queen Anne's	Talbot	Baltimore	Harford	Allegany	Garrett	Washington	Anne Arundel	Carroll	Howard	Frederick	Montgomery	Calvert	Charles	Prince George's	St. Mary's	Baltimore City	TOTAL
LAW - TOTALS	108	34	235	381	90	188	63	76	83	3081	548	316	88	309	1717	280	628	300	3271	139	246	3328	228	5871	21,608
TORT:																									
Motor Tort	13	7	45	19	9	32	13	11	13	889	144	33	10	79	436	46	103	78	720	27	50	1058	57	2037	5929
Other Tort	6	2	29	11	5	15	6	6	32	350	34	25	10	20	93	27	24	27	371	1	17	450	13	627	2206
CONTRACT	22	13	93	63	17	44	14	40	6	1048	146	114	52	87	610	121	245	128	1388	20	115	1131	76	983	6576
CONDEMNATION	1	0	1	1	2	6	0	2	2	62	4	6	0	7	17	2	13	12	64	14	5	13	11	71	316
CONTESTED CONFESED JUDGMENT	1	1	5	0	6	2	1	0	3	25	0	0	0	0	1	2	4	2	4	2	2	4	18	6	89
OTHER LAW	27	6	12	244	29	44	13	2	12	215	94	72	3	39	225	35	79	6	275	38	8	112	14	765	2369
APPEALS:																									
District Court - On Record	0	0	6	4	0	3	0	0	0	56	15	5	1	6	21	3	10	2	58	2	2	77	3	72	346
District Court - De Novo	0	0	6	1	0	1	1	0	0	35	12	5	1	6	105	1	9	3	58	1	3	160	4	43	455
Administrative Agencies	34	4	33	20	8	13	14	5	8	279	68	1	4	56	124	26	49	25	165	21	29	187	22	1004	2199
UNREPORTED CATEGORY	4	1	5	18	14	28	1	10	7	122	31	55	7	9	80	17	92	17	168	13	15	136	10	263	1123
EQUITY - TOTALS	729	281	1150	495	507	1047	220	383	266	5626	1731	640	350	1262	4597	929	1215	1284	5321	829	1317	9163	967	13,419	53,728
DIVORCE/NULLITY	123	56	389	95	95	194	74	83	89	2855	592	306	132	541	1737	371	664	559	2418	141	351	1938	236	3989	18,028
OTHER DOMESTIC RELATIONS	72	67	175	62	45	163	39	51	58	606	400	24	83	204	413	205	157	267	313	55	198	1525	205	1067	6454
ADOPTION/GUARDIANSHIP	28	2	42	10	9	31	6	11	13	278	90	62	34	64	175	56	45	64	139	21	39	294	35	446	1994
PATERNITY	163	102	131	66	101	146	23	62	46	195	94	91	17	105	350	20	59	91	74	136	163	646	106	5418	8405
OTHER GENERAL	82	45	162	228	60	167	53	77	58	1193	315	99	48	169	1155	202	210	261	1239	178	251	1763	114	2003	10,132
UNREPORTED CATEGORY	261	9	251	34	197	346	25	99	2	499	240	58	36	179	767	75	80	42	1138	298	315	2997	271	496	8715
JUVENILE - TOTALS	94	59	210	166	51	192	39	87	80	2288	561	363	131	357	1869	489	527	224	2410	366	477	4369	219	9743	25,371
DELINQUENCY	66	46	145	142	32	164	25	70	66	1858	465	181	66	259	1088	344	416	103	1444	266	313	2898	186	8053	18,696
ADULT	0	5	0	1	0	0	0	1	0	0	1	122	5	0	1	11	4	0	7	1	0	2	0	9	170
CHILD IN NEED OF SUPERVISION	2	2	0	4	1	1	1	3	2	43	6	24	10	17	15	3	8	5	13	27	1	3	2	87	280
CHILD IN NEED OF ASSISTANCE	24	2	18	4	8	27	4	2	10	276	45	33	34	42	214	30	20	32	246	27	41	96	23	593	1851
UNREPORTED CATEGORY	2	4	47	15	10	0	9	11	2	111	44	3	16	39	551	101	79	84	700	45	122	1370	8	1001	4374
CRIMINAL - TOTALS*	225	176	712	950	102	548	92	189	133	4862	945	331	137	696	2547	753	1139	503	2220	306	684	3555	276	23,980	46,061
INDICTMENT INFORMATION	91	108	295	189	66	323	42	87	67	2091	318	159	105	288	1467	287	588	281	1231	220	407	2117	163	8104	19,094
APPEALS FROM DISTRICT COURT:																									
Motor Vehicle	4	4	47	92	3	32	3	7	3	407	78	32	8	28	91	67	113	26	151	3	23	81	9	1760	4201
Other	19	5	41	81	4	31	12	9	11	297	26	33	3	38	130	32	31	15	95	2	21	171	22		
JURY TRIAL PRAYED - MOTOR	30	12	111	214	14	46	12	22	19	1062	241	64	11	219	345	189	179	79	279	6	97	774	24	13,030	19,395
JURY TRIAL PRAYED - OTHER	67	37	134	359	4	73	11	19	20	1062	241	64	11	219	345	189	179	79	279	6	97	774	24		
NONSUPPORT	1	0	0	0	1	0	1	0	1	595	4	2	0	1	22	0	0	1	0	0	0	0	0	864	1494
POST CONVICTION	0	0	0	0	0	0	0	2	0	0	0	0	0	2	10	0	0	0	0	0	5	49	1	222	291
UNREPORTED CATEGORY	13	10	84	15	10	43	11	43	12	159	146	3	4	44	324	62	119	32	107	71	53	185	36	0	1586

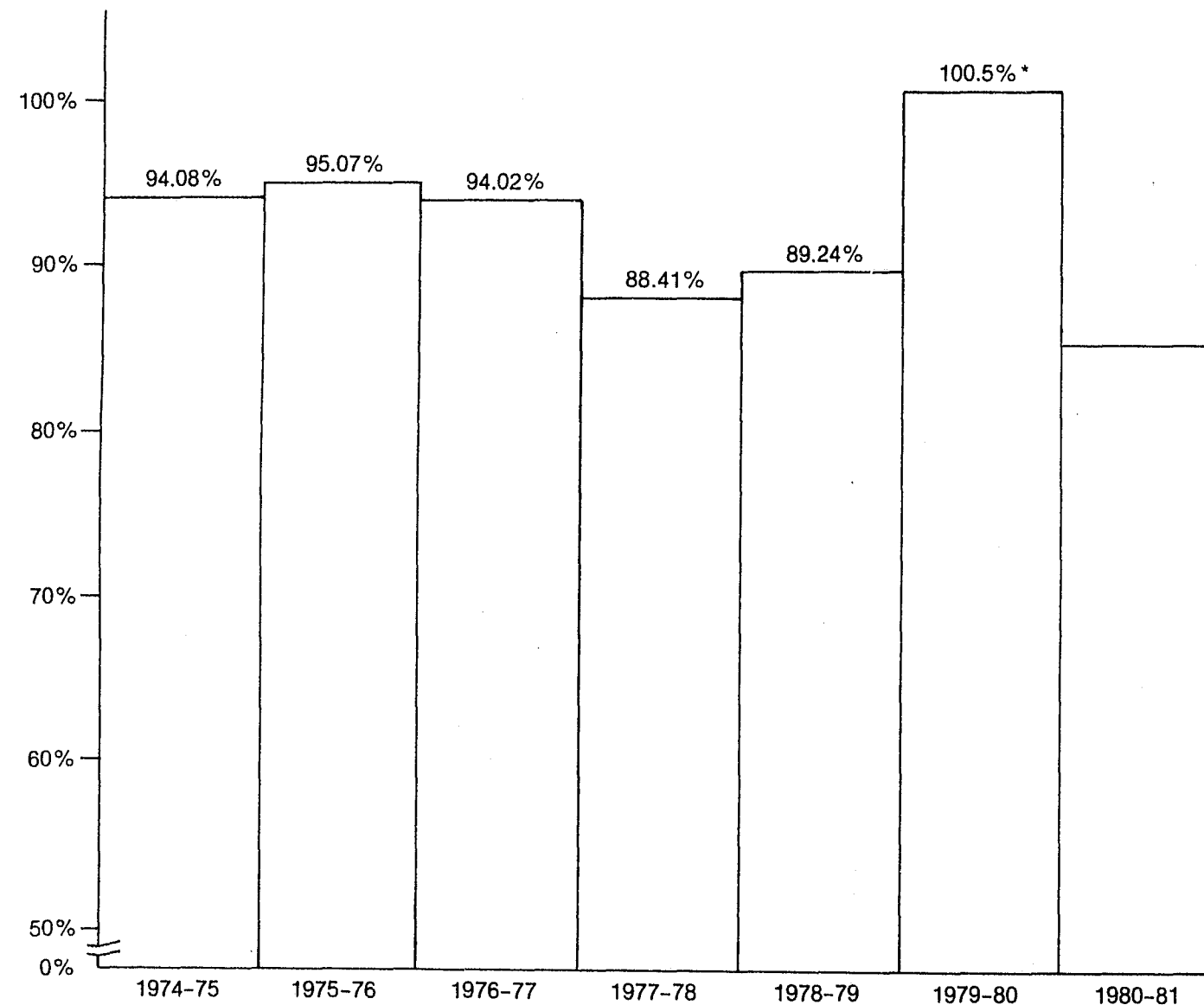
*See footnotes on Table CC-1 Eighth Circuit.

TABLE CC-4

CATEGORIES OF TERMINATIONS
TERMINATIONS OF ORIGINAL CASES FILED AND OF REOPENED CASES HEARD
JULY 1, 1980 - JUNE 30, 1981
FISCAL 1981

	Dorchester	Somerset	Wicomico	Worcester	Caroline	Cecil	Kent	Queen Anne's	Talbot	Baltimore	Harford	Allegany	Garrett	Washington	Anne Arundel	Carroll	Howard	Frederick	Montgomery	Calvert	Charles	Prince George's	St. Mary's	Baltimore City	TOTAL
LAW - TOTALS	93	28	202	293	66	131	71	77	20	3125	462	165	98	306	1227	253	596	319	2012	153	274	2763	180	4660	17,574
TORT:																									
Motor Tort	21	3	43	14	13	37	14	11	3	979	136	42	12	70	353	47	122	81	573	25	71	905	48	1763	5386
Other Tort	5	3	13	9	3	9	4	8	7	351	32	19	16	21	79	24	52	42	281	4	21	395	5	550	1953
CONTRACT	15	10	86	48	14	23	27	38	1	1095	111	44	44	100	510	110	244	141	889	20	127	1096	57	847	5697
CONDEMNATION	1	1	2	0	4	1	0	1	0	50	0	2	0	6	18	5	14	7	37	8	3	24	8	93	285
CONTESTED CONFESED JUDGMENT	1	1	3	1	3	1	1	0	0	10	0	0	0	0	0	0	0	2	0	1	0	1	16	2	43
OTHER LAW	25	8	37	212	11	53	8	14	7	525	160	43	19	88	225	53	143	33	178	65	33	277	30	1113	3360
APPEALS:																									
District Court - On Record	2	0	0	0	1	2	1	0	0	2	0	2	0	0	0	0	0	0	0	1	0	0	0	0	11
District Court - De Novo	0	0	0	0	2	0	0	0	1	6	0	3	0	0	1	1	0	1	0	3	0	0	0	0	18
Administrative Agencies	10	2	0	0	5	1	16	0	0	3	0	10	0	0	5	1	0	3	10	22	0	0	0	34	122
UNREPORTED CATEGORY	13	0	18	9	10	4	0	5	1	104	23	0	7	21	36	12	21	9	44	4	19	65	16	258	699
EQUITY - TOTALS	684	285	1126	467	478	1055	222	338	111	5062	1627	523	337	1091	4028	1002	1014	1273	3756	818	1047	7178	791	10,375	44,688
DIVORCE/NULLITY	172	76	536	117	148	489	110	110	59	3018	705	326	166	677	1933	529	664	639	2258	257	418	3160	336	3812	20,715
OTHER DOMESTIC RELATIONS	50	60	120	45	34	141	28	44	13	461	245	6	55	73	268	110	55	183	76	39	150	795	124	390	3565
ADOPTION/GUARDIANSHIP	31	4	49	11	32	38	4	16	3	266	81	42	30	58	201	53	44	63	144	26	31	246	38	382	1893
PATERNITY	365	93	216	90	140	224	28	67	14	177	97	65	12	70	436	9	30	104	63	328	210	1006	159	4285	8288
OTHER GENERAL	62	49	165	203	116	154	51	93	22	1124	479	69	73	187	1090	268	215	277	903	161	229	1697	124	1439	9250
UNREPORTED CATEGORY	4	3	40	1	8	9	1	8	0	16	20	15	1	26	100	33	6	7	312	7	9	274	10	67	977
JUVENILE - TOTALS	78	56	185	134	49	207	33	64	58	2140	417	334	117	319	1752	448	438	195	1529	323	427	3938	173	8487	21,901
DELINQUENCY	52	43	157	125	34	171	25	56	48	1860	385	163	66	263	1282	378	399	152	1145	260	351	3778	149	7754	19,096
ADULT	0	9	0	0	0	0	0	0	0	0	0	119	4	0	0	17	0	1	4	1	0	6	0	2	163
CHILD IN NEED OF SUPERVISION	2	2	1	4	2	1	1	1	2	56	3	22	12	13	18	4	9	4	22	15	3	21	2	79	299
CHILD IN NEED OF ASSISTANCE	22	2	25	5	13	35	7	6	8	217	29	27	34	42	319	44	18	24	346	46	56	122	21	615	2083
UNREPORTED CATEGORY	2	0	2	0	0	0	0	1	0	7	0	3	1	1	133	5	12	14	12	1	17	11	1	37	260
CRIMINAL - TOTALS*	140	124	582	549	68	418	59	119	94	3850	806	271	104	694	2186	660	805	343	1604	248	771	3000	232	22,897	40,624
INDICTMENT INFORMATION	65	73	259	104	37	255	27	49	50	1602	307	115	70	275	1427	222	363	169	761	178	441	1226	142	6807	15,024
APPEALS FROM DISTRICT COURT:																									
Motor Vehicle	3	3	37	37	1	18	1	5	5	362	66	33	6	24	89	46	91	15	123	2	26	82	4	1771	3714
Other	7	3	36	30	3	21	2	9	5	209	28	29	3	33	111	34	27	14	68	3	21	150	18		
JURY TRIAL PRAYED - MOTOR	20	12	99	94	8	52	13	10	19	411	186	25	3	124	215	153	83	64	305	6	125	493	21	13,226	18,013
JURY TRIAL PRAYED - OTHER	20	16	73	119	1	28	2	10	3	551	151	34	3	171	163	82	119	41	128	5	80	434	12		
NONSUPPORT	0	0	0	0	1	0	0	0	0	267	7	2	0	1	50	0	0	0	3	0	0	0	0	872	1203
POST CONVICTION	0	0	1	0	0	0	0	0	0	0	2	0	0	8	5	2	2	0	0	0	4	41	0	221	286
UNREPORTED CATEGORY	0	0	0	0	0	0	2	8	0	0	0	0	0	1	8	0	0	1	1	1	0	3	0	0	25
CLOSURES**	25	17	77	165	17	44	12	28	12	448	59	33	19	57	118	121	120	39	215	53	74	571	35	0	2359

TABLE CC-5
TERMINATIONS AS A PERCENTAGE OF FILINGS
IN THE CIRCUIT COURTS



*On July 1, 1980, a new statistical record collection system was implemented. Thus, many unreported terminations were reported in Fiscal 1980 so that the new system could be as reflective as possible of the existing balance as of July 1, 1980.

**In Fiscal 1981, termination statistics were lower than actual terminations by an unknown amount because of unmatched case numbers and other problems with the new statistical system.

TABLE CC-6

FIVE-YEAR COMPARATIVE TABLE
ALL CASES
FILINGS AND TERMINATIONS

	COMBINED ORIGINAL AND REOPENED CASES FILED AND TERMINATED								COMBINED ORIGINAL CASES FILED AND TERMINATED AND REOPENED CASES HEARD	
	1976-77		1977-78		1978-79		1979-80		1980-81	
	F	T	F	T	F	T	F	T	F	T
FIRST CIRCUIT	5,532	4,905	5,589	5,877	5,691	5,482	6,128	5,964	6,005	5,026
Dorchester	1,491	1,344	1,362	1,384	1,306	1,224	1,370	1,284	1,156	995
Somerset	651	594	554	568	562	485	618	684	550	493
Wicomico	1,924	1,608	2,036	2,307	2,251	2,252	2,522	2,438	2,307	2,095
Worcester	1,466	1,359	1,637	1,618	1,572	1,521	1,618	1,558	1,992	1,443
SECOND CIRCUIT	3,861	3,950	4,220	4,042	4,249	3,883	4,669	4,584	4,436	3,738
Caroline	488	537	572	555	549	486	618	641	750	661
Cecil	1,772	1,710	2,030	1,998	1,892	1,824	2,121	1,976	1,975	1,811
Kent	534	531	464	429	399	383	457	443	414	385
Queen Anne's	566	589	531	510	753	670	747	757	735	598
Talbot	501	583	623	550	656	520	726	767	562	283
THIRD CIRCUIT	17,454	17,024	18,020	16,182	19,248	18,172	19,582	21,304	19,642	17,489
Baltimore	14,259	14,061	14,723	13,208	15,648	14,772	16,126	17,751	15,857	14,177
Harford	3,195	2,963	3,297	2,974	3,600	3,400	3,456	3,553	3,785	3,312
FOURTH CIRCUIT	4,564	3,756	5,120	4,526	5,519	4,817	6,052	5,390	4,980	4,359
Allegany	1,796	1,432	1,873	1,422	2,073	1,730	2,112	1,680	1,650	1,293
Garrett	600	549	645	614	640	590	725	710	706	656
Washington	2,168	1,775	2,602	2,490	2,806	2,497	3,215	3,000	2,624	2,410
FIFTH CIRCUIT	15,852	14,326	17,553	15,133	17,956	16,205	18,399	18,550	16,690	14,409
Anne Arundel	11,580	10,734	12,705	11,443	13,123	12,136	12,671	11,834	10,730	9,193
Carroll	1,777	1,687	2,044	1,628	2,221	1,610	2,612	2,868	2,451	2,363
Howard	2,495	1,905	2,804	2,062	2,612	2,459	3,116	3,848	3,509	2,853
SIXTH CIRCUIT	14,023	13,519	13,669	12,229	13,571	12,754	15,180	12,706	15,533	11,031
Frederick	1,820	1,775	2,353	2,286	2,472	2,294	2,688	2,558	2,311	2,130
Montgomery*	12,203	11,744	11,316	9,943	11,099	10,460	12,492	10,148	13,222	8,901
SEVENTH CIRCUIT	20,838	19,962	22,496	20,380	23,468	21,384	25,419	23,866	26,469	22,316
Calvert	944	846	994	947	1,013	1,080	1,352	1,232	1,640	1,542
Charles	1,554	1,451	1,876	1,810	2,212	1,926	2,497	2,449	2,724	2,519
Prince George's	17,028	16,368	18,278	16,378	19,054	17,038	20,152	18,803	20,415	16,879
St. Mary's	1,312	1,297	1,348	1,245	1,189	1,340	1,418	1,382	1,690	1,376
EIGHTH CIRCUIT	53,812	50,970	48,363	41,448	55,364	46,763	56,517	60,356	53,013	46,419
Baltimore City**	53,812	50,970	48,363	41,448	55,364	46,763	56,517	60,356	53,013	46,419
STATE	135,936	128,412	135,030	119,817	145,066	129,460	151,946	152,720	146,768	124,787

*Includes juvenile causes heard at District Court level.

**One case represents one charge (count) rather than one incident. An audit conducted in 1980 found that by using charge statistics Baltimore City reported 2.19 times the number of filings and 2.01 times the number of terminations as would have been reported under a system comparable to other counties.

NOTE: (1) Included in the termination figures are criminal cases which are actually closed but remain on the open case file because of CJIS considerations.
(2) Terminations in the law category for appeals are available for June 1981 only.

TABLE CC-7

FIVE-YEAR COMPARATIVE TABLE

LAW CASES

FILINGS AND TERMINATIONS

	COMBINED ORIGINAL AND REOPENED CASES FILED AND TERMINATED								COMBINED ORIGINAL CASES FILED AND TERMINATED AND REOPENED CASES HEARD	
	1976-77		1977-78		1978-79		1979-80		1980-81	
	F	T	F	T	F	T	F	T	F	T
FIRST CIRCUIT	885	717	934	952	960	867	962	993	758	616
Dorchester	143	133	181	162	191	169	201	185	108	93
Somerset	112	97	81	62	94	72	87	129	34	28
Wicomico	248	171	205	235	224	189	248	247	235	202
Worcester	382	316	467	466	451	437	426	432	381	293
SECOND CIRCUIT	589	571	735	652	618	573	668	608	500	365
Caroline	61	52	56	54	51	43	75	67	90	66
Cecil	309	317	421	383	306	297	280	241	188	131
Kent	66	54	73	60	54	68	77	58	63	71
Queen Anne's	86	72	76	86	112	106	116	96	76	77
Talbot	67	76	109	69	95	59	120	146	83	20
THIRD CIRCUIT	2,998	2,827	3,074	2,479	3,399	3,023	3,996	3,474	3,629	3,587
Baltimore	2,562	2,419	2,621	2,066	2,889	2,513	3,376	2,985	3,081	3,125
Harford	436	408	453	413	510	510	620	489	548	462
FOURTH CIRCUIT	846	586	1,015	842	1,020	790	1,110	792	713	569
Allegany	412	243	445	253	437	289	442	225	316	165
Garrett	99	89	141	129	142	123	154	149	88	98
Washington	335	254	429	460	441	378	514	418	309	306
FIFTH CIRCUIT	2,520	2,374	3,686	3,084	3,530	2,913	3,865	4,069	2,625	2,076
Anne Arundel	1,657	1,661	2,548	2,259	2,434	2,072	2,554	2,569	1,717	1,227
Carroll	384	311	408	321	441	325	506	596	280	253
Howard	515	402	730	504	655	516	805	904	628	596
SIXTH CIRCUIT	2,872	2,570	2,905	2,615	2,997	2,470	3,485	2,573	3,571	2,331
Frederick	216	283	268	305	305	249	370	312	300	319
Montgomery	2,656	2,287	2,637	2,310	2,692	2,221	3,115	2,261	3,271	2,012
SEVENTH CIRCUIT	3,126	3,611	3,260	2,940	3,548	3,273	4,256	3,566	3,941	3,370
Calvert	150	152	123	129	159	157	222	219	139	153
Charles	207	207	189	212	279	224	333	283	246	274
Prince George's	2,578	3,005	2,780	2,425	2,923	2,679	3,474	2,847	3,328	2,763
St. Mary's	191	247	168	174	187	213	227	217	228	180
EIGHTH CIRCUIT	5,536	6,485	5,480	5,813	5,382	5,794	6,977	5,785	5,871	4,660
Baltimore City	5,536	6,485	5,480	5,813	5,382	5,794	6,977	5,785	5,871	4,660
STATE	19,372	19,741	21,089	19,350	21,454	19,703	25,319	21,860	21,608	17,574

NOTE: Terminations in the law category for appeals are available for June 1981 only.

TABLE CC-8

FIVE-YEAR COMPARATIVE TABLE

EQUITY CASES

FILINGS AND TERMINATIONS

	COMBINED ORIGINAL AND REOPENED CASES FILED AND TERMINATED										COMBINED ORIGINAL CASES FILED AND TERMINATED AND REOPENED CASES HEARD	
	1976-77		1977-78		1978-79		1979-80		1980-81			
	F	T	F	T	F	T	F	T	F	T	F	T
FIRST CIRCUIT	2,659	2,357	3,142	3,069	3,338	3,249	3,522	3,411	2,655	2,562		
Dorchester	906	808	787	796	826	772	839	763	729	684		
Somerset	308	250	334	335	312	286	326	345	281	285		
Wicomico	851	732	1,319	1,270	1,442	1,486	1,634	1,560	1,150	1,126		
Worcester	594	567	702	668	758	705	723	743	495	467		
SECOND CIRCUIT	1,851	1,855	2,035	1,945	2,239	2,030	2,487	2,516	2,423	2,204		
Caroline	278	312	336	306	341	303	378	378	507	478		
Cecil	850	786	935	952	970	929	1,143	1,141	1,047	1,055		
Kent	223	213	211	187	223	186	224	225	220	222		
Queen Anne's	258	250	260	235	393	344	428	453	383	338		
Talbot	242	294	293	265	312	268	314	319	266	111		
THIRD CIRCUIT	7,641	7,176	8,085	7,287	8,294	8,247	8,103	9,646	7,357	6,689		
Baltimore	6,182	5,830	6,406	5,718	6,505	6,580	6,349	8,006	5,626	5,062		
Harford	1,459	1,346	1,679	1,569	1,789	1,667	1,754	1,640	1,731	1,627		
FOURTH CIRCUIT	1,924	1,405	2,313	1,911	2,402	2,131	2,743	2,332	2,252	1,951		
Allegany	719	541	815	581	900	737	969	767	640	523		
Garrett	232	197	272	240	299	266	350	347	350	337		
Washington	973	667	1,226	1,090	1,203	1,128	1,424	1,218	1,262	1,091		
FIFTH CIRCUIT	6,928	5,806	7,991	6,231	9,143	7,774	8,935	8,357	6,741	6,044		
Anne Arundel	5,300	4,577	6,105	4,958	7,098	6,215	6,652	5,661	4,597	4,028		
Carroll	750	631	837	585	942	694	1,041	1,047	929	1,002		
Howard	878	598	1,049	688	1,103	865	1,242	1,649	1,215	1,014		
SIXTH CIRCUIT	6,283	5,461	6,544	5,365	6,636	6,372	6,901	5,397	6,605	5,029		
Frederick	1,164	1,026	1,540	1,443	1,547	1,480	1,672	1,578	1,284	1,273		
Montgomery	5,119	4,435	5,004	3,922	5,089	4,892	5,229	3,819	5,321	3,756		
SEVENTH CIRCUIT	8,222	7,199	9,742	8,449	11,613	10,204	12,377	10,726	12,276	9,834		
Calvert	322	336	431	395	482	476	613	473	829	818		
Charles	606	506	675	586	769	764	847	788	1,317	1,047		
Prince George's	6,567	5,687	7,880	6,750	9,725	8,261	10,159	8,717	9,163	7,178		
St. Mary's	727	670	756	718	637	703	758	748	967	791		
EIGHTH CIRCUIT	11,146	8,689	13,779	9,080	15,945	9,982	15,908	17,928	13,419	10,375		
Baltimore City	11,146	8,689	13,779	9,080	15,945	9,982	15,908	17,928	13,419	10,375		
STATE	46,654	39,948	53,631	43,337	59,610	49,989	60,976	60,313	53,728	44,688		

TABLE CC-9

FIVE-YEAR COMPARATIVE TABLE
CRIMINAL CASES
FILINGS AND TERMINATIONS

	COMBINED ORIGINAL AND REOPENED CASES FILED AND TERMINATED								COMBINED ORIGINAL CASES FILED AND TERMINATED AND REOPENED CASES HEARD	
	1976-77		1977-78		1978-79		1979-80		1980-81	
	F	T	F	T	F	T	F	T	F	T
FIRST CIRCUIT	1,318	1,136	977	1,309	890	887	1,124	1,002	2,063	1,395
Dorchester	192	155	206	225	139	148	157	141	225	140
Somerset	175	180	86	117	94	81	149	139	176	124
Wicomico	597	464	351	618	405	390	482	472	712	582
Worcester	354	337	334	349	252	268	336	250	950	549
SECOND CIRCUIT	821	858	897	866	773	680	920	851	1,064	758
Caroline	83	88	101	117	70	56	100	118	102	68
Cecil	379	373	435	407	363	356	462	346	548	418
Kent	134	139	120	119	69	72	84	82	92	59
Queen Anne's	143	159	124	123	137	115	119	123	189	119
Talbot	82	99	117	100	134	81	155	182	133	94
THIRD CIRCUIT	4,686	4,941	4,681	4,476	4,939	4,581	4,791	5,368	5,807	4,656
Baltimore	4,006	4,344	4,103	3,884	4,258	4,013	4,173	4,609	4,862	3,850
Harford	680	597	578	592	681	568	618	759	945	806
FOURTH CIRCUIT	795	822	812	774	1,053	848	1,145	1,231	1,164	1,069
Allegany	240	259	204	177	288	256	277	286	331	271
Garrett	75	73	89	94	81	81	93	84	137	104
Washington	480	490	519	503	684	511	775	861	696	694
FIFTH CIRCUIT	3,910	3,801	3,311	3,078	3,123	3,090	3,171	3,660	4,439	3,651
Anne Arundel	2,841	2,893	2,274	2,215	2,078	2,189	1,915	2,091	2,547	2,186
Carroll	328	360	435	404	450	213	594	697	753	660
Howard	741	548	602	459	595	688	662	872	1,139	805
SIXTH CIRCUIT	1,800	2,015	1,935	1,740	1,714	1,443	2,083	1,833	2,723	1,947
Frederick	286	332	369	324	395	328	462	473	503	343
Montgomery	1,514	1,683	1,566	1,416	1,319	1,115	1,621	1,360	2,220	1,604
SEVENTH CIRCUIT	3,400	3,095	3,604	2,921	3,650	3,626	3,948	4,148	4,821	4,251
Calvert	260	205	234	183	179	246	170	217	306	248
Charles	385	367	480	501	770	545	876	951	684	771
Prince George's	2,641	2,411	2,734	2,106	2,533	2,647	2,724	2,804	3,555	3,000
St. Mary's	114	112	156	131	168	188	178	176	276	232
EIGHTH CIRCUIT	26,441	24,139	19,512	17,348	22,374	21,121	21,825	23,743	23,980	22,897
Baltimore City*	26,441	24,139	19,512	17,348	22,374	21,121	21,825	23,743	23,980	22,897
STATE	43,171	40,807	35,729	32,512	38,516	36,276	39,007	41,836	46,061	40,624

*One case represents one charge (count) rather than one incident. An audit conducted in 1980 found that by using charge statistics Baltimore City reported 2.19 times the number of filings and 2.01 times the number of terminations as would have been reported under a system comparable to other counties.

NOTE: Included in the termination figures are cases which are actually closed but remain on the open case file because of CJIS considerations.

TABLE CC-10

FIVE-YEAR COMPARATIVE TABLE
JUVENILE CAUSES
FILINGS AND TERMINATIONS

	COMBINED ORIGINAL AND REOPENED CASES FILED AND TERMINATED								COMBINED ORIGINAL CASES FILED AND TERMINATED AND REOPENED CASES HEARD	
	1976-77		1977-78		1978-79		1979-80		1980-81	
	F	T	F	T	F	T	F	T	F	T
FIRST CIRCUIT	670	695	536	574	503	479	520	558	529	453
Dorchester	250	248	188	201	150	135	173	195	94	78
Somerset	56	67	53	54	62	46	56	71	56	56
Wicomico	228	241	161	184	180	187	158	159	210	185
Worcester	136	339	134	135	111	111	133	133	166	134
SECOND CIRCUIT	600	666	553	579	619	600	594	609	449	411
Caroline	66	85	79	78	87	84	65	78	51	49
Cecil	234	234	239	256	253	242	236	248	192	207
Kent	111	125	60	63	53	57	72	78	39	33
Queen Anne's	79	108	71	66	111	105	84	85	87	64
Talbot	110	114	104	116	115	112	137	120	80	58
THIRD CIRCUIT	2,129	2,080	2,180	1,940	2,616	2,321	2,692	2,816	2,849	2,557
Baltimore	1,509	1,468	1,593	1,540	1,996	1,666	2,228	2,151	2,288	2,140
Harford	620	612	587	400	620	655	464	665	561	417
FOURTH CIRCUIT	999	943	980	999	1,044	1,048	1,054	1,035	851	770
Allegany	425	389	409	411	448	448	424	402	363	334
Garrett	194	190	143	151	118	120	128	130	131	117
Washington	380	364	428	437	478	480	502	503	357	319
FIFTH CIRCUIT	2,494	2,345	2,565	2,740	2,160	2,428	2,428	2,464	2,885	2,638
Anne Arundel	1,782	1,603	1,778	2,011	1,513	1,660	1,550	1,513	1,869	1,752
Carroll	351	385	364	318	388	378	471	528	489	448
Howard	361	357	423	411	259	390	407	423	527	438
SIXTH CIRCUIT	3,068	3,473	2,285	2,509	2,224	2,469	2,711	2,903	2,634	1,724
Frederick	154	134	176	214	225	237	184	195	224	195
Montgomery	2,914	3,339	2,109	2,295	1,999	2,232	2,527	2,708	2,410	1,529
SEVENTH CIRCUIT	6,090	6,057	5,890	6,070	4,657	4,281	4,838	5,426	5,431	4,861
Calvert	212	153	206	240	193	201	347	323	366	323
Charles	356	371	532	511	394	393	441	427	477	427
Prince George's	5,242	5,265	4,884	5,097	3,873	3,451	3,795	4,435	4,369	3,938
St. Mary's	280	268	268	222	197	236	255	241	219	173
EIGHTH CIRCUIT	10,689	11,657	9,592	9,207	11,663	9,866	11,807	12,900	9,743	8,487
Baltimore City	10,689	11,657	9,592	9,207	11,663	9,866	11,807	12,900	9,743	8,487
STATE	26,739	27,916	24,581	24,618	25,486	23,492	26,644	28,711	25,371	21,901

TABLE CC-11

CASES TRIED BY COUNTY AND CIRCUIT

JULY 1, 1980 - JUNE 30, 1981
FISCAL 1981

	TOTALS	LAW		EQUITY	CRIMINAL	
		JURY	NONJURY		JURY	NONJURY
FIRST CIRCUIT	668	17	22	129	80	420
Dorchester	94	5	4	32	16	37
Somerset	131	0	1	8	19	103
Wicomico	293	6	11	82	43	151
Worcester	150	6	6	7	2	129
SECOND CIRCUIT	803	37	39	168	116	443
Caroline	42	4	4	6	8	20
Cecil	488	9	11	131	74	263
Kent	66	5	13	8	10	30
Queen Anne's	152	16	9	21	12	94
Talbot	55	3	2	2	12	36
THIRD CIRCUIT	3,188	179	233	891	123	1,762
Baltimore	2,469	144	195	396	65	1,669
Harford	719	35	38	495	58	93
FOURTH CIRCUIT	622	34	57	125	126	280
Allegany	273	12	15	12	35	199
Garrett	84	1	18	41	8	16
Washington	265	21	24	72	83	65
FIFTH CIRCUIT	2,774	158	248	641	170	1,557
Anne Arundel	1,458	121	165	415	119	638
Carroll	701	5	38	179	20	459
Howard	615	32	45	47	31	460
SIXTH CIRCUIT	3,394	142	671	2,252	110	219
Frederick	265	23	18	139	33	52
Montgomery	3,129	119	653	2,113	77	167
SEVENTH CIRCUIT	2,202	195	178	1,222	278	329
Calvert	140	11	9	93	15	12
Charles	133	29	24	9	52	19
Prince George's	1,802	148	138	1,026	202	288
St. Mary's	127	7	7	94	9	10
EIGHTH CIRCUIT	6,137	164	273	648	675	4,377
Baltimore City	6,137	164	273	648	675	4,377
STATE	19,788	926	1,721	6,076	1,678	9,387

NOTE: Some of the differences in criminal nonjury trials and equity trials for courts of similar size may be due to one or more of the following reporting variations:

- Some courts report stet cases as nonjury trials.
- Some courts report nolle prosequi cases as nonjury trials.
- Some courts report pleas as nonjury trials.
- Some courts include hearings before a master.

Current information is not available to identify variations by court.

TABLE CC-12

CASES TRIED BY MAJOR JURISDICTION

JULY 1, 1980 - JUNE 30, 1981
FISCAL 1981

	State	Baltimore City	All Counties	Four Largest Counties	Other 19 Counties
LAW					
Jury	926	164	762	532	230
Nonjury	1,721	273	1,448	1,151	297
EQUITY*	6,076	648	5,428	3,950	1,478
CRIMINAL					
Jury	1,678	675	1,003	463	540
Nonjury*	9,387	4,377	5,010	2,762	2,248

*Some of the differences in criminal nonjury trials and equity trials for courts of similar size may be due to one or more of the following reporting variations:

- Some courts report stet cases as nonjury trials.
- Some courts report nolle prosequi cases as nonjury trials.
- Some courts report pleas as nonjury trials.
- Some courts include hearings before a master.

Current information is not available to identify variations by court.

TABLE CC-13

PERCENTAGE OF CIRCUIT COURT CASE FILINGS
ORIGINATING FROM THE DISTRICT COURTJULY 1, 1980 - JUNE 30, 1981
FISCAL 1981

	Prayers for Jury Trials and Appeals	Circuit Court Filings	% of Circuit Court Filings That Are Jury Trials and Appeals
FIRST CIRCUIT	1,274	6,005	21.2
Dorchester	120	1,156	10.4
Somerset	58	550	10.5
Wicomico	345	2,307	14.9
Worcester	751	1,992	37.7
SECOND CIRCUIT	360	4,436	8.1
Caroline	25	750	3.3
Cecil	186	1,975	9.4
Kent	39	414	9.4
Queen Anne's	57	735	7.8
Talbot	53	562	9.4
THIRD CIRCUIT	2,611	19,642	13.3
Baltimore	2,107	15,857	13.3
Harford	504	3,785	13.3
FOURTH CIRCUIT	580	4,980	11.6
Allegany	177	1,650	10.7
Garrett	30	706	4.2
Washington	373	2,624	14.2
FIFTH CIRCUIT	1,709	16,690	10.2
Anne Arundel	850	10,730	7.9
Carroll	408	2,451	16.6
Howard	451	3,509	12.9
SIXTH CIRCUIT	1,192	13,123	9.1
Frederick	194	2,311	8.4
Montgomery*	998	10,812	9.2
SEVENTH CIRCUIT	1,766	26,469	6.7
Calvert	18	1,640	1.1
Charles	224	2,724	8.2
Prince George's	1,441	20,415	7.1
St. Mary's	83	1,690	4.9
EIGHTH CIRCUIT	14,905	53,013	28.1
Baltimore City	14,905	53,013	28.1
STATE*	24,397	144,358	16.9

*Excludes juvenile statistics for Montgomery County.

TABLE CC-14

LAW CASES

RATIO OF TRIALS TO DISPOSITIONS

JULY 1, 1980 - JUNE 30, 1981
FISCAL 1981

	DISPOSITIONS	TRIALS	PERCENTAGES	JURY	%	NON- JURY	%
FIRST CIRCUIT	616	39	6.3	17	2.7%	22	3.6%
Dorchester	93	9	9.6	5	5.3%	4	4.3%
Somerset	28	1	3.5	0	0.0%	1	3.5%
Wicomico	202	17	8.4	6	3.0%	11	5.4%
Worcester	293	12	4.0	6	2.0%	6	2.0%
SECOND CIRCUIT	365	76	20.8	37	10.1%	39	10.7%
Caroline	66	8	12.2	4	6.1%	4	6.1%
Cecil	131	20	15.2	9	6.8%	11	8.4%
Kent	71	18	25.3	5	7.0%	13	18.3%
Queen Anne's	77	25	32.5	16	20.8%	9	11.7%
Talbot	20	5	25.0	3	15.0%	2	10.0%
THIRD CIRCUIT	3,587	412	11.5	179	5.0%	233	6.5%
Baltimore	3,125	339	10.8	144	4.6%	195	6.2%
Harford	462	73	15.8	35	7.6%	38	8.2%
FOURTH CIRCUIT	569	91	16.0	34	6.0%	57	10.0%
Allegany	165	27	16.4	12	7.3%	15	9.1%
Garrett	98	19	19.4	1	1.0%	18	18.4%
Washington	306	45	14.7	21	6.9%	24	7.8%
FIFTH CIRCUIT	2,076	406	19.5	158	7.6%	248	11.9%
Anne Arundel	1,227	286	23.3	121	9.9%	165	13.4%
Carroll	253	43	17.0	5	2.0%	38	15.0%
Howard	596	77	12.9	32	5.4%	45	7.5%
SIXTH CIRCUIT	2,331	813	34.9	142	6.1%	671	28.8%
Frederick	319	41	12.8	23	7.2%	18	5.6%
Montgomery	2,012	772	38.3	119	5.9%	653	32.4%
SEVENTH CIRCUIT	3,370	373	11.1	195	5.8%	178	5.3%
Calvert	153	20	13.1	11	7.2%	9	5.9%
Charles	274	53	19.3	29	10.6%	24	8.7%
Prince George's	2,763	286	10.4	148	5.4%	138	5.0%
St. Mary's	180	14	7.8	7	3.9%	7	3.9%
EIGHTH CIRCUIT	4,660	437	9.4	164	3.5%	273	5.9%
Baltimore City	4,660	437	9.4	164	3.5%	273	5.9%
STATE	17,574	2,647	15.1	926	5.3%	1,721	9.8%

TABLE CC-15

FIVE-YEAR COMPARATIVE TABLE

LAW CASES TRIED

	1976-77	1977-78	1978-79	1979-80	1980-81
FIRST CIRCUIT					39
Dorchester	23	22	23	17	9
Somerset	5	4	5	26	1
Wicomico	24	42	22	31	17
Worcester	21	27	27	17	12
SECOND CIRCUIT					76
Caroline	1	4	9	1	8
Cecil	42	50	23	30	20
Kent	13	17	14	14	18
Queen Anne's	25	24	9	14	25
Talbot	15	12	2	11	5
THIRD CIRCUIT					412
Baltimore	450	280	212	289	339
Harford	101	110	77	64	73
FOURTH CIRCUIT					91
Allegany	5	16	21	17	27
Garrett	16	15	17	16	19
Washington	33	47	48	40	45
FIFTH CIRCUIT					406
Anne Arundel	207	253	235	302	286
Carroll	77	36	36	73	43
Howard	78	48	118	126	77
SIXTH CIRCUIT					813
Frederick	30	44	44	35	41
Montgomery	312	288	269	181	772
SEVENTH CIRCUIT					373
Calvert	40	11	18	41	20
Charles	54	43	42	53	53
Prince George's	453	303	260	262	286
St. Mary's	68	37	26	44	14
EIGHTH CIRCUIT					437
Baltimore City	446	660	922	712	437
STATE	2,539	2,393	2,479	2,416	2,647

TABLE CC-16

CRIMINAL CASES

RATIO OF TRIALS TO DISPOSITIONS

JULY 1, 1980 - JUNE 30, 1981
FISCAL 1981

	DISPOSITIONS	TRIALS	PERCENTAGES	JURY	%	NON-JURY*	%*
FIRST CIRCUIT	1,395	500	35.8	80	5.7%	420	30.1%
Dorchester	140	53	37.8	16	11.4%	37	26.4%
Somerset	124	122	98.4	19	15.3%	103	83.1%
Wicomico	582	194	33.3	43	7.4%	151	25.9%
Worcester	549	131	23.9	2	.4%	129	23.5%
SECOND CIRCUIT	758	559	73.7	116	15.3%	443	58.4%
Caroline	68	28	41.2	8	11.8%	20	29.4%
Cecil	418	337	80.6	74	17.7%	263	62.9%
Kent	59	40	67.8	10	16.9%	30	50.9%
Queen Anne's	119	106	89.1	12	10.1%	94	79.0%
Talbot	94	48	51.1	12	12.8%	36	38.3%
THIRD CIRCUIT	4,656	1,885	40.4	123	2.6%	1,762	37.8%
Baltimore	3,850	1,734	45.0	65	1.7%	1,669	43.3%
Harford	806	151	18.7	58	7.2%	93	11.5%
FOURTH CIRCUIT	1,069	406	38.0	126	11.8%	280	26.2%
Allegany	271	234	86.3	35	12.9%	199	73.4%
Garrett	104	24	23.1	8	7.7%	16	15.4%
Washington	694	148	21.3	83	11.9%	65	9.4%
FIFTH CIRCUIT	3,651	1,727	47.3	170	4.7%	1,557	42.6%
Anne Arundel	2,186	757	34.6	119	5.4%	638	29.2%
Carroll	660	479	72.6	20	3.0%	459	69.6%
Howard	805	491	61.0	31	3.9%	460	57.1%
SIXTH CIRCUIT	1,947	329	16.9	110	5.6%	219	11.3%
Frederick	343	85	24.8	33	9.6%	52	15.2%
Montgomery	1,604	244	15.2	77	4.8%	167	10.4%
SEVENTH CIRCUIT	4,251	607	14.2	278	6.5%	329	7.7%
Calvert	248	27	10.9	15	6.1%	12	4.8%
Charles	771	71	9.2	52	6.7%	19	2.5%
Prince George's	3,000	490	16.3	202	6.7%	288	9.6%
St. Mary's	232	19	8.2	9	3.9%	10	4.3%
EIGHTH CIRCUIT	22,897	5,052	22.0	675	2.9%	4,377	19.1%
Baltimore City	22,897	5,052	22.0	675	2.9%	4,377	19.1%
STATE	40,624	11,065	27.2	1,678	4.1%	9,387	23.1%

*Some of the differences in criminal nonjury trials and equity trials for courts of similar size may be due to one or more of the following reporting variations:

- Some courts report stet cases as nonjury trials.
- Some courts report nolle prosequi cases as nonjury trials.
- Some courts report pleas as nonjury trials.
- Some courts include hearings before a master.

Current information is not available to identify variations by court.

TABLE CC-17

FIVE-YEAR COMPARATIVE TABLE
CRIMINAL CASES TRIED*

	1976-77	1977-78	1978-79	1979-80	1980-81
FIRST CIRCUIT					500
Dorchester	219	201	138	134	53
Somerset	53	39	65	95	122
Wicomico	214	337	231	303	194
Worcester	188	246	77	106	131
SECOND CIRCUIT					559
Caroline	62	90	41	46	28
Cecil	176	274	159	167	337
Kent	50	20	14	13	40
Queen Anne's	60	52	35	39	106
Talbot	73	64	14	16	48
THIRD CIRCUIT					1,885
Baltimore	1,857	1,457	2,862	4,355	1,734
Harford	327	244	198	252	151
FOURTH CIRCUIT					406
Allegany	206	162	227	231	234
Garrett	44	58	41	12	24
Washington	124	156	146	154	148
FIFTH CIRCUIT					1,727
Anne Arundel	744	606	616	676	757
Carroll	243	329	175	424	479
Howard	51	126	495	501	491
SIXTH CIRCUIT					329
Frederick	37	52	40	32	85
Montgomery	330	354	305	242	244
SEVENTH CIRCUIT					607
Calvert	68	42	30	28	27
Charles	38	58	39	41	71
Prince George's	357	364	367	388	490
St. Mary's	43	40	17	16	19
EIGHTH CIRCUIT					5,052
Baltimore City	4,417	3,418	5,550	5,734	5,052
STATE	9,981	8,789	11,882	14,005	11,065

*Some of the differences in criminal nonjury trials and equity trials for courts of similar size may be due to one or more of the following reporting variations:

- Some courts report stet cases as nonjury trials.
- Some courts report nolle prosequi cases as nonjury trials.
- Some courts report pleas as nonjury trials.
- Some courts include hearings before a master.

Current information is not available to identify variations by court.

TABLE CC-18

FIVE-YEAR COMPARATIVE TABLE
EQUITY CASES TRIED*

	1976-77	1977-78	1978-79	1979-80	1980-81**
FIRST CIRCUIT					129
Dorchester	497	369	240	298	32
Somerset	50	91	62	75	8
Wicomico	53	419	619	661	82
Worcester	127	191	133	74	7
SECOND CIRCUIT					168
Caroline	47	43	36	49	6
Cecil	154	64	357	633	131
Kent	6	2	3	23	8
Queen Anne's	38	30	97	176	21
Talbot	21	27	12	6	2
THIRD CIRCUIT					891
Baltimore	3,223	3,018	2,858	2,871***	396
Harford	100	65	90	359	495
FOURTH CIRCUIT					125
Allegany	92	51	38	276	12
Garrett	38	55	64	154	41
Washington	11	23	7	170	72
FIFTH CIRCUIT					641
Anne Arundel	143	613	862	1,294***	415
Carroll	383	327	357	507***	179
Howard	364	358	490	701***	47
SIXTH CIRCUIT					2,252
Frederick	42	39	189	257	139
Montgomery	1,914	1,869	2,005	1,936***	2,113
SEVENTH CIRCUIT					1,222
Calvert	24	34	59	79	93
Charles	36	117	175	230	9
Prince George's	3,459	3,906	3,804	3,833***	1,026
St. Mary's	152	99	140	233	94
EIGHTH CIRCUIT					648
Baltimore City	3,434	2,920	2,431	1,767***	648
STATE	14,408	14,730	15,128	16,662	6,076

*Some courts include hearings before a master but current data is not available as to which courts.

**Some courts have included both nonjury trials and hearings. (See "Hearings" under definitions.)

***Includes hearings before a master.

TABLE CC-19

LAW, EQUITY, CRIMINAL, AND JUVENILE HEARINGS

JULY 1, 1980 - JUNE 30, 1981
FISCAL 1981

	TOTALS	LAW HEARINGS	EQUITY HEARINGS*	CRIMINAL HEARINGS	JUVENILE HEARINGS
FIRST CIRCUIT	2,508	129	789	1,107	483
Dorchester	544	18	346	90	90
Somerset	155	2	37	45	71
Wicomico	1,219	70	356	572	221
Worcester	590	39	50	400	101
SECOND CIRCUIT	2,463	78	911	859	615
Caroline	423	8	247	97	71
Cecil	1,374	29	449	526	370
Kent	156	11	44	46	55
Queen Anne's	347	26	146	106	69
Talbot	163	4	25	84	50
THIRD CIRCUIT	10,384	1,222	1,535	3,301	4,326
Baltimore	7,925	963	1,145	2,125	3,692
Harford	2,459	259	390	1,176	634
FOURTH CIRCUIT	2,444	92	384	1,110	858
Allegany	589	20	52	183	334
Garrett	457	20	132	135	170
Washington	1,398	52	200	792	354
FIFTH CIRCUIT	12,712	543	2,185	5,034	4,950
Anne Arundel	8,529	334	1,123	3,519	3,553
Carroll	1,333	52	272	419	590
Howard	2,850	157	790	1,096	807
SIXTH CIRCUIT	11,515	1,376	1,933	4,067	4,139
Frederick	800	72	64	433	231
Montgomery	10,715	1,304	1,869	3,634	3,908
SEVENTH CIRCUIT	29,335	1,383	8,344	8,414	11,194
Calvert	1,819	36	415	619	749
Charles	2,620	56	697	1,223	644
Prince George's	23,442	1,256	6,629	6,070	9,487
St. Mary's	1,454	35	603	502	314
EIGHTH CIRCUIT	17,666**	579	667	**	16,420
Baltimore City	17,666**	579	667	**	16,420
STATE	89,027**	5,402	16,748	23,892**	42,985

*Some courts have included both nonjury trials and hearings. (See "Hearings" under definitions.)

**Baltimore City does not report the number of criminal hearings; therefore, the State total does not include Baltimore City criminal hearings.

TABLE CC-20

AVERAGE DAYS FROM FILING TO DISPOSITION

	COMBINED ORIGINAL AND REOPENED CASES								ORIGINAL CASES ONLY*			
	LAW		EQUITY		CRIMINAL		JUVENILE		LAW	EQUITY	CRIMINAL	JUVENILE
	1978-79	1979-80	1978-79	1979-80	1978-79	1979-80	1978-79	1979-80	1980-81	1980-81	1980-81	1980-81
FIRST CIRCUIT												
Dorchester	231	216	104	95	106	98	22	52	313	116	132	36
Somerset	63	191	108	201	81	91	52	59	265	130	78	33
Wicomico	293	313	130	103	109	88	41	59	298	116	86	30
Worcester	182	202	175	180	135	131	69	80	194	189	150	66
SECOND CIRCUIT												
Caroline	211	282	167	150	107	111	46	50	279	135	125	47
Cecil	212	218	152	126	154	151	47	42	469	189	178	60
Kent	253	213	138	177	144	121	45	69	267	301	130	110
Queen Anne's	152	206	112	121	151	133	38	46	247	184	155	42
Talbot	171	289	154	192	98	134	43	36	140	118	116	36
THIRD CIRCUIT												
Baltimore	491	481	232	432	126	156	102	80	507	265	118	153
Harford	341	307	207	210	220	204	82	93	402	376	178	59
FOURTH CIRCUIT												
Allegany	288	425	233	187	108	144	25	21	675	306	113	36
Garrett	178	276	261	202	155	184	46	67	427	251	174	38
Washington	240	247	217	197	162	157	25	28	384	233	156	34
FIFTH CIRCUIT												
Anne Arundel	213	278	193	207	158	143	108	115	413	297	149	107
Carroll	167	260	172	211	155	175	57	64	481	433	213	54
Howard	234	460	237	328	224	169	155	91	503	315	121	65
SIXTH CIRCUIT												
Frederick	205	244	149	180	111	119	74	67	332	206	150	71
Montgomery	395	359	551	250	164	155	94	306	408	275	161	157
SEVENTH CIRCUIT												
Calvert	229	175	179	136	146	174	84	104	310	190	111	102
Charles	198	208	204	195	116	123	81	75	313	205	126	64
Prince George's	364	365	204	191	187	171	72	64	406	258	193	66
St. Mary's	297	236	304	230	110	108	67	67	256	218	122	71
EIGHTH CIRCUIT												
Baltimore City					167	156	57	78			N/A	64
SC	490	395	CC1 262	464					SC 498	CC1 231		
CC	426	404	CC2 164	345					CC 340	CC2 196		
CP	478	926							CP 664			
STATE	371	375	236	285	159	155	71	97	435	248	N/A	82

*Does not include reopened cases or cases with incorrect termination dates.

NOTE: A small number of lengthy cases can greatly increase an average, particularly in a small jurisdiction. See Tables CC-21, 22, 23, and 24 for a more detailed breakdown of filing to disposition ages.

TABLE CC-21

LAW -- AVERAGE DAYS FROM FILING TO DISPOSITION BY AGE OF CASES
AND CUMULATIVE PERCENTAGES OF DISPOSITIONS WITHIN
SPECIFIC TIME PERIODS

FISCAL 1981

	NUMBER OF CASES	AVERAGE IN DAYS FILING TO DISPOSITION		PERCENTAGE OF TOTAL CASES DISPOSED OF LESS THAN:				
		All Cases	Excluding Cases Over 1081	61 Days	181 Days	361 Days	721 Days	1081 Days
FIRST CIRCUIT								
Dorchester	93	313	290	37.6	47.3	63.4	84.9	97.8
Somerset	28	265	265	25.0	57.1	67.9	89.3	100.0
Wicomico	185	298	275	21.6	44.3	67.6	90.8	97.8
Worcester	288	194	179	56.9	67.0	78.5	92.4	98.6
SECOND CIRCUIT								
Caroline	66	279	249	27.3	54.5	71.2	87.9	97.0
Cecil	130	469	401	6.9	25.4	51.5	79.2	92.3
Kent	70	267	267	10.0	41.4	72.9	98.6	100.0
Queen Anne's	74	247	247	18.9	50.0	75.7	97.3	100.0
Talbot	20	140	140	40.0	65.0	90.0	100.0	100.0
THIRD CIRCUIT								
Baltimore	3,106	507	418	9.6	24.6	44.3	74.5	91.3
Harford	460	402	333	13.7	34.1	58.9	85.0	93.7
FOURTH CIRCUIT								
Allegany	165	675	473	2.4	12.1	27.9	66.1	83.6
Garrett	97	427	361	12.4	34.0	50.5	83.5	93.8
Washington	301	384	369	8.6	26.2	50.2	92.0	98.7
FIFTH CIRCUIT								
Anne Arundel	1,220	413	336	9.5	31.0	58.5	83.0	92.6
Carroll	250	481	241	14.8	33.6	54.8	76.8	87.2
Howard	586	503	378	14.8	30.2	48.1	74.1	88.1
SIXTH CIRCUIT								
Frederick	317	332	321	11.4	29.3	65.6	90.5	98.7
Montgomery	2,008	408	358	8.6	29.2	51.4	86.0	95.0
SEVENTH CIRCUIT								
Calvert	149	310	291	19.5	36.9	69.1	90.6	98.0
Charles	273	313	297	13.2	37.7	68.1	92.7	98.5
Prince George's	2,740	406	369	8.5	28.6	49.7	84.1	96.2
St. Mary's	179	256	248	19.0	41.3	78.2	96.1	99.4
EIGHTH CIRCUIT								
Baltimore City	SC 2,927	498	419	8.5	26.2	44.7	71.7	91.7
CC 1,310		340	288	24.5	49.1	65.9	83.4	95.2
CP 388		664	430	10.6	20.9	35.8	58.5	75.8
STATE	17,430	435	366	12.0	30.8	51.8	80.1	93.3

NOTE: Does not include reopened cases or cases with incorrect termination dates. In some counties the number of terminated cases may differ slightly and will be lower than figures appearing on other pages in this report.

TABLE CC-22

EQUITY -- AVERAGE DAYS FROM FILING TO DISPOSITION BY AGE OF CASES
AND CUMULATIVE PERCENTAGES OF DISPOSITIONS WITHIN
SPECIFIC TIME PERIODS

FISCAL 1981

	NUMBER OF CASES	AVERAGE IN DAYS FILING TO DISPOSITION		PERCENTAGE OF TOTAL CASES DISPOSED OF LESS THAN:				
		All Cases	Excluding Cases Over 721	61 Days	181 Days	361 Days	721 Days	1081 Days
FIRST CIRCUIT								
Dorchester	438	116	99	55.3	81.5	90.2	97.9	99.8
Somerset	282	130	85	64.2	81.2	89.0	95.7	97.2
Wicomico	815	116	104	49.6	83.7	91.0	98.7	99.9
Worcester	446	189	144	38.6	70.4	82.5	94.4	99.3
SECOND CIRCUIT								
Caroline	302	135	102	51.7	79.5	89.4	96.0	100.0
Cecil	744	189	122	44.5	71.6	82.0	91.8	99.2
Kent	212	301	208	25.5	50.9	66.5	88.2	96.7
Queen Anne's	258	184	132	41.5	74.0	81.8	93.0	99.6
Talbot	110	118	106	52.7	80.9	91.8	98.2	100.0
THIRD CIRCUIT								
Baltimore	4,947	265	175	26.6	60.0	73.9	88.5	98.3
Harford	1,578	376	175	26.7	54.2	65.3	79.9	91.0
FOURTH CIRCUIT								
Allegany	511	306	145	30.9	67.1	81.6	92.0	94.1
Garrett	311	251	213	32.8	59.2	69.1	94.2	99.7
Washington	1,032	233	176	29.3	62.8	78.0	92.6	98.6
FIFTH CIRCUIT								
Anne Arundel	3,725	297	163	26.8	58.7	74.6	86.1	93.4
Carroll	990	433	165	23.6	51.7	65.4	75.2	85.5
Howard	967	315	211	14.9	52.6	71.4	87.8	95.6
SIXTH CIRCUIT								
Frederick	1,255	206	147	35.9	70.3	80.5	93.1	98.0
Montgomery	3,712	275	208	14.1	52.7	75.6	92.1	97.4
SEVENTH CIRCUIT								
Calvert	564	190	147	37.8	66.8	82.6	94.3	99.1
Charles	892	205	147	34.8	69.6	81.7	92.8	98.9
Prince George's	6,829	258	188	24.2	58.2	76.6	91.2	98.1
St. Mary's	687	218	179	26.1	61.0	82.2	95.3	98.7
EIGHTH CIRCUIT								
Baltimore City	CC1 3,601	231	176	19.5	60.0	81.4	92.9	98.5
CC2 6,683		196	140	31.1	66.5	88.4	94.3	97.8
STATE	41,891	248	166	27.4	61.6	78.7	90.9	97.1

NOTE: Does not include reopened cases or cases with incorrect termination dates. In some counties the number of terminated cases may differ slightly and will be lower than figures appearing on other pages in this report.

TABLE CC-23

CRIMINAL -- AVERAGE DAYS FROM FILING TO DISPOSITION BY AGE OF CASES
AND CUMULATIVE PERCENTAGES OF DISPOSITIONS WITHIN
SPECIFIC TIME PERIODS

FISCAL 1981

	NUMBER OF CASES	AVERAGE IN DAYS FILING TO DISPOSITION		PERCENTAGE OF TOTAL CASES DISPOSED OF LESS THAN:				
		All Cases	Excluding Cases Over 360	61 Days	91 Days	121 Days	181 Days	361 Days
FIRST CIRCUIT								
Dorchester	105	132	129	5.7	28.6	41.9	85.7	99.0
Somerset	103	78	75	26.2	82.5	91.3	96.1	99.0
Wicomico	442	86	77	45.2	72.2	85.3	92.8	99.1
Worcester	374	150	147	13.4	30.5	40.6	64.4	98.9
SECOND CIRCUIT								
Caroline	48	125	112	18.8	47.9	62.5	79.2	95.8
Cecil	351	178	168	5.7	12.3	22.5	56.4	97.4
Kent	46	130	130	8.7	26.1	43.5	78.3	100.0
Queen Anne's	89	155	127	7.9	23.6	47.2	79.8	93.3
Talbot	81	116	116	18.5	45.7	65.4	87.7	100.0
THIRD CIRCUIT								
Baltimore	3,279	118	101	26.1	50.4	71.3	85.9	96.7
Harford	626	178	135	14.2	31.6	42.7	68.7	91.2
FOURTH CIRCUIT								
Allegany	234	113	98	37.6	49.6	65.4	84.2	96.2
Garrett	82	174	174	3.7	7.3	17.1	56.1	100.0
Washington	603	156	118	21.1	45.4	57.4	74.0	93.0
FIFTH CIRCUIT								
Anne Arundel	1,803	149	124	10.6	28.7	53.3	79.7	95.1
Carroll	501	213	138	7.0	16.8	42.7	72.5	90.0
Howard	628	121	108	22.8	47.1	64.3	81.2	97.3
SIXTH CIRCUIT								
Frederick	288	150	110	26.7	36.8	54.5	83.3	94.4
Montgomery	1,328	161	123	19.9	33.7	49.5	75.2	93.0
SEVENTH CIRCUIT								
Calvert	151	111	109	21.9	45.0	70.2	87.4	99.3
Charles	663	126	107	20.5	39.4	57.8	89.9	96.5
Prince George's	2,289	193	129	17.4	30.9	46.3	70.0	89.8
St. Mary's	167	122	115	22.2	40.7	56.3	85.6	98.2
EIGHTH CIRCUIT								
Baltimore City	N/A	N/A	N/A	N/A	N/A	N/A	N/A	N/A
STATE	N/A	N/A	N/A	N/A	N/A	N/A	N/A	N/A

NOTE: Does not include reopened cases or cases with incorrect termination dates. In some counties the number of terminated cases may differ slightly and will be lower than figures appearing on other pages in this report.

TABLE CC-24

JUVENILE -- AVERAGE DAYS FROM FILING TO DISPOSITION BY AGE OF CASES
AND CUMULATIVE PERCENTAGES OF DISPOSITIONS WITHIN
SPECIFIC TIME PERIODS

FISCAL 1981

	NUMBER OF CASES	AVERAGE IN DAYS FILING TO DISPOSITION		PERCENTAGE OF TOTAL CASES DISPOSED OF LESS THAN:					
		All Cases	Excluding Cases Over 271	31 Days	61 Days	121 Days	181 Days	271 Days	361 Days
FIRST CIRCUIT									
Dorchester	78	36	36	37.2	93.6	100.0	100.0	100.0	100.0
Somerset	54	33	19	83.3	92.6	94.4	94.4	96.3	98.1
Wicomico	161	30	30	62.1	96.3	98.8	98.8	100.0	100.0
Worcester	129	66	53	22.5	76.0	92.2	96.1	96.9	96.9
SECOND CIRCUIT									
Caroline	41	47	47	41.5	82.9	92.7	97.6	100.0	100.0
Cecil	206	60	43	43.7	77.7	90.3	96.1	96.1	97.1
Kent	30	110	91	26.7	53.3	60.0	63.3	93.3	100.0
Queen Anne's	60	42	38	41.7	81.7	98.3	98.3	98.3	100.0
Talbot	58	36	36	43.1	89.7	100.0	100.0	100.0	100.0
THIRD CIRCUIT									
Baltimore	2,066	153	60	18.4	54.6	77.4	82.6	86.3	88.6
Harford	407	59	57	23.6	71.7	93.1	96.6	99.5	99.5
FOURTH CIRCUIT									
Allegany	334	36	20	77.8	88.9	94.3	96.1	97.0	97.6
Garrett	104	38	36	71.2	87.5	91.3	96.2	99.0	100.0
Washington	283	34	34	65.7	88.3	96.5	97.9	100.0	100.0
FIFTH CIRCUIT									
Anne Arundel	1,463	107	84	12.5	34.5	73.8	89.3	94.5	96.9
Carroll	362	54	52	29.6	72.1	93.6	97.8	99.2	100.0
Howard	387	65	64	13.2	52.5	93.3	97.7	99.7	100.0
SIXTH CIRCUIT									
Frederick	139	71	65	28.8	51.8	86.3	94.2	97.8	99.3
Montgomery	1,149	157	84	12.9	34.5	64.2	75.4	86.2	93.6
SEVENTH CIRCUIT									
Calvert	296	102	69	18.9	49.7	77.7	83.4	90.9	94.6
Charles	372	64	64	17.2	55.1	93.5	97.3	100.0	100.0
Prince George's	2,909	66	64	22.2	56.2	89.0	96.5	99.4	99.8
St. Mary's	170	71	71	10.6	41.8	90.6	97.6	100.0	100.0
EIGHTH CIRCUIT									
Baltimore City	7,743	64	53	29.0	66.0	91.3	95.6	97.2	98.4
STATE	19,001	82	60	25.9	59.7	86.6	92.6	95.7	97.3

NOTE: Does not include reopened cases or cases with incorrect termination dates. In some counties the number of terminated cases may differ slightly and will be lower than figures appearing on other pages in this report.

TABLE CC-25

POPULATION AND CASELOAD PER CIRCUIT COURT JUDGE

AS OF JUNE 30, 1981

FISCAL 1981

	NUMBER OF JUDGES*	POPULATION PER JUDGE**	CASES FILED PER JUDGE		CASES TERMINATED PER JUDGE	
			CIVIL	CRIMINAL	CIVIL	CRIMINAL
FIRST CIRCUIT						
Dorchester	1	30,800	931	225	855	140
Somerset	1	19,200	374	176	369	124
Wicomico	2	32,900	798	356	757	291
Worcester	2	15,850	521	475	447	275
SECOND CIRCUIT						
Caroline	1	23,600	648	102	593	68
Cecil	2	30,650	714	274	697	209
Kent	1	16,800	322	92	326	59
Queen Anne's	1	26,500	546	189	479	119
Talbot	1	25,800	429	133	189	94
THIRD CIRCUIT						
Baltimore	10	66,000	1,100	486	1,033	385
Harford	3	49,900	947	315	835	269
FOURTH CIRCUIT						
Allegany	2	40,050	660	166	511	136
Garrett	1	27,100	569	137	552	104
Washington	2	57,150	964	348	858	347
FIFTH CIRCUIT						
Anne Arundel	9	42,233	909	283	779	243
Carroll	2	49,950	849	377	852	330
Howard	3	41,966	790	380	683	268
SIXTH CIRCUIT						
Frederick	2	59,150	904	252	894	172
Montgomery***	11	53,309	781	202	524	146
SEVENTH CIRCUIT						
Calvert	1	36,500	1,334	306	1,294	248
Charles	2	38,050	1,020	342	874	386
Prince George's	13	51,169	1,297	273	1,068	231
St. Mary's	1	61,500	1,414	276	1,144	232
EIGHTH CIRCUIT						
Baltimore City	23	33,591	1,262	1,043	1,023	996
STATE	97	43,868	1,013	475	852	419

*Number of Judges as of June 30, 1981.

**Population Estimate for July 1, 1981 issued by the Maryland Center for Health Statistics.

***Juvenile causes not included since they are heard at the District Court level. Juvenile causes in all other counties are included in the civil category.

TABLE CC-26

FIVE-YEAR COMPARATIVE TABLE

CASES FILED AND TERMINATED PER JUDGE

	FILED		TERMINATED	
	Civil*	Criminal	Civil*	Criminal
1976-77	1,091	508	1,031	480
1977-78	1,080	397	945	361
1978-79	1,162	428	1,011	403
1979-80	1,540	402	1,546	431
1980-81	1,013	475	852	419

*Juvenile causes in Montgomery County are not included since they are heard at the District Court level. Juvenile causes in all other counties are included in the civil category.

TABLE CC-27

CASES FILED IN THE CIRCUIT COURT
PER THOUSAND POPULATION

JULY 1, 1980 - JUNE 30, 1981
FISCAL 1981

	POPULATION*	CIVIL	CRIMINAL	TOTAL
FIRST CIRCUIT				
Dorchester	30,800	30	7	37
Somerset	19,200	19	9	28
Wicomico	65,800	24	11	35
Worcester	31,700	33	30	63
SECOND CIRCUIT				
Caroline	23,600	27	4	31
Cecil	61,300	23	9	32
Kent	16,800	19	5	24
Queen Anne's	26,500	21	7	28
Talbot	25,800	17	5	22
THIRD CIRCUIT				
Baltimore	660,000	17	7	24
Harford	149,700	19	6	25
FOURTH CIRCUIT				
Allegany	80,100	16	4	20
Garrett	27,100	21	5	26
Washington	114,300	17	6	23
FIFTH CIRCUIT				
Anne Arundel	380,100	22	7	29
Carroll	99,900	17	8	25
Howard	125,900	19	9	28
SIXTH CIRCUIT				
Frederick	118,300	15	4	19
Montgomery**	586,400	15	4	19
SEVENTH CIRCUIT				
Calvert	36,500	37	8	45
Charles	76,100	27	9	36
Prince George's	665,200	25	5	30
St. Mary's	61,500	23	4	27
EIGHTH CIRCUIT				
Baltimore City	772,600	38	31	69
STATE	4,255,200	23	11	34

*Population estimate for July 1, 1981, issued by the Maryland Center for Health Statistics.

**Juvenile causes heard at the District Court level are not included.

TABLE CC-28

RATIO OF JURY TRIALS TO POPULATION

JULY 1, 1980 - JUNE 30, 1981
FISCAL 1981

	Number of Jury Trials	Population	Per 1,000 Population
FIRST CIRCUIT			
Dorchester	21	30,800	.68
Somerset	19	19,200	.98
Wicomico	49	65,800	.74
Worcester	8	31,700	.25
SECOND CIRCUIT			
Caroline	12	23,600	.50
Cecil	83	61,300	1.35
Kent	15	16,800	.89
Queen Anne's	28	26,500	1.05
Talbot	15	25,800	.58
THIRD CIRCUIT			
Baltimore	209	660,000	.31
Harford	93	149,700	.62
FOURTH CIRCUIT			
Allegany	47	80,100	.58
Garrett	9	27,100	.33
Washington	104	114,300	.90
FIFTH CIRCUIT			
Anne Arundel	240	380,100	.63
Carroll	25	99,900	.25
Howard	63	125,900	.50
SIXTH CIRCUIT			
Frederick	56	118,300	.47
Montgomery	196	586,400	.33
SEVENTH CIRCUIT			
Calvert	26	36,500	.71
Charles	81	76,100	1.06
Prince George's	350	665,200	.52
St. Mary's	16	61,500	.26
EIGHTH CIRCUIT			
Baltimore City	839	772,600	1.08
STATE	2,604	4,255,200	.61

TABLE CC-29
FIVE YEAR COMPARATIVE GRAPH
CIVIL CASES FILED*

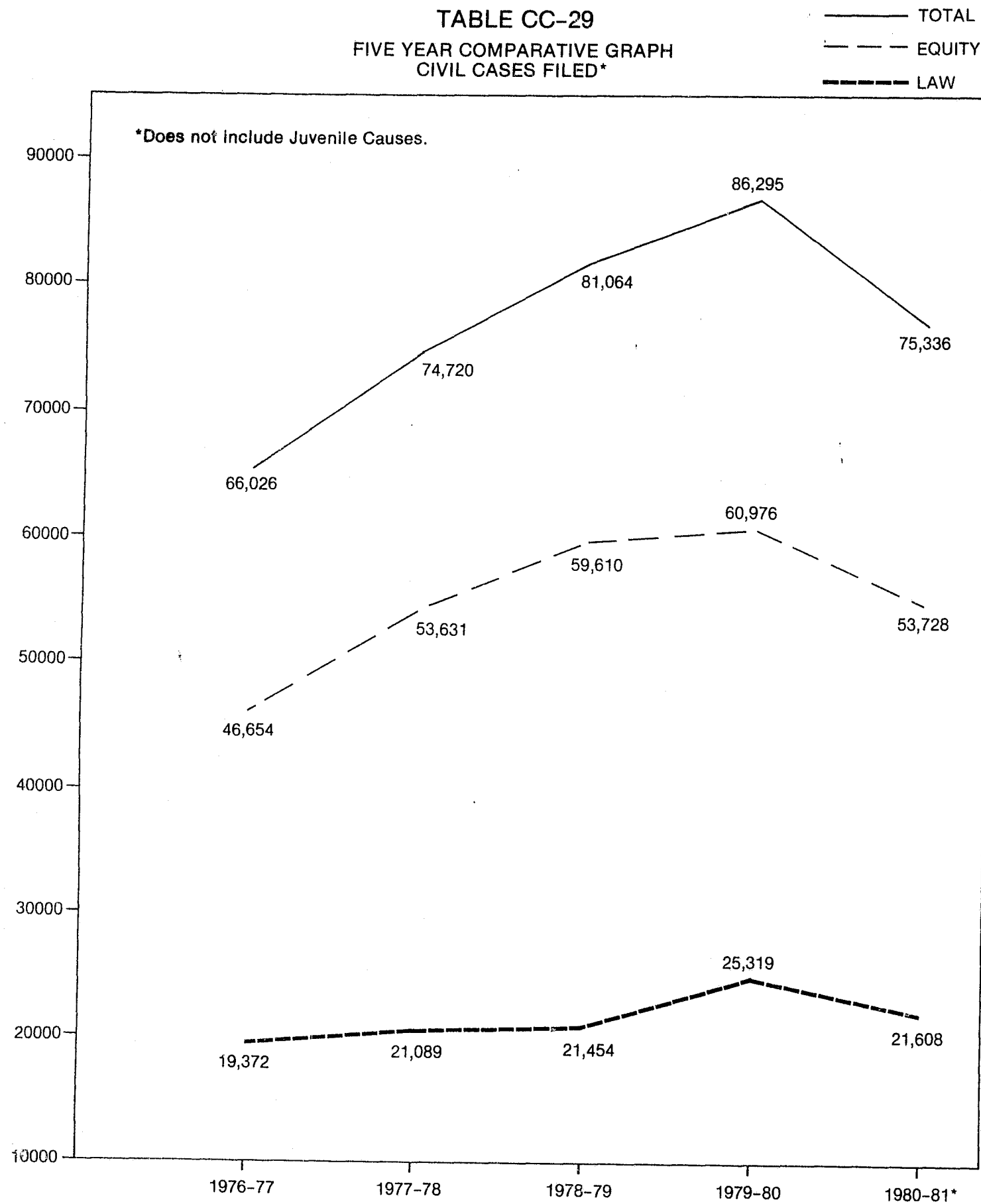


TABLE CC-30

APPEALS FROM DISTRICT COURT AND ADMINISTRATIVE AGENCIES

JULY 1, 1980 - JUNE 30, 1981

FISCAL 1981

	LAW				CRIMINAL			TOTAL
	DISTRICT COURT DeNovo	COURT On Record	ADMINISTRATIVE AGENCIES	TOTAL	MOTOR VEHICLE	OTHER	TOTAL	
FIRST CIRCUIT	7	10	91	108	147	146	293	401
Dorchester	0	0	34	34	4	19	23	57
Somerset	0	0	4	4	4	5	9	13
Wicomico	6	6	33	45	47	41	88	133
Worcester	1	4	20	25	92	81	173	198
SECOND CIRCUIT	2	3	48	53	48	67	115	168
Caroline	0	0	8	8	3	4	7	15
Cecil	1	3	13	17	32	31	63	80
Kent	1	0	14	15	3	12	15	30
Queen Anne's	0	0	5	5	7	9	16	21
Talbot	0	0	8	8	3	11	14	22
THIRD CIRCUIT	47	71	347	465	485	323	808	1,273
Baltimore	35	56	279	370	407	297	704	1,074
Harford	12	15	68	95	78	26	104	199
FOURTH CIRCUIT	12	12	61	85	68	74	142	227
Allegany	5	5	1	11	32	33	65	76
Garrett	1	1	4	6	8	3	11	17
Washington	6	6	56	68	28	38	66	134
FIFTH CIRCUIT	115	34	199	348	271	193	464	812
Anne Arundel	105	21	124	250	91	130	221	471
Carroll	1	3	26	30	67	32	99	129
Howard	9	10	49	68	113	31	144	212
SIXTH CIRCUIT	61	60	190	311	177	110	287	598
Frederick	3	2	25	30	26	15	41	71
Montgomery	58	58	165	281	151	95	246	527
SEVENTH CIRCUIT	168	84	259	511	116	216	332	843
Calvert	1	2	21	24	3	2	5	29
Charles	3	2	29	34	23	21	44	78
Prince George's	160	77	187	424	81	171	252	676
St. Mary's	4	3	22	29	9	22	31	60
EIGHTH CIRCUIT	43	72	1,004	1,119	-1,760-		1,760	2,879
Baltimore City	43	72	1,004	1,119	-1,760-		1,760	2,879
STATE	455	346	2,199	3,000	-4,201-		4,201	7,201

TABLE CC-31
FIVE YEAR COMPARATIVE CHART
APPEALS FROM DISTRICT COURT AND ADMINISTRATIVE AGENCIES

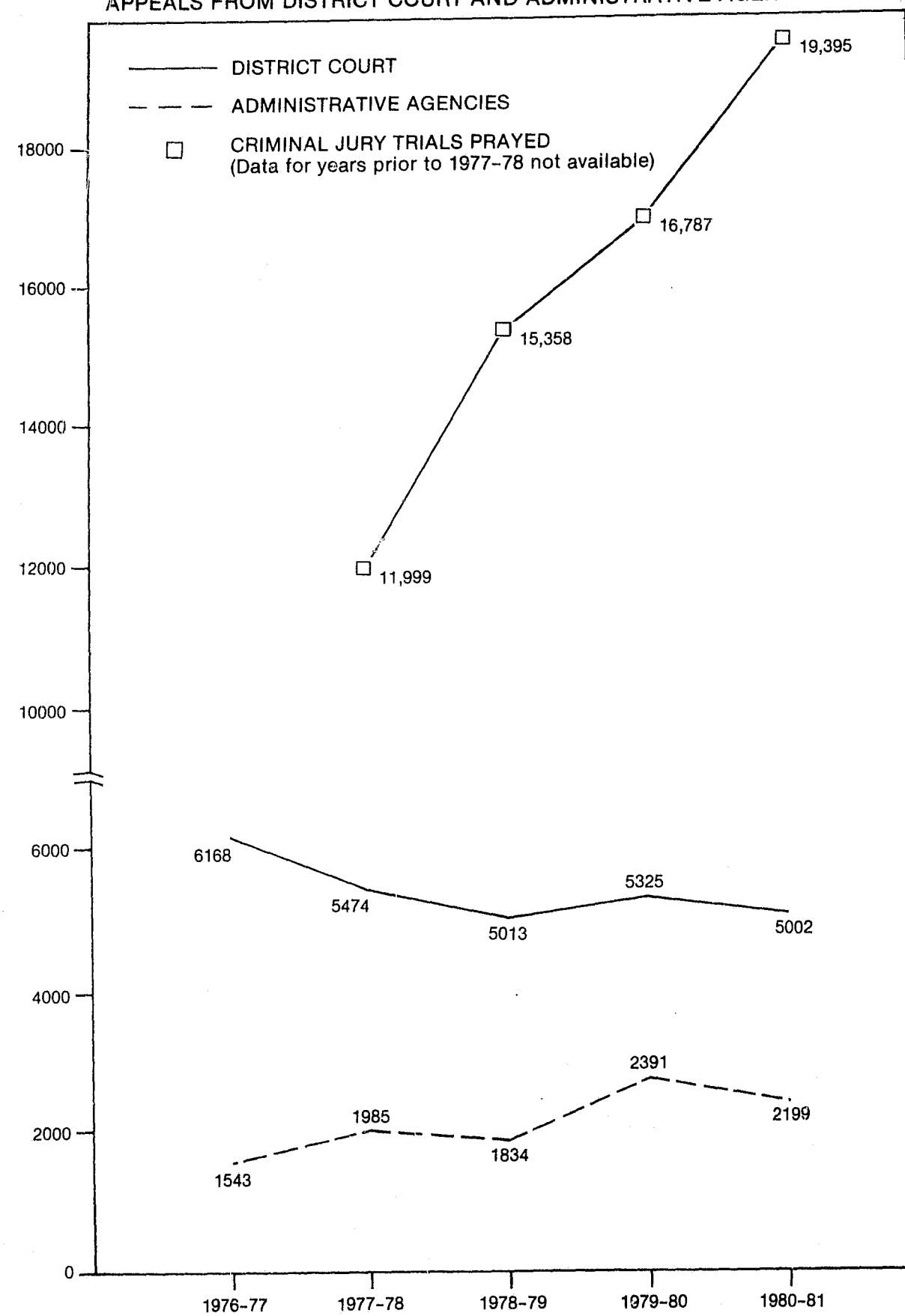


TABLE CC-32

FIVE-YEAR COMPARATIVE TABLE
APPEALS FROM ADMINISTRATIVE AGENCIES

	1976-77	1977-78	1978-79	1979-80	1980-81
FIRST CIRCUIT					91
Dorchester	48	83	84	81	34
Somerset	4	5	0	3	4
Wicomico	11	17	24	28	33
Worcester	13	9	14	18	20
SECOND CIRCUIT					48
Caroline	3	3	3	4	8
Cecil	9	20	24	29	13
Kent	6	6	6	8	14
Queen Anne's	9	8	9	12	5
Talbot	8	12	6	2	8
THIRD CIRCUIT					347
Baltimore	205	291	208	259	279
Harford	47	45	48	53	68
FOURTH CIRCUIT					61
Allegany	38	45	28	36	1
Garrett	8	5	6	1	4
Washington	37	57	60	69	56
FIFTH CIRCUIT					199
Anne Arundel	103	178	156	178	124
Carroll	21	51	32	31	26
Howard	40	58	44	44	49
SIXTH CIRCUIT					190
Frederick	14	18	20	30	25
Montgomery	125	137	140	188	165
SEVENTH CIRCUIT					259
Calvert	13	22	21	20	21
Charles	10	9	13	18	29
Prince George's	167	135	149	156	187
St. Mary's	11	5	10	12	22
EIGHTH CIRCUIT					1,004
Baltimore City	593	766	729	1,111	1,004
STATE	1,543	1,985	1,834	2,391	2,199

TABLE CC-33

FIVE-YEAR COMPARATIVE TABLE
APPEALS FROM THE DISTRICT COURT

	1976-77	1977-78	1978-79	1979-80	1980-81
FIRST CIRCUIT					310
Dorchester	23	40	29	30	23
Somerset	22	7	14	8	9
Wicomico	63	84	62	83	100
Worcester	71	50	52	80	178
SECOND CIRCUIT					120
Caroline	19	16	12	14	7
Cecil	51	81	58	68	67
Kent	19	12	9	6	16
Queen Anne's	20	16	12	14	16
Talbot	26	13	41	39	14
THIRD CIRCUIT					926
Baltimore	780	666	805	840	795
Harford	153	121	166	133	131
FOURTH CIRCUIT					166
Allegany	91	90	91	132	75
Garrett	14	5	17	16	13
Washington	97	84	95	91	78
FIFTH CIRCUIT					613
Anne Arundel	453	380	289	304	347
Carroll	124	157	103	125	103
Howard	215	192	152	156	163
SIXTH CIRCUIT					408
Frederick	69	60	109	66	46
Montgomery	328	344	235	277	362
SEVENTH CIRCUIT					584
Calvert	27	17	21	24	8
Charles	46	70	77	69	49
Prince George's	291	374	334	405	489
St. Mary's	28	32	34	29	38
EIGHTH CIRCUIT					1,875
Baltimore City	3,138	2,563	2,196	2,316	1,875
STATE	6,168	5,474	5,013	5,325	5,002

TABLE CC-34

FIVE-YEAR COMPARATIVE TABLE
POST CONVICTION CASES FILED

	1976-77	1977-78	1978-79	1979-80	1980-81
FIRST CIRCUIT					0
Dorchester	11	8	2	1	0
Somerset	1	1	0	0	0
Wicomico	13	10	11	3	0
Worcester	8	9	0	0	0
SECOND CIRCUIT					2
Caroline	6	4	0	2	0
Cecil	14	13	8	8	0
Kent	0	0	0	0	0
Queen Anne's	6	14	6	1	2
Talbot	0	17	1	2	0
THIRD CIRCUIT					0
Baltimore	118	84	42	42	0
Harford	18	8	8	3	0
FOURTH CIRCUIT					2
Allegany	0	0	1	0	0
Garrett	5	3	0	1	0
Washington	2	3	6	10	2
FIFTH CIRCUIT					10
Anne Arundel	14	25	9	4	10
Carroll	2	1	2	0	0
Howard	0	0	3	4	0
SIXTH CIRCUIT					0
Frederick	4	2	10	7	0
Montgomery	10	15	4	1	0
SEVENTH CIRCUIT					55
Calvert	0	0	15	6	0
Charles	11	10	5	5	5
Prince George's	80	74	52	62	49
St. Mary's	0	0	0	0	1
EIGHTH CIRCUIT					222
Baltimore City	118	292	224	226	222
STATE	441	593	409	388	291

TABLE CC-35

APPLICATIONS FOR REVIEW OF CRIMINAL SENTENCES

JULY 1, 1980 - JUNE 30, 1981
FISCAL 1981

	Filed During Year	Withdrawn by Applicant	Terminated		
			Considered and Disposed Of		
			Original Sentence Unchanged	Original Sentence Increased	Original Sentence Decreased
FIRST CIRCUIT					
Dorchester	4	0	4	0	0
Somerset	0	0	0	0	0
Wicomico	5	0	3	0	0
Worcester	1	0	0	0	0
SECOND CIRCUIT					
Caroline	0	0	0	0	0
Cecil	14	0	14	0	0
Kent	1	0	2	0	0
Queen Anne's	0	0	0	0	0
Talbot	0	0	0	0	0
THIRD CIRCUIT					
Baltimore	10	0	9	0	2
Harford	8	0	4	0	0
FOURTH CIRCUIT					
Allegany	4	2	3	0	0
Garrett	4	0	2	0	0
Washington	21	0	15	0	1
FIFTH CIRCUIT					
Anne Arundel	17	3	4	0	3
Carroll	4	0	2	0	6
Howard	0	0	0	0	0
SIXTH CIRCUIT					
Frederick	9	0	3	0	2
Montgomery	15	2	12	0	2
SEVENTH CIRCUIT					
Calvert	2	0	2	0	0
Charles	11	1	9	0	0
Prince George's	2	0	2	0	1
St. Mary's	2	0	3	0	1
EIGHTH CIRCUIT					
Baltimore City	49	1	47	0	0
STATE	183	9	140	0	18

THE DISTRICT COURT

CONTINUED

1 OF 2

TABLE CC-35

APPLICATIONS FOR REVIEW OF CRIMINAL SENTENCES

JULY 1, 1980 - JUNE 30, 1981
FISCAL 1981

	Filed During Year	Withdrawn by Applicant	Terminated		
			Considered and Disposed Of		
			Original Sentence Unchanged	Original Sentence Increased	Original Sentence Decreased
FIRST CIRCUIT					
Dorchester	4	0	4	0	0
Somerset	0	0	0	0	0
Wicomico	5	0	3	0	0
Worcester	1	0	0	0	0
SECOND CIRCUIT					
Caroline	0	0	0	0	0
Cecil	14	0	14	0	0
Kent	1	0	2	0	0
Queen Anne's	0	0	0	0	0
Talbot	0	0	0	0	0
THIRD CIRCUIT					
Baltimore	10	0	9	0	2
Harford	8	0	4	0	0
FOURTH CIRCUIT					
Allegany	4	2	3	0	0
Garrett	4	0	2	0	0
Washington	21	0	15	0	1
FIFTH CIRCUIT					
Anne Arundel	17	3	4	0	3
Carroll	4	0	2	0	6
Howard	0	0	0	0	0
SIXTH CIRCUIT					
Frederick	9	0	3	0	2
Montgomery	15	2	12	0	2
SEVENTH CIRCUIT					
Calvert	2	0	2	0	0
Charles	11	1	9	0	0
Prince George's	2	0	2	0	1
St. Mary's	2	0	3	0	1
EIGHTH CIRCUIT					
Baltimore City	49	1	47	0	0
STATE	183	9	140	0	18

THE DISTRICT COURT

THE DISTRICT COURT

The District Court processed 644,512 motor vehicle cases, 128,990 criminal cases and 482,223 civil cases in Fiscal 1981. The District Court for Montgomery County also reported an additional 2,410 juvenile filings.

Statewide, 194,115 motor vehicle cases went to trial, with the remaining 450,397 being disposed of without trial by payment or forfeiture. Baltimore County recorded the most motor vehicle trials, 60,321, followed by Baltimore City with 32,468 and Prince George's County with 23,542. Kent County registered the smallest number of motor vehicle trials, 290.

More than one-third (35.82 percent) of the District Court criminal caseload was processed in Baltimore City. The four largest counties accounted for 41.28 percent (53,255 cases) of the criminal workload, with Prince George's having the highest activity, followed by Baltimore, Montgomery, and Anne Arundel. The smallest caseload in the criminal area was noted in Kent County where 355 cases were terminated.

Filings in the civil area increased by 5.12 percent from 1979-80 to 1980-81. Baltimore City, as usual,

tallied the most civil filings, 174,973, followed by Prince George's and Baltimore Counties with 120,930 and 70,243, respectively. Garrett County recorded the smallest number of civil actions, 749.

Statistical charts reflecting the workload of the District Court follow.

TABLE DC-1

MOTOR VEHICLE, CRIMINAL, AND CIVIL CASES FILED OR PROCESSED
IN THE DISTRICT COURT OF MARYLAND

JULY 1, 1980 - JUNE 30, 1981
FISCAL 1981

	MOTOR VEHICLE	CRIMINAL*	CIVIL	TOTAL
DISTRICT 1 Baltimore City	56,946	46,215	174,973	278,134
DISTRICT 2 Dorchester	4,652	954	2,189	7,795
Somerset	4,615	785	847	6,247
Wicomico	15,852	1,819	4,017	21,688
Worcester	14,311	1,801	1,705	17,817
DISTRICT 3 Caroline	3,121	663	896	4,680
Cecil	23,160	1,845	1,541	26,546
Kent	2,577	355	854	3,786
Queen Anne's	5,633	425	943	7,001
Talbot	6,234	653	1,023	7,910
DISTRICT 4 Calvert	5,105	809	1,160	7,074
Charles	8,693	2,029	2,298	13,020
St. Mary's	5,551	1,404	1,760	8,715
DISTRICT 5 Prince George's	109,602	17,870	120,930	248,402
DISTRICT 6 Montgomery	98,274	11,717	40,853	150,844
DISTRICT 7 Anne Arundel	40,069	8,914	26,529	75,512
DISTRICT 8 Baltimore	128,269	14,754	70,243	213,266
DISTRICT 9 Harford	23,334	2,601	7,773	33,708
DISTRICT 10 Carroll	7,500	1,530	2,844	11,874
Howard	28,397	3,238	6,842	38,477
DISTRICT 11 Frederick	22,885	2,354	4,309	29,548
Washington	17,648	2,918	5,435	26,001
DISTRICT 12 Allegany	8,463	2,731	1,510	12,704
Garrett	3,621	606	749	4,976
STATE	644,512	128,990	482,223	1,255,725

*Criminal figures are not available for the months of July and August, 1980, for all jurisdictions and for Baltimore City for September, 1980, as well. Above statistics have been adjusted by District Court personnel to reflect comparable annual totals.

TABLE DC-2

MOTOR VEHICLE CASES PROCESSED BY THE
DISTRICT COURT OF MARYLAND

JULY 1, 1980 - JUNE 30, 1981
FISCAL 1981

	CASES TRIED*	CASES PAID**	TOTAL CASES
DISTRICT 1 Baltimore City	32,468	24,478	56,946
DISTRICT 2 Dorchester	1,040	3,612	4,652
Somerset	475	4,140	4,615
Wicomico	2,057	13,795	15,852
Worcester	1,927	12,384	14,311
DISTRICT 3 Caroline	585	2,536	3,121
Cecil	2,911	20,249	23,160
Kent	290	2,287	2,577
Queen Anne's	810	4,823	5,633
Talbot	1,468	4,766	6,234
DISTRICT 4 Calvert	1,534	3,571	5,105
Charles	1,664	7,029	8,693
St. Mary's	1,032	4,519	5,551
DISTRICT 5 Prince George's	23,542	86,060	109,602
DISTRICT 6 Montgomery	16,729	81,545	98,274
DISTRICT 7 Anne Arundel	17,457	22,612	40,069
DISTRICT 8 Baltimore	60,321	67,948	128,269
DISTRICT 9 Harford	7,661	15,673	23,334
DISTRICT 10 Carroll	2,523	4,977	7,500
Howard	8,457	19,940	28,397
DISTRICT 11 Frederick	3,890	18,995	22,885
Washington	2,375	15,273	17,648
DISTRICT 12 Allegany	2,250	6,213	8,463
Garrett	649	2,972	3,621
STATE	194,115	450,397	644,512

*Includes guilty, not guilty, and probation before judgment.

**Includes collateral forfeited and citations paid without court appearance.

TABLE DC-3

CRIMINAL CASES PROCESSED BY THE
DISTRICT COURT OF MARYLAND*

JULY 1, 1980 - JUNE 30, 1981
FISCAL 1981

DISTRICT 1 Baltimore City	46,215
DISTRICT 2 Dorchester	954
Somerset	785
Wicomico	1,819
Worcester	1,801
DISTRICT 3 Caroline	663
Cecil	1,845
Kent	355
Queen Anne's	425
Talbot	653
DISTRICT 4 Calvert	809
Charles	2,029
St. Mary's	1,404
DISTRICT 5 Prince George's	17,870
DISTRICT 6 Montgomery	11,717
DISTRICT 7 Anne Arundel	8,914
DISTRICT 8 Baltimore	14,754
DISTRICT 9 Harford	2,601
DISTRICT 10 Carroll	1,530
Howard	3,238
DISTRICT 11 Frederick	2,354
Washington	2,918
DISTRICT 12 Allegany	2,731
Garrett	606
STATE	128,990

*Figures are not available for months of July and August, 1980, for all jurisdictions and for Baltimore City for September, 1980, as well. Above statistics have been adjusted by District Court personnel to reflect comparable annual totals.

TABLE DC-4

CIVIL CASES FILED IN THE DISTRICT COURT OF MARYLAND
JULY 1, 1980 - JUNE 30, 1981
FISCAL 1981

	LANDLORD AND TENANT CASES		CONTRACT AND TORT CASES		OTHER CASES		TOTALS	
	Filed	Contested	Filed	Contested	Filed	Hearings Held	Filed	Contested
DISTRICT 1 Baltimore City	137,584	14,068	33,149	2,873	4,240	1,398	174,973	18,339
DISTRICT 2 Dorchester	559	7	1,432	114	198	123	2,189	244
Somerset	89	47	658	130	100	49	847	226
Wicomico	1,340	13	2,368	194	309	183	4,017	390
Worcester	190	30	1,308	184	207	103	1,705	367
DISTRICT 3 Caroline	88	21	731	47	77	17	896	85
Cecil	285	79	1,130	119	126	41	1,541	239
Kent	47	20	750	31	57	13	854	64
Queen Anne's	68	10	822	53	53	11	943	74
Talbot	112	16	813	100	98	13	1,023	129
DISTRICT 4 Calvert	84	54	951	105	125	32	1,160	191
Charles	541	51	1,494	124	263	145	2,298	320
St. Mary's	429	43	1,141	145	190	57	1,760	245
DISTRICT 5 Prince George's	94,198	7,598	24,083	1,811	2,649	1,134	120,930	10,543
DISTRICT 6 Montgomery*	24,307	1,120	14,895	1,717	1,651	97	40,853	2,934
DISTRICT 7 Anne Arundel	15,361	574	9,964	1,798	1,204	543	26,529	2,915
DISTRICT 8 Baltimore	52,221	2,334	15,768	2,624	2,254	1,359	70,243	6,317
DISTRICT 9 Harford	3,850	308	3,579	318	344	74	7,773	700
DISTRICT 10 Carroll	682	80	1,822	125	340	75	2,844	280
Howard	3,610	202	2,856	415	376	109	6,842	726
DISTRICT 11 Frederick	1,313	97	2,654	203	342	25	4,309	325
Washington	1,261	164	3,862	243	312	75	5,435	482
DISTRICT 12 Allegany	119	46	1,343	258	48	31	1,510	335
Garrett	51	16	657	62	41	17	749	95
STATE	338,389	27,048	128,230	13,793	15,604	5,724	482,223	46,565

*Juvenile causes not included.

TABLE DC-5

FIVE-YEAR COMPARATIVE TABLE
MOTOR VEHICLE, CRIMINAL, AND CIVIL CASES
FILED IN THE DISTRICT COURT*

	1976-77	1977-78	1978-79	1979-80	1980-81**
DISTRICT 1 Baltimore City	302,507	295,798	270,162	230,333	278,134
DISTRICT 2 Dorchester	9,569	8,786	6,620	6,679	7,795
Somerset	6,264	6,191	4,767	4,112	6,247
Wicomico	14,284	15,492	16,117	15,701	21,688
Worcester	10,563	9,290	9,701	11,220	17,817
DISTRICT 3 Caroline	7,058	5,777	4,668	4,015	4,680
Cecil	34,401	38,654	33,365	30,958	26,546
Kent	3,829	3,770	3,652	2,337	3,786
Queen Anne's	7,337	6,988	6,285	5,886	7,001
Talbot	7,272	6,991	6,562	6,234	7,910
DISTRICT 4 Calvert	7,400	7,955	7,441	7,542	7,074
Charles	12,780	12,534	12,357	12,382	13,020
St. Mary's	9,040	8,848	9,847	8,938	8,715
DISTRICT 5 Prince George's	236,841	241,791	227,970	224,327	248,402
DISTRICT 6 Montgomery	105,803	105,368	114,277	54,919	150,844
DISTRICT 7 Anne Arundel	72,735	71,406	73,023	65,648	75,512
DISTRICT 8 Baltimore	161,337	183,754	184,507	114,830	213,266
DISTRICT 9 Harford	41,060	38,232	34,628	31,692	33,708
DISTRICT 10 Carroll	13,928	14,931	14,813	11,476	11,874
Howard	28,453	32,475	33,309	32,471	38,477
DISTRICT 11 Frederick	25,034	29,142	26,993	28,261	29,548
Washington	22,908	23,432	22,816	24,533	26,001
DISTRICT 12 Allegany	10,448	10,453	11,796	12,529	12,704
Garrett	4,674	4,649	5,275	5,421	4,976
STATE	1,155,525	1,182,707	1,140,951	1,040,214***	1,255,725

*Criminal figures not included in 1979-80.

**Criminal figures are not available for the months of July and August, 1980, for all jurisdictions and for Baltimore City for September, 1980, as well. Above statistics have been adjusted by District Court personnel to reflect comparable annual totals.

***Total includes 87,770 motor vehicle cases paid in Districts 6 or 8 that were not tabulated by separate jurisdiction.

TABLE DC-6

FIVE-YEAR COMPARATIVE TABLE
MOTOR VEHICLE CASES
PROCESSED BY THE DISTRICT COURT

	1976-77	1977-78	1978-79	1979-80	1980-81
DISTRICT 1 Baltimore City	93,880	90,861	69,892	61,060	56,946
DISTRICT 2 Dorchester	7,168	6,560	4,469	4,860	4,652
Somerset	4,678	4,944	3,491	3,265	4,615
Wicomico	9,962	11,068	11,551	12,006	15,852
Worcester	7,472	6,457	6,986	9,537	14,311
DISTRICT 3 Caroline	6,106	4,806	3,739	3,120	3,121
Cecil	31,636	35,898	30,559	29,469	23,160
Kent	2,778	2,945	2,753	1,765	2,577
Queen Anne's	6,579	6,142	5,279	4,956	5,633
Talbot	6,168	5,805	5,315	5,320	6,234
DISTRICT 4 Calvert	6,025	6,555	5,917	6,266	5,105
Charles	10,294	9,960	9,610	10,515	8,693
St. Mary's	6,795	6,719	7,639	7,275	5,551
DISTRICT 5 Prince George's	136,958	132,588	112,424	109,434	109,602
DISTRICT 6 Montgomery	69,675	65,661	72,674	17,524	98,274
DISTRICT 7 Anne Arundel	46,562	45,100	44,143	39,685	40,069
DISTRICT 8 Baltimore	102,687	119,552	116,341	48,423	128,269
DISTRICT 9 Harford	32,966	29,968	26,319	24,153	23,334
DISTRICT 10 Carroll	11,127	11,862	11,137	8,679	7,500
Howard	22,451	25,448	25,696	26,217	28,397
DISTRICT 11 Frederick	20,775	24,751	22,094	24,722	22,885
Washington	18,263	18,073	17,035	19,598	17,648
DISTRICT 12 Allegany	7,768	7,900	9,142	11,123	8,463
Garrett	3,743	3,622	4,203	4,746	3,621
STATE	672,516	683,245	628,408	581,488*	644,512

*Total includes 87,770 cases paid in Districts 6 or 8 that were not tabulated by separate jurisdiction.

TABLE DC-7

FOUR-YEAR COMPARATIVE TABLE
CRIMINAL CASES BY THE NUMBER OF DEFENDANTS CHARGED
PROCESSED IN THE DISTRICT COURT*

	1976-77	1977-78	1978-79	1980-81**
DISTRICT 1 Baltimore City	47,362	41,502	35,647	46,215
DISTRICT 2 Dorchester	1,160	965	740	954
Somerset	783	578	549	785
Wicomico	1,965	1,359	1,327	1,819
Worcester	1,549	1,349	1,066	1,801
DISTRICT 3 Caroline	425	374	210	663
Cecil	1,584	1,500	1,388	1,845
Kent	399	304	324	355
Queen Anne's	287	286	256	425
Talbot	564	582	613	653
DISTRICT 4 Calvert	685	493	476	809
Charles	1,258	1,164	1,139	2,029
St. Mary's	1,113	963	921	1,404
DISTRICT 5 Prince George's	13,939	10,868	8,282	17,870
DISTRICT 6 Montgomery	7,858	8,380	5,298	11,717
DISTRICT 7 Anne Arundel	8,065	7,907	7,037	8,914
DISTRICT 8 Baltimore	10,797	11,271	12,424	14,754
DISTRICT 9 Harford	2,575	2,283	2,273	2,601
DISTRICT 10 Carroll	1,111	1,167	1,061	1,530
Howard	1,999	2,234	1,909	3,238
DISTRICT 11 Frederick	2,161	1,950	1,786	2,354
Washington	1,939	1,852	2,141	2,918
DISTRICT 12 Allegany	1,704	1,426	1,509	2,731
Garrett	391	445	463	606
STATE	111,673	101,202	88,839	128,990

*Figures for 1979-80 not available.

**Criminal figures are not available for the months of July and August, 1980, for all jurisdictions and for Baltimore City for September, 1980, as well. Above statistics have been adjusted by District Court personnel to reflect comparable annual totals.

TABLE DC-8

FIVE-YEAR COMPARATIVE TABLE

CIVIL CASES
FILED IN THE DISTRICT COURT

	1976-77	1977-78	1978-79	1979-80	1980-81
DISTRICT 1 Baltimore City	161,265	163,435	164,623	169,273	174,973
DISTRICT 2 Dorchester	1,241	1,261	1,411	1,819	2,189
Somerset	803	669	727	847	847
Wicomico	2,357	3,065	3,239	3,695	4,017
Worcester	1,542	1,484	1,649	1,683	1,705
DISTRICT 3 Caroline	527	597	719	895	896
Cecil	1,181	1,256	1,418	1,489	1,541
Kent	652	521	575	572	854
Queen Anne's	471	560	750	930	943
Talbot	540	604	634	914	1,023
DISTRICT 4 Calvert	690	907	1,048	1,276	1,160
Charles	1,228	1,410	1,608	1,867	2,298
St. Mary's	1,132	1,166	1,287	1,663	1,760
DISTRICT 5 Prince George's	85,944	98,335	107,264	114,893	120,930
DISTRICT 6 Montgomery	28,270	31,327	36,305	37,395	40,853
DISTRICT 7 Anne Arundel	18,108	18,399	21,843	25,963	26,529
DISTRICT 8 Baltimore	47,853	52,931	55,742	66,407	70,243
DISTRICT 9 Harford	5,519	5,981	6,036	7,539	7,773
DISTRICT 10 Carroll	1,690	1,902	2,615	2,797	2,844
Howard	4,003	4,793	5,704	6,254	6,842
DISTRICT 11 Frederick	2,098	2,441	3,113	3,539	4,309
Washington	2,706	3,507	3,640	4,935	5,435
DISTRICT 12 Allegany	976	1,127	1,145	1,406	1,510
Garrett	540	582	609	675	749
STATE	371,336	398,260	423,704	458,726	482,223

TABLE DC-9

POPULATION AND CASELOAD PER DISTRICT COURT JUDGE*
AS OF JUNE 30, 1981

FISCAL 1981

	NUMBER OF JUDGES	POPULATION PER JUDGE**	CASES FILED PER JUDGE			
			Civil	Motor Vehicle	Criminal	Total
DISTRICT 1 Baltimore City	22	35,118	7,953	2,588	2,101	12,642
DISTRICT 2 Dorchester	1	30,800	2,189	4,652	954	7,795
Somerset	1	19,200	847	4,615	785	6,247
Wicomico	1	65,800	4,017	15,852	1,819	21,688
Worcester	1	31,700	1,705	14,311	1,801	17,817
DISTRICT 3 Caroline	1	23,600	896	3,121	663	4,680
Cecil	2	30,650	771	11,580	923	13,274
Kent	1	16,800	854	2,577	355	3,786
Queen Anne's	1	26,500	943	5,633	425	7,001
Talbot	1	25,800	1,023	6,234	653	7,910
DISTRICT 4 Calvert	1	36,500	1,160	5,105	809	7,074
Charles	1	76,100	2,298	8,693	2,029	13,020
St. Mary's	1	61,500	1,760	5,551	1,404	8,715
DISTRICT 5 Prince George's	9	73,911	13,437	12,178	1,985	27,600
DISTRICT 6 Montgomery	7***	83,771	5,836	14,039	1,674	21,549
DISTRICT 7 Anne Arundel	6	63,350	4,422	6,678	1,486	12,586
DISTRICT 8 Baltimore	12	55,000	5,854	10,689	1,230	17,773
DISTRICT 9 Harford	3	49,900	2,591	7,778	867	11,236
DISTRICT 10 Carroll	2	49,950	1,422	3,750	765	5,937
Howard	3	41,966	2,294	9,466	1,079	12,839
DISTRICT 11 Frederick	2	59,150	2,155	11,443	1,177	14,775
Washington	2	57,150	2,718	8,824	1,459	13,001
DISTRICT 12 Allegany	2	40,050	755	4,232	1,366	6,353
Garrett	1	27,100	749	3,621	606	4,976
STATE	84	50,657	5,741	7,673	1,536	14,950

*Chief Judge of District Court not included in statistics.

Number of Judges as of June 30, 1981.

**Population Estimate for July 1, 1981, issued by the Maryland Center for Health Statistics.

***Two Juvenile Court judges and Juvenile Causes omitted as included in Juvenile statistics.

TABLE DC-10

CASES FILED OR PROCESSED IN THE DISTRICT COURT
PER THOUSAND POPULATION

JULY 1, 1980 - JUNE 30, 1981
FISCAL 1981

	POPULATION*	CIVIL	MOTOR VEHICLE	CRIMINAL	TOTAL
DISTRICT 1 Baltimore City	772,600	226	74	60	360
DISTRICT 2 Dorchester	30,800	71	151	31	253
Somerset	19,200	44	240	41	325
Wicomico	65,800	61	241	28	330
Worcester	31,700	54	451	57	562
DISTRICT 3 Caroline	23,600	38	132	28	198
Cecil	61,300	25	378	30	433
Kent	16,800	51	153	21	225
Queen Anne's	26,500	36	213	16	265
Talbot	25,800	39	242	25	306
DISTRICT 4 Calvert	36,500	32	139	22	193
Charles	76,100	30	114	27	171
St. Mary's	61,500	29	90	23	142
DISTRICT 5 Prince George's	665,200	182	165	27	374
DISTRICT 6 Montgomery	586,400	70	168	20	258
DISTRICT 7 Anne Arundel	380,100	70	105	23	198
DISTRICT 8 Baltimore	660,000	106	194	22	322
DISTRICT 9 Harford	149,700	52	156	17	225
DISTRICT 10 Carroll	99,900	28	75	15	118
Howard	125,900	54	226	26	306
DISTRICT 11 Frederick	118,300	36	193	20	249
Washington	114,300	48	154	26	228
DISTRICT 12 Allegany	80,100	19	106	34	159
Garrett	27,100	28	134	22	184
STATE	4,255,200	113	151	30	294

*Population estimate for July 1, 1981, issued by the Maryland Center for Health Statistics.

THE STATE BOARD OF LAW EXAMINERS

Charles H. Dorsey, Jr., Esquire, Chairman (Member of the Baltimore City Bar)

William H. Price, II, Esquire, Talbot County Bar

William F. Abell, Jr., Esquire, Montgomery County Bar

David C. Daneker, Esquire, Baltimore City Bar

M. Natalie McSherry, Esquire, Baltimore City Bar

John F. Mudd, Esquire, Charles County Bar

Robert H. Reinhart, Esquire, Allegany County Bar

Results of examinations given by the State Board of Law Examiners during Fiscal Year 1981 are as follows:

EXAMINATION	NUMBER OF CANDIDATES	TOTAL SUCCESSFUL CANDIDATES	NUMBER OF CANDIDATES TAKING FIRST TIME	NUMBER OF CANDIDATES PASSING FIRST TIME*
SUMMER 1980 (July)	701	455 (64.90%)	541	386 (71.34%)
Graduates University of Baltimore	201	115 (57.21%)	133	90 (67.66%)
Graduates University of Maryland	209	155 (74.16%)	175	138 (78.85%)
Graduates Out-of-State Law Schools	291	185 (63.57%)	233	158 (67.81%)
WINTER 1981 (February)	443	324 (73.13%)	241	196 (81.32%)
Graduates University of Baltimore	139	97 (69.78%)	62	52 (83.87%)
Graduates University of Maryland	78	56 (71.79%)	27	23 (85.18%)
Graduates Out-of-State Law Schools	226	171 (75.66%)	152	121 (79.60%)

*Percentages are based upon the number of first-time candidates.

THE STANDING COMMITTEE ON RULES OF PRACTICE AND PROCEDURE

Hon. David Ross, Chairman; Supreme Bench of Baltimore City
Hon. Robert M. Bell, Supreme Bench of Baltimore City
Hon. J. Louis Boublitz, District Court for Washington County
Lowell R. Bowen, Esq., Baltimore City Bar
Robert R. Bowie, Esq., Talbot County Bar
Albert D. Brault, Esq., Montgomery County Bar
Hon. Jerome F. Connell, State Senator, Anne Arundel County
Leo William Dunn, Jr., Esq., Prince George's County Bar
William A. Franch, Esq., Anne Arundel County Bar
Judson P. Garrett, Jr., Esq., Baltimore City Bar
John O. Herrmann, Esq., Baltimore City Bar
Hon. Frederick W. Invernizzi, District Court for Baltimore
City (retired)
Alexander G. Jones, Esq., Somerset County Bar
Dean Michael J. Kelly, University of Maryland School of Law
James J. Lombardi, Esq., Prince George's County Bar
Hon. John F. McAuliffe, Circuit Court for Montgomery County
Paul V. Niemeyer, Esq., Baltimore City Bar
George A. Nilson, Esq., Deputy Attorney General of Maryland
Anne C. Ogletree, Esq., Caroline County Bar
Hon. Joseph E. Owens, Chairman, Judiciary Committee, House
of Delegates of Maryland
Hon. Kenneth C. Proctor, Circuit Court for Baltimore County
(retired); Emeritus
Robert J. Ryan, Esq., Baltimore County Bar
Mr. A. James Smith, Clerk, Circuit Court for Wicomico County

Melvin J. Sykes, Esq., Baltimore City Bar
Arnold M. Weiner, Esq., Baltimore City Bar

Prof. Larry S. Gibson, Reporter
Linda M. Richards, Esq., Assistant Reporter

APPELLATE JUDICIAL NOMINATING COMMISSION

James J. Cromwell, Esq., Chairman

T. Hughlett Henry, Jr., Esq.	Dorothy Startt
E. Scott Moore, Esq.	Harry Ratrie
Vincent L. Gingerich, Esq.	Gloria Cole
A. Lee Haislip, Jr., Esq.	Dean John M. Sine
James B. Dudley, Esq.	George W. Settle, M.D.
Robert J. Thieblot, Esq.	Flossie M. Dedmond

TRIAL COURT JUDICIAL NOMINATING COMMISSIONS

First Judicial Circuit

John R. Purnell, Chairman

Lionel Bennett, Esq.	Harland Cottman
Harold B. Gordy, Jr., Esq.	Calvin S. Dean
Charles E. Hearne, Jr., Esq.	Walter Jones
Richard M. Matthews, Esq.	Norman Polk
Vaughn E. Richardson, Esq.	Herman J. Stevens
Henry P. Walters, Esq.	Audrey Stewart

Second Judicial Circuit

Doris P. Scott, Esq., Chairperson

David C. Bryan, Esq.	J. Howard Anthony
Ernest S. Cookerly, Esq.	Robert E. Bryson
L. Clark Ewing, Esq.	Hugh M. Gordy
Edwin B. Fockler, III, Esq.	Grace McCool
Roland C. Kent, Esq.	James O. Pippin, Jr.
Frank C. Sherrard, Esq.	

Third Judicial Circuit

James H. Cook, Esq., Chairman

Thomas G. Bodie, Esq.	Louis Akers
Alfred L. Brennan, Esq.	Eddie C. Brown
Francis N. Iglehart, Jr., Esq.	Selena Gaskins
J. Earle Plumhoff, Esq.	Robert Plummer
Richard A. Reid, Esq.	Benedict A. Pokrywka
Donald G. Smith, Esq.	Sarah Whiting

Fourth Judicial Circuit

F. Perry Smith, Jr., Chairman

Thomas N. Berry, Esq.	Anne L. Gormer
W. Kennedy Boone, III, Esq.	William L. Huff
Irving M. Einbinder, Esq.	Dorothy Leuba
Hugh A. McMullen, Esq.	Joseph H. McElwee
W. Dwight Stover, Esq.	David H. Miller, M.D.
John H. Urner, Esq.	Lillian Tumbusch

Fifth Judicial Circuit

Lewis Straughn Nippard, Esq., Chairman

Richard G. Anderson, Esq.	Shirley Hager Hobbs
James K. Carmody, Esq.	Walter E. Morgan
William B. Dulany, Esq.	George Pettigrew
Thomas A. Garland, Esq.	Marion Satterthwaite
Martin B. Lessans, Esq.	Ruth Uhrig
John B. Wright, Esq.	Thomas Yeager

Sixth Judicial Circuit

Alfred L. Scanlan, Esq., Chairman

Albert D. Brault, Esq.	Joseph P. Burke
William M. Canby, Esq.	Virginia Lewis, Ph.D.
Thomas L. Craven, Esq.	Susan P. Messitte
Herbert L. Rollins, Esq.	Miriam S. Raff
Roger W. Titus, Esq.	Donald B. Rice
James T. Wharton, Esq.	Charles F. Wilding

Seventh Judicial Circuit

James C. Chapin, Esq., Chairman

Paul J. Bailey, Esq.	Thomas Amenta
Thomas F. Mudd, Esq.	Warren E. Barley
Ralph W. Powers, Jr., Esq.	Shirley E. Colleary
Richard H. Sothoron, Jr., Esq.	Annette Funn
Thomas L. Starkey, Esq.	Rev. Andrew Johnson
Benjamin R. Wolman, Esq.	

Eighth Judicial Circuit

Shale D. Stiller, Esq., Chairman

Andrew Jay Graham, Esq.

L. Paige Marvel, Esq.

Theodore S. Miller, Esq.

Kathleen O'Ferrall Friedman, Esq.

Leroy W. Preston, Esq.

George L. Russell, Jr., Esq.

Pearl Cole Brackett, Ph.D.

Antonia Keane

Travis W. Vauls

Walter Vickers, Jr.

William H. C. Wilson

M. Gordon Wolman, Ph.D.

END