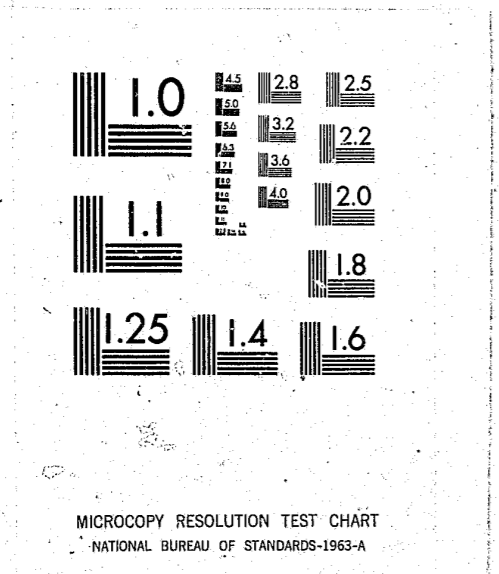


National Criminal Justice Reference Service



This microfiche was produced from documents received for inclusion in the NCJRS data base. Since NCJRS cannot exercise control over the physical condition of the documents submitted, the individual frame quality will vary. The resolution chart on this frame may be used to evaluate the document quality.



Microfilming procedures used to create this fiche comply with the standards set forth in 41CFR 101-11.504.

Points of view or opinions stated in this document are those of the author(s) and do not represent the official position or policies of the U. S. Department of Justice.

National Institute of Justice  
United States Department of Justice  
Washington, D. C. 20531

7-6-82

A PROFILE OF CHARACTERISTICS DISTINGUISHING BETWEEN PROGRAM COMPLETERS AND PROGRAM NON-COMPLETERS AT MASSACHUSETTS HALFWAY HOUSES, INC. 1977 AND 1978 RELEASES

PREPARED BY:

Lawrence T. Williams  
Research Specialist

U.S. Department of Justice  
National Institute of Justice

This document has been reproduced exactly as received from the person or organization originating it. Points of view or opinions stated in this document are those of the authors and do not necessarily represent the official position or policies of the National Institute of Justice.

Permission to reproduce this copyrighted material has been granted by

Massachusetts Department  
of Corrections

to the National Criminal Justice Reference Service (NCJRS).

Further reproduction outside of the NCJRS system requires permission of the copyright owner.

82028

MASSACHUSETTS DEPARTMENT OF CORRECTION

William T. Hogan, Jr.  
Commissioner

May , 1980

Publication #11,967 - 63 - 250 - 6-80  
Approved by Alfred C. Holland, State Purchasing Agent

ABSTRACT

This report examines the characteristics that distinguish between program completers and program non-completers for residents released from Massachusetts Halfway Houses, Inc. during 1977 and 1978.

For the total combined sample of 1977 and 1978 releases, there were fourteen variables that produced statistically significant differences. In rank order of their significance, the variables were:

- 1) Number of Furloughs
- 2) Prior Juvenile Incarcerations
- 3) Age at First Arrest
- 4) Number of Juvenile Paroles and Juvenile Parole Violations
- 5) Number of Prior Charges for Crimes Against Property
- 6) Committing Institution
- 7) Number of Successful Furlough Outcomes
- 8) Number of Prior Court Appearances
- 9) Number of Escape Furlough Outcomes
- 10) Minimum Sentence
- 11) Age at Release
- 12) Number of Prior Charges for Escape Offenses
- 13) Age at Pre-Release Placement
- 14) Number of Prior Charges for Crimes Against the Person

For the 1977 releasee population, there were fifteen variables that produced statistically significant differences. For the 1978 releasee population, there were seven variables that produced statistically significant differences.

NCJRS

OCT 28 1981

ACQUISITIONS

TABLE OF CONTENTS

TITLE	PAGE NUMBER
I. Introduction	1
II. Table I - Reason for Return to Sending Institutions; Massachusetts Halfway Houses, Inc.	3
III. Data Collection	4
IV. Methodology	5
V. Findings: Total Sample Results	6
VI. Findings: 1977 Releasee Results	9
VII. Findings: 1978 Releasee Results	13
VIII. Summary	15
IX. Appendix I - Variables Found to Distinguish Between Program Completers and Program Non-Completers: Combined 1977 and 1978 Releases	16
X. Appendix II - Variables Found to Distinguish Between Program Completers and Program Non-Completers: 1977 Releases	22
XI. Appendix III- Variables Found to Distinguish Between Program Completers and Program Non-Completers: 1978 Releases	28
XII. Appendix IV - Variables Found Not To Distinguish Between Program Completers and Program Completters: Combined 1977 and 1978 Releases	32
XIII. Appendix V - Variables Found Not to Distinguish Between Program Completers and Program Non-Completers: 1977 Releases	40
XIV. Appendix VI - Variables Found Not to Distinguish Between Program Completers and Program Non-Completers: 1978 Releases	49
XV. References	60

## INTRODUCTION

Since 1977, the Massachusetts Department of Correction has contracted Massachusetts Halfway Houses, Inc. (MHHI) to provide beds for residents of the system. Initially, MHHI consisted of only Brooke House and Coolidge House but has expanded quite a bit to include several other programs and facilities. MHHI expanded services to the Department of Correction in 1974 by providing pre-release services to residents from state institutions.

This report is the second component of a three-part evaluation of residents released from MHHI during 1977 and 1978. Included in this report is an analysis of the pre-release sample in terms of the basic statistical differences between individuals who were program completers and those who were program non-completers.

This analysis is an update of a previous report done by the Department of Correction.<sup>1</sup> It is useful in providing a guide to determine whether or not a particular individual has a high, medium, or low success/failure probability for completing their MHHI program.

During 1977, there were a total of 182 residents released from MHHI and in 1978, there were 139 individuals released. For comparative purposes, the total sample for each year was divided into two groups - program completers and program non-completers. A program completer was defined as any resident who successfully completed his or her stay at MHHI and was released to the streets either by permit of the Parole Board or by a certificate of discharge. Also, individuals who received a lateral transfer to a similar security institution are included as program completers. A program non-completer was defined as any resident who did not complete his stay at MHHI but was instead returned to his sending institution or an institution of higher security.

Of the 1977 releasee sample, 137 of the 182 residents, or 75%, were successful program completers. The remaining 45 residents, or 25%, were returned to their sending institutions as program non-completers. For the 1978 sample, 98 of the 139 releases or 71% were successful completers. The remaining 41, or 29% were returned as non-completers. There were several reasons given for individuals being returned as program non-completers. Some examples are as follows: violation of house or department rules, an inability to adjust to the program, an attempted or an actual escape, or being a major disciplinary problem while at the facility. The specific reasons for a return to a higher security institution for both the 1977 and 1978 non-completion sub-samples are summarized in Table I.

<sup>1</sup>Landolfi, Joseph, A Comparison Between Pre-Release Program Completers and Non-Completers at Massachusetts Halfway Houses, Inc., Massachusetts Department of Correction Publication No. 104, October, 1975.

TABLE I

REASON FOR RETURN TO SENDING INSTITUTIONS - MASSACHUSETTS HALFWAY HOUSES, INC. PRE-RELEASE POPULATION

	<u>1977 RELEASES</u>		<u>1978 RELEASES</u>		<u>TOTAL SAMPLE</u>	
	<u>N</u>	<u>%</u>	<u>N</u>	<u>%</u>	<u>N</u>	<u>%</u>
New Charges	6	( 13)	4	( 10)	10	( 12)
Violation of House Rules	10	( 22)	11	( 27)	21	( 24)
Escape or Returned from Escape	26	( 58)	23	( 56)	49	( 57)
Inability to Adjust	1	( 3)	2	( 5)	3	( 3)
Unfit for Program	0	( 0)	1	( 2)	1	( 2)
Security Risk	2	( 4)	0	( 0)	2	( 2)
<b>TOTAL</b>	<b>45</b>	<b>(100)</b>	<b>41</b>	<b>(100)</b>	<b>86</b>	<b>(100)</b>

### DATA COLLECTION

Data collection consisted of criminal history variables, social background variables, and commitment variables. The material was collected from the Massachusetts Department of Correction Central Office files and from the computerized data base developed by the Correction and Parole Management Information System (CAPMIS) and was produced on the Massachusetts State College Computer Network (MSCCN).<sup>1</sup>

<sup>1</sup>The author would like to acknowledge his appreciation for the careful and thorough work and assistance given in coding data for this report by John Harrington, Northeastern University student intern.

### METHODOLOGY

Commitment, background, and criminal history variables were characterized according to a series of splits for each completion sample. The split yielding the highest chi square value was chosen. Variables that yielded a statistically significant relationship at the .05 probability level ( $\chi^2=3.84$ , 1df) were selected as indicators of differences between the samples for each year.

### Findings

A comparison of the differences in the variables between program completers and non-completers for MHHI residents for both years and the total sample resulted in several variables that produced statistically significant differences. These differences and variables will be discussed first for the total sample, and then for the 1977 and 1978 releases.

A. TOTAL SAMPLE RESULTS

There were fourteen variables that produced statistically significant differences. In rank order of their significance the variables were:

- 1) Number of Furloughs
- 2) Prior Juvenile Incarcerations
- 3) Age at First Arrest
- 4) Number of Juvenile Paroles and Parole Violations
- 5) Number of Prior Charges for Crimes against Property
- 6) Committing Institution
- 7) Number of Successful Furlough Outcomes
- 8) Number of Prior Court Appearances
- 9) Number of Escape Furlough Outcomes
- 10) Minimum Sentence
- 11) Age at Release
- 12) Number of Prior Charges for Escape Offenses
- 13) Age at Pre-Release Placement
- 14) Number of Prior Charges for Crimes Against the Person

A brief discussion of each variable follows.

1) Number of Furloughs

When this variable is examined, it is discovered that more than half (51%) of the non-completion sample had either one furlough or none at all. For the total completion sample, 79% had two or more furloughs. This difference was found to be significant.

2) Number of Prior Juvenile Incarcerations

An analysis of this variable yields interesting results. Forty-four percent of the non-completers had one or more previous juvenile incarceration compared with only 19% for the successful completers. The vast majority of the successful completers (81%) did not have any prior juvenile incarcerations.

3) Age at First Arrest

After excluding the unknowns for this variable, we find that more than half (66%) of the non-completion sample were first arrested as juveniles whereas only 40% of the successful completers were arrested as juveniles. The majority (60%) of the successful completers were arrested for the first time as adults.

4) Number of Juvenile Paroles and Juvenile Parole Violations

Significantly more of the non-completers had one or more juvenile paroles and juvenile parole violations. Twenty-nine percent of the non-completion sample had at least one juvenile parole or parole violation compared to only 12% for the successful completion sample.

5) Number of Prior Charges for Crimes Against Property

An analysis of this variable shows that a large percentage (65%) of the non-completers had five or more previous charges for property offenses and only 44% of the successful completers had as many as this. The vast majority (56%) of the successful completers had four or fewer previous charges for property offenses.

6) Committing Institution

Significantly more of the non-completion sample were Concord or Framingham commitments. Seventy-eight percent of the non-completers fell into this group compared with 58% of the successful completers.

7) Number of Successful Furlough Outcomes

A further analysis of a furlough variable yields the following result: more of the non-completers had only one successful furlough outcomes. Significantly more of the successful completers had two or more successful furlough outcomes.

8) Number of Prior Court Appearances

A majority of the successful completers (60%) had fewer than sixteen previous court appearances. Significantly more of the non-completers had more than sixteen previous court appearances.

9) Number of Escape Furlough Outcomes

The analysis of this last furlough variable shows that more of the non-completers had one escape furlough outcome than the successful completers.

10) Minimum Sentence

The results of this analysis correspond to the results found when examining the committing institution. That is, most of the non-completion sample were serving indeterminate sentences. Significantly fewer of the successful completers are serving indeterminate sentences.

11) Age at Release

Significantly more of the non-completers were age 22 and younger when released. Specifically, 43% of the non-completers were 22 and younger compared to only 30% for the successful completers. The majority of the successful completers (70%) were 23 or older when released.

12) Number of Prior Charges for Escape Offenses

Fourteen percent of the non-completers had one or more prior charges for an escape offense while only 6% of the successful completers had as many changes as this.

13) Age at Pre-Release Placement

Significantly more of the non-completion sample were twenty or younger when placed in a pre-release facility. Twenty-nine percent of the non-completers were twenty or younger compared with only 19% for the successful completers.

14) Number of Prior Charges for Crimes Against the Person

More of the non-completers (31%) had six or more prior charges for crimes against the person compared to only 21% for the successful completers.

A profile can be constructed of the typical MHHI pre-release program completer as compared to the non-completer for the sample of all individuals released in 1977 and 1978. The successful completer was a Walpole commitment serving a non-indeterminate sentence, 21 or older when placed in a pre-release facility, had two or more furloughs and successful furlough outcomes, as well as no escape furlough outcomes. The successful completer also had 15 or fewer prior court appearances, 5 or fewer charges for crimes against property, no prior escape offenses, no prior juvenile incarcerations, no prior juvenile paroles

or parole violations, and was first arrested as an adult. This profile seems to indicate that successful completers are individuals without extensive involvements in the criminal justice system and without any juvenile justice involvement.

A summary of these relationships is presented in Appendix I. The remaining variables that did not produce significant results for this sample are documented in Appendix IV.

B. 1977 RELEASEE RESULTS

There were fifteen variables that produced statistically significant differences. In rank order of their significance the variables were:

- 1) Age at First Arrest
- 2) Number of Furloughs
- 3) Number of Prior Juvenile Incarcerations
- 4) Number of Juvenile Paroles
- 5) Number of Escape Furlough Outcomes
- 6) Age at Incarceration
- 7) Number of Charges for Property Offenses
- 8) Number of Court Appearances
- 9) Number of Successful Furlough Outcomes
- 10) Number of Charges for Person Offenses
- 11) Committing Institution
- 12) Number of Charges for Escape Offenses
- 13) Number of Prior County Incarcerations
- 14) Marital Status
- 15) Number of Late Under Furlough Outcomes

A brief discussion of each variable follows:

1) Age at First Arrest

When this variable is examined, it is discovered that the majority of the non-completers (73%) were first arrested as juveniles compared to only 31% for the successful completers. The majority of the successful completers (69%) were first arrested as an adult.

2) Number of Furloughs

More than half of the non-completion sample (56%) had one or fewer furloughs. This is contrasted with a percentage of 23 for the successful completion sample. The vast majority of the successful completers (77%) had two or more furloughs.

3) Number of Prior Juvenile Incarcerations

Significantly more of the non-completers had one or more prior juvenile incarcerations. 42% of this sample had one or more juvenile incarcerations whereas only 17% of the successful completers had as many prior juvenile incarcerations. Most of the successful completers (83%) had not been incarcerated as a juvenile.

4) Number of Juvenile Paroles

Corresponding to previous results, the analysis of this variable yields the conclusion that significantly more of the non-completers had one or more prior juvenile paroles. Specifically, 31% of the non-completion sample had one or more juvenile paroles compared with 11% for the successful completion sample. The vast majority of the successful completers (89%) had not received any juvenile paroles.

5) Number of Escape Furlough Outcomes

There were not any successful completers with an escape furlough outcome. Nine percent of the non-completers had one escape furlough outcome.

6) Age at Incarceration

Significantly more of the non-completers were age 18 or younger when incarcerated. Specifically, 27% of the non-completers were eighteen or younger when incarcerated compared to only 9% for the successful completers. The vast majority of the successful completers (91%) were 19 or older when incarcerated.

7) \*Number of Charges for Property Offenses

Most of the non-completion sample (84%) had three or more charges for property offenses compared to only 61% for the successful completers. Thirty-nine percent of the successful completers had two or fewer prior charges for property offenses.

8) Number of Court Appearances

Most of the unsuccessful completers (58%) had 12 or more prior court appearances which contrasts with the successful completers who only had 34% with twelve or more prior court appearances. Sixty-six percent of the successful completers had eleven or fewer prior court appearances.

9) Number of Successful Furlough Outcomes

Significantly more of the unsuccessful completers had only one successful furlough outcome. The majority of the successful completers (94%) had two or more successful furlough outcomes.

10) Number of Charges for Person Offenses

More than half of the non-completers (56%) had four or more charges for person offenses. The majority of the successful completers (66%) had three or fewer prior charges for person offenses.

11) Committing Institution

Significantly more of the unsuccessful completers were Concord or Framingham commitments. Specifically, 78% of the non-completion sample were Concord or Framingham commitments compared to only 58% for the successful completers. Forty-two percent of the successful completion sample were Walpole commitments.

12) Number of Charges for Escape Offenses

Sixteen percent of the unsuccessful completers had at least one charge for an escape offense, compared to only 5% for the successful completers. A significant majority of the successful completers (95%) had not had any prior charges for escape offenses.

13) Number of Prior County Incarcerations

Most of the unsuccessful completers (49%) had one or more prior county incarcerations compared to only 31% for the successful completers. The majority of the successful completers (69%) had not had any prior house of correction incarcerations.



14) Marital Status

Most of the non-completers were not married. Ninety-one of the unsuccessful completers fell into this class. Compared with 77% for the successful completers, 23% of the successful were married.

15) Number of Late Under Furlough Outcomes

There were not any successful completers with a late under furlough outcome while only 4% had a late under furlough outcome for the non-completers.

A profile can be constructed of the typical MHHI pre-release program completer for the sample of individuals released in 1977. A program completer in 1977 was married, a Walpole commitment, 19 or older when incarcerated, had two or more furloughs and successful outcomes, and did not have any late under or escape furlough outcomes. The successful completer also had eleven or fewer court appearances, three or fewer person offenses, two or fewer property offenses, no escape offenses, no prior juvenile incarcerations, no prior house incarcerations, no juvenile paroles, and 17 or older when first arrested.

A summary of these relationships is presented in Appendix II. The remaining variables that did not produce significant results for this sample are documented in Appendix V.

C) 1978 RELEASEE RESULTS

There were seven variables that produced statistically significant differences in 1978. In rank order of their significance the variables were:

- 1) Number of Furloughs
- 2) Number of Prior Juvenile Incarcerations
- 3) Committing Institution
- 4) Minimum Sentence
- 5) Race
- 6) Military Status
- 7) Number of Charges for Property Offenses

A brief discussion of each variable follows:

1) Number of Furloughs

Consistent with previous findings, this variable yielded statistically significant results. Forty-six percent of the non-completers had either one furlough or none at all. This compares to a percentage of 18 for the successful completers with one or fewer furloughs. A sizable portion of the successful completers (32%) had two or more furloughs.

2) Number of Prior Juvenile Incarcerations

Significantly more of the non-completers had two or more prior juvenile incarcerations. Specifically, 34% of the unsuccessful completers had two or more prior juvenile incarcerations and only 12% of the successful completers had as many as two or more prior juvenile incarcerations. Most of the successful completers (88%) had one or fewer prior juvenile incarcerations.

3) Committing Institution

Most unsuccessful completers were Concord or Framingham commitments. More of the successful completers were Walpole commitments.

4) Minimum Sentence

Most non-completers were serving an indeterminate sentence while the successful completers were serving Walpole sentences.

5) Race

For the unsuccessful completion sample, 61% were non-white compared with only 41% for the successful completers. The majority of the successful completers (59%) were white individuals.

6) Military Service

Thirty-six percent of the non-completers had some kind of military service compared with only 18% for the successful completers. Eighty-two percent of the successful completers did not have any prior military service.

7) Number of Charges for Property Offenses

The vast majority of the unsuccessful completers (66%) had five or more prior property offenses. Fifty-three percent of the successful completers had four or fewer prior charges for property offenses.

A profile can be constructed of the typical MHHI program completer for 1978. A profile completer was a Walpole commitment serving a Walpole sentence, white, with no prior military service and two or more furloughs. The successful completers also had four or fewer charges for property offenses and one or zero prior juvenile incarcerations.

A summary of these relationships is presented in Appendix III. The remaining variables that did not produce significant results for the 1978 releasee sample are documented in Appendix IV.

SUMMARY

From this report, it is possible to identify characteristics of individuals who have a high, moderate, and low probability of success at the facilities operated by the Massachusetts Halfway Houses, Inc. This analysis was based on those individuals who were released in 1977 and 1978. From this kind of an analysis, MHHI program administrators can make an initial estimate of the success potential for each resident admitted to the program. This type of classification of individuals based on their probability of future success can also be very beneficial in focusing on those individuals who have a low probability of success in order to take steps to attempt to positively impact this sub-group of the population.

APPENDIX I

APPENDIX I

VARIABLES FOUND TO DISTINGUISH BETWEEN PROGRAM COMPLETERS  
AND PROGRAM NON-COMPLETERS-COMBINED 1977 AND 1978 RELEASES

1. <u>Number of Furloughs</u>	<u>COMPLETION RATE</u>	<u>COMPLETIONS</u>		<u>NON-COMPLETIONS</u>	
		<u>N</u>	<u>%</u>	<u>N</u>	<u>%</u>
None or One	53%	50	( 21)	44	( 51)
Two or More	81%	185	( 79)	42	( 49)
TOTAL	73%	235	(100)	86	(100)
$(x^2=27.6, \text{ldf}, p .001)$					

2. <u>Number of Prior Juvenile Incarcerations</u>	<u>COMPLETION RATE</u>	<u>COMPLETIONS</u>		<u>NON-COMPLETIONS</u>	
		<u>N</u>	<u>%</u>	<u>N</u>	<u>%</u>
None	80%	191	( 81)	48	( 56)
One or More	54%	44	( 19)	38	( 44)
TOTAL	73%	235	(100)	86	(100)
$(x^2=21.46, \text{ldf}, p .001)$					

3. <u>Age at First Arrest (Unknowns Excluded)</u>	<u>COMPLETION RATE</u>	<u>COMPLETIONS</u>		<u>NON-COMPLETIONS</u>	
		<u>N</u>	<u>%</u>	<u>N</u>	<u>%</u>
16 or Younger	62%	94	( 40)	57	( 66)
17 or Older	83%	140	( 60)	29	( 34)
TOTAL	73%	234	(100)	86	(100)
$(x^2=17.20, \text{ldf}, p .001)$					

	<u>COMPLETION RATE</u>	<u>COMPLETIONS</u>		<u>NON-COMPLETIONS</u>	
		<u>N</u>	<u>%</u>	<u>N</u>	<u>%</u>
<u>4. Number of Juvenile Paroles</u>					
None	77%	206	( 88)	61	( 71)
One or More	54%	29	( 12)	25	( 29)
TOTAL	73%	235	(100)	86	(100)
(X <sup>2</sup> =12.59, 1df, p .001)					

	<u>COMPLETION RATE</u>	<u>COMPLETIONS</u>		<u>NON-COMPLETIONS</u>	
		<u>N</u>	<u>%</u>	<u>N</u>	<u>%</u>
<u>5. Number of Prior Charges for Crimes Against Property</u>					
4 or Less	81%	131	( 56)	30	( 35)
5 or More	65%	104	( 44)	56	( 65)
TOTAL	73%	235	(100)	86	(100)
(X <sup>2</sup> =10.96, 1df, p .001)					

	<u>COMPLETION RATE</u>	<u>COMPLETIONS</u>		<u>NON-COMPLETIONS</u>	
		<u>N</u>	<u>%</u>	<u>N</u>	<u>%</u>
<u>6. Committing Institution</u>					
Walpole	84%	98	( 42)	19	( 22)
Concord or Framingham	67%	137	( 58)	67	( 78)
TOTAL	73%	235	(100)	86	(100)
(X <sup>2</sup> =10.46, 1df, p .001)					

7. <u>Number of Successful Furlough Outcomes (Never Furloughed Excluded)</u>	<u>COMPLETION RATE</u>		<u>COMPLETIONS</u>		<u>NON-COMPLETIONS</u>	
			<u>N</u>	<u>%</u>	<u>N</u>	<u>%</u>
One	56%		15	( 8)	12	( 22)
Two or More	81%		185	( 92)	42	( 78)
TOTAL	73%		200	(100)	54	(100)
$(x^2=9.70, \text{ldf}, p .01)$						

8. <u>Number of Prior Court Appearances</u>	<u>COMPLETION RATE</u>		<u>COMPLETIONS</u>		<u>NON-COMPLETIONS</u>	
			<u>N</u>	<u>%</u>	<u>N</u>	<u>%</u>
15 or Less	77%		188	( 80)	56	( 65)
16 or More	61%		47	( 20)	30	( 35)
TOTAL	73%		235	(100)	86	(100)
$(x^2=7.65, \text{ldf}, p .01)$						

9. <u>Number of Escape Furlough Outcomes (Never Furloughed Excluded)</u>	<u>COMPLETION RATE</u>		<u>COMPLETIONS</u>		<u>NON-COMPLETIONS</u>	
			<u>N</u>	<u>%</u>	<u>N</u>	<u>%</u>
None	79%		200	(100)	52	( 96)
One	0%		0	( 0)	2	( 4)
TOTAL	73%		200	(100)	54	(100)
$(x^2=7.47, \text{ldf}, p .01)$						

10. <u>Minimum Sentence</u>	<u>COMPLETION RATE</u>	<u>COMPLETIONS</u>		<u>NON-COMPLETIONS</u>	
		<u>N</u>	<u>%</u>	<u>N</u>	<u>%</u>
Indeterminate	68%	129	( 55)	60	( 70)
Non-Indeterminate	80%	106	( 45)	26	( 30)
TOTAL	73%	235	(100)	86	(100)
$(X^2=5.75, 1df, p .02)$					

11. <u>Age at Release</u>	<u>COMPLETION RATE</u>	<u>COMPLETIONS</u>		<u>NON-COMPLETIONS</u>	
		<u>N</u>	<u>%</u>	<u>N</u>	<u>%</u>
22 Years and Younger	65%	70	( 30)	37	( 43)
23 Years and Older	77%	165	( 70)	49	( 57)
TOTAL	73%	235	(100)	86	(100)
$(X^2=4.96, 1df, p .05)$					

12. <u>Number of Prior Charges for Escape Offenses</u>	<u>COMPLETION RATE</u>	<u>COMPLETIONS</u>		<u>NON-COMPLETIONS</u>	
		<u>N</u>	<u>%</u>	<u>N</u>	<u>%</u>
None	75%	220	( 94)	74	( 86)
One or More	56%	15	( 6)	12	( 14)
TOTAL	73%	235	(100)	86	(100)
$(X^2=4.69, 1df, p .05)$					

13. <u>Age at Pre-Release Placement</u>	<u>COMPLETION RATE</u>	<u>COMPLETIONS</u>		<u>NON-COMPLETIONS</u>	
		<u>N</u>	<u>%</u>	<u>N</u>	<u>%</u>
20 Years and Younger	64%	44	( 19)	25	( 29)
21 Years and Older	76%	191	( 81)	61	( 71)
TOTAL:	73%	235	(100)	86	(100)
(x <sup>2</sup> =3.99, 1df, p .05)					

14. <u>Number of Prior Charges for Crimes Against the Person</u>	<u>COMPLETION RATE</u>	<u>COMPLETIONS</u>		<u>NON-COMPLETIONS</u>	
		<u>N</u>	<u>%</u>	<u>N</u>	<u>%</u>
5 or Less	75%	186	( 79)	59	( 69)
6 or More	64%	49	( 21)	27	( 31)
TOTAL:	73%	235	(100)	86	(100)
(x <sup>2</sup> =3.87, 1df, p .05)					



APPENDIX II

APPENDIX II

VARIABLES FOUND TO DISTINGUISH BETWEEN PROGRAM COMPLETERS  
AND PROGRAM NON-COMPLETERS - 1977 RELEASES

	COMPLETION RATE	COMPLETIONS		NON-COMPLETIONS	
		N	%	N	%
1. <u>Age at First Arrest (Unknowns Excluded)</u>					
16 years or Younger	56%	42	( 31)	33	( 73)
17 Years or Older	89%	94	( 69)	12	( 27)
TOTAL	75%	136	(100)	45	(100)
$(X^2=25.11, \text{ldf}, p .001)$					

	COMPLETION RATE	COMPLETIONS		NON-COMPLETIONS	
		N	%	N	%
2. <u>Number of Furloughs</u>					
One or None	56%	32	( 23)	25	( 56)
Two or More	84%	105	( 77)	20	( 44)
TOTAL	75%	137	(100)	45	(100)
$(X^2=16.33, \text{ldf}, p .001)$					

	COMPLETION RATE	COMPLETIONS		NON-COMPLETIONS	
		N	%	N	%
3. <u>Number of Juvenile Incarcerations</u>					
None	81%	114	( 83)	26	( 58)
One or More	55%	23	( 17)	19	( 42)
TOTAL	75%	137	(100)	45	(100)
$(X^2=12.34, \text{ldf}, p .001)$					

4. <u>Number of Juvenile Paroles</u>	<u>COMPLETION RATE</u>	<u>COMPLETIONS</u>		<u>NON-COMPLETIONS</u>	
		<u>N</u>	<u>%</u>	<u>N</u>	<u>%</u>
None	80%	122	( 89)	31	( 69)
One or More	52%	15	( 11)	14	( 31)
TOTAL	75%	137	(100)	45	(100)
$(\chi^2=10.28, 1df, p .01)$					

5. <u>Number of Escape Furlough Outcomes (Never Furloughed Excluded)</u>	<u>COMPLETION RATE</u>	<u>COMPLETIONS</u>		<u>NON-COMPLETIONS</u>	
		<u>N</u>	<u>%</u>	<u>N</u>	<u>%</u>
None	82%	112	(100)	24	( 92)
One	0%	0	( 0)	2	( 8)
TOTAL	75%	112	(100)	26	(100)
$(\chi^2=8.74, 1df, p .01)$					

6. <u>Age at Incarceration</u>	<u>COMPLETION RATE</u>	<u>COMPLETIONS</u>		<u>NON-COMPLETIONS</u>	
		<u>N</u>	<u>%</u>	<u>N</u>	<u>%</u>
18 Years and Younger	52%	13	( 9)	12	( 27)
19 Years and Older	79%	124	( 91)	33	( 73)
TOTAL	75%	137	(100)	45	(100)
$(\chi^2=8.44, 1df, p .01)$					

	<u>COMPLETION RATE</u>		<u>COMPLETIONS</u>		<u>NON-COMPLETIONS</u>	
			<u>N</u>	<u>%</u>	<u>N</u>	<u>%</u>
7. <u>Number of Charges for Property Offenses</u>						
Two or Less	88%		53	( 39)	7	( 16)
Three or More	69%		84	( 61)	38	( 84)
TOTAL	75%		137	(100)	45	(100)
$(X^2=8.20, 1df, p .01)$						

	<u>COMPLETION RATE</u>		<u>COMPLETIONS</u>		<u>NON-COMPLETIONS</u>	
			<u>N</u>	<u>%</u>	<u>N</u>	<u>%</u>
8. <u>Number of Court Appearances</u>						
11 or Fewer	83%		90	( 66)	19	( 42)
12 or More	64%		47	( 34)	26	( 58)
TOTAL	75%		137	(100)	45	(100)
$(X^2=7.77, 1df, p .01)$						

	<u>COMPLETION RATE</u>		<u>COMPLETIONS</u>		<u>NON-COMPLETIONS</u>	
			<u>N</u>	<u>%</u>	<u>N</u>	<u>%</u>
9. <u>Number of Successful Furlough Outcomes (Never Furloughed Excluded)</u>						
One	54%		7	( 6)	6	( 23)
Two or More	84%		105	( 94)	20	( 77)
TOTAL	75%		112	(100)	26	(100)
$(X^2=7.00, 1df, p .01)$						

10. <u>Number of Charges for Person Offenses</u>	<u>COMPLETION RATE</u>	<u>COMPLETIONS</u>		<u>NON-COMPLETIONS</u>	
		<u>N</u>	<u>%</u>	<u>N</u>	<u>%</u>
Three or Fewer	82%	91	( 66)	20	( 44)
Four or More	65%	46	( 34)	25	( 56)
TOTAL	75%	137	(100)	45	(100)
(x <sup>2</sup> =6.88, 1df, p .01)					

11. <u>Committing Institution</u>	<u>COMPLETION RATE</u>	<u>COMPLETIONS</u>		<u>NON-COMPLETIONS</u>	
		<u>N</u>	<u>%</u>	<u>N</u>	<u>%</u>
Walpole	85%	57	( 42)	10	( 22)
Concord or Framingham	70%	80	( 58)	35	( 78)
TOTAL	75%	137	(100)	45	(100)
(x <sup>2</sup> =5.47, 1df, p .02)					

12. <u>Number of Charges for Escape Offenses</u>	<u>COMPLETION RATE</u>	<u>COMPLETIONS</u>		<u>NON-COMPLETIONS</u>	
		<u>N</u>	<u>%</u>	<u>N</u>	<u>%</u>
None	77%	130	( 95)	38	( 84)
One or More	50%	7	( 5)	7	( 16)
TOTAL	75%	137	(100)	45	(100)
(x <sup>2</sup> 5.21, 1df, p .05)					

13. <u>Number of Prior County Incarcerations</u>	<u>COMPLETION RATE</u>	<u>COMPLETIONS</u>		<u>NON-COMPLETIONS</u>	
		<u>N</u>	<u>%</u>	<u>N</u>	<u>%</u>
None	80%	94	( 69)	23	( 51)
One or More	66%	43	( 31)	22	( 49)
TOTAL	75%	137	(100)	45	(100)
$(X^2=4.52, \text{ldf}, p .05)$					

14. <u>Marital Status</u>	<u>COMPLETION RATE</u>	<u>COMPLETIONS</u>		<u>NON-COMPLETIONS</u>	
		<u>N</u>	<u>%</u>	<u>N</u>	<u>%</u>
Married	89%	32	( 23)	4	( 9)
Other	72%	105	( 77)	41	( 91)
TOTAL	75%	137	(100)	45	(100)
$(X^2=4.47, \text{ldf}, p .05)$					

15. <u>Number of Late Under Furlough Outcomes (Never Furloughed excluded)</u>	<u>COMPLETION RATE</u>	<u>COMPLETIONS</u>		<u>NON-COMPLETIONS</u>	
		<u>N</u>	<u>%</u>	<u>N</u>	<u>%</u>
None	82%	112	(100)	25	( 96)
One	0%	0	( 0)	1	( 4)
TOTAL	75%	112	(100)	26	(100)
$(X^2=4.34, \text{ldf}, p .05)$					

APPENDIX III

APPENDIX III

VARIABLES FOUND TO DISTINGUISH BETWEEN PROGRAM COMPLETERS  
AND PROGRAM NON-COMPLETERS - 1978 RELEASES

	<u>COMPLETION RATE</u>	<u>COMPLETIONS</u>		<u>NON-COMPLETIONS</u>	
		<u>N</u>	<u>%</u>	<u>N</u>	<u>%</u>
1. <u>Number of Furloughs</u>					
One or Less	49%	18	( 18)	19	( 46)
Two or More	78%	80	( 82)	22	( 54)
TOTAL	71%	98	(100)	41	(100)
(X <sup>2</sup> =11.58, 1df, p .001)					

	<u>COMPLETION RATE</u>	<u>COMPLETIONS</u>		<u>NON-COMPLETIONS</u>	
		<u>N</u>	<u>%</u>	<u>N</u>	<u>%</u>
2. <u>Number of Prior Juvenile Incarcerations</u>					
One or Less	76%	86	( 88)	27	( 66)
Two or More	46%	12	( 12)	14	( 34)
TOTAL	71%	98	(100)	41	(100)
(X <sup>2</sup> =9.12, 1df, p .01)					

	<u>COMPLETION RATE</u>	<u>COMPLETIONS</u>		<u>NON-COMPLETIONS</u>	
		<u>N</u>	<u>%</u>	<u>N</u>	<u>%</u>
3. <u>Community Institution</u>					
Walpole	82%	41	( 42)	9	( 22)
Concord or Framingham	64%	57	( 58)	32	( 78)
TOTAL	71%	98	(100)	41	(100)
(X <sup>2</sup> =4.96, 1df, p .05)					



4. <u>Minimum Sentence</u>	<u>COMPLETION RATE</u>	<u>COMPLETIONS</u>		<u>NON-COMPLETIONS</u>	
		<u>N</u>	<u>%</u>	<u>N</u>	<u>%</u>
Indeterminate	63%	52	( 53)	30	( 73)
Non-Indeterminate	81%	46	( 47)	11	( 27)
TOTAL	71%	98	(100)	41	(100)
$(x^2=4.83, \text{ldf}, p .05)$					

5. <u>Race</u>	<u>COMPLETION RATE</u>	<u>COMPLETIONS</u>		<u>NON-COMPLETIONS</u>	
		<u>N</u>	<u>%</u>	<u>N</u>	<u>%</u>
White	78%	58	( 59)	16	( 39)
Non-White	62%	40	( 41)	25	( 61)
TOTAL	71%	98	(100)	41	(100)
$(x^2=4.72, \text{ldf}, p .05)$					

6. <u>Military Service (Unknowns Excluded)</u>	<u>COMPLETION RATE</u>	<u>COMPLETIONS</u>		<u>NON-COMPLETIONS</u>	
		<u>N</u>	<u>%</u>	<u>N</u>	<u>%</u>
No Service	77%	75	( 82)	23	( 64)
Some Service	57%	17	( 18)	13	( 36)
TOTAL	71%	92	(100)	36	(100)
$(x^2=4.48, \text{ldf}, p .05)$					

	<u>COMPLETION RATE</u>	<u>COMPLETIONS</u>		<u>NON-COMPLETIONS</u>	
		<u>N</u>	<u>%</u>	<u>N</u>	<u>%</u>
7. <u>Number of Charges for Property Offenses</u>					
4 or Fewer	79%	52	(.53)	14	(.34)
5 or More	63%	46	(.47)	27	(.66)
TOTAL	71%	98	(100)	41	(100)

( $\chi^2=4.15$ , 1df, p .05)

APPENDIX IV

APPENDIX IV

VARIABLES FOUND NOT TO DISTINGUISH BETWEEN PROGRAM COMPLETERS AND PROGRAM NON-COMPLETERS-COMBINED 1977 AND 1978 RELEASES

	COMPLETIONS		NON-COMPLETIONS	
	<u>N</u>	<u>%</u>	<u>N</u>	<u>%</u>
1. <u>Race</u>				
Black	83	( 35)	38	( 44)
Non-Black	152	( 65)	48	( 56)
TOTAL	235	(100)	86	(100)
$(X^2=2.11, \text{ldf}, p > .05)$				
2. <u>Marital Status</u>				
Married	50	( 21)	14	( 16)
Other	185	( 79)	72	( 84)
TOTAL	235	(100)	86	(100)
$(X^2=.99, \text{ldf}, p > .05)$				
3. <u>Military</u>				
No Service	176	( 75)	58	( 67)
Some Service	59	( 25)	28	( 33)
TOTAL	235	(100)	86	(100)
$(X^2=1.77, \text{ldf}, p > .05)$				
4. <u>Address</u>				
Boston	105	( 45)	44	( 51)
Other	130	( 55)	42	( 49)
TOTAL	235	(100)	86	(100)
$(X^2=1.06, \text{ldf}, p > .05)$				

APPENDIX IV

VARIABLES FOUND NOT TO DISTINGUISH BETWEEN PROGRAM COMPLETERS AND PROGRAM NON-COMPLETERS-COMBINED 1977 AND 1978 RELEASES

	COMPLETIONS		NON-COMPLETIONS	
	<u>N</u>	<u>%</u>	<u>N</u>	<u>%</u>
5. <u>Age at Incarceration</u>				
20 or Younger	75	( 32)	32	( 37)
21 or Older	160	( 68)	54	( 63)
TOTAL	235	(100)	86	(100)
$(X^2=.79, \text{ldf}, p > .05)$				
6. <u>Sex</u>				
Male	233	( 99)	83	( 97)
Female	2	( 1)	3	( 3)
TOTAL	235	(100)	86	(100)
$(X^2=2.86, \text{ldf}, p > .05)$				
7. <u>Present Offense</u>				
Drug	30	( 13)	5	( 6)
Non-Drug	205	( 87)	81	( 94)
TOTAL	235	(100)	86	(100)
$(X^2=3.13, \text{ldf}, p > .05)$				
8. <u>Drug Offenses (Not Applicable Excluded)</u>				
Sale of Heroin	4	( 13)	1	( 20)
Other	26	( 87)	4	( 80)
TOTAL	30	(100)	5	(100)
$(X^2=.16, \text{ldf}, p > .05)$				

APPENDIX IV

VARIABLES FOUND NOT TO DISTINGUISH BETWEEN PROGRAM COMPLETERS  
AND PROGRAM NON-COMPLETERS-COMBINED 1977 AND 1978 RELEASES

	COMPLETIONS		NON-COMPLETIONS	
	N	%	N	%
9. <u>Person Offenses (Not Applicable Excluded)</u>				
Assault-Intent	8	( 6)	0	( 0)
Other	134	( 94)	59	(100)
TOTAL	142	(100)	59	(100)
(x <sup>2</sup> =1.79, ldf, p > .05)				
10. <u>Sex Offenses (Not Applicable Excluded)</u>				
Rape	15	( 63)	5	( 83)
Other	9	( 37)	1	( 17)
TOTAL	24	(100)	6	(100)
(x <sup>2</sup> =.94, ldf, p > .05)				
11. <u>Property Offenses (Not Applicables Excluded)</u>				
Burglary	17	( 50)	8	( 67)
Other	17	( 50)	4	( 33)
TOTAL	34	(100)	12	(100)
(x <sup>2</sup> =.99, ldf, p > .05)				
12. <u>Maximum Sentence</u>				
7 Years or Less	129	( 55)	43	( 50)
8 Years or More	106	( 45)	43	( 50)
TOTAL	235	(100)	86	(100)
(x <sup>2</sup> =.61, ldf, p > .05)				

APPENDIX IV

VARIABLES FOUND NOT TO DISTINGUISH BETWEEN PROGRAM COMPLETERS  
AND PROGRAM NON-COMPLETERS-COMBINED 1977 AND 1978 RELEASES

	COMPLETIONS		NON-COMPLETIONS	
	N	%	N	%
13. <u>Number of Late Under Furlough Outcomes (Never Furloughed Excluded)</u>				
None	196	( 98)	52	( 96)
One	4	( 2)	2	( 4)
TOTAL	200	(100)	54	(100)
(x <sup>2</sup> =.54, ldf, p > .05)				
14. <u>Occupation</u>				
Manual	119	( 51)	41	( 48)
Other	116	( 49)	45	( 52)
TOTAL	235	(100)	86	(100)
(x <sup>2</sup> =.21, ldf, p > .05)				
15. <u>Longest Period of Time at Any One Job</u>				
6 Months or Less	92	( 39)	29	( 34)
7 Months or More	143	( 61)	57	( 66)
TOTAL	235	(100)	86	(100)
(x <sup>2</sup> .79, ldf, p > .05)				
16. <u>Time at Most Skilled Position</u>				
6 Months or Less	104	( 44)	31	( 36)
7 Months or More	131	( 56)	55	( 64)
TOTAL	235	(100)	86	(100)
(x <sup>2</sup> =1.74, ldf, p > .05)				

APPENDIX IV

VARIABLES FOUND NOT TO DISTINGUISH BETWEEN PROGRAM COMPLETERS  
AND PROGRAM NON-COMPLETERS-COMBINED 1977 AND 1978 RELEASES

	COMPLETIONS		NON-COMPLETIONS	
	<u>N</u>	<u>%</u>	<u>N</u>	<u>%</u>
17. <u>Last Grade Completed</u>				
10th Grade or Less	122	( 52)	54	( 63)
11th Grade or More	113	( 48)	32	( 37)
TOTAL	235	(100)	86	(100)
(X <sup>2</sup> =3.01, 1df, p >.05)				
18. <u>Known Drug Use (Nones Excluded)</u>				
Heroin	61	( 41)	28	( 52)
Other	87	( 59)	26	( 48)
TOTAL	148	(100)	54	(100)
(X <sup>2</sup> =1.82, 1df, p >.05)				
19. <u>Prior Charges for Sex Offenses</u>				
One or Less	220	( 94)	84	( 98)
Two or More	15	( 6)	2	( 2)
TOTAL	235	(100)	86	(100)
(X <sup>2</sup> =2.07, 1df, p >.05)				
20. <u>Prior Charges for Narcotics Offenses</u>				
Two or Less	183	( 78)	65	( 76)
Three or More	52	( 22)	21	( 24)
TOTAL	235	(100)	86	(100)
(X <sup>2</sup> =.19, 1df, p >.05)				

APPENDIX IV

VARIABLES FOUND NOT TO DISTINGUISH BETWEEN PROGRAM COMPLETERS  
AND PROGRAM NON-COMPLETERS-COMBINED 1977 AND 1978 RELEASES

	COMPLETIONS		NON-COMPLETIONS	
	<u>N</u>	<u>%</u>	<u>N</u>	<u>%</u>
21. <u>Prior Charges for Drunkenness Offenses</u>				
Two or Less	206	( 88)	68	( 79)
Three or More	29	( 12)	18	( 21)
TOTAL	235	(100)	86	(100)
(X <sup>2</sup> =3.72, 1df, p >.05)				
22. <u>Number of Prior County Incarcerations</u>				
One or Less	202	( 86)	68	( 79)
Two or More	33	( 14)	18	( 21)
TOTAL	235	(100)	86	(100)
(X <sup>2</sup> =2.24, 1df, p >.05)				
23. <u>Institution Received From</u>				
Concord	91	( 39)	42	( 49)
Other	144	( 61)	44	( 51)
TOTAL	235	(100)	86	(100)
(X <sup>2</sup> =2.65, 1df, p >.05)				
24. <u>Number of Prior State or Federal Incarcerations</u>				
None	184	( 78)	64	( 74)
One or More	51	( 22)	22	( 26)
TOTAL	235	(100)	86	(100)
(X <sup>2</sup> .54, 1df, p >.05)				

APPENDIX IV

VARIABLES FOUND NOT TO DISTINGUISH BETWEEN PROGRAM COMPLETERS  
AND PROGRAM NON-COMPLETERS-COMBINED 1977 AND 1978 RELEASES

	COMPLETIONS		NON-COMPLETIONS	
	<u>N</u>	<u>%</u>	<u>N</u>	<u>%</u>
25. <u>Number of Adult Paroles</u>				
None	190	( 81)	72	( 84)
One or More	45	( 19)	14	( 16)
TOTAL	235	(100)	86	(100)
(X <sup>2</sup> =.35, 1df, p > .05)				
26. <u>Number of Adult Parole Violations (Never Paroled Excluded)</u>				
One or Less	40	( 89)	12	( 86)
Two or More	5	( 11)	2	( 14)
TOTAL	45	(100)	14	(100)
(X <sup>2</sup> =.10, 1df, p > .05)				
27. <u>Age at First Drug Arrest (Unknowns and Not Applicables Excluded)</u>				
17 or Younger	32	( 31)	15	( 39)
18 or Older	72	( 69)	23	( 61)
TOTAL	104	(100)	38	(100)
(X <sup>2</sup> =.95, 1df, p > .05)				
28. <u>Age at First Drunk Arrest (Not Applicables &amp; Unknowns Excluded)</u>				
17 or Younger	20	( 26)	14	( 45)
18 or Older	56	( 74)	17	( 55)
TOTAL	76	(100)	31	(100)
(X <sup>2</sup> =3.61, 1df, p > .05)				

APPENDIX V

APPENDIX V

VARIABLES FOUND NOT TO DISTINGUISH BETWEEN PROGRAM COMPLETERS  
AND PROGRAM NON-COMPLETERS - 1977 RELEASES

	COMPLETIONS		NON-COMPLETIONS	
	<u>N</u>	<u>%</u>	<u>N</u>	<u>%</u>
1. <u>Sex</u>				
Male	136	( 99)	43	( 96)
Female	1	( 1)	2	( 4)
TOTAL	137	(100)	45	(100)
	(X <sup>2</sup> =2.88, 1df, p > .05)			
2. <u>Jail Credits</u>				
50 Days or Less	85	( 62)	31	( 69)
51 Days or More	52	( 38)	14	( 31)
TOTAL	137	(100)	45	(100)
	(X <sup>2</sup> =.69, 1df, p > .05)			
3. <u>Present Offense</u>				
Drug Offense	20	( 15)	3	( 7)
Non-Drug Offense	117	( 85)	42	( 93)
TOTAL	137	(100)	45	(100)
	(X <sup>2</sup> =1.93, 1df, p > .05)			
4. <u>Drug Offenses (Not Applicables Excluded)</u>				
Class - A	11	( 55)	2	( 66)
Other	9	( 45)	1	( 34)
TOTAL	20	(100)	3	(100)
	(X <sup>2</sup> =.14, 1df, p > .05)			

APPENDIX V

VARIABLES FOUND NOT TO DISTINGUISH BETWEEN PROGRAM COMPLETERS  
AND PROGRAM NON-COMPLETERS - 1977 RELEASES

	COMPLETIONS		NON-COMPLETIONS	
	<u>N</u>	<u>%</u>	<u>N</u>	<u>%</u>
5. <u>Person Offenses (Not Applicables Excluded)</u>				
Armed Robbery	45	( 56)	13	( 48)
Other	36	( 44)	14	( 52)
TOTAL	81	(100)	27	(100)
	(X <sup>2</sup> =.45, 1df, p > .05)			
6. <u>Sex Offenses (Not Applicables Excluded)</u>				
Rape	7	( 54)	3	( 75)
Other	6	( 46)	1	( 25)
TOTAL	13	(100)	4	(100)
	(X <sup>2</sup> =.57, 1df, p > .05)			
7. <u>Property Offenses (Not Applicables Excluded)</u>				
Burglary	12	( 57)	6	( 67)
Other	9	( 43)	3	( 33)
TOTAL	21	(100)	9	(100)
	(X <sup>2</sup> =.24, 1df, p > .05)			
8. <u>Minimum Sentence</u>				
Indeterminate	77	( 56)	30	( 67)
Other	60	( 44)	15	( 33)
TOTAL	137	(100)	45	(100)
	(X <sup>2</sup> =1.53, 1df, p > .05)			



APPENDIX V

VARIABLES FOUND NOT TO DISTINGUISH BETWEEN PROGRAM COMPLETERS  
AND PROGRAM NON-COMPLETERS - 1977 RELEASES

	COMPLETIONS		NON-COMPLETIONS	
	N	%	N	%
9. <u>Maximum Sentence</u>				
5 Years or Less	57	( 42)	13	( 29)
6 Years or More	80	( 58)	32	( 71)
TOTAL	137	(100)	45	(100)
$(X^2=2.31, \text{ldf}, p > .05)$				
10. <u>Race</u>				
White	81	( 59)	30	( 67)
Non-white	56	( 41)	15	( 33)
TOTAL	137	(100)	45	(100)
$(X^2=.81, \text{ldf}, p > .05)$				
11. <u>Military Service</u>				
No Service	101	( 74)	35	( 78)
Some Service	36	( 26)	10	( 22)
TOTAL	137	(100)	45	(100)
$(X^2=.29, \text{ldf}, p > .05)$				
12. <u>Address</u>				
Boston	57	( 42)	20	( 44)
Other	80	( 58)	25	( 56)
TOTAL	137	(100)	45	(100)
$(X^2=.11, \text{ldf}, p > .05)$				

APPENDIX V

VARIABLES FOUND NOT TO DISTINGUISH BETWEEN PROGRAM COMPLETERS  
AND PROGRAM NON-COMPLETERS - 1977 RELEASES

	COMPLETIONS		NON-COMPLETIONS	
	N	%	N	%
13. <u>Age at Pre-Release Placement</u>				
20 Years or Younger	22	( 16)	13	( 29)
21 Years or Older	115	( 84)	32	( 71)
TOTAL	137	(100)	45	(100)
$(X^2=3.59, \text{ldf}, p > .05)$				
14. <u>Age at Release</u>				
22 Years or Younger	37	( 27)	19	( 42)
23 Years or Older	100	( 73)	26	( 58)
TOTAL	137	(100)	45	(100)
$(X^2=3.68, \text{ldf}, p > .05)$				
15. <u>Number of Late Over Furlough Outcomes (Never Furloughed Excluded)</u>				
None	111	( 99)	26	(100)
One	1	( 1)	0	( 0)
TOTAL	112	(100)	26	(100)
$(X^2=.23, \text{ldf}, p > .05)$				
16. <u>Occupation (Unknowns Excluded)</u>				
Services	34	( 26)	11	( 24)
Other	99	( 74)	34	( 76)
TOTAL	133	(100)	45	(100)
$(X^2=.02, \text{ldf}, p > .05)$				

## APPENDIX V

VARIABLES FOUND NOT TO DISTINGUISH BETWEEN PROGRAM COMPLETERS  
AND PROGRAM NON-COMPLETERS - 1977 RELEASES

	COMPLETIONS		NON-COMPLETIONS	
	<u>N</u>	<u>%</u>	<u>N</u>	<u>%</u>
17. <u>Time on Job of Longest Duration (Unknowns Excluded)</u>				
4 Months or Less	33	( 31)	15	( 37)
5 Months or More	73	( 69)	26	( 63)
TOTAL	106	(100)	41	(100)
	$(X^2=.39, \text{ldf}, p > .05)$			
18. <u>Time at Most Skilled Position (Unknowns Excluded)</u>				
6 Months or Less	59	( 51)	18	( 45)
7 Months or More	57	( 49)	22	( 55)
TOTAL	116	(100)	40	(100)
	$(X^2=.41, \text{ldf}, p > .05)$			
19. <u>Last Grade Completed (Unknowns Excluded)</u>				
10th Grade or Less	78	( 58)	33	( 73)
11th Grade or More	56	( 42)	12	( 27)
TOTAL	134	(100)	45	(100)
	$(X^2=3.27, \text{ldf}, p > .05)$			
20. <u>Known Drug Use (Unknowns Excluded)</u>				
None	59	( 44)	15	( 33)
Some Use	74	( 56)	30	( 67)
TOTAL	133	(100)	45	(100)
	$(X^2=1.68, \text{ldf}, p > .05)$			

## APPENDIX V

VARIABLES FOUND NOT TO DISTINGUISH BETWEEN PROGRAM COMPLETERS  
AND PROGRAM NON-COMPLETERS - 1977 RELEASES

	COMPLETIONS		NON-COMPLETIONS	
	<u>N</u>	<u>%</u>	<u>N</u>	<u>%</u>
21. <u>Number of Charges for Sex Offenses</u>				
One or Less	126	( 92)	44	( 98)
Two or More	11	( 8)	1	( 2)
TOTAL	137	(100)	45	(100)
	$(X^2=1.85, \text{ldf}, p > .05)$			
22. <u>Number of Charges for Narcotics Offenses</u>				
Two or Less	106	( 77)	30	( 67)
Three or More	31	( 23)	15	( 33)
TOTAL	137	(100)	45	(100)
	$(X^2=2.06, \text{ldf}, p > .05)$			
23. <u>Number of Charges for Drunkenness Offenses</u>				
One or Less	108	( 79)	32	( 71)
Two or More	29	( 21)	13	( 29)
TOTAL	137	(100)	45	(100)
	$(X^2=1.14, \text{ldf}, p > .05)$			
24. <u>Institution Received From</u>				
Walpole	19	( 14)	3	( 7)
Other	118	( 86)	42	( 93)
TOTAL	137	(100)	45	(100)
	$(X^2=1.65, \text{ldf}, p > .05)$			

APPENDIX V

VARIABLES FOUND NOT TO DISTINGUISH BETWEEN PROGRAM COMPLETERS  
AND PROGRAM NON-COMPLETERS - 1977 RELEASES

	COMPLETIONS		NON-COMPLETIONS	
	N	%	N	%
25. <u>Number of Juvenile Parole Violations (Never Paroled Excluded)</u>				
None	7	( 47)	7	( 50)
One or More	8	( 53)	7	( 50)
TOTAL	15	(100)	14	(100)

( $\chi^2=.03$ , 1df, p > .05)

26. Number of Adult Paroles

None	111	( 81)	36	( 80)
One or More	26	( 19)	9	( 20)
TOTAL	137	(100)	45	(100)

( $\chi^2=.02$ , 1df, p > .05)

27. Number of Adult Parole Violations (Never Paroled Excluded)

None	14	( 54)	3	( 33)
One or More	12	( 46)	6	( 67)
TOTAL	26	(100)	9	(100)

( $\chi^2=1.13$ , 1df, p > .05)

28. Age at First Drug Arrest (Not Applicables Excluded)

19 Years or Younger	29	( 44)	12	( 52)
20 Years or Older	37	( 56)	11	( 48)
TOTAL	66	(100)	23	(100)

( $\chi^2=.47$ , 1df, p > .05)

APPENDIX V

VARIABLES FOUND NOT TO DISTINGUISH BETWEEN PROGRAM COMPLETERS  
AND PROGRAM NON-COMPLETERS - 1977 RELEASES

	COMPLETIONS		NON-COMPLETIONS	
	N	%	N	%
29. <u>Massachusetts Halfway House Institution</u>				
577 House	31	( 23)	7	( 16)
Other	106	( 77)	38	( 84)
TOTAL	137	(100)	45	(100)

( $\chi^2=1.03$ , 1df, p .05)

30. Time Served Before Pre-Release Placement

23 Months or Less	86	( 63)	35	( 78)
24 Months or More	51	( 37)	10	( 22)
TOTAL	137	(100)	45	(100)

( $\chi^2=3.42$ , 1df, p .05)

APPENDIX VI

APPENDIX VI

\* VARIABLES FOUND NOT TO DISTINGUISH BETWEEN PROGRAM COMPLETERS  
AND PROGRAM NON-COMPLETERS - 1978 RELEASES

	COMPLETIONS		NON-COMPLETIONS	
	<u>N</u>	<u>%</u>	<u>N</u>	<u>%</u>
1. <u>Massachusetts Halfway House Institution</u>				
THP	6	( 6)	0	( 0)
Other	92	( 94)	41	(100)
TOTAL	98	(100)	41	(100)
	(X <sup>2</sup> =2.62, 1df, p > .05)			
2. <u>Jail Credits</u>				
100 Days or Less	75	( 77)	26	( 63)
101 Days or More	23	( 23)	15	( 37)
TOTAL	98	(100)	41	(100)
	(X <sup>2</sup> =2.50, 1df, p > .05)			
3. <u>Present Offense</u>				
Person Offense	61	( 62)	32	( 78)
Non-Person Offense	37	( 38)	9	( 22)
TOTAL	98	(100)	41	(100)
	(X <sup>2</sup> =3.26, 1df, p > .05)			
4. <u>Person Offenses (Not Applicables Excluded)</u>				
Armed Robbery	37	( 61)	16	( 50)
Other	24	( 39)	16	( 50)
TOTAL	61	(100)	32	(100)
	(X <sup>2</sup> =.97, 1df, p > .05)			

APPENDIX VI

VARIABLES FOUND NOT TO DISTINGUISH BETWEEN PROGRAM COMPLETERS AND PROGRAM NON-COMPLETERS - 1978 RELEASES

	COMPLETIONS		NON-COMPLETIONS	
	N	%	N	%
5. <u>Sex Offenses (Not Applicables Excluded)</u>				
Rape	8	( 73)	2	(100)
Other	3	( 27)	0	( 0)
TOTAL	11	(100)	2	(100)
	(X <sup>2</sup> =.71, ldf, p > .05)			
6. <u>Property Offenses (Not Applicables Excluded)</u>				
Burglary	5	( 38)	2	( 67)
Other	8	( 62)	1	( 33)
TOTAL	13	(100)	3	(100)
	(X <sup>2</sup> =.79, ldf, p > .05)			
7. <u>Other Offenses</u>				
Weapons Offenses	3	(100)	1	( 50)
Other	0	( 0)	1	( 50)
TOTAL	3	(100)	2	(100)
	(X <sup>2</sup> =1.88, ldf, p > .05)			
8. <u>Maximum Sentence</u>				
3 Years or Less	13	( 13)	9	( 22)
4 Years or More	85	( 87)	32	( 78)
TOTAL	98	(100)	41	(100)
	(X <sup>2</sup> =1.64, ldf, p > .05)			

APPENDIX VI

VARIABLES FOUND NOT TO DISTINGUISH BETWEEN PROGRAM COMPLETERS AND PROGRAM NON-COMPLETERS - 1978 RELEASES

	COMPLETIONS		NON-COMPLETIONS	
	N	%	N	%
9. <u>Marital Status</u>				
Married	18	( 18)	10	( 24)
Other	80	( 82)	31	( 76)
TOTAL	98	(100)	41	(100)
	(X <sup>2</sup> =.65, ldf, p > .05)			
10. <u>Address</u>				
Boston	48	( 49)	24	( 59)
Other	50	( 51)	17	( 41)
TOTAL	98	(100)	41	(100)
	(X <sup>2</sup> =3.06, ldf, p > .05)			
11. <u>Age at Pre-Release Placement</u>				
25 Years or Younger	50	( 51)	27	( 66)
26 Years or Older	48	( 49)	14	( 34)
TOTAL	98	(100)	41	(100)
	(X <sup>2</sup> =2.57, ldf, p > .05)			
12. <u>Age at Incarceration</u>				
24 Years or Younger	58	( 59)	27	( 66)
25 Years or Older	40	( 41)	14	( 34)
TOTAL	98	(100)	41	(100)
	(X <sup>2</sup> =.54, ldf, p > .05)			

## APPENDIX VI

VARIABLES FOUND NOT TO DISTINGUISH BETWEEN PROGRAM COMPLETERS  
AND PROGRAM NON-COMPLETERS - 1978 RELEASES

	COMPLETIONS		NON-COMPLETIONS	
	<u>N</u>	<u>%</u>	<u>N</u>	<u>%</u>
13. <u>Age at Release</u>				
25 Years and Younger	49	( 50)	27	( 66)
26 Years and Older	49	( 50)	14	( 34)
TOTAL	98	(100)	41	(100)
( $X^2=2.93$ , 1df, $p > .05$ )				
14. <u>Number of Successful Furlough Outcomes (excluding Never Furloughed)</u>				
One	8	( 9)	6	( 21)
Two or More	80	( 91)	22	( 79)
TOTAL	88	(100)	28	(100)
( $X^2=3.04$ , 1df, $p > .05$ )				
15. <u>Number of Late Under Furlough Outcomes (excluding Never Furloughed)</u>				
None	84	( 95)	27	( 96)
One	4	( 5)	1	( 4)
TOTAL	88	(100)	28	(100)
( $X^2=.05$ , 1df, $p > .05$ )				
16. <u>Occupation</u>				
Services	27	( 29)	9	( 24)
Other	67	( 71)	28	( 76)
TOTAL	94	(100)	37	(100)
( $X^2=.26$ , 1df, $p > .05$ )				

## APPENDIX VI

VARIABLES FOUND NOT TO DISTINGUISH BETWEEN PROGRAM COMPLETERS  
AND PROGRAM NON-COMPLETERS - 1978 RELEASES

	COMPLETIONS		NON-COMPLETIONS	
	<u>N</u>	<u>%</u>	<u>N</u>	<u>%</u>
17. <u>Longest Time at Any One Job (Unknowns Excluded)</u>				
6 Months or Less	42	( 49)	11	( 37)
7 Months or More	44	( 51)	19	( 63)
TOTAL	86	(100)	30	(100)
( $X^2=1.33$ , 1df, $p > .05$ )				
18. <u>Length of Time at Most Skilled Position (Unknowns Excluded)</u>				
6 Months or Less	45	( 54)	13	( 43)
7 Months or More	39	( 46)	17	( 57)
TOTAL	84	(100)	30	(100)
( $X^2=.93$ , 1df, $p > .05$ )				
19. <u>Last Grade Completed (Unknowns Excluded)</u>				
10th Grade or Less	56	( 57)	27	( 69)
11th Grade or More	42	( 43)	12	( 31)
TOTAL	98	(100)	39	(100)
( $X^2=1.71$ , 1df, $p > .05$ )				
20. <u>Known Drug Use (Unknowns Excluded)</u>				
Heroin	23	( 24)	8	( 20)
Other	73	( 76)	32	( 80)
TOTAL	96	(100)	40	(100)
( $X^2=.25$ , 1df, $p > .05$ )				

APPENDIX VI

VARIABLES FOUND NOT TO DISTINGUISH BETWEEN PROGRAM COMPLETERS AND PROGRAM NON-COMPLETERS - 1978 RELEASES

	COMPLETIONS		NON-COMPLETIONS	
	<u>N</u>	<u>%</u>	<u>N</u>	<u>%</u>
21. <u>Total Number of Court Appearances</u>				
11 or Fewer	66	( 67)	21	( 51)
12 or More	32	( 33)	20	( 49)
TOTAL	98	(100)	41	(100)
$(X^2=3.21, \text{ldf}, p > .05)$				
22. <u>Number of Charges for Person Offenses</u>				
4 Or Less	66	( 67)	26	( 63)
5 Or More	32	( 33)	15	( 37)
TOTAL	98	(100)	41	(100)
$(X^2=.19, \text{ldf}, p > .05)$				
23. <u>Number of Charges for Sex Offenses</u>				
Zero	82	( 84)	38	( 93)
One or More	16	( 16)	3	( 7)
TOTAL	98	(100)	41	(100)
$(X^2=1.99, \text{ldf}, p > .05)$				
24. <u>Number of Charges for Narcotics Offenses</u>				
2 Or Less	77	( 79)	35	( 85)
3 Or More	21	( 21)	6	( 15)
TOTAL	98	(100)	41	(100)
$(X^2=.85, \text{ldf}, p > .05)$				

APPENDIX VI

VARIABLES FOUND NOT TO DISTINGUISH BETWEEN PROGRAM COMPLETERS AND PROGRAM NON-COMPLETERS - 1978 RELEASES

	COMPLETIONS		NON-COMPLETIONS	
	<u>N</u>	<u>%</u>	<u>N</u>	<u>%</u>
25. <u>Number of Charges for Drunkenness Offenses</u>				
None	66	( 67)	26	( 63)
One or More	32	( 33)	15	( 37)
TOTAL	98	(100)	41	(100)
$(X^2=.19, \text{ldf}, p > .05)$				
26. <u>Number of Charges for Escape Offenses</u>				
None	90	( 92)	36	( 88)
One or More	8	( 8)	5	( 12)
TOTAL	98	(100)	41	(100)
$(X^2=.56, \text{ldf}, p > .05)$				
27. <u>Number of Prior County Incarcerations</u>				
None	61	( 62)	28	( 68)
One or More	37	( 38)	13	( 32)
TOTAL	98	(100)	41	(100)
$(X^2=.46, \text{ldf}, p > .05)$				
28. <u>Number of Prior State or Federal Incarcerations</u>				
One or Less	90	( 92)	38	( 93)
Two or More	8	( 8)	3	( 7)
TOTAL	98	(100)	41	(100)
$(X^2=.03, \text{ldf}, p > .05)$				

APPENDIX VI

VARIABLES FOUND NOT TO DISTINGUISH BETWEEN PROGRAM COMPLETERS AND PROGRAM NON-COMPLETERS - 1978 RELEASES

	COMPLETIONS		NON-COMPLETIONS	
	N	%	N	%
29. <u>Total Number of Prior Adult Incarcerations</u>				
2 Or Less	90	( 92)	36	( 88)
3 Or More	8	( 8)	5	( 12)
TOTAL	98	(100)	41	(100)
(X <sup>2</sup> =.55, 1df, p > .05)				
30. <u>Institution Received From</u>				
Shirley	10	( 10)	1	( 2)
Other	88	( 90)	40	( 98)
TOTAL	98	(100)	41	(100)
(X <sup>2</sup> =2.39, 1df, p > .05)				
31. <u>Number of Juvenile Paroles</u>				
None	84	( 86)	30	( 73)
One or More	14	( 14)	11	( 27)
TOTAL	98	(100)	41	(100)
(X <sup>2</sup> =3.08, 1df, p > .05)				
32. <u>Number of Juvenile Parole Violations (Never Paroled Excluded)</u>				
One or Less	11	( 79)	11	(100)
Two or More	3	( 21)	0	( 0)
TOTAL	14	(100)	11	(100)
(X <sup>2</sup> =2.68, 1df, p > .05)				

APPENDIX VI

VARIABLES FOUND NOT TO DISTINGUISH BETWEEN PROGRAM COMPLETERS AND PROGRAM NON-COMPLETERS - 1978 RELEASES

	COMPLETIONS		NON-COMPLETIONS	
	N	%	N	%
33. <u>Number of Adult Paroles</u>				
None	79	( 81)	36	( 88)
One or More	19	( 19)	5	( 12)
TOTAL	98	(100)	41	(100)
(X <sup>2</sup> =1.05, 1df, p > .05)				
34. <u>Number of Adult Parole Violations</u>				
Never Paroled	79	( 81)	36	( 88)
One or More	19	( 19)	5	( 12)
TOTAL	98	(100)	41	(100)
(X <sup>2</sup> =1.04, 1df, p > .05)				
35. <u>Age at First Drug Arrest (Not Applicable Excluded)</u>				
17 Years or Younger	15	( 38)	8	( 53)
18 Years or Older	24	( 62)	7	( 47)
TOTAL	39	(100)	15	(100)
(X <sup>2</sup> .98, 1df, p > .05)				
36. <u>Age at First Drunk Arrest (Not Applicables Excluded)</u>				
24 Years or Younger	27	( 84)	12	( 80)
25 Years or Older	5	( 16)	3	( 20)
TOTAL	32	(100)	15	(100)
(X <sup>2</sup> =.14, 1df, p > .05)				



APPENDIX VI

VARIABLES FOUND NOT TO DISTINGUISH BETWEEN PROGRAM COMPLETERS AND PROGRAM NON-COMPLETERS - 1978 RELEASES

	COMPLETIONS		NON-COMPLETIONS	
	<u>N</u>	<u>%</u>	<u>N</u>	<u>%</u>
37. <u>Age at First Arrest</u>				
15 Years or Younger	44	( 45)	22	( 54)
16 Years or Older	54	( 55)	19	( 46)
TOTAL	98	(100)	41	(100)

( $\chi^2 = .89$ , 1df, p .05)

REFERENCES

1. Landolfi, Joseph, 1974 Client Profile Massachusetts Halfway Houses, Inc., Massachusetts Department of Correction Publication Number 103, September, 1975.
2. Landolfi, Joseph, A Comparison Between Pre-Release Program Completers and Non-Completers at Massachusetts Halfway Houses, Inc., Massachusetts Department of Correction Publication Number 104, October, 1975.
3. Williams, Lawrence, Client Profile - Massachusetts Halfway Houses, Inc. 1977 and 1978 Releases, Massachusetts Department of Correction Publication Number 187, May, 1980.

**END**