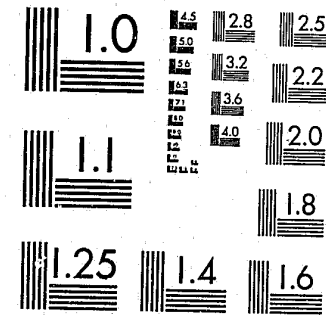


National Criminal Justice Reference Service



This microfiche was produced from documents received for inclusion in the NCJRS data base. Since NCJRS cannot exercise control over the physical condition of the documents submitted, the individual frame quality will vary. The resolution chart on this frame may be used to evaluate the document quality.



MICROCOPY RESOLUTION TEST CHART
NATIONAL BUREAU OF STANDARDS-1963-A

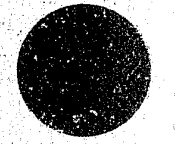
Microfilming procedures used to create this fiche comply with the standards set forth in 41CFR 101-11.504.

Points of view or opinions stated in this document are those of the author(s) and do not represent the official position or policies of the U. S. Department of Justice.

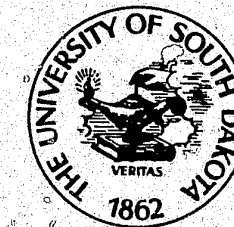
National Institute of Justice
United States Department of Justice
Washington, D. C. 20531

3-18-82

MF-1



X
USERS GUIDE
TO THE
1976 VICTIMIZATION DATA



80672⁶¹

X
SOUTH DAKOTA
STATISTICAL ANALYSIS CENTER

NCJ 77-1000

AUG 18 1977

ACQU

Prepared by
 THE SOUTH DAKOTA STATISTICAL ANALYSIS CENTER
 Criminal Justice Studies Program
 University of South Dakota
 Vermillion, S.D. 57069

James R. Villone, Director

- Diane I. Beecher. Research Associate
- George Breed. Research Associate
- Michel G. Hillman Research Associate
- James F. Martin Research Associate
- Kathleen D. Morrison. Research Associate
- Michael P. Roche. Research Associate
- James M. Rumbolz. Research Associate
- Nancy Rumbolz Secretary

This project was supported by grants from the Department of Justice, Law Enforcement Assistance Administration under the Omnibus Crime Control Safe Streets Act of 1968, as amended. (Grant numbers: 77-SS-08-0002, 77-ED-08-0007.) Points of view or opinions stated in this report are those of the authors and do not necessarily represent the official position or policies of the U.S. Department of Justice.

U.S. Department of Justice
 National Institute of Justice

This document has been reproduced exactly as received from the person or organization originating it. Points of view or opinions stated in this document are those of the authors and do not necessarily represent the official position or policies of the National Institute of Justice.

Permission to reproduce this copyrighted material has been granted by
Public Domain, LEAA, US Dept. of Justice, SD Statistical Ana. Ctr.
 to the National Criminal Justice Reference Service (NCJRS).

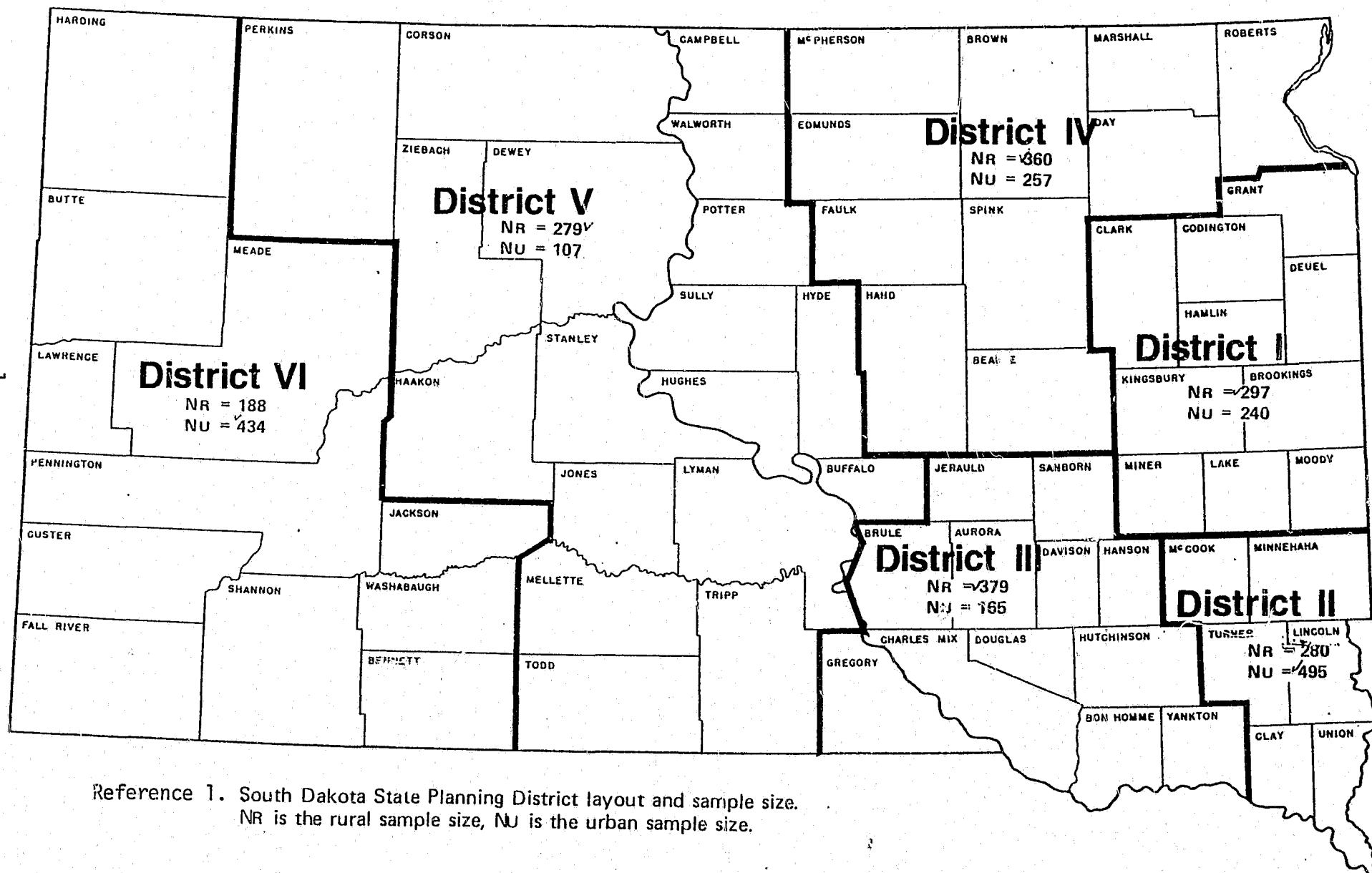
Further reproduction outside of the NCJRS system requires permission of the copyright owner.

TABLE OF CONTENTS

	PAGE
INTRODUCTION	2
QUESTIONNAIRE.....	2
VARIABLE IDENTIFICATION AND LAYOUT.....	3
Variable Identification.....	3
Cross Reference.....	3
Geographic Coding.....	4
TAPE FILE DESCRIPTION.....	4
Raw Data File.....	5
SPSS Data File.....	5
SPSS Programs.....	6
PROGRAMMING EXAMPLES.....	6
SPSS FILE CORRECTIONS.....	10
COMMENTS.....	12
SAMPLE QUESTIONNAIRE.....	14
VICTIMIZATION VARIABLE IDENTIFICATION AND LAYOUT.....	23
VARIABLE CROSS REFERENCE.....	33
GEOGRAPHIC CODINGS.....	35
SAMPLE JCL FOR TAPE OR DISK ACCESS.....	51
SAMPLE PROGRAMS.....	52

ILLUSTRATIONS

	Page
Reference 1 State of South Dakota.....	1
Reference 2 Victimization Tape File Specification.....	5
Reference 3 Example Program 1.....	8
Reference 4 Example Program 2	9
Reference 5 Questionnaire	13
Reference 6 Variable Identification and Layout.....	23
Reference 7 Variable Cross Reference Table.....	33
Reference 8 Geographic Coding Table	35
Reference 9 Sample JCL for Tape or Disc Access.....	51
Reference 10 Three SPSS Programs.....	52



Reference 1. South Dakota State Planning District layout and sample size.
 NR is the rural sample size, NU is the urban sample size.

SCALE
 0 12 24 48 MILES

VICTIMIZATION DATA USERS GUIDE

The 1976 crime victimization survey was conducted early in 1977. The incidents of robbery assault, sexual assault, motor vehicle theft, burglary, theft and vandalism were accessed. All data for 3,475 respondents were computerized and several programs were developed to produce the data analysis. Crime rates and details concerning each crime type were established and are presented in the Statistical Analysis Center report 'Crime Victimization in South Dakota 1976'. It is expected that the reader is familiar with the contents of the report.

This pamphlet contains a description of the 1976 crime victimization data from a data management perspective. The intention of which is to provide for prospective users the means for accessing the data for developing additional analyses tailored to specific needs and jurisdictional interests.

There are four essentials for using data. The first, a general knowledge of the victimization report, second, a knowledge of the questionnaire, third, familiarity with the variable identification and layout on the computer file, and finally, the tape file specification. Detailed information of the latter three are presented in this report.

Questionnaire

The questionnaire presented on page 13 to 22 is the exact form mailed to some 5,000 South Dakotans in the survey. It contains 132 questions, the first 110 elicit detail on each of the seven crime types

mentioned earlier. The last 22 items provide information about the respondents and their opinions on crime issues. Each section is labeled according to its general content. Within the context of this report, it serves as a catalog of variables (questions) for possible analysis plus complete details on each variable. At the onset, its perusal should stimulate curiosity and ideas for further analytical investigation.

Variable Identification and layout

Variable Identification

The variable layout beginning on page 23 shows the sequence as well as the specific layout of each variable in the raw data file (computer file UBGR.VICT76.RAW.DATA). The raw data is the data coded directly from the survey questionnaire. The variable naming convention assumes a direct correspondence between the variable name and the question number. For example, variable R1 is question number 1 and is from the robbery section. Likewise, variable MV36 corresponds to question 36 and is in the motor vehicle theft section.

The variable identification and layout also contains some additional variables created by the first SPSS program (page 32) for the SPSS file (UBGR.VICT76.SPSS.DATA). The new variables were developed by recategorization or combining old variables. For example, victims were classified as personal or property crime victims, and reported-actual or non-reported actual. Also, numbers of actual and attempted crime were combined to obtain a new variable for calculating crime rates.

Cross Reference Table

The cross reference table page 33 facilitates variable selection by question and crime. For instance, the user wishes to investigate the

report rate for property crimes. Eyeing the left column, find reporting, then find the variables for those crime types categorized as property crimes, B25, MV45, T59, and V104. Thus, once a type of analysis has been defined the variables of interest can be identified.

Geographic Coding

The last section of the variable description is the geographic area coding. A sequence of numbers was applied to each possible geographic breakdown: Town (#1-696), County (1-67), and Planning District (1-6). These numbers may be combined in many ways for the user to arrive at a suitable regional analysis. The coding capabilities also allow comparisons between specified planning districts, clusters of counties, or the larger urban areas of South Dakota. One important rule of thumb is that minimally accurate crime rate estimates require the sample being estimated to have at least 150 respondents.

Tape File Description

The victimization files are located on tape HEC103. The available data consists of the raw victimization data as coded and translated from the survey questionnaire, and an SPSS file of the raw data with additional data described previously and in the variable layout sheets. Also, there are three SPSS programs residing on the tape. The first was used to establish the SPSS data file and develops the additional variables. The second program was used to perform the bulk of the analysis presented in the victimization report. Finally, the latter program was left open-ended: that is, it provides the necessary JCL to access the SPSS file for any additional analyses the researcher wishes to program.

Reference 2. Victimization Tape File Specification

Tape: HEC103 Tape Size 1200

Data Set Name	Description	Block Type	LRECL	Block Size	LABEL
UBGR.VICT76.RAW.DATA	Raw Data	FB	80	4800	(1,SL)
UBGR.VICT76.SPSS.DATA	SPSS File of Raw Data	VBS	20008	2012	(2,SL)
UBGR.VICT76.SPSS1.CNTL	Program to Create SPSS File	FB	80	4240	(3,SL)
UBGR.VICT76.SPSS2.CNTL	Program Analysis	FB	80	4240	(4,SL)
UBGR.VICT76.SCHED.CNTL	Program JCL	FB	80	4240	(5,SL)

Raw Data File

The raw data file contents are covered in the variable description and in Reference 6.

SPSS Data File

The SPSS data file has all the information contained in the raw data file with additional variables discussed previously. The SPSS file was created primarily for ease of access to the data and the one shot programming advantage of identification and labeling of variable.

To speed data analysis the SPSS file was given a subfile structure as follows:

```
File: VSAMPLE (N=3475)
Subfiles: NONVICT (N=2800)
          VICTIM (N=675)
```

The obvious advantage of subfiling is in program turn around and programming ease. When investigating crime specific details and victim characteristics, which are the most frequent types of analysis, the system does not have to process all cases, only victims. Any or all

files may be accessed by specifying the desired files. If all files are selected, comparisons between victim and nonvictim profiles or opinions may be accomplished by specifying the variable victim (VICT, refer to reference 6).

SPSS Programs

Listings of the three SPSS Programs start on page 52. As mentioned earlier the programs were used to set-up and analyze the data. Further investigation of these programs is left to the discretion of the user. They are presented here for the reconstruction of the data file and analysis if such a need arises.

Programming Examples

A few examples will serve to illustrate possible uses of the data and the means for gaining access. In the first example the researcher wishes to find characteristics of the act of vandalism in Sioux Falls. The user must construct the program JCL to access UBGR.VICT76.SPSS.DATA.. Program UBGR.VICT76.SCHED.CNTL can be used as a reference. At this point three attributes of the analysis are needed:

- 1) What file(s) are needed (VSAMPLE, NONVICT, VICTIM)
- 2) What specific variable or questions are of interest in this analysis. (R1 to OP132)
- 3) What geographic region is of interest (TOWN, CONUM, DIST).

For this analysis we need only the victim subfile, and only response to vandalism so variable V98 = 1 (refer to reference 5 and 7) is selected to fill criteria (2) above. For criteria (3), Sioux Falls is the specific region of interest. Referring to Reference 8, the analysis of Sioux Falls requires that TOWN = 554. The selections are as follows:

- 1) File: VICTIM
- 2) Variable: If V98 = 1 then questions were answered by vandalism victims only
- 3) If TOWN = 554 only respondents from Sioux Falls are considered.

After the three criteria above are satisfied, the program can be designed as presented in Reference 3, and SPSS frequencies procedure performed on all vandalism variables.

In the second example, Reference 4, the researcher wishes to determine the Sioux Falls crime rate based on victimization rates. The file selected is VSAMPLE. Even though crime only happens to victims, the total sample size for the designated geographic area is needed to establish a crime rate. If our sample indicated 20 burglaries in Sioux Falls and accessing VSAMPLE indicates our sample size from Sioux Falls is 424, the burglary rate is 20/424 or 46/1,000.

The variables of interest are R.INCDT, B.INCDT, MV.INCDT, T.INCDT, SA.INCDT, A.INCDT, VINCDT. These are special variables created by UBGR. UBGR.VICT76.SPSS1.CNTL to add all actuals and attempts for each crime type. Looking at burglary specifically, though the variable B19 is a likely selection to calculate crime rate, unlike B.INCDT it measures only the number of people who have been burglarized at least once, not the sum of the number of times each victim was burglarized. Finally, the Sioux Falls region can be specified as in the previous example and the three suggested criteria will be satisfied.

As can be seen from the examples, the procedure is not complex, but requires that the user become acquainted with the information in the questionnaire and the variable identification and layout.

Reference 3. Example Program 1

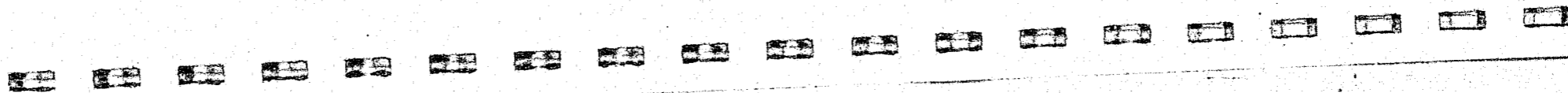
Cards

Comment

Use job cards and execute cards as defined by computer facility

```
//FT03F001 DD DSN=UBGR.VICT76.SPSS.DATA,DIST=(OLD,KEEP)
//FT06F001 DD SYSOUT=A
//SYSIN DD *
RUN NAME      VANDALISM VARIABLE FREQUENCIES FOR SIOUX FALLS
GET FILE      VSAMPLE
RUN SUBFILES  (VICTIM)
SELECT IF     (V98 EQ 1 and TOWN EQ 554)
FREQUENCIES   GENERAL=V98 To VII
OPTIONS       9
FINISH
//
```

Input file, SPSS Data file which has been cataloged
Output file, in this case we use the print file
Program Input Medium
Title of Run chosen by programmer (can be left blank)
Name on SPSS file
Want to use Subfile Victim only
For victims of vandalism and town of Sioux Falls
Defines procedures to be used; refer to SPSS manual
Option for dictionary of Frequency tables used primarily for long runs.



Reference 4 Example Program 2

Cards

RUN NAME VICTIMIZATION RATES FOR SIOUX FALLS
GET FILE VSAMPLE
RUN SUBFILES ALL
SELECT IF (TOWN EQ 554)
FREQUENCIES GENERAL= R.INCDT, B.INCDT, MY.INCDT, T.INCDT
A.INCDT, SA.INCOT, V.INCDT
OPTIONS 9
FINISH

Comment

Same JCL as Reference 3

Total file will be processed so that the denominator produced for total number of individuals sampled from Sioux Falls.

Out Put will show first the number of individual with:

- 0 Crimes
- 1 Robbery
- 2 Robberies
- 3 Robberies

Crime rate for Sioux Falls is than the total number of robberies devided by the total Sioux Falls population sampled.

SPSS FILE CORRECTIONS

In the process of programming the creation of the SPSS file, errors occurred in the labeling of four variable T57,V102,OP127 and OP128.

Variable T57 deals with the type of property involved in a theft incident. The correct labeling is as follows:

<u>Response Code</u>	<u>Property</u>
0	Non-Victim of theft
1	Tools, Testequip., Small Farm Equip.
2	Farm property, livestock, grain, implements, etc.
3	Hunting, sporting, recreation and hobby equip (includes bicycles)
4	Indoor household property and goods
5	Outdoor household property and goods
6	Cash, tickets, jewelry, keys and other valuables (purse, wallet)
7	Motor Vehicle parts and accessories (auto stereos, CB equip., key taken from vehicle).
9	Missing Response

Variable V102 deals with the type of property involved in vandalism as follows:

<u>Response Code</u>	<u>Property</u>
0	Non-Victim of Vandalism
1	House (door, windows, etc)
2	Outbuildings, fences
3	Landscaping, outdoor household, mailboxes
4	Farm property; livestock, grain, implements
5	Sporting, recreational equip.
6	Motor Vehicles
7	Motor Vehicle parts and Accessories including stereos and CB's, mirrors, antenna etc.
8	Other
9	Missing Response

Both OP127 and OP128 assessing law enforcement officials on judges performance should have the following labels.

<u>Code</u>	<u>Response</u>
1	Excellent
2	Good
3	Fair
4	Poor
5	No Opinion
9	Missing Response

Comment

Perhaps the most effective way for the user to become familiar with the data is to obtain or generate from the data, SPSS frequencies for all the variables. That would provide not only a feel for the type of data but a sense of trends in the data. Then the information in the report will serve as a guide to gain more from the data through your own investigation.

Reference 5

VICTIMIZATION QUESTIONNAIRE



A SURVEY OF
CRIME IN SOUTH DAKOTA

This booklet contains questions about your experiences and views of crime in South Dakota.

Your cooperation in answering these questions will help public officials in their continuing efforts to understand and prevent crime in our state.

Your response will be handled confidentially and anonymously. Though we needed your name to contact you, only the booklet number will be recorded for statistical analysis.

Instructions for completing the booklet are on the following page. A stamped, addressed envelope is included for the booklet's return.

Thank you for your assistance.

SOUTH DAKOTA STATISTICAL ANALYSIS CENTER
CRIMINAL JUSTICE STUDIES PROGRAM
UNIVERSITY OF SOUTH DAKOTA





THE FOLLOWING QUESTIONS REFER ONLY TO CRIMES THAT HAPPENED TO YOU DURING 1976.

1. During 1976 did anyone, by directly confronting you with force or threat of force, take or attempt to take something from you (includes anything from wallets or money to autos, farm equipment or livestock, anything taken by force or threat of force)? Circle your response.

- 1. Yes
- 2. No

15

IF THE RESPONSE TO THE ABOVE QUESTION WAS NO PLEASE TURN TO PAGE 3.

IF YOUR RESPONSE TO THE ABOVE WAS YES, PLEASE ANSWER QUESTIONS 2 THROUGH 18.

2. Number of times you were actually robbed in 1976.

3. Number of attempted robberies in 1976.

4. How many robberies or attempted robberies occurred in each month during 1976?

- | | |
|--------------|---------------|
| ___ January | ___ July |
| ___ February | ___ August |
| ___ March | ___ September |
| ___ April | ___ October |
| ___ May | ___ November |
| ___ June | ___ December |

FOR THE REST OF THIS SECTION, REPORT ONLY DETAILS OF THE MOST RECENT INCIDENT FOR EACH QUESTION. CIRCLE THE ONE RESPONSE WHICH MOST ACCURATELY DESCRIBES THE INCIDENT.

5. What kind of weapon was used in the most recent incident?

- 1. Gun
- 2. Knife or sharp instrument
- 3. Club or blunt instrument
- 4. Threat of or use of physical force
- 5. Other please specify: _____

6. Where did the most recent incident occur? (Circle the single most accurate description).

- 1. At home
- 2. In someone else's home
- 3. In a residential area
- 4. Outside city or town limits
- 5. In or near a bar or lounge
- 6. In downtown area
- 7. In or near my hotel/motel room
- 8. At or near my place of work

7. Dollar value of any property stolen or damaged in the most recent burglary.

- 1. Nothing was taken
- 2. \$5-\$20
- 3. \$21-100
- 4. \$101-200
- 5. \$201-500
- 6. \$501-1000
- 7. Over \$1000

8. Was the stolen property insured?

- 1. No, property was not insured
- 2. Some of the property was insured
- 3. All property was insured
- 4. Nothing was taken

9. Was anything recovered from the most recent robbery?

- 1. Nothing was recovered
- 2. Something was recovered
- 3. Everything was recovered
- 4. Nothing was taken

10. Was the most recent robbery reported?

- 1. Yes
- 2. No

11. If the most recent robbery was not reported circle the one most important reason you had for not reporting it.

- 1. Afraid of retaliation
- 2. Private or personal matter, did not want to report it
- 3. Did not want to take time-too inconvenient
- 4. Did not want to get involved
- 5. Police wouldn't want to be bothered
- 6. Nothing could be done-lack of proof
- 7. Did not think it important enough
- 8. Other-specify: _____

12. Were you injured physically as a result of the most recent robbery?

- 1. No, no injury at all
- 2. Yes, but no medical help required
- 3. Yes, medical first aid required
- 4. Yes, hospitalization was required for overnight care or longer

13. Were you mentally or psychologically injured from the robbery?

- 1. No, no mental or psychological injuries
- 2. Yes, some mental or psychological injuries, but no treatment was required
- 3. Yes, some mental or psychological injury, counseling and/or medical treatment was required
- 4. Yes, extensive mental or psychological injuries, counseling and/or medical treatment was required

14. What was the approximate cost of medical services and psychological services required as a

result of the crime? Include expenses covered by insurance, medication, doctor bills and related medical examinations.

- 1. No services required
- 2. None sought due to expense
- 3. \$5-20
- 4. \$21-100
- 5. \$101-200
- 6. \$201-500
- 7. \$501-1000
- 8. \$1001-5000
- 9. over \$5000

please specify: _____

15. How much time did you lose as a result of the crime due to injury, reporting time, court processing, inconvenience, etc.

- 1. No time lost
- 2. Half day or less
- 3. One day
- 4. 1 to 2 days
- 5. 2 to 5 days
- 6. More than 5 days

please specify: _____

16. Was/were the robber(s) caught in the most recent robbery?

- 1. Yes, all were caught
- 2. Yes, some were caught
- 3. No, robbers were not caught
- 4. Don't know

17. How well did you know the offender(s)? (If more than one offender, describe most well known).

- 1. Never knew who it was
- 2. A total stranger (never saw before)
- 3. Had seen before
- 4. An acquaintance
- 5. Knew well
- 6. Relative

18. Was the event just described an actual or attempted robbery?

- 1. Actual
- 2. Attempted

BURGLARY



THE FOLLOWING QUESTIONS REFER ONLY TO CRIMES THAT HAPPENED TO YOU DURING 1976.

19. During 1976, did anyone forcibly or unlawfully enter or attempt to enter your home, apartment, garage, farm building or hotel/motel rooms to steal something without directly confronting you? Circle your response.

- 1. Yes
2. No

IF THE RESPONSE TO THE ABOVE QUESTION WAS NO PLEASE TURN TO PAGE 5.

IF THE RESPONSE TO THE ABOVE WAS YES, PLEASE ANSWER QUESTIONS 20 THROUGH 35.

20. Number of times actually burglarized during 1976.

21. Number of attempted burglaries during 1976.

22. How many burglaries or attempted burglaries occurred in each month during 1976?

- January July
February August
March September
April October
May November
June December

16

FOR THE REST OF THIS SECTION, REPORT ONLY DETAILS OF THE MOST RECENT INCIDENT. FOR EACH QUESTION CIRCLE THE ONE RESPONSE WHICH MOST ACCURATELY DESCRIBES THE INCIDENT.

23. What type of area was burglarized?

- 1. Single family dwelling (town)
2. Country or farm house
3. Two family apartment or house
4. Three or larger family dwelling
5. Other farm buildings
6. Hotel or motel while traveling

24. Dollar value of any property stolen or damaged in the most recent burglary.

- 1. Nothing was taken
2. \$5-20
3. \$21-100
4. \$101-200
5. \$201-500
6. \$501-1000
7. Over \$1000

please specify: _____

25. Was the most recent burglary reported?

- 1. Yes
2. No

26. If the most recent burglary was not reported circle the one most important reason you had for not reporting it.

- 1. Afraid of retaliation
2. Private or personal matter, did not want to report it
3. Did not want to take time-too inconvenient
4. Did not want to get involved
5. Police wouldn't want to be bothered
6. Nothing could be done-lack of proof
7. Did not think it important enough
8. Other specify: _____

BURGLARY

27. Was anything recovered that was stolen in the most recent burglary?

- 1. Nothing was recovered
2. Somethings were recovered
3. Everything was recovered
4. Nothing was taken

28. Was the stolen property insured?

- 1. No, property was not insured
2. Some property was insured
3. All property was insured
4. Nothing was taken

29. Were you injured physically as a result of the most recent burglary?

- 1. No, no injuries at all
2. Yes, but no medical help required
3. Yes, medical first aid required
4. Yes, hospitalization for overnight or longer was required

30. Were you or anyone else mentally or psychologically injured?

- 1. No, no mental or psychological injuries
2. Yes, some mental or psychological injuries, but no treatment was required
3. Yes, some mental or psychological injury, counseling and/or medical treatment was required
4. Yes, extensive mental or psychological injuries, counseling and/or medical treatment was required

31. What was the approximate cost of medical services and psychological services required as a result of the crime? Include expenses covered by insurance, medication, doctor bills and

related medical examinations.

- 1. No services required
2. None sought due to expense
3. \$5-20
4. \$21-100
5. \$101-200
6. \$201-500
7. \$501-1000
8. \$1001-5000
9. Over \$5000

please specify: _____

32. How much time did you lose as a result of the crime due to injury, reporting time, court processing, inconvenience, etc?

- 1. No time lost
2. Half day or less
3. One day
4. 1 to 2 days
5. 2 to 5 days
6. More than 5 days

please specify: _____

33. Was/were the burglar(s) caught in the most recent burglary?

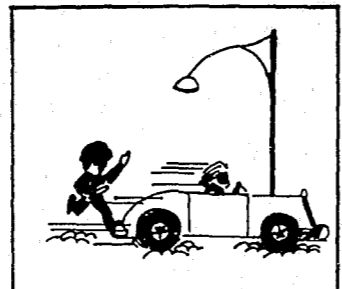
- 1. Yes, all were caught
2. Yes, some were caught
3. No, burglar(s) were not caught
4. Don't know

34. How well did you know the offender(s) in the most recent burglary? (If more than one offender describe the most well known).

- 1. Never knew who it was
2. A total stranger (never saw before)
3. Had seen before
4. An acquaintance
5. Knew well
6. Relative

35. Was the event just described an actual or attempted burglary?

- 1. Actual
2. Attempted



THE FOLLOWING QUESTIONS REFER ONLY TO CRIMES THAT HAPPENED TO YOU DURING 1976.

36. Did anyone during 1976 steal or attempt to steal your auto, truck, motorcycle, tractor, or snowmobile? (If garage or building was broken into for the vehicle, the offense is burglary not theft). Circle your response.
1. Yes
 2. No

IF THE RESPONSE TO THE ABOVE QUESTION WAS NO PLEASE TURN TO PAGE 7.

IF YOUR RESPONSE TO THE ABOVE WAS YES PLEASE ANSWER QUESTIONS 37 THROUGH 51.

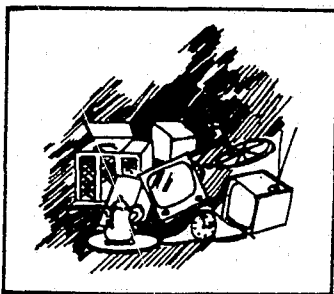
37. How many times was a vehicle actually stolen from you during 1976?
38. Number of unsuccessful attempts to take vehicle during 1976.
39. How many vehicle thefts or attempted vehicle thefts occurred in each month during 1976?
- | | |
|--------------|---------------|
| ___ January | ___ July |
| ___ February | ___ August |
| ___ March | ___ September |
| ___ April | ___ October |
| ___ May | ___ November |
| ___ June | ___ December |

FOR THE REST OF THIS SECTION, REPORT ONLY DETAILS OF THE MOST RECENT INCIDENT. FOR EACH QUESTION CIRCLE THE ONE RESPONSE WHICH MOST ACCURATELY DESCRIBES THE INCIDENT.

40. What type of vehicle was involved in the most recent incident?
1. Automobile
 2. Truck
 3. Motorcycle
 4. Tractor or other farm vehicle
 5. Snowmobile
41. Where was motor vehicle stolen from?
1. My garage, my driveway, or on my property
 2. Street adjacent to my house
 3. Other street in town
 4. Parking lot, ramp, etc.
 5. Country road
 6. Other, please specify: _____
42. In the most recent incident, were the keys in the vehicle?
1. No
 2. Yes
 3. Don't know
43. Was the vehicle recovered?
1. Yes, in nearly the same condition
 2. Yes, but damaged
 3. No
44. Was/were the thieves caught eventually?
1. Yes, all were caught
 2. Yes, some were caught
 3. No, thieves were not caught
 4. Don't know

45. Was the most recent theft reported?
1. Yes
 2. No
46. If the most recent theft was not reported circle the one most important reason you had for not reporting it.
1. Afraid of retaliation
 2. Private or personal matter, did not want to report it
 3. Did not want to take time-too inconvenient
 4. Did not want to get involved
 5. Police wouldn't want to be bothered
 6. Nothing could be done-lack of proof
 7. Did not think it important enough
 8. Other-specify: _____
47. Dollar value of any property stolen or damaged in the most recent theft.
1. Nothing was taken
 2. \$5-20
 3. \$21-100
 4. \$101-200
 5. \$201-500
 6. \$501-1000
 7. Over \$1000
- please specify: _____
48. How much time did you lose as a result of the crime due to injury, reporting time, court processing, inconvenience, etc?
1. No time lost
 2. Half day or less
 3. One day
 4. 1 to 2 days
 5. 2 to 5 days
 6. More than 5 days
- please specify: _____

49. How well did you know the offender(s) in the most recent theft? (If more than one offender describe most well known).
1. Never knew who it was
 2. A total stranger (never saw before)
 3. Have seen before
 4. An acquaintance
 5. Knew well
 6. Relative
50. Was vehicle insured?
1. Yes, vehicle was insured
 2. No, vehicle was not insured
51. Was the event just described an actual or attempted motor vehicle theft?
1. Actual
 2. Attempted



THE FOLLOWING QUESTIONS REFER ONLY TO CRIMES THAT HAPPENED TO YOU DURING 1976.

52. Was any property or valuables taken without your permission in the past, but not by force or unlawful entry? (DO NOT INCLUDE PROPERTY TAKEN DURING A BURGLARY OR ROBBERY OR MOTOR THEFT) Circle your response.

- 1. Yes
2. No

IF THE RESPONSE TO THE ABOVE QUESTION WAS NO PLEASE TURN TO PAGE 9.

IF YOUR RESPONSE TO THE ABOVE WAS YES, PLEASE ANSWER QUESTIONS 53 THROUGH 66.

53. Number of actual thefts during 1976.

54. Number of attempted thefts during 1976.

55. How many thefts or attempted thefts occurred in each month during 1976?

- January July
February August
March September
April October
May November
June December

18

FOR THE REST OF THIS SECTION, REPORT ONLY DETAILS OF THE MOST RECENT INCIDENT. FOR EACH QUESTION CIRCLE THE ONE RESPONSE WHICH MOST ACCURATELY DESCRIBES THE INCIDENT.

56. Where did the most recent theft occur? (Circle the single most accurate description).

- 1. At home
2. In someone else's home
3. In a residential area
4. Outside city or town limits
5. In or near a bar or lounge
6. In downtown area
7. In or near my hotel/motel room
8. At or near my place of work.

57. Describe the property taken in the most recent theft.

58. Dollar value of any property stolen in the most recent theft.

- 1. Nothing was stolen
2. \$5-20
3. \$21-200
4. \$201-500
5. \$501-1000
6. \$1001-5000
7. Over \$5000
please specify: _____

59. Was the most recent theft reported?

- 1. Yes
2. No

60. If the most recent theft was not reported circle the one most important reason you had for not reporting it.

- 1. Afraid of retaliation
2. Private or personal matter, did not want to report it
3. Did not want to take time-too inconvenient
4. Did not want to get involved
5. Police wouldn't want to be bothered
6. Nothing could be done-lack of proof
7. Did not think it important enough
8. Other-specify: _____

61. Was anything recovered from the most recent theft?

- 1. Nothing was recovered
2. Something was recovered
3. Everything was recovered
4. Nothing was taken

62. Was the stolen property insured?

- 1. Nothing was taken
2. Some of the property was insured
3. All of the property was insured
4. No, property was not insured

63. How much time did you lose as a result of the crime due to injury, reporting time, court processing, inconvenience, etc.?

- 1. No time lost
2. Half day or less
3. One day
4. 1 to 2 days
5. 2 to 5 days
6. More than 5 days
please specify: _____

64. Was/were the thief(s) caught in the most recent incident?

- 1. Yes, all were caught
2. Yes, some were caught
3. No, thieves were not caught
4. Don't know

65. How well did you know the offender(s) in the most recent theft? If more than one offender describe most well known.

- 1. Never knew who it was
2. A total stranger (never saw before)
3. Had seen before
4. An acquaintance
5. Know well
6. Relative

66. Was the event just described an actual or attempted theft?

- 1. Actual
2. Attempted



THE FOLLOWING QUESTIONS REFER ONLY TO CRIMES THAT HAPPENED TO YOU DURING 1976.

67. Did anyone force you or attempt to force you to engage in sexual activity against your will? Circle your response.

1. Yes
2. No

IF THE RESPONSE TO THE ABOVE QUESTION WAS NO PLEASE TURN TO PAGE 11.

19

IF YOUR RESPONSE TO THE ABOVE WAS YES, PLEASE ANSWER QUESTIONS 68 THROUGH 81.

68. Number of actual incidents during 1976.

69. Number of attempted incidents during 1976.

70. In what month did the incident(s) occur?

FOR THE REST OF THIS SECTION, REPORT ONLY DETAILS OF THE MOST SERIOUS INCIDENT. FOR EACH QUESTION CIRCLE THE ONE RESPONSE WHICH MOST ACCURATELY DESCRIBES THE INCIDENT.

71. Where did the most serious incident occur?

1. At my home
2. In someone else's home
3. In a residential area
4. In the country
5. In or near bar or lounge
6. In or near my hotel/motel room
7. In downtown area
8. Other please specify: _____

72. What type of force was used? (Circle as many as apply)

1. Verbal threats were used
2. Physical force was used
3. A weapon was used
4. Other specify: _____

73. Were you or anyone else mentally or psychologically injured?

1. No, no mental or psychological injuries
2. Yes, some mental or psychological injuries, but no treatment was required
3. Yes, some mental or psychological injury, counseling and/or medical treatment was required
4. Yes, extensive mental, or psychological injuries, counseling and/or medical treatment was required.

74. Were there any physical injuries from the most serious assault?

1. No, no injuries at all
2. Yes, but no medical help required
3. Yes, medical first aid required
4. Yes, hospitalization for overnight or longer was required

75. Was the most serious incident reported?

1. Yes
2. No

76. If the most recent incident was not reported, circle the one most important reason you had for not reporting it.

1. Afraid of retaliation
2. Private or personal matter, did not want to report it
3. Did not want to take time-too inconvenient
4. Did not want to get involved
5. Police wouldn't want to be bothered
6. Nothing could be done-lack of proof
7. Did not think it important enough
8. Other specify: _____

77. What was the approximate cost of medical services and psychological services required as a result of the crime? Include expenses covered by insurance, medication, doctor bills and related medical examinations.

1. None needed
2. None sought due to expense
3. \$5-20
4. \$21-100
5. \$101-200
6. \$201-500

7. \$501-1000
8. \$1001-5000
9. Over \$5000

please specify: _____

78. How much time was lost as a result of the crime due to injury, reporting time, court processing, inconvenience, etc?

1. No time lost
2. Half day or less
3. One day
4. 1 to 2 days
5. 2 to 5 days
6. More than 5 days

please specify: _____

79. Was the offender eventually caught?

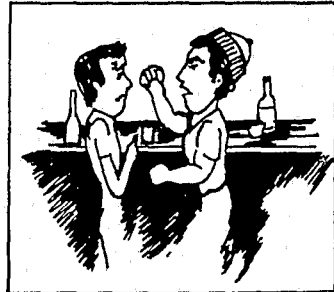
1. Yes
2. No
3. Don't know

80. How well did you know the offender(s)? (If more than one offender describe most well known).

1. Never knew who it was
2. A total stranger (never saw before)
3. Had seen before
4. An acquaintance
5. Knew well
6. Relative

81. Was the event just described an actual or attempted sexual assault?

1. Actual
2. Attempted



THE FOLLOWING QUESTIONS REFER ONLY TO CRIMES THAT HAPPENED TO YOU DURING 1976.

82. Did anyone attack or threaten to attack you with the purpose of inflicting bodily injury? Circle your response.

- 1. Yes, I was attacked or threatened
2. No, I was not attacked or threatened

IF THE RESPONSE TO THE ABOVE QUESTION WAS NO PLEASE TURN TO PAGE 13.

IF YOUR RESPONSE TO THE ABOVE WAS YES PLEASE ANSWER QUESTIONS 83 THROUGH 97.

83. Number of times actually assaulted during 1976.

84. Number of attempted assaults during 1976.

85. How many assaults or attempted assaults occurred during each month of 1976?

- January July
February August
March September
April October
May November
June December

FOR THE REST OF THIS SECTION, REPORT ONLY DETAILS OF THE MOST RECENT INCIDENT. FOR EACH QUESTION CIRCLE THE ONE RESPONSE WHICH MOST ACCURATELY DESCRIBES THE INCIDENT.

86. Where did the most recent incident occur?

- 1. At home
2. In someone else's home
3. In residential area
4. In the country
5. In or near bar or lounge
6. In or near hotel/motel room
7. In downtown area
8. At or near my place of work.

87. Was a weapon used?

- 1. Yes
2. No

88. If yes, what type of weapon was used?

- 1. Gun
2. Knife or sharp instrument
3. Club or blunt instrument
4. Other please specify: _____

89. Were there any physical injuries from the most recent assault?

- 1. No, no injuries at all
2. Yes, but no medical help required
3. Yes, medical first aid required
4. Yes, hospitalization for overnight or longer was required.

90. Were you or anyone else mentally or psychologically injured?

- 1. No, no mental or psychological injuries.

2. Yes, some mental or psychological injuries, but no treatment was required.

3. Yes, some mental or psychological injury, counseling and/or medical treatment was required.

4. Yes, extensive mental or psychological injuries, counseling and/or medical treatment was required.

91. What was the approximate cost of medical services and psychological services required as a result of the crime? Include expenses covered by insurance, medication, doctor bills and related medical examinations.

- 1. None needed
2. None sought due to expense
3. \$5-20
4. \$21-100
5. \$101-200
6. \$201-500
7. \$501-1000
8. \$1001-5000
9. Over \$5000
please specify: _____

92. How much time was lost as a result of the crime due to injury, reporting time, court processing, inconvenience, etc.?

- 1. No time lost
2. Half day or less
3. One day
4. 1 to 2 days
5. 2 to 5 days
6. More than 5 days
please specify: _____

93. Was the most recent incident reported?

- 1. Yes
2. No

94. If the most recent incident was not reported circle the one most important reason you had for not reporting it

- 1. Afraid of retaliation
2. Private or personal matter, did not want to report it
3. Did not want to take time-too inconvenient
4. Did not want to get involved
5. Police wouldn't want to be bothered
6. Nothing could be done-lack of proof
7. Did not think it important enough
8. Other-specify: _____

95. Was the offender eventually caught?

- 1. Yes
2. No
3. Don't know

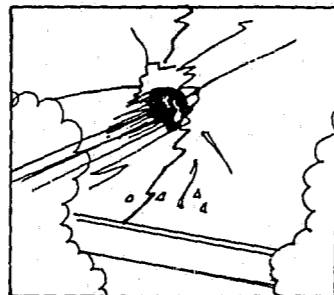
96. How well did you know the offender(s) in the most recent incident? If more than one offender describe most well known.

- 1. Never knew who it was
2. A total stranger (never saw before)
3. Had seen before
4. An acquaintance
5. Knew well
6. Relative

97. Was the event just described an actual or attempted assault?

- 1. Actual
2. Attempted





THE FOLLOWING QUESTIONS REFER ONLY TO CRIMES THAT HAPPENED TO YOU DURING 1976.

98. Did anyone willfully or maliciously deface or destroy any property belonging to you, (such as buildings, motor vehicles, livestock, fences, trees, shrubs, mail boxes, etc.)? Circle your response.

1. Yes
2. No

IF THE RESPONSE TO THE ABOVE QUESTION WAS NO PLEASE TURN TO PAGE 15.

IF YOUR RESPONSE TO THE ABOVE WAS YES, PLEASE ANSWER QUESTIONS 99 THROUGH 110.

___ 99. Number of times vandalism occurred during 1976.

___ 100. Number of incidents of vandalism you reported during 1976.

101. Please indicate the number of incidents during each month of 1976.

- | | |
|--------------|---------------|
| ___ January | ___ July |
| ___ February | ___ August |
| ___ March | ___ September |
| ___ April | ___ October |
| ___ May | ___ November |
| ___ June | ___ December |

FOR THE REST OF THIS SECTION, REPORT ONLY DETAILS OF THE MOST RECENT INCIDENT. FOR EACH QUESTION CIRCLE THE ONE RESPONSE WHICH MOST ACCURATELY DESCRIBES THE INCIDENT.

102. Describe the type of property that was vandalized in the most recent incident

103. Approximate cost of damage in the most recent incident.

1. Nothing was damaged
 2. \$5-20
 3. \$21-100
 4. \$101-200
 5. \$201-500
 6. \$501-1000
 7. \$1001-5000
 8. Over \$5000
- please specify: _____

104. Was the incident reported?

1. Yes
2. No

105. If the most recent vandalism was not reported circle the one most important reason you had for not reporting it

1. Afraid of retaliation
2. Private or personal matter, did not want to report it
3. Did not want to take time-too inconvenient
4. Did not want to get involved
5. Police wouldn't want to be bothered
6. Nothing could be done-lack of proof
7. Did not think it important enough
8. Other-specify: _____

106. Was the damaged property insured?

1. Yes
2. No
3. Don't know

107. How much time did you lose as a result of the crime due to injury, reporting time, court processing, inconvenience, etc.?

1. No time lost
 2. Half day or less
 3. One day
 4. 1 to 2 days
 5. 2 to 5 days
 6. More than 5 days
- please specify: _____

108. Was/were the offender(s) caught in the most recent incident?

1. Yes
2. No, not all offenders were caught
3. Don't know

109. How well did you know the offender(s) in the most recent incident? (If more than one offender describe the most well known.)

1. Did not see offender(s)
2. A total stranger (never saw before)
3. Had seen before
4. An acquaintance
5. Knew well
6. Relative

110. Was the event just described an actual or attempted vandalism?

1. Actual
2. Attempted

RESPONDENT PROFILE

- 111. Are you male or female?
 - 1. Male
 - 2. Female
- 112. How old were you on your last birthday?

_____ years old
- 113. What is your race or ethnic background?
 - 1. White
 - 2. Indian
 - 3. Black
 - 4. Mexican or Spanish
 - 5. Other (specify: _____)
- 114. In what income bracket was your total family income for 1976 (last year) before taxes?
 - 1. 3,000 yearly or less
 - 2. 3,000 to 5,999 yearly
 - 3. 6,000 to 9,999
 - 4. 10,000 to 14,999
 - 5. 15,000 to 24,999
 - 6. 25,000 to 49,999
 - 7. Over 50,000 yearly income
- 115. What is the highest grade in school that you have completed?
 - 1. 1st to 8th grade
 - 2. 8th to 11th grade
 - 3. High school graduate or GED
 - 4. Vocational-technical school
 - 5. College 1 to 3 years
 - 6. College graduate
 - 7. Professional or advanced degree beyond 4 years of college.
- 116. How many people including yourself live in your house or apartment?

_____ people
- 117. How long have you lived at your present address?
 - 1. 1 year or less
 - 2. 1 to 2 years
 - 3. 2 to 5 years
 - 4. 5 to 10 years
 - 5. Over 10 years

22

- 118. During the past year, what was your work status?
 - 1. Employment outside home
 - 2. Have a commercial business at home
 - 3. Farming or ranching
 - 4. Housewife (or homemaker)
 - 5. Student
 - 6. Unemployed
 - 7. Disabled
 - 8. Retired
 - 9. Other specify: _____
- 119. Is your zip code on the mailing address for this survey correct?
 - 1. Yes the zip code is correct
 - 2. No, my correct zip code is _____
- 120. Do you live within the boundaries of a town?
 - 1. Yes
 - 2. No
- 121. Which of the following best describes your home.
 - 1. House in town
 - 2. Apartment complex of from 1-6 units
 - 3. Rural non-farm house
 - 4. Farm house
 - 5. Apartment in building with six or more units
 - 6. Other, please specify: _____
- 122. What is your relationship to the head of this household?
 - 1. I am head of this household
 - 2. Spouse of head of household
 - 3. Daughter or son of head of household
 - 4. Other relative
 - 5. Non-relative

OPINIONS ABOUT CRIME

- 123. Do you feel safe in your home at night?
 - 1. Yes
 - 2. No
 - 3. No opinion
- 124. How safe do you feel in your community compared to about 6 years ago (1970)?
 - 1. Safer now
 - 2. No difference
 - 3. Less safe now
 - 4. Did not live here in 1970
- 125. Within the past two years, do you think crime in your community has increased, decreased, or remained about the same?
 - 1. Crime has increased
 - 2. Crime has decreased
 - 3. Crime has remained about the same
- 126. Do you believe that there is a serious drug problem in your community?
 - 1. Yes
 - 2. No
 - 3. No opinion
- 127. How would you rate the job done by your local law enforcement officials?
 - 1. Excellent
 - 2. Good
 - 3. Fair
 - 4. Poor
 - 5. No opinion
- 128. How would you rate the job done by South Dakota judges?
 - 1. Excellent
 - 2. Good
 - 3. Fair
 - 4. Poor
 - 5. No opinion

- 129. Do you believe that each crime should have a previously agreed upon penalty or sentence, so that a person convicted of a crime should automatically receive that sentence?
 - 1. Yes
 - 2. No
 - 3. No opinion

Comments: _____
- 130. Do you believe that innocent victims of violent crimes should be compensated or reimbursed for their loss or injury?
 - 1. Yes
 - 2. No (if NO, skip question 131)
 - 3. No opinion (If NO OPINION, skip question 131)

Comments: _____
- 131. Do you believe that the reimbursement of innocent victims of violent crimes should come from state funds?
 - 1. Yes
 - 2. No
 - 3. No opinion

Comments: _____
- 132. Do you believe that restrictions on the ownership of handguns (pistols) in South Dakota would decrease the amount of crime?
 - 1. Yes
 - 2. No
 - 3. No opinion

Comments: _____

VICTIMIZATION VARIABLE IDENTIFICATION AND LAYOUT

Question #	Variable Name	Card #	Column Location	Description of Variable
	CASE	1	1-4	Range 1-5059, 6001-6524
	Card 1	1	5	Card Number = 1
	TOWN	1	6-8	Town number according to town dex
	CONUM	1	9-10	County Number, Ordered within Dist.
	DIST	1	11	District Number (Planning Dist.)
	POP	1	12-16	Population of town (1975 est.)
	VICT	1	17	0-Not Victimized, 1-Victimized
	DAY	1	18-19	Day Quest. was returned
Variables R1 to R18 pertain to Robbery only (Refer to questionnaire for Interpretation of Responses)				
1	R1	1	20	Did Robbery occur 1) yes 2) no
2	R2	1	21-22	# Actual Robberies during 1976
3	R3	1	23-24	# Attempted Robberies during 1976
4	R401	1	25	# of incidents in Jan.
Feb.	R402	1	26	# of incidents in Feb.
March	R403	1	27	# of incidents in March
April	R404	1	28	# of incidents in April
May	R405	1	29	# of incidents in May
June	R406	1	30	# of incidents in June
July	R407	1	31	# of incidents in July
Aug.	R408	1	32	# of incidents in Aug.
Sept.	R409	1	33	# of incidents in Sept.
Oct.	R410	1	34	# of incidents in Oct.
Nov.	R411	1	35	# of incidents in Nov.
Dec.	R412	1	36	# of incidents in Dec.
5	R5	1	37	Type of weapon
6	R6	1	38	Where crime occurred

VICTIMIZATION VARIABLE IDENTIFICATION AND LAYOUT

Question #	Variable Name	Card #	Column Location	Description of Variable
7	R7	1	39	Dollar value of stolen property
8	R8	1	40	Was property insured
9	R9	1	41	Was anything recovered
10	R10	1	42	Was incident reported
11	R11	1	43	Why not reported
12	R12	1	44	Physical injury
13	R13	1	45	Mental injury
14	R14	1	46-47	Cost of med. and psycho. service
15	R15	1	48	Time lost
16	R16	1	49	Were offenders caught
17	R17	1	50	Know offender
18	R18	1	51	Actual attempt
Variables B 19 to B 35 pertain to Burglary only (Refer to questionnaire for Interpretation of Responses)				
19	B19	1	52	Were you Burg.
20	B20	1	53-54	# Actual Burg.
21	B21	1	55-56	# Attempted Burg.
22 Jan.	B2201	1	57	# of Actual or attempts Jan.
Feb.	B2202	1	58	# of Actual or attempts Feb.
March	B2203	1	59	# of Actual or attempts March
April	B2204	1	60	# of Actual or attempts April
May	B2205	1	61	# of Actual or attempts May
June	B2206	1	62	# of Actual or attempts June
July	B2207	1	63	# of Actual or attempts July
Aug.	B2208	1	64	# of Actual or attempts Aug.
Sept.	B2209	1	65	# of Actual attempts Sept.
Oct.	B2210	1	66	# of Actual attempts Oct.

VICTIMIZATION VARIABLE IDENTIFICATION AND LAYOUT

Question #	Variable Names	Card #	Column Location	Description of Variable
Nov.	B2211	1	67	# of Actual or attempts Nov.
Dec.	B2212	1	68	# of Actual or attempts Dec.
23	B23	1	69	Area Burglarized
24	B24	1	70	Dollar value
25	B25	1	71	Was incident reported
26	B26	1	72	Why not reported
27	B27	1	73	Anything recovered
28	B28	1	74	Was property insured
29	B29	1	75	Physical
30	B30	1	76	Mental injury
31	B31	1	77-78	Cost of Med. and Psycho. services
32	B32	1	79	Time lost
33	B33	1	80	Were offenders caught
	CASE #	ALL	1-4	Same as Questionnaire #
	CARD2	2	5	Car # 2
34	B34	2	6	Know offender
35	B35	2	7	Actual or attempt
Variables MV 36 to MV 51 pertain to Motor Vehicle Theft only (Refer to questionnaire for Interpretation of Responses)				
36	MV 36	2	8	Victim of MV Theft
37	MV 37	2	9-10	# Actual
38	MV 38	2	11-12	# Attempts
39 Jan.	MV 3901	2	13	# of incidents in Jan.
Feb.	MV 3902	2	14	# of incidents in Feb.
March	MV 3903	2	15	# of incidents in March
April	MV 3904	2	16	# of incidents in April
May	MV 3905	2	17	# of incidents in May
June	MV 3906	2	18	# of incidents in June
July	MV 3907	2	19	# of incidents in July

VICTIMIZATION VARIABLE IDENTIFICATION AND LAYOUT

Question #	Variable Names	Card #	Column Location	Description of Variable
Aug.	MV3908	2	20	# of incidents in Aug.
Sept.	MV3909	2	21	# of incidents in Sept.
Oct.	MV3910	2	22	# of incidents in Oct.
Nov.	MV3911	2	23	# of incidents in Nov.
Dec.	MV3912	2	24	# of incidents in Dec.
40	MV40	2	25	Type of MV
41	MV41	2	26	Where stolen
42	MV42	2	27	Were keys in MV
43	MV43	2	28	Was MV recovered
44	MV44	2	29	Where thieves caught
45	MV45	2	30	Was it reported
46	MV46	2	31	Why not
47	MV47	2	32	Dollar value
48	MV48	2	33	Time lost
49	MV49	2	34	Know offender
50	MV50	2	35	Was MV insured
51	MV51	2	36	Actual or attempt
Variables T52 50 T66 pertain to Theft only (Refer to questionnaire for Interpretation of Responses)				
52	T52	2	37	Was there a theft
53	T53	2	38-39	# Actual
54	T54	2	40-41	# Attempted
55 Jan.	T5501	2	42	# incident in Jan.
Feb.	T5502	2	43	# incident in Feb.
March	T5503	2	44	# incident in March
April	T5504	2	45	# incident in April
May	T5505	2	46	# incident in May
June	T5506	2	47	# incident in June

VICTIMIZATION VARIABLE IDENTIFICATION AND LAYOUT

Question #	Variable Names	Card #	Column Location	Description of Variable
July	T5507	2	48	# incident in July
Aug.	T5508	2	49	# incident in Aug.
Sept.	T5509	2	50	# incident in Sept.
Oct.	T5510	2	51	# incident in Oct.
Nov.	T5511	2	52	# incident in Nov.
Dec.	T5512	2	53	# incident in Dec.
56	T56	2	54	Where did theft occur
57	T57	2	55-56	Type of property taken
58	T58	2	57	Dollar value
59	T59	2	58	Reported?
60	T60	2	59	Why not reported
61	T61	2	60	Was anything recovered
62	T62	2	61	Was property insured
63	T63	2	62	Time lost
64	T64	2	63	Were thieves caught
65	T65	2	64	Know offenders
66	T66	2	65	Actual or attempt
Variables SA67 to SA81 pertain to sexual assault (Refer to questionnaire for Interpretation of Responses)				
67	SA67	2	66	Were you sexually assaulted
68	SA68	2	67-68	# Actual
69	SA69	2	69-70	# Attempted
70 Jan.	SA7001	2	71	# incidents in Jan.
Feb.	SA7002	2	72	# incidents in Feb.
March	SA7003	2	73	# incidents in March
April	SA7004	2	74	# incidents in April
May	SA7005	2	75	# incidents in May
June	SA7006	2	76	# incidents in June
July	SA7007	2	77	# incidents in July

VICTIMIZATION VARIABLE IDENTIFICATION AND LAYOUT

Question #	Variable Name	Card #	Column Location	Description of Variable
Aug.	SA7008	2	78	# incidents in Aug.
Sept.	SA7009	2	79	# incidents in Sept.
Oct.	SA7010	2	80	# incidents in Oct.
Nov.	SA7011	3	6	# incidents in Nov.
Dec.	SA7012	3	7	# incidents in Dec.
	CASE	3	1-4	Questionnaire Number
	CARD3	3	5	Card No. 3
71	SA71	3	8	Where SA occurred
72	SA72	3	9	Type of force
73	SA73	3	10	Psyc. injury
74	SA74	3	11	Phys. injury
75	SA75	3	12	Was it reported
76	SA76	3	13	Why not reported
77	SA77	3	14	Cost of med. psyc. services
78	SA78	3	15	Time lost
79	SA79	3	16	Was offender caught
80	SA80	3	17	Know offender
81	SA81	3	18	Actual or attempt
Variables A82 to A97 pertain to assault only (Refer to questionnaire for Interpretation of Responses)				
82	A82	3	19	Did anyone assault
83	A83	3	20-21	# Actual
84	A84	3	22-23	# Attempted
Jan.	A8501	3	24	# incidents in Jan.
Feb.	A8502	3	25	# incidents in Feb.
March	A8503	3	26	# incidents in March
April	A8504	3	27	# incidents in April
May	A8505	3	28	# incidents in May

VICTIMIZATION VARIABLE IDENTIFICATION AND LAYOUT

Question #	Variable Name	Card #	Column Location	Description of Variable
June	A8506	3	29	# incidents in June
July	A8507	3	30	# incidents in July
Aug.	A8508	3	31	# incidents in Aug.
Sept.	A8509	3	32	# incidents in Sept.
Oct.	A8510	3	33	# incidents in Oct.
Nov.	A8511	3	34	# incidents in Nov.
Dec.	A8512	3	35	# incidents in Dec.
86	A86	3	36	Where incident occurred
87	A87	3	37	Was weapon used
88	A88	3	38	Type of weapon
89	A89	3	39	Physical injury
90	A90	3	40	Mental injury
91	A91	3	41	Cost of Med. Psyc. services
92	A92	3	42	Time lost
93	A93	3	43	Was assault reported
94	A94	3	44	Why not
95	A95	3	45	Was offender caught
96	A96	3	46	Know offender
97	A97	3	47	Actual or attempted
Variables V98 to V110 pertain to vandalism only (Refer to questionnaire for Interpretation of Responses)				
98	V98	3	48	Were you vandalized
99	V99	3	49-50	# incidents
100	V100	3	51-52	# incidents reported
101 Jan.	V10101	3	53	# occurring in Jan.
Feb.	V10102	3	54	# occurring in Feb.
March	V10103	3	55	# occurring in March
April	V10104	3	56	# occurring in April

VICTIMIZATION VARIABLE IDENTIFICATION AND LAYOUT

Question #	Variable Name	Card #	Column Location	Description of Variable
May	V10105	3	57	# occurring in May
June	V10106	3	58	# occurring in June
July	V10107	3	59	# occurring in July
Aug.	V10108	3	60	# occurring in Aug.
Sept.	V10109	3	61	# occurring in Sept.
Oct.	V10110	3	62	# occurring in Oct.
Nov.	V10111	3	63	# occurring in Nov.
Dec.	V10112	3	64	# occurring in Dec.
102	V102	3	65-66	Property vandalized
103	V103	3	67	Cost of damage
104	V104	3	68	Was incident reported
105	V105	3	69	Why not
106	V106	3	70	Was property insured
107	V107	3	71	Time lost
108	V108	3	72	Were offenders caught
109	V109	3	73	Know offenders
110	V110	3	74	Actual or attempted
	CASE	4	1-4	Questionnaire #4
	CARD4	4	5	CARD #4

Variables RP111 to RP122 pertain to the Respondent Profile (Refer to questionnaire for Interpretation of Responses)

111	RP111	4	6	Male or Female
112	RP112	4	7-8	Age
113	RP113	4	9	Ethnic background
114	RP114	4	10	Income
115	RP115	4	11	Education
116	RP116	4	12-13	People in household

VICTIMIZATION VARIABLE IDENTIFICATION AND LAYOUT

Question #	Variable Name	Card #	Column Location	Description of Variable
117	RP117	4	14	Years at present address
118	RP118	4	15	Work status
120	RP120	4	16	Boundaries of a town
121	RP121	4	17	Type of home
122	RP122	4	18	Relationship to head of household
Variables OP123 to OP132 pertain to Respondent Opinions (Refer to questionnaire for Interpretation of Responses)				
123	OP123	4	19	Feel safe at home at night
124	OP124	4	20	Safe compared to 6 years ago
125	OP125	4	21	Crime has increased or decreased
126	OP126	4	22	Drug problem
127	OP127	4	23	Rate LE officials
128	OP128	4	24	Rate Judges
129	OP129	4	25	Uniform Penalty
130	OP130	4	26	Victims Compensation
131	OP131	4	27	State funds for victims
132	OP132	4	28	Gun restrictions/reduced crime

VICTIMIZATION VARIABLE IDENTIFICATION AND LAYOUT

Variables added to SPSS File	Description (abbreviated)
	<u>Actual plus attempts for:</u>
R.INCDT	Robbery
B.INCDT	Burglary
MV.INCDT	Motor Vehicle Theft
T.INCDT	Theft
SA.INCDT	Sexual Assault
A.INCDT	Assault
V.INCDT	Vandalism
	<u>The Variables in this group are coded as follows:</u>
	(0) Non Victim (1) Reported Actual (2) Reported Attempted (3) Non reported Actual (4) Non reported for:
RSTAT	Robbery
BSTAT	Burglary
MVSTAT	Motor Vehicle Theft
TSTAT	Theft
SASTAT	Sexual Assault
ASTAT	Assault
VSTAT	Vandalism
	<u>Type of Victim</u>
	(0) no crime (1) Personal (2) Property (3) Both
CRIMETYP	
POPSTAT	(1) Rural (2) Urban

Reference 7
VARIABLE CROSS REFERENCE

KEY	VARIABLES						
	ROB	BURG	MV THEFT	OTHER THEFT	SEXUAL ASSAULT	ASSAULT	VANDALISM
Victimized	R1	B19	MV36	T52	SA67	A82	V98
# Actual	R2	B20	MV37	T53	SA68	A83	V99
# Attempted	R3	B21	MV38	T54	SA69	A84	V100
# Incidents in							
January	R401	B2201	MV3901	T5501	SA7001	A8501	V10101
February	R402	B2202	MV3902	T5502	SA7002	A8502	V10102
March	R403	B2203	MV3903	T5503	SA7003	A8503	V10103
April	R404	B2204	MV3904	T5504	SA7004	A8504	V10104
May	R405	B2205	MV3905	T5505	SA7005	A8505	V10105
June	R406	B2206	MV3906	T5506	SA7006	A8506	V10106
July	R407	B2207	MV3907	T5507	SA7007	A8507	V10107
August	R408	B2208	MV3908	T5508	SA7008	A8508	V10108
September	R409	B2209	MV3909	T5509	SA7009	A8509	V10109
October	R410	B2210	MV3910	T5510	SA7010	A8510	V10110
November	R411	B2211	MV3911	T5511	SA7011	A8511	V10111
December	R412	B2212	MV3912	T5512	SA7012	A8512	V10112
<u>Weapon</u>	R5				SA72	A88	
<u>Where crime occurred</u>	R6	B23	MV41	T56	SA71	A86	
<u>Cost of property stolen or damaged</u>	R7	B24	MV47	T58			V103
<u>Type property stolen or damaged</u>			MV40	T57			V102
<u>Property Insured</u>	R8	B28	MV50	T62			V106
<u>Property recovered</u>	R9	B27	MV43	T61			
<u>Was incident reported</u>	R10	B25	MV45	T59	SA75	A93	V104
<u>Why not reported</u>	R11	B26	MV46	T60	SA76	A94	V105
<u>Physical injury</u>	R12	B29			SA74	A89	
<u>Psychological injury</u>	R13	B30			SA73	A90	
<u>Cost of Med. and Psycho. services</u>	R14	B31			SA77	A91	
<u>Time lost</u>	R15	B32	MV48	T63	SA78	A92	V107
<u>Offender caught</u>	R16	B33	MV44	T64	SA79	A95	V108
<u>Know offenders</u>	R17	B34	MV49	T65	SA80	A96	V109
<u>Act/or attempted</u>	R18	B35	MV51	T66	SA81	A97	V110
<u>Keys in vehicle</u>			MV42				
<u>Was a weapon</u>						A87	
<u>Number of Actuals & Attempts</u>	R. INCDT	B. INCDT	MV. INCDT	T. INCDT	SA. INCDT	A. INCDT	V. INCDT

OTHER VARIABLES

<u>KEY</u>	<u>VARIABLES</u>
Respondent Profile	RP111 to RP122
Opinions	OP123 to OP132
Crime Types: Personal/Property	CRIMETYP
Type of Residence: Rural/Urban	POPSTAT

Reference 8. Geographic Codings

CODING OF TOWNS, COUNTIES AND PLANNING DISTRICTS IN SOUTH DAKOTA

Town Number (Town)*	County Number (Conum)*	District Number (Dist)*	Town Population (Pop)*	Town	County
1	30	4	28,300	Aberdeen	Brown
2	20	3	25	Academy	Charles Mix
3	52	5	156	Agar	Sully
4	55	5	46	Akaska	Walworth
5	5	1	26	Albee	Grant
6	16	2	627	Alcester	Union
7	24	3	598	Alexandria	Hanson
8	57	6	120	Allen	Bennett
9	26	3	307	Alpena	Jerauld
10	4	1	54	Altamont	Deuel
11	34	4		Ames	Hand
12	36	4	80	Amherst	Marshall
13	31	4	138	Andover	Day
14	53	5	400	Antelope	Todd
15	60	6	14	Ardmore	Fall River
16	7	1	954	Arlington	Kingsbury
17	1	1	30	Arlington Beach	Brookings
18	22	3	925	Armour	Douglas
19	58	6		Arpan	Butte
20	40	5	73	Artas	Campbell
21	27	3	277	Artesian	Sanborn
22	38	4	137	Ashton	Spink
23	4	1	153	Astoria	Deuel
24	38	4	60	Athol	Spink
25	1	1	237	Aurora	Brookings
26	17	3	40	Aurora Center	Aurora
27	18	3	610	Avon	Bon Homme
28	7	1	122	Badger	Kingsbury
29	14	2	364	Baltic	Minnehaha
30	7	1	48	Bancroft	Kingsbury
31	30	4	70	Barnard	Brown
32	66	6	135	Batesland	Shannon
33	30	4	175	Bath	Brown
34	64	6		Bear Butte	Meade
35	42	5		Bear Creek	Dewey
36	25	3		Beardsley	Hutchinson
37	32	4		Beebe	Edmunds
38	58	6	4,236	Belle Fourche	Butte
39	62	6	96	Belvidere	Jackson
40	4	1	35	Bemis	Deuel
41	14	2		Benclare	Minnehaha
42	16	2	1,655	Beresford	Union
43	12	2	1,655	Beresford	Lincoln
44	59	6		Berne	Custer
45	64	6	15	Bethlehem	Meade
46	21	3		Betts	Davison

TABLE

CODING OF TOWNS, COUNTIES AND PLANNING DISTRICTS IN SOUTH DAKOTA

Town Number (Town)*	County Number (Conum)*	District Number (Dist)*	Town Population (Pop)*	Town	County
47	65	6			
48	16	2	15	Big Bend	Pennington
49	5	1	631	Big Springs	Union
50	19	3	10	Big Stone City	Grant
51	49	5	406	Bijou Hills	Brule
52	64	6	400	Bison	Perkins
53	63	6	30	Black Hawk	Meade
54	33	4	30	Blacktail	Lawrence
55	44	5	445	Blumengard Colony	Faulk
56	23	3	354	Blunt	Hughes
57	18	3	60	Bonesteel	Gregory
58	29	4	50	Bon Homme Colony	Bon Homme
59	20	3		Bonilla	Beadle
60	32	4	667	Bovee	Charles Mix
61	65	6	607	Bowdle	Edmunds
62	2	1	157	Box Elder	Pennington
63	14	2	1,543	Bradley	Clark
64	14	2		Brandon	Minnehaha
65	14	2		Brandon Park	Minnehaha
66	4	1	132	Brandon Terrace	Minnehaha
67	38	4	94	Brandt	Deuel
68	56	5	30	Brentford	Spink
69	13	2	633	Bridger	Ziebach
70	31	4	470	Bridgewater	McCook
71	36	4	1,465	Bristol	Day
72	29	4	45	Britton	Marshall
73	1	1	13,713	Broadland	Beadle
74	1	1	217	Brookings	Brookings
75	6	1	502	Bruce	Brookings
76	61	6	393	Bryant	Hamlin
77	59	6	155	Buffalo	Harding
78	14	2		Buffalo Gap	Custer
79	41	5	300	Buffalo Trading Post	Minnehaha
80	11	2	100	Bullhead	Corson
81	99	6		Burbank	Clay
82	23	3	892	Burdock	
83	1	1	65	Burke	Gregory
84	31	4	38	Bushnell	Brookings
85	62	6		Butler	Day
86	61	6	150	Cactus Flat	Jackson
87	13	2	636	Camp Crook	Harding
88	44	5		Canistota	McCook
89	9	1	204	Canning	Hughes
90	12	2	2,665	Canova	Miner
91	46	5	15	Canton	Lincoln
92	65	6	35	Capa	Jones
				Caputa	Pennington

TABLE

CODING OF TOWNS, COUNTIES AND PLANNING DISTRICTS IN SOUTH DAKOTA

Town Number (Town)*	County Number (Conum)*	District Number (Dist)*	Town Population (Pop)*	Town	County
93	2	1	35	Carpenter	Clark
94	54	5	17	Carter	Tripp
95	9	1	362	Carthage	Miner
96	58	6		Castle Rock	Butte
97	6	1	523	Castlewood	Hamlin
98	29	4	134	Cavour	Beadle
99	48	5	10	Cedarbutte	Mellette
100	13	2		Center	McCook
101	15	2	20	Center Point	Turner
102	15	2	910	Centerville	Turner
103	63	6	188	Central City	Lawrence
104	19	3	2,626	Chamberlain	Brule
105	64	6		Champion Siding	Meade
106	15	2	220	Chancellor	Turner
107	8	1	100	Chautauqua	Lake
108	33	4	45	Chelsea	Faulk
109	56	5	300	Cherry Creek	Ziebach
110	8	1	250	Chester	Lake
111	63	6		Cheyenne Crossing	Lawrence
112	37	4	100	Claire City	Roberts
113	30	4	214	Claremont	Brown
114	2	1	1,356	Clark	Clark
115	38	4	120	Clark County	Spink
116	25	3	15	Clayton	Hutchinson
117	4	1	1,157	Clear Lake	Deuel
118	54	5	15	Clearfield	Tripp
119	10	1	456	Colman	Moody
120	54	5	375	Colome	Tripp
121	14	2	601	Colton	Minnehaha
122	30	4	240	Columbia	Brown
123	14	2		Commerce	Minnehaha
124	65	6		Conata	Pennington
125	38	4	279	Conde	Spink
126	37	4	133	Corona	Roberts
127	22	3	615	Corsica	Douglas
128	14	2	70	Corson	Minnehaha
129	62	6	16	Cottonwood	Jackson
130	31	4	15	Crandall	Day
131	32	4		Craven	Edmunds
132	59	6	15	Crazy Horse	Custer
133	65	6	5	Creighton	Pennington
134	33	4	224	Cresbard	Faulk
135	65	6		Creston	Pennington
136	2	1	65	Crocker	Clark
137	14	2	240	Crooks	Minnehaha
138	26	3		Crow Lake	Jerauld

TABLE

CODING OF TOWNS, COUNTIES AND PLANNING DISTRICTS IN SOUTH DAKOTA

Town Number (Town)*	County Number (Conum)*	District Number (Dist)*	Town Population (Pop)*	Town	County
139	59	6	1,597	Custer	Custer
140	27	3		Cuthbert	Sanborn
141	37	4		Dahlberg	Roberts
142	23	3	233	Dallas	Gregory
143	64	6		Dalzell	Meade
144	20	3	88	Dante	Charles Mix
145	15	2	101	Davis	Turner
146	44	5	101	De Grey	Hughes
147	7	1	1,336	De Smet	Kingsbury
148	63	6	2,400	Deadwood	Lawrence
149	14	2	1,991	Dell Rapids	Minnehaha
150	22	3	75	Delmont	Douglas
151	6	1	75	Dempster	Hamlin
152	66	6	10	Denby	Shannon
153	59	6		Dewey	Custer
154	25	3	167	Dimock	Hutchinson
155	23	3	15	Dixon	Gregory
156	38	4	430	Doland	Spink
157	15	2	60	Dolton	Turner
158	46	5	200	Draper	Jones
159	63	6		Dumont	Lawrence
160	56	5	523	Dupree	Ziebach
161	38	4		Duxbury	Spink
162	42	5	530	Eagle Butte	Dewey
163	52	5		Eakin	Sully
164	14	2	75	East Sioux Falls	Minnehaha
165	36	4	132	Eden	Marshall
166	60	6	1,174	Edgemont	Fall River
167	10	1	281	Egan	Moody
168	16	2	1,372	Elk Point	Union
169	1	1	541	Elkton	Brookings
170	14	2	60	Ellis	Minnehaha
171	63	6	100	Elmore	Lawrence
172	64	6		Elm Springs	Meade
173	25	3	100	Elm Springs Colony	Hutchinson
174	2	1		Elrod	Clark
175	24	3	452	Emery	Hanson
176	58	6		Empire	Butte
177	63	6		Englewood	Lawrence
178	64	6	15	Enning	Meade
179	24	3	70	Epiphany	Hanson
180	9	1	70	Epiphany	Miner
181	7	1	106	Erwin	Kingsbury
182	7	1	19	Esmond	Kingsbury
183	6	1	624	Estelline	Hamlin
184	21	3	309	Ethan	Davison

TABLE

CODING TOWNS, COUNTIES AND PLANNING DISTRICTS IN SOUTH DAKOTA

Town Number (Town)*	County Number (Conum)*	District Number (Dist)*	Town Population (Pop)*	Town	County
185	35	4	1,547	Eureka	McPherson
186	65	6		Everist Spur	Pennington
187	59	6	50	Fairburn	Custer
188	23	3	199	Fairfax	Gregory
189	64	6	5	Fairpoint	Meade
190	12	2	72	Fairview	Lincoln
191	64	6	576	Faith	Meade
192	63	6		Fantail	Lawrence
193	24	3	58	Farmer	Hanson
194	65	6	25	Farmingdale	Pennington
195	33	4	955	Faulton	Faulk
196	9	1	100	Fedora	Miner
197	30	4	80	Ferney	Brown
198	42	5	35	Firesteel	Dewey
199	10	1	2,027	Flandreau	Woody
200	14	2		Fleetwood	Minnehaha
201	3	1	175	Florence	Codington
202	16	2		Foley	Union
203	27	3	300	Forestburg	Sanborn
204	38	4	192	Frankfort	Spink
205	8	1		Franklin	Lake
206	30	4	359	Frederick	Brown
207	25	3	1,357	Freeman	Hutchinson
208	14	2	750	Froehlich Addition	Minnehaha
209	58	6	74	Fruitdale	Butte
210	64	6		Ft. Meade	Meade
211	51	5	1,448	Ft. Pierre	Stanley
212	23	3		Ft. Randall	Gregory
213	39	5	300	Ft. Thompson	Buffalo
214	24	3	101	Fulton	Hanson
215	63	6		Galena	Lawrence
216	38	4		Gallup	Spink
217	59	6		Game Lodge	Custer
218	39	5	100	Garden Valley	Buffalo
219	2	1	126	Garden City	Clark
220	14	2	847	Garretson	Minnehaha
221	4	1	366	Gary	Deuel
222	28	3	269	Gayville	Yankton
223	20	3	308	Geddes	Charles Mix
224	50	5	1,915	Gettysburg	Potter
225	56	5	5	Glad Valley	Ziebach
226	42	5	30	Glencross	Dewey
227	38	4	60	Glendale Colony	Spink
228	55	5	178	Glenham	Walworth
229	4	1	114	Goodwin	Deuel
230	50	5		Gorman	Potter

TABLE
CODING TOWNS, COUNTIES AND PLANNING DISTRICTS IN SOUTH DAKOTA

Town Number (Town)*	County Number (Conum)*	District Number (Dist)*	Town Population (Pop)*	Town	County
231	8	1	100	Graceville Colony	Lake
232	11	2		Greenfield	Clay
233	42	5	100	Green Grass	Dewey
234	35	4	10	Greenway	McPherson
235	20	3	125	Greenwood	Charles Mix
236	23	3	1,756	Gregory	Gregory
237	31	4	154	Grenville	Day
238	32	4		Gretna	Edmunds
239	30	4	1,021	Groton	Brown
240	3	1		Grover	Codington
241	54	5	40	Hamill	Tripp
242	37	4	15	Hammer	Roberts
243	63	6		Hanna	Lawrence
244	61	6		Harding	Harding
245	57	6	5	Harrington	Bennett
246	12	2	338	Harrisburg	Lincoln
247	22	3	80	Harrison	Douglas
248	44	5	184	Harrold	Hughes
249	14	2	800	Hartford	Minnehaha
250	37	4	40	Hartford Beach	Roberts
251	51	5	30	Hayes	Stanley
252	6	1	393	Hayti	Hamlin
253	14	2	725	Hayward Addition	Minnehaha
254	6	1	101	Hazel	Hamlin
255	30	4	407	Hecla	Brown
256	30	4	407	Hecla	Brown
257	3	1	182	Henry	Codington
258	64	6	5	Hereford	Meade
259	59	6	150	Hermosa	Custer
260	40	5	672	Herreid	Campbell
261	23	3	126	Herrick	Gregory
262	7	1	81	Hetland	Kingsbury
263	37	4		Hiawatha Beach	Roberts
264	49	5		Hidden Timber	Perkins
265	45	5	1,173	Hill City	Hyde
266	65	6	389	Hillhead	Pennington
267	36	4	15	Hillside	Marshall
268	22	3		Hillside Colony	Douglas
269	38	4	100	Hillsview	Spink
270	35	4	19	Hisega	McPherson
271	65	6		Hisle	Pennington
272	67	6		Hitchcock	Washabaugh
273	29	4	150	Holabird	Beadle
274	45	5	30	Holmquist	Hyde
275	31	4		Hooker	Day
276	15	2	20		Turner

TABLE
CODING TOWNS, COUNTIES AND PLANNING DISTRICTS IN SOUTH DAKOTA

Town Number (Town)*	County Number (Conum)*	District Number (Dist)*	Town Population (Pop)*	Town	County
277	58	6		Hoover	Butte
278	65	6		H O Siding	Pennington
279	32	4	437	Hosmer	Edmunds
280	60	6	4,434	Hot Springs	Fall River
281	30	4	100	Houghton	Brown
282	50	5	671	Hoven	Potter
283	9	1	1,175	Howard	Miner
284	64	6	5	Howes	Meade
285	11	2		Hub City	Clay
286	12	2	366	Hudson	Lincoln
287	30	4		Huffton	Brown
288	14	2	411	Humboldt	Minnehaha
289	15	2	399	Hurley	Turner
290	29	4	13,200	Huron	Beadle
291	29	4	50	Huron Colony	Beadle
292	54	5	50	Ideal	Tripp
293	60	6		Iglod	Fall River
294	65	6		Imlay	Pennington
295	62	6	81	Interior	Jackson
296	47	5	10	Iona	Lyman
297	32	4	1,187	Ipswich	Edmunds
298	11	2	461	Irene	Clay
299	28	3	461	Irene	Yankton
300	15	2	461	Irene	Turner
301	56	5	35	Iron Lightning	Ziebach
302	7	1	375	Iroquois	Kingsbury
303	29	4	375	Iroquois	Beadle
304	42	5	394	Isabel	Dewey
305	37	4		Jackson	Roberts
306	30	4		James	Brown
307	55	5	305	Java	Walworth
308	55	5		Java Junction	Walworth
309	16	2	474	Jefferson	Union
310	65	6		Johnson Siding	Pennington
311	65	6		Jolly Acres	Pennington
312	58	6		Jolly Dump	Butte
313	22	3		Joubert	Douglas
314	16	2		Junction City	Union
315	8	1	35	Junius	Lake
316	62	6	815	Kadoka	Jackson
317	3	1		Kampeska	Codington
318	25	3	130	Kaylor	Hutchinson
319	41	5	15	Keldron	Corson
320	41	5	100	Kenel	Corson
321	47	5	372	Kennebec	Lyman
322	54	5	5	Keyapaha	Tripp

TABLE

CODING TOWNS, COUNTIES AND PLANNING DISTRICTS IN SOUTH DAKOTA

Town Number (Town)*	County number (Conum)*	District Number (Dist)*	Town Population (Pop)*	Town	County
323	65	6	272	Keystone	Pennington
324	36	4	100	Kidder	Marshall
325	19	3	825	Kimball	Brule
326	18	3	10	Kingsburg	Bon Homme
327	63	6		Kirk	Lawrence
328	43	5		Kirley	Haakon
329	6	1	143	Kones Corner	Hamlin
330	3	1	143	Kranzburg	Codington
331	66	6	100	Kyle	Shannon
332	5	1	90	La Bolt	Grant
333	42	5	100	La Plant	Dewey
334	61	6	5	Ladner	Harding
335	20	3	948	Lake Andes	Charles Mix
336	10	1		Lake Campbell Res.	Moody
337	36	4	44	Lake City	Marshall
338	6	1	393	Lake Norden	Hamlin
339	7	1	812	Lake Preston	Kingsbury
340	26	3	94	Lane	Jerauld
341	36	4	328	Langford	Marshall
342	42	5	30	Lantry	Dewey
343	14	2		Lawrence Spur	Minnehaha
344	63	6	5,420	Lead	Lawrence
345	50	5	182	Lebanon	Potter
346	49	5	1,997	Lemmon	Perkins
347	12	2	1,487	Lennox	Lincoln
348	35	4	787	Leola	McPherson
349	28	3	181	Lesterville	Yankton
350	27	3	201	Letcher	Sanborn
351	14	2		Level Siding	Minnehaha
352	59	6		Lien	Custer
353	31	4	62	Lily	Day
354	37	4		Linden Beach	Roberts
355	41	5	300	Little Eagle	Corson
356	49	5	20	Lodgepole	Perkins
357	10	1		Lone Tree	Moody
358	35	4	128	Long Lake	McPherson
359	35	4	140	Long Lake Colony	McPherson
360	67	6	15	Long Valley	Wahabauh
361	21	3	45	Loomis	Davison
362	47	5	300	Lower Brule	Lyman
363	55	5	35	Lowry	Walworth
364	32	4	10	Loyalton	Edmunds
365	23	3	25	Lucas	Gregory
366	61	6	5	Ludlow	Harding
367	47	5		Lyman	Lyman
368	14	2	90	Lyons	Minnehaha

TABLE

CODING TOWNS, COUNTIES AND PLANNING DISTRICTS IN SOUTH DAKOTA

Town Number (Town)*	County Number (Conum)*	District Number (Dist)*	Town Population (Pop)*	Town	County
369	8	1	6,315	Madison	Lake
370	35	4		Madra	McPherson
371	37	4		Madsen Beach	Roberts
372	41	5	15	Mahto	Corson
373	7	1	20	Manchester	Kingsbury
374	66	6	150	Manderson	Shannon
375	38	4	150	Mansfield	Spink
376	30	4	150	Mansfield	Brown
377	64	6	10	Marcus	Meade
378	25	3	30	Marcy Colony	Hutchinson
379	60	6		Marietta	Fall River
380	15	2	844	Marion	Turner
381	36	4		Marlow	Marshall
382	57	6	1,248	Martin	Bennett
383	20	3	100	Marty	Charles Mix
384	5	1	65	Marvin	Grant
385	64	6		Maurine	Meade
386	25	3	75	Maxwell Colony	Hutchinson
387	28	3	25	Mayfield	Yankton
388	16	2	600	McCook Lake	Union
389	41	5	563	McIntosh	Corson
390	41	5	863	McLughlin	Corson
391	49	5	15	Meadow	Perkins
392	11	2	120	Meckling	Clay
393	38	4	199	Mellette	Spink
394	25	3	796	Menno	Hutchinson
395	43	5	270	Midland	Haakon
396	28	3	25	Midway	Yankton
397	5	1	3,727	Milbank	Grant
398	43	5	10	Milesville	Haakon
399	54	5	10	Millboro	Tripp
400	34	4	50	Miller	Hand
401	34	4	50	Miller Dale Colony	Hand
402	25	3	25	Milltown	Hutchinson
403	32	4	35	Mina	Edmunds
404	60	6		Minnekahta	Fall River
405	33	4	50	Miranda	Faulk
406	53	5	739	Mission	Todd
407	28	3	161	Mission Hill	Yankton
408	51	5	5	Mission Ridge	Stanley
409	21	3	14,000	Mitchell	Davison
410	55	5	4,545	Mobridge	Walworth
411	15	2	134	Monroe	Turner
412	13	2	377	Montrose	McCook
413	41	5		Moreau Junction	Corson
414	29	4	200	Morningside	Beadle

TABLE

CODING TOWNS, COUNTIES AND PLANNING DISTRICTS IN SOUTH DAKOTA

Town Number (Town)*	County Number (Conum)*	District Number (Dist)*	Town Population (Pop)*	Town	County
415	41	5	144	Morristown	Corson
416	48	5	20	Mosher	Mellette
417	40	5	164	Mound City	Campbell
418	21	3	398	Mt. Vernon	Davison
419	64	6	10	Mud Butte	Meade
420	46	5	865	Murdo	Jones
421	65	6		Murphy	Pennington
422	65	6		Mystic	Pennington
423	15	2		Naomi Spur	Turner
424	28	3		Napa	Yankton
425	2	1	38	Naples	Clark
426	63	6	40	Nemo	Lawrence
427	36	4	12	Newark	Marshall
428	37	4	258	New Effington	Roberts
429	22	3	120	New Holland	Douglas
430	65	6	416	New Underwood	Pennington
431	58	6	664	Newell	Butte
432	59	6		Nihart	Custer
433	58	6	157	Nisland	Butte
434	16	2		Nora	Union
435	33	4		Norbeck	Faulk
436	48	5	70	Norris	Mellette
437	42	5	1,351	North Eagle Butte	Dewey
438	16	2	860	North Sioux City	Union
439	38	4	119	Northville	Spink
440	14	2	800	Norton Acres	Minnehaha
441	43	5		Nowlin	Haakon
442	8	1	85	Nunda	Lake
443	53	5	150	O Kreek	Todd
444	47	5	215	Oakoma	Lyman
445	60	6	94	Oelrichs	Fall River
446	66	6	50	Oglala	Shannon
447	46	5	45	Okaton	Jones
448	19	3		Ola	Brule
449	7	1	244	Oldham	Kingsbury
450	25	3	103	Olivet	Hutchinson
451	53	5		Olsonville	Todd
452	33	4	69	Onaka	Faulk
453	52	5	785	Onida	Sully
454	64	6	10	Opal	Meade
455	60	6	60	Oral	Fall River
456	30	4	15	Ordway	Brown
457	33	4	131	Orient	Faulk
458	8	1		Ordland	Lake
459	37	4	111	Ortley	Roberts
460	7	1	20	Osceola	Kingsbury

TABLE

CODING OF TOWNS, COUNTIES AND PLANNING DISTRICTS IN SOUTH DAKOTA

Town Number (Town)*	County Number (Conum)*	District Number (Dist)*	Town Population (Pop)*	Town	County
461	43	5	5	Ottumwa	Haakon
462	65	6	25	Owanka	Pennington
463	42	5	5	Parade	Dewey
464	15	2	1,005	Parker	Turner
465	25	3	1,611	Parkston	Hutchinson
466	53	5	400	Parmalee	Todd
467	14	2		Pathfinder Spur	Minnehaha
468	57	6		Patricia	Bennett
469	29	4	50	Pearl Creek Colony	Beadle
470	28	3		Pearsons Corner	Yankton
471	65	6		Pedro	Pennington
472	37	4	202	Peever	Roberts
473	8	1		Peninsula Park	Lake
474	18	3		Perkins	Bon Homme
475	43	5	983	Philip	Haakon
476	31	4	20	Pickrel	Day
477	20	3	260	Pickstown	Charles Mix
478	64	6	300	Piedmont	Meade
479	31	4	241	Pierpont	Day
480	44	5	10,300	Pierre	Hughes
481	66	6	2,768	Pine Ridge	Shannon
482	64	6	5	Plainview	Meade
483	32	4	25	Plainview Colony	Edmunds
484	17	3	613	Plankinton	Aurora
485	24	3		Plano	Hanson
486	20	3	1,351	Platte	Charles Mix
487	63	6	100	Pluma	Lawrence
488	40	5	341	Pollock	Campbell
489	34	4	25	Polo	Hand
490	66	6	150	Pocupine	Shannon
491	67	6	60	Potato Creek	Washabaugh
492	49	5	50	Prairie City	Perkins
493	47	5	922	Presho	Lyman
494	59	6	86	Pringle	Custer
495	42	5		Promise	Dewey
496	60	6	100	Provo	Fall River
497	19	3	208	Pukwana	Brule
498	14	2		Pumpkin Center	Minnehaha
499	30	4	15	Putney	Brown
500	65	6	105	Quinn	Pennington
501	65	6		Quinn Table	Pennington
502	61	6	5	Ralph	Harding
503	8	1	227	Ramona	Lake
504	30	4		Randolph	Brown
505	65	6	45,000	Rapid City	Pennington
506	3	1		Rauville	Codington

TABLE

CODING TOWNS, COUNTIES AND PLANNING DISTRICTS IN SOUTH DAKOTA

Town Number (Town)*	County Number (Conum)*	District Number (Dist)*	Town Population (Pop)*	Town	County
507	20	3	100	Ravinia	Charles Mix
508	2	1	114	Raymond	Clark
509	64	6	20	Red Owl	Meade
510	56	5		Red Elm	Ziebach
511	65	6		Redfern	Pennington
512	38	4	2,043	Redfield	Spink
513	61	6	10	Redig	Harding
514	56	5	70	Red Scaffold	Ziebach
515	66	6	50	Red Shirt	Shannon
516	34	4	183	Ree Heights	Hand
517	47	5	204	Reliance	Lyman
518	65	6	1,200	Renel Heights	Pennington
519	14	2	200	Renner	Minnehaha
520	61	6	5	Reva	Harding
521	5	1	142	Revillo	Grant
522	16	2	50	Richland	Union
523	42	5	40	Ridgeview	Dewey
524	24	3		Riverside	Hanson
525	29	4	45	Riverside Colony	Beadle
526	65	6	50	Rochford	Pennington
527	65	6	30	Rockerville	Pennington
528	33	4	60	Rockham	Faulk
529	24	3	75	Rockport	Hanson
530	32	4	398	Roscoe	Edmunds
531	53	5	600	Rosebud	Todd
532	24	3	75	Rosedale Colony	Hanson
533	37	4	456	Rosholt	Roberts
534	31	4	250	Roslyn	Day
535	9	1	32	Roswell	Miner
536	14	2	100	Rowena	Minnehaha
537	30	4		Rudolph	Brown
538	60	6		Rumford	Fall River
539	13	2	15	Rumpus Ridge	McCook
540	18	3	20	Running Water	Bon Homme
541	8	1	60	Rutland	Lake
542	13	2	1,391	Salem	McCook
543	59	6		Sanator	Custer
544	63	6		Savoy	Lawrence
545	65	6	50	Scenic	Pennington
546	18	3	984	Scotland	Bon Homme
547	55	5	957	Selby	Walworth
548	33	4	118	Seneca	Faulk
549	49	5	25	Shadehill	Perkins
550	37	4	15	Shady Beach	Roberts
551	14	2	82	Sherman	Minnehaha
552	65	6	40	Silver City	Pennington
553	1	1	147	Sinai	Brookings

TABLE

CODING TOWNS, COUNTIES AND PLANNING DISTRICTS FOR SOUTH DAKOTA

Town Number (Town)*	County Number (Conum)*	District Number (Dist)*	Town Population (Pop)*	Town	County
554	14	2	79,800	Sioux Falls	Minnehaha
555	12	2	79,800	Sioux Falls	Lincoln
556	37	4	3,094	Sisseton	Roberts
557	55	5		Sitka	Walworth
558	61	6		Sky Ranch	Harding
559	8	1		Smiths Park	Lake
560	60	6	35	Smithwick	Fall River
561	53	5	100	Soldier Creek	Todd
562	49	5	5	Sorum	Perkins
563	3	1	199	South Shore	Codington
564	36	4		Spain	Marshall
565	63	6	4,661	Spearfish	Lawrence
566	13	2	385	Spencer	McCook
567	16	2	40	Spink	Union
568	38	4	100	Spink Colony	Spink
569	38	4		Spottswppd	Spink
570	53	5	60	Spring Creek	Todd
571	35	4	100	Spring Creek Colony	McPherson
572	18	3	1,566	Springfield	Bon Homme
573	15	2		Spring Valley	Turner
574	26	3	100	Spring Valley Colony	Jerauld
575	23	3	50	St. Charles	Gregory
576	53	5	300	St. Francis	Todd
577	34	4	249	St. Lawrence	Hand
578	63	6	100	St. Onge	Lawrence
579	62	6		Stamford	Jackson
580	13	2		Stanley Corner	McCook
581	45	5	50	Stephan	Hyde
582	17	3	421	Stickney	Aurora
583	5	1	116	Stockholm	Grant
584	6	1	10	Stone Bridge	Hamlin
585	64	6	5	Stoneville	Meade
586	17	3	80	Storla	Aurora
587	5	1	98	Strandburg	Grant
588	30	4	106	Stratford	Brown
589	64	6	5,162	Sturgis	Meade
590	37	4	332	Summit	Roberts
591	1	1	60	Sunnyview	Brookings
592	57	6		Swett	Bennett
593	59	6		Sylvan Lake	Custer
594	18	3	388	Tabor	Bon Homme
595	30	4		Takoma Park	Brown

TABLE

CODING TOWNS, COUNTIES AND PLANNING DISTRICTS IN SOUTH DAKOTA

Town Number (Town)*	County Number (Conum)*	District Number (Dist)*	Town Population (Pop)*	Town	County
596	12	2	302	Tea	Lincoln
597	37	4		Tekakwitha	Roberts
598	63	6	100	Terraville	Lawrence
599	6	1		Thomas	Hamlin
600	56	5	50	Thunder Butte	Ziebach
601	41	5	30	Thunder Hawk	Corson
602	64	6	35	Tilford	Meade
603	42	5	625	Timber Lake	Dewey
604	50	5	99	Tolstoy	Potter
605	4	1	216	Toronto	Deuel
606	42	5	70	Trail City	Dewey
607	41	5	70	Trail City	Corson
608	10	1	177	Trent	Moody
609	25	3	851	Tripp	Hutchinson
610	5	1	15	Troy	Grant
611	25	3	80	Tschetter Colony	Hutchinson
612	38	4	211	Tulare	Spink
613	15	2	15	Turkey Ridge	Turner
614	38	4	121	Turton	Spink
615	57	6	25	Tuthill	Bennett
616	5	1	122	Twin Brooks	Grant
617	18	3	1,245	Tyndall	Bon Homme
618	64	6	40	Union Center	Meade
619	13	2	35	Unityville	McCook
620	49	5		Usta	Perkins
621	28	3	89	Utica	Yankton
622	58	6	150	Vale	Butte
623	14	2	566	Valley Springs	Minnehaha
624	28	3		Valley View	Yankton
625	46	5		Van Metre	Jones
626	34	4		Vayland	Hand
627	36	4	377	Veblen	Marshall
628	28	3		Vedin Corner	Yankton
629	30	4	18	Verdon	Brown
630	11	2	9,128	Vermillion	Clay
631	57	6	10	Vetal	Bennett
632	15	2	662	Viborg	Turner
633	37	4	15	Victor	Roberts
634	2	1	119	Vienna	Clark
635	64	6		Viewfield	Meade
636	9	1	33	Vilas	Miner
637	65	6	3,171	Villa Rancharo	Pennington
638	65	6	350	Villa Trailer Court	Pennington
639	29	4	43	Virgil	Beadle
640	47	5	215	Vivian	Lyman
641	1	1	982	Volga	Brookings
642	28	3	157	Volin	Yankton
643	64	6		Volunteer	Meade
644	20	3	1,655	Wagner	Charles Mix

TABLE

CODING OF TOWNS, COUNTIES AND PLANNING DISTRICTS IN SOUTH DAKOTA

Town Number (Town)*	County Number (Conum)*	District Number (Dist)*	Town Population (Pop)*	Town	County
645	11	2	290	Wakonda	Clay
646	41	5	250	Wakpala	Corson
647	41	5	15	Walker	Corson
648	65	6	786	Wall	Pennington
649	3	1	95	Wallace	Codington
650	67	6	350	Wanblee	Washabaugh
651	10	1	57	Ward	Moody
652	30	4	170	Warner	Brown
653	65	6	127	Wasta	Pennington
654	41	5	60	Wautaga	Corson
655	3	1	19,200	Watertown	Codington
656	31	4	696	Waubay	Day
657	3	1	40	Waverly	Codington
658	31	4	2,252	Webster	Day
659	14	2	540	Webster Grove	Minnehaha
660	33	4	50	Wecota	Faulk
661	51	5		Wendte	Stanley
662	8	1	196	Wentworth	Lake
663	26	3	1,300	Wess Springs	Jerauld
664	29	4	380	Wessington	Beadle
665	34	4	380	Wessington	Hand
666	11	2		Westerville	Clay
667	30	4	150	Westport	Brown
668	62	6		Weta	Jackson
669	35	4	31	Wetonka	McPherson
670	54	5	30	Wewela	Tripp
671	1	1	418	White	Brookings
672	49	5		White Butte	Perkins
673	42	5	90	White Horse	Dewey
674	17	3	395	White Lake	Aurora
675	64	6	5	White Owl	Meade
676	48	5	617	White River	Mellette
677	37	4	35	White Rock	Roberts
678	63	6	689	Whitewood	Lawrence
679	65	6		Wicksville	Pennington
680	2	1	353	Willow Lake	Clark
681	37	4	518	Wilmot	Roberts
682	8	1	110	Winfred	Lake
683	54	5	3,789	Winner	Tripp
684	30	4		Winship	Brown
685	54	5	1,020	Witten	Tripp
686	25	3	130	Wolf Creek Colony	Hutchinson
687	29	4	436	Wolsey	Beadle
688	48	5	132	Wood	Mellette
689	27	3	852	Woonsocket	Sanborn
690	12	2	294	Worthing	Lincoln

TABLE

CODING TOWNS, COUNTIES AND PLANNING DISTRICTS IN SOUTH DAKOTA

Town Number (Town)*	County Number (Conum)*	District Number (Dist)*	Town Population (Pop)*	Town	County
691	66	6	250	Wounded Knee	Shannon
692	29	4	148	Yale	Beadle
693	28	3	12,300	Yankton	Yankton
694	63	6		Yates	Lawrence
695	33	4	90	Zell	Faulk
696	49	5	5	Zeona	Perkins

*Name in parenthesis is the corresponding variable name as it appears in the variable layout and identification list.

SAMPLE JCL for Tape or Disk Access

Reference 9.

```
//FT FOOL DSN=UBGR. data set name , UNIT=____,  
// VOL=SER=HEC____,SPACE=(TRK,( , 1),  
// DCB=(RECFM=____,LRECL=____,BLKSIZE=____),  
// DISP=( , ),LABEL=( ,SL)
```

FT: Needed for most custom or SPSS programs. Enter numbers 01 to 99 according to convenience observing SPSS and computer center conventions

DSN: Data set name

UNIT: 3330 for disk, 3400 tape. Not necessary if data set was cataloged

VOL=SER= Serial number of tape or disk file. Not necessary if data set was cataloged.

SPACE= For creation or allocation of new disk data sets, follow convention in users guide. One TRK is approximately 147 card images of length 80.

DCB= Specific Record format, record length, and blocksize. Only necessary on initial allocation.

DISP= Needed for all accesses to data. If data set is cataloged and no modification is required DISP and parameters follow the data set name. No other information is necessary.

LABEL= (,SL) location of specific data set in the order of data sets on tape file only.

Reference 10

Program: UBGR.VICT76.SPSS1.CNTL

```
//UBGRDATA JOB (SAC,$028,240,10),USERS NAME,CLASS=A
// EXEC SPSSH
//FT03F001 DD DSN=UBGR.SPSS,STATE,VICT,DATA,DISP=(OLD,KEEP)
//FT06F001 DD SYSOUT=A
RUN NAME
GET FILE VSAMPLE
RUN SUBFILES (VICTIM)
COMPUTE UCRGRP=CONUM
RECODE UCRGRP (41,49,56,58,61,64=1)(65=2)(59,62,63,57,67=3)(18,43,46,47,
48,51,60,66=4)(20,23,53,54=5)(19,34,39,42,44,45,52=6)(32,33,35,
40,50,55=7)(30=8)(31,36,37=9)(29,38=10)(3,5=11)(2,4,6,7=12)(1,8=
13)(9,10,13,24,26,27=14)(14=15)(17,21,22=16)(15,25,28=17)(11,12,
16=18)
CROSSTABS VARIABLES=UCRGRP(1,18),R2,R3,B20,B21,MV37,MV38,T53,T54,SA68,SA69,
A83,A84,V99,V100(),99),R.INCDT,MV.INCDT,T.INCDT,SA.INCDT,
A.INCDT,V.INCDT(0,21)/
TABLES=R2,B20,B21,MV37,MV38,T53,T54,SA68,SA69,A83,A84,V99,
V100,R.INCDT,B.INCDT,MV.INCDT,SA.INCDT,A.INCDT,
V.INCDT BY UCRGRP
CROSSTABS VARIABLES=R1,B19,MV36,T52,SA67,A82,V98(0,9),DIST(1,6),
POPSTAT(0,9)/
TABLES=R1,B19,MV36,T52,SA67,A82,V98 BY DIST BY POPSTAT/
R1,B19,MV36,T52,SA67,A82,V98 BY DIST
OPTIONS 7
STATISTICS 1
CROSSTABS VARIABLES=R.INCDT,B.INCDT,MV.INCDT,T.INCDT,SA.INCDT,A.INCDT,
V.INCDT(0,21),DIST(1,6),POSTAT(0,9)/TABLES=R.INCDT,B.INCDT,
MV.INCDT,T.INCDT,SA.INCDT,A.INCDT,V.INCDT BY DIST BY POPSTAT/
R.INCDT,B.INCDT,MV.INCDT,T.INCDT,SA.INCDT,V.INCDT BY DIST
OPTIONS 7
STATISTICS 1
CROSSTABS VARIABLES=RSTAT,BSTAT,MVSTAT,TSTAT,SASTAT,ASTAT,VSTA(1,9),
DIST(1,6),POPSTAT(0,9)/TABLES=RSTAT,BSTAT,MVSTAT,TSTAT,SASTAT,
ASTAT,VSTAT BY DIST BY POPSTAT/RSTAT,BSTAT,MVSTAT,TSTAT,SASTAT,
ASTAT,VSTAT BY DIST
```

52

Reference 10 cont'd

Program: UBGR.VICT76.SPSS1.CNTL

```
OPTIONS      7
STATISTICS   1
CROSSTABS    VARIABLES=R11,B26,MV46,T60,SA76,A94,V105(0,9),DIST(1,6),
              POPSTAT(0,9)/TABLES=R11,B26,MV46,T60,SA76,A94,V105 BY DIST BY
              POPSTAT/R11,B26,MV46,T60,SA76,A94,V105 BY DIST

OPTIONS      7
STATISTICS   1
CROSSTABS    VARIABLES=R7,B24,MV47,T58,V103(0,9),DIST(1,6),POPSTAT(0,9)/
              TABLES=R7,B24,MV47,T58,V103 BY DIST BY POPSTAT/R7,B24,MV47,T58,
              V103 BY DIST

OPTIONS      7
STATISTICS   1
CROSSTABS    VARIABLES=R14,B31,SA77,S91(0,9)DIST(1,6),POPSTAT(0,9)/
              TABLES=R14,B31,SA77,A91 BY DIST BY POPSTAT/R14,B31,SA77,A91 BY
              DIST

OPTIONS      7
STATISTICS   1
CROSSTABS    VARIABLES=R15,B32,MV48,T63,SA78,A92,V107(0,9),DIST(1,6),
              POPSTAT(0,9)/TABLES=R15,B32,MV48,T63,SA78,A92,V107 BY DIST BY
              POPSTAT/R15,B32,MV48,T63,SA78,A92,V107 BY DIST

OPTIONS      7
STATISTICS   1
FREQUENCIES  INTEGER=R12,B29,SA74,A89(0,9)
FREQUENCIES  INTEGER=R13,B30,SA73,A90(0,9)
CROSSTABS    VARIABLES=R8,B28,MV50,T62,V106(0,9),DIST(1,6),POPSTAT(0,9)/
              TABLES=R8,MV50,T62,V106 BY DIST BY DIST BY POPSTAT/R8,B28,MV50,T62,
              V106 BY DIST

OPTIONS      7
STATISTICS   1
CROSSTABS    VARIABLES=RP111(0,9),RP112(0,99),RP113(0,9),RP114(0,9),
              RP115(0,9),RP121(0,9),RP120(0,9),VICT(0,9)/
              TABLES=RP111,RP112,RP113,RP114,RP115,RP121,RP120 BY VICT

OPTIONS      7
STATISTICS   1
RECODE       RP112 (0 THRU 25=1)(26 THRU 35=2)(36 THRU 50=3)(51 THRU 64=4)
              (65 THRU 80=5)(81 THRU 98=6)(99=9)
```


Reference 10 cont'd.

Program: UBGR.VICT76.SPSS1.CNTL

MISSING VALUES RP112(9)
VALUE LABELS RP112 (1)0-25 (2)26-35 (3)36-50 (4)51-64 (5)65-80 (c)81-98 (9)MIS
SING
CROSSTABS VARIABLES=OP123,OP124,OP125,OP126,OP127,OP128,OP129,OP130,OP131,
OP132(0,9),VICT(0,9),DIST(1,6),POPSTAT(0,9),RP112(0,9)/
TABLES=OP123,OP124,OP125,OP126,OP127,OP128,OP129,OP130,OP131,
OP132 BY DIST BY POPSTAT/OP123,OP124,OP125,OP126,OP127,OP128,
OP129,OP130,OP131,OP132 BY DIST,VICT,RP112/RP112 BY DIST/
OP123 TO OP132 BY RP112 BY VICT
OPTIONS 7
STATISTICS 1
CROSSTABS VARIABLES=R5,R10,R11,SA72,SA75,SA76,A88,A93,A94(0,9)/
TABLES=R5 BY R10,R11/SA72 BY SA75,SA76/A88 BY A93,A94
OPTIONS 7
STATISTICS 1
CROSSTABS VARIABLES=R6,R10,R11,B23,B25,B26,MV41,MV45,MV46,T56,T59,T60,SA71,
SA75,SA76,A86,A93,A94,V104,V105,POPSTAT,OP127,OP128(0,9)/
TABLES=OP127,OP128 BY R10,R11,B25,B26/MV45,MV46,T59,T60,SA75,
SA76,A93,A94,V104,V105/R6 BY R10/B23 BY B25/MV41 BY MV45/T56 BY
T59/SA71 BY SA75/A86 BY A93/B23,MV41,T56,SA71,A86 BY POPSTAT
OPTIONS 7
STATISTICS 1
CROSSTABS VARIABLES=R6,B23,MV41,T56,SA71,A86,R17,B34,MV49,T56,SA80,
A96(0,9)/TABLES=R6 BY R17/B34/MV41 BY MVT56 BY T65/
SA71 BY SA80/A86 BY A96
OPTIONS 7
STATISTICS 1
CROSSTABS VARIABLES=WT.R2,WT.20,WT.21,WT.VM38,WT.T53,WT.T54,
WT.SA68,WT.SA69,WT.A83,WT.A84(0,21)DIST(1,6),POPSTAT(0,9)/
TABLES=WT.R2,WT.R3,WT.B20,WT.B21,WT.MV37,WT.MV38,WT.T53,WT.T54,
WT.SA68,WT.SA69,WT.A83,WT.A83,WT.A84 BY DIST BY POPSTAT/WT.R2,WT.SA69,
WT.A83,WT.A84 BY DIST
OPTIONS 7
STATISTICS 1
CROSSTABS VARIABLES=R11,R18,B26,B35,MV46,MV51,T60,T66,SA76,SA81,A94,A97,
V105,V110(0,9)/TABLES=T11 BY R18/B26 BY B35/MV46 BY MV51/
T60 BY T66/SA76 BY SA81/A94 BY A97/V105 BY V110

Reference 10 cont'd.

Program: UBGR.VICT76.SPSS1.CNTL

```
OPTIONS          7
STATISTICS       1
FINISH
/*
//
```

Reference 10 cont'd.

Program: UBGR.VICT76,SPSS2.CNTL

//UBGRFREQ JOB (SAC,\$028,240,USERS NAME,CLASS=A

// EXEC SPSS

//FT04FOO1 DD DSN=UBGR.VICT76.SPSS.DATA,UNIT=3330,

// VOL=SER=HECS10,SPACE=(TRK,(200,15)),DISP=(NEW,CATLG)

//FT08FOO1 DD DSN=UBGR.VICT76.RAW.DATA,UNIT=3330,DISP=(OLD,KEEP)

PAGESIZE 42

RUN NAME CREATE DATA SET VSAMPLE...VICTIMS AND NONVICTIMS

FILE NAME VSAMPLE

VARIABLE LIST CASE,TOWN,CONUM,DIST,POP,VICT,DAY,R1,R2,R3,
R401,R402,R403,R404,R405,R406,R407,R408,R409,R410,
R411,R412,
R5,R6,R7,R8,R9,R10,R11,R12,R13,R14,R15,R16,R17,R18,
B19,B20,B21,
B2201,B2202,B2203,B2204,B2205,B2206,B2207,B2208,B2209,
B2210,B2211,B2212,
B23,B24,B25,B26,B27,B28,B29,B30,B31,B32,B33,B34,B35,
MV36,MV37,MV38,
MV3901,MV3902,MV3903,MV3904,MV3905,MV3906,MV3907,
MV3908,MV3909,MV3910,MV3911,MV3912,
MV40,MV41,MV42,MV43,MV44,MV45,MV47,MV48,MV49,
MV50,MV51,
T52,T53,T54,
T5501,T5502,T5503,T5504,T5505,T5506,T5507,T5508,T5509,
T5510,T5511,T5512,
T56,T57,T58,T59,T60,T61,T62,T63,T64,T65,T66,
SA67,SA68,SA69,
SA7001,SA7002,SA7003,SA7004,SA7005,SA7006,SA7007,
SA7008,SA7009,SA7010,SA7011,SA7012,
SA71,SA72,SA73,SA74,SA75,SA76,SA78,SA79,SA80,SA81,
A82,A83,A84,
A8501,A8502,A8503,A8504,A8505,A8506,A8507,A8508,A8509,
A8510,A8511,A8512,
A86,A87,A88,A89,A90,A91,A92,A93,A94,A95,A96,A97,
V98,V99,V100,

Reference 10 cont'd.

Program: UBGR.VICT76,SPSS2.CNTL

V10101,V10102,V10103,V10104,V10105,V10106,V10107,V10108,V
V10109,V1010,V10111,V10112,
V102,V103,V104,V105,V106,V107,V108,V109,V110,
RP111,RP112,RP113,RP114,RP115,RP116,RP117,RP118,
RP120,RP121,RP122,
OP123,OP124,OP125,OP126,OP127,OP128,OP129,OP130,OP131,
OP132
INPUT MEDIUM DISK
N OF CASES 3475
INPUT FORMAT FIXED (F4.0,1X,F3.0,F2.0,F1.0,F5.0,F1.0,F2.0,F1.0,2F2.0,2
1F1.0,F2.0,5F1.0,2F2.0,20F1.0,F2.0,2F1.0/5X,3F1.0,2F2.0,1
2F1.0,F1.0,12F1.0,2F2.0,13F1.0,F2.0,10F1.0,2F2.0,10F1.0/5
X,14F1.0,2F2.0,25F1.0,2F2.0,112F1.0,F2.0,8F1.0/5X,F1.0,F2.
0,3F1.0,F2.0,15F1.0)
VAR LABELS CASE,QUESTIONNAIRE NUMBER/TOWN OF RESIDENCE/
CONUM,COUNTY OF RESIDENCE/DIST,DISTRICT OF RESIDENCE/
POP,POPULATION OF TOWN/VICT,WERE YOU VICTIMIZED?/
DAY,DAY RECEIVED/R1,WERE YOU ROBBED?/R2,NUMBER OF ACTUAL
ROBBERIES/R3,NUMBER OF ATTEMPTED ROBBERIES/R401,ROBBERIES
IN JANUARY/R402,ROBBERIES IN FEBRUARY/R403,ROBBERIES IN
MARCH?R404,ROBBERIES IN APRIL/R405,ROBBERIES IN MAY/
R406,ROBBERIES IN JUNE/R407,ROBBERIES IN JULY/
R408,ROBBERIES IN AUGUST/R409,ROBBERIES IN SEPTEMBER/
R410,ROBBERIES IN OCTOBER/R411,ROBBERIES IN NOVEMBER/
R412,ROBBERIES IN DECEMBER/R5,WEAPON USED IN ROBBERY/
R6,WHERE CRIME OCCURRED/R7,DOLLAR VALUE--ROB./RB,WAS THE
PROPERTY INSURED--ROB./R9,ANYTHING RECOVERED--ROB./R10,WAS
ROBBERY REPORTED?/R11,WHY ROBBERY NOT REPORTED/
R12,PHYSICAL INJURY--ROB./R13,MENTAL INJURY--ROB./
R14,COST OF MED, & PSYC. SERVICES--ROB./R15,TIME LOST--
ROB./R16,WERE ROBBERS CAUGHT?/R17KNOW OFFENDERS?--ROB./
R18,ACTUAL OR ATTEMPT--ROB./
B19,WERE YOU BURGLARIZED?/B20,NUMBER OF ACTUAL BURGLARIES
/B21,NUMBER OF ATTEMPTED BURGLARIES/
B2201,BURGLARIES IN JANUARY/B2202,BURGLARIES IN FEBRUARY/
B2203,BURGLARIES IN MARCH/B2204,BURGLARIES IN APRIL/
B2205,BURGLARIES IN MAY/B2206,BURGLARIES IN JUNE/
B2207,BURGLARIES IN JULY/B2208,BURGLARIES IN AUGUST/
B2209,BURGLARIES IN SEPTEMBER/B2210,BURGLARIES IN OCTOBER

Reference 10 cont'd.

Program: UBGR.VICT76,SPSS2.CNTL

/B2211,BURGLARIES IN NOVEMBER/B2212,BURGLARIES IN DECEMBER/
R/B23,AREA BURGLARIZED/B24,DOLLAR VALUE/B25,WAS BURGLARY REPORTED?/B26,WHY BURG, NOT REPORTED/
B27,ANYTHING RECOVERED--BURG./B28,WAS PROPERTY INSURED--
BURG./B29,PHYSICAL INJURY--BURG./B30,MENTAL INJURY--BURG./
B31,COST OF MED.& PSYC.SERVICES--BURG./B32,TIME LOST--BURG/
B33,WERE BURGLARS CAUGHT?/B34,KNOW OFFENDERS?--BURG./
B35,ACT. OR ATT. BURG.??/
MV36,VICTIM OF MV. THEFT?/MV37,NUMBER OF ACTUAL MOTOR
VEHICLE/MV38,NUMBER OF ATTEMPTED MOTOR VEHICLE/
MV3901,M.V. IN JANUARY/MV3902,M.V. IN FEBRUARY/
MV3903,M.V. IN MARCH/MV3904,M.V. IN APRIL/
MV3905,M.V. IN MAY/MV3906,M.V. IN JUNE/
MV3907,M.V. IN JULY/MV3908,M.V. IN AUGUST/
MV3909,M.V. IN SEPTEMBER/MV3910,M.V. IN OCTOBER/
MV3911,M.V. IN NOVEMBER/MV3912,M.V. IN DECEMBER/
MV40,TYPE OF M.V. STOLEN/MV41,WHERE M.V. STOLEN/MV42,WERE
KEYS IN M.V.?/MV43,WAS M.V. RECOVERED?/MV44,WERE OFFENDER
S COUGHT?--M.V./MV45,WAS INCIDENT REPORTED?--M.V./
MV46,WHY NOT REPORTED--M.V./MV47,DOLLAR VALUE--M.V./
MV48,TIME LOST--M.V./MV49,KNOW OFFENDER?--M.V./
MV50,WAS M.V. INSURED?/MV51,ACT. OR ATT. M.V./
T52,VICTIM OF THEFT?/T53,NUMBER OF ACTUAL THEFTS/
T54,NUMBER OF ATTEMPTED THEFTS/T5501,THEFTS IN JANUARY/
T5502,THEFTS IF FEBRUARY/T5503,THEFTS IN MARCH/
T5504,THEFTS IN APRIL/T5505,THEFTS IN MAY/
T5506,THEFTS IN JUNE/T5507,THEFTS IN JULY/T5508,THEFTS IN
AUGUST/T5509,THEFTS IN SEPTEMBER/T5510,THEFTS IN OCTOBER/
T5511,THEFTS IN NOVEMBER/T5512,THEFTS IN DECEMBER/
T56,WHERE THEFT OCCURRED/T57,TYPE OF PROPERTY TAKEN--T./
T58,DOLLAR VALUE--T./T59,WAS THEFT REPORTED?/T60,WHY NOT
REPORTED--T./T61,ANYTHING RECOVERED?--T./T62,WAS PROPERTY
INSURED?--T./T63,TIME LOST--T./T64,THIEVES COUGHT?/
T65,KNOW THIEVES?/T66,ACT. OR ATT. THEFT/SA67,VICTIM OF S.
A./SA68,NUMBER ACTUAL S.A./SA69,NUMBER ATTEMPT S.A./
SA7001,S.A. IN JANUARY/SA7002,S.A. IN FEBRUARY/SA7003,
S.A. IN MARCH/SA7004,S.A. IN APRIL/SA7005,S.A. IN MAY/
SA7006,S.A. IN JUNE/SA7007,S.A. IN JULY/
SA7008,S.A. IN AUGUST/SA7009,S.A. IN SEPTEMBER/
SA7010,S.A. IN OCTOBER/SA7011,S.A. IN NOVEMBER/SA7012,S.A.

Reference 10 cont'd.

Program: UBGR.VICT76,SPSS2.CNTL

IN DECEMBER/SA71,WHERE S.A. OCCURRED/SA72,TYPE OF FORCE
--S.A./SA73,PSYCH. INJURY--S.A./SA74,PHYSICAL INJURY--S.A.
./SA75,WAS S.A. REPORTED?/SA76,WHY NOT REPORTED?--S.A./
SA77,COST OF MED.&PSYCH. SERVICES--S.A./SA78,TIME LOST--
S.A./SA79,WAS OFFENDER COUGHT?--S.A./SA80,KNOW OFFENDER?--
S.A./SA81,ACT.OR ATT.SEXUAL ASSAULT?/A82,WERE YOU ASSAU
TED/A83,NUMBER ACTUAL ASSAULTS/A84,NUMBER ATTEMPTED ASSAU
LTS/A8501,ASSAULTS IN JANUARY/A8502,ASSAULTS IN FEBRUARY/
A8503,ASSAULTS IN MARCH/A8504,ASSAULTS IN APRIL/A8505,ASS
AULTS IN MAY/A8506,ASSAULTS IN JUNE/A8507,ASSAULTS IN JUL
Y/A8508,ASSAULTS IN AUGUST/A8509,ASSAULTS IN SEPTEMBER/
A8510,ASSAULTS IN OCTOBER/A8511,ASSAULTS IN NOVEMBER/
A8512,ASSAULTS IN DECEMBER/A86,WHERE ASSAULT OCCURRED/
A87,WAS WEAPON USED?--ASSLT./A88,TYPE OF WEAPON--ASSLT./
A89,PHYSICAL INJURY?--ASSLT./A90,MENTAL INJURY?--ASSLT./
A91,COST OF MED.& PSYC. SERVICES--ASSLT./A92,TIME LOST--
ASSLT./A93,WAS ASSAULT REPORTED?/A94,WHY ASSAULT NOT REPO
RTED?/A95,WAS OFFENDER CAUGHT--ASSAULT/A96,KNOW OFFENDER-
ASSLT./A97,ACT.OR ATT. ASSAULT/?V98,WERE YOU VANDALIZED?/
V99,NUMBER OF INCIDENTS--VANDALISM/V100,NUMBER INCIDENTS
REPORTED--VANDALISM/V10101,VANDALISM IN JANUARY/V10102,VA
NDALISM IN FEBRUARY/V10103,VANDALISM IN MARCH
V10104,VANDALISM IN APRIL.V10105,VANDALISM IN MAY/V10106,
VANDALISM IN JUNE/V10107,VANDALISM IN JULY/V10108,VANDALI
SM IN AUGUST/V10109,VANDALISM IN SEPTEMBER/V10110,VANDALI
SM IN OCTOBER/V10111,VANDALISM IN NOVEMBER/V10112,VANDALI
SM IN DECEMBER/V102,PROPERTY VANDALIZED/V103,COST OF DAMA
GE--VAND./V104,WAS VANDALISM REPORTED?/V105,WHY NOT REPOR
TED--VAND.V106,WAS PROPERTY INSURED?--VAND.V107,TIME LO
ST--VAND.?V108,WERE OFFENDERS COUGHT?--VAND./109,KNOW OF
FENDERS?--VAND./V110,ACT.OR ATT. VANDALISM/
RP111,YOUR SEX/RP112,YOUR AGE/RP113,ETHNIC BACKGROUND/
RP114,INCOME BRACKET/RP115,EDUCATION/RP116,NUMBER IN THE
HOUSEHOLD/RP117,YEARS AT PRESENT ADDRESS/RP118,WORK STAT
US/RP120,LIVE IN TOWN?/RP121,TYPE OF HOME/RP122,RELATION
TO HEAD OF HOUSEHOLD/OP123,FEEL SAFE AT HOME AT NIGHT?/
OP124,SAFE COMPARED to 6 YR. AGO/OP125,HAS CRIME INCREAS
ED?/OP126,DRUG PROBLEM?/OP127,RATE L.E. OFFICIALS/
OP128,RATE JUDGES/OP129,UNIFORM PENALTY?/OP130,VICTIMS C

Reference 10 cont'd.

Program: UBGR.VICT76,SPSS2.CNTL

VALUE LABELS COMPENSATED ?/OP131,STATE FUNDS FOR VICTIMS?/OP132,GUN REST
RICTIONS?/
R1,B19,MV36,T52,SA67,A82,V98,R10,B25,MV45,T59,SA75,A87,
MV50,A93,V104,RP120 (1)YES (2)NO/SA79,A95,V106 (1)YES
(2)NO (3)DO NOT KNOW/V108 (1)YES (2) NO (3)NO OPIN./
R5 (1)GUN(2)KNIFE OR SH.INST(3)CLUB OR BL.INST(4)PHYSICAL
FORCE(5)OTHER/SA72 (1)VERBAL THREATS(2)PHYSICAL FORCE
(3) A WEAPONS(4)OTHER?A88 (0)NO WEAPON(1)GUN(2)KNIFE OR SH.
INST(3)CLUB OR BL.INST.(4)OTHER/
R6,T56 (1)AT HOME(2)OTHER'S HOME(3)RESIDENT AREA (4)IN
COUNTRY(5)BAR OR LOUNGE(6)DOWNTOWN AREA(7)HO-MOTEL ROOM
(8)NEAR WORK?SA71,A86 (1)MY HOME(2)OTHER'S HOME
(3)RESIDENT AREA(4)IN THE COUNTRY(5)BAR OR LOUNGE(6)HO-
MOTEL ROOM (7)DOWNTOWN AREA(8)OTHER/MV41 (1)GARAGE -DRIVEW
AY(2)STREET--HOUSE(3)OTHER STREET(4)PARKING LOT(5)COUNT
RY ROAD(6)OTHER?R7,MV47,B24 (1)NOTHING TAKEN(2)\$5-20
(3)\$21-100 (4)\$101-200(5)\$201-500(6)501-1000(7)OVER
\$1000/T58 (1)NOTHING TAKEN(2)\$5-20 (3)\$21-200 (4)\$201-500
(5)501-1000(6)\$1001- \$5000(7)OVER \$5000/V103 (1)NOTHI
ING DAMAGED(2)\$5-20 (3)\$21-100 (4)\$101-200(5)\$201-500
(6)501-1000(7)\$1001 to \$5000(8)OVER \$5000/
MV40 (1)AUTO (2)TRUCK (3)MOTOR CYCLE(4)TRACTOR OR OTH
ER(5)SNOWMOB./
B23 (1)SG.F.DWL TOWN(2)SG.F.DWL COUNTRY(3)TWO F. APT-HO
(4)GT.2 FAM HOUSE(5)O. FARM BUILD.(6)H-MOTEL TRAVEL/
R8,B28 (1)ND (2)SOME(3)ALL(4)NOTHING TAKEN/
T62 (1)NOTHING TAKEN(2)SOME(3)ALL(4)NO/
R9,B27,T61 (1)NOTHING(2)SMETHING(3)EVYTHING(4)NOTHING
TAKEN/MV43 (1)YES(2)YES DAMAGED(3)NO/
R11,B26,MV46,T60,SA76,A94,V105 (0)WAS REPT(1)AFRAID RETA
(2)PRIVATE PERSONAL(3)TOO INCONVENIENT(4)NO GET INVOLVED
(5)POLCE NO BOTHR.(6)NOTHING CAN DO(7)WAS NOT IMPORTANT
(8)OTHER/R12,B29,SA74,A89 (1)NO(2)Y-NO MEDICAL HLP
(3)FRST AID(4)HOSPITAL/
R13,B30,SA73,A90 (1)NO(2)SOME. NO TREAT(3)SOME.WTH TREAT
(4)EXTENSIVE WTH TRI/R14,B31,SA77,A91 (1)NO SERV.REQUIRED
(2)TOO EXPENSIVE(3)\$5-20(4)\$21-1--(5)\$101-200(6)\$201-500

Reference 10 cont'd.

Program: UBGR.VICT76,SPSS2.CNTL

(7)501-1000(8)\$1001 - \$5000(9)OVER \$5000/
R15,B32,MV48,T63,SA78,A92,V107 (1)NONE(2)HALF DAY(3)ONE D
(4)1-2 DAYS(5)2-5 DAYS(6)OVER 5 DAYS/R16,B33,MV44,T64
(1)Y. ALL(2)Y. SOME(3)NO(4)DO NOT KNOW/R17,B34,MV49,T65.
SA80,A96 (1) NEVER KNEW(2)A TOTAL STRANGER(3)HAD SEEN
(4)AQUAINTANCE(5)KNEW THM WELL(6)RELATIVE/V109 (1)DID NOT
SEE OFF.(2)A TOTAL STRANGER(3)HAD SEEN(4)AQUAINTANCE
(5)KNEW THM WELL(6)RELATIVE/R18,B35,MV51,T66,SA81,A97,
V110 (1)ACTUAL(2)ATTEMPTD/MV42,(1)NO(2)YES(3)DNT KNOW/
RP111 (1)MALE(2)FEMALE/RP113 (1)WHITE(2)INDIAN(3)BLACK
(4)MEXICAN-SPANISH(5)OTHER/RP114 (1)\$3000
(2)\$3000 - \$5999(3)\$6000 - \$9999(4)\$10,000-\$14,999
(5)\$15,000-\$24,999(6)\$25,000-\$49,999(7)\$50,000 AND UP/
RP115 (1)1-8 GRD(2)8-11 GRD(3)HIGH SCH OR GED(4)VO-TEC
(5)1-3 COLL(6)COLLEGE(7)PROFESSIONAL/RP117 (1)1 OR LES
(2)1-2 YR.(3)2-5 YR.(4)5-10 YR.(5)OVER 10/
RP118 (1)OUTSIDE HOME (2)COMMERC BUSINESS(3)FARMING-RANCH
(4)HOUSEWIFE(5)STUDENT(6)UNEMPLOY(7)DISABLED(8)RET IRED
(9)OTHER/RP121 (1)HOUSE IN TOWN(2)APT.1-6(3)RURAL N.FARM
(4)FRM HSE,(5)APT.GT.6(6)OTHER/RP122 (1)HEAD(2)SPOUSE
(3)SON-DAUT(4)OTHR REL(5)NON-REL/OP124 (1)SAFR NOW
(2)NO DIFF.(3)LESS NOW(4)NOT HERE IN 1970/
OP125 (1)INCRSED(2)DECRSED(3)SAME/OP127,OP128 (1)EXCELNT
(2)GOOD(3)FAIR(4)POOR(5)NO OPIN.
T57 (1)TOO!S-SM FM.EQPT(2)FRM PRPT-LS-G-IM
(3)H,S,R,HB-EQ.=BYC(4)INDOOR HOUS.PRP(5)OUTDOOR HOUS.PRP
(6)VALUABLES(7)MV.PT&AC=ST.&CB/V102 (1)HOUSE
(2)OUT BLD.FENCES(3)O. HSHLD,MB,LSCP(4)FRM PRPT,LS,GR,I
(5)SPT,REC EQUIPT(6)MOTOR V.(7)MV.PT,AC+S,CB,AT(8)OTHER
POP(99999)/CASE(9999)/TOWN(999)/DAY(97,99)/CONUM,R2,R3,
R14,B20,B21,B31,MV37,MV38,T53,T54,T57,SA68,SA69,
A83,A84,V99,V100,V102,RP112,RP116(99)/DIST,VICT,R1,
MV3912,MV40 TO T52,T5501 TO T56,T58 TO SA67,SA7001 TO A82
,A8501 TO V98,V10101 TO V10112,V103 TO RP111,RP113 TO
RP115,RP117 TO OP132(9)/RP118 (0)

MISSING VALUES

Reference 10 cont'd.

Program: UBGR.VICT76,SPSS2.CNTL

62

```

R.INCDT = R2 + R3
B.INCDT = B20 + B21
MV.INCDT = MV37 + MV38
T.INCDT = T53 + T54
SA.INCDT = SA68 + SA69
A.INCDT = A83 + A84
V.INCDT = V99
CRIMETYP = 0
POPSTAT = 0
COMPUTE
COMPUTE
COMPUTE
COMPUTE
COMPUTE
IF ((MV.INCDT GT 0 OR T.INCDT GT 0 OR V.INCDT GT 0 OR
B.INCDT GT 0) AND (R.INCDT GT 0 OR SA.INCDT GT 0 OR
A.INCDT GT 0)) CRIMETYP=3
IF ((CRIMETYP LT 3) AND (MV.INCDT GT 0 OR T.INCDT GT 0 OR
V.INCDT GT 0 OR B.INCDT GT 0)) CRIMETYP=2
IF ((CRIMETYP LT 2) AND (R.INCDT GT 0 OR SA.INCDT GT 0 OR
A.INCDT GT 0)) CRIMETYP=1
IF (POP GT 0000 AND POP LT 2500) POPSTAT = 1
IF (POP GT 2499 AND POP LT 90001) POPSTAT = 2
IF (POP GT 90000) POPSTAT = 9
(99=21) RECODE R.INCDT,B.INCDT,MV.INCDT,T.INCDT,SA.INCDT,A.INCDT,V.INCDT
ASSIGN MISSING R.INCDT,B.INCDT,MV,INCDT,T.INCDT,SA.INCDT,A.INCDT,V.INCDT
(21)/POPSTAT,CRIMETYP (9)
VAR LABELS R.INCDT,TOTAL INCIDENTS OF ROBBERY...ACT+ATT/
B.INCDT,TOTAL INCIDENTS OF BURGLARY..ACT+ATT/
MV.INCDT,TOTAL INCIDENTS OF M.V.THEFT.ACT+ATT/
T.INCDT,TOTAL INCIDENTS OF THEFT...ACT+ATT/
SA.INCDT,TOTAL INCIDENTS OF SEXUAL ASSULT..ACT+ATT/
A.INCDT,TOTAL INCIDENTS OF ASSAULT..ACT+ATT/
V.INCDT,TOTAL INCIDENTS OF VANDALISM..ACT+ATT/
CRIMETYP,TYPE OF CRIME..PERSONAL OR PROPERTY
POPSTAT,POPULATION STATUS..RURAL OR URBAN
VALUE LABELS CRIMETYP (0)NO CRIME (1)PERSONAL(2)PROPERTY(3)BOTH PERSON
AL + PROPERTY(9)MISSING/POPSTAT (1)RURAL(2)URBAN(9)MISSIN
G
READ INPUT DATA
SAVE FILE
FINISH
/*
```

Reference 10 cont'd.

Program: IBGR.VICT76.SCMED.CNTL

```
//UBGRDATA JOB (SAC,$028,40),USERS NAME,CLASS=A
//EXEC SPSS
//FT03FO01 DD DSN=UBGR.SPSS2.STATE.VICT.DATA,DISP=(OLD,KEEP)
//FT06FO01 DD SYSOUT=A
RUN NAME      REPRESENTATION OF NONVICT AND VICTS IN FIVE POP LEVELS
GET FILE      VSAMPLE
RUN SUBFILES  (NONVICT,VICTIM)
RECODE        POP (0 THRU 499=1)(500 THRU 2499=2) (2500 THRU 9999=3)
              (10000 THRU 24999=4)(25000THRU 95000=5)
CROSSTABS     TABLES=DIST BY POP
RUN SUBFILES  (VICTIM)
CROSSTABS     TABLES=DIST BY POP
FINISH
//
/*
```