

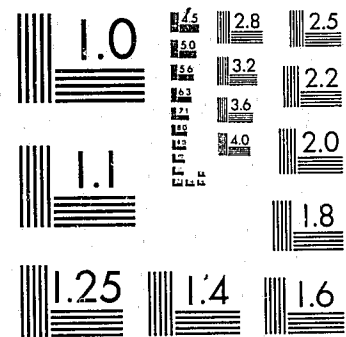
CR sent
3-16-82

National Criminal Justice Reference Service



Vol. XIV, No. 2

This microfiche was produced from documents received for inclusion in the NCJRS data base. Since NCJRS cannot exercise control over the physical condition of the documents submitted, the individual frame quality will vary. The resolution chart on this frame may be used to evaluate the document quality.



MICROCOPY RESOLUTION TEST CHART
NATIONAL BUREAU OF STANDARDS-1963-A

Microfilming procedures used to create this fiche comply with the standards set forth in 41CFR 101-11.504.

Points of view or opinions stated in this document are those of the author(s) and do not represent the official position or policies of the U. S. Department of Justice.

National Institute of Justice
United States Department of Justice
Washington, D. C. 20531

DATE FILMED

2/23/82

^xCHARACTERISTICS OF
INMATES DISCHARGED - 1979

U.S. Department of Justice 80406
National Institute of Justice

This document has been reproduced exactly as received from the person or organization originating it. Points of view or opinions stated in this document are those of the authors and do not necessarily represent the official position or policies of the National Institute of Justice.

Permission to reproduce this copyrighted material has been granted by

New York State Dept. of
Correctional Services

to the National Criminal Justice Reference Service (NCJRS).

Further reproduction outside of the NCJRS system requires permission of the copyright owner.

80406

^xSTATE OF NEW YORK

DEPARTMENT OF CORRECTIONAL SERVICES

THOMAS A. COUGHLIN III.

COMMISSIONER

DIVISION OF PROGRAM PLANNING, RESEARCH AND EVALUATION
THE STATE OFFICE BUILDING CAMPUS
ALBANY, N.Y. 12226

Martin F. Horn
Assistant Commissioner

DIVISION OF PROGRAM PLANNING, RESEARCH AND EVALUATION
Frank Tracy, Director

Henry C. Donnelly
Director of Records and Statistical Analysis

Prepared by Jeanne Bassett,
Senior Research Analyst

CHARACTERISTICS OF INMATES DISCHARGED FROM
FACILITIES OF THE NEW YORK STATE DEPARTMENT OF
CORRECTIONAL SERVICES IN 1979

TABLE OF CONTENTS

	<u>Page</u>
Highlights	ii
1979 Releases: Type of Release	1
Time Served in DOCS Facilities	3
Time Served on First Release: Sex	4
Time Served on First Release: Crime	5
Time Served on First Release: Age	19
Time Served on First Release: Prior Record	26
Time Served on First Release: Maximum Sentence	31
Time Served on First Release: County	38

NCJRE

AUG 03 1981

CHARACTERISTICS OF INMATES DISCHARGED FROM
NEW YORK STATE DEPARTMENT OF CORRECTIONAL SERVICES FACILITIES
IN 1979

Vol. XIV, No. 2

This report is one of a series designed to make data available on the population in facilities of the New York State Department of Correctional Services. The data in this report provide a profile of persons discharged from facility custody during 1979. The following characteristics are covered in this report: type of release; sex; time served; age; commitment offense; prior criminal record; maximum sentence; and county of commitment.

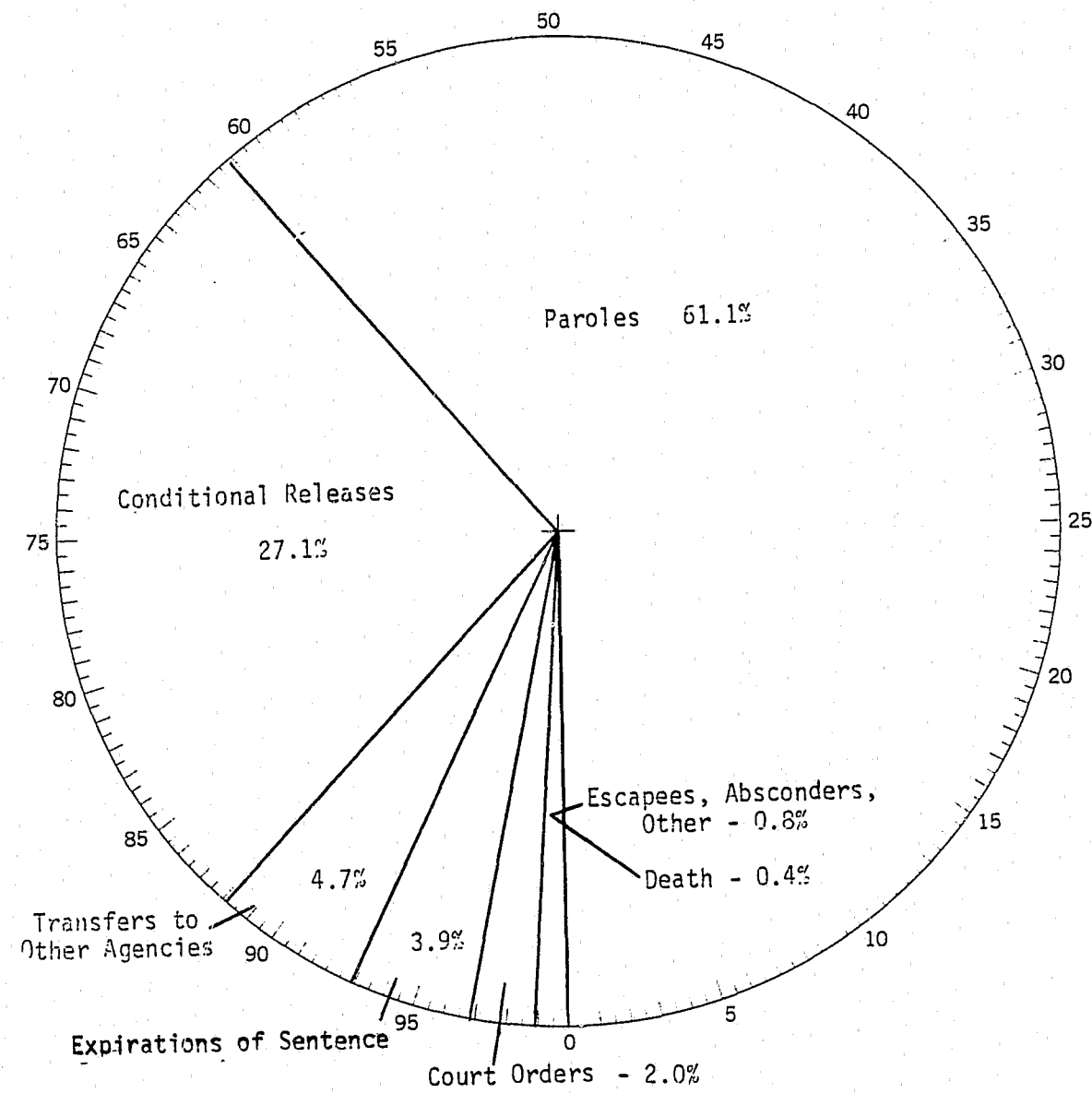
Characteristics of Inmates Discharged, in this edition, provides information on the amount of time served in Department facilities for several profile characteristics.

H I G H L I G H T S

1. During 1979 there were 8,787 inmates released from DOCS facilities. The vast majority, 88.2%, were released to parole supervision.
2. Males accounted for 96.6% of all inmates discharged compared to 3.4% for females.
3. Persons released to parole supervision for the first time on their current sentence made up 77.4% (6,800) of all persons discharged from DOCS facilities during 1979.
4. The median time served by males released at the discretion of the Board of Parole was 23.4 months while female first paroles had a median time of 18.3 months. Mandatory conditional releases served 23.5 months for males and 20.6 months for females, a slightly longer term than for female first paroles.
5. Persons committed for murder served the longest periods of time, 52.0 months for male first paroles. Homicide commitments were next highest with 44.4 months followed by rape at 43.5 months. The largest single crime category was robbery, accounting for 35.6% of all male first paroles with a median time served of 27.7 months. Grand larceny (not auto) commitments served the shortest period for male first paroles, 17.6 months.

6. Nearly two-thirds of male first releases were under 30 years of age (65.0%). The older inmates had generally served longer periods of time, with male first paroles aged 45 to 49 years serving a median time of 30.5 months.
7. Most of the 1979 releases had a prior criminal record with only 9.8 percent of male first paroles with no adult criminal history. 19.6% of male first paroles had a record of prior state or federal commitment. Persons with more serious prior criminal histories tended to serve more time under DOCS custody. Offenders with records of prior state commitments served a median time of 28.7 months while those with no record spent only 21.5 months in DOCS facilities.
8. Over half (52.6%) of male first paroles had been committed with maximum sentences of five years or less. Conditional releases generally had shorter maximum terms than did their parolee counterparts.
9. 63% of male first paroles had been committed from New York City. An additional 11.8% came from the suburban New York City area while the remaining 25.2% were from upstate counties. Male first paroles from New York City had a slightly longer median time served, 24.3 months, than did those from suburban New York City at 21.5 months and upstate at 22.5 months.

CHARACTERISTICS OF INMATES DISCHARGED - 1979
TYPE OF RELEASE



Type of Release	Number	Percent
TOTAL RELEASES	8,787	100.0%
Paroles	5,372	61.1%
Conditional Releases	2,381	27.1%
Transfers to Other Agencies	409	4.7%
Expirations of Sentence	344	3.9%
Court Orders	179	2.0%
Escapes, Absconders, Other	71	0.8%
Death	31	0.4%

1979 RELEASES: TYPE OF RELEASE

Type of Release There were 8,787 releases from Department facilities in 1979. 8,490 releases (96.6%) were males and 297 (3.4%) were females.

The largest number of males discharged in 1979 were released to parole supervision. These included 5,154 paroled by discretionary action of the Board of Parole (60.7%) and 2,333 by mandatory conditional release (27.5%). Thus, a total of 7,487 males (88.2% of total male releases) were released to parole supervision in 1979. 339 males (4.0%) were released on the maximum expiration date of their sentence. Other releases included 390 males (4.6%) transferred to institutions outside the Department, namely, to the Department of Mental Hygiene, under a cooperative program for treatment of mentally-disturbed inmates. 174 males were released on orders from the court (2.0%) and there were 31 deaths (0.4%) none court-mandated. There were a total of 63 escapes from institutional custody and absconders from temporary release in 1979 plus six other discharges. The percentage of male escapes and absconders in 1979 was only 0.7 percent -- most of whom were recaptured within a short period of time. In comparison with 1978 releases, it appears that a somewhat lower percentage of males were paroled by the Board of Parole in 1979 (2.0% less) while a somewhat higher proportion were released by conditional release in 1979 (2.5% more).

Females released in 1979 in comparison with male 1979 discharges, showed a higher proportion paroled by action of the Parole Board (218 or 73.4%) and a smaller proportion of conditional releases to parole supervision, 48 or 16.1 percent. Thus, a total of 266 females or almost 90 percent were released to parole supervision -- 1.4 percent more than the male experience. Only five females were released upon the maximum expiration of their sentences (1.7%) or 2.3 percent less than male releases at their maximum term.

1979 RELEASES: TYPE OF RELEASE BY SEX

Release Type	Number			Percent		
	Total	Males	Females	Total	Males	Females
Total, All Types	8,787	8,490	297	100.0	100.0	100.0
Parole	5,372	5,154	218	61.1	60.7	73.4
Expiration of Sentence	344	339	5	3.9	4.0	1.7
Court Order	179	174	5	2.0	2.0	1.7
Death	31	31	--	0.4	0.4	--
To Outside Institution	409	390	19	4.7	4.6	6.4
Conditional Release	2,381	2,333	48	27.1	27.5	16.1
Escape, Absconder, Other	71	69	2	0.8	0.8	0.7

TIME SERVED IN DOCS FACILITIES

The following sections present profile characteristics of inmates released to parole supervision for the first time on their current sentence. These characteristics include: sex; commitment offense; age at time of release; prior criminal record; maximum sentence and county of commitment. Each of these characteristics is shown by time actually served in DOCS facilities between the date originally received from the court of commitment and the date the inmate was returned to the community under parole supervision. Data are presented separately for discretionary Parole Board releases and for mandatory conditional releases which occur after an inmate has successfully completed two-thirds of the maximum sentence.

First Releases Information is presented in the next five sections on 6,800 inmates who were released for the first time to parole supervision on their current sentence. Of these 6,558 (96.4%) were males and 242 (3.6%) were females. Among male first releases, 4,529 (69.1%) were discretionary parole releases compared to 202 female paroles (83.5%). Male conditional first releases numbered 2,029 (30.9%) while female conditional first releases were 40 (16.5%). In comparison with first releases to parole supervision in 1978, the percentage of first paroles declined from 73.8% in 1978 to 69.6% in 1979 while first conditional releases rose from 26.2% to 30.4%. This may reflect a decreasing proportion of parole eligible cases approved for release by the Board of Parole in 1979.

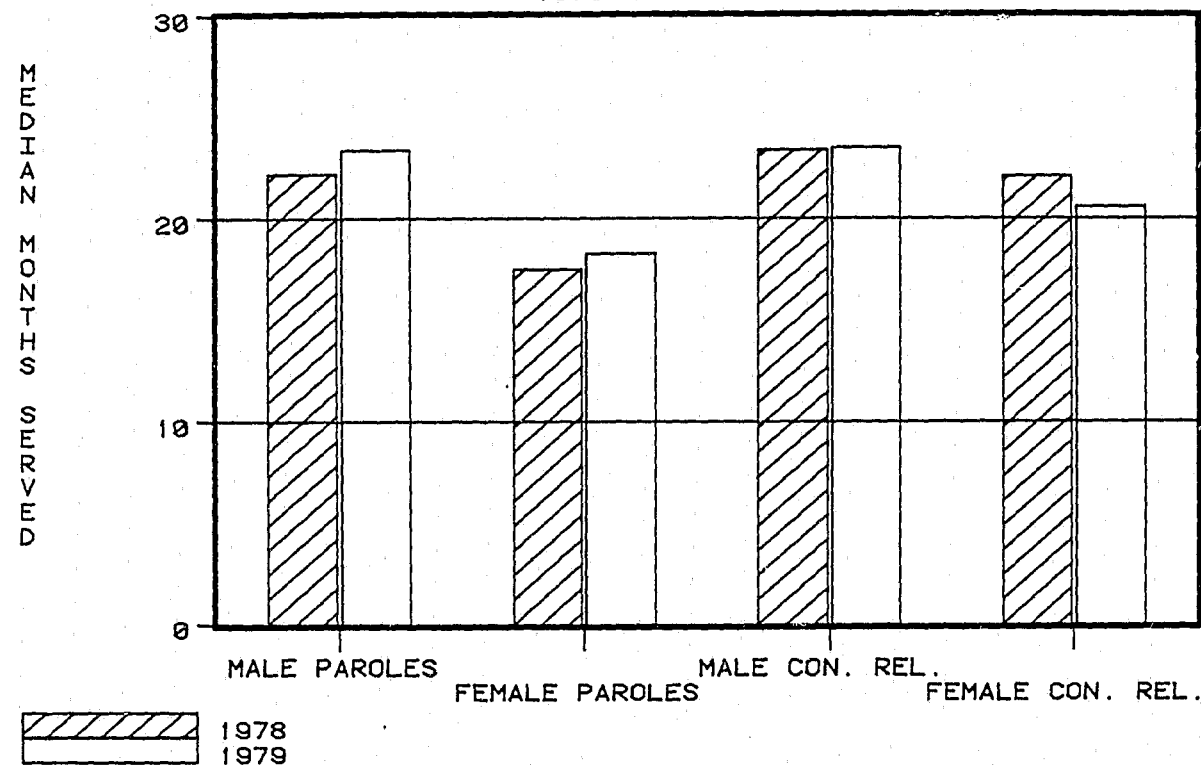
FIRST RELEASES: SEX

Sex	Total First Releases	Type of First Release			
		Parole		Conditional Release	
		Number	Percent	Number	Percent
Total	6,800	4,731	69.6	2,069	30.4
Male	6,558	4,529	69.1	2,029	30.9
Female	242	202	83.5	40	16.5

TIME SERVED ON FIRST RELEASE: SEX

A median time of 23.4 months was served in DOCS facilities by the 4,529 male first parole releases during 1979. Male conditional first releases served approximately the same median time, 23.5 months. Females released by first parole served substantially less time than any of the other groups with a median time of 18.3 months. Time served by female first conditional releases was 20.6 months or 2.3 months more than the parole group.

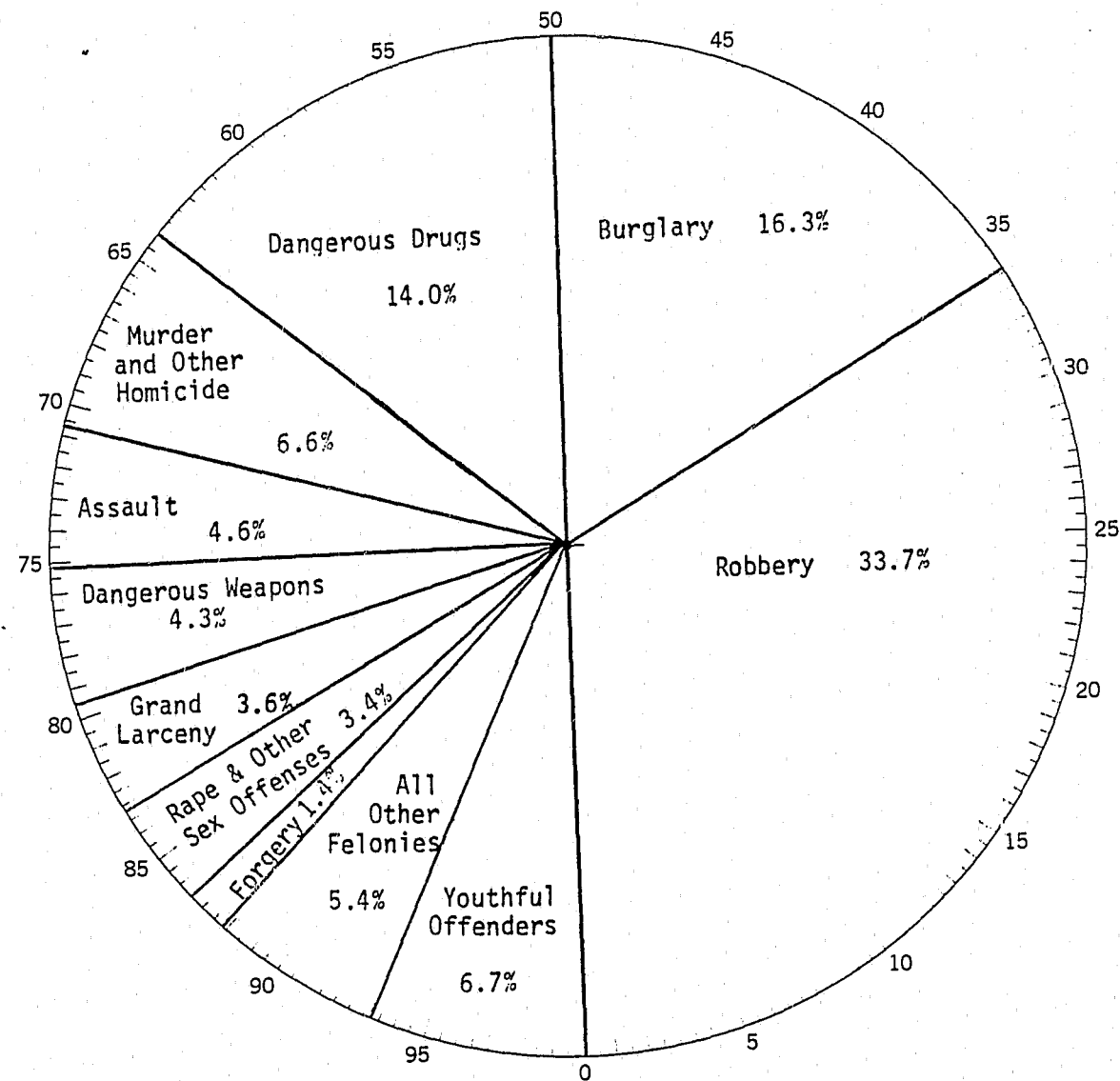
TIME SERVED ON FIRST RELEASE: SEX
1978 AND 1979



TIME SERVED ON FIRST RELEASE: SEX

Sex	Number	Type of First Release	
		Parole Median Time Served (Mos.)	Conditional Release Median Time Served (Mos.)
Male	4,529	23.4	23.5
Female	202	18.3	20.6

CHARACTERISTICS OF INMATES DISCHARGED - 1979
OFFENSE ON COMMITMENT



First Releases to Parole Supervision*

Offense on Commitment	Number	Percent
TOTAL RELEASED	6,800	100.0%
Total Felonies	6,344	93.3%
Robbery	2,289	33.7%
Burglary	1,108	16.3%
Dangerous Drugs	950	14.0%
Murder & Other Homicide	450	6.6%
Assault	310	4.6%
Dangerous Weapons	293	4.3%
Grand Larceny	245	3.6%
Rape & Other Sex Offenses	232	3.4%
Forgery	98	1.4%
All Other Felonies	369	5.4%
Youthful Offenders	454	6.7%
Juvenile Delinquents	2	a/

*Includes first paroles and first conditional releases.

a/ Less than 0.1

TIME SERVED ON FIRST RELEASE: CRIME

First Paroles Over 93 percent of male first paroles in 1979 had been committed for felonies (4,228 out of 4,529). Robbery was the offense on commitment for the largest number of male first paroles (35.6%). Other felonies which comprised ten percent or more of the 1979 male first parole cohort included dangerous drugs (17.6%) and burglary (15.2%). Only 5.3 percent of male first paroles had been committed for homicide (238) and merely 6.6 percent had been committed as Youthful Offenders (300).

Seventy-nine percent of male felons paroled for the first time in 1979 had served less than three years (3,342 out of 4,228). The median time served of male felon first paroles was 23.8 months -- almost two years. Total male first paroles in 1979 had served an average of 23.4 months. 80.3 percent had served less than three years (3,638 out of 4,529). This latter figure includes 300 male Youthful Offender first paroles whose median time served was 19.6 months. The time served distribution of male first paroles by specific crime (felony) varies greatly depending on the severity and dispersion of offenses included in each designated crime and the numbers of commitments under these offenses. For example, robbery includes commitments under robbery first degree, robbery second degree and robbery third degree, which are class B, class C and class D felonies, respectively, in descending order of severity. While the spread of minimum terms permitted for specific crime classes may overlap, the tendency is toward longer minimum terms for the more serious crimes, as defined in the penal law. Thus, the median time served by male first paroles was longest for those convicted of murder (52.0 mos.), homicide (44.4 mos.) and rape (43.5 mos.) while shortest for grand larceny (not auto) - 17.6 months.

In comparison with male first paroles in 1978, the crime distribution was similar in 1979 with respect to robbery and dangerous drugs commitments paroled for the first time. First paroles of male burglary commitments in 1979 were 2.2 percent over the 1978 proportion while first paroles of male homicide commitments were down 1.9 percent and Youthful Offender paroles were down 0.9 percent in 1979. The median time served of male first paroles in 1979, at 23.4 months, was 1.2 months longer than the median time served by the 1978 cohort. The median time served by male first paroles in 1979 committed for the "violent felony" type crimes of homicide, robbery and rape has risen about 2½ months for robbery, 4 months for rape and nearly 8 months for homicide. This occurred perhaps because of the increasing emphasis on harsher punishments for violent felons although the new violent felony offender law enacted in 1978 had little effect yet.

97.5 percent of female first paroles in 1979 had been committed for felonies -- 197 out of 202. Dangerous drug crimes accounted for the highest proportion of female first paroles (74 or 36.6%) while the second largest number had been committed for robbery, 42 or 20.8 percent.

Nearly 88 percent of female felons paroled for the first time in 1979 had served less than three years (173 out of 197). This was up from the 1978 proportion of almost 95 percent. The median time served of female felon first paroles was only 18.5 months, just over 1½ years. The median time served of total female first paroles was 18.3 months, slightly longer than the 1978 experience (17.5 mos.) and over 5 months less than that for the male 1979 parole cohort. Table 2 gives the median time served by commitment offense for both males and females and the numbers of first paroles for each offense.

MEDIAN TIME SERVED BY CRIME AND SEX
FIRST PAROLES - 1979

Offense on Commitment	Male First Paroles		Female First Paroles	
	Number	Median Time Served (Mos.)	Number	Median Time Served (Mos.)
Total	4,529	23.4	202	18.3
Felonies	4,228	23.8	197	18.5
Murder	42	52.0	2	48.0
Homicide	238	44.4	19	30.8
Robbery	1,611	27.7	42	18.8
Burglary	690	20.1	7	16.5
Assault	145	23.2	12	24.0
Grand Larceny (not auto)	118	17.6	18	16.0
Grand Larceny (auto)	23	19.9	--	--
Rape	82	43.5	1	42.0
Sex Offense excl. Rape	42	30.5	--	--
Dangerous Drugs	796	21.7	74	18.0
Forgery	55	19.1	7	17.3
Dangerous Weapons	164	20.8	3	19.5
All Other Felony	222	18.7	12	17.0
Youthful Offender	300	19.6	5	15.8
Juvenile Delinquent	1	42.0	--	--

First Conditional Releases Nearly 93 percent of male first conditional releases in 1979 had been committed for felonies (1,882 out of 2,029). The largest number of male first conditional releases had been committed for robbery (31.0%). The only other felony which comprised ten percent or more of the 1979 male first conditional release cohort was burglary (20.2%). Dangerous drug crimes, which accounted for nearly 18 percent of male first paroles in 1979, were only 3.8 percent of the 1979 male conditional release cohort. A substantial number of "Rockefeller" law dangerous drug commitments were paroled

in 1979 after serving relatively short minimum terms. Only 6.5 percent of male first conditional releases had been committed for homicide (131) and 7.2 percent had been committed as Youthful Offenders (146).

85.5 percent of male felons conditionally released for the first time in 1979 had served less than three years (1,609 out of 1,882). The median time served of male felon first conditional releases was 23.4 months and for total male first conditional releases, 23.5 months. The latter was slightly higher because the median time served of the Youthful Offender first conditional release cohort was 24.5 months -- slightly over 2 years. Like first paroles, the time served distribution varies by specific crime. Table 2A gives the median time served by commitment offense for both male and female first conditional releases.

In comparison with male first conditional releases in 1978, the proportion of male burglary commitment CR's was up from 14.5 percent in 1978 to 20.2 percent in 1979. Conversely, the proportion of robbery commitments conditionally released in 1979 was down from 32.5 percent in 1978 to 31.0 percent while homicide commitment CR's were down from 8.1 percent to 6.5 percent in 1979. The median time served of male first CR's in 1979, at 23.5 months was close to the median time served by the 1978 cohort (23.4 mos.). Median time served for individual crimes did not vary remarkably from the 1978 distribution except for Youthful Offenders, up from 18.6 months in 1978 to 24.5 months in 1979.

37 of the 40 female first conditional releases in 1979 had been committed for felonies (92.5%) and the largest number were homicide commitments, nine (22.5%). All 40 females who were conditionally released for the first time in 1979, had served less than three years. The median time served of total female first conditional releases was 20.6 months, slightly less than the median time served in 1978 (22.1 mos.).

MEDIAN TIME SERVED BY CRIME AND SEX
FIRST CONDITIONAL RELEASES - 1979

<u>Offense on Commitment</u>	<u>Male First CR's</u>		<u>Female First CR's</u>	
	<u>Number</u>	<u>Median Time Served (Mos.)</u>	<u>Number</u>	<u>Median Time Served (Mos.)</u>
Total	2,029	23.5	40	20.6
Felonies	1,882	23.4	37	20.4
Murder	9	27.0	--	--
Homicide	131	29.7	9	22.5
Robbery	629	24.3	7	20.3
Burglary	409	23.1	2	21.0
Assault	146	23.5	7	19.0
Grand Larceny (not auto)	70	20.5	3	21.0
Grand Larceny (auto)	13	21.3	--	--
Rape	43	30.6	--	--
Sex Offense excl. Rape	64	28.2	--	--
Dangerous Drugs	77	24.9	3	22.5
Forgery	33	21.6	3	Less Than 12 Mos.
Dangerous Weapons	126	22.4	--	--
All Other Felonies	132	20.6	3	19.5
Youthful Offender	146	24.5	3	22.5
Juvenile Delinquent	1	Less Than 12 Mos.	--	--

1979 FIRST PAROLES

FILE FIRST (CREATION DATE = 02/03/81) PAROLES BY CRIME, TIME SERVED AND SEX

***** CROSSTABULATION OF *****
 FELONY BY TIMESERV TIME SERVED IN MONTHS
 CONTROLLING FOR.. SEX VALUE = 1. MALES
 ***** PAGE 1 OF 1

COUNT ROW PCT	TIMESERV										ROW TOTAL
	UNDER 12 MO	12-17 MO	18-23 MO	24-35 MO	36-47 MO	48-59 MO	60-71 MO	72-119 MO	120-239 MO	240 MO & OVER	
FELONY	1.1	2.1	3.1	4.1	5.1	6.1	7.1	8.1	9.1	10.1	
FELONIES	92	1076	972	1202	444	273	94	57	16	2	4228
COLUMN TOTAL	2.2	25.4	23.0	28.4	10.5	6.5	2.2	1.3	0.4	0.0	100.0

***** CROSSTABULATION OF *****
 FELONY BY TIMESERV TIME SERVED IN MONTHS
 CONTROLLING FOR.. SEX VALUE = 2. FEMALES
 ***** PAGE 1 OF 1

-10-

COUNT ROW PCT	TIMESERV								ROW TOTAL
	UNDER 12 MO	12-17 MO	18-23 MO	24-35 MO	36-47 MO	48-59 MO	60-71 MO	72-119 MO	
FELONY	1.1	2.1	3.1	4.1	5.1	6.1	7.1	8.1	
FELONIES	13	82	40	38	14	6	1	3	197
COLUMN TOTAL	6.6	41.6	20.3	19.3	7.1	3.0	0.5	1.5	100.0

NUMBER OF MISSING OBSERVATIONS = 309

1979 FIRST PAROLES

FILE FIRST (CREATION DATE = 02/03/81) PAROLES BY CRIME, TIME SERVED AND SEX

***** C R O S S T A B U L A T I O N O F *****
 CRIME CRIME ON COMMITMENT BY TIMESERV TIME SERVED IN MONTHS
 CONTROLLING FOR.. SEX VALUE = 1. MALES
 ***** PAGE 1 OF 2

CRIME	ROW PCT	TIMESERV										ROW TOTAL
		UNDER 12 MO	12-17 MO	18-23 MO	24-35 MO	36-47 MO	48-59 MO	60-71 MO	72-119 MO	120-239 MO	240 MO & OVER	
MURDER	1.	0	1	3	10	6	3	3	5	9	2	42
		0.8	2.4	7.1	23.8	14.3	7.1	7.1	11.9	21.4	4.8	0.9
HOMICIDE	2.	2	9	11	55	60	55	22	23	1	0	238
		0.8	3.8	4.6	23.1	25.2	23.1	9.2	9.7	0.4	0.	5.3
ROBBERY	3.	22	249	361	563	224	137	42	10	3	0	1611
		1.4	15.5	22.4	34.9	13.9	8.5	2.6	0.6	0.2	0.	35.6
BURGLARY	4.	17	256	207	165	34	8	1	1	1	0	690
		2.5	37.1	30.0	23.9	4.9	1.2	0.1	0.1	0.1	0.	15.2
ASSAULT	5.	2	34	42	48	6	10	2	1	0	0	145
		1.4	23.4	29.0	33.1	4.1	6.9	1.4	0.7	0.	0.	3.2
GR LARC NOT AUTO	6.	7	56	43	10	2	0	0	0	0	0	118
		5.9	47.5	36.4	8.5	1.7	0.	0.	0.	0.	0.	2.6
GRAND LARC AUTO	7.	0	9	8	6	0	0	0	0	0	0	23
		0.	39.1	34.8	26.1	0.	0.	0.	0.	0.	0.	0.5
RAPE	8.	1	4	7	19	16	13	9	12	1	0	82
		1.2	4.9	8.5	23.2	19.5	15.9	11.0	14.6	1.2	0.	1.8
SEX OFF EX RAPE	9.	1	4	9	13	11	2	1	1	0	0	42
		2.4	9.5	21.4	31.0	26.2	4.8	2.4	2.4	0.	0.	0.9
DANGEROUS DRUGS	10.	23	280	155	215	70	39	12	2	0	0	796
		2.9	35.2	19.5	27.0	8.8	4.9	1.5	0.3	0.	0.	17.6
FORGERY	11.	2	22	20	11	0	0	0	0	0	0	55
		3.6	40.0	36.4	20.0	0.	0.	0.	0.	0.	0.	1.2
COLUMN TOTAL		94	1190	1097	1257	448	274	94	57	16	2	4529
(CONTINUED)		2.1	26.3	24.2	27.8	9.9	6.0	2.1	1.3	0.4	0.0	100.0

1979 FIRST PAROLES

FILE FIRST (CREATION DATE = 02/03/81) PAROLES BY CRIME, TIME SERVED AND SEX

***** CROSSTABULATION OF *****
 CRIME CRIME ON COMMITMENT BY TIMESERV TIME SERVED IN MONTHS
 CONTROLLING FOR.. VALUE = 1. MALES
 ***** PAGE 2 OF 2

CRIME	COUNT ROW PCT	TIMESERV										ROW TOTAL
		UNDER 1 MO	12-17 MO	18-23 MO	24-35 MO	36-47 MO	48-59 MO	60-71 MO	72-119 MO	120-239 MO	240 MO & OVER	
12. DANGEROUS WEAPON	3 1.8	61 37.2	39 23.8	47 28.7	8 4.9	4 2.4	1 0.6	1 0.6	0 0	0 0	0 0	164 3.6
13. ALL OTHER FELONY	12 5.4	91 41.0	67 30.2	40 18.0	7 3.2	2 0.9	1 0.5	1 0.5	1 0.5	0 0	0 0	222 4.9
15. YOUTHFUL OFFENDR	2 0.7	114 38.0	125 41.7	55 18.3	3 1.0	1 0.3	0 0	0 0	0 0	0 0	0 0	300 6.6
16. JUVENILE DELINQT	0 0	0 0	0 0	0 0	1 100.0	0 0	0 0	0 0	0 0	0 0	0 0	1 0.0
COLUMN TOTAL	94 2.1	1190 26.3	1097 24.2	1257 27.8	448 9.9	274 6.0	94 2.1	57 1.3	16 0.4	2 0.0	4529 100.0	

1979 FIRST PAROLES

FILE FIRST (CREATION DATE = 02/03/81) PAROLES BY CRIME, TIME SERVED AND SEX

***** CROSSTABULATION OF *****
 CRIME CRIME ON COMMITMENT BY TIMESERV TIME SERVED IN MONTHS
 CONTROLLING FOR.. SEX VALUE = 2. FEMALES
 ***** PAGE 1 OF 2

CRIME	COUNT ROW PCT	TIMESERV								ROW TOTAL
		UNDER 12 MO	12-17 MO	18-23 MO	24-35 MO	36-47 MO	48-59 MO	60-71 MO	72-119 MO	
		1.I	2.I	3.I	4.I	5.I	6.I	7.I	8.I	
MURDER	1.	0	0	0	0	1	1	0	0	2
		0.0	0.0	0.0	0.0	50.0	50.0	0.0	0.0	1.0
HOMICIDE	2.	2	3	0	8	3	1	1	1	19
		10.5	15.8	0.0	42.1	15.8	5.3	5.3	5.3	9.4
ROBBERY	3.	3	17	8	14	0	0	0	0	42
		7.1	40.5	19.0	33.3	0.0	0.0	0.0	0.0	20.8
BURGLARY	4.	2	2	3	0	0	0	0	0	7
		28.6	28.6	42.9	0.0	0.0	0.0	0.0	0.0	3.5
ASSAULT	5.	0	4	2	5	0	1	0	0	12
		0.0	33.3	16.7	41.7	0.0	8.3	0.0	0.0	5.9
GR LARC NOT AUTO	6.	1	12	5	0	0	0	0	0	18
		5.6	66.7	27.8	0.0	0.0	0.0	0.0	0.0	8.9
RAPE	8.	0	0	0	0	1	0	0	0	1
		0.0	0.0	0.0	0.0	100.0	0.0	0.0	0.0	0.5
DANGEROUS DRUGS	10.	4	33	15	8	9	3	0	2	74
		5.4	44.6	20.3	10.8	12.2	4.1	0.0	2.7	36.6
FORGERY	11.	0	4	2	1	0	0	0	0	7
		0.0	57.1	28.6	14.3	0.0	0.0	0.0	0.0	3.5
DANGEROUS WEAPON	12.	0	1	2	0	0	0	0	0	3
		0.0	33.3	66.7	0.0	0.0	0.0	0.0	0.0	1.5
ALL OTHER FELONY	13.	1	6	3	2	0	0	0	0	12
		8.3	50.0	25.0	16.7	0.0	0.0	0.0	0.0	5.9
COLUMN TOTAL		13	86	41	38	14	6	1	3	202
(CONTINUED)		6.4	42.6	20.3	18.8	6.9	3.0	0.5	1.5	100.0

1979 FIRST PAROLES

FILE FIRST (CREATION DATE = 02/03/81) PAROLES BY CRIME, TIME SERVED AND SEX

***** C R O S S T A B U L A T I O N O F *****
 CRIME CRIME ON COMMITMENT BY TIMESERV TIME SERVED IN MONTHS
 CONTROLLING FOR.. VALUE = 2. FEMALES
 SEX ***** PAGE 2 OF 2

CRIME	COUNT ROW PCT	TIMESERV								ROW TOTAL
		UNDER 12 MO	12-17 MO	18-23 MO	24-35 MO	36-47 MO	48-59 MO	60-71 MO	72-119 MO	
YOUTHFUL OFFENDR	15. 0.	1.I 80.0	2.I 20.0	3.I 0.	4.I 0.	5.I 0.	6.I 0.	7.I 0.	8.I 0.	5 2.5
COLUMN TOTAL	13 6.4	86 42.6	41 20.3	38 18.8	14 6.9	6 3.0	1 0.5	3 1.5	202 100.0	

NUMBER OF MISSING OBSERVATIONS = 3

1979 FIRST CONDITIONAL RELEASES

FILE FIRST (CREATION DATE = 02/04/81) CONDITIONAL RELEASES BY CRIME, TIME SERVED AND SEX

***** CROSSTABULATION OF *****
 FELONY BY TIMESERV TIME SERVED IN MONTHS
 CONTROLLING FOR..
 SEX VALUE = 1. MALES
 ***** PAGE 1 OF 1

COUNT ROW PCT	TIMESERV										ROW TOTAL
	UNDER 1 MO	12 1.I	12-17 2.I	18-23 3.I	24-35 4.I	36-47 5.I	48-59 6.I	60-71 7.I	72-119 8.I	120-239 9.I	
FELONY	1.	151	229	622	607	161	72	24	15	1	1882
FELONIES		8.0	12.2	33.0	32.3	8.6	3.8	1.3	0.8	0.1	100.0
COLUMN TOTAL		151	229	622	607	161	72	24	15	1	1882
		8.0	12.2	33.0	32.3	8.6	3.8	1.3	0.8	0.1	100.0

***** CROSSTABULATION OF *****
 FELONY BY TIMESERV TIME SERVED IN MONTHS
 CONTROLLING FOR..
 SEX VALUE = 2. FEMALES
 ***** PAGE 1 OF 1

COUNT ROW PCT	TIMESERV				ROW TOTAL	
	UNDER 1 MO	12 1.I	12-17 2.I	18-23 3.I		24-35 4.I
FELONY	1.	5	8	14	10	37
FELONIES		13.5	21.6	37.8	27.0	100.0
COLUMN TOTAL		5	8	14	10	37
		13.5	21.6	37.8	27.0	100.0

NUMBER OF MISSING OBSERVATIONS = 157

1979 FIRST CONDITIONAL RELEASES

FILE FIRST (CREATION DATE = 02/04/81) CONDITIONAL RELEASES BY CRIME, TIME SERVED AND SEX

***** C R O S S T A B U L A T I O N O F *****
 CRIME ON COMMITMENT BY TIMESERV TIME SERVED IN MONTHS
 CONTROLLING FOR.. SEX VALUE = 1. MALES
 ***** PAGE 1 OF 2

CRIME	COUNT ROW PCT	TIMESERV										ROW TOTAL
		UNDER 1 MO	12-17 MO	18-23 MO	24-35 MO	36-47 MO	48-59 MO	60-71 MO	72-119 MO	120-239 MO	9. I	
MURDER	1.	0	0	4	2	1	0	1	1	0	0	9
		0.	0.	44.4	22.2	11.1	0.	11.1	11.1	0.	0.	0.4
HOMICIDE	2.	16	9	23	37	23	16	6	1	0	131	
		12.2	6.9	17.6	28.2	17.6	12.2	4.6	0.8	0.	6.5	
ROBBERY	3.	51	81	178	208	77	17	10	6	1	629	
		8.1	12.9	28.3	33.1	12.2	2.7	1.6	1.0	0.2	31.0	
BURGLARY	4.	27	47	154	154	18	7	1	1	0	409	
		6.6	11.5	37.7	37.7	4.4	1.7	0.2	0.2	0.	20.2	
ASSAULT	5.	11	17	49	39	16	9	3	2	0	146	
		7.5	11.6	33.6	26.7	11.0	6.2	2.1	1.4	0.	7.2	
GR LARC NOT AUTO	6.	8	14	31	15	2	0	0	0	0	70	
		11.4	20.0	44.3	21.4	2.9	0.	0.	0.	0.	3.4	
GRAND LARC AUTO	7.	0	1	10	2	0	0	0	0	0	13	
		0.	7.7	76.9	15.4	0.	0.	0.	0.	0.	0.6	
RAPE	8.	1	4	11	10	8	5	2	2	0	43	
		2.3	9.3	25.6	23.3	18.6	11.6	4.7	4.7	0.	2.1	
SEX OFF EX RAPE	9.	1	5	18	23	4	11	0	2	0	64	
		1.6	7.8	28.1	35.9	6.3	17.2	0.	3.1	0.	3.2	
DANGEROUS DRUGS	10.	5	8	23	32	4	4	1	0	0	77	
		6.5	10.4	29.9	41.6	5.2	5.2	1.3	0.	0.	3.8	
FORGERY	11.	2	2	21	7	0	1	0	0	0	33	
		6.1	6.1	63.6	21.2	0.	3.0	0.	0.	0.	1.6	
COLUMN TOTAL		155	241	677	681	163	72	24	15	1	2029	
(CONTINUED)		7.6	11.9	33.4	33.6	8.0	3.5	1.2	0.7	0.0	100.0	

-16-

1979 FIRST CONDITIONAL RELEASES

FILE FIRST (CREATION DATE = 02/04/81) CONDITIONAL RELEASES BY CRIME, TIME SERVED AND SEX

***** CROSSTABULATION OF *****
 CRIME CRIME ON COMMITMENT BY TIMESERV TIME SERVED IN MONTHS
 CONTROLLING FOR..
 SEX VALUE = 1. MALES
 ***** PAGE 2 OF 2

CRIME	COUNT I	TIMESERV										ROW TOTAL
		UNDER 12 MO	12-17 MO	18-23 MO	24-35 MO	36-47 MO	48-59 MO	60-71 MO	72-119 MO	120-239 MO	9.I	
12. DANGEROUS WEAPON	8	17	52	43	5	1	0	0	0	0	0	126
	6.3	13.5	41.3	34.1	4.0	0.8	0.	0.	0.	0.	0.	6.2
13. ALL OTHER FELONY	21	24	48	35	3	1	0	0	0	0	0	132
	15.9	18.2	36.4	26.5	2.3	0.8	0.	0.	0.	0.	0.	6.5
15. YOUTHFUL OFFENDR	3	12	55	74	2	0	0	0	0	0	0	146
	2.1	8.2	37.7	50.7	1.4	0.	0.	0.	0.	0.	0.	7.2
16. JUVENILE DELINQT	1	0	0	0	0	0	0	0	0	0	0	1
	100.0	0.	0.	0.	0.	0.	0.	0.	0.	0.	0.	0.0
COLUMN TOTAL	155	241	677	681	163	72	24	15	1	2029		
	7.6	11.9	33.4	33.6	8.0	3.5	1.2	0.7	0.0	100.0		

1979 FIRST CONDITIONAL RELEASES

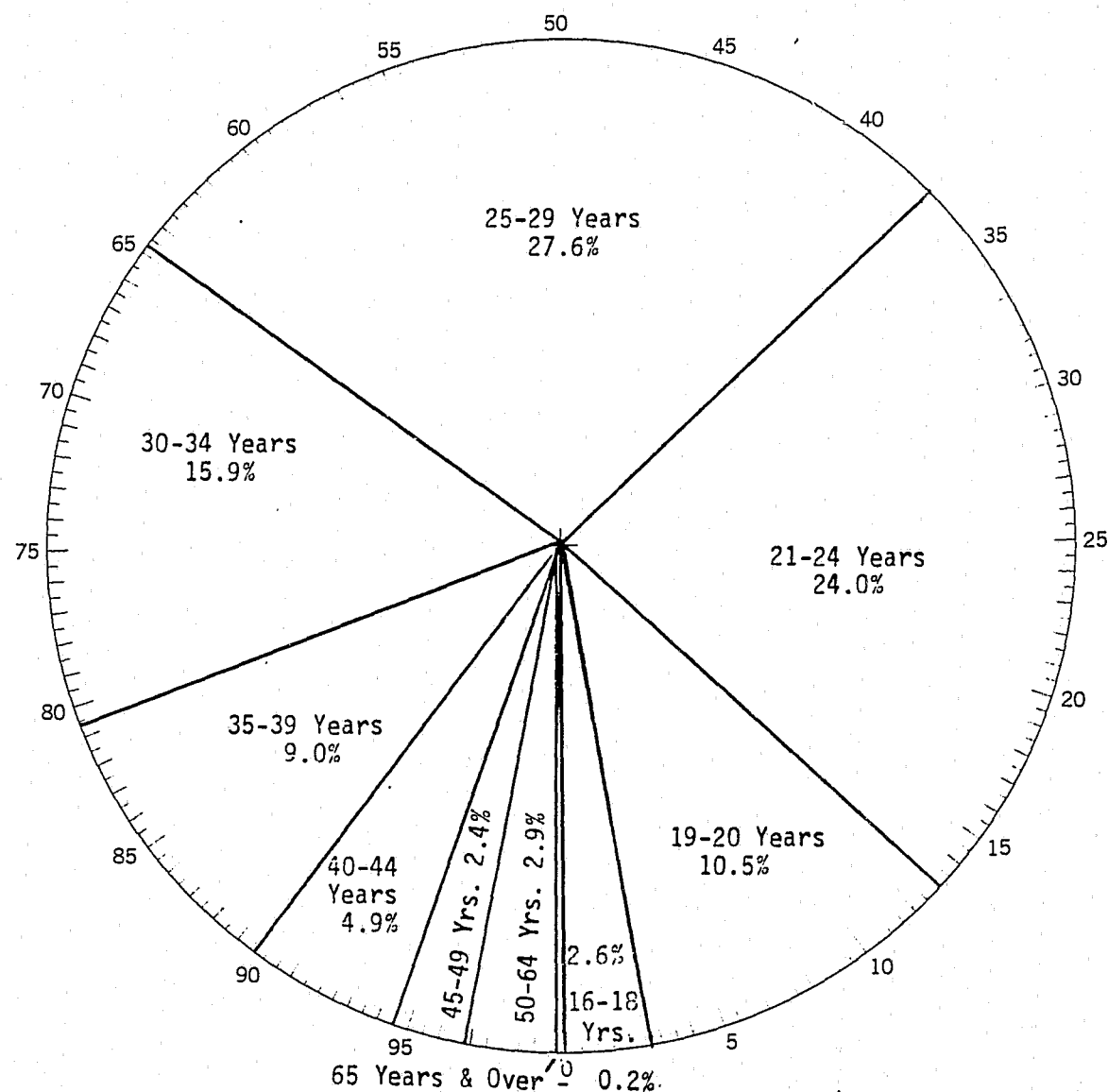
FILE FIRST (CREATION DATE = 02/04/81) CONDITIONAL RELEASES BY CRIME, TIME SERVED AND SEX

***** CROSSTABULATION OF *****
 CRIME CRIME ON COMMITMENT BY TIMESERV TIME SERVED IN MONTHS
 CONTROLLING FOR..
 SEX VALUE = 2. FEMALES
 ***** PAGE 1 OF 1

CRIME	COUNT ROW PCT	TIMESERV				ROW TOTAL
		UNDER 12 MO	12-17 MO	18-23 MO	24-35 MO	
		1.I	2.I	3.I	4.I	
HOMICIDE	2.	0	3	2	4	9
		0.	33.3	22.2	44.4	22.5
ROBBERY	3.	1	1	4	1	7
		14.3	14.3	57.1	14.3	17.5
BURGLARY	4.	0	1	0	1	2
		0.	50.0	0.	50.0	5.0
ASSAULT	5.	2	1	3	1	7
		28.6	14.3	42.9	14.3	17.5
GR LARC NOT AUTO	6.	0	1	1	1	3
		0.	33.3	33.3	33.3	7.5
DANGEROUS DRUGS	10.	0	0	2	1	3
		0.	0.	66.7	33.3	7.5
FORGERY	11.	2	0	0	1	3
		66.7	0.	0.	33.3	7.5
ALL OTHER FELONY	13.	0	1	2	0	3
		0.	33.3	66.7	0.	7.5
YOUTHFUL OFFENDR	15.	0	0	2	1	3
		0.	0.	66.7	33.3	7.5
COLUMN TOTAL		5	8	16	11	40
		12.5	20.0	40.0	27.5	100.0

NUMBER OF MISSING OBSERVATIONS = 7

CHARACTERISTICS OF INMATES DISCHARGED - 1979
AGE ON RELEASE



Age on Release	First Releases to Parole Supervision*	
	Number	Percent
TOTAL RELEASES	6,798	100.0%
16-18 Years	173	2.6%
19-20 Years	715	10.5%
21-24 Years	1,634	24.0%
25-29 Years	1,875	27.6%
30-34 Years	1,079	15.9%
35-39 Years	612	9.0%
40-44 Years	331	4.9%
45-49 Years	166	2.4%
50-64 Years	197	2.9%
65 Years & Over	16	0.2%

*Includes first paroles and first conditional releases.

TIME SERVED ON FIRST RELEASE: AGE

First Paroles Over 90 percent of total male first paroles were under 40 years of age on release and almost 54 percent were in the 21 through 29 year age group. Only 13.5 percent were less than 21 years of age on release and nearly three percent were aged 50 or over. The median age on release of male first paroles was 26.9 years, close to the 1978 median age of 27.0 years. While the median time served of all male first paroles in 1979 was 23.4 months, there appears to be a direct relationship between time served and age on release, with a high of 36.0 months as the median time served of those aged 65 and over and a low of 18.1 months for those 16 to 18 years of age on release.

The age distribution of female first paroles was slightly higher than that for males. Nearly 88 percent were under 40 years of age on release and 50 percent were in the 21 through 29 year age group while only 5.5 percent were under 21. The median age on release of female first paroles was 29.1 years, more than 2 years greater than that for males. The relationship between time served and age on release for females appears to vary directly up to age 39 with a low of 15.0 months for the one female between 16 and 18 years of age and a high of 23.6 months for those aged 35 through 39. This relationship does not hold true for the older age groups, however. The median time served of total female first paroles was 5.1 months less than that for males.

MEDIAN TIME SERVED BY AGE ON RELEASE AND SEX
FIRST PAROLES - 1979

Age on Release	Male First Paroles		Female First Paroles	
	Number	Median Time Served (Mos.)	Number	Median Time Served (Mos.)
Total	4,528	23.4	202	18.3
16-18 Years	136	18.1	1	15.0
19-20 "	476	21.2	10	17.0
21-24 "	1,167	22.8	41	17.2
25-29 "	1,260	24.3	60	18.0
30-34 "	686	25.9	36	19.2
35-39 "	369	26.7	29	23.6
40-44 "	206	27.8	13	16.3
45-49 "	97	30.5	7	21.0
50-64 "	123	25.1	4	18.0
65 Years & Over	8	36.0	1	Less Than 12 Mos.

First Conditional Releases The median age on release of male first conditional releases (CR's) at 28.1 years was more than one year greater than for male first paroles. Nearly 88 percent of total male CR's were under age 40 on release and 47.4 percent were in the age group 21 through 29. Thirteen percent were less than 21 and 3.7 percent were 50 years of age or over. Median time served did not appear to vary much by age group but remained essentially the same for each age group. Thus, male first conditional releases in the lower age groups tended to serve more time than male first paroles in those age groups while the reverse was true for males aged 25 or over on release.

Female first conditional releases had a median age of 29.1 years. This was the same as female first paroles and it was one year greater than the median age of male first CR's. The median time served of female first CR's was 20.6 months, or nearly 3 months less than that for male CR's. Fluctuations by age group for median time served were mostly due to the small number of cases involved.

MEDIAN TIME SERVED BY AGE ON RELEASE AND SEX
FIRST CONDITIONAL RELEASES - 1979

Age on Release	Male First CR's		Female First CR's	
	Number	Median Time Served (Mos.)	Number	Median Time Served (Mos.)
Total	2,028	23.5	40	20.6
16-18 Years	36	21.0	--	--
19-20 "	227	23.3	2	21.0
21-24 "	417	23.4	9	22.2
25-29 "	544	23.6	11	21.8
30-34 "	344	23.7	13	19.0
35-39 "	212	23.1	2	15.0
40-44 "	110	23.3	2	12.0
45-49 "	62	26.7	--	--
50-64	69	26.9	1	21.0
65 Years & Over	7	23.0	--	--

1979 FIRST PAROLES

FILE FIRST (CREATION DATE = 02/24/81) PAROLES BY AGE AT TIME OF RELEASE, TIME SERVED & SEX

***** C R O S S T A B U L A T I O N O F *****
 AGEREL AGE AT TIME OF RELEASE BY TIMESERV TIME SERVED IN MONTHS

CONTROLLING FOR..
 SEX

VALUE = 1. MALES

PAGE 1 OF 1

AGEREL	COUNT ROW PCT	TIMESERV										ROW TOTAL
		UNDER 1 MO	12 12-17 MO	18-23 MO	24-35 MO	36-47 MO	48-59 MO	60-71 MO	72-119 MO	120-239 MO	240 MO & OVER	
		1.I	2.I	3.I	4.I	5.I	6.I	7.I	8.I	9.I	10.I	
16-18 YR	1.	1	66	59	10	0	0	0	0	0	0	136
		0.7	48.5	43.4	7.4	0.	0.	0.	0.	0.	0.	3.0
19-20 YR	2.	3	142	177	142	10	2	0	0	0	0	476
		0.6	29.8	37.2	29.8	2.1	0.4	0.	0.	0.	0.	10.5
21-24 YR	3.	11	319	319	366	107	36	8	1	0	0	1167
		0.9	27.3	27.3	31.4	9.2	3.1	0.7	0.1	0.	0.	25.8
25-29 YR	4.	28	322	271	365	137	93	31	13	0	0	1260
		2.2	25.6	21.5	29.0	10.9	7.4	2.5	1.0	0.	0.	27.8
30-34 YR	5.	20	155	140	175	93	69	21	13	0	0	686
		2.9	22.6	20.4	25.5	13.6	10.1	3.1	1.9	0.	0.	15.2
35-39 YR	6.	16	84	63	95	46	37	13	12	3	0	369
		4.3	22.8	17.1	25.7	12.5	10.0	3.5	3.3	0.8	0.	8.1
40-44 YR	7.	6	52	29	50	30	16	9	8	5	1	206
		2.9	25.2	14.1	24.3	14.6	7.8	4.4	3.9	2.4	0.5	4.5
45-49 YR	8.	1	18	16	25	12	11	7	4	3	0	97
		1.0	18.6	16.5	25.8	12.4	11.3	7.2	4.1	3.1	0.	2.1
50-64 YR	9.	8	31	20	28	12	10	3	6	5	0	123
		6.5	25.2	16.3	22.8	9.8	8.1	2.4	4.9	4.1	0.	2.7
65 YR & OVER	10.	0	1	2	1	1	0	2	0	0	1	8
		0.	12.5	25.0	12.5	12.5	0.	25.0	0.	0.	12.5	0.2
COLUMN TOTAL		94	1190	1096	1257	448	274	94	57	16	2	4528
		2.1	26.3	24.2	27.8	9.9	6.1	2.1	1.3	0.4	0.0	100.0

-22-

1979 FIRST PAROLES

FILE FIRST (CREATION DATE = 02/24/81) PAROLES BY AGE AT TIME OF RELEASE, TIME SERVED & SEX

***** CROSSTABULATION OF *****
 AGEREL AGE AT TIME OF RELEASE BY TIMESERV TIME SERVED IN MONTHS
 CONTROLLING FOR.. SEX VALUE = 2. FEMALES
 ***** PAGE 1 OF 1

AGEREL	COUNT ROW PCT	TIMESERV								ROW TOTAL
		UNDER 12 MO	12-17 MO	18-23 MO	24-35 MO	36-47 MO	48-59 MO	60-71 MO	72-119 MO	
		1.I	2.I	3.I	4.I	5.I	6.I	7.I	8.I	
16-18 YR	1.	0	1	0	0	0	0	0	0	1
		0.	100.0	0.	0.	0.	0.	0.	0.	0.5
19-20 YR	2.	0	6	4	0	0	0	0	0	10
		0.	60.0	40.0	0.	0.	0.	0.	0.	5.0
21-24 YR	3.	4	19	6	10	2	0	0	0	41
		9.8	46.3	14.6	24.4	4.9	0.	0.	0.	20.3
25-29 YR	4.	5	25	11	11	4	2	1	1	60
		8.3	41.7	18.3	18.3	6.7	3.3	1.7	1.7	29.7
30-34 YR	5.	3	13	10	7	3	0	0	0	36
		8.3	36.1	27.8	19.4	8.3	0.	0.	0.	17.8
35-39 YR	6.	0	8	7	7	3	2	0	2	29
		0.	27.6	24.1	24.1	10.3	6.9	0.	6.9	14.4
40-44 YR	7.	0	9	1	2	0	1	0	0	13
		0.	69.2	7.7	15.4	0.	7.7	0.	0.	6.4
45-49 YR	8.	0	3	1	1	1	1	0	0	7
		0.	42.9	14.3	14.3	14.3	14.3	0.	0.	3.5
50-64 YR	9.	0	2	1	0	1	0	0	0	4
		0.	50.0	25.0	0.	25.0	0.	0.	0.	2.0
65 YR & OVER	10.	1	0	0	0	0	0	0	0	1
		100.0	0.	0.	0.	0.	0.	0.	0.	0.5
COLUMN TOTAL		13	86	41	38	14	6	1	3	202
		6.4	42.6	20.3	18.8	6.9	3.0	0.5	1.5	100.0

NUMBER OF MISSING OBSERVATIONS = 1

1979 FIRST CONDITIONAL RELEASES

FILE 1ST (CREATION DATE = 02/23/81) CONDITIONAL RELEASES BY AGE ON RELEASE, TIME SERVED, SEX

***** CROSSTABULATION OF *****
 AGEREL AGE AT TIME OF RELEASE BY TIMESERV TIME SERVED IN MONTHS
 CONTROLLING FOR..
 SEX VALUE = 1. MALES
 ***** PAGE 1 OF 1

AGEREL	COUNT ROW PCT	TIMESERV										ROW TOTAL
		UNDER 1 MO	12 1.I	12-17 2.I	18-23 3.I	24-35 4.I	36-47 5.I	48-59 6.I	60-71 7.I	72-119 8.I	120-239 9.I	
16-18 YR	1.	2	6	20	8	0	0	0	0	0	0	36
		5.6	16.7	55.6	22.2	0.	0.	0.	0.	0.	0.	1.8
19-20 YR	2.	10	27	86	98	6	0	0	0	0	0	227
		4.4	11.9	37.9	43.2	2.6	0.	0.	0.	0.	0.	11.2
21-24 YR	3.	29	42	153	151	33	7	2	0	0	0	417
		7.0	10.1	36.7	36.2	7.9	1.7	0.5	0.	0.	0.	20.6
25-29 YR	4.	42	68	175	166	53	26	10	4	0	0	544
		7.7	12.5	32.2	30.5	9.7	4.8	1.8	0.7	0.	0.	26.8
30-34 YR	5.	39	46	92	115	29	12	4	7	0	0	344
		11.3	13.4	26.7	33.4	8.4	3.5	1.2	2.0	0.	0.	17.0
35-39 YR	6.	15	25	77	69	9	12	5	0	0	0	212
		7.1	11.8	36.3	32.5	4.2	5.7	2.4	0.	0.	0.	10.5
40-44 YR	7.	6	20	33	30	17	3	1	0	0	0	110
		5.5	18.2	30.0	27.3	15.5	2.7	0.9	0.	0.	0.	5.4
45-49 YR	8.	6	4	17	18	9	3	1	3	1	1	62
		9.7	6.5	27.4	29.0	14.5	4.8	1.6	4.8	1.6	1.6	3.1
50-64 YR	9.	5	3	21	23	7	8	1	1	0	0	69
		7.2	4.3	30.4	33.3	10.1	11.6	1.4	1.4	0.	0.	3.4
65 YR & OVER	10.	1	0	3	2	0	1	0	0	0	0	7
		14.3	0.	42.9	28.6	0.	14.3	0.	0.	0.	0.	0.3
COLUMN TOTAL		155	241	677	680	163	72	24	15	1	2028	
		7.6	11.9	33.4	33.5	8.0	3.6	1.2	0.7	0.0	100.0	

-24-

1979 FIRST CONDITIONAL RELEASES

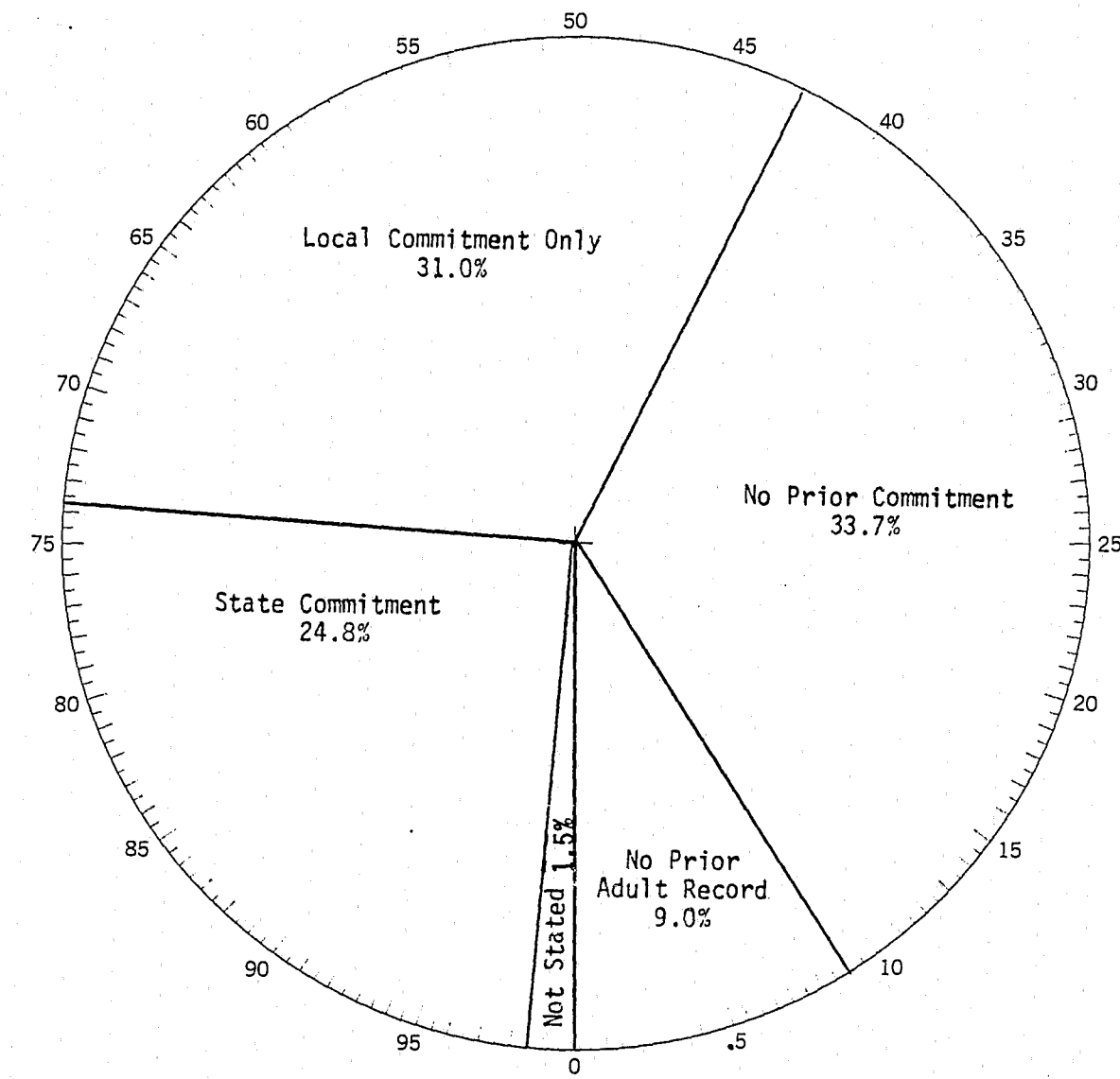
FILE 1ST (CREATION DATE = 02/23/81) CONDITIONAL RELEASES BY AGE ON RELEASE, TIME SERVED, SEX

 AGEREL AGE AT TIME OF RELEASE CROSS TABULATION OF *****
 CONTROLLING FOR.. BY TIMESERV TIME SERVED IN MONTHS
 SEX VALUE = 2. FEMALES
 ***** PAGE 1 OF 1

		TIMESERV					ROW TOTAL
AGEREL	COUNT ROW PCT	UNDER 12 MO	12-17 MO	18-23 MO	24-35 MO		
		1.I	2.I	3.I	4.I		
19-20 YR	2.	0	0	2	0	2	
		0.	0.	100.0	0.	5.0	
21-24 YR	3.	0	1	5	3	9	
		0.	11.1	55.6	33.3	22.5	
25-29 YR	4.	1	2	4	4	11	
		9.1	18.2	36.4	36.4	27.5	
30-34 YR	5.	2	4	3	4	13	
		15.4	30.8	23.1	30.8	32.5	
35-39 YR	6.	1	0	1	0	2	
		50.0	0.	50.0	0.	5.0	
40-44 YR	7.	1	1	0	0	2	
		50.0	50.0	0.	0.	5.0	
50-64 YR	9.	0	0	1	0	1	
		0.	0.	100.0	0.	2.5	
	COLUMN TOTAL	5	8	16	11	40	
		12.5	20.0	40.0	27.5	100.0	

NUMBER OF MISSING OBSERVATIONS = 1

CHARACTERISTICS OF INMATES DISCHARGED - 1979
PRIOR CRIMINAL RECORD



Prior Adult Criminal Record	First Releases to Parole Supervision*	
	Number	Percent
TOTAL RELEASED	6,795	100.0%
No Prior Adult Record	612	9.0%
No Prior Commitment	2,290	33.7%
Local Commitment Only	2,104	31.0%
State Commitment	1,688	24.8%
Not Stated	101	1.5%

*Includes first paroles and first conditional releases.

TIME SERVED ON FIRST RELEASES: PRIOR CRIMINAL RECORD

First Paroles Over 48 percent of male first paroles had either no prior adult record (no arrests) or no prior adult commitment. Nearly 31 percent had prior local commitment(s) only and slightly less than twenty percent had previous state commitments.

While nearly 85 percent of those who had no prior record nor commitment served less than three years, slightly over 67 percent of males with one or more prior state and/or federal commitments served less than three years when paroled for the first time. The median time served of male first paroles varied directly with the severity of the prior record. For example, those with no prior record served an average of 20.5 months; those with no prior adult commitment averaged 22.6 months; the median time served of those with prior local commitments only was 22.8 months; while male first paroles with previous state commitments averaged 28.7 months in department facilities. Most of the inmates with previous state commitments were committed as second felony offenders, with minimum terms fixed by the court at one-half the maximum term.

Over 22 percent of female first paroles in 1979 had no prior record while about 38 percent had no prior commitment. A little over 29 percent had a prior local commitment while only 8.9 percent had previous state commitments. The relationship between median time served and severity of prior record appears to be inverse with respect to the female first parole cohort in 1979.

In comparison with the prior adult criminal record of male first paroles in 1978, the prior record in the current year was more severe in that over 3 percent less in 1979 had no prior record or commitment and over two percent more had prior local or state commitments. The prior criminal record of female first paroles in 1978 was much less severe than the 1979 group in that about 8 percent more had no prior record or commitment in the earlier year and about 8 percent less had prior local or state commitments in 1978.

MEDIAN TIME SERVED BY PRIOR ADULT RECORD AND SEX
FIRST PAROLES - 1979

<u>Prior Adult Record</u>	<u>Male First Paroles</u>		<u>Female First Paroles</u>	
	<u>Number</u>	<u>Median Time Served (Mos.)</u>	<u>Number</u>	<u>Median Time Served (Mos.)</u>
Total	4,526	23.4	202	18.3
No Prior Adult Record	443	21.5	45	20.5
No Prior Commitment	1,739	22.6	77	19.0
Local Commitment Only	1,386	22.8	59	17.7
State Commitment	887	28.7	18	16.8
Not Stated	71	28.3	3	19.5

First Conditional Releases Seven out of ten (70.0%) male first conditional releases had previously served time in a penal facility for a prior criminal conviction. 31.6% had served sentences in local facilities and 38.4% had served time in state or federal prisons. Thus, nearly 20 percent more male first conditional releases had prior commitments compared to male first paroles in 1979. In contrast with the male first parole group, there did not appear to be a relationship between median time served and prior adult criminal record, for the 1979 male first conditional release cohort.

The female first conditional releases also had a more serious prior criminal record than their parole counterparts. Over 57 percent had served time in penal facilities for prior offenses and only 3 offenders (7.5%) had no prior adult criminal record. Again there was no apparent relationship between length of time served and prior adult criminal record.

MEDIAN TIME SERVED BY PRIOR ADULT RECORD AND SEX
FIRST CONDITIONAL RELEASES - 1979

<u>Prior Adult Record</u>	<u>Male First CR's</u>		<u>Female First CR's</u>	
	<u>Number</u>	<u>Median Time Served (Mos.)</u>	<u>Number</u>	<u>Median Time Served (Mos.)</u>
Total	2,027	23.5	40	20.6
No Prior Adult Record	121	23.8	3	21.0
No Prior Commitment	460	24.5	14	19.7
Local Commitment Only	641	22.8	18	21.0
State Commitment	778	23.5	5	22.5
Not Stated	27	28.1	--	--

1979 FIRST PAROLES

FILE FIRST (CREATION DATE = 03/23/81) PAROLES BY PRIOR ADULT RECORD, TIME SERVED AND SEX

***** C R O S S T A B U L A T I O N O F *****
 CRIMREC PRIOR ADULT CRIMINAL RECORD BY TIMESERV TIME SERVED IN MONTHS
 CONTROLLING FOR.. SEX VALUE = 1. MALES
 ***** PAGE 1 OF 1

COUNT ROW PCT	TIMESERV										ROW TOTAL
	UNDER 12 MO	12-17 MO	18-23 MO	24-35 MO	36-47 MO	48-59 MO	60-71 MO	72-119 MO	120-239 MO	240 MO & OVER	
CRIMREC	1. I	2. I	3. I	4. I	5. I	6. I	7. I	8. I	9. I	10. I	
NO PRIOR RECORD	10 I 2.3	143 I 32.3	118 I 26.6	108 I 24.4	38 I 8.6	16 I 3.6	4 I 0.9	4 I 0.9	1 I 0.2	1 I 0.2	443 I 9.8
NO PRIOR COMMIT	20 I 1.2	500 I 28.8	453 I 26.0	493 I 28.3	145 I 8.3	82 I 4.7	32 I 1.8	12 I 0.7	2 I 0.1	0 I 0.	1739 I 38.4
LOCAL COM ONLY	32 I 2.3	365 I 26.3	373 I 26.9	357 I 25.8	135 I 9.7	83 I 6.0	20 I 1.4	17 I 1.2	3 I 0.2	1 I 0.1	1386 I 30.6
STATE OR FED COM	30 I 3.4	168 I 18.9	148 I 16.7	250 I 28.2	126 I 14.2	93 I 10.5	38 I 4.3	24 I 2.7	10 I 1.1	0 I 0.	887 I 19.6
NOT STATED	10. I 1.4	13 I 18.3	4 I 5.6	49 I 69.0	4 I 5.6	0 I 0.	0 I 0.	0 I 0.	0 I 0.	0 I 0.	71 I 1.6
COLUMN TOTAL	93 I 2.1	1189 I 26.3	1096 I 24.2	1257 I 27.8	448 I 9.9	274 I 6.1	94 I 2.1	57 I 1.3	16 I 0.4	2 I 0.0	4526 I 100.0

***** C R O S S T A B U L A T I O N O F *****
 CRIMREC PRIOR ADULT CRIMINAL RECORD BY TIMESERV TIME SERVED IN MONTHS
 CONTROLLING FOR.. SEX VALUE = 2. FEMALES
 ***** PAGE 1 OF 1

COUNT ROW PCT	TIMESERV								ROW TOTAL
	UNDER 12 MO	12-17 MO	18-23 MO	24-35 MO	36-47 MO	48-59 MO	60-71 MO	72-119 MO	
CRIMREC	1. I	2. I	3. I	4. I	5. I	6. I	7. I	8. I	
NO PRIOR RECORD	5 I 11.1	15 I 33.3	6 I 13.3	11 I 24.4	3 I 6.7	3 I 6.7	0 I 0.	2 I 4.4	45 I 22.3
NO PRIOR COMMIT	3 I 3.9	33 I 42.9	15 I 19.5	15 I 19.5	9 I 11.7	0 I 0.	1 I 1.3	1 I 1.3	77 I 38.1
LOCAL COM ONLY	4 I 6.8	27 I 45.8	15 I 25.4	10 I 16.9	2 I 3.4	1 I 1.7	0 I 0.	0 I 0.	59 I 29.2
STATE OR FED COM	1 I 5.6	10 I 55.6	3 I 16.7	2 I 11.1	0 I 0.	2 I 11.1	0 I 0.	0 I 0.	18 I 8.9
NOT STATED	10. I 0.	1 I 33.3	2 I 66.7	0 I 0.	0 I 0.	0 I 0.	0 I 0.	0 I 0.	3 I 1.5
COLUMN TOTAL	13 I 6.4	86 I 42.6	41 I 20.3	38 I 18.8	14 I 6.9	6 I 3.0	1 I 0.5	3 I 1.5	202 I 100.0

1979 FIRST CONDITIONAL RELEASES

FILE FIRST (CREATION DATE = 03/27/81) CONDITIONAL RELEASES BY PRIOR RECORD, TIME SERVED, SEX

***** C R O S S T A B U L A T I O N O F *****
 CRIMREC PRIOR ADULT CRIMINAL RECORD BY TIMESERV TIME SERVED IN MONTHS
 CONTROLLING FOR.. SEX VALUE = 1. MALES
 ***** PAGE 1 OF 1

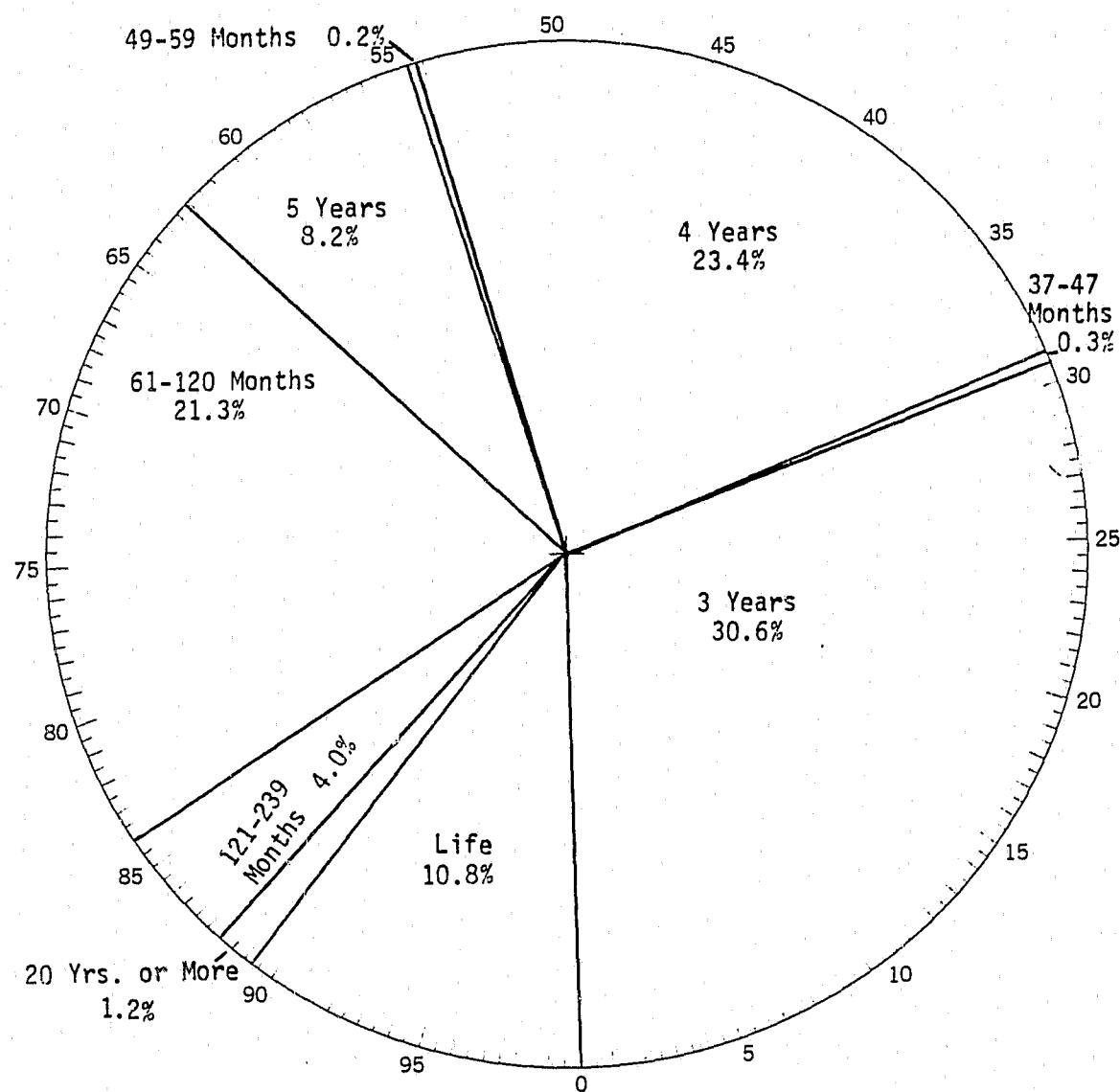
COUNT ROW PCT	TIMESERV										ROW TOTAL
	UNDER 12 MO	12-17 MO	18-23 MO	24-35 MO	36-47 MO	48-59 MO	60-71 MO	72-119 MO	120-239 MO	9.I	
CRIMREC	1.I	2.I	3.I	4.I	5.I	6.I	7.I	8.I	9.I		
1. NO PRIOR RECORD	12	14	36	36	13	7	1	2	0	121	
	9.9	11.6	29.8	29.8	10.7	5.8	0.8	1.7	0.	6.0	
2. NO PRIOR COMMIT	29	37	156	188	28	11	6	5	0	460	
	6.3	8.0	33.9	40.9	6.1	2.4	1.3	1.1	0.	22.7	
3. LOCAL COM ONLY	44	91	234	194	51	18	7	2	0	641	
	6.9	14.2	36.5	30.3	8.0	2.8	1.1	0.3	0.	31.6	
4. STATE OR FED COM	67	97	247	246	63	36	10	6	1	778	
	8.6	12.5	31.7	31.6	8.7	4.6	1.3	0.8	0.1	38.4	
10. NOT STATED	2	2	4	16	3	0	0	0	0	27	
	7.4	7.4	14.8	59.3	11.1	0.	0.	0.	0.	1.3	
COLUMN TOTAL	154	241	677	680	163	72	24	15	1	2027	
	7.6	11.9	33.4	33.5	8.0	3.6	1.2	0.7	0.0	100.0	

***** C R O S S T A B U L A T I O N O F *****
 CRIMREC PRIOR ADULT CRIMINAL RECORD BY TIMESERV TIME SERVED IN MONTHS
 CONTROLLING FOR.. SEX VALUE = 2. FEMALES
 ***** PAGE 1 OF 1

COUNT ROW PCT	TIMESERV				ROW TOTAL
	UNDER 12 MO	12-17 MO	18-23 MO	24-35 MO	
CRIMREC	1.I	2.I	3.I	4.I	
1. NO PRIOR RECORD	0	1	1	1	3
	0.	33.3	33.3	33.3	7.5
2. NO PRIOR COMMIT	2	3	7	2	14
	14.3	21.4	50.0	14.3	35.0
3. LOCAL COM ONLY	3	3	6	6	18
	16.7	16.7	33.3	33.3	45.0
4. STATE OR FED COM	0	1	2	2	5
	0.	20.0	40.0	40.0	12.5
COLUMN TOTAL	5	8	16	11	40
	12.5	20.0	40.0	27.5	100.0

NUMBER OF MISSING OBSERVATIONS = 2

CHARACTERISTICS OF INMATES DISCHARGED - 1979
MAXIMUM SENTENCE ON COMMITMENT



First Releases to Parole Supervision*

Maximum Sentence	Number	Percent
TOTAL RELEASES	6,800	100.0%
3 Years	2,079	30.6%
37-47 Months	19	0.3%
4 Years	1,588	23.4%
49-59 Months	13	0.2%
5 Years	559	8.2%
61-120 Months	1,450	21.3%
121-239 Months	275	4.0%
20 Years or More	83	1.2%
Life	734	10.8%

*Includes first paroles and first conditional releases.

TIME SERVED ON FIRST RELEASE: MAXIMUM SENTENCE

First Paroles The median maximum sentence on commitment of total male first paroles was 5 years. Over 43 percent had received maximums of either 3 years (22.6%) or 4 years (20.8%) while over 56 percent had received maximum sentences of 5 years or more. Fourteen percent of male first paroles were under maximum sentence of life imprisonment. While the median time served of all male first paroles was 23.4 months, median time served varied directly with maximum sentence received on commitment with few exceptions. Yet male first paroles with life maximum terms averaged only 22.5 months confinement because a large portion of these had been felony class A-III commitments under the old Rockefeller drug laws (now a B felony) who had short minimum sentences, often as short as one year, but had life maximum terms. Male first paroles with a three year maximum sentence served a median time of 16.6 months or 46% of their term; those with a four year maximum served 21.2 months or 44% of their term; and those with a five year maximum served 25.9 months or 43% of their term. In contrast, the median time served by inmates with maximum sentences of over ten years was about 27 percent of their term.

The median maximum sentence on commitment of female first paroles was 65.8 months, or nearly 5½ years. Slightly over 39 percent had received maximums of either 3 years (24.3%) or 4 years (14.9%) while 61 percent had received maximum sentences of 5 years or more. Nearly 34 percent of female first paroles were under a maximum sentence of life imprisonment. Over 2.4 times as high a proportion of female first paroles had received life maximum terms compared to males because of the relatively higher proportion of female drug law commitments, many of whom, first paroled in 1979, had been committed under the "Rockefeller" drug laws. The median time served of all female first paroles was only 18.3 months. The relationship between time served and maximum sentence on commitment for females also appears to be a direct one except for life terms.

MEDIAN TIME SERVED BY MAXIMUM SENTENCE ON COMMITMENT
AND SEX
FIRST PAROLES - 1979

Maximum Sentence	Male First Paroles		Female First Paroles	
	Number	Median Time Served (Mos.)	Number	Median Time Served (Mos.)
Total	4,529	23.4	202	18.3
3 years	1,022	16.6	49	15.5
37-47 months	11	17.5	--	--
4 years	941	21.2	30	19.5
49-59 months	8	22.0	--	--
5 years	398	25.9	20	24.0
61-120 months	1,182	32.6	25	26.7
121-239 months	251	50.1	8	36.0
20 years or more	81	69.3	2	a/
Life	635	22.5	68	18.5

a/ Not computed.

First Conditional Releases The median maximum sentence on commitment of total male first conditional releases was four years. Over 78 percent had received maximum terms of either 3 years (48.3%) or 4 years (29.9%) while about 21 percent had received maximum sentences of five years or more. This contrasts sharply with male first paroles with a median maximum sentence of 5 years and over 56 percent with maximums of 5 years or more. One explanation for the fact that most first conditional releases are short-termers is that most inmates with three year terms do not have minimum terms set by the court. And approximately 95 percent of these short-term cases have minimum periods of imprisonment set by the Parole Board which are greater than one-third of the maximum term. Thus, if a short-term inmate is rejected for parole at his first MPI hearing, it may be a relatively short period of time before he is eligible for conditional release. Therefore, many of these inmates do not appear again before the Parole Board but instead are conditionally released by statute after having served at least two-thirds of their maximum sentence (2 years for 3 year terms).

While the median time served of all male first conditional releases was 23.5 months, time served varied directly with maximum sentence received on commitment, with few exceptions, as in the case of first paroles. By statute, inmates conditionally released must have served at least two-thirds of their maximum sentence (at least 2 years) while inmates can be paroled after serving only their minimum period of imprisonment, which can be as short as one year. This accounts for the fact that time served by males conditionally released for the first time tends to be higher than for first paroles.

The median maximum sentence on commitment of female first conditional releases was three years. Ninety-five percent had received maximum terms of either three years (70.0%) or four years (25.0%) while only two female first conditional releases had received maximums of 5 or more years (5.0%). Thus, female first conditional releases tended to have considerably shorter maximum terms than males. The median time served by female first conditional releases (20.6 months) was almost 3 months less than the male experience. The relationship between time served and maximum sentence on commitment for females is also a direct one and similar to that for male first conditional releases.

MEDIAN TIME SERVED BY MAXIMUM SENTENCE ON COMMITMENT
AND SEX
FIRST CONDITIONAL RELEASES - 1979

Maximum Sentence	Male First CR's		Female First CR's	
	Number	Median Time Served (Mos.)	Number	Median Time Served (Mos.)
Total	2,029	23.5	40	20.6
3 years	980	20.0	28	18.8
37-47 months	8	20.0	--	--
4 years	607	28.7	10	28.5
49-59 months	5	31.5	--	--
5 years	140	33.0	1	30.0
61-120 months	243	44.4	--	--
121-239 months	16	48.0	--	--
20 years or more	--	--	--	--
Life	30	25.8	1	30.0

1979 FIRST PAROLES

FILE FIRST (CREATION DATE = 04/07/81) PAROLES BY MAXIMUM SENTENCE, TIME SERVED & SEX

***** CROSSTABULATION OF *****
 MAXSEN MAXIMUM SENTENCE ON COMMITMENT BY TIMESERV TIME SERVED IN MONTHS
 CONTROLLING FOR..
 SEX VALUE = 1. MALES
 ***** PAGE 1 OF 1

MAXSEN	COUNT ROW PCT	TIMESERV										ROW TOTAL
		UNDER 1 MO	12 MO	18-23 MO	24-35 MO	36-47 MO	48-59 MO	60-71 MO	72-119 MO	120-239 MO	240 MO & OVER	
		1.I	2.I	3.I	4.I	5.I	6.I	7.I	8.I	9.I	10.I	
3 YEARS	1.	34 3.3	620 60.7	312 30.5	42 4.1	9 0.9	3 0.3	2 0.2	0 0.	0 0.	0 0.	1022 22.6
37-47 MO	2.	0 0.	6 54.5	3 27.3	1 9.1	1 9.1	0 0.	0 0.	0 0.	0 0.	0 0.	11 0.2
4 YEARS	3.	18 1.9	222 23.6	426 45.3	253 26.9	14 1.5	7 0.7	1 0.1	0 0.	0 0.	0 0.	944 20.8
49-59 MO	4.	0 0.	2 25.0	3 37.5	2 25.0	1 12.5	0 0.	0 0.	0 0.	0 0.	0 0.	8 0.2
5 YEARS	5.	6 1.5	61 15.3	99 24.9	212 53.3	14 3.5	5 1.3	0 0.	1 0.3	0 0.	0 0.	398 8.8
61-120 MO	6.	15 1.3	60 5.1	130 11.0	539 45.6	277 23.4	140 11.8	20 1.7	1 0.1	0 0.	0 0.	1182 26.1
121-239 MO	7.	3 1.2	3 1.2	9 3.6	36 14.3	61 24.3	78 31.1	39 15.5	22 8.8	0 0.	0 0.	251 5.5
20 YR OR MORE	8.	1 1.2	1 1.2	1 1.2	7 8.6	5 6.2	10 12.3	20 24.7	30 37.0	6 7.4	0 0.	81 1.8
LIFE OR DEATH	9.	17 2.7	215 33.9	114 18.0	165 26.0	66 10.4	31 4.9	12 1.9	3 0.5	10 1.6	2 0.3	635 14.0
COLUMN TOTAL		94 2.1	1190 26.3	1097 24.2	1257 27.8	448 9.9	274 6.0	94 2.1	57 1.3	16 0.4	2 0.0	4529 100.0

-34-

1979 FIRST PAROLES

FILE FIRST (CREATION DATE = 04/07/81) PAROLES BY MAXIMUM SENTENCE, TIME SERVED & SEX

***** CROSS TABULATION OF *****
 MAXSEN MAXIMUM SENTENCE ON COMMITMENT BY TIMESERV TIME SERVED IN MONTHS
 CONTROLLING FOR.. SEX VALUE = 2. FEMALES
 ***** PAGE 1 OF 1

MAXSEN	COUNT ROW PCT	TIMESERV								ROW TOTAL
		UNDER 1 MO	12-17 MO	18-23 MO	24-35 MO	36-47 MO	48-59 MO	60-71 MO	72-119 MO	
		1.I	2.I	3.I	4.I	5.I	6.I	7.I	8.I	
3 YEARS	1.	3 6.1	37 75.5	8 16.3	1 2.0	0 0.	0 0.	0 0.	0 0.	49 24.3
4 YEARS	3.	3 10.0	9 30.0	12 40.0	6 20.0	0 0.	0 0.	0 0.	0 0.	30 14.9
5 YEARS	5.	0 0.	7 35.0	3 15.0	10 50.0	0 0.	0 0.	0 0.	0 0.	20 9.9
61-120 MO	6.	1 4.0	4 16.0	5 20.0	11 44.0	3 12.0	1 4.0	0 0.	0 0.	25 12.4
121-239 MO	7.	1 12.5	0 0.	0 0.	3 37.5	1 12.5	2 25.0	1 12.5	0 0.	8 4.0
20 YR OR MORE	8.	1 50.0	0 0.	0 0.	0 0.	0 0.	0 0.	0 0.	1 50.0	2 1.0
LIFE OR DEATH	9.	4 5.9	29 42.6	13 19.1	7 10.3	10 14.7	3 4.4	0 0.	2 2.9	68 33.7
COLUMN TOTAL		13 6.4	86 42.6	41 20.3	38 18.8	14 6.9	6 3.0	1 0.5	3 1.5	202 100.0

35

1979 FIRST CONDITIONAL RELEASES

FILE FIRST (CREATION DATE = 04/06/81) CONDITIONAL RELEASES BY MAX SEN, TIME SERVED & SEX

***** CROSS TABULATION OF *****
 MAXSEN MAXIMUM SENTENCE ON COMMITMENT BY TIMESERV TIME SERVED IN MONTHS
 CONTROLLING FOR.. SEX VALUE = 1. MALES
 ***** PAGE 1 OF 1

MAXSEN	COUNT ROW PCT	TIMESERV										ROW TOTAL
		UNDER 1 MO	12 1.I	12-17 2.I	18-23 3.I	24-35 4.I	36-47 5.I	48-59 6.I	60-71 7.I	72-119 8.I	120-239 9.I	
3 YEARS	1.	99	191	589	92	7	1	1	0	0	0	980
		10.1	19.5	60.1	9.4	0.7	0.1	0.1	0.	0.	0.	48.3
37-47 MO	2.	0	3	3	2	0	0	0	0	0	8	
		0.	37.5	37.5	25.0	0.	0.	0.	0.	0.	0.4	
4 YEARS	3.	24	27	64	479	8	2	2	1	0	607	
		4.0	4.4	10.5	78.9	1.3	0.3	0.3	0.2	0.	29.9	
49-59 MO	4.	0	0	0	4	1	0	0	0	0	5	
		0.	0.	0.	80.0	20.0	0.	0.	0.	0.	0.2	
5 YEARS	5.	9	7	4	67	52	0	0	1	0	140	
		6.4	5.0	2.9	47.9	37.1	0.	0.	0.7	0.	6.9	
61-120 MO	6.	17	10	8	23	91	67	20	7	0	243	
		7.0	4.1	3.3	9.5	37.4	27.6	8.2	2.9	0.	12.0	
121-239 MO	7.	4	0	1	1	2	0	1	6	1	16	
		25.0	0.	6.3	6.3	12.5	0.	6.3	37.5	6.3	0.8	
LIFE OR DEATH	9.	2	3	8	13	2	2	0	0	0	30	
		6.7	10.0	26.7	43.3	6.7	6.7	0.	0.	0.	1.5	
COLUMN TOTAL		155	241	677	681	163	72	24	15	1	2029	
		7.6	11.9	33.4	33.6	8.0	3.5	1.2	0.7	0.0	100.0	

-96-

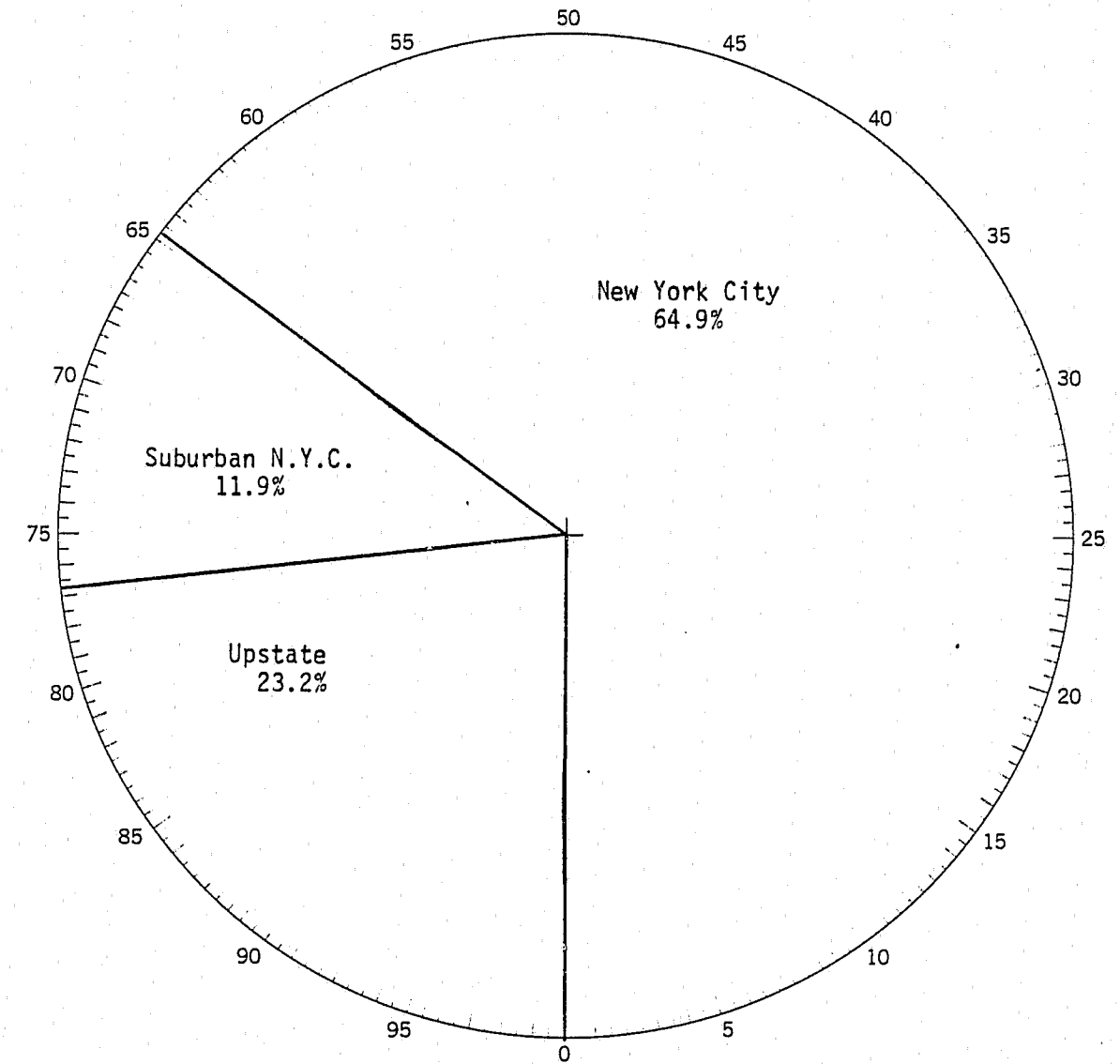
1979 FIRST CONDITIONAL RELEASES

FILE FIRST (CREATION DATE = 04/06/81) CONDITIONAL RELEASES BY MAX SEN, TIME SERVED & SEX

***** CROSS TABULATION OF *****
 MAXSEN MAXIMUM SENTENCE ON COMMITMENT BY TIMESERV TIME SERVED IN MONTHS
 CONTROLLING FOR..
 SEX VALUE = 2. FEMALES
 ***** PAGE 1 OF 1

MAXSEN	COUNT ROW PCT	TIMESERV				ROW TOTAL
		UNDER 1 MO	12 1-11 MO	18-23 MO	24-35 MO	
3 YEARS	1.	4	8	15	1	28
		14.3	28.6	53.6	3.6	70.0
4 YEARS	3.	1	0	1	8	10
		10.0	0.	10.0	80.0	25.0
5 YEARS	5.	0	0	0	1	1
		0.	0.	0.	100.0	2.5
LIFE OR DEATH	9.	0	0	0	1	1
		0.	0.	0.	100.0	2.5
COLUMN TOTAL		5	8	16	11	40
		12.5	20.0	40.0	27.5	100.0

CHARACTERISTICS OF INMATES DISCHARGED - 1979
COUNTY OF COMMITMENT



County of Commitment	First Releases to Parole Supervision*	
	Number	Percent
TOTAL STATE	6,800	100.0%
New York City	4,411	64.9%
Suburban N.Y.C.	808	11.9%
Upstate	1,581	23.2%

^{1/} Suburban N.Y.C. includes counties of Nassau, Rockland, Suffolk and Westchester.

*Includes first paroles and first conditional releases.

TIME SERVED ON FIRST RELEASE: COUNTY OF COMMITMENT

First Paroles Sixty-three percent of male first paroles had been committed from the five boroughs which comprise New York City. An additional 11.8% had been committed from counties suburban to New York City with the remaining 25.2% coming from upstate counties. While the median time served of all male first paroles was 23.4 months, inmates committed from New York City served a median time of 24.3 months, almost one month longer. Male inmates committed from the counties suburban to New York City served a median time of 21.5 months, or nearly 2 months less than the median time served by the total male first parole cohort and nearly 3 months less than those committed from the suburban counties. Upstate male commitments served a median time of 22.5 months, one month longer than the suburban group.

Over 64% of female first paroles during 1979 were from New York City. The suburban New York City area accounted for 12.4% and the upstate counties for 23.3 percent. Thus more female first paroles had been committed from suburban and New York City counties while fewer had been committed from upstate counties. While the median time served of all female first paroles was 18.3 months, New York City commitments served slightly less, 18.0 months. The median time served of upstate female commitments was slightly longer (19.0 months) and for suburban counties, 18.5 months.

MEDIAN TIME SERVED BY COUNTY OF COMMITMENT
AND SEX
FIRST PAROLES - 1979

County of Commitment	Male First Paroles		Female First Paroles	
	Number	Median Time Served (Mos.)	Number	Median Time Served (Mos.)
Grand Total	4,529	23.4	202	18.3
New York City	2,854	24.3	130	18.0
New York	921	26.0	66	17.6
Kings	702	23.3	28	19.0
Bronx	759	25.4	23	18.5
Queens	425	22.0	10	18.0
Richmond	47	23.8	3	21.0
Suburban NYC ^{1/}	533	21.5	25	18.5
Upstate	1,142	22.5	47	19.0

^{1/}Suburban NYC includes counties of Nassau, Rockland, Suffolk and Westchester.

First Conditional Releases Over 69% of male first conditional releases had been committed from New York City while 12% had been committed from suburban counties and nearly 19% from upstate. Thus, over 6% more of the male conditional releases were from New York City than male paroles. While the proportion committed from the suburban counties was similar, over 6% fewer male first conditional releases were from upstate than the proportion of male first paroles. The median time served by males committed from New York City was 23.3 months and for suburban New York City was 23.1 months, both close to the median time served of total male first conditional releases, 23.5 months. Upstate commitments, however, served a median time of 24.9 months, nearly two months higher than commitments from other areas of the state.

Sixty percent of female first conditional releases in 1979 were from New York City while the suburban New York City area accounted for 17.5% and the upstate counties, 22.5 percent. Thus, more female first conditional releases had been committed from suburban and upstate counties than the male cohort. The median time served was slightly longer for females committed from the upstate area (21.8 months) than for New York City females (20.0 months) or those committed from the suburban New York City area (20.1 months).

MEDIAN TIME SERVED BY COUNTY OF COMMITMENT
AND SEX
FIRST CONDITIONAL RELEASES - 1979

County of Commitment	Male First CR's		Female First CR's	
	Number	Median Time Served (Mos.)	Number	Median Time Served (Mos.)
Grand Total	2,029	23.5	40	20.6
New York City	1,403	23.3	24	20.0
New York	523	23.8	12	18.0
Kings	404	22.1	4	18.0
Bronx	240	25.7	6	20.0
Queens	205	22.6	2	30.0
Richmond	31	23.1	--	--
Suburban NYC	243	23.1	7	20.1
Upstate	383	24.9	9	21.8

1979 FIRST PAROLES

FILE FIRST (CREATION DATE = 03/20/81) PAROLES BY COUNTY OF COMMITMENT, TIME SERVED & SEX

***** CROSSTABULATION OF *****
 NYC NEW YORK CITY BY TIMESERV TIME SERVED IN MONTHS
 CONTROLLING FOR.. SEX

***** VALUE = 1. MALES *****

		TIMESERV										ROW TOTAL
ROW PCT	COUNT	UNDER 12 MO	12-17 MO	18-23 MO	24-35 MO	36-47 MO	48-59 MO	60-71 MO	72-119 MO	120-239 MO	240 MO & OVER	
1.	60	696	653	818	297	214	72	33	9	2	2854	
	2.1	24.4	22.9	28.7	10.4	7.5	2.5	1.2	0.3	0.1	100.0	
COLUMN TOTAL	60	696	653	818	297	214	72	33	9	2	2854	
	2.1	24.4	22.9	28.7	10.4	7.5	2.5	1.2	0.3	0.1	100.0	

		TIMESERV										ROW TOTAL
ROW PCT	COUNT	UNDER 12 MO	12-17 MO	18-23 MO	24-35 MO	36-47 MO	48-59 MO	60-71 MO	72-119 MO	120-239 MO		
1.	9	177	137	118	48	29	3	10	2	533		
	1.7	33.2	25.7	22.1	9.0	5.4	0.6	1.9	0.4	100.0		
COLUMN TOTAL	9	177	137	118	48	29	3	10	2	533		
	1.7	33.2	25.7	22.1	9.0	5.4	0.6	1.9	0.4	100.0		

		TIMESERV										ROW TOTAL
ROW PCT	COUNT	UNDER 12 MO	12-17 MO	18-23 MO	24-35 MO	36-47 MO	48-59 MO	60-71 MO	72-119 MO	120-239 MO		
1.	25	317	307	321	103	31	19	14	5	1142		
	2.2	27.8	26.9	28.1	9.0	2.7	1.7	1.2	0.4	100.0		
COLUMN TOTAL	25	317	307	321	103	31	19	14	5	1142		
	2.2	27.8	26.9	28.1	9.0	2.7	1.7	1.2	0.4	100.0		

1979 FIRST PAROLES

FILE FIRST (CREATION DATE = 03/20/81) PAROLES BY COUNTY OF COMMITMENT, TIME SERVED & SEX

***** CROSS TABULATION OF *****
 COUNTY COUNTY OF COMMITMENT BY TIMESERV TIME SERVED IN MONTHS
 CONTROLLING FOR.. SEX VALUE = 1. MALES
 ***** PAGE 1 OF 6

COUNTY	COUNT ROW PCT	TIMESERV											ROW TOTAL
		UNDER 1 MO	12 1-11 MO	12-17 MO	18-23 MO	24-35 MO	36-47 MO	48-59 MO	60-71 MO	72-119 MO	120-239 MO	240 MO & OVER	
ALBANY	1.	0	53	24	35	7	3	2	0	0	0	0	124
		0.	42.7	19.4	28.2	5.6	2.4	1.6	0.	0.	0.	0.	2.7
ALLEGANY	2.	0	4	1	0	0	0	0	0	0	0	0	5
		0.	80.0	20.0	0.	0.	0.	0.	0.	0.	0.	0.	0.1
BROOME	3.	0	10	7	10	1	3	1	0	0	0	0	32
		0.	31.3	21.9	31.3	3.1	9.4	3.1	0.	0.	0.	0.	0.7
CATTARAUGUS	4.	0	5	7	1	0	0	0	0	0	0	0	13
		0.	38.5	53.8	7.7	0.	0.	0.	0.	0.	0.	0.	0.3
CAYUGA	5.	0	5	4	7	4	0	0	0	0	0	0	20
		0.	25.0	20.0	35.0	20.0	0.	0.	0.	0.	0.	0.	0.4
CHAUTAUQUA	6.	1	3	2	1	2	0	0	0	0	0	0	9
		11.1	33.3	22.2	11.1	22.2	0.	0.	0.	0.	0.	0.	0.2
CHEMUNG	7.	0	5	10	12	4	0	1	0	0	0	0	32
		0.	15.6	31.3	37.5	12.5	0.	3.1	0.	0.	0.	0.	0.7
CLINTON	9.	0	3	5	1	0	0	0	0	0	0	0	9
		0.	33.3	55.6	11.1	0.	0.	0.	0.	0.	0.	0.	0.2
COLUMBIA	10.	0	0	1	0	0	0	0	0	0	0	0	1
		0.	0.	100.0	0.	0.	0.	0.	0.	0.	0.	0.	0.0
CORTLAND	11.	0	1	2	3	0	0	0	0	0	0	0	6
		0.	16.7	33.3	50.0	0.	0.	0.	0.	0.	0.	0.	0.1
DELAWARE	12.	0	1	2	2	0	0	0	0	0	0	0	5
		0.	20.0	40.0	40.0	0.	0.	0.	0.	0.	0.	0.	0.1
COLUMN TOTAL		94	1190	1097	1257	448	274	94	57	16	2	4529	
		2.1	26.3	24.2	27.8	9.9	6.0	2.1	1.3	0.4	0.0	100.0	

(CONTINUED)

-42-

1979 FIRST PAROLES

FILE FIRST (CREATION DATE = 03/20/81) PAROLES BY COUNTY OF COMMITMENT, TIME SERVED & SEX

***** CROSSTABULATION OF *****
 COUNTY COUNTY OF COMMITMENT BY TIMESERV TIME SERVED IN MONTHS
 CONTROLLING FOR..
 SEX VALUE = 1. MALES
 ***** PAGE 2 OF 6

COUNTY	COUNT ROW PCT	TIMESERV										ROW TOTAL
		UNDER 1 MO	12 1.I	12-17 MO 2.I	18-23 MO 3.I	24-35 MO 4.I	36-47 MO 5.I	48-59 MO 6.I	60-71 MO 7.I	72-119 MO 8.I	120-239 MO 9.I	
DUTCHESS	13.	2	11	9	23	3	3	0	1	1	0	53
		3.8	20.8	17.0	43.4	5.7	5.7	0.	1.9	1.9	0.	1.2
ERIE	14.	8	35	35	55	22	3	4	3	1	0	166
		4.8	21.1	21.1	33.1	13.3	1.8	2.4	1.8	0.6	0.	3.7
ESSEX	15.	0	2	0	2	0	0	0	0	0	0	4
		0.	50.0	0.	50.0	0.	0.	0.	0.	0.	0.	0.1
FRANKLIN	16.	0	2	1	1	0	0	0	0	0	0	4
		0.	50.0	25.0	25.0	0.	0.	0.	0.	0.	0.	0.1
FULTON	17.	0	2	2	0	0	0	0	0	0	0	4
		0.	50.0	50.0	0.	0.	0.	0.	0.	0.	0.	0.1
GENESEE	18.	0	0	0	4	2	0	0	0	0	0	6
		0.	0.	0.	66.7	33.3	0.	0.	0.	0.	0.	0.1
GREENE	19.	0	0	1	1	0	0	0	0	0	0	2
		0.	0.	50.0	50.0	0.	0.	0.	0.	0.	0.	0.0
HAMILTON	20.	1	0	2	1	0	0	0	0	0	0	4
		25.0	0.	50.0	25.0	0.	0.	0.	0.	0.	0.	0.1
HERKIMER	21.	0	2	1	2	0	0	0	0	0	0	5
		0.	40.0	20.0	40.0	0.	0.	0.	0.	0.	0.	0.1
JEFFERSON	22.	0	6	6	1	0	0	0	0	0	0	13
		0.	46.2	46.2	7.7	0.	0.	0.	0.	0.	0.	0.3
KINGS	23.	19	196	155	187	66	46	24	7	2	0	702
		2.7	27.9	22.1	26.6	9.4	6.6	3.4	1.0	0.3	0.	15.5
COLUMN TOTAL		94	1190	1097	1257	448	274	94	57	16	2	4529
(CONTINUED)		2.1	26.3	24.2	27.8	9.9	6.0	2.1	1.3	0.4	0.0	100.0

1979 FIRST PAROLES

FILE FIRST (CREATION DATE = 03/20/81) PAROLES BY COUNTY OF COMMITMENT, TIME SERVED & SEX

***** CROSSTABULATION OF *****
 COUNTY COUNTY OF COMMITMENT BY TIMESERV TIME SERVED IN MONTHS
 CONTROLLING FOR..
 SEX VALUE = 1. MALES
 ***** PAGE 3 OF 6

COUNTY	COUNT ROW PCT	TIMESERV										ROW TOTAL			
		UNDER 1 MO	12 MO	12-17 MO	18-23 MO	24-35 MO	36-47 MO	48-59 MO	60-71 MO	72-119 MO	120-239 MO		240 MO & OVER		
LEWIS	24.	0	1	0	1	0	0	0	1	0	0	0	0	0	3
		0.	33.3	0.	33.3	0.	0.	0.	33.3	0.	0.	0.	0.	0.	0.1
LIVINGSTON	25.	0	3	5	2	0	0	0	0	0	0	0	0	0	10
		0.	30.0	50.0	20.0	0.	0.	0.	0.	0.	0.	0.	0.	0.	0.2
MADISON	26.	0	3	0	2	0	0	0	0	0	1	0	0	6	
		0.	50.0	0.	33.3	0.	0.	0.	0.	0.	16.7	0.	0.	0.1	
MONROE	27.	0	25	47	50	23	8	4	4	4	3	0	0	164	
		0.	15.2	28.7	30.5	14.0	4.9	2.4	2.4	2.4	1.8	0.	0.	3.6	
MONTGOMERY	28.	0	0	0	1	0	0	0	0	0	0	0	0	1	
		0.	0.	0.	100.0	0.	0.	0.	0.	0.	0.	0.	0.	0.0	
NASSAU	29.	6	75	60	45	17	10	1	4	1	1	0	0	219	
		2.7	34.2	27.4	20.5	7.8	4.6	0.5	1.8	0.5	0.5	0.	0.	4.8	
NEW YORK	30.	22	201	188	295	109	58	22	20	5	1	1	1	921	
		2.4	21.8	20.4	32.0	11.8	6.3	2.4	2.2	0.5	0.1	0.1	0.1	20.3	
NIAGARA	31.	3	14	19	7	3	0	2	0	0	0	0	0	48	
		6.3	29.2	39.6	14.6	6.3	0.	4.2	0.	0.	0.	0.	0.	1.1	
ONEIDA	32.	0	5	10	5	1	0	0	0	0	0	0	0	21	
		0.	23.8	47.6	23.8	4.8	0.	0.	0.	0.	0.	0.	0.	0.5	
OHONDAGA	33.	2	25	32	27	13	8	1	5	0	0	0	0	113	
		1.8	22.1	28.3	23.9	11.5	7.1	0.9	4.4	0.	0.	0.	0.	2.5	
ONTARIO	34.	0	7	7	1	0	0	0	0	0	0	0	0	15	
		0.	46.7	46.7	6.7	0.	0.	0.	0.	0.	0.	0.	0.	0.3	
COLUMN TOTAL		94	1190	1097	1257	448	274	94	57	16	2	4529			
(CONTINUED)		2.1	26.3	24.2	27.8	9.9	6.0	2.1	1.3	0.4	0.0	100.0			

1979 FIRST PAROLES

FILE FIRST (CREATION DATE = 03/20/81) PAROLES BY COUNTY OF COMMITMENT, TIME SERVED & SEX

***** C R O S S T A B U L A T I O N O F *****
 COUNTY COUNTY OF COMMITMENT BY TIMESERV TIME SERVED IN MONTHS
 CONTROLLING FOR.. VALUE = 1. MALES
 ***** PAGE 4 OF 6

COUNTY	COUNT ROW PCT	TIMESERV										ROW TOTAL	
		UNDER 1 MO	12 MO	12-17 MO	18-23 MO	24-35 MO	36-47 MO	48-59 MO	60-71 MO	72-119 MO	120-239 MO		240 MO & OVER
ORANGE	35.	1	18	14	11	5	0	2	0	0	0	0	51
		2.0	35.3	27.5	21.6	9.8	0.	3.9	0.	0.	0.	0.	1.1
ORLEANS	36.	0	4	2	3	2	0	0	0	0	0	0	11
		0.	36.4	18.2	27.3	18.2	0.	0.	0.	0.	0.	0.	0.2
OSWEGO	37.	1	1	5	5	0	0	0	0	0	0	0	12
		8.3	8.3	41.7	41.7	0.	0.	0.	0.	0.	0.	0.	0.3
OTSEGO	38.	0	3	1	6	1	0	0	0	0	0	0	11
		0.	27.3	9.1	54.5	9.1	0.	0.	0.	0.	0.	0.	0.2
PUTNAM	39.	0	4	1	0	0	0	0	0	0	0	0	5
		0.	80.0	20.0	0.	0.	0.	0.	0.	0.	0.	0.	0.1
QUEENS	40.	10	129	110	110	31	28	4	1	1	1	1	425
		2.4	30.4	25.9	25.9	7.3	6.6	0.9	0.2	0.2	0.2	0.2	9.4
RENSSELAER	41.	0	3	4	2	0	0	0	0	0	0	0	9
		0.	33.3	44.4	22.2	0.	0.	0.	0.	0.	0.	0.	0.2
RICHMOND	42.	2	5	17	10	7	5	1	0	0	0	0	47
		4.3	10.6	36.2	21.3	14.9	10.6	2.1	0.	0.	0.	0.	1.0
ROCKLAND	43.	1	6	8	9	5	1	0	1	0	0	0	31
		3.2	19.4	25.8	29.0	16.1	3.2	0.	3.2	0.	0.	0.	0.7
ST LAWRENCE	44.	1	4	2	4	2	0	0	0	0	0	0	13
		7.7	30.8	15.4	30.8	15.4	0.	0.	0.	0.	0.	0.	0.3
SARATOGA	45.	1	7	4	1	0	0	0	0	0	0	0	13
		7.7	53.8	30.8	7.7	0.	0.	0.	0.	0.	0.	0.	0.3
COLUMN TOTAL		94	1190	1097	1257	448	274	94	57	16	2	2	4529
(CONTINUED)		2.1	26.3	24.2	27.8	9.9	6.0	2.1	1.3	0.4	0.0	0.0	100.0

1979 FIRST PAROLES

FILE FIRST (CREATION DATE = 03/20/81) PAROLES BY COUNTY OF COMMITMENT, TIME SERVED & SEX

***** C R O S S T A B U L A T I O N O F *****
 COUNTY COUNTY OF COMMITMENT BY TIMESERV TIME SERVED IN MONTHS
 CONTROLLING FOR.. SEX VALUE = 1. MALES
 ***** PAGE 5 OF 6

COUNTY	COUNT ROW PCT	TIMESERV										ROW TOTAL
		UNDER 1 MO	12 1-11 MO	12-17 MO	18-23 MO	24-35 MO	36-47 MO	48-59 MO	60-71 MO	72-119 MO	120-239 MO	
		1.I	2.I	3.I	4.I	5.I	6.I	7.I	8.I	9.I	10.I	
SCHENECTADY	46.	0	6	4	9	0	1	0	0	0	0	20
		0.	30.0	20.0	45.0	0.	5.0	0.	0.	0.	0.	0.4
SCHUYLER	48.	0	1	1	0	0	0	0	0	0	0	2
		0.	50.0	50.0	0.	0.	0.	0.	0.	0.	0.	0.0
SENECA	49.	0	0	0	3	0	0	0	0	0	0	3
		0.	0.	0.	100.0	0.	0.	0.	0.	0.	0.	0.1
STEUZEN	50.	0	6	4	4	1	0	0	0	0	0	15
		0.	40.0	26.7	26.7	6.7	0.	0.	0.	0.	0.	0.3
SUFFOLK	51.	0	56	37	32	12	10	1	4	0	0	152
		0.	36.8	24.3	21.1	7.9	6.6	0.7	2.6	0.	0.	3.4
SULLIVAN	52.	0	7	8	5	0	0	0	0	0	0	20
		0.	35.0	40.0	25.0	0.	0.	0.	0.	0.	0.	0.4
TIOGA	53.	0	2	1	1	0	0	0	0	0	0	4
		0.	50.0	25.0	25.0	0.	0.	0.	0.	0.	0.	0.1
TOMPKINS	54.	1	4	6	1	2	0	0	0	0	0	14
		7.1	28.6	42.9	7.1	14.3	0.	0.	0.	0.	0.	0.3
ULSTER	55.	2	4	2	6	4	0	1	0	0	0	19
		10.5	21.1	10.5	31.6	21.1	0.	5.3	0.	0.	0.	0.4
WARREN	56.	0	3	0	0	0	0	0	0	0	0	3
		0.	100.0	0.	0.	0.	0.	0.	0.	0.	0.	0.1
WASHINGTON	57.	1	1	1	0	0	0	0	0	0	0	3
		33.3	33.3	33.3	0.	0.	0.	0.	0.	0.	0.	0.1
COLUMN TOTAL		94	1190	1097	1257	448	274	94	57	16	2	4529
(CONTINUED)		2.1	26.3	24.2	27.8	9.9	6.0	2.1	1.3	0.4	0.0	100.0

1979 FIRST PAROLES

FILE FIRST (CREATION DATE = 03/20/81) PAROLES BY COUNTY OF COMMITMENT, TIME SERVED & SEX

***** CROSSTABULATION OF *****
 COUNTY COUNTY OF COMMITMENT BY TIMESERV TIME SERVED IN MONTHS
 CONTROLLING FOR..
 SEX VALUE = 1. MALES
 ***** PAGE 6 OF 6

COUNT ROW PCT	TIMESERV										ROW TOTAL	
	I MO	1.I	2.I	3.I	4.I	5.I	6.I	7.I	8.I	9.I		10.I
58.	0	3	2	2	0	2	0	0	0	0	0	9
WAYNE	0.	33.3	22.2	22.2	0.	22.2	0.	0.	0.	0.	0.	0.2
59.	2	40	32	32	14	8	1	1	1	0	131	
WESTCHESTER	1.5	30.5	24.4	24.4	10.7	6.1	0.8	0.8	0.8	0.	2.9	
60.	0	3	3	0	0	0	0	0	0	0	6	
WYOMING	0.	50.0	50.0	0.	0.	0.	0.	0.	0.	0.	0.1	
61.	0	0	0	0	1	0	0	0	0	0	1	
YATES	0.	0.	0.	0.	100.0	0.	0.	0.	0.	0.	0.0	
62.	7	165	183	216	84	77	21	5	1	0	759	
BRONX	0.9	21.7	24.1	28.5	11.1	10.1	2.8	0.7	0.1	0.	16.8	
COLUMN TOTAL	94	1190	1097	1257	448	274	94	57	16	2	4529	
	2.1	26.3	24.2	27.8	9.9	6.0	2.1	1.3	0.4	0.0	100.0	

1979 FIRST PAROLES

FILE FIRST (CREATION DATE = 03/20/81) PAROLES BY COUNTY OF COMMITMENT, TIME SERVED & SEX

***** C R O S S T A B U L A T I O N O F *****
 COUNTY COUNTY OF COMMITMENT BY TIMESERV TIME SERVED IN MONTHS
 CONTROLLING FOR.. SEX VALUE = 2. FEMALES
 ***** PAGE 1 OF 3

COUNT	ROW PCT	TIMESERV								ROW TOTAL
		UNDER 12 MO	12-17 MO	18-23 MO	24-35 MO	36-47 MO	48-59 MO	60-71 MO	72-119 MO	
ALBANY	1.	0	3	3	2	0	0	0	0	8
		0.	37.5	37.5	25.0	0.	0.	0.	0.	4.0
CORTLAND	11.	0	0	1	0	0	0	0	0	1
		0.	0.	100.0	0.	0.	0.	0.	0.	0.5
DELAWARE	12.	0	0	1	0	0	0	0	0	1
		0.	0.	100.0	0.	0.	0.	0.	0.	0.5
DUTCHESS	13.	1	0	0	0	1	0	0	0	2
		50.0	0.	0.	0.	50.0	0.	0.	0.	1.0
ERIE	14.	0	2	0	0	0	0	0	0	2
		0.	100.0	0.	0.	0.	0.	0.	0.	1.0
GREENE	19.	0	0	0	1	0	0	0	0	1
		0.	0.	0.	100.0	0.	0.	0.	0.	0.5
KINGS	23.	2	11	6	4	3	2	0	0	28
		7.1	39.3	21.4	14.3	10.7	7.1	0.	0.	13.9
MONROE	27.	0	4	0	1	2	0	0	0	7
		0.	57.1	0.	14.3	28.6	0.	0.	0.	3.5
NASSAU	29.	0	3	2	1	1	0	0	0	7
		0.	42.9	28.6	14.3	14.3	0.	0.	0.	3.5
NEW YORK	30.	6	29	10	15	4	1	0	1	66
		9.1	43.9	15.2	22.7	6.1	1.5	0.	1.5	32.7
NIAGARA	31.	0	1	1	2	0	0	0	0	4
		0.	25.0	25.0	50.0	0.	0.	0.	0.	2.0
COLUMN TOTAL		13	86	41	38	14	6	1	3	202
(CONTINUED)		6.4	42.6	20.3	18.8	6.9	3.0	0.5	1.5	100.0

1979 FIRST PAROLES

FILE FIRST (CREATION DATE = 03/20/81) PAROLES BY COUNTY OF COMMITMENT, TIME SERVED & SEX

***** CRO S T A B U L A T I O N O F *****
 COUNTY COUNTY OF COMMITMENT BY TIMESERV TIME SERVED IN MONTHS
 CONTROLLING FOR.. SEX VALUE = 2. FEMALES
 ***** PAGE 2 OF 3

COUNTY	COUNT ROW PCT	TIMESERV										ROW TOTAL
		UNDER 12	12-17	18-23	24-35	36-47	48-59	60-71	72-119	MO		
		1.I	2.I	3.I	4.I	5.I	6.I	7.I	8.I			
ONEIDA	32.	0	2	1	0	0	0	0	0	0	0	3
		0.	66.7	33.3	0.	0.	0.	0.	0.	0.	0.	1.5
ONONDAGA	33.	0	1	2	2	0	0	0	0	0	5	
		0.	20.0	40.0	40.0	0.	0.	0.	0.	0.	2.5	
ORANGE	35.	0	1	0	0	0	0	0	0	0	1	
		0.	100.0	0.	0.	0.	0.	0.	0.	0.	0.5	
ORLEANS	36.	0	0	0	1	0	0	0	0	0	1	
		0.	0.	0.	100.0	0.	0.	0.	0.	0.	0.5	
QUEENS	40.	1	4	3	1	0	1	0	0	0	10	
		10.0	40.0	30.0	10.0	0.	10.0	0.	0.	0.	5.0	
RICHMOND	42.	0	1	1	0	0	1	0	0	0	3	
		0.	33.3	33.3	0.	0.	33.3	0.	0.	0.	1.5	
ST LAWRENCE	44.	0	1	0	0	0	0	0	0	0	1	
		0.	100.0	0.	0.	0.	0.	0.	0.	0.	0.5	
SARATOGA	45.	0	2	0	0	0	0	0	0	0	2	
		0.	100.0	0.	0.	0.	0.	0.	0.	0.	1.0	
SCHENECTADY	46.	0	1	0	0	0	0	0	0	0	1	
		0.	100.0	0.	0.	0.	0.	0.	0.	0.	0.5	
SUFFOLK	51.	1	2	3	1	1	0	0	0	0	8	
		12.5	25.0	37.5	12.5	12.5	0.	0.	0.	0.	4.0	
ULSTER	55.	0	0	0	0	1	0	1	0	0	2	
		0.	0.	0.	0.	50.0	0.	50.0	0.	0.	1.0	
COLUMN TOTAL		13	86	41	38	14	6	1	3		202	
(CONTINUED)		6.4	42.6	20.3	18.8	6.9	3.0	0.5	1.5		100.0	

1979 FIRST PAROLES

FILE FIRST (CREATION DATE = 03/20/81) PAROLES BY COUNTY OF COMMITMENT, TIME SERVED & SEX

***** CROSSTABULATION OF *****
 COUNTY COUNTY OF COMMITMENT BY TIMESERV TIME SERVED IN MONTHS
 CONTROLLING FOR..

SEX VALUE = 2. FEMALES
 ***** PAGE 3 OF 3

COUNTY	COUNT ROW PCT	TIMESERV								ROW TOTAL
		UNDER 1 MO	12-17 MO	18-23 MO	24-35 MO	36-47 MO	48-59 MO	60-71 MO	72-119 MO	
		1.I	2.I	3.I	4.I	5.I	6.I	7.I	8.I	
WARREN	56.	1	0	0	1	0	0	0	0	2
		50.0	0.	0.	50.0	0.	0.	0.	0.	1.0
WASHINGTON	57.	0	0	0	0	0	1	0	0	1
		0.	0.	0.	0.	0.	100.0	0.	0.	0.5
WAYNE	58.	0	1	0	0	0	0	0	0	1
		0.	100.0	0.	0.	0.	0.	0.	0.	0.5
WESTCHESTER	59.	1	5	1	1	0	0	0	2	10
		10.0	50.0	10.0	10.0	0.	0.	0.	20.0	5.0
WYOMING	60.	0	1	0	0	0	0	0	0	1
		0.	100.0	0.	0.	0.	0.	0.	0.	0.5
BRONX	62.	0	11	6	5	1	0	0	0	23
		0.	47.8	26.1	21.7	4.3	0.	0.	0.	11.4
COLUMN TOTAL		13 6.4	86 42.6	41 20.3	38 18.8	14 6.9	6 3.0	1 0.5	3 1.5	202 100.0

1979 FIRST CONDITIONAL RELEASES

FILE FIRST (CREATION DATE = 03/19/81) CONDITIONAL RELEASES BY COUNTY, TIME SERVED & SEX

 NYC NEW YORK CITY CROSSTABULATION OF *****
 CONTROLLING FOR.. BY TIMESERV TIME SERVED IN MONTHS
 SEX

VALUE = 1. MALES

PAGE 1 OF 1

COUNT	ROW PCT	TIMESERV									ROW TOTAL
		UNDER 12 MO	12-17 MO	18-23 MO	24-35 MO	36-47 MO	48-59 MO	60-71 MO	72-119 MO	120-239 MO	
NYC	1.	114	180	464	432	134	46	20	12	1	1403
NEW YORK CITY		8.1	12.8	33.1	30.8	9.6	3.3	1.4	0.9	0.1	100.0
COLUMN TOTAL		114	180	464	432	134	46	20	12	1	1403
		8.1	12.8	33.1	30.8	9.6	3.3	1.4	0.9	0.1	100.0
SUBURBAN	1.	22	27	86	89	10	7	1	1	1	243
		9.1	11.1	35.4	36.6	4.1	2.9	0.4	0.4	0.4	100.0
COLUMN TOTAL		22	27	86	89	10	7	1	1	1	243
		9.1	11.1	35.4	36.6	4.1	2.9	0.4	0.4	0.4	100.0
UPSTATE	1.	19	34	127	160	19	19	3	2	1	383
		5.0	8.9	33.2	41.8	5.0	5.0	0.8	0.5	0.3	100.0
COLUMN TOTAL		19	34	127	160	19	19	3	2	1	383
		5.0	8.9	33.2	41.8	5.0	5.0	0.8	0.5	0.3	100.0

1979 FIRST CONDITIONAL RELEASES

FILE FIRST (CREATION DATE = 03/19/81) CONDITIONAL RELEASES BY COUNTY, TIME SERVED & SEX

***** CROSSTABULATION OF *****
 COUNTY COUNTY OF COMMITMENT BY TIMESERV TIME SERVED IN MONTHS
 CONTROLLING FOR.. VALUE = 1. MALES
 ***** PAGE 1 OF 6

COUNTY	COUNT ROW PCT	TIMESERV										ROW TOTAL
		UNDER 1 MO	12-17 MO	18-23 MO	24-35 MO	36-47 MO	48-59 MO	60-71 MO	72-119 MO	120-239 MO	9.I	
ALBANY	1.	22.2	0.	22.2	33.3	11.1	11.1	0.	0.	0.	0.	0.4
ALLEGANY	2.	0.	0.	100.0	0.	0.	0.	0.	0.	0.	0.	0.1
BROOME	3.	0.	6.3	43.8	31.3	6.3	6.3	6.3	0.	0.	0.	0.8
CATTARAUGUS	4.	0.	0.	50.0	50.0	0.	0.	0.	0.	0.	0.	0.1
CAYUGA	5.	0.	0.	0.	50.0	50.0	0.	0.	0.	0.	0.	0.1
CHAUTAUQUA	6.	0.	0.	33.3	33.3	33.3	0.	0.	0.	0.	0.	0.1
CHEMUNG	7.	0.	0.	27.3	54.5	18.2	0.	0.	0.	0.	0.	0.5
CHENANGO	8.	0.	0.	50.0	50.0	0.	0.	0.	0.	0.	0.	0.1
CLINTON	9.	0.	0.	50.0	50.0	0.	0.	0.	0.	0.	0.	0.1
COLUMBIA	10.	1	0	40.0	40.0	0.	0.	0.	0.	0.	0.	0.2
CORTLAND	11.	0	0	0	100.0	0	0	0	0	0	0	0.1
COLUMN TOTAL		155 7.6	241 11.9	677 33.4	681 33.6	163 8.0	72 3.5	24 1.2	15 0.7	1 0.0	2029 100.0	

(CONTINUED)

CONTINUED

1 OF 2

1979 FIRST CONDITIONAL RELEASES

FILE FIRST (CREATION DATE = 03/19/81) CONDITIONAL RELEASES BY COUNTY, TIME SERVED & SEX

***** CROSSTABULATION OF *****
 COUNTY COUNTY OF COMMITMENT BY TIMESERV TIME SERVED IN MONTHS
 CONTROLLING FOR..
 SEX VALUE = 1. MALES
 ***** PAGE 2 OF 6

COUNTY	COUNT ROW PCT	TIMESERV											ROW TOTAL		
		UNDER 12	12-17	18-23	24-35	36-47	48-59	60-71	72-119	120-239					
		MO	1.I	2.I	3.I	4.I	5.I	6.I	7.I	8.I	9.I				
DELAWARE	12.	0	0	1	1	0	0	0	0	0	0	0	0	0	2
		0.	0.	50.0	50.0	0.	0.	0.	0.	0.	0.	0.	0.	0.1	
DUTCHESS	13.	1	2	5	7	1	2	0	0	0	0	0	0	18	
		5.6	11.1	27.8	38.9	5.6	11.1	0.	0.	0.	0.	0.	0.9		
ERIE	14.	6	9	12	29	3	3	2	0	0	0	0	64		
		9.4	14.1	18.8	45.3	4.7	4.7	3.1	0.	0.	0.	0.	3.2		
ESSEX	15.	0	0	2	0	1	0	0	0	0	0	0	3		
		0.	0.	66.7	0.	33.3	0.	0.	0.	0.	0.	0.	0.1		
FRANKLIN	16.	0	0	1	1	0	0	0	0	0	0	0	2		
		0.	0.	50.0	50.0	0.	0.	0.	0.	0.	0.	0.	0.1		
FULTON	17.	0	0	2	1	0	0	0	0	0	0	0	3		
		0.	0.	66.7	33.3	0.	0.	0.	0.	0.	0.	0.	0.1		
GENESEE	18.	0	0	0	0	0	2	0	0	0	0	0	2		
		0.	0.	0.	0.	0.	100.0	0.	0.	0.	0.	0.	0.1		
GREENE	19.	0	1	2	1	0	0	0	0	0	0	0	4		
		0.	25.0	50.0	25.0	0.	0.	0.	0.	0.	0.	0.	0.2		
HERKIMER	21.	0	1	1	2	0	0	0	0	0	0	0	4		
		0.	25.0	25.0	50.0	0.	0.	0.	0.	0.	0.	0.	0.2		
JEFFERSON	22.	0	0	3	4	0	0	0	0	0	0	0	7		
		0.	0.	42.9	57.1	0.	0.	0.	0.	0.	0.	0.	0.3		
KINGS	23.	41	59	148	103	42	6	4	1	0	0	0	404		
		10.1	14.6	36.6	25.5	10.4	1.5	1.0	0.2	0.	0.	0.	19.9		
COLUMN TOTAL		155	241	677	681	163	72	24	15	1	0	0	2029		
(CONTINUED)		7.6	11.9	33.4	33.6	8.0	3.5	1.2	0.7	0.0	0.0	0.0	100.0		

-54-

11

1979 FIRST CONDITIONAL RELEASES

FILE FIRST (CREATION DATE = 03/19/81) CONDITIONAL RELEASES BY COUNTY, TIME SERVED & SEX

***** C R O S S T A B U L A T I O N O F *****
 COUNTY COUNTY OF COMMITMENT BY TIMESERV TIME SERVED IN MONTHS
 CONTROLLING FOR.. SEX VALUE = 1. MALES
 ***** PAGE 3 OF 6

COUNTY	COUNT ROW PCT	TIMESERV										ROW TOTAL	
		UNDER 12 MO	12-17 MO	18-23 MO	24-35 MO	36-47 MO	48-59 MO	60-71 MO	72-119 MO	120-239 MO	9.I		
LEWIS	24.	0	0	0	1	0	0	0	0	0	0	0	1
		0.	0.	0.	100.0	0.	0.	0.	0.	0.	0.	0.	0.0
LIVINGSTON	25.	1	1	1	0	0	1	0	0	0	0	0	4
		25.0	25.0	25.0	0.	0.	25.0	0.	0.	0.	0.	0.	0.2
MADISON	26.	0	0	2	2	0	0	0	0	0	0	0	4
		0.	0.	50.0	50.0	0.	0.	0.	0.	0.	0.	0.	0.2
MONROE	27.	1	4	17	22	3	4	0	0	0	0	0	51
		2.0	7.8	33.3	43.1	5.9	7.8	0.	0.	0.	0.	0.	2.5
MONTGOMERY	28.	0	1	0	0	0	0	0	0	0	0	0	1
		0.	100.0	0.	0.	0.	0.	0.	0.	0.	0.	0.	0.0
NASSAU	29.	16	11	32	40	2	2	1	1	1	0	0	105
		15.2	10.5	30.5	38.1	1.9	1.9	1.0	1.0	1.0	0.	0.	5.2
NEW YORK	30.	32	52	185	163	59	17	8	6	1	1	0	523
		6.1	9.9	35.4	31.2	11.3	3.3	1.5	1.1	0.2	0.2	0.	25.8
NIAGARA	31.	0	0	3	6	0	0	0	0	0	0	0	9
		0.	0.	33.3	66.7	0.	0.	0.	0.	0.	0.	0.	0.4
ONEIDA	32.	1	0	5	3	0	1	0	0	0	0	0	10
		10.0	0.	50.0	30.0	0.	10.0	0.	0.	0.	0.	0.	0.5
ONONDAGA	33.	1	1	17	15	2	3	0	1	1	0	0	40
		2.5	2.5	42.5	37.5	5.0	7.5	0.	2.5	2.5	0.	0.	2.0
ONTARIO	34.	0	0	2	3	0	0	0	0	0	0	0	5
		0.	0.	40.0	60.0	0.	0.	0.	0.	0.	0.	0.	0.2
COLUMN TOTAL		155	241	677	681	163	72	24	15	1	0	0	2029
(CONTINUED)		7.6	11.9	33.4	33.6	8.0	3.5	1.2	0.7	0.0	0.0	0.0	100.0

1979 FIRST CONDITIONAL RELEASES

FILE FIRST (CREATION DATE = 03/19/81) CONDITIONAL RELEASES BY COUNTY, TIME SERVED & SEX

***** C R O S S T A B U L A T I O N O F *****
 COUNTY COUNTY OF COMMITMENT BY TIMESERV TIME SERVED IN MONTHS
 CONTROLLING FOR..
 SEX VALUE = 1. MALES
 ***** PAGE 4 OF 6

COUNTY	COUNT ROW PCT	TIMESERV										ROW TOTAL
		UNDER 12 MO	12-17 MO	18-23 MO	24-35 MO	36-47 MO	48-59 MO	60-71 MO	72-119 MO	120-239 MO	9. I	
ORANGE	35.	1 4.5	5 22.7	8 36.4	8 36.4	0 0.	0 0.	0 0.	0 0.	0 0.	0 0.	22 1.1
ORLEANS	36.	0 0.	0 0.	1 50.0	1 50.0	0 0.	0 0.	0 0.	0 0.	0 0.	0 0.	2 0.1
OSWEGO	37.	0 0.	0 0.	0 0.	5 100.0	0 0.	0 0.	0 0.	0 0.	0 0.	0 0.	5 0.2
OTSEGO	38.	0 0.	0 0.	0 0.	1 100.0	0 0.	0 0.	0 0.	0 0.	0 0.	0 0.	1 0.0
PUTNAM	39.	0 0.	1 100.0	0 0.	0 0.	0 0.	0 0.	0 0.	0 0.	0 0.	0 0.	1 0.0
QUEENS	40.	22 10.7	36 17.6	58 28.3	69 33.7	10 4.9	5 2.4	3 1.5	2 1.0	0 0.	0 0.	205 10.1
RENSSELAER	41.	0 0.	1 50.0	0 0.	1 50.0	0 0.	0 0.	0 0.	0 0.	0 0.	0 0.	2 0.1
RICHMOND	42.	2 6.5	5 16.1	10 32.3	10 32.3	3 9.7	1 3.2	0 0.	0 0.	0 0.	0 0.	31 1.5
ROCKLAND	43.	1 5.3	0 0.	7 36.8	9 47.4	1 5.3	1 5.3	0 0.	0 0.	0 0.	0 0.	19 0.9
ST LAWRENCE	44.	0 0.	1 33.3	1 33.3	1 33.3	0 0.	0 0.	0 0.	0 0.	0 0.	0 0.	3 0.1
SARATOGA	45.	0 0.	0 0.	4 80.0	1 20.0	0 0.	0 0.	0 0.	0 0.	0 0.	0 0.	5 0.2
COLUMN TOTAL		155 7.6	241 11.9	677 33.4	681 33.6	163 8.0	72 3.5	24 1.2	15 0.7	1 0.0		2029 100.0

(CONTINUED)

1979 FIRST CONDITIONAL RELEASES

FILE FIRST (CREATION DATE = 03/19/81) CONDITIONAL RELEASES BY COUNTY, TIME SERVED & SEX

***** CROSSTABULATION OF *****
 COUNTY COUNTY OF COMMITMENT BY TIMESERV TIME SERVED IN MONTHS
 CONTROLLING FOR.. SEX VALUE = 1. MALES
 ***** PAGE 5 OF 6

COUNTY	COUNT ROW PCT	TIMESERV										ROW TOTAL	
		UNDER 1 MO	12 1-11 MO	12-17 MO	18-23 MO	24-35 MO	36-47 MO	48-59 MO	60-71 MO	72-119 MO	120-239 MO		
SCHEENECTADY	46.	1	0	1	0	1	0	1	0	0	1	0	4
		25.0	0.	25.0	0.	25.0	0.	25.0	0.	0.	25.0	0.	0.2
SCHOHARIE	47.	0	0	2	1	0	0	0	0	0	0	0	3
		0.	0.	66.7	33.3	0.	0.	0.	0.	0.	0.	0.	0.1
SENECA	49.	0	1	0	1	0	0	0	0	0	0	0	2
		0.	50.0	0.	50.0	0.	0.	0.	0.	0.	0.	0.	0.1
STEBEN	50.	2	0	3	3	0	0	0	0	0	0	0	8
		25.0	0.	37.5	37.5	0.	0.	0.	0.	0.	0.	0.	0.4
SUFFOLK	51.	4	5	9	16	3	3	0	0	0	0	0	40
		10.0	12.5	22.5	40.0	7.5	7.5	0.	0.	0.	0.	0.	2.0
SULLIVAN	52.	0	2	1	3	1	0	0	0	0	0	0	7
		0.	28.6	14.3	42.9	14.3	0.	0.	0.	0.	0.	0.	0.3
TIOGA	53.	0	0	1	2	0	0	0	0	0	0	0	3
		0.	0.	33.3	66.7	0.	0.	0.	0.	0.	0.	0.	0.1
TOMPKINS	54.	1	1	0	2	0	0	0	0	0	0	0	4
		25.0	25.0	0.	50.0	0.	0.	0.	0.	0.	0.	0.	0.2
ULSTER	55.	0	0	0	2	0	0	0	0	0	0	0	2
		0.	0.	0.	100.0	0.	0.	0.	0.	0.	0.	0.	0.1
WARREN	56.	0	0	1	0	0	1	0	0	0	0	0	2
		0.	0.	50.0	0.	0.	50.0	0.	0.	0.	0.	0.	0.1
WASHINGTON	57.	0	0	1	1	1	0	0	0	0	0	0	3
		0.	0.	33.3	33.3	33.3	0.	0.	0.	0.	0.	0.	0.1
COLUMN TOTAL		155	241	677	681	163	72	24	15	1			2029
(CONTINUED)		7.6	11.9	33.4	33.6	8.0	3.5	1.2	0.7	0.0			100.0

-47-

11

1979 FIRST CONDITIONAL RELEASES

FILE FIRST (CREATION DATE = 03/19/81) CONDITIONAL RELEASES BY COUNTY, TIME SERVED & SEX

***** CROSSTABULATION OF *****
 COUNTY COUNTY OF COMMITMENT BY TIMESERV TIME SERVED IN MONTHS
 CONTROLLING FOR.. SEX VALUE = 1. MALES
 ***** PAGE 6 OF 6

COUNTY	COUNT ROW PCT	TIMESERV										ROW TOTAL
		UNDER 12 MO	12-17 MO	18-23 MO	24-35 MO	36-47 MO	48-59 MO	60-71 MO	72-119 MO	120-239 MO	9.I	
WAYNE	58.	0	1	4	3	0	0	0	0	0	0	8
		0.	12.5	50.0	37.5	0.	0.	0.	0.	0.	0.	0.4
WESTCHESTER	59.	1	11	38	24	4	1	0	0	0	79	
		1.3	13.9	48.1	30.4	5.1	1.3	0.	0.	0.	3.9	
WYOMING	60.	0	0	2	1	0	0	0	0	0	3	
		0.	0.	66.7	33.3	0.	0.	0.	0.	0.	0.1	
YATES	61.	0	0	0	1	0	0	0	0	0	1	
		0.	0.	0.	100.0	0.	0.	0.	0.	0.	0.0	
BRONX	62.	17	28	63	87	20	17	5	3	0	240	
		7.1	11.7	26.3	36.3	8.3	7.1	2.1	1.3	0.	11.8	
COLUMN TOTAL		155	241	677	681	163	72	24	15	1	2029	
		7.6	11.9	33.4	33.6	8.0	3.5	1.2	0.7	0.0	100.0	

1979 FIRST CONDITIONAL RELEASES

FILE FIRST (CREATION DATE = 03/19/81) CONDITIONAL RELEASES BY COUNTY, TIME SERVED & SEX

***** CROSSTABULATION OF *****
 NYC NEW YORK CITY BY TIMESERV TIME SERVED IN MONTHS
 CONTROLLING FOR.. SEX VALUE = 2. FEMALES

		TIMESERV					
COUNT	I	UNDER 12	12-17 MO	18-23 MO	24-35 MO	ROW	
ROW PCT	I	MO				TOTAL	
NYC	1.	12.5	29.2	25.0	33.3	24	
NEW YORK CITY	1.	12.5	29.2	25.0	33.3	100.0	
COLUMN		3	7	6	8	24	
TOTAL		12.5	29.2	25.0	33.3	100.0	

		TIMESERV		
COUNT	I	UNDER 12	18-23 MO	ROW
ROW PCT	I	MO		TOTAL
SUBURB	1.	14.3	85.7	7
SUBURBAN	1.	14.3	85.7	100.0
COLUMN		1	6	7
TOTAL		14.3	85.7	100.0

		TIMESERV					
COUNT	I	UNDER 12	12-17 MO	18-23 MO	24-35 MO	ROW	
ROW PCT	I	MO				TOTAL	
UPSTATE	1.	11.1	11.1	44.4	33.3	9	
UPSTATE	1.	11.1	11.1	44.4	33.3	100.0	
COLUMN		1	1	4	3	9	
TOTAL		11.1	11.1	44.4	33.3	100.0	

NUMBER OF MISSING OBSERVATIONS = 1677

1979 FIRST CONDITIONAL RELEASES

FILE FIRST (CREATION DATE = 03/19/81) CONDITIONAL RELEASES BY COUNTY, TIME SERVED & SEX

***** CROSSTABULATION OF *****
 COUNTY COUNTY OF COMMITMENT BY TIMESERV TIME SERVED IN MONTHS
 CONTROLLING FOR..
 SEX VALUE = 2. FEMALES
 ***** PAGE 1 OF 1

COUNTY	COUNT ROW PCT	TIMESERV				ROW TOTAL
		UNDER 1 MO	12 1-11 MO	18-23 MO	24-35 MO	
ERIE	14.	0	1	1	0	2
		0.	50.0	50.0	0.	5.0
KINGS	23.	0	2	1	1	4
		0.	50.0	25.0	25.0	10.0
MONROE	27.	0	0	3	2	5
		0.	0.	60.0	40.0	12.5
NASSAU	29.	1	0	5	0	6
		16.7	0.	83.3	0.	15.0
NEW YORK	30.	2	4	2	4	12
		16.7	33.3	16.7	33.3	30.0
OHONDAGA	33.	1	0	0	1	2
		50.0	0.	0.	50.0	5.0
QUEENS	40.	0	0	0	2	2
		0.	0.	0.	100.0	5.0
WESTCHESTER	59.	0	0	1	0	1
		0.	0.	100.0	0.	2.5
BROHX	62.	1	1	3	1	6
		16.7	16.7	50.0	16.7	15.0
COLUMN TOTAL		5	8	16	11	40
		12.5	20.0	40.0	27.5	100.0

END