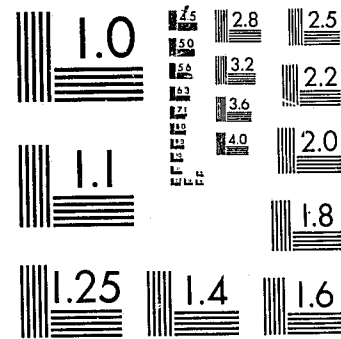


National Criminal Justice Reference Service



This microfiche was produced from documents received for inclusion in the NCJRS data base. Since NCJRS cannot exercise control over the physical condition of the documents submitted, the individual frame quality will vary. The resolution chart on this frame may be used to evaluate the document quality.



MICROCOPY RESOLUTION TEST CHART
NATIONAL BUREAU OF STANDARDS-1963-A

Microfilming procedures used to create this fiche comply with the standards set forth in 41CFR 101-11.504.

Points of view or opinions stated in this document are those of the author(s) and do not represent the official position or policies of the U. S. Department of Justice.

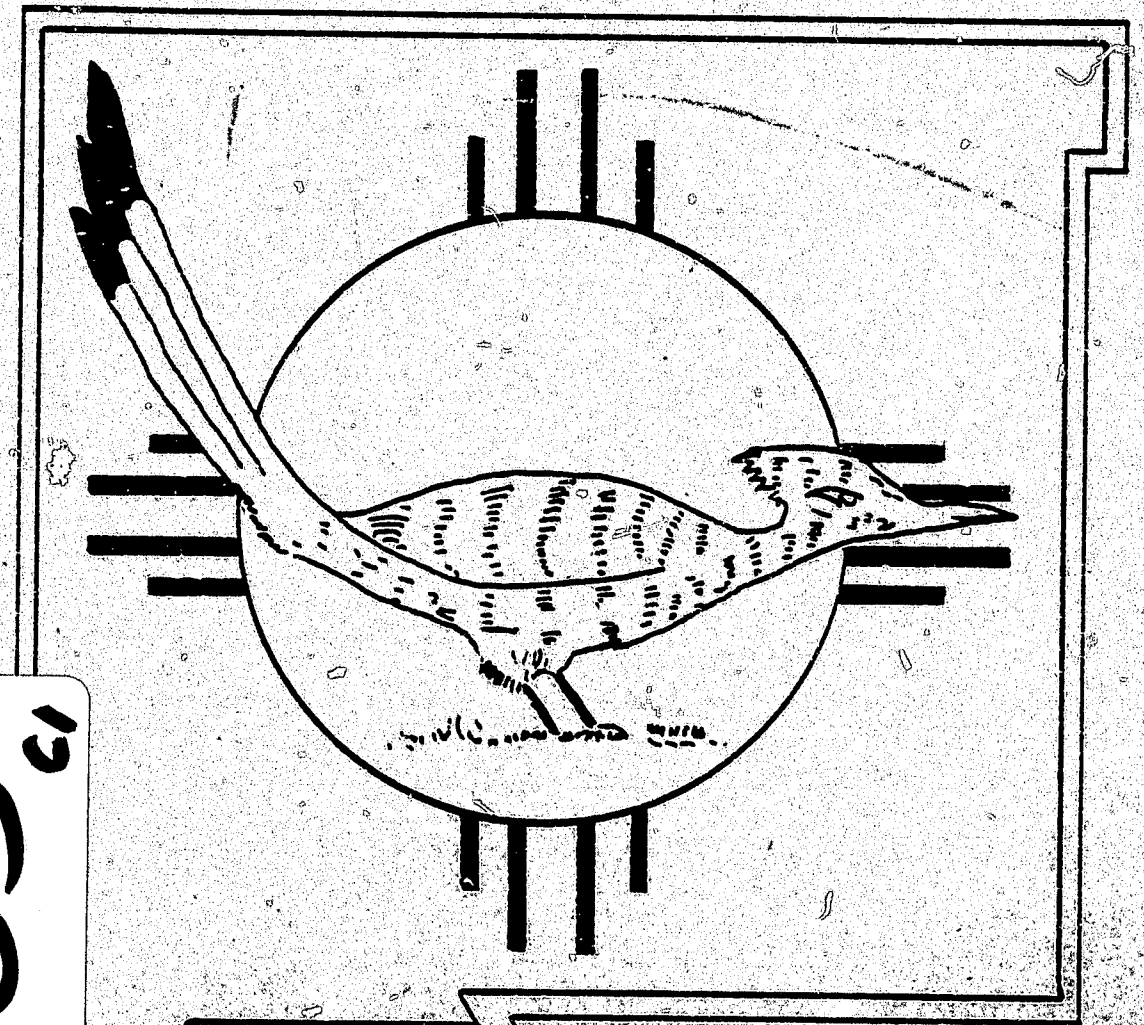
National Institute of Justice
United States Department of Justice
Washington, D. C. 20531

DATE FILMED

2-8-82

NEW MEXICO

CRIME REPORTS



80263

1980

NEW MEXICO STATE POLICE
UNIFORM CRIME REPORTS



New Mexico State Police

P.O. BOX 1828
SANTA FE, NEW MEXICO 87501



BRUCE KING
GOVERNOR

MARTIN VIGIL
CHIEF

NCJRS

JUL 29 1981

ACQUISITIONS

THE HONORABLE BRUCE KING
Governor of New Mexico
State Capitol
Santa Fe, New Mexico 87503

Dear Governor King:

The following summary presents the highlights of the Uniform Crime Reporting Program in New Mexico during 1980.

During 1980, there were 7,976 violent crimes (156 murders, 543 rapes, 1,631 robberies, 5,646 aggravated assaults), and 63,983 property crimes (18,513 burglaries, 41,960 larcenies, 3,510 motor vehicle thefts), for a total of 71,959 serious crimes in the state. This is an increase of 3.3 percent from 69,663 serious crimes reported in 1979.

The serious crime rate per 1,000 population was 60.0; up from the 55.9 rate for 1979.

Firearms were used in 52.6 percent of the 156 murders; 141 of the reported murders were cleared by arrest.

Five hundred forty-three (543) rapes were reported; a decrease of 11.1 percent over the 611 reported in 1979. 40.9 percent of the cases reported were cleared by arrest.

There were 1,631 robberies in 1980; an increase of 8.9 percent over the 1,498 reported in 1979. There was a total of \$1,069,307 taken in New Mexico robberies.

There were 18,513 reported cases of breaking and entering in 1980; an increase of 3.2 percent in this category from 17,935 reported in 1979. Larceny accounted for 41,960 cases; and, within this category, there were 9,579 thefts of motor vehicle parts and accessories.

In 1980, New Mexico law enforcement agencies reported 3,510 cases of motor vehicle thefts amounting to approximately \$12.4 million. Law enforcement agencies were able to recover 2,536 of these stolen vehicles.

Police recovered \$12.7 million of the \$40.1 million in property stolen in 1980.

U.S. Department of Justice
National Institute of Justice
This document has been reproduced exactly as received from the person or organization originating it. Points of view or opinions stated in this document are those of the authors and do not necessarily represent the official position or policies of the National Institute of Justice.

Permission to reproduce this copyrighted material has been granted by
New Mexico State Police
Department

to the National Criminal Justice Reference Service (NCJRS).
Further reproduction outside of the NCJRS system requires permission of the copyright owner.

Governor Bruce King

Page Two (2)

There were 768 law enforcement officers assaulted and three killed during 1980. The number of officers assaulted increased by 9.6 percent over 1979. The largest number, 230 assaults, were officers responding to family disturbance calls.

The cooperation extended by the law enforcement agencies throughout New Mexico has made possible the success of the Uniform Crime Reporting Program during 1980. It is with appreciation to these dedicated officers, and in the interest of better law enforcement for all the citizens of New Mexico, that this seventh annual New Mexico Crime Report is submitted.

Respectfully submitted,



CHIEF MARTIN E. VIGIL
New Mexico State Police

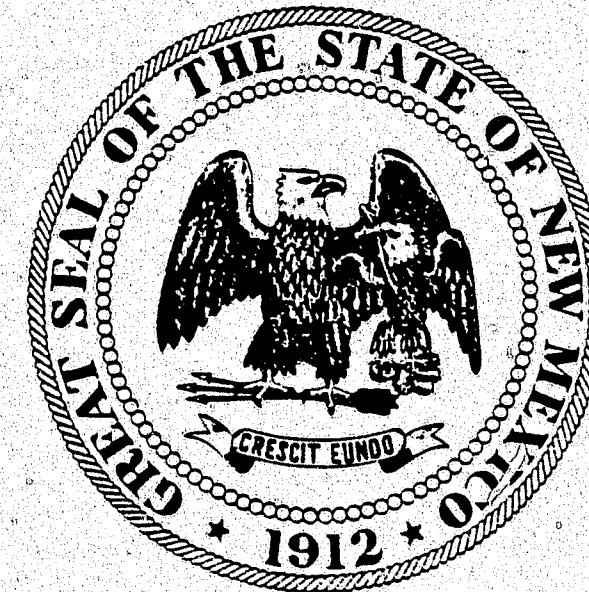
MEV:d1

STATE OF NEW MEXICO

BRUCE KING GOVERNOR

NEW MEXICO STATE POLICE

MARTIN E. VIGIL CHIEF



UNIFORM CRIME REPORTING

POST OFFICE BOX 1628

SANTA FE, NEW MEXICO 87501

TELEPHONE 505/827-5147

TABLE OF CONTENT

INTRODUCTION 2
CLASSIFICATIONS OF OFFENSES 4
CRIMINAL HOMICIDE 6
 Homicide - Age and Race 7
 Homicide - Circumstances and Weapons 8
RAPE 9
 By Month 10
ROBBERY 11
 By Month and Weapon Involved 12
AGGRAVATED ASSAULT 13
 By Month and Weapon Involved 14
BURGLARY 15
 By Month and Means of Entry 16
LARCENY - THEFT 17
 By Month and Value 18
 Classification and Month 19
MOTOR VEHICLE THEFT 20
 By Month 21
 Recovery Information 22
STATE TOTALS, PART 1 CRIMES 23
VALUE OF STOLEN PROPERTY AND RECOVERY 24
TYPES AND VALUE OF PROPERTY STOLEN BY MONTH 25
TYPES AND VALUE OF PROPERTY RECOVERED BY MONTH 26
VALUE OF PROPERTY STOLEN BY CRIME AND MONTH 27
ALL ARREST - PART 1 AND PART 11 OFFENSES 28
AGE AND SEX OF PERSONS ARRESTED 29-33
TOTAL ARRESTS BY RACE AND ETHNIC BACKGROUND 34
IN MEMORIAM 35
POLICE ASSAULT - TIME OF ASSAULT 36
 By Activity, Weapon and Assignment 37
CRIME INDEX TRENDS 38
CRIME BY COUNTIES 39-45

I
NEW MEXICO
UNIFORM CRIME REPORTING
PROGRAM
ANNUAL REPORT 1980

INTRODUCTION

HISTORY OF UNIFORM CRIME REPORTING

The need to gather and analyze crime statistics in this country dates back to 1870. During this time Congress sought to provide a national system of crime reporting, but their efforts failed. In 1871 the National Police Association attempted to collect crime data, but with equal lack of success.

It was not until 1927 that a Uniform Records Committee was established by the International Association of Chiefs of Police. This committee developed a uniform classification for most parts of the country. This classification was based directly upon the system employed by the Bureau of Census in compiling statistics of prisoners.

During the later part of 1930, the program was turned over to the Federal Bureau of Investigation. The Bureau began receiving on a voluntary basis crime statistics from police agencies throughout the United States. Since those early times, the Bureau has published many distinguished reports using those statistics. In recent years, the Bureau has actively assisted individual states in developing their own statewide programs.

INTENT OF THE SYSTEM

The intent of the New Mexico Uniform Crime Reporting (NMUCR) Program shall be to supply local community agencies, institutions and organizations with a source of crime statistics which they can use to assist in management decisions and implementing planning strategies to deter, reduce and prevent crime.

ASSUMPTIONS AND LIMITATIONS OF THE PUBLICATION

Unfortunately, we cannot state that all police agencies within New Mexico accurately record and submit crime data to NMUCR; however, the statistics listed in this publication are based on the most accurate data currently available. Accompanying this current data are many assumptions and limitations which directly affect the accuracy and precision of the statistics within this publication. These assumptions and limitations also directly affect the summarizing and the comparing of local community crime statistics. These are being noted for the reader who endeavors to draw conclusions concerning the statistical data.

The following factors are the major aspects which have an influence on the statistics presented in this publication:

ASSUMPTION

1. Crime is a social problem in New Mexico.
2. Crime figures presented in this publication are police statistics as distinguished from judicial or penal statistics.
3. Actual crimes represent violations of New Mexico statutes and local ordinances.
4. Citizen apathy and indifference contribute to the spread of crime.
5. Community institutions and organizations, coupled with police agencies are influenced by the decline and/or rise in crime rates.
6. A high level of integrity is needed in order to state NMUCR index crime rates.
7. Some police agencies have a profound distrust of the practical value of a statistical collection of data.
8. It is significant to consider the fact that policy relevant to reporting will differ in accordance with the philosophy of the various agency heads.

LIMITATIONS

1. All police departments are not equipped to render complete and accurate accounting of offenses committed and persons charged because of limited manpower, funding, etc.
2. Difference in the collecting and interpreting crime date.
3. Some police jurisdictions overlap.
4. Some juveniles are informally handled which affects the accuracy of the juvenile report input.
5. Crimes against persons and their property are not always reported to police.
6. Crime clearances lag months and sometimes years behind the actual reported offenses.
7. Property illustrations reflect the property stolen and/or recovered. Property damage is not included.
8. Stolen property figures represent property stolen during the reporting year. Recovered property figures may reflect reported property stolen in a previous calendar year but recovered in the reporting year.

UNIFORM CRIME REPORTING CLASSIFICATION OF OFFENSES

MAJOR OFFENSES (CRIME INDEX) - PART I

VIOLENT CRIMES

Murder and Non-Negligent
Manslaughter
Forcible Rape
Robbery
Aggravated Assault

NON-VIOLENT CRIMES

Burglary
Larceny
Motor Vehicle Theft

OTHER CRIME OFFENSES (NON-INDEX) - PART II

Other Assaults
Arson
Forgery and Counterfeiting
Fraud
Embezzlement
Stolen Property: Buying, Receiving, Possession, etc.
Vandalism
Weapons: Carrying, Possession, etc.
Prostitution
Sex Offenses (Except Forcible Rape and Prostitution)
Narcotic Drug Laws
Gambling
Offense Against Family and Children
Driving Under the Influence
Disorderly Conduct
Vagrancy
All Other Offenses (Except Traffic)
Suspicion
Curfew and Loitering
Runaways

CONCLUSION

The release of crime statistics frequently results in a controversy as to the accuracy of the statistics and how these statistics should be interpreted. Listed within this publication are many of the major assumptions and limitations which make it very apparent that great caution should be used when referring to the statistical data in this publication. The recognition of the assumptions and limitations should help the reader of this statistical resource to focus attention on valid objects, thus minimizing the dangers of over-generalization.

II

NEW MEXICO

CRIME INDEX OFFENSES

CRIMINAL HOMICIDE

Definition and Classification

Murder is defined as the unlawful killing of a human being. Any death due to a fight, argument, quarrel, assault or commission of a crime is included.

Analysis

In 1980, New Mexico reported 156 criminal homicides. The month of February had the highest number of murders with 34, and this was due to the riot at the State Penitentiary where 33 murders took place. January was the next highest month with 17 murders. Of the 71,959 index offenses reported in 1980, the crime of murder made up 0.22 percent of these offenses.

There were 0.13 murders for every 1,000 New Mexico residents. The weapon most often used was the firearm, which was used to commit 82 of the murders, or 52.6 percent. Also it was found that 72.0 percent of the firearms used were handguns. Cutting and stabbing instruments were used to commit 14.1 percent of the murders and 32.1 percent of the murders had other weapons used such as blunt objects, etc. This number, 50 incidents, is high for 1980 because the riot murders were classified in this category. The remaining murders, 1.3 percent, were committed through the use of personal weapons such as hands, fists, feet, etc.

Murder by Month

CIRCUMSTANCE	TOTAL	JAN	FEB	MAR	APR	MAY	JUN	JUL	AUG	SEP	OCT	NOV	DEC
Murder Non-Negligent Manslaughter	156	17	34	11	14	10	9	15	11	6	6	10	13

HOMICIDE - VICTIM BY AGE AND RACE

AGE	WHITE		BLACK		INDIAN		TOTAL	
	MALE	FEMALE	MALE	FEMALE	MALE	FEMALE	MALE	FEMALE
1-4	1	1	-	-	-	-	1	1
5-9	-	-	-	-	-	-	-	-
10-14	1	1	-	-	-	-	1	1
15-19	12	2	-	-	-	-	12	2
20-24	24	5	-	2	1	-	25	7
25-29	24	2	2	-	2	-	28	2
30-34	16	4	-	-	1	-	17	4
35-39	14	2	-	-	2	-	16	2
40-44	6	1	-	-	-	-	6	1
45-49	4	1	1	-	-	-	5	1
50-54	1	1	1	-	-	-	2	1
55-59	1	-	-	-	-	-	1	-
60-64	-	1	-	-	-	-	-	1
65-Over	6	1	-	-	-	-	6	1
Unknown	10	2	-	-	-	-	10	2
TOTALS	120	24	4	2	6	-	130	26

HOMICIDE - CIRCUMSTANCES AND WEAPON

	Handgun	Rifle	Shotgun	Firearm Not Stated	Knife	Hands	Others	TOTALS
Robbery	4	-	-	-	-	-	1	5
Burglary	-	-	-	-	-	-	-	-
Other	4	2	3	5	3	-	37	54
Lover's Triangle	1	-	-	-	1	-	-	2
Brawl-Alcohol	4	-	-	-	2	1	-	7
Brawl-Narcotics	5	-	-	-	-	-	-	5
Argument-Money	-	-	-	-	-	-	-	-
Other Arguments	26	5	3	1	10	-	7	52
Not Stated	15	3	-	1	6	1	5	31
TOTALS	59	10	6	7	22	2	50	156

RAPE

Definition and Classification

Rape is defined by NMUCR as the carnal knowledge of a female; forcibly and against her will. Generally carnal abuse (statutory rape) or other sex offenses are not classified in this section.

Analysis

Forcible rape and attempts to commit forcible rape accounted for 543 of New Mexico's 71,959 index crimes reported in 1980, or 0.8 percent.

Law enforcement agencies were able to clear 222 of these offenses by arrest, or 40.9 percent. Of those persons arrested for rape, 13.5 percent were juveniles.

FORCIBLE RAPE BY MONTH

CIRCUMSTANCES	TOTAL	JAN	FEB	MAR	APR	MAY	JUN	JUL	AUG	SEP	OCT	NOV	DEC
Forcible Rape	416	44	26	35	42	46	39	33	47	32	19	22	31
Attempted Rape	127	12	6	7	12	12	14	17	14	12	8	7	6
TOTALS	543	56	32	42	54	58	53	50	61	44	27	29	37

ROBBERY

Definition and Classification

Robbery is defined as the felonious and forcible taking the property of another against the person's will by violence, force or by putting the person in fear. Generally, robbery differs from larceny in that it is aggravated by the element of force or threat of force.

Analysis

There were 1,631 robberies reported during 1980. These robberies were 2.3 percent of the index crimes reported during the year. Reporting agencies were able to clear 25.5 percent of the robberies; the average dollar amount taken was \$655. There was a total of \$1,069,307 taken in New Mexico robberies.

ROBBERY BY MONTH AND WEAPON INVOLVED

CIRCUMSTANCES	TOTAL	JAN	FEB	MAR	APR	MAY	JUN	JUL	AUG	SEP	OCT	NOV	DEC
Firearm	746	74	72	47	64	57	42	41	81	56	48	71	93
Knife or Cutting Instrument	233	24	14	19	18	20	8	24	24	20	27	18	17
Other Dangerous Weapons	131	10	12	8	15	6	14	13	19	11	12	6	5
Strong Arm	521	37	45	41	39	36	48	43	52	53	46	43	38
TOTALS	1,631	145	143	115	136	119	112	121	176	140	133	138	153

AGGRAVATED ASSAULT

Definition and Classification

Assault is defined by NMUCR as an unlawful attack by one person upon another for the purpose of inflicting severe bodily injury. Not included in this section are assaults with intent to rob or rape.

Analysis

There were 5,626 aggravated assaults in the state in 1980. The largest number of assaults occurred during the month of June with 569. Firearms were used most frequently to commit aggravated assaults, 27.2 percent.

Personal weapons such as hands, feet, fists, etc. were used in 26.6 percent of assaults while other dangerous weapons and cutting instruments were used 24.7 percent and 21.5 percent respectively. Aggravated assaults accounted for 7.8 percent of the reported index crimes.

ASSAULT BY MONTH AND WEAPON USED

CIRCUMSTANCES	TOTAL	JAN	FEB	MAR	APR	MAY	JUN	JUL	AUG	SEP	OCT	NOV	DEC
Firearms	1,532	73	111	106	123	148	169	174	139	138	105	123	123
Cutting Instrument	1,211	68	98	95	91	112	121	124	102	105	92	117	86
Other Dangerous Weapons	1,389	90	113	131	121	125	145	130	132	135	95	86	86
71 Hands, Fists, Feet, etc.	1,494	98	153	120	125	170	134	109	169	143	98	98	77
TOTAL	5,626	329	475	452	460	555	569	537	542	521	390	424	372

BURGLARY

Definition and Classification

Burglary is defined as the unlawful entry of a structure to commit a felony or theft, even though no force was used to gain entry.

Analysis

The 18,513 reported burglaries in New Mexico during 1980 comprised 25.7 percent of the index crimes reported. Law enforcement agencies were successful in clearing 1,832 cases, or 9.9 percent.

Forcible entry accounted for 72.9 percent of all burglaries, and December was the most active month with 9.9 percent. Residential burglaries amounted to 68.7 percent.

Burglary by Location and Time

CLASSIFICATION	NUMBER OF OFFENSES	% DISTRIBUTION
Residence(Sub-total)	12,723	68.7
Night(6 PM - 6 AM)	4,443	24.0
Day(6 AM - 6 PM)	5,054	27.3
Unknown	3,226	17.4
Non-Residence(Sub-total)	5,790	31.3
Night(6 PM - 6 AM)	3,293	17.8
Day(6 AM - 6 PM)	960	5.2
Unknown	1,537	8.3
TOTAL	18,513	100.0

BURGLARY BY MONTH AND MEANS OF ENTRY

Means of Entry	TOTAL	JAN	FEB	MAR	APR	MAY	JUN	JUL	AUG	SEP	OCT	NOV	DEC
Forcible Entry	13,492	1136	1105	1239	1030	1211	1052	1065	1015	991	1139	1111	1398
Unlawful Entry (No force)	3,706	168	224	240	250	324	344	413	450	403	328	269	293
Attempted Forcible Entry	1,315	86	109	114	113	96	105	104	113	95	131	110	139
TOTALS	18,513	1390	1438	1593	1393	1631	1501	1582	1578	1489	1598	1490	1830

LARCENY - THEFT

Definition and Classification

Larceny - Theft is the unlawful taking or stealing of property or articles of value without the use of force, violence or fraud.

New Mexico Law Enforcement Agencies reported 41,960 cases of larceny-theft in 1980. These larcenies made up 58.6 percent of the index offenses. Of the total number of these crimes 8,755 were cleared.

LARCENY BY MONTH AND VALUE

CLASSIFICATION	TOTAL	JAN	FEB	MAR	APR	MAY	JUN	JUL	AUG	SEP	OCT	NOV	DEC
\$200 & over	11,625	894	936	1059	933	1102	949	901	1056	950	916	937	992
\$50 to \$200	13,029	925	1007	1069	1087	1152	1255	1203	1251	1077	1017	927	1059
Under \$50	17,306	1444	1516	1695	1453	1444	1322	1292	1489	1373	1360	1360	1558
TOTALS	41,960	3263	3459	3823	3473	3698	3526	3396	3796	3400	3293	3224	3609

LARCENY BY CLASSIFICATION AND MONTH

CLASSIFICATION	TOTAL	JAN	FEB	MAR	APR	MAY	JUN	JUL	AUG	SEP	OCT	NOV	DEC
Pocket-Picking	173	11	16	13	16	25	18	8	15	14	8	13	16
Purse-Snatching	178	21	17	10	10	11	28	12	23	8	13	12	13
Shoplifting	6616	540	523	587	468	508	453	499	583	575	582	614	684
From Motor Vehicles	7634	638	716	714	630	697	591	592	616	584	572	586	698
¹⁹ Motor Vehicle Parts/Accessory	9579	838	885	941	881	785	714	691	746	740	727	761	870
Bicycles	4236	150	190	267	351	401	540	574	581	377	342	221	242
From Buildings	5058	443	407	468	395	471	385	358	450	397	420	411	453
From Coin-Operated Machines	664	54	78	65	84	76	53	54	84	58	16	20	22
All Others	7822	568	627	758	638	724	744	608	698	647	613	586	611
TOTALS	41,960	3263	3459	3823	3473	3698	3526	3396	3796	3400	3293	3224	3609

MOTOR VEHICLE THEFT

Definition and Classification

NMUCR defines motor vehicle theft as the unlawful taking or stealing of a motor vehicle, including attempts. Examples of motor vehicles are automobiles, trucks, buses, motorcycles, motor scooters, snowmobiles, etc.

Analysis

In 1980, New Mexico law enforcement agencies reported 3,510 offenses of motor vehicle thefts. Of the reported 71,959 index crimes, motor vehicle thefts accounted for 4.9 percent.

During 1980, 21.1 percent of the 3,510 offenses reported were cleared by arrest and 2,536 stolen vehicles were recovered.

MOTOR VEHICLE THEFTS BY MONTH

TYPES	TOTAL	JAN	FEB	MAR	APR	MAY	JUN	JUL	AUG	SEP	OCT	NOV	DEC
Autos	1,819	176	123	168	154	149	165	163	145	148	138	159	131
Trucks and Buses	1,104	94	85	97	78	92	100	96	102	94	89	94	83
Other Vehicles	587	59	50	54	54	49	49	61	57	34	34	47	39
TOTALS	3,510	329	258	319	286	290	314	320	304	276	261	300	253

MOTOR VEHICLE RECOVERY INFORMATION

SITUATION	TOTAL	JAN	FEB	MAR	APR	MAY	JUN	JUL	AUG	SEP	OCT	NOV	DEC
Locally Stolen (Recovered Locally)	1,804	173	153	162	186	157	145	157	150	118	118	146	139
Locally Stolen (Recovered Other)	732	60	49	67	79	58	58	59	60	58	60	59	65
22 Total (Locally Stolen and Recovered)	2,536	233	202	229	265	215	203	216	210	176	178	205	204
Stolen (Other Recovered Locally)	674	50	47	46	48	66	64	68	64	49	71	49	52
TOTALS	3,210	283	249	275	313	281	267	284	274	225	249	254	256

STATE TOTALS - PART I CRIMES, 1980

<u>Index Crimes</u>	<u>Total</u>	<u>Total Cleared</u>	<u>Rate Per 1000 Inhabitants</u>	<u>% Distribution</u>
Criminal Homicide	156	141	.1	.2
Forcible Rape	543	222	.4	.7
Robbery	1,631	416	1.2	2.2
Aggravated Assault	5,646	2,556	4.1	7.8
Burglary	18,513	1,832	13.7	25.7
Larceny	41,960	8,755	31.0	58.6
Motor Vehicle Theft	3,510	741	2.6	4.8
TOTALS	71,959	14,363	53.3	

State Totals

This section deals with state totals. These figures demonstrate the potential for a deeper study of crime analysis that can be made in addition to the information contained hereafter.

VALUE OF PROPERTY STOLEN AND RECOVERED FOR INDEX OFFENSES

The next two charts will deal with value of property stolen and recovered by article and month, as well as property stolen by crime and month.

The article or type of property stolen is of great importance to the police administrator when he attempts to develop programs to prevent the theft of any particular article.

This is an attempt to list articles stolen by month and, also, to reveal the value of property involved in the seven Part I crimes.

Value of Property Stolen and Recovered by Month

<u>Month</u>	<u>Total Amount Stolen</u>	<u>Total Amount Recovered</u>	<u>% Recovered</u>
JAN	3,037,318	820,439	27.0
FEB	3,549,284	1,090,814	30.7
MAR	3,496,892	1,041,514	29.7
APR	3,445,582	1,169,011	33.9
MAY	3,456,341	1,083,727	31.3
JUN	3,335,971	874,559	26.2
JUL	3,090,016	975,772	31.5
AUG	3,229,402	1,214,826	37.6
SEP	2,769,035	851,611	30.7
OCT	3,345,218	955,848	28.5
NOV	3,463,317	1,250,993	36.1
DEC	3,904,411	1,376,905	35.2
TOTALS	40,123,287	12,706,019	31.6

II

NEW MEXICO

CRIME INDEX OFFENSES

TYPES AND VALUE OF PROPERTY STOLEN BY MONTH

PROPERTY TYPE	TOTAL	DIST.	JAN	FEB	MAY	APR	MAY	JUN	JUL	AUG	SEP	OCT	NOV	DEC
Currency	2,667,319	6.6	219,062	177,005	265,254	322,909	233,693	170,669	211,928	177,150	217,120	223,461	133,046	316,022
Jewelry	6,220,840	15.5	398,068	673,008	433,685	635,945	522,526	407,938	387,782	432,178	270,900	511,063	622,201	925,546
Clothing	767,391	1.9	47,941	64,692	76,163	75,015	56,164	52,621	36,835	50,784	62,596	74,640	50,222	118,718
Locally Stolen Vehicles	13,164,859	32.8	1,103,978	1,254,486	1,159,508	967,848	1,185,181	1,163,589	1,081,244	1,181,780	908,811	973,799	1,152,481	1,012,154
Office Equipment	431,370	1.0	25,435	36,665	62,214	28,700	37,691	30,267	14,995	20,488	30,955	36,841	21,318	81,801
TV Stereos	3,711,479	9.2	260,618	334,918	329,993	294,488	358,235	297,120	258,899	281,941	272,790	313,125	339,711	769,641
Firearms	819,440	2.0	62,362	60,182	56,944	69,570	82,261	65,973	58,442	54,792	77,981	62,153	91,088	77,692
Household Items	2,062,475	5.1	127,517	185,725	164,576	102,627	149,129	186,828	163,461	128,464	127,989	304,262	202,403	219,494
Consumables	587,318	1.4	38,430	36,890	38,083	69,061	52,571	112,105	37,906	21,783	63,410	46,162	34,388	36,529
Livestock	69,897	.1	365	3,911	9,135	3,619	3,423	7,043	2,183	1,338	19,196	15,910	2,275	1,499
Misc.	9,620,899	23.9	752,542	721,802	901,337	874,800	775,967	841,818	836,341	878,704	717,287	783,802	812,184	723,315
TOTALS	40,123,287		3,037,318	3,549,284	3,496,892	3,445,582	3,456,841	3,335,971	3,090,016	3,229,402	2,769,035	3,345,218	3,463,317	3,904,411

25

TYPES AND VALUE OF PROPERTY RECOVERED BY MONTH

PROPERTY TYPE	TOTAL	PERCENT RECOVERED	JAN	FEB	MAR	APR	MAY	JUN	JUL	AUG	SEP	OCT	NOV	DEC
Currency	189,677	7.1	6,576	5,040	5,290	59,675	23,823	7,616	14,296	13,680	8,751	8,008	11,088	25,834
Jewelry	555,210	8.9	17,588	29,345	48,040	88,679	41,369	5,406	33,097	45,323	13,445	56,682	86,655	89,581
Clothing	75,403	9.8	4,862	7,450	6,304	6,256	6,121	3,719	2,856	6,058	8,500	7,867	8,373	7,037
Locally Stolen Vehicles	10,144,244	77.0	714,723	946,498	836,261	868,696	844,860	754,586	720,939	922,935	708,913	746,039	980,526	1,009,268
Office Equipment	59,512	13.7	4,091	9,070	2,746	5,317	2,580	645	1,813	4,031	2,028	1,507	1,319	24,365
TV Stereos	312,751	8.4	13,909	18,015	38,383	27,960	53,502	24,010	20,877	20,577	15,996	29,577	28,872	21,073
Firearms	92,613	11.3	4,120	4,494	4,480	14,127	4,314	4,800	11,714	8,855	2,558	8,188	11,033	13,930
Household Items	78,633	3.6	3,174	2,837	5,481	4,485	14,607	5,728	8,054	9,827	12,013	2,406	3,556	6,465
Consumables	48,174	8.2	4,385	6,360	6,234	1,708	1,989	2,569	3,087	2,991	3,599	3,366	4,280	7,606
Livestock	19,490	27.8	3,000	1,500	400	---	400	3,169	950	785	---	9,000	---	286
Misc.	1,130,312	11.7	44,011	60,205	87,895	92,108	90,162	62,311	158,089	179,764	75,808	83,208	115,291	81,460
TOTALS	12,706,019	31.6	820,439	1,090,814	1,041,514	1,169,011	1,083,727	874,559	975,772	1,214,826	851,611	955,848	1,250,993	1,376,905

VALUE OF PROPERTY STOLEN BY CRIME AND MONTH

OFFENSE	TOTAL	JAN	FEB	MAR	APR	MAY	JUN	JUL	AUG	SEP	OCT	NOV	DEC
Murder	1,000	---	---	---	---	---	---	---	---	---	1,000	---	---
Rape	21,823	384	---	440	800	395	2	14	2,058	5,213	392	8,345	3,780
Robbery	1,069,307	156,851	124,124	39,702	101,932	72,536	39,555	67,941	67,657	50,010	128,226	38,394	182,379
Burglary	14,383,559	1,032,645	1,303,455	1,268,584	1,193,532	1,215,505	1,189,756	1,057,644	978,733	930,925	1,315,476	1,328,225	1,569,079
Larceny	12,264,328	834,469	1,038,259	1,141,224	1,224,376	1,146,557	871,860	929,941	1,008,168	1,007,589	952,181	991,588	1,123,116
Vehicles	12,381,270	1,012,969	1,083,446	1,046,942	924,942	1,021,848	1,234,798	1,039,476	1,172,786	775,298	947,943	1,096,765	1,026,057
TOTALS	40,123,287	3,037,318	3,549,284	3,496,892	3,445,582	3,456,841	3,335,971	3,090,016	3,229,402	2,769,035	3,345,218	3,463,317	3,904,414

ALL ARRESTS FOR PART I AND PART II OFFENSES

Arrest statistics reflecting characteristics of persons arrested by age, sex and race are collected monthly from contributing law enforcement agencies. In examining these arrest figures, it is important to remember that the same person may be arrested several times during the year for the same type or different offenses.

A juvenile is counted as a person arrested when he commits an offense and the circumstances are such that if the offender were an adult an arrest would be made.

Juvenile Dispositions

Handled within the Department and released	1,518
Referred to Juvenile Court or Probation Department	10,266
Referred to Welfare Agency	72
Referred to Other Police Agency	133
Referred to Adult or Criminal Court	31
TOTAL	12,020

AGE AND SEX OF PERSONS ARRESTED - 17 Years and Under

OFFENSE		Under 10	11-12	13-14	15	16	17	TOTAL
Murder	Male	-	-	-	-	3	2	5
	Female	-	-	-	-	-	-	-
Forcible Rape	Male	-	2	4	4	10	10	30
	Female	-	-	-	-	-	-	-
Robbery	Male	-	1	15	11	27	30	84
	Female	-	-	2	3	1	2	8
Aggravated Assault	Male	5	17	52	40	72	79	265
	Female	-	1	15	14	14	23	67
Burglary	Male	21	53	168	162	200	170	774
	Female	-	5	21	9	14	11	60
Larceny	Male	135	292	629	409	483	493	2441
	Female	38	162	370	246	249	227	1292
Motor Vehicle Theft	Male	-	4	40	62	55	54	215
	Female	-	1	7	6	9	9	32
PART I TOTALS		199	538	1323	966	1137	1110	5273

AGE AND SEX OF PERSONS ARRESTED - 17 Years & Under-continued

OFFENSE	SEX	UNDER 10	11-12	13-14	15	16	17	TOTAL
Other Assaults	Male	7	5	28	33	54	55	182
	Female	-	1	11	2	15	7	36
Arson	Male	7	5	7	4	4	-	27
	Female	-	-	-	-	-	-	-
Forgery & Counterfeiting	Male	1	-	3	11	4	12	31
	Female	-	-	5	1	6	6	18
Fraud	Male	-	2	4	6	12	13	37
	Female	-	-	4	1	2	5	12
Embezzlement	Male	-	-	1	5	3	3	12
	Female	-	-	-	3	-	1	4
Possession Stolen Property	Male	2	3	37	38	44	57	181
	Female	1	3	16	4	5	4	33
Vandalism	Male	27	59	88	73	91	97	435
	Female	4	4	9	4	11	17	49
Possession of Weapons	Male	-	4	15	11	23	32	85
	Female	-	-	-	1	2	1	4

AGE AND SEX OF PERSONS ARRESTED - 17 Years and Under - continued

OFFENSES	SEX	UNDER 10	11-12	13-14	15	16	17	TOTAL
Prostitution	Male	-	1	-	-	-	-	1
	Female	-	-	-	-	-	1	1
Other Sex	Male	-	1	5	13	9	12	40
	Female	-	-	-	-	1	-	1
Narcotic/Drugs	Male	-	4	58	74	124	159	419
	Female	-	1	16	11	21	23	72
Gambling	Male	-	-	-	-	-	1	1
	Female	-	-	-	-	-	-	-
Offense Against Family	Male	-	-	-	2	3	1	6
	Female	-	-	-	3	1	-	4
DWI	Male	-	1	5	27	119	231	383
	Female	-	-	2	5	14	35	56
Liquor Laws	Male	-	12	84	207	421	638	1362
	Female	-	2	42	63	99	90	296
Disorderly Conduct	Male	2	14	73	123	177	260	649
	Female	1	10	37	45	59	36	188
Vagrancy	Male	-	-	-	-	-	2	2
	Female	-	-	-	-	-	-	-
All other Offenses (except traffic)	Male	26	47	179	209	246	285	992
	Female	9	13	69	53	56	48	248
Suspicion	Male	-	-	1	1	-	-	2
	Female	-	-	-	-	-	-	-
Curfew & Loitering	Male	-	11	61	95	121	76	364
	Female	-	3	29	50	66	53	201
Runaway	Male	6	4	22	28	31	17	108
	Female	-	4	57	64	53	27	205
PART II TOTALS		93	213	969	1270	1897	2305	6747
TOTAL JUVENILE ARRESTS		292	751	2292	2236	3034	3415	12020

AGE AND SEX OF PERSONS ARRESTED

OFFENSES	SEX	18	19	20	21	22	23	24	25-29	30-34	35-39	40-44	45-49	50-54	55-59	60-64	65	TOTAL
Murder	Male	2	7	3	3	8	5	2	21	15	7	5	5	2	-	-	2	88
	Female	-	-	1	3	1	-	-	3	-	1	1	1	-	-	-	-	11
Forcible Rape	Male	8	15	11	8	5	10	10	27	20	8	3	4	3	-	-	-	132
	Female	-	-	-	-	-	-	-	-	-	-	-	-	-	-	-	-	-
Robbery	Male	39	26	31	34	24	21	21	53	32	7	9	5	3	2	-	-	307
	Female	4	4	-	3	3	1	2	-	-	-	1	-	-	-	-	-	18
Aggravated Assault	Male	88	89	104	135	92	91	109	338	240	136	108	78	39	22	11	18	1707
	Female	15	17	14	12	16	13	8	31	30	30	14	12	7	3	-	2	224
Burglary	Male	169	158	98	77	70	60	46	150	81	52	19	9	6	-	-	-	995
	Female	7	3	7	2	1	2	-	11	5	1	4	1	-	-	-	-	44
Larceny	Male	404	324	303	197	177	171	146	545	389	241	150	131	78	67	43	55	3421
	Female	217	176	161	117	104	105	87	309	348	152	111	104	90	64	50	69	2264
Motor Vehicle Theft	Male	44	31	33	24	18	27	16	64	26	23	7	6	1	2	1	-	323
	Female	1	2	1	1	1	1	1	6	5	3	-	-	-	-	-	-	22
PART I TOTAL OFFENSES		998	852	767	616	520	508	448	1,558	1,200	661	432	356	229	160	105	146	9556
Other Assaults	Male	31	44	59	38	54	48	47	176	147	72	54	43	20	19	5	9	866
	Female	6	6	6	7	7	5	7	30	13	8	6	7	5	2	-	-	115
Arson	Male	-	1	3	3	3	1	1	9	7	4	5	4	-	-	-	-	41
	Female	-	-	-	-	-	-	-	-	-	-	-	-	-	-	-	-	-
Forgery & Counterfeiting	Male	11	7	14	13	5	6	9	34	19	7	13	5	1	3	-	1	148
	Female	7	6	9	5	7	7	2	25	12	3	2	4	-	-	-	-	89
Fraud	Male	28	30	31	29	26	25	25	115	73	51	40	25	12	14	7	4	535
	Female	17	10	9	7	14	8	9	30	25	15	8	8	3	3	2	-	168
Embezzlement	Male	5	6	8	7	6	4	10	22	16	8	2	3	5	1	-	-	103
	Female	1	5	2	3	1	2	2	7	2	-	1	3	-	1	1	-	31
Stolen Property	Male	54	49	37	38	34	33	17	88	58	31	17	10	6	2	2	-	476
	Female	6	13	5	5	3	2	4	20	9	2	2	2	-	-	-	-	73
Vandalism	Male	87	77	51	36	41	41	26	114	62	36	19	16	12	6	4	-	628
	Female	7	4	8	7	9	2	5	15	20	8	3	1	-	2	1	-	92

AGE AND SEX OF PERSONS ARRESTED-continued

OFFENSES	SEX	18	19	20	21	22	23	24	25-29	30-34	35-39	40-44	45-49	50-54	55-59	60-64	65	TOTAL
Possession of Weapons	Male	34	34	31	32	37	22	32	107	76	32	35	15	10	9	3	5	514
	Female	1	4	1	8	3	5	2	11	8	8	1	1	1	1	-	1	56
Prostitution	Male	-	-	2	1	4	1	2	3	3	1	4	2	-	1	-	-	26
	Female	6	11	13	14	21	29	9	28	6	3	2	1	-	-	-	-	143
Other Sex Offenses	Male	8	13	11	6	6	5	11	37	33	13	9	9	8	8	4	4	185
	Female	1	1	3	5	3	4	9	4	3	1	1	1	1	3	-	-	40
Narcotic Drugs	Male	234	193	192	163	127	137	105	391	193	71	28	11	5	5	2	1	1858
	Female	30	35	21	20	17	27	10	45	27	7	2	3	3	2	-	-	249
Gambling	Male	-	-	-	-	-	-	-	1	-	-	2	-	1	1	-	-	6
	Female	-	-	-	-	-	-	-	-	-	-	-	-	-	-	-	-	1
Offense Against Family	Male	1	1	1	4	2	4	5	29	15	16	1	1	3	1	-	-	84
	Female	1	2	4	2	4	5	4	18	9	4	5	1	-	-	-	-	59
DWI	Male	319	378	365	466	463	472	433	1432	1136	757	767	530	432	324	176	148	8598
	Female	64	63	60	66	70	65	61	265	202	155	146	83	88	45	24	15	1472
Liquor Laws	Male	420	397	293	119	110	88	76	228	125	71	54	34	30	11	12	11	2079
	Female	92	66	53	19	12	7	8	19	15	12	8	3	8	3	2	-	327
Disorderly Conduct	Male	238	213	220	272	196	185	169	674	470	270	323	190	178	120	82	98	3903
	Female	51	57	49	53	52	58	32	135	109	86	61	48	22	15	14	7	849
Vagrancy	Male	-	-	-	1	1	2	-	2	-	-	-	-	2	2	2	-	12
	Female	-	-	-	-	-	-	-	-	-	-	-	-	-	-	-	-	-
All Other Offenses (except traffic)	Male	567	554	558	543	455	460	422	1282	768	386	395	189	153	128	78	53	6991
	Female	165	160	110	115	88	103	73	253	160	111	59	40	12	16	10	7	1482
PART II TOTALS		2492	2440	2229	2107	1881	1863	1627	5647	3822	2249	2080	1293	1021	748	433	365	32299
TOTAL ARRESTS		3490	3292	2996	2723	2401	2371	2075	7207	5022	2910	2512	1649	1250	908	538	511	41855

TOTAL ARRESTS BY RACE AND ETHNIC BACKGROUND

OFFENSE	WHITE	BLACK	INDIAN	ASIAN	TOTAL	HISPANIC	NON HISPANIC
Murder	88	12	4	-	104	62	42
Rape	130	14	18	-	162	90	72
Robbery	359	32	26	-	417	250	167
Aggr. Assault	1,798	112	348	5	2,263	1,284	979
Burglary	1,637	116	119	1	1,873	1,101	772
Larceny	7,793	466	1,138	21	9,418	4,871	4,547
Motor Vehicle Theft	497	34	59	2	592	265	327
PART I TOTALS	12,302	786	1,712	29	14,829	7,923	6,906
Other Assaults	1,070	75	50	4	1,199	737	462
Arson	60	1	7	-	68	28	40
Forgery & Counterfeiting	253	26	7	-	286	144	142
Fraud	637	72	40	3	752	256	496
Embezzlement	130	17	3	-	150	61	89
Stolen Property	640	67	56	-	763	367	396
Vandalism	1,073	32	98	1	1,204	635	569
Weapons	581	44	31	3	659	366	293
Prostitution	91	74	6	-	171	36	135
Other Sex Offenses	220	14	31	1	266	131	135
Narcotic Drugs	2,393	105	99	1	2,598	1,272	1,326
Gambling	4	4	-	-	8	3	5
Offense Against Family	65	5	81	2	153	47	106
DWI	9,124	293	1,072	20	10,509	5,992	4,517
Liquor Laws	3,559	82	421	2	4,064	2,584	1,480
Disorderly Conduct	3,917	308	1,356	8	5,589	2,975	2,614
Vagrancy	10	-	-	4	14	4	10
All Other Offenses	7,394	625	1,680	14	9,713	5,106	4,607
Suspicion	2	-	-	-	2	2	-
Curfew	511	4	50	-	565	387	178
Runaways	272	6	35	-	313	117	196
PART II TOTALS	32,006	1,854	5,127	59	39,046	21,250	17,796
TOTAL ARRESTS	44,308	2,640	6,839	88	53,875	29,173	24,702

34

IN MEMORIAM

The New Mexico State Police joins the criminal justice community of New Mexico in extending its sincere sympathy to the families of the following law enforcement officers who gave their lives in the performance of protecting and serving the citizens of their communities and state during 1980.



RICHARD GOMEZ
NEW MEXICO STATE POLICE

LEO GURULE
SANTA FE COUNTY SHERIFF'S DEPARTMENT

PHILLIP H. CHACON
ALBUQUERQUE POLICE DEPARTMENT

POLICE ASSAULT FIGURES

Police assault figures are crucial to the police administrator. They say much to anyone attempting to evaluate the causation of this type of criminal activity. The information to follow will portray the frequency of these events and allow each agency head to evaluate the cause after considering his unique variables and factors.

<u>Time of Assault</u>		AM	PM
12:01	2:00	110	32
2:01	4:00	92	39
4:01	6:00	18	54
6:01	8:00	6	93
8:01	10:00	6	146
10:01	12:00	10	161
TOTALS		243	525

POLICE ASSAULTS BY ACTIVITY, WEAPON AND ASSIGNMENT

ACTIVITY	TOTAL	FIREARMS	KNIFE/CUT INSTRUMENTS	OTHER DANG. WEAPONS	HANDS, FISTS FEET	TWO-MAN VEHICLE	ONE-MAN ALONE	VEHICLE ASSISTED	DET. SPEC. ASSIGN. ALONE ASSISTED	OTHER ALONE ASSISTED	TOTAL CLEAR		
Disturbance	230	22	27	31	150	76	52	97	2	2	1	228	
37 Burglary	28	1		7	20	4	3	20	1			28	
Robbery	7	7				3	4					4	
Other Arrests	79	2	2	6	69	9	19	45	3		3	79	
Civil Disorders	8				8	1	3	2	1	1		8	
Prisoners	110			6	104	27	40	40	1	1	1	110	
Suspicious	75	10		3	62	14	23	31	1	5	1	68	
Ambush													
Deranged	3	1			2		1		1	1		3	
Traffic	147	10	1	25	111	19	61	62	1		1	3	145
All Others	81	7	4	8	62	12	36	26	1		6	79	
TOTALS	768	60	34	86	588	165	242	323	4	14	12	8	752
Personal Injury	109	5	1	16	87								
Non-Personal Injury	659	55	33	70	501								

NEW MEXICO UNIFORM CRIME REPORTING

Statistics presented here were gathered under the Uniform Crime Reporting Program of New Mexico and were submitted by the law enforcement agencies of the state. Attempts at comparisons of the resulting crime figures should not be made without first considering the individual crime factors which exist in each city and county

Crime figures for the calendar year 1980, as measured by the Crime Index, disclosed a statewide increase of 3.3 percent as compared to 1979. Violent crimes, which include murder, rape, robbery and aggravated assault, increased 9.2 percent while the property crime grouping of burglary, larceny and motor vehicle theft increased 2.6 percent.

STATE OF NEW MEXICO

CRIME INDEX TRENDS

January - December Percent Change 1980 Over 1979

ACTUAL OFFENSES KNOWN TO THE POLICE

Index Offenses	1979	1980	% Change
Murder	152	156	+ 2.6
Rape	611	543	-11.1
Robbery	1,498	1,631	+ 8.9
Aggravated Assault	5,042	5,646	+12.0
Burglary	17,935	18,513	+ 3.2
Larceny	40,263	41,960	+ 4.2
Motor Vehicle Theft	4,162	3,510	-15.7
TOTALS	69,663	71,959	+ 3.3

	YEAR	MURDER	FORCIBLE RAPE	ROBBERY	AGGRAVATED ASSAULT	BURGLARY	LARCENY	MOTOR VEHICLE THEFT	TOTAL
<u>BERNALILLO</u>									
Sheriff	80	-	12	16	91	276	410	63	868
	79	16	44	71	316	1,275	1,430	245	3,397
Albuquerque	80	50	225	993	1,740	8,081	16,808	1,429	29,326
	79	47	215	815	1,602	7,298	15,613	1,751	27,341
U. N. M.	80	-	1	-	3	33	717	18	772
	79	-	2	-	1	17	643	18	681
State Police	80	-	3	4	24	10	55	27	123
	79	1	6	7	37	13	90	19	173
<u>CATRON</u>									
Sheriff	80	-	-	-	1	6	8	3	18
	79	-	-	-	1	1	10	2	14
State Police	80	-	4	1	1	8	6	6	21
	79	-	-	-	6	34	16	2	63
<u>CHAVES</u>									
Sheriff	80	-	-	5	16	46	138	12	217
	79	-	6	1	19	55	100	14	195
Roswell	80	11	15	47	224	616	1,645	96	2,654
	79	7	6	34	146	580	1,667	108	2,548
State Police	80	-	1	-	2	-	5	3	11
	79	-	3	-	2	3	11	10	29
<u>COLFAX</u>									
Sheriff	80	-	-	-	2	6	10	1	19
	79	-	1	-	1	9	19	1	31
Raton	80	-	-	4	131	86	259	24	504
	79	-	1	6	33	83	225	15	363
Cimarron (1)	80	-	-	-	4	2	3	-	9
	79	-	-	-	-	5	4	-	9
Springer	80	-	1	-	3	10	19	2	34
	79	-	-	-	1	12	8	3	25
State Police	80	-	-	4	4	21	29	6	64
	79	-	3	2	7	36	24	6	78
<u>CURRY</u>									
Sheriff	80	-	-	3	1	21	41	4	70
	79	-	-	-	-	15	42	2	59
Clovis	80	7	15	13	116	294	916	37	1,398
	79	5	16	20	91	359	973	53	1,517
State Police	80	-	-	-	2	-	7	3	12
	79	-	-	-	6	5	26	8	45
<u>DE BACA</u>									
Sheriff	80	-	-	-	1	14	24	-	39
	79	-	-	-	1	16	10	2	29
State Police	80	-	2	-	2	2	2	-	6
	79	-	-	-	2	7	14	1	26

	YEAR	MURDER	FORCIBLE RAPE	ROBBERY	AGGRAVATED ASSAULT	BURGLARY	LARCENY	MOTOR VEHICLE THEFT	TOTALS
<u>DONA ANA</u>									
Sheriff	80	1	11	15	53	281	440	57	858
	79	1	10	6	49	239	303	72	680
Las Cruces	80	-	13	49	140	822	2,775	186	3,985
	79	9	21	50	148	574	2,388	189	3,379
Mesilla	80	-	-	1	3	26	26	1	57
	79	-	-	-	1	3	7	3	14
N.M.S.U.	80	-	1	1	4	16	411	8	441
	79	-	4	-	10	18	318	16	366
State Police	80	-	-	3	4	-	5	2	14
	79	1	-	-	5	1	20	16	43
<u>EDDY</u>									
Sheriff	80	-	-	2	16	54	125	10	207
	79	2	4	3	17	69	140	21	256
Artesia	80	-	2	10	9	82	337	15	455
	79	-	2	2	14	128	336	17	499
Carlsbad	80	2	7	11	65	317	1,051	67	1,520
	79	5	5	12	77	297	885	90	1,371
State Police	80	-	-	-	-	-	4	-	4
	79	-	-	-	2	-	9	9	20
<u>GRANT</u>									
Sheriff	80	1	2	3	24	68	76	6	180
	79	-	1	4	24	66	116	8	219
Silver City	80	-	4	10	49	92	320	10	485
	79	-	7	1	18	99	367	13	505
Bayard	80	-	-	3	7	30	54	-	94
	79	-	2	2	8	26	88	2	128
Central	80	-	-	-	3	4	5	1	13
	79	-	-	-	2	12	8	2	24
Hurley (1)	80	-	-	-	1	7	3	-	11
	79	-	-	-	-	5	3	-	8
W.N.M.U. (1)	80	-	-	-	1	12	7	1	21
	79	-	-	-	-	3	9	-	12
State Police	80	-	1	2	2	2	4	3	14
	79	-	-	1	1	3	7	4	16
<u>GUADALUPE</u>									
Santa Rosa	80	-	-	1	4	9	23	2	39
	79	No reports received for 1979							
Vaughn	80	-	-	-	3	4	3	-	10
	79	-	-	-	1	1	-	-	2
State Police	80	-	-	1	2	3	18	-	24
	79	-	-	2	4	5	18	6	35
<u>HARDING</u>									
Sheriff	80	-	-	-	1	4	-	-	5
	79	-	-	-	-	10	1	-	11
State Police	80	-	-	-	1	-	2	-	3
	79	-	-	-	-	2	11	1	14

	YEAR	MURDER	FORCIBLE RAPE	ROBBERY	AGGRAVATED ASSAULT	BURGLARY	LARCENY	MOTOR VEHICLE THEFT	TOTALS
<u>HIDALGO</u>									
Sheriff	80	No Reports received for 1980							
	79	-	-	-	6	4	7	3	20
Lordsburg	80	No Reports received for 1980							
	79	-	-	3	8	50	69	4	134
State Police	80	-	-	1	-	-	3	-	4
	79	-	2	-	1	-	6	10	19
<u>LEA</u>									
Sheriff	80	1	1	7	14	63	184	12	282
	79	2	3	1	17	65	161	13	262
Eunice	80	-	-	-	-	2	-	-	2
	79	No Reports received for 1979							
Hobbs	80	4	12	24	212	380	1,330	91	2,053
	79	-	9	26	196	420	1,376	97	2,124
Jal	80	-	-	-	-	-	1	-	1
	79	No Reports received for 1979							
Lovington	80	1	2	6	22	132	337	15	515
	79	-	5	2	30	81	297	14	429
Tatum	80	-	-	-	1	4	4	2	11
	79	-	1	-	-	5	6	1	13
State Police	80	-	-	-	-	-	5	-	5
	79	-	-	-	1	-	3	10	14
<u>LINCOLN</u>									
Sheriff	80	1	-	-	1	7	7	-	16
	79	1	1	1	4	31	17	2	57
Ruidoso	80	1	2	2	5	89	186	17	302
	79	1	-	-	15	114	144	21	295
Ruidoso Downs	80	-	-	2	8	22	28	3	63
	79	1	1	-	5	21	24	2	54
State Police	80	-	-	-	2	5	12	1	20
	79	-	-	-	6	2	20	13	41
<u>LOS ALAMOS</u>									
Los Alamos	80	-	4	-	5	95	397	17	518
	79	-	-	3	7	83	391	14	498
State Police	80	-	-	-	1	-	-	-	1
	79	-	-	-	-	-	-	-	-
<u>LUNA</u>									
Sheriff	80	-	3	3	12	104	172	12	306
	79	2	1	5	8	97	131	17	261
Deming	80	1	4	7	25	214	384	17	652
	79	-	2	9	28	203	433	17	692
State Police	80	-	-	1	-	-	5	2	8
	79	-	-	1	2	-	10	14	27

	YEAR	MURDER	FORCIBLE RAPE	ROBBERY	AGGRAVATED ASSAULT	BURGLARY	LARCENY	MOTOR VEHICLE THEFT	TOTAL
<u>MCKINLEY</u>									
Sheriff	80	1	20	13	31	113	113	23	314
	79	-	17	11	34	71	82	19	234
Gallup	80	5	28	87	151	424	996	125	1,816
	79	5	24	91	189	378	1,123	143	1,953
State Police	80	-	1	4	14	12	21	17	69
	79	-	5	8	26	16	49	18	122
<u>MORA</u>									
Sheriff	80	-	-	-	4	5	9	1	19
	79	-	-	-	-	12	11	1	24
Wagon Mound	80	-	-	-	8	10	3	-	21
	79	No reports received for 1979							
State Police	80	-	-	1	13	19	8	2	43
	79	-	1	2	15	40	16	2	76
<u>OTERO</u>									
Sheriff	80	-	3	1	12	73	41	3	133
	79	2	1	-	1	63	28	4	99
Alamogordo	80	1	6	15	63	445	1,126	76	1,732
	79	-	10	20	57	466	942	74	1,569
Cloudcroft	80	-	-	-	-	2	-	-	2
	79	-	-	1	-	10	2	1	14
Tularosa	80	-	-	-	-	39	49	2	90
	79	1	-	-	1	36	35	-	73
State Police	80	-	-	-	1	2	10	4	17
	79	1	-	-	10	3	10	16	48
<u>QUAY</u>									
Tucumcari	80	2	3	16	60	125	321	19	546
	79	-	3	12	45	142	319	27	548
State Police	80	-	-	5	7	5	5	2	24
	79	-	-	3	3	2	19	5	32
<u>RIO ARRIBA</u>									
Sheriff	80	-	-	-	10	20	14	-	44
	79	-	2	-	4	18	13	1	38
Dulce	80	-	-	-	80	10	18	-	152
	79	1	-	-	45	3	14	-	63
Espanola	80	1	4	6	99	140	255	38	543
	79	4	4	12	67	205	460	39	791
San Juan	80	-	-	-	-	1	3	1	5
	79	No Reports received for 1979							
State Police	80	-	8	3	91	145	212	10	469
	79	-	10	10	101	181	180	21	503

	YEAR	MURDER	FORCIBLE RAPE	ROBBERY	AGGRAVATED ASSAULT	BURGLARY	LARCENY	MOTOR VEHICLE THEFT	TOTAL
<u>ROOSEVELT</u>									
Sheriff	80	1	-	-	1	28	71	4	105
	79	-	5	3	9	62	77	8	164
Portales	80	-	6	-	21	127	312	15	481
	79	-	6	4	22	122	295	10	459
E. N. M. U.	80	No Reports received for 1980							
	79	-	-	-	4	1	110	1	116
State Police	80	-	-	1	1	-	2	1	5
	79	-	-	-	-	-	10	4	14
<u>SANDOVAL</u>									
Sheriff	80	4	6	3	23	163	163	20	382
	79	2	3	5	29	166	161	16	382
Corrales	80	-	-	-	12	39	45	7	103
	79	-	2	-	12	82	51	6	153
Cuba	80	-	-	-	1	5	16	1	23
	79	-	-	1	4	2	7	1	15
State Police	80	1	1	1	6	2	11	3	25
	79	-	1	3	4	2	19	5	34
<u>SAN JUAN</u>									
Sheriff	80	2	19	9	91	99	277	56	553
	79	3	14	4	72	89	258	57	497
Aztec	80	-	4	2	13	62	126	4	211
	79	-	2	3	19	53	151	6	234
Bloomfield	80	1	4	1	12	24	66	9	117
	79	-	1	2	8	29	76	10	126
Farmington	80	1	35	70	454	724	1,962	208	3,454
	79	8	32	70	419	623	1,895	187	3,234
State Police	80	-	-	6	12	5	393	16	432
	79	-	-	9	16	4	195	22	244
<u>SAN MIGUEL</u>									
Sheriff	80	-	-	-	1	33	10	1	45
	79	-	-	-	4	28	12	-	44
Las Vegas	80	1	4	17	301	446	638	64	1,471
	79	3	9	20	111	366	562	48	1,119
N.M.H.U.	80	-	-	-	4	16	57	2	79
	79	-	-	-	7	16	62	3	90
State Police	80	4	2	2	26	37	20	-	91
	79	2	8	2	36	36	33	5	122
<u>SANTA FE</u>									
Sheriff	80	1	-	-	10	40	25	3	79
	79	-	3	2	18	83	42	6	154
Santa Fe	80	2	16	56	502	1,169	2,511	278	4,534
	79	7	16	30	258	458	1,477	150	2,396
State Police	80	39	8	7	59	125	129	27	394
	79	-	10	16	42	110	119	32	329

	YEAR	MURDER	FORCIBLE RAPE	ROBBERY	AGGRAVATED ASSAULT	BURGLARY	LARCENY	MOTOR VEHICLE THEFT	TOTAL
<u>SIERRA</u>									
Sheriff	80	1	1	1	5	21	62	3	94
	79	-	-	1	5	24	74	5	109
T. or C.	80	1	1	1	9	43	121	7	183
	79	-	-	3	8	46	146	4	207
State Police	80	-	-	-	1	-	7	1	9
	79	-	-	-	-	-	5	2	7
<u>SOCORRO</u>									
Sheriff	80	-	-	2	14	26	28	5	75
	79	1	1	2	5	22	36	3	70
Socorro	80	-	2	1	13	64	148	8	236
	79	-	1	-	39	98	160	19	317
State Police	80	-	1	-	1	3	5	1	11
	79	-	-	2	2	-	9	6	19
<u>TAOS</u>									
Sheriff	80	-	1	-	31	53	133	6	224
	79	3	3	2	22	88	161	6	285
Questa	80	-	-	1	1	6	1	5	14
	79	No Reports Received for 1979							
Red River	80	-	-	-	1	9	23	1	34
	79	-	-	-	3	6	33	3	45
Taos	80	-	-	1	85	104	181	28	399
	79	1	1	3	20	99	210	12	346
State Police	80	3	3	9	32	54	77	7	185
	79	1	2	6	38	53	67	15	182
<u>TORRANCE</u>									
Sheriff	80	2	-	-	6	56	55	2	121
	79	-	-	1	16	79	62	3	161
Estancia	80	-	-	-	5	5	5	-	15
	79	-	-	-	-	3	3	-	6
Moriarty	80	-	1	-	-	3	7	-	11
	79	-	-	-	1	3	6	-	10
State Police	80	-	1	1	7	12	13	2	36
	79	-	-	-	-	8	22	4	34
<u>UNION</u>									
Sheriff	80	No Reports Received for 1980							
	79	-	-	-	-	3	8	-	11
Clayton	80	-	1	2	4	25	60	2	94
	79	-	-	-	15	44	72	3	134
State Police	80	-	-	-	2	3	10	1	16
	79	-	-	-	-	6	11	3	20

	YEAR	MURDER	FORCIBLE RAPE	ROBBERY	AGGRAVATED ASSAULT	BURGLARY	LARCENY	MOTOR VEHICLE THEFT	TOTAL
<u>VALENCIA</u>									
Sheriff	80	1	7	13	70	339	301	33	764
	79	1	7	11	54	311	265	44	693
Acoma	80	-	-	-	4	11	3	-	18
	79	-	-	1	17	16	11	1	46
Belen	80	-	-	4	16	122	164	4	310
	79	1	4	7	20	102	143	4	281
Bosque Farms	80	-	-	1	1	21	45	2	70
	79	-	-	-	6	25	45	1	77
Grants	80	-	3	11	51	209	444	38	756
	79	2	8	18	63	253	456	58	858
Los Lunas	80	-	1	1	5	52	109	10	178
	79	-	1	1	9	26	168	4	209
Milan	80	-	-	-	9	39	53	2	103
	79	1	1	1	2	49	45	3	102
State Police	80	-	1	2	12	17	20	7	59
	79	1	-	4	18	32	76	29	160

END