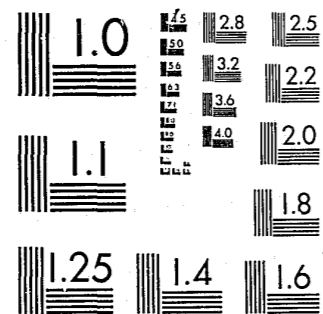


National Criminal Justice Reference Service



This microfiche was produced from documents received for inclusion in the NCJRS data base. Since NCJRS cannot exercise control over the physical condition of the documents submitted, the individual frame quality will vary. The resolution chart on this frame may be used to evaluate the document quality.



MICROCOPY RESOLUTION TEST CHART
NATIONAL BUREAU OF STANDARDS-1963-A

Microfilming procedures used to create this fiche comply with the standards set forth in 41CFR 101-11.504.

Points of view or opinions stated in this document are those of the author(s) and do not represent the official position or policies of the U. S. Department of Justice.

National Institute of Justice
United States Department of Justice
Washington, D. C. 20531

DATE FILMED

12/28/81

MF-1

224

~~X~~ POPULATION MOVEMENTS IN THE ~~X~~ MASSACHUSETTS
DEPARTMENT OF CORRECTION DURING 1980:
AN ANNUAL STATISTICAL REPORT

U.S. Department of Justice
National Institute of Justice

This document has been reproduced exactly as received from the person or organization originating it. Points of view or opinions stated in this document are those of the authors and do not necessarily represent the official position or policies of the National Institute of Justice.

Permission to reproduce this copyrighted material has been granted by

Massachusetts Department of
Corrections

to the National Criminal Justice Reference Service (NCJRS).

Further reproduction outside of the NCJRS system requires permission of the copyright owner.

Prepared by:

Linda K. Holt
Senior Researcher

Massachusetts Department of Correction

Michael V. Fair
Commissioner

July, 1981

Publication: #12478-29-250-7-81-CR.

Approved by: John J. Manton, State Purchasing Agent.

79855 c1

Abstract

This report is a description of admissions, releases and transfers within institutions of the Massachusetts Department of Correction during 1980. The information in this report is broken down into a number of specific categories including: type of admission, type of release, institutional transfers, transfers to and from hospitals, transfers to and from houses of correction, admissions and releases from other states and court of commitment.

NCJ
AUG 12 1981
ACC

Table of Contents

<u>Title</u>	<u>Page Number</u>
Abstract	1
Table of Contents	2
Introduction	4
Highlights of 1980 Movements	7
Table 1. Summary of all Movements and Population in the Department of Correction, January 1, 1980 to December 31, 1980	12
Table 2. Type of Admission by Admitting Institution	13
Table 3. Type of Release by Releasing Institution	14
Table 4. Court of Commitment: New Court Commitments during 1980	15
Table 5. Inter-Institutional Transfers: Sending Institution by Receiving Institution	16
Table 6. Inter-Institutional Transfers: Receiving Institution by Sending Institution	17
Table 7. Pre-Release Transfers: Sending Institution by Receiving Institution	18
Table 8. Pre-Release Transfers: Receiving Institution by Receiving Institution	19
Table 9. Releases to Hospitals	20
Table 10. Returns from Hospitals	21
Table 11. Transfer of DOC Inmates to Houses of Correction	22
Table 12. Return of DOC Inmates from Houses of Correction	23
Table 13. Transfer of House of Correction Inmates to DOC Facilities	24

Table of Contents

<u>Title</u>	<u>Page Number</u>
Table 14. DOC Inmates Released to Houses of Correction on a From and After Sentence	25
Table 15. DOC and Non-DOC Inmates Released to Prisons in Other States	26
Table 16. DOC and Non-DOC Inmates Admitted from Prisons in Other States	27
Glossary	28

Introduction

The population movement report is one of six annual statistical reports regularly produced by the Research Unit. Each correctional facility of the Department of Correction submits weekly admission and release reports describing in detail each inmate move into or out of that facility. This annual movement report is a compilation of all admissions and releases during 1980. It presents information by type of admission and release including: new court commitments, paroles, returns on parole violations, discharges, escapes, deaths, transfers to other correction facilities, both in state and out of state, and trips to hospitals and courts.

This report consists primarily of sixteen tables that describe the various movement types. The first table summarizes changes in population from January 1, 1980 to December 31, 1980. The next two tables summarize all types of admissions and releases. The following thirteen tables consider specific types of moves in detail. Each table is broken down by specific institution or institutional group.

Inmates can be received into an institution in any one of a number of ways. Offenders can be committed by the courts to Walpole, Concord or Framingham. Only at the time that the offender arrives at that institution is the commitment registered. During 1980 and several years previous to that, it was often the case that after sentencing an offender would be placed at a House of Correction while awaiting space at a DOC facility. These offenders are not counted as commitments until they actually arrive at the institution of commitment. Offenders can also arrive from another institution to begin serving a new sentence, having finished a first sentence and beginning a second or third sentence. These are "from and after," "B" and "C" sentences. Generally an offender would be paroled or discharged from the initial sentence and then committed on a second sentence.

Offenders can be admitted in ways that are not directly related to the beginning of a new sentence. Offenders who have violated some condition of their parole can be returned as a parole violator to continue serving the sentence on which they were released. Inmates can also be returned from outside releases of short duration such as trips to courts or hospitals or be returned from escape. Inmates can also be transferred from other correctional authorities including Houses of Correction, which are county facilities, federal prison authorities, other state prison authorities or sheriffs.

Offenders can be released by the authority of the Parole Board, by finishing serving the maximum of their sentence or having their sentence changed by the courts. Such paroles and releases can be to the community, to another prison authority or to another sentence. Offenders can also be released on a short term basis to hospitals or courts. Offenders can also be released because of death during their incarceration or by escaping from confinement.

The most numerous type of movement is a transfer from one facility within the Department to another. Because the Department has facilities of so many different security levels it is quite common for an offender to be placed in an initial setting, their commitment institution, and then to be placed into a number of lower security settings as that offender progresses through the Department. Such inter-institutional transfers are generally from a higher security setting to a lower security setting but can sometimes be from a lower security setting to a higher security setting. Each time a movement of this type occurs one institution records an admission and another institution records a release.

When considering numbers of admissions and releases then, this report does a great deal more than to tabulate the number of offenders admitted from the courts and released by being paroled or terminating their sentences. This report includes information on all types of admissions and releases to all of the institutions in the department and as such is a valuable statistical description of the correctional system of Massachusetts.

Highlights of 1980 Movements

In this section some of the more important characteristics of population movements during 1980 will be discussed. More complete information can be found by consulting individual tables.

Population Changes. During 1980 overcrowded facilities was one of the main issues the Department of Correction faced. At the beginning of 1980 the population of all Massachusetts Department of Correction facilities was 2784; at the end of 1980 the population was 3100. This figure of 3100 does not include 131 individuals sentenced to the Department who are awaiting places, 20 women awaiting trial at MCI-Framingham or any Bridgewater placements. This represents an increase of 316 or 12 percent during a single year. The first table summarizes all movements of offenders to show how the population increase during 1980 is related to a larger number of admissions than releases.

Admissions. There was a total of 7,327 movements of all types into institutions during 1980. This is a 9 percent increase over the number of such movements in 1979. The number of returns on parole violations in 1980 was 385, a 10 percent increase from the previous year. There were 5,216 transfers among Department

of Correction facilities, an 11 percent increase from the previous year. There was an 8 percent increase in the number of new court commitments, from 1,120 in 1979 to 1,208 in 1980.* There was a 78 percent increase in the number of individuals received on a from and after sentence, from 18 in 1979 to 32 in 1980. Other types of admissions did not change very much from 1979 to 1980.

Releases. There were 6,990 movements out of institutions during 1980, a 6 percent increase from the previous year. A large increase came in inter-institutional transfers, an 11 percent increase in one year. There was also a 42 percent increase in transfers to other correctional authorities, from 76 in 1979 to 108 in 1980. There were declines in paroles over the last year, from 950 in 1979 to 818 in 1980, a 14 percent decrease. There were decreases in transfers to Houses of Correction, from 115 in 1979 to 66 in 1980, a 43 percent decrease. There were 13 deaths in Department of Correction facilities during the year. There were 6 deaths by homicide, 1 by suicide, 5 by natural causes and 1 by accident.

Court Commitments. There were 1,208 new court commitments during 1980, an 8 percent increase from 1979. Walpole commitments decreased by 3 percent, Concord commitments increased by 17 percent and Framingham commitments increased by 19 percent from

* (not including 131 individuals awaiting placement in a DOC facility)

1979. This 1,208 new court commitments does not include 131 individuals sentenced to the Department but in a house of correction awaiting initial placement in the Department.

Institutional Transfers. There was a large increase in inter-institutional transfers from 1979 to 1980. Two institutions, Walpole and Concord, account for 47 percent of the transfers sent out. Norfolk and pre-release centers are the largest receivers of institutional transfers. Two new tables were added to the movement report this year which show inter-institutional movements by specific pre-release center.

Hospital Movements. Inmates needing hospital care can be treated at Lemuel Shattuck, a Department of Correction hospital, or other community hospitals.

There were 326 releases to Lemuel Shattuck Hospital in 1980 and 332 returns from Lemuel Shattuck.

There were 95 releases to non-Department of Correction hospitals. Massachusetts General Hospital, Tufts New England Medical Center and Framingham Union Hospital received the most releases. Additionally there were 92 returns from other hospitals. This is similar to last year's returns. Massachusetts General Hospital, Peter Bent Brigham Hospital and Tufts New England Medical Center received the most returns.

Transfers to Houses of Correction. Four types of movements to and from houses of correction are considered in Tables 11 to 14. The first is a Department of Correction inmate transferring to a county institution. There were 65 such transfers in 1980, a decrease from 115 in 1979. Hampden county received the largest number of transfers (N=15) during 1980. The second type is a Department of Correction inmate returning from a county facility. There were 46 such returns in 1980, a 27 percent decrease from 1979. Half of the returns were to Concord or a pre-release center. The third type of move is a county inmate transferring to a Department of Correction facility. There were only 5 such admissions in 1980, a decrease from 7 in 1979. The fourth type of move are releases of Department of Correction inmates to a county facility on a from and after sentence. There were 29 such releases in 1980, very similar to the 25 releases in 1979. Most of the releases were to Deer Island (N=11) or Billerica.

Movements to Other States. There were 107 transfers from Department of Correction facilities to prisons in other states. This includes 91 Department of Correction inmates and 16 non-Department of Correction inmates transferred. Most of these inmates (88 percent) were transferred from Walpole, Concord and Norfolk. Over three-quarters were transferred to other New England facilities and 15 percent were transferred to Pennsylvania. There were 90 returns from other states during 1980. This included 52 Department of

Correction inmates and 38 non-Department of Correction inmates being admitted from an out of state prison. Most of these inmates (91 percent) were admitted to Walpole, Concord or Norfolk. Most of these inmates (88 percent) were admitted from other New England states.

Table 1
Summary of All Movements and Population Changes in The
Massachusetts Department of Correction
December 31, 1979-December 31, 1980¹

Movement of Population	Number
Department Population on December 31, 1979	2784
Admissions	
New Court Commitments	1208
B Sentence	9
C Sentence	1
Parole Violators	385
Transfers from Another DOC Facility	5116
Transfers from a House of Correction	5
Return from a House of Correction	46
Return from a Court	68
Received on a From and After Sentence	32
Returns from a Hospital	92
Returns from Escape	169
Received from Federal Authority	5
DOC Inmate Returning From Out-Of-State	52
Non-DOC Inmate Transferring from Out-Of-State	38
Total Admissions	7226
Releases	
Transfer to Another DOC Facility	5153
Transfer to a House of Correction	65
Transfer to Another Authority	108
Parole to Street	818
Parole to Another Authority	15
Parole to Another Sentence	35
Sentence Expired	85
Discharge to Street	120
Discharge to Other Authority	3
Discharge to Another Sentence	37
Release to a Warrant	11
Removed by Court	134
Release to Sheriff	1
Released by Court	41
Transfer to Hospital	95
Escape	176
Death	13
Total Releases	6910
Department Population on December 31, 1980	3100

¹/excludes individuals awaiting trial at MCI-Framingham or placed at Bridgewater State Hospital.

TYPE OF ADMISSION

	WALPOLE	CONCORD	FRAMINGHAM	NORFOLK	SECC	NECC	BAY STATE C.C.	FORESTRY	DRUG REHAB.	PRE RELEASE	RDC	LEWEL SHATTUCK	BRIDGEWATER STATE HOSPITAL	TOTAL
Court Commitments	521 (32)	466 (30)	221 (61)	0 (0)	0 (0)	0 (0)	0 (0)	0 (0)	0 (0)	0 (0)	0 (0)	0 (0)	0 (0)	1208 (16)
Commitments B Sentence	8 (0)	0 (0)	1 (0)	0 (0)	0 (0)	0 (0)	0 (0)	0 (0)	0 (0)	0 (0)	0 (0)	0 (0)	0 (0)	9 (0)
Commitments C Sentence	1 (0)	0 (0)	0 (0)	0 (0)	0 (0)	0 (0)	0 (0)	0 (0)	0 (0)	0 (0)	0 (0)	0 (0)	0 (0)	1 (0)
Parole Violation	147 (9)	217 (14)	21 (6)	0 (0)	0 (0)	0 (0)	0 (0)	0 (0)	0 (0)	0 (0)	0 (0)	0 (0)	0 (0)	385 (5)
Transfers from a MCI	805 (50)	734 (47)	57 (16)	1149 (93)	332 (94)	293 (99)	48 (100)	222 (97)	27 (100)	967 (97)	156 (98)	326 (97)	100 (99)	5216 (71)
Transfer from a House of Correction	0 (0)	2 (0)	2 (1)	0 (0)	1 (0)	0 (0)	0 (0)	0 (0)	0 (0)	0 (0)	0 (0)	0 (0)	0 (0)	5 (0)
Returns from a House of Correction	1 (0)	17 (1)	0 (0)	6 (0)	4 (1)	2 (1)	0 (0)	4 (2)	0 (0)	8 (1)	2 (1)	2 (1)	0 (0)	46 (1)
Returns from Court	20 (1)	19 (1)	0 (0)	20 (2)	1 (0)	1 (0)	0 (0)	1 (0)	0 (0)	6 (1)	0 (0)	0 (0)	1 (1)	69 (1)
Received on a From & After Sentence	9 (1)	4 (0)	19 (5)	0 (0)	0 (0)	0 (0)	0 (0)	0 (0)	0 (0)	0 (0)	0 (0)	0 (0)	0 (0)	32 (0)
Returns from a Hospital	19 (1)	7 (0)	18 (5)	28 (2)	7 (2)	1 (0)	0 (0)	0 (0)	0 (0)	4 (0)	0 (0)	8 (2)	0 (0)	92 (1)
Returns from Escape	40 (2)	74 (5)	24 (7)	10 (1)	3 (1)	0 (0)	0 (0)	2 (1)	0 (0)	15 (1)	0 (0)	1 (0)	0 (0)	169 (2)
Received from Federal Authority	3 (0)	0 (0)	1 (0)	1 (0)	0 (0)	0 (0)	0 (0)	0 (0)	0 (0)	0 (0)	0 (0)	0 (0)	0 (0)	5 (0)
DOC Inmate from Out of State	12 (1)	13 (1)	1 (0)	20 (2)	4 (1)	0 (0)	0 (0)	1 (0)	0 (0)	1 (0)	0 (0)	0 (0)	0 (0)	52 (1)
Non-DOC Inmate From out of state	20 (1)	12 (1)	0 (0)	5 (0)	0 (0)	0 (0)	0 (0)	0 (0)	0 (0)	0 (0)	1 (1)	0 (0)	0 (0)	38 (1)
TOTAL	1606	1565	365	1239	352	297	48	230	27	1001	159	337	101	7327

TYPE OF RELEASE

	WALPOLE	CONCORD	FRAMINGHAM	NORFOLK	SECC	NECC	BAY STATE C.C.	FORESTRY	DRUG REHAB.	PRE RELEASE	RDC	LEHUEL SHATTUCK	BRIDGEWATER STATE HOSPITAL	TOTAL
Transfer to Another MCI	1304 (83)	1175 (80)	95 (26)	857 (78)	271 (79)	247 (84)	42 (86)	156 (68)	9 (31)	454 (50)	210 (96)	332 (98)	79 (98)	5231 (75)
Transfer to a House of Correction	12 (1)	26 (2)	1 (0)	10 (1)	4 (1)	1 (0)	0 (0)	1 (0)	0 (0)	2 (0)	6 (3)	1 (0)	1 (1)	65 (1)
Transfer to Another Authority	42 (3)	22 (2)	1 (0)	31 (3)	9 (3)	0 (0)	0 (0)	1 (0)	0 (0)	0 (0)	2 (1)	0 (0)	0 (0)	108 (2)
Parole to Street	79 (5)	132 (9)	77 (21)	112 (10)	24 (7)	33 (11)	3 (6)	52 (23)	8 (28)	297 (33)	0 (0)	1 (0)	0 (0)	818 (12)
Parole to Another Authority	3 (0)	4 (0)	2 (1)	5 (0)	0 (0)	0 (0)	0 (0)	0 (0)	0 (0)	1 (0)	0 (0)	0 (0)	0 (0)	15 (0)
Parole to Another Sentence	9 (1)	9 (1)	6 (2)	8 (1)	1 (0)	1 (0)	0 (0)	0 (0)	0 (0)	1 (0)	0 (0)	0 (0)	0 (0)	35 (1)
Sentence Expired	0 (0)	0 (0)	81 (22)	0 (0)	1 (0)	0 (0)	0 (0)	0 (0)	0 (0)	3 (0)	0 (0)	0 (0)	0 (0)	85 (1)
Discharge to the Street	21 (1)	17 (1)	38 (10)	8 (1)	5 (1)	4 (1)	0 (0)	3 (1)	0 (0)	25 (3)	0 (0)	0 (0)	0 (0)	121 (2)
Discharge to Another Authority	1 (0)	0 (0)	1 (0)	1 (0)	0 (0)	0 (0)	0 (0)	0 (0)	0 (0)	0 (0)	0 (0)	0 (0)	0 (0)	3 (0)
Discharge to Another Sentence	16 (1)	4 (0)	13 (4)	2 (0)	2 (1)	0 (0)	0 (0)	0 (0)	0 (0)	0 (0)	0 (0)	0 (0)	0 (0)	37 (1)
Release to a Warrant	4 (0)	5 (0)	1 (0)	1 (0)	0 (0)	0 (0)	0 (0)	0 (0)	0 (0)	0 (0)	0 (0)	0 (0)	0 (0)	11 (0)
Removed by Court	38 (2)	44 (3)	0 (0)	35 (3)	9 (3)	1 (0)	0 (0)	1 (0)	0 (0)	6 (1)	0 (0)	0 (0)	0 (0)	134 (2)
Released to Sheriff	0 (0)	1 (0)	0 (0)	0 (0)	0 (0)	0 (0)	0 (0)	0 (0)	0 (0)	0 (0)	0 (0)	0 (0)	0 (0)	1 (0)
Released by Court	4 (0)	10 (1)	10 (3)	8 (1)	0 (0)	0 (0)	2 (4)	1 (0)	0 (0)	6 (1)	0 (0)	0 (0)	1 (1)	42 (1)
Transfer to a Hospital	25 (2)	11 (1)	20 (5)	20 (2)	9 (3)	1 (0)	0 (0)	1 (0)	0 (0)	5 (1)	0 (0)	3 (1)	0 (0)	95 (1)
Escape	0 (0)	3 (0)	21 (6)	3 (0)	2 (1)	6 (2)	2 (4)	14 (6)	12 (41)	111 (12)	0 (0)	2 (1)	0 (0)	176 (3)
Death	5 (0)	0 (0)	0 (0)	1 (0)	4 (1)	0 (0)	0 (0)	0 (0)	0 (0)	2 (0)	0 (0)	1 (0)	0 (0)	13 (0)
TOTAL	1563	1463	367	1102	341	294	49	230	29	913	218	340	81	6990

COURT OF COMMITMENT

	WALPOLE	CONCORD	FRAMINGHAM	TOTAL
Barnstable	10 (2)	8 (2)	0 (0)	18 (1)
Berkshire	14 (3)	8 (2)	0 (0)	22 (2)
Bristol	33 (6)	50 (11)	0 (0)	83 (7)
Essex	54 (10)	49 (11)	4 (2)	107 (9)
Franklin	5 (1)	1 (0)	0 (0)	6 (0)
Hampden	69 (13)	31 (7)	4 (2)	104 (9)
Hampshire	5 (1)	2 (0)	0 (0)	7 (1)
Middlesex	92 (18)	73 (16)	13 (6)	178 (15)
Norfolk	35 (7)	28 (6)	5 (2)	68 (6)
Plymouth	28 (5)	40 (9)	2 (1)	70 (6)
Suffolk	148 (28)	109 (23)	15 (7)	272 (23)
Worcester	28 (5)	45 (10)	12 (5)	85 (7)
Municipal Courts	0 (0)	6 (1)	63 (29)	69 (6)
District Courts	0 (0)	16 (3)	103 (47)	119 (10)
TOTAL	521	466	221	1208

INSTITUTIONAL TRANSFERS

SENDING	RECEIVING	WALPOLE	CONCORD	FRAMINGHAM	NORFOLK	SECC	NECC	BAY STATE C.C.	FORESTRY	DRUG REHAB.	PRE RELEASE	RDC	LEMUEL SHATTUCK	BRIDGEWATER STATE HOSPITAL	TOTAL
Walpole		0 (0)	385 (52)	3 (5)	402 (35)	102 (31)	33 (11)	9 (19)	28 (13)	6 (22)	65 (7)	122 (78)	92 (28)	39 (39)	1286 (25)
Concord		205 (25)	0 (0)	3 (5)	391 (34)	61 (18)	149 (51)	6 (13)	73 (33)	10 (37)	206 (21)	8 (5)	40 (12)	16 (16)	1168 (22)
Framingham		7 (1)	1 (0)	0 (0)	2 (0)	1 (0)	0 (0)	1 (2)	0 (0)	1 (4)	72 (7)	0 (0)	9 (3)	0 (0)	94 (2)
Norfolk		296 (37)	40 (5)	11 (19)	0 (0)	85 (26)	61 (21)	22 (46)	60 (27)	6 (22)	117 (12)	25 (16)	110 (34)	8 (8)	841 (16)
SECC		51 (6)	14 (2)	6 (11)	37 (3)	0 (0)	25 (9)	8 (17)	22 (10)	2 (7)	42 (4)	0 (0)	28 (9)	26 (26)	261 (5)
NECC		7 (1)	45 (6)	0 (0)	3 (0)	4 (1)	0 (0)	0 (0)	9 (4)	1 (4)	170 (18)	0 (0)	8 (2)	0 (0)	247 (5)
Bay State C.C.		1 (0)	2 (0)	0 (0)	14 (1)	0 (0)	0 (0)	0 (0)	0 (0)	0 (0)	23 (2)	0 (0)	2 (1)	0 (0)	42 (1)
Forestry		17 (2)	23 (3)	2 (4)	6 (1)	10 (3)	3 (1)	0 (0)	4 (2)	0 (0)	85 (9)	0 (0)	6 (2)	0 (0)	156 (3)
Drug Rehab.		1 (0)	6 (1)	0 (0)	0 (0)	1 (0)	1 (0)	0 (0)	0 (0)	0 (0)	0 (0)	0 (0)	0 (0)	0 (0)	9 (0)
Pre-Release		72 (9)	145 (20)	16 (28)	21 (2)	5 (2)	5 (2)	0 (0)	12 (5)	0 (0)	164 (17)	0 (0)	14 (4)	0 (0)	454 (9)
RDC		27 (3)	14 (2)	7 (12)	126 (11)	8 (2)	6 (2)	0 (0)	8 (4)	1 (4)	11 (1)	0 (0)	1 (0)	1 (1)	210 (4)
Lemuel Shattuck		87 (11)	42 (6)	9 (16)	124 (11)	27 (8)	9 (3)	2 (4)	6 (3)	0 (0)	11 (1)	0 (0)	0 (0)	9 (9)	326 (6)
Bridgewater S.H.		34 (4)	17 (2)	0 (0)	23 (2)	28 (8)	1 (0)	0 (0)	0 (0)	0 (0)	1 (0)	1 (1)	16 (5)	1 (1)	122 (2)
TOTAL		805	734	57	1149	332	293	48	222	27	967	156	326	100	5216

NOTE: Bridgewater State Hospital does not regularly submit admission and release forms on all prison transfers. For this reason the following four tables are not compatible.

INSTITUTIONAL TRANSFERS

RECEIVING	SENDING	WALPOLE	CONCORD	FRAMINGHAM	NORFOLK	SECC	NECC	BAY STATE C.C.	FORESTRY	DRUG REHAB.	PRE RELEASE	RDC	LEMUEL SHATTUCK	BRIDGEWATER S.H.	TOTAL
Walpole		0 (0)	205 (17)	7 (7)	296 (35)	51 (19)	7 (3)	1 (2)	17 (11)	1 (11)	72 (16)	27 (13)	87 (26)	28 (35)	799 (15)
Concord		385 (30)	0 (0)	1 (1)	40 (5)	14 (5)	45 (18)	2 (5)	23 (15)	6 (67)	145 (32)	14 (7)	42 (13)	14 (18)	731 (14)
Framingham		3 (0)	3 (0)	0 (0)	11 (1)	6 (2)	0 (0)	0 (0)	2 (1)	0 (0)	16 (4)	7 (3)	9 (3)	0 (0)	57 (1)
Norfolk		402 (31)	391 (33)	2 (2)	0 (0)	37 (14)	3 (1)	14 (33)	6 (4)	0 (0)	21 (5)	126 (60)	124 (37)	10 (13)	1136 (22)
SECC		102 (8)	61 (5)	1 (1)	85 (10)	0 (0)	4 (2)	0 (0)	10 (6)	1 (11)	5 (1)	8 (4)	27 (8)	18 (23)	322 (6)
NECC		33 (3)	149 (13)	0 (0)	61 (7)	25 (9)	0 (0)	0 (0)	3 (2)	1 (11)	5 (1)	6 (3)	9 (3)	1 (1)	293 (6)
Bay State C.C.		9 (1)	6 (1)	1 (1)	22 (3)	8 (3)	0 (0)	0 (0)	0 (0)	0 (0)	0 (0)	0 (0)	2 (1)	0 (0)	48 (1)
Forestry		28 (2)	73 (6)	0 (0)	60 (7)	22 (8)	9 (4)	0 (0)	4 (3)	0 (0)	12 (3)	8 (4)	6 (2)	0 (0)	222 (4)
Drug Rehab.		6 (0)	10 (1)	1 (1)	6 (1)	2 (1)	1 (0)	0 (0)	0 (0)	0 (0)	0 (0)	1 (0)	0 (0)	0 (0)	27 (1)
Pre-Release		65 (5)	205 (17)	73 (77)	117 (14)	42 (15)	170 (69)	23 (55)	85 (54)	0 (0)	164 (36)	11 (5)	11 (3)	1 (1)	967 (18)
RDC		122 (9)	8 (1)	0 (0)	25 (3)	0 (0)	0 (0)	0 (0)	0 (0)	0 (0)	0 (0)	0 (0)	0 (0)	1 (1)	156 (3)
Lemuel Shattuck		92 (7)	40 (3)	9 (9)	110 (13)	28 (10)	8 (3)	2 (5)	6 (4)	0 (0)	14 (3)	1 (0)	0 (0)	6 (8)	316 (6)
Bridgewater S.H.		57 (4)	24 (2)	0 (0)	24 (3)	36 (13)	0 (0)	0 (0)	0 (0)	0 (0)	0 (0)	1 (0)	15 (5)	0 (0)	157 (3)
TOTAL		1304	1175	95	857	271	247	42	156	9	454	210	332	79	5231

PRE-RELEASE TRANSFERS

SENDING	RECEIVING	WALPOLE	CONCORD	FRAMINGHAM	NORFOLK	SECC	NECC	BAY STATE CC	FORESTRY	DRUG REHAB.	PRE RELEASE	RDC	LEMUEL SHATTUCK	BRIDGEWATER SH	TOTAL
Shirley		16 (2)	46 (6)	0 (0)	1 (0)	0 (0)	2 (1)	0 (0)	11 (5)	0 (0)	59 (6)	0 (0)	4 (1)	0 (0)	139 (3)
Boston State		15 (2)	17 (2)	0 (0)	2 (0)	2 (1)	1 (0)	0 (0)	0 (0)	0 (0)	17 (2)	0 (0)	4 (1)	0 (0)	58 (1)
South Middlesex		9 (1)	13 (2)	0 (0)	0 (0)	1 (0)	1 (0)	0 (0)	0 (0)	0 (0)	30 (3)	0 (0)	1 (0)	0 (0)	55 (1)
Park Drive		7 (1)	13 (2)	0 (0)	3 (0)	0 (0)	0 (0)	0 (0)	1 (0)	0 (0)	22 (2)	0 (0)	1 (0)	0 (0)	47 (1)
Lancaster		0 (0)	17 (2)	3 (5)	2 (0)	0 (0)	1 (0)	0 (0)	0 (0)	0 (0)	6 (1)	0 (0)	0 (0)	0 (0)	29 (1)
Hillside		7 (1)	2 (0)	0 (0)	0 (0)	0 (0)	0 (0)	0 (0)	0 (0)	0 (0)	0 (0)	0 (0)	0 (0)	0 (0)	9 (0)
Norfolk		7 (1)	5 (1)	0 (0)	9 (1)	1 (0)	0 (0)	0 (0)	0 (0)	0 (0)	9 (1)	0 (0)	0 (0)	0 (0)	31 (1)
Medfield		0 (0)	0 (0)	0 (0)	2 (0)	1 (0)	0 (0)	0 (0)	0 (0)	0 (0)	12 (1)	0 (0)	0 (0)	0 (0)	15 (0)
Charlotte House		0 (0)	0 (0)	9 (16)	0 (0)	0 (0)	0 (0)	0 (0)	0 (0)	0 (0)	0 (0)	0 (0)	0 (0)	0 (0)	9 (0)
Mass. Halfway Houses		11 (1)	32 (4)	4 (7)	2 (0)	0 (0)	0 (0)	0 (0)	0 (0)	0 (0)	9 (1)	0 (0)	4 (1)	0 (0)	62 (1)
Drug Rehab Program		1 (0)	6 (1)	0 (0)	0 (0)	1 (0)	1 (0)	0 (0)	0 (0)	0 (0)	0 (0)	0 (0)	0 (0)	0 (0)	9 (0)
Major Institutions		732 (91)	583 (79)	41 (72)	1128 (98)	326 (98)	287 (98)	48 (100)	210 (95)	27 (100)	803 (83)	156 (100)	312 (96)	100 (100)	4753 (91)
TOTAL		805	734	57	1149	332	293	48	222	27	967	156	326	100	5216

PRE-RELEASE TRANSFERS

RECEIVING	SENDING	WALPOLE	CONCORD	FRAMINGHAM	NORFOLK	SECC	NECC	BAY STATE C.C.	FORESTRY	DRUG REHAB.	PRE RELEASE	RDC	LEWEL SHATTUCK	BRIDGEWATER STATE HOSPITAL	TOTAL
Shirley		7 (1)	81 (7)	3 (3)	29 (3)	11 (4)	65 (26)	1 (2)	12 (8)	0 (0)	3 (1)	3 (1)	4 (1)	0 (0)	219 (4)
Boston State		10 (1)	23 (2)	2 (2)	11 (1)	6 (2)	20 (8)	2 (5)	15 (10)	0 (0)	24 (5)	0 (0)	3 (1)	1 (1)	117 (2)
South Middlesex		2 (0)	13 (1)	6 (6)	7 (1)	2 (1)	15 (6)	4 (10)	13 (8)	0 (0)	16 (4)	2 (1)	0 (0)	0 (0)	80 (2)
Park Drive		3 (0)	14 (1)	2 (2)	10 (1)	5 (2)	7 (3)	5 (12)	9 (6)	0 (0)	18 (4)	0 (0)	1 (0)	0 (0)	74 (1)
Lancaster		3 (0)	23 (2)	20 (21)	5 (1)	5 (2)	16 (6)	2 (5)	4 (3)	0 (0)	4 (1)	1 (0)	0 (0)	0 (0)	83 (2)
Hillside		8 (1)	3 (0)	0 (0)	6 (1)	2 (1)	6 (2)	0 (0)	1 (1)	0 (0)	2 (0)	1 (0)	0 (0)	0 (0)	29 (1)
Norfolk		7 (1)	8 (1)	1 (1)	9 (1)	3 (1)	7 (3)	3 (7)	3 (2)	0 (0)	5 (1)	3 (1)	0 (0)	0 (0)	49 (1)
Medfield		0 (0)	0 (0)	0 (0)	7 (1)	2 (1)	0 (0)	1 (2)	3 (2)	0 (0)	0 (0)	0 (0)	0 (0)	0 (0)	13 (0)
Charlotte House		0 (0)	0 (0)	22 (23)	0 (0)	0 (0)	0 (0)	0 (0)	0 (0)	0 (0)	0 (0)	0 (0)	0 (0)	0 (0)	22 (0)
Mass. Halfway Houses		25 (2)	40 (3)	17 (18)	33 (4)	6 (2)	34 (14)	5 (12)	25 (16)	0 (0)	92 (20)	1 (0)	3 (1)	0 (0)	281 (5)
Drug Rehab. Programs		6 (0)	10 (1)	1 (1)	6 (1)	2 (1)	1 (0)	0 (0)	0 (0)	0 (0)	0 (0)	1 (0)	0 (0)	0 (0)	27 (1)
Major Institutions		1233 (95)	960 (82)	21 (22)	734 (86)	227 (84)	76 (31)	19 (45)	71 (46)	9 (100)	290 (64)	198 (94)	321 (97)	78 (99)	4237 (81)
TOTAL		1304	1175	95	857	271	247	42	156	9	454	210	332	79	5231

RELEASES TO HOSPITALS

	WALFOLE	CONCORD	FRAMINGHAM	NORFOLK	SECC	NECC	FORESTRY	PRE RELEASE	LEMUEL SHATTUCK	TOTAL
Boston City	0	1	0	1	0	0	0	0	0	2
Cardinal Cushing	0	0	0	0	6	0	0	0	0	6
Emerson	0	6	0	0	0	0	0	0	0	6
Framingham Union	0	0	10	0	0	0	0	0	0	10
Mass. Eye & Ear	1	0	0	1	0	0	0	0	0	2
Mass. General	6	0	0	5	1	0	0	0	0	12
Medfield	0	0	1	0	0	0	0	0	0	1
Peter Bent Brigham	4	0	0	5	0	0	0	0	0	9
Pondville	0	0	0	2	0	0	0	1	1	4
Westboro State	0	0	2	0	0	0	0	0	0	2
Norwood	4	0	0	0	0	0	0	1	0	5
University	0	0	0	0	0	0	0	1	0	1
New England Medical Ctr.	4	0	0	4	1	1	0	0	1	11
Beth Israel	4	3	0	1	0	0	0	0	0	8
Jordan	0	0	0	0	0	0	1	0	0	1
Danvers	0	0	4	0	0	0	0	0	0	4
Worcester State	0	0	0	0	0	0	0	1	0	1
Metropolitan State	0	0	1	0	0	0	0	0	0	1
Boston V.A.	0	0	0	0	0	0	0	1	0	1
Faulkner	2	1	2	1	0	0	0	0	1	7
Brockton Hosp.	0	0	0	0	1	0	0	0	0	1
TOTAL	25	11	20	20	9	1	1	5	3	95

RETURNS FROM HOSPITALS

	WALFOLE	CONCORD	FRAMINGHAM	NORFOLK	SECC	NECC	PRE RELEASE	RDC	TOTAL
Boston City	0	0	1	2	0	0	0	0	3
Cardinal Cushing	0	0	0	2	4	0	0	0	6
Emerson	0	3	0	1	0	0	0	1	5
Framingham Union	0	0	8	0	0	0	0	0	8
Mass. Eye & Ear	1	0	0	1	0	0	0	2	4
Mass. General	4	0	0	6	1	0	0	2	13
Peter Bent Brigham	4	1	0	6	0	0	0	0	11
Pondville	0	0	0	1	0	0	2	1	4
Westboro State	0	0	3	0	0	0	0	0	3
Norwood	0	0	0	2	0	0	0	0	2
Middlesex State	0	0	0	6	1	0	0	0	7
University	0	0	0	0	0	0	1	0	1
New England Medical Ctr.	3	0	0	3	1	1	1	0	9
Beth Israel	5	2	0	7	0	0	0	0	14
Jordan	0	0	0	0	0	0	0	0	0
Danvers	0	0	3	0	0	0	0	0	3
Metropolitan State	0	0	1	0	0	0	0	0	1
Boston V.A.	0	0	0	0	0	0	0	0	0
Faulkner	2	1	2	4	1	0	0	0	10
Brockton Hospital	0	0	0	0	0	1	0	0	1
TOTAL	19	7	18	28	7	7	1	4	92

TRANSFERS TO HOUSES OF CORRECTION

	WALPOLE	CONCORD	FRAMINGHAM	NORFOLK	SECC	NECC	FORESTRY	PRE RELEASE	RDC	LEMUEL SHATTUCK	BRIDGEWATER STATE HOSPITAL	TOTAL
Barnstable	1 (8)	2 (8)	0 (0)	1 (10)	0 (0)	0 (0)	0 (0)	0 (0)	0 (0)	1 (100)	0 (0)	5 (8)
Billerica	0 (0)	3 (12)	0 (0)	1 (10)	0 (0)	0 (0)	0 (0)	0 (0)	0 (0)	0 (0)	0 (0)	4 (6)
Charles Street	1 (8)	1 (4)	0 (0)	0 (0)	1 (25)	0 (0)	0 (0)	0 (0)	0 (0)	0 (0)	1 (100)	4 (6)
Dedham	1 (8)	1 (4)	0 (0)	1 (10)	0 (0)	0 (0)	0 (0)	0 (0)	0 (0)	0 (0)	0 (0)	3 (5)
Deer Island	0 (0)	0 (0)	0 (0)	0 (0)	2 (50)	0 (0)	0 (0)	1 (50)	0 (0)	0 (0)	0 (0)	3 (5)
Greenfield	0 (0)	0 (0)	0 (0)	1 (10)	0 (0)	0 (0)	0 (0)	0 (0)	0 (0)	0 (0)	0 (0)	1 (2)
Lawrence	1 (8)	0 (0)	0 (0)	0 (0)	1 (25)	0 (0)	0 (0)	0 (0)	3 (50)	0 (0)	0 (0)	5 (8)
New Bedford	0 (0)	2 (8)	0 (0)	1 (10)	0 (0)	0 (0)	0 (0)	0 (0)	0 (0)	0 (0)	0 (0)	3 (5)
Northampton	3 (25)	2 (8)	0 (0)	0 (0)	0 (0)	0 (0)	0 (0)	0 (0)	0 (0)	0 (0)	0 (0)	5 (8)
Pittsfield	1 (8)	2 (8)	0 (0)	0 (0)	0 (0)	0 (0)	0 (0)	0 (0)	0 (0)	0 (0)	0 (0)	3 (5)
Plymouth	0 (0)	1 (4)	0 (0)	2 (20)	0 (0)	0 (0)	0 (0)	0 (0)	0 (0)	0 (0)	0 (0)	3 (5)
Salem	2 (17)	0 (6)	0 (0)	0 (0)	0 (0)	0 (0)	0 (0)	0 (0)	1 (17)	0 (0)	0 (0)	3 (5)
Springfield	2 (17)	9 (35)	1 (100)	0 (0)	0 (0)	1 (100)	1 (100)	1 (50)	0 (0)	0 (0)	0 (0)	15 (23)
Worcester	0 (0)	3 (12)	0 (0)	3 (30)	0 (0)	0 (0)	0 (0)	0 (0)	2 (33)	0 (0)	0 (0)	8 (12)
TOTAL	12	26	1	10	4	1	1	2	6	1	1	65

RETURNS OF DOC INMATES
FROM HOUSES OF CORRECTION

	WALPOLE	CONCORD	NORFOLK	SECC	NECC	FORESTRY	PRE RELEASE	RDC	LEMUEL SHATTUCK	TOTAL
Barnstable	0 (0)	0 (0)	0 (0)	0 (0)	0 (0)	0 (0)	1 (13)	0 (0)	1 (50)	2 (4)
Billerica	0 (0)	3 (18)	2 (33)	0 (0)	0 (0)	0 (0)	1 (13)	0 (0)	0 (0)	6 (13)
Charles Street	0 (0)	1 (6)	1 (17)	0 (0)	0 (0)	0 (0)	0 (0)	0 (0)	0 (0)	2 (4)
Dedham	0 (0)	0 (0)	0 (0)	1 (25)	0 (0)	0 (0)	0 (0)	0 (0)	1 (50)	2 (4)
Deer Island	0 (0)	1 (6)	0 (0)	1 (25)	0 (0)	0 (0)	1 (13)	0 (0)	0 (0)	3 (7)
Greenfield	0 (0)	0 (0)	1 (17)	0 (0)	0 (0)	0 (0)	0 (0)	0 (0)	0 (0)	1 (2)
Lawrence	0 (0)	1 (6)	0 (0)	1 (25)	0 (0)	0 (0)	0 (0)	2 (100)	0 (0)	4 (9)
New Bedford	0 (0)	0 (0)	1 (17)	0 (0)	2 (100)	2 (50)	0 (0)	0 (0)	0 (0)	5 (11)
Northampton	0 (0)	3 (18)	0 (0)	0 (0)	0 (0)	0 (0)	0 (0)	0 (0)	0 (0)	3 (7)
Pittsfield	0 (0)	1 (6)	0 (0)	0 (0)	0 (0)	0 (0)	1 (13)	0 (0)	0 (0)	2 (4)
Plymouth	0 (0)	2 (12)	0 (0)	0 (0)	0 (0)	0 (0)	0 (0)	0 (0)	0 (0)	2 (4)
Salem	0 (0)	2 (12)	0 (0)	0 (0)	0 (0)	1 (25)	0 (0)	0 (0)	0 (0)	3 (7)
Springfield	1 (100)	2 (12)	0 (0)	0 (0)	0 (0)	0 (0)	0 (0)	0 (0)	0 (0)	3 (7)
Worcester	0 (0)	1 (6)	1 (17)	1 (25)	0 (0)	1 (25)	4 (50)	0 (0)	0 (0)	8 (17)
TOTAL	1	17	6	4	2	4	8	2	2	46

TRANSFERS OF HOUSES OF CORRECTION INMATES
TO DOC FACILITIES

	CONCORD	FRAMINGHAM	SECC	TOTAL
Billerica .	2 (100)	0 (0)	0 (0)	2 (40)
Deer Island	0 (0)	0 (0)	1 (100)	1 (20)
Greenfield	0 (0)	2 (100)	0 (0)	2 (40)
TOTAL	2	2	1	5

TRANSFERS TO HOUSES OF CORRECTION ON A FROM AND AFTER SENTENCE

	WALPOLE	CONCORD	NORFOLK	SECC	TOTAL
Barnstable	0 (0)	1 (9)	0 (0)	0 (0)	1 (3)
Billerica	2 (25)	5 (45)	3 (38)	0 (0)	10 (34)
Deer Island	4 (50)	1 (9)	4 (50)	2 (100)	11 (38)
Lawrence	1 (13)	0 (0)	0 (0)	0 (0)	1 (3)
New Bedford	0 (0)	1 (9)	1 (13)	0 (0)	2 (7)
Plymouth	0 (0)	2 (18)	0 (0)	0 (0)	2 (7)
Springfield	0 (0)	1 (9)	0 (0)	0 (0)	1 (3)
Worcester	1 (13)	0 (0)	0 (0)	0 (0)	1 (3)
TOTAL	8	11	8	2	29

RELEASES TO OUT OF STATE

	WALPOLE	CONCORD	FRAMINGHAM	NORFOLK	SECC	FORESTRY	RDC	TOTAL
Maine	5 (12)	1 (5)	0 (0)	1 (3)	1 (11)	0 (0)	0 (0)	8 (7)
New Hampshire	6 (14)	4 (18)	0 (0)	13 (42)	2 (22)	0 (0)	1 (100)	26 (24)
Rhode Island	13 (31)	6 (27)	0 (0)	6 (19)	0 (0)	1 (100)	0 (0)	26 (24)
Vermont	0 (0)	0 (0)	1 (100)	2 (6)	0 (0)	0 (0)	0 (0)	3 (3)
Connecticut	4 (10)	8 (36)	0 (0)	4 (13)	0 (0)	0 (0)	0 (0)	16 (15)
New Jersey	1 (2)	0 (0)	0 (0)	0 (0)	0 (0)	0 (0)	0 (0)	1 (1)
New York	0 (0)	0 (0)	0 (0)	2 (6)	0 (0)	0 (0)	0 (0)	2 (2)
Pennsylvania	11 (26)	0 (0)	0 (0)	0 (0)	5 (56)	0 (0)	0 (0)	16 (15)
Illinois	1 (2)	0 (0)	0 (0)	0 (0)	0 (0)	0 (0)	0 (0)	1 (1)
Indiana	1 (2)	0 (0)	0 (0)	0 (0)	0 (0)	0 (0)	0 (0)	1 (1)
Michigan	0 (0)	0 (0)	0 (0)	1 (3)	0 (0)	0 (0)	0 (0)	1 (1)
Florida	0 (0)	3 (14)	0 (0)	1 (3)	0 (0)	0 (0)	0 (0)	4 (4)
California	0 (0)	0 (0)	0 (0)	1 (3)	1 (11)	0 (0)	0 (0)	2 (2)
TOTAL	42	22	1	31	9	1	1	107

ADMISSIONS FROM OUT OF STATE

	WALPOLE	CONCORD	FRAMINGHAM	NORFOLK	SECC	FORESTRY	PRE RELEASE	RDC	TOTAL
Maine	3 (9)	3 (12)	0 (0)	1 (4)	1 (25)	0 (0)	0 (0)	0 (0)	8 (9)
New Hampshire	4 (13)	3 (12)	0 (0)	11 (44)	1 (25)	1 (0)	0 (0)	0 (0)	20 (22)
Rhode Island	15 (47)	7 (28)	0 (0)	7 (28)	0 (0)	0 (0)	1 (100)	0 (0)	30 (33)
Vermont	0 (0)	0 (0)	0 (0)	2 (8)	0 (0)	0 (0)	0 (0)	0 (0)	2 (2)
Connecticut	6 (19)	11 (44)	0 (0)	1 (4)	0 (0)	0 (0)	0 (0)	1 (100)	19 (21)
New Jersey	1 (3)	0 (0)	0 (0)	0 (0)	0 (0)	0 (0)	0 (0)	0 (0)	1 (1)
New York	0 (0)	0 (0)	0 (0)	1 (4)	0 (0)	0 (0)	0 (0)	0 (0)	1 (1)
Pennsylvania	3 (9)	0 (0)	0 (0)	0 (0)	0 (0)	0 (0)	0 (0)	0 (0)	3 (3)
Michigan	0 (0)	0 (0)	0 (0)	1 (4)	0 (0)	0 (0)	0 (0)	0 (0)	1 (1)
Kansas	0 (0)	0 (0)	0 (0)	0 (0)	1 (25)	0 (0)	0 (0)	0 (0)	1 (1)
Florida	0 (0)	1 (4)	0 (0)	1 (4)	0 (0)	0 (0)	0 (0)	0 (0)	2 (2)
West Virginia	0 (0)	0 (0)	1 (100)	0 (0)	0 (0)	0 (0)	0 (0)	0 (0)	1 (1)
California	0 (0)	0 (0)	0 (0)	0 (0)	1 (25)	0 (0)	0 (0)	0 (0)	1 (1)
TOTAL	32	25	1	25	4	1	1	1	90

Glossary

Institution

1. Framingham is a co-correctional facility.
2. SECC is the Southeastern Correctional Center
3. NECC is the Northeastern Correctional Center
4. Forestry consists of two minimum security forestry camps at Plymouth and Warwick
5. Drug Rehab are Drug Rehabilitation Programs that are pre-release centers for inmates with drug related problems. Drug Rehab includes the following programs: Concilio House, Spectrum House, Meridian House, Boston V.A. Hospital, the Third Nail, Project Turnabout, and Bedford V.A. Hospital.
6. Lemuel Shattuck Hospital provides a security ward for those inmates requiring treatment.
7. RDC is the Reception Diagnostic Center which closed in May, 1980.
8. Bridgewater State Hospital includes the hospital for the criminally insane and the sexually dangerous persons (SDP Treatment Center.
9. Houses of Correction are county facilities.
10. MHHI (Massachusetts Halfway House, Incorporated) is a private non-profit corporation that provides facilities to DOC on a contract basis. MHHI includes the following facilities: 577 House, 699 House, Temporary Housing Project (THP), Coolidge House and Brooke House.
11. Charlotte House is a private pre-release center run by the Friends of Framingham that contracts with DOC.
12. Pre-Release Centers include all state and privately run facilities. The Medfield Prison Project, a minimum security facility, is also included in this category. Pre-release includes all MHHI facilities as well as Shirley, Boston State, South Middlesex, Park Drive, Lancaster, Hillside, Norfolk and Charlotte House.

Type of Release

1. Transfers, paroles and discharge to other authorities includes releases to other states, the Federal Bureau of Prisons and Immigration.
2. Paroles and discharges to other sentences includes released to B, C and D sentences, or from and after sentences at DOC facilities or houses of correction.
3. Released by Court includes sentence revoked, sentence vacated, sentence stayed, released on bail and released by court.

END