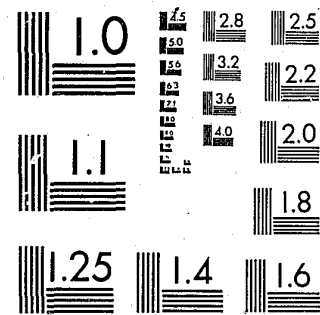


National Criminal Justice Reference Service

ncjrs

This microfiche was produced from documents received for inclusion in the NCJRS data base. Since NCJRS cannot exercise control over the physical condition of the documents submitted, the individual frame quality will vary. The resolution chart on this frame may be used to evaluate the document quality.



MICROCOPY RESOLUTION TEST CHART
NATIONAL BUREAU OF STANDARDS-1963-A

Microfilming procedures used to create this fiche comply with the standards set forth in 41CFR 101-11.504.

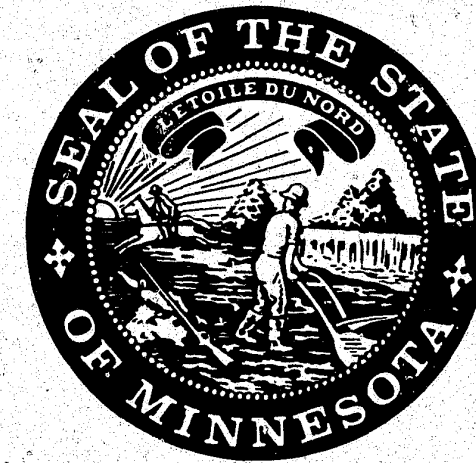
Points of view or opinions stated in this document are those of the author(s) and do not represent the official position or policies of the U. S. Department of Justice.

National Institute of Justice
United States Department of Justice
Washington, D. C. 20531

DATE FILMED

2-11-82

MINNESOTA
JUSTICE SYSTEM
IMPROVEMENT STUDY



DATA SOURCE BOOK

79730

CR Sent
1-19-82

X
MINNESOTA
JUSTICE SYSTEM IMPROVEMENT STUDY
DATA SOURCE BOOK

December 31, 1980

79730
U.S. Department of Justice
National Institute of Justice
This document has been reproduced exactly as received from the person or organization originating it. Points of view or opinions stated in this document are those of the authors and do not necessarily represent the official position or policies of the National Institute of Justice.
Permission to reproduce this copyrighted material has been granted by
Michael McMahon
(MN) CrimeControl Planning Board
to the National Criminal Justice Reference Service (NCJRS).
Further reproduction outside of the NCJRS system requires permission of the copyright owner.

This Data Source Book is respectfully
submitted to the Justice System
Improvement Study Task Force.

NCJRS
FEB 2 1981
ACQUISITIONS

MINNESOTA
JUSTICE SYSTEM IMPROVEMENT STUDY
TASK FORCE

Room 638 - Space Center
444 Lafayette Road
St. Paul, Minnesota 55101
Telephone: (612) 296-8824

Task Force Members

Charlton Dietz, Chairman
Vice President, 3M, St. Paul
Rosemary Ahmann
County Commissioner, Olmsted County
Gerald Benjamin
Sheriff, Jackson County
Robert Campbell
Judge, Probate Court, Duluth
Jimmy Evans
Chemical Dependency Consultant, Minneapolis
Robert Johnson
County Attorney, Anoka
Kenneth Kraft
Therapist, Bemidji
John Wunsch
Administrator, Best and Flanagan, Minneapolis

Staff

N. Doran Hunter
Project Director
John Bolles
Associate Director
David Opp
Staff Economist
Michael Dean
Management Analyst
Mark Lofthus
Senior Staff Intern
Thomas Harbinson
Staff Intern
Michael Hickey
Staff Intern

ACKNOWLEDGMENTS

Many people have contributed to the Justice System Improvement Study. We wish to acknowledge the outstanding cooperation we received from the following criminal justice system professionals:

Linda K. Anderson
Minnesota Sentencing Guidelines Commission

James N. Bradford
Board of Pardons

Howard J. Costello
Department of Corrections

Robert J. Griesgraber
Crime Control Planning Board

Gary Hansen
Office of the Attorney General

C. Paul Jones
State Public Defender

David W. Larson
County Attorneys Council

Wes Paulus
Department of Public Safety

James L. Pederson
Department of Public Safety

Mark K. Shields
Minnesota Board of Peace Officer Standards
and Training

Dorothy J. Skwiera
Minnesota Corrections Board

Theartrice Williams
Ombudsman for Corrections

Duane E. Woodworth
Minnesota Crime Victims Reparations Board

PREFACE

This volume is one of four produced by the Justice System Improvement Study (JSIS). The first volume, entitled Research Design, contains the methods and techniques employed to analyze Minnesota's twelve state executive branch criminal justice agencies. The second volume, entitled Final Report, lists the organizational problems identified within the twelve agencies, the corrective proposals, and the final recommendations. The third volume, entitled Executive Summary, is a synopsis of the Final Report. The fourth volume, the Data Source Book, contains the questionnaire data collected by the JSIS.

The Data Source Book is divided into three parts. Part I is a brief summary of the Justice System Improvement Study. Part II describes how the reader may interpret the data found in this volume. Part III contains actual questionnaire data.

PART I

A BRIEF SUMMARY OF THE JUSTICE SYSTEM IMPROVEMENT STUDY

The Justice System Improvement Study is an attempt to provide the Governor, the legislature, and other decision makers with an organizational analysis of Minnesota's executive branch criminal justice agencies. The project was originally undertaken by the Crime Control Planning Board, which received a discretionary grant from the Law Enforcement Assistance Administration and additional funds from the legislature. Activities of the JSIS staff, direction and scope of the project, and final recommendations were all supervised by the Justice System Improvement Study Task Force. Chaired by Charlton Dietz, Vice President of 3M, the Task Force is composed of eight criminal justice practitioners and interested citizens.

The project was initiated because national studies of criminal justice have determined that criminal justice systems often have problems with their organizational structures. Included among these problems are overlap, duplication, fragmentation, lack of coordination, cooperation, and integration, and mandated responsibility without sufficient managerial control over organizational resources. Through its research efforts, the JSIS has sought to identify organization problems and to recommend ways of creating a more integrated and coordinated criminal justice system.

There are twelve agencies in Minnesota's executive branch of government that constitute an integral portion of the state's criminal justice system. Criminal justice responsibilities are exercised in these agencies through the functions of investigation, law enforcement, prosecution, defense, corrections, and the administrative services associated with each. The twelve agencies are:

Attorney General
Board of Pardons
Department of Corrections
Corrections Board
County Attorneys Council
Crime Control Planning Board
Crime Victims Reparations Board
Ombudsman for Corrections

Peace Officer Standards and Training (POST) Board
Department of Public Safety
Sentencing Guidelines Commission
State Public Defender

Within these twelve agencies, the JSIS focused its analysis on administrative service and support functions--research, evaluation, planning, policy, budgeting, personnel, training, auditing, accounting, grants administration, public information, management analysis--because these functions are the keys to effective decision making. If efficiently used, administrative service and support functions can help managers make better decisions on the delivery of services to the public. Efficient use cannot occur, however, unless two conditions are met: The functions must be free of organizational problem areas, and managers must have ready access to the functions so that they can carry out their responsibilities.

With the help of criminal justice practitioners, each administrative service and support function was reduced to a set of activities; the activity became the basic unit of analysis. Using a questionnaire, activities were analyzed from seven organizational perspectives:

- 1) Impact and Utilization--the organizational level for which the activity is performed;
- 2) Resource Interdependency--who controls the resources needed to perform the activity;
- 3) Responsibility Control--the organizational level at which the decision is made to perform the activity;
- 4) Authority Control--the kind of authority that controls the activity;
- 5) Priority--a ranking of the activity's importance with respect to the purposes for which the function exists;
- 6) Congruence--an evaluation of whether the activity is consistent with the mission, goals, and objectives of the agency;
- 7) Appropriateness--a determination of whether the activity is located in the appropriate organizational unit.

A basic standard was developed to make judgments about the activities, namely, that responsibility control and resource control should

be located at the level of impact and utilization. Also, anomalies in the other four perspectives raised particular organizational questions for the JSIS.

A comprehensive portrayal of administrative service and support costs is another aspect of the JSIS. This expenditure analysis has proven useful to the Task Force in finalizing its recommendations and to decision makers interested in the flow of administrative costs within the criminal justice system.

The Task Force's final recommendations will receive initial review from three sources. The Crime Control Planning Board will examine, vote on, and forward the recommendations it endorses to the Governor, who must decide to which of these recommendations he will lend his support in the next session of the legislature. Any recommendations proposed to the legislature must be analyzed by the Reorganization Approvals Program in the Department of Administration's Management Analysis Division. The Department of Finance will analyze the recommendations in terms of budgetary impact.

The twelve agencies analyzed by the JSIS have had a crucial role in the project. Throughout the data collection, they critiqued the data for factual and interpretive error. They also commented in written form on the preliminary proposals, and testified at Task Force meetings on the validity of the recommendations.

PART II

HOW TO INTERPRET PART III OF THE DATA SOURCE BOOK

Part III of the Data Source Book contains the questionnaire data obtained through interviews with executive branch criminal justice system practitioners in the Summer and early Fall of 1980. Activities on which questionnaire data were collected totaled 866. For reference purposes in the Final Report, each activity was assigned a number ranging from 1 through 888. These activities, with their attendant information, are listed sequentially in Part III of the Data Source Book.

The reader wishing to employ Part III will need an understanding of the elements which make up the description of the activities. The

steps to achieve this are discussed below in section (B). First, however, the reader will need a guide to what the numbers and symbols in Part III mean. The numbers and symbols are codes which describe the elements that make up the activity descriptions. The reader is advised to become familiar with these numbers and symbols as Part III cannot be deciphered without them.

(A) Guide to the Numbers and Symbols used in Part III

AGENCIES

- 01 Attorney General
- 02 Board of Pardons
- 03 Department of Corrections (DOC)
- 04 Corrections Board
- 05 County Attorneys Council
- 06 Crime Control Planning Board (CCPB)
- 07 Crime Victims Reparations Board
- 08 Ombudsman for Corrections
- 09 Peace Officer Standards and Training (POST) Board
- 10 Department of Public Safety (DPS)
- 11 Sentencing Guidelines Commission
- 12 State Public Defender (SPD)

PROGRAMS

- 01 Attorney General
- 02 Board of Pardons
- 03 DOC--Institutions
- 04 DOC--Community Services
- 05 DOC--Policy/Planning
- 06 DOC--Management
- 07 Corrections Board
- 08 County Attorneys Council
- 09 CCPB--Criminal Justice Planning, Research, Evaluation
- 10 CCPB--Administration
- 11 CCPB--Law Enforcement Assistance
- 12 Crime Victims Reparations Board

- 13 Ombudsman for Corrections
- 14 POST Board
- 15 DPS--Criminal Apprehension
- 16 DPS--State Patrol
- 17 DPS--Capitol Security
- 18 DPS--Driver and Vehicle Licensing
- 19 DPS--Fire Safety
- 20 DPS--Emergency Services
- 21 DPS--Liquor Licensing
- 22 DPS--Administration
- 23 DPS--Ancillary Services
- 24 Sentencing Guidelines Commission
- 25 SPD--Legal Advocacy Project
- 26 SPD--Legal Assistance to Minnesota Prisoners
- 27 SPD--Operations

FUNCTIONS

- 01 Research
- 02 Evaluation
- 03 Accounting
- 04 Auditing
- 05 Data Processing
- 06 Planning
- 07 Budgeting
- 08 Personnel
- 09 Training
- 10 Grants Administration
- 11 Policy

FUNCTIONAL SUBJECT AREAS

- 01 School Bus Inspections
- 02 Weighing Inspections
- 03 Project 20 (55 MPH Enforcement)
- 04 Crash Facts (Statistics on Accidents)

- 05 Evaluation of the Helmet Repeal Law
- 06 Evaluation of the Motorcycle Operator Skills Test
- 07 Traffic Records Integration Project
- 08 Minnesota Cooperative Training Agreement
- 09 Nuclear Power Plan Training
- 10 Juvenile Institutions Admission Update
- 11 Juvenile Releases
- 12 Women Offenders
- 13 Corrections Management Information System
- 15 Code System
- 16 Evaluation of the Minnesota Automated Fingerprint Identification Network
- 17 Community Corrections Funding Evaluation
- 18 Youth Intervention Project
- 19 Cost Aspect of Community Corrections Act Evaluation
- 20 Family Violence Project
- 21 Juvenile Services Delivery System Analysis Project
- 22 Grants Management Information System
- 23 Justice System Improvement Study
- 24 Department of Corrections Service Recipient Planning
- 25 Community Corrections Act Evaluation
- 26 Work Flow Analysis
- 27 Evaluation of the Free Venture Prison Industries Program
- 28 State Judicial Information System/Criminal Justice Reporting System
- 98 Internal
- 99 External

ORGANIZATIONAL PERSPECTIVES

<u>Impact</u>	Activity impacts on same program where located	A
	Activity impacts on other agency programs	B
	Activity impacts outside the agency	C

<u>Respon- sibility Control</u>	Decisions on activity are made in same program where located	1
	Decisions on activity are made at the agency level	2
	Decisions are made by someone outside the agency	3
<u>Resource Interde- pendency</u>	Resources are controlled in same program where located	N
	Resources are controlled by someone else	Y
<u>Priority</u>	Activity is important for the function	H
	Activity is not important for the function	L
<u>Authority Control</u>	Activity is mandated by statute	0
	Activity is mandated by agency rule	4
	Activity is mandated by agency policy	8
	Activity is at discretion of program manager	12
<u>Congruence</u>	Activity is consistent with agency objectives	0
	Activity is not consistent with agency objectives	1
<u>Appro- priateness</u>	Activity belongs where it is	0
	Activity does not belong where it is	2

(B) Understanding the Activity Information in Part III

The key system for finding activities in the Data Source Book was developed so that the reader of the Final Report can interpret quickly the information on a particular activity. When an activity is mentioned in the Final Report, it is noted in brackets, e.g., [122]. This three-digit number is the key to finding the activity in the Data Source Book.

An activity can be located by simply finding its three-digit number in the far right column of the printout. Activity [122] would be found thus:

0609021905084	05082203C3N08H0008	120
0609021906084	05082203C1N12H0012	121
0609022001084	05082203A1N08H0008	122 +
0609022002084	05082203A1N08H0008	123
0609022003084	05082203A1N12H0012	124

Once the activity is located in the printout, the information on the activity can be deciphered by following the steps outlined below.

1. The first two numbers in the row identify the agency in which the activity is located.

0609022001084 05082203A1N08H0008 122

Consulting the reference list of agencies in section (A), agency 06 is the Crime Control Planning Board.

2. The next two numbers in the row identify the program in which the activity is located.

0609022001084 05082203A1N08H0008 122

Consulting the reference list of programs as above, program 09 is Criminal Justice Planning, Research, and Evaluation, a program of the Crime Control Planning Board.

3. The next two numbers in the row identify the function in which the activity is located.

0609022001084 05082203A1N08H0008 122

Consulting the reference list of functions as above, function 02 is evaluation. Therefore, this activity is performed as part of the evaluation function in the Crime Control Planning Board's Criminal Justice Planning, Research, and Evaluation Program.

4. The next two numbers in the row identify the functional subject area, the particular category or subject of that function, for which the activity is performed.

0609022001084 05082203A1N08H0008 122

The reference list for functional subject areas indicates that subject area 20 is family violence. To summarize, activity 122 is located in the family violence evaluation project of the Crime Control Planning Board's Criminal Justice Planning, Research, and Evaluation program.

5. As was noted above in Part I, every administrative service and support function is broken down into a basic list of activities. The next two numbers in the row pertain to one of those activities.

0609022001084 05082203A1N08H0008 122

The list of activities within each function is in the glossary of the Final Report. In the example above, evaluation activity 01 is "selecting programs to be evaluated and negotiating management questions to be answered by the evaluation . . ."

6. The next three numbers refer to the person who provided the information on the activity.

0609022001084 05082203A1N08H0008 122

In the interest of confidentiality, it is the policy of the JSIS not to disclose respondent numbers. Disclosure would unduly compromise those who responded frankly to the questionnaire. In any case, respondent numbers are not essential to understanding an activity's characteristics.

Summarizing what has been described in the printout on activity [122] thus far:

0609022001084 05082203A1N08H0008 122

Activity [122] is the evaluation activity of selecting programs to be evaluated, performed for the family violence evaluation project in the Crime Control Planning Board's Planning, Research and Evaluation program.

7. The first pair of numbers in the middle column is a mechanism of the computer schema that was used.

0609022001084 05082203A1N08H0008 122

If the number is 05, it indicates that the activity is located in a functional subject area. If the number is 06, the activity is not located in a functional subject area; it is simply part of a function that is not broken down into a subject area:

061003 01080 06082105B2N08H0008 457

The empty spaces in the row mean that there is no functional subject area, and the rest of the data are interpreted as before. In this example, activity [457] is the accounting activity for recording various types of transactions into the statewide accounting system, performed in the Crime Control Planning Board's Administration program.

8. The next four numbers give the date on which the activity information was obtained.

0609022001084 05082203A1N08H0008 122

In this example, 0822 = August 22.

9. The next two numbers identify the person who did the interview. Like the respondent numbers, interviewer numbers are only used by the Task Force and staff.

0609022001084 05082203A1N08H0008 122

10. The next ten numbers and symbols are the most important part of an activity's characteristics, for they contain the data that are derived from the 7 parts of the JSIS questionnaire. These are the data that are used to analyze the activities.

The first three numbers and the letters describe the impact, responsibility control, and resource control of an activity.

0609022001084 05082203A1N08H0008 122

These three dimensions, and the variables of which they are composed, are described in detail in Chapter 1 of the Final

Report. The chart explaining the dimensions' variables found on p. of the Final Report has been duplicated in Section (A) in this Source Book for easy reference. In the example, AIN means that the impact is on the same program in which the activity is located, the decision control is in the same program in which the activity is located, and the resources are controlled in the same program in which the activity is located.

11. The next two numbers describe the authority control for an activity.

0609022001084 05082203A1N08H0008 122

Consulting the reference list in Section (A), authority control of 08 means that the activity is mandated to be performed by agency policy.

12. The next symbol describes the priority of the activity.

0609022001084 05082203A1N08H0008 122

Priority can be either high (H) or low (L). In this example, the activity was given a high priority.

13. The next number describes the congruence of the activity.

0609022001084 05082203A1N08H0008 122

The congruence dimension can have variables of congruent (0) or not congruent (1). In this example, the activity was considered to be congruent with agency goals and objectives.

14. The next number describes the appropriateness of the activity.

0609022001084 05082203A1N08H0008 122

The appropriateness dimension can have variables of appropriate (0) or not appropriate (2). In this example, the activity was considered to be located in its appropriate organizational position.

15. The next two numbers describe the activity's feasibility determinant.

060902201084 05082203A1N08H0008 122

The 08 is a summation of the value labels given the authority control, priority, and congruence dimensions. From a range of 0 to 15, the lower the feasibility determinant, the greater the difficulty--legally, politically, and practically--of reorganizing an activity.

PART III

QUESTIONNAIRE DATA

0304119901070	05100603C1N12H0012	001
0304119902070	05100603C1N12H0012	002
0304119903070	05100603C1N12H0012	003
0304119904070	05100603C1N12H0012	004
0304119905070	05100603C1N12H0012	005
0304119801070	05100603A1N12H0012	006
0304119802070	05100603A1N12H0012	007
0304119803070	05100603A1N12H0012	008
0304119804070	05100604A1N12H0012	009
0304119805070	05100603A1N12H0012	010
1022119901110	05103108B1N08L0008	011
1022119902110	05103108B2Y08H0008	012
1022119903110	05103108A1N04H0004	013
1022119904110	05103108A2N08L0008	014
1022119905098	05103108B1Y08H0008	015
0303119901104	05090601C1Y08H0008	016
0303119902104	05090601C1Y08H0008	017
0303119903104	05090601C1Y08H0008	018
0303119904104	05090601C1Y08H0008	019
0303119905104	05090601C1Y08H0008	020
0304069805070	05090305A1N12H0012	021
0304069807070	05090305A1N12H0012	022
0304069901070	05090305C1N00H0000	023
0304069902070	05090305C1N00H0000	024
0304069906070	05090305C1N00H0000	025
0304069907070	05090305C1N12H0012	026
0304079802070	05090305A1N12H0012	027
0304079805070	05090305A1N12H0012	028
0304079902070	05090305C3Y00H0202	029
0304079905070	05090305C1N00H0000	030
0304119801105	05091602A1N00H0000	031
0304119803105	05091602A1N00H0000	032
0304119804105	05091602A1N00H0000	033
0304119805105	05091602A1N00H0000	034
0305011003065	05090305B2N12H0012	035
0305011004065	05090305B2N12H0012	036
0305011005065	05090305A1N12H0012	037
0305011006065	05090305B2N12H0012	038
0305011103065	05090305B2N12H0012	039
0305011104065	05090305B2N12H0012	040
0305011105065	05090305B2N12H0012	041
0305011106065	05090305B2N12H0012	042
0305011203066	05090802C2Y08H0008	043
0305011204066	05090802C2Y08H0008	044
0305011205066	05090802C2Y08H0008	045
0305011206066	05090802C2Y08H0008	046
0305022502094	05090902C1Y00H0000	047
0305022503094	05090902C1Y00H0000	048
0305022504094	05090902C1Y00H0000	049
0305022505094	05090902B1Y12H0012	050
0305022702061	05091809B2N08H0008	051
0305022703061	05091809B2N08H0008	052

0305022704061	05091809B2N08H0008	053
0305022705061	05091809B2N08H0008	054
0305022706061	05091809B2N08H0008	055
0305051303067	05082909B2N08H0008	056
0305052803067	05082909C3N08H1211	057
0305062402095	05090302C2Y00H0202	058
0305062404095	05090302C2Y00H0202	059
0305062406095	05090302C2Y00H0202	060
0305119801095	05090302B2N00H0000	061
0305119803095	05090302B2N00H0000	062
0305119804095	05090302B2N00H0000	063
0305119805095	05090302B2N00H0000	064
0306119901062	05092303B2N08H0008	065
0306119902062	05092303B2N08H0008	066
0306119903106	05090902C2Y00H0000	067
0306119903062	05092303B2N08H0008	068
0306119904062	05092303B2N08H0008	069
0306119905106	05090902C2Y00H0008	070
0306119905062	05092303B2N08H0008	071
0407069901100	05090402C2Y00H0000	072
0407069902100	05090402C2Y00H0000	073
0407069903100	05090402C2Y00H0000	074
0407069904100	05090402C2Y00H0000	075
0407069905100	05090402C2Y00H0000	076
0407069906100	05090402C2Y00H0000	077
0407069907100	05090402C2Y00H0000	078
0407119901100	05090402C2N00H0000	079
0407119902100	05090402C2N00H0000	080
0407119903100	05090402C2N00H0000	081
0407119904100	05090402C2N00H0000	082
0407119905100	05090402C2N00H0000	083
0609011801084	05082203A1N08H0008	084
0609011802084	05082203A1N12H0012	085
0609011803084	05082203A1N12H0012	086
0609011804084	05082203C1N08H0008	087
0609011805084	05082203C1N08H0008	088
0609011806084	05082203C1N12H0012	089
0609012101091	05082108A1Y08H0008	090
0609012102092	05090408A1N08H0008	091
0609012104091	05082108A1Y08H0210	092
0609012105092	05090408C1N08H0008	093
0609012106091	05082108C2Y08H0008	094
0609012301093	05092501C1N12H0214	095
0609012302093	05092501C1N12H0214	096
0609012303093	05092501C1N12H0214	097
0609012304093	05092501C1N12H0214	098
0609012305093	05092501C1N12H0214	099
0609012306093	05092501C1N12H0214	100
0609021503082	05082803C1N08H0008	101
0609021504082	05082803C1N08H0008	102
0609021505082	05082803C1N08H0008	103
0609021506082	05082803C1N08H0008	104

0609021601082	05082803C1N08H0008	105
0609021602082	05082803C1N08H0008	106
0609021603082	05082803C1N08H0008	107
0609021604082	05082803C1N08H0008	108
0609021605082	05082803C1N08H0008	109
0609021606082	05082803C1N08H0210	110
0609021702083	05082903C3Y12H0214	111
0609021703083	05082903C3Y12H0214	112
0609021704083	05082903C3N12H0214	113
0609021705083	05082903C3Y12H0214	114
0609021706083	05082903C3Y12H0214	115
0609021901084	05082203C1N08H0008	116
0609021902084	05082203A3N08H0008	117
0609021903084	05082203A3N08H0008	118
0609021904084	05082203C3N08H0008	119
0609021905084	05082203C3N08H0008	120
0609021906084	05082203C1N12H0012	121
0609022001084	05082203A1N08H0008	122
0609022002084	05082203A1N08H0008	123
0609022003084	05082203A1N12H0012	124
0609022004084	05082203C1N08H0008	125
0609022005084	05082203C1N12H0012	126
0609022006084	05082203C1N12H0012	127
0609022501077	05082905C3Y12H0012	128
0609022502077	05082905C3Y12H0012	129
0609022503077	05082905C3Y12H0012	130
0609022504077	05082905C3Y12H0012	131
0609022505077	05082905C3Y12H0012	132
0609022506077	05082905C3Y00H0000	133
0609051501086	05081909A1N12H0012	134
0609051502086	05081909A1N12H0012	135
0609051503085	05082109C2Y12H0012	136
0609051505086	05081909C1N08H0008	137
0609052101086	05081909B2Y08L1009	138
0609052102086	05081909B2Y12L1013	139
0609052201086	05081909B2Y08H1009	140
0609052202086	05081909B2Y12H0012	141
0609119803079	05082005B2N08H0008	142
0609119804079	05082005B2N08H0008	143
0609119902076	05090909C1N08H0008	144
0609119903076	05090909C1N08H0008	145
0610042501081	05090508C1N08H0008	146
0610042502081	05090508C1N08H0008	147
0610042503081	05090508C1N08H0008	148
0610119801087	05082902B2N08H0008	149
0610119805087	05082902B2N08H0008	150
0610119901087	05082902C3Y12H0012	151
0610119903087	05082902C3Y12H0012	152
0610119905087	05082902C3Y12H0012	153
0813119801056	05090205A1N08H0008	154
0813119802056	05090205A1N08H0008	155
0813119803056	05090205A1N08H0008	156

0813119805056	05090205A1N08L1211	157
0813119902056	05090205C1N08H0008	158
0813119903056	05090205C1N08H0008	159
0813119904056	05090205C1N08H0008	160
0914019902048	05090502C2Y04H0206	161
0914019903048	05090502C2Y04H0206	162
0914019904048	05090502C2Y04H0206	163
0914019905048	05090502C2Y04H0206	164
0914019906048	05090502C2Y04H0206	165
0914119901048	05090502C2N00H0000	166
0914119903048	05090502C2N00H0000	167
0914119904048	05090502C2N00H0000	168
0914119905048	05090502C2N12H0012	169
1015119801042	05090809A1N08H0008	170
1015119802042	05090809A1N08H0008	171
1015119803042	05090809A1N08H0008	172
1015119804042	05090809A1N08H0008	173
1015119805042	05090809A1N08H0008	174
1015119806042	05090809A1N08H0008	175
1015119901103	05092908A2N00H0000	176
1015119902103	05092908A2N00H0000	177
1015119903103	05092908A2N00H0000	178
1015119904103	05092908A2N00H0000	179
1015119905103	05092908A2N00H0000	180
1016020101016	05090803C1N00H0000	181
1016020104016	05090803C1N00H0000	182
1016020105016	05090803C1N00H0000	183
1016020201016	05090803C1N00H0000	184
1016020204016	05090803C1N00H0000	185
1016020205016	05090803C1N00H0000	186
1016020301016	05090803C1N00H0000	187
1016020304016	05090803C1N00H0000	188
1016020305016	05090803C1N00H0000	189
1016119901099	05092202A1N08H0008	190
1016119903099	05092202A1N08H0008	191
1016119904099	05092202A1N08H0008	192
1016119905099	05092202A1N08H0008	193
1017119801108	05092909A1N08L1009	215
1017119802108	05092909A1N08L1009	216
1017119803108	05092909A1N08L1009	217
1017119804108	05092909A1N08L1009	218
1017119805108	05092909A1N08L1009	219
1018022601026	05090903A1N12H0012	225
1018022602026	05090903A1N12H0012	226
1018022603026	05090903A1N12H0012	227
1018022604026	05090903A1N12H0012	228
1018022605026	05090903A1N12L0012	229
1018022606026	05090903A1N12H0012	230
1018050701026	05090903A1Y00H0000	231
1018099801027	05092203A1N12L0012	232
1018099802027	05092203A1N12L0012	233
1018099803027	05092203A1N12L0012	234

1018099804027	05092203A1N12L0012	235
1018099901027	05092203C1N12L0012	236
1018099902027	05092203C1N12L0012	237
1018099903027	05092203C1N12L0012	238
1018099904027	05092203C1N12L0012	239
1018119901027	05092203C1N00H0000	240
1018119902027	05092203C1N00H0000	241
1018119903027	05092203C1N00H0000	242
1018119904027	05092203C1N00H0000	243
1018119905027	05092203C1N00H0000	244
1019119801033	05091508A1N00H0000	245
1019119802033	05091508A1N08H0008	246
1019119804033	05091508A1N00H0000	247
1019119805033	05091508A1N00H0000	248
1019119901033	05091508C1N08L0008	249
1019119902033	05091508C1N08H1009	250
1019119903033	05091508A1N04H0004	251
1019119904033	05091508B1N12H0012	252
1019119905033	05091508B1N12H0012	253
1020090801037	05090809C1N08H0008	254
1020090803037	05090809C1N08H0008	255
1020090901037	05090809C1N08H0008	256
1020090902037	05090809C1N08H0008	257
1020090903037	05090809C1N08H0008	258
1020090904037	05090809C1N08H0008	259
1020119901096	05092209A1N00H0000	260
1020119902096	05092209A1N00H0000	261
1020119903096	05092209A1N00H0000	262
1020119904096	05092209A1N00H0000	263
1020119905096	05092209A1N00H0000	264
1021119901039	05090403C1N00H0000	265
1021119902039	05090403C1N00H0000	266
1021119903039	05090403C1N00H0000	267
1021119904039	05090403C1N00H0000	268
1021119905039	05090403C1N00H0000	269
1022119905097	05092202C2Y08H0008	270
1022119803010	05091709B2Y08H0008	271
1022119804010	05091709B2Y08H0008	272
1022119901097	05092202C2Y08H0008	273
1022119901098	05092408B1N08L0008	274
1022119902098	05092408B2Y08H0008	275
1022119902001	05090309B2Y08L0008	276
1022119903098	05092408A1N04H0004	277
1022119904097	05092202C2Y08H0008	278
1022119904098	05092408A2N08L0008	279
1022119905098	05092408B1Y08H0008	280
1023010402022	05090903C2Y08H0008	281
1023010403022	05090903C2Y08L0008	282
1023010404022	05090903C2N12H0012	283
1023010405022	05090903C2N00H0000	284
1023010406022	05090903C2N12H0012	285
1023010501022	05090803A1N12H0012	286

1023010502022	05090803A1Y12H0012	287
1023010503022	05090803A1Y12H0012	288
1023010504022	05090803C1N12H0012	289
1023010505022	05090803C1N00H0000	290
1023010506022	05090803C1N08H0008	291
1023020601022	05090903A1N12L0012	292
1023020602022	05090903A1Y12H0012	293
1023020603022	05090903A1Y12H0012	294
1023020604022	05090903A1N12H0012	295
1023020605022	05090903C1N12H0012	296
1023020606022	05090903B1Y12H0012	297
1124119901059	05090805C1N00H0000	298
1124119903059	05090805C1N08H0008	299
1124119904059	05090805C1Y00H0000	300
1227119801060	05090503A1N08H0008	301
1227119802060	05090503A1N08H0008	302
1227119803060	05090503A1N08H0008	303
1227119804060	05090503A1N08H0008	304
1227119805060	05090503A1N08H0008	305
091408	05048 06090502B2Y04H0206	306
061009	01109 06100609C1N12H0012	307
061009	02109 06100609C1N12H0012	308
061009	03109 06100609C1N12H0012	309
061009	03109 06100609C1N12H0012	310
061009	04109 06100609C1N12H0012	311
102206	01110 06103108A1N08H0000	312
102206	02110 06103108B1Y00H0000	313
102206	03110 06103108A1N08H0008	314
102206	05110 06103108A1Y08H0008	315
102206	06110 06103108A1N08H0008	316
030403	03070 06090305A1N12H0012	317
030306	02104 06090601A1Y00H0000	318
030306	05104 06090601A1Y00H0000	319
030306	06104 06090601A1Y00H0000	320
030306	07104 06090601A1Y00H0000	321
030406	01105 06091602A1N08H0008	322
030406	02105 06091602A1N08H0008	323
030406	05105 06091602A1N08H0008	324
030406	06105 06091602A1N08H0008	325
030406	07105 06091602A1N08H0008	326
030409	01101 06092609A1N00H0000	327
030409	02101 06092609A1N00H0000	328
030409	03101 06092609A1N00H0000	329
030409	04101 06092609A1N00H0000	330
030501	01071 06090408B2N08H0000	331
030501	01069 06091808A2Y08H0008	332
030501	01069 06091005A1N12H0012	333
030501	02069 06091808A2Y08H0008	334
030501	02071 06090408B2N00H0000	335
030501	02069 06091005B2N12H0012	336
030501	03069 06091808A2Y08H0008	337
030501	03071 06090408B2N00H0000	338

030501	03069	06091005B2N12H0012	339
030501	04069	06091808A2Y08H0008	340
030501	04071	06090408B2N08H0000	341
030501	04069	06091005B2N12H0012	342
030501	05069	06091808A2Y08H0008	343
030501	05069	06091005B2N12H0012	344
030501	05071	06090408B2N08H0000	345
030501	06069	06091808A2Y08H0008	346
030501	06069	06091005B2N12H0012	347
030501	06071	06090408B2N08H0000	348
030502	01071	06090408B2N08H0008	349
030502	02071	06090408B2N08H0008	350
030502	03071	06090408B2N08H0008	351
030502	04071	06090408B2N08H0008	352
030502	05071	06090408B2N08H0008	353
030502	06071	06090408B2N08H0008	354
030506	01095	06091302B2Y08H0008	355
030506	02064	06090905B2N08H0008	356
030506	02095	06091302B2Y08H0008	357
030506	04064	06090905B2N08H0008	358
030506	04095	06091302B2Y08H0008	359
030506	05064	06090905B2N08H0008	360
030506	05095	06091302B2Y08H0008	361
030506	07064	06090905B2N08H0008	362
030506	07095	06091302B2Y08H0008	363
030507	03095	06091302B2Y00H0000	364
030507	04095	06091302B2Y00H0000	365
030507	05095	06091302B2Y00H0000	366
030603	01073	06091709C2N00H0000	367
030603	01075	06091608B2N08H0008	368
030603	02068	06091709C2N12H0008	369
030603	02075	06091608B2N08H0008	370
030603	02072	06090709B2N12H0012	371
030603	02073	06091709B2N08H0008	372
030603	03075	06091608B2N08H0008	373
030603	03072	06090709B2N12H0012	374
030603	03068	06091709C2N12H0008	375
030603	03073	06091709B2N08H0008	376
030604	01062	06091608B2N08H0008	377
030604	01072	06091709B2N12H0012	378
030604	02062	06091608B2N08H0008	379
030604	02072	06090709B2N12H0012	380
030604	03062	06091608B2N08H0008	381
030604	03072	06090709B2N12H0012	382
030604	04062	06091608B2N08H0008	383
030604	04072	06090709B2N12H0012	384
030604	05062	06091608B2N08H0008	385
030605	01074	06090408B2N00H0000	386
030605	04074	06090408C2N08L0008	387
030606	01062	06092303B2N08H0008	388
030606	02106	06090902C2Y08H0008	389
030606	02062	06092303B2N08H0008	390

030606	03062	06092303B2N08H0008	391
030606	04106	06090902B2N12H0012	392
030606	04062	06092303B2N08H0008	393
030606	05106	06090902B2N12H0012	394
030606	05062	06092303B2N08H0008	395
030606	06062	06092303B2N08H0008	396
030606	07062	06092303B2N08H0008	397
030606	07106	06090902B2N12H0012	398
030607	01075	06091608B2N08H0008	399
030607	01073	06091709B2N08H0008	400
030607	01072	06091709B2N08H0012	401
030607	01068	06091708C3N00H0000	402
030607	02075	06091608B2N08H0008	403
030607	02073	06091709B2N08H0008	404
030607	03075	06091608B2N08H0008	405
030607	03072	06091709B2N12H0012	406
030607	03073	06091709B2N08H0008	407
030607	03068	06091708C3N00H0000	408
030607	04075	06091608B2N08H0008	409
030607	04106	06090902B2N04H0004	410
030607	04073	06091709B2N08H0008	411
030607	04072	06091709B2N12H0012	412
030607	04068	06091708C3N00H0000	413
030607	05075	06091608B2N08H0008	414
030607	05073	06091709B2N08H0008	415
030607	05072	06091709B2N12H0012	416
030607	05068	06091708C3N00H0000	417
030608	01107	06091002B2Y04H0004	418
030608	02107	06091002B2Y04H0004	419
030608	03107	06091002B2Y04H0004	420
030608	04107	06091002B2Y04H0004	421
030608	05107	06091002B2Y04H0004	422
030610	01074	06090508B2N08H0008	423
030610	01073	06091709B2N08H0008	424
030610	02074	06090508B2N12H0012	425
030610	02073	06091709B2N08H0008	426
030610	03073	06091709C2N08H0008	427
030610	04073	06091709B2N08H0008	428
030610	05074	06090508B2N12H0012	429
030610	05073	06091709B2N08H0008	430
040701	01069	06091808C2Y08H0008	431
040701	02069	06091808C2Y08H0008	432
040701	03069	06091808C2Y08H0008	433
040701	04069	06091808C2Y08H0008	434
040701	05069	06091808C2Y08H0008	435
040701	06069	06091808C2Y08H0008	436
040703	01075	06091608C1N08H0008	437
040703	02075	06091608C1N08H0008	438
040703	03075	06091608C1N08H0008	439
040707	01075	06091608C2N08H0008	440
040707	02100	06090402A1Y08H0008	441

040707	02075	06091608C2N08H0008	442
040707	03075	06091608C2N08H0008	443
040707	04100	06090402A1Y08H0008	444
040707	04075	06091608C2N08H0008	445
040707	05100	06090402A1Y08H0008	446
060906	01076	06082209C1N00H0000	447
060906	01089	06082502C2Y00H0000	448
060906	02076	06082209C1N00H0000	449
060906	02089	06082502C2Y00H0000	450
060906	03076	06082209C1N00H0000	451
060906	03089	06082502C2Y00H0000	452
060906	04089	06082502C2Y00H0000	453
060906	04076	06082209C1N00H0000	454
060906	05089	06082502B2N08H0008	455
060906	07089	06082502C2Y00H0202	456
061003	01080	06082105B2N08H0008	457
061003	02080	06082105B2N08H0008	458
061003	03080	06082105B2N08H0008	459
061005	02090	06082109B2N08H0008	460
061005	03090	06082109B2Y08H0008	461
061006	02087	06082902C2Y00H0000	462
061006	02088	06082602C2Y00H0000	463
061006	03088	06082602C2Y00H0000	464
061006	05087	06082902B2N08L0008	465
061006	06088	06082602B2N08H0008	466
061006	06087	06082902B2N08H0008	467
061007	01080	06082105B2N08H0008	468
061007	01088	06082602B2N08H1009	469
061007	02080	06082105B2N08H0008	470
061007	02088	06082602A1Y08H0008	471
061007	03080	06082105B2N08H0008	472
061007	03088	06082602B2N12L0012	473
061007	04080	06082105B2N08H0008	474
061007	04088	06082602B2N12H0012	475
061008	01080	06082105B2N08L0210	476
061008	05080	06082105B2N04H0004	477
061010	01078	06062401C1N00H0000	478
061010	02078	06062401C1N00H0000	479
061010	03078	06062401C1N00H0000	480
061010	04078	06062401C1N00H0000	481
061010	05078	06062401C1N00H0000	483
081301	02053	06090208A1N12H0012	484
081301	03053	06090208A1N12H0012	485
081301	04053	06090208A1N12H0012	486
081301	05053	06090208A1N12H0012	487
081302	01056	06090205C1N08H0008	488
081302	04056	06090205C1N08H0008	489
081302	05056	06090205C1N08H0008	490
081303	01054	06082905A1N08H0008	491
081303	02054	06082905A1N08H0008	492
081306	02056	06090205C1N00H0000	493
081306	02053	06090208A1N12H0012	494

081306	05056	06090205A1N08H0008	495
081307	02056	06090205A1N00H0000	496
081307	03056	06090205A1N00H0000	497
081307	05056	06090205A1N00H0000	498
081308	01056	06090205A1N08H0008	499
081308	02056	06090205A1N08H0008	500
081308	04055	06090208A1N00H0008	501
081308	05055	06090208A1N00H0000	502
081308	05056	06090205A1N08H0008	503
081309	01055	06090208A1N08H0008	504
081309	02053	06090208A1N12H0012	505
081309	02055	06090208A1N08H0008	506
081309	03053	06090208A1N12H0012	507
081309	03055	06090208A1N08H0008	508
081309	04053	06090208A1N12H0012	509
081309	04055	06090208A1N08H0008	510
101501	04042	06090809A1N08L0008	511
101501	05042	06090809A1N08L0008	512
101502	01042	06090809A1N08H0008	513
101502	04042	06090809A1N08H0008	514
101502	05042	06090809A1N08H0008	515
101505	01045	06091709C2N00H0000	516
101505	02045	06091709C2N00H0000	517
101505	03045	06091709C2N00H0000	518
101505	04045	06091709C2N00H0000	519
101506	01103	06092908A1N00H0000	520
101506	02103	06092908A1N00H0000	521
101506	02042	06090809A1N08H0008	522
101506	03103	06092908A1N00H0000	523
101506	03042	06090809A1N08H0008	524
101506	04103	06092908A1N00H0000	525
101506	05042	06090809A1N08H0008	526
101506	05103	06092908A1N00H0000	527
101506	06042	06090809A1N08H0008	528
101506	06103	06092908A1N00H0000	529
101506	07042	06090809A1N08H0008	530
101506	07103	06092908A1N00H0000	531
101508	05041	06090809A1N08H0008	532
101509	01044	06091709C1N08H0008	533
101509	02044	06091709C1N08H0008	534
101509	03044	06091709C1N08H0008	535
101509	04044	06091709C1N08H0008	536
101510	01043	06092208C1N08H0008	537
101510	02043	06092208C1N00H0008	538
101510	03043	06092208A1N08H0008	539
101510	04043	06092208A1N08A0008	540
101510	05043	06092208C1N00H0000	541
101601	02015	06090903A1Y12H1013	542
101601	03015	06090903A1N12H1013	543
101601	04015	06090903A1N12L0012	544
101601	05015	06090903A1N12L0012	545
101601	06015	06090903A1N12H0012	546

101603	01018	06090402B2Y08H0008	547
101603	02018	06090402B2Y08H0008	548
101603	03018	06090402B2Y08H0008	549
101606	01017	06091703C1Y12H0012	550
101606	02017	06091703C1Y12H0012	551
101606	02099	06092202A1N12H0012	552
101606	03017	06091703C1Y12H0012	553
101606	04099	06092202A1N12H0012	554
101606	04017	06091703C1Y12L1013	555
101606	05099	06092202A1N12H0012	556
101606	05017	06091703A1Y12H0012	557
101606	06017	06091703A1Y12H0012	558
101606	07017	06091703A1Y12L1013	559
101607	01017	06091703A1N00H0000	560
101607	02017	06091703A1N00H0000	561
101607	03017	06091703A1N08H0008	562
101607	04017	06091703A1N08H0008	563
101607	05017	06091703A1N08H0210	564
101608	05020	06090805A1N12H0012	565
101609	01014	06090908C1N12H0012	566
101609	02014	06090908C1N04H0206	567
101609	03014	06090908C1N08H0210	568
101609	04014	06090908C1N12H0012	569
101610	01019	06091005A1N12H0012	570
101610	02019	06091005C1N12H0012	571
101610	03019	06091005C1N00H0000	572
101610	04019	06091005C1N12H0012	573
101610	05019	06091005C1N12H0012	574
101702	01108	06092909A1N08L1009	575
101702	02108	06092909A1N08L1009	576
101702	03108	06092909A1N08L1009	577
101702	04108	06092909A1N08L1009	578
101702	05108	06092909A1N08L1009	579
101702	06108	06092909A1N08L1009	580
101708	02108	06092909A1N08H0008	581
101708	03108	06092909A1N08H0008	582
101708	04108	06092909A1N08H0008	583
101708	05108	06092909A1N08H0008	584
101801	04025	06091703C1N12H0012	585
101801	05025	06091703C1N12H0012	586
101801	06025	06091703C1N12H0012	587
101802	04025	06091703A1N12H0012	588
101802	05025	06091703A1N12H0012	589
101802	06025	06091703A1N12H0012	590
101803	01029	06091105A1N08H0000	591
101803	02029	06091105A1N08H0000	592
101803	03029	06091105A1N00H0000	593
101805	01028	06091509A1N08H0008	594
101805	04028	06091509A1N08H0008	595
101806	01027	06092203A1N00H0000	596
101806	02027	06092203A1N00H0000	597
101806	03027	06092203A1N00H0000	598

101806	04027	06092203A1N00H0000	599
101806	05027	06092203A1N00H0000	600
101806	06027	06092203A1N00H0000	601
101806	07027	06092203A1N00H0000	602
101807	02029	06091105A1N00H0000	603
101807	03029	06091105A1N00H0000	604
101807	04029	06091105A1N00H0000	605
101807	05029	06091105A1N00H0000	606
101808	01024	06091703A1N12H0012	607
101808	02024	06091703A1N12L0012	608
101808	05024	06091703A1N12H0012	609
101901	01031	06091808A1N00H0000	610
101901	02031	06091808A1N00H0000	611
101901	03031	06091808A1Y00H0000	612
101901	04031	06091808A1N00H0000	613
101901	05031	06091808A1Y00H0000	614
101901	06031	06091808A1N00H0000	615
101905	01031	06091808A1Y00H0000	616
101905	04031	06091808A1N00H0000	617
101907	01030	06091608A1N08H0008	618
101907	02030	06091608A1N12H0012	619
101907	04030	06091608A1N08H0008	620
101907	05030	06091608A1N12H0012	621
101908	02030	06091708A1N12H0012	622
101908	03030	06091708A1N08H0008	623
101908	04030	06091708A1N00H0000	624
101909	01032	06091608C1N12H0012	625
101909	02032	06091608C1N12H0012	626
101909	03032	06091608C1N12H0012	627
101909	04032	06091608C1N12H0012	628
102101	03040	06090403C1N12L0012	629
102101	04040	06090403C1N12L0012	630
102101	05040	06090403C1N12L0012	631
102101	06040	06090403C1N12L0012	632
102102	01038	06090409A1N08H0008	633
102102	06038	06090409A1N08H0008	634
102105	01038	06090409A1Y08L1211	635
102106	05039	06090403A1N12L1215	636
102106	06039	06090403A1N12L1215	637
102106	07039	06090403A1N12L1215	638
102107	01039	06090403A1Y12H0012	639
102107	02039	06090403A1Y12H0012	640
102107	03039	06090403A1Y12H0012	641
102107	04039	06090403A1Y12H0012	642
102107	05039	06090403A1Y12H0012	643
102108	01040	06090403A1N12L0012	644
102108	05040	06090403A1N12L0012	645
102109	02038	06090509C1N12H0012	646
102109	03038	06090509C1N12H0012	647
102201	01001	06090309A2N08H0008	648
102201	01002	06090409B2N08H0008	649
102201	02001	06090309A2Y00H0000	650

102201	03002	06090409B2N08H0008	651
102201	03001	06090309A2Y00L1203	652
102201	04002	06090409B2N08H0008	653
102201	04001	06090309B2N08H1211	654
102201	05002	06090409B2N08H0008	655
102201	05001	06090309B2N08H0008	656
102201	06002	06090409B2N08H0008	657
102201	06001	06090309B2N08H0008	658
102202	01002	06090409B2N08H0008	659
102202	01006	06090903B2N08H0008	660
102202	02001	06090509B2N08H0008	661
102202	02002	06090409B2N08H0008	662
102202	02006	06090903B2N08H0008	663
102202	03001	06090509B2N08H0008	664
102202	03002	06090409B2N08H0008	665
102202	03006	06090903B2N08H0008	666
102202	04001	06090509B2N08H0008	667
102202	04002	06090409B2N08H0008	668
102202	04006	06090903B2N08H0008	669
102202	05001	06090509B2N08H0008	670
102202	05006	06090903B2N08H0008	671
102202	05002	06090409B2N08H0008	672
102202	06006	06090903B2N08H0008	673
102202	06002	06090409B2N08H0008	674
102203	01004	06090909B2N08H0008	675
102203	01009	06091803C2N00L0000	676
102203	01003	06091209B2N08H0008	677
102203	01012	06092408B2N04H0004	678
102203	01008	06091105B2N12H0012	679
102203	03009	06091803C2N00H0000	680
102203	03013	06091808C2N08H0008	681
102204	01011	06091105A1N12H0012	682
102204	02011	06091105A1N00H0000	683
102204	03011	06091105A1N12H0012	684
102204	04011	06091105C1N12H0012	685
102205	01001	06090309B2Y08H0008	686
102205	01006	06090905B2N08H0008	687
102205	02001	06090309B2Y08H0008	688
102205	02006	06090905B2N08H0008	689
102205	03006	06090905B2N08H0008	690
102205	04001	06090309B2Y08H0008	691
102205	04006	06090905B2N08H0008	692
102206	01098	06092408A1N08H0000	693
102206	02097	06092202C2Y08H0210	694
102206	02098	06092408B1Y00H0000	695
102206	03097	06092202C2Y03H0210	696
102206	03098	06092408A1N08H0008	697
102206	04098	06092408A1N08H0008	698
102206	05098	06092408A1Y08H0008	699
102206	06098	06092408A1N08H0008	700
102207	01013	06091608B2N00A0000	701
102207	01097	06092202C2N08H0008	702

102207	01005	06091509B2N00H0000	703
102207	01098	06092408B1N08H0008	704
102207	01012	06092408B2N12H0012	705
102207	01009	06091803C2N00H0000	706
102207	02098	06092408B1N08H0008	707
102207	02013	06091608B2N00H0000	708
102207	02005	06091509B2N00H0000	709
102207	02012	06092408B2N08H0008	710
102207	03098	06092408B1N08H0008	711
102207	03005	06091509B2N00H0000	712
102207	03013	06091608B2N08H0008	713
102207	03012	06092408B2N08H0008	714
102207	04097	06092202C2N08H0008	715
102207	04009	06091803C2N00H0000	716
102207	04098	06092408B1N08H0008	717
102207	04013	06091608B2N08H0008	718
102207	04005	06091509B2N00H0000	719
102207	04012	06092408B2N08H0008	720
102207	05009	06091803C2N00H0000	721
102207	05013	06091608B2N08H0008	722
102207	05005	06091509B2N00H0000	723
102207	05012	06092408B2N12H0012	724
102208	01010	06091209B2N08L0008	725
102208	02010	06091209B2N08L0008	726
102208	03010	06091209B2Y00H0000	727
102208	04010	06091209B2N00H0000	728
102208	05010	06091209B2N00H0000	729
102209	01007	06090402B2Y12H0214	730
102209	02007	06090402B2Y12H0214	731
102209	03007	06090402B2Y12H0214	732
102209	04007	06090402B2Y12H0214	733
102306	01023	06091103C2N08H0008	734
102306	02023	06091103C2N08H0008	735
102306	03023	06091103C2N08H0008	736
102306	04023	06091103C2N08H0008	737
102306	05023	06091103A1N08L0008	738
102306	06023	06091103A1N08L0009	739
102306	07023	06091103A2N08L1009	740
102307	02021	06091005A1N12H0012	741
102307	05021	06091005A1N12H0012	742
102310	01023	06091003A1N00L1203	743
102310	02023	06091003C1N00H0000	744
102310	03023	06091003C1N00L0000	745
102310	04023	06091003C1N00H0000	746
102310	05023	06091003C1N00H0000	747
112401	01058	06090405C1N12H0012	748
112401	02058	06090405C1N12H0012	749
112401	03058	06090405C1Y12H0012	750
112401	04058	06090405C1N12H0012	751
112401	05058	06090405C1N12H0012	752
112401	06058	06090405C1N00H0000	753
112402	01058	06090405C1N00H0000	754

112402	02058	06090405C1N12H0012	755
112402	03058	06090405C1Y12H0012	756
112402	04058	06090405C1N12H0012	757
112402	05058	06090405C1N08H0008	758
112402	06058	06090405C1N12H0012	759
112403	02057	06091005A1N08H0008	760
112403	03057	06091005A1N08H0008	761
112404	05057	06091005A1N08H0008	762
112405	01058	06090405C1N12H0012	763
112405	02058	06090405C1N12H0012	764
112405	04058	06090405C3N12H0012	765
112406	01058	06090405C1N00H0000	766
112406	02059	06090805C1N00H0000	767
112406	02058	06090405C1N00H0000	768
112406	03059	06090805C1N00H0000	769
112406	03058	06090405C1N00H0000	770
112406	04059	06090805A1N08H0008	771
112406	04058	06090405C1N00H0000	772
112406	05059	06090805A1N08H0008	773
112406	05058	06090405A1N08H0008	774
112406	06058	06090405C1N00H0000	775
112406	07059	06090805A1N08H0008	776
112406	07058	06090405C1N00H0000	777
112407	02057	06091005A1N08H0008	778
112407	03057	06091005A1N08H0008	779
112407	04057	06091005A1N08H0008	780
112407	05057	06091005A1N08H0008	781
112408	01057	06091105A1N08H0008	782
112408	02057	06091105A1Y08H0008	783
112408	03057	06091105A1N12H0012	784
112408	04057	06091105A1N12H0012	785
112408	05057	06091105A1N12H0012	786
112409	01057	06091105A1N08H0008	787
112409	03057	06091105A1Y08H0008	788
112409	04057	06091105A1N08H0008	789
112410	03058	06090405C1N00H0000	790
122703	01060	06090503A1N08H0008	791
122703	02060	06090503A1N08H0008	792
122703	03060	06090503A1N08H0008	793
122706	01060	06090503C1N08H0008	794
122706	02060	06090503C1N08H0008	795
122706	03060	06090503C1N08H0008	796
122706	04060	06090503C1N08H0008	797
122706	05060	06090503A1N08H0008	798
122706	06060	06090503A1N08H0008	799
122706	07060	06090503A1N08H0008	800
122707	01060	06090503A1Y08H0008	801
122707	02060	06090503A1Y08H0008	802
122707	03060	06090503A1Y08H0008	803
122707	04060	06090503A1Y08H0008	804
122707	05060	06090503A1Y08H0008	805
122708	01060	06090503A1N08H0008	806

122708	02060	06090503A1N08H0008	807
122708	05060	06090503A1N08H0008	808
122709	01060	06090503C1Y08H0008	809
122709	02060	06090503C1Y08H0008	810
122709	03060	06090503C1Y08H0008	811
122709	04060	06090503C1Y08H0008	812
091403	01046	06082909C3N00H0000	813
091403	02046	06082909C3N00H0000	814
091403	03046	06082909C3N00H0000	815
091404	01051	06090909C3N00H0000	816
091404	02051	06090909C3N00H0000	817
091404	03046	06082909C1N08H0000	818
091404	05051	06090909C3N00L0000	819
091404	05046	06082909A1N04L1005	820
091405	01047	06090509C1N08H0008	821
091405	01049	06090502C3Y12H0012	822
091405	02047	06090509C1N12H0012	823
091405	02049	06090502C3Y12H0012	824
091405	03047	06090509C1N12H0012	825
091406	02048	06090502C2Y00H0000	826
091406	04048	06090502C2Y00H0000	827
091406	06048	06090502C2Y00H0000	828
091406	07048	06090502C2Y00H0000	829
091407	01048	06091002A1N00H0000	830
091407	02048	06091002A1N00H0000	831
091407	03048	06091002A1N00H0000	832
091407	04048	06091002A1N00H0000	833
091408	01048	06090502A1Y04H0206	834
091408	02052	06091009C3N00L0000	835
091408	03052	06091009C3N00L0000	836
091408	04048	06090502A1Y04H0206	837
091408	04052	06091009C3N00L0000	838
091408	05052	06091009C3N00L0000	839
091410	01050	06090309C1N04H0004	840
091410	03050	06090309C1N08L0008	841
102003	01034	06091803A1N00H0000	842
102003	02034	06091803A1N00H0000	843
102003	03034	06091803C1N00L0000	844
102006	01035	06090908C1N00H0000	845
102006	01096	06092209A1N08H0008	846
102006	02096	06092209A2N08H0008	847
102006	02035	06090908C1N00H0000	848
102006	03096	06092209A1N08H0008	849
102006	03035	06090908C1N00H0000	850
102006	04035	06090908C1N00H0000	851
102006	04096	06092209A1N08H0008	852
102006	05096	06092209A1N08H0008	853
102006	06096	06092209A1N08H0008	854
102007	02036	06090509A1N08H0008	855
102007	03036	06090509A1N08H0008	856
102007	04096	06092209A1N00H0000	857
102007	05096	06092209A1N00H0000	858

102008	05036	06090509A1N08H0008	859
102010	01102	06092909C1N00H0202	860
102010	02102	06092909C1N00H0202	861
102010	03102	06092909C1N00H0202	862
102010	04102	06092909C1N00H0202	863
102010	05102	06092909C1N00H0202	864
091408	06091	06090909C3N00L0000	865
0610119803087	05082902B2N08H0008	866	
1124119905059	05090805C1N00H0000	867	
101709	01108	05092909A1N08L1211	868
101709	02108	05092909A1N08L1211	869
101709	03108	05092909A1N08L1211	870
101709	04108	05092909A1N08L1211	871
101706	01108	05092909A1N08L1009	872
101706	02108	05092909A1N08L1009	873
101706	03108	05092909A1N08L1009	874
101706	04108	05092909A1N08L1009	875
101706	05108	05092909A1N08L1009	876
101706	06108	05092909A1N08L1009	877
102203	01013	06091808B2N00H0000	878
102203	02004	06090909B2N08H0008	879
102203	02005	06091509B2N08H0000	880
102203	02008	06091105B2N12H0012	881
102203	02012	06092408B2N04H0004	882
102203	02009	06091803C2N00H0000	883
102203	02013	06091808B2N00H0000	884
102203	03005	06091509B2N08H0000	885
102203	03008	06091105C2N00H0000	886
102203	03012	06092408C2N04H0004	887
030606	03106	06090902C2Y08H0008	888

END